

# **Breeders Choice**

# **Alpaca Auction**

**Saturday 17th July 2021**

**12 Noon**

**Online @ [www.auctionsplus.com.au](http://www.auctionsplus.com.au)**

***National Alpaca Sale***

***Stud & Commercial***

***Genetics Plus***

***9th Annual BCAA***



**Online Auction @ AuctionsPlus**

**Contact Agent: Nutrien Livestock**

**Wilson Beer: 0428 505 520**

## Information for Buyers

**AUCTION START:** Saturday 17th July, 2021. Auction –12.00 (noon)

**INSPECTIONS:** By Arrangements with Vendors Prior to Auction or on Sale Day. See Vendors Facebook, Web sites etc. for Open Days. Some Vendors may have selected lots at 'Christmas Carnival Of Colour' Show 10th & 11th July @ Goulburn Showground.

**REGISTRATION:** All prospective buyers must register with Auctions Plus by Thursday 15th July. Terms as per Nutrien / AuctionsPlus. Ph: 02 9262 4222. [www.auctionsplus.com.au](http://www.auctionsplus.com.au)

**DELIVERY:** Alpacas may remain up to 4 weeks free of charge at Vendors property, or by arrangement.

**TRANSPORT:** Buyers should make their own transport arrangements prior to the auction.

**INSURANCE:** Buyers please arrange own insurance contract prior to sale day.

**HEALTH:** As Per Vendors. Refer to Page 6 & 7.

**AAA TRANSFERS:** All animal transfers with the AAA will be at the purchasers cost.

**STATE HEALTH PROTOCOL:** Buyers, please ensure that you are aware of the necessary State Health Protocol required at the destination of your purchase.

**OPENING BIDS:** Minimum opening bid applies: Single Lots—\$500.00; Females with Female Cria at Foot—\$1,000.00; Females with Male Cria at Foot—\$800.00. Reserved Lots—Opening bid will vary.

**TERMS & CONDITIONS:** All stock is offered under standard terms and conditions. These are available from the Agent, Nutrien. GST will be charged on top of bid price i.e. \$1500 + \$150 GST = \$1,650.00

**TERMS OF PAYMENT:** Terms of payment are EFT at time of purchase on Invoice. In accordance with the conditions of sale. For further information contact Nutrien : Wilson Beer 0428 505 520.

**BUYING ORDERS, TELEPHONE BIDDING:** Buyers orders can be placed with Nutrien prior to Auction day. Telephone Bidding, available for both national and international. **Buying Orders will be handled By Wilson Beer 0428 505 520.**

**CATALOGUES:** All details in this catalogue are provided by the Vendors and whilst all care has been taken in their preparation Nutrien Livestock & Hunter Alpacas accept no responsibility for errors or mis-descriptions herein. Catalogues are available from Nutrien, or online Nutrien & AuctionsPlus.

**VENDORS:** Details on Page 6 & 7 .

**Wilson Beer: 0428 505 520 E: [wilsonbeer@bigpond.com](mailto:wilsonbeer@bigpond.com)**

**Ray Attwell: 0428 836 136**



# Breeders Choice Alpaca Auction

*Since 2013*

**Welcome** to the 9th annual **Breeders Choice Alpaca Auction**— an annual event not to be missed on the Australian Alpaca Calendar. This year our Alpaca Vendors decided, after the very successful online auction of 2020, to once again hold an online auction. Covid altered our lives and brought about many changes, not all bad, so lets proceed with the 2nd BCAA **“online auction”!**

Access the most unique array of animals from the comfort & convenience of your own home. As a buyer you have access to a diversified range of Alpacas all in one convenient location like never before!

Think of the variety in genetics, the range of fleeces & styles, and the different coloured selections which will make complementary additions to your herd. Perfect options for the new breeder or experienced breeder. There is something for everyone on offer at this auction.

**We welcome Vendors from WA, SA, Vic, NSW & UK at this National—International Event.**

**24 Breeders have especially selected for auction, a total of 74 Lots.  
Huacaya and Suri genetics are offered for sale.**

These Breeders, all active participants in the Australian Alpaca Industry, represent a community of people who are passionate about what they do and wish to share this passion and support others in the industry, new or old breeders. **BCAA offers everyone an ideal opportunity to purchase sought after genetics at reasonable prices.** Make sure you don't miss an important opportunity such as this!

Vendors have presented for your consideration **unreserved lots and other lots with very sensible reserves.** You will find everything from diversified genetics with quality fleece production, White to Black and some with spots, beautiful temperaments, stud sires & potential stud sires, 3-in-1 packages, established breeding females and everything in between.

**Join the vendors & breeders on sale day, online.**

**All lots are open for bidding simultaneously or pre-bid.**

**Pre-inspect the alpacas (see note on Page 4 & 36) prior to auction day. Contact Vendors and inspect alpacas on farm or at an event, meet someone new, chat with old friends, learn something new and make some exciting alpaca purchases.**

**Strengthen & Reinforce your Breeding. Select & Expand your Bloodlines .**

**“Be assured these alpacas are presented to sell at this auction.”**

## Online Auction

**Register with AuctionsPlus:** Buyers must complete Full Registration in order to bid/buy.

**Auction Site / Location:** Your own home, office, lounge room. Or wherever you may be at auction time. **12 noon, Saturday 17th July 2021.**

**Alpaca Inspections:** Vendors Farms, live video chat with vendors, facetime etc. Discuss your options with vendors. Christmas Carnival of Colour: 10th & 11th July @ Goulburn. Page 36

**Photos:** Extra and larger photos posted online at Auctions Plus. Vendors Web Sites & Facebook Pages. There will extra photos to include teeth / legs etc.

**Videos:** AuctionsPlus, Facebook. Ask a vendor direct for what you require—facetime an alpaca.

**Fleece Samples:** Request vendors to post samples.

**Farm Visits:** Inspect Alpacas yourself or ask a friend.

**Contact Vendors & Ask Questions:** See Vendor details page 6 & 7

**Delivery of Alpacas:** All vendors will allow alpacas to remain on farm up to 4 weeks free. If you require additional agistment or additional time for collection, please contact vendors as they are very open to making suitable arrangements.



# AuctionsPlus

*Buy and Sell stock nationally*

## On-Line via AuctionsPlus — Bid! Bid! Bid!

1. Online—Day of Auction Sat. 17th July or Pre Bid
2. Phone Bidding or Buying Order – Arranged with Wilson by Thursday 15th July
3. On-Line via AuctionsPlus — Must Pre-Register by Thursday 15th July

### To Pre Register with AuctionsPlus -

1. Go to [www.auctionsplus.com.au](http://www.auctionsplus.com.au) and signup. Complete Full Registration
2. Enter your info and confirm your email address
3. NOTE: You need to have FULL approval to Buy/Sell (Approval may take 24-48 hours). Contact: 02 9262 4222 for further information & assistance

**Nutrien Livestock, Agent :** Wilson Beer 0428 505 520 e: [wilsonbeer@bigpond.com](mailto:wilsonbeer@bigpond.com)

<https://auctionsplus.com.au/auctions/other/breeders-choice-alpaca-auction/55924>

# EP Cambridge Alpaca Stud

est. 1993

Take advantage of 28 years of Passion with our  
Predictable, Proven Pedigrees.

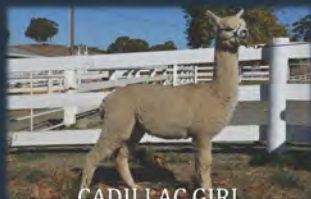
This year's BCAA selections from EP Cambridge offer the  
opportunity to secure elite genetic across the spectrum.



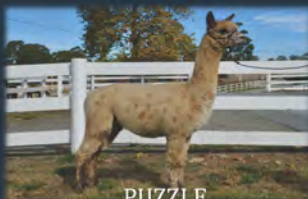
GAL ABOUT TOWN



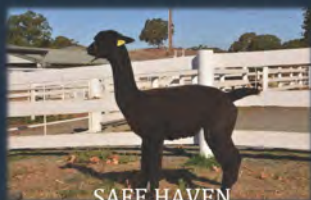
SMOKY MARGARITA



CADILLAC GIRL



PUZZLE



SAFE HAVEN



ROYAL FIRE



LUMINESCENCE



GIGOLO



HUNTSMAN

OAKBANK, South Australia  
0417828753 or 0429818595  
lawrence@alpacastud.com.au  
epcambridge@btconnect.com  
matthew.lloyd@btconnect.com



**Aigean Ridge** (Non-Assessed)

1 Reardon Place, Bungendore NSW  
Pic: ND084512

**Ashbourne Alpacas**

PO Box 503, Woodend. VIC 3442  
826 Ashbourne Rd, Woodend VIC 3442  
Pic: 3MRHS238

**Auravale Alpacas** (Q 14/0434)

1557 Wellington Rd, Narre Warren North VIC 3804  
1557 Wellington Rd, Belgrave South VIC 3160  
Pic: 3YRVP180

**Baarrooka Alpacas** (Q—06/406)

172 Coach Rd, Strathbogie VIC 3666  
Pic: 3SBTL046

**Booyong Alpacas** (Non-Assessed)

2217 Windellama Rd, Quialigo NSW 2580  
Pic: NG 272 8334

**Coolawarra / Storybook** (Non-Assessed)

PO Box 701, Picton NSW 2571  
471 Woodlands Rd, Mittagong NSW 2575  
Pic: NJ460240

**Eaglewood Alpacas** (Non-Assessed)

156 Isabel Dr, Murrumbateman. NSW 2582  
Pic: NG622849

**EP Cambridge Alpaca Stud** (MN3-S46)

PO Box 261, Balhannah SA 5242  
173 Martins Rd, Oakbank SA 5243  
Pic: SB420752

**EP Cambridge Alpaca Stud / Blackberry** (MN3-S46)

**Fern Tree Alpacas** (Non-Assessed)

PO Box 183, Ourimbah NSW  
15 Fern Tree Lane, Palmdale NSW  
Pic: NC350241

**Golfleaf Alpacas** (WA. JD Free)

PO Box 5230 , Albany.WA 6332  
Corio Rd, Torbay WA  
Pic: WAAY2355

**Green Gully** (Q—05/0002)

89 Brechts Lane, Kentucky South NSW  
Pic: NA 023079

**Jenni Smith**

Mob: 0437 257 222  
E: jenni@avantia.com.au  
www.aigeanridge.com.au

**Darren & Rebecca Hard**

P: 03 5427 2215 / Mob: 0438 756 231  
E: rebecca@ashbournealpacas.com.au  
www.ashbournealpacas.com.au

**Lynda & Nic Holdsworth**

Mob: 0419 334 276  
E: queries@auravalealpacas.com.au  
www.auravalealpacas.com.au

**Julie Wilkinson**

Mob: 0407 889 669  
E: jwilkinson@baarrooka.com.au  
www.baarrooka.com.au

**Keith Whitfield**

P: 02 4844 7267 / Mob: 0408 278 763  
E: booyongalpacas@optusnet.com.au

**Mick Williams & Rubey Williams**

Mob: 0407 407 618  
E: storybookalpacas@gmail.com  
www.storybookalpacas.com.au

**Robert Harborne**

Mob: 0417 998 897  
E: info@eaglewood.com.au

**Matthew & Catherine Lloyd /Lawrence**

P: 08 8389 7199 Mob: 0417 828 753  
E: lawrence@alpacastud.com.au  
www.epcambridgealpacas.com

Contact: EP Cambridge

**Susan Tiley**

Mob: 0417 462 827  
E: ferntreealpacas@gmail.com

**Brett Fallon**

Mob: 0408 403 910  
E: info@goldleafalpacas.com.au

**Noel & Cathy Reid**

Mob: 0415 459 067 / 0414 663 541  
E: cathyreid@bigpond.com  
www.greengullyalpacas.com

**Helmshore Manor Alpacas** (Non-Assessed)  
100 Felled Timber Rd, Porters Retreat NSW 2787  
Pic: NF046427

**Jandarra** (Q—06/0202)  
142 Woodlands Ln, Bald Hills NSW 2549  
Pic:NI232406

**Lillyfield Alpacas** (Q—01/2005)  
PO Bos 2051, Bowning NSW 2582  
69 Graces Flat Road, Bowning NSW 2582  
Pic: NH622680

**Malakai** (Non—Assesses)  
17 Miners Rd, Miners Rest Vic 3352  
Pic: 3BTFH095

**Malakaishbourne** (Non—Assesses)

**Mapa Alpacas** (Q—20/0559)  
2764 Yass River Rd, Yass River. NSW.2582  
Pic: NC623764

**Marchmont Park** (Non-Assessed)  
PO Box 275, Yass NSW 2582  
11366 Wee Jasper Rd, Yass NSW 2582  
Pic: NG622726

**Patagonia Alpacas** (Non-Assessed)  
166 Diamond Swamp Rd, Meadow Flat NSW 2795  
Pic:

**Signature Alpacas** (Non-Assessed)  
'Carlowrie' 2044 Grassmere Rd, Condobolin NSW 2877  
Pic: NC142194  
E: signaturealpacas@esat.net.au

**Walkley Fields Alpacas** (Q—05/0068)  
43 Tierney Rd, Kurmond NSW 2757  
Pic: NH041165

**Windella** (WA JD Free)  
PO Box 5230, Albany WA 6332  
161 Corio Rd, Torbay WA  
Pic: WAAY2355

**Yaringa Alpacas Pty Ltd** (Q-15/0449)  
PO Box 60, Yankalilla SA 5204  
"Coomooloo"91 Coomooloo Rd, Bald Hills SA  
Pic: SB472018

**Brian & Jill Ross**  
Ph: 02 6335 5241 Mob: 0419 123 576  
E: info@helmshoremanor.com.au  
www.helmshoremanor.com.au

**Robert Crewe**  
Mob: 0428 598 324  
E: jandarra1@optusnet.com.au  
www.jandarraalpacas.com

**Carolyn Austin**  
Ph: 02 6227 6224 Mob: 0410 693 802  
E: lillyfield@bigpond.com  
www.lillyfield.com.au

**Shane Carey**  
Mob: 0409 270 381  
E: Malakai@vic.chariot.net.au  
E: www.malakai.com.au

**Shane Carey** (as above—Malakai)

**Paul Maslen & Malcom Gray**  
Mob: 0417 862 096  
E: paul@maslensbookkeeping.com.au

**Ann & Barry Ranyard**  
Ph: 02 6226 2062 Mob: 0428 296 191  
E: menagerie2@bigpond.com  
www.marchmontpark.com.au

**Ian Braithwaite & Cathi McMullen**  
Mob: 0418 608 447 Mob: 0407 338 823  
E: info@patagoniaalpacas.com.au  
www.patagoniaalpacas.com.au

**Debra O'Neill**  
Ph: 02 6895 7665 Mob: 0447 957 665  
E: Debra14562@gmail.com  
www.signaturealpacas.com.au

**Richard Brennan**  
Ph: 02 4573 0732 Mob: 0400 477 091  
E:richardjbrennan@gmail.com  
www.walkleyfieldsalpacas.com.au

**Carolyn Emery /Brett Fallon**  
Mob: 0408 403 910  
E: info@goldleafalpacas.com.au

**Susan Haese**  
Mob: 0418 846 271  
E: susan@yaringaalpacas.com.au  
www.yaringaalpacas.com.au

### Lot 1. Signature Poise

Solid White Female

IAR: 219192    DOB: 1.04.18



Signature – Reserved

Purrumbete D'Artagnan                      Signature Quedos  
 Sire: Signature Hidalgo                      Dam: Signature Last Dance  
          Meadowbank Fanfare II                      Forestglen Hilary

Mated: Hunter Classic Caesar 11.04.21—15.5.21  
 Fleece: 3<sup>rd</sup> fleece—M 21.3, SD 4.2, CV 19.6, CF 97.6

This young female is holding her micron well in highly aligned and defined pencilling bundles across her body. The influence of stable low micron fleeces comes from her dam with both Allin Capac and Prince John and the very stable low micron fleeces from her sire. This joining should produce and exciting result for the lucky purchaser.

### Lot 2. Signature Pontoise

Solid White Female

IAR: 219202    DOB: 30.5.18



Signature – Reserved

Cedar House Tijera Hugo                      Coricancha Cotopaxi  
 Sire: Cedar House Cooper                      Dam: Signature Guipure  
          Cedar House Timepiece                      Molonglo Zuleika

Mated: Hunter Classic Caesar 11.04.21—15.5.21  
 Fleece: 3<sup>rd</sup> fleece—M 17.9, SD 4.2, CV 21.4, CF 98.3

With the influence of Ruffo and 2 x Highlander in her background this young female is packed with potential with her beautifully aligned fleece. Add to that the influence of Hugo and you have a powerhouse of genetics on a correct medium frame with lots of capacity to carry what should be a stunning cria.

### Lot 3. Signature Mimic

Solid Light Fawn Female

IAR: 219169    DOB: 30.7.16



Signature – Reserved

Winterbrook Prince John                      Cedar House Lucifer  
 Sire: Signature Quedos                      Dam: Forestglen Dame Nellie  
          Forestglen Querida                      Biddleston Alisha

Mated: Hunter Classic Caesar 11.04.21—15.5.21  
 Fleece: 4th fleece 2019—M 22.9, SD 4.3, CV 18.6, CF 94.4  
          5th fleece 2020—M 24.2, SD 5.2, CV 21.5, CF 87.6

A nice smaller framed female out of a Prince John son who has held his micron and length and out of a very reliable breeder of good quality stock. She has good coverage and well aligned fleece which is also comes through from her dams side. This mating will be an exciting prospect for the purchaser.



Lot 4. Signature Pure Chemistry

Solid White Male

IAR: 219205 DOB: 31.5.18



Sire: Shanbrook Plantel Haynacho  
 Forestglen Maestro  
 Signature Pure Evolution  
 Dam: Signature Pagan Queen  
 Shanbrooke Accoyo Pride  
 Forestglen Salome

Fleece: 1st fleece—M 15.2, SD 4.4, CV 29, CF 100%  
 2nd fleece—M 18.5, SD 4.0, CV 21.6, CF 99.4%  
 3rd fleece—M 22.9, SD 5.2, CV 22.5, CF 92.1%

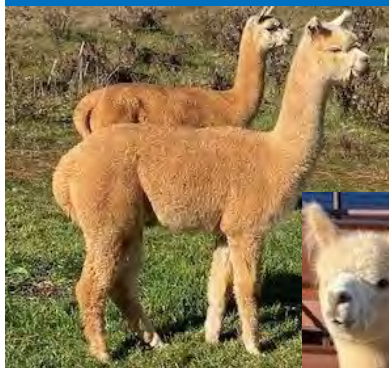
This is a conformationally correct young male with some of the best genetics in the industry in his background. This has produced a super dense, highly aligned uniform fleece. He has been on high protein (23%) feed during the drought which has pushed up his fleece stats and I am expecting the next fleece to fall back into range. Certification guaranteed.

Signature – Reserved

Lot 5. Helmshore Manor Passionate

Light Fawn Female

IAR: 245837 DOB: 25.11.19



Sire: Jolimont Caesar  
 Patagonia Celtic Triumph  
 Hunter Classic Caesar  
 Dam: Helmshore M CT Passion  
 Jolimont Valli  
 Helmshore Manor Pixie

Mated: Hunter Excalibur SW PM 29.3.21 - 11.5.21  
 Fleece: Nov 20 – M 17.6, SD 3.4, CV 19.4%, CF 99.7, CRV 60.0

**Very impressive female displaying a stunning ultrafine, uniform soft dense stylish fleece.** Passionate is a serious fibre producer who has inherited the abundance of fibre traits from both sire and dam. With a background of Supreme Show Champions, Passionate is a chance for the astute breeder to gain this elite asset for their breeding program.

Helmshore Manor – Reserved

Lot 6. Helmshore M. Celtic Maryse

Fawn Female

IAR: 182143 DOB: 2.12.14



Sire: PTG Celtic Triumph  
 Acheron Safari  
 PTG CT Machiavelli  
 Dam: Helmshore Manor Mairead  
 Patagonia Mietta  
 Helmshore Manor Maeve

Mated: Hunter Excalibur SW PM 6.4.21 – 11.5.21  
 Fleece: Nov 20 – M 20.1, SD 3.8, CV 19.2%, CF 98.6, CRV 40.0

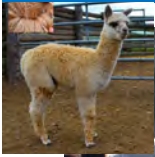
**One for the discerning breeder!** Celtic Maryse carries an abundance of highly productive, organised crimped fleece with coverage from head to toe on a strong solid frame. Coming from a strong line of show winners, Celtic Maryse still holds outstanding fleece statistics at 7 years of age. She is an excellent mother and easy birther.

Helmshore Manor – Reserved

Lot 7. Yaringa Beatrice & F/Cria

Solid White Female

IAR: 229482 DOB: 2.3.18



Yaringa—Reserved

Sire: [Faversham Larry](#) Dam: [Yaringa Faith ET](#)

Mated: [Selected Male of your choice from Yaringa Stable](#)

Fleece: 3rd fleece—M 20.5, SD 4.1, SL 105 CRV 45.3

Cria: [Belinda, Mid Fawn Female, by Yaringa Crown Prince \(DF\)](#)

Yaringa Beatrice, a fine upstanding three-year-old sired by Faversham Larry (RC Mature National Show 2016). Her exceptional female line should excite the astute buyer with highlights including Yaringa Hope ET (Supreme White Vic Colourbration), Yaringa Heritage ET (White: 30+ Broad Ribbons), Yaringa Integrity (Dark Fawn: 25+ Broad Ribbons) and Yaringa Nobility (Light Fawn: 10+ Broad Ribbons). An exciting opportunity for white or colour breeders.

Lot 8. Yaringa Delilah

Solid Med Brown Female

IAR: 240745 DOB: 6.12.20



Yaringa – Reserved

Sire: [Yaringa Black Watch](#)

Dam: [Yaringa Desiree ET](#)

Mated: [Weanling Female](#)

Fleece: [Untested](#)

**Delilah, an elite coloured female, is the result of two exceptional parents.** Earmarked for 2022 National show team prior to auction. Delilah has tremendous density from an ultra-fine, very well aligned silky soft staple extending pleasingly into the extremities, carried on a well-conformed frame allowing Delilah to command attention in the paddock. By, Y. Black Watch ET probably Australia's most awarded black male, & DF Y. Desiree ET who had a stellar show career of her own. **Exceptional future dam. Delilah unlikely to disappoint.**

Lot 9. Yaringa Princess Chetana

Solid Med Fawn Female

IAR: 229427 DOB: 30.12.17



Yaringa – Reserved

Sire: [Shanbrooke Simply The Best](#)

Dam: [Classic Yaringa Maharani](#)

Mated: [Yaringa Black Watch, LMD 30.3.21](#)

Fleece: M 20.9, SD 4.0, SL 85, CRV 44.2

Chetana is a product of a our very successful embryo transfer program. She is one of 5 Simply The Best embryo transfer progeny from the exceptional Maharani, now standing as an ET doner in Victoria. Her Colour Pedigree is closely related to our special male Yaringa Commander ET. While she missed out on mating last year, her ET twin produced a Dark Brown girl to Black Watch and we are hoping she will do the same in February 22.

**Lot 10. Yaringa Renegade****Solid Dark Brown Male**

IAR: 239200 DOB: 2.2.19

Sire: [Yaringa Commander ET](#) Dam: [Alpacaspecialist Norika](#)

Fleece: 2nd fleece—M 21.8, SD 5.1, SL 100, CRV 32.1

Renegade is a stocky upstanding male processing a very dense dark brown fleece with outstanding levels of brightness and style extending well into the brisket, down the legs and into the belly. Renegade combines two exceptional lineages. His sire Yaringa Commander ET excelled in the show ring and is now only surpassed by his cria. Norika, a superstar in her own right. Her lines have produced five certified males, all of which have been used at Yaringa, including Black Watch. Show Record 2019—1st National, Champion Junior Male Adelaide Royal.



Yaringa — Reserved

**Lot 11. Yaringa Radiance****Solid Dark Brown Female**

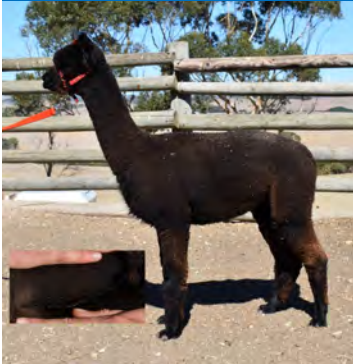
IAR: 240677 DOB: 21.1.20

Sire: [Yaringa Black Watch](#) Dam: [Yaringa Sensational](#)

Mated: Maiden

Fleece: 1st fleece—M 17.1, SD 4.3, SL 90, CRV 39.4

In 2019 show season, Commander ET and Black Watch progeny produced over 100 placings and in excess of 30 broad ribbons! Combining these lines are producing exceptional results. Yaringa Radiance is one of the first females from this combination to be released from the stud. Radiance is a very attractive young female with an ultra-fine fleece and her entire breeding life ahead of her. With your winning bid, we will include a mating to any sire of your choice (or ask our advice) from the Yaringa herd.



Yaringa — Reserved

**Lot 12. Auravale G. Abs. Rhythm****Solid White Male**

IAR: 248566 DOB: 3.5.20

[Snowmass Absolute Asset](#)[Patagonia Celtic Triumph](#)Sire: [Snowmass A. Temptation](#)Dam: [Patagonia Celtic Cadenza](#)[Snowmass I. Temptations](#)[Malakai All That Jazz](#)

Fleece: 1st Fleece 2020—M 16.4, SD 3.9, CV 23.6, CRV 33.6

2nd fleece 2021—M 17.0, SD 3.3, CV 19.4, CRV 49.3

Rhythm is a solid young male with an advanced fleece style. He has great softness, length and superior density. Deep bold crimp that extends well into extremities, with tightly packed bundles. To top it all off, he has genetics difficult to surpass. Sired by a top imported Snowmass stud male, Snowmass Absolut Temptation. Available for Inspection.



Auravale — Reserved

Lot 13. Aingeal Ridge Picasso

Rose Grey Certified Male

IAR: 189789 DOB: 17.8.19



Blue Grass Waterloo Sunset

Wyterra Propaganda

Sire: Vista Manolo

Dam: Softfoot Provocation

Timbertop Mila

Parnabrae Karma

Fleece: M 19.0, SD 4.5, CRV 48.1, SL 100.0

Packed with the leading grey genetics of Blue Grass Waterloo Sunset on both sides of his pedigree, Picasso represents exceptional value to grey breeders. He has an even light rose grey fleece that is fine, soft and dense as you would expect with his pedigree. Picasso couples his fleece characteristics with his beautiful frame, gentle nature and stunning head. Picasso has been shown once at the 2020 Canberra Royal where he won his junior class.

Aingeal Ridge – Reserved



AINGEAL RIDGE  
ALPACAS

WWW.AINGEALRIDGE.COM.AU  
INFO@AINGEALRIDGE.COM.AU  
0437257222

Lot 14. Aingeal Ridge Solitaire

Solid True Black Female

IAR: 189788 DOB: 1.4.19



Wyterra Propaganda

Coonawarra Dorchester

Sire: Softfoot Proprietor

Dam: Alpacaspecialist Solitude

Softfoot Gigi

Alpacaspecialist Reign Dance

Mated: Open

Fleece: M 21.5, SD 4.6, CRV 33.6, SL 100.0

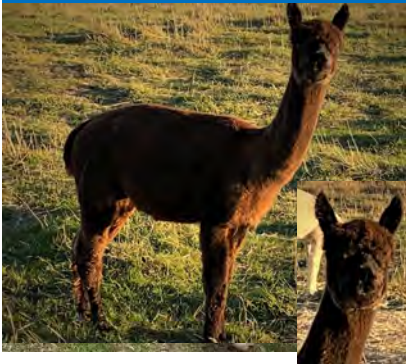
Solitaire is out of AS. Solitude, a champion in her own right, a "mother of champions". Several of Solitude's progeny have become the foundation animals of several specialist black breeders in Australia and New Zealand. Solitude's 2020 fleece is an amazing mic 22.3 SD 3.7 on her 14<sup>th</sup> fleece. Solitaire is living up to the standard of her siblings, being awarded 1st Junior H. Female - Black and Best Black at the 2020 Canberra Royal, her only show to date.

Aingeal Ridge – Reserved

Lot 15. Aingeal Ridge Pandora

Solid Dark Brown Female

IAR: 189784 DOB: 29.3.18



Jolimont Gianmarco

Wyterra Propaganda

Sire: Softfoot Maudib ET

Dam: Softfoot Provocation WP

Softfoot Pasha

Parnabrae Karma

Mated: Open

Fleece: M 19.9, SD 4.5, CRV 45.6, SL 100.0

**Exceptional Genetics, Exceptional Show Record.** Pandora has won every time she has entered the show ring, culminating in Champion Adult Female Canberra Royal 20. Show Results (2019 ) Canberra-1st Jun. Brown. National, Sydney Royal, Ledgers, Hawkesbury —1st Intermediate Brown. She carries a beautiful rich, soft handling, fine & dense fleece. Pandora will attract Serious Breeders.

Aingeal Ridge – Reserved

Lot 16. Booyong Pepe

Rose Grey Male

IAR: 250412 DOB: 16.2.20



Sire: Booyong Guido

Dam: Kallaroes Padme

Fleece: 1st Fleece—M 19.8, SD 4.7

Booyong Pepe is a luxuriously soft easy to handle male, with a strong genetic lineage of grey. His fibre is low micron and low SD. Pepe would be an asset to any coloured breeder.

Booyong—Reserved

Lot 17. Baarrooka Magic Eurydice

True Black Suri Female

IAR: 251940 DOB: 1.3.20



Sire: Baarrooka UB Magician ET Dam: Baarrooka Durango's Europa

Mated: Maiden

Fleece: Unshorn—Fleece Stats Pending

**This is the Best Black we have bred at Baarrooka!** And with multiple Best Black awards at National level, that is saying something. Defined lock, long staple length, head to toe coverage, excellent lustre and impressive density. With the pick of our US imports in her pedigree (including double Durango), and from our ET program, she is destined to produce exceptional progeny. **This is certainly the choice of our black breeding program.**

Baarrooka—Reserved

Lot 18. Baarrooka FA London

Light Brown Suri Female

IAR: 251890 DOB: 23.4.20



Sire: Baarrooka Durango's Foreign Affair

Dam: Baarrooka BLK20

Mated: Maiden

Fleece: Unshorn—Fleece Stats Pending (Micron Est. 15-17)

From a female in our commercial herd with an impressive Accoyo pedigree (T-Pito, Zosimo, Amador, Top Hat) and our top maternal lines (Pucara Eliza and Baarrooka Cordela), this combination with Foreign Affair (Durango, Icalon) was our pick from an impressive bunch from last breeding season. Excellent growth for age, lustre, locking, coverage and density. Foreign Affair progeny won Best Med/Dark Fawn and Best Brown at Sydney Royal Fleece Show.

Baarrooka—Reserved

Lot 19. Baarrooka Silver Halo

Silver Grey Suri Female

IAR: 251825 DOB: 2.3.19



Sire: Lowanna Solstice

Dam: Baarrooka Silver Palomino

Mated: Baarrooka DA Maverick LMD: 13.4.21

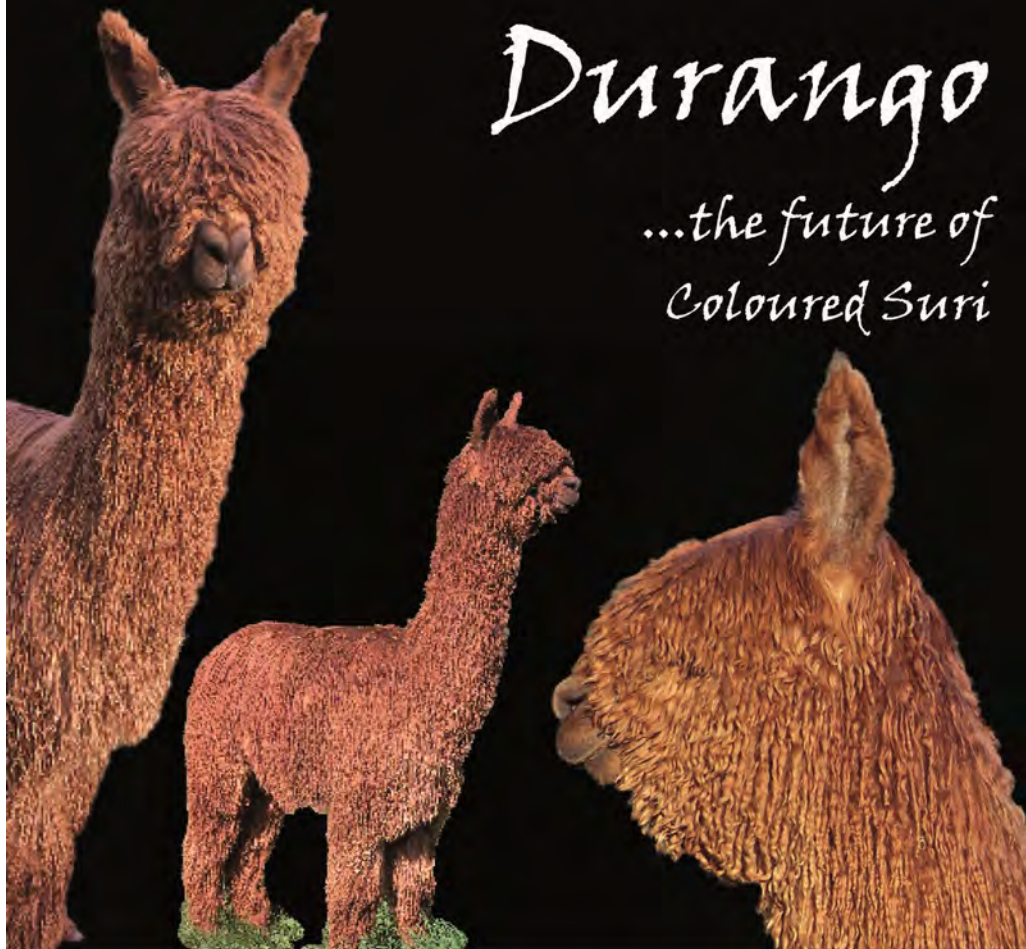
Fleece: Sept 20—M 23.0, SD 6.3, CV 27.6, CF 87.3

When we dispersed our greys, I held onto this female's dam, with the intention of producing elite blue-blacks. However, two grey females later, I'm still waiting on black! Silver Halo has fantastic coverage, a dense, soft handling fleece and excellent lock architecture. She has a strong, upright frame and excellent capacity. With the high quality mating on board, this is a great option for grey and black breeders.

Baarrooka—Reserved

# Durango

*...the future of  
Coloured Suri*



**TESTED  
CONFIRMED**



**BAARROKA**

172 Coach Rd, Strathbogie, Vic 3666 | 03 5790 5288 | 0407 889 669  
jwilkinson@baarrooka.com.au [www.baarrooka.com.au](http://www.baarrooka.com.au)

Lot 20. Baarrooka Kaeli & F/Cria

White Suri Female

IAR: 251816 DOB: 8.12.18



Baarrooka—Reserved

Sire: Alabaster Kid Klu Dam: Baarrooka BLK20

Mated: Baarrooka FA Lisbon ET

Fleece: Sept 20—M 18.5, SD 4.2, CV 22.6, CF 99.0%

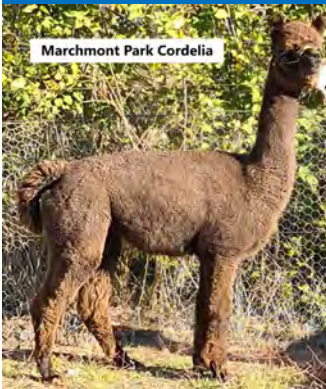
Cria: Female Cria by Kurrawa Man About Town ET

**This is a knock-your-socks-off package!** Kaeli was Reserve Champion Junior Female at the 2019 National. Female cria at Foot by Kurrawa Man About Town and mated back to 2019 National Supreme Suri Baarrooka FA Lisbon ET. . A huge pedigree of Accoyo and US genetics

Lot 21. Marchmont Park Cordelia

Roan Female

IAR: 236705 DOB: 16.2.17



Marchmont Park – Reserved

Sire: Kelany Hobo Dam: Lillyfield Sweet Juliette

Mated: Open

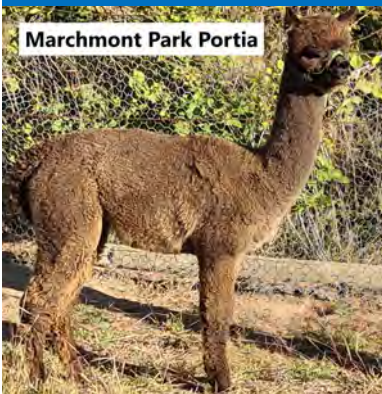
Fleece: M 21.6, SD 4.4, CF 96.0

Cordelia's sire and dam are both roan and she has grey in her genetics. She has produced a black cria by fawn sire and is ready to be mated again. She has a well structured fleece with a soft handle and is holding her micron well.

Lot 22. Marchmont Park Portia

Roan Female

IAR: 251216 DOB: 27.3.20



Marchmont Park – Reserved

Sire: Kelany Hobo Dam: Lillyfield Sweet Juliette

Mated: Maiden

Fleece: M 19.7, SD 4.3, CF 98.5

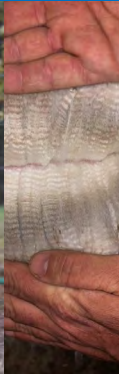
A quiet natured young female with a well aligned crimp structure and soft fleece handle. Both her sire and dam are roan and she has grey in her background. She would make an excellent addition to a coloured herd.



Lot 23. Malakai Talk to Me

Solid White Female

IAR: 252607 DOB: 1.10.20



Sire: Malakai Fire Chief ET Dam: Malakai Lacey ET

Mated: Maiden

Fleece: Untested -TBA

Talk To Me has an incredible Presence and she boasts an impressive pedigree to boot being a Malakai Fire Chief daughter whose progeny have dominated the show circuit for the past few years and her dam is a Shanbrooke Silken Lace granddaughter. **She will become an asset to any stud breeders band of quality hembras.** Her fleece has a beautiful handle with deep crimping very even style. We are proud to offer her for your selection in this auction.

Malakai – Reserved

Lot 24. Malakai Pure Attraction

Light Fawn Female

IAR: 243633 DOB: 10.3.20



Sire: Malakai Fire Chief ET Dam: Malakai Leading Attraction ET

Mated: Softfoot Maudib.

Fleece: M 13.2, CF 100

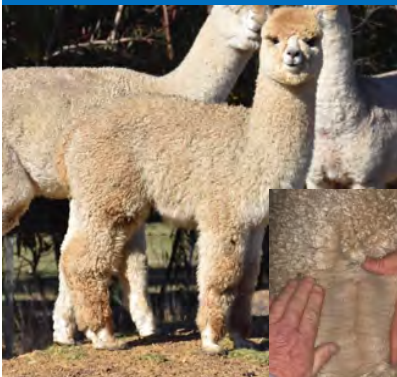
**Pure Attraction is as her name suggests** a very attractive female with a beautiful soft handling fleece that is both even in style and micron through to her extremities. She boasts an impressive pedigree that combines the who's who of the Malakai Hall of Fame, jam packed with Champion winning lines. She has it all and with her mating to Softfoot Maudib she should produce an outstanding cria.

Malakai – Unreserved

Lot 25. Malakai Gold Edition

Solid Dark Fawn Female

IAR: 252611 DOB: 20.11.20



Sire: Malakai Premium Edition Dam: Vista Lider

Mated: Maiden

Fleece: Untested—TBA

**Gold Edition is as cute as a button. Her Quality speaks for itself.** She has beautiful correct frame with impressive boning for her young age. Her fleece is extremely dense and very uniform in style and micron. Take her home and grow her out or have some fun with her in the show ring, she will do you proud on either front.

Malakai – Unreserved

Lot 26. Malakai Jazz Singer

Medium Grey Female

IAR: 243737 DOB: 18.3.20



Sire: Autumn Gold Galeleo Dam: Malakai Jazarah

Mated: To be mated to Vista El Comodin—prior to auction  
Fleece: M 16.6, CF 100

**Jazz Singer is a beautiful well conformed quality grey female, she has it all.** Her fleece is bright and very soft to touch. Her crimp is highly defined and extremely even. She is one we thought long and hard before entering as we would love to keep her in our own breeding program, **but we wanted to offer our best in this auction, so here she is available to the astute purchaser.** She will be mated to Supreme Champion Sire Vista El Comodin.

Malakai – Reserved

Lot 27. Malakai Zorba ET

Solid White Male

IAR: 252602 DOB: 20.5.20



Sire: Blackgate Lodge Sunseeker Dam: Malakai Celebrity ET

Fleece: M 16, CF 100

**Rarely does a young male with such a pedigree come up for sale with both Zorbas parents being National Champions.** His fleece has a deep amplitude very even style that is extremely fine and dense, these traits being rewarded at the recent Sydney Royal where he was awarded Reserve Junior Champion Male. **A great opportunity to add these prepotent breeding traits n to your breeding program.**

Malakai – Reserved

Lot 28. Fern Tree Amarinda

Solid Light Fawn Suri Female

IAR: 224322 DOB: 18.9.17



Sire: Bumble Hill Chakri Dam: Grayleigh Kallie

Mated: Last mated 27.2.21 to Birrong Okami

Fleece: 1st fleece—M 17.1, SD 4.4, CF 100%

4th fleece—M 22.8, SD 6.2, CF 89.2

Amarinda is a lovely breeding female with dense soft handling fleece. She has a friendly nature and her creamy fleece has maintained fineness and a beautiful soft handle. Mated to Birrong Okami, she should produce a lovely result.

Fern Tree – Reserved

Lot 29. Green Gully Ariane

Solid True Black Female

IAR: 240785 DOB: 1.11.19



Jolimont Tiberio MG

LVP Brigalow Blk

Sire: Jolimont Essien Blk

Dam: Green Gully Adelphi Blk

Jolimont Greta II MF

Koorana Park Arwen MBR

Mated: Maiden

Fleece: M 21.2, SD 4.4, CV 20.8, CF 96.5

Ariane is an eye catching upstanding young female. Her fleece is lustrous, with length and density. She is a great example of our best black genetics and would be a worthy addition to any black or grey herd.

Green Gully – Reserved

Lot 30. Green Gully Moonstone

Solid Light Fawn Female

IAR: 240817 DOB: 20.4.20



Millduck Lincoln SDF

Barrabinda Lord Dijon SW

Sire: Green Gully The Joker

Dam: Green Gully Marigold SMF

Elysion Jubilee SW

Green Gully Lilly SLF

Mated: Maiden

Fleece: M 19.6, SD 4.6, CV 23.4, CF 98.2

This sweet natured female is ready to be mated to a special male. Her fleece displays a consistent style running into the chest and extremities. We really appreciate the lovely creamy soft handle of her fleece and her nicely balanced frame. Moonstone is friendly and curious making her a delight to have around.

Green Gully – Reserved

Lot 31. Fern Tree Vienna & M/Cria

Solid White Suri Female

IAR: 224297 DOB: 11.3.17



Sire: Wallaby Ridge Milan

Dam: Wallaby Ridge Goddess

Mated: To be mated before auction—Birrong Okami

Fleece: 1st fleece—M 16, SD 4.6, CF 100

4th fleece—M 23.1, SD 6.3, CF 90.7%

Vienna has a lovely nature and is proving to be an excellent mother. She has a lustrous, soft, well locked fleece. She come with her male cria, DOB 18/3/21 by Alabaster Sinbad. He is developing well, with highly lustrous, well defined locking. Vienna will be remated to Birrong Okami prior to the auction.

Fern Tree – Reserved

Lot 32. EP Cambridge Cadillac Girl

Solid White Female

IAR: 257458 DOB: 10.3.20



Sire:	Snowmass Defiance SW Snow Diamond Cadillac Jack SW Snow Diamond Celeste SW	Dam:	Cambridge Good As Gold SMF Cambridge Goldie Girl SLF Cambridge Edwina SLF
-------	--	------	---

Mated: Maiden

Fleece: OCT 20—M 17.4, SD 4.6, CV 26.3, CF 100%, CRV 43.1

As with the Cadillac luxury car that drives the world forward, Cadillac Girl is an elite female that will drive your herd to the next level. This is your opportunity to access the elite genetics of Cadillac Jack, who EP Cambridge selected as one of their next super sires in the USA in 2019. Cadillac Girl is one of a handful of this spectacular male's offspring that EPC have released to the open market. When you delve deeper into her pedigree you find some of Australia's most influential stud sires with Jolimont Conquistador, Jolimont Gianmarco and EP Cambridge Spartacus. She has a real show presence, substance of bone and is truly fit for purpose. A complete fleece that is fine, dense and beautifully even with a highly defined structure.

EP Cambridge – Reserved

**A Luxurious female one must own**

Lot 33. EP Cambridge Smoky Margarita

Medium Grey Female

IAR: 257359 DOB: 8.12.19



Sire:	Morning Star Sirius MG EP Cambridge Spectre ET MG Wyterrica Miss Spectacular SBLK	Dam:	Jolimont Jaquan MG EP Cambridge Bailey SBLK Pinjarra Putzi-Anne SBLK
-------	---	------	--

Mated: Maiden

Fleece: OCT 20 -M 18.8, SD 4.3, CV 23.1, CF 98.5%, CRV 48.9

**When one blends from the top shelf, the perfect cocktail is created. Smoky Margarita is proof of this** with her blended genetics including EP Cambridge Spectre, Sirius and the critical ingredient Wyterrica Propaganda. All great cocktails however must include a secret ingredient and Smoky Margarita is no exception with the National Black Champion Miss Spectacular making this blend intoxicating. Greys really don't get much better, exhibiting a truly advance fleece style, high frequency crimp with even colour and super fine handle giving her the perfect balance. Matthew really struggled to put this girl up.

**A result of expert mixology!**

EP Cambridge – Reserved

**Certified Male—Appaloosa**

Fleece: MAY 21 -M 23.3, SD 4.5, CV 19.2,  
CF 93.2%, CRV 41.0

Sire:

Erehwon Silverado RG

Leaenna Armani SBLK

Leaenna Blush RG

Dam:

Chaparral Mojito SLB

Chaparral Augustina DF

Chaparral Cusquena SLF

Trying to get the pieces of your appaloosa and coloured breeding program to fall into place? Haylilla Puzzle is the solution you're looking for.

EP Cambridge purchased Puzzle at the 2017 Australian Alpaca Spectacular Auction and it's clear to see why. His perfect conformation, substance of bone and even markings across a quality fleece met the demanding requirements we were looking for.

His job was clear, inject these qualities and fresh genetics into our appaloosa and coloured herd, and that's exactly what he has done. He is passing on his frame, excellent density and importantly.... his colour.

Puzzle's sire, Leaenna Armani, is well known for his ability to produce 'Best of Colour' show winners in a range of colours but also for his talent of throwing leopard appaloosas.

Puzzle had a successful show career to National level with results including Best Appaloosa/Fancy VIC AlpacaFest 2017 and Reserve Champion Appaloosa Male VIC Colourbration 2016. Puzzle achieved the highest price of \$5,000 for a single stud service fee at the 2016 National Show and Sale Stud Service Auction, a testament to this male's quality.

With two other National Show ribbon-winning sons of Armani working at EP Cambridge, including the National Supreme Fawn Intuition, we are in the position to release Puzzle.

A chance to secure a show winning, proven herdsire of leopard appaloosas.

**Puzzle solved!**

Lot 35. Canchones Gal About Town

Solid Black Female

IAR: 257509 DOB: 25.3.20



Canchones Gendarme  
SBLK

Canchones Yatagan ET SBLK

Sire: Blaka Galahad SBLK

Dam: Bywong RavenET SBLK

Canchones Allegra SBLK

Canchones Keora SBLK

Mated: Maiden

Fleece: OCT 20– M 17.5, SD 4.1, CV 23.7, CF 100%, CRV 50.1

The first release by EP Cambridge & Blackberry Alpacas (UK) since their acquisition of the Canchones herd. This female is ready to hit the town and paint it **'black'!** **Gal About Town is awesome with an exquisitely fine, dense, advanced fleece and a pedigree boasting black, black and more black.** Named with a nod to her sire, Galahad, who needs little introduction...this female is a powerhouse of black genetics. Her lustrous muzzle is the first indication of the quality this female exudes from tip to toe. Blacks of this quality are very rare and this female is an opportunity to enter the very top of the black industry globally. Gal About Town is a must have for the discerning black breeder and is destined to be a future Champion. This sort of opportunity won't be repeated.

EP Cambridge / Blackberry – Reserved

Lot 36. EP Cambridge Royal Fire

Solid Dark Fawn Female

IAR: 257436 DOB: 26.2.20



Jolimont Warrior SW

Jolimont Turpial SBLK

Sire: Windsong Valley Fire-dragon SLF

Dam: EP Cambridge Little Princess SBLK

Windsong Valley Star-bright SLF

Eringa Park Little Surprise SLF

Mated: Maiden

Fleece: OCT 20 –M 17.7, SD 4.2, CV 23.4, CF 99.8%, CRV 41.7

**Here is a beautiful young fawn female ready to join a herd demanding quality colour.** With black and fawn genetics within her pedigree, Royal Fire offers exciting breeding options and will be a great addition to those looking to improve and diversify their colour genetics.

Sired by the one and only—Firedragon; it is no wonder EPC believe this female will inevitably make 'Royal' status in your herd. She exhibits great density and fineness and uniformity in micron across her fleece. **With her pedigree's colour and depth, Royal Fire is certain to wear the crown in the paddock.**

EP Cambridge—Unreserved

Lot 37. EP Cambridge Luminescence

Dark Grey Female

IAR: 237338

DOB: 22/11/19



Arcady Formidable RN

EP Cambridge Evolution MG

Sire: Majestica Obsidian  
SBLK

Dam: Cambridge Glowworm DG

Adaminca Juno SMF

Eringa Park Ruffo's Golden  
Glow SLF

Mated: Maiden

Fleece: OCT 20— M 16.8, SD 3.8, CV 22.5, CF 100%, CRV 38.5

Looking for a shining light for your herd?

The spot light is on Luminescence, a beautifully dark grey maiden. A combination of black in Majestica Obsidian, a sire who is producing elite export coloureds, and grey from EP Cambridge Evolution, who has become a cornerstone of our grey breeding program. To have the famous Ruffo in any pedigree is a blessing, especially one of colour.

Luminescence emits style and grace with her correct frame and substance of bone. Her fleece exhibits a high frequency crimp and is also even in colour and consistency throughout. Luminescence is ready to take your coloured genetics to the highest level.

EP Cambridge—Unreserved

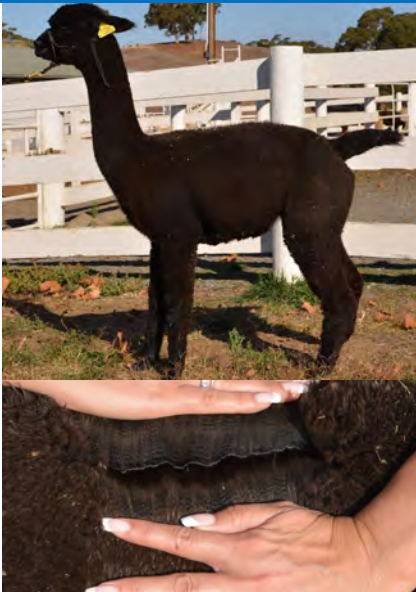
**The Future's Bright.**

Lot 38. Cambridge Safe Haven

Solid Black Female

IAR: 257332

DOB: 18/11/19



Canchones Gendarme  
SBLK

EP Cambridge King Slayer  
SBLK

Sire: Marquez Kristian SBLK

Dam: Cambridge Haven SDB

Alpacaspecialist Shilo  
SBLK

Cambridge Hostess SWT

Mated: Maiden

Fleece: OCT 20 - M 18.9, SD 4.3, CV 22.7, CF 98.3%, CRV 35.3

Safe Haven is certainly an appropriate name for this stunning young black girl. True black with depth of color throughout her pedigree. Her sire Kristian is himself a multiple Black Supreme and is proving to consistently produce spectacular black offspring. Softness to touch with a highly defined crimp extending from skin to tip and down into her extremities. These attributes are here to stay through the genetics of EP Cambridge King Slayer, renowned for producing persistent fine fleeces.

Safe Haven is a must have for serious black breeders.

EP Cambridge—Unreserved



PATAGONIA

alpacos

Deep crimp by design

# We succeed ...



Patagonia MZ Vika



Patagonia Elite Moritz



Patagonia MZ Eye Candy

Patagonia Elite Moritz\* has continued in his winning way for his new owners, Paul and Malcolm of Mapa Alpacas, picking up 1<sup>st</sup> In Medium/Dark Fawn Mature Male and then Reserve Champion Mature Male at the 2021 Hawkesbury Show. His first progeny dropped in April 2021 – Patagonia MZ Vika and Patagonia MZ Eye-Candy. We are so pleased that we reserved matings when we sold Moritz, as we have been able to repeat these joinings!

\*Son of Snowmass Elite Transcendence & Patagonia Midnight Sun - Lot 46 BCAA 2020.



## when our connections succeed



Bova Minnelli\* - Reserve Junior Champion Female (to our own Patagonia VV Fantasy) for Pat Bova at the 2021 Highlands Show. \*Daughter of Snowmass Elite Transcendence & Patagonia Celtic Cabaret - Lot 39 BCAA 2018.



Patagonia Elite Grantham\*, the very first of our Snowmass progeny group, has continued to win championships for his new owners, Jane & Lesley of Janella Alpacas. Grantham followed up his Reserve Mature Champion at the National Fleece Challenge 2020 (over 400 entries), with Champion Mature Fleece at Sydney Royal 2021. \*Son of Snowmass Elite Transcendence & Patagonia Celtic Gossamer – Lot 71 BCAA 2020.

**Lot 39 Patagonia KH Gossip****Solid White Female**

IAR: 239750

DOB: 1.11.19

Snowmass Conopa's Kahuna  
Sire: ILR Snowmass Royal Kahuna W  
Snowmass Royal Wedding

Patagonia Celtic Triumph W  
Dam: Patagonia Celtic Gossamer SF  
Jolimont Karly SW

Mated: Snowmass Absolut Temptation  
Fleece: Nov 20 (2nd) - M: 17.1 SD: 4.2  
CV:24.4 SF: 17.1 CF: 100% Cur: 42.7

**Show Results**

1<sup>st</sup> White Int. Female Highlands Show 2021  
Res. Champion Int. Female Highlands Show 2021  
1<sup>st</sup> White Int. Female Hawkesbury 2021  
Res. Champion Int. Female Hawkesbury 2021

Patagonia - Reserved

Serious white breeders owe it to themselves to take a close look at KH Gossip, our **STAR FEMALE** pick for this year's auction. KH Gossip is a stunning white female with impeccable bloodlines. Her sire, Snowmass Royal Kahuna, needs no introduction having established himself around the country (since arriving from the US in 2015) with his outstanding progeny. He is producing quality in both whites and colours.

Gossip's dam, Celtic Gossamer is one of our favourite Celtic Triumph daughters. Gossamer's first son Elite Grantham (Lot 71 in last year's auction) followed up his championships in halter classes in 2019 with broad ribbons at the highly competitive 2020 National Fleece Challenge and Sydney Royal Fleece Show 2021 for his new owners. Gossamer's dam, Jolimont Karly, was a top imported Peruvian female who has left a strong legacy in our herd. Another of Karly's daughter's Jolimont Joanna just happens to be the great granddam of Ashbourne The Hipster!

Her deep crimping fleece with exquisite handle, and her magnificent frame, have seen Gossip quickly establish her own reputation in the show ring (see show results). Great for Patagonia but unlucky for Gossip - has been the success of Gossip's light fawn show buddy, Absolut-ly Starstruck (Champion Int. Female and Supreme Champion at both shows entered). The choice of covering sire for Gossip was very simple - Snowmass Absolut Temptation (sire of Absolut-ly Starstruck) who is working quietly in the background transforming our herd. He is strictly an "in-house sire" so there are limited opportunities to access his genetics.



Snowmass Absolut Temptation  
7<sup>th</sup> Fleece 2019



KH Gossip (L) and  
Absolut-ly Starstruck (R)  
Highlands Show 2021



Patagonia Absolut-ly  
Starstruck - 2<sup>nd</sup> Fleece 2021

**STOP PRESS: Gossip will be entered in the Christmas Carnival of Colour Show in Goulburn, NSW on 10-11<sup>th</sup> July and available for inspection across the weekend**

**Lot 40 Patagonia Elite Lone Star****Solid White Male**

IAR: 239727

DOB: 17.3.18

Fleece: Nov 20 (3rd) - M: 21.8 SD: 4.8 CV: 22.2  
SF: 21.4 CF: 94.7% Cur: 42.2

Snowmass Elite Legend W

Patagonia Celtic Triumph W

Sire: ILR Snowmass Elite Transcendence W Dam: Patagonia Celtic Starlet SW

SPA Alpaca's Peruvian Sonnet W

Cedar House Star SW

The pictures tell the story for Elite Lone Star, a young white certified male who looks exactly like a male ought to look. We are pleased with the way his sire, Snowmass Elite Transcendence, has been stamping his frame and fleece attributes onto his progeny.

Lone Star is out of our best Celtic Triumph female, Celtic Starlet. Our latest progeny from Celtic Starlet, a light fawn female Absolut-ly Starstruck, has been "wowing" it in the show ring - taking out Supreme Champion at her first two shows in 2021.

Lone Star's highly aligned fleece has exquisite softness, extreme lustre and is packed on all over his magnificent frame. As you would expect from the Celtic Triumph line, this boy has a beautiful temperament.

We proudly offer Elite Lone Star as our **STAR MALE** selection for the Breeders Choice 2021.

**Show Results**

1<sup>st</sup> White Adult male - Gunning Show 2020  
 Champion Adult Male - Gunning Show 2020  
 2<sup>nd</sup> White Senior Male - Hawkesbury Show 2021  
 Res. Champion Senior Male - Hawkesbury 2021

Patagonia – Reserved *Patagonia reserves the right to retain 7 services*



Need to agist your purchases until life becomes a bit more certain? Our 92 hectare property is ideal alpaca country, located just a few hours from Sydney – but at 1,000 metres so low humidity, good rainfall and a great climate for alpacas and people.

For overseas buyers we are offering free agistment\* until 30<sup>th</sup> June 2022 on Patagonia animals purchased in this auction. For local buyers a three months free agistment\* period is offered.

\*Conditions apply. Please contact Cathi or Ian at [info@patagoniaalpacas.com.au](mailto:info@patagoniaalpacas.com.au) to discuss your needs.

**STOP PRESS: Lone Star will be entered in the Christmas Carnival of Colour Show in Goulburn, NSW on 10-11<sup>th</sup> July and available for inspection across the weekend**

Sire: Snowmass Velvet Touche MB  
ILR Snowmass Velveteer DF  
Snowmass Royal Divinity LB

Dam: Patagonia Celtic Triumph W  
Patagonia Celtic Secret SMF  
Patagonia Parasena SMF

Unjoined  
Fleece: Nov 20 (1st) - M: 15.2 SD: 3.4  
CV:22.7 SF: 15.0 CF: 100% Cur: 44.4



Patagonia - Reserved

What a stunner! What attitude!

Mystic Dancer is a captivating young brown female – sired by our exceptional imported fawn male, Snowmass Velveteer (now deceased) and one of our treasured coloured Celtic Triumph daughters, Celtic Secret. Dancer has lustrous, ultra-fine and exquisitely soft fleece with a high frequency crimp that extends evenly across her compact, very square frame.

You may wonder why Dancer doesn't have show results, as she is old enough to have been on our show team. The story is that she is halter trained and walks well but on our past two show days, she has quietly but firmly decided that she would rather stay home and do her nails and send her sisters off to do the showing. Her two half- sisters, VV Fantasy and VV Cocoa Chanel have been strong performers on the 2021 show team – taking out 1<sup>st</sup> in Junior Medium/ Dark Fawn and in Brown along with a Junior Champion at Highlands Show for Fantasy and 1<sup>st</sup> in progeny for the VV girls at both 2021 shows so far.

Velveteer daughters are held tightly in our herd as we can't make any more of them. Don't let the chance to buy one pass you by!



VV Shambala Champion Med/Dark Fawn Female 2019 Victorian Colourbration



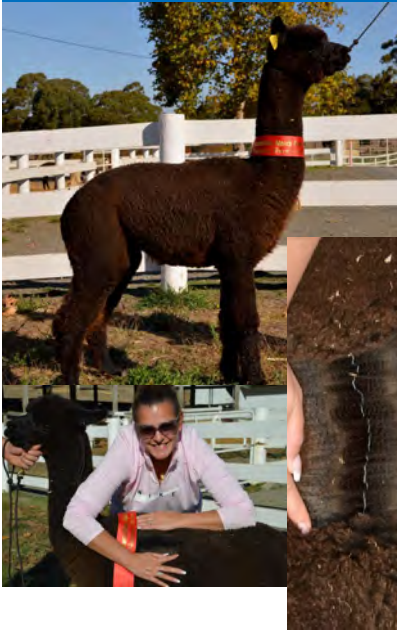
VV Cocoa Chanel (L) and VV Fantasy (R) 1<sup>st</sup> in Progeny class - Highlands show 2021

**STOP PRESS: Mystic Dancer will be entered in the Christmas Carnival of Colour Show in Goulburn, NSW on 10-11<sup>th</sup> July and available for inspection across the weekend**

Lot 42. EP Cambridge Gigolo

Solid Black Male

IAR: 235491 DOB: 8.1.19



Windsong Valley Fire-dragon SLF

Ailahtan Hans SBLK

Sire: EP Cambridge Firestone SMF

Dam: EP Cambridge Handana SBLK

Yaringa Jade ET SDB

EP Cambridge Ooh La La SDF

Fleece: OCT 20— M 18.9, SD 4.1, CV 21.9, CF 98.4%, CRV 33.5

**A young stud with an enviable pedigree** boasting Windsong Valley Firedragon and Ailahtan Hans. This cross of elite black and fawn genetics has produced ‘Gigolo’ who has all the attributes one looks for in a potential stud sire. He has an exceptional head type that we’ve come to expect from his sire Firestone. The fleece he produces has exceptional length and a deep crimp that’s paired with beautiful brightness. His second place at the 2019 Nationals is testament to the quality of this male given the depth and size of the black classes at the show and in Australia.

**Gigolo is ready and waiting to ‘escort’ your females into the future.**

EP Cambridge—Unreserved

Lot 43. EP Cambridge Huntsman

Solid White Male

IAR: 235475 DOB: 10.2.17



Windsong Valley Firedragon SLF

Jolimont Commisario SW

Sire: EP Cambridge Fire Hunter SW  
EP Cambridge Show-piece SW

Dam: Eringa Park Glitterati SW

Eringa Park Spartira SW

Fleece: OCT 20—M 18.2, SD 3.9, CV 21.5, CF 99.3%, CRV 49.7

Huntsman is a culmination of EP Cambridge’s elite breeding program over the years. **Seek and you will find**, to name but a few, EP Cambridge Peruvian Spartacus, our super sire who produced National Champions throughout Australia, New Zealand and Europe. Its no surprise to also find the influence of Jolimont Gianmarco and Jolimont Commisario. **Hunt a little deeper** and you find Jolimont Verona 2... the dam of Invictus, as Australian National Supreme Champion, Top Account who is a leading name in the UK and many more champions. Huntsman is very keen to start his working career. Density, crimp, brightness and structure...everything a stud male should be. Available only due to him being so closely related to our working stable of sires. Recognised and awarded 3rd at 2019 Nationals.

**Opportunity to inject depth of genetics in just one step.**

EP Cambridge —Unreserved

Lot 44. Jandarra Evie

Solid Light Fawn Female

IAR: 241435 DOB: 1.5.20



Jandarra – Reserved

Ambersun Kings Ransom

Kurrawa L.A. Med & Dangerous

Sire: Yaringa Czar

Dam: Jandarra Soopa Doopa

Alpaca Specialist Dynasty

Jandarra Solitaire

Mated: Maiden

Fleece: 1st fleece—M 15.6, SD 3.5, CV 22.9, CF 100%

2nd fleece—TBA

Evie is a well grown maiden with excellent conformation and quiet temperament. Her ultra fine long fleece is very bright with good crimp structure and staple definition. Evie carries excellent genetics in her pedigree with both her sire and dam excelling in the show ring.

Lot 45. Goldleaf Antique Lady

Solid Medium Fawn Female

IAR: 227683 DOB: 4.12.20



Goldleaf – Reserved

Faversham Larry SLF

Blue Grass Rising Star SMF

Sire: Goldleaf Relic SMF

Dam: Pentland Danielle SMF

Goldleaf Vintage Showpiece

Pentland Darlene MF

Mated: Weanling

Fleece: 2021—M 16.7, SD 4.2, CV 25.1, CRV 47.1

Well grown young female, with beautiful frame and presence. Very even micron and consistent style of fleece throughout. Great level of density, fineness and handle. Daughter of multiple Champion, Goldleaf Relic, in addition to some of the best female producing genetics, Star Of Tulangi & El Dorado. **This young lady was bred for the show ring.**

**Transport included from WA to the Eastern States.**

Lot 46. Mapa Pure Joy

Solid Light Fawn Female

IAR: 246668 DOB: 28.2.20



Goldleaf – Reserved

Yenaminut Lunar Eclipse

Suncloud Gershwin

Sire: Yenaminut Moon Landing

Dam: Goldleaf Pure Guess

Yenaminut Marita

Goldleaf Pure Artiste

Mated: Maiden

Fleece: 2020—M 15.5, SD 3.3, 90mm

Lovely Maiden female with superfine fleece. Interesting cross of bloodlines, with a multiple generation focus for longevity of length and softness. All traits one wants in the alpacas the future.

**Inspections—Currently residing at Mapa Stud NSW.**

---

## Goldleaf Alpacas

*have been consistently awarded at a national level, and to push further ahead than this the stud continues to invest in improvement of the commercial attributes at the heart of the all breeding decisions.*

*The continued refinement of the breeding program has allowed for accentuation of the long term focus on producing the best alpaca product for the manufacturer and the end consumer.*

*It is a pleasure to present a select number of young female alpaca exhibiting these traits for consideration.*

*They are all long and soft, with a genetic foundation that they will be productive fibre producers into the future.*

*All featured auction lots are reserved. Included within this reserve price is a fertility guarantee, and transport from Western Australia. This will include nearly all agricultural areas throughout Australia.*

*Please do not hesitate to contact Brett Fallon for more detail.*

0408403910  
info@goldleafalpacas.com.au

---



Goldleaf Nobility (pictured above) exhibits evenness of style and micron throughout his entire fleece. He is out of one of the top donor females at Goldleaf and has numerous full siblings that have made their mark throughout Australia. His progeny are easily recognised for the same even fleece traits. Nobility has been awarded National Champion, is the son of a well proven National Champion, and sire of National Champion Goldleaf Vintage Burlesque (pictured above right). These genetics are proven and do not disappoint. 2021 BCAA lots include daughters **Goldleaf Pentland Adorable** and **Goldleaf Joyous Charm**.

---

Part of the success of the coloured herd at Goldleaf has come from understanding the science behind alpaca colour genetics. Fawn males have been integral to the advancement of the coloured breeding program. One highly recognised 'recessive coloured' stud male retained at Goldleaf, has been Goldleaf Relic. Producing all colours with superfine micron, superior density and style. Multiple championship winner, including 2017 National Supreme Champion Mid-Dark Fawn Huacaya Fleece.

Goldleaf Relic (pictured below) is the sire of 2021 BCAA lots including **Goldleaf Antique Lady** and **Goldleaf Windella Tempest**.



Lot 47. Mapa Anastasia

Solid White Female

IAR: 246665    DOB: 1.2.20



Illawarra Dynasty

Bed Rock Crusader

Sire: Plantel Shakaba

Dam: Faversham Anastasia

Plantel Illawarra Faith

Faversham Annabelle

Mated: Maiden

Fleece: 2020—M 15.9, SD 3.2, 80mm

Such silky soft fleece being pumped out of this young female. Descending from a line of females that keep their fineness with age, she is ready to breed the next step.

**Inspections—Currently residing at Mapa Stud NSW.**

Goldleaf – Reserved

Lot 48. Goldleaf Joyous Charm

Solid Light Fawn Female

IAR: 227725    DOB: 10.5.20



Faversham Armani

Warralinga Gorge Star Graduate ET

Sire: Goldleaf Nobility ET

Dam: Stansfield Park Glenda Joy

Qualup Elly

Banksia Park Charisma ET

Mated: Maiden

Fleece: 2021—M 20.1, SD 4.1, CV 20.4, CRV 37.5

**You will be hard pressed to breed any more superstar genetics into this girl.** Her pedigree is jam packed with the best. Her maternal line descends from Banksia Park's Challice, dam of Colorado'. Her sire is the well renowned National Champion, Goldleaf Nobility. Deep bold crimp, with great density and exceptional length.

**Included Transport from WA to Eastern States.**

Goldleaf – Reserved

Lot 49. Goldleaf Pentland Adorabelle

Solid Medium Fawn Female

IAR: 227653    DOB: 24.5.20



Faversham Armani SLF

Pentland Astral SW

Sire: Goldleaf Nobility SLF

Dam: Pentland Annazac SMF

Qualup Elly SW

Pentland Harmony SMF

Mated: Maiden

Fleece: 2021—M 20.5, SD 4.0, CV 19.5, CRV 43.4

**Such a sweet girl!** Very sound frame and well grown for her age. An even style fleece consistent with all of the best Goldleaf Nobility progeny. Small bundles tightly packed in with great length and a soft handle. Adorabelle is a young female worth considering for breeding programs looking to advance density and length.

**Included Transport from WA to Eastern States.**

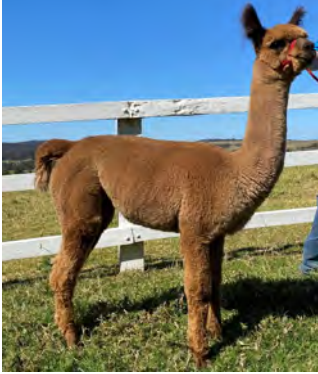
Goldleaf – Reserved



Lot 50. Storybook Harleys Panda

Roan Female

IAR: 239624    DOB: 20.1.20



Coolawarra / Storybook – Reserved

Regal House Mr Darcy

Patagonia Celtic Machiavelli

Sire: Coolaroo Harlequin APP

Dam: Storybook Pearl Bay SMB

Greenvale Angela G

Patagonia Sea Change SLB

Mated: Bardella Park Ambushed ET during April 2021

Fleece: 2020—M 16.8 Classed into Ultra Fine Roan

Harleys Panda is a well grown and upstanding young female. Wining second place at the 2021 Sydney Royal Easter Show, she was commended on her softness to hand and even colouring across her frame. She has been mated to BARDELLA PARK Ambushed, a very impressive fancy male with a notable show career; wining various colour championships at a state and national level. This joining will improve density and enhance her appaloosa genetics.

Lot 51. Coolaroo Practical Magic

Solid Light Fawn Female

IAR: 239693    DOB: 31.1.20



Coolawarra / Storybook – Reserved

Wingsong Valley Iceman

Regal House Mr Darcy

Sire: Coolaroo Magic Ice

Dam: Coolaroo Miss Moonrise

Jolimont Maggie

Coolaroo Amber Moonrise

Mated: Illawarra Maverick Dancer during April 2021

Fleece: 2020— 14.3 microns classed into SUFLF

A true to type and conformationally sound female. Practical Magic is has an exceptionally fine fleece with a high frequency crimp style. One of our favourites here at Coolaroo, she is of high quality coupled with a sweet nature. She has been mated to ILLAWARRA Maverick Dancer, the current Australian National Champion Adult Male. We expect the cria of this union to have outstanding brightness, a high frequency crimp and an impressive level of density.

Lot 52. Coolaroo Tina Sparkle

Solid White Female

IAR: 238464    DOB: 26.3.19



Coolawarra / Storybook – Reserved

Wingsong Valley Iceman

Softfoot Paso Doble

Sire: Coolaroo Magic Ice

Dam: Coolaroo Charnga

Jolimont Maggie

Coolaroo Condorsanka

Mated: Softfoot Chaconne during April 2021

Fleece: 2019— 15.5 micron classed into SUFWT

2020— 16.3 micron classed into SUFWT

Tina Sparkle is a well-covered and attractive young female. She has an impressive density for her fineness, a high frequency crimp style which she carries well across her blanket and maintains an exciting level of softness into her extremities. She has impressive genetics, which aren't normally released off farm. Joined to the exceptional Softfoot Chaconne, who is still maintaining a great level of softness, density and fineness for his age. Chaconne progeny are distinctive in their elite fibre characteristics and sound frames.

Lot 53. Softfoot Galloway

Solid White Certified Male

IAR: 172539 DOB: 25.2.11



Eaglewood – Reserved

Jolimont Doulton SLF

Jolimont Aramis SBlk

Sire: Timbertop Whistler

Dam: EP Cambridge Tallulah

Jolimont Charo SW

Taylor's Rieni SBlk

Fleece: 2016— M 23, SD 3.8, CF 95.4, CRV 45.4

Exceptional Stud Male that has produced beautiful progeny, many winning Championships. He is fine, dense with low SD. Progeny 1st year measure 14 –17 m, 2nd year average 16.7 m. Supreme Fleece Adelaide Royal 14 & Supreme Exhibit Hawkesbury 14. Champion Mature Male— Canberra, Boorowa, Gunning, R/Ch. Central West & Sydney Royal 15. Unrequired in Stud as we are using a Son.

Lot 54. Eaglewood Karma

Medium Fawn Female

IAR: 188002 DOB: 3.1.14



Eaglewood – Reserved

Alpacapena Inca

Beneleigh Lorimer

Sire: Eaglewood Ironman

Dam: Alpacapena Kitty MF

Clearview Inga

Coolaroo Whirlwind

Mated: Paddock Mated April 21—Shanbrooke Silverspoon LG  
Fleece: 2020— M 20.5 ,SD 3.8

Exceptionally fine female with beautiful conformation and a great mum. Genetics from her Sire Eaglewood Ironman who was National Champion Commercial Fleece 2010 & Reserve Champion Commercial Fleece 2011. Plus a must for all breeders genetics of Beneleigh Lorimer.

Lot 55. Eaglewood Sunset Girl

Brown Female

IAR: 230670 DOB: 15.10.19



Eaglewood – Reserved

Bluegrass Waterloo Sunset

Blackgate Lodge Marquis

Sire: Wyona Sunset Avenue RG

Dam: Eaglewood Gareema LF

Wyona Mystical Woman

Eaglewood Georgia

Mated: Paddock Mated May 21— Shanbrooke Silverspoon LG  
Fleece: M 19.2, SD 4.4, CRV 55.44

Sunset Girl is a beautifully conformed brown female exhibiting a high degree of crimp style, and an excellent level of density. Definitely Show Quality. She has a great future ahead of her.

Guarantee mating to Silverspoon by Auction. Included 1/2 price stud matings for 4 years.

Lot 56. Goldleaf Windella Tempest

Solid Medium Brown Female

IAR: 227682

DOB: 10.7.20



Faversham Larry SLF

Careton-Lea Knight Rider

Sire: Goldleaf Relic SMF

Dam: Windella Temptation SBK

Goldleaf Vintage Show Piece

Windella Teme SBK

Mated: Maiden

Fleece: 2021— M 18.8, SD 3.7, CV 19.6, CRV 39.8

Showy young coloured female. Well nourished fleece with good lustre and very soft handle. Displays a well aligned style with minimal micron variation. Some of the best coloured genetics from Western Australia, daughter of 2017 National Supreme Champion Fawn Huacaya Fleece winner, Goldleaf Relic.

**Transport included from WA to the Eastern States.**

Windella – Reserved

# Alpaca Transport

## Need to Move Alpacas?

**Contact: Rob Harborne of Eaglewood Alpacas.**

**16 Years Experienced Alpaca Handler.**

**Ph: 0417 998 897**

**info@eaglewood.com.au**



**Alpaca Movements with Rob**

# Inspections

All Vendors welcome on farm inspections, please contact us and make arrangements.

Vendors Open Days: See Vendors Stud notices on facebook, web sites etc.

Mapa & Lillyfield: Open Weekend 3rd & 4th July  
@ 69 Graces Flat Rd, Bowning.

Come and Join BCAA & Exhibitors at *Christmas Carnival of Colour*

Inspect the Auction Alpacas on Display from the Vendors of  
*Breeders Choice Alpaca Auction.*

A Selection of auction alpacas will either be on Display or Exhibited in Show.

*Christmas Carnival of Colour—2 day Colour Alpaca Show*

**Weekend: 10th & 11th July.**

**Venue: Peden Pavilion, Goulburn NSW**

*Show Schedule : ealpaca June*

The committee of CC of C has kindly invited **BCAA** vendors  
to **Display Auction Alpacas.**

Please Note: Not all Vendors will be attending the show.  
Please Check with Vendors and Enquiry if they are Attending the Show.  
See: BCAA Updates, Vendors Facebook & Web sites.

*Inspect 2021 Breeders Choice Auction Alpacas on Farm or at an Event.*  
**Then On July 17th @ midday, Complete your Online Bidding.**

Lot 57. Lillyfield Gold Star & F/Cria

Solid Medium Fawn Female

IAR: 175535 DOB: 10.11.11



Benleigh Ringleader

Blue Grass Star Warrior

Sire: Blue Grass Bollinger

Dam: Tennyson Park Summer Star

Purrumbete Vanilla

Gunnamatta Georgia

Mated: Lillyfield Gaughin TBA

Fleece: M 26.6, SD 4.3

Cria: Female cria at foot—Lillyfield Irish Star

Gold Star was a highly successful show girl winning many best colour & broad ribbons. She comes with a very cute SMF Female cria “Irish Star” by Lillyfield Dublin at foot. Gold star has a beautiful bright crimped dense fleece on a perfect frame. She is sure to add quality to any herd.

Lillyfield – Reserved

Lot 58. Lillyfield Gypsy Princess & F/Cria

Solid White Female

IAR: 175537 DOB: 8.1.12



Jolimont Warrior

Forestview Prince of Thieves

Sire: Lillyfield Alchemy

Dam: Lillyfield Czigany

Brabant Fairy Jane

Lillyfield Syiera

Mated: EP Cambridge Oblivion ET—TBA

Fleece: M 27.3, SD 5.2

Cria: Female cria at foot—Lillyfield Shelta

Gypsy Princess has produced 3 Show winning Oblivion daughters for us and now we have a 4<sup>th</sup>. “Shelta” is now offered with her mum for others to benefit. Gypsy has a dense, typey fleece on a true to type frame.

Lillyfield – Reserved

Lot 59. Garibaldi Grand Design

Light Fawn Female

IAR: 214110 DOB: 30.9.15



Jolimont Warrior

Shanbrooke Ac.coyo Shere Impact

Sire: Lillyfield Alchemy

Dam: Shanbrooke Society Shere Design

Brabant Fairy Jane

Shanbrooke Society Designer Label

Mated: Lillyfield Gaughin—TBA

Fleece: M 26.1, SD 5.4

A beautifully put together female producing quality cria. She has a spot on her side, but so far has not reproduced that spot. She is dense and carries exceptional bone. Fabulous backline genetics that are nearly impossible to source.

Lillyfield – Unreserved

Lot 60. Lillyfield Alimoni & F/Cria

Light Fawm Female

IAR: 201365 DOB: 17.5.14



	Benleigh Ringleader		Shanbrooke High Society
Sire:	Blue Grass Bollinger	Dam:	Blue Grass Leading Lady 2
	Purrumbete Vanilla		Blue Grass Leading Lady

Mated: Lillyfield Gaughin 5.4.21  
 Fleece: M 21.5, SD 4.6, CRV 42  
 Cria: MF Female Cria "Shine On" - DOB 1.3.21

Alimoni comes with the sweetest MF Female cria "Shine On" dob 01/03/21 from Malakai Rezeki. We have 2 other females from this joining & they have both made the Show Team – so no pressure Shine On! Alimoni herself was a show girl winning in both led & fleece classes. She is true to type, excellent substance of bone & produces advanced style cria, whilst still holding an enviable micron herself.

Lillyfield – Reserved

Lot 61. Garibaldi Bahama

Solid Light Fawm Female

IAR: 243501 DOB: 23.8.19



	Jolimont Warrior		Lillyfield Santanna
Sire:	Lillyfield Alchemy	Dam:	Garibaldi Havannah
	Brabant Fairy Jane		Garibaldi Eden

Mated: Cambridge Showman 24.4.21  
 Fleece: M 20.4, SD 4.6, cut 2.1kg of saddle fleece

Attractive female now mated to our high frequency coloured male EP Cambridge Showman. Bahama produces an exceptional length of fleece and lustre, on a true to type frame from a highly female producing line.

Lillyfield – Reserved

Introducing .....**Aberfeldy Orpheus**

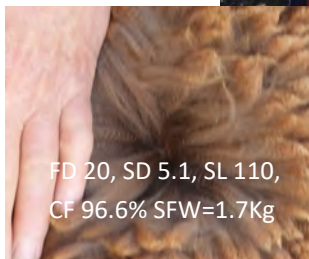
**Our fabulous Roan - great genetics, enviable fleece characteristics, well conformed frame & quiet temperament .**

Stud Service Available —  
On Farm or Outside.

**Aberfeldy Alpacas**

**Googong NSW**

**Margaret: 0409 141 595**



FD 20, SD 5.1, SL 110,  
 CF 96.6% SFW=1.7Kg



**Kelany Hobo (R) X**  
**Aberfeldy Lisabet (SMB)**

Lot 62. Mapa Frankie

Medium Fawn Female

IAR: 245697 DOB: 5.2.18



Banksia Park Pennant  
 Yuralee Nemisis  
 Sire: Elsendale Patric Dam: Chregan Fleur  
 Elsendale Perla Berridale Alloura

Mated: LMD May 2020 Plantel Shabaka  
 Fleece: M 18.6, SD 3.7, CF 99.7, CRV 40.5

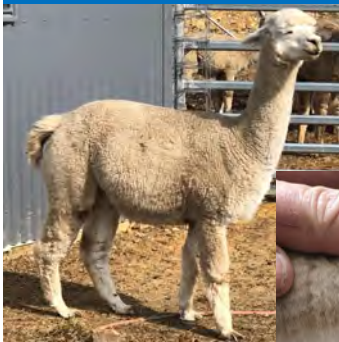
Frankie is a well-developed female, currently pregnant and due to have her cria in May 21. Her fleece is fine with a medium to high frequency crimp style. She will make an excellent addition for a breeder looking to add fineness and is well worth an inspection. She will be re-mated prior to auction.

Mapa – Reserved

Lot 63. Goldleaf Pure Artiste

Solid White Female

IAR: 202707 DOB: 10.8.13



Illawarra Yucatan  
 Suncloud Kinetic  
 Sire: Wyndarra Designer Dam: Goldleaf Pure Attraction  
 Benleigh Olympic Dream Goldleaf Pure Accent

Mated: LMD May 2020 Grey Gum Classified  
 Fleece: M 17.6, SD 3.7, CF 99.8, CRV 50.8

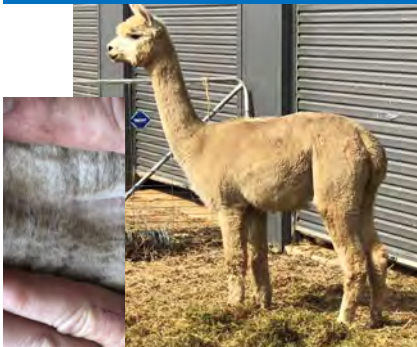
Pure Artiste is heavily pregnant and due to have her cria in May 21. Her fleece is dense with a high frequency crimp style and for her age is holding nicely. She has excellent conformation and produces healthy, well framed cria. These bloodlines are primarily from WA & will be a great asset to any herd.

Mapa – Reserved

Lot 64. Constellation Monique

Solid White Female

IAR: 206622 DOB: 8.11.16



Forestview Houhere  
 Benleigh Lorimer  
 Sire: Plantel Illawarra Horatio Dam: Constellation Mira  
 Plantel Illawarra Bellissima Cedar House Cloud Daner

Mated: LMD 18.04.2021 Yenaminut Moon Landing  
 Fleece: M 22.7, SD 4.1, CF 95.6, CRV 38.5

Monique is an upstanding female with a quiet gentle nature, her fleece is Low to Medium frequency with density – she does produce a good length. She has been re-mated and will make a great addition to any herd.

Mapa – Reserved

Lot 65. Mapa Phoxy Sunset

Solid White Female

IAR: 246662 DOB: 3.12.19



Mapa – Reserved

Sire: Camlot Tor  
 Blackgate Lodge Sunseeker  
 Blackgate Lodge Sonnette

Dam: Alpha Centauri Outlaw  
 Alpha Centauri Phoxy Lady  
 Jolimont Pennie

Mated: Maiden  
 Fleece: M 19.7, SD 3.4, CF 99.8, CRV 41

If you're after a girl that has low fleece stats and density plus a solid frame then Phoxy Sunset is for you. She also pumps out the fleece with excellent length of 110mm last shearing.

You will also be obtaining the well known Blackgate Lodge Sunseeker genetics.

Lot 66. Walkley Field Emerald

Solid White Female

IAR: 241527 DOB: 22.3.19



Walkley Field – Unreserved

Sire: Shanbrooke G. Perfect  
 Shanbrooke P. Excellence  
 Shanbrooke Shere Pred

Dam: Mongolo Figaro SW  
 Walkley Field Ember SW  
 Walkley Field Emelody

Mated: Forestglen Catalyst LMD 11.5.21  
 Fleece: Oct 20—M 23.0, SD 5.3, 2.3kg Skirted Saddle Weight

Emerald is a stylish female with a bright, high frequency and very dense solid white fleece which carries very well. With Supreme Champion Shanbrooke Perfection Excellence as her sire, she has density and style. On the dam side she has the fineness from WF Ember who goes back to WV Firedragon. The combination with Supreme Champion Forestglen Catalyst should produce something very exciting.

[www.walkleyfieldsalpacos.com.au](http://www.walkleyfieldsalpacos.com.au)—for more information

Lot 67. Walkley Field Palani

Solid Light Fawn Female

IAR: 252201 DOB: 25.5.19



Walkley Field – Unreserved

Sire: Benleigh Legend SW  
 Bumble Hill Moonraker  
 Bumble Hill Moonbeam

Dam: Jandarra Paloma SW  
 Jandarra Sapphire W

Mated: Forestglen Illuminate LMD 11.5.21  
 Fleece: Oct 20—M 22.7, SD 5.0, 3.4kg Skirted Saddle Weight

Palani is a beautiful light fawn female with lovely genetics. With Benleigh Legend through her sire, Moonraker (follicle density over 65 mm sq.) she has great density and advanced fleece style. A very lustrous fleece with soft handle and an impressive skirted saddle weight of 3.4kg. The combination with Supreme Champion Forestglen Illuminate should produce a lovely fawn combination. [www.walkleyfieldsalpacos.com.au](http://www.walkleyfieldsalpacos.com.au)—for more information.





## MOST SUCCESSFUL NSW BREEDER SYDNEY ROYAL ALPACA SHOW 2018

Walkley Fields Alpacas has been in operation for over ten years, with properties located in the Hawkesbury district at the foothills of the Blue Mountains, and Meadow Flat just west of the Great Dividing Range.



**Walkley Field Iridion**

Sired by Walkley Field Acolade (Belbourie Moonshine & Shanbrooke Taquiles Standing Ovation). A very advanced fleece style. First fleece at 16.2 micron, SD of 3.4, and an impressive annualised fleece weight of 2.67kg. 2nd Canberra Royal 2019, 3rd Sydney Royal 2019. Also a 1st Sydney Royal 2019 from other Acolade progeny.



**Walkley Field Fire Dancer**

Sired by Cambridge Fireproof with Windsong Valley Firedragon genetics and the mighty Shanbooke Accoyo Taquile on the dam side, a next generation alpaca. Our data is showing us that these big bold crimping fleeces give a heavy-cutting, lustrous and consistent fleece with a slippery cashmere feel to it. Fire Dancer (offered for sale at the auction) is a great example of this.

Our breeding strategy is to produce a softer and silkier cashmere style of fleece with a typically bolder style of crimp. We are proud that these genetics are not only making a statement in the show ring, but also in fleece competitions. At Canberra Royal 2019, Walkley Fields was awarded Champion Junior and Intermediate Fleeces, as well as Champion Brown and Light Fawn Fleeces.

We take a scientific, data-based approach to our breeding programme. An animal may exhibit certain traits but is only valuable if it is pre-potent (high probability) for passing those positive traits on to the progeny. As a result, Walkley Fields has a very stable base of elite genetics that are producing beautiful, consistent commercial fleeces.

WE ARE EXCITED TO BE RELEASING A SELECT NUMBER OF  
OUR ELITE HERD FOR THE BREEDERS CHOICE AUCTION

PLEASE VISIT US AT

[www.walkleyfieldsalpacas.com.au](http://www.walkleyfieldsalpacas.com.au), email at [info@walkleyfieldsalpacas.com.au](mailto:info@walkleyfieldsalpacas.com.au) or  
call on 0438168681 to get more information on stud services and sale animals

Lot 68. Walkley Field Fire Dancer

Solid White Male

IAR: 241515 DOB: 25.12.19



Windsong Valley Firedragon SLF

Shanbrooke Peruvian Nano SW

Sire: Cambridge Fireproof

Dam: Shanb Taquiles St Ovation S

Cambridge Validation

Shanbrooke Accoyo Taquile

Fleece: Oct 20—M 23.8, SD 4.6

1st in Class Sydney Royal 2021 (fleece)

FireDancer is only the 2nd Cambridge Fireproof stud male to be offered for sale and the 1st ever released out of Shanbrooke Standing Ovation, from the legendary Shanbrooke Accoyo Taquile. **Very impressive set of genetics.** FireDancer has inherited Fireproof and Taquile's creamy and lustrous fleece, bolder crimp style & deep Amplitude. **A Rare Opportunity.** [www.walkleyfieldsalpacas.com.au](http://www.walkleyfieldsalpacas.com.au)

Walkley Field – Unreserved

Lot 69. Walkley Field Cascadia

Solid Light Fawn Female

IAR: 241548 DOB: 13.5.19



Belbourie Moonshine SW

Forestview Price of Thieves SW

Sire: Walkley Field Accolade SW

Dam: Lillyfield Cassidy SLF

Shanbrooke Taq Ovation SW

Alani Bronte SW

Mated: Forestglen Illuminate LMD 11/5/2021

Fleece: Oct 20—M 24, SD 4.5 SD, 2.55kg Saddle Weight

Cascadia is a beautiful light fawn female with an impressive set of genetics. With Belbourie Moonshine, Shanbrooke Peruvian Nano, the famous Shanbrooke Accoyo Taquile, Celtic Triumph & Adelyn Highland Mist. A skirted saddle weight of 2.55kg, the combination with Supreme Champion Forestglen Illuminate should produce a lovely fawn result. Check out—[www.walkleyfieldsalpacas.com.au](http://www.walkleyfieldsalpacas.com.au).

Walkley Field—Unreserved

Lot 70. Walkley Field Jessamine

Solid White Female

IAR: 241544 DOB: 3.4.19



Benleigh Legend SW

Belbourie Sorrento SW

Sire: Bumble Hill Monraker

Dam: Belbourie Jurilique SW

Bumble Hill Moonbeam

Belbourie Jessamine SW

Mated: Nurrenyen Kirrin LMD 11/5/2021

Fleece: Oct 20—M 22.4, SD 4.8

Jessamine is a stylish female with a bright, lustrous and very dense solid white fleece. With Benleigh Legend through her sire, Moonraker (follicle density over 65 mm sq.) and Belbourie Jessamine on the dam side (the finest female ever bred in the Belbourie herd) she has inherited the best of both. The combination with Champion Nurrenyen Kirrin (still under 19 micron at 6 years of age) should produce something very special. [www.walkleyfieldsalpacas.com.au](http://www.walkleyfieldsalpacas.com.au)—for more information

Walkley Field—Unreserved

Lot 71. MalakaiAshbourne Bo Delicious

Solid Dark Fawn Female

IAR: 236948 DOB: 7.4.20

Sire: Softfoot Tatus MD ET

Dam: Softfoot Rishita PL

Mated: Maiden—Offered with mating to Ashbourne Rising Dragon  
Fleece: M 16.6, CF 100%

This well balanced female has a huge future, for a breeder that is looking for amazing coloured genetics. On a very correct frame, this female has a stunning fleece which is uniform, bright & high frequency in its style. Bo Delicious will be offered with a mating to Ashbourne Rising Dragon.



MalakaiAshbourne – Unreserved

Lot 72. MalakaiAshbourne White Pepper

Solid White Female

IAR: 250001 DOB: 26.4.20

Sire: Whyte Park Innsbruck

Dam: Softfoot Cassia GM

Mated: Maiden—Offered with mating to Malakai Fire Chief  
Fleece: TBA

White Pepper caught our eye as a young cria and has not disappointed. She is a well grown huacaya with a very feminine frame. This is combined with a very stylish, well aligned & bright fleece displaying great density. This definitely is a female ready to add to any advanced breeding program. White Pepper will be offered with a mating to Malakai Fire Chief ET



MalakaiAshbourne – Reserved

Lot 73. MalakaiAshbourne Hickory

Solid Brown Female

IAR: 250069 DOB: 12.4.20

Sire: Softfoot Tatus MD ET

Dam: Softfoot Amore

Mated: Maiden—Offered with mating to Softfoot Protagonist  
Fleece: M 15.4, CF 100%

MalakaiAshbourne Hickory is a beautifully grown solid brown female, with a very correct frame. Her fleece is a stunning deep brown colour that is well aligned and is extremely soft handling. Hickory bring together many of the Softfoot herds very best coloured genetics and will be a great asset to any coloured breeder's herd.



MalakaiAshbourne – Reserved

Lot 74. Ashbourne Dragonfly

Solid White Female

IAR: 247683 DOB: 24.4.20



Sire: Ashbourne Rising Dragon Dam: Ashbourne Persephone

Mated: Maiden—Offered with mating to Ashbourne The Hipster  
Fleece: 2020—M 13.9, SD 2.9

An outstanding opportunity to purchase a well bred female from the Ashbourne Herd. Pedigree includes our best genetics; with her mother being the full sister to the Adult R/ Champion National Show 19 & who is from one of our best female lines. Sired by A. Rising Dragon, a multiple broad ribbon winner. This combination has produced a well proportioned young female with a beautiful soft handling, well organised fleece. Very happy with Hipster's 1st progeny, believe that this mating should produce something very special.

Ashbourne – Reserved

**Thanks to the Vendors for Making Available,  
These Outstanding Selections for this Year's Line Up .....**

***Breeders Choice Alpaca Auction.***

***Choices, Choices, Choices.***

***Now it is up to you the Buyers.***

**Deciding what to Bid On.**

**Deciding on How Many to Bid On.**

**Deciding on what Bloodlines & Colours to Bid On.**

**Bid Online Across Australia & World Wide.**

**Bidding Online Requires you to Register.**

**Register & Bid Online : [www.auctionsplus.com.au](http://www.auctionsplus.com.au)**

## A Note From The Breeders...

**Aymara Alpacas**— Located in Bungendore NSW and now run a herd of Aprox. 150 huacaya of exceptional breeding and outstanding quality. We have carefully rebuilt Aingeal Ridge over the last few years to feature alpacas built on leading genetics, successful show careers and outstanding fleece and conformation traits.

**Auravale Alpacas**— Boutique award winning stud located in the Dandenong Ranges of Victoria. Our passion for breeding elite white huacaya has led us all over the country seeking the best matings to ensure measurable genetics improvement in each generation. Utilising SRS breeding system, visual measures and detail herd analysis.

**Ashbourne Alpacas**— Est. 2009 by Rebecca & Darren Hard. Starting small, we now run over 100 Alpacas on our beautiful property at Woodend, Vic. Using elite genetics, we are closely associated with Malakai Alpacas.

**Baarrooka Alpaca**— Baarrooka has been breeding suris for 20 years and in that time, has contributed to the development of world class suri genetics in Australia. In particular, the coloured suris from Baarrooka have garnered international recognition. Maintaining a strong focus on the traits of suri that make it an incomparable luxury fibre means Baarrooka suris are sought out by those recognising the importance of these characteristics.

**Booyong Alpacas**— Est. in 1997. We are coloured breeders with strong grey genetics. Since 1997 we have won numerous ribbons at show and also operate our own Alpaca Product Shop. Farm visits are welcome.

**Coolawarra / Storybook Alpacas**— Committed to the entirety of the Alpaca, the sustainability of Australian Agriculture, and passionate about the development of genetically bred champions. We are excited to be part of this wonderful industry now and 'happily ever after!!!'.

**Eaglewood Alpacas**— Located at Murrumbateman and established since 2005. We aim to breed fine, well-grown alpacas that produce beautiful wool. Focus on whites & colours, especially greys. Eaglewood has enjoyed considerable success in the showing over the years. Recently added Sire 'Vista Del Nunca' to our herd —Supreme Champion Roan, 2017 Nationals.

**EP Cambridge Alpaca Stud**— Est. 1993. Grown to become Australia's largest pedigree herd and a true international stud with operations in Europe and USA. Dedicated to the breeding of elite alpacas with next level fleece characteristics. We have recently imported some of the most renowned and prepotent males available from America— worthy additions to our stable of industry sires. We offer advanced fleeced animals with generations of predictable, proven genetics in every colour.

**EP Cambridge Alpaca Stud & Blackberry Alpacas UK** — An international partnership was established with the acquisition of the Canchones herd. Blackberry a well established stud in the UK are very excited to partner with EP Cambridge and offer an outstanding elite black female in this auction.

**Fern Tree Alpacas** — A Boutique Suri stud located on the lush Central Coast NSW. Selecting for fleece quality and breeding soundness, focusing on whites, but also carry blacks and greys.

## A Note From The Breeders...

**Goldleaf Alpacas**—as of 2019 the Goldleaf quality white huacaya stud ahs expanded, along with black huacaya & suri. This has allowed for the long term alpaca product focus to be accentuated. Goldleaf genetics consistently awarded at a National level. This year all Goldleaf Lots from WA include transport to nearly all agricultural areas throughout Australia. Goldleaf Lots are based either at Mapa stud NSW (Q) or in WA (JD Free).

**Green Gully Alpacas**—We started in 2005 and our love and fascination with these unique animals continues to grow. Our herd of 100 Huacayas thrives in the New England climate and we are proud of the quality of alpacas that we are producing and offering for sale. The ongoing health and wellbeing of our alpacas is most important to us, so we are very happy to provide ongoing advice and support.

**Helmshore Manor Alpacas**— breeding quality alpacas since 2002, we focus on breeding predictability with sound conformation combined with fine, well –structured fleeces. We concentrate our breeding program on producing fineness, density, lustre and crimp across all our colour ranges—effectively concentrating on “the whole package”. Our stock originates from some of the finest Hunter and Jolimont bloodlines plus additional sourced genetics to improve our lines.

**Jandarra Alpacas**— A boutique award winning stud located at Pambula, south coast of NSW. Jandarra’s show successes at the highest level come from a small herd of elite breeding females entwining Australia’s best bloodlines.

**Lillyfield Alpacas**—Breeding Generations of Champions with long term fineness, commercial fibre length, great capacity & substance of bone. Focusing on fawns but excelling in breeding exceptional whites.

**Malakai Alpacas**— Since 1996, located at Miners Rest Victoria. Producing advance fibre alpacas by remaining focused on our breed criteria. Long term successful breeders, we ar honours to offer our genetics for sale at this auction.

**Malakaiashbourne Alpacas**— Joint venture by two very successful studs. By combining our very successful genetics and breeding programs we see the results leading the industry with advanced fibre and animal production.

**Mapa Alpacas**— Establish in 2016 and young to the industry, however growing in size quickly. We run a Q alpaca herd in NSW using well known genetics from Australia wide. Producing mostly white & light fawns, however some quality coloured stock.

**Marchmont Park**— Marchmont Park has been breeding Huacayas for 13 years, both whites & colours. We have had success in the showing & endeavour to breed for quality fleece, correct conformation & sound temperament.

**Patagonia Alpacas**—Since 1996, our quest at Patagonia has been to breed to ultimate elite Australian alpaca. As a luxury natural fibre, we realise the importance of focusing on the key attributes that reinforce this positioning—high lustre, softness and silky soft handle. We select for high fleece weights, strong crimp definition, ultra-soft handle, long fibre length and lustre. We have invested significantly in importing unique genetics from Snowmass Alpacas—arguably one of the best breeders in the USA. Very excited by the progeny from the Snowmass males over our Celtic Triumph females.

## A Note From The Breeders...

**Signature Alpacas**— 19 years of breeding predominantly white lines focused on low SD, length, uniformity defined crimp and fineness. These clean genetics on a correct frame remain for the life of the alpaca and are passed onto the next generation.

**Walkley Fields**— Specialising in White & Fawn alpacas. In operation for almost a decade, Walkley Fields has carefully selected unique genetics to establish the core of our elite breeding herd. Our strategy is focused on the collection of scientific data, shearing results & establishing the pre-potency of traits for each individual animal. Situated at properties located at the foothills of the Blue Mountains & Meadow Flat, just west of the Great Dividing Range.

**Windella Alpacas** — long term partnership with Goldleaf Alpacas has allowed for the continued improvement and acceleration of the Windella stud's focus. Softness, length and intense colour are the key attributes of the breeding program. Transport from WA is included in this year's lots (as per Goldleaf). Please contact Brett Fallon for details.

**Yaringa Alpacas**— Located in South Australia's picturesque Fleurieu Peninsula owned and managed by Susan Haese. Yaringa is one of the best—recognised breeders of both white and coloured alpacas in Australia with an enviable sow record. We are excited to once again present alpacas for sale at this year's BCAA.

**Vendors of 2021 BCAA Thank you for Your Consideration at this sale.**

**In Order to Bid, Don't Forget to Complete your Online Registration.**



Breeders Choice Alpaca Auction  
Become a Vendor in 2022

All Breeders Welcome.  
It's Your Auction—It's Your Selection  
Contact: [prnrtulip@outlook.com](mailto:prnrtulip@outlook.com) Ph: 0412 496 520

**Breeders Choice Alpaca Auction**

Auction—Saturday 17th July 2021

Mail : PR & NR Tulip

537 Louth Park Rd

East Maitland...NSW...2323

Ph: 0412 496 520

[www.huntermalpaca.com.au](http://www.huntermalpaca.com.au)

**POSTAGE**

**PAID**

**AUSTRALIA**