

ROSEDALE CHAROLAIS 32ND ANNUAL BULL SALE



FRIDAY 21ST MAY 2021
AUCTION STARTS 12PM



55 X CHAROLAIS BULLS

27 X COMPOSITE BULLS

9 X YEARLING STUD HEIFERS

32ND ANNUAL BULL SALE

Friday 21 May 2021 - 12 pm
on property at "Rosedale" Blayney



CONTACTS

James Millner

Mobile: 0425 341 341
millner@rosedalecharolais.com.au

Michael and Jenny Millner

Ph:(02) 6368 7195
Mobile: 0409 682 339

FOLLOW US



rosedalecharolais.com.au

ONLINE SALES



AUCTIONEER



Paul Dooley
0458 662 646

SELLING AGENTS



Todd Clements
0429 070 225

Nick Fogerty
0409 070 225

Justin Guy
0421 467 520

Tom Card
0438 594 675

Harry Phillips
0428 855 314

Connor Lamond
0478 120 630

SELLING AGENTS



Andrew Bickford
0427 943 78

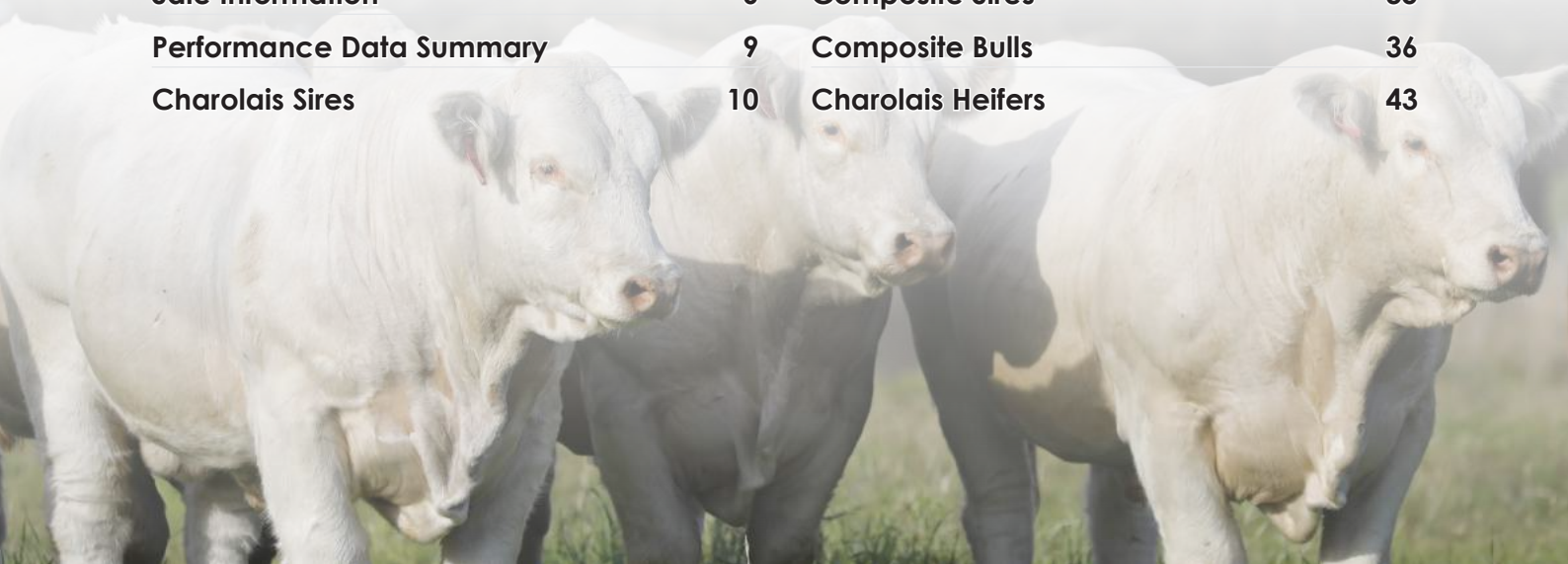
Lincoln Mckinley
0419 239 963

Paul Jameson
0428 667 998

Jesse Gauci
0417 473 127

CONTENTS

Welcome	4	Charolais Bulls	13
Rosedale News	5	Charolais Yearling Bulls	33
Sale Information	6	Composite Sires	35
Performance Data Summary	9	Composite Bulls	36
Charolais Sires	10	Charolais Heifers	43



LEADING from the front FOR OVER 50 YEARS



Rosedale Charolais are your proven source of top quality polled Charolais genetics.

Rosedale continues to lead the way in Australia's carcass competitions with unrivalled success in recent times.

This is a true reflection that our breeding program is on the right track and that our genetics are out performing in a commercial situation.

We have a wide range of bulls to cover all Australian domestic & export markets including stud sire duties. We welcome your inspection and stand 100% behind the bulls we put on offer. We focus on growth and meat quality and this reflected in our carcass competition success.

Now with a branded product for Rosedale Customers there is no better place to source your bulls for maximum crossbreeding profitability.

Our cattle are specifically bred for profitable cross-breeding under Australian conditions.

ROSEDALE'S PROVEN COMMERCIAL PERFORMANCE IN AUSTRALIA'S BIGGEST INDEPENDENT FEEDLOT TRIALS.

NSW BEEF SPECTACULAR FEED LOT TRIAL

- 2013** Grand Champion Team, Most Profitable Team Reserve Champion Weight Gain
- 2014** 3 Teams in the Top 10 (out of 120 entered) 2nd Most Profitable Team
- 2016** Champion Weight Gain, Most Profitable
- 2017** Reserve Champion Weight Gain, 2nd most profitable Team. 3rd Overall
- 2018** Riverine Classic Champion
- 2019** 10th overall and 3 teams in the top 20.
- 2020** 6th overall

AUSTRALIAN NATIONAL FIELD DAYS

- 2012** Grand Champion Team 1st Carcass Yield
- 2013** 1st Carcass Yield, 2nd Carcass Points, 4th overall
- 2014** Champion Individual Steer
- 2015** Highest Carcass Points, 3rd overall
- 2017** Grand Champion Team, 1st and 2nd Carcass and yield.

SYDNEY ROYAL BEEF CHALLENGE

- 2012** Grand Champion Domestic Team
- 2013** Grand Champion Export Team
- 2015** Grand Champion Domestic Team
- 2016** Grand Champion Export Team, 4th Domestic Team
- 2019** Branga Plains - Grand Champion Domestic Team (Rosedale Genetics)

BRISBANE ROYAL PADDOCK TO PALATE

- 2017** Highest MSA Indexing Team (Domestic)
- 2019** Champion Domestic Team
- 2020** Reserve Champion Export Team HGP Free





WELCOME TO OUR 32ND ANNUAL BULL SALE

Welcome to 2021 and our 32nd On Property Annual sale. We are very pleased with the quality of the livestock we have presented for this year's sale. The past 12 months has been an extraordinary time to be involved in agriculture and in particular the beef industry. Widespread rain across the majority of the Eastern sea board has seen empty and bare paddocks turn into lush green fields full of grass. This in turn has given us producers the confidence to get back into ramping up production after 3 straight years of a declination in the national cow herd. Many of us managed to scrape through the drought with heavy feed bills whilst others have been forced to restock in a much stronger market. For those well entrenched in the cattle industry it is exciting times as cattle have hit record levels this year. For those trying to restock or get into cattle there may be some short-term pain but we still believe the fundamentals look very promising over the longer term.

We believe our bulls sit at the forefront of where the modern day Charolais as a terminal sire needs to be to remain relevant in the beef industry today. Having said that we are always striving to get better and we know the direction we are heading with our herd. We focus on growth rates to ensure you hit your target weights faster, We focus on sensible birthweights to ensure you never have to worry about problems with your cows calving, We focus on carcass traits to help you hit the grid specifications and maximise MSA scores, We focus on Polled cattle to give you one less job to do and help keep PETA off our backs, We focus on good temperaments and good types as they are the cattle we all like dealing with. It all sounds relatively simple when broken down but it takes years of patience and persistence to get animals that cover all the bases consistently.

This year's draft of Charolais Bulls are sired mostly by our walking sires along with a few chosen AI sires including Silverstream Landmark and Rosedale Donotello. This year will be the last of the Rosedale Harry and Rosedale Kaviar progeny through the ring, the second year of the Rosedale Mavericks, The Sixth year of the Rosedale H168's the first year of the Palgrove Mandates and the Mt William Monoliths. We do find we find greater success with a good walking sire as we find we know a lot more about the animal. AI sires are very useful from time to time and we have over the years had a lot of success but there is always a little risk in not knowing the animal on such an intricate level. We are very patient with our walking sire selection and only choose bull that we believe will progress our breeding herd towards our goals.

The composite bull program is coming along very well and these are the best bulls chosen from our commercial breeding herd out of specially selected sires. The composite bulls deliver a different dimension in a cross breeding situation and in general have the ability to lay on a bit more fat cover than a pure Charolais with above industry growth rates.

All Animals purchased in the sale come with the Rosedale 12 month guarantee for fertility and structure. We stand behind the animals we sell and you can be assured when purchasing from Rosedale the quality is guaranteed.

Inspections are available at any time leading up to the sale by appointment but we do welcome you all to come on sale day and look forward to catching up.

Supplementary information and pictures of all lots will be available on www.rosedalecharolais.com.au as well as Rosedale's Auctionsplus sale page.

Michael, Jenny and James Millner





2021 BEEF SPECTACULAR - FEEDLOT TRIAL

At the 2021 Beef Spectacular a Charolais x Shorthorn team from Millner AG placed 6th overall in the standings with a team of Rosedale Charolais/shorthorn cross steers (the brothers of the composite bulls). This year the competition was HGP free with all teams assessed on weight gain in the feedlot and carcass characteristics. The team entered the competition averaging 435kg's at just 12 months of age (Great return to the producers). They averaged 1.92kg/day versus the competition average of 1.67 kg/Day (Great return for the feedlotters). They placed 12th overall on the carcass and averaged an MSA Index score of 61.2 (Great return for the processor).

Another team of Charolais x Angus steers entered by Rosedale Livestock Partnership were ruled out after losing a steer to bloat but the 4 remaining steers averaged 2.06 kg/per day in the feedlot well above the competition average of 1.67kg/Day. They also averaged a MSA score Index of 62.19 between the 4 of them.



2020 RNA Paddock to Palate

At this year EKKa we entered a team in the 100 Day HGP Export class of Rosedale Charolais/Shorthorn steers (actually bred by client Warwick Knight and Family at Coonabarabran) who did extremely well to finish 2nd overall. These cattle finished 6th in the weight gain averaging 2.2 kg/Day and did well in the meat-eating quality section averaging an MSA index of 62.02 as well as placing top 5 in the carcass section of the competition.



RECORD COW PRICE AT CENTRAL TABLELANDS LIVESTOCK EXCHANGE (CTLX)

During 2020 we managed to break a record at our local selling centre (CTLX) which is also happens to be the 3rd Largest selling centre for cattle in New South Wales. A Rosedale cow weighing in at a whopping 1004kg's and made \$3.10/kg to come back at \$3122.40. Although the cow was well above the average weight of our typical cow it was nice to be involved in such a record. She was a dry cow that was given a second chance to have another calf given the drought but was unable to do so.



SALE INFORMATION

ROSEDALE SALE BULL EBV'S

Rosedale has been a member of breedplan for over 30 years. This has helped assist us to consistently retain and source external genetics that have enabled us to produce the types of cattle you see in our paddocks today.

Genetic gain in growth rates has always been a priority of ours, but we understand sensible calving ease and birthweights need to be maintained. With our own commercial herd of 1000 British bred cows, we are very familiar with the benefits our charolais bulls are delivering in a crossbreeding situation.

The graphs shown are a good 'measuring stick' as to where our sale bulls are compared to the Australian Charolais breed average.

Although we understand that EBV's are not everything we believe they do help to illustrate the types of bulls we are aiming to produce. We submit large amounts of meaningful data each year to breedplan to help ensure the information is as accurate as it can be.

At Rosedale we are always looking to improve our genetic pool in an effort to further satisfy our clients. We welcome all feedback you may have on our breeding program and objectives.

VISUAL ASSESSMENT

When choosing bulls we recommend using a combination of EBVs, Raw Data and visual assessment. Visual assessment is essential to assess physical and structural soundness and is a reasonable indicator of health and temperament.

EBV's are a tool that will help you to make more "educated" decisions when you are choosing breeding stock. Do your homework well before the sale when you have plenty of time and set some parameters for your EBVs that fall within your market requirements, to narrow down potential purchases.

Use this "suitable list" of bulls and spend time looking and assessing the physical characteristics that you require.

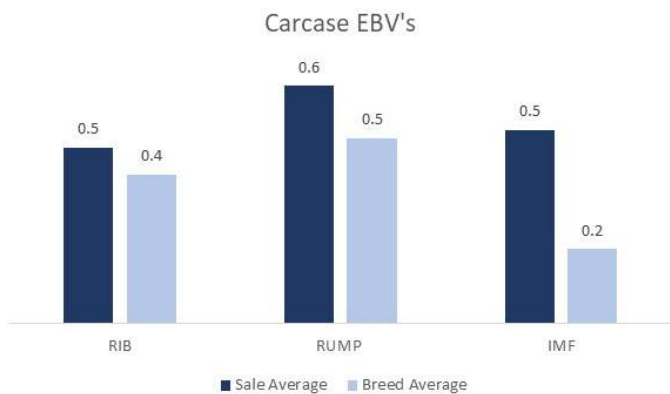
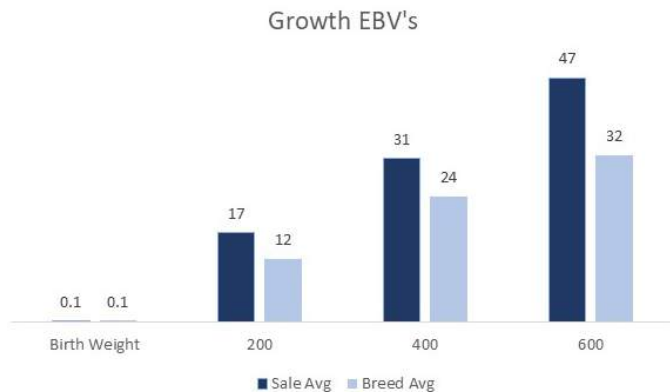
CARING FOR YOUR NEW BULL

Always be considerate to your bulls and handle them with respect and kindness. Handle them quietly, walk them rather than rushing them, treat them with care and in a gentle manner and they will do likewise.

A bull leaving ROSEDALE is leaving the security of a large mob and will arrive in a strange environment at the purchaser's property. Unload him and make sure he has a steer or cow as a companion straight away if you can't put him out into your bull mob immediately.

A young bull can move in with older bulls and settle well, but remember, being the youngest he will get the last of any feed available because of the pecking order. The paddock needs to be reasonably large so he can keep away from the others and find adequate feed. Young bulls are still growing fast and need enough feed to maintain their growth pattern and be able to settle the cows quickly and efficiently.

ROSEDALE bulls are used to being handled by stockmen on motor bikes. Most of the fences are electrified and the bulls treat them with respect.



SALE INFORMATION



INSPECTION: cattle inspections are welcome at any time prior to the sale by arrangement with the Vendor. Cattle will be yarded into pens by 9am sale day.

MORNING TEA & LUNCH: Will be available.

LOCATION: (map inside back cover)

1km out of Blayney on the Orange Road, turn left into Brown's Creek Road. Continue for 5kms and you will see "Rosedale Charolais Stud" on the left. Follow gravel road for 2kms.

HEALTH: All bulls catalogued have been semen tested and examined by Peter Brown of Bovine Breeders for structural soundness. All of our cattle receive 7 in 1 vaccinations at 4 months of age, then 6 weeks later and an annual booster. They were drenched at weaning and periodically according to worm counts. Cattle were last drenched with Cattleguard together with a 7in1 in March. The sale bulls have been vaccinated for Pestivirus (BVDV).

RAW DATA: All bulls will be scanned prior to the Sale for eye muscle area (EMA), rump and rib fat, marbling (IMF%) as well as sale weight and scrotal measurements. Supplementary sheet available on the day and on the rosedale website, along with photos of all the lots.

ROSEDALE'S 12 MONTH GUARANTEE: All stock have been evaluated for structural soundness and fertility. To the best of our knowledge the bulls are in sound working order at the time of the sale. Any claim against the breeding ability or a structural breakdown of any animal must be made in writing and accompanied by a Veterinary Certificate within 12 months of the sale date. Any animal failing to breed may be either replaced with an animal of similar value or credit made available to the value of the purchase price, minus salvage value, for use at a future Rosedale sale. The Purchaser will be responsible for any costs incurred.

DELIVERY: A delivery instruction slip must be completed and signed. Stock awaiting delivery will be held free of charge - all care will be taken, but absolutely no responsibility will be accepted for any injury or loss occasioned during, as a consequence of, or in relation to any holding. Rosedale offers a free delivery service locally and to Dubbo. We are more than happy to assist with all deliveries, please speak to us as we will go out of our way to help you get your purchases home safely and economically. We also can deliver cattle to CTLX, which is a transport hub for most major carriers. For Interstate buyers please speak to us directly as we can subsidise freight costs.

INSURANCE: Ownership passes at the fall of the hammer. An insurance representative will be in attendance on Sale day.

TELEPHONE LINK-UP: Mobile telephones will be available. Please arrange with the Vendor or Agent to ensure a line.

AUCTIONS PLUS: Our sale is conducted live on line in real time and will be interfaced on Auctions Plus with the physical auction that is being conducted. A computer is used to bring the on-site bid price to the internet screen for remote bidders to observe. Bidders can bid on computers at their location and the bid is immediately transferred to the auction barn and relayed to the auctioneer. Bidding is only available if registered with Auctions Plus. You must register on-line to their website www.auctionsplus.com.au - at least 24 hours prior to the sale. For first time users of Auctions Plus we recommend you register as soon as possible and become familiar with the site. The staff in Sydney are very helpful and happy to guide you through it.

For more information contact:- Auctions Plus - (02) 9262 4222

3% REBATE: The rebate will be offered to outside agents on the condition that a written introduction is received 48 hours prior to the sale and/or the agent accompanies the purchaser to the sale and settles on their behalf within 7 days. (This clause will be strictly adhered to.)

TERMS AND CONDITIONS: Terms of the sale are as per Conditions of Sale NSW Stud Stock.

PLEASE NOTE: It is unethical for anyone to promote, advertise or arrange the sale of any cattle, other than those in this sale on this sale premises.

COVID 19: Please follow directions and safety signs on sale day in regards to Covid 19. We will be working within current guidelines as set by the Australian Government. All guests will be required to sign in on arrival and adhere to current social distancing rules. Please be responsible and respectful of others and their health and safety and do not attend if you are not feeling well. Online Bidding and over the phone bidding is available and private inspections are welcomed and encouraged at any time prior to the sale by appointment.

SALE DAY SAFETY: All sale bulls have been screened for temperament and are quiet to handle under normal circumstances. However, there are risks associated with cattle handling. **Visitors enter the cattle pens at their own risk. Children must not enter pens.**

DISCLAIMER: People entering upon this property for any purpose whatsoever including attendance at cattle auctions do so at their own risk. We are not liable to you for any personal injury or death suffered by you and for theft loss or damage to any property caused or contributed to by us or by any other person whether caused or contributed to by or by negligence deliberate act or unlawful conduct. "We" or "us" or "our" refer to the owners their employees contractors and agents and each of them. While every care has been taken in compiling this catalogue to ensure accuracy of information supplied no responsibility is accepted for any errors which may have occurred.



UNDERSTANDING BREEDPLAN EBV'S

All bulls in this sale have been managed under identical conditions from the point of weaning, therefore comparisons can be made between animals of similar age. Weights, scans of EMA and IMF% and scrotal measurements will be available on the day of sale to further aid your visual assessment.

Charolais Group Breedplan is an advanced genetic evaluation system that provides a genetic description of Charolais cattle for a range of traits influencing fertility, growth and carcass performance. It provides predictions of the genetic merit of individual animals called Estimated Breeding Values (EBVs). EBVs are based on all the available pedigree and performance records provided by breeders in Australia and New Zealand, along with available overseas genetic information. EBVs are expressed in the units of measurement for each particular trait and are shown as +ive or -ive values. The Charolais breed average EBV for different traits changes over time as the breed makes genetic progress. The absolute value of any EBV is not critical, but rather the differences in EBVs between animals. Particular animals should be viewed as being "above or below breed average" for a particular trait. The averages for calves born in 2014 are shown below and at the bottom of the Performance Data Summary. Please note that each breed has their own EBV and cannot be compared across breeds. All EBVs quoted in this catalogue are Charolais Group Breedplan EBVs and are directly comparable with the EBVs from other Charolais Group Breedplan herds.

How to use EBVs

To use these figures successfully you must first determine which characteristics you desire to breed for and then select the EBV which best supports these qualities. It is important to note that in a successful breeding programme it is advisable to maintain balance and not to direct effort toward gaining a single, higher EBV for one particular trait.

Birth Weight is a major factor in calving difficulty. Use this EBV to select against birth weight if calving is a problem.

The lower the EBV the lighter the calves are expected to be at birth.

200 Day Growth and Milk is of particular interest to those targeting high weight gains at an early age to supply to the Domestic and Restaurant trade. Milk should be emphasized if the bull is being used to breed replacement progeny.

400 and 600 Day Growth indicates animals with superior weight gains from 12 months to 2 years of age, which would optimize profits in the domestic to Jap Ox markets.

Accuracy (Acc.%) provides an indication of the reliability of an EBV. As more performance information becomes available on an animal, it's progeny and relatives, the accuracy of it's EBVs for particular traits increases. The higher the accuracy the less chance the figure for each EBV will vary.

Index Values are reported as EBVs, in units of relative earning capacity (\$'s) for a given market. They reflect both the short-term profit generated by a sire through the sale of his progeny, and the longer-term profit generated by his daughters in a self-replacing cow herd. A selection index combines the EBVs with economic information (costs and returns) for specific market and production systems to rank animals based on relative profit values. Note that different types of animals can give similar profit values, so consideration should be given to both the index and the component EBVs when selecting animals for a particular production system.

Domestic Index(\$) Estimates the genetic differences between animals in net profitability per cow joined for an example commercial herd with a British cow base targeting grass-finished production for the domestic trade. This Index assumes pasture grown & finished steers weighing 430kgs (240kg HSCW and 6mm P8 fat) at 12 months. Daughters are retained or sold for breeding therefore maternal traits are of importance. In response to industry feedback, positive emphasis has been placed on finishing ability.


Export Index(\$) Estimates the genetic differences between animals in net profitability per cow joined for an example commercial herd with a British cow base targeting the production of steers for export markets. This Index assumes pasture grown & finished steers weighing 700kg (380kg HSCW and 9mm P8 fat) at 29 months. Daughters are retained or sold for breeding therefore maternal traits are of importance. In response to industry feedback, positive emphasis has been placed on finishing ability.

Scrotal Size is a good indicator of the bull's ability to produce sperm. A 2 year old bull with a testicle size of 34cm or more is regarded as satisfactory. Measurements will be available sale day.

Average Group Breedplan EBV's for 2019 born calves - March 2019 data.																	
Charolais	Calve ease direct (%)	Calve ease dtrs (%)	Gest length (days)	Birth Wt (kg)	200 Day Wt (kg)	400 Day Wt (kg)	600 Day Wt (kg)	Mat Cow Wt (kg)	Milk	Mat Value (kg)	Scr Size (cm)	Carc Wt (kg)	Eye mscl area (cm ²)	Rib fat (mm)	Rump fat (mm)	Retail beef yield (%)	IMF (%)
EBV	+1.5	+0.8	-2.8	+0.1	+12	+24	+32	+31	+7	+20	+1.1	+19	+1.6	+0.4	+0.5	+0.0	+0.2
Represents top 25% or better of Charolais Breed												\$ Index Value		+\$25		+\$35	

PERFORMANCE DATA SUMMARY



Lot	Calving Ease	Birth Weight	200 Day Growth	400 Day Growth	600 Day Growth	Milk	Eye Muscle Area	Rib Fat	Rump Fat	IMF
1	+0.1	+0.3	+24	+39	+56	+8	+1.3	-0.2	-0.1	+0.1
2	-5.1	+1.7	+19	+41	+60	+14	+1.4	+1.3	+1.6	+0.9
3	+8.5	-1.3	+16	+29	+29	+11	+0.9	+0.5	+0.8	+0.7
4	-3.5	+0.9	+18	+35	+50	+5	+2.5	+0.1	+0.3	+0.8
5	+4.0	+0.1	+18	+36	+51	+8	+1.5	+0.7	+0.7	+1.1
6	+0.1	+1.2	+17	+44	+56	+7	+1.4	+0.2	+0.6	+1.1
7	+2.4	+0.6	+17	+33	+53	+10	+2.3	+0.6	+0.9	+0.5
8	+5.1	-0.4	+14	+23	+33	+8	+0.7	+0.7	+1.0	+0.4
9	+0.3	+1.0	+21	+36	+48	+4	+1.8	+0.0	+0.3	+0.6
10	+2.0	+0.8	+14	+30	+47	+8	+3.1	-0.5	-0.6	+0.5
11	+0.7	+1.5	+20	+41	+65	+12	+2.3	-0.7	-0.9	+0.6
12	+5.0	-0.2	+17	+29	+43	+12	+1.1	-0.5	-0.9	0.0
13	-2.2	+1.4	+19	+45	+58	+7	+1.1	+0.0	+0.4	+1.3
14	+0.8	+0.7	+16	+32	+52	+12	+2.7	+0.0	-0.1	+0.3
15	+8.0	-0.7	+16	+23	+40	+12	+0.7	+0.3	+0.3	+0.2
16	+0.9	+0.6	+17	+37	+46	+6	+2.7	+0.1	+0.4	+1.1
17	+3.4	+0.6	+17	+29	+46	+7	+2.4	-0.2	+0.2	+1.1
18	-2.5	+0.4	+20	+39	+54	+8	+2.1	+0.2	+0.3	+0.3
19	+6.9	-0.8	+18	+24	+47	+14	+0.5	+0.7	+0.9	+0.4
20	+2.3	+0.4	+16	+35	+53	+9	+1.6	-0.1	+0.0	+1.0
21	+2.7	-0.4	+20	+28	+40	+8	+1.1	+0.0	+0.0	+0.1
22	-2.8	+0.9	+17	+27	+32	+4	+0.9	+0.9	+1.3	+0.3
23	-1.2	+0.3	+15	+24	+32	+7	+0.9	+0.0	+0.0	-0.1
24	+2.8	+0.5	+19	+31	+38	+7	+1.4	-0.3	-0.3	+0.4
25	+3.2	-0.7	+21	+33	+43	+11	-0.3	+0.4	+0.3	-0.2
26	+3.0	-0.9	+13	+28	+40	+13	+1.9	+1.1	+1.4	+0.5
27	-0.9	+0.8	+21	+40	+62	+15	+0.9	+1.1	+1.3	+0.3
28	+6.3	-0.8	+15	+27	+47	+18	+0.4	+0.8	+0.9	+0.5
29	-3.8	+1.8	+19	+37	+57	+9	+2.0	+0.0	+0.1	+0.7
30	+6.0	-0.8	+16	+28	+36	+7	+2.2	+0.1	+0.3	+0.8
31	+4.6	-0.1	+12	+27	+40	+10	+0.5	-0.2	-0.2	+0.6
32	+4.7	-0.3	+17	+32	+43	+8	+1.9	+0.8	+1.3	+0.8
33	+4.2	-0.5	+19	+27	+48	+7	+1.1	+0.2	+0.0	-0.2
34	+0.9	-0.2	+18	+28	+37	+9	-0.1	+0.3	+0.5	+0.7
35	+7.1	-1.9	+16	+27	+45	+14	+1.0	+1.1	+1.6	+1.0
36	+8.1	-0.7	+9	+26	+35	+17	+2.1	+0.4	+0.7	+0.7
37	+2.7	-0.5	+17	+28	+46	+17	+0.9	+0.4	+0.3	+0.2
38	+4.9	-0.1	+15	+21	+32	+7	+1.9	+0.6	+0.9	+0.7
39	+3.5	-0.1	+12	+22	+32	+8	+2.5	-1.4	-1.8	-0.3
40	-1.8	+0.7	+21	+42	+65	+15	+2.6	+1.5	+2.0	+0.9
41	-5.1	+1.1	+23	+46	+70	+13	+2.1	+1.6	+2.2	+0.6
42	+2.7	+0.3	+14	+24	+37	+7	+1.3	+1.1	+1.4	+0.3
43	+5.4	-0.1	+19	+32	+52	+15	+2.4	+1.9	+2.6	+1.0
44	-0.6	+0.6	+18	+39	+58	+16	+2.4	+1.5	+1.8	+0.7
45	-1.1	+0.9	+19	+37	+52	+14	+2.1	+0.9	+1.0	+0.4
46	-3.8	+1.1	+21	+40	+63	+15	+2.7	+0.2	+0.1	+0.5
47	-3.0	+1.0	+20	+38	+62	+14	+2.0	+1.6	+2.0	+0.8
48	+7.0	-1.0	+13	+18	+36	+14	+1.8	+0.9	+0.7	-0.1
49	+3.7	-0.6	+17	+28	+51	+11	+0.2	+0.9	+1.0	+0.3
50	-2.9	+0.7	+17	+33	+53	+16	+1.0	+0.8	+1.0	+0.3
51	+10.6	-1.1	+12	+22	+38	+15	+1.0	+0.6	+0.8	+0.5
52	+7.0	-0.7	+12	+21	+37	+14	+0.8	+0.9	+1.1	+0.4
53	+6.5	-0.6	+15	+25	+39	+11	+0.6	+1.0	+1.4	+0.6
54	+4.7	-0.3	+16	+32	+49	+14	+0.5	+0.7	+0.9	+0.7
55	+2.5	0.0	+14	+24	+39	+9	+1.2	+0.4	+0.5	+0.2
EBV	Breed average EBV's for 2019 born calves									
	Calving Ease	Birth Weight	200 Day Growth	400 Day Growth	600 Day Growth	Milk	Eye Muscle Area	Rib Fat	Rump Fat	IMF
	+1.5	+0.1	+12	+24	+32	+7	+1.6	+0.4	+0.5	+0.2
Represents top 25% or better of Charolais Breed										



CHAROLAIS SIRES

ROSEDALE MAVERICK (AI) (ET) (RF)

Born: 21/07/2016

Society ID: MRM299E

Sire: **ROSEDALE DEALER (P)**
 PALGROVE STANDOUT (P)
 GUNNADOO YUPPY (P)
 GUNNADOO CINDY (P)

Dam: **ROSEDALE CANDY G304 (AI) (ET) (P) (R/F)**
 MINNIE-VALE DEPUTY (P)
 ROSEDALE BUTTERSCOTCH Y47 (P) (RF)
 ROSEDALE BUTTERSCOTCH V150 (P)
 LANGS ERIC THE RED (P)
 HARVIE JAGER (P)
 HARVIE MISS FRANCIS



Charolais Group Breedplan EBV's - March, 2020								
	DIR	DTRS	GL	BWT	200	400	600	MWT
	+8.6	+1.7	-1.7	-0.6	+14	+24	+38	+38
	60%	43%	61%	89%	77%	82%	77%	71%
MILK	SS	CWT	EMA	RIB	RMP	RBY	IMF	
	+11	+1.4	+22	+1.1	+1.1	+1.5	-0.6	+0.7
	54%	68%	67%	56%	69%	69%	62%	56%
Index \$ Value	Domestic (\$)				Export (\$)			
	+\$ 43				+\$ 66			

Sire Appeal, Red Factor and Homozygous polled - Maverick is one of the best bulls we have produced in recent times. His first progeny are in this sale and they fantastic. Earlier maturity pattern, Excellent IMF and fantastic skin type. We expect a big future in this bull and have used him for 4 joinings in the past 2 years.

SILVERSTREAM LANDMARK (P)

Born: 5/09/2015

Society ID: OANL40E

Sire: **SILVERSTREAM EVOLUTION (P)**
 PALGROVE XCEPT (AI) (ET) (P)
 SILVERSTREAM BRUMBY (P)
 SILVERSTREAM R75
 IJOUFFLU
 SILVERSTREAM GLOSSY S120
 SILVERSTREAM IVEY

Dam: **MERRIDALE FARAH F14**
 DALTON
 NECESSAIRE
 LICHETTE
 KAITOKE OCTAVIOUS (P)
 MERRIDALE TASMAN T8
 MERRIDALE OLIVIA



Charolais Group Breedplan EBV's - March, 2020								
	DIR	DTRS	GL	BWT	200	400	600	MWT
	+8	-1.4	-2.0	-0.2	+14	+23	+40	+39
	68%	56%	80%	94%	87%	88%	88%	79%
MILK	SS	CWT	EMA	RIB	RMP	RBY	IMF	
	+5	+0.4	+27	+2.8	-1.6	-2.4	+1.8	+0.2
	65%	88%	77%	68%	77%	76%	71%	67%
Index \$ Value	Domestic (\$)				Export (\$)			
	+\$ 26				+\$ 39			

Exclusive to Rosedale, Landmark is doing all the things we asked for adding bone, muscle, style and growth to his progeny. Moderate birth weight calves that really grow into substance. His sire Silverstream Evolution needs no introduction to the charolais world but Landmark could be better yet. Was selected for his type and Excellent EMA and IMF raw measurements.

PALGROVE MANDATE (AI) (P)

Born: 14/08/2016

Society ID: PKM380E

Sire: **PALGROVE CARBINE**
 PLATINUM WIND-FALL (P)
 PALGROVE AMBUSH (P)
 PALGROVE AROHA 19 (P)
 PALGROVE QUINTERO (AI) (ET)
 PALGROVE IDEAL 40
 PALGROVE IDEAL 25
 LT RIO BRAVO (P)
 RANGAN PARK RIO BRAVO (P)
 PALGROVE SHOW GIRL 6 (P)

Dam: **PALGROVE DIGNA 194 (P)**
 AIRLIE ADVANTAGE (AI) (ET)
 PALGROVE DIGNA 159
 PALGROVE DIGNA 104 (AI) (ET)



Charolais Group Breedplan EBV's - March, 2020								
	DIR	DTRS	GL	BWT	200	400	600	MWT
	+3.3	+3.1	-3.4	+0.6	+19	+36	+50	+45
	61%	45%	77%	90%	77%	77%	74%	70%
MILK	SS	CWT	EMA	RIB	RMP	RBY	IMF	
	+4	+2.7	+28	+2.5	-0.1	+0.4	0.0	+1.5
	55%	79%	72%	60%	69%	68%	65%	55%
Index \$ Value	Domestic (\$)				Export (\$)			
	+\$ 44				+\$ 63			

This year we see the first offering of Palgrove Mandate progeny and we are thrilled with the way he has bred for us. Progeny are thick yet soft with good growth rates and excellent carcass attributes. Mandates EBV's rank him as a trait leader for 200 Day Growth and scrotal size as well as ranking in the Top 1% of the breed for marbling (IMF %).



ROSEDALE HARRY (HOMO POLLED)

Born: 30/03/2012

Society ID: MRH16E

LT RIO BLANCO (P)
SVY PIONEER (P)
SVY JINGLES
Sire: SVY PILGRIM (P)
RGP EUREKA (P)
HFCC FRENCH KISS 919J
QCR FRENCH KISS (P)

LT WYOMING WIND (P)
DSK YABBA DABBA DO (AI)
PALGROVE ESTELLA (AI) (ET)
Dam: ROSEDALE CANDY C36 (P)
MINNIE VALE DEPUTY (P)
ROSEDALE CANDY Z34 (P)
ROSEDALE CANDY U109 (P)



Another Homozygous polled homebred sire who has done a tremendous job at Rosedale. Harry progeny combine the growth and muscle of SVY pilgrim with the maternal quality of Yabba. Some outstanding sons in this sale. Trait leader for birthweight, 200, 400 & 600 day growth.

Charolais Group Breedplan EBV's - March, 2020								
	DIR	DTRS	GL	BWT	200	400	600	MWT
Charolais	+0.8	-7.6	-3.8	-0.1	+22	+33	+37	+34
	73%	61%	77%	96%	87%	94%	92%	82%
	MILK	SS	CWT	EMA	RIB	RMP	RBY	IMF
	+6	+2.5	+21	+0.4	0.0	+0.2	-0.2	+0.3
	67%	91%	81%	70%	83%	82%	74%	71%
Index \$ Value	Domestic (\$)				Export (\$)			
	+\$ 24				+\$ 31			

ROSEDALE H168 (HOMO POLLED)

Born: 05/10/2012

Society ID: MRH168E

FERNVALE RIPPER
FERNVALE TRAPPER
FERNVALE PRIMA DONNA (AI) (ET)
Sire: ROSEDALE DARWIN (P)
WCR SIR DUKE (P)
ROSEDALE GRACE A97 (AI) (ET) (P)
ROSEDALE GRACE T9 (P)

NOVOTEL
PARINGA NOVOTEL (P)
PARINGA FISTRAC (AI) (ET) (P)
Dam: ROSEDALE BEATRIX D148 (P)
ROSEDALE WILLIE (P)
ROSEDALE BEATRIX Z185 (P)
ROSEDALE BEATRIX W119



Homozygous polled, with growth and depth, softness combined with marbling ability. H168 has been joined heavily at Rosedale and maintained excellent body condition and structural correctness his entire working life. Retired from stud earlier this year after his 7th year around with feet still in excellent condition.

Charolais Group Breedplan EBV's - March, 2020								
	DIR	DTRS	GL	BWT	200	400	600	MWT
Charolais	+5.4	-1.9	+0.1	+0.5	+17	+35	+55	+70
	72%	58%	63%	96%	89%	94%	92%	82%
	MILK	SS	CWT	EMA	RIB	RMP	RBY	IMF
	+18	+0.8	+29	+1.9	+1.8	+2.6	-1.5	+1.2
	68%	89%	81%	70%	83%	82%	72%	70%
Index \$ Value	Domestic (\$)				Export (\$)			
	+\$ 46				+\$ 67			

ROSEDALE MUSTANG (AI) (ET) (P)

Born: 29/07/2016

Society ID: MRM297E

PALGROVE STANDOUT (P)
GUNNADOO YUPPY (P)
GUNNADOO CINDY (P)
Sire: ROSEDALE DEALER (P)
MINNIE-VALE DEPUTY (P)
ROSEDALE BUTTERSCOTCH Y47 (P) (RF)
ROSEDALE BUTTERSCOTCH V150 (P)

LANGS ERIC THE RED (P)
HARVIE JAGER (P)
HARVIE MISS FRANCIS
Dam: ROSEDALE CANDY G304 (AI) (ET) (P) (R/F)
PALGROVE JACKPOT (P)
ROSEDALE CANDY Q140 (P)
ROSEDALE CANDY 10 (P)



A full brother to Rosedale Maverick and his first calves are just coming through the system. We are absolutely delighted with the way he has bred and the consistency in his progeny.

Charolais Group Breedplan EBV's - March, 2020								
	DIR	DTRS	GL	BWT	200	400	600	MWT
Charolais	+11.0	+2.6	-2.4	-1.3	+14	+22	+36	+28
	51%	40%	53%	76%	65%	68%	69%	63%
	MILK	SS	CWT	EMA	RIB	RMP	RBY	IMF
	+12	+1.4	+22	+1.5	+0.2	+0.3	+0.3	+0.1
	49%	55%	58%	45%	55%	56%	51%	45%
Index \$ Value	Domestic (\$)				Export (\$)			
	+\$ 42				+\$ 61			



CHAROLAIS SIRES

ROSEDALE KAVIAR (P)

Born: 10/04/2014

Society ID: MRK20E

NOVOTEL 5897127519 OAFS7519F (H)
PARINGA NOVOTEL A100 (AI) (ET) (P)
PARINGA FASTRACK Y654 (AI) (ET) (P)

Sire: ROSEDALE FAIRLANE (P)

COBRABALD WINSTON (AI) (P)
ROSEDALE HONOR A118 (H)
ROSEDALE HONOR V11 (AI) (H)

M6 GRID MAKER 104 PET M633377 (P)
EC NO DOUBT 2022 P M685500 (P)
EC LADY DUKE 2022 P (P)

Dam: ROSEDALE NET E58 (AI) (P)

GUNNADOO YUPPY (P)
ROSEDALE NET B195 (P)
ROSEDALE NET V59 (P)



A thick bodied, soft coated and growthy homozygous polled bull we bred ourselves. Calves are born small and grow out extremely well. Trait leader for birthweight, 200, 400 & 600 day growth.

Charolais Group Breedplan EBV's - March, 2020								
	DIR	DTRS	GL	BWT	200	400	600	MWT
	+8.3	-1.2	-3.7	-1.3	+21	+35	+60	+76
	68%	56%	68%	95%	84%	91%	88%	78%
	MILK	SS	CWT	EMA	RIB	RMP	RBV	IMF
	+16	+1.5	+30	+0.2	+1.0	+1.2	-1.2	+0.5
	64%	84%	76%	65%	79%	78%	70%	65%
Index \$ Value	Domestic (\$)				Export (\$)			
	+\$46				+\$72			

MT WILLIAM MONOLITH (AI) (ET) (P)

Born: 08/09/2011

Society ID: JAJG52E

PCC SUDDEN IMPACT (P)

Sire: PALGROVE HANNIBAL (AI) (ET) (RF) (P)

PALGROVE DIGNA 84 (R/F)

ROSEDALE BOSS

Dam: MT WILLIAM GREENIE

MT WILLIAM BABBETTE



Purchased in 2018 for a Victorian record price of \$26,000. First progeny for 2018. Top 1% of breed for EMA 200, 400 & 600 day growth.

Charolais Group Breedplan EBV's - March, 2020								
	DIR	DTRS	GL	BWT	200	400	600	MWT
	-7.8	+3.3	-3.3	+2.0	+23	+48	+66	+66
	57%	43%	75%	82%	67%	68%	74%	67%
	MILK	SS	CWT	EMA	RIB	RMP	RBV	IMF
	+16	+2.1	+39	+3.9	+1.6	+2.0	0.0	+0.9
	52%	56%	61%	52%	57%	56%	54%	45%
Index \$ Value	Domestic (\$)				Export (\$)			
	+\$36				+\$53			





1 ROSEDALE QUEENSCLIFF (P)

Born: 02/09/2019
Society ID: MRQ202E

Sire: ROSEDALE HARRY (P)
SVY PIONEER
SVY PILGRIM (P)
HCR FRENCH KISS
ROSEDALE CANDY C36 (P)
ROSEDALE CANDY Z34 (P)

Dam: ROSEDALE REBECCA J143 (P)
PALGROVE WISDOM (AI) (ET) (P)
CANOONA CAVALERO (P)
PALGROVE ESTELLA 174 (P)
GUNNADOO YUPPY (P)
ROSEDALE REBECCA D31 (P)
ROSEDALE REBECCA R137 (P)



Index \$ Value					
Domestic (\$)	Export (\$)				
\$+30	+\$46				
Charolais Group Breedplan EBV's					
	Calving ease	Birth weight	200 day growth	400 day growth	600 Day Growth
EBV	+0.1	+0.3	+24	+39	+56
ACC	47%	74%	66%	69%	66%
Milk	CWT	EMA	Rib	Rump	IMF %
+8	+29	+1.3	-0.2	-0.1	+0.1
49%	59%	54%	59%	58%	54%

Comments - HOMOZYGOUS POLLED
TOP 1% 200 DAY GROWTH, TOP 5% 400 & 600 Day Growth Top 10% Carcase Weight
A top quality bull to lead off the sale by Rosedale Harry. Excellent growth for age with a very strong polled sirey outlook with the bonus of being Homozygous polled. He combines length, thickness and eye appeal. Consistent producing dam who bred last years high selling lot 4.

Purchaser _____
\$ _____



2 ROSEDALE QUADRO (P)

Born: 14/08/2019
Society ID: MRQ93E

Sire: ROSEDALE H168 (P)
FERNVALE TRAPPER
ROSEDALE DARWIN (P) MRD122E (P)
ROSEDALE GRACE A97 (AI) (ET) (P)
PARINGA NOVOTEL A100 (AI) (ET) (P)
ROSEDALE BEATRIX D148 (P)
ROSEDALE BEATRIX Z185 (P)

Dam: ROSEDALE GERTY J183 (P)
PINAY
PALGROVE EXPO (AI) (ET) (P)
PALGROVE ESTELLA 130 (P)
GUNNADOO YUPPY (P)
ROSEDALE GERTY D56 (P)
ROSEDALE GERTY Y73



Index \$ Value					
Domestic (\$)	Export (\$)				
\$27	\$38				
Charolais Group Breedplan EBV's					
	Calving ease	Birth weight	200 day growth	400 day growth	600 Day Growth
EBV	-5.1	+1.7	+19	+41	+60
ACC	49%	73%	65%	67%	64%
Milk	CWT	EMA	Rib	Rump	IMF %
+14	+30	+1.4	+1.3	+1.6	+0.9
45%	56%	49%	56%	55%	49%

Comments - HOMOZYGOUS POLLED
Top 5% 400 & 600 DAY GROWTH, IMF % and MILK. TOP 10% 200 DAY GROWTH & CWT , TOP 15% RIB and RUMP
Used in the stud program as a yearling bull we believe Quadro to be one of the best H168 sons we have bred. He is at the top of the draft for performance and is athletic for a bull of his capacity. Homozygous polled to boot out of a quality Expo cow. Stud sire in the making.

Purchaser _____
\$ _____





CHAROLAIS BULLS

3 ROSEDALE QUIMBY (P)

Born: 18/09/2019

Society ID: MRQ177E

Sire: **ROSEDALE HARRY (P)**
 VY PIONEER
 SVY PILGRIM
 HCR FRENCH KISS
 DSK YABBA DABBA DO
 ROSEDALE CANDY C36 (P)
 ROSEDALE CANDY Z34 (P)

Dam: **ROSEDALE CANDY J86 (AI) (P)**
 LT BLUEGRASS
 LT LEDGER 0332 (P)
 LT BRENDA
 ROSEDALE DARWIN (P)
 ROSEDALE CANDY G213 (P)
 ROSEDALE CANDY Z60



Purchaser

\$



Index \$ Value

Domestic (\$)	Export (\$)
\$+40	+\$49

Charolais Group Breedplan EBV's

	Calving ease	Birth weight	200 day growth	400 day growth	600 Day Growth
EBV	+8.5	-1.3	+16	+30	+29
ACC	48%	73%	66%	69%	69%

Milk	CWT	EMA	Rib	Rump	IMF %
+11	+20	+1.0	+0.5	+0.8	+0.7
49%	58%	46%	54%	53%	46%

Comments - POLLED

Top 15% CALVING EASE, TOP 20% BIRTH and 200 DAY GROWTH, Top 25% 400 Day Growth

This combination of Harry over a moderate framed but very neat Lt Ledger cow has really worked well. Softness combined with muscle and performance. Quimby has a strong polled outlook and is very well put together - this is a top of the class type of bull and so quiet.

4 ROSEDALE QUARTERMASTER (P)

Born: 09/09/2019

Society ID: MRQ125E

Sire: **PALGROVE MANDATE (AI) (P)**
 PALGROVE AMBUSH (P)
 PALGROVE CARBINE (P)
 PALGROVE IDEAL
 RANGAN PARK RIO BRAVO (P)
 PALGROVE DIGNA 194 (P)
 PALGROVE DIGNA 159

Dam: **ROSEDALE POPPY K151 (P)**
 PINAY
 PALGROVE EXPO (AI) (ET) (P)
 PALGROVE ESTELLA 130 (P)
 ROSEDALE ZINGER (P)
 ROSEDALE UNPOPPED D55 (P)
 DOWNUNDER UNPOPPED (P)



Purchaser

\$



Index \$ Value

Domestic (\$)	Export (\$)
\$29	\$42

Charolais Group Breedplan EBV's

	Calving ease	Birth weight	200 day growth	400 day growth	600 Day Growth
EBV	-3.5	+0.9	+18	+35	+50
ACC	49%	71%	62%	64%	60%

Milk	CWT	EMA	Rib	Rump	IMF %
+5	+28	+2.5	+0.1	+0.3	+0.8
51%	58%	45%	53%	53%	45%

Comments - POLLED

Top 10% 600 DAY GROWTH and IMF%, Top 15% 200 & 400 DAY GROWTH

Stud sire prospect and used as a yearling. We absolutely love this bull and many have judged him as their pick of the bulls. So well put together and beautifully balanced combining growth, carcass and sire appeal. So stylish with depth and width.



5 ROSEDALE QUANDARY (P)

Born: 24/08/2019
Society ID: MRQ127E

Sire: PALGROVE MANDATE (AI) (P)
 PALGROVE AMBUSH (P)
 PALGROVE CARBINE (P)
 PALGROVE IDEAL
 RANGAN PARK RIO BRAVO (P)
 PALGROVE DIGNA 194 (P)
 PALGROVE DIGNA 159

Dam: ROSEDALE RUBY K227 (P)
 LT EASY BLEND (P)
 ROSEDALE FIRST CLASS (AI) (P)
 ROSEDALE CINDERELLA D6 (P)
 PARINGA NOVOTEL (P)
 ROSEDALE RUBY E143 (P)
 ROSEDALE RUBY A6 (P)



Purchaser	
\$	

Index \$ Value					
Domestic (\$)	Export (\$)				
+\$43	+\$61				
Charolais Group Breedplan EBV's					
	Calving ease	Birth weight	200 day growth	400 day growth	600 Day Growth
EBV	+4.0	+0.1	+18	+36	+51
ACC	40%	71%	62%	64%	60%
Milk	CWT	EMA	Rib	Rump	IMF %
+8	+28	+1.4	+0.7	+1.2	+1.1
42%	57%	44%	53%	53%	44%

Comments - HOMOZYGOUS POLLED
Top 10% 400 & 600 DAY GROWTH & IMF %, TOP 15% 200 DAY GROWTH, DOM & EXP INDEX and CWT.
 Another quality Mandate son and is homo polled. Long, thick and fleshy with excellent depth of body. Not many bulls can combine growth for age with top of the range carcass data. He is the complete package and another crowd favourite.

6 ROSEDALE QUANO (P)

Born: 09/09/2019
Society ID: MRQ136E

Sire: PALGROVE MANDATE (AI) (P)
 PALGROVE AMBUSH (P)
 PALGROVE CARBINE (P)
 PALGROVE IDEAL
 RANGAN PARK RIO BRAVO (P)
 PALGROVE DIGNA 194 (P)
 PALGROVE DIGNA 159

Dam: ROSEDALE VIOLET L189 (P)
 HARVIE JAGER 65J (P)
 ASCOT GRAND REDEMPTION (AI) (P)
 GOBONGO JULIET B43 (P)
 GUNNADOO YUPPY (P)
 ROSEDALE VIOLET E96 (P)
 ROSEDALE VIOLET V38 (P)



Purchaser	
\$	

Index \$ Value					
Domestic (\$)	Export (\$)				
\$42	\$57				
Charolais Group Breedplan EBV's					
	Calving ease	Birth weight	200 day growth	400 day growth	600 Day Growth
EBV	+0.1	+1.2	+17	+44	+56
ACC	40%	73%	63%	64%	60%
Milk	CWT	EMA	Rib	Rump	IMF %
+7	+32	+1.4	+0.2	+0.6	+1.1
42%	51%	36%	45%	45%	38%

Comments - POLLED
Top 5% 400 & 600 DAY GROWTH and IMF%, Top 15% 200 Day Growth and Dom & Exp Index
 This bull is so soft and is still ranked at the top of the breed for growth for age. Yet again typical of the Mandate sons comprising of thickness, fat cover and the ability to marble. A top Quality commercial sire.



CHAROLAIS BULLS

7 ROSEDALE QUANTUM (P) (R/F)

Born: 19/09/2019

Society ID: MRQ66E

GUNNADOO YUPPY (P)
 ROSEDALE DEALER (AI) (P) (R/F)
 ROSEDALE BUTTERSCOTCH Y47 (P) (R/F)
Sire: ROSEDALE MAVERICK (AI) (ET) (P) (R/F)
 HARVIE JAEGAR (P) (R/F)
 ROSEDALE CANDY G304 (AI) (ET) (P) (R/F)
 ROSEDALE CANDY Q140 (P)

PALGROVE WISDOM (AI) (ET) (P)
 CANOONA CAVALERO (P)
 PALGROVE ESTELLA 174 (P)
Dam: ROSEDALE HONOR F222 (P)
 FERVALE TRAPPER
 ROSEDALE HONOR W39 (P)
 ROSEDALE HONOR R157 (P)

Cross into profit



Purchaser

\$



Index \$ Value

Domestic (\$)	Export (\$)
\$+37	+\$58

Charolais Group Breedplan EBV's

	Calving ease	Birth weight	200 day growth	400 day growth	600 Day Growth
EBV	+2.4	+0.6	+17	+33	+53
ACC	45%	63%	63%	66%	58%

Milk	CWT	EMA	Rib	Rump	IMF %
+10	+29	+2.3	+0.6	+0.9	+0.5
42%	54%	39%	53%	53%	40%

Comments - POLLED

TOP 10% 600 DAY GROWTH & CWT, TOP 15% 200 & 400 DAY GROWTH, TOP 20% EMA & EXP INDEX TOP 25% IMF%

A Classy Red Factor Stud Sire possibility, Quantum has always been a standout. Thickness, depth of body and a fantastic nature are just some of the features of this bull. Used as a yearling in our composite breeding program this bull will leave a lasting impact in any herd.

8 ROSEDALE QUINLAN (P) (TW)

Born: 20/08/2019

Society ID: MRQ82E

GUNNADOO YUPPY (P)
 ROSEDALE DEALER (AI) (P) (R/F)
 ROSEDALE BUTTERSCOTCH Y47 (P) (R/F)
Sire: ROSEDALE MAVERICK (AI) (ET) (P) (R/F)
 HARVIE JAEGAR (P) (R/F)
 ROSEDALE CANDY G304 (AI) (ET) (P) (R/F)
 ROSEDALE CANDY Q140 (P)

SVY PILGRIM (P)
 ROSEDALE HARRY (P)
 ROSEDALE CANDY C36 (P)
Dam: ROSEDALE KRISTINA K301 (P)
 SVY FREEDOM
 ROSEDALE KRISTINA F28 (P)
 ROSEDALE KRISTINA C81 (P)

Cross into profit



Purchaser

\$



Index \$ Value

Domestic (\$)	Export (\$)
\$33	\$47

Charolais Group Breedplan EBV's

	Calving ease	Birth weight	200 day growth	400 day growth	600 Day Growth
EBV	+5.1	-0.4	+14	+23	+33
ACC	40%	59%	52%	53%	51%

Milk	CWT	EMA	Rib	Rump	IMF %
+8	+18	+0.7	+0.7	+1.0	+0.4
51%	58%	45%	53%	53%	45%

Comments - HOMOZYGOUS POLLED

Top 25% Calving Ease and DOM and EXP Index

A moderate framed yet thick and meaty bull by Rosedale Maverick. This is a bull we really like and believe is the ideal type to use on british bred cows to target the domestic market. Natural thickness and structurally correct with a bit of extra style he will stamp into his progeny.



9 ROSEDALE QUILPIE (P)

Born: 29/08/2019
Society ID: MRQ133E

Sire: PALGROVE MANDATE (AI) (P)
 PALGROVE AMBUSH (P)
 PALGROVE CARBINE (P)
 PALGROVE IDEAL
 RANGAN PARK RIO BRAVO (P)
 PALGROVE DIGNA 194 (P)
 PALGROVE DIGNA 159

Dam: ROSEDALE ROSE L155E
 SVY PILGRIM (P)
 ROSEDALE HARRY (P)
 ROSEDALE CANDY C36 (P)
 SVY FREEDOM (P)
 ROSEDALE ROSE H112 (P)
 ROSEDALE ROSE F38 (P)



Purchaser	
\$	



Index \$ Value					
Domestic (\$)	Export (\$)				
\$+28	+\$40				
Charolais Group Breedplan EBV's					
	Calving ease	Birth weight	200 day growth	400 day growth	600 Day Growth
EBV	+0.3	+1.0	+21	+36	+48
ACC	40%	71%	62%	65%	61%
Milk	CWT	EMA	Rib	Rump	IMF %
+4	+26	+1.8	+0.0	+0.3	+0.6
40%	53%	47%	53%	53%	48%

Comments - HOMOZYGOUS POLLED

TOP 5% 200 DAY GRWOTH, TOP 10% 400 DAY, TOP 15% 600 DAY, TOP 20% IMF AND CWT
 A terrific bull with length of body and thickness from behind. One of the leading weight gain bulls that still combines style and admirable carcass traits. A Strong polled outlook and homozygous polled.

10 ROSEDALE QUICKSTEP (AI) (P)

Born: 19/08/2019
Society ID: MRQ204

Sire: SILVERSTREAM LANDMARK (AI) (P)
 SILVERSTREAM BRUMBY (P)
 SILVERSTREAM EVOLUTION (P)
 SILVERSTREAM GLOSSY
 NECESSAIRE
 MERRIDALE FARAH
 MERRIDALE TASMAN T8

Dam: ROSEDALE VIOLET J233 (P)
 PALGROVE WISDOM (AI) (ET) (P)
 CANOONA CAVALERO (P)
 PALGROVE ESTELLA 174 (P)
 FERNVALE TRAPPER
 ROSEDALE VIOLET Z136 (P)
 ROSEDALE VIOLET 17 (P)



Purchaser	
\$	



Index \$ Value					
Domestic (\$)	Export (\$)				
\$30	\$43				
Charolais Group Breedplan EBV's					
	Calving ease	Birth weight	200 day growth	400 day growth	600 Day Growth
EBV	+2.0	+0.8	+14	+30	+47
ACC	49%	73%	63%	69%	65%
Milk	CWT	EMA	Rib	Rump	IMF %
+8	+29	+3.1	-0.5	-0.6	+0.5
51%	58%	45%	53%	53%	45%

Comments

TOP 5% EMA, TOP 10% CWT, TOP 15% 600 DAY GROWTH, TOP 25% 400 DAY GROWTH AND IMF %
 The first of the Landmarks to be sold and here is a thumping bull that has impressed us a lot. Very full across the top and strongly made yet still athletic with soft skin. Top of the breed for Eye Muscle, growth and Marbling - this is a bull we think very highly of.



CHAROLAIS BULLS

11 ROSEDALE QUICK GUN (AI) (P)

Born: 26/09/2019

Society ID: MRQ224E

SILVERSTREAM BRUMBY (P)
 SILVERSTREAM EVOLUTION (P)
 SILVERSTREAM GLOSSY
Sire: SILVERSTREAM LANDMARK (AI) (P)
 NECESSAIRE
 MERRIDALE FARAH
 MERRIDALE TASMAN T8

ROSEDALE DARWIN (P)
 ROSEDALE H168 (P)
 ROSEDALE BEATRIX D148 (P)
Dam: ROSEDALE CANDY M37 (P)
 ROSEDALE DONOTELLO (P)
 ROSEDALE CANDY F312 (AI) (ET) (P)
 ROSEDALE CANDY T27 (AI) (P)



Purchaser

\$



Index \$ Value

Domestic (\$)	Export (\$)
\$+31	+\$48

Charolais Group Breedplan EBV's

	Calving ease	Birth weight	200 day growth	400 day growth	600 Day Growth
EBV	+0.7	+1.5	+20	+41	+65
ACC	45%	63%	61%	68%	63%

Milk	CWT	EMA	Rib	Rump	IMF %
+12	+36	+2.3	-0.7	-0.9	+0.6
42%	57%	44%	53%	53%	44%

Comments - POLLED

Top 1% 600 Day Growth & CWT, Top 5% 400 Day Growth, Top 10% Milk, 200 Day Growth Top 20% EMA and IMF

A slightly younger bull showing his true performance as he rivals some of the older bulls for weight. Another outstanding Landmark son stacked with high growth and terrific carcass attributes including the rare combination of high EMA and High IMF.

12 ROSEDALE QATAR (AI) (P)

Born: 04/10/2019

Society ID: MRQ219E

SILVERSTREAM BRUMBY (P)
 SILVERSTREAM EVOLUTION (P)
 SILVERSTREAM GLOSSY
Sire: SILVERSTREAM LANDMARK (AI) (P)
 NECESSAIRE
 MERRIDALE FARAH
 MERRIDALE TASMAN T8

PARINGA NOVOTEL (P)
 ROSEDALE FAIRLANE (P)
 ROSEDALE HONOR A118
Dam: ROSEDALE ROSLYN K182 (P)
 ASHWOOD PARK BACARDI (P)
 ROSEDALE ROSLYN F150 (P)
 ROSEDALE ROSLYN X63



Purchaser

\$

Index \$ Value

Domestic (\$)	Export (\$)
\$26	\$38

Charolais Group Breedplan EBV's

	Calving ease	Birth weight	200 day growth	400 day growth	600 Day Growth
EBV	+5.0	-0.2	+17	+29	+43
ACC	49%	73%	63%	69%	65%

Milk	CWT	EMA	Rib	Rump	IMF %
+12	+26	+1.1	-0.5	-0.9	0.0
51%	58%	45%	53%	53%	45%

Comments - POLLED

Top 10% Milk, Top 15% 200 Day Growth, Top 25% CE, CWT, and 400 & 600 Day Growth.

A very nice thick deep and wide sire who is an October born calf but up there for weight. We really appreciate the smoothness of this bull considering the power and growth he brings to the table. Has always looked the goods and is so beautifully balanced.



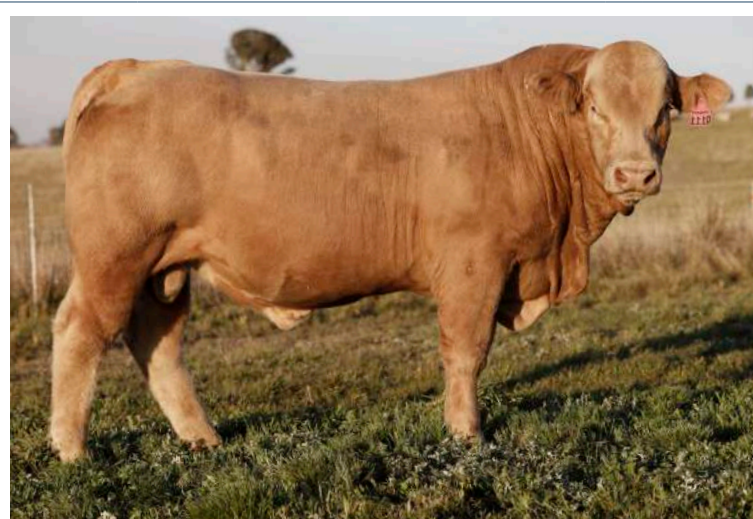
13 ROSEDALE QUICKFIRE (P) (R/F)

Born: 02/09/2019

Society ID: MRQ111E

Sire: **PALGROVE MANDATE (AI) (P)**
 PALGROVE AMBUSH (P)
 PALGROVE CARBINE (P)
 PALGROVE IDEAL
 RANGAN PARK RIO BRAVO (P)
 PALGROVE DIGNA 194 (P)
 PALGROVE DIGNA 159

Dam: **BRYSON FIRE L28 (P) (R/F)**
 HARVIE JAGER (P)
 DSK EXPECT NO BETTER E38E (AI) (ET) (P) (R/F)
 DSK ESTELLE Z6E (AI) (ET) (P)
 BRYSON YODA (AI) (P)
 BRYSON BY FIRE (P) (R/F)
 MARLEGOO FIRE R/F (AI)



Index \$ Value					
Domestic (\$)	Export (\$)				
\$+36	+\$48				
Charolais Group Breedplan EBV's					
	Calving ease	Birth weight	200 day growth	400 day growth	600 Day Growth
EBV	-2.2	+1.4	+19	+45	+58
ACC	38%	69%	59%	62%	58%
Milk	CWT	EMA	Rib	Rump	IMF %
+7	+32	+1.1	0.0	+0.4	+1.3
42%	57%	44%	53%	53%	44%

Purchaser

\$



Comments - POLLED

Top 1% 400 Day Growth and IMF %, Top 10% 200 & 600 Day Growth and CWT. Top 25% Dom and Exp Index

A quality growth bull with excellent skin and carcass characteristics with a real softness to him. Out of a very good young cow who was our pick of the females at the Bryson Herd dispersal. Top of the breed for growth and marbling as well as visual appeal - do not overlook.

14 ROSEDALE QUADRELLA (P) (R/F)

Born: 08/09/2019

Society ID: MRQ81E

Sire: **ROSEDALE MAVERICK (AI) (ET) (P) (R/F)**
 GUNNADOO YUPPY (P)
 ROSEDALE DEALER (AI) (P) (R/F)
 ROSEDALE BUTTERSCOTCH Y47 (P) (R/F)
 HARVIE JAEGAR (P) (R/F)
 ROSEDALE CANDY G304 (AI) (ET) (P) (R/F)
 ROSEDALE CANDY Q140 (P)

Dam: **ROSEDALE RUBY K166 (P)**
 PINAY (P)
 PALGROVE EXPO (P)
 PALGROVE ESTELLA 130 (AI) (P)
 PARINGA NOVOTEL (P)
 ROSEDALE RUBY G175
 ROSEDALE RUBY Z98 (P)



Index \$ Value					
Domestic (\$)	Export (\$)				
\$31	\$45				
Charolais Group Breedplan EBV's					
	Calving ease	Birth weight	200 day growth	400 day growth	600 Day Growth
EBV	+0.8	+0.7	+16	+32	+52
ACC	40%	72%	62%	65%	61%
Milk	CWT	EMA	Rib	Rump	IMF %
+12	+30	+2.7	0.0	-0.1	+0.3
51%	58%	45%	53%	53%	45%

Purchaser

\$



Comments - POLLED

Top 10% MILK, EMA and CWT. Top 15% 600 Day Growth Top 20% 200, 400 Day Growth.

A top class Maverick son out of a thick and high performing Expo cow. Moderate birth with some accelerated growth numbers. Red Factor and a very placid nature.



CHAROLAIS BULLS

15 ROSEDALE QUANDONG (P) (R/F)

Born: 10/09/2019

Society ID: MRQ69E

GUNNADOO YUPPY (P)
 ROSEDALE DEALER (AI) (P) (R/F)
 ROSEDALE BUTTERSCOTCH Y47 (P) (R/F)
Sire: ROSEDALE MAVERICK (AI) (ET) (P) (R/F)
 HARVIE JAEGAR (P) (R/F)
 ROSEDALE CANDY G304 (AI) (ET) (P) (R/F)
 ROSEDALE CANDY Q140 (P)

NOVOTEL
 PARINGA NOVOTEL (AI) (ET) (P)
 PARINGA FSTRACK (AI) (ET) (P)
Dam: ROSEDALE REBECCA H115 (P)
 FERNVALE TRAPPER
 ROSEDALE REBECCA A143 (P)
 ROSEDALE REBECCA(AI) (ET) (P)



Purchaser

\$



Index \$ Value

Domestic (\$)	Export (\$)
\$+34	+\$51

Charolais Group Breedplan EBV's

	Calving ease	Birth weight	200 day growth	400 day growth	600 Day Growth
EBV	+8.0	-0.7	+16	+23	+40
ACC	43%	72%	63%	66%	62%

Milk	CWT	EMA	Rib	Rump	IMF %
+12	+21	+0.7	+0.3	+0.3	+0.2
42%	57%	44%	53%	53%	44%

Comments - HOMOZYGOUS POLLED

Top 10% MILK, Top 15% Calving Ease, Top 25% Birth and 200 Day Growth, Dom & Exp Index.

A more moderate framed but still very punchy deep Red Factor bull out of a cow who just produced the heaviest weaner in the Spring "R" calves. A great polled head and neatly put together.

16 ROSEDALE QUANDARY (P)

Born: 03/09/2019

Society ID: MRQ72E

PALGROVE AMBUSH (P)
 PALGROVE CARBINE (P)
 PALGROVE IDEAL
Sire: PALGROVE MANDATE (AI) (P)
 RANGAN PARK RIO BRAVO (P)
 PALGROVE DIGNA 194 (P)
 PALGROVE DIGNA 159

PINAY (P)
 PALGROVE EXPO (P)
 PALGROVE ESTELLA 130 (AI) (P)
Dam: ROSEDALE REBECCA J177 (P)
 DSK YABBA DABBA DO
 ROSEDALE REBECCA D206 (P)
 ROSEDALE REBECCA A100 (P)



Purchaser

\$

Index \$ Value

Domestic (\$)	Export (\$)
\$40	\$57

Charolais Group Breedplan EBV's

	Calving ease	Birth weight	200 day growth	400 day growth	600 Day Growth
EBV	+0.9	+0.6	+17	+37	+52
ACC	41%	72%	63%	65%	61%

Milk	CWT	EMA	Rib	Rump	IMF %
+6	+31	+2.7	+0.1	+0.4	+1.1
43%	53%	48%	53%	52%	49%

Comments - POLLED

Top 5% IMF %, TOP 10% 400 & 600 Day Growth and CWT, Top 15% 200 Day & Exp Index, Top 20% Dom Index

Easily on of the softest bulls in the sale with the ability to marble. So much to like about this future sire who mixes his wonderful carcass traits with growth, thickness and eye appeal. This is a bull we are truly happy to have produced.



17 ROSEDALE QUIRINDI (P) (R/F)

Born: 19/08/2019

Society ID: MRQ124E

Sire: **PALGROVE MANDATE (AI) (P)**
 PALGROVE AMBUSH (P)
 PALGROVE CARBINE (P)
 PALGROVE IDEAL
 RANGAN PARK RIO BRAVO (P)
 PALGROVE DIGNA 194 (P)
 PALGROVE DIGNA 159

Dam: **ROSEDALE CANDY K129E (P) (R/F)**
 FERVALE TRAPPER
 ROSEDALE DARWIN
 ROSEDALE GRACE A97 (AI) (ET) (P)
 PALGROVE EXPO (AI) (ET) (P)
 ROSEDALE CANDY G308E (AI) (ET) (P) (R/F)
 ROSEDALE CANDY Q140 (P)



Purchaser

\$



Index \$ Value

Domestic (\$)	Export (\$)
+\$36	+\$54

Charolais Group Breedplan EBV's

	Calving ease	Birth weight	200 day growth	400 day growth	600 Day Growth
EBV	+3.4	+0.6	+17	+29	+46
ACC	40%	71%	62%	64%	60%

Milk	CWT	EMA	Rib	Rump	IMF %
+7	+25	+2.4	-0.2	+0.2	+1.1
42%	52%	47%	53%	53%	47%

Comments - POLLED SCUR

Top 5% IMF %, Top 15% 200 Day Growth, Top 20% EMA, Top 25% 400 and 600 Day Growth and CWT & Dom Ind
 Another quality Mandate son possessing thickness and length of body put together very smoothly. One of the highest bulls for IMF when scanned as yearlings.

18 ROSEDALE QUEST (P)

Born: 30/09/2019

Society ID: MRQ170E

Sire: **ROSEDALE HARRY (P)**
 SVY PIONEER
 SVY PILGRIM (P)
 HCR FRENCH KISS (P)
 DSK YABBA DABBA DO
 ROSEDALE CANDY C36 (P)
 ROSEDALE CANDY Z34 (P)

Dam: **ROSEDALE EMPRESS J167 (P)**
 PINAY (P)
 PALGROVE EXPO (P)
 PALGROVE ESTELLA 130 (AI) (P)
 FERVALE TRAPPER
 ROSEDALE EMPRESS B188 (P)
 ROSEDALE EMPRESS S66 (P)



Purchaser

\$



Index \$ Value

Domestic (\$)	Export (\$)
\$30	\$45

Charolais Group Breedplan EBV's

	Calving ease	Birth weight	200 day growth	400 day growth	600 Day Growth
EBV	-2.5	+0.4	+20	+39	+54
ACC	48%	74%	66%	69%	66%

Milk	CWT	EMA	Rib	Rump	IMF %
+8	+31	+2.1	+0.2	+0.3	+0.3
51%	58%	45%	53%	53%	45%

Comments - POLLED

Top 5% 400 Day Growth, Top 10% 200 & 600 Day Growth and CWT Top 25% EMA - Top 1% Scrotal
 Plain and simply Quest is a very very good polled bull. Excellent carcass data with a strong EMA, magnificent on the eye with thickness, body depth and top of the breed growth for age. His dam is one of our best and last year one of her sons sold to stud.



CHAROLAIS BULLS

19 ROSEDALE QUINTAS (P)

Born: 08/09/2019

Society ID: MRQ196E

P NOVOTEL (P)
ROSEDALE FAIRLANE (P)
ROSEDALE HONOR A118
Sire: ROSEDALE KAVIAR (P)
PARINGA NOVOTEL A100 (AI) (ET) (P)
ROSEDALE BEATRIX D148 (P)
ROSEDALE BEATRIX Z185 (P)

FERNVALE TRAPPER
ROSEDALE DARWIN (P)
ROSEDALE GRACE A97 (AI) (ET) (P)
Dam: ROSEDALE ROSE H170 (P)
PARINGA NOVOTEL (P)
ROSEDALE ROSE D195 (P)
ROSEDALE ROSE Z214 (P) (R/F)



Purchaser

\$



Index \$ Value

Domestic (\$)	Export (\$)
\$+33	+\$55

Charolais Group Breedplan EBV's

	Calving ease	Birth weight	200 day growth	400 day growth	600 Day Growth
EBV	+6.9	-0.8	+18	+24	+47
ACC	44%	74%	64%	68%	64%

Milk	CWT	EMA	Rib	Rump	IMF %
+14	+23	+0.5	+0.7	+0.9	+0.4
42%	57%	44%	53%	53%	44%

Comments - HOMOZYGOUS POLLED

Top 15% 200 & 600 Day Growth, Top 20% Calving Ease and Birthweight and Exp Index. Top 25% Rump Fat

A very nice Homo polled Kaviar bull with low birth and curve bending growth. A bull that will work well in number of scenarios. Soft with style.

20 ROSEDALE QUARTERBACK (P)

Born: 25/09/2019

Society ID: MRQ144E

PALGROVE AMBUSH (P)
PALGROVE CARBINE (P)
PALGROVE IDEAL
Sire: PALGROVE MANDATE (AI) (P)
RANGAN PARK RIO BRAVO (P)
PALGROVE DIGNA 194 (P)
PALGROVE DIGNA 159

VMX COUGARHILL HANK
HIGH BLUFF HANK (P)
HOMESYDE HOT ON TOP (P)
Dam: ROSEDALE BEATRIX L55 (AI) (P)
PARINGA NOVOTEL (P)
ROSEDALE BEATRIX H119 (P)
ROSEDALE BEATRIX A209 (P)



Purchaser

\$



Index \$ Value

Domestic (\$)	Export (\$)
\$38	\$57

Charolais Group Breedplan EBV's

	Calving ease	Birth weight	200 day growth	400 day growth	600 Day Growth
EBV	+2.3	+0.4	+16	+35	+53
ACC	41%	71%	59%	61%	59%

Milk	CWT	EMA	Rib	Rump	IMF %
+9	+29	+1.6	-0.1	0.0	+1.0
42%	50%	43%	49%	48%	44%

Comments - POLLED

Top 5% IMF%, Top 15% CWT, 400 & 600 Day Growth, Top 20% 200 Day Growth, Dom & Exp Indexes and Milk.

A strong topped and even bodied mandate sired bull out of a one of our favorite "L Drop" cows. Lovely soft skin and balance to this bull. Top of the breed growth and carcass.



CHAROLAIS BULLS

21 ROSEDALE QUARRY (P)

Born: 09/09/2019
Society ID: MRQ161E

SVY PIONEER
SVY PILGRIM (P)
HCR FRENCH KISS (P)
Sire: ROSEDALE HARRY (P)
DSK YABBA DABBA DO
ROSEDALE CANDY C36 (P)
ROSEDALE CANDY Z34 (P)

NOVOTEL
PARINGA NOVOTEL (P)
PARINGA FASTRACK (P)
Dam: ROSEDALE BEATRIX G173 (P)
ROSEDALE Y10 (P)
ROSEDALE BEATRIX A209 (P)
ROSEDALE BEATRIX W119



Charolais Group Breedplan EBV's									
DIR	GL	BWT	200	400	600	MILK	DOM		
+2.7	-3.5	-0.4	+20	+28	+40	+8		+\$27	
48%	52%	74%	66%	69%	66%	51%			
SS	CWT	EMA	RIB	RMP	RBY	IMF	EXP		
+1.8	+23	+1.1	0.0	0.0	+0.3	+0.1		+\$40	
75%	58%	54%	59%	58%	57%	54%			
Purchaser					\$				

Top 10% 200 Day Growth and Scrotal - HOMOZYGOUS POLLED

A Quality curve bending bull in the top 30% for birth weight and 200 & 600 Day growth. Have to admire the thickness, and squareness of this bull who will leave behind some top progeny.

22 ROSEDALE QUIGLEY (P)

Born: 12/09/2019
Society ID: MRQ164E

SVY PIONEER
SVY PILGRIM (P)
HCR FRENCH KISS (P)
Sire: ROSEDALE HARRY (P)
DSK YABBA DABBA DO
ROSEDALE CANDY C36 (P)
ROSEDALE CANDY Z34 (P)

PLD EVOLUTION
SVY FREEDOM (P)
SVY PURFECT (P)
Dam: ROSEDALE ARMOUR G43 (P)
GUNNADOO YUPPY (P)
ROSEDALE ARMOUR D220 (P)
ROSEDALE ARMOUR W43 (R/F) (P)



Charolais Group Breedplan EBV's									
DIR	GL	BWT	200	400	600	MILK	DOM		
-2.8	-3.7	+0.9	+17	+27	+32	+4		+\$16	
42%	70%	72%	61%	66%	62%	40%			
SS	CWT	EMA	RIB	RMP	RBY	IMF	EXP		
+1.7	+14	+0.9	+0.9	+1.3	-0.5	+0.3		+\$22	
51%	54%	40%	47%	47%	44%	40%			
Purchaser					\$				

Top 15% 200 Day Growth, Top 20% Scrotal, Top 25% Rump Fat

HOMOZYGOUS POLLED - A moderately made bull that combines thickness and power with the ability to lay down fat cover. A bull with a great earlier maturity pattern.

23 ROSEDALE QUIERA (P)

Born: 14/09/19
Society ID: MRQ172E

SVY PIONEER
SVY PILGRIM (P)
HCR FRENCH KISS (P)
Sire: ROSEDALE HARRY (P)
DSK YABBA DABBA DO
ROSEDALE CANDY C36 (P)
ROSEDALE CANDY Z34 (P)
PINAY
PALGROVE EXPO (P)
PALGROVE ESTELLA (P)
Dam: ROSEDALE HONOR J190 (P)
DSK YABBA DABBA DO
ROSEDALE HONOR F80 (P)
ROSEDALE HONOR C124 (P)



Charolais Group Breedplan EBV's									
DIR	GL	BWT	200	400	600	MILK	DOM		
-1.2	-3.4	+0.3	+15	+24	+32	+7		\$16	
49%	55%	73%	63%	69%	65%	51%			
SS	CWT	EMA	RIB	RMP	RBY	IMF	EXP		
+2.0	+18	+0.9	+0.0	+0.0	+0.3	-0.1		\$22	
54%	58%	45%	53%	53%	49%	45%			
Purchaser					\$				

Top 15% 200 Day Growth, Top 20% Scrotal, Top 25% Rump Fat

HOMOZYGOUS POLLED - QUIERA is another top quality Harry son above breed average for Gestation Length and growth. We surely love the roundness and width to this young sire.



CHAROLAIS BULLS

24 ROSEDALE QUARTO (P)

Born: 19/08/2019
Society ID: MRQ163E

SVY PIONEER
SVY PILGRIM (P)
HCR FRENCH KISS (P)
Sire: ROSEDALE HARRY (P)
DSK YABBA DABBA DO
ROSEDALE CANDY C36 (P)
ROSEDALE CANDY Z34 (P)

FERNVALE TRAPPER
ROSEDALE DARWIN (P)
ROSEDALE GRACE A97 AI) (P)
Dam: ROSEDALE CANDY G213 (P)
EC NEW TREND (P)
ROSEDALE CANDY Z60 (AI)
ROSEDALE CANDY W23



Charolais Group Breedplan EBV's										
	DIR	GL	BWT	200	400	600	MILK	DOM		
Charolais	+2.8	-2.3	+0.5	+19	+31	+38	+7		+\$28	
	48%	53%	74%	65%	68%	66%	51%			
	SS	CWT	EMA	RIB	RMP	RBY	IMF	EXP		
	+1.0	+22	+1.4	-0.3	+0.4	+0.4	+0.4		+\$37	
	73%	58%	52%	57%	56%	55%	52%			
Purchaser						\$				

Top 10% 200 Day Growth, Top 25% 400 Day Growth
A strong, long and thickly made bull with some very handy growth figures. Nice polled head and softly made skin.

25 ROSEDALE QUANTUM (P)

Born: 20/09/2019
Society ID: MRQ176E

SVY PIONEER
SVY PILGRIM (P)
HCR FRENCH KISS (P)
Sire: ROSEDALE HARRY (P)
DSK YABBA DABBA DO
ROSEDALE CANDY C36 (P)
ROSEDALE CANDY Z34 (P)

SPARROWS DURANGO (P)
WINN MANS LANZA (P)
WINN MAN MERIT 036K
Dam: ROSEDALE BOBBIN J69 (AI) (P)
PARINGA NOVOTEL A100 (AI) (ET) (P)
ROSEDALE BOBBIN G3 (P)
ROSEDALE BOBBIN A190 (P)



Charolais Group Breedplan EBV's										
	DIR	GL	BWT	200	400	600	MILK	DOM		
Charolais	+3.2	-3.4	-0.7	+21	+33	+43	+11		+\$29	
	42%	70%	72%	61%	66%	62%	40%			
	SS	CWT	EMA	RIB	RMP	RBY	IMF	EXP		
	+2.7	+23	-0.3	+0.4	+0.3	-0.6	-0.2		+\$42	
	51%	54%	40%	47%	47%	44%	40%			
Purchaser						\$				

Top 5% 200 Day Growth & Scrotal, Top 15% 400 Day Growth & MILK, Top 25% 600 Day Growth and Birth weight - HOMOZYGOUS POLLED
A terrific growth bull with the bonus of being homo Polled. Curve bending figures and strong milk from a great Lanza cow. A good bull indeed.

26 ROSEDALE QUINT (P)

Born: 21/08/19 (18 months)
Society ID: MRQ88E

FERNVALE TRAPPER
ROSEDALE DARWIN (P) MRD122E (P)
ROSEDALE GRACE A97 (AI) (ET) (P)
Sire: ROSEDALE H168 (P)
PARINGA NOVOTEL A100 (AI) (ET) (P)
ROSEDALE BEATRIX D148 (P)
ROSEDALE BEATRIX Z185 (P)
PINAY
PALGROVE EXPO (P)
PALGROVE ESTELLA (P)
Dam: ROSEDALE HIGHNESS G114 (P)
EC NEW TREND (P)
ROSEDALE HIGHNESS x27 (AI) (P)
ROSEDALE HIGHNESS U134 (P)



Charolais Group Breedplan EBV's										
	DIR	GL	BWT	200	400	600	MILK	DOM		
Charolais	+3.0	-4.1	-0.9	+13	+28	+40	+13		\$39	
	49%	55%	73%	63%	69%	65%	51%			
	SS	CWT	EMA	RIB	RMP	RBY	IMF	EXP		
	+1.2	+24	+1.9	+1.1	+1.4	-0.4	+0.5		\$54	
	54%	58%	45%	53%	53%	49%	45%			
Purchaser						\$				

Top 20% Dom & EXP Index, Top 25% GL, Birthweight, RIB & RUMP Fat, IMF
Very eye appealing bull who is commercially focused in all aspects with calving, GL and birth Wt all being a feature along with above average growth complimented by excellent carcass scans. G114 is a top class cow.



27 ROSEDALE QUASTO (AI) (P/S)

Born: 16/08/2019

Society ID: MRQ231E

NOVOTEL
PARINGA NOVOTEL (P)
PARINGA FASTRAC
Sire: ROSEDALE DONOTELLO (P)
FERNVAL TRAPPER
ROSEDALE REBECCA A38 (P)
ROSEDALE REBECCA V56 (P)

HARVIE REDEMPTION (P)
ASCOT GRAND REDEMPTION (P)
GOBONGO REBECCA
Dam: ROSEDALE CANDY N200 (P)
ROSEDALE FAIRLANE (P)
ROSEDALE CANDY K197 (AI) (P)
ROSEDALE CANDY G132



Charolais Group Breedplan EBV's

DIR	GL	BWT	200	400	600	MILK	DOM
-0.9	-2.8	+0.8	+21	+40	+62	+15	
41%	70%	72%	61%	66%	62%	39%	+\$34
SS	CWT	EMA	RIB	RMP	RBY	IMF	EXP
+1.9	+32	+0.9	+1.1	+1.3	-0.7	+0.3	
51%	54%	39%	47%	47%	43%	39%	+\$53

Purchaser

\$

Top 5% 200,400 & 600 Day Growth, Milk, Top 15% Exp Index, Top 25% Dom Index, Rib & Rump Fat.

Undoubtably a bull who ticks all the commercial boxes. We admire his ability to lay on the cover, whilst maintaining weight gain performance with a very appealing soft skin type. Has done well for a Hfrs first calf.

28 ROSEDALE QUENTON (AI) (P)

Born: 12/08/2019

Society ID: MRQ235E

NOVOTEL
PARINGA NOVOTEL (P)
PARINGA FASTRAC
Sire: ROSEDALE DONOTELLO (P)
FERNVALE TRAPPER
ROSEDALE REBECCA A38 (P)
ROSEDALE REBECCA V56 (P)

ROSEDALE FAIRLANE (P)
ROSEDALE KAVIAR (P)
ROSEDALE CANDY C36 (P)
Dam: ROSEDALE BEATRIX N258 (P)
DSK YABBA DABBA DO
ROSEDALE BEATRIX G147 (P)
ROSEDALE BEATRIX D148 (P)



Charolais Group Breedplan EBV's

DIR	GL	BWT	200	400	600	MILK	DOM
+6.3	-3.6	-0.8	+15	+27	+47	+18	
42%	70%	72%	61%	66%	62%	40%	+\$38
SS	CWT	EMA	RIB	RMP	RBY	IMF	EXP
+1.1	+24	+0.4	+0.8	+0.9	-0.8	+0.5	
51%	54%	40%	47%	47%	44%	40%	+\$57

Purchaser

\$

Top 1% Milk, Top 15% 600 Day Growth, Top 25% Birth, GL, DIR & IMF %

Another quality thick and fleshy bull by Donotello out of a 2y.o heifer. This bull could be used on heifers but also has a fantastic growth curve. The best milk figure in the sale if you are looking to breed replacements.

29 ROSEDALE QUIMBO (P)

Born: 31/08/19

Society ID: MRQ118E

PALGROVE AMBUSH (P)
PALGROVE CARBINE (P)
PALGROVE IDEAL
Sire: PALGROVE MANDATE (AI) (P)
RANGAN PARK RIO BRAVO (P)
PALGROVE DIGNA 194 (P)
PALGROVE DIGNA 159
PINAY

PALGROVE EXPO (P)
PALGROVE ESTELLA (P)
Dam: ROSEDALE BEATRIX G231 (P)
GUNNADOO YUPPY (P)
ROSEDALE BEATRIX B108 (P)
ROSEDALE BEATRIX W87 (P)



Charolais Group Breedplan EBV's

DIR	GL	BWT	200	400	600	MILK	DOM
-3.8	-2.4	+1.8	+19	+37	+57	+9	
49%	55%	73%	63%	69%	65%	51%	\$25
SS	CWT	EMA	RIB	RMP	RBY	IMF	EXP
+0.9	+31	+2.0	0.0	+0.1	+0.2	+0.7	
54%	58%	45%	53%	53%	49%	45%	\$38

Purchaser

\$

Top 5% 600 Day, Top 10% CWT 200, 400 Day, Top 15% IMF%, Top 25% MILK, EMA - HOMOZYGOUS POLLED.

Tremendous bull in the middle of the catalogue, his Dam is on of our Donor cows. Big Growth, Great scans with strong bloodlines.



CHAROLAIS BULLS

30 ROSEDALE QUACK (P)

Born: 02/09/2019
Society ID: MRQ147E

PALGROVE AMBUSH (P)
PALGROVE CARBINE (P)
PALGROVE IDEAL
Sire: PALGROVE MANDATE (AI) (P)
RANGAN PARK RIO BRAVO (P)
PALGROVE DIGNA 194 (P)
PALGROVE DIGNA 159

SVY PILGRIM PLD 655S (P)
ROSEDALE HARRY (AI) (P)
ROSEDALE CANDY C36 (P)
Dam: ROSEDALE EMPRESS M47 (P)
P NOVOTEL
ROSEDALE EMPRESS H48 (P)
ROSEDALE EMPRESS W85 (P)



Charolais Group Breedplan EBV's								
	DIR	GL	BWT	200	400	600	MILK	DOM
Charolais	+6.0	-3.5	-0.8	+16	+28	+36	+7	+\$39
	40%	51%	72%	62%	64%	60%	41%	
	SS	CWT	EMA	RIB	RMP	RBY	IMF	EXP
	+1.5	+24	+2.2	+0.1	+0.3	+0.1	+0.8	+\$53
	73%	52%	46%	50%	49%	49%	47%	
Purchaser						\$		

Top 10% IMF, TOP 20% Dom & Exp Index, Top 25% CE, Birth and 200 Day
Another very good Mandate son, there is no doubting the consistency of his breeding. Once again moderate birth, strong growth and excellent all-round carcass scans.

31 ROSEDALE QUAFFI (P)

Born: 10/10/2019
Society ID: MRQ145E

PALGROVE AMBUSH (P)
PALGROVE CARBINE (P)
PALGROVE IDEAL
Sire: PALGROVE MANDATE (AI) (P)
RANGAN PARK RIO BRAVO (P)
PALGROVE DIGNA 194 (P)
PALGROVE DIGNA 159

WINN MANZ LANZA(P)
ROSEDALE JUKE (AI) (P)
ROSEDALE REBECCA A38 (P)
Dam: ROSEDALE BUTTERSCOTCH M11 (P)
GUNNADOO YUPPY (P)
ROSEDALE BUTTERSCOTCH F68 (P) (R/F)
ROSEDALE BUTTERSCOTCH Y47 (P)



Charolais Group Breedplan EBV's								
	DIR	GL	BWT	200	400	600	MILK	DOM
Charolais	+4.6	-3.5	-0.1	+12	+27	+40	+10	+\$33
	39%	50%	71%	58%	63%	59%	38%	
	SS	CWT	EMA	RIB	RMP	RBY	IMF	EXP
	+1.6	+20	+0.5	-0.2	-0.2	-0.3	+0.6	+\$47
	73%	50%	45%	48%	47%	47%	45%	
Purchaser						\$		

Top 20% MILK and IMF %
An October calf with a bright future ahead, very strong maternal bloodlines and would be a top bull to breed females with. Thick, soft and ability to lay on fat and marbling.

32 ROSEDALE QUANDIALLA (P)

Born: 27/08/2019
Society ID: MRQ139E

PALGROVE AMBUSH (P)
PALGROVE CARBINE (P)
PALGROVE IDEAL
Sire: PALGROVE MANDATE (AI) (P)
RANGAN PARK RIO BRAVO (P)
PALGROVE DIGNA 194 (P)
PALGROVE DIGNA 159
P NOVOTEL
ROSEDALE FAIRLANE
ROSEDALE HONOR A118
Dam: ROSEDALE BOBBIN L225 (P)
PALGROVE COACH (AI) (ET) (P)
ROSEDALE BOBBIN F72 (P)
ROSEDALE BOBBIN (P) C23



Charolais Group Breedplan EBV's								
	DIR	GL	BWT	200	400	600	MILK	DOM
Charolais	+4.7	-3.0	-0.3	+17	+32	+43	+8	+\$42
	49%	55%	73%	63%	69%	65%	51%	
	SS	CWT	EMA	RIB	RMP	RBY	IMF	EXP
	+1.9	+27	+1.9	+0.8	+1.3	-0.5	+0.8	+\$53
	54%	58%	45%	53%	53%	49%	45%	
Purchaser						\$		

Top 10% IMF, Top 15% 200 Day, Dom & Exp Ind, CWT, Top 25% 400 & 600
A very good example of a modern day Australian Charolais bull and a bull that we are extremely proud to put before you all. Moderate birth, unreal weight for age with strong all round carcass attributes and depth of body.



33 ROSEDALE QUEANBEYAN (AI) (P)

Born: 16/08/2019

Society ID: MRQ195E

SILVERSTREAM BRUMBY B89 (P)
SILVERSTREAM EVOLUTION E168 (P)
SILVERSTREAM GLOSSY
Sire: SILVERSTREAM LANDMARK L40 (P)
NECESSAIRE (H)
MERRIDALE FARAH (H)
MERRIDALE TASMAN (H)

NOVOTEL
PARINGA NOVOTEL (P)
PARINGA FISTRAC
Dam: ROSEDALE BEATRIX G109 (P)
MINNIE-VALE DEPUTY (P)
ROSEDALE BEATRIX A122 (P)
ROSEDALE BEATRIX W88 (AI)



Charolais Group Breedplan EBV's

Charolais	DIR	GL	BWT	200	400	600	MILK	DOM
	+4.2	-5.2	-0.5	+19	+27	+48	+7	+\$27
	41%	70%	72%	61%	66%	62%	39%	
	SS	CWT	EMA	RIB	RMP	RBY	IMF	EXP
	+2.2	+26	+2.2	+0.2	0.0	+0.2	-0.2	+\$45
	51%	54%	39%	47%	47%	43%	39%	

Purchaser

\$

Top 10% 200 Day Growth, GL, SS, Top 15% 600 Day growth and CWT, Top 25% EMA - HOMOZYGOUS POLLED

A powerful and naturally thick Silverstream Landmark young sire with a bit of extra bone and power. Great growth for age and will add a bit of lift to any commercial operation.

34 ROSEDALE QUICK SILVER (P)

Born: 01/09/2019

Society ID: MRQ178E

SVY PIONEER
SVY PILGRIM (P)
HCR FRENCH KISS (P)
Sire: ROSEDALE HARRY (P)
DSK YABBA DABBA DO
ROSEDALE CANDY C36 (P)
ROSEDALE CANDY Z34 (P)

LT BLUEGRASS (P)
LT LEDGER (P)
LT BRENDA (P)
Dam: ROSEDALE BUTTERSCOTCH J87 (P)
PALGROVE EXPO (AI) (ET) (P)
ROSEDALE BUTTERSCOTCH G160 (P)
ROSEDALE BUTTERSCOTCH B199 (P)



Charolais Group Breedplan EBV's

Charolais	DIR	GL	BWT	200	400	600	MILK	DOM
	+0.9	-2.9	-0.2	+18	+28	+37	+9	+\$23
	42%	70%	72%	61%	66%	62%	40%	
	SS	CWT	EMA	RIB	RMP	RBY	IMF	EXP
	+2.0	+17	-0.1	+0.3	+0.3	-0.8	+0.7	+\$33
	51%	54%	40%	47%	47%	44%	40%	

Purchaser

\$

Top 15% 200 Day Growth, SS and IMF % - HOMOZYGOUS POLLED

Below average birth with a big spread to 200 Day Growth. A quality bull not to be overlooked out of a very tidy Ledger cow who bred last years lot 1. Great marbling and all-round carcasse.

35 ROSEDALE QUANNAH (P)

Born: 03/09/19

Society ID: MRQ194E

P NOVOTEL (P)
ROSEDALE FAIRLANE (P)
ROSEDALE HONOR A118
Sire: ROSEDALE KAVIAR (P)
PARINGA NOVOTEL A100 (AI) (ET) (P)
ROSEDALE BEATRIX D148 (P)
ROSEDALE BEATRIX Z185 (P)
PALGROVE WISDOM (P)
CANOONA CAVALERO (P)

PALGROVE ESTELLA (AI) (P)
Dam: ROSEDALE VIOLET G92 (P) (R/F)
ROSEDALE SNAG (AI) (P)
ROSEDALE VIOLET V38 (P)
ROSEDALE VIOLET S149 (P)



Charolais Group Breedplan EBV's

Charolais	DIR	GL	BWT	200	400	600	MILK	DOM
	+7.1	-4.8	-1.9	+16	+27	+45	+14	\$45
	46%	51%	74%	65%	69%	65%	48%	
	SS	CWT	EMA	RIB	RMP	RBY	IMF	EXP
	+1.9	+23	+1.0	+1.1	+1.6	-1.0	+1.0	\$68
	54%	58%	45%	53%	53%	49%	45%	

Purchaser

\$

Top 5% IMF & MILK, Top 15% DIR & BW, Dom & EXP INDEX Top 20% BW, 200 and 600 Day Growth, RIB and RUMP Fat - HOMOZYGOUS POLLED

This boy looks good on paper and just as impressive in the flesh. Very nice bull suitable to used on hfrs out of a top class cow. Softness and Marbling



CHAROLAIS BULLS

36 ROSEDALE QUASI (P)

Born: 26/08/2019
Society ID: MRQ94E

FERNVALE TRAPPER
ROSEDALE DARWIN (P) MRD122E (P)
ROSEDALE GRACE A97 (AI) (ET) (P)
Sire: ROSEDALE H168 (P)
PARINGA NOVOTEL A100 (AI) (ET) (P)
ROSEDALE BEATRIX D148 (P)
ROSEDALE BEATRIX Z185 (P)
P NOVOTEL (P)
ROSEDALE FRONTIER (P)
ROSEDALE NICKY X7 (P)
Dam: ROSEDALE RUBY J219 (P)
EC NEW TREND (P)
ROSEDALE RUBY Z57
ROSEDALE RUBY W154 (P)



Charolais Group Breedplan EBV's								
Charolais	DIR	GL	BWT	200	400	600	MILK	DOM
	+8.1	-1.5	-0.7	+9	+26	+35	+17	+\$42
	46%	48%	74%	66%	69%	66%	46%	
	SS	CWT	EMA	RIB	RMP	RBY	IMF	EXP
	+0.3	+23	+2.1	+0.4	+0.7	-0.2	+0.7	+\$55
	51%	54%	39%	47%	47%	43%	39%	
Purchaser							\$	

Top 5% MILK, Top 15% CED, IMF%, Dom & Exp Index, Top 25% EMA and IMF%
A nice soft and fleshy bull with a lovely smooth muscle pattern. One of the highest milk figures in the sale and could be utilised to breed females and his dam is a good reliable consistent producer.

37 ROSEDALE QUIRKY (P)

Born: 23/09/2019
Society ID: MRQ186E

P NOVOTEL (P)
ROSEDALE FAIRLANE (P)
ROSEDALE HONOR A118
Sire: ROSEDALE KAVIAR (P)
PARINGA NOVOTEL A100 (AI) (ET) (P)
ROSEDALE BEATRIX D148 (P)
ROSEDALE BEATRIX Z185 (P)
PINAY
PALGROVE EXPO (AI) (P)
PALGROVE ESTELLA (AI) (P)
Dam: ROSEDALE GAIETY G113 (P)
ROSEDALE WILLIE (P)
ROSEDALE GAIETY C48 (P)
ROSEDALE GAIETY W159 (P)



Charolais Group Breedplan EBV's								
Charolais	DIR	GL	BWT	200	400	600	MILK	DOM
	+2.7	-3.2	-0.5	+17	+28	+46	+15	+\$29
	44%	48%	73%	64%	68%	65%	46%	
	SS	CWT	EMA	RIB	RMP	RBY	IMF	EXP
	+0.7	+23	+0.9	+0.4	+0.3	-0.3	+0.2	+\$42
	74%	57%	52%	58%	57%	55%	51%	
Purchaser							\$	

Top 5% MILK, Top 15% 200 Day Growth, Top 20% 600 Day Growth
A moderately made bull with extra bone. We do admire his soft fleshy skin and maturity pattern. A bull that is well suited to targeting the domestic market.

38 ROSEDALE QUAZAR (P)

Born: 01/09/19
Society ID: MRQ113E

PALGROVE AMBUSH (P)
PALGROVE CARBINE (P)
PALGROVE IDEAL
Sire: PALGROVE MANDATE (AI) (P)
RANGAN PARK RIO BRAVO (P)
PALGROVE DIGNA 194 (P)
PALGROVE DIGNA 159
WYOMING WIND
DSK YABBA DABBA DO
PALGROVE ESTELLA 31
Dam: ROSEDALE CONFIDENCE E204 (P)
ROSEDALE WILLIE (P)
ROSEDALE CONFIDENCE B177 (P) (R/F)
ROSEDALE CONFIDENCE W33 (P) (R/F)



Charolais Group Breedplan EBV's								
Charolais	DIR	GL	BWT	200	400	600	MILK	DOM
	+4.9	-3.0	-0.1	+15	+21	+32	+7	\$32
	42%	51%	72%	62%	64%	61%	44%	
	SS	CWT	EMA	RIB	RMP	RBY	IMF	EXP
	+1.9	+15	+1.6	+0.6	+0.6	-0.1	+0.7	\$46
	73%	53%	48%	52%	51%	51%	48%	
Purchaser							\$	

Top 25% IMF
Yet again another long soft skinned Mandate bull combining marbling and good growth for age.



39 ROSEDALE QUALIFIED (AI) (P)

Born: 27/09/2019

Society ID: MRQ217E

SILVERSTREAM BRUMBY B89 (P)
SILVERSTREAM EVOLUTION E168 (P)
SILVERSTREAM GLOSSY
Sire: SILVERSTREAM LANDMARK L40 (P)
NECESSAIRE (H)
MERRIDALE FARAH (H)
MERRIDALE TASMAN (H)

NWMSU DOC SILVER (P)
ASCOT DOC SILVER G100 (AI) (P)
PARINGA RIO BRAVO
Dam: ROSEDALE BOBBIN J301 (P)
ROSEDALE ZINGER (P)
ROSEDALE BOBBIN C23 (P)
ROSEDALE BOBBIN Z106 (P)



Charolais Group Breedplan EBV's

Charolais	DIR	GL	BWT	200	400	600	MILK	DOM
	+3.5	-3.5	-0.1	+12	+22	+32	+8	+\$20
	41%	70%	73%	65%	67%	65%	44%	
SS	CWT	EMA	RIB	RMP	RBY	IMF	EXP	
	+1.2	+24	+2.5	-1.4	-1.8	+1.9	-0.3	+\$30
	74%	57%	52%	56%	55%	54%	54%	

Purchaser

\$

Top 15% EMA, Top 1% Retail Beef Yield - HOMOZYGOUS POLLED

A long strong topped and sound bodied powerful homozygous polled bull by the outcross New Zealand bred Landmark. Certainly would go well over an Angus or British based cow herd.

40 ROSEDALE QUALCO (P)

Born: 22/09/2019

Society ID: MRQ49A

PCC SUDDEN IMPACT (P)
PALGROVE HANNIBAL (AI) (ET) (P) (R/F)
PALGROVE DIGNA (R/F)
Sire: MT WILLIAM MONOLITH (P)
ROSEDALE BOSS
MT WILLIAM GREENIE (P) (R/F)
MT WILLIAM BABBETTE

ROSEDALE FAIRLANE (P)
ROSEDALE KAVIAR (P)
ROSEDALE NET E58 (AI) (P)
Dam: ROSEDALE CANDY M235 (P)
CANOONA CAVALERO (P)
ROSEDALE CANDY F71 (P)
ROSEDALE GAIETY W73 (P)



Charolais Group Breedplan EBV's

Charolais	DIR	GL	BWT	200	400	600	MILK	DOM
	-1.8	-3.5	+0.7	+21	+42	+65	+15	+\$41
	41%	49%	71%	61%	64%	61%	41%	
SS	CWT	EMA	RIB	RMP	RBY	IMF	EXP	
	+1.8	+34	+2.6	+1.5	+2.0	-0.5	+0.9	+\$61
	72%	54%	47%	51%	50%	44%	47%	

Purchaser

\$

TOP 5% 200, 400 and 600 Day Growth, MILK, IMF, CWT,EMA, Top 10% cRIB and RUMP

A classy bull by MT William monolith. Polled, Powerful and soft. High calibre commercial bull.

41 ROSEDALE QAZIR (P)

Born: 22/09/19

Society ID: MRQ41A

PCC SUDDEN IMPACT (P)
PALGROVE HANNIBAL (AI) (ET) (P) (R/F)
PALGROVE DIGNA (R/F)
Sire: MT WILLIAM MONOLITH (P)
ROSEDALE BOSS
MT WILLIAM GREENIE (P) (R/F)
MT WILLIAM BABBETTE
HARVIE JAGER 65J (P)
ASCOT GRAND REDEMPTION (AI) (P)
GOBONGO JULIET B43 (P)

Dam: ROSEDALE HUSSY M196 (P)
PARINGA NOVOTEL (P)
ROSEDALE HUSSEY E195 (P)
ROSEDALE HUSSY Z79 (P)



Charolais Group Breedplan EBV's

Charolais	DIR	GL	BWT	200	400	600	MILK	DOM
	-5.1	-3.1	+1.1	+23	+46	+70	+13	\$38
	39%	50%	70%	57%	63%	61%	37%	
SS	CWT	EMA	RIB	RMP	RBY	IMF	EXP	
	+3.3	+37	+2.1	+1.6	+2.2	-0.7	+0.6	\$53
	54%	58%	45%	53%	53%	49%	45%	

Purchaser

\$

Top 5% 200, 400, 600 Day, Rib Fat, SS, CWT, Top 20% MILK, RUMP Fat, Dom & EXP Index, IMF% - HOMOZYGOUS POLLED

Excellent commercial bull with an outstanding combination of growth and carcass figures. Yet again weight for age and ability to lay on the cover.



CHAROLAIS BULLS

42 ROSEDALE QUANDEL (P)

Born: 1/09/2019

Society ID: MRQ34E

GUNNADOO YUPPY (P)
 ROSEDALE DEALER (AI) (P) (R/F)
 ROSEDALE BUTTERSCOTCH Y47 (P) (R/F)
Sire: ROSEDALE MAVERICK (AI) (ET) (P) (R/F)
 HARVIE JAEGER (P) (R/F)
 ROSEDALE CANDY G304 (AI) (ET) (P) (R/F)
 ROSEDALE CANDY Q140 (P)

LT SILVER BAR (P)
 PALGROVE COACH (AI) (P)
 PALGROVE FRESIA (P)
Dam: ROSEDALE REBECCA F54 (P)
 MINNIE VALE DEPUTY (P)
 ROSEDALE REBECCA B44 (P)
 ROSEDALE REBECCA V56 (P)



Charolais Group Breedplan EBV's								
Charolais	DIR	GL	BWT	200	400	600	MILK	DOM
	+2.7	-1.8	+0.3	+14	+24	+37	+7	+\$29
	41%	41%	60%	52%	54%	53%	41%	
	SS	CWT	EMA	RIB	RMP	RBY	IMF	EXP
	+1.2	+20	+1.3	+1.1	+1.4	-0.4	+0.3	+\$43
	46%	46%	39%	48%	48%	43%	39%	
Purchaser							\$	

TOP 20% Rib and Rump Fat

A classic polled and soft bull who is unmistakably easy on the eye as is the case with all the maverick progeny. Great carcass scans yet good solid growth for age.

43 ROSEDALE QUEENSPARK (P)

Born: 20/08/2019

Society ID: MRQ90E

FERNVALE TRAPPER
 ROSEDALE DARWIN (P) MRD122E (P)
 ROSEDALE GRACE A97 (AI) (ET) (P)
Sire: ROSEDALE H168 (P)
 PARINGA NOVOTEL A100 (AI) (ET) (P)
 ROSEDALE BEATRIX D148 (P)
 ROSEDALE BEATRIX Z185 (P)

NOVOTEL
 PARINGA NOVOTEL
 PARINGA FASTRAC (P)
Dam: ROSEDALE LUCY H120 (P)
 FERNVALE TRAPPER
 ROSEDALE LUCY A210 (P)
 ROSEDALE LUCY V69 (P)



Charolais Group Breedplan EBV's								
Charolais	DIR	GL	BWT	200	400	600	MILK	DOM
	+5.4	-1.3	-0.1	+19	+32	+52	+15	+\$44
	42%	70%	72%	61%	66%	62%	40%	
	SS	CWT	EMA	RIB	RMP	RBY	IMF	EXP
	+0.1	+28	+2.4	+1.9	+2.6	-1.1	+1.0	+\$66
	51%	54%	40%	47%	47%	44%	40%	
Purchaser							\$	

Top 5% Rib & Rump, Top 10% 200 & 600 Day, MILK, Top 15% Dom & Exp Index, IMF, EMA CWT. - HOMOZYGOUS POLLED

A long bodied, thick and smooth homozygous bull by H168. One of the heavier bulls in the draft as a yearling.

44 ROSEDALE QUILLAN (P) (R/F)

Born: 26/08/19

Society ID: MRQ58A

PCC SUDDEN IMPACT (P)
 PALGROVE HANNIBAL (AI) (ET) (P) (R/F)
 PALGROVE DIGNA (R/F)
Sire: MT WILLIAM MONOLITH (P)
 ROSEDALE BOSS
 MT WILLIAM GREENIE (P) (R/F)
 MT WILLIAM BABETTE
 LANG'S ERIC THE RED 3E (P/S)
 HARVIE JAGER 65J
 HARVIE MISS FRANCIS

Dam: ROSEDALE CANDY G308E (AI) (ET) (P) (R/F)
 PALGROVE JACKPOT (AI) (ET) (P)
 ROSEDALE CANDY Q140 (P)
 ROSEDALE CANDY 10 (P)



Charolais Group Breedplan EBV's								
Charolais	DIR	GL	BWT	200	400	600	MILK	DOM
	-0.9	-1.0	+0.4	+21	+41	+54	+11	\$38
	49%	55%	73%	63%	69%	65%	51%	
	SS	CWT	EMA	RIB	RMP	RBY	IMF	EXP
	+2.6	+32	+1.3	+0.8	+1.2	+0.3	+0.5	\$53
	54%	58%	45%	53%	53%	49%	45%	
Purchaser							\$	

Top 5% 200 & 400 Day Growth, Scrotal, CWT Top 10% 600 Day Growth, MILK Top 20% Dom & Exp Index

A really good commercial bull with tremendous growth for age & strong raw carcass data. Out of a genuinely great cow that always delivers.



45 ROSEDALE QASIM (P)

Born: 15/10/2019

Society ID: MRQ39A

PCC SUDDEN IMPACT (P)
PALGROVE HANNIBAL (AI) (ET) (P) (R/F)
PALGROVE DIGNA (R/F)
Sire: MT WILLIAM MONOLITH (P)
ROSEDALE BOSS
MT WILLIAM GREENIE (P) (R/F)
MT WILLIAM BABETTE

HARVIE JAGER 65J (P)
ASCOT GRAND REDEMPTION (AI) (P)
GOBONGO JULIET B43 (P)
Dam: ROSEDALE GAIEITY M190 (P)
DSK YABBA DABBA DO
ROSEDALE GAIEITY E101 (P)
ROSEDALE GAIEITY C48 (P)



Charolais Group Breedplan EBV's

DIR	GL	BWT	200	400	600	MILK	DOM
-1.1	-2.5	+0.9	+19	+37	+52	+14	\$35
39%	50%	69%	57%	62%	60%	38%	
SS	CWT	EMA	RIB	RMP	RBY	IMF	EXP
+1.6	+30	+2.1	+0.9	+1.0	0.0	+0.4	+\$48
70%	52%	47%	51%	50%	46%		

Purchaser

\$

Top 10% 200,400 & 600 Day Growth, Milk, Top 25% EMA and Dom and Exp Indexes - HOMOZYGOUS POLLED

Another well put together Monolith son with power and admittedly great carcass traits. Homo polled to boot.

46 ROSEDALE QUALEUP (P/S)

Born: 22/09/2019

Society ID: MRQ53A

PCC SUDDEN IMPACT (P)
PALGROVE HANNIBAL (AI) (ET) (P) (R/F)
PALGROVE DIGNA (R/F)
Sire: MT WILLIAM MONOLITH (P)
ROSEDALE BOSS
MT WILLIAM GREENIE (P) (R/F)
MT WILLIAM BABETTE

ROSEDALE FAIRLANE (P)
ROSEDALE KAVIAR (AI) (P)
ROSEDALE NET E58 (P)
Dam: ROSEDALE EMPRESS M258 (P)
PALGROVE EXPO (AI) (ET) (P)
ROSEDALE EMPRESS H203 (P)
ROSEDALE EMPRESS B196 (P)



Charolais Group Breedplan EBV's

DIR	GL	BWT	200	400	600	MILK	DOM
-3.8	-3.2	+1.1	+21	+40	+63	+15	+\$30
37%	49%	69%	56%	62%	60%	34%	
SS	CWT	EMA	RIB	RMP	RBY	IMF	EXP
+0.7	+35	+2.7	+0.2	+0.1	+0.6	+0.5	+\$44
70%	54%	47%	51%	49%	50%	45%	

Purchaser

\$

Top 5% 200,400 & 600 Day Growth, MILK, CWT, Top 10% EMA, Top 25% IMF

Eye appeal, growth and wonderful maturity pattern in this bull. Good mix and balance of muscling, growth and carcass.

47 ROSEDALE QUAKERS HILL (P)

Born: 18/10/19

Society ID: MRQ54A

PCC SUDDEN IMPACT (P)
PALGROVE HANNIBAL (AI) (ET) (P) (R/F)
PALGROVE DIGNA (R/F)
Sire: MT WILLIAM MONOLITH (P)
ROSEDALE BOSS
MT WILLIAM GREENIE (P) (R/F)
MT WILLIAM BABETTE
ROSEDALE DARWIN (P)
ROSEDALE H168 (P)
ROSEDALE BEATRIX D148 (P)

Dam: ROSEDALE RUBY M283 (P)
PARINGA NOVOTEL (P)
ROSEDALE RUBY F10 (P)
ROSEDALE RUBY Z211 (P)



Charolais Group Breedplan EBV's

DIR	GL	BWT	200	400	600	MILK	DOM
-3.0	-2.7	+1.0	+20	+38	+62	+14	\$33
38%	48%	69%	62%	62%	60%	36%	
SS	CWT	EMA	RIB	RMP	RBY	IMF	EXP
+2.0	+31	+2.5	+1.6	+2.0	-0.7	+0.8	+\$53
70%	51%	47%	50%	49%	50%	45%	

Purchaser

\$

Top 5% 600 Day Growth, Top 10% 200 & 400 Day Growth, SS, CWT, RIB & RUMP Fat, IMF%, Top 25% Export Index

A bull that is very strong on breedplan being at the top of the breed for a number of traits. Nicely muscled with the soft skin type we strive to achieve.



CHAROLAIS BULLS

48 ROSEDALE QUATRO (P)

Born: 28/09/2019
Society ID: MRQ215E

ROSEDALE GUNNADOO YUPPY (P)
ROSEDALE DEALER (P) (R/F)
ROSEDALE BUTTERSCOTCH Y47 (P) (R/F)
Sire: ROSEDALE MUSTANG (AI) (ET) (P) (R/F)
HARVIE JAGER 65J PMC228759 (P)
ROSEDALE CANDY G304E (AI) (ET) (P) (R/F)
ROSEDALE CANDY Q140 (P)

ROSEDALE PARINGA NOVOTEL (P)
ROSEDALE DONOTELLO (P)
ROSEDALE REBECCA A38 (P)
Dam: ROSEDALE CANDY F312 (AI) (ET) (P)
DC MR ELIMINATOR 2210
ROSEDALE CANDY T27 (AI) (P)
ROSEDALE CANDY Q140 (P)



Charolais Group Breedplan EBV's									
	DIR	GL	BWT	200	400	600	MILK	DOM	
Charolais	+7.0	-2.6	-1.0	+13	+18	+36	+14		+\$30
	41%	46%	70%	60%	63%	60%	43%		
	SS	CWT	EMA	RIB	RMP	RBY	IMF	EXP	
	+1.8	+18	+0.9	+0.6	+0.7	0.0	-0.1		+\$49
	51%	54%	39%	47%	47%	43%	39%		
Purchaser									\$

Top 20% CE, BIRTHWEIGHT, Top 5% MILK and Export Index

One of the most gentle natured bulls of the sale, moderate birth with above average growth and good carcass scans. We really like this bull and he is guaranteed not to disappoint.

49 ROSEDALE QUINLANN (P)

Born: 23/09/2019
Society ID: MRQ197E

P NOVOTEL (P)
ROSEDALE FAIRLANE (P)
ROSEDALE HONOR A118
Sire: ROSEDALE KAVIAR (P)
PARINGA NOVOTEL A100 (AI) (ET) (P)
ROSEDALE BEATRIX D148 (P)
ROSEDALE BEATRIX Z185 (P)

PINAY
PALGROVE EXPO (AI) (P)
PALGROVE ESTELLA (AI) (P)
Dam: ROSEDALE HONOR H199 (P)
FERNVALE TRAPPER
ROSEDALE HONOR B170 (P)
ROSEDALE HONOR S75 (P)



Charolais Group Breedplan EBV's									
	DIR	GL	BWT	200	400	600	MILK	DOM	
Charolais	+3.7	-3.7	-0.6	+17	+28	+61	+11		+\$34
	45%	48%	73%	64%	68%	51%	45%		
	SS	CWT	EMA	RIB	RMP	RBY	IMF	EXP	
	+1.5	+24	+0.2	+0.9	+1.0	-0.9	+0.3		+\$55
	51%	54%	40%	47%	47%	44%	40%		
Purchaser									\$

Top 5% 600 Day Growth, Top 15% 200 Day, MILK, Top 25% Dom and Exp Index - HOMOZYGOUS POLLED

A neat and tidy homozygous polled bull who will continue to grow out nicely. His dam is one of our bigger cows and packs some punch.

50 ROSEDALE QUASTOR (AI) (P)

Born: 21/08/2019
Society ID: MRQ232E

NOVOTEL
PARINGA NOVOTEL (P)
PARINGA FASTRAC
Sire: ROSEDALE DONOTELLO (P)
FERNVALE TRAPPER
ROSEDALE REBECCA A38 (P)
ROSEDALE REBECCA V56 (P)
HARVIE JAGER 65J (P)
ASCOT GRAND REDEMPTION (AI) (P)
GOBONGO JULIET B43 (P)

Dam: ROSEDALE DAINTE N217 (P)
ROSEDALE FAIRLANE (P)
ROSEDALE DAINTE K199 (P)
ROSEDALE DAINTE G149 (P)



Charolais Group Breedplan EBV's									
	DIR	GL	BWT	200	400	600	MILK	DOM	
Charolais	-2.9	-1.3	+0.7	+17	+33	+53	+16		+\$26
	49%	72%	74%	66%	69%	66%	49%		
	SS	CWT	EMA	RIB	RMP	RBY	IMF	EXP	
	+1.6	+28	+1.0	+0.8	+1.0	-0.5	+0.3		+\$41
	75%	59%	54%	60%	59%	57%	54%		
Purchaser									\$

Top 5% MILK, Top 10% 600 Day Growth, Top 15% 200, 400 DAY Growth, CWT - HOMOZYGOUS POLLED A terrific Skinned Donotello bull to finish of the Spring Drop Charolais offering. Long, naturally thick and strong along the topline. A hfrs calf and we believe would breed nice feminine daughters.

CHAROLAIS YEARLING BULLS



51 ROSEDALE REMINGTON (P) (R/F)

Born: 7/05/2020

Society ID: MRR7E

GUNNADOO YUPPY (P)
ROSEDALE DEALER (P) (R/F)
ROSEDALE BUTTERSCOTCH Y47 (P) (R/F)
Sire: ROSEDALE MAVERICK (AI) (ET) (P) (R/F)
HARVIE JAGER 65J PMC228759 (P)
ROSEDALE CANDY G304E (AI) (ET) (P) (R/F)
ROSEDALE CANDY Q140 (P)

FERNVALE TRAPPER
ROSEDALE DARWIN (P)
ROSEDALE GRACE A97 (AI) (ET) (P)
Dam: ROSEDALE BEATRIX J231 (P)
PARINGA NOVOTEL (P)
ROSEDALE BEATRIX D148 (P)
ROSEDALE BEATRIX Z185 (P)



Purchaser	
\$	



Index \$ Value					
Domestic (\$)	Export (\$)				
+\$42	+\$62				
Charolais Group Breedplan EBV's					
	Calving ease	Birth weight	200 day growth	400 day growth	600 Day Growth
EBV	+10.6	-1.1	+12	+22	+38
ACC	41%	71%	59%	57%	55%
Milk	CWT	EMA	Rib	Rump	IMF %
+15	+21	+1.0	+06	+0.8	+0.5
41%	46%	38%	48%	47%	39%

Comments - HOMOZYGOUS POLLED

Top 5% Milk, Top 10% Calving Ease, Top 15% Dom & Exp Index's, Top 20% Birthweight, Top 25% IMF

Wonderfully put together bull who ticks all the boxes, Calving Ease, low birth weight and above avg growth supported with fantastic raw data. This bull is worthy of stud duties and will stand a very strong inspection. This bull is just over 12 months with that hard to find x Factor.

52 ROSEDALE RESISTOL (P) (R/F)

Born: 10/05/2020

Society ID: MRR6E

GUNNADOO YUPPY (P)
ROSEDALE DEALER (P) (R/F)
ROSEDALE BUTTERSCOTCH Y47 (P) (R/F)
Sire: ROSEDALE MAVERICK (AI) (ET) (P) (R/F)
HARVIE JAGER 65J PMC228759 (P)
ROSEDALE CANDY G304E (AI) (ET) (P) (R/F)
ROSEDALE CANDY Q140 (P)

PARINGA NOVOTEL (P)
PALGROVE FAIRLANE (P)
ROSEDALE HONOR A118
Dam: ROSEDALE ZIG J28 (P)
MINNIE VALE DEPUTY (P)
ROSEDALE ZIG B146 (P)
ROSEDALE ZIG X114



Purchaser	
\$	



Index \$ Value					
Domestic (\$)	Export (\$)				
\$34	\$51				
Charolais Group Breedplan EBV's					
	Calving ease	Birth weight	200 day growth	400 day growth	600 Day Growth
EBV	+7.0	-0.7	+12	+21	+37
ACC	41%	71%	55%	57%	56%
Milk	CWT	EMA	Rib	Rump	IMF %
+14	+20	+0.8	+0.9	+1.1	+0.4
40%	46%	37%	43%	43%	37%

Comments - POLLED

Top 10% 200, 400, 600 Day, CWT Top 15% Milk

Also a very appealing Red Factor maverick yearling at only 12 months of age. Could be used in stud or a top end commercial operation on both cows or heifers. Undoubtedly a great bull that is versatile and of a very high standard.



CHAROLAIS YEARLING BULLS

53 ROSEDALE RANGO (P)

Born: 16/05/2020

Society ID: MRR14E

GUNNADOO YUPPY (P)
 ROSEDALE DEALER (P) (R/F)
 ROSEDALE BUTTERSCOTCH Y47 (P) (R/F)
Sire: ROSEDALE MAVERICK (AI) (ET) (P) (R/F)
 HARVIE JAGER 65J PMC228759 (P)
 ROSEDALE CANDY G304E (AI) (ET) (P) (R/F)
 ROSEDALE CANDY Q140 (P)

PARINGA NOVOTEL (P)
 PALGROVE FAIRLANE (P)
 ROSEDALE HONOR A118
Dam: ROSEDALE BEATRIX L4 (P)
 REIDS ASSASSIN (P)
 ROSEDALE BEATRIX E244 (P)
 ROSEDALE BEATRIX Z26 (P)



Charolais Group Breedplan EBV's

Charolais	DIR	GL	BWT	200	400	600	MILK	DOM
	+6.5	+0.5	-0.6	+15	+25	+39	+11	+\$37
	40%	70%	72%	61%	66%	62%	38%	
SS	CWT	EMA	RIB	RMP	RBY	IMF	EXP	
	+1.0	+22	+0.6	+1.0	+1.4	-0.9	+0.6	+\$55
	45%	47%	38%	47%	47%	43%	39%	

Purchaser

\$

Top 20% CALVING EASE, Exp INDEX, IMF, Top 15% Milk, Exp Top 25% RIB and RUMP FAT, Dom INDEX - HOMOZYGOUS POLLED

A top quality youngster who continues to improve and impress. His Dam is a good one and we believe he will develop into a very useful sire.

54 ROSEDALE RANGER (P)

Born: 20/04/2020

Society ID: MRR9E

GUNNADOO YUPPY (P)
 ROSEDALE DEALER (P) (R/F)
 ROSEDALE BUTTERSCOTCH Y47 (P) (R/F)
Sire: ROSEDALE MAVERICK (AI) (ET) (P) (R/F)
 HARVIE JAGER 65J PMC228759 (P)
 ROSEDALE CANDY G304E (AI) (ET) (P) (R/F)
 ROSEDALE CANDY Q140 (P)

LT EASY BLEND (P)
 ROSEDALE FIRST CLASS (AI) (P)
 ROSEDALE CINDERELLA D6 (P)
Dam: ROSEDALE GOLDEN GIRL J130 (P)
 PARINGA NOVOTEL A100 (AI) (ET) (P)
 ROSEDALE GOLDEN GIRL E49
 ROSEDALE GOLDEN GIRL Z39 (P)



Charolais Group Breedplan EBV's

Charolais	DIR	GL	BWT	200	400	600	MILK	DOM
	+4.7	-2.2	-0.3	+16	+32	+49	+14	+\$36
	40%	44%	71%	55%	56%	55%	39%	
SS	CWT	EMA	RIB	RMP	RBY	IMF	EXP	
	+1.2	+26	+0.5	+0.7	+0.9	-0.9	+0.7	+\$52
	51%	54%	40%	47%	47%	44%	40%	

Purchaser

\$

Top 20% CALVING EASE, Exp INDEX, IMF, Top 15% Milk, Exp Top 25% RIB and RUMP FAT, Dom INDEX - HOMOZYGOUS POLLED

A smooth and soft yearling with a fantastic skin type. We expect this bull to continue to grow out nicely. Evenly balanced and moderate in type.

55 ROSEDALE RENEGADE (P)

Born: 12/05/2020

Society ID: MRR13E

GUNNADOO YUPPY (P)
 ROSEDALE DEALER (P) (R/F)
 ROSEDALE BUTTERSCOTCH Y47 (P) (R/F)
Sire: ROSEDALE MAVERICK (AI) (ET) (P) (R/F)
 HARVIE JAGER 65J PMC228759 (P)
 ROSEDALE CANDY G304E (AI) (ET) (P) (R/F)
 ROSEDALE CANDY Q140 (P)

PINAY
 PALGROVE EXPO (P)
 PALGROVE ESTELLA 130 (P)
Dam: ROSEDALE GAIETY J186 (P)
 DSK YABBA DABBO DO
 ROSEDALE GAIETY E 8(P)
 ROSEDALE GAIETY V116



Charolais Group Breedplan EBV's

Charolais	DIR	GL	BWT	200	400	600	MILK	DOM
	+2.5	-2.5	0.0	+14	+24	+39	+9	\$28
	41%	44%	71%	55%	57%	56%	41%	
SS	CWT	EMA	RIB	RMP	RBY	IMF	EXP	
	+1.4	+21	+1.2	+0.4	+0.5	+0.1	+0.2	\$43
	45%	46%	38%	53%	53%	49%	45%	

Purchaser

\$

Top 20% CALVING EASE, Exp INDEX, IMF, Top 15% Milk, Exp Top 25% RIB and RUMP FAT, Dom INDEX - HOMOZYGOUS POLLED

For 12 month old bulls we are very impressed with this set of young bulls and renegade is no exception. Fantastic potential and his dam is a beauty.



DSK TGL LOTABULL L13 (R/F) (P)

Born: 02/02/2015

Society ID: DSKL13E

TEMANA XOROX
YACCAMOO COWBOY (P)
YACCAMOO (AI) (P)
Sire: TEMANA GOLDEN LOGIE G66E (P) (R/F)
MEILARD RJ
TEMANA X104 (AI) (ET)
TEMANA LORETTA (P/S)

AYR HUELVA'S HUSTLER (AI)
DSK RED EMPEROR Y13E (P) (R/F)
DSK GN JULIETTE U1E (AI) (P)
Dam: DSK RE WENDY C31E (P) (R/F)
LT WYOMING WIND 4020 PLD (P)
DSK WW WENDY A10E (AI) (ET) (P)
PINNAROO RED TRENDIE R/F



A Dark Red Bull purchased from DSK in 2016, one of the Sale toppers. He has done such a good job in our black program we bought his full brother as well.

Canadian Charolais EPD's								
	DIR	DTRS	GL	BWT	200	400	600	MWT
Charolais	-0.2	-1.1	-0.7	+1.4	+11	+19	+27	+32
	43%	34%	48%	70%	55%	59%	60%	53%
	MILK	SS	CWT	EMA	RIB	RMP	RBY	IMF
	+4	+1.3	+11	+1.2	+0.5	+0.6	-0.4	+0.6
	35%	68%	49%	42%	46%	45%	45%	41%
Index \$ Value	Domestic (\$)				Export (\$)			
	+\$14				+\$22			

DSK MITCH M44 (P) (R/F)

Born: 03/06/2016

Society ID: DSKM44E

TEMANA XOROX
YACCAMOO COWBOY (P)
YACCAMOO (AI) (P)
Sire: TEMANA GOLDEN LOGIE G66E (P) (R/F)
MEILARD RJ
TEMANA X104 (AI) (ET)
TEMANA LORETTA (P/S)

AYR HUELVA'S HUSTLER (AI)
DSK RED EMPEROR Y13E (P) (R/F)
DSK GN JULIETTE U1E (AI) (P)
Dam: DSK RE WENDY C31E (P) (R/F)
LT WYOMING WIND 4020 PLD (P)
DSK WW WENDY A10E (AI) (ET) (P)
PINNAROO RED TRENDIE R/F



A Dark Red Charolais Sire doing a great job on our black commercial herd. Top priced bull in their 2018 sale. Some lovely offspring in this draft, very happy with his progeny.

Charolais Group Breedplan EBV's								
	DIR	DTRS	GL	BWT	200	400	600	MWT
Charolais	+3.4	-4.3	-0.7	+0.3	+3	+6	+9	+15
	33%	25%	46%	68%	60%	62%	65%	55%
	MILK	SS	CWT	EMA	RIB	RMP	RBY	IMF
	+6	+0.7	+5	+1.2	-0.7	-0.9	+0.5	+0.2
	41%	71%	51%	43%	43%	43%	45%	42%
Index \$ Value	Domestic (\$)				Export (\$)			
	+\$7				+\$9			





COMPOSITE BULLS

56 ROSEDALE Q41 (P) BLACK

Born: 12/8/2019 Tag: P41

TEMANA GOLD LOGIE (P) (R/F)
SIRE: DSK MITCH M44
 DSK WENDY C31(P) (R/F)

DAM: TWYNAM ANGUS COW _____

Raw Data					
Weight	P8	Rib	EMA	IMF %	Scrotal
Purchaser				\$	



57 ROSEDALE Q87 (P) BLACK

Born: 23/8/2019 Tag: P87

TEMANA GOLD LOGIE (P) (R/F)
SIRE: DSK LOTTABULL
 DSK WENDY C31(P) (R/F)

DAM: SELECTED ANGUS COW _____

Raw Data					
Weight	P8	Rib	EMA	IMF %	Scrotal
Purchaser				\$	



58 ROSEDALE Q93 (P) BLACK

Born: 19/08/2019 Tag: P93

TEMANA GOLD LOGIE (P) (R/F)
SIRE: DSK MITCH M44
 DSK WENDY C31(P) (R/F)

DAM: TWYNAM ANGUS COW _____

Raw Data					
Weight	P8	Rib	EMA	IMF %	Scrotal
Purchaser				\$	



59 ROSEDALE Q113(P) BLACK

Born: 21/07/2019 Tag: P113

TEMANA GOLD LOGIE (P) (R/F)
SIRE: DSK LOTTABULL
 DSK WENDY C31(P) (R/F)

DAM: SELECTED ANGUS COW _____

Raw Data					
Weight	P8	Rib	EMA	IMF %	Scrotal
Purchaser				\$	





60 ROSEDALE Q258 P BLACK

Born: 29/8/2019 Tag: P258

TEMANA GOLD LOGIE (P) (R/F)
SIRE: DSK LOTTABULL
 DSK WENDY C31(P) (R/F)

DAM: SELECTED ANGUS COW _____

Raw Data					
Weight	P8	Rib	EMA	IMF %	Scrotal
Purchaser				\$	



61 ROSEDALE Q62 (P) BLACK

Born: 23/8/2019 Tag: P62

TEMANA GOLD LOGIE (P) (R/F)
SIRE: DSK LOTTABULL
 DSK WENDY C31(P) (R/F)

DAM: SELECTED ANGUS COW _____

Raw Data					
Weight	P8	Rib	EMA	IMF %	Scrotal
Purchaser				\$	



62 ROSEDALE Q69 (P) BLACK

Born: 1/09/2019 Tag: P69

TEMANA GOLD LOGIE (P) (R/F)
SIRE: DSK LOTTABULL
 DSK WENDY C31(P) (R/F)

DAM: SELECTED ANGUS COW _____

Raw Data					
Weight	P8	Rib	EMA	IMF %	Scrotal
Purchaser				\$	



63 ROSEDALE Q161 (P)BLACK

Born: 21/07/2019 Tag: 161

TEMANA GOLD LOGIE (P) (R/F)
SIRE: DSK MITCH M44
 DSK WENDY C31(P) (R/F)

DAM: TWYNAM ANGUS COW _____

Raw Data					
Weight	P8	Rib	EMA	IMF %	Scrotal
Purchaser				\$	





COMPOSITE BULLS

64 ROSEDALE Q138 (P)BLACK

Born: 18/8/2019 Tag: 138

TEMANA GOLD LOGIE (P) (R/F)
SIRE: DSK LOTTABULL
 DSK WENDY C31(P) (R/F)

DAM: SELECTED ANGUS COW _____

Raw Data					
Weight	P8	Rib	EMA	IMF %	Scrotal
Purchaser				\$	



65 ROSEDALE Q177(P) BLACK

Born: 2/9/2019 Tag: 177

TEMANA GOLD LOGIE (P) (R/F)
SIRE: DSK MITCH M44
 DSK WENDY C31(P) (R/F)

DAM: TWYNAM ANGUS COW _____

Raw Data					
Weight	P8	Rib	EMA	IMF %	Scrotal
Purchaser				\$	



66 ROSEDALE Q187(P) BLACK

Born: 16/08/2019 Tag: 187

TEMANA GOLD LOGIE (P) (R/F)
SIRE: DSK LOTTABULL
 DSK WENDY C31(P) (R/F)

DAM: SELECTED ANGUS COW _____

Raw Data					
Weight	P8	Rib	EMA	IMF %	Scrotal
Purchaser				\$	



67 ROSEDALE Q197(P) BLACK

Born: 21/08/2019 Tag: 197

TEMANA GOLD LOGIE (P) (R/F)
SIRE: DSK LOTTABULL
 DSK WENDY C31(P) (R/F)

DAM: SELECTED ANGUS COW _____

Raw Data					
Weight	P8	Rib	EMA	IMF %	Scrotal
Purchaser				\$	





68 ROSEDALE Q186 (P)BLACK

Born: 12/8/2019 Tag: 186

TEMANA GOLD LOGIE (P) (R/F)
SIRE: DSK MITCH M44
 DSK WENDY C31(P) (R/F)

DAM: TWYNAM ANGUS COW _____

Raw Data					
Weight	P8	Rib	EMA	IMF %	Scrotal
Purchaser				\$	



69 ROSEDALE Q188(P) BLACK

Born: 2/8/2019 Tag: 188

TEMANA GOLD LOGIE (P) (R/F)
SIRE: DSK LOTTABULL
 DSK WENDY C31(P) (R/F)

DAM: SELECTED ANGUS COW _____

Raw Data					
Weight	P8	Rib	EMA	IMF %	Scrotal
Purchaser				\$	



70 ROSEDALE Q147(P) BLACK

Born: 9/08/2019 Tag: 147

TEMANA GOLD LOGIE (P) (R/F)
SIRE: DSK MITCH M44
 DSK WENDY C31(P) (R/F)

DAM: TWYNAM ANGUS COW _____

Raw Data					
Weight	P8	Rib	EMA	IMF %	Scrotal
Purchaser				\$	



71 ROSEDALE Q26 (P) BLACK

Born: 25/08/2019 Tag: P26

TEMANA GOLD LOGIE (P) (R/F)
SIRE: DSK LOTTABULL
 DSK WENDY C31(P) (R/F)

DAM: SELECTED ANGUS COW _____

Raw Data					
Weight	P8	Rib	EMA	IMF %	Scrotal
Purchaser				\$	





COMPOSITE BULLS

72 ROSEDALE Q34 (P) GREY

Born: 12/8/2019 Tag: P34

HIGH BLUFF HANK (P)
SIRE: Rosedale Lone Ranger (AI) (P)
 ROSEDALE NICKY G185 (P)

DAM: SELECTED ANGUS COW _____

Raw Data					
Weight	P8	Rib	EMA	IMF %	Scrotal
Purchaser				\$	



73 ROSEDALE Q6 (P) GREY

Born: 26/8/2019 Tag: Q6

ROSEDALE DEALER (P) (R/F)
SIRE: ROSEDALE MAVERICK
 ROSEDALE CANDY G304 (P)

DAM: TWYNAM ANGUS COW _____

Raw Data					
Weight	P8	Rib	EMA	IMF %	Scrotal
Purchaser				\$	



74 ROSEDALE Q764 (P)

Born: 1/08/2019 Tag: Q764

ROSEDALE HARRY (P)
SIRE: ROSEDALE KLYD (P)
 ROSEDALE BEATRIX G14 (P)

DAM: SELECTED SHORTHORN COW _____

Raw Data					
Weight	P8	Rib	EMA	IMF %	Scrotal
Purchaser				\$	



75 ROSEDALE Q693 (P)

Born: 21/07/2019 Tag: Q693

ROSEDALE HARRY (P)
SIRE: ROSEDALE MONTREAL (P)
 ROSEDALE HONOR J254 (P)

DAM: SELECTED SHORTHORN COW _____

Raw Data					
Weight	P8	Rib	EMA	IMF %	Scrotal
Purchaser				\$	





76 **ROSEDALE Q763 (P)**

Born: 12/8/2019 **Tag:** Q763

ROSEDALE HARRY (P)
SIRE: ROSEDALE KLYD (P)
 ROSEDALE BEATRIX G14 (P)

DAM: SELECTED SHORTHORN COW _____

Raw Data					
Weight	P8	Rib	EMA	IMF %	Scrotal

Purchaser _____ \$ _____



77 **ROSEDALE Q691 (P)**

Born: 6/8/2019 **Tag:** Q691

PALGROVE EXPO (P)
SIRE: KEANU (P)
 ROSEDALE BUTTERSCOTCH D123 (P)

DAM: SELECTED SHORTHORN COW _____

Raw Data					
Weight	P8	Rib	EMA	IMF %	Scrotal

Purchaser _____ \$ _____



78 **ROSEDALE Q767 (P)**

Born: 25/07/2019 **Tag:** Q767

ROSEDALE HARRY (P)
SIRE: ROSEDALE MONTREAL (P)
 ROSEDALE HONOR J254 (P)

DAM: SELECTED SHORTHORN COW _____

Raw Data					
Weight	P8	Rib	EMA	IMF %	Scrotal

Purchaser _____ \$ _____



79 **ROSEDALE Q655 (P)**

Born: 21/07/2017 **Tag:** P655

ROSEDALE HARRY (P)
SIRE: ROSEDALE MONTREAL (P)
 ROSEDALE HONOR J254 (P)

DAM: SELECTED SHORTHORN COW _____

Raw Data					
Weight	P8	Rib	EMA	IMF %	Scrotal

Purchaser _____ \$ _____





COMPOSITE BULLS

80 ROSEDALE Q700 (P)
 Born: 26/8/2019 Tag: Q700
 PALGROVE EXPO (P)
SIRE: KEANU (P)
 ROSEDALE BUTTERSCOTCH D123 (P)
DAM: SELECTED SHORTHORN COW _____

Raw Data					
Weight	P8	Rib	EMA	IMF %	Scrotal
Purchaser				\$	



81 ROSEDALE Q15 (P)
 Born: 5/8/2019 Tag: G15
 ROSEDALE HARRY (P)
SIRE: ROSEDALE KLYD (P)
 ROSEDALE BEATRIX G14 (P)
DAM: SELECTED SHORTHORN COW _____

Raw Data					
Weight	P8	Rib	EMA	IMF %	Scrotal
Purchaser				\$	



82 ROSEDALE Q146 (P)
 Born: 13/08/2019 Tag: Q146
 ROSEDALE HARRY (P)
SIRE: ROSEDALE MONTREAL (P)
 ROSEDALE HONOR J254 (P)
DAM: SELECTED SHORTHORN COW _____

Raw Data					
Weight	P8	Rib	EMA	IMF %	Scrotal
Purchaser				\$	



CHAROLAIS HEIFERS



83 ROSEDALE NICKY R1 (P) (R/F)

Born: 10/04/2020

Society ID: MRR1E

GUNNADOO YUPPY (P)
ROSEDALE DEALER (P) (R/F)
ROSEDALE BUTTERSCOTCH Y47 (P) (R/F)
Sire: ROSEDALE MAVERICK (AI) (ET) (P) (R/F)
HARVIE JAGER 65J PMC228759 (P)
ROSEDALE CANDY G304E (AI) (ET) (P) (R/F)
ROSEDALE CANDY Q140 (P)



MONTANA SILVER (P)
LT SILVER VALUE (P)
LT UNLIMITED MAID (P)
Dam: ROSEDALE NICKY G238E (AI) (P)
MINNIE VALE DEPUTY (P)
ROSEDALE NICKY B41 (P)
ROSEDALE NICKY X7 (P)

Charolais Group Breedplan EBV's									
DIR	GL	BWT	200	400	600	MILK	DOM		
+0.2	-2.1	+0.9	+18	+33	+47	+6		+\$31	
41%	50%	71%	55%	57%	56%	44%			
SS	CWT	EMA	RIB	RMP	RBY	IMF	EXP		
+0.9	+26	+1.5	+0.5	+0.8	-0.1	+0.4		+\$44	
37%	46%	35%	44%	44%	40%	35%			
Purchaser						\$			

Top 15% 200, 400, 600 Day Growth - HOMOZYGOUS POLLED

Sells unjoined but 100% guaranteed to breed for 12 months. Great young heifer out of a nice matron that we used to show back in the day.

84 ROSEDALE RUBY R5 (P)

Born: 22/04/2020

Society ID: MRR5E

GUNNADOO YUPPY (P)
ROSEDALE DEALER (P) (R/F)
ROSEDALE BUTTERSCOTCH Y47 (P) (R/F)
Sire: ROSEDALE MAVERICK (AI) (ET) (P) (R/F)
HARVIE JAGER 65J PMC228759 (P)
ROSEDALE CANDY G304E (AI) (ET) (P) (R/F)
ROSEDALE CANDY Q140 (P)



PARINGA NOVOTEL (P)
ROSEDALE DONOTELLO (P)
ROSEDALE REBECCA A38 (P)
Dam: ROSEDALE RUBY H8 (P)
MINNIE VALE DEPUTY (P)
ROSEDALE RUBY A218 (P)
ROSEDALE RUBY V120

Charolais Group Breedplan EBV's									
DIR	GL	BWT	200	400	600	MILK	DOM		
+7.1	-2.8	-0.9	+12	+24	+41	+14		+\$37	
41%	50%	71%	54%	56%	55%	44%			
SS	CWT	EMA	RIB	RMP	RBY	IMF	EXP		
+1.1	+22	+0.8	+0.5	+0.6	-0.3	+0.4		+\$55	
45%	50%	37%	43%	42%	42%	37%			
Purchaser						\$			

Top 25% BWT, Exp Index Top 5% MILK Top 20% Dom Index - HOMOZYGOUS POLLED

Sells unjoined but 100% guaranteed to breed for 12 months. A classy young heifer that will make a great future breeder.

85 ROSEDALE EMPRESS R8 (P)

Born: 26/04/2020

Society ID: MRR8E

GUNNADOO YUPPY (P)
ROSEDALE DEALER (P) (R/F)
ROSEDALE BUTTERSCOTCH Y47 (P) (R/F)
Sire: ROSEDALE MAVERICK (AI) (ET) (P) (R/F)
HARVIE JAGER 65J PMC228759 (P)
ROSEDALE CANDY G304E (AI) (ET) (P) (R/F)
ROSEDALE CANDY Q140 (P)



LT SILVER BAR (P)
PALGROVE COACH (P)
PALGROVE FRIESIA 19 (P)
Dam: ROSEDALE EMPRESS F33 (AI) (P)
FERNVALE TRAPPER
ROSEDALE EMPRESS B188 (P)
ROSEDALE EMPRESS S66 (P)

Charolais Group Breedplan EBV's									
DIR	GL	BWT	200	400	600	MILK	DOM		
+4.9	-1.5	+0.3	+15	+27	+43	+10		+\$37	
39%	50%	70%	60%	57%	56%	40%			
SS	CWT	EMA	RIB	RMP	RBY	IMF	EXP		
+1.3	+24	+1.9	+0.8	+1.1	+0.0	+0.4		+\$54	
35%	44%	31%	40%	40%	36%	32%			
Purchaser						\$			

Top 25% 600 Day Growth, Top 20% Milk, Dom and Exp Index

Sells unjoined but 100% guaranteed to breed for 12 months. A Baby heifer with a big future by the Very impressive Rosedale Maverick.



CHAROLAIS HEIFERS

86 ROSEDALE HUSSEY R11 (P)

Born: 07/05/2020

Society ID: MRR11E

GUNNADOO YUPPY (P)
 ROSEDALE DEALER (P) (R/F)
 ROSEDALE BUTTERSCOTCH Y47 (P) (R/F)
Sire: ROSEDALE MAVERICK (AI) (ET) (P) (R/F)
 HARVIE JAGER 65J PMC228759 (P)
 ROSEDALE CANDY G304E (AI) (ET) (P) (R/F)
 ROSEDALE CANDY Q140 (P)

FERNVALE TRAPPER (H)
 ROSEDALE DARWIN (P)
 ROSEDALE GRACE A97 (AI) (ET) (P)
Dam: ROSEDALE HUSSEY G145 (P)
 PARINGA NOVOTEL A100 (AI) (ET) (P)
 ROSEDALE HUSSEY C46 (P)
 ROSEDALE HUSSY Z179 (P)



Charolais Group Breedplan EBV's								
DIR	GL	BWT	200	400	600	MILK	DOM	
+7.9	-1.3	-0.3	+12	+22	+38	+13		+\$38
42%	45%	71%	56%	58%	56%	43%		
SS	CWT	EMA	RIB	RMP	RBY	IMF	EXP	
+1.3	+19	+0.6	+0.9	+1.4	-0.7	+0.5		+\$57
44%	43%	39%	48%	48%	44%	39%		
Purchaser						\$		

Top 15% CE DIR, Top 10% MILK, Top 25% RUMP, IMF - HOMOZYGOUS POLLED
 Sells unjoined but 100% guaranteed to breed for 12 months. A lovely soft and stylish heifer that will not disappoint.

87 ROSEDALE KRISTINA R12 (P)

Born: 08/05/2020

Society ID: MRR12E

GUNNADOO YUPPY (P)
 ROSEDALE DEALER (P) (R/F)
 ROSEDALE BUTTERSCOTCH Y47 (P) (R/F)
Sire: ROSEDALE MAVERICK (AI) (ET) (P) (R/F)
 HARVIE JAGER 65J PMC228759 (P)
 ROSEDALE CANDY G304E (AI) (ET) (P) (R/F)
 ROSEDALE CANDY Q140 (P)

NOVOTEL (H)
 PARINGA NOVOTEL A100 (AI) (ET) (P)
 PARINGA FASTRACK Y654 (AI) (ET) (P)
Dam: ROSEDALE KRISTINA H116 (P)
 FERNVALE TRAPPER (H)
 ROSEDALE KRISTINA A168 (P)
 ROSEDALE KRISTINA U40 (AI) (P)



Charolais Group Breedplan EBV's								
DIR	GL	BWT	200	400	600	MILK	DOM	
+7.5	-2.1	-0.7	+15	+25	+46	+13		+\$39
43%	46%	71%	56%	64%	59%	43%		
SS	CWT	EMA	RIB	RMP	RBY	IMF	EXP	
+1.4	+23	+0.8	+0.8	+1.0	-0.5	+0.3		+\$61
42%	48%	40%	39%	38%	42%	40%		
Purchaser						\$		

Top 15% CE DIR, Exp Index, Top 10% MILK, Top 20% Dom Ind, Top 25% 600 Day Growth - HOMOZYGOUS POLLED
 Sells unjoined but 100% guaranteed to breed for 12 months. Thick and fleshy young heifer who undoubtedly will make top cow.

88 ROSEDALE NET R15 (P)

Born: 19/05/2020

Society ID: MRR15E

GUNNADOO YUPPY (P)
 ROSEDALE DEALER (P) (R/F)
 ROSEDALE BUTTERSCOTCH Y47 (P) (R/F)
Sire: ROSEDALE MAVERICK (AI) (ET) (P) (R/F)
 HARVIE JAGER 65J PMC228759 (P)
 ROSEDALE CANDY G304E (AI) (ET) (P) (R/F)
 ROSEDALE CANDY Q140 (P)

LT WYOMING WIND (AI) (ET) (P)
 DSK YABBA DABBA DO
 PALGROVE ESTELLA 31 (P)
Dam: ROSEDALE NET F106 (P)
 MINNIE-VALE DEPUTY (P)
 ROSEDALE NET C112 (P)
 ROSEDALE NET U12 (P)



Charolais Group Breedplan EBV's								
DIR	GL	BWT	200	400	600	MILK	DOM	
+6.8	-1.6	+0.0	+12	+21	+33	+8		+\$34
43%	50%	72%	57%	58%	56%	46%		
SS	CWT	EMA	RIB	RMP	RBY	IMF	EXP	
+1.4	+18	+0.9	+0.9	+1.3	-0.3	+0.2		+\$51
35%	47%	40%	40%	48%	36%	40%		
Purchaser						\$		

Top 25% Rump, Top 20% CE DIR, DOM and Exp Index
 Sells unjoined but 100% guaranteed to breed for 12 months. A great opportunity to secure a quality softly made future breeder.

CHAROLAIS HEIFERS



89 ROSEDALE R10 (P) (R/F)

Born: 09/05/2020

Society ID: MRR10E

ROSEDALE GUNNADOO YUPPY (P)
ROSEDALE DEALER (P) (R/F)
ROSEDALE BUTTERS SCOTCH Y47 (P) (R/F)
Sire: ROSEDALE MAVERICK (AI) (ET) (P) (R/F)
HARVIE JAGER 65J PMC228759 (P)
ROSEDALE CANDY G304E (AI) (ET) (P) (R/F)
ROSEDALE CANDY Q140 (P)

ROSEDALE PARINGA NOVOTEL (P)
ROSEDALE DONOTELLO (P)
ROSEDALE REBECCA A38 (P)
Dam: ROSEDALE GAIETY F37 (AI) (P)
MINNIE VALE DEPUTY (P)
ROSEDALE GAIETY C115 (P)
ROSEDALE GAIETY X32 (AI)



Charolais Group Breedplan EBV's

DIR	GL	BWT	200	400	600	MILK	DOM
+6.5	-3.4	-0.9	+14	+25	+43	+12	
42%	51%	71%	55%	58%	56%	38%	+\$38
SS	CWT	EMA	RIB	RMP	RBY	IMF	EXP
+1.3	+22	+0.7	+0.7	+0.8	-0.5	+0.4	
37%	46%	35%	44%	44%	40%	36%	+\$58

Purchaser

\$

Top 20% DOM and Exp Ind, TOP 25% BIRTH & 600 Day, Top 10% MILK

Sells unjoined but 100% guaranteed to breed for 12 months. High quality Red Factor Heifer out of a reliable good stud matron.

90 ROSEDALE BEATRIX R18 (P)

Born: 23/05/2020

Society ID: MRR18E

ROSEDALE GUNNADOO YUPPY (P)
ROSEDALE DEALER (P) (R/F)
ROSEDALE BUTTERS SCOTCH Y47 (P) (R/F)
Sire: ROSEDALE MAVERICK (AI) (ET) (P) (R/F)
HARVIE JAGER 65J PMC228759 (P)
ROSEDALE CANDY G304E (AI) (ET) (P) (R/F)
ROSEDALE CANDY Q140 (P)

ROSEDALE NOVOTEL (H)
ROSEDALE PARINGA NOVOTEL A100 (AI) (ET) (P)
ROSEDALE PARINGA FASTRACK Y654 (AI) (ET) (P)
Dam: ROSEDALE BEATRIX F146 (P)
ROSEDALE FERVALE TRAPPER (H)
ROSEDALE BEATRIX W119
ROSEDALE BEATRIX R147 (AI) (P)



Charolais Group Breedplan EBV's

DIR	GL	BWT	200	400	600	MILK	DOM
+5.0	-2.1	-0.3	+16	+29	+52	+13	
43%	47%	71%	56%	64%	59%	46%	+\$41
SS	CWT	EMA	RIB	RMP	RBY	IMF	EXP
+1.5	+26	+0.8	+0.9	+1.3	-0.2	+0.5	
42%	50%	40%	47%	47%	42%	40%	+\$65

Purchaser

\$

Top 25% 200 Day, 600 Day growth, IMF, RMP, Top 15% Dom and Exp Indexes

HOMOZYGOUS POLLED Sells unjoined but 100% guaranteed to breed for 12 months. Youngest Hfr in the draft. Full brother sold for \$14,000 last year, out of a very nice soft and long dam.

91 ROSEDALE DAFFODIL R19 (P) (RF)

Born: 24/04/2019

Society ID: MRR19E

ROSEDALE GUNNADOO YUPPY (P)
ROSEDALE DEALER (P) (R/F)
ROSEDALE BUTTERS SCOTCH Y47 (P) (R/F)
Sire: ROSEDALE MAVERICK (AI) (ET) (P) (R/F)
HARVIE JAGER 65J PMC228759 (P)
ROSEDALE CANDY G304E (AI) (ET) (P) (R/F)
ROSEDALE CANDY Q140 (P)

ROSEDALE PINAY
ROSEDALE PALGROVE EXPO (P)
ROSEDALE PALGROVE ESTELLA 130 (AI) (P)
Dam: ROSEDALE DAFFODIL H223 (P)
ROSEDALE DSK YABBA DABBA DO (P)
ROSEDALE DAFFODIL E5 (P)
ROSEDALE DAFFODIL 5 (AI) (P)



Charolais Group Breedplan EBV's

DIR	GL	BWT	200	400	600	MILK	DOM
+2.7	-2.8	+0.3	+17	+32	+49	+10	
39%	50%	70%	60%	57%	56%	40%	+\$37
SS	CWT	EMA	RIB	RMP	RBY	IMF	EXP
+1.6	+28	+2.2	+0.8	+1.0	+0.3	+0.3	
35%	44%	31%	40%	47%	44%	40%	+\$54

Purchaser

\$

Top 15% 200 Day Growth CWT, Top 20% 400, 600 Day Growth, MILK, EMA DOM and Exp Ind - HOMOZYGOUS POLLED

Sells unjoined but 100% guaranteed to breed for 12 months. Lovely RF heifer, Full brother sold for a Rosedale Yearling Record of \$18,000 last year.



Join the Rosedale Ruby Supply Chain

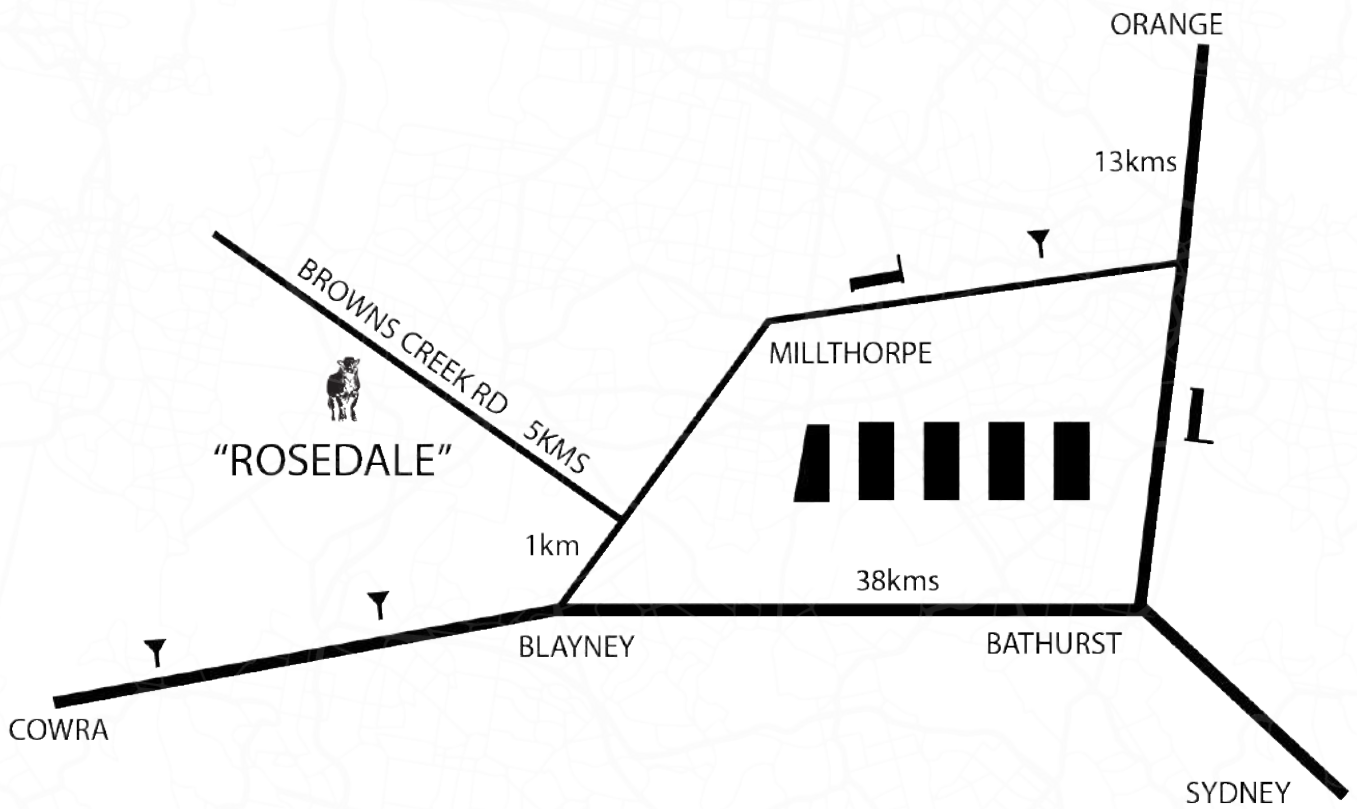
Your chance to be part of a true gate-to-plate Program

Supplier Specifications:

- Minimum 50% British Breed
- Up to 50% Rosedale Charolais
- No Bos-Indicus Content
- Milk Tooth preferred (2 tooth accepted)
- 400 -500 kg Empty Weight
- EU & Non EU
- 100% Hormone Free
- Attractive Feeder Rates to approved customers
- Carcase Feedback available on request

Contact James for further information





1km out of Blayney on the Orange Road, turn left into Brown's Creek Road. Continue for 5kms and you will see "Rosedale Charolais Stud" on the left. Following gravel road for 2kms.





'Rosedale Charolais' 126 Rosedale Road, Browns Creek via Blayney NSW 2799

James Millner m: 0425 341 341 e: millner@rosedalecharolais.com.au

Michael & Jenny Millner m: 0409 682 339 p: (02) 6368 7195

www.rosedalecharolais.com.au

