

Glenhope Alpacas

Herd Dispersal 1st May 2021

Via  AuctionsPlus™

- High Impact Genetics – High Performance Alpaca
- 20 years of breeding
- 15 years using the SRS® with Dr Jim Watts
- Producing high-end products



Fleece weight matters Density + length = Results



Bron & David Mitchell
59 Red Gum Lane, Armidale NSW 2350

Bron: 0422 969 310 | David: 0434 832 001

www.glenhopealpacas.com.au | www.glenhopeco.com

Wilson Beer, Nutrien: 0428 505 520





All Buyers must be
Registered and Bid
Online with Auctions
Plus or via Wilson Beer.

REGISTER HERE

Glenhope Alpacas

Information for Buyers

AUCTION START:

Saturday 1st May, 2021. Auction – 12pm.

Videos of sale animals will be on Auction Plus site plus we will endeavour to have photos of all crias listed two weeks prior to the sale.

For further info on SRS and stud sires visit www.glenhopealpacas.com.au

INSPECTIONS BY ARRANGEMENT:

For further information phone

Bron 0422 969 310 or

David 0434 832 001 or by email

david@glenhopealpacas.com.au

REGISTRATION AUCTION PLUS:

All prospective buyers must register with Auctions Plus by **Thursday 29th April** by visiting www.auctionsplus.com.au or by phoning **02 9262 4222**.

DELIVERY:

Animals may remain at Vendors property up to 4 weeks after auction free of charge or by arrangement.

TRANSPORT:

Buyers should make their own transport arrangements prior to the auction.

INSURANCE:

Buyers please arrange own insurance contract prior to sale day.

HEALTH: Farm PIC NA022746

AAA TRANSFERS:

All animal transfers with the AAA will be at the purchasers cost.

STATE HEALTH PROTOCOL:

Buyers please ensure that you are aware of the necessary State Health Protocol required at the destination of your purchase. Glenhope herd is unassessed.

OPENING BIDS:

All animals will be listed with an opening bid and there will be a reserve price.

TERMS & CONDITIONS:

All stock is offered under standard terms and conditions. These are available from the auctioneers. GST will be charged on top of bid price i.e. \$1500 + \$150 GST.

TERMS OF PAYMENT:

For further information contact Wilson Beer at Nurtien on **0428 505 520**.

BUYING ORDERS:

If unable to bid online buying orders can be placed with Wilson Beer **0428 5050 520**

CATALOGUES:

All details in this catalogue are provided by the Vendors and whilst all care has been taken in their preparation Nutrien & Glenhope accept no responsibility for errors or mis-descriptions herein.

VENDORS:

Glenhope Alpacas:

59 Red Gum Lane Armidale 2350

Wilson Beer:

0428 505 520 | wilsonbeer@bigpond.com





For more information:
Bron 0422 969 310 or
David 0434 832 001

Glenhope Alpacas commenced operations in 2000. Since that time we have built the herd to over 200 then due to the drought down to 140.

Our aim has always been to produce a line of fleeced animals that are soft, uniform in quality and producing quality fibre for processing. To achieve this aim we worked closely with the late Dr Jim Watts using his SRS® breeding system as well as using Jim as our herd classer and breeding adviser. His scientific background and extensive research has been critical in developing this line of animals that we are now offering for sale. The fleece markers that are most important are reducing the primary fibre diameter, increasing density and length, developing softness and lustre in the fibre and having fibre that has good elasticity for processing.

The selection of our certified males was done using skin testing to finally determine their suitability. Unfortunately since Jim's death we have not been able to skin test our younger males that we offer as potential herd sires. However, those selected have been thoroughly vetted using our fleece markers and visual assessment of their conformation and other physical traits. We are confident that the males on offer would enhance any breeding herd.

Breeding alpacas is a journey with no defined destination. However by using the scientific tools and other aids available the journey is one that results in development and progress that is better for the animals and the industry.

For further information on the SRS® breeding system and the stud males we have used at Glenhope www.glenhopealpacas.com.au

We have not been involved in animal showing in recent years other than the New England Alpaca Show but have entered our fleeces for showing at National and Sydney Shows. In 2014 we exerted ourselves and entered 14 fleeces and received 11 ribbons and 3 championships at Sydney Royal. Glenhope received the Most Successful Exhibitor (Medium Breeder) award at the Commercial Alpaca Fleece Show in 2019.

We would like to acknowledge the following people for their support over the years. Firstly to the late Dr Jim Watts who, by his contacts and extensive work was able to lift the quality of the alpacas we bred. Secondly to Peter and Carolyn Richards at Suncloud Alpacas in WA for their generosity in allowing their male Suncloud Talahasi to spend time at Glenhope and infuse those genetics into our herd. Thirdly, the late Julienne Gelber for her friendship and knowledge of the processing of alpaca fibre and to her and Frank for their hospitality during our baling days of fleece in preparation for processing in Italy.

Glenhope has achieved our aim of developing a top fleece producing herd of soft animals with low primary fibre. In conjunction with other SRS® breeders we processed our first blanket line in Italy resulting in beautiful soft blankets. Glenhope has continued to process their own line of throw blankets that are also soft but showing no evidence of primary fibre in the blankets.

A most gratifying achievement, visit www.glenhopeco.com

Lot 1 Glenhope Revival R4

Huacaya	Sex: F	DOB: 20/3/2020	IAR: 248152	Colour: SW
---------	--------	----------------	-------------	------------

SIRE: Glenhope Jester

GRAND SIRE: Suncloud Talahasi
GRAND DAM: Glenhope Fenella

First Fleece:

SSWt = skirted saddle weight
FD 18.7 SD 4.8 CF 98.2% SSWt 1.4 kg

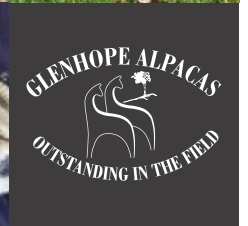
DAM: Chachani Youki San

GRAND SIRE: Shanbrooke Accoyo Yavari
GRAND DAM: Chachani Tsunami

Mating & covering sire:

Maiden

A beautiful ultrafine and soft fibred female with Accoyo Yavari genetics in her lineage. Revival has good length and lustre in her fleece. Her fleece is displaying some fine bundling. She is ready to be joined.



Lot 2 Glenhope Regae R5

Huacaya	Sex: F	DOB: 20/3/2020	IAR: 248153	Colour: SW
---------	--------	----------------	-------------	------------

SIRE: Glenhope Minder

GRAND SIRE: Glenhope Griffin
GRAND DAM: Glenhope Geko

First Fleece:

SSWt = skirted saddle weight
FD 18.2 SD 5.0 CF 99% SSWt 1.8kg

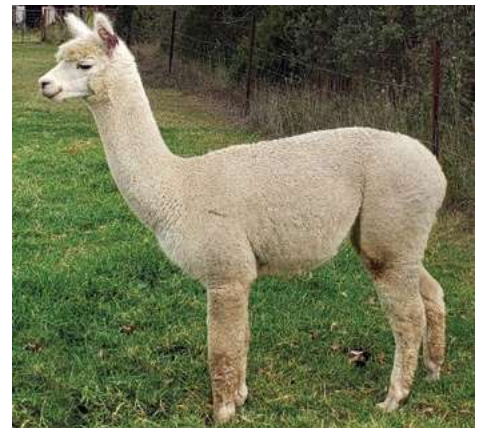
DAM: Glenhope Persona

GRAND SIRE: Glenhope Jupiter
GRAND DAM: Glenhope Karat

Mating & covering sire:

Maiden

Regae is a well framed ultrafine female with a soft open face showing excellent elasticity with high amplitude in her fleece. The density and fleece length is reflected in her high cutting fleece weight. She is ready to be joined.



Lot 3 Glenhope Rosette R6

Huacaya	Sex: F	DOB: 24/3/2020	IAR: 248154	Colour: SW
---------	--------	----------------	-------------	------------

SIRE: Wyndarra Indigo Jones

GRAND SIRE: Wyndarra Designer
GRAND DAM: Mononglo Fandango

First Fleece:

SSWt = skirted saddle weight
FD 17.7 SD 5.0 CF 97.6% SSWt 2.2kg

DAM: Glenhope Mambo

GRAND SIRE: Glenhope Gibraltar
GRAND DAM: Rosemount Deva

Mating & covering sire:

Maiden

Rosette is an excellent framed female showing the growth and solid hindquarters of her sire Indigo Jones. She is ultrafine and exhibiting a deep bold crimp style in her fleece with high density and length cutting a huge 2.2 kg of saddle weight. It will be exciting to see what she is capable of in the future. She is ready to be joined.



Lot 4 Glenhope Rocknroll R8

Huacaya	Sex: F	DOB: 31/3/2020	IAR: 248156	Colour: SW
---------	--------	----------------	-------------	------------

SIRE: Glenhope Jupiter

GRAND SIRE: Suncloud Talahasi
GRAND DAM: Glenhope Estelle

First Fleece:

SSWt = skirted saddle weight
FD 18.2 SD 5.1 CF 98.5% SSWt 1.kg

DAM: Bumble Hill Harpist

GRAND SIRE: Windsong Valley Kenjiro
GRAND DAM: Bumble Hill Harp

Mating & covering sire:

Maiden

Rocknroll a beautifully constructed female. Her ultrafine fleece is developing well at the skin and her fleece will improve with age. She has high lustre, softness with good fibre length. Her dam is from Bumble Hill and exhibits very low primary fibre.



Lot 5 Glenhope Rapture R9

Huacaya	Sex: F	DOB: 3/4/2020	IAR: 248159	Colour: SW
---------	--------	---------------	-------------	------------

SIRE: Glenhope Jester

GRAND SIRE: Suncloud Talahasi
GRAND DAM: Glenhope Fenella

First Fleece:

SSWt = skirted saddle weight
FD 17.6 SD 5.2 CF 98.8% SSWt 2.2kg

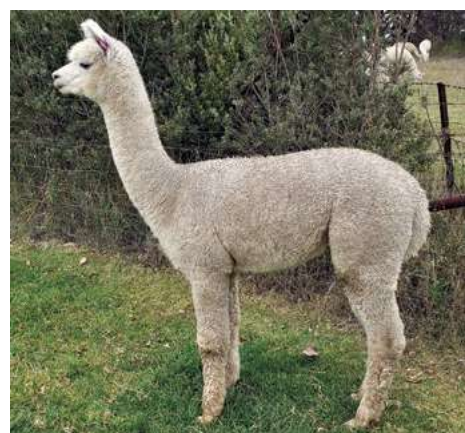
DAM: Glenhope Eccles

GRAND SIRE: Benleigh Legend
GRAND DAM: Glenhope Winter Joy

Mating & covering sire:

Maiden

Another star is born. Rapture is a full sister to our top performing female Primadonna. She has it all; great conformation, very high density and lustre with a soft bundling fleece. Her dam, Eccles has been one of our high performing multiple supreme winning females who has produced extremely well with Glenhope Jester hence the repeat mating. A high cutting fleece with low primary fibre and soft handle. She has a great future ahead.



Lot 6 Glenhope Rapsody R10

Huacaya	Sex: F	DOB: 3/4/2020	IAR: 248158	Colour: SW
---------	--------	---------------	-------------	------------

SIRE: Wyndarra Indigo Jones

GRAND SIRE: Wyndarra Designer
GRAND DAM: Mononglo Fandango

First Fleece:

SSWt = skirted saddle weight
FD 16.8 SD 4.0 CF 100% SSWt 2.4kg

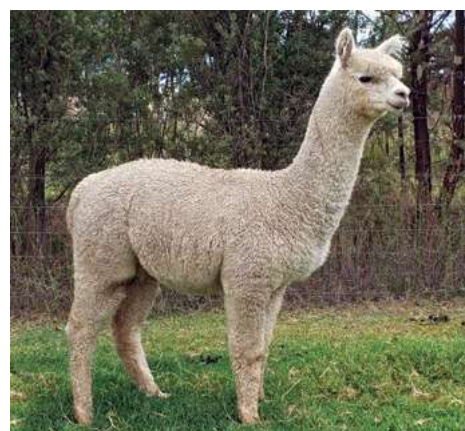
DAM: Glenhope Hyacynth

GRAND SIRE: Suncloud Talahasi
GRAND DAM: Glenhope Fatima

Mating & covering sire:

Maiden

This was another repeat joining that has proved very successful with her and her full sister Quper. Rapsody has excellent structure and bone with an ultrafine supersoft lustrous fleece. She displays a deep crimping structure in her fleece with very high density and length which is reflected in her exceptional skirted saddle fleece weight of 2.4 kgs



Lot 7 Glenhope Ritz R11

Huacaya	Sex: F	DOB: 7/4/2020	IAR: 248159	Colour: SW
---------	--------	---------------	-------------	------------

SIRE: Glenhope Jupiter

GRAND SIRE: Suncloud Talahasi
GRAND DAM: Glenhope Estelle

First Fleece:

SSWt = skirted saddle weight
FD 17.2 SD4.6 CF 99.3% SSWt 1.6kg

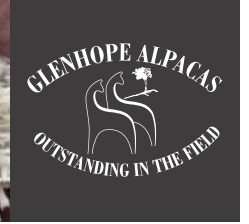
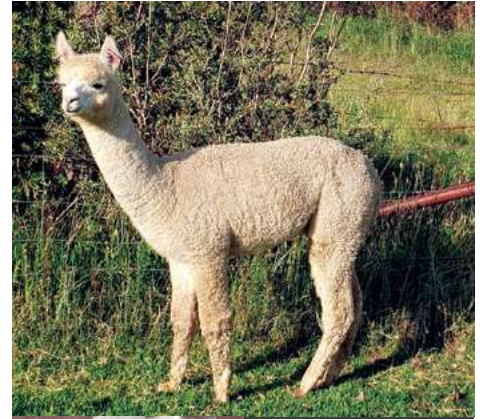
DAM: Glenhope Karisma

GRAND SIRE: Molonglo Figaro
GRAND DAM: Glenhope Eccles

Mating & covering sire:

Maiden

The dam of Ritz (Karisma) is one of Eccles's daughters. Ritz is a very attractive soft faced female with an ultrafine lustrous fleece with loads of style with deep crimp.



Lot 8 Glenhope Ringleader R13

Huacaya	Sex: F	DOB: 8/4/2020	IAR: 248161	Colour: SW
---------	--------	---------------	-------------	------------

SIRE: Glenhope Mighty

GRAND SIRE: Glenhope Griffin
GRAND DAM: Glenhope Hoot ET

First Fleece:

SSWt = skirted saddle weight
FD 18.1 SD 4.8 CF 98.9% SSWt 2.0kg

DAM: Glenhope Lafeyette

GRAND SIRE: Belbourie Moonshine
GRAND DAM: Glenhope Hyacynth

Mating & covering sire:

Maiden

Ringleader has some strong genetics with two top granddams in her background. Her ultrafine fleece has excellent density and lustre with deep crimping from the tips to the skin. Also cutting an excellent fleece weight. She has a good breeding future ahead.



Lot 9 Glenhope Rising Star R16 (R16 & R25 combined)

Huacaya	Sex: F	DOB: 11/4/2020	IAR: 248164	Colour: SW
---------	--------	----------------	-------------	------------

SIRE: Grandeverge Maverick

GRAND SIRE: Glenhope Gibraltar
GRAND DAM: Grandeverge Hayley

First Fleece:

SSWt = skirted saddle weight
FD 17.2 SD 4.8 CF 99.3% SSWt 1.6kg

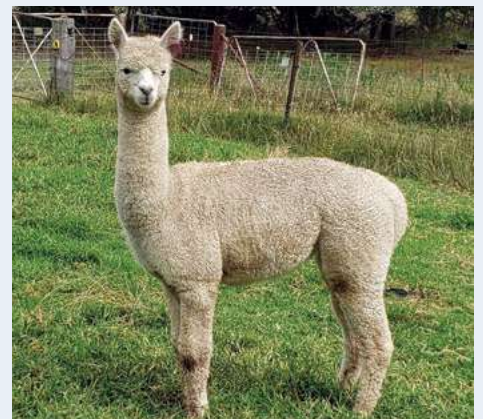
DAM: Glenhope Korma

GRAND SIRE: Chachani Mochica
GRAND DAM: Glenhope Fanfare

Mating & covering sire:

Maiden

Rising Star is a stylish smaller framed female with a deep crimping fleece developing at the skin. The light bounces off this lustrous ultrafine fleece. She will be a good asset to any herd. This girl is being sold in one lot with Ragtime R25.



Lot 10 Glenhope Ragamuffin R19

Huacaya	Sex: F	DOB: 14/4/2020	IAR: 248167	Colour: SW
---------	--------	----------------	-------------	------------

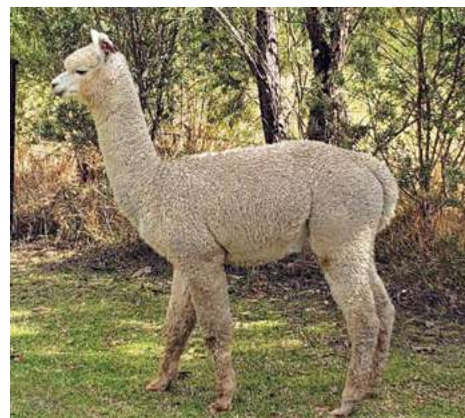
SIRE: Grandeverge Maverick
 GRAND SIRE: Glenhope Gibraltar
 GRAND DAM: Grandeverge Hayley

DAM: Glenhope Mingle
 GRAND SIRE: Glenhope Griffin
 GRAND DAM: Glenhope Jewel

First Fleece:
 SSWt = skirted saddle weight
 FD 19.7 SD 5.2 CF 97% SSWt 1.3kg

Mating & covering sire:
 Maiden

Ragamuffin's dam is from a top line of females, Glenhope Jewel, who consistently threw some of our top performing girls. She is a beautifully framed soft female with a superfine fleece exhibiting a load of character and style.



Lot 11 Glenhope Replica R21

Huacaya	Sex: F	DOB: 16/4/2020	IAR: 248167	Colour: SW
---------	--------	----------------	-------------	------------

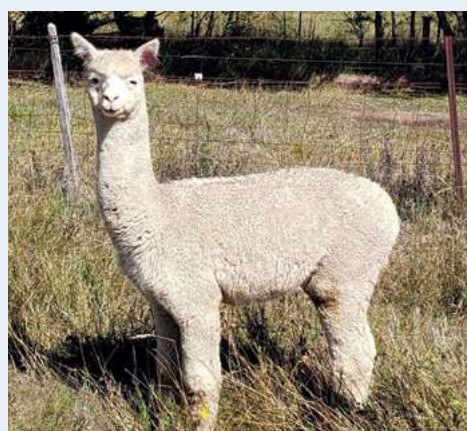
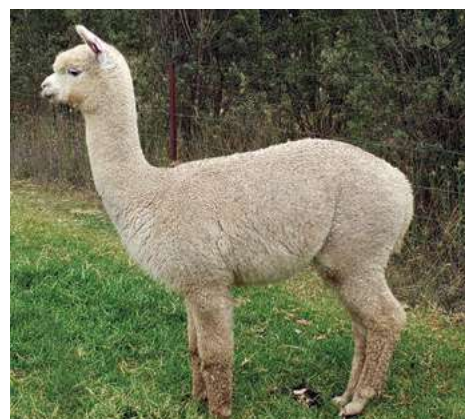
SIRE: Glenhope Griffin
 GRAND SIRE: Chachani Mochica
 GRAND DAM: Glenhope Elite

DAM: Glenhope Hallelujah
 GRAND SIRE: Suncloud Talahasi
 GRAND DAM: Glenhope Estelle

First Fleece:
 SSWt = skirted saddle weight
 FD 18.4 SD 4.3 CF 99% SSWt 1.6kg

Mating & covering sire:
 Maiden

Replica has a strong female line going back to Elite who won Supreme and a number of championships as a young female. She is a fine upstanding girl with a superfine fleece showing good development at the skin of her soft lustrous fleece.



Lot 9 Glenhope Ragtime R25 (R16 & R25 combined)

Huacaya	Sex: F	DOB: 4/5/2020	IAR: 248173	Colour: SW
---------	--------	---------------	-------------	------------

SIRE: Glenhope Mighty
 GRAND SIRE: Glenhope Griffin
 GRAND DAM: Glenhope Hoot ET

DAM: Glenhope Pirovette
 GRAND SIRE: Glenhope Gibraltar
 GRAND DAM: Glenhope Mombassa

First Fleece:
 SSWt = skirted saddle weight
 FD 16.8 SD 4.3 CF 99.6% SSWt 1.5kg

Mating & covering sire:
 Maiden

Ragtime is a smaller framed female with an ultrafine fleece showing good development at the skin. She was treated for eye ulcers due to grass seeds and has a small white spec in one eye. During treatment she developed a close relationship with Rising Star so we are selling these two animals as one lot.

Lot 12 Glenhope Quizz Q5

Huacaya	Sex: F	DOB: 27/2/2019	IAR: 240629	Colour: SW
---------	--------	----------------	-------------	------------

SIRE: Glenhope Jupiter

GRAND SIRE: Suncloud Talahasi
GRAND DAM: Glenhope Estelle

DAM: Glenhope Karat

GRAND SIRE: Molonglo Figaro
GRAND DAM: Rosemount Ellonie

SSWt = skirted saddle weight

First Fleece:

FD 16.8 SD 4.7 CF 98.5% SSWt 1.2kg

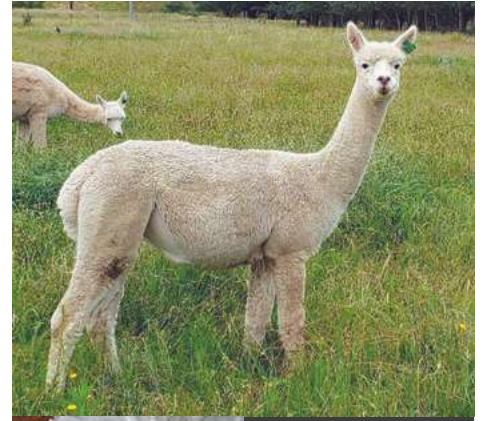
Second Fleece:

FD 19.4 SD 4.3 CF 98.9% SSWt 1.7kg

Mating & covering sire:

Male cria DOB 12/03/21 –
Glenhope Mighty

An outstanding female with a very bright white fleece, low primary fibres, soft and dense. She is a full sister to Persona who is still carrying a superfine fleece as well. She has taken to motherhood very well with her new male cria.



Lot 13 Glenhope Quilter Q6

Huacaya	Sex: F	DOB: 2/3/2019	IAR: 240630	Colour: SW
---------	--------	---------------	-------------	------------

SIRE: Glenhope Minder

GRAND SIRE: Glenhope Griffin
GRAND DAM: Glenhope Geko

DAM: Glenhope Ginko

GRAND SIRE: Ross Creek Arctic Lad
GRAND DAM: Glenhope Asella

SSWt = skirted saddle weight

First Fleece:

FD 18.3 SD 4.3 CF 97.2% SSWt 1.0kg

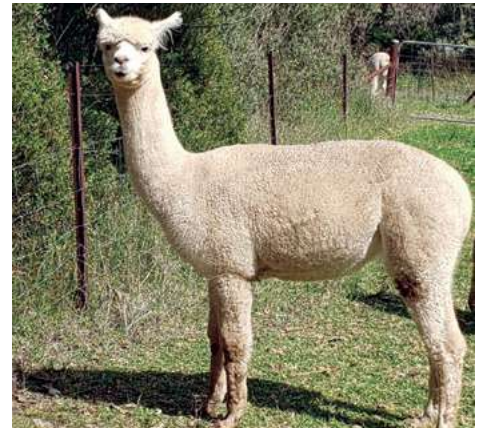
Second Fleece:

FD 21.9 SD 4.1 CF 96.9% SSWt 1.75kg

Mating & covering sire:

Due 16/03/21
– Glenhope Mystro

Quilter is fine fibred with good density and 120mm in length. Her dam Ginko is still in our herd and has produced well for us and received an 'excellent' comment from Jim when classed on her second fleece. The combination with Glenhope Mystro as covering sire should be an exciting outcome.



Lot 14 Glenhope Quper Q7

Huacaya	Sex: F	DOB: 2/3/2019	IAR: 240631	Colour: SW
---------	--------	---------------	-------------	------------

SIRE: Wyndarra Indigo Jones

GRAND SIRE: Wyndarra Designer
GRAND DAM: Mononglo Fandango

DAM: Glenhope Hyacynth

GRAND SIRE: Suncloud Talahasi
GRAND DAM: Glenhope Fatima

SSWt = skirted saddle weight

First Fleece:

FD 19.5 SD 5.3 CF 97.1% SSWt 2.3kg

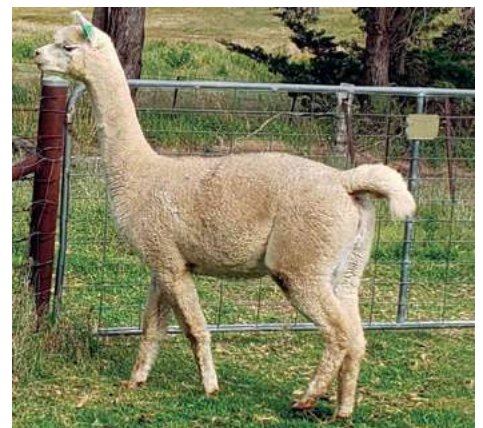
Second Fleece:

FD 22 SD 4.4 CF 95.5% SSWt 2.3kg

Mating & covering sire:

Male cria DOB 7/03/21
– Glenhope Mystro

This is a girl who demands attention and is the personality of our herd. She displays a huge fine cutting fleece with the silkiest soft handle which is difficult to convey in a photo. Her dam Hyacynth is a consistently high performing dam. Queper displays the body shape we aim to breed with solid hindquarters and good muscling enabling survival even in tough conditions and to provide a good surface area to pack on the fleece. We were so happy with this outcome we repeated the combination in her full sister Rapsody.



Lot 15 Glenhope Quill Q15

Huacaya	Sex: F	DOB: 14/3/2019	IAR: 240640	Colour: SW
---------	--------	----------------	-------------	------------

SIRE: Glenhope Minder

- GRAND SIRE: Glenhope Griffin
- GRAND DAM: Glenhope Geko

DAM: Glenhope Mystical

- GRAND SIRE: Glenhope Gibraltar
- GRAND DAM: Glenhope Fontane

SSWt = skirted saddle weight

First Fleece:

FD 19.2 SD 5.3 CF 97.4% SSWt 1.0kg

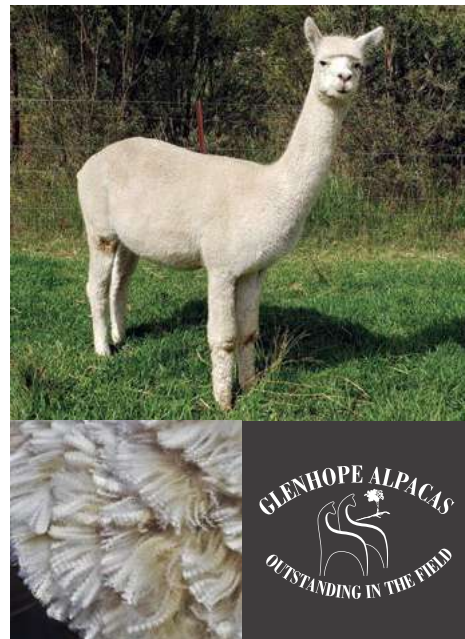
Second Fleece:

FD 20.5 SD 4.0 CF 98.6% SSWt 1.8kg

Mating & covering sire:

Female cria DOB 9/2/21
- Grandeverge Maverick

Quill is another superfine female cutting a good weight of very soft low primary fleece. A bright white fleece with fine bundling and a deep crimping style. Her dam is still carrying a quality fine fleece. We are keen to see the outcome of her cria by Maverick that we expect to be quite special.



Lot 16 Glenhope Quinne Q13

Huacaya	Sex: F	DOB: 12/3/2019	IAR: 240637	Colour: SW
---------	--------	----------------	-------------	------------

SIRE: Glenhope Jester

- GRAND SIRE: Suncloud Talahasi
- GRAND DAM: Glenhope Fenella

DAM: Glenhope Minto

- GRAND SIRE: Glenhope Griffin
- GRAND DAM: Glenhope Filigree Silk

SSWt = skirted saddle weight

First Fleece:

FD 17.4 SD 4.7 CF 99% SSWt 1.2kg

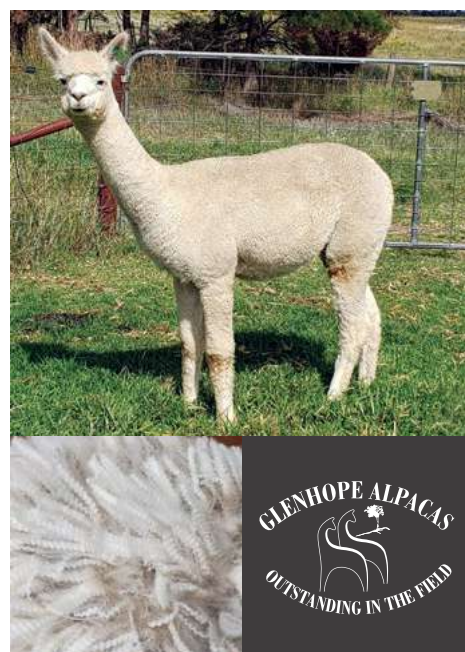
Second Fleece:

FD 22.8 SD 5.6 CF 92.9% SSWt 2.0kg

Mating & covering sire:

Due 16/03/21
- Glenhope Mystro

Quinne has a fine fleece with excellent density and length with deep crimping and great lustre. She also has incredible softness to her fleece which is one of our top priorities for fleece improvements. Her cria by Glenhope Mystro should be another step in the right direction.



Lot 17 Glenhope Quetta Q23

Huacaya	Sex: F	DOB: 25/3/2019	IAR: 240649	Colour: SW
---------	--------	----------------	-------------	------------

SIRE: Glenhope Minder

- GRAND SIRE: Glenhope Griffin
- GRAND DAM: Glenhope Geko

DAM: Glenhope Jiggles

- GRAND SIRE: Suncloud Talahasi
- GRAND DAM: Glenhope Frolick

SSWt = skirted saddle weight

First Fleece:

FD 18.6 SD 5.5 CF 97.5% SSWt 1.6kg

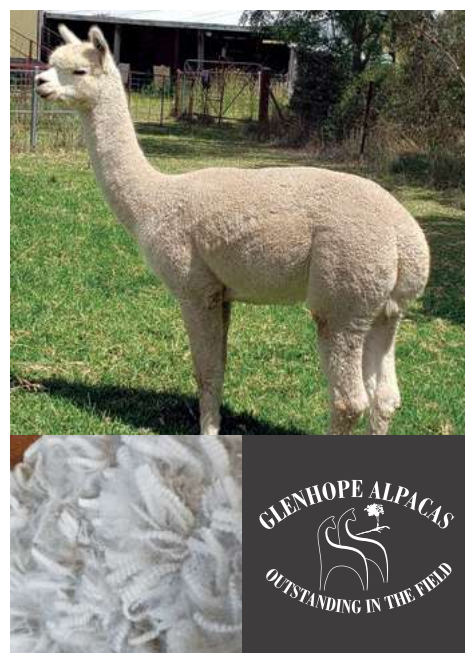
Second Fleece:

FD 22.3 SD 4.4 CF 95.4% SSWt 2.1kg

Mating & covering sire:

Due 4/04/21
- Grandeverge Maverick

Quetta is a fine fleeced, very low primary fibred hembra with a silky soft handle. Her dam is still in our herd and was classed as a 'wool female- beauty' by Jim. She has good density and has produced a quality bright fleece that you would expect from this combination.



Lot 18 Glenhope Quorma Q25

Huacaya	Sex: F	DOB: 26/3/2019	IAR: 246352	Colour: SW
---------	--------	----------------	-------------	------------

SIRE: Glenhope Jupiter

GRAND SIRE: Suncloud Talahasi
GRAND DAM: Glenhope Estelle

DAM: Glenhope Limelight

GRAND SIRE: Glenhope Gibraltar
GRAND DAM: Glenhope Falky

SSWt = skirted saddle weight

First Fleece:

FD 17.1 SD 4.7 CF 99.1% SSWt 1.2kg

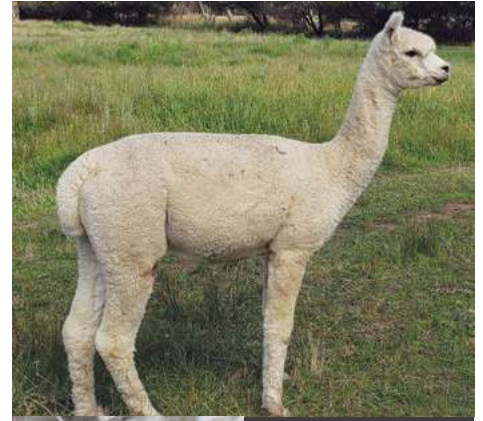
Second Fleece:

FD 19.2 SD 4.7 CF 98.1% SSWt 1.4kg

Mating & covering sire:

Due 29/03/21
- Grandeverge Maverick

Quorma is a well conformed hembra with a lovely soft face. Her superfine fleece is bright and carrying a good crimp structure over the length of the staple. She will be an asset for any herd.



Lot 19 Glenhope Quarg Q26

Huacaya	Sex: F	DOB: 27/3/2019	IAR: 246353	Colour: SW
---------	--------	----------------	-------------	------------

SIRE: Glenhope Jupiter

GRAND SIRE: Suncloud Talahasi
GRAND DAM: Glenhope Estelle

DAM: Glenhope Maddison

GRAND SIRE: Chachani Mochica
GRAND DAM: Glenhope Hingis

SSWt = skirted saddle weight

First Fleece:

FD 16.1 SD 4.4 CF 99.1% SSWt 1.2kg

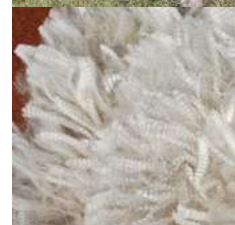
Second Fleece:

FD 18.8 SD 3.3 CF 99.6% SSWt 1.9kg

Mating & covering sire:

Due 30/03/21
- Glenhope Mighty

Quarg's first fleece was sheer ultra with her second still superfine at 18.8 microns. She has high density and a bright fine bundling silky fleece. Her fleece weight at this micron is very encouraging.



Lot 20 Glenhope Primadonna P3

Huacaya	Sex: F	DOB: 1/3/2018	IAR: 226309	Colour: SW
---------	--------	---------------	-------------	------------

SIRE: Glenhope Jester

GRAND SIRE: Suncloud Talahasi
GRAND DAM: Glenhope Fenella

DAM: Glenhope Eccles

GRAND SIRE: Benleigh Legend
GRAND DAM: Glenhope Winter Joy

SSWt = skirted saddle weight

First Fleece:

FD 14.4 SD 3.5 CF 100% SSWt 2.4kg

Second Fleece:

FD 17.1 SD 4.9 CF 99.3% SSWt 2.4kg

Last Fleece 2020:

FD 19.6 SD 4.2 CF 98.6% SSWt 2.3kg

Mating & covering sire:

Due 30/04/21 - Grandeverge Maverick

Primadonna is an absolute ripper. Her first sheer ultra fleece was 14.4 micron with an annularised fleece weight of 2.4 kgs. This fleece won the Most Valuable Commercial Fleece at the Commercial Alpaca Fleece Judging 2019. She has great density and very low primary fibre with deep crimping and fine bundling. People interested in purchasing her need to contact us prior to auction as last year she was treated for a large abdominal abscess. Her first joining following surgery was successful and she has not skipped a beat since. We are excited to see her cria.



Lot 21 Glenhope Protea P4

Huacaya	Sex: F	DOB: 3/3/2018	IAR: 226310	Colour: SW
---------	--------	---------------	-------------	------------

SIRE: Glenhope Jupiter

GRAND SIRE: Suncloud Talahasi
GRAND DAM: Glenhope Estelle

DAM: Glenhope Kosmic

GRAND SIRE: Molonglo Figaro
GRAND DAM: Chai-Tee Coolomon

SSWt = skirted saddle weight

First Fleece:

FD 17.7 SD 4.0 CF 99.5% SSWt 1.2kg

Second Fleece:

FD 23.4 SD 4.9 CF 94.3% SSWt 1.6kg

Last Fleece 2020:

FD 23.9 SD 4.8 CF 91.5% SSWt 1.8kg

Mating & covering sire:

Lost cria at birth – Glenhope Mighty

Protea is a smaller framed hembra with a bright stylish fleece exhibiting good character, softness and length. Sadly Protea lost her cria but she is happy assisting a friend with the mothering of her cria.



FEMALES

Lot 22 Glenhope Persona P6

Huacaya	Sex: F	DOB: 6/3/2018	IAR: 226312	Colour: SW
---------	--------	---------------	-------------	------------

SIRE: Glenhope Jupiter

GRAND SIRE: Suncloud Talahasi
GRAND DAM: Glenhope Estelle

DAM: Glenhope Karat

GRAND SIRE: Molonglo Figaro
GRAND DAM: Rosemont Ellonie

SSWt = skirted saddle weight

First Fleece:

FD 14.9 SD 3.4 CF 100% SSWt 1.0kg

Second Fleece:

FD 18.8 SD 4.4 CF 97.7% SSWt 1.3kg

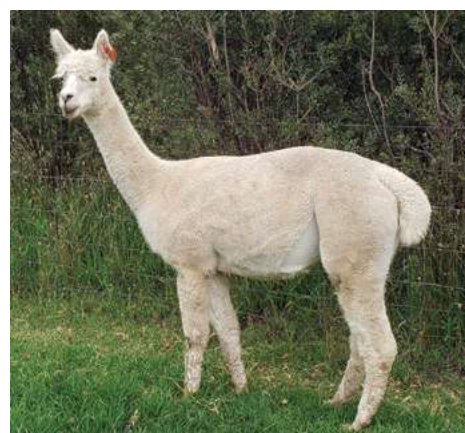
Last Fleece 2020:

FD 19.4 SD 3.4 CF 99.6% SSWt 2.3kg

Mating & covering sire:

Due 6/04/21 – Grandeverge Maverick

Persona is carrying a superfine fleece with a finer crimping style and cutting a very healthy weight of 2.3kgs. She has good density, softness and low primary fibre. She is the dam of Rosette. Maverick we think will be a good match for this girl.



Lot 23 Glenhope Pacifist P11

Huacaya	Sex: F	DOB: 18/3/2018	IAR: 226317	Colour: SW
---------	--------	----------------	-------------	------------

SIRE: Glenhope Griffin

GRAND SIRE: Chachani Mochica
GRAND DAM: Glenhope Elite

DAM: Glenhope Jazzstar

GRAND SIRE: Suncloud Talahasi
GRAND DAM: Glenhope Elusive

SSWt = skirted saddle weight

First Fleece:

FD 16.7 SD 4.1 CF 100% SSWt 1.6kg

Second Fleece:

FD 21.2 SD 4.7 CF 97% SSWt 1.9kg

Last Fleece 2020:

FD 23.6 SD 4.6 CF 92.7% SSWt 1.8kg

Mating & covering sire:

Due 16/03/21 – Glenhope Mystro

Pacifist has a beautiful frame and a soft bright low primary fibred fleece. This girl has the genetics of Glenhope Elite and Glenhope Griffin in her line. Both Champions in Fleece and animal classes.



Lot 24 Glenhope Prejudice P15

Huacaya	Sex: F	DOB: 21/3/2018	IAR: 226321	Colour: SW
---------	--------	----------------	-------------	------------

SIRE: Glenhope Jupiter

GRAND SIRE: Suncloud Talahasi
GRAND DAM: Glenhope Estelle

DAM: Glenhope Korma

GRAND SIRE: Chachani Mochica
GRAND DAM: Glenhope Fanfare

SSWt = skirted saddle weight

First Fleece:

FD 17.4 SD 4.2 CF 99.8% SSWt 1.0kg

Second Fleece:

FD 22.3 SD 4.7 Cf 95.6% SSWt 1.4kg

Last Fleece 2020:

FD 23.0 SD 5.0 CF 93.1% SSWt 1.5kg

Mating & covering sire:

Due 13/04/21 – Glenhope Mighty

Prejudice is a well conformed female with strong hind quarters. Her soft bright fleece has a finer crimping style with a lovely handle.



Lot 25 Glenhope Prosperity P22

Huacaya	Sex: F	DOB: 27/3/2018	IAR: 240603	Colour: SW
---------	--------	----------------	-------------	------------

SIRE: Glenhope Jester

GRAND SIRE: Suncloud Talahasi
GRAND DAM: Glenhope Fenella

DAM: Glenhope Minto

GRAND SIRE: Glenhope Griffin
GRAND DAM: Glenhope Filigree Silk

SSWt = skirted saddle weight

First Fleece:

FD 17.3 SD 4.2 CF 99.9% SSWt 1.6kg

Second Fleece:

FD 20.7 SD 4.2 CF 98.4% SSWt 1.8kg

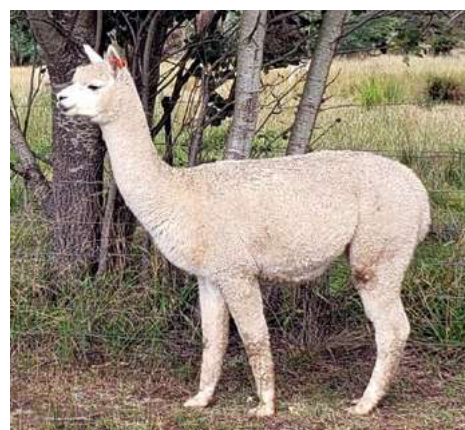
Last Fleece 2020:

FD 23.2 SD 4.4 CF 95.1% SSWt 1.8kg

Mating & covering sire:

Male cria DOB 3/03/21
– Glenhope Mighty

Prosperity has good conformation with a triple wedge shape that is evident in many of our females. She is cutting a healthy fleece weight with excellent length and character.



Lot 26 Glenhope Panadu P30

Huacaya	Sex: F	DOB: 3/4/2018	IAR: 240611	Colour: SW
---------	--------	---------------	-------------	------------

SIRE: Glenhope Griffin

GRAND SIRE: Chachani Mochica
GRAND DAM: Glenhope Elite

DAM: Glenhope Jute

GRAND SIRE: Suncloud Talahasi
GRAND DAM: Glenhope Falky

SSWt = skirted saddle weight

First Fleece:

FD 16.9 SD 4.8 CF 99.4% SSWt 1.0kg

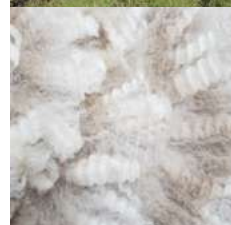
Second Fleece:

FD 24.3 SD 4.6 CF 92.9% SSWt 1.4kg

Last Fleece 2020:

FD 26.2 SD 5.0 CF 81.2% SSWt 1.7 kg

Panadu also has a robust conformation with a very bold crimp style. She is a very sound female.



Lot 27 Glenhope Pirovette P42

Huacaya	Sex: F	DOB: 21/4/2018	IAR: 240623	Colour: SW
---------	--------	----------------	-------------	------------

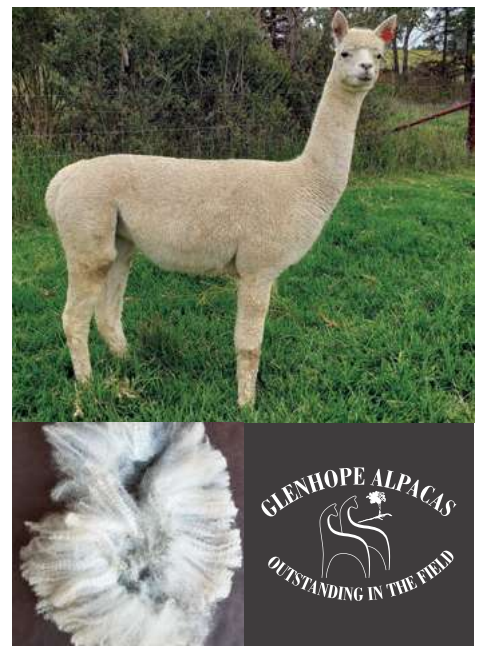
SIRE: Glenhope Gibraltar
 GRAND SIRE: Suncloud Talahasi
 GRAND DAM: Glenhope Eccles

DAM: Glenhope Mombassa
 GRAND SIRE: Chachani Mochica
 GRAND DAM: Glenhope Jute

SSWt = skirted saddle weight
First Fleece:
 FD 18.6 SD 4.8 CF 97.7% SSWt 0.95kg
Second Fleece:
 FD 20.5 SD 4.7 CF 96.8% SSWt 1.0kg
Last Fleece 2020:
 FD 22.2 SD 4.7 CF 93.6 SSWt 1.1kg

Mating & covering sire:
 Due 23/11/21 – Grandeverge Maverick

Pirovette is a large framed girl with low primary fibre and a medium density fine fleece. She is the dam of Ragtime.



Lot 28 Glenhope Paris P44

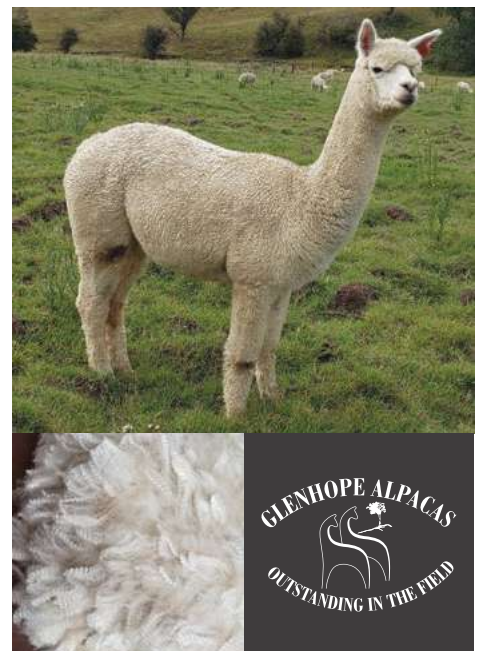
Huacaya	Sex: F	DOB: 24/4/2018	IAR: 240625	Colour: SW
---------	--------	----------------	-------------	------------

SIRE: Wyndarra Indigo Jones
 GRAND SIRE: Wyndarra Designer
 GRAND DAM: Mononglo Fandango

DAM: Glenhope Miff
 GRAND SIRE: Glenhope Griffin
 GRAND DAM: Glenhope Hallelujah

SSWt = skirted saddle weight
First Fleece:
 FD 16.2 SD 3.6 CF 100% SSWt 0.95kg
Second Fleece:
 FD 18.9 SD 3.9 CF 99.1% SSWt 1.1kg
Last Fleece 2020:
 FD 21.8 SD 4.1 CF 97% SSWt 1.1kg

Paris has the Indigo frame with a bright lustrous, very soft handling ultrafine fleece. She is also a beautifully natured female and would be welcomed into any herd. She is ready to join.



Lot 29 Glenhope Nougat N1

Huacaya	Sex: F	DOB: 14/2/2017	IAR: 226262	Colour: SW
---------	--------	----------------	-------------	------------

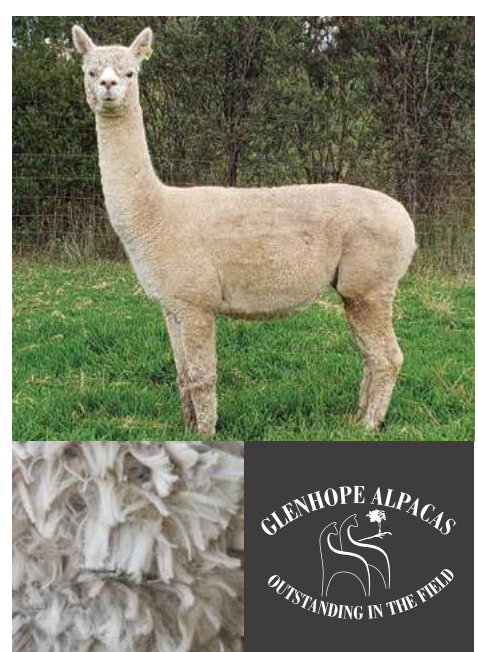
SIRE: Glenhope Gibraltar
 GRAND SIRE: Suncloud Talahasi
 GRAND DAM: Glenhope Eccles

DAM: Rosemount Emerald
 GRAND SIRE: Belbourie Jurado
 GRAND DAM: Rosemount Bambi

SSWt = skirted saddle weight
First Fleece:
 FD 16.8 SD 4.8 CF 100%
Second Fleece:
 FD 21.4 SD 4,3 CF 96.4%
Last Fleece 2020:
 FD 24.6 SD5.2 CF 86.5% SSWt 2.2kg

Mating & covering sire:
 Due 1/04/21 – Glenhope Mighty

Nougat is a quality smaller framed hembra with a soft, fine fleece with low primary fibre and excellent fleece weight. She has produced a sheer ultra fine male cria-Romeo by Mighty who we are watching as a potential stud male.



Lot 30 Glenhope Nellie N5

Huacaya	Sex: F	DOB: 10/3/2017	IAR: 226266	Colour: SW
---------	--------	----------------	-------------	------------

SIRE: Glenhope Griffin

GRAND SIRE: Chachani Mochica
GRAND DAM: GGlenhope Elite

DAM: Glenhope Hallelujah

GRAND SIRE: Suncloud Talahasi
GRAND DAM: Glenhope Estelle

SSWt = skirted saddle weight

First Fleece:

FD 18.8 SD 4.6 CF 98.7

Second Fleece:

FD 20.7 SD 3.8 CF 98.2%

Last Fleece 2020:

FD 22.5 SD 4.2 CF 95.8% SSWt 1.6kg

Mating & covering sire:

Due 5/04/21 – Grandeverge Maverick

Nellie has a finer crimping style fine micron fleece with a soft handle. She produced an ultrafine female cria Roulette last year by Jupiter.



Lot 31 Glenhope Nimbin N7

Huacaya	Sex: F	DOB: 28/2/2017	IAR: 226268	Colour: SW
---------	--------	----------------	-------------	------------

SIRE: Glenhope Griffin

GRAND SIRE: Chachani Mochica
GRAND DAM: Glenhope Elite

DAM: Glenhope Harper

GRAND SIRE: Suncloud Talahasi
GRAND DAM: Glenhope Rebel

SSWt = skirted saddle weight

First Fleece:

FD 17.3 SD 4.4 Cf 99.6

Second Fleece:

FD 21.1 SD 3.6 CF 98.1%

Last Fleece 2020:

FD 23.6 SD 4.2 CF 93.5% SSWt 1.7kg

Mating & covering sire:

Due 4/04/21 – Glenhope Jupiter

Nimbin still has a beautiful fine fleece with a load of deep crimp, good length and fine primary fibres. She has some strong genetics behind her so we expect something special from her cria by Jupiter.



Lot 32 Glenhope Niggle N12

Huacaya	Sex: F	DOB: 6/3/2017	IAR: 226273	Colour: SW
---------	--------	---------------	-------------	------------

SIRE: Glenhope Griffin

GRAND SIRE: Chachani Mochica
GRAND DAM: Glenhope Elite

DAM: Glenhope Jute

GRAND SIRE: Suncloud Talahasi
GRAND DAM: Glenhope Falky

SSWt = skirted saddle weight

First Fleece:

FD 18.1 SD 4.8 CF 98.6%

Second Fleece:

FD 22.9 SD 5.1 CF 91.8%

Last Fleece 2020:

FD 27.1 SD 5.2 CF 75.8% SSWt 1.3kg

Niggle has a stylish fleece with deep crimping and medium micron. She produced a very stylish female cria Quorn which has been sold. She is ready to be joined.



Lot 33 Glenhope Nissa N13

Huacaya	Sex: F	DOB: 24/2/2017	IAR: 226274	Colour: SW
---------	--------	----------------	-------------	------------

SIRE: Glenhope Griffin

GRAND SIRE: Chachani Mochica
GRAND DAM: Glenhope Elite

DAM: Glenhope Hingis

GRAND SIRE: Suncloud Talahasi
GRAND DAM: Glenhope Eclipse

SSWt = skirted saddle weight

First Fleece:

FD 17.4 SD 4.7 CF 99.4

Second Fleece:

FD 20.6 SD 3.9 Cf 98.7%

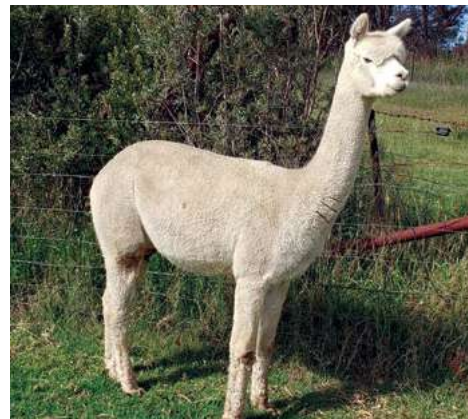
Last Fleece 2020:

FD 23.7 SD 4.6 CF 92.5% SSWt 2.1kg

Mating & covering sire: Female cria

DOB 14/02/21 – Glenhope Mystro

There is nothing not to love about this girl. She is classy through and through with a delightful personality. She has delivered a female cria by Glenhope Mystro that is density ++.



FEMALES

Lot 34 Glenhope Nova N16

Huacaya	Sex: F	DOB: 13/3/2017	IAR: 226277	Colour: SW
---------	--------	----------------	-------------	------------

SIRE: Glenhope Gibraltar

GRAND SIRE: Suncloud Talahasi
GRAND DAM: Glenhope Eccles

DAM: Glenhope Korma

GRAND SIRE: Chachani Mochica
GRAND DAM: Glenhope Fanfare

SSWt = skirted saddle weight

First Fleece:

FD 16.5 SD 3.6 CF 100%

Second Fleece:

FD 20.1 SD 4.3 CF 97.7

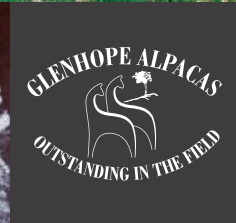
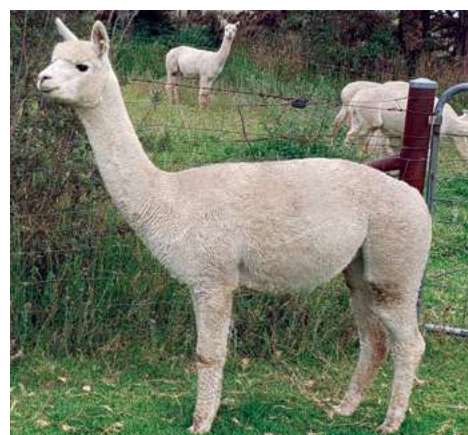
Last Fleece 2020:

FD 23.0 SD 5.4 CF 91.4% SSWt 1.8kg

Mating & covering sire:

Due 2/04/21 – Glenhope Mighty

Nova is carrying a fine low primary fleece on her excellent frame. She is soft with low primary fibres and cutting a good fleece weight. She has deep crimping happening in her fleece. A Glenhope Mighty cria is something to look forward to.



Lot 35 Glenhope Nigella N17

Huacaya	Sex: F	DOB: 17/3/2017	IAR: 226278	Colour: SW
---------	--------	----------------	-------------	------------

SIRE: Glenhope Jester

GRAND SIRE: Suncloud Talahasi
GRAND DAM: Glenhope Fenella

DAM: Glenhope Lafayette

GRAND SIRE: Belbourie Moonshine
GRAND DAM: Glenhope Hyacynth

SSWt = skirted saddle weight

First Fleece:

FD 19.0 SD 4.6 Cf 98.5%

Second Fleece:

FD 22.7 SD 4.3 CF 95.7%

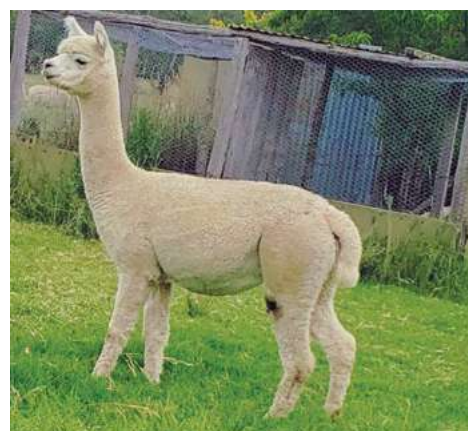
Last Fleece 2020:

FD 24.8 SD 4.1 CF 91.3% SSWt 1.8kg

Mating & covering sire:

Due 29/03/21 – Glenhope Mighty

This is another high profile Nigella. She has beautiful conformation with strong hindquarters. She has a stylish fleece with good crimp definition, good density, fine primary fibres and a lovely soft handling fleece.



Lot 36 Glenhope Noway N21

Huacaya	Sex: F	DOB: 25/3/2017	IAR: 226282	Colour: SW
---------	--------	----------------	-------------	------------

SIRE: Glenhope Gibraltar

- GRAND SIRE: Suncloud Talahasi
- GRAND DAM: Glenhope Eccles

DAM: Glenhope Klassic

- GRAND SIRE: Belbourie Moonshine
- GRAND DAM: Glenhope Gucci

SSWt = skirted saddle weight

First Fleece:

FD 16.4 SD 3.4 CF 100%

Second Fleece:

FD 22.6 SD 4.0 CF 96.1%

Last Fleece 2020:

FD 25.9 SD 4.6 CF 84,4% SSWt 1.3kg

Mating & covering sire: Male cria

DOB 19/02/21 – Glenhope Mighty

A lovely soft beautiful natured female with some reasonable character still in her fleece. A very sound breeding female. She has produced an ultra fine female cria Quince who has been sold.



Lot 37 Glenhope Nessie N22

Huacaya	Sex: F	DOB: 26/3/2017	IAR: 226283	Colour: SW
---------	--------	----------------	-------------	------------

SIRE: Glenhope Griffin

- GRAND SIRE: Chachani Mochica
- GRAND DAM: Glenhope Elite

DAM: Glenhope Jezreel

- GRAND SIRE: Suncloud Talahasi
- GRAND DAM: Glenhope Asella

SSWt = skirted saddle weight

First Fleece:

FD 19.3 SD 5.8 CF 95.6%

Second Fleece:

FD 23.3 SD 4.7 CF 92.2%

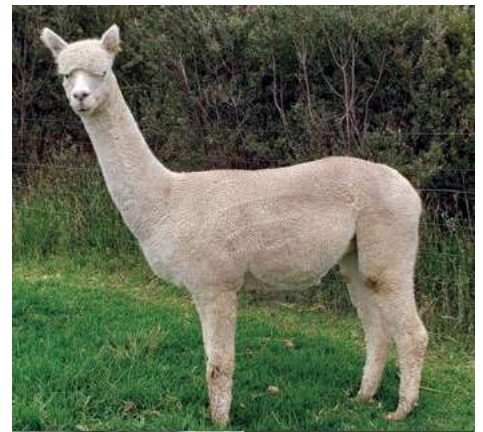
Last Fleece 2020:

FD 28.5 SD 5.1 CF 70.6% SSWt 1.6kg

Mating & covering sire:

Due 23/03/21 – Grandeverge Maverick

Nessie is a sound breeding female with good crimping style in her fleece. She has good conformation and should produce a nice cria by Maverick.



Lot 38 Glenhope Nobility N25

Huacaya	Sex: F	DOB: 29/3/2017	IAR: 226286	Colour: SW
---------	--------	----------------	-------------	------------

SIRE: Glenhope Jupiter

- GRAND SIRE: Suncloud Talahasi
- GRAND DAM: Glenhope Estelle

DAM: Glenhope Knockout

- GRAND SIRE: Chachani Mochica
- GRAND DAM: Glenhope Dior

SSWt = skirted saddle weight

First Fleece:

FD 17.6 SD 4.7 CF 99.4%

Second Fleece:

FD 20.9 SD 3.7 CF 98.2%

Last Fleece 2020:

FD 20.8 SD 3.8 CF 98.2% SSWt 1.4kg

Mating & covering sire:

Due 3/05/21 – Grandeverge Maverick

Nobility has quality genetics in her pedigree with Knockout as her dam. She has produced a beautiful stylish fawn male last year, Rustique. Nobility has one blue eye with no ill effect from it. It has not passed to any of her progeny. She is a classy dam.



Lot 39 Glenhope Nightingale N28

Huacaya	Sex: F	DOB: 3/4/2017	IAR: 226291	Colour: SW
---------	--------	---------------	-------------	------------

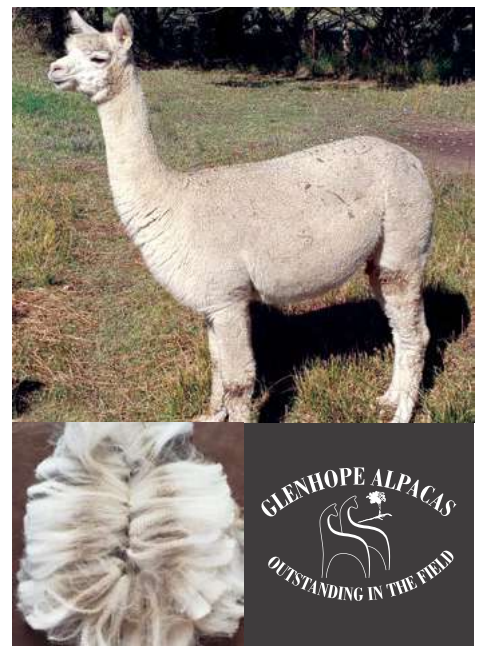
SIRE: Glenhope Hugo
 GRAND SIRE: Suncloud Talahasi
 GRAND DAM: Glenhope Winter Joy

DAM: Glenhope Rebel
 GRAND SIRE: Meadow Bank Claud
 GRAND DAM: Meadow Bank Eliza

SSWt = skirted saddle weight
First Fleece:
 FD 18.1 SD 4.7 CF 98.9%
Second Fleece:
 FD 20.5 SD 4.2 CF 97.8%
Last Fleece 2020:
 FD 22.3 SD 4.3 CF 95.2 SSWt 1.1kg

Mating & covering sire: Male cria
 DOB 14/03/21 – Grandeverge Maverick

Nightingale is a well conformed hembra with a soft face. She has a fine soft fleece with low primaries and a finer crimping style. Nightingales sire Glenhope Hugo won Most Valuable Commercial Fleece at the Nationals. She produced a female cria Queenie who has been sold.



Lot 40 Glenhope Nandina N29

Huacaya	Sex: F	DOB: 5/4/2017	IAR: 226289	Colour: SW
---------	--------	---------------	-------------	------------

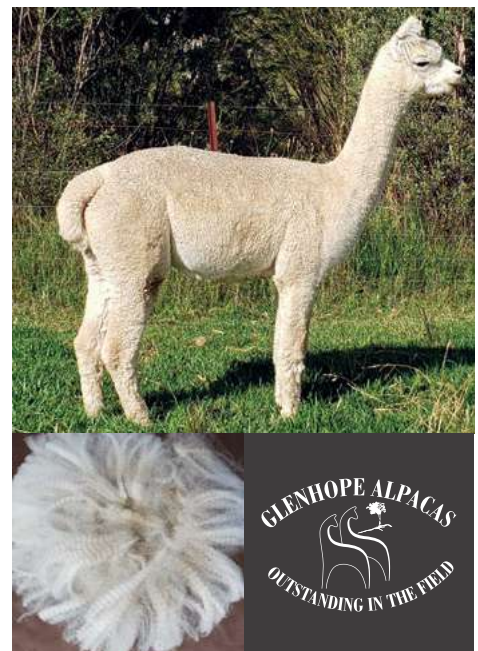
SIRE: Glenhope Jupiter
 GRAND SIRE: Suncloud Talahasi
 GRAND DAM: Glenhope Estelle

DAM: Glenhope Limited Edition
 GRAND SIRE: Halcyon Stars & Stripes
 GRAND DAM: Glenhope Juniberry

SSWt = skirted saddle weight
First Fleece:
 FD 17.4 SD 4.2 CF 99.9%
Second Fleece:
 FD 22.6 SD 4.1 CF 96.9%
Last Fleece 2020:
 FD 25.5 SD 5.2 CF 83.4% SSWt 1.3kg

Mating & covering sire: Male cria
 DOB 14/03/21 – Glenhope Mighty

Nandina is a very attractive smaller framed female with a very lay back personality. She is exhibiting good deep crimping in her fleece. The combination with Glenhope Mighty should be a good outcome for her cria.



Lot 41 Glenhope Nifty N30

Huacaya	Sex: F	DOB: 12/4/2017	IAR: 226290	Colour: SW
---------	--------	----------------	-------------	------------

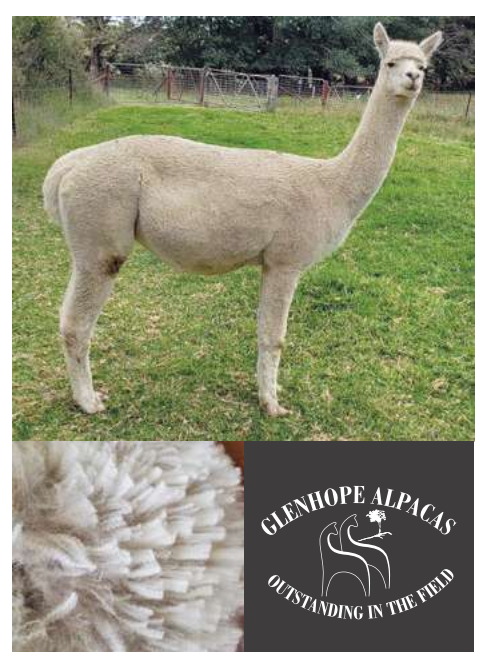
SIRE: Glenhope Griffin
 GRAND SIRE: Chachani Mochica
 GRAND DAM: Glenhope Elite

DAM: Glenhope Hoot ET
 GRAND SIRE: Suncloud Talahasi
 GRAND DAM: Glenhope Bellgenny

SSWt = skirted saddle weight
First Fleece:
 FD 17.4 SD 4.2 CF 99.9%
Second Fleece:
 FD 21.5 SD 4.3 CF 97.9%
Last Fleece 2020:
 FD 23.9 SD 4.8 CF 91.1% SSWt 1.3kg

Mating & covering sire: Female cria
 DOB 26/02/21 – Glenhope Jupiter

Nifty is a lovely quality female out of our E.T female Hoot who has produced very well for us. Her last cria Quell has been sold. She has a lovely strong frame and a beautiful nature. She has a stylish fleece with a soft handle.



Lot 42 Glenhope Nettle N31

Huacaya	Sex: F	DOB: 15/4/2017	IAR: 226292	Colour: SW
---------	--------	----------------	-------------	------------

SIRE: Glenhope Griffin

GRAND SIRE: Chachani Mochica
GRAND DAM: Glenhope Elite

DAM: Glenhope Jiggles

GRAND SIRE: Suncloud Talahasi
GRAND DAM: Glenhope Frolick

SSWt = skirted saddle weight

First Fleece:

-

Second Fleece:

FD 20.5 SD 4.2 CF 98.1%

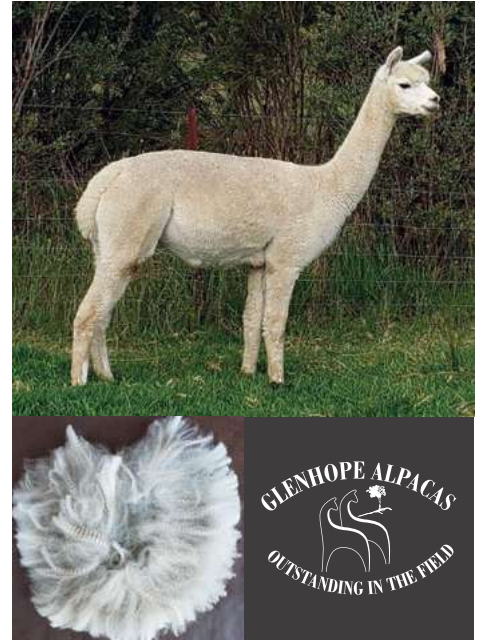
Last Fleece 2020:

FD 22.6 SD 4.3 CF 93.8% SSWt 1.5kg

Mating & covering sire: Male cria

DOB 2/03/21 – Grandeverge Maverick

Nettle is a quality female out of a good genetic line. She has a soft low primary fibred fleece. She has delivered an upstanding male by Maverick who is looking rather smart at this young stage of his life.



Lot 43 Glenhope Norska N36

Huacaya	Sex: F	DOB: 12/11/2017	IAR: 226297	Colour: SW
---------	--------	-----------------	-------------	------------

SIRE: Glenhope Griffin

GRAND SIRE: Chachani Mochica
GRAND DAM: Glenhope Elite

DAM: Glenhope Jewel

GRAND SIRE: Suncloud Talahasi
GRAND DAM: Glenhope Bellgenny

SSWt = skirted saddle weight

First Fleece:

FD 17.7 SD 4.3 CF 98.9%

Second Fleece:

FD 22.1 SD 4.9 CF 94.6%

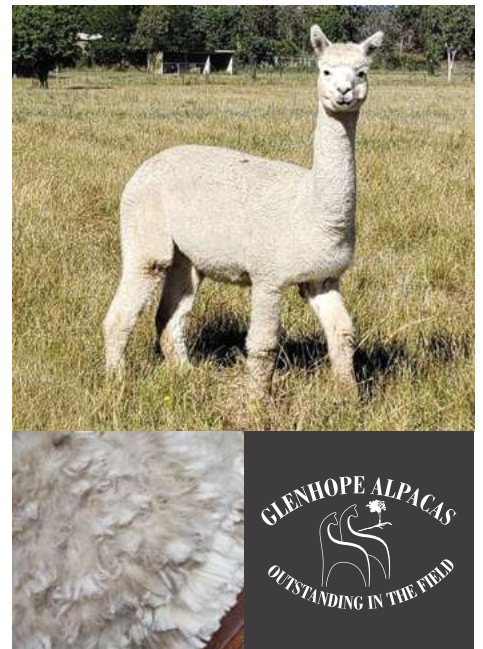
Last Fleece 2020:

FD 24.2 SD 4.9 CF 88.4% SSWt 2.0kg

Mating & covering sire:

Male cria DOB 14/03/21
– Glenhope Mystro

Norska is pure class and has received a Champion and Reserve Champion at the New England Alpaca Show. Her fleece is bright white with high lustre, softness and fine bundling. She is out of a top line at Glenhope. Her dam Jewel also had an illustrious show career. Her Mystro cria should be an absolute stunner.



Lot 44 Glenhope Numph N39

Huacaya	Sex: F	DOB: 17/11/2017	IAR: 226300	Colour: SW
---------	--------	-----------------	-------------	------------

SIRE: Glenhope Griffin

GRAND SIRE: Chachani Mochica
GRAND DAM: Glenhope Elite

DAM: Glenhope Lucca

GRAND SIRE: Glenhope Gibraltar
GRAND DAM: Rosemount Francesca

SSWt = skirted saddle weight

First Fleece:

FD 20.7 SD 5.3 CF 95%

Second Fleece:

FD 25.4 SD 6.9 CF 79.6%

Last Fleece 2020:

-

Mating & covering sire:

Due 4/04/21 – Glenhope Mystro

Numph is a sound breeding female with good length and still holding some crimping in her fleece. Glenhope Mystro should give her cria a big lift.



Lot 45 Grandeverge Nola

Huacaya	Sex: F	DOB: 4/9/2017	IAR: 220136	Colour: SW
---------	--------	---------------	-------------	------------

SIRE: Glenhope Griffin

GRAND SIRE: Chachani Mochica
GRAND DAM: Glenhope Elite

DAM: Barkala Nina

GRAND SIRE: Halycon Humdinger
GRAND DAM: Barkala Gigi

SSWt = skirted saddle weight
First Fleece:

-
Second Fleece:

-
Last Fleece 2020:

-
Mating & covering sire:
Due 26/03/2021 - Glenhope Mystro

Nola and her dam were agisted on our property and we purchased her when the other animals departed. She has Halycon Humdinger and Hallabaloo in her pedigree along with Illawarra Yucatan and Forestglen Maestro. It is not surprising with that line up that she caught our eye. She has high density and a soft stylish fleece. We look forward to her cria by Mystro with great anticipation.



FEMALES

Lot 46 Glenhope Missie M1

Huacaya	Sex: F	DOB: 17/1/2016	IAR: 213678	Colour: SW
---------	--------	----------------	-------------	------------

SIRE: Glenhope Hugo

GRAND SIRE: Suncloud Talahasi
GRAND DAM: Glenhope Winter Joy

DAM: Glenhope Faberge

GRAND SIRE: Ross Creek Arctic Lad
GRAND DAM: Glenhope Dior

SSWt = skirted saddle weight
First Fleece:

FD 20.4 SD 4.9 CF 97.9%

Second Fleece:

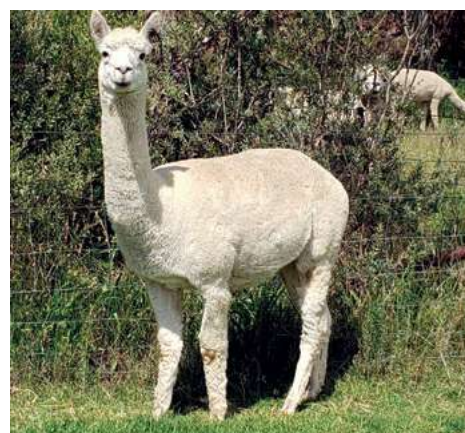
FD 24.7 SD 4.3 CF 91%

Last Fleece 2020:

FD 29.6 SD 5.5 CF 57.5% SSWt 1.7kg

Mating & covering sire:
Female cria DOB 14/03/21
- Grandeverge Maverickk

Missie is a lovely framed female with good conformation. She has good density with a soft handling fleece with low primary fibre.



Lot 47 Glenhope Marigold M3

Huacaya	Sex: F	DOB: 2/2/2016	IAR: 213680	Colour: SW
---------	--------	---------------	-------------	------------

SIRE: Glenhope Jupiter

GRAND SIRE: Suncloud Talahasi
GRAND DAM: Glenhope Estelle

DAM: Glenhope Winter Joy

GRAND SIRE: Illawarra Wenoim
GRAND DAM: Rosemount Tanya

SSWt = skirted saddle weight
First Fleece:

FD 18.7 SD 5.1 CF 96.9

Second Fleece:

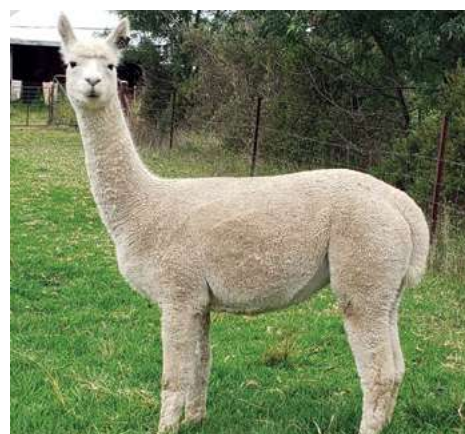
FD 22.0 SD 4.6 CF 94.4%

Last Fleece 2020:

FD 25.6 SD 5.8 CF 80%

Mating & covering sire:
-

Marigold is a beautifully put together female with a great presence about her. She has low primary fibre with a soft handling finer crimping style fleece. She is currently unjoined.



Lot 48 Glenhope Magical M5

Huacaya	Sex: F	DOB: 4/2/2016	IAR: 213682	Colour: SW
---------	--------	---------------	-------------	------------

SIRE: Glenhope Gibraltar

GRAND SIRE: Suncloud Talahasi
GRAND DAM: Glenhope Eccles

DAM: Rosemount Emerald

GRAND SIRE: Belbourie Jurado
GRAND DAM: Rosemount Bambi

SSWt = skirted saddle weight

First Fleece:

FD 18.7 SD 5.1 CF 97.9%

Second Fleece:

FD 22.1 SD 4.4 Cf 94.9%

Last Fleece 2020:

FD 29.6 SD 5.5 CF 60.2 % SSWt 1.9kg

Mating & covering sire: Female cria

DOB 23/02/21 – Glenhope Mighty

Magical has a higher frequency style crimp with excellent length of fleece. She is an excellent mother and enjoying her beautiful female cria. She is a well conformed female.



Lot 49 Glenhope Mississippi M7

Huacaya	Sex: F	DOB: 7/2/2016	IAR: 213684	Colour: SW
---------	--------	---------------	-------------	------------

SIRE: Chachani Mochica

GRAND SIRE: Windsong Valley Iceman
GRAND DAM: Barrabinda Joeys Gold

DAM: Glenhope Harper

GRAND SIRE: Suncloud Talahasi
GRAND DAM: Glenhope Rebel

SSWt = skirted saddle weight

First Fleece:

FD 17.5 SD 5.0 CF 97.7%

Second Fleece:

FD 21.8 SD 4.5 Cf 94.9%

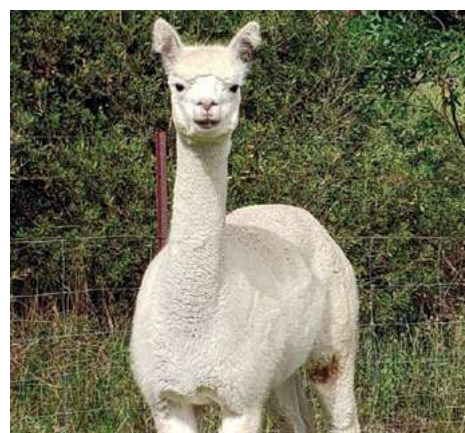
Last Fleece 2020:

FD 22.1 SD 4.5 CF 95.1% SSWt 1.0kg

Mating & covering sire:

Female cria DOB 8/03/21
– Glenhope Mystro

Mississippi is a fine fleeced hembra that has some quality progeny on the ground. Petal who has been sold plus a very stylish male Quokka sired by Mystro who is a potential stud male. We repeated this combination due to the excellent result with Quokka. Her present cria is also quite special.



Lot 50 Glenhope Mombassa M8

Huacaya	Sex: F	DOB: 7/2/2016	IAR: 213685	Colour: SW
---------	--------	---------------	-------------	------------

SIRE: Chachani Mochica

GRAND SIRE: Windsong Valley Iceman
GRAND DAM: Barrabinda Joeys Gold

DAM: Glenhope Jute

GRAND SIRE: Suncloud Talahasi
GRAND DAM: Glenhope Falky

SSWt = skirted saddle weight

First Fleece:

FD 18.1 SD 4.8 CF 98.3%

Second Fleece:

FD 22.8 SD 4.5 CF 84.3%

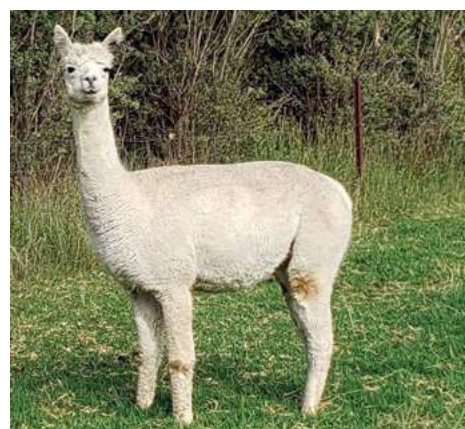
Last Fleece 2020:

FD 26.9 SD 5.3 CF 78.6% SSWt 1.0kg

Mating & covering sire: Female cria

DOB 11/02/21 – Glenhope Mystro

Mombassa is a strong framed animal with good muscling resulting in easy birthing and has a very nice female cria by Mystro. She is exhibiting good elasticity in her fleece.



Lot 51 Glenhope Minto M15

Huacaya	Sex: F	DOB: 11/2/2016	IAR: 213692	Colour: SW
---------	--------	----------------	-------------	------------

SIRE: Glenhope Griffin

GRAND SIRE: Chachani Mochica
GRAND DAM: Glenhope Elite

DAM: Glenhope Filigree Silk

GRAND SIRE: Ross Creek Arctic Lad
GRAND DAM: Meadow Bank Rosetta

SSWt = skirted saddle weight

First Fleece:

FD 18.6 SD 5.9 CF 95.6%

Second Fleece:

FD 22.4 SD 4.0 CF 96.1%

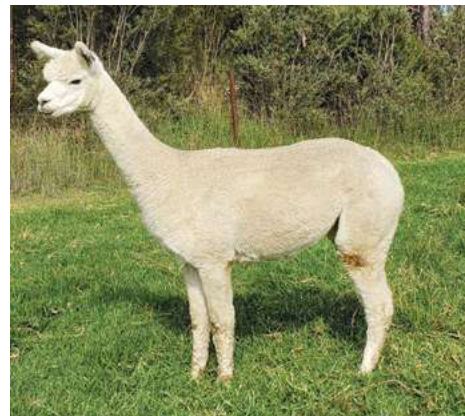
Last Fleece 2020:

FD 24.2 SD 4.3 CF 91.8% SSWt 1.0kg

Mating & covering sire:

-

Minto has a fine soft low primary fibre fleece with excellent conformation. She has some excellent genetics behind her. Her progeny include Quinne and Prosperity, both very soft, stylish heavy cutting fleeces.



FEMALES

Lot 52 Glenhope Myrical M24

Huacaya	Sex: F	DOB: 26/2/2016	IAR: 226231	Colour: SW
---------	--------	----------------	-------------	------------

SIRE: Glenhope Gibraltar

GRAND SIRE: Suncloud Talahasi
GRAND DAM: Glenhope Eccles

DAM: Glenhope Fontane

GRAND SIRE: Halcyon Stars & Stripes
GRAND DAM: Glenhope Glad

SSWt = skirted saddle weight

First Fleece:

FD 20.8 SD 6.1 CF 94%

Second Fleece:

FD 24.3 SD 4.7 CF 89.8%

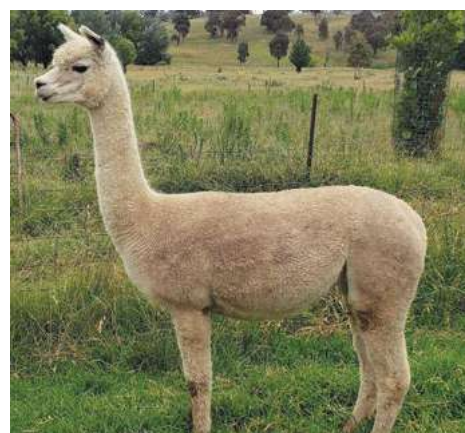
Last Fleece 2020:

FD 26.3 SD 5.3 CF 80.4% SSWt 1.3kg

Mating & covering sire:

Due 5/04/21 - Glenhope Mighty

Myrical is a soft low primary fibre female with an excellent frame and good density. Sadly we lost her sister Panache but her male progeny Rufus is shaping up very well with his ultrafine heavy cutting young fleece.



Lot 53 Glenhope Mystical M27

Huacaya	Sex: F	DOB: 2/3/2016	IAR: 226234	Colour: W
---------	--------	---------------	-------------	-----------

SIRE: Glenhope Jupiter

GRAND SIRE: Suncloud Talahasi
GRAND DAM: Glenhope Estelle

DAM: Glenhope Elusive

GRAND SIRE: Beenleigh Legend
GRAND DAM: Starline Gemini 2

SSWt = skirted saddle weight

First Fleece:

FD 18.7 SD 4.9 CF 98.3%

Second Fleece:

FD 22.5 SD 3.6 CF 97.3%

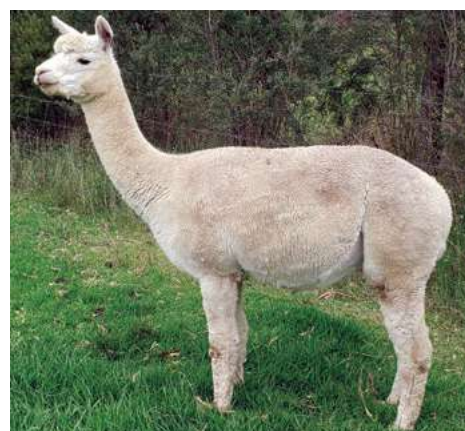
Last Fleece 2020:

FD 24.7 SD 3.8 CF 92.3% SSWt 1.4kg

Mating & covering sire: Female cria

DOB 24/02/21 - Glenhope Mighty

Mystical is a low primary fibred hembra out of a Benleigh Legend dam Elusive. Quill, her last cria is a quality girl. She has good density and a deep crimp in her very soft handling fleece.



Lot 54 Glenhope Miami M31

Huacaya	Sex: F	DOB: 5/3/2016	IAR: 226238	Colour: SW
---------	--------	---------------	-------------	------------

SIRE: Glenhope Griffin

GRAND SIRE: Chachani Mochica
GRAND DAM: Glenhope Elite

DAM: Glenhope Kazure

GRAND SIRE: Glenhope Gibraltar
GRAND DAM: Glenhope Exstatic

SSWt = skirted saddle weight

First Fleece:

FD 17.6 SD 4.7 CF 98.6%

Second Fleece:

FD 23.2 SD 4.3 CF 94.9%

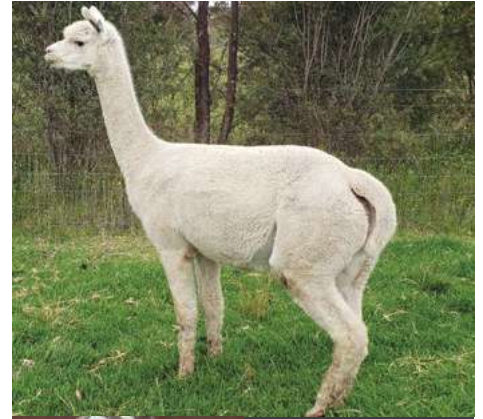
Last Fleece 2020:

-

Mating & covering sire:

Due 16/03/21 – Glenhope Mystro

Miami is a frame female with an incredibly bright lustrous fleece with deep crimping. Mystro should produce a good outcome from this match.



Lot 55 Glenhope Minstral M34

Huacaya	Sex: F	DOB: 11/3/2016	IAR: 226241	Colour: SW
---------	--------	----------------	-------------	------------

SIRE: Glenhope Jester

GRAND SIRE: Suncloud Talahasi
GRAND DAM: Glenhope Fenella

DAM: Rosemount Ellonie

GRAND SIRE: Belbourie Jurado
GRAND DAM: Rosemount Timone

SSWt = skirted saddle weight

First Fleece:

FD 18.6 SD 5.4 CF 97.6%

Second Fleece:

FD 23.0 SD 3.8 CF 96.1%

Last Fleece 2020:

FD 25.3 SD 4.8 CF 86.7% SSWt 2.1kg

Mating & covering sire:

Due 13/04/21 – Grandeverge Maverick

Minstral has good density and low primary fibres. Her last male cria Quebec by Indigo Jones produced an incredibly soft fine fleece weighing 2.3 kgs with a length of 140mm.



Lot 56 Glenhope Moonlight M46

Huacaya	Sex: F	DOB: 11/4/2016	IAR: 226253	Colour: SW
---------	--------	----------------	-------------	------------

SIRE: Glenhope Griffin

GRAND SIRE: Chachani Mochica
GRAND DAM: Glenhope Elite

DAM: Glenhope Higgledy

GRAND SIRE: Suncloud Talahasi
GRAND DAM: Glenhope Andean Nova

SSWt = skirted saddle weight

First Fleece:

FD 16.5 SD 5.0 CF 98.2%

Second Fleece:

FD 20.5 SD 3.9 CF 97.9%

Last Fleece 2020:

FD 23.0 SD 4.5 CF 93.7% SSWt 1.5kg

Mating & covering sire:

Due 4/04/21 – Grandeverge Maverick

Moonlight is out of a top female Higgledy who won champion fleece at Sydney Royal. She is a fine fleeced girl with low primary fibre and has a good frame. Her bright white fleece has style ++ with a beautiful soft handle.



Lot 57 Glenhope Milko M48

Huacaya	Sex: F	DOB: 15/4/2016	IAR: 226256	Colour: SW
---------	--------	----------------	-------------	------------

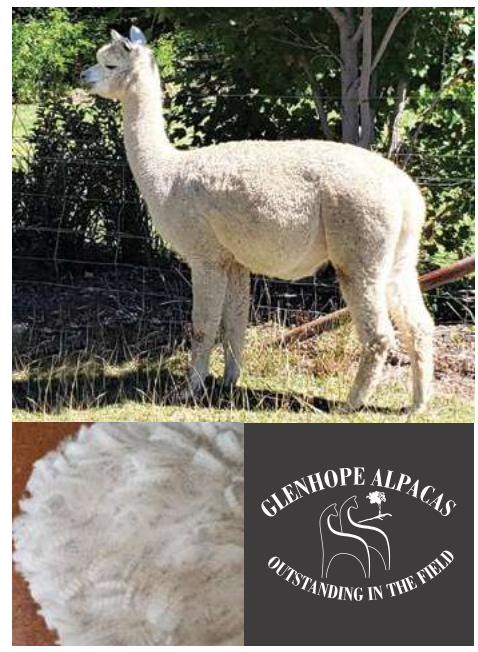
SIRE: Glenhope Hendrix
 GRAND SIRE: Suncloud Talahasi
 GRAND DAM: Glenhope Bellgenny

DAM: Glenhope Flash
 GRAND SIRE: Ross Creek Arctic Lad
 GRAND DAM: Glenhope Aquifer

SSWt = skirted saddle weight
First Fleece:
 FD 19.5 SD 5.7 CF 96.5%
Second Fleece:
 FD 25.3 SD 4.6 CF 86.8%
Last Fleece 2020:
 -

Mating & covering sire:
 Due 16/03/21 – Glenhope Mighty

Milko is a medium micron frame female with a soft fleece with fine primaries. She is a good mother. Her last cria Q20 produced 2 kgs of 23 micron skirted saddle fleece.



Lot 58 Glenhope Mingle M50

Huacaya	Sex: F	DOB: 19/4/2016	IAR: 226257	Colour: SW
---------	--------	----------------	-------------	------------

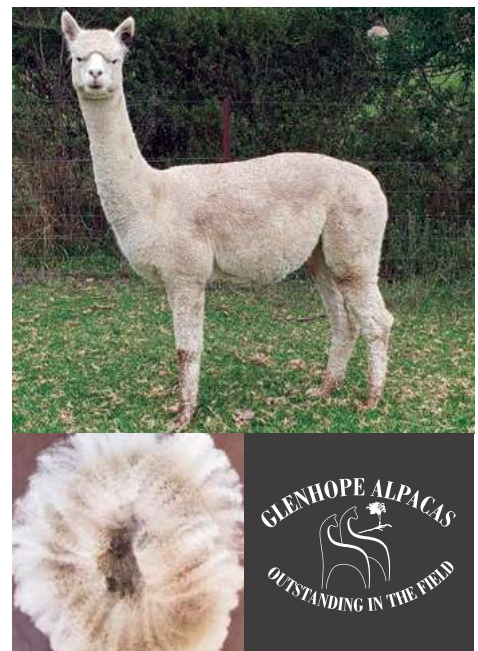
SIRE: Glenhope Griffin
 GRAND SIRE: Chachani Mochica
 GRAND DAM: Glenhope Elite

DAM: Glenhope Jewel
 GRAND SIRE: Suncloud Talahasi
 GRAND DAM: Glenhope Bellgenny

SSWt = skirted saddle weight
First Fleece:
 FD 16.4 SD 4.7 CF 98.7%
Second Fleece:
 FD 21.0 SD 4.2 CF 97.5%
Last Fleece 2020:
 FD 23.6 SD 4.4 CF 92.4% SSWt 1.6kg

Mating & covering sire:
 Due 14/04/21 – Glenhope Mighty

Mingle is out of a top female Glenhope Jewel. She is dense with low primary fibre, high lustre with a very soft fleece. She has an excellent style and elasticity in her deep crimp.



Lot 59 Glenhope Lulu L1

Huacaya	Sex: F	DOB: 3/2/2015	IAR: 206567	Colour: SW
---------	--------	---------------	-------------	------------

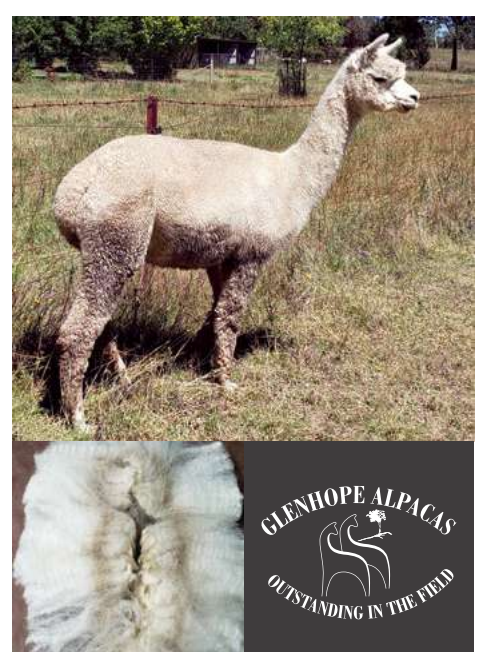
SIRE: Marriglen Delta
 GRAND SIRE:
 Somerset Accoyo Challenger
 GRAND DAM: Marriglen Victory

DAM: Rosemount Emerald
 GRAND SIRE: Belbourie Jurado
 GRAND DAM: Rosemount Bambi

SSWt = skirted saddle weight
First Fleece:
 FD 18.6 SD 4.2 CF 99%
Second Fleece:
 FD 22.5 SD 5.1 CF 93.9%
Last Fleece 2020:
 FD 28.0 SD 6.1 CF 68.7% SSWt 1.6kg

Mating & covering sire: Female cria
 DOB 13/02/21 – Glenhope Mighty

Lulu is a frame female who has produced well in Navigator who was Junior Champion at the New England Show and was sold as a stud male. She also produced Quipper, an ultrafine male cutting 1.9 kgs.



Lot 60 Glenhope Ludo L4

Huacaya	Sex: F	DOB: 9/3/2015	IAR: 206570	Colour: W
---------	--------	---------------	-------------	-----------

SIRE: Halcyon Stars & Stripes

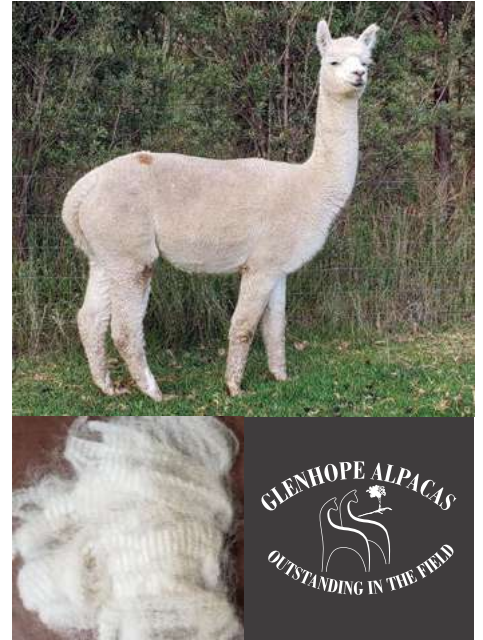
GRAND SIRE: Halycon Alianza Alloro
 GRAND DAM:
 Halycon Sollacotta Sunbeam

DAM: Glenhope Dignity

GRAND SIRE: Marriglen Delta
 GRAND DAM: Glenhope Aquifer

SSWt = skirted saddle weight
First Fleece:
 FD 19.5 SD 4.7 CF 97.4%
Second Fleece:
 FD 22.5 SD 5.2 CF 93.8%
Last Fleece 2020:
 FD 29.4 SD 6.6 CF 61.7% SSWt 2.2kg
Mating & covering sire:
 Due 13/04/21 – Glenhope Mighty

Ludo has good density and length. She is a very layback sort of girl. Her fleece is still bright, soft and lustrous.



Lot 61 Glenhope Limited Edition L9

Huacaya	Sex: F	DOB: 18/3/2015	IAR: 206575	Colour: SW
---------	--------	----------------	-------------	------------

SIRE: Halcyon Stars & Stripes

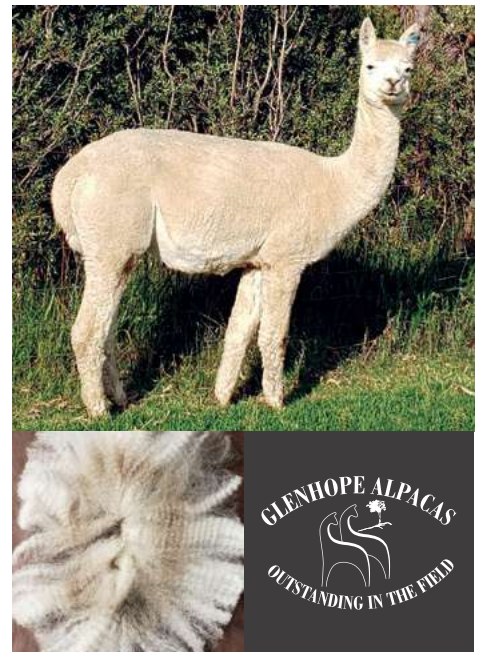
GRAND SIRE: Halycon Alianza Alloro
 GRAND DAM:
 Halycon Sollacotta Sunbeam

DAM: Glenhope Juniberry

GRAND SIRE: Suncloud Talahasi
 GRAND DAM: Glenhope Darjeeling

SSWt = skirted saddle weight
First Fleece:
 FD 17.5 SD 3.8 CF 100%
Second Fleece:
 FD 24.5 SD 5.3 CF 90.6%
Last Fleece 2020:
 FD 28.0 SD 6.0 CF 69.1% SSWt 1.5kg
Mating & covering sire:
 Due 16/03/21 – Glenhope Jupiter

Limited Edition has unique genetics going back to the Halycon import Alianza Alloro with very little of this blood line in Australia. She has excellent elasticity in her deep crimping fleece.



Lot 62 Glenhope Limelight L11

Huacaya	Sex: F	DOB: 19/3/2015	IAR: 206577	Colour: SW
---------	--------	----------------	-------------	------------

SIRE: Glenhope Gibraltar

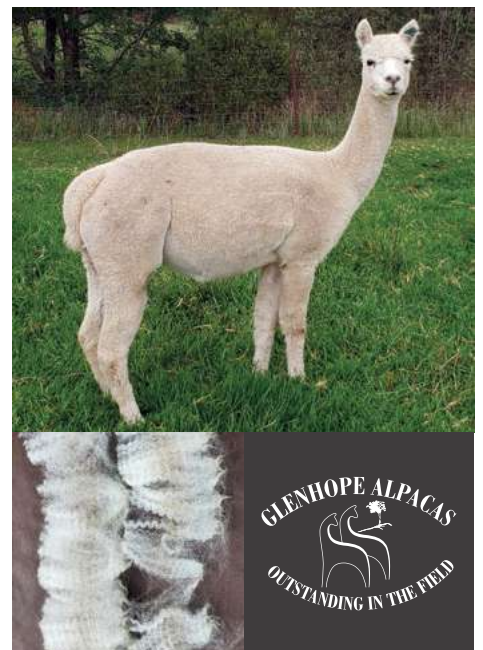
GRAND SIRE: Suncloud Talahasi
 GRAND DAM: Glenhope Eccles

DAM: Glenhope Falky

GRAND SIRE: Ladysmith Top Shelf
 GRAND DAM: Rosemount Azura

SSWt = skirted saddle weight
First Fleece:
 FD 16.8 SD 4.6 CF 100%
Second Fleece:
 FD 21.4 SD 5.7 CF 96.1%
Last Fleece 2020:
 FD 25.8 SD 5.2 CF 82.2% SSWt 1.4kg
Mating & covering sire: Male cria
 DOB 14/02/21 – Glenhope Jupiter

Limelight is a lovely soft female with good density and low primary fibres and a deep crimping style. She has produced some stylish progeny.



Lot 63 Glenhope Lyrical L14

Huacaya	Sex: F	DOB: 28/3/2015	IAR: 206580	Colour: SW
---------	--------	----------------	-------------	------------

SIRE: Glenhope Gibraltar

GRAND SIRE: Suncloud Talahasi
GRAND DAM: Glenhope Eccles

DAM: Glenhope Rebel

GRAND SIRE: Meadow Bank Claud
GRAND DAM: Meadow Bank Eliza

SSWt = skirted saddle weight

First Fleece:

FD 16.5 SD 3.7 CF 100%

Second Fleece:

FD 19.6 SD 3.7 CF 99%

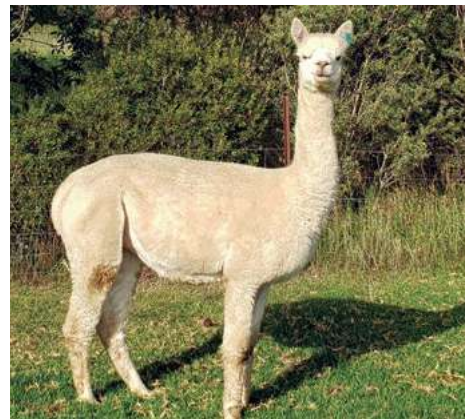
Last Fleece 2020:

FD 23.5 SD 3.4 CF 96.4% SSWt 1.0kg

Mating & covering sire:

Due 22/02/21 – Glenhope Mighty

Lyrical is still carrying a very fine, soft classy fleece with low primary fibres and good length. She has a good solid frame and we are expecting a special outcome from this joining.



GLENHOPE ALPACAS
OUTSTANDING IN THE FIELD

FEMALES

Lot 64 Glenhope Lafayette L15

Huacaya	Sex: F	DOB: 8/4/2015	IAR: 206581	Colour: SW
---------	--------	---------------	-------------	------------

SIRE: Belbourie Moonshine

GRAND SIRE: Belbourie Trooper
GRAND DAM: Andean Park Mistica

DAM: Glenhope Hyacynth

GRAND SIRE: Suncloud Talahasi
GRAND DAM: Glenhope Fatima

SSWt = skirted saddle weight

First Fleece:

FD 14.6 SD 3.8 CF 100%

Second Fleece:

FD 19.5 SD 4.1 CF 97.2%

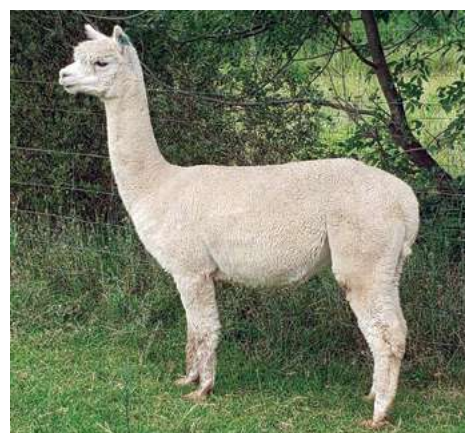
Last Fleece 2020:

FD 24.8 SD 3.4 CF 94.4% SSWt 1.6kg

Mating & covering sire:

Due 11/04/21 – Glenhope Mighty

Lafayette is a quality wool female out of a good genetic line of animals. She is the dam of Nigella a top quality, high performing female. Her fleece is still fine with a soft handle.



GLENHOPE ALPACAS
OUTSTANDING IN THE FIELD

Lot 65 Glenhope Lucca L20

Huacaya	Sex: F	DOB: 18/4/2015	IAR: 213671	Colour: W
---------	--------	----------------	-------------	-----------

SIRE: Glenhope Gibraltar

GRAND SIRE: Suncloud Talahasi
GRAND DAM: Glenhope Eccles

DAM: Glenhope Filigree Silk

GRAND SIRE: Ross Creek Arctic Lad
GRAND DAM: Meadow Bank Rosetta

SSWt = skirted saddle weight

First Fleece:

FD 17.9 SD 4.5 CF 99.1%

Second Fleece:

FD 23.3 SD 5.6 CF 90.7%

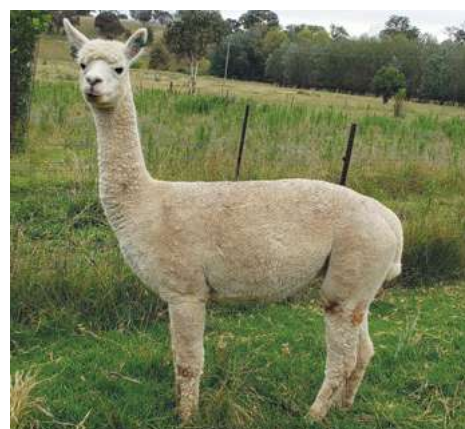
Last Fleece 2020:

FD 31.1 SD 7.3 CF 51.7%

Mating & covering sire:

Due 29/03/21 – Glenhope Jupiter

Lucca is a frame female still showing some good character and softness in her fleece. She has excellent mothering virtues and an excellent choice for a new breeder.



GLENHOPE ALPACAS
OUTSTANDING IN THE FIELD

Lot 66 Glenhope Lotus L21

Huacaya	Sex: F	DOB: 22/4/2015	IAR: 213672	Colour: SW
---------	--------	----------------	-------------	------------

SIRE: Belbourie Moonshine

GRAND SIRE: Belbourie Trooper
GRAND DAM: Andean Park Mistica

DAM: Glenhope Jewel

GRAND SIRE: Suncloud Talahasi
GRAND DAM: Glenhope Bellgenny

SSWt = skirted saddle weight

First Fleece:

FD 15.7 SD 4.5 CF 100%

Second Fleece:

FD 20.0 SD 4.4 CF 98.4%

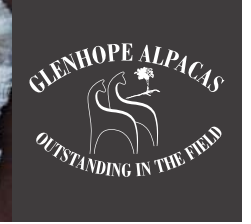
Last Fleece 2020:

FD 25.6 SD 4.6 CF 85.5% SSWt 1.9kg

Mating & covering sire:

Due 4/04/21 – Grandeverge Maverick

Lotus is a top quality girl out of a top line up of great genetics. She has high density and length and low primaries. She is very soft and cutting a healthy fleece weight.



Lot 67 Glenhope Kestral K1

Huacaya	Sex: F	DOB: 17/1/2014	IAR: 195515	Colour: W
---------	--------	----------------	-------------	-----------

SIRE: Beenleigh Legend

GRAND SIRE: Benleigh Bellisimo
GRAND DAM: Benleigh Sweet Peteule

DAM: Glenhope Winter Joy

GRAND SIRE: Illawarra Wenoim
GRAND DAM: Rosemont Tanya

SSWt = skirted saddle weight

First Fleece:

FD 19.7 SD 5.1 CF 95.6%

Second Fleece:

FD 23.3 SD 4.9 CF 90.9%

Last Fleece 2020:

FD 28.2 SD 5.7 CF 68.4%

Mating & covering sire:

–

Kestral is a full sister to Eccles. She has an excellent frame and carries a very dense, low primary soft fleece which is still showing deep crimping. She has produced a stud male in Glenhope Evander and we have Nullabor listed for sale as a stud male. She is empty but can be joined to Glenhope Jester if purchased as Jester has done well over this line.



Lot 68 Glenhope Kamos K18

Huacaya	Sex: F	DOB: 15/3/2014	IAR: 206542	Colour: SW
---------	--------	----------------	-------------	------------

SIRE: Glenhope Griffin

GRAND SIRE: Chachani Mochica
GRAND DAM: Glenhope Elite

DAM: Chachani Impala

GRAND SIRE: Windsong Valley Iceman
GRAND DAM: Chachani Yvresse

SSWt = skirted saddle weight

First Fleece:

FD 16.5 SD 4.4 CF 100%

Second Fleece:

FD 20.2 SD 4.0 CF 98.1%

Last Fleece 2020:

FD 25.2 SD 5.1 CF 85%

Mating & covering sire:

Sadly lost her cria at 10 days

Kamos has Highlander genetics via Iceman. She has a soft, uniform, silky fleece with good density and low primary fibre and still carrying good length and crimp style.



Lot 69 Glenhope Kimino K19

Huacaya	Sex: F	DOB: 16/3/2014	IAR: 206543	Colour: SW
---------	--------	----------------	-------------	------------

SIRE: Chachani Mochica

GRAND SIRE: Windsong Valley Iceman
GRAND DAM: Barrabinda Joeys Gold

DAM: Glenhope Asella

GRAND SIRE: Illawarra Wenoim
GRAND DAM: Rosemount Jacinta

SSWt = skirted saddle weight

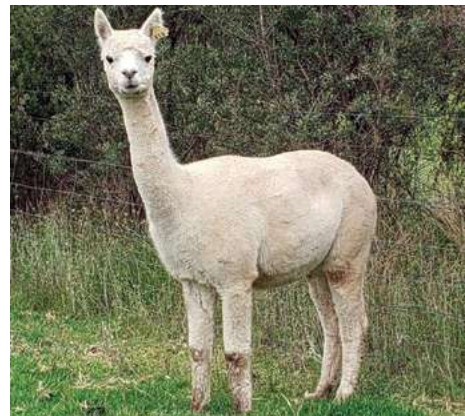
First Fleece:
FD 16.7 SD 3.9 CF 100%

Second Fleece:
FD 19.6 SD 4.4 CF 97.4%

Last Fleece 2020:
FD 25.3 SD 5.5 CF 83.1%

Mating & covering sire:
Due 25/03/21 – Grandeverge Maverick

Kimino is a wool female from a strong genetic line with very good density and low primary fibre. As you can see she still has good crimp style to her fleece. All of her progeny have been quality animals. Her last cria Raindance cut 2kgs (annualised skirted saddle) of 18.2 micron fleece.



FEMALES

Lot 70 Glenhope Korma K26

Huacaya	Sex: F	DOB: 1/4/2014	IAR: 206550	Colour: SW
---------	--------	---------------	-------------	------------

SIRE: Chachani Mochica

GRAND SIRE: Windsong Valley Iceman
GRAND DAM: Barrabinda Joeys Gold

DAM: Glenhope Fanfare

GRAND SIRE: Ross Creek Arctic Lad
GRAND DAM: Glenhope Asella

SSWt = skirted saddle weight

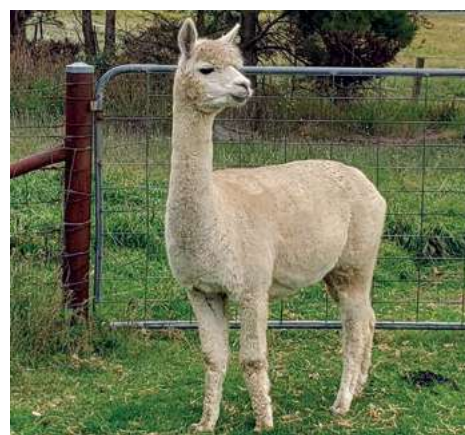
First Fleece:
FD 17.0 SD 4.6 CF 100%

Second Fleece:
FD 22.0 SD 4.2 CF 96.3%

Last Fleece 2020:
FD 29.2 SD 6.6 CF 67.1%

Mating & covering sire:
Due 1/04/21 – Grandeverge Maverick

Korma has a strong mix of Highlander genetics from Iceman and Artic Lad. She has produced some top progeny in Nova and Quartz (a sheer ultra female) that has been sold. She has a dense fleece with low primary fibres and a soft handle.



Lot 71 Glenhope Kernel K34

Huacaya	Sex: F	DOB: 1/12/2014	IAR: 206558	Colour: W
---------	--------	----------------	-------------	-----------

SIRE: Wyndarra Designer

GRAND SIRE: Illawarra Yucatan
GRAND DAM: Benleigh Olympic Dream

DAM: Glenhope Estelle

GRAND SIRE: Marriglen Delta
GRAND DAM: Chai-Tee Coolomon

SSWt = skirted saddle weight

First Fleece:
FD 20.1 SD 4.6 CF 97.7%

Second Fleece:
FD 23.8 SD 5.9 CF 89.1%

Last Fleece 2020:
FD 26.9 SD 5.7 CF 76.5%

Mating & covering sire:
Due 26/03/21 – Grandeverge Maverick

Kernel was classed as a wool female with low primary fibre with excellent density and length and softness. This is another cria that we are excited to see as we think Maverick will be a great match.



Lot 72 Glenhope Karisma K35

Huacaya	Sex: F	DOB: 7/12/2014	IAR: 206559	Colour: SW
---------	--------	----------------	-------------	------------

SIRE: Molonglo Figaro

GRAND SIRE: Marriglen Mars
GRAND DAM: Molonglo Athena

DAM: Glenhope Eccles

GRAND SIRE: Benleigh Legend
GRAND DAM: Glenhope Winter Joy

SSWt = skirted saddle weight

First Fleece:

FD 17.7 SD 4.0 CF 99.8%

Second Fleece:

FD 229 SD 5.3 CF 94.3%

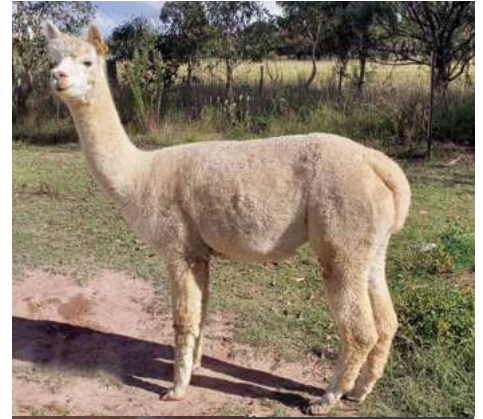
Last Fleece 2020:

FD 25.7 SD 4.8 CF 84.5%

Mating & covering sire:

-

Karisma is a daughter of Eccles who needs no introduction. She produced an ultra fine female Ritz last year who looks rather special. She has a high density, soft fleece showing a good crimp style, length and lustre. She is empty but can be joined to Glenhope Jester if purchased. Jester has done very well over this line of animals.



Lot 73 Glenhope Karat K36

Huacaya	Sex: F	DOB: 16/12/2014	IAR: 206560	Colour: SW
---------	--------	-----------------	-------------	------------

SIRE: Molonglo Figaro

GRAND SIRE: Marriglen Mars
GRAND DAM: Molonglo Athena

DAM: Rosemount Ellonie

GRAND SIRE: Belbourie Jurado
GRAND DAM: Rosemount Timone

SSWt = skirted saddle weight

First Fleece:

FD 18.5 SD 4.1 CF 99.7%

Second Fleece:

FD 21,1 SD4.4 CF 97.6%

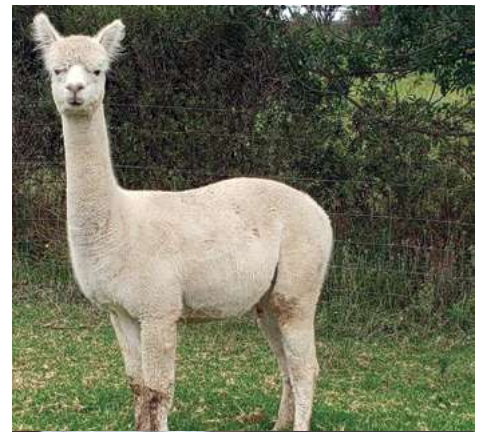
Last Fleece 2020:

FD 23.8 SD 4.3 CF 91.5% SSWt 1.1k

Mating & covering sire:

Due 27/04/21 – Grandeverge Maverick

Karat is a low primary fibre frame female. She has produced Persona who is a super fine female. Quizz by Jupiter who is a top notch and a nice young male Renegade who we are watching as a potential stud male.



Lot 74 Glenhope Jiggles J3

Huacaya	Sex: F	DOB: 11/1/2013	IAR: 186789	Colour: W
---------	--------	----------------	-------------	-----------

SIRE: Suncloud Talahasi

GRAND SIRE: Suncloud Montgomery
GRAND DAM: Suncloud Mystique

DAM: Glenhope Frolock

GRAND SIRE: Halcyon Stars & Stripes
GRAND DAM: Glenhope Darjeeling

SSWt = skirted saddle weight

First Fleece:

FD 18.4 SD 3.9 CF 99.6%

Second Fleece:

FD 24.0 SD 4.0 CF 89.4%

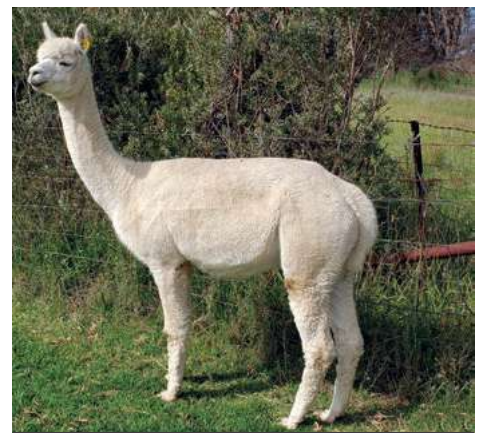
Last Fleece 2020:

FD 27.4 SD 5.0 CF 77.1%

Mating & covering sire: Female cria

DOB 10/03/21 – Glenhope Mystro

Jiggles was classed as a wool female “beauty” by Jim and she has not disappointed as you will see by her progeny Nettle and Quetta who are in the sale catalogue. She has an excellent frame and a soft, dense, low primary fleece with excellent length.



Lot 75 Glenhope Joplin J25

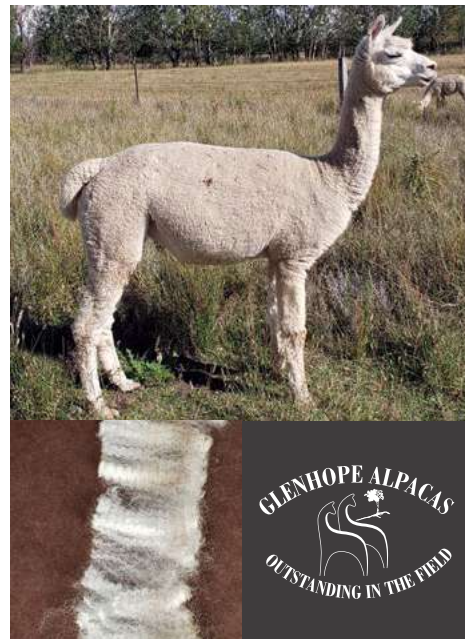
Huacaya	Sex: F	DOB: 2/4/2013	IAR: 195486	Colour: W
---------	--------	---------------	-------------	-----------

SIRE: Suncloud Talahasi
 GRAND SIRE: Suncloud Montgomery
 GRAND DAM: Suncloud Mystique

DAM: Glenhope Eccles
 GRAND SIRE: Benleigh Legend
 GRAND DAM: Glenhope Winter Joy

SSWt = skirted saddle weight
First Fleece:
 FD 18.3 SD 4.3 CF 98.9%
Second Fleece:
 FD 22.9 SD 4.5 CF 94.4%
Last Fleece 2020:
 FD 29.5 SD 5.0 CF 61.1%
Mating & covering sire:
 Due 5/05/21 – Wyndarra Indigo Jones

Joplin is another quality daughter of Eccles. Unfortunately we lost her male Masters who we planned to use as a stud male. We will be watching her male cria, Radar by Indigo Jones to see if he measures up to his brother. Radar is extremely silky with deep bold crimp.



Lot 76 Glenhope Jazzstar J43

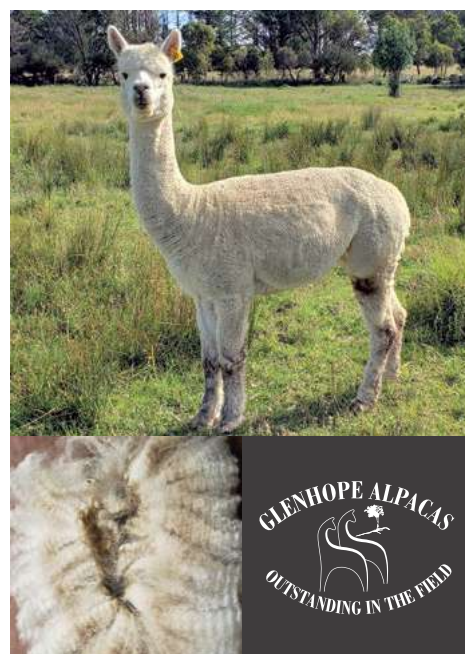
Huacaya	Sex: F	DOB: 14/4/2013	IAR: 195504	Colour: SW
---------	--------	----------------	-------------	------------

SIRE: Suncloud Talahasi
 GRAND SIRE: Suncloud Montgomery
 GRAND DAM: Suncloud Mystique

DAM: Glenhope Elusive
 GRAND SIRE: Benleigh Legend
 GRAND DAM: Starline Gemini 2

SSWt = skirted saddle weight
First Fleece:
 FD 17.5 SD 4.5 CF 98.7%
Second Fleece:
 FD 21.3 SD 4.3 CF 92.8%
Last Fleece 2020:
 FD 28.4 SD 5.3 CF 67.7% SSWt 1.9kg
Mating & covering sire:
 -

Jazzstar is a another daughter of Benleigh Legend with very low primary fibre, excellent length, softness, lustre and showing good deep crimp in her fleece. She has produced Nordic who we unfortunately lost and Pacifist a quality girl for sale in the catalogue.



Lot 77 Barkala Nina

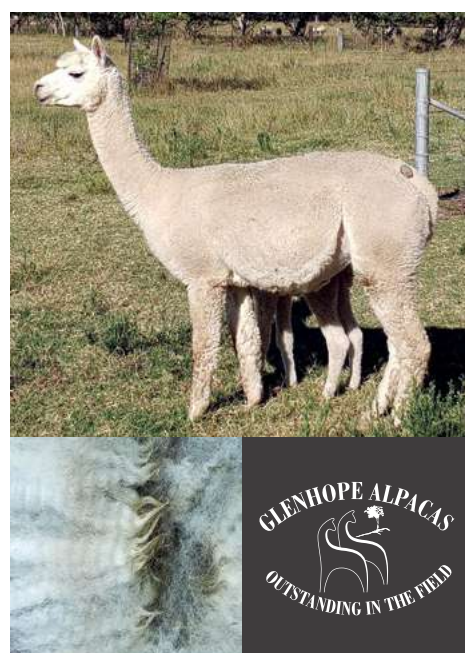
Huacaya	Sex: F	DOB: 20/3/2013	IAR: 182057	Colour: SW
---------	--------	----------------	-------------	------------

SIRE: Halycon Humdinger
 GRAND SIRE:
 Ilr Peruvian Hemingways Protégé
 GRAND DAM: Halycon Hullabaloo

DAM: Barkala Gigi
 GRAND SIRE: Illawarra Yucatan
 GRAND DAM: Barkala Dulcinea

SSWt = skirted saddle weight
First Fleece:
 -
Second Fleece:
 -
Last Fleece 2020:
 FD 26.2 SD 5.7 CF 80.8%
Mating & covering sire: Male cria
 DOB 25/02/21 – Glenhope Mystro

Nina we purchased from animals who were agisted on our farm as we were keen to have more of the Halycon Humdinger and Halycon Hullabaloo genetics in our herd and we have not been disappointed. We also purchased her look a like daughter G.V Nola. She is a heavy framed female who has just delivered a male cria. She still exhibits good style and softness in her fleece.



Lot 78 Bumble Hill Harpist

Huacaya	Sex: F	DOB: 10/3/2013	IAR: 181431	Colour: SW
---------	--------	----------------	-------------	------------

SIRE: Windsong Valley Kenjiro

GRAND SIRE: Windsong Valley Iceman
GRAND DAM: Kaloma Tamika

DAM: Bumble Hill Harp

GRAND SIRE: Accoyo America Damocles
GRAND DAM: Bumble Hill Erin

SSWt = skirted saddle weight

First Fleece:

-

Second Fleece:

-

Last Fleece 2020:

FD 27.3 SD 4.7 CF 79.3%

Mating & covering sire:

Due 25/03/21 - Glenhope Jupiter

Harpist was a Bumble Hill hembra with Windsong Kenjiro a Supreme winner at the National Show. She also has the unique genetics of Damocles in her lineup. She has very low primary fibres and a soft handling fleece. Check out her last cria Rocknroll.



Lot 79 Glenhope Hallelujah H12

Huacaya	Sex: F	DOB: 11/4/2012	IAR: 186759	Colour: SW
---------	--------	----------------	-------------	------------

SIRE: Suncloud Talahasi

GRAND SIRE: Suncloud Montgomery
GRAND DAM: Suncloud Mystique

DAM: Glenhope Estelle

GRAND SIRE: Marriglen Delta
GRAND DAM: Chai-Tee Coolomon

SSWt = skirted saddle weight

First Fleece:

FD 17.1 SD 4.4 CF 100%

Second Fleece:

FD 22.6 SD 4.1 CF 96.4%

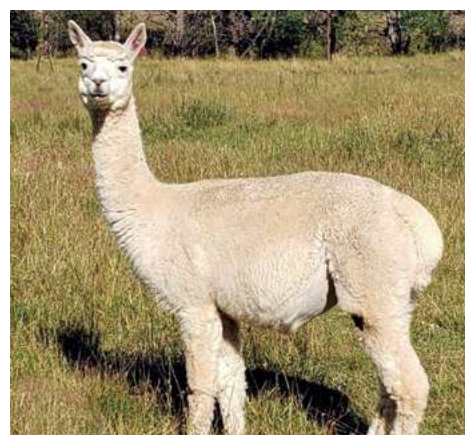
Last Fleece 2020:

FD 26.1 SD 4.2 CF 88.4%

Mating & covering sire:

Due 11/04/21 - Grandeverge Maverick

Hallelujah is a beautiful frame female with a lovely soft face. She has a high frequency style fleece. Check out Nellie to see what she is capable of producing.



Lot 80 Glenhope Hoot ET H20

Huacaya	Sex: F	DOB: 4/5/2012	IAR: 186767	Colour: SW
---------	--------	---------------	-------------	------------

SIRE: Suncloud Talahasi

GRAND SIRE: Suncloud Montgomery
GRAND DAM: Suncloud Mystique

DAM: Glenhope Bellgenny

GRAND SIRE: Illawarra Wenoim
GRAND DAM: Glenhope Basilea

SSWt = skirted saddle weight

First Fleece:

FD 17.9 SD 4.1 CF 99.7%

Second Fleece:

FD 20.4 SD 3.8 CF 99.1%

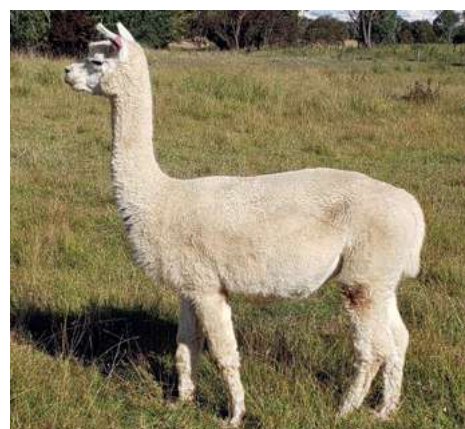
Last Fleece 2020:

FD 26.0 SD 4.4 CF 86.7%

Mating & covering sire:

Due 23/03/21 - Glenhope Mystro

Hoot ET has been a top performer for us. She is the dam of our stud sire Mighty and also Nifty. She has an excellent low primary fibre fleece and at 8 years is lustrous and exhibiting good length and style in her fleece.



Lot 81 Glenhope Hyacynth H21

Huacaya	Sex: F	DOB: 16/5/2012	IAR: 186768	Colour: SW
---------	--------	----------------	-------------	------------

SIRE: Suncloud Talahasi

GRAND SIRE: Suncloud Montgomery
GRAND DAM: Suncloud Mystique

DAM: Glenhope Fatima

GRAND SIRE: Ross Creek Arctic Lad
GRAND DAM: Glenhope Rebel

SSWt = skirted saddle weight

First Fleece:
FD 18.2 SD 5.0 CF 99.1%

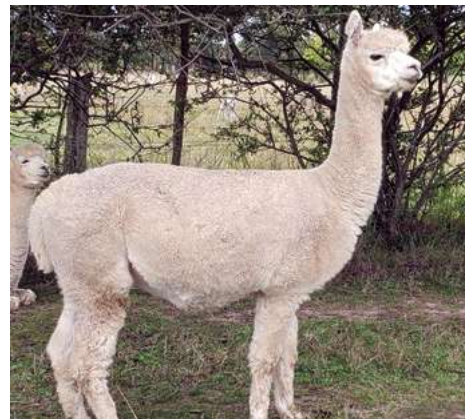
Second Fleece:
FD 22.4 SD 3.9 CF 97%

Last Fleece 2020:
FD 27.3 SD 4.7 CF 78.6%

Mating & covering sire:

Due 27/04/21 – Grandeverge Maverick

Hyacynth has been a treasured female for us as we lost her stunning mother. She is low primary, high density. All of her progeny have been rather schmick and include Lafayette, Quper and Rapsody.



FEMALES

Lot 82 Glenhope Hoola H23

Huacaya	Sex: F	DOB: 28/4/2012	IAR: 186770	Colour: SW
---------	--------	----------------	-------------	------------

SIRE: Suncloud Talahasi

GRAND SIRE: Suncloud Montgomery
GRAND DAM: Suncloud Mystique

DAM: Glenhope Exquisite

GRAND SIRE: Benleigh Legend
GRAND DAM: Glenhope Cyrah

SSWt = skirted saddle weight

First Fleece:
FD 16.7 SD 4.6 CF 100%

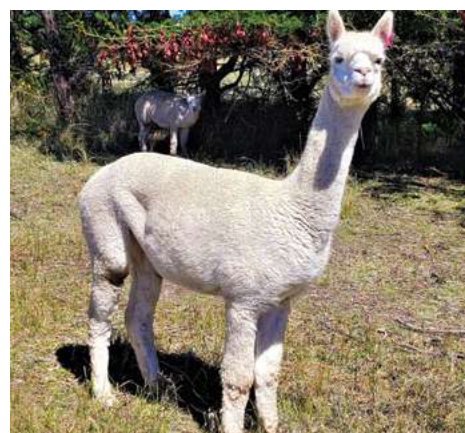
Second Fleece:
FD 20.6 SD 4.6 CF 97%

Last Fleece 2020:
FD 27.8 SD 5.1 CF 71.6%

Mating & covering sire:

Due 6/04/21 – Grandeverge Maverick

Hoola is a daughter of our Supreme Champion Exquisite (a Benleigh Legend female) and a granddaughter of Cyrah a supreme champion so it is not surprising she is also a classy dam. She has very high density, low primary fibre and good elasticity in her fleece. She was placed at Sydney Royal for her 12 to 18 months fleece. We look forward to this cria combo.



Lot 83 Glenhope Ginko G6

Huacaya	Sex: F	DOB: 9/3/2011	IAR: 177702	Colour: SW
---------	--------	---------------	-------------	------------

SIRE: Ross Creek Arctic Lad

GRAND SIRE: Purrumbete Highlander
GRAND DAM: Windsong Valley Arctic Pearl

DAM: Glenhope Asella

GRAND SIRE: Illawarra Wenoim
GRAND DAM: Rosemount Jacinta

SSWt = skirted saddle weight

First Fleece:
FD 17.4 SD 4.8 CF 100%

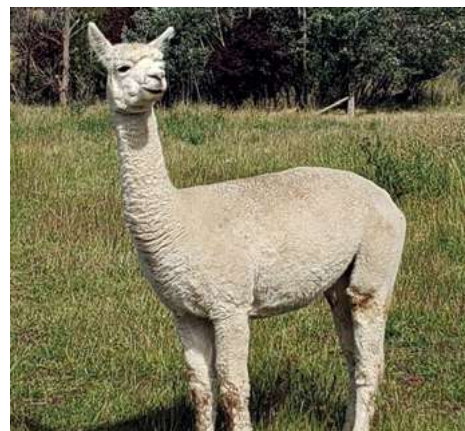
Second Fleece:
FD 21.2 SD 4.9 CF 96.2%

Last Fleece 2020:
FD 23.7 SD 4.1 CF 93.8%

Mating & covering sire: Female cria

DOB 1/03/21 – Glenhope Mystro

Ginko is a very low primary fibre girls with a good mix of P. Highlander and Yucatan genetics is her pedigree. Jim was impressed with her on classing day. Her daughter Quilter is for sale.



Lot 84 Glenhope Fontane F22

Huacaya	Sex: F	DOB: 29/4/2010	IAR: 166800	Colour: SW
---------	--------	----------------	-------------	------------

SIRE: Halcyon Stars & Stripes

GRAND SIRE: Halcyon Alianza Alloro
GRAND DAM: Halcyon Sollacotta Sunbeam

DAM: Glenhope Glad

GRAND SIRE: Marriglen Delta
GRAND DAM: Meadow Bank Festivity

SSWt = skirted saddle weight

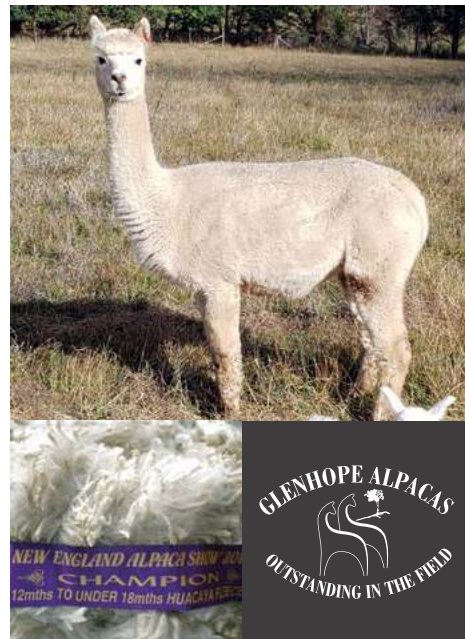
First Fleece:
FD 18.1 SD 4.6 CF 99.2%

Second Fleece:
FD 22.1 SD 4.4 CF 96.6%

Last Fleece 2020:
FD 27.8 SD 5.2 CF 73.9%

Mating & covering sire: Male cria
DOB 6/03/21 – Grandeverge Maverick

Fontane has some unique genetics in H.Allianza Alloro and H. Sunbeam that are no longer available in Australia. She has produced a top daughter in Myrical and a stud male in Pegasus both on offer. Her 12 to 18 month fleece received a first at the Nationals and a Championship at N. E. Now short but still has good crimp structure to her fleece. She was selected as an ET doner.



Lot 85 Glenhope Exquisite E12

Huacaya	Sex: F	DOB: 17/4/2009	IAR: 156224	Colour: SW
---------	--------	----------------	-------------	------------

SIRE: Benleigh Legend

GRAND SIRE: Benleigh Bellisimo
GRAND DAM: Benleigh Sweet Peteule

DAM: Glenhope Cyrah

GRAND SIRE: Marriglen Delta
GRAND DAM: Glenhope Winter Joy

SSWt = skirted saddle weight

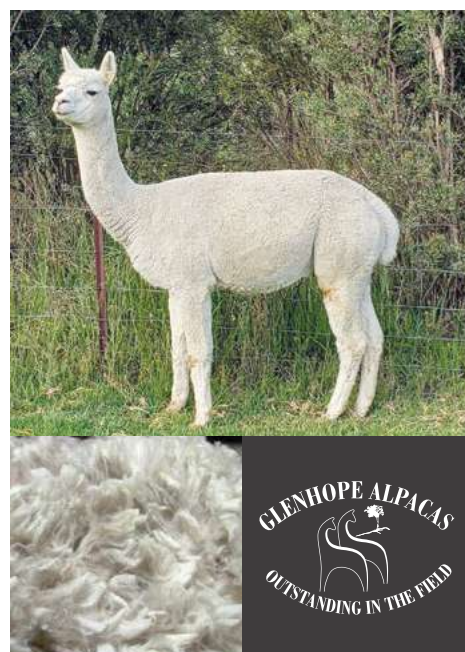
First Fleece:
FD 16.2 SD 4.0 CF 100%

Second Fleece:
FD 18.9 SD 3.8 CF 99%

Last Fleece 2020:
FD 25.7 SD 4.1 CF 93.8%

Mating & covering sire:
Due 14/04/21 – Glenhope Jester

Exquisite also a top girl. Her dam Cyrah was Supreme Champion in animal and fleece at the New England Show at the same show she was Champion junior animal and fleece. She still has good elasticity in her fleece which is now short. We sadly lost two of her excellent quality progeny so we await her cria to Jester with great anticipation. She was selected as an ET donor.



2010 FLEECE

Lot 86 Glenhope Eccles E16

Huacaya	Sex: F	DOB: 29/4/2009	IAR: 156228	Colour: W
---------	--------	----------------	-------------	-----------

SIRE: Benleigh Legend

GRAND SIRE: Benleigh Bellisimo
GRAND DAM: Benleigh Sweet Peteule

DAM: Glenhope Winter Joy

GRAND SIRE: Illawarra Wenoim
GRAND DAM: Rosemount Tanya

SSWt = skirted saddle weight

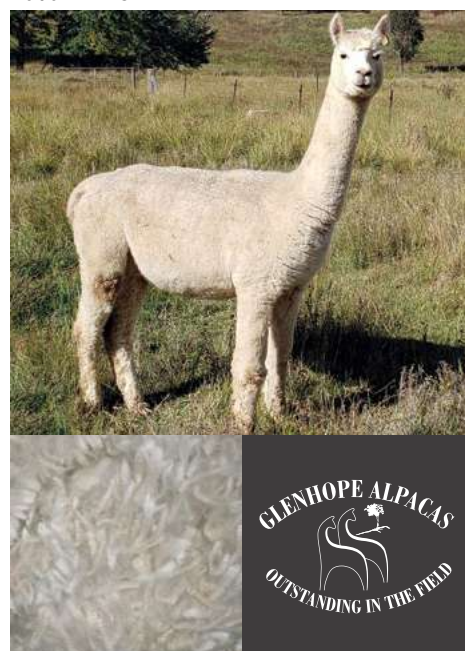
First Fleece:
FD 16.3 SD 4.5 CF 98.5%

Second Fleece:
-

Last Fleece 2020:
FD 27.1 SD 5.1 CF 77%

Mating & covering sire:
Due 6/04/21 – Glenhope Jester

Eccles is the queen of the crop and the dam of some of our top quality animals. She is a very high density animal with a high definition fleece, beautiful temperament and an excellent mother. Her matings to Jester have produced Primadonna and Rapture that are outstanding. She is expecting another Jester cria before the sale. She has won many broad ribbons at national and regional shows taking out supreme in animal and fleece at New England Show. 1st for her fleece at the Nationals.



2010 FLEECE

MALES

Lot 87 Glenhope Raindance R3 Uncertified male

Huacaya	Sex: M	DOB: 18/3/2020	IAR: 248151	Colour: SW
---------	--------	----------------	-------------	------------

SIRE: Glenhope Mighty

GRAND SIRE: Glenhope Griffin
GRAND DAM: Glenhope Hoot ET

DAM: Glenhope Kimino

GRAND SIRE: Chachani Mochica
GRAND DAM: Glenhope Asella

SSWt = skirted saddle weight

First Fleece:

FD 18.2 SD 4.2 CF 99.6% SSWt 2.0kg

Second Fleece:

-

Last Fleece 2020:

-

It is not surprising that Raindance has made the potential sire list as he has some solid genetics behind him. His ultrafine fleece is soft and bundling and developing well at the skin. I am sure he will grow into a solid male given the strong muscling developing in his hindquarters.



GLENHOPE ALPACAS
OUTSTANDING IN THE FIELD

MALES

Lot 88 Glenhope Rufus R20 Uncertified male

Huacaya	Sex: M	DOB: 15/4/2020	IAR: 248168	Colour: SW
---------	--------	----------------	-------------	------------

SIRE: Glenhope Mighty

GRAND SIRE: Glenhope Griffin
GRAND DAM: Glenhope Hoot ET

DAM: Glenhope Myrical

GRAND SIRE: Glenhope Gibraltar
GRAND DAM: Glenhope Fontane

SSWt = skirted saddle weight

First Fleece:

FD 17.9 SD 4.1 CF 99.6% SSWt 2.0kg

Second Fleece:

-

Last Fleece 2020:

-

This young well grown male is out of a top dam Myrical. Cutting a good weight of ultrafine silky fleece. He is very early maturing and has well grown testicles. His dam Myrical is a full sister to Pegasus, the stud male that is on offer.



GLENHOPE ALPACAS
OUTSTANDING IN THE FIELD

Lot 89 Glenhope Renegade R24 Uncertified male

Huacaya	Sex: M	DOB: 3/5/2020	IAR: 248172	Colour: SW
---------	--------	---------------	-------------	------------

SIRE: Glenhope Mighty

GRAND SIRE: Glenhope Griffin
GRAND DAM: Glenhope Hoot ET

DAM: Glenhope Karat

GRAND SIRE: Molonglo Figaro
GRAND DAM: Rosemont Ellonie

SSWt = skirted saddle weight

First Fleece:

FD 17.8 SD 4.7 CF 98.9% SSWt 1.5kg

Second Fleece:

-

Last Fleece 2020:

-

Renegade although young is showing good signs of stud potential.



GLENHOPE ALPACAS
OUTSTANDING IN THE FIELD

Lot 90 Glenhope Quilpie Q14

Uncertified male

Huacaya	Sex: M	DOB: 13/3/2019	IAR: 240638	Colour: SMF
---------	--------	----------------	-------------	-------------

SIRE: Glenhope Minder

GRAND SIRE: Glenhope Griffin
GRAND DAM: Glenhope Geko

DAM: Glenhope Milo

GRAND SIRE: Glenhope Jester
GRAND DAM: Glenhope Knockout

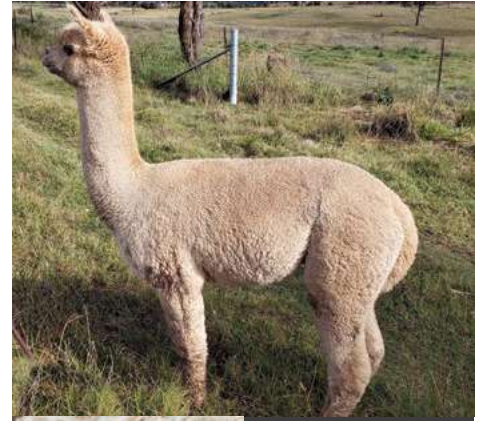
SSWt = skirted saddle weight

First Fleece:
FD 17.6 SD 5.4 CF 97.1%

Second Fleece:
FD 21.4 SD 5.3 CF 93.8% SSWt 2.6kg

Last Fleece 2020:
-

A stunning fawn male out of a top quality female. He has a soft fleece with very low primary fibres. As you can see by the photo, fine bundling staples. This was not a surprising result as his dam and granddam were both top notch.



Lot 91 Glenhope Quixote Q17

Uncertified male

Huacaya	Sex: M	DOB: 15/3/2019	IAR: 240642	Colour: SW
---------	--------	----------------	-------------	------------

SIRE: Glenhope Minder

GRAND SIRE: Glenhope Griffin
GRAND DAM: Glenhope Geko

DAM: Glenhope Eccles

GRAND SIRE: Benleigh Legend
GRAND DAM: Glenhope Winter Joy

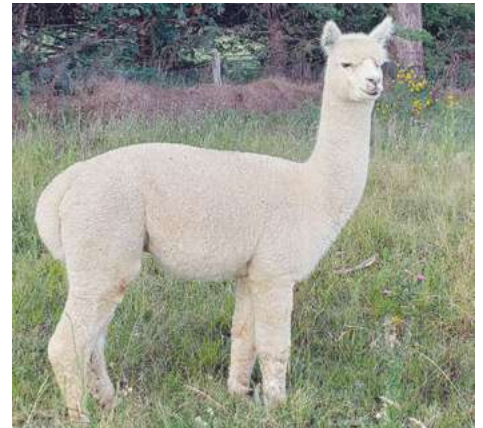
SSWt = skirted saddle weight

First Fleece:
-

Second Fleece:
FD 21.5 SD 4.3 CF 96% SSWt 2.7kg

Last Fleece 2020:
-

Glenhope Quixote is out of our top female line Glenhope Eccles and a brother to our star female Primadonna. He has high density and very soft and lustrous fleece. This is a proven genetic for a great fleece producing line with show winning qualities.



Lot 92 Glenhope Quest Q21

Uncertified male

Huacaya	Sex: M	DOB: 23/3/2019	IAR: 240247	Colour: W
---------	--------	----------------	-------------	-----------

SIRE: Glenhope Jupiter

GRAND SIRE: Suncloud Talahasi
GRAND DAM: Glenhope Estelle

DAM: Glenhope Elusive

GRAND SIRE: Benleigh Legend
GRAND DAM: Starline Gemini 2

SSWt = skirted saddle weight

First Fleece:
FD 16.1 SD 3.9 CF 99% SWt 1.2kg

Second Fleece:
FD 20.4 SD 4.2 CF 97.9% SSWt 1.9kg

Last Fleece 2020:
-

Quest is a well grown early maturing male with good conformation and good testicle size. He has a soft, lustrous super fine fleece.



Lot 93 Glenhope Quilby Q28

Uncertified male

Huacaya	Sex: M	DOB: 28/3/2019	IAR: 246356	Colour: SW
---------	--------	----------------	-------------	------------

SIRE: Glenhope Mojo

GRAND SIRE: Glenhope Gibraltar
GRAND DAM: Chachani Impala

DAM: Glenhope Higgledy

GRAND SIRE: Suncloud Talahasi
GRAND DAM: Glenhope Andean Nova

SSWt = skirted saddle weight

First Fleece:

FD 14.4 SD 2.9 CF 99.6% SSWt 1.2kg

Second Fleece:

FD 18.9 SD 4.0 CF 99.4% SSWt 1.9kg

Last Fleece 2020:

-

Quilbys dam Higgledy received a champion fleece at Sydney Royal. His first fleece was sheer ultra and he is cutting a good quality and quantity of fleece with fine bundling. He has good testicle size and showing early signs of maturity.



GLENHOPE ALPACAS
OUTSTANDING IN THE FIELD

MALES

Lot 94 Glenhope Quadron Q35

Uncertified male

Huacaya	Sex: M	DOB: 10/12/2019	IAR: 246363	Colour: W
---------	--------	-----------------	-------------	-----------

SIRE: Glenhope Mighty

GRAND SIRE: Glenhope Griffin
GRAND DAM: Glenhope Hoot ET

DAM: Glenhope Harper

GRAND SIRE: Suncloud Talahasi
GRAND DAM: Glenhope Rebel

SSWt = skirted saddle weight

First Fleece:

FD 17.7 SD 4.8 CF 98.9% SSWt 2.0kg

Second Fleece:

-

Last Fleece 2020:

-

Quadron is a nice chunky young male with good hindquarters. He has low primary fibres, a very soft fleece with a higher frequency fleece style. He has average testicle development at this age.



GLENHOPE ALPACAS
OUTSTANDING IN THE FIELD

Lot 95 Glenhope Quokka Q41

Uncertified male

Huacaya	Sex: M	DOB: 19/12/2019	IAR: 246369	Colour: SW
---------	--------	-----------------	-------------	------------

SIRE: Glenhope Mystro

GRAND SIRE: Glenhope Gibraltar
GRAND DAM: Glenhope Elite

DAM: Glenhope Mississippi

GRAND SIRE: Chachani Mochica
GRAND DAM: Glenhope Harper

SSWt = skirted saddle weight

First Fleece:

FD 16.7 SD 4.1 CF 100% SSWt 1.8kg

Second Fleece:

-

Last Fleece 2020:

-

We are seeing some pretty amazing fleeces coming through from Glenhope Mystro and Quokka's from last years drop is a good example. His ultra fine first fleece is silky with fine bundles. He was placed at the National Fleece Challenge 2020. He is early maturing with good testicle growth.



GLENHOPE ALPACAS
OUTSTANDING IN THE FIELD

Lot 96 Glenhope Quipper Q43

Uncertified male

Huacaya	Sex: M	DOB: 23/12/2019	IAR: 246371	Colour: SW
---------	--------	-----------------	-------------	------------

SIRE: Glenhope Mighty

GRAND SIRE: Glenhope Griffin
GRAND DAM: Glenhope Hoot ET

DAM: Glenhope Lulu

GRAND SIRE: Marriglen Delta
GRAND DAM: Rosemount Emerald

SSWt = skirted saddle weight

First Fleece:

FD 18.2 SD 4.0 CF 99.3 SSWt 1.9kg

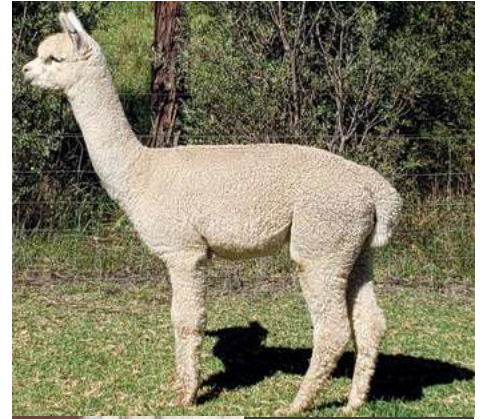
Second Fleece:

-

Last Fleece 2020:

-

Quipper is from a dam who produced a stud male Navigator who was a champion junior male at New England Show. Quippers fleece was placed at the 2020 National Fleece Challenge. He has a silky bundling fleece with excellent density and softness and has good testicle size.



Lot 97 Glenhope Pollock P8

Uncertified male

Huacaya	Sex: M	DOB: 12/3/2018	IAR: 226314	Colour: SW
---------	--------	----------------	-------------	------------

SIRE: Glenhope Jester

GRAND SIRE: Suncloud Talahasi
GRAND DAM: Glenhope Fenella

DAM: Chachani Youki San

GRAND SIRE: Shanbrooke Accoyo Yavari
GRAND DAM: Chachani Tsunami

SSWt = skirted saddle weight

First Fleece:

FD 14.6 SD 3.7 CF 100%

Second Fleece:

FD 18.5 SD 4.4 CF 98.9% SSWt 1.8kg

Last Fleece 2020:

FD 21.1 SD 4.4 CF 98% SSWt 2.2kg

Glenhope Pollock a very compact male exhibiting a sheer ultra fleece with soft fine pencil bundles. His fleece displays good amplitude and as a younger animal had a very impressive 0.49mm/day fibre growth rate. Awarded 3rd place at the National Fleece Show 2019.



Lot 98 Glenhope Pegasus P37

Uncertified male

Huacaya	Sex: M	DOB: 11/4/2018	IAR: 240618	Colour: SW
---------	--------	----------------	-------------	------------

SIRE: Glenhope Gibraltar

GRAND SIRE: Suncloud Talahasi
GRAND DAM: Glenhope Eccles

DAM: Glenhope Fontane

GRAND SIRE: Halcyon Stars & Stripes
GRAND DAM: Glenhope Glad

SSWt = skirted saddle weight

First Fleece:

FD 18.7 SD 4.5 CF 99%

Second Fleece:

FD 21.9 SD 4.3 CF 97.6% SSWt 2.2kg

Last Fleece 2020:

FD 20.0 SD 4.7 CF 97.1% SSWt 1.8kg

Glenhope Pegasus is a well grown animal with high density and a heavy cutting fleece with high amplitude. He is a stylish male with excellent bone. His dam Fontane was also a show winner. His fleece is soft with loads of fine bundles. A good size male with real presence.



Lot 99 Glenhope Nullabor N44

Uncertified male

Huacaya	Sex: M	DOB: 30/11/2017	IAR: 226305	Colour: W
---------	--------	-----------------	-------------	-----------

SIRE: Glenhope Gibraltar

GRAND SIRE: Suncloud Talahasi
GRAND DAM: Glenhope Eccles

DAM: Glenhope Kestral

GRAND SIRE: Beenleigh Legend
GRAND DAM: Glenhope Winter Joy

SSWt = skirted saddle weight

First Fleece:
FD 17.6. SD 4.2 CF 98.8%

Second Fleece:
- FD 19.3 SD 4.3 CF 97.8% SSWt 1.9kg

Last Fleece 2020:
FD 21.9 SD 4.8 CF 93.4% SSWt 2.3kg

Glenhope Nullabor has Benleigh legend on both dam and sires line. He has a very soft handling fleece with high amplitude and fine bundling and very low primary fibre. He is uncertified but is a male we would have added to stud animals.



MALES

Lot 100 Glenhope Mojo M39

Certified male

Huacaya	Sex: CM	DOB: 19/3/2016	IAR: 226246	Colour: SW
---------	---------	----------------	-------------	------------

SIRE: Glenhope Gibraltar

GRAND SIRE: Suncloud Talahasi
GRAND DAM: Glenhope Eccles

DAM: Chachani Impala

GRAND SIRE: Windsong Valley Iceman
GRAND DAM: Chachani Yvresse

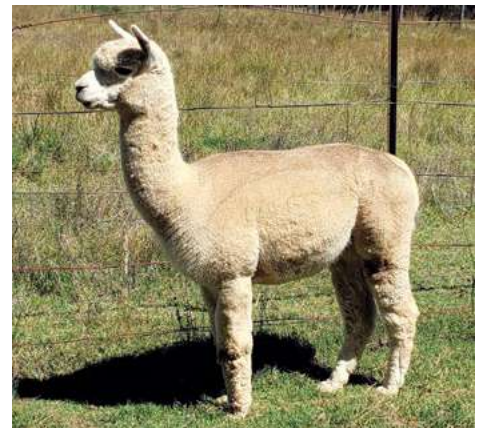
SSWt = skirted saddle weight

First Fleece:
FD 14.8 SD 4.6 CF 98.4%

Second Fleece:
FD 21.4 SD 4.0 CF 97.5%

Last Fleece 2020:
FD 27.3 SD 4.9 CF 78% SSWt 1.8kg

Glenhope Mojo (Certified male) is a smaller framed male from the Benleigh Legend line. He has progeny on the ground and is keen to have more. He is the sire of Quilby listed as a stud male.



Lot 101 Glenhope Mighty M54

Certified male

Huacaya	Sex: CM	DOB: 5/5/2016	IAR: 226261	Colour: SW
---------	---------	---------------	-------------	------------

SIRE: Glenhope Griffin

GRAND SIRE: Chachani Mochica
GRAND DAM: Glenhope Elite

DAM: Glenhope Hoot ET

GRAND SIRE: Suncloud Talahasi
GRAND DAM: Glenhope Bellgenny

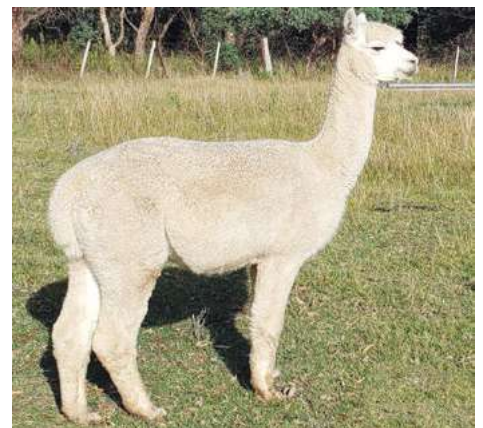
SSWt = skirted saddle weight

First Fleece:
FD 16.6 SD 4.3 CF 99%

Second Fleece:
FD 20.5 SD 3.0 CF 98.8%

Last Fleece 2020:
FD 24.7 Sd 4.4 CF 90.5% SSWt 2.0kg

Mighty has a star line up behind his breeding and his progeny and the results are evident in his progeny. He is still producing a beautiful quantity and quality of fleece as you can see in his fleece photos. His skin test which is available on Auctions Plus was also excellent. High density, soft with low primary fibres. High density of 68.7 and a secondary to primary ratio of 13.1.



Lot 102 **Grandeveerge Maverick** Certified male

Huacaya	Sex: CM	DOB: 15/2/2016	IAR: 207497	Colour: SW
---------	---------	----------------	-------------	------------

SIRE: **Glenhope Gibraltar**

GRAND SIRE: Suncloud Talahasi
GRAND DAM: Glenhope Eccles

DAM: **Grandeveerge Hayley**

GRAND SIRE: Halycon Humdinger
GRAND DAM: Bonny Belle Karlena

SSWt = skirted saddle weight

First Fleece:

-

Second Fleece:

-

Last Fleece 2020:

FD 28.9 SD 5.3 CF 63.6 SSWt 2.0kg

Maverick was a male agisted at our farm. When his fleece was shorn I was very disappointed that it was not one that belonged to us. Fortunately we were able to purchase him and he has not disappointed in what he has done over his progeny. Also a great genetic mix in his background. He was also skin tested with high density and good length.



Lot 103 **Wyndarra Indigo Jones** Certified male

Huacaya	Sex: CM	DOB: 30/11/2013	IAR: 188760	Colour: SW
---------	---------	-----------------	-------------	------------

SIRE: **Wyndarra Designer**

GRAND SIRE: Illawarra Yucatan
GRAND DAM: Benleigh Olympic Dream

DAM: **Mononglo Fandango**

GRAND SIRE: Marriglen Mars
GRAND DAM: Mononglo Capriccio

SSWt = skirted saddle weight

First Fleece:

-

Second Fleece:

-

Last Fleece 2020:

FD 26.8 SD 5.2 CF 79.7% SSWt 2.0kg

Indigo Jones was selected from the Wyndarra herd for his amazing bone and incredible softness of fleece. Both traits are evident in his progeny with their silky faces and heavy bone. He has deep crimp and good density. He has produced some stand out progeny and we are now seeing the results in their crias this year. His skin test showed high density and low primary fibre. He has a good mix of Accoyo Challenger in his background. It is exciting to see the ongoing development.



Lot 104 **Glenhope Griffin G25** Certified male

Huacaya	Sex: CM	DOB: 2/5/2011	IAR: 177717	Colour: SW
---------	---------	---------------	-------------	------------

SIRE: **Chachani Mochica**

GRAND SIRE: Windsong Valley Iceman
GRAND DAM: Barrabinda Joeys Gold

DAM: **Glenhope Elite**

GRAND SIRE: Marriglen Delta
GRAND DAM: Glenhope Asella

SSWt = skirted saddle weight

First Fleece:

FD 15.9 SD 4.0 CF 100%

Second Fleece: -

Last Fleece 2020:

FD 29.0 SD 5.2 CF 65.7 SSWt 1.4kg

Glenhope Griffin has a soft, lustrous fleece which carries across his body. He produces a large volume of fleece. His neck fleece in 2012 was 95mm and with good crimp definition. As an Intermediate male he won Supreme at the New England Alpaca Show in 2012 and his 2012 fleece was Champion Intermediate fleece at the Sydney Royal in 2013. The same fleece was Reserve Champion at the 2013 National Show. As a senior male Griffin won the championship in 2014 and mature male champion in 2017 at the New England Alpaca Show. He has high fertility and commenced working at 19 months.





Bron & David Mitchell
59 Red Gum Lane, Armidale NSW 2350

Bron: **0422 969 310** | David: **0434 832 001**

www.glenhopealpacas.com.au | www.glenhopeco.com

Wilson Beer, Nutrien: **0428 505 520**

