

AA ABSOLUTE ANGUS

AUTUMN BULL SALE



**ON-PROPERTY |
WEDNESDAY 7 APRIL 2021 | 1PM
45 | ANGUS BULLS**

EXCELLENCE IN GENETICS



LOT 1

ABSOLUTE QUINN Q445



LOT 3

ABSOLUTE QUADRANT Q436



AUTUMN BULL SALE

WEDNESDAY 7 APRIL 2021 | 1PM

45 | 18 MONTH BULLS

ON PROPERTY | AUCTION LIVE FROM 1PM
INSPECTION FROM 10AM
AUCTION INTERFACED LIVE ON AUCTIONSPLUS



ANTHONY PISA

0447 000 758

E: ANTHONY.PISA@HOTMAIL.COM

ABSOLUTEANGUS.COM.AU



Ross Milne
0408 057 558

Ryan Bajada
0435 411 536



David Setches
0409 443 473

rma network Accredited Member

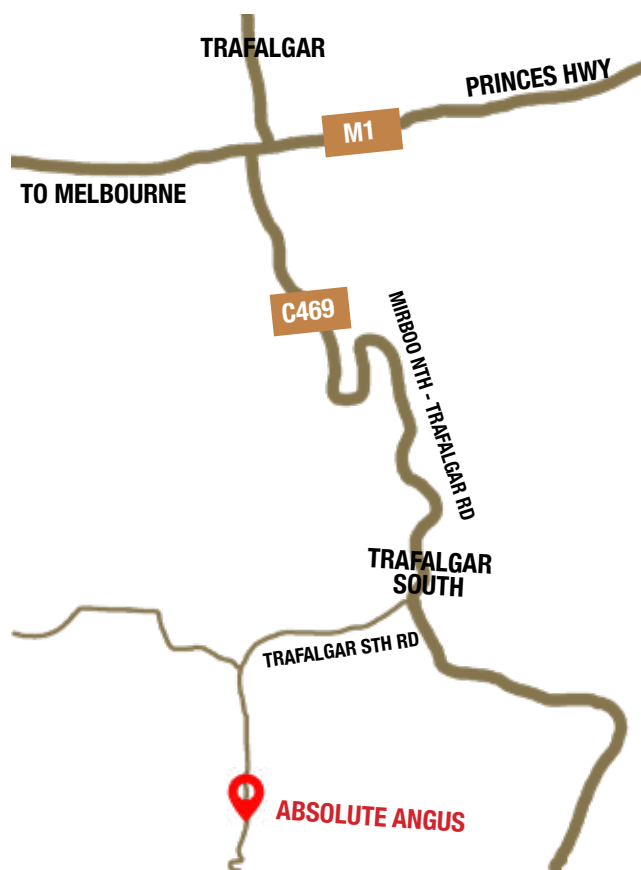


AuctionsPlus

Buy and Sell stock nationally

Unable to join us in Trafalgar South
on Sale Day?

Watch, listen & purchase online.
register on Auctionsplus.com.au



SALE LOCATION | 292 Trafalgar South Rd
Trafalgar South, Victoria



PRE-SALE INSPECTION

The bulls are available for pre-sale inspection from 10am on sale day or prior inspections are welcome by private appointment. Sale Day will run in line with current Covid-19 guidelines.

SALE BULL - LOT 5

Information on Lot 5, Absolute Quasim Q433 will be available in a Supplementary Sheet on Sale Day. Absolute Quasim Q433 is an Sydgen Enhance son. Enhance is a sire who brings a lot of style to the Angus breed. Q433's dam is Landfall Flock J145 - a phenotypically stand out cow in the Absolute herd, breeding quality, definition & Q433 represents that. A great heifer bull.

AUCTIONSPLUS

The auction is fully interfaced live with AuctionsPlus for those interested buyers who can't make the sale. Please register your interest early to avoid disappointment.

HEALTH OF SALE CATTLE

All bulls offered in this Sale have been vaccinated with Ultravac 7 in 1, Vibriosis, Pesti Guard (BVD), and drenched prior to the sale.

ABSOLUTE ANGUS GUARANTEE

All sale bulls have been DNA Tested and Sire Verified, and independently structurally assessed by Liam Cardile, Beef Excel, to maximise the quality of stock on offer at the sale.

All Sale Bulls have also been independently inspected by Dick Whale, Breeder Genetics. Dick will be available on Sale Day if you would like any further information on any of the sale bulls.

Genomics information for all sale bulls will also be available on Sale Day.

To the best of our knowledge the bulls offered are in sound working order as at the time of sale. If a bull becomes infertile or breaks down due to reasons other than injury or misadventure, at any time in the next 12 months, Absolute Angus will: 1. provide you with a mutually agreeable replacement if available, or 2. We will issue a refund equal to the purchase value minus any salvage value or 3. Issue you with a credit equal to purchase price minus salvage value to purchase an animal from Absolute Angus within a 2 year timeframe.

Please note in some cases a veterinary report may be requested. Normal care and good husbandry practices must be observed as replacement or a credit is not available if a bull is simply injured or dies for any other reason. The guarantee is for the value of the bull without interest, costs or damages.

INSURANCE

We recommend you insure animals against injury, for transit and potential loss of use in the first joining season. Please ensure bulls are insured at the fall of the hammer as our insurance does not cover injury of bulls in transit. An insurance service will be available on sale day.

SAFETY

All sale bulls and heifers are generally quiet to handle under normal conditions however care must be taken during sale day as crowd pressure may change their behaviour. Please use caution and be alert. All visitors enter the cattle pens at their own risk. Children are not permitted to enter the bull or heifer pens.

CATERING

Complementary refreshments will be provided on the day.

DELIVERY OF SALE BULLS & HEIFERS

Absolute Angus provide a free delivery service within a 100 kilometre radius to local saleyards from the sale location. Further travel distances can be arranged by negotiation. Please fill out your delivery and insurance instructions.

OUTSIDE AGENT REBATE

A 2% rebate is paid to outside agents, introducing a buyer, and settling within 7 days.

DISCLAIMER

Absolute Angus has taken great care in ensuring the information provided in this catalogue is accurate however we take no responsibility for the accuracy and/or interpretation of the information in this sale catalogue.

WELCOME



Welcome to the first Absolute Angus Autumn Bull Sale.

It pleases me to be able to hold both an Autumn and Spring bull sale in 2021. With strategic planning and hard work, everything has pulled together well for this sale. A very big thank you to my clients and agents for your support in helping make this happen.

We have had some exciting developments here at the stud over the past 12 months and with cattle prices at an all-time high the cattle industry has never been in better shape. This is great news for beef producers around the country.

Feedback from our commercial clients who purchased our 2020 sale bulls report those bulls have grown out well and doing what all good bulls should be doing - producing quality progeny for their herds.

Angus genetics sits at the heart of our breeding philosophy. We seek out the best of the best the Angus world has to offer, and continually strive to improve the genetics of our herds where we maintain an ongoing focus on the type of data which we believe delivers long term profitability for commercial and stud breeders.

We continue to source semen and embryos worldwide from elite Angus bulls; hard-working bulls, and females for commercial beef production as this is the mainstay of the Absolute Angus operation.

Last year 2020 we added sires of the highest calibre in the country, Landfall Leonardo P145, Landfall Prominent P317 and Te Mania Prime P586 to our already strong gene pool. This ensures the stud continues to focus on producing progeny with the important traits we value in the breed.

Landfall Leonardo P145 who has well-balanced figures sitting in the Top 1% of the breed for low birth, grass fed growth rates, milk, carcass and IMF in both rib and rump; brings longevity, productivity, and good doing ability genes to our stud herd. And we must not forget Landfall NewGround N90 who has proven to be the Sire of Sires. A truly magnificent stud sire, we could not ask for a better bull. He is a magnificent bull to look at and has the high data to go with it. NewGround N90 has it all.

It is pleasing to highlight that the Absolute female herd is getting stronger each year with more depth, resilience and geographical adaptability. The progeny on offer in our Autumn Bull Sale are a clear example of our breeding focus and investment we have made in using leading Angus bloodlines in both our stud dams and sires.

Using a balance of AI sires and our own stud sires to back them up, Sydgen Enhance has 18 sons on offer in this sale, the first progeny of this bull available in Australia. A great bull, he has brought growth and thickness to the herd along with carcass growth and leading breed traits of high rib and rump figures.

With an impressive 12 sons in the sale, LD Capitalist 316 is continuing to breed well in the stud. He is an all-purpose sire whose progeny will complement any herd. His sons present well with balanced EBV's with highlights in calving ease, good feet, carcass weight, EMA and rib and rump.

Baldrige Command is demonstrating to be one of the elite bulls of the Angus breed, phenotypically stunning and the data to go with it. He is producing high quality data driven progeny. Other noted sires are Ardrossan Edmond K165, a Rennyale Edmund E11 son, his structure is simply outstanding and along with his sons he has produced outstanding females.

A great all-round sire, Absolute M110 has great power producing quality calves. A son of Landfall Westward J169 with his dam by Aryvale Bartel E7, M110 progeny has a lot to offer.

Buyers looking to improve their herds with ready-to-work bulls who present with leading traits such as calving ease, growth, fertility, carcass weight and fat cover, both rib and rump, will have a range of bulls to choose from on Sale day.

Working alongside the Absolute Angus team is a high calibre team of livestock professionals including Elders Stud Stock, Alex Scott & Staff and Outriders Media. Their contribution and support ensures the ongoing and longer term development of the Absolute Angus stud.

We look forward to catching up with you on sale day and thank you for your ongoing support and interest in Absolute Angus.

Best Regards

Anthony



EXCELLENCE IN GENETICS



LANDFALL NEW GROUND N90



**Our group of elite stud sires.
Genetic firepower suitable for a range of herds.**



TE MANIA PRIME P586
Prime P586 - purchased in September 2020 for \$20,000.



LANDFALL NEW GROUND N90 - SIRE OF SIRES
New Ground N90 - purchased in March 2019 in partnership with ABS for record Tasmanian Angus price of \$75,000.



LANDFALL LEONARDO P145 - ONE TO WATCH
Leonardo P145 - purchased in March 2020 for the top price of \$33,000.



LANDFALL PROMINENT P317
Prominent P317 - purchased in September 2020 for \$30,000

2021 AUTUMN SALE BULLS INCLUDE SONS OF FEATURE SIRES - SYDGEN ENHANCE, LD CAPITALIST 316, BALDRIDGE COMMAND C036 & ARDROSSAN EDMUND K165.

We continue to invest in the best bulls the industry has to offer with the purchase of Landfall Prominent P317, Landfall Leonardo P145, and Te Mania Prime P586 in 2020.

Progeny of these exceptional sires superior genetics will be on offer at future bull sales.

Acquiring & investing in specially selected pedigree sires & females with genetic depth & the right performance data is paying dividends & supports our unique breeding program's emphasise on phenotype & data.

Bulls used this year for joining:

- **Landfall New Ground N90 - joined to P heifers sired by LD Capitalist 315, Gdar Regulator 364, EF Complement and Thomas Up River.**
- **Landfall Leonardo P145 - joined to Q heifers by LD Capitalist 315, Sydgen Enhance & Baldrige Command.**
- **Landfall Prominent P317 - joined to Thomas Up River & EF Complement daughters.**
- **Te Mania Prime P586 - joined to Q-Heifers by Ardrossan Edmund K165**
- **Sitz Stellar 726D - Calves are now on the ground.**



Our specialised ET program is introducing new genetics into our stud herds with progeny expected from these leading sires in the coming year.

- **GB Fireball 362**
- **Baldrige Beast Mode B07**
- **Murdeduke Quarter Back Q011**
- **SAV America**

WE WELCOME ALL ENQUIRIES TO PURCHASE BULLS & COMMERCIAL HEIFERS AS WE BREED WITH THE COMMERCIAL & REGISTERED BREEDER IN MIND.



Reference Sire ABSOLUTE M110^{SV} HRWM110

Date of Birth: 06/09/2016 Register: HBR Mating Type: Natural AMFU,CAFU,DD4%,NHFU

WERNER WESTWARD 357 # AYRVALE BARTEL E7^{PV}
SIRE: TFAJ169 LANDFALL WESTWARD J169^{SV} **DAM: VLYH1095 LAWSONS BARTEL E7 H1095 #**
 LANDFALL E545 # LAWSONS TANK D977 #

TACE	March 2021 TransTasman Angus Cattle Evaluation																		Traits Observed: BWT, Genomics	
	CEDir	CEDtrs	GL	BW	200	400	600	MCW	Milk	SS	DTC	CWT	EMA	Rib	P8	RBY	IMF	NFI-F	Doc	
EBV	+4.7	+5.3	-4.3	+3.7	+49	+85	+107	+80	+19	+2.5	-8.8	+69	+5.3	+2.2	+1.2	-0.9	+3.1	+0.33	-	
Acc	45%	38%	70%	76%	72%	70%	71%	68%	61%	64%	41%	66%	61%	66%	63%	63%	61%	53%	-	
Perc	34	27	53	36	46	59	67	82	31	25	3	35	59	4	12	93	14	71	-	

Statistics: Number of Herds: 1, Prog Analysed: 10, Genomic Prog: 0

Selection Indexes							
Angus Breeding		Domestic		Heavy Grain		Heavy Grass	
\$136	22	\$120	26	\$151	22	\$126	27

Reference Sire ARDROSSAN EDMUND K165^{PV} NAQK165

Date of Birth: 28/08/2014 Register: HBR Mating Type: AI AMFU,CAFU,DDFU,NHFU

BOOROOMOOKA UNDERTAKEN Y145^{PV} LEACHMAN RIGHT TIME^{SV}
SIRE: NORE11 RENNYLEA EDMUND E11^{PV} **DAM: NAQD204 ARDROSSAN BLACKBIRD D204^{SV}**
 LAWSONS HENRY VIII Y5^{SV} VERMILION BLACKBIRD 3525 #

TACE	March 2021 TransTasman Angus Cattle Evaluation																		Traits Observed: GL, CE, BWT, 400WT	
	CEDir	CEDtrs	GL	BW	200	400	600	MCW	Milk	SS	DTC	CWT	EMA	Rib	P8	RBY	IMF	NFI-F	Doc	
EBV	+5.3	+3.0	-5.1	+3.3	+43	+73	+96	+75	+17	+1.6	-7.7	+60	+6.0	+0.9	-0.2	+0.2	+2.6	+0.41	-	
Acc	69%	60%	87%	89%	82%	80%	77%	74%	67%	71%	56%	72%	69%	73%	71%	70%	69%	61%	-	
Perc	29	49	39	27	79	90	88	89	53	66	8	69	46	20	42	64	26	79	-	

Statistics: Number of Herds: 1, Prog Analysed: 56, Genomic Prog: 0

Selection Indexes							
Angus Breeding		Domestic		Heavy Grain		Heavy Grass	
\$124	44	\$112	51	\$135	42	\$116	53

Reference Sire BALDRIDGE COMMAND C036^{PV} USA18219911

Date of Birth: 13/01/2015 Register: HBR Mating Type: Natural AMF,CAF,DDF,NHF,DWF,MAF,MHF,OHF,

EF COMPLEMENT 8088^{PV} HOOVER DAM #
SIRE: USA17082311 EF COMMANDO 1366^{PV} **DAM: USA17770899 BALDRIDGE BLACKBIRD A030 #**
 RIVERBEND YOUNG LUCY W1470 # BALDRIDGE BLACKBIRD X89 #

TACE	March 2021 TransTasman Angus Cattle Evaluation																		Traits Observed: Genomics	
	CEDir	CEDtrs	GL	BW	200	400	600	MCW	Milk	SS	DTC	CWT	EMA	Rib	P8	RBY	IMF	NFI-F	Doc	
EBV	+10.4	+10.2	-7.7	+2.6	+60	+105	+136	+104	+21	+0.3	-0.6	+74	+12.5	-2.0	-2.5	+2.3	+2.5	+0.50	+16	
Acc	71%	50%	98%	98%	97%	97%	96%	92%	85%	95%	49%	85%	86%	87%	83%	81%	85%	66%	94%	
Perc	4	2	9	15	5	7	10	39	18	97	97	18	1	94	93	3	29	87	18	

Statistics: Number of Herds: 94, Prog Analysed: 870, Genomic Prog: 211

Selection Indexes							
Angus Breeding		Domestic		Heavy Grain		Heavy Grass	
\$152	5	\$141	1	\$165	11	\$148	2

Reference Sire HF TIGER 5T # CAN1402252

Date of Birth: 01/01/2007 Register: HBR Mating Type: Natural AMF,CAF,DDF,NHF,MAF

SANDY BAR ADVANTAGE 43M # TC FREEDOM 104 #
SIRE: CAN1274305 HF KODIAK 5R^{PV} **DAM: CAN1274314 HF ECHO 84R #**
 WILBAR RUBY 955N # HFDF ECHO 6N #

TACE	March 2021 TransTasman Angus Cattle Evaluation																		Traits Observed: Genomics	
	CEDir	CEDtrs	GL	BW	200	400	600	MCW	Milk	SS	DTC	CWT	EMA	Rib	P8	RBY	IMF	NFI-F	Doc	
EBV	+4.8	+6.6	-9.7	+3.6	+51	+92	+113	+104	+19	+2.0	-8.2	+73	+3.3	-0.5	+0.1	+1.4	+0.0	-0.88	+16	
Acc	87%	70%	98%	98%	98%	98%	98%	96%	97%	97%	71%	94%	93%	94%	93%	91%	91%	80%	91%	
Perc	33	17	2	34	35	34	53	40	28	46	5	22	88	62	34	15	99	1	18	

Statistics: Number of Herds: 102, Prog Analysed: 822, Genomic Prog: 77

Selection Indexes							
Angus Breeding		Domestic		Heavy Grain		Heavy Grass	
\$120	52	\$120	26	\$112	71	\$121	39



Reference Sire **LD CAPITALIST 316 PV** USA17666102

Date of Birth: 26/01/2013 Register: HBR Mating Type: Natural AMF,CAF,DDF,NHF,DWF,MAF,MHF,OHF,
 S A V FINAL ANSWER 0035 # C A FUTURE DIRECTION 5321 #
SIRE: USA16752262 CONNEALY CAPITALIST 028 # **DAM: USA14407230 LD DIXIE ERICA 2053 #**
 PRIDES PITA OF CONANGA 8821 # LD DIXIE ERICA OAR 0853 #

TACE	March 2021 TransTasman Angus Cattle Evaluation																			Traits Observed: Genomics	
	CEDir	CEDtrs	GL	BW	200	400	600	MCW	Milk	SS	DTC	CWT	EMA	Rib	P8	RBY	IMF	NFI-F	Doc		
EBV	+12.6	+10.9	-4.2	+2.0	+51	+92	+114	+84	+14	+1.3	-1.6	+74	+8.8	+0.7	-0.2	+0.2	+2.1	+0.41	-9		
Acc	87%	65%	99%	99%	98%	99%	99%	93%	89%	98%	55%	89%	90%	90%	86%	84%	88%	71%	98%		
Perc	1	1	55	8	33	34	50	77	76	78	92	19	12	24	42	64	43	79	90		

Statistics: Number of Herds: 172, Prog Analysed: 2638, Genomic Prog: 760

Selection Indexes							
Angus Breeding		Domestic		Heavy Grain		Heavy Grass	
\$123	46	\$122	21	\$124	56	\$125	29

Reference Sire **SYDGEN ENHANCE SV** USA18170041

Date of Birth: 27/01/2015 Register: HBR Mating Type: Natural AMF,CAF,DDF,NHF,DWF,MAF,MHF,OHF,
 SYDGEN GOOGOL # SYDGEN LIBERTY GA 8627 #
SIRE: USA17501893 SYDGEN EXCEED 3223 PV **DAM: USA17405676 SYDGEN RITA 2618 #**
 SYDGEN FOREVER LADY 1255 # FOX RUN RITA 9308 #

TACE	March 2021 TransTasman Angus Cattle Evaluation																			Traits Observed: Genomics	
	CEDir	CEDtrs	GL	BW	200	400	600	MCW	Milk	SS	DTC	CWT	EMA	Rib	P8	RBY	IMF	NFI-F	Doc		
EBV	+2.2	+1.8	-3.5	+3.3	+62	+109	+144	+111	+19	+2.6	-1.7	+78	+8.7	-2.4	-2.6	+1.3	+2.8	-0.62	+30		
Acc	77%	43%	99%	99%	98%	98%	96%	86%	81%	96%	44%	85%	87%	87%	83%	82%	86%	67%	95%		
Perc	53	60	67	27	4	4	5	27	30	21	92	10	13	97	94	18	21	1	2		

Statistics: Number of Herds: 57, Prog Analysed: 1171, Genomic Prog: 98

Selection Indexes							
Angus Breeding		Domestic		Heavy Grain		Heavy Grass	
\$147	9	\$132	5	\$164	11	\$141	5

Reference Sire **TE MANIA INFINITY 04 379 AB #** NZE04379

Date of Birth: 30/09/2004 Register: HBR Mating Type: Natural AMF,CAF,DDF,NHF
 B/R NEW DESIGN 036 # TE MANIA PRINCE 153-93 #
SIRE: VTMU3271 TE MANIA UNLIMITED U3271 # **DAM: NZE95102 TE MANIA 95102 #**
 TE MANIA LOWAN R426+96 # TE MANIA 92F006 AB #

TACE	March 2021 TransTasman Angus Cattle Evaluation																			Traits Observed: GL, BWT, 200WT, 400WT, 600WT, SC, Scan(EMA, Rib, Rump, IMF), Genomics	
	CEDir	CEDtrs	GL	BW	200	400	600	MCW	Milk	SS	DTC	CWT	EMA	Rib	P8	RBY	IMF	NFI-F	Doc		
EBV	-0.1	-7.1	-4.2	+2.4	+36	+74	+90	+79	+10	+2.9	-4.4	+45	+2.0	-1.8	+0.0	-1.2	+2.9	+0.98	+11		
Acc	98%	96%	99%	99%	99%	99%	99%	99%	99%	99%	96%	98%	98%	98%	98%	98%	98%	97%	99%		
Perc	68	98	55	12	96	89	93	84	95	13	56	97	96	92	37	96	19	99	34		

Statistics: Number of Herds: 267, Prog Analysed: 5042, Genomic Prog: 191

Selection Indexes							
Angus Breeding		Domestic		Heavy Grain		Heavy Grass	
\$92	90	\$93	92	\$101	81	\$88	95





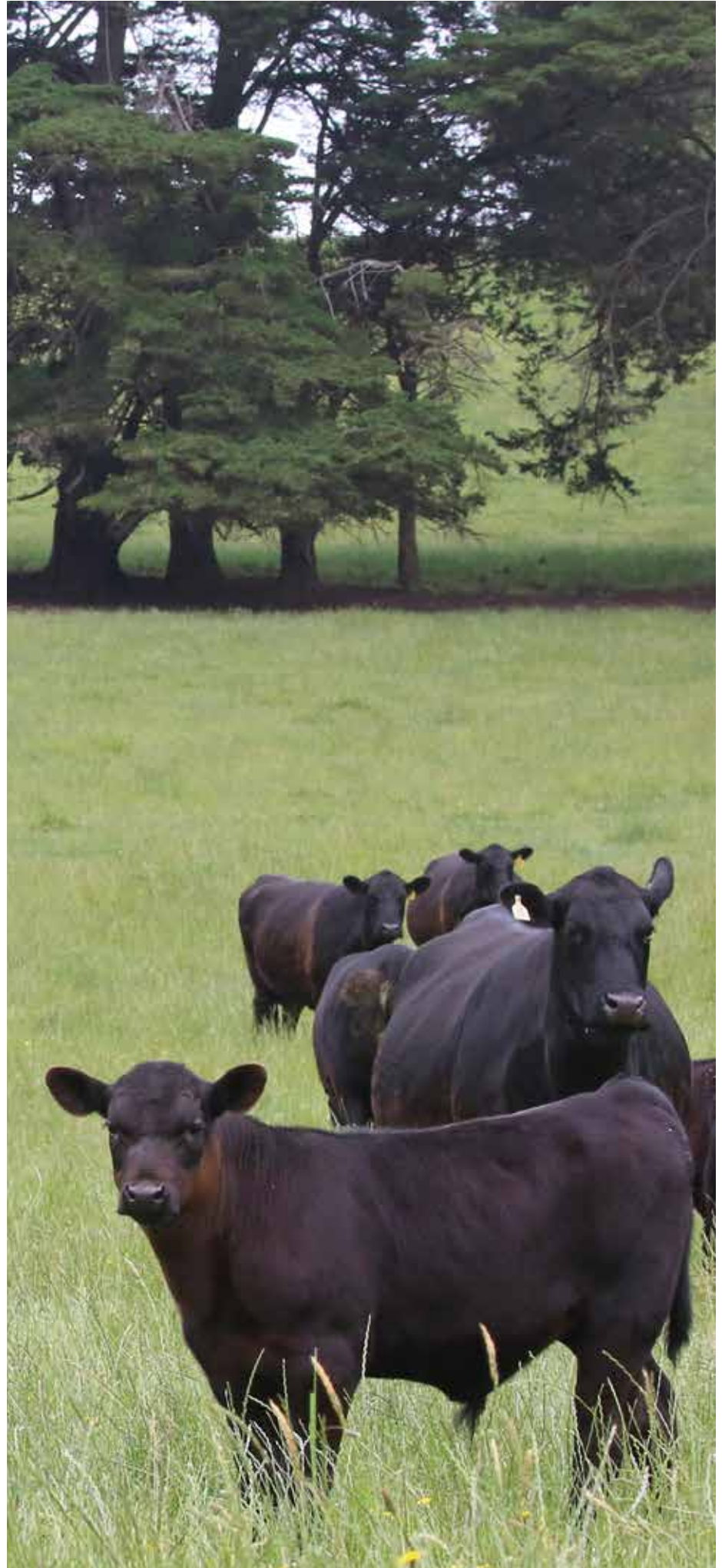
EBV Quick Reference for Absolute Angus Autumn Bull Sale

Animal Ident	Calving Ease				Birth				Growth				Fertility				Carcass				Other				Selection Indexes																				
	CED	CEM	GL	BW	200	400	600	MCW	Milk	SS	DC	CWT	EMA	Rib	Rump	RBV	IMF	NFI-F	Doc	ABI	DOM	GRN	GRS	CED	CEM	GL	BW	200	400	600	MCW	Milk	SS	DC	CWT	EMA	Rib	Rump	RBV	IMF	NFI-F	Doc	ABI	DOM	GRN
1	HRWQ445	+1.8	+1.2	-3.4	+3.6	+53	+96	+126	+96	+18	+1.8	-1.7	+69	+8.5	-1.9	-2.5	+1.6	+2.5	-0.23	-	\$132	\$124	\$145	\$128																					
2	HRWQ438	+0.8	+2.2	-4.0	+3.7	+52	+89	+116	+100	+16	+2.4	-3.8	+85	+5.6	-1.7	-2.3	+0.7	+2.8	-0.11	-	\$122	\$114	\$137	\$115																					
3	HRWQ436	+2.3	+2.1	-2.7	+4.1	+53	+98	+129	+109	+18	+2.6	-2.6	+69	+4.9	-1.6	-1.6	+0.4	+2.7	-0.14	-	\$129	\$118	\$144	\$123																					
4	HRWQ498	-2.4	+2.2	-1.0	+4.3	+50	+90	+118	+94	+14	+3.0	-4.0	+64	+6.8	-0.9	-1.2	+0.6	+2.5	+0.10	-	\$123	\$113	\$135	\$118																					
6	HRWQ441	+8.5	+7.5	-7.4	+2.1	+51	+90	+117	+82	+19	+1.2	-4.9	+70	+8.0	-0.9	-0.7	+0.6	+2.8	+0.03	-	\$142	\$128	\$155	\$135																					
7	HRWQ411	+0.7	-0.3	-3.3	+4.5	+54	+95	+127	+120	+15	+2.0	-2.2	+66	+4.8	-1.5	-1.9	+0.2	+2.6	-0.03	-	\$118	\$109	\$131	\$114																					
8	HRWQ420	+6.8	+4.3	-7.8	+2.8	+50	+89	+115	+91	+19	+2.2	-5.3	+68	+7.1	-0.5	-0.3	+0.5	+3.0	-0.08	-	\$139	\$125	\$155	\$131																					
9	HRWQ446	+3.1	+2.1	-3.0	+3.1	+53	+99	+128	+101	+20	+2.3	-3.3	+71	+7.0	-2.0	-2.2	+0.8	+2.5	-0.09	-	\$133	\$123	\$147	\$128																					
10	HRWQ448	+2.6	+2.9	-4.8	+3.4	+53	+94	+121	+94	+18	+1.8	-2.8	+75	+8.6	-1.4	-2.0	+1.1	+2.5	-0.07	-	\$130	\$122	\$141	\$126																					
11	HRWQ409	+4.9	+7.9	-2.0	+4.0	+54	+94	+124	+98	+18	+1.9	-2.1	+68	+6.8	-1.2	-1.9	+1.0	+1.9	-0.35	-	\$125	\$120	\$131	\$125																					
12	HRWQ418	+9.6	+6.3	-5.9	+3.1	+47	+86	+111	+91	+14	+0.7	-4.6	+72	+9.3	+0.4	-1.1	+1.0	+2.5	+0.29	-	\$136	\$125	\$149	\$129																					
13	HRWQ494	+9.0	+6.4	-3.5	+2.9	+47	+84	+109	+84	+16	+1.3	-3.9	+73	+9.8	+0.4	-0.7	+0.4	+3.0	+0.48	-	\$133	\$122	\$147	\$127																					
14	HRWQ496	+7.4	+5.0	-2.6	+3.1	+49	+89	+113	+93	+16	+1.9	-3.5	+69	+4.5	+0.8	+0.3	-0.3	+1.7	+0.15	-	\$113	\$111	\$112	\$114																					
15	HRWQ499	+6.6	+4.4	-4.1	+3.9	+53	+91	+118	+88	+16	+1.1	-3.1	+75	+7.1	-0.3	-1.2	+0.4	+2.5	+0.17	-	\$128	\$120	\$136	\$124																					
16	HRWQ439	+3.5	+0.3	-7.9	+3.4	+51	+92	+123	+99	+17	+2.8	-2.7	+70	+8.1	-1.8	-2.3	+1.6	+2.3	-0.19	-	\$131	\$121	\$144	\$127																					
17	HRWQ424	+0.2	+1.2	-3.2	+3.6	+51	+93	+123	+106	+18	+2.3	-2.9	+67	+3.7	-1.2	-1.5	+0.1	+2.6	-0.08	-	\$118	\$110	\$130	\$113																					
18	HRWQ431	-0.1	-0.6	-2.0	+4.1	+52	+97	+125	+99	+16	+2.9	-3.8	+69	+6.2	-1.3	-1.5	+0.5	+2.2	-0.10	-	\$125	\$116	\$134	\$121																					
19	HRWQ413	+0.7	+0.2	-3.3	+3.9	+52	+89	+117	+98	+12	+2.4	-2.3	+63	+5.9	+0.6	+0.8	-0.3	+2.1	+0.12	-	\$111	\$107	\$112	\$112																					
20	HRWQ444	+9.6	+10.2	-7.1	+2.9	+47	+85	+109	+98	+13	+1.1	-3.5	+67	+5.3	+0.6	-0.2	-0.6	+2.4	+0.31	-	\$117	\$112	\$123	\$115																					
21	HRWQ410	+1.2	-1.1	-2.6	+3.8	+58	+104	+133	+110	+16	+3.3	-2.9	+73	+8.5	-2.0	-2.1	+1.0	+2.8	+0.09	-	\$138	\$127	\$154	\$131																					
22	HRWQ407	+11.9	+8.1	-7.8	+1.7	+47	+82	+101	+79	+17	+1.2	-4.1	+64	+7.6	+0.5	-0.4	+0.5	+2.0	+0.40	-	\$117	\$116	\$118	\$116																					
23	HRWQ489	+1.2	+3.8	-4.7	+5.0	+59	+104	+136	+118	+20	+1.3	-2.6	+75	+7.8	-1.6	-1.9	+2.0	+1.6	-0.05	-	\$135	\$127	\$142	\$132																					
24	HRWQ404	-0.1	-3.0	-3.3	+3.7	+52	+91	+119	+96	+17	+1.9	-3.6	+63	+6.9	-1.7	-1.5	+1.4	+2.1	-0.38	-	\$123	\$116	\$131	\$119																					
25	HRWQ425	+4.5	+3.6	-7.2	+2.8	+48	+88	+118	+98	+16	+1.0	-2.9	+68	+9.5	-1.7	-2.6	+1.8	+2.1	-0.32	-	\$132	\$122	\$143	\$127																					
26	HRWQ483	+8.2	+4.9	-3.8	+3.0	+55	+96	+120	+85	+22	+1.3	-2.7	+65	+6.9	+0.1	+0.2	+0.7	+2.3	+0.45	-	\$130	\$126	\$135	\$129																					
27	HRWQ474	+5.7	+7.9	-3.9	+3.5	+56	+100	+130	+104	+20	+1.3	-2.5	+71	+8.8	-1.4	-1.2	+1.0	+2.4	+0.46	-	\$140	\$129	\$151	\$136																					
28	HRWQ975	+4.2	+7.2	-6.5	+3.4	+43	+80	+100	+88	+18	+1.7	-5.1	+63	+2.9	+0.2	+0.5	+0.1	+1.0	-0.32	-	\$102	\$105	\$96	\$104																					
29	HRWQ978	+2.0	+1.6	-3.7	+2.7	+35	+71	+88	+75	+13	+2.1	-3.2	+49	+2.2	-0.5	+0.5	-1.2	+2.5	+0.63	-	\$89	\$93	\$92	\$89																					
30	HRWQ471	+9.3	+6.0	-3.7	+2.0	+51	+90	+112	+87	+20	+1.3	-2.5	+65	+10.5	-1.1	-1.6	+1.8	+1.9	+0.41	-	\$127	\$126	\$131	\$126																					
31	HRWQ359	+4.0	+3.2	-4.7	+3.3	+42	+74	+96	+77	+16	+2.0	-5.9	+59	+5.0	+0.8	+0.3	-0.4	+2.1	+0.31	-	\$108	\$104	\$111	\$106																					
32	HRWQ467	+7.1	+3.3	-4.2	+3.3	+52	+92	+117	+85	+23	+2.7	-6.2	+67	+5.3	+1.0	+0.4	-0.3	+2.7	+0.24	-	\$133	\$121	\$144	\$127																					
33	HRWQ367	+5.1	+2.5	-5.0	+3.8	+43	+75	+98	+83	+16	+1.3	-7.1	+60	+5.0	+1.4	+0.8	-0.8	+2.8	+0.52	-	\$119	\$107	\$130	\$112																					
34	HRWQ389	+1.4	-3.4	-3.3	+3.7	+41	+70	+94	+73	+16	+1.9	-7.2	+64	+7.5	+0.1	-0.9	+0.9	+2.9	+0.32	-	\$123	\$109	\$139	\$113																					
35	HRWQ475	+2.6	+5.6	-4.3	+4.5	+52	+92	+120	+100	+19	+1.6	-5.8	+73	+5.6	+0.9	+0.3	-0.7	+2.8	+0.42	-	\$131	\$116	\$143	\$124																					



EBV Quick Reference for Absolute Angus Autumn Bull Sale

Animal Ident	Calving Ease			Birth			Growth				Fertility				Carcass				Other				Selection Indexes			
	CED	CEM	GL	GL	BW	200	400	600	MCW	Milk	SS	DC	CWT	EMA	Rib	Rump	RBV	IMF	NFI-F	Doc	ABI	DOM	GRN	GRS		
36 HRWQ374	+5.1	+1.2	-5.3	+3.3	+4.0	+74	+95	+86	+15	+2.4	-5.5	+61	+8.0	+0.1	-0.9	+0.7	+2.2	+0.61	-	\$115	\$109	\$123	\$110			
37 HRWQ361	+3.2	+0.4	-3.7	+4.0	+42	+74	+97	+70	+19	+2.0	-5.8	+58	+7.3	+0.2	-0.2	+0.8	+2.0	+0.38	-	\$116	\$109	\$120	\$112			
38 HRWQ427	+2.0	+1.5	-1.3	+4.1	+54	+98	+130	+91	+20	+3.2	-3.2	+74	+8.1	-2.4	-3.2	+1.6	+2.2	-0.22	-	\$136	\$125	\$148	\$131			
39 HRWQ403	-0.8	-0.4	-2.5	+4.6	+55	+97	+130	+111	+17	+2.2	-3.5	+71	+5.4	-1.5	-1.9	+1.2	+1.6	-0.47	-	\$122	\$114	\$128	\$120			
40 HRWQ394	+3.9	+4.1	-5.4	+3.8	+44	+77	+102	+79	+18	+1.2	-4.3	+63	+5.5	-0.4	-1.6	+0.4	+2.8	+0.20	-	\$117	\$110	\$130	\$111			
41 HRWQ370	+3.1	+1.7	-6.0	+3.6	+42	+77	+103	+91	+15	+2.1	-6.2	+60	+3.5	-0.6	-0.5	-0.1	+2.3	+0.37	-	\$115	\$105	\$125	\$109			
	+2.0	+2.5	-4.5	+4.2	+48	+87	+114	+99	+17	+2.0	-4.7	+65	+6.0	-0.1	-0.4	+0.5	+2.0	+0.18	+6	+119	+112	+127	+116			





LOT 4

ABSOLUTE QUINLAN Q498



LOT 5

ABSOLUTE QUASIM Q433



LOT 1 ABSOLUTE QUINN Q445 # HRWQ445

Date of Birth: 30/09/2019 Register: HBR Mating Type: AI AMFU,CAFU,DDFU,NHFU
 SYDGEN EXCEED 3223^{PV} B/R NEW DAY 454 #
 SIRE: USA18170041 SYDGEN ENHANCE^{SV} DAM: NWPJ102 WATTLETOP J102 #
 SYDGEN RITA 2618 # WATTLETOP USUAL F308 #

TACE	Mid March 2021 TransTasman Angus Cattle Evaluation											Traits Observed: GL, BWT, 200WT, SC, Scan(EMA, Rib, Rump, IMF)							
	CEDir	CEDtrs	GL	BW	200	400	600	MCW	Milk	SS	DTC	CWT	EMA	Rib	P8	RBY	IMF	NFI-F	Doc
EBV	+1.8	+1.2	-3.4	+3.6	+53	+96	+126	+96	+18	+1.8	-1.7	+69	+8.5	-1.9	-2.5	+1.6	+2.5	-0.23	-
Acc	56%	39%	85%	74%	69%	67%	67%	62%	57%	73%	35%	59%	61%	62%	62%	58%	58%	48%	-
Perc	56	65	69	34	24	23	23	55	42	56	92	35	14	93	93	11	29	9	-

Notes: Strong bull to start the sale. His Dam Wattletop J102 is a prominent cow in the absolute herd with high fertility, AI on all 6 joinings and never failed a Quality calf. Q445 is her first bull calf and a son of Sydgen Enhance. He has a great pedigree going back to B/R New day 454. Great fertility structure a well balanced Bull.

Selection Indexes							
Angus Breeding		Domestic		Heavy Grain		Heavy Grass	
\$132	28	\$124	16	\$145	29	\$128	23

Purchaser:

\$

LOT 2 ABSOLUTE QUINTON Q438 # HRWQ438

Date of Birth: 04/10/2019 Register: HBR Mating Type: AI AMFU,CAFU,DD9%,NHFU
 SYDGEN EXCEED 3223^{PV} TEHAMA SCHWARZENEGGER N600 #
 SIRE: USA18170041 SYDGEN ENHANCE^{SV} DAM: VLYD1383 LAWSONS SCHWARNEGGER D1383 #
 SYDGEN RITA 2618 # YTHANBRAE NEW DESIGN 036 V995 #

TACE	Mid March 2021 TransTasman Angus Cattle Evaluation											Traits Observed: GL, BWT, 200WT, SC, Scan(EMA, Rib, Rump, IMF)							
	CEDir	CEDtrs	GL	BW	200	400	600	MCW	Milk	SS	DTC	CWT	EMA	Rib	P8	RBY	IMF	NFI-F	Doc
EBV	+0.8	+2.2	-4.0	+3.7	+52	+89	+116	+100	+16	+2.4	-3.8	+65	+5.6	-1.7	-2.3	+0.7	+2.8	-0.11	-
Acc	56%	39%	85%	73%	68%	66%	65%	60%	55%	73%	35%	58%	60%	60%	60%	57%	57%	47%	-
Perc	63	57	58	36	30	43	45	47	61	28	66	51	53	90	91	41	21	17	-

Notes: Well balanced bull out of a great cow lawson Schwarnegger D1383. A tough bull and has plenty to offer in growth structure and fertility. Good for heifers.

Selection Indexes							
Angus Breeding		Domestic		Heavy Grain		Heavy Grass	
\$122	48	\$114	44	\$137	39	\$115	55

Purchaser:

\$

LOT 3 ABSOLUTE QUADRANT Q436 # HRWQ436

Date of Birth: 01/10/2019 Register: HBR Mating Type: AI AMFU,CAFU,DDFU,NHFU
 SYDGEN EXCEED 3223^{PV} LANDFALL EVERLAST G168^{SV}
 SIRE: USA18170041 SYDGEN ENHANCE^{SV} DAM: TFAJ364 LANDFALL ELSA J364 #
 SYDGEN RITA 2618 # LANDFALL ELSA G728 #

TACE	Mid March 2021 TransTasman Angus Cattle Evaluation											Traits Observed: GL, BWT, 200WT, SC, Scan(EMA, Rib, Rump, IMF)							
	CEDir	CEDtrs	GL	BW	200	400	600	MCW	Milk	SS	DTC	CWT	EMA	Rib	P8	RBY	IMF	NFI-F	Doc
EBV	+2.3	+2.1	-2.7	+4.1	+53	+98	+129	+109	+18	+2.6	-2.6	+69	+4.9	-1.6	-1.6	+0.4	+2.7	-0.14	-
Acc	55%	37%	84%	73%	68%	66%	66%	61%	53%	72%	33%	57%	59%	59%	60%	56%	56%	45%	-
Perc	52	57	79	46	24	18	18	31	36	21	84	34	66	89	80	54	24	15	-

Notes: A great bull he has depth style and plenty of eye appeal. He is by Sydgen Enhance a true indication of what the Enhance blood line will bring to your herd. Power, Growth,fertility and structure. His Dam Landfall Elsa J364 is a great mother and a asset to my herd. Q436 is good for heifers.

Selection Indexes							
Angus Breeding		Domestic		Heavy Grain		Heavy Grass	
\$129	34	\$118	32	\$144	30	\$123	34

Purchaser:

\$

LOT 4 ABSOLUTE QUINLAN Q498 # HRWQ498

Date of Birth: 03/10/2019 Register: HBR Mating Type: AI AMFU,CAFU,DDFU,NHFU
 SYDGEN EXCEED 3223^{PV} KENNY'S CREEK EDGELL E52^{PV}
 SIRE: USA18170041 SYDGEN ENHANCE^{SV} DAM: NDIJ361 KENNY'S CREEK FINKS PRIDE J361 #
 SYDGEN RITA 2618 # KENNY'S CREEK FINKS PRIDE E148 #

TACE	Mid March 2021 TransTasman Angus Cattle Evaluation											Traits Observed: GL, BWT, 200WT, SC, Scan(EMA, Rib, Rump, IMF)							
	CEDir	CEDtrs	GL	BW	200	400	600	MCW	Milk	SS	DTC	CWT	EMA	Rib	P8	RBY	IMF	NFI-F	Doc
EBV	-2.4	+2.2	-1.0	+4.3	+50	+90	+118	+94	+14	+3.0	-4.0	+64	+6.8	-0.9	-1.2	+0.6	+2.5	+0.10	-
Acc	54%	36%	84%	73%	68%	66%	66%	61%	54%	72%	33%	57%	59%	60%	60%	56%	56%	45%	-
Perc	81	57	94	52	39	39	40	59	72	11	63	53	33	74	71	45	29	40	-

Notes: Another Enhance bull. You can start seeing the style of Enhance leaving his mark just pure quality. Q498 is an essay moving bull with lots of attributes. Dam is Kennys Creek Finks Pride J361 a great cow with a great pedigree. Good for heifers.

Selection Indexes							
Angus Breeding		Domestic		Heavy Grain		Heavy Grass	
\$123	46	\$113	48	\$135	41	\$118	47

Purchaser:

\$

LOT 6

ABSOLUTE QURAN Q441

HRWQ441

Date of Birth: 22/09/2019 Register: HBR Mating Type: AI AMFU,CAFU,DD19%,NHFU
 SYDGEN EXCEED 3223^{PV} AYRVALE BARTEL E7^{PV}
 SIRE: USA18170041 SYDGEN ENHANCE^{SV} DAM: VLYH1099 LAWSONS BARTEL E7 H1099 #
 SYDGEN RITA 2618 # LAWSONS SWAGMAN D25 #

TACE	Mid March 2021 TransTasman Angus Cattle Evaluation											Traits Observed: GL, BWT, 200WT, SC, Scan(EMA, Rib, Rump, IMF)							
	CEDir	CEDtrs	GL	BW	200	400	600	MCW	Milk	SS	DTC	CWT	EMA	Rib	P8	RBY	IMF	NFI-F	Doc
EBV	+8.5	+7.5	-7.4	+2.1	+51	+90	+117	+82	+19	+1.2	-4.9	+70	+8.0	-0.9	-0.7	+0.6	+2.8	+0.03	-
Acc	56%	40%	85%	73%	68%	66%	65%	61%	56%	73%	37%	59%	60%	61%	61%	58%	58%	49%	-
Perc	10	11	11	9	37	40	44	81	32	82	46	32	18	74	57	45	21	32	-

Notes: A bull by Enhance with well balanced figures a all rounder with good growth and calving ease. A great bull for heifers.

Selection Indexes							
Angus Breeding	Domestic		Heavy Grain		Heavy Grass		
\$142	14	\$128	10	\$155	18	\$135	11

Purchaser:

\$

LOT 7

ABSOLUTE QUALITY Q411

HRWQ411

Date of Birth: 28/09/2019 Register: HBR Mating Type: AI AMFU,CAFU,DDFU,NHFU
 SYDGEN EXCEED 3223^{PV} LANDFALL EVERLAST D66^{SV}
 SIRE: USA18170041 SYDGEN ENHANCE^{SV} DAM: TFAJ642 LANDFALL ARCHER J642 #
 SYDGEN RITA 2618 # LANDFALL ARCHER E632 #

TACE	Mid March 2021 TransTasman Angus Cattle Evaluation											Traits Observed: BWT, 200WT, SC, Scan(EMA, Rib, Rump, IMF)							
	CEDir	CEDtrs	GL	BW	200	400	600	MCW	Milk	SS	DTC	CWT	EMA	Rib	P8	RBY	IMF	NFI-F	Doc
EBV	+0.7	-0.3	-3.3	+4.5	+54	+95	+127	+120	+15	+2.0	-2.2	+66	+4.8	-1.5	-1.9	+0.2	+2.6	-0.03	-
Acc	55%	38%	68%	74%	68%	66%	67%	62%	55%	73%	34%	58%	60%	60%	61%	57%	57%	47%	-
Perc	63	77	70	57	21	24	21	16	70	46	88	45	68	87	85	64	26	25	-

Notes: Q411 is pure quality. A powerful bull that stands out in the field. Q411 will deliver Quality, Growth, structure. This bull is a great asset to the angus breed. Out of Landfall Archer J642 her progeny are always a standout in the herd.

Selection Indexes							
Angus Breeding	Domestic		Heavy Grain		Heavy Grass		
\$118	56	\$109	60	\$131	46	\$114	58

ABS

Purchaser:

\$

LOT 8

ABSOLUTE QUSAI Q420

HRWQ420

Date of Birth: 22/09/2019 Register: HBR Mating Type: AI AMFU,CAFU,DDFU,NHFU
 SYDGEN EXCEED 3223^{PV} PARINGA JUDD J5^{PV}
 SIRE: USA18170041 SYDGEN ENHANCE^{SV} DAM: VLYL1638 LAWSONS JUDD L1638 #
 SYDGEN RITA 2618 # LAWSONS BARTEL E7 H1114 #

TACE	Mid March 2021 TransTasman Angus Cattle Evaluation											Traits Observed: GL, BWT, 200WT, SC, Scan(EMA, Rib, Rump, IMF)							
	CEDir	CEDtrs	GL	BW	200	400	600	MCW	Milk	SS	DTC	CWT	EMA	Rib	P8	RBY	IMF	NFI-F	Doc
EBV	+6.8	+4.3	-7.8	+2.8	+50	+89	+115	+91	+19	+2.2	-5.3	+68	+7.1	-0.5	-0.3	+0.5	+3.0	-0.08	-
Acc	55%	38%	84%	72%	67%	65%	64%	60%	54%	73%	33%	57%	59%	59%	60%	56%	56%	46%	-
Perc	19	36	9	18	40	42	49	66	28	37	39	38	29	62	45	50	16	20	-

Notes: Q420 is a well balanced bull, great for heifers. Dam is Lawsons Judd L1638 going back to Lawson Bartel E7.

Selection Indexes							
Angus Breeding	Domestic		Heavy Grain		Heavy Grass		
\$139	17	\$125	14	\$155	18	\$131	17

Purchaser:

\$

LOT 9

ABSOLUTE QUAID Q446

HRWQ446

Date of Birth: 01/10/2019 Register: APR Mating Type: AI AMFU,CAFU,DDFU,NHFU
 SYDGEN EXCEED 3223^{PV} LANDFALL HANK H68^{PV}
 SIRE: USA18170041 SYDGEN ENHANCE^{SV} DAM: TFAL126 LANDFALL ELSA L126 #
 SYDGEN RITA 2618 # LANDFALL ELSA J13 #

TACE	Mid March 2021 TransTasman Angus Cattle Evaluation											Traits Observed: GL, BWT, 200WT, SC, Scan(EMA, Rib, Rump, IMF)							
	CEDir	CEDtrs	GL	BW	200	400	600	MCW	Milk	SS	DTC	CWT	EMA	Rib	P8	RBY	IMF	NFI-F	Doc
EBV	+3.1	+2.1	-3.0	+3.1	+53	+99	+128	+101	+20	+2.3	-3.3	+71	+7.0	-2.0	-2.2	+0.8	+2.5	-0.09	-
Acc	55%	37%	84%	73%	68%	66%	66%	61%	55%	72%	33%	58%	60%	61%	61%	57%	57%	46%	-
Perc	46	57	75	23	24	16	20	45	22	32	75	29	30	94	89	36	29	19	-

Notes: A beautiful Enhance bull out of Landfall Elsa L126. Moderate figures with great growth, milk and fertility. Great for heifers.

Selection Indexes							
Angus Breeding	Domestic		Heavy Grain		Heavy Grass		
\$133	27	\$123	19	\$147	27	\$128	23

Purchaser:

\$



LOT 10 ABSOLUTE QAIS Q448 # HRWQ448

Date of Birth: 28/09/2019 Register: HBR Mating Type: AI AMFU,CAFU,DDFU,NHFU
 SYDGEN EXCEED 3223 ^{PV} ARDROSSAN EQUATOR A241 ^{PV}
SIRE: USA18170041 SYDGEN ENHANCE ^{SV} **DAM: TFAJ556 LANDFALL ANGUISH J556 #**
 SYDGEN RITA 2618 # LANDFALL ANGUISH F392 #

TACE	Mid March 2021 TransTasman Angus Cattle Evaluation																			Traits Observed: GL, BWT, 200WT, SC, Scan(EMA, Rib, Rump, IMF)			
	CEDir	CEDtrs	GL	BW	200	400	600	MCW	Milk	SS	DTC	CWT	EMA	Rib	P8	RBV	IMF	NFI-F	Doc				
EBV	+2.6	+2.9	-4.8	+3.4	+53	+94	+121	+94	+18	+1.8	-2.8	+75	+8.6	-1.4	-2.0	+1.1	+2.5	-0.07	-				
Acc	56%	40%	85%	73%	68%	66%	66%	61%	55%	72%	37%	58%	60%	60%	61%	57%	57%	48%	-				
Perc	50	50	45	29	25	26	34	60	42	56	82	17	14	86	87	24	29	21	-				

Notes: A great pedigree on the maternal side Dam is by Adrossan Equator A241 one of the best angus bulls who truly left his mark and still going strong. A well balanced bull with good growth and calving ease. Great for heifers.

Selection Indexes							
Angus Breeding		Domestic		Heavy Grain		Heavy Grass	
\$130	32	\$122	21	\$141	34	\$126	27

Purchaser:

\$

LOT 11 ABSOLUTE QUANTO Q409 # HRWQ409

Date of Birth: 30/09/2019 Register: HBR Mating Type: AI AMFU,CAFU,DDFU,NHFU
 CONNEALY CAPITALIST 028 # WATTLETOP FRANKLIN G188 ^{SV}
SIRE: USA17666102 LD CAPITALIST 316 ^{PV} **DAM: NWPJ397 WATTLETOP J397 ^{SV}**
 LD DIXIE ERICA 2053 # WATTLETOP DANDLOO G30 #

TACE	Mid March 2021 TransTasman Angus Cattle Evaluation																			Traits Observed: GL, BWT, 200WT, SC, Scan(EMA, Rib, Rump, IMF)			
	CEDir	CEDtrs	GL	BW	200	400	600	MCW	Milk	SS	DTC	CWT	EMA	Rib	P8	RBV	IMF	NFI-F	Doc				
EBV	+4.9	+7.9	-2.0	+4.0	+54	+94	+124	+98	+18	+1.9	-2.1	+68	+6.8	-1.2	-1.9	+1.0	+1.9	-0.35	-				
Acc	56%	45%	84%	73%	68%	67%	68%	66%	62%	73%	38%	63%	61%	64%	61%	61%	61%	51%	-				
Perc	32	9	86	44	23	27	28	52	43	51	89	39	33	82	85	28	51	5	-				

Notes: The first Capitalist bulls of the sale. Q409 is one of the best Capitalist bulls of the sale promoting quality and style. His Dam Wattletop J397 was purchased at the Wattletop dispersal for \$16,000 and she has not failed a calf since she has been here and going strong. Q409 has great structure, growth and a great heifer bull. Very appealing.

Selection Indexes							
Angus Breeding		Domestic		Heavy Grain		Heavy Grass	
\$125	42	\$120	26	\$131	46	\$125	29

Purchaser:

\$

LOT 12 ABSOLUTE QUICKSILVER Q418 # HRWQ418

Date of Birth: 26/09/2019 Register: HBR Mating Type: AI AMFU,CAFU,DDFU,NHFU
 CONNEALY CAPITALIST 028 # TUWHARETOA REGENT D145 ^{PV}
SIRE: USA17666102 LD CAPITALIST 316 ^{PV} **DAM: VTMH898 TE MANIA LOWAN H898 #**
 LD DIXIE ERICA 2053 # TE MANIA LOWAN B305 #

TACE	Mid March 2021 TransTasman Angus Cattle Evaluation																			Traits Observed: GL, BWT, 200WT, SC, Scan(EMA, Rib, Rump, IMF)			
	CEDir	CEDtrs	GL	BW	200	400	600	MCW	Milk	SS	DTC	CWT	EMA	Rib	P8	RBV	IMF	NFI-F	Doc				
EBV	+9.6	+6.3	-5.9	+3.1	+47	+86	+111	+91	+14	+0.7	-4.6	+72	+9.3	+0.4	-1.1	+1.0	+2.5	+0.29	-				
Acc	60%	50%	85%	74%	69%	67%	67%	64%	61%	74%	42%	61%	62%	63%	63%	60%	60%	51%	-				
Perc	6	19	27	23	57	56	59	66	76	93	52	24	9	33	68	28	29	65	-				

Notes: Q418 a capitalist Son with a great pedigree. This powerful bulls Dam is from the Te Mania Lowan family sire by Tuwaretoa RegentD145. Q418 has great muscle and Carcase a true Capitalist son. Great for heifers.

Selection Indexes							
Angus Breeding		Domestic		Heavy Grain		Heavy Grass	
\$136	22	\$125	14	\$149	24	\$129	21

Purchaser:

\$

LOT 13 ABSOLUTE QUINTAVIOUS Q494 # HRWQ494

Date of Birth: 29/09/2019 Register: HBR Mating Type: AI AMFU,CAFU,DDFU,NHFU
 CONNEALY CAPITALIST 028 # TUWHARETOA REGENT D145 ^{PV}
SIRE: USA17666102 LD CAPITALIST 316 ^{PV} **DAM: VTMH1098 TE MANIA MITTAGONG H1098 #**
 LD DIXIE ERICA 2053 # TE MANIA MITTAGONG D51 #

TACE	Mid March 2021 TransTasman Angus Cattle Evaluation																			Traits Observed: GL, BWT, 200WT, SC, Scan(EMA, Rib, Rump, IMF)			
	CEDir	CEDtrs	GL	BW	200	400	600	MCW	Milk	SS	DTC	CWT	EMA	Rib	P8	RBV	IMF	NFI-F	Doc				
EBV	+9.0	+6.4	-3.5	+2.9	+47	+84	+109	+84	+16	+1.3	-3.9	+73	+9.8	+0.4	-0.7	+0.4	+3.0	+0.48	-				
Acc	60%	49%	85%	74%	69%	67%	66%	63%	60%	73%	41%	60%	61%	62%	62%	59%	59%	50%	-				
Perc	8	18	67	20	58	62	63	77	62	78	65	23	7	33	57	54	16	84	-				

Notes: Q494 has a similar pedigree as the previous lot but out of a Mittagong family. Again a powerful Bull with capacity and length. A great bull for heifers.

Selection Indexes							
Angus Breeding		Domestic		Heavy Grain		Heavy Grass	
\$133	27	\$122	21	\$147	27	\$127	25

Purchaser:

\$



LOT 9

ABSOLUTE QUAID Q446



LOT 10

ABSOLUTE QAIS Q448



LOT 14 ABSOLUTE QUILLAN Q496 # HRWQ496

Date of Birth: 02/10/2019 Register: APR Mating Type: AI AMFU,CAFU,DD25%,NHFU
 CONNEALY CAPITALIST 028 # LANDFALL RIGHT TIME 24J G265 SV
 SIRE: USA17666102 LD CAPITALIST 316 PV DAM: TFAJ961 LANDFALL YELENA J961 #
 LD DIXIE ERICA 2053 # LANDFALL YELENA F717 #

TACE	Mid March 2021 TransTasman Angus Cattle Evaluation											Traits Observed: GL, BWT, 200WT, SC, Scan(EMA, Rib, Rump, IMF)							
	CEDir	CEDtrs	GL	BW	200	400	600	MCW	Milk	SS	DTC	CWT	EMA	Rib	P8	RBV	IMF	NFI-F	Doc
EBV	+7.4	+5.0	-2.6	+3.1	+49	+89	+113	+93	+16	+1.9	-3.5	+69	+4.5	+0.8	+0.3	-0.3	+1.7	+0.15	-
Acc	57%	45%	83%	73%	68%	66%	65%	62%	58%	72%	35%	58%	59%	60%	60%	57%	57%	46%	-
Perc	15	30	80	23	48	45	54	61	59	51	71	35	73	22	29	82	60	47	-

Notes: Q496 is a quality bull with lots of good attributes. A good heifer bull.

Selection Indexes							
Angus Breeding		Domestic		Heavy Grain		Heavy Grass	
\$113	65	\$111	54	\$112	71	\$114	58

Purchaser:

\$

LOT 15 ABSOLUTE QUANTAVIOUS Q499 # HRWQ499

Date of Birth: 08/10/2019 Register: HBR Mating Type: AI AMFU,CAFU,DDFU,NHFU
 CONNEALY CAPITALIST 028 # DUNOON GOODTHING G167 PV
 SIRE: USA17666102 LD CAPITALIST 316 PV DAM: VLYK856 LAWSONS GOODTHING K856 #
 LD DIXIE ERICA 2053 # LAWSONS TANK B1155 G1085 #

TACE	Mid March 2021 TransTasman Angus Cattle Evaluation											Traits Observed: BWT, 200WT, SC, Scan(EMA, Rib, Rump, IMF)							
	CEDir	CEDtrs	GL	BW	200	400	600	MCW	Milk	SS	DTC	CWT	EMA	Rib	P8	RBV	IMF	NFI-F	Doc
EBV	+6.6	+4.4	-4.1	+3.9	+53	+91	+118	+88	+16	+1.1	-3.1	+75	+7.1	-0.3	-1.2	+0.4	+2.5	+0.17	-
Acc	57%	46%	69%	74%	69%	67%	67%	64%	60%	74%	38%	60%	61%	62%	61%	59%	59%	49%	-
Perc	20	35	57	41	27	35	41	71	59	85	78	17	29	55	71	54	29	50	-

Notes: Q499 has great carcase and great growth. Great heifer bull.

Selection Indexes							
Angus Breeding		Domestic		Heavy Grain		Heavy Grass	
\$128	36	\$120	26	\$136	40	\$124	32

Purchaser:

\$

LOT 16 ABSOLUTE QUASHAWN Q439 # HRWQ439

Date of Birth: 23/09/2019 Register: HBR Mating Type: AI AMFU,CAFU,DDFU,NHFU
 SYDGEN EXCEED 3223 PV LANDFALL COMMANDER C47 SV
 SIRE: USA18170041 SYDGEN ENHANCE SV DAM: TFAJ540 LANDFALL ELSA J540 #
 SYDGEN RITA 2618 # LANDFALL ELSA F597 #

TACE	Mid March 2021 TransTasman Angus Cattle Evaluation											Traits Observed: GL, BWT, 200WT, SC, Scan(EMA, Rib, Rump, IMF)							
	CEDir	CEDtrs	GL	BW	200	400	600	MCW	Milk	SS	DTC	CWT	EMA	Rib	P8	RBV	IMF	NFI-F	Doc
EBV	+3.5	+0.3	-7.9	+3.4	+51	+92	+123	+99	+17	+2.8	-2.7	+70	+8.1	-1.8	-2.3	+1.6	+2.3	-0.19	-
Acc	55%	38%	84%	73%	68%	66%	66%	61%	55%	73%	33%	58%	60%	60%	61%	57%	56%	45%	-
Perc	43	72	8	29	35	34	29	50	48	15	83	32	18	92	91	11	36	12	-

Notes: Another Great Enhance bull. These enhance bulls are all style an asset to any herd. Q439 great for growth and birth. Great heifer bull.

Selection Indexes							
Angus Breeding		Domestic		Heavy Grain		Heavy Grass	
\$131	30	\$121	23	\$144	30	\$127	25

Purchaser:

\$

LOT 17 ABSOLUTE QUENTYN Q424 # HRWQ424

Date of Birth: 01/10/2019 Register: APR Mating Type: AI AMFU,CAFU,DDFU,NHFU
 SYDGEN EXCEED 3223 PV JAROBEE F119 SV
 SIRE: USA18170041 SYDGEN ENHANCE SV DAM: TFAJ572 LANDFALL LORETTA J572 #
 SYDGEN RITA 2618 # LANDFALL F242 #

TACE	Mid March 2021 TransTasman Angus Cattle Evaluation											Traits Observed: GL, BWT, 200WT, SC, Scan(EMA, Rib, Rump, IMF)							
	CEDir	CEDtrs	GL	BW	200	400	600	MCW	Milk	SS	DTC	CWT	EMA	Rib	P8	RBV	IMF	NFI-F	Doc
EBV	+0.2	+1.2	-3.2	+3.6	+51	+93	+123	+106	+18	+2.3	-2.9	+67	+3.7	-1.2	-1.5	+0.1	+2.6	-0.08	-
Acc	54%	36%	84%	73%	68%	66%	66%	61%	55%	72%	33%	57%	60%	61%	61%	57%	56%	46%	-
Perc	67	65	72	34	34	30	29	36	35	32	80	43	84	82	78	68	26	20	-

Notes: Q424 is another high growth bull with low birth, Good carcase and milk. A great bull for heifers.

Selection Indexes							
Angus Breeding		Domestic		Heavy Grain		Heavy Grass	
\$118	56	\$110	57	\$130	48	\$113	60

Purchaser:

\$



LOT 12

ABSOLUTE QUICKSILVER Q418



LOT 19

ABSOLUTE QUAIVION Q413



LOT 27

ABSOLUTE QUINNLAN Q474



LOT 28

ABSOLUTE QUINCY Q975

LOT 18

ABSOLUTE QUADARIUS Q431

HRWQ431

Date of Birth: 02/10/2019 Register: HBR Mating Type: AI

AMFU,CAFU,DDFU,NHFU

SYDGEN EXCEED 3223^{PV}
SIRE: USA18170041 SYDGEN ENHANCE^{SV}
 SYDGEN RITA 2618 #

LANDFALL BANDO G75^{SV}
DAM: TFAJ324 LANDFALL FUSHIA J324 #
 LANDFALL G467 #

TACE	Mid March 2021 TransTasman Angus Cattle Evaluation											Traits Observed: GL, BWT, 200WT, SC, Scan(EMA, Rib, Rump, IMF)							
	CEDir	CEDtrs	GL	BW	200	400	600	MCW	Milk	SS	DTC	CWT	EMA	Rib	P8	RBY	IMF	NFI-F	Doc
EBV	-0.1	-0.6	-2.0	+4.1	+52	+97	+125	+99	+16	+2.9	-3.8	+69	+6.2	-1.3	-1.5	+0.5	+2.2	-0.10	-
Acc	55%	38%	84%	73%	68%	65%	65%	60%	54%	72%	33%	57%	59%	60%	60%	56%	56%	45%	-
Perc	69	79	86	46	31	19	25	50	58	13	66	34	43	84	78	50	39	18	-

Notes: Q431 is a easy going bull with good growth and low birth weight. A great heifer bull.

Selection Indexes							
Angus Breeding		Domestic		Heavy Grain		Heavy Grass	
\$125	42	\$116	38	\$134	43	\$121	39

Purchaser:

\$

LOT 19

ABSOLUTE QUAVION Q413

HRWQ413

Date of Birth: 29/09/2019 Register: HBR Mating Type: AI

AMFU,CAFU,DDFU,NHFU

SYDGEN EXCEED 3223^{PV}
SIRE: USA18170041 SYDGEN ENHANCE^{SV}
 SYDGEN RITA 2618 #

THE BASIN OUTSTANDING V682 #
DAM: SMBA178 THE BASIN A178 #
 THE BASIN Q421+95 #

TACE	Mid March 2021 TransTasman Angus Cattle Evaluation											Traits Observed: GL, BWT, 200WT, SC, Scan(EMA, Rib, Rump, IMF)							
	CEDir	CEDtrs	GL	BW	200	400	600	MCW	Milk	SS	DTC	CWT	EMA	Rib	P8	RBY	IMF	NFI-F	Doc
EBV	+0.7	+0.2	-3.3	+3.9	+52	+89	+117	+98	+12	+2.4	-2.3	+63	+5.9	+0.6	+0.8	-0.3	+2.1	+0.12	-
Acc	54%	36%	83%	73%	67%	65%	65%	60%	54%	72%	34%	56%	58%	58%	59%	55%	54%	43%	-
Perc	63	73	70	41	32	45	43	51	86	28	87	59	48	27	18	82	43	43	-

Notes: Q413 was a standout as a calf and was leading the pack. Maturing into a long beautiful bull. From old breeding on the maternal side The basin A178 a powerful cow that had an abundance of milk. Good for heifers.

Selection Indexes							
Angus Breeding		Domestic		Heavy Grain		Heavy Grass	
\$111	69	\$107	66	\$112	71	\$112	62

Purchaser:

\$

LOT 20

ABSOLUTE QASEM Q444

HRWQ444

Date of Birth: 24/09/2019 Register: HBR Mating Type: AI

AMFU,CAFU,DDFU,NHFU

CONNEALY CAPITALIST 028 #
SIRE: USA17666102 LD CAPITALIST 316^{PV}
 LD DIXIE ERICA 2053 #

WATTLETOP FRANKLIN G7^{SV}
DAM: NWPJ313 WATTLETOP J313 #
 WATTLETOP USUAL D70 #

TACE	Mid March 2021 TransTasman Angus Cattle Evaluation											Traits Observed: GL, BWT, 200WT, SC, Scan(EMA, Rib, Rump, IMF)							
	CEDir	CEDtrs	GL	BW	200	400	600	MCW	Milk	SS	DTC	CWT	EMA	Rib	P8	RBY	IMF	NFI-F	Doc
EBV	+9.6	+10.2	-7.1	+2.9	+47	+85	+109	+98	+13	+1.1	-3.5	+67	+5.3	+0.6	-0.2	-0.6	+2.4	+0.31	-
Acc	57%	45%	84%	74%	69%	67%	68%	65%	60%	73%	36%	60%	60%	62%	61%	58%	58%	48%	-
Perc	6	2	14	20	57	59	62	51	84	85	71	43	59	27	42	89	32	68	-

Notes: Q444 is a great heifer bull very low birth. Out of a wattle top cow purchased at the 2017 dispersal.

Selection Indexes							
Angus Breeding		Domestic		Heavy Grain		Heavy Grass	
\$117	58	\$112	51	\$123	57	\$115	55

Purchaser:

\$

LOT 21

ABSOLUTE QUINELLA Q410

HRWQ410

Date of Birth: 01/10/2019 Register: HBR Mating Type: AI

AMFU,CAFU,DDFU,NHFU

SYDGEN EXCEED 3223^{PV}
SIRE: USA18170041 SYDGEN ENHANCE^{SV}
 SYDGEN RITA 2618 #

TE MANIA INFINITY 04 379 AB #
DAM: HRWK5 ABSOLUTE DANDLOO K5 #
 TE MANIA DANDLOO H421 #

TACE	Mid March 2021 TransTasman Angus Cattle Evaluation											Traits Observed: GL, BWT, 200WT, SC, Scan(EMA, Rib, Rump, IMF)							
	CEDir	CEDtrs	GL	BW	200	400	600	MCW	Milk	SS	DTC	CWT	EMA	Rib	P8	RBY	IMF	NFI-F	Doc
EBV	+1.2	-1.1	-2.6	+3.8	+58	+104	+133	+110	+16	+3.3	-2.9	+73	+8.5	-2.0	-2.1	+1.0	+2.8	+0.09	-
Acc	57%	42%	84%	73%	68%	66%	65%	61%	55%	73%	38%	59%	61%	61%	58%	58%	49%	-	
Perc	60	82	80	39	9	8	13	29	59	7	80	23	14	94	88	28	21	39	-

Notes: Another standout son of Enhance with good figures. Long and smooth skin just a good high quality bull with lots of appeal. Very powerful maternal pedigree with Te Mania Emperor and Te Mania infinity.

Selection Indexes							
Angus Breeding		Domestic		Heavy Grain		Heavy Grass	
\$138	19	\$127	11	\$154	19	\$131	17

Purchaser:

\$



LOT 22 ABSOLUTE QUANTE Q407 # HRWQ407

Date of Birth: 22/09/2019 Register: HBR Mating Type: AI AMFU,CAFU,DDFU,NHFU
 CONNEALY CAPITALIST 028 # MOHNEN LONG DISTANCE 1639 #
SIRE: USA17666102 LD CAPITALIST 316 PV DAM: NDIK228 KENNY'S CREEK MITTAGONG K228 SV
 LD DIXIE ERICA 2053 # KENNY'S CREEK MITTAGONG H776 SV

TACE	Mid March 2021 TransTasman Angus Cattle Evaluation														Traits Observed: GL, BWT, 200WT, SC, Scan(EMA, Rib, IMF)				
	CEDir	CEDtrs	GL	BW	200	400	600	MCW	Milk	SS	DTC	CWT	EMA	Rib	P8	RBV	IMF	NFI-F	Doc
EBV	+11.9	+8.1	-7.8	+1.7	+47	+82	+101	+79	+17	+1.2	-4.1	+64	+7.6	+0.5	-0.4	+0.5	+2.0	+0.40	-
Acc	58%	46%	85%	74%	69%	67%	66%	63%	59%	73%	37%	60%	61%	61%	60%	58%	58%	48%	-
Perc	2	8	9	6	60	69	79	84	50	82	61	56	23	30	48	50	47	77	-

Notes: A Capitalist Son out of a Kennys Creek Mittagong K228 Cow who was purchased with a calf at foot in 2016. Q407 is a good doing bull and is a great heifer bull.

Selection Indexes							
Angus Breeding		Domestic		Heavy Grain		Heavy Grass	
\$117	58	\$116	38	\$118	63	\$116	52

Purchaser:

\$

LOT 23 ABSOLUTE QUENTEN Q489 # HRWQ489

Date of Birth: 28/09/2019 Register: APR Mating Type: AI AMFU,CAFU,DDFU,NHFU
 EF COMMANDO 1366 PV VBR CHIEFTAIN 3W21 PV
SIRE: USA18219911 BALDRIDGE COMMAND C036 PV DAM: HRWM153 ABSOLUTE M153 #
 BALDRIDGE BLACKBIRD A030 # LANDFALL ELSA J108 #

TACE	Mid March 2021 TransTasman Angus Cattle Evaluation														Traits Observed: GL, BWT, 200WT, SC, Scan(EMA, Rib, Rump, IMF)				
	CEDir	CEDtrs	GL	BW	200	400	600	MCW	Milk	SS	DTC	CWT	EMA	Rib	P8	RBV	IMF	NFI-F	Doc
EBV	+1.2	+3.8	-4.7	+5.0	+59	+104	+136	+118	+20	+1.3	-2.6	+75	+7.8	-1.6	-1.9	+2.0	+1.6	-0.05	-
Acc	52%	38%	85%	73%	67%	65%	65%	61%	56%	72%	33%	57%	58%	59%	55%	55%	44%	-	
Perc	60	41	46	69	8	8	10	18	26	78	84	17	20	89	85	5	64	23	-

Notes: Q489 is the first of the Command bulls on over. A bull with a great pedigree. On the maternal side his Dam is by VBR Chiefton 3W21 a standout on The USA tour I went on in 2015. Q489 has plenty to offer for growth carcase RBV. A good all rounder bull.

Selection Indexes							
Angus Breeding		Domestic		Heavy Grain		Heavy Grass	
\$135	23	\$127	11	\$142	33	\$132	15

Purchaser:

\$

LOT 24 ABSOLUTE QUINTARIUS Q404 # HRWQ404

Date of Birth: 30/09/2019 Register: HBR Mating Type: AI AMFU,CAFU,DD30%,NHFU
 SYDGEN EXCEED 3223 PV DUNOON EVIDENT E614 PV
SIRE: USA18170041 SYDGEN ENHANCE SV DAM: VLYH1106 LAWSONS EVIDENT H1106 #
 SYDGEN RITA 2618 # LAWSONS NEW DESIGN 1407 Z1117 #

TACE	Mid March 2021 TransTasman Angus Cattle Evaluation														Traits Observed: GL, BWT, 200WT, SC, Scan(EMA, Rib, Rump, IMF)				
	CEDir	CEDtrs	GL	BW	200	400	600	MCW	Milk	SS	DTC	CWT	EMA	Rib	P8	RBV	IMF	NFI-F	Doc
EBV	-0.1	-3.0	-3.3	+3.7	+52	+91	+119	+96	+17	+1.9	-3.6	+63	+6.9	-1.7	-1.5	+1.4	+2.1	-0.38	-
Acc	56%	39%	85%	73%	68%	66%	65%	61%	56%	73%	36%	58%	60%	60%	61%	57%	57%	48%	-
Perc	69	90	70	36	28	38	39	55	44	51	70	58	31	90	78	15	43	4	-

Notes: Q404 another great Enhance bull. Great growth for 200,400 and 600 days with good EMA. A great heifer bull.

Selection Indexes							
Angus Breeding		Domestic		Heavy Grain		Heavy Grass	
\$123	46	\$116	38	\$131	46	\$119	44

Purchaser:

\$

LOT 25 ABSOLUTE QUANTAE Q425 # HRWQ425

Date of Birth: 25/09/2019 Register: HBR Mating Type: AI AM10%,CAFU,DDFU,NHFU
 SYDGEN EXCEED 3223 PV LAWSONS TANK B1155 PV
SIRE: USA18170041 SYDGEN ENHANCE SV DAM: VLYG483 LAWSONS TANK B1155 G483 #
 SYDGEN RITA 2618 # LAWSONS SOLUTION C1196 #

TACE	Mid March 2021 TransTasman Angus Cattle Evaluation														Traits Observed: GL, BWT, 200WT, SC, Scan(EMA, Rib, Rump, IMF)				
	CEDir	CEDtrs	GL	BW	200	400	600	MCW	Milk	SS	DTC	CWT	EMA	Rib	P8	RBV	IMF	NFI-F	Doc
EBV	+4.5	+3.6	-7.2	+2.8	+48	+88	+118	+98	+16	+1.0	-2.9	+68	+9.5	-1.7	-2.6	+1.8	+2.1	-0.32	-
Acc	56%	39%	85%	74%	68%	66%	65%	61%	56%	73%	36%	59%	60%	61%	61%	58%	58%	48%	-
Perc	35	43	13	18	50	46	39	51	60	87	80	40	8	90	94	8	43	5	-

Notes: A good doing bull with plenty of potential. Out of a Lawson Tank cow he has great Ema and birth weight. Great for Heifers.

Selection Indexes							
Angus Breeding		Domestic		Heavy Grain		Heavy Grass	
\$132	28	\$122	21	\$143	31	\$127	25

Purchaser:

\$



LOT 30

ABSOLUTE QUINT Q471



LOT 33

ABSOLUTE QUAN Q367



LOT 26 **ABSOLUTE QUARTEZ Q483 #** **HRWQ483**

Date of Birth: 29/09/2019 Register: HBR Mating Type: AI AMFU,CAFU,DDFU,NHFU
 EF COMMANDO 1366 PV THOMAS UP RIVER 1614 PV
SIRE: USA18219911 BALDRIDGE COMMAND C036 PV **DAM: HRWN272 ABSOLUTE QUEANBEYAN N272 #**
 BALDRIDGE BLACKBIRD A030 # TE MANIA QUEANBEYAN H635 #

TACE	Mid March 2021 TransTasman Angus Cattle Evaluation																			Traits Observed: GL, BWT, 200WT, SC, Scan(EMA, Rib, Rump, IMF)	
	CEDir	CEDtrs	GL	BW	200	400	600	MCW	Milk	SS	DTC	CWT	EMA	Rib	P8	RBY	IMF	NFI-F	Doc		
EBV	+8.2	+4.9	-3.8	+3.0	+55	+96	+120	+85	+22	+1.3	-2.7	+65	+6.9	+0.1	+0.2	+0.7	+2.3	+0.45	-		
Acc	53%	40%	84%	73%	67%	65%	65%	62%	57%	72%	35%	58%	59%	60%	60%	56%	57%	46%	-		
Perc	11	31	62	21	18	21	36	76	12	78	83	49	31	42	32	41	36	82	-		

Notes: Another Command Bull. A bull that ticks all the boxes with birth Growth Milk Carcase EMA. Good for heifers.

Selection Indexes							
Angus Breeding		Domestic		Heavy Grain		Heavy Grass	
\$130	32	\$126	13	\$135	41	\$129	21

Purchaser:

\$

LOT 27 **ABSOLUTE QUINLAN Q474 #** **HRWQ474**

Date of Birth: 28/09/2019 Register: HBR Mating Type: AI AMFU,CAFU,DDFU,NHFU
 EF COMMANDO 1366 PV EF COMPLEMENT 8088 PV
SIRE: USA18219911 BALDRIDGE COMMAND C036 PV **DAM: HRWN302 ABSOLUTE N302 #**
 BALDRIDGE BLACKBIRD A030 # LANDFALL PARADE J150 #

TACE	Mid March 2021 TransTasman Angus Cattle Evaluation																			Traits Observed: GL, BWT, 200WT	
	CEDir	CEDtrs	GL	BW	200	400	600	MCW	Milk	SS	DTC	CWT	EMA	Rib	P8	RBY	IMF	NFI-F	Doc		
EBV	+5.7	+7.9	-3.9	+3.5	+56	+100	+130	+104	+20	+1.3	-2.5	+71	+8.8	-1.4	-1.2	+1.0	+2.4	+0.46	-		
Acc	55%	43%	84%	73%	67%	65%	65%	63%	58%	62%	39%	60%	59%	62%	59%	59%	59%	49%	-		
Perc	26	9	60	32	14	14	16	40	23	78	85	27	12	86	71	28	32	83	-		

Notes: Another Command Bull with great figures. Commands progeny are standouts showing style and quality. Definitely adds definition to his progeny.

Selection Indexes							
Angus Breeding		Domestic		Heavy Grain		Heavy Grass	
\$140	16	\$129	8	\$151	22	\$136	10

Purchaser:

\$

LOT 28 **ABSOLUTE QUINCY Q975 #** **HRWQ975**

Date of Birth: 03/09/2019 Register: HBR Mating Type: ET AMFU,CAFU,DDFU,NHFU
 HF KODIAK 5R PV LOCHTON Y003 #
SIRE: CAN1402252 HF TIGER 5T # **DAM: NFJA18 FORRES WILCOOLA A18 SV**
 HF ECHO 84R # LOCHTON Y004 #

TACE	Mid March 2021 TransTasman Angus Cattle Evaluation																			Traits Observed: BWT, 200WT, SC, Scan(EMA, Rib, Rump, IMF)	
	CEDir	CEDtrs	GL	BW	200	400	600	MCW	Milk	SS	DTC	CWT	EMA	Rib	P8	RBY	IMF	NFI-F	Doc		
EBV	+4.2	+7.2	-6.5	+3.4	+43	+80	+100	+88	+18	+1.7	-5.1	+63	+2.9	+0.2	+0.5	+0.1	+1.0	-0.32	-		
Acc	56%	47%	65%	67%	65%	65%	65%	64%	64%	62%	44%	62%	59%	62%	61%	60%	59%	51%	-		
Perc	37	13	20	29	80	75	82	71	43	61	43	60	91	39	24	68	85	5	-		

Notes: Q975 is By HF Tiger 5T. His Dam is Foress A18 purchased for the top price at the Foress dispersal for \$30,000. She has left some great progeny. Great for heifers.

Selection Indexes							
Angus Breeding		Domestic		Heavy Grain		Heavy Grass	
\$102	81	\$105	71	\$96	84	\$104	79

Purchaser:

\$

LOT 29 **ABSOLUTE QUINTEN Q978 #** **HRWQ978**

Date of Birth: 01/09/2019 Register: HBR Mating Type: ET AMFU,CAFU,DDFU,NHFU
 TE MANIA UNLIMITED U3271 # LOCHTON Y003 #
SIRE: NZE04379 TE MANIA INFINITY 04 379 AB # **DAM: NFJA18 FORRES WILCOOLA A18 SV**
 TE MANIA 95102 # LOCHTON Y004 #

TACE	Mid March 2021 TransTasman Angus Cattle Evaluation																			Traits Observed: None	
	CEDir	CEDtrs	GL	BW	200	400	600	MCW	Milk	SS	DTC	CWT	EMA	Rib	P8	RBY	IMF	NFI-F	Doc		
EBV	+2.0	+1.6	-3.7	+2.7	+35	+71	+88	+75	+13	+2.1	-3.2	+49	+2.2	-0.5	+0.5	-1.2	+2.5	+0.63	-		
Acc	61%	59%	65%	67%	66%	65%	66%	65%	65%	63%	55%	64%	62%	65%	63%	64%	62%	58%	-		
Perc	54	62	64	16	97	93	94	88	82	41	76	94	95	62	24	96	29	93	-		

Notes: Q978 is by Te Mania Infinity. Stylish bull with plenty of length. Dam Foress A18 was purchased for \$30,000 at the foress dispersal a full sister to Q978 made \$15,000 as a 9 month old heifer. A great heifer bull.

Selection Indexes							
Angus Breeding		Domestic		Heavy Grain		Heavy Grass	
\$89	92	\$93	91	\$92	87	\$89	94

Purchaser:

\$

LOT 30 ABSOLUTE QUINT Q471 # HRWQ471

Date of Birth: 01/10/2019 Register: HBR Mating Type: AI AMFU,CAFU,DDFU,NHFU
 EF COMMANDO 1366 PV CONNEALY MENTOR 7374 SV
SIRE: USA18219911 BALDRIDGE COMMAND C036 PV DAM: NDIM172 KENNY'S CREEK MITTALONG M172 PV
 BALDRIDGE BLACKBIRD A030 # KENNY'S CREEK MITTAGONG K228 SV

TACE	Mid March 2021 TransTasman Angus Cattle Evaluation																			Traits Observed: GL, BWT, 200WT, SC, Scan(EMA, Rib, Rump, IMF)			
	CEDir	CEDtrs	GL	BW	200	400	600	MCW	Milk	SS	DTC	CWT	EMA	Rib	P8	RBV	IMF	NFI-F	Doc				
EBV	+9.3	+6.0	-3.7	+2.0	+51	+90	+112	+87	+20	+1.3	-2.5	+65	+10.5	-1.1	-1.6	+1.8	+1.9	+0.41	-				
Acc	53%	39%	85%	73%	67%	65%	64%	61%	57%	72%	34%	57%	59%	59%	60%	56%	56%	45%	-				
Perc	7	21	64	8	37	40	55	73	22	78	85	50	5	79	80	8	51	78	-				

Notes: Q471 is a very stylish bull by Baldrige Command. His Dam kennys creek M172 by Connealy Mentor 7374 was purchased as a calf at foot at the kennys creek spring dispersal for \$13,500. Q471 presents style frame and good body length. A very strong pedigree and with a lot of positive attributes.

Selection Indexes							
Angus Breeding		Domestic		Heavy Grain		Heavy Grass	
\$127	38	\$126	13	\$131	46	\$126	27

Purchaser: \$

LOT 31 ABSOLUTE QUINTUS Q359 # HRWQ359

Date of Birth: 19/10/2019 Register: HBR Mating Type: Natural AMFU,CAFU,DDFU,NHFU
 RENNYLEA EDMUND E11 PV KENNY'S CREEK WARWICK G1 PV
SIRE: NAQ165 ARDROSSAN EDMUND K165 PV DAM: HRWK2 ABSOLUTE BARA K2 #
 ARDROSSAN BLACKBIRD D204 SV KENNY'S CREEK BARA D128 #

TACE	Mid March 2021 TransTasman Angus Cattle Evaluation																			Traits Observed: BWT, 200WT, SC, Scan(EMA, Rib, Rump, IMF)			
	CEDir	CEDtrs	GL	BW	200	400	600	MCW	Milk	SS	DTC	CWT	EMA	Rib	P8	RBV	IMF	NFI-F	Doc				
EBV	+4.0	+3.2	-4.7	+3.3	+42	+74	+96	+77	+16	+2.0	-5.9	+59	+5.0	+0.8	+0.3	-0.4	+2.1	+0.31	-				
Acc	49%	40%	56%	71%	62%	59%	59%	55%	50%	68%	36%	52%	53%	54%	55%	52%	49%	42%	-				
Perc	39	47	46	27	83	88	87	86	56	46	29	72	64	22	29	84	43	68	-				

Notes: A well balanced bull and will be great over heifers.

Selection Indexes							
Angus Breeding		Domestic		Heavy Grain		Heavy Grass	
\$108	73	\$104	74	\$111	72	\$106	75

Purchaser: \$

LOT 32 ABSOLUTE QUENTON Q467 # HRWQ467

Date of Birth: 23/11/2019 Register: HBR Mating Type: Natural AMFU,CA13%,DD14%,NHFU
 LANDFALL WESTWARD J169 SV THOMAS UP RIVER 1614 PV
SIRE: HRWM110 ABSOLUTE M110 SV DAM: HRWN278 ABSOLUTE WARGOONA N278 #
 LAWSONS BARTEL E7 H1095 # ABSOLUTE WARGOONA G18 #

TACE	Mid March 2021 TransTasman Angus Cattle Evaluation																			Traits Observed: BWT, 200WT, SC, Scan(EMA, Rib, Rump, IMF)			
	CEDir	CEDtrs	GL	BW	200	400	600	MCW	Milk	SS	DTC	CWT	EMA	Rib	P8	RBV	IMF	NFI-F	Doc				
EBV	+7.1	+3.3	-4.2	+3.3	+52	+92	+117	+85	+23	+2.7	-6.2	+67	+5.3	+1.0	+0.4	-0.3	+2.7	+0.24	-				
Acc	44%	36%	59%	67%	60%	57%	57%	54%	49%	67%	34%	51%	53%	54%	55%	52%	50%	43%	-				
Perc	17	46	55	27	31	32	44	76	9	18	24	42	59	18	27	82	24	59	-				

Notes: A bull with plenty of style, length and appeal with a great pedigree. Great for heifers.

Selection Indexes							
Angus Breeding		Domestic		Heavy Grain		Heavy Grass	
\$133	27	\$121	23	\$144	30	\$127	25

Purchaser: \$

LOT 33 ABSOLUTE QUAN Q367 # HRWQ367

Date of Birth: 14/10/2019 Register: HBR Mating Type: Natural AMFU,CAFU,DDFU,NHFU
 RENNYLEA EDMUND E11 PV KENNY'S CREEK BERKLEY H16 PV
SIRE: NAQ165 ARDROSSAN EDMUND K165 PV DAM: HRWL39 ABSOLUTE BARA L39 #
 ARDROSSAN BLACKBIRD D204 SV KENNY'S CREEK BARA J273 #

TACE	Mid March 2021 TransTasman Angus Cattle Evaluation																			Traits Observed: BWT, 200WT, SC, Scan(EMA, Rib, Rump, IMF)			
	CEDir	CEDtrs	GL	BW	200	400	600	MCW	Milk	SS	DTC	CWT	EMA	Rib	P8	RBV	IMF	NFI-F	Doc				
EBV	+5.1	+2.5	-5.0	+3.8	+43	+75	+98	+83	+16	+1.3	-7.1	+60	+5.0	+1.4	+0.8	-0.8	+2.8	+0.52	-				
Acc	50%	41%	63%	71%	63%	60%	59%	56%	50%	68%	37%	52%	53%	55%	56%	52%	50%	43%	-				
Perc	31	54	41	39	80	86	85	79	57	78	14	69	64	12	18	92	21	87	-				

Notes: Balanced an good body length and thickness supported by a great pedigree.

Selection Indexes							
Angus Breeding		Domestic		Heavy Grain		Heavy Grass	
\$119	54	\$107	66	\$130	48	\$112	62

Purchaser: \$



LOT 34 **ABSOLUTE QUADIR Q389 #** **HRWQ389**

Date of Birth: 10/11/2019 Register: HBR Mating Type: Natural AMFU,CAFU,DDFU,NHFU
 RENNYLEA EDMUND E11^{PV} TUWHARETOA REGENT D145^{PV}
SIRE: NAQK165 ARDROSSAN EDMUND K165^{PV} **DAM: VTMH716 TE MANIA MITTAGONG H716 #**
 ARDROSSAN BLACKBIRD D204^{SV} TE MANIA MITTAGONG Z272^{PV}

TACE	Mid March 2021 TransTasman Angus Cattle Evaluation																			Traits Observed: BWT, 200WT, SC, Scan(EMA, Rib, Rump, IMF)	
	CEDir	CEDtrs	GL	BW	200	400	600	MCW	Milk	SS	DTC	CWT	EMA	Rib	P8	RBY	IMF	NFI-F	Doc		
EBV	+1.4	-3.4	-3.3	+3.7	+41	+70	+94	+73	+16	+1.9	-7.2	+64	+7.5	+0.1	-0.9	+0.9	+2.9	+0.32	-		
Acc	53%	49%	60%	70%	64%	62%	61%	58%	53%	70%	44%	56%	56%	57%	58%	56%	54%	48%	-		
Perc	59	92	70	36	87	93	90	90	60	51	13	56	24	42	63	32	19	69	-		

Notes: A balanced bull with a great pedigree with both Regent and Rennylea Edmond dominating this bull. A great bull for heifers and IMF.

Selection Indexes							
Angus Breeding		Domestic		Heavy Grain		Heavy Grass	
\$123	46	\$109	60	\$139	36	\$113	60

Purchaser:

\$

LOT 35 **ABSOLUTE QUSAY Q475 #** **HRWQ475**

Date of Birth: 29/12/2019 Register: APR Mating Type: Natural AMFU,CAFU,DD2%,NHFU
 LANDFALL WESTWARD J169^{SV} EF COMPLEMENT 8088^{PV}
SIRE: HRWM110 ABSOLUTE M110^{SV} **DAM: HRWN340 ABSOLUTE N340 #**
 LAWSONS BARTEL E7 H1095[#] LANDFALL LORETTA J572[#]

TACE	Mid March 2021 TransTasman Angus Cattle Evaluation																			Traits Observed: BWT, 200WT, SC, Scan(EMA, Rib, Rump, IMF)	
	CEDir	CEDtrs	GL	BW	200	400	600	MCW	Milk	SS	DTC	CWT	EMA	Rib	P8	RBY	IMF	NFI-F	Doc		
EBV	+2.6	+5.6	-4.3	+4.5	+52	+92	+120	+100	+19	+1.6	-5.8	+73	+5.6	+0.9	+0.3	-0.7	+2.8	+0.42	-		
Acc	44%	37%	54%	67%	57%	56%	56%	54%	49%	68%	34%	52%	52%	54%	55%	52%	50%	44%	-		
Perc	50	25	53	57	30	33	35	47	34	65	31	21	53	20	29	90	21	79	-		

Notes: Balanced bull with plenty of style length and good frame and moderate data. A good bull that ticks plenty of boxes.

Selection Indexes							
Angus Breeding		Domestic		Heavy Grain		Heavy Grass	
\$131	30	\$116	38	\$143	31	\$124	32

Purchaser:

\$

LOT 36 **ABSOLUTE QUINNTON Q374 #** **HRWQ374**

Date of Birth: 14/10/2019 Register: HBR Mating Type: Natural AMFU,CAFU,DDFU,NHFU
 RENNYLEA EDMUND E11^{PV} LANDFALL COMMANDER C47^{SV}
SIRE: NAQK165 ARDROSSAN EDMUND K165^{PV} **DAM: TFAJ746 LANDFALL SOUTHERN J746 #**
 ARDROSSAN BLACKBIRD D204^{SV} LANDFALL B75[#]

TACE	Mid March 2021 TransTasman Angus Cattle Evaluation																			Traits Observed: BWT, 200WT, SC, Scan(EMA, Rib, Rump, IMF)	
	CEDir	CEDtrs	GL	BW	200	400	600	MCW	Milk	SS	DTC	CWT	EMA	Rib	P8	RBY	IMF	NFI-F	Doc		
EBV	+5.1	+1.2	-5.3	+3.3	+40	+74	+95	+86	+15	+2.4	-5.5	+61	+8.0	+0.1	-0.9	+0.7	+2.2	+0.61	-		
Acc	52%	44%	58%	71%	64%	61%	61%	58%	51%	68%	37%	53%	54%	56%	57%	53%	50%	43%	-		
Perc	31	65	36	27	88	89	89	75	68	28	36	68	18	42	63	41	39	92	-		

Notes: Stylish strong bull with great body structure. Suitable for heifers.

Selection Indexes							
Angus Breeding		Domestic		Heavy Grain		Heavy Grass	
\$115	61	\$109	60	\$123	57	\$110	67

Purchaser:

\$

LOT 37 **ABSOLUTE QADIR Q361 #** **HRWQ361**

Date of Birth: 15/10/2019 Register: HBR Mating Type: Natural AMFU,CAFU,DDFU,NHFU
 RENNYLEA EDMUND E11^{PV} LT DRIVEN 9087[#]
SIRE: NAQK165 ARDROSSAN EDMUND K165^{PV} **DAM: HRWL65 ABSOLUTE JAPARA L65 #**
 ARDROSSAN BLACKBIRD D204^{SV} TE MANIA JAPARA H32[#]

TACE	Mid March 2021 TransTasman Angus Cattle Evaluation																			Traits Observed: BWT, 200WT, SC, Scan(EMA, Rib, Rump, IMF)	
	CEDir	CEDtrs	GL	BW	200	400	600	MCW	Milk	SS	DTC	CWT	EMA	Rib	P8	RBY	IMF	NFI-F	Doc		
EBV	+3.2	+0.4	-3.7	+4.0	+42	+74	+97	+70	+19	+2.0	-5.8	+58	+7.3	+0.2	-0.2	+0.8	+2.0	+0.38	-		
Acc	51%	42%	63%	71%	62%	59%	59%	56%	50%	69%	36%	52%	53%	55%	56%	52%	50%	43%	-		
Perc	45	72	64	44	82	88	86	92	29	46	31	78	26	39	42	36	47	76	-		

Notes: Stylish bull with a great pedigree. Good for heifers.

Selection Indexes							
Angus Breeding		Domestic		Heavy Grain		Heavy Grass	
\$116	60	\$109	60	\$120	61	\$112	62

Purchaser:

\$

LOT 38 ABSOLUTE QUAMIR Q427 # HRWQ427

Date of Birth: 03/10/2019 Register: HBR Mating Type: AI AMFU,CAFU,DD5%,NHFU
 SYDGEN EXCEED 3223^{PV} G A R RIGHT DIRECTION #
 SIRE: USA18170041 SYDGEN ENHANCE^{SV} DAM: VLYD1394 LAWSONS RIGHT DIRECTION D1394 #
 SYDGEN RITA 2618 # LAWSONS HENRY VIII W1274 #

TACE	Mid March 2021 TransTasman Angus Cattle Evaluation																			Traits Observed: GL, BWT, 200WT, SC, Scan(EMA, Rib, Rump, IMF)	
	CEDir	CEDtrs	GL	BW	200	400	600	MCW	Milk	SS	DTC	CWT	EMA	Rib	P8	RBY	IMF	NFI-F	Doc		
EBV	+2.0	+1.5	-1.3	+4.1	+54	+98	+130	+91	+20	+3.2	-3.2	+74	+8.1	-2.4	-3.2	+1.6	+2.2	-0.22	-		
Acc	55%	38%	84%	73%	68%	66%	65%	61%	56%	73%	34%	58%	60%	60%	60%	57%	57%	46%	-		
Perc	54	63	92	46	21	18	17	65	20	8	76	19	18	97	97	11	39	10	-		

Notes: Balanced stylish bull with good genetics. Great for heifers.

Selection Indexes							
Angus Breeding		Domestic		Heavy Grain		Heavy Grass	
\$136	22	\$125	14	\$148	25	\$131	17

Purchaser: \$

LOT 39 ABSOLUTE QUINTYN Q403 # HRWQ403

Date of Birth: 02/10/2019 Register: APR Mating Type: AI AMFU,CAFU,DDFU,NHFU
 SYDGEN EXCEED 3223^{PV} YANCOWINNA EXPORT E16^{SV}
 SIRE: USA18170041 SYDGEN ENHANCE^{SV} DAM: TFAJ51 LANDFALL ARCHER J51 #
 SYDGEN RITA 2618 # LANDFALL ARCHER G283 #

TACE	Mid March 2021 TransTasman Angus Cattle Evaluation																			Traits Observed: GL, BWT, 200WT, SC, Scan(EMA, Rib, Rump, IMF)	
	CEDir	CEDtrs	GL	BW	200	400	600	MCW	Milk	SS	DTC	CWT	EMA	Rib	P8	RBY	IMF	NFI-F	Doc		
EBV	-0.8	-0.4	-2.5	+4.6	+55	+97	+130	+111	+17	+2.2	-3.5	+71	+5.4	-1.5	-1.9	+1.2	+1.6	-0.47	-		
Acc	55%	37%	84%	73%	68%	66%	66%	61%	55%	72%	33%	57%	59%	60%	60%	56%	56%	45%	-		
Perc	73	77	81	59	18	19	17	28	53	37	71	27	57	87	85	21	64	2	-		

Notes: A bull with great growth and carcass. Natural thickness and stylish.

Selection Indexes							
Angus Breeding		Domestic		Heavy Grain		Heavy Grass	
\$122	48	\$114	44	\$128	50	\$120	42

Purchaser: \$

LOT 40 ABSOLUTE QUAVON Q394 # HRWQ394

Date of Birth: 20/10/2019 Register: HBR Mating Type: Natural AMFU,CAFU,DDFU,NHFU
 RENNYLEA EDMUND E11^{PV} SYDGEN BLACK PEARL 2006^{PV}
 SIRE: NAQK165 ARDROSSAN EDMUND K165^{PV} DAM: HRWL44 ABSOLUTE PEARL L44 #
 ARDROSSAN BLACKBIRD D204^{SV} WATTLETOP J102 #

TACE	Mid March 2021 TransTasman Angus Cattle Evaluation																			Traits Observed: BWT, 200WT, SC, Scan(EMA, Rib, Rump, IMF)	
	CEDir	CEDtrs	GL	BW	200	400	600	MCW	Milk	SS	DTC	CWT	EMA	Rib	P8	RBY	IMF	NFI-F	Doc		
EBV	+3.9	+4.1	-5.4	+3.8	+44	+77	+102	+79	+18	+1.2	-4.3	+63	+5.5	-0.4	-1.6	+0.4	+2.8	+0.20	-		
Acc	52%	45%	60%	71%	63%	60%	60%	57%	52%	69%	39%	54%	54%	55%	57%	53%	52%	46%	-		
Perc	40	38	35	39	73	83	78	85	35	82	57	57	55	59	80	54	21	54	-		

Notes: Balanced bull with shape and length. A great pedigree. Good for heifers.

Selection Indexes							
Angus Breeding		Domestic		Heavy Grain		Heavy Grass	
\$117	58	\$110	57	\$130	48	\$111	65

Purchaser: \$

LOT 41 ABSOLUTE QUADE Q370 # HRWQ370

Date of Birth: 15/10/2019 Register: HBR Mating Type: Natural AMFU,CAFU,DDFU,NHFU
 RENNYLEA EDMUND E11^{PV} TE MANIA INFINITY 04 379 AB #
 SIRE: NAQK165 ARDROSSAN EDMUND K165^{PV} DAM: NDIJ324 KENNY'S CREEK MITTAGONG J324 #
 ARDROSSAN BLACKBIRD D204^{SV} KENNY'S CREEK MITTAGONG G609 #

TACE	Mid March 2021 TransTasman Angus Cattle Evaluation																			Traits Observed: BWT	
	CEDir	CEDtrs	GL	BW	200	400	600	MCW	Milk	SS	DTC	CWT	EMA	Rib	P8	RBY	IMF	NFI-F	Doc		
EBV	+3.1	+1.7	-6.0	+3.6	+42	+77	+103	+91	+15	+2.1	-6.2	+60	+3.5	-0.6	-0.5	-0.1	+2.3	+0.37	-		
Acc	53%	46%	60%	71%	60%	58%	58%	56%	50%	55%	42%	54%	53%	57%	55%	55%	53%	47%	-		
Perc	46	61	26	34	82	81	77	65	69	41	24	70	86	65	51	75	36	74	-		

Notes: A bull with great genetics and has good shape and length. Dam by Kennys creek Mittagong by infinity. Good for heifers.

Selection Indexes							
Angus Breeding		Domestic		Heavy Grain		Heavy Grass	
\$115	61	\$105	71	\$125	54	\$109	69

Purchaser: \$



**ABSOLUTE
ANGUS**



Evison Grain supplying

Beef Mixers - Dairy Mixers - Calf Meal



**18 Weerong Road, Drouin.
(03) 5625 3625**



**ALEX SCOTT
AND STAFF**

CLASSIC GOOD SERVICE
SINCE
1886

Est. 1886

Your local livestock specialists

Our Livestock Agents tailored advice and specialised knowledge across a range of products and industries helps your livestock deliver the best financial return for your hard work.

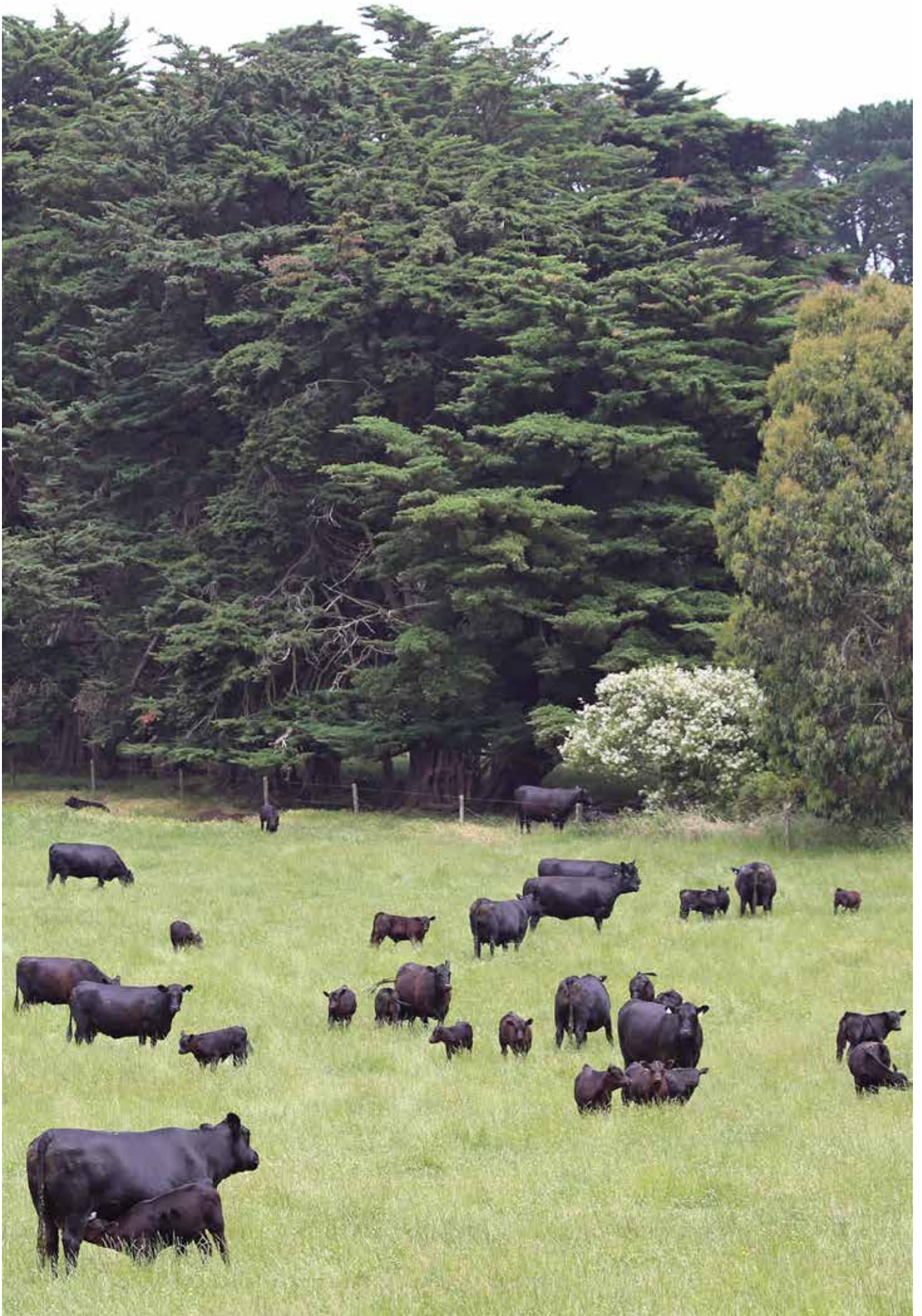
Talk to an agent in your area today for all your Rural needs.

95 Main Street, Pakenham

David Setches 0409 443 473 - Glenn Barwick 0408 975 476

Tim Gibson 0420 306 599 - Les Ingram 0409 443 133

Accredited Member
rmanetwork.





WE LIVE YOUR BUSINESS LIKE YOU DO

Ross Milne | 0408 057 558
Ryan Bajada | 0418 218 328
Peter Rollason | 0419 600 323

Elder Pakenham | 03 5941 0200
www.eldersrural.com.au



TransTasman Angus Cattle Evaluation - Mid March 2021 Reference Tables



BREED AVERAGE EBVs																																							
Calving Ease					Birth					Growth					Fertility					Carcass					Other					Structure					Selection Indexes				
CEDir	CEDirs	GL	BW	200	400	600	MCW	Milk	SS	DTC	CWT	EMA	RIB	P8	RBV	IMF	NFI-F	DOC	Angle	Claw	ABI	DOM	GRN	GRS															
Brd Avg	+2.0	+2.5	-4.5	+4.2	+48	+87	+114	+99	+17	+2.0	-4.7	+65	+6.0	-0.1	-0.4	+0.5	+2.0	+0.18	+6	+0.98	+0.85	+119	+112	+127	+116														

* Breed average represents the average EBV of all 2019 drop Australian Angus and Angus-influenced seedstock animals analysed in the Mid March 2021 TransTasman Angus Cattle Evaluation .

PERCENTILE BANDS TABLE																																							
Calving Ease					Birth					Growth					Fertility					Carcass					Other					Structure					Selection Indexes				
% Band	CEDir	CEDirs	GL	BW	200	400	600	MCW	Milk	SS	DTC	CWT	EMA	RIB	P8	RBV	IMF	NFI-F	DOC	Angle	Claw	ABI	DOM	GRN	GRS														
1%	+12.1	+10.8	-10.5	+0.2	+66	+116	+156	+153	+27	+4.3	-9.7	+90	+12.4	+3.2	+3.1	+2.7	+4.5	-0.54	+33	+0.60	+0.42	+164	+140	+193	+151														
5%	+9.8	+8.9	-8.6	+1.5	+60	+107	+142	+134	+24	+3.5	-8.2	+82	+10.2	+2.1	+2.0	+2.0	+3.8	-0.32	+25	+0.72	+0.56	+152	+132	+175	+141														
10%	+8.5	+7.7	-7.6	+2.2	+57	+102	+136	+126	+22	+3.1	-7.5	+78	+9.1	+1.5	+1.4	+1.7	+3.4	-0.21	+20	+0.76	+0.62	+146	+128	+166	+136														
15%	+7.4	+6.9	-7.0	+2.6	+56	+99	+131	+120	+21	+2.8	-7.0	+75	+8.4	+1.2	+1.0	+1.4	+3.1	-0.14	+18	+0.80	+0.66	+141	+125	+159	+132														
20%	+6.6	+6.2	-6.5	+2.9	+54	+97	+128	+116	+20	+2.7	-6.5	+73	+7.8	+0.9	+0.7	+1.3	+2.9	-0.08	+16	+0.84	+0.70	+137	+123	+153	+130														
25%	+5.9	+5.6	-6.1	+3.2	+53	+95	+125	+112	+20	+2.5	-6.2	+72	+7.4	+0.7	+0.5	+1.1	+2.7	-0.03	+14	+0.86	+0.72	+134	+121	+148	+127														
30%	+5.2	+5.0	-5.7	+3.4	+52	+93	+122	+109	+19	+2.4	-5.9	+70	+7.0	+0.5	+0.3	+1.0	+2.5	+0.02	+12	+0.88	+0.76	+131	+119	+144	+125														
35%	+4.5	+4.4	-5.4	+3.6	+51	+91	+120	+106	+18	+2.3	-5.6	+69	+6.7	+0.4	+0.1	+0.9	+2.4	+0.06	+11	+0.92	+0.78	+129	+117	+140	+123														
40%	+3.9	+3.9	-5.1	+3.8	+50	+90	+118	+104	+18	+2.2	-5.3	+68	+6.4	+0.2	-0.1	+0.8	+2.2	+0.10	+9	+0.94	+0.80	+126	+116	+136	+121														
45%	+3.2	+3.4	-4.8	+4.0	+49	+89	+116	+101	+17	+2.1	-5.0	+66	+6.1	+0.0	-0.3	+0.6	+2.1	+0.13	+8	+0.96	+0.82	+124	+114	+132	+119														
50%	+2.6	+2.9	-4.5	+4.2	+48	+87	+114	+99	+17	+2.0	-4.7	+65	+5.8	-0.1	-0.4	+0.5	+2.0	+0.17	+6	+0.98	+0.84	+121	+113	+128	+117														
55%	+1.9	+2.4	-4.2	+4.4	+48	+86	+112	+96	+16	+1.9	-4.5	+64	+5.5	-0.3	-0.6	+0.4	+1.8	+0.21	+5	+1.00	+0.86	+119	+111	+125	+115														
60%	+1.2	+1.8	-3.9	+4.6	+47	+84	+110	+94	+16	+1.8	-4.2	+63	+5.3	-0.4	-0.8	+0.3	+1.7	+0.25	+3	+1.02	+0.90	+116	+109	+121	+113														
65%	+0.4	+1.2	-3.6	+4.8	+46	+83	+108	+91	+15	+1.6	-3.9	+61	+5.0	-0.6	-0.9	+0.2	+1.6	+0.29	+2	+1.04	+0.92	+113	+108	+117	+111														
70%	-0.4	+0.6	-3.3	+5.0	+45	+81	+106	+88	+15	+1.5	-3.6	+60	+4.7	-0.7	-1.1	+0.1	+1.5	+0.33	+0	+1.06	+0.94	+110	+106	+113	+109														
75%	-1.3	-0.1	-3.0	+5.3	+44	+80	+103	+85	+14	+1.4	-3.3	+58	+4.4	-0.9	-1.3	-0.1	+1.3	+0.37	-2	+1.08	+0.98	+107	+104	+108	+106														
80%	-2.3	-0.9	-2.6	+5.5	+43	+78	+101	+82	+13	+1.3	-2.9	+57	+4.0	-1.1	-1.6	-0.2	+1.2	+0.43	-3	+1.12	+1.00	+103	+101	+102	+103														
85%	-3.5	-1.8	-2.1	+5.9	+41	+76	+97	+78	+12	+1.1	-2.5	+55	+3.6	-1.3	-1.9	-0.4	+1.0	+0.49	-6	+1.14	+1.04	+98	+98	+95	+100														
90%	-5.1	-3.0	-1.5	+6.3	+39	+72	+93	+73	+11	+0.9	-1.9	+52	+3.0	-1.7	-2.2	-0.7	+0.8	+0.57	-9	+1.20	+1.10	+91	+94	+85	+95														
95%	-7.7	-5.0	-0.6	+6.9	+36	+68	+86	+64	+10	+0.6	-0.9	+47	+2.2	-2.1	-2.8	-1.0	+0.5	+0.70	-13	+1.26	+1.18	+81	+88	+71	+86														
99%	-13.2	-9.1	+1.4	+8.3	+29	+56	+69	+45	+7	-0.2	+1.3	+37	+0.5	-3.1	-4.0	-1.9	-0.1	+0.95	-21	+1.42	+1.32	+55	+73	+35	+66														
	More Difficult Calving	More Difficult Calving	Longer Gestation Length	Heavier Birth Weight	Lighter Live Weight	Lighter Live Weight	Lighter Live Weight	Lighter Mature Weight	Lighter Live Weight	Smaller Scrotal Size	Longer Time to Calving	Lighter Carcass Weight	Smaller EMA	Less Fat	Less Fat	Lower Yield	Less IMF	Lower Feed Efficiency	Less Docile	Less Sound	Less Sound	Lower Profitability	Lower Profitability	Lower Profitability	Lower Profitability														

* The percentile bands represent the distribution of EBVs across the 2019 drop Australian Angus and Angus-influenced seedstock animals analysed in the Mid March 2021 TransTasman Angus Cattle Evaluation .



BRINGING YOUR NEW BULL HOME

WHEN PURCHASING A BULL, CARE AND HANDLING AFTER THE SALE CAN BE AS IMPORTANT AS THE PURCHASE ITSELF. LOOKING AFTER YOUR BULL WELL DURING THE INITIAL STAGES OF HIS WORKING LIFE MAY ENSURE LONGEVITY AND SUCCESS WITHIN YOUR BREEDING HERD.

PURCHASE

Temperament is an important characteristic when selecting a bull. Selecting a bull that may be flighty or aggressive will make life difficult for you each time he is handled. Note which bulls continually push to the centre of a mob, run around, or are unreasonably nervous, aggressive or excited.

At the sale, note any changes of temperament by individual bulls. Some bulls that are quiet in the yard or paddock may not like the pressure and noise of the auction and become excited. Others that were excited beforehand get much worse in the sale ring and can really perform. Use the yard or paddock behaviour as a guide, rather than the temperament shown in the ring.

DELIVERY

When transporting your new bull insurance against loss in transit, accidental loss of use, or infertility, is sometimes provided by vendors. Where it is not, it is worth considering. After purchase tips:

- When purchasing, ask which health treatments he has received.
- Treat and handle him quietly at all times - no dogs, no buzzers. Talk to him and give him time and room to make up his mind.
- With more than one bull from different origins, you must be able to separate them on the truck.
- Make sure that the truck floor is covered to prevent bulls from slipping. Sand, sawdust or a floor grid will prevent bulls from being damaged by going down in transit.
- If you can arrange it, put a few quiet cows or steers on the truck with the bull. Let them down into a yard with the bulls for a while before loading and after unloading.
- Unload and reload during the trip as little as possible. If necessary, rest with water and feed. Treat bulls kindly your impatience or nervousness is easily transmitted to an animal unfamiliar to you and unsure of his environment.

IF YOU USE A PROFESSIONAL CARRIER:

- Make sure the carrier knows which bulls can be mixed together.

- Discuss with the carrier, resting procedures for long trips, expected delivery time, truck condition and quiet handling.
- Give ear tag and brand numbers to the carrier and make sure you have the carrier's phone number.
- If buying bulls from interstate, organise any necessary health tests before leaving and work out if any other requirements must be met before cattle can come into another State.

When buying bulls from far away, you may often have to fit in with other delivery arrangements to reduce cost. You should make it clear how you want your bulls handled.

ARRIVAL

When the bull or bulls arrive home, unload them at the yards into a group of house cows, steers or herd cows. Never jump them from the back of a truck directly into a paddock—it may be the last time you see them. Bulls from different origins should be put into separate yards with other cattle for company.

Provide hay and water, then leave them alone until the next morning .

The next day, bulls should receive routine health treatments. If they have not been treated before, all bulls should be vaccinated with:

- 5-in-1 vaccine;
- vibriosis vaccine;
- leptospirosis vaccine (if in areas like the Hunter where leptospirosis exists);
- three-day sickness vaccine (if in areas where this sickness can cause problems).

Give particular attention to preventing new bulls bringing vibriosis into a herd. Vibriosis, a sexually transmitted disease, causes infertility and abortions and is most commonly introduced to a clean herd by an infected bull. These bulls show no signs of the illness. Vaccinated bulls are free from vibriosis, so vaccinating bulls against the disease should be a routine practice.

Vaccination involves two injections, 4–6 weeks apart, at the time of introduction, and then a booster shot every year. Complete the vaccinations 4 weeks before joining.

PURCHASE

DELIVERY

AFTER PURCHASE TIPS

ARRIVAL

MATING NEW YOUNG BULLS

MANAGING OLDER HERD BULL

DURING MATING

NORTHERN AUSTRALIA



BRINGING YOUR NEW BULL HOME

Consult with your veterinarian and draw up a policy for treating bulls on arrival and then annually. Bulls should be drenched to prevent introducing worms and, if necessary, should be treated for lice.

Plan to give follow-up vaccinations 4–6 weeks later. Leave the bulls in the yards for the next day or two on feed and water to allow them to settle down with other stock for company. A bull's behaviour will decide how quickly he can be moved out to paddocks.

MATING NEW YOUNG BULLS

Newly purchased young bulls should not be placed with older herd bulls for multiple-sire joining. The older, dominant bull will not allow the young bulls to work, and will knock them around while keeping them away from the cows.

Use new bulls in either single-sire groups or with young bulls their own age. If a number of young bulls are to be used together, run them together for a few weeks before joining starts. They sort out their pecking order quickly and have few problems later.

When the young bulls are working, inspect them regularly and closely.

MATING NEW YOUNG BULLS

Older working bulls also need special care and attention before mating starts. They should be tested or checked every year for physical soundness, testicle tone, and serving capacity or ability.

All bulls to be used must be free-moving, active and in good condition. Working bulls may need supplementary feeding before the joining season to bring up condition.

DURING MATING

- Check bulls at least twice each week for the first 2 months. Get up close to them and watch each bull walk; check for swellings around the sheath and for lameness.
- Have a spare bull or bulls available to replace any that break down. Replace any suspect bull immediately.
- Rotate bulls in single-sire groups to make sure that any bull infertility is covered. Single-sire joining works well but it has risks. The bulls must be checked regularly and carefully, or the bulls should be rotated every one or two cycles.

Bulls are a large investment for breeding herds and they have a major effect on herd fertility. A little time and attention to make sure they are fit, free from disease and actively working is well worthwhile.

NORTHERN AUSTRALIA

Although the Angus breed originated in a cooler climate, they can adapt to subtropical regions with many straight-bred and cross bred producers finding success in Northern Australia. Some of the following information may also be helpful for new bulls located in more temperate climates.

ADAPTATION

The key to Northern success for Angus is that cattle introduced from the Southern regions of Australia be allowed to adapt to their new environment before commencing their working life. If possible, a break of 3 months is advisable before you set your bull to work.

PURCHASE IN COOLER MONTHS

Ensure your bulls are in good condition before they do commence their working life. The cooler months are an ideal time to purchase and introduce Angus cattle, allowing them plenty of time to acclimatise.

CHANGE OF FEED SOURCE

When inducting Angus cattle into your herd consider their source of feed. Have you taken an animal which has been supplemented on grain straight to a dry pasture? Animals should be gradually changed over to their new feed to ensure they do not lose condition. This may involve using supplements which could include dry lick/urea blocks.

MANAGING CATTLE TICKS

For ticky areas, bulls should be vaccinated prior to transport and given another booster afterwards. Remember males are more susceptible to ticks than females.

Information is provided by the Department of Primary Industries NSW. For further information visit the DPI web site: www.dpi.nsw.gov.au. or www.angusaustralia.com.au. Further reading - Buying Angus Bulls

FOR FURTHER INFORMATION VISIT
www.angusaustralia.com.au

Angus Australia Locked Bag 11, Armidale NSW 2350
Phone: (02) 6772 3011 | Fax: (02) 6772 3095
Email: office@angusaustralia.com.au
Website: www.angusaustralia.com.au



BUYERS INSTRUCTION SLIP

TRADING NAME: _____

POSTAL ADDRESS: _____

POSTCODE: _____

EMAIL: _____

PHONE: _____ MOBILE: _____

AGENT: _____

LOTS PURCHASED: _____

DELIVERY INSTRUCTIONS:

(Please ensure adequate time is allowed to organise appropriate yarding and safe transport of your purchase)

INSURANCE:

YES: _____ NO: _____

PERIOD: _____

BUYER SIGNATURE (or AGENT NAME/SIGNATURE)

TO ENSURE PROMPT AND SAFE DELIVERY OF YOUR PURCHASE, PLEASE COMPLETE THE ABOVE. VERBAL INSTRUCTION WILL NOT BE ACCEPTED.



LOT 7

ABSOLUTE QUALITY Q411



LOT 21

ABSOLUTE QUINELLA Q410

AA ABSOLUTE ANGUS



ABSOLUTEANGUS.COM.AU

292 TRAFALGAR SOUTH ROAD, TRAFALGAR SOUTH, VICTORIA