



FINAL
CHAROLAIS

2021

BULL SALE
18TH MARCH AT 11 AM

The herd of proven multi trait excellence



ON PROPERTY YEA & AUCTIONSPLUS ONLINE

WWW.PARINGALIVESTOCK.COM.AU



WELCOME

Welcome to our 18th and final Charolais bull sale on 18th March 2021 on property Creeds Road Murrindindi. We are of the firm belief that Charolais continue to play a significant role in the beef industry going forward globally, producing high quality and high yielding beef, efficiently. No other cross does it better than Charolais in our opinion.

Our Paringa bull business has grown substantially in recent years, and although we love our Charolais cattle, it has come a time where we need to simplify our production system. Trying to run 3 different fully recorded breeds while focussing on holistic grazing is not straight forward, so we made the difficult decision that one breed had to go. The good news is, we leave you with this last run of Paringa Charolais bulls of which is possibly the best yet.

The 2021 Charolais offering is top of the drop, and will go under the hammer as open cry auction interfaced with AuctionsPlus. The sale group is sired by four elite industry focussed sires including feature Paringa Kilo Packer N391E for his multi trait excellence, OW Lead Time for raw power and unmatched docility, WR Foreman sons are superbly balanced with good data, sound structure, and heavy muscling, and Violet Hills McKinley M226E adds another dimension to our Paringa genetics with outcross lines, extra scale, good docility and hair type.

Looking at this year's final Charolais offering both in the paddock and on paper, it is possibly our best. An even line of quiet, sound, and most balanced group of Charolais bulls we have produced to date. If we reflect on where we started some 20 years ago, we have created some truly unique Charolais that excel across multiple traits and the herd evolved into packages of predictable performance Charolais to be proud of.

Over the years we have achieved notable milestones in our Charolais:

- reduced average birth weights by 10kgs
- increased weaning weights by 30kgs
- increased carcase weights and reduced time to slaughter by 6 months
- made them easy calvers as 2 year olds
- added 4 mls of fat
- market weights faster off grass or grain
- added an extra marble score
- reduced mature cow weights by 150kgs
- improving udders, feet and docility
- & through the \$Profit system reduced feed intakes and almost doubled feed to gain efficiency.

Paringa Charolais are some of the most predictable genetics around, and our hope is the breed as a whole will continue to work on this by continual improvement; lift generational intervals, increase polled selection, use more domestic young bulls, and keep removing "bad cattle" who underperform from the system so that buyers of Charolais genetics have a positive experience each and every time.

We welcome you to our field day "Made Well, Grade Well, Paid Well" on Wednesday 17th March on property Murrindindi with guest speakers from MLA, Meat Standards Australia, Greenhams, joined by Jason Trompf breeding consultant and Pete McGilchrist from UNE. Charolais bulls will be available to view from 3pm.

Look forward to catching up with everyone at the Autumn field day, sale day or at our annual Spring Bull Sale. Thank you for spending the time looking through the catalogue and this is our last line up of Charolais sale bulls of which we are very proud.

Best Wishes,

*Tom, Olivia
& family*



PARINGA

LIVESTOCK GENETICS

FINAL CHAROLAIS SALE

On Property + Online | 11 AM START

SALE BY AUCTION
Interfaced with AuctionsPlus

28 x 18 MONTH OLD BULLS
27 CHAROLAIS SEMEN LOTS

- ✓ SIRE VERIFIED
- ✓ GENOMICALLY ENHANCED EBVS
- ✓ JBAS - 8 ACCREDITED
- ✓ SEMEN TESTED
- ✓ STRUCTURE & TEMPERAMENT ASSESSED
- ✓ HOMOZYGOUS POLL TESTED
- ✓ PESTIVIRUS TESTED
- ✓ VACCINATED & DRENCHED

Sale location: 93 Creeds Rd, Murrindindi, VIC



Office (02) 9262 4222
Contact Hugh Courts

Auctioneer
Michael Glasser 0448 716 464

Livestock Agents:
James Brown 0419 333 295
David Benson 0428 275 504
Lach Williams 0428 020 540
Jack Nelson 0448 716 464
Ryan Morris 0458 120 605

PRE-REGISTER ONLINE WWW.RAYWHITEGTSM.COM.AU

4% REBATE TO AGENTS - SEE SALE INFORMATION PAGE FOR DETAILS

VENDORS: PARINGA LIVESTOCK PTY LTD

Contact Tom and Olivia Lawson

Olivia 0407 978 317 **Tom** 0434 146 795

Email info@paringalivestock.com.au **Website** www.paringalivestock.com.au

DISCLAIMER: Every care has been taken in compiling this catalogue to ensure accuracy of information supplied, but no responsibility is accepted for any errors which may have occurred.



3/29/58

Dear Maria,

Bought my first cows today. 20 head. Ranch life here & come! I can't wait until we're married and living on the farm together.



Jan. 8 1994

Almost lost 13 head to BRD. Our rep brought out a solution when nothing else worked. Saved all and vaccinated the rest.

KEEP PROGRESSING



INTRODUCING OUR LATEST SOLUTION FOR THE NEXT GENERATION OF COMMERCIAL COW-CALF PRODUCERS— INHERIT™ Select, a multi-breed genetic test delivering insights and profit indexes on your females so you can keep your herd moving forward.

Get started at [INHERITprogress.com](https://www.inheritprogress.com)

SALE INFORMATION

SALE DATE AND PRIOR INSPECTION

Selling will commence at 11 AM on Thursday 18th March, 2021. Bulls may be inspected from 9am on the morning of the sale and from 3pm the day prior 17th March, or at another time by prior arrangement with the agents or vendors.

SELLING SYSTEM

Sale of animals will be conducted under Open Cry Auction terms and conditions, and interfaced sequentially online with AuctionsPlus. Please ensure to register with the selling agents and/or AuctionsPlus to obtain a buyers number if you are considering making a purchase. Successful purchasers are requested to give written advice to the selling agents regarding transport arrangements at the conclusion of the sale.

AUCTIONSPLUS

Buyers will have the option of bidding off site, or on site. Note this will be sale by video auction - sequentially sold from lot 1 through to 150. All lots will have photos and/or video uploaded to AuctionsPlus mid February. Please register your trading details with AuctionsPlus prior to sale day.

DELIVERY

Delivery can be organised by the vendor or the purchaser but please advise the selling agents of your requirements on sale day on the buyer sheet including full contact details. Delivery is at the cost of the purchaser. Please note: no transport is permitted during the auction.

GST

All animals are sold exclusive of GST.

INSURANCE

All due care is taken in the delivery of animals purchased however buyers are responsible for the insurance of animals against injury or death from the fall of the hammer. Insurance is available on the day or arrangements can be made prior to the sale. We strongly recommend taking out insurance on bulls for the first 12 months and especially during joining.

SALE DAY SAFETY

All the sale bulls have been screened for temperament and are quiet to handle under normal circumstances. However, there are inherent risks associated with cattle handling.

PLEASE NOTE

OUR CATTLE ARE NATURALLY QUIET, HOWEVER VISITORS ENTER THE CATTLE PENS AT THEIR OWN RISK. FOR THEIR OWN SAFETY CHILDREN MUST NOT ENTER THE PENS AND YARDS AT ANY TIME.

LOT PHOTOS

Our bulls are paddock reared and reflect our breeding program, not a feeding program. Please note their photos were taken 6 weeks prior to sale day and will present heavier by 18th March, Weights will be available sale day.

PAYMENT OPTIONS

Settling of accounts will be facilitated by the selling agents. Payment options include payment by cheque, EFT or credit card on day of purchase, or within normal trading terms. More details on rebates and payments on page 39.

REBATE

A 4% rebate is claimable to all livestock agents who attend the sale and make purchase, or register introduction of the successful purchaser in writing at least 24 hours PRIOR to the sale start time.

BREED SOCIETY TRANSFERS

For stud ownership, the transfer of ownership of the animals at Charolais Society of Australia will be organised by the vendors if requested. Please ensure accurate herd prefix, and transferee details are supplied on the buyer registration form. There is no obligation for commercial buyers to transfer animals.

PARINGA BULL GUARANTEE

All breeding cattle bred by Paringa are fertile and structurally sound to the best of our knowledge.

If an issue arises with a bull within 12 months of purchase Paringa are willing to discuss options for a refund or replacement on a case by case basis based on fertility and structure. Important to make contact with us directly in the first instance. To be eligible for the guarantee the purchaser must lodge an application to Paringa in writing within 12 months of date of purchase, provide a full veterinary report, photos and in some cases inspection by the vendor.

This is not an insurance policy - we recommend each purchaser takes out their own bull insurance and to avoid single sire mating their yearling bull.

This guarantee is additional to the normal terms and conditions governing auction sales, and as such the vendors decision will be final. Paringa Livestock Genetics Pty Ltd reserves the right to refuse a guarantee in some cases. Please note, Paringa Livestock Genetics Pty Ltd is not liable for genetic defects, either current or future.



BULL INFORMATION

BREEDPLAN & \$PROFIT DATA

Our Charolais sale bulls are recorded using the Breedplan system, and are also sold with their set of \$Profit data comparing them to Charolais worldwide. All Charolais are 100% genomics tested and parent verified. Breeding systems that rank animals in their population on heritable economic traits are our most powerful tools, particularly indexes. By submitting our data into both systems keeps everything in check and balance, and keeps us as seed stock breeders accountable, with added traits such as Intake, Cow Maintenance and Maternal calving ease. An added advantage of \$Profit system is the extra “cow sense” behind it, not published in the data set here. With no breed bias it aims to assist traits to move in the right direction and recognises the “all breeds” potential.

Breeding indexes are the most powerful tool for the commercial producer. Once we understand what an Index takes into account, in terms of traits, it takes the guesswork out of analysing the data set yourself. Genomics, on farm measurements and a bit of cow sense are all vital inputs into breeding indexes.

FERTILITY TESTED

Bulls are fertility and semen checked and screened by Nationwide Artificial Breeding.

INDEPENDENTLY ASSESSED

Structure and Temperament Assessment by Jim Green on 10th October 2020.

The Beef Class Structural Assessment System was designed by the Beef Improvement Association and breed societies funded by Meat & Livestock Australia to enable selection to improve structural soundness. Paringa uses a strict assessment program to assess the structural composition of their herd to best guarantee the soundness of their stock; the cow herd assessed by Tom, and since 2007 the sale bulls have been INDEPENDENTLY assessed by Jim Green of Green Livestock Services.

HEALTH & PHYSICAL EXAMINATION

All bulls have received the following health treatments:

- Vaccinations up to date for Pestigard, booster 7 in 1, Selovin, B12
- Drenched with Eclipse Pour On
- Access to mineral licks and pasture

Bulls have been handled using quad bikes, horses and dogs. Note: foot trimming has not been performed on any animal.

AN EXPLANATION OF THE BEEF CLASS STRUCTURAL ASSESSMENT SYSTEM

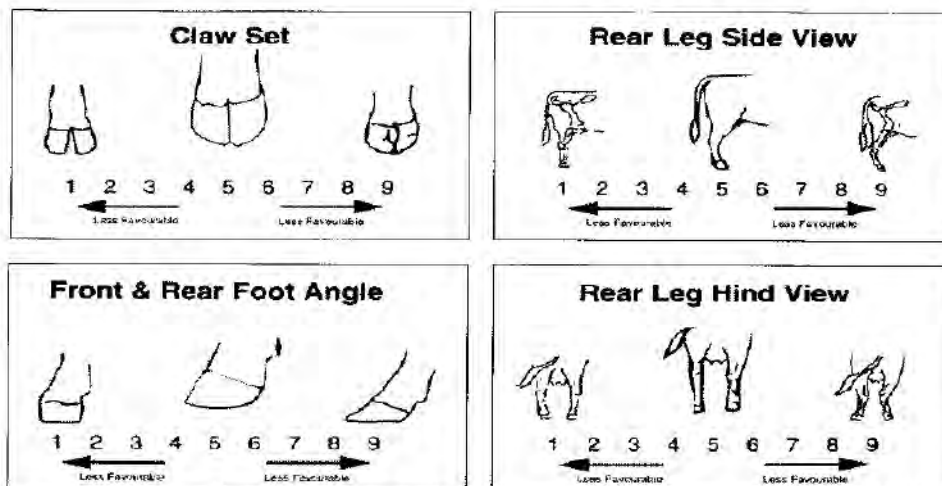
The Beef Class Structural Assessment System uses a scoring system 1-9 for feet and leg structure:

- A score of **5** is ideal;
- A score of **4 or 6** show slight variations from ideal; but this includes most sound animals. An animal scoring 4 or 6 would be acceptable in any breeding program;
- A score of **3 or 7** shows greater variation but would be acceptable in most commercial programs. However seed stock producers should be aware and understand that this score indicates greater variation than ideal;
- A score of **2 or 8** are low scoring animals and should be looked at cautiously and inspected closely before purchasing;
- A score of **1 or 9** should not be catalogued and are considered culls.

Aside from individual commentary from Tom on each lot, their structural and temperament scores are also listed.

TEMPERAMENT SCORE

The temperament or docility score separates animals from the same contemporary group on their calmness in a confined area. Animals which are extremely quiet (touchable) score '1'. Animals that are aggressive or extremely agitated in the crush are scored as '5'.



Understanding SNP Poll Test Results

Neogen Australasia moved to SNP based DNA testing in September 2017. The move to SNP based testing means that we now have a far more accurate test for Poll in both taurine and indicine cattle.

Previously used Beef CRC based Poll tests would return a result and an accuracy (e.g. Homozygous Polled 98%). With SNP based Poll testing, the Poll gene can now be identified with a lot more accuracy and a description of the specific poll allele found is included as a subscript.

When reporting Poll test results from a SNP based test, the results will be reported as seen below:

Result	Interpretation	Animal's Appearance
PcPc	Homozygous Poll (PP)	Predominately Polled (occasional scurs)
PcPf		
PfPf		
HPc	Heterozygous Poll (PH)	Polled or Scurred
HPf		
HH	Horned (HH)	Horned

Mating outcomes (statistically):

Pc and Pf are interchangeable for 'P' in the graphic below.

<table border="1"> <thead> <tr><th></th><th>P</th><th>P</th></tr> </thead> <tbody> <tr><th>P</th><td>PP</td><td>PP</td></tr> <tr><th>P</th><td>PP</td><td>PP</td></tr> </tbody> </table>		P	P	P	PP	PP	P	PP	PP	<p>PP x PP</p> <p>100% progeny will be PP polled</p>	<table border="1"> <thead> <tr><th></th><th>P</th><th>P</th></tr> </thead> <tbody> <tr><th>H</th><td>PH</td><td>PH</td></tr> <tr><th>H</th><td>PH</td><td>PH</td></tr> </tbody> </table>		P	P	H	PH	PH	H	PH	PH	<p>PP x HH</p> <p>100% progeny will be PH polled</p>
	P	P																			
P	PP	PP																			
P	PP	PP																			
	P	P																			
H	PH	PH																			
H	PH	PH																			
<table border="1"> <thead> <tr><th></th><th>P</th><th>P</th></tr> </thead> <tbody> <tr><th>P</th><td>PP</td><td>PP</td></tr> <tr><th>H</th><td>PH</td><td>PH</td></tr> </tbody> </table>		P	P	P	PP	PP	H	PH	PH	<p>PP x PH</p> <p>50% progeny will be PP polled, 50% will be PH polled</p>	<table border="1"> <thead> <tr><th></th><th>P</th><th>H</th></tr> </thead> <tbody> <tr><th>P</th><td>PP</td><td>PH</td></tr> <tr><th>H</th><td>PH</td><td>HH</td></tr> </tbody> </table>		P	H	P	PP	PH	H	PH	HH	<p>PH x PH</p> <p>50% progeny will be PH polled, 25% will be PP polled, 25% will be HH horned</p>
	P	P																			
P	PP	PP																			
H	PH	PH																			
	P	H																			
P	PP	PH																			
H	PH	HH																			
<table border="1"> <thead> <tr><th></th><th>P</th><th>H</th></tr> </thead> <tbody> <tr><th>H</th><td>PH</td><td>HH</td></tr> <tr><th>H</th><td>PH</td><td>HH</td></tr> </tbody> </table>		P	H	H	PH	HH	H	PH	HH	<p>PH x HH</p> <p>50% progeny will be PH polled, 50% will be HH horned</p>	<table border="1"> <thead> <tr><th></th><th>H</th><th>H</th></tr> </thead> <tbody> <tr><th>H</th><td>HH</td><td>HH</td></tr> <tr><th>H</th><td>HH</td><td>HH</td></tr> </tbody> </table>		H	H	H	HH	HH	H	HH	HH	<p>HH x HH</p> <p>100% progeny will be HH horned</p>
	P	H																			
H	PH	HH																			
H	PH	HH																			
	H	H																			
H	HH	HH																			
H	HH	HH																			

AUSTRALIA'S \$PROFIT INDEX

The unique \$Profit breeding value ranking system, not only compares all breeds equally, but compares hybrid composite multi breed animals as well.

What makes this \$Profit selection even more unique is, in addition to the standard traits such as birth, weaning weights and carcass assessments which are revenue traits, it also looks at feed efficiency and cow maintenance; which can impact costs significantly. The biggest improvement is its balance; it recognises the benefits of hybrid vigour in a breeding system, and does not assume "more is better". Traits are not linear, and realising this and that more is not better is an important component of this index.

We will continue to work with ABRI for Breedplan Analysis EBVs on the pure bred registered animals, and now can also offer an additional selection tool, \$Profit Index. Internally in the Paringa breeding program, we have been observing the impact \$Profit Index has had in the USA over a number of years; then carefully selected AI sires to use within our herd here in Australia. \$Profit sires have worked extremely well over our herd, while customers using Paringa bred sons have achieved similar results in the progeny.

To deliver positive outcomes to livestock producers, and in particular being able to offer our customers the best available global genetics, providing a \$Profit Index is the perfect tool. By linking our herd in, and comparing them to 1.4 million plus animals currently on the system, buyers can be confident we are comparing apples with apples. Buying quality yearling bulls can be the most rapid genetic gain achievable. Effectively, the bulls are purchased at an age that their progeny are sold, so this gives a simple picture of what they will breed.

Visiting commercial producers in recent times, using yearling bulls in their herds, the genetic gain was obvious – these bulls bought a year ago as yearlings, now a two year old, had amazing calves on the ground. The neighbour, who purchased a 2 year old bull same time last year, is essentially a year behind in genetic progress. It is easy to see why the 2 year olds are attractive; they are grown out and always look impressive. But remember good genetics compound quickly. Why wait?



"Leachman Cattle of Colorado (LCOC) has partnered with Zoetis to create a weekly multi-breed genetic evaluation that provides Genomic-Enhanced Expected Progeny Differences powered by HD50K for \$Profit testing. HD50K for \$Profit significantly improves the accuracy of GE-EPDs and \$Profit indexes on young animals allowing Paringa clients to make even more reliable bull purchasing decisions.

The increase in accuracy across Growth & Efficiency, Maternal and Carcass trait groups is roughly equivalent to an average of 17 recorded progeny with these phenotypes required in conventional evaluations. The improved accuracy will increase the rate of genetic gain at Paringa and in turn Paringa's commercial clients helping drive more rapid and impactful advancements in profitability."

From Lachlan Ayoub, Genetics Key Account & Technical Manager (Beef) Zoetis (050820)

WHY \$PROFIT HELPS

"With over 20 traits and so many measurements, buying the best bull has become really confusing. Every bull is good on some traits and weak on others. The challenge is figuring out how each of those traits is going to impact your bottom line. This is where \$Profit value comes in."

HOW \$PROFIT WORKS

"\$Profit assumes that the average commercial bull will have 100 progeny over its lifetime. The model assumes you will keep 30% of your heifers as replacements and that you retain ownership on the remainder of calves through finishing and sale.

The model then factors in all of the effects on both income and expense to come up with a net profit figure for each bull. \$Profit allows you to compare any two bulls and calculate the difference in profit that they are expected to generate in your herd."

- Leachman Cattle, Colorado



SPRING SALE 100 YEARLING BULLS

30TH SEPTEMBER 2021

On Property Murrindindi Victoria & Online

WHAT TRAITS ARE INCLUDED IN \$PROFIT?

\$Profit includes nearly every trait that impacts profitability. The effect of most traits on profit is fairly simple to understand. Here is a list of what is included and its effect:

REVENUE TRAITS

Calving ease = more calves

Weaning & yearling EBV = more weight

Fertility (days to conception) = more weight and more calves

Carcase weight = worth more

Marbling = value based premiums

Eye muscle area = more yield is more meat

COST TRAITS

Cow mature size = bigger eats more

Cow intake = more intake costs more

Feedlot feed efficiency = cost of gain

Some traits are not so easily characterised for \$Profit. Milk, for example, is a good thing until you get too much. When over +25, milk has a more negative effect on fertility that it has a positive effect on weaning weight.

WHY WE JOINED THE \$PROFIT DATABASE

- Essentially we needed an index that did the following:
- Reflects the true benefits of cross breeding systems; and Heterosis. The Pork and Poultry industries have used similar indexes for years.
- It is one index that genuinely reflects the best cattle, looking at all cost and revenue traits
- Includes feed efficiency data and fertility inputs
- Is focussed on the end product and profitability, without sacrificing livestock producer business
- Helps bull buyers make better breeding decisions, simplifies all the important data into one easy to identify index
- Database is managed and operated by professional cattle breeders, not by a board of directors
- More is not always better

\$Profit has been commercially tested and verified in the USA for 14 years, we have analysed our cattle for the last 7 years and the results are conclusive. "It consistently highlights the best cattle".

Tom Lawson 2020

"Optimal is always best in nature"



- ✓ BW +1.5
- ✓ CED +8.7
- ✓ EMA +11.7
- ✓ IMF +3.8
- ✓ ABI +\$150
- ✓ \$P \$30,000
- ✓ Docility
- ✓ Feet

SydGen Bonus

HEIFER BULLS | MATERNAL BULLS | POWER BULLS

PARINGA GENETICS

20 years of Selection for Fertility, Feed Efficiency & Eating Quality

Contact:

P Tom Lawson - 0434 146 795 E Tom_lawson@bigpond.com

www.paringalivestock.com.au



EXPLANATION FOR ACROSS BREED EBVS (ABE)

Across Breed EBVs are published for all the Stabilizer® bulls in this catalogue. These Across Breed EBVs predict differences expected in performance of future progeny of these bulls. All the Across Breed EBVs can be used to compare the Stabilizers® within this catalogue.

Birth Weight (BW) ABE
is the weight of progeny at birth, expressed in kg.

Weaning Weight (WW) ABE
is the weight of progeny at weaning, expressed in kg.

Yearling Weight (YW) ABE
is the weight of progeny at yearling age (12 months of age) expressed in kg.

Milk (MK) ABE
This is the best indicator of a bull's daughter ability to milk. It measures the difference in weaning weight between bulls' progeny solely due to milk.

Scrotal (SC) ABE
is calculated from the circumference of the bulls' scrotum.

Back Fat (BF) ABE
is the ultrasound based ABE for back fat in mm.

Rib Eye (RE) ABE
is the ultrasound based ABE for rib eye area, expressed in cm squared.

Marbling (MB) ABE
is the ultrasound based ABE for marbling.

Carcase Weight (CW) ABE
is the expected progeny differences in bulls progeny for carcase weight, expressed in kgs.

Mature Weight (MW) ABE
is the predicted mature weight of daughters. This ABE is the best indicator of daughter size.

Intake (IN) ABE
Is an estimate of the amount of feed that the bull's progeny will consume over a 112 day feeding period. Animals with lower IN ABE figures will consume less throughout their life.

Feeder Gain (FG) ABE
predicts the feedlot efficiency of the bulls' offspring. Bulls with lower FG ABE figures will produce progeny that feed more efficiently.







MCKENZIE
AG SERVICES

www.mckenzieag.com.au

Follow us on 



Charolais/Angus Steer finished for the domestic market on a customised Beef Finisher Mix supplied by McKenzie Ag Services.



Supplier of grains,
mixed feeds, pellets,
hay and protein meals



Ration formulation
and nutrition
advice



Custom feeding:
domestic, export
and stud cattle

What Our Clients Are Saying



"Many of my key clients use products and services from McKenzie Ag Services. The results have been excellent and the service cannot be faulted."

Mick Curtis - Rodwells



"Because our business requirements are a bit different from many producing breeding stock rather than fattening stock, getting the feed ration right is vital to ensure the guaranteed longevity of our stock to customers, whilst meeting weight gain targets. The reason we like using McKenzie feeds is their hands on approach, tailoring the mix to suit our operation, and ensuring the ration is balanced whilst minimising the need for rumen modifiers."

Tom Lawson



"In addition to supplying my feed and formulating my rations, I rely on McKenzie Ag Services for advice on many aspects of my feedlot business. Their combined knowledge of the grains industry and intensive livestock production is hard to come by, and has been instrumental to the success of my feedlot operations."

Simon O'Donnell - Beef Producer



"McKenzie Ag are a critical component of our operations at Yambinya Station. Their assistance with ration formulation, feed budgeting, grain and fodder inventory control and supply contracts are critical to our business. We rely on McKenzie Ag to provide the most appropriate rations for our Beef and Lamb Feedlots at Yambinya Station, as well as assisting many of our Farm Assurance and Great Southern producers. McKenzie Ag comes with my highest recommendation."

Steve Chapman - Southern Livestock Manager, JBS

Lachlan McKenzie | P: 0417 899 221 | E: lach@mckenzieag.com.au



REFERENCE SIREs

CHAROLAIS **OW LEAD TIME 6294 PLD**

DOB: 10/4/16

Soc. ID: OAUM6294E

MARCH 2021 CHAROLAIS BREED PLAN										
CALVING EASE				GROWTH & MATERNAL					FERTILITY	
DIR	DTRS	GL	BWT	200	400	600	MCW	MILK	SS	
EBVs	12.5	3.1	-6.6	-3.3	8	16	19	-5	11	3.9
% Rank	4	28	3	3	80	80	85	97	15	1
CARCASS						INDEX VALUES				
CWT	EMA	RIB	RUMP	RBV	IMF%	DOI	EXI	NTI		
EBVs	17	2.5	1.5	1.7	0.1	-0.3	50	70	26	
% Rank	65	14	9	13	50	96	7	5	15	

SIRE COOLEY ROYCE 1107T39
FF ABOUT TIME Y07
DC GRONA 146T

SCHURRTOP HCR RANCHER
MS COOLEY S DUKE 1107N60

SRC KENTAKE S02
SRC CLASSIC 019R

DAM MC-OW SANDCREEK 375
OW MISS SANDCREEK 3031 PLD
OW MISS MAXIMISER W13 PLD

HOODOO SANDCREEK 9008
MC HANNA 904

DC-OW MAXIMISER 385
OW MISS DESIGN S515



\$PROFIT
\$19,629

TOP 1%

The Lead Time sons in this sale group are some of the most powerful yet quietest Charolais bulls you will ever see. They offer high ranking weight for age, which will produce lower ossification scores in progeny resulting in big improvements in MSA Index scores. High weight for age genetics like Lead Time is just as important as marbling when guaranteeing eating quality to consumers. This impressive set of Lead Time sons will weigh heavily on the scale, improve MSA scores, with weight for age, ease of calving and docility all adding up to more \$\$\$ in your pocket.

We have been fortunate in Australia to have ABS invest in some top Charolais over the last couple of decades, including greats such as: LT Bluegrass, Doc Silver, LCoC White Gold, Welcome Swallow F508E and now Lead Time who we feel is in a similar league. Hetero Polled.

TOP 7% Domestic Index TOP 5% Export Index
TOP 15% Northern Terminal

CHAROLAIS **WR FOREMAN D602**

DOB: 2/2/16

Soc. ID: OAUM3344E

MARCH 2021 CHAROLAIS BREED PLAN										
CALVING EASE				GROWTH & MATERNAL					FERTILITY	
DIR	DTRS	GL	BWT	200	400	600	MCW	MILK	SS	
EBVs	20.9	6.6	-8.3	-5.6	9	20	19	-7	12	2.8
% Rank	1	9	1	1	70	65	85	98	10	2
CARCASS						INDEX VALUES				
CWT	EMA	RIB	RUMP	RBV	IMF%	DOI	EXI	NTI		
EBVs	19	0.6	1.0	1.4	-1.0	0.5	65	86	29	
% Rank	55	89	20	19	93	20	1	1	9	

SIRE CMF 192 WRANGLER 256 M615145
WR WRANGLER W601
WR MISS PRINCESS T629

BALDRIDGE FASTTRACK 82E
CMF 138 OF DO40 192

OAKDALE DUKE 9003P
WR EASE 4412

DAM LT LEDGER 0332
WR DUCHESS B612
WR DUCHESS Y601

LT BLUEGRASS 4017P
LT BRENDA 6120

NWMSU DOC SILVER 362
WR DUCHESS W609



\$PROFIT
\$14,511

TOP 10%

Foreman is a bull who is rich in a royal pedigree of "top" proven Charolais bulls, including: Duke, Fastrack, Ledger and Doc Silver. Like all these renowned sires, Foreman has all the positive attributes of his royal pedigree. We were fortunate when STechnologies purchased Foreman and this allowed us to purchase conventional and sexed semen through Genetics Australia.

Foreman ranks top 1% Calving Ease Direct, Top 1% BW & GL, top 2% SS, on Australian Breedplan. This terrific run of sons sired by Foreman are a credit to their sire; we have had almost zero wastage with his progeny, and his sons will sire lots of live calves, born early, grow with a ton of muscle, all drivers of profitability. Homozygous Polled.

TOP 1% Domestic Index TOP 5% Export Index
Top 9% Northern Terminal

CHAROLAIS PARINGA KILO PACKER N391

DOB: 20/8/17 Soc. ID: TOLN391E

		MARCH 2021 CHAROLAIS BREED PLAN									
		CALVING EASE				GROWTH & MATERNAL				FERTILITY	
		DIR	DTRS	GL	BWT	200	400	600	MCW	MILK	SS
EBVs		16.4	8.0	-7.1	-4.6	21	30	45	34	11	2.6
% Rank		1	3	2	1	4	24	16	49	15	3
		CARCASE					INDEX VALUES				
		CWT	EMA	RIB	RUMP	RBV	IMF%	DOI	EXI	NTI	
EBVs		24	0.8	2.8	4.1	-2.4	1.3	75	111	41	
% Rank		25	83	1	1	99	1	1	1	1	

VPI FREE LUNCH 708T
SIRE PARINGA KILO PACKER K330
 PARINGA WHITE GOLD H410

LT RIO BLANCO 1234
 VPI MISS DUCHESS 404
 LEACHMAN WHITE GOLD P002X
 PARINGA BT SMART CHOICE E323

LT LONG DISTANCE 9001
DAM PARINGA LONG DISTANCE J361
 PARINGA D213 G326

LT SILVER DISTANCE 5342
 LT BELLE 7026
 PARINGA RIO BRAVO D213E
 BRADIARNA DEBBIE

\$PROFIT
\$16,677

TOP 4%



PARINGA KILO PACKER N391

Where does one start when describing the likes of this magnificent beef sire? He really is one out of the box, and regardless of what breed this bull is a game changer. If you are involved in profitable beef breeding systems and you want to look to the future and stay ahead of the curve, N391E and his elite sons will get you there faster than any bull we know about. Not only is he a bull in the top 1% of the 1% of almost ALL Indexes globally, but he is also roughly 3 times greater than the average Charolais on every trait. Other key points of difference: Jim Green scored N391E a 5/5 for structure, in all the years of breeding bulls this is a mean feat. So this sire is not only a data for profit "super star", but he is also a "foot fixer". And his final attribute of note? N391E has the best docility of any bull we have ever bred, is tough and adaptable - the whole package.



GRAND SIRE PARINGA KILO PACKER K330E

N391E sons in this sale will sire all the above plus super soft, profitable progeny that will never go out of fashion. They are the bulls to fix everything, including addressing animal welfare issues like calving difficulty and de horning, and reduce emissions with faster time to market and more fertile and productive daughters.

TOP 1% CED, BWT, RIB, RUMP & IMF
 TOP 4% \$Profit Index TOP 1% Domestic Index
 Top 1% Export Index Top 1% Northern Index

(N391E is owned by Balcomba Station Queensland. Semen available to purchase later on in this sale.)

CHAROLAIS VIOLET HILLS MCKINLEY

DOB: 1/9/16 Soc. ID: VHVM226E

		MARCH 2021 CHAROLAIS BREED PLAN									
		CALVING EASE				GROWTH & MATERNAL				FERTILITY	
		DIR	DTRS	GL	BWT	200	400	600	MCW	MILK	SS
EBVs		14.7	11.3	-3.3	-3.0	5	10	17	-1	10	0.7
% Rank		3	1	34	3	89	95	88	96	20	70
		CARCASE					INDEX VALUES				
		CWT	EMA	RIB	RUMP	RBV	IMF%	DOI	EXI	NTI	
EBVs		18	2.4	0.2	-0.1	1.0	-0.6	46	64	24	
% Rank		60	15	55	65	14	99	8	7	20	

JWX SILVER BULLET 524W
SIRE VIOLET HILLS JOLLY JOKER
 VIOLET HILLS BRIANA

BAR J SILVERADO 14S
 KMAC MISS MARMALADE 31R
 POURIWI 5378
 VIOLET HILLS TABOO

VIOLET HILLS ALEXANDER
DAM VIOLET HILLS DOROTHY
 VIOLET HILLS BLODWEN

VIOLET HILLS XCEED
 VIOLET HILLS TABOO
 VIOLET HILLS XTRASPECIAL
 VIOLET HILLS Y0057E

\$PROFIT
\$5,108

TOP 81%



We purchased McKinley M226E from Violet Hills a few years ago for natural joining as an outcross pedigree for our Charolais herd, and to complement our highly ranked calving ease, high growth, fertile and feed efficient Charolais breeding base. M226E has worked extremely well in our programs and his sons in this final Charolais sale stand up well against some of the "big gun" sires in the Charolais world. When measured in a global perspective, McKinley has a unique genetic profile with his exceptional calving ease, maternal calving ease, while still maintaining high yielding traits with adequate growth and nice fats. His progeny are sound, slick and very quiet. Hetero Polled.

TOP 1% Daughters, Top 3% BW & Calving Ease DIR, TOP 8% Domestic Index.



CHAROLAIS

SALE LOTS



1 CHAROLAIS **PARINGA KILO PACKER N391 Q354 (AI)(P)**

DOB: 11/8/19 Tag: Q0354 Soc.ID: TOLQ354E Poll Test: PcPf Join Type: AI TRAITS OBSERVED CE,BWT,200WT,400WT,SS,FAT,EMA,IMF,GENOMICS

MARCH 2021 CHAROLAIS BREED PLAN																			
EBVs	CALVING EASE				GROWTH & MATERNAL					FERTILITY	CARCASE					INDEX VALUES			
	DIR	DTRS	GL	BWT	200	400	600	MCW	MILK	SS	CWT	EMA	RIB	RUMP	RBY	IMF%	DOI	EXI	NTI
	13.6	5.2	-7.6	-3.4	25	46	60	53	14	3.5	32	0.2	1.6	2.5	-1.9	1.2	77	109	44
%Rank	4	13	1	4	1	1	2	14	5	1	5	97	9	5	97	2	1	1	1

SIRE PARINGA KILO PACKER K330 VPI FREE LUNCH 708T PARINGA WHITE GOLD H410
PARINGA KILO PACKER N391
 PARINGA LONG DISTANCE J361 LT LONG DISTANCE 9001 PLD PARINGA D213 G326

DAM WELCOME SWALLOW EASY GAIN F508 LT EASY PRO 1158 BJR SILVER MAID 717
PARINGA EASY GAIN M307
 PARINGA FREE LUNCH K346 VPI FREE LUNCH 708T PARINGA WESTERN SPUR D264



\$PROFIT	TOP 18%	STRUCTURAL ASSESSMENT								
		FC	RC	FA	RA	RS	RH	LM	TP	SN
\$13,030		6	6	6	6	6	6	C+	1	4

Please note: This 2021 Paringa Sale Team have been Sire Verified, semen tested, homozygous poll tested, independently structurally and temperament assessed, pestivirus tested, vaccinated and drenched.

What a way to kick off our final Charolais bull sale!
 A bigger, powerful N391E son with breed topping EBVs. Visually this bull is outstanding and it is no wonder when you look at his royal pedigree stacked with highly productive, balanced genetics that the Paringa herd is founded on. This bull comes from one of our best cows and a proven cow family lines that traces back to the original Palgrove Ideal 43. Q354's dam M307E is a beautiful uddered, Easy Gain young female. Q354 ranks as the number 1 animal in the Charolais breed (2019 born) for DOM Index at \$77. Whilst also ranking in the top 18% on the global \$Profit multibreed analysis.
 Hommo Polled top bull with STUD credentials.

2 CHAROLAIS PARINGA KILO PACKER N391 Q372 (AI)(P)



DOB: 6/9/19 Tag: Q0372 Soc.ID: TOLQ372E Poll Test: PcPf Join Type: AI

TRAITS OBSERVED
CE,BWT,200WT,400WT,SS,FAT,EMA,IMF,GENOMICS

MARCH 2021 CHAROLAIS BREED PLAN																			
CALVING EASE				GROWTH & MATERNAL					FERTILITY	CARCASS						INDEX VALUES			
DIR	DTRS	GL	BWT	200	400	600	MCW	MILK	SS	CWT	EMA	RIB	RUMP	RBV	IMF%	DOI	EXI	NTI	
EBVs	18.3	10.9	-6.3	-4.2	12	20	22	9	9	1.1	18	1.2	1.5	2.1	-1.1	0.9	67	89	29
%Rank	1	1	3	2	50	66	79	88	25	45	60	70	10	9	93	5	1	2	10

PARINGA KILO PACKER K330
SIRE PARINGA KILO PACKER N391
 PARINGA LONG DISTANCE J361

VPI FREE LUNCH 708T
 PARINGA WHITE GOLD H410

BRANCH VIEW HOWLER
DAM PARINGA HOWLER L365
 BRANCH VIEW HOWLER

BRANCH VIEW DYNAMO
 BRANCH VIEW A TOUCH OF CLASS E10

LT LONG DISTANCE 9001 PLD
 PARINGA D213 G326

LT BLUEGRASS 4017P
 PARINGA WYOMING A103



\$PROFIT	TOP 16%	STRUCTURAL ASSESSMENT								
		FC	RC	FA	RA	RS	RH	LM	TP	SN
\$13,399		6	5	6	6	6	5	C+	1	5

Here we have another of the sale bulls sired by home bred great Paringa N391; one of our best ever Paringa bred sires.

He is a true "breed changer", not only because of his multi trait excellence for any Charolais program, but also his ability to fix temperament and feet in one generation. Dam Paringa L365E is a productive feminine Branchview Howler female from one of our favourite Bluegrass females.

These N391 sons are outstanding; it is hard to pick a favourite. Q372 is a very good bull who ranks top 1% on DOM Index and top 16% for \$Profit globally.

Homo Polled.

3 CHAROLAIS PARINGA KILO PACKER N391 Q394 (AI)(P)



DOB: 19/8/19 Tag: Q0394 Soc.ID: TOLQ354E Poll Test: HPc Join Type: AI

TRAITS OBSERVED
CE,BWT,200WT,400WT,SS,FAT,EMA,IMF,GENOMICS

MARCH 2021 CHAROLAIS BREED PLAN																			
CALVING EASE				GROWTH & MATERNAL					FERTILITY	CARCASS						INDEX VALUES			
DIR	DTRS	GL	BWT	200	400	600	MCW	MILK	SS	CWT	EMA	RIB	RUMP	RBV	IMF%	DOI	EXI	NTI	
EBVs	16	9.6	-5.6	-4.8	12	21	24	19	13	1.6	17	0.7	2.7	3.8	-2.8	2.0	71	97	20
%Rank	2	2	7	1	40	65	74	79	9	25	65	88	1	1	99	1	1	1	9

PARINGA KILO PACKER K330
SIRE PARINGA KILO PACKER N391
 PARINGA LONG DISTANCE J361

VPI FREE LUNCH 708T
 PARINGA WHITE GOLD H410

LT BLUEGRASS 4017P
DAM PARINGA BLUEGRASS D140
 FERNVALE ZHIRL Z62

LT ASSERTION 1277
 LT PEARLS BREEZE 2236

LT LONG DISTANCE 9001 PLD
 PARINGA D213 G326

FERNVALE UPHILL
 FERNVALE WHIRL



\$PROFIT	TOP 3%	STRUCTURAL ASSESSMENT								
		FC	RC	FA	RA	RS	RH	LM	TP	SN
\$17,276		5	5	6	6	5	6	C+	1	4

It is no wonder these N391 sons have risen to the top; they are rippers. Q394 may be the best bull in the sale when you add up his looks, data, and pedigree in one package.

Q394 shares the same dam as the great Paringa Harvey H338E; D140 is without a doubt one of the best Charolais females in the country, if not globally. She is a magnificent breeding female who has never missed a calf over her 10 years; with 9 natural calves born and 6 ET calves during that period. Every calf born from D140 has been a cracker. So it is no surprise that Q394 is a crowd favourite with visitors; he is hot property with breed topping data and stud potential written all over him.

Top 1% DOM Index, top 3% \$Profit Index.

Hetero Polled.

4 CHAROLAIS PARINGA KILO PACKER N391 Q380 (AI)(P)



DOB: 16/8/19 Tag: Q0380 Soc.ID: TOLQ380E Poll Test: PcPf Join Type: AI

TRAITS OBSERVED
CE,BWT,400WT,SS,FAT,EMA,IMF,GENOMICS

MARCH 2021 CHAROLAIS BREED PLAN																			
CALVING EASE				GROWTH & MATERNAL					FERTILITY	CARCASS						INDEX VALUES			
DIR	DTRS	GL	BWT	200	400	600	MCW	MILK	SS	CWT	EMA	RIB	RUMP	RBY	IMF%	DOI	EXI	NTI	
EBVs	12.1	4.3	-8.2	-3.2	20	36	50	43	15	3.1	25	0.1	2.8	4.0	-2.7	1.3	69	99	39
%Rank	5	2	18	1	6	6	10	10	29	4	1	25	98	1	1	99	1	1	1

SIRE PARINGA KILO PACKER N391
 PARINGA LONG DISTANCE J361
 VPI FREE LUNCH 708T
 PARINGA WHITE GOLD H410
DAM PARINGA LEGEND N366
 PARINGA EASY GAIN J330
 PARINGA HARVEY H338
 PARINGA RIO G125
 WELCOME SWALLOW EASY GAIN F508
 PARINGA BT SMART CHOICE E323



\$PROFIT	\$15,944	TOP 6%	STRUCTURAL ASSESSMENT								
			FC	RC	FA	RA	RS	RH	LM	TP	SN
			6	5	6	6	5	6	C+	1	5

It is a difficult task trying to separate these N391 sons as mentioned previously; another here with a kind nature and wonderful structure.

This young bull is from a beautiful Paringa Legend L384 first calf heifer, with genetic lineages that trace back to one of our best Camp Cooley females, BT Smart Choice E323. Q380 is quite simply a beautiful bull that would do a top job for any Charolais weaner or feeder production system. His genetic potential is limitless both off grass or grain fed systems. Check out his growth, fat scores and marbling.

Top 1% DOM Index and super high \$Profit Index putting him in the top 6%.

Homo Polled.

5 CHAROLAIS PARINGA LEAD TIME Q384 (AI)(P)



DOB: TOLQ384E Tag: Q0384 Soc.ID: TOLQ384E Poll Test: PpPf Join Type: AI

TRAITS OBSERVED
CE,BWT,400WT,SS,FAT,EMA,IMF,GENOMICS

MARCH 2021 CHAROLAIS BREED PLAN																			
CALVING EASE				GROWTH & MATERNAL					FERTILITY	CARCASS						INDEX VALUES			
DIR	DTRS	GL	BWT	200	400	600	MCW	MILK	SS	CWT	EMA	RIB	RUMP	RBY	IMF%	DOI	EXI	NTI	
EBVs	12.3	4.5	-5.0	-3.0	14	26	35	17	10	2.9	23	1.3	1.6	2.1	-0.7	0.0	56	81	32
%Rank	5	17	11	6	35	40	44	82	20	2	35	65	9	9	83	65	4	4	5

SIRE OW LEAD TIME 6294 PLD
 OW MISS SANDCREEK 3031 PLD
 FF ABOUT TIME Y07
 COOLEY ROYCE 1107T39
 DC GRONA 146T
DAM PARINGA FREE LUNCH K354
 PARINGA WESTERN SPUR D259
 VPI FREE LUNCH 708T
 LT RIO BLANCO 1234 P
 VPI MISS DUCHESS 404 P
 MC-OW SANDCREEK 375
 OW MISS MAXIMISER W13 PLD
 LT WESTERN SPUR 2061
 PARINGA FASTRACK Y670



\$PROFIT	\$17,621	TOP 2%	STRUCTURAL ASSESSMENT								
			FC	RC	FA	RA	RS	RH	LM	TP	SN
			7	7	7	8	6	5	B-	2	4

These Lead Time sons certainly have some grunt about them; we also really like their magnificent docility.

This may be one of the top bulls in the sale, amongst a high calibre and uniform line up of Charolais bulls you will ever see. For commercially managed bulls in large contemporary groups the Lead Times are incredibly quiet. They will produce some impressive weaners. Q384 is a very unique homozygous polled son from one of our top Free Lunch daughters K354E (she is also grand dam of Lot 1). Q384 is one of the biggest curve benders in this sale, with a massive birth to growth spread with nice fat cover.

Top 4% DOM Index and one of the top \$Profit bulls putting him at top 2% worldwide for profitable progeny.

Homo Polled.

6

CHAROLAIS PARINGA LEAD TIME Q374 (AI)(P)



DOB: 17/8/19 Tag: Q0374 Soc.ID: TOLQ374E Poll Test: HPF Join Type: AI

TRAITS OBSERVED
CE,BWT,400WT,SS,FAT,EMA,IMF,GENOMICS

MARCH 2021 CHAROLAIS BREED PLAN																			
CALVING EASE				GROWTH & MATERNAL					FERTILITY	CARCASS						INDEX VALUES			
DIR	DTRS	GL	BWT	200	400	600	MCW	MILK	SS	CWT	EMA	RIB	RUMP	RBV	IMF%	DOI	EXI	NTI	
EBVs	7.2	1.3	-5.9	-1.8	12	32	40	28	18	3.7	23	1.1	1.3	1.9	-1.1	0.6	52	72	29
%Rank	16	45	4	12	50	20	30	64	1	1	35	75	15	12	93	15	6	5	10

FF ABOUT TIME Y07
SIRE OW LEAD TIME 6294 PLD
 OW MISS SANDCREEK 3031 PLD

COOLEY ROYCE 1107T39
 DC GRONA 146T
DAM PARINGA DOC SILVER H338 L350
 MC-OW SANDCREEK 375
 OW MISS MAXIMISER W13 PLD

PARINGA HARVEY H338
 PARINGA EASY GAIN J330

NWMSU DOC SILVER 362 PLD
 PARINGA BLUEGRASS D140
 WELCOME SWALLOW EASY GAIN F508
 PARINGA BT SMART CHOICE E323



\$PROFIT \$19,486	TOP 1%	STRUCTURAL ASSESSMENT								
		FC	RC	FA	RA	RS	RH	LM	TP	SN
		6	5	6	6	6	6	B-	1	3

Q374 is a magnificent all rounder bull, with good looks bred from our favourite young cow of all time. Welcome Swallow Easy Gain F508E has left us many fabulous females who are breeding on young females that are angular, good uddered and rear top calves year on year. L350E is one of his best. Putting all the pluses together and it certainly makes for "one hell of a bull", Q374 will leave a very positive influence in any breeding program.

Top 1% for \$Profit Index and potential profitability of progeny. Also ranked top 1% for DOM Index.

Hetero Polled.

7

CHAROLAIS PARINGA LEAD TIME Q362 (AI)



DOB: 18/8/19 Tag: Q0362 Soc.ID: TOLQ362E Poll Test: HH Join Type: AI

TRAITS OBSERVED
CE,BWT,400WT,SS,FAT,EMA,IMF,GENOMICS

MARCH 2021 CHAROLAIS BREED PLAN																			
CALVING EASE				GROWTH & MATERNAL					FERTILITY	CARCASS						INDEX VALUES			
DIR	DTRS	GL	BWT	200	400	600	MCW	MILK	SS	CWT	EMA	RIB	RUMP	RBV	IMF%	DOI	EXI	NTI	
EBVs	12.4	4.9	-6.0	-3.2	10	22	27	3	11	3.7	20	2.3	2.1	3.0	-1.0	0.7	60	85	30
%Rank	5	15	4	6	65	60	65	92	15	1	50	20	3	3	90	12	3	3	9

FF ABOUT TIME Y07
SIRE OW LEAD TIME 6294 PLD
 OW MISS SANDCREEK 3031 PLD

COOLEY ROYCE 1107T39
 DC GRONA 146T
DAM PARINGA HARVEY M356
 MC-OW SANDCREEK 375
 OW MISS MAXIMISER W13 PLD

PARINGA HARVEY H338
 PARINGA D213 G408

NWMSU DOC SILVER 362 PLD
 PARINGA BLUEGRASS D140
 PARINGA RIO BRAVO D213E
 PARINGA WYOMING Z1830



\$PROFIT \$17,159	TOP 3%	STRUCTURAL ASSESSMENT								
		FC	RC	FA	RA	RS	RH	LM	TP	SN
		7	6	7	6	5	5	C+	2	5

Q362 is a big time data bull with big time good looks. He is one of the biggest EMA bulls in the sale whilst still maintaining excellent fat cover and marbling; an ideal bull for producing heavy weaners and to lift MSA scores and total \$\$\$ per head.

Dam of Q362 is a beautiful Paringa Harvey H338E daughter who has added shape and style to this OW Lead Time son. There is a lot to like about this bull with his high ranked EBVs, top cow lines, good looks with added scale and presence.

Top 3% DOM Index at \$60 extra, and top 3% \$Profit Index.

Horned.

8 CHAROLAIS PARINGA LEAD TIME Q393 (AI)(P/S)



DOB: 16/8/19 Tag: Q0393 Soc.ID: TOLQ393E Poll Test: HPc Join Type: AI

TRAITS OBSERVED
CE,BWT,400WT,SS,FAT,EMA,IMF,GENOMICS

MARCH 2021 CHAROLAIS BREED PLAN																			
CALVING EASE				GROWTH & MATERNAL					FERTILITY	CARCASS						INDEX VALUES			
DIR	DTRS	GL	BWT	200	400	600	MCW	MILK	SS	CWT	EMA	RIB	RUMP	RBY	IMF%	DOI	EXI	NTI	
EBVs	13.5	3.3	-6.4	-3.5	12	29	35	20	17	2.8	24	0.8	1.3	1.8	-1.0	0.4	61	83	32
%Rank	4	26	3	3	50	30	44	76	2	3	30	85	15	14	90	30	3	3	5

FF ABOUT TIME Y07
SIRE OW LEAD TIME 6294 PLD
 OW MISS SANDCREEK 3031 PLD

COOLEY ROYCE 1107T39
 DC GRONA 146T

MC-OW SANDCREEK 375
 OW MISS MAXIMISER W13 PLD

WELCOME SWALLOW EASY GAIN F508
DAM PARINGA EASY GAIN J410
 PARINGA COLORADO F388

LT EASY PRO 1158
 BJR SILVER MAID 717

SILVERSTREAM COLORADO C26
 PARINGA WESTERN SPUR D272



\$PROFIT \$17,806	TOP 2%	STRUCTURAL ASSESSMENT								
		FC	RC	FA	RA	RS	RH	LM	TP	SN
		6	6	6	6	6	5	B	1	4

Q393 is one of the greatest birth to growth bulls in the sale, and his Paringa Easy Gain J410E dam is one of our favourite females, breeding terrific progeny year on year.

Over the past 20 years we have sorted a lot of Charolais genetics and maintained a disciplined approach throughout. Uncompromising across the board on calving ease, fertility, structure, and fleshing ability has eventuated in seeing the reward in this most functional easy doing group of bulls we have bred to date.

Q393 ranks top 2% for global \$Profit Index and top 3% on Australian Breedplan for DOM Index.

Hetero Polled.

9 CHAROLAIS PARINGA LEAD TIME Q401 (AI)(P)



DOB: 15/8/19 Tag: Q0401 Soc.ID: TOLQ401E Poll Test: HPf Join Type: AI

TRAITS OBSERVED
CE,BWT,400WT,SS,FAT,EMA,IMF,GENOMICS

MARCH 2021 CHAROLAIS BREED PLAN																			
CALVING EASE				GROWTH & MATERNAL					FERTILITY	CARCASS						INDEX VALUES			
DIR	DTRS	GL	BWT	200	400	600	MCW	MILK	SS	CWT	EMA	RIB	RUMP	RBY	IMF%	DOI	EXI	NTI	
EBVs	16.6	7.2	-6.1	-5.1	5	12	9	-15	16	2.3	10	0.9	1.9	2.8	-1.4	0.8	61	80	24
%Rank	2	5	3	1	90	90	94	98	3	5	90	80	4	4	96	10	3	4	23

FF ABOUT TIME Y07
SIRE OW LEAD TIME 6294 PLD
 OW MISS SANDCREEK 3031 PLD

COOLEY ROYCE 1107T39
 DC GRONA 146T

MC-OW SANDCREEK 375
 OW MISS MAXIMISER W13 PLD

WELCOME SWALLOW EASY GAIN F508
DAM PARINGA EASY GAIN J428
 PARINGA D213 G338

LT EASY PRO 1158
 BJR SILVER MAID 717

PARINGA RIO BRAVO D213E
 PARINGA BLUEGRASS D140



\$PROFIT \$16,078	TOP 5%	STRUCTURAL ASSESSMENT								
		FC	RC	FA	RA	RS	RH	LM	TP	SN
		6	6	6	6	6	5	B-	1	5

Q401 will make a terrific vealer bull. He is the lowest birth weight, shortest gestation bull in the sale and would be suitable to use over any heifer safely. Q401 will produce live calves that thrive and carcasses that bring in top dollar. Royal pedigree.

Top 3% of the breed on Australian DOM Index and top 5% on \$Profit global.

Hetero Polled.

10

CHAROLAIS **PARINGA LEAD TIME Q336 (AI)(P/S)**

DOB: 23/8/19 Tag: Q0336 Soc.ID: TOLQ336E Poll Test: HPc Join Type: AI

TRAITS OBSERVED
CE,BWT,400WT,SS,FAT,EMA,IMF,GENOMICS

MARCH 2021 CHAROLAIS BREED PLAN																			
CALVING EASE				GROWTH & MATERNAL					FERTILITY	CARCASS						INDEX VALUES			
DIR	DTRS	GL	BWT	200	400	600	MCW	MILK	SS	CWT	EMA	RIB	RUMP	RBV	IMF%	DOI	EXI	NTI	
EBVs	13.5	5.3	-3.6	-3.2	12	27	38	16	12	4.5	26	2.6	1.3	1.9	-0.1	0.0	64	93	36
%Rank	4	12	30	6	50	35	35	83	10	1	20	10	15	12	60	65	2	1	2

FF ABOUT TIME Y07
SIRE OW LEAD TIME 6294 PLD

OW MISS SANDCREEK 3031 PLD

COOLEY ROYCE 1107T39
DC GRONA 146TMC-OW SANDCREEK 375
OW MISS MAXIMISER W13 PLDNWMSU DOC SILVER 362 PLD
DAM PARINGA DOC SILVER M309

PARINGA FREE LUNCH K354

S \$ MONTANA SILVER
NWMSU DOLORES 0035VPI FREE LUNCH 708T
PARINGA WESTERN SPUR D259

\$PROFIT	TOP 1%	STRUCTURAL ASSESSMENT									
		FC	RC	FA	RA	RS	RH	LM	TP	SN	
\$18,646	TOP 1%	6	7	6	7	6	5	B-	2	4	

This combination of OW Lead Time X Doc Silver mating is definitely a match made in heaven. Q336 has the rare combination of both extremely high Calving Ease Direct, and Daughter progeny calves.

Not only is Q336 a beautiful powerful looking bull, his genetic profile ranks him top 1% globally on \$Profit database at \$18,646, and top 2% on Australian DOM Index at \$64.

Hetero Polled.

11

CHAROLAIS **PARINGA LEAD TIME Q351 (AI)(P)**

DOB: 8/8/19 Tag: Q0351 Soc.ID: TOLQ351E Poll Test: HPc Join Type: AI

TRAITS OBSERVED
CE,BWT,400WT,SS,FAT,EMA,IMF,GENOMICS

MARCH 2021 CHAROLAIS BREED PLAN																			
CALVING EASE				GROWTH & MATERNAL					FERTILITY	CARCASS						INDEX VALUES			
DIR	DTRS	GL	BWT	200	400	600	MCW	MILK	SS	CWT	EMA	RIB	RUMP	RBV	IMF%	DOI	EXI	NTI	
EBVs	13.8	-	-7.6	-3.2	11	24	31	15	10	3.3	21	1.3	0.9	1.3	-0.3	0.0	57	81	31
%Rank	4	13	1	6	60	50	55	84	20	1	45	65	28	25	70	54	4	4	8

FF ABOUT TIME Y07
SIRE OW LEAD TIME 6294 PLD
OW MISS SANDCREEK 3031 PLDCOOLEY ROYCE 1107T39
DC GRONA 146T
MC-OW SANDCREEK 375
OW MISS MAXIMISER W13 PLDPARINGA KILO PACKER K330
DAM PARINGA KILO PACKER N321
PARINGA GEDDES L302VPI FREE LUNCH 708T
PARINGA WHITE GOLD H410
SILVERSTREAM GEDDES G102
PARINGA D213 G365

\$PROFIT	TOP 5%	STRUCTURAL ASSESSMENT									
		FC	RC	FA	RA	RS	RH	LM	TP	SN	
\$16,208	TOP 5%	6	5	6	6	6	5	B-	1	4	

Wow take a close look at this fella. Q351 really pushes the boundaries with both his genetic profile and rock star looks. His dam is a beautiful 2 year old Paringa Kilopacker K330E daughter.

He ranks top 5% on the global \$Profit multibreed at \$16,208 Index, and top 4% on the Australian DOM Index at \$57.

Hetero Polled.



DOB: 16/8/19 Tag: Q0361 Soc.ID: TOLQ361E Poll Test: HH Join Type: AI

TRAITS OBSERVED
CE,BWT,400WT,SS,FAT,EMA,IMF,GENOMICS

MARCH 2021 CHAROLAIS BREED PLAN																			
CALVING EASE				GROWTH & MATERNAL					FERTILITY	CARCASE					INDEX VALUES				
DIR	DTRS	GL	BWT	200	400	600	MCW	MILK	SS	CWT	EMA	RIB	RUMP	RBY	IMF%	DOI	EXI	NTI	
EBVs	6.2	-1.8	-4.8	-1.6	13	29	39	19	15	3.9	26	2.6	2.3	3.0	-0.8	0.1	48	70	31
%Rank	20	76	14	14	40	20	33	79	4	1	20	10	2	3	85	55	9	7	8

FF ABOUT TIME Y07
SIRE OW LEAD TIME 6294 PLD
 OW MISS SANDCREEK 3031 PLD

COOLEY ROYCE 1107T39
 DC GRONA 146T
 MC-OW SANDCREEK 375
 OW MISS MAXIMISER W13 PLD

LT VENTURE 3198
DAM PARINGA VENTURE L356
 PARINGA EASY GAIN J451

LT STAGECOACH 8068 PLD
 LT BALL 9219
 WELCOME SWALLOW EASY GAIN F508
 PARINGA MIGHTY ADONIS C174



\$PROFIT	TOP 8%	STRUCTURAL ASSESSMENT								
		FC	RC	FA	RA	RS	RH	LM	TP	SN
\$15,164		7	7	7	7	7	7	B-	1	4

Here is another beautiful combination of OW Lead Time from a deep bodied, easy fleshing show stopping looks of LT Venture daughter Paringa Venture L356E.

With this genetic package you not only get stunning style on the outside, but underneath Q361E's predictions on his genetic profile rank him top 9% of the breed for DOM Index at \$48, and top 8% on the multi breed \$Profit database.

Horned.



DOB: 31/8/19 Tag: Q0366 Soc.ID: TOLQ366E Poll Test: HPC Join Type: AI

TRAITS OBSERVED
CE,BWT,400WT,SS,FAT,EMA,IMF,GENOMICS

MARCH 2021 CHAROLAIS BREED PLAN																			
CALVING EASE				GROWTH & MATERNAL					FERTILITY	CARCASE					INDEX VALUES				
DIR	DTRS	GL	BWT	200	400	600	MCW	MILK	SS	CWT	EMA	RIB	RUMP	RBY	IMF%	DOI	EXI	NTI	
EBVs	4.7	2.7	-0.9	-1.7	8	20	25	8	13	2.3	20	2.2	2.2	2.8	-0.6	-0.2	41	58	22
%Rank	29	31	86	13	80	66	72	89	9	5	50	25	2	4	80	85	15	14	30

FF ABOUT TIME Y07
SIRE OW LEAD TIME 6294 PLD
 OW MISS SANDCREEK 3031 PLD

COOLEY ROYCE 1107T39
 DC GRONA 146T
 MC-OW SANDCREEK 375
 OW MISS MAXIMISER W13 PLD

LT VENTURE 3198
DAM PARINGA VENTURE L377
 PARINGA WESTERN SPUR D264

LT STAGECOACH 8068 PLD
 LT BALL 9219
 LT WESTERN SPUR 2061
 PARINGA FASTRACK Y670



\$PROFIT	TOP 21%	STRUCTURAL ASSESSMENT								
		FC	RC	FA	RA	RS	RH	LM	TP	SN
\$12,456		6	6	6	6	6	6	C+	1	5

Q366E is a very handsome young bull with scale and substance. As with all these bulls, it is the female lines behind them that are the key to their success.

The Paringa Charolais herd offers some of the finest looking, most productive and highly ranked genetic profiles of any Charolais herd around the world. Dam Paringa Venture L377E is another example of that productive broody type at Paringa that you know is backed with a profitable and predictable lineage that will put a stamp on your herd for generations to come.

Top 21% for \$Profit and top 15% DOM Index.

Horned.

14 CHAROLAIS PARINGA FOREMAN Q345 (AI)(P)



DOB: 14/9/19 Tag: Q0345 Soc.ID: TOLQ345E Poll Test: PcPc Join Type: AI

TRAITS OBSERVED
CE,BWT,400WT,SS,FAT,EMA,IMF,GENOMICS

MARCH 2021 CHAROLAIS BREED PLAN																			
CALVING EASE				GROWTH & MATERNAL					FERTILITY	CARCASS					INDEX VALUES				
DIR	DTRS	GL	BWT	200	400	600	MCW	MILK	SS	CWT	EMA	RIB	RUMP	RBV	IMF%	DOI	EXI	NTI	
EBVs	14.1	3.5	-5.7	-2.8	12	25	27	14	10	1.5	19	0.9	1.4	2.0	-1.3	0.8	55	73	28
%Rank	3	24	6	8	50	45	65	85	20	29	55	80	12	10	95	10	4	4	12

SIRE WR WRANGLER W601
WR DUCHESS B612

CMF 192 WRANGLER 256
WR MISS PRINCESS T629

LT LEDGER O332
WR DUCHESS Y601

DAM PARINGA LEGEND N361
PARINGA WESTERN SPUR D141

PARINGA LEGEND L384
ASCOT JAJG0125

PARINGA HARVEY H338
ROSEDALE HONOR Y077



\$PROFIT	TOP 8%	STRUCTURAL ASSESSMENT								
		FC	RC	FA	RA	RS	RH	LM	TP	SN
\$15,001	TOP 8%	7	7	7	6	5	6	C+	1	5

Q345 is a terrific young WR Foreman son from another productive and tidy Paringa Legend 1st calf 2 year old female.

It is no wonder this bull has such a high ranking genetic profile with his maternal strength in his pedigree. Note: grand dam is Rosedale Honor Y77E, this Rosedale line really pushes performance along. Q345 represents ideal cutting edge genetics - sleep easy at night calving, but still retain Charolais growth with nice fat cover - to produce those lovely calves with softness we all dream about.

Top 4% DOM Index at \$55 and top 8% \$Profit Index. A pretty cool package.

Homo Polled.

15 CHAROLAIS PARINGA FOREMAN Q352 (AI)(P)



DOB: 14/8/19 Tag: Q0352 Soc.ID: TOLQ352E Poll Test: HPC Join Type: AI

TRAITS OBSERVED
CE,BWT,400WT,SS,FAT,EMA,IMF,GENOMICS

MARCH 2021 CHAROLAIS BREED PLAN																			
CALVING EASE				GROWTH & MATERNAL					FERTILITY	CARCASS					INDEX VALUES				
DIR	DTRS	GL	BWT	200	400	600	MCW	MILK	SS	CWT	EMA	RIB	RUMP	RBV	IMF%	DOI	EXI	NTI	
EBVs	18.1	8.6	-7.8	-4.6	12	23	27	4	12	2.2	21	1.3	0.8	1.2	-0.6	0.6	66	88	31
%Rank	1	2	1	2	50	55	65	91	10	6	45	65	30	27	80	15	1	2	8

SIRE WR WRANGLER W601
WR DUCHESS B612

CMF 192 WRANGLER 256
WR MISS PRINCESS T629

LT LEDGER O332
WR DUCHESS Y601

DAM PARINGA KILO PACKER N372
PARINGA HARVEY L360

PARINGA KILO PACKER K330
VPI FREE LUNCH 708T
PARINGA WHITE GOLD H410

PARINGA HARVEY H338
PARINGA FREE LUNCH J417



\$PROFIT	TOP 17%	STRUCTURAL ASSESSMENT								
		FC	RC	FA	RA	RS	RH	LM	TP	SN
\$13,219	TOP 17%	6	5	6	6	6	5	B	2	5

Wowzers, worth checking out Q352 - you will not find a better stacked pedigree in a Charolais bull.

WR Foreman X Paringa Kilopacker K330E X Paringa Harvey X Free Lunch X LHD Cigar X Prime Cut from a famous Palgrove 106 Estella female! So it is no surprise he has turned out such a good bull. You would be hard pressed finding an equivalent bull who is this strong on Calving Ease Direct and Daughters with that much growth and muscle with excellent fats and marbling, and the looks to back it up. Keep in mind this bull is out of a 2 year old!

Top 1% DOM Index at \$66, and top 17% \$Profit Index. Once again a pretty loaded bull.

Hetero Polled.

16 CHAROLAIS PARINGA FOREMAN Q385 (AI)(P)



DOB: 14/9/19 Tag: Q0385 Soc.ID: TOLQ385E Poll Test: PcPc Join Type: AI

TRAITS OBSERVED
CE,BWT,400WT,SS,FAT,EMA,IMF,GENOMICS

MARCH 2021 CHAROLAIS BREED PLAN																			
CALVING EASE				GROWTH & MATERNAL					FERTILITY	CARCASE					INDEX VALUES				
DIR	DTRS	GL	BWT	200	400	600	MCW	MILK	SS	CWT	EMA	RIB	RUMP	RBV	IMF%	DOI	EXI	NTI	
EBVs	16.4	4.6	-3.6	-3.4	11	29	37	21	8	3.4	27	1.2	0.8	1.5	-0.8	0.6	65	93	35
%Rank	2	16	30	4	60	30	38	75	35	1	15	70	30	20	85	15	2	1	3

WR WRANGLER W601
SIRE WR FOREMAN D602
WR DUCHESS B612

CMF 192 WRANGLER 256
WR MISS PRINCESS T629

LT LEDGER O332
WR DUCHESS Y601

SILVERSTREAM GEDDES G102
DAM PARINGA GEDDES L397
PARINGA D213 G401

SILVERSTREAM ENTICER E30
SILVERTREAM DOLLY V5

PARINGA RIO BRAVO D213E
CHARNELL ZENA 2



\$PROFIT	TOP 11%	STRUCTURAL ASSESSMENT								
		FC	RC	FA	RA	RS	RH	LM	TP	SN
\$14,273	TOP 11%	7	6	7	7	6	5	B	2	5

Another pretty cool and absolutely loaded WR Foreman son, with an interesting twist in his pedigree.

Q385's dam Paringa Geddes L397E has a lot to like about her. This combination of Geddes X Paringa Rio D213E has worked well for us over the years. The Grand dam Charnelle Zena B29 was a key foundation female we purchased many years ago; super sound, slick and functional. With this bulls high ranking genetic profile, his royal pedigree with a twist, his good looks, great feet, and Homozygous polled status makes Q385 a very attractive package.

Top 2% DOM Index at \$65, and top 11% \$Profit Index making this bull pretty special.

Homo Polled.

17 CHAROLAIS PARINGA FOREMAN Q396 (AI)(P)



DOB: 17/8/19 Tag: Q0396 Soc.ID: TOLQ396E Poll Test: PcPc Join Type: AI

TRAITS OBSERVED
CE,BWT,400WT,SS,FAT,EMA,IMF,GENOMICS

MARCH 2021 CHAROLAIS BREED PLAN																			
CALVING EASE				GROWTH & MATERNAL					FERTILITY	CARCASE					INDEX VALUES				
DIR	DTRS	GL	BWT	200	400	600	MCW	MILK	SS	CWT	EMA	RIB	RUMP	RBV	IMF%	DOI	EXI	NTI	
EBVs	15.0	5.9	-5.8	-3.5	13	24	28	6	9	1.9	19	0.9	1.2	1.8	-1.2	0.9	60	81	29
%Rank	3	10	5	3	40	50	62	92	25	12	55	80	17	14	94	5	3	4	10

WR WRANGLER W601
SIRE WR FOREMAN D602
WR DUCHESS B612

CMF 192 WRANGLER 256
WR MISS PRINCESS T629

LT LEDGER O332
WR DUCHESS Y601

PARINGA KILO PACKER K330
DAM PARINGA KILO PACKER N355
PARINGA MIGHTY ADONIS C174

VPI FREE LUNCH 708T
PARINGA WHITE GOLD H410

GCR MIGHTY ADONIS JO3
PARINGA WYOMING A19



\$PROFIT	TOP 7%	STRUCTURAL ASSESSMENT								
		FC	RC	FA	RA	RS	RH	LM	TP	SN
\$15,316	TOP 7%	7	6	6	6	6	5	B-	2	5

A Homozygous polled Foreman son who has the style, pedigree and data to have stud duties or produce ripping weaners, profitable feeder steers that will be cheaper to feed due to their high weight gains, high feed efficiency, yielding well for the processor and taste fantastic for end consumers.

We are impressed with how high the Paringa Charolais cattle rank on the global multi breed \$Profit system, and Australian Charolais Breedplan; meaning by using Paringa Charolais you will get more live calves more, will hit market specs consistently earlier, which means more money in your pocket.

Top 3% DOM Index at \$50, and top 7% \$Profit Index.

Homo Polled.

DOB: 19/8/19 Tag: Q0369 Soc.ID: TOLQ385E Poll Test: PcPc Join Type: AI

TRAITS OBSERVED
CE,BWT,400WT,SS,FAT,EMA,IMF,GENOMICS

MARCH 2021 CHAROLAIS BREED PLAN																			
CALVING EASE				GROWTH & MATERNAL					FERTILITY	CARCASE					INDEX VALUES				
DIR	DTRS	GL	BWT	200	400	600	MCW	MILK	SS	CWT	EMA	RIB	RUMP	RBV	IMF%	DOI	EXI	NTI	
EBVs	12.6	-2.3	-4.0	-2.8	14	30	34	13	15	1.6	26	1.6	1.5	1.9	-0.9	0.6	54	70	31
%Rank	5	80	24	8	35	25	45	86	4	25	25	50	10	12	87	15	4	6	8

WR WRANGLER W601
SIRE WR FOREMAN D602
 WR DUCHESS B612

CMF 192 WRANGLER 256
 WR MISS PRINCESS T629

LT LEDGER O332
 WR DUCHESS Y601

PARINGA STAGECOACH L339

DAM PARINGA STAGECOACH N353

PARINGA LONG DISTANCE K341

LT STAGECOACH 8068 PLD
 PARINGA THUNDERING WIND H402

LT LONG DISTANCE 9001 PLD
 PARINGA TOP GRADE H453



\$PROFIT	TOP 3%	STRUCTURAL ASSESSMENT								
		FC	RC	FA	RA	RS	RH	LM	TP	SN
\$17,203	TOP 3%	6	6	6	6	6	5	C+	1	5

Q369 is an intriguing Homozygous polled Charolais bull from a beautiful Paringa Stagecoach 2 year old female; stacked with LT Long Distance, LCoC Top Grade, and LT Rio Bravo. They don't come much better than this. Study his genetic potential, \$Profit weaning and yearling data puts him up at Number 1 ranked growth bull in the sale.

His Breedplan data puts him in the top 4% for DOM Index with his excellent calving ease, high 400D growth, good EMA, fat scores, and marbling. Bound to keep customers happy down the supply chain.

Top 3% \$Profit Index, top 4% DOM Index at \$54. Top bull from a first calf female.

Homo Polled.

DOB: 7/9/19 Tag: Q0379 Soc.ID: TOLQ379E Poll Test: PcPc Join Type: AI

TRAITS OBSERVED
CE,BWT,400WT,SS,FAT,EMA,IMF,GENOMICS

MARCH 2021 CHAROLAIS BREED PLAN																			
CALVING EASE				GROWTH & MATERNAL					FERTILITY	CARCASE					INDEX VALUES				
DIR	DTRS	GL	BWT	200	400	600	MCW	MILK	SS	CWT	EMA	RIB	RUMP	RBV	IMF%	DOI	EXI	NTI	
EBVs	14.1	2.1	-7.3	-2.8	11	19	20	3	10	1.5	12	0.4	1.5	2.1	-1.3	0.7	49	64	24
%Rank	3	36	1	8	60	70	82	92	20	29	85	94	10	9	95	12	8	9	23

WR WRANGLER W601
SIRE WR FOREMAN D602
 WR DUCHESS B612

CMF 192 WRANGLER 256
 WR MISS PRINCESS T629

LT LEDGER O332
 WR DUCHESS Y601

PARINGA LEGEND L384

DAM PARINGA LEGEND N358

PARINGA THUNDER G414

PARINGA HARVEY H338
 PARINGA RIO G125

LT THUNDERING WIND 5200P
 PARINGA CIGAR B015



\$PROFIT	TOP 32%	STRUCTURAL ASSESSMENT								
		FC	RC	FA	RA	RS	RH	LM	TP	SN
\$11,019	TOP 32%	6	5	6	6	5	6	C+	2	5

Interesting to see these bulls in the paddock; they are extremely even in type and a similar story with their data. It is no surprise when you look at the depth of breeding in the pedigrees of these bulls.

Paringa Charolais have twice the generational interval compared to any other Charolais herd in Australia. Generational interval is one of the most powerful methods to breed predictable cattle that are highly profitable. A lot to really like about this bull Q379, with his proven pedigree that should maximise profit in the paddock.

Another top bull from a 2 year old heifer. Top 8% DOM Index at \$49, top 30% \$Profit Index.

Homo Polled.

20 CHAROLAIS PARINGA FOREMAN Q390 (AI)(P)



DOB: 23/8/19 Tag: Q0390 Soc.ID: TOLQ390E Poll Test: PcPc Join Type: AI

TRAITS OBSERVED
CE,BWT,400WT,SS,FAT,EMA,IMF,GENOMICS

Charolais GROUP BREEDPLAN	MARCH 2021 CHAROLAIS BREED PLAN																		
	CALVING EASE				GROWTH & MATERNAL					FERTILITY	CARCASE					INDEX VALUES			
	DIR	DTRS	GL	BWT	200	400	600	MCW	MILK	SS	CWT	EMA	RIB	RUMP	RBY	IMF%	DOI	EXI	NTI
EBVs	14.6	-2.8	-5.1	-3.3	10	19	24	-3	11	2.3	17	1.8	1.6	2.5	-0.9	0.8	50	69	29
%Rank	3	84	10	4	65	70	74	96	15	5	65	40	9	5	87	10	7	8	10

WR WRANGLER W601
SIRE WR FOREMAN D602
WR DUCHESS B612

CMF 192 WRANGLER 256
WR MISS PRINCESS T629
LT LEDGER O332
WR DUCHESS Y601

PARINGA LEGEND L384
DAM PARINGA LEGEND N359
PARINGA LONG DISTANCE J404
PARINGA HARVEY H338
PARINGA RIO G125
LT LONG DISTANCE 9001 PLD
PARINGA D213 G438



\$PROFIT \$15,648	TOP 6%	STRUCTURAL ASSESSMENT									
		FC	RC	FA	RA	RS	RH	LM	TP	SN	
		6	5	6	6	5	6	C+	1	5	

The last of the WR Foreman sons to come through this outstanding group of bulls. The catalogue order is based on Sire group, then tag number and in no way does this bull represent the least desirable WR Foreman son. Quite the opposite; another Homozygous polled bull and Q390 is a ripper out of a 2 year old heifer. This combination on the dam side of Paringa Legend, Paringa Rio D213E, and LT Long Distance has been a repeating pedigree found in these top bulls.

Many of these WR Foreman sons are the result of sexed male semen from Sexing Technology (ST). Only recently have ST entered the market to buy beef sires in addition to dairy, which gave us confidence in the quality, preg rates, and that if they were to invest in only one Charolais bull, it would be top notch. WR Foreman has bred consistently for us with little wastage from 1st calf heifers. Q396 is atypical of WR Foreman sons; super sound, thick and quiet temperament. We really like a lot of these bulls - they have such strong credentials to add profit along the entire production chain.

Top 7% DOM Index at \$50, top 6% \$Profit Index.

Homo Polled.

21 CHAROLAIS PARINGA MCKINLEY Q339 (P)



DOB: 6/9/19 Tag: Q0339 Soc.ID: TOLQ339E Poll Test: PcPc Join Type: NAT

TRAITS OBSERVED
CE,BWT,400WT,SS,FAT,EMA,IMF,GENOMICS

Charolais GROUP BREEDPLAN	MARCH 2021 CHAROLAIS BREED PLAN																		
	CALVING EASE				GROWTH & MATERNAL					FERTILITY	CARCASE					INDEX VALUES			
	DIR	DTRS	GL	BWT	200	400	600	MCW	MILK	SS	CWT	EMA	RIB	RUMP	RBY	IMF%	DOI	EXI	NTI
EBVs	14.1	10.3	-5.1	-3.3	10	24	29	17	15	1.9	23	1.3	1.5	1.8	-1.1	0.3	62	83	29
%Rank	3	1	10	4	65	50	60	82	4	12	35	65	10	14	93	35	3	3	10

VIOLET HILLS JOLLY JOKER
SIRE VIOLET HILLS MCKINLEY
VIOLET HILLS DOROTHY

JWX SILVER BULLET 524W
VIOLET HILLS BRIANA
VIOLET HILLS ALEXANDER
VIOLET HILLS BLOWDEN

LT VENTURE 3198
DAM PARINGA VENTURE L368
PARINGA WHITE GOLD H407
LT STAGECOACH 8068 PLD
LT BALL 9219
LCOC WHITE GOLD P002X
PARINGA BLUEGRASS C141



\$PROFIT \$10,750	TOP 24%	STRUCTURAL ASSESSMENT									
		FC	RC	FA	RA	RS	RH	LM	TP	SN	
		6	6	6	6	6	6	C+	1	5	

STAR LOT. Every day this bull grows on me, it is rare to find a bull of any breed that pushes every genetic antagonistic boundary to the limit. Very few bulls have double digit calving ease and daughter calving ease combination with this much growth, carcass weight, muscle, fat cover and marbling.

This bulls genetic profile is "unique" and would suit stud herds to breed futuristic sires and profitable easy care females. Not only is his genetic makeup superb and superior, he is a perfectly balanced bull, free moving with extra length and style. Dam of Q339 is a beautiful LT Venture female.

Top 3% on DOM Index at \$62, and top 24% on \$Profit Index.

Homo Polled.

DOB: 31/8/19 Tag: Q0363 Soc.ID: TOLQ363E Poll Test: HH Join Type: NAT

TRAITS OBSERVED
CE,BWT,400WT,SS,FAT,EMA,IMF,GENOMICS

MARCH 2021 CHAROLAIS BREED PLAN																			
CALVING EASE				GROWTH & MATERNAL					FERTILITY	CARCASS					INDEX VALUES				
DIR	DTRS	GL	BWT	200	400	600	MCW	MILK	SS	CWT	EMA	RIB	RUMP	RBV	IMF%	DOI	EXI	NTI	
EBVs	18.0	14.3	-5.7	-4.8	7	12	12	2	11	1.3	17	1.5	0.4	0.4	0.0	0.0	59	79	23
%Rank	1	1	6	1	85	90	92	93	15	35	65	55	50	53	55	65	4	4	25

SIRE VIOLET HILLS MCKINLEY
VIOLET HILLS DOROTHY

JWX SILVER BULLET 524W
VIOLET HILLS BRIANA

VIOLET HILLS ALEXANDER
VIOLET HILLS BLOWEN

DAM PARINGA FREE LUNCH J408
PARINGA BLUEGRASS D140

LT RIO BLANCO 1234 P
VPI MISS DUCHESS 404

LT BLUEGRASS 4017P
FERNVALE ZHIRL Z62



\$PROFIT \$9,486	TOP 31%	STRUCTURAL ASSESSMENT									
		FC	RC	FA	RA	RS	RH	LM	TP	SN	
		6	6	6	6	6	5	B-	1	5	

Q363 is a high calving ease bull with very short gestation, and one of the top ranked EMA bulls in this sale.

This beast of a bull will breed some beautiful calves with softness and shape that buyers love when presented to them. Grand dam is the famous Paringa D140E whom is also dam of Lot 3, and of semen sire Paringa Harvey H338E. Loads of predictable performance and longevity in this handy package.

Top 4% DOM Index at \$59, and top 30% on the global \$Profit database.

Horned.

DOB: 22/9/19 Tag: Q0398 Soc.ID: TOLQ398E Poll Test: HPC Join Type: NAT

TRAITS OBSERVED
CE,BWT,400WT,SS,FAT,EMA,IMF,GENOMICS

MARCH 2021 CHAROLAIS BREED PLAN																			
CALVING EASE				GROWTH & MATERNAL					FERTILITY	CARCASS					INDEX VALUES				
DIR	DTRS	GL	BWT	200	400	600	MCW	MILK	SS	CWT	EMA	RIB	RUMP	RBV	IMF%	DOI	EXI	NTI	
EBVs	19.2	11.0	-6.0	-4.3	4	11	16	-7	13	2.1	15	1.8	0.3	0.4	0.2	0.1	57	78	26
%Rank	1	1	4	2	92	92	87	97	9	8	75	40	55	53	45	55	4	4	18

SIRE VIOLET HILLS MCKINLEY
VIOLET HILLS DOROTHY

JWX SILVER BULLET 524W
VIOLET HILLS BRIANA

VIOLET HILLS ALEXANDER
VIOLET HILLS BLOWEN

DAM PARINGA DOC SILVER G479
PARINGA PINAY D231E

S \$ MONTANA SILVER
NWMSU DOLORES 0035

PINAY
ROSDALE REBECCA Y7



\$PROFIT \$7,314	TOP 45%	STRUCTURAL ASSESSMENT									
		FC	RC	FA	RA	RS	RH	LM	TP	SN	
		6	5	6	6	6	6	C+	1	4	

Q398 is the number 1 ranked bull for calving ease in this sale group, with a heap of muscle and shape.

We really like this combination of McKinley M226E from the Doc Silver X Pinay female - it is no wonder this bull is so highly ranked for calving ease and yield. These McKinley sons have a unique ability to strengthen Charolais genetics (or any breed) that needs calving ease direct and daughter calving fixed in one generation, whilst still maintaining the traditional breed characteristics of Charolais.

Top 4% DOM Index, and top 45% \$Profit Index.

Hetero Polled.

24 CHAROLAIS PARINGA MCKINLEY Q364



DOB: 28/9/19 Tag: Q0364 Soc.ID: TOLQ364E Poll Test: HH Join Type: NAT

TRAITS OBSERVED
CE,BWT,400WT,SS,FAT,EMA,IMF,GENOMICS

MARCH 2021 CHAROLAIS BREED PLAN																			
CALVING EASE				GROWTH & MATERNAL					FERTILITY	CARCASS						INDEX VALUES			
DIR	DTRS	GL	BWT	200	400	600	MCW	MILK	SS	CWT	EMA	RIB	RUMP	RBY	IMF%	DOI	EXI	NTI	
EBVs	14.4	5.8	-4.2	-3.4	9	18	22	3	15	0.4	17	1.5	0.8	1.0	-0.5	0.5	51	66	26
%Rank	3	11	20	4	75	75	79	92	4	82	65	55	30	35	75	25	7	8	18

VIOLET HILLS JOLLY JOKER
SIRE VIOLET HILLS MCKINLEY
VIOLET HILLS DOROTHY

JWX SILVER BULLET 524W
VIOLET HILLS BRIANA

VIOLET HILLS ALEXANDER
VIOLET HILLS BLODWEN

WELCOME SWALLOW EASY GAIN F508
DAM PARINGA EASY GAIN M303
PARINGA LONG DISTANCE K332

LT EASY PRO 1158
BJR SILVER MAID 717

LT LONG DISTANCE 9001 PLD
PARINGA WHITE GOLD H440



\$PROFIT	TOP 29%	STRUCTURAL ASSESSMENT								
		FC	RC	FA	RA	RS	RH	LM	TP	SN
\$9,974		6	5	6	6	5	5	B-	1	4

Q364 is a genetic package we really like, with another pedigree combination that consistently delivers in the paddock and on the rail for our customers.

His dam Paringa Easy Gain M303E is an absolute ripper; no surprise with her lineage going back to Long Distance, White Gold with Easy Gain to boot. As we keenly anticipated, she worked well with Violet Hills McKinley M226E further enhancing the profitable predictable genetic make up of the powerful maternal line. Our Paringa Charolais bulls like Q364E give buyers confidence in hassle free calving along with market flexibility when selling their progeny.

Top 7% for DOM Index at \$51, and top 30% on \$Profit Index.

Horned.

25 CHAROLAIS PARINGA MCKINLEY Q371 (P)



DOB: 10/9/19 Tag: Q0371 Soc.ID: TOLQ371E Poll Test: PcPf Join Type: NAT

TRAITS OBSERVED
CE,BWT,400WT,SS,FAT,EMA,IMF,GENOMICS

MARCH 2021 CHAROLAIS BREED PLAN																			
CALVING EASE				GROWTH & MATERNAL					FERTILITY	CARCASS						INDEX VALUES			
DIR	DTRS	GL	BWT	200	400	600	MCW	MILK	SS	CWT	EMA	RIB	RUMP	RBY	IMF%	DOI	EXI	NTI	
EBVs	11.5	8.4	-4.0	-3.3	8	21	27	6	15	2.0	20	1.0	1.2	1.4	-0.8	0.2	54	74	26
%Rank	6	3	24	6	80	65	65	92	4	10	50	76	17	23	85	45	4	4	18

VIOLET HILLS JOLLY JOKER
SIRE VIOLET HILLS MCKINLEY
VIOLET HILLS DOROTHY

JWX SILVER BULLET 524W
VIOLET HILLS BRIANA

VIOLET HILLS ALEXANDER
VIOLET HILLS BLODWEN

LT VENTURE 3198
DAM PARINGA VENTURE L366
PARINGA CIGAR B014

LT STAGECOACH 8068 PLD
LT BALL 9219

LHD CIGAR E46
PARINGA PRIME CUT Y565



\$PROFIT	TOP 70%	STRUCTURAL ASSESSMENT								
		FC	RC	FA	RA	RS	RH	LM	TP	SN
\$3,474		6	5	6	6	5	5	B-	1	5

Together Liv and I purchased Violet Hills McKinley M226E as a walking outcross sire that would further improve and balance traits in our high ranked female herd.

The Paringa Charolais herd excel on heritability traits that drive economic probability to our customers and end users. His sons offer our customers whom have been using Paringa genetics for a long time, a great opportunity to introduce some breed diversity into their breeding programs. Q371E is typical of what sire M226E has done for us. They are very good footed, coated, super quiet, with nice gentle profile.

Top 4% DOM Index at \$54, Top 3% CED, top 6% BW, CE DIR, top 10% SS.

Homo polled.

26 CHAROLAIS PARINGA MCKINLEY Q376 (P)



DOB: 22/9/19 Tag: Q0376 Soc.ID: TOLQ376E Poll Test: Polled Join Type: NAT

TRAITS OBSERVED
CE,BWT,400WT,SS,FAT,EMA,IMF

MARCH 2021 CHAROLAIS BREED PLAN																			
CALVING EASE				GROWTH & MATERNAL					FERTILITY	CARCASE						INDEX VALUES			
DIR	DTRS	GL	BWT	200	400	600	MCW	MILK	SS	CWT	EMA	RIB	RUMP	RBY	IMF%	DOI	EXI	NTI	
EBVs	8.3	7.5	-1.6	-1.0	9	14	29	7	8	0.0	14	1.7	0.7	0.6	0.3	-0.2	34	46	19
%Rank	11	4	77	20	75	85	82	90	35	95	80	45	35	45	40	85	26	27	45

SIRE VIOLET HILLS MCKINLEY
VIOLET HILLS DOROTHY

JWX SILVER BULLET 524W
VIOLET HILLS BRIANA

VIOLET HILLS ALEXANDER
VIOLET HILLS BLODWEN

DAM PARINGA HOWLER L382
PARINGA THUNDER G414

BRANCH VIEW DYNAMO
BRANCH VIEW A TOUCH OF CLASS E10

LT THUNDERING WIND 5200P
PARINGA CIGAR B015



\$PROFIT	TOP 22%	STRUCTURAL ASSESSMENT									
		FC	RC	FA	RA	RS	RH	LM	TP	SN	
\$11,132		7	6	7	7	6	5	C+	1	5	

Q376E's genetic package offers excellent calving ease directly and good daughter calving ease with above average muscle.

Q376E is as tough as nails and would do a great job over some good Angus, Angus cross or Brahman cross females to produce some excellent feeder steers and high value feed heifers. A good bull that looks the part and ranks well across the board.

Top 26% DOM Index at \$34, top 22% global \$Profit Index.

Homo Polled.

27 CHAROLAIS PARINGA MCKINLEY Q386 (P)



DOB: 12/9/19 Tag: Q0386 Soc.ID: TOLQ386E Poll Test: PcPc Join Type: NAT

TRAITS OBSERVED
CE,BWT,400WT,SS,FAT,EMA,IMF,GENOMICS

MARCH 2021 CHAROLAIS BREED PLAN																			
CALVING EASE				GROWTH & MATERNAL					FERTILITY	CARCASE						INDEX VALUES			
DIR	DTRS	GL	BWT	200	400	600	MCW	MILK	SS	CWT	EMA	RIB	RUMP	RBY	IMF%	DOI	EXI	NTI	
EBVs	16.5	9.2	-5.3	-4.0	5	7	10	-12	10	0.3	11	0.9	1.3	1.4	-0.8	-0.1	45	61	21
%Rank	2	2	8	2	90	97	93	97	20	85	88	80	15	23	85	75	11	11	35

SIRE VIOLET HILLS MCKINLEY
VIOLET HILLS DOROTHY

JWX SILVER BULLET 524W
VIOLET HILLS BRIANA

VIOLET HILLS ALEXANDER
VIOLET HILLS BLODWEN

DAM PARINGA LONG DISTANCE J345
PARINGA COLORADO F311

LT LONG DISTANCE 9001 PLD
LT SILVER DISTANCE 5342
LT BELLE 7026

SILVERSTREAM COLORADO C26
PARINGA WYOMING A7



\$PROFIT	TOP 27%	STRUCTURAL ASSESSMENT									
		FC	RC	FA	RA	RS	RH	LM	TP	SN	
\$10,233		7	6	6	6	6	6	C	1	4	

Q386E is a bull not to be overlooked; he's one of the youngest bulls in the sale and a calving ease specialist. Nice genetic combination with his dam another beautiful LT Long Distance female. Although this bull is one of the lower ranked in this sale group, it is worth remembering he sits in the top 10% of the Breed, and how good this group of sale bulls are.

Our lower ranked Paringa Charolais still perform better than most other Charolais herds top animals. **Check out the 2021 EBV summary table and you will see this Paringa Charolais sale team have more than double the overall performance of the average Charolais. And in some traits 4 time over.**

Top 11% DOM Index \$45, and top 27% \$Profit global Index.

Homo Polled.

28 CHAROLAIS PARINGA MCKINLEY Q348



DOB: 6/10/19 Tag: Q0348 Soc.ID: TOLQ348E Poll Test: HH Join Type: NAT

TRAITS OBSERVED
CE,BWT,400WT,SS,FAT,EMA,IMF

MARCH 2021 CHAROLAIS BREED PLAN																			
Charolais Genetic Association	CALVING EASE				GROWTH & MATERNAL					FERTILITY	CARCASS					INDEX VALUES			
	DIR	DTRS	GL	BWT	200	400	600	MCW	MILK	SS	CWT	EMA	RIB	RUMP	RBV	IMF%	DOI	EXI	NTI
EBVs	8.8	0.5	-4.5	-2.4	7	14	19	-2	14	-0.7	16	2.5	0.7	0.5	0.4	0.0	32	39	21
%Rank	11	54	15	9	85	85	84	94	5	100	70	15	35	50	35	65	30	59	35

VIOLET HILLS JOLLY JOKER
SIRE VIOLET HILLS MCKINLEY
VIOLET HILLS DOROTHY

JWX SILVER BULLET 524W
VIOLET HILLS BRIANA

VIOLET HILLS ALEXANDER
VIOLET HILLS BLOWWEN

RAILE SOVEREIGN J827 Y064
DAM PARINGA SOVEREIGN N350
PARINGA FREE LUNCH K380

FINK 8790 OF 2126 GM
RC NICHOLE T082 V175

PARINGA EASY PRO H360
PARINGA D213 G408



\$PROFIT	TOP 63%	STRUCTURAL ASSESSMENT									
		FC	RC	FA	RA	RS	RH	LM	TP	SN	
\$4,634		6	5	6	6	5	5	C	2	5	

When breeding livestock you will always get a natural distribution across all traits that are recorded that meet your breeding objectives.

Some people do not fully understand population genetic principles and the power of Economic Breeding Values. Using breeding indexes keeps ALL traits moving in the right direction over successive generations. This is the strength of Paringa Charolais; some of the most genetically balanced, powerful and profitable Charolais genetics in Australia, and the world (as proven on global \$Profit database). Indexes keep the bad traits in check. This combination with independent culling for structure, temperament, and fertility has produced Paringa's outstanding Charolais cattle.

This disciplined breeding program applies across all of our pure bred herds, and it works. The last lot of our last sale, Q348E is a good bull and will perform better than most Charolais bulls in the breed.

Top 30% DOM Index at \$32, and top 60% on \$Profit.

Horned.



Artificial Breeding
Bull fertility tests
Semen collection
From 1 to 1000 no job too big or small

Contact: Drew Pickford
M: 0428 925 255 | E: drew@nationwideab.com.au
Nationwide Artificial Breeders Pty. Ltd.



AUSTRALIAN BREEDPLAN ESTIMATED BREEDING VALUES - DECEMBER 2020

TAG	LOT	DIR	DTRS	GL	BWT	200	400	600	MCW	MILK	SS	CWT	EMA	RIB	RUMP	RBV	IMF%	DOI
Q0354	1	13.6	5.2	-7.6	-3.4	25	46	60	53	14	3.5	32	0.2	1.6	2.5	-1.9	1.2	77
Q0372	2	18.3	10.9	-6.3	-4.2	12	20	22	9	9	1.1	18	1.2	1.5	2.1	-1.1	0.9	67
Q0394	3	16.0	9.6	-5.6	-4.8	13	21	24	19	13	1.6	17	0.7	2.7	3.8	-2.8	2.0	71
Q0380	4	12.1	4.3	-8.2	-3.2	20	36	50	43	15	3.1	25	0.1	2.8	4.0	-2.7	1.3	69
Q0384	5	12.3	4.5	-5.0	-3.0	14	26	35	17	10	2.9	23	1.3	1.6	2.1	-0.7	0.0	56
Q0374	6	7.2	1.3	-5.9	-1.8	12	32	40	28	18	3.7	23	1.1	1.3	1.9	-1	0.6	52
Q0362	7	12.4	4.9	-6.0	-3.2	10	22	27	3	11	3.7	20	2.3	2.1	3.0	-1.0	0.7	60
Q0393	8	13.5	3.3	-6.4	-3.5	12	29	35	20	17	2.8	24	0.8	1.3	1.8	-1.0	0.4	61
Q0401	9	16.6	7.2	-6.1	-5.1	5	12	9	-15	16	2.3	10	0.9	1.9	2.8	-1.4	0.8	61
Q0336	10	13.5	5.3	-3.6	-3.2	12	27	38	16	12	4.5	26	2.6	1.3	1.9	-0.1	0.0	64
Q0351	11	13.8	0.0	-7.6	-3.2	11	24	31	15	10	3.3	21	1.3	0.9	1.3	-0.3	0.0	57
Q0361	12	6.2	-1.8	-4.8	-1.6	13	29	39	19	15	3.9	26	2.6	2.3	3.0	-0.8	0.1	48
Q0366	13	4.7	2.7	-0.9	-1.7	8	20	25	8	13	2.3	20	2.2	2.2	2.8	-0.6	-0.2	41
Q0345	14	14.1	3.5	-5.7	-2.8	12	25	27	14	10	1.5	19	0.9	1.4	2.0	-1.3	0.8	55
Q0352	15	18.1	8.6	-7.8	-4.6	12	23	27	4	12	2.2	21	1.3	0.8	1.2	-0.6	0.6	66
Q0385	16	16.4	4.6	-3.6	-3.4	11	29	37	21	8	3.4	27	1.2	0.8	1.5	-0.8	0.6	65
Q0396	17	15.0	5.9	-5.8	-3.5	13	24	28	6	9	1.9	19	0.9	1.2	1.8	-1.2	0.9	60
Q0369	18	12.6	-2.3	-4.0	-2.8	14	30	34	13	15	1.6	25	1.6	1.5	1.9	-0.9	0.6	54
Q0379	19	14.1	2.1	-7.3	-2.8	11	19	20	3	10	1.5	12	0.4	1.5	2.1	-1.3	0.7	49
Q0390	20	14.6	-2.8	-5.1	-3.3	10	19	24	-3	11	2.3	17	1.8	1.6	2.5	-0.9	0.8	50
Q0339	21	14.1	10.3	-5.1	-3.3	10	24	29	17	15	1.9	23	1.3	1.5	1.8	-1.1	0.3	62
Q0363	22	18.0	14.3	-5.7	-4.8	7	12	12	2	11	1.3	17	1.5	0.4	0.4	0.0	0.0	59
Q0398	23	19.2	11.0	-6.0	-4.3	4	11	16	-7	13	2.1	15	1.8	0.3	0.4	0.2	0.1	57
Q0364	24	14.4	5.8	-4.2	-3.4	9	18	22	3	15	0.4	17	1.5	0.8	1.0	-0.5	0.5	51
Q0371	25	11.5	8.4	-4.0	-3.3	8	21	27	6	15	2.0	20	1.0	1.2	1.4	-0.8	0.2	54
Q0376	26	8.3	7.5	-1.6	-1.0	9	14	20	7	8	0.0	14	1.7	0.7	0.6	0.3	-0.2	34
Q0386	27	16.5	9.2	-5.3	-4.0	5	7	10	-12	10	0.3	11	0.9	1.3	1.4	-0.8	0.1	45
Q0348	28	8.8	0.5	-4.5	-2.4	7	14	19	-2	14	-0.7	16	2.5	0.7	0.5	0.4	0.0	32

MARCH 2021 CHAROLAIS BREED AVERAGE EBVS

	DIR	DTRS	GL	BWT	200	400	600	MCW	MILK	SS	CWT	EMA	RIB	RUMP	RBV	IMF%	DOI
PAR BSAUT CC Avg	13.4	5.3	-5.3	-3.3	11	23	28	11	12	2.2	20	1.3	1.4	1.9	-0.9	0.5	56
CC Breed Avg (2018 calves)	1.4	0.7	-2.7	0.3	12	24	32	33	7	1.1	20	1.6	0.3	0.4	0.1	0.2	24



SUMMARY PARINGA CHAROLAIS SALE LOTS - GLOBAL \$PROFIT ACROSS BREED ESTIMATED BREEDING VALUES (ABEs)

TAG	LOT	BW	WW	YW	YH	MILK	SCR	ABE BF	REA	IMF	ABE RP	CWT	INTAKE	F:G	MWT	\$PROFIT
Q0354	1	5.6	70	108	0.78	25	0.72	-0.03	0.77	0.04	1.18	838.23	107.89	0.12	79.52	\$13,030
Q0372	2	4.9	67	102	1.05	24	0.51	-0.05	0.86	-0.06	1.42	848.88	77.08	0.01	69.45	\$13,399
Q0394	3	2.1	54	85	0.91	28	0.65	-0.04	0.94	0.06	1.42	839.04	35.87	0.15	51.61	\$17,276
Q0380	4	5.9	70	107	1.08	30	0.98	-0.03	0.98	0.09	1.51	843.05	135.50	0.40	53.77	\$15,944
Q0384	5	4.3	68	110	0.55	30	1.16	-0.05	0.86	0.00	1.18	863.10	87.16	0.15	68.06	\$17,621
Q0374	6	4.9	61	98	0.70	32	0.18	-0.06	0.86	0.07	1.37	859.15	39.77	0.23	36.29	\$19,486
Q0362	7	4.1	55	87	0.84	26	0.15	-0.07	1.06	0.04	1.39	864.89	51.28	0.17	44.52	\$17,159
Q0393	8	4.4	65	103	0.59	33	0.79	-0.04	0.77	-0.05	1.63	849.65	41.59	0.16	44.23	\$17,806
Q0401	9	0.3	45	74	0.62	29	0.29	-0.04	0.84	-0.02	1.60	836.79	20.64	0.22	35.37	\$16,078
Q0336	10	3.3	58	97	0.75	30	0.40	-0.05	0.88	0.04	1.09	855.85	63.60	0.10	41.32	\$18,646
Q0351	11	4.7	60	95	0.48	32	1.00	-0.03	0.78	0.03	1.35	838.52	58.28	0.15	42.62	\$16,208
Q0361	12	7.4	68	110	0.60	30	0.47	-0.06	0.99	-0.18	1.47	870.57	58.55	0.11	54.70	\$15,164
Q0366	13	6.1	55	85	0.60	26	0.43	-0.05	0.87	-0.08	1.31	844.07	12.37	0.08	60.30	\$12,456
Q0345	14	3.1	59	95	0.62	24	0.16	-0.05	0.93	-0.07	1.47	855.19	75.30	0.16	48.41	\$15,001
Q0352	15	2.3	52	82	0.46	22	0.49	-0.04	0.69	-0.02	1.42	835.75	28.82	0.09	32.16	\$13,219
Q0385	16	2.5	60	96	0.47	23	0.06	-0.07	0.94	-0.20	1.62	867.63	54.52	0.06	50.36	\$14,273
Q0396	17	3.0	63	96	0.75	24	0.31	-0.05	0.97	-0.14	1.40	851.20	-0.77	0.02	75.49	\$15,316
Q0369	18	4.2	71	115	0.84	28	0.16	-0.05	1.03	-0.12	1.58	867.00	87.56	0.29	74.06	\$17,203
Q0379	19	3.7	58	93	0.53	19	-0.08	-0.05	0.94	-0.24	1.50	854.26	46.98	-0.03	51.63	\$11,019
Q0390	20	3.2	60	95	0.70	25	0.10	-0.06	0.93	-0.10	1.63	856.41	35.58	0.10	54.25	\$15,648
Q0339	21	6.9	59	86	1.01	26	0.43	-0.05	0.79	-0.15	1.48	838.60	-12.58	0.12	66.40	\$10,750
Q0363	22	3.2	48	78	0.53	22	0.40	-0.04	0.77	-0.12	1.57	840.63	66.80	0.05	61.26	\$9,486
Q0398	23	2.5	35	55	0.63	22	0.48	-0.05	0.71	-0.21	1.57	834.54	7.98	0.07	30.45	\$7,314
Q0364	24	4.5	47	66	0.54	30	-0.21	-0.05	0.77	-0.09	1.46	830.36	5.79	0.11	64.74	\$9,974
Q0371	25	6.8	53	79	1.04	27	0.13	-0.07	0.83	-0.13	1.68	855.26	20.92	0.19	50.81	\$11,132
Q0376	26	8.3	40	58	0.47	22	-0.25	-0.07	0.91	-0.20	1.66	842.44	57.98	0.09	44.33	\$3,474
Q0386	27	2.5	41	65	0.82	22	-0.40	-0.06	0.94	-0.20	1.59	843.40	4.10	0.05	48.97	\$10,233
Q0348	28	6.8	43	65	0.09	21	-0.86	-0.07	0.79	-0.22	1.61	847.93	43.29	0.21	51.42	\$4,634

MARCH 2021 \$PROFIT ACROSS BREED EBVs

	BW	WW	YW	YH	MILK	SCR	ABE BF	REA	IMF	ABE RP	CWT	INTAKE	F:G	MWT	\$PROFIT
Paringa BSAUT CC Avg	4.3	57	89	0.68	26	0.32	-0.05	0.87	-0.08	1.47	849.01	46.85	0.13	53.09	\$13,534
CC Breed Avg (2020)	5.3	54	86	0.88	19	0.19	-0.07	0.58	-0.14	1.37	651.45	35.08	-0.07	39.68	\$7,805



CHAROLAIS

SEMEN LOTS

29 + 30

SIRE **IMPAIR**

Soc.ID: OAFN189F

Charolais GROUP BREEDPLAN	MARCH 2021 CHAROLAIS BREED PLAN																
	CALVING EASE				GROWTH & MATERNAL					FERTILITY	CARCASE						INDEX VALUES
	DIR	DTRS	GL	BWT	200	400	600	MCW	MILK	SS	CWT	EMA	RIB	RUMP	RBY	IMF%	DOI
EBVs	0.0	8.5	-2.7	2.0	20	45	72	105	19	-1.5	46	3.4	-1.6	-2.9	1.8	-0.3	30
% Rank	62	4	45	89	5	1	1	1	1	100	1	3	99	99	1	90	33



TOTAL UNITS	\$PRICE	BUYER
LOT #29	4	
LOT #30	3	

Impair is renowned the world over. An early 90's French bull who ended up being one of the heaviest used bulls of all time. Many Australian Charolais trace back to Impair including widely used son Pinay.

As for his Breeding values, they are still pretty respectable. A genuine outlier and breed improver.

31

SIRE **NWMSU DOC SILVER 362 PLD**

Soc.ID: OAU9488E

Charolais GROUP BREEDPLAN	MARCH 2021 CHAROLAIS BREED PLAN																
	CALVING EASE				GROWTH & MATERNAL					FERTILITY	CARCASE						INDEX VALUES
	DIR	DTRS	GL	BWT	200	400	600	MCW	MILK	SS	CWT	EMA	RIB	RUMP	RBY	IMF%	DOI
EBVs	21.4	11.9	-4.5	-5.1	11	36	39	22	21	2.7	28	1.4	0.7	1.6	-1.2	1.5	90
% Rank	1	1	14	1	55	9	30	75	1	2	14	60	30	14	94	1	1



TOTAL UNITS	\$PRICE	BUYER
2		

Without a doubt Doc Silver was the most influential sire in our Paringa Charolais herd. He has added more predictability and multi trait excellence than any other bull. Grab these last straws while you can.



MARCH 2021 CHAROLAIS BREED PLAN																	
CALVING EASE				GROWTH & MATERNAL					FERTILITY	CARCASE						INDEX VALUES	
DIR	DTRS	GL	BWT	200	400	600	MCW	MILK	SS	CWT	EMA	RIB	RUMP	RBY	IMF%	DOI	
EBVs	-0.5	3.9	-7.1	-2.8	9	32	34	24	25	2.9	21	-2.4	2.9	3.6	-3.1	-0.2	42
% Rank	66	23	2	4	70	19	45	70	1	2	40	100	1	1	100	85	9



TOTAL UNITS	\$PRICE	BUYER
2		

True curve bending genetics, combined with high carcass merit, high fats, big scrotal and 400 day growth. Western Edge has been one of our favourite LT sires. Progeny are quiet, good footed, big nuted, with extra scale.



MARCH 2021 CHAROLAIS BREED PLAN																	
CALVING EASE				GROWTH & MATERNAL					FERTILITY	CARCASE						INDEX VALUES	
DIR	DTRS	GL	BWT	200	400	600	MCW	MILK	SS	CWT	EMA	RIB	RUMP	RBY	IMF%	DOI	
EBVs	15.7	-2.7	-7.5	-4.9	3	2	2	-34	15	-0.2	-2	-1.1	2.6	3.3	-2.9	1.1	35
% Rank	2	82	2	1	95	99	99	100	4	97	100	100	1	2	99	2	21



TOTAL UNITS	\$PRICE	BUYER
3		

More than just a good heifer bull, Long Distance progeny distance themselves from the pack with docile temperaments, sound structure and lots of eye appeal. Calves are born easily and are very stylish. A global success story.



MARCH 2021 CHAROLAIS BREED PLAN																	
CALVING EASE				GROWTH & MATERNAL					FERTILITY	CARCASE						INDEX VALUES	
DIR	DTRS	GL	BWT	200	400	600	MCW	MILK	SS	CWT	EMA	RIB	RUMP	RBY	IMF%	DOI	
EBVs	5.8	-7.2	-3.7	-0.5	23	33	45	33	11	2.7	21	0.4	2.6	3.0	-1.9	0.7	40
% Rank	20	97	25	26	2	15	16	50	15	3	40	91	1	3	99	10	14



TOTAL UNITS	\$PRICE	BUYER
LOT #34	15	
LOT #35	16	

Thundering Wind progeny have added punch, but still retain excellent fat cover with structural soundness. Widely used both here and in the USA.



MARCH 2021 CHAROLAIS BREED PLAN

	CALVING EASE				GROWTH & MATERNAL					FERTILITY	CARCASE						INDEX VALUES
	DIR	DTRS	GL	BWT	200	400	600	MCW	MILK	SS	CWT	EMA	RIB	RUMP	RBY	IMF%	DOI
EBVs	7.9	-9.1	-4.5	-1.7	18	43	49	49	7	0.9	32	-1.5	1.5	2.3	-2.6	0.7	45
% Rank	13	98	14	10	10	2	11	18	45	55	5	100	9	6	99	10	9



TOTAL UNITS	\$PRICE	BUYER
1		

Easy Blend has broken all records for his ability to convert grass to meat. Progeny have more scale and stretch than a majority of the LT bulls. Easy Blend has bred many "bull maker" females.



MARCH 2021 CHAROLAIS BREED PLAN

	CALVING EASE				GROWTH & MATERNAL					FERTILITY	CARCASE						INDEX VALUES
	DIR	DTRS	GL	BWT	200	400	600	MCW	MILK	SS	CWT	EMA	RIB	RUMP	RBY	IMF%	DOI
EBVs	-0.6	-3.1	-6.4	-2.7	5	9	11	-29	6	3.3	8	-0.9	1.8	2.9	-1.8	0.6	18
% Rank	67	83	3	4	91	95	96	100	55	1	95	99	5	4	98	15	65



TOTAL UNITS	\$PRICE	BUYER
4		

As you can tell by his photo, this sire packs some muscle, depth, and thickness into his progeny.



MARCH 2021 CHAROLAIS BREED PLAN

	CALVING EASE				GROWTH & MATERNAL					FERTILITY	CARCASE						INDEX VALUES
	DIR	DTRS	GL	BWT	200	400	600	MCW	MILK	SS	CWT	EMA	RIB	RUMP	RBY	IMF%	DOI
EBVs	4.7	8.8	-3.5	0.7	13	26	38	45	5	1.3	25	3.1	-1.8	-2.6	2.1	0.4	32
% Rank	26	2	29	55	40	40	31	24	65	35	21	4	99	99	1	25	29



TOTAL UNITS	\$PRICE	BUYER
1		

Calving ease bull with huge muscle from the NZ Silverstream stud. Thick, sound, meaty and super quiet. Progeny are well suited to Australian conditions.

39 SIRE SILVERSTREAM COLORADO C26 (Q)

Soc.ID: OAU5113E

Charolais GROUP BREEDPLAN	MARCH 2021 CHAROLAIS BREED PLAN																
	CALVING EASE				GROWTH & MATERNAL					FERTILITY	CARCASE						INDEX VALUES
	DIR	DTRS	GL	BWT	200	400	600	MCW	MILK	SS	CWT	EMA	RIB	RUMP	RBY	IMF%	DOI
EBVs	3.5	5.0	-5.7	0.2	21	36	61	83	9	0.9	29	-2.7	0.2	0.4	-1.9	0.1	21
% Rank	33	14	6	40	4	9	2	1	30	55	10	100	55	46	99	50	30



TOTAL UNITS	\$PRICE	BUYER
LOT #39	30	
LOT #40	30	
LOT #41	30	
LOT #42	30	
LOT #43	24	

Personally selected at the renowned Silverstream Charolais herd in New Zealand, Colorado exhibits all the physical attributes we were looking for, strong breed characteristics, amazingly quiet temperament, and excellent structure.

44 SIRE WELCOME SWALLOW EASY GAIN F508 (AI)(ET)(P)

Soc.ID: CMAF508E

Charolais GROUP BREEDPLAN	MARCH 2021 CHAROLAIS BREED PLAN																
	CALVING EASE				GROWTH & MATERNAL					FERTILITY	CARCASE						INDEX VALUES
	DIR	DTRS	GL	BWT	200	400	600	MCW	MILK	SS	CWT	EMA	RIB	RUMP	RBY	IMF%	DOI
EBVs	11.9	-2.3	-3.0	-3.1	24	53	61	56	29	1.6	35	0.5	2.3	3.2	-2.5	1.8	79
% Rank	4	78	39	3	1	1	2	9	1	20	2	90	2	3	99	1	1



TOTAL UNITS	\$PRICE	BUYER
19		

Easy Gain is the only bull in the breed to be top 1% DOI, and top 1% 200D and 400D weights, in fact 11 traits in top 10% of breed. Easy Gain progeny are easily born, good performance cattle with nice muscle expression. Known high feed efficiency pedigree.

45 + 46 SIRE PARINGA KILOPACKER N391E (AI) (P)

Soc.ID: TOLN391E

Charolais GROUP BREEDPLAN	MARCH 2021 CHAROLAIS BREED PLAN																
	CALVING EASE				GROWTH & MATERNAL					FERTILITY	CARCASE						INDEX VALUES
	DIR	DTRS	GL	BWT	200	400	600	MCW	MILK	SS	CWT	EMA	RIB	RUMP	RBY	IMF%	DIR
EBVs	15.4	7.8	-6.2	-4.2	22	31	46	38	10	2.6	24	0.8	2.9	4.3	-2.5	1.3	75
% Rank	2	3	2	2	4	23	2	39	20	4	30	85	1	1	99	1	1



TOTAL UNITS	\$PRICE	BUYER
LOT #45	30	
LOT #46	30	
LOT #47	37	

A data for profit "super star" and a "foot fixer". Not only is N391E a bull in the top 1% of the 1% of almost ALL Indexes globally, but he also ranks roughly 3 times greater than the average Charolais on every trait. N391E has the best docility of any bull we have ever bred, is tough and adaptable - the whole package. Dam is Paringa Long Distance J361E.

48 SIRE PARINGA RIO BRAVO D213E (AI) (P)

Soc.ID: TOLD213E



MARCH 2021 CHAROLAIS BREED PLAN

	CALVING EASE				GROWTH & MATERNAL					FERTILITY	CARCASE						INDEX VALUES
	DIR	DTRS	GL	BWT	200	400	600	MCW	MILK	SS	CWT	EMA	RIB	RUMP	RBY	IMF%	DOI
EBVs	19.6	-2.4	-5.7	-5.0	9	18	25	-14	16	0.4	8	1.8	3.7	6.7	-2.8	2.0	66
% Rank	1	79	9	1	70	75	70	100	3	85	95	40	1	1	99	1	1



TOTAL UNITS	\$PRICE	BUYER
9		

One of our most popular bulls we have bred at Paringa. He is a freak. Ten times the breed average for fats, marbling, and calving ease. Top 1% for birth weight with exceptional temperament. Super sound, good nuts and #1 for Domestic Index. Still out working for Dobson Charolais Tasmania at 13 years of age. Dam is Paringa Cigar B64E.

49 SIRE PARINGA WESTERN SPUR D196 (AI)(ET) (P)

Soc.ID: TOLD196E



MARCH 2021 CHAROLAIS BREED PLAN

	CALVING EASE				GROWTH & MATERNAL					FERTILITY	CARCASE						INDEX VALUES
	DIR	DTRS	GL	BWT	200	400	600	MCW	MILK	SS	CWT	EMA	RIB	RUMP	RBY	IMF%	DOI
EBVs	5.0	10.8	-5.5	-1.8	11	26	30	21	1	1.9	23	1.2	1.3	2.6	-0.5	-0.7	47
% Rank	22	1	9	9	55	40	55	76	95	14	30	67	14	4	80	83	8



TOTAL UNITS	\$PRICE	BUYER
15		

Homozygous Polled. A super long, very docile, good footed bull that has sired some of the top selling bulls at Ascot Charolais. A very easy keeping bull that moves freely. Low birth weight sire. Sired by LT Western Edge out of Rosedale Y74E.

50 SIRE PARINGA EASY GAIN N302E (AI) (ET) (P)

Soc.ID: TOLN302E



MARCH 2021 CHAROLAIS BREED PLAN

	CALVING EASE				GROWTH & MATERNAL					FERTILITY	CARCASE						INDEX VALUES
	DIR	DTRS	GL	BWT	200	400	600	MCW	MILK	SS	CWT	EMA	RIB	RUMP	RBY	IMF%	DOI
EBVs	14.5	2.6	-6.6	-3	25	54	63	52	19	2.3	41	2.2	2.3	3.3	-1.3	1.1	87
% Rank	3	32	3	6	1	1	1	15	1	5	1	25	3	2	95	2	1



TOTAL UNITS	\$PRICE	BUYER
LOT #50	50	
LOT #51	50	
LOT #52	50	
LOT #53	43	

An attractive Charolais bull that excels for calving ease, and is quiet and sound. He is currently ranked the **Number 1** active animal on the entire Charolais database. His dam Paringa White Gold H372E ranks as Number 3.

PICTURED DAM PARINGA WHITE GOLD H372E (AS A YEARLING HEIFER)

COVID-19

SALE DAY ARRANGEMENTS



In response to the ongoing Covid-19 situation, preparations have been made for our on property sale at Murrindindi Victoria on Thursday 18th March. This information is current as this catalogue goes to print but may be subject to change.

The safety and wellbeing of our clients, visitors and staff remains our highest priority and we will be implementing measures to ensure the safety of all attendees on sale day.

PRE-SALE INSPECTIONS

- We encourage viewing of the bulls prior to sale day. Please make arrangements directly with Tom Lawson phone 0434 146795 or Livestock Agent James Brown 0419 333 295.

IN PERSON ATTENDANCE AT THE SALE

- We welcome all buyers and visitors to the sale in person. We will ensure all necessary hygiene and social distancing measures are in place
- We have a current COVID Safe Plan in place for our property and workplace
- It is a requirement all visitors who attend the sale in person register their details upon arrival
- To save time and reduce contact on sale day please pre-register your intention to buy before sale day on www.gtsm.net.au
- Please do not attend in person if you or your close contacts have any Covid-19 symptoms
- Rules for entry to Victoria are subject to change, so we suggest before travelling you refer to the guidelines at : www.dhhs.vic.gov.au/victorias-restriction-levels-covid-19 or contact us.

ONLINE SALE WITH AUCTIONSPLUS

- The sale will be simultaneously streamed with AuctionsPlus on the day. Lots will have photos uploaded before sale day along with individual commentary, independent structure scores, and performance data to assist with your selections. Please make contact with us prior to sale day if you have any queries or to request extra footage of a particular animal.
- NOTE: If COVID restrictions increase by 18th March it will move to online only (AuctionsPlus) and we will notify by email, Paringa website and Facebook..

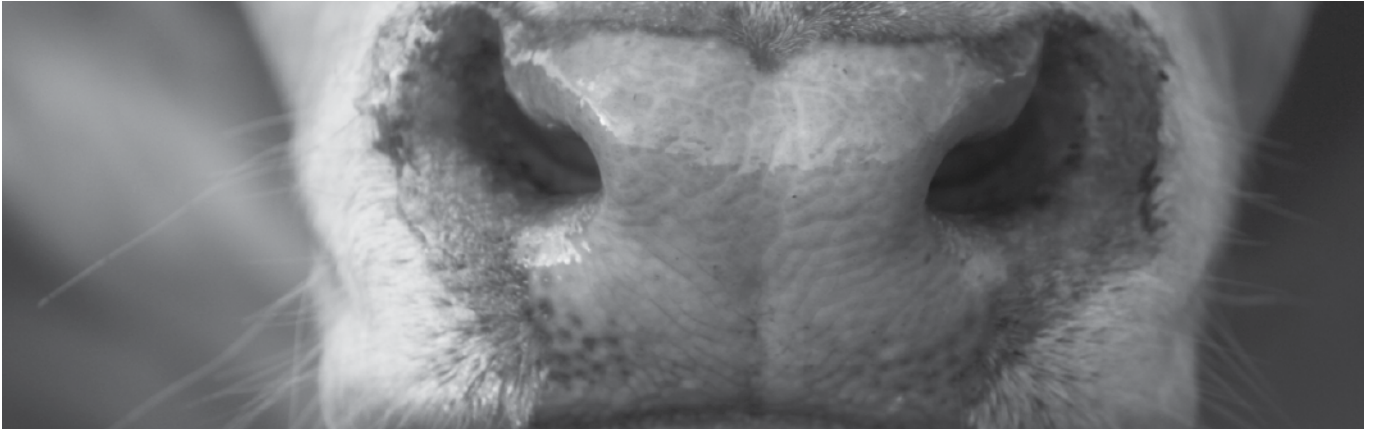
ABSENTEE BUYER OPTIONS

- If you are unable to attend the sale in person, or bid online, we can assist with an agreed nominated independent agent to speak with you by phone during the sale. Please contact the selling agents or vendors for details.
- Many clients request us to collate a list of bulls to match their specific requirements. Please make contact prior to sale day if you wish to take up this offer..

Paringa have provided a fully comprehensive analysis of each bull selling; globally analysed, genomically tested, independently structurally scored, semen tested, measured from birth to sale day, supported by 40 years of breeding experience and our Paringa Bull Guarantee*.

BORDER APPROVED:

Please note ALL animals are eligible to travel to every state & territory (Accredited JBAS-8)



REBATES & PAYMENT INSTRUCTIONS

DIRECT SETTLEMENT

2%

Purchasers who choose to pay by cheque, EFT or Credit Card on the day of sale will be entitled to a 2% rebate on their purchases.

DIRECT SETTLEMENT

CREDIT CARD

Clients may pay by credit card on the day of the sale (Please note: a 1% surcharge applies for credit card transactions).

OR AGENT SETTLEMENT

4%

4% rebate to all agents that attend the sale and purchase with/on behalf of their clients (written notice of 24 hours), and settle within 5 working days, with payment received no later than 26th March 2021.

SAVE TIME PRE-REGISTER

ONLINE BUYERS REGISTRATION FORM AT: WWW.RAYWHITEGTSM.COM.AU

Register online before you get to the sale, once you arrive please pick up your buyers number from the sale office.



PLEASE NOTE: Registration on sale day is still available as normal.

YOU ARE READY TO BID!

Phone Bidding will be available too.

Please make contact with GTSM or Ray White Livestock if you need this service.



RayWhite[®]
GTSM



Ray White GTSM

Though our name has changed, our Values stay the same

The expert team at GTSM have joined a leading rural network.

Same team, same service, now with a national brand.

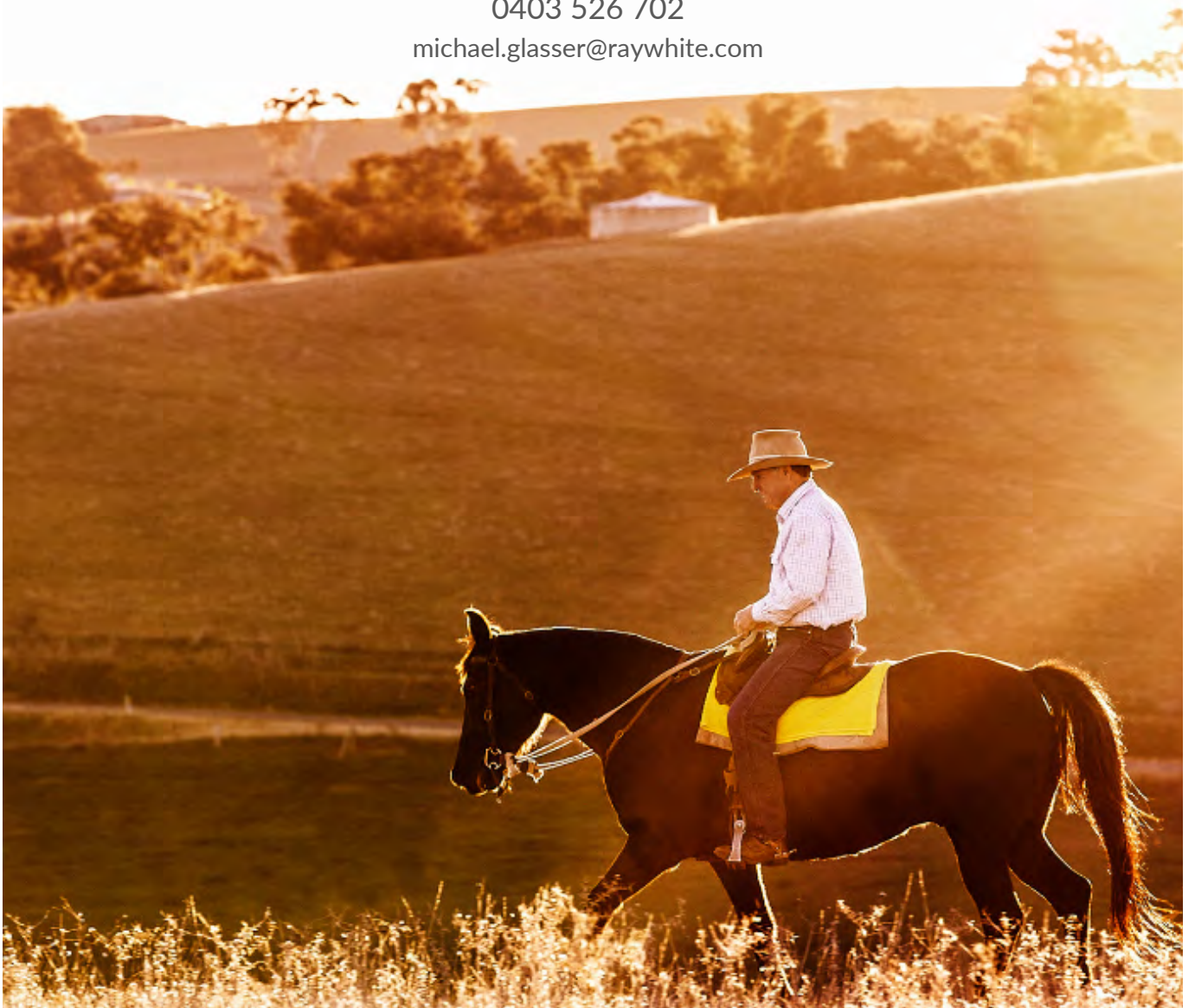
For all your stud stock consultancy needs, contact us today!

www.raywhitegtsm.com.au

Michael Glasser

0403 526 702

michael.glasser@raywhite.com





INFORMATION DAY & BULL WALK

“MADE WELL, GRADE WELL, PAID WELL”

WITH GUEST SPEAKERS FROM MEAT & LIVESTOCK AUSTRALIA, MEAT STANDARDS AUSTRALIA, UNIVERSITY NEW ENGLAND & GREENHAMS.



WEDNESDAY 17TH MARCH 2021
ON PROPERTY MURRINDINDI

RSVP ESSENTIAL - NUMBERS ARE LIMITED

FINAL CHAROLAIS SALE
THURSDAY 18TH MARCH 2021 AT 11AM

- ✓ SIRE VERIFIED
- ✓ GENOMICALLY ENHANCED
- ✓ SEMEN TESTED
- ✓ HOMOZYGOUS POLL TESTED
- ✓ STRUCTURE & TEMPERAMENT ASSESSED
- ✓ PESTIVIRUS TESTED
- ✓ VACCINATED & DRENCHED
- ✓ JBAS-8 TRAVEL ALL STATES

