

LEAWOOD

ANGUS



Established 1944

Autumn

1545 Princes Hwy, Flynn

Sale Tuesday 30th March 1.30pm

OPEN DAY

20th March 11.00am-3.00pm



44 Bulls 18 Mths

40 Females with CAF



Graeme mob: 0429 992 683 Luke mob: 0474 992 683



LOT 1
LEAWOOD
EXPRESS Q382



LOT 28
LEAWOOD
RAMBO
Q398

LOT 14
LEAWOOD
STEAKS
Q285



Welcome to Leawood Angus

Welcome to our 2021 Autumn bull and Female sale.

We invite you to our open day on the 20th of March to view our sale bulls and females.

This autumn we will have 44 bulls on offer with over 34 HBR or APR Registerable Bulls to pick from. This autumn line up is one we have been looking forward to for couple of years now, you will notice large amount of bulls out of first calving heifers which has been very exciting to watch this group of bulls develop over the last 18 months.

The sale line up offers great diversity in genetics but also still keeping our consistent evenness that we aim to breed. You will notice how the extra kilos that Leawood Express J292 puts in his progeny. Lot one being a classic example along with lot 8,9 and 25. Merchiston Steakhouse has done a great job for us over the last couple of years and with his 2 sons N297 & N282 progeny now available to our clients. Leawood Nugget N282 is a real dense meaty animal and has followed this trait through to all his progeny. Leawood N297 is everything steakhouse is himself; N297 is breeding slightly larger frame progeny then N282. Rangitira Mack has 3 cracking bulls in the sale all in the first half of the catalogue Mack has given us more length and weight in our herd which we have been gently increasing without losing our ever important structural traits we pride ourselves upon.

We have scanned the bulls again this year knowing that carcass information is so important. The results are detailed in the catalogue. All sale bulls passed an onsite semen test conducted by Ian Moreland which was conducted in late February.

There will be a selected amount of commercial females for sale following the sale of bulls and also displayed at the open day consisting of spring cows with 6mth old calves at foot. For more information keep an eye out on Auctions plus and our Facebook page. Feel free to get in contact with us anytime. Luke Stuckey 0474992683

We hope you can make the sale and enjoy a light lunch supplied by Flynn CWA

ONLINE VIDEO OF SALE LOTS

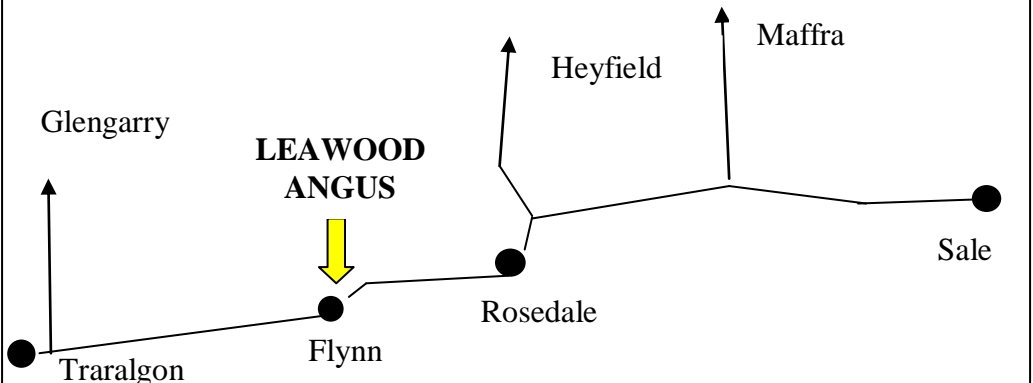
GOOGLE @

livestockvideo.com.au

COMING SALES/LEAWOOD

Directions

We are located 15.45 kms out of Traralgon heading East bound and 35kms from Sale via Rosedale heading West bound, on the North side of the Princes Hwy. Signage will be visible on sale day




Nutrien
Ag Solutions[™]

NUTRIEN CONTACTS:

Ray Attwell - 0428 836 136

Kevin Morgan - 0419 917 510

Neville Kelly - 0417 359 637

Adam Sutton – 0407 714 689

LEAWOOD ANGUS History

Leawood Angus was established in 1944 at its current location Princes Highway, Flynn. By Roy and later Joan who purchased registered females from various herds including Martinadale Beauty-Lavender, Sarum Kay (QLD), Bontharambo, Booroomooka, Hazeldean, Pine Grove, and a 15-month-old heifer Valley Pacis Vanilla from Kahlua Stud dispersal of Sir Kinsley Newell of Shorham. Vanilla developed into a top cow producing many heifer calves and today her descendants comprise approximately 80% of the herd.

Leawood was one of the first studs to import cattle from New Zealand in 1969 when the embargo on imports was lifted. This began a long connection with New Zealand comprising fourteen bulls and three cows imported and semen rights from twenty other bulls over the years. It is our belief that a herd is only as good as its females and these New Zealand cattle have established a very strong herd for us. Leawood now comprises of four generations and has continued its high standards in sourcing sires and semen from the best available progeny throughout the Angus industry, concentrating on cattle that are fertile, quiet, moderate mature cow weight, good milking, easy calving, high weight gain, and carcass traits that enable us to convert grass into meat on a dry land commercially based program.

We are calving down more than 700 females this year. With the introduction of Luke's youth and enthusiasm for the industry over the past few years, we have been travelling around a lot more and finding new progeny to complement our herd with many exciting bull purchases and undergoing extensive AI programs, using outstanding sires from New Zealand and Australia.

The Agricultural industry has many positives at this stage, however conditions can at times challenge us but we believe in our cattle and that they are as easy care as you can get, which they need to be for us and our clients. We invite you to inspect our cattle on property and wish all purchasers much financial return, pleasure and success and under bidder's better luck next time.

Regards the Stuckey family.



Joy, Graeme and Luke Stuckey

LOT 1**LEAWOOD EXPRESS Q382**

LEAWOOD EXPRESS B34
SIRE: LEAWOOD EXPRESS J292
 LEAWOOD KAY U77

LEAWOOD DENI G250
DAM: LEAWOOD VANILLA L466
 LEAWOOD VANILLA F37

| BIRTH DATE | BWT Kg | WT Kg 2/8/19 | FRAME SCORE | SCROTAL Cm | RUMP mm | RIB mm | IMF % | EMA Cm2 | REG STATIS |
|------------|-----------|-----------------|----------------|---------------|------------|-----------|----------|------------|---------------|
| 15/08/19 | 42 | 798 | 6.9 | 43 | 8 | 8 | 6.1 | 125 | HBR |

NOTES: A high capacity sire with loads of depth and weight for age, growth and length, highest weight for age within group. Semen has been retained for in herd use.

LOT 2**LEAWOOD LEGEND Q334 (AI)**

MATAURI REALITY 839
SIRE: CLUNIE RANGE LEGEND L348
 ABERDEEN ESTATE J81

LEAWOOD DENI G250
DAM: LEAWOOD VANILLA L343
 LEAWOOD VANILLA G295

| BIRTH DATE | BWT Kg | WT Kg 9/2/21 | FRAME SCORE | SCROTAL Cm | RUMP mm | RIB mm | IMF % | EMA Cm2 | REG STATIS |
|------------|-----------|-----------------|----------------|---------------|------------|-----------|----------|------------|---------------|
| 11/08/19 | 42 | 790 | 6.5 | 45 | 12 | 10 | 6.2 | 118 | COM |

NOTES: A real meat machine. Q334 has length and growth, with fine bone with high IMF and fats. He should breed great carcass cattle.

LOT 3**LEAWOOD HECTOR Q332 (AI)**

K C F BENNETT PERFORMER
SIRE: COONAMBLE HECTOR H249
 COONAMBLE E9

LEAWOOD YEO B324
DAM: LEAWOOD VANILLA G412
 LEAWOOD VANILLA Y227

| BIRTH DATE | BWT Kg | WT Kg 9/2/21 | FRAME SCORE | SCROTAL Cm | RUMP mm | RIB mm | IMF % | EMA Cm2 | REG STATIS |
|------------|-----------|-----------------|----------------|---------------|------------|-----------|----------|------------|---------------|
| 11/08/19 | 42 | 738 | 5.9 | 43 | 10 | 9 | 6.1 | 120 | HBR |

NOTES: Quality bull here. He was considered to be used on our heifers, but missed out. Great scanning figures, high 200 & 400 day weight gain and out of a top cow.

LOT 4**LEAWOOD YEO Q496**

LEAWOOD YEO E573
SIRE: LEAWOOD YEO K268
 LEAWOOD PINESONG A127

HYLINE RIGHT TIME 338
DAM: WITHERSWOOD GILL F6
 WITHERSWOOD GILL W78

| BIRTH DATE | BWT Kg | WT Kg 9/2/21 | FRAME SCORE | SCROTAL Cm | RUMP mm | RIB mm | IMF % | EMA Cm2 | REG STATIS |
|------------|--------|-----------------|-------------|------------|---------|--------|-------|---------|------------|
| 2/9/19 | 37 | 706 | 6.8 | 39 | 8 | 7 | 5.8 | 122 | HBR |

NOTES: This fellow covers some ground with style and length, has high EMA and by the K268 bull which really leaves quality in his progeny.

LOT 5**LEAWOOD BOS Q446**

STERN BRAVE HEART
SIRE: WITHERSWOOD BOS M0018
 ABERDEEN ESTATE H22

LEAWOOD YEO G117
DAM: LEAWOOD VANILLA M413
 LEAWOOD VANILLA Z427

| BIRTH DATE | BWT Kg | WT Kg 9/2/21 | FRAME SCORE | SCROTAL Cm | RUMP mm | RIB mm | IMF % | EMA Cm2 | REG STATIS |
|------------|--------|-----------------|-------------|------------|---------|--------|-------|---------|------------|
| 25/8/19 | 37 | 714 | 5.4 | 43 | 9 | 9 | 5.7 | 119 | HBR |

NOTES: A great style of a bull with width of meat in the places that our markets demand. A real prospect to improve any program, good scanning figures.

LOT 6**LEAWOOD MACK Q294 (AI)**

KAHARAU COBRA 10-546
SIRE: RANGATIRA MACK 15-32
 KAHARAU 10-9085

LEAWOOD PINE C538
DAM: LEAWOOD VANILLA J099
 LEAWOOD Z179

| BIRTH DATE | BWT Kg | WT Kg 9/2/21 | FRAME SCORE | SCROTAL Cm | RUMP mm | RIB mm | IMF % | EMA Cm2 | REG STATIS |
|------------|--------|-----------------|-------------|------------|---------|--------|-------|---------|------------|
| 6/8/19 | 34 | 724 | 5.9 | 42 | 8 | 8 | 5.7 | 116 | COM |

NOTES: A muscle packed lad with loads of length and width. By the NZ sire Mack, low birth high growth, out of a heavy bodied dam that breeds very consistently.

LOT 7**LEAWOOD MACK Q364 (AI)**

KAHARAU COBRA 10-546 LEAWOOD CRACKER H490
SIRE: RANGATIRA MACK 15-32 **DAM:** LEAWOOD VANILLA L321
 KAHARAU 10-9085 LEAWOOD VANILLA J488

| BIRTH DATE | BWT Kg | WT Kg 9/2/21 | FRAME SCORE | SCROTAL Cm | RUMP mm | RIB mm | IMF % | EMA Cm2 | REG STATIS |
|------------|--------|-----------------|-------------|------------|---------|--------|-------|---------|------------|
| 13/8/19 | 40 | 718 | 7 | 44 | 8 | 7 | 5.1 | 124 | COM |

NOTES: Another Mack son, Q364 looks like he may have an extra rib he is that long. Out of a consistent breeder with four calves, two heifers retained two bulls.

LOT 8**LEAWOOD EXPRESS Q552**

LEAWOOD EXPRESS B034 LEAWOOD DENI G250
SIRE: LEAWOOD EXPRESS J292 **DAM:** LEAWOOD VANILLA L630
 LEAWOOD KAY U77 LEAWOOD VANILLA G475

| BIRTH DATE | BWT Kg | WT Kg 9/2/21 | FRAME SCORE | SCROTAL Cm | RUMP mm | RIB mm | IMF % | EMA Cm2 | REG STATIS |
|------------|--------|-----------------|-------------|------------|---------|--------|-------|---------|------------|
| 15/9/19 | 37 | 680 | 6.1 | 37 | 7 | 7 | 5.7 | 118 | HBR |

NOTES: Q552 shows style and balance, has growth and clean shoulders with length. L630 has had 4calves two heifers retained two bulls. He is the third youngest.

LOT 9**LEAWOOD EXPRESS Q532**

LEAWOOD EXPRESS B034 LEAWOOD YEO E573
SIRE: LEAWOOD EXPRESS J292 **DAM:** LEAWOOD PINESONG K49
 LEAWOOD KAY U077 LEAWOOD PINESONG F205

| BIRTH DATE | BWT Kg | WT Kg 9/2/21 | FRAME SCORE | SCROTAL Cm | RUMP mm | RIB mm | IMF % | EMA Cm2 | REG STATIS |
|------------|--------|-----------------|-------------|------------|---------|--------|-------|---------|------------|
| 10/9/19 | 40 | 670 | 6.1 | 40 | 10 | 8 | 5.9 | 110 | HBR |

NOTES: Young handy sire here showing great depth and rear end while very soft. K49 has a proven record and currently has one of the top bull calves by Lazarus.

LOT 10**LEAWOOD RAMBO Q258**

TURIHAUA RAMBO N75

E F COMPLEMENT 8088

SIRE: LEAWOOD RAMBO N324 DAM: LEAWOOD VANILLA N323
 LEAWOOD VANILLA L466 LEAWOOD VANILLA L456

| BIRTH DATE | BWT Kg | WT Kg 9/2/21 | FRAME SCORE | SCROTAL Cm | RUMP mm | RIB mm | IMF % | EMA Cm2 | REG STATIS |
|------------|--------|-----------------|-------------|------------|---------|--------|-------|---------|------------|
| 1/8/19 | 34 | 710 | 5.6 | 39 | 6 | 6 | 5.3 | 118 | APR |

NOTES: A bull with wow factor about him. Low birth weight, high 200 & 400 day weight gain. Has a lot of thickness and depth and great rear end, a heifer's first calf.

LOT 11**LEAWOOD EXPRESS Q534**

LEAWOOD EXPRESS B034

LEAWOOD YEO G117

SIRE: LEAWOOD EXPRESS G508 DAM: LEAWOOD VANILLA L671
 LEAWOOD VANILLA B285 LEAWOOD VANILLA K137

| BIRTH DATE | BWT Kg | WT Kg 9/2/21 | FRAME SCORE | SCROTAL Cm | RUMP mm | RIB mm | IMF % | EMA Cm2 | REG STATIS |
|------------|--------|-----------------|-------------|------------|---------|--------|-------|---------|------------|
| 11/9/19 | 38 | 662 | 5.5 | 40 | 10 | 9.0 | 5.1 | 120 | HBR |

NOTES: High growth for age that has strong muscle development and length all the way into his butt, while having such high fats. Out of a consistent top breeder.

LOT 12**LEAWOOD KLOONEY Q395**

MILLAH MURRAH KLOONEY K42

PATHFINDER JABIRU J319

SIRE: MILWILLAH KLOONEY M137 DAM: LEAWOOD VANILLA M535
 MILWILLAH MITTAGONG B137 LEAWOOD VANILLA J510

| BIRTH DATE | BWT Kg | WT Kg 9/2/21 | FRAME SCORE | SCROTAL Cm | RUMP mm | RIB mm | IMF % | EMA Cm2 | REG STATIS |
|------------|--------|-----------------|-------------|------------|---------|--------|-------|---------|------------|
| 18/8/19 | 39 | 658 | 5.8 | 43 | 9 | 8 | 6 | 118 | COM |

NOTES: Q395 is a long growth fellow that fills out with muscle and meat through to his hams. Future looks great when our 2nd calvers produce such calves.

LOT 13**LEAWOOD KLOONEY Q317 (AI)**

BOOROOMOOKA THEO T30 LEAWOOD YEO E573
SIRE: MILLAH MURRAH K42 DAM: LEAWOOD BASIN K397
MILLAH MURRAY PRUE H4 LEAWOOD BASIN C092

| BIRTH DATE | BWT Kg | WT Kg 9/2/21 | FRAME SCORE | SCROTAL Cm | RUMP mm | RIB mm | IMF % | EMA Cm2 | REG STATIS |
|------------|--------|-----------------|-------------|------------|---------|--------|-------|---------|------------|
| 9/8/19 | 38 | 692 | 6.5 | 42 | 10 | 9 | 6.1 | 115 | HBR |

NOTES: Q317 has high fat scores and display it as you look him over. Has clean shoulders and a lot of length. Son of Klooney K42 which sold for \$80,000.

LOT 14**LEAWOOD STEAKS Q285**

MERCHISTON STEAK HOUSE 489 MERCHISTON GENERATE 243
SIRE: LEAWOOD STEAKS N297 DAM: LEAWOOD KAY N314
LEAWOOD ANEMONE J477 LEAWOOD KAY J313

| BIRTH DATE | BWT Kg | WT Kg 9/2/21 | FRAME SCORE | SCROTAL Cm | RUMP mm | RIB mm | IMF % | EMA Cm2 | REG STATIS |
|------------|--------|-----------------|-------------|------------|---------|--------|-------|---------|------------|
| 6/8/19 | 36 | 690 | 5.9 | 42 | 9 | 7 | 5.6 | 115 | HBR |

NOTES: A long bodied sire with spring of rib and softness. Real easy doing type here. Breeding program looks promising when our heifers produce these types.

LOT 15**LEAWOOD EXPRESS Q582**

LEAWOOD EXPRESS G508 LEAWOOD YEO E573
SIRE: LEAWOOD EXPRESS L581 DAM: LEAWOOD KAY K398
LEAWOOD VANILLA D681 LEAWOOD KAY E520

| BIRTH DATE | BWT Kg | WT Kg 9/2/21 | FRAME SCORE | SCROTAL Cm | RUMP mm | RIB mm | IMF % | EMA Cm2 | REG STATIS |
|------------|--------|-----------------|-------------|------------|---------|--------|-------|---------|------------|
| 28/9/19 | 37 | 628 | 7.2 | 39 | 9 | 7 | 6.1 | 118 | HBR |

NOTES: The youngest born of the group. He will develop into a large framed bull with length. He has high IMF out of a cow that produced a top son in 2019.

LOT 16**LEAWOOD STEAKHOUSE Q314 (AI)**

MERCHISTON EXCLUSIVE 269 MERRIDALE BONUS B3
SIRE: MERCHISTON STEAKHOUSE **DAM:** LEAWOOD KAY J313
 MERCHISTON RANGI 684 LEAWOOD KAY C317

| BIRTH DATE | BWT Kg | WT Kg 9/2/21 | FRAME SCORE | SCROTAL Cm | RUMP mm | RIB mm | IMF % | EMA Cm2 | REG STATIS |
|------------|--------|--------------|-------------|------------|---------|--------|-------|---------|------------|
| 9/8/19 | 36 | 684 | 5.5 | 43 | 9 | 7 | 5.9 | 117 | HBR |

NOTES: Low birth and high 200day weight gain with high IMF make Q314 one to look at. J313 was dam to a top bull sold to the McFarlane family in 2017.

LOT 17**LEAWOOD EXPRESS Q515**

LEAWOOD EXPRESS B034 LEAWOOD YEO G117
SIRE: LEAWOOD EXPRESS G508 **DAM:** LEAWOOD L588
 LEAWOOD VANILLA B285 LEAWOOD G288

| BIRTH DATE | BWT Kg | WT Kg 9/2/21 | FRAME SCORE | SCROTAL Cm | RUMP mm | RIB mm | IMF % | EMA Cm2 | REG STATIS |
|------------|--------|--------------|-------------|------------|---------|--------|-------|---------|------------|
| 4/9/19 | 43 | 660 | 5.8 | 42 | 8 | 8 | 5.1 | 122 | COM |

NOTES: A light boned youngster that displays a lot of muscle and thickness. Confirmed by his excellent scanning numbers, should breed great carcass progeny.

LOT 18**LEAWOOD MACK Q335 (AI)**

KAHARAU COBRA 10-546 LEAWOOD YEO G117
SIRE: RANGATIRA MACK 15-32 **DAM:** LEAWOOD VANILLA L464
 KAHARAU 10-9085 LEAWOOD VANILLA G552

| BIRTH DATE | BWT Kg | WT Kg 9/2/21 | FRAME SCORE | SCROTAL Cm | RUMP mm | RIB mm | IMF % | EMA Cm2 | REG STATIS |
|------------|--------|--------------|-------------|------------|---------|--------|-------|---------|------------|
| 11/8/19 | 34 | 676 | 6.9 | 44 | 9 | 8 | 5.4 | 117 | HBR |

NOTES: Growth and softness with Q335, an easy doing style with low birth and top end scanning figures. Dam L464 has a top Lazarus heifer calf on her now.

LOT 19**LEAWOOD RAMBO Q376**

TURIHAU RAMBO N75

MERCHISTON STEAKHOUSE

SIRE: LEAWOOD RAMBO N324 **DAM:** LEAWOOD VANILLA N292
 LEAWOOD VANILLA L466 LEAWOOD VANILLA J428

| BIRTH DATE | BWT Kg | WT Kg 9/2/21 | FRAME SCORE | SCROTAL Cm | RUMP mm | RIB mm | IMF % | EMA Cm2 | REG STATIS |
|------------|--------|-----------------|-------------|------------|---------|--------|-------|---------|------------|
| 14/8/19 | 36 | 674 | 5.7 | 43 | 8 | 8 | 5.6 | 121 | COM |

NOTES: An easy doing type here with depth and fat cover. This is the type of bull our industry needs, great scanning numbers and all out of our heifer program.

LOT 20**LEAWOOD RAMBO Q259**

TURIHAU RAMBO N75

PATHFINDER JABIRU J319

SIRE: LEAWOOD RAMBO N324 **DAM:** LEAWOOD VANILLA N346
 LEAWOOD VANILLA L466 LEAWOOD VANILLA C007

| BIRTH DATE | BWT Kg | WT Kg 9/2/21 | FRAME SCORE | SCROTAL Cm | RUMP mm | RIB mm | IMF % | EMA Cm2 | REG STATIS |
|------------|--------|-----------------|-------------|------------|---------|--------|-------|---------|------------|
| 2/8/19 | 33 | 682 | 4.9 | 43 | 8 | 7 | 5.1 | 117 | APR |

NOTES: This fellow has extra thickness and muscle in the rear end. Out of a heifer again. Note he has low birth weight and impressive scanning figures.

LOT 21**LEAWOOD EXPRESS Q431**

LEAWOOD EXPRESS B034

FUTURE DIRECTION

SIRE: LEAWOOD EXPRESS G508 **DAM:** LEAWOOD ANNIE D366
 LEAWOOD VANILLA B285 LEAWOOD ANNIE Z044

| BIRTH DATE | BWT Kg | WT Kg 9/2/21 | FRAME SCORE | SCROTAL Cm | RUMP mm | RIB mm | IMF % | EMA Cm2 | REG STATIS |
|------------|--------|-----------------|-------------|------------|---------|--------|-------|---------|------------|
| 24/8/19 | 39 | 660 | 6 | 40 | 8 | 8 | 5.8 | 117 | HBR |

NOTES: A long bodied bull with loads of muscle backed up by his excellent scanning figures. This is D366 tenth calf with a full sister retained.

LOT 22**LEAWOOD STEAKS Q462**

MERCHISTON STEAKHOUSE
SIRE: LEAWOOD STEAKS N297
 LEAWOOD ANEMONE J477

KENNY'S CREEK CHISUM L56
DAM: LEAWOOD VANILLA N422
 LEAWOOD VANILLA K387

| BIRTH DATE | BWT Kg | WT Kg 9/2/21 | FRAME SCORE | SCROTAL Cm | RUMP mm | RIB mm | IMF % | EMA Cm2 | REG STATIS |
|------------|--------|-----------------|-------------|------------|---------|--------|-------|---------|------------|
| 26/8/19 | 35 | 654 | 5.2 | 41 | 8 | 8 | 4.6 | 116 | HBR |

NOTES: Q462 is another N297 son out of a heifer. A very meaty type with a good muscle pattern. Really admire the rump and wide head set on this youngster.

LOT 23**LEAWOOD EXPRESS Q566**

LEAWOOD EXPRESS B034
SIRE: LEAWOOD EXPRESS G508
 LEAWOOD VANILLA B285

LEAWOOD ANZAC H318
DAM: LEAWOOD L632
 LEAWOOD J323

| BIRTH DATE | BWT Kg | WT Kg 9/2/21 | FRAME SCORE | SCROTAL Cm | RUMP mm | RIB mm | IMF % | EMA Cm2 | REG STATIS |
|------------|--------|-----------------|-------------|------------|---------|--------|-------|---------|------------|
| 23/9/19 | 39 | 626 | 6.9 | 40 | 6 | 5 | 4.4 | 110 | COM |

NOTES: A tall growth sire with clean shoulders and a lot of length. Note he is the second youngest in the group. G508 has been an outstanding sire now ten years old.

LOT 24**LEAWOOD STEAKHOUSE Q312 (AI)**

MERCHISTON EXCLUSIVE 269
SIRE: MERCHISTON STEAKHOUSE
 MERCHISTON RANGI 684

LEAWOOD HENRY E062
DAM: LEAWOOD KAY K402
 LEAWOOD KAY A602

| BIRTH DATE | BWT Kg | WT Kg 9/2/21 | FRAME SCORE | SCROTAL Cm | RUMP mm | RIB mm | IMF % | EMA Cm2 | REG STATIS |
|------------|--------|-----------------|-------------|------------|---------|--------|-------|---------|------------|
| 9/8/19 | 38 | 670 | 6.1 | 43 | 11 | 9 | 5.9 | 118 | HBR |

NOTES: A great rump on this bull, typical of the Steakhouse progeny, His scanning figures are terrific and shows softness. Out of a high producing cow.

| "LEAWOOD" BULLS SUMMARY | | | | | | |
|--------------------------------|---------------|----------------|-------------|------------|----------------|--------------|
| | Animal | Date of | | | Scrotal | Frame |
| Lot | Ident | Birth | Sire | Dam | Dia Cm | Score |
| 1 | Q382 | 15/08/2019 | J292 | L466 | 43 | 6.9 |
| 2 | Q334 | 11/08/2019 | LEGEND | L343 | 45 | 6.5 |
| 3 | Q332 | 11/08/2019 | HEC 249 | G412 | 43 | 5.9 |
| 4 | Q496 | 2/09/2019 | K268 | CWJ F6 | 39 | 6.8 |
| 5 | Q446 | 25/08/2019 | M0018 | M413 | 43 | 5.4 |
| 6 | Q294 | 6/08/2019 | MACK | J099 | 42 | 5.9 |
| 7 | Q364 | 13/08/2019 | MACK | L321 | 44 | 7.0 |
| 8 | Q552 | 15/09/2019 | J292 | L630 | 37 | 6.1 |
| 9 | Q532 | 10/09/2019 | J292 | K049 | 40 | 6.1 |
| 10 | Q258 | 1/08/2019 | N324 | N323 | 39 | 5.6 |
| 11 | Q534 | 11/09/2019 | G508 | L671 | 40 | 5.5 |
| 12 | Q395 | 18/08/19 | M137M | M535 | 43 | 5.8 |
| 13 | Q317 | 9/08/2019 | KLOONEY K42 | K397 | 42 | 6.5 |
| 14 | Q285 | 6/08/2019 | N297 | N314 | 42 | 5.9 |
| 15 | Q582 | 28/09/2019 | L581 | K398 | 39 | 7.2 |
| 16 | Q314 | 9/08/2019 | STEAKHOUSE | J313 | 43 | 5.5 |
| 17 | Q515 | 4/09/2019 | G508 | L588 | 42 | 5.8 |
| 18 | Q335 | 11/08/2019 | MACK | L464 | 44 | 6.9 |
| 19 | Q376 | 14/08/2019 | N324 | N292 | 43 | 5.7 |
| 20 | Q259 | 2/08/2019 | N324 | N346 | 43 | 4.9 |
| 21 | Q431 | 24/08/2019 | G508 | D366 | 40 | 6.0 |
| 22 | Q462 | 26/08/2019 | N297 | N422 | 41 | 5.2 |
| 23 | Q566 | 23/09/2019 | G508 | L632 | 40 | 6.9 |
| 24 | Q312 | 9/08/2019 | STEAKHOUSE | K402 | 43 | 6.1 |
| 25 | Q514 | 4/09/2019 | J292 | L408 | 42 | 5.3 |
| 26 | Q274 | 4/08/2019 | K115 | K286 | 44 | 5.3 |
| 27 | Q410 | 18/08/2019 | N317 | N446 | 39 | 5.2 |
| 28 | Q398 | 18/08/2019 | RAMBO | K365 | 40 | 5.9 |
| 29 | Q386 | 16/08/2019 | STERN 15815 | J182 | 38 | 6.3 |
| 30 | Q461 | 27/08/2019 | N317 | N394 | 40 | 6.2 |
| 31 | Q510 | 8/09/2019 | N282 | N101 | 42 | 4.7 |
| 32 | Q296 | 7/08/2019 | K115 | J403 | 40 | 5.9 |
| 33 | Q394 | 18/08/2019 | M137 M | M390 | 39 | 5.5 |
| 34 | Q369 | 14/08/2019 | M0018 | M516 | 42 | 5.3 |
| 35 | Q422 | 20/08/2019 | N297 | N405 | 42 | 5.5 |
| 36 | Q444 | 25/08/2019 | K115 | G420 | 43 | 5.6 |
| 37 | Q432 | 24/08/2019 | K268 | L295 | 43 | 5.4 |
| 38 | Q320 | 9/08/2019 | HEC 249 | J379 | 41 | 5.3 |
| 39 | Q360 | 12/08/2019 | N282 | N386 | 40 | 5.1 |
| 40 | Q454 | 27/08/2019 | L581 | C355 | 42 | 5.8 |
| 41 | Q316 | 9/08/2019 | K115 | K304 | 40 | 5.3 |
| 42 | Q372 | 13/08/2019 | N317 | N281 | 45 | 6.1 |
| 43 | Q307 | 8/08/2019 | STEAKHOUSE | D053 | 41 | 6.1 |
| 44 | Q402 | 16/08/19 | N282 | N624 | 42 | 5.2 |
| Averages >> | | | | | 42 | 5.7 |

BULLS WEIGHT SUMMARY

| Birth Kg | 27/03/2020 | | 30/10/2020 | | 9/02/2021 | | LIFE | LOT |
|-------------|----------------|--------------------|---------------|--------------------|----------------|--------------------|------|-----|
| | W200 Weight | Gain Kg Per Day | 400 Weight | Gain Kg Per Day | W500 Weight | Gain Kg Per Day | | |
| 42 | 333 | 1.29 | 638 | 1.35 | 798 | 1.39 | 1 | |
| 42 | 298 | 1.12 | 632 | 1.32 | 790 | 1.36 | 2 | |
| 42 | 323 | 1.23 | 324 | 1.30 | 738 | 1.27 | 3 | |
| 37 | 267 | 1.11 | 560 | 1.23 | 706 | 1.27 | 4 | |
| 37 | 282 | 1.16 | 574 | 1.24 | 714 | 1.27 | 5 | |
| 34 | 295 | 1.12 | 592 | 1.24 | 724 | 1.25 | 6 | |
| 40 | 286 | 1.08 | 592 | 1.24 | 718 | 1.24 | 7 | |
| 37 | 268 | 1.19 | 532 | 1.20 | 680 | 1.25 | 8 | |
| 40 | 281 | 1.21 | 562 | 1.25 | 670 | 1.22 | 9 | |
| 34 | 329 | 1.23 | 632 | 1.31 | 710 | 1.21 | 10 | |
| 38 | 277 | 1.21 | 546 | 1.22 | 662 | 1.21 | 11 | |
| 39 | 304 | 1.21 | 574 | 1.22 | 658 | 1.17 | 12 | |
| 38 | 304 | 1.15 | 556 | 1.16 | 692 | 1.19 | 13 | |
| 36 | 286 | 1.07 | 546 | 1.13 | 690 | 1.18 | 14 | |
| 37 | 257 | 1.22 | 510 | 1.19 | 628 | 1.18 | 15 | |
| 36 | 330 | 1.29 | 590 | 1.24 | 684 | 1.18 | 16 | |
| 43 | 263 | 1.07 | 514 | 1.12 | 660 | 1.18 | 17 | |
| 34 | 274 | 1.05 | 556 | 1.17 | 676 | 1.17 | 18 | |
| 36 | 272 | 1.04 | 530 | 1.12 | 674 | 1.17 | 19 | |
| 33 | 294 | 1.12 | 566 | 1.17 | 682 | 1.17 | 20 | |
| 39 | 291 | 1.17 | 534 | 1.14 | 660 | 1.16 | 21 | |
| 35 | 250 | 1.00 | 516 | 1.12 | 654 | 1.16 | 22 | |
| 39 | 294 | 1.37 | 554 | 1.28 | 626 | 1.16 | 23 | |
| 38 | 329 | 1.28 | 560 | 1.17 | 670 | 1.15 | 24 | |
| 40 | 256 | 1.05 | 508 | 1.11 | 640 | 1.15 | 25 | |
| 38 | 309 | 1.16 | 536 | 1.10 | 672 | 1.14 | 26 | |
| 36 | 277 | 1.11 | 497 | 1.05 | 656 | 1.15 | 27 | |
| 39 | 304 | 1.21 | 590 | 1.26 | 658 | 1.14 | 28 | |
| 36 | 270 | 1.04 | 554 | 1.17 | 656 | 1.14 | 29 | |
| 33 | 259 | 1.08 | 540 | 1.18 | 648 | 1.16 | 30 | |
| 35 | 291 | 1.30 | 522 | 1.17 | 634 | 1.15 | 31 | |
| 38 | 285 | 1.07 | 576 | 1.20 | 666 | 1.14 | 32 | |
| 40 | 292 | 1.15 | 536 | 1.13 | 652 | 1.13 | 33 | |
| 30 | 298 | 1.20 | 560 | 1.20 | 650 | 1.14 | 34 | |
| 30 | 249 | 1.00 | 526 | 1.14 | 638 | 1.13 | 35 | |
| 37 | 282 | 1.16 | 538 | 1.16 | 634 | 1.12 | 36 | |
| 37 | 287 | 1.16 | 558 | 1.20 | 632 | 1.11 | 37 | |
| 34 | 268 | 1.01 | 554 | 1.16 | 656 | 1.13 | 38 | |
| 38 | 281 | 1.08 | 508 | 1.06 | 650 | 1.12 | 39 | |
| 38 | 274 | 1.12 | 520 | 1.12 | 626 | 1.11 | 40 | |
| 35 | 287 | 1.11 | 566 | 1.19 | 640 | 1.10 | 41 | |
| 34 | 257 | 0.98 | 502 | 1.05 | 630 | 1.09 | 42 | |
| 39 | 249 | 0.95 | 518 | 1.07 | 632 | 1.08 | 43 | |
| 33 | 224 | 1.04 | 520 | 1.1 | 622 | 1.07 | 44 | |
| 37 | 284 | 0 | 546 | 0 | 669 | 0 | | |

LOT 25**LEAWOOD EXPRESS Q514**

LEAWOOD EXPRESS B034
SIRE: LEAWOOD EXPRESS J292
 LEAWOOD KAY U077

LEAWOOD DENI G250
DAM: LEAWOOD VANILLA L408
 LEAWOOD VANILLA G458

| BIRTH DATE | BWT Kg | WT Kg 9/2/21 | FRAME SCORE | SCROTAL Cm | RUMP mm | RIB mm | IMF % | EMA Cm2 | REG STATIS |
|------------|--------|-----------------|-------------|------------|---------|--------|-------|---------|------------|
| 4/9/19 | 40 | 640 | 5.3 | 42 | 9 | 9 | 5.3 | 117 | HBR |

NOTES: A very stylish fellow that shows depth and spring of rib. By the top sire in J292 whom bred so well for us. Great scanning figures from this bull.

LOT 26**LEAWOOD TANGI Q274**

LEAWOOD TANGI E103
SIRE: LEAWOOD TANGI K115
 LEAWOOD VANILLA W003

LEAWOOD YEO E573
DAM: LEAWOOD VANILLA K286
 LEAWOOD VANILLA C629

| BIRTH DATE | BWT Kg | WT Kg 9/2/21 | FRAME SCORE | SCROTAL Cm | RUMP mm | RIB mm | IMF % | EMA Cm2 | REG STATIS |
|------------|--------|-----------------|-------------|------------|---------|--------|-------|---------|------------|
| 4/8/19 | 38 | 672 | 5.3 | 44 | 7 | 6 | 4.5 | 108 | HBR |

NOTES: Q274 shows depth and softness, a real easy doing type with large testicle development. Out of a leading cow that produced a top bull in 2019.

LOT 27**LEAWOOD GENERATE Q410**

MERCHISTON GENERATE 243
SIRE: LEAWOOD GENERATE N317
 LEAWOOD VANILLA J374

PATHFINDER JABIRU J319
DAM: LEAWOOD VANILLA N446
 LEAWOOD VANILLA B016

| BIRTH DATE | BWT Kg | WT Kg 9/2/21 | FRAME SCORE | SCROTAL Cm | RUMP mm | RIB mm | IMF % | EMA Cm2 | REG STATIS |
|------------|--------|-----------------|-------------|------------|---------|--------|-------|---------|------------|
| 18/8/19 | 36 | 656 | 5.2 | 39 | 7 | 6 | 5.1 | 111 | APR |

NOTES: Yet another heifer's first calf, a strong muscled youngster with loads of thickness and meat down through his hind end.

LOT 28**LEAWOOD RAMBO Q398 (AI)**

TURIHAUA RAMBLE
SIRE: TURIHAUA RAMBO N75
 TURIHAUA 311

LEAWOOD TANGI E103
DAM: LEAWOOD VANILLA K365
 LEAWOOD VANILLA F424

| BIRTH DATE | BWT Kg | WT Kg 9/2/21 | FRAME SCORE | SCROTAL Cm | RUMP mm | RIB mm | IMF % | EMA Cm2 | REG STATIS |
|------------|--------|-----------------|-------------|------------|---------|--------|-------|---------|------------|
| 18/8/19 | 39 | 658 | 5.9 | 40 | 8 | 7 | 4.5 | 116 | HBR |

NOTES: This bull has length and growth. He is soft skinned and has high 200 & 400 day wt gain, by the Rambo sire which we continue to use sparingly.

LOT 29**LEAWOOD STERN Q386 (AI)**

MATAURI OUTLIER F031
SIRE: STERN 15815
 STERN 13962

LEAWOOD TANGI E103
DAM: LEAWOOD SPICE J182
 LEAWOOD SPICE D189

| BIRTH DATE | BWT Kg | WT Kg 9/2/21 | FRAME SCORE | SCROTAL Cm | RUMP mm | RIB mm | IMF % | EMA Cm2 | REG STATIS |
|------------|--------|-----------------|-------------|------------|---------|--------|-------|---------|------------|
| 16/8/19 | 36 | 656 | 6.3 | 38 | 13 | 9 | 5.9 | 113 | HBR |

NOTES: Q386 has the highest fat scores which follow through to he's IMF. Low birth and by the Stern 15815 which sons have topped our last two sales.

LOT 30**LEAWOOD GENERATE Q461**

MERCHISTON GENERATE 243
SIRE: LEAWOOD GENERATE N317
 LEAWOOD VANILLA J374

LEAWOOD EXPRESS G508
DAM: LEAWOOD VANILLA N394
 LEAWOOD VANILLA C364

| BIRTH DATE | BWT Kg | WT Kg 9/2/21 | FRAME SCORE | SCROTAL Cm | RUMP mm | RIB mm | IMF % | EMA Cm2 | REG STATIS |
|------------|--------|-----------------|-------------|------------|---------|--------|-------|---------|------------|
| 27/8/19 | 33 | 648 | 6.2 | 40 | 11 | 8 | 5.9 | 117 | HBR |

NOTES: Above average for all scanning with low birth and a lot of length. Displays softness and a lot of thickness and depth, from our heifer program again.

LOT 31**LEAWOOD NUGGET Q510**

MERCHISTON STEAKHOUSE

LEAWOOD ANZAC H318

SIRE: LEAWOOD NUGGET N282 DAM: LEAWOOD VANILLA N101

LEAWOOD WANTRE G421

LEAWOOD VANILLA A191

| BIRTH DATE | BWT Kg | WT Kg 9/2/21 | FRAME SCORE | SCROTAL Cm | RUMP mm | RIB mm | IMF % | EMA Cm2 | REG STATIS |
|------------|--------|-----------------|-------------|------------|---------|--------|-------|---------|------------|
| 8/9/19 | 35 | 634 | 4.7 | 42 | 8 | 7 | 5.2 | 117 | HBR |

NOTES: Not big but is packed with meat. Note the width across his jump muscle and down the rump. A top 200 day wt gain, again out of our future heifer program.

LOT 32**LEAWOOD TANGI Q296**

LEAWOOD TANGI E103

LEAWOOD HENRY E062

SIRE: LEAWOOD TANGI K115 DAM: LEAWOOD VANILLA J403

LEAWOOD VANILLA W003

LEAWOOD VANILLA F487

| BIRTH DATE | BWT Kg | WT Kg 9/2/21 | FRAME SCORE | SCROTAL Cm | RUMP mm | RIB mm | IMF % | EMA Cm2 | REG STATIS |
|------------|--------|-----------------|-------------|------------|---------|--------|-------|---------|------------|
| 7/8/19 | 38 | 666 | 5.9 | 40 | 7 | 7 | 5.5 | 115 | HBR |

NOTES: Q296 is a long soft coated sire with clean shoulders and meat all the way down his hams. He's dam, J403 is a consistent breeder with a top calf on her now.

LOT 33**LEAWOOD KLOONEY Q394**

MILLAH MURRAH KLOONEY K42

LEAWOOD YEO G117

SIRE: MILWILLAH KLOONEY M137 DAM: LEAWOOD VANILLA M390

MILWILLAH MITTAGONG B137

LEAWOOD VANILLA G480

| BIRTH DATE | BWT Kg | WT Kg 9/2/21 | FRAME SCORE | SCROTAL Cm | RUMP mm | RIB mm | IMF % | EMA Cm2 | REG STATIS |
|------------|--------|-----------------|-------------|------------|---------|--------|-------|---------|------------|
| 18/8/19 | 40 | 652 | 5.5 | 39 | 9 | 9 | 5.6 | 118 | HBR |

NOTES: A light boned sire which moves well. He displays a lot of length with good fat scanning. By the outcross sire we purchased at Milwillah in 2018.

LOT 34**LEAWOOD BOS Q369**

BRAVEHEART OF STERN
SIRE: WITHERSWOOD BOS M0018
 ABERNEEN ESTATE H022

LEAWOOD YEO G117
DAM: LEAWOOD VANILLA M516
 LEAWOOD VANILLA G482

| BIRTH DATE | BWT Kg | WT Kg 9/2/21 | FRAME SCORE | SCROTAL Cm | RUMP mm | RIB mm | IMF % | EMA Cm2 | REG STATIS |
|-----------------|-----------|--------------|-------------|------------|----------|----------|------------|------------|------------|
| 14/08/19 | 30 | 650 | 5.3 | 42 | 8 | 7 | 5.6 | 117 | HBR |

NOTES: A low birth weight deep bodied youngster which features a soft skin and a load of depth. His dam has stamped herself as future top cow.

LOT 35**LEAWOOD STEAKS Q422**

MERCHISTON STEAKHOUSE
SIRE: LEAWOOD STEAKS N297
 LEAWOOD ANEMONE J477

KENNY'S CREEK CHISUM L56
DAM: LEAWOOD N405
 LEAWOOD K389

| BIRTH DATE | BWT Kg | WT Kg 9/2/21 | FRAME SCORE | SCROTAL Cm | RUMP mm | RIB mm | IMF % | EMA Cm2 | REG STATIS |
|----------------|-----------|--------------|-------------|------------|----------|----------|------------|------------|------------|
| 20/8/19 | 30 | 638 | 5.5 | 42 | 8 | 8 | 5.9 | 116 | COM |

NOTES: An easy doing bull with low birth and again a heifer's first calf. He has a lot of length of body and a spring of rib to admire.

LOT 36**LEAWOOD TANGI Q444**

LEAWOOD TANGI E103
SIRE: LEAWOOD TANGI K115
 LEAWOOD VANILLA W003

LEAWOOD EXPRESS B034
DAM: LEAWOOD VANILLA G420
 LEAWOOD VANILLA C649

| BIRTH DATE | BWT Kg | WT Kg 9/2/21 | FRAME SCORE | SCROTAL Cm | RUMP mm | RIB mm | IMF % | EMA Cm2 | REG STATIS |
|----------------|-----------|--------------|-------------|------------|-----------|----------|------------|------------|------------|
| 25/8/19 | 37 | 634 | 5.6 | 43 | 10 | 8 | 4.9 | 119 | HBR |

NOTES: Q444 dam G420 is currently rearing her fifth bull calf and has three daughters retained. One of these daughters is dam of lot 39.

LOT 37**LEAWOOD YEO Q432**

LEAWOOD YEO E573
SIRE: LEAWOOD YEO K268
 LEAWOOD PINESONG A127

LEAWOOD TANGI E103
DAM: LEAWOOD SPICE L295
 LEAWOOD SPICE D405

| BIRTH DATE | BWT Kg | WT Kg | FRAME SCORE | SCROTAL Cm | RUMP mm | RIB mm | IMF % | EMA Cm2 | REG STATIS |
|------------|--------|-------|-------------|------------|---------|--------|-------|---------|------------|
| 24/8/19 | 37 | 632 | 5.4 | 43 | 6 | 6 | 4.9 | 117 | HBR |

NOTES: A young son of K268 which has bred very consistent progeny. Q432 has a lot of length and a high EMA which confirms with his heavy muscle pattern.

LOT 38**LEAWOOD HECTOR Q320 (AI)**

K C F BENNETT PERFORMER
SIRE: COONAMBLE HECTOR H249
 COONAMBLE E9

TEMANIA BLEDISLOE
DAM: LEAWOOD VANILLA J379
 LEAWOOD VANILLA G355

| BIRTH DATE | BWT Kg | WT Kg | FRAME SCORE | SCROTAL Cm | RUMP mm | RIB mm | IMF % | EMA Cm2 | REG STATIS |
|------------|--------|-------|-------------|------------|---------|--------|-------|---------|------------|
| 9/8/19 | 34 | 656 | 5.3 | 41 | 8 | 8 | 4.7 | 123 | HBR |

NOTES: A low birth weight fellow well suited to heifer joining. Thick bodied with a lot of depth. Out of a good cow which is currently rearing her fourth bull calf.

LOT 39**LEAWOOD NUGGET Q360**

MERCHISTON STEAKHOUSE
SIRE: LEAWOOD NUGGET N282
 LEAWOOD WANTRE G421

LEAWOOD YEO G117
DAM: LEAWOOD VANILLA N386
 LEAWOOD VANILLA G420

| BIRTH DATE | BWT Kg | WT Kg | FRAME SCORE | SCROTAL Cm | RUMP mm | RIB mm | IMF % | EMA Cm2 | REG STATIS |
|------------|--------|-------|-------------|------------|---------|--------|-------|---------|------------|
| 12/8/19 | 38 | 650 | 5.1 | 40 | 8 | 6 | 4.9 | 119 | HBR |

NOTES: A very thick sire with great depth and width through his loins and down to his hump. Backed up by a very strong maternal pedigree.

LOT 40**LEAWOOD EXPRESS Q454**

LEAWOOD EXPRESS G508 BRUNSLA FUTURE DIRECTION
SIRE: LEAWOOD EXPRESS L581 **DAM:** LEAWOOD C355
 LEAWOOD VANILLA D681 LEAWOOD T434

| BIRTH DATE | BWT Kg | WT Kg 9/2/21 | FRAME SCORE | SCROTAL Cm | RUMP mm | RIB mm | IMF % | EMA Cm2 | REG STATIS |
|----------------|-----------|-----------------|-------------|------------|-----------|----------|------------|------------|------------|
| 27/8/19 | 38 | 626 | 5.8 | 42 | 11 | 8 | 5.7 | 116 | COM |

NOTES: If you want Longevity this bull may be it. Dam is thirteen and a half years young, now rearing twelfth calf. Great fat scores with soft skin and clean shoulders.

LOT 41**LEAWOOD TANGI Q316**

LEAWOOD TANGI E103 LEAWOOD TANGI E103
SIRE: LEAWOOD TANGI K115 **DAM:** LEAWOOD VANILLA K304
 LEAWOOD VANILLA W003 LEAWOOD VANILLA D668

| BIRTH DATE | BWT Kg | WT Kg 9/2/21 | FRAME SCORE | SCROTAL Cm | RUMP mm | RIB mm | IMF % | EMA Cm2 | REG STATIS |
|---------------|-----------|-----------------|-------------|------------|-----------|-----------|------------|------------|------------|
| 9/8/19 | 35 | 640 | 5.3 | 40 | 10 | 10 | 6.4 | 122 | HBR |

NOTES: A low birth weight character one with an easy doing ability enabling him to lay down fat also has high EMA. Displays a lot of length and clean shoulders.

LOT 42**LEAWOOD GENERATE Q372**

MERCHISTON GENERATE 243 MERCHISTON STEAKHOUSE
SIRE: LEAWOOD GENERATE N317 **DAM:** LEAWOOD LILA N281
 LEAWOOD VANILLA J374 LEAWOOD LILA J391

| BIRTH DATE | BWT Kg | WT Kg 9/2/21 | FRAME SCORE | SCROTAL Cm | RUMP mm | RIB mm | IMF % | EMA Cm2 | REG STATIS |
|----------------|-----------|-----------------|-------------|------------|----------|----------|------------|------------|------------|
| 13/8/19 | 34 | 630 | 6.1 | 45 | 8 | 7 | 5.1 | 115 | COM |

NOTES: Another example of a strong New Zealand pedigree from a heifer. He has a great butt profile with a strong head and mussel. Low birth weight as well.

LOT 43**LEAWOOD STEAKHOUSE Q307 (AI)**

MERCHISTON EXCLUSIVE 269

BRUNSLA FUTURE DIRECTION

SIRE: MERCHISTON STEAKHOUSE**DAM:** LEAWOOD VANILLA D53

MERCHISTON RANGI 684

LEAWOOD VANILLA W069

| BIRTH DATE | BWT Kg | WT Kg 9/2/21 | FRAME SCORE | SCROTAL Cm | RUMP mm | RIB mm | IMF % | EMA Cm2 | REG STATIS |
|---------------|-----------|-----------------|-------------|------------|----------|----------|------------|------------|------------|
| 8/8/19 | 39 | 632 | 6.1 | 41 | 8 | 7 | 5.2 | 119 | HBR |

NOTES: A muscular fellow with high EMA of 119cm. Out of a twelve and half year old cow, which is now rearing her eleventh calf. Sired by the great Steakhouse Bull.

LOT 44**LEAWOOD NUGGET Q402**

MERCHISTON STEAKHOUSE

LEAWOOD BONUS F162

SIRE: LEAWOOD NUGGET N282**DAM:** LEAWOOD VANILLA N624

LEAWOOD WANTRE G421

LEAWOOD VANILLA K365

| BIRTH DATE | BWT Kg | WT Kg 9/2/21 | FRAME SCORE | SCROTAL Cm | RUMP mm | RIB mm | IMF % | EMA Cm2 | REG STATIS |
|----------------|-----------|-----------------|-------------|------------|----------|----------|------------|------------|------------|
| 16/8/19 | 33 | 622 | 5.2 | 42 | 8 | 8 | 4.8 | 120 | COM |

NOTES: A low birth weight one to finish with but note his easy doing ability. Another heifer's first calf, with a high EMA of 120cm and great butt shape.



**LOT 18_LEAWOOD_MACK
Q335**

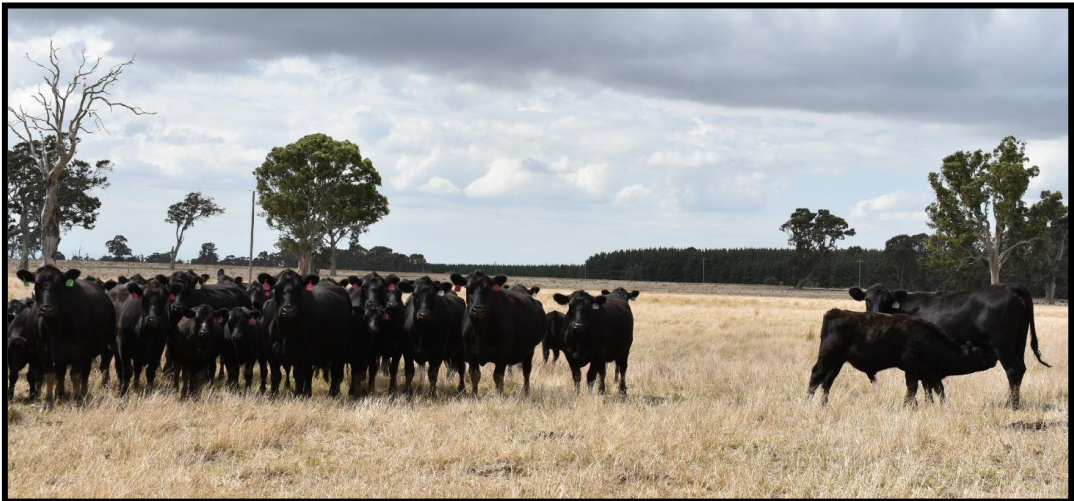


**LOT 35 LEAWOOD STEAKS
Q422**

Leawood Angus Females

This autumn we have selected approximately 40 spring cows with 6 month old calves at foot.

Females will be sold following the sale of the bulls. Final selection will be done in the coming weeks prior to the field day on the 20th march where all bull and females lots will be on display. For more information please get in contact with us for data sheets on the females prior to sale.



References Sires

LEAWOOD YEO K268

LEAWOOD YEO G117
SIRE: LEAWOOD YEO E573
LEAWOOD KAY A602

LEAWOOD PONO X1
DAM: LEAWOOD PINESONG A127
LEAWOOD PINESONG Y154

NOTES: An absolute cracker of a home bred Sire with volume and balance. Covers a lot of ground and has two sons in Catalogue, breeds with great consistency and averages 34.5kg for birth weight over 222 calves.

RANGATIRA MACK 15-32

DANDALOO ADMIRAL
SIRE: KARHARAU COBRA 10-546
KAHARAU 07-8134

TARANGOWER VICE
DAM: KAHARAU 10-9085
KAHARAU 6847

NOTES: On inspection in 2017, we considered him the best young bull we inspected in New Zealand. He later became the top priced bull for that season. Great capacity, softness and he has not disappointed. Breeding consistent low birth weight and correctness. He has been bought back by Rangatira Angus. Three sons on offer.



LEAWOOD YEO K268



RANATIRA MACK

References Sire

LEAWOOD RAMBO N324

| | | | |
|--------------|---------------------------|-------------|-----------------------------|
| | TURIHAUA RAMBLE | | LEAWOOD DENI G250 |
| SIRE: | TURIHAUA RAMBO N75 | DAM: | LEAWOOD VANILLA L466 |
| | TURIHAUA 311 | | LEAWOOD VANILLA F037 |

NOTES: When you see how well N324 is breeding you would wonder why it took us so long to go back and use Turihaua Rambo semen again. N324 was picked out to use in our heifer program and has been used every joining since. Leawood Rambo N324 Semen is available for sale.

LEAWOOD EXPRESS J292

| | | | |
|--------------|----------------------------|-------------|-------------------------|
| | KNOWLDALE EXPRESS S163 | | MAX OF WAITERANUI (NZ) |
| SIRE: | LEAWOOD EXPRESS B34 | DAM: | LEAWOOD KAY U077 |
| | LEAWOOD VANILLA W069 | | LEAWOOD KAY Q009 |

NOTES: An exciting sire with loads of depth and softness, he has stamped his calves with quality and depth. He was born 38kg and progeny average birth weight is 35kg, four sons in catalogue.

LEAWOOD STEAKS N297

| | | | |
|--------------|------------------------------|-------------|-----------------------------|
| | MERCHISTON EXCLUSIVE | | LEAWOOD HENRY E062 |
| SIRE: | MERCHISTON STEAKHOUSE | DAM: | LEAWOOD ANEMONE J477 |
| | MERCHISTON RANGI 684 | | LEAWOOD ANEMONE F638 |

NOTES: N297 is an exciting Steakhouse son selected for his easy calving and early growth traits N297 progeny display slightly more frame than Leawood Nugget N282.

References Sires

LEAWOOD NUGGET N282

MERCHISTON EXCLUSIVE

LEAWOOD TANGI Z027

SIRE: MERCHISTON STEAK HOUSE

DAM: LEAWOOD WANTRE G421

MERCHISTON RANGI 684

LEAWOOD WANTRE A415

NOTES: Powerful bull that lays on the muscle you will notice his progeny are the same very thick and meaty cattle .Leawood Nugget N282 will do a great job on a larger framed cow if looking to add more muscle power in to your herd. Note the high EMA scores on N282 Progeny.

Leawood Nugget N282 Semen Available for sale.

LEAWOOD EXPRESS G508

KNOWLDALE EXPRESS S168

MERRIDALE YEOMAN Y052

SIRE: LEAWOOD EXPRESS B034

DAM: LEAWOOD VANILLA B285

LEAWOOD VANILLA W069

LEAWOOD VANILLA Y287

NOTES: Selected for his moderate birth weight of 36kg, quick young growth and doing ability produces well developed calves that really are impressive, was used in our heifer program, 356 progeny average 35.4kg 4 sons in listed.



LEAWOOD EXPRESS J292



LEAWOOD STEAKS N297

SALE INFORMATION

INSPECTIONS

Cattle will be yarded and in pens ready to be inspected from 11.30am on sale day, And on our open day from 11.00am – 3.00pm Saturday 20th March 2021.

REBATE

Please register before sale to enable a smooth event.

A rebate of 2% is offered to outside agents who attend the sale with or on behalf of their clients, as well as introduce their clients in writing prior to sale.

BULLS TREATMENTS

Bulls have been Freeze branded, B12, ADE, 7:1 and Drenched with pour on in Feb 2021. Bulls are protected from transmitting reproductive diseases with Pestigard and Vibrovax Feb- Mar 2021.



**Annual booster
recommended**

zoetis

BULL GUARANTEE

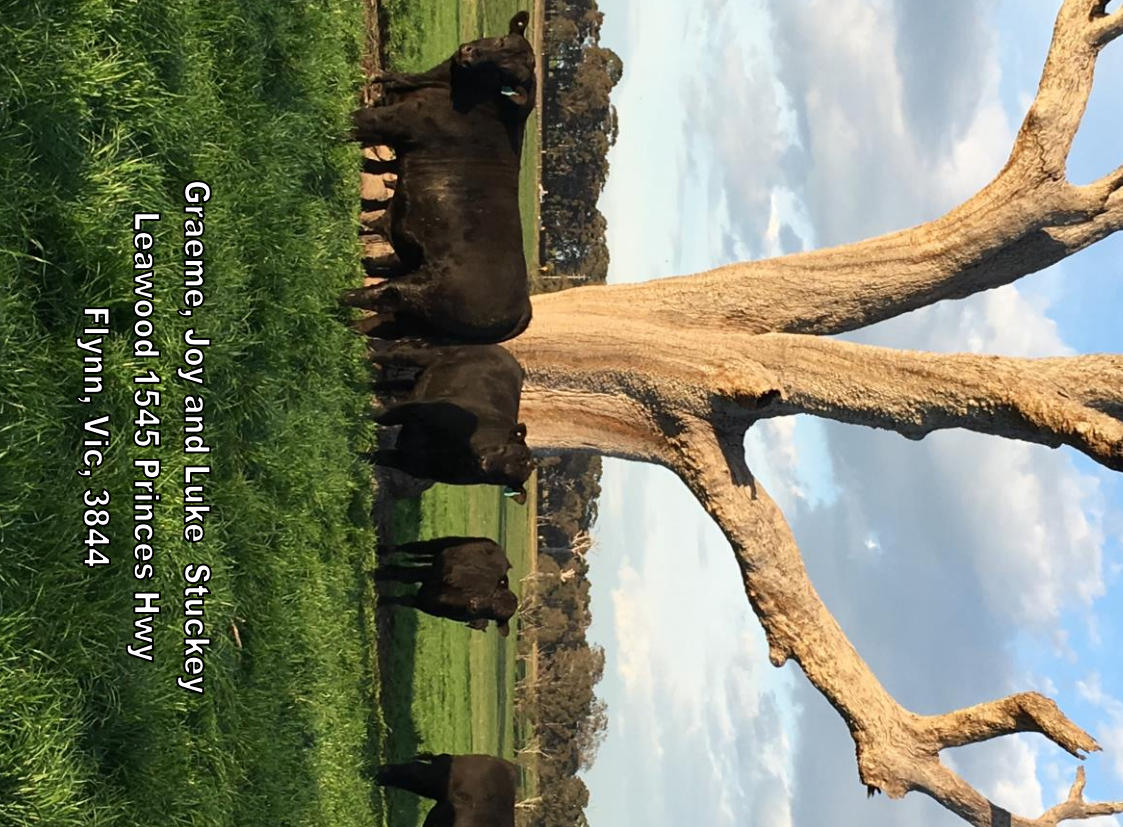
Too the best of our knowledge all our sale bulls are structurally sound, fertile and free of disease. If a bull seems to have an issue due to infertility or broken down due to reason other than injury, misadventure or negligence. We will provide you with a satisfactory replacement, or credit the purchaser the bulls value minuses salvage costs, feel free to get in contact with us at any time to discuss.

CATERING

Light luncheon and drinks available from 12.00pm provided by Flynn CWA.

BULL DELIVERY

All sale bulls will be delivered for free throughout Gippsland. Delivery will be arranged with local carriers and ourselves following sale day.



Graeme, Joy and Luke Stuckey

Leawood 1545 Princes Hwy

Flynn, Vic, 3844



| |
|------------------------------|
| POSTAGE PAID AUSTRALIA |
|------------------------------|