

# Kirraweena Glenholme

**HEREFORD & POLL HEREFORD STUDS**



**19<sup>th</sup> ANNUAL SALE**

*At*

**“Glenholme”**

**Rodeo Drive**

**COOTAMUNDRA NSW**

**Wednesday,**

**3<sup>rd</sup> March, 2021**

**ONLINE BIDDING**



**19 HEREFORD**

**& POLL HEREFORD BULLS**

**26 UNJOINED HEIFERS**

# *Ag Solutions\**

**TIM WOODHAM 0436 015 115**  
**PETER GODBOLT 0457 591 929**

**Matt Hallam 0409 718 492**  
**Nutrien Cootamundra (02) 6942 2122**

---

## **ONLINE BIDDING**



**For more information about online  
bidding please phone  
Tim Woodham 0436 015 115**



**JAMES TOLMIE 0439 991 082**  
**STEVE TOLMIE 0429 037 446**  
**OFFICE (02) 6942 3055**

# **KIRRAWEENA**

*Est. 1953*

# **GLENHOLME**

*Est. 1993*

## **HEREFORD STUDS**

### **SALE**

*at*

**“Glenholme”**

**Rodeo Drive**

**COOTAMUNDRA NSW**

**Wednesday, 3<sup>rd</sup> March, 2021**

**19 HEREFORD & POLL HEREFORD  
BULLS**

**26 UNJOINED HEIFERS**

- *Inspections from 10.30 am on the day  
or by prior arrangement with the  
vendors*
- *Sale to commence at approximately  
1.30 pm*
  - *Light Luncheon provided*
- *Free Delivery for all bulls sold to NSW  
& Victoria*

**Contact: Geoff & Heather Bush (02) 6942 3222**

EMAIL: [ghb.glenholme@bigpond.com](mailto:ghb.glenholme@bigpond.com)

View videos of bulls on line at

Website: [www.glenholmeherefords.com.au](http://www.glenholmeherefords.com.au)

& Facebook Kirraweena Glenholme Hereford Stud

*Selling Agents:*

**Holman Tolmie Pty Ltd**

**Cootamundra**

**(02) 6942 3055**

**James Tolmie**

**Mob 0439 911 082**

**Steve Tolmie**

**0429 037 446**

**Nutrien**

**Tim Woodham**

**0436 015 115**

**Nutrien,**

**Cootamundra**

**Matt Hallam**

**(02)6942 2122**

### **KIRRAWEENA HEREFORD STUD**

Kirraweena Hereford Stud was founded by the late Fred Bush in 1953, with a bull from the Glenelvie Stud and 2 females from the Bywong Stud, for the purpose of improving the commercial cattle he ran in conjunction with his father Sam and brother Rodney.

Two years after forming the Stud, Fred took his first cattle to the Sydney Royal Easter Show. He believed that the nearly 3 weeks (as it was then) mixing with the best Stud breeders in Australia would be the best place to learn.

Kirraweena cattle have been exhibited at every Sydney Royal Show since that first outing.

Commercial attributes were always top priority and with the use of seven Cuppa bulls in a row, rich in Vern (English) blood, they produced a line of easy doing cattle of a rich ruby red colour with females having plenty of milk. The easy doing ability and plenty of milk was necessary at "Greendale", Dalton. It was a fine wool property, situated 50 km east of Yass in Southern NSW. With the rich colour came softness and quality which the butchers still seek today, as before the technology now used, this was an indication of the eating quality of the meat.

Kirraweena has taken out numerous hoof and hook awards at both local and Royal Show level in mainly supermarket weight (300-420 live) classes.

The Kirraweena females are probably what the stud is best known for. A large number of both Hereford and Poll Hereford Studs have purchased heifers, the most well known of these, being the Llanglothan stud, who purchased heifers firstly as commercials and then later decided to form a Stud with them. They went on to breed bulls from those females to win major Show awards and received top prices at sales.

After the sudden passing of Fred in 1997, the partnership with Rodney was dissolved and the Kirraweena Cow herd was moved to Geoff & Heather Bush's property, "Glenholme" at Cootamundra.

Stud sires used in recent years have come from Lowanna, Glenwarrah, Talbalba, Curracabark and Lotus.

In addition, AI programs have been conducted with the Kirraweena females being joined to Mawarra Virginian, Kirraweena Lehmann and Sugarloaf Houston.

In 2018, a sire was imported from Ireland, Trillick Hotspur which was used across both Glenholme and Kirraweena studs. The first Trillick Hotspur bull will be exhibited at the Wodonga Show and Sale this year.

### **GLENHOLME**

Glenholme was founded by Geoff & Heather in 1993. Formed with the purchase of 12 cows and 3 heifers from Don & Judy Maclean's Strathglee Stud at Moss Vale and later with females from Kirraweena, Tumulla (Max and Margaret Peel) and Lysten Studs. Females from the Field's Tiverton Stud and Smithston have been purchased.

Sires used over the years include Lamlash Leroy, Glen Wilga Python, Talbalba Limerick, 6 Smithston bulls including, Tam O'Shanter and Value Add, Charnock Each Way, Eurangatuck Bahrain and Devoncourt Rockford.

Sires used in recent years include Bowmont Winchester, Curracabark Junee and Lotus Larson.

One of our own bulls, Glenholme Maclean, sired by Sugarloaf Houston was kept and used within our herd. His first calves for sale are available this year.

A Poll Hereford herd was formed in 2003 to breed good commercial Poll Cattle. Bulls used have been Gonyah Lion, Braybook Braxton Y243, Valma Landmark, Valma Ollie and Tycolah Majestic.

AI sires used in the Poll Herefords include Rilo Park Unshakeable, Kidman Think Big, Allendale Vengeance and Minlacowie Griffin.

For the first time, all Poll Hereford bulls offered are homozygous polled and sired by either Doodle Cooma Magnate, purchased at Dubbo Show and Sale in 2018 or by AI sire Mawarra Prime Time.

Glenholme & Kirraweena Studs are currently joining 160 females annually.

## **DELIVERIES**

### ***Free delivery for bull purchases in NSW and Victoria.***

Cattle will be held free of charge at the Purchaser's risk until transport arrangements can be completed. Instructions concerning the delivery of cattle purchased at this sale must be given in writing and signed by the buyer or their representative. Buyer's instruction slips are at the back of the catalogue. No verbal instructions will be accepted.

## **GST**

GST will be added to all prices gained on the day of the sale.

G R & H B Bush, ABN 97 604 958 216

## **HERD HEALTH STATUS**

The property is in a Bovine Johnes disease protected zone and Tuberculosis free area. **All Cattle have been tested Negative for Pestivirus.** All Cattle have been vaccinated twice with Pestiguard.

## **WODONGA HEREFORD SHOW & SALE**

We have entered 6 bulls for the Wodonga National Show and Sale that will not be offered at our Sale.

## **BREEDPLAN**

Kirraweena Glenholme joined Group Breedplan in 2001. Breedplan figures on sale bulls are January 2021 Group EBV's. If you have any questions regarding Breedplan, do not hesitate to ask us.

## **SUPPLEMENTARY SHEET**

There will be a supplementary sheet available on the day of the sale detailing bull weights, eye muscle area, Fat Scans and Testicle measurements.

## **OUTSIDE AGENTS**

4% Rebate to outside Agents introducing buyers in writing 24 hours prior to the sale and settling within 14 days.

## **GUARANTEE & AFTER SALE SERVICE**

Don't hesitate to contact us. We have always looked after our clients, however, we would strongly suggest that buyers look at insuring their purchases. Bulls have been prepared to show their potential whilst they are ready to use.

**REFERENCE SIRES**

**Curracabark Junee (AI) (ET) (H) CRKJ106**

Born: 05/10/13

GH Neon 17N (IMP CAN) (H)  
Mawarra Unique C041 (AI) (H)  
Mawarra Minerva 554 ET1 (AI) (ET) (H)

SIRE:

Yarram Unique F181 (H)

Braybook Upperclass U504 (AI) (H)  
Yarram Flossie A096 (H)  
Yarram Flossie R065 (AI) (H)

Yarram Extra 57U M629 ET1 (AI) (ET) (H)  
Curracabark Crusader (AI) (H)  
Faulkand Carnation 42 (H)

DAM:

Curracabark Favourite F68 (H)

Yarram Star General S160 (AI) (H)  
Curracabark Favourite 115 (AI) (H)  
Curracabark Favourite 105 (H)

	BW	Milk	200 G	400 G	600 G	MWT
EBV	+7.9	+17	+39	+62	+88	+70
Acc %	93	61	86	86	88	80
	CWT	EMA	RIB	RUMP	RBV%	IMF%
EBV	+59	+5.9	+0.1	+0.5	+1.5	+0.6
Acc%	85	77	81	84	71	83

**Notes: Junee has the top value EBV in the breed for feed intake to growth rate in a feedlot setting. Also top 5% EMA. Part of the 6<sup>th</sup> Cohort of the BIN Progeny Test Trial Sires.**



**Curracabark Junee CRKJ106**

**Bowmont Winchester H063 (H) GRKH063**

Born: 7/3/12

South Boorok Cracov (H)  
Sugarloaf Cracov A231 (H)  
Sugarloaf T-Caroway X163 (H)

SIRE:

Gunyah Winchester (H)  
Charnock Detonator (H)  
Gunyah Loyal Y319 (H)  
Gunyah Loyal R228 (H)

Widgiewa Jabiru (H)  
Tarcombe Captain (H)  
East Ross G Leonie J234 (H)

DAM:

Bowmont Queen W195 (H)  
Devon Court Standard Lad (H)  
Bowmont Queen 130 (H)  
Bowmont Queen 78 (H)

	BW	Milk	200 G	400 G	600 G	MWT
EBV	+5.6	+17	+30	+55	+89	+93
Acc %	90	59	82	83	84	75
	CWT	EMA	RIB	RUMP	RBV%	IMF%
EBV	+51	+3.3	-1.0	-1.6	+2.2	-0.3
Acc%	70	59	65	70	62	67

**Notes: Top 5% in the breed for Retail Beef Yield, top 10% for Mature Cow Weight and Scrotal Size.**



**Bowmont Winchester GRKH063**

---



**Glenholme Maclean (AI) (H)****GHBM038**

Born: 17/07/16

Cootharaba Magnum (H)  
 Glendan Park Empire E002 (AI) (ET) (H)  
 Glendan Park Minerva W164 (AI) (H)

SIRE:

Sugarloaf Houston (H)

Sugarloaf Jelly Bean A220 (H)  
 Sugarloaf Ladylike D18 (H)  
 Sugarloaf Ladylike Y008 (H)

Smithston Northern Light N046 (H)  
 Smithston Zig Zag (AI) (H)  
 Smithston Lady Lynda V192 (ET) (H)

DAM:

Glenholme Doreen F035 (AI) (H)

Eurangatuck Bahrain (H)  
 Glenholme Doreen C021 (H)  
 Glenholme Doreen W020 (H)

	BW	Milk	200 G	400 G	600 G	MWT
EBV	+6.9	+18	+37	+60	+98	+89
Acc %	81	50	73	75	76	67
	CWT	EMA	RIB	RUMP	RBV%	IMF%
EBV	+63	+4.5	-1.3	-1.5	+2.8	-0.3
Acc%	63	53	60	65	57	60

**Notes: Top 1% Retail Beef Yield, Top 10% 600 day weight.**

**Lotus Larson (H)****OCTL119**

Born: 13/07/15

Cootharaba Magnum (H)  
 Mawarra Vice Admiral (H)  
 Mawarra Minerva 554 (AI) (ET) (H)

SIRE:

Mawarra Be Quick (AI) (H)

Yallaroo Tornado (H)  
 Mawarra Miss Titania 299 ET1 (ET) (H)  
 Mawarra Miss Titania 123 (AI) (ET) (H)

Red Hill Rockford Roy (AI) (H)  
 Red Hill Variety VB35 (H)  
 Red Hill Minerva 164 (H)

DAM:

Lotus Maritana 97 D6 (H)

SMH 598 Dom J50(H)  
 Lotus Maritana 26 (H)  
 Lotus Maritana 4 (H)

	BW	Milk	200 G	400 G	600 G	MWT
EBV	+4.3	+16	+27	+45	+61	+58
Acc %	86	59	76	76	77	68
	CWT	EMA	RIB	RUMP	RBV%	IMF%
EBV	+36	+2.2	-0.5	-0.9	+0.6	+0.8
Acc%	63	53	59	63	55	60

**Kirraweena Lehmann (H)****FSBL224**

Born: 08/08/15

Glendan Park Storm W134 (H)  
 Bowmont Storm C115 (AI) (H)  
 Bowmont L Minerva Y314 (H)

SIRE:

Talbalba Bridgetown (H)

Cootharaba Magnum (H)  
 Talbalba Pearl D095 (AI) (H)  
 Injemira Pearl U561 (H)

Lowanna Jackpot S014 (AI) (H)  
 Lowanna Jackpot Y44 (H)  
 Lowanna Queen 87 (H)

DAM:

Kirraweena Minerva C111 (H)

Talbalba Limerick (AI) (H)  
 Kirraweena Minerva 258 (H)

Kirraweena Minerva 224 (AI) (H)

	BW	Milk	200 G	400 G	600 G	MWT
EBV	+3.3	+10	+25	+41	+59	+45
Acc %	76	51	70	72	71	63
	CWT	EMA	RIB	RUMP	RBV%	IMF%
EBV	+38	+3.4	-0.1	-0.1	+0.9	+0.3
Acc%	61	48	58	62	54	57

**Notes: Sold for \$11,000 at the 2017 Wodonga Show and Sale.**

**KIRRAWEENA LEHMANN FSBL224**

**POLL HEREFORD****Doodle Cooma Magnate****DCPM061**

Born: 21/08/16

Bowen Atlas A214 (AI) (ET) (P)  
Braybook Dynamo D309 (P)  
Bowen Maple X252 (P)

SIRE:

Doodle Cooma James Bond J19 (PP)  
Margfred Park Value U563 (AI) (ET) (P)  
Doodle Cooma Duchess B29 (P)  
Doodle Cooma Duchess (P)Bowen Atlas A214 (AI) (ET) (P)  
Braybook Dynamo D309 (P)  
Bowen Maple X252 (P)

DAM:

Doodle Cooma Minerva 16 (P)  
Oak Downs Optimism (P)  
Doodle Cooma Minerva 8 (P)  
LJS 75A Minerva T215 (P)

	BW	Milk	200 G	400 G	600 G	MWT
EBV	+5.6	+19	+30	+47	+74	+74
Acc %	78	54	73	74	73	64
	CWT	EMA	RIB	RUMP	RBV%	IMF%
EBV	+37	+1.9	+0.5	+0.2	+0.3	+1.1
Acc%	62	54	62	67	58	63

**Notes: Purchased at 2018 Dubbo Show and Sale.****MAWARRA PRIME TIME (AI) (PP)****HRPM192**

Born: 02/07/2016

Koanui Unanimous 7174 (P)  
Koanui Unanimous 0408 (P)  
Koanui Girlie 3048 (P)

SIRE:

Koanui Techno 3062 (IMP NZL) (PP)  
Leelands X-tension 293 (P)  
Koanui Blush 6455 (P)  
Koanui Blush 3304 (P)Karina Cherry Z8 (PP)  
Tycolah Jovial F77 (PP)  
Tycolah Countess W48 (P)

DAM:

Mawarra Doreen 017 (AI) (P)  
Merawah Maddux A63 (AI) (P)  
Mawarra Doreen 017 (AI) (P)  
Mawarra Doreen 265 (H)

	BW	Milk	200 G	400 G	600 G	MWT
EBV	+7.5	+25	+42	+69	+100	+87
Acc %	79	58	79	80	79	71
	CWT	EMA	RIB	RUMP	RBV%	IMF%
EBV	+62	+3.5	+0.6	+0.9	+1.1	+0.1
Acc%	69	57	62	65	57	63

**Notes: Top 5% for Milk and, Top 10% for 200, 400 Day Weight and 600 Day Weight.**

*Also available*

***GLENHOLME***  
**POLL DORSET**  
**RAMS**



*(Brucellosis accredited)*

***Now taking orders for***  
***2021***

***GLENHOLME***

***PIES***

***Lunch is provided on the day***  
***of the sale –***

Come and try our delicious  
home-grown meat pies



## **UNJOINED HEIFERS**

Please note that heifers will be sold on a 3 hammer system. The person with the highest bid will have the option of taking from 1 to all heifers in pen. If they only take a part then the rest of the pen will be re-offered. The same will apply to the person with the highest bid the second time – either all remaining heifers or heifers of their choice. If they choose only part of what was on offer then the remainder of pen would be sold a third time and if there are some remaining they will be sold on the fourth and last fall of the hammer. A \$15 transfer fee will be added to purchases if needed to be transferred (for stud use). Transport can be arranged.

Heifers will be preg tested empty prior to the sale. Every precaution has been taken to ensure that the heifers are empty.



## **FEMALES – Unjoined Heifers**

<b>LOT 1</b>	<b>NO.</b>	<b>NAME</b>	<b>D.O.B.</b>	<b>SIRE</b>	<b>SIRE OF DAM</b>
	Q120	Glenholme Sunflower	14/6/19	Curracabark Junee	Eurangatuck Bahrain
	Q136	Glenholme Victoria	5/8/19	Bowmont Winchester	Kirraweena Australia
	Q138	Glenholme Twilight	7/8/19	Glenholme Maclean	Talbalba Yogi
	Q139	Glenholme Last Day	11/8/19	Bowmont Winchester	Glenwarrah Lynch
	Q142	Glenholme Innocent	17/8/19	Glenholme Maclean	Talbalba Yogi
	Q145	Glenholme Victoria	28/8/19	Lotus Larson	Talbalba Yogi
	Q153	Glenholme Last Day	15/9/19	Glenholme Maclean	Bundarra Zambia

Purchased by: \_\_\_\_\_

Price: \_\_\_\_\_

Purchased by: \_\_\_\_\_

Price: \_\_\_\_\_

Purchased by: \_\_\_\_\_

Price: \_\_\_\_\_

LOT 2	NO.	NAME	D.O.B.	SIRE	SIRE OF DAM
	Q111	Glenholme Pearl (AI)	27/5/19	Kirraweena Lehmann	Bowmont Winchester
	Q158	Glenholme Doreen	9/10/19	Curcabark Junee	Devon Court Rockford
	Q163	Glenholme Prudence	19/10/19	Glenholme Maclean	Kirraweena Australia
	Q166	Glenholme Twilight	1/12/19	Glenholme Maclean	Bundarra Zambia
	Q216	Kirraweena Minerva	21/7/19	Lotus Larson	Glenholme Flanders
	Q219	Kirraweena Miss Bradman	23/7/19	Lotus Larson	Mawarra Virginian
	Q220	Kirraweena Doreen	27/7/19	Lotus Larson	Kirraweena Australia
	Q224	Kirraweena Miss Bradman	19/9/19	Lotus Larson	Kirraweena Australia
	Q227	Kirraweena Queenie	22/9/19	Lotus Larson	Bowmont Winchester

Purchased by: \_\_\_\_\_

Price: \_\_\_\_\_

Purchased by: \_\_\_\_\_

Price: \_\_\_\_\_

Purchased by: \_\_\_\_\_

Price: \_\_\_\_\_

	No.	Name	D.O.B.	SIRE	SIRE OF DAM
<b>LOT 3A</b>					
<b>POLL</b>	Q126	Glenholme Pearl	27/6/19	Doodle Cooma Magnate	Valma Landmark
<b>POLL</b>	Q162	Glenholme Garland	29/8/19	Doodle Cooma Magnate	Valma Landmark
<b>LOT 3</b>	Q165	Glenholme Queenie	4/11/19	Glenholme Maclean	Glenholme Banks
	Q222	Kirraweena Queenie	24/8/19	Lotus Larson	Devon Court Emperor 72
	Q226	Kirraweena Doreen	21/9/19	Lotus Larson	Glenholme Flanders
	Q228	Kirraweena Doreen	30/9/19	Lotus Larson	Mawarra Virginian
	Q231	Kirraweena Queenie	1/8/19	Lotus Larson	Lowanna Walsh
	Q233	Kirraweena Doreen	10/10/19	Lotus Larson	Thorn Hill Zac
	Q234	Kirraweena Doreen	25/10/19	Lotus Larson	Lowanna Jackpot
	Q235	Kirraweena Pearl	3/9/19	Lotus Larson	Lowanna Jackpot

Purchased by: \_\_\_\_\_ Price: \_\_\_\_\_

Purchased by: \_\_\_\_\_ Price: \_\_\_\_\_

Purchased by: \_\_\_\_\_ Price: \_\_\_\_\_



## STUD BULLS

### LOT 4

**GLENHOLME QUAID (H)      GHBQ146**

Born: 29/08/2019

SIRE:

Bowmont Winchester H063 (H)

Bundarra Wally (H)  
Bundarra Zambia (H)  
Bundarra Lioness S78 (H)

DAM:

Glenholme Doreen J020 (H)

Eurangatuck Bahrain (H)  
Glenholme Doreen E022 (H)  
Glenholme Doreen W045 (H)

	BW	Milk	200 G	400 G	600 G	MCW
EBV	+6.7	+13	+34	+60	+91	+94
Acc %	71	42	63	64	63	56
	EMA	RIB	RUMP	RBV%	IMF%	CWT
EBV	+3.8	-0.3	-0.3	+1.6	-0.1	+53
Acc%	43	48	52	46	47	52

Notes: Top 10% of breed for Mature Cow Weight.

Purchased by: \_\_\_\_\_

Price: \_\_\_\_\_



**Lot 4 – Glenholme Quaid**

**LOT 5  
GLENHOLME QUARTERMASTER (H) GHBQ141**

Born: 13/08/2019

SIRE:

Bowmont Winchester H063 (H)

Cootharaba Magnum (H)  
Mawarra Virginian (H)  
Mawarra Cherry Ripe 263 (H)

DAM:

Glenholme Doreen H005 (AI) (H)

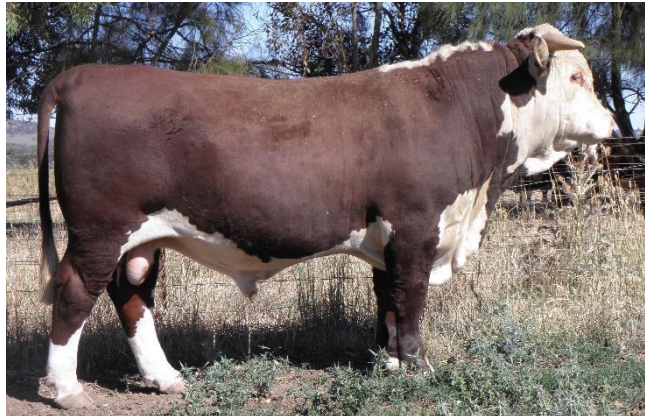
Eurangatuck Bahrain (H)  
Glenholme Doreen E022 (H)  
Glenholme Doreen W045 (H)

	BW	Milk	200 G	400 G	600 G	MCW
EBV	+6.5	+18	+35	+63	+96	+97
Acc %	72	48	64	66	66	59
	EMA	RIB	RUMP	RBV%	IMF%	CWT
EBV	+2.7	-0.8	-1.1	+1.6	-0.2	+55
Acc%	47	54	58	50	54	57

Notes: Top 5% of breed for Mature Cow Weight.

Purchased by:

Price:



**Lot 5 – Glenholme Quartermaster**

**LOT 6**  
**GLENHOLME QUANTUM (H) GHBQ119**  
Born 17/06/2019

SIRE:

Glenholme Maclean (AI) (H)  
Smithston Union Jack (H)  
Eurangatuck Bahrain (H)  
Eurangatuck Twilight 319 (H)

DAM:

Glenholme Pearl D025 (H)  
Smithston Value Add ET1 (ET) (H)  
Glenholme Pearl Z057 (H)  
Kirraweena Pearl 31 (H)

	BW	Milk	200 G	400 G	600 G	MCW
EBV	+6.1	+18	+33	+56	+84	+82
Acc %	68	40	61	63	62	53
	EMA	RIB	RUMP	RBV%	IMF%	CWT
EBV	+3.1	-0.7	-0.7	+1.7	-0.5	+52
Acc%	40	45	49	43	43	50

Notes: Top 10% Retail Beef Yield.

Purchased by: \_\_\_\_\_

Price: \_\_\_\_\_



**Lot 6 – Glenholme Quantum**

**LOT 7**  
**GLENHOLME QUINLAN (TW) (H)**      **GHBQ109**  
 Born 26/04/2019

SIRE:  
 Glenholme Maclean (AI) (H)      Cootharaba Magnum (H)  
    Mawarra Virginian (H)  
    Mawarra Cherry Ripe 263 (H)

DAM:  
 Glenholme C Miss Loyal L048 (AI) (H)      Kirraweena Australia (H)  
    Glenholme C Miss Loyal G013 (H)  
    Glenholme Miss Loyal X094 (H)

	BW	Milk	200 G	400 G	600 G	MCW
EBV	+4.9	+12	+27	+41	+68	+64
Acc %	69	44	61	62	64	56
	EMA	RIB	RUMP	RBV%	IMF%	CWT
EBV	+4.3	-0.6	-0.5	+1.7	+0.5	+41
Acc%	44	51	55	48	51	53

Notes: Twin brother of Lot 8, Glenholme Quigley.  
 Top 10% of the breed for Retail Beef Yield.

Purchased by: \_\_\_\_\_ Price: \_\_\_\_\_



**Lot 7 – Glenholme Quinlan**

**LOT 8**  
**GLENHOLME QUIGLEY (TW) (H)**      **GHBQ110**  
Born 26/04/2019

SIRE:

Glenholme Maclean (AI) (H)  
Cootharaba Magnum (H)  
Mawarra Virginian (H)  
Mawarra Cherry Ripe 263 (H)

DAM:

Glenholme C Miss Loyal L048 (AI) (H)  
Kirraweena Australia (H)  
Glenholme C Miss Loyal G013 (H)  
Glenholme Miss Loyal X094 (H)

	BW	Milk	200 G	400 G	600 G	MCW
EBV	+5.5	+15	+30	+49	+79	+69
Acc %	70	46	62	63	65	57
	EMA	RIB	RUMP	RBV%	IMF%	CWT
EBV	+4.2	-0.1	+0.3	+1.4	+0.8	+49
Acc%	45	52	56	49	52	55

Indexes: Twin brother of Lot 7, Glenholme Quinlan.

Purchased by:

Price:



**Lot 8 – Glenholme Quigley**

**LOT 9**  
**GLENHOLME QUEBEC (PP) GHBQ160**  
Born 20/06/2019

SIRE:  
Doodle Cooma Magnate (PP)

Tycolah Jovial F77 (PP)  
Tycolah Majestic J138 (AI) (P)  
Tycolah Bess E101 (P)

DAM:  
Kirraweena Doreen M213 (P)

Glenholme Flanders (H)  
Kirraweena Doreen J225 (H)  
Kirraweena Doreen E115 (H)

	BW	Milk	200 G	400 G	600 G	MCW
EBV	+5.5	+15	+28	+44	+65	+65
Acc %	56	36	52	57	55	48
	EMA	RIB	RUMP	RBY%	IMF%	CWT
EBV	+2.1	+0.8	+1.0	-0.2	+0.9	+33
Acc%	40	46	51	44	44	46

Notes: Homozygous Poll bull out of a strong  
Kirraweena cow family on his Dam's side.  
Heifer's first calf.

Purchased by:

Price:



**Lot 9 - Glenholme Quebec**

**LOT 10**  
**GLENHOLME QUINN (AI) (PP) GHBQ116**  
Born 03/05/2019

SIRE:  
Mawarra Prime Time (AI) (PP)

Allendale Waterloo B50 (AI) (P)  
Minlacowie Griffin (PP)  
Minlacowie Sally D120 (AI) (P)

DAM:  
Glenholme Doreen L027 (AI) (P)  
Glenholme Campbell (P)  
Glenholme Doreen E045 (P)  
Glenholme Doreen C021 (H)

	BW	Milk	200 G	400 G	600 G	MCW
EBV	+5.7	+16	+30	+46	+73	+69
Acc %	68	41	62	63	62	54
	EMA	RIB	RUMP	RBY%	IMF%	CWT
EBV	+2.7	+0.4	+0.6	+0.8	+0.5	+41
Acc%	42	47	50	43	47	51

Notes: Homozygous Polled.

Purchased by: \_\_\_\_\_

Price: \_\_\_\_\_



**Lot 10 – Glenholme Quinn**

**LOT 11**  
**GLENHOLME QUIMBY (AI) (PP)**      **GHBQ127**  
Born 30/06/2019

SIRE:  
Mawarra Prime Time (AI) (PP)  
Antara Faroh A67 (P)  
Bahloo A67 Spartacus E51 (TW) (P)  
Bahloo Symphony Y5 (AI) (ET) (P)

DAM:  
Glenholme Doreen J026 (AI) (P)  
Glenholme Campbell (P)  
Glenholme Doreen E045 (P)  
Glenholme Doreen C021 (H)

	BW	Milk	200 G	400 G	600 G	MCW
EBV	+5.9	+18	+32	+49	+76	+70
Acc %	68	40	62	64	63	55
	EMA	RIB	RUMP	RBV%	IMF%	CWT
EBV	+3.2	+0.7	+0.9	+1.0	+0.1	+44
Acc%	45	50	54	47	47	52

Notes: Homozygous Polled.

Purchased by:

Price:



**Lot 11 – Glenholme Quimby**



**LOT 12**  
**GLENHOLME QUINEY (PP) GHBQ130**  
Born 23/07/2019

SIRE:  
Doodle Cooma Magnate (PP)

The Granary Bothwell X554 (P)  
Valma Ollie (P)  
Valma Golds Moonshine Z35 (P)

DAM:  
Glenholme Lindy Loo H062 (P)  
Valma Landmark A39 (P)  
Glenholme Lindy Loo (P)  
Smithston Lindy Loo B310 (H)

	BW	Milk	200 G	400 G	600 G	MCW
EBV	+5.1	+14	+28	+41	+61	+64
Acc %	68	38	60	62	61	52
	EMA	RIB	RUMP	RBV%	IMF%	CWT
EBV	+1.4	-0.2	-0.9	+0.6	+0.3	+31
Acc%	43	49	53	46	46	49

Notes: Homozygous Polled.

Purchased by:

Price:



**Lot 12 – Glenholme Quiney**

**LOT 13**

**GLENHOLME QUALIFIED (PP)**

**GHBQ149**

Born 05/09/2019

SIRE:

Doodle Cooma Magnate (PP)

The Granary Bothwell X554 (P)  
Valma Ollie (P)  
Valma Golds Moonshine Z35 (P)

DAM:

Glenholme Minerva H020 (P)

Allendale Vengeance A49 (AI) (P)  
Glenholme Minerva E014 (AI) (P)  
Glenholme Minerva Y021 (P)

	BW	Milk	200 G	400 G	600 G	MCW
EBV	+5.5	+17	+31	+47	+67	+70
Acc %	67	37	59	61	60	52
	EMA	RIB	RUMP	RBV%	IMF%	CWT
EBV	+2.0	-0.2	-0.7	+0.8	+0.4	+35
Acc%	41	47	51	44	45	48

Notes: Homozygous Polled.

Purchased by:

Price:



**Lot 13 – Glenholme Qualified**

**LOT 14**  
**GLENHOLME QUENTIN Q117 (H)      GHBQ117**  
Born 26/05/2019

SIRE:

Glenholme Maclean (AI) (H)  
Glenwarrah Lynch U028 (H)  
Kirraweena Australia (H)  
Kirraweena Doreen W053 (P)

DAM:

Glenholme Victoria K053 (H)  
Devon Court Rockford Y176 (H)  
Glenholme Victoria B009 (H)  
Lynlen Victoria T012 (H)

	BW	Milk	200 G	400 G	600 G	MCW
EBV	+5.4	+12	+27	+42	+71	+65
Acc %	68	36	59	60	60	52
	EMA	RIB	RUMP	RBV%	IMF%	CWT
EBV	+4.0	-0.8	-0.9	+2.2	0.0	+41
Acc%	40	46	50	43	43	47

Notes: Top 5% of the breed for Retail Beef Yield.

Purchased by: \_\_\_\_\_

Price: \_\_\_\_\_



**Lot 14 – Glenholme Quentin**

**LOT 15**  
**KIRRAWEENA QUENCH (AI) (H)      FSBQ205**

Born: 26/04/2019

SIRE:

Kirraweena Lehmann (H)

Glendan Park Empire E002 (AI) (ET) (H)  
Sugarloaf Houston H146 (AI) (H)  
Sugarloaf Ladylike D18 (H)

DAM:

Kirraweena Queenie M208 (AI) (H)  
Lowanna Walsh (H)  
Kirraweena Queenie G144 (H)  
Kirraweena Queenie F123 (H)

	BW	Milk	200 G	400 G	600 G	MCW
EBV	+4.2	+12	+26	+41	+60	+50
Acc %	68	37	57	55	56	49
	EMA	RIB	RUMP	RBY%	IMF%	CWT
EBV	+4.1	-0.2	0.0	+1.3	+0.3	+38
Acc%	35	43	47	40	43	46

Notes: Heifer's first calf.

Purchased by: \_\_\_\_\_

Price: \_\_\_\_\_



**Lot 15 – Kirraweena Quench**

**LOT 16**  
**KIRRAWEENA QUADRANT (H)**      **FSBQ217**  
Born: 13/06/2019

SIRE:  
Lotus Larson (H)

Kirraweena Australia (H)  
Glenholme Flanders (H)  
Glenholme Queenie A073 (H)

DAM:  
Kirraweena Doreen J228 (H)  
Thorn Hill Zac (H)  
Kirraweena Doreen C119 (H)  
Kirraweena Doreen Z125 (H)

	BW	Milk	200 G	400 G	600 G	MCW
EBV	+5.1	+12	+28	+47	+69	+69
Acc %	69	40	59	56	58	50
	EMA	RIB	RUMP	RBV%	IMF%	CWT
EBV	+2.8	-1.2	-1.7	+1.5	+0.2	+38
Acc%	36	43	47	40	43	46

Purchased by: \_\_\_\_\_ Price: \_\_\_\_\_



**Lot 16 – Kirraweena Quadrant**

**LOT 17****GLENHOLME QUAKER (H)****GHBQ151**

Born: 08/09/2019

SIRE:

Glenholme Maclean (AI) (H)

Smithston Northern Light N046 (H)

Smithston Zig Zag (AI) (H)

Smithston Lady Lynda V192 (ET) (H)

DAM:

Glenholme Doreen G066 (AI) (H)

Smithston Sailor ET1 (ET) (H)

Glenholme Doreen W010 (H)

Lynen Doreen 22 (H)

	BW	Milk	200 G	400 G	600 G	MCW
EBV	+6.3	+17	+34	+53	+86	+82
Acc %	71	42	62	62	62	55
	EMA	RIB	RUMP	RBV%	IMF%	CWT
EBV	+2.9	-1.1	-1.4	+2.0	-0.3	+51
Acc%	43	48	52	46	46	50

Notes: Half brother Glenholme Kershaw sold at Wodonga Show and Sale in 2016.  
Top 5% of the breed for Retail Beef Yield and Scrotal Size.

Purchased by:

Price:

**Lot 17 – Kirraweena Quaker**

**LOT 18**  
**KIRRAWEENA QUARTZ (H)** **FSBQ223**  
Born 10/09/2019

SIRE:  
Lotus Larson (H)

Glenwarrah Lynch U028 (H)  
Kirraweena Australia (H)  
Kirraweena Doreen W053 (H)

DAM:  
Kirraweena Doreen G146 (H)  
Lowanna Jackpot Y44 (H)  
Kirraweena Doreen D116 (H)  
Kirraweena Doreen X016 (H)

	BW	Milk	200 G	400 G	600 G	MCW
EBV	+4.4	+12	+25	+39	+59	+54
Acc %	69	40	60	59	59	51
	EMA	RIB	RUMP	RBV%	IMF%	CWT
EBV	+3.0	-0.3	-0.4	+1.0	+0.6	+32
Acc%	41	45	49	43	43	47

Purchased by:

Price:

---



**Lot 18 – Kirraweena Quartz**

**LOT 19**  
**KIRRAWEENA QUARRY Q230 (H)      FSBQ230**  
 Born 20/09/2019

SIRE:  
 Lotus Larson (H)

Devon Court Pacemaker 5 (AI) (H)  
 Glenwarrah Lynch U028 (H)  
 Glenwarrah Last Day 4 (H)

DAM:  
 Kirraweena Pearl Z119 (H)

Llanglothan Limelight (TW) (H)  
 Kirraweena Pearl 33 (H)  
 Kirraweena Pearl 26 (H)

	BW	Milk	200 G	400 G	600 G	MCW
EBV	+4.1	+13	+23	+32	+45	+45
Acc %	70	46	62	62	61	54
	EMA	RIB	RUMP	RBV%	IMF%	CWT
EBV	+1.5	-0.6	-0.8	+0.5	+0.4	+22
Acc%	42	46	50	44	44	49

Notes: The 12<sup>th</sup> calf of Kirraweena Pearl Z119 who raised Quarry as a 15 year old cow.

Purchased by: \_\_\_\_\_ Price: \_\_\_\_\_



**Lot 19 – Kirraweena Quarry**



**LOT 20**  
**GLENHOLME QUASSI (H)      GHBQ164**

Born 02/11/2019

SIRE:

Glenholme Maclean (AI) (H)

Glenwarrah Lynch U028 (H)  
Kirraweena Australia (H)  
Kirraweena Doreen W053 (H)

DAM:

Glenholme Queenie F030 (H)

Eurangatuck Bahrain (H)  
Glenholme Queenie B071 (H)  
Glenholme Queenie 9 (H)

	BW	Milk	200 G	400 G	600 G	MCW
EBV	+6.1	+13	+30	+46	+76	+77
Acc %	68	36	59	60	59	52
	EMA	RIB	RUMP	RBV%	IMF%	CWT
EBV	+3.0	-1.3	-1.6	+2.0	-0.4	+44
Acc%	41	46	50	43	43	47

Notes: In the top 5% of the breed for Retail Beef Yield.

Purchased by:

Price:

---



**Lot 20 – Glenholme Quassi**

**LOT 21**  
**GLENHOLME QUILTY (H)      GHBQ167**  
Born 20/11/17

SIRE:  
Curracabark Junee J106 (AI) (ET) (H)

Bundarra Wally (H)  
Bundarra Zambia (H)  
Bundarra Lioness S78 (H)

DAM:  
Glenholme Victoria G080 (H)  
Smithston Sailor ET1 (ET) (H)  
Glenholme Victoria A002 (H)  
Glenholme Victoria 5 (H)

	BW	Milk	200 G	400 G	600 G	MCW
EBV	+6.7	+12	+35	+57	+81	+72
Acc %	67	44	60	60	62	55
	EMA	RIB	RUMP	RBV%	IMF%	CWT
EBV	+4.9	+0.2	+0.6	+1.3	+0.4	+53
Acc%	48	54	56	47	55	57

Purchased by:

Price:



**Lot 21 – Glenholme Quilty**

**LOT 22**  
**GLENHOLME QUE (PP)**      **GHBQ161**  
Born 02/12/2019

SIRE:  
Doodle Cooma Magnate (PP)

The Granary Bothwell X554 (P)  
Valma Ollie (P)  
Valma Golds Moonshine Z35 (P)

DAM:  
Glenholme Duchess H045 (P)

Gunyah Lion V008 (P)  
Kirraweena Duchess A023 (P)  
Glenholme Duchess X013 (TW) (H)

	BW	Milk	200 G	400 G	600 G	MCW
EBV	+4.2	+13	+25	+39	+57	+59
Acc %	57	37	52	52	52	46
	EMA	RIB	RUMP	RBV%	IMF%	CWT
EBV	+2.5	+0.2	-0.1	+0.7	+0.6	+31
Acc%	35	41	44	38	41	43

Notes: Homozygous Polled.

Purchased by:

Price:



**Lot 22 – Glenholme Que**



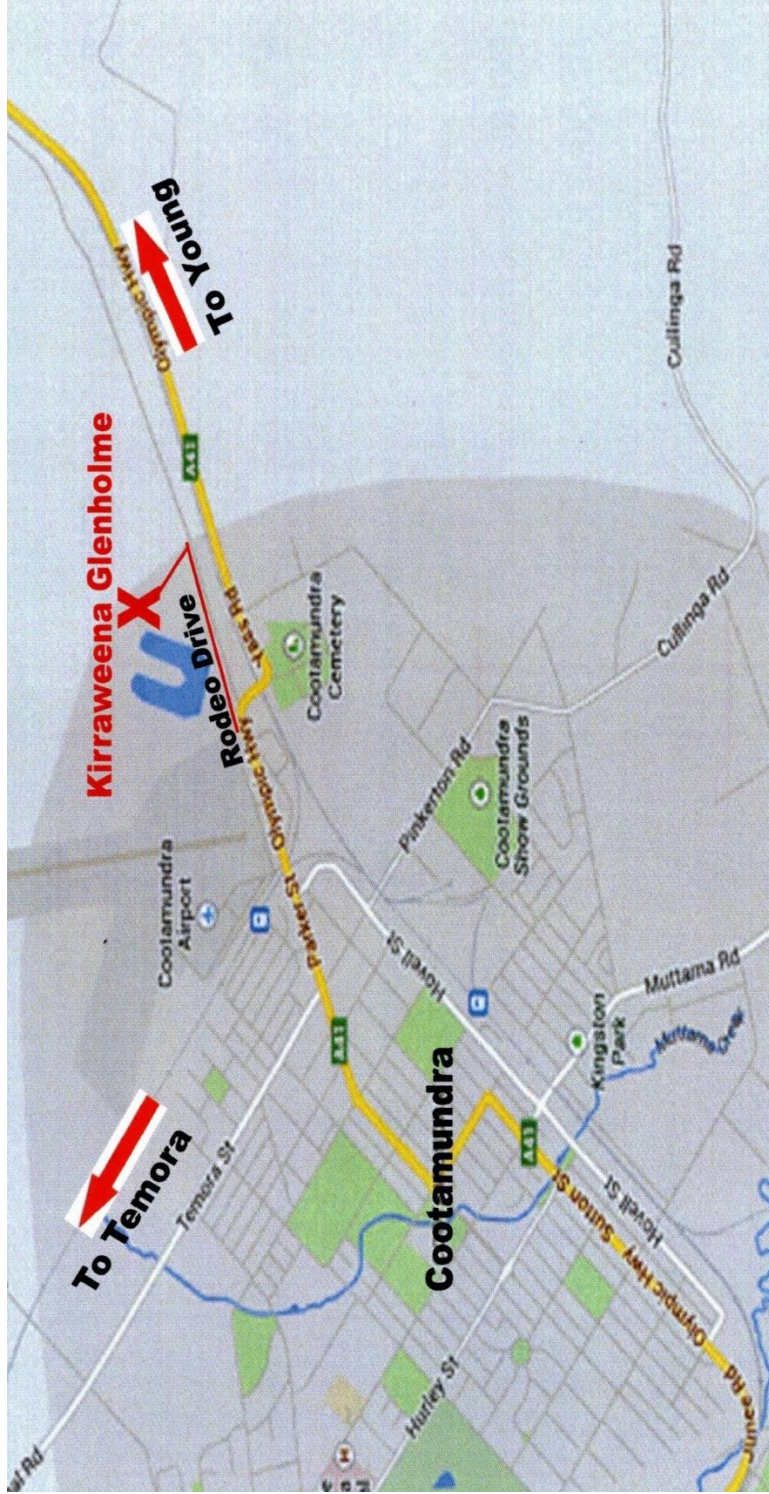
**Trillick Hotspur**  
*AI Sire. Semen imported from  
Ireland*

*Also available*

***GLENHOLME***  
**POLL DORSET**  
**RAMS**



*(Brucellosis accredited)*  
***Now taking orders for  
2021***



**Buyer's Instruction Slip** – no verbal instructions can be accepted

NAME: .....

ADDRESS: .....

.....Phone: .....

(of person to whom transfer certificate is to be issued)

**PIC NO.** ..... **LOTS PURCHASED:** .....

ACCOUNT TO: .....

DELIVERY INSTRUCTIONS: .....

# **Independent Breeding Services**

*Providing the following Services*

**Artificial Insemination**

**Bull semen evaluations**

**Semen Collection & testing**

**Liquid Nitrogen deliveries**

**All AI Supplies**



**Freeze Branding**

**Semen Storage**

**Semen Shipping**

**Semen Purchases**

**Geoff & Heather Bush**

**Phone: 0428 423 221, email: [ghb.glenholme@bigpond.com](mailto:ghb.glenholme@bigpond.com)**



***Kirraweena Packer***

***Sold Wodonga 2020 for \$9,000 to Tondara Herefords, Coonong Station, Urana  
Supreme Champion Gundagai Hereford Feature Show 2020  
CONSISTENTLY BREEDING QUALITY, EASY DOING, QUIET HEREFORDS SINCE 1953***