

# MARYVALE

LIMOUSIN & ANGUS



## BREEDING BETTER BEEF



LOT **20**

## 2021 Maryvale Limousin & Angus

### “Power in the Pedigree”

### Bull & Female Sale

### Friday 19<sup>th</sup> February 2021

On Property, Inspection from 8.00am sale at 10.00am

JBAS  
8  
& EU

  
AuctionsPlus®



**Vogt Family**

**Mobile Contact: 0407 959 837 (Matt)**

**Ph: 08 8566 2045 Tess: 0428 105 373**

**Email: [maryvalestock@gmail.com](mailto:maryvalestock@gmail.com)**

**1315 Marrabel Road, Kapunda SA 5373**

**Property Located 10km North of Kapunda on the Marrabel Road SA**

**[www.maryvalestock.com.au](http://www.maryvalestock.com.au)**



*You are invited*

The time has come for the beef industry to be on another high. We are seeing record weaner prices up to \$6.50kg live weight and PTIC breeders over \$3000/head. The abundance of hay and feed across some parts of the country is a massive turn around from this time last year.

Thank you and welcome to the 2021 Maryvale "Power in the Pedigree" Sale. Taking the opportunities when they are available, is always a big chance, not to be missed in life. We have that chance right now, with low barley and hay prices, combined with very strong to exceptional cattle prices.

With feed available, it is the time for long term investment and opportunity to rebuild the national beef herd. Good rains and fresh feed presented us the opportunity to sell many bulls last spring. We are happy to have them out working on the rebuilding project for clients during the last few months.

Our February Sale will present a great opportunity to purchase top genetics at exceptional value. Slowly more breeders are offering younger bulls as purchasers

are finding the value of acclimatization to their new home at a younger age. We find that bulls work really well when out with breeder cows around 18months old as they are keen as ever to start working. All bulls have been given selenium, fertility tested and vaccinated with 7 in 1 and against Vibriosis and Pesti-Virus.

**Great young Angus bulls** from docile Millah Murrah dams with sires including Millah Murrah Loch Up, Sydgen Enhance, Banquet Nixon, BenNevis Metamorphic, Murdeduke Kicking and Texas No Regrets.

When joining young heifers, yearling bulls are doing well as they are not as heavy and hard on the 15 month old females. We have some Angus yearling R drop bulls suitable to join heifers with great calving ease genetics.

For those who prefer older, stronger, bigger bulls we have top Limousin available that will add more red meat to the calves and returns to the producer with current beef prices. **Quality Limousin bulls** with sires such as

Blueprint M20, Greenwood Canadian Ways, TM Westwood, LFLC Denver, BBar Slate, Paynes Cracker, Birubi Kaiser, MV Mammon. The **Limousin females** on offer are exceptional animals also.

We continue to search far and wide for top genetics that cover all bases and work exceptionally well for the commercial beef industry providing excellent buying opportunities to the purchaser.

We look forward to welcoming you to our on property Field Day on 5<sup>th</sup> February and our **Sale by Auction 10am on 19<sup>th</sup> February**. If unable to attend there are photos and videos of all lots, and we are aware Auctionsplus limit bids can be placed in advance of the sale so you don't miss out. Sale link accessible via [www.maryvalestock.com.au](http://www.maryvalestock.com.au). Wishing you all the very best of luck in 2021 as your success is our priority.





2.

# 2020 Highlights

1. Well done to Kevin & Sue Nettleton of Unison Limousin with your Maryvale sired cattle winning the 2020 Harvey Beef Gate 2 Plate Challenge! A sensational endorsement of the Unison breeding program. 1<sup>st</sup> & 5<sup>th</sup> in Most Profitable team, 1<sup>st</sup> & 2<sup>nd</sup> in Team with best feedlot Performance. Our goal is to bring our clients more profit where it counts with industry relevant genetics. It brings us great pleasure to see so many of our limo clients featuring on this podium.



1.



3.



4.



5.

2. Ben Watson, Prospect, Pinnaroo.

3. Les Arthur and Maryvale's Barry Vogt with Maryvale Powerplay P13, the top priced Angus Bull.

4. Maryvale's Matt Vogt with Rebekah Rushton who purchased a foundation female for her Lakota Limousin Stud.

5. Volume buyers - Audrey, Linda, Chris and Ava, Old Canowie - and Matt with one of the bulls they purchased.

6. Maryvale's Alastair Vogt, buyer Robyn Vivian, Knockando, Cowirra, Maryvale's Tess and Barry Vogt, and Stephen Vivian, Knockando, with Maryvale Potent P853 the top-priced Limousin Bull.

*Thank-you* to all our valued supporters.



6.



**Sale Day Information**

**Sale Date: Friday 19th February 2021**

Sale at 10.00am – Inspection from 8.00am



**19 Angus Bulls 17 Limousin Bulls 12 Elite Female Lots**

**Sale Information** – Nutrien & Landmark Beaton Agencies will be facilitating the sale for us by Auction with all cattle present onsite in holding pens for easy viewing. Visitors can enter pens at their own risk. Please register with Nutrien prior to the start of the sale, or with Auctionsplus. Animals are sold exclusive of GST.

**Phone Bidding – Key contacts** (Interstate bidders please note we are on SA Central Standard Time) Phone Bidding can be arranged in advance direct with the **Auctioneer Leo Redden 0408 806 021** or by contacting one of the following key contacts within Nutrien:

**Greg Beaton – Landmark Beaton Agencies Kapunda SA – 0428 847 510 or 08-85662004**

Gordon Wood – Nutrien Stud Stock – SA - 0408 813 215

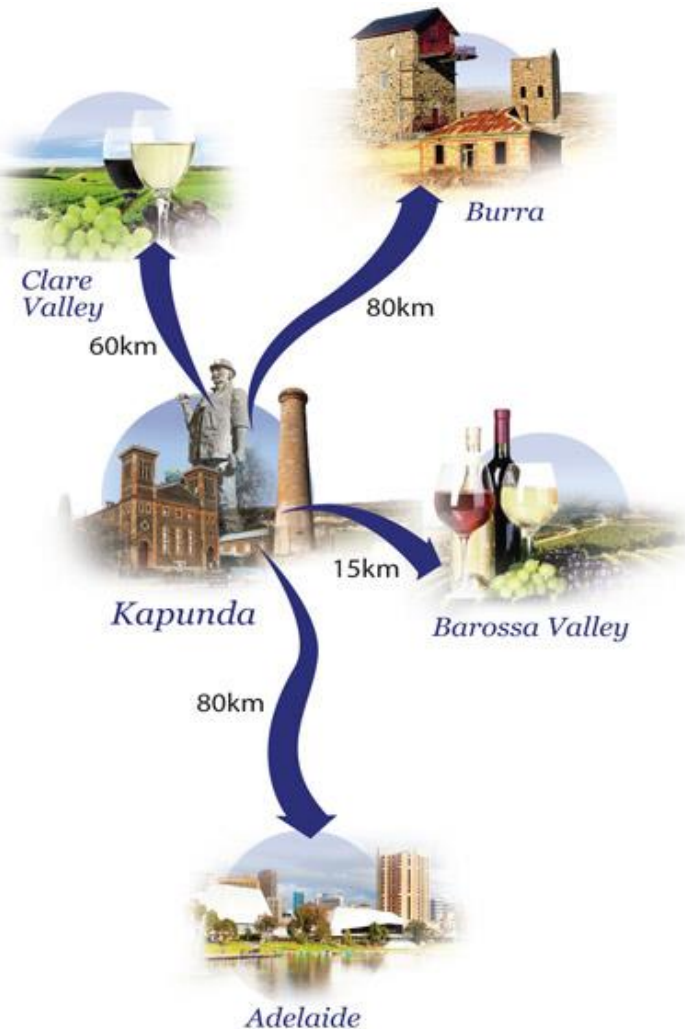
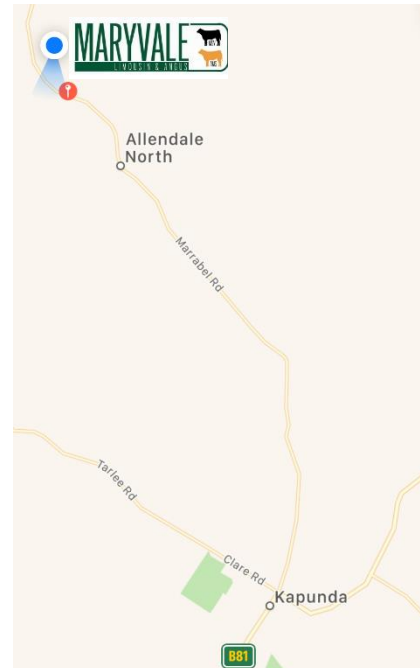
Trevor Driver – Nutrien SA & NT Area Manager – 0428 241 049

Richard Miller – Nutrien SA – 0428 849 327

Ray Atwell – Nutrien Stud Stock – Melbourne – 0428 836 136

Peter Godbolt – Nutrien Stud Stock – Albury – 0457 591 929

John Settree – Nutrien Livestock Sales - NSW - 0408297368



**Rebates to outside agents**

We appreciate the strong support that has been shown to us by Nutrien and many other agents over the history of our stud. A 6% rebate will be made available to all outside agents purchasing stock at the sale of behalf of clients. Outside agents must introduce the clients to us in writing 24 hours before the start of the sale to be eligible for the 6% rebate.

**Insurance**

Animals will become the responsibility of the purchasers at the conclusion of the sale. We strongly recommend insuring your animals for a 3, 6, or 12 month period at the conclusion of the sale. Insurance can be arranged with Nutrien as required.

**Freight & Travel**

We are willing to hold animals for a reasonable period after the sale to enable purchasers to coordinate the successful and efficient transport of animals home to their properties. We can provide recommendations of suitable stud stock carriers and will assist wherever we can to ensure the safe and efficient transport of animals to your property. Please contact Matt Vogt on 0407 959 837 in regard to the freight and transport post sale.

**Accommodation**

Our property is located 10 kilometres North of Kapunda on the road to Marrabel on the Eastern side of the road. We are located approximately 1.5 hours North of the Adelaide Airport. The Kapunda airstrip adjoins our property and light planes are most welcome to use it. We will happily pick you up. We are located between the two small townships of Allendale North and Hamilton. Our property has a “Maryvale” sign on the main road. 1315 Marrabel Road Allendale North. Accommodation is readily available in Kapunda (Kapunda Tourist Park [www.kapundatouristpark.com](http://www.kapundatouristpark.com) 0885662094 is one of many options) and both the nearby Barossa (25kms from us) and Clare Valleys which are both very renowned areas of attraction.



Can't make the sale?



# AuctionsPlus

## How to Register and Bid on AuctionsPlus

- 1 Go to [www.auctionsplus.com.au](http://www.auctionsplus.com.au) to register at least 48 hours before the sale.
- 2 Select "Sign Up" in the top right hand corner.
- 3 Fill out your name, mobile number, email address and create a password.
- 4 Go to your emails and confirm the account.
- 5 Return to AuctionsPlus and log in.
- 6 Select "Dashboard" and then select "Request Approval to Buy".
- 7 Fill in buyer details and once completed go back to Dashboard.
- 8 Complete buyer induction module (approx. 30 minutes).
- 9 AuctionsPlus will email you to let you know that your account has been approved.
- 10 Log in on sale day and connect to auction.
- 11 Bid using the two-step process – unlock the bid button and bid at that price.
- 12 If you are successful, the selling agent will contact you post sale to organise delivery and payment.

## Place a limit bid now! so you don't miss out!

- 1 Login to AuctionsPlus and go into the catalogue of the sale you are interested in.
- 2 Click on limit bid button next to the lot you are interested in and enter the price you're willing to go to. This will automatically put the first bid on for you at the start price entered by the agent on that lot. If someone bids against you it will automatically place the next bid for you at the bid increment chosen by the agent.
- 3 Please note limit bids will only go up to your price if someone has bid against you.
- 4 Also note there is a possibility you will be on the wrong leg at your limit bid. For example in a bull sale if the start price is \$4,000 and they're taking \$1,000 bids and your limit bid is \$5,000 then you will automatically have the first bid at \$4,000 but as the next bid is \$5,000 you won't get that as you're on the wrong leg.

For more information please contact us on:

Phone: (02) 9262 4222 Email: [studsales@auctionsplus.com.au](mailto:studsales@auctionsplus.com.au)

Website: [www.auctionsplus.com.au](http://www.auctionsplus.com.au)





<b>Lot 1 MARYVALE QUEENSLAND Q83<sup>PV</sup></b>		DOB: 16/06/2019 Ident: MSVQ83																
Tatt: Q83 (TATTOO-AND-NLIS) HBR		Queensland Q83 is a full Millah Murrah blood bull with great calving ease, fertility, docility and breed leading fat cover for commercial function.																
ASCOT HALLMARK H147 <sup>PV</sup> <b>Sire: NMMN326 MILLAH MURRAH HALLMARK N326<sup>PV</sup></b> MILLAH MURRAH BEAC K250 <sup>SV</sup>																		
TE MANIA EMPEROR E343 <sup>PV</sup> <b>Dam: NMML275 MILLAH MURRAH ECLIPSE L275<sup>SV</sup></b> MILLAH MURRAH ECLIPSE F209 <sup>PV</sup>																		
Selection Index																		
ABI		DOM																
\$122		\$111																
GRN		GRS																
\$128		\$118																
<b>TACE</b> Mid January 2021 TransTasman Angus Cattle Evaluation																		
Dir	Dtr	GL	BW	200	400	600	MCW	Milk	SS	DTC	CWT	EMA	RIB	P8	RBY	IMF	NFI-F	Doc
+4.2	+4.6	-5.6	+4.6	+45	+83	+109	+96	+14	+2.2	-6.9	+56	+4.0	+2.0	+1.1	-0.4	+1.9	+0.43	+13
48%	43%	63%	60%	54%	54%	54%	54%	49%	49%	38%	52%	50%	54%	52%	53%	50%	46%	49%
AMFU,CAFU,DDFU,NHFU				<b>Traits Observed: BWT,DOC</b>														



<b>Lot 2 MARYVALE QUENCHER Q88<sup>PV</sup></b>		DOB: 04/08/2019 Ident: MSVQ88																
Tatt: Q88 (TATTOO-AND-NLIS) HBR		Quencher Q88 is sired by the \$32K Banquet Nixon out of the solid Wattletop Kerry M3 cow. Super heifer bull, low BW, short gestation, great calving ease, milk, fertility, EMA and fat cover, in a well-made package.																
ABERDEEN ESTATE HOMER H70 <sup>PV</sup> <b>Sire: VONN099 BANQUET NIXON N099<sup>SV</sup></b> BANQUET KITE J463 <sup>PV</sup>																		
MUSGRAVE BIG SKY <sup>PV</sup> <b>Dam: NWPM3 WATTLETOP KERRY M3<sup>SV</sup></b> WATTLETOP KERRY K12 <sup>"</sup>																		
Selection Index																		
ABI		GRS																
\$116		\$119																
DOM		GRN																
\$112		\$109																
<b>TACE</b> Mid January 2021 TransTasman Angus Cattle Evaluation																		
Dir	Dtr	GL	BW	200	400	600	MCW	Milk	SS	DTC	CWT	EMA	RIB	P8	RBY	IMF	NFI-F	Doc
+4.6	+7.6	-5.7	+2.2	+45	+82	+107	+81	+22	+2.1	-5.2	+58	+7.4	+1.2	+1.6	+0.2	+1.1	+0.27	-16
47%	36%	66%	71%	62%	62%	61%	57%	50%	56%	34%	55%	54%	58%	56%	55%	53%	45%	46%
AMFU,CAFU,DDFU,NHFU				<b>Traits Observed: BWT,DOC</b>														



<b>Lot 3 MARYVALE QUESTED Q89<sup>PV</sup></b>		DOB: 09/08/2019 Ident: MSVQ89																
Tatt: Q89 (TATTOO-AND-NLIS) HBR		Quested Q89 our first bull for sale this year by the popular Sydgen Enhance from a MM Kingdom K35 daughter. Awesome growth, docility, feed efficiency, carcass weight, EMA & yield. SC38cm.																
SYDGEN EXCEED 3223 <sup>PV</sup> <b>Sire: USA18170041 SYDGEN ENHANCE<sup>SV</sup></b> SYDGEN RITA 2618 <sup>"</sup>																		
MILLAH MURRAH KINGDOM K35 <sup>PV</sup> <b>Dam: NMMN317 MILLAH MURRAH FLOWER N317<sup>PV</sup></b> MILLAH MURRAH FLOWER K225 <sup>SV</sup>																		
Selection Index																		
ABI		GRS																
\$129		\$127																
DOM		GRN																
\$119		\$135																
<b>TACE</b> Mid January 2021 TransTasman Angus Cattle Evaluation																		
Dir	Dtr	GL	BW	200	400	600	MCW	Milk	SS	DTC	CWT	EMA	RIB	P8	RBY	IMF	NFI-F	Doc
-3.3	+0.1	-4.5	+6.3	+59	+104	+135	+119	+13	+1.9	-4.8	+70	+7.2	-0.8	-0.6	+0.9	+1.5	-0.57	+24
53%	37%	67%	72%	63%	63%	62%	58%	54%	60%	34%	57%	57%	59%	56%	56%	56%	47%	57%
AMFU,CAFU,DDFU,NHFU				<b>Traits Observed: BWT,DOC</b>														



<b>Lot 4 MARYVALE QUONDONG Q92<sup>SV</sup></b>		DOB: 12/08/2019 Ident: MSVQ92																
Tatt: Q92 (TATTOO-AND-NLIS) APR		Quondong Q92 presents as a top bull by the famed Meta sire. Half-brothers averaged \$15K in spring sales. Awesome dollar indexes, breed leading growth from positive calving ease genetics. Plenty of milk, fertility, feed effective, carcass weights and IMF. Covers all bases well. SC39cm.																
AYRVALE BARTEL E7 <sup>PV</sup> <b>Sire: NBNM51 BEN NEVIS METAMORPHIC M51<sup>SV</sup></b> BEN NEVIS JEAN K80 <sup>"</sup>																		
MATAURI REALITY 839 <sup>"</sup> <b>Dam: NMML32 MILLAH MURRAH L32<sup>SV</sup></b> MILLAH MURRAH G69 <sup>SV</sup>																		
Selection Index																		
ABI		GRS																
\$147		\$139																
DOM		GRN																
\$129		\$164																
<b>TACE</b> Mid January 2021 TransTasman Angus Cattle Evaluation																		
Dir	Dtr	GL	BW	200	400	600	MCW	Milk	SS	DTC	CWT	EMA	RIB	P8	RBY	IMF	NFI-F	Doc
+3.9	+6.1	-3.1	+5.3	+61	+113	+149	+146	+19	+3.4	-5.7	+85	+3.9	-0.7	-1.1	+0.2	+2.1	+0.00	+4
51%	42%	66%	72%	63%	63%	62%	60%	52%	60%	40%	57%	56%	59%	57%	57%	55%	48%	52%
AMFU,CAFU,DDFU,NHFU				<b>Traits Observed: BWT,DOC</b>														



**Lot 5 MARYVALE QUINTAR Q95<sup>SV</sup>** DOB: 15/08/2019  
Ident: MSVQ95

Tatt: Q95 (TATTOO-AND-NLIS) APR

AYRVALE BARTEL E7<sup>PV</sup>  
**Sire: NBNM51 BEN NEVIS METAMORPHIC M51<sup>SV</sup>**  
 BEN NEVIS JEAN K80<sup>#</sup>

MATAURI REALITY 839<sup>#</sup>  
**Dam: NMML32 MILLAH MURRAH L32<sup>SV</sup>**  
 MILLAH MURRAH G69<sup>SV</sup>

Quintar Q95 is a full brother to the previous lot. Both bulls have top of the tree Angus genetics in them. Ben Nevis Jean K80 sold for \$32K and Ben Nevis Jean H215 set the new mature Angus cow record price of \$82K in Oct 20. Also Matauri Reality and Bartel E7 and Equator D78 often found in the top Angus across the country. SC38cm.

Selection Index			
ABI	DOM	GRN	GRS
\$147	\$128	\$165	\$139

**TACE** Mid January 2021 TransTasman Angus Cattle Evaluation

Dir	Dtr	GL	BW	200	400	600	MCW	Milk	SS	DTC	CWT	EMA	RIB	P8	RBY	IMF	NFI-F	Doc
+2.9	+5.7	-3.0	+5.7	+62	+114	+151	+148	+18	+3.4	-5.7	+86	+3.9	-0.8	-1.2	+0.2	+2.1	-0.01	+4
51%	42%	66%	72%	63%	63%	62%	60%	52%	60%	40%	57%	56%	59%	57%	57%	55%	48%	52%

AMFU,CAFU,DDFU,NHFU **Traits Observed: BWT,DOC**



**Lot 6 MARYVALE QWERTY Q96<sup>#</sup>** DOB: 17/08/2019  
Ident: MSVQ96

Tatt: Q96 (TATTOO-AND-NLIS) APR

ASCOT HALLMARK H147<sup>PV</sup>  
**Sire: NMMN326 MILLAH MURRAH HALLMARK N326<sup>PV</sup>**  
 MILLAH MURRAH BEAC K250<sup>SV</sup>

MILLAH MURRAH DOC J162<sup>SV</sup>  
**Dam: NMML222 MILLAH MURRAH L222<sup>PV</sup>**  
 MILLAH MURRAH J242<sup>SV</sup>

Qwerty Q96 has a great combination of top Angus genetics in his pedigree. The standout phenotype bull in the sale, combining excellent growth, fertility and docility. His mother is a thumping cow that keeps on impressing us. SC 40cm.

Selection Index			
ABI	DOM	GRN	GRS
\$123	\$109	\$134	\$118

**TACE** Mid January 2021 TransTasman Angus Cattle Evaluation

Dir	Dtr	GL	BW	200	400	600	MCW	Milk	SS	DTC	CWT	EMA	RIB	P8	RBY	IMF	NFI-F	Doc
-1.6	+1.5	-5.9	+7.0	+51	+92	+126	+121	+14	+3.0	-5.7	+68	+3.5	+0.1	-0.1	+0.4	+1.8	+0.17	+17
45%	37%	61%	58%	51%	51%	51%	50%	45%	45%	30%	47%	45%	50%	48%	48%	46%	39%	46%

AMFU,CAFU,DDFU,NHFU **Traits Observed: BWT,DOC**



**Lot 7 MARYVALE QUEDOS Q101<sup>SV</sup>** DOB: 10/09/2019  
Ident: MSVQ101

Tatt: Q101 (TATTOO-AND-NLIS) APR

THOMAS UP RIVER 1614<sup>PV</sup>  
**Sire: NMML133 MILLAH MURRAH LOCH UP L133<sup>PV</sup>**  
 MILLAH MURRAH BRENDA H49<sup>SV</sup>

MATAURI REALITY 839<sup>#</sup>  
**Dam: NMML32 MILLAH MURRAH L32<sup>SV</sup>**  
 MILLAH MURRAH G69<sup>SV</sup>

Quedos Q101 Presents an opportunity to buy short gestation, great calving ease followed up with super growth and great mature pelvis size. Topped off with fertility, docility, feed efficiency and heavy carcass. His brother topped last years sale. SC40cm.

Selection Index			
ABI	DOM	GRN	GRS
\$132	\$121	\$142	\$128

**TACE** Mid January 2021 TransTasman Angus Cattle Evaluation

Dir	Dtr	GL	BW	200	400	600	MCW	Milk	SS	DTC	CWT	EMA	RIB	P8	RBY	IMF	NFI-F	Doc
+6.2	+6.0	-7.1	+5.3	+58	+106	+140	+131	+19	+3.0	-3.8	+77	+2.8	-0.5	-1.1	+0.2	+1.8	-0.20	+18
54%	46%	68%	67%	65%	65%	66%	65%	60%	62%	45%	62%	61%	64%	62%	63%	61%	56%	62%

AMFU,CAFU,DDFU,NHFU **Traits Observed: BWT,DOC**



**Lot 8 MARYVALE QUESTA Q110<sup>PV</sup>** DOB: 02/11/2019  
Ident: MSVQ110

Tatt: Q110 (TATTOO-AND-NLIS) HBR

THOMAS UP RIVER 1614<sup>PV</sup>  
**Sire: NMML133 MILLAH MURRAH LOCH UP L133<sup>PV</sup>**  
 MILLAH MURRAH BRENDA H49<sup>SV</sup>

PATHFINDER GENESIS G357<sup>PV</sup>  
**Dam: NURM177 MURRAY GENESIS M177<sup>PV</sup>**  
 MURRAY INCENTIVE H121<sup>PV</sup>

Questa Q110 is a young genetic powerhouse! He is stacked with breed greats being sired by the \$85K MM Lock Up. A no holes set of data across all traits we will expect Questa to breed back to the great Genesis G357 bull.

Selection Index			
ABI	DOM	GRN	GRS
\$137	\$124	\$148	\$131

**TACE** Mid January 2021 TransTasman Angus Cattle Evaluation

Dir	Dtr	GL	BW	200	400	600	MCW	Milk	SS	DTC	CWT	EMA	RIB	P8	RBY	IMF	NFI-F	Doc
+7.1	+7.0	-5.9	+4.7	+53	+95	+123	+103	+21	+2.8	-5.9	+72	+6.4	+0.4	-0.3	+0.4	+2.2	+0.30	+21
52%	45%	66%	70%	67%	67%	68%	66%	62%	64%	45%	65%	63%	67%	64%	65%	63%	57%	59%

AMFU,CAFU,DDFU,NHFU **Traits Observed: BWT,DOC**





**Lot 9 MARYVALE QUALCO Q111<sup>PV</sup>** DOB: 02/11/2019  
Ident: MSVQ111

Tatt: Q111 (TATTOO-AND-NLIS) HBR

ARDROSSAN EQUATOR A241<sup>PV</sup>  
**Sire: SRKJ310 BOWMONT JACKPOT J310<sup>PV</sup>**  
 ARDROSSAN WILCOOLA Z31<sup>PV</sup>

MILLAH MURRAH KINGDOM K35<sup>PV</sup>  
**Dam: NMMN317 MILLAH MURRAH FLOWER N317<sup>PV</sup>**  
 MILLAH MURRAH FLOWER K225<sup>SV</sup>

Qualco Q111 has a pedigree completely full of Angus breed leaders. Starting with Equator A241, then Wilcoola Z31, Millah Murrah Kingdom and Te Mania Emperor. Predictable functional performance on offer here.

Selection Index			
ABI	DOM	GRN	GRS
\$119	\$107	\$118	\$118

**TACE** Mid January 2021 TransTasman Angus Cattle Evaluation

Dir	Dtr	GL	BW	200	400	600	MCW	Milk	SS	DTC	CWT	EMA	RIB	P8	RBY	IMF	NFI-F	Doc
-1.2	-0.5	-4.6	+5.1	+49	+89	+121	+108	+16	+3.1	-7.8	+65	+4.9	+0.5	+0.5	+0.5	+0.7	-0.17	+11
53%	44%	67%	70%	63%	62%	63%	61%	59%	60%	44%	59%	57%	60%	58%	58%	57%	50%	57%

AMFU,CAFU,DDFU,NHFU **Traits Observed: BWT,DOC**



**Lot 10 MARYVALE QUINTO Q114<sup>PV</sup>** DOB: 08/11/2019  
Ident: MSVQ114

Tatt: Q114 (TATTOO-AND-NLIS) HBR

THOMAS UP RIVER 1614<sup>PV</sup>  
**Sire: NMML133 MILLAH MURRAH LOCH UP L133<sup>PV</sup>**  
 MILLAH MURRAH BRENDA H49<sup>SV</sup>

PATHFINDER GENESIS G357<sup>PV</sup>  
**Dam: NURM177 MURRAY GENESIS M177<sup>PV</sup>**  
 MURRAY INCENTIVE H121<sup>PV</sup>

Quinto Q114 is another result of Embryo transfer, whilst expensive and time consuming it allows us to offer animals with pedigrees full of the good stuff! Another excellent example of this here, full brother to Lot 8. SC38cm.

Selection Index			
ABI	DOM	GRN	GRS
\$136	\$123	\$146	\$130

**TACE** Mid January 2021 TransTasman Angus Cattle Evaluation

Dir	Dtr	GL	BW	200	400	600	MCW	Milk	SS	DTC	CWT	EMA	RIB	P8	RBY	IMF	NFI-F	Doc
+6.7	+6.8	-5.9	+4.6	+53	+94	+122	+102	+22	+2.8	-5.9	+71	+6.4	+0.4	-0.2	+0.4	+2.2	+0.30	+21
52%	45%	66%	70%	67%	67%	68%	66%	62%	64%	45%	65%	63%	67%	64%	65%	63%	57%	59%

AMFU,CAFU,DDFU,NHFU **Traits Observed: BWT,DOC**



**Lot 11 MARYVALE RAVI R101<sup>PV</sup>** DOB: 01/01/2020  
Ident: MSVR101

Tatt: R101 (TATTOO-AND-NLIS) HBR

TE MANIA EMPEROR E343<sup>PV</sup>  
**Sire: CSWK428 MURDEDUKE KICKING K428<sup>PV</sup>**  
 MURDEDUKE E175<sup>PV</sup>

COONAMBLE HECTOR H249<sup>SV</sup>  
**Dam: NMMN190 MILLAH MURRAH ELA N190<sup>PV</sup>**  
 MILLAH MURRAH ELA L196<sup>PV</sup>

Ravi R101 The first yearling bull provides you with a great opportunity to buy a heifer bull with breed leading data for all calving ease traits. These bulls have impressed with their growth and frame since birth, from their strong powerful pedigrees.

Selection Index			
ABI	DOM	GRN	GRS
\$119	\$113	\$121	\$118

**TACE** Mid January 2021 TransTasman Angus Cattle Evaluation

Dir	Dtr	GL	BW	200	400	600	MCW	Milk	SS	DTC	CWT	EMA	RIB	P8	RBY	IMF	NFI-F	Doc
+7.8	+7.9	-6.8	+1.8	+42	+81	+108	+84	+16	+2.7	-4.8	+61	+4.6	+1.1	-0.6	+0.7	+1.4	-0.03	-
51%	42%	68%	72%	63%	63%	63%	62%	57%	60%	43%	62%	60%	62%	61%	61%	60%	55%	-

AMFU,CAFU,DDFU,NHFU **Traits Observed: BWT**



**Lot 12 MARYVALE RAMCO R102<sup>PV</sup>** DOB: 02/01/2020  
Ident: MSVR102

Tatt: R102 (TATTOO-AND-NLIS) HBR

COONAMBLE HECTOR H249<sup>SV</sup>  
**Sire: DXTN046 TEXAS NO REGRETS N046<sup>PV</sup>**  
 TEXAS UNDINE H647<sup>SV</sup>

PATHFINDER GENESIS G357<sup>PV</sup>  
**Dam: NURM177 MURRAY GENESIS M177<sup>PV</sup>**  
 MURRAY INCENTIVE H121<sup>PV</sup>

Ramco R102 These yearlings are ideal to join with heifers for replacement or industry cattle. Sired by the \$32K Texas No Regrets combined with Genesis G357 for top carcasses, feed efficiency, EMA, fat cover and yield.

Selection Index			
ABI	DOM	GRN	GRS
\$119	\$114	\$115	\$121

**TACE** Mid January 2021 TransTasman Angus Cattle Evaluation

Dir	Dtr	GL	BW	200	400	600	MCW	Milk	SS	DTC	CWT	EMA	RIB	P8	RBY	IMF	NFI-F	Doc
+6.8	+1.8	-4.8	+2.8	+50	+84	+111	+91	+11	+1.0	-3.7	+65	+9.4	+0.9	+0.1	+0.8	+1.3	-0.06	-
42%	34%	65%	70%	64%	64%	63%	61%	55%	58%	35%	59%	57%	62%	58%	59%	57%	48%	-

AMFU,CAFU,DDFU,NHFU **Traits Observed: BWT**





**Lot 13 MARYVALE RAINMAKER R103<sup>PV</sup>** DOB: 04/01/2020  
Ident: MSVR103

Tatt: R103 (TATTOO-AND-NLIS) HBR

THOMAS UP RIVER 1614<sup>PV</sup>  
**Sire: NMML133 MILLAH MURRAH LOCH UP L133<sup>PV</sup>**  
 MILLAH MURRAH BRENDA H49<sup>SV</sup>

BOOROOMOOKA THEO T030<sup>SV</sup>  
**Dam: NMML247 MILLAH MURRAH FLOWER L247<sup>SV</sup>**  
 MILLAH MURRAH FLOWER G173<sup>PV</sup>

Rainmaker R103 Sired by the \$85K MM Loch Up bull out of the \$18K Theo daughter, all these bulls have calving ease genetics that grow into big frames with great milk and feed efficiency. Awesome predictable, powerful, profitable genetics.

Selection Index			
ABI	DOM	GRN	GRS
\$112	\$107	\$114	\$112

**TACE** Mid January 2021 TransTasman Angus Cattle Evaluation

Dir	Dtr	GL	BW	200	400	600	MCW	Milk	SS	DTC	CWT	EMA	RIB	P8	RBY	IMF	NFI-F	Doc
+5.5	+4.6	-4.0	+4.0	+48	+87	+117	+91	+21	+2.3	-3.8	+64	+3.1	+0.0	-0.8	-0.2	+1.7	-0.05	-
56%	48%	68%	73%	66%	66%	66%	64%	60%	62%	46%	63%	61%	65%	62%	63%	61%	56%	-

AMFU,CAFU,DDFU,NHFU **Traits Observed: BWT**



**Lot 14 MARYVALE RADICAL R104<sup>PV</sup>** DOB: 08/01/2020  
Ident: MSVR104

Tatt: R104 (TATTOO-AND-NLIS) HBR

TE MANIA EMPEROR E343<sup>PV</sup>  
**Sire: CSWK428 MURDEDUKE KICKING K428<sup>PV</sup>**  
 MURDEDUKE E175<sup>PV</sup>

COONAMBLE HECTOR H249<sup>SV</sup>  
**Dam: NMMN190 MILLAH MURRAH ELA N190<sup>PV</sup>**  
 MILLAH MURRAH ELA L196<sup>PV</sup>

Radical R104 We think this bull is great! Such functional genetics here combining Murdeduke Kicking and Coonamble Hector H249. Top calving ease followed with growth, fertility, feed efficiency and fat cover. Awesome!

Selection Index			
ABI	DOM	GRN	GRS
\$123	\$114	\$127	\$121

**TACE** Mid January 2021 TransTasman Angus Cattle Evaluation

Dir	Dtr	GL	BW	200	400	600	MCW	Milk	SS	DTC	CWT	EMA	RIB	P8	RBY	IMF	NFI-F	Doc
+4.6	+6.5	-6.2	+3.0	+45	+85	+115	+93	+15	+2.8	-4.8	+64	+4.6	+0.9	-0.8	+0.8	+1.4	-0.08	-
51%	42%	68%	72%	63%	63%	63%	62%	57%	60%	43%	62%	60%	62%	61%	61%	60%	55%	-

AMFU,CAFU,DDFU,NHFU **Traits Observed: BWT**



**Lot 15 MARYVALE ROYALTY R111<sup>#</sup>** DOB: 03/02/2020  
Ident: MSVR111

Tatt: R111 (TATTOO-AND-NLIS) HBR

ASCOT HALLMARK H147<sup>PV</sup>  
**Sire: NMMN326 MILLAH MURRAH HALLMARK N326<sup>PV</sup>**  
 MILLAH MURRAH BEAC K250<sup>SV</sup>

MILLAH MURRAH LOCH UP L133<sup>PV</sup>  
**Dam: NMMN227 MILLAH MURRAH FLOWER N227<sup>PV</sup>**  
 MILLAH MURRAH FLOWER L247<sup>SV</sup>

Royalty R111 Has a pedigree full of Millah Murrah royalty including Hallmark, Reality, Loch Up and Theo. The boys love this bull as he is so quiet and easy to handle. Top growth, fertility and fat cover here.

Selection Index			
ABI	DOM	GRN	GRS
\$123	\$108	\$130	\$119

**TACE** Mid January 2021 TransTasman Angus Cattle Evaluation

Dir	Dtr	GL	BW	200	400	600	MCW	Milk	SS	DTC	CWT	EMA	RIB	P8	RBY	IMF	NFI-F	Doc
+2.0	+3.6	-4.2	+5.8	+52	+92	+127	+111	+17	+2.8	-5.6	+67	+2.4	+0.9	+0.1	-0.5	+1.9	+0.17	-
44%	38%	62%	57%	52%	52%	52%	51%	47%	48%	35%	50%	49%	53%	50%	52%	49%	44%	-

AMFU,CAFU,DDFU,NHFU **Traits Observed: BWT**



**Lot 16 MARYVALE RALPH R113<sup>#</sup>** DOB: 04/02/2020  
Ident: MSVR113

Tatt: R113 (TATTOO-AND-NLIS) HBR

SYDGEN EXCEED 3223<sup>PV</sup>  
**Sire: USA18170041 SYDGEN ENHANCE<sup>SV</sup>**  
 SYDGEN RITA 2618<sup>#</sup>

COONAMBLE HECTOR H249<sup>SV</sup>  
**Dam: NMMN190 MILLAH MURRAH ELA N190<sup>PV</sup>**  
 MILLAH MURRAH ELA L196<sup>PV</sup>

Ralph R113 Another heifer bull with great genetics. Combining the new and popular Enhance with the reliable Hector H249. Great profitable genetics on offer here.

Selection Index			
ABI	DOM	GRN	GRS
\$124	\$121	\$129	\$122

**TACE** Mid January 2021 TransTasman Angus Cattle Evaluation

Dir	Dtr	GL	BW	200	400	600	MCW	Milk	SS	DTC	CWT	EMA	RIB	P8	RBY	IMF	NFI-F	Doc
+3.8	+3.5	-4.8	+2.4	+50	+89	+111	+85	+14	+2.1	-3.6	+66	+7.4	-0.6	-0.9	+0.9	+2.1	-0.42	-
53%	35%	67%	71%	63%	63%	61%	58%	53%	60%	32%	57%	56%	59%	56%	56%	56%	47%	-

AMFU,CAFU,DDFU,NHFU **Traits Observed: BWT**



**Lot 17 MARYVALE ROSCO R125#** DOB: 14/03/2020  
Ident: MSVR125

Tatt: R125 (TATTOO-AND-NLIS) HBR

THOMAS UP RIVER 1614<sup>PV</sup>  
**Sire: NMML133 MILLAH MURRAH LOCH UP L133<sup>PV</sup>**  
 MILLAH MURRAH BRENDA H49<sup>SV</sup>

BOOROOMOOKA THEO T030<sup>SV</sup>  
**Dam: NMML247 MILLAH MURRAH FLOWER L247<sup>SV</sup>**  
 MILLAH MURRAH FLOWER G173<sup>PV</sup>

Rosco R125 Sired by the \$85K MM Loch Up bull out of the \$18K Theo daughter, all these bulls have calving ease genetics that grow into big frames with great milk and feed efficiency. Awesome predictable, powerful, profitable genetics.

Selection Index			
ABI	DOM	GRN	GRS
-	-	-	-

**TACE** Mid January 2021 TransTasman Angus Cattle Evaluation

Dir	Dtr	GL	BW	200	400	600	MCW	Milk	SS	DTC	CWT	EMA	RIB	P8	RBY	IMF	NFI-F	Doc	
-	-	-	-	-	-	-	-	-	-	-	-	-	-	-	-	-	-	-	-
-	-	-	-	-	-	-	-	-	-	-	-	-	-	-	-	-	-	-	-

AMFU,CAFU,DDFU,NHFU **Traits Observed: None**



**Lot 18 MARYVALE ROXBY R126#** DOB: 14/03/2020  
Ident: MSVR126

Tatt: R126 (TATTOO-AND-NLIS) HBR

THOMAS UP RIVER 1614<sup>PV</sup>  
**Sire: NMML133 MILLAH MURRAH LOCH UP L133<sup>PV</sup>**  
 MILLAH MURRAH BRENDA H49<sup>SV</sup>

BOOROOMOOKA THEO T030<sup>SV</sup>  
**Dam: NMML247 MILLAH MURRAH FLOWER L247<sup>SV</sup>**  
 MILLAH MURRAH FLOWER G173<sup>PV</sup>

Roxby R126 Sired by the \$85K MM Loch Up bull out of the \$18K Theo daughter, all these bulls have calving ease genetics that grow into big frames with great milk and feed efficiency. Awesome predictable, powerful, profitable genetics.

Selection Index			
ABI	DOM	GRN	GRS
-	-	-	-

**TACE** Mid January 2021 TransTasman Angus Cattle Evaluation

Dir	Dtr	GL	BW	200	400	600	MCW	Milk	SS	DTC	CWT	EMA	RIB	P8	RBY	IMF	NFI-F	Doc	
-	-	-	-	-	-	-	-	-	-	-	-	-	-	-	-	-	-	-	-
-	-	-	-	-	-	-	-	-	-	-	-	-	-	-	-	-	-	-	-

AMFU,CAFU,DDFU,NHFU **Traits Observed: None**



**Lot 19 MARYVALE RUFUS R134#** DOB: 22/03/2020  
Ident: MSVR134

Tatt: R134 (TATTOO-AND-NLIS) HBR

THOMAS UP RIVER 1614<sup>PV</sup>  
**Sire: NMML133 MILLAH MURRAH LOCH UP L133<sup>PV</sup>**  
 MILLAH MURRAH BRENDA H49<sup>SV</sup>

BOOROOMOOKA THEO T030<sup>SV</sup>  
**Dam: NMML247 MILLAH MURRAH FLOWER L247<sup>SV</sup>**  
 MILLAH MURRAH FLOWER G173<sup>PV</sup>

Rufus R134 Sired by the \$85K MM Loch Up bull out of the \$18K Theo daughter, all these bulls have calving ease genetics that grow into big frames with great milk and feed efficiency. Awesome predictable, powerful, profitable genetics.

Selection Index			
ABI	DOM	GRN	GRS
-	-	-	-

**TACE** Mid January 2021 TransTasman Angus Cattle Evaluation

Dir	Dtr	GL	BW	200	400	600	MCW	Milk	SS	DTC	CWT	EMA	RIB	P8	RBY	IMF	NFI-F	Doc	
-	-	-	-	-	-	-	-	-	-	-	-	-	-	-	-	-	-	-	-
-	-	-	-	-	-	-	-	-	-	-	-	-	-	-	-	-	-	-	-

AMFU,CAFU,DDFU,NHFU **Traits Observed: None**

## Angus Reference Sires



**MURDEDUKE KICKING K428**



**BEN NEVIS  
METAMORPHIC M51**



**SYDGEN ENHANCE**



**Lot 20 MARYVALE QUEST Q910 (P) (PU)** DOB: 24/02/2019  
Ident: AMSPQ910

Horn: (PU) Pure

WULFS ZANE X238Z (IMUPH238) (HP\*) (B) (PN) (AA)  
**Sire: SUMMIT BLUEPRINT M20 (HLGPM20) (HP\*) (B) (PF) (2A)**  
 SUMMIT MEADOWGRASS 2149 H39 (HLGPH39) (P) (PN) (AA)  
 RUNL STETSON 850S (IMUPB850) (2P) (HB) (PN) (AA)  
**Dam: MARYVALE KHLOE K419 (AMSPK419) (P) (B) (PU)**  
 MARYVALE FASHION SETTER 0117F (AM-SPF117) (P) (B) (PU)

Quest Q910 is a beautiful soft carcass bull with top 1% docility. He has a pedigree stacked with some of the best Limousin genetics available. Starting with top notch calving ease and excellent growth that flows into big EMA, yield and IMF. Hard to go past this bull.

Selection Index			
VTI	DOM	SRI	HSTI
-	+\$74	+\$87	+\$83

January 2021 Southern Limousin BREEDPLAN

Dir	Dtr	GL	BW	200	400	600	MCW	Milk	SS	CWT	EMA	RIB	P8	RBV	IMF	Doc
+1.5	+1.0	-5.6	+0.8	+26	+44	+51	+48	+6	+1.0	+39	+3.8	-0.2	-0.3	+1.4	+0.1	+73
40%	35%	56%	58%	55%	55%	55%	44%	39%	47%	44%	35%	42%	41%	37%	37%	54%

Colour: Apricot Traits Observed: BWT,600WT,DOC



**Lot 21 MARYVALE QUALIFY Q918 (P) (PU)** DOB: 09/04/2019  
Ident: AMSPQ918

Horn: (PU) Pure

COLE ARCHITECT 08A (IMUPA08) (HP\*) (B) (PN) (2P) (B) (PN) (AA)  
**Sire: GREENWOOD CANADIAN WAYS (IMCPC711) (2P) (B) (PN) (AA)**  
 GREENWOOD WISTERIA LANE (IMCPE40) (HP\*) (B) (PN)  
 TMF WESTWOOD 505W (IMCPE6387) (HP\*) (PN) (AA)  
**Dam: MARYVALE HOT CHOCOLATE H203 (AM-SPH203) (P) (B) (PU)**  
 MARYVALE DAY LILLY 8132D (AMSPD8132) (P) (B) (PU)

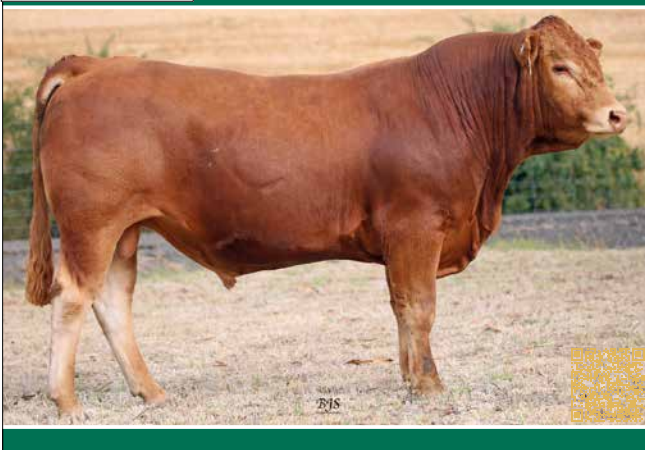
Qualify Q918 has awesome short gestation and moderate birth weight. From this he has top 5% growth and carcass weight, great fat cover and dollar indexes. A free moving bull with the ability to cover a lot of country easily. SC38cm.

Selection Index			
VTI	DOM	SRI	HSTI
-	+\$60	+\$95	+\$114

January 2021 Southern Limousin BREEDPLAN

Dir	Dtr	GL	BW	200	400	600	MCW	Milk	SS	CWT	EMA	RIB	P8	RBV	IMF	Doc
+0.0	-1.6	-6.1	+1.4	+30	+53	+74	+73	+12	+1.6	+46	-	+0.1	+0.2	+1.0	-	+39
38%	33%	71%	69%	62%	64%	61%	44%	36%	38%	43%	-	28%	28%	25%	-	53%

Colour: Apricot Traits Observed: GL,BWT,400WT,DOC



**Lot 22 MARYVALE QUANTIC Q925 (2P) (PF)** DOB: 18/02/2019  
Ident: AMSPQ925

Horn: (PF) Pure

BIRUBI SIR GOTHIC G211 (MATPG211) (P) (PF) (AA)  
**Sire: BIRUBI KAISER K140 (MATPK140) (HP\*) (R) (PF) (AC)**  
 DONNA VALLEY P. FINNA-CELESTE (MGWPF797) (P) (PF)  
 TMF WESTWOOD 505W (IMCPE6387) (HP\*) (PN) (AA)  
**Dam: MARYVALE JESSICA J309 (AMSPJ309) (2P) (PF)**  
 MARYVALE CURACAO 7057C (AMSPC7057) (HP\*) (B) (PN)

Quantic Q925 has some of the most predictable genetics we have available, in his pedigree. Kaiser, Westwood and Xceed produce cattle that get the job done quickly, accurately and trouble free. SC38cm.

Selection Index			
VTI	DOM	SRI	HSTI
-	+\$17	+\$49	+\$81

January 2021 Southern Limousin BREEDPLAN

Dir	Dtr	GL	BW	200	400	600	MCW	Milk	SS	CWT	EMA	RIB	P8	RBV	IMF	Doc
-3.0	-1.7	-3.2	+2.2	+24	+43	+62	+70	+11	+0.8	+36	+1.6	-0.4	-0.7	+1.0	-0.1	+54
44%	40%	50%	60%	59%	63%	58%	49%	45%	50%	48%	35%	40%	40%	36%	34%	56%

Colour: Apricot Traits Observed: BWT,400WT



**Lot 23 MARYVALE QUILLON Q928 (P) (PU)** DOB: 24/04/2019  
Ident: AMSPQ928

Horn: (PU) Pure

BIRUBI SIR GOTHIC G211 (MATPG211) (P) (PF) (AA)  
**Sire: BIRUBI KAISER K140 (MATPK140) (HP\*) (R) (PF) (AC)**  
 DONNA VALLEY P. FINNA-CELESTE (MGWPF797) (P) (PF)  
 RPY PAYNES DERBY 46Z (IMCPH46) (2P) (B) (PN) (AA)  
**Dam: MARYVALE LILLIAN L585 (AMSPL585) (P) (PU)**  
 MARYVALE ELABORATE 9357E (AMSP9357) (PU)

Quillon Q928 is a super long, smooth and meaty bull with plenty of growth and strength. A great combination of Kaiser and Derby for cattle with trouble free function available here. SC38cm.

Selection Index			
VTI	DOM	SRI	HSTI
-	+\$26	+\$54	+\$91

January 2021 Southern Limousin BREEDPLAN

Dir	Dtr	GL	BW	200	400	600	MCW	Milk	SS	CWT	EMA	RIB	P8	RBV	IMF	Doc
+0.2	+1.1	-3.7	+2.5	+26	+50	+67	+77	+12	+1.5	+38	+1.2	-0.4	-0.7	+0.9	+0.0	+37
42%	37%	52%	70%	65%	68%	63%	50%	41%	49%	49%	34%	39%	38%	35%	33%	58%

Colour: Apricot Traits Observed: BWT,400WT,DOC



**Lot 24 MARYVALE QUALIFIER Q940 (P) (PF)** DOB: 01/05/2019  
Ident: AMSQP940

Horn: (PF) Pure

BIRUBI SIR GOTHIC G211 (MATPG211) (P) (PF) (AA)  
**Sire: BIRUBI KAISER K140 (MATPK140) (HP\*) (R) (PF) (AC)**  
 DONNA VALLEY P. FINNA-CELESTE (MGWPF797) (P) (PF)

REFSTRUP TABIAS (IMDFB291) (PN) (AA)  
**Dam: MARYVALE DESIGNER 8129D (AMSPD8129) (S) (PN)**  
 MARYVALE XPRESSIVE 3 (AMSPX9801) (P) (R) (PU)

Qualifier Q940 has more fertility, growth and soundness than we can expect to find in most bulls. Strong, trouble free cattle is the answer, available for top producers right here. SC39cm.

Selection Index			
VTI	DOM	SRI	HSTI
-	+\$11	+\$47	+\$88

January 2021 Southern Limousin BREEDPLAN

Dir	Dtr	GL	BW	200	400	600	MCW	Milk	SS	CWT	EMA	RIB	P8	RBV	IMF	Doc
-2.8	+1.1	-4.6	+3.4	+26	+47	+71	+80	+10	+1.9	+29	-0.3	-0.2	-0.7	+0.4	+0.0	+46
46%	42%	54%	70%	66%	69%	65%	54%	49%	52%	52%	37%	42%	41%	38%	35%	60%

**Colour:** Apricot **Traits Observed:** CE,BWT,400WT,DOC



**Lot 25 MARYVALE QUILLET Q942 (P) (PU)** DOB: 03/05/2019  
Ident: AMSQP942

Horn: (PU) Pure

BIRUBI SIR GOTHIC G211 (MATPG211) (P) (PF) (AA)  
**Sire: BIRUBI KAISER K140 (MATPK140) (HP\*) (R) (PF) (AC)**  
 DONNA VALLEY P. FINNA-CELESTE (MGWPF797) (P) (PF)

TMF WESTWOOD 505W (IMCPE6387) (HP\*) (PN) (AA)  
**Dam: MARYVALE MELLOW M604 (AMSPM604) (P) (PU)**  
 MARYVALE HERON H268 (AMSPH268) (P) (PU)

Quillet Q942 is another consistent example of Kaiser and Westwood producing sound, strong cattle with the powerful growth and quality we strive for.

Selection Index			
VTI	DOM	SRI	HSTI
-	+\$20	+\$56	+\$93

January 2021 Southern Limousin BREEDPLAN

Dir	Dtr	GL	BW	200	400	600	MCW	Milk	SS	CWT	EMA	RIB	P8	RBV	IMF	Doc
-3.2	+0.0	-4.0	+3.1	+30	+53	+74	+85	+12	+1.1	+40	+1.7	-0.5	-1.0	+1.2	-0.2	+47
43%	38%	55%	69%	65%	67%	63%	50%	43%	50%	49%	35%	40%	40%	36%	34%	58%

**Colour:** Apricot **Traits Observed:** CE,BWT,400WT,DOC



**Lot 26 MARYVALE QUILLAN Q937 (P) (B) (PU)** DOB: 04/05/2019  
Ident: AMSQP937

Horn: (PU) Pure

TMF TANKARD 206T (PEDPC9773) (P) (PU) (PN) (AA)  
**Sire: TMF WESTWOOD 505W (IMCPE6387) (HP\*) (R) (PF) (AC)**  
 TOP MEADOW 902P (PEDPZ9772) (P) (PU)

MANDAYEN RAVEN TIME E1492 (MDNPE1492) (P) (B) (PN)  
**Dam: MARYVALE HEPBURN H220 (AMSPH220) (P) (B) (PU)**  
 MARYVALE DRIPPING GOLD 8147D (AMSPD8147) (S) (PU)

Quillan Q937 is sired by the breed topping Westwood that we find unbeatable. He has the added bonus of being black and having a great data profile. When semen testing he was described as a hurricane with super fertility. A completely great bull.

Selection Index			
VTI	DOM	SRI	HSTI
-	+\$38	+\$68	+\$92

January 2021 Southern Limousin BREEDPLAN

Dir	Dtr	GL	BW	200	400	600	MCW	Milk	SS	CWT	EMA	RIB	P8	RBV	IMF	Doc
+0.5	+1.0	-4.4	+1.0	+26	+42	+60	+58	+16	+1.3	+42	+3.3	-0.1	-0.1	+1.1	-0.1	+59
49%	46%	62%	68%	64%	65%	63%	52%	54%	53%	51%	38%	42%	41%	37%	36%	60%

**Colour:** Black **Traits Observed:** BWT,400WT,DOC



**Lot 27 MARYVALE QUILPIE Q965 (P) (B) (PU)** DOB: 10/06/2019  
Ident: AMSQP965

Horn: (PU) Pure

MARYVALE LEGEND L510 (AMSPL510) (HP\*) (B) (PF)  
**Sire: MARYVALE NIGHTHAWK N761 (AMSPN761) (P) (B) (PU)**  
 MARYVALE HAITIAN H209 (AMSPH209) (P) (B) (PU)

MARYVALE GRANGE G207 (AMSPG207) (HP\*) (PN)  
**Dam: MARYVALE KATE K440 (AMSPK440) (HP\*) (B) (PN)**  
 MARYVALE BLACK ICE (AMSPB6113) (HP\*) (HB\*) (PU)

Quilpie Q965 is one of the best type black limo bulls we have bred. Great calving ease for all traits, great growth, fertility and carcass wt making more profitable cattle. SC38cm.

Selection Index			
VTI	DOM	SRI	HSTI
-	+\$47	+\$71	+\$88

January 2021 Southern Limousin BREEDPLAN

Dir	Dtr	GL	BW	200	400	600	MCW	Milk	SS	CWT	EMA	RIB	P8	RBV	IMF	Doc
+1.4	+2.8	-3.8	+1.1	+24	+42	+56	+59	+11	+1.3	+41	-	-	-	-	-	+22
33%	29%	39%	65%	59%	62%	59%	43%	36%	34%	43%	-	-	-	-	-	47%

**Colour:** Black **Traits Observed:** CE,BWT,400WT,DOC



**Lot 28 MARYVALE QUINDLE Q977 (P) (B) (PU)** DOB: 28/07/2019  
Ident: AMSQP977

Horn: (PU) Pure

TMF WESTWOOD 505W (IMCPE6387) (HP\*) (PN) (AA)

**Sire: MARYVALE HAMMERTIME H300 (AMSPH300) (P) (B) (PN)**  
MARYVALE DAY LILLY 8132D (AMSPD8132) (P) (B) (PU)

GOLDSTEIN PARK WESTWOOD K32 (GSNPK32) (2P) (B) (PF)

**Dam: MARYVALE NOOSA N722 (AMSPN722) (P) (B) (PU)**  
MARYVALE KITSCH K448 (AMSPK448) (P) (B) (PU)

Quindle Q977 provides the opportunity for unbelievable ease of calving. Following through with great growth, fertility, carcass and docility. Resulting in top dollar indexes.

Selection Index			
VTI	DOM	SRI	HSTI
-	+\$60	+\$85	+\$101

January 2021 Southern Limousin BREEDPLAN

Dir	Dtr	GL	BW	200	400	600	MCW	Milk	SS	CWT	EMA	RIB	P8	RBV	IMF	Doc
+5.6	+1.7	-6.7	-0.4	+22	+42	+57	+59	+10	+1.4	+43	+2.7	+0.0	+0.1	+0.8	+0.1	+68
42%	37%	70%	67%	60%	58%	59%	45%	40%	41%	42%	26%	30%	29%	27%	25%	52%

Colour: Black Traits Observed: GL,CE,BWT,DOC



**Lot 29 MARYVALE QUOTE Q979 (2P) (B) (PF)** DOB: 29/07/2019  
Ident: AMSQP979

Horn: (PF) Pure

WULFS ZIPLOCK N922Z (IMUP922Z) (HP\*) (PU) (PN) (AA)

**Sire: LFLC DENVER 857D (IMUP857D) (HP\*) (HB\*) (PN) (AA)**  
LFLC ANNABELLE 857A (PEDP857A) (P) (B) (PU)

GOLDSTEIN PARK WESTWOOD K32 (GSNPK32) (2P) (B) (PF)

**Dam: MARYVALE NESSA N723 (AMSPN723) (2P) (B) (PF)**  
MARYVALE KATE K440 (AMSPK440) (HP\*) (B) (PN)

Quote Q979 is another black heifer bull with hard to beat figures. Small calves that grow fast with valuable carcasses and top docility. Awesome dollar indexes on offer.

Selection Index			
VTI	DOM	SRI	HSTI
-	+\$67	+\$91	+\$101

January 2021 Southern Limousin BREEDPLAN

Dir	Dtr	GL	BW	200	400	600	MCW	Milk	SS	CWT	EMA	RIB	P8	RBV	IMF	Doc
+2.4	+2.8	-6.5	+1.1	+27	+47	+62	+60	+9	+1.7	+38	+2.8	+0.0	+0.0	+0.9	+0.2	+62
42%	33%	70%	68%	62%	65%	60%	43%	26%	45%	44%	29%	35%	34%	30%	31%	52%

Colour: Black Traits Observed: GL,CE,BWT,400WT,DOC



**Lot 30 MARYVALE QUESTOR Q945 (P) (PU)** DOB: 07/05/2019  
Ident: AMSQP945

Horn: (PU) Pure

BIRUBI SIR GOTHIC G211 (MATPG211) (P) (PF) (AA)

**Sire: BIRUBI KAISER K140 (MATPK140) (HP\*) (R) (PF) (AC)**  
DONNA VALLEY P. FINNA-CELESTE (MGWPF797) (P) (PF)

MARYVALE GRANGE G207 (AMSPG207) (HP\*) (PN)

**Dam: MARYVALE KAILEY K438 (AMSPK438) (P) (PU)**  
PALMDALE C046 (TJGPC46) (P) (PU)

Questor Q945 Gives you another chance to purchase some powerful, sound and consistent genetics. If even lines of quality, are what you are after, then these bulls will produce it. Breed leading growth and function. SC38cm.

Selection Index			
VTI	DOM	SRI	HSTI
-	+\$18	+\$54	+\$92

January 2021 Southern Limousin BREEDPLAN

Dir	Dtr	GL	BW	200	400	600	MCW	Milk	SS	CWT	EMA	RIB	P8	RBV	IMF	Doc
-3.8	+1.8	-2.9	+3.7	+30	+55	+77	+89	+10	+1.2	+39	+0.7	-0.4	-0.9	+0.9	-0.1	+50
42%	37%	50%	70%	65%	67%	64%	52%	43%	50%	50%	33%	38%	38%	34%	32%	57%

Colour: Apricot Traits Observed: CE,BWT,400WT,DOC



**Lot 31 MARYVALE QUIRE Q980 (P) (PU)** DOB: 30/07/2019  
Ident: AMSQP980

Horn: (PU) Pure

DVCL MR UNBELIEVABLE U03 (PEDPDVCLU03U) (HP) (R) (PU)

**Sire: B BAR SLATE 17C (IMCP17C) (HP\*) (R) (PN) (AA)**  
B BAR WHISKEY GIRL (PEDPBEA118W) (HP) (R) (PU)

BIRUBI KAISER K140 (MATPK140) (HP\*) (R) (PF) (AC)

**Dam: MARYVALE NERINE N751 (AMSPN751) (P) (PU)**  
MARYVALE JONQUIL J435 (AMSPJ435) (P) (PU)

Quire Q980 can be used on heifers whilst maintaining great growth, fertility and carcass, resulting in good dollar indexes and profit.

Selection Index			
VTI	DOM	SRI	HSTI
-	+\$55	+\$80	+\$102

January 2021 Southern Limousin BREEDPLAN

Dir	Dtr	GL	BW	200	400	600	MCW	Milk	SS	CWT	EMA	RIB	P8	RBV	IMF	Doc
+1.3	+0.7	-4.5	+1.8	+28	+53	+68	+73	+11	+1.8	+42	-	-	-	-	-	+14
36%	28%	68%	65%	58%	62%	56%	39%	25%	32%	39%	-	-	-	-	-	51%

Colour: Apricot Traits Observed: GL,CE,BWT,400WT,DOC



**Lot 32 MARYVALE QUADIC Q954 (P) (PU)** DOB: 20/05/2019  
Ident: AMSPQ954

Horn: (PU) Pure

MARYVALE HAMMERTIME H300 (AMSPH300) (P) (B) (PN)  
**Sire: MARYVALE MAMMON M602 (AMSPM602) (HP\*) (B) (PU)**  
 MARYVALE HEAVENSENT H264 (AMSPH264) (P) (B) (PU)

RLF YARDLEY 601Y (IMCPG601) (HP\*) (HB) (PN) (AA)  
**Dam: MARYVALE JETSTAR J316 (AMSPJ316) (P) (B) (PU)**  
 MARYVALE ZETA JONES (AMSPZ4705) (PU)

**Quadic Q954 is a super stylish, thick and meaty bull with impressive loin and structure. From a top Yardley cow with great docility.**

Selection Index			
VTI	DOM	SRI	HSTI
-	+\$47	+\$61	+\$74

January 2021 Southern Limousin BREEDPLAN

Dir	Dtr	GL	BW	200	400	600	MCW	Milk	SS	CWT	EMA	RIB	P8	RBV	IMF	Doc
+6.9	+1.2	-6.9	-1.1	+17	+29	+36	+43	+8	+1.2	+32	-	-	-	-	-	+55
36%	31%	55%	68%	62%	65%	61%	45%	38%	39%	45%	-	-	-	-	-	54%

**Colour: Apricot** **Traits Observed: CE,BWT,400WT,DOC**



**Lot 33 MARYVALE QUINTREX Q956 (P) (PU)** DOB: 26/05/2019  
Ident: AMSPQ956

Horn: (PU) Pure

BIRUBI KAISER K140 (MATPK140) (HP\*) (R) (PF) (AC)  
**Sire: MARYVALE NEWYORK N720 (AMSPN720) (P) (PF)**  
 MARYVALE KEIRA K415 (AMSPK415) (P) (PN)

TMF WESTWOOD 505W (IMCPE6387) (HP\*) (PN) (AA)  
**Dam: MARYVALE HAZELWOOD H237 (AMSPH237) (P) (PU)**  
 PALMDALE WOW (TJGPE43) (P) (PU)

**Quintrex Q956 is unique in the fact that he has great calving ease that is followed up with awesome growth. Milk, fertility, carcass wt, EMA, Yield and docility are also his strengths.**

Selection Index			
VTI	DOM	SRI	HSTI
-	+\$25	+\$52	+\$82

January 2021 Southern Limousin BREEDPLAN

Dir	Dtr	GL	BW	200	400	600	MCW	Milk	SS	CWT	EMA	RIB	P8	RBV	IMF	Doc
+0.8	+1.6	-4.7	+1.5	+24	+42	+58	+67	+11	+1.2	+37	+2.1	-0.5	-0.9	+1.3	-0.2	+56
37%	33%	49%	65%	60%	64%	59%	44%	41%	39%	44%	27%	30%	30%	27%	26%	48%

**Colour: Apricot** **Traits Observed: CE,BWT,400WT,DOC**



**Lot 34 MARYVALE QUIIMS Q957 (P) (PU)** DOB: 26/05/2019  
Ident: AMSPQ957

Horn: (PU) Pure

BIRUBI KAISER K140 (MATPK140) (HP\*) (R) (PF) (AC)  
**Sire: MARYVALE NEWYORK N720 (AMSPN720) (P) (PF)**  
 MARYVALE KEIRA K415 (AMSPK415) (P) (PN)

TMF WESTWOOD 505W (IMCPE6387) (HP\*) (PN) (AA)  
**Dam: MARYVALE KIARA K421 (AMSPK421) (P) (PU)**  
 PALMDALE TOPY (TJGPB48) (P) (PU)

**Quiims Q957 is a New York son who has been producing top selling calves at recent weaner sales. He has good calving ease that grows into awesome carcasses once on the ground.**

Selection Index			
VTI	DOM	SRI	HSTI
-	+\$25	+\$47	+\$63

January 2021 Southern Limousin BREEDPLAN

Dir	Dtr	GL	BW	200	400	600	MCW	Milk	SS	CWT	EMA	RIB	P8	RBV	IMF	Doc
-1.3	+1.0	-4.3	+1.2	+20	+33	+45	+48	+9	+1.1	+28	+1.5	-0.4	-0.8	+1.2	-	+59
36%	32%	49%	65%	60%	64%	60%	46%	37%	39%	45%	26%	29%	28%	26%	-	46%

**Colour: Apricot** **Traits Observed: CE,BWT,400WT,DOC**



**Lot 35 MARYVALE QUAMBY Q975 (P) (PU)** DOB: 26/07/2019  
Ident: AMSPQ975

Horn: (PU) Pure

DVCL MR UNBELIEVABLE U03 (PEDPDVCLU03U) (HP) (R) (PU)  
**Sire: B BAR SLATE 17C (IMCP17C) (HP\*) (R) (PN) (AA)**  
 B BAR WHISKEY GIRL (PEDPBEA118W) (HP) (R) (PU)

BIRUBI KAISER K140 (MATPK140) (HP\*) (R) (PF) (AC)  
**Dam: MARYVALE NARRIDY N752 (AMSPN752) (P) (PU)**  
 MARYVALE JACINTA J303 (AMSPJ303) (P) (PU)

**Quamby Q975 is a ripping classic Limousin bull that combines top calving ease with awesome growth and structure. He is super fertile and has 42cmSC. By the new Slate bull with the consistent proven bloodlines from his dam.**

Selection Index			
VTI	DOM	SRI	HSTI
-	+\$59	+\$85	+\$99

January 2021 Southern Limousin BREEDPLAN

Dir	Dtr	GL	BW	200	400	600	MCW	Milk	SS	CWT	EMA	RIB	P8	RBV	IMF	Doc
+0.6	+0.3	-5.8	+1.2	+27	+49	+64	+68	+9	+1.5	+41	-	-0.3	-	-	-	+33
36%	28%	68%	65%	58%	62%	56%	39%	26%	32%	40%	-	25%	-	-	-	51%

**Colour: Apricot** **Traits Observed: GL,CE,BWT,400WT,DOC**



**Lot 36 MARYVALE QUOLL Q981 (P) (PU)**

DOB: 30/07/2019  
Ident: AMSQP981

Horn: (PU) Pure

DVCL MR UNBELIEVABLE U03 (PEDPDVCLU03U) (HP) (R) (PU)

**Sire: B BAR SLATE 17C (IMCP17C) (HP\*) (R) (PN) (AA)**

B BAR WHISKEY GIRL (PEDPBEA118W) (HP) (R) (PU)

BIRUBI KAISER K140 (MATPK140) (HP\*) (R) (PF) (AC)

**Dam: MARYVALE NELIA N777 (AMSPN777) (P) (PU)**

MARYVALE HOT CHOCOLATE H203 (AMSPH203) (P) (B) (PU)

Quoll Q981 has the birth to growth spread that is so practical and functional. Followed up with milk, fertility and carcass weight in a complete package.

January 2021 Southern Limousin BREEDPLAN																
Dir	Dtr	GL	BW	200	400	600	MCW	Milk	SS	CWT	EMA	RIB	P8	RBY	IMF	Doc
+0.0	-0.6	-4.2	+1.2	+25	+44	+60	+64	+12	+1.3	+38	-	-	-	-	-	+49
34%	26%	68%	65%	59%	62%	56%	39%	26%	33%	40%	-	-	-	-	-	49%

Colour: Apricot **Traits Observed: GL,CE,BWT,400WT,DOC**



**Lot 37 MARYVALE REGGAE R011 (P) (B) (PU)**

DOB: 30/01/2020  
Ident: AMSPR11

Horn: (PU) Pure

WULFS XCLUSIVE 2458X (IMUPF2458) (HP\*) (B) (PN) (AC)

**Sire: SHANNALEA NAVERONE (SEKPN12) (HP\*) (B) (PN) (AC)**

GREENWOOD WISTERIA LANE (IMCPE40) (HP\*) (B) (PN)

BIRUBI KAISER K140 (MATPK140) (HP\*) (R) (PF) (AC)

**Dam: MARYVALE NEAT N753 (AMSPN753) (P) (B) (PU)**

MARYVALE JUNIOR FASHION J361 (AMSPJ361) (P) (B) (PU)

Reggae R11 would have to be the most stylish eye appealing heifer that we have bred. She is so wide and meaty, yet balanced and free moving. She has a lot of carcass champion bloodlines in her and looks that way inclined also.

January 2021 Southern Limousin BREEDPLAN																
Dir	Dtr	GL	BW	200	400	600	MCW	Milk	SS	CWT	EMA	RIB	P8	RBY	IMF	Doc
-4.9	-0.9	-2.0	+3.9	+31	+55	+78	+81	+9	+1.6	+37	-	+0.3	+0.4	-	-	-
31%	26%	37%	54%	48%	47%	47%	34%	28%	32%	32%	-	26%	26%	-	-	-

Colour: Black **Traits Observed: CE,BWT**



**Lot 38 MARYVALE RAZOO R07 (P) (B) (PF)**

DOB: 16/01/2020  
Ident: AMSPR7

Horn: (PF) Pure

WULFS XCLUSIVE 2458X (IMUPF2458) (HP\*) (B) (PN) (AC)

**Sire: SHANNALEA NAVERONE (SEKPN12) (HP\*) (B) (PN) (AC)**

GREENWOOD WISTERIA LANE (IMCPE40) (HP\*) (B) (PN)

GOLDSTEIN PARK WESTWOOD K32 (GSNPK32) (2P) (B) (PF)

**Dam: MARYVALE NASHVILLE N721 (AMSPN721) (P) (B) (PF)**

MARYVALE KATY K447 (AMSPK447) (P) (B) (PN)

Razoo R7 is a sweet and stylish black polled heifer. She has great EBV's and blood lines in her pedigree that include Harmonica, Romn Justice, Mr Jock, Stetson and Xclusive, just to name a few.

January 2021 Southern Limousin BREEDPLAN																
Dir	Dtr	GL	BW	200	400	600	MCW	Milk	SS	CWT	EMA	RIB	P8	RBY	IMF	Doc
+0.9	+0.8	-3.3	+1.5	+24	+44	+59	+63	+7	+1.7	+35	-	-	-	-	-	-
30%	25%	36%	59%	51%	48%	50%	35%	27%	29%	31%	-	-	-	-	-	-

Colour: Black **Traits Observed: CE,BWT**



**Lot 39 MARYVALE REMODEL R014 (2P) (B) (PU)**

DOB: 23/02/2020  
Ident: AMSPR14

Horn: (PU) Pure

WULFS XCLUSIVE 2458X (IMUPF2458) (HP\*) (B) (PN) (AC)

**Sire: SHANNALEA NAVERONE (SEKPN12) (HP\*) (B) (PN) (AC)**

GREENWOOD WISTERIA LANE (IMCPE40) (HP\*) (B) (PN)

TMF WESTWOOD 505W (IMCPE6387) (HP\*) (PN) (AA)

**Dam: MARYVALE KINDNESS K425 (AMSPK425) (2P) (PU)**

PALMDALE VERA (TJGPD31) (HP\*) (PU)

Remodel R14 is the most perfect black polled heifer! She is wide, deep, stylish and sound. This is not a surprise with Westwood and Ionesco on her mother's side and Wisteria Lane and Xclusive on the sire side.

January 2021 Southern Limousin BREEDPLAN																
Dir	Dtr	GL	BW	200	400	600	MCW	Milk	SS	CWT	EMA	RIB	P8	RBY	IMF	Doc
+0.5	-1.6	-3.7	+1.0	+21	+42	+57	+61	+7	+0.8	+38	-	+0.2	+0.3	+1.0	-	-
34%	30%	47%	61%	53%	52%	54%	40%	37%	35%	36%	-	28%	27%	25%	-	-

Colour: Black **Traits Observed: CE,BWT**





<b>Lot 40 MARYVALE ROXY R34 (P) (B) (PU)</b>		DOB: 26/04/2020 Ident: AMSPR34														
Horn: (PU) Pure		Roxy R34 is another super black polled heifer straight out of the mould. If consistency is important in the industry these heifers certainly have plenty of it.														
Sire: <b>SHANNALEA NAVERONE (SEKPN12) (HP*) (B) (PN) (AC)</b> GREENWOOD WISTERIA LANE (IMCPE40) (HP*) (B) (PN)		Selection Index														
Dam: <b>MARYVALE MONCHERI M638 (AMSPM638) (P) (B) (PU)</b> MARYVALE HAZELWOOD H237 (AMSPH237) (P) (PU)																
<table border="1"> <tr> <th>VTI</th> <th>DOM</th> <th>SRI</th> <th>HSTI</th> </tr> <tr> <td>-</td> <td>-</td> <td>-</td> <td>-</td> </tr> </table>		VTI	DOM	SRI	HSTI	-	-	-	-							
VTI	DOM	SRI	HSTI													
-	-	-	-													
Dir	Dtr	GL	BW	200	400	600	MCW	Milk	SS	CWT	EMA	RIB	P8	RBV	IMF	Doc
-	-	-	-	-	-	-	-	-	-	-	-	-	-	-	-	-
-	-	-	-	-	-	-	-	-	-	-	-	-	-	-	-	-
<b>Colour: Black</b>								<b>Traits Observed:</b>								



<b>Lot 41 MARYVALE REDOCHRE (P) (PU)</b>		DOB: 29/01/2020 Ident: AMSPR10														
Horn: (PU) Pure		Redochre R10 is a super soft, smart young heifer. She has a pedigree full of outstanding Limousin blood including Westwood, Arizona, Xclusive and Wisteria Lane. Fat cover over natural muscle expression is the key to success.														
Sire: <b>SHANNALEA NAVERONE (SEKPN12) (HP*) (B) (PN) (AC)</b> GREENWOOD WISTERIA LANE (IMCPE40) (HP*) (B) (PN)		Selection Index														
Dam: <b>MARYVALE MILLY M693 (AMSPM693) (P) (B) (PU)</b> MARYVALE HOT FUDGE H204 (AMSPH204) (P) (B) (PU)																
<table border="1"> <tr> <th>VTI</th> <th>DOM</th> <th>SRI</th> <th>HSTI</th> </tr> <tr> <td>-</td> <td>+\$51</td> <td>+\$83</td> <td>+\$102</td> </tr> </table>		VTI	DOM	SRI	HSTI	-	+\$51	+\$83	+\$102							
VTI	DOM	SRI	HSTI													
-	+\$51	+\$83	+\$102													
January 2021 Southern Limousin BREEDPLAN																
Dir	Dtr	GL	BW	200	400	600	MCW	Milk	SS	CWT	EMA	RIB	P8	RBV	IMF	Doc
-1.8	-	-3.6	+2.2	+28	+50	+70	+70	+10	+1.3	+40	-	-	-	-	-	-
29%	-	38%	59%	51%	48%	49%	34%	28%	32%	31%	-	-	-	-	-	-
<b>Colour: Apricot</b>								<b>Traits Observed: CE,BWT</b>								



<b>Lot 42 MARYVALE REDHOT R015 (P) (PU)</b>		DOB: 26/02/2020 Ident: AMSPR15														
Horn: (PU) Pure		Red Hot R15 is another chance to own some industry type of blood lines. All these heifers are stamped with natural thickness, but most importantly have the soft and soggy skin allowing fat cover. They are completed with free moving structures.														
Sire: <b>SHANNALEA NAVERONE (SEKPN12) (HP*) (B) (PN) (AC)</b> GREENWOOD WISTERIA LANE (IMCPE40) (HP*) (B) (PN)		Selection Index														
Dam: <b>MARYVALE MADONA M698 (AMSPM698) (P) (PU)</b> PALMDALE Y0172 (TJGPY172) (P) (R) (PU)																
<table border="1"> <tr> <th>VTI</th> <th>DOM</th> <th>SRI</th> <th>HSTI</th> </tr> <tr> <td>-</td> <td>+\$41</td> <td>+\$71</td> <td>+\$86</td> </tr> </table>		VTI	DOM	SRI	HSTI	-	+\$41	+\$71	+\$86							
VTI	DOM	SRI	HSTI													
-	+\$41	+\$71	+\$86													
January 2021 Southern Limousin BREEDPLAN																
Dir	Dtr	GL	BW	200	400	600	MCW	Milk	SS	CWT	EMA	RIB	P8	RBV	IMF	Doc
-5.9	-1.1	-1.9	+3.1	+28	+50	+69	+73	+6	+1.3	+37	-	+0.4	-	-	-	-
31%	26%	38%	59%	51%	49%	50%	35%	30%	30%	32%	-	25%	-	-	-	-
<b>Colour: Apricot</b>								<b>Traits Observed: CE,BWT</b>								



<b>Lot 43 MARYVALE RUBY R30 (P) (PU)</b>		DOB: 12/04/2020 Ident: AMSPR30														
Horn: (PU) Pure		Ruby R30 is a rare gem of genetic material! She is our first heifer by Red Oak Next Generation N29. She also has the great carcass sire in Kaiser K140 on her mother's side.														
Sire: <b>RED OAK NEXT GENERATION N29 (SCFPN29) (HP*) (PN) (AA)</b> SUMMIT MAGIC PRIZE L45 (HLGPL45) (2P) (PF) (AA)		Selection Index														
Dam: <b>MARYVALE PRESENT P835 (AMSP835) (P) (PU)</b> MARYVALE ESTEEM 9356 (AMSPE9356) (S) (PU)																
<table border="1"> <tr> <th>VTI</th> <th>DOM</th> <th>SRI</th> <th>HSTI</th> </tr> <tr> <td>-</td> <td>-</td> <td>-</td> <td>-</td> </tr> </table>		VTI	DOM	SRI	HSTI	-	-	-	-							
VTI	DOM	SRI	HSTI													
-	-	-	-													
Dir	Dtr	GL	BW	200	400	600	MCW	Milk	SS	CWT	EMA	RIB	P8	RBV	IMF	Doc
-	-	-	-	-	-	-	-	-	-	-	-	-	-	-	-	-
-	-	-	-	-	-	-	-	-	-	-	-	-	-	-	-	-
<b>Colour: Apricot</b>								<b>Traits Observed:</b>								



**Lot 44 MARYVALE PLUSH P861 (P) (PU)** DOB: 22/04/2018  
Ident: AMSPP861

Horn: (PU) Pure

TMF WESTWOOD 505W (IMCPE6387) (HP\*) (PN) (AA)  
**Sire: TMF REDWOOD 322A (IMCJP322) (HP\*) (PN) (AC)**  
 TOP MEADOW 163M (PEDPX841) (P) (PU)

WULFS XTRACTOR X233X (IMUPF233) (HP\*) (PN) (AA)  
**Dam: MARYVALE JINGLE J331 (AMSPJ331) (P) (PU)**  
 MARYVALE ZOOKY (AMSPZ4741) (P) (PU)

Plush P861 is one plush unit! Take a look at the ripping bull calf at foot here. A rare opportunity to own a TMF Redwood daughter. More consistent, functional, trouble free blood lines here, don't miss the opportunity.

Selection Index			
VTI	DOM	SRI	HSTI
-	+\$31	+\$55	+\$71

January 2021 Southern Limousin BREEDPLAN

Dir	Dtr	GL	BW	200	400	600	MCW	Milk	SS	CWT	EMA	RIB	P8	RBV	IMF	Doc
-1.1	-0.1	+0.8	+2.0	+22	+38	+53	+52	+8	+1.1	+37	+2.6	-0.5	-0.8	+1.5	-0.2	+54
39%	35%	73%	67%	63%	58%	58%	43%	40%	39%	41%	27%	30%	29%	27%	26%	49%

**Colour: Apricot** **Traits Observed: GL,BWT,200WT,DOC**



**Lot 45 MARYVALE JEMIMA J358 (P) (PU)** DOB: 25/08/2013  
Ident: AMSPJ358

Horn: (PU) Pure

TMF WESTWOOD 505W (IMCPE6387) (HP\*) (PN) (AA)  
**Sire: MARYVALE GRANGE G207 (AMSPG207) (HP\*) (PN)**  
 PALMDALE SHANTAL (TJGPA189) (P) (PU)

MARYVALE E-CLASS 9277E (AMSP9277) (P) (PU)  
**Dam: MARYVALE GRANITA G135 (AMSPG135) (P) (PU)**  
 MARYVALE EFFORTLESS DIVA 9353 (AM-SPE9353) (PU)

Jemima J358 I would describe as the perfect cow. Just the right size, very stylish and most importantly trouble free functionality. She has just had two natural bull calves 11 months apart and sells with the second one at foot. Great bloodlines in this outfit.

Selection Index			
VTI	DOM	SRI	HSTI
-	+\$30	+\$63	+\$79

January 2021 Southern Limousin BREEDPLAN

Dir	Dtr	GL	BW	200	400	600	MCW	Milk	SS	CWT	EMA	RIB	P8	RBV	IMF	Doc
-0.3	-0.4	-4.2	+1.4	+25	+34	+55	+56	+5	+1.3	+34	+2.4	-0.4	-0.7	+1.3	-0.3	+46
51%	46%	56%	74%	70%	69%	67%	51%	60%	48%	50%	28%	36%	35%	32%	28%	63%

**Colour: Apricot** **Traits Observed: CE,BWT,200WT,400WT,DOC**



**Lot 46 MARYVALE LEYLA L574 (P) (PF)** DOB: 15/07/2015  
Ident: AMSPL574

Horn: (PF) Pure

WZRK PRIMESTAR 861P (PEDPZ5504) (P) (B) (PU)  
**Sire: WZRK PRIME CUT 8012Y (IMUPG8012) (HP\*) (PN) (AA)**  
 WZRK MISS NASCAR 8012U (PEDPD183) (HP\*) (B) (PU)

TMF WESTWOOD 505W (IMCPE6387) (HP\*) (PN) (AA)  
**Dam: MARYVALE GAZELLE G116 (AMSPG116) (P) (PN)**  
 PALMDALE SHANTAL (TJGPA189) (P) (PU)

Leyla L574 has some unique genetics on offer that are not widely used in the Limousin breed. From a long line of great females sells with her current heifer calf at foot that shows how they get the job done. A rare opportunity.

Selection Index			
VTI	DOM	SRI	HSTI
-	+\$39	+\$68	+\$84

January 2021 Southern Limousin BREEDPLAN

Dir	Dtr	GL	BW	200	400	600	MCW	Milk	SS	CWT	EMA	RIB	P8	RBV	IMF	Doc
-2.7	+4.0	-4.0	+2.2	+25	+47	+64	+67	+9	+0.5	+40	+2.3	-0.7	-1.0	+1.7	-0.2	+29
49%	44%	62%	74%	70%	71%	69%	56%	58%	55%	54%	40%	48%	46%	41%	41%	65%

**Colour: Apricot** **Traits Observed: CE,BWT,200WT,400WT,DOC**



**Lot 47 MARYVALE PRIDE P864 (P) (PU)** DOB: 28/04/2018  
Ident: AMSPP864

Horn: (PU) Pure

WULFS XTRACTOR X233X (IMUPF233) (HP\*) (PN) (AA)  
**Sire: MARYVALE LEGENDARY L501 (AMSP501) (HP\*) (PN)**  
 MARYVALE HOPSCOTCH H250 (AMSPH250) (P) (PU)

TMF WESTWOOD 505W (IMCPE6387) (HP\*) (PN) (AA)  
**Dam: MARYVALE HOT CHOCOLATE H203 (AMSPH203) (P) (B) (PU)**  
 MARYVALE DAY LILLY 8132D (AMSPD8132) (P) (B) (PU)

Pride P864 is another super functional cow and calf package. She has superb birth to growth data, followed up with milk, fertility, carcass wt, EMA, yield, docility and dollar indexes. She has a ripper bull calf at foot to top it off.

Selection Index			
VTI	DOM	SRI	HSTI
-	+\$59	+\$86	+\$100

January 2021 Southern Limousin BREEDPLAN

Dir	Dtr	GL	BW	200	400	600	MCW	Milk	SS	CWT	EMA	RIB	P8	RBV	IMF	Doc
+1.9	-0.6	-5.6	+0.5	+27	+49	+65	+62	+10	+1.5	+49	+3.9	-0.8	-1.1	+2.2	-0.3	+60
41%	37%	49%	66%	63%	58%	59%	46%	44%	42%	43%	31%	35%	34%	31%	30%	51%

**Colour: Apricot** **Traits Observed: BWT,200WT,DOC**



Lot 48 MARYVALE NASHI N745 (P) (B) (PU)

DOB: 11/04/2017  
Ident: AMSPN745

Horn: (PU) Pure  
 BIRUBI SIR GOTHIC G211 (MATPG211) (P) (PF) (AA)  
**Sire: BIRUBI KAISER K140 (MATPK140) (HP\*) (R) (PF) (AC)**  
 DONNA VALLEY P. FINNA-CELESTE (MGWPF797) (P) (PF)  
 RUNL STETSON 850S (IMUPB850) (2P) (HB) (PN) (AA)  
**Dam: MARYVALE HALFMOON H202 (AMSPH202) (P) (B) (PU)**  
 PALMDALE RITZ (TJGPZ12) (P) (B) (PU)

Nashi N745 is one of two black Kaiser females we have, both are exceptional. She has great function and figures along with a black polled heifer calf that sells with her. Some unique bloodlines here, with a black coat.

Selection Index			
VTI	DOM	SRI	HSTI
-	+\$29	+\$52	+\$83

January 2021 Southern Limousin BREEDPLAN

Dir	Dtr	GL	BW	200	400	600	MCW	Milk	SS	CWT	EMA	RIB	P8	RBV	IMF	Doc
+3.0	+3.1	-4.6	+1.5	+24	+42	+55	+69	+10	+1.2	+34	+1.0	-0.2	-0.4	+0.5	+0.0	+47
45%	40%	57%	70%	66%	63%	62%	51%	45%	52%	47%	38%	43%	43%	39%	37%	58%

Colour: Black Traits Observed: CE, BWT, 200WT, DOC

# Nutrien Livestock™

## Energise your Auction

### Your S.A. Breeding Stock Specialists

Gordon Wood 0408 813 215  
 Richard Miller 0428 849 327  
 Leo Redden 0408 806 021



NutrienAgSolutions.com.au



## EXPLANATION OF THE SUFFIXES TO ANIMAL NAMES IN THIS CATALOGUE

**Horn Status:** (HP\*) Homozygous Polled by DNA test (which has an accuracy of 92%), (HP) Homozygous Polled by progeny test, (2P) Homozygous Polled by Pedigree, (P) Polled, (S) Scurred.

**Colour:** (HB) DNA tested Homozygous Black, (2B) Homozygous Black by pedigree, (B) Black, (R) Red (not Apricot)

**Protoporphyrin Status:** (PN) Proto Normal, (PF) Proto free by pedigree, (PC) the animal is a carrier of the abnormal gene for Protoporphyrin, (PS) Proto Suspect (parent of diseased animal), (PU) the animal has not been tested for Protoporphyrin or have parents which have been tested normal or are free by pedigree.

**Homozygous:** Is the term where an animal has two copies of the particular gene (tested or pedigree) for a trait (colour, polled). AN example is Homozygous Polled where all progeny will be polled from that particular animal or Homozygous Black where all progeny will be black.

**F94L:** (AA) 2 copies, (AC) 1 copy, (2A) 2 copies by pedigree, (CC) no copies.

## EXPLANATION OF ESTIMATED BREEDING VALUES

An Estimated Breeding Value (EBV) is an estimate of the genetic merit of that animal for each trait measured.

EBVs are provided for the following traits:

**Calving Ease Direct:** estimates the differences in the ability of a sire's calves to be born unassisted from a 2-year-old heifer.

**Gestation Length:** ranks sires for the time between conception and the birth of a calf. Shorter gestation is indicated by negative EBVs and longer by positive EBVs.

**Birth Weight:** indicates the genetic potential for birth weight. Positive EBVs indicate higher birth weights and negative EBVs indicate lower birth weights of progeny.

**200, 400 & 600 Day Weight:** give us an estimation of the animal's genetic potential for growth.

**Mature Cow Weight:** estimates differences between animals in live weights of cows at 5 years of age.

**Milk:** a key component of fast growth to weaning is the dam's maternal performance. A bull with a high milk EBV should produce daughters which milk well.

**Scrotal Size:** indicates whether the bull will produce sons with above average or below average scrotal sizes.

**Carcase Weight:** ranks animals for carcass weight.

**Eye Muscle Area:** ranks animals for eye muscle area measured at the 12th rib on a 300kg carcass.

**Rib Fat:** ranks animals for rib fat depth at the 12th rib on a 300kg carcass.

**Rump Fat:** ranks animals for fat depth at the p8 site on the rump on a 300kg carcass.

**Intra Muscular Fat:** ranks animals for the percentage of intramuscular fat at the 12th rib of a 300kg carcass.

**Docility:** is expressed as the increase or decrease in the percentage of progeny that will be scored as docile (score 1 or 2). Positive EBVs indicate a higher proportion of progeny that will be scored as docile and negative EBVs indicate a lower percentage of progeny being scored as docile.

**Comparing EBVs:** The EBVs for Limousins cannot be compared with EBVs for animal of other breeds. They should be compared with the current average EBV for the Limousin breed shown below.

Breed Average EBVs for 2019 Born Calves														
CED	GL	BWt	200	400	600	MC	MLK	SS	CWT	EMA	RIB	RMP	IMF	DOC
+0.4	-2.0	+1.6	+20	+34	+47	+48	+7	+1.0	+29	+1.7	+0.0	-0.2	+0.0	+41

**Accuracies:** Accuracies are presented with each EBV and give an indication of the amount of information that has been used in the calculation of that EBV. The higher the accuracy the lower the likelihood of change in the animal's EBV as more information is analysed for that animal and its relatives.

**Disclaimer:** The Estimated Breeding Values (EBVs) contained within this sale catalogue were compiled by the Agricultural Business Research Institute (ABRI) from the data supplied by breeders. Neither the Australian Limousin Breeders' Society or ABRI oversee or audit the collection of this data.

Health Maryvale is JBAS8 Accredited under the BJD Market Assurance Program. EU accredited. All bulls have been given selenium, fertility tested, vaccinated twice with 7 in 1, and have also been vaccinated against vibriosis and pesti-virus.

**Please note:** Whilst every care has been taken to ensure that all of the details presented in this catalogue are accurate and correct we cannot guarantee that the content is free of any errors or omissions.



# Angus Cattle Evaluation Table

## EBV Quick Reference for 2021 Maryvale "Power in the Pedigree" Bull Sale

Animal Ident	Calving Ease		Birth		Growth				Fertility				Carcase			Other			Selection Indexes				
	CED	CEM	GL	BW	200	400	600	MCW	Milk	SS	DC	CWT	EMA	Rib	Rump	RBY	IMF	NFI-F	Doc	ABI	DOM	GRN	GRS
1 MSVQ83	+4.2	+4.6	-5.6	+4.6	+45	+83	+109	+96	+14	+2.2	-6.9	+56	+4.0	+2.0	+1.1	-0.4	+1.9	+0.43	+13	\$122	\$111	\$128	\$118
2 MSVQ88	+4.6	+7.6	-5.7	+2.2	+45	+82	+107	+81	+22	+2.1	-5.2	+58	+7.4	+1.2	+1.6	+0.2	+1.1	+0.27	-16	\$116	\$112	\$109	\$119
3 MSVQ89	-3.3	+0.1	-4.5	+6.3	+59	+104	+135	+119	+13	+1.9	-4.8	+70	+7.2	-0.8	-0.6	+0.9	+1.5	-0.57	+24	\$129	\$119	\$135	\$127
4 MSVQ92	+3.9	+6.1	-3.1	+5.3	+61	+113	+149	+146	+19	+3.4	-5.7	+85	+3.9	-0.7	-1.1	+0.2	+2.1	+0.00	+4	\$147	\$129	\$164	\$139
5 MSVQ95	+2.9	+5.7	-3.0	+5.7	+62	+114	+151	+148	+18	+3.4	-5.7	+86	+3.9	-0.8	-1.2	+0.2	+2.1	-0.01	+4	\$147	\$128	\$165	\$139
6 MSVQ96	-1.6	+1.5	-5.9	+7.0	+51	+92	+126	+121	+14	+3.0	-5.7	+68	+3.5	+0.1	-0.1	+0.4	+1.8	+0.17	+17	\$123	\$109	\$134	\$118
7 MSVQ101	+6.2	+6.0	-7.1	+5.3	+58	+106	+140	+131	+19	+3.0	-3.8	+77	+2.8	-0.5	-1.1	+0.2	+1.8	-0.20	+18	\$132	\$121	\$142	\$128
8 MSVQ110	+7.1	+7.0	-5.9	+4.7	+53	+95	+123	+103	+21	+2.8	-5.9	+72	+6.4	+0.4	-0.3	+0.4	+2.2	+0.30	+21	\$137	\$124	\$148	\$131
9 MSVQ111	-1.2	-0.5	-4.6	+5.1	+49	+89	+121	+108	+16	+3.1	-7.8	+65	+4.9	+0.5	+0.5	+0.5	+0.7	-0.17	+11	\$119	\$107	\$118	\$118
10 MSVQ114	+6.7	+6.8	-5.9	+4.6	+53	+94	+122	+102	+22	+2.8	-5.9	+71	+6.4	+0.4	-0.2	+0.4	+2.2	+0.30	+21	\$136	\$123	\$146	\$130
11 MSVR101	+7.8	+7.9	-6.8	+1.8	+42	+81	+108	+84	+16	+2.7	-4.8	+61	+4.6	+1.1	-0.6	+0.7	+1.4	-0.03	-	\$119	\$113	\$121	\$118
12 MSVR102	+6.8	+1.8	-4.8	+2.8	+50	+84	+111	+91	+11	+1.0	-3.7	+65	+9.4	+0.9	+0.1	+0.8	+1.3	-0.06	-	\$119	\$114	\$115	\$121
13 MSVR103	+5.5	+4.6	-4.0	+4.0	+48	+87	+117	+91	+21	+2.3	-3.8	+64	+3.1	+0.0	-0.8	-0.2	+1.7	-0.05	-	\$112	\$107	\$114	\$112
14 MSVR104	+4.6	+6.5	-6.2	+3.0	+45	+85	+115	+93	+15	+2.8	-4.8	+64	+4.6	+0.9	-0.8	+0.8	+1.4	-0.08	-	\$123	\$114	\$127	\$121
15 MSVR111	+2.0	+3.6	-4.2	+5.8	+52	+92	+127	+111	+17	+2.8	-5.6	+67	+2.4	+0.9	+0.1	-0.5	+1.9	+0.17	-	\$123	\$108	\$130	\$119
16 MSVR113	+3.8	+3.5	-4.8	+2.4	+50	+89	+111	+85	+14	+2.1	-3.6	+66	+7.4	-0.6	-0.9	+0.9	+2.1	-0.42	-	\$124	\$121	\$129	\$122
17 MSVR125	-	-	-	-	-	-	-	-	-	-	-	-	-	-	-	-	-	-	-	-	-	-	-
18 MSVR126	-	-	-	-	-	-	-	-	-	-	-	-	-	-	-	-	-	-	-	-	-	-	-
19 MSVR134	-	-	-	-	-	-	-	-	-	-	-	-	-	-	-	-	-	-	-	-	-	-	-
	CED	CEM	GL	BW	200	400	600	MCW	Milk	SS	DC	CWT	EMA	Rib	Rump	RBY	IMF	NFI-F	Doc	ABI	DOM	GRN	GRS
	+2.0	+2.6	-4.5	+4.2	+48	+87	+114	+99	+17	+2.0	-4.7	+65	+6.0	-0.1	-0.4	+0.5	+2.0	+0.18	+6	+120	+112	+127	+116

## DISCLAIMER AND PRIVACY INFORMATION

### Attention Buyer

Animal details included in this catalogue, including but not limited to pedigree, DNA information, Estimated Breeding Values (EBVs) and Index values, are based on information provided by the breeder or owner of the animal. Whilst all reasonable care has been taken to ensure that the information provided in this catalogue was correct at the time of publication, Angus Australia will assume no responsibility for the accuracy or completeness of the information, nor for the outcome (including consequential loss) of any action taken based on this information.

### Parent Verification Suffixes

The animals listed within this catalogue including its pedigree, are displaying a Parent Verification Suffix which indicates the DNA parent verification status that has been conducted on the animal. The Parent Verification Suffixes that will appear at the end of each animal's name.

The suffix displayed at the end of each animal's name indicates the DNA parentage verification that has been conducted by Angus Australia.

PV : both parents have been verified by DNA.

SV : the sire has been verified by DNA.

DV : the dam has been verified by DNA.

# : DNA verification has not been conducted.

E : DNA verification has identified that the sire and/or dam may possibly be incorrect, but this cannot be confirmed conclusively.

# Bull Management & Taking Delivery of your New Bull



## Taking Delivery of your New Bull

To help your new bull or bulls settle into their new home as quickly as possible, the following points may be of some help.

- All Maryvale bulls have been run in large mobs most of their lives, so they've always had plenty of mates around, and have "never" been alone.
- It's a good idea to **have some of your own cattle in the yards** when your new bull/s arrive, a handful of steers, or PTIC cows or even an old bull; just something to keep them company, whilst they survey their new surroundings.
- At Maryvale, we handle our cattle quietly and confidently, we always show our cattle respect, and our cattle respect us. We generally use a motorbikes to yard and handle the bulls. The bulls have not been handled with horses or dogs.
- Handle your new bull/s quietly and with respect and he'll settle into his new home well, and will be easy to handle whenever the need arises.

## Bull Management

Maryvale would like to make some suggestions to assist your newly purchased bull to settle into his new environment and also provide some general bull management tips.

### SETTLING IN:

- The majority of bulls have been running in a large mob.
- Once unloaded, ensure he has company (eg cow or steer) and plenty of food in front of him, until he is able to be placed into his mob.
- Don't box bulls up too much – the majority of breakdowns are caused in the bull paddock when new bulls are directly added to an existing group of bulls.
- Be aware that it is a new environment to them and some time in the yards may be required.
- Remember the pecking order scenario with other bulls – the newest addition may receive a hard time for a little while. Perhaps run bulls alongside each other for a while before running them together.
- They are used to being treated in a gentle manner and will respond accordingly and should be treated with respect and kindness.

### JOINING TIME

- All bulls should be serving ability tested each year to ensure they are sound, prior to going out for mating.
- Once they are out working, please check them regularly to make sure they have not had a breakdown or moved paddocks etc. This practice is essential!
- Always put a back up bull in for a couple of weeks in single mating situations to cover yourself against bull failure.
- Don't mate bulls with horns and polled/dehorned bulls together. Single mating is preferred. If multiple joining, put in bulls that have been together prior to joining and ensure they are roughly the same age, weight, and size.



### AFTER JOINING

- Try and split bulls up, particularly if you have a large number of bulls. If finding suitable paddocks is a problem, consider running mature bulls with sheep to allow this split up.
- After taking them out of their joining mobs, provide plenty of feed in front of them. This will ensure minimum fighting.

### DELIVERY

**Matt Vogt 0407 959 837** will work with you on your purchases to arrange suitable and safe delivery wherever in Australia or the world you may be.



Videos of all lots at [www.maryvalestock.com.au](http://www.maryvalestock.com.au)

