



# CLAREMONT ANGUS



**ON PROPERTY SALE**

Friday 19th February 2021 at 1.00pm



# CLAREMONT ANGUS

2020 Mount Gambier Show

Reserve Champion



**CLAREMONT BLACKS Q9185 (APR)**

Sire: Claremont Blacks N798(APR)(AI)

Dam: Claremont Blacks Sam G109(APR)

## Show Winner

**CLAREMONT BLACKS Quent Q9185 was Reserve Champion Steer on hoof at Mt Gambier Show 2020 Carcase Competition.**

He was born on 29/3/2019 and weighed a massive 684kg at the Show!!

**HUGE Thank you to Grant High School** for the preparation and presentation of this steer. It is important to note that most schools could not go to Royal Shows due to Covid 19 and Mt Gambier Show was the only live show in 2020.

## CLAREMONT ANGUS ON PROPERTY SALE

**Offering:**

**60 APR Angus Bulls March/April 2019 drop**

(All Sale bulls free of genetic birth defects)

**Friday 19th February 2021 at 1.00pm**

On property sale

At **Claremont**, 352 Harris Road, Woolsthorpe, Victoria 3276



### AGENTS



Clayton Horspole, Auctioneer

Mobile: 0428 931 369

219 Manifold Street Camperdown Vic 3260

Phone: 03 5593 2288 Fax: 03 5593 2299

Email: browbottom@charlesstewart.com.au

### AGENTS



LIVESTOCK & REAL ESTATE

62 Thompson Street, Hamilton 03 5571 1404

[sglrealestate.com.au](http://sglrealestate.com.au)

Blair O'Toole 0458 690 008

### CLAREMONT PRINCIPALS

Graeme & Liz Glasgow

Claremont

Woolsthorpe VIC 3276

Phone: 03 5569 2243 Mobile: 0427 692 243

Email: claremont@aussiebroadband.com.au

View sale lots via video link on our website:  
[www.claremontangus.com.au](http://www.claremontangus.com.au)

3% Rebate to outside agents registering their clients in writing by the working day prior to sale day. The agent must accompany buyer on sale day and settle for clients within 7 days.



## Sale Conditions:

We are pleased to offer our bulls in the same format as last year. Our sale will be conducted as an auction but not through a bull ring. The bulls will remain in their pens. The sale will be conducted in a shed close by. To aid you in purchasing the bulls, there will be a large screen inside to view the bulls. This year there will be a moving video of each lot. Each bull will be shown on the screen, in lot order and auctioned. More time in viewing the cattle before the sale commences is highly recommended.

We have done this for two reasons: Occupational, Health and Safety issues and time involved for preparation of sale. We also think it is less stressful on the bulls. We think this is the way of the future. Please feel free to offer your opinion on this new selling format over a drink after the sale.

## Bull Health:

All bulls have been vaccinated with 7 in 1, Vibrovax, Pestiguard and drenched with Dectomax prior to sale day. We recommend a booster of Vibrovax and semen testing prior to joining each season.

## History:

Angus cattle were first introduced to *Claremont* in 1940 with the purchase of 40 heifers from the Kahlua Stud. New bloodlines were added with the purchase of bulls from the annual Angus sales at Wodonga. In the late 1960's it was decided to breed our own bulls from our own specially selected cows.

This meant we could breed Angus cattle with their own stamp and particular style, unique to *Claremont*. With vast improvement in AI techniques and astute blending of worldwide genetics, we believe each new drop of calves is better than the last.

Our aim for the future is a blend of muscle, structure and growth in a consistent package year in year out.

## Inspection of Cattle:

Bulls can be viewed on the day of the sale, or prior inspection by arrangement.

## Delivery:

Free delivery for the first 100km's radius from Claremont. To be coordinated immediately after the sale, and be trucked directly from the property.

## Insurance:

All cattle are at the purchaser's risk from the fall of the hammer. We recommend all cattle be insured.

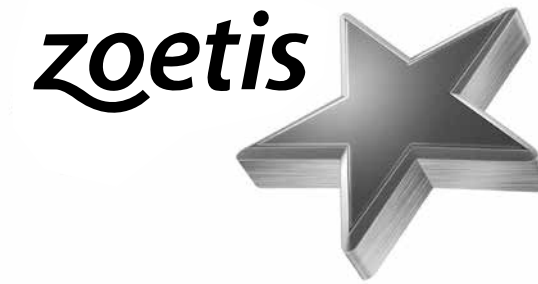
## 12 Month Guarantee & Fertility:

As with any species, fertility can be a problem. This is why Claremont Angus semen test ALL sale bulls, this testing was done on the 5th February 2021. Bulls are examined by Nationwide Artificial Breeders Pty Ltd for erection abnormalities and satisfactory sperm count specifications. The visual test identifies penile warts, hair rings, injuries and penile frenulums by undergoing a physical examination of external genitalia and conformation. The crush side semen test involves qualified analysis of spermatozoa for motility, concentration, morphology and semen infections such as seminal vesiculitis. This information provides testicular and epididymal function which helps predict the potential fertility of the bull. Only bulls that pass this strict testing regime are certified and make the sale listing.

This testing was done by Drew Pickford from Nationwide Artificial Breeders. Buyers shall receive proof of fertility of each purchased bull after the sale.

In the unlikely event of a bull proving to be infertile or incapable of natural service the vendor will credit the purchase price to be used at the next sale, less the salvage value of the bull provided the problem is not caused by injury or disease contracted since taking delivery.

Any claim must be accompanied by a relevant veterinary certificate.



## STUD STOCK BUYER

**Claremont** aim to maximise the reproductive integrity and health of their stud stock by adopting the Zoetis STAR Program - this is **Steps Taken Against Reproductive disease.**

**Each Zoetis STAR certified animal bull in this catalogue has been**

- Tested to show that they are not Bovine Viral Diarrhoea (BVDV) Persistently Infected (PI) animals
- Vaccinated against BVDV to ensure they are protected to the effects of this infection
- Vaccinated against Leptospirosis, a potential reproductive and OH&S risk for cattle handlers
- Vaccinated against Vibriosis, a sexually transmitted cattle disease
- Given 2 vaccinations to ensure they have immunity established prior to leaving these premises
- Issued with a Zoetis STAR certificate - valid for 12 months

You can be confident that every step has been taken by this stud breeder **Claremont** to ensure that these animals presented for sale will not introduce preventable reproductive diseases into your heard.

Contact Zoetis for further information on

**1800 963 847**

[www.zoetis.com.au](http://www.zoetis.com.au)



# REFERENCE SIREs

Reference Sire	BALDRIDGE BEAST MODE B074 <sup>PV</sup>	USA17960722	7/02/2014	HBR
S: B A R EXT TRAVELER 205 <sup>#</sup>	S: SITZ UPWARD 307R <sup>SV</sup>			
S: C R A BEXTOR 872 5205 608 <sup>#</sup>	S: STYLES UPGRADE J59 <sup>#</sup>			
D: CRA LADY JAYE 608 498 S EASY <sup>#</sup>	D: PLAINVIEW LASSIE 71B <sup>#</sup>			
<b>S: G A R PROPHET<sup>SV</sup></b>	<b>D: BALDRIDGE ISABEL Y69<sup>#</sup></b>			
S: S S OBJECTIVE T510 0T26 <sup>#</sup>	S: BALDRIDGE KABOOM K243 KCF <sup>SV</sup>			
D: G A R OBJECTIVE 1885 <sup>#</sup>	D: BALDRIDGE ISABEL T935 <sup>#</sup>			
D: G A R 1407 NEW DESIGN 2232 <sup>#</sup>	D: BALDRIDGE ISABEL P4527 <sup>#</sup>			

January 2021 TransTasman Angus Cattle Evaluation											
TACE	CE Dir	CE Dtrs	Gest Lgth	Birth Wt.	200 Wt.	400 Wt.	600 Wt.	MC Wt.	Milk	Scrotal	D to Calv
EBV	+8.1	+2.6	-3.8	+3.3	+74	+125	+156	+131	+19	+2.4	-6.3
ACC	77%	53%	99%	99%	98%	98%	97%	87%	80%	97%	56%

	Carc Wt.	EMA	Rib Fat	Rump Fat	RBV	IMF	AMFU,CAF,DDF,NHFU,DWF,MAF,MHF
EBV	+78	+5.7	-1.5	-2.1	+1.1	+2.8	
ACC	85%	88%	88%	84%	82%	86%	Genomics

Beast Mode has the potential to become a breed legend. The calves are born easily and are super impressive. He is top 1% of the breed for 200, 400 and 600 Day Growth and top 10% for Carcase Wt.

Reference Sire	MUSGRAVE 316 STUNNER <sup>PV</sup>	USA18467508	19/02/2016	HBR
S: S A V FINAL ANSWER 0035 <sup>#</sup>	S: CONNEALY FINAL PRODUCT <sup>PV</sup>			
S: CONNEALY CAPITALIST 028 <sup>#</sup>	S: MCATL PURE PRODUCT 903-55 <sup>SV</sup>			
D: PRIDES PITA OF CONANGA 8821 <sup>#</sup>	D: M A EST A 55-252 <sup>#</sup>			
<b>S: LD CAPITALIST 316<sup>PV</sup></b>	<b>D: MCATL BLACKBIRD 831-1378<sup>#</sup></b>			
S: C A FUTURE DIRECTION 5321 <sup>#</sup>	S: CONNEALY REFLECTION <sup>PV</sup>			
D: LD DIXIE ERICA 2053 <sup>#</sup>	D: MCATL BLACKBIRD 1378-573 <sup>#</sup>			
D: LD DIXIE ERICA OAR 0853 <sup>#</sup>	D: MA BLACKBIRD 573 <sup>#</sup>			

January 2021 TransTasman Angus Cattle Evaluation											
TACE	CE Dir	CE Dtrs	Gest Lgth	Birth Wt.	200 Wt.	400 Wt.	600 Wt.	MC Wt.	Milk	Scrotal	D to Calv
EBV	+2.5	+7.0	-1.2	+3.1	+56	+104	+138	+116	+18	+2.3	-1.6
ACC	67%	41%	98%	98%	95%	96%	93%	85%	78%	94%	45%

	Carc Wt.	EMA	Rib Fat	Rump Fat	RBV	IMF	AMFU,CAF,DDF,NHF,DWF,MHF,OHF,OSF
EBV	+83	+5.6	+2.5	+1.4	-1.3	+1.7	
ACC	84%	84%	85%	81%	80%	82%	Genomics

Stunner is leaving calves with added butt shape with softness rarely seen. He is in the top 5% of the breed for Carcase Wt and Rib Fat, top 8% for 400 and 600 Day Wt.



**Baldridge Beast Mode B074** 8 Sons



**Musgrave 316 Stunner** 4 Sons

Reference Sire	S WHITLOCK 179 <sup>PV</sup>	USA17007891	21/03/2011	HBR
S: PAWS UP ALLIANCE 9561 <sup>#</sup>	S: BASIN EXPEDITION 6241 <sup>#</sup>			
S: S ALLIANCE 3313 <sup>#</sup>	S: R&S EXPEDITION 1404 <sup>#</sup>			
D: PAWS UP 9048 EMULATION EXT <sup>#</sup>	D: R&S CLOVA PRIDE E51 <sup>#</sup>			
<b>S: S CHISUM 6175<sup>PV</sup></b>	<b>D: S PRIDE ANNA 709<sup>#</sup></b>			
S: S ECLIPSE 169 <sup>#</sup>	S: G A R GRID MAKER <sup>#</sup>			
D: S GLORIA 464 <sup>#</sup>	D: S PRIDE ANNA 567 <sup>#</sup>			
D: S GLORIA 209 <sup>#</sup>	D: S PRIDE ANNA 2244 <sup>#</sup>			

January 2021 TransTasman Angus Cattle Evaluation											
TACE	CE Dir	CE Dtrs	Gest Lgth	Birth Wt.	200 Wt.	400 Wt.	600 Wt.	MC Wt.	Milk	Scrotal	D to Calv
EBV	+1.1	+11.2	-6.6	+3.3	+69	+123	+162	+131	+26	+3.1	-5.1
ACC	69%	51%	98%	98%	96%	96%	96%	89%	88%	95%	56%

	Carc Wt.	EMA	Rib Fat	Rump Fat	RBV	IMF	AMF,CAF,DDF,NHF,DWF,MAF,MHF,OSF
EBV	+93	+5.1	+1.3	+2.4	+0.5	+0.0	
ACC	87%	87%	88%	85%	83%	86%	Genomics

Whitlock is unmatched for birth to growth spread amongst all AI Sires and when you add positive fat, he stands alone. He is top 1% for 200,400,600 Day Wt, Carcase Wt and Calving Ease to Daughters and top 2% for Milk and Rump Fat.

Reference Sire	QUAKER HILL DEAD CENTER <sup>SV</sup>	USA17831035	12/03/2014	HBR
S: SITZ UPWARD 307R <sup>SV</sup>	S: BOYD NEW DAY 8005 <sup>#</sup>			
S: EXAR UPSHOT 0562B <sup>#</sup>	S: MCC DAYBREAK <sup>#</sup>			
D: EXAR BARBARA T020 <sup>#</sup>	D: MCC MISS FOCUS 134 <sup>#</sup>			
<b>S: EXAR DENVER 2002B<sup>#</sup></b>	<b>D: QUAKER HILL BLACKCAP 0A32<sup>#</sup></b>			
S: EXAR 263C <sup>#</sup>	S: IDEAL 4355 OF 0T26 2440 <sup>#</sup>			
D: EXAR ROYAL LASS 1067 <sup>#</sup>	D: QHF BLACKCAP 6E2 OF4V16 4355 <sup>#</sup>			
D: BR ROYAL LASS 19-132 <sup>#</sup>	D: QHF BLACKCAP 4V16 OF 1H8 <sup>#</sup>			

January 2021 TransTasman Angus Cattle Evaluation											
TACE	CE Dir	CE Dtrs	Gest Lgth	Birth Wt.	200 Wt.	400 Wt.	600 Wt.	MC Wt.	Milk	Scrotal	D to Calv
EBV	+9.8	+10.6	-7.6	+2.9	+53	+99	+127	+102	+13	+1.8	-3.3
ACC	60%	42%	98%	97%	94%	94%	94%	87%	83%	90%	47%

	Carc Wt.	EMA	Rib Fat	Rump Fat	RBV	IMF	AMFU,CAFU,DDFU,NHFU,MAF,RGF
EBV	+69	+8.8	+0.1	-1.3	+1.8	+2.3	
ACC	84%	81%	84%	79%	79%	80%	Structure(Claw Set x 1, Foot Angle x 1),Genomics

Quaker Hill is a calving ease sire who is in the top 2% of the breed for Calving Ease to Daughters and top 5% Calving Ease Direct. The bull also is at the top of the breed for Retail Beef Yield and all Selection Indexes.



**S Whitlock 179** 5 Sons



**Quaker Hill Dead Center** 6 Sons



<b>Reference Sire</b>	<b>WMR TIMELESS 458<sup>#</sup></b>	<b>USA16226527</b>	<b>30/01/2008</b>	<b>HBR</b>
	S:LEACHMAN RIGHT TIME <sup>SV</sup>	S:CONNEALY DATELINE <sup>#</sup>		
	S:HYLINE RIGHT TIME 338 <sup>#</sup>	S:W M R DATELINE 210 <sup>#</sup>		
	D:HYLINE PRIDE 265 <sup>#</sup>	D:W M R PRIDE 217-168 <sup>#</sup>		
<b>S:</b>	<b>LEACHMAN RIGHT TIME 338-5605<sup>#</sup></b>	<b>D: WMR BLACKCAP 521<sup>#</sup></b>		
	S:CONNEALY FRONTLINE <sup>#</sup>	S:HYLINE WMR TRAVELER 724 <sup>#</sup>		
	D:LEACHMAN ERICA 1201 <sup>#</sup>	D:W M R BLACKCAP 043 <sup>#</sup>		
	D:LEACHMAN ERICA 6267 <sup>#</sup>	D:W M R BLACKCAP 849 <sup>#</sup>		

January 2021 TransTasman Angus Cattle Evaluation											
TACE	CE Dir	CE Dtrs	Gest Lgth	Birth Wt.	200 Wt.	400 Wt.	600 Wt.	MC Wt.	Milk	Scrotal	D to Calv
EBV	-14.1	+1.6	-7.0	+7.3	+63	+111	+145	+129	+18	+1.6	-4.0
ACC	85%	67%	98%	98%	98%	98%	98%	96%	96%	97%	64%

	Carc Wt.	EMA	Rib Fat	Rump Fat	RBV	IMF	
EBV	+78	+6.0	+0.8	+1.0	+1.2	+0.7	AMF,CAF,DDF,NHF,MAF
ACC	92%	91%	92%	90%	88%	89%	Genomics

Timeless is a breed leader for high performance cattle. When kilos pay, he will give you the most for your money. Timeless calves are a cut above the rest at Claremont. He is in the top 1% of the breed for Feed Efficiency, top 3% for 200, 400 and 600 Day Wt, top 10% for Carcase Wt.

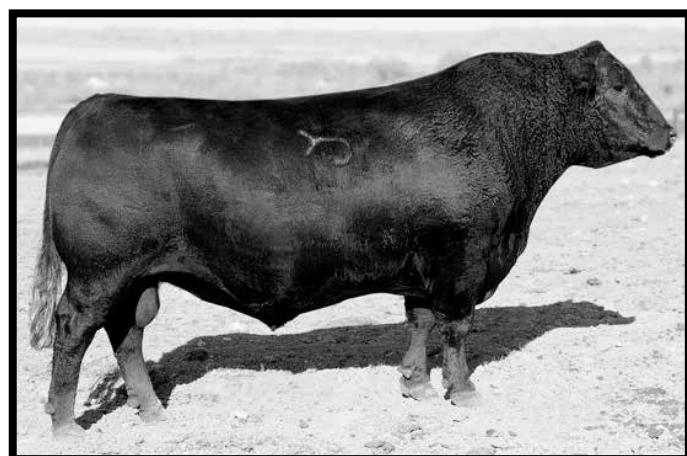
<b>Reference Sire</b>	<b>TEXAS WESTERN EXPRESS H220<sup>SV</sup></b>	<b>DXTH220</b>	<b>2/08/2012</b>	<b>HBR</b>
	S:B S S LIMITED DESIGN <sup>#</sup>	S:TE MANIA UNLIMITED U3271 <sup>#</sup>		
	S:COONAMBLE Z3 <sup>PV</sup>	S:TE MANIA INFINITY 04 379 AB <sup>#</sup>		
	D:IMRAN ROSEBUD U17 <sup>#</sup>	D:TE MANIA 95102 <sup>#</sup>		
<b>S:</b>	<b>BANGADANG WESTERN EXPRESS E10<sup>SV</sup></b>	<b>D: TEXAS OMNIA F486<sup>#</sup></b>		
	S:STEVENSON BRUNO 561G <sup>#</sup>	S:TEXAS FRED V42 <sup>#</sup>		
	D:BANGADANG WILCOOLA Y7 <sup>#</sup>	D:TEXAS OMNIA X205 <sup>#</sup>		
	D:IMRAN WILCOOLA U87 <sup>#</sup>	D:TEXAS OMNIA V109 <sup>#</sup>		

January 2021 TransTasman Angus Cattle Evaluation											
TACE	CE Dir	CE Dtrs	Gest Lgth	Birth Wt.	200 Wt.	400 Wt.	600 Wt.	MC Wt.	Milk	Scrotal	D to Calv
EBV	-7.6	-9.3	-5.5	+7.0	+60	+113	+157	+180	+12	+4.3	-1.7
ACC	60%	44%	97%	97%	95%	96%	96%	85%	81%	96%	55%

	Carc Wt.	EMA	Rib Fat	Rump Fat	RBV	IMF	
EBV	+89	+0.9	-3.7	-1.9	+1.4	+0.1	AMFU,CAFU,DDFU,NHFU
ACC	86%	87%	88%	86%	82%	85%	BWT,400WT,600WT,SC,Scan(EMA,Rib,Rump,IMF),Genomics

Texas Western Express is a big free moving sire coupled with softness. H220's feet are immaculate. His progeny have explosive growth, have great temperament and are easy fleshing. He is in the top 1% of the breed for 400 and 600 Day Wt, Carcase Wt and Scrotal Size, top 5% 200 Day Wt and Docility.



**WMR Timeless 458**

5 Sons



**Texas Western Express H220** 10 Sons

<b>Reference Sire</b>	<b>CLAREMONT BLACKS N7114<sup>SV</sup></b>	<b>CCPN7114</b>	<b>18/03/2017</b>	<b>APR</b>
	S:CONNEALY REFLECTION <sup>#</sup>	S:SUMMITCREST PRIME CUT 1G42 <sup>#</sup>		
	S:JINDRA DOUBLE VISION <sup>SV</sup>	S:CLAREMONT BLACKS F046 <sup>SV</sup>		
	D:HOFF RACHEL 8312 405 <sup>#</sup>	D:CLAREMONT BLACKS HOLLY V003 <sup>#</sup>		
<b>S:</b>	<b>CLAREMONT BLACKS L520<sup>SV</sup></b>	<b>D: CLAREMONT BLACKS DAISY H2142<sup>#</sup></b>		
	S:CLAREMONT BLACKS D873 <sup>SV</sup>	S:CLAREMONT BLACKS C736 <sup>#</sup>		
	D:CLAREMONT BLACKS ZIA F0169 <sup>#</sup>	D:CLAREMONT BLACKS DAISY E944 <sup>#</sup>		
	D:CLAREMONT BLACKS ZIA Y3123 <sup>#</sup>	D:CLAREMONT BLACKS DAISY Y373 <sup>#</sup>		

January 2021 TransTasman Angus Cattle Evaluation											
TACE	CE Dir	CE Dtrs	Gest Lgth	Birth Wt.	200 Wt.	400 Wt.	600 Wt.	MC Wt.	Milk	Scrotal	D to Calv
EBV	-8.4	-4.9	-2.8	+7.4	+47	+88	+103	+103	+14	+0.3	-3.5
ACC	62%	42%	62%	89%	84%	82%	84%	76%	60%	77%	38%

	Carc Wt.	EMA	Rib Fat	Rump Fat	RBV	IMF	
EBV	+69	+7.4	-0.3	-0.7	+1.6	+0.0	AMFU,CAFU,DDFU,NHFU
ACC	68%	62%	66%	65%	60%	59%	CE,BWT,200WT,400WT,600WT,SC,Scan(EMA,Rib,Rump,IMF)

N7114 has great growth and carcase figures. Top 10% RBV, top 20% Feed Efficiency and top 25% Eye Muscle Area.

<b>Reference Sire</b>	<b>CLAREMONT BLACKS N7101<sup>SV</sup></b>	<b>CCPN7101</b>	<b>15/03/2017</b>	<b>APR</b>
	S:LEACHMAN RIGHT TIME 338-5605 <sup>#</sup>	S:F A R KRUGERRAND 410H <sup>#</sup>		
	S:WMR TIMELESS 458 <sup>#</sup>	S:CLAREMONT BLACKS A546 <sup>SV</sup>		
	D:WMR BLACKCAP 521 <sup>#</sup>	D:CLAREMONT BLACKS DAISY U9110 <sup>#</sup>		
<b>S:</b>	<b>CLAREMONT BLACKS L551<sup>SV</sup></b>	<b>D: CLAREMONT BLACKS JILL C777<sup>#</sup></b>		
	S:F A R KRUGERRAND 410H <sup>#</sup>	S:CLAREMONT BLACKS U9106 <sup>#</sup>		
	D:CLAREMONT BLACKS HOLLY A556 <sup>#</sup>	D:CLAREMONT BLACKS JILL X2170 <sup>#</sup>		
	D:CLAREMONT BLACKS HOLLY X203 <sup>#</sup>	D:CLAREMONT BLACKS JILL Q5163+95 <sup>#</sup>		

January 2021 TransTasman Angus Cattle Evaluation											
TACE	CE Dir	CE Dtrs	Gest Lgth	Birth Wt.	200 Wt.	400 Wt.	600 Wt.	MC Wt.	Milk	Scrotal	D to Calv
EBV	-7.0	-0.4	-3.2	+6.4	+46	+83	+109	+120	+12	+1.1	-4.6
ACC	61%	42%	57%	88%	82%	80%	82%	74%	60%	74%	38%

	Carc Wt.	EMA	Rib Fat	Rump Fat	RBV	IMF	
EBV	+61	+3.4	-2.6	-2.0	+1.8	+0.3	AMF,CAF,DDF,NHF
ACC	67%	60%	62%	63%	57%	55%	CE,BWT,200WT,400WT,600WT,SC,Scan(EMA,Rib,Rump,IMF)

N7101 has good doing, sleek coated cattle on both sides of the pedigree. Top 2% of the breed for Feed Efficiency and top 5% for Retail Beef Yield.

<b>Reference Sire</b>	<b>CLAREMONT BLACKS N753<sup>SV</sup></b>	<b>CCPN753</b>	<b>9/03/2017</b>	<b>APR</b>
	S:LEACHMAN RIGHT TIME 338-5605 <sup>#</sup>	S:BALDRIDGE KABOOM K243 KCF <sup>#</sup>		
	S:WMR TIMELESS 458 <sup>#</sup>	S:MOHNEN DYNAMITE 1356 <sup>#</sup>		
	D:WMR BLACKCAP 521 <sup>#</sup>	D:MOHNEN JILT 910 <sup>#</sup>		
<b>S:</b>	<b>CLAREMONT BLACKS L551<sup>SV</sup></b>	<b>D: CLAREMONT BLACKS DAISY G153<sup>#</sup></b>		
	S:F A R KRUGERRAND 410H <sup>#</sup>	S:A A R REALLY WINDY 1205 <sup>#</sup>		
	D:CLAREMONT BLACKS HOLLY A556 <sup>#</sup>	D:CLAREMONT BLACKS DAISY A512 <sup>#</sup>		
	D:CLAREMONT BLACKS HOLLY X203 <sup>#</sup>	D:CLAREMONT BLACKS DAISY X2118 <sup>#</sup>		

January 2021 TransTasman Angus Cattle Evaluation											
TACE	CE Dir	CE Dtrs	Gest Lgth	Birth Wt.	200 Wt.	400 Wt.	600 Wt.	MC Wt.	Milk	Scrotal	D to Calv
EBV	-8.0	-3.5	-3.5	+7.3	+56	+101	+133	+128	+17	+2.2	-3.9
ACC	60%	43%	60%	85%	79%	78%	81%	74%	57%	76%	41%

	Carc Wt.	EMA	Rib Fat	Rump Fat	RBV	IMF	
EBV	+75	+2.3	+0.8	+1.0	+0.0	+0.7	AMFU,CAFU,DDFU,NHFU
ACC	66%	62%	64%	65%	59%	57%	CE,BWT,200WT,400WT,600WT,SC,Scan(EMA,Rib,Rump,IMF)

CCPN753 has Timeless and Krugerrand for growth and Really Windy for fat cover in his pedigree. It is a good combination. Top 15% of the breed for 200, 400 and 600 Day Wt, Carcase Wt and Rump Fat.

Reference Sire	CLAREMONT BLACKS N736 <sup>SV</sup>	CCPN736	7/03/2017	APR
S:HYLINE RIGHT TIME 338 <sup>#</sup>	S:F A R KRUGERRAND 410H <sup>#</sup>			
S: LEACHMAN RIGHT TIME 338-5605 <sup>#</sup>	S:CLAREMONT BLACKS Z421 <sup>SV</sup>			
D:LEACHMAN ERICA 1201 <sup>#</sup>	D:CLAREMONT BLACKS CERES V030 <sup>#</sup>			
S: WMR TIMELESS 458 <sup>#</sup>	D: CLAREMONT BLACKS KIM B619 <sup>#</sup>			
S:W M R DATELINE 210 <sup>#</sup>	S:CLAREMONT BLACKS T8155 <sup>#</sup>			
D: WMR BLACKCAP 521 <sup>#</sup>	D:CLAREMONT BLACKS KIM X2228 <sup>#</sup>			
D:W M R BLACKCAP 043 <sup>#</sup>	D:CLAREMONT BLACKS KIM J946+89 <sup>#</sup>			

January 2021 TransTasman Angus Cattle Evaluation											
TACE	CE Dir	CE Dtrs	Gest Lgth	Birth Wt.	200 Wt.	400 Wt.	600 Wt.	MC Wt.	Milk	Scrotal	D to Calv
EBV	-9.4	-1.9	-6.1	+6.5	+43	+83	+100	+106	+10	+0.7	-5.6
ACC	64%	48%	85%	87%	82%	80%	82%	76%	68%	76%	43%

	Carc Wt.	EMA	Rib Fat	Rump Fat	RBV	IMF	
EBV	+57	+2.9	-1.1	-1.1	+1.9	-0.2	AMF,CAF,DDF,NHFU
ACC	70%	64%	68%	67%	64%	63%	GL,CE,BWT,200WT,400WT,600WT,SC,Scan(EMA,Rib,Rump,IMF)

CCPN736 is typical of that Timeless and Krugerrand combination. He is in the top 1% of the breed for Feed Efficiency which means his progeny will put on weight faster.

Reference Sire	CLAREMONT BLACKS N755 <sup>SV</sup>	CCPN755	9/03/2017	APR
S:HYLINE RIGHT TIME 338 <sup>#</sup>	S:HF TIGER 5T <sup>#</sup>			
S: LEACHMAN RIGHT TIME 338-5605 <sup>#</sup>	S:CLAREMONT BLACKS G132 <sup>SV</sup>			
D:LEACHMAN ERICA 1201 <sup>#</sup>	D:CLAREMONT BLACKS HOLLY A556 <sup>#</sup>			
S: WMR TIMELESS 458 <sup>#</sup>	D: CLAREMONT BLACKS BETH J3198 <sup>#</sup>			
S:W M R DATELINE 210 <sup>#</sup>	S:CLAREMONT BLACKS D873 <sup>#</sup>			
D: WMR BLACKCAP 521 <sup>#</sup>	D:CLAREMONT BLACKS BETH F0149 <sup>#</sup>			
D:W M R BLACKCAP 043 <sup>#</sup>	D:CLAREMONT BLACKS BETH Y365 <sup>#</sup>			

January 2021 TransTasman Angus Cattle Evaluation											
TACE	CE Dir	CE Dtrs	Gest Lgth	Birth Wt.	200 Wt.	400 Wt.	600 Wt.	MC Wt.	Milk	Scrotal	D to Calv
EBV	-0.4	+2.8	-5.9	+4.6	+55	+100	+129	+116	+19	+2.3	-4.0
ACC	60%	45%	84%	80%	75%	75%	77%	72%	63%	74%	40%

	Carc Wt.	EMA	Rib Fat	Rump Fat	RBV	IMF	
EBV	+73	+5.6	+1.4	+1.3	+1.1	+0.0	AMFU,CAFU,DDFU,NHFU
ACC	65%	62%	63%	64%	59%	57%	GL,CE,BWT,200WT,400WT,600WT,SC,Scan(EMA,Rib,Rump,IMF)

With Timeless and Tiger in his pedigree, N755 had to be a good doing bull. Top 3% of the breed for Feed Efficiency, top 10% for Rib and Rump Fat, top 15% for 200, 400 and 600 Day Wt and top 20% for Carcase Wt.

Reference Sire	CLAREMONT BLACKS N798 <sup>SV</sup>	CCPN798	15/03/2017	APR
S:HYLINE RIGHT TIME 338 <sup>#</sup>	S:HOFF FIRST EDITION 058 242 <sup>#</sup>			
S: LEACHMAN RIGHT TIME 338-5605 <sup>#</sup>	S:CLAREMONT BLACKS D873 <sup>SV</sup>			
D:LEACHMAN ERICA 1201 <sup>#</sup>	D:CLAREMONT BLACKS DAISY Z433 <sup>#</sup>			
S: WMR TIMELESS 458 <sup>#</sup>	D: CLAREMONT BLACKS UNA F040 <sup>#</sup>			
S:W M R DATELINE 210 <sup>#</sup>	S:CLAREMONT BLACKS V0144 <sup>#</sup>			
D: WMR BLACKCAP 521 <sup>#</sup>	D:CLAREMONT BLACKS UNA Y386 <sup>#</sup>			
D:W M R BLACKCAP 043 <sup>#</sup>	D:CLAREMONT BLACKS UNA U9112 <sup>#</sup>			

January 2021 TransTasman Angus Cattle Evaluation											
TACE	CE Dir	CE Dtrs	Gest Lgth	Birth Wt.	200 Wt.	400 Wt.	600 Wt.	MC Wt.	Milk	Scrotal	D to Calv
EBV	-12.9	-3.0	-2.7	+6.3	+57	+97	+133	+122	+15	+2.2	-2.4
ACC	61%	46%	84%	82%	77%	76%	78%	72%	64%	73%	40%

	Carc Wt.	EMA	Rib Fat	Rump Fat	RBV	IMF	
EBV	+73	+5.0	+1.0	+0.9	+1.4	-0.5	AMF,CAF,DDF,NHFU
ACC	67%	61%	63%	63%	59%	58%	GL,CE,BWT,200WT,400WT,600WT,SC,Scan(EMA,Rib,Rump,IMF)

N798 is typical of Timeless progeny.Fantastic growth with the ability to convert grass to meat. Feed Efficiency in the top 1% of the breed.

Reference Sire	CLAREMONT BLACKS N794 <sup>SV</sup>	CCPN794	15/03/2017	APR
S:CONNEALY REFLECTION <sup>#</sup>	S:DMM DYNASTY 03G <sup>#</sup>			
S: CONNEALY IMPRESSION <sup>#</sup>	S:CLAREMONT BLACKS Y3118 <sup>#</sup>			
D:PEARL PAMMY OF CONANGA 194 <sup>#</sup>	D:CLAREMONT BLACKS DAISY U9110 <sup>#</sup>			
S: MAR INNOVATION 251 <sup>IV</sup>	D: CLAREMONT BLACKS KIM A583 <sup>#</sup>			
S:S A V FINAL ANSWER 0035 <sup>#</sup>	S:CLAREMONT BLACKS U9162 <sup>#</sup>			
D: MAR FINAL KAHUNA 856 <sup>#</sup>	D:CLAREMONT BLACKS KIM W170 <sup>#</sup>			
D:MAR KAHUNA PRECISION 328 674 <sup>#</sup>	D:CLAREMONT BLACKS KIM U9130 <sup>#</sup>			

January 2021 TransTasman Angus Cattle Evaluation											
TACE	CE Dir	CE Dtrs	Gest Lgth	Birth Wt.	200 Wt.	400 Wt.	600 Wt.	MC Wt.	Milk	Scrotal	D to Calv
EBV	-8.7	-0.1	-2.1	+8.3	+63	+107	+143	+145	+9	+1.6	-2.4
ACC	59%	43%	84%	80%	76%	76%	79%	73%	65%	75%	40%

	Carc Wt.	EMA	Rib Fat	Rump Fat	RBV	IMF	
EBV	+78	+6.7	-1.9	-2.3	+1.8	+1.2	AMFU,CAFU,DDFU,NHFU
ACC	67%	61%	66%	66%	61%	60%	GL,CE,BWT,200WT,400WT,600WT,SC,Scan(Rib,Rump,IMF)

Look at the growth and carcase figures on this bull. Top 5% of the breed for 200,400 and 600 Day Growth and top 5% Retail Beef yield to push down those scales. Couple that with top 10 % for Carcase Wt.



FOR ALL YOUR FARMING NEEDS SEE US AT

MG TRADING KOROIT  
 96-98 COMMERCIAL RD KOROIT 3282  
 PH 03 5565 8643

YOUR FARMING SPECIALISTS



# SALE BULLS

**LOT 1 CLAREMONT BLACKS Q952<sup>SV</sup> CCPQ952 04/03/2019 APR**

S:HYLINE RIGHT TIME 338<sup>#</sup>  
 S: LEACHMAN RIGHT TIME 338-5605<sup>#</sup>  
 D:LEACHMAN ERICA 1201<sup>#</sup>  
**S: WMR TIMELESS 458<sup>#</sup>**  
 S:W M R DATELINE 210<sup>#</sup>  
 D: WMR BLACKCAP 521<sup>#</sup>  
 D:W M R BLACKCAP 043<sup>#</sup>

S:HOFF FIRST EDITION 058 242<sup>#</sup>  
 S:CLAREMONT BLACKS E956<sup>SV</sup>  
 D:CLAREMONT BLACKS CLARE W123<sup>#</sup>  
**D: CLAREMONT BLACKS DAISY G1177<sup>#</sup>**  
 S:CLAREMONT BLACKS B693<sup>#</sup>  
 D:CLAREMONT BLACKS DAISY D850<sup>#</sup>  
 D:CLAREMONT BLACKS DAISY Z4126<sup>#</sup>

**January 2021 TransTasman Angus Cattle Evaluation**

TACE	CE Dir	CE Dtrs	Gest Lgth	Birth Wt.	200 Wt.	400 Wt.	600 Wt.	MC Wt.	Milk	Scrotal	D to Calv
EBV	-5.7	-0.2	-3.8	+6.2	+56	+98	+124	+114	+13	+1.5	-3.4
ACC	44%	36%	84%	75%	72%	71%	74%	70%	67%	73%	43%

Carc Wt.	EMA	Rib Fat	Rump Fat	RBV	IMF	NFI-F	AMFU,CAFU,DDFU,NHFU
EBV	+71	+5.0	+0.8	+1.4	+0.6	-0.31	
ACC	67%	64%	68%	66%	65%	63%	Traits Observed: GL,CE,BWT,200WT,400WT,600WT,SC,Scan(EMA,Rib,Rump,IMF),Genomics

A soft skinned high growth bull to start off our 2021 bull sale. Top 5% of the breed for Feed Efficiency and top 15% for 200 and 400 Day Wt. A very impressive bull.  
 Purchaser:.....Price:

**LOT 2 CLAREMONT BLACKS Q904<sup>SV</sup> CCPQ904 25/02/2019 APR**

S:HYLINE RIGHT TIME 338<sup>#</sup>  
 S: LEACHMAN RIGHT TIME 338-5605<sup>#</sup>  
 D:LEACHMAN ERICA 1201<sup>#</sup>  
**S: WMR TIMELESS 458<sup>#</sup>**  
 S:W M R DATELINE 210<sup>#</sup>  
 D: WMR BLACKCAP 521<sup>#</sup>  
 D:W M R BLACKCAP 043<sup>#</sup>

S:HF KODIAK 5R<sup>PV</sup>  
 S:HF TIGER 5T<sup>#</sup>  
 D:HF ECHO 84R<sup>#</sup>  
**D: CLAREMONT BLACKS CERES G144<sup>#</sup>**  
 S:CLAREMONT BLACKS Z421<sup>PV</sup>  
 D:CLAREMONT BLACKS CERES B6112<sup>#</sup>  
 D:CLAREMONT BLACKS CERES X2120<sup>#</sup>

**January 2021 TransTasman Angus Cattle Evaluation**

TACE	CE Dir	CE Dtrs	Gest Lgth	Birth Wt.	200 Wt.	400 Wt.	600 Wt.	MC Wt.	Milk	Scrotal	D to Calv
EBV	-18.8	-2.3	-6.4	+9.7	+67	+116	+160	+163	+14	+2.2	-3.8
ACC	45%	37%	74%	75%	73%	73%	74%	72%	70%	68%	45%

Carc Wt.	EMA	Rib Fat	Rump Fat	RBV	IMF	NFI-F	AMFU,CAFU,DDFU,NHFU
EBV	+89	+3.0	-1.7	-1.3	+1.6	+0.4	
ACC	69%	66%	71%	68%	67%	66%	Traits Observed: BWT,200WT,400WT,600WT,SC,Scan(EMA,Rib,Rump,IMF),Genomics

OMG!! Q904 is typical of the Timeless/Tiger blend of cattle. Mix this with our renowned Claremont Ceres cow lineage and you will end up with one hell of a bull. Look at his incredible growth and carcass figures.Top 1% 200 and 600 Day Wt and Feed Efficiency.Top 2% for 400 Day Wt and Carcass Wt. Not one to be missed.  
 Purchaser:.....Price:

**LOT 3 CLAREMONT BLACKS Q911<sup>SV</sup> CCPQ911 28/02/2019 APR**

S:S ALLIANCE 3313<sup>#</sup>  
 S: S CHISUM 6175<sup>PV</sup>  
 D:S GLORIA 464<sup>#</sup>  
**S: S WHITLOCK 179<sup>PV</sup>**  
 S:R&S EXPEDITION 1404<sup>#</sup>  
 D: S PRIDE ANNA 709<sup>#</sup>  
 D:S PRIDE ANNA 567<sup>#</sup>

S:SUMMITCREST PRIME CUT 1G42<sup>#</sup>  
 S:CLAREMONT BLACKS H2145<sup>#</sup>  
 D:CLAREMONT BLACKS GWEN Z4156<sup>#</sup>  
**D: CLAREMONT BLACKS VERA K4113<sup>#</sup>**  
 S:HOFF LIMITED EDITION S C 594<sup>#</sup>  
 D:CLAREMONT BLACKS VERA C751<sup>#</sup>  
 D:CLAREMONT BLACKS VERA X2139<sup>#</sup>

**January 2021 TransTasman Angus Cattle Evaluation**

TACE	CE Dir	CE Dtrs	Gest Lgth	Birth Wt.	200 Wt.	400 Wt.	600 Wt.	MC Wt.	Milk	Scrotal	D to Calv
EBV	-4.2	+4.5	-3.3	+4.6	+59	+110	+141	+127	+18	+3.3	-2.8
ACC	39%	31%	70%	73%	71%	70%	71%	68%	65%	66%	39%

Carc Wt.	EMA	Rib Fat	Rump Fat	RBV	IMF	NFI-F	AMFU,CAFU,DDFU,NHFU
EBV	+85	+6.6	-0.1	+0.2	+1.3	+0.4	
ACC	65%	62%	67%	63%	64%	62%	Traits Observed: BWT,200WT,400WT,600WT,SC,Scan(EMA,Rib,Rump,IMF),Genomics

Q911 is our first Whitlock bull for the 2021 sale and we have been very impressed with his style and length. His dam, Vera K4113, goes back to Vera X2139 and Gwen Z 4156 on the maternal side which are all some of our strongest cow families and always produce the goods.Top 3% for 400 Day Wt and Carcass Wt, top 8% for 200, 600 Day Wt and Scrotal Size.  
 Purchaser:.....Price:

**LOT 4 CLAREMONT BLACKS Q989<sup>#</sup> CCPQ989 08/03/2019 APR**

S:COONAMBLE Z3<sup>PV</sup>  
 S: BANGADANG WESTERN EXPRESS E10<sup>SV</sup>  
 D:BANGADANG WILCOOLA Y7<sup>#</sup>  
**S: TEXAS WESTERN EXPRESS H220<sup>SV</sup>**  
 S:TE MANIA INFINITY 04 379 AB<sup>#</sup>  
 D: TEXAS OMNIA F486<sup>#</sup>  
 D:TEXAS OMNIA X205<sup>#</sup>

S:CLAREMONT BLACKS F0175<sup>SV</sup>  
 S:CLAREMONT BLACKS H210<sup>#</sup>  
 D:CLAREMONT BLACKS BERRY Z4217<sup>#</sup>  
**D: CLAREMONT BLACKS DORIS K472<sup>#</sup>**  
 S:CLAREMONT BLACKS E954<sup>SV</sup>  
 D:CLAREMONT BLACKS DORIS G1113<sup>#</sup>  
 D:CLAREMONT BLACKS DORIS Z4100<sup>#</sup>

**January 2021 TransTasman Angus Cattle Evaluation**

TACE	CE Dir	CE Dtrs	Gest Lgth	Birth Wt.	200 Wt.	400 Wt.	600 Wt.	MC Wt.	Milk	Scrotal	D to Calv
EBV	-2.8	-5.2	-3.2	+5.9	+50	+95	+123	+133	+12	+2.9	-3.3
ACC	49%	35%	83%	74%	69%	70%	73%	65%	56%	72%	35%

Carc Wt.	EMA	Rib Fat	Rump Fat	RBV	IMF	NFI-F	AMFU,CAFU,DDFU,NHFU
EBV	+74	+2.8	-2.5	-1.3	+1.3	+0.3	
ACC	60%	59%	61%	61%	55%	54%	Traits Observed: GL,CE,BWT,200WT,400WT,600WT,SC,Scan(EMA,Rib,Rump,IMF)

Q989 is our first Texas Western Express bull in our lineup this year and we are very happy with them. They are extremely placid well grown cattle that are a dream to handle. Q989 is thick and built like a brick. Top 10% for Feed Efficiency.  
 Purchaser:.....Price:

**LOT 5 CLAREMONT BLACKS Q969<sup>SV</sup> CCPQ969 06/03/2019 APR**

S:EXAR UPSHOT 0562B<sup>#</sup>  
 S: EXAR DENVER 2002B<sup>#</sup>  
 D:EXAR ROYAL LASS 1067<sup>#</sup>  
**S: QUAKER HILL DEAD CENTER<sup>SV</sup>**  
 S:MCC DAYBREAK<sup>#</sup>  
 D: QUAKER HILL BLACKCAP 0A32<sup>#</sup>  
 D:QHF BLACKCAP 6E2 0F4V16 4355<sup>#</sup>

S:CLAREMONT BLACKS G138<sup>SV</sup>  
 S:CLAREMONT BLACKS J3257<sup>SV</sup>  
 D:CLAREMONT BLACKS HILDA E9140<sup>#</sup>  
**D: CLAREMONT BLACKS KIM L5174<sup>#</sup>**  
 S:CLAREMONT BLACKS Y3118<sup>SV</sup>  
 D:CLAREMONT BLACKS KIM A583<sup>#</sup>  
 D:CLAREMONT BLACKS KIM W170<sup>#</sup>

**January 2021 TransTasman Angus Cattle Evaluation**

TACE	CE Dir	CE Dtrs	Gest Lgth	Birth Wt.	200 Wt.	400 Wt.	600 Wt.	MC Wt.	Milk	Scrotal	D to Calv
EBV	+2.9	+3.7	-4.7	+5.5	+53	+96	+127	+115	+9	+1.0	-3.4
ACC	49%	32%	84%	74%	70%	69%	72%	66%	62%	70%	34%

Carc Wt.	EMA	Rib Fat	Rump Fat	RBV	IMF	NFI-F	AMFU,CAFU,DDFU,NHFU
EBV	+69	+5.4	-0.4	-1.2	+1.2	+1.0	
ACC	64%	60%	66%	62%	62%	60%	Traits Observed: GL,CE,BWT,200WT,400WT,600WT,SC,Scan(EMA,Rib,Rump,IMF),Genomics

We used the sire of this bull, Quaker Hill Dead Center last year and decided to use him again for another year. Q969 is in top 20% for 400 and 600 Day Wt and RBV, top 25% for 200 Day Wt and Feed Efficiency and top 30% for Carcass Wt.  
 Purchaser:.....Price:

**LOT 6 CLAREMONT BLACKS Q926<sup>SV</sup> CCPQ926 02/03/2019 APR**

S:HYLINE RIGHT TIME 338<sup>#</sup>  
 S: LEACHMAN RIGHT TIME 338-5605<sup>#</sup>  
 D:LEACHMAN ERICA 1201<sup>#</sup>  
**S: WMR TIMELESS 458<sup>#</sup>**  
 S:W M R DATELINE 210<sup>#</sup>  
 D: WMR BLACKCAP 521<sup>#</sup>  
 D:W M R BLACKCAP 043<sup>#</sup>

S:HF TIGER 5T<sup>#</sup>  
 S:CLAREMONT BLACKS G132<sup>SV</sup>  
 D:CLAREMONT BLACKS HOLLY A556<sup>#</sup>  
**D: CLAREMONT BLACKS BETH J3198<sup>#</sup>**  
 S:CLAREMONT BLACKS D873<sup>#</sup>  
 D:CLAREMONT BLACKS BETH F0149<sup>#</sup>  
 D:CLAREMONT BLACKS BETH Y365<sup>#</sup>

**January 2021 TransTasman Angus Cattle Evaluation**

TACE	CE Dir	CE Dtrs	Gest Lgth	Birth Wt.	200 Wt.	400 Wt.	600 Wt.	MC Wt.	Milk	Scrotal	D to Calv
EBV	-3.0	+0.2	-6.4	+5.7	+54	+100	+126	+119	+18	+1.3	-3.0
ACC	44%	36%	84%	75%	72%	72%	74%	71%	68%	72%	42%

Carc Wt.	EMA	Rib Fat	Rump Fat	RBV	IMF	NFI-F	AMFU,CAFU,DDFU,NHFU
EBV	+71	+6.9	+1.7	+1.8	+0.8	+0.0	
ACC	68%	65%	69%	66%	66%	64%	Traits Observed: GL,CE,BWT,200WT,400WT,600WT,SC,Scan(EMA,Rib,Rump,IMF),Genomics

Another high growth Timeless son our of own Beth lineage.. Look at that Feed Efficiency; top 1% of the breed! Plenty of growth and rib and rump fat to keep his daughters in good condition throughout the winter.A really stylish bull.  
 Purchaser:.....Price:



# 2021 SALE BULLS

**LOT 7 CLAREMONT BLACKS Q940<sup>SV</sup> CCPQ940 03/03/2019 APR**

S:HYLINE RIGHT TIME 338<sup>#</sup> S:HOFF LIMITED EDITION S C 594<sup>#</sup>  
 S: LEACHMAN RIGHT TIME 338-5605<sup>#</sup> S:CLAREMONT BLACKS D869<sup>SV</sup>  
 D:LEACHMAN ERICA 1201<sup>#</sup> D:CLAREMONT BLACKS VERA X2139<sup>#</sup>  
**S: WMR TIMELESS 458<sup>#</sup> D: CLAREMONT BLACKS BETH F0116<sup>#</sup>**  
 S:W M R DATELINE 210<sup>#</sup> S:CLAREMONT BLACKS A509<sup>#</sup>  
 D: WMR BLACKCAP 521<sup>#</sup> D:CLAREMONT BLACKS BETH C754<sup>#</sup>  
 D:W M R BLACKCAP 043<sup>#</sup> D:CLAREMONT BLACKS BETH T872<sup>#</sup>

**January 2021 TransTasman Angus Cattle Evaluation**

TACE	CE Dir	CE Dtrs	Gest Lgth	Birth Wt.	200 Wt.	400 Wt.	600 Wt.	MC Wt.	Milk	Scrotal	D to Calv
EBV	-7.6	+1.0	-8.4	+6.2	+54	+94	+126	+103	+15	+1.8	-4.4
ACC	45%	37%	85%	76%	73%	73%	75%	71%	68%	73%	43%

Carc Wt.	EMA	Rib Fat	Rump Fat	RBV	IMF	NFI-F	AMFU,CAFU,DDFU,NHFU
EBV	+67	+3.9	+1.9	+2.0	-0.5	+1.7	-0.21
ACC	68%	65%	70%	67%	66%	64%	54%

Traits Observed: GL,CE,BWT,200WT,400WT,600WT,SC,Scan(EMA,Rib,Rump,IMF),Genomics

Q940 is by one of our best cows, Claremont Blacks Beth F0116. A big roomy cow with Hoff First Edition, for height, and Really Windy 1205 for Fat cover in her pedigree. This makes her an outstanding cow that produces the goods every year. Join her with Timeless and CCPQ940 is the perfectly balanced product.

Purchaser:.....Price:

**LOT 8 CLAREMONT BLACKS Q934<sup>#</sup> CCPQ934 03/03/2019 APR**

S:COONAMBLE Z3<sup>PV</sup> S:VERMONT NEW FRONTIER Z106<sup>SV</sup>  
 S: BANGADANG WESTERN EXPRESS E10<sup>SV</sup> S:CLAREMONT BLACKS D8198<sup>SV</sup>  
 D:BANGADANG WILCOOLA Y7<sup>#</sup> D:CLAREMONT BLACKS HOLLY V003<sup>#</sup>  
**S: TEXAS WESTERN EXPRESS H220<sup>SV</sup> D: CLAREMONT BLACKS ZENA F026<sup>#</sup>**  
 S:TE MANIA INFINITY 04 379 AB<sup>#</sup> S:CLAREMONT BLACKS R611+96<sup>SV</sup>  
 D: TEXAS OMNIA F486<sup>#</sup> D:CLAREMONT BLACKS ZENA V095<sup>#</sup>  
 D:TEXAS OMNIA X205<sup>#</sup> D:CLAREMONT BLACKS ZENA S7141<sup>#</sup>

**January 2021 TransTasman Angus Cattle Evaluation**

TACE	CE Dir	CE Dtrs	Gest Lgth	Birth Wt.	200 Wt.	400 Wt.	600 Wt.	MC Wt.	Milk	Scrotal	D to Calv
EBV	+2.6	-0.4	-5.2	+4.2	+49	+96	+130	+125	+12	+4.0	-4.6
ACC	50%	36%	84%	75%	70%	71%	74%	66%	59%	72%	37%

Carc Wt.	EMA	Rib Fat	Rump Fat	RBV	IMF	NFI-F	AMFU,CAFU,DDFU,NHFU
EBV	+73	+2.3	+0.1	+1.7	-0.2	+0.7	+0.19
ACC	61%	59%	60%	61%	55%	54%	42%

Traits Observed: GL,CE,BWT,200WT,400WT,600WT,SC,Scan(EMA,Rib,Rump,IMF)

This bull is by a 10 year old super fertile cow, Claremont Blacks Zena F026, who always produces a thumper calf and never misses a beat. Top 2% Scrotal Size, top 15% 600 Day Wt, top 20% 400 Day Wt and Carcase Wt. Q934 has an actual scrotal size of 46cm.Wow!!

Purchaser:.....Price:

**LOT 9 CLAREMONT BLACKS Q964<sup>SV</sup> CCPQ964 06/03/2019 APR**

S:HYLINE RIGHT TIME 338<sup>#</sup> S:LEACHMAN RIGHT TIME<sup>SV</sup>  
 S: LEACHMAN RIGHT TIME 338-5605<sup>#</sup> S:BT RIGHT TIME 24J<sup>#</sup>  
 D:LEACHMAN ERICA 1201<sup>#</sup> D:SITZ EVERELDA ENTENSE 1905<sup>#</sup>  
**S: WMR TIMELESS 458<sup>#</sup> D: CLAREMONT BLACKS KIM G127<sup>#</sup>**  
 S:W M R DATELINE 210<sup>#</sup> S:CLAREMONT BLACKS Z421<sup>SV</sup>  
 D: WMR BLACKCAP 521<sup>#</sup> D:CLAREMONT BLACKS KIM B619<sup>#</sup>  
 D:W M R BLACKCAP 043<sup>#</sup> D:CLAREMONT BLACKS KIM X2228<sup>#</sup>

**January 2021 TransTasman Angus Cattle Evaluation**

TACE	CE Dir	CE Dtrs	Gest Lgth	Birth Wt.	200 Wt.	400 Wt.	600 Wt.	MC Wt.	Milk	Scrotal	D to Calv
EBV	-12.6	-2.4	-3.6	+6.0	+46	+88	+119	+116	+17	+1.4	-4.6
ACC	46%	39%	85%	76%	74%	73%	75%	72%	70%	73%	48%

Carc Wt.	EMA	Rib Fat	Rump Fat	RBV	IMF	NFI-F	AMFU,CAFU,DDFU,NHFU
EBV	+64	+3.0	+0.4	+1.2	+0.2	+0.5	-0.53
ACC	69%	67%	71%	68%	68%	67%	58%

Traits Observed: GL,CE,BWT,200WT,400WT,600WT,SC,Scan(EMA,Rib,Rump,IMF),Genomics

Q964 is typical of the doing ability of his sire,WMR Timless 458. An easy doing bull with a net feed efficiency in the top 1% of the breed.

Purchaser:.....Price:



LOT 2 CCPQ904



LOT 3 CCPQ911



LOT 4 CCPQ989



LOT 6 CCPQ926



LOT 8 CCPQ934



LOT 9 CCPQ964



LOT 10 CCPQ991



LOT 13 CCPQ9143



# CLAREMONT DAMS



DAM OF LOT 1 CCPG1177



DAM OF LOT 26 CCPJ3163



DAM OF LOT 39 CCPE923



DAM OF LOT 7 CCPF0116



DAM OF LOT 25 CCPK421



DAM OF LOT 35 CCPM6157



DAM OF LOT 31 CCPJ383



THE CLAREMONT WORKERS

<b>LOT 10</b>	<b>CLAREMONT BLACKS Q991 #</b>	<b>CCPQ991</b>	<b>08/03/2019</b>	<b>APR</b>
S: EXAR UPSHOT 0562B <sup>#</sup> S: EXAR DENVER 2002B <sup>#</sup> D: EXAR ROYAL LASS 1067 <sup>#</sup>		S: RAFF LIMITED EDITION B113 <sup>SV</sup> S: CLAREMONT BLACKS G130 <sup>SV</sup> D: CLAREMONT BLACKS AVA X2244 <sup>#</sup>		
S: QUAKER HILL DEAD CENTER <sup>SV</sup> S: MCC DAYBREAK <sup>#</sup> D: QUAKER HILL BLACKCAP 0A32 <sup>#</sup> D: QHF BLACKCAP 6E2 OF4V16 4355 <sup>#</sup>		D: CLAREMONT BLACKS LUCY J3167 <sup>#</sup> S: DMM DYNASTY 03G <sup>SV</sup> D: CLAREMONT BLACKS LUCY Z419 <sup>#</sup> D: CLAREMONT BLACKS LUCY W107 <sup>#</sup>		

January 2021 TransTasman Angus Cattle Evaluation											
TACE	CE Dir	CE Dtrs	Gest Lgth	Birth Wt.	200 Wt.	400 Wt.	600 Wt.	MC Wt.	Milk	Scrotal	D to Calv
EBV	+3.4	+4.2	-4.5	+4.7	+48	+87	+118	+103	+11	+2.0	-3.7
ACC	49%	35%	84%	75%	69%	70%	73%	66%	57%	71%	33%

Carc Wt.	EMA	Rib Fat	Rump Fat	RBV	IMF	NFI-F	AMFU,CAFU,DDFU,NHFU				
EBV	+61	+1.5	+1.4	+1.9	-0.7	+1.8	Traits Observed: GL,CE,BWT,200WT,400WT,600WT,SC,Scan(EMA,Rib,Rump,IMF)				
ACC	59%	58%	59%	60%	54%	39%					

Q991 is a calving ease bull with plenty of growth. This bull is an absolute ripper and not one to be overlooked.

Purchaser:.....Price:

<b>LOT 11</b>	<b>CLAREMONT BLACKS Q9172 <sup>SV</sup></b>	<b>CCPQ9172</b>	<b>24/03/2019</b>	<b>APR</b>
S: JINDRA DOUBLE VISION <sup>SV</sup> S: CLAREMONT BLACKS L520 <sup>SV</sup> D: CLAREMONT BLACKS ZIA F0169 <sup>#</sup>		S: KM BROKEN BOW 002 <sup>PV</sup> S: CLAREMONT BLACKS K457 <sup>SV</sup> D: CLAREMONT BLACKS FLO E927 <sup>#</sup>		
S: CLAREMONT BLACKS N7114 <sup>SV</sup> S: CLAREMONT BLACKS F046 <sup>SV</sup> D: CLAREMONT BLACKS DAISY H2142 <sup>#</sup> D: CLAREMONT BLACKS DAISY E944 <sup>#</sup>		D: CLAREMONT BLACKS UNA M6135 <sup>#</sup> S: CLAREMONT BLACKS D873 <sup>PV</sup> D: CLAREMONT BLACKS UNA F040 <sup>#</sup> D: CLAREMONT BLACKS UNA Y386 <sup>#</sup>		

January 2021 TransTasman Angus Cattle Evaluation											
TACE	CE Dir	CE Dtrs	Gest Lgth	Birth Wt.	200 Wt.	400 Wt.	600 Wt.	MC Wt.	Milk	Scrotal	D to Calv
EBV	-6.1	-6.0	-3.0	+6.3	+53	+98	+122	+124	+14	+2.0	-2.0
ACC	50%	32%	63%	73%	69%	68%	72%	66%	57%	69%	33%

Carc Wt.	EMA	Rib Fat	Rump Fat	RBV	IMF	NFI-F	AMFU,CAFU,DDFU,NHFU				
EBV	+77	+8.8	-0.6	-0.7	+2.3	-0.6	Traits Observed: CE,BWT,200WT,400WT,600WT,SC,Scan(EMA,Rib,Rump,IMF),Genomics				
ACC	62%	58%	64%	60%	60%	46%					

Q9172 is by one of our followup bulls,CCPN7114, and he can stand up to compete with the rest of them. Top 3% for RBV,top 12% Carcase Wt, EMA and Net Feed Efficiency. Everything right for pushing down those scales.

Purchaser:.....Price:

<b>LOT 12</b>	<b>CLAREMONT BLACKS Q966 #</b>	<b>CCPQ966</b>	<b>06/03/2019</b>	<b>APR</b>
S: EXAR UPSHOT 0562B <sup>#</sup> S: EXAR DENVER 2002B <sup>#</sup> D: EXAR ROYAL LASS 1067 <sup>#</sup>		S: HF KODIAK 5R <sup>PV</sup> S: HF TIGER 5T <sup>#</sup> D: HF ECHO 84R <sup>#</sup>		
S: QUAKER HILL DEAD CENTER <sup>SV</sup> S: MCC DAYBREAK <sup>#</sup> D: QUAKER HILL BLACKCAP 0A32 <sup>#</sup> D: QHF BLACKCAP 6E2 OF4V16 4355 <sup>#</sup>		D: CLAREMONT BLACKS BETSY J367 <sup>#</sup> S: GLAMIS PARK T32 <sup>PV</sup> D: CLAREMONT BLACKS BETSY Z4124 <sup>#</sup> D: CLAREMONT BLACKS BETSY T8140 <sup>#</sup>		

January 2021 TransTasman Angus Cattle Evaluation											
TACE	CE Dir	CE Dtrs	Gest Lgth	Birth Wt.	200 Wt.	400 Wt.	600 Wt.	MC Wt.	Milk	Scrotal	D to Calv
EBV	+2.7	+4.7	-4.8	+3.2	+48	+89	+106	+89	+13	+1.7	-4.4
ACC	51%	37%	85%	75%	70%	71%	74%	67%	59%	72%	36%

Carc Wt.	EMA	Rib Fat	Rump Fat	RBV	IMF	NFI-F	AMFU,CAFU,DDFU,NHFU				
EBV	+63	+5.9	+0.1	-0.4	+1.1	+1.5	Traits Observed: GL,CE,BWT,200WT,400WT,600WT,SC,Scan(EMA,Rib,Rump,IMF)				
ACC	61%	60%	61%	61%	56%	43%					

This bull has a good combination in his pedigree. Quaker Hill for low Birth Wt and Calving Ease Direct and to his daughters, and good Feed Efficiency, to put on weight, from his dam, an HF Tiger cow. A perfect bull for heifers.

Purchaser:.....Price:



LOT 13	CLAREMONT BLACKS Q9143 #	CCPQ9143	17/03/2019	APR
S: CONNEALY CAPITALIST 028# S: LD CAPITALIST 316 <sup>PV</sup> D: LD DIXIE ERICA 2053#		S: HOFF LIMITED EDITION S C 594# S: RAFF LIMITED EDITION B113 <sup>SV</sup> D: RAFF DORIS S130#		
S: MUSGRAVE 316 STUNNER <sup>PV</sup> S: MCATL PURE PRODUCT 903-55 <sup>SV</sup> D: MCATL BLACKBIRD 831-1378# D: MCATL BLACKBIRD 1378-573#		D: CLAREMONT BLACKS KATE E9120# S: CLAREMONT BLACKS N3156.# D: CLAREMONT BLACKS KATE T840# D: CLAREMONT BLACKS KATE K086+90#		

January 2021 TransTasman Angus Cattle Evaluation											
TACE	CE Dir	CE Dtrs	Gest Lgth	Birth Wt.	200 Wt.	400 Wt.	600 Wt.	MC Wt.	Milk	Scrotal	D to Calv
EBV	-6.2	-2.3	+3.0	+6.1	+46	+83	+116	+105	+13	+2.1	-0.9
ACC	51%	37%	84%	75%	70%	71%	73%	66%	57%	72%	34%

Carc Wt.	EMA	Rib Fat	Rump Fat	RBV	IMF	NFI-F	AMFU,CAFU,DDFU,NHFU
EBV	+66	+2.8	+1.5	+1.2	-1.0	+1.4	+0.19
ACC	60%	59%	60%	60%	55%	54%	41%

This bull is a great combination between his extremely thick, muscular sire, Musgrave 316 Stunner, and our own big roomy cow, Claremont Blacks Kate E9120, who is by Raff Limited Edition. Plenty of growth and top 10% for Rib and Rump Fat to keep his female progeny well covered in the winter.

Purchaser:.....Price:

LOT 14	CLAREMONT BLACKS Q965 #	CCPQ965	06/03/2019	APR
S: C R A BEXTOR 872 5205 608# S: G A R PROPHET <sup>SV</sup> D: G A R OBJECTIVE 1885#		S: HOFF FIRST EDITION 058 242# S: CLAREMONT BLACKS E956 <sup>SV</sup> D: CLAREMONT BLACKS CLARE W123#		
S: BALDRIDGE BEAST MODE B074 <sup>PV</sup> S: STYLES UPGRADE J59# D: BALDRIDGE ISABEL Y69# D: BALDRIDGE ISABEL T935#		D: CLAREMONT BLACKS KIM G1116# S: CLAREMONT BLACKS B6139# D: CLAREMONT BLACKS KIM D8141# D: CLAREMONT BLACKS KIM W170#		

January 2021 TransTasman Angus Cattle Evaluation											
TACE	CE Dir	CE Dtrs	Gest Lgth	Birth Wt.	200 Wt.	400 Wt.	600 Wt.	MC Wt.	Milk	Scrotal	D to Calv
EBV	+4.8	-0.2	-3.6	+4.4	+58	+98	+120	+106	+9	+1.4	-5.2
ACC	54%	40%	84%	75%	70%	73%	73%	66%	57%	71%	36%

Carc Wt.	EMA	Rib Fat	Rump Fat	RBV	IMF	NFI-F	AMFU,CAFU,DDFU,NHFU
EBV	+66	+3.9	-0.1	+0.1	+1.8	+0.06	
ACC	60%	59%	60%	60%	55%	55%	43%

Q965, by the popular Baldrige Beast Mode B074, is a moderate Birth Wt bull with stacks of growth. Top 10% for 200 Day Wt and top 15% for 400 Day Wt. Perfect for producing top quality weaner calves.

Purchaser:.....Price:

LOT 15	CLAREMONT BLACKS Q9155 #	CCPQ9155	20/03/2019	APR
S: WMR TIMELESS 458# S: CLAREMONT BLACKS L551 <sup>SV</sup> D: CLAREMONT BLACKS HOLLY A556#		S: CLAREMONT BLACKS G116 <sup>SV</sup> S: CLAREMONT BLACKS J3104# D: CLAREMONT BLACKS JILL B6104#		
S: CLAREMONT BLACKS N7101 <sup>SV</sup> S: CLAREMONT BLACKS A546 <sup>SV</sup> D: CLAREMONT BLACKS JILL C777# D: CLAREMONT BLACKS JILL X2170#		D: CLAREMONT BLACKS EMMA L5191# S: BUFFALOS CONCLUSIVE BN46 <sup>SV</sup> D: CLAREMONT BLACKS EMMA J371# D: CLAREMONT BLACKS EMMA A534#		

January 2021 TransTasman Angus Cattle Evaluation											
TACE	CE Dir	CE Dtrs	Gest Lgth	Birth Wt.	200 Wt.	400 Wt.	600 Wt.	MC Wt.	Milk	Scrotal	D to Calv
EBV	-4.6	-1.2	-2.1	+5.9	+48	+87	+115	+120	+12	+1.4	-4.7
ACC	49%	34%	48%	73%	67%	67%	71%	63%	48%	68%	29%

Carc Wt.	EMA	Rib Fat	Rump Fat	RBV	IMF	NFI-F	AMFU,CAFU,DDFU,NHFU
EBV	+65	+2.6	-1.4	-1.1	+1.4	+0.0	-0.31
ACC	55%	53%	55%	56%	49%	46%	34%

The dam of this bull, Claremont Blacks Zia L5191, always produces a calf taller and wider than herself. Her son, Q9155, is in the top 5% of the breed for Feed Efficiency which says it all. A deep, thick bull.

Purchaser:.....Price:

LOT 16	CLAREMONT BLACKS Q941 #	CCPQ941	03/03/2019	APR
S: S ALLIANCE 3313# S: S CHISUM 6175 <sup>PV</sup> D: S GLORIA 464#		S: HOFF FIRST EDITION 058 242# S: CLAREMONT BLACKS D873 <sup>SV</sup> D: CLAREMONT BLACKS DAISY Z433#		
S: S WHITLOCK 179 <sup>PV</sup> S: R&S EXPEDITION 1404# D: S PRIDE ANNA 709# D: S PRIDE ANNA 567#		D: CLAREMONT BLACKS ZIA F0169# S: CLAREMONT BLACKS V075# D: CLAREMONT BLACKS ZIA Y3123# D: CLAREMONT BLACKS ZIA M278+92#		

January 2021 TransTasman Angus Cattle Evaluation											
TACE	CE Dir	CE Dtrs	Gest Lgth	Birth Wt.	200 Wt.	400 Wt.	600 Wt.	MC Wt.	Milk	Scrotal	D to Calv
EBV	+2.5	+7.5	-5.5	+4.9	+56	+100	+137	+122	+18	+3.2	-4.6
ACC	53%	39%	84%	75%	71%	72%	74%	67%	61%	72%	38%

Carc Wt.	EMA	Rib Fat	Rump Fat	RBV	IMF	NFI-F	AMFU,CAFU,DDFU,NHFU
EBV	+77	+5.0	-0.8	+0.3	+1.6	-0.2	-0.06
ACC	62%	60%	62%	62%	57%	56%	44%

We do like these Whitlock sons. They are moderate Birth Wt, easy Calving, super fertile bulls with stacks of Growth.

Purchaser:.....Price:

LOT 17	CLAREMONT BLACKS Q978 #	CCPQ978	06/03/2019	APR
S: COONAMBLE Z3 <sup>PV</sup> S: BANGADANG WESTERN EXPRESS E10 <sup>SV</sup> D: BANGADANG WILCOOLA Y7#		S: SUMMITCREST COMPLETE 1P55# S: KM BROKEN BOW 002 <sup>PV</sup> D: SUMMITCREST PRINCESS 0P12#		
S: TEXAS WESTERN EXPRESS H220 <sup>SV</sup> S: TE MANIA INFINITY 04 379 AB# D: TEXAS OMNIA F486# D: TEXAS OMNIA X205#		D: CLAREMONT BLACKS DIANA K402# S: CLAREMONT BLACKS Z460# D: CLAREMONT BLACKS DIANA B662# D: CLAREMONT BLACKS DIANA V071#		

January 2021 TransTasman Angus Cattle Evaluation											
TACE	CE Dir	CE Dtrs	Gest Lgth	Birth Wt.	200 Wt.	400 Wt.	600 Wt.	MC Wt.	Milk	Scrotal	D to Calv
EBV	+0.7	+0.5	-5.9	+4.0	+48	+89	+121	+125	+13	+2.3	-1.4
ACC	51%	37%	85%	75%	70%	70%	73%	66%	57%	72%	38%

Carc Wt.	EMA	Rib Fat	Rump Fat	RBV	IMF	NFI-F	AMFU,CAFU,DDFU,NHFU
EBV	+68	+2.1	-1.4	-0.2	+0.6	+0.7	-0.27
ACC	61%	61%	62%	62%	57%	56%	45%

Another Texas Western Express son out of our very soft easy doing cow, K402. Q978 has moderate Birth Wt, plenty of growth and top 5% Feed Efficiency.

Purchaser:.....Price:

LOT 18	CLAREMONT BLACKS Q915 <sup>SV</sup>	CCPQ915	28/02/2019	APR
S: COONAMBLE Z3 <sup>PV</sup> S: BANGADANG WESTERN EXPRESS E10 <sup>SV</sup> D: BANGADANG WILCOOLA Y7#		S: SUMMITCREST COMPLETE 1P55# S: KM BROKEN BOW 002 <sup>PV</sup> D: SUMMITCREST PRINCESS 0P12#		
S: TEXAS WESTERN EXPRESS H220 <sup>SV</sup> S: TE MANIA INFINITY 04 379 AB# D: TEXAS OMNIA F486# D: TEXAS OMNIA X205#		D: CLAREMONT BLACKS JESS K415# S: SUMMITCREST PRIME CUT 1G42# D: CLAREMONT BLACKS JESS Z412# D: CLAREMONT BLACKS JESS V014#		

January 2021 TransTasman Angus Cattle Evaluation											
TACE	CE Dir	CE Dtrs	Gest Lgth	Birth Wt.	200 Wt.	400 Wt.	600 Wt.	MC Wt.	Milk	Scrotal	D to Calv
EBV	+7.3	+5.1	-8.9	+2.4	+59	+105	+142	+128	+17	+3.1	-2.2
ACC	38%	31%	84%	74%	71%	71%	73%	67%	63%	71%	41%

Carc Wt.	EMA	Rib Fat	Rump Fat	RBV	IMF	NFI-F	AMFU,CAFU,DDFU,NHFU
EBV	+84	+6.1	-1.9	-1.7	+1.7	+0.7	-0.05
ACC	65%	63%	68%	65%	64%	63%	52%

You can't go past this bull who has the height from his sire, Texas H220, and softness from his Broken Bow dam. Low Birth Wt, top 5% 200,400,600 Day Wt, and Carcase Wt. Top 10 % RBV and Scrotal Size. Q915 was our heaviest bull at scanning in October 2020 with a scrotal size of 44cm!

Purchaser:.....Price:



LOT 19	CLAREMONT BLACKS Q9180 <sup>SV</sup>	CCPQ9180	27/03/2019	APR
S:LEACHMAN RIGHT TIME 338-5605 <sup>#</sup> S: WMR TIMELESS 458 <sup>#</sup> D:WMR BLACKCAP 521 <sup>#</sup>		S:SUMMITCREST COMPLETE 1P55 <sup>#</sup> S:KM BROKEN BOW 002 <sup>PV</sup> D:SUMMITCREST PRINCESS 0P12 <sup>#</sup>		
S: CLAREMONT BLACKS N736 <sup>SV</sup> S:CLAREMONT BLACKS Z421 <sup>SV</sup> D: CLAREMONT BLACKS KIM B619 <sup>#</sup> D:CLAREMONT BLACKS KIM X2228 <sup>#</sup>		D: CLAREMONT BLACKS BETH K448 <sup>#</sup> S:HYLINE RIGHT WAY 781 <sup>#</sup> D:CLAREMONT BLACKS BETH G165 <sup>#</sup> D:CLAREMONT BLACKS BETH C754 <sup>#</sup>		

January 2021 TransTasman Angus Cattle Evaluation											
TACE	CE Dir	CE Dtrs	Gest Lgth	Birth Wt.	200 Wt.	400 Wt.	600 Wt.	MC Wt.	Milk	Scrotal	D to Calv
EBV	-11.6	-0.1	-3.9	+7.8	+54	+94	+125	+141	+10	+1.3	-6.4
ACC	39%	32%	70%	73%	69%	68%	72%	66%	61%	70%	37%

Carc Wt.	EMA	Rib Fat	Rump Fat	RBV	IMF	NFI-F	AMFU,CAFU,DDFU,NHFU
EBV	+66	+1.7	-1.2	-1.4	+1.8	-0.4	-0.77
ACC	63%	59%	65%	62%	62%	59%	49%

Q9180 is a really good doing bull. Top 1% of the breed for Feed Efficiency,top 5% for Retail Beef Yield and top 20% for 200 Day Wt. This bull has plenty of style.  
Purchaser:.....Price:

LOT 20	CLAREMONT BLACKS Q9195 <sup>#</sup>	CCPQ9195	03/04/2019	APR
S:LEACHMAN RIGHT TIME 338-5605 <sup>#</sup> S: WMR TIMELESS 458 <sup>#</sup> D:WMR BLACKCAP 521 <sup>#</sup>		S:MCATL TRIPLE STACK <sup>#</sup> S:CLAREMONT BLACKS G116 <sup>SV</sup> D:CLAREMONT BLACKS CERES C708 <sup>#</sup>		
S: CLAREMONT BLACKS N755 <sup>SV</sup> S:CLAREMONT BLACKS G132 <sup>SV</sup> D: CLAREMONT BLACKS BETH J3198 <sup>#</sup> D:CLAREMONT BLACKS BETH F0149 <sup>#</sup>		D: CLAREMONT BLACKS DIANA J3222 <sup>#</sup> S:CLAREMONT BLACKS Z460 <sup>#</sup> D:CLAREMONT BLACKS DIANA B662 <sup>#</sup> D:CLAREMONT BLACKS DIANA V071 <sup>#</sup>		

January 2021 TransTasman Angus Cattle Evaluation											
TACE	CE Dir	CE Dtrs	Gest Lgth	Birth Wt.	200 Wt.	400 Wt.	600 Wt.	MC Wt.	Milk	Scrotal	D to Calv
EBV	+1.5	+2.3	-4.9	+3.7	+46	+83	+103	+91	+14	+1.5	-3.2
ACC	48%	34%	56%	72%	66%	66%	70%	63%	50%	68%	30%

Carc Wt.	EMA	Rib Fat	Rump Fat	RBV	IMF	NFI-F	AMF,CAF,DDF,NHFU
EBV	+61	+3.4	+1.4	+1.8	+0.2	+0.5	-0.22
ACC	55%	53%	54%	55%	49%	45%	34%

Q9195 is a low Birth Wt, Calving Ease bull with positive Rib and Rump Fat to pass on to his daughters which keeps the condition on throughout the winter. Top 10% for Feed Efficiency.  
Purchaser:.....Price:

LOT 21	CLAREMONT BLACKS Q916 <sup>#</sup>	CCPQ916	28/02/2019	APR
S:CONNEALY CAPITALIST 028 <sup>#</sup> S: LD CAPITALIST 316 <sup>PV</sup> D:LD DIXIE ERICA 2053 <sup>#</sup>		S:HOFF LIMITED EDITION S C 594 <sup>#</sup> S:CLAREMONT BLACKS B646 <sup>SV</sup> D:CLAREMONT BLACKS EMMA S7146 <sup>#</sup>		
S: MUSGRAVE 316 STUNNER <sup>PV</sup> S:MCATL PURE PRODUCT 903-55 <sup>SV</sup> D: MCATL BLACKBIRD 831-1378 <sup>#</sup> D:MCATL BLACKBIRD 1378-573 <sup>#</sup>		D: CLAREMONT BLACKS ZORA D8105 <sup>#</sup> S:BT DIRECTION 65D <sup>#</sup> D:CLAREMONT BLACKS ZORA X215 <sup>#</sup> D:CLAREMONT BLACKS ZORA S762 <sup>#</sup>		

January 2021 TransTasman Angus Cattle Evaluation											
TACE	CE Dir	CE Dtrs	Gest Lgth	Birth Wt.	200 Wt.	400 Wt.	600 Wt.	MC Wt.	Milk	Scrotal	D to Calv
EBV	+0.3	+2.3	-1.2	+3.8	+42	+80	+102	+89	+12	+1.2	-0.3
ACC	49%	35%	64%	73%	68%	68%	70%	63%	56%	66%	32%

Carc Wt.	EMA	Rib Fat	Rump Fat	RBV	IMF	NFI-F	AMFU,CAFU,DDFU,NHFU
EBV	+62	+4.3	+1.2	+1.1	-0.5	+1.1	+0.03
ACC	58%	56%	59%	57%	54%	54%	41%

A low Birth Wt, Calving Ease bull by Musgrave 316 Stunner. Q916 has Postive Rib and Rump Fat to pass on to his daughters;top 15% for these traits.  
Purchaser:.....Price:

LOT 22	CLAREMONT BLACKS Q9127 <sup>SV</sup>	CCPQ9127	15/03/2019	APR
S:LEACHMAN RIGHT TIME 338-5605 <sup>#</sup> S: WMR TIMELESS 458 <sup>#</sup> D:WMR BLACKCAP 521 <sup>#</sup>		S:CLAREMONT BLACKS F046 <sup>SV</sup> S:CLAREMONT BLACKS H223 <sup>#</sup> D:CLAREMONT BLACKS AMBER E951 <sup>#</sup>		
S: CLAREMONT BLACKS N736 <sup>SV</sup> S:CLAREMONT BLACKS Z421 <sup>SV</sup> D: CLAREMONT BLACKS KIM B619 <sup>#</sup> D:CLAREMONT BLACKS KIM X2228 <sup>#</sup>		D: CLAREMONT BLACKS BELLE K4238 <sup>#</sup> S:B C C BUSHWACKER 41-93 <sup>SV</sup> D:CLAREMONT BLACKS BELLE Z494 <sup>#</sup> D:CLAREMONT BLACKS BELLE Q5152+95 <sup>#</sup>		

January 2021 TransTasman Angus Cattle Evaluation											
TACE	CE Dir	CE Dtrs	Gest Lgth	Birth Wt.	200 Wt.	400 Wt.	600 Wt.	MC Wt.	Milk	Scrotal	D to Calv
EBV	-3.0	-2.7	-4.0	+5.1	+49	+92	+115	+103	+13	+2.2	-4.3
ACC	37%	30%	67%	73%	68%	67%	71%	65%	60%	69%	35%

Carc Wt.	EMA	Rib Fat	Rump Fat	RBV	IMF	NFI-F	AMFU,CAFU,DDFU,NHFU
EBV	+66	+4.6	-1.4	-2.0	+2.1	+0.1	-0.58
ACC	62%	58%	64%	60%	60%	57%	47%

A really good doing bull with top 1% of the breed for Feed Efficiency and top 5% for Retail Beef Yield. A good vealer bull.  
Purchaser:.....Price:

LOT 23	CLAREMONT BLACKS Q9212 <sup>#</sup>	CCPQ9212	13/04/2019	APR
S:LEACHMAN RIGHT TIME 338-5605 <sup>#</sup> S: WMR TIMELESS 458 <sup>#</sup> D:WMR BLACKCAP 521 <sup>#</sup>		S:HOFF FIRST EDITION 058 242 <sup>#</sup> S:CLAREMONT BLACKS D872 <sup>SV</sup> D:CLAREMONT BLACKS GWEN Z4156 <sup>#</sup>		
S: CLAREMONT BLACKS N798 <sup>SV</sup> S:CLAREMONT BLACKS D873 <sup>SV</sup> D: CLAREMONT BLACKS UNA F040 <sup>#</sup> D:CLAREMONT BLACKS UNA Y386 <sup>#</sup>		D: CLAREMONT BLACKS DORIS F0181 <sup>#</sup> S:CLAREMONT BLACKS X2222 <sup>#</sup> D:CLAREMONT BLACKS DORIS Z4100 <sup>#</sup> D:CLAREMONT BLACKS DORIS U981 <sup>#</sup>		

January 2021 TransTasman Angus Cattle Evaluation											
TACE	CE Dir	CE Dtrs	Gest Lgth	Birth Wt.	200 Wt.	400 Wt.	600 Wt.	MC Wt.	Milk	Scrotal	D to Calv
EBV	-5.8	-3.9	-1.9	+6.2	+51	+93	+131	+127	+16	+2.8	-0.6
ACC	50%	36%	54%	73%	67%	68%	71%	64%	52%	68%	33%

Carc Wt.	EMA	Rib Fat	Rump Fat	RBV	IMF	NFI-F	AMFU,CAFU,DDFU,NHFU
EBV	+72	+4.6	-1.0	-1.4	+2.2	-0.1	-0.36
ACC	56%	54%	55%	57%	50%	47%	35%

Q9212 is a well grown bull with top 15% of the breed for 600 Day Wt. He is also a good convertor being top 4% Net Feed Efficiency and top 3% Retail Beef Yield.  
Purchaser:.....Price:

LOT 24	CLAREMONT BLACKS Q9159 <sup>SV</sup>	CCPQ9159	21/03/2019	APR
S:JINDRA DOUBLE VISION <sup>SV</sup> S: CLAREMONT BLACKS L520 <sup>SV</sup> D:CLAREMONT BLACKS ZIA F0169 <sup>#</sup>		S:KM BROKEN BOW 002 <sup>PV</sup> S:CLAREMONT BLACKS K432 <sup>SV</sup> D:CLAREMONT BLACKS LOREN C7182 <sup>#</sup>		
S: CLAREMONT BLACKS N7114 <sup>SV</sup> S:CLAREMONT BLACKS F046 <sup>SV</sup> D: CLAREMONT BLACKS DAISY H2142 <sup>#</sup> D:CLAREMONT BLACKS DAISY E944 <sup>#</sup>		D: CLAREMONT BLACKS EMMA M699 <sup>#</sup> S:BRAVEHEART OF STERN <sup>PV</sup> D:CLAREMONT BLACKS EMMA K450 <sup>#</sup> D:CLAREMONT BLACKS EMMA F088 <sup>#</sup>		

January 2021 TransTasman Angus Cattle Evaluation											
TACE	CE Dir	CE Dtrs	Gest Lgth	Birth Wt.	200 Wt.	400 Wt.	600 Wt.	MC Wt.	Milk	Scrotal	D to Calv
EBV	-9.0	-5.4	-1.5	+6.4	+43	+77	+88	+72	+16	+1.1	-5.4
ACC	50%	32%	61%	72%	67%	67%	71%	64%	56%	68%	32%

Carc Wt.	EMA	Rib Fat	Rump Fat	RBV	IMF	NFI-F	AMFU,CAFU,DDFU,NHFU
EBV	+54	+9.8	+1.3	+1.1	+1.1	+0.2	+0.16
ACC	60%	56%	62%	59%	58%	55%	44%

Q9159 is a good carcase bull with top 5% Retail Beef Yield and top 15% Rib and Rump Fat to keep condition on his daughters.  
Purchaser:.....Price:

LOT 25	CLAREMONT BLACKS Q962 <sup>SV</sup>	CCPQ962	06/03/2019	APR
S: S ALLIANCE 3313 <sup>#</sup>	S: REMITALL PARAMOUNT 150P <sup>#</sup>			
S: S CHISUM 6175 <sup>PV</sup>	S: REMITALL SIZZLER 580S <sup>#</sup>			
D: S GLORIA 464 <sup>#</sup>	D: REMITALL QUEEN 110M <sup>#</sup>			
S: S WHITLOCK 179 <sup>PV</sup>	D: CLAREMONT BLACKS DAISY K421 <sup>#</sup>			
S: R&S EXPEDITION 1404 <sup>#</sup>	S: CLAREMONT BLACKS C736 <sup>#</sup>			
D: S PRIDE ANNA 709 <sup>#</sup>	D: CLAREMONT BLACKS DAISY E944 <sup>#</sup>			
D: S PRIDE ANNA 567 <sup>#</sup>	D: CLAREMONT BLACKS DAISY Y373 <sup>#</sup>			

**January 2021 TransTasman Angus Cattle Evaluation**

TACE	CE Dir	CE Dtrs	Gest Lgth	Birth Wt.	200 Wt.	400 Wt.	600 Wt.	MC Wt.	Milk	Scrotal	D to Calv
EBV	-1.4	+1.2	-5.8	+4.1	+61	+108	+138	+131	+20	+1.3	-2.6
ACC	40%	32%	85%	75%	72%	72%	74%	69%	65%	72%	40%

Carc Wt.	EMA	Rib Fat	Rump Fat	RBV	IMF	NFI-F	AMFU,CAFU,DDFU,NHFU
EBV	+86	+2.0	-1.4	-1.3	+0.4	+0.5	-0.55
ACC	66%	64%	69%	65%	65%	64%	53%

Another bull by S Whitlock. Low Birth Wt to use for your heifers. Plenty of Growth for his calves; top 5% 200 and 400 Day Wt, and top 8% for 600 Day Wt. Include a top 3% of the breed for Carcase Wt and top 1% for Feed Efficiency and you have just the perfect package.

Purchaser:.....Price:

LOT 26	CLAREMONT BLACKS Q9179 <sup>#</sup>	CCPQ9179	27/03/2019	APR
S: WMR TIMELESS 458 <sup>#</sup>	S: HF TIGER 5T <sup>#</sup>			
S: CLAREMONT BLACKS L551 <sup>SV</sup>	S: CLAREMONT BLACKS G132 <sup>SV</sup>			
D: CLAREMONT BLACKS HOLLY A556 <sup>#</sup>	D: CLAREMONT BLACKS HOLLY A556 <sup>#</sup>			
S: CLAREMONT BLACKS N753 <sup>SV</sup>	D: CLAREMONT BLACKS ZENA J3163 <sup>#</sup>			
S: MOHNEN DYNAMITE 1356 <sup>#</sup>	S: MVF VRD DATELINE 913P <sup>#</sup>			
D: CLAREMONT BLACKS DAISY G153 <sup>#</sup>	D: CLAREMONT BLACKS ZIA F044 <sup>#</sup>			
D: CLAREMONT BLACKS DAISY A512 <sup>#</sup>	D: CLAREMONT BLACKS JILL B6104 <sup>#</sup>			

**January 2021 TransTasman Angus Cattle Evaluation**

TACE	CE Dir	CE Dtrs	Gest Lgth	Birth Wt.	200 Wt.	400 Wt.	600 Wt.	MC Wt.	Milk	Scrotal	D to Calv
EBV	-2.6	+0.1	-4.5	+5.4	+50	+89	+109	+106	+16	+2.3	-6.8
ACC	49%	35%	48%	73%	67%	71%	71%	63%	48%	68%	31%

Carc Wt.	EMA	Rib Fat	Rump Fat	RBV	IMF	NFI-F	AMFU,CAFU,DDFU,NHFU
EBV	+65	+0.3	+0.3	+1.1	+0.0	+0.8	-0.15
ACC	55%	53%	54%	56%	49%	45%	35%

A wonderful weight gainer that is in the top 15% for Feed Efficiency.

Purchaser:.....Price:

LOT 27	CLAREMONT BLACKS Q977 <sup>SV</sup>	CCPQ977	06/03/2019	APR
S: COONAMBLE Z3 <sup>PV</sup>	S: REMITALL SIZZLER 580S <sup>#</sup>			
S: BANGADANG WESTERN EXPRESS E10 <sup>SV</sup>	S: CLAREMONT BLACKS H238 <sup>SV</sup>			
D: BANGADANG WILCOOLA Y7 <sup>#</sup>	D: CLAREMONT BLACKS FAY A5143 <sup>#</sup>			
S: TEXAS WESTERN EXPRESS H220 <sup>SV</sup>	D: CLAREMONT BLACKS DIANA K487 <sup>#</sup>			
S: TE MANIA INFINITY 04 379 AB <sup>#</sup>	S: CLAREMONT BLACKS B646 <sup>#</sup>			
D: TEXAS OMNIA F486 <sup>#</sup>	D: CLAREMONT BLACKS DIANA D8231 <sup>#</sup>			
D: TEXAS OMNIA X205 <sup>#</sup>	D: CLAREMONT BLACKS DIANA X2112 <sup>#</sup>			

**January 2021 TransTasman Angus Cattle Evaluation**

TACE	CE Dir	CE Dtrs	Gest Lgth	Birth Wt.	200 Wt.	400 Wt.	600 Wt.	MC Wt.	Milk	Scrotal	D to Calv
EBV	-8.8	-8.4	-3.8	+5.0	+41	+74	+90	+97	+13	+1.6	-2.7
ACC	37%	30%	84%	75%	72%	71%	74%	68%	63%	72%	39%

Carc Wt.	EMA	Rib Fat	Rump Fat	RBV	IMF	NFI-F	AMFU,CAFU,DDFU,NHFU
EBV	+56	+1.5	-2.0	-0.1	+0.4	+0.8	-0.07
ACC	66%	63%	69%	65%	65%	63%	51%

We are very pleased with all the bulls by Texas Western Express H220.They are placid and easy doing bulls.

Purchaser:.....Price:

LOT 28	CLAREMONT BLACKS Q9198 <sup>#</sup>	CCPQ9198	05/04/2019	APR
S: CONNEALY IMPRESSION <sup>#</sup>	S: HOFF FIRST EDITION 058 242 <sup>#</sup>			
S: MAR INNOVATION 251 <sup>PV</sup>	S: CLAREMONT BLACKS D873 <sup>SV</sup>			
D: MAR FINAL KAHUNA 856 <sup>#</sup>	D: CLAREMONT BLACKS DAISY Z433 <sup>#</sup>			
S: CLAREMONT BLACKS N794 <sup>SV</sup>	D: CLAREMONT BLACKS UNA F040 <sup>#</sup>			
S: CLAREMONT BLACKS Y3118 <sup>#</sup>	S: CLAREMONT BLACKS V0144 <sup>#</sup>			
D: CLAREMONT BLACKS KIM A583 <sup>#</sup>	D: CLAREMONT BLACKS UNA Y386 <sup>#</sup>			
D: CLAREMONT BLACKS KIM W170 <sup>#</sup>	D: CLAREMONT BLACKS UNA U9112 <sup>#</sup>			

**January 2021 TransTasman Angus Cattle Evaluation**

TACE	CE Dir	CE Dtrs	Gest Lgth	Birth Wt.	200 Wt.	400 Wt.	600 Wt.	MC Wt.	Milk	Scrotal	D to Calv
EBV	-7.4	-3.3	-1.3	+7.2	+54	+93	+127	+127	+11	+0.9	-0.3
ACC	49%	35%	57%	72%	66%	67%	71%	63%	52%	69%	32%

Carc Wt.	EMA	Rib Fat	Rump Fat	RBV	IMF	NFI-F	AMFU,CAFU,DDFU,NHFU
EBV	+71	+6.0	-1.2	-1.8	+1.9	-0.1	-0.37
ACC	56%	53%	55%	56%	49%	46%	35%

Q9198 is a good doing bull that is in the top 5% of the breed for Net Feed Efficiency and RBV. His dam, Una F040, is a big framed cow that is a regular in our AI program.

Purchaser:.....Price:

LOT 29	CLAREMONT BLACKS Q9221 <sup>SV</sup>	CCPQ9221	16/04/2019	APR
S: WMR TIMELESS 458 <sup>#</sup>	S: HF TIGER 5T <sup>#</sup>			
S: CLAREMONT BLACKS L551 <sup>SV</sup>	S: CLAREMONT BLACKS H257 <sup>SV</sup>			
D: CLAREMONT BLACKS HOLLY A556 <sup>#</sup>	D: CLAREMONT BLACKS HOLLY A556 <sup>#</sup>			
S: CLAREMONT BLACKS N753 <sup>SV</sup>	D: CLAREMONT BLACKS DAISY K4131 <sup>#</sup>			
S: MOHNEN DYNAMITE 1356 <sup>#</sup>	S: CLAREMONT BLACKS F046 <sup>#</sup>			
D: CLAREMONT BLACKS DAISY G153 <sup>#</sup>	D: CLAREMONT BLACKS DAISY H2142 <sup>#</sup>			
D: CLAREMONT BLACKS DAISY A512 <sup>#</sup>	D: CLAREMONT BLACKS DAISY E944 <sup>#</sup>			

**January 2021 TransTasman Angus Cattle Evaluation**

TACE	CE Dir	CE Dtrs	Gest Lgth	Birth Wt.	200 Wt.	400 Wt.	600 Wt.	MC Wt.	Milk	Scrotal	D to Calv
EBV	-6.4	-3.9	-3.2	+6.8	+50	+91	+109	+99	+21	+2.4	-6.2
ACC	38%	30%	63%	72%	68%	67%	71%	65%	58%	69%	34%

Carc Wt.	EMA	Rib Fat	Rump Fat	RBV	IMF	NFI-F	AMFU,CAFU,DDFU,NHFU
EBV	+68	+2.5	+0.8	+1.4	-0.1	+1.3	+0.10
ACC	62%	58%	64%	61%	60%	57%	46%

Being one of the younger bulls of the group, I expect this bull will only improve as he matures with age. He is long and just as tall as his mates.

Purchaser:.....Price:

LOT 30	CLAREMONT BLACKS Q963 <sup>#</sup>	CCPQ963	06/03/2019	APR
S: C R A BEXTOR 872 5205 608 <sup>#</sup>	S: CLAREMONT BLACKS Z421 <sup>SV</sup>			
S: G A R PROPHET <sup>SV</sup>	S: CLAREMONT BLACKS B693 <sup>SV</sup>			
D: G A R OBJECTIVE 1885 <sup>#</sup>	D: CLAREMONT BLACKS CUPID X2164 <sup>#</sup>			
S: BALDRIDGE BEAST MODE B074 <sup>PV</sup>	D: CLAREMONT BLACKS BERRY D854 <sup>#</sup>			
S: STYLES UPGRADE J59 <sup>#</sup>	S: CLAREMONT BLACKS V075 <sup>SV</sup>			
D: BALDRIDGE ISABEL Y69 <sup>#</sup>	D: CLAREMONT BLACKS BERRY Z4217 <sup>#</sup>			
D: BALDRIDGE ISABEL T935 <sup>#</sup>	D: CLAREMONT BLACKS BERRY R659+96 <sup>#</sup>			

**January 2021 TransTasman Angus Cattle Evaluation**

TACE	CE Dir	CE Dtrs	Gest Lgth	Birth Wt.	200 Wt.	400 Wt.	600 Wt.	MC Wt.	Milk	Scrotal	D to Calv
EBV	+4.1	-0.3	-2.7	+4.6	+52	+90	+110	+102	+9	+2.6	-6.3
ACC	55%	40%	84%	75%	71%	71%	74%	66%	59%	72%	37%

Carc Wt.	EMA	Rib Fat	Rump Fat	RBV	IMF	NFI-F	AMFU,CAFU,DDFU,NHFU
EBV	+58	+1.7	-1.2	-0.8	+0.6	+1.9	+0.07
ACC	60%	59%	60%	61%	56%	55%	44%

This bull will be perfect for heifers;moderate birth and top 30% of the breed for Calving Ease direct to Daughters


Purchaser:.....Price:



agri-mac.com.au


# BEEF UP YOUR OPERATION


with Agrimac AGRI MACHINERY SPECIALISTS





**Agrimac have a full range of machines to make beef production easier and more efficient.**


Our range includes tractors from Case IH and Kubota, to the best name in fodder conservation, Krone, through to quality Australian made bale feeders from Willies.





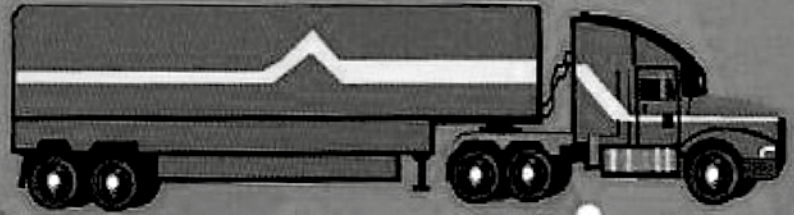






<p><b>TALK TO AGRIMAC TODAY AND WE'LL SHOW YOU HOW TO BEEF UP YOUR BUSINESS.</b></p>	<p><b>Warrnambool</b> 92 Caramut Road Warrnambool VIC 3280 03 5562 5555</p>	<p><b>Ballarat</b> Cnr Learmonth &amp; Ring Roads Wendouree VIC 3355 03 5339 3038</p>	<p><b>Hamilton</b> 26 Peck Street Hamilton, VIC 3300 0488 776 633</p>	<p><b>St Arnaud</b> Sunraysia Highway St Arnaud VIC 3478 03 5495 1288</p>
--	---	---	---	---

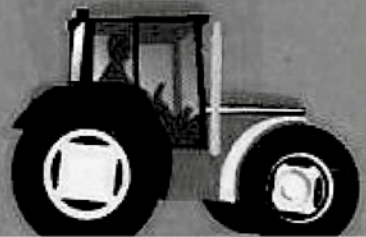
# FRY



## cartage & contracting

3418 Woolsthorpe/Heywood Rd.,  
Broadwater 3301

M. 0428 529 356 Trevor Fry  
0427 816 178 Adam Fry



LIVESTOCK – GENERAL FREIGHT – HARVESTING



**Contact: Drew Pickford**  
M: 0428 925 255 | E: drew@nationwideab.com.au  
Nationwide Artificial Breeders Pty. Ltd.



From 1 to 1000 no job too big or small

# Breakwater

Insurance Brokers

Professional, on farm service  
for all your insurance needs.

**Warrnambool**  
182 Fairy Street, Warrnambool  
Phone (03) 5562 0248

**Camperdown**  
200 Manifold Street, Camperdown  
Phone (03) 5593 2220

breakwaterib.com.au





LOT 31	CLAREMONT BLACKS Q9174 #	CCPQ9174	26/03/2019	APR
S:LEACHMAN RIGHT TIME 338-5605# S: WMR TIMELESS 458# D:WMR BLACKCAP 521#		S:RAFF LIMITED EDITION B113 <sup>SV</sup> S:CLAREMONT BLACKS G130 <sup>SV</sup> D:CLAREMONT BLACKS AVA X2244#		
<b>S: CLAREMONT BLACKS N755<sup>SV</sup></b> S:CLAREMONT BLACKS G132 <sup>SV</sup> D: CLAREMONT BLACKS BETH J3198# D:CLAREMONT BLACKS BETH F0149#		<b>D: CLAREMONT BLACKS BELLE J383#</b> S:B C C BUSHWACKER 41-93 <sup>SV</sup> D:CLAREMONT BLACKS BELLE Z494# D:CLAREMONT BLACKS BELLE Q5152+95#		

January 2021 TransTasman Angus Cattle Evaluation											
TACE	CE Dir	CE Dtrs	Gest Lgth	Birth Wt.	200 Wt.	400 Wt.	600 Wt.	MC Wt.	Milk	Scrotal	D to Calv
EBV	+0.8	+2.7	-4.8	+4.5	+46	+80	+103	+90	+10	+2.3	-3.7
ACC	47%	34%	55%	71%	65%	66%	70%	62%	49%	67%	31%

Carc Wt.	EMA	Rib Fat	Rump Fat	RBY	IMF	NFI-F	AMF,CAF,DDF,NHFU
EBV	+58	+6.0	+1.5	+1.5	+1.3	-0.2	+0.00
ACC	54%	52%	53%	54%	48%	44%	34%

Traits Observed: CE,BWT,200WT,400WT,600WT,SC,Scan(EMA,Rib,Rump,IMF)

Q9174 is a moderate birth wt bull. He has positive Rib and Rump Fat, Top 10 %, which he will pass onto his daughters.

Purchaser:.....Price:

LOT 32	CLAREMONT BLACKS Q9164 #	CCPQ9164	22/03/2019	APR
S:WMR TIMELESS 458# S: CLAREMONT BLACKS L551 <sup>SV</sup> D:CLAREMONT BLACKS HOLLY A556#		S:REMITALL SIZZLER 580S# S:CLAREMONT BLACKS E992 <sup>SV</sup> D:CLAREMONT BLACKS KIM A583#		
<b>S: CLAREMONT BLACKS N753<sup>SV</sup></b> S:MOHNEN DYNAMITE 1356# D: CLAREMONT BLACKS DAISY G153# D:CLAREMONT BLACKS DAISY A512#		<b>D: CLAREMONT BLACKS CERES G1168#</b> S:HOFF FIRST EDITION 058 242# D:CLAREMONT BLACKS CERES E982# D:CLAREMONT BLACKS CERES A591#		

January 2021 TransTasman Angus Cattle Evaluation											
TACE	CE Dir	CE Dtrs	Gest Lgth	Birth Wt.	200 Wt.	400 Wt.	600 Wt.	MC Wt.	Milk	Scrotal	D to Calv
EBV	-8.5	-4.2	-2.2	+6.8	+50	+89	+114	+114	+13	+1.2	-3.7
ACC	49%	35%	48%	73%	66%	67%	71%	63%	48%	68%	32%

Carc Wt.	EMA	Rib Fat	Rump Fat	RBY	IMF	NFI-F	AMFU,CAFU,DDFU,NHFU
EBV	+66	+5.0	+0.1	-0.1	+0.9	+0.2	-0.12
ACC	55%	53%	54%	56%	49%	46%	34%

Traits Observed: CE,BWT,200WT,400WT,600WT,SC,Scan(EMA,Rib,Rump,IMF)

A tall, long bull that will fill out his pants as he gets older. If you want length in your herd, then look at this bull. Top 15% for Feed Efficiency.

Purchaser:.....Price:

LOT 33	CLAREMONT BLACKS Q9106 #	CCPQ9106	10/03/2019	APR
S:WMR TIMELESS 458# S: CLAREMONT BLACKS L551 <sup>SV</sup> D:CLAREMONT BLACKS HOLLY A556#		S:CLAREMONT BLACKS G138 <sup>SV</sup> S:CLAREMONT BLACKS J3257 <sup>SV</sup> D:CLAREMONT BLACKS HILDA E9140#		
<b>S: CLAREMONT BLACKS N7101<sup>SV</sup></b> S:CLAREMONT BLACKS A546 <sup>SV</sup> D: CLAREMONT BLACKS JILL C777# D:CLAREMONT BLACKS JILL X2170#		<b>D: CLAREMONT BLACKS HILDA L5159#</b> S:HOFF FIRST EDITION 058 242 <sup>SV</sup> D:CLAREMONT BLACKS HILDA C709# D:CLAREMONT BLACKS HILDA A517#		

January 2021 TransTasman Angus Cattle Evaluation											
TACE	CE Dir	CE Dtrs	Gest Lgth	Birth Wt.	200 Wt.	400 Wt.	600 Wt.	MC Wt.	Milk	Scrotal	D to Calv
EBV	-1.2	+2.3	-3.6	+4.3	+36	+61	+79	+82	+11	+1.2	-5.3
ACC	47%	33%	46%	72%	66%	67%	70%	62%	47%	68%	29%

Carc Wt.	EMA	Rib Fat	Rump Fat	RBY	IMF	NFI-F	AMFU,CAFU,DDFU,NHFU
EBV	+46	+2.4	-0.2	+0.2	+1.0	+0.1	-0.11
ACC	54%	52%	53%	55%	48%	44%	34%

Traits Observed: CE,BWT,200WT,400WT,600WT,SC,Scan(EMA,Rib,Rump,IMF)

A moderate birth wt bull that has longevity in the cows on both sides of the pedigree. These type of "longevity cows" that are kept at Claremont are always good, safe productive cows.

Purchaser:.....Price:

LOT 34	CLAREMONT BLACKS Q9116 <sup>SV</sup>	CCPQ9116	12/03/2019	APR
S:CONNEALY CAPITALIST 028# S: LD CAPITALIST 316 <sup>PV</sup> D:LD DIXIE ERICA 2053#		S:HOFF HEAD OF THE CLASS SC534# S:HOFF FIRST EDITION 058 242# D:HOFF WITCH OF S C 7131 058#		
<b>S: MUSGRAVE 316 STUNNER<sup>PV</sup></b> S:MCATL PURE PRODUCT 903-55 <sup>SV</sup> D: MCATL BLACKBIRD 831-1378# D:MCATL BLACKBIRD 1378-573#		<b>D: CLAREMONT BLACKS FLO E927#</b> S:CLAREMONT BLACKS A509# D:CLAREMONT BLACKS FLO C755# D:CLAREMONT BLACKS FLO T882#		

January 2021 TransTasman Angus Cattle Evaluation											
TACE	CE Dir	CE Dtrs	Gest Lgth	Birth Wt.	200 Wt.	400 Wt.	600 Wt.	MC Wt.	Milk	Scrotal	D to Calv
EBV	+6.1	+1.3	-1.1	+3.0	+46	+85	+104	+86	+10	+2.7	-3.1
ACC	41%	32%	85%	75%	72%	72%	73%	68%	63%	72%	37%

Carc Wt.	EMA	Rib Fat	Rump Fat	RBY	IMF	NFI-F	AMFU,CAFU,DDFU,NHFU
EBV	+63	+6.8	+1.4	+0.9	+0.2	+0.7	+0.46
ACC	65%	63%	67%	64%	64%	62%	50%

Traits Observed: GL,CE,BWT,200WT,400WT,600WT,SC,Scan(EMA,Rib,Rump,IMF),Genomics

Q9116 is a low Birth Wt, Calving Ease bull By Musgrave 316 Stunner that would be suitable for heifers. He is a long bull that will add some stretch to your calves.

Purchaser:.....Price:

LOT 35	CLAREMONT BLACKS Q983 #	CCPQ983	07/03/2019	APR
S:EXAR UPSHOT 0562B# S: EXAR DENVER 2002B# D:EXAR ROYAL LASS 1067#		S:CLAREMONT BLACKS H238 <sup>SV</sup> S:CLAREMONT BLACKS K4181 <sup>SV</sup> D:CLAREMONT BLACKS SARAH D827#		
<b>S: QUAKER HILL DEAD CENTER<sup>SV</sup></b> S:MCC DAYBREAK# D: QUAKER HILL BLACKCAP 0A32# D:QHF BLACKCAP 6E2 0F4V16 4355#		<b>D: CLAREMONT BLACKS JULIA M6157#</b> S:CLAREMONT BLACKS H239 <sup>SV</sup> D:CLAREMONT BLACKS JULIA K479# D:CLAREMONT BLACKS JULIA H2171#		

January 2021 TransTasman Angus Cattle Evaluation											
TACE	CE Dir	CE Dtrs	Gest Lgth	Birth Wt.	200 Wt.	400 Wt.	600 Wt.	MC Wt.	Milk	Scrotal	D to Calv
EBV	+8.6	+7.6	-4.0	+2.2	+44	+81	+101	+83	+14	+1.2	-3.2
ACC	48%	34%	83%	74%	68%	69%	72%	65%	53%	70%	31%

Carc Wt.	EMA	Rib Fat	Rump Fat	RBY	IMF	NFI-F	AMFU,CAFU,DDFU,NHFU
EBV	+57	+6.0	-0.1	-1.2	+1.4	+1.1	+0.06
ACC	58%	57%	58%	59%	53%	51%	38%

Traits Observed: GL,CE,BWT,200WT,400WT,600WT,SC,Scan(EMA,Rib,Rump,IMF)

Perfect bull for heifers. Low Birth Wt of +2.2, and top 10% for Calving Ease Direct and Calving Ease to Daughters.

Purchaser:.....Price:

LOT 36	CLAREMONT BLACKS Q957 #	CCPQ957	05/03/2019	APR
S:COONAMBLE Z3 <sup>PV</sup> S: BANGADANG WESTERN EXPRESS E10 <sup>SV</sup> D:BANGADANG WILCOOLA Y7#		S:CLAREMONT BLACKS F046 <sup>SV</sup> S:CLAREMONT BLACKS H223# D:CLAREMONT BLACKS AMBER E951#		
<b>S: TEXAS WESTERN EXPRESS H220<sup>SV</sup></b> S:TE MANIA INFINITY 04 379 AB# D: TEXAS OMNIA F486# D:TEXAS OMNIA X205#		<b>D: CLAREMONT BLACKS EMMA K4177#</b> S:CLAREMONT BLACKS U9106 <sup>SV</sup> D:CLAREMONT BLACKS EMMA Z4223# D:CLAREMONT BLACKS EMMA M2013+92#		

January 2021 TransTasman Angus Cattle Evaluation											
TACE	CE Dir	CE Dtrs	Gest Lgth	Birth Wt.	200 Wt.	400 Wt.	600 Wt.	MC Wt.	Milk	Scrotal	D to Calv
EBV	+3.6	+0.4	-4.6	+2.7	+43	+85	+102	+102	+13	+2.8	-3.2
ACC	49%	35%	83%	75%	69%	70%	73%	65%	56%	71%	36%

Carc Wt.	EMA	Rib Fat	Rump Fat	RBY	IMF	NFI-F	AMFU,CAFU,DDFU,NHFU
EBV	+63	+2.0	-1.9	-0.8	+1.1	+0.2	-0.23
ACC	60%	59%	61%	61%	56%	54%	41%

Traits Observed: GL,CE,BWT,200WT,400WT,600WT,SC,Scan(EMA,Rib,Rump,IMF)

A low Birth Weight, easy doing, bull that is suitable for heifers. Top 15% for Low birth Wt and Scrotal Size and top 10% for Feed Efficiency.

Purchaser:.....Price:



LOT 37	CLAREMONT BLACKS Q9222 #	CCPQ9222	17/04/2019	APR
S:WMR TIMELESS 458#	S:CLAREMONT BLACKS L551SV	S:MOHNEN DYNAMITE 1356#	S:MOHNEN DYNAMITE 1356#	S:MOHNEN DYNAMITE 1356#
D:CLAREMONT BLACKS HOLLY A556#	D:CLAREMONT BLACKS DAISY G153#	D:CLAREMONT BLACKS DAISY G153#	D:CLAREMONT BLACKS DAISY G153#	D:CLAREMONT BLACKS DAISY G153#
S: CLAREMONT BLACKS N753SV	D: CLAREMONT BLACKS GWEN K420#	S:CLAREMONT BLACKS C743#	S:CLAREMONT BLACKS C743#	S:CLAREMONT BLACKS C743#
S:MOHNEN DYNAMITE 1356#	D:CLAREMONT BLACKS GWEN E936#	D:CLAREMONT BLACKS GWEN E936#	D:CLAREMONT BLACKS GWEN E936#	D:CLAREMONT BLACKS GWEN E936#
D: CLAREMONT BLACKS DAISY A512#	D:CLAREMONT BLACKS GWEN Z4220#	D:CLAREMONT BLACKS GWEN Z4220#	D:CLAREMONT BLACKS GWEN Z4220#	D:CLAREMONT BLACKS GWEN Z4220#

January 2021 TransTasman Angus Cattle Evaluation											
TACE	CE Dir	CE Dtrs	Gest Lgth	Birth Wt.	200 Wt.	400 Wt.	600 Wt.	MC Wt.	Milk	Scrotal	D to Calv
EBV	-10.2	-4.9	-3.4	+8.3	+53	+95	+130	+131	+11	+1.6	-2.4
ACC	51%	39%	55%	73%	67%	68%	72%	64%	50%	69%	35%

Carc Wt.	EMA	Rib Fat	Rump Fat	RBV	IMF	NFI-F	AMFU,CAFU,DDFU,NHFU
EBV	+72	+3.0	-0.3	-0.4	+0.9	+0.5	-0.10
ACC	57%	55%	56%	58%	51%	48%	39%

Q9222 is one of the youngest bulls of the group that has the potential to really grow into a big, stretchy sire. Top 15% for 600 Day Wt, top 25% for 200, 400 Day Wt and Carcase Wt.

Purchaser:.....Price:

LOT 38	CLAREMONT BLACKS Q9122 #	CCPQ9122	13/03/2019	APR
S:JINDRA DOUBLE VISIONSV	S:CLAREMONT BLACKS L520SV	S:SUMMITCREST COMPLETE 1P55#	S:SUMMITCREST COMPLETE 1P55#	S:SUMMITCREST COMPLETE 1P55#
D:CLAREMONT BLACKS ZIA F0169#	D:CLAREMONT BLACKS ZIA F0169#	D:SUMMITCREST PRINCESS 0P12#	D:SUMMITCREST PRINCESS 0P12#	D:SUMMITCREST PRINCESS 0P12#
S: CLAREMONT BLACKS N7114SV	D: CLAREMONT BLACKS KIM M653#	S:CLAREMONT BLACKS B6139#	S:CLAREMONT BLACKS B6139#	S:CLAREMONT BLACKS B6139#
S:CLAREMONT BLACKS F046SV	D:CLAREMONT BLACKS KIM D8141#	D:CLAREMONT BLACKS KIM D8141#	D:CLAREMONT BLACKS KIM D8141#	D:CLAREMONT BLACKS KIM D8141#
D: CLAREMONT BLACKS DAISY H2142#	D:CLAREMONT BLACKS KIM W170#	D:CLAREMONT BLACKS KIM W170#	D:CLAREMONT BLACKS KIM W170#	D:CLAREMONT BLACKS KIM W170#
D:CLAREMONT BLACKS DAISY E944#				

January 2021 TransTasman Angus Cattle Evaluation											
TACE	CE Dir	CE Dtrs	Gest Lgth	Birth Wt.	200 Wt.	400 Wt.	600 Wt.	MC Wt.	Milk	Scrotal	D to Calv
EBV	-0.6	+1.5	-2.6	+4.0	+40	+73	+82	+76	+10	+0.2	-3.8
ACC	50%	36%	55%	72%	67%	67%	71%	63%	48%	68%	32%

Carc Wt.	EMA	Rib Fat	Rump Fat	RBV	IMF	NFI-F	AMFU,CAFU,DDFU,NHFU
EBV	+53	+4.7	-0.3	-0.1	+0.4	+1.2	+0.01
ACC	56%	53%	55%	56%	50%	47%	36%

A medium Birth Wt bull out of a KM Broken Bow cow. This cow always keeps in good condition and has passed this attribute on to her son.

Purchaser:.....Price:

LOT 39	CLAREMONT BLACKS Q9161 #	CCPQ9161	21/03/2019	APR
S:COONAMBLE Z3PV	S:CLAREMONT BLACKS L520SV	S:REMITALL PARAMOUNT 150P#	S:REMITALL PARAMOUNT 150P#	S:REMITALL PARAMOUNT 150P#
D:BANGADANG WILCOOLA Y7#	D:CLAREMONT BLACKS ZIA F0169#	D:REMITALL QUEEN 110M#	D:REMITALL QUEEN 110M#	D:REMITALL QUEEN 110M#
S: TEXAS WESTERN EXPRESS H220SV	D: CLAREMONT BLACKS JULIA E923#	S:A A R REALLY WINDY 120S#	S:A A R REALLY WINDY 120S#	S:A A R REALLY WINDY 120S#
S:TE MANIA INFINITY 04 379 AB#	D:CLAREMONT BLACKS JULIA Y301#	D:CLAREMONT BLACKS JULIA Y301#	D:CLAREMONT BLACKS JULIA Y301#	D:CLAREMONT BLACKS JULIA Y301#
D: TEXAS OMNIA F486#	D:CLAREMONT BLACKS JULIA W132#	D:CLAREMONT BLACKS JULIA W132#	D:CLAREMONT BLACKS JULIA W132#	D:CLAREMONT BLACKS JULIA W132#
D:TEXAS OMNIA X205#				

January 2021 TransTasman Angus Cattle Evaluation											
TACE	CE Dir	CE Dtrs	Gest Lgth	Birth Wt.	200 Wt.	400 Wt.	600 Wt.	MC Wt.	Milk	Scrotal	D to Calv
EBV	-14.9	-7.6	+1.6	+6.8	+50	+89	+106	+123	+10	+2.5	-4.8
ACC	51%	37%	84%	75%	71%	72%	74%	67%	59%	73%	39%

Carc Wt.	EMA	Rib Fat	Rump Fat	RBV	IMF	NFI-F	AMFU,CAFU,DDFU,NHFU
EBV	+63	+0.4	-1.0	+0.5	+0.3	+0.1	-0.41
ACC	62%	61%	62%	63%	57%	56%	45%

What a good combination this is for Q9161.Plenty of grunt and thickness from his Sizzler/Really Windy dam crossed with his Texas sire to get length, stretch and height. Combine the fact that Q9161 is in the top 3% for Net Feed Efficiency and you will end up withone hell of a bull.

Purchaser:.....Price:

LOT 40	CLAREMONT BLACKS Q972 #	CCPQ972	06/03/2019	APR
S:C R A BEXTOR 872 5205 608#	S:G A R PROPHETSV	S:CONNEALY REFLECTION#	S:CONNEALY REFLECTION#	S:CONNEALY REFLECTION#
D:G A R OBJECTIVE 1885#	D:G A R OBJECTIVE 1885#	S:JINDRA DOUBLE VISIONSV	S:JINDRA DOUBLE VISIONSV	S:JINDRA DOUBLE VISIONSV
S: BALDRIDGE BEAST MODE B074PV	D:CLAREMONT BLACKS GABBY M631#	D:HOFF RACHEL 8312 405#	D:HOFF RACHEL 8312 405#	D:HOFF RACHEL 8312 405#
S:STYLES UPGRADE J59#	S:CLAREMONT BLACKS Z421#	S:CLAREMONT BLACKS Z421#	S:CLAREMONT BLACKS Z421#	S:CLAREMONT BLACKS Z421#
D: BALDRIDGE ISABEL Y69#	D:CLAREMONT BLACKS GABBY B6167#	D:CLAREMONT BLACKS GABBY B6167#	D:CLAREMONT BLACKS GABBY B6167#	D:CLAREMONT BLACKS GABBY B6167#
D:BALDRIDGE ISABEL T935#	D:CLAREMONT BLACKS GABBY X2109#	D:CLAREMONT BLACKS GABBY X2109#	D:CLAREMONT BLACKS GABBY X2109#	D:CLAREMONT BLACKS GABBY X2109#

January 2021 TransTasman Angus Cattle Evaluation											
TACE	CE Dir	CE Dtrs	Gest Lgth	Birth Wt.	200 Wt.	400 Wt.	600 Wt.	MC Wt.	Milk	Scrotal	D to Calv
EBV	+5.5	+2.5	-3.1	+3.0	+55	+93	+116	+97	+14	+1.9	-5.5
ACC	55%	40%	82%	74%	70%	70%	73%	66%	56%	72%	37%

Carc Wt.	EMA	Rib Fat	Rump Fat	RBV	IMF	NFI-F	AMFU,CAFU,DDFU,NHFU
EBV	+62	+7.6	+0.9	+0.6	+0.7	+1.3	+0.26
ACC	60%	60%	61%	61%	57%	57%	46%

A low Birth Wt, Calving Ease bull suitable for heifers. Stacks of growth, high EMA and positive Rib and Rump Fat. Our Gabby cows, M631, B6167 and X2109 have all been in our AI program and are big roomy cows.

Purchaser:.....Price:

LOT 41	CLAREMONT BLACKS Q975 #	CCPQ975	06/03/2019	APR
S:S ALLIANCE 3313#	S:S CHISUM 6175PV	S:HOFF HEAD OF THE CLASS SC534#	S:HOFF HEAD OF THE CLASS SC534#	S:HOFF HEAD OF THE CLASS SC534#
D:S GLORIA 464#	D:S GLORIA 464#	S:HOFF FIRST EDITION 058 242#	S:HOFF FIRST EDITION 058 242#	S:HOFF FIRST EDITION 058 242#
S: S WHITLOCK 179PV	D:CLAREMONT BLACKS SARAH D827#	D:HOFF WITCH OF S C 7131 058#	D:HOFF WITCH OF S C 7131 058#	D:HOFF WITCH OF S C 7131 058#
S:R&S EXPEDITION 1404#	S:ROSSANDER ULTRAVOX X64#	S:ROSSANDER ULTRAVOX X64#	S:ROSSANDER ULTRAVOX X64#	S:ROSSANDER ULTRAVOX X64#
D: S PRIDE ANNA 709#	D:CLAREMONT BLACKS SARAH B6158#	D:CLAREMONT BLACKS SARAH B6158#	D:CLAREMONT BLACKS SARAH B6158#	D:CLAREMONT BLACKS SARAH B6158#
D:S PRIDE ANNA 567#	D:CLAREMONT BLACKS SARAH S720#	D:CLAREMONT BLACKS SARAH S720#	D:CLAREMONT BLACKS SARAH S720#	D:CLAREMONT BLACKS SARAH S720#

January 2021 TransTasman Angus Cattle Evaluation											
TACE	CE Dir	CE Dtrs	Gest Lgth	Birth Wt.	200 Wt.	400 Wt.	600 Wt.	MC Wt.	Milk	Scrotal	D to Calv
EBV	+2.4	+4.6	-4.1	+4.4	+56	+94	+131	+115	+19	+2.1	-2.6
ACC	54%	41%	85%	76%	71%	72%	75%	68%	62%	73%	39%

Carc Wt.	EMA	Rib Fat	Rump Fat	RBV	IMF	NFI-F	AMFU,CAFU,DDFU,NHFU
EBV	+73	+6.5	+0.2	+0.1	+1.7	-0.5	-0.17
ACC	62%	61%	62%	62%	58%	57%	45%

We like these Whitlock bulls. Q975 is no exception. Moderate birth and high growth. These bulls just naturally pack on the pounds. Top 10% for RBV, top 15% 200, 600 Day Wt and Feed Efficiency.

Purchaser:.....Price:

LOT 42	CLAREMONT BLACKS Q9231 #	CCPQ9231	22/04/2019	APR
S:CONNEALY IMPRESSION#	S:MAR INNOVATION 251PV	S:VERMILION DATELINE 7078#	S:VERMILION DATELINE 7078#	S:VERMILION DATELINE 7078#
D:MAR FINAL KAHUNA 856#	D:MAR FINAL KAHUNA 856#	S:MVF VRD DATELINE 913PSV	S:MVF VRD DATELINE 913PSV	S:MVF VRD DATELINE 913PSV
S: CLAREMONT BLACKS N794SV	D:CLAREMONT BLACKS ZIA F044#	D:MVF LADY DI 60K#	D:MVF LADY DI 60K#	D:MVF LADY DI 60K#
S:CLAREMONT BLACKS Y3118#	S:CLAREMONT BLACKS Z421#	S:CLAREMONT BLACKS Z421#	S:CLAREMONT BLACKS Z421#	S:CLAREMONT BLACKS Z421#
D: CLAREMONT BLACKS KIM A583#	D:CLAREMONT BLACKS JILL B6104#	D:CLAREMONT BLACKS JILL B6104#	D:CLAREMONT BLACKS JILL B6104#	D:CLAREMONT BLACKS JILL B6104#
D:CLAREMONT BLACKS KIM W170#	D:CLAREMONT BLACKS JILL X2170#	D:CLAREMONT BLACKS JILL X2170#	D:CLAREMONT BLACKS JILL X2170#	D:CLAREMONT BLACKS JILL X2170#

January 2021 TransTasman Angus Cattle Evaluation											
TACE	CE Dir	CE Dtrs	Gest Lgth	Birth Wt.	200 Wt.	400 Wt.	600 Wt.	MC Wt.	Milk	Scrotal	D to Calv
EBV	-8.5	-1.4	-2.4	+7.5	+53	+92	+120	+124	+10	+1.4	-5.0
ACC	49%	36%	62%	72%	66%	67%	71%	64%	53%	69%	34%

Carc Wt.	EMA	Rib Fat	Rump Fat	RBV	IMF	NFI-F	AMFU,CAFU,DDFU,NHFU
EBV	+67	+3.2	-1.9	-1.3	+1.2	+1.0	-0.16
ACC	56%	55%	56%	58%	51%	49%	37%

Q9231 is the youngest bull in the lineup and has really grown well to catch up with his mates. Top 15% for Feed Efficiency.

Purchaser:.....Price:

LOT 43	CLAREMONT BLACKS Q925 #	CCPQ925	02/03/2019	APR
S:C R A BEXTOR 872 5205 608*		S:CLAREMONT BLACKS H223*		
S: G A R PROPHET <sup>SV</sup>		S:CLAREMONT BLACKS K4136 <sup>SV</sup>		
D:G A R OBJECTIVE 1885*		D:CLAREMONT BLACKS SAM A560*		
<b>S: BALDRIDGE BEAST MODE B074<sup>PV</sup></b>	<b>D: CLAREMONT BLACKS BETH M6163*</b>			
S:STYLES UPGRADE J59*		S:HF TIGER 5T*		
D: BALDRIDGE ISABEL Y69*		D:CLAREMONT BLACKS BETH J348*		
D:BALDRIDGE ISABEL T935*		D:CLAREMONT BLACKS BETH B689*		

January 2021 TransTasman Angus Cattle Evaluation											
TACE	CE Dir	CE Dtrs	Gest Lgth	Birth Wt.	200 Wt.	400 Wt.	600 Wt.	MC Wt.	Milk	Scrotal	D to Calv
EBV	+9.3	+5.2	-4.4	+1.2	+54	+95	+112	+90	+18	+2.2	-5.5
ACC	53%	38%	81%	74%	69%	70%	73%	65%	54%	71%	35%

Carc Wt.	EMA	Rib Fat	Rump Fat	RBV	IMF	NFI-F	AMFU,CAFU,DDFU,NHFU
EBV	+65	+3.9	+0.7	+0.2	+0.2	+1.6	+0.15
ACC	59%	59%	60%	61%	56%	55%	44%

Another bull by the popular Beast Mode out of our renowned Claremont Beth lineage that always produce the goods. This bull is in the top 5% of the breed for low Birth Wt so will be suitable for heifers. Top 20 % for 200 Day Growth. Good vealer bull.

Purchaser:.....Price:

LOT 44	CLAREMONT BLACKS Q927 <sup>SV</sup>	CCPQ927	02/03/2019	APR
S:S ALLIANCE 3313*		S:HYLINE RIGHT TIME 338*		
S: S CHISUM 6175 <sup>PV</sup>		S:HYLINE RIGHT WAY 781*		
D:S GLORIA 464*		D:HYLINE ELLEN 86*		
<b>S: S WHITLOCK 179<sup>PV</sup></b>	<b>D: CLAREMONT BLACKS FLO H299*</b>			
S:R&S EXPEDITION 1404*		S:CLAREMONT BLACKS V075*		
D: S PRIDE ANNA 709*		D:CLAREMONT BLACKS FLO A541*		
D:S PRIDE ANNA 567*		D:CLAREMONT BLACKS FLO T882*		

January 2021 TransTasman Angus Cattle Evaluation											
TACE	CE Dir	CE Dtrs	Gest Lgth	Birth Wt.	200 Wt.	400 Wt.	600 Wt.	MC Wt.	Milk	Scrotal	D to Calv
EBV	+4.1	+7.2	-6.3	+3.0	+54	+84	+103	+75	+21	+0.9	-6.8
ACC	41%	33%	85%	73%	69%	72%	74%	69%	66%	73%	43%

Carc Wt.	EMA	Rib Fat	Rump Fat	RBV	IMF	NFI-F	AMFU,CAFU,DDFU,NHFU
EBV	+59	-0.8	+2.8	+1.4	+1.0	+0.5	+0.00
ACC	67%	65%	69%	66%	64%	53%	

Another low Birth Wt bull sired by Whitlock. Perfect for heifers. He is out of a Claremont cow, Flo H299, a smaller cow who stays fat all winter and produces a calf just as big as herself at weaning. Q927 has Rib and Rump Fat in Top 1% of the breed.

Purchaser:.....Price:

LOT 45	CLAREMONT BLACKS Q9199 #	CCPQ9199	05/04/2019	APR
S:JINDRA DOUBLE VISION <sup>SV</sup>		S:LEACHMAN RIGHT TIME 338-5605*		
S: CLAREMONT BLACKS L520 <sup>SV</sup>		S:WMR TIMELESS 458*		
D:CLAREMONT BLACKS ZIA F0169*		D:WMR BLACKCAP 521*		
<b>S: CLAREMONT BLACKS N7114<sup>SV</sup></b>	<b>D: CLAREMONT BLACKS CERES M654*</b>			
S:CLAREMONT BLACKS F046 <sup>SV</sup>		S:CLAREMONT BLACKS C736*		
D: CLAREMONT BLACKS DAISY H2142*		D:CLAREMONT BLACKS CERES E9109*		
D:CLAREMONT BLACKS DAISY E944*		D:CLAREMONT BLACKS CERES Y3134*		

January 2021 TransTasman Angus Cattle Evaluation											
TACE	CE Dir	CE Dtrs	Gest Lgth	Birth Wt.	200 Wt.	400 Wt.	600 Wt.	MC Wt.	Milk	Scrotal	D to Calv
EBV	-12.0	-5.6	-3.0	+6.6	+51	+93	+109	+104	+16	+0.8	-3.4
ACC	51%	37%	55%	72%	67%	67%	71%	63%	48%	69%	31%

Carc Wt.	EMA	Rib Fat	Rump Fat	RBV	IMF	NFI-F	AMFU,CAFU,DDFU,NHFU
EBV	+72	+7.1	-0.1	-0.3	+1.0	+0.8	-0.10
ACC	56%	54%	55%	57%	50%	47%	36%

Q9199 is out of renowned Claremont Ceres lineage. These cows seem to last for ever and always produce the goods. Q9199 is in the top 25% of the breed for Carcase Wt and Retail Beef Yield.

Purchaser:.....Price:

LOT 46	CLAREMONT BLACKS Q9165 #	CCPQ9165	23/03/2019	APR
S:WMR TIMELESS 458*		S:REMITALL PARAMOUNT 150P*		
S: CLAREMONT BLACKS L551 <sup>SV</sup>		S:REMITALL SIZZLER 580S*		
D:CLAREMONT BLACKS HOLLY A556*		D:REMITALL QUEEN 110M*		
<b>S: CLAREMONT BLACKS N753<sup>SV</sup></b>	<b>D: CLAREMONT BLACKS LILLA H272*</b>			
S:MOHNEN DYNAMITE 1356*		S:TC STOCKMAN 2164*		
D: CLAREMONT BLACKS DAISY G153*		D:CLAREMONT BLACKS LILLA A5106*		
D:CLAREMONT BLACKS DAISY A512*		D:CLAREMONT BLACKS LILLA X229*		

January 2021 TransTasman Angus Cattle Evaluation											
TACE	CE Dir	CE Dtrs	Gest Lgth	Birth Wt.	200 Wt.	400 Wt.	600 Wt.	MC Wt.	Milk	Scrotal	D to Calv
EBV	-6.3	-0.5	-3.0	+5.2	+47	+82	+100	+95	+15	+1.6	-3.9
ACC	49%	35%	54%	73%	67%	67%	71%	63%	49%	68%	35%

Carc Wt.	EMA	Rib Fat	Rump Fat	RBV	IMF	NFI-F	AMFU,CAFU,DDFU,NHFU
EBV	+58	+4.1	+0.3	+1.0	+0.7	+0.3	-0.11
ACC	56%	54%	55%	57%	50%	47%	38%

Q9165 is out of a Remital Sizzler cow, Claremont Blacks Lilla H272. All progeny with Sizzler bloodlines are quiet, easy doing cattle that really know how to keep their condition when the going gets tough.

Purchaser:.....Price:

LOT 47	CLAREMONT BLACKS Q979 #	CCPQ979	07/03/2019	APR
S:EXAR UPSHOT 0562B*		S:WILSON DOWNS EQUATOR V191 <sup>SV</sup>		
S: EXAR DENVER 2002B*		S:CLAREMONT BLACKS J3102 <sup>SV</sup>		
D:EXAR ROYAL LASS 1067*		D:CLAREMONT BLACKS CERES E9109*		
<b>S: QUAKER HILL DEAD CENTER<sup>SV</sup></b>	<b>D: CLAREMONT BLACKS DORIS L5141*</b>			
S:MCC DAYBREAK*		S:S A V CAMARO 9272 <sup>SV</sup>		
D: QUAKER HILL BLACKCAP 0A32*		D:CLAREMONT BLACKS DORIS J312*		
D:QHF BLACKCAP 6E2 OF4V16 4355*		D:CLAREMONT BLACKS DORIS E960*		

January 2021 TransTasman Angus Cattle Evaluation											
TACE	CE Dir	CE Dtrs	Gest Lgth	Birth Wt.	200 Wt.	400 Wt.	600 Wt.	MC Wt.	Milk	Scrotal	D to Calv
EBV	+6.0	+4.4	-5.1	+3.4	+52	+91	+117	+96	+15	+2.1	-4.0
ACC	49%	35%	84%	74%	69%	70%	72%	65%	56%	70%	32%

Carc Wt.	EMA	Rib Fat	Rump Fat	RBV	IMF	NFI-F	AMFU,CAFU,DDFU,NHFU
EBV	+67	+6.8	+1.2	+0.3	+0.6	+1.9	+0.47
ACC	59%	58%	60%	60%	55%	53%	41%

Another bull by Quaker Hill Dead Center that is low Birth Wt , plenty of Growth and high EMA.

Purchaser:.....Price:

LOT 48	CLAREMONT BLACKS Q987 #	CCPQ987	07/03/2019	APR
S:C R A BEXTOR 872 5205 608*		S:CLAREMONT BLACKS H223*		
S: G A R PROPHET <sup>SV</sup>		S:CLAREMONT BLACKS K4136 <sup>SV</sup>		
D:G A R OBJECTIVE 1885*		D:CLAREMONT BLACKS SAM A560*		
<b>S: BALDRIDGE BEAST MODE B074<sup>PV</sup></b>	<b>D: CLAREMONT BLACKS CERES M697*</b>			
S:STYLES UPGRADE J59*		S:REMITALL SIZZLER 580S*		
D: BALDRIDGE ISABEL Y69*		D:CLAREMONT BLACKS CERES J322*		
D:BALDRIDGE ISABEL T935*		D:CLAREMONT BLACKS CERES B6112*		

January 2021 TransTasman Angus Cattle Evaluation											
TACE	CE Dir	CE Dtrs	Gest Lgth	Birth Wt.	200 Wt.	400 Wt.	600 Wt.	MC Wt.	Milk	Scrotal	D to Calv
EBV	+5.9	+2.5	-2.7	+2.4	+54	+93	+110	+94	+15	+1.5	-5.3
ACC	53%	39%	81%	74%	69%	70%	73%	65%	54%	71%	35%

Carc Wt.	EMA	Rib Fat	Rump Fat	RBV	IMF	NFI-F	AMFU,CAFU,DDFU,NHFU
EBV	+61	+2.9	-0.6	-0.7	+0.1	+1.8	-0.03
ACC	59%	59%	60%	60%	55%	55%	44%

Another bull by the popular Beast Mode our of our renowned Claremont Ceres lineage that always produce the goods. Q987 is a low Birth Wt bull so will be suitable for heifers. Top 20 % for 200 Day Growth. Good vealer bull.

Purchaser:.....Price:



**LOT 49** **CLAREMONT BLACKS Q9151 #** **CCPQ9151** **19/03/2019** **APR**

S: CONNEALY CAPITALIST 028\* S: HOFF LIMITED EDITION S C 594\*  
 S: LD CAPITALIST 316<sup>PV</sup> S: CLAREMONT BLACKS B646<sup>SV</sup>  
 D: LD DIXIE ERICA 2053\* D: CLAREMONT BLACKS EMMA S7146\*  
**S: MUSGRAVE 316 STUNNER<sup>TV</sup>** **D: CLAREMONT BLACKS DORIS D8119\***  
 S: MCATL PURE PRODUCT 903-55<sup>SV</sup> S: CLAREMONT BLACKS T885\*  
 D: MCATL BLACKBIRD 831-1378\* D: CLAREMONT BLACKS DORIS X2146\*  
 D: MCATL BLACKBIRD 1378-573\* D: CLAREMONT BLACKS DORIS U981\*

**January 2021 TransTasman Angus Cattle Evaluation**

TACE	CE Dir	CE Dtrs	Gest Lgth	Birth Wt.	200 Wt.	400 Wt.	600 Wt.	MC Wt.	Milk	Scrotal	D to Calv
EBV	-1.2	+0.5	+3.4	+4.0	+42	+80	+102	+83	+11	+2.0	-2.3
ACC	51%	35%	84%	75%	70%	71%	73%	65%	57%	71%	33%

Carc Wt.	EMA	Rib Fat	Rump Fat	RBV	IMF	NFI-F	AMFU,CAFU,DDFU,NHFU
EBV	+58	+5.3	+2.6	+2.6	-1.1	+1.1	+0.31
ACC	59%	58%	59%	59%	54%	53%	40%

Both sides of this bull's pedigree are renowned for low Birth Wt and high Rib and Rump Fat which makes Q9151 a really good doing bull suitable for heifers.

Purchaser:.....Price:

**LOT 50** **CLAREMONT BLACKS Q980 #** **CCPQ980** **07/03/2019** **APR**

S: COONAMBLE Z3<sup>PV</sup> S: HF KODIAK 5R<sup>PV</sup>  
 S: BANGADANG WESTERN EXPRESS E10<sup>SV</sup> S: HF TIGER 5T\*  
 D: BANGADANG WILCOOLA Y7\* D: HF ECHO 84R\*  
**S: TEXAS WESTERN EXPRESS H220<sup>SV</sup>** **D: CLAREMONT BLACKS BETH J348\***  
 S: TE MANIA INFINITY 04 379 AB\* S: HOFF FIRST EDITION 058 242<sup>PV</sup>  
 D: TEXAS OMNIA F486\* D: CLAREMONT BLACKS BETH B689\*  
 D: TEXAS OMNIA X205\* D: CLAREMONT BLACKS BETH S7125\*

**January 2021 TransTasman Angus Cattle Evaluation**

TACE	CE Dir	CE Dtrs	Gest Lgth	Birth Wt.	200 Wt.	400 Wt.	600 Wt.	MC Wt.	Milk	Scrotal	D to Calv
EBV	-1.6	-1.9	-3.4	+4.6	+49	+93	+114	+121	+14	+3.0	-4.3
ACC	51%	38%	84%	75%	70%	71%	74%	66%	59%	72%	38%

Carc Wt.	EMA	Rib Fat	Rump Fat	RBV	IMF	NFI-F	AMFU,CAFU,DDFU,NHFU
EBV	+71	+1.5	-0.5	+0.5	+0.8	-0.1	-0.38
ACC	61%	61%	62%	63%	57%	56%	45%

What a perfect combination Q980 has. Low Birth Wt, toughness and doing ability from his dam, and length, growth and height from his sire. Net Feed Efficiency in the top 4% of the breed and a moderate Birth Wt.

Purchaser:.....Price:

**LOT 51** **CLAREMONT BLACKS Q946 #** **CCPQ946** **04/03/2019** **APR**

S: COONAMBLE Z3<sup>PV</sup> S: MCATL TRIPLE STACK\*  
 S: BANGADANG WESTERN EXPRESS E10<sup>SV</sup> S: CLAREMONT BLACKS G116<sup>SV</sup>  
 D: BANGADANG WILCOOLA Y7\* D: CLAREMONT BLACKS CERES C708\*  
**S: TEXAS WESTERN EXPRESS H220<sup>SV</sup>** **D: CLAREMONT BLACKS BETH J398\***  
 S: TE MANIA INFINITY 04 379 AB\* S: ROSSANDER ULTRAVOX X64\*  
 D: TEXAS OMNIA F486\* D: CLAREMONT BLACKS BETH B6110\*  
 D: TEXAS OMNIA X205\* D: CLAREMONT BLACKS BETH V081\*

**January 2021 TransTasman Angus Cattle Evaluation**

TACE	CE Dir	CE Dtrs	Gest Lgth	Birth Wt.	200 Wt.	400 Wt.	600 Wt.	MC Wt.	Milk	Scrotal	D to Calv
EBV	+1.1	-3.7	-5.3	+3.9	+45	+84	+107	+111	+11	+2.4	-3.1
ACC	49%	36%	84%	75%	70%	70%	73%	65%	57%	71%	35%

Carc Wt.	EMA	Rib Fat	Rump Fat	RBV	IMF	NFI-F	AMFU,CAFU,DDFU,NHFU
EBV	+65	+3.2	+0.0	+0.9	+0.7	+0.1	-0.05
ACC	60%	59%	61%	61%	56%	54%	42%

Q946 is a low Birth Wt bull suitable for heifers out of our renowned Claremont Beth lineage.

Purchaser:.....Price:

# 2021 SALE BULLS



LOT 14 CCPQ965



LOT 15 CCPQ9155



LOT 16 CCPQ941



LOT 18 CCPQ915



LOT 19 CCPQ9180



LOT 23 CCPQ9212



LOT 29 CCPQ9221



LOT 47 CCPQ979



# CLAREMONT DAMS



CLAREMONT FEMALES



DAM OF LOT 40 CCPM631



DAUGHTER OF WMR TIMELESS 458 CCPL504



2 MUSGRAVE 316 STUNNER HEIFERS



TEXAS WESTERN EXPRESS H220 DAUGHTER

<b>LOT 52</b>	<b>CLAREMONT BLACKS Q917 #</b>	CCPQ917	28/02/2019	APR
S: EXAR UPSHOT 0562B <sup>#</sup> S: EXAR DENVER 2002B <sup>#</sup> D: EXAR ROYAL LASS 1067 <sup>#</sup>		S: HIGHLANDER OF STERN AB <sup>#</sup> S: BRAVEHEART OF STERN <sup>SV</sup> D: STERN 3886 <sup>#</sup>		
S: QUAKER HILL DEAD CENTER <sup>SV</sup> S: MCC DAYBREAK <sup>#</sup> D: QUAKER HILL BLACKCAP 0A32 <sup>#</sup> D: QHF BLACKCAP 6E2 OF4V16 4355 <sup>#</sup>		D: CLAREMONT BLACKS BERRY M664 <sup>#</sup> S: CLAREMONT BLACKS B693 <sup>#</sup> D: CLAREMONT BLACKS BERRY D854 <sup>#</sup> D: CLAREMONT BLACKS BERRY Z4217 <sup>#</sup>		

January 2021 TransTasman Angus Cattle Evaluation											
TACE	CE Dir	CE Dtrs	Gest Lgth	Birth Wt.	200 Wt.	400 Wt.	600 Wt.	MC Wt.	Milk	Scrotal	D to Calv
EBV	+9.1	+7.7	-6.0	+2.3	+42	+82	+103	+83	+13	+2.0	-2.9
ACC	51%	38%	82%	74%	69%	70%	73%	66%	56%	71%	36%

Carc Wt.	EMA	Rib Fat	Rump Fat	RBV	IMF	NFI-F	AMFU,CAFU,DDFU,NHFU
EBV	+57	+6.8	-0.9	-1.5	+1.7	+1.3	+0.21
ACC	60%	55%	60%	60%	55%	54%	43%

Traits Observed: GL,CE,BWT,200WT,400WT,600WT,SC,Scan(Rib,Rump,IMF)  
A low Birth Wt, super Calving Ease bull that has the added bonus of being in the top 10% for Retail Beef Yield. Perfect heifer bull.  
Purchaser:.....Price:

<b>LOT 53</b>	<b>CLAREMONT BLACKS Q937 #</b>	CCPQ937	03/03/2019	APR
S: C R A BEXTOR 872 5205 608 <sup>#</sup> S: G A R PROPHET <sup>SV</sup> D: G A R OBJECTIVE 1885 <sup>#</sup>		S: SUMMITCREST PRIME CUT 1G42 <sup>#</sup> S: CLAREMONT BLACKS F046 <sup>SV</sup> D: CLAREMONT BLACKS HOLLY V003 <sup>#</sup>		
S: BALDRIDGE BEAST MODE B074 <sup>SV</sup> S: STYLES UPGRADE J59 <sup>#</sup> D: BALDRIDGE ISABEL Y69 <sup>#</sup> D: BALDRIDGE ISABEL T935 <sup>#</sup>		D: CLAREMONT BLACKS CERES H2197 <sup>#</sup> S: CLAREMONT BLACKS C757 <sup>#</sup> D: CLAREMONT BLACKS CERES E9104 <sup>#</sup> D: CLAREMONT BLACKS CERES A5144 <sup>#</sup>		

January 2021 TransTasman Angus Cattle Evaluation											
TACE	CE Dir	CE Dtrs	Gest Lgth	Birth Wt.	200 Wt.	400 Wt.	600 Wt.	MC Wt.	Milk	Scrotal	D to Calv
EBV	+5.9	+3.5	-6.2	+3.1	+56	+93	+117	+101	+15	+2.1	-4.6
ACC	54%	39%	83%	75%	70%	71%	73%	66%	56%	71%	38%

Carc Wt.	EMA	Rib Fat	Rump Fat	RBV	IMF	NFI-F	AMFU,CAFU,DDFU,NHFU
EBV	+62	+3.4	-0.9	-0.7	+0.5	+2.1	+0.16
ACC	60%	60%	61%	61%	56%	56%	44%

Traits Observed: GL,CE,BWT,200WT,400WT,600WT,SC,Scan(EMA,Rib,Rump,IMF)  
Q937 is another bull by Beast Mode out of our well known Claremont Ceres and Holly lineages, both of which always produce the goods. Q937 has low Birth Wt, positive Calving Ease and top 15% for 200 Day Wt. A good vealer bull that is suitable for heifers.  
Purchaser:.....Price:

<b>LOT 54</b>	<b>CLAREMONT BLACKS Q995 #</b>	CCPQ995	08/03/2019	APR
S: C R A BEXTOR 872 5205 608 <sup>#</sup> S: G A R PROPHET <sup>SV</sup> D: G A R OBJECTIVE 1885 <sup>#</sup>		S: CLAREMONT BLACKS G116 <sup>SV</sup> S: CLAREMONT BLACKS J3104 <sup>#</sup> D: CLAREMONT BLACKS JILL B6104 <sup>#</sup>		
S: BALDRIDGE BEAST MODE B074 <sup>SV</sup> S: STYLES UPGRADE J59 <sup>#</sup> D: BALDRIDGE ISABEL Y69 <sup>#</sup> D: BALDRIDGE ISABEL T935 <sup>#</sup>		D: CLAREMONT BLACKS LUCY L573 <sup>#</sup> S: CLAREMONT BLACKS G130 <sup>SV</sup> D: CLAREMONT BLACKS LUCY J3167 <sup>#</sup> D: CLAREMONT BLACKS LUCY Z419 <sup>#</sup>		

January 2021 TransTasman Angus Cattle Evaluation											
TACE	CE Dir	CE Dtrs	Gest Lgth	Birth Wt.	200 Wt.	400 Wt.	600 Wt.	MC Wt.	Milk	Scrotal	D to Calv
EBV	+5.3	+1.0	-3.3	+2.8	+53	+87	+107	+93	+14	+0.8	-5.9
ACC	53%	39%	84%	74%	69%	70%	72%	64%	54%	71%	35%

Carc Wt.	EMA	Rib Fat	Rump Fat	RBV	IMF	NFI-F	AMFU,CAFU,DDFU,NHFU
EBV	+56	+1.3	+0.7	+1.1	-0.4	+1.6	+0.02
ACC	58%	59%	59%	60%	55%	55%	44%

Traits Observed: GL,CE,BWT,200WT,400WT,600WT,SC,Scan(EMA,Rib,Rump,IMF)  
These bulls by Beast Mode just keep producing the goods. Low Birth Wt, positive Calving Ease and top 25% of the breed for 200 Day Wt.. Q995 is another bull suitable for heifers and his calves will make good vealers.  
Purchaser:.....Price:



LOT 55	CLAREMONT BLACKS Q9131 #	CCPQ9131	15/03/2019	APR
S: JINDRA DOUBLE VISION <sup>SV</sup>	S: HF KODIAK 5R <sup>PV</sup>			
S: CLAREMONT BLACKS L520 <sup>SV</sup>	S: HF TIGER 5T <sup>+</sup>			
D: CLAREMONT BLACKS ZIA F0169 <sup>+</sup>	D: HF ECHO 84R <sup>+</sup>			
<b>S: CLAREMONT BLACKS N7114<sup>SV</sup></b>	<b>D: CLAREMONT BLACKS CERES M621<sup>+</sup></b>			
S: CLAREMONT BLACKS F046 <sup>SV</sup>	S: HOFF LIMITED EDITION S C 594 <sup>PV</sup>			
D: CLAREMONT BLACKS DAISY H2142 <sup>+</sup>	D: CLAREMONT BLACKS CERES F0125 <sup>+</sup>			
D: CLAREMONT BLACKS DAISY E944 <sup>+</sup>	D: CLAREMONT BLACKS CERES X2196 <sup>+</sup>			

January 2021 TransTasman Angus Cattle Evaluation											
TACE	CE Dir	CE Dtrs	Gest Lgth	Birth Wt.	200 Wt.	400 Wt.	600 Wt.	MC Wt.	Milk	Scrotal	D to Calv
EBV	-6.7	-2.9	-4.1	+6.5	+45	+80	+94	+95	+13	+0.0	-3.4
ACC	51%	36%	55%	72%	67%	67%	71%	63%	48%	69%	33%

Carc Wt.	EMA	Rib Fat	Rump Fat	RBV	IMF	NFI-F	AMFU,CAFU,DDFU,NHFU
EBV	+64	+5.3	-0.3	-0.5	+1.3	+0.2	-0.39
ACC	56%	54%	55%	57%	51%	48%	38%

Traits Observed: CE,BWT,200WT,400WT,600WT,SC,Scan(EMA,Rib,Rump,IMF)

Another bull with our renowned Claremont Ceres lineage. Any bulls with HF Tiger in his pedigree will be tough and good doers even in the dead of winter. No wonder Q9131 is in the top 3% for Feed Efficiency. His calves will also be good doers.

Purchaser:.....Price:

LOT 56	CLAREMONT BLACKS Q9154 #	CCPQ9154	19/03/2019	APR
S: LEACHMAN RIGHT TIME 338-5605 <sup>+</sup>	S: A A R REALLY WINDY 1205 <sup>+</sup>			
S: WMR TIMELESS 458 <sup>+</sup>	S: CLAREMONT BLACKS Z429 <sup>SV</sup>			
D: WMR BLACKCAP 521 <sup>+</sup>	D: CLAREMONT BLACKS HOLLY X203 <sup>+</sup>			
<b>S: CLAREMONT BLACKS N736<sup>SV</sup></b>	<b>D: CLAREMONT BLACKS CERES B6155<sup>+</sup></b>			
S: CLAREMONT BLACKS Z421 <sup>SV</sup>	S: BAR S FIRST CHOICE 9353 <sup>+</sup>			
D: CLAREMONT BLACKS KIM B619 <sup>+</sup>	D: CLAREMONT BLACKS CERES Z427 <sup>+</sup>			
D: CLAREMONT BLACKS KIM X2228 <sup>+</sup>	D: CLAREMONT BLACKS CERES X2196 <sup>+</sup>			

January 2021 TransTasman Angus Cattle Evaluation											
TACE	CE Dir	CE Dtrs	Gest Lgth	Birth Wt.	200 Wt.	400 Wt.	600 Wt.	MC Wt.	Milk	Scrotal	D to Calv
EBV	-2.5	+2.7	-5.1	+4.3	+45	+82	+99	+93	+12	+0.9	-5.2
ACC	50%	39%	60%	73%	67%	68%	72%	64%	55%	69%	34%

Carc Wt.	EMA	Rib Fat	Rump Fat	RBV	IMF	NFI-F	AMFU,CAFU,DDFU,NHFU
EBV	+61	+2.4	+0.1	+0.0	+0.1	+1.0	-0.20
ACC	56%	54%	56%	57%	51%	48%	36%

Traits Observed: CE,BWT,200WT,400WT,600WT,SC,Scan(EMA,Rib,Rump,IMF)

Q9154 has Timeless for length and growth and Really Windy for low Birth Wt, doing ability and fat cover in his pedigree. Strengthen the pedigree with our own Ceres and Holly lineages and you have a really consistent package. Top 10% for Feed Efficiency.

Purchaser:.....Price:

LOT 57	CLAREMONT BLACKS Q9141 #	CCPQ9141	16/03/2019	APR
S: JINDRA DOUBLE VISION <sup>SV</sup>	S: SYDGEN TRUST 6228 <sup>+</sup>			
S: CLAREMONT BLACKS L520 <sup>SV</sup>	S: SYDGEN BLACK PEARL 2006 <sup>PV</sup>			
D: CLAREMONT BLACKS ZIA F0169 <sup>+</sup>	D: SYDGEN ANITA 8611 <sup>+</sup>			
<b>S: CLAREMONT BLACKS N7114<sup>SV</sup></b>	<b>D: CLAREMONT BLACKS QUEEN M649<sup>+</sup></b>			
S: CLAREMONT BLACKS F046 <sup>SV</sup>	S: CLAREMONT BLACKS C749 <sup>+</sup>			
D: CLAREMONT BLACKS DAISY H2142 <sup>+</sup>	D: CLAREMONT BLACKS QUEEN E9123 <sup>+</sup>			
D: CLAREMONT BLACKS DAISY E944 <sup>+</sup>	D: CLAREMONT BLACKS QUEEN B624 <sup>+</sup>			

January 2021 TransTasman Angus Cattle Evaluation											
TACE	CE Dir	CE Dtrs	Gest Lgth	Birth Wt.	200 Wt.	400 Wt.	600 Wt.	MC Wt.	Milk	Scrotal	D to Calv
EBV	-3.5	+0.1	-2.3	+6.1	+44	+80	+103	+96	+13	+0.6	-2.8
ACC	51%	37%	55%	72%	67%	67%	71%	63%	48%	69%	33%

Carc Wt.	EMA	Rib Fat	Rump Fat	RBV	IMF	NFI-F	AMFU,CAFU,DDFU,NHFU
EBV	+65	+6.9	-0.1	-1.0	+1.4	+0.4	+0.12
ACC	56%	54%	55%	56%	50%	47%	37%

Traits Observed: CE,BWT,200WT,400WT,600WT,SC,Scan(EMA,Rib,Rump,IMF)

Q9141 is a thicker bull that is in the top 15% of the breed for Retail Beef Yield.

Purchaser:.....Price:

LOT 58	CLAREMONT BLACKS Q981 #	CCPQ981	07/03/2019	APR
S: C R A BEXTOR 872 5205 608 <sup>+</sup>	S: CLAREMONT BLACKS Z421 <sup>SV</sup>			
S: G A R PROPHET <sup>SV</sup>	S: CLAREMONT BLACKS B693 <sup>SV</sup>			
D: G A R OBJECTIVE 1885 <sup>+</sup>	D: CLAREMONT BLACKS CUPID X2164 <sup>+</sup>			
<b>S: BALDRIDGE BEAST MODE B074<sup>PV</sup></b>	<b>D: CLAREMONT BLACKS UNITY D8122<sup>+</sup></b>			
S: STYLES UPGRADE J59 <sup>+</sup>	S: A A R REALLY WINDY 1205 <sup>SV</sup>			
D: BALDRIDGE ISABEL Y69 <sup>+</sup>	D: CLAREMONT BLACKS UNITY Z401 <sup>+</sup>			
D: BALDRIDGE ISABEL T935 <sup>+</sup>	D: CLAREMONT BLACKS UNITY X261 <sup>+</sup>			

January 2021 TransTasman Angus Cattle Evaluation											
TACE	CE Dir	CE Dtrs	Gest Lgth	Birth Wt.	200 Wt.	400 Wt.	600 Wt.	MC Wt.	Milk	Scrotal	D to Calv
EBV	+5.1	+0.8	-3.4	+3.3	+50	+82	+94	+81	+8	+2.1	-7.1
ACC	54%	40%	84%	75%	70%	71%	73%	65%	58%	71%	36%

Carc Wt.	EMA	Rib Fat	Rump Fat	RBV	IMF	NFI-F	AMFU,CAFU,DDFU,NHFU
EBV	+50	+3.2	+0.0	+0.6	+0.3	+1.5	+0.04
ACC	60%	56%	60%	60%	55%	55%	43%

Traits Observed: GL,CE,BWT,200WT,400WT,600WT,SC,Scan(Rib,Rump,IMF)

Q981 is a low Birth Wt, positive Calving Ease bull. Beast Mode and Really Windy on either side of the pedigree are low Birth Wt sires.

Purchaser:.....Price:

LOT 59	CLAREMONT BLACKS Q9112 #	CCPQ9112	12/03/2019	APR
S: COONAMBLE Z3 <sup>PV</sup>	S: HIGHLANDER OF STERN AB <sup>+</sup>			
S: BANGADANG WESTERN EXPRESS E10 <sup>SV</sup>	S: BRAVEHEART OF STERN <sup>SV</sup>			
D: BANGADANG WILCOOLA Y7 <sup>+</sup>	D: STERN 3886 <sup>+</sup>			
<b>S: TEXAS WESTERN EXPRESS H220<sup>SV</sup></b>	<b>D: CLAREMONT BLACKS AMBER K444<sup>+</sup></b>			
S: TE MANIA INFINITY 04 379 AB <sup>+</sup>	S: CLAREMONT BLACKS A509 <sup>+</sup>			
D: TEXAS OMNIA F486 <sup>+</sup>	D: CLAREMONT BLACKS AMBER C778 <sup>+</sup>			
D: TEXAS OMNIA X205 <sup>+</sup>	D: CLAREMONT BLACKS AMBER U9149 <sup>+</sup>			

January 2021 TransTasman Angus Cattle Evaluation											
TACE	CE Dir	CE Dtrs	Gest Lgth	Birth Wt.	200 Wt.	400 Wt.	600 Wt.	MC Wt.	Milk	Scrotal	D to Calv
EBV	-9.3	-9.0	-2.4	+6.6	+46	+85	+109	+118	+12	+2.6	-3.1
ACC	51%	40%	85%	75%	70%	71%	74%	66%	57%	73%	39%

Carc Wt.	EMA	Rib Fat	Rump Fat	RBV	IMF	NFI-F	AMFU,CAFU,DDFU,NHFU
EBV	+60	+1.3	-2.3	-0.7	+1.0	+0.3	-0.36
ACC	61%	61%	62%	62%	57%	56%	46%

Traits Observed: GL,CE,BWT,200WT,400WT,600WT,SC,Scan(EMA,Rib,Rump,IMF)

Q9112 has the Texas sire for growth and height and Braveheart of Stern and Really Windy for lower Birth Wt and softness on the dam side. It is a good combination.

Purchaser:.....Price:



TJ & KATHY

## "OUR UNSUNG HEROES"

*On the farm they are always by our side, our constant companions. They will work all day in sometimes atrocious conditions, rain, hail and blistering heat without a complaint.*

*They love us unconditionally and we love them just as much. Having our dogs by our side is an honour and a privilege. "Our unsung working dog heroes" this is a tribute to them.*

*We lost "TJ" a month ago, she was a much loved talented working dog.*

*Rest In Peace our beautiful friend!*

# DISCLAIMER AND PRIVACY INFORMATION

## Attention Buyer

Animal details included in this catalogue, including but not limited to pedigree, DNA information, Estimated Breeding Values (EBVs) and Index values, are based on information provided by the breeder or owner of the animal. Whilst all reasonable care has been taken to ensure that the information provided in this catalogue was correct at the time of publication, Angus Australia will assume no responsibility for the accuracy or completeness of the information, nor for the outcome (including consequential loss) of any action taken based on this information.

## Parent Verification Suffixes

The animals listed within this catalogue including its pedigree, are displaying a Parent Verification Suffix which indicates the DNA parent verification status that has been conducted on the animal. The Parent Verification Suffixes that will appear at the end of each animal's name.

The suffix displayed at the end of each animal's name indicates the DNA parentage verification that has been conducted by Angus Australia.

PV : both parents have been verified by DNA.

SV : the sire has been verified by DNA.

DV : the dam has been verified by DNA.

# : DNA verification has not been conducted.

E : DNA verification has identified that the sire and/or dam may possibly be incorrect, but this cannot be confirmed conclusively.

## Privacy Information

In order for Angus Australia to process the transfer of a registered animal in this catalogue, the vendor will need to provide certain information to Angus Australia and the buyer consents to the collection and disclosure of that information by Angus Australia in certain circumstances. If the buyer does not wish for his or her information to be stored and disclosed by Angus Australia, the buyer must complete the form included below and forward it to Angus Australia. If the form is not completed, the buyer will be taken to have consented to the disclosure of such information.

### BUYERS OPTION TO OPT OUT OF DISCLOSING PERSONAL INFORMATION TO ANGUS AUSTRALIA

If you do not complete this form, you will be taken to have consented to Angus Australia using your name, address and phone number for the purposes of effecting a change of registration of the animal(s) that you have purchased, maintaining its database and disclosing that information to its members on its website.

I, the buyer of animals with the following ids.....

.....(name) do not consent to Angus

Australia using my name, address and phone number for the purposes of effecting a change of registration of the animals I have mentioned above that I have purchased, maintaining its database and disclosing that information to its members on its website.

Name: ..... Signature: .....

Date: .....

Please forward this completed consent form to Angus Australia, 86 Glen Innes Road, Armidale NSW 2350.



If you have any questions or queries regarding any of the above, please contact Angus Australia on (02) 6773 4600 or email office@angusaustralia.com.au

Updated 25/11/2020



## TransTasman Angus Cattle Evaluation - January 2021 Reference Tables

BREED AVERAGE EBVs																									
% Band	Calving Ease		Birth		Growth			Fertility			Carcase			Other		Structure		Selection Indexes							
	CEDir	CEDirs	GL	BW	200	400	600	MCW	Milk	SS	DTC	CWT	EMA	RIB	P8	RFY	IMF	NFF	DOC	Angle	Claw	ABI	DOM	GRN	GRS
Brd Avg	+2.0	+2.5	-4.5	+4.2	+48	+87	+114	+99	+17	+2.0	-4.7	+65	+6.0	-0.1	-0.4	+0.5	+2.0	+0.18	+6	+0.98	+0.85	+120	+112	+127	+116

\* Breed average represents the average EBV of all 2019 drop Australian Angus and Angus-influenced seedstock animals analysed in the January 2021 TransTasman Angus Cattle Evaluation .

PERCENTILE BANDS TABLE																									
% Band	Calving Ease		Birth		Growth			Fertility			Carcase			Other		Structure		Selection Indexes							
	Less	More	Shorter	Longer	Lighter	Heavier	Lighter	Heavier	Lighter	Heavier	Lighter	Heavier	Lighter	Heavier	Lighter	Heavier	Lighter	Heavier	Lighter	Heavier	Lighter	Heavier	Lighter	Heavier	Lighter
1%	+12.2	+10.8	-10.5	+0.2	+66	+116	+155	+151	+27	+4.2	-9.6	+90	+12.3	+3.1	+3.0	+2.7	+4.5	-0.53	+33	+0.60	+0.42	+165	+141	+193	+151
5%	+9.9	+8.9	-8.5	+1.5	+60	+107	+142	+134	+24	+3.5	-8.2	+82	+10.2	+2.0	+1.9	+2.0	+3.8	-0.32	+25	+0.72	+0.54	+152	+133	+176	+141
10%	+8.5	+7.7	-7.6	+2.2	+57	+102	+135	+125	+22	+3.1	-7.4	+78	+9.1	+1.5	+1.3	+1.6	+3.4	-0.21	+21	+0.78	+0.62	+146	+128	+166	+136
15%	+7.5	+6.9	-6.9	+2.6	+56	+99	+131	+120	+21	+2.8	-6.9	+75	+8.4	+1.1	+1.0	+1.4	+3.1	-0.13	+18	+0.82	+0.66	+141	+125	+159	+132
20%	+6.6	+6.2	-6.5	+2.9	+54	+97	+127	+116	+20	+2.7	-6.5	+72	+7.8	+0.9	+0.7	+1.2	+2.9	-0.07	+16	+0.84	+0.70	+138	+123	+153	+130
25%	+5.9	+5.6	-6.1	+3.2	+53	+95	+125	+112	+20	+2.5	-6.2	+70	+7.4	+0.7	+0.5	+1.1	+2.7	-0.02	+14	+0.86	+0.72	+134	+121	+149	+127
30%	+5.2	+5.0	-5.7	+3.4	+52	+93	+122	+109	+19	+2.4	-5.8	+70	+7.0	+0.5	+0.3	+1.0	+2.5	+0.02	+12	+0.90	+0.74	+132	+119	+144	+125
35%	+4.5	+4.5	-5.4	+3.6	+51	+92	+120	+106	+18	+2.3	-5.5	+69	+6.6	+0.3	+0.1	+0.9	+2.3	+0.06	+11	+0.92	+0.76	+129	+117	+140	+123
40%	+3.8	+3.9	-5.1	+3.8	+50	+90	+118	+104	+18	+2.2	-5.3	+68	+6.3	+0.2	-0.1	+0.7	+2.2	+0.10	+9	+0.94	+0.80	+126	+116	+136	+121
45%	+3.2	+3.4	-4.8	+4.0	+49	+89	+116	+101	+17	+2.1	-5.0	+66	+6.1	+0.0	-0.3	+0.6	+2.1	+0.14	+8	+0.96	+0.82	+124	+114	+133	+119
50%	+2.5	+2.9	-4.5	+4.2	+48	+87	+114	+99	+17	+2.0	-4.7	+65	+5.8	-0.1	-0.4	+0.5	+2.0	+0.17	+7	+0.98	+0.84	+124	+113	+129	+118
55%	+1.9	+2.4	-4.2	+4.4	+48	+86	+112	+96	+16	+1.9	-4.5	+64	+5.5	-0.3	-0.6	+0.4	+1.8	+0.21	+5	+1.00	+0.86	+119	+111	+125	+116
60%	+1.2	+1.8	-3.9	+4.6	+47	+85	+110	+94	+16	+1.8	-4.2	+63	+5.3	-0.4	-0.8	+0.3	+1.7	+0.25	+4	+1.02	+0.88	+116	+110	+121	+114
65%	+0.4	+1.2	-3.6	+4.8	+46	+83	+108	+91	+15	+1.7	-4.0	+61	+5.0	-0.6	-0.9	+0.2	+1.6	+0.28	+2	+1.04	+0.92	+114	+108	+117	+112
70%	-0.4	+0.6	-3.3	+5.0	+45	+82	+106	+89	+15	+1.5	-3.7	+60	+4.7	-0.7	-1.1	+0.1	+1.5	+0.32	+1	+1.08	+0.94	+111	+106	+113	+109
75%	-1.3	-0.1	-3.0	+5.3	+44	+80	+104	+86	+14	+1.4	-3.4	+59	+4.4	-0.9	-1.3	+0.0	+1.4	+0.37	-1	+1.06	+0.96	+108	+104	+108	+107
80%	-2.3	-0.9	-2.6	+5.5	+43	+78	+101	+82	+13	+1.3	-3.0	+57	+4.0	-1.1	-1.6	-0.2	+1.2	+0.42	-3	+1.12	+1.00	+104	+102	+103	+104
85%	-3.5	-1.8	-2.2	+5.9	+41	+76	+98	+78	+13	+1.1	-2.6	+55	+3.6	-1.3	-1.8	-0.4	+1.0	+0.48	-5	+1.16	+1.04	+99	+99	+96	+100
90%	-5.1	-3.0	-1.6	+6.3	+40	+73	+94	+73	+12	+0.9	-2.0	+52	+3.1	-1.6	-2.2	-0.6	+0.8	+0.56	-8	+1.20	+1.08	+92	+95	+86	+95
95%	-7.6	-5.0	-0.6	+6.9	+37	+68	+87	+65	+10	+0.6	-1.0	+47	+2.3	-2.1	-2.8	-1.0	+0.5	+0.68	-12	+1.28	+1.16	+82	+88	+72	+87
99%	-13.1	-9.0	+1.4	+8.2	+29	+57	+71	+46	+7	-0.2	+1.4	+38	+0.6	-3.1	-3.9	-1.8	+0.0	+0.94	-20	+1.42	+1.32	+56	+74	+37	+67

\* The percentile bands represent the distribution of EBVs across the 2019 drop Australian Angus and Angus-influenced seedstock animals analysed in the January 2021 TransTasman Angus Cattle Evaluation .



EBV Quick Reference for Claremont Annual Bull Sale

Animal Ident	Calving Ease			Birth			Growth			Fertility			Carcass			Other			Selection Indexes					
	CED	CEM	GL	BW	200	400	600	MCW	Milk	SS	DC	CWT	EMA	Rib	Rump	RBV	IMF	NFI-F	Doc	ABI	DOM	GRN	GRS	
1	CCPQ952	-5.7	-0.2	-3.8	+6.2	+56	+98	+124	+114	+13	+1.5	-3.4	+5.0	+0.8	+1.4	+0.6	+0.3	-0.31	-	\$100	\$103	\$88	\$107	
2	CCPQ904	-18.8	-2.3	-6.4	+9.7	+67	+116	+160	+163	+14	+2.2	-3.8	+89	+3.0	-1.7	+1.6	+0.4	-0.99	-	\$103	\$93	\$104	\$104	
3	CCPQ911	-4.2	+4.5	-3.3	+4.6	+59	+110	+141	+127	+18	+3.3	-2.8	+85	+6.6	-0.1	+0.2	+0.4	+0.22	-	\$120	\$118	\$114	\$125	
4	CCPQ989	-2.8	-5.2	-3.2	+5.9	+50	+95	+123	+133	+12	+2.9	-3.3	+74	+2.8	-2.5	+1.3	+0.3	-0.23	-	\$97	\$100	\$93	\$100	
5	CCPQ969	+2.9	+3.7	-4.7	+5.5	+53	+96	+127	+115	+9	+1.0	-3.4	+69	+5.4	-0.4	+1.2	+1.0	+0.00	-	\$124	\$118	\$126	\$124	
6	CCPQ926	-3.0	+0.2	-6.4	+5.7	+54	+100	+126	+119	+18	+1.3	-3.0	+71	+6.9	+1.7	+1.8	+0.8	-0.60	-	\$104	\$107	\$90	\$112	
7	CCPQ940	-7.6	+1.0	-8.4	+6.2	+54	+94	+126	+103	+15	+1.8	-4.4	+67	+3.9	+1.9	+2.0	-0.5	+1.7	-0.21	-	\$110	\$101	\$110	\$111
8	CCPQ934	+2.6	-0.4	-5.2	+4.2	+49	+96	+130	+125	+12	+4.0	-4.6	+73	+2.3	+0.1	+1.7	-0.2	+0.19	-	\$117	\$108	\$114	\$119	
9	CCPQ964	-12.6	-2.4	-3.6	+6.0	+46	+88	+119	+116	+17	+1.4	-4.6	+64	+3.0	+0.4	+1.2	+0.2	+0.53	-	\$85	\$83	\$77	\$89	
10	CCPQ991	+3.4	+4.2	-4.5	+4.7	+48	+87	+118	+103	+11	+2.0	-3.7	+61	+1.5	+1.4	+1.9	-0.7	+1.8	+0.30	-	\$115	\$107	\$117	\$115
11	CCPQ9172	-6.1	-6.0	-3.0	+6.3	+53	+98	+122	+124	+14	+2.0	-2.0	+77	+8.8	-0.6	-0.7	+2.3	-0.6	-0.22	-	\$92	\$102	\$75	\$101
12	CCPQ966	+2.7	+4.7	-4.8	+3.2	+48	+89	+106	+89	+13	+1.7	-4.4	+63	+5.9	+0.1	-0.4	+1.1	+1.5	-0.07	-	\$117	\$120	\$118	\$117
13	CCPQ9143	-6.2	-2.3	+3.0	+6.1	+46	+83	+116	+105	+13	+2.1	-0.9	+66	+2.8	+1.5	+1.2	-1.0	+1.4	+0.19	-	\$82	\$81	\$74	\$88
14	CCPQ965	+4.8	-0.2	-3.6	+4.4	+58	+98	+120	+106	+9	+1.4	-5.2	+66	+3.9	-0.1	+0.1	+1.8	+0.06	-	\$124	\$121	\$127	\$122	
15	CCPQ9155	-4.6	-1.2	-2.1	+5.9	+48	+87	+115	+120	+12	+1.4	-4.7	+65	+2.6	-1.4	-1.1	+1.4	+0.00	-0.31	-	\$93	\$96	\$85	\$97
16	CCPQ941	+2.5	+7.5	-5.5	+4.9	+56	+100	+137	+122	+18	+3.2	-4.6	+77	+5.0	-0.8	+0.3	+1.6	-0.2	-0.06	-	\$127	\$119	\$118	\$131
17	CCPQ978	+0.7	+0.5	-5.9	+4.0	+48	+89	+121	+125	+13	+2.3	-1.4	+68	+2.1	-1.4	-0.2	+0.6	+0.7	-0.27	-	\$97	\$98	\$91	\$102
18	CCPQ915	+7.3	+5.1	-8.9	+2.4	+59	+105	+142	+128	+17	+3.1	-2.2	+84	+6.1	-1.9	-1.7	+1.7	+0.7	-0.05	-	\$131	\$124	\$130	\$133
19	CCPQ9180	-11.6	-0.1	-3.9	+7.8	+54	+94	+125	+141	+10	+1.3	-6.4	+66	+1.7	-1.2	-1.4	+1.8	-0.4	-0.77	-	\$92	\$92	\$85	\$94
20	CCPQ9195	+1.5	+2.3	-4.9	+3.7	+46	+83	+103	+91	+14	+1.5	-3.2	+61	+3.4	+1.4	+1.8	+0.2	+0.5	-0.22	-	\$93	\$101	\$78	\$101
21	CCPQ916	+0.3	+2.3	-1.2	+3.8	+42	+80	+102	+89	+12	+1.2	-0.3	+62	+4.3	+1.2	+1.1	-0.5	+1.1	+0.03	-	\$83	\$92	\$71	\$92
22	CCPQ9127	-3.0	-2.7	-4.0	+5.1	+49	+92	+115	+103	+13	+2.2	-4.3	+66	+4.6	-1.4	-2.0	+2.1	+0.1	-0.58	-	\$102	\$108	\$95	\$106
23	CCPQ9212	-5.8	-3.9	-1.9	+6.2	+51	+93	+131	+127	+16	+2.8	-0.6	+72	+4.6	-1.0	-1.4	+2.2	-0.1	-0.36	-	\$95	\$95	\$85	\$102
24	CCPQ9159	-9.0	-5.4	-1.5	+6.4	+43	+77	+88	+72	+16	+1.1	-5.4	+54	+9.8	+1.3	+1.1	+1.1	+0.2	+0.16	-	\$79	\$91	\$60	\$86
25	CCPQ962	-1.4	+1.2	-5.8	+4.1	+61	+108	+138	+131	+20	+1.3	-2.6	+86	+2.0	-1.4	-1.3	+0.4	+0.5	-0.55	-	\$104	\$107	\$96	\$110
26	CCPQ9179	-2.6	+0.1	-4.5	+5.4	+50	+89	+109	+106	+16	+2.3	-6.8	+65	+0.3	+1.1	+0.0	+0.8	-0.15	-	\$98	\$101	\$92	\$100	
27	CCPQ977	-8.8	-8.4	-3.8	+5.0	+41	+74	+90	+97	+13	+1.6	-2.7	+56	+1.5	-2.0	-0.1	+0.4	+0.8	-0.07	-	\$59	\$75	\$47	\$66
28	CCPQ9198	-7.4	-3.3	-1.3	+7.2	+54	+93	+127	+127	+11	+0.9	-0.3	+71	+6.0	-1.2	-1.8	+1.9	-0.1	-0.37	-	\$87	\$92	\$75	\$96
29	CCPQ963	+4.1	-0.3	-2.7	+4.6	+52	+90	+110	+102	+9	+2.6	-6.3	+58	+1.7	-1.2	-0.8	+0.6	+1.9	+0.07	-	\$119	\$117	\$128	\$114
30	CCPQ9174	+0.8	+2.7	-4.8	+4.5	+46	+80	+103	+90	+10	+2.3	-3.7	+58	+6.0	+1.5	+1.5	+1.3	-0.2	+0.00	-	\$97	\$104	\$79	\$106
31	CCPQ9164	-8.5	-4.2	-2.2	+6.8	+50	+89	+114	+114	+13	+1.2	-3.7	+66	+5.0	+0.1	-0.1	+0.9	+0.2	-0.12	-	\$84	\$90	\$73	\$91
32	CCPQ9106	-1.2	+2.3	-3.6	+4.3	+36	+61	+79	+82	+11	+1.2	-5.3	+46	+2.4	-0.2	+0.2	+1.0	+0.1	-0.11	-	\$74	\$85	\$58	\$80
33	CCPQ9116	+6.1	+1.3	-1.1	+3.0	+46	+85	+104	+86	+10	+2.7	-3.1	+63	+6.8	+1.4	+0.9	+0.2	+0.7	+0.46	-	\$101	\$108	\$89	\$108
34	CCPQ983	+8.6	+7.6	-4.0	+2.2	+44	+81	+101	+83	+14	+1.2	-3.2	+57	+6.0	-0.1	-1.2	+1.4	+1.1	+0.06	-	\$110	\$114	\$107	\$112
35	CCPQ957	+3.6	+0.4	-4.6	+2.7	+43	+85	+102	+102	+13	+2.8	-3.2	+63	+2.0	-1.9	-0.8	+1.1	+0.2	-0.23	-	\$90	\$103	\$79	\$96
36	CCPQ972	+5.5	+2.5	-3.1	+3.0	+55	+93	+116	+97	+14	+1.9	-5.5	+82	+7.6	+0.9	+0.6	+0.7	+1.3	+0.28	-	\$126	\$122	\$124	\$126
37	CCPQ975	+2.4	+4.6	-4.1	+4.4	+56	+94	+131	+115	+19	+2.1	-2.6	+73	+6.5	+0.2	+0.1	+1.7	-0.5	-0.17	-	\$111	\$109	\$95	\$121
38	CCPQ9231	-8.5	-1.4	-2.4	+7.5	+53	+92	+120	+124	+10	+1.4	-5.0	+67	+3.2	-1.9	-1.3	+1.2	+1.0	-0.16	-	\$101	\$99	\$103	\$100
39	CCPQ925	+9.3	+5.2	-4.4	+1.2	+54	+95	+112	+90	+18	+2.2	-5.5	+65	+3.9	+0.7	+0.2	+0.2	+1.6	+0.15	-	\$120	\$122	\$118	\$120
40	CCPQ927	+4.1	+7.2	-6.3	+3.0	+46	+84	+103	+75	+21	+0.9	-6.8	+59	-0.8	+2.8	+3.4	-1.0	+0.3	+0.00	-	\$99	\$103	\$81	\$106
41	CCPQ9199	-12.0	-5.6	-3.0	+6.6	+51	+93	+109	+104	+16	+0.8	-3.4	+72	+7.1	-0.1	-0.3	+1.0	+0.8	-0.10	-	\$82	\$93	\$73	\$87
42	CCPQ9165	-6.3	-0.5	-3.0	+5.2	+47	+82	+100	+95	+15	+1.6	-3.9	+58	+4.1	+0.3	+1.0	+0.7	+0.3	-0.11	-	\$80	\$91	\$64	\$88
43	CCPQ979	+6.0	+4.4	-5.1	+3.4	+52	+91	+117	+96	+15	+2.1	-4.0	+67	+6.8	+1.2	+0.3	+0.6	+1.9	+0.47	-	\$128	\$121	\$131	\$126
44	CCPQ9122	-0.6	+1.5	-2.6	+4.0	+40	+73	+82	+76	+10	+0.2	-3.8	+53	+4.7	-0.3	-0.1	+0.4	+1.2	+0.01	-	\$82	\$97	\$74	\$86
45	CCPQ987	+5.9	+2.5	-2.7	+2.4	+54	+93	+110	+94	+15	+1.5	-5.3	+61	+2.9	-0.6	-0.7	+0.1	+1.8	-0.03	-	\$114	\$117	\$115	\$113
46	CCPQ9222	-10.2	-4.9	-3.4	+8.3	+53	+95	+130	+131	+11	+1.6	-2.4	+72	+3.0	-0.3	-0.4	+0.9	+0.5	-0.10	-	\$91	\$89	\$86	\$95
47	CCPQ9151	-1.2	+0.5	+3.4	+4.0	+42	+80	+102	+83	+11	+2.0	-2.3	+58	+5.3	+2.6	+2.6	-1.1	+1.1	+0.31	-	\$88	\$92	\$75	\$96
48	CCPQ980	-1.6	-1.9	-3.4	+4.6	+49	+93	+114	+121	+14	+3.0	-4.3	+71	+1.5	-0.5	+0.5	+0.8	-0.1	-0.38	-	\$91	\$100	\$78	\$98
49	CCPQ946	+1.1	-3.7	-5.3	+3.9	+45	+84	+107	+111	+11	+2.4	-3.1	+65	+3.2	+0.0	+0.9	+0.7	+0.1	-0.05	-	\$89	\$96	\$75	\$96
50	CCPQ917	+9.1	+7.7	-6.0	+2.3	+42	+82	+103	+83	+13	+2.0	-2.9	+57	+6.8	-0.9	-1.5	+1.7	+1.3	+0.21	-	\$117	\$118	\$117	\$117
51	CCPQ937	+5.9	+3.5	-6.2	+3.1	+56	+93	+117	+101	+15	+2.1	-4.6	+62	+3.4	-0.9	-0.7	+0.5	+2.1	+0.16	-	\$123	\$120	\$129	\$120
52	CCPQ995	+5.3	+1.0	-3.3	+2.8	+53	+87	+107	+93	+14	+0.8	-5.9	+56	+1.3	+0.7	+1.1	-0.4	+1.6	+0.02	-	\$109	\$110	\$106	\$110
53	CCPQ9161	-14.9	-7.6	+1.6	+6.8	+50	+89	+106	+123	+10	+2.5	-4.8	+63	+0.4	-1.0	+0.5	+0.3	+0.1	-0.41	-	\$60	\$75	\$45	\$67
54	CCPQ9131	-6.7	-2.9	-4.1	+6.5	+45	+80	+94	+95	+13	+0.0	-3.4	+64	+5.3	-0.3	-0.5	+1.3	+0.2	-0.39	-	\$74	\$90	\$59	\$81
55	CCPQ9154	-2.5	+2.7	-5.1	+4.3	+45	+82	+99	+93	+12	+0.9	-5.2	+61	+2.4	+0.1	+0.0	+0.1	+1.0	-0.20	-	\$92	\$98	\$85	\$94
56	CCPQ9141	-3.5	+0.1	-2.3	+6.1	+44	+80	+103	+96	+13	+0.6	-2.8	+65	+6.9	-0.1	-1.0	+1.4	+0.4	+0.12	-	\$89	\$96	\$79	\$95
57	CCPQ981	+5.1	+0.8	-3.4	+3.3	+50	+82	+94	+81	+8	+2.1	-7.1	+50	+3.2	+0.0	+0.6	+0.3	+1.5	+0.04	-	\$109	\$114	\$107	\$108
58	CCPQ9112	-9.3	-9.0	-2.4	+6.6	+46	+85	+109	+118	+12	+2.6	-3.1	+60	+1.3	-2.3	-0.7	+1.0	+0.3	-0.36	-	\$72	\$82	\$62	\$78
59	CCPQ9112	+2.0	+2.5	-4.5	+4.2	+48	+87	+114	+99	+17	+2.0	-4.7	+65	+6.0	-0.1	-0.4	+0.5	+2.0	+0.18	+6	\$120	\$127	+116	+116



EBV Quick Reference for Claremont Annual Bull Sale

Animal Ident	Calving Ease			Birth			Growth			Fertility			Carcass			Other			Selection Indexes		
	CED	CEM	GL	BW	200	400	600	MCW	Milk	SS											

## UNDERSTANDING THE TRANSTASMAN ANGUS CATTLE EVALUATION (TACE)



### What is the TransTasman Angus Cattle Evaluation?

The TransTasman Angus Cattle Evaluation is the genetic evaluation program adopted by Angus Australia for Angus and Angus influenced beef cattle. The TransTasman Angus Cattle Evaluation uses Best Linear Unbiased Prediction (BLUP) technology to produce Estimated Breeding Values (EBVs) of recorded cattle for a range of important production traits (e.g. weight, carcass, fertility).

The TransTasman Angus Cattle Evaluation is an international genetic evaluation and includes pedigree, performance and genomic information from the Angus Australia and Angus New Zealand databases, along with selected information from the American and Canadian Angus Associations.

The TransTasman Angus Cattle Evaluation utilises a range of genetic evaluation software, including the internationally recognised BLUPF90 family of programs, and BREEDPLAN® beef genetic evaluation analytical software, as developed by the Animal Genetics and Breeding Unit (AGBU), a joint institute of NSW Agriculture and the University of New England, and Meat and Livestock Australia Limited (MLA).

### What is an EBV?

An animal's breeding value can be defined as its genetic merit for each trait. While it is not possible to determine an animal's true breeding value, it is possible to estimate it. These estimates of an animal's true breeding value are called EBVs (Estimated Breeding Values).

EBVs are expressed as the difference between an individual animal's genetics and a historical genetic level (i.e. group of animals) within the TACE genetic evaluation, and are reported in the units in which the measurements are taken.

### Using EBVs to Compare the Genetics of Two Animals

TACE EBVs can be used to estimate the expected difference in the genetics of two animals, with the expected difference equating to half the difference in the EBVs of the animals, all other things being equal (e.g. they are joined to the same animal/s).

For example, a bull with a 200 Day Growth EBV of +60 would be expected to produce progeny that are, on average, 10 kg heavier at 200 days of age than a bull with a 200 Day Growth EBV of +40 kg (i.e. 20 kg difference between the sire's EBVs, then halved as the sire only contributes half the genetics).

Or similarly, a bull with an IMF EBV of +3.0 would be expected to produce progeny with on average, 1% more intramuscular fat in a 400 kg carcass than a bull with a IMF EBV of +1.0 (i.e. 2% difference between the sire's EBVs, then halved as the sire only contributes half the genetics).

### Using EBVs to Benchmark an Animal's Genetics with the Breed

EBVs can also be used to benchmark an animal's genetics relative to the genetics of other Angus or Angus infused animals in Australia.

To benchmark an animal's genetics relative to other Angus animals, an animal's EBV can be compared to the EBV reference tables, which provide:

- the breed average EBV
- the percentile bands table

The current breed average EBV is listed on the bottom of each page in this publication, while the current EBV reference tables are included at the end of these introductory notes. For easy reference, the percentile band in which an animal's EBV ranks is also published in association with the EBV.

### Considering Accuracy

An accuracy value is published with each EBV, and is usually displayed as a percentage value immediately below the EBV.

The accuracy value provides an indication of the reliability of the EBV in estimating the animal's genetics (or true breeding value), and is an indication of the amount of information that has been used in the calculation of the EBV.

EBVs with accuracy values below 50% should be considered as preliminary or of low accuracy, 50-74% as of medium accuracy, 75-90% of medium to high accuracy, and 90% or greater as high accuracy.

### Description of TACE EBVs

EBVs are calculated for a range of traits within TACE, covering calving ease, growth, fertility, maternal performance, carcass merit, feed efficiency and structural soundness. A description of each EBV included in this publication is provided on the following page.

## UNDERSTANDING ESTIMATED BREEDING VALUES (EBVS)

Category	Trait	Unit	Description	Impact
Birth	CEDir	%	Genetic differences in the ability of a sire's calves to be born unassisted from 2 year old heifers.	Higher EBVs indicate fewer calving difficulties in 2 year old heifers.
	CEDtrs	%	Genetic differences in the ability of a sire's daughters to calve unassisted at 2 years of age.	Higher EBVs indicate fewer calving difficulties in 2 year old heifers.
	GL	days	Genetic differences between animals in the length of time from the date of conception to the birth of the calf.	Lower EBVs indicate shorter gestation length.
	BW	kg	Genetic differences between animals in calf weight at birth.	Lower EBVs indicate lighter birth weight.
Growth	200 Day	kg	Genetic differences between animals in live weight at 200 days of age due to genetics for growth.	Higher EBVs indicate heavier live weight.
	400 Day	kg	Genetic differences between animals in live weight at 400 days of age.	Higher EBVs indicate heavier live weight.
	600 Day	kg	Genetic differences between animals in live weight at 600 days of age.	Higher EBVs indicate heavier live weight.
	MCW	kg	Genetic differences between animals in live weight of cows at 5 years of age.	Higher EBVs indicate heavier mature weight.
	Milk	kg	Genetic differences between animals in live weight at 200 days of age due to the maternal contribution of its dam.	Higher EBVs indicate heavier live weight.
	Fertility	DtC	days	Genetic differences between animals in the time from the start of the joining period (i.e. when the female is introduced to a bull) until subsequent calving.
SS		cm	Genetic differences between animals in scrotal circumference at 400 days of age.	Higher EBVs indicate larger scrotal circumference.
Carcass	CWT	kg	Genetic differences between animals in hot standard carcass weight at 750 days of age.	Higher EBVs indicate heavier carcass weight.
	EMA	cm <sup>2</sup>	Genetic differences between animals in eye muscle area at the 12/13th rib site in a 400 kg carcass.	Higher EBVs indicate larger eye muscle area.
	Rib Fat	mm	Genetic differences between animals in fat depth at the 12/13th rib site in a 400 kg carcass.	Higher EBVs indicate more fat.
	P8 Fat	mm	Genetic differences between animals in fat depth at the P8 rump site in a 400 kg carcass.	Higher EBVs indicate more fat.
	RBV	%	Genetic differences between animals in boned out saleable meat from a 400 kg carcass.	Higher EBVs indicate higher yield.
	IMF	%	Genetic differences between animals in intramuscular fat (marbling) at the 12/13th rib site in a 400 kg carcass.	Higher EBVs indicate more intramuscular fat.
Other	NFI-F	kg/day	Genetic differences between animals in feed intake at a standard weight and rate of weight gain when animals are in a feedlot finishing phase.	Lower EBVs indicate more feed efficiency.
	Doc	%	Genetic differences between animals in temperament.	Higher EBVs indicate better temperament.
Structure	Foot Angle	score	Genetic differences in foot angle (strength of pastern, depth of heel).	Lower EBVs indicate more desirable foot angle.
	Claw Set	score	Genetic differences in claw set structure (shape and evenness of claws).	Lower EBVs indicate more desirable claw structure.
Selection Index	ABI	\$	Genetic differences between animals in net profitability per cow joined in a typical commercial self replacing herd using Angus bulls. This selection index is not specific to a particular production system or market end-point, but identifies animals that will improve overall profitability in the majority of commercial grass and grain finishing beef production systems.	Higher selection index values indicate greater profitability.
	DOM	\$	Genetic differences between animals in net profitability per cow joined in a commercial self replacing herd targeting the domestic supermarket trade.	Higher selection index values indicate greater profitability.
	HGRN	\$	Genetic differences between animals in net profitability per cow joined in a commercial self replacing herd targeting pasture grown steers with a 250 day feedlot finishing period for the grain fed high quality, highly marbled markets.	Higher selection index values indicate greater profitability.
	HGRS	\$	Genetic differences between animals in net profitability per cow joined in a commercial self replacing herd targeting pasture finished steers.	Higher selection index values indicate greater profitability.







# CLAREMONT ANGUS

## BUYERS INSTRUCTION SLIP

Agent Name (PRINT) .....

Client Name (PRINT) .....

PIC No. ....

Client Postal Address (In Full) .....

..... Postcode .....

Home phone ..... Mobile .....

Insurance .....

Lots Purchased .....

.....

.....

Client Delivery Address .....

.....

Delivery Directions .....

.....

.....

Signature of Buyer ..... Date .....

# CLAREMONT FUTURE GENETICS



Texas No Regrets calf  
CCPRO20



Texas No Regrets calves  
CCPRO47 CCPRO24 CCPRO41



TWE H220 calf CCPRO15  
Texas No Regrets calf CCPRO42



Texas No Regrets calves  
CCPRO47 & CCPRO24



Baldrige Beast Mode calf  
CCPRO75







# CLAREMONT ANGUS

*"Behind every good male there is a good female"*



CLAREMONT PRINCIPALS – Graeme and Liz Glasgow

**Claremont**, 352 Harris Road, Woolsthorpe, Victoria 3276

Phone: 03 5569 2243 Graeme: 0427 692 243 Liz: 0427 048 430

Email: [claremont@aussiebroadband.com.au](mailto:claremont@aussiebroadband.com.au)

[www.claremontangus.com.au](http://www.claremontangus.com.au)

