



Office - 102 McDowall Street, Roma QLD 4455,
Tel:(07) 46227799 Fax:(07) 46227288

John Sims - Manager & Property - 0428 221 727

Geoff Maslen - Livestock - 0427 697 527

Nick Shorten - Livestock - 0429 624 091

Sam Clarke Livestock - 0429 518 218

The GDL team are very pleased to be conducting the
2021 Roselea Poll Merino Ram Sale
In conjunction with QWool Services.

Bruce Lines - QWool Services - 0438 404 069



Peter, Linda & Will Hacker continually maintain and increase their reputation as Merino Ram Breeders, producing the highest quality wool on robust large framed merinos.

We also wish all purchasers the very best on their ram selections.

ROSELEA Merino Stud

LONGREACH ANNUAL SHOW
CHAMPION
STUD RAM'S FLEECE
LONGREACH ANNUAL SHOW

LONGREACH ANNUAL SHOW
GRAND CHAMPION
FLEECE OF THE SHOW

ON PROPERTY

Inspection Open day

AuctionsPlus Sale

40 Poll Merino Rams



Thursday, 9th December 2021

INSPECTIONS from 11.00am

AuctionsPlus winddown clock starts at 1.00pm

Light Lunch and refreshments provided.

Peter & Linda Hacker (Ph) 0746 268 313 (M) 0429 152 727

Bruce Lines - QWool Services (M) 0438 404 069

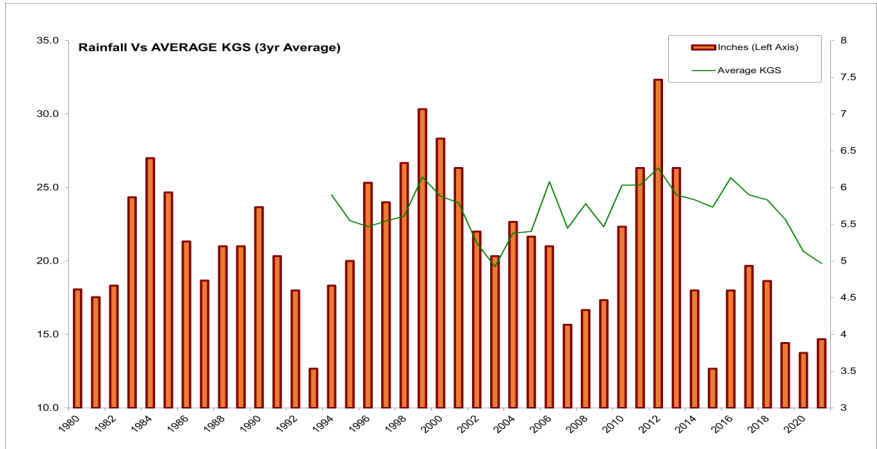
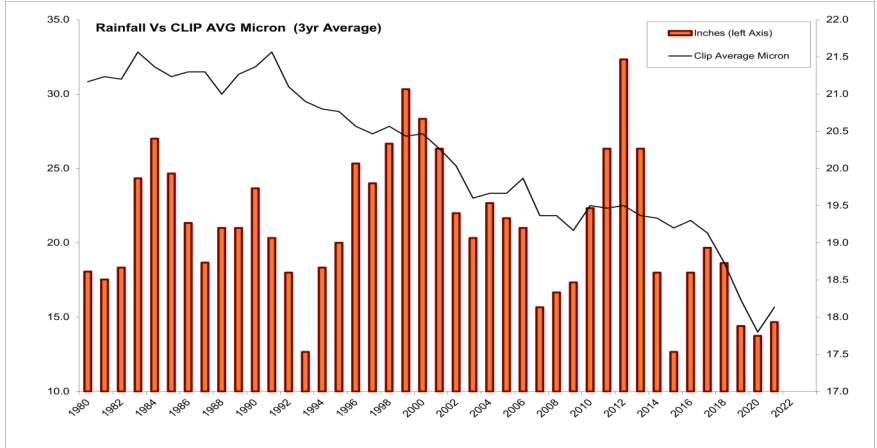
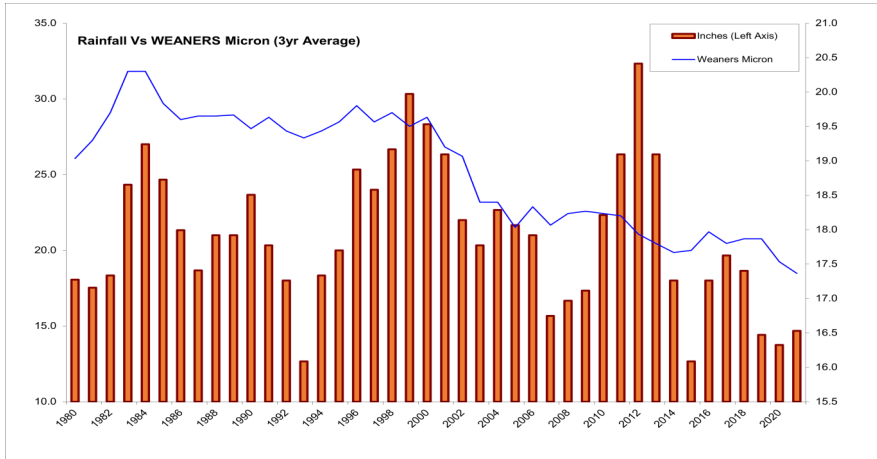
GDL Roma (Ph) 0746 227 799

Roselea Merino Stud — Ram Sale

Buyers Instructions Details

(To be filled in and handed to the Auctioneers before leaving sale)

Account to:.....
 NAME:.....
 ADDRESS:.....
 PHONE:.....MOBILE:.....
 PURCHASERS PIC No:



Lot No. Purchased	Eartag No.	Purchase Price.
		\$
		\$
		\$
		\$
		\$
		\$
		\$
		\$
		\$
		\$

Delivery Instructions:.....Rams
 Buyers Signature:.....
 Agent:.....
 Agents Signature:.....Date:.....

Roselea Merino Stud — Ram Sale

Buyers Instructions Details

(To be filled in and handed to the Auctioneers before leaving sale)

Account to:.....

NAME:.....

ADDRESS:.....

PHONE:.....MOBILE:.....

PUCHASERS PIC No.....

Lot No. Purchased	Eartag No.	Purchase Price.
		\$
		\$
		\$
		\$
		\$
		\$
		\$
		\$
		\$
		\$
		\$

Delivery Instructions:.....Rams

Buyers Signature:.....

Agent:.....

Agents Signature:.....Date:.....

ROSELEA Merino Stud - History

Roselea Merino Stud was founded in 1936 by T.A.Hacker on Bundemar and Haddon Rig bloodlines. The sheep produced were well nourished 64S quality medium wools.

Through the 1950's and 60's only Haddon Rig and Uardry sires were used. Pooginook blood was added in the early 80's.

The Roselea Poll Stud was established in 1957 on Success and Reno blood. Some Poll Boonoke and Eudora sires were added in the 1980's.

In the early 90's Peter Hacker became Roselea Studmaster. Since then Billandri and Willemenup blood has been added to the polls and more Haddon Rig and Uardry to the Merinos.

Over recent years size and body weight of the sheep has been given higher priority and a greater emphasis has been placed on softness of the wool . These measures have resulted in a lowering of the micron by nearly 2 microns over the past 23 years while maintaining a productive fleece weight.

Sire codes

PB -POLL BOONOKE 536 SYNDICATE - NSW

PB 536 was a semen sire used in 2019 who bred extremely well, and his syndicate will be the main focus in the near future.

GD -GLEN DONALD POLL 121 – VIC

GD 1221 was a semen sire used in 2020 and 2021, comes from an impressive line of Glen Donald Poll Sires.

BAN -BANAVIE POLL SYNDICATE - VIC

The Banavie syndicate started with a ram purchased in 2013, this family produces rich well marked wools on solid frames.

SP -SEYMOUR PARK SYNDICATE - WA

This syndicate was started from 2 Seymour Park rams that were both Grand & Reserve Champion Poll rams at the Australian Sheep Show in Bendigo 2013. This has been the major syndicate that has been used over the last few years and are producing top quality breeding ewes with bright white wools.

GP—ROSELEA GENERAL POLL SYNDICATE - QLD

The general poll syndicate is made up of rams from the syndicates but were surplus to their syndicate's requirements.



EXPLANATION OF TERMS

MIDSIDE SAMPLE

The midside sample is generally the accepted region for sampling individual animals. The midway between belly and back line and around the third rib area.

MICRON

The mean fibre diameter of all fibres measured.

SD

Standard deviation - a measure of dispersion of individual results. Standard deviation is expressed in the units of measurement.

CV%

The co-efficient of variation of fibre diameter. It is expressed as a percentage of standard deviation and mean fibre diameter. Figures less than 29% are desirable. The lower the better.

COMFORT

Comfort Factor. % of fibre above 30 micron = 100%

Comfort Factor. Above 95% - Desirable.

Comfort Factor. Above 98% - Excellent

BODY WT

Actual Live Body Weights = Kgs.

COMMENTS

Measurements are influenced by the age of the sheep, the site from which the sample is taken, the length of the wool (wool growth) and nutrition. We recommend that when selecting your rams you take these factors into consideration and combine this information with balanced “hands-on” approach.

<i>BID</i>	<i>BID</i>	<i>BID</i>	<i>BID</i>	<i>BID</i>	<i>BID</i>	<i>BID</i>

KEEP TRACK OF YOUR BIDS AT ROSELEA BY WRITING THEM ACROSS THE PAGE.

Lot No.	BID	BID	BID	BID	BID	BID



How to Register and Bid on AuctionsPlus

- 1** Go to www.auctionsplus.com.au to register at least 48 hours before the sale.
- 7** Fill in buyer details and once completed go back to Dashboard.
- 2** Select "Sign Up" in the top right hand corner.
- 8** Complete buyer induction module (approx. 30 minutes).
- 3** Fill out your name, mobile number, email address and create a password.
- 9** AuctionsPlus will email you to let you know that your account has been approved.
- 4** Go to your emails and confirm the account.
- 10** Log in on sale day and connect to auction.
- 5** Return to AuctionsPlus and log in.
- 11** Bid using the two-step process – unlock the bid button and bid at that price.
- 6** Select "Dashboard" and then select "Request Approval to Buy".
- 12** If you are successful, the selling agent will contact you post sale to organise delivery and payment.

For more information please contact us on:
 Phone: (02) 9262 4222
 Email: info@auctionsplus.com.au

KEEP TRACK OF YOUR BIDS AT ROSELEA BY WRITING THEM ACROSS THE PAGE.



Big Enough To Count – Small Enough To Care

GDL is one of the largest and most successful privately-owned livestock and property selling agencies in Australia. The GDL footprint of 20 branches forms a marketing network throughout the cattle and sheep producing areas of Queensland and the Northern Territory.

Nutrien Ltd, operating in Australia through its wholly owned subsidiary Landmark Operations Limited (Landmark), officially acquired Ruralco Holdings Limited (Ruralco) on 1 October 2019. The combined Ruralco and Landmark ag retail businesses is known as Nutrien Ag Solutions®.

GDL's partnership with Nutrien Ag Solutions, also provides clients with the ability to tap into an extensive marketing network right across Australia. At GDL our number one priority is to listen to your needs and work with you to help your business grow and prosper year after year, season after season.

From our smallest, to our biggest clients, we know every dollar counts.

We build lasting relationships based on the principles of honesty, integrity and pride in a job well done.

“Our Clients Are Never Just A Number”

Our Business

GDL is the largest independent livestock and property agency in Australia. From humble begins in 1997, with just a desk, a phone and four agents, GDL has consistently put the runs on the board.

Now GDL's 20 Branches create a marketing network throughout the cattle and sheep producing areas of Queensland.

GDL Branches are based in Dalby, Barcaldine, Blackall, Chinchilla, Cunnamulla, Goondiwindi, Kingaroy, Longreach, Mackay, Meandarra, Miles, Mitchell, Moura, Quilpie, Rockhampton, Roma, St George, Taroom, Toowoomba and Wandoan.

GDL is also partnered with Territory Rural McPherson in Alice Springs NT.

Working in joint venture with Australian-based company, Nutrien Ag Solutions, GDL has access to the resources of a further 500 livestock agency offices across Australia.

As well as marketing commercial livestock, GDL specialise in studstock, real estate, finance and insurance, merchandise and transport logistics.

www.gdlrural.com.au

Lot No.	Tag No.	Micron	SD	CV%	Comfort	Body WT
31	SP 1229	20.7	3.6	17.3	99.0	65 kg
Note:						
32	GP 1469	18.4	3.5	19.0	99.5	64.5 kg
Note:						
33	SP 1084	21.1	3.6	17.0	99.1	70.5 kg
Note:						
34	BAN 621	19.9	4.2	21.0	99.1	64 kg
Note:						
35	SP 1048	17.8	3.3	18.7	99.0	71.5 kg
Note:						
36	SP 1034	20.0	3.7	18.3	98.8	67.5 kg
Note:						
37	GP 102	21.0	3.3	15.8	98.4	62 kg
Note:						
38	GD 1426	21.1	3.3	15.5	99.1	70.5 kg
Note:						
39	SP 1202	18.7	3.4	18.2	99.4	70.5 kg
Note:						
40	GP 1380	20.7	3.5	16.9	98.8	76 kg
Note:						

Lot No.	Tag No.	Micron	SD	CV%	Comfort	Body WT
21	SP 1008	20.9	3.8	18.2	98.3	64.5 kg
Note:						
22	SP 1029	20.2	3.0	14.7	99.4	79.5 kg
Note:						
23	SP 1109	18.6	3.0	16.2	99.0	72 kg
Note:						
24	SP 668	18.5	3.6	19.5	99.3	61 kg
Note:						
25	GP 225	17.8	3.7	20.9	99.0	62 kg
Note:						
26	BAN 634	19.4	3.3	17.0	98.9	65.5 kg
Note:						
27	GP 1405	20.0	3.3	16.8	98.9	67.5 kg
Note:						
28	SP 1105	19.0	3.7	19.4	99.0	64 kg
Note:						
29	GP 1431	18.7	3.3	17.5	99.6	74 kg
Note:						
30	BAN 336	21.2	3.9	18.3	98.5	70 kg
Note:						

QWool

Services



Wool Sales & Marketing

Wool Brokering - Auction room, Private Sale,
Forward Contract and Wooltrade - Wool Advance facilities.
With the support of Australian Wool Network (AWN)



Sheep Sales & Marketing

Private and Yard Sales, On Farm, Auctionsplus,
Forward Contract and Direct to Processor.
With the support of Australian Wool Network (AWN)



Stud Sheep Sales & Marketing

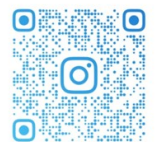
Private Sales, On Farm & Special Auction Sales
Auctionsplus and Electronic Marketing.
With the support of Australian Wool Network (AWN)



Wool Industry Experience

In Shed Clip Preparation Advice, Woolclassing,
Shearing & Wool Handling to conducting
Wool industry events to in-shed training.

LOCAL SERVICE, NATIONAL STRENGTH



QWOOLSERVICES

<i>Lot No.</i>	<i>Tag No.</i>	<i>Micron</i>	<i>SD</i>	<i>CV%</i>	<i>Comfort</i>	<i>Body WT</i>
01	PB 54	18	2.8	15.3	99.8	96 kg
Note:						
02	PB 94	17.3	3.4	19.6	99.4	76.5 kg
Note:						
03	GD 1	18.5	3.4	18.4	98.9	80.5 kg
Note:						
04	GP 1422	16.8	2.8	16.6	99.5	62.5 kg
Note:						
05	GD 2	18.8	3.4	17.9	99.3	77 kg
Note:						
06	PB 95	NT	NT	NT	NT	68.5 kg
Note:						
07	BAN 477	18.1	2.8	15.3	99.7	72.5 kg
Note:						
08	BAN 448	19.4	3.2	16.7	99.5	69.5 kg
Note:						
09	PB 50	17.7	3.4	19.3	99.3	79 kg
Note:						
10	GP 186	19.0	3.6	18.8	98.9	71.5 kg
Note:						

<i>Lot No.</i>	<i>Tag No.</i>	<i>Micron</i>	<i>SD</i>	<i>CV%</i>	<i>Comfort</i>	<i>Body WT</i>
11	GP 103	18.7	3.1	16.5	99.4	75 kg
Note:						
12	SP 1092	20.5	4	19.7	98.4	68.5 kg
Note:						
13	PB 74	18.5	3.3	17.6	99.3	70.5 kg
Note:						
14	GP 155	19.5	3.9	19.8	98.6	62 kg
Note:						
15	BAN 396	20.8	3.3	16.0	99.2	64 kg
Note:						
16	BAN 392	19.0	3.7	19.4	98.3	65.5 kg
Note:						
17	PB 71	19.2	3.1	16.0	99.1	70 kg
Note:						
18	SP 1282	20.3	3.3	16.1	99.1	68 kg
Note:						
19	BAN 624	19.1	4.2	21.7	98.4	60.5 kg
Note:						
20	SP 1203	19.4	3.5	17.9	99.2	72.5 kg
Note:						