



# **Suffolk Stud Total Dispersal Sale**

**Friday,  
15th January, 2021  
on property**

Sale to commence at  
**11.00 a.m. (EST)**

**Auctionsplus will be operating**



**auctionsplus**  
*agricultural auctions at a click*

**Vendors: A. J. & J. J. Donnan**

# **Kerangie Suffolk Stud**

## **Flock No. 2187**

### **2020 Sale Toppers**

**Both dams of these rams up for sale  
– Lot 104 & Lot 99 –**



**Tag 192484**

**Top Price Suffolk at 2020 Annual Sale  
\$11,000**



**Tag 192465**

**Sold for \$6,000 at 2020 Annual Sale**

# ORDER OF SALE FROM 11.00 AM

172 lots comprising:

- 34 – 2019 Drop Ewes
- 21 – 2018 Drop Ewes
- 35 – 2017 Drop Ewes
- 13 – 2016 Drop Ewes
- 10 – 2015 Drop Ewes
- 1 – 2014 Drop Ewe
- 3 – 2013 Drop Ewes
- 46 – 2020 Drop Ewe Lambs
- 9 – Specially Selected 2020 Stud Ram Lambs

SALE TO BE HELD ON PROPERTY 'ANDEN STUD'  
1117 Willangie-Woomelang Road, Willangie, Vic.  
(See map on back cover).

**Auctions Plus will be operating for all lots.  
For more information call Peter Rollason,  
Elders 0419 600 323.**

*Please note: Light luncheon and drinks  
will be catered for on the day.*

Lambplan participant – Ovine Brucellosis  
Accredited Free Flock – Ovine Johne's MN3 Accredited.

**For further information, contact Elders agents:**

Shane McLoughlan, Wycheproof, 0418 844 533  
Jonno Sutherland, Bendigo, 0400 307 619  
Ross Milne, Auctioneer, 0408 057 558

**Inspection of stock** from 9.00 a.m. sale day or  
prior to sale by arrangement with  
Andrew Donnan, mobile 0427 812 227  
or Joel Donnan, mobile 0428 514 406  
website: [andenstud.com.au](http://andenstud.com.au)

## *From the Anden Stud*

Welcome to the Kerangie Suffolk Total Dispersal Sale.

We are offering 173 top quality Stud Ewes, from the 2013 Drop through to the 2020 Drop Ewe Lambs. We also provide the opportunity to purchase from nine specially selected 2020 Drop Ram Lambs.

Our On-Property Auction will run with COVID-19 protocols in place and is interfaced with AuctionsPlus for all sale lots. Inspections prior to the sale are welcome and encouraged, by appointment.

**Please note the starting time for the Sale is 11am.**

The decision to sell the Suffolks hasn't been made lightly. The Kerangie Suffolks were originally founded in 1971 by John and Melva Donnan, who had many highlights and much success at the shows. In 2010, Andrew re-activated the Kerangie Suffolk Stud, Flock No. 2187. Andrew initially purchased 25 Suffolk ewes in-lamb and a top 15 of the 2010 drop from the highly regarded Burwood Stud in SA. In 2011 we attained 6 outstanding Burwood ewes and in the following year acquired Burwood's best 3 ewe lambs, before purchasing the top price ewe at the Burwood 2013 dispersal sale. It must be said that Andrew proclaimed the Suffolks would just be a hobby! But like all hobbies, passion took over and the urge to develop and produce top quality animals, with high performance genetics to best suit the industry and the buyers, is what we present today.

The Kerangie Suffolks have represented and have had success at the Royal Adelaide Show, Bendigo Show and at Hamilton SheepVention. We have always enjoyed showing and the comradery and lifelong friends made between breeders, is something we truly value.

Over the past 32 years the Anden Stud has been home to four different breeds: the Anden White Suffolks, Viewdale Poll Dorsets, Kerangie Suffolks and currently developing the new Anden UltraWhites. Each breed has played a major role in our Stud enterprise, each boosting genetic gains within the Anden Stud and the sheep industry. It has been hard to let the Suffolks go, but with our Stud stock numbers at capacity, the decision has been made.

We are proud to present the stud ewes on offer, who are proven breeders with outstanding bloodlines. The 2020 Drop ram and ewe lambs have impressed us early and all ewe lambs from this drop are on offer. We have also specially selected nine standout 2020 drop ram lambs to be offered in this dispersal sale. We are thrilled to give breeders the opportunity to obtain Kerangie genetics that will enhance any Stud.

Please note, the remaining 2020 Drop ram lambs will be sold in our Annual Anden Stud Sale on Thursday 7th October 2021.

We wish to thank everyone who has purchased Kerangie Suffolks in the past. It is always a pleasure to see where our genetics are going and into which breeding programs.

We thank you for your interest at this time and look forward to seeing you on January 15th.

Andrew & Denita, Joel & Lauren and Trent & Brigitte

# SIRE MEMO

**GYP SUM HILL-860116** – ‘SEAWAY’ 1986 drop ram, so yes, he is 34 years old! Andrew still remembers stories of how good this ram was back in the day. With Ian Turner cleaning out his semen tank we couldn’t help but have a crack at something unique!!

5 ewe lambs + 3 ram lambs in the sale.

**KERANGIE-192458** – Large framed ram, very good doing animal.  
13 ewe lambs in the sale.

**KERANGIE-192465** – Sold to Cheetara for \$6,000. Beautiful clean deep bodied ram, produced a lot of top lambs this season.  
25 ewe lambs + 3 ram lambs in the sale.

**LYNBURN-170125** – ‘HAYSTACK’ Purchased in partnership with Sayla Park and Bundara Downs, as top priced ram \$4,500 at Lynburn Dispersal Very early maturing ram with great muscling and fat cover.

6 ewes, 3 ewe lambs + 3 ram lambs in the sale.

**ALLENDALE-172027** – Very correct ram, with beautiful carcass. Reserve Champion Adelaide Show, Champion Ram Melbourne.

7 ewes in the sale.

**OAKWOOD-177531** – Full brother to Glenraig 150406. Purchased as ram lamb at the completion of Oakwood.

21 ewes in the sale.

**KERANGIE-170529** – Used as ram lamb. Top son of Lynburn 150247.

7 ewes in the sale.

**KERANGIE-170558** – Used as ram lamb. Top son of Glenraig 150406.

2 ewes in the sale.

**PAMELLEN-160028** – Used in AI. High growth ram, with balanced data.

1 ewe in the sale.

**PAMELLEN-150074** – Used in AI. High growth ram, with balanced data.

8 ewes in the sale.

**GLENCRAIG-150406** – ‘KENT’ purchased half share at \$5,500 from Oakwood as a ram lamb.

17 ewes in the sale.

**LYNBURN-150247** – Used in AI. Good data ram, with big positive EMD.

6 ewes in the sale.

**KERANGIE-150544** – Used as ram lamb, top son of Noble-Lee 130984. Big stylish ram.

6 ewes in the sale.

**OAKWOOD-140140** – Used in AI. Big long correct ram, full of muscle.

6 ewes in the sale.

**NOBLE-LEE-130984** – Purchased in partnership with Gypsum Hill. Big clean stylish ram.

6 ewes in the sale.

**OAKWOOD-130019**

4 ewes in the sale.

**OAKWOOD-130003**

4 ewes in the sale.

**GLENCRAIG-121038** – ‘LOGAN’ sire of both Glenraig 150406 and Oakwood 177531.

2 ewes in the sale.

**KERANGIE-120033** – Triplet, very correct medium size ram with muscle.

2 ewes in the sale.

**ALLENDALE-110830** – Linkage sire with good growth.

5 ewes in the sale.

# 34 – 2019 DROP EWES

**LOT TAG BT SIRE DOB**  
**1 Kerangie-192451 single Allendale-172027 8/06/2019**  
 Dam: Kerangie-170523 SOD: Lynburn-150247

BWT	WWT	PWWT	PEMD	PFAT	TCP	IMF	SHRF5
.33	7.24	11.08	1.77	.58	126.05	-.17	-.55

Pur./Price .....

**LOT TAG BT SIRE DOB**  
**2 Kerangie-192454 twin Lynburn-170125 11/06/2019**  
 Dam: Kerangie-150516 SOD: Noble-Lee-130984

BWT	WWT	PWWT	PEMD	PFAT	TCP	IMF	SHRF5
.44	8.14	13.79	.47	.16	122.01	-.49	1.71

Pur./Price .....

**LOT TAG BT SIRE DOB**  
**3 Kerangie-192456 twin Allendale-172027 11/06/2019**  
 Dam: Kerangie-130539 SOD: Kerangie-120033

BWT	WWT	PWWT	PEMD	PFAT	TCP	IMF	SHRF5
.43	7.59	11.55	1.13	-.21	127.37	-.3	-.85

Pur./Price .....

**LOT TAG BT SIRE DOB**  
**4 Kerangie-192464 single Lynburn-170125 14/06/2019**  
 Dam: Kerangie-150546 SOD: Noble-Lee-130984

BWT	WWT	PWWT	PEMD	PFAT	TCP	IMF	SHRF5
.52	9.07	14.57	.37	-.05	123.7	-.58	2.74

Pur./Price .....

**LOT TAG BT SIRE DOB**  
**5 Kerangie-192467 single Lynburn-170125 14/06/2019**  
 Dam: Kerangie-170554 SOD: Glenraig-150406

BWT	WWT	PWWT	PEMD	PFAT	TCP	IMF	SHRF5
.43	8.25	14.06	.98	-.2	128.17	-.7	1.72

Pur./Price .....

# 2019 DROP EWES

**LOT**            **TAG**            **BT**            **SIRE**            **DOB**  
**6**      **Kerangie-192472**   **twin**      **Allendale-172027**      **14/06/2019**  
 Dam: Kerangie-150510      SOD: Allendale-110830

BWT	WWT	PWWT	PEMD	PFAT	TCP	IMF	SHRF5
.33	7.13	10.72	1.27	-.1	125.06	-.31	-.8

Pur./Price .....

**LOT**            **TAG**            **BT**            **SIRE**            **DOB**  
**7**      **Kerangie-192474**   **twin**      **Allendale-172027**      **14/06/2019**  
 Dam: Kerangie-170525      SOD: Lynburn-150247

BWT	WWT	PWWT	PEMD	PFAT	TCP	IMF	SHRF5
.48	8.07	12.05	1.33	.23	127.17	-.23	.02

Pur./Price .....

**LOT**            **TAG**            **BT**            **SIRE**            **DOB**  
**8**      **Kerangie-192477**   **twin**      **Allendale-172027**      **14/06/2019**  
 Dam: Glenraig-150453      SOD: Glenraig-130127

BWT	WWT	PWWT	PEMD	PFAT	TCP	IMF	SHRF5
.45	7.9	12.24	1.05	-.25	125.79	-.38	.45

Pur./Price .....

**LOT**            **TAG**            **BT**            **SIRE**            **DOB**  
**9**      **Kerangie-192478**   **single**      **Lynburn-170125**      **14/06/2019**  
 Dam: Kerangie-150535      SOD: Noble-Lee-130984

BWT	WWT	PWWT	PEMD	PFAT	TCP	IMF	SHRF5
.35	6.54	11.18	.93	.76	116.08	-.34	1.41

Pur./Price .....

**LOT**            **TAG**            **BT**            **SIRE**            **DOB**  
**10**      **Kerangie-192481**   **single**      **Lynburn-170125**      **15/06/2019**  
 Dam: Kerangie-160504      SOD: Oakwood-140140

BWT	WWT	PWWT	PEMD	PFAT	TCP	IMF	SHRF5
.39	7.7	12.87	.46	.12	121.59	-.41	1.2

Pur./Price .....

# 2019 DROP EWES

**LOT TAG BT SIRE DOB**  
**11 Kerangie-192483 twin Allendale-172027 15/06/2019**  
 Dam: Kerangie-170555 SOD: Glencraig-150406

BWT	WWT	PWWT	PEMD	PFAT	TCP	IMF	SHRF5
.61	9.25	14.02	.69	-.57	130.91	-.51	.84

Pur./Price .....

**LOT TAG BT SIRE DOB**  
**12 Kerangie-192487 single Allendale-172027 17/06/2019**  
 Dam: Kerangie-130518 SOD: Allendale-110830

BWT	WWT	PWWT	PEMD	PFAT	TCP	IMF	SHRF5
.44	8.44	13.01	1.03	-.5	132.24	-.39	-.33

Pur./Price .....

**LOT TAG BT SIRE DOB**  
**13 Kerangie-192488 single Oakwood-177531 23/06/2019**  
 Dam: Kerangie-140503 SOD: Kerangie-120033

BWT	WWT	PWWT	PEMD	PFAT	TCP	IMF	SHRF5
.47	8.01	12.4	.61	-.4	125.62	-.49	.33

Pur./Price .....

**LOT TAG BT SIRE DOB**  
**14 Kerangie-192489 single Oakwood-177531 24/06/2019**  
 Dam: Kerangie-160520 SOD: Oakwood-140140

BWT	WWT	PWWT	PEMD	PFAT	TCP	IMF	SHRF5
.53	7.93	12.85	.51	-.22	128.9	-.34	-.72

Pur./Price .....

**LOT TAG BT SIRE DOB**  
**15 Kerangie-192490 twin Oakwood-177531 24/06/2019**  
 Dam: Kerangie-150511 SOD: Allendale-110830

BWT	WWT	PWWT	PEMD	PFAT	TCP	IMF	SHRF5
.43	8.17	12.96	.63	-.5	128.13	-.51	-.23

Pur./Price .....



# 2019 DROP EWES

**LOT TAG BT SIRE DOB**  
**16 Kerangie-192492 single Oakwood-177531 29/06/2019**  
 Dam: Kerangie-160561 SOD: Kerangie-150544

BWT	WWT	PWWT	PEMD	PFAT	TCP	IMF	SHRF5
.45	7.93	12.65	.52	-.56	126.56	-.55	.25

Pur./Price .....

**LOT TAG BT SIRE DOB**  
**17 Kerangie-192497 twin Lynburn-170125 21/07/2019**  
 Dam: Kerangie-180538 SOD: Kerangie-170529

BWT	WWT	PWWT	PEMD	PFAT	TCP	IMF	SHRF5
.48	8.37	13.83	.73	.29	124.38	-.47	1.36

Pur./Price .....

**LOT TAG BT SIRE DOB**  
**18 Kerangie-192503 twin Oakwood-177531 29/07/2019**  
 Dam: Kerangie-140538 SOD: Kerangie-120033

BWT	WWT	PWWT	PEMD	PFAT	TCP	IMF	SHRF5
.58	8.47	13.26	1.38	.08	132.88	-.41	-1

Pur./Price .....

**LOT TAG BT SIRE DOB**  
**19 Kerangie-192504 single Oakwood-177531 29/07/2019**  
 Dam: Kerangie-160560 SOD: Kerangie-150544

BWT	WWT	PWWT	PEMD	PFAT	TCP	IMF	SHRF5
.51	8.88	14.03	.63	-.81	131.96	-.66	.69

Pur./Price .....

**LOT TAG BT SIRE DOB**  
**20 Kerangie-192506 triplet Oakwood-177531 1/08/2019**  
 Dam: Kerangie-160577 SOD: Kerangie-150544

BWT	WWT	PWWT	PEMD	PFAT	TCP	IMF	SHRF5
.62	10.22	16.28	.42	-.86	135.91	-.68	1.57

Pur./Price .....

# 2019 DROP EWES

**LOT TAG BT SIRE DOB**  
**21 Kerangie-192507 triplet Oakwood-177531 1/08/2019**  
 Dam: Kerangie-160577 SOD: Kerangie-150544

BWT	WWT	PWWT	PEMD	PFAT	TCP	IMF	SHRF5
.59	9.86	15.6	.75	-.68	135.68	-.66	1.31

Pur./Price .....

**LOT TAG BT SIRE DOB**  
**22 Kerangie-192514 twin Oakwood-177531 2/08/2019**  
 Dam: Kerangie-130515 SOD: Kerangie-100010

BWT	WWT	PWWT	PEMD	PFAT	TCP	IMF	SHRF5
.55	7.42	11.57	.52	-.35	124.28	-.46	-.58

Pur./Price .....

**LOT TAG BT SIRE DOB**  
**23 Kerangie-192516 twin Oakwood-177531 3/08/2019**  
 Dam: Kerangie-170520 SOD: Glencraig-150406

BWT	WWT	PWWT	PEMD	PFAT	TCP	IMF	SHRF5
.55	8.85	14.16	1.07	-.43	133.22	-.68	.6

Pur./Price .....

**LOT TAG BT SIRE DOB**  
**24 Kerangie-192518 twin Oakwood-177531 3/08/2019**  
 Dam: Kerangie-160537 SOD: Kerangie-150544

BWT	WWT	PWWT	PEMD	PFAT	TCP	IMF	SHRF5
.6	8.66	13.61	.71	-.32	129.16	-.56	.36

Pur./Price .....

**LOT TAG BT SIRE DOB**  
**25 Kerangie-192519 twin Oakwood-177531 5/08/2019**  
 Dam: Oakwood-177392 SOD: Oakwood-130003

BWT	WWT	PWWT	PEMD	PFAT	TCP	IMF	SHRF5
.55	9.45	15.07	.84	-.43	134.88	-.47	-.1

Pur./Price .....

# 2019 DROP EWES

**LOT TAG BT SIRE DOB**  
**26 Kerangie-192522 single Oakwood-177531 5/08/2019**  
 Dam: Kerangie-170582 SOD: Glencraig-150406

BWT	WWT	PWWT	PEMD	PFAT	TCP	IMF	SHRF5
.55	8.86	14.15	.9	-.28	131.18	-.61	.49

Pur./Price .....

**LOT TAG BT SIRE DOB**  
**27 Kerangie-192529 twin Oakwood-177531 7/08/2019**  
 Dam: Kerangie-160530 SOD: Oakwood-140140

BWT	WWT	PWWT	PEMD	PFAT	TCP	IMF	SHRF5
.56	9.23	14.55	.21	-.68	131.2	-.49	.64

Pur./Price .....

**LOT TAG BT SIRE DOB**  
**28 Kerangie-192531 twin Oakwood-177531 7/08/2019**  
 Dam: Kerangie-150526 SOD: Noble-Lee-130984

BWT	WWT	PWWT	PEMD	PFAT	TCP	IMF	SHRF5
.59	9.16	14.87	.63	-.09	130.78	-.49	.26

Pur./Price .....

**LOT TAG BT SIRE DOB**  
**29 Kerangie-192545 single Oakwood-177531 9/08/2019**  
 Dam: Burwood-110117 SOD: Coleford-050624

BWT	WWT	PWWT	PEMD	PFAT	TCP	IMF	SHRF5
.42	7.12	11.81	.86	-.16	127.77	-.41	-1.06

Pur./Price .....

**LOT TAG BT SIRE DOB**  
**30 Kerangie-192546 single Oakwood-177531 9/08/2019**  
 Dam: Oakwood-177033 SOD: Oakwood-130019

BWT	WWT	PWWT	PEMD	PFAT	TCP	IMF	SHRF5
.49	8.82	13.75	1.08	-.36	131.49	-.58	.45

Pur./Price .....

# 2019 DROP EWES

**LOT TAG BT SIRE DOB**  
**31 Kerangie-192549 twin Oakwood-177531 1/08/2019**  
 Dam: Kerangie-160532 SOD: Oakwood-140140

BWT	WWT	PWWT	PEMD	PFAT	TCP	IMF	SHRF5
.5	9.24	14.84	.62	-.45	134.02	-.44	.02

Pur./Price .....

**LOT TAG BT SIRE DOB**  
**32 Kerangie-192550 twin Oakwood-177531 16/08/2019**  
 Dam: Kerangie-160522 SOD: Oakwood-140140

BWT	WWT	PWWT	PEMD	PFAT	TCP	IMF	SHRF5
.63	9.37	14.25	.18	-.79	131.13	-.5	.63

Pur./Price .....

**LOT TAG BT SIRE DOB**  
**33 Kerangie-192551 twin Oakwood-177531 16/08/2019**  
 Dam: Kerangie-160522 SOD: Oakwood-140140

BWT	WWT	PWWT	PEMD	PFAT	TCP	IMF	SHRF5
.52	8.77	13.45	.13	-.69	128.4	-.44	.4

Pur./Price .....

**LOT TAG BT SIRE DOB**  
**34 Kerangie-192553 single Oakwood-177531 17/08/2019**  
 Dam: Kerangie-160518 SOD: Oakwood-140140

BWT	WWT	PWWT	PEMD	PFAT	TCP	IMF	SHRF5
.52	8.73	13.87	.65	-.36	131.28	-.44	.1

Pur./Price .....

All sheep are presented with across flock ASBVs as at December 2020.

**IMF** (Intramuscular fat) and **SHRF5** (Shear force) genomic testing measurements are included in this catalogue. These measurements focus on improving and maintaining eating qualities.

# 21 – 2018 DROP EWES

**LOT TAG BT SIRE DOB**  
**35 Kerangie-180488 twin Pamellen-160028 10/9/2018**  
 Dam: Oakwood-177512 SOD: Glencraig-121038

BWT	WWT	PWWT	PEMD	PFAT	TCP	IMF	SHRF5
.83	10.21	15.23	.68	-.09	131.97	-.43	1.72

Pur./Price .....

**LOT TAG BT SIRE DOB**  
**36 Kerangie-180492 single Kerangie-170529 10/9/2018**  
 Dam: Kerangie-170554 SOD: Glencraig-150406

BWT	WWT	PWWT	PEMD	PFAT	TCP	IMF	SHRF5
.55	8.97	14.63	.97	-.7	137.51	-.57	-.09

Pur./Price .....

**LOT TAG BT SIRE DOB**  
**37 Kerangie-180502 twin Pamellen-150074 17/6/2018**  
 Dam: Kerangie-150514 SOD: Noble-Lee-130984

BWT	WWT	PWWT	PEMD	PFAT	TCP	IMF	SHRF5
.64	10.01	15.17	.19	-.43	129.66	-.32	.72

Pur./Price .....

**LOT TAG BT SIRE DOB**  
**38 Kerangie-180504 single Pamellen-150074 17/6/2018**  
 Dam: Kerangie-150506 SOD: Noble-Lee-130984

BWT	WWT	PWWT	PEMD	PFAT	TCP	IMF	SHRF5
.49	8.61	12.94	.34	-.24	126.13	-.24	-.01

Pur./Price .....

**LOT TAG BT SIRE DOB**  
**39 Kerangie-180505 twin Pamellen-150074 17/6/2018**  
 Dam: Kerangie-160528 SOD: Oakwood-140140

BWT	WWT	PWWT	PEMD	PFAT	TCP	IMF	SHRF5
.55	10.88	16.9	.69	-.37	138.75	-.24	.24

Pur./Price .....

# 2018 DROP EWES

**LOT TAG BT SIRE DOB**  
**40 Kerangie-180506 twin Pamellen-150074 17/6/2018**  
 Dam: Kerangie-160528 SOD: Oakwood-140140

BWT	WWT	PWWT	PEMD	PFAT	TCP	IMF	SHRF5
.48	9.49	15.11	.81	.19	133.87	-.07	-.8

Pur./Price .....

**LOT TAG BT SIRE DOB**  
**41 Kerangie-180508 twin Pamellen-150074 17/6/2018**  
 Dam: Kerangie-160517 SOD: Noble-Lee-130984

BWT	WWT	PWWT	PEMD	PFAT	TCP	IMF	SHRF5
.5	10.11	15.27	.51	-.39	131.46	-.34	.54

Pur./Price .....

**LOT TAG BT SIRE DOB**  
**42 Kerangie-180509 twin Pamellen-150074 19/6/2018**  
 Dam: Burwood-110117 SOD: Coleford-050624

BWT	WWT	PWWT	PEMD	PFAT	TCP	IMF	SHRF5
.54	9.62	14.67	.6	-.35	133.93	-.27	-.4

Pur./Price .....

**LOT TAG BT SIRE DOB**  
**43 Kerangie-180510 twin Pamellen-150074 19/6/2018**  
 Dam: Burwood-110117 SOD: Coleford-050624

BWT	WWT	PWWT	PEMD	PFAT	TCP	IMF	SHRF5
.5	10.11	15.13	.75	-.27	134.64	-.28	-.06

Pur./Price .....

**LOT TAG BT SIRE DOB**  
**44 Kerangie-180513 twin Pamellen-150074 19/6/2018**  
 Dam: Kerangie-160549 SOD: Kerangie-150544

BWT	WWT	PWWT	PEMD	PFAT	TCP	IMF	SHRF5
.53	10.83	16.88	.87	-.54	139.52	-.45	.46

Pur./Price .....

# 2018 DROP EWES

**LOT TAG BT SIRE DOB**  
**45 Kerangie-180528 single Glencraig-150406 20/6/2018**  
 Dam: Kerangie-150535 SOD: Noble-Lee-130984

BWT	WWT	PWWT	PEMD	PFAT	TCP	IMF	SHRF5
.6	7.65	11.97	.44	-.38	123.93	-.51	.99

Pur./Price .....

**LOT TAG BT SIRE DOB**  
**46 Kerangie-180531 triplet Glencraig-150406 21/6/2018**  
 Dam: Kerangie-130539 SOD: Kerangie-120033

BWT	WWT	PWWT	PEMD	PFAT	TCP	IMF	SHRF5
.58	8.99	14.12	.38	-.84	131.28	-.59	.25

Pur./Price .....

**LOT TAG BT SIRE DOB**  
**47 Kerangie-180535 single Glencraig-150406 22/6/2018**  
 Dam: Kerangie-130555 SOD: Kerangie-120033

BWT	WWT	PWWT	PEMD	PFAT	TCP	IMF	SHRF5
.49	7.7	12.53	.48	-.46	127.54	-.5	-.58

Pur./Price .....

**LOT TAG BT SIRE DOB**  
**48 Kerangie-180536 single Kerangie-170558 3/7/2018**  
 Dam: Kerangie-160546 SOD: Kerangie-150544

BWT	WWT	PWWT	PEMD	PFAT	TCP	IMF	SHRF5
.65	8.54	12.85	0	-.96	127.53	-.62	.77

Pur./Price .....

**LOT TAG BT SIRE DOB**  
**49 Kerangie-180538 twin Kerangie-170529 5/7/2018**  
 Dam: Burwood-120268 SOD: Kerangie-100017

BWT	WWT	PWWT	PEMD	PFAT	TCP	IMF	SHRF5
.61	8.36	12.65	.95	-.31	132.26	-.35	-1.03

Pur./Price .....





# 2018 DROP EWES

**LOT**            **TAG**            **BT**            **SIRE**            **DOB**  
 55      Kerangie-180593    twin      Kerangie-170529    28/8/2018  
          Dam: Kerangie-150526      SOD: Noble-Lee-130984

BWT	WWT	PWWT	PEMD	PFAT	TCP	IMF	SHRF5
.45	7.73	12.89	.78	-.21	130.36	-.32	-.98

Pur./Price .....



**Lot 99 Tag 16-0548**

Dam of 19-2465 at \$6,000 sold to Cheetara.  
 Dam of Lot 164 Ram lamb tag 20-2001.



**Lot 104 Tag 15-0501**

Dam of top price 2019 drop ram 19-2484 at  
 \$11,000 Sold to Mullinger Park.  
 Dam of Lot 167, Ram Lamb tag 20-2025.

# 35 – 2017 DROP EWES

**LOT**            **TAG**            **BT**            **SIRE**            **DOB**  
**56**    **Kerangie-170505**    **twin**    **Glencraig-150406**    **27/5/2017**  
 Dam: Kerangie-120069            SOD: Kerangie-100017

BWT	WWT	PWWT	PEMD	PFAT	TCP	IMF	SHRF5
.31	6.27	9.93	1.3	.11	123.29	-.44	-.99

Pur./Price .....

**LOT**            **TAG**            **BT**            **SIRE**            **DOB**  
**57**    **Kerangie-170507**    **twin**    **Glencraig-150406**    **27/5/2017**  
 Dam: Kerangie-130505            SOD: Kerangie-100010

BWT	WWT	PWWT	PEMD	PFAT	TCP	IMF	SHRF5
.38	7.38	12.13	.72	-.36	127.97	-.57	-.1

Pur./Price .....

**LOT**            **TAG**            **BT**            **SIRE**            **DOB**  
**58**    **Kerangie-170508**    **twin**    **Glencraig-150406**    **27/5/2017**  
 Dam: Kerangie-140503            SOD: Kerangie-120033

BWT	WWT	PWWT	PEMD	PFAT	TCP	IMF	SHRF5
.5	8.03	12.38	.37	-.55	124.67	-.55	.74

Pur./Price .....

**LOT**            **TAG**            **BT**            **SIRE**            **DOB**  
**59**    **Kerangie-170510**    **single**    **Lynburn-150247**    **27/5/2017**  
 Dam: Kerangie-150514            SOD: Noble-Lee-130984

BWT	WWT	PWWT	PEMD	PFAT	TCP	IMF	SHRF5
.55	7.84	12.48	1.19	.2	129.41	-.24	-1.16

Pur./Price .....

**LOT**            **TAG**            **BT**            **SIRE**            **DOB**  
**60**    **Kerangie-170513**    **twin**    **Lynburn-150247**    **28/5/2017**  
 Dam: Kerangie-120050            SOD: Kerangie-100017

BWT	WWT	PWWT	PEMD	PFAT	TCP	IMF	SHRF5
.65	8.92	14.55	.66	-.25	134.23	-.32	-1.3

Pur./Price .....

# 2017 DROP EWES

**LOT TAG BT SIRE DOB**  
**61 Kerangie-170523 triplet Lynburn-150247 14/7/2017**  
 Dam: Kerangie-150534 SOD: Noble-Lee-130984

BWT	WWT	PWWT	PEMD	PFAT	TCP	IMF	SHRF5
.44	7.73	12.46	1.73	.6	131.28	-.16	-1.09

Pur./Price .....

**LOT TAG BT SIRE DOB**  
**62 Kerangie-170525 triplet Lynburn-150247 14/7/2017**  
 Dam: Kerangie-150534 SOD: Noble-Lee-130984

BWT	WWT	PWWT	PEMD	PFAT	TCP	IMF	SHRF5
.48	7.94	12.8	1.39	.37	131.22	-.18	-.95

Pur./Price .....

**LOT TAG BT SIRE DOB**  
**63 Kerangie-170530 twin Lynburn-150247 16/7/2017**  
 Dam: Kerangie-150521 SOD: Noble-Lee-130984

BWT	WWT	PWWT	PEMD	PFAT	TCP	IMF	SHRF5
.69	9.32	14.05	.92	.01	133.6	-.32	-.21

Pur./Price .....

**LOT TAG BT SIRE DOB**  
**64 Kerangie-170537 twin Lynburn-150247 17/7/2017**  
 Dam: Kerangie-150510 SOD: Allendale-110830

BWT	WWT	PWWT	PEMD	PFAT	TCP	IMF	SHRF5
.36	7.79	12.85	1.95	-.07	138.32	-.32	-2.37

Pur./Price .....

**LOT TAG BT SIRE DOB**  
**65 Kerangie-170538 twin Oakwood-130019 17/7/2017**  
 Dam: Kerangie-140506 SOD: Kerangie-120033

BWT	WWT	PWWT	PEMD	PFAT	TCP	IMF	SHRF5
.5	7.26	10.42	.44	-.78	122.04	-.48	-.4

Pur./Price .....

# 2017 DROP EWES

**LOT TAG BT SIRE DOB**  
**66 Kerangie-170554 twin Glencraig-150406 4/8/2017**  
 Dam: Kerangie-150528 SOD: Allendale-110830

BWT	WWT	PWWT	PEMD	PFAT	TCP	IMF	SHRF5
.68	9.68	15.28	.41	-1.29	137.19	-.76	.68

Pur./Price .....

**LOT TAG BT SIRE DOB**  
**67 Kerangie-170556 twin Glencraig-150406 4/8/2017**  
 Dam: Kerangie-150539 SOD: Noble-Lee-130391

BWT	WWT	PWWT	PEMD	PFAT	TCP	IMF	SHRF5
.52	8.59	14.22	.53	-.17	128.06	-.57	1.17

Pur./Price .....

**LOT TAG BT SIRE DOB**  
**68 Kerangie-170562 twin Glencraig-150406 5/8/2017**  
 Dam: Kerangie-140533 SOD: Kerangie-120033

BWT	WWT	PWWT	PEMD	PFAT	TCP	IMF	SHRF5
.46	7.45	11.24	.98	-.41	126.42	-.56	-.23

Pur./Price .....

**LOT TAG BT SIRE DOB**  
**69 Kerangie-170564 twin Glencraig-150406 7/8/2017**

BWT	WWT	PWWT	PEMD	PFAT	TCP	IMF	SHRF5
.47	7.16	10.76	.38	-.39	117.95	-.53	2.4

Pur./Price .....

**LOT TAG BT SIRE DOB**  
**70 Kerangie-170574 single Glencraig-150406 16/8/2017**  
 Dam: Kerangie-130555 SOD: Kerangie-120033

BWT	WWT	PWWT	PEMD	PFAT	TCP	IMF	SHRF5
.61	7.77	12.14	.05	-.77	125.46	-.53	-.2

Pur./Price .....

# 2017 DROP EWES

**LOT TAG BT SIRE DOB**  
**71 Kerangie-170578 triplet Glencraig-150406 17/8/2017**  
 Dam: Kerangie-150526 SOD: Noble-Lee-130984

BWT	WWT	PWWT	PEMD	PFAT	TCP	IMF	SHRF5
.51	8.5	14.11	.8	-.23	131.84	-.46	-.28

Pur./Price .....

**LOT TAG BT SIRE DOB**  
**72 Kerangie-170582 twin Glencraig-150406 18/8/2017**  
 Dam: Kerangie-140516 SOD: Kerangie-120033

BWT	WWT	PWWT	PEMD	PFAT	TCP	IMF	SHRF5
.52	8.34	12.85	.7	-.18	126.75	-.49	.09

Pur./Price .....

**LOT TAG BT SIRE DOB**  
**73 Oakwood-177008 twin Glencraig-150406 1/07/2017**  
 Dam: Oakwood-140209 SOD: Oakwood-130023

BWT	WWT	PWWT	PEMD	PFAT	TCP	IMF	SHRF5
.37	6.93	10.61	.63	-.33	122.64	-.36	-.4

Pur./Price .....

**LOT TAG BT SIRE DOB**  
**74 Oakwood-177033 single Oakwood-130019 1/07/2017**  
 Dam: Oakwood-140216 SOD: Oakwood-130003

BWT	WWT	PWWT	PEMD	PFAT	TCP	IMF	SHRF5
.46	8.73	13.07	.58	-.75	128.76	-.5	.3

Pur./Price .....

**LOT TAG BT SIRE DOB**  
**75 Oakwood-177037 twin Oakwood-130019 1/07/2017**  
 Dam: Oakwood-140255 SOD: Oakwood-130003

BWT	WWT	PWWT	PEMD	PFAT	TCP	IMF	SHRF5
.51	8.93	13.39	.77	-.62	128.75	-.51	.33

Pur./Price .....

# 2017 DROP EWES

**LOT TAG BT SIRE DOB**  
**76 Oakwood-177051 twin Oakwood-130019 1/07/2017**  
 Dam: Oakwood-155150 SOD: Glencraig-130098

BWT	WWT	PWWT	PEMD	PFAT	TCP	IMF	SHRF5
.62	9.55	14.62	.52	-.58	131.43	-.6	.6

Pur./Price .....

**LOT TAG BT SIRE DOB**  
**77 Oakwood-177054 single Glencraig-150406 1/07/2017**  
 Dam: Oakwood-130004 SOD: Waimotu-031010

BWT	WWT	PWWT	PEMD	PFAT	TCP	IMF	SHRF5
.47	7.48	11.69	.81	-.44	124.98	-.6	.37

Pur./Price .....

**LOT TAG BT SIRE DOB**  
**78 Oakwood-177103 single Glencraig-150406 1/07/2017**  
 Dam: Oakwood-155280 SOD: Oakwood-140140

BWT	WWT	PWWT	PEMD	PFAT	TCP	IMF	SHRF5
.42	7.71	12.51	.46	-.36	126.19	-.43	.81

Pur./Price .....

**LOT TAG BT SIRE DOB**  
**79 Oakwood-177125 twin Oakwood-130019 1/07/2017**  
 Broughton Lodge-100216 SOD: Broughton Lodge-070338

BWT	WWT	PWWT	PEMD	PFAT	TCP	IMF	SHRF5
.39	8.18	12.27	.88	-.55	129.5	-.47	-.11

Pur./Price .....

**LOT TAG BT SIRE DOB**  
**80 Oakwood-177157 single Glencraig-150406 1/07/2017**  
 Dam: Oakwood-130041 SOD: Glencraig-070508

BWT	WWT	PWWT	PEMD	PFAT	TCP	IMF	SHRF5
.5	7.86	13.05	1.55	.89	129.88	-.34	-1.37

Pur./Price .....

# 2017 DROP EWES

**LOT TAG BT SIRE DOB**  
**81 Oakwood-177160 single Glencraig-150406 1/07/2017**  
 Dam: Oakwood-140210 SOD: Oakwood-130001

BWT	WWT	PWWT	PEMD	PFAT	TCP	IMF	SHRF5
.62	8.08	12.88	.86	-.45	130.07	-.6	-.03

Pur./Price .....

**LOT TAG BT SIRE DOB**  
**82 Oakwood-177190 twin Oakwood-130003 1/07/2017**  
 Dam: Broughton Lodge-110152 SOD: Broughton Lodge-080016

BWT	WWT	PWWT	PEMD	PFAT	TCP	IMF	SHRF5
.43	8.69	13.66	.6	-.46	129.36	-.42	-.1

Pur./Price .....

**LOT TAG BT SIRE DOB**  
**83 Oakwood-177194 single 1/07/2017**

BWT	WWT	PWWT	PEMD	PFAT	TCP	IMF	SHRF5
.3	6.64	10.37	1.05	-.12	123.16	-.27	-1.14

Pur./Price .....

**LOT TAG BT SIRE DOB**  
**84 Oakwood-177331 single Oakwood-130003 1/07/2017**  
 Dam: Oakwood-140160 SOD: Kaula Dale-110810

BWT	WWT	PWWT	PEMD	PFAT	TCP	IMF	SHRF5

Pur./Price .....

**LOT TAG BT SIRE DOB**  
**85 Oakwood-177364 twin Glencraig-121038 1/07/2017**  
 Dam: Oakwood-155198 SOD: Oakwood-140140

BWT	WWT	PWWT	PEMD	PFAT	TCP	IMF	SHRF5
.6	8.31	13.01	-.4	-.74	124.59	-.41	1.07

Pur./Price .....

# 2017 DROP EWES

**LOT TAG BT SIRE DOB**  
**86 Oakwood-177392 single Oakwood-130003 1/07/2017**  
 Dam: Oakwood-140113 SOD: Kaula Dale-110810

BWT	WWT	PWWT	PEMD	PFAT	TCP	IMF	SHRF5
.56	9.75	14.77	.46	-.41	133.01	-.18	-.89

Pur./Price .....

**LOT TAG BT SIRE DOB**  
**87 Oakwood-177423 single Oakwood-130003 1/07/2017**  
 Dam: Oakwood-130043 SOD: Kaula Dale-110810

BWT	WWT	PWWT	PEMD	PFAT	TCP	IMF	SHRF5

Pur./Price .....

**LOT TAG BT SIRE DOB**  
**88 Oakwood-177507 triplet Oakwood-130003 1/07/2017**  
 Dam: Oakwood-140117 SOD: Kaula Dale-110810

BWT	WWT	PWWT	PEMD	PFAT	TCP	IMF	SHRF5
.57	9.33	13.64	-.06	-.62	127.57	-.16	-.44

Pur./Price .....

**LOT TAG BT SIRE DOB**  
**89 Oakwood-177512 triplet Glencraig-121038 1/07/2017**  
 Dam: Oakwood-155206 SOD: Oakwood-140140

BWT	WWT	PWWT	PEMD	PFAT	TCP	IMF	SHRF5
.61	8.69	12.87	-.05	-.98	125.68	-.55	2.17

Pur./Price .....

**LOT TAG BT SIRE DOB**  
**90 Oakwood-177982 single Glencraig-150406 1/07/2017**  
 Dam: Oakwood-130005 SOD: Waimotu-031010

BWT	WWT	PWWT	PEMD	PFAT	TCP	IMF	SHRF5
.6	9.22	14.16	1.03	-.4	132.01	-.65	1

Pur./Price .....



# 13 – 2016 DROP EWES

**LOT TAG BT SIRE DOB**  
**91 Kerangie-160501 single Oakwood-140140 14/6/2016**  
 Dam: Kerangie-130515 SOD: Kerangie-100010

BWT	WWT	PWWT	PEMD	PFAT	TCP	IMF	SHRF5
.49	8.15	12.33	.12	-.63	128.37	-.22	-.89

Pur./Price .....

**LOT TAG BT SIRE DOB**  
**92 Kerangie-160503 twin Oakwood-140140 14/6/2016**  
 Dam: Kerangie-140523 SOD: Kerangie-120033

BWT	WWT	PWWT	PEMD	PFAT	TCP	IMF	SHRF5
.3	6.99	10.13	-.31	-.49	119.73	-.04	-1.32

Pur./Price .....

**LOT TAG BT SIRE DOB**  
**93 Kerangie-160504 twin Oakwood-140140 14/6/2016**  
 Dam: Kerangie-120050 SOD: Kerangie-100017

BWT	WWT	PWWT	PEMD	PFAT	TCP	IMF	SHRF5
.56	8.35	12.7	-.11	-.83	128.15	-.3	-.46

Pur./Price .....

**LOT TAG BT SIRE DOB**  
**94 Kerangie-160517 twin Noble-Lee-130984 15/6/2016**  
 Dam: Kerangie-130523 SOD: Kerangie-120033

BWT	WWT	PWWT	PEMD	PFAT	TCP	IMF	SHRF5
.52	8.62	13.05	-.19	-.68	122.68	-.49	1.01

Pur./Price .....

**LOT TAG BT SIRE DOB**  
**95 Kerangie-160518 twin Oakwood-140140 15/6/2016**  
 Dam: Kerangie-140503 SOD: Kerangie-120033

BWT	WWT	PWWT	PEMD	PFAT	TCP	IMF	SHRF5
.52	9.62	14.33	-.34	-1.15	130.79	-.35	.8

Pur./Price .....

# 2016 DROP EWES

**LOT TAG BT SIRE DOB**  
**96 Kerangie-160520 single Oakwood-140140 15/6/2016**  
 Dam: Burwood-110117 SOD: Coleford-050624

BWT	WWT	PWWT	PEMD	PFAT	TCP	IMF	SHRF5
.49	8.29	12.97	.16	-.24	129.93	-.12	-1.25

Pur./Price .....

**LOT TAG BT SIRE DOB**  
**97 Kerangie-160522 twin Oakwood-140140 15/6/2016**  
 Dam: Kerangie-140512 SOD: Kerangie-120033

BWT	WWT	PWWT	PEMD	PFAT	TCP	IMF	SHRF5
.48	8.61	12.66	-.11	-.58	127.17	-.18	-.49

Pur./Price .....

**LOT TAG BT SIRE DOB**  
**98 Kerangie-160537 twin Kerangie-150544 4/8/2016**  
 Dam: Kerangie-120029 SOD: Kerangie-100017

BWT	WWT	PWWT	PEMD	PFAT	TCP	IMF	SHRF5
.63	8.35	12.51	-.28	-.89	123.2	-.49	.46

Pur./Price .....

**LOT TAG BT SIRE DOB**  
**99 Kerangie-160548 twin Kerangie-150544 6/8/2016**  
 Dam: Kerangie-120023 SOD: Kerangie-100017

BWT	WWT	PWWT	PEMD	PFAT	TCP	IMF	SHRF5
.58	8.81	13.06	.83	-.34	128.77	-.62	1.05

Pur./Price .....

**LOT TAG BT SIRE DOB**  
**100 Kerangie-160549 twin Kerangie-150544 6/8/2016**  
 Dam: Kerangie-120023 SOD: Kerangie-100017

BWT	WWT	PWWT	PEMD	PFAT	TCP	IMF	SHRF5
.52	8.76	13.15	.64	-.46	129.27	-.54	.58

Pur./Price .....

# 2016 DROP EWES

**LOT**            **TAG**            **BT**            **SIRE**            **DOB**  
**101**    **Kerangie-160556**    **twin**    **Kerangie-150544**    **7/8/2016**  
 Dam: Kerangie-130505            SOD: Kerangie-100010

BWT	WWT	PWWT	PEMD	PFAT	TCP	IMF	SHRF5
.6	9.3	14.2	-.23	-.91	128.61	-.59	1.15

Pur./Price .....

**LOT**            **TAG**            **BT**            **SIRE**            **DOB**  
**102**    **Kerangie-160560**    **single**    **Kerangie-150544**    **12/8/2016**  
 Dam: Kerangie-130555            SOD: Kerangie-120033

BWT	WWT	PWWT	PEMD	PFAT	TCP	IMF	SHRF5
.46	8.96	13.61	.13	-1.09	129.51	-.58	.69

Pur./Price .....

**LOT**            **TAG**            **BT**            **SIRE**            **DOB**  
**103**    **Kerangie-160577**    **triplet**    **Kerangie-150544**    **26/8/2016**  
 Dam: Kerangie-120012            SOD: Advancer-100317

BWT	WWT	PWWT	PEMD	PFAT	TCP	IMF	SHRF5
.69	10.36	16.09	.06	-1.03	135.38	-.57	1.52

Pur./Price .....



# 10 – 2015 DROP EWES

**LOT TAG BT SIRE DOB**  
**104 Kerangie-150501 twin Allendale-110830 3/6/2015**  
 Dam: Kerangie-120003 SOD: Kerangie-100017

BWT	WWT	PWWT	PEMD	PFAT	TCP	IMF	SHRF5
.33	8.42	13.79	.73	-.99	135.95	-.47	-1.01

Pur./Price .....

**LOT TAG BT SIRE DOB**  
**105 Kerangie-150510 twin Allendale-110830 5/6/2015**  
 Dam: Kerangie-120062 SOD: Kerangie-100017

BWT	WWT	PWWT	PEMD	PFAT	TCP	IMF	SHRF5
.3	7.39	11.67	.97	-.8	130.27	-.47	-1.5

Pur./Price .....

**LOT TAG BT SIRE DOB**  
**106 Kerangie-150511 twin Allendale-110830 5/6/2015**  
 Dam: Kerangie-120062 SOD: Kerangie-100017

BWT	WWT	PWWT	PEMD	PFAT	TCP	IMF	SHRF5
.33	7.28	10.99	.62	-.71	125.57	-.38	-1.35

Pur./Price .....

**LOT TAG BT SIRE DOB**  
**107 Kerangie-150516 twin Noble-Lee-130984 5/6/2015**  
 Dam: Kerangie-130539 SOD: Kerangie-120033

BWT	WWT	PWWT	PEMD	PFAT	TCP	IMF	SHRF5
.56	8.32	12.81	-.08	-.64	124.12	-.34	.29

Pur./Price .....

**LOT TAG BT SIRE DOB**  
**108 Kerangie-150521 twin Noble-Lee-130984 8/6/2015**  
 Dam: Kerangie-110012 SOD: Advancer-080491

BWT	WWT	PWWT	PEMD	PFAT	TCP	IMF	SHRF5
.6	7.9	11.45	.6	-.21	125.31	-.44	.68

Pur./Price .....

# 2015 DROP EWES

**LOT TAG BT SIRE DOB**  
**109 Kerangie-150528 twin Allendale-110830 8/6/2015**  
 Dam: Kerangie-120078 SOD: Kerangie-100017

BWT	WWT	PWWT	PEMD	PFAT	TCP	IMF	SHRF5
.4	8.64	13.28	.13	-1.33	131.94	-.46	-.73

Pur./Price .....

**LOT TAG BT SIRE DOB**  
**110 Kerangie-150535 single Noble-Lee-130984 19/6/2015**  
 Dam: Kerangie-100021 SOD: Coleford-050624

BWT	WWT	PWWT	PEMD	PFAT	TCP	IMF	SHRF5
.56	7.48	11.01	.26	-.1	118.69	-.26	1.23

Pur./Price .....

**LOT TAG BT SIRE DOB**  
**111 Kerangie-150546 triplet Noble-Lee-130984 2/8/2015**  
 Dam: Burwood-110117 SOD: Coleford-050624

BWT	WWT	PWWT	PEMD	PFAT	TCP	IMF	SHRF5
.67	10.19	15.16	-.13	-.62	128.86	-.46	1.78

Pur./Price .....

**LOT TAG BT SIRE DOB**  
**112 Kerangie-150549 triplet Noble-Lee-130984 3/8/2015**  
 Dam: Kerangie-100004 SOD: Coleford-050624

BWT	WWT	PWWT	PEMD	PFAT	TCP	IMF	SHRF5
.66	8.76	13.67	-.31	-.52	124.83	-.37	.88

Pur./Price .....

**LOT TAG BT SIRE DOB**  
**113 Glencraig-150453 single Glencraig-130127 1/07/2015**  
 Dam: Glencraig-140308 SOD: Glencraig-121038

BWT	WWT	PWWT	PEMD	PFAT	TCP	IMF	SHRF5
.42	7.75	12.65	1.32	.04	126.9	-.38	-.1

Pur./Price .....

# 1 – 2014 DROP EWE

**LOT**            **TAG**            **BT**            **SIRE**            **DOB**  
 114    Kerangie-140512    twin    Kerangie-120033    20/6/2014  
 Dam: Kerangie-100005    SOD: Coleford-050624

BWT	WWT	PWWT	PEMD	PFAT	TCP	IMF	SHRF5
.31	5.46	7.82	.27	.04	113.88	-.08	-2.21

Pur./Price .....

# 3 – 2013 DROP EWES

**LOT**            **TAG**            **BT**            **SIRE**            **DOB**  
 115    Kerangie-130518    single    Allendale-110830    25/7/2013  
 Dam: Burwood-110117    SOD: Coleford-050624

BWT	WWT	PWWT	PEMD	PFAT	TCP	IMF	SHRF5
.36	7.98	12.86	.69	-.92	135.12	-.4	-1.64

Pur./Price .....

**LOT**            **TAG**            **BT**            **SIRE**            **DOB**  
 116    Kerangie-130539    twin    Kerangie-120033    12/8/2013  
 Dam: Kerangie-110051    SOD: Kerangie-100031

BWT	WWT	PWWT	PEMD	PFAT	TCP	IMF	SHRF5
.4	7.08	11.31	.2	-.85	126.17	-.27	-2.06

Pur./Price .....

**LOT**            **TAG**            **BT**            **SIRE**            **DOB**  
 117    Oakwood-130005    single    Waimotu-031010    1/07/2013  
 Dam: GlenCraig-090737    SOD: Coleford-050624

BWT	WWT	PWWT	PEMD	PFAT	TCP	IMF	SHRF5
.58	8.76	12.56	.81	-.54	127.26	-.47	.48

Pur./Price .....

# 46 – 2020 DROP EWE LAMBS

**LOT TAG BT SIRE DOB**  
 118 Kerangie-202005 twin Gypsum Hill-860116 18/07/2020  
 Dam: Kerangie-180593 SOD: Kerangie-170529

BWT	WWT	PWWT	PEMD	PFAT	TCP	IMF	SHRF5
.3	5.84	9.8	.96	.06	123.51	-.22	-1.7

Pur./Price .....

**LOT TAG BT SIRE DOB**  
 119 Kerangie-202006 twin Gypsum Hill-860116 18/07/2020  
 Dam: Kerangie-180593 SOD: Kerangie-170529

BWT	WWT	PWWT	PEMD	PFAT	TCP	IMF	SHRF5
.34	6.07	9.98	.19	-.4	121.31	-.23	-1.31

Pur./Price .....

**LOT TAG BT SIRE DOB**  
 120 Kerangie-202008 twin Gypsum Hill-860116 18/07/2020  
 Dam: Kerangie-180531 SOD: Glenraig-150406

BWT	WWT	PWWT	PEMD	PFAT	TCP	IMF	SHRF5
.49	7.01	11.01	.2	-.56	123.5	-.38	-.73

Pur./Price .....

**LOT TAG BT SIRE DOB**  
 121 Kerangie-202019 twin Lynburn-170125 20/07/2020  
 Dam: Kerangie-130518 SOD: Allendale-110830

BWT	WWT	PWWT	PEMD	PFAT	TCP	IMF	SHRF5
.28	7.7	13.21	.98	-.04	126.64	-.53	.89

Pur./Price .....

**LOT TAG BT SIRE DOB**  
 122 Kerangie-202022 triplet Lynburn-170125 20/07/2020  
 Dam: Kerangie-160549 SOD: Kerangie-150544

BWT	WWT	PWWT	PEMD	PFAT	TCP	IMF	SHRF5
.42	7.35	12.52	.67	.2	121.24	-.53	1.26

Pur./Price .....

# 2020 DROP EWE LAMBS

**LOT TAG BT SIRE DOB**  
**123 Kerangie-202024 twin Kerangie-192458 21/07/2020**  
 Dam: Kerangie-150521 SOD: Noble-Lee-130984

BWT	WWT	PWWT	PEMD	PFAT	TCP	IMF	SHRF5
.62	7.75	12.17	.46	.08	121.26	-.49	1.12

Pur./Price .....

**LOT TAG BT SIRE DOB**  
**124 Kerangie-202027 twin Lynburn-170125 21/07/2020**  
 Dam: Kerangie-150549 SOD: Noble-Lee-130984

BWT	WWT	PWWT	PEMD	PFAT	TCP	IMF	SHRF5
.58	8.35	13.94	.02	.07	120.55	-.48	2.04

Pur./Price .....

**LOT TAG BT SIRE DOB**  
**125 Kerangie-202030 triplet Gypsum Hill-860116 21/07/2020**  
 Dam: Kerangie-160518 SOD: Oakwood-140140

BWT	WWT	PWWT	PEMD	PFAT	TCP	IMF	SHRF5
.5	7.51	11.39	.08	-.53	124.59	-.26	-.54

Pur./Price .....

**LOT TAG BT SIRE DOB**  
**126 Kerangie-202033 single Gypsum Hill-860116 22/07/2020**  
 Dam: Kerangie-160501 SOD: Oakwood-140140

BWT	WWT	PWWT	PEMD	PFAT	TCP	IMF	SHRF5
.52	6.76	10.33	-.03	-.5	122.43	-.21	-1.3

Pur./Price .....

**LOT TAG BT SIRE DOB**  
**127 Kerangie-202041 twin Kerangie-192465 23/07/2020**  
 Dam: Kerangie-180556 SOD: Kerangie-170529

BWT	WWT	PWWT	PEMD	PFAT	TCP	IMF	SHRF5
.47	8.48	13.25	.7	-.21	125.23	-.62	1.77

Pur./Price .....



# 2020 DROP EWE LAMBS

**LOT TAG BT SIRE DOB**  
**128 Kerangie-202043 single Kerangie-192458 27/07/2020**  
 Dam: Kerangie-170546 SOD: Glencraig-150406

BWT	WWT	PWWT	PEMD	PFAT	TCP	IMF	SHRF5
.67	9.72	15.58	.25	-.54	129.6	-.71	1.96

Pur./Price .....

**LOT TAG BT SIRE DOB**  
**129 Kerangie-202047 twin Kerangie-192465 31/07/2020**  
 Dam: Oakwood-177061 SOD: Glencraig-150406

BWT	WWT	PWWT	PEMD	PFAT	TCP	IMF	SHRF5
.52	8.36	13.9	.47	-.17	123.13	-.77	2.57

Pur./Price .....

**LOT TAG BT SIRE DOB**  
**130 Kerangie-202049 twin Kerangie-192465 31/07/2020**  
 Dam: Oakwood-177051 SOD: Oakwood-130019

BWT	WWT	PWWT	PEMD	PFAT	TCP	IMF	SHRF5
.59	9	14.02	.58	-.07	124.85	-.64	1.87

Pur./Price .....

**LOT TAG BT SIRE DOB**  
**131 Kerangie-202051 twin Kerangie-192465 1/08/2020**  
 Dam: Oakwood-177392 SOD: Oakwood-130003

BWT	WWT	PWWT	PEMD	PFAT	TCP	IMF	SHRF5
.59	9.62	14.69	.42	-.21	126.8	-.51	1.66

Pur./Price .....

**LOT TAG BT SIRE DOB**  
**132 Kerangie-202052 twin Kerangie-192465 1/08/2020**  
 Dam: Oakwood-177392 SOD: Oakwood-130003

BWT	WWT	PWWT	PEMD	PFAT	TCP	IMF	SHRF5
.54	8.78	13.72	.46	-.01	124.56	-.41	.94

Pur./Price .....

# 2020 DROP EWE LAMBS

**LOT TAG BT SIRE DOB**  
**133 Kerangie-202053 single Kerangie-192458 2/08/2020**  
 Dam: Kerangie-170537 SOD: Lynburn-150247

BWT	WWT	PWWT	PEMD	PFAT	TCP	IMF	SHRF5
.58	8.98	14.31	.75	-.25	129.59	-.54	.74

Pur./Price .....

**LOT TAG BT SIRE DOB**  
**134 Kerangie-202054 triplet Kerangie-192458 3/08/2020**  
 Dam: Kerangie-170555 SOD: Glenraig-150406

BWT	WWT	PWWT	PEMD	PFAT	TCP	IMF	SHRF5
.88	9.4	14.86	-.57	-.89	125.44	-.68	1.7

Pur./Price .....

**LOT TAG BT SIRE DOB**  
**135 Kerangie-202055 triplet Kerangie-192458 3/08/2020**  
 Dam: Kerangie-170555 SOD: Glenraig-150406

BWT	WWT	PWWT	PEMD	PFAT	TCP	IMF	SHRF5
.66	7.94	13.15	-.08	-.5	122.98	-.57	.74

Pur./Price .....

**LOT TAG BT SIRE DOB**  
**136 Kerangie-202057 twin Kerangie-192458 3/08/2020**  
 Dam: Kerangie-150510 SOD: Allendale-110830

BWT	WWT	PWWT	PEMD	PFAT	TCP	IMF	SHRF5
.58	9.32	14.34	.22	-.59	126.32	-.62	1.47

Pur./Price .....

**LOT TAG BT SIRE DOB**  
**137 Kerangie-202059 triplet Kerangie-192458 3/08/2020**  
 Dam: Kerangie-150546 SOD: Noble-Lee-130984

BWT	WWT	PWWT	PEMD	PFAT	TCP	IMF	SHRF5
.73	10.33	15.58	-.68	-.86	124	-.65	3.19

Pur./Price .....

# 2020 DROP EWE LAMBS

**LOT TAG BT SIRE DOB**  
**138 Kerangie-202061 twin Kerangie-192465 4/08/2020**  
 Dam: Kerangie-150528 SOD: Allendale-110830

BWT	WWT	PWWT	PEMD	PFAT	TCP	IMF	SHRF5
.41	8.32	13.1	.55	-.24	124.52	-.52	1

Pur./Price .....

**LOT TAG BT SIRE DOB**  
**139 Kerangie-202064 twin Kerangie-192465 5/08/2020**  
 Dam: Kerangie-192477 SOD: Allendale-172027

BWT	WWT	PWWT	PEMD	PFAT	TCP	IMF	SHRF5
.54	8.04	12.73	1.11	.1	123.63	-.59	1.72

Pur./Price .....

**LOT TAG BT SIRE DOB**  
**140 Kerangie-202065 twin Kerangie-192465 5/08/2020**  
 Dam: Kerangie-192477 SOD: Allendale-172027

BWT	WWT	PWWT	PEMD	PFAT	TCP	IMF	SHRF5
.44	7.85	12.4	.63	-.15	120.74	-.56	1.92

Pur./Price .....

**LOT TAG BT SIRE DOB**  
**141 Kerangie-202067 twin Kerangie-192465 6/08/2020**  
 Dam: Kerangie-180506 SOD: Pamellen-150074

BWT	WWT	PWWT	PEMD	PFAT	TCP	IMF	SHRF5
.58	9.41	14.78	.53	.09	126.95	-.44	1.58

Pur./Price .....

**LOT TAG BT SIRE DOB**  
**142 Kerangie-202069 triplet Kerangie-192458 6/08/2020**  
 Dam: Oakwood-177194

BWT	WWT	PWWT	PEMD	PFAT	TCP	IMF	SHRF5
.53	7.45	11.96	.22	-.24	119.73	-.45	.63

Pur./Price .....

# 2020 DROP EWE LAMBS

**LOT TAG BT SIRE DOB**  
**143 Kerangie-202070 twin Kerangie-192465 6/08/2020**  
 Dam: Kerangie-160556 SOD: Kerangie-150544

BWT	WWT	PWWT	PEMD	PFAT	TCP	IMF	SHRF5
.66	9.36	14.39	.14	-.52	125.55	-.75	2.65

Pur./Price .....

**LOT TAG BT SIRE DOB**  
**144 Kerangie-202071 twin Kerangie-192465 6/08/2020**  
 Dam: Kerangie-160556 SOD: Kerangie-150544

BWT	WWT	PWWT	PEMD	PFAT	TCP	IMF	SHRF5
.58	9.45	14.45	.05	-.52	124.57	-.73	2.84

Pur./Price .....

**LOT TAG BT SIRE DOB**  
**145 Kerangie-202072 twin Kerangie-192458 6/08/2020**  
 Dam: Kerangie-160530 SOD: Oakwood-140140

BWT	WWT	PWWT	PEMD	PFAT	TCP	IMF	SHRF5
.55	8.55	13.69	-.3	-.58	123.26	-.46	1.32

Pur./Price .....

**LOT TAG BT SIRE DOB**  
**146 Kerangie-202073 twin Kerangie-192465 6/08/2020**  
 Dam: Kerangie-160530 SOD: Oakwood-140140

BWT	WWT	PWWT	PEMD	PFAT	TCP	IMF	SHRF5
.42	7.69	12.5	.13	-.33	121.97	-.47	1.19

Pur./Price .....

**LOT TAG BT SIRE DOB**  
**147 Kerangie-202074 single Kerangie-192465 6/08/2020**  
 Dam: Kerangie-160520 SOD: Oakwood-140140

BWT	WWT	PWWT	PEMD	PFAT	TCP	IMF	SHRF5
.57	8.53	13.39	.3	-.14	125.03	-.48	1.24

Pur./Price .....

# 2020 DROP EWE LAMBS

**LOT TAG BT SIRE DOB**  
**148 Kerangie-202075 single Kerangie-192465 7/08/2020**  
 Dam: Kerangie-192481 SOD: Lynburn-170125

BWT	WWT	PWWT	PEMD	PFAT	TCP	IMF	SHRF5
.42	7.41	12.39	.7	.42	118.85	-.51	1.7

Pur./Price .....

**LOT TAG BT SIRE DOB**  
**149 Kerangie-202076 twin Kerangie-192465 7/08/2020**  
 Dam: Oakwood-177982 SOD: Glenraig-150406

BWT	WWT	PWWT	PEMD	PFAT	TCP	IMF	SHRF5
.58	9.09	14.09	.87	-.07	126.09	-.71	2.37

Pur./Price .....

**LOT TAG BT SIRE DOB**  
**150 Kerangie-202079 single Kerangie-192465 8/08/2020**  
 Dam: Kerangie-180492 SOD: Kerangie-170529

BWT	WWT	PWWT	PEMD	PFAT	TCP	IMF	SHRF5
.58	8.94	14.35	1.05	.06	129.21	-.62	1.5

Pur./Price .....

**LOT TAG BT SIRE DOB**  
**151 Kerangie-202084 twin Kerangie-192465 9/08/2020**  
 Dam: Oakwood-177160 SOD: Glenraig-150406

BWT	WWT	PWWT	PEMD	PFAT	TCP	IMF	SHRF5
.59	8.05	12.93	.92	-.05	125.06	-.69	1.51

Pur./Price .....

**LOT TAG BT SIRE DOB**  
**152 Kerangie-202085 twin Kerangie-192465 9/08/2020**  
 Dam: Oakwood-177160 SOD: Glenraig-150406

BWT	WWT	PWWT	PEMD	PFAT	TCP	IMF	SHRF5
.62	8.39	13.32	.81	-.06	125.2	-.68	1.67

Pur./Price .....

# 2020 DROP EWE LAMBS

**LOT TAG BT SIRE DOB**  
**153 Kerangie-202090 triplet Kerangie-192458 11/08/2020**  
 Dam: Kerangie-150511 SOD: Allendale-110830

BWT	WWT	PWWT	PEMD	PFAT	TCP	IMF	SHRF5
.52	8.43	12.99	-.13	-.69	121.65	-.55	1.19

Pur./Price .....

**LOT TAG BT SIRE DOB**  
**154 Kerangie-202093 twin Kerangie-192458 12/08/2020**  
 Dam: Kerangie-170578 SOD: Glencairg-150406

BWT	WWT	PWWT	PEMD	PFAT	TCP	IMF	SHRF5
.69	8.93	14.49	.16	-.19	125.29	-.55	1.25

Pur./Price .....

**LOT TAG BT SIRE DOB**  
**155 Kerangie-202094 twin Kerangie-192458 12/08/2020**  
 Dam: Kerangie-170578 SOD: Glencairg-150406

BWT	WWT	PWWT	PEMD	PFAT	TCP	IMF	SHRF5
.62	8.86	14.39	.18	-.29	125.25	-.58	1.45

Pur./Price .....

**LOT TAG BT SIRE DOB**  
**156 Kerangie-202097 triplet Kerangie-192465 12/08/2020**  
 Dam: Kerangie-170523 SOD: Lynburn-150247

BWT	WWT	PWWT	PEMD	PFAT	TCP	IMF	SHRF5
.54	8.15	13.06	1.39	.47	126.61	-.49	1.11

Pur./Price .....

**LOT TAG BT SIRE DOB**  
**157 Kerangie-202098 triplet Kerangie-192465 12/08/2020**  
 Dam: Kerangie-170523 SOD: Lynburn-150247

BWT	WWT	PWWT	PEMD	PFAT	TCP	IMF	SHRF5
.43	7.79	12.62	1.55	.61	125.69	-.45	.94

Pur./Price .....

# 2020 DROP EWE LAMBS

**LOT TAG BT SIRE DOB**  
**158 Kerangie-202105 twin Kerangie-192465 14/08/2020**  
 Dam: Kerangie-180509 SOD: Pamellen-150074

BWT	WWT	PWWT	PEMD	PFAT	TCP	IMF	SHRF5
.58	9.49	14.59	.62	-.1	127.63	-.55	1.81

Pur./Price .....

**LOT TAG BT SIRE DOB**  
**159 Kerangie-202106 single Kerangie-192458 15/08/2020**  
 Dam: Kerangie-160522 SOD: Oakwood-140140

BWT	WWT	PWWT	PEMD	PFAT	TCP	IMF	SHRF5
.57	8.56	13.22	-.37	-.56	121.91	-.44	1.24

Pur./Price .....

**LOT TAG BT SIRE DOB**  
**160 Kerangie-202108 twin Kerangie-192465 15/08/2020**  
 Dam: Kerangie-170562 SOD: Glenraig-150406

BWT	WWT	PWWT	PEMD	PFAT	TCP	IMF	SHRF5
.47	7.81	12.13	.61	-.23	121.65	-.66	1.66

Pur./Price .....

**LOT TAG BT SIRE DOB**  
**161 Kerangie-202112 triplet Kerangie-192465 20/08/2020**  
 Dam: Oakwood-177037 SOD: Oakwood-130019

BWT	WWT	PWWT	PEMD	PFAT	TCP	IMF	SHRF5
.55	8.73	13.49	.82	-.02	124.13	-.6	1.71

Pur./Price .....

**LOT TAG BT SIRE DOB**  
**162 Kerangie-202115 triplet Kerangie-192465 22/08/2020**  
 Dam: Kerangie-160504 SOD: Oakwood-140140

BWT	WWT	PWWT	PEMD	PFAT	TCP	IMF	SHRF5
.57	8.24	12.89	.35	-.28	123.8	-.53	1.33

Pur./Price .....

# 2020 DROP EWE LAMBS

**LOT**            **TAG**            **BT**            **SIRE**            **DOB**  
 163    Kerangie-202117   single   Kerangie-192465   1/09/2020  
          Dam: Glenraig-150453        SOD: Glenraig-130127

BWT	WWT	PWWT	PEMD	PFAT	TCP	IMF	SHRF5
.54	8.32	13.26	.58	-.02	121.97	-.56	1.78

Pur./Price .....

## SPECIALLY SELECTED 2020 STUD RAM LAMBS



**Lot 164**



**Lot 165**



**Lot 166**



**Lot 167**



# SPECIALLY SELECTED 2020 STUD RAM LAMBS



**Lot 168**



**Lot 169**



**Lot 170**



**Lot 171**



**Lot 172**

# 9 – SPECIALLY SELECTED 2020 STUD RAM LAMBS

**LOT TAG BT SIRE DOB**  
**164 Kerangie-202001 twin Gypsum Hill-860116 17/07/2020**  
 Dam: Kerangie-160548 SOD: Kerangie-150544

BWT	WWT	PWWT	PEMD	PFAT	TCP	IMF	SHRF5
.42	6.41	9.98	1.01	.09	123.47	-.35	-.99

Pur./Price .....

**LOT TAG BT SIRE DOB**  
**165 Kerangie-202003 twin Gypsum Hill-860116 18/07/2020**  
 Dam: Kerangie-150535 SOD: Noble-Lee-130984

BWT	WWT	PWWT	PEMD	PFAT	TCP	IMF	SHRF5
.51	6.37	9.85	.54	-.06	120.57	-.24	-.51

Pur./Price .....

**LOT TAG BT SIRE DOB**  
**166 Kerangie-202020 triplet Lynburn-170125 20/07/2020**  
 Dam: Kerangie-160549 SOD: Kerangie-150544

BWT	WWT	PWWT	PEMD	PFAT	TCP	IMF	SHRF5
.6	10.07	16.28	.52	-.24	129.78	-.75	2.97

Pur./Price .....

**LOT TAG BT SIRE DOB**  
**167 Kerangie-202025 twin Lynburn-170125 21/07/2020**  
 Dam: Kerangie-150501 SOD: Allendale-110830

BWT	WWT	PWWT	PEMD	PFAT	TCP	IMF	SHRF5
.36	8.1	14.04	.91	.04	127.43	-.54	.97

Pur./Price .....

**LOT TAG BT SIRE DOB**  
**168 Kerangie-202026 twin Lynburn-170125 21/07/2020**  
 Dam: Kerangie-150549 SOD: Noble-Lee-130984

BWT	WWT	PWWT	PEMD	PFAT	TCP	IMF	SHRF5
.58	8.57	14.16	.03	-.07	121.36	-.53	2.38

Pur./Price .....

# SPECIALLY SELECTED 2020 STUD RAM LAMBS

**LOT TAG BT SIRE DOB**  
**169 Kerangie-202029 triplet Gypsum Hill-860116 21/07/2020**  
 Dam: Kerangie-160518 SOD: Oakwood-140140

BWT	WWT	PWWT	PEMD	PFAT	TCP	IMF	SHRF5
.49	7.68	11.84	-.38	-.78	123.79	-.27	-.31

Pur./Price .....

**LOT TAG BT SIRE DOB**  
**170 Kerangie-202048 twin Kerangie-192465 31/07/2020**  
 Dam: Oakwood-177051 SOD: Oakwood-130019

BWT	WWT	PWWT	PEMD	PFAT	TCP	IMF	SHRF5
.7	9.96	15.45	.6	-.37	129.56	-.77	2.45

Pur./Price .....

**LOT TAG BT SIRE DOB**  
**171 Kerangie-202077 twin Kerangie-192465 8/08/2020**  
 Dam: Kerangie-180488 SOD: Pamellen-160028

BWT	WWT	PWWT	PEMD	PFAT	TCP	IMF	SHRF5
.8	10.25	15.51	.63	.04	128.01	-.64	3.03

Pur./Price .....

**LOT TAG BT SIRE DOB**  
**172 Kerangie-202088 single Kerangie-192465 10/08/2020**  
 Dam: Kerangie-180546 SOD: Kerangie-170529

BWT	WWT	PWWT	PEMD	PFAT	TCP	IMF	SHRF5
.55	8.89	14.65	.76	-.27	131.01	-.63	1.26

Pur./Price .....

- Ovine Johne's Disease MN3 (2002) Status (VS 1212)
  - Ovine Brucellosis Accredited Free (No. 2063)
  - Footrot free
  - All sheep are Glanvac 6 with B-12 vaccinated.
- Ewes drenched & Avenge back-lined.





# NATIONAL SHEEP HEALTH DECLARATION

July 2019

Property Identification Code (PIC) of this property  
This MUST be the PIC of the property that  
the stock is being moved from

3BUE1011

Attached to accompanying NVD/Waybill No.

40230501

## SECTION A – Biosecurity Information

1. All consigned sheep are from a Livestock Production Assurance (LPA) accredited property?\*  Y  N

2. The number of different sources of sheep that have been introduced onto the consignment property in the last 5 years is:

0 (closed flock)  1-5  6+  Rams Only

## SECTION B – Animal Health Information

3. All consigned sheep are from a flock that is free of virulent footrot?\*  Y  N

4. All consigned sheep are from a flock that is free of benign footrot or scald?\*

*(If (N) please provide further information below)*

Y  N

5. All consigned sheep are from a flock that is free of lice?\*

Y  N

6. All consigned sheep are from a flock in an ovine brucellosis accreditation scheme?

Y  N

If Yes, Flock Accreditation No. (except Qld) 2063 Expiry Date 30 / 04 / 22

7. All consigned sheep are Johné's disease (JD) Approved Vaccinates?\*

Y  N

If Yes, I have been continuously vaccinating all retained lambs in the consignment flock against JD for \_\_\_\_\_ years. *(Merino-bred sheep only)*

8. All consigned sheep are from a SheepMAP flock?\*

Y  N

If yes, Status MN3 Year commenced 1988 Certificate Number VS1212

\*See explanatory notes on back page for further information

Submitted: 2020-12-18 15:58

Last updated: 2020-12-18 15:58

9. All consigned sheep are from a flock with a negative test for JD?\*

Y  N

If Yes, which test? Faecal 350 Date of test 10 / 04 / 18

10. Any other JD management practices carried out on the property?

Annual Audit by Vet.14/5/2020, Internal Audit.15/10/2020.

11. Any other relevant health information

## SECTION C – Treatment Information of Consigned Sheep

Treatment type	Product	Date of last treatment
External Parasite Treatment	Avenge Plus on ewes	20/10/2020
Internal Parasite Treatment	Ivermac on ewes	20/04/2020
Other treatments		
Vaccination (other than JD)	Glanvac 6 B-12 on ewes	20-04-2020
	Glanvac 6 B-12 on lambs	07-08-2020

Declaration *(see explanatory notes for further information)*

I Andrew Donnan *(full name)*

1117 Willangie-Woomelang Rd *(Address)* WILLANGIE *(Town/suburb)* VIC *(State)* 3485 *(Postcode)*

Tel. No. ( ) 0427812227 *(Telephone)* Email andensv@bigpond.com *(Email)*

Signature *(Signature)* Date 18 / 12 / 20

Producers are advised to retain appropriate records to support this declaration. Persons making false statements may be liable under fair trading and other relevant state legislation.

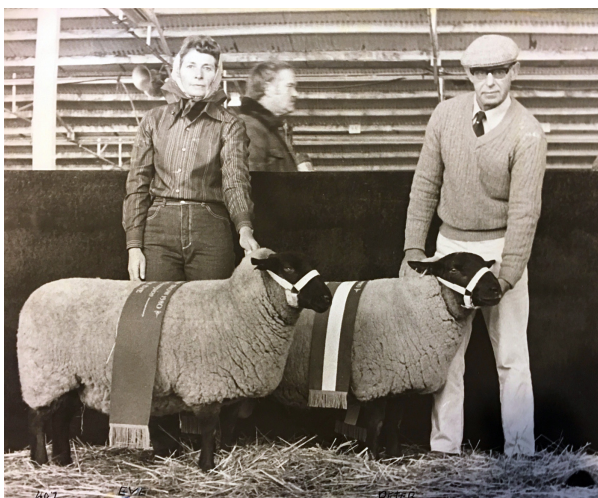
Printed: 2020-12-18 15:58

C-10076928



# Kerangie Suffolk Stud

Flock No. 2187 1971 - 2021



Melva and John Donnan with 407/78 'Eve' and 493/78 'Peter' at the Ballarat Sheep Show, 1979.



Joel and Andrew Donnan with Kerangie 150530, 2016 Royal Adelaide Show – Grand Champion Suffolk Ram.



**'ANDEN STUD'**  
1117 Willangie-Woomelang Road,  
Willangie, Vic.

---

**~ Abbreviations used in this booklet ~**

BWT – birth weight. WWT – weaning weight.  
PWWT – weight gain. PEMD – eye muscle depth.  
PFAT – fat depth.  
TCP – Terminal Carcase Production.  
IMF – Intramuscular Fat. SHRF5 – Shear Force.

---