

Crathes Park

SHORTHORN STUD

'VASSE', WA



ONLINE HERD REDUCTION SALE

7TH OCTOBER 2020. 11AM WST

INSPECTION DAY

3RD OCTOBER 2020

10.30AM - 2.30PM. LUNCH PROVIDED

37 COW/CALF UNITS - 6 BULLS - 3 UNJOINED HEIFERS



 AuctionsPlus

Buy and Sell stock nationally



AuctionsPlus[®]

Australia's Livestock Marketplace

Can't make the sale?

Purchase online in eight simple steps!

Log on to AuctionsPlus and bid on your phone, tablet or computer.

1

REGISTER ONLINE

Free once off registration for all auctions.

2

COMPLETE BUYER INDUCTION

The buyer induction will help you understand the roles and responsibilities of everyone on the AuctionsPlus system.

3

VIEW CATALOGUE

View photos, videos, pedigrees and more.

4

ENTER AUCTION

Log into the auction anytime, anywhere and bid on your mobile, tablet or computer.

5

AUTO BID

Can't stay for the whole sale? Set your maximum bid on the lot that you want to purchase and let the computer bid for you.

6

CONTACT SELLING AGENT

If successful, contact selling agent to arrange payment and delivery. The agent contact details will be in the catalogue header.

7

PAYMENT

Via the selling agent's terms and conditions.

8

DELIVERY

Arrange transport of livestock at your expense.

Contact AuctionsPlus on (02) 9262 4222
or email studsales@auctionsplus.com.au
or www.auctionsplus.com.au

Check us out on:    

Crathes Park

SHORTHORN STUD 'VASSE', WA

Dear Producer,

Welcome to the Crathes Park Shorthorn Stud Reduction Sale 2020.

It is with unfortunate circumstances that bring us to this position and it is with great sadness we are required to reduce the herd, we are proud to offer an outstanding line up of Shorthorn Cattle with depth of genetics and a fantastic outlook.

Shorthorn cattle have the innate ability to create increased profits by striking the balance between maternal efficiency and growth, carcass yield and quality, high fertility and hardiness, as well as high production and longevity.

The Shorthorn breed is also one of the most complementary breeds in the world, having formed the basis of over forty breeds worldwide.

We value the importance and need to visually assess cattle for type and functionality and also believe it is essential that animals are performance bred and that they replicate this performance consistently in paddock, sale yard and plate.

All bulls have been semen tested fit for service. All Females are unjoined and suitable for breeding. The cattle have been vaccinated with 7-in-1.

Kindly from the team at Crathes Park,
Phil Burnett & Lindy Cornish

Phillip Burnett

1949 – 2020



EXPLANATORY NOTES FOR CATALOGUES

Only 2013 AUTUMN Trans-Tasman Shorthorn GROUP BREEDPLAN EBVs or Interim EBVs with Accuracy (Acc) can be validly compared between Shorthorn herds.

ESTIMATED BREEDING VALUES (EBVs)

The EBV is the best estimate of an animal's genetic merit for that trait.

ACCURACY

An accuracy is presented with every EBV and gives an indication of the amount of information that has been used in the calculation of that EBV. The higher the accuracy the lower the likelihood of change in the animal's EBV as more information is analysed for that animal or its relatives. Accuracy below 75% should be considered low.

CALVING EASE

EBVs are based on calving ease (CE) scores, birth weights and gestation length information. More positive EBVs are favourable and indicate easier calving.

DIR: Direct calving ease indicates how this animal influences the birth of its progeny.

DTRS: Daughter's calving ease indicates how well the animal produces daughters that have easier calving.

BIRTH

GL: Gestation Length EBV (days) is based on AI records. Lower (negative) GL EBVs indicate easier calving and increased growth after birth.

BWT: Birth Weight EBV (kg) is based on the measured birth weight of animals, adjusted for dam age. The lower the value the lighter the calf at birth and the lower the likelihood of a difficult birth. This is particularly important when selecting sires for use over heifers.

FERTILITY

SS: Scrotal Size EBV (cm) is an indicator of male fertility in regards to semen quality and quantity. Higher (positive) EBVs indicate higher fertility. SS is also positively associated with female fertility.

GROWTH

MILK: 200-Day Milk EBV (kg) is an estimate of an animal's milking ability. For sires, this EBV is indicative of their daughter's milking ability as it affects the 200 and 400 day weight of their calves.

200: 200-Day Growth EBV (kg) is calculated from the weight of animals taken between 80 and 300 days of age. Values are adjusted to 200 days and forage of dam. This EBV is the best single estimate of an animal's genetic merit for growth to early ages.

400: 400-Day Weight EBV (kg) is calculated from the weight of progeny taken between 301 and 500 days of age, adjusted to 400 days and for age of dam. This EBV is the best single estimate of an animal's genetic merit for yearling weight.

600: 600-Day Weight EBV (kg) is calculated from the weight of animals taken between 501 and 900 days of age, adjusted to 600 days and for age of dam. This EBV is the best single estimate of an animal's genetic merit for growth beyond yearling age.

MWT: Mature Cow Weight EBV (kg) is an estimate of the genetic difference in cow weight at 5 years of age.

CARCASE

CWT: Carcase Weight EBV (kg) estimates the genetic difference in carcase weight at a standard age of 650 days.

EMA: Eye Muscle Area EBV (cm²) estimates genetic differences in eye muscle area at the 12/13th rib site of a 300kg dressed carcase. More positive EBVs indicate better muscling on animals.

RIB: Rib Fat EBV (mm) estimates the genetic differences in fat depth at the 12/13th rib in a 300kg dressed carcase. More positive EBVs indicate more subcutaneous fat and earlier maturity.

RUMP: Rump Fat EBV (mm) estimates the genetic differences in fat depth at the P8 site of a 300kg dressed carcase. More positive EBVs indicate more subcutaneous fat and earlier maturity.

RBV%: Retail Beef Yield Percent EBV (%) represents total (boned out) meat yield as a percentage of a 300kg dressed carcase. A more positive EBV indicates higher percentage yield for the 300kg carcase size.

IMF%: Intra-muscular Fat Percent EBV (%) is an estimate of the genetic difference in the percentage of intra-muscular fat at the 12/13th rib site in a 300kg carcase. Depending on market targets, larger more positive values are generally more favourable.

DM: Domestic Maternal index (\$) estimates the genetic differences between animals in net profitability per cow joined for an example commercial herd in a temperate environment (e.g. Shorthorn, Angus or Hereford cows) targeting pasture grown and finished steers for the domestic trade (e.g. supermarket). Steers are marketed at 480 kg live weight (260kg HSCW and 10mm P7 fat depth) at 16 months of age. Daughters are retained for breeding.

EM: Export Maternal index (\$) estimates genetic differences between animals in net profitability per cow joined for an example commercial herd in a temperate environment (e.g. Shorthorn, Angus or Hereford cows) targeting steers for the Japanese B3 market. Steers are pasture grown to feedlot entry then feedlot finished for 150 days. Steers are marketed to the feedlot at 450kg live weight, and then slaughtered after finishing at 675kg live weight (370kg HSCW). Daughters are retained for breeding.

NM: Northern Maternal index (\$) estimates the genetic differences between animals in net profitability per cow joined for an example commercial herd in Northern Australia (e.g. Braham, Droughtmaster or Santa Gertrudis cows) targeting the export trade. Steers are finished on grass and marketed at 600kg live weight (320kg HSCW and 10 mm P8 fat depth) at 28 months of age. Daughters are retained for breeding.

SHORTHORN BREEDPLAN

EBV's

An animal's breeding value is its genetic merit, half of which will be passed on to its progeny. While we will never know the exact breeding value, for performance traits it is possible to make good estimates. These estimates are called Estimated Breeding Values (EBVs).

In the calculation of EBVs, the performance of individual animals within a contemporary group is directly compared to the average of other animals in that group. A contemporary group consists of animals of the same sex and age class within a herd, run under the same management conditions and treated equally. Indirect comparisons are made between animals reared in different contemporary groups, through the use of pedigree links between the groups.

EBVs are expressed in the units of measurement for each particular trait. They are shown as +ive or -i've differences between an individual animal's genetics difference and the genetic base to which the animal is compared. For example, a bull with an EBV of +50 kg for 600-Days Weight is estimated to have genetic merit 50 kg above the breed base of 0 kg. Since the breed base is set to an historical benchmark, the average EBVs of animals in each year drop has changed over time as a result of genetic progress within the breed.

The absolute value of any EBV is not critical, but rather the differences in EBVs between animals. Particular animals should be viewed as being "above or below breed average" for a particular trait.

Whilst EBVs provide the best basis for the comparison of the genetic merit of animals reared in different environments and management conditions, they can only be used to compare animals analysed within the same analysis. Consequently, Shorthorn BREEDPLAN EBVs cannot be validly compared with EBVs for any other breed.

EBVs are published for a range of traits covering fertility, calving ease, Milking ability, growth and carcase merit. When using EBVs to assist in selection decisions it is important to achieve a balance between the different groups of traits and to place emphasis on those traits that are important to the particular herd, markets and environment. One of the advantages of having a comprehensive range of EBVs is that it is possible to avoid extremes in particular traits and select for animals with balanced overall performance.

An animal's breeding value is its genetic merit, half of which will be passed on to its progeny. While we will never know the exact breeding value, for performance traits it is possible to make good estimates. These are called Estimated Breeding Values (EBVs). They are expressed as the difference between an individual animal's genetics and the genetic base to which the animal is compared.

Breed Average EBVs for 2017 Born Calves

	Birth Wt (kg)	200 Day Wt (kg)	400 Day Wt (kg)	600 Day Wt (kg)	Mat Cow Wt (kg)	Milk (kg)	Scrotal Size (cm)	Carcase Wt (kg)	Eye Muscle Area (sq cm)	Rib Fat (mm)	Rump Fat (mm)	Retail Beef Yield (%)	IMF (%)
EBV	+2.9	+27	+38	+51	+43	+6	+1.5	+34	+4.3	-0.3	-0.3	+1.0	+0.5

Selection Index Values	
Target Market:	Index:
Domestic Mat	\$32
Export Mat	\$34
Northern Mat	\$42

Crathes Park

SHORTHORN STUD

'VASSE', WA

LOTS 1 - 37

COWS WITH CALVES AT FOOT

UNJOINED

LOT 1	CRATHES PLUSH L8 (UNJOINED)		TCPL8
	DOB: 3/05/2015	HPS: POLLED	RED
CALF AT FOOT	R33 - 20/06/2020	BULL	ROAN
	SIRE: DNA RESULTS PENDING		

GLSZ076 (HBR)(P) SPRYS LEGEND Z076

Sire: TCPD45 (HBR)(P) CRATHES DENON

IPVW07 (HBR)(P) MARS ENIA W7

TCPA24 (HBR)(P) CRATHES ALYDAR

Dam: TCPF24 (HBR)(P) CRATHES PLUSH F24

TCPB16 (HBR)(P) CRATHES PLUSH 2ND

	CE-D	BW	WWT	YWT	MILK	MCE	MWWT	STAY	CWT	REA	FAT	MARB	YG	\$INDEX
EPD	5.8	5.3	69.3	112.7	22.8	4.9	57.5	18.3	8.3	0.24	-0.092	0.08	-0.31	123.29
Acc	16%	20%	28%	30%	22%	14%	24%	11%	27%	24%	18%	20%	20%	
Rank	80	90	3	1	90	65	30	3	5	10	55	10	65	5

LOT 2	CRATHES WENDY G72 (UNJOINED)		TCPG72
	DOB: 1/07/2011	HPS: POLLED	ROAN
CALF AT FOOT	R30 - 4/05/2020	BULL	RED
	SIRE: DNA RESULTS PENDING		

RJJW106 (HBR)(P) RONELLE PARK WYATT EARP

Sire: GLSA114 (HBR)(P) SPRYS ADVANCER A114

GLSFX1117 (SFA)(P) SPRYS WP X1117

M9X564 (HBR)(P) NEEARRA XCEED

Dam: M9XX32 (HBR)(P) NEEARRA WENDY 52

M9X579 (HBR)(P) NEEARRA WENDY 42

	CE-D	BW	WWT	YWT	MILK	MCE	MWWT	STAY	CWT	REA	FAT	MARB	YG	\$INDEX
EPD	4.2	3.1	54.5	80.3	15.2	3.3	42.5	15.6	-3.8	0.09	-0.089	0.08	-0.3	112.25
Acc	19%	48%	33%	36%	30%	19%	31%	16%	29%	27%	18%	21%	21%	
Rank	95	75	75	75	80	90	90	15	40	55	45	15	40	40

LOT 3	CRATHES SYMPHONY J26 (UNJOINED)		TCPJ26
	DOB: 15/04/2013	HPS: POLLED	RED
CALF AT FOOT	R42 - 23/05/2020	HEIFER	ROAN
	SIRE: DNA RESULTS PENDING		

GLSZ076 (HBR)(P) SPRYS LEGEND Z076

Sire: TCPD45 (HBR)(P) CRATHES DENON
IPVW07 (HBR)(P) MARS ENIA W7

TCPA24 (HBR)(P) CRATHES ALYDAR

Dam: TCPD13 (HBR)(P) CRATHES SYMPHONY 1ST
LNPB7 (HBR)(P) LIMORN B7 SYMPHONY

	CE-D	BW	WWT	YWT	MILK	MCE	MWWT	STAY	CWT	REA	FAT	MARB	YG	\$INDEX
EPD	6.9	2.6	63.1	91.2	11	2.7	42.6	18.1	-2.1	0.02	-0.093	0.09	-0.28	124.74
Acc	17%	44%	29%	28%	23%	15%	25%	13%	26%	24%	15%	18%	19%	
Rank	60	60	35	40	100	95	90	2	35	80	70	10	10	10

LOT 4	CRATHES TESSA K26 (UNJOINED)		TCPK26
	DOB: 9/05/2014	HPS: POLLED	RED
CALF AT FOOT	R63 - 21/04/2020	HEIFER	ROAN
	SIRE: DNA RESULTS PENDING		

RJJW106 (HBR)(P) RONELLE PARK WYATT EARP

Sire: GLSA114 (HBR)(P) SPRYS ADVANCER A114
GLSFX1117 (SFA)(P) SPRYS WP X1117

TCPD45 (HBR)(P) CRATHES DENON

Dam: TCPG11 (HBR)(P) CRATHES TESSA G11
TCPZ10 (HBR)(P) CRATHES TESSA 32

	CE-D	BW	WWT	YWT	MILK	MCE	MWWT	STAY	CWT	REA	FAT	MARB	YG	\$INDEX
EPD	5.2	3.5	60.9	87.7	12.8	5	43.3	17	-2.4	0.06	-0.095	-0.03	-0.3	111.58
Acc	16%	42%	28%	27%	22%	15%	24%	13%	23%	22%	15%	17%	18%	
Rank	90	80	45	55	95	60	90	5	35	65	80	60	40	40

LOT 5	CRATHES RONIE G5 (UNJOINED)		TCPG5
	DOB: 25/04/2011	HPS: POLLED	RED
CALF AT FOOT	R60 - 15/05/2020	HEIFER	RED LITTLE WHITE
	SIRE: DNA RESULTS PENDING		

GLSA114 (HBR)(P) SPRYS ADVANCER A114

Sire: TCPE63 (HBR)(P) CRATHES CONDO 2

98X03265 (HBR)(P) SPRYS CONDO ENIA T66

GLSZ076 (HBR)(P) SPRYS LEGEND Z076

Dam: TCPE20 (HBR)(P) CRATHES RONIE E20

LNPB45 (HBR)(P) LIMORN B45 RONIE

	CE-D	BW	WWT	YWT	MILK	MCE	MWWT	STAY	CWT	REA	FAT	MARB	YG	\$INDEX
EPD	5.9	3.1	70.5	98.4	14.7	1.1	50	11.3	-4	0.17	-0.092	0.01	-0.34	107.26
Acc	15%	42%	27%	27%	22%	16%	24%	15%	22%	21%	14%	17%	17%	
Rank	80	75	10	20	85	100	30	70	40	25	65	35	60	60

LOT 6	CRATHES ENIA J13 (UNJOINED)		TCPJ13
	DOB: 16/04/2013	HPS: POLLED	ROAN
CALF AT FOOT	R26 - 27/04/2020	BULL	ROAN
	SIRE: DNA RESULTS PENDING		

GLSZ076 (HBR)(P) SPRYS LEGEND Z076

Sire: TCPD45 (HBR)(P) CRATHES DENON

IPVW07 (HBR)(P) MARS ENIA W7

MCDW046 (HBR)(P) DUNBEACON WAGMAN

Dam: GLSA028 (HBR)(P) SPRYS WAGMANS ENIA A028

GLSV219 (HBR)(H) SPRYS MISS ENIA V219

	CE-D	BW	WWT	YWT	MILK	MCE	MWWT	STAY	CWT	REA	FAT	MARB	YG	\$INDEX
EPD	6.7	2.6	71.5	108.1	7.3	2.1	43.1	13.3	10.3	0.09	-0.096	0.07	-0.26	117.89
Acc	16%	42%	30%	29%	23%	16%	25%	14%	27%	25%	14%	20%	19%	
Rank	65	60	10	5	100	100	90	40	4	55	85	15	20	20

LOT 7	CRATHES PATSY J17 (UNJOINED)		TCPJ17
	DOB: 8/04/2013	HPS: POLLED	RED LITTLE WHITE
CALF AT FOOT	R54 - 24/04/2020	HEIFER	RED LITTLE WHITE
	SIRE: DNA RESULTS PENDING		

RJJW106 (HBR)(P) RONELLE PARK WYATT EARP

Sire: GLSA114 (HBR)(P) SPRYS ADVANCER A114

GLSFX1117 (SFA)(P) SPRYS WP X1117

BP4U18 (HBR)(P) TREVINO ULTIMATE 2ND

Dam: TCPC5 (HBR)(P) CRATHES PATSY

TV4A010 (HBR)(P) NARRALDA PATSY A010

	CE-D	BW	WWT	YWT	MILK	MCE	MWWT	STAY	CWT	REA	FAT	MARB	YG	\$INDEX
EPD	6	2.2	60	89.8	15.9	4.6	45.9	15	-3.9	0.15	-0.085	-0.03	-0.31	111.28
Acc	17%	43%	31%	30%	24%	15%	26%	13%	26%	23%	18%	18%	20%	
Rank	75	50	50	45	75	70	70	20	40	35	30	60	45	45

LOT 8	CRATHES JUDITH K13 (UNJOINED)		TCPK13
	DOB: 8/05/2014	HPS: POLLED	RED
CALF AT FOOT	R29 - 11/04/2020	BULL	RED
	SIRE: DNA RESULTS PENDING		

GLSZ076 (HBR)(P) SPRYS LEGEND Z076

Sire: TCPD45 (HBR)(P) CRATHES DENON

IPVW07 (HBR)(P) MARS ENIA W7

M9XY50 (HBR)(P) NEEARRA BULLION

Dam: M9XA87 (HBR)(P) NEEARRA JUDITH 114

M9XV52 (HBR)(P) NEEARRA JUDITH 70

	CE-D	BW	WWT	YWT	MILK	MCE	MWWT	STAY	CWT	REA	FAT	MARB	YG	\$INDEX
EPD	5.1	2.7	75.5	110.1	16.6	0.2	54.4	16.8	11.1	0.31	-0.095	0.11	-0.33	126.2
Acc	19%	43%	33%	31%	25%	15%	28%	17%	26%	25%	15%	20%	19%	
Rank	90	65	3	4	70	100	10	10	4	3	80	10	5	5

LOT 9	CRATHES TESSA M33 (UNJOINED)		TCPM33
	DOB: 27/06/2016	HPS: POLLED	ROAN
CALF AT FOOT	R12 - 28/05/2020	BULL	RED
	SIRE: DNA RESULTS PENDING		

TCPD45 (HBR)(P) CRATHES DENON
Sire: TCPG52 (HBR)(P) CRATHES GATLING
TCPB14 (HBR)(P) CRATHES MARRINGTON 2ND

GLSA114 (HBR)(P) SPRYS ADVANCER A114
Dam: TCPG74 (HBR)(P) CRATHES TESSA G74
TCPB8 (HBR)(P) CRATHES TESSA 33

	CE-D	BW	WWT	YWT	MILK	MCE	MWWT	STAY	CWT	REA	FAT	MARB	YG	\$INDEX
EPD	6.9	2.6	57.2	83.8	17.6	6.7	46.2	14.8	-1	0.27	-0.079	0.11	-0.33	117.99
Acc	15%	40%	26%	25%	17%	13%	20%	13%	24%	24%	15%	17%	18%	
Rank	60	60	65	65	55	30	65	25	30	10	10	10	20	20

LOT 10	CRATHES WENDY N19 (UNJOINED)		TCPN19
	DOB: 13/05/2013	HPS: POLLED	RED
CALF AT FOOT	R18 - 2/06/2020	BULL	ROAN
	SIRE: DNA RESULTS PENDING		

TCPD45 (HBR)(P) CRATHES DENON
Sire: TCPJ68 (HBR)(P) CRATHES QUEENS DENON J68
TCPB6 (HBR)(P) CRATHES PARK QUEEN 2ND

TCPE76 (HBR)(P) CRATHES EXCEED
Dam: TCPG2 (HBR)(P) CRATHES WENDY G2
TCPE36 (HBR)(P) CRATHES 3UP E36

	CE-D	BW	WWT	YWT	MILK	MCE	MWWT	STAY	CWT	REA	FAT	MARB	YG	\$INDEX
EPD	6.3	2.9	65.7	94.4	11.6	6.2	44.5	17.9	2.1	0.16	-0.09	0.03	-0.3	121.12
Acc	13%	38%	28%	26%	13%	11%	18%	7%	23%	20%	14%	14%	16%	
Rank	70	70	20	30	100	35	80	2	20	30	50	25	15	15

LOT 11	CRATHES ELENOR J14 (UNJOINED)		TCPJ14
	DOB: 28/03/2013	HPS: POLLED	RED
CALF AT FOOT	R9 - 14/05/2020	BULL	RED
	SIRE: DNA RESULTS PENDING		

GLSZ076 (HBR)(P) SPRYS LEGEND Z076

Sire: TCPD45 (HBR)(P) CRATHES DENON

IPVW07 (HBR)(P) MARS ENIA W7

BP4U18 (HBR)(P) TREVINO ULTIMATE 2ND

Dam: IPVY9 (HBR)(P) MARS ELENOR Y9

IPVW02 (HBR)(P) MARS ELENOR W2

	CE-D	BW	WWT	YWT	MILK	MCE	MWWT	STAY	CWT	REA	FAT	MARB	YG	\$INDEX
EPD	7.2	3.1	67.3	98.7	11.9	6.1	45.6	16.5	-3	0.2	-0.084	0.07	-0.32	122.27
Acc	17%	43%	31%	30%	25%	16%	27%	15%	27%	26%	18%	22%	21%	
Rank	55	75	15	20	95	40	75	10	35	20	25	15	10	10

LOT 12	CRATHES ENIA L15 (UNJOINED)		TCPL15
	DOB: 4/07/2015	HPS: POLLED	ROAN
CALF AT FOOT	R47 - 17/05/2020	HEIFER	RED
	SIRE: DNA RESULTS PENDING		

TCPD45 (HBR)(P) CRATHES DENON

Sire: TCPH42 (HBR)(P) CRATHES HASTINGS

TCPD11 (HBR)(P) CRATHES ENIA 6TH

BP4U18 (HBR)(P) TREVINO ULTIMATE 2ND

Dam: TCPB18 (HBR)(P) CRATHES ENIA 3RD

98X03265 (HBR)(P) SPRYS CONDO ENIA T66

	CE-D	BW	WWT	YWT	MILK	MCE	MWWT	STAY	CWT	REA	FAT	MARB	YG	\$INDEX
EPD	9.1	1.4	64.1	98.7	24.7	6.6	56.8	18.7	-3	0.3	-0.074	0.3	-0.33	144.55
Acc	23%	46%	34%	34%	26%	19%	29%	9%	32%	30%	22%	24%	24%	
Rank	25	30	30	20	3	30	2	1	35	4	5	1	1	1

LOT 13	CRATHES PATSY H10 (UNJOINED)		TCPH10
	DOB: 6/05/2012	HPS: POLLED	ROAN
CALF AT FOOT	R39 - 26/05/2020	HEIFER	RED LITTLE WHITE
	SIRE: DNA RESULTS PENDING		

RJJW106 (HBR)(P) RONELLE PARK WYATT EARP

Sire: GLSA114 (HBR)(P) SPRYS ADVANCER A114
GLSFX1117 (SFA)(P) SPRYS WP X1117

BP4U18 (HBR)(P) TREVINO ULTIMATE 2ND

Dam: TCPC5 (HBR)(P) CRATHES PATSY
TV4A010 (HBR)(P) NARRALDA PATSY A010

	CE-D	BW	WWT	YWT	MILK	MCE	MWWT	STAY	CWT	REA	FAT	MARB	YG	\$INDEX
EPD	6.7	2.3	56.4	87.9	16.7	6.3	44.9	16.1	-8.2	0.16	-0.084	0.02	-0.33	116.18
Acc	19%	48%	35%	35%	29%	17%	31%	15%	27%	27%	17%	19%	21%	
Rank	65	55	70	55	65	35	75	10	65	30	25	30	25	25

LOT 14	CRATHES JUDITH G76 (UNJOINED)		TCPG76
	DOB: 4/07/2011	HPS: POLLED	ROAN
CALF AT FOOT	R48 - 2/06/2020	HEIFER	RED
	SIRE: DNA RESULTS PENDING		

RJJW106 (HBR)(P) RONELLE PARK WYATT EARP

Sire: GLSA114 (HBR)(P) SPRYS ADVANCER A114
GLSFX1117 (SFA)(P) SPRYS WP X1117

TCPA24 (HBR)(P) CRATHES ALYDAR

Dam: TCPD17 (HBR)(P) CRATHES JUDITH 2ND
M9XA87 (HBR)(P) NEEARRA JUDITH 114

	CE-D	BW	WWT	YWT	MILK	MCE	MWWT	STAY	CWT	REA	FAT	MARB	YG	\$INDEX
EPD	5.2	2.6	57.3	83.4	15.7	3.9	44.3	13.1	-3.6	0.09	-0.094	-0.04	-0.32	103.69
Acc	15%	40%	30%	31%	26%	16%	27%	15%	25%	24%	14%	16%	19%	
Rank	90	60	65	70	75	80	80	45	40	55	75	65	75	75

LOT 15	CRATHES LILY J32 (UNJOINED)		TCPJ32
	DOB: 21/05/2013	HPS: POLLED	RED LITTLE WHITE
CALF AT FOOT	R44 - 21/04/2020	HEIFER	RED LITTLE WHITE
	SIRE: DNA RESULTS PENDING		

RJJW106 (HBR)(P) RONELLE PARK WYATT EARP

Sire: GLSA114 (HBR)(P) SPRYS ADVANCER A114
GLSFX1117 (SFA)(P) SPRYS WP X1117

MCDW046 (HBR)(P) DUNBEACON WAGMAN

Dam: GLSZ141 (HBR)(P) SPRYS WAGMANS LILY Z141
98X03268 (HBR)(P) SPRYS R C LILY T92

	CE-D	BW	WWT	YWT	MILK	MCE	MWWT	STAY	CWT	REA	FAT	MARB	YG	\$INDEX
EPD	4.5	5.3	53	80.2	30.7	2.7	57.2	13.1	-2.0	0.02	-0.098	-0.12	-0.29	91.95
Acc	19%	24%	30%	28%	26%	14%	27%	13%	26%	24%	15%	17%	19%	
Rank	95	90	55	65	20	95	30	55	30	75	85	90	80	95

LOT 16	CRATHES JUDITH L10 (UNJOINED)		TCPL10
	DOB: 1/05/2015	HPS: POLLED	RED
CALF AT FOOT	R2 - 5/04/2020	BULL	RED
	SIRE: DNA RESULTS PENDING		

GLSZ076 (HBR)(P) SPRYS LEGEND Z076

Sire: TCPD45 (HBR)(P) CRATHES DENON
IPVW07 (HBR)(P) MARS ENIA W7

TCPA24 (HBR)(P) CRATHES ALYDAR

Dam: TCPE11 (HBR)(P) CRATHES 3UP E11
M9XA87 (HBR)(P) NEEARRA JUDITH 114

	CE-D	BW	WWT	YWT	MILK	MCE	MWWT	STAY	CWT	REA	FAT	MARB	YG	\$INDEX
EPD	8.0	3.2	58.5	92.0	32.5	5.0	61.8	17.1	6.2	0.19	-0.093	0.15	-0.31	126.67
Acc	17%	18%	20%	20%	16%	12%	17%	20%	23%	22%	18%	19%	19%	
Rank	45	45	30	25	10	65	10	10	10	20	60	3	70	2

LOT 17	CRATHES LILY K9 (UNJOINED)		TCPK9
	DOB: 1/05/2014	HPS: POLLED	RED LITTLE WHITE
CALF AT FOOT	R37 - 2/06/2020	HEIFER	RED
	SIRE: DNA RESULTS PENDING		

RJJW106 (HBR)(P) RONELLE PARK WYATT EARP

Sire: GLSA114 (HBR)(P) SPRYS ADVANCER A114
GLSFX1117 (SFA)(P) SPRYS WP X1117

MCDW046 (HBR)(P) DUNBEACON WAGMAN

Dam: GLSZ141 (HBR)(P) SPRYS WAGMANS LILY Z141
98X03268 (HBR)(P) SPRYS R C LILY T92

	CE-D	BW	WWT	YWT	MILK	MCE	MWWT	STAY	CWT	REA	FAT	MARB	YG	\$INDEX
EPD	4.3	3.5	57.4	81.4	18.3	2.7	47	11.8	-4.2	0.04	-0.094	-0.05	-0.3	96.98
Acc	17%	41%	30%	29%	23%	13%	25%	14%	25%	24%	15%	18%	19%	
Rank	95	80	65	75	50	95	60	65	40	75	75	70	95	95

LOT 18	CRATHES ZOOS COUNTESS J21 (UNJOINED)		TCPJ21
	DOB: 10/04/2013	HPS: POLLED	ROAN
CALF AT FOOT	R5 - 31/05/2020	BULL	RED
	SIRE: DNA RESULTS PENDING		

RJJW106 (HBR)(P) RONELLE PARK WYATT EARP

Sire: GLSA114 (HBR)(P) SPRYS ADVANCER A114
GLSFX1117 (SFA)(P) SPRYS WP X1117

ERAV33 (HBR)(P) ERAMBIE ZOO V33

Dam: GLSB037 (HBR)(P) SPRYS ZOOS COUNTESS B037
97/01257 (HBR)(P) SPRYS GEE NINE COUNTESS S120

	CE-D	BW	WWT	YWT	MILK	MCE	MWWT	STAY	CWT	REA	FAT	MARB	YG	\$INDEX
EPD	4.9	2.7	52.7	70	18.1	5.2	44.5	12.4	-7.2	-0.17	-0.097	-0.09	-0.25	95.61
Acc	14%	42%	29%	29%	25%	15%	26%	10%	26%	21%	13%	16%	17%	
Rank	90	65	85	95	50	55	80	55	60	100	90	90	95	95

LOT 19	CRATHES PORTIA N21 (UNJOINED)		TCPN21
	DOB: 11/05/2017	HPS: POLLED	RED
CALF AT FOOT	R51 - 4/06/2020	HEIFER	ROAN
	SIRE: DNA RESULTS PENDING		

GLSZ076 (HBR)(P) SPRYS LEGEND Z076

Sire: TCPD45 (HBR)(P) CRATHES DENON

IPVW07 (HBR)(P) MARS ENIA W7

GLSA114 (HBR)(P) SPRYS ADVANCER A114

Dam: TCPE25 (HBR)(P) CRATHES PORTIA E25

BP4X13 (HBR)(P) TREVINO PORTIA 59TH

	CE-D	BW	WWT	YWT	MILK	MCE	MWWT	STAY	CWT	REA	FAT	MARB	YG	\$INDEX
EPD	4.7	4.7	59.2	88.2	22.5	2.1	52.1	16.1	4.2	0.12	-0.095	0.04	-0.30	110.63
Acc	15%	18%	25%	24%	15%	11%	18%	10%	24%	22%	15%	17%	18%	
Rank	95	80	25	35	90	100	65	15	10	40	70	20	80	35

LOT 20	CRATHES WAGMANS GIRL J4 (UNJOINED)		TCPJ4
	DOB: 30/04/2013	HPS: POLLED	RED
CALF AT FOOT	R31 - 24/05/2020	BULL	ROAN
	SIRE: DNA RESULTS PENDING		

TCPD45 (HBR)(P) CRATHES DENON

Sire: TCPG52 (HBR)(P) CRATHES GATLING

TCPB14 (HBR)(P) CRATHES MARRINGTON 2ND

GLSA114 (HBR)(P) SPRYS ADVANCER A114

Dam: TCPG20 (HBR)(P) CRATHES WAGMANS GIRL G20

EHSZ011 (HBR)(P) EDEN PARK WAGMANS GIRL Z011

	CE-D	BW	WWT	YWT	MILK	MCE	MWWT	STAY	CWT	REA	FAT	MARB	YG	\$INDEX
EPD	7.6	2.4	59.2	84.7	15.4	7.3	45	11.6	3.7	0.02	-0.091	0.01	-0.26	106.61
Acc	19%	41%	27%	27%	17%	16%	20%	10%	25%	23%	15%	18%	18%	
Rank	50	55	55	65	80	20	75	65	15	80	60	35	65	65

LOT 21	CRATHES AMY G12 (UNJOINED)		TCPG12
	DOB: 27/04/2011	HPS: POLLED	ROAN
CALF AT FOOT	R35 - 8/04/2020	BULL	RED LITTLE WHITE
	SIRE: DNA RESULTS PENDING		

RJJW106 (HBR)(P) RONELLE PARK WYATT EARP

Sire: GLSA114 (HBR)(P) SPRYS ADVANCER A114
GLSFX1117 (SFA)(P) SPRYS WP X1117

BP4U18 (HBR)(P) TREVINO ULTIMATE 2ND

Dam: IPVY1 (HBR)(P) MARS AMY Y1
98X00214 (HBR)(P) SPRYS J.P. AMY T7

	CE-D	BW	WWT	YWT	MILK	MCE	MWWT	STAY	CWT	REA	FAT	MARB	YG	\$INDEX
EPD	5	2.8	53.5	73.9	13.3	4	40.1	14.9	-10	-0.05	-0.086	-0.08	-0.28	101.65
Acc	17%	45%	30%	30%	27%	17%	28%	14%	27%	23%	17%	19%	19%	
Rank	90	65	80	90	90	80	100	20	75	95	35	85	80	80

LOT 22	CRATHES ENIA F22 (UNJOINED)		TCPF22
	DOB: 9/05/2010	HPS: POLLED	RED
CALF AT FOOT	R64 - 27/05/2020	HEIFER	RED LITTLE WHITE
	SIRE: DNA RESULTS PENDING		

RJJW106 (HBR)(P) RONELLE PARK WYATT EARP

Sire: GLSA114 (HBR)(P) SPRYS ADVANCER A114
GLSFX1117 (SFA)(P) SPRYS WP X1117

BP4U18 (HBR)(P) TREVINO ULTIMATE 2ND

Dam: TCPB18 (HBR)(P) CRATHES ENIA 3RD
98X03265 (HBR)(P) SPRYS CONDO ENIA T66

	CE-D	BW	WWT	YWT	MILK	MCE	MWWT	STAY	CWT	REA	FAT	MARB	YG	\$INDEX
EPD	4.2	3.7	66.2	96.9	21.9	3.9	55	16.2	-2.9	0.14	-0.083	0.03	-0.3	114.13
Acc	17%	47%	32%	34%	28%	18%	29%	14%	28%	24%	19%	19%	20%	
Rank	95	85	20	25	15	80	5	10	35	35	20	25	30	30

LOT 23	CRATHES LILY H50 (UNJOINED)		TCPH50
	DOB: 24/05/2012	HPS: POLLED	ROAN
CALF AT FOOT	R23 - 28/05/2020	BULL	RED
	SIRE: DNA RESULTS PENDING		

RJJW106 (HBR)(P) RONELLE PARK WYATT EARP

Sire: GLSA114 (HBR)(P) SPRYS ADVANCER A114
GLSFX1117 (SFA)(P) SPRYS WP X1117

MCDW046 (HBR)(P) DUNBEACON WAGMAN

Dam: GLSZ141 (HBR)(P) SPRYS WAGMANS LILY Z141
98X03268 (HBR)(P) SPRYS R C LILY T92

	CE-D	BW	VWT	YWT	MILK	MCE	MWWT	STAY	CWT	REA	FAT	MARB	YG	\$INDEX
EPD	4.5	3.1	49.7	70.4	22.4	2.5	47.3	13.3	-11	0.03	-0.092	0	-0.32	101.03
Acc	18%	46%	32%	32%	28%	17%	29%	14%	27%	25%	16%	19%	20%	
Rank	95	75	95	95	10	95	55	40	80	75	65	45	85	85

LOT 24	CRATHES COUNTESS H17 (UNJOINED)		TCPH17
	DOB: 18/04/2012	HPS: POLLED	RED
CALF AT FOOT	R58 - 4/04/2020	HEIFER	RED
	SIRE: DNA RESULTS PENDING		

GLSZ076 (HBR)(P) SPRYS LEGEND Z076

Sire: TCPD45 (HBR)(P) CRATHES DENON
IPVW07 (HBR)(P) MARS ENIA W7

GLSB174 (HBR)(P) SPRYS TLC DYNAMIC B174

Dam: TCPD19 (HBR)(P) CRATHES COUNTESS
GLSB037 (HBR)(P) SPRYS ZOOS COUNTESS B037

	CE-D	BW	VWT	YWT	MILK	MCE	MWWT	STAY	CWT	REA	FAT	MARB	YG	\$INDEX
EPD	6.3	3.2	67	94.6	10.3	4.4	43.8	12.2	1.5	0.13	-0.089	0.13	-0.29	114.77
Acc	17%	44%	30%	28%	24%	13%	26%	14%	24%	23%	15%	18%	18%	
Rank	70	75	20	30	100	75	85	55	20	40	45	4	30	30

LOT 25	CRATHES QUEEN K18 (UNJOINED)		TCPK18
	DOB: 6/05/2014	HPS: POLLED	RED
CALF AT FOOT	R61 - 13/05/2020	HEIFER	ROAN
	SIRE: DNA RESULTS PENDING		

GLSZ076 (HBR)(P) SPRYS LEGEND Z076

Sire: TCPD45 (HBR)(P) CRATHES DENON

IPVW07 (HBR)(P) MARS ENIA W7

TCPA24 (HBR)(P) CRATHES ALYDAR

Dam: TCPF19 (HBR)(P) CRATHES QUEEN F19

TCPB6 (HBR)(P) CRATHES PARK QUEEN 2ND

	CE-D	BW	WWT	YWT	MILK	MCE	MWWT	STAY	CWT	REA	FAT	MARB	YG	\$INDEX
EPD	8.1	1.9	62.8	95	10.8	6.7	42.2	19.7	-0.8	0.13	-0.085	0.17	-0.29	136.08
Acc	17%	44%	31%	30%	24%	16%	26%	15%	25%	23%	16%	19%	19%	
Rank	40	40	35	30	100	30	90	1	25	40	30	2	1	1

LOT 26	CRATHES PORTIA J7 (UNJOINED)		TCPJ7
	DOB: 9/05/2013	HPS: POLLED	RED LITTLE WHITE
CALF AT FOOT	R56 - 2/05/2020	HEIFER	RED LITTLE WHITE
	SIRE: DNA RESULTS PENDING		

TCPD45 (HBR)(P) CRATHES DENON

Sire: TCPG49 (HBR)(P) CRATHES GALWAY

TCPD11 (HBR)(P) CRATHES ENIA 6TH

GLSA114 (HBR)(P) SPRYS ADVANCER A114

Dam: TCPG15 (HBR)(P) CRATHES PORTIA G15

BP4X13 (HBR)(P) TREVINO PORTIA 59TH

	CE-D	BW	WWT	YWT	MILK	MCE	MWWT	STAY	CWT	REA	FAT	MARB	YG	\$INDEX
EPD	5.4	3.1	65	92.6	11.2	2.5	43.7	18.4	-2.6	0.12	-0.089	0.04	-0.31	120.85
Acc	18%	42%	27%	26%	21%	15%	23%	11%	25%	23%	17%	17%	19%	
Rank	85	75	25	35	100	95	85	2	35	45	45	25	15	15

LOT 27	NEEARRA JUDITH 114 (UNJOINED)		M9XA87
	DOB: 27/04/2005	HPS: POLLED	RED LITTLE WHITE
CALF AT FOOT	R34 - 2/06/2020	BULL	RED LITTLE WHITE
	SIRE: DNA RESULTS PENDING		

IMP4023444 (HBR)(P) WAUKARU GOLDSHIP (IMP USA)

Sire: M9XY50 (HBR)(P) NEEARRA BULLION

96/00132 (HBR)(P) NEEARRA JUDITH 45

98X00248 (HBR)(P) NEEARRA WEST AUSSIE

Dam: M9XV52 (HBR)(P) NEEARRA JUDITH 70

95/01162 (HBR)(P) NEEARRA JUDITH 38

	CE-D	BW	WWT	YWT	MILK	MCE	MWWT	STAY	CWT	REA	FAT	MARB	YG	\$INDEX
EPD	3.7	2.4	65.2	96.1	38.2	-0.6	70.8	13.1	9.4	0.32	-0.102	0.01	-0.35	108.31
Acc	27%	52%	42%	43%	39%	23%	40%	16%	33%	28%	20%	20%	23%	
Rank	100	55	25	25	1	100	1	45	5	3	100	35	55	55

LOT 28	CRATHES PLUSH J16 (UNJOINED)		TCPJ16
	DOB: 19/04/2013	HPS: POLLED	RED
CALF AT FOOT	R13 - 2/06/2020	BULL	ROAN
	SIRE: DNA RESULTS PENDING		

RJJW106 (HBR)(P) RONELLE PARK WYATT EARP

Sire: GLSA114 (HBR)(P) SPRYS ADVANCER A114

GLSFX1117 (SFA)(P) SPRYS WP X1117

IPVY11 (HBR)(P) MARS YAHOO

Dam: TCPB9 (HBR)(P) CRATHES PLUSH 5TH

TCPZ1 (HBR)(P) CRATHES PLUSH

	CE-D	BW	WWT	YWT	MILK	MCE	MWWT	STAY	CWT	REA	FAT	MARB	YG	\$INDEX
EPD	6	2.3	56.1	79.1	12.8	4.1	40.9	13.4	-6.7	-0.01	-0.092	-0.06	-0.29	103.95
Acc	15%	42%	28%	27%	24%	13%	25%	10%	24%	22%	16%	18%	18%	
Rank	75	55	70	80	95	80	95	40	55	85	65	75	75	75

LOT 29	CRATHES PORTIA E25 (UNJOINED)		TCPE25
	DOB: 11/03/2009	HPS: POLLED	RED
CALF AT FOOT	R27 - 11/05/2020	BULL	RED LITTLE WHITE
	SIRE: DNA RESULTS PENDING		

RJJW106 (HBR)(P) RONELLE PARK WYATT EARP

Sire: GLSA114 (HBR)(P) SPRYS ADVANCER A114

GLSFX1117 (SFA)(P) SPRYS WP X1117

95X01875 (HBR)(P) BROUGHTON PARK RODEO STAR Q59

Dam: BP4X13 (HBR)(P) TREVINO PORTIA 59TH

BP4V61 (HBR)(P) TREVINO PORTIA 50TH

	CE-D	BW	WWT	YWT	MILK	MCE	MWWT	STAY	CWT	REA	FAT	MARB	YG	\$INDEX
EPD	2.6	3.6	56.8	76.5	20.1	0.9	48.5	16.1	-1	0.07	-0.094	-0.11	-0.3	98.94
Acc	17%	48%	32%	34%	29%	16%	30%	15%	26%	23%	16%	14%	19%	
Rank	100	85	65	85	30	100	45	10	30	60	75	95	90	90

LOT 30	CRATHES PATSY N10 (UNJOINED)		TCPN10
	DOB: 27/04/2017	HPS: POLLED	RED
CALF AT FOOT	R32 - 2/06/2020	BULL	RED LITTLE WHITE
	SIRE: DNA RESULTS PENDING		

TCPD45 (HBR)(P) CRATHES DENON

Sire: TCPH42 (HBR)(P) CRATHES HASTINGS

TCPD11 (HBR)(P) CRATHES ENIA 6TH

TCPA24 (HBR)(P) CRATHES ALYDAR

Dam: TCPE13 (HBR)(P) CRATHES E13

TV4A010 (HBR)(P) NARRALDA PATSY A010

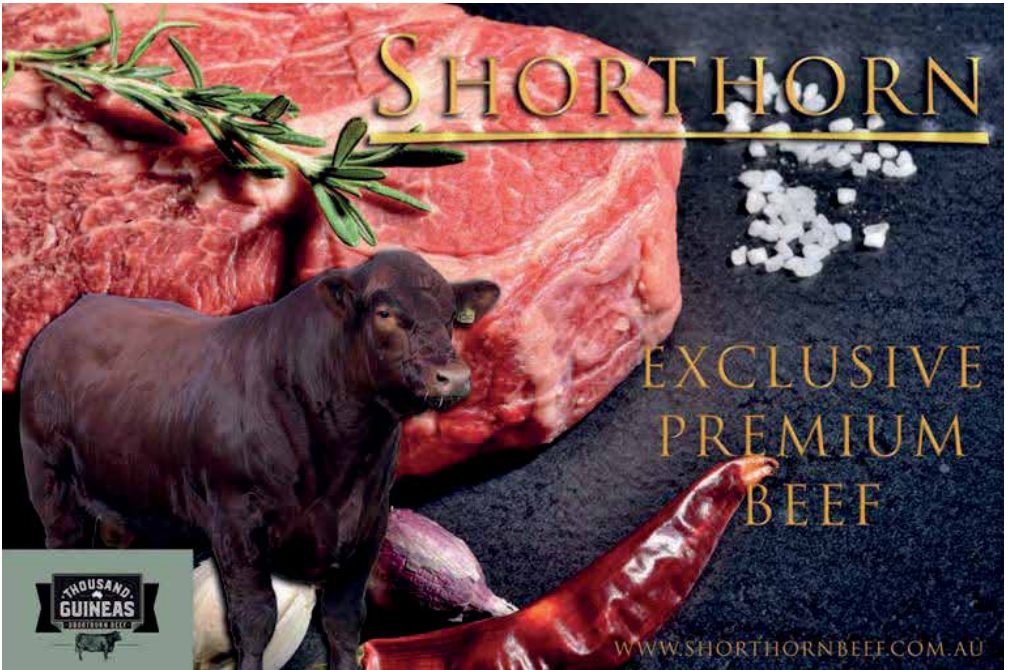
	CE-D	BW	WWT	YWT	MILK	MCE	MWWT	STAY	CWT	REA	FAT	MARB	YG	\$INDEX
EPD	8.3	2.8	49.6	80.2	20.6	6.2	45.4	14.8	-11.4	0.09	-0.087	0.25	-0.33	125.66
Acc	23%	23%	29%	28%	14%	15%	19%	10%	28%	26%	13%	15%	19%	
Rank	40	35	70	65	95	40	95	35	75	50	30	1	40	3

LOT 31	CRATHES QUEEN F19 (UNJOINED)		TCPF19
	DOB: 9/04/2010	HPS: POLLED	RED LITTLE WHITE
CALF AT FOOT	R15 - 7/04/2020	BULL	RED
	SIRE: DNA RESULTS PENDING		

Sire: **TCPA24 (HBR)(P) CRATHES ALYDAR**
 BP4U18 (HBR)(P) TREVINO ULTIMATE 2ND
 M9XX2 (HBR)(P) NEEARRA BRIDESMAID 29

Dam: **TCPB6 (HBR)(P) CRATHES PARK QUEEN 2ND**
 TV4Y35 (HBR)(P) NARRALDA YARDLEY Y35
 KSTY079 (HBR)(P) BROUGHTON PARK QUEEN Y079

	CE-D	BW	VWT	YWT	MILK	MCE	MWWT	STAY	CWT	REA	FAT	MARB	YG	\$INDEX
EPD	6.2	2.7	60.8	94.6	15.4	6.6	45.8	19	-5.1	0.09	-0.082	0.13	-0.29	128.1
Acc	17%	46%	32%	34%	27%	18%	29%	14%	27%	23%	13%	18%	18%	
Rank	75	65	45	30	80	30	70	1	45	55	20	4	4	4



COMMERCIAL COWS & CALVES

UNKNOWN PEDIGREE

LOT 32	CRATHES LC (UNJOINED)		
	DOB: 2 TH	HPS: POLLED	RED
CALF AT FOOT	R19 - 1/06/2020	BULL	RED
	SIRE: DNA RESULTS PENDING		

LOT 33	CRATHES LC5 (UNJOINED)		
	DOB: 2 TH	HPS: POLLED	RED
CALF AT FOOT	R49 - 22/04/2020	HEIFER	RED
	SIRE: DNA RESULTS PENDING		

LOT 34	CRATHES LC16 (UNJOINED)		
	DOB: 4 TH	HPS: POLLED	RED LITTLE WHITE
CALF AT FOOT	R14 - 11/04/2020	BULL	RED LITTLE WHITE
	SIRE: DNA RESULTS PENDING		

LOT 35	CRATHES N27 (UNJOINED)		
	DOB: 2 TH	HPS: POLLED	RED LITTLE WHITE
CALF AT FOOT	R62 - 2/06/2020	HEIFER	RED
	SIRE: DNA RESULTS PENDING		

LOT 36	CRATHES G41 (UNJOINED)		
	DOB: 2 TH	HPS: POLLED	RED LITTLE WHITE
CALF AT FOOT	R11 - 17/05/2020	BULL	ROAN
	SIRE: DNA RESULTS PENDING		

LOT 37	CRATHES LC18 (UNJOINED)		
	DOB: 4 TH	HPS: POLLED	RED
CALF AT FOOT	R41 - 20/05/2020	HEIFER	RED
	SIRE: DNA RESULTS PENDING		

Crathes Park

SHORTHORN STUD

'VASSE', WA

LOTS 38 - 40

UNJOINED HEIFERS

LOT 38**CRATHES LILY Q2**

TCPQ2

DOB: 14/04/2019

HPS: POLLED

ROAN

YY E65 (HBR)(P) YAMBURGAN OSSIE E65
Sire: YY L278 (HBR)(P) YAMBURGAN ANZAC L278
 YY F82 (HBR)(P) YAMBURGAN MAYFLOWER F82

TCPH42 (HBR)(P) CRATHES HASTINGS
Dam: TCPN14 (HBR)(P) CRATHES LILY N14
 TCPH50 (HBR)(P) CRATHES LILY H50

	CE-D	BW	WWT	YWT	MILK	MCE	MWWT	STAY	CWT	REA	FAT	MARB	YG	\$INDEX
EPD	6.8	3.4	55.7	85.0	27.2	5.1	55.1	17.2	-8.5	0.05	-0.082	0.09	-0.29	119.68
Acc	15%	19%	18%	18%	7%	10%	11%	8%	23%	22%	11%	12%	16%	
Rank	65	50	40	50	55	60	45	10	60	65	15	10	80	10

**CRATHES LILY Q2**

LOT 39**CRATHES THELMAS Q4**

TCPQ4

DOB: 10/05/2019

HPS: POLLED

ROAN

TCPH42 (HBR)(P) CRATHES HASTINGS

Sire: TCPL51 (HBR)(P) CRATHES LAING L51

TCPE13 (HBR)(P) CRATHES E13

HT J42 (HBR)(P) BAYVIEW REGAL J42

Dam: TCPM10 (HBR)(P) CRATHES THELMA M10

TCPJ29 (HBR)(P) CRATHES THELMA J29

	CE-D	BW	VVWT	YWT	MILK	MCE	MVWT	STAY	CWT	REA	FAT	MARB	YG	\$INDEX
EPD	8.0	2.5	44.2	68.7	24.3	5.0	46.4	15.3	-13.5	0.00	-0.093	0.11	-0.32	115.90
Acc	13%	13%	16%	16%	7%	8%	10%	8%	24%	23%	11%	12%	17%	
Rank	45	30	90	90	80	65	95	25	85	80	60	5	45	20

**CRATHES THELMAS Q4**

LOT 40**CRATHES ENIA Q23**

TCPQ23

DOB: 15/05/2019

HPS: POLLED

ROAN

TCPH42 (HBR)(P) CRATHES HASTINGS

Sire: TCPL51 (HBR)(P) CRATHES LAING L51

TCPE13 (HBR)(P) CRATHES E13

TCPD45 (HBR)(P) CRATHES DENON

Dam: TCPJ13 (HBR)(P) CRATHES ENIA J13

GLSA028 (HBR)(P) SPRYS WAGMANS ENIA A028

	CE-D	BW	WWT	YWT	MILK	MCE	MWWT	STAY	CWT	REA	FAT	MARB	YG	\$INDEX
EPD	7.9	3.7	54.1	85.4	19	4.3	46.1	14.6	-6.4	0.00	-0.094	0.20	-0.30	121.34
Acc	13%	13%	16%	16%	8%	9%	11%	9%	25%	24%	12%	13%	18%	
Rank	45	60	50	45	100	75	95	35	50	80	65	1	75	10

**CRATHES ENIA Q23**

LOTS 41 - 46

BULLS

STUD SIRES & YOUNG BULLS

LOT 41**CRATHES KIEV K51**

TCPK51

DOB: 16/04/2014

HPS: POLLED

ROAN

GLSA114 (HBR)(P) SPRYS ADVANCER A114

Sire: TCPG56 (HBR)(P) CRATHES GASCON

TV4A010 (HBR)(P) NARRALDA PATSY A010

TV4U29 (HBR)(P) NARRALDA VALID U29

Dam: TCPA5 (HBR)(P) CRATHES PINE ROANY 5TH

98/01001 (HBR)(P) LONE PINE ROANY T35

	CE-D	BW	WWT	YWT	MILK	MCE	MWWT	STAY	CWT	REA	FAT	MARB	YG	\$INDEX
EPD	5.6	4.5	38.0	57.8	28.2	4.1	47.2	13.1	-17.5	0.06	-0.097	-0.03	-0.37	94.16
Acc	16%	22%	37%	33%	11%	15%	20%	7%	28%	25%	18%	16%	21%	
Rank	85	80	100	100	45	80	90	55	95	65	80	50	10	95

LOT 42**CRATHES PACKER P57**

TCPP57

DOB: 20/03/2018

HPS: POLLED

RED

TCPD45 (HBR)(P) CRATHES DENON

Sire: TCPH42 (HBR)(P) CRATHES HASTINGS

TCPD11 (HBR)(P) CRATHES ENIA 6TH

M9XY50 (HBR)(P) NEEARRA BULLION

Dam: M9XA87 (HBR)(P) NEEARRA JUDITH 114

M9XV52 (HBR)(P) NEEARRA JUDITH 70

	CE-D	BW	WWT	YWT	MILK	MCE	MWWT	STAY	CWT	REA	FAT	MARB	YG	\$INDEX
EPD	7.0	2.4	55.7	86	37.4	3.2	65.3	13.4	2.8	0.16	-0.096	0.16	-0.31	118.27
Acc	17%	20%	21%	21%	13%	13%	16%	10%	18%	17%	12%	15%	14%	
Rank	60	30	40	45	1	90	3	55	2	25	75	2	60	15



CRATHES KIEV K51



CRATHES PACKER P57

LOT 43**CRATHES LAING L51**

TCPL51

DOB: 29/06/2015

HPS: POLLED

RED

Sire: **TCPH42 (HBR)(P) CRATHES HASTINGS**
 TCPD45 (HBR)(P) CRATHES DENON
 TCPD11 (HBR)(P) CRATHES ENIA 6TH

Dam: **TCPE13 (HBR)(P) CRATHES E13**
 TCPA24 (HBR)(P) CRATHES ALYDAR
 TV4A010 (HBR)(P) NARRALDA PATSY A010

	CE-D	BW	VWT	YWT	MILK	MCE	MWWT	STAY	CWT	REA	FAT	MARB	YG	\$INDEX
EPD	9.7	2.5	44.9	69.4	20.6	6.9	43.1	15.2	-22.7	-0.04	-0.089	0.34	-0.34	131.13
Acc	43%	40%	46%	46%	13%	20%	24%	22%	45%	44%	35%	38%	35%	
Rank	25	30	90	90	95	30	100	25	100	90	40	1	35	1

**CRATHES LAING L51**

LOT 44**CRATHES E19S HASTINGS Q59**

TCPQ59

DOB: 17/04/2019

HPS: POLLED

ROAN

TCPD45 (HBR)(P) CRATHES DENON

Sire: TCPH42 (HBR)(P) CRATHES HASTINGS

TCPD11 (HBR)(P) CRATHES ENIA 6TH

GLSZ076 (HBR)(P) SPRYS LEGEND Z076

Dam: TCPE19 (HBR)(P) CRATHES MARRINGTON E19

TCPB14 (HBR)(P) CRATHES MARRINGTON 2ND

	CE-D	BW	WWT	YWT	MILK	MCE	MWWT	STAY	CWT	REA	FAT	MARB	YG	\$INDEX
EPD	6.7	3.7	57.1	88.8	27.4	4.8	56.0	15.2	0.7	0.08	-0.086	0.23	-0.27	123.64
Acc	15%	17%	19%	18%	11%	12%	14%	10%	16%	16%	12%	14%	13%	
Rank	65	60	35	35	55	70	40	25	20	55	25	1	90	4

**CRATHES E19S HASTINGS Q59**

LOT 45**CRATHES E21S HASTINGS Q66**

TCPQ66

DOB: 28/03/2019

HPS: POLLED

RED

Sire: **TCPH42 (HBR)(P) CRATHES HASTINGS**
TCPD11 (HBR)(P) CRATHES ENIA 6TH

Dam: **TCPE21 (SAR)(P) CRATHES BERNADETTE E21**
EHSB002 (HBR)(P) EDEN PARK BERNADETTE B002

	CE-D	BW	WWT	YWT	MILK	MCE	MWWT	STAY	CWT	REA	FAT	MARB	YG	\$INDEX
EPD	6.1	4.7	60.9	90.8	26.8	3.6	57.3	13.5	-1.2	0.05	-0.091	0.19	-0.28	115.85
Acc	14%	17%	19%	19%	11%	11%	14%	9%	16%	15%	11%	13%	13%	
Rank	75	80	20	30	60	85	30	50	25	65	45	2	85	20

**CRATHES E21S HASTINGS Q66**

LOT 46**CRATHES E11S HASTINGS Q72**

TCPQ72

DOB: 23/04/2019

HPS: POLLED

RED LITTLE WHITE

Sire: TCPD45 (HBR)(P) CRATHES DENON
TCPH42 (HBR)(P) CRATHES HASTINGS
TCPD11 (HBR)(P) CRATHES ENIA 6TH

Dam: TCPA24 (HBR)(P) CRATHES ALYDAR
TCPE11 (HBR)(P) CRATHES 3UP E11
M9XA87 (HBR)(P) NEEARRA JUDITH 114

	CE-D	BW	WWT	YWT	MILK	MCE	MWWT	STAY	CWT	REA	FAT	MARB	YG	\$INDEX
EPD	8.0	2.1	52.7	83.3	36.9	5.8	63.3	14.6	1.4	0.14	-0.090	0.20	-0.30	124.13
Acc	16%	19%	20%	20%	11%	11%	14%	10%	16%	16%	12%	14%	13%	
Rank	45	20	55	55	1	50	10	35	15	35	45	1	75	4

**CRATHES E11S HASTINGS Q72**



IN MEMORY

Phillip Burnett

1949 – 2020

Crathes Park
SHORTHORN STUD 'VASSE', WA



www.shorthornbeef.com.au



For further enquiries please contact
Clint Gartrell 0438 953 362 or Deane Allen, Elders 0427 421 306