

BRIDGEWATER  
PERFORMANCE +  
ANGUS



**ANNUAL BULL SALE**  
**THURSDAY AUGUST 6<sup>TH</sup> 2020, 1PM**  
ON PROPERTY "MYOLA" BLACK MOUNTAIN  
**OPEN DAY: TUESDAY 28<sup>TH</sup> JULY, 10AM - 3PM**





**LOT 1 P1 - A CLUNIE RANGE LEGEND L348 <sup>PV</sup> SON**



**LOT 2 P3 - A AYRVALE GENERAL G18 <sup>PV</sup> SON**



**LOT 4 P5 - A BOONAROO GRAVITY G013 <sup>PV</sup> SON**




**LOT 7 P11 - A AYRVALE GENERAL G18 <sup>PV</sup> SON**



**LOT 8 P12 - A V A R DISCOVERY 2240 <sup>PV</sup> SON**



 @bridgewaterangus

 @bridgewaterangus



BRIDGEWATER  
PERFORMANCE +  
ANGUS



## ANNUAL BULL SALE

On Property "Myola"  
278 Toms Gully Road Black Mountain

**THURSDAY 6<sup>TH</sup> AUGUST 2020  
COMMENCING AT 1PM**

OPEN DAY  
Tuesday 28th July, 10am - 3pm

**Offering  
40 SIRE ASSURED BULLS**



**FOR FURTHER PARTICULARS PLEASE CONTACT**

Roger Flower 0407 958 224

James Flower 0448 816 778

Email: [roger@bridgewaterangus.com.au](mailto:roger@bridgewaterangus.com.au)

**Selling Agents: Davidson Cameron Co Guyra**

Nick Rogers 0429 382 108

John Pearson 0428 255 994

 AuctionsPlus

The sale will also be interfaced with  
AUCTIONS PLUS

Auctions Plus Sydney - 02 9262 4222

[www.auctionsplus.com.au](http://www.auctionsplus.com.au)

 **Davidson Cameron & Co**  
A NUTRIEN AG SOLUTIONS PARTNER

# WELCOME TO BRIDGEWATER'S THIRD ON PROPERTY BULL SALE

Eighteen months of rewriting the history books and like many of you we have experienced the worst drought since European settlement. I often wonder how it compared to the Federation drought which forced my great grandfather Frederick to leave the Bega district in 1905 after prolonged drought and a rabbit plague to venture to the green hills of Bangalow NSW.

In May 2018 we made the hard decision to feed all our cattle and little did we know then that we would be committed to doing so for the next 18 months. In March 2019 our son James came home to Myola to help us through this period becoming a 5th generation farmer. He took over the daily feeding of our herd and has proven himself to be a great asset to our operation. Thankfully we have come out the other side albeit at a great cost. Our spirits have lifted and our country and livestock have bounced back remarkably well. The drought was an opportunity to reassess our stud females and after looking closely at phenotype and EBVs we made the decision to move a number of them to our commercial operation. We currently have 171 registered females of which 96 are Wattletop bloodlines and 20 Ayrvale bloodlines.

On the 6 August we will offer a good quality lineup of 40 Bulls, who have come through this period remarkably well. Their sires include Var Discovery, Millah Murrah Loch Up, Ayrvale General, Bald Blair General, Boonaroo Gravity, Clunie Range Legend, Te Mania Emperor, Gates All In, Bridgewater Genesis, Clunes Crossing Dusty and Granite Ridge Kaiser. They are all high indexing bulls, with an emphasis on feed efficiency. All bulls have been Sire verified so buyers can be confident that what you see is what you get. They are free from all recessive genes and genomics have been carried out on each one. Semen testing and scrotal measurements have been carried out by Peter Brown from Bovine Breeders. All bulls have been tested pestivirus free. 12 of the bulls on offer are suitable for heifers.

We sold all our early weaned EU steers on Auctions Plus back in May and were very pleased with the result of over \$6/kg. All the steers went to the same buyer in Qld. We will be offering around

100 yearling EU heifers on Auctions Plus towards the end of August just in time to join.

We have just sent off Tissue samples from our Q bulls for DNA and genomics and are very pleased with how they are shaping up despite a very ordinary start to life and an early weaning in 2019. The standouts are the calves by Clunes Crossing Dusty M13, Rennylea L508, Wattletop L78, Booragul General N5 and Lawsons Magnificent M638. We look forward to showcasing these guys in our fourth on property sale in 2021.

## REBATE

2% rebate to agents introducing clients 24 hours prior to sale and settling their account under Davidson Cameron Co trading terms.

## SALE LOCATION

Bridgewater Angus is situated 6 Km in off the New England Highway 30 Km north of Armidale and 12 Km south of Guyra at 278 Toms Gully Road, Black Mountain. If travelling north turn left at the BP Black Mountain Road House into Black Mountain Road proceed through the village of Black Mountain and across the old railway line which becomes Toms Gully Road. Myola is situated 2.8 Km on the right (stone entrance).

## METHOD OF SELLING

The sale will be conducted under open auction in conjunction with Auctions Plus. Prices for lots sold will be GST EXCLUSIVE at the fall of the hammer and 10% GST will be added to the sales invoice. Please remember if you not already registered with Auctions Plus you must do so at least 24 hours prior to the Sale.

## INSPECTION

The bulls can be inspected on Tuesday 28th July between 10am and 3pm and at any other time by contacting Roger Flower 0407 958 224, OR Nick Rogers Davidson Cameron & Co Guyra 0429 382 108.





On the morning of the sale the bulls will be penned and ready for inspection from 10am.

## COVID 19

Under current COVID 19 guidelines and with the safety of the community utmost in our minds every person attending our sale or inspecting the bulls prior to our sale date will be asked to register on arrival recording their name, address, telephone number and email address. Hand sanitiser and hand washing facilities will be provided.

## REFRESHMENTS

Morning tea and a BBQ lunch will be provided on sale day.

## INSURANCE

It is our recommendation that insurance is taken out for all purchases. Achmea insurance will be in attendance on Sale day.

## HEALTH

All bulls have been ear notched tested free of pestivirus. They have a full vaccination history since birth and have most recently been given a Zoetis 7 in 1, 2 doses of Vibrovax, a Multimin and drenched with Dectomax. AM,NH,CC,CA AND DD status is shown in each lot heading. All Bulls have been semen tested by Peter Brown from Bovine Breeders. The bulls are all AM, NH,CC,CA AND DD FREE.

The Bridgewater Angus Herd has a J-BAS score of 7 and is fully EU accredited.

## NUTRITION

Thank fully this year the bulls have been predominantly pasture fed with a small ration being introduced in the last month of 18% protein pellets and vetch hay.

## DNA PARENT VERIFICATION

Buyers can feel confident about the pedigree of the bulls in this Bridgewater Sale, as the bulls have been verified to their sires.

The suffix displayed at the end of each animal's name indicates the DNA parentage verification that has been conducted by Angus Australia.

PV: both parents have been verified by DNA

SV: the sire has been verified by DNA

DV: the dam has been verified by DNA

#: DNA verification has not been conducted

E: DNA verification has identified that the sire and/or dam may possibly be incorrect, but this cannot be confirmed conclusively

*All the bulls have all had genomic and DNA testing done through Neogen Australia.*

## NLIS AND ANGUS SOCIETY TRANSFERS

Bridgewater Angus will provide complimentary NLIS transfers (please ensure your PIC No is recorded on the Buyers Registration form). Please also indicate if you would like the registration of your bull transferred to you from the Angus Society.

## GUARANTEE

Bridgewater Angus guarantees the structural soundness and fertility of their sale bulls. Should a bull prove to be infertile or be unable to serve naturally for reasons other than injury, misadventure or negligence for a period of 6 months from the sale date, we will replace the bull if possible or provide a credit less the salvage value to purchase another bull at a future Bridgewater Sale.

## SAFETY

We select animals with traits of good temperament and ease of handling. However, all animals can be unpredictable, particularly if stressed. Visitors enter pens at their own risk.

- CHILDREN ARE NOT PERMITTED IN PENS
- Do not overcrowd the pens
- Keep movement and noise to a minimum
- Be aware of your surroundings

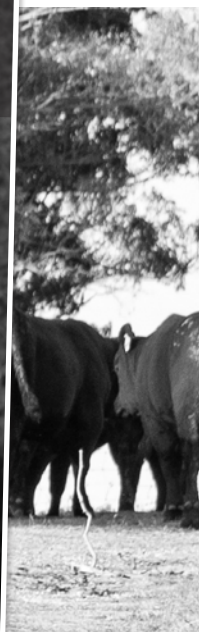
## DISCLAIMER

Every care has been taken in the compilation of this catalogue to ensure the accuracy of information supplied. However, no responsibility will be accepted for any errors which may have occurred.



We look forward to welcoming you to our open day,  
Tuesday 28th July and to our third on property Bull Sale.

*Roger, GERALYN, James and Charlie*





# SUMMARY OF ANGUS EBVS & \$ INDEX VALUES

The following is a brief description of EBVs and \$ Index values and Accuracies.

**Accuracy (%)** – Provides an indication of the reliability of an EBV. As more performance information becomes available on an animal (or it's progeny, or relatives) then the accuracy of it's EBVs for particular traits will increase. See Understanding Accuracies for a more detailed explanation.

**Calving Ease DIR (%)** – Estimates of the genetic differences between animals in the ability of their calves from 2 year old heifers to be delivered without assistance.

**Calving Ease DTRS (%)** – Estimates of the genetic differences between animals in the ability of their 2 year old daughters to calve without assistance.

**Gestation Length (Days)** – Estimates of the genetic differences between animals in the number of days from the date of conception to the calf birth date.

**Birth Wt (kg)** – Estimates of the genetic differences between animals in calf birth weight.

**200-Day Wt (kg)** – Estimates of the genetic differences between animals in liveweight at 200 days of age.

**400-Day Wt (kg)** – Estimates of the genetic differences between animals in liveweight at 400 days of age.

**600-Day Wt (kg)** – Estimates of the genetic differences between animals in liveweight at 600 days of age.

**Mature Cow Weight (kg)** – Estimates of the genetic differences between animals in cow weight at 5 years of age.

**Milk (kg)** – Estimates of the genetic differences between animals in milk production, expressed as variation in 200-day weight of daughter's calves.

**Scrotal Size (cm)** – Estimates of the genetic differences between animals in scrotal circumference at 400 days of age.

**Days to Calving** – Estimates of the genetic differences in female fertility, expressed as the number of days

from the start of the joining period until calving.

**Carcase Weight (kg)** – Estimates of the genetic differences between animals in carcase weight, adjusted to 650 days of age.

**Eye Muscle Area (cm<sup>2</sup>)** – Estimates of the genetic differences between animals in eye muscle area at the 12/13th rib site, in a 300kg carcase.

**Rib Fat (mm)** – Estimates of the genetic differences between animals in fat depth at the 12/13th rib site, in a 300 kg carcase.

**Rump Fat (mm)** – Estimates of the genetic differences between animals in fat depth at the P8 rump site, in a 300kg carcase.

**Retail Beef Yield % (RBY%)** – Estimates of the genetic differences between animals in percentage retail beef yield, in a 300kg carcase.

**Intra-Muscular Fat % (IMF%)** – Estimates of the genetic differences between animals in percentage intra-muscular fat (marbling) at the 12/13th rib site, in a 300 kg carcase.

**Trial Net Feed Intake (NFI)** – Estimates of the genetic differences in feed intake for animals adjusted to the same growth rate and weight base. Following a review last year a whole suite of new Selection Indexes were introduced with the December 2014 Group Breedplan run. The objective with the new Indexes was to bring them into line with the changes in cattle markets over time.

**Angus Breeding Index** – Estimates the genetic differences between animals in net profitability per cow joined in a typical commercial self replacing herd using Angus bulls. This selection index is not specific to a particular production system or market end-point, but identifies animals that will improve overall profitability in the majority of commercial grass and grain finishing beef production systems. The Angus Breeding Index is particularly suited to commercial producers who

sell progeny into different markets, or to seedstock producers supplying bulls to commercial clients who produce for a range of different production systems and market end points.

**Domestic Index** – Estimates the genetic differences between animals in net profitability per cow joined in a commercial self replacing herd targeting the domestic supermarket trade. Steers are assumed to be finished using either grass, grass supplemented by grain or grain (eg. 50 – 70 days) with steers slaughtered at 490 kg live weight (270 kg carcase weight with 12 mm P8 fat depth) at 16 months of age. Daughters are retained for breeding and therefore maternal traits are of importance. Emphasis has been placed on eating quality and tenderness to favour animals that are suited to MSA requirements.

**Heavy Grain Index** – Estimates the genetic differences between animals in net profitability per cow joined in a commercial self replacing herd targeting pasture grown steers with a 200 day feedlot finishing period for the grain fed, high quality, highly marbled markets. Steers are assumed to be slaughtered at 760 kg live weight (420 kg carcase weight with 30 mm P8 fat depth) at 24 months of age. Daughters are retained for breeding and therefore maternal traits are of importance. There is a significant premium for steers that exhibit superior marbling.

**Heavy Grass Index** – Estimates the genetic differences between animals in net profitability per cow joined in a commercial self replacing herd targeting pasture finished steers.

Steers are assumed to be slaughtered at 620 kg live weight (340 kg carcase weight with 12 mm P8 fat depth) at 22 months of age. Daughters are retained for breeding and therefore maternal traits are of importance. Emphasis has been placed on eating quality and tenderness to favour animals that are suited to MSA requirements.



**JOSH LAWLOR**  
Branch Manager  
Guyra

*We do ...*

- Rural Merchandise
- Animal Health
- Fertiliser
- Agronomy
- Gas
- Water
- Insurance
- Finance

**Nutrien**  
Ag Solutions®

*Proudly supporting  
Bridgewater Angus Bull sale  
2020*



# BRIDGEWATER ANGUS 2020 BULL SUMMARY

## Mid June 2020 TransTasman Angus Cattle Evaluation EBVs ■ Top 10%

Lot	ID	CED	CEM	GL	BW	200	400	600	MCW	Milk	SS	DC	CWT	EMA	Rib	Rump	RBY	IMF	NFI-F	Doc	ABI	DOM	GRN	GRS
1	BONP001	+5.4	+11.1	-8.9	+3.8	+52	+89	+110	+102	+10	+2.8	-8.8	+62	+3.8	+2.2	+1.5	-0.6	+1.8	+0.22	-	\$129	\$120	\$134	\$124
2	BONP003	-1.3	-1.7	-6.1	+4.6	+54	+97	+126	+99	+25	+1.7	-4.9	+80	+9.2	-1.5	-1.9	+0.7	+3.3	+0.34	-	\$138	\$121	\$159	\$127
3	BONP004	-11.6	-1.0	-4.7	+8.1	+62	+102	+135	+121	+11	+3.9	-7.3	+76	+4.4	+0.1	-1.5	+0.1	+2.8	+0.15	-	\$125	\$108	\$145	\$115
4	BONP005	+0.0	+2.9	-3.8	+5.2	+59	+104	+143	+133	+27	+4.2	-3.5	+82	+7.5	-3.7	-3.8	+1.6	+3.0	-0.63	-	\$143	\$124	\$168	\$132
5	BONP007	+1.6	-3.0	-2.8	+4.2	+51	+91	+123	+95	+20	+3.1	-6.9	+75	+4.0	+0.4	+0.0	-0.2	+2.1	+0.41	-	\$127	\$112	\$136	\$122
6	BONP008	+2.3	-0.5	-8.1	+3.9	+57	+112	+142	+124	+25	+1.5	-6.1	+82	+1.4	-1.2	-1.7	+0.0	+2.8	-0.12	-	\$143	\$127	\$165	\$132
7	BONP011	+2.3	-9.8	-4.3	+4.5	+55	+98	+126	+121	+20	+4.7	-8.8	+72	+10.9	-1.1	-0.2	+1.0	+2.8	+0.51	-	\$149	\$127	\$171	\$136
8	BONP012	+4.6	+4.7	-8.3	+1.9	+47	+93	+116	+103	+20	+2.6	-2.2	+70	+6.9	-1.8	-4.2	+1.8	+2.0	+0.08	-	\$120	\$120	\$131	\$116
9	BONP015	+3.6	-2.6	-6.5	+3.3	+64	+117	+144	+125	+19	+2.3	-4.1	+85	+7.9	-0.3	-0.9	+0.9	+2.6	+0.60	-	\$150	\$138	\$167	\$143
10	BONP017	+2.7	-2.9	-4.7	+4.4	+61	+120	+161	+131	+25	+2.2	-3.4	+93	+1.2	-1.3	-0.5	+0.1	+2.1	-0.25	-	\$146	\$127	\$161	\$141
11	BONP018	-1.7	-4.8	-3.8	+5.1	+52	+98	+126	+118	+19	+2.7	-1.5	+70	+7.9	-2.5	-3.1	+2.1	+2.7	-0.12	-	\$125	\$119	\$144	\$118
12	BONP022	-0.4	+2.7	-4.3	+4.0	+52	+99	+120	+109	+17	+2.4	-6.5	+62	+0.2	-0.4	+0.1	-0.4	+3.0	+0.01	-	\$129	\$120	\$147	\$119
13	BONP026	-4.6	-3.1	-1.6	+4.6	+58	+113	+138	+111	+24	+4.0	-6.2	+74	+3.7	-2.4	-2.2	+0.8	+3.2	+0.48	-	\$143	\$129	\$168	\$130
14	BONP028	+1.2	+1.6	+0.0	+2.9	+57	+113	+142	+131	+24	+3.3	-4.0	+83	+2.9	-2.2	-3.0	+0.7	+3.5	+0.14	-	\$146	\$132	\$176	\$133
15	BONP030	-3.3	-8.0	-4.5	+5.8	+55	+90	+115	+97	+20	+2.9	-6.7	+64	+11.4	-2.2	-2.3	+2.5	+2.3	-0.27	-	\$132	\$121	\$146	\$123
16	BONP036	-12.3	-5.0	-5.5	+10.9	+65	+113	+157	+161	+18	+2.9	-6.0	+92	-0.2	-1.4	-1.1	+0.5	+1.6	-0.07	-	\$119	\$100	\$134	\$112
17	BONP045	+1.7	-0.6	-8.1	+4.1	+61	+116	+150	+138	+20	+3.9	-5.1	+87	+4.1	-1.3	-2.7	+0.6	+2.8	+0.14	-	\$149	\$131	\$174	\$138
18	BONP047	+6.8	+7.5	-8.8	+4.5	+49	+82	+103	+84	+13	+0.7	-3.9	+57	+3.4	-1.0	-1.5	+0.0	+2.4	+0.02	-	\$111	\$111	\$118	\$108
19	BONP049	+3.5	+5.0	-6.1	+4.9	+62	+119	+158	+136	+20	+4.0	-0.8	+88	+8.6	-3.8	-5.7	+3.1	+2.4	+0.32	-	\$159	\$144	\$185	\$150
20	BONP057	-5.5	+0.2	-3.7	+5.4	+70	+124	+155	+139	+21	+3.6	-4.2	+88	+3.3	-1.6	-2.5	+0.8	+3.0	+0.22	-	\$143	\$131	\$166	\$133
21	BONP058	-4.2	+1.3	-5.2	+4.4	+63	+111	+139	+123	+18	+2.3	-2.3	+84	+8.2	-1.7	-4.6	+2.2	+2.5	+0.27	-	\$133	\$128	\$151	\$127
22	BONP059	+5.4	+8.0	-5.9	+4.2	+50	+87	+117	+103	+12	+1.3	-1.1	+66	+4.8	-0.3	-0.6	+0.9	+1.0	-0.01	-	\$109	\$110	\$104	\$114
23	BONP065	+4.8	+1.8	-4.2	+5.1	+49	+88	+113	+80	+21	+2.5	-2.9	+62	+6.1	+1.3	+0.6	+0.4	+1.2	-0.02	-	\$110	\$111	\$104	\$114
24	BONP068	+6.7	+6.6	-5.5	+3.1	+51	+93	+113	+101	+12	+1.3	-3.4	+65	+8.0	+1.2	-0.7	+0.8	+2.2	-0.01	-	\$128	\$125	\$136	\$125
25	BONP072	+1.4	+3.8	-2.2	+3.4	+48	+90	+108	+91	+20	+1.7	-4.0	+64	+5.6	+0.8	+0.5	-0.1	+2.9	+0.70	-	\$120	\$117	\$131	\$115
26	BONP075	-9.8	-9.6	-6.4	+7.0	+60	+113	+146	+143	+15	+3.3	-0.6	+82	+3.5	-2.8	-3.1	+2.4	+0.7	-0.09	-	\$104	\$106	\$106	\$106
27	BONP080	+0.8	+0.7	-3.3	+4.3	+58	+113	+137	+119	+19	+2.8	-4.7	+77	+5.1	+1.8	+0.7	-0.6	+3.2	+0.73	-	\$143	\$130	\$162	\$134
28	BONP081	-9.9	-3.9	-3.3	+5.8	+64	+114	+144	+144	+16	+4.5	-2.6	+79	+5.7	+0.1	-1.5	+1.3	+2.4	+0.31	-	\$123	\$116	\$137	\$117
29	BONP086	+10.2	+4.9	-2.8	-0.2	+48	+98	+121	+87	+24	+2.6	-3.3	+75	+7.6	-0.3	-2.1	+0.6	+2.9	+0.55	-	\$136	\$129	\$152	\$130
30	BONP095	+2.2	+2.0	-3.2	+5.0	+48	+82	+102	+82	+12	+2.2	-1.8	+55	+7.8	-0.5	-0.7	+0.7	+2.1	-0.42	-	\$106	\$109	\$108	\$107
31	BONP096	-2.6	+0.6	-1.2	+6.9	+59	+98	+117	+87	+16	+3.5	-4.6	+66	+5.5	-0.3	-0.7	+0.9	+1.7	-0.08	-	\$115	\$117	\$116	\$114
32	BONP098	-1.9	+5.9	-3.2	+6.4	+50	+94	+121	+120	+10	+1.5	-2.8	+72	+5.7	-0.4	-2.4	+1.1	+1.7	+0.11	-	\$114	\$111	\$124	\$112
33	BONP104	-6.6	+1.6	-0.8	+6.5	+69	+124	+159	+158	+13	+1.7	-4.6	+89	+4.2	-0.3	-1.8	+0.2	+2.5	+0.21	-	\$141	\$125	\$161	\$132
34	BONP106	+0.4	+3.6	+2.9	+5.1	+58	+105	+129	+128	+7	+3.1	-3.0	+70	+12.6	-1.3	-2.6	+3.5	+1.3	+0.09	-	\$143	\$139	\$153	\$138
35	BONP107	+5.3	+7.9	-3.8	+2.7	+50	+89	+112	+98	+15	+2.0	-2.9	+66	+7.3	+0.0	-2.6	+2.1	+1.1	+0.16	-	\$118	\$121	\$118	\$119
36	BONP114	+1.3	+3.1	-2.8	+4.9	+54	+107	+149	+131	+22	+1.7	-3.0	+87	+4.7	-0.1	-1.4	+0.3	+2.4	+0.01	-	\$142	\$121	\$160	\$135
37	BONP120	-1.6	+5.3	-4.6	+4.5	+60	+104	+127	+99	+17	+1.8	-2.8	+78	+13.1	+0.4	-0.8	+2.4	+1.3	+0.18	-	\$135	\$133	\$135	\$135
38	BONP127	+8.1	+5.1	-9.5	+3.0	+58	+102	+144	+140	+14	+3.3	-3.8	+88	+4.1	+0.0	-0.8	+1.0	+1.2	-0.15	-	\$137	\$121	\$143	\$135
39	BONQ003	+8.0	+4.3	-7.2	+4.0	+52	+88	+120	+104	+19	+1.7	-7.3	+70	+8.4	+0.1	-0.7	+0.9	+2.1	-0.01	-	\$141	\$123	\$154	\$133
40	BONQ007	+1.7	+1.5	-6.6	+5.0	+60	+100	+131	+100	+21	+1.6	-9.2	+77	+8.7	-0.1	-0.9	+1.1	+2.8	+0.22	-	\$161	\$136	\$182	\$147

TACE		CED	CEM	GL	BW	200	400	600	MCW	Milk	SS	DC	CWT	EMA	Rib	Rump	RBY	IMF	NFI-F	Doc	ABI	DOM	GRN	GRS
TransTasman Angus Cattle Evaluation		+1.8	+2.3	-4.4	+4.3	+48	+86	+112	+98	+17	+1.9	-4.8	+64	+5.7	-0.1	-0.4	+0.5	+2.0	+0.18	+5	+118	+110	+124	+114



1

**BRIDGEWATER LEGEND P001 SV**

**HBR**

DOB: 01/07/2018

Society Ident: BONP001

Genetic Status: AMFU,CAFU,DDFU,NHFU

MATAURI REALITY 839 #

SCHURRTOP REALITY X723 #  
MATAURI 06663 #

WATTLETOP FRANKLIN G188 K252 SV  
WATTLETOP FRANKLIN G188 SV  
WATTLETOP DANDLOO E252 #

**CLUNIE RANGE LEGEND L348 PV**

**WATTLETOP GILDA M446 #**

ABERDEEN ESTATE LAURA J81 PV

CONNEALY EARNAN 076E PV  
TUWHARETOA E111 PV

WATTLETOP GILDA H229 #

TE MANIA AFRICA A217 PV  
WATTLETOP GILDA C61 #

Angus	Mid June 2020 TransTasman Angus Cattle Evaluation								
	CALVING EASE			BIRTH			GROWTH		
	Direct	Dtrs	Gest. Lgth	Birth Wt.	200 Wt.	400 Wt.	600 Wt.	MCW	Milk
<b>EBV</b>	<b>+5.4</b>	<b>+11.1</b>	<b>-8.9</b>	<b>+3.8</b>	<b>+52</b>	<b>+89</b>	<b>+110</b>	<b>+102</b>	<b>+10</b>
Acc	58%	48%	68%	73%	70%	71%	73%	65%	57%
FERTILITY			CARCASE				OTHER		
Scrotal	D to Calv.	Carc. W.	EMA	Rib Fat	Rump Fat	RBV%	IMF%	NFI-F	Doc
<b>+2.8</b>	<b>-8.8</b>	<b>+62</b>	<b>+3.8</b>	<b>+2.2</b>	<b>+1.5</b>	<b>-0.6</b>	<b>+1.8</b>	<b>+0.22</b>	-
64%	40%	64%	62%	66%	63%	63%	61%	54%	-

Traits Observed: CE,BWT,200WT,400WT,600WT,Genomics

Moderate framed Legend Son, suitable for heifers. Great pedigree, Legend X G188

Purchaser: \_\_\_\_\_ \$: \_\_\_\_\_

INDEX VALUES			
Angus Breeding	Domestic	Heavy Grain	Heavy Grass
<b>\$129</b>	<b>\$120</b>	<b>\$134</b>	<b>\$124</b>

2

**BRIDGEWATER GENERAL P003 SV**

**APR**

DOB: 03/07/2018

Society Ident: BONP003

Genetic Status: AMFU,CAFU,DDFU,NHFU

TE MANIA BERKLEY B1 SV

TE MANIA YORKSHIRE Y437 PV  
TE MANIA LOWAN Z53 #

CONNEALY REVENUE 7392 #

RITO REVENUE 5M2 OF 2536 PRE #  
EBONISHA OF CONGANGA 1842 #

**AYRVALE GENERAL G18 PV**

**WATTLETOP M167 #**

AYRVALE EASE E3 PV

TE MANIA BARTEL B219 PV  
EAGLEHAWK JEDDA B32 SV

WATTLETOP F114 #

WATTLETOP ZOOMER Z171 SV  
WATTLETOP BARUNAH C183 #

Angus	Mid June 2020 TransTasman Angus Cattle Evaluation								
	CALVING EASE			BIRTH			GROWTH		
	Direct	Dtrs	Gest. Lgth	Birth Wt.	200 Wt.	400 Wt.	600 Wt.	MCW	Milk
<b>EBV</b>	<b>-1.3</b>	<b>-1.7</b>	<b>-6.1</b>	<b>+4.6</b>	<b>+54</b>	<b>+97</b>	<b>+126</b>	<b>+99</b>	<b>+25</b>
Acc	61%	53%	71%	73%	70%	71%	74%	68%	64%
FERTILITY			CARCASE				OTHER		
Scrotal	D to Calv.	Carc. W.	EMA	Rib Fat	Rump Fat	RBV%	IMF%	NFI-F	Doc
<b>+1.7</b>	<b>-4.9</b>	<b>+80</b>	<b>+9.2</b>	<b>-1.5</b>	<b>-1.9</b>	<b>+0.7</b>	<b>+3.3</b>	<b>+0.34</b>	-
64%	45%	65%	62%	66%	64%	64%	63%	54%	-

Traits Observed: CE,BWT,200WT,400WT,600WT,Genomics

Ayrvale General Son out of a Wattletop Connealy Revenue cow, used as a back up bull with the stud

Purchaser: \_\_\_\_\_ \$: \_\_\_\_\_

INDEX VALUES			
Angus Breeding	Domestic	Heavy Grain	Heavy Grass
<b>\$138</b>	<b>\$121</b>	<b>\$159</b>	<b>\$127</b>

3

**BRIDGEWATER LEGEND P004 SV**

**HBR**

DOB: 04/07/2018

Society Ident: BONP004

Genetic Status: AMFU,CAFU,DDFU,NHFU

MATAURI REALITY 839 #

SCHURRTOP REALITY X723 #  
MATAURI 06663 #

OUR FARM J102 SV

TUWHARETOA REGENT D145 PV  
RENNYLEA D307 PV

**CLUNIE RANGE LEGEND L348 PV**

**WATTLETOP BARUNAH M344 #**

ABERDEEN ESTATE LAURA J81 PV

CONNEALY EARNAN 076E PV  
TUWHARETOA E111 PV

WATTLETOP J417 #

WATTLETOP AFRICA G130 SV  
WATTLETOP BARUNAH E276 #

Angus	Mid June 2020 TransTasman Angus Cattle Evaluation								
	CALVING EASE			BIRTH			GROWTH		
	Direct	Dtrs	Gest. Lgth	Birth Wt.	200 Wt.	400 Wt.	600 Wt.	MCW	Milk
<b>EBV</b>	<b>-11.6</b>	<b>-1.0</b>	<b>-4.7</b>	<b>+8.1</b>	<b>+62</b>	<b>+102</b>	<b>+135</b>	<b>+121</b>	<b>+11</b>
Acc	59%	48%	70%	73%	69%	70%	73%	65%	55%
FERTILITY			CARCASE				OTHER		
Scrotal	D to Calv.	Carc. W.	EMA	Rib Fat	Rump Fat	RBV%	IMF%	NFI-F	Doc
<b>+3.9</b>	<b>-7.3</b>	<b>+76</b>	<b>+4.4</b>	<b>+0.1</b>	<b>-1.5</b>	<b>+0.1</b>	<b>+2.8</b>	<b>+0.15</b>	-
63%	40%	63%	61%	65%	62%	63%	61%	53%	-

Traits Observed: CE,BWT,200WT,400WT,600WT,Genomics

High indexing Clunie Range Legend Son, out of a \$12,000 Wattletop cow. Top 10% for 200, 400 & 600 day weight, scrotal in the top 2%

Purchaser: \_\_\_\_\_ \$: \_\_\_\_\_

INDEX VALUES			
Angus Breeding	Domestic	Heavy Grain	Heavy Grass
<b>\$125</b>	<b>\$108</b>	<b>\$145</b>	<b>\$115</b>



DOB: 05/07/2018

Society Ident: BONP005

Genetic Status: AMFU,CAFU,DDFU,NHFU

TE MANIA AFRICA A217 PV

TE MANIA ULONG U41 SV  
TE MANIA JEDDA Y32 SV

WATTLETOP FRANKLIN G188 K23 SV

WATTLETOP FRANKLIN G188 SV  
WATTLETOP USUAL H77 #

BOONAROO GRAVITY G013 PV

WATTLETOP USUAL M505 #

TE MANIA LOWAN Z618 PV

KENNY'S CREEK SANDY S15 SV  
TE MANIA LOWAN V19 #

WATTLETOP USUAL K346 #

KENNY'S CREEK REGENT G213 SV  
WATTLETOP USUAL E69 #

Angus AUSTRALIA	Mid June 2020 TransTasman Angus Cattle Evaluation								
	CALVING EASE			BIRTH			GROWTH		
	Direct	Dtrs	Gest. Lgth	Birth Wt.	200 Wt.	400 Wt.	600 Wt.	MCW	Milk
<b>EBV</b>	<b>+0.0</b>	<b>+2.9</b>	<b>-3.8</b>	<b>+5.2</b>	<b>+59</b>	<b>+104</b>	<b>+143</b>	<b>+133</b>	<b>+27</b>
Acc	55%	49%	65%	73%	69%	70%	73%	65%	58%
FERTILITY			CARCASE				OTHER		
Scrotal	D to Calv.	Carc. W.	EMA	Rib Fat	Rump Fat	RBY%	IMF%	NFI-F	Doc
<b>+4.2</b>	<b>-3.5</b>	<b>+82</b>	<b>+7.5</b>	<b>-3.7</b>	<b>-3.8</b>	<b>+1.6</b>	<b>+3.0</b>	<b>-0.63</b>	-
62%	43%	63%	61%	66%	63%	62%	61%	54%	-

Traits Observed: CE,BWT,200WT,400WT,600WT,Genomics

Gravity son, displaying high marbling index. From Te Mania Africa bloodline.  
Great feed efficiency, from a Wattletop mother purchased for \$9,000

Purchaser: \_\_\_\_\_ \$: \_\_\_\_\_

INDEX VALUES			
Angus Breeding	Domestic	Heavy Grain	Heavy Grass
<b>\$143</b>	<b>\$124</b>	<b>\$168</b>	<b>\$132</b>

DOB: 06/07/2018

Society Ident: BONP007

Genetic Status: AMFU,CAFU,DDFU,NHFU

AYRVALE GENERAL G18 PV

TE MANIA BERKLEY B1 SV  
AYRVALE EASE E3 PV

WATTLETOP CONVERSION K155 SV

SILVEIRAS CONVERSION 8064 #  
WATTLETOP BARUNAH G316 #

BALD BLAIR GENERAL L67 PV

WATTLETOP USUAL M499 #

BALD BLAIR J285 PV

BALD BLAIR HIGHLANDER C126 PV  
BALD BLAIR Z5 SV

WATTLETOP USUAL F174 #

TE MANIA INFINITY 04 379 AB #  
WATTLETOP USUAL D97 #

Angus AUSTRALIA	Mid June 2020 TransTasman Angus Cattle Evaluation								
	CALVING EASE			BIRTH			GROWTH		
	Direct	Dtrs	Gest. Lgth	Birth Wt.	200 Wt.	400 Wt.	600 Wt.	MCW	Milk
<b>EBV</b>	<b>+1.6</b>	<b>-3.0</b>	<b>-2.8</b>	<b>+4.2</b>	<b>+51</b>	<b>+91</b>	<b>+123</b>	<b>+95</b>	<b>+20</b>
Acc	53%	44%	63%	71%	66%	68%	71%	63%	53%
FERTILITY			CARCASE				OTHER		
Scrotal	D to Calv.	Carc. W.	EMA	Rib Fat	Rump Fat	RBY%	IMF%	NFI-F	Doc
<b>+3.1</b>	<b>-6.9</b>	<b>+75</b>	<b>+4.0</b>	<b>+0.4</b>	<b>+0.0</b>	<b>-0.2</b>	<b>+2.1</b>	<b>+0.41</b>	-
58%	36%	57%	54%	59%	57%	56%	54%	44%	-

Traits Observed: CE,BWT,200WT,400WT,600WT,Genomics

What a great Pedigree, Bald Blair General X Wattletop Conversion. Suitable for heifers.

Purchaser: \_\_\_\_\_ \$: \_\_\_\_\_

INDEX VALUES			
Angus Breeding	Domestic	Heavy Grain	Heavy Grass
<b>\$127</b>	<b>\$112</b>	<b>\$136</b>	<b>\$122</b>

Suitable for Heifers

DOB: 09/07/2018

Society Ident: BONP008

Genetic Status: AMFU,CAFU,DDFU,NHFU

A A R TEN X 7008 S A SV

MYTTY IN FOCUS #  
A A R LADY KELTON 5551 #

BOOROOMOOKA FRANKEL F510 PV

ARDROSSAN EQUATOR A241 PV  
BOOROOMOOKA TRACEY Z5 PV

V A R DISCOVERY 2240 PV

WATTLETOP LADY K74 #

DEER VALLEY RITA 0308 #

SITZ UPWARD 307R SV  
G A R OBJECTIVE 2345 #

WATTLETOP LADY E196 #

B/R AMBUSH 28 #  
WATTLETOP LADY A306 #

Angus AUSTRALIA	Mid June 2020 TransTasman Angus Cattle Evaluation								
	CALVING EASE			BIRTH			GROWTH		
	Direct	Dtrs	Gest. Lgth	Birth Wt.	200 Wt.	400 Wt.	600 Wt.	MCW	Milk
<b>EBV</b>	<b>+2.3</b>	<b>-0.5</b>	<b>-8.1</b>	<b>+3.9</b>	<b>+57</b>	<b>+112</b>	<b>+142</b>	<b>+124</b>	<b>+25</b>
Acc	59%	50%	85%	75%	70%	71%	74%	67%	62%
FERTILITY			CARCASE				OTHER		
Scrotal	D to Calv.	Carc. W.	EMA	Rib Fat	Rump Fat	RBY%	IMF%	NFI-F	Doc
<b>+1.5</b>	<b>-6.1</b>	<b>+82</b>	<b>+1.4</b>	<b>-1.2</b>	<b>-1.7</b>	<b>+0.0</b>	<b>+2.8</b>	<b>-0.12</b>	-
65%	41%	63%	61%	65%	62%	61%	61%	51%	-

Traits Observed: GL,CE,BWT,200WT,400WT,600WT,Genomics

Very high indexing Discovery son. Used in our commercial operation over heifers.

Purchaser: \_\_\_\_\_ \$: \_\_\_\_\_

INDEX VALUES			
Angus Breeding	Domestic	Heavy Grain	Heavy Grass
<b>\$143</b>	<b>\$127</b>	<b>\$165</b>	<b>\$132</b>

7

**BRIDGEWATER GENERAL P011<sup>SV</sup>**

**HBR**

DOB: 10/07/2018

Society Ident: BONP011

Genetic Status: AMFU,CAFU,DDFU,NHFU

TE MANIA BERKLEY B1<sup>SV</sup>

TE MANIA YORKSHIRE Y437<sup>PV</sup>  
TE MANIA LOWAN Z53 #

SILVEIRAS CONVERSION 8064 #

BT CROSSOVER 758N #  
EXG SARAS DREAM S609 R3 #

**AYRVALE GENERAL G18<sup>PV</sup>**

**WATTLETOP ANN L184 #**

AYRVALE EASE E3<sup>PV</sup>

TE MANIA BARTEL B219<sup>PV</sup>  
EAGLEHAWK JEDDA B32<sup>SV</sup>

WATTLETOP ANN F17 #

TE MANIA INFINITY 04 379 AB #  
WATTLETOP ANN D208 #

Angus	Mid June 2020 TransTasman Angus Cattle Evaluation								
	CALVING EASE		BIRTH			GROWTH			
	Direct	Dtrs	Gest. Lgth	Birth Wt.	200 Wt.	400 Wt.	600 Wt.	MCW	Milk
<b>EBV</b>	<b>+2.3</b>	<b>-9.8</b>	<b>-4.3</b>	<b>+4.5</b>	<b>+55</b>	<b>+98</b>	<b>+126</b>	<b>+121</b>	<b>+20</b>
Acc	62%	55%	71%	74%	70%	71%	74%	69%	65%
FERTILITY			CARCASS				OTHER		
Scrotal	D to Calv.	Carc. W.	EMA	Rib Fat	Rump Fat	RBV%	IMF%	NFI-F	Doc
<b>+4.7</b>	<b>-8.8</b>	<b>+72</b>	<b>+10.9</b>	<b>-1.1</b>	<b>-0.2</b>	<b>+1.0</b>	<b>+2.8</b>	<b>+0.51</b>	-
65%	46%	65%	63%	67%	65%	64%	63%	55%	-

Traits Observed: CE,BWT,200WT,400WT,600WT,Genomics

Ayrvale General Son, out of a \$10,000 big framed Wattletop Conversion cow. All indexes in the top 10%. Used as a backup bull in our stud.

Purchaser: \_\_\_\_\_ \$: \_\_\_\_\_

INDEX VALUES			
Angus Breeding	Domestic	Heavy Grain	Heavy Grass
<b>\$149</b>	<b>\$127</b>	<b>\$171</b>	<b>\$136</b>

Suitable for Heifers

8

**BRIDGEWATER DISCOVERY P012<sup>SV</sup>**

**APR**

DOB: 10/07/2018

Society Ident: BONP012

Genetic Status: AMFU,CAFU,DDFU,NHFU

A A R TEN X 7008 S A<sup>SV</sup>

MYTTY IN FOCUS #  
A A R LADY KELTON 5551 #

WATTLETOP FRANKLIN G188<sup>SV</sup>

TC FRANKLIN 619 #  
WATTLETOP BARUNAH E295<sup>PV</sup>

**V A R DISCOVERY 2240<sup>PV</sup>**

**WATTLETOP K244 #**

DEER VALLEY RITA 0308 #

SITZ UPWARD 307R<sup>SV</sup>  
G A R OBJECTIVE 2345 #

WATTLETOP E46 #

B/R AMBUSH 28 #  
WATTLETOP Y179 #

Angus	Mid June 2020 TransTasman Angus Cattle Evaluation								
	CALVING EASE		BIRTH			GROWTH			
	Direct	Dtrs	Gest. Lgth	Birth Wt.	200 Wt.	400 Wt.	600 Wt.	MCW	Milk
<b>EBV</b>	<b>+4.6</b>	<b>+4.7</b>	<b>-8.3</b>	<b>+1.9</b>	<b>+47</b>	<b>+93</b>	<b>+116</b>	<b>+103</b>	<b>+20</b>
Acc	59%	50%	85%	74%	70%	71%	74%	67%	62%
FERTILITY			CARCASS				OTHER		
Scrotal	D to Calv.	Carc. W.	EMA	Rib Fat	Rump Fat	RBV%	IMF%	NFI-F	Doc
<b>+2.6</b>	<b>-2.2</b>	<b>+70</b>	<b>+6.9</b>	<b>-1.8</b>	<b>-4.2</b>	<b>+1.8</b>	<b>+2.0</b>	<b>+0.08</b>	-
65%	40%	64%	61%	65%	62%	61%	61%	51%	-

Traits Observed: GL,CE,BWT,200WT,400WT,600WT,Genomics

Another high indexing Discovery son, comes with a great pedigree. Mother is a Wattletop G188 purchased for \$8,000. Very feed efficient and suitable for heifers.

Purchaser: \_\_\_\_\_ \$: \_\_\_\_\_

INDEX VALUES			
Angus Breeding	Domestic	Heavy Grain	Heavy Grass
<b>\$120</b>	<b>\$120</b>	<b>\$131</b>	<b>\$116</b>

Suitable for Heifers

9

**BRIDGEWATER DISCOVERY P015<sup>SV</sup>**

**HBR**

DOB: 15/07/2018

Society Ident: BONP015

Genetic Status: AMFU,CAFU,DDFU,NHFU

A A R TEN X 7008 S A<sup>SV</sup>

MYTTY IN FOCUS #  
A A R LADY KELTON 5551 #

WATTLETOP NADAL H132<sup>SV</sup>

LAWSONS NADAL E398<sup>SV</sup>  
WATTLETOP USUAL E314 #

**V A R DISCOVERY 2240<sup>PV</sup>**

**WATTLETOP ANN K288 #**

DEER VALLEY RITA 0308 #

SITZ UPWARD 307R<sup>SV</sup>  
G A R OBJECTIVE 2345 #

WATTLETOP ANN G91 #

B/R FUTURE DIRECTION 4268<sup>SV</sup>  
WATTLETOP ANN D291 #

Angus	Mid June 2020 TransTasman Angus Cattle Evaluation								
	CALVING EASE		BIRTH			GROWTH			
	Direct	Dtrs	Gest. Lgth	Birth Wt.	200 Wt.	400 Wt.	600 Wt.	MCW	Milk
<b>EBV</b>	<b>+3.6</b>	<b>-2.6</b>	<b>-6.5</b>	<b>+3.3</b>	<b>+64</b>	<b>+117</b>	<b>+144</b>	<b>+125</b>	<b>+19</b>
Acc	57%	48%	84%	74%	70%	70%	73%	66%	61%
FERTILITY			CARCASS				OTHER		
Scrotal	D to Calv.	Carc. W.	EMA	Rib Fat	Rump Fat	RBV%	IMF%	NFI-F	Doc
<b>+2.3</b>	<b>-4.1</b>	<b>+85</b>	<b>+7.9</b>	<b>-0.3</b>	<b>-0.9</b>	<b>+0.9</b>	<b>+2.6</b>	<b>+0.60</b>	-
64%	38%	61%	59%	63%	61%	59%	59%	47%	-

Traits Observed: GL,CE,BWT,200WT,400WT,600WT,Genomics

Great combination of Discovery X Wattletop Nadal. Very high indexing and suitable for heifers.

Purchaser: \_\_\_\_\_ \$: \_\_\_\_\_

INDEX VALUES			
Angus Breeding	Domestic	Heavy Grain	Heavy Grass
<b>\$150</b>	<b>\$138</b>	<b>\$167</b>	<b>\$143</b>



DOB: 17/07/2018

Society Ident: BONP017

Genetic Status: AMFU,CAFU,DDFU,NHFU

A A R TEN X 7008 S A SV

MYTTY IN FOCUS #

TUWHARETOA REGENT D145 PV

TE MANIA AMBASSADOR A134 SV

A A R LADY KELTON 5551 #

LAWSONS HENRY VIII Y5 SV

V A R DISCOVERY 2240 PV

WATTLETOP J217 #

DEER VALLEY RITA 0308 #

SITZ UPWARD 307R SV

WATTLETOP USUAL E12 #

WILLALOOKA BUSHMAN B333 SV

G A R OBJECTIVE 2345 #

WATTLETOP USUAL C65 #

Angus	Mid June 2020 TransTasman Angus Cattle Evaluation								
	CALVING EASE			BIRTH			GROWTH		
	Direct	Dtrs	Gest. Lgth	Birth Wt.	200 Wt.	400 Wt.	600 Wt.	MCW	Milk
<b>EBV</b>	<b>+2.7</b>	<b>-2.9</b>	<b>-4.7</b>	<b>+4.4</b>	<b>+61</b>	<b>+120</b>	<b>+161</b>	<b>+131</b>	<b>+25</b>
Acc	60%	51%	85%	75%	71%	71%	74%	68%	63%
FERTILITY			CARCASE			OTHER			
Scrotal	D to Calv.	Carc. W.	EMA	Rib Fat	Rump Fat	RBY%	IMF%	NFI-F	Doc
<b>+2.2</b>	<b>-3.4</b>	<b>+93</b>	<b>+1.2</b>	<b>-1.3</b>	<b>-0.5</b>	<b>+0.1</b>	<b>+2.1</b>	<b>-0.25</b>	-
65%	43%	63%	61%	65%	62%	61%	61%	51%	-

Traits Observed: GL,CE,BWT,200WT,400WT,600WT,Genomics

Another very high indexing Discovery son. Used in our stud program. Mother is a Wattletop Regent, purchased for \$10,000. Great feed efficiency in the top 8% with carcass weight in the top 1% of the breed.

Purchaser: \_\_\_\_\_ \$: \_\_\_\_\_

INDEX VALUES			
Angus Breeding	Domestic	Heavy Grain	Heavy Grass
<b>\$146</b>	<b>\$127</b>	<b>\$161</b>	<b>\$141</b>

DOB: 17/07/2018

Society Ident: BONP018

Genetic Status: AMFU,CAFU,DDFU,NHFU

A A R TEN X 7008 S A SV

MYTTY IN FOCUS #

SILVEIRAS CONVERSION 8064 #

BT CROSSOVER 758N #

A A R LADY KELTON 5551 #

EXG SARAS DREAM S609 R3 #

V A R DISCOVERY 2240 PV

WATTLETOP USUAL K118 #

DEER VALLEY RITA 0308 #

SITZ UPWARD 307R SV

WATTLETOP USUAL C357 #

WATTLETOP ACONITES A95 SV

G A R OBJECTIVE 2345 #

WATTLETOP USUAL Z286 #

Angus	Mid June 2020 TransTasman Angus Cattle Evaluation								
	CALVING EASE			BIRTH			GROWTH		
	Direct	Dtrs	Gest. Lgth	Birth Wt.	200 Wt.	400 Wt.	600 Wt.	MCW	Milk
<b>EBV</b>	<b>-1.7</b>	<b>-4.8</b>	<b>-3.8</b>	<b>+5.1</b>	<b>+52</b>	<b>+98</b>	<b>+126</b>	<b>+118</b>	<b>+19</b>
Acc	59%	50%	85%	74%	70%	71%	74%	67%	63%
FERTILITY			CARCASE			OTHER			
Scrotal	D to Calv.	Carc. W.	EMA	Rib Fat	Rump Fat	RBY%	IMF%	NFI-F	Doc
<b>+2.7</b>	<b>-1.5</b>	<b>+70</b>	<b>+7.9</b>	<b>-2.5</b>	<b>-3.1</b>	<b>+2.1</b>	<b>+2.7</b>	<b>-0.12</b>	-
64%	40%	63%	61%	65%	62%	61%	61%	50%	-

Traits Observed: GL,CE,BWT,200WT,400WT,600WT,Genomics

A standout bull! Hits every major target! Great feed efficiency.

Purchaser: \_\_\_\_\_ \$: \_\_\_\_\_

INDEX VALUES			
Angus Breeding	Domestic	Heavy Grain	Heavy Grass
<b>\$125</b>	<b>\$119</b>	<b>\$144</b>	<b>\$118</b>

DOB: 18/07/2018

Society Ident: BONP022

Genetic Status: AMFU,CAFU,DDFU,NHFU

A A R TEN X 7008 S A SV

MYTTY IN FOCUS #

WATTLETOP FRANKLIN G7 SV

TC FRANKLIN 619 #

A A R LADY KELTON 5551 #

WATTLETOP BARUNAH E211 #

V A R DISCOVERY 2240 PV

WATTLETOP J330 #

DEER VALLEY RITA 0308 #

SITZ UPWARD 307R SV

WATTLETOP USUAL D115 PV

B/R AMBUSH 28 #

G A R OBJECTIVE 2345 #

WATTLETOP USUAL A143 PV

Angus	Mid June 2020 TransTasman Angus Cattle Evaluation								
	CALVING EASE			BIRTH			GROWTH		
	Direct	Dtrs	Gest. Lgth	Birth Wt.	200 Wt.	400 Wt.	600 Wt.	MCW	Milk
<b>EBV</b>	<b>-0.4</b>	<b>+2.7</b>	<b>-4.3</b>	<b>+4.0</b>	<b>+52</b>	<b>+99</b>	<b>+120</b>	<b>+109</b>	<b>+17</b>
Acc	58%	49%	84%	74%	70%	71%	74%	67%	63%
FERTILITY			CARCASE			OTHER			
Scrotal	D to Calv.	Carc. W.	EMA	Rib Fat	Rump Fat	RBY%	IMF%	NFI-F	Doc
<b>+2.4</b>	<b>-6.5</b>	<b>+62</b>	<b>+0.2</b>	<b>-0.4</b>	<b>+0.1</b>	<b>-0.4</b>	<b>+3.0</b>	<b>+0.01</b>	-
64%	39%	62%	60%	64%	61%	60%	60%	48%	-

Traits Observed: GL,CE,BWT,200WT,400WT,600WT,Genomics

A high indexing and marbling bull with excellent feed efficiency. Mother a Wattletop Franklin cow purchased for \$10,000

Purchaser: \_\_\_\_\_ \$: \_\_\_\_\_

INDEX VALUES			
Angus Breeding	Domestic	Heavy Grain	Heavy Grass
<b>\$129</b>	<b>\$120</b>	<b>\$147</b>	<b>\$119</b>

**13 BRIDGEWATER DISCOVERY P026<sup>SV</sup> HBR**

DOB: 20/07/2018 Society Ident: BONP026 Genetic Status: AMFU,CAFU,DDFU,NHFU  
 A A R TEN X 7008 S A<sup>SV</sup> MYTTY IN FOCUS # WATTLETOP NADAL H132<sup>SV</sup> LAWSONS NADAL E398<sup>SV</sup>  
 V A R DISCOVERY 2240<sup>PV</sup> A A R LADY KELTON 5551 # WATTLETOP ANN K311 # WATTLETOP USUAL E314 #  
 DEER VALLEY RITA 0308 # SITZ UPWARD 307R<sup>SV</sup> WATTLETOP ANN G183 # TE MANIA AFRICA A217<sup>PV</sup>  
 G A R OBJECTIVE 2345 # WATTLETOP ANN D155<sup>SV</sup>

Angus	Mid June 2020 TransTasman Angus Cattle Evaluation									
	CALVING EASE			BIRTH			GROWTH			
	Direct	Dtrs	Gest. Lgth	Birth Wt.	200 Wt.	400 Wt.	600 Wt.	MCW	Milk	
EBV	-4.6	-3.1	-1.6	+8.6	+58	+1.3	+138	+111	+24	
Acc	57%	48%	84%	74%	69%	70%	73%	66%	60%	
FERTILITY			CARCASS				OTHER			
Scrotal	D to Calv.	Carc. W.	EMA	Rib Fat	Rump Fat	RBV%	IMF%	NFI-F	Doc	
+4.0	-6.2	+74	+3.7	-2.4	-2.2	+0.8	+3.2	+0.48	-	
63%	38%	62%	59%	63%	60%	59%	59%	48%	-	
Traits Observed: GL,CE,BWT,200WT,400WT,600WT,Genomics							<b>\$INDEX VALUES</b>			
							Angus Breeding	Domestic	Heavy Grain	Heavy Grass
							<b>\$143</b>	<b>\$129</b>	<b>\$168</b>	<b>\$130</b>

Purchaser: \_\_\_\_\_ \$: \_\_\_\_\_

**14 BRIDGEWATER DISCOVERY P028<sup>SV</sup> HBR**

DOB: 23/07/2018 Society Ident: BONP028 Genetic Status: AMFU,CAFU,DDFU,NHFU  
 A A R TEN X 7008 S A<sup>SV</sup> MYTTY IN FOCUS # TUWHARETOA REGENT D145<sup>PV</sup> TE MANIA AMBASSADOR A134<sup>SV</sup>  
 V A R DISCOVERY 2240<sup>PV</sup> A A R LADY KELTON 5551 # WATTLETOP J207 # LAWSONS HENRY VIII Y5<sup>SV</sup>  
 DEER VALLEY RITA 0308 # SITZ UPWARD 307R<sup>SV</sup> WATTLETOP KERRY F187 # WATTLETOP ANDY C109<sup>PV</sup>  
 G A R OBJECTIVE 2345 # WATTLETOP Z101<sup>PV</sup>

Angus	Mid June 2020 TransTasman Angus Cattle Evaluation									
	CALVING EASE			BIRTH			GROWTH			
	Direct	Dtrs	Gest. Lgth	Birth Wt.	200 Wt.	400 Wt.	600 Wt.	MCW	Milk	
EBV	+1.2	+1.6	+0.0	+2.9	+57	+113	+142	+131	+24	
Acc	60%	52%	85%	75%	70%	71%	74%	67%	62%	
FERTILITY			CARCASS				OTHER			
Scrotal	D to Calv.	Carc. W.	EMA	Rib Fat	Rump Fat	RBV%	IMF%	NFI-F	Doc	
+3.3	-4.0	+83	+2.9	-2.2	-3.0	+0.7	+3.5	+0.14	-	
66%	44%	64%	62%	65%	63%	63%	62%	52%	-	
Traits Observed: GL,CE,BWT,200WT,400WT,600WT,Genomics							<b>\$INDEX VALUES</b>			
							Angus Breeding	Domestic	Heavy Grain	Heavy Grass
							<b>\$146</b>	<b>\$132</b>	<b>\$176</b>	<b>\$133</b>

A big framed high indexing and marbling bull with excellent feed efficiency. A low birthweight bull, with curve bending growth! Carcase weight in the top 3% of the breed.

Purchaser: \_\_\_\_\_ \$: \_\_\_\_\_

**15 BRIDGEWATER GRAVITY P030<sup>SV</sup> HBR**

DOB: 31/07/2018 Society Ident: BONP030 Genetic Status: AMFU,CAFU,DDFU,NHFU  
 TE MANIA AFRICA A217<sup>PV</sup> TE MANIA ULONG U41<sup>SV</sup> SILVEIRAS CONVERSION 8064 # BT CROSSOVER 758N #  
 BOONAROO GRAVITY G013<sup>PV</sup> TE MANIA JEDDA Y32<sup>SV</sup> WATTLETOP ANN L279 # EXG SARAS DREAM S609 R3 #  
 TE MANIA LOWAN Z618<sup>PV</sup> KENNY'S CREEK SANDY S15<sup>SV</sup> WATTLETOP ANN G172 # TC FRANKLIN 619 #  
 TE MANIA LOWAN V19 # WATTLETOP ANN E172 #

Angus	Mid June 2020 TransTasman Angus Cattle Evaluation									
	CALVING EASE			BIRTH			GROWTH			
	Direct	Dtrs	Gest. Lgth	Birth Wt.	200 Wt.	400 Wt.	600 Wt.	MCW	Milk	
EBV	-3.3	-8.0	-4.5	+5.8	+55	+90	+115	+97	+20	
Acc	57%	51%	70%	74%	70%	71%	73%	67%	60%	
FERTILITY			CARCASS				OTHER			
Scrotal	D to Calv.	Carc. W.	EMA	Rib Fat	Rump Fat	RBV%	IMF%	NFI-F	Doc	
+2.9	-6.7	+64	+11.4	-2.2	-2.3	+2.5	+2.3	-0.27	-	
63%	45%	64%	61%	66%	63%	62%	62%	55%	-	
Traits Observed: CE,BWT,200WT,400WT,600WT,Genomics							<b>\$INDEX VALUES</b>			
							Angus Breeding	Domestic	Heavy Grain	Heavy Grass
							<b>\$132</b>	<b>\$121</b>	<b>\$146</b>	<b>\$123</b>

Moderate framed Gravity son. Huge EMA within the top 1% of the breed. Decent feed efficiency ranking in the top 6%

Purchaser: \_\_\_\_\_ \$: \_\_\_\_\_



DOB: 10/08/2018

Society Ident: BONP036

Genetic Status: AMFU,CAFU,DDFU,NHFU

WERNER WESTWARD 357 #

G A R PREDESTINED #  
BFF EVERELDA ENTENSE 4015 #

SILVEIRAS M811 TOTAL 6103 #

TEHAMA TOTAL M811 #  
SILVEIRA ELBA 3309 #

**GLENAVON L114 SV**

**WATTLETOP J257 #**

GLENAVON J221 #

DUNOON EVERYTHING E499 SV  
GLENAVON D336 #

WATTLETOP ANN Z397 SV

WATTLETOP OB45 X75 #  
WATTLETOP ANN T105 #

Angus	Mid June 2020 TransTasman Angus Cattle Evaluation									
	CALVING EASE			BIRTH			GROWTH			
	Direct	Dtrs	Gest. Lgth	Birth Wt.	200 Wt.	400 Wt.	600 Wt.	MCW	Milk	
<b>EBV</b>	<b>-12.3</b>	<b>-5.0</b>	<b>-5.5</b>	<b>+10.9</b>	<b>+65</b>	<b>+113</b>	<b>+157</b>	<b>+161</b>	<b>+18</b>	
Acc	52%	46%	64%	72%	66%	68%	71%	65%	57%	
FERTILITY			CARCASS				OTHER			
Scrotal	D to Calv.	Carc. W.	EMA	Rib Fat	Rump Fat	RBY%	IMF%	NFI-F	Doc	
<b>+2.9</b>	<b>-6.0</b>	<b>+92</b>	<b>-0.2</b>	<b>-1.4</b>	<b>-1.1</b>	<b>+0.5</b>	<b>+1.6</b>	<b>-0.07</b>	-	
56%	36%	58%	54%	59%	56%	56%	54%	45%	-	

Traits Observed: CE,BWT,200WT,400WT,600WT,Genomics

Big framed Glenavon Westward son. Very high growth rates with 200/400/600 day weights in the top percentile of the breed. Carcass weight in the top 1% with a high level of feed efficiency.

Purchaser: \_\_\_\_\_ \$: \_\_\_\_\_

INDEX VALUES			
Angus Breeding	Domestic	Heavy Grain	Heavy Grass
<b>\$119</b>	<b>\$100</b>	<b>\$134</b>	<b>\$112</b>

Suitable for Heifers

DOB: 08/07/2018

Society Ident: BONP045

Genetic Status: AMF,CAF,DDF,NHF

A A R TEN X 7008 S A SV

MYTTY IN FOCUS #  
A A R LADY KELTON 5551 #

TRIPLE A GARSEN G32 SV

TC FRANKLIN 619 #  
TRIPLE A ELSIE E37 #

**V A R DISCOVERY 2240 PV**

**BRIDGEWATER MYOLA-APR K009 #**

DEER VALLEY RITA 0308 #

SITZ UPWARD 307R SV  
G A R OBJECTIVE 2345 #

MYOLA-APR H217 SV

LANDFALL ADMIRAL E459 SV  
MYOLA-APR 7023 #

Angus	Mid June 2020 TransTasman Angus Cattle Evaluation									
	CALVING EASE			BIRTH			GROWTH			
	Direct	Dtrs	Gest. Lgth	Birth Wt.	200 Wt.	400 Wt.	600 Wt.	MCW	Milk	
<b>EBV</b>	<b>+1.7</b>	<b>-0.6</b>	<b>-8.1</b>	<b>+4.1</b>	<b>+61</b>	<b>+116</b>	<b>+150</b>	<b>+138</b>	<b>+20</b>	
Acc	56%	47%	84%	73%	69%	70%	73%	65%	59%	
FERTILITY			CARCASS				OTHER			
Scrotal	D to Calv.	Carc. W.	EMA	Rib Fat	Rump Fat	RBY%	IMF%	NFI-F	Doc	
<b>+3.9</b>	<b>-5.1</b>	<b>+87</b>	<b>+4.1</b>	<b>-1.3</b>	<b>-2.7</b>	<b>+0.6</b>	<b>+2.8</b>	<b>+0.14</b>	-	
61%	36%	61%	57%	61%	58%	57%	57%	46%	-	

Traits Observed: GL,BWT,200WT,400WT,600WT,Genomics

Standout as a bull calf and has continued to impress!  
Curve bending figures all round with excellent feed efficiency

Purchaser: \_\_\_\_\_ \$: \_\_\_\_\_

INDEX VALUES			
Angus Breeding	Domestic	Heavy Grain	Heavy Grass
<b>\$149</b>	<b>\$131</b>	<b>\$174</b>	<b>\$138</b>

DOB: 10/07/2018

Society Ident: BONP047

Genetic Status: AMF,CAF,DDF,NHF

THOMAS UP RIVER 1614 PV

SITZ UPWARD 307R SV  
THOMAS CAROL 7595 #

TRIPLE A GARSEN G32 SV

TC FRANKLIN 619 #  
TRIPLE A ELSIE E37 #

**MILLAH MURRAH LOCH UP L133 PV**

**BRIDGEWATER MYOLA-APR K004 #**

MILLAH MURRAH BRENDA H49 SV

TE MANIA EMPEROR E343 PV  
MILLAH MURRAH BRENDA E64 PV

MYOLA-APR H127 SV

KAIWARA 440 SV  
MYOLA-APR 1867 #

Angus	Mid June 2020 TransTasman Angus Cattle Evaluation									
	CALVING EASE			BIRTH			GROWTH			
	Direct	Dtrs	Gest. Lgth	Birth Wt.	200 Wt.	400 Wt.	600 Wt.	MCW	Milk	
<b>EBV</b>	<b>+6.8</b>	<b>+7.5</b>	<b>-8.8</b>	<b>+4.5</b>	<b>+49</b>	<b>+82</b>	<b>+103</b>	<b>+84</b>	<b>+13</b>	
Acc	55%	46%	84%	72%	69%	70%	73%	64%	58%	
FERTILITY			CARCASS				OTHER			
Scrotal	D to Calv.	Carc. W.	EMA	Rib Fat	Rump Fat	RBY%	IMF%	NFI-F	Doc	
<b>+0.7</b>	<b>-3.9</b>	<b>+57</b>	<b>+3.4</b>	<b>-1.0</b>	<b>-1.5</b>	<b>+0.0</b>	<b>+2.4</b>	<b>+0.02</b>	-	
61%	37%	62%	59%	63%	60%	60%	59%	53%	-	

Traits Observed: GL,BWT,200WT,400WT,600WT,Genomics

A Loch Up son, with great calving ease and gestation length. Another feed efficient bull.

Purchaser: \_\_\_\_\_ \$: \_\_\_\_\_

INDEX VALUES			
Angus Breeding	Domestic	Heavy Grain	Heavy Grass
<b>\$111</b>	<b>\$111</b>	<b>\$118</b>	<b>\$108</b>



# Davidson Cameron & Co

A NUTRIEN AG SOLUTIONS PARTNER

We're committed to securing **successful** outcomes for our **valued** clients.

## GUNNEDAH

**Luke Scicluna**

0428 421 828

**Hamish Fauchon**

0447 246 742

## TAMWORTH

**Scott Newberry**

0447 624 440

**Chris Gooch**

0419 334 690

**Simon Burke**

0427 634 341

(Rural Property Sales)

## COOLAH

**Paul Banks**

0427 922 700

## QUIRINDI

**Tom Tanner**

0448 462 177

**Richard Cudmore**

0428 658 497

(Rural Property Sales)

## NARRABRI

**Hunter Harley**

0447 220 245

**Barry Thompson**

0428 936 552

**Joe Sevil**

0428 961 414

(Rural Property Sales)

## MOREE

**Matt Hann**

0409 626 474

**Hamish Hosegood**

0427 626 474

## SCONE

**Warick Clydsdale**

0447 453 570

**Dean Taylor**

0467 829 567

**Jim Callinan**

0459 451 911

**Stephen Johnston**

0414 217 911

(Rural Property Sales)

## GUYRA/ARMIDALE

**John Pearson**

0428 255 994

**Nick Rogers**

0429 382 108

**Angus MacTavish**

0427 165 120

**For more information contact: 02 6742 0185**

**or email: [livestock@dcco.com.au](mailto:livestock@dcco.com.au)**

**[www.dcco.com.au](http://www.dcco.com.au)**



# Achmea, Australia's specialist farm insurer, is delighted to support the Bridgewater Angus Bull Sale on 6th August 2020

“With competitive rates, insure your stud bulls with Achmea today. To finalise your cover, contact me directly.”



Local Risk Specialist  
**ALLAN COWAN**

Local Risk Specialist Allan Cowan  
0417 156 837 | [allan.cowan@achmea.com.au](mailto:allan.cowan@achmea.com.au)

[achmea.com.au](http://achmea.com.au)



The information in this advertisement is general advice only and does not take into account your individual objectives, financial situation or needs (your personal circumstances). Before using this information to decide whether to purchase the insurance policy, you should consider your personal circumstances and the relevant Product Disclosure Statement available from the 'Downloads' section of our website [www.achmea.com.au](http://www.achmea.com.au). Achmea Schadeverzekeringen N.V. ABN 86 158 237 702 AFSL 433984.

19

BRIDGEWATER DISCOVERY P049 SV

APR

DOB: 12/07/2018

Society Ident: BONP049

Genetic Status: AMF,CAF,DDFU,NHF

A A R TEN X 7008 S A SV

MYTTY IN FOCUS #

IRELANDS FLETCHER F1 PV

RENNYLEA C277 PV

A A R LADY KELTON 5551 #

TE MANIA WARGOONA Z31 PV

V A R DISCOVERY 2240 PV

BRIDGEWATER L003 #

DEER VALLEY RITA 0308 #

SITZ UPWARD 307R SV

MYOLA-APR H47 SV

AYRVALE BARTEL E7 PV

G A R OBJECTIVE 2345 #

MYOLA-APR 30096 #

Angus	Mid June 2020 TransTasman Angus Cattle Evaluation								
	CALVING EASE		BIRTH			GROWTH			
	Direct	Dtrs	Gest. Lgth	Birth Wt.	200 Wt.	400 Wt.	600 Wt.	MCW	Milk
<b>EBV</b>	<b>+3.5</b>	<b>+5.0</b>	<b>-6.1</b>	<b>+4.9</b>	<b>+62</b>	<b>+119</b>	<b>+158</b>	<b>+136</b>	<b>+20</b>
Acc	58%	49%	84%	71%	69%	70%	73%	66%	60%
FERTILITY			CARCASS				OTHER		
Scrotal	D to Calv.	Carc. W.	EMA	Rib Fat	Rump Fat	RBV%	IMF%	NFI-F	Doc
<b>+4.0</b>	<b>-0.8</b>	<b>+88</b>	<b>+8.6</b>	<b>-3.8</b>	<b>-5.7</b>	<b>+3.1</b>	<b>+2.4</b>	<b>+0.32</b>	-
63%	38%	61%	59%	62%	59%	59%	59%	48%	-

Traits Observed: GL,BWT,200WT,400WT,600WT,Genomics

Well as far as figures go, what can I say! Top 1% of the breed for ABI, DOM, Grain, Grass, 400/600 day weight, carcass weight and retail beef yield. Great feed efficiency.

Purchaser: \_\_\_\_\_ \$: \_\_\_\_\_

INDEX VALUES			
Angus Breeding	Domestic	Heavy Grain	Heavy Grass
<b>\$159</b>	<b>\$144</b>	<b>\$185</b>	<b>\$150</b>

20

BRIDGEWATER DISCOVERY P057 SV

APR

DOB: 15/07/2018

Society Ident: BONP057

Genetic Status: AMF,CAF,DDF,NHF

A A R TEN X 7008 S A SV

MYTTY IN FOCUS #

TE MANIA EMPEROR E343 PV

TE MANIA BERKLEY B1 SV

A A R LADY KELTON 5551 #

TE MANIA LOWAN Z74 PV

V A R DISCOVERY 2240 PV

BRIDGEWATER L040 #

DEER VALLEY RITA 0308 #

SITZ UPWARD 307R SV

MYOLA-APR G078 SV

CHERYLTON STEWIE D19 PV

G A R OBJECTIVE 2345 #

MYOLA-APR 4189 #

Angus	Mid June 2020 TransTasman Angus Cattle Evaluation								
	CALVING EASE		BIRTH			GROWTH			
	Direct	Dtrs	Gest. Lgth	Birth Wt.	200 Wt.	400 Wt.	600 Wt.	MCW	Milk
<b>EBV</b>	<b>-5.5</b>	<b>+0.2</b>	<b>-3.7</b>	<b>+5.4</b>	<b>+70</b>	<b>+124</b>	<b>+155</b>	<b>+139</b>	<b>+21</b>
Acc	59%	50%	84%	71%	69%	70%	73%	66%	61%
FERTILITY			CARCASS				OTHER		
Scrotal	D to Calv.	Carc. W.	EMA	Rib Fat	Rump Fat	RBV%	IMF%	NFI-F	Doc
<b>+3.6</b>	<b>-4.2</b>	<b>+88</b>	<b>+3.3</b>	<b>-1.6</b>	<b>-2.5</b>	<b>+0.8</b>	<b>+3.0</b>	<b>+0.22</b>	-
64%	42%	62%	60%	64%	61%	60%	60%	50%	-

Traits Observed: GL,BWT,200WT,400WT,600WT,Genomics

Discovery X L40 Emperor cow (who has had stand out calves!). This boy is no exception with curve bending EBVs!

Purchaser: \_\_\_\_\_ \$: \_\_\_\_\_

INDEX VALUES			
Angus Breeding	Domestic	Heavy Grain	Heavy Grass
<b>\$143</b>	<b>\$131</b>	<b>\$166</b>	<b>\$133</b>

21

BRIDGEWATER DISCOVERY P058 SV

APR

DOB: 15/07/2018

Society Ident: BONP058

Genetic Status: AMF,CAF,DDFU,NHF

A A R TEN X 7008 S A SV

MYTTY IN FOCUS #

TE MANIA EMPEROR E343 PV

TE MANIA BERKLEY B1 SV

A A R LADY KELTON 5551 #

TE MANIA LOWAN Z74 PV

V A R DISCOVERY 2240 PV

BRIDGEWATER L007 #

DEER VALLEY RITA 0308 #

SITZ UPWARD 307R SV

MYOLA-APR H22 SV

TWYNAM D154 SV

G A R OBJECTIVE 2345 #

MYOLA-APR 10253 #

Angus	Mid June 2020 TransTasman Angus Cattle Evaluation								
	CALVING EASE		BIRTH			GROWTH			
	Direct	Dtrs	Gest. Lgth	Birth Wt.	200 Wt.	400 Wt.	600 Wt.	MCW	Milk
<b>EBV</b>	<b>-4.2</b>	<b>+1.3</b>	<b>-5.2</b>	<b>+4.4</b>	<b>+63</b>	<b>+111</b>	<b>+139</b>	<b>+123</b>	<b>+18</b>
Acc	59%	51%	84%	73%	70%	71%	73%	66%	62%
FERTILITY			CARCASS				OTHER		
Scrotal	D to Calv.	Carc. W.	EMA	Rib Fat	Rump Fat	RBV%	IMF%	NFI-F	Doc
<b>+2.3</b>	<b>-2.3</b>	<b>+84</b>	<b>+8.2</b>	<b>-1.7</b>	<b>-4.6</b>	<b>+2.2</b>	<b>+2.5</b>	<b>+0.27</b>	-
64%	42%	63%	61%	64%	61%	61%	61%	51%	-

Traits Observed: GL,BWT,200WT,400WT,600WT,Genomics

A Discovery son that is a good "allrounder", displaying big growth rates.

Purchaser: \_\_\_\_\_ \$: \_\_\_\_\_

INDEX VALUES			
Angus Breeding	Domestic	Heavy Grain	Heavy Grass
<b>\$133</b>	<b>\$128</b>	<b>\$151</b>	<b>\$127</b>



DOB: 15/07/2018

Society Ident: BONP059

Genetic Status: AMF,CAF,DDFU,NHF

TE MANIA BERKLEY B1 SV

TE MANIA YORKSHIRE Y437 PV  
TE MANIA LOWAN Z53 #

BLACKROCK F3 SV

LAWSONS INVINCIBLE C402 PV  
BLACKROCK D120 #

TE MANIA EMPEROR E343 PV

MYOLA-APR J159 SV

TE MANIA LOWAN Z74 PV

B T ULTRAVOX 297E #  
TE MANIA LOWAN V201 #

MYOLA-APR 9075 #

UNKNOWN  
UNKNOWN

Angus	Mid June 2020 TransTasman Angus Cattle Evaluation								
	CALVING EASE		BIRTH			GROWTH			
	Direct	Dtrs	Gest. Lgth	Birth Wt.	200 Wt.	400 Wt.	600 Wt.	MCW	Milk
<b>EBV</b>	<b>+5.4</b>	<b>+8.0</b>	<b>-5.9</b>	<b>+4.2</b>	<b>+50</b>	<b>+87</b>	<b>+117</b>	<b>+103</b>	<b>+12</b>
Acc	61%	57%	84%	72%	69%	70%	73%	67%	64%
FERTILITY			CARCASS				OTHER		
Scrotal	D to Calv.	Carc. W.	EMA	Rib Fat	Rump Fat	RBY%	IMF%	NFI-F	Doc
<b>+1.3</b>	<b>-1.1</b>	<b>+66</b>	<b>+4.8</b>	<b>-0.3</b>	<b>-0.6</b>	<b>+0.9</b>	<b>+1.0</b>	<b>-0.01</b>	-
63%	52%	66%	63%	67%	65%	65%	64%	59%	-

Traits Observed: GL,BWT,200WT,400WT,600WT,Genomics

Te Mania Emperor son, suitable for heifers with great feed efficiency.

Purchaser: \_\_\_\_\_ \$: \_\_\_\_\_

INDEX VALUES			
Angus Breeding	Domestic	Heavy Grain	Heavy Grass
<b>\$109</b>	<b>\$110</b>	<b>\$104</b>	<b>\$114</b>

DOB: 16/07/2018

Society Ident: BONP065

Genetic Status: AMF,CAF,DDF,NHF

THOMAS UP RIVER 1614 PV

SITZ UPWARD 307R SV  
THOMAS CAROL 7595 #

44 STIMULUS 8523 #

HYLINE RIGHT TIME 338 #  
B/R RUBY 419 #

MILLAH MURRAH LOCH UP L133 PV

BRIDGEWATER MYOLA-APR K080 #

MILLAH MURRAH BRENDA H49 SV

TE MANIA EMPEROR E343 PV  
MILLAH MURRAH BRENDA E64 PV

MYOLA-APR G057 SV

BOOROOMOOKA MIDLAND C196 SV  
MYOLA-APR 4152 #

Angus	Mid June 2020 TransTasman Angus Cattle Evaluation								
	CALVING EASE		BIRTH			GROWTH			
	Direct	Dtrs	Gest. Lgth	Birth Wt.	200 Wt.	400 Wt.	600 Wt.	MCW	Milk
<b>EBV</b>	<b>+4.8</b>	<b>+1.8</b>	<b>-4.2</b>	<b>+5.1</b>	<b>+49</b>	<b>+88</b>	<b>+113</b>	<b>+80</b>	<b>+21</b>
Acc	56%	47%	84%	74%	70%	71%	73%	65%	60%
FERTILITY			CARCASS				OTHER		
Scrotal	D to Calv.	Carc. W.	EMA	Rib Fat	Rump Fat	RBY%	IMF%	NFI-F	Doc
<b>+2.5</b>	<b>-2.9</b>	<b>+62</b>	<b>+6.1</b>	<b>+1.3</b>	<b>+0.6</b>	<b>+0.4</b>	<b>+1.2</b>	<b>-0.02</b>	-
62%	39%	64%	60%	64%	61%	62%	60%	54%	-

Traits Observed: GL,BWT,200WT,400WT,600WT,Genomics

Loch Up son with good feed efficiency, milk and scrotal.

Purchaser: \_\_\_\_\_ \$: \_\_\_\_\_

INDEX VALUES			
Angus Breeding	Domestic	Heavy Grain	Heavy Grass
<b>\$110</b>	<b>\$111</b>	<b>\$104</b>	<b>\$114</b>

DOB: 16/07/2018

Society Ident: BONP068

Genetic Status: AMF,CAF,DDF,NHF

TE MANIA BERKLEY B1 SV

TE MANIA YORKSHIRE Y437 PV  
TE MANIA LOWAN Z53 #

GLENMORGAN THUNDERBIRD MAN G148 #

S A V THUNDERBIRD 9061 SV  
GLENMORGAN BANDO D6 #

TE MANIA EMPEROR E343 PV

MYOLA-APR J049 #

TE MANIA LOWAN Z74 PV

B T ULTRAVOX 297E #  
TE MANIA LOWAN V201 #

MYOLA-APR G007 SV

REILAND EVERITT E17 PV  
MYOLA-APR 4030 #

Angus	Mid June 2020 TransTasman Angus Cattle Evaluation								
	CALVING EASE		BIRTH			GROWTH			
	Direct	Dtrs	Gest. Lgth	Birth Wt.	200 Wt.	400 Wt.	600 Wt.	MCW	Milk
<b>EBV</b>	<b>+6.7</b>	<b>+6.6</b>	<b>-5.5</b>	<b>+3.1</b>	<b>+51</b>	<b>+93</b>	<b>+113</b>	<b>+101</b>	<b>+12</b>
Acc	61%	57%	84%	74%	69%	70%	73%	67%	63%
FERTILITY			CARCASS				OTHER		
Scrotal	D to Calv.	Carc. W.	EMA	Rib Fat	Rump Fat	RBY%	IMF%	NFI-F	Doc
<b>+1.3</b>	<b>-3.4</b>	<b>+65</b>	<b>+8.0</b>	<b>+1.2</b>	<b>-0.7</b>	<b>+0.8</b>	<b>+2.2</b>	<b>-0.01</b>	-
62%	52%	65%	62%	67%	64%	64%	63%	57%	-

Traits Observed: GL,BWT,200WT,400WT,600WT,Genomics

Emperor son that is suitable for heifers. Excellent calving ease, EMA and feed efficiency.

Purchaser: \_\_\_\_\_ \$: \_\_\_\_\_

INDEX VALUES			
Angus Breeding	Domestic	Heavy Grain	Heavy Grass
<b>\$128</b>	<b>\$125</b>	<b>\$136</b>	<b>\$125</b>

DOB: 17/07/2018

Society Ident: BONP072

Genetic Status: AMF,CAF,DDF,NHF

A A R TEN X 7008 S A SV

MYTTY IN FOCUS #

TRIPLE A GARSEN G32 SV

TC FRANKLIN 619 #

A A R LADY KELTON 5551 #

BRIDGEWATER MYOLA-APR K007 #

TRIPLE A ELSIE E37 #

V A R DISCOVERY 2240 PV

SITZ UPWARD 307R SV

MYOLA-APR H135 SV

MATONI RIGHT TIME D240 SV

DEER VALLEY RITA 0308 #

G A R OBJECTIVE 2345 #

MYOLA-APR 8009 #

Angus	Mid June 2020 TransTasman Angus Cattle Evaluation								
	CALVING EASE			BIRTH			GROWTH		
	Direct	Dtrs	Gest. Lgth	Birth Wt.	200 Wt.	400 Wt.	600 Wt.	MCW	Milk
<b>EBV</b>	<b>+1.4</b>	<b>+3.8</b>	<b>-2.2</b>	<b>+3.4</b>	<b>+48</b>	<b>+90</b>	<b>+108</b>	<b>+91</b>	<b>+20</b>
Acc	56%	47%	84%	73%	69%	70%	73%	65%	59%
FERTILITY			CARCASS				OTHER		
Scrotal	D to Calv.	Carc. W.	EMA	Rib Fat	Rump Fat	RBY%	IMF%	NFI-F	Doc
<b>+1.7</b>	<b>-4.0</b>	<b>+64</b>	<b>+5.6</b>	<b>+0.8</b>	<b>+0.5</b>	<b>-0.1</b>	<b>+2.9</b>	<b>+0.70</b>	-
60%	36%	60%	56%	60%	57%	57%	56%	46%	-

Traits Observed: GL,BWT,200WT,400WT,600WT,Genomics

A heifer bull with good IMF.

Purchaser: \_\_\_\_\_ \$: \_\_\_\_\_

INDEX VALUES			
Angus Breeding	Domestic	Heavy Grain	Heavy Grass
<b>\$120</b>	<b>\$117</b>	<b>\$131</b>	<b>\$115</b>

DOB: 17/07/2018

Society Ident: BONP075

Genetic Status: AMF,CAF,DDFU,NHF

A A R TEN X 7008 S A SV

MYTTY IN FOCUS #

BALD BLAIR HIGHLANDER C126 PV

BALD BLAIR HIGHMARK Z58 PV

A A R LADY KELTON 5551 #

MYOLA-APR J218 SV

BALD BLAIR Y191 #

V A R DISCOVERY 2240 PV

SITZ UPWARD 307R SV

MYOLA-APR 4105 #

UNKNOWN

DEER VALLEY RITA 0308 #

G A R OBJECTIVE 2345 #

UNKNOWN

Angus	Mid June 2020 TransTasman Angus Cattle Evaluation								
	CALVING EASE			BIRTH			GROWTH		
	Direct	Dtrs	Gest. Lgth	Birth Wt.	200 Wt.	400 Wt.	600 Wt.	MCW	Milk
<b>EBV</b>	<b>-9.8</b>	<b>-9.6</b>	<b>-6.4</b>	<b>+7.0</b>	<b>+60</b>	<b>+113</b>	<b>+146</b>	<b>+143</b>	<b>+15</b>
Acc	57%	48%	84%	72%	69%	70%	73%	65%	60%
FERTILITY			CARCASS				OTHER		
Scrotal	D to Calv.	Carc. W.	EMA	Rib Fat	Rump Fat	RBY%	IMF%	NFI-F	Doc
<b>+3.3</b>	<b>-0.6</b>	<b>+82</b>	<b>+3.5</b>	<b>-2.8</b>	<b>-3.1</b>	<b>+2.4</b>	<b>+0.7</b>	<b>-0.09</b>	-
62%	37%	62%	59%	63%	60%	59%	59%	49%	-

Traits Observed: GL,BWT,200WT,400WT,600WT,Genomics

A Discovery son with big growth rates, carcass weight and excellent feed efficiency.

Purchaser: \_\_\_\_\_ \$: \_\_\_\_\_

INDEX VALUES			
Angus Breeding	Domestic	Heavy Grain	Heavy Grass
<b>\$104</b>	<b>\$106</b>	<b>\$106</b>	<b>\$106</b>

DOB: 17/07/2018

Society Ident: BONP080

Genetic Status: AMF,CAF,DDF,NHF

A A R TEN X 7008 S A SV

MYTTY IN FOCUS #

TE MANIA EMPEROR E343 PV

TE MANIA BERKLEY B1 SV

A A R LADY KELTON 5551 #

BRIDGEWATER L026 #

TE MANIA LOWAN Z74 PV

V A R DISCOVERY 2240 PV

SITZ UPWARD 307R SV

MYOLA-APR G011 SV

ARDROSSAN DIRECTION D196 PV

DEER VALLEY RITA 0308 #

G A R OBJECTIVE 2345 #

MYOLA-APR 1921 #

Angus	Mid June 2020 TransTasman Angus Cattle Evaluation								
	CALVING EASE			BIRTH			GROWTH		
	Direct	Dtrs	Gest. Lgth	Birth Wt.	200 Wt.	400 Wt.	600 Wt.	MCW	Milk
<b>EBV</b>	<b>+0.8</b>	<b>+0.7</b>	<b>-3.3</b>	<b>+4.3</b>	<b>+58</b>	<b>+113</b>	<b>+137</b>	<b>+119</b>	<b>+19</b>
Acc	59%	51%	84%	72%	68%	68%	69%	65%	61%
FERTILITY			CARCASS				OTHER		
Scrotal	D to Calv.	Carc. W.	EMA	Rib Fat	Rump Fat	RBY%	IMF%	NFI-F	Doc
<b>+2.8</b>	<b>-4.7</b>	<b>+77</b>	<b>+5.1</b>	<b>+1.8</b>	<b>+0.7</b>	<b>-0.6</b>	<b>+3.2</b>	<b>+0.73</b>	-
64%	42%	63%	61%	64%	61%	61%	61%	51%	-

Traits Observed: GL,BWT,400WT,600WT,Genomics

Discovery son from a Te Mania Emperor cow. He exhibits big indexes, high growth rates and IMF. Used in our commercial herd.

Purchaser: \_\_\_\_\_ \$: \_\_\_\_\_

INDEX VALUES			
Angus Breeding	Domestic	Heavy Grain	Heavy Grass
<b>\$143</b>	<b>\$130</b>	<b>\$162</b>	<b>\$134</b>



DOB: 17/07/2018

Society Ident: BONP081

Genetic Status: AMF,CAF,DDFU,NHF

A A R TEN X 7008 S A SV

MYTTY IN FOCUS #

HOOVER DAM #

SYDGEN C C & 7 #

A A R LADY KELTON 5551 #

ERICA OF ELLSTON C124 #

V A R DISCOVERY 2240 PV

BRIDGEWATER L025 #

DEER VALLEY RITA 0308 #

SITZ UPWARD 307R SV

MYOLA-APR G173 SV

BALD BLAIR DEBONAIR D34 SV

G A R OBJECTIVE 2345 #

MYOLA-APR 5155 #

Angus	Mid June 2020 TransTasman Angus Cattle Evaluation								
	CALVING EASE		BIRTH			GROWTH			
	Direct	Dtrs	Gest. Lgth	Birth Wt.	200 Wt.	400 Wt.	600 Wt.	MCW	Milk
<b>EBV</b>	<b>-9.9</b>	<b>-3.9</b>	<b>-3.3</b>	<b>+5.8</b>	<b>+64</b>	<b>+114</b>	<b>+144</b>	<b>+144</b>	<b>+16</b>
Acc	59%	50%	84%	73%	69%	70%	73%	66%	61%
FERTILITY			CARCASS				OTHER		
Scrotal	D to Calv.	Carc. W.	EMA	Rib Fat	Rump Fat	RBY%	IMF%	NFI-F	Doc
<b>+4.5</b>	<b>-2.6</b>	<b>+79</b>	<b>+5.7</b>	<b>+0.1</b>	<b>-1.5</b>	<b>+1.3</b>	<b>+2.4</b>	<b>+0.31</b>	-
64%	39%	62%	60%	63%	61%	60%	60%	49%	-

Traits Observed: GL,BWT,200WT,400WT,600WT,Genomics

A Discovery son with impressive top 1% of the breed for 200/400 day weights with Scrotal also in the top 1%

Purchaser: \_\_\_\_\_ \$: \_\_\_\_\_

INDEX VALUES			
Angus Breeding	Domestic	Heavy Grain	Heavy Grass
<b>\$123</b>	<b>\$116</b>	<b>\$137</b>	<b>\$117</b>

Suitable for Heifers

DOB: 18/07/2018

Society Ident: BONP086

Genetic Status: AMF,CAF,DDFU,NHF

A A R TEN X 7008 S A SV

MYTTY IN FOCUS #

HOOVER DAM #

SYDGEN C C & 7 #

A A R LADY KELTON 5551 #

ERICA OF ELLSTON C124 #

V A R DISCOVERY 2240 PV

BRIDGEWATER L014 #

DEER VALLEY RITA 0308 #

SITZ UPWARD 307R SV

MYOLA-APR H67 SV

RENNYLEA EDMUND E11 PV

G A R OBJECTIVE 2345 #

MYOLA-APR 7310 #

Angus	Mid June 2020 TransTasman Angus Cattle Evaluation								
	CALVING EASE		BIRTH			GROWTH			
	Direct	Dtrs	Gest. Lgth	Birth Wt.	200 Wt.	400 Wt.	600 Wt.	MCW	Milk
<b>EBV</b>	<b>+10.2</b>	<b>+4.9</b>	<b>-2.8</b>	<b>-0.2</b>	<b>+48</b>	<b>+98</b>	<b>+121</b>	<b>+87</b>	<b>+24</b>
Acc	58%	49%	84%	74%	70%	71%	73%	66%	62%
FERTILITY			CARCASS				OTHER		
Scrotal	D to Calv.	Carc. W.	EMA	Rib Fat	Rump Fat	RBY%	IMF%	NFI-F	Doc
<b>+2.6</b>	<b>-3.3</b>	<b>+75</b>	<b>+7.6</b>	<b>-0.3</b>	<b>-2.1</b>	<b>+0.6</b>	<b>+2.9</b>	<b>+0.55</b>	-
64%	39%	63%	60%	63%	61%	60%	60%	49%	-

Traits Observed: GL,BWT,200WT,400WT,600WT,Genomics

A Discovery with a very low birth weight, good growth rates and marbling. Suitable for heifers.

Purchaser: \_\_\_\_\_ \$: \_\_\_\_\_

INDEX VALUES			
Angus Breeding	Domestic	Heavy Grain	Heavy Grass
<b>\$136</b>	<b>\$129</b>	<b>\$152</b>	<b>\$130</b>

DOB: 19/07/2018

Society Ident: BONP095

Genetic Status: AMF,CAF,DDF,NHF

THOMAS UP RIVER 1614 PV

SITZ UPWARD 307R SV

WAITARA 8523 GAVEL G56 SV

44 STIMULUS 8523 #

THOMAS CAROL 7595 #

WAITARA 03G TRENDY KIM X32 #

MILLAH MURRAH LOCH UP L133 PV

BRIDGEWATER MYOLA-APR K018 #

MILLAH MURRAH BRENDA H49 SV

TE MANIA EMPEROR E343 PV

MYOLA-APR H9 SV

MERCHISTON EXPEDITION 934 SV

MILLAH MURRAH BRENDA E64 PV

MYOLA-APR 10245 #

Angus	Mid June 2020 TransTasman Angus Cattle Evaluation								
	CALVING EASE		BIRTH			GROWTH			
	Direct	Dtrs	Gest. Lgth	Birth Wt.	200 Wt.	400 Wt.	600 Wt.	MCW	Milk
<b>EBV</b>	<b>+2.2</b>	<b>+2.0</b>	<b>-3.2</b>	<b>+5.0</b>	<b>+48</b>	<b>+82</b>	<b>+102</b>	<b>+82</b>	<b>+12</b>
Acc	55%	46%	84%	74%	68%	69%	72%	64%	58%
FERTILITY			CARCASS				OTHER		
Scrotal	D to Calv.	Carc. W.	EMA	Rib Fat	Rump Fat	RBY%	IMF%	NFI-F	Doc
<b>+2.2</b>	<b>-1.8</b>	<b>+55</b>	<b>+7.8</b>	<b>-0.5</b>	<b>-0.7</b>	<b>+0.7</b>	<b>+2.1</b>	<b>-0.42</b>	-
61%	37%	63%	59%	64%	60%	61%	59%	53%	-

Traits Observed: GL,BWT,200WT,400WT,600WT,Genomics

A Loch Up son with great feed efficiency.

Purchaser: \_\_\_\_\_ \$: \_\_\_\_\_

INDEX VALUES			
Angus Breeding	Domestic	Heavy Grain	Heavy Grass
<b>\$106</b>	<b>\$109</b>	<b>\$108</b>	<b>\$107</b>

31

**BRIDGEWATER LOCH UP P096 SV**

APR

DOB: 19/07/2018

Society Ident: BONP096

Genetic Status: AMF,CAF,DDF,NHF

THOMAS UP RIVER 1614 PV

SITZ UPWARD 307R SV  
THOMAS CAROL 7595 #

DWYERS RANGE EQUATOR H53 SV  
ARDROSSAN EQUATOR A241 PV  
FORRES LOWAN C1 PV

**MILLAH MURRAH LOCH UP L133 PV**

**BRIDGEWATER MYOLA-APR K114 #**

MILLAH MURRAH BRENDA H49 SV

TE MANIA EMPEROR E343 PV  
MILLAH MURRAH BRENDA E64 PV

MYOLA-APR G162 SV

LORABAR MIGHTY PRINCE D113 PV  
MYOLA-APR 7286 #

Angus	Mid June 2020 TransTasman Angus Cattle Evaluation								
	CALVING EASE		BIRTH			GROWTH			
	Direct	Dtrs	Gest. Lgth	Birth Wt.	200 Wt.	400 Wt.	600 Wt.	MCW	Milk
<b>EBV</b>	<b>-2.6</b>	<b>+0.6</b>	<b>-1.2</b>	<b>+6.9</b>	<b>+59</b>	<b>+98</b>	<b>+117</b>	<b>+87</b>	<b>+16</b>
Acc	55%	47%	84%	73%	69%	70%	73%	64%	57%
FERTILITY			CARCASS				OTHER		
Scrotal	D to Calv.	Carc. W.	EMA	Rib Fat	Rump Fat	RBV%	IMF%	NFI-F	Doc
<b>+3.5</b>	<b>-4.6</b>	<b>+66</b>	<b>+5.5</b>	<b>-0.3</b>	<b>-0.7</b>	<b>+0.9</b>	<b>+1.7</b>	<b>-0.08</b>	-
61%	39%	63%	60%	64%	60%	62%	60%	54%	-

Traits Observed: GL,BWT,200WT,400WT,600WT,Genomics

Another feed efficient Loch Up son with solid growth and scrotal.

Purchaser: \_\_\_\_\_ \$: \_\_\_\_\_

INDEX VALUES			
Angus Breeding	Domestic	Heavy Grain	Heavy Grass
<b>\$115</b>	<b>\$117</b>	<b>\$116</b>	<b>\$114</b>

32

**BRIDGEWATER EMPEROR P098 PV**

APR

DOB: 20/07/2018

Society Ident: BONP098

Genetic Status: AMF,CAF,DDFU,NHF

TE MANIA BERKLEY B1 SV

TE MANIA YORKSHIRE Y437 PV  
TE MANIA LOWAN Z53 #

PATHFINDER EQUATOR F195 SV

ARDROSSAN EQUATOR A241 PV  
PATHFINDER BALMAIN B493 #

**TE MANIA EMPEROR E343 PV**

**MYOLA-APR J128 SV**

TE MANIA LOWAN Z74 PV

B T ULTRAVOX 297E #  
TE MANIA LOWAN V201 #

MYOLA-APR 6491 #

UNKNOWN  
UNKNOWN

Angus	Mid June 2020 TransTasman Angus Cattle Evaluation								
	CALVING EASE		BIRTH			GROWTH			
	Direct	Dtrs	Gest. Lgth	Birth Wt.	200 Wt.	400 Wt.	600 Wt.	MCW	Milk
<b>EBV</b>	<b>-1.9</b>	<b>+5.9</b>	<b>-3.2</b>	<b>+6.4</b>	<b>+50</b>	<b>+94</b>	<b>+121</b>	<b>+120</b>	<b>+10</b>
Acc	60%	56%	84%	74%	69%	70%	72%	66%	63%
FERTILITY			CARCASS				OTHER		
Scrotal	D to Calv.	Carc. W.	EMA	Rib Fat	Rump Fat	RBV%	IMF%	NFI-F	Doc
<b>+1.5</b>	<b>-2.8</b>	<b>+72</b>	<b>+5.7</b>	<b>-0.4</b>	<b>-2.4</b>	<b>+1.1</b>	<b>+1.7</b>	<b>+0.11</b>	-
62%	51%	65%	62%	66%	64%	64%	63%	58%	-

Traits Observed: GL,BWT,200WT,400WT,600WT,Genomics

An Emperor son with good growth and feed efficiency.

Purchaser: \_\_\_\_\_ \$: \_\_\_\_\_

INDEX VALUES			
Angus Breeding	Domestic	Heavy Grain	Heavy Grass
<b>\$114</b>	<b>\$111</b>	<b>\$124</b>	<b>\$112</b>

33

**BRIDGEWATER DISCOVERY P104 SV**

APR

DOB: 22/07/2018

Society Ident: BONP104

Genetic Status: AMF,CAF,DDF,NHF

A A R TEN X 7008 S A SV

MYTTY IN FOCUS #  
A A R LADY KELTON 5551 #

TE MANIA EMPEROR E343 PV

TE MANIA BERKLEY B1 SV  
TE MANIA LOWAN Z74 PV

**V A R DISCOVERY 2240 PV**

**BRIDGEWATER L028 #**

DEER VALLEY RITA 0308 #

SITZ UPWARD 307R SV  
G A R OBJECTIVE 2345 #

MYOLA-APR H205 SV

LAWSON'S NADAL E398 SV  
MYOLA-APR 8096 #

Angus	Mid June 2020 TransTasman Angus Cattle Evaluation								
	CALVING EASE		BIRTH			GROWTH			
	Direct	Dtrs	Gest. Lgth	Birth Wt.	200 Wt.	400 Wt.	600 Wt.	MCW	Milk
<b>EBV</b>	<b>-6.6</b>	<b>+1.6</b>	<b>-0.8</b>	<b>+6.5</b>	<b>+69</b>	<b>+124</b>	<b>+159</b>	<b>+158</b>	<b>+13</b>
Acc	59%	52%	84%	73%	69%	70%	70%	66%	62%
FERTILITY			CARCASS				OTHER		
Scrotal	D to Calv.	Carc. W.	EMA	Rib Fat	Rump Fat	RBV%	IMF%	NFI-F	Doc
<b>+1.7</b>	<b>-4.6</b>	<b>+89</b>	<b>+4.2</b>	<b>-0.3</b>	<b>-1.8</b>	<b>+0.2</b>	<b>+2.5</b>	<b>+0.21</b>	-
64%	42%	63%	61%	65%	62%	62%	61%	51%	-

Traits Observed: GL,BWT,200WT,400WT,Genomics

A moderate framed discovery son, used in our commercial herd (hard worker!). Displays curve bending EBVs, being in the top 1% of the breed for 200/400/600 day and carcass weight

Purchaser: \_\_\_\_\_ \$: \_\_\_\_\_

INDEX VALUES			
Angus Breeding	Domestic	Heavy Grain	Heavy Grass
<b>\$141</b>	<b>\$125</b>	<b>\$161</b>	<b>\$132</b>



DOB: 25/07/2018

Society Ident: BONP106

Genetic Status: AMF,CAF,DDFU,NHF

MCC DAYBREAK #

BOYD NEW DAY 8005 #  
MCC MISS FOCUS 134 #

HAZELDEAN F1023 SV

TE MANIA BERKLEY B1 SV  
HAZELDEAN B723 #

QUAKER HILL RAMPAGE 0A36 PV


MYOLA-APR J192 SV

QHF BLACKCAP 6E2 OF4V16 4355 #

IDEAL 4355 OF 0T26 2440 #  
QHF BLACKCAP 4V16 OF 1H8 #

MYOLA-APR 9034 #

UNKNOWN  
UNKNOWN

	Mid June 2020 TransTasman Angus Cattle Evaluation								
	CALVING EASE		BIRTH			GROWTH			
	Direct	Dtrs	Gest. Lgth	Birth Wt.	200 Wt.	400 Wt.	600 Wt.	MCW	Milk
<b>EBV</b>	<b>+0.4</b>	<b>+3.6</b>	<b>+2.9</b>	<b>+5.1</b>	<b>+58</b>	<b>+105</b>	<b>+129</b>	<b>+128</b>	<b>+7</b>
Acc	54%	45%	83%	73%	68%	69%	72%	65%	59%
FERTILITY			CARCASS				OTHER		
Scrotal	D to Calv.	Carc. W.	EMA	Rib Fat	Rump Fat	RBY%	IMF%	NFI-F	Doc
<b>+3.1</b>	<b>-3.0</b>	<b>+70</b>	<b>+12.6</b>	<b>-1.3</b>	<b>-2.6</b>	<b>+3.5</b>	<b>+1.3</b>	<b>+0.09</b>	-
62%	34%	61%	58%	62%	59%	58%	58%	46%	-

Traits Observed: GL,BWT,200WT,400WT,600WT,Genomics

Check out this Rampage son with loads of Muscle! EMA 12.5 in the top 1% of the breed. Top 1% for Domestic Index and Retail Beef Yield. Top 5% for 200 and 400 day weights. Solid feed conversion.

Purchaser: \_\_\_\_\_ \$: \_\_\_\_\_

INDEX VALUES			
Angus Breeding	Domestic	Heavy Grain	Heavy Grass
<b>\$143</b>	<b>\$139</b>	<b>\$153</b>	<b>\$138</b>

Suitable for Heifers

DOB: 28/07/2018

Society Ident: BONP107

Genetic Status: AMF,CAF,DDFU,NHF

DEER VALLEY ALL IN SV

A A R TEN X 7008 S A SV  
DEER VALLEY RITA 0274 #

PATHFINDER GENESIS G357 PV

TE MANIA BERKLEY B1 SV  
PATHFINDER DIRECTION D245 SV

GATES J7 ALL IN L59 PV


BRIDGEWATER M011 #

DWYERS RANGE G20 GRETEL J7 SV

MURRAY EL GRANDO G20 SV  
WATTLETOP GRETEL A359 #

MYOLA-APR H171 SV

KAHARAU CLASS 790 #  
MYOLA-APR 3002 #

	Mid June 2020 TransTasman Angus Cattle Evaluation								
	CALVING EASE		BIRTH			GROWTH			
	Direct	Dtrs	Gest. Lgth	Birth Wt.	200 Wt.	400 Wt.	600 Wt.	MCW	Milk
<b>EBV</b>	<b>+5.3</b>	<b>+7.9</b>	<b>-3.8</b>	<b>+2.7</b>	<b>+50</b>	<b>+89</b>	<b>+112</b>	<b>+98</b>	<b>+15</b>
Acc	51%	44%	62%	69%	63%	65%	69%	61%	53%
FERTILITY			CARCASS				OTHER		
Scrotal	D to Calv.	Carc. W.	EMA	Rib Fat	Rump Fat	RBY%	IMF%	NFI-F	Doc
<b>+2.0</b>	<b>-2.9</b>	<b>+66</b>	<b>+7.3</b>	<b>+0.0</b>	<b>-2.6</b>	<b>+2.1</b>	<b>+1.1</b>	<b>+0.16</b>	-
52%	35%	55%	51%	56%	53%	53%	51%	44%	-

Traits Observed: BWT,200WT,400WT,600WT,Genomics

Gates All In son, suitable for heifers. Good Calving Ease, EMA and Feed Efficiency.

Purchaser: \_\_\_\_\_ \$: \_\_\_\_\_

INDEX VALUES			
Angus Breeding	Domestic	Heavy Grain	Heavy Grass
<b>\$118</b>	<b>\$121</b>	<b>\$118</b>	<b>\$119</b>

DOB: 03/08/2018

Society Ident: BONP114

Genetic Status: AMF,CAF,DDF,NHF

DEER VALLEY ALL IN SV

A A R TEN X 7008 S A SV  
DEER VALLEY RITA 0274 #

PARINGA JUDD J5 PV

TUWHARETOA REGENT D145 PV  
STRATHEWEN BERKLEY WILPENA F30 PV

GATES J7 ALL IN L59 PV


BRIDGEWATER M014 #

DWYERS RANGE G20 GRETEL J7 SV

MURRAY EL GRANDO G20 SV  
WATTLETOP GRETEL A359 #

MYOLA-APR G051 SV

RENNYLEA C511 PV  
MYOLA-APR 30096 #

	Mid June 2020 TransTasman Angus Cattle Evaluation								
	CALVING EASE		BIRTH			GROWTH			
	Direct	Dtrs	Gest. Lgth	Birth Wt.	200 Wt.	400 Wt.	600 Wt.	MCW	Milk
<b>EBV</b>	<b>+1.3</b>	<b>+3.1</b>	<b>-2.8</b>	<b>+4.9</b>	<b>+54</b>	<b>+107</b>	<b>+149</b>	<b>+131</b>	<b>+22</b>
Acc	51%	45%	62%	69%	64%	65%	69%	61%	53%
FERTILITY			CARCASS				OTHER		
Scrotal	D to Calv.	Carc. W.	EMA	Rib Fat	Rump Fat	RBY%	IMF%	NFI-F	Doc
<b>+1.7</b>	<b>-3.0</b>	<b>+87</b>	<b>+4.7</b>	<b>-0.1</b>	<b>-1.4</b>	<b>+0.3</b>	<b>+2.4</b>	<b>+0.01</b>	-
53%	35%	55%	51%	56%	53%	53%	51%	43%	-

Traits Observed: BWT,200WT,400WT,600WT,Genomics

Gates All In son with huge growth and carcass weight with solid feed efficiency.

Purchaser: \_\_\_\_\_ \$: \_\_\_\_\_

INDEX VALUES			
Angus Breeding	Domestic	Heavy Grain	Heavy Grass
<b>\$142</b>	<b>\$121</b>	<b>\$160</b>	<b>\$135</b>

**37 BRIDGEWATER ALL IN P120<sup>SV</sup> APR**

DOB: 10/08/2018 Society Ident: BONP120 Genetic Status: AMF,CAF,DDFU,NHF  
 DEER VALLEY ALL IN<sup>SV</sup> A A R TEN X 7008 S A<sup>SV</sup> HOOVER DAM # SYDGEN C C & 7 #  
 DEER VALLEY RITA 0274 # MURRAY EL GRANDO G20<sup>SV</sup> MYOLA-APR H218<sup>SV</sup> GLENOCHE ETHAN E142<sup>SV</sup>  
**GATES J7 ALL IN L59<sup>PV</sup>** **BRIDGEWATER L030 #** MYOLA-APR 7397 #  
 DWYERS RANGE G20 GRETEL J7<sup>SV</sup> WATTLETOP GRETEL A359 #

Angus	Mid June 2020 TransTasman Angus Cattle Evaluation									
	CALVING EASE			BIRTH			GROWTH			
	Direct	Dtrs	Gest. Lgth	Birth Wt.	200 Wt.	400 Wt.	600 Wt.	MCW	Milk	
<b>EBV</b>	<b>-1.6</b>	<b>+5.3</b>	<b>-4.6</b>	<b>+4.5</b>	<b>+60</b>	<b>+104</b>	<b>+127</b>	<b>+99</b>	<b>+17</b>	
Acc	51%	44%	63%	70%	61%	65%	69%	61%	53%	
FERTILITY			CARCASS				OTHER			
Scrotal	D to Calv.	Carc. W.	EMA	Rib Fat	Rump Fat	RBV%	IMF%	NFI-F	Doc	
<b>+1.8</b>	<b>-2.8</b>	<b>+78</b>	<b>+13.1</b>	<b>+0.4</b>	<b>-0.8</b>	<b>+2.4</b>	<b>+1.3</b>	<b>+0.18</b>	-	
52%	33%	55%	50%	55%	53%	52%	51%	42%	-	
Traits Observed: BWT,200WT,400WT,600WT,Genomics						<b>INDEX VALUES</b>				
Moderate framed Gates All In son with good growth a big EMA and Carcase Weight.						Angus Breeding	Domestic	Heavy Grain	Heavy Grass	
Purchaser: _____ \$: _____						<b>\$135</b>	<b>\$133</b>	<b>\$135</b>	<b>\$135</b>	

**38 BRIDGEWATER GENESIS P127<sup>SV</sup> APR**

DOB: 23/08/2018 Society Ident: BONP127 Genetic Status: AMF,CAF,DDF,NHF  
 PATHFINDER GENESIS G357<sup>PV</sup> TE MANIA BERKLEY B1<sup>SV</sup> 44 STIMULUS 8523 # HYLINE RIGHT TIME 338 #  
 PATHFINDER DIRECTION D245<sup>SV</sup> BRIDGEWATER MYOLA-APR K071 # B/R RUBY 419 #  
**BRIDGEWATER GENESIS M1<sup>PV</sup>** RENNYLEA EDMUND E11<sup>PV</sup> MYOLA-APR G170<sup>SV</sup> BOOROOMOOKA ON TIME D105<sup>PV</sup>  
 MYOLA-APR H67<sup>SV</sup> MYOLA-APR 7310 # MYOLA-APR 6392 #

Angus	Mid June 2020 TransTasman Angus Cattle Evaluation									
	CALVING EASE			BIRTH			GROWTH			
	Direct	Dtrs	Gest. Lgth	Birth Wt.	200 Wt.	400 Wt.	600 Wt.	MCW	Milk	
<b>EBV</b>	<b>+8.1</b>	<b>+5.1</b>	<b>-9.5</b>	<b>+3.0</b>	<b>+58</b>	<b>+102</b>	<b>+144</b>	<b>+140</b>	<b>+14</b>	
Acc	50%	43%	60%	68%	64%	65%	69%	61%	53%	
FERTILITY			CARCASS				OTHER			
Scrotal	D to Calv.	Carc. W.	EMA	Rib Fat	Rump Fat	RBV%	IMF%	NFI-F	Doc	
<b>+3.3</b>	<b>-3.8</b>	<b>+88</b>	<b>+4.1</b>	<b>+0.0</b>	<b>-0.8</b>	<b>+1.0</b>	<b>+1.2</b>	<b>-0.15</b>	-	
54%	34%	56%	50%	56%	52%	53%	51%	43%	-	
Traits Observed: BWT,200WT,400WT,600WT,Genomics						<b>INDEX VALUES</b>				
A Bridgewater Genesis X Stimulus heifer bull. A long bodied bull with a low birth weight and high growth rates/carcase weight						Angus Breeding	Domestic	Heavy Grain	Heavy Grass	
Purchaser: _____ \$: _____						<b>\$137</b>	<b>\$121</b>	<b>\$143</b>	<b>\$135</b>	



DOB: 21/02/2019

Society Ident: BONQ003

Genetic Status: AMFU,CAFU,DDFU,NHFU

TE MANIA FOE F734 SV

TE MANIA CALAMUS C46 SV  
TE MANIA DANDLOO D700 #

DUNOON GOODTHING G167 PV

TUWHARETOA REGENT D145 PV  
DUNOON PRINCESS B187 PV

GRANITE RIDGE KAISER K26 SV

AYRVALE LADY L4 PV

GRANITE RIDGE SUPREME F158 #

NICHOLS QUIET LAD T9 #  
GRANITE RIDGE SUPREME D85 #

AYRVALE JADE J11 PV

MILLAH MURRAH EQUATOR D78 PV  
AYRVALE EXCEL E4 PV

Angus	Mid June 2020 TransTasman Angus Cattle Evaluation								
	CALVING EASE		BIRTH			GROWTH			
	Direct	Dtrs	Gest. Lgth	Birth Wt.	200 Wt.	400 Wt.	600 Wt.	MCW	Milk
<b>EBV</b>	<b>+8.0</b>	<b>+4.3</b>	<b>-7.2</b>	<b>+4.0</b>	<b>+52</b>	<b>+88</b>	<b>+120</b>	<b>+104</b>	<b>+19</b>
Acc	54%	46%	66%	71%	66%	67%	67%	62%	58%
FERTILITY			CARCASS				OTHER		
Scrotal	D to Calv.	Carc. W.	EMA	Rib Fat	Rump Fat	RBY%	IMF%	NFI-F	Doc
<b>+1.7</b>	<b>-7.3</b>	<b>+70</b>	<b>+8.4</b>	<b>+0.1</b>	<b>-0.7</b>	<b>+0.9</b>	<b>+2.1</b>	<b>-0.01</b>	-
63%	37%	59%	58%	61%	59%	58%	58%	46%	-

Traits Observed: BWT,200WT,400WT

Heifer bull with a great pedigree. He has it all!

Purchaser: \_\_\_\_\_ \$: \_\_\_\_\_

INDEX VALUES			
Angus Breeding	Domestic	Heavy Grain	Heavy Grass
<b>\$141</b>	<b>\$123</b>	<b>\$154</b>	<b>\$133</b>

DOB: 23/02/2019

Society Ident: BONQ007

Genetic Status: AMFU,CAFU,DDFU,NHFU

G A R PROPHET SV

C R A BEXTOR 872 5205 608 #  
G A R OBJECTIVE 1885 #

LAWSONS NOVAK E313 SV

TC TOTAL 410 #  
LAWSONS PREDESTINED B770 SV

CLUNES CROSSING DUSTY M13 PV

AYRVALE LILYFIELD L28 PV

CLUNES CROSSING GLORIOUS G1 SV

TE MANIA BERKLEY B1 SV  
TE MANIA LOWAN A1 #

AYRVALE HEIRLOOM H19 PV

TUWHARETOA REGENT D145 PV  
AYRVALE EDGE E5 PV

Angus	Mid June 2020 TransTasman Angus Cattle Evaluation								
	CALVING EASE		BIRTH			GROWTH			
	Direct	Dtrs	Gest. Lgth	Birth Wt.	200 Wt.	400 Wt.	600 Wt.	MCW	Milk
<b>EBV</b>	<b>+1.7</b>	<b>+1.5</b>	<b>-6.6</b>	<b>+5.0</b>	<b>+60</b>	<b>+100</b>	<b>+131</b>	<b>+100</b>	<b>+21</b>
Acc	56%	48%	66%	71%	66%	65%	64%	61%	56%
FERTILITY			CARCASS				OTHER		
Scrotal	D to Calv.	Carc. W.	EMA	Rib Fat	Rump Fat	RBY%	IMF%	NFI-F	Doc
<b>+1.6</b>	<b>-9.2</b>	<b>+77</b>	<b>+8.7</b>	<b>-0.1</b>	<b>-0.9</b>	<b>+1.1</b>	<b>+2.8</b>	<b>+0.22</b>	-
59%	40%	59%	56%	60%	57%	58%	56%	49%	-

Traits Observed: BWT,200WT,400WT

Lucky Last! Our nomination for Angus Australia benchmarking cohort 11. A Clunes Crossing Dusty son with the complete package! Huge indexing! A taste of our 2021 catalogue!

Purchaser: \_\_\_\_\_ \$: \_\_\_\_\_

INDEX VALUES			
Angus Breeding	Domestic	Heavy Grain	Heavy Grass
<b>\$161</b>	<b>\$136</b>	<b>\$182</b>	<b>\$147</b>







# BUYERS INSTRUCTION SLIP

Bid Card Number

**THURSDAY 6<sup>TH</sup> AUGUST 2020**

On Property "Myola" 278 Toms Gully Road Black Mountain

\* No verbal instructions will be accepted

Name: \_\_\_\_\_

Address: \_\_\_\_\_

Phone: \_\_\_\_\_ Email: \_\_\_\_\_

Purchase Property Identification Code (PIC): \_\_\_\_\_

## BILLING DETAILS

Please send the account direct to me

Please send the account to my agent, who is:

## LOTS PURCHASED:

Transfer of Bull Registration/s Required:

Yes  No

## TRANSPORT ARRANGEMENTS:

\_\_\_\_\_  
\_\_\_\_\_

## INSURANCE:

12 Months  6 Months  3 Months

## SIGNATURE OF PURCHASER OR AGENT

Name: \_\_\_\_\_ Phone: \_\_\_\_\_

Signature: \_\_\_\_\_ Date: \_\_\_\_\_

## SPECIAL NOTE TO BUYERS

In the interest of buyers, and to prevent the occurrence of mistakes, all instructions concerning the delivery and trucking of stock must be given in writing and signed by the buyer or their representative.





LOT 10 P17 - A V A R DISCOVERY 2240 PV SON



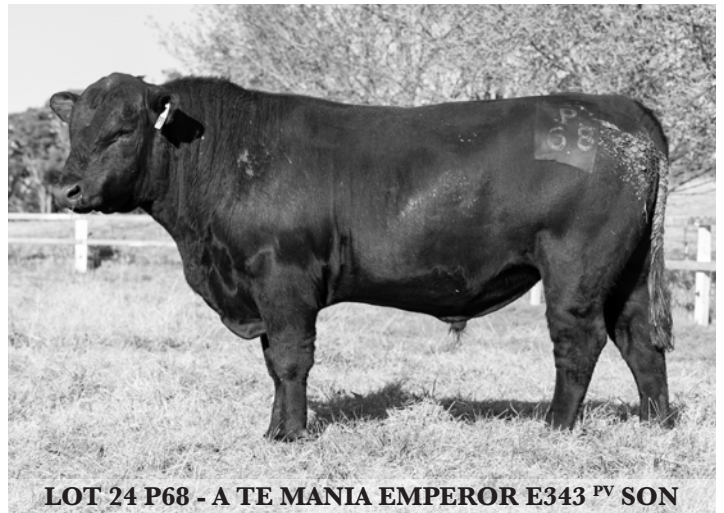
LOT 11 P18 - A V A R DISCOVERY 2240 PV SON



LOT 16 P36 - A GLENAVON L114 SV SON



LOT 17 P45 - A V A R DISCOVERY 2240 PV SON



LOT 24 P68 - A T E M A N I A E M P E R O R E 343 PV SON





LOT 28 P81 - A V A R DISCOVERY 2240 <sup>PV</sup> SON



LOT 30 P95 - A MILLAH MURRAH LOCH UP L133 <sup>PV</sup> SON



LOT 40 Q007 - A CLUNES CROSSING DUSTY M13 <sup>PV</sup> SON



LOT 33 P104 - A V A R DISCOVERY 2240 <sup>PV</sup> SON



LOT 39 Q003 - A GRANITE RIDGE KAISER K26 <sup>SV</sup> SON



# REFERENCE SIRE



Clunes Crossing Dusty M13



Te Mania Emperor E343



Granite Ridge Kraiser K26

Reference Sire Name	CE Dir %	CE Dtrs %	Gest. Lgth	Birth Wt.	200 Day Wt.	400 Day Wt.	600 Day Wt.	Mat Cow Wt.	Milk	Scrot	D to Calv.	Carc. Wt.	EMA	Rib Fat	RBV %	IMF %	NFI-F
AYRVALE GENERAL G18 <sup>PV</sup>	+11.4	+5.8	-8.2	+2.0	+53	+96	+129	+103	+19	+1.9	-9.5	+76	+8.9	+0.9	-0.2	+3.5	+0.86
BALD BLAIR GENERAL L67 <sup>PV</sup>	+1.1	-0.4	-4.6	+5.4	+52	+92	+133	+119	+15	+3.1	-7.7	+71	+2.9	+1.9	-1.1	+2.8	+0.75
BOONAROO GRAVITY G013 <sup>PV</sup>	+7.8	+2.8	-5.9	+3.8	+50	+88	+118	+110	+27	+3.6	-7.7	+60	+5.9	-2.3	+1.8	+2.7	-0.56
BRIDGEWATER GENESIS M1 <sup>PV</sup>	+13.2	+7.4	-11.6	+0.6	+50	+91	+116	+107	+17	+3.4	-6.5	+71	+6.8	+1.5	+0.6	+1.8	+0.54
CLUNES CROSSING DUSTY M13 <sup>PV</sup>	+4.4	+6.1	-8.6	+5.5	+68	+114	+143	+101	+19	+1.3	-8.5	+85	+12.8	-0.7	+2.4	+2.8	+0.34
CLUNIE RANGE LEGEND L348 <sup>PV</sup>	-1.4	+9.4	-8.1	+6.3	+60	+103	+132	+153	+4	+3.3	-9.1	+74	+2.1	+3.4	-1.4	+3.0	+0.14
GATES J7 ALL IN L59 <sup>PV</sup>	-2.7	+6.2	-6.3	+4.4	+60	+105	+136	+119	+17	+1.9	-2.0	+80	+9.3	-1.4	+2.4	+2.1	+0.02
GLENAVON L114 <sup>SV</sup>	-4.8	+1.1	-1.8	+8.1	+58	+106	+148	+130	+22	+1.9	-4.1	+93	+1.6	-1.3	+0.5	+1.9	-0.01
GRANITE RIDGE KAISER K26 <sup>SV</sup>	+6.6	+4.6	-7.3	+5.3	+57	+100	+139	+128	+22	+2.1	-7.1	+78	+9.4	+0.8	+0.7	+1.6	-0.07
MILLAH MURRAH LOCH UP L133 <sup>PV</sup>	+7.4	+7.7	-6.3	+5.1	+59	+102	+134	+105	+23	+2.1	-2.9	+77	+2.4	-1.2	+0.1	+1.8	-0.40
QUAKER HILL RAMPAGE 0A36 <sup>PV</sup>	-1.2	+6.4	-0.5	+4.7	+64	+108	+140	+131	+3	+2.2	-2.4	+77	+12.7	-3.4	+5.1	+0.8	-0.23
TE MANIA EMPEROR E343 <sup>PV</sup>	+4.7	+6.5	-6.7	+5.1	+51	+95	+126	+125	+11	+1.9	-6.3	+68	+4.2	+2.2	-0.7	+2.6	+0.19
V A R DISCOVERY 2240 <sup>PV</sup>	-3.2	-2.3	-4.1	+3.9	+67	+132	+163	+140	+27	+3.9	-2.8	+93	+5.4	-2.3	+1.7	+3.1	+0.38



Millah Murrah Loch Up L133



V A R Discovery 2240



Boonaroo Gravity G013

