

Waitara Angus

the one to chase

14th ANNUAL PRODUCTION SALE

Friday 14th August 2020

WAITARA, TRANGIE - 1PM

32 Bulls

**PLUS 50 HEIFERS
TO BE SOLD IN AUCTIONS PLUS
WEANER & YEARLING SALE
SAME DAY**

STEPHEN & AMITY CHASE
"WAITARA" TRANGIE 2823
0427 883 186
chase@waitaraangus.com.au
www.waitaraangus.com.au

Ashley McGilchrist
Nutrien Ag Solutions Warren
0427 280 773

Marcus Bruce
Nutrien Ag Solutions Warren
0457 512 736

Tim Woodham
Nutrien Stud Stock
0436 015 115

Nutrien
Ag Solutions®

Nutrien Ag Solutions Wilson Russ, Warren
02 6847 4702

PLEASE BRING THIS CATALOGUE TO THE SALE

 AuctionsPlus®
Australia's Livestock Marketplace

Welcome to our fourteenth on property sale!

Well how different can two years be? Last year we all battled through the worst period of dry in living memory and now we are on track for a cracker and for many the biggest challenge is to find enough stock to use all the feed we have around. We feel for those who have not yet had their big break— surely it is only just around the corner?

Our 2020 sale group

This year's bulls should present in good working order ready to do their job. They have been fully vaccinated, semen tested, measured and come guaranteed.

With the season we endured last two years our numbers have been reduced and half of the bull calves were marked and will provide valuable carcass data for our program. As a consequence of this only the very best remain to sell and I am very happy with the bulls we have on offer.

Commercial heifers on offer

This year we are excited to offer 50 unjoined yearling heifers drafted into suitable lines to be sold in the Auctions Plus Weaner & Yearling Sale in the morning of our sale day. These quality Waitara bred heifers will be on display with the bulls all day & are also available for inspection prior to the sale.

Experienced bulls

Almost all of this year's bulls have been used as yearlings in our commercial and stud herds and they will have calves on the ground by sale day- this is a further test of our bulls' ability to work and still express their potential. Our heifers have almost finished calving over a 6 week period with very minimal assistance.

Structural assessment

The entire drop of bulls have been structurally assessed by Roger Evans and structure EBVs generated from this data. We are finding that structure EBVs are a valuable tool to have. They allow us to objectively assess an animal's structural integrity and not have to rely on hearsay and rumours when making assessments of bulls, and as more studs measure structure (and submit the data) the EBVs will only increase in accuracy. We believe this is an important step forward and gives us a significant point of difference. You will note that we have not added either the raw data or the EBVs in the catalogue simply because of space constraints, but the structure EBVs are available on the Angus Australia website. We are also happy to make available the individual structure scores if you would like them. I would be more than happy to help you understand these better if you would like.

Angus Sire Benchmarking Program

We have been a co-operator herd for the Angus Sire Benchmarking Program since 2015. Our commercial cows are AI'd to some of our breed's elite bulls with progeny being measured for every possible trait, thus providing valuable data to be used to identify top performing sires as well as helping to ensure that Breedplan is as accurate a tool as it can be. Our 6th drop of ASBP calves have been born, weighed and tagged and we start again collecting more data on this group of cattle.

Our involvement with ASBP has certainly been valuable- the amount of information that is generated through the program is amazing and it helps to ensure that Angus continue to remain as a breed that is highly sought after for their ability to perform in the paddock, feedlot and on the rail.

The commercial side to our program has made me acutely aware of the importance of data collection and analysis. The difference between individual performance in the ASBP cattle as well as our own feedlot cattle has strengthened my belief in measuring as much as we can. It is these measurements- be they weights, scans, pregnancy tests etc. (as part of a proper contemporary group) that give producers the ability to truly identify animals that can increase profitability.

Stockyard Beef

We are very thankful to the team at Kerwee Feedlot and Stockyard Beef. They are tremendous partners to have in business. They purchase our steers and provide us with great feedback on how our cattle are going and areas we need to improve. They have also been very keen to purchase any more Waitara bred steers, so please let me know if you want to know more, or have cattle to sell.

Partnerships

It is important to remember that all businesses are strengthened by relationships, be they staff, agent, advisor, supplier, customer etc. This is something we have always been aware of but it has become especially apparent in more difficult times. We are lucky to have been able to develop these relationships over the years and I am very thankful for them. We couldn't operate without great people supporting the business and we are fortunate to have a great team around us.

A big thank you to Nutrien especially to the team at Warren. They do a great job and are a valuable asset when it comes to their knowledge and pricing of merchandise, as well as their expertise in marketing of commercial stock. They have proven to be a great partner for us at Waitara and nothing has ever been a problem.

Please contact us if you wish to arrange an inspection of the bulls or to discuss anything to do with the beef industry, be it production, genetics or marketing. We look forward to seeing you at the sale and hope you can join us after for refreshments.

the Chase family- Steve, Amity, Harry, Fergus, Toby & Patrick

SALE INFORMATION

SALE LOCATION

Waitara Angus is located 25km NE of Tottenham and 43km SW of Nevertire on the Tottenham-Nevertire Rd, 7km north of the Bogan River. Allow 1 hour 20 minutes from Dubbo, 50 minutes from Narromine, 40 minutes from Warren.

A map is on the second last page. Enter "2766 Tottenham Rd Bogan" into your GPS.

SALE DATE & INSPECTION TIMES

The sale will commence at 1pm on Friday 14th August 2020 in our undercover sale complex. Cattle inspections from 9am on the morning of the sale, or at any other time by private arrangement.

CATERING

Morning tea and lunch will be available, provided by the Tottenham War Memorial Early Childhood Centre who will be in attendance all day, with all the proceeds going directly to purchasing much needed equipment for the children. We are proud to be able to support them in their fundraising efforts.

The Chase family would like to invite all visitors and their agents to join us for a few casual beverages after the sale.

DELIVERY

Subsidised transport can be arranged by the vendors, and will be carried out at the earliest convenience of both parties following the sale.

Please contact Stephen Chase on 0427 883 186 if you wish to use this service.

SELLING SYSTEM

The sale will be conducted under normal auction conditions with a buyer number system. Please register with the selling agents on sale day. GST will be added to the final price on each lot. Phone bidding will be available, contact Landmark Warren prior to sale day. Terms and conditions are available from the selling agents.

AUCTIONS PLUS

The sale will be interfaced with Auctions Plus.



Australia's Livestock Marketplace

REBATE

A 2% rebate will be offered to outside agents introducing buyers prior to the sale in writing, or attending the sale and settling within 7 days of invoice.

REGISTRATION

Ownership transfer with the Angus Society will be made at the request of the purchaser. Please fill in the registration section of the buyers instruction sheet on sale day.

WAITARA PARTNERSHIP ABN: 13116375639

DISCLAIMER

All reasonable care has been taken to ensure the information provided in this catalogue is correct, however neither the vendor nor the selling agents assume any responsibility for the correctness, use or interpretation of the information included.

HERD HEALTH

Your new Waitara bull

The life of your new bull begins at AI. All stud females are AI'd to industry leading sires from Australia and around the world. Each female is individually matched to the AI sire to result in a joining that 'meshes' through figures, performance, structure and constitution. Every female is preg tested and any empty ones culled. Females must calve unassisted at 2 years old– any cow that is assisted is culled along with her calf. The entire cow herd is run under commercial conditions in order to identify truly superior animals.

All calves are weighed at birth and tagged with the dam's ID to ensure accurate mothering. The dam tag is removed at weaning to allow for the animal's own ID tag, and an NLIS button. All calves are weighed, temperament scored and vaccinated at this point with 7-in-1, and dosed with vitamins ADE & B12.

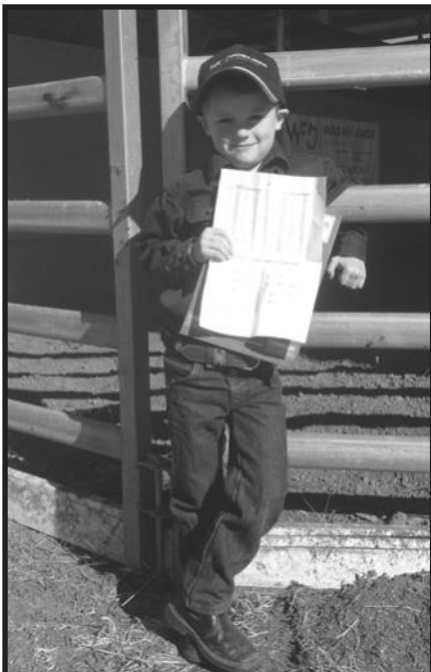
Waitara practises early weaning in an attempt to maximise efficiency of the breeding herd, through enhanced rumen development and increased conception rates. Calves are yard weaned to settle them for their first days off their mother.

Bulls are run in large groups from weaning, and are weighed again as yearlings, as well as being scanned for fat, eye muscle area and marbling (IMF), and measured for scrotal circumference at the same time. All the data is entered in the Breedplan system to increase the accuracy of the EBVs. We believe that precise performance recording combined with phenotype and fertility assessment enables more accurate selection of superior animals, allowing us to offer our clients a better product. Cattle are constantly being assessed for structure and animals that are not up to standard are culled.

All bulls that have been selected for the Production Sale have been independently semen tested and health checked, PI tested and vaccinated with 7-in-1, Pestigard & Vibrovax.

At Waitara we use low stress handling techniques on all our cattle. The bulls are used to motor bikes, utes, horses, people on foot and a controlled use of dogs. On taking delivery of your new bull try to provide him with company and please be aware that he will require time to settle into his new surroundings. Treat your bull with respect and he should be easy to handle when required.

Please don't hesitate to contact Waitara if you would like to discuss our breeding and health program.



GUARANTEE

All bulls sold by Waitara are fertile and structurally sound to the best of our knowledge. If an animal becomes infertile or breaks down due to reasons other than injury or misadventure at any time in the next 12 months, we will;

1. Provide you with a satisfactory replacement if available, or
2. Issue you with a credit equal to the purchase price less the salvage value, that can be used to purchase any animal in future Waitara sales.

Normal care needs to be taken as we cannot replace an animal that is injured or dies for any reason. Any claims are to be accompanied by a certificate from a registered veterinarian. All vet costs are the responsibility of the purchaser.

UNDERSTANDING BREEDPLAN

ACCURACY (%) ~ Provides an indication of the reliability of an EBV. As more performance information becomes available on an animal (or its progeny, or relatives) then the accuracy of its EBVs for particular traits will increase.

CALVING EASE DIR (%) ~ Estimates of the genetic differences between animals in the ability of their calves from 2 year old heifers to be delivered without assistance.

CALVING EASE DTRS (%) ~ Estimates of the genetic differences between animals in the ability of their 2 year old daughters to calve without assistance.

GESTATION LENGTH (DAYS) ~ Estimates of the genetic differences between animals in the number of days from the date of conception to the calf birth date.

BIRTH WT (KG) ~ Estimates of the genetic differences between animals in calf birth weight.

200-DAY WT (KG) ~ Estimates of the genetic differences between animals in liveweight at 200 days of age.

400-DAY WT (KG) ~ Estimates of the genetic differences between animals in liveweight at 400 days of age.

600-DAY WT (KG) ~ Estimates of the genetic differences between animals in liveweight at 600 days of age.

MATURE COW WEIGHT (KG) ~ Estimates of the genetic differences between animals in cow weight at 5 years of age.

MILK (KG) ~ Estimates of the genetic differences between animals in milk production, expressed as variation in 200-day weight of daughter's calves.

SCROTAL SIZE (CM) ~ Estimates of the genetic differences between animals in scrotal circumference at 400 days of age.

DAYS TO CALVING ~ Estimates of the genetic differences in female fertility, expressed as the number of days from the start of the joining period until subsequent calving.

CARCASE WEIGHT (KG) ~ Estimates of the genetic differences between animals in carcass weight, adjusted to 650 days of age.

EYE MUSCLE AREA (CM²) ~ Estimates of the genetic differences between animals in eye muscle area at the 12/13th rib site, in a 300kg carcass.

RIB FAT (MM) ~ Estimates of the genetic differences between animals in fat depth at the 12/13th rib site, in a 300 kg carcass.

RUMP FAT (MM) ~ Estimates of the genetic differences between animals in fat depth at the P8 rump site, in a 300kg carcass.

RETAIL BEEF YIELD % (RBY%) ~ Estimates of the genetic differences between animals in percentage retail beef yield, in a 300kg carcass.

INTRA-MUSCULAR FAT % (IMF%) ~ Estimates of the genetic differences between animals in percentage intramuscular fat (marbling) at the 12/13th rib site, in a 300 kg carcass.

DOCILITY ~ Differences in the percentage of progeny that will be scored with an acceptable temperament.

ANGUS BREEDING INDEX (\$) ~ -Estimates the genetic differences between animals in net profitability per cow joined in a typical commercial self replacing herd using Angus bulls. This selection index is not specific to a particular production system or market end-point, but identifies animals that will improve overall profitability in the majority of commercial grass and grain finishing beef production systems.

DOMESTIC INDEX (\$) ~ Estimates the genetic differences between animals in net profitability per cow joined in a commercial self replacing herd targeting the domestic supermarket trade, with progeny finished using either grass, grass supplemented by grain or grain finishing systems.

HEAVY GRAIN INDEX (\$) ~ Estimates the genetic differences between animals in net profitability per cow joined in a commercial self replacing herd targeting pasture grown steers with a 200 day feedlot finishing period for the grain fed high quality, highly marbled markets.

HEAVY GRASS INDEX (\$) ~ Estimates the genetic differences between animals in net profitability per cow joined in a commercial self replacing herd targeting pasture finished heavy steers.

For more information please contact:

The Angus Society of Australia Phone: (02) 6772 3011

Email: office@angusaustralia.com.au Home Page: <http://www.angusaustralia.com.au>

A basic understanding of BREEDPLAN and EBVs in plain simple ENGLISH for the COMMERCIAL CATTLEMAN

Your breeding/ marketing program:-

- (1) *Vealer production for the local/ domestic trade (slaughter age 9-15 months, with liveweight 250-320kg)* -select bulls with high 200-400 day growth EBVs.
- (2) *Yearling production and/or light feeder steers for supermarket (320-400kg liveweight), or hotel & restaurant trade (MSA & CAAB)*. Look for bulls with high 400 day EBVs, increased EMA values and adequate fat cover. If aiming at MSA or CAAB select for higher IMF%.
- (3) *Korean market (steers and heifers up to 6 teeth)*, select for 400-600 day EBVs, increased EMA and adequate fat cover.
- (4) *Japanese market- a) longfed-* Select bulls with excellent structure to stand 200-300 days on feed, above average 600 day weight, good EMA values, and must be selected for positive IMF/marbling. *b) grassfed or shortfed (to produce a finished beast from 550-700kg liveweight up to 6 teeth or 3 years old)-* marbling not required, select for above average 600 day & high EMA values.
- (5) *Bulls to put over 1st calf heifers-* AVOID high birth weight EBVs, select for short gestation length and above all avoid big shouldered, short necked bulls.
- (6) For any self replacing herd generally avoid negative milk EBVs.
- (7) Notice accuracy values- the lower the accuracy (due to less available related animals) the wider deviation from the value can be expected.
- (8) Remember, the bull is only half the picture!

BREED AVERAGE EBVs

Breed Avg	Calving Ease			Birth			Growth			Fertility			Carcase			Other			Structures			Selection Indexes									
	CED ₂	CE ₂	CE ₃	OL	BW	300	400	500	600	MS	SS	DFC	CWT	EMA	MB	FB	RFY	RF	MP	MPF	DOC	FA	FC	FA	RS	RM	RS	AM	DOM	GM	GM
	+1.8	+2.4	-4.4	-4.4	+4.3	+48	+55	+112	+55	+17	+1.9	-4.8	+64	+5.7	-0.1	-0.4	-0.5	+2.0	+0.16	+5	+1	+0	-1	-0.5	-0.3	+117	+110	+124	+114		

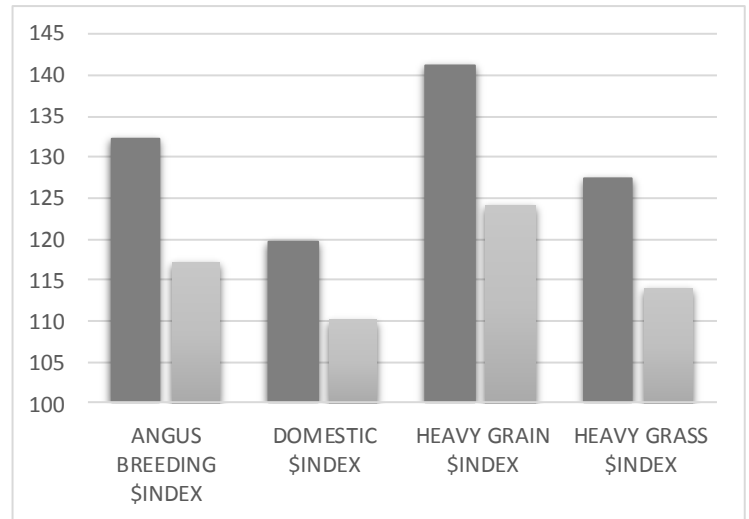
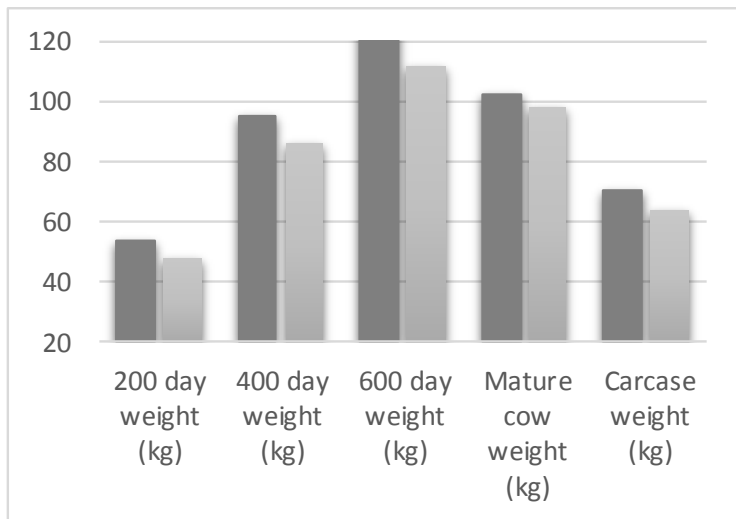
* Breed average represents the average EBV of all 2018 drop Australian Angus and Angus-influenced seedstock animals analysed in the July 2020 TransTasman Angus Cattle Evaluation.

PERCENTILE BANDS TABLE

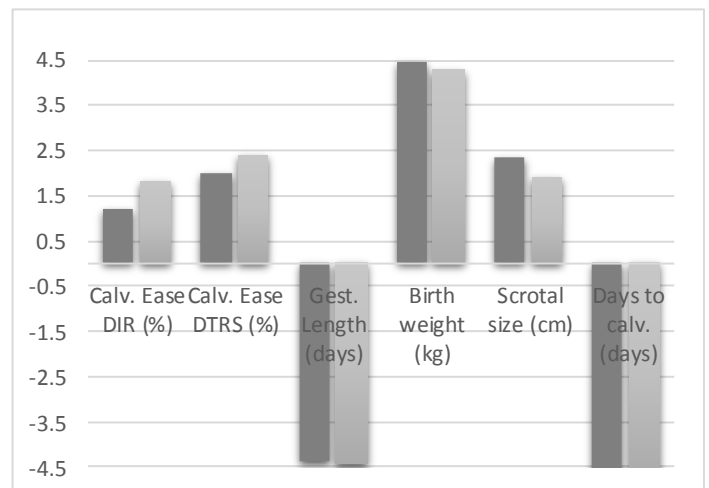
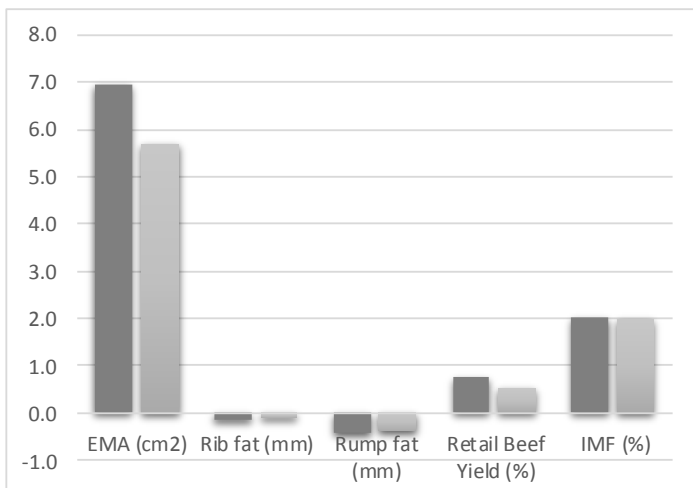
% Band	Calving Ease			Birth			Growth			Fertility			Carcase			Other			Structures			Selection Indexes									
	CED ₂	CE ₂	CE ₃	OL	BW	300	400	500	600	MS	SS	DFC	CWT	EMA	MB	FB	RFY	RF	MP	MPF	DOC	FA	FC	FA	RS	RM	RS	AM	DOM	GM	GM
1%	+12.1	+10.8	-10.2	-0.4	-64	-113	-152	-149	-27	-11.6	-3.0	-3.0	-88	-11.6	-3.0	-3.0	-2.6	-4.3	-0.53	-33	-22	-24	-15	-4.5	-0.3	-180	-136	-187	-147		
5%	+9.9	+8.6	-8.3	-1.6	-58	-104	-139	-131	-24	-9.5	-1.9	-1.8	-80	-9.5	-1.9	-1.8	-2.0	-3.6	-0.32	-25	-16	-19	-11	-2.9	-0.3	-148	-129	-171	-138		
10%	+8.5	+7.5	-7.3	-2.2	-56	-100	-132	-123	-22	-8.5	-1.4	-1.3	-76	-8.5	-1.4	-1.3	-1.6	-3.2	-0.21	-20	-14	-17	-9	-2.1	-0.3	-142	-125	-161	-133		
15%	+7.5	+6.7	-6.7	-2.6	-54	-97	-128	-118	-21	-7.9	-1.1	-0.9	-74	-7.9	-1.1	-0.9	-1.4	-3.0	-0.14	-17	-11	-14	-7	-1.7	-0.3	-138	-123	-155	-130		
20%	+6.5	+6.0	-6.3	-2.9	-53	-95	-125	-114	-20	-7.4	-0.9	-0.7	-72	-7.4	-0.9	-0.7	-1.2	-2.8	-0.08	-15	-10	-12	-6	-1.5	-0.3	-134	-121	-149	-127		
25%	+5.8	+5.4	-5.9	-3.2	-52	-93	-122	-110	-19	-7.1	-0.6	-0.5	-70	-7.1	-0.6	-0.5	-1.1	-2.6	-0.03	-13	-8	-11	-5	-1.1	-0.3	-131	-119	-144	-125		
30%	+5.1	+4.8	-5.6	-3.5	-51	-91	-120	-107	-19	-6.7	-0.5	-0.3	-69	-6.7	-0.5	-0.3	-1.0	-2.4	-0.01	-11	-7	-9	-4	-0.9	-0.2	-129	-117	-140	-123		
35%	+4.4	+4.3	-5.2	-3.7	-50	-90	-118	-105	-18	-6.4	-0.3	-0.1	-68	-6.4	-0.3	-0.1	-0.8	-2.3	-0.05	-10	-5	-7	-3	-0.7	-0.2	-126	-116	-136	-121		
40%	+3.7	+3.8	-4.9	-3.9	-49	-89	-116	-102	-18	-6.2	-0.1	-0.1	-66	-6.2	-0.1	-0.1	-0.7	-2.1	-0.09	-8	-5	-6	-2	-0.4	-0.2	-124	-114	-132	-119		
45%	+3.0	+3.3	-4.6	-4.1	-49	-87	-114	-100	-17	-5.9	-0.0	-0.2	-64	-5.9	-0.0	-0.2	-0.6	-2.0	-0.12	-7	-4	-4	+1	-0.2	-0.1	-121	-113	-129	-117		
50%	+2.3	+2.8	-4.4	-4.3	-48	-86	-112	-97	-17	-5.6	-0.2	-0.4	-64	-5.6	-0.2	-0.4	-0.5	-1.9	-0.16	-5	-3	-2	+0	-0.0	-0.1	-119	-111	-125	-115		
55%	+1.6	+2.2	-4.1	-4.5	-47	-85	-110	-95	-16	-5.4	-0.3	-0.6	-63	-5.4	-0.3	-0.6	-0.4	-1.8	-0.20	-4	-2	-1	-1	-0.3	-0.0	-117	-110	-122	-114		
60%	+0.9	+1.7	-3.8	-4.7	-46	-83	-109	-92	-15	-5.1	-0.4	-0.7	-62	-5.1	-0.4	-0.7	-0.3	-1.7	-0.23	-2	-0	-1	-2	-0.5	-0.1	-114	-108	-118	-112		
65%	+0.1	+1.1	-3.5	-4.9	-45	-82	-107	-90	-15	-4.8	-0.6	-0.9	-60	-4.8	-0.6	-0.9	-0.2	-1.6	-0.27	+1	-1	-4	-3	-0.7	-0.2	-111	-107	-114	-110		
70%	-0.7	+0.4	-3.2	-5.1	-44	-80	-104	-87	-14	-4.5	-0.7	-1.1	-59	-4.5	-0.7	-1.1	-0.1	-1.4	-0.31	-1	-3	-5	-4	-1.1	-0.3	-109	-105	-110	-108		
75%	-1.6	-0.2	-2.9	-5.3	-43	-79	-102	-85	-14	-4.3	-0.9	-1.3	-58	-4.3	-0.9	-1.3	-0.0	-1.3	-0.35	-2	-5	-9	-5	-1.7	-0.5	-105	-103	-105	-105		
80%	-2.7	-1.0	-2.5	-5.6	-42	-77	-100	-82	-13	-3.9	-1.1	-1.5	-56	-3.9	-1.1	-1.5	-0.2	-1.2	-0.40	-4	-8	-12	-7	-2.1	-0.7	-102	-101	-100	-102		
85%	-3.9	-2.0	-2.1	-5.9	-41	-75	-97	-79	-12	-3.5	-1.3	-1.8	-54	-3.5	-1.3	-1.8	-0.4	-1.0	-0.45	-6	-12	-15	-10	-2.9	-0.9	-97	-95	-94	-99		
90%	-5.5	-3.3	-1.5	-6.3	-39	-72	-93	-73	-11	-3.0	-1.6	-2.1	-51	-3.0	-1.6	-2.1	-0.5	-0.8	-0.53	-9	-17	-19	-12	-4.1	-1.4	-91	-84	-85	-94		
95%	-8.0	-5.3	-0.6	-6.9	-37	-68	-86	-65	-10	-2.3	-2.1	-2.7	-47	-2.3	-2.1	-2.7	-1.0	-0.5	-0.64	-13	-23	-24	-17	-5.8	-2.2	-81	-68	-72	-86		
99%	-13.4	-9.3	+1.4	-8.2	-30	-58	-71	-49	-7	-0.5	-3.0	-3.8	-38	-0.5	-3.0	-3.8	-1.8	-0.0	-0.89	-21	-31	-31	-25	-9.6	-4.5	-69	-74	-42	-69		

* The percentile bands represent the distribution of EBVs across the 2018 drop Australian Angus and Angus-influenced seedstock animals analysed in the July 2020 TransTasman Angus Cattle Evaluation.

EBV GRAPHS FOR WAITARA SALE BULLS



■ WAITARA AVERAGE ■ BREED AVERAGE



Recording structural soundness scores

Structural soundness scores for Angus BREEDPLAN are collected using the Beef Class Structural Assessment System.

Scores are collected for 5 traits related to feet and leg structure using a 1 - 9 scoring system, where:

- A score of 5 is considered ideal
- Scores of 4 and 6 show slight variation from ideal, but this includes most animals. Any animal scoring 4 and 6 would be acceptable in any breeding program
- Scores of 3 and 7 show greater variation, but would be acceptable in most commercial breeding programs, however seedstock producers should be wary
- Scores of 2 and 8 are low scoring animals and should be looked at carefully before purchasing
- Scores of 1 and 9 should be considered culls

Structural soundness scores for Angus BREEDPLAN are collected by an accredited technician.



LOOK TO NUTRIEN AG SOLUTIONS® FOR GREAT RESULTS

Waitara Angus Annual Production Sale

Office	Rachel Eves- Hardy	02 6847 4702
Livestock	Ashley McGilchrist	0427 280 773
Livestock	Marcus Bruce	0457 512 736
Merchandise	David Cleasby	0428 484 802
Real Estate	Trevor Wilson	0428 667 561
Stud Stock	Tim Woodham	0436 015 115

Nutrien Ag Solutions
143 Dubbo Street, Warren NSW | (02) 6847 4702
NutrienAgSolutions.com.au

Nutrien
Ag Solutions®
WILSON RUIZ

REFERENCE SIRE

REFERENCE
SIRE

PATHFINDER GENERAL K7

Identifier
SMPK7

TE MANIA BERKLEY B1
AYRVALE GENERAL G18
AYRVALE EASE E3

ARDROSSAN EQUATOR A241
PATHFINDER EQUATOR H63
PATHFINDER F153

WFS JULY 2020 ANGUS GROUP BREEDPLAN EBVS																		
	CE-Dir	CE-Dgt	GL	BW	200	400	600	Mwt	Mik	SS	DTC	Cwt	EMA	Rib	Rmp	RBY	IMF	DOC
EBV	+10.9	+7.5	-8.1	+1.5	+56	+89	+122	+102	+17	+1.8	-8.3	+76	+9.1	-0.9	-1.6	+1.1	+2.3	-12
ACC%	85	70	99	98	89	98	98	93	89	97	56	88	87	87	87	81	86	97

Pathfinder General sired the top selling sire group in our 2019 sale. He is siring really attractive progeny who are mid maturing with plenty of muscle, adequate growth and tremendous claw structure. He offers a really balanced set of EBVs being one of those rare bulls that truly bends the growth curve. He also ranks highly for EMA, IMF as well as ranking in the top 2% for frontclaw set. We expect K7 to have a massive influence on our herd. **8 SONS SELL**

Selection Index Values

Market	\$Value	Market	\$Value
Angus Breeding	+\$150	Domestic	+\$129
H. Grain	+\$165	H. Grass	+\$141

REFERENCE
SIRE

H P C A INTENSITY 7102

Identifier
USA17366506

G A R NEW DESIGN 5050
G A R INGENUITY
G A R OBJECTIVE 1067

G A R PREDESTINED
G A R PREDESTINED 287L
G A R OBJECTIVE 1885

WFS JULY 2020 ANGUS GROUP BREEDPLAN EBVS																		
	CE-Dir	CE-Dgt	GL	BW	200	400	600	Mwt	Mik	SS	DTC	Cwt	EMA	Rib	Rmp	RBY	IMF	DOC
EBV	-14.5	-3.6	-3.3	+7.3	+66	+115	+149	+127	+26	+0.7	-6.2	+84	+9.7	-0.7	-1.7	+1.1	+3.2	-3
ACC%	94	84	99	99	97	98	98	98	97	98	76	95	94	95	94	93	94	97

Intensity sires long bodied, growthy and attractive progeny. There are a number of sons at the front end of our sale including full brothers from the dam of our 2017 sale topper. **5 SONS SELL**

Selection Index Values

Market	\$Value	Market	\$Value
Angus Breeding	+\$140	Domestic	+\$118
H. Grain	+\$164	H. Grass	+\$128

REFERENCE
SIRE

WAITARA 292 LIBERATOR L16

Identifier
B&CL16

SITZ TOP GAME 561X
JMB TRACTION 292
JMB EMULOTA 013

WAITARA PIO FEDERAL F73
WAITARA FED MISS WILCOOLA J56
WAITARA KD MISS WILCOOLA D41

WFS JULY 2020 ANGUS GROUP BREEDPLAN EBVS																		
	CE-Dir	CE-Dgt	GL	BW	200	400	600	Mwt	Mik	SS	DTC	Cwt	EMA	Rib	Rmp	RBY	IMF	DOC
EBV	+6.2	+4.4	-4.2	+2.7	+48	+97	+126	+81	+29	+2.7	-4.8	+66	+9	-1.4	-2.1	+1.8	+1.1	+14
ACC%	67	52	93	90	66	86	82	76	66	75	41	74	73	77	75	71	73	83

L16 was the \$18k sale topper in our successful 2017 sale. He is very long bodied with plenty of muscle. He is part of cohort 8 in the Angus Sire Benchmarking Program where he ranked first for birthweight. From an EBV standpoint he offers calving ease, growth, scrotal, muscle, yield as well as very solid structure EBVs. **3 SONS SELL**

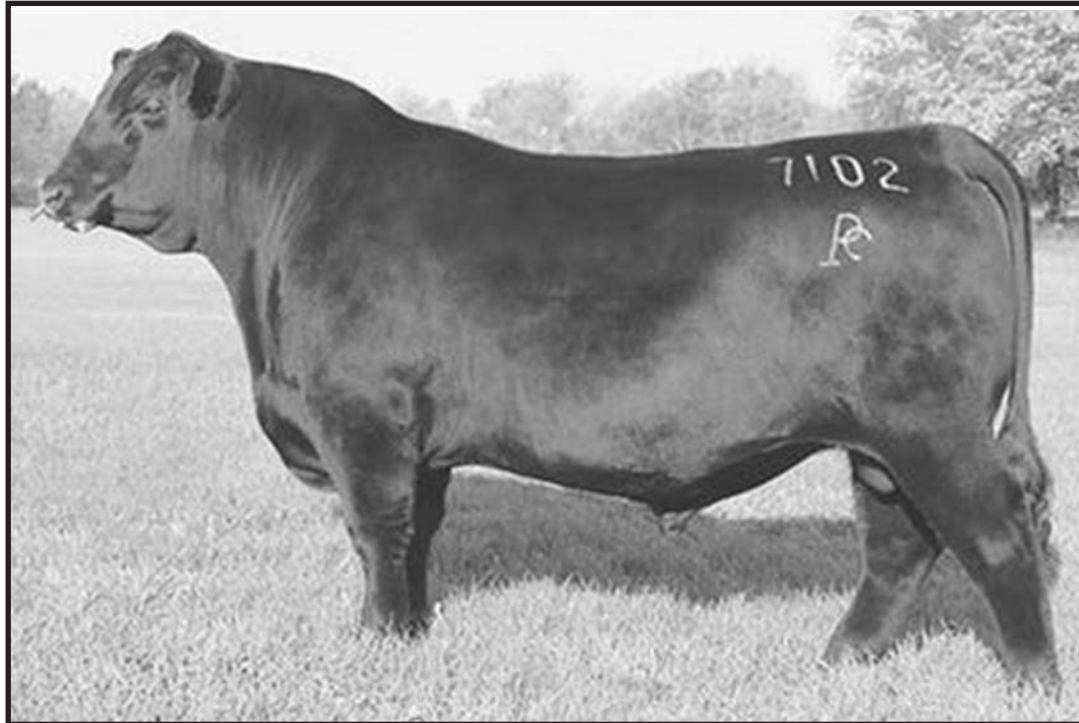
Selection Index Values

Market	\$Value	Market	\$Value
Angus Breeding	+\$136	Domestic	+\$127
H. Grain	+\$139	H. Grass	+\$135

PATHFINDER
GENERAL
K7



HPCA
INTENSITY
7102



WAITARA
LIBERATOR
L16



REFERENCE SIRE	KAROO KNOCKOUT K176											Selection Index Values			
	NENK176											ABI	DOM	GRN	GRS
												+\$134	+\$121	+\$148	+\$126

WFS JULY 2020 ANGUS GROUP BREEDPLAN EBVS																		
	CE-Dir	CE-Dgt	GL	BW	200	400	600	Mwt	Mik	SS	DTC	Cwt	EMA	Rib	Rmp	RBY	IMF	DOC
EBV	+3.8	+7.5	-8	+5.1	+49	+90	+114	+137	+5	+3.6	-7	+56	+7.9	2.6	+1.3	+0.2	+2.1	+24
ACC%	78	62	98	98	75	97	96	86	75	96	56	85	86	87	85	81	84	96

REFERENCE SIRE	RENNYLEA MAGNATE M49											Selection Index Values			
	NORM49											ABI	DOM	GRN	GRS
												+\$152	+\$123	+\$181	+\$137

WFS JULY 2020 ANGUS GROUP BREEDPLAN EBVS																		
	CE-Dir	CE-Dgt	GL	BW	200	400	600	Mwt	Mik	SS	DTC	Cwt	EMA	Rib	Rmp	RBY	IMF	DOC
EBV	-1.8	+5.1	-4	+5.4	+51	+96	+136	+112	+30	+4.3	-7.1	+72	+4.3	-2.3	-0.9	+0.8	+3.3	+9
ACC%	70	59	93	94	70	90	85	78	70	86	55	76	74	77	75	73	73	89

REFERENCE SIRE	WAITARA THE CHAIRMAN M6											Selection Index Values			
	BSCM6											ABI	DOM	GRN	GRS
												+\$135	+\$123	+\$140	+\$132

WFS JULY 2020 ANGUS GROUP BREEDPLAN EBVS																		
	CE-Dir	CE-Dgt	GL	BW	200	400	600	Mwt	Mik	SS	DTC	Cwt	EMA	Rib	Rmp	RBY	IMF	DOC
EBV	-2.1	+0.8	-3.6	+5.8	+61	+107	+139	+126	+24	+3	-5.5	+76	+7.5	+0.3	+0.1	+1.4	+1.3	-15
ACC%	66	51	93	92	65	84	81	76	65	80	42	73	67	72	69	67	67	86

REFERENCE SIRE	THE ROCK GENERAL KNOWLEDGE											Selection Index Values			
	ATZK21											ABI	DOM	GRN	GRS
												+\$135	+\$119	+\$151	+\$126

WFS JULY 2020 ANGUS GROUP BREEDPLAN EBVS																		
	CE-Dir	CE-Dgt	GL	BW	200	400	600	Mwt	Mik	SS	DTC	Cwt	EMA	Rib	Rmp	RBY	IMF	DOC
EBV	+7.9	+4.5	-5.9	+3.5	+52	+91	+118	+94	+17	+2.2	-7.8	+73	+2.1	+0.9	+0.8	-1.2	+3	-10
ACC%	68	56	84	90	70	85	84	77	70	82	47	77	71	75	75	71	72	82

REFERENCE SIRE	CHILTERN PARK MOE M6											Selection Index Values			
	GTNM6											ABI	DOM	GRN	GRS
												+\$149	+\$124	+\$165	+\$140

WFS JULY 2020 ANGUS GROUP BREEDPLAN EBVS																		
	CE-Dir	CE-Dgt	GL	BW	200	400	600	Mwt	Mik	SS	DTC	Cwt	EMA	Rib	Rmp	RBY	IMF	DOC
EBV	+9.4	+5.9	-2.6	+1.8	+49	+96	+133	+98	+28	+2	-6.6	+69	+7.4	-0.7	-1.1	0	+2.5	+39
ACC%	71	57	97	97	70	93	91	82	70	88	48	78	77	79	78	74	75	85

REFERENCE SIRE	BALDRIDGE BRONC											Selection Index Values			
	USA18229425											ABI	DOM	GRN	GRS
												+\$144	+\$134	+\$141	+\$144

WFS JULY 2020 ANGUS GROUP BREEDPLAN EBVS																		
	CE-Dir	CE-Dgt	GL	BW	200	400	600	Mwt	Mik	SS	DTC	Cwt	EMA	Rib	Rmp	RBY	IMF	DOC
EBV	+14	+10.2	-8.2	+0.2	+57	+102	+125	+98	+19	+1.7	-6.5	+66	+10.3	+2.2	+2.2	+0.2	+1.4	+23
ACC%	72	52	97	97	78	96	95	85	78	94	47	83	85	86	82	80	84	86

REFERENCE SIRE	GAR FAIL SAFE											Selection Index Values			
	USA18181757											ABI	DOM	GRN	GRS
												+\$149	+\$130	+\$172	+\$137

WFS JULY 2020 ANGUS GROUP BREEDPLAN EBVS																		
	CE-Dir	CE-Dgt	GL	BW	200	400	600	Mwt	Mik	SS	DTC	Cwt	EMA	Rib	Rmp	RBY	IMF	DOC
EBV	+4	+4.3	-5	+3	+50	+91	+118	+81	+22	+2.9	-6	+67	+6.4	-0.1	+0.3	+0.2	+3.7	+7
ACC%	83	60	98	98	77	94	93	85	77	90	50	83	81	83	79	78	80	91

SALE-O SALE-O....

1

WAITARA GENERAL P48 (AI)

Identifier
BSCP48

DOB: 25/07/2018 Reg: HBR AMFU NHFU CAFU DDFU

AYRVALE GENERAL G18

Sire: **PATHFINDER GENERAL K7**

PATHFINDER EQUATOR H63

JMB TRACTION 292

Dam: **WAITARA 292 ROMANTIC L41**

WAITARA 458N ROMANTIC H22

DAMS ACI- 362 days — No. of calves- 3

Selection Index Values

Market Target	\$ Index Value
Angus Breeding	+\$133
Domestic	+\$123
Heavy Grain	+\$141
Heavy Grass	+\$129

JULY 2020 ANGUS GROUP BREEDPLAN EBVS

WFS	CE-Dir	CE-Dgt	GL	BW	200	400	600	Mwt	Mik	SS	DTC	Cwt	EMA	Rib	Rmp	RBY	IMF	DOC
EBV	+8.7	+5.9	-6.5	+2	+51	+87	+116	+92	+19	+2.5	-5.3	+65	+7.8	-0.6	-1.2	+1.3	+1.9	+2
ACC%	58	47	84	74	69	70	68	65	59	73	36	61	61	61	62	57	57	58

EBVs rated within the breed's top 10% CED, BW

Once again K7 has a top draft of sons represented and P48 is a top bull to start the sale. Calving ease here with growth and plenty of muscle. Top 25% claw set and hind view.

2

WAITARA 7102 PRODIGY P41 (AI)

Identifier
BSCP41

DOB: 24/07/2018 Reg: HBR AMFU NHFU CAFU DDFU

G A R INGENUITY

Sire: **H P C A INTENSITY 7102**

G A R PREDESTINED 287L

WAITARA PIO FEDERAL F73

Dam: **WAITARA FED MISS WILCOOLA J56**

WAITARA KD MISS WILCOOLA D41

DAMS ACI- DONOR — No. of calves- 18

Selection Index Values

Market Target	\$ Index Value
Angus Breeding	+\$125
Domestic	+\$114
Heavy Grain	+\$131
Heavy Grass	+\$121

JULY 2020 ANGUS GROUP BREEDPLAN EBVS

WFS	CE-Dir	CE-Dgt	GL	BW	200	400	600	Mwt	Mik	SS	DTC	Cwt	EMA	Rib	Rmp	RBY	IMF	DOC
EBV	-1.3	+1.9	-5.1	+3.6	+50	+89	+116	+85	+23	+1.3	-6.3	+68	+6.6	+0.9	0	+0.3	+2.1	+3
ACC%	63	56	85	75	71	71	71	69	66	67	47	66	64	68	66	65	64	63

EBVs rated within the breed's top 10% MILK

P41 is a long bodied bull who was selected as part of our feature breed show team. He is the first of 3 flush brothers out of the mother of the 2017 sale topper .

3

WAITARA PROSPER P91 (AI) (ET)

Identifier
BSCP91

DOB: 1/08/2018 Reg: HBR AMFU NHFU CAFU DDFU

G A R INGENUITY

Sire: **H P C A INTENSITY 7102**

G A R PREDESTINED 287L

WAITARA PIO FEDERAL F73

Dam: **WAITARA FED MISS WILCOOLA J56**

WAITARA KD MISS WILCOOLA D41

DAMS ACI- DONOR — No. of calves- 18

Selection Index Values

Market Target	\$ Index Value
Angus Breeding	+\$147
Domestic	+\$132
Heavy Grain	+\$159
Heavy Grass	+\$140

JULY 2020 ANGUS GROUP BREEDPLAN EBVS

WFS	CE-Dir	CE-Dgt	GL	BW	200	400	600	Mwt	Mik	SS	DTC	Cwt	EMA	Rib	Rmp	RBY	IMF	DOC
EBV	+5.1	+3.4	-4.9	+2.6	+50	+100	+126	+80	+29	+0.8	-7	+74	+8.1	+0.1	-1.5	+0.8	+2.1	+5
ACC%	63	56	71	74	71	71	71	69	66	72	48	67	65	68	66	65	65	63

EBVs rated within the breed's top 1% MILK, TOP 5% DOM, GRS, TOP 10% ABI

P91 is an exciting individual. He was used as a yearling in our stud program and combines tremendous calving ease & growth with an impressive phenotype and foot structure. He was one of the best scoring individuals at assessment for Breedplan. He is out of the the dam of the 2017 sale topper who is proving to be a very consistent breeder. Retaining a semen share for in-herd use only. Top 25% claw set and hind view.

4

WAITARA KNOWLEDGE P130

Identifier
BSCP130

DOB: 19/08/2018 Reg: HBR AMFU NHFU CAFU DD50%

AYRVALE GENERAL G18
Sire: THE ROCK GENERAL KNOWLEDGE
 THE ROCK H12

DUNOON EVIDENT E614
Dam: WAITARA EV WILCOOLA H71
 ARISAIG WILCOOLA X15

DAMS ACI- 370 days — No. of calves- 6

Selection Index Values

Market Target	\$ Index Value
Angus Breeding	+\$122
Domestic	+\$109
Heavy Grain	+\$129
Heavy Grass	+\$118

JULY 2020 ANGUS GROUP BREEDPLAN EBVS

WFS	CE-Dir	CE-Dgt	GL	BW	200	400	600	Mwt	Milk	SS	DTC	Cwt	EMA	Rib	Rmp	RBY	IMF	DOC
EBV	-2.1	-1.5	-2.9	+5.7	+52	+91	+122	+109	+16	+3.5	-6.4	+70	+4.7	-0.5	0.6	+0.3	+1.8	-2
ACC%	53	44	61	73	68	68	65	60	55	70	38	58	58	59	60	55	53	55

P130 has a very impressive phenotype. He is deep sided with a tremendous hip shape blending into a smooth shoulder and front end. Top 25% front foot angle.

5

WAITARA FAILSAFE P16 (AI)

Identifier
BSCP16

DOB: 21/07/2018 Reg: HBR AMFU NHFU CAFU DDFU

CONNELLY IN SURE 8524
Sire: G A R FAIL SAFE
 G A R PROGRESS 830

WERNER WESTWARD 357
Dam: WAITARA 357 VERONICA J20
 WAITARA A2 VERONICA C109

DAMS ACI- DONOR — No. of calves- 20

Selection Index Values

Market Target	\$ Index Value
Angus Breeding	+\$151
Domestic	+\$127
Heavy Grain	+\$175
Heavy Grass	+\$140

JULY 2020 ANGUS GROUP BREEDPLAN EBVS

WFS	CE-Dir	CE-Dgt	GL	BW	200	400	600	Mwt	Milk	SS	DTC	Cwt	EMA	Rib	Rmp	RBY	IMF	DOC
EBV	-1.1	-1.8	-7.2	+5.8	+57	+109	+147	+123	+24	+2.6	-3.9	+83	+7.6	-0.5	-0.6	+0.5	+3.2	+11
ACC%	59	48	85	76	71	71	69	64	60	74	39	61	62	63	62	60	59	61

EBVs rated within the breed's top 5% 400,600,MILK, CWT, TOP 5% 200, DOM, IMF

This bull is a powerful individual. He is really deep sided and displays explosive growth. His dam has sold sons for up to \$11k. Top 25% rear foot angle

6

WAITARA KNOCKOUT P56 (AI)

Identifier
BSCP56

DOB: 26/07/2018 Reg: HBR AMFU NHFU CAFU DDFU

MATAURI REALITY 839
Sire: KAROO KNOCKOUT K176
 KAROO JEDDA H213

LAWSONS NOVAK E313
Dam: WAITARA NOV LASSIE K66
 WAITARA EP LASSIE G111

DAMS ACI- 357 days — No. of calves- 3

Selection Index Values

Market Target	\$ Index Value
Angus Breeding	+\$131
Domestic	+\$117
Heavy Grain	+\$143
Heavy Grass	+\$123

JULY 2020 ANGUS GROUP BREEDPLAN EBVS

WFS	CE-Dir	CE-Dgt	GL	BW	200	400	600	Mwt	Milk	SS	DTC	Cwt	EMA	Rib	Rmp	RBY	IMF	DOC
EBV	-0.4	+4.4	-5.2	+4.7	+51	+92	+119	+122	+12	+3.6	-6.6	+59	+6.1	+1.6	0.8	+0.3	+2.2	+15
ACC%	56	44	85	74	69	70	68	62	54	73	38	60	61	61	62	57	56	58

EBVs rated within the breed's top 5% SS, TOP 10% RIB

P56 is an attractive, long bodied and smooth made bull. Top 25% both foot angles and hind view.

7

WAITARA PRINCETON P90 (AI)

Identifier
BSCP90

DOB: 31/07/2018 Reg: HBR AMFU NHFU CAFU DDFU

TE MANIA FOE F734

Sire: **CHILTERN PARK MOE M6**

STRATHEWEN TIMEOUT JADE F15

HOOVER DAM

Dam: **WAITARA HD DIANA J2**

WAITARA 307R DIANA G83

DAMS ACI- 370 days — No. of calves- 5

Selection Index Values

Market Target	\$ Index Value
Angus Breeding	+\$139
Domestic	+\$119
Heavy Grain	+\$153
Heavy Grass	+\$133

JULY 2020 ANGUS GROUP BREEDPLAN EBVS

WFS	CE-Dir	CE-Dgt	GL	BW	200	400	600	Mwt	Mik	SS	DTC	Cwt	EMA	Rib	Rmp	RBY	IMF	DOC
EBV	+0.3	+2.8	-2	+4.6	+54	+101	+138	+119	+25	+2.4	-4.9	+79	+7.7	+0.3	0.1	0	+2.4	+25
ACC%	54	46	85	74	69	69	67	63	58	71	36	60	58	62	60	58	57	54

EBVs rated within the breed's top 5% MILK, DOC, TOP 10% 400, 600, CWT, GRS

P90 is a definite star lot. He is very sound structured with tremendous foot shape. He was a top performer at structural assessment and scan- this is reflected in his structure EBVs. His EBVs reflect what we are striving for; moderate BW to explosive growth, with positive fat and high docility. He is one of only a few individuals in the breed with all structure traits in the top 30%. He was used on both stud heifers and cows as a yearling and will have calves on the ground in July. We will be using him again by AI this season and are retaining a semen share for in-herd use only. He is also entered for Cohort 11 of the Angus Sire Benchmarking Program. Top 25% both foot angles.

8

WAITARA MARITIME P108

Identifier
BSCP108

DOB: 6/08/2018 Reg: HBR AMFU NHFU CAFU DDFU

WAITARA H1 KIDDO K46

Sire: **WAITARA 292 MARITIME M122**

WAITARA 357 VERONICA J20

TE MANIA EMPEROR E343

Dam: **WAITARA E343 KIM M5**

WAITARA FED KIM K10

DAMS ACI- N/A — No. of calves- 1

Selection Index Values

Market Target	\$ Index Value
Angus Breeding	+\$137
Domestic	+\$121
Heavy Grain	+\$146
Heavy Grass	+\$133

JULY 2020 ANGUS GROUP BREEDPLAN EBVS

WFS	CE-Dir	CE-Dgt	GL	BW	200	400	600	Mwt	Mik	SS	DTC	Cwt	EMA	Rib	Rmp	RBY	IMF	DOC
EBV	-0.5	+0.6	-4.6	+5.2	+57	+104	+137	+113	+21	+3.1	-5.2	+76	+7.2	+1.6	1	0	+2.1	+8
ACC%	50	43	58	71	64	65	62	59	50	69	36	55	56	57	58	53	51	48

EBVs rated within the breed's top 5% 200, 400, 600, SS, CWT, RIB, GRS

Top 25% both foot angles.

9

WAITARA GENERAL P50 (AI)

Identifier
BSCP50

DOB: 26/07/2018 Reg: HBR AMFU NHFU CAFU DDFU

AYRVALE GENERAL G18

Sire: **PATHFINDER GENERAL K7**

PATHFINDER EQUATOR H63

DUNOON GOODTHING G167

Dam: **WAITARA GT RITA K68**

WAITARA EV RITA H56

DAMS ACI- 364 days — No. of calves- 4

Selection Index Values

Market Target	\$ Index Value
Angus Breeding	+\$133
Domestic	+\$121
Heavy Grain	+\$141
Heavy Grass	+\$127

JULY 2020 ANGUS GROUP BREEDPLAN EBVS

WFS	CE-Dir	CE-Dgt	GL	BW	200	400	600	Mwt	Mik	SS	DTC	Cwt	EMA	Rib	Rmp	RBY	IMF	DOC
EBV	+6.1	+1	-4.9	+3.3	+52	+86	+111	+87	+16	+0.6	-6.7	+71	+8.5	-0.2	-0.5	+0.7	+2.2	+3
ACC%	58	49	85	75	70	71	69	66	60	73	38	61	61	62	63	58	58	58

EBVs rated within the breed's top 10% EMA

Used successfully on commercial heifers. Top 25% claw set and hind view.

10

WAITARA GENERAL P26 (AI)

Identifier
BSCP26

DOB: 22/07/2018 Reg: HBR AMFU NHFU CAFU DDFU

AYRVALE GENERAL G18

Sire: **PATHFINDER GENERAL K7**

PATHFINDER EQUATOR H63

CLUNIE RANGE HAVE A LOOK H346

Dam: **WAITARA H346 PAGEANT L139**

WAITARA GAL PAGEANT J116

DAMS ACI- 380 days — No. of calves- 2

Selection Index Values

Market Target	\$ Index Value
Angus Breeding	+\$124
Domestic	+\$114
Heavy Grain	+\$128
Heavy Grass	+\$122

JULY 2020 ANGUS GROUP BREEDPLAN EBVS

WFS	CE-Dir	CE-Dgt	GL	BW	200	400	600	Mwt	Milk	SS	DTC	Cwt	EMA	Rib	Rmp	RBY	IMF	DOC
EBV	+2.8	+3	-6.5	+3.6	+49	+81	+110	+87	+15	+1.6	-5.9	+64	+8	-0.2	-0.8	+1.1	+1.6	-14
ACC%	57	47	84	74	69	69	67	65	58	73	36	59	59	59	61	55	56	58

Top 25% claw set and hind view.

11

WAITARA GENERAL P47 (AI)

Identifier
BSCP47

DOB: 25/07/2018 Reg: HBR AMFU NHFU CAFU DDFU

AYRVALE GENERAL G18

Sire: **PATHFINDER GENERAL K7**

PATHFINDER EQUATOR H63

SITZ UPWARD 307R

Dam: **WAITARA 307R PRIDE G58**

WAITARA COOL PRIDE B42

DAMS ACI- 368 days — No. of calves- 7

Selection Index Values

Market Target	\$ Index Value
Angus Breeding	+\$132
Domestic	+\$125
Heavy Grain	+\$137
Heavy Grass	+\$128

JULY 2020 ANGUS GROUP BREEDPLAN EBVS

WFS	CE-Dir	CE-Dgt	GL	BW	200	400	600	Mwt	Milk	SS	DTC	Cwt	EMA	Rib	Rmp	RBY	IMF	DOC
EBV	+7.8	+5.7	-4.8	+2.9	+54	+91	+116	+94	+17	+1.7	-6.2	+73	+7.8	-1.1	-2.2	+1.5	+1.5	-10
ACC%	59	50	85	75	70	71	68	64	62	73	40	61	62	62	63	58	58	61

EBVs rated within the breed's top 10% RBY, DOM

Check out the calving ease here. Used successfully on commercial heifers. Top 25% hind view.

12

WAITARA LIBERATOR P51 (AI)

Identifier
BSCP51

DOB: 26/07/2018 Reg: HBR AMFU NHFU CAFU DDFU

JMB TRACTION 292

Sire: **WAITARA 292 LIBERATOR L16**

WAITARA FED MISS WILCOOLA J56

CLUNIE RANGE HAVE A LOOK H346

Dam: **WAITARA H346 PAGEANT L131**

WAITARA 4F MISS PAGEANT Y42

DAMS ACI- 337 days — No. of calves- 2

Selection Index Values

Market Target	\$ Index Value
Angus Breeding	+\$115
Domestic	+\$117
Heavy Grain	+\$113
Heavy Grass	+\$117

JULY 2020 ANGUS GROUP BREEDPLAN EBVS

WFS	CE-Dir	CE-Dgt	GL	BW	200	400	600	Mwt	Milk	SS	DTC	Cwt	EMA	Rib	Rmp	RBY	IMF	DOC
EBV	+5.2	+5.2	-4.7	+3.1	+44	+87	+108	+77	+22	+2.2	-3.9	+61	+6.4	-0.5	-1	+1.2	+1.1	+18
ACC%	51	40	83	72	66	67	64	61	49	68	32	57	56	58	59	54	52	51

EBVs rated within the breed's top 10% MILK

Top 25% front foot angle hind view and side view.

13**WAITARA KNOCKOUT P27 (AI)**Identifier
BSCP27

DOB: 22/07/2018 Reg: HBR AMFU NHFU CAFU DDFU

MATAURI REALITY 839
Sire: KAROO KNOCKOUT K176
 KAROO JEDDA H213

WAITARA PIO FEDERAL F73
Dam: WAITARA F73 PRIDE M81
 WAITARA EV PRIDE H57
DAMS ACI- N/A — No. of calves- 1

Selection Index Values	
Market Target	\$ Index Value
Angus Breeding	+\$126
Domestic	+\$117
Heavy Grain	+\$133
Heavy Grass	+\$121

JULY 2020 ANGUS GROUP BREEDPLAN EBVS																		
WF5	CE-Dir	CE-Dgt	GL	BW	200	400	600	Mwt	Mik	SS	DTC	Cwt	EMA	Rib	Rmp	RBV	IMF	DOC
EBV	-0.8	+3	-3.7	+4.6	+52	+95	+118	+111	+14	+3.2	-6.2	+64	+6.4	+1.6	1.3	0	+2	+22
ACC%	55	43	84	73	69	70	68	62	52	73	38	59	60	61	62	57	56	57

EBVs rated within the breed's top 5% SS, RIB, RUMP, DOC
 Deep sided Knockout son. Top 25% front foot angle rear foot angle and hind view.

14**WAITARA GENERAL P104 (AI) (ET)**Identifier
BSCP104

DOB: 5/08/2018 Reg: HBR AMFU NHFU CAFU DDFU

AYRVALE GENERAL G18
Sire: PATHFINDER GENERAL K7
 PATHFINDER EQUATOR H63

SILVEIRAS CONVERSION 8064
Dam: WATTLETOP GILDA J29
 WATTLETOP GILDA G217
DAMS ACI- N/A — No. of calves- 1

Selection Index Values	
Market Target	\$ Index Value
Angus Breeding	+\$140
Domestic	+\$125
Heavy Grain	+\$153
Heavy Grass	+\$132

JULY 2020 ANGUS GROUP BREEDPLAN EBVS																		
WF5	CE-Dir	CE-Dgt	GL	BW	200	400	600	Mwt	Mik	SS	DTC	Cwt	EMA	Rib	Rmp	RBV	IMF	DOC
EBV	+7.5	+2.5	-6.9	+3.2	+55	+87	+115	+100	+14	+1.4	-7.1	+67	+9.3	-1.2	-1	+1	+2.4	-5
ACC%	58	50	69	74	69	70	68	65	62	72	40	62	60	63	62	59	60	59

EBVs rated within the breed's top 10% EMA, DOM
 Dam purchased for \$16k at the Wattletop dispersal- P104 is a thick made K7 son. Top 25% claw set.

15**WAITARA MAGNATE P55**Identifier
BSCP55

DOB: 26/07/2018 Reg: HBR AMFU NHFU CAFU DDFU

RENNYLEA G317
Sire: RENNYLEA MAGNATE M49
 RENNYLEA H116

EXAR UPSHOT 0562B
Dam: WAITARA UPS COOL PRIDE J85
 WAITARA COOL PRIDE B42
DAMS ACI- 371 days — No. of calves- 5

Selection Index Values	
Market Target	\$ Index Value
Angus Breeding	+\$124
Domestic	+\$114
Heavy Grain	+\$137
Heavy Grass	+\$118

JULY 2020 ANGUS GROUP BREEDPLAN EBVS																		
WF5	CE-Dir	CE-Dgt	GL	BW	200	400	600	Mwt	Mik	SS	DTC	Cwt	EMA	Rib	Rmp	RBV	IMF	DOC
EBV	-2.2	+2	-1.2	+5.7	+50	+90	+119	+96	+22	+2.9	-4.6	+67	+6.1	-1.9	-2	+1.5	+2.2	+7
ACC%	53	45	66	74	68	69	65	62	54	70	39	58	57	59	60	55	54	56

EBVs rated within the breed's top 10% MILK
 The first son to sell from the \$25k Rennylea M49. Top 25% both foot angles and side view.

16**WAITARA GENERAL P123**Identifier
BSCP123

DOB: 14/08/2018 Reg: HBR AMFU NHFU CAFU DDFU

Sire: **THE ROCK GENERAL KNOWLEDGE**
AYRVALE GENERAL G18
THE ROCK H12

Dam: **WAITARA EV PRIDE H57**
DUNOON EVIDENT E614
WAITARA 458N PRIDE D56

DAMS ACI- 370 days — No. of calves- 6**Selection Index Values**

Market Target	\$ Index Value
Angus Breeding	+\$117
Domestic	+\$112
Heavy Grain	+\$124
Heavy Grass	+\$113

JULY 2020 ANGUS GROUP BREEDPLAN EBVS

WFS	CE-Dir	CE-Dgt	GL	BW	200	400	600	Mwt	Mik	SS	DTC	Cwt	EMA	Rib	Rmp	RBY	IMF	DOC
EBV	+4.2	+1.2	-4	+2.9	+46	+82	+102	+79	+18	+1.7	-6	+61	+4.6	-0.2	0.3	-0.3	+2.5	+8
ACC%	53	45	64	74	68	68	66	61	56	70	37	59	58	59	60	55	54	54

17**WAITARA BRONC P82 (AI) (ET)**Identifier
BSCP82

DOB: 29/07/2018 Reg: HBR AMFU NHFU CAFU DDFU

Sire: **BALDRIDGE BRONC**
EF COMMANDO 1366
BALDRIDGE ISABEL Y69

Dam: **WAITARA E343 VERONICA M124**
TE MANIA EMPEROR E343
WAITARA 458N VERONICA H50

DAMS ACI- DONOR — No. of calves- 3**Selection Index Values**

Market Target	\$ Index Value
Angus Breeding	+\$146
Domestic	+\$130
Heavy Grain	+\$156
Heavy Grass	+\$142

JULY 2020 ANGUS GROUP BREEDPLAN EBVS

WFS	CE-Dir	CE-Dgt	GL	BW	200	400	600	Mwt	Mik	SS	DTC	Cwt	EMA	Rib	Rmp	RBY	IMF	DOC
EBV	+6.4	+5.3	-6.1	+4.7	+61	+110	+146	+133	+16	+2	-3.6	+74	+6.9	+0.4	-0.1	+0.4	+1.9	+14
ACC%	53	45	64	67	66	67	66	62	57	71	39	60	60	62	60	59	59	54

EBVs rated within the breed's top 5% 200, 400, 600, DOM, GRS, TOP 10% ABI

Interesting bull here- massive spread of calving ease with growth in the top 5% in an attractive phenotype. Top 25% front foot angle, hind view and side view.

18**WAITARA GENERAL P64 (AI)**Identifier
BSCP64

DOB: 26/07/2018 Reg: HBR AMFU NHFU CAFU DDFU

Sire: **PATHFINDER GENERAL K7**
AYRVALE GENERAL G18
PATHFINDER EQUATOR H63

Dam: **WAITARA FED WILCOOLA K101**
WAITARA PIO FEDERAL F73
WAITARA KD WILCOOLA F24

DAMS ACI- 366 days — No. of calves- 4**Selection Index Values**

Market Target	\$ Index Value
Angus Breeding	+\$124
Domestic	+\$112
Heavy Grain	+\$131
Heavy Grass	+\$122

JULY 2020 ANGUS GROUP BREEDPLAN EBVS

WFS	CE-Dir	CE-Dgt	GL	BW	200	400	600	Mwt	Mik	SS	DTC	Cwt	EMA	Rib	Rmp	RBY	IMF	DOC
EBV	+0.2	+2.2	-3.8	+4.2	+56	+91	+126	+114	+15	+1.5	-4.1	+79	+7.1	-0.6	-1.1	+0.8	+1.9	-16
ACC%	58	49	85	74	70	70	70	68	62	73	39	63	61	64	63	60	61	60

EBVs rated within the breed's top 10% CWT

Used successfully on commercial heifers. Top 25% claw set hind view and side view.



KERWEE FEEDLOT

PRODUCING AUSTRALIA'S MOST AWARDED BRANDED BEEF

Partnering with Waitara Angus genetics

Established global brand recognition and customer demand for premium long fed Angus beef

Supplying Australia's most awarded branded beef

BE PART OF THE JOURNEY

CONTACT US

STEVE MARTIN
GENERAL MANAGER
P: 07 4692 2277
M: 0437 549 745
E: smartin@kerwee.com.au

GEORGE LUBBE
ASSISTANT MANAGER
ANGUS PROCUREMENT
P: 07 4692 2277
M: 0408 502 787
E: glubbe@kerwee.com.au



19**WAITARA LIBERATOR P59 (AI)**Identifier
BSCP59

DOB: 26/07/2018 Reg: HBR AMFU NHFU CAFU DD50%

JMB TRACTION 292

Sire: WAITARA 292 LIBERATOR L16

WAITARA FED MISS WILCOOLA J56

SITZ NEW DESIGN 458N

Dam: WAITARA 458N LARA D62

WAITARA FM LARA A73

DAMS ACI- 361 days — No. of calves- 9**Selection Index Values**

Market Target	\$ Index Value
Angus Breeding	+\$128
Domestic	+\$117
Heavy Grain	+\$131
Heavy Grass	+\$127

JULY 2020 ANGUS GROUP BREEDPLAN EBVS

WFS	CE-Dir	CE-Dgt	GL	BW	200	400	600	Mwt	Mik	SS	DTC	Cwt	EMA	Rib	Rmp	RBY	IMF	DOC
EBV	+0.6	+2.9	-3.8	+4.5	+50	+93	+125	+92	+21	+2.6	-4.1	+66	+7.2	-0.8	-0.5	+1.2	+1.4	+12
ACC%	54	44	85	73	68	68	65	62	54	70	37	58	58	60	60	55	54	55

Larger framed, smooth made Liberator son. Top 25% front foot angle, claw set and side view.

20**WAITARA INTENSITY P89 (AI)**Identifier
BSCP89

DOB: 31/07/2018 Reg: HBR AMFU NHFU CAFU DDC

G A R INGENUITY

Sire: H P C A INTENSITY 7102

G A R PREDESTINED 287L

WAITARA PIO FEDERAL F73

Dam: WAITARA FED MITTAGONG J84

WAITARA 458N MITTAGONG E75

DAMS ACI- 364 days — No. of calves- 4**Selection Index Values**

Market Target	\$ Index Value
Angus Breeding	+\$112
Domestic	+\$106
Heavy Grain	+\$120
Heavy Grass	+\$109

JULY 2020 ANGUS GROUP BREEDPLAN EBVS

WFS	CE-Dir	CE-Dgt	GL	BW	200	400	600	Mwt	Mik	SS	DTC	Cwt	EMA	Rib	Rmp	RBY	IMF	DOC
EBV	-14.3	-5.9	-1.1	+6.5	+58	+104	+131	+95	+24	+2	-4.4	+75	+5.9	-1.3	-1	+1.3	+2.1	-7
ACC%	62	56	85	75	70	71	70	70	67	74	48	66	65	68	66	65	65	60

EBVs rated within the breed's top 10% 200, 400, MILK
Top 25% front foot angle and hind view.**21****WAITARA BRONC P107 (AI) (ET)**Identifier
BSCP107

DOB: 4/08/2018 Reg: HBR AMFU NHFU CAFU DDFU

EF COMMANDO 1366

Sire: BALDRIDGE BRONC

BALDRIDGE ISABEL Y69

TE MANIA EMPEROR E343

Dam: WAITARA E343 VERONICA M124

WAITARA 458N VERONICA H50

DAMS ACI- DONOR — No. of calves- 3**Selection Index Values**

Market Target	\$ Index Value
Angus Breeding	+\$148
Domestic	+\$132
Heavy Grain	+\$160
Heavy Grass	+\$143

JULY 2020 ANGUS GROUP BREEDPLAN EBVS

WFS	CE-Dir	CE-Dgt	GL	BW	200	400	600	Mwt	Mik	SS	DTC	Cwt	EMA	Rib	Rmp	RBY	IMF	DOC
EBV	+5.7	+0.8	-2.7	+5.3	+60	+109	+141	+115	+15	+2.5	-3.9	+70	+7.5	+0.7	0.7	+0.3	+2.3	+14
ACC%	56	48	67	72	68	68	68	64	59	71	41	62	61	65	62	61	61	54

EBVs rated within the breed's top 5% DOM, GRS, ABI, TOP 10% 200, 400, 600, GRS
Full brother to Lot 17. Long bodied, larger framed bull. Top 25% hind view and side view.

22

WAITARA INTENSITY P72 (AI)

Identifier
BSCP72

DOB: 28/07/2018 Reg: HBR AMFU NHFU CAFU DDFU

G A R INGENUITY

Sire: **H P C A INTENSITY 7102**

G A R PREDESTINED 287L

WAITARA MD END POINT E65

Dam: **WAITARA EP LASSIE G111**

WAITARA KD LASSIE E117

DAMS ACI- 363 days — No. of calves- 7

Selection Index Values

Market Target	\$ Index Value
Angus Breeding	+\$124
Domestic	+\$115
Heavy Grain	+\$133
Heavy Grass	+\$120

JULY 2020 ANGUS GROUP BREEDPLAN EBVS

WFS	CE-Dir	CE-Dgt	GL	BW	200	400	600	Mwt	MIK	SS	DTC	Cwt	EMA	Rib	Rmp	RBY	IMF	DOC
EBV	-4.9	-1	-3.4	+5.3	+55	+99	+128	+110	+21	+1	-4.9	+72	+6.5	-0.3	-1	+1.1	+1.9	+4
ACC%	60	53	85	75	70	71	68	65	65	74	45	63	63	64	65	61	60	59

Heaps of muscle here. His dam has produced a sale topper. Top 25% hind view.

23

WAITARA CHAIRMAN P115

Identifier
BSCP115

DOB: 9/08/2018 Reg: HBR AMFU NHFU CAFU DDFU

V A R INDEX 3282

Sire: **WAITARA THE CHAIRMAN M6**

WAITARA FED DIANA K97

DUNOON GOODTHING G167

Dam: **WAITARA G167 VERONICA M79**

WAITARA E7 VERONICA K15

DAMS ACI- 345 days — No. of calves- 2

Selection Index Values

Market Target	\$ Index Value
Angus Breeding	+\$142
Domestic	+\$125
Heavy Grain	+\$155
Heavy Grass	+\$135

JULY 2020 ANGUS GROUP BREEDPLAN EBVS

WFS	CE-Dir	CE-Dgt	GL	BW	200	400	600	Mwt	MIK	SS	DTC	Cwt	EMA	Rib	Rmp	RBY	IMF	DOC
EBV	-1.7	-2.1	-2.6	+6.5	+57	+101	+135	+112	+22	+3.4	-5.6	+78	+9.1	-1	-1.5	+2.1	+1.8	-9
ACC%	51	41	62	72	67	67	64	61	49	69	33	56	55	57	57	53	50	54

EBVs rated within the breed's top 5% SS, RBY, TOP 10% 200, 400, 600, MILK, EMA

24

WAITARA MAGNATE P120

Identifier
BSCP120

DOB: 12/08/2018 Reg: HBR AMFU NHFU CAFU DDFU

RENNYLEA G317

Sire: **RENNYLEA MAGNATE M49**

RENNYLEA H116

JMB TRACTION 292

Dam: **WAITARA 292 VERONICA M45**

WAITARA HP VERONICA F12

DAMS ACI- 377 days — No. of calves- 2

Selection Index Values

Market Target	\$ Index Value
Angus Breeding	+\$142
Domestic	+\$127
Heavy Grain	+\$160
Heavy Grass	+\$133

JULY 2020 ANGUS GROUP BREEDPLAN EBVS

WFS	CE-Dir	CE-Dgt	GL	BW	200	400	600	Mwt	MIK	SS	DTC	Cwt	EMA	Rib	Rmp	RBY	IMF	DOC
EBV	+3.2	+5.2	-4.9	+4.1	+52	+97	+128	+103	+25	+3.6	-5.4	+70	+4.8	-1.9	-1.6	+1.2	+2.5	+9
ACC%	51	42	65	73	67	68	65	61	51	69	35	57	56	58	58	54	52	55

EBVs rated within the breed's top 5% MILK, SS, TOP 10% ABI, DOM, GRS

Top 25% rear foot angle and side view.

25**WAITARA LIBERATOR P45 (AI)**Identifier
BSCP45

DOB: 25/07/2018 Reg: HBR AMFU NHFU CAFU DDFU

JMB TRACTION 292

Sire: WAITARA 292 LIBERATOR L16

WAITARA FED MISS WILCOOLA J56

AYRVALE BARTEL E7

Dam: WAITARA E7 ROMANTIC K49

WAITARA HP ROMANTIC F16

DAMS ACI- 359 days — No. of calves- 3**Selection Index Values**

Market Target	\$ Index Value
Angus Breeding	+\$144
Domestic	+\$128
Heavy Grain	+\$153
Heavy Grass	+\$139

JULY 2020 ANGUS GROUP BREEDPLAN EBVS

WFS	CE-Dir	CE-Dgt	GL	BW	200	400	600	Mwt	Mik	SS	DTC	Cwt	EMA	Rib	Rmp	RBY	IMF	DOC
EBV	+6.9	+6	-4.5	+3.8	+51	+100	+132	+104	+25	+2.9	-6.5	+71	+7	-0.2	-0.3	+0.8	+1.5	+7
ACC%	53	43	84	73	67	68	65	61	51	69	36	58	57	59	60	55	54	53

EBVs rated within the breed's top 5% MILK, GRS, TOP 10% ABI, DOM

Used successfully on commercial heifers. Top 25% both foot angles, hind view and side view.

26**WAITARA GENERAL P38 (AI)**Identifier
BSCP38

DOB: 24/07/2018 Reg: HBR AMFU NHFU CAFU DD3%

AYRVALE GENERAL G18

Sire: PATHFINDER GENERAL K7

PATHFINDER EQUATOR H63

WAITARA PIO FEDERAL F73

Dam: WAITARA FED DIANA K97

WAITARA BP DIANA D88

DAMS ACI- 380 days — No. of calves- 4**Selection Index Values**

Market Target	\$ Index Value
Angus Breeding	+\$142
Domestic	+\$123
Heavy Grain	+\$150
Heavy Grass	+\$136

JULY 2020 ANGUS GROUP BREEDPLAN EBVS

WFS	CE-Dir	CE-Dgt	GL	BW	200	400	600	Mwt	Mik	SS	DTC	Cwt	EMA	Rib	Rmp	RBY	IMF	DOC
EBV	+1	+2.3	-4.9	+4.6	+59	+100	+135	+110	+19	+3.2	-7	+78	+5.7	+0.5	0.7	+0.3	+1.9	-8
ACC%	58	48	85	75	70	71	69	66	60	74	38	61	61	62	63	57	57	60

EBVs rated within the breed's top 5% 200, TOP 10% 400, 600, SS, CWT

K7 son out of a very consistent breeder. Top 25% claw set and hind view.

27**WAITARA MARITIME P131**Identifier
BSCP131

DOB: 20/08/2018 Reg: HBR AMFU NHFU CAFU DDFU

WAITARA H1 KIDDO K46

Sire: WAITARA 292 MARITIME M122

WAITARA 357 VERONICA J20

EXAR UPSHOT 0562B

Dam: WAITARA UPS DIANA J42

WAITARA KD DIANA D105

DAMS ACI- 366 days — No. of calves- 5**Selection Index Values**

Market Target	\$ Index Value
Angus Breeding	+\$124
Domestic	+\$115
Heavy Grain	+\$128
Heavy Grass	+\$123

JULY 2020 ANGUS GROUP BREEDPLAN EBVS

WFS	CE-Dir	CE-Dgt	GL	BW	200	400	600	Mwt	Mik	SS	DTC	Cwt	EMA	Rib	Rmp	RBY	IMF	DOC
EBV	-2.9	-5.3	-3.5	+6.1	+57	+100	+132	+101	+23	+3.5	-3.3	+73	+8.9	+0.2	-0.4	+1.2	+1.7	+13
ACC%	51	42	58	72	65	66	63	60	53	69	33	55	56	57	58	53	51	50

EBVs rated within the breed's top 5% SS, TOP 10% 200, 400, 600, MILK, EMA

Top 25% front foot angle, claw set and rear foot angle.

28**WAITARA MAGNATE P119**Identifier
BSCP119

DOB: 11/08/2018 Reg: HBR AMFU NHFU CAFU DDFU

RENNYLEA G317

Sire: RENNYLEA MAGNATE M49

RENNYLEA H116

SITZ WISDOM 481T

Dam: WAITARA 481T DIANA J5

WAITARA 759 DIANA G12

DAMS ACI- 357 days — No. of calves- 5**Selection Index Values**

Market Target	\$ Index Value
Angus Breeding	+\$133
Domestic	+\$118
Heavy Grain	+\$149
Heavy Grass	+\$125

JULY 2020 ANGUS GROUP BREEDPLAN EBVS

WFS	CE-Dir	CE-Dgt	GL	BW	200	400	600	Mwt	Milk	SS	DTC	Cwt	EMA	Rib	Rmp	RBY	IMF	DOC
EBV	-0.2	+4.6	-4.1	+4.1	+49	+92	+121	+96	+25	+2.7	-5.7	+64	+4.6	-0.4	0	+0.3	+2.8	+3
ACC%	52	43	66	73	68	68	65	61	53	70	35	57	56	58	59	54	52	55

EBVs rated within the breed's top 5% MILK
Top 25% rear foot angle.

29**WAITARA CHAIRMAN P138**Identifier
BSCP138

DOB: 24/08/2018 Reg: HBR AMFU NHFU CAFU DDFU

V A R INDEX 3282

Sire: WAITARA THE CHAIRMAN M6

WAITARA FED DIANA K97

SITZ NEW DESIGN 458N

Dam: WAITARA 458N LARA H66

WAITARA FM LARA A73

DAMS ACI- 372 days — No. of calves- 5**Selection Index Values**

Market Target	\$ Index Value
Angus Breeding	+\$118
Domestic	+\$110
Heavy Grain	+\$123
Heavy Grass	+\$116

JULY 2020 ANGUS GROUP BREEDPLAN EBVS

WFS	CE-Dir	CE-Dgt	GL	BW	200	400	600	Mwt	Milk	SS	DTC	Cwt	EMA	Rib	Rmp	RBY	IMF	DOC
EBV	-5.8	+0.8	-1.9	+6	+53	+97	+128	+115	+19	+2.4	-3.6	+72	+6.6	-0.8	-0.3	+1.1	+1.6	-5
ACC%	52	42	66	73	67	67	64	59	52	69	36	57	56	58	58	54	51	56

Top 25% side view.

30**WAITARA INTENSITY P109 (AI) (ET)**Identifier
BSCP109

DOB: 7/08/2018 Reg: HBR AMFU NHFU CAFU DDFU

G A R INGENUITY

Sire: H P C A INTENSITY 7102

G A R PREDESTINED 287L

WAITARA PIO FEDERAL F73

Dam: WAITARA FED MISS WILCOOLA J56

WAITARA KD MISS WILCOOLA D41

DAMS ACI- DONOR — No. of calves- 18**Selection Index Values**

Market Target	\$ Index Value
Angus Breeding	+\$138
Domestic	+\$123
Heavy Grain	+\$149
Heavy Grass	+\$132

JULY 2020 ANGUS GROUP BREEDPLAN EBVS

WFS	CE-Dir	CE-Dgt	GL	BW	200	400	600	Mwt	Milk	SS	DTC	Cwt	EMA	Rib	Rmp	RBY	IMF	DOC
EBV	-2.8	-0.1	-4.1	+4.9	+57	+106	+137	+101	+26	+1.1	-5.5	+82	+7.9	-0.5	-1.5	+0.8	+2.1	+5
ACC%	61	54	69	74	70	71	69	66	64	72	47	64	63	65	65	62	62	63

EBVs rated within the breed's top 5% 400, CWT, TOP 10% 200, 600
Top 25% hind view.

31

WAITARA CHAIRMAN P95

Identifier
BSCP95

DOB: 4/08/2018 Reg: HBR AMFU NHFU CAFU DDFU

V A R INDEX 3282

Sire: **WAITARA THE CHAIRMAN M6**
WAITARA FED DIANA K97

TE MANIA EMPEROR E343

Dam: **WAITARA E343 ROMANTIC M44**
WAITARA PIO ROMANTIC H45**DAMS ACI- 395 days — No. of calves- 2**

Selection Index Values

Market Target	\$ Index Value
Angus Breeding	+\$131
Domestic	+\$119
Heavy Grain	+\$136
Heavy Grass	+\$128

JULY 2020 ANGUS GROUP BREEDPLAN EBVS

WFS	CE-Dir	CE-Dgt	GL	BW	200	400	600	Mwt	Milk	SS	DTC	Cwt	EMA	Rib	Rmp	RBY	IMF	DOC
EBV	-0.2	+2.7	-5.3	+5.2	+57	+97	+128	+114	+17	+2.9	-5.4	+68	+6.6	+1.5	0.7	+0.7	+1.7	-15
ACC%	52	43	66	72	67	67	64	61	50	69	36	56	56	57	58	53	51	55

**EBVs rated within the breed's top 10% 200, RIB
Top 25% foot angle.**

32

WAITARA GENERAL P20 (AI)

Identifier
BSCP20

DOB: 21/07/2018 Reg: HBR AMFU NHFU CAFU DD50%

AYRVALE GENERAL G18

Sire: **PATHFINDER GENERAL K7**
PATHFINDER EQUATOR H63

S A V HARVESTOR 0338

Dam: **WAITARA 0338 MITTAGONG L91**
WAITARA 458N MITTAGONG E75**DAMS ACI- 326 days — No. of calves- 2**

Selection Index Values

Market Target	\$ Index Value
Angus Breeding	+\$137
Domestic	+\$125
Heavy Grain	+\$141
Heavy Grass	+\$133

JULY 2020 ANGUS GROUP BREEDPLAN EBVS

WFS	CE-Dir	CE-Dgt	GL	BW	200	400	600	Mwt	Milk	SS	DTC	Cwt	EMA	Rib	Rmp	RBY	IMF	DOC
EBV	+7.4	+5.1	-7.6	+2.7	+53	+90	+117	+94	+15	+2.3	-6.9	+70	+7.2	+0.4	0.7	+0.6	+1.7	-5
ACC%	57	47	84	74	69	70	68	63	59	73	36	61	61	61	62	57	57	57

EBVs rated within the breed's top 10% GL, DOM, GRS**Handy bull to finish the sale- tremendous blend of calving ease and growth in an easy doing package. Top 25% foot angle claw set and hind view.**

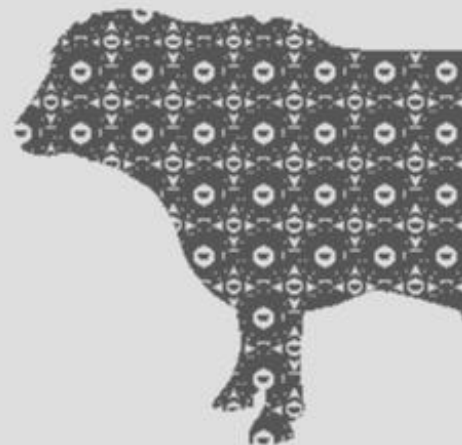
Experts in your field.

Westpac is an official supporter and founding member of Beef Australia.

Speak to a local Agribusiness specialist today.

Visit westpac.com.au/agribusiness

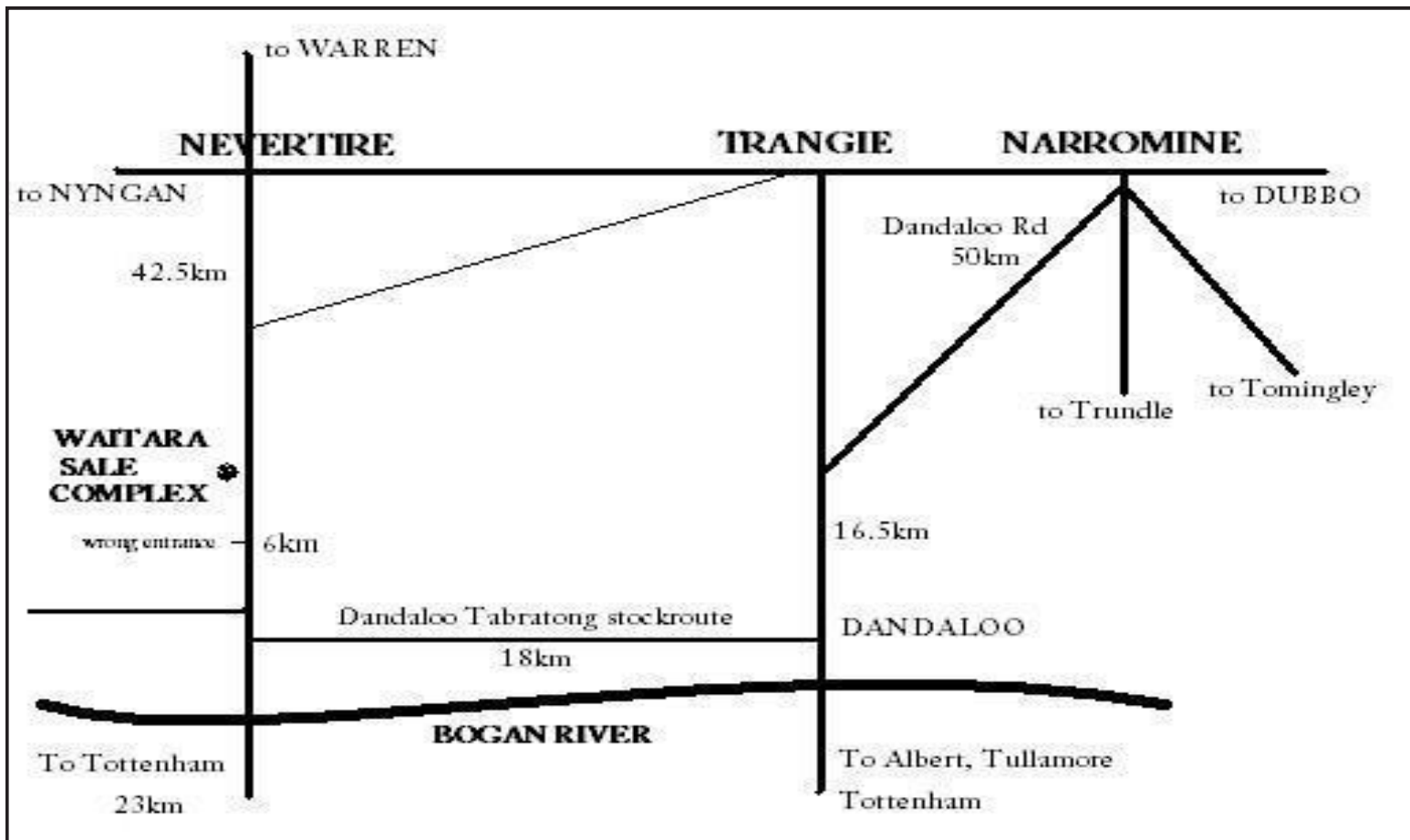
Call 1300 134 979

Westpac Banking Corporation (ABN 33 007 457 141)
A0001**We're a bank you can bank on.**

Wilson's Transport Narromine

**Guaranteed safe
delivery of your
stock.....
anytime & anyplace
to anywhere!**

**Single, B-Double & Road Train
loads of sheep & cattle
General freight Owner operated
Competitive rates
PH: NATHAN WILSON
0407949702 or 0268895676**



EBV SUMMARY TABLE

LOT	I.D.	SIRE	CE-Dir	CE-Dgt	GL	BW	200	400	600	Mwt	Mik	SS	DTC	Cwt	EMA	Rib	Rmp	RBV	IMF	DOC	ABI	DOM	GRN	GRS
1	P048	K7	+8.7	5.9	-6.5	+2	+51	+87	+116	+92	+19	+2.5	-5.3	+65	+7.8	-0.6	-1.2	+1.3	+1.9	+2	\$133	\$123	\$141	\$129
2	P041	7102	-1.3	1.9	-5.1	+3.6	+50	+89	+116	+85	+23	+1.3	-6.3	+68	+6.6	+0.9	0	+0.3	+2.1	+3	\$125	\$114	\$131	\$121
3	P091	7102	+5.1	3.4	-4.9	+2.6	+50	+100	+126	+80	+29	+0.8	-7	+74	+8.1	+0.1	-1.5	+0.8	+2.1	+5	\$147	\$132	\$159	\$140
4	P130	GK	-2.1	-1.5	-2.9	+5.7	+52	+91	+122	+109	+16	+3.5	-6.4	+70	+4.7	-0.5	+0.6	+0.3	+1.8	-2	\$122	\$109	\$129	\$118
5	P016	FS	-1.1	-1.8	-7.2	+5.8	+57	+109	+147	+123	+24	+2.6	-3.9	+83	+7.6	-0.5	-0.6	+0.5	+3.2	+11	\$151	\$127	\$175	\$140
6	P056	K176	-0.4	4.4	-5.2	+4.7	+51	+92	+119	+122	+12	+3.6	-6.6	+59	+6.1	+1.6	+0.8	+0.3	+2.2	+15	\$131	\$117	\$143	\$123
7	P090	MOE	+0.3	2.8	-2	+4.6	+54	+101	+138	+119	+25	+2.4	-4.9	+79	+7.7	+0.3	+0.1	0	+2.4	+25	\$139	\$119	\$153	\$133
8	P108	M122	-0.5	0.6	-4.6	+5.2	+57	+104	+137	+113	+21	+3.1	-5.2	+76	+7.2	+1.6	+1	0	+2.1	+8	\$137	\$121	\$146	\$133
9	P050	K7	+6.1	1	-4.9	+3.3	+52	+86	+111	+87	+16	+0.6	-6.7	+71	+8.5	-0.2	-0.5	+0.7	+2.2	+3	\$133	\$121	\$141	\$127
10	P026	K7	+2.8	3	-6.5	+3.6	+49	+81	+110	+87	+15	+1.6	-5.9	+64	+8	-0.2	-0.8	+1.1	+1.6	-14	\$124	\$114	\$128	\$122
11	P047	K7	+7.8	5.7	-4.8	+2.9	+54	+91	+116	+94	+17	+1.7	-6.2	+73	+7.8	-1.1	-2.2	+1.5	+1.5	-10	\$132	\$125	\$137	\$128
12	P051	L16	+5.2	5.2	-4.7	+3.1	+44	+87	+108	+77	+22	+2.2	-3.9	+61	+6.4	-0.5	-1	+1.2	+1.1	+18	\$115	\$117	\$113	\$117
13	P027	K176	-0.8	3	-3.7	+4.6	+52	+95	+118	+111	+14	+3.2	-6.2	+64	+6.4	+1.6	+1.3	0	+2	+22	\$126	\$117	\$133	\$121
14	P104	K7	+7.5	2.5	-6.9	+3.2	+55	+87	+115	+100	+14	+1.4	-7.1	+67	+9.3	-1.2	-1	+1	+2.4	-5	\$140	\$125	\$153	\$132
15	P055	M49	-2.2	2	-1.2	+5.7	+50	+90	+119	+96	+22	+2.9	-4.6	+67	+6.1	-1.9	-2	+1.5	+2.2	+7	\$124	\$114	\$137	\$118
16	P123	GK	+4.2	1.2	-4	+2.9	+46	+82	+102	+79	+18	+1.7	-6	+61	+4.6	-0.2	+0.3	-0.3	+2.5	+8	\$117	\$112	\$124	\$113
17	P082	BRON	+6.4	5.3	-6.1	+4.7	+61	+110	+146	+133	+16	+2	-3.6	+74	+6.9	+0.4	-0.1	+0.4	+1.9	+14	\$146	\$130	\$156	\$142
18	P064	K7	+0.2	2.2	-3.8	+4.2	+56	+91	+126	+114	+15	+1.5	-4.1	+79	+7.1	-0.6	-1.1	+0.8	+1.9	-16	\$124	\$112	\$131	\$122
19	P059	L16	+0.6	2.9	-3.8	+4.5	+50	+93	+125	+92	+21	+2.6	-4.1	+66	+7.2	-0.8	-0.5	+1.2	+1.4	+12	\$128	\$117	\$131	\$127
20	P089	7102	-14.3	-5.9	-1.1	+6.5	+58	+104	+131	+95	+24	+2	-4.4	+75	+5.9	-1.3	-1	+1.3	+2.1	-7	\$112	\$106	\$120	\$109
21	P107	BRON	+5.7	0.8	-2.7	+5.3	+60	+109	+141	+115	+15	+2.5	-3.9	+70	+7.5	+0.7	+0.7	+0.3	+2.3	+14	\$148	\$132	\$160	\$143
22	P072	7102	-4.9	-1	-3.4	+5.3	+55	+99	+128	+110	+21	+1	-4.9	+72	+6.5	-0.3	-1	+1.1	+1.9	+4	\$124	\$115	\$133	\$120
23	P115	M6	-1.7	-2.1	-2.6	+6.5	+57	+101	+135	+112	+22	+3.4	-5.6	+78	+9.1	-1	-1.5	+2.1	+1.8	-9	\$142	\$125	\$155	\$135
24	P120	M49	+3.2	5.2	-4.9	+4.1	+52	+97	+128	+103	+25	+3.6	-5.4	+70	+4.8	-1.9	-1.6	+1.2	+2.5	+9	\$142	\$127	\$160	\$133
25	P045	L16	+6.9	6	-4.5	+3.8	+51	+100	+132	+104	+25	+2.9	-6.5	+71	+7	-0.2	-0.3	+0.8	+1.5	+7	\$144	\$128	\$153	\$139
26	P038	K7	+1	2.3	-4.9	+4.6	+59	+100	+135	+110	+19	+3.2	-7	+78	+5.7	+0.5	+0.7	+0.3	+1.9	-8	\$142	\$123	\$150	\$136
27	P131	M122	-2.9	-5.3	-3.5	+6.1	+57	+100	+132	+101	+23	+3.5	-3.3	+73	+8.9	+0.2	-0.4	+1.2	+1.7	+13	\$124	\$115	\$128	\$123
28	P119	M49	-0.2	4.6	-4.1	+4.1	+49	+92	+121	+96	+25	+2.7	-5.7	+64	+4.6	-0.4	0	+0.3	+2.8	+3	\$133	\$118	\$149	\$125
29	P138	M6	-5.8	0.8	-1.9	+6	+53	+97	+128	+115	+19	+2.4	-3.6	+72	+6.6	-0.8	-0.3	+1.1	+1.6	-5	\$118	\$110	\$123	\$116
30	P109	7102	-2.8	-0.1	-4.1	+4.9	+57	+106	+137	+101	+26	+1.1	-5.5	+82	+7.9	-0.5	-1.5	+0.8	+2.1	+5	\$138	\$123	\$149	\$132
31	P095	M6	-0.2	2.7	-5.3	+5.2	+57	+97	+128	+114	+17	+2.9	-5.4	+68	+6.6	+1.5	+0.7	+0.7	+1.7	-15	\$131	\$119	\$136	\$128
32	P020	K7	+7.4	5.1	-7.6	+2.7	+53	+90	+117	+94	+15	+2.3	-6.9	+70	+7.2	+0.4	+0.7	+0.6	+1.7	-5	\$137	\$125	\$141	\$133
WAITARA AVERAGE			+1.2	+2.0	-4.4	+4.4	+53	+96	+125	+103	+20	+2.3	-5.4	+71	+7.0	-0.2	-0.4	+0.8	+2.0	+4	\$132	\$120	\$141	\$127
BREED AVERAGE			+1.8	+2.4	-4.4	+4.3	+48	+86	+112	+98	+17	+1.9	-4.8	+64	+5.7	-0.1	-0.4	+0.5	+2.0	+5	\$117	\$110	\$124	\$114

Highlighted traits are in the top 10% of the breed



WESTERN RIVERS
VETERINARY GROUP

Supporting Waitara Angus & Cattle producers to improve welfare and growth rates using pain relief at calf marking.

WARREN
35 Zora Street
6847 4795

NYNGAN
Lot 1 Lawlor Street
6832 1335

TRANGIE & TOTTENHAM
Fortnightly clinic

**Cattle Preg Testing - Bull testing - Sheep scanning
Equine Dentistry & Complete Small Animal Care**