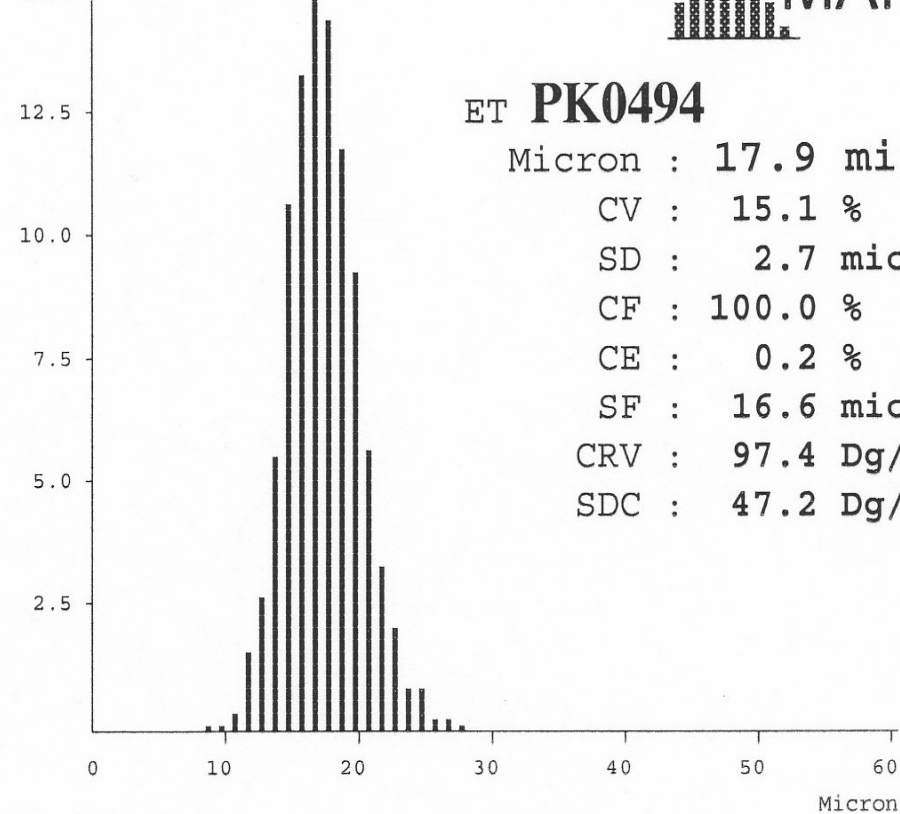




JW & LC Huf

Fibre Count %
15.0



ET PK0494

Micron : 17.9 mic

CV : 15.1 %

SD : 2.7 mic

CF : 100.0 %

CE : 0.2 %

SF : 16.6 mic

CRV : 97.4 Dg/mm

SDC : 47.2 Dg/mm

Lot 48

98 kgs bodyweight