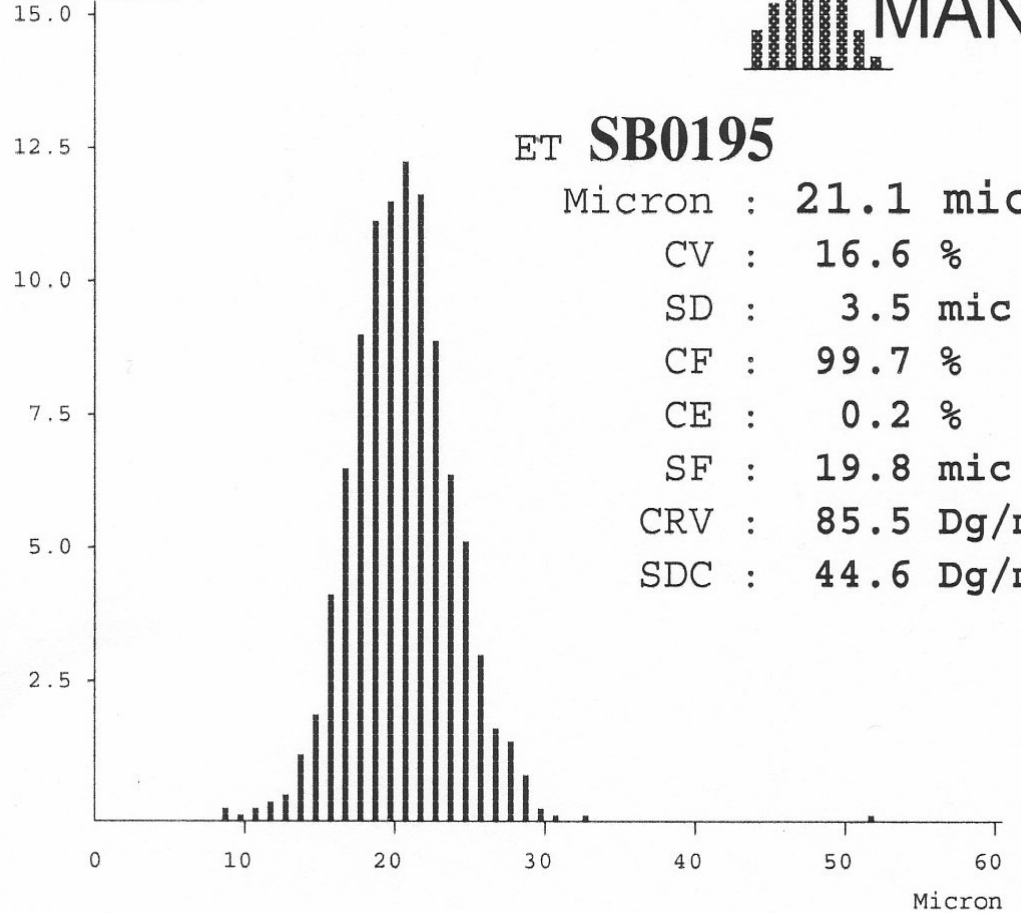




JW & LC Huf

Fibre Count %



ET SB0195

Micron : 21.1 mic
CV : 16.6 %
SD : 3.5 mic
CF : 99.7 %
CE : 0.2 %
SF : 19.8 mic
CRV : 85.5 Dg/mm
SDC : 44.6 Dg/mm

Lot 36

107 kgs bodyweight