



## **SPRING BULL SALE**

**THURSDAY 13<sup>TH</sup> AUGUST 2020**

**1.00PM**

*On-Property*

**'INGLEBURN' CASSILIS NSW**

**50 ANGUS BULLS**





**MILLAH MURRAH MAESTRO M182**



**ASCOT LION HEART L305**



**KIDMAN PRECEDENCE K72**



**LAWSONS MOMENTOUS M518**



**PEAKES GABBA K556**



**TEXAS MOUNT K002**



**BALDRIDGE BEAST MODE B074**



**PRE-SALE VIDEOS AVAILABLE  
TO VIEW ONLINE FROM  
31ST JULY:  
[WWW.TRIOANGUS.COM.AU](http://WWW.TRIOANGUS.COM.AU)**



## **SPRING BULL SALE**

**THURSDAY 13<sup>TH</sup> AUGUST 2020**  
**1.00PM**

*On-Property*  
**'INGLEBURN' CASSILIS NSW**

**50 ANGUS BULLS**

Inspections from 10am  
Auction at 1pm



**Matt Cherry & Shelley Piper** 0429 319 073 [info@trioangus.com.au](mailto:info@trioangus.com.au)  
**Michael Glasser, GTSM** 0403 526 702 [michael@gtsm.net.au](mailto:michael@gtsm.net.au)

**[WWW.TRIOANGUS.COM.AU](http://WWW.TRIOANGUS.COM.AU)**

# Welcome

## We invite you to join us for our Spring Bull Sale.

We're all hoping the drought is behind us now. There's a sense of caution, but people have a positive outlook & are moving towards some sort of herd rebuilding.

This rebuild period has been a focus of our breeding program for the last three years. We've been thinking long & hard about what genetics people will need. As a result, this is what we'll have to offer in the sale:

**Plenty of calving ease bulls:** 66% of the bulls in the sale are suitable to use over heifers. So those looking to join extra heifers will have plenty of options.

**The ability to breed easy-keeping, more fertile females:** We've used sires who are leaders in the breed for higher Rib/Rump Fat. This trait is correlated with higher fertility. Close to 60% of the bulls in the sale are above breed average for fat figures.

**Keeping mature cow weight in check:** We knew the issue of high mature cow weights would be on people's minds. So we've introduced new sire lines with low cow weights to provide people with more options.

**Excellent temperament:** Our program has a strong focus on breeding for docility. 100%

of past buyers rated the temperament of Trio Angus bulls as excellent or very good.

**Value for money:** We're offering a large number of bulls in the sale to give people plenty of buying options. This means more chance to secure a bull they like, within their budget.

**Bulls that last:** We tick three main boxes towards this goal. Firstly, we don't over-prepare our bulls. Secondly, we haven't fed them a grain ration since it rained in January. Thirdly, buying a bull locally offers advantages in that they're used to the local feed types, climate & terrain.

Taking your time to select the right bulls during the herd rebuilding phase is vital. The bulls you use will be responsible for 90% of your herd improvement over the coming years. We endeavour to make this process as easy as possible for you, with extra information in the catalogue, percentiles included with the EBVs & additional comments. If we can help in any other way please reach out.

You will notice a couple of changes with the sale this year:

- We will have a selection of two year old bulls in the sale. There wasn't the demand for bulls earlier in the year so we decided to prepare them for this sale instead.





- We'll be offering our stud sire, Millah Murrah Maestro, as Lot 14. Opportunities to buy proven sires like this don't come around very often!

- We've changed our free delivery to major centres (see Page 5 for details). As the number of bulls we're offering has increased, we needed a new system to get them delivered in a timely manner.

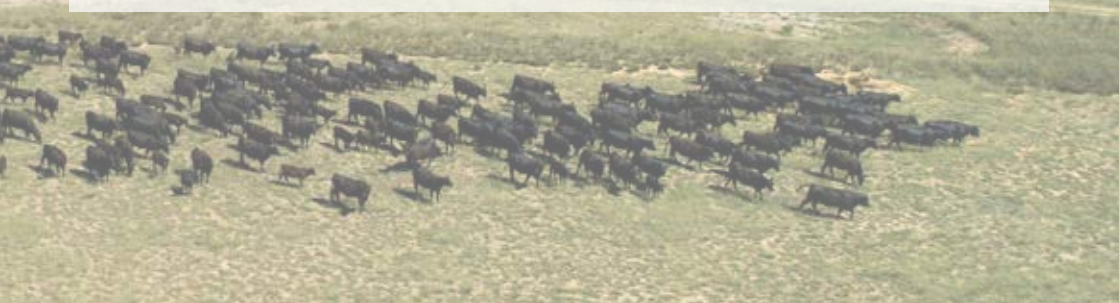
Don't just buy a bull this season, invest in a

program. Our program aims to help people be more profitable & sustainable. Superior calving ease, docility & customer service are our focus.

Inspections of the bulls prior to sale day are welcome, simply contact us to arrange a time.

We look forward to catching up with you on sale day.

*Matt & Shell*



# Sale Information

## **SALE DATE**

The sale will commence at 1pm on Thursday 13th August 2020. Bulls will be penned ready for inspection from 10am.

## **SALE LOCATION**

The Trio Angus Bull Sale will be held on-property at 'Ingleburn', 6914 Ulan Rd, Cassilis NSW. From Cassilis, travel 10 kms west on the Golden Highway, turn left onto the Ulan/Mudgee Rd, 'Ingleburn' is 2.5km on the left (map on Page 6).

## **COVID-19**

At this stage the sale will be going ahead as per normal. However, if COVID-19 regulations change we may need to make alternative plans. Please check our website for updates.

## **SELLING SYSTEM**

The sale of bulls will be conducted under normal auction conditions. Buyers must register with the selling agents prior to sale commencement. All bulls are sold GST exclusive. Successful purchasers must give the selling agents written advice regarding payment & transport arrangements at the conclusion of the sale. EFTPOS payment available on sale day (1% surcharge).

## **AUCTIONSPLUS**

The sale will be interfaced with AuctionsPlus. Please register 24 hours before the sale if you wish to bid online.

## **OUTSIDE AGENTS REBATE**

A rebate of 2% will be payable to agents who introduce their clients in writing 24 hours prior to the sale and attend the sale with or on behalf of their clients & settle within 7 days. A rebate of 1% will be payable to agents who introduce their clients in writing prior to sale day, but do not attend the sale, and settle within 7 days.

## **HEALTH & FERTILITY**

The bulls are ready for immediate use. They have had the following:

- Semen tested
- Vaccinated with 7 in 1
- Vaccinated for Vibrio
- Tested Pestivirus free
- Drenched with Dectomax

The Trio Angus herd is Johne's Beef Assurance Score (J-BAS) 7.

## **MANAGEMENT**

The bulls have been running as two management groups. We do not recommend joining younger bulls with older bulls. The bulls have all been grazing an oats crop, along with native pastures to balance their diet.

## **INSURANCE**

There is no vendor insurance on the bulls. We encourage buyers to insure their purchases, especially those that aren't getting picked up on sale day. Various insurance options will be available on the day.

## **'VIRTUAL' INSPECTION DAY**

Videos of all the bulls, along with additional information, will be available from Friday 31st July.

## **PHYSICAL INSPECTIONS**

Physical inspections of the bulls are welcome, please contact us to arrange a suitable time.

## **BULL WARRANTY**

All bulls are sold as fertile and capable of natural service. If, within 6 months of sale, a bull should breakdown due to reasons other than injury, misadventure or negligence, Trio Angus will provide you with a satisfactory replacement if available, or issue you with a credit equal to the purchase price minus salvage value. This credit may be used to purchase a bull from Trio Angus in the future. Any request for replacement/refund must be lodged with the vendor within 6 months of purchase and be accompanied by a current vet certificate.

## **SAFETY DISCLAIMER**

All of the cattle are quiet to handle under normal conditions. However, there are always risks associated with handling cattle. Visitors enter the cattle pens at their own risk. Children must not enter the pens under any circumstances. The vendor accepts no liability for accidents that may occur at the Trio Angus sale or whilst on the property.

## **DELIVERY OPTIONS**



**Our delivery options have changed this year. As our bull numbers have increased we needed to implement a more efficient system. We are still committed to making your post-sale bull arrangements as easy as possible.**

### **FREE DELIVERY TO MAJOR CENTRES**

We will be offering free delivery to the major centres of Scone, Mudgee, Dubbo & Gunnedah (and all stops en-route which will cover local clients). Delivery will take place the week following the sale.

We will still endeavour to deliver to your farm if possible. However, if this can't be achieved we can help coordinate a carrier for you at cost.

### **TAKE YOUR BULL HOME ON SALE DAY**

Bring your own truck, or organise a carrier, so you can take delivery of your bull on sale day.

Like always, we will take all care to look after your bull after the sale, but no responsibility can be accepted whilst awaiting delivery. Various insurance options will be available on sale day and are recommended.

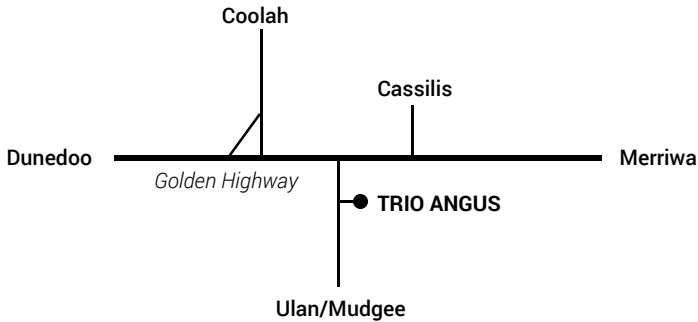
**PLEASE NOTE: DELIVERY OPTION MUST BE INDICATED ON THE BUYERS DELIVERY SLIP AT THE CONCLUSION OF THE SALE.**

# Directions

**Trio Angus is located 12kms south west of Cassilis.**

**From Merriwa/Cassilis:** Travel 10km past Cassilis on the Golden Highway. Turn left on to the Ulan/Mudgee Rd, Trio Angus will be 2.5km on your left.

**From Coolah:** Leave town on the Cassilis Rd, follow it all the way to the Golden Highway. Turn left. Stay on the Golden Highway until you reach the Ulan/Mudgee Rd, turn right. Trio Angus will be 2.5km on left.



# Using EBV Percentiles

## MAKING IT EASIER TO PICK THE RIGHT BULL

Selecting the right bull for your business needs to be as easy as possible. So we've incorporated percentiles into our catalogue as an extra tool to help you.

A percentile value allows you to see where an animal sits in the breed for each trait. This gives you more information than an EBV figure alone. Eg. If an animal sits in the 30th Percentile for 600D it means it's in the Top 30% of the breed. But, if an animal sits in the 80th Percentile, it means that 80% of animals are better than it. Generally, the lower the percentile figure the better, except in the case of Mature Cow Weight where being the biggest isn't always the best.

The 600D of this bull sits in the 30th Percentile, meaning he's in the top 30% of the breed for this trait.

TRIO FRED N1					
	600	EMA	RIB	RMP	IMF
EBV	+90	+4.5	+2.3	+2.3	+2.1
PERC	30%	55%	5%	5%	5%

The IMF of this bull sits in the 5th Percentile, meaning he's in the top 5% of the breed for this trait.



# VIRTUAL OPEN DAY

## LAUNCHING FRIDAY 31ST JULY

This year we've decided to hold a 'Virtual Open Day', rather than host the event on-farm. This will limit contact whilst giving you the chance to analyse the bulls at your own convenience. It will also allow us to provide you with some additional info.

### HOW WILL IT WORK?

On the day we will be launching a collection of information that will help you evaluate the bulls on offer. This includes:

**Individual videos:** Every bull will be recorded & have it's video launched on the day

**'Insiders Guide'** – Matt & Shells tips on the catalogue, including the best heifer bulls, hidden gems & FAQ

**Phone advice:** Matt will be available on the phone all day to answer any questions

### WHAT ABOUT PHYSICAL INSPECTIONS?

You're still welcome to inspect the bulls, simply call us to arrange a suitable time. The bulls will also be penned up early on sale day to allow plenty of time to look through them.



# 5 Steps for buying better heifer bulls

## WANT TO BUY A GREAT HEIFER BULL THAT FITS YOUR BUDGET?

Follow these simple steps to pick the right bulls & bid with more confidence & less stress on sale day.

### Step 1. LOOK AT THE GESTATION LENGTH EBV

The Gestation Length EBV is the number of days from conception to birth. Calves that are born a few days early are smaller. A negative Gestation Length EBV is ideal. Currently the breed average for Gestation Length EBV is -4.4, so any figure below this is good.

	GL	BW	200	400
EBV	-7.6	+3.0	+45	+99
PERC	10%	25%	65%	15%

	GL	BW	200	400
EBV	-5.6	+5.6	+54	+100
PERC	29%	80%	17%	9%

*This bull has the best Gestation Length EBV for calving ease (lower figure)*

### Step 2. LOOK AT THE BIRTH WEIGHT EBV

The Birth Weight EBV reflects the weight of the calf at birth, so it makes sense that a lighter calf is preferred. This means a lower Birth Weight EBV should be selected. Currently the breed average Birth Weight EBV is +4.3, so we suggest selecting a birth weight at or below this figure.

	GL	BW	200	400
EBV	-7.6	+3.0	+45	+99
PERC	10%	21%	65%	15%

	GL	BW	200	400
EBV	-5.6	+5.6	+54	+100
PERC	29%	80%	17%	9%

*This bull has the best Birth Weight EBV for calving ease (lower figure)*

*\*Note: Calving Ease EBVs are also a great tool, however most sale bulls do not have an EBV of high enough accuracy to be useful.*

### Step 3. TAKE NOTE OF THE PEDIGREE

A bull's pedigree can give an indication of how reliable his calving ease will be. Stacking multiple generations of calving ease provides more reliability, meaning less chance of a 'throwback' to larger calves. Look in each bull's 'Comments' for insights.

## Step 4. LOOK AT THE STRUCTURE OF THE BULL

The bull's shoulders are an important aspect to check. Smooth shoulders promote an easy calving. The shoulders should be smooth against the rib cage. We find an easy way to assess this is to stand at the front of the bull & look at the top of his shoulder blades.

*Less width at the top of the shoulder blades is ideal*

*Less width at the point of the shoulder is ideal*



Smooth shoulders



Prominent shoulders

## Step 5. ASSESS THE BULLS PHYSICAL SIZE

If a bull ticks all the boxes for calving ease so far, it's then important to think about his physical size. A heavy, mature bull may not be ideal for joining smaller heifers. We find yearling bulls work well over heifers, as they are similar size & reduce the risk of injury.

### OTHER INSIGHTS

These tips will help you get the bull side right for an improved calving, but good heifer management plays a key role. As a rule, genetics account for 40% and the environment accounts for the other 60%. At Trio Angus, we work hard to get the genetics right, it's then up to you to control the environmental effects to the best of your ability. Ensuring your heifers are well grown by the end of the first trimester is vital.

**Good genetics, combined with good management, is the key to a profitable & enjoyable calving season.**



PRE-SALE VIDEOS OF EVERY BULL AVAILABLE TO VIEW ONLINE FROM 31ST JULY  
[www.trioangus.com.au](http://www.trioangus.com.au)



INSPECTIONS OF THE BULLS WELCOME ANYTIME  
Simply contact us to arrange a suitable time

# MILLAH MURRAH MAESTRO M182

## 13 SONS ON OFFER

The timing for our Maestro progeny coming through couldn't be more perfect..

### WHY MAESTRO?

We purchased Maestro in 2017, for an Australian yearling record price of \$50,000. We were looking for a "cow-maker" - a bull that had all the attributes to breed productive females. We needed a strong maternal pedigree, calving ease & good rib & rump fat. Maestro ticked all the boxes & on inspection we knew we had to add him to our sire line-up.

### IS A MAESTRO SON FOR ME?

**Calving ease** - Maestro genetics are perfect for those wanting a safe, reliable calving ease bull. We've used him over heifers with no problems at all. His progeny are born light & are a great shape to promote an easy calving.

**Replacement females** - The Maestro sons are a great option for those wanting to rebuild their herd with lovely replacement females. His strong maternal pedigree will give you fertility, fat cover, great udders, structural soundness & docility.

### WHATS THE FUTURE?

We've used Maestro heavily & will continue to have progeny coming through for the next few sales. We've decided to sell Maestro himself, as it's time to introduce new genetics to our program & build on the legacy he has left us. He's still young & we'd love to see his genetics fully utilised by another herd. Semen is available.



*Two year old bulls*



## TRIO MOUNT P63

DOB: 16/06/2018 ELYP63 (HBR)

AMFU, NHFU, CAFU, DDF

KC HAAS GPS

STONEY POINT KILBOURNE K27

**SIRE** TEXAS MOUNT K002

**DAM** TRIO LOWAN M149

TEXAS UNDINE Z183

TUCKLAN LOWAN D40

	GL	BW	200	400	600	MCW	MILK	SS	CW	EMA	RIB	RMP	RBY	IMF
EBV	-5.6	+5.6	+54	+100	+139	+136	+12	+2.5	+70	+3.2	-0.1	+0.2	0.0	+1.4
PERC	29%	80%	17%	9%	5%	4%	89%	22%	25%	89%	47%	31%	72%	70%

An impressive Texas Mount son to start the sale. He's a long-bodied bull with excellent growth, placing him in the top 10% of the breed. He offers a later maturity pattern along with very sound feet & a good temperament.

	\$ INDEX	VALUE	PERC
ANGUS BREEDING		\$125	37%
DOMESTIC		\$111	50%
HEAVY GRAIN		\$131	42%
HEAVY GRASS		\$124	26%

PURCHASER ..... \$ .....



## TRIO MOUNT P69

DOB: 20/06/2018 ELYP69 (HBR)

AMFU, NHFU, CAFU, DDFU

KC HAAS GPS

HOOVER DAM

**SIRE** TEXAS MOUNT K002

**DAM** TRIO BURNETTE M130

TEXAS UNDINE Z183

TRIO BURNETTE J73

	GL	BW	200	400	600	MCW	MILK	SS	CW	EMA	RIB	RMP	RBY	IMF
EBV	-5.3	+5.4	+51	+97	+134	+125	+13	+2.8	+66	+3.7	-0.4	+0.1	+0.1	+2.2
PERC	34%	76%	32%	14%	9%	9%	82%	13%	43%	83%	58%	33%	68%	36%

A heavy-muscled bull with a strong topline & thick hindquarter. He's also free moving & sound-footed. His EBVs suggest his progeny should have excellent growth with added marbling. His maternal grand-dam is currently in our donor program.

	\$ INDEX	VALUE	PERC
ANGUS BREEDING		\$130	27%
DOMESTIC		\$114	39%
HEAVY GRAIN		\$144	25%
HEAVY GRASS		\$125	24%

PURCHASER ..... \$ .....

**3****TRIO LION HEART P83**

DOB: 13/07/2018 ELYP83 (HBR) AMFU, NHFU, CAFU, DDFU

ASCOT HALLMARK H147

S A V PIONEER 7301

**SIRE** ASCOT LION HEART L305**DAM** TRIO BURNETTE H48

ASCOT H148

TRIO BURNETTE E1

	GL	BW	200	400	600	MCW	MILK	SS	CW	EMA	RIB	RMP	RBY	IMF
EBV	-3.7	+7.7	+61	+108	+144	+149	+12	+3.7	+85	+8.8	-1.7	-2.7	+2.7	+1.0
PERC	62%	99%	3%	3%	3%	1%	87%	3%	2%	8%	91%	96%	1%	84%

A standout in the sale. Lion Heart has certainly left his mark on this bull, offering a ton of power & performance. He's a genuine B muscle score & has excellent EBVs right across the board. He's in the top 5% of the Angus breed for Growth, Scrotal Size, Carcase Weight, EMA & Retail Beef Yield. P83 is also exceptionally quiet. His dam is a high performing cow, who had the equal top priced yearling bull in 2016.

\$ INDEX	VALUE	PERC
ANGUS BREEDING	\$133	22%
DOMESTIC	\$120	21%
HEAVY GRAIN	\$144	25%
HEAVY GRASS	\$127	20%

PURCHASER ..... \$ .....

**4****TRIO MAESTRO P81**

DOB: 9/07/2018 ELYP81 (HBR) AMFU, NHFU, CAFU, DDFU

MILLAH MURRAH KLOONEY K42

MATAURI REALITY 839

**SIRE** MILLAH MURRAH MAESTRO M182**DAM** TRIO QUAIL M82

MILLAH MURRAH FLOWER K269

TRIO QUAIL K72

	GL	BW	200	400	600	MCW	MILK	SS	CW	EMA	RIB	RMP	RBY	IMF
EBV	-5.8	+3.5	+42	+75	+93	+67	+15	+0.3	+52	+4.0	+1.8	+0.6	-0.6	+1.5
PERC	26%	31%	80%	86%	90%	94%	67%	98%	89%	79%	6%	21%	90%	66%

A bull that always catches our eye - he's beautifully put together & well balanced. He offers a low Birth Weight & short Gestation Length which should make him a good option to use over heifers. The Reality in his pedigree adds extra calving ease confidence. He would also be ideal for breeding replacement females, with his strong pedigree, higher Rib/Rump Fat, low Mature Cow Weight & good temperament.

\$ INDEX	VALUE	PERC
ANGUS BREEDING	\$100	82%
DOMESTIC	\$103	74%
HEAVY GRAIN	\$94	85%
HEAVY GRASS	\$103	79%

PURCHASER ..... \$ .....



**ASCOT LION HEART L305**

Stud sires like him are hard to find! His legacy continues with plenty of daughters here at Trio Angus & progeny right across Australia.



**KIDMAN PRECEDENCE K72**

Calving ease, easy-keeping & a lovely temperament - the Precedence progeny have the perfect combination & have been highly sought after in past sales.



**5****TRIO LOCH UP P137**

DOB: 31/07/2018 ELYP137 (HBR)

AMFU, NHFU, CAFU, DDC

THOMAS UP RIVER 1614

ARDROSSAN DEFINITIVE D230

**SIRE** MILLAH MURRAH LOCH UP L133**DAM** TRIO BURNETTE J52

MILLAH MURRAH BRENDA H49

TRIO BURNETTE E17

	GL	BW	200	400	600	MCW	MILK	SS	CW	EMA	RIB	RMP	RBY	IMF
EBV	-4.2	+6.3	+56	+98	+130	+105	+22	+2.4	+73	+2.9	-1.6	-1.7	+0.6	+1.8
PERC	53%	90%	11%	13%	12%	35%	11%	25%	16%	91%	90%	84%	44%	52%

A Millah Murrah Loch Up son with alot of presence. He offers plenty of growth & his steer progeny should be well suited to the feeder steer market. He also has a great cow family behind him, with his grand-dam E17 being one of our best Burnette cows.

	\$ INDEX	VALUE	PERC
ANGUS BREEDING		\$116	56%
DOMESTIC		\$110	53%
HEAVY GRAIN		\$122	55%
HEAVY GRASS		\$114	53%

PURCHASER ..... \$ .....

**6****TRIO LION HEART P104**

DOB: 17/07/2018 ELYP104 (HBR)

AMFU, NHF, CAFU, DDFU

ASCOT HALLMARK H147

S A V BIRTHSTONE 8258

**SIRE** ASCOT LION HEART L305**DAM** TRIO QUOLL K54

ASCOT H148

OUTWEST XRD QUOLL B57

	GL	BW	200	400	600	MCW	MILK	SS	CW	EMA	RIB	RMP	RBY	IMF
EBV	-5.5	+3.1	+44	+83	+106	+96	+16	+2.5	+64	+8.2	-0.9	-1.7	+1.8	+1.1
PERC	31%	22%	71%	61%	67%	54%	52%	22%	51%	12%	74%	84%	7%	81%

You won't find many like this bull. He's a low birth weight Lion Heart son with an exceptional pedigree on both sides. His maternal grand-dam was our foundation Quoll female.

P104 is long-bodied & smooth through the shoulders. He also offers one of the largest EMA's in his contemporary group. Should be a safe option to use over heifers.

	\$ INDEX	VALUE	PERC
ANGUS BREEDING		\$118	52%
DOMESTIC		\$116	33%
HEAVY GRAIN		\$119	59%
HEAVY GRASS		\$116	48%

PURCHASER ..... \$ .....

**7****TRIO PRECEDENCE P102**

DOB: 16/07/2018 ELYP102 (HBR) AMFU, NHFU, CAFU, DDFU

MATAURI REALITY 839

BT EQUATOR 395M

**SIRE** KIDMAN PRECEDENCE K72**DAM** TRIO BURNETTE E17

KIDMAN THELMA H15

TRIO BURNETTE Z2

	GL	BW	200	400	600	MCW	MILK	SS	CW	EMA	RIB	RMP	RBY	IMF
EBV	-8.1	+2.1	+38	+72	+92	+84	+16	+1.7	+51	+4.3	+2.5	+1.6	-0.6	+1.6
PERC	6%	9%	93%	90%	91%	78%	58%	58%	91%	74%	3%	7%	90%	61%

P102 has the best combination of a short gestation length & low birth weight of all the bulls in this age group. He also has one of the best Rib & Rump Fat EBVs in the sale. He is a lovely, quiet bull to handle.

His dam was one of our most productive Burnette cows. Unfortunately, we lost her in the drought last year after she gave birth to twins.

	\$ INDEX	VALUE	PERC
ANGUS BREEDING		\$107	73%
DOMESTIC		\$103	74%
HEAVY GRAIN		\$105	76%
HEAVY GRASS		\$106	73%

PURCHASER ..... \$ .....

**8****TRIO MOUNT P123**

DOB: 24/07/2018 ELYP123 (HBR) AMFU, NHFU, CA2%, DDFU

KC HAAS GPS

KANSAS CUSTER G52

**SIRE** TEXAS MOUNT K002**DAM** TRIO QUAIL J88

TEXAS UNDINE Z183

TRIO QUAIL E41

	GL	BW	200	400	600	MCW	MILK	SS	CW	EMA	RIB	RMP	RBY	IMF
EBV	-7.1	+5.8	+49	+90	+125	+126	+12	+3.0	+62	+2.4	-1.1	-0.3	+0.1	+2.0
PERC	12%	83%	45%	34%	20%	8%	85%	10%	59%	95%	79%	46%	68%	44%

A longer-made Texas Mount son with a later maturity pattern. He offers a good 400 & 600 Day Weight & a large Scrotal Size EBV.

	\$ INDEX	VALUE	PERC
ANGUS BREEDING		\$114	60%
DOMESTIC		\$104	72%
HEAVY GRAIN		\$124	52%
HEAVY GRASS		\$111	61%

PURCHASER ..... \$ .....

**9****TRIO MAESTRO P110**

DOB: 20/07/2018 ELYP110 (HBR)

AMFU, NHFU, CAFU, DDF

MILLAH MURRAH KLOONEY K42

STONEY POINT KILBOURNE K27

**SIRE** MILLAH MURRAH MAESTRO M182**DAM** TRIO LOWAN M166

MILLAH MURRAH FLOWER K269

TUCKLAN LOWAN F29

	GL	BW	200	400	600	MCW	MILK	SS	CW	EMA	RIB	RMP	RBY	IMF
EBV	-5.3	+3.0	+42	+76	+93	+74	+19	+0.4	+59	+5.4	+0.9	+0.3	0.0	+1.7
PERC	34%	21%	81%	83%	90%	89%	25%	97%	73%	54%	18%	28%	72%	57%

A very smart Maestro son who is soft skinned, deep-sided & very quiet. He offers a low birth weight & should be a good option to use over heifers. His daughters will also make ideal replacements, given P110's strong pedigree, positive fat EBVs & lower Mature Cow Weight. A full brother sells as Lot 49.

	\$ INDEX	VALUE	PERC
ANGUS BREEDING		\$104	77%
DOMESTIC		\$106	66%
HEAVY GRAIN		\$102	79%
HEAVY GRASS		\$105	75%

PURCHASER ..... \$ .....

**10****TRIO MAESTRO P144**

DOB: 18/08/2018 ELYP144 (HBR)

AMFU, NHFU, CAFU, DDFU

MILLAH MURRAH KLOONEY K42

S A V PIONEER 7301

**SIRE** MILLAH MURRAH MAESTRO M182**DAM** TRIO QUAIL H49

MILLAH MURRAH FLOWER K269

TRIO QUAIL E28

	GL	BW	200	400	600	MCW	MILK	SS	CW	EMA	RIB	RMP	RBY	IMF
EBV	-4.8	+5.2	+47	+84	+107	+85	+14	+1.1	+63	+5.9	0.0	-0.8	+0.8	+1.4
PERC	42%	72%	55%	58%	66%	75%	76%	84%	54%	44%	44%	61%	35%	70%

This bull is thick-made with a moderate maturity pattern. He has a well balanced set of EBVs & would be suited to breeding replacements. His dam is a solid Pioneer daughter who is very sound footed with a lovely udder.

	\$ INDEX	VALUE	PERC
ANGUS BREEDING		\$109	69%
DOMESTIC		\$109	57%
HEAVY GRAIN		\$108	73%
HEAVY GRASS		\$110	64%

PURCHASER ..... \$ .....

**11****TRIO PRECEDENCE P143**

DOB: 15/08/2018 ELYP143 (HBR) AMFU, NHFU, CAFU, DD1%

MATAURI REALITY 839

ARDROSSAN EQUATOR A241

**SIRE** KIDMAN PRECEDENCE K72**DAM** TRIO CATATONIA J42

KIDMAN THELMA H15

TRIO CATATONIA F37

	GL	BW	200	400	600	MCW	MILK	SS	CW	EMA	RIB	RMP	RBY	IMF
EBV	-7.5	+3.9	+46	+84	+113	+105	+15	+1.9	+62	+5.2	+1.4	+0.7	0.0	+1.8
PERC	9%	40%	63%	56%	49%	35%	61%	48%	60%	58%	10%	19%	72%	52%

Be sure to look hard at this bull. He has plenty of eye appeal, balanced EBVs and a proven pedigree. He also has a lovely temperament. His dam produced one of the top bulls in our 2017 sale, selling for \$14,000 to Kintyre Angus. Upon inspecting him recently, he's developed into one of the heaviest muscled bulls we've bred. P143 is also very well muscled but has the extra benefit of Reality in his pedigree adding some fat cover. He should be a safe option to use over heifers.

	\$ INDEX	VALUE	PERC
ANGUS BREEDING		\$125	37%
DOMESTIC		\$113	43%
HEAVY GRAIN		\$131	42%
HEAVY GRASS		\$121	34%

PURCHASER ..... \$ .....

**12****TRIO PRECEDENCE P147**

DOB: 24/08/2018 ELYP147 (HBR) AMFU, NHFU, CAFU, DD1%

MATAURI REALITY 839

KMK ALLIANCE 6595 I87

**SIRE** KIDMAN PRECEDENCE K72**DAM** TRIO FLEUR G45

KIDMAN THELMA H15

BOORAGUL FLEUR B26

	GL	BW	200	400	600	MCW	MILK	SS	CW	EMA	RIB	RMP	RBY	IMF
EBV	-6.4	+4.7	+49	+87	+112	+94	+13	+0.7	+60	+3.5	+1.7	+0.4	-0.5	+1.4
PERC	18%	61%	41%	46%	52%	57%	81%	93%	69%	86%	7%	25%	88%	70%

A bull who has inherited plenty of traits from the Reality in his pedigree - being deep, thick & easy-keeping. Reality has been a very influential sire & has a reputation right across Australia & NZ for being sound footed & quiet with great constitution.

	\$ INDEX	VALUE	PERC
ANGUS BREEDING		\$111	66%
DOMESTIC		\$107	63%
HEAVY GRAIN		\$110	70%
HEAVY GRASS		\$112	59%

PURCHASER ..... \$ .....

**13****TRIO PRECEDENCE P146**

DOB: 24/08/2018 ELYP146 (HBR)

AMFU, NHFU, CAFU, DDFU

MATAURI REALITY 839

DUNOON EVIDENT E614

**SIRE** KIDMAN PRECEDENCE K72**DAM** TRIO LOWAN J98

KIDMAN THELMA H15

ST PAULS HM LOWAN B208

	GL	BW	200	400	600	MCW	MILK	SS	CW	EMA	RIB	RMP	RBY	IMF
EBV	-6.0	+3.1	+43	+77	+98	+92	+14	+2.4	+52	+7.5	+1.4	+0.8	+0.4	+2.1
PERC	23%	22%	80%	80%	84%	62%	74%	25%	89%	19%	10%	17%	54%	40%

A great pedigree combination in this bull. The Reality offers softness & fat cover yet the Evident injects some muscle. He has a really good temperament & should be a sound option to use over heifers.

\$ INDEX	VALUE	PERC
ANGUS BREEDING	\$119	49%
DOMESTIC	\$112	46%
HEAVY GRAIN	\$124	52%
HEAVY GRASS	\$114	53%

PURCHASER ..... \$ .....

**N26 - TOP PRICED KIDMAN PRECEDENCE SON 2018**

Precedence sons have proved to be our most popular sire line to date for calving ease.

# Stud Sire on offer!



MILLAH MURRAH MAESTRO M182



SIRE: MILLAH MURRAH KLOONEY K42



GRANDAM: MILLAH MURRAH PRUE H4

## AN EXCEPTIONAL PEDIGREE...

Maestro's sire, Millah Murrah Klooney, sold for \$80,000 in 2015. He has since been used heavily through AI right across Australia & is receiving great reviews. His sons at the Millah Murrah Bull Sale have averaged close to \$20,000. Klooneys dam is considered one of the best Emperor daughters in Australia. **Maestro gives you the opportunity to access these absolutely exceptional genetics.**

**14**

# MILLAH MURRAH MAESTRO M182

DOB: 14/07/2016 NMMM182 (HBR) AMFU, NHFU, CAFU, DDFU

BOOROOMOOKA THEO T030

MILLAH MURRAH DOC F159

**SIRE** MILLAH MURRAH KLOONEY K42**DAM** MILLAH MURRAH FLOWER K269

MILLAH MURRAH PRUE H4

MILLAH MURRAH FLOWER E96

	GL	BW	200	400	600	MCW	MILK	SS	CW	EMA	RIB	RMP	RBY	IMF
EBV	-5.1	+2.9	+40	+75	+88	+47	+19	+0.5	+54	+4.1	+1.5	+1.1	-0.9	+2.1
PERC	37%	19%	89%	85%	94%	99%	26%	96%	85%	77%	9%	12%	94%	40%

\$ INDEX	VALUE	PERC
ANGUS BREEDING	\$107	73%
DOMESTIC	\$109	57%
HEAVY GRAIN	\$105	76%
HEAVY GRASS	\$107	71%

We've decided it's the ideal time to offer Millah Murrah Maestro M182 for sale. He's only 4yrs old & 100% sound. Offering him for sale now will give one of our clients the opportunity to utilise his exceptional genetics for herd rebuilding.

We've used him extensively for several consecutive Spring & Autumn joinings & we love his progeny. As you can see from his sons in this sale, he's breeding very well. Our only reason for selling him is that it's time for us to progress genetically. As stud breeders we try to stay one step ahead & we need to bring in some new genetics to further build on the foundation he has left us.

We purchased Maestro in 2017 for an Australian yearling record price of \$50,000. We were looking for a 'cow-maker' for our program - a bull that had all the attributes to breed productive females. We needed a strong maternal pedigree, calving ease & good rib & rump fat. He also needed a great temperament. Maestro ticked all the boxes.

He still has a long breeding life ahead of him & we'd love to see his genetics put to good use.

We will continue to have Maestro sons for sale over the next few years. His influence on our program will also continue for many years through all of his daughters.

PURCHASER ..... \$ .....

18 month old bulls

15

### TRIO MOUNT Q10

DOB: 12/02/2019 ELYQ10 (HBR)

AMFU, NHFU, CAFU, DDFU

KC HAAS GPS

KANSAS CUSTER G52

**SIRE** TEXAS MOUNT K002

**DAM** TRIO EXPENSIVE K35

TEXAS UNDINE Z183

TRIO EXPENSIVE E63

	GL	BW	200	400	600	MCW	MILK	SS	CW	EMA	RIB	RMP	RBY	IMF
EBV	-10.3	+3.4	+49	+93	+119	+129	+14	+3.2	+69	+3.2	-0.5	-0.5	+0.1	+2.1
PERC	1%	28%	45%	26%	32%	7%	74%	7%	31%	89%	61%	52%	68%	40%

Stud sire potential. This bull has been a standout since he was a calf. He weaned the heaviest in the mob & has continued to grow into a larger framed bull with very sound feet. He also offers a large Scrotal Size & one of the shortest Gestation Length figures of all the bull's in the sale. His dam is one of the best in our herd right now, she's currently in our donor program. Her last son was the top priced bull in our 2019 Bull Sale.

\$ INDEX	VALUE	PERC
ANGUS BREEDING	\$123	41%
DOMESTIC	\$115	36%
HEAVY GRAIN	\$136	35%
HEAVY GRASS	\$118	42%

PURCHASER ..... \$ .....

16

### PRIME INDEX Q34

DOB: 1/02/2019 CXBQ34 (HBR)

AMFU, NHFU, CAFU, DDFU

G A R INGENUITY

PRIME KATAPAUULT K1

**SIRE** V A R INDEX 3282

**DAM** PRIME ZANDY M5

SANDPOINT BLACKBIRD 8809

PRIME ZANDY K102

	GL	BW	200	400	600	MCW	MILK	SS	CW	EMA	RIB	RMP	RBY	IMF
EBV	-6.9	+1.9	+52	+94	+120	+104	+24	+3.9	+70	+12.1	-0.2	-1.7	+2.5	+2.1
PERC	13%	7%	22%	21%	31%	36%	5%	2%	26%	1%	51%	84%	2%	40%

Stud sire potential. A very attractive young sire who is smooth-fronted with strong muscling over his top & hindquarter. He has good, balanced EBVs right across the board. He has a massive EMA, sitting him in the top 1% of the breed. His \$Index values are also excellent & his low Birth Weight & short Gestation Length should make him a good option to use over heifers.

\$ INDEX	VALUE	PERC
ANGUS BREEDING	\$146	7%
DOMESTIC	\$135	2%
HEAVY GRAIN	\$159	12%
HEAVY GRASS	\$139	4%

PURCHASER ..... \$ .....



**17****TRIO LION HEART Q13**

DOB: 16/02/2019 ELYQ13 (HBR)

AMFU, NHFU, CAFU, DDFU

ASCOT HALLMARK H147

BT EQUATOR 395M

**SIRE** ASCOT LION HEART L305**DAM** TRIO BURNETTE E8

ASCOT H148

TRIO BURNETTE Z2

	GL	BW	200	400	600	MCW	MILK	SS	CW	EMA	RIB	RMP	RBY	IMF
EBV	-4.7	+5.9	+53	+99	+135	+129	+18	+2.7	+74	+5.8	-1.5	-1.3	+1.4	+1.6
PERC	44%	85%	19%	11%	8%	6%	36%	16%	14%	46%	88%	75%	14%	61%

Q13 is an ET son, out of one of our best Burnette cows. He's a real powerhouse with a wide top & plenty of muscle. His EBVs indicate he's progeny will offer plenty of growth, along with a heavy Carcase Weight.

Full brother to Lot 18.

	\$ INDEX	VALUE	PERC
ANGUS BREEDING		\$127	32%
DOMESTIC		\$112	46%
HEAVY GRAIN		\$139	31%
HEAVY GRASS		\$121	34%

PURCHASER ..... \$ .....

**18****TRIO LION HEART Q50**

DOB: 21/03/2019 ELYQ50 (HBR)

AMFU, NHFU, CAFU, DDFU

ASCOT HALLMARK H147

BT EQUATOR 395M

**SIRE** ASCOT LION HEART L305**DAM** TRIO BURNETTE E8

ASCOT H148

TRIO BURNETTE Z2

	GL	BW	200	400	600	MCW	MILK	SS	CW	EMA	RIB	RMP	RBY	IMF
EBV	-2.3	+7.0	+54	+100	+126	+131	+15	+3.3	+77	+3.8	-0.2	-1.0	+0.3	+1.7
PERC	83%	96%	17%	10%	19%	5%	67%	6%	10%	82%	51%	67%	59%	57%

A flush brother to Lot 17. He has the same great phenotype with a strong muscle pattern. He will also offer the same in his progeny - plenty of growth & a heavy carcase weight.

The dam of these two ET brothers is larger framed, with a very sound udder & good feet. She is still in the herd today at 11 years of age.

	\$ INDEX	VALUE	PERC
ANGUS BREEDING		\$111	66%
DOMESTIC		\$102	77%
HEAVY GRAIN		\$122	55%
HEAVY GRASS		\$104	77%

PURCHASER ..... \$ .....



#### TRIO EXPENSIVE K35

Dam of Lot 15 & currently in our donor program. She will have plenty more progeny coming through in future sales & lots more daughters in production soon.



#### NEW COWS!

You'll notice some of the bull's catalogued are out of cows from Prime & Riga Angus. These females were purchased last year to add new genetics to our program.

**19****PRIME COMMANDO Q25**

DOB: 29/01/2019 CXBQ25 (HBR) AMFU, NHFU, CAFU, DDFU

EF COMPLEMENT 8088

PRIME EMPEROR H92

**SIRE** EF COMMANDO 1366**DAM** PRIME ZANDY K102

RIVERBEND YOUNG LUCY W1470

PRIME ZANDY G41

	GL	BW	200	400	600	MCW	MILK	SS	CW	EMA	RIB	RMP	RBY	IMF
EBV	-7.2	+2.9	+51	+90	+117	+87	+23	+0.9	+66	+6.1	-0.3	+0.3	-0.4	+2.9
PERC	11%	19%	31%	34%	38%	72%	6%	89%	41%	41%	54%	28%	85%	16%

This bull is out of a cow we purchased last year. Just like his dam, he is deep-sided, with a strong top & plenty of shape through the hindquarter. He should be a safe option to use over heifers.

\$ INDEX	VALUE	PERC
ANGUS BREEDING	\$134	20%
DOMESTIC	\$121	18%
HEAVY GRAIN	\$146	23%
HEAVY GRASS	\$128	18%

PURCHASER ..... \$ .....

**20****PRIME MAXIMUS Q56**

DOB: 4/02/2019 CXBQ56 (HBR) AMFU, NHFU, CAFU, DDFU

MILLAH MURRAH EQUATOR D78

S A V THUNDERBIRD 9061

**SIRE** PRIME MAXIMUS M7**DAM** PRIME MITTAGONG K13

PRIME MITTAGONG K5

PRIME MITTAGONG H86

	GL	BW	200	400	600	MCW	MILK	SS	CW	EMA	RIB	RMP	RBY	IMF
EBV	-11.1	+2.9	+51	+94	+127	+124	+15	+1.8	+72	+3.6	+1.0	0.0	0.0	+2.0
PERC	1%	19%	28%	23%	17%	9%	65%	53%	20%	84%	16%	36%	72%	44%

This bull's dam was also purchased last year. He has a later maturity pattern & is heavier boned. He has one of the shortest Gestation Length EBV's in the sale & should be a good option to use over heifers.

\$ INDEX	VALUE	PERC
ANGUS BREEDING	\$131	25%
DOMESTIC	\$118	26%
HEAVY GRAIN	\$142	28%
HEAVY GRASS	\$127	20%

PURCHASER ..... \$ .....

**21****PRIME J474 Q84**

DOB: 11/02/2019 CXBQ84 (HBR)

AMFU, NHFU, CAFU, DDFU

TUWHARETOA REGENT D145

TE MANIA EMPEROR E343

**SIRE** RENNYLEA J474**DAM** PRIME JEDDA J10

RENNYLEA C310

PRIME JEDDA G40

	GL	BW	200	400	600	MCW	MILK	SS	CW	EMA	RIB	RMP	RBY	IMF
EBV	-3.8	+5.0	+50	+90	+127	+103	+22	+0.6	+70	+4.4	+0.2	+0.6	-0.8	+3.6
PERC	60%	68%	33%	34%	16%	39%	12%	95%	25%	72%	37%	21%	93%	5%

If you're looking to increase the marbling levels in your herd then this bull is well worth a look. He has an IMF EBV in the top 5% of the breed. He has two proven Angus sires in his pedigree with Emperor & Regent, meaning his genetics should be very predictable.

\$ INDEX	VALUE	PERC
ANGUS BREEDING	\$137	16%
DOMESTIC	\$112	46%
HEAVY GRAIN	\$160	11%
HEAVY GRASS	\$126	22%

PURCHASER ..... \$ .....

**22****RIGA QUAMBY Q96**

DOB: 13/03/2019 VKRQ96 (HBR)

AMFU, NHFU, CAFU, DDFU

TC FRANKLIN 619

CARABAR DOCKLANDS D62

**SIRE** WATTLETOP FRANKLIN G188**DAM** RIGA MADONNA M28

WATTLETOP BARUNAH E295

RIGA KACEY K48

	GL	BW	200	400	600	MCW	MILK	SS	CW	EMA	RIB	RMP	RBY	IMF
EBV	-3.4	+3.9	+57	+96	+127	+96	+21	+2.3	+65	+5.0	-0.2	+0.2	+0.4	+0.7
PERC	67%	40%	8%	17%	17%	53%	13%	29%	45%	62%	51%	31%	54%	92%

This bull is the only son of Wattletop Franklin G188 in the sale. G188 has been labelled as the best bull to come out of the Wattletop program. This son is deep-sided & with a later maturity pattern. He offers a low birth weight & solid growth. Would be well suited to breeding feeder steers.

\$ INDEX	VALUE	PERC
ANGUS BREEDING	\$124	39%
DOMESTIC	\$117	29%
HEAVY GRAIN	\$118	60%
HEAVY GRASS	\$127	20%

PURCHASER ..... \$ .....

**23****TRIO MAESTRO Q24**

DOB: 25/02/2019 ELYQ24 (HBR)

AMFU, NHFU, CAFU, DDFU

MILLAH MURRAH KLOONEY K42

KANSAS EVIDENTLY J81

**SIRE** MILLAH MURRAH MAESTRO M182**DAM** KANSAS WAGON L52

MILLAH MURRAH FLOWER K269

KANSAS WAGON J125

	GL	BW	200	400	600	MCW	MILK	SS	CW	EMA	RIB	RMP	RBY	IMF
EBV	-3.4	+4.6	+45	+82	+102	+74	+19	+1.9	+56	+6.3	+0.4	+0.4	+0.3	+1.8
PERC	67%	58%	66%	65%	76%	90%	28%	48%	80%	37%	31%	25%	59%	52%

A bull who's very correct in his structure. Good feet & legs is certainly a trait that Maestro has passed on to his progeny. This bull's grand-dam was purchased from Kansas Angus for \$10,000 & is part of our donor program.

	\$ INDEX	VALUE	PERC
ANGUS BREEDING		\$110	68%
DOMESTIC		\$108	60%
HEAVY GRAIN		\$110	70%
HEAVY GRASS		\$109	66%

PURCHASER ..... \$ .....

**24****PRIME BEAST MODE Q43**

DOB: 1/02/2019 CXBQ43 (HBR)

AMFU, NHFU, CAFU, DDFU

G A R PROPHET

TE MANIA EMPEROR E343

**SIRE** BALDRIDGE BEAST MODE B074**DAM** PRIME BEEAC L4

BALDRIDGE ISABEL Y69

PRIME BEEAC J34

	GL	BW	200	400	600	MCW	MILK	SS	CW	EMA	RIB	RMP	RBY	IMF
EBV	-7.2	+1.4	+48	+85	+110	+97	+12	+1.8	+61	+8.4	-0.3	-1.6	+0.9	+3.0
PERC	11%	4%	51%	55%	58%	51%	85%	53%	62%	11%	54%	82%	30%	14%

The first Beast Mode son to be offered for sale & one that will be sure to catch your eye. This bull is deep-ribbed, with a thick hindquarter & quiet temperament. He has a good IMF figure & his low Birth Weight should make him a sound choice over heifers. He would also breed good replacements.

	\$ INDEX	VALUE	PERC
ANGUS BREEDING		\$141	11%
DOMESTIC		\$126	9%
HEAVY GRAIN		\$161	10%
HEAVY GRASS		\$130	14%

PURCHASER ..... \$ .....



### BULLS - DROUGHT FEEDING

We culled hard & then committed to feeding the remaining bulls. Things were ugly but plenty of valuable lessons were learnt.



### GREEN GRASS AT LAST!

Our digit paddocks were quick to respond to the rain in January. This meant the bulls could leave their drought diet behind & enjoy some green grass for a change!

**25****RIGA QUINCEY Q17**

DOB: 3/03/2019 VKRQ17 (APR)

AMFU, NHFU, CAFU, DDFU

EF COMMANDO 1366

SYDGEN BLACK PEARL 2006

**SIRE** BALDRIDGE COMMAND C036**DAM** RIGA NERINE N22

BALDRIDGE BLACKBIRD A030

RIGA LYRA L169

	GL	BW	200	400	600	MCW	MILK	SS	CW	EMA	RIB	RMP	RBY	IMF
EBV	-6.4	+3.4	+57	+102	+140	+121	+22	+0.7	+75	+4.8	-2.1	-2.1	+0.7	+2.6
PERC	18%	28%	9%	8%	5%	12%	9%	93%	12%	65%	96%	90%	39%	24%

This bull is a curve-bender with a low birth weight yet 200, 400 & 600 Day growth in the top 10% of the breed. He has a moderate maturity pattern to go with it & is well muscled. Should be a safe option to use over heifers. His dam was purchased last year from Riga Angus, VIC.

	\$ INDEX	VALUE	PERC
ANGUS BREEDING		\$137	16%
DOMESTIC		\$123	14%
HEAVY GRAIN		\$152	17%
HEAVY GRASS		\$132	11%

PURCHASER ..... \$ .....

**26****RIGA QUENTIN Q25**

DOB: 5/03/2019 VKRQ25 (APR)

AMFU, NHFU, CAFU, DDFU

AYRVALE GENERAL G18

WATTLETOP FRANKLIN G188

**SIRE** PATHFINDER GENERAL K7**DAM** RIGA QUALITY N38

PATHFINDER EQUATOR H63

RIGA QUALITY L100

	GL	BW	200	400	600	MCW	MILK	SS	CW	EMA	RIB	RMP	RBY	IMF
EBV	-5.9	+3.7	+58	+101	+133	+118	+20	+1.3	+78	+6.3	-2.0	-2.3	+0.8	+2.5
PERC	25%	35%	7%	8%	10%	15%	18%	77%	8%	37%	95%	92%	35%	27%

The first Pathfinder General K7 son to be offered for sale. Another bull that offers the great combination of calving ease, yet growth in the top 10% of the breed.

	\$ INDEX	VALUE	PERC
ANGUS BREEDING		\$144	8%
DOMESTIC		\$128	6%
HEAVY GRAIN		\$161	10%
HEAVY GRASS		\$135	7%

PURCHASER ..... \$ .....

**27****TRIO KING OF HEARTS Q46**

DOB: 17/03/2019 ELYQ46 (HBR) AMFU, NHFU, CAFU, DDFU

TC TOTAL 410

ARDROSSAN EQUATOR A241

**SIRE** TEXAS KING OF HEARTS K535**DAM** TRIO KIWI J10

TEXAS UNDINE Z183

TRIO KIWI G20

	GL	BW	200	400	600	MCW	MILK	SS	CW	EMA	RIB	RMP	RBY	IMF
EBV	-1.8	+5.0	+51	+83	+110	+101	+16	+2.9	+66	+6.6	-0.8	-1.0	+1.4	+1.0
PERC	88%	68%	31%	61%	58%	43%	56%	11%	43%	32%	71%	67%	14%	84%

A well-balanced bull with good depth of rib & plenty of muscle development through his hindquarter. His sire, King of Hearts, was one of the standout bulls offered by Texas Angus in 2017. His dam line, the Undine's, are the most influential in the Texas herd & we wanted to introduce these genetics to our own program.

\$ INDEX	VALUE	PERC
ANGUS BREEDING	\$104	77%
DOMESTIC	\$102	77%
HEAVY GRAIN	\$100	80%
HEAVY GRASS	\$105	75%

PURCHASER ..... \$ .....

**28****TRIO MAESTRO Q19**

DOB: 19/02/2019 ELYQ19 (HBR) AMFU, NHFU, CAFU, DDFU

MILLAH MURRAH KLOONEY K42

KIDMAN PRECEDENCE K72

**SIRE** MILLAH MURRAH MAESTRO M182**DAM** TRIO BURNETTE N44

MILLAH MURRAH FLOWER K269

TRIO BURNETTE L22

	GL	BW	200	400	600	MCW	MILK	SS	CW	EMA	RIB	RMP	RBY	IMF
EBV	-5.1	+4.1	+45	+78	+96	+78	+12	+1.2	+57	+5.2	+2.2	+1.5	-0.2	+1.5
PERC	37%	45%	69%	79%	87%	85%	86%	81%	77%	58%	4%	8%	79%	66%

Another stylish Maestro son that ticks plenty of boxes. He's a heifers first calf that has one of the best Rib & Rump Fat EBVs in his age group & a low Mature Cow Weight. This data would make him ideal for breeding replacements. He's also very sound footed, with good muscle shape & plenty of length.

\$ INDEX	VALUE	PERC
ANGUS BREEDING	\$109	69%
DOMESTIC	\$109	57%
HEAVY GRAIN	\$105	76%
HEAVY GRASS	\$110	64%

PURCHASER ..... \$ .....



**29****TRIO MAESTRO Q16**

DOB: 17/02/2019 ELYQ16 (HBR)

AMFU, NHFU, CAFU, DDFU

MILLAH MURRAH KLOONEY K42

KIDMAN PRECEDENCE K72

**SIRE** MILLAH MURRAH MAESTRO M182**DAM** TRIO QUAIL N38

MILLAH MURRAH FLOWER K269

TRIO QUAIL K40

	GL	BW	200	400	600	MCW	MILK	SS	CW	EMA	RIB	RMP	RBY	IMF
EBV	-8.1	+2.3	+42	+78	+98	+63	+19	+2.2	+61	+4.8	+2.5	+1.9	-1.1	+2.6
PERC	6%	11%	84%	79%	84%	97%	32%	33%	64%	65%	3%	5%	96%	24%

A heifers first calf. This bull is easy-keeping with a lovely soft hair type. This is supported by good Rib & Rump Fat EBVs. He should be a very good option to use over heifers. He offers a low Birth Weight & short Gestation Length, along with a pedigree loaded with calving ease genetics. He would also breed good replacements. He has a lovely, quiet temperament.

\$ INDEX	VALUE	PERC
ANGUS BREEDING	\$120	47%
DOMESTIC	\$112	46%
HEAVY GRAIN	\$125	50%
HEAVY GRASS	\$117	45%

PURCHASER ..... \$ .....

**30****TRIO MAESTRO Q3**

DOB: 5/02/2019 ELYQ3 (HBR)

AMFU, NHF, CAFU, DDFU

MILLAH MURRAH KLOONEY K42

KIDMAN PRECEDENCE K72

**SIRE** MILLAH MURRAH MAESTRO M182**DAM** TRIO QUOLL N52

MILLAH MURRAH FLOWER K269

TRIO QUOLL L31

	GL	BW	200	400	600	MCW	MILK	SS	CW	EMA	RIB	RMP	RBY	IMF
EBV	-7.1	+3.1	+47	+87	+112	+91	+16	+1.8	+70	+4.3	+0.5	-1.6	+0.4	+1.6
PERC	12%	22%	56%	45%	51%	63%	54%	53%	27%	74%	28%	82%	54%	61%

A Maestro son who's still developing. He should be another good option to use over heifers, with Precedence adding some extra calving ease genetics further back in the pedigree. His dam is a moderate cow who has plenty of natural thickness.

\$ INDEX	VALUE	PERC
ANGUS BREEDING	\$123	41%
DOMESTIC	\$116	33%
HEAVY GRAIN	\$129	45%
HEAVY GRASS	\$119	39%

PURCHASER ..... \$ .....

**31****TRIO MAESTRO Q54**

DOB: 10/04/2019 ELYQ54 (HBR)

AMFU, NHFU, CAFU, DD12%

MILLAH MURRAH KLOONEY K42

ELLINGSON SCOTSMAN 0010

**SIRE** MILLAH MURRAH MAESTRO M182**DAM** TRIO NINAH L25

MILLAH MURRAH FLOWER K269

TRIO NINAH J7

	GL	BW	200	400	600	MCW	MILK	SS	CW	EMA	RIB	RMP	RBY	IMF
EBV	-4.8	+3.6	+41	+80	+99	+68	+20	-0.1	+60	+4.9	+1.0	+0.4	-0.3	+1.8
PERC	42%	33%	85%	73%	82%	94%	22%	99%	68%	63%	16%	25%	82%	52%

Another low birth weight Maestro son. He is one of the youngest bulls in his age group but is still showing good muscle development. Note the Ellingson Scotsman in his pedigree - a very popular calving ease sire.

	\$ INDEX	VALUE	PERC
ANGUS BREEDING		\$103	78%
DOMESTIC		\$105	69%
HEAVY GRAIN		\$101	79%
HEAVY GRASS		\$105	75%

PURCHASER ..... \$ .....

**32****RIGA QUINN Q5**

DOB: 28/02/2019 VKRQ5 (APR)

AMFU, NHFU, CAFU, DDFU

AYRVALE GENERAL G18

SYDGEN BLACK PEARL 2006

**SIRE** PATHFINDER GENERAL K7**DAM** RIGA NOLLEEN N154

PATHFINDER EQUATOR H63

RIGA LISA L35

	GL	BW	200	400	600	MCW	MILK	SS	CW	EMA	RIB	RMP	RBY	IMF
EBV	-8.6	+1.0	+46	+75	+93	+60	+18	+0.9	+62	+12.4	+1.6	+0.5	+0.6	+2.2
PERC	4%	3%	60%	85%	90%	98%	37%	89%	61%	1%	8%	23%	44%	36%

If improving EMA is one of your breeding objectives, you'll be hard pressed to find a better bull anywhere. He has an EMA in the top 1% of the breed, yet also offers calving ease & good marbling.

	\$ INDEX	VALUE	PERC
ANGUS BREEDING		\$132	23%
DOMESTIC		\$124	12%
HEAVY GRAIN		\$134	38%
HEAVY GRASS		\$128	18%

PURCHASER ..... \$ .....

**33****TRIO KING OF HEARTS Q49**

DOB: 20/03/2019 ELYQ49 (HBR)

AMFU, NHFU, CAFU, DDFU

TC TOTAL 410

KO EMIR E120

**SIRE** TEXAS KING OF HEARTS K535**DAM** TRIO BESS L46

TEXAS UNDINE Z183

TRIO BESS G3

	GL	BW	200	400	600	MCW	MILK	SS	CW	EMA	RIB	RMP	RBY	IMF
EBV	-0.8	+5.9	+51	+87	+110	+120	+12	+1.6	+57	+7.8	-2.0	-1.8	+1.9	+1.5
PERC	94%	85%	32%	48%	58%	13%	85%	63%	78%	16%	95%	86%	5%	66%

A later maturing type with a solid muscle pattern. He should pass on plenty of thickness to his progeny with an EMA in the top 20% of the breed.

	\$ INDEX	VALUE	PERC
ANGUS BREEDING		\$100	82%
DOMESTIC		\$103	74%
HEAVY GRAIN		\$103	78%
HEAVY GRASS		\$99	85%

PURCHASER ..... \$ .....

**34****TRIO MAESTRO Q22**

DOB: 21/02/2019 ELYQ22 (HBR)

AMFU, NHFU, CAFU, DDFU

MILLAH MURRAH KLOONEY K42

TRIO DOCKLANDS H1

**SIRE** MILLAH MURRAH MAESTRO M182**DAM** TRIO WILCOOLA N1

MILLAH MURRAH FLOWER K269

N BAR 8005 WILCOOLA E72

	GL	BW	200	400	600	MCW	MILK	SS	CW	EMA	RIB	RMP	RBY	IMF
EBV	-5.1	+0.3	+38	+73	+84	+43	+19	+0.8	+53	+5.4	+2.0	+2.1	-0.3	+1.9
PERC	37%	1%	93%	90%	97%	99%	26%	92%	89%	54%	5%	4%	82%	48%

Yet another Maestro son that ticks all the boxes for calving ease. He has a very low Birth Weight, short Gestation Length & has calving ease genetics on both sides of his pedigree. On the dams side, he goes back to Trio Docklands H1, a sire with proven genetics through the Angus Benchmarking Program. Q22 also has a low Mature Cow Weight & some of the best Rib/Rump Fat EBVs in the sale.

	\$ INDEX	VALUE	PERC
ANGUS BREEDING		\$119	49%
DOMESTIC		\$117	29%
HEAVY GRAIN		\$116	63%
HEAVY GRASS		\$117	45%

PURCHASER ..... \$ .....

**35****TRIO MAESTRO Q7**

DOB: 8/02/2019 ELYQ7 (HBR)

AMFU, NHFU, CAFU, DDFU

MILLAH MURRAH KLOONEY K42

BRUIN UPROAR 0070

**SIRE** MILLAH MURRAH MAESTRO M182**DAM** TRIO JANE N16

MILLAH MURRAH FLOWER K269

TRIO JANE G17

	GL	BW	200	400	600	MCW	MILK	SS	CW	EMA	RIB	RMP	RBY	IMF
EBV	-2.9	+4.4	+40	+72	+81	+44	+19	+1.7	+55	+6.2	+1.1	+0.2	+0.6	+1.1
PERC	75%	53%	88%	91%	98%	99%	32%	58%	84%	39%	15%	31%	44%	81%

A heifers first calf. He is a long, well balanced bull with a good muscle pattern & very low mature cow weight.

	\$ INDEX	VALUE	PERC
ANGUS BREEDING		\$92	90%
DOMESTIC		\$104	72%
HEAVY GRAIN		\$81	92%
HEAVY GRASS		\$96	88%

PURCHASER ..... \$ .....

**36****TRIO MOUNT Q11**

DOB: 16/02/2019 ELYQ11 (HBR)

AMFU, NHFU, CAFU, DDC

KC HAAS GPS

S A V PIONEER 7301

**SIRE** TEXAS MOUNT K002**DAM** TRIO NINAH H10

TEXAS UNDINE Z183

TRIO NINAH A11

	GL	BW	200	400	600	MCW	MILK	SS	CW	EMA	RIB	RMP	RBY	IMF
EBV	-7.9	+3.1	+41	+74	+91	+69	+9	+0.8	+49	+4.8	-0.2	-0.1	+0.5	+1.7
PERC	7%	22%	86%	87%	92%	94%	97%	92%	94%	65%	51%	39%	49%	57%

More calving ease genetics. This bull is from the Ninah maternal line, these cows consistently milk well & wean heavy calves. They're also fertile & hold their condition well - which goes against all the rules for heavy milking cows. His dam has sold sons to \$10,000 in the past.

	\$ INDEX	VALUE	PERC
ANGUS BREEDING		\$99	83%
DOMESTIC		\$106	66%
HEAVY GRAIN		\$95	84%
HEAVY GRASS		\$102	80%

PURCHASER ..... \$ .....

**37****TRIO MAESTRO Q4**

DOB: 6/02/2019 ELYQ4 (HBR)

AMFU, NHFU, CAFU, DDFU

MILLAH MURRAH KLOONEY K42

KIDMAN PRECEDENCE K72

**SIRE** MILLAH MURRAH MAESTRO M182**DAM** TRIO BURNETTE N35

MILLAH MURRAH FLOWER K269

TRIO BURNETTE J95

	GL	BW	200	400	600	MCW	MILK	SS	CW	EMA	RIB	RMP	RBY	IMF
EBV	-6.3	+0.9	+27	+53	+63	+27	+15	-0.3	+33	+6.1	+3.4	+1.8	-1.4	+2.5
PERC	20%	2%	99%	99%	99%	99%	61%	99%	99%	41%	1%	5%	98%	27%

This bull should be a very safe calving ease option. He has one of the lowest Birth Weight EBV's of any bull on offer, a short Gestation Length & also calving ease genetics on both sides of his pedigree. To look at, he is well put together & sound footed. He also has Rib & Rump Fat figures in the top 5% of the breed.

\$ INDEX	VALUE	PERC
ANGUS BREEDING	\$95	87%
DOMESTIC	\$96	88%
HEAVY GRAIN	\$92	86%
HEAVY GRASS	\$94	90%

PURCHASER ..... \$ .....

**38****RIGA QANTAS Q31**

DOB: 6/03/2019 VKRQ31 (APR)

AMFU, NHFU, CAFU, DDFU

EF COMMANDO 1366

TE MANIA EMPEROR E343

**SIRE** BALDRIDGE COMMAND C036**DAM** RIGA FLOWERS N15

BALDRIDGE BLACKBIRD A030

RIGA FLOWERS K76

	GL	BW	200	400	600	MCW	MILK	SS	CW	EMA	RIB	RMP	RBY	IMF
EBV	-4.2	+3.2	+44	+78	+95	+58	+15	+1.5	+52	+7.8	+1.4	0.0	-0.8	+4.1
PERC	53%	24%	72%	77%	88%	98%	62%	68%	89%	16%	10%	36%	93%	2%

This bull has an IMF in the top 2% of the breed. He also has a low Birth Weight & big EMA. He has a thick-set appearance with an early maturity pattern. We purchased his dam from Riga Angus, VIC.

\$ INDEX	VALUE	PERC
ANGUS BREEDING	\$127	32%
DOMESTIC	\$118	26%
HEAVY GRAIN	\$146	23%
HEAVY GRASS	\$118	42%

PURCHASER ..... \$ .....



## *Lion Heart sons to Banquet Angus*

Two Lion Heart ET brothers have settled into stud duties at Banquet Angus, VIC. They were purchased through AuctionsPlus at last year's sale. Both bulls offered excellent growth, along with heavy carcass weights & big EMAs.



**39**

**TRIO BEAST MODE Q78**

DOB: 16/06/2019 ELYQ78 (HBR) AMFU, NHFU, CAFU, DDFU

G A R PROPHET

TRIO DOCKLANDS H1

**SIRE** BALDRIDGE BEAST MODE B074

**DAM** TRIO BURNETTE L78

BALDRIDGE ISABEL Y69

TRIO BURNETTE E17

	GL	BW	200	400	600	MCW	MILK	SS	CW	EMA	RIB	RMP	RBY	IMF
EBV	-8.8	+6.0	+74	+131	+168	+143	+17	+2.0	+94	+3.4	-0.7	-0.2	+0.6	+1.8
PERC	4%	86%	1%	1%	1%	2%	41%	43%	1%	87%	68%	42%	44%	52%

Stud sire potential. This bull has been a standout since he was born. He weighed almost 100kg heavier than the average at weaning & continues to charge ahead. He has the highest 200, 400 & 600 Day Weight of any bull in the sale, sitting in the top 1% of the breed. His Carcase Weight is also in the top 1%. He is a neat-made bull to match, with a good temperament.

We're certain the Beast Mode sons will be popular in coming sales.

\$ INDEX	VALUE	PERC
ANGUS BREEDING	\$164	1%
DOMESTIC	\$144	1%
HEAVY GRAIN	\$178	3%
HEAVY GRASS	\$158	1%

PURCHASER ..... \$ .....

**40**

**TRIO GABBA K556 Q80**

DOB: 17/06/2019 ELYQ80 (HBR) AMFU, NHF, CAFU, DDF

DUNOON GABBA G548

TRIO ABERDEEN H8

**SIRE** PEAKES GABBA K556

**DAM** TRIO LOWAN L76

BOWEN ABIGAIL B13

TRIO LOWAN J44

	GL	BW	200	400	600	MCW	MILK	SS	CW	EMA	RIB	RMP	RBY	IMF
EBV	-5.7	+8.3	+61	+113	+155	+148	+18	+2.5	+89	+5.8	-1.1	-1.4	+1.1	+1.4
PERC	27%	99%	2%	1%	1%	1%	40%	22%	1%	46%	79%	78%	23%	70%

Another standout yearling, this time from the new sire line of Peakes Gabba. This bull is beautifully put together & just gets better & better everytime we look at him. He has loads of power & performance, which is backed up by 200, 400 & 600 Day Weights in the top 2% of the breed. His Carcase Weight is also in the top 1%.

\$ INDEX	VALUE	PERC
ANGUS BREEDING	\$116	56%
DOMESTIC	\$104	72%
HEAVY GRAIN	\$124	52%
HEAVY GRASS	\$115	51%

PURCHASER ..... \$ .....

**41****TRIO MOMENTOUS Q95**

DOB: 13/07/2019 ELYQ95 (APR) AM1%, NHFU, CA1%, DD1%

G A R MOMENTUM

KANSAS CUSTER G52

**SIRE** LAWSONS MOMENTOUS M518**DAM** TRIO 216 J81

LAWSONS AFRICA H229

TRIO E216

	GL	BW	200	400	600	MCW	MILK	SS	CW	EMA	RIB	RMP	RBY	IMF
EBV	-5.6	+4.9	+54	+90	+117	+110	+16	+0.8	+71	+4.5	-2.0	-3.4	+0.3	+2.6
PERC	29%	65%	17%	34%	38%	26%	51%	92%	22%	71%	95%	99%	59%	24%

These yearling bulls present a great opportunity to secure leading-edge genetics. This is the first Lawsons Momentous son to be offered for sale. We used Momentous as he is one of the best bulls in the breed for both marbling & EMA - a combination thats hard to find. Q95 is deep-sided with a soft hair type.

	\$ INDEX	VALUE	PERC
ANGUS BREEDING		\$99	83%
DOMESTIC		\$101	79%
HEAVY GRAIN		\$108	73%
HEAVY GRASS		\$98	86%

PURCHASER ..... \$ .....

**42****TRIO MOMENTOUS Q93**

DOB: 13/07/2019 ELYQ93 (HBR) AMFU, NHFU, CAFU, DDFU

G A R MOMENTUM

TRIO ALLIANCE D8

**SIRE** LAWSONS MOMENTOUS M518**DAM** TRIO BURNETTE F61

LAWSONS AFRICA H229

TRIO BURNETTE D14

	GL	BW	200	400	600	MCW	MILK	SS	CW	EMA	RIB	RMP	RBY	IMF
EBV	-7.4	+4.7	+60	+105	+136	+121	+24	+2.6	+78	+9.2	-1.2	-1.5	+1.5	+1.6
PERC	10%	61%	3%	5%	7%	12%	5%	19%	8%	6%	82%	80%	12%	61%

Stud sire potential.

Another Momentous son who is very stylish & will catch your eye. His EBVs are great across the board, with his growth, Carcase Weight, EMA, Domestic Index & Heavy Grass Index all in the top 10% of the breed. He also has a lovely temperament. His grand-dam was one of our Burnette donors & the dam of the \$18,000 top priced bull in 2017.

	\$ INDEX	VALUE	PERC
ANGUS BREEDING		\$139	13%
DOMESTIC		\$128	6%
HEAVY GRAIN		\$147	22%
HEAVY GRASS		\$135	7%

PURCHASER ..... \$ .....



**43****TRIO GABBA K556 Q81**

DOB: 17/06/2019 ELYQ81 (HBR)

AMFU, NHFU, CAFU, DDFU

DUNOON GABBA G548

MATAURI REALITY 839

**SIRE** PEAKES GABBA K556**DAM** TRIO BURNETTE M107

BOWEN ABIGAIL B13

TRIO BURNETTE E17

	GL	BW	200	400	600	MCW	MILK	SS	CW	EMA	RIB	RMP	RBY	IMF
EBV	-4.9	+4.4	+44	+78	+106	+94	+16	+3.3	+60	+4.1	+2.3	+1.9	-1.1	+2.5
PERC	40%	53%	71%	78%	67%	57%	54%	6%	65%	77%	3%	5%	96%	27%

A very neat Peakes Gabba son with a lovely temperament. He has one of the largest Scrotal Size figures of any bull in the sale. This EBV indicates his progeny should reach puberty at an earlier age, which is desirable. His dam is another Burnette E17 daughter - they feature heavily throughout the catalogue.

	\$ INDEX	VALUE	PERC
ANGUS BREEDING		\$111	66%
DOMESTIC		\$101	79%
HEAVY GRAIN		\$117	62%
HEAVY GRASS		\$108	69%

PURCHASER ..... \$ .....

**44****TRIO GABBA K556 Q79**

DOB: 17/06/2019 ELYQ79 (APR)

AM2%, NHFU, CA2%, DDFU

DUNOON GABBA G548

TRIO BOJANGLES B12

**SIRE** PEAKES GABBA K556**DAM** TRIO KATE G203

BOWEN ABIGAIL B13

TRIO KATE D203

	GL	BW	200	400	600	MCW	MILK	SS	CW	EMA	RIB	RMP	RBY	IMF
EBV	-8.2	+3.9	+47	+92	+120	+102	+20	+2.8	+72	+4.6	+1.1	+1.8	+0.1	+2.2
PERC	5%	40%	57%	30%	31%	39%	22%	13%	19%	69%	15%	5%	68%	36%

This bull has always been a favourite. He is long & soft with plenty of muscle & a balanced set of EBVs. He's out of a great cow in G203, her sons have averaged close to \$10,000 over the last 3 years.

	\$ INDEX	VALUE	PERC
ANGUS BREEDING		\$130	27%
DOMESTIC		\$118	26%
HEAVY GRAIN		\$138	33%
HEAVY GRASS		\$126	22%

PURCHASER ..... \$ .....



**NEW AI SIRE - LAWSONS MOMENTOUS**

A sire that offers a massive EMA, along with exceptional marbling - sitting in the Top 1% of the breed for both traits.



**NEW AI SIRE - PEAKES GABBA**

\$30,000 top priced bull at the Bowen Bull Sale in 2016. A great all-rounder with excellent feet & added length of body.

**45****TRIO TR LOCH UP Q172**

DOB: 9/09/2019 ELYQ172 (HBR) AMFU, NHFU, CAFU, DDFU

MILLAH MURRAH LOCH UP L133

KANSAS CUSTER G52

**SIRE** TRIO LOCH UP N95**DAM** TRIO LEAH J90

TRIO LOWAN J98

KANSAS LEAH Y135

	GL	BW	200	400	600	MCW	MILK	SS	CW	EMA	RIB	RMP	RBY	IMF
EBV	-3.0	+5.5	+47	+78	+102	+88	+17	+1.6	+60	+4.2	-1.8	-1.9	+1.1	+2.0
PERC	73%	78%	56%	78%	76%	70%	46%	63%	67%	76%	93%	87%	23%	44%

A deep, soft bull with a strong topline. Super quiet. Sired by one of our own Millah Murrah Loch Up sons, who we selected & used as a yearling.

	\$ INDEX	VALUE	PERC
ANGUS BREEDING		\$101	81%
DOMESTIC		\$102	77%
HEAVY GRAIN		\$106	75%
HEAVY GRASS		\$100	83%

PURCHASER ..... \$ .....

**46****TRIO MOMENTOUS Q92**

DOB: 13/07/2019 ELYQ92 (APR) AMFU, NHFU, CAFU, DDFU

G A R MOMENTUM

T&amp;R THUNDER DOWN UNDER J8

**SIRE** LAWSONS MOMENTOUS M518**DAM** TRIO KATE M113

LAWSONS AFRICA H229

TRIO KATE K99

	GL	BW	200	400	600	MCW	MILK	SS	CW	EMA	RIB	RMP	RBY	IMF
EBV	-8.7	+3.5	+46	+85	+110	+83	+21	+3.9	+54	+11	-1.4	-2.5	+1.9	+3.6
PERC	4%	31%	60%	53%	56%	79%	13%	2%	86%	2%	86%	94%	5%	5%

This is a young bull that provides you with plenty of options. He offers calving ease - with a low Birth Weight, ultra short Gestation Length & a safe pedigree. He also has one of the highest EMA, IMF & Scrotal Size figures of any bull in the sale, sitting in the top 5% of the breed. Each of his \$Index Values are also in the top 10%, reflecting how flexible his progeny should be to suit a range of markets.

	\$ INDEX	VALUE	PERC
ANGUS BREEDING		\$147	6%
DOMESTIC		\$132	3%
HEAVY GRAIN		\$173	4%
HEAVY GRASS		\$134	9%

PURCHASER ..... \$ .....

**47****TRIO MOMENTOUS Q119**

DOB: 21/07/2019 ELYQ119 (HBR)

AMFU, NHFU, CAFU, DDFU

G A R MOMENTUM

ARDROSSAN DEFINITIVE D230

**SIRE** LAWSONS MOMENTOUS M518**DAM** TRIO SAPPHIRE J48

LAWSONS AFRICA H229

TRIO SAPPHIRE G44

	GL	BW	200	400	600	MCW	MILK	SS	CW	EMA	RIB	RMP	RBY	IMF
EBV	-2.7	+3.0	+44	+85	+102	+83	+19	+2.8	+59	+9.5	-1.1	-0.6	+0.7	+3.2
PERC	78%	21%	73%	55%	75%	79%	28%	13%	71%	5%	79%	55%	39%	10%

This bull should be a sound option to use over heifers with his low birth weight. He has a big EMA figure & a high IMF.

	\$ INDEX	VALUE	PERC
ANGUS BREEDING		\$123	41%
DOMESTIC		\$119	23%
HEAVY GRAIN		\$138	33%
HEAVY GRASS		\$116	48%

PURCHASER ..... \$ .....

**48****TRIO MAESTRO Q121**

DOB: 21/07/2019 ELYQ121 (HBR)

AMFU, NHFU, CAFU, DDF

MILLAH MURRAH KLOONEY K42

MOHNEN DYNAMITE 1356

**SIRE** MILLAH MURRAH MAESTRO M182**DAM** TRIO LOWAN G36

MILLAH MURRAH FLOWER K269

TUCKLAN LOWAN Z54

	GL	BW	200	400	600	MCW	MILK	SS	CW	EMA	RIB	RMP	RBY	IMF
EBV	-3.9	+6.0	+50	+90	+113	+109	+10	+1.7	+69	+8.8	+0.1	+0.3	+0.9	+1.2
PERC	58%	86%	36%	33%	49%	27%	95%	58%	29%	8%	40%	28%	30%	78%

A neatly-made bull with a soft hair type & good carcase traits. He sits in the top 10% of the breed for EMA & also has positive Rib & Rump Fat figures. His dam is a larger-framed cow, who holds her condition well.

	\$ INDEX	VALUE	PERC
ANGUS BREEDING		\$121	45%
DOMESTIC		\$115	36%
HEAVY GRAIN		\$123	53%
HEAVY GRASS		\$119	39%

PURCHASER ..... \$ .....

**49****TRIO MAESTRO Q147**

DOB: 3/08/2019 ELYQ147 (HBR) AMFU, NHFU, CAFU, DDC

MILLAH MURRAH KLOONEY K42

STONEY POINT KILBOURNE K27

**SIRE** MILLAH MURRAH MAESTRO M182**DAM** TRIO LOWAN M166

MILLAH MURRAH FLOWER K269

TUCKLAN LOWAN F29

	GL	BW	200	400	600	MCW	MILK	SS	CW	EMA	RIB	RMP	RBY	IMF
EBV	-5.0	+4.4	+49	+87	+110	+95	+21	+0.9	+67	+6.0	+1.3	+0.5	-0.1	+2.2
PERC	39%	53%	45%	46%	58%	56%	14%	89%	36%	42%	12%	23%	76%	36%

A full brother to Lot 9, which gives you a good indication of how this young bull will develop. He is long-bodied with very sound feet & a good temperament. He should be a safe option to use over heifers.

	\$ INDEX	VALUE	PERC
ANGUS BREEDING		\$122	43%
DOMESTIC		\$114	39%
HEAVY GRAIN		\$129	45%
HEAVY GRASS		\$117	45%

PURCHASER ..... \$ .....

**50****TRIO PRECEDENCE Q71**

DOB: 9/06/2019 ELYQ71 (HBR) AMFU, NHFU, CAFU, DDFU

MATAURI REALITY 839

HOOVER DAM

**SIRE** KIDMAN PRECEDENCE K72**DAM** TRIO QUAIL L95

KIDMAN THELMA H15

TRIO QUAIL C11

	GL	BW	200	400	600	MCW	MILK	SS	CW	EMA	RIB	RMP	RBY	IMF
EBV	-8.7	+4.7	+47	+85	+110	+101	+12	+1.6	+61	+4.9	+2.1	+1.2	-0.4	+2.3
PERC	4%	61%	55%	53%	56%	41%	88%	63%	65%	63%	4%	11%	85%	33%

Another young bull who should be a safe option to use over heifers. He has a very short Gestation Length EBV, meaning his calves will be born earlier & smaller. He also has both Reality & Hoover Dam in his pedigree - two respected calving ease sires.

	\$ INDEX	VALUE	PERC
ANGUS BREEDING		\$126	35%
DOMESTIC		\$115	36%
HEAVY GRAIN		\$135	37%
HEAVY GRASS		\$121	34%

PURCHASER ..... \$ .....

# TISSUE SAMPLES

Quality assurance & herd health are vital components of our program. We've started collecting tissue samples from every calf born to add an extra level of confidence.

## WHAT IS A TISSUE SAMPLE?

A tissue sample is basically a small piece of the calves ear. We use a special applicator that punches a hole through the ear & secures it in a vial. This sample is then sent to the lab for testing.

## WHAT DOES IT TELL US?

1. Firstly, it allows us to verify the sire of every calf. This means the pedigree information in our bull sale catalogue is very accurate.
2. It allows a high-density genomic test to be carried out on each animal, meaning it's EBVs will be more accurate. This is beneficial to buyers.
3. We can easily test for recessive genetic conditions such as DD or NH.
4. It allows us to test that all animals are pestivirus negative, which is important for our own herd health & that of our clients.



REFERENCE  
SIRE

## MILLAH MURRAH MAESTRO M182

DOB: 14/07/2016 NMMM182 (HBR) AMFU, NHFU, CAFU, DDFU

BOOROOMOOKA THEO T030

MILLAH MURRAH DOC F159

**SIRE** MILLAH MURRAH KLOONEY K42

**DAM** MILLAH MURRAH FLOWER K269

MILLAH MURRAH PRUE H4

MILLAH MURRAH FLOWER E96

	GL	BW	200	400	600	MCW	MILK	SS	CW	EMA	RIB	RMP	RBY	IMF	
EBV	-5.1	+2.9	+40	+75	+88	+47	+19	+0.5	+54	+4.1	+1.5	+1.1	-0.9	+2.1	
PERC	35%	20%	90%	85%	95%	99%	25%	95%	85%	75%	10%	70%	90%	40%	
ANGUS BREEDING	\$107 75%		DOMESTIC				\$109 60%		HEAVY GRAIN		\$105 80%		HEAVY GRASS		\$107 75%

We were very excited to add Maestro to our program in 2017. He was purchased for \$50,000, a new record price for a yearling bull. Maestro offers calving ease along with exceptional depth & softness. His maternal strength is flawless, his pedigree contains some of the best cows in the Millah Murrah herd. Maestro has been used heavily over the last few years to give our clients the best access to his genetics.



**13 SONS SELL LOTS: 4,9,10,23,28,29,30,31,34,35,37,48,49**

REFERENCE  
SIRE

## ASCOT LION HEART L305

DOB: 15/03/2015 QQFL305 (HBR) AMFU, NHFU, CAFU, DDFU

TE MANIA EMPEROR E343

DUNOON EVIDENT E614

**SIRE** ASCOT HALLMARK H147

**DAM** ASCOT H148

MILLAH MURRAH BRENDA F123

MILLAH MURRAH FLOWER F126

	GL	BW	200	400	600	MCW	MILK	SS	CW	EMA	RIB	RMP	RBY	IMF	
EBV	-4.4	+6.9	+61	+114	+148	+148	+15	+4.4	+91	+9.0	-2.9	-4.2	+2.6	+1.6	
PERC	50%	95%	5%	1%	5%	1%	60%	1%	1%	10%	95%	99%	1%	65%	
ANGUS BREEDING	\$143 10%		DOMESTIC				\$127 10%		HEAVY GRAIN		\$163 10%		HEAVY GRASS		\$132 15%

Ascot Lion Heart is one of the top bulls in the breed for Growth & Carcase Weight. He was purchased at the record breaking Ascot Bull Sale in QLD for \$70,000 in partnership with Ben Nevis Angus, Walcha. He has a big hindquarter, is easy keeping, with good feet & a pedigree backed by the well respected Millah Murrah female herd.



**4 SONS SELL LOTS: 3,6,17,18**

REFERENCE  
SIRE

## KIDMAN PRECEDENCE K72

DOB: 7/08/2014 BKCK72 (HBR) AMFU, NHF, CAFU, DDFU

SCHURRTOP REALITY X723

TE MANIA EMPEROR E343

**SIRE** MATAURI REALITY 839

**DAM** KIDMAN THELMA H15

MATAURI 06663

KIDMAN THELMA D56

	GL	BW	200	400	600	MCW	MILK	SS	CW	EMA	RIB	RMP	RBY	IMF
EBV	-10.6	+2.8	+45	+84	+109	+106	+11	+1.9	+54	+4.1	+5.0	+3.6	-2.0	+2.3
PERC	1%	15%	65%	60%	60%	35%	90%	50%	85%	75%	1%	1%	99%	35%
ANGUS BREEDING		\$126 35%		DOMESTIC		\$111 50%		HEAVY GRAIN		\$131 45%		HEAVY GRASS		\$121 35%

Precedence has had some outstanding sons come through our bull sales already. His pedigree combines two great Angus sires in Matauri Reality & Te Mania Emperor. He offers calving ease along with excellent Rib & Rump Fat. He also has a lovely temperament & holds his condition really well.



**5 SONS SELL    LOTS: 7,11,12,13,50**

REFERENCE  
SIRE

## TEXAS MOUNT K002

DOB: 6/02/2014 DXTK002 (HBR) AMFU, NHFU, CAFU, DDFU

GARDENS PRIME STAR

BUSHES GRAND DESIGN

**SIRE** KC HAAS GPS

**DAM** TEXAS UNDINE Z183

KCH ELINE 549

TEXAS UNDINE X221

	GL	BW	200	400	600	MCW	MILK	SS	CW	EMA	RIB	RMP	RBY	IMF
EBV	-8.9	+4.2	+51	+103	+141	+143	+11	+3.8	+62	+1.9	-0.1	+1.0	-0.6	+2.2
PERC	5%	45%	30%	10%	5%	5%	90%	5%	60%	95%	50%	65%	90%	35%
ANGUS BREEDING		\$135 20%		DOMESTIC		\$118 30%		HEAVY GRAIN		\$149 20%		HEAVY GRASS		\$130 15%

We saw Mount K2 on one of our trips to Texas Angus. He offers an exceptional pedigree, with his dam being rated as the stud's best donor & the Undine family as the strongest female line in their herd. On inspection Mount K2 had a lovely temperament & was very sound. Genetically he offers great calving ease, leading growth & good marbling.



**5 SONS SELL    LOTS: 1,2,8,15,36**



REFERENCE  
SIRE

## LAWSONS MOMENTOUS M518

DOB: 30/06/2016 VLYM518 (HBR) AMFU, NHFU, CAFU, DDF

G A R PROGRESS

TE MANIA AFRICA A217

**SIRE** G A R MOMENTUM

**DAM** LAWSONS AFRICA H229

G A R BIG EYE 1770

LAWSONS ROCKND AMBUSH E1103

	GL	BW	200	400	600	MCW	MILK	SS	CW	EMA	RIB	RMP	RBY	IMF
EBV	-5.7	+3.9	+49	+92	+118	+97	+24	+2.3	+60	+12.9	-0.6	-1.4	+0.7	+4.4
PERC	25%	40%	40%	30%	35%	50%	5%	30%	65%	1%	65%	75%	40%	1%
ANGUS BREEDING	\$144 10%		DOMESTIC		\$127 10%		HEAVY GRAIN		\$173 5%		HEAVY GRASS		\$131 15%	

Lawsons Momentous offers a great combination of carcass traits. He has a massive EMA along with one of the highest IMFs in the breed. Momentous is also very sound footed. We used him through both AI & ET to inject these traits further into our herd.



**4 SONS SELL    LOTS: 41,42,46,47**

REFERENCE  
SIRE

## PEAKES GABBA K556

DOB: 6/08/2014 EVTK556 (HBR) AMFU, NHFU, CAFU, DDF

TUWHARETOA REGENT D145

DSK HU X-TRA STRENGTH X4

**SIRE** DUNOON GABBA G548

**DAM** BOWEN ABIGAIL B13

DUNOON BEEAC Z120

BOWEN ABIGAIL X31

	GL	BW	200	400	600	MCW	MILK	SS	CW	EMA	RIB	RMP	RBY	IMF
EBV	-5.8	+4.9	+45	+88	+127	+119	+17	+2.7	+72	+1.8	+1.0	+2.0	-0.9	+2.8
PERC	25%	65%	65%	45%	20%	15%	45%	15%	20%	95%	20%	5%	90%	20%
ANGUS BREEDING	\$123 45%		DOMESTIC		\$102 80%		HEAVY GRAIN		\$138 35%		HEAVY GRASS		\$117 45%	

Peakes Gabba K556 was the top priced Angus Bull at the 2016 Bowen Bull Sale selling for \$30,000. Upon inspection he was an impressive bull & his sons at Mountain Valley Angus, Peakes Angus & other studs have proved very popular with commercial breeders.



**3 SONS SELL    LOTS: 40,43,44**

REFERENCE  
**SIRE**

## BALDRIDGE BEAST MODE B074

DOB: 7/02/2014 USA17960722 AMFU, NHFU, CAF, DDF  
(HBR)

C R A BEXTOR 872 5205 608

STYLES UPGRADE J59

**SIRE** G A R PROPHET

**DAM** BALDRIDGE ISABEL Y69

G A R OBJECTIVE 1885

BALDRIDGE ISABEL T935

	GL	BW	200	400	600	MCW	MILK	SS	CW	EMA	RIB	RMP	RBY	IMF
EBV	-3.8	+3.3	+74	+126	+153	+125	+20	+2.1	+80	+6.2	-1.0	-1.3	+0.9	+2.4
PERC	60%	25%	1%	1%	1%	10%	20%	40%	5%	40%	75%	75%	30%	30%

ANGUS BREEDING	\$164 1%	DOMESTIC	\$151 1%	HEAVY GRAIN	\$180 5%	HEAVY GRASS	\$156 1%
----------------	-------------	----------	-------------	-------------	-------------	-------------	-------------

Beast Mode is a new sire line we've introduced. His first sons will sell this year, with more on the way next sale. He's a real curve-bender - offering a low birth weight yet plenty of growth. He also has a heavy Carcase Weight & good marbling.



**2 SONS SELL    LOTS: 24,39**



**NEW STUD SIRE - ARDROSSAN HOLBROOK N329**

We purchased N329 last Spring. He is one of the highest marbling bulls in the entire breed. His first sons will sell next year.



**QUOLL FAMILY** Trio Quoll D50



**PRUE FAMILY** Millah Murrah Prue F203



**BURNETTE FAMILY** Trio Burnette D16



**BURNETTE FAMILY** Trio Burnette E8



**EXPENSIVE FAMILY** Trio Expensive E63



**BURNETTE FAMILY** Trio Burnette D42



**WAGON FAMILY** Kansas Wagon J125



**QUAIL FAMILY** Trio Quail G9

# *Females are our Foundation*

## **BULLS ARE OUR BUSINESS, BUT FEMALES ARE OUR FOUNDATION.**

For the past 16 years our Angus cows have been very good to us. They have consistently produced every year and this has allowed us to grow the business we love. We started out with a handful of carefully chosen registered cows, and from there have slowly built our cow herd to as high as 245 quality females. Here is a background to some of the cow families in our herd.

### *Burnette*

The Burnette line began with one of the very first stud cows we purchased in 2003. We refer to the Burnettes as 'the workers' and today they are still the top producing cow family in the Trio Angus herd. Embryo transfer work allowed us to multiply this foundation line and as a result we've had over 40 females in production originating from the first Burnette cow. The more the better, as the impact the Burnette family has had on our breeding program is immeasurable. Our Burnettes breed power and performance, and also have plenty of longevity.

### *Lowan*

We purchased two half sisters from Tucklan Valley Angus to introduce the Lowan family into our herd. The dam of these two cows was a full sister to Te Mania Unlimited, a bull with an outstanding reputation for siring great maternal daughters that are easy keeping with good milk. With this genetic background they have proven to be a quality investment for our program.



## *Quail*

Our Quail females have certainly earned their place in our herd. This family line originated from one of the first stud heifers we bred with our own prefix, Trio Quail Z1. We only recently sold Z1 as she proved to be a top producing cow. We now have plenty of daughters & grand-daughters in the herd. The Quail females are fertile, deep-sided & sound footed cows.

## *Quoll*

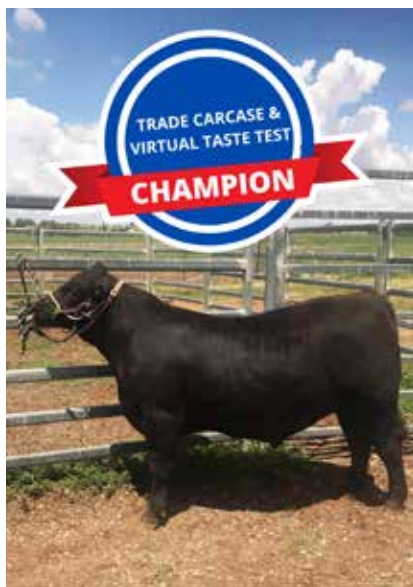
The Quoll family is one of our favourites. They are stylish, with excellent growth & good temperaments. Our original Quoll cow, B57, was purchased with a group of heifers from Outwest Angus. B57 quickly rose to the top & has continued to breed one of the pick calves year in, year out. We have used two of her sons as sires in our herd with great success.

## *Wilcoola*

The Wilcoola line has been introduced in recent years through the purchase of two females that both go back to the great matron, Ardrossan Wilcoola W53. This cow is a ninth generation donor dam & we spent quite some time looking for the best cows to introduce her genetics to our program. Our Wilcoola females have proved to be fertile, good milking & slick coated.

***When you invest in Trio Angus genetics you are buying more than a bull, you are buying a piece of our program. These females are the foundation of our program.***





## *Champion Trade Steer*

### **BACKED BY TRIO ANGUS GENETICS**

Champion Trade Carcase in the 2020 Colin Say & Co. Carcase Competition was an Angus cross steer sired by Trio Ultimate M121.

Ultimate was the top-priced bull in the 2017 Trio Angus Bull Sale, selling for \$18,000 to Sprys Angus.

The steer was also awarded the Virtual Taste Test Champion for the Trade Carcase section.

All the animals in this competition were originally destined for the Sydney Royal before it was cancelled. Congratulations to Sprys for breeding the steer & Calrossy School for preparing him.



## *ET calves arrive home...*

In March we had 30 ET calves arrive home. It's always an exciting time, as these calves represent the top end of our breeding program.

It's a rather long and expensive process to get them to this point. It started by taking four of our best cows to Holbrook to be flushed in early 2018. Their eggs were then implanted into recipient cows in a co-operator herd, with a 50% success rate. The recipes then calve down and we buy the calves back at weaning.

We've been doing this for consecutive Autumn & Spring calvings every year since 2017. It's a great way to replicate the best genetics in our herd.

# #farmlife



# EBV QUICK REFERENCE

LOT	ID	CEDIR	GL	BW	200D	400D	600D	MCW	MILK	SS	CWT	EMA	RIB	RUMP	RBV	IMF	\$AB	\$DOM	\$HGN	\$HGS
1	P63	+1.6	-5.6	+5.6	+54	+100	+139	+136	+12	+2.5	+70	+3.2	-0.1	+0.2	+0.0	+1.4	\$125	\$111	\$131	\$124
2	P69	+1.4	-5.3	+5.4	+51	+97	+134	+125	+13	+2.8	+66	+3.7	-0.4	+0.1	+0.1	+2.2	\$130	\$114	\$144	\$125
3	P83	-7.9	-3.7	+7.7	+61	+108	+144	+149	+12	+3.7	+85	+8.8	-1.7	-2.7	+2.7	+1.0	\$133	\$120	\$144	\$127
4	P81	+7.4	-5.8	+3.5	+42	+75	+93	+67	+15	+0.3	+52	+4.0	+1.8	+0.6	-0.6	+1.5	\$100	\$103	\$94	\$103
5	P137	-2.4	-4.2	+6.3	+56	+98	+130	+105	+22	+2.4	+73	+2.9	-1.6	-1.7	+0.6	+1.8	\$116	\$110	\$122	\$114
6	P104	+4.8	-5.5	+3.1	+44	+83	+106	+96	+16	+2.5	+64	+8.2	-0.9	-1.7	+1.8	+1.1	\$118	\$116	\$119	\$116
7	P102	+6.8	-8.1	+2.1	+38	+72	+92	+84	+16	+1.7	+51	+4.3	+2.5	+1.6	-0.6	+1.6	\$107	\$103	\$105	\$106
8	P123	+0.2	-7.1	+5.8	+49	+90	+125	+126	+12	+3.0	+62	+2.4	-1.1	-0.3	+0.1	+2.0	\$114	\$104	\$124	\$111
9	P110	+5.0	-5.3	+3.0	+42	+76	+93	+74	+19	+0.4	+59	+5.4	+0.9	+0.3	+0.0	+1.7	\$104	\$106	\$102	\$105
10	P144	+0.4	-4.8	+5.2	+47	+84	+107	+85	+14	+1.1	+63	+5.9	+0.0	-0.8	+0.8	+1.4	\$109	\$109	\$108	\$110
11	P143	+6.4	-7.5	+3.9	+46	+84	+113	+105	+15	+1.9	+62	+5.2	+1.4	+0.7	+0.0	+1.8	\$125	\$113	\$131	\$121
12	P147	+2.6	-6.4	+4.7	+49	+87	+112	+94	+13	+0.7	+60	+3.5	+1.7	+0.4	-0.5	+1.4	\$111	\$107	\$110	\$112
13	P146	+5.3	-6.0	+3.1	+43	+77	+98	+92	+14	+2.4	+52	+7.5	+1.4	+0.8	+0.4	+2.1	\$119	\$112	\$124	\$114
14	M182	+7.0	-5.1	+2.9	+40	+75	+88	+47	+19	+0.5	+54	+4.1	+1.5	+1.1	-0.9	+2.1	\$107	\$109	\$105	\$107
15	Q10	+8.2	-10.3	+3.4	+49	+93	+119	+129	+14	+3.2	+69	+3.2	-0.5	-0.5	+0.1	+2.1	\$123	\$115	\$136	\$118
16	Q34	+8.2	-6.9	+1.9	+52	+94	+120	+104	+24	+3.9	+70	+12.1	-0.2	-1.7	+2.5	+2.1	\$146	\$135	\$159	\$139
17	Q13	-6.8	-4.7	+5.9	+53	+99	+135	+129	+18	+2.7	+74	+5.8	-1.5	-1.3	+1.4	+1.6	\$127	\$112	\$139	\$121
18	Q50	-11.9	-2.3	+7.0	+54	+100	+126	+131	+15	+3.3	+77	+3.8	-0.2	-1.0	+0.3	+1.7	\$111	\$102	\$122	\$104
19	Q25	+8.4	-7.2	+2.9	+51	+90	+117	+87	+23	+0.9	+66	+6.1	-0.3	+0.3	-0.4	+2.9	\$134	\$121	\$146	\$128
20	Q56	+8.9	-11.1	+2.9	+51	+94	+127	+124	+15	+1.8	+72	+3.6	+1.0	+0.0	+0.0	+2.0	\$131	\$118	\$142	\$127
21	Q84	-1.9	-3.8	+5.0	+50	+90	+127	+103	+22	+0.6	+70	+4.4	+0.2	+0.6	-0.8	+3.6	\$137	\$112	\$160	\$126
22	Q96	+3.5	-3.4	+3.9	+57	+96	+127	+96	+21	+2.3	+65	+5.0	-0.2	+0.2	+0.4	+0.7	\$124	\$117	\$118	\$127
23	Q24	+0.4	-3.4	+4.6	+45	+82	+102	+74	+19	+1.9	+56	+6.3	+0.4	+0.4	+0.3	+1.8	\$110	\$108	\$110	\$109
24	Q43	+12.7	-7.2	+1.4	+48	+85	+110	+97	+12	+1.8	+61	+8.4	-0.3	-1.6	+0.9	+3.0	\$141	\$126	\$161	\$130
25	Q17	+7.8	-6.4	+3.4	+57	+102	+140	+121	+22	+0.7	+75	+4.8	-2.1	-2.1	+0.7	+2.6	\$137	\$123	\$152	\$132



LOT	ID	CEDIR	GL	BW	200D	400D	600D	MCW	MILK	SS	CWT	EMA	RIB	RUMP	RBV	IMF	SAB	\$DOM	\$HGN	\$HGS
26	Q25	+7.0	-5.9	+3.7	+58	+101	+133	+118	+20	+1.3	+78	+6.3	-2.0	-2.3	+0.8	+2.5	\$144	\$128	\$161	\$135
27	Q46	-2.4	-1.8	+5.0	+51	+83	+110	+101	+16	+2.9	+66	+6.6	-0.8	-1.0	+1.4	+1.0	\$104	\$102	\$100	\$105
28	Q19	+6.5	-5.1	+4.1	+45	+78	+96	+78	+12	+1.2	+57	+5.2	+2.2	+1.5	-0.2	+1.5	\$109	\$109	\$105	\$110
29	Q16	+9.6	-8.1	+2.3	+42	+78	+98	+63	+19	+2.2	+61	+4.8	+2.5	+1.9	-1.1	+2.6	\$120	\$112	\$125	\$117
30	Q3	+5.2	-7.1	+3.1	+47	+87	+112	+91	+16	+1.8	+70	+4.3	+0.5	-1.6	+0.4	+1.6	\$123	\$116	\$129	\$119
31	Q54	+3.5	-4.8	+3.6	+41	+80	+99	+68	+20	-0.1	+60	+4.9	+1.0	+0.4	-0.3	+1.8	\$103	\$105	\$101	\$105
32	Q5	+10.7	-8.6	+1.0	+46	+75	+93	+60	+18	+0.9	+62	+12.4	+1.6	+0.5	+0.6	+2.2	\$132	\$124	\$134	\$128
33	Q49	-6.0	-0.8	+5.9	+51	+87	+110	+120	+12	+1.6	+57	+7.8	-2.0	-1.8	+1.9	+1.5	\$100	\$103	\$103	\$99
34	Q22	+9.0	-5.1	+0.3	+38	+73	+84	+43	+19	+0.8	+53	+5.4	+2.0	+2.1	-0.3	+1.9	\$119	\$117	\$116	\$117
35	Q7	+1.5	-2.9	+4.4	+40	+72	+81	+44	+19	+1.7	+55	+6.2	+1.1	+0.2	+0.6	+1.1	\$92	\$104	\$81	\$96
36	Q11	+6.4	-7.9	+3.1	+41	+74	+91	+69	+9	+0.8	+49	+4.8	-0.2	-0.1	+0.5	+1.7	\$99	\$106	\$95	\$102
37	Q4	+8.4	-6.3	+0.9	+27	+53	+63	+27	+15	-0.3	+33	+6.1	+3.4	+1.8	-1.4	+2.5	\$95	\$96	\$92	\$94
38	Q31	+5.5	-4.2	+3.2	+44	+78	+95	+58	+15	+1.5	+52	+7.8	+1.4	+0.0	-0.8	+4.1	\$127	\$118	\$146	\$118
39	Q78	+2.1	-8.8	+6.0	+74	+131	+168	+143	+17	+2.0	+94	+3.4	-0.7	-0.2	+0.6	+1.8	\$164	\$144	\$178	\$158
40	Q80	-11.3	-5.7	+8.3	+61	+113	+155	+148	+18	+2.5	+89	+5.8	-1.1	-1.4	+1.1	+1.4	\$116	\$104	\$124	\$115
41	Q95	+0.5	-5.6	+4.9	+54	+90	+117	+110	+16	+0.8	+71	+4.5	-2.0	-3.4	+0.3	+2.6	\$99	\$101	\$108	\$98
42	Q93	+1.8	-7.4	+4.7	+60	+105	+136	+121	+24	+2.6	+78	+9.2	-1.2	-1.5	+1.5	+1.6	\$139	\$128	\$147	\$135
43	Q81	+1.8	-4.9	+4.4	+44	+78	+106	+94	+16	+3.3	+60	+4.1	+2.3	+1.9	-1.1	+2.5	\$111	\$101	\$117	\$108
44	Q79	+5.8	-8.2	+3.9	+47	+92	+120	+102	+20	+2.8	+72	+4.6	+1.1	+1.8	+0.1	+2.2	\$130	\$118	\$138	\$126
45	Q172	+0.2	-3.0	+5.5	+47	+78	+102	+88	+17	+1.6	+60	+4.2	-1.8	-1.9	+1.1	+2.0	\$101	\$102	\$106	\$100
46	Q92	+5.3	-8.7	+3.5	+46	+85	+110	+83	+21	+3.9	+54	+11.0	-1.4	-2.5	+1.9	+3.6	\$147	\$132	\$173	\$134
47	Q119	+1.1	-2.7	+3.0	+44	+85	+102	+83	+19	+2.8	+59	+9.5	-1.1	-0.6	+0.7	+3.2	\$123	\$119	\$138	\$116
49	Q121	-0.1	-3.9	+6.0	+50	+90	+113	+109	+10	+1.7	+69	+8.8	+0.1	+0.3	+0.9	+1.2	\$121	\$115	\$123	\$119
49	Q147	+2.9	-5.0	+4.4	+49	+87	+110	+95	+21	+0.9	+67	+6.0	+1.3	+0.5	-0.1	+2.2	\$122	\$114	\$129	\$117
50	Q71	+5.6	-8.7	+4.7	+47	+85	+110	+101	+12	+1.6	+61	+4.9	+2.1	+1.2	-0.4	+2.3	\$126	\$115	\$135	\$121
<b>AVERAGE</b>		+0.2	-4.4	+4.3	+48	+86	+112	+98	+17	+1.9	+64	+5.7	-0.1	-0.4	+0.5	+1.9	\$118	\$110	\$124	\$114

## NOTES

---

SALE CATALOGUE DISCLAIMER - All reasonable care has been taken to ensure the information in this catalogue is correct at the time of publication. The vendor & agents make no representations about accuracy, reliability or the completeness of any information provided & do not assume any responsibility for the use or interpretation of the information.



THANK YOU TO LYALL & SALLY WOODS, HARGRAVES, FOR PURCHASING THE TOP-PRICED BULL AT OUR 2019 SPRING BULL SALE, TRIO LION HEART P2.

---

**SPRING BULL SALE:** Thursday 13<sup>th</sup> August, 1pm

**'VIRTUAL' INSPECTION DAY:** Friday 31st July

*Physical inspections prior to sale welcome by appointment*





**TRIO**  
*Angus*