

SOHNIC MERINOS

2020 Ram Sale - 78 Poll Merinos



ST ARNAUD
Glendon Hancock
0429829613

Friday 18th September 2020
Inspection 9am - Auction Starts 1pm

Scott Nicholson - 0438 086 403

Greg Hose - 0427 507 151

All Rams May 2019 Drop • All Rams Shorn 14 April 2020
Scanning for Fat & EMD: 15/7/20 • Midside samples taken August 2020
Brucellosis Acc • Whole Flock Approved OLD Vaccinates

Sohnic OJD Status - MN1V-14 Current Negative Test

Email: enquiries@sohnic.com.au

Auctions Plus will be available for live online bidding, with audio streaming of the sale.
Please register 2 days prior to sale. www.auctionsplus.com.au

Nutrien™

ST ARNAUD
Damian Drum
0428952284





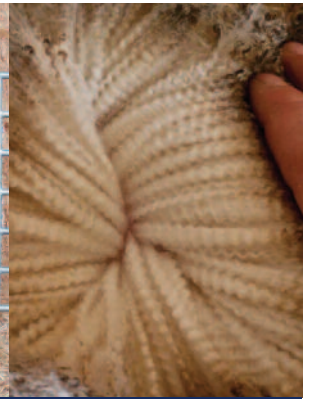
LOT 2



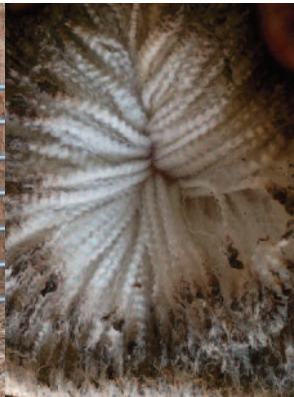
LOT 3



LOT 6



LOT 7



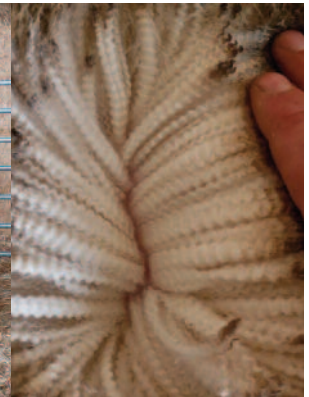
LOT 10



LOT 13



LOT 16



LOT 24

Sohnic 2020 Sire Reference

50100	=	2015 Drop ET X Sohnic 87 X Sohnic 497 X Leahcim 317
60464	=	2016 Drop x Sohnic 964 X Rohemakita 2110
60200	=	2016 Drop X Leahcim 123153
R121	=	2017 Drop X Sohnic 31189 X Sohnic 497 X Leahcim 317
O122	=	ET 2017 Drop X Lea 152775
Y123	=	2017 Drop SYN - Ewe Lambs
71471	=	2017 x Sohnic 31026 X Glenlea Park 380
41160	=	2014 Drop by Sohnic 505 X Lea 30
RamsG	=	Ramsgate 170176 Purchased in 2018
Luci	=	Lucinbrae 160032 X Gunallo 140026

LOT	Tag No.	Sire	P/H	Mic	CV	SD	%^30	Fleece Weight 6 months	Eye Muscle Depth (mm)	FAT Depth (mm)	EMD as % of LWT	Scan Weight	Weight 13/04	Weight 3/12	Weight 15/10	Weight 21/08	EID
SALE TEAM AVERAGES				19.7	15.6	3.1	0.5	3.6	38.9	5.96	40%	97.0	69.1	55.3	51.2	40.0	
1	90903	LucB	PP	19.9	13.1	2.6	0.2	3.9	37	4.5	40%	92	66	47.5		37	982 123729344285
		Price						Buyer									
2	90379	71741	PP	20.8	14.7	3.1	0	3.6	38	7	39%	97.5	58	53	48.5	35	982 123729344809
		Price						Buyer									
3	90164	60424	PP	19.6	15	2.9	0.2	3.3	43	5.5	44%	98.5	74	54.5	45.5	39.5	982 123729345024
		Price						Buyer									
4	90979		PP	20.4	17.3	3.5	0.6	3.8	37	7	38%	98.5	71.5	55	55	48.5	982 123729344209
		Price						Buyer									
5	90400	71741	PH	21.1	16.4	3.2	0.8	4.8	41	5	42%	97	67	51	47	33.5	982 123729344788
		Price						Buyer									
6	90862	LucB	PP	19.5	14	2.7	0.2	4.2	38	5.5	35%	108.5	77	58.5	54	43.5	982 123729344326
		Price						Buyer									
7	91093	O122	PP	20.9	16.1	3.4	0.8	3.5	41	6	38%	107.5	82	66.5	50	44	982 123729344095
		Price						Buyer									
8	90938		PP	20.4	15.9	3.2	0.4	3.4	37	5.5	39%	95.5	66.5	57	55.5	48.5	982 123729344250
		Price						Buyer									
9	90363	71741	PH	20.4	15.2	3.1	0.4	3.4	42	7.5	41%	103	75	55.5		35	982 123729344825
		Price						Buyer									
10	90003	60200		20.2	13.9	2.8	0.6	3.3	40	4.5	42%	94.5	62	49	45	36.5	982 123729345185
		Price						Buyer									

LOT	Tag No.	Sire	P/H	Mic	CV	SD	%^30	Fleece Weight 6 months	Eye Muscle Depth (mm)	FAT Depth (mm)	EMD as % of LWT	Scan Weight	Weight 13/04	Weight 3/12	Weight 15/10	Weight 21/08	EID
SALE TEAM AVERAGES				19.7	15.6	3.1	0.5	3.6	38.9	5.96	40%	97.0	69.1	55.3	51.2	40.0	
11	90279	Y123	PP	17.9	15.3	2.7	0	3.5	34	6.5	40%	84.5	52	43	37.5	27	982 123729344909
		Price															Buyer
12	91127		PH	19.9	17.1	3.4	0.8	3.8	42	6	40%	104	65.5	49	46.5	36	982 123729344061
		Price															Buyer
13	90898	LucB	PP	19.1	19.2	4.1	1.2	3.7	41	4.5	42%	98.5	73	59	57	40	982 123729344290
		Price															Buyer
14	90123	60424	PP	20.2	16.4	3.3	1	3.2	44	6	44%	100.5	75	58	56	48	982 123729345065
		Price															Buyer
15	90850	LucB	PH	18.6	15.4	2.9	0.6	3.7	43	6.5	39%	109	75	58	48.5	40	982 123729344338
		Price															Buyer
16	90194	60424		20.9	15.6	3.1	0.4	3	37	5	37%	101	72.5	57	52	36.5	982 123729344994
		Price															Buyer
17	90996	71448	PH	19	16.6	3.2	0.4	3.9	42	6	39%	109	81	63	59	45	982 123729344192
		Price															Buyer
18	90724	O122	PP	19.8	15.7	3.1	0.6	3.7	40	5	46%	87	60.5	46.5	49	34.5	982 123729344464
		Price															Buyer
19	90744	O122	PP	18	15.9	2.9	0.4	3.1	40	6	41%	97.5	67.5	60	66	52	982 123729344444
		Price															Buyer
20	90825	LucB	PH	20.3	12.1	2.5	0	3.5	38	7	40%	94	70	53	47	39.5	982 123729344363
		Price															Buyer

LOT	Tag No.	Sire	P/H	Mic	CV	SD	%^30	Fleece Weight 6 months	Eye Muscle Depth (mm)	FAT Depth (mm)	EMD as % of LWT	Scan Weight	Weight 13/04	Weight 3/12	Weight 15/10	Weight 21/08	EID
SALE TEAM AVERAGES				19.7	15.6	3.1	0.5	3.6	38.9	5.96	40%	97.0	69.1	55.3	51.2	40.0	
21	90980	O122	PP	20.2	17.7	3.6	0.8	3.1	41	7	41%	99	76	64.5	62	44	982 123729344208
		Price															Buyer
22	90573	R121	PP	18.9	14.3	2.7	0.2	3.5	35	5	38%	91.5	67	52.5	39	22	982 123729344615
		Price															Buyer
23	91197		PP	21.4	16.3	3.5	1		43	5	48%	90.5	61.5	43.5	35.5	27.5	982 123729343991
		Price															Buyer
24	90645	50100	PH	20.5	15.6	3.2	0.4	4.5	43	10	46%	93	63.5	48.5	50.5	38.5	982 123729344543
		Price															Buyer
25	90958	60424	PH	21	15.3	3.3	1.2	3	41	6.5	45%	92	75	69	65	43	982 123729344230
		Price															Buyer
26	90701	O122	PP	19.1	16.9	3.2	0.8	4.1	35	5	40%	88.5		53	49	35.5	982 123729344487
		Price															Buyer
27	90819	LucB	PP	20.7	14.3	3	0.2	3.3	38	3.5	45%	85	67.5	55	52	47	982 123729344369
		Price															Buyer
28	90494	RamsG	PH	17.7	17.7	3.1	0.4	3.5	39	7	43%	91	71	56	45	32	982 123729344694
		Price															Buyer
29	90115	60424	PH	21	16.4	3.5	1	2.7	43	5.5	43%	99.5	70.5	61	57.5	44	982 123729345073
		Price															Buyer
30	90109	60424	PH	20.8	14.2	3	0.2	3.7	41	5.5	41%	99	71		53.5	41.5	982 123729345079
		Price															Buyer

LOT	Tag No.	Sire	P/H	Mic	CV	SD	%^30	Fleece Weight 6 months	Eye Muscle Depth (mm)	FAT Depth (mm)	EMD as % of LWT	Scan Weight	Weight 13/04	Weight 3/12	Weight 15/10	Weight 21/08	EID
SALE TEAM AVERAGES				19.7	15.6	3.1	0.5	3.6	38.9	5.96	40%	97.0	69.1	55.3	51.2	40.0	
31	91180	O122	PH	20.1	14.8	3	0.4	3.5	40	5	40%	99	73.5	52.5	45.5	37.5	982 123729344008
		Price															Buyer
32	90460	RamsG	PP	18.5	16.4	3	0.4	3	41	6.5	39%	104.5	68.5		61	41	982 123729344728
		Price															Buyer
33	90771	O122	PP	19.1	14.9	2.8	0.2	4.1	39	5.5	40%	97	67.5	48.5	48.5	36	982 123729344417
		Price															Buyer
34	90167	60424	PP	19.5	17.8	3.5	0.2	4.2	36	4	34%	106	87	67.5	64	52.5	982 123729345021
		Price															Buyer
35	90972	60424	PH	21.2	14.6	3.1	0.2	3	30	4	36%	84	60.5	46.5	45.5	36.5	982 123729344216
		Price															Buyer
36	90954	60424	PP	19.7	15.8	3.1	0.6	4.4	39	6	40%	96.5	63.5	48.5	45	36.5	982 123729344234
		Price															Buyer
37	91094	O122	PH	19.6	14	2.7	0.6	4	37	6.5	40%	93.5	65	49	47	35	982 123729344094
		Price															Buyer
38	90748	O122	PP	18.5	17.8	3.3	0.8		36	6	39%	91.5	62.5	45	44	32.5	982 123729344440
		Price															Buyer
39	90791	O122	PH	20.3	14.3	2.9	1.2	3.6	35	6	41%	86	71	56.5	48	40.5	982 123729344397
		Price															Buyer
40	90789	O122	PH	20.9	13.5	2.9	0.2	3.9	38	6	38%	99.5	69.5	53	51.5	45	982 123729344399
		Price															Buyer

LOT	Tag No.	Sire	P/H	Mic	CV	SD	%^30	Fleece Weight 6 months	Eye Muscle Depth (mm)	FAT Depth (mm)	EMD as % of LWT	Scan Weight	Weight 13/04	Weight 3/12	Weight 15/10	Weight 21/08	EID	
SALE TEAM AVERAGES				19.7	15.6	3.1	0.5	3.6	38.9	5.96	40%	97.0	69.1	55.3	51.2	40.0		
41	91081	O122m		20	13.6	2.7	0.2	3.4	38	9	39%	97	69.5	53	51.5	45	982 123729344107	
		Price															Buyer	
42	90798	O122	PH	19.8	15	3	0.4	4.1	38	6.5	41%	92.5	65.5	54.5	40	36.5	982 123729344390	
		Price															Buyer	
43	90344	41160	PP	18.8	14.5	2.7	0.2	3.5	39	4.5	40%	98	64.5	51	48.5	39	982 123729344844	
		Price															Buyer	
44	90664		PP	20.5	13.7	2.8	0.4	3.2	38	7.5	41%	92	67	54	52	40.5	982 123729344524	
		Price															Buyer	
45	90766	O122	PP	20.3	17.7	3.6	0.8	3.4	44	5.5	45%	97.5	69	59.5	56.5	40.5	982 123729344422	
		Price															Buyer	
46	91044		PH	18.7	15.7	2.9	0	4	40	6.5	42%	96	68.5		49.5	36.5	982 123729344144	
		Price															Buyer	
47	91259	R121	PP	18.2	17.6	3.2	0.8	3.3	38	5	40%	95	63	48.5	48.5	36.5	982 123729343929	
		Price															Buyer	
48	Yellow	50100	PP	20.8	14.9	3.1	0.6	3.5	40	6	40%	98						
		Price															Buyer	
49	90124	61243	PP	20.5	16.6	3.4	0.4	3.6	39	5.5	42%	92.5	63	49	44.5	36	982 123729345064	
		Price															Buyer	
50	90156	60424	PH	19.6	20.3	4	0.8	3.9	38	6	35%	107.5	66.5	56.5	52	39.5	982 123729345032	
		Price															Buyer	

LOT	Tag No.	Sire	P/H	Mic	CV	SD	%^30	Fleece Weight 6 months	Eye Muscle Depth (mm)	FAT Depth (mm)	EMD as % of LWT	Scan Weight	Weight 13/04	Weight 3/12	Weight 15/10	Weight 21/08	EID
SALE TEAM AVERAGES				19.7	15.6	3.1	0.5	3.6	38.9	5.96	40%	97.0	69.1	55.3	51.2	40.0	
51	90251	Y123	PH	19.9	16.3	3.3	0.6	3	41	8	38%	107	70.5	54	54	38.5	982 123729344937
		Price															Buyer
52	90256	Y123	PP	19.9	15.7	3.1	0.2	3.8	38	7	39%	98	64	55		41.5	982 123729344932
		Price															Buyer
53	91072	O122	PP	19.6	16.9	3.3	1.2	3.8	37	6	40%	92.5	61	50	46.5	35.5	982 123729344116
		Price															Buyer
54	90179	60424	PP	20.3	14.9	3	0.4	2.9	38	5.5	42%	89.5	63.5	60	54.5	52	982 123729345009
		Price															Buyer
55	90444	RamsG	PP	17.8	15	2.7	0.2	3.7	36	6	35%	102.5	77.5	63		47	982 123729344744
		Price															Buyer
56	91160		PP	19.9	13.6	2.7	0.2	3.5	39	5.5	41%	94	70.5	58	52.5	38.5	982 123729344028
		Price															Buyer
57	90727	O122	PP	19.8	13.6	2.7	0.2	2.8	38	6	44%	86.5	65	52	47	32.5	982 123729344461
		Price															Buyer
58	91089	O122m		19.1	13.7	2.6	0	3.2	36	6.5	43%	83.5	56	47	43	34	982 123729344099
		Price															Buyer
59	90768	O122	PP	18.3	15	2.7	0.6	3.7	39	5.5	39%	99	73.5	63	57.5	44	982 123729344420
		Price															Buyer
60	90879	LucB	PP	18.3	17.4	3.2	0.4	3.7	34	4.5	36%	93.5	68.5	48.5	46.5	36.5	982 123729344309
		Price															Buyer

LOT	Tag No.	Sire	P/H	Mic	CV	SD	%^30	Fleece Weight 6 months	Eye Muscle Depth (mm)	FAT Depth (mm)	EMD as % of LWT	Scan Weight	Weight 13/04	Weight 3/12	Weight 15/10	Weight 21/08	EID	
SALE TEAM AVERAGES				19.7	15.6	3.1	0.5	3.6	38.9	5.96	40%	97.0	69.1	55.3	51.2	40.0		
61	90711	O122		18.1	16.4	3	0.8	3.6	41	6	48%	86	54	47	47	32	982 123729344477	
		Price															Buyer	
62	91328	R121	PP	18	13.7	2.5	0	4.1	36	6	39%	92	71	57	60	45.5	982 123729343860	
		Price															Buyer	
63	91261	R121	PP	20.3	16.5	3.3	0.4	4.2	37	5.5	38%	97	66	62.5	61	46	982 123729343927	
		Price															Buyer	
64	90519	RamsG	PP	18.7	15.6	2.9	0.4	3	36	4.5	40%	90.5	66.5	51	49.5	37	982 123729344669	
		Price															Buyer	
65	91110	O122	PH	20.7	16.5	3.4	1	3.1	37	4.5	43%	86.5	57.5	42		30	982 123729344078	
		Price															Buyer	
66	91042	O122	PP	19.8	14.3	2.8	0	3.1	38	6	36%	105.5	71	55.5	53	37.5	982 123729344146	
		Price															Buyer	
67	91096	O122	PP	18.9	14.6	2.8	0.6	3.5	34	5.5	34%	99	72	56	55	42.5	982 123729344092	
		Price															Buyer	
68	90396	31026	PP	20.1	15.1	3	0.8	3.6	39	7	38%	103	70	59	58	46.5	982 123729344792	
		Price															Buyer	
69	90046	60200	PH	19.6	15.2	3	0.4		38	9	37%	102.5	72	55	53	41	982 123729345142	
		Price															Buyer	
70	91339	R121						3.1	39	6.5	39%	100	71.5	54.5	51.5	39	982 123729343849	
		Price															Buyer	

LOT	Tag No.	Sire	P/H	Mic	CV	SD	%^30	Fleece Weight 6 months	Eye Muscle Depth (mm)	FAT Depth (mm)	EMD as % of LWT	Scan Weight	Weight 13/04	Weight 3/12	Weight 15/10	Weight 21/08	EID
SALE TEAM AVERAGES				19.7	15.6	3.1	0.5	3.6	38.9	5.96	40%	97.0	69.1	55.3	51.2	40.0	
71	90408	71741	PP	20.1	17.1	3.4	0.4	4.1	41.5	5	38%	110.5	73.5	50	46.5	40	982 123729344780
				Price			Buyer										
72	90790	O122	PH	21.1	15.1	3.2	0.4	3.3	45.5	5.5	41%	112	82	74	69	56	982 123729344398
				Price			Buyer										
73	91037	O122	PH	19.8	14.6	2.9	0	4.1	39	9	35%	113	81.5	67	63	44.5	982 123729344151
				Price			Buyer										
74	91317	R121	PP	18.8	13.4	2.5	0	4	38	6.5	38%	99.5	73	63	58	47	982 123729343871
				Price			Buyer										
75	91066	O122	PP	19.9	15.6	3.1	0.4	4.1	40	6.5	38%	105.5	80	70	61	52	982 123729344122
				Price			Buyer										
76	90963		PP	19.1	19.6	3.7	0.4	4	42	6	43%	97	74.5	61	62.5	46	982 123729344225
				Price			Buyer										
77	91308	R121		19	14.4	2.7	0.4	4.2	35	5	34%	101.5	71.5	64	60	41.5	982 123729343880
				Price			Buyer										
78	90521	RamsG	PP	19.3	16.1	3.1	0.2	3.6	42	6.5	48%	87	71.5	64	59.5	41.5	982 123729344667
				Price			Buyer										

Notes:



We need sheep which can withstand the variability in seasons while maintaining production.



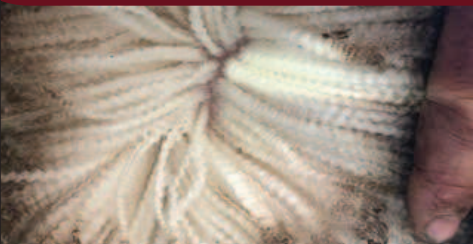


SOHNIC MERINOS



Due to the COVID restrictions, this year we will be offering private inspections from 7th-17th September. This will be an opportunity to assess the sale team at a time which suits you, and a great chance to spend sometime with the people at Sohnic to discuss your breeding objectives and direction.

To book your time call Scott 0438 086 403 or email scott_nicholson@icloud.com



2020 Calendar

Sohnic aims to produce rams for the commercial market to help producers maximise their combined returns from wool and carcass.

Classings Classic
7th September
Selling 4 Rams

Inspection Day
Friday 11th September
10am - 4pm

On-Property Ram Sale
Friday September 18th
Inspection from 9am(tba) - Sale @ 1pm

Sohnic Is Looking For New Clients With Shared Goals.

Our breeding principles are totally focussed on \$/ha performance of our clients flocks. Focussing on flock performance without individual focus - Currently we are witnessing huge focus on individual elements within a flock (eg. wool cut, scanning %, lamb survival).

To have a productive and profitable flock being outstanding at individual elements is not enough, we just need to be good at a lot of elements.

This focus of being exceptional at nothing, but good at everything enables optimum returns per hectare and dramatically reduces our risk. We are better being average at a lot of things rather than exceptional at one.

Sohnic focusses are

- Easy Care - Efficient, ability to withstand tough seasons and bounce back
- Wether lamb performance on feed - Non-mulsed
- Optimum wool balance - why not have the quality also.



Sohnic aims to produce rams for the commercial market to help producers maximise their combined returns from wool and carcass.



ST ARNAUD
Glendon Hancock
0429829613



@sohnicmerinos



ST ARNAUD
Damian Drum
0428952284