

Coodardie Brahmans Bull Sale

ON-PROPERTY and ONLINE
Wed 19th August 2020

Coodardie Station, Stuart Hwy, Mataranka NT



 AuctionsPlus™

 **WESTCOAST**
NORTHERN LIVESTOCK



FINAL Catalogue

www.coodardie.com

Welcome



*We are here to make your job
EASY, ENJOYABLE and EFFORTLESS*

UPDATED, FINAL CATALOGUE

Covid-19 has made Sale Day more challenging but we are pleased to offer you both On-property and AuctionsPlus opportunity to purchase quality herd improvers.

All bulls have now been fully and completely assessed. You will notice some changes to the bull line up. Identify your breeding priorities, and look for the relevant purple boxes to identify the high performers in that field.

This sale team represents a quality selection of bulls—bulls ready to work in your conditions—be it small or large, open range for the Live Export market; for the growing local abattoir trade; or for your bull breeding herd—for your herd improver needs.

It is with pleasure to have Westcoast Northern Livestock join our selling team. Talk to Scott now to secure their generous 90 day deferred payment terms. Pre approval necessary.

Thank you to our repeat clients. Welcome to our new.

Yours sincerely

*Moir, Mike, Clair
& families ..*

Coodardie Brahmans

“Excellence, Naturally—Grass fed, Quality bred”



Selling sequentially by Auction
On-Property at Coodardie Station
& Online via AuctionsPlus

57 Lots
including
6 Led Registered Sires
(21 Polled/Scurred)

Performance & Fertility tested Sound
JBAS 7 for current entry into WA

11.30am, **Wed 19th August 2020**, Mataranka NT

Inspections from 9am Sale Day or any time by prior arrangement.

90 day deferred payment terms for approved buyers
from Westcoast Northern Livestock.

Selling Agents: Scott Witham 0428 253 080
Westcoast Northern Livestock

Vendors: Moira Lanzarin 0428 474 262
Mike & Clair O'Brien 0889 754 460
www.coodardie.com.au



AuctionsPlus[®]

Australia's Livestock Marketplace

Can't make the sale?

Purchase online in eight simple steps!

Log on to AuctionsPlus and bid on your phone, tablet or computer.

- 1 REGISTER ONLINE**
Free once off registration for all auctions.
- 2 COMPLETE BUYER INDUCTION**
The buyer induction will help you understand the roles and responsibilities of everyone on the AuctionsPlus system.
- 3 VIEW CATALOGUE**
View photos, videos, pedigrees and more.
- 4 ENTER AUCTION**
Log into the auction anytime, anywhere and bid on your mobile, tablet or computer.
- 5 AUTO BID**
Can't stay for the whole sale? Set your maximum bid on the lot that you want to purchase and let the computer bid for you.
- 6 CONTACT SELLING AGENT**
If successful, contact selling agent to arrange payment and delivery. The agent contact details will be available in the catalogue header.
- 7 PAYMENT**
Via the selling agent's terms and conditions.
- 8 DELIVERY**
Arrange transport of livestock at your expense.

Contact AuctionsPlus on (02) 9262 4222
or email studsales@auctionsplus.com.au
or www.auctionsplus.com.au

Check us out on:    



Understanding our assessments & information

All lots have undergone extensive and ongoing assessments. This full information is presented for each bull, online and in this catalogue. **Due to Covid-19 travel restrictions**, independent livestock consultant, Gerald Wyatt's (Classic Livestock Management Services) **full assessments will be available the week prior to sale day**. This is our alternative to Breed Plan. The following pages explains more.

Background & Preparations

Coodardie Brahmans was formed in 1976 by my father and Uncle, Mike & Rory O'Brien. The stud is based on Cherokee bloodlines and has been a closed herd for the last 15 years. From a high of 1200 registered cows, we have now downsized to Coodardie, a small property (2080 ha) running approximately 500 head on native pastures under planned holistic grazing. We control mate in multi-sire groups, with DNA testing for sire determination, and apply constant holistic, multi-trait selection pressure to identify proven performers—for temperament, fertility, adaptability, meat quality and Zebu purity—in a grass based system.

Mineral & Protein Supplementation

The bulls are paddock prepared on native spear grass rangeland rotation at Coodardie Stn with access to Sweetpro blocks. Due to multiple very poor seasons, they have been supplemented with high quality hay (Neil & Lucy Dickens) and hay pellets (National Feed Company) prior to Auction day.

Health & Biosecurity

All bulls are botulinum vaccinated (July 2020, 1 year Longrange) and will be treated with tickicide (Bomectin) ready for final clearance dip to move across tick lines (see DPIR for individual requirements.) Ours sires are DNA tested free of Pompes. The Coodardie herd is JBAS 7, annually tested clear, with current entry into WA.

Transportation

A travel subsidy of \$55 per bull will be made available to interstate buyers. Westcoast Livestock & Coodardie will assist in travel arrangements post sale.

Mother's Story

This is a graphic representation to show her reproductive performance. It is in chronological order with each box being a calving year, (July to June). The most recent is on the left and back through history. Each box represents a year. The e.g. below is a 10 year old cow who has had 4 calves. **Mating has been on average for 3 months, with the bulls removed prior to weaning.** Cows are not allowed more than

| | | | | | | | | | | |
|---------|-----------|-----|---------|-----|---------|-----|-------|-------|-------|--|
| #0 calf | This bull | dry | #7 calf | dry | #5 calf | dry | 2yHfr | 1yHfr | Birth | 1 year without producing a calf. Missing or unknown data is represented with a ? |
|---------|-----------|-----|---------|-----|---------|-----|-------|-------|-------|--|

Classic (CLMS) Rating



Tenderness is closely linked to fertility and therefore considered the most important trait, or a base from which to work. The flatter (or best, more concave) the bone (felt on the jaw or rib bone and also visible on the hock) the more tender the meat.



Hormonal activity: Directly related to palatability (taste) and fertility—determined by greasy spine, teat assessment, prominence and position of hair swirls and the softness of the skin. All of these are controlled by the pituitary gland.



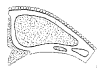
Escutcheon / Milk Quantity: The escutcheon is the shield-like pattern made by the hair growth from under the tail to teats and across the back of the legs. These different patterns have been correlated to milk quantity and ability to continue lactating whilst pregnant. (Frenchman F.Guenon mid 1700's) I.e. produce higher weight weaners.



Butter Fat / Milk Quality is determined by the presence of fine, soft hair, yellowish skin and small feathers between the legs, and flakes in the tail swish and in the ears. I.e. produce higher weight weaners.



Fertility Traits: This is a summary classification of basic form, body shape, angularity, body length, depth, femininity, calving capacity, udder, teats, calving capabilities and reproductive capacity.



Meat Traits: This is a summary classification of head shape/muzzle; eye muscle, front end – neck/shoulders/chine, rear end – rump/hips/leg angle, muscle shape and fat cover.



Linear Measure: Is based on the work of Professor Bonsmar and assists in identifying animals that perform well in grass production systems—fertility and meat—through use of quantitative measurements. Recorded here is an average of 6 measurement ratios.





Temperament: Animals assessed within the same management group on their calmness. Animals that are naturally extremely quiet score “1”. Temperament over 3.5 is not tolerated at Coodardie and results in castration of males. We use Low Stress Stockhandling techniques.

Scoring: **1 is best**, 5 is worst, **3 is good**, 3.5 acceptable
Highlighted boxes show above average results

Semen Evaluation

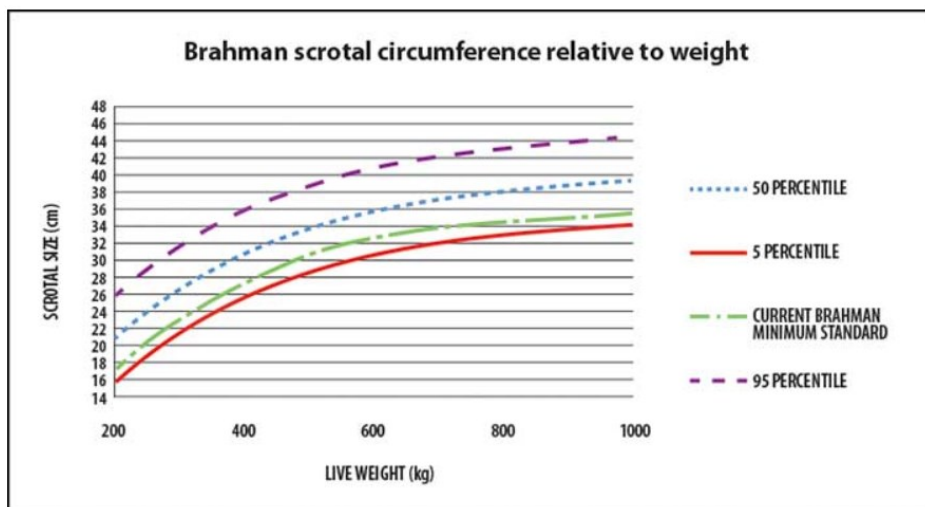
Scrotal Volume

At Coodardie we consider good scrotal length and predominate epididymis more important than scrotal circumference alone. Therefore we have also recorded the scrotal length and calculated a comparative scrotal value.

| Semen Test | |
|---|---|
| 30cm  |  |
| 860 | 75% |

NT DPIR: *“It is important to recognize that the scrotal circumference is related to weight rather than age. The graph shows the average scrotal circumference for Brahman bulls at 2 years old for given weights.”*

Figure 1: Details of normal scrotal circumference in the Australian Brahman bull population are provided in Figure 1



Source: www.brahman.com.au

Morphology—% Normal Sperm

The bulls have been semen tested sounded by Moira Lanzarin (trained by Bovine Fertility legend, Alf Turner). This involves crush side examination of penis; testicle shape, texture, circumference, length and epididymis; internal palpation and check of seminal vesicles; and collection of sperm and microscopic analysis to determine semen morphology (abnormalities).

NT DPIR:

“Throughout puberty semen of different quality is produced. Prior to puberty no semen is produced followed by a stage of semen with a large number of abnormalities until reaching maturity with relatively stable sperm abnormalities.”



DOB: 11/1/2016 45 months
 Description: Dark Grey, Dehorned

Herd ID: 1066/7
 Weight at 11/8/20: 616 kg

Sire: Coodardie Lover Boy (Red, Poll)
 Dam: Coodardie TXT 14 (Light Red, Horn)

| Semen Test | | Classic Rating (Individual Traits) | | | | (Averaged Traits) | | | Temp. |
|-------------------|------------|------------------------------------|--------------|---------------|------------|-------------------|------|----------------|-------|
| 37cm SC 18cm L | Morphology | Tenderness | Palatability | Milk Quantity | Butter Fat | Fertility | Meat | Linear Measure | Temp. |
| | | | | | | | | | |
| 1962 | 97 | 3 | 2.5 | 1 | 2.5 | 2.75 | 2.8 | 2.71 | 2.5 |

Mother's Story — her calving history

| | | | | | | | |
|------|---------|------|-----------|------|---------|-------|-------|
| 2020 | 2019 | 2018 | 2017 | 2016 | 2015 | 2014 | 2013 |
| dry | #9 calf | dry | This bull | dry | #5 calf | 1yHfr | Birth |

Comments: A strong and fertile, old style Zebu bull showing ample depth of character and breeding.

Buyer: Price \$



Lot 2

“Coodardie Ronan”

Pen B



DOB: 12/1/2016 44 months

Herd ID: 1106/7

Description: Grey Gyr, Polled

Weight at 11/8/20: 530kg

Sire: Coodardie All Bull (Grey, Dehorn)

Dam: Coodardie 387 (Grey, Poll)

| Semen Test | | Classic Rating (Individual Traits) | | | | (Averaged Traits) | | | Temp. |
|-------------------|------------|------------------------------------|--------------|---------------|------------|-------------------|------|----------------|-------|
| 33cm SC 18cm L | Morphology | Tenderness | Palatability | Milk Quantity | Butter Fat | Fertility | Meat | Linear Measure | |
| | | | | | | | | | |
| 1561 | 80 | 2.5 | 3 | 2.5 | 3 | 2.90 | 2.90 | 2.43 | 2 |

Mother’s Story — her calving history

| 2020 | 2019 | 2018 | 2017 | 2016 | 2015 | 2014 | 2013 | 2012 | 2011 | 2010 |
|------|---------|---------|-----------|------|---------|------|------|-------|-------|-------|
| dry | #9 calf | #8 calf | This bull | dry | #5 calf | dry | dry | 2yHfr | 1yHfr | Birth |

Comments: A robust, well-muscled, even temperament bull with good maternal rebreed rate.

Buyer:

Price \$



Lot 3

“Coodardie Blue Moon”

Pen C



DOB: 11/5/2017 33 months

Herd ID: 1199/8

Description: Dark Grey (gyr), Dehorned

Weight at c: 493kg

Sire: Coodardie All Bull (Grey, Dehorn)

Dam: Coodardie 609 (Grey, Poll)

| Semen Test | | Classic Rating (Individual Traits) | | | | (Averaged Traits) | | | Temp. |
|-------------------|------------|------------------------------------|--------------|---------------|------------|-------------------|------|----------------|-------|
| 35cm SC 19cm L | Morphology | Tenderness | Palatability | Milk Quantity | Butter Fat | Fertility | Meat | Linear Measure | Temp. |
| | | | | | | | | | |
| 1853 | 91 | 3 | 2 | 3 | 3 | 2.90 | 2.8 | 2.57 | 2.5 |

Mother’s Story — her calving history

| | | | | | | | | |
|------|---------|-----------|------|---------|------|-------|-------|-------|
| 2020 | 2019 | 2018 | 2017 | 2016 | 2015 | 2014 | 2013 | 2012 |
| dry | #9 calf | This bull | dry | #6 calf | dry | 2yHfr | 1yHfr | Birth |

Comments: With characteristic Coodardie colouring, Blue Moon stacks it on in all the right places.

Buyer:

Price \$



Lot 4

“Coodardie He-Ore”

Pen C



DOB: 11/7/2017 33 months

Herd ID: 1269/8

Description: dark Grey, Dehorned

Weight at 11/8/20: 497 kg

Sire: Coodardie All Bull* (Grey, Dehorn)

Dam: Coodardie 171 (Grey, Dehorn)

| Semen Test | | Classic Rating (Individual Traits) | | | | (Averaged Traits) | | | Temp. |
|-------------------|------------|------------------------------------|--------------|---------------|------------|-------------------|------|----------------|-------|
| 36cm SC 17cm L | Morphology | Tenderness | Palatability | Milk Quantity | Butter Fat | Fertility | Meat | Linear Measure | |
| | | | | | | | | | |
| 1754 | 88 | 3.5 | 2.5 | 3.5 | 3.5 | 2.60 | 2.90 | 2.43 | 1.5 |

Mother’s Story — her calving history

| | | | | | | | | | | | | |
|------|---------|-----------|------|---------|------|---------|------|---------|------|-------|-------|-------|
| 2020 | 2019 | 2018 | 2017 | 2016 | 2015 | 2014 | 2013 | 2012 | 2011 | 2010 | 2009 | 2008 |
| dry | #9 calf | This bull | dry | #6 calf | dry | #4 calf | dry | #2 calf | dry | 2yHfr | 1yHfr | Birth |

Comments: Good pigmentation and beautiful temperament, He-Ore is a top all-rounder.

Buyer:

Price \$



Lot 5

“Coodardie Pontiac”

Pen D



DOB: 11/4/2017 33 months

Herd ID: 1193/8

Description: Grey, Dehorned

Weight at 11/8/20: 510 kg

Sire: Coodardie Sire

Dam: Coodardie 448 (Grey, Horn)

| Semen Test | | Classic Rating (Individual Traits) | | | | (Averaged Traits) | | | Temp. |
|-------------------|------------|------------------------------------|--------------|---------------|------------|-------------------|------|----------------|-------|
| 33cm SC 15cm L | Morphology | Tenderness | Palatability | Milk Quantity | Butter Fat | Fertility | Meat | Linear Measure | Temp. |
| | | | | | | | | | |
| 1301 | 82 | 3 | 1.5 | 2.5 | 2.5 | 2.70 | 2.70 | 2.70 | 2.5 |

Mother’s Story — her calving history

| | | | | | | | | | | |
|---------|------|-----------|------|---------|------|---------|------|-------|-------|-------|
| 2020 | 2019 | 2018 | 2017 | 2016 | 2015 | 2014 | 2013 | 2012 | 2011 | 2010 |
| #0 calf | dry | This bull | dry | #6 calf | dry | #4 calf | dry | 2yHfr | 1yHfr | Birth |

Comments: Pontiac has lots of frame and capacity through both the heart girth and flank with a very tidy sheath.

Buyer:

Price \$



Lot 6

“Coodardie Quarterback”

Pen D



DOB: 11/1/2017 33 months

Herd ID: 1214/8

Description: Grey, Dehorned

Weight at 11/8/20: 518 kg

Sire: Coodardie Sire

Dam: Coodardie 638 (Grey, Dehorn)

| Semen Test | | Classic Rating (Individual Traits) | | | | (Averaged Traits) | | | Temp. |
|-------------------|------------|------------------------------------|--------------|---------------|------------|-------------------|------|----------------|-------|
| 32cm SC 15cm L | Morphology | Tenderness | Palatability | Milk Quantity | Butter Fat | Fertility | Meat | Linear Measure | |
| | | | | | | | | | |
| 1223 | 82 | 3.5 | 2.5 | 3 | 3 | 3.00 | 3.25 | 3 | 2 |

Mother’s Story — her calving history

2020 2019 2018 2017 2016 2015 2014 2013 2012 2011 2010

| | | | | | | | | | | |
|---------|-----|-----------|-----|---------|-----|---------|-----|-------|-------|-------|
| #0 calf | dry | This bull | dry | #6 calf | dry | #4 calf | dry | 2yHfr | 1yHfr | Birth |
|---------|-----|-----------|-----|---------|-----|---------|-----|-------|-------|-------|

Comments: Quarterback is another well framed, structurally correct quality herd bull.

Buyer:

Price \$



Lot 7

“Coodardie Latte”

Pen E



DOB: 11/4/2017 33 months

Herd ID: 1209/8

Description: White, Dehorned

Weight at 11/8/20: 499kg

Sire: Coodardie Sire

Dam: Coodardie 07 (White, Dehorned)

| Semen Test | | Classic Rating (Individual Traits) | | | | (Averaged Traits) | | | Temp. |
|-------------------|------------|------------------------------------|--------------|---------------|------------|-------------------|------|----------------|-------|
| 36cm SC 16cm L | Morphology | Tenderness | Palatability | Milk Quantity | Butter Fat | Fertility | Meat | Linear Measure | |
| | | | | | | | | | |
| 1651 | 92 | 3 | 2.5 | 3 | 3 | 2.75 | 2.75 | 3.0 | 3 |

Mother’s Story — her calving history

| | | | | | | | | | | | |
|---------|------|-----------|------|---------|---------|------|---------|---------|-------|-------|-------|
| 2020 | 2019 | 2018 | 2017 | 2016 | 2015 | 2014 | 2013 | 2012 | 2011 | 2010 | 2009 |
| #0 calf | dry | This bull | dry | #6 calf | #5 calf | dry | #3 calf | #2 calf | 2yHfr | 1yHfr | Birth |

Comments: Latte combines depth, width and style with impressive Mother's story and his own high fertility stats.

Buyer:

Price \$



Lot 8

“Coodardie Blanc”

Pen E



DOB: 11/11/2017 33 months

Herd ID: 1184/8

Description: White, Dehorned

Weight at 11/8/20: 465kg

Sire: Coodardie Sire

Dam: Coodardie 631 (White, Dehorned)

| Semen Test | | Classic Rating (Individual Traits) | | | | (Averaged Traits) | | | Temp. |
|-------------------|------------|------------------------------------|--------------|---------------|------------|-------------------|------|----------------|-------|
| 32cm SC 17cm L | Morphology | Tenderness | Palatability | Milk Quantity | Butter Fat | Fertility | Meat | Linear Measure | 😊 |
| 1386 | 76 | 3 | 2 | 3.5 | 3 | 2.9 | 2.9 | 3 | 3 |

Mother’s Story — her calving history

| | | | | | | | | |
|---------|------|-----------|------|---------|---------|---------|-------|-------|
| 2020 | 2019 | 2018 | 2017 | 2016 | 2015 | 2014 | 2013 | 2012 |
| #0 calf | dry | This bull | dry | #6 calf | #5 calf | #4 calf | 1yHfr | Birth |

Comments: Like Latte, Blanc is showing Nellore (pure Zebu) through his mother's line. The Nellore are renowned for their tidy sheaths, udders and high fertility.

Buyer:

Price \$



Lot 9

“Coodardie Spot On”

Pen F



DOB: 11/10/2017 33 months

Herd ID: 1237/8

Description: Grey, Dehorned

Weight at 11/8/20: 455 kg

Sire: Coodardie Sire

Dam: Coodardie 209 (Grey, Dehorned)

| Semen Test | | Classic Rating (Individual Traits) | | | | (Averaged Traits) | | | Temp. |
|-------------------|------------|------------------------------------|--------------|---------------|------------|-------------------|------|----------------|-------|
| 32cm SC 15cm L | Morphology | Tenderness | Palatability | Milk Quantity | Butter Fat | Fertility | Meat | Linear Measure | Temp. |
| | | | | | | | | | |
| 1223 | 88 | 3 | 2.5 | 2.5 | 3 | 3 | 3 | 3.14 | 2.5 |

Mother’s Story — her calving history

| 2020 | 2019 | 2018 | 2017 | 2016 | 2015 | 2014 | 2013 | 2012 | 2011 | 2010 | 2009 | 2008 | 2007 |
|---------|------|-----------|------|---------|------|---------|------|---------|------|------|------|-------|-------|
| #0 calf | dry | This bull | dry | #6 calf | dry | #4 calf | dry | #2 calf | ? | ? | ? | 1yHfr | Birth |

Comments: Spot On is a classy individual showing great tropically adapted characteristics.

Buyer:

Price \$



Lot 10

“Coodardie Classic”

Pen F



DOB: 11/15/2017 33 months

Herd ID: 1176/8

Description: Grey, Dehorned

Weight at 11/8/20: 461kg

Sire: Coodardie Levi* (Grey, Dehorned)

Dam: Coodardie 510 (Grey, Horned)

| Semen Test | | Classic Rating (Individual Traits) | | | | (Averaged Traits) | | | Temp. |
|-------------------|------------|------------------------------------|--------------|---------------|------------|-------------------|------|----------------|-------|
| 34cm SC 15cm L | Morphology | Tenderness | Palatability | Milk Quantity | Butter Fat | Fertility | Meat | Linear Measure | |
| | | | | | | | | | |
| 1381 | 70 | 3.5 | 2 | 3 | 3.5 | 2.6 | 2.6 | 2.71 | 2.5 |

Mother’s Story — her calving history

2020 2019 2018 2017 2016 2015 2014 2013 2012 2011

| | | | | | | | | | |
|-----|---------|-----------|-----|---------|-----|---------|-------|-------|-------|
| dry | #9 calf | This bull | dry | #6 calf | dry | #4 calf | 2yHfr | 1yHfr | Birth |
|-----|---------|-----------|-----|---------|-----|---------|-------|-------|-------|

Comments: A well-balanced bull, reminiscent of the old-style classic Brahman.

Buyer:

Price \$



Lot 11

“Coodardie Christmas”

Pen G



DOB: 12/25/2017 31 months

Herd ID: 1623/8

Description: Grey, Dehorned

Weight at 11/8/20: 405 kg

Sire: Coodardie Sire

Dam: Coodardie 620 (Grey, Poll)

| Semen Test | | Classic Rating (Individual Traits) | | | | (Averaged Traits) | | | Temp. |
|-------------------|------------|------------------------------------|--------------|---------------|------------|-------------------|------|----------------|-------|
| 31cm SC 14cm L | Morphology | Tenderness | Palatability | Milk Quantity | Butter Fat | Fertility | Meat | Linear Measure | |
| | | | | | | | | | |
| 1071 | 90 | 2.5 | 2.5 | 3 | 3 | 2.9 | 3.0 | 3.4 | 2.5 |

Mother’s Story — her calving history

2020 2019 2018 2017 2016 2015 2014 2013 2012

| | | | | | | | | |
|-----|---------|-----------|-----|---------|-----|-------|-------|-------|
| dry | #9 calf | This bull | dry | #6 calf | dry | 2yHfr | 1yHfr | Birth |
|-----|---------|-----------|-----|---------|-----|-------|-------|-------|

Comments: Christmas is smooth and tidy all round with good meat and fertility grades.

Buyer:

Price \$



Lot 12

“Coodardie Ocelot”

Pen G



DOB: 12/22/2017 31 months

Herd ID: 1211/8

Description: Grey Gyr, Polled

Weight at 11/8/20: 464 kg

Sire: Coodardie Sire

Dam: Coodardie 232 (Grey, Scur)

| Semen Test | | Classic Rating (Individual Traits) | | | | (Averaged Traits) | | | Temp. |
|-------------------|------------|------------------------------------|--------------|---------------|------------|-------------------|------|----------------|-------|
| 32cm SC 14cm L | Morphology | Tenderness | Palatability | Milk Quantity | Butter Fat | Fertility | Meat | Linear Measure | |
| | | | | | | | | | |
| 1141 | 94 | 3 | 2.5 | 3.5 | 3.5 | 2.38 | 2.5 | 3.1 | 2.5 |

Mother’s Story — her calving history

| | | | | | | | | | | | |
|---------|------|-----------|---------|------|---------|------|---------|------|-------|-------|-------|
| 2020 | 2019 | 2018 | 2017 | 2016 | 2015 | 2014 | 2013 | 2012 | 2011 | 2010 | 2009 |
| #0 calf | dry | This bull | #7 calf | dry | #5 calf | dry | #3 calf | dry | 2yHfr | 1yHfr | Birth |

Comments: This attractive young poll bull is not only pretty to look at but delivered high volume, high quality sperm at testing.

Buyer:

Price \$



Lot 14

“Coodardie Two Dozen”

Pen H



DOB: 11/25/2017 32 months

Herd ID: 1212/8

Description: Grey, Dehorned

Weight at 11/8/20: 381 kg

Sire: Coodardie Levi* (Grey, Dehorn)

Dam: Coodardie 505 (Grey, Dehorn)

| Semen Test | | Classic Rating (Individual Traits) | | | | (Averaged Traits) | | | Temp. |
|-------------------|------------|------------------------------------|--------------|---------------|------------|-------------------|------|----------------|-------|
| 32cm SC 13cm L | Morphology | Tenderness | Palatability | Milk Quantity | Butter Fat | Fertility | Meat | Linear Measure | Temp. |
| | | | | | | | | | |
| 1060 | 70 | 3 | 2.5 | 3 | 3 | 2.67 | 2.69 | 3.4 | 2.5 |

Mother’s Story — her calving history

2020 2019 2018 2017 2016 2015 2014 2013 2012 2011

| | | | | | | | | | |
|---------|---------|-----------|---------|-----|---------|-----|-------|-------|-------|
| #0 calf | #9 calf | This bull | #7 calf | dry | #5 calf | dry | 2yHfr | 1yHfr | Birth |
|---------|---------|-----------|---------|-----|---------|-----|-------|-------|-------|

Comments: Two Dozen's mother story speaks for itself making him difficult to overlook.

Buyer:

Price \$



Lot 15

“Coodardie Plainsman”

Pen H



DOB: 11/6/2017 33 months

Herd ID: 1259/8

Description: Grey, Dehorned

Weight at 11/8/20: 401 kg

Sire: Coodardie Sire

Dam: Coodardie 192 (Grey, Dehorn)

| Semen Test | | Classic Rating (Individual Traits) | | | | (Averaged Traits) | | | Temp. |
|-------------------|------------|------------------------------------|--------------|---------------|------------|-------------------|------|----------------|-------|
| 27cm SC 13cm L | Morphology | Tenderness | Palatability | Milk Quantity | Butter Fat | Fertility | Meat | Linear Measure | Temp. |
| | | | | | | | | | |
| 755 | 72 | 3 | 3 | 3 | 3 | 2.63 | 2.88 | 2.57 | 2.5 |

Mother’s Story — her calving history

| | | | | | | | | | | | | |
|---------|------|-----------|------|---------|------|---------|------|---------|------|-------|-------|-------|
| 2020 | 2019 | 2018 | 2017 | 2016 | 2015 | 2014 | 2013 | 2012 | 2011 | 2010 | 2009 | 2008 |
| #0 calf | dry | This bull | dry | #6 calf | dry | #4 calf | dry | #2 calf | dry | 2yHfr | 1yHfr | Birth |

Comments:

Plainsman is neat, tidy and functionally correct with great length.

Buyer:

Price \$



Lot 16

“Coodardie Wyatt”

Pen H



DOB: 8/14/2018 24 months

Herd ID: 1337/9

Description: Grey, Dehorned

Weight at 11/8/20: 394 kg

Sire: Coodardie Count Down 765/4 (Grey, Poll)

Dam: Coodardie Geraldine (Red, Scur)

| Semen Test | | Classic Rating (Individual Traits) | | | | (Averaged Traits) | | | Temp. |
|-------------------|------------|------------------------------------|--------------|---------------|------------|-------------------|------|----------------|-------|
| 27cm SC 14cm L | Morphology | Tenderness | Palatability | Milk Quantity | Butter Fat | Fertility | Meat | Linear Measure | |
| | | | | | | | | | |
| 813 | 91 | 3 | 2.5 | 3 | 3 | 2.38 | 3 | 3.29 | 2.5 |

Mother’s Story — her calving history

| | | | | | | |
|------|-----------|------|---------|-------|-------|-------|
| 2020 | 2019 | 2018 | 2017 | 2016 | 2015 | 2014 |
| dry | This bull | dry | #7 calf | 2yHfr | 1yHfr | Birth |

Comments:

Wyatt, a year younger than his pen mates, is a growthy young bull with much potential.

Buyer:

Price \$



Lot 17

“Coodardie Honda”

Pen 1



DOB: 12/20/2017 31 months

Herd ID: 1268/8

Description: Grey, Dehorned

Weight at 11/8/20: 402 kg

Sire: Coodardie Sire

Dam: Coodardie 515 (White, Dehorned)

| Semen Test | | Classic Rating (Individual Traits) | | | | (Averaged Traits) | | | Temp. |
|-------------------|------------|------------------------------------|--------------|---------------|------------|-------------------|------|----------------|-------|
| 28cm SC 14cm L | Morphology | Tenderness | Palatability | Milk Quantity | Butter Fat | Fertility | Meat | Linear Measure | |
| | | | | | | | | | |
| 874 | 90 | 3.5 | 3 | 3 | 3.5 | 2.88 | 3.19 | 2.57 | 2.5 |

Mother’s Story — her calving history

2020 2019 2018 2017 2016 2015 2014 2013 2012 2011

| | | | | | | | | | |
|---------|-----|-----------|-----|---------|-----|---------|-------|-------|-------|
| #0 calf | dry | This bull | dry | #6 calf | dry | #4 calf | 2yHfr | 1yHfr | Birth |
|---------|-----|-----------|-----|---------|-----|---------|-------|-------|-------|

Comments:

Honda is a long bull whose mother always demonstrates extreme protectiveness and care over her newborns.

Buyer:

Price \$



Lot 18

“Coodardie Reece”

Pen I



DOB: 2/4/2018 30 months

Herd ID: 1272/8

Description: Grey, Dehorned

Weight at 11/8/20: 405 kg

Sire: Coodardie Long John (Grey, Scur)

Dam: Coodardie 7671 (Grey, Dehorn)

| Semen Test | | Classic Rating (Individual Traits) | | | | (Averaged Traits) | | | Temp. |
|-------------------|------------|------------------------------------|--------------|---------------|------------|-------------------|------|----------------|-------|
| 29cm SC 14cm L | Morphology | Tenderness | Palatability | Milk Quantity | Butter Fat | Fertility | Meat | Linear Measure | |
| | | | | | | | | | |
| 937 | 92 | 3.5 | 3 | 3.5 | 3.5 | 2.13 | 2.81 | 2.29 | 2 |

Mother’s Story — her calving history

| | | | | | | | | | | | | | |
|------|------|-----------|------|------|---------|------|------|------|------|------|----|------|-------------|
| 2020 | 2019 | 2018 | 2017 | 2016 | 2015 | 2014 | 2013 | 2012 | 2011 | 2010 | to | 2003 | |
| — | dry | This bull | dry | dry | #5 calf | ? | ? | ? | ? | ? | ? | ? | 1yHfr Birth |

Comments:

Reece is the last calf from an old Coodardie matron.

Buyer:

Price \$



Lot 19

“Coodardie Caramel”

Pen 1



DOB: 2/24/2018 29 months

Herd ID: 1277/8

Description: Grey, Dehorned

Weight at 11/8/20: 434 kg

Sire: Coodardie Sire

Dam: Coodardie 604 (Red, Poll)

| Semen Test | | Classic Rating (Individual Traits) | | | | (Averaged Traits) | | | Temp. |
|-------------------|------------|------------------------------------|--------------|---------------|------------|-------------------|------|----------------|-------|
| 33cm SC 14cm L | Morphology | Tenderness | Palatability | Milk Quantity | Butter Fat | Fertility | Meat | Linear Measure | |
| | | | | | | | | | |
| 1214 | 80% | 3.5 | 3 | 2.5 | 3.5 | 2.67 | 2.69 | 2.14 | 2 |

Mother’s Story — her calving history

2020 2019 2018 2017 2016 2015 2014 2013 2012

| | | | | | | | | |
|---|------|-----------|-----|-----|---------|-------|-------|-------|
| — | Sold | This bull | dry | dry | #5 calf | 2yHfr | 1yHfr | Birth |
|---|------|-----------|-----|-----|---------|-------|-------|-------|

Comments:

Caramel shows good width of muzzle and smooth even depth with great masculine head. (Note, jersey/brahman milker heifer photo-bombing in background 😊)

Buyer:

Price \$



Lot 20

“Coodardie JohnnyO”

Pen J



DOB: 2/7/2018 30 months

Herd ID: 1275/8

Description: Grey, polled

Weight at 11/8/20: 389kg

Sire: Coodardie Long John (Grey, Scur)

Dam: Coodardie 184 (Grey, Poll)

| Semen Test | | Classic Rating (Individual Traits) | | | | (Averaged Traits) | | | Temp. |
|-------------------|------------|------------------------------------|--------------|---------------|------------|-------------------|------|----------------|-------|
| 29cm SC 13cm L | Morphology | Tenderness | Palatability | Milk Quantity | Butter Fat | Fertility | Meat | Linear Measure | |
| | | | | | | | | | |
| 870 | 80 | 3 | 3 | 2 | 3 | 2.63 | 2.75 | 2.29 | 2.5 |

Mother’s Story — her calving history

2020 2019 2018 2017 2016 2015 2014 2013 2012 2011 2010 2009 2008 2007

| | | | | | | | | | | | | | |
|---------|-----|-----------|---------|-----|---------|---------|---------|---------|---|---|---|-------|-------|
| #0 calf | dry | This bull | #7 calf | dry | #5 calf | #4 calf | #3 calf | #2 calf | ? | ? | ? | 1yHfr | Birth |
|---------|-----|-----------|---------|-----|---------|---------|---------|---------|---|---|---|-------|-------|

Comments:

This impressive poll / scur mating, good mother's story and consistent scoring make JohnnyO a bull very worthy of attention.

Buyer:

Price \$



Lot 21

“Coodardie Larry”

Pen J



DOB: 9/20/2018 22 months

Herd ID: 1363/9

Description: Grey Gyr, polled

Weight at 11/8/20: 358 kg

Sire: Coodardie Sire

Dam: Coodardie Tara 1134 (Red, Poll)

| Semen Test | | Classic Rating (Individual Traits) | | | | (Averaged Traits) | | | Temp. |
|-------------------|------------|------------------------------------|--------------|---------------|------------|-------------------|------|----------------|-------|
| 31cm SC 14cm L | Morphology | Tenderness | Palatability | Milk Quantity | Butter Fat | Fertility | Meat | Linear Measure | |
| | | | | | | | | | |
| 1071 | 90 | 3 | 3 | 2.5 | 3 | 2.25 | 2.88 | 3.14 | 2.5 |

Mother’s Story — her calving history

2020 2019 2018 2017 2016 2015 2014 2013

| | | | | | | | |
|---------|-----------|-----|---------|-----|-------|-------|-------|
| #0 calf | This bull | dry | #7 calf | dry | 2yHfr | 1yHfr | Birth |
|---------|-----------|-----|---------|-----|-------|-------|-------|

Comments:

Larry has great fleshing, fertility and style with the bonus of being a clean poll.

Buyer:

Price \$



Lot 22

“Coodardie Amore”

Pen LED



DOB: 10/3/2018 22 months

Herd ID: 1279/9

Description: Grey Gyr, polled

Weight at 11/8/20: 460 kg

Sire: Coodardie All Bull (Grey, Dehorn)

Dam: Coodardie 574 (Grey, Poll)

| Semen Test | | Classic Rating (Individual Traits) | | | | (Averaged Traits) | | | Temp. |
|-------------------|------------|------------------------------------|--------------|---------------|------------|-------------------|------|----------------|-------|
| 31cm SC 14cm L | Morphology | Tenderness | Palatability | Milk Quantity | Butter Fat | Fertility | Meat | Linear Measure | 😊 |
| 1071 | 70 | 3 | 2.5 | 2.5 | 3 | 2.25 | 2.63 | 3.29 | 1.5 |

Mother’s Story — her calving history

2020 2019 2018 2017 2016 2015 2014 2013 2012

| | | | | | | | | |
|-----|-----------|-----|---------|-----|---|-------|-------|-------|
| dry | This bull | dry | #7 calf | dry | ? | 2yHfr | 1yHfr | Birth |
|-----|-----------|-----|---------|-----|---|-------|-------|-------|

Comments:

Amore is a gentle giant with tremendous capacity through the heart girth and flank. ABBA Registered and successfully exhibited on NT show circuit, 2019.

Buyer:

Price \$



Lot 23

“Coodardie Starbucks”

Pen LED



DOB: 10/4/2018 22 months

Herd ID: 1278/9

Description: Grey, polled

Weight at 11/8/20: 457kg

Sire: Coodardie All Bull (Grey, Dehorn)

Dam: Coodardie 619 (Grey, Poll)

| Semen Test | | Classic Rating (Individual Traits) | | | | (Averaged Traits) | | | Temp. |
|-------------------|------------|------------------------------------|--------------|---------------|------------|-------------------|------|----------------|-------|
| 36cm SC 15cm L | Morphology | Tenderness | Palatability | Milk Quantity | Butter Fat | Fertility | Meat | Linear Measure | |
| | | | | | | | | | |
| 1548 | 94 | 3.5 | 2.5 | 3 | 3.5 | 2.75 | 2.88 | 3.0 | 2 |

Mother’s Story — her calving history

2020 2019 2018 2017 2016 2015 2014 2013 2012

| | | | | | | | | |
|---------|-----------|-----|---------|-----|---------|-------|-------|-------|
| #0 calf | This bull | dry | #7 calf | dry | #5 calf | 2yHfr | 1yHfr | Birth |
|---------|-----------|-----|---------|-----|---------|-------|-------|-------|

Comments:

Starbucks' scrotal development is exceptional. He combines this with great length and style. ABBA Registered and successfully exhibited on NT show circuit, 2019.

Buyer:

Price \$



Lot 24

“Coodardie Jimmy”

Pen LED



DOB: 10/5/2018 22 months

Herd ID: 1281/9

Description: Red, polled

Weight at 11/8/20: 425kg

Sire: Coodardie Power of Three (Red, Dehorn)

Dam: Coodardie Carina 09 (Red Poll)

| Semen Test | | Classic Rating (Individual Traits) | | | | (Averaged Traits) | | | Temp. |
|-------------------|------------|------------------------------------|--------------|---------------|------------|-------------------|------|----------------|-------|
| 31cm SC 15cm L | Morphology | Tenderness | Palatability | Milk Quantity | Butter Fat | Fertility | Meat | Linear Measure | |
| | | | | | | | | | |
| 1148 | 92 | 3.5 | 3 | 3 | 2.5 | 3.25 | 2.94 | 3 | 2 |

Mother’s Story — her calving history

2020 2019 2018 2017 2016 2015 2014 2013 2012 2011 2010 2009

| | | | | | | | | | | | |
|-----|-----------|-----|---------|-----|---------|-----|---------|-----|-------|-------|-------|
| dry | This bull | dry | #7 calf | dry | #5 calf | dry | #3 calf | dry | 2yHfr | 1yHfr | Birth |
|-----|-----------|-----|---------|-----|---------|-----|---------|-----|-------|-------|-------|

Comments:

Jimmy is a docile young gentleman with good semen. ABBA Registered and successfully exhibited on NT show circuit, 2019.

Buyer:

Price \$



Lot 24.a

“Coodardie Honey Bear”

Pen LED



DOB: 1/11/2017 33 months

Herd ID: 1225/8

Description: Red, polled

Weight at 11/8/20: 455 kg

NEW LISTING

Sire: Coodardie Victor Gordon (Red, Poll)

Dam: Coodardie 1143(Light Red, Horn)

| Semen Test | | Classic Rating (Individual Traits) | | | | (Averaged Traits) | | | Temp. |
|-------------------|------------|------------------------------------|--------------|---------------|------------|-------------------|------|----------------|-------|
| 33cm SC 16cm L | Morphology | Tenderness | Palatability | Milk Quantity | Butter Fat | Fertility | Meat | Linear Measure | 😊 |
| | | | | | | | | | |
| 1387 | 94 | 3.5 | 2 | 3 | 2.5 | 2.75 | 2.67 | 2.86 | 2 |

Mother’s Story — her calving history

2020 2019 2018 2017 2016 2015 2014 2013 2012 2011 2010 2009

| | | | | | | | | | | | |
|-----|-----------|-----|---------|-----|---------|-----|---------|-----|-------|-------|-------|
| dry | This bull | dry | #7 calf | dry | #5 calf | dry | #3 calf | dry | 2yHfr | 1yHfr | Birth |
|-----|-----------|-----|---------|-----|---------|-----|---------|-----|-------|-------|-------|

Comments:

Honey Bear is a bull of note: he is exceptional on so many criteria. ABBA Registered and successfully exhibited on NT show circuit, 2019.

Buyer:

Price \$



Lot 25

“Coodardie Nugget”

Pen K



DOB: 11/23/2017 32 months

Herd ID: 1179/8

Description: Red, Dehorned

Weight at 11/8/20: 454 kg

Sire: Coodardie Sire

Dam: Coodardie 1006 (Red Dehorn)

| Semen Test | | Classic Rating (Individual Traits) | | | | (Averaged Traits) | | | Temp. |
|-------------------|------------|------------------------------------|--------------|---------------|------------|-------------------|------|----------------|-------|
| 37cm SC 17cm L | Morphology | Tenderness | Palatability | Milk Quantity | Butter Fat | Fertility | Meat | Linear Measure | |
| | | | | | | | | | |
| 1853 | 88 | 2.5 | 2.5 | 3 | 3 | 2.81 | 2.67 | 2.86 | 2.5 |

Mother’s Story — her calving history

2020 2019 2018 2017 2016 2015 2014

| | | | | | | |
|---------|-----|-----------|-----|-------|-------|-------|
| #0 calf | dry | This bull | dry | 2yHfr | 1yHfr | Birth |
|---------|-----|-----------|-----|-------|-------|-------|

Comments:

As his name suggests, Nugget is well balanced across the board with good muscle and strength.

Buyer:

Price \$





DOB: 11/22/2017 32 months

Herd ID: 1234/8

Description: Red, Horned

Weight at 11/8/20: 462 kg

Sire: Coodardie Bees Knees 63/9 (Red, Scur)

Dam: Coodardie Jan B 495 (Red, Horn)

| Semen Test | | Classic Rating (Individual Traits) | | | | (Averaged Traits) | | | Temp. |
|-------------------|------------|------------------------------------|--------------|---------------|------------|-------------------|------|----------------|-------|
| 33cm SC 18cm L | Morphology | Tenderness | Palatability | Milk Quantity | Butter Fat | Fertility | Meat | Linear Measure | |
| | | | | | | | | | |
| 1561 | 92 | 3.5 | 3 | 3 | 3.5 | 3.00 | 3.1 | 2.7 | 3 |

Mother’s Story — her calving history

| | | | | | | | | | | |
|------|---------|-----------|---------|------|---------|------|---------|-------|-------|-------|
| 2020 | 2019 | 2018 | 2017 | 2016 | 2015 | 2014 | 2013 | 2012 | 2011 | 2010 |
| dry | #9 calf | This bull | #7 calf | dry | #5 calf | dry | #3 calf | 2yHfr | 1yHfr | Birth |

Comments:

Numeric boasts strong fertility stats personally and from both parents. His mother, Jan B, is an easy care, old-style red horned matriarch.

Buyer:

Price \$



Lot 27

“Coodardie Shayman”

Pen K



DOB: 11/7/2017 33 months

Herd ID: 1249/8

Description: Red, Dehorned

Weight at 11/8/20: 445kg

Sire: Coodardie Sire

Dam: Coodardie 988 (Red Gyr, Scurr)

| Semen Test | | Classic Rating (Individual Traits) | | | | (Averaged Traits) | | | Temp. |
|-------------------|------------|------------------------------------|--------------|---------------|------------|-------------------|------|----------------|-------|
| 33cm SC 14cm L | Morphology | Tenderness | Palatability | Milk Quantity | Butter Fat | Fertility | Meat | Linear Measure | |
| | | | | | | | | | |
| 1214 | 88 | 2.5 | 2 | 2 | 3 | 2.88 | 3.0 | 2.86 | 3 |

Mother’s Story — her calving history

2020 2019 2018 2017 2016 2015 2014

| | | | | | | |
|---------|-----|-----------|-----|-------|-------|-------|
| #0 calf | dry | This bull | dry | 2yHfr | 1yHfr | Birth |
|---------|-----|-----------|-----|-------|-------|-------|

Comments: Shayman is above average on his meat tenderness and palatability (hormonal) scores and comes in a neat, tidy and balanced package.

Buyer:

Price \$



Lot 28

“Coodardie Roswell”

Pen L



DOB: 10/15/2018 22 months

Herd ID: 1352/9

Description: Red, Dehorned

Weight at 11/8/20: 358 kg

Sire: Coodardie Bees Knees 63/9 (Red, Scur)

Dam: Coodardie 197 (Grey, Dehorn)

| Semen Test | | Classic Rating (Individual Traits) | | | | (Averaged Traits) | | | Temp. |
|-------------------|------------|------------------------------------|--------------|---------------|------------|-------------------|------|----------------|-------|
| 32cm SC 12cm L | Morphology | Tenderness | Palatability | Milk Quantity | Butter Fat | Fertility | Meat | Linear Measure | |
| | | | | | | | | | |
| 978 | 92 | 4 | 2 | 3.5 | 3.5 | 3.0 | 3.25 | 2.86 | 2.5 |

Mother’s Story — her calving history

| | | | | | | | | | | | | | |
|------|-----------|---------|------|---------|------|---------|---------|---------|------|---------|-------|-------|-------|
| 2020 | 2019 | 2018 | 2017 | 2016 | 2015 | 2014 | 2013 | 2012 | 2011 | 2010 | 2009 | 2008 | 2007 |
| Sold | This bull | #8 calf | dry | #6 calf | dry | #4 calf | #3 calf | #2 calf | dry | #0 calf | 2yHfr | 1yHfr | Birth |

Comments:

Roswell is a wide muzzled, deep, solid red bull demonstrating impressive fertility stats.

Buyer:

Price \$



Lot 29

“Coodardie Tumeric”

Pen L



DOB: 11/20/2018 20 months

Herd ID: 1353/9

Description: Red, Horned

Weight at 11/8/20: 380 kg

Sire: Coodardie Bees Knees 63/9 (Red, Scur)

Dam: Coodardie Jan B 495 (Red, Horn)

| Semen Test | | Classic Rating (Individual Traits) | | | | (Averaged Traits) | | | Temp. |
|-------------------|------------|------------------------------------|--------------|---------------|------------|-------------------|------|----------------|-------|
| 30cm SC 14cm L | Morphology | Tenderness | Palatability | Milk Quantity | Butter Fat | Fertility | Meat | Linear Measure | |
| | | | | | | | | | |
| 1003 | 75 | 3 | 2 | 3 | 3 | 3.13 | 3 | 2.57 | 3 |

Mother’s Story — her calving history

2020 2019 2018 2017 2016 2015 2014 2013 2012 2011 2010

| | | | | | | | | | | |
|-----|-----------|---------|---------|-----|---------|-----|---------|-------|-------|-------|
| dry | This bull | #8 calf | #7 calf | dry | #5 calf | dry | #3 calf | 2yHfr | 1yHfr | BIRTH |
|-----|-----------|---------|---------|-----|---------|-----|---------|-------|-------|-------|

Comments:

Full brother to "Numeric" Lot 26. Tumeric has exceptional depth, fleshing and fertility story.

Buyer:

Price \$



Lot 30

“Coodardie Scoobie Doo”

Pen L



DOB: 11/15/2018 21 months

Herd ID: 1355/9

Description: light Red, polled

Weight at 11/8/20: 368 kg

Sire: Coodardie Bees Knees 63/9 (Red, Scur)

Dam: Coodardie Scoobie 660 (Grey, Poll)

| Semen Test | | Classic Rating (Individual Traits) | | | | (Averaged Traits) | | | Temp. |
|-------------------|------------|------------------------------------|--------------|---------------|------------|-------------------|------|----------------|-------|
| 27cm SC 14cm L | Morphology | Tenderness | Palatability | Milk Quantity | Butter Fat | Fertility | Meat | Linear Measure | |
| | | | | | | | | | |
| 813 | 90 | 3 | 2 | 3 | 2.5 | 3.25 | 2.75 | 2.71 | 3 |

Mother’s Story — her calving history

| | | | | | | | |
|---------|-----------|---------|------|---------|-------|-------|-------|
| 2020 | 2019 | 2018 | 2017 | 2016 | 2015 | 2014 | 2013 |
| #0 calf | This bull | #8 calf | dry | #6 calf | 2yHfr | 1yHfr | Birth |

Comments:

This promising young bull is from a particularly fertile female line crossed with the exceptional fertility and growth of Bees Knees. Scoobie Doo belongs to Moira's sons but is of same lineage and management as other Coodardie cattle.

Buyer:

Price \$



Lot 31

“Coodardie Komatsu”

Pen M



DOB: 11/16/2018 21 months

Herd ID: 1332/9

Description: light Red, polled

Weight at 11/8/20: 333 kg

Sire: Coodardie Bees Knees 63/9 (Red, Scur)

Dam: Coodardie 633 (Red, Horn)

| Semen Test | | Classic Rating (Individual Traits) | | | | (Averaged Traits) | | | Temp. |
|-------------------|------------|------------------------------------|--------------|---------------|------------|-------------------|------|----------------|-------|
| 25cm SC 11cm L | Morphology | Tenderness | Palatability | Milk Quantity | Butter Fat | Fertility | Meat | Linear Measure | |
| | | | | | | | | | |
| 547 | 76 | 3.5 | 2 | 3 | 3 | 2.75 | 2.88 | 2 | 3 |

Mother’s Story — her calving history

2020 2019 2018 2017 2016 2015 2014 2013 2012

| | | | | | | | | |
|-----|-----------|---------|-----|---------|-----|-------|-------|-------|
| dry | This bull | #8 calf | dry | #6 calf | dry | 2yHfr | 1yHfr | Birth |
|-----|-----------|---------|-----|---------|-----|-------|-------|-------|

Comments:

A tidy young poll, strongly characteristic of his father, BeesKnees - a powerfully fertile, dominant sire. Komatsu’s brother, Soldier, is also in this sale draft at Lot 13.

Buyer:

Price \$



Lot 32

“Coodardie Nectar”

Pen M



DOB: 1/17/2019 19 months

Herd ID: 1381/9

Description: light Red, polled

Weight at 11/8/20: 308kg

Sire: Coodardie Bees Knees 63/10 (Red, Scur)

Dam: Coodardie 991 (Grey, Poll)

| Semen Test | | Classic Rating (Individual Traits) | | | | (Averaged Traits) | | | Temp. |
|-------------------|------------|------------------------------------|--------------|---------------|------------|-------------------|------|----------------|-------|
| 26cm SC 14cm L | Morphology | Tenderness | Palatability | Milk Quantity | Butter Fat | Fertility | Meat | Linear Measure | |
| | | | | | | | | | |
| 754 | 91 | 3 | 2 | 3 | 2.5 | 2.88 | 2.75 | 3.29 | 2.5 |

Mother’s Story — her calving history

2020 2019 2018 2017 2016 2015 2014

| | | | | | | |
|-----|-----------|---------|-----|-------|-------|-------|
| dry | This bull | #8 calf | dry | 2yHfr | 1yHfr | Birth |
|-----|-----------|---------|-----|-------|-------|-------|

Comments:

The youngest bull in the draft, Nectar is an early maturing (his already high % normal sperm) bull. His dam’s rebreed is positive and he has impressive capacity and heart girth (equalling higher meat yields and do-ability off grass).

Buyer:

Price \$



Lot 33

“Coodardie Sleepy”

Pen M



DOB: 11/14/2018 21 months

Herd ID: 1354/9

Description: Red, Horned

Weight at 11/8/20: 336 kg

Sire: Coodardie Bees Knees 63/11 (Red, Scur)

Dam: Coodardie 760 (Red, Horn)

| Semen Test | | Classic Rating (Individual Traits) | | | | (Averaged Traits) | | | Temp. |
|-------------------|------------|------------------------------------|--------------|---------------|------------|-------------------|------|----------------|-------|
| 27cm SC 11cm L | Morphology | Tenderness | Palatability | Milk Quantity | Butter Fat | Fertility | Meat | Linear Measure | |
| | | | | | | | | | |
| 638 | 70 | 3 | 2 | 3 | 2.5 | 3.13 | 3 | 2.86 | 2 |

Mother’s Story — her calving history

2020 2019 2018 2017 2016 2015

| | | | | | |
|-----|-----------|---------|-------|-------|-------|
| dry | This bull | #8 calf | 2yHfr | 1yHfr | Birth |
|-----|-----------|---------|-------|-------|-------|

Comments:

A gentle, young bull with great fleshing and depth of hindquarter.

Buyer:

Price \$



SweetPro

Performance Stock Supplements

NT Distributor

Coodardie Pty Ltd

SweetPro products support animal digestive health and growth, while supporting excellent feed efficiency. A blend of distillers grains, vitamins and minerals, with beta-glucan, a prebiotic and proprietary blend additive ProBiotain.

No molasses and no urea. Gut friendly.

Cattle Horse Goats

Mike & Clair 08-89754460 Moira 0428 474 262

The New Science in Animal Health & Nutrition



(EQUIPRIDE



(EQUILIX™

THANK YOU

To our wonderful supporters & volunteers who make Sale Day possible.

To the Mataranka Better Half Club for catering.

To Rohan & Sally Sullivan, Birdum Station, for the use of extra yard panels.

To all who attend, bid and buy.

You are appreciated.

Lot 35

“Coodardie Dee Jay”

Pen N



DOB: 10/18/2018 22 months

Herd ID: 1377/9

Description: Red, polled

Weight at 11/8/20: 329 kg

Sire: Coodardie Sire

Dam: Coodardie 824 (Red, Poll)

| Semen Test | | Classic Rating (Individual Traits) | | | | (Averaged Traits) | | | Temp. |
|-------------------|------------|------------------------------------|--------------|---------------|------------|-------------------|------|----------------|-------|
| 26cm SC 12cm L | Morphology | Tenderness | Palatability | Milk Quantity | Butter Fat | Fertility | Meat | Linear Measure | |
| | | | | | | | | | |
| 646 | 80 | 3 | 2 | 3 | 3 | 2.6 | 2.33 | 2.29 | 2 |

Mother’s Story — her calving history

2020 2019 2018 2017 2016 2015

| | | | | | |
|-----|-----------|-----|-------|-------|-------|
| dry | This bull | dry | 2yHfr | 1yHfr | Birth |
|-----|-----------|-----|-------|-------|-------|

Comments:

A deep red, clean headed young poll sire potential whom I eagerly await to see his CLMS scoring.

Buyer:

Price \$





DOB: 9/26/2018 **22 months**
Description: Grey Gyr, Dehorned

Herd ID: 1340/9
Weight at 11/8/20: 440 kg

Sire: Coodardie All Bull (Grey, Dehorn)
Dam: Coodardie 150 (Grey, Horn)

| Semen Test | | Classic Rating (Individual Traits) | | | | (Averaged Traits) | | | Temp. |
|-------------------|------------|------------------------------------|--------------|---------------|------------|-------------------|------|----------------|-------|
| 29cm SC 14cm L | Morphology | Tenderness | Palatability | Milk Quantity | Butter Fat | Fertility | Meat | Linear Measure | Temp. |
| | | | | | | | | | |
| 937 | 88 | 2.5 | 2.75 | 3 | 2.5 | 2.5 | 2.75 | 3 | 2 |

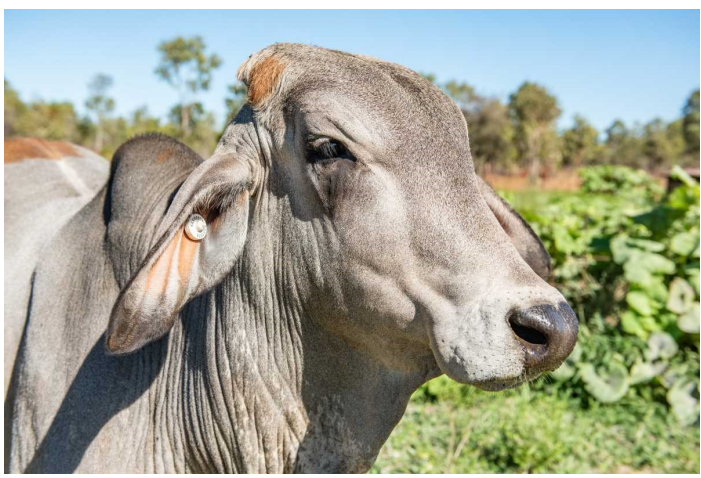
Mother's Story — her calving history

| 2020 | 2019 | 2018 | 2017 | 2016 | 2015 | 2014 | 2013 | 2012 | 2011 | 2010 | 2009 |
|---------|-----------|------|---------|---------|------|---------|---------|---------|-------|-------|-------|
| #0 calf | This bull | dry | #7 calf | #6 calf | dry | #4 calf | #3 calf | #2 calf | 2yHfr | 1yHfr | Birth |

Comments:

This consistent pen of three All Bull sons could possibly be my favourite pen. Like his namesake, Mako Bull, this young bull is good natured, large for his age with strong pigmentation and style. 7 calves in 9 seasons makes his mother extra impressive under our conditions.

Buyer: **Price \$**



Lot 37

“Coodardie Moon Shadow”

Pen O



DOB: 10/4/2018 22 months

Herd ID: 1359/9

Description: Grey Gyr, Dehorned

Weight at 11/8/20: 368 kg

Sire: Coodardie All Bull (Grey, Dehorn)

Dam: Coodardie 240 (Grey, Dehorn)

| Semen Test | | Classic Rating (Individual Traits) | | | | (Averaged Traits) | | | Temp. |
|-------------------|------------|------------------------------------|--------------|---------------|------------|-------------------|------|----------------|-------|
| 29cm SC 13cm L | Morphology | Tenderness | Palatability | Milk Quantity | Butter Fat | Fertility | Meat | Linear Measure | 😊 |
| | | | | | | | | | 😊 |
| 870 | 70 | 3.5 | 2.5 | 2 | 2.5 | 3.38 | 3.13 | 3.43 | 2 |

Mother’s Story — her calving history

| | | | | | | | | | | | | | | |
|------|-----------|------|---------|------|---------|------|---------|---------|------|---------|------|------|-------|-------|
| 2020 | 2019 | 2018 | 2017 | 2016 | 2015 | 2014 | 2013 | 2012 | 2011 | 2010 | 2009 | 2008 | 2007 | 2006 |
| Sold | This bull | dry | #7 calf | dry | #5 calf | dry | #3 calf | #2 calf | dry | #0 calf | ? | ? | 1yHfr | Birth |

Comments:

The red spot on grey is known in Brahman circles as the "purity spot" and shows the famous Cherokee heritage. Moon Shadow is certainly not lacking in Brahman purity or style.

Buyer:

Price \$



Lot 38

“Coodardie Allflex”

Pen O



DOB: 9/17/2018 23 months

Herd ID: 1361/9

Description: Grey, Dehorned

Weight at 11/8/20: 394 kg

Sire: Coodardie All Bull (Grey, Dehorn)

Dam: Coodardie 438 (Grey, Poll)

| Semen Test | | Classic Rating (Individual Traits) | | | | (Averaged Traits) | | | Temp. |
|-------------------|------------|------------------------------------|--------------|---------------|------------|-------------------|------|----------------|-------|
| 30cm SC 12cm L | Morphology | Tenderness | Palatability | Milk Quantity | Butter Fat | Fertility | Meat | Linear Measure | |
| | | | | | | | | | |
| 860 | 96 | 3 | 2.5 | 3 | 3 | 2.88 | 2.88 | 2.71 | 2 |

Mother’s Story — her calving history

2020 2019 2018 2017 2016 2015 2014 2013 2012 2011 2010

| | | | | | | | | | | |
|-----|-----------|-----|---------|-----|---------|-----|---------|-------|-------|-------|
| dry | This bull | dry | #7 calf | dry | #5 calf | dry | #3 calf | 2yHfr | 1yHfr | Birth |
|-----|-----------|-----|---------|-----|---------|-----|---------|-------|-------|-------|

Comments:

Allflex's spots are more subtle against his good pigmentation and complement his smooth, fluid composition.

Buyer:

Price \$



Lot 39

“Coodardie Pinpoint”

Pen P



DOB: 9/26/2018 22 months

Herd ID: 1335/9

Description: Grey, polled

Weight at 11/8/20: 364 kg

Sire: Coodardie All Bull (Grey, Dehorn)

Dam: Coodardie 1170 (Red, Poll)

| Semen Test | | Classic Rating (Individual Traits) | | | | (Averaged Traits) | | | Temp. |
|-------------------|------------|------------------------------------|--------------|---------------|------------|-------------------|------|----------------|-------|
| 27cm SC 12cm L | Morphology | Tenderness | Palatability | Milk Quantity | Butter Fat | Fertility | Meat | Linear Measure | |
| | | | | | | | | | |
| 697 | 72 | 3.5 | 3 | 2.5 | 3 | 2.75 | 3 | 2.43 | 2 |

Mother’s Story — her calving history

2020 2019 2018 2017 2016 2015 2014 2013 2012

| | | | | | | | | |
|---------|-----------|-----|---------|-----|---------|-------|-------|-------|
| #0 calf | This bull | dry | #7 calf | dry | #5 calf | 2yHfr | 1yHfr | Birth |
|---------|-----------|-----|---------|-----|---------|-------|-------|-------|

Comments:

Pinpoint is an upstanding and long young polled bull whose mother is now finding her rebreed rhythm.

Buyer:

Price \$



Lot 40

“Coodardie Mikhail”

Pen P



DOB: 10/15/2018 22 months

Herd ID: 1343/9

Description: Grey, Dehorned

Weight at 11/8/20: 361kg

Sire: Coodardie All Bull (Grey, Dehorn)

Dam: Coodardie 484 (Grey, Horn)

| Semen Test | | Classic Rating (Individual Traits) | | | | (Averaged Traits) | | | Temp. |
|-------------------|------------|------------------------------------|--------------|---------------|------------|-------------------|------|----------------|-------|
| 32cm SC 14cm L | Morphology | Tenderness | Palatability | Milk Quantity | Butter Fat | Fertility | Meat | Linear Measure | |
| | | | | | | | | | |
| 1141 | 98 | 4 | 2 | 3.5 | 3.5 | 2.88 | 3.13 | 2.57 | 2 |

Mother’s Story — her calving history

2020 2019 2018 2017 2016 2015 2014 2013 2012 2011

| | | | | | | | | | |
|-----|-----------|---------|-----|---------|-----|---------|-------|-------|-------|
| dry | This bull | #8 calf | dry | #6 calf | dry | #4 calf | 2yHfr | 1yHfr | Birth |
|-----|-----------|---------|-----|---------|-----|---------|-------|-------|-------|

Comments:

Mikhail is an early maturing bull with excellent scrotal and semen for his age combined with good meat and fertility traits.

Buyer:

Price \$



Lot 41

“Coodardie Morrow”

Pen P



DOB: 10/4/2018 22 months

Herd ID: 1364/9

Description: Grey, Dehorned

Weight at 11/8/20: 323kg

Sire: Coodardie Sire

Dam: Coodardie 713 (Grey, Poll)

| Semen Test | | Classic Rating (Individual Traits) | | | | (Averaged Traits) | | | Temp. |
|-------------------|------------|------------------------------------|--------------|---------------|------------|-------------------|------|----------------|-------|
| 26cm SC 12cm L | Morphology | Tenderness | Palatability | Milk Quantity | Butter Fat | Fertility | Meat | Linear Measure | |
| | | | | | | | | | |
| 646 | 70 | 4 | 2.5 | 3 | 2 | 3 | 3.25 | 2.71 | 2 |

Mother’s Story — her calving history

2020 2019 2018 2017 2016 2015 2014 2013

| | | | | | | | |
|-----|-----------|-----|---------|-----|-------|-------|-------|
| dry | This bull | dry | #7 calf | dry | 2yHfr | 1yHfr | Birth |
|-----|-----------|-----|---------|-----|-------|-------|-------|

Comments:

Morrow is an even coloured grey bull and a handy all-rounder.

Buyer:

Price \$



Lot 42

“Coodardie Zeus”

Pen Q



DOB: 10/3/2018 22 months

Herd ID: 1333/9

Description: Grey Gyr, Dehorned

Weight at 11/8/20: 361 kg

Sire: Coodardie All Bull (Grey, Dehorn)

Dam: Coodardie 570 (Grey, Dehorn)

| Semen Test | | Classic Rating (Individual Traits) | | | | (Averaged Traits) | | | Temp. |
|-------------------|------------|------------------------------------|--------------|---------------|------------|-------------------|------|----------------|-------|
| 27cm SC 12cm L | Morphology | Tenderness | Palatability | Milk Quantity | Butter Fat | Fertility | Meat | Linear Measure | |
| | | | | | | | | | |
| 697 | 85 | 3 | 3 | 3 | 2.5 | 2.88 | 2.94 | 3 | 2 |

Mother’s Story — her calving history

2020 2019 2018 2017 2016 2015 2014 2013 2012

| | | | | | | | | |
|-----|-----------|-----|---------|-----|---------|-------|-------|-------|
| dry | This bull | dry | #7 calf | dry | #5 calf | 2yHfr | 1yHfr | BIRTH |
|-----|-----------|-----|---------|-----|---------|-------|-------|-------|

Comments:

Big and bold with a masculine head, Zeus stands out for all the right reasons.

Buyer:

Price \$



Lot 43

“Coodardie Benjamin”

Pen Q



DOB: 11/14/2018 21 months

Herd ID: 1338/9

Description: Grey Gyr, Dehorned

Weight at 11/8/20: 343kg

Sire: Coodardie All Bull (Grey, Dehorn)

Dam: Coodardie Benita 643 (Grey, Horn)

| Semen Test | | Classic Rating (Individual Traits) | | | | (Averaged Traits) | | | Temp. |
|-------------------|------------|------------------------------------|--------------|---------------|------------|-------------------|------|----------------|-------|
| 25cm SC 12cm L | Morphology | Tenderness | Palatability | Milk Quantity | Butter Fat | Fertility | Meat | Linear Measure | |
| | | | | | | | | | |
| 597 | 90 | 3 | 2 | 3.5 | 3 | 2.63 | 2.94 | 2.57 | 3 |

Mother’s Story — her calving history

2020 2019 2018 2017 2016 2015 2014 2013

| | | | | | | | |
|-----|-----------|---------|---------|-----|-------|-------|-------|
| dry | This bull | #8 calf | #7 calf | dry | 2yHfr | 1yHfr | Birth |
|-----|-----------|---------|---------|-----|-------|-------|-------|

Comments:

Benjamin is a handy young bull with good rebreed from his mother and semen morphology.

Buyer:

Price \$



Lot 44

“Coodardie G’pa”

Pen Q



DOB: 11/9/2018 21 months

Herd ID: 1342/9

Description: Grey Gyr, Dehorned

Weight at 11/8/20: 380 kg

Sire: Coodardie Count Down 765/4 (Grey, Poll)

Dam: Coodardie Milkwood 306 (Grey, Dehorn)

| Semen Test | | Classic Rating (Individual Traits) | | | | (Averaged Traits) | | | Temp. |
|-------------------|------------|------------------------------------|--------------|---------------|------------|-------------------|------|----------------|-------|
| 27cm SC 13cm L | Morphology | Tenderness | Palatability | Milk Quantity | Butter Fat | Fertility | Meat | Linear Measure | |
| | | | | | | | | | |
| 755 | 70% | 3 | 2.5 | 3 | 3 | 2.88 | 2.69 | 2.71 | 2 |

Mother’s Story — her calving history

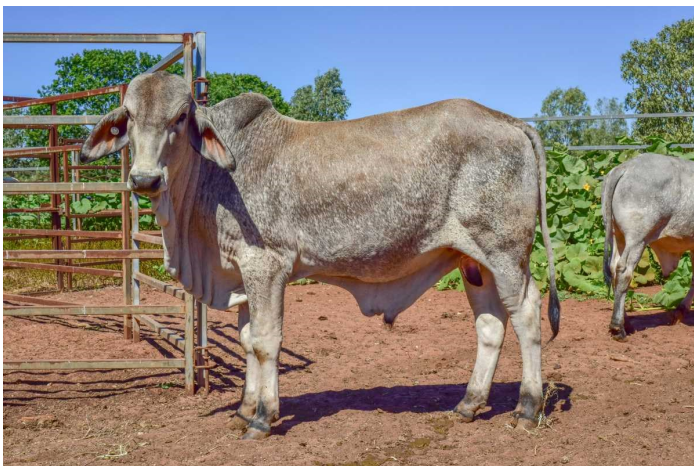
2020 2019 2018 2017 2016 2015 2014 2013 2012 2011 2010 2009

| | | | | | | | | | | | |
|-----|-----------|---------|---------|-----|---------|---------|-----|---------|-------|-------|-------|
| dry | This bull | #8 calf | #7 calf | dry | #5 calf | #4 calf | dry | #2 calf | 2yHfr | 1yHfr | Birth |
|-----|-----------|---------|---------|-----|---------|---------|-----|---------|-------|-------|-------|

Comments:

G’pa is a personal favourite - he is a smooth and stylish, well-mannered gentleman - like G’pa O'Brien. His colouration and domed head, shows Gyr (pure Zebu) back in his lineage. His dam, a small bodied, low maintenance cow has weaned 6 calves in the last 9 seasons.

Buyer: Price \$



Lot 45.a

“Coodardie Invictus”

Pen R



DOB: 12/1/2018 20 months

Herd ID: 1372/9

Description: Grey, Horned

Weight at 11/8/20: 358 kg

Sire: Coodardie All Bull* (Grey, Dehorn)

Dam: Coodardie 225 (Grey, Dehorn)

CHANGED LOT #. Was LOT 57

| Semen Test | | Classic Rating (Individual Traits) | | | | (Averaged Traits) | | | Temp. |
|-------------------|------------|------------------------------------|--------------|---------------|------------|-------------------|------|----------------|-------|
| 28cm SC 13cm L | Morphology | Tenderness | Palatability | Milk Quantity | Butter Fat | Fertility | Meat | Linear Measure | |
| | | | | | | | | | |
| 811 | 65 | 3 | 2 | 3 | 3 | 2.25 | 2.63 | 2.57 | 1 |

Mother’s Story — her calving history

| | | | | | | | | | | | | |
|------|-----------|---------|------|---------|------|------|------|---------|------|-------|-------|-------|
| 2020 | 2019 | 2018 | 2017 | 2016 | 2015 | 2014 | 2013 | 2012 | 2011 | 2010 | 2009 | 2008 |
| Sold | This bull | #8 calf | dry | #6 calf | dry | dry | ? | #2 calf | dry | 2yHfr | 1yHfr | Birth |

Comments:

Invictus is a magnificent natured, strong young sire with wonderful body form and strong old Brahman style.

Buyer:

Price \$



Lot 46

“Coodardie Quinerius”

Pen R



DOB: 10/24/2018 21 months

Herd ID: 1346/9

Description: Grey, polled

Weight at 11/8/20: 346 kg

Sire: Coodardie Count Down 765/4 (Grey, Poll)

Dam: Coodardie Quiet Miss 512 (Grey, Horn)

| Semen Test | | Classic Rating (Individual Traits) | | | | (Averaged Traits) | | | Temp. |
|-------------------|------------|------------------------------------|--------------|---------------|------------|-------------------|------|----------------|-------|
| 26cm SC 12cm L | Morphology | Tenderness | Palatability | Milk Quantity | Butter Fat | Fertility | Meat | Linear Measure | |
| | | | | | | | | | |
| 646 | 80 | 3 | 2.5 | 3 | 3 | 2.25 | 2.69 | 2.14 | 2 |

Mother’s Story — her calving history

2020 2019 2018 2017 2016 2015 2014 2013 2012 2011

| | | | | | | | | | |
|---------|-----------|-----|---------|-----|---------|-----|-------|-------|-------|
| #0 calf | This bull | dry | #7 calf | dry | #5 calf | dry | 2yHfr | 1yHfr | BIRTH |
|---------|-----------|-----|---------|-----|---------|-----|-------|-------|-------|

Comments:

This is a bull that has always grabbed my attention. His mother, Quiet Miss, is now finding our groove with her third pregnancy in a row.

Buyer:

Price \$





DOB: 11/14/2018 **21 months**

Herd ID: P13/9

Description: Grey, polled

Weight at 11/8/20: 309 kg

Sire: Coodardie Sire

Dam: Coodardie PTZ Plover 02 (Grey, Poll)

| Semen Test | | Classic Rating (Individual Traits) | | | | (Averaged Traits) | | | Temp. |
|-------------------|------------|------------------------------------|--------------|---------------|------------|-------------------|------|----------------|-------|
| 24cm SC 10cm L | Morphology | Tenderness | Palatability | Milk Quantity | Butter Fat | Fertility | Meat | Linear Measure | Temp. |
| | | | | | | | | | |
| 459 | 70 | 3.5 | 2.5 | 2.5 | 3.5 | 3.0 | 3.06 | 2.86 | 2 |

Mother's Story — her calving history

2020 2019 2018 2017 2016

| | | | | |
|-----|-----------|-------|-------|-------|
| dry | This bull | 2yHfr | 1yHfr | Birth |
|-----|-----------|-------|-------|-------|

Comments:

Owned by Patrick O'Brien, Paddington has been bred and managed under identical conditions to all the Coodardie animals. He is a promising young polled bull.

Buyer:

Price \$



Lot 48

“Coodardie Eli”

Pen S



DOB: 11/20/2018 20 months

Herd ID: 1360/9

Description: Grey Gyr, polled

Weight at 11/8/20: 336 kg

Sire: Coodardie Count Down 765/4 (Grey, Poll)

Dam: Coodardie Qantas 180 (Grey, Horn)

| Semen Test | | Classic Rating (Individual Traits) | | | | (Averaged Traits) | | | Temp. |
|-------------------|------------|------------------------------------|--------------|---------------|------------|-------------------|------|----------------|-------|
| 27cm SC 11cm L | Morphology | Tenderness | Palatability | Milk Quantity | Butter Fat | Fertility | Meat | Linear Measure | Temp. |
| | | | | | | | | | |
| 638 | 88 | 3.5 | 3 | 3.5 | 3.5 | 2.75 | 2.94 | 2.86 | 2 |

Mother’s Story — her calving history

| | | | | | | | | | | | |
|------|-----------|------|---------|------|---------|------|---------|------|-------|-------|-------|
| 2020 | 2019 | 2018 | 2017 | 2016 | 2015 | 2014 | 2013 | 2012 | 2011 | 2010 | 2009 |
| dry | This bull | dry | #7 calf | dry | #5 calf | dry | #3 calf | dry | 2yHfr | 1yHfr | Birth |

Comments:

A beautifully pigmented and tidy poll with a magnificent hind quarter.

Buyer:

Price \$



Lot 49

“Coodardie Tennant”

Pen S



DOB: 11/19/2018 21 months






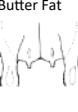




Herd ID: 1365/9

Description: Grey Gyr, polled

Weight at 11/8/20: 357kg

Sire: Coodardie Count Down 765/4 (Grey, Scur)

Dam: Coodardie 629 (Grey, Poll)

| Semen Test | | Classic Rating (Individual Traits) | | | | (Averaged Traits) | | | Temp. |
|--|---|---|---|--|---|--|---|---|---|
| 26cm SC 11cm L  | Morphology  | Tenderness  | Palatability  | Milk Quantity  | Butter Fat  | Fertility  | Meat  | Linear Measure  |  |
| 592 | 65 | 3.5 | 3 | 3 | 3.5 | 2.63 | 3 | 3.29 | 1.5 |

Mother’s Story — her calving history

2020 2019 2018 2017 2016 2015 2014 2013 2012

| | | | | | | | | |
|-----|-----------|---------|-----|---------|-----|-------|-------|-------|
| dry | This bull | #8 calf | dry | #6 calf | dry | 2yHfr | 1yHfr | Birth |
|-----|-----------|---------|-----|---------|-----|-------|-------|-------|

Comments: This is a bull with personality and quality. He is a clean poll out of polled sire and dam, great pigmentation and style.

Buyer:

Price \$



Lot 50

“Coodardie Tradition”

Pen S



DOB: 9/26/2018 22 months

Herd ID: 1339/9

Description: Grey, Dehorned

Weight at 11/8/20: 323 kg

Sire: Coodardie All Bull (Grey, Dehorn)

Dam: Coodardie 696 (Grey, Dehorn)

| Semen Test | | Classic Rating (Individual Traits) | | | | (Averaged Traits) | | | Temp. |
|-------------------|------------|------------------------------------|--------------|---------------|------------|-------------------|------|----------------|-------|
| 27cm SC 13cm L | Morphology | Tenderness | Palatability | Milk Quantity | Butter Fat | Fertility | Meat | Linear Measure | |
| | | | | | | | | | |
| 755 | 78 | 4 | 2.5 | 3 | 3 | 3 | 2.75 | 3 | 2 |

Mother’s Story — her calving history

2020 2019 2018 2017 2016 2015 2014 2013

| | | | | | | | |
|---------|-----------|---------|-----|---------|-------|-------|-------|
| #0 calf | This bull | #8 calf | dry | #6 calf | 2yHfr | 1yHfr | Birth |
|---------|-----------|---------|-----|---------|-------|-------|-------|

Comments:

An old-style Brahman with strong masculine head and hooded eye. His young mother has produced 4 calves in 5 years. His father, All Bull, is one of our most fertile and prepotent Sires.

Buyer:

Price \$



Lot 51

“Coodardie Luke”

Pen T



DOB: 10/4/2018 22 months

Herd ID: 1374/9

Description: White, Dehorned

Weight at 11/8/20: 321 kg

Sire: Coodardie Sire

Dam: Coodardie Nelly 1131 (White, Dehorned)

| Semen Test | | Classic Rating (Individual Traits) | | | | (Averaged Traits) | | | Temp. |
|-------------------|------------|------------------------------------|--------------|---------------|------------|-------------------|------|----------------|-------|
| 26cm SC 12cm L | Morphology | Tenderness | Palatability | Milk Quantity | Butter Fat | Fertility | Meat | Linear Measure | |
| | | | | | | | | | |
| 646 | 72 | 3 | 2.5 | 1 | 2.5 | 2.5 | 2.81 | 2.57 | 2 |

Mother’s Story — her calving history

2020 2019 2018 2017 2016 2015 2014 2013 2012

| | | | | | | | | |
|---------|-----------|---------|---------|---------|-----|---------|-------|-------|
| #0 calf | This bull | #8 calf | #7 calf | #6 calf | dry | #4 calf | 1yHfr | Birth |
|---------|-----------|---------|---------|---------|-----|---------|-------|-------|

Comments:

We describe Luke's mother as "fast but fertile" - again of Nellore origin. She has had 6 calves in 7 years. At weaning her calves are lighter weight but she is usually back in calf.

Buyer:

Price \$



Lot 52

“Coodardie Orwell”

Pen T



DOB: 12/12/2018 20 months

Herd ID: 1349/9

Description: White, Dehorned

Weight at 11/8/20: 333 kg

Sire: Coodardie Big Brother (White, Dehorn)

Dam: Coodardie Mary 626 (White, Horn)

| Semen Test | | Classic Rating (Individual Traits) | | | | (Averaged Traits) | | | Temp. |
|-------------------|------------|------------------------------------|--------------|---------------|------------|-------------------|------|----------------|-------|
| 27cm SC 12cm L | Morphology | Tenderness | Palatability | Milk Quantity | Butter Fat | Fertility | Meat | Linear Measure | |
| | | | | | | | | | |
| 697 | 68 | 2.5 | 2.5 | 2 | 2 | 2.63 | 2.75 | 3.14 | 2 |

Mother’s Story — her calving history

2020 2019 2018 2017 2016 2015 2014 2013 2012

| | | | | | | | | |
|-----|-----------|---------|-----|---------|-----|-------|-------|-------|
| dry | This bull | #8 calf | dry | #6 calf | dry | 2yHfr | 1yHfr | Birth |
|-----|-----------|---------|-----|---------|-----|-------|-------|-------|

Comments:

Orwell is a friendly young bull with good fertility history on both Dam and Sire lines and much potential. His older brother, Maritimus was successfully shown last year and the top price bull at our 2019 sale.

Buyer:

Price \$



Lot 53

“Coodardie Tony”

Pen T



DOB: 12/5/2018 20 months

Herd ID: 1375/9

Description: Grey, Dehorned

Weight at 11/8/20: 298kg

Sire: Coodardie Sire

Dam: Coodardie Alice 116 (Red, Dehorned)

| Semen Test | | Classic Rating (Individual Traits) | | | | (Averaged Traits) | | | Temp. |
|-------------------|------------|------------------------------------|--------------|---------------|------------|-------------------|------|----------------|-------|
| 25cm SC 10cm L | Morphology | Tenderness | Palatability | Milk Quantity | Butter Fat | Fertility | Meat | Linear Measure | Temp. |
| | | | | | | | | | |
| 498 | 70 | 3.5 | 2.5 | 2 | 2.5 | 2.88 | 2.88 | 3.14 | 2.5 |

Mother’s Story — her calving history

2020 2019 2018 2017 2016 2015 2014 2013 2012 2011 2010 2009

| | | | | | | | | | | | |
|-----|-----------|---------|-----|---------|---------|-----|---------|-----|-------|-------|-------|
| dry | This bull | #8 calf | dry | #6 calf | #5 calf | dry | #3 calf | dry | 2yHfr | 1yHfr | Birth |
|-----|-----------|---------|-----|---------|---------|-----|---------|-----|-------|-------|-------|

Comments:

A tidy young bull with plenty to look forward to. His mother is a deep flanked cow with huge capacity who has weaned 5 calves in the last 8 years.

Buyer:

Price \$



Lot 54

“Coodardie Boy Blue”

Pen U



DOB: 11/12/2018 21 months

Herd ID: 1331/9

Description: Grey, polled

Weight at 11/8/20: 307 kg

Sire: Coodardie Count Down 765/4 (Grey, Poll)

Dam: Coodardie 482 (Grey, Horn)

| Semen Test | | Classic Rating (Individual Traits) | | | | (Averaged Traits) | | | Temp. |
|-------------------|------------|------------------------------------|--------------|---------------|------------|-------------------|------|----------------|-------|
| 26cm SC 12cm L | Morphology | Tenderness | Palatability | Milk Quantity | Butter Fat | Fertility | Meat | Linear Measure | |
| | | | | | | | | | |
| 646 | 72 | 3.5 | 2.5 | 3 | 3 | 3 | 2.83 | 2.57 | 2 |

Mother’s Story — her calving history

2020 2019 2018 2017 2016 2015 2014 2013 2012 2011 2010

| | | | | | | | | | | |
|-----|-----------|---------|-----|---------|-----|-----|---------|-------|-------|-------|
| dry | This bull | #8 calf | dry | #6 calf | dry | dry | #3 calf | 2yHfr | 1yHfr | BIRTH |
|-----|-----------|---------|-----|---------|-----|-----|---------|-------|-------|-------|

Comments:

Boy Blue is a friendly and handy, deep bodied young polled bull.

Buyer:

Price \$



Lot 55

“Coodardie Oreo”

Pen U



DOB: 11/26/2018 20 months

Herd ID: 1336/9

Description: dark Grey, Dehorned

Weight at 11/8/20: 293 kg

Sire: Coodardie All Bull (Grey, Dehorn)

Dam: Coodardie She-Ore 171 (Grey, Dehorn)

| Semen Test | | Classic Rating (Individual Traits) | | | | (Averaged Traits) | | | Temp. |
|-------------------|------------|------------------------------------|--------------|---------------|------------|-------------------|------|----------------|-------|
| 28cm SC 12cm L | Morphology | Tenderness | Palatability | Milk Quantity | Butter Fat | Fertility | Meat | Linear Measure | |
| | | | | | | | | | |
| 749 | 70 | 4 | 3 | 3.5 | 3 | 2.7 | 2.58 | 3 | 2.5 |

Mother’s Story — her calving history

2020 2019 2018 2017 2016 2015 2014 2013 2012 2011 2010 2009 2008

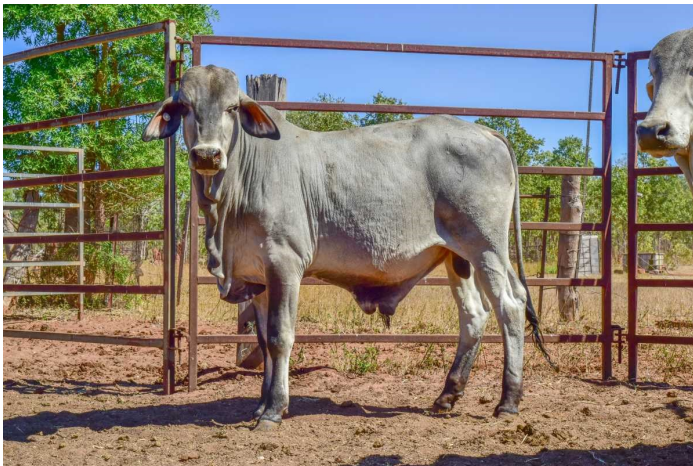
| | | | | | | | | | | | | |
|------|-----------|---------|-----|---------|-----|---------|-----|---------|-----|-------|-------|-------|
| Sold | This bull | #8 calf | dry | #6 calf | dry | #4 calf | dry | #2 calf | dry | 2yHfr | 1yHfr | Birth |
|------|-----------|---------|-----|---------|-----|---------|-----|---------|-----|-------|-------|-------|

Comments:

Full brother to He-Ore (Lot 4), Oreo is a good pigmented young bull showing consistency of breeding and true to type.

Buyer:

Price \$



Lot 56

“Coodardie Frodo”

Pen U



DOB: 12/13/2018 20 months

Herd ID: 1357/9

Description: Grey, polled

Weight at 11/8/20: 306kg

Sire: Coodardie Count Down 765/4 (Grey, Poll)

Dam: Coodardie 620 (Grey, Poll)

| Semen Test | | Classic Rating (Individual Traits) | | | | (Averaged Traits) | | | Temp. |
|-------------------|------------|------------------------------------|--------------|---------------|------------|-------------------|------|----------------|-------|
| 25cm SC 12cm L | Morphology | Tenderness | Palatability | Milk Quantity | Butter Fat | Fertility | Meat | Linear Measure | |
| | | | | | | | | | |
| 597 | 72 | 3 | 2 | 2.5 | 3.5 | 2.8 | 2.58 | 3.14 | 2 |

Mother’s Story — her calving history

2020 2019 2018 2017 2016 2015 2014 2013 2012

| | | | | | | | | |
|-----|-----------|---------|-----|---------|-----|-------|-------|-------|
| dry | This bull | #8 calf | dry | #6 calf | dry | 2yHfr | 1yHfr | Birth |
|-----|-----------|---------|-----|---------|-----|-------|-------|-------|

Comments:

Frodo is a clean headed poll with both parents also being polled. He is already demonstrating good muscling and meat characteristics.

Buyer:

Price \$



Lot 57.a

“Coodardie John Snow”

Pen LED



DOB: 26/02/2018 29 months

Herd ID: 1276/8

Description: Grey, polled (PP)

Weight at 11/8/20: 433 kg

NEW LISTING

Sire: Coodardie Long John (Grey, Scur)

Dam: Coodardie 1139 (Light Red, Poll)

| Semen Test | | Classic Rating (Individual Traits) | | | | (Averaged Traits) | | | Temp. |
|-------------------|------------|------------------------------------|--------------|---------------|------------|-------------------|------|----------------|-------|
| 26cm SC 12cm L | Morphology | Tenderness | Palatability | Milk Quantity | Butter Fat | Fertility | Meat | Linear Measure | |
| | | | | | | | | | |
| 628 | 73 | 3 | 2 | 2.5 | 3.5 | 2.75 | 2.94 | 3.29 | 2 |

Mother’s Story — her calving history

| 2020 | 2019 | 2018 | 2017 | 2016 | 2015 | 2014 | 2013 | 2012 | 2011 | 2010 | 2009 |
|------|-----------|------|---------|------|---------|---------|------|---------|-------|-------|-------|
| dry | This bull | dry | #7 calf | dry | #5 calf | #4 calf | dry | #2 calf | 2yHfr | 1yHfr | Birth |

Comments:

John Snow is a homozygous poll. This means all his progeny should be polled/scur. Combined in an impressive form John Snow is an exciting addition. ABBA Registered and successfully exhibited on the 2019 Show Circuit.

Buyer:

Price \$



Lot 58

“Coodardie Stoic”

Pen LED



DOB: 11/1/2018 21 months

Herd ID: 1282/9

Description: dark Grey, polled

Weight at 11/8/20: 377 kg

Sire: Coodardie All Bull (Grey, Dehorn)

Dam: Coodardie 169 (Grey, Poll)

| Semen Test | | Classic Rating (Individual Traits) | | | | (Averaged Traits) | | | Temp. |
|-------------------|------------|------------------------------------|--------------|---------------|------------|-------------------|------|----------------|-------|
| 31cm SC 14cm L | Morphology | Tenderness | Palatability | Milk Quantity | Butter Fat | Fertility | Meat | Linear Measure | |
| | | | | | | | | | |
| 1071 | 92 | 3 | 2 | 2.5 | 3.5 | 2.38 | 2.56 | 2.43 | 1 |

Mother’s Story — her calving history

| 2020 | 2019 | 2018 | 2017 | 2016 | 2015 | 2014 | 2013 | 2012 | 2011 | 2010 | 2009 |
|------|-----------|------|---------|------|---------|---------|------|---------|-------|-------|-------|
| dry | This bull | dry | #7 calf | dry | #5 calf | #4 calf | dry | #2 calf | 2yHfr | 1yHfr | Birth |

Comments:

Stoic is a magnificent natured, strongly pigmented young poll sire with plenty of muscle. His scrotal and semen reports are above average. This is a potential sire of note with possibly the best kept for last. ABBA Registered and successfully exhibited on the 2019 Show Circuit.

Buyer:

Price \$





— [JDH VALENTINE DE MANSO 606/5](#)

— [DUKE DE MANSO](#)

— [JDH QUEEN DE MANSO 33/5](#)

— **Sire:** [WANDARRI DUKE DE MANSO 3171 \(AI\)_\(H\)](#)

— [WANDARRI VALHALLA \(H\)](#)

— [WANDARRI MISS 2066/22 \(H\)](#)

— [WANDARRI ANGELLA \(H\)](#)

Animal: [COODARDIE ALL BULL](#)

— [CHEROKEE LA BULL MAN \(H\)](#)

— [BALARA TALL TEXAN \(H\)](#)

— [BALARA DAMSEL 5TH \(H\)](#)

— **Dam:** [COODARDIE MISS CARMOR \(H\)](#)

— [CHEROKEE GI LITTLE MO 4/82 \(H\)](#)

— [CHEROKEE MIW MISS 7/7275 \(H\)](#)

— [CHEROKEE ORANGE BLOSSOM X7/1615 \(PS\)](#)



- [CHEROKEE GI SLOW DACOMA 7/386 \(H\)](#)
- [COODARDIE SLOWPOKE \(H\)](#)
- [CHEROKEE MI MISS 7/6839 \(H\)](#)
- **Sire:** [COODARDIE KAMAHL \(H\)](#)
- [COODARDIE AUSSIE GOLD \(H\)](#)
- [COODARDIE GOLD-DEE \(H\)](#)
- [SEASIDE SINDEE \(H\)](#)

Animal: [COODARDIE BEES KNEES \(PS\)](#)

- [CHEROKEE W TOTEM-MAN 6/6619 \(PS\)](#)
- [COODARDIE POLAR BEAR \(PS\)](#)
- [COODARDIE CONDAI QUEEN \(H\)](#)
- **Dam:** [COODARDIE FLYING BEAR \(PS\)](#)
- [WANDARRI DUKE DE MANSO 3101 \(AI\) \(H\)](#)
- [COODARDIE MISS FLYING-U \(H\)](#)
- [CHEROKEE MIW MISS 6/6856 \(H\)](#)



STUD STOCK AUCTION TERMS AND CONDITIONS OF SALE

IMPORTANT NOTICE

All bids shall be treated as offers made upon the following Terms and Conditions of Sale and all persons present are admitted to attend the sale on the basis that they have notice of these Terms and Conditions.

The highest bidder shall, subject to Condition 2, be the Purchaser provided that the Vendor reserves the right to bid either by himself or through his Agent or Auctioneer and should any dispute arise among the bidders for any lot, during or immediately after the sale of the lot, it shall be settled at the Auctioneers absolute discretion who may, should one of the disputants advance, put the lot or lots up again. The bidding from time to time shall be regulated by the Auctioneer and no bid shall be retracted.

The sale will be conducted on a "Sale" or "No Sale" basis whereby the lot for sale shall be knocked down to the highest bidder, but the sale will be subject to the acceptance of the highest bid by the Vendor who will immediately after the fall of the hammer declare "Sale" or "No Sale". Should the Vendor reject the bid of the highest bidder such bidder will have the right of first refusal of the lot at the Vendor's nominated price for one hour after the lot has been passed out of the ring on the Terms and Conditions herein set forth in so far as they shall apply.

The details of the Purchaser, the purchase price and the lot sold as recorded by the sale clerk for and on behalf of the Auctioneer shall be equally binding on both Purchaser and Vendor.

The Auctioneer expressly reserves the right, without giving any reasons therefore, to:

Refuse to acknowledge any bid;

Withdraw any lot or lots before or during the sale;

Exclude any person from the auction venue should it think fit.

Each lot in all cases shall be at the risk and expense of the Purchaser upon acceptance of his bid by the Vendor or upon acceptance of the highest bidder's offer by the Vendor whichever shall be the earlier.

Except as expressly provided in these Terms and Conditions of Sale no guarantee or warranty shall be given in respect of any lot sold under these Conditions as to pedigree, sex, age, breeding condition or otherwise howsoever, and no guarantee, warranty or condition whatsoever shall be implied from any affirmation made before or at the time of the sale, or from any circumstances of the sale, but in all cases where a guarantee is intended the same shall attach and be enforceable only if reduced to writing before delivery of the lot and signed by the Vendor or by the Auctioneer acting as agent for the Vendor, and the absence of such writing shall be conclusive evidence in case of dispute that no guarantee, warranty or condition whatsoever was given or implied.

In the event of any dispute in respect to the sale of any lot:

(i) The Purchaser shall nevertheless be obliged to pay to the Auctioneer the full purchase price and any other monies or interest payable by the Purchaser in accordance with these terms and conditions;

(ii) The Vendor and the Purchaser shall resolve the dispute between themselves;

(iii) The Auctioneer shall have no liability or responsibility in regard to the dispute; and

(iv) No lot shall be returned to the Auctioneer and the Purchaser shall indemnify the Auctioneer for all costs, expenses and damages which the Auctioneer is put to or incurs by reason of the Purchaser so doing.

The name of the Vendor for whom the Auctioneer acts is acknowledged to have been furnished to Purchasers prior to the sale and further particulars will in all cases be furnished to a Purchaser if required. In the case of any disputes the remedy of the Purchaser shall be against the Vendor only and in no case or under any circumstances against the Auctioneer who is to be regarded for all intents and purposes as agent for a disclosed principal.

(a) **PAYMENT** — Unless prior credit arrangements have been made in writing with the Auctioneer the full purchase price for each lot shall be due and payable to the Auctioneer in cash upon acceptance of the highest bid or the highest bidder's offer by the Vendor and prior to delivery. Notwithstanding that delivery is given to or possession obtained by the purchaser or his representative prior to the payment of the purchase money in full the property in any lot which is sold shall not pass to the Purchaser until the full purchase price and all cheques, promissory notes, bills of exchange, acceptance orders or drafts given in connection with such payment have been paid and liquidated, and until property shall pass, the Purchaser shall hold such lot as bailee, provided that in all cases should such payment not have been made and liquidated within 14 days of the date of the sale the Auctioneer reserves the right to:—

(i) Rescind the contract on behalf of the Vendor and repossess and resell any lot;

(ii) Recover from the Purchaser interest upon the purchase price at a rate per annum which aggregates the AMBA Bill Rate plus two percentum. For the purposes of this condition, the expression "the AMBA Bill Rate" is the rate published by the Australian Merchant Bankers Association in good faith as at the date of the sale as its bill rate for 180 day bills of exchange expressed as a percentage per annum. If at any time the AMBA Bill Rate becomes

unavailable for any reason, the Auctioneer shall determine and advise the Purchaser of the interest rate to apply for the purposes of this condition.

(b) The Auctioneer is selling as the del credere agent of the Vendor and the full purchase price of any lot sold shall be payable by the Purchaser to the Auctioneer and be fully recoverable by the Auctioneer in its own name.

If the Purchaser shall neglect or fail to comply with any of the within conditions, any lot purchased by him may be immediately resold by public auction or private contract, with or without notice, at the risk of the former Purchaser, who will be held responsible for all loss and expenses arising out of such resale, and shall not participate in any profit accruing therefrom.

Any Vendor or Purchaser removing the sale number from any lot after it has been sold will fully indemnify all affected parties for any loss, costs or damage should the lot be wrongly delivered.

The Purchasers, if any more than one, shall be jointly and severally bound by these Terms and Conditions, and shall jointly and severally carry out and perform same.

Any person who advances a bid on a lot shall do so on the expressed condition and understanding that should that person's bid be the highest bid and such bid is accepted by the Vendor, then that person will be held personally liable for the price so agreed upon, regardless of the fact that that person may be acting on behalf of another party, either disclosed or undisclosed to the Vendor or Auctioneer, provided however, that this Condition shall not in any way negate the Vendor's right to claim against any principal and in such case the bidder's liability shall be construed to be by way of guarantee.

The Auctioneer may, should it think fit, make arrangements on a Purchaser's behalf for the feeding, watering, trucking, shipping of and general attendance to any lot after sale but no responsibility will be accepted by the Auctioneer and all such service will be at the Purchaser's risk and expense.

No lot will be delivered until the sales invoice has been checked and signed by the Purchaser or his duly authorised representative.

(a) Each lot in all cases shall be sold with all faults, if any, and excepting those conditions and warranties implied by the Trade Practices Act or any applicable State legislation which cannot be contractually excluded and excepting conditions and warranties expressly contained in these Terms and Conditions of Sale, any express or implied condition, statement of warranty, statutory or otherwise, is hereby excluded. The Auctioneer is not liable in respect of any error, misdescription or omission in any particulars appearing or stated regarding the description of pedigrees of any lot offered for sale and no such error, misdescription of omission shall entitle the Purchaser to annul the sale or reject the lot or claim any compensation, damage or abatement in price.

(b) Each lot will be sold subject to passing all veterinary tests required by the law of the state or country to which the Purchaser intends to transport that particular lot, such tests to be undertaken at the Purchaser's expense and concluded immediately following the sale. In the event of a lot failing to pass these tests, the sale shall be null and void, any purchase moneys paid by the Purchaser shall be refunded and property in the lot shall revert to or remain with the Vendor.

GUARANTEES OF FERTILITY:—

17.1 BULLS - Save and except for calves at foot, all bulls are guaranteed breeders and to so prove by the later of: six months after the date of sale or the animal reaching the age of 24 months

17.2 FEMALES - Save and except for female calves at foot, all females are guaranteed to be in calf or go into calf by the later of:

6 months of the date of sale

the animal reaching the age of 30 months

A positive pregnancy test certified by a qualified veterinary surgeon shall be sufficient evidence that the animal is in calf.

17.3 Claims under Clauses 17(1) and 17(2). A claim that an animal has failed to satisfy a guarantee of fertility under Clause 17(1) or 17(2) must be made to the Vendor within the relevant guarantee period but prior to the animal entering a quarantine area other than on the Vendor's property.

All claims must be accompanied by a certificate from a registered veterinarian surgeon in accordance with the guidelines established by the Australian Association of Cattle Veterinarians which must clearly identify the basis of the claim.

Subject to Clause 17(9), infertility resulting from injury or disease occurring after the sale of the animal is not covered by this guarantee.

The Vendor retains the right to have the animal placed on a property nominated by him or returned to his own property for further assessment of fertility for a period not exceeding six months. If the animal proves fertile within the period such status must be confirmed by a certificate issued by a registered veterinary surgeon in accordance with the guideline established by the Australian

Association of Cattle Veterinarians and costs incurred must be borne by the Purchaser. If the animal is not proven fertile within the period, the costs incurred must be borne by the Vendor.

LIABILITY OF A VENDOR - Except for costs defined elsewhere in the conditions of sale, the liability of a Vendor in respect of claims relating to fertility shall not exceed the purchase price of the animal(s) or provide mutually agreed upon replacement animal(s).

REFUNDS - In the event of a claim being substantiated:

The purchase price shall be refunded within 14 days unless a mutually agreed upon replacement animal has been provided.

The animal/s which are the subject of the claim shall automatically become the property of the Vendor and be returned to him or disposed of according to his instruction at his expense.

Subject to Clause 17(9), this guarantee is of no effect if:

(a) The animal is returned to the Vendor.

(i) In poor physical condition or with any injury;

(ii) Tests carried out on behalf of the Vendor within fourteen days of such return proved positive to any diseases which may affect the animal's fertility or ability to breed naturally; or

(b) The Purchaser has collected and stored semen from a bull or

(c) The Purchaser attempted any form of embryo collection from a female.

In the event of a dispute as to whether a lot is a breeder, such dispute shall be resolved by the Vendor and the Purchaser. The Auctioneer, while he will use his best endeavours to assist, shall have no liability or responsibility in that regard. If an animal is alleged or proved not to be a breeder, the Purchaser must nevertheless pay the Auctioneer the full purchase price and any other monies or interest payable by the Purchaser in accordance with these Terms & Conditions.

(a) Each lot shall be at the risk of the Vendor in respect of any damage or injury, whether by disease, accident or otherwise, or whether caused by the negligence of the Auctioneer for the period that the lot be in the custody of the Auctioneer, unless such lots shall have been sold in which latter case such lot shall be at the risk of the Purchaser in all such respects.

(b) If any Vendor brings to the sale premises any lot which is dangerous, or infected with any disease, that Vendor shall be liable for all injury, damages, costs, losses or expenses which the Auctioneer may sustain, incur or be put to either directly or indirectly as a result of the Vendor so doing. The Auctioneer reserves the right, at its absolute discretion, to exclude from the sale, or put out of the sale venue or dispose of, any lot which in its opinion shows signs of any disease, whether infectious, contagious or not, or of any serious fault or of being dangerous.

DELIVERY — Except at the discretion of the Auctioneer no lot shall be delivered to the Purchaser unless payment of the purchase money together with any additional charges incurred including those expenses incurred by the Auctioneer pursuant to Condition 14 hereof, is first made by the Purchaser to the Auctioneer. Release of lots may be withheld by the Auctioneer until personal cheques are cleared.

In these Conditions:—

References to "Auctioneer" shall be taken to mean as the context so admits, the Selling Agent or any member, subsidiary or related corporation or body, officer, agent or employee thereof, authorised by the Vendor to conduct the sale of the lot;

"Purchaser" shall have the meaning ascribed to it in Condition 1;

"Vendor" shall mean the person or corporation upon whose account lots are offered for sale and where a stud or farm is named shall mean the proprietor of that stud or farm;

"Lot" shall be taken to mean the animal offered for sale and/or sold by the Auctioneer on behalf of a Vendor.

IMPORTANT NOTICE

The Selling Agent, its members, subsidiary or related corporations, officers, agents, and employees for themselves and for those for whom they act while exercising due care provide all information without responsibility and give no guarantee whatsoever as to its accuracy.

All persons who attend the Sale do so entirely at their risk and the Selling Agent, its members, subsidiary or related corporations, officers, agents, employees and its principals, for themselves and for those for whom they act, do not assume or accept any responsibility or liability of whatever nature for any injury or damage whatsoever which may occur.

The hammer price is exclusive of GST but GST will be applied to the final hammer price & included on the invoice

SALE SUMMARY

Coodardie Brahmans 2020 Bull Sale

| | Gross | Average | Top Price |
|-------------------------------|-------|---------|-----------|
| Coodardie Brahman Bulls | | | |
| Bulk Buyer | | | |

BUYERS INSTRUCTION SHEET

Please register and complete the Buyer's instruction sheet from the Agent's booth. Thank you.

Sale Catalogue Disclaimer: All reasonable care has been taken to ensure that the information provided in this catalogue is correct at time of publication. However, neither the vendor nor the selling agents make any other representations about the accuracy, reliability or completeness of any information provided in this catalogue and do not assume any responsibility for the use or interpretation of the information in this catalogue. You are encouraged to seek independent verification of any information contained in this catalogue before relying on such information.

Personal Safety: All efforts have been made to provide a safe and comfortable environment for you to participate in the Auction, however, you do so at your own risk. Please apply common sense, follow safety instructions and stay within designated areas.

COVID-19: Social distancing and personal hygiene applies. Hand sanitizers will be available. A contact register (sign in) may be required to attend on property. These rules could change at any time and we seek your patience, respect and adherence to current advice at all times.



Thank You



Thank you to the
NT GOVERNMENT
For the printing of this Sale
Catalogue and helping support
local businesses.