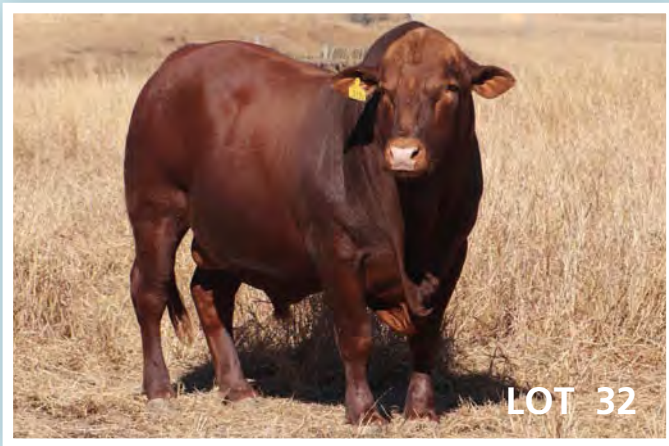


# Seifert BELMONT REDS

**2020 SALE 62 Bulls and 5 PTIC Heifers**

On property 30 July 'Wonga' Jandowae & AuctionsPlus  
Auction 11.30am – 12.30pm



- \* FREE cartage to Rockhampton, Roma and Dalby.
- \* Fully BREEDPLAN recorded \* DNA Poll/Horn tested \* DNA Sire Verified
- \* Semen Morphology and Motility \* JBAS 7 - WA Eligible

Inspections from 7.00am on the day and by appointment anytime

**Elders Agent: Robert Murray 0419 644 813**

**AuctionsPlus: Bob Jakins 0419 788 366**

**Ian Stark & Jeanne Seifert**

**'Wonga' 490 Jolimont Rd Jandowae QLD 4410**

Jeanne: 0427 632 113 • Ian: 0439 632 113  

[jeanne@seifertbelmontreds.com](mailto:jeanne@seifertbelmontreds.com) • [www.seifertbelmontreds.com](http://www.seifertbelmontreds.com)





# WITH YOU EVERY STEP OF THE WAY

## QLD

Michael Smith  
P. 0428 541711  
Blake Munro  
P. 0428 862469  
Andrew Meara  
P. 0427 210634

## QLD

Robert Murray  
P. 0419 644813  
Robert Jakins A+  
P. 0419 788366  
Lisa Hedges  
P. 0427 891367

## QLD

Ross Ruddell  
P. 0418 756521  
Elders Jandowae  
P. 07 4565 4100

*Elders*

# Introduction

Ian and I extend a warm welcome to you for our 2020 Seifert Belmont Red sale.

In the words of the Queen, 2019 was our "Annus Horribilis" with only 7" to 9" of rain across our six properties from Crow's Nest, to Jandowae and Chinchilla. Our country types range from marginal, ticky, decomposed granite, iron- bark forest country, to box, brigalow, belah and buffel with some leucaena, to pockets of bottle tree scrub. Every place was equally desertified in the drought. Despite this, our moderate framed Belmont Red females soldiered on, but by January of 2020 with sparse grass left, we reached our 'drought deadline'. For the first time ever, we early weaned. Remarkably most females fell pregnant prior to the weaning event. For example, we achieved 96% PTIC on our wet, first calf, yearling mated heifers. Foetal aging identified that 63% fell pregnant in the first two cycles – before their calves were weaned. These statistics were consistent across our Belmont Red herd and added new meaning to 'drought tolerant' and 'heat resistant' adapted cattle.

Environmentally adapted fertile cows produce hardy profit-generating bulls. Our 'survival of the fittest' breeding philosophy means we produce genuinely unpampered and low-input-cost, commercially relevant genetics for Northern Australian conditions. Our breeders - young and old - must 'do' with only loose urea lick through winter, no supplement in summer, and not substituted or spike fed to get pregnant. They are never treated for tick or fly (except to clear to clean country) to maintain the highest natural resistance.

The beauty of inherent traits like this, is that they are a 'Free lunch'. The economy of not having to repeatedly muster to chemically treat for tick or fly is a massive saving. Cattle that continue to feed and breed unbothered in 48c heat, are making you money. Moderate framed breeders who breed early, and every year, mean your dollars multiply faster. Bulls that can be used at one year old, and at 1%-2%, give more bang for your buck and have

a longer working life. Short sheaths mean break downs are rare. Naturally calm, polite cattle that don't need 'special' handling, are safer and easier to work in the paddock or the yards, gain weight more readily, and produce fewer dark cutters. MSA carcasses deliver higher premiums. Polled cattle save time, weight-loss and life-loss, from dehorning. Each of these traits is economically valuable, and fortunately you do not have to 'pay extra' for them when they are already 'fixed' in the genes. As such, they don't rely on costly external man-made inputs like management, feeding and chemicals to artificially 'prop up the animal'. In our bulls all these traits are in one convenient, heritable, genetic package and will be passed onto their cross-bred or purebred progeny.

The 2020 Sale bulls and PTIC heifers are out of this tough cow herd. The 62 bulls listed here are an outstanding group of profitable sires with over 82% of them in the top 40th percentile band for profitability on the export \$index, and over 60% of them in the top 20th percentile band for profitability on the domestic \$ index.

This is where phenotype meets genotype, with the lead of the bulls over 800kg by sale day and representing the high growth genetics sought by many breeders. At the same time there is great selection

of low and average birth weight bulls ideal for heifer joining. In a class of their own are the curve benders that are both low birth weight combined with high growth. There is muscling, marbling and supreme fertility traits and every bull is polled, including 11 homozygous (PP) polls. In short, here is a wide choice of bulls with a comprehensive range of traits to drive profitability in any herd.

Finally, this sage and timely advice:

- When you buy a bull in 2020, his first calves will be born in 2021, and his first daughters will calve in 2023 or 2024.
- His last calves will be born in 2026 or later.
- In 2036, the 10-year-old females and older, in your herd, could still be out of this year's bull purchase. Most of your middle-aged cows will be his granddaughters.
- The moral of the story is - There are no short-term decisions in this business.
- Find and buy the best bulls you can afford, from a professional source, that is committed to profitability, because his genetics will be in your herd until the early 2040's. (credit to 'Allied Genetic Resources' USA).

*Jeanne and Ian*





**AuctionsPlus**<sup>®</sup>

Australia's Livestock Marketplace

## Can't make the sale?

*Purchase online in eight simple steps!*

*Log on to AuctionsPlus and bid on your phone, tablet or computer.*

- 1 REGISTER ONLINE**  
Free once off registration for all auctions.
- 2 COMPLETE BUYER INDUCTION**  
The buyer induction will help you understand the roles and responsibilities of everyone on the AuctionsPlus system.
- 3 VIEW CATALOGUE**  
View photos, videos, pedigrees and more.
- 4 ENTER AUCTION**  
Log into the auction anytime, anywhere and bid on your mobile, tablet or computer.
- 5 AUTO BID**  
Can't stay for the whole sale? Set your maximum bid on the lot that you want to purchase and let the computer bid for you.
- 6 CONTACT SELLING AGENT**  
If successful, contact selling agent to arrange payment and delivery. The agent contact details will be available in the catalogue header.
- 7 PAYMENT**  
Via the selling agent's terms and conditions.
- 8 DELIVERY**  
Arrange transport of livestock at your expense.

Contact AuctionsPlus on (02) 9262 4222  
or email [studsales@auctionsplus.com.au](mailto:studsales@auctionsplus.com.au)  
or [www.auctionsplus.com.au](http://www.auctionsplus.com.au)

Check us out on:



# Sale Details

Ian and I welcome you to our on-property Seifert Belmont Red Sale at our home 'Wonga' 490 Jolimont Rd Jandowae Q 4410. Sale day is Thursday the 30th July 2020. The Helmsman Auction will commence at 11.30 am and close at approximately 12.30 pm. It will be held concurrently on-line on AuctionsPlus. Bidding online will be available from Monday 27th July.

If you are unable to attend the sale and intend to bid online, please ensure you are registered to bid with AuctionsPlus prior to the sale. AuctionsPlus can be contacted on 02-92624222 and studsales@auctionsplus.com.au

If you wish to bid by phone, please arrange this prior to the sale by contacting Elders agent Robert Murray 0419644813 or your own agent. There is mobile phone coverage on site.

## DIRECTIONS

There is a map on Page 50 of this catalogue (MAP)

## PRE-SALE INSPECTIONS

Bulls and heifers are available for inspection anytime – just give us a call!

## SAFETY RECOMMENDATIONS

COVID-19 recommended best practice will be adhered to at the sale, with hand washing facilities, sanitiser, and plenty of room to socially distance in and outside of our big open shed.

All bulls will be penned in groups according to lot numbers. We are confident all bulls offered for sale are quiet and of sound temperament. However, sale day brings different conditions and bulls are subjected to unusual levels of pressure. Even the quietest bull can be unpredictable. Visitors entering pens do so at their own risk and children are forbidden in pens. Our station hands Sam and Neil, and the Elders agents, will be on hand during the day to walk bulls up to the rails or around the pens as you wish.

## HEALTH

All bulls have been vaccinated with 5in1, and for Vibriosis, Bovine Ephemeral fever (3-day sickness), tick fever and are tested PI negative. 'Wonga' is tick free and all bulls are clear to go to tick free areas. Seifert Belmont Reds are JBAS 7 and WA eligible.

## FERTILITY

All the bulls have passed a semen test, including semen morphology and motility by John Chapman of SEQ genetics. Full details will be available in the supplementary sheet on the day.

## RAW DATA

A supplementary sheet with raw data including recent weight, scrotal measurement, semen morphology and motility, and ultrasound live carcass scanning, will be available on our website [www.seifertbelmontreds.com](http://www.seifertbelmontreds.com) a week before the sale, and on sale day.

## IDENTIFICATION

All bulls have a yellow management tag with their breed register identification number (ID), and an NLIS tag, in their right ear. All bulls are branded with their year number and ID. Both the animal's lot number and ID's are noted in the sale catalogue and on the pens. The pens will be in lot number order with about 9 bulls per pen.

## PIC

Our PIC number is QDWB0155

## INSURANCE

Ownership passes at the fall of the hammer. Insurance can be arranged on the day through Elders or your agent.

## AGENT REBATE

A rebate of 4% is offered to outside agents introducing approved buyers in writing no later than 24 hours prior to the sale, and who accompany their buyer to the sale, and who settle on their behalf within 7 days of the sale. A 2% is offered to all licensed agents introducing buyers in writing at least 24 hours prior to the sale.

## REGISTRATION TRANSFERS

Upon request by the purchaser, Seifert Belmont Reds is happy to transfer the Belmont Australia breed registration of bulls, free of charge.

## REFRESHMENTS/LUNCH

Due to COVID-19 limitations, unfortunately we will not be offering our usual buffet style morning tea and BBQ this year. However, complimentary pre-packaged snacks, sandwiches, and a beer or two at the end of the sale, will be on offer.

## TRANSPORT

We are offering free cartage to Rockhampton, Roma, and Dalby. For other inquiries about organising transport, please contact the Elders agent, or Ian on 0439632113 for advice, prior to the sale.

## ACCOMMODATION

The town of Jandowae is a 20 minute drive from 'Wonga' and accommodation is available at AAOK Jandowae accommodation park 104 High St, Jandowae ph: 46685071; The Exchange hotel 41 High St, Jandowae ph 4668 5139; Jandowae hotel motel 32 High St, Jandowae 4668 5206.

There are many motels in Kingaroy, Dalby or Chinchilla which are all about 1 hours' drive from 'Wonga'.

## SEMEN INTEREST

Seifert Belmont Reds will retain a half interest in any semen sold from bulls in this sale. This is a revenue sharing opportunity for buyers. If required, we reserve the right to access bulls at a mutually convenient time and place and at our cost.

## GUARANTEE

We warrant that every bull is fertile and capable of natural service at the time of the sale and is guaranteed fertile for twelve months from sale day. If a bull should become infertile or breakdown to be unable to serve cows naturally within 12 months for reasons other than injury or misadventure, Seifert Belmont Reds will provide you with either a satisfactory replacement or a credit equal to the purchase price of the bull less salvage value. Seifert Belmont Reds will require you to provide a veterinary report.

## DISCLAIMER

Whilst all due care and attention has been paid to accuracy in the compilation of this catalogue, neither the Vendors nor the Selling Agents or representative(s) thereof assume any responsibility whatsoever for the correctness, use or interpretation of the information on animals included in this sale catalogue.

## BREEDPLAN EBVs - PERCENTILE BANDS FOR 2018 BORN CALVES

PERCENTILE BAND	GL	BW	200 WT	400 WT	600 WT	MC WT	MILK	SS	DC	C WT	EMA	RIB	RUMP	RBY	IMF	DI \$	EI %
Top Value	3.9	-1.7	+39	+49	+75	+112	+18	+5.2	-11.0	+54	+6.5	+1.5	+3.8	+1.8	+1.0	+38	+52
Top 1%	-2.8	-1.0	+33	+42	+64	+91	+15	+3.6	-9.0	+43	+5.0	+1.1	+2.7	+1.3	+0.8	+36	+43
Top 5%	-2.1	+0.1	+29	+36	+54	+71	+14	+3.0	-7.3	+36	+4.2	+0.7	+2.1	+1.1	+0.5	+32	+38
Top 10%	-2.0	+0.6	+27	+33	+49	+63	+12	+2.6	-6.1	+34	+3.8	+0.5	+1.7	+1.0	+0.4	+29	+36
Top 15%	-1.9	+1.0	+24	+31	+46	+59	+11	+2.4	-5.5	+32	+3.6	+0.4	+1.5	+0.9	+0.3	+27	+33
Top 20%	-1.7	+1.3	+23	+29	+43	+54	+11	+2.2	-4.6	+30	+3.4	+0.3	+1.3	+0.8	+0.3	+26	+31
Top 25%	-1.6	+1.5	+22	+28	+40	+51	+10	+2.1	-4.0	+29	+3.2	+0.2	+1.1	+0.8	+0.3	+25	+29
Top 30%	-1.4	+1.6	+21	+27	+38	+49	+10	+1.9	-3.4	+28	+2.9	+0.1	+0.8	+0.7	+0.3	+24	+28
Top 35%	-1.4	+1.8	+20	+25	+37	+46	+9	+1.8	-3.0	+27	+2.7	+0.0	+0.7	+0.7	+0.2	+23	+27
Top 40%	-1.3	+1.9	+19	+24	+35	+43	+9	+1.7	-2.4	+26	+2.6	-0.1	+0.5	+0.6	+0.2	+22	+25
Top 45%	-1.2	+2.1	+18	+23	+33	+41	+8	+1.6	-1.8	+25	+2.4	-0.1	+0.4	+0.6	+0.2	+21	+24
Top 50%	-1.1	+2.3	+18	+22	+31	+39	+8	+1.5	-1.4	+23	+2.3	-0.2	+0.3	+0.6	+0.2	+20	+23
Top 55%	-1.0	+2.5	+17	+21	+30	+37	+8	+1.4	-1.0	+22	+2.1	-0.2	+0.2	+0.5	+0.1	+19	+22
Top 60%	-0.9	+2.7	+16	+20	+28	+35	+7	+1.3	-0.7	+21	+1.9	-0.3	+0.1	+0.5	+0.1	+18	+21
Top 65%	-0.8	+2.9	+16	+19	+27	+33	+6	+1.2	-0.4	+20	+1.8	-0.3	-0.1	+0.4	+0.1	+17	+20
Top 70%	-0.7	+3.1	+15	+18	+25	+30	+6	+1.1	+0.1	+19	+1.6	-0.4	-0.1	+0.4	+0.1	+17	+19
Top 75%	-0.6	+3.2	+14	+17	+24	+28	+5	+1.0	+0.4	+18	+1.4	-0.5	-0.2	+0.4	+0.1	+16	+19
Top 80%	-0.4	+3.5	+13	+15	+22	+25	+5	+0.9	+1.0	+17	+1.3	-0.6	-0.4	+0.3	+0.1	+15	+17
Top 85%	-0.2	+3.8	+11	+14	+20	+22	+4	+0.7	+1.6	+15	+1.2	-0.7	-0.5	+0.3	+0.0	+14	+16
Top 90%	-0.1	+4.1	+10	+12	+18	+17	+3	+0.5	+2.3	+13	+1.0	-0.8	-0.7	+0.2	+0.0	+12	+14
Top 95%	+0.2	+4.7	+8	+9	+14	+10	+2	+0.1	+3.6	+10	+0.7	-1.0	-1.1	+0.1	-0.1	+10	+11
Top 99%	+0.5	+5.8	+5	+4	+8	-1	-4	-1.2	+6.4	+3	-0.2	-1.4	-2.0	-0.1	-0.2	+7	+6
Low Value	+0.9	+7.0	+0	-3	+0	-17	-7	-1.9	+8.6	-1	-0.4	-2.4	-3.4	-0.1	-0.3	+1	+0

GL Gestation Length (days) BW Birth Wt (kg) 200 WT 200 Day Wt (kg) 400 WT 400 Day Wt (kg) 600 WT 600 Day Wt (kg) MC WT Mat Cow Wt (kg) MILK Milk (kg) SS Scrotal Size (cm) DC Days to Calving (days)  
C WT Carcase Wt (kg) EMA Eye Muscle Area (sq cm) RIB Rib Fat (mm) RUMP Rump Fat (mm) RBY Retail Beef Yield (%) IMF IMF (%) DI \$ Domestic Index (\$) EI \$ Export Index (\$) FT Flight Time (secs) SF Shear Force (kgs)

**IF YOU ARE UNSURE ON ANY OF THE EBV TITLES LISTED HERE AND THROUGHOUT OUR CATALOGUE, PLEASE TURN TO PAGE 48 FOR AN EBV INDEX EXPLANATION**



### BBSE BULL BREEDING SOUNDNESS EVALUATION

Under the BBSE Bull Breeding Soundness Evaluation run by the ACV the following is stated.

**Motility For Live Rate:** Fail under 30%  
Pass is given for 30 to 59%  
Tick is 60% or higher

**Morphology:** Fail under 50%  
P level pass is 50 to 69%  
Tick for 70% and over

### The standards for Crush-side Semen and Sperm Morphology

Crush-side Semen evaluation and laboratory evaluation of Sperm Morphology are strong indicators of whether a bull is fertile or sub-fertile. If a physically-normal bull is rated as having passed these evaluations, he is expected to be fertile, ie, if mated, he can impregnate (pregnant at day 42 of gestation) by natural service at least 60% and 90% of 50 normal, cycling, disease-free females within 3 and 9 weeks, respectively.

The ACV has 2 pass levels for semen evaluation.

The highest level -Tick - indicates that the bull is fertile with respect to the category assessed and has 60% or higher progressively forward motile sperm. Further, it is very likely that the semen of this bull will be fertile after freezing. The lower level - P - was introduced to indicate that a bull may be fertile under natural mating, but it is likely his semen is not suitable for freezing.

The P level is given to bulls with between 30 and 59% motile sperm in Crush-side Semen evaluation. Bulls have to pass thresholds for eight Sperm Morphology categories and 70% or higher normal sperm, as assessed by an accredited sperm morphologist, to gain a tick for this assessment category.

For a P-level pass, this includes having between 50% and 69% normal sperm.

It is possible that physically-normal, P-level bulls, and especially those close to the lower threshold, may be shown to be less than fully fertile when mated. Such bulls are acceptable under multiple-sire mating, but veterinary advice should be considered before single-sire mating of such bulls.



LOT  
1

## SEIFERT BELMONT REDS

**ID:** SEI190001    **DOB:** 20/08/2018    **AGE:** 23.4 Mths    **REGO STATUS:** REGISTERED  
**GRADE:** PURE BR    **HORN:** POLLED    **DNA TEST:** PH

BEL070211 BELMONT 070211  
 SEI130539 SEIFERT 130539  
 JIS030228 SEIFERT 3-228  
**SIRE:** SEI150301 SEIFERT BELMONT 150301  
 MON990041 MONTPELLIER 99-41  
 MON030002 MONTPELLIER 03-2  
 MON980284 MONTPELLIER 98-284  
**ANIMAL:** SEI190001 SEIFERT BELMONT 190001  
 SEI090377 SEIFERT TEDSTAR  
 SEI130061 SEIFERT 130061  
 SEI080322 SEIFERT 08 0322  
**DAM:** SEI160258 SEIFERT BELMONT 160258  
 MON030017 MONTPELLIER 03-17  
 MON060212 MONTPELLIER 06-22  
 SEI0000G1 SEIFERT GENERIC G1



Beautifully rounded like his figures, 190001 is a highly profitable bull. He is a curve bender with growth in the top 10% for 600D in combination with favourable low BW (birth weight). He is also in the top 5% for SS (scrotal size), top 20% for carcass weight and 25% for DTC (days to calving) putting him in the top 5% on the domestic \$index and nearly the top 1% for the export \$index. His dam is a young stayer being on her 3rd in a row. Scrotal size of 39 cm in April.

June 2020 Belmont Red GROUP BREEDPLAN																	
	GL	BW	200	400	600	MC	Milk	SS	DC	CW	EMA	Rib	Rump	RBY	IMF	Domestic	Export
EBV	-3	0.9	21	33	51	67	9	3.1	-4.1	30	2.4	0	0.8	0.4	0.2	\$34	\$42
Acc	59%	76%	74%	74%	76%	70%	49%	73%	41%	62%	57%	61%	59%	47%	54%		
Breed Avg. EBVs for 2018 Born Calves																	
EBV	-1.1	+2.4	+18	+22	+32	+40	+8	+1.5	-1.7	+24	+2.3	-0.2	+0.4	+0.6	+0.2	+\$20	+\$24

Traits Observed: GL, BWT, 200WT, 400WT(x2), 600WT, SS, FAT, EMA, IMF, FLT

Purchaser ..... \$ .....

LOT  
2

## SEIFERT BELMONT REDS

**ID:** SEI190101    **DOB:** 26/09/2018    **AGE:** 22.1 Mths    **REGO STATUS:** REGISTERED  
**GRADE:** PURE BR    **HORN:** POLLED    **DNA TEST:** PH

SAAG91130 AG 91-130 (BONS.) (IMP Sth AF)  
 ISAGRC9714 GRC9714 (P) (IMP STH AF) (ET)  
 SAIVYN142 IVY N 142 (BONS.) (IMP Sth AF)  
**SIRE:** VAL01B808 VALINOR B808 (IVF)  
 VAL91V655 VALINOR 655  
 VAL96V182 VALINOR 96-V182 (B)  
 BAN870N55 BANGALLA 87-N55  
**ANIMAL:** SEI190101 SEIFERT BELMONT 190101  
 SEI06MS01 06 OAK  
 SEI090187 SEIFERT 09 0187SEI  
 MON050012 MONTPELLIER 05-12  
**DAM:** SEI120220 SEIFERT 120220  
 COR010057 CORYMBIA 0057  
 COR030089 CORYMBIA 0089  
 COR010097 CORYMBIA 0097



A broad and appealing IVF son by outside sire VAL01B808, he is a high yielding bull in the top 15% for RBY (retail beef yield). This is combined with negative DTC (days to calving) in the top 45% which puts him in the top 10% in the export \$index. His dam was a proven breeder who had 6 calves in a row. Scrotal Size 36cm in April.

June 2020 Belmont Red GROUP BREEDPLAN																	
	GL	BW	200	400	600	MC	Milk	SS	DC	CW	EMA	Rib	Rump	RBY	IMF	Domestic	Export
EBV	-1.6	3.1	27	34	53	61	8	0.7	-1.8	32	2.8	0	0.2	0.9	0	\$28	\$36
Acc	47%	75%	70%	71%	68%	66%	50%	71%	41%	60%	55%	58%	57%	45%	51%		
Breed Avg. EBVs for 2018 Born Calves																	
EBV	-1.1	+2.4	+18	+22	+32	+40	+8	+1.5	-1.7	+24	+2.3	-0.2	+0.4	+0.6	+0.2	+\$20	+\$24

Traits Observed: GL, BWT, 200WT, 400WT(x2), 600WT, SS, FAT, EMA, IMF, FLT

Purchaser ..... \$ .....



LOT  
3

## SEIFERT BELMONT REDS

**ID:** SEI190541    **DOB:** 10/08/2018    **AGE:** 23.7 Mths    **REGO STATUS:** REGISTERED  
**GRADE:** PURE BR    **HORN:** POLLED    **DNA TEST:** PH

BEL070211 BELMONT 070211  
 SEI130539 SEIFERT 130539  
 JIS030228 SEIFERT 3-228  
**SIRE: SEI150143 SEIFERT BELMONT 150143**  
 MON980035 MONTPELLIER 98-035  
 MON020060 MONTPELLIER 02-60  
 MON990002 MONTPELLIER 99-2  
**ANIMAL: SEI190541 SEIFERT BELMONT 190541**  
 BEL070211 BELMONT 070211  
 SEI130071 SEIFERT 130071  
 MON070332 MONTPELLIER 0332  
**DAM: SEI150200 SEIFERT 150003**  
 TRE070059 TREMERE 07-59  
 SEI120184 SEIFERT 120184  
 JIS030168 SEIFERT 3-168



This heavy, soft bull is Ian's favourite. He is as quiet as a lamb (the bull, not Ian) and not surprisingly is in the top 1% for both 600D growth and carcass weight. Combined with an impressive Scrotal size (42cm in April) and SS (scrotal size) EBV in the top 5%, this puts him in the top 15% on the export \$index.

June 2020 Belmont Red GROUP BREEDPLAN																	
	GL	BW	200	400	600	MC	Milk	SS	DC	CW	EMA	Rib	Rump	RBY	IMF	Domestic	Export
EBV	-1.3	4.4	28	47	68	98	7	3.1	1.7	43	1.7	-0.6	-0.2	0.6	0.2	\$28	\$33
Acc	27%	58%	72%	72%	76%	68%	46%	73%	41%	59%	57%	61%	59%	46%	54%		
Breed Avg. EBVs for 2018 Born Calves																	
EBV	-1.1	+2.4	+18	+22	+32	+40	+8	+1.5	-1.7	+24	+2.3	-0.2	+0.4	+0.6	+0.2	+\$20	+\$24

Traits Observed: GL, BWT, 200WT, 400WT(x2), 600WT, SS, FAT, EMA, IMF, FLT

Purchaser ..... \$ .....

LOT  
4

## SEIFERT BELMONT REDS

**ID:** SEI190149    **DOB:** 05/09/2018    **AGE:** 22.8 Mths    **REGO STATUS:** REGISTERED  
**GRADE:** PURE BR    **HORN:** POLLED    **DNA TEST:** PP

SEI13MS01 SEI110155, BEL110089  
 SEI130097 SEIFERT BELMONT 130097  
 SEI090044 SEIFERT 09-044  
**SIRE: SEI170405 SEIFERT BELMONT 170405**  
 COR04MS01 MULTIPLE SIRES 2004  
 COR040024 CORYMBIA 04-24  
 NAR000168 NARAYEN 00/168  
**ANIMAL: SEI190149 SEIFERT BELMONT 190149**  
 F3K050508 CO JUNE 05-508  
 TRE090231 TREMERE 090231  
 TRE020314 TREMERE 020314  
**DAM: SEI140518 SEIFERT 140518 (AI)**  
 SEI11MS01 SEI060017 & SEI080251  
 SEI110186 SEIFERT 110186  
 JIS030209 SEIFERT 3-209



One of the heaviest bulls in the draft and what a carcass bull - and a homozygous poll as well. This super docile, soft skinned bull is above the top 1% for carcass weight, and in the top 10% for RBY (retail beef yield) and EMA (eye muscle area). He is out of a proven breeder who is on her 5th calf in a row. Scrotal Size 41cm in April.

June 2020 Belmont Red GROUP BREEDPLAN																	
	GL	BW	200	400	600	MC	Milk	SS	DC	CW	EMA	Rib	Rump	RBY	IMF	Domestic	Export
EBV	-1	5.8	34	51	70	101	9	1.9	4.7	52	3.9	-0.1	0.3	1	0	\$26	\$29
Acc	27%	57%	68%	70%	66%	64%	43%	70%	35%	56%	54%	56%	56%	43%	50%		
Breed Avg. EBVs for 2018 Born Calves																	
EBV	-1.1	+2.4	+18	+22	+32	+40	+8	+1.5	-1.7	+24	+2.3	-0.2	+0.4	+0.6	+0.2	+\$20	+\$24

Traits Observed: GL, BWT, 200WT, 400WT(x2), 600WT, SS, FAT, EMA, IMF, FLT

Purchaser ..... \$ .....

LOT  
5

## SEIFERT BELMONT REDS

**ID:** SEI190591    **DOB:** 30/09/2018    **AGE:** 22.0 Mths    **REGO STATUS:** REGISTERED  
**GRADE:** PURE BR    **HORN:** POLLED    **DNA TEST:** PP

BEL070211 BELMONT 070211  
 SEI130539 SEIFERT 130539  
 JIS030228 SEIFERT 3-228

**SIRE:** SEI150143 SEIFERT BELMONT 150143

MON980035 MONTPELLIER 98-035  
 MON020060 MONTPELLIER 02-60  
 MON990002 MONTPELLIER 99-2

**ANIMAL:** SEI190591 SEIFERT BELMONT 190591

SEI100005 SEIFERT 0005  
 SEI120021 SEIFERT GERONIMO  
 SEI090180 SEIFERT 09 0180SEI

**DAM:** SEI150018 SEIFERT 150018

TRE070065 TREMERE 07-65  
 BEL120138 BELMONT 120138  
 BEL080229 BELMONT 080229



Another of Ian's favorites. A very quiet and heavy Homozygous Poll, in keeping with his growth and carcass weight EBVs, which are both in the very top value (>1%). This positions him in the top 15% on the export \$index. His dam is a stayer on her 4th calf in a row. Scrotal Size 38cm in April.

June 2020 Belmont Red GROUP BREEDPLAN																	
	GL	BW	200	400	600	MC	Milk	SS	DC	CW	EMA	Rib	Rump	RBY	IMF	Domestic	Export
EBV	-0.7	6.3	36	54	82	114	9	1.8	3.1	53	2.6	-0.6	-0.5	0.6	0	\$25	\$33
Acc	30%	58%	71%	72%	75%	68%	45%	72%	41%	59%	56%	61%	59%	46%	53%		
Breed Avg. EBVs for 2018 Born Calves																	
EBV	-1.1	+2.4	+18	+22	+32	+40	+8	+1.5	-1.7	+24	+2.3	-0.2	+0.4	+0.6	+0.2	+\$20	+\$24

Traits Observed: GL, BWT, 200WT, 400WT(x2), 600WT, SS, FAT, EMA, IMF, FLT

Purchaser ..... \$ .....

LOT  
6

## SEIFERT BELMONT REDS

**ID:** SEI190571    **DOB:** 12/10/2018    **AGE:** 21.6 Mths    **REGO STATUS:** REGISTERED  
**GRADE:** PURE BR    **HORN:** POLLED    **DNA TEST:** PH

BEL070211 BELMONT 070211  
 SEI130539 SEIFERT 130539  
 JIS030228 SEIFERT 3-228

**SIRE:** SEI150143 SEIFERT BELMONT 150143

MON980035 MONTPELLIER 98-035  
 MON020060 MONTPELLIER 02-60  
 MON990002 MONTPELLIER 99-2

**ANIMAL:** SEI190571 SEIFERT BELMONT 190571

HAP070204 HAPPY HILL 07-204 (AI)  
 HAP120300 HAPPY HILL 12 - 300  
 HAP090251 HAPPY HILL 09-251

**DAM:** SEI150272 SEIFERT 150272

MON030013 MONTPELLIER 03-13  
 MON080484 MONTPELLIER 08-484  
 SEI0000G3 SEIFERT GENERIC BR DAM



This super-quiet, big framed bull is not surprisingly above the top 1% for both growth and carcass weight EBVs, as well as in the top 15% for SS (scrotal size) which places him in the top 10% on the domestic and export \$indexes. His dam is a solid performer on her 5th calf in a row. Scrotal Size 37cm in April.

June 2020 Belmont Red GROUP BREEDPLAN																	
	GL	BW	200	400	600	MC	Milk	SS	DC	CW	EMA	Rib	Rump	RBY	IMF	Domestic	Export
EBV	-0.9	4.5	26	49	75	113	6	2.5	3.1	51	3.2	-0.9	-0.8	0.8	0.2	\$29	\$36
Acc	27%	58%	72%	72%	75%	69%	47%	72%	41%	59%	56%	61%	59%	45%	53%		
Breed Avg. EBVs for 2018 Born Calves																	
EBV	-1.1	+2.4	+18	+22	+32	+40	+8	+1.5	-1.7	+24	+2.3	-0.2	+0.4	+0.6	+0.2	+\$20	+\$24

Traits Observed: GL, BWT, 200WT, 400WT(x2), 600WT, SS, FAT, EMA, IMF, FLT

Purchaser ..... \$ .....



# SEIFERT BELMONT REDS

**ID:** SEI190527    **DOB:** 01/10/2018    **AGE:** 22.0 Mths    **REGO STATUS:** REGISTERED  
**GRADE:** PURE BR    **HORN:** POLLED    **DNA TEST:** PH

BEL070211 BELMONT 070211  
 SEI130539 SEIFERT 130539  
 JIS030228 SEIFERT 3-228

**SIRE:** SEI150143 SEIFERT BELMONT 150143

MON980035 MONTPELLIER 98-035  
 MON020060 MONTPELLIER 02-60  
 MON990002 MONTPELLIER 99-2

**ANIMAL:** SEI190527 SEIFERT BELMONT 190527

BEL070211 BELMONT 070211  
 SEI130071 SEIFERT 130071  
 MON070332 MONTPELLIER 0332

**DAM:** SEI150220 SEIFERT 150220

SEI100005 SEIFERT 0005  
 SEI120068 SEIFERT 120068  
 MON040100 MONTPELLIER 04-100



Not surprisingly this growthy bull is in the top 1% for growth and carcass weight and will also breed fertile daughters with a SS (scrotal size) EBV in the top 10%. This places him in the top 10% on the domestic \$index. Scrotal Size 41cm in April.

June 2020 Belmont Red GROUP BREEDPLAN																	
	GL	BW	200	400	600	MC	Milk	SS	DC	CW	EMA	Rib	Rump	RBY	IMF	Domestic	Export
EBV	-1.3	5.3	30	48	69	103	8	2.7	-0.4	47	2	-0.6	-0.2	0.6	0.1	\$29	\$35
Acc	26%	57%	72%	72%	76%	69%	45%	72%	40%	59%	56%	61%	59%	45%	53%		
Breed Avg. EBVs for 2018 Born Calves																	
EBV	-1.1	+2.4	+18	+22	+32	+40	+8	+1.5	-1.7	+24	+2.3	-0.2	+0.4	+0.6	+0.2	+\$20	+\$24

Traits Observed: GL, BWT, 200WT, 400WT(x2), 600WT, SS, FAT, EMA, IMF, FLT

Purchaser ..... \$ .....



# SEIFERT BELMONT REDS

**ID:** SEI190661    **DOB:** 07/10/2018    **AGE:** 21.8 Mths    **REGO STATUS:** REGISTERED  
**GRADE:** PURE BR    **HORN:** POLLED    **DNA TEST:** PH

MON040011 MONTPELLIER 04-11  
 SEI090377 SEIFERT TEDSTAR  
 COR030089 CORYMBIA 0089

**SIRE:** SEI160037 SEIFERT BELMONT 160037

MON040011 MONTPELLIER 04-11  
 SEI090344 SEIFERT BELMONT DOLLY  
 MON040044 MONTPELLIER 04-44

**ANIMAL:** SEI190661 SEIFERT BELMONT 190661

SEI100005 SEIFERT 0005  
 SEI120021 SEIFERT GERONIMO  
 SEI090180 SEIFERT 09 0180SEI

**DAM:** SEI160156 SEIFERT BELMONT 160156

SEI080231 SEIFERT 08 0231SEI  
 SEI130030 SEIFERT 130030  
 MON020014 MONTPELLIER 02-14



An extraordinarily quiet bull, with extraordinary EBVs, he still has some growing to do. This bull is the most profitable bull in the sale and possibly the Belmont Red breed at present. He has fertility, carcass, and growth in one complete package, positioning him in the top value (>1%) on the domestic and export \$indexes. His grand-dam is the most profitable female ever in the Belmont Red breed - she is still in our herd and we have cloned her. We have retained his brother. Scrotal Size 38cm in April.

June 2020 Belmont Red GROUP BREEDPLAN																	
	GL	BW	200	400	600	MC	Milk	SS	DC	CW	EMA	Rib	Rump	RBY	IMF	Domestic	Export
EBV	-1.2	4.6	36	54	93	121	15	1.8	-4.3	51	2.9	-0.1	0.8	0.4	0	\$41	\$57
Acc	32%	57%	71%	72%	75%	68%	46%	72%	43%	60%	57%	61%	59%	47%	54%		
Breed Avg. EBVs for 2018 Born Calves																	
EBV	-1.1	+2.4	+18	+22	+32	+40	+8	+1.5	-1.7	+24	+2.3	-0.2	+0.4	+0.6	+0.2	+\$20	+\$24

Traits Observed: GL, BWT, 200WT, 400WT(x2), 600WT, SS, FAT, EMA, IMF, FLT

Purchaser ..... \$ .....

LOT  
9

## SEIFERT BELMONT REDS

**ID:** SEI190177    **DOB:** 19/09/2018    **AGE:** 22.4 Mths    **REGO STATUS:** REGISTERED  
**GRADE:** PURE BR    **HORN:** POLLED    **DNA TEST:** PH

SEI110155 SEIFERT 110155  
 SEI140287 SEIFERT BELMONT 140287  
 MON080462 MONTPELLIER 0462

**SIRE:** SEI170191 SEIFERT BELMONT 170191  
 HAP120300 HAPPY HILL 12 - 300

SEI140128 SEIFERT 140128  
 JIS080469 SEIFERT JIS 08-469

**ANIMAL:** SEI190177 SEIFERT BELMONT 190177  
 COR050034 CORYMBIA 05-34  
 SEI080231 SEIFERT 08 0231SEI  
 COR050057 CORYMBIA 05-57

**DAM:** SEI130030 SEIFERT 130030  
 MON980035 MONTPELLIER 98-035  
 MON020014 MONTPELLIER 02-14  
 MON930272 MONTPELLIER 93-272



A later maturing and heavy bullock-type bull, he has a lot more growing to do. Not surprisingly he is in the top 20% for 600D growth and is also above the top 5% for EMA (eye muscle area) and top 15% for RBV (retail beef yield). His dam is a stayer now on her 6th calf in a row. Scrotal Size 39cm in April.

### June 2020 Belmont Red GROUP BREEDPLAN

	GL	BW	200	400	600	MC	Milk	SS	DC	CW	EMA	Rib	Rump	RBV	IMF	Domestic	Export
EBV		4.2	23	31	45	60	7	0.8	1.5	37	4.7	0.6	1.1	0.9	0.2	\$21	\$25
Acc	0%	57%	71%	71%	74%	68%	44%	71%	40%	58%	54%	58%	57%	44%	51%		

### Breed Avg. EBVs for 2018 Born Calves

EBV	-1.1	+2.4	+18	+22	+32	+40	+8	+1.5	-1.7	+24	+2.3	-0.2	+0.4	+0.6	+0.2	+\$20	+\$24
-----	------	------	-----	-----	-----	-----	----	------	------	-----	------	------	------	------	------	-------	-------

Traits Observed: GL, BWT, 200WT, 400WT(x2), 600WT, SS, FAT, EMA, IMF, FLT

Purchaser ..... \$ .....

LOT  
10

## SEIFERT BELMONT REDS

**ID:** SEI190697    **DOB:** 01/11/2018    **AGE:** 21.0 Mths    **REGO STATUS:** REGISTERED  
**GRADE:** PURE BR    **HORN:** POLLED    **DNA TEST:** PH

BEL070211 BELMONT 070211  
 SEI130539 SEIFERT 130539  
 JIS030228 SEIFERT 3-228

**SIRE:** SEI150143 SEIFERT BELMONT 150143  
 MON980035 MONTPELLIER 98-035  
 MON020060 MONTPELLIER 02-60

MON990002 MONTPELLIER 99-2

**ANIMAL:** SEI190697 SEIFERT BELMONT 190697  
 KER050345 KER-RON 05-345 (AI)  
 SEI120143 SEIFERT 120143  
 SEI05078J SEIFERT 07-78J

**DAM:** SEI150112 SEIFERT 150112  
 SEI11MS01 SEI060017 & SEI080251  
 SEI110298 SEIFERT 110298  
 SEI030105 SEIFERT 0105



One of the youngest, but one of the heaviest in the sale, this bull is showing great growth and carcase potential, with both traits in the top 1%. His SS (scrotal size) EBV is in the top 1% and EMA (eye muscle area) in the top 15% which positions him in the top 5% on the export \$index. He is out of a yearling mated heifer with staying power who is on her 5th calf in a row. Scrotal Size 39cm in April.

### June 2020 Belmont Red GROUP BREEDPLAN

	GL	BW	200	400	600	MC	Milk	SS	DC	CW	EMA	Rib	Rump	RBV	IMF	Domestic	Export
EBV	-1	5.2	30	49	73	104	7	3.6	1.4	48	3.5	-0.7	-0.5	1	0.1	\$30	\$38
Acc	25%	55%	68%	70%	73%	66%	44%	70%	38%	57%	54%	59%	57%	43%	52%		

### Breed Avg. EBVs for 2018 Born Calves

EBV	-1.1	+2.4	+18	+22	+32	+40	+8	+1.5	-1.7	+24	+2.3	-0.2	+0.4	+0.6	+0.2	+\$20	+\$24
-----	------	------	-----	-----	-----	-----	----	------	------	-----	------	------	------	------	------	-------	-------

Traits Observed: GL, BWT, 200WT, 400WT(x2), 600WT, SS, FAT, EMA, IMF, FLT

Purchaser ..... \$ .....

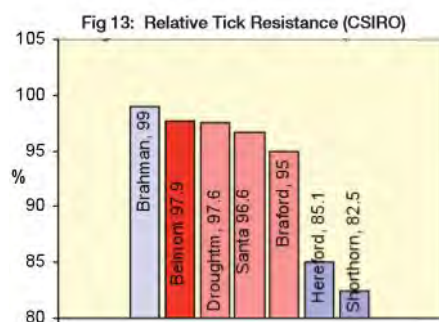
# Are you sick of treating for cattle ticks and fly?

Did you know we never treat for ticks or fly (unless we have to clear to clean country) which means our cattle maintain their natural inherent parasite resistance at very high levels. Natural tick resistance is also the most ecologically sound and the most economical method (free!) available for tick control - no time and money

spent on wages for repeated musters to dip; no back rubbers, fly tags, injectables, or pour on's means we are not facilitating chemical resistance nor affecting dung beetle populations.

CSIRO tick resistance trials identified that the Belmont Reds tick resistance was 98% which means that only 2 of

100 seed ticks complete their lifecycle. By comparison the Shorthorn's resistance was 82% which means that 18 out of 100 seed ticks survive. The Belmont Red is therefore 9 times more tick resistant than the Shorthorn for instance. Tick resistance is highly heritable, and is a highly effective, natural and sustainable method of controlling ticks.



The Belmonts tick resistance of 98% (Fig. 13) means that only 2 of 100 seed ticks complete their lifecycle, while 82% resistance of the Shorthorn means that 18 out of 100 seed ticks survive. The Belmont is therefore 9 times more resistant than the Shorthorn. Using the Belmont is therefore an effective and sustainable method of controlling ticks.

regional &  
agribusiness



LOT  
11

## SEIFERT BELMONT REDS

**ID:** SEI190179    **DOB:** 15/10/2018    **AGE:** 21.5 Mths    **REGO STATUS:** REGISTERED  
**GRADE:** PURE BR    **HORN:** POLLED    **DNA TEST:** PH

SEI090377 SEIFERT TEDSTAR  
 SEI130061 SEIFERT 130061  
 SEI080322 SEIFERT 08 0322  
**SIRE:** SEI170107 SEIFERT BELMONT 170107  
 SEI04MS02 W.S MULTI SIRE  
 SEI100156 SEIFERT 0 0156  
 COR040041 CORYMBIA 04-41  
**ANIMAL:** SEI190179 SEIFERT BELMONT 190179  
 COR04MS01 MULTIPLE SIRES 2004  
 COR040030 CORYMBIA 04-30  
 NAR000247 NARAYEN 00/247  
**DAM:** SEI080262 SEIFERT 08 0262  
 COR04MS01 MULTIPLE SIRES 2004  
 COR040033 CORYMBIA 04-33  
 COR010070 CORYMBIA 0070



A well-muscled long bull, packing some weight, and with fantastic fertility and carcass EBVs. He is above the top 1% for carcass weight and top 15% for RBV (retail beef yield) as well as being in the top 5% for SS (scrotal size) and top 35% for DTC (days to calving) which puts him in the top 5% on the export index. He is out of a great cow who has had 9 calves in a row and is PTIC with the 10th. Scrotal size 40cm in April.

June 2020 Belmont Red GROUP BREEDPLAN																	
	GL	BW	200	400	600	MC	Milk	SS	DC	CW	EMA	Rib	Rump	RBV	IMF	Domestic	Export
EBV	-1.3	4.9	31	42	67	85	9	3.1	-3	46	2.7	-1	-0.9	0.9	0	\$30	\$41
Acc	37%	75%	73%	73%	76%	70%	47%	72%	42%	62%	54%	57%	56%	44%	50%		
Breed Avg. EBVs for 2018 Born Calves																	
EBV	-1.1	+2.4	+18	+22	+32	+40	+8	+1.5	-1.7	+24	+2.3	-0.2	+0.4	+0.6	+0.2	+\$20	+\$24

Traits Observed: GL, BWT, 200WT, 400WT(x2), 600WT, SS, FAT, EMA, IMF, FLT

Purchaser ..... \$ .....

LOT  
12

## SEIFERT BELMONT REDS

**ID:** SEI190125    **DOB:** 06/09/2018    **AGE:** 22.8 Mths    **REGO STATUS:** REGISTERED  
**GRADE:** PURE BR    **HORN:** SCURRED    **DNA TEST:** PH

SEI110155 SEIFERT 110155  
 SEI140287 SEIFERT BELMONT 140287  
 MON080462 MONTPELLIER 0462  
**SIRE:** SEI170191 SEIFERT BELMONT 170191  
 HAP120300 HAPPY HILL 12 - 300  
 SEI140128 SEIFERT 140128  
 JIS080469 SEIFERT JIS 08-469  
**ANIMAL:** SEI190125 SEIFERT BELMONT 190125  
 MON040011 MONTPELLIER 04-11  
 SEI090377 SEIFERT TEDSTAR  
 COR030089 CORYMBIA 0089  
**DAM:** SEIFERT 140060  
 06 WS multi  
 SEI080322 SEIFERT 08 0322



A great carcass bull. Heavy and with a broad, flat back, his EMA (eye muscle area) is in the top 25% and carcass weight is in the top 15%. He is out of a proven cow who is on her 6th calf in a row. Scrotal Size of 40cm in April.

June 2020 Belmont Red GROUP BREEDPLAN																	
	GL	BW	200	400	600	MC	Milk	SS	DC	CW	EMA	Rib	Rump	RBV	IMF	Domestic	Export
EBV	0.1	3.5	16	27	41	64	8	1.2	-1.3	32	3.3	-0.9	-1.1	0.6	-0.1	\$21	\$26
Acc	27%	53%	67%	67%	63%	61%	41%	69%	38%	54%	52%	53%	52%	41%	48%		
Breed Avg. EBVs for 2018 Born Calves																	
EBV	-1.1	+2.4	+18	+22	+32	+40	+8	+1.5	-1.7	+24	+2.3	-0.2	+0.4	+0.6	+0.2	+\$20	+\$24

Traits Observed: GL, BWT, 200WT, 400WT(x2), 600WT, SS, FAT, EMA, IMF, FLT

Purchaser ..... \$ .....

LOT  
13

## SEIFERT BELMONT REDS

**ID:** SEI190471    **DOB:** 15/11/2018    **AGE:** 20.5 Mths    **REGO STATUS:** REGISTERED  
**GRADE:** PURE BR    **HORN:** POLLED    **DNA TEST:** PH

MON040011 MONTPELLIER 04-11  
 SEI090377 SEIFERT TEDSTAR  
 COR030089 CORYMBIA 0089  
**SIRE:** SEI160037 SEIFERT BELMONT 160037  
 MON040011 MONTPELLIER 04-11  
 SEI090344 SEIFERT BELMONT DOLLY  
 MON040044 MONTPELLIER 04-44

**ANIMAL:** SEI190471 SEIFERT BELMONT 190471

TRD09P406 TOORIDGE P406  
 SEI140129 SEIFERT 140129  
 BEL090141 BELMONT 090141

**DAM:** SEI160122 SEIFERT BELMONT 160122

SEI13MS04 TRE100173, TRE100067  
 SEI130182 SEIFERT 130182  
 BEL080278 BELMONT 080278



The second most profitable bull in the sale according to his EBV's, this beautifully built youngster is also one of the youngest in the sale and is by one of the top indexing bulls in the breed. He has an epic suite of traits which positions him at the top in the 'top value' (above the top 1%) on the domestic and export \$indexes. Scrotal Size 34cm in April.

June 2020 Belmont Red GROUP BREEDPLAN																	
	GL	BW	200	400	600	MC	Milk	SS	DC	CW	EMA	Rib	Rump	RBY	IMF	Domestic	Export
EBV	-1.5	5.2	36	60	94	136	15	2.4	-0.7	54	3.2	-0.5	-0.2	1	0.1	\$42	\$54
Acc	29%	56%	70%	71%	74%	67%	43%	71%	40%	58%	55%	59%	58%	45%	52%		
Breed Avg. EBVs for 2018 Born Calves																	
EBV	-1.1	+2.4	+18	+22	+32	+40	+8	+1.5	-1.7	+24	+2.3	-0.2	+0.4	+0.6	+0.2	+\$20	+\$24

Traits Observed: GL, BWT, 200WT, 400WT(x2), 600WT, SS, FAT, EMA, IMF, FLT

Purchaser ..... \$ .....

LOT  
14

## SEIFERT BELMONT REDS

**ID:** SEI190019    **DOB:** 25/08/2018    **AGE:** 23.2 Mths    **REGO STATUS:** REGISTERED  
**GRADE:** PURE BR    **HORN:** SCURRED    **DNA TEST:** PH

SEI090377 SEIFERT TEDSTAR  
 SEI140269 SEIFERT 140269  
 MON040122 MONTPELLIER 0122 (COM)  
**SIRE:** SEI160055 SEIFERT BELMONT LIMELIGHT  
 MON030013 MONTPELLIER 03-13  
 MON080472 MONTPELLIER 08-472  
 SEI0000G2 SEIFERT GENERIC BR DAM

**ANIMAL:** SEI190019 SEIFERT BELMONT 190019

SEI100005 SEIFERT 0005  
 SEI120021 SEIFERT GERONIMO  
 SEI090180 SEIFERT 09 0180SEI

**DAM:** SEI160220 SEIFERT BELMONT 160220

TRE070059 TREMERE 07-59  
 SEI110232 SEIFERT 110232  
 SEI080316 SEIFERT 08 0316



A handy and heavy bull, with high growth in the top 5% for 600D, but with favourable average BW (birth weight), and negative DTC (days to calving) this positions him in the top 5% on the export \$index. Scrotal Size of 35cm in April.

June 2020 Belmont Red GROUP BREEDPLAN																	
	GL	BW	200	400	600	MC	Milk	SS	DC	CW	EMA	Rib	Rump	RBY	IMF	Domestic	Export
EBV	-1.3	2.4	26	38	62	69	9	1.1	-1.2	35	2.2	-0.8	-0.7	0.6	0	\$29	\$39
Acc	58%	75%	73%	73%	76%	70%	41%	73%	40%	62%	57%	61%	59%	47%	54%		
Breed Avg. EBVs for 2018 Born Calves																	
EBV	-1.1	+2.4	+18	+22	+32	+40	+8	+1.5	-1.7	+24	+2.3	-0.2	+0.4	+0.6	+0.2	+\$20	+\$24

Traits Observed: GL, BWT, 200WT, 400WT(x2), 600WT, SS, FAT, EMA, IMF, FLT

Purchaser ..... \$ .....

**LOT  
15**

# SEIFERT BELMONT REDS

**ID: SEI190153**    **DOB:** 10/10/2018    **AGE:** 21.7 Mths    **REGO STATUS:** REGISTERED  
**GRADE:** PURE BR    **HORN:** POLLED    **DNA TEST:** PP

SEI090377 SEIFERT TEDSTAR  
 SEI130061 SEIFERT 130061  
 SEI080322 SEIFERT 08 0322  
**SIRE: SEI170097 SEIFERT BELMONT 170097**  
 KER050345 KER-RON 05-345 (AI)  
 SEI120114 SEIFERT 120114  
 SEI080050 SEIFERT STAR ANISE  
**ANIMAL: SEI190153 SEIFERT BELMONT 190153**  
 COR050034 CORYMBIA 05-34  
 SEI080231 SEIFERT 08 0231SEI  
 COR050057 CORYMBIA 05-57  
**DAM: SEI130098 SEIFERT 130098**  
 MON000045 MONTPELLIER 00-45  
 MON030024 MONTPELLIER 03-24  
 MON990092 MONTPELLIER 99-92



A very quiet, deep, smooth Homozygous Poll with high growth and top carcass traits. He is above the top 5% for carcass weight and EMA (eye muscle area) and in the top 10% for RBY (retail beef yield). This is combined with 600D growth in the top 1% and rib fat in the top 10%. His dam is a proven cow on her 5th calf in a row. Scrotal Size 38cm in April.

June 2020 Belmont Red GROUP BREEDPLAN																	
	GL	BW	200	400	600	MC	Milk	SS	DC	CW	EMA	Rib	Rump	RBY	IMF	Domestic	Export
EBV	-1.2	3.8	27	45	64	90	10	1.1	-0.9	42	4.5	0.6	1.2	0.8	-0.2	\$34	\$41
Acc	37%	74%	71%	72%	74%	69%	43%	71%	38%	60%	55%	59%	57%	45%	51%		
Breed Avg. EBVs for 2018 Born Calves																	
EBV	-1.1	+2.4	+18	+22	+32	+40	+8	+1.5	-1.7	+24	+2.3	-0.2	+0.4	+0.6	+0.2	+\$20	+\$24

Traits Observed: GL, BWT, 200WT, 400WT(x2), 600WT, SS, FAT, EMA, IMF, FLT

Purchaser ..... \$ .....

**HALL CHADWICK**   
 CHARTERED ACCOUNTANTS & BUSINESS ADVISORS | QLD



**LOT  
16**

# SEIFERT BELMONT REDS

**ID:** SEI190071      **DOB:** 19/09/2018      **AGE:** 22.4 Mths      **REGO STATUS:** REGISTERED  
**GRADE:** PURE BR      **HORN:** POLLED      **DNA TEST:** PH

SAAG91130 AG 91-130 (BONS.) (IMP Sth AF)  
 ISAGRC9714 GRC9714 (P) (IMP STH AF) (ET)  
 SAIVYN142 IVY N 142 (BONS.) (IMP Sth AF)

**SIRE:** VAL01B808 VALINOR B808 (IVF)

VAL91V655 VALINOR 655  
 VAL96V182 VALINOR 96-V182 (B)  
 BAN870N55 BANGALLA 87-N55

**ANIMAL:** SEI190071 SEIFERT BELMONT 190071

TRE010765 TREMERE 010765  
 TRE050123 TREMERE 050123  
 TRE930480 TREMERE 93-480

**DAM:** SEI080012 SEIFERT BELMONT 08 0012

MON980035 MONTPELLIER 98-035  
 MON020014 MONTPELLIER 02-14  
 MON930272 MONTPELLIER 93-272



A very beefy, light red IVF calf by outside sire VAL01B808. He is a full brother to 190053 being out of the same good cow who had 8/8 calves in a row. He is in the top 15% in the export \$index. Scrotal Size 40cm in April.

June 2020 Belmont Red GROUP BREEDPLAN																	
	GL	BW	200	400	600	MC	Milk	SS	DC	CW	EMA	Rib	Rump	RBY	IMF	Domestic	Export
EBV	-1.1	2.7	25	30	54	61	4	1.2	0.1	29	2.8	-0.1	0.1	0.7	0	\$23	\$33
Acc	47%	75%	72%	72%	75%	69%	51%	71%	42%	62%	55%	58%	56%	45%	50%		
Breed Avg. EBVs for 2018 Born Calves																	
EBV	-1.1	+2.4	+18	+22	+32	+40	+8	+1.5	-1.7	+24	+2.3	-0.2	+0.4	+0.6	+0.2	+\$20	+\$24

Traits Observed: GL, BWT, 200WT, 400WT(x2), 600WT, SS, FAT, EMA, IMF, FLT

Purchaser ..... \$ .....

**LOT  
17**

# SEIFERT BELMONT REDS

**ID:** SEI190011      **DOB:** 09/08/2018      **AGE:** 23.7 Mths      **REGO STATUS:** REGISTERED  
**GRADE:** PURE BR      **HORN:** SCURRED      **DNA TEST:** PH

BEL070211 BELMONT 070211  
 SEI130539 SEIFERT 130539  
 JIS030228 SEIFERT 3-228

**SIRE:** SEI150301 SEIFERT BELMONT 150301

MON990041 MONTPELLIER 99-41  
 MON030002 MONTPELLIER 03-2  
 MON980284 MONTPELLIER 98-284

**ANIMAL:** SEI190011 SEIFERT BELMONT 190011

SEI090377 SEIFERT TEDSTAR  
 SEI130087 SEIFERT 130087  
 SEI080014 SEIFERT 08-14

**DAM:** SEI160062 SEIFERT BELMONT 160062

COR04MS01 MULTIPLE SIRES 2004  
 COR040025 CORYMBIA 04-25  
 COR010104 CORYMBIA 0104



A dark red, deep, and long bull, with a curve bending low BW (birth weight) EBV but with high growth, being above the top 25% for 400D and 600D. Scrotal Size of 36cm in April.

June 2020 Belmont Red GROUP BREEDPLAN																	
	GL	BW	200	400	600	MC	Milk	SS	DC	CW	EMA	Rib	Rump	RBY	IMF	Domestic	Export
EBV	-4.2	0.7	16	28	42	53	10	1.2	-2.5	18	-0.9	-0.2	1.1	-0.1	0.2	\$25	\$30
Acc	56%	61%	72%	72%	75%	69%	46%	72%	40%	60%	56%	61%	59%	46%	53%		
Breed Avg. EBVs for 2018 Born Calves																	
EBV	-1.1	+2.4	+18	+22	+32	+40	+8	+1.5	-1.7	+24	+2.3	-0.2	+0.4	+0.6	+0.2	+\$20	+\$24

Traits Observed: GL, BWT, 200WT, 400WT(x2), 600WT, SS, FAT, EMA, IMF, FLT

Purchaser ..... \$ .....

**LOT  
18**

## SEIFERT BELMONT REDS

**ID: SEI190155**    **DOB:** 08/10/2018    **AGE:** 21.7 Mths    **REGO STATUS:** REGISTERED  
**GRADE:** PURE BR    **HORN:** POLLED    **DNA TEST:** PP

BEL070211 BELMONT 070211  
 SEI130539 SEIFERT 130539  
 JIS030228 SEIFERT 3-228  
**SIRE: SEI150301 SEIFERT BELMONT 150301**  
 MON990041 MONTPELLIER 99-41  
 MON030002 MONTPELLIER 03-2  
 MON980284 MONTPELLIER 98-284

**ANIMAL: SEI190155 SEIFERT BELMONT 190155**  
 BAU992007 BONSMARA AUST. 99-2007  
 BAU030005 BONSMARA AUST. 030005 (ET)  
 BAU992002 BONSMARA AUST. 99-2002

**DAM: BEL090367 BELMONT 090367**  
 BEL960319 BELMONT 96-319  
 BEL020118 BELMONT 02-0118  
 BEL950692 BELMONT 95-692



A heavy, later maturing homozygous poll bull, out of an 'oldy but a goody'. He is out of a CSIRO cow who has had 9 calves in a row and is PTIC with her 10th. He has growth and Scrotal EBVs in the top 10% and carcase weight and RBY (retail beef yield) in the top 30% putting him in the top 15% on the domestic index. Scrotal size 35cm in April.

June 2020 Belmont Red GROUP BREEDPLAN																	
	GL	BW	200	400	600	MC	Milk	SS	DC	CW	EMA	Rib	Rump	RBY	IMF	Domestic	Export
EBV	-1.5	1.8	22	32	49	65	10	2.8	-0.4	28	1.3	-0.8	-0.9	0.7	0	\$27	\$32
Acc	51%	77%	74%	74%	77%	71%	54%	74%	43%	64%	58%	60%	59%	48%	54%		
Breed Avg. EBVs for 2018 Born Calves																	
EBV	-1.1	+2.4	+18	+22	+32	+40	+8	+1.5	-1.7	+24	+2.3	-0.2	+0.4	+0.6	+0.2	+\$20	+\$24

Traits Observed: GL, BWT, 200WT, 400WT(x2), 600WT, SS, FAT, EMA, IMF, FLT

Purchaser ..... \$ .....

**LOT  
19**

## SEIFERT BELMONT REDS

**ID: SEI190233**    **DOB:** 28/09/2018    **AGE:** 22.1 Mths    **REGO STATUS:** REGISTERED  
**GRADE:** PURE BR    **HORN:** POLLED    **DNA TEST:** PP

BEL070211 BELMONT 070211  
 SEI130539 SEIFERT 130539  
 JIS030228 SEIFERT 3-228  
**SIRE: SEI150301 SEIFERT BELMONT 150301**  
 MON990041 MONTPELLIER 99-41  
 MON030002 MONTPELLIER 03-2  
 MON980284 MONTPELLIER 98-284

**ANIMAL: SEI190233 SEIFERT BELMONT 190233**  
 MON000043 MONTPELLIER 00-43  
 MON030017 MONTPELLIER 03-17  
 MON960212 MONTPELLIER 96-212

**DAM: NOR090010 NOR 09-10**  
 BEL870257 BELMONT 87-257  
 MON980222 MONTPELLIER 98-222 (AI)  
 MON940038 MONTPELLIER 94-38



One of my favourites, this very appealing and very quiet homozygous poll bull is in the top 10% for 600D growth and top 15% for carcase weight as well as in the top 20% for SS (scrotal size). He is out of a bought cow who had 3 calves in a row. Scrotal Size 37cm in April.

June 2020 Belmont Red GROUP BREEDPLAN																	
	GL	BW	200	400	600	MC	Milk	SS	DC	CW	EMA	Rib	Rump	RBY	IMF	Domestic	Export
EBV	-1.5	3	20	33	50	73	6	2.3	-0.2	32	2.5	-0.4	-0.2	0.7	0.1	\$26	\$31
Acc	43%	62%	72%	72%	75%	68%	50%	73%	42%	60%	56%	59%	57%	46%	53%		
Breed Avg. EBVs for 2018 Born Calves																	
EBV	-1.1	+2.4	+18	+22	+32	+40	+8	+1.5	-1.7	+24	+2.3	-0.2	+0.4	+0.6	+0.2	+\$20	+\$24

Traits Observed: GL, BWT, 200WT, 400WT(x2), 600WT, SS, FAT, EMA, IMF, FLT

Purchaser ..... \$ .....

**LOT  
20**

# SEIFERT BELMONT REDS

**ID: SEI190243**      **DOB:** 17/10/2018      **AGE:** 21.4 Mths      **REGO STATUS:** REGISTERED  
**GRADE:** PURE BR      **HORN:** POLLED      **DNA TEST:** PP

SEI120051 SEIFERT 120051  
 SEI140171 SEIFERT 140171  
 SEI080214 SEIFERT 08 0214  
**SIRE: SEI160023 SEIFERT BELMONT 160023**  
 BEL070211 BELMONT 070211  
 SEI130348 SEIFERT 130348  
 MON060200 MONTPELLIER 06-2  
**ANIMAL: SEI190243 SEIFERT BELMONT 190243**  
 HAP070204 HAPPY HILL 07-204 (AI)  
 HAP110286 HAPPY HILL 11-286  
 HAP060159 HAPPY HILL 06-159  
**DAM: SEI140302 SEIFERT 140302**  
 MON040055 MONTPELLIER 04-55  
 SEI070248 SEIFERT 07-248  
 MON030047 MONTPELLIER 03-47



Another one of our personal favourites, this quiet, well-put-together Homozygous Poll has above average growth and a carcass weight EBV in the top 10%. His dam is a stayer on her 5th calf in a row. Scrotal Size 41cm in April.

June 2020 Belmont Red GROUP BREEDPLAN																	
	GL	BW	200	400	600	MC	Milk	SS	DC	CW	EMA	Rib	Rump	RBY	IMF	Domestic	Export
EBV	-0.1	4.9	21	39	49	68	9	2.8	-0.6	35	1.6	-0.3	0.5	0.5	0.3	\$23	\$24
Acc	39%	75%	73%	73%	76%	70%	41%	72%	39%	61%	56%	59%	58%	45%	52%		
Breed Avg. EBVs for 2018 Born Calves																	
EBV	-1.1	+2.4	+18	+22	+32	+40	+8	+1.5	-1.7	+24	+2.3	-0.2	+0.4	+0.6	+0.2	+\$20	+\$24

Traits Observed: GL, BWT, 200WT, 400WT(x2), 600WT, SS, FAT, EMA, IMF, FLT

Purchaser ..... \$ .....

**LOT  
21**

# SEIFERT BELMONT REDS

**ID: SEI190811**      **DOB:** 18/10/2018      **AGE:** 21.4 Mths      **REGO STATUS:** REGISTERED  
**GRADE:** PURE BR      **HORN:** POLLED      **DNA TEST:** PH

SEI090377 SEIFERT TEDSTAR  
 SEI130061 SEIFERT 130061  
 SEI080322 SEIFERT 08 0322  
**SIRE: SEI170097 SEIFERT BELMONT 170097**  
 KER050345 KER-RON 05-345 (AI)  
 SEI120114 SEIFERT 120114  
 SEI080050 SEIFERT STAR ANISE  
**ANIMAL: SEI190811 SEIFERT BELMONT 190811**  
 SEI090377 SEIFERT TEDSTAR  
 SEI120051 SEIFERT 120051  
 MON010042 MONTPELLIER 01-42  
**DAM: SEI140118 SEIFERT 140118**  
 KER050345 KER-RON 05-345 (AI)  
 KER110786 KER-RON 11-786  
 KER060413 KER-RON 06-413



Another cracker of a carcass bull and one of only five sons of SEI170097 in the sale. This bull has the highest EMA (eye muscle area) and RBY (retail beef yield) EBVs in the sale, both sitting in the top 1%. He also has a SS (scrotal size) EBV in the top 5%, positioning him in the top 1% on the domestic index. Scrotal Size 40cm in April.

June 2020 Belmont Red GROUP BREEDPLAN																	
	GL	BW	200	400	600	MC	Milk	SS	DC	CW	EMA	Rib	Rump	RBY	IMF	Domestic	Export
EBV	-1.2	5.2	30	52	66	105	10	3.5	0.2	53	5.5	0.1	0.1	1.4	-0.1	\$37	\$40
Acc	30%	59%	71%	71%	75%	68%	43%	72%	41%	59%	56%	59%	58%	45%	52%		
Breed Avg. EBVs for 2018 Born Calves																	
EBV	-1.1	+2.4	+18	+22	+32	+40	+8	+1.5	-1.7	+24	+2.3	-0.2	+0.4	+0.6	+0.2	+\$20	+\$24

Traits Observed: GL, BWT, 200WT, 400WT(x2), 600WT, SS, FAT, EMA, IMF, FLT

Purchaser ..... \$ .....

**LOT  
22**

## SEIFERT BELMONT REDS

**ID:** SEI190005    **DOB:** 26/08/2018    **AGE:** 23.2 Mths    **REGO STATUS:** REGISTERED  
**GRADE:** PURE BR    **HORN:** POLLED    **DNA TEST:** PP

BEL070211 BELMONT 070211  
 SEI130539 SEIFERT 130539  
 JIS030228 SEIFERT 3-228  
**SIRE: SEI150301 SEIFERT BELMONT 150301**  
 MON990041 MONTPELLIER 99-41  
 MON030002 MONTPELLIER 03-2  
 MON980284 MONTPELLIER 98-284  
**ANIMAL: SEI190005 SEIFERT BELMONT 190005**  
 SEI090377 SEIFERT TEDSTAR  
 SEI140269 SEIFERT 140269  
 MON040122 MONTPELLIER 0122 (COM)  
**DAM: SEI160454 SEIFERT BELMONT 160454**  
 TRE050123 TREMERE 050123  
 SEI080016 SEIFERT AURORA  
 MON020048 MONTPELLIER 02-48



A beautiful smooth-coated Homozygous Poll, with favourable low BW (birth weight) and moderate MCW (mature cow weight) but above average growth. He is in the top 25% for 400D growth with favourable negative DTC (days to calving) and SS (scrotal size) both in the top 25%. Scrotal Size of 39cm in April.

June 2020 Belmont Red GROUP BREEDPLAN																	
	GL	BW	200	400	600	MC	Milk	SS	DC	CW	EMA	Rib	Rump	RBY	IMF	Domestic	Export
EBV	-2	0.7	18	28	38	42	11	1.7	-2.4	20	1.7	0.3	1.2	0.3	0.2	\$27	\$31
Acc	59%	75%	71%	68%	68%	64%	47%	56%	38%	59%	46%	52%	51%	42%	46%		
Breed Avg. EBVs for 2018 Born Calves																	
EBV	-1.1	+2.4	+18	+22	+32	+40	+8	+1.5	-1.7	+24	+2.3	-0.2	+0.4	+0.6	+0.2	+\$20	+\$24

Traits Observed: GL, BWT, 200WT, 400WT(x2), 600WT, SS, FAT, EMA, IMF, FLT

Purchaser ..... \$ .....

**LOT  
23**

## SEIFERT BELMONT REDS

**ID:** SEI190039    **DOB:** 11/09/2018    **AGE:** 22.6 Mths    **REGO STATUS:** REGISTERED  
**GRADE:** PURE BR    **HORN:** POLLED    **DNA TEST:** PH

MON040011 MONTPELLIER 04-11  
 SEI090377 SEIFERT TEDSTAR  
 COR030089 CORYMBIA 0089  
**SIRE: SEI170053 SEIFERT BELMONT 170053 (AI)**  
 TRE090231 TREMERE 090231  
 SEI140432 SEIFERT 140432 (AI)  
 SEI110196 SEIFERT 110196  
**ANIMAL: SEI190039 SEIFERT BELMONT 190039**  
 TRD09P406 TOORIDGE P406  
 SEI140129 SEIFERT 140129  
 BEL090141 BELMONT 090141  
**DAM: SEI160042 SEIFERT BELMONT 160042**  
 SEI13MS02 BEL110005, SEI110215, SEI110199  
 SEI130360 SEIFERT 130360  
 SEI110160 SEIFERT 110160



With a combination of muscling and marbling his carcass EBV is above the top 10%, RBY (retail beef yield) is in the top 15%, and IMF (intramuscular fat) is in the top 10%. Fertility traits of SS (scrotal size) is in the top 1%, and DTC (days to calving) is in the top 35%. He is in the top 15% on the domestic and export \$indexes. His dam is a proven stayer being on her 3rd calf in a row. Scrotal size of 39cm in April.

June 2020 Belmont Red GROUP BREEDPLAN																	
	GL	BW	200	400	600	MC	Milk	SS	DC	CW	EMA	Rib	Rump	RBY	IMF	Domestic	Export
EBV	-0.1	5.2	27	36	54	73	10	4.5	-3.2	35	3.2	-0.1	0.7	0.9	0.4	\$27	\$35
Acc	43%	75%	71%	71%	74%	68%	39%	70%	36%	60%	53%	57%	55%	44%	50%		
Breed Avg. EBVs for 2018 Born Calves																	
EBV	-1.1	+2.4	+18	+22	+32	+40	+8	+1.5	-1.7	+24	+2.3	-0.2	+0.4	+0.6	+0.2	+\$20	+\$24

Traits Observed: GL, BWT, 200WT, 400WT(x2), 600WT, SS, FAT, EMA, IMF, FLT

Purchaser ..... \$ .....

**LOT  
24**

## SEIFERT BELMONT REDS

**ID:** SEI190569    **DOB:** 03/10/2018    **AGE:** 21.9 Mths    **REGO STATUS:** REGISTERED  
**GRADE:** PURE BR    **HORN:** POLLED    **DNA TEST:** PH

BEL070211 BELMONT 070211  
 SEI130539 SEIFERT 130539  
 JIS030228 SEIFERT 3-228  
**SIRE:** SEI150143 SEIFERT BELMONT 150143  
 MON980035 MONTPELLIER 98-035  
 MON020060 MONTPELLIER 02-60  
 MON990002 MONTPELLIER 99-2  
**ANIMAL:** SEI190569 SEIFERT BELMONT 190569  
 MON000043 MONTPELLIER 00-43  
 MON030017 MONTPELLIER 03-17  
 MON960212 MONTPELLIER 96-212  
**DAM:** MON070332 MONTPELLIER 0332



SEI0000G2 SEIFERT GENERIC BR DAM

A very nicely put-together bull, with great carcass traits. His EMA (eye muscle area) EBV is in the top 10%, RBY (retail beef yield) in the top 15%, and carcass weight is in the top 5%. This places him in the top 20% on the domestic \$index. His dam is a young proven breeder on her 3rd calf in a row. Scrotal Size 38cm in April.

June 2020 Belmont Red GROUP BREEDPLAN																	
	GL	BW	200	400	600	MC	Milk	SS	DC	CW	EMA	Rib	Rump	RBY	IMF	Domestic	Export
EBV	-1.2	4.9	26	47	56	96	4	2.6	-0.5	43	3.1	0	0.6	0.8	0.3	\$31	\$32
Acc	29%	59%	72%	72%	75%	68%	50%	73%	40%	59%	56%	60%	58%	45%	53%		
Breed Avg. EBVs for 2018 Born Calves																	
EBV	-1.1	+2.4	+18	+22	+32	+40	+8	+1.5	-1.7	+24	+2.3	-0.2	+0.4	+0.6	+0.2	+\$20	+\$24

Traits Observed: GL, BWT, 200WT, 400WT(x2), 600WT, SS, FAT, EMA, IMF, FLT

Purchaser ..... \$ .....

**LOT  
25**

## SEIFERT BELMONT REDS

**ID:** SEI190403    **DOB:** 16/11/2018    **AGE:** 20.5 Mths    **REGO STATUS:** REGISTERED  
**GRADE:** PURE BR    **HORN:** SCURRED    **DNA TEST:** PH

SEI090377 SEIFERT TEDSTAR  
 SEI130061 SEIFERT 130061  
 SEI080322 SEIFERT 08 0322  
**SIRE:** SEI170097 SEIFERT BELMONT 170097  
 KER050345 KER-RON 05-345 (AI)  
 SEI120114 SEIFERT 120114  
 SEI080050 SEIFERT STAR ANISE  
**ANIMAL:** SEI190403 SEIFERT BELMONT 190403  
 SEI06MS01 06 OAK  
 SEI090187 SEIFERT 09 0187SEI  
 MON050012 MONTPELLIER 05-12  
**DAM:** SEI120254 SEIFERT 120254  
 MON950253 MONTPELLIER 95-253  
 MON000064 MONTPELLIER 00-64  
 MON970330 MONTPELLIER 970330



A top bull across the board with above average rib and rump fat, and in the top 10% for EMA (eye muscle area) the top 15% for RBY (retail beef yield), the top 25% for DTC (days to calving) and the top 15% for SS (scrotal size) which positions him in the top 1% on the export \$index. His dam was a proven breeder producing 5 calves in a row. Scrotal Size 37cm in April.

June 2020 Belmont Red GROUP BREEDPLAN																	
	GL	BW	200	400	600	MC	Milk	SS	DC	CW	EMA	Rib	Rump	RBY	IMF	Domestic	Export
EBV	-1.4	4.7	32	41	62	78	12	2.4	-4.2	42	3.8	0.4	1.1	0.9	0	\$33	\$43
Acc	28%	57%	70%	71%	74%	68%	47%	71%	42%	59%	55%	59%	58%	45%	52%		
Breed Avg. EBVs for 2018 Born Calves																	
EBV	-1.1	+2.4	+18	+22	+32	+40	+8	+1.5	-1.7	+24	+2.3	-0.2	+0.4	+0.6	+0.2	+\$20	+\$24

Traits Observed: GL, BWT, 200WT, 400WT(x2), 600WT, SS, FAT, EMA, IMF, FLT

Purchaser ..... \$ .....

**LOT  
26**

# SEIFERT BELMONT REDS

**ID:** SEI190549      **DOB:** 27/07/2018      **AGE:** 24.1 Mths      **REGO STATUS:** REGISTERED  
**GRADE:** PURE BR      **HORN:** POLLED      **DNA TEST:** PH

BEL070211 BELMONT 070211  
 SEI130539 SEIFERT 130539  
 JIS030228 SEIFERT 3-228  
**SIRE: SEI150143 SEIFERT BELMONT 150143**  
 MON980035 MONTPELLIER 98-035  
 MON020060 MONTPELLIER 02-60  
 MON990002 MONTPELLIER 99-2  
**ANIMAL: SEI190549 SEIFERT BELMONT 190549**  
 SEI110155 SEIFERT 110155  
 SEI140039 SEIFERT BELMONT 140039  
 COR040024 CORYMBIA 04-24  
**DAM: SEI160224 SEIFERT BELMONT 160224**  
 SEI100300 SEIFERT 0 0300  
 SEI110016 SEIFERT 110016  
 SEI06008S SEIFERT 06-008S



A quiet, functional bull with growth and carcass weight EBVs in the top 20% and 10% respectively, which puts this bull in the top 15% on the domestic and export indexes. His dam is a stayer on her 3rd calf in a row.

June 2020 Belmont Red GROUP BREEDPLAN																	
	GL	BW	200	400	600	MC	Milk	SS	DC	CW	EMA	Rib	Rump	RBY	IMF	Domestic	Export
EBV	-0.9	3.1	19	36	54	82	5	1.6	-0.5	35	2.2	-0.4	0.1	0.5	0.2	\$27	\$33
Acc	26%	56%	71%	71%	74%	67%	44%	72%	40%	58%	55%	58%	57%	44%	51%		
Breed Avg. EBVs for 2018 Born Calves																	
EBV	-1.1	+2.4	+18	+22	+32	+40	+8	+1.5	-1.7	+24	+2.3	-0.2	+0.4	+0.6	+0.2	+\$20	+\$24

Traits Observed: GL, BWT, 200WT, 400WT(x2), 600WT, SS, FAT, EMA, IMF, FLT

Purchaser ..... \$ .....



**LOT  
27**

# SEIFERT BELMONT REDS

**ID: SEI190007**    **DOB:** 26/08/2018    **AGE:** 23.2 Mths    **REGO STATUS:** REGISTERED  
**GRADE:** PURE BR    **HORN:** POLLED    **DNA TEST:** PH

BEL070211 BELMONT 070211  
 SEI130539 SEIFERT 130539  
 JIS030228 SEIFERT 3-228  
**SIRE: SEI150301 SEIFERT BELMONT 150301**  
 MON990041 MONTPELLIER 99-41  
 MON030002 MONTPELLIER 03-2  
 MON980284 MONTPELLIER 98-284  
**ANIMAL: SEI190007 SEIFERT BELMONT 190007**  
 MON040011 MONTPELLIER 04-11  
 SEI090377 SEIFERT TEDSTAR  
 COR030089 CORYMBIA 0089  
**DAM: SEI160398 SEIFERT BELMONT 160398**  
 KER050345 KER-RON 05-345 (AI)  
 SEI120232 SEIFERT 120232  
 COR050057 CORYMBIA 05-57



This bull is a very quiet, great looking bull, with high marbling and great fertility traits. His IMF (intramuscular fat) EBV is in the top 10% and his DTC (days to calving) in the top 30% with SS (Scrotal Size) in the top 25%. Out of a young dam who PTIC with her 3rd calf in a row. Scrotal Size of 39cm in April.

June 2020 Belmont Red GROUP BREEDPLAN																	
	GL	BW	200	400	600	MC	Milk	SS	DC	CW	EMA	Rib	Rump	RBY	IMF	Domestic	Export
EBV	-2	1	17	29	44	58	12	2.1	-3.9	18	-0.1	0.5	2.1	-0.1	0.4	\$29	\$34
Acc	60%	76%	74%	74%	76%	71%	49%	73%	44%	63%	58%	62%	60%	48%	55%		
Breed Avg. EBVs for 2018 Born Calves																	
EBV	-1.1	+2.4	+18	+22	+32	+40	+8	+1.5	-1.7	+24	+2.3	-0.2	+0.4	+0.6	+0.2	+\$20	+\$24

Traits Observed: GL, BWT, 200WT, 400WT(x2), 600WT, SS, FAT, EMA, IMF, FLT

Purchaser ..... \$ .....

**LOT  
28**

# SEIFERT BELMONT REDS

**ID: SEI190559**    **DOB:** 30/07/2018    **AGE:** 24.0 Mths    **REGO STATUS:** REGISTERED  
**GRADE:** PURE BR    **HORN:** POLLED    **DNA TEST:** PH

BEL070211 BELMONT 070211  
 SEI130539 SEIFERT 130539  
 JIS030228 SEIFERT 3-228  
**SIRE: SEI150143 SEIFERT BELMONT 150143**  
 MON980035 MONTPELLIER 98-035  
 MON020060 MONTPELLIER 02-60  
 MON990002 MONTPELLIER 99-2  
**ANIMAL: SEI190559 SEIFERT BELMONT 190559**  
 SEI16MS03 SEI140137 & SEI140315  
**DAM: SEI160424 SEIFERT BELMONT 160424**  
 TRD09P406 TOORIDGE P406  
 SEI130538 SEIFERT 130538  
 MON050116 MONTPELLIER 05-116



A very nicely put-together bull, with great carcass traits. His EMA (eye muscle area) EBV is in the top 10%, RBY (retail beef yield) in the top 15%, and carcass weight is in the top 5%. This places him in the top 20% on the domestic \$index. His dam is a young proven breeder on her 3rd calf in a row. Scrotal Size 38cm in April.

June 2020 Belmont Red GROUP BREEDPLAN																	
	GL	BW	200	400	600	MC	Milk	SS	DC	CW	EMA	Rib	Rump	RBY	IMF	Domestic	Export
EBV		3	22	38	50	75	7	2.7	2.8	39	4	-0.3	-0.3	0.9	0.2	\$26	\$28
Acc	0%	54%	70%	70%	73%	66%	41%	71%	37%	56%	53%	56%	54%	42%	49%		
Breed Avg. EBVs for 2018 Born Calves																	
EBV	-1.1	+2.4	+18	+22	+32	+40	+8	+1.5	-1.7	+24	+2.3	-0.2	+0.4	+0.6	+0.2	+\$20	+\$24

Traits Observed: GL, BWT, 200WT, 400WT(x2), 600WT, SS, FAT, EMA, IMF, FLT

Purchaser ..... \$ .....

**LOT  
29**

# SEIFERT BELMONT REDS

**ID:** SEI190805    **DOB:** 01/11/2018    **AGE:** 21.0 Mths    **REGO STATUS:** REGISTERED  
**GRADE:** PURE BR    **HORN:** SCURRED    **DNA TEST:** PH

SEI090377 SEIFERT TEDSTAR  
 SEI130061 SEIFERT 130061  
 SEI080322 SEIFERT 08 0322  
**SIRE: SEI170097 SEIFERT BELMONT 170097**  
 KER050345 KER-RON 05-345 (AI)  
 SEI120114 SEIFERT 120114  
 SEI080050 SEIFERT STAR ANISE  
**ANIMAL: SEI190805 SEIFERT BELMONT 190805**  
 MON040011 MONPELLIER 04-11  
 SEI090377 SEIFERT TEDSTAR  
 COR030089 CORYMBIA 0089  
**DAM: SEI140074 SEIFERT 140074**  
 COR04MS01 MULTIPLE SIRES 2004  
 COR040033 CORYMBIA 04-33  
 COR010070 CORYMBIA 0070



This deep well-fleshed young bull has the second highest EMA (eye muscle area) EBV in the sale in the top 1% and RBY (retail beef yield) in the top 5%. Combined with SS (scrotal size) in the top 5% and positive rib and rump fat, this puts him in the top 1% on the domestic and export \$indexes. Scrotal Size 37cm in April.

June 2020 Belmont Red GROUP BREEDPLAN																	
	GL	BW	200	400	600	MC	Milk	SS	DC	CW	EMA	Rib	Rump	RBY	IMF	Domestic	Export
EBV	-1.2	4.9	32	52	72	101	11	3.1	-0.1	50	5	0.3	0.9	1.1	0	\$37	\$43
Acc	33%	60%	69%	70%	66%	65%	45%	71%	42%	58%	56%	58%	57%	46%	52%		
Breed Avg. EBVs for 2018 Born Calves																	
EBV	-1.1	+2.4	+18	+22	+32	+40	+8	+1.5	-1.7	+24	+2.3	-0.2	+0.4	+0.6	+0.2	+\$20	+\$24

Traits Observed: GL, BWT, 200WT, 400WT(x2), 600WT, SS, FAT, EMA, IMF, FLT

Purchaser ..... \$ .....

**LOT  
30**

# SEIFERT BELMONT REDS

**ID:** SEI190575    **DOB:** 13/10/2018    **AGE:** 21.6 Mths    **REGO STATUS:** REGISTERED  
**GRADE:** PURE BR    **HORN:** POLLED    **DNA TEST:** PH

MON040011 MONPELLIER 04-11  
 SEI090377 SEIFERT TEDSTAR  
 COR030089 CORYMBIA 0089  
**SIRE: SEI170089 SEIFERT BELMONT 170089 (AI)**  
 BEL070211 BELMONT 070211  
 SEI140040 SEIFERT 140040  
 SEI100078 SEIFERT 0 0078  
**ANIMAL: SEI190575 SEIFERT BELMONT 190575**  
 SEI090377 SEIFERT TEDSTAR  
 SEI140017 SEIFERT 140017  
 SEI080050 SEIFERT STAR ANISE  
**DAM: SEI160362 SEIFERT BELMONT 160362**  
 SEI05MS03 2005 BLK MULTI  
 SEI070078 SEIFERT 0078  
 JIS030209 SEIFERT 3-209



This solid-bodied and calm bull has the best DTC (days to calving) EBV in the sale- in the top 5% at -7.5 days, which puts him in the top 15% on the domestic index. His dam is a proven breeder on her 4th calf in a row. Scrotal Size 35cm in April.

June 2020 Belmont Red GROUP BREEDPLAN																	
	GL	BW	200	400	600	MC	Milk	SS	DC	CW	EMA	Rib	Rump	RBY	IMF	Domestic	Export
EBV	-1.3	2	16	23	33	47	14	1.2	-7.5	15	0.2	0.2	1.6	-0.1	0.2	\$27	\$32
Acc	37%	61%	71%	71%	74%	68%	44%	72%	41%	59%	55%	59%	58%	46%	52%		
Breed Avg. EBVs for 2018 Born Calves																	
EBV	-1.1	+2.4	+18	+22	+32	+40	+8	+1.5	-1.7	+24	+2.3	-0.2	+0.4	+0.6	+0.2	+\$20	+\$24

Traits Observed: GL, BWT, 200WT, 400WT(x2), 600WT, SS, FAT, EMA, IMF, FLT

Purchaser ..... \$ .....



**LOT  
31**

# SEIFERT BELMONT REDS

**ID:** SEI190027    **DOB:** 26/08/2018    **AGE:** 23.2 Mths    **REGO STATUS:** REGISTERED  
**GRADE:** PURE BR    **HORN:** SCURRED    **DNA TEST:** PH

SEI090377 SEIFERT TEDSTAR  
 SEI140269 SEIFERT 140269  
 MON040122 MONTPELLIER 0122 (COM)  
**SIRE: SEI160055 SEIFERT BELMONT'S LIMELIGHT**  
 MON030013 MONTPELLIER 03-13  
 MON080472 MONTPELLIER 08-472  
 SEI0000G2 SEIFERT GENERIC BR DAM  
**ANIMAL: SEI190027 SEIFERT BELMONT'S 190027**  
 SEI13MS01 SEI110155, BEL110089  
 SEI130097 SEIFERT BELMONT'S 130097  
 SEI090044 SEIFERT 09-044  
**DAM: SEI160246 SEIFERT BELMONT'S 160246**  
 MTE010137 MT EUGENE 01-137  
 COR050002 CORYMBIA 05-02  
 MTE000644 MT EUGENE 00-0644



A good all-round moderate bull with well-balanced figures across all traits, he is out of a young, hardy dam who is on her 3rd calf in a row. Scrotal Size of 36cm in April.

June 2020 Belmont Red GROUP BREEDPLAN																	
	GL	BW	200	400	600	MC	Milk	SS	DC	CW	EMA	Rib	Rump	RBY	IMF	Domestic	Export
EBV	-1.7	2.2	22	25	36	41	8	1.7	-0.7	22	1.8	0	0.8	0.5	0.1	\$21	\$24
Acc	57%	75%	73%	73%	76%	70%	41%	72%	37%	61%	56%	60%	58%	45%	52%		
Breed Avg. EBVs for 2018 Born Calves																	
EBV	-1.1	+2.4	+18	+22	+32	+40	+8	+1.5	-1.7	+24	+2.3	-0.2	+0.4	+0.6	+0.2	+\$20	+\$24

Traits Observed: GL, BWT, 200WT, 400WT(x2), 600WT, SS, FAT, EMA, IMF, FLT

Purchaser ..... \$ .....

**LOT  
32**

# SEIFERT BELMONT REDS

**ID:** SEI190213    **DOB:** 25/09/2018    **AGE:** 22.2 Mths    **REGO STATUS:** REGISTERED  
**GRADE:** PURE BR    **HORN:** POLLED    **DNA TEST:** PP

SEI120051 SEIFERT 120051  
 SEI140171 SEIFERT 140171  
 SEI080214 SEIFERT 08 0214  
**SIRE: SEI160023 SEIFERT BELMONT'S 160023**  
 BEL070211 BELMONT 070211  
 SEI130348 SEIFERT 130348  
 MON060200 MONTPELLIER 06-2  
**ANIMAL: SEI190213 SEIFERT BELMONT'S 190213**  
 MON17 MONTPELLIER GENERIC BR SIRE  
**DAM: MON130576 MONTPELLIER 130576**  
 MON18 MONTPELLIER GENERIC BR DAM



A solid, very quiet, Homozygous Poll with great carcass traits. He is in the top 5% for carcass weight and top 10% for EMA (eye muscle area). His dam is a bought cow who is on her 5th calf in a row. Scrotal Size 38cm in April.

June 2020 Belmont Red GROUP BREEDPLAN																	
	GL	BW	200	400	600	MC	Milk	SS	DC	CW	EMA	Rib	Rump	RBY	IMF	Domestic	Export
EBV	-1.3	3.8	19	30	35	63	3	1.3	1.6	37	3.9	-0.7	-0.9	1.1	0	\$21	\$20
Acc	25%	58%	71%	71%	74%	68%	43%	71%	35%	58%	53%	56%	55%	42%	49%		
Breed Avg. EBVs for 2018 Born Calves																	
EBV	-1.1	+2.4	+18	+22	+32	+40	+8	+1.5	-1.7	+24	+2.3	-0.2	+0.4	+0.6	+0.2	+\$20	+\$24

Traits Observed: GL, BWT, 200WT, 400WT(x2), 600WT, SS, FAT, EMA, IMF, FLT

Purchaser ..... \$ .....

**LOT  
33**

## SEIFERT BELMONT REDS

**ID:** SEI190201    **DOB:** 24/09/2018    **AGE:** 22.2 Mths    **REGO STATUS:** REGISTERED  
**GRADE:** PURE BR    **HORN:** SCURRED    **DNA TEST:** PH

MON040011 MONTPELLIER 04-11  
 SEI090377 SEIFERT TEDSTAR  
 COR030089 CORYMBIA 0089

**SIRE:** SEI170143 SEIFERT BELMONT 170143 (AI)

HAP120304 HAPPY HILL 12 - 304  
 SEI140096 SEIFERT 140096  
 SEI110200 SEIFERT 110200

**ANIMAL:** SEI190201 SEIFERT BELMONT 190201

SEI9000G2 GENERIC BELMONT SIRE

**DAM:** SEI150104 SEIFERT BELMONT 150104

SEI95BRBR SEIFERT GENERIC BR SIRE  
 SEI080120X SEIFERT BELMONT 080120X



A soft, docile bull with great carcass traits. He is in the top 10% for EMA (eye muscle area) and top 15% for RBY (retail beef yield). This is combined with solid fertility traits including DTC (days to calving) in the top 35% which places him in the top 10% on the domestic \$index. Scrotal size 41cm in April.

June 2020 Belmont Red GROUP BREEDPLAN																	
	GL	BW	200	400	600	MC	Milk	SS	DC	CW	EMA	Rib	Rump	RBY	IMF	Domestic	Export
EBV	-1.9	3.3	22	35	44	67	9	1.9	-3.1	34	4	-0.2	0.3	0.9	0	\$31	\$34
Acc	30%	56%	70%	70%	74%	67%	38%	69%	36%	56%	50%	53%	51%	40%	46%		
Breed Avg. EBVs for 2018 Born Calves																	
EBV	-1.1	+2.4	+18	+22	+32	+40	+8	+1.5	-1.7	+24	+2.3	-0.2	+0.4	+0.6	+0.2	+\$20	+\$24

Traits Observed: GL, BWT, 200WT, 400WT(x2), 600WT, SS, FAT, EMA, IMF, FLT

Purchaser ..... \$ .....

**LOT  
34**

## SEIFERT BELMONT REDS

**ID:** SEI190259    **DOB:** 03/10/2018    **AGE:** 21.9 Mths    **REGO STATUS:** REGISTERED  
**GRADE:** PURE BR    **HORN:** SCURRED    **DNA TEST:** NR

SEI110155 SEIFERT 110155  
 SEI140287 SEIFERT BELMONT 140287  
 MON080462 MONTPELLIER 0462

**SIRE:** SEI170191 SEIFERT BELMONT 170191

HAP120300 HAPPY HILL 12 - 300  
 SEI140128 SEIFERT 140128  
 JIS080469 SEIFERT JIS 08-469

**ANIMAL:** SEI190259 SEIFERT BELMONT 190259

SEI06MS02 06 WS MULTI

**DAM:** SEI080214 SEIFERT 08 0214

MON980247 MONTPELLIER 98-247 (AI)  
 MON020028 MONTPELLIER 02-28  
 MON950234 MONTPELLIER 95-234



A very appealing, and deep and high-yielding bull. He has a carcass weight EBV in the top 15% and EMA (eye muscle area) above the top 5% combined with SS (scrotal size) in the top 10%. He is the natural calf of donor cow SEI080214 (a very productive cow raising 7 calves in a row) making him a 1/2 brother to IVF calf 190103 (lot 62) in the sale. Scrotal Size of 39cm in April.

June 2020 Belmont Red GROUP BREEDPLAN																	
	GL	BW	200	400	600	MC	Milk	SS	DC	CW	EMA	Rib	Rump	RBY	IMF	Domestic	Export
EBV		3.6	20	29	39	56	5	2.7	0.3	38	4.7	-0.2	-0.1	1.2	0.3	\$24	\$27
Acc	0%	57%	71%	71%	74%	68%	43%	73%	38%	58%	54%	56%	54%	42%	49%		
Breed Avg. EBVs for 2018 Born Calves																	
EBV	-1.1	+2.4	+18	+22	+32	+40	+8	+1.5	-1.7	+24	+2.3	-0.2	+0.4	+0.6	+0.2	+\$20	+\$24

Traits Observed: GL, BWT, 200WT, 400WT(x2), 600WT, SS, FAT, EMA, IMF, FLT

Purchaser ..... \$ .....

# Fertility is the biggest profit driver.

Our job is to not only produce great tasting tender beef but also lots of it.

We use the 'days to calving' EBV to select the most profitable cows which fall pregnant early every year.

The EBV graph here shows one of our favourite cows who is in the top 1% for days to calving. She has also raised 9 calves in a row without ever being spike fed, or given any special treatment. She has survived and bred her whole life in our marginal ticky Crows Nest country which is phosphorous deficient, decomposed granite, unimproved spear grass and iron bark, forest county .

Other important fertility traits - including Scrotal Size - in this super-duper cow are also in the top 1%-5%.

Not surprisingly she is at the absolute highest \$value for the domestic index (\$42 versus ave \$20) and export index (\$52 versus ave \$24).

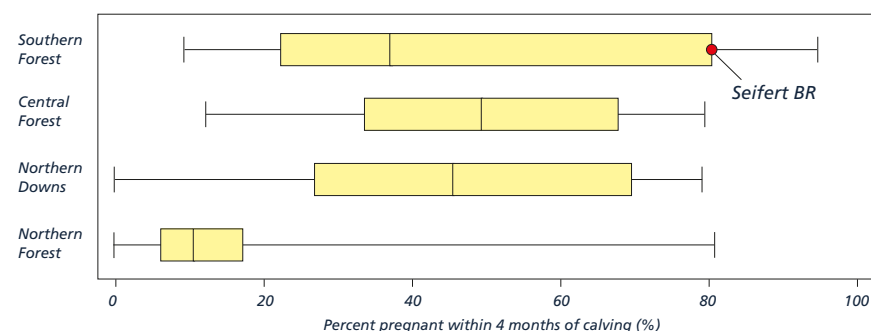
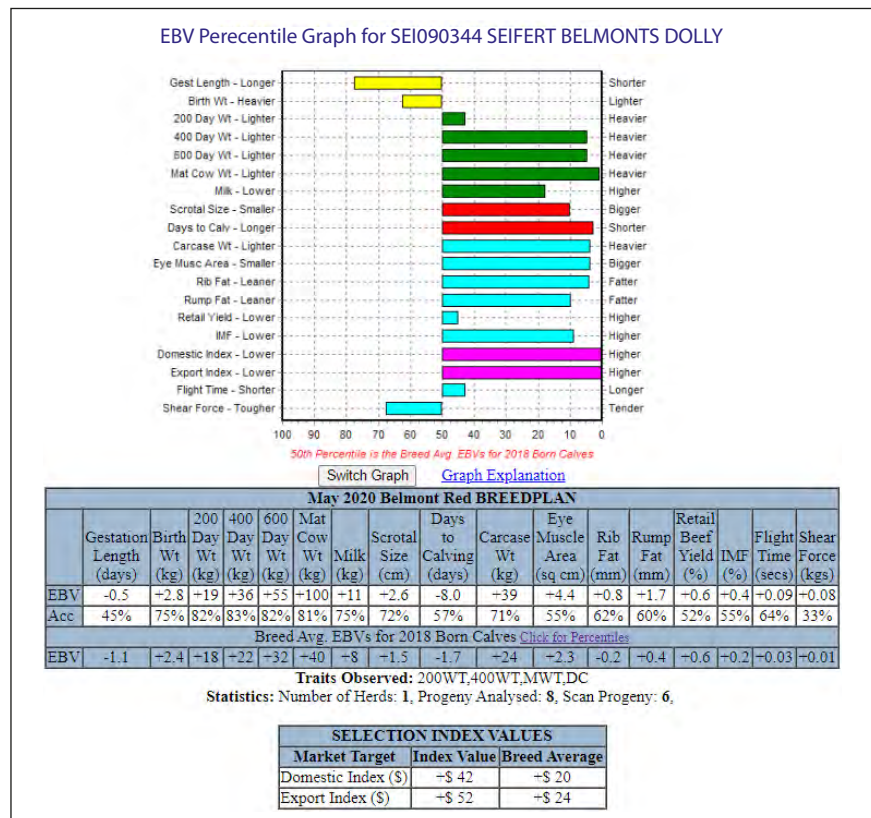
This makes her the equal most profitable cow on the domestic \$index ever. We think so highly of her that we have named her 'Dolly' and cloned her. We will implant 11 clone embryos later this year.

We also select our bulls using days to calving and scrotal size EBVs, and semen test them as yearlings at 11-14mths old for %normal morphology and %normal motility, which means their daughters will reach puberty earlier, and have less lactation anoestrus.

Our females and bulls must be doing a good job, because when we were in the \* CASHCOW research project we learnt that our lactating first calf heifers return to calf rate 2009 was 45% better than the project median.

Simplistically this could mean an extra 450 more calves /per year / per 1000 breeders.

(\*CASHCOW is the largest research project to date looking at female fertility and included about 75000 females and 72 commercial properties in QLD, NT and WA).



Our performance at 80% return to calf on first calf lactating heifers - we joined for 3 months.

**LOT  
35**

## SEIFERT BELMONT REDS

**ID: SEI190265**    **DOB:** 25/09/2018    **AGE:** 22.2 Mths    **REGO STATUS:** REGISTERED  
**GRADE:** PURE BR    **HORN:** POLLED    **DNA TEST:** PP

BEL070211 BELMONT 070211  
 SEI130539 SEIFERT 130539  
 JIS030228 SEIFERT 3-228  
**SIRE: SEI150301 SEIFERT BELMONT 150301**  
 MON990041 MONTPELLIER 99-41  
 MON030002 MONTPELLIER 03-2  
 MON980284 MONTPELLIER 98-284

**ANIMAL: SEI190265 SEIFERT BELMONT 190265**

SEI04MS02 W.S MULTI SIRE

**DAM: SEI100154 SEIFERT 0 0154**

MON950253 MONTPELLIER 95-253  
 MON010020 MONTPELLIER 01-20  
 MON980220 MONTPELLIER 98-220



A very nice Homozygous Poll with a distinctive birth mark on his left side. He is an ideal candidate for heifer joining due to his low birth weight and low MCW (mature cow weight) EBVs. His DTC (days to calving) EBV is in the top 30% which places him in the top 20% on the domestic \$index. He is out of a great cow raising 8 calves in a row and on her 9th. Scrotal Size 38cm in April.

June 2020 Belmont Red GROUP BREEDPLAN																	
	GL	BW	200	400	600	MC	Milk	SS	DC	CW	EMA	Rib	Rump	RBY	IMF	Domestic	Export
EBV	-1.5	0.7	12	23	26	40	8	1.3	-3.7	15	1.2	0.2	0.9	0.3	0.2	\$26	\$27
Acc	40%	61%	73%	73%	76%	70%	52%	73%	43%	60%	57%	61%	59%	46%	54%		
Breed Avg. EBVs for 2018 Born Calves																	
EBV	-1.1	+2.4	+18	+22	+32	+40	+8	+1.5	-1.7	+24	+2.3	-0.2	+0.4	+0.6	+0.2	+\$20	+\$24

Traits Observed: GL, BWT, 200WT, 400WT(x2), 600WT, SS, FAT, EMA, IMF, FLT

Purchaser ..... \$ .....

**LOT  
36**

## SEIFERT BELMONT REDS

**ID: SEI190089**    **DOB:** 26/09/2018    **AGE:** 22.1 Mths    **REGO STATUS:** REGISTERED  
**GRADE:** PURE BR    **HORN:** POLLED    **DNA TEST:** PH

SEI120051 SEIFERT 120051  
 SEI140171 SEIFERT 140171  
 SEI080214 SEIFERT 08 0214  
**SIRE: SEI160023 SEIFERT BELMONT 160023**  
 BEL070211 BELMONT 070211  
 SEI130348 SEIFERT 130348  
 MON060200 MONTPELLIER 06-2

**ANIMAL: SEI190089 SEIFERT BELMONT 190089**

KER100716 KER-RON 10-716

**DAM: SEI140198 SEIFERT 140198**

MON030017 MONTPELLIER 03-17  
 MON060210 MONTPELLIER 06-18  
 SEI0000G1 SEIFERT GENERIC G1



A sleek and solid moderate bull with above average DTC (days to calving) and SS (scrotal size) EBVs are combined with carcass weight and IMF (intramuscular fat) in the top 20%. Scrotal Size of 37cm in April.

June 2020 Belmont Red GROUP BREEDPLAN																	
	GL	BW	200	400	600	MC	Milk	SS	DC	CW	EMA	Rib	Rump	RBY	IMF	Domestic	Export
EBV	0.4	6.2	19	32	29	54	7	1.9	-1.7	30	2	-0.3	0.1	0.9	0.3	\$18	\$14
Acc	38%	75%	73%	73%	75%	69%	41%	72%	39%	61%	56%	60%	58%	46%	53%		
Breed Avg. EBVs for 2018 Born Calves																	
EBV	-1.1	+2.4	+18	+22	+32	+40	+8	+1.5	-1.7	+24	+2.3	-0.2	+0.4	+0.6	+0.2	+\$20	+\$24

Traits Observed: GL, BWT, 200WT, 400WT(x2), 600WT, SS, FAT, EMA, IMF, FLT

Purchaser ..... \$ .....

LOT  
37

## SEIFERT BELMONT REDS

**ID:** SEI190189    **DOB:** 25/09/2018    **AGE:** 22.2 Mths    **REGO STATUS:** REGISTERED  
**GRADE:** PURE BR    **HORN:** POLLED    **DNA TEST:** PH

MON040011 MONTPELLIER 04-11  
 SEI090377 SEIFERT TEDSTAR  
 COR030089 CORYMBIA 0089  
**SIRE:** SEI170143 SEIFERT BELMONT 170143 (AI)  
 HAP120304 HAPPY HILL 12 - 304  
 SEI140096 SEIFERT 140096  
 SEI110200 SEIFERT 110200  
**ANIMAL:** SEI190189 SEIFERT BELMONT 190189  
 BEL070211 BELMONT 070211  
 SEI130539 SEIFERT 130539  
 JIS030228 SEIFERT 3-228  
**DAM:** SEI150246 SEIFERT 150246  
 MTE060950 MT EUGENE 06-950  
 SEI090178 SEIFERT 09 0178SEI  
 MON050030 MONTPELLIER 05-30



A deep and very quiet, dark red bull with strong growth and carcase weight EBVs. He is in the top 5% for 600D growth and carcase weight, and in the top 15% for RBY (retail beef yield). He is out of a young proven breeder on her 4th calf in a row. Scrotal Size 38cm in April.

June 2020 Belmont Red GROUP BREEDPLAN																	
	GL	BW	200	400	600	MC	Milk	SS	DC	CW	EMA	Rib	Rump	RBY	IMF	Domestic	Export
EBV	-1.6	4	24	44	60	94	10	1.9	2.2	41	3	-0.5	-0.2	0.9	0.1	\$29	\$32
Acc	35%	58%	71%	71%	74%	68%	42%	71%	38%	58%	53%	55%	53%	43%	49%		
Breed Avg. EBVs for 2018 Born Calves																	
EBV	-1.1	+2.4	+18	+22	+32	+40	+8	+1.5	-1.7	+24	+2.3	-0.2	+0.4	+0.6	+0.2	+\$20	+\$24

Traits Observed: GL, BWT, 200WT, 400WT(x2), 600WT, SS, FAT, EMA, IMF, FLT

Purchaser ..... \$ .....

LOT  
38

## SEIFERT BELMONT REDS

**ID:** SEI190373    **DOB:** 16/10/2018    **AGE:** 21.5 Mths    **REGO STATUS:** REGISTERED  
**GRADE:** PURE BR    **HORN:** SCURRED    **DNA TEST:** PH

SEI13MS01 SEI110155, BEL110089  
 SEI130097 SEIFERT BELMONT 130097  
 SEI090044 SEIFERT 09-044  
**SIRE:** SEI170405 SEIFERT BELMONT 170405  
 COR04MS01 MULTIPLE SIRES 2004  
 COR040024 CORYMBIA 04-24  
 NAR000168 NARAYEN 00/168  
**ANIMAL:** SEI190373 SEIFERT BELMONT 190373  
 BEL070211 BELMONT 070211  
 SEI130071 SEIFERT 130071  
 MON070332 MONTPELLIER 0332  
**DAM:** SEI150006 SEIFERT 150006  
 SEI100300 SEIFERT 0 0300  
 SEI120134 SEIFERT 120134  
 SEI080260 SEIFERT 08 0260SEI



A super quiet, long, dark red bull with great carcase and growth traits being in the top 5% for both 600D growth and carcase weight EBVs placing him in the top 30% on the export \$index. Scrotal Size 39cm in April.

June 2020 Belmont Red GROUP BREEDPLAN																	
	GL	BW	200	400	600	MC	Milk	SS	DC	CW	EMA	Rib	Rump	RBY	IMF	Domestic	Export
EBV		5.2	30	36	61	75	5		0.4	37	1.3	0.1	1.2	0.4	0.1	\$19	\$28
Acc	0%	56%	70%	70%	73%	67%	42%	70%	35%	57%	52%	54%	53%	41%	47%		
Breed Avg. EBVs for 2018 Born Calves																	
EBV	-1.1	+2.4	+18	+22	+32	+40	+8	+1.5	-1.7	+24	+2.3	-0.2	+0.4	+0.6	+0.2	+\$20	+\$24

Traits Observed: GL, BWT, 200WT, 400WT(x2), 600WT, SS, FAT, EMA, IMF, FLT

Purchaser ..... \$ .....

LOT  
39

# SEIFERT BELMONT REDS

**ID:** SEI190221    **DOB:** 10/09/2018    **AGE:** 22.7 Mths    **REGO STATUS:** REGISTERED  
**GRADE:** PURE BR    **HORN:** SCURRED    **DNA TEST:** PH

SEI13MS01 SEI110155, BEL110089  
 SEI130097 SEIFERT BELMONTs 130097  
 SEI090044 SEIFERT 09-044

**SIRE:** SEI170405 SEIFERT BELMONTs 170405

COR04MS01 MULTIPLE SIREs 2004  
 COR040024 CORYMBIA 04-24  
 NAR000168 NARAYEN 00/168

**ANIMAL:** SEI190221 SEIFERT BELMONTs 190221

HAP070204 HAPPY HILL 07-204 (AI)  
 HAP120300 HAPPY HILL 12 - 300  
 HAP090251 HAPPY HILL 09-251

**DAM:** SEI140240 SEIFERT 140240

TRE030179 TREMERE 030179  
 BEL080497 BELMONT 080497  
 BEL030333 BELMONT 03-0333



Destined to be a great carcass sire. His EMA (eye muscle area) and RBY (retail beef yield) are both in the top 5% and this is combined with above average growth. Scrotal Size 38cm in April.

June 2020 Belmont Red GROUP BREEDPLAN																	
	GL	BW	200	400	600	MC	Milk	SS	DC	CW	EMA	Rib	Rump	RBY	IMF	Domestic	Export
EBV	-0.8	3.5	26	29	44	47	7	1	3.8	36	4.3	-0.6	-1.1	1.2	-0.2	\$17	\$21
Acc	38%	74%	72%	72%	75%	69%	42%	71%	39%	60%	54%	58%	56%	44%	50%		
Breed Avg. EBVs for 2018 Born Calves																	
EBV	-1.1	+2.4	+18	+22	+32	+40	+8	+1.5	-1.7	+24	+2.3	-0.2	+0.4	+0.6	+0.2	+\$20	+\$24

Traits Observed: GL, BWT, 200WT, 400WT(x2), 600WT, SS, FAT, EMA, IMF, FLT

Purchaser ..... \$ .....



**LOT  
40**

# SEIFERT BELMONT REDS

**ID: SEI190493**      **DOB:** 16/09/2018      **AGE:** 22.5 Mths      **REGO STATUS:** REGISTERED  
**GRADE:** PURE BR      **HORN:** POLLED      **DNA TEST:** PP

BEL070211 BELMONT 070211  
 SEI130539 SEIFERT 130539  
 JIS030228 SEIFERT 3-228  
**SIRE: SEI150301 SEIFERT BELMONT 150301**  
 MON990041 MONTPELLIER 99-41  
 MON030002 MONTPELLIER 03-2  
 MON980284 MONTPELLIER 98-284  
**ANIMAL: SEI190493 SEIFERT BELMONT 190493**  
 SEI13MS01 SEI110155, BEL110089  
 SEI130097 SEIFERT BELMONT 130097  
 SEI090044 SEIFERT 09-044  
**DAM: SEI170440 SEIFERT BELMONT 170440**  
 MON010045 MONTPELLIER 01-45  
 SEI070192 SEIFERT 07-192  
 MON990088 MONTPELLIER 99-88



This beefy, dark red, homozygous poll is in the top 5% for rib fat and top 15% for carcass weight which places him in the top 25% on the export index. Scrotal Size 39cm in April.

June 2020 Belmont Red GROUP BREEDPLAN																	
	GL	BW	200	400	600	MC	Milk	SS	DC	CW	EMA	Rib	Rump	RBY	IMF	Domestic	Export
EBV	-2	2.8	24	31	48	59	9	1.6	1	33	3.9	0.8	1.6	0.6	0.2	\$24	\$29
Acc	47%	75%	73%	73%	76%	69%	48%	73%	42%	62%	57%	61%	60%	47%	54%		
Breed Avg. EBVs for 2018 Born Calves																	
EBV	-1.1	+2.4	+18	+22	+32	+40	+8	+1.5	-1.7	+24	+2.3	-0.2	+0.4	+0.6	+0.2	+\$20	+\$24

Traits Observed: GL, BWT, 200WT, 400WT(x2), 600WT, SS, FAT, EMA, IMF, FLT

Purchaser ..... \$ .....

**LOT  
41**

# SEIFERT BELMONT REDS

**ID: SEI190651**      **DOB:** 15/09/2018      **AGE:** 22.5 Mths      **REGO STATUS:** REGISTERED  
**GRADE:** PURE BR      **HORN:** POLLED      **DNA TEST:** PH

BEL070211 BELMONT 070211  
 SEI130539 SEIFERT 130539  
 JIS030228 SEIFERT 3-228  
**SIRE: SEI150143 SEIFERT BELMONT 150143**  
 MON980035 MONTPELLIER 98-035  
 MON020060 MONTPELLIER 02-60  
 MON990002 MONTPELLIER 99-2  
**ANIMAL: SEI190651 SEIFERT BELMONT 190651**  
 SEI090187 SEIFERT 09 0187SEI  
 SEI120227 SEIFERT 120227  
 SEI080262 SEIFERT 08 0262  
**DAM: SEI150072 SEIFERT 150072**  
 SEI070095 SEIFERT 07-0095  
 SEI100060 SEIFERT 0 0060  
 MON050038 MONTPELLIER 05-038



This extremely quiet bull is beautifully balanced genetically, with most carcass EBVs including IMF (intramuscular fat), EMA (eye muscle area) and carcass weight above the 50th percentile. He has a particularly good SS (scrotal size) EBV in the top 5% and DTC in the top 25% placing him in the top 1% on the export index. He is a bit behind in condition compared to the others after a setback when he got in the wrong paddock for an extended period. He is out of a hardy, fertile yearling mated heifer who is on her 5th calf in a row.

June 2020 Belmont Red GROUP BREEDPLAN																	
	GL	BW	200	400	600	MC	Milk	SS	DC	CW	EMA	Rib	Rump	RBY	IMF	Domestic	Export
EBV	-0.9	4.9	27	44	68	98	9	3.2	-4.3	45	2.4	-0.6	-0.1	0.6	0.3	\$33	\$43
Acc	28%	58%	72%	72%	75%	68%	46%	72%	42%	59%	56%	61%	59%	46%	54%		
Breed Avg. EBVs for 2018 Born Calves																	
EBV	-1.1	+2.4	+18	+22	+32	+40	+8	+1.5	-1.7	+24	+2.3	-0.2	+0.4	+0.6	+0.2	+\$20	+\$24

Traits Observed: GL, BWT, 200WT, 400WT(x2), 600WT, SS, FAT, EMA, IMF, FLT

Purchaser ..... \$ .....

**LOT  
42**

## SEIFERT BELMONT REDS

**ID:** SEI190157    **DOB:** 27/09/2018    **AGE:** 22.1 Mths    **REGO STATUS:** REGISTERED  
**GRADE:** PURE BR    **HORN:** POLLED    **DNA TEST:** PP

SEI120051 SEIFERT 120051  
 SEI140171 SEIFERT 140171  
 SEI080214 SEIFERT 08 0214  
**SIRE:** SEI160023 SEIFERT BELMONT 160023 (IVF)  
 BEL070211 BELMONT 070211  
 SEI130348 SEIFERT 130348  
 MON060200 MONTPELLIER 06-2  
**ANIMAL:** SEI190157 SEIFERT BELMONT 190157

PED00BRBR GENERIC BR SIRE

**DAM:** SEI090478 SEIFERT BELMONT 090478

PED9500BR GENERIC BR



This chunky, neat, Homozygous Poll is another IVF calf out of one of our favourite cows 'Dulce' who has had 8 calves in a row and is PTIC with her 9th. He is a full brother to 190087 (LOT 48). He has strong fertility traits with his SS (scrotal size) EBV being in the top 20% and DTC (days to calving) in the top 30%. Scrotal Size 39cm in April.

June 2020 Belmont Red GROUP BREEDPLAN																	
	GL	BW	200	400	600	MC	Milk	SS	DC	CW	EMA	Rib	Rump	RBY	IMF	Domestic	Export
EBV	-1.5	3	20	27	37	56	6	2.3	-3.4	29	2.2	0	1.1	0.4	0.2	\$24	\$28
Acc	27%	54%	58%	59%	58%	56%	42%	53%	30%	47%	40%	43%	42%	33%	38%		
Breed Avg. EBVs for 2018 Born Calves																	
EBV	-1.1	+2.4	+18	+22	+32	+40	+8	+1.5	-1.7	+24	+2.3	-0.2	+0.4	+0.6	+0.2	+\$20	+\$24

Traits Observed: GL, BWT, 200WT, 400WT(x2), 600WT, SS, FAT, EMA, IMF, FLT

Purchaser ..... \$ .....

**LOT  
43**

## SEIFERT BELMONT REDS

**ID:** SEI190799    **DOB:** 25/10/2018    **AGE:** 21.2 Mths    **REGO STATUS:** REGISTERED  
**GRADE:** PURE BR    **HORN:** POLLED    **DNA TEST:** PH

SEI090377 SEIFERT TEDSTAR  
 SEI130061 SEIFERT 130061  
 SEI080322 SEIFERT 08 0322  
**SIRE:** SEI170097 SEIFERT BELMONT 170097  
 KER050345 KER-RON 05-345 (AI)  
 SEI120114 SEIFERT 120114  
 SEI080050 SEIFERT STAR ANISE  
**ANIMAL:** SEI190799 SEIFERT BELMONT 190799

SEI14MS03 MS1203

**DAM:** SEI140410 SEIFERT 140410

SEI090068 SEIFERT 09-068



This bull is in the top 5% for EMA (eye muscle area). Plus he has fertility traits of DTC (days to calving) in the top 40%. His rib fat is in the top 40% and 15% respectively. This places him in the top 5% on the export \$index. Scrotal Size 36cm in April.

June 2020 Belmont Red GROUP BREEDPLAN																	
	GL	BW	200	400	600	MC	Milk	SS	DC	CW	EMA	Rib	Rump	RBY	IMF	Domestic	Export
EBV		2.8	24	31	53	65	9	1.4	-2.8	36	4.3	0.4	1.3	0.6	0	\$29	\$38
Acc	0%	53%	68%	69%	72%	66%	38%	68%	37%	55%	51%	55%	54%	41%	48%		
Breed Avg. EBVs for 2018 Born Calves																	
EBV	-1.1	+2.4	+18	+22	+32	+40	+8	+1.5	-1.7	+24	+2.3	-0.2	+0.4	+0.6	+0.2	+\$20	+\$24

Traits Observed: GL, BWT, 200WT, 400WT(x2), 600WT, SS, FAT, EMA, IMF, FLT

Purchaser ..... \$ .....



LOT  
44

# SEIFERT BELMONT REDS

**ID:** SEI190017    **DOB:** 22/08/2018    **AGE:** 23.3 Mths    **REGO STATUS:** REGISTERED  
**GRADE:** PURE BR    **HORN:** POLLED    **DNA TEST:** PP

BEL070211 BELMONT 070211  
 SEI130539 SEIFERT 130539  
 JIS030228 SEIFERT 3-228  
**SIRE: SEI150301 SEIFERT BELMONT 150301**  
 MON990041 MONTPELLIER 99-41  
 MON030002 MONTPELLIER 03-2  
 MON980284 MONTPELLIER 98-284  
**ANIMAL: SEI190017 SEIFERT BELMONT 190017**  
 SEI090377 SEIFERT TEDSTAR  
 SEI130061 SEIFERT 130061  
 SEI080322 SEIFERT 08 0322  
**DAM: SEI160108 SEIFERT BELMONT 160108**  
 MON030017 MONTPELLIER 03-17  
 MON070310 MONTPELLIER 0310  
 SEI0000G1 SEIFERT GENERIC G1



This very nice, compact, and highly profitable Homozygous Poll bull has it all. He has a very low BW in the top 5% and the second highest DTC at -7 in the top 5%. This is coupled with marbling in the top 10% and EMA (eye muscle area) in the top 25%. With almost the largest testicles in the draft (40cm in April) and a SS EBV in the top 5%, this puts him in the top 5% on the domestic and export \$indexes.

June 2020 Belmont Red GROUP BREEDPLAN																	
	GL	BW	200	400	600	MC	Milk	SS	DC	CW	EMA	Rib	Rump	RBY	IMF	Domestic	Export
EBV	-2.6	-0.8	14	20	27	38	9	3.1	-7	20	2.8	0.1	0.8	0.5	0.4	\$34	\$38
Acc	59%	75%	74%	74%	76%	70%	48%	73%	41%	62%	57%	61%	59%	47%	54%		
Breed Avg. EBVs for 2018 Born Calves																	
EBV	-1.1	+2.4	+18	+22	+32	+40	+8	+1.5	-1.7	+24	+2.3	-0.2	+0.4	+0.6	+0.2	+\$20	+\$24

Traits Observed: GL, BWT, 200WT, 400WT(x2), 600WT, SS, FAT, EMA, IMF, FLT

Purchaser ..... \$ .....

LOT  
45

# SEIFERT BELMONT REDS

**ID:** SEI190015    **DOB:** 25/08/2018    **AGE:** 23.2 Mths    **REGO STATUS:** REGISTERED  
**GRADE:** PURE BR    **HORN:** SCURRED    **DNA TEST:** PH

SEI090377 SEIFERT TEDSTAR  
 SEI140269 SEIFERT 140269  
 MON040122 MONTPELLIER 0122 (COM)  
**SIRE: SEI160055 SEIFERT BELMONT LIMELIGHT**  
 MON030013 MONTPELLIER 03-13  
 MON080472 MONTPELLIER 08-472  
 SEI0000G2 SEIFERT GENERIC BR DAM  
**ANIMAL: SEI190015 SEIFERT BELMONT 190015**  
 KER100716 KER-RON 10-716  
 SEI140279 SEIFERT 140279  
 SEI080416 SEIFERT 08-416  
**DAM: SEI160166 SEIFERT BELMONT 160166**  
 SEI100300 SEIFERT 0 0300  
 SEI130398 SEIFERT 0398 (COM)  
 SEI110358 SEIFERT 110358



A very quiet, dark red, moderate bull with low birth weight and favourable low MCW (mature cow weight). Out of a young dam who is PTIC with her 3rd calf in a row. Scrotal Size of 35cm in April.

June 2020 Belmont Red GROUP BREEDPLAN																	
	GL	BW	200	400	600	MC	Milk	SS	DC	CW	EMA	Rib	Rump	RBY	IMF	Domestic	Export
EBV	-2.5	1.1	18	22	27	33	9	1.4	-0.3	19	2	-0.2	0.1	0.6	0.2	\$21	\$21
Acc	57%	75%	73%	73%	76%	70%	40%	72%	37%	62%	57%	61%	59%	46%	53%		
Breed Avg. EBVs for 2018 Born Calves																	
EBV	-1.1	+2.4	+18	+22	+32	+40	+8	+1.5	-1.7	+24	+2.3	-0.2	+0.4	+0.6	+0.2	+\$20	+\$24

Traits Observed: GL, BWT, 200WT, 400WT(x2), 600WT, SS, FAT, EMA, IMF, FLT

Purchaser ..... \$ .....

LOT  
46

## SEIFERT BELMONT REDS

**ID:** SEI190023    **DOB:** 28/08/2018    **AGE:** 23.1 Mths    **REGO STATUS:** REGISTERED  
**GRADE:** PURE BR    **HORN:** POLLED    **DNA TEST:** PH

SEI090377 SEIFERT TEDSTAR  
 SEI140269 SEIFERT 140269  
 MON040122 MONTELLIER 0122 (COM)  
**SIRE:** SEI160055 SEIFERT BELMONT'S LIMELIGHT  
 MON030013 MONTELLIER 03-13  
 MON080472 MONTELLIER 08-472  
 SEI0000G2 SEIFERT GENERIC BR DAM  
**ANIMAL:** SEI190023 SEIFERT BELMONT'S 190023  
 SEI090377 SEIFERT TEDSTAR  
 SEI130061 SEIFERT 130061  
 SEI080322 SEIFERT 08 0322  
**DAM:** SEI160240 SEIFERT BELMONT'S 160240  
 SEI06MS02 06 WS MULTI  
 SEI080416 SEIFERT 08-416  
 MON050004 MONTELLIER 05-4



This long, sleek, and solid bull is the highest marbling (IMF) bull in the sale, being in the top 5%. He has an immaculate temperament and a low BW EBV, but moderate growth combined with above average DTC (days to calving) and SS (scrotal) EBVs which puts him in the top 15% on the domestic \$index. Out of a young dam on her 3rd calf in a row. Scrotal Size of 39cm in April.

June 2020 Belmont Red GROUP BREEDPLAN																	
	GL	BW	200	400	600	MC	Milk	SS	DC	CW	EMA	Rib	Rump	RBY	IMF	Domestic	Export
EBV	-1.2	1	16	26	33	44	10	2.6	-3.2	23	2.5	0.3	1.3	0.4	0.5	\$28	\$30
Acc	59%	76%	74%	74%	77%	71%	43%	73%	40%	63%	58%	61%	60%	48%	55%		
Breed Avg. EBVs for 2018 Born Calves																	
EBV	-1.1	+2.4	+18	+22	+32	+40	+8	+1.5	-1.7	+24	+2.3	-0.2	+0.4	+0.6	+0.2	+\$20	+\$24

Traits Observed: GL, BWT, 200WT, 400WT(x2), 600WT, SS, FAT, EMA, IMF, FLT

Purchaser ..... \$ .....

LOT  
47

## SEIFERT BELMONT REDS

**ID:** SEI190053    **DOB:** 16/09/2018    **AGE:** 22.5 Mths    **REGO STATUS:** REGISTERED  
**GRADE:** PURE BR    **HORN:** POLLED    **DNA TEST:** PH

SAAG91130 AG 91-130 (BONS.) (IMP Sth AF)  
 ISAGRC9714 GRC9714 (P) (IMP STH AF) (ET)  
 SAIYVN142 IVY N 142 (BONS.) (IMP Sth AF)  
**SIRE:** VAL01B808 VALINOR B808 (IVF)  
 VAL91V655 VALINOR 655  
 VAL96V182 VALINOR 96-V182 (B)  
 BAN870N55 BANGALLA 87-N55  
**ANIMAL:** SEI190053 SEIFERT BELMONT'S 190053  
 TRE010765 TREMERE 010765  
 TRE050123 TREMERE 050123  
 TRE930480 TREMERE 93-480  
**DAM:** SEI080012 SEIFERT BELMONT'S 08 0012  
 MON980035 MONTELLIER 98-035  
 MON020014 MONTELLIER 02-14  
 MON930272 MONTELLIER 93-272



A long and low IVF calf, by outside sire VAL01B808, and out of a great cow that produced 8/8 calves in a row before being retired for artificial breeding. This bull is in the top 25% on the export \$index. Scrotal Size 39cm in April.

June 2020 Belmont Red GROUP BREEDPLAN																	
	GL	BW	200	400	600	MC	Milk	SS	DC	CW	EMA	Rib	Rump	RBY	IMF	Domestic	Export
EBV	-0.9	2.8	24	27	48	53	4	1.2	0.1	27	2.4	-0.3	-0.2	0.7	0.1	\$20	\$29
Acc	45%	74%	65%	64%	64%	62%	51%	54%	39%	58%	43%	47%	46%	39%	41%		
Breed Avg. EBVs for 2018 Born Calves																	
EBV	-1.1	+2.4	+18	+22	+32	+40	+8	+1.5	-1.7	+24	+2.3	-0.2	+0.4	+0.6	+0.2	+\$20	+\$24

Traits Observed: GL, BWT, 200WT, 400WT(x2), 600WT, SS, FAT, EMA, IMF, FLT

Purchaser ..... \$ .....

**LOT  
48**

## SEIFERT BELMONT REDS

**ID: SEI190087**    **DOB:** 23/09/2018    **AGE:** 22.2 Mths    **REGO STATUS:** REGISTERED  
**GRADE:** PURE BR    **HORN:** POLLED    **DNA TEST:** PH

SEI120051 SEIFERT 120051  
 SEI140171 SEIFERT 140171  
 SEI080214 SEIFERT 08 0214  
**SIRE: SEI160023 SEIFERT BELMONT 160023 (IVF)**  
 BEL070211 BELMONT 070211  
 SEI130348 SEIFERT 130348  
 MON060200 MONTPELLIER 06-2  
**ANIMAL: SEI190087 SEIFERT BELMONT 190087**  
 PED00BRBR GENERIC BR SIRE  
**DAM: SEI090478 SEIFERT BELMONT 090478**  
 PED9500BR GENERIC BR



This muscular, clean coated, bull has a great top line. He ranks in the top 15% for SS (scrotal size) and top 20% for DTC (days to calving) and is in the top 25% on the export \$index. We rarely name cows, but his dam is such a personality and an exceptional breeder that we called her 'Dulce' (SEI090478). Dulce has had 8 calves in a row and is PTIC with her 9th. Scrotal Size 40cm in April.

June 2020 Belmont Red GROUP BREEDPLAN																	
	GL	BW	200	400	600	MC	Milk	SS	DC	CW	EMA	Rib	Rump	RBY	IMF	Domestic	Export
EBV	-1.3	3.1	20	24	38	56	6	2.5	-4.7	27	1.6	0.2	1.7	0.2	0.4	\$23	\$30
Acc	37%	74%	72%	72%	74%	69%	42%	71%	35%	59%	53%	56%	54%	42%	49%		
Breed Avg. EBVs for 2018 Born Calves																	
EBV	-1.1	+2.4	+18	+22	+32	+40	+8	+1.5	-1.7	+24	+2.3	-0.2	+0.4	+0.6	+0.2	+\$20	+\$24

Traits Observed: GL, BWT, 200WT, 400WT(x2), 600WT, SS, FAT, EMA, IMF, FLT

Purchaser ..... \$ .....

**LOT  
49**

## SEIFERT BELMONT REDS

**ID: SEI190523**    **DOB:** 29/09/2018    **AGE:** 22.0 Mths    **REGO STATUS:** REGISTERED  
**GRADE:** PURE BR    **HORN:** POLLED    **DNA TEST:** PH

SEI090377 SEIFERT TEDSTAR  
 SEI140269 SEIFERT 140269  
 MON040122 MONTPELLIER 0122 (COM)  
**SIRE: SEI160055 SEIFERT BELMONT LIMELIGHT**  
 MON030013 MONTPELLIER 03-13  
 MON080472 MONTPELLIER 08-472  
 SEI0000G2 SEIFERT GENERIC BR DAM  
**ANIMAL: SEI190523 SEIFERT BELMONT 190523**  
 SEI130539 SEIFERT 130539  
 SEI150291 SEIFERT BELMONT 150291  
 MON020014 MONTPELLIER 02-14  
**DAM: SEI170220 SEIFERT BELMONT 170220**  
 SEI070095 SEIFERT 07-0095  
 SEI120010 SEIFERT 120010  
 SEI090476 SEIFERT 09-476



A very quiet and versatile, dark-red bull, with favourable low BW but above average growth, he is also in the top 20% for DTC (days to calving) and above the top 10% for SS (scrotal size), with rib fat in the top 25% and marbling in the top 5%, which positions him in the top 5% on the domestic \$index. He is out of a yearling mated heifer now on her 3rd calf in a row. Scrotal Size 38cm in April.

June 2020 Belmont Red GROUP BREEDPLAN																	
	GL	BW	200	400	600	MC	Milk	SS	DC	CW	EMA	Rib	Rump	RBY	IMF	Domestic	Export
EBV	-2.2	0.9	21	29	40	54	11	2.9	-4.5	26	2.3	0.2	1.1	0.5	0.3	\$33	\$37
Acc	44%	75%	72%	72%	76%	69%	40%	72%	39%	61%	56%	60%	59%	46%	53%		
Breed Avg. EBVs for 2018 Born Calves																	
EBV	-1.1	+2.4	+18	+22	+32	+40	+8	+1.5	-1.7	+24	+2.3	-0.2	+0.4	+0.6	+0.2	+\$20	+\$24

Traits Observed: GL, BWT, 200WT, 400WT(x2), 600WT, SS, FAT, EMA, IMF, FLT

Purchaser ..... \$ .....

**LOT  
50**

# SEIFERT BELMONT REDS

**ID: SEI190545**      **DOB:** 26/08/2018      **AGE:** 23.2 Mths      **REGO STATUS:** REGISTERED  
**GRADE:** PURE BR      **HORN:** POLLED      **DNA TEST:** PH

BEL070211 BELMONT 070211  
 SEI130539 SEIFERT 130539  
 JIS030228 SEIFERT 3-228  
**SIRE: SEI150143 SEIFERT BELMONT 150143**  
 MON980035 MONTPELLIER 98-035  
 MON020060 MONTPELLIER 02-60  
 MON990002 MONTPELLIER 99-2  
**ANIMAL: SEI190545 SEIFERT BELMONT 190545**  
 SEI080165 SEIFERT ACHIEVABULL  
 SEIFERT 120249  
 MON050004 MONTPELLIER 05-4  
**DAM: SEIFERT 160386**



SEIFERT 080108BEL

This neat, docile bull has great EBVs with SS (scrotal size) in the top 5% and DTC (days to calving) in the top 25%, plus above average growth and high marbling in the top 10%. This places him in the top 15% on the domestic index. Scrotal Size 40cm in April.

June 2020 Belmont Red GROUP BREEDPLAN																	
	GL	BW	200	400	600	MC	Milk	SS	DC	CW	EMA	Rib	Rump	RBY	IMF	Domestic	Export
EBV	-0.8	3.1	17	31	41	65	7	3.2	-4.2	24	1.3	0	1.1	0.3	0.4	\$27	\$31
Acc	27%	57%	71%	71%	75%	68%	45%	72%	40%	59%	56%	61%	59%	45%	53%		
Breed Avg. EBVs for 2018 Born Calves																	
EBV	-1.1	+2.4	+18	+22	+32	+40	+8	+1.5	-1.7	+24	+2.3	-0.2	+0.4	+0.6	+0.2	+\$20	+\$24

Traits Observed: GL, BWT, 200WT, 400WT(x2), 600WT, SS, FAT, EMA, IMF, FLT

Purchaser ..... \$ .....



**LOT  
51**

# SEIFERT BELMONT REDS

**ID:** SEI190271    **DOB:** 03/10/2018    **AGE:** 21.9 Mths    **REGO STATUS:** REGISTERED  
**GRADE:** PURE BR    **HORN:** POLLED    **DNA TEST:** PP

SEI120051 SEIFERT 120051  
 SEI140171 SEIFERT 140171  
 SEI080214 SEIFERT 08 0214  
**SIRE:** SEI160023 SEIFERT BELMONT 160023  
 BEL070211 BELMONT 070211  
 SEI130348 SEIFERT 130348  
 MON060200 MONTPELLIER 06-2  
**ANIMAL:** SEI190271 SEIFERT BELMONT 190271  
 IUS1100331 PRR 840 (IMP USA) (ET)  
 KER050345 KER-RON 05-345 (AI)  
 NAR960275 NARAYEN 96/275  
**DAM:** SEI120048 SEIFERT 120048  
 MON010045 MONTPELLIER 01-45  
 MON050054 MONTPELLIER 05-54  
 MON930110 MONTPELLIER 93-110



A very well built, moderate, light red and quiet Homozygous Poll with an EMA (eye muscle area) EBV in the top 35% and RBY (retail beef yield) in the top 20%. His dam has had 6/6 calves in a row and is PTIC with the 7th.

June 2020 Belmont Red GROUP BREEDPLAN																	
	GL	BW	200	400	600	MC	Milk	SS	DC	CW	EMA	Rib	Rump	RBY	IMF	Domestic	Export
EBV	0.1	3.2	12	20	22	41	5	0.6	-0.4	23	2.7	-0.3	-0.4	0.8	0	\$17	\$16
Acc	30%	60%	72%	73%	76%	69%	44%	73%	41%	60%	56%	60%	59%	46%	53%		
Breed Avg. EBVs for 2018 Born Calves																	
EBV	-1.1	+2.4	+18	+22	+32	+40	+8	+1.5	-1.7	+24	+2.3	-0.2	+0.4	+0.6	+0.2	+\$20	+\$24

Traits Observed: GL, BWT, 200WT, 400WT(x2), 600WT, SS, FAT, EMA, IMF, FLT

Purchaser ..... \$ .....

**LOT  
52**

# SEIFERT BELMONT REDS

**ID:** SEI190329    **DOB:** 30/10/2018    **AGE:** 21.0 Mths    **REGO STATUS:** REGISTERED  
**GRADE:** PURE BR    **HORN:** SCURRED    **DNA TEST:** PH

SEI090377 SEIFERT TEDSTAR  
 SEI130061 SEIFERT 130061  
 SEI080322 SEIFERT 08 0322  
**SIRE:** SEI170107 SEIFERT BELMONT 170107  
 SEI04MS02 W.S MULTI SIRE  
 SEI100156 SEIFERT 0 0156  
 COR040041 CORYMBIA 04-41  
**ANIMAL:** SEI190329 SEIFERT BELMONT 190329  
 TRE010765 TREMERE 010765  
 TRE070059 TREMERE 07-59  
 TRE010950 TREMERE 010950  
**DAM:** SEI120290 SEIFERT 120290  
 MON000043 MONTPELLIER 00-43  
 SEI060020 SEIFERT 06-020  
 MON990028 MONTPELLIER 99-28



An attractive, dark pigmented and docile bull. He has low BW (birthweight) and is in the top 10% for DTC (days to calving) and top 20% for SS (scrotal size) with favourable low MCW (mature cow weight). He is out of a proven breeder on her 7th calf in a row. Scrotal Size 38cm in April.

June 2020 Belmont Red GROUP BREEDPLAN																	
	GL	BW	200	400	600	MC	Milk	SS	DC	CW	EMA	Rib	Rump	RBY	IMF	Domestic	Export
EBV	-0.7	1.4	13	20	20	33	7	2.2	-6.3	17	1.6	-0.4	0	0.5	0.3	\$26	\$27
Acc	27%	57%	68%	70%	72%	67%	45%	70%	42%	58%	54%	58%	56%	44%	51%		
Breed Avg. EBVs for 2018 Born Calves																	
EBV	-1.1	+2.4	+18	+22	+32	+40	+8	+1.5	-1.7	+24	+2.3	-0.2	+0.4	+0.6	+0.2	+\$20	+\$24

Traits Observed: GL, BWT, 200WT, 400WT(x2), 600WT, SS, FAT, EMA, IMF, FLT

Purchaser ..... \$ .....

LOT  
53

## SEIFERT BELMONT REDS

**ID:** SEI190239    **DOB:** 13/10/2018    **AGE:** 21.6 Mths    **REGO STATUS:** REGISTERED  
**GRADE:** PURE BR    **HORN:** POLLED    **DNA TEST:** PH

SEI120051 SEIFERT 120051  
 SEI140171 SEIFERT 140171  
 SEI080214 SEIFERT 08 0214  
**SIRE:** SEI160023 SEIFERT BELMONT 160023  
 BEL070211 BELMONT 070211  
 SEI130348 SEIFERT 130348  
 MON060200 MONTPELLIER 06-2  
**ANIMAL:** SEI190239 SEIFERT BELMONT 190239  
 MTE020525 MT EUGENE 02-0525 (AI)  
 MTE060086 MT EUGENE 06-86  
 MTE000113 MT EUGENE 00-113 (AI)  
**DAM:** BEL120110 BELMONT 120110  
 MTE920982 MT EUGENE 92-982  
 BEL010401 BELMONT 01-0401  
 BEL950756 BELMONT 95-756



A chunky bull with a great top line, he has a great combination of fertility and carcase traits. He is in the top 25%-40% for SS (scrotal size) and DTC (days to calving) respectively and is in the top 5% for RBY (retail beef yield) and top 15% for carcase weight. He is out of a good CSIRO cow who is on her 7th calf in a row. Scrotal size 38cm in April.

June 2020 Belmont Red GROUP BREEDPLAN																	
	GL	BW	200	400	600	MC	Milk	SS	DC	CW	EMA	Rib	Rump	RBY	IMF	Domestic	Export
EBV	-0.3	3.9	19	24	35	52	6	1.9	-2.3	32	3.1	-0.9	-1.1	1.1	0.2	\$22	\$26
Acc	34%	63%	72%	72%	76%	69%	44%	73%	38%	60%	56%	60%	58%	45%	52%		
Breed Avg. EBVs for 2018 Born Calves																	
EBV	-1.1	+2.4	+18	+22	+32	+40	+8	+1.5	-1.7	+24	+2.3	-0.2	+0.4	+0.6	+0.2	+\$20	+\$24

Traits Observed: GL, BWT, 200WT, 400WT(x2), 600WT, SS, FAT, EMA, IMF, FLT

Purchaser ..... \$ .....

LOT  
54

## SEIFERT BELMONT REDS

**ID:** SEI190033    **DOB:** 06/09/2018    **AGE:** 22.8 Mths    **REGO STATUS:** REGISTERED  
**GRADE:** PURE BR    **HORN:** SCURRED    **DNA TEST:** PH

SEI090377 SEIFERT TEDSTAR  
 SEI130061 SEIFERT 130061  
 SEI080322 SEIFERT 08 0322  
**SIRE:** SEI170103 SEIFERT BELMONT 170103  
 SEI050065 SEIFERT 05-65  
 SEI080120 SEIFERT BELMONT 08 0120  
 MON030014 MONTPELLIER 03-14  
**ANIMAL:** SEI190033 SEIFERT BELMONT 190033  
 SEI090377 SEIFERT TEDSTAR  
 SEI130115 SEIFERT 130115  
 MON040024 MONTPELLIER 04-24  
**DAM:** SEI160320 SEIFERT BELMONT 160320  
 JIS00SEBR SEIFERT JIS GENERIC SEBR  
 JIS080638 SEIFERT JIS 08-638  
 JIS0000DM SEIFERT JIS GENERIC DM



A solid, smooth, well-balanced bull with excellent temperament and fertility traits. His SS (scrotal size) is in the top 15% and DTC (days to calving) is in the top 25%. He has positive fats with rib fat in the top 30% and IMF (intramuscular fat) in the top 10%. His young dam is proven being on her 3rd calf in a row. Scrotal Size 38cm in April.

June 2020 Belmont Red GROUP BREEDPLAN																	
	GL	BW	200	400	600	MC	Milk	SS	DC	CW	EMA	Rib	Rump	RBY	IMF	Domestic	Export
EBV	-0.8	2.3	18	25	38	49	7	2.5	-4.3	26	2.2	0.1	1.2	0.4	0.4	\$26	\$32
Acc	41%	75%	72%	71%	75%	69%	42%	71%	38%	60%	54%	57%	55%	43%	49%		
Breed Avg. EBVs for 2018 Born Calves																	
EBV	-1.1	+2.4	+18	+22	+32	+40	+8	+1.5	-1.7	+24	+2.3	-0.2	+0.4	+0.6	+0.2	+\$20	+\$24

Traits Observed: GL, BWT, 200WT, 400WT(x2), 600WT, SS, FAT, EMA, IMF, FLT

Purchaser ..... \$ .....

LOT  
55

## SEIFERT BELMONT REDS

**ID:** SEI190085    **DOB:** 24/09/2018    **AGE:** 22.2 Mths    **REGO STATUS:** REGISTERED  
**GRADE:** PURE BR    **HORN:** POLLED    **DNA TEST:** PH

SAAG91130 AG 91-130 (BONS.) (IMP Sth AF)  
 ISAGRC9714 GRC9714 (P) (IMP STH AF) (ET)  
 SAIVYN142 IVY N 142 (BONS.) (IMP Sth AF)

**SIRE:** VAL01B808 VALINOR B808 (IVF)

VAL91V655 VALINOR 655  
 VAL96V182 VALINOR 96-V182 (B)  
 BAN870N55 BANGALLA 87-N55

**ANIMAL:** SEI190085 SEIFERT BELMONT 190085

SEI090377 SEIFERT TEDSTAR  
 SEI130061 SEIFERT 130061  
 SEI080322 SEIFERT 08 0322

**DAM:** SEI170150 SEIFERT BELMONT 170150

BEL070211 BELMONT 070211  
 SEI130104 SEIFERT 130104  
 SEI080306 SEIFERT 08 0306



A long, neat IVF calf by outside sire VAL01B808, he is in the top 10% on the export \$index. He is out of a fertile yearling mated heifer who is on her 3rd calf in a row. Scrotal Size 38cm in April.

June 2020 Belmont Red GROUP BREEDPLAN																	
	GL	BW	200	400	600	MC	Milk	SS	DC	CW	EMA	Rib	Rump	RBY	IMF	Domestic	Export
EBV	-1.4	3	28	31	54	61	7	1.9	-1	36	4	-0.5	-1	1.1	0	\$27	\$36
Acc	47%	74%	66%	67%	65%	62%	45%	64%	35%	57%	43%	49%	48%	40%	43%		
Breed Avg. EBVs for 2018 Born Calves																	
EBV	-1.1	+2.4	+18	+22	+32	+40	+8	+1.5	-1.7	+24	+2.3	-0.2	+0.4	+0.6	+0.2	+\$20	+\$24

Traits Observed: GL, BWT, 200WT, 400WT(x2), 600WT, SS, FAT, EMA, IMF, FLT

Purchaser ..... \$ .....

LOT  
56

## SEIFERT BELMONT REDS

**ID:** SEI190479    **DOB:** 09/09/2018    **AGE:** 22.7 Mths    **REGO STATUS:** REGISTERED  
**GRADE:** PURE BR    **HORN:** POLLED    **DNA TEST:** PH

SEI090377 SEIFERT TEDSTAR  
 SEI140269 SEIFERT 140269  
 MON040122 MONTPELLIER 0122 (COM)

**SIRE:** SEI160055 SEIFERT BELMONT LIMELIGHT

MON030013 MONTPELLIER 03-13  
 MON080472 MONTPELLIER 08-472  
 SEI0000G2 SEIFERT GENERIC BR DAM

**ANIMAL:** SEI190479 SEIFERT BELMONT 190479

SEI110155 SEIFERT 110155  
 SEI140287 SEIFERT BELMONT 140287  
 MON080462 MONTPELLIER 0462

**DAM:** SEI170206 SEIFERT BELMONT 170206

HAP110283 HAPPY HILL 11-283 (AI)  
 SEI140372 SEIFERT 140372  
 SEI080130 SEIFERT 0130



A calm, above-average bull, he is in the top 5% for SS (scrotal size) and 20% for both 600D growth and carcass weight positions him in the top 30% in both the domestic and export \$indexes. Scrotal Size 38cm in April.

June 2020 Belmont Red GROUP BREEDPLAN																	
	GL	BW	200	400	600	MC	Milk	SS	DC	CW	EMA	Rib	Rump	RBY	IMF	Domestic	Export
EBV	-1.6	2.2	25	29	44	54	8	3	0.8	31	2.8	0.1	0.9	0.7	0.2	\$24	\$28
Acc	38%	59%	71%	71%	75%	67%	38%	72%	37%	58%	56%	60%	59%	45%	53%		
Breed Avg. EBVs for 2018 Born Calves																	
EBV	-1.1	+2.4	+18	+22	+32	+40	+8	+1.5	-1.7	+24	+2.3	-0.2	+0.4	+0.6	+0.2	+\$20	+\$24

Traits Observed: GL, BWT, 200WT, 400WT(x2), 600WT, SS, FAT, EMA, IMF, FLT

Purchaser ..... \$ .....

LOT  
57

## SEIFERT BELMONT REDS

**ID:** SEI190307    **DOB:** 31/10/2018    **AGE:** 21.0 Mths    **REGO STATUS:** REGISTERED  
**GRADE:** PURE BR    **HORN:** POLLED    **DNA TEST:** PH

SEI090377 SEIFERT TEDSTAR  
 SEI130061 SEIFERT 130061  
 SEI080322 SEIFERT 08 0322

**SIRE:** SEI170105 SEIFERT BELMONT 170105

TRE070059 TREMERE 07-59  
 SEI120184 SEIFERT 120184  
 JIS030168 SEIFERT 3-168

**ANIMAL:** SEI190307 SEIFERT BELMONT 190307

TRE000303 TREMERE 000303  
 TRE050155 TREMERE 050155  
 TRE980446 TREMERE 98-446

**DAM:** BEL090113 BELMONT 090113

ALS951451 ALEXANDRIA STATION 1451  
 BEL010180 BELMONT 01-0180  
 BEL900429 BELMONT 90-429



A handy heifer bull with an extremely low BW EBV; he will be perfect for yearling mating. He is also in the top 25% for DTC (days to calving) which combined with other well-balanced traits, places him in the top 15% on the domestic and export \$indexes. He is out of a CSIRO cow who had 6 calves in a row. Scrotal Size 38cm in April.

June 2020 Belmont Red GROUP BREEDPLAN																	
	GL	BW	200	400	600	MC	Milk	SS	DC	CW	EMA	Rib	Rump	RBY	IMF	Domestic	Export
EBV	-2.2	-1.8	11	19	28	30	7	1.3	-4.2	17	2.3	0.2	0.8	0.2	0.3	\$28	\$33
Acc	42%	74%	72%	72%	74%	69%	47%	71%	38%	61%	54%	55%	53%	44%	48%		
Breed Avg. EBVs for 2018 Born Calves																	
EBV	-1.1	+2.4	+18	+22	+32	+40	+8	+1.5	-1.7	+24	+2.3	-0.2	+0.4	+0.6	+0.2	+\$20	+\$24

Traits Observed: GL, BWT, 200WT, 400WT(x2), 600WT, SS, FAT, EMA, IMF, FLT

Purchaser ..... \$ .....

LOT  
58

## SEIFERT BELMONT REDS

**ID:** SEI190501    **DOB:** 20/09/2018    **AGE:** 22.3 Mths    **REGO STATUS:** REGISTERED  
**GRADE:** PURE BR    **HORN:** SCURRED    **DNA TEST:** PH

SEI090377 SEIFERT TEDSTAR  
 SEI130061 SEIFERT 130061  
 SEI080322 SEIFERT 08 0322

**SIRE:** SEI170267 SEIFERT BELMONT 170267

TRE080023 TREMERE 080023  
 BEL120213 BELMONT 120213  
 BEL080074 BELMONT 080074 (COM)

**ANIMAL:** SEI190501 SEIFERT BELMONT 190501

SEI130539 SEIFERT 130539  
 SEI150301 SEIFERT BELMONT 150301  
 MON030002 MONTPELLIER 03-2

**DAM:** SEI170158 SEIFERT BELMONT 170158

MON000043 MONTPELLIER 00-43  
 SEI060020 SEIFERT 06-020  
 MON990028 MONTPELLIER 99-28



This very solid and appealing bull is a curve bender being in the top 1% for low BW but in the top 10% for 600D growth. He is also in the top 20% for DTC (days to calving) placing him in the top 1% in the export \$index. Scrotal Size 36cm in April.

June 2020 Belmont Red GROUP BREEDPLAN																	
	GL	BW	200	400	600	MC	Milk	SS	DC	CW	EMA	Rib	Rump	RBY	IMF	Domestic	Export
EBV	-3.3	-1.3	23	27	52	57	9	1	-4.9	26	1.7	-0.9	-1.1	0.5	-0.2	\$35	\$47
Acc	43%	75%	72%	72%	73%	67%	42%	71%	39%	60%	55%	58%	56%	45%	51%		
Breed Avg. EBVs for 2018 Born Calves																	
EBV	-1.1	+2.4	+18	+22	+32	+40	+8	+1.5	-1.7	+24	+2.3	-0.2	+0.4	+0.6	+0.2	+\$20	+\$24

Traits Observed: GL, BWT, 200WT, 400WT(x2), 600WT, SS, FAT, EMA, IMF, FLT

Purchaser ..... \$ .....



**LOT  
59**

## SEIFERT BELMONT REDS

**ID: SEI190169**    **DOB:** 08/10/2018    **AGE:** 21.7 Mths    **REGO STATUS:** REGISTERED  
**GRADE:** PURE BR    **HORN:** SCURRED    **DNA TEST:** PH

SEI110155 SEIFERT 110155  
 SEI140287 SEIFERT BELMONT 140287  
 MON080462 MONTPELLIER 0462  
**SIRE: SEI170191 SEIFERT BELMONT 170191**  
 HAP120300 HAPPY HILL 12 - 300  
 SEI140128 SEIFERT 140128  
 JIS080469 SEIFERT JIS 08-469  
**ANIMAL: SEI190169 SEIFERT BELMONT 190169**  
 SEI06MS01 06 OAK  
 SEI090187 SEIFERT 09 0187SEI  
 MON050012 MONTPELLIER 05-12  
**DAM: SEI120188 SEIFERT 120188**  
 MON000003 MONTPELLIER 00-3  
 SEI060058 SEIFERT 06-058  
 JIS030221 SEIFERT 3-221



A light-red, moderate bull with nice lines, he has a favourable low mature cow weight EBV combined with solid fertility traits in the top 30% for SS (scrotal size) and DTC (days to calving). He is out of a proven breeder on her 7th calf in a row. Scrotal Size 35cm in April.

June 2020 Belmont Red GROUP BREEDPLAN																	
	GL	BW	200	400	600	MC	Milk	SS	DC	CW	EMA	Rib	Rump	RBY	IMF	Domestic	Export
EBV		3.2	14	17	19	27	9	1.9	-3.4	19	2.5	0.9	2.3	0.4	0.4	\$17	\$18
Acc	0%	58%	71%	71%	74%	68%	43%	72%	39%	59%	54%	57%	55%	43%	50%		
Breed Avg. EBVs for 2018 Born Calves																	
EBV	-1.1	+2.4	+18	+22	+32	+40	+8	+1.5	-1.7	+24	+2.3	-0.2	+0.4	+0.6	+0.2	+\$20	+\$24

Traits Observed: GL, BWT, 200WT, 400WT(x2), 600WT, SS, FAT, EMA, IMF, FLT

Purchaser ..... \$ .....

**LOT  
60**

## SEIFERT BELMONT REDS

**ID: SEI190031**    **DOB:** 01/09/2018    **AGE:** 23.0 Mths    **REGO STATUS:** REGISTERED  
**GRADE:** PURE BR    **HORN:** POLLED    **DNA TEST:** PP

SEI120051 SEIFERT 120051  
 SEI140171 SEIFERT 140171  
 SEI080214 SEIFERT 08 0214  
**SIRE: SEI160023 SEIFERT BELMONT 160023**  
 BEL070211 BELMONT 070211  
 SEI130348 SEIFERT 130348  
 MON060200 MONTPELLIER 06-2  
**ANIMAL: SEI190031 SEIFERT BELMONT 190031**  
 KER100716 KER-RON 10-716  
 SEI140279 SEIFERT 140279  
 SEI080416 SEIFERT 08-416  
**DAM: SEI160378 SEIFERT BELMONT 160378**  
 SEI06MS01 06 OAK  
 SEI080014 SEIFERT 08-14  
 SEI040020 SEIFERT 4-20



A very attractive, light red, Homozygous Poll, with a low MCW (mature cow weight) EBV and favourable DTC (negative days to calving) and EMA (eye muscle area) in the top 40%. His dam is a young stayer on her 3rd calf in row.

June 2020 Belmont Red GROUP BREEDPLAN																	
	GL	BW	200	400	600	MC	Milk	SS	DC	CW	EMA	Rib	Rump	RBY	IMF	Domestic	Export
EBV	-0.2	3.9	18	15	26	20	9	-0.5	-2.7	22	2.6	0.1	0.5	0.5	0.1	\$12	\$17
Acc	38%	75%	73%	73%	76%	70%	39%	73%	38%	61%	57%	60%	58%	46%	53%		
Breed Avg. EBVs for 2018 Born Calves																	
EBV	-1.1	+2.4	+18	+22	+32	+40	+8	+1.5	-1.7	+24	+2.3	-0.2	+0.4	+0.6	+0.2	+\$20	+\$24

Traits Observed: GL, BWT, 200WT, 400WT(x2), 600WT, SS, FAT, EMA, IMF, FLT

Purchaser ..... \$ .....

# Seifert Belmont Reds have high marbling & well-muscled high yielding carcasses.

On occasion when we have had adequate numbers in the correct weight range and at the right time, we enter carcass competitions. We are chuffed that to date we have won or placed in classes in every steer competition we have ever entered.

It is widely acknowledged that Belmont Reds are highly fertile good carcass animals, however few producers know that in the CRC Meat quality trials, under both Northern Pasture and Feedlot conditions, Belmont Reds surpassed the Angus in marbling under northern pasture conditions; or that a 'Signature Beef' Angus x Belmont Red composite won silver at the World Steak Branded Beef Challenge (UK 2016) to beat a full blood Wagyu.

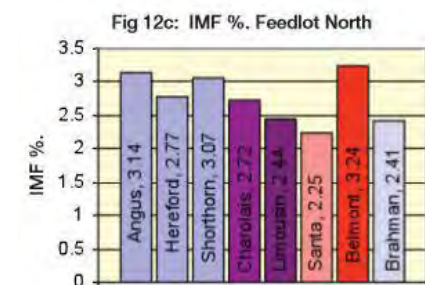
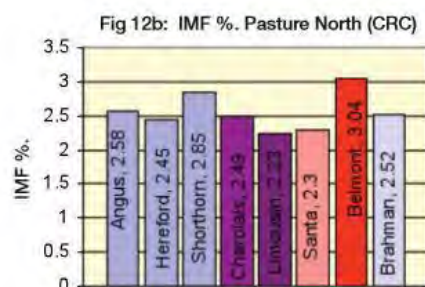
About fifteen years ago CRC analysis showed the likely returns from infusion of Brahmans into the northern herd were slowing. Results from the CRC's (and other) northern crossbreeding study suggested significant gains could be derived in the north from using Sanga infused tropically adapted composites such as the Belmont Red, designed to improve product quantity and quality, relative to the Brahman, without compromising adaptation to environmental stressors.

Hence, an economic evaluation was undertaken at herd and northern Australian industry level, to examine the effect of changing 25 % of the Brahman herd in northern Australia

over a 10-year period (i.e. by 2013) to a tropically adapted infused system.

Under a grain-finishing scenario, the Extra Gross Margin for the Tropically Adapted Composite relative to Brahman was conservatively estimated to be \$76 /AE due to increased fertility, earlier turn off, earlier finishing, increased growth rate and feed efficiency, and improved meat tenderness and marbling. Today the profit margin would be much higher.

50/kg tenderness premium on 60% of fed steers	\$ 9	Extra Gross Margin = \$52/AE (+ \$7 and \$24 from base model)
10c/kg marbling premium on 15% of fed steers	\$ 5	
Growth rate and feed efficiency differences	\$38	



## Seifert Belmont Reds have placed or won in every steer competition they have entered

- 2018** : 5th and 7th 8th 9th 10th - BEEF Australia ANZ domestic 'Pen of 3 steers'
- 2017** : 3rd - BEEF Australia ANZ domestic 'Pen of 3 steers'
- 2012** : 1st - Pacific Beef Carcass Comp (ABCAS-MSA & yield) 'Individual carcass'
- 2012** : 2nd - Pacific Beef Carcass Comp 'Pen of 4 trade steers'
- 2012** : 2nd - Pacific Beef Carcass Comp 'Individual carcass'
- 2011** : 2nd - RNA Paddock to Plate 'Taste Section'

### c. Marbling (IMF %)

"CRC" Figs. 12 a,b,c show the Intra Muscular Fat percentage (IMF%) for breeds in three environments. Intra Muscular Fat % (IMF%) is an accurate measure of marbling. Under Northern Pasture and Feedlot conditions, Belmonts had the best marbling and surpassed even the Angus.

**LOT  
61**

# SEIFERT BELMONT REDS

**ID:** SEI190483    **DOB:** 12/09/2018    **AGE:** 22.6 Mths    **REGO STATUS:** REGISTERED  
**GRADE:** PURE BR    **HORN:** SCURRED    **DNA TEST:** PH

BEL070211 BELMONT 070211  
 SEI130539 SEIFERT 130539  
 JIS030228 SEIFERT 3-228  
**SIRE: SEI150301 SEIFERT BELMONT 150301**  
 MON990041 MONPELLIER 99-41  
 MON030002 MONPELLIER 03-2  
 MON980284 MONPELLIER 98-284  
**ANIMAL: SEI190483 SEIFERT BELMONT 190483**  
 SEI090377 SEIFERT TEDSTAR  
 SEI150165 SEIFERT BELMONT 150165  
 SEI080016 SEIFERT AURORA  
**DAM: SEI170504 SEIFERT BELMONT 170504**  
 MON17 MONPELLIER GENERIC BR SIRE  
 MON120452 MONPELLIER 120452  
 MON18 MONPELLIER GENERIC BR DAM



A very tidy, docile bull, with great fertility traits including SS (scrotal size) in the top 5%, DTC (days to calving) in the top 40% and with favourable moderate MCW (mature cow weight) and average growth. Scrotal Size 38cm in April.

June 2020 Belmont Red GROUP BREEDPLAN																	
	GL	BW	200	400	600	MC	Milk	SS	DC	CW	EMA	Rib	Rump	RBY	IMF	Domestic	Export
EBV	-1.7	2.6	18	25	31	42	8	3.3	-2.6	23	1.5	-0.5	0.1	0.6	0.2	\$23	\$24
Acc	46%	75%	72%	72%	75%	68%	46%	72%	39%	61%	55%	58%	56%	45%	51%		
Breed Avg. EBVs for 2018 Born Calves																	
EBV	-1.1	+2.4	+18	+22	+32	+40	+8	+1.5	-1.7	+24	+2.3	-0.2	+0.4	+0.6	+0.2	+\$20	+\$24

Traits Observed: GL, BWT, 200WT, 400WT(x2), 600WT, SS, FAT, EMA, IMF, FLT

Purchaser ..... \$ .....

**LOT  
62**

# SEIFERT BELMONT REDS

**ID:** SEI190103    **DOB:** 28/09/2018    **AGE:** 22.1 Mths    **REGO STATUS:** REGISTERED  
**GRADE:** PURE BR    **HORN:** SCURRED    **DNA TEST:** PH

SEI120051 SEIFERT 120051  
 SEI140171 SEIFERT 140171  
 SEI080214 SEIFERT 08 0214  
**SIRE: SEI160023 SEIFERT BELMONT 160023**  
 BEL070211 BELMONT 070211  
 SEI130348 SEIFERT 130348  
 MON060200 MONPELLIER 06-2  
**ANIMAL: SEI190103 SEIFERT BELMONT 190103**  
 SEI06MS02 06 WS MULTI  
**DAM: SEI080214 SEIFERT 08 0214**  
 MON980247 MONPELLIER 98-247 (AI)  
 MON020028 MONPELLIER 02-28  
 MON950234 MONPELLIER 95-234



A neat and tidy ideal heifer bull with favourable low BW (birth weight) and low MCW (mature cow weight), and with great fertility traits of DTC (days to calving) in the top 20%. He is out of a proven cow who had 7 calves in a row. Scrotal Size 36cm.

June 2020 Belmont Red GROUP BREEDPLAN																	
	GL	BW	200	400	600	MC	Milk	SS	DC	CW	EMA	Rib	Rump	RBY	IMF	Domestic	Export
EBV	-0.6	1.3	9	14	11	25	6	0.8	-4.6	16	1.4	-0.4	-0.1	0.5	0.4	\$20	\$19
Acc	39%	76%	75%	75%	77%	72%	46%	75%	41%	63%	59%	60%	58%	47%	54%		
Breed Avg. EBVs for 2018 Born Calves																	
EBV	-1.1	+2.4	+18	+22	+32	+40	+8	+1.5	-1.7	+24	+2.3	-0.2	+0.4	+0.6	+0.2	+\$20	+\$24

Traits Observed: GL, BWT, 200WT, 400WT(x2), 600WT, SS, FAT, EMA, IMF, FLT

Purchaser ..... \$ .....

# Purebred PTIC Belmont Red Heifers

This year we are offering five beautiful, quiet purebred PTIC Belmont Red heifers. Up-to-date photos and videos will be available on our webpage and on AuctionsPlus from the second week of July.

Below are listed the three sires that the heifers are in calf to. On the following pages are the heifers' full details including their due dates.

## IDENTIFICATION NO.: RJS180103

	GL	BW	200 WT	400 WT	600 WT	MC WT	MILK	SS	DC	C WT	EMA	RIB	RUMP	RBV	IMF	FT	SF	DI \$	EI \$
EBV	-2.0	+3.4	+29	+34	+50	+67	+8	+4.0	-7.3	+44	+5.9	+0.3	+1.2	+1.0	+0.2	+0.16	+0.11	\$38	\$47
ACC	33%	54%	69%	69%	73%	65%	51%	71%	41%	57%	54%	57%	55%	44%	50%	40%	25%		
'18 EBV Av.	-1.1	+2.4	+18	+22	+32	+40	+8	+1.5	-1.7	+24	+2.3	-0.2	+0.4	+0.6	+0.2	+0.03	+0.01		

## IDENTIFICATION NO.: COR180010

	GL	BW	200 WT	400 WT	600 WT	MC WT	MILK	SS	DC	C WT	EMA	RIB	RUMP	RBV	IMF	FT	SF	DI \$	EI \$
EBV	-	+1.3	+18	+2	+14	-4	+13	+0.1	+1.5	+12	+1.5	-0.2	+0.2	+0.6	+0.1	-	-	\$5	\$8
ACC	-	43%	55%	53%	51%	49%	54%	46%	29%	44%	27%	27%	26%	27%	25%	-	-		
'18 EBV Av.	-1.1	+2.4	+18	+22	+32	+40	+8	+1.5	-1.7	+24	+2.3	-0.2	+0.4	+0.6	+0.2	+0.03	+0.01		

## IDENTIFICATION NO.: SEI190097

	GL	BW	200 WT	400 WT	600 WT	MC WT	MILK	SS	DC	C WT	EMA	RIB	RUMP	RBV	IMF	FT	SF	DI \$	EI \$
EBV	-1.3	+4.3	+34	+39	+65	+79	+8	+2.7	-0.7	+48	+5.8	0.0	-0.3	+1.4	0.0	-0.10	-	\$31	\$42
ACC	49%	75%	70%	70%	67%	65%	45%	71%	39%	60%	55%	58%	57%	46%	51%	57%	-		
'18 EBV Av.	-1.1	+2.4	+18	+22	+32	+40	+8	+1.5	-1.7	+24	+2.3	-0.2	+0.4	+0.6	+0.2	+0.03	+0.01		



**SEIFERT BELMONT REDS**

**ID: SEI180038**      **DOB: 07/09/2017**      **AGE: 34.8 Mths**      **REGO STATUS: REGISTERED**  
**GRADE: PURE BR**      **HORN: HORNED**      **DNA TEST: HH**

SAAG91130 AG 91-130 (BONS.) (IMP Sth AF)  
 ISAGRC9714 GRC9714 (P) (IMP STH AF) (ET)  
 SAIVYN142 IVY N 142 (BONS.) (IMP Sth AF)

**SIRE: VAL01B808 VALINOR B808 (AI)**

VAL91V655 VALINOR 655  
 VAL96V182 VALINOR 96-V182 (B)  
 BAN870N55 BANGALLA 87-N55

**ANIMAL: SEI180038 SEIFERT BELMONT 180038**

BEL070211 BELMONT 070211  
 SEI130539 SEIFERT 130539  
 JIS030228 SEIFERT 3-228

**DAM: SEI150144 SEIFERT 150144**

TRE080023 TREMERE 080023  
 BEL120080 BELMONT 120080  
 BEL020117 BELMONT 02-0117



An IVF daughter by outside sire VAL01B808, this heifer has the highest genetic growth potential with her 600D EBV in the top 10%. She also has a particularly good EMA EBV in the top 20% positioning her in the top 5% on the domestic \$ index. PTIC to outside sire RJS180103. Due on or about the 6th November 2020.

June 2020 Belmont Red GROUP BREEDPLAN																	
	GL	BW	200	400	600	MC	Milk	SS	DC	CW	EMA	Rib	Rump	RBV	IMF	Domestic	Export
EBV	-1.6	2.3	29	32	53	64	5	1.8	1.7	36	3.4	-0.6	-1.3	1.3	0	\$26	\$34
Acc	58%	75%	72%	72%	75%	68%	44%	52%	34%	60%	48%	61%	60%	44%	51%		
Breed Avg. EBVs for 2018 Born Calves																	
EBV	-1.1	+2.4	+18	+22	+32	+40	+8	+1.5	-1.7	+24	+2.3	-0.2	+0.4	+0.6	+0.2	+\$20	+\$24

Traits Observed: GL, BWT, 200WT, 400WT(x2), 600WT, SS, FAT, EMA, IMF, FLT

Purchaser ..... \$ .....

LOT  
64

# SEIFERT BELMONT REDS

**ID:** SEI180200    **DOB:** 18/10/2017    **AGE:** 33.4 Mths    **REGO STATUS:** REGISTERED  
**GRADE:** PURE BR    **HORN:** POLLED    **DNA TEST:** PH

SEI090377 SEIFERT TEDSTAR  
 SEI140269 SEIFERT 140269  
 MON040122 MONTPELLIER 0122 (COM)

**SIRE:** SEI160203 SEIFERT BELMONT 160203

TRE050123 TREMERE 050123  
 SEI100078 SEIFERT 0 0078  
 MON040026 MONTPELLIER 04-26

**ANIMAL:** SEI180200 SEIFERT BELMONT 180200

BAU992007 BONSMARA AUST. 99-2007  
 TRE030179 TREMERE 030179  
 TRE000950 TREMERE 000950

**DAM:** BEL080085 BELMONT 080085

BEL960319 BELMONT 96-319  
 BEL020037 BELMONT 02-0037  
 BEL990716 BELMONT 99-716



A low birthweight heifer with good average growth and favourable below average mature cow weight EBVs. PTIC to outside sire COR180010. Due on or about 31 October 2020.

June 2020 Belmont Red GROUP BREEDPLAN																	
	GL	BW	200	400	600	MC	Milk	SS	DC	CW	EMA	Rib	Rump	RBY	IMF	Domestic	Export
EBV	-0.4	1.1	12	22	28	35	5	0.5	-2	15	1.6	-0.6	-0.7	0.6	0	\$22	\$24
Acc	33%	59%	68%	70%	67%	64%	47%	54%	34%	57%	42%	43%	38%	39%			
Breed Avg. EBVs for 2018 Born Calves																	
EBV	-1.1	+2.4	+18	+22	+32	+40	+8	+1.5	-1.7	+24	+2.3	-0.2	+0.4	+0.6	+0.2	+\$20	+\$24

Traits Observed: GL, BWT, 200WT, 400WT(x2), 600WT, SS, FAT, EMA, IMF, FLT

Purchaser ..... \$ .....

LOT  
65

# SEIFERT BELMONT REDS

**ID:** SEI180256    **DOB:** 03/11/2017    **AGE:** 32.9 Mths    **REGO STATUS:** REGISTERED  
**GRADE:** PURE BR    **HORN:** POLLED    **DNA TEST:** PH

BEL070211 BELMONT 070211  
 SEI130539 SEIFERT 130539  
 JIS030228 SEIFERT 3-228

**SIRE:** SEI150143 SEIFERT BELMONT 150143

MON980035 MONTPELLIER 98-035  
 MON020060 MONTPELLIER 02-60  
 MON990002 MONTPELLIER 99-2

**ANIMAL:** SEI180256 SEIFERT BELMONT 180256

SEI050065 SEIFERT 05-65  
 SEI080165 SEIFERT ACHIEVABULL  
 MONTPELLIER 97-70

**DAM:** SEI120206 SEIFERT 120206

SEI9000G2 GENERIC BELMONT SIRE  
 JIS030169 SEIFERT 3-169  
 SEI9000G1 GENERIC BELMONT DAM



A moderate heifer with above average growth and above average eye muscle area EBVs. PTIC to outside sire COR180010. Due on our about 31 October 2020.

June 2020 Belmont Red GROUP BREEDPLAN																	
	GL	BW	200	400	600	MC	Milk	SS	DC	CW	EMA	Rib	Rump	RBY	IMF	Domestic	Export
EBV	-0.6	3.3	16	31	39	69	2	1.6	-1.5	32	2.7	-0.1	0.3	0.6	0.2	\$25	\$27
Acc	27%	57%	71%	72%	75%	68%	48%	56%	39%	58%	44%	50%	49%	40%	44%		
Breed Avg. EBVs for 2018 Born Calves																	
EBV	-1.1	+2.4	+18	+22	+32	+40	+8	+1.5	-1.7	+24	+2.3	-0.2	+0.4	+0.6	+0.2	+\$20	+\$24

Traits Observed: GL, BWT, 200WT, 400WT(x2), 600WT, SS, FAT, EMA, IMF, FLT

Purchaser ..... \$ .....

LOT  
66

# SEIFERT BELMONT REDS

**ID:** SEI180392    **DOB:** 02/11/2017    **AGE:** 32.9 Mths    **REGO STATUS:** REGISTERED  
**GRADE:** PURE BR    **HORN:** POLLED    **DNA TEST:** PP

BEL070211 BELMONT 070211  
 SEI130539 SEIFERT 130539  
 JIS030228 SEIFERT 3-228  
**SIRE:** SEI150143 SEIFERT BELMONT 150143  
 MON980035 MONTPELLIER 98-035  
 MON020060 MONTPELLIER 02-60  
 MON990002 MONTPELLIER 99-2  
**ANIMAL:** SEI180392 SEIFERT BELMONT 180392  
 SEI050065 SEIFERT 05-65  
 SEI080165 SEIFERT ACHIEVABULL  
 MONTPELLIER 97-70

**DAM:** SEI110176 SEIFERT 110176  
 MON010045 MONTPELLIER 01-45  
 MON050038 MONTPELLIER 05-038  
 MON020033 MONTPELLIER 02-33



A Homozygous Poll heifer with above average growth in the top 15% for 600D. PTIC to SEI190097. Due on or about 30th October 2020.

June 2020 Belmont Red GROUP BREEDPLAN																	
	GL	BW	200	400	600	MC	Milk	SS	DC	CW	EMA	Rib	Rump	RBY	IMF	Domestic	Export
EBV	-0.3	3.5	17	32	47	63	5	1.1	-1.6	29	1.4	-1	-0.9	0.4	0.1	\$22	\$27
Acc	29%	60%	71%	72%	70%	67%	51%	59%	43%	60%	53%	65%	48%	57%			
Breed Avg. EBVs for 2018 Born Calves																	
EBV	-1.1	+2.4	+18	+22	+32	+40	+8	+1.5	-1.7	+24	+2.3	-0.2	+0.4	+0.6	+0.2	+\$20	+\$24

Traits Observed: GL, BWT, 200WT, 400WT(x2), 600WT, SS, FAT, EMA, IMF, FLT

Purchaser ..... \$ .....

LOT  
67

# SEIFERT BELMONT REDS

**ID:** SEI180456    **DOB:** 04/10/2017    **AGE:** 33.9 Mths    **REGO STATUS:** REGISTERED  
**GRADE:** PURE BR    **HORN:** POLLED    **DNA TEST:**

SEI100300 SEIFERT 0 0300  
 SEI130437 SEIFERT 130437  
 SEI110346 SEIFERT 110346  
**SIRE:** SEI160173 SEIFERT BELMONT 160173  
 TRE050155 TREMERE 050155  
 BEL090274 BELMONT 090274  
 BEL010007 BELMONT 01-0007  
**ANIMAL:** SEI180456 SEIFERT BELMONT 180456  
 SEI090377 SEIFERT TEDSTAR  
 SEI140017 SEIFERT 140017  
 SEI080050 SEIFERT STAR ANISE  
**DAM:** SEI160362 SEIFERT BELMONT 160362  
 SEI05MS03 2005 BLK MULTI  
 SEI070078 SEIFERT 0078  
 JIS030209 SEIFERT 3-209



An above average growth heifer with good days to calving and scrotal size EBVs. PTIC to SEI190097. Due on or about 1 January 2021.

June 2020 Belmont Red GROUP BREEDPLAN																	
	GL	BW	200	400	600	MC	Milk	SS	DC	CW	EMA	Rib	Rump	RBY	IMF	Domestic	Export
EBV	-1.1	5.3	25	28	41	54	10	2.8	-3	26	0.3	0.2	1.9	0.2	0.2	\$17	\$22
Acc	38%	74%	69%	70%	66%	64%	44%	52%	35%	58%	49%	62%	63%	45%	53%		
Breed Avg. EBVs for 2018 Born Calves																	
EBV	-1.1	+2.4	+18	+22	+32	+40	+8	+1.5	-1.7	+24	+2.3	-0.2	+0.4	+0.6	+0.2	+\$20	+\$24

Traits Observed: GL, BWT, 200WT, 400WT(x2), 600WT, SS, FAT, EMA, IMF, FLT

Purchaser ..... \$ .....



# EBV INDEX

## Explanatory Notes

### Estimated Breeding Values (EBVs)

An animal's breeding value can be defined as its genetic merit for each trait. While it is not possible to determine an animal's true breeding value, it is possible to estimate it. These estimates of an animal's true breeding value are called EBVs (Estimated Breeding Values). EBVs are expressed as the difference between an individual animal's genetics and the genetic base to which the animal is compared. EBVs are reported in the units in which the measurements are taken (e.g. kilograms for the weight EBVs). Thus a value of +12 kg for 400 day weight means the animal is genetically superior by 12 kg at 400 days compared with the genetic base of the relevant cattle population. On average, half of this difference will be passed on to the animal's progeny.

**Gestation Length:** Provide an estimate of genetic differences between animals in gestation length. They are expressed in days. Lower or more negative Gestation Length EBVs are considered to be more favourable.

**Birth weight:** Estimates of genetic differences between animals in calf birth weight. They are expressed in kilograms (kg). Small, or moderate, Birth Weight EBVs are more favourable.

**200 Day Growth:** Estimates of the genetic differences between animals in live weight at 200 days of age due to their genetics for growth. They are expressed in kilograms (kg) and are a measure of an animal's early growth to weaning. Larger, more positive, 200 Day Growth EBVs are generally more favourable.

**400 Day Weight:** Estimates of the genetic differences between animals in live weight at 400 days of age. They are expressed in kilograms (kg) and are an important trait for breeders turning off animals as yearlings. Larger, more positive, 400 Day Weight EBVs are generally more favourable.

**600 Day Weight:** Estimates of the genetic differences between animals in live weight at 600 days of age. They are expressed in kilograms (kg) and are an important trait for breeders targeting the production of animals suited for heavy weight grass or grain fed markets. Larger, more positive, 600 Day Weight EBVs are generally more favourable.

**Mature Cow Weight:** Estimates of the genetic differences between cows in live weight at 5 years of age. They are expressed in kilograms (kg). Animals with higher, more positive Mature Cow Weight EBVs would be expected to produce progeny with a higher mature weight than animals with lower Mature Cow Weight EBVs.

**Milk:** Provide an estimate of the maternal contribution of a dam to the 200 day weight of her calf. In the case of sires, this estimates the maternal contribution that his daughters will make to the 200 day weight of their progeny. The Milk EBV is expressed in kilograms and indicates the expected difference in the weight of the calf at 200 days due to the maternal contribution of the cow. Larger, more positive, 200 Day Milk EBVs are generally more favourable, depending on the environment.

**Scrotal Size:** Provide an estimate of the genetic differences between animals in scrotal

circumference at 400 days of age. Scrotal Size EBVs are expressed in centimetres (cm). Larger, more positive, Scrotal Size EBVs are generally more favourable.

**Days to Calving:** Estimates of genetic differences between animals in the time from the start of the joining period (i.e. when the female is introduced to a bull) until subsequent calving. Days to Calving EBVs are expressed in days and are calculated from the joining records submitted for both heifers and mature cows. Lower, or more negative, Days to Calving EBVs are generally more favourable.

**Carcase Weight:** Estimates of the genetic differences between animals in hot standard carcass weight (as defined by AUSMEAT) at 650 days of age. They are expressed in kilograms (kg). Larger, more positive, Carcass Weight EBVs are generally more favourable.

**Eye Muscle Area:** Estimates of the genetic differences between animals in eye muscle area at 12/13th rib site in a standard weight steer carcass. They are expressed in square centimetres (cm<sup>2</sup>). Larger, more positive, EMA EBVs are generally more favourable.

**Rib Fat:** Estimates of the genetic differences between animals in fat depth at the 12/13th rib site in a standard weight steer carcass. They are expressed in millimetres (mm). More positive or more negative Rib Fat EBVs may be more favourable, depending on your breeding goals relating to the finishing ability of your animals

**Rump Fat:** EBVs are estimates of the genetic differences between animals in fat depth at the P8 rump site in a standard weight steer carcass. They are expressed in millimetres (mm). More positive or more negative Rump Fat EBVs may be more favourable, depending on your breeding goals relating to the finishing ability of your animals.

**Retail Beef Yield:** Estimates of genetic differences between animals in boned out retail beef yield in a standard weight steer carcass. They are reported as differences in percentage (%) yield. Larger, more positive, RBV EBVs are generally more favourable.

**Intramuscular Fat:** Estimates of genetic differences between animals in intramuscular fat (marbling) at the 12/13 rib site in a standard weight steer carcass. They are reported as differences in percentage (%) IMF. Larger, more positive, IMF EBVs are generally more favourable.

**Flight Time:** Estimates of genetic differences between animals in temperament. They are expressed as differences in the number of seconds taken for an animal to travel approximately 2.0 metres after leaving the crush. Higher (i.e. Longer) Flight Time EBVs are more favourable.

**Shear Force:** Estimates of genetic differences between animals in meat tenderness. They are expressed as differences in the kilograms of shear force that are required to pull a mechanical blade through a piece of cooked meat. Lower, more negative, Shear Force EBVs are more favourable.

### EBV Accuracy

The "accuracy" figure produced with each EBV provides an indication of the amount of information that has been used in the calculation of that EBV. The higher the accuracy,

the more likely the EBV is to predict the animal's true breeding value and the lower the likelihood of change in the animal's EBV as more information is analysed for that animal, its progeny or its relatives.

### Interpreting Selection Indexes

The Selection Index value for an animal is effectively an EBV of the animal's profitability in that particular commercial production scenario and market. Ranking seedstock animals on their Selection Index value sorts them based on their progeny's expected profitability for the targeted production system.

Selection Indexes are expressed as "net profit per cow mated". For example, if we compare a bull with an Index of +\$60 with a bull that has an Index of +\$30, we can estimate that the difference in net profit from the progeny of the bulls would be:

$$\begin{aligned} &= \frac{1}{2} \times \text{difference in Index} \\ &= \frac{1}{2} \times (60-30) \\ &= \$15 \text{ per cow mated} \end{aligned}$$

N.B. We need to multiply by  $\frac{1}{2}$  because only half the progeny's genes come from the sire.

It is important to note that this difference includes profit across the entire production chain from joining to slaughter and also considers the long term profit generated by a sire's daughters (if a self-replacing Selection Index).

### Using Selection Indexes

As a guide to using Selection Indexes, it is recommended that producers complete the following steps:

- (i) Identify the Selection Index of most relevance
- (ii) Rank animals on the Selection Index
- (iii) Consider the individual EBVs of importance
- (iv) Consider other traits of importance

### Belmont Australia Selection Indexes

There are currently two different selection indexes calculated for Belmont Australia animals.

**Domestic Steer Index** – Estimates the genetic differences between animals in net profitability per cow joined for an example self-replacing commercial herd (run in subtropical environment) producing steers for the domestic trade. This index assumes that the steer progeny are pasture grown and finished and marketed at 460 kg live weight (240 kg HSCW and 6 mm P8 fat depth) at 16 months of age. Daughters are retained for breeding.

**Export Steer Index** – Estimates the genetic differences between animals in net profitability per cow joined for an example commercial herd (run in a sub-tropical environment) producing steers for the export trade. This index assumes that the steer progeny are pasture grown and finished and are marketed at 680 kg live weight (370 kg HSCW and 12 mm P8 fat depth) at 30 months of age. Daughters are retained for breeding.

### Disclaimer

The GROUP BREEDPLAN Estimated Breeding Values (EBVs) contained within this sale catalogue were compiled by the Agricultural Business Research Institute (ABRI) from the data supplied by breeders. Neither Belmont Australia nor ABRI oversee or audit the collection of this data.





**BUYERS INSTRUCTIONS**  
*(No verbal instructions accepted)*



NAME \_\_\_\_\_

BID CARD NO \_\_\_\_\_ PIC \_\_\_\_\_

ADDRESS \_\_\_\_\_

\_\_\_\_\_ POSTCODE \_\_\_\_\_

PHONE \_\_\_\_\_

EMAIL \_\_\_\_\_

ACCOUNT TO (AGENT) \_\_\_\_\_

LOTS PURCHASED \_\_\_\_\_

TRANSPORT DETAILS \_\_\_\_\_

INSURANCE - YES/NO

FEEDING - YES/NO

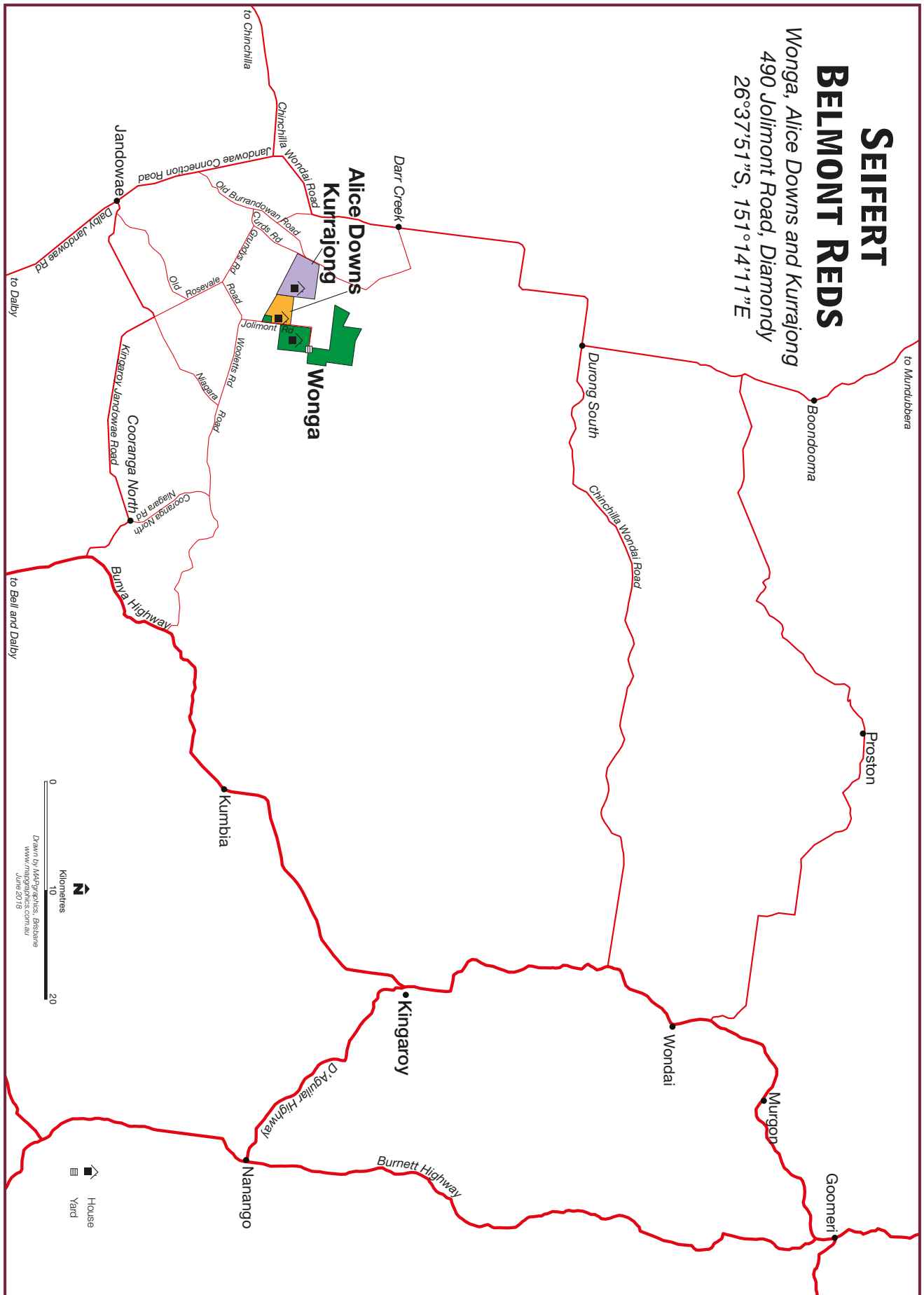
FURTHER INSTRUCTIONS \_\_\_\_\_

\_\_\_\_\_

\_\_\_\_\_

SIGNED \_\_\_\_\_ DATE \_\_\_\_\_

# Map - Seifert Belmont Reds





*Ian and Jeanne sincerely  
thank the generous support  
of our sponsors*





Please 'like us' on Facebook : [Seifert Belmonts and Sylvia Vale Stock Horses](#)

### Ian Stark & Jeanne Seifert

'Wonga'

490 Jolimont Rd  
Jandowae Q 4410  
Ph: 07 4668 6125

'Flag Springs'

11315 Auburn Rd  
Chinchilla Q 4413  
Ph: 07 4668 6125

'Sylvia Vale'

2077 Pierces Creek Rd  
Emu Creek Q 4355  
Ph: 07 4668 6125

Jeanne: 0427 632 113

Ian: 0439 632 113

[www.seifertbelmontreds.com](http://www.seifertbelmontreds.com)

