



RAYLEIGH

POLL HEREFORDS

EST. 1957

11TH ANNUAL ON PROPERTY BULL & FEMALE SALE

Friday 10th July 2020

Inspections - 10am • Sale Starts - 1pm

• 21 Bulls

• 16 Registered Heifers

INSPECTION DAY

FRIDAY 26TH JUNE 2020

PLEASE CALL TO ARRANGE AN APPOINTMENT

Jeff & Robyn Holcombe

“Rayleigh”, 31921 Kamilaroi Hwy, Burren Junction

Jeff: 0427 285 226 • Robyn: 0428 285 226 • Anna: 0429 694 435

Email: rayleigh8@bigpond.com • www.rayleighpollherefords.com.au

Selling Agent: Bruce Evans - Nutrien Phone: 0428 921 599

Stud Stock Agent: John Settree - Nutrien Phone: 0408 297 368

OUR BREEDING OPERATION

Rayleigh Poll Hereford Stud was established in 1957. Now with over 60 years of experience in the industry, we produce lines of cattle that are reliable in both their performance and predictability.

The aim of the Stud has always been to breed functional and efficient cattle, noted for their ability to fatten on pasture and carry themselves through tough times. Structural soundness, doing ability and natural muscling are at the forefront of our program to ensure this vision is met. Maintaining productivity and fertility in dry times are further attributes integral in our program. Being from a marginal climate our cattle are well accustomed to these conditions. This allows for our bulls to be well adapted, low fuss and ready to work.

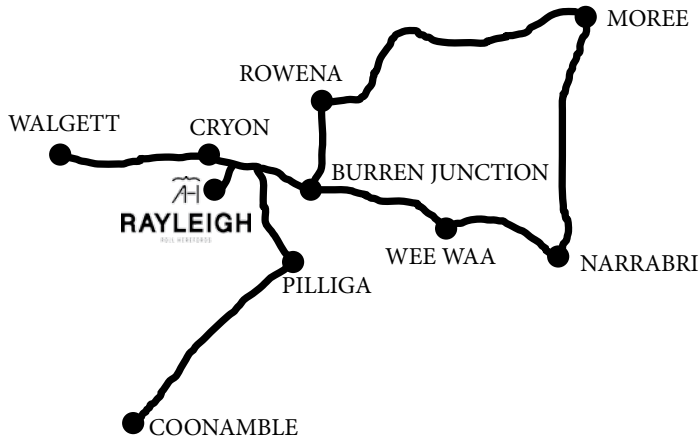
ABOUT THE BULLS

In any beef operation, we recognise that carcass and performance are integral components to maximising profitability. We have focused heavily on combining these components with visual appeal, softness and temperament. As a result, over one quarter of this year's bulls are in the top 20% of the breed for EMA, IMF, Rib & Rump Fat. While over 70% of the bulls are above breed average for their 200, 400 & 600 DW, with half of the catalogue in the top 20% of the breed for their 400 & 600 DW. On top of this, this year's sale animals have all undergone rigorous selection criteria during the drought, with only the best performers being carried through.

This year represents the first opportunity to obtain genetics in Yalgoo Knickerbocker L205, who's progeny consistently display fantastic natural muscle pattern and raw power. Combined with the softness and power of the Calibre sons, extra frame and temperament of the Karabar's and the low birth weights of the Landslides, we are confident that there are bulls to fit most operations in this year's sale draft. Please chat to us directly if you require any assistance selecting the right animal for your herd.



SALE INFORMATION



Rayleigh Poll Hereford Stud is located 35km west of Burren Junction and 60km east of Walgett on the Kamilaroi Highway.

- All cattle will be available for inspection from 10am on sale day, with the auction to commence at 1pm sharp. Prior inspection can be arranged by contacting the vendor or selling agents.
- The sale will be conducted using the open cry auction system, with an online bidding option available through Auctions Plus. Cattle will be presented for auction via video. Please note Rayleigh has good mobile service.
- GST is to be added onto the purchase price at the fall of the auctioneer's hammer. You will be invoiced purchase price plus GST.
- A rebate of 2% will be offered to outside agents introducing buyers in writing 24 hours prior to the sale, and attending the sale with the client.
- A Buyer's Instruction Slip must be completed by the purchaser or representative and handed to the auctioneer prior to leaving the sale. No verbal instructions will be accepted.
- We offer free delivery within 200kms of Rayleigh. Delivery can be taken from the completion of the sale, with transport options available on sale day.
- All care will be taken with the wellbeing of animals prior to delivery. However, should unforeseen injury or illness occur, no responsibility will be accepted by the vendor. Insurance is recommended.
- There is no vendor insurance on sale animals. It will be the responsibility of the buyer to insure their purchases. Insurance representatives will be in attendance on sale day.
- All bulls have been 7 in 1, Pestiguard and Vibrio vaccinated, as well as treated with Dectomax injectable.

SALE INFORMATION

- All bulls have been semen, morphology and soundness tested by Scott Parry, North West Vets. Certificates are available on request.
- A selection of bulls have been DNA and SNIP tested for this year's sale. Should any additional sires require such testing, this will be completed upon request and at the vendor's expense.
- Should there be any issues with your purchases, we would like to be the first to know. All bulls come with a guarantee to naturally breed. If your bull fails to breed within the first 6 months, a replacement bull or credit (less salvage value) can be arranged. This excludes loss due to injury or illness sustained post sale day. Please contact us to discuss any issues and provide a veterinary certificate.
- We welcome any feedback as to how your bull is performing. This strengthens our future breeding program and ensures we continue to produce cattle suited to your needs.
- Rayleigh Poll Herefords have a Biosecurity plan with a JBAS – 7.
- Visitors enter the cattle pens at their own risk. Children and prams must not enter the yards.
- Food and refreshments to be served on Sale Day under Covid 19 restriction rules.
- Accommodation can be arranged by contacting the selling agents.

COVID-19 & OUR 2020 BULL AND SELECT FEMALE SALE

Based on current and projected restrictions on gatherings, we are hopeful that our 2020 sale will be able to proceed as per normal, in the live video auction format, with some adjustments made on site to accommodate social distancing regulations. As with previous years, we will also be interfacing the sale with **AuctionsPlus** to give those who do not wish to attend, or cannot make the sale the opportunity to bid.

With this in mind, we will also be hosting an inspection day on **FRIDAY 26th JUNE 2020** to give those not attending the opportunity to view the sale draft. We strongly encourage inspections during this time, particularly for those who are at risk or caregivers to those at risk.

Inspections during the inspection day will be available by appointment, with appointment times allotted to attendees, so that we are able to better manage social distancing regulations. If you are unable to make this day, please get in contact with us to make other arrangements.

We will continue to monitor and adhere to the latest advice from the Australian Government regarding COVID-19. Updates will be made via our website and social media platforms if and when they are required. If you have any questions, or would like to make an appointment to view our sale draft, please feel free to give one of us or our selling agents a call!

Disclaimer

Whilst all due care and attention has been paid to the accuracy in the compilation of this catalogue, neither the vendor nor selling agents or representatives therefore assume any responsibility whatsoever for the correctness, use or interpretation of the information on animals included in this catalogue. Potential buyers are advised to inspect animals prior to sale.

REFERENCE SIRES



Bowen Calibre K207- BWNK207

Sire: Days Calibre G74 (PP)

Dam: Bowen Hilda F8 (P)

BW	200	400	600	MCW	MILK	SS	CW	EMA	RIB	RUMP	RBY%	IMF%
+8.8	+40	+69	+102	+114	+5	+3.9	+61	+6.7	+0.3	+0.3	+1.2	+1.8

Index Values	SSR	NSR	SBM	NBT
	+\$147	+\$136	+\$142	+\$107



Mountain Valley Karabar K203 – SBDK203

Sire: Mountain Valley Gambler G14 (P)

Dam: Mountain Valley Shamrock C12 (P)

BW	200	400	600	MCW	MILK	SS	CW	EMA	RIB	RUMP	RBY%	IMF%
+9.8	+55	+94	+134	+124	+20	+2.6	+81	+4.4	0.0	+0.5	+1.1	+0.2

Index Values	SSR	NSR	SBM	NBT
	+\$122	+\$88	+\$87	+\$67



Yalgoo Knickerbocker L205 – SODL205

Sire: Yalgoo Break Out G075 (AI) (P)

Dam: Yalgoo Vanessa E054 (ET) (P)

BW	200	400	600	MCW	MILK	SS	CW	EMA	RIB	RUMP	RBY%	IMF%
+5.8	+39	+68	+105	+90	+14	+2.7	+68	+5.6	+0.2	+0.7	+1.5	+0.8

Index Values	SSR	NSR	SBM	NBT
	+\$171	+\$153	+\$161	+\$114



Rayleigh Landslide L118 – AHCL118

Sire: Yavenvale Benchmark B278 (P)

Dam: Rayleigh Alysia E103 (TW) (P)

BW	200	400	600	MCW	MILK	SS	CW	EMA	RIB	RUMP	RBY%	IMF%
+1.2	+28	+42	+58	+44	+19	+1.8	+38	+0.5	+1.5	+2.5	-0.5	+0.4

Index Values	SSR	NSR	SBM	NBT
	+\$123	+\$116	+\$139	+\$102

REFERENCE SIRES



Injemira Anzac H006 – IHSH006

Sire: Allendale Anzac E114 (PP)

Dam: Injemira Marinda B028 (AI) (P)

BW	200	400	600	MCW	MILK	SS	CW	EMA	RIB	RUMP	RBY%	IMF%
+5.8	+48	+86	+113	+107	+23	+3.3	+81	+5.8	+0.6	+0.7	+1.6	+0.4

Index Values

SSR	NSR	SBM	NBT
+\$167	+\$151	+\$167	+\$125

FUTURE REFERENCE SIRES



Injemira Anzac L170 - IHSL170

Sire: Allendale Anzac E114 (PP)

Dam: Injemira Happy Day D053 (AI) (ET) (P)

BW	200	400	600	MCW	MILK	SS	CW	EMA	RIB	RUMP	RBY%	IMF%
+7.1	+46	+77	+109	+89	+19	+2.0	+77	+6.8	+1.4	+2.0	+0.6	+1.7

Index Values

SSR	NSR	SBM	NBT
+\$179	+\$162	+\$189	+\$140



Injemira Techno P271 (Ai) (Pp) – IHSP271

Sire: Koanui Techno 3062 (IMP NZL) (PP)

Dam: Injemira Happy Day K332 (P)

BW	200	400	600	MCW	MILK	SS	CW	EMA	RIB	RUMP	RBY%	IMF%
+5.2	+45	+74	+104	+83	+18	+3.2	+73	+5.4	+1.0	+1.2	+0.7	+2.0

Index Values

SSR	NSR	SBM	NBT
+\$189	+\$173	+\$187	+\$137



Eathorpe Prowler P037 (Ai) (Et) (Pp) – ETHP037

Sire: Koanui Techno 3062 (IMP NZL) (PP)

Dam: Yalgoo Blush A036 (P)

BW	200	400	600	MCW	MILK	SS	CW	EMA	RIB	RUMP	RBY%	IMF%
+7.9	+47	+76	+108	+86	+17	+3.0	+70	+5.0	+0.9	+1.0	+1.2	+1.7

Index Values

SSR	NSR	SBM	NBT
+\$187	+\$169	+\$187	+\$136

BREEDPLAN MADE EASY

Breedplan is a performance evaluation program that compares bulls “on a level playing field” for a number of important commercial traits.

The difference between a bull's genetics and the breed benchmark for a range of traits is reported as an **Estimated Breeding Value (EBV)** - an estimate of how a bull will perform as a parent rather than how he looks on the day.

EBVs can be positive (+) or negative (-), ie, above or below the breed benchmark of zero.

EBVs are calculated from the available performance information on the animal, its parents, progeny and its close relatives within the breed.

The information is adjusted for age, dam age, and for differences between herds, years, season of calving, management effects and for mating and selection biases. The heritability of the trait is also taken into account.

EBVs - what do they tell me about a bull

BIRTH

Birth Weight: The Birth Weight EBV (kg) is based on the measured birth weight of animals, adjusted for dam age. The lower the value the lighter the calf at birth and the lower the likelihood of a difficult birth. This is particularly important when selecting sires for use over heifers.

FERTILITY

Scrotal Size: The Scrotal Size EBV (cm) is an indicator of male fertility. Higher (positive) EBVs indicate higher fertility. Higher SS EBVs are also positively associated with female fertility through earlier age of puberty.

GROWTH

Milk: 200-Day Milk EBV (kg) is an estimate of the contribution that a dam makes to the 200 day weight of her progeny. For sires, this is an indication of the contribution that his daughters will make to the 200 day weight of their calves.

200-Day Growth: The 200-Day EBV (kg) is calculated from the weight of animals taken between 80 and 300 days of age. Values are adjusted to 200 days and for dam age. This EBV is the best single estimate of an animal's genetic merit for growth to early ages (ie. 8-10 months).

400-Day Weight: The 400-Day Weight EBV (kg) is calculated from the weight of progeny taken between 301 and 500 days of age, adjusted to 400 days and for dam age. This EBV is the best single estimate of an animal's genetic merit for yearling weight.

600-Day Weight: The 600-Day Weight EBV (kg) is calculated from the weight of progeny taken between 501 and 900 days of age, adjusted to 600 days and for dam age. This EBV is the best single estimate of an animal's genetic merit for growth beyond yearling age.

CARCASE

Eye Muscle Area: The EMA EBV (cm²) estimates genetic differences in eye muscle area at the 12/13th rib site of a 300kg dressed carcass. More positive EBVs indicate better muscling on animals.

Rib Fat: The Rib Fat EBV (mm) estimates the genetic differences in fat depth at the 12/13th rib in a 300kg dressed carcass. More positive EBVs indicate more subcutaneous fat and earlier maturity.

Rump Fat: The Rump Fat EBV (mm) estimates the genetic differences in fat depth at the P8 site of a 300kg dressed carcass. More positive EBVs indicate more subcutaneous fat and earlier maturity.

Intramuscular Fat Percent: The IMF% EBV (%) is an estimate of the genetic difference in the percentage of intra-muscular fat at the 12/13th rib site in a 300kg carcass. More positive EBVs indicate higher marbling.

BREED AVERAGE - To aid in your interpretation of the GROUP BREEDPLAN EBV'S in this catalogue please find below the Breed Average EBV's for the 2018 drop calves.

BW	200	400	600	MCW	MILK	SS	CW	EMA	RIB	RUMP	RBY%	IMF%
+4.4	+33	+54	+77	+68	+16	+2.0	+50	+3.2	+0.5	+0.5	+0.8	+0.4

The Group Breedplan Estimated Breeding Values contained in this catalogue were supplied by the Agricultural Business Research Institute from data supplied by the breeders. Neither Herefords Australia Limited nor the ABRI oversee or audit the collection of this data. Log on to www.herefordsaustralia.com.au for a full description and explanation of all Breedplan, EBVs, Accuracies, Selection Indexes and Comparing Animals.



AUSTRALIAN HEREFORD SELECTION INDEXES

THERE ARE CURRENTLY FOUR DIFFERENT SELECTION INDEXES CALCULATED FOR AUSTRALIAN HEREFORD ANIMALS. THESE ARE:

- SOUTHERN SELF-REPLACING INDEX
- SOUTHERN BALDY MATERNAL INDEX
- NORTHERN SELF-REPLACING INDEX
- NORTHERN BALDY TERMINAL INDEX

Each selection index describes a different production/market scenario and relates to a typical commercial herd using Hereford bulls. Producers are advised to use the selection index that most closely aligns to their production system. All four selection indexes are focussed on maintaining and improving eating quality. Significant premiums are applied for increasing marble score up to a marble score of 3. Pressure is also applied to early life growth to maintain low ossification scores and good MSA compliance. In addition, each selection index targets the following specifications.

SOUTHERN SELF-REPLACING INDEX

Estimates the genetic differences between animals in net profitability per cow joined in a commercial self-replacing straight bred Hereford herd targeting the domestic market. Daughters are retained for breeding and so maternal traits are of importance. Steers are slaughtered at 20 to 22 months of age to produce 300 kg carcasses with 10 mm P8 fat depth. A moderate cost is applied for cow feed costs during the annual feed shortage period.

NORTHERN SELF-REPLACING INDEX

Estimates the genetic differences between animals in net profitability per cow joined in a commercial self-replacing herd targeting the domestic market. This index is suitable for use by both straight bred Hereford herds and in crossbreeding programs where Hereford bulls are being used over a *Bos indicus* based cow herd (e.g. flatback). Daughters are retained for breeding and so maternal traits are of importance. Steers are slaughtered at 20 to 22 months of age to produce 340 kg carcasses with 12 mm P8 fat depth. A high cost is applied for cow feed costs during the annual feed shortage period.

SOUTHERN BALDY MATERNAL INDEX

Estimates the genetic differences between animals in net profitability per cow joined in a commercial crossbred herd using Hereford bulls over *Bos taurus* females (e.g. Angus). A portion of the heifers are retained for breeding and so maternal traits are of importance. The steers and surplus heifers are destined for slaughter at 20 to 22 months of age. Steers produce 300 kg carcasses with 10 mm of P8 fat depth, while heifers produce 270 kg carcasses with 12 mm of P8 fat depth. A moderate cost is applied for cow feed costs during the annual feed shortage period.

NORTHERN BALDY TERMINAL INDEX

Estimates the genetic differences between animals in net profitability per cow joined in a commercial crossbred herd (e.g. flatback) using Hereford bulls over *Bos indicus/Tropical* females (e.g. Santa Gertrudis) where all progeny (male and female) are destined for slaughter. Steers and heifers are slaughtered at 20 to 22 months of age. Steers produce 340 kg carcasses with 14 mm of P8 fat depth while heifers produce 300 kg carcasses with 17 mm of P8 fat depth.

All selection index values have been derived using BreedObject technology. More detailed information regarding each selection index is provided on the following pages.

If you have any further queries regarding Hereford Selection Indexes, please do not hesitate to contact staff at Herefords Australia or your BREEDPLAN processing centre.

SELECTION INDEX VALUES BREED AVERAGES

Southern Self Replacing Index	Northern Self Replacing Index	Southern Baldy Maternal Index	Northern Baldy Terminal Index
+126	+112	+127	+93



AuctionsPlus[®]

Australia's Livestock Marketplace

***Can't make the sale?
Log onto AuctionsPlus to bid from
anywhere on your phone, tablet or desktop.***

1

REGISTER ONLINE

Simply click 'Sign Up' to begin your free registration. To register as a buyer for livestock, you will need to provide us with a few more details.

2

COMPLETE BUYER INDUCTION

The buyer induction will help you understand the roles and responsibilities of everyone on the AuctionsPlus system.

3

VIEW CATALOGUE

Photos, videos, pedigrees and other information will be available in the online catalogue.

4

ENTER AUCTION

Log into the auction anytime, anywhere and bid on your mobile, tablet or computer.

5

AUTO BID

Can't stay for the whole sale? Set your maximum bid on the lot that you want to purchase and let the computer bid for you.

6

CONTACT SELLING AGENT

If successful, contact selling agent directly after the sale to arrange payment.

7

DELIVERY

Arrange transport of livestock at your expense.

***Contact AuctionsPlus on (02) 9262 4222
or www.auctionsplus.com.au***

Lot 1 RAYLEIGH POPE P101 (S)

Tattoo: P101

Rego No: AHCP101

Born: 08/08/2018

BOWMONT STORM C093 (H)

YALGOO BREAK OUT G075 (AI) (P)

YALGOO BLUSH A036 (P)

Sire: YALGOO KNICKERBOCKER L205 (PP)

STUDBROOK D'ARTAGNION V086 (AI) (ET) (S)

YALGOO VANESSA E054 (ET) (P)

YALGOO VANESSA T104 (P)

STUDBROOK D'ARTAGNION V086 (AI) (ET) (S)

OTAPAWA SPARK 3060 (IMP NZL) (AI) (ET) (P)

OTAPAWA SPOT P30 (P)

Dam: RAYLEIGH L.SPICE J1 (AI) (P)

RAYLEIGH ALBERTA A4 (AI) (P)

RAYLEIGH L ALYSIA F37 (P)

RAYLEIGH L TIFFANY D007 (P)

May 2020 Hereford BREEDPLAN

BW	200	400	600	MCW	Milk	SS	Cwt	EMA	Rib	RUMP	RBY%	IMF%
+4.6	+39	+66	+96	+82	+21	+2.0	+68	+6.2	+0.8	+1.3	+1.6	+0.8
70%	63%	61%	62%	56%	49%	58%	54%	45%	50%	53%	47%	50%
Selection Index Values:				SSR: +\$174	NSR: +\$160	SBM: +\$175	NBT: +\$128					

Traits Observed: CE,BWT,200WT,400WT(x2),600WT,SS,FAT,EMA,IMF,Genomics

Notes: An industry relevant young sire that is thick and heavy, with a fantastic natural muscle pattern and great set of numbers to match. Pope is structurally correct and well balanced with a smooth, soft dark coat. As one of the youngest bulls in the sale, Pope displays outstanding weight for age, check out his curve bending growth EBVs. We considered keeping this bull. Top 5% EMA; Top 10% 600 DW, CW, Milk, RBY & all Index Values, Top 15% 200 & 400 DW. A stud sire prospect. Scurred. EP: 80/95.

Purchaser:

Price \$:

Lot 2 RAYLEIGH PANAMA P53 (PP)

Tattoo: P053

Rego No: AHCP053

Born: 12/05/2018

ALLENDALE WATERHOUSE D1 (PP)

DAYS CALIBRE G74 (PP)

ALLENDALE DAWN C62 (AI) (P)

Sire: BOWEN CALIBRE K207 (AI) (ET) (PP)

MAUNGAHINA KINGDOM BAY 070073 (IMP NZL) (P)

BOWEN HILDA F8 (AI) (P)

BOWEN HILDA A101 (AI) (P)

KAIRURU ABERDEEN 03 0047 (IMP NZL) (P)

KAIRURU FLINT 080058 (IMP NZL) (PP)

KAIRURU LEONORA 01 02 (P)

Dam: RAYLEIGH L SERENITY K14 (AI) (TW) (P)

DEBARRY TRIBULUS 2 (P)

RAYLEIGH L TIFFANY C71 (TW) (P)

RAYLEIGH L TANIA W34 (AI) (P)

May 2020 Hereford BREEDPLAN

BW	200	400	600	MCW	Milk	SS	Cwt	EMA	Rib	RUMP	RBY%	IMF%
+6.8	+36	+62	+92	+101	+9	+2.7	+59	+5.5	+0.9	+1.4	+0.9	+0.7
71%	66%	66%	69%	59%	47%	59%	56%	45%	49%	53%	47%	49%
Selection Index Values:				SSR: +\$137	NSR: +\$128	SBM: +\$140	NBT: +\$107					

Traits Observed: CE,BWT,200WT,400WT,600WT(x2),SS,FAT,EMA,IMF,Genomics

Notes: Panama has been an absolute standout since birth, we had originally entered him into the Dubbo National prior to Coronavirus. A sire that has to be admired for his exceptional length, muscle and raw power. Panama is a balanced, structural correct bull with excellent cosmetics. Scanned a raw EMA of 120 cm and 6.6% IMF at scanning back in March. Top 10% EMA; Top 20% 600 DW. A top stud sire prospect that comes with our highest recommendation. Homozygous Polled. EP 100/100.

Purchaser:

Price \$:

Lot 3 RAYLEIGH PINNACLE P36 (PP)

Tattoo: P036

Rego No: AHCP036

Born: 26/04/2018

ALLENDALE WATERHOUSE D1 (PP)
 DAYS CALIBRE G74 (PP)
 ALLENDALE DAWN C62 (AI) (P)
 Sire: **BOWEN CALIBRE K207 (AI) (ET) (PP)**
 MAUNGAHINA KINGDOM BAY 070073 (IMP NZL) (P)
 BOWEN HILDA F8 (AI) (P)
 BOWEN HILDA A101 (AI) (P)

ALLENDALE ANZAC E114 (PP)
 INJEMIRA ANZAC H003 (P)
 INJEMIRA HAPPY DAY C097 (P)

Dam: **RAYLEIGH L ANASTASIA L105 (P)**
 KERLSON PINES CARRIETON F110 (P)
 RAYLEIGH L CURLY J110 (TW) (P)
 RAYLEIGH L BONNIE E1 (AI) (P)

May 2020 Hereford BREEDPLAN												
BW	200	400	600	MCW	Milk	SS	Cwt	EMA	Rib	RUMP	RBY%	IMF%
+8.7	+44	+69	+101	+100	+8	+2.4	+63	+6.1	+0.9	+1.2	+1.1	+1.0
72%	67%	67%	70%	60%	45%	75%	56%	48%	52%	56%	50%	49%
Selection Index Values:			SSR: +\$127	NSR: +\$113	SBM: +\$107	NBT: +\$74						

Traits Observed: BWT,200WT,400WT,600WT(x2),SS,FAT,EMA,IMF,Genomics

Notes: Power and performance! Pinnacle is an upstanding sire with so much muscle and natural thickness. Outstanding butt shape and great length of neck. This bull has a lot to offer to any operation. Top 5% 200 DW, 600 DW & EMA; Top 10% 400 DW, Top 15% CW & IMF. A stud sire prospect. Homozygous Polled. EP 100/100.

Purchaser: Price \$:.....

Lot 4 RAYLEIGH PHARAOH P34 (S)

Tattoo: P034

Rego No: AHCP034

Born: 25/04/2018

ALLENDALE WATERHOUSE D1 (PP)
 DAYS CALIBRE G74 (PP)
 ALLENDALE DAWN C62 (AI) (P)
 Sire: **BOWEN CALIBRE K207 (AI) (ET) (PP)**
 MAUNGAHINA KINGDOM BAY 070073 (IMP NZL) (P)
 BOWEN HILDA F8 (AI) (P)
 BOWEN HILDA A101 (AI) (P)

SOUTH BUKALONG WALL
 YAVENVALE BENCHMARK B278
 YAVENVALE

Dam: **RAYLEIGH L BELLA G112 (P)**
 RAYLEIGH L BELLA G112 (P)
 RAYLEIGH L BELLA G112 (P)

May 2020 Hereford BREEDPLAN												
BW	200	400	600	MCW	Milk	SS	Cwt	EMA	Rib	RUMP	RBY%	IMF%
+7.9	+44	+69	+115	+108	+9	+3.5	+69	+4.3	+0.4	+0.3	+1.6	+0.7
72%	67%	67%	70%	60%	50%	75%	57%	48%	52%	56%	50%	50%
Selection Index Values:			SSR: +\$190	NSR: +\$175	SBM: +\$195	NBT: +\$139						

Traits Observed: BWT,200WT,400WT,600WT(x2),SS,FAT,EMA,IMF,Genomics

Notes: An exceptionally powerful sire that has loads of presence. Big, thick and dark with extreme carcass and bone. Consistently the heaviest bull of the drop. Extreme growth figures and out of a very good benchmark cow. Top 1% 600 DW; Top 5% 200 DW, 400 DW, CW& all Index Values; Top 10% RBY. A stud sire prospect. Scurred. EP 100/100.

Purchaser: Price \$:.....

Lot 5 RAYLEIGH PICASSO P28 (P)

Tattoo: P028

Rego No: AHCP028

Born: 19/04/2018

ALLEDALE WATERHOUSE D1 (PP)

DAYS CALIBRE G74 (PP)

ALLEDALE DAWN C62 (AI) (P)

Sire: BOWEN CALIBRE K207 (AI) (ET) (PP)

MAUNGAHINA KINGDOM BAY 070073 (IMP NZL) (P)

BOWEN HILDA F8 (AI) (P)

BOWEN HILDA A101 (AI) (P)

ALLEDALE POSEIDON Z110 (P)

RAYLEIGH DOMINGO D4 (P)

RAYLEIGH SALLY 6 S58 (P)

Dam: RAYLEIGH L DOMINICA G3 (P)

DAVENGER UPSTART (AI) (P)

RAYLEIGH L UABBA Y53 (P)

RAYLEIGH PANSEY S26 (P)

May 2020 Hereford BREEDPLAN

BW	200	400	600	MCW	Milk	SS	Cwt	EMA	Rib	RUMP	RBY%	IMF%
+6.8	+32	+52	+79	+88	+5	+3.3	+44	+4.2	+0.2	+0.2	+0.8	+0.7
70%	65%	65%	67%	57%	45%	71%	54%	44%	47%	51%	45%	44%
Selection Index Values:		SSR: +\$105		NSR: +\$93		SBM: +\$96		NBT: +\$71				

Traits Observed: BWT,200WT,400WT,600WT(x2),SS,FAT,EMA,IMF

Notes: Named Picasso because he is a work of art. A thick, heavy Calibre bull with plenty of frame and performance. Well muscled and out of a good old cow. Quiet. Top 5% SS. EP 100/100.

Purchaser:

Price \$:.....

Lot 6 RAYLEIGH PRAGUE P87 (P)

Tattoo: P087

Rego No: AHCP087

Born: 21/06/2018

CANNAWIGRA COMMANDER Z51 (S)

MOUNTAIN VALLEY GAMBLER G14 (P)

MOUNTAIN VALLEY B44 (P)

Sire: MOUNTAIN VALLEY KARABAR K203 (AI) (ET) (PP)

STRATHLEIGH TITANIC 34 (H)

MOUNTAIN VALLEY SHAMROCK C12 (AI) (P)

MOUNTAIN VALLEY SHAMROCK Z72 (AI) (P)

ALLEDALE OVERTON (P)

ALLEDALE POSEIDON Z110 (P)

ALLEDALE FANCY T24 (P)

Dam: RAYLEIGH I POSIE E19 (P)

DAVENGER UPSTART (AI) (P)

RAYLEIGH I UABBA Y20 (P)

RAYLEIGH SALLY 13 S78 (P)

May 2020 Hereford BREEDPLAN

BW	200	400	600	MCW	Milk	SS	Cwt	EMA	Rib	RUMP	RBY%	IMF%
+7.7	+41	+65	+93	+94	+15	+1.8	+52	+2.5	-0.3	-0.3	+0.8	-0.4
69%	65%	65%	68%	59%	53%	71%	56%	46%	50%	55%	48%	48%
Selection Index Values:		SSR: +\$65		NSR: +\$39		SBM: +\$36		NBT: +\$26				

Traits Observed: CE,BWT,200WT,400WT(x2),600WT,SS,FAT,EMA,IMF

Notes: A Karabar son that would add plenty of frame to your females. A nice headed bull with very good eye setting and a soft dark coat. Quiet. Out of a top old cow. Top 15% 200 DW; Top 20% 400 & 600 DW. EP 100/100.

Purchaser:

Price \$:.....

Lot 7 RAYLEIGH PALISADE P83 (PP)

Tattoo: P083

Rego No: AHCP083

Born: 14/06/2018

BOWMONT STORM C093 (H)
 YALGOO BREAK OUT G075 (AI) (P)
 YALGOO BLUSH A036 (P)
 Sire: **YALGOO KNICKERBOCKER L205 (PP)**
 STUDBROOK D'ARTAGNION V086 (AI) (ET) (S)
 YALGOO VANESSA E054 (ET) (P)
 YALGOO VANESSA T104 (P)

WHIM PARK DESTROYER D035 (AI) (S)
 RAYLEIGH GLADIATOR G53 (P)
 RAYLEIGH L POSIE C88 (P)

Dam: **RAYLEIGH S GLADIOLLI K1 (P)**
 DEBARRY TRIBULUS 2 (P)
 RAYLEIGH S TIFFANY C83 (P)
 RAYLEIGH S KYLIE 8 W57 (P)

May 2020 Hereford BREEDPLAN												
BW	200	400	600	MCW	Milk	SS	Cwt	EMA	Rib	RUMP	RBY%	IMF%
+4.3	+35	+63	+94	+94	+11	+0.7	+61	+4.0	-0.1	+0.2	+1.4	-0.2
67%	63%	63%	66%	57%	43%	71%	52%	43%	47%	51%	45%	45%
Selection Index Values:				SSR: +\$130	NSR: +\$115	SBM: +\$124	NBT: +\$92					

Traits Observed: CE,BWT,200WT,400WT(x2),600WT,SS,FAT,EMA,IMF,Genomics

Notes: Another eye-catching Yalgoo Knickerbocker L205 son. Palisade is a very correct, upstanding sire with loads of length. Beautiful well set eye and soft skin. Great growth for age. If you're looking for a bull to improve structure and balance in your herd, this is your bull. Top 15% 600 DW & CW; Top 20% 400 DW & RBY. Homozygous Polled. EP 100/100

Purchaser: Price \$:.....

Lot 8 RAYLEIGH PEGASUS P47 (PP)

Tattoo: P047

Rego No: AHCP047

Born: 03/05/2018

ALLENDALE WATERHOUSE D1 (PP)
 DAYS CALIBRE G74 (PP)
 ALLENDALE DAWN C62 (AI) (P)
 Sire: **BOWEN CALIBRE K207 (AI) (ET) (PP)**
 MAUNGAHINA KINGDOM BAY 070073 (IMP NZL) (P)
 BOWEN HILDA F8 (AI) (P)
 BOWEN HILDA A101 (AI) (P)

SOUTH BUKALONG WALLACE 2 (P)
 YAVENVALE BENCHMARK B278 (P)
 YAVENVALE MISS MINERVA W051 (AI) (H)

Dam: **RAYLEIGH S BELLA G74 (P)**
 COLUMBIAN SURVIVOR W45 (P)
 RAYLEIGH S SHAMROCK Z47 (P)
 RAYLEIGH AMOROUS 6 T67 (P)

May 2020 Hereford BREEDPLAN												
BW	200	400	600	MCW	Milk	SS	Cwt	EMA	Rib	RUMP	RBY%	IMF%
+6.6	+41	+67	+97	+95	+10	+2.8	+60	+3.3	+1.5	+2.3	-0.9	+2.0
72%	67%	66%	69%	59%	50%	73%	56%	48%	51%	55%	49%	50%
Selection Index Values:				SSR: +\$150	NSR: +\$135	SBM: +\$152	NBT: +\$112					

Traits Observed: CE,BWT,200WT,400WT(x2),600WT,SS,FAT,EMA,IMF,Genomics

Notes: A large frame bull that is structurally very sound. Pegasus is in the top 1% of the breed for IMF and at scanning in March had a raw IMF of 7.1%, an impressive figure for any British bred animal. If you are wanting to add some extra frame and marbling to your herd, this is your bull. Very quiet temperament. Top 1% IMF; Top 10% 200DW, 600 DW, Rib & Rump Fat; Top 15% 400 DW; Top 20% CW. Homozygous Polled. EP 100/100.

Purchaser: Price \$:.....

Lot 9 RAYLEIGH PHILADELPHIA P82 (P)

Tattoo: P082

Rego No: AHCP082

Born: 13/06/2018

ALLEDALE WATERHOUSE D1 (PP)
DAYS CALIBRE G74 (PP)

Sire: **BOWEN CALIBRE K207 (AI) (ET) (PP)**
ALLEDALE DAWN C62 (AI) (P)
MAUNGAHINA KINGDOM BAY 070073 (IMP NZL) (P)

BOWEN HILDA F8 (AI) (P)
BOWEN HILDA A101 (AI) (P)

SOUTH BUKALONG WALLACE 2 (P)
YAVENVALE BENCHMARK B278 (P)
YAVENVALE MISS MINERVA W051 (AI) (H)

Dam: **RAYLEIGH O BELLA J93 (P)**
TYCOLAH GOLD RUSH (S)
RAYLEIGH O GOLDIE G23 (AI) (P)
RAYLEIGH O TIFFANY C80 (P)

May 2020 Hereford BREEDPLAN												
BW	200	400	600	MCW	Milk	SS	Cwt	EMA	Rib	RUMP	RBY%	IMF%
+5.7	+35	+57	+78	+75	+13	+3.8	+49	+4.1	+0.7	+0.9	+0.7	+0.9
69%	66%	66%	69%	60%	47%	73%	57%	48%	52%	56%	50%	50%
Selection Index Values:			SSR: +\$136	NSR: +\$126	SBM: +\$140	NBT: +\$102						

Traits Observed: CE,BWT,200WT,400WT(x2),600WT,SS,FAT,EMA,IMF

Notes: Another long and stretchy Calibre son. A framey bull that carries plenty of capacity. Very good soft skin and hooded eye. Good temperament. Top 5% SS; Top 20% IMF. EP 100/100.

Purchaser: Price \$:.....

Lot 10 RAYLEIGH PATRIOT P56 (P)

Tattoo: P056

Rego No: AHCP056

Born: 15/05/2018

CANNAWIGRA COMMANDER Z51 (S)
MOUNTAIN VALLEY GAMBLER G14 (P)

Sire: **MOUNTAIN VALLEY KARABAR K203 (AI) (ET) (PP)**
MOUNTAIN VALLEY B44 (P)
STRATHLEIGH TITANIC 34 (H)
MOUNTAIN VALLEY SHAMROCK C12 (AI) (P)
MOUNTAIN VALLEY SHAMROCK Z72 (AI) (P)

SOUTH BUKALONG WALLACE 2 (P)
YAVENVALE BENCHMARK B278 (P)
YAVENVALE MISS MINERVA W051 (AI) (H)

Dam: **RAYLEIGH L BELLA J77 (P)**
RILO PARK UNSHAKEABLE (AI) (ET) (P)
RAYLEIGH L UNITY G41 (P)
RAYLEIGH L TIFFANY D007 (P)

May 2020 Hereford BREEDPLAN												
BW	200	400	600	MCW	Milk	SS	Cwt	EMA	Rib	RUMP	RBY%	IMF%
+5.8	+38	+63	+89	+66	+20	+2.6	+54	+2.9	+2.4	+3.9	-1.0	+1.1
71%	67%	66%	70%	60%	49%	76%	56%	47%	51%	55%	49%	47%
Selection Index Values:			SSR: +\$131	NSR: +\$111	SBM: +\$112	NBT: +\$78						

Traits Observed: CE,BWT,200WT,400WT,600WT(x2),SS,FAT,EMA,IMF

Notes: A moderate, extremely easy doing Karabar son with plenty of length and grunt. Outstanding fat figures which were backed up by very good raw scans. An industry relevant bull that would breed excellent supermarket trade steers. Very quiet. Top 1% Rib & Rump Fat, Top 15% Milk & IMF; Top 20% 200 DW & SS. EP 100/100.

Purchaser: Price \$:.....

Lot 11 RAYLEIGH PATAGONIA P70 (P)

Tattoo: P070

Rego No: AHCP070

Born: 01/06/2018

CANNAWIGRA COMMANDER Z51 (S)
 MOUNTAIN VALLEY GAMBLER G14 (P)
 MOUNTAIN VALLEY B44 (P)
 Sire: MOUNTAIN VALLEY KARABAR K203 (AI) (ET) (PP)
 STRATHLEIGH TITANIC 34 (H)
 MOUNTAIN VALLEY SHAMROCK C12 (AI) (P)
 MOUNTAIN VALLEY SHAMROCK Z72 (AI) (P)

BOWEN TORNADO Z260 (AI) (ET) (PP)
 RILO PARK UNSHAKEABLE (AI) (ET) (P)
 BOWEN MATCHLESS L140 (AI) (P)

Dam: RAYLEIGH L UNITY G41 (P)
 DEBARRY TRIBULUS 2 (P)
 RAYLEIGH L TIFFANY D007 (P)
 RAYLEIGH L UABBA X80 (P)

May 2020 Hereford BREEDPLAN												
BW	200	400	600	MCW	Milk	SS	Cwt	EMA	Rib	RUMP	RBY%	IMF%
+8.2	+45	+75	+103	+95	+18	+1.5	+60	+3.3	-0.1	-0.3	+0.9	+0.2
71%	66%	66%	69%	59%	51%	72%	55%	45%	48%	52%	46%	45%
Selection Index Values:			SSR: +\$99	NSR: +\$70	SBM: +\$71	NBT: +\$52						

Traits Observed: CE,BWT,200WT,400WT,600WT(x2),SS,FAT,EMA,IMF

Notes: A square, very well balanced and put together bull with plenty of length. Great dark skin and eye pigment. Very quiet. Top 5% 200, 400 & 600 DW. EP 100/100.

Purchaser: Price \$:.....

Lot 12 RAYLEIGH PROSPECT P54 (P)

Tattoo: P054

Rego No: AHCP054

Born: 14/05/2018

SOUTH BUKALONG WALLACE 2 (P)
 YAVENVALE BENCHMARK B278 (P)
 YAVENVALE MISS MINERVA W051 (AI) (H)
 Sire: RAYLEIGH LANDSLIDE L118 (TW) (P)
 RAYLEIGH ALBERTA A4 (AI) (P)
 RAYLEIGH ALYSIA E103 (TW) (P)
 RAYLEIGH L SHAMROCK A26 (P)

ALLENDALE ANZAC E114 (PP)
 INJEMIRA ANZAC H003 (P)
 INJEMIRA HAPPY DAY C097 (P)

Dam: RAYLEIGH L ANASTASIA L101 (P)
 YAVENVALE BENCHMARK B278 (P)
 RAYLEIGH L BELLA G71 (P)
 RAYLEIGH L BONNIE E1 (AI) (P)

May 2020 Hereford BREEDPLAN												
BW	200	400	600	MCW	Milk	SS	Cwt	EMA	Rib	RUMP	RBY%	IMF%
+3.8	+30	+48	+69	+53	+13	+2.0	+42	+2.2	+2.0	+3.0	-0.4	+0.8
69%	63%	57%	58%	48%	44%	45%	45%	34%	39%	42%	36%	38%
Selection Index Values:			SSR: +\$131	NSR: +\$122	SBM: +\$131	NBT: +\$90						

Traits Observed: CE,BWT,200WT,400WT,600WT(x2),SS,FAT,EMA,IMF

Notes: A long, stretchy and correct bull with a good top line. A heifer's first calf by Landslide, a low birthweight sire we are currently using over heifers for the 4th season. Top 5% Rib & Rump Fat. Could be suitable for heifers. EP 100/100.

Purchaser: Price \$:.....

Lot 13 RAYLEIGH PERCIVAL P50 (P)

Tattoo: P050

Rego No: AHCP050

Born: 11/05/2018

SOUTH BUKALONG WALLACE 2 (P)
 YAVENVALE BENCHMARK B278 (P)
 YAVENVALE MISS MINERVA W051 (AI) (H)

Sire: RAYLEIGH LANDSLIDE L118 (TW) (P)
 RAYLEIGH ALBERTA A4 (AI) (P)
 RAYLEIGH ALYSIA E103 (TW) (P)
 RAYLEIGH L SHAMROCK A26 (P)

MOUNTAIN VALLEY GAMBLER G14 (P)
 MOUNTAIN VALLEY KARABAR K203 (AI) (ET) (PP)
 MOUNTAIN VALLEY SHAMROCK C12 (AI) (P)

Dam: RAYLEIGH C KARA M40 (P)
 YAVENVALE BENCHMARK B278 (P)
 RAYLEIGH I BELLA G98 (P)
 RAYLEIGH I UNA Z6 (AI) (P)

May 2020 Hereford BREEDPLAN												
BW	200	400	600	MCW	Milk	SS	Cwt	EMA	Rib	RUMP	RBY%	IMF%
+2.7	+29	+52	+69	+63	+17	+1.7	+42	+0.8	+0.8	+1.4	-0.2	+0.4
68%	65%	64%	67%	56%	42%	73%	52%	42%	45%	49%	43%	41%
Selection Index Values:			SSR: +\$111	NSR: +\$98	SBM: +\$121	NBT: +\$93						

Traits Observed: CE,BWT,200WT,400WT,600WT(x2),SS,FAT,EMA,IMF

Notes: A moderate, correct bull that is soft and dark with great eye pigment and setting. Another heifer's first calf by Landslide. Could be suitable for heifers. EP 100/100.

Purchaser: Price \$:.....

Lot 14 RAYLEIGH PIONEER P106 (TW) (P)

Tattoo: P106

Rego No: AHCP106

Born: 23/08/2018

BOWMONT STORM C093 (H)
 YALGOO BREAK OUT G075 (AI) (P)
 YALGOO BLUSH A036 (P)
 Sire: YALGOO KNICKERBOCKER L205 (PP)
 STUDBROOK D'ARTAGNION V086 (AI) (ET) (S)
 YALGOO VANESSA E054 (ET) (P)
 YALGOO VANESSA T104 (P)

SOUTH BUKALONG WALLACE 2 (P)
 YAVENVALE BENCHMARK B278 (P)
 YAVENVALE MISS MINERVA W051 (AI) (H)

Dam: RAYLEIGH L BELLA G71 (P)
 HEATHERDALE BONANZA Z48 (AI) (P)
 RAYLEIGH L BONNIE E1 (AI) (P)
 RAYLEIGH L TIFFANY C7 (P)

May 2020 Hereford BREEDPLAN												
BW	200	400	600	MCW	Milk	SS	Cwt	EMA	Rib	RUMP	RBY%	IMF%
+5.4	+37	+60	+91	+70	+15	+2.3	+56	+3.9	+1.5	+2.4	+0.4	+1.0
57%	55%	53%	54%	48%	45%	51%	47%	38%	42%	45%	39%	42%
Selection Index Values:			SSR: +\$164	NSR: +\$150	SBM: +\$158	NBT: +\$109						

Traits Observed: BWT,200WT,400WT(x2),600WT,SS,FAT,EMA,IMF

Notes: Second youngest bull in the sale. A bull that is carrying loads of muscle and natural thickness that should breed very efficient steers for the supermarket trade. Good soft dark coat and good eye pigment. Top 5% Rump Fat; Top 10% Rib Fat; Top 15% IMF, SSR & NSR; Top 20% 600 DW & SBM. Twin. EP 100/100.

Purchaser: Price \$:.....

Lot 15 RAYLEIGH PRINCE P113 (P)

Tattoo: P113

Rego No: AHCP113

Born: 03/09/2018

BOWMONT STORM C093 (H)
YALGOO BREAK OUT G075 (AI) (P)
YALGOO BLUSH A036 (P)
Sire: YALGOO KNICKERBOCKER L205 (PP)
STUDBROOK D'ARTAGNION V086 (AI) (ET) (S)
YALGOO VANESSA E054 (ET) (P)
YALGOO VANESSA T104 (P)

CANNAWIGRA COMMANDER Z51 (S)
WHIM PARK DESTROYER D035 (AI) (S)
NOROLLE V1 NIKKI Z78 (AI) (P)
Dam: RAYLEIGH S DESIRE J37 (P)
ALLEDALE POSEIDON Z110 (P)
RAYLEIGH S POSIE D69 (P)
RAYLEIGH S CAROL B4 (P)

May 2020 Hereford BREEDPLAN												
BW	200	400	600	MCW	Milk	SS	Cwt	EMA	Rib	RUMP	RBY%	IMF%
+7.3	+40	+66	+103	+97	+14	+1.8	+60	+3.8	-0.4	-0.5	+1.0	+0.3
69%	63%	58%	59%	51%	45%	53%	48%	40%	45%	48%	41%	44%
Selection Index Values:			SSR: +\$126	NSR: +\$100	SBM: +\$113	NBT: +\$79						

Traits Observed: BWT,200WT,400WT(x2),600WT,SS,FAT,EMA,IMF

Notes: Youngest bull of the drop. A well structured bull with plenty of frame, that is really starting to go ahead. Dark soft coated bull. Top 5% 600 DW; Top 15% 200 DW, 400 DW & RBY; Top 20% CW. EP 100/100.

Purchaser: Price \$:

Lot 16 RAYLEIGH PHILOSOPHER P103 (P)

Tattoo: P103

Rego No: AHCP103

Born: 13/08/2018

BOWMONT STORM C093 (H)
YALGOO BREAK OUT G075 (AI) (P)
YALGOO BLUSH A036 (P)
Sire: YALGOO KNICKERBOCKER L205 (PP)
STUDBROOK D'ARTAGNION V086 (AI) (ET) (S)
YALGOO VANESSA E054 (ET) (P)
YALGOO VANESSA T104 (P)

KIDMAN THE DON Y220 (P)
BRAYBOOK FEDERER F448 (P)
WIRANYA PETAL X35 (P)
Dam: RAYLEIGH S FRED A J3 (AI) (P)
DEBARRY TRIBULUS 2 (P)
RAYLEIGH S TIFFANY D78 (P)
RAYLEIGH S SHAMROCK Z47 (P)

May 2020 Hereford BREEDPLAN												
BW	200	400	600	MCW	Milk	SS	Cwt	EMA	Rib	RUMP	RBY%	IMF%
+5.3	+36	+55	+85	+79	+17	+2.2	+54	+4.2	-0.2	-0.3	+1.5	+0.1
69%	62%	60%	60%	52%	45%	51%	48%	39%	44%	47%	41%	43%
Selection Index Values:			SSR: +\$126	NSR: +\$109	SBM: +\$127	NBT: +\$93						

Traits Observed: CE,BWT,200WT,400WT(x2),600WT,SS,FAT,EMA,IMF

Notes: Another well fleshed young Knickerbocker bull with plenty of growth, bone and power. Would produce steers for the local trade. Top 5% RBY. EP 100/100.

Purchaser: Price \$:

Lot 17 RAYLEIGH PRESTIGE P95 (ET) (PP)

Tattoo: P095

Rego No: AHCP095

Born: 09/07/2018

ALLEDALE YACKA (AI) (P)
ALLEDALE ANZAC E114 (PP)
ALLEDALE DAWN B22 (AI) (ET) (P)

Sire: INJEMIRA ANZAC H006 (PP)

PINE HILL ERIK Y601 (AI) (S)
INJEMIRA MARINDA B028 (AI) (P)
INJEMIRA MARINDA Y065 (H)

SOUTH BUKALONG WALLACE 2 (P)
YAVENVALE BENCHMARK B278 (P)
YAVENVALE MISS MINERVA W051 (AI) (H)

Dam: RAYLEIGH S BELLA H36 (P)

DEBARRY TRIBULUS 2 (P)
RAYLEIGH S TIFFANY E76 (P)
RAYLEIGH S UABBA A59 (P)

May 2020 Hereford BREEDPLAN												
BW	200	400	600	MCW	Milk	SS	Cwt	EMA	Rib	RUMP	RBY%	IMF%
+5.4	+44	+70	+96	+80	+21	+2.6	+66	+4.5	+1.4	+2.2	+0.7	+0.5
67%	65%	64%	65%	58%	57%	62%	56%	47%	51%	55%	49%	53%
Selection Index Values:			SSR: +\$166	NSR: +\$153	SBM: +\$168	NBT: +\$121						

Traits Observed: BWT,200WT,400WT(x2),600WT,SS,FAT,EMA,IMF,Genomics

Notes: An ET bull out of one of our top cows and by Injemira Anzac H006, who has bred very well for Jarrah Cattle Company. A bull with great growth and weight for age and backed by some very well rounded figures. Top 5% 200 DW; Top 10% 400 DW, 600 DW, Milk, CW, Rib & Rump Fat; Top 20% SS & EMA. Homozygous Polled. EP 100/100.

Purchaser: Price \$:.....

Lot 18 RAYLEIGH PLYMOUTH P62 (P)

Tattoo: P062

Rego No: AHCP062

Born: 26/05/2018

ALLEDALE WATERHOUSE D1 (PP)
DAYS CALIBRE G74 (PP)
ALLEDALE DAWN C62 (AI) (P)

Sire: BOWEN CALIBRE K207 (AI) (ET) (PP)

MAUNGAHINA KINGDOM BAY 070073 (IMP NZL) (P)
BOWEN HILDA F8 (AI) (P)
BOWEN HILDA A101 (AI) (P)

ALLEDALE ANZAC E114 (PP)
INJEMIRA ANZAC H003 (P)
INJEMIRA HAPPY DAY C097 (P)

Dam: RAYLEIGH I ANASTASIA L85 (P)

WHIM PARK DESTROYER D035 (AI) (S)
RAYLEIGH L DESIRE J35 (P)
RAYLEIGH I ALYSIA E68 (P)

May 2020 Hereford BREEDPLAN												
BW	200	400	600	MCW	Milk	SS	Cwt	EMA	Rib	RUMP	RBY%	IMF%
+4.7	+31	+51	+77	+74	+8	+2.0	+51	+5.5	+1.4	+1.9	+0.3	+1.6
72%	67%	67%	70%	60%	46%	72%	57%	47%	52%	56%	49%	49%
Selection Index Values:			SSR: +\$130	NSR: +\$123	SBM: +\$130	NBT: +\$96						

Traits Observed: CE,BWT,200WT,400WT,600WT(x2),SS,FAT,EMA,IMF

Notes: A neat, structurally sound and moderate framed Calibre son. Smooth through the front end. Top 5% IMF; Top 10% EMA; Top 15% Rib & Rump Fat. EP 100/100.

Purchaser: Price \$:.....

SPECIALISING IN

✦ **QUALITY** ✦ **LOW COST**
FEEDS FOR HORSES, SHEEP & CATTLE



SOME OF OUR PRODUCTS INCLUDE:

Bypass Drylick + Rumensin

A supplement designed to feed the rumen bugs and stimulate feed intake for sheep and cattle on a low quality roughage diet. Plenty of roughage is essential.

Total Ration

A high protein, high energy complete feed ration for finishing domestic type, trade weight cattle and sheep.

- *Promotes good weight gain
- *Reduces fat deposition
- *Reduces 'feedlot entry' weight loss

Bypass Feedlot concentrate

A Supplement to add to your own grain. Provides macro and micro ingredients including Urea.

For feed lotting sheep & cattle.

Use 50Kg of Bypass Feedlot Concentrate for each tonne of finished feed.

PRODUCT DOES NOT CONTAIN RESTRICTED ANIMAL MATERIAL



ARE YOU FEEDLOTING ?

DO YOUR STOCK NEED
FINISHING ? BEFORE SALE

AFTER A SUPPLEMENT TO
ADD TO YOUR OWN GRAIN ?

WEANING CALVES ?

PASTURE CONDITIONS ?

*SERVERLY DRY *LUSH GREEN
*Or IN BETWEEN

**WE HAVE THE PRODUCT
FOR YOUR STOCK**

**BYPASS STOCKFEEDS
&
SWEETBULK HORSEFEEDS**

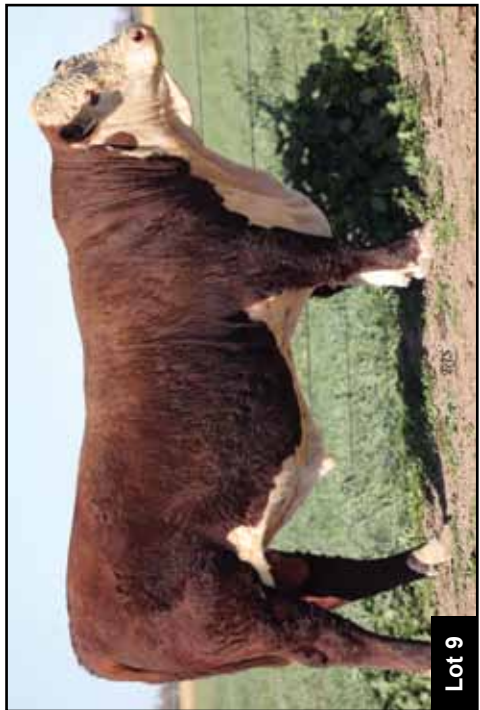
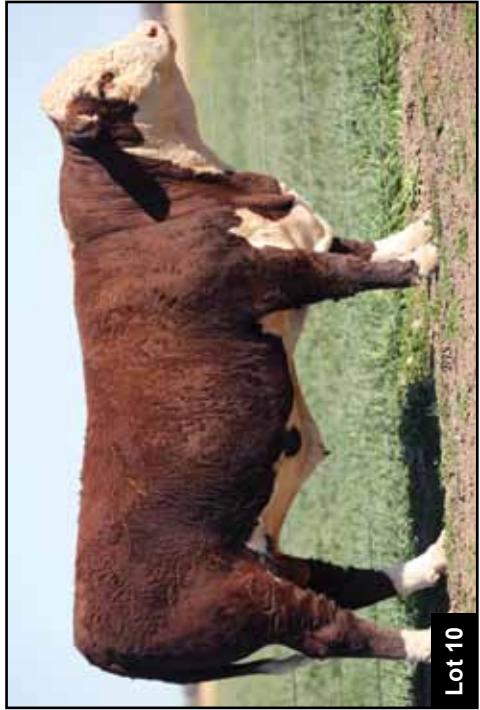
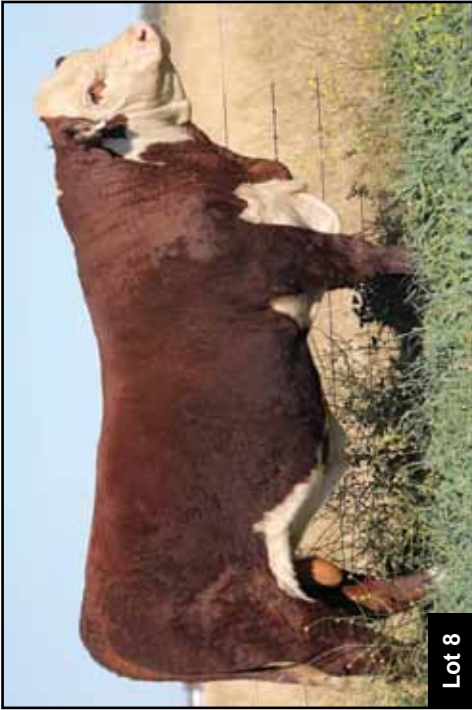
ABN: 83077109767

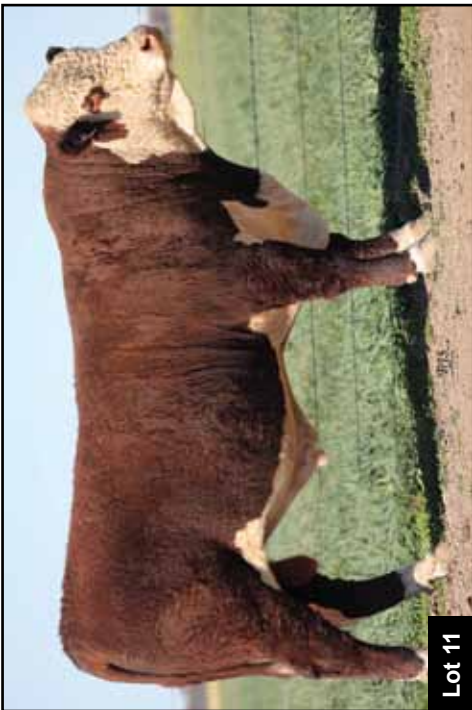
PHONE: 02 68 431 933

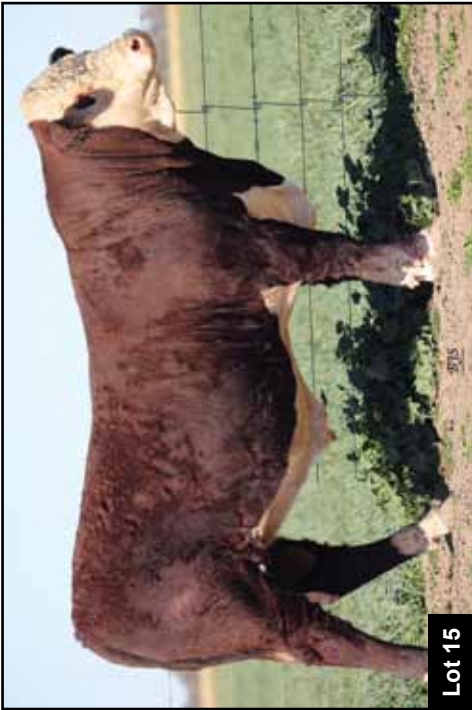
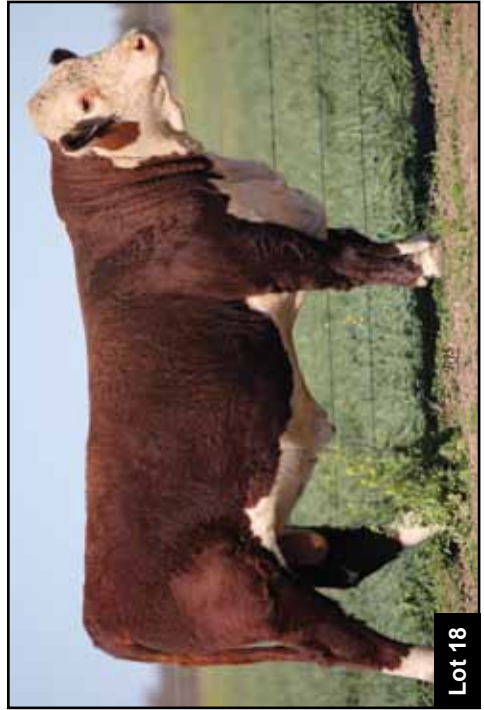
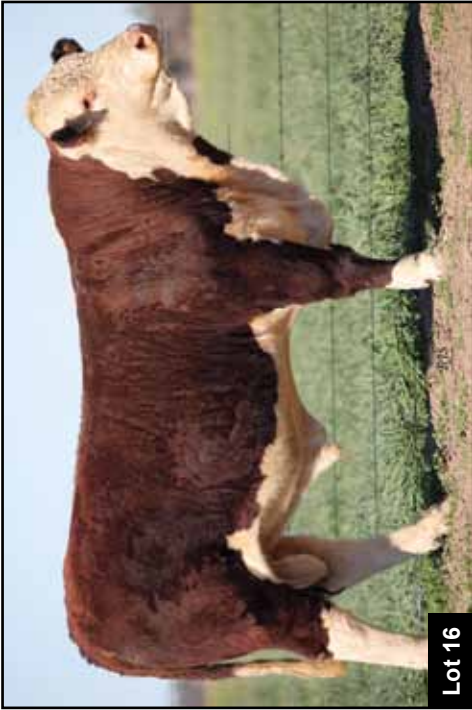
EMAIL: glenda@sweetbulk.com











YEARLING BULLS





Thousands of farmers.
One specialist broker.

Contact us for a chat about your farm and crop insurance needs.

Tamworth	02 5794 7100
Toowoomba	07 4639 7100
Sydney	02 9424 1894



AgriRisk

A Gallagher Company

www.agrisk.com.au

Ask us about our other insurance solutions:



Cover is subject to the Policy terms and conditions. You should consider if the insurance is suitable for you and read the Product Disclosure Statement (PDS) and Financial Services Guide (FSG) before making a decision to acquire insurance. These are available at www.ajg.com.au. REF2715-0520-2.2

2019 SALE TOPPERS

**ON PROPERTY
SALE**

.....
**LOT 4
RAYLEIGH
NILE N052**

*Purchased for \$12,000
by Tom Lyons.*
.....



.....
**LOT 19
RAYLEIGH
NIGEL N079**

*Purchased for \$9000
by Sparkes Family,
Hornet Bank.*
.....

**2019 HERFORD
NATIONAL SHOW
AND SALE DUBBO**

.....
**RAYLEIGH
NULLABOR
N069**

*Purchased for \$14,000
by Devon Court Stud.*
.....









Lots 30 & 31



Lots 32 & 33



Lots 34 & 35



Lots 36 & 37

YEARLING BULLS

With bull numbers back in this year's sale, we decided to bring forward some of our top yearling bulls to offer to you. This is the first time we have offered yearling bulls at our on-property sale. There are several big advantages of using yearling bulls. These include;

- **Better value:** using yearling extends a bull's working life and thus lowers your cost per calf.
- **Adaptable:** yearling bulls tend to adapt to new environments quicker.
- **Genetic improvement:** accessing bulls earlier allows you to accelerate the rate of genetic improvement.
- **Durable:** yearlings are usually fitter and more agile (although not necessarily stronger) than older bulls. Circumstantial evidence suggests that bulls used first as yearlings have longer working lives because of superior fitness and lower levels of body fat.

However, yearling bulls require a little extra care in their first joining. In order to harness the potential of yearling bulls there are several crucial management requirements:

1. Join yearlings either alone or with bulls of the same age.
2. Join yearling bulls for 6–8 weeks (2 cycles) only, then spell them for at least 3 months. Mating loads of only 25–30 females per yearling are recommended.
3. Keep an eye on yearlings during joining and do not let bulls drop below a fat score 2.
4. After removing yearling bulls from their joining groups, place them on high quality feed to allow them to recover and continue to grow.

For more information, please refer to 'Yearling bulls - tapping their immense potential' on the NSW DPI website at the below link. Please don't hesitate to contact us with questions.

www.dpi.nsw.gov.au/animals-and-livestock/beef-cattle/breeding/bull-selection/yearling-bulls

Lot 19 RAYLEIGH QUADE Q024 (P)

Tattoo: Q024

Rego No: AHCQ024

Born: 11/04/2019

SOUTH BUKALONG WALLACE 2 (P)
 YAVENVALE BENCHMARK B278 (P)
 YAVENVALE MISS MINERVA W051 (AI) (H)
 Sire: RAYLEIGH LANDSLIDE L118 (TW) (P)
 RAYLEIGH ALBERTA A4 (AI) (P)
 RAYLEIGH ALYSIA E103 (TW) (P)
 RAYLEIGH L SHAMROCK A26 (P)

TYCOLAH H-BOMB (PP)
 THE RANCH MARKSMAN H14 (P)
 THE RANCH DUCHESS A37 (AI) (P)

Dam: RAYLEIGH S MARVEL M26 (P)
 BRAYBOOK FEDERER F448 (P)
 RAYLEIGH S FRED A J5 (AI) (P)
 RAYLEIGH S TIFFANY E64 (P)

May 2020 Hereford BREEDPLAN

BW	200	400	600	MCW	Milk	SS	Cwt	EMA	Rib	RUMP	RBY%	IMF%
+5.1	+36	+55	+78	+69	+20	+1.9	+47	+2.0	+0.5	+0.7	+0.6	+0.1
67%	62%	54%	55%	46%	41%	45%	43%	32%	36%	38%	34%	36%
Selection Index Values:			SSR: +\$120	NSR: +\$103	SBM: +\$126	NBT: +\$92						

Traits Observed: CE,BWT,200WT

Notes: A heifer's first calf by Landslide. A yearling that is already maturing very well, and should grow into a powerful bull with plenty of length, depth of body and good muscling. Good head and eye. Mother is milking very well. Positive calving ease and Top 15% Milk. EP 100/100.

Purchaser:

Price \$:.....

Lot 20 RAYLEIGH QUESTER Q015 (P)

Tattoo: Q015

Rego No: AHCQ015

Born: 06/04/2019

SOUTH BUKALONG WALLACE 2 (P)
 YAVENVALE BENCHMARK B278 (P)
 YAVENVALE MISS MINERVA W051 (AI) (H)
 Sire: **RAYLEIGH LANDSLIDE L118 (TW) (P)**
 RAYLEIGH ALBERTA A4 (AI) (P)
 RAYLEIGH ALYSIA E103 (TW) (P)
 RAYLEIGH L SHAMROCK A26 (P)

TYCOLAH H-BOMB (PP)
 THE RANCH MARKSMAN H14 (P)
 THE RANCH DUCHESS A37 (AI) (P)
 Dam: **RAYLEIGH I MARVEL M81 (P)**
 RILO PARK UNSHAKEABLE (AI) (ET) (P)
 RAYLEIGH I UNITY F70 (P)
 RAYLEIGH I POSIE C39 (P)

May 2020 Hereford BREEDPLAN												
BW	200	400	600	MCW	Milk	SS	Cwt	EMA	Rib	RUMP	RBY%	IMF%
+3.6	+29	+46	+64	+55	+17	+1.7	+37	+1.4	+0.7	+1.1	+0.1	+0.3
67%	62%	54%	55%	46%	41%	45%	43%	32%	36%	38%	34%	36%
Selection Index Values:			SSR: +\$107	NSR: +\$93	SBM: +\$111	NBT: +\$80						

Traits Observed: CE,BWT,200WT

Notes: A heifer's first calf by Landslide. A more moderate framed young bull that is developing well, with plenty of natural muscling and weight for age. Very well set eye and good cosmetics. Positive calving ease and fat figures. Could be suitable for heifers. EP 100/100.

Purchaser:

Price \$:.....

Lot 21 RAYLEIGH QUIRKY Q027 (P)

Tattoo: Q027

Rego No: AHCQ027

Born: 13/04/2019

SOUTH BUKALONG WALLACE 2 (P)
 YAVENVALE BENCHMARK B278 (P)
 YAVENVALE MISS MINERVA W051 (AI) (H)
 Sire: **RAYLEIGH LANDSLIDE L118 (TW) (P)**
 RAYLEIGH ALBERTA A4 (AI) (P)
 RAYLEIGH ALYSIA E103 (TW) (P)
 RAYLEIGH L SHAMROCK A26 (P)

DAYS CALIBRE G74 (PP)
 DAYS ROBIN HOOD J183 (PP)
 ALLENDALE FANCY U5 (AI) (P)
 Dam: **RAYLEIGH L RUBY M112 (P)**
 ALLENDALE POSEIDON Z110 (P)
 RAYLEIGH L POSIE C77 (TW) (P)
 RAYLEIGH SUZIE 8 V40 (P)

May 2020 Hereford BREEDPLAN												
BW	200	400	600	MCW	Milk	SS	Cwt	EMA	Rib	RUMP	RBY%	IMF%
+2.6	+27	+41	+57	+54	+13	+1.6	+35	+2.0	+1.0	+2.0	-0.1	+0.5
67%	62%	55%	56%	47%	42%	45%	44%	33%	37%	40%	35%	37%
Selection Index Values:			SSR: +\$107	NSR: +\$102	SBM: +\$121	NBT: +\$90						

Traits Observed: CE,BWT,200WT

Notes: Finishing off this year's bulls with an eye catching Landslide son who is out of a Robin Hood heifer, giving him low birth weight and calving ease genetics on both sides of his pedigree. A correct, well balanced young bull with good cosmetics that will mature into a very good bull given the right opportunity. Very smooth shoulders. Could be suitable for heifers. Top 10% CEDTRS; Top 15% Rump Fat. EP 100/100.

Purchaser:

Price \$:.....

agribusiness

more
than
money



Dedicated to
**THE AGRICULTURAL
INDUSTRY IN
NORTH WEST NSW**

With more than 155 years of experience looking after primary producers and secondary processors, we have the insights, expertise and the local knowledge to help you bring your plans to life – at every stage of the journey.

Talk to your NAB Agribusiness banker today or call:

James Pitman

0427 005 269

Samantha Hegarty

0436 925 086

Maddie Cunningham

0427 241 069

Alex Reed

0429 569 267

SINGLE LOT HEIFERS

Lot 22 RAYLEIGH L CHANEL Q034 (P)

Tattoo: Q034

Rego No: AHCQ034

Born: 19/04/2019

ALLENDALE WATERHOUSE D1 (PP)
DAYS CALIBRE G74 (PP)
ALLENDALE DAWN C62 (AI) (P)

Sire: BOWEN CALIBRE K207 (AI) (ET) (PP)

MAUNGAHINA KINGDOM BAY 070073 (IMP NZL) (P)
BOWEN HILDA F8 (AI) (P)
BOWEN HILDA A101 (AI) (P)

CANNAWIGRA COMMANDER Z51 (S)
WHIM PARK DESTROYER D035 (AI) (S)
NOROLLE V1 NIKKI Z78 (AI) (P)

Dam: RAYLEIGH L DESIRE J34 (P)

COLUMBIAN SURVIVOR W45 (P)
RAYLEIGH L SHAMROCK A40 (P)
RAYLEIGH AMOROUS 8 U36 (P)

May 2020 Hereford BREEDPLAN												
BW	200	400	600	MCW	Milk	SS	Cwt	EMA	Rib	RUMP	RBY%	IMF%
+4.8	+29	+51	+74	+76	+8	+2.3	+47	+4.7	+0.6	+0.7	+0.4	+1.1
70%	66%	61%	63%	54%	47%	58%	52%	44%	48%	52%	46%	48%
Selection Index Values:				SSR: +\$115	NSR: +\$105	SBM: +\$117	NBT: +\$86					

Traits Observed: CE,BWT,200WT

Notes: A beautiful shaped heifer, that has to be admired for her thickness and depth. A great example of the females that Calibre has thrown. It was a tough decision to let this heifer go. Out of a very good cow. Maternal half-brother sold to the Scriven family at Dubbo National in 2018 after placing in his class. EP 100/100.

Purchaser:

Price \$:

Lot 23 RAYLEIGH L LILLY Q028 (P)

Tattoo: Q028

Rego No: AHCQ028

Born: 13/04/2019

SOUTH BUKALONG WALLACE 2 (P)
YAVENVALE BENCHMARK B278 (P)
YAVENVALE MISS MINERVA W051 (AI) (H)

Sire: RAYLEIGH LANDSLIDE L118 (TW) (P)

RAYLEIGH ALBERTA A4 (AI) (P)
RAYLEIGH ALYSIA E103 (TW) (P)
RAYLEIGH L SHAMROCK A26 (P)

TYCOLAH H-BOMB (PP)
THE RANCH MARKSMAN H14 (P)
THE RANCH DUCHESS A37 (AI) (P)

Dam: RAYLEIGH L MARVEL M92 (P)

BRAYBOOK FEDERER F448 (P)
RAYLEIGH L FRED A J18 (AI) (P)
RAYLEIGH L UNITY F66 (P)

May 2020 Hereford BREEDPLAN												
BW	200	400	600	MCW	Milk	SS	Cwt	EMA	Rib	RUMP	RBY%	IMF%
+3.6	+31	+49	+69	+61	+20	+1.8	+43	+2.0	+0.3	+0.3	+0.8	+0.1
67%	61%	54%	55%	46%	40%	44%	42%	31%	35%	38%	33%	35%
Selection Index Values:				SSR: +\$118	NSR: +\$103	SBM: +\$130	NBT: +\$96					

Traits Observed: CE,BWT,200WT

Notes: Another heifer with exceptional thickness and depth. Well fleshed and structurally correct. A heifer that is thick across the top with loads of capacity. Again, it was a hard decision to let this female go. EP 100/100.

Purchaser:

Price \$:

Lot 24 RAYLEIGH Y LILLY Q076 (P)

Tattoo: Q076

Rego No: AHCQ076

Born: 29/05/2019

SOUTH BUKALONG WALLACE 2 (P)
 YAVENVALE BENCHMARK B278 (P)
 YAVENVALE MISS MINERVA W051 (AI) (H)

Sire: RAYLEIGH LANDSLIDE L118 (TW) (P)
 RAYLEIGH ALBERTA A4 (AI) (P)
 RAYLEIGH ALYSIA E103 (TW) (P)
 RAYLEIGH L SHAMROCK A26 (P)

ALLEDALE YACKA (AI) (P)
 ALLEDALE ANZAC E114 (PP)
 ALLEDALE DAWN B22 (AI) (ET) (P)

Dam: COURALLIE FATTIE M643 (AI) (P)
 KIDMAN TURBO Z11 (AI) (P)
 COURALLIE Z11 FATTIE C075 (TW) (P)
 COURALLIE P358 FATTIE Z042 (AI) (H)

May 2020 Hereford BREEDPLAN												
BW	200	400	600	MCW	Milk	SS	Cwt	EMA	Rib	RUMP	RBY%	IMF%
+4.7	+38	+61	+84	+75	+17	+2.3	+54	+2.5	+1.2	+1.8	-0.2	+0.6
66%	60%	54%	55%	47%	44%	46%	45%	36%	40%	42%	38%	40%
Selection Index Values:		SSR: +\$126	NSR: +\$111	SBM: +\$132	NBT: +\$98							

Traits Observed: CE,BWT,200WT

Notes: A growthy young heifer with nicely set hindquarters. Good smooth shoulders and good topline. Note, youngest single lot heifer. EP 100/100.

Purchaser: Price \$:.....

Lot 25 RAYLEIGH L CHANEL Q026 (P)

Tattoo: Q026

Rego No: AHCQ026

Born: 13/04/2019

ALLEDALE WATERHOUSE D1 (PP)
 DAYS CALIBRE G74 (PP)
 ALLEDALE DAWN C62 (AI) (P)

Sire: BOWEN CALIBRE K207 (AI) (ET) (PP)
 MAUNGAHINA KINGDOM BAY 070073 (IMP NZL) (P)
 BOWEN HILDA F8 (AI) (P)
 BOWEN HILDA A101 (AI) (P)

CANNAWIGRA COMMANDER Z51 (S)
 WHIM PARK DESTROYER D035 (AI) (S)
 NOROLLE V1 NIKKI Z78 (AI) (P)

Dam: RAYLEIGH L DESIRE J35 (P)
 RAYLEIGH ALBERTA A4 (AI) (P)
 RAYLEIGH I ALYSIA E68 (P)
 RAYLEIGH I POSIE C13 (P)

May 2020 Hereford BREEDPLAN												
BW	200	400	600	MCW	Milk	SS	Cwt	EMA	Rib	RUMP	RBY%	IMF%
+5.2	+31	+52	+79	+80	+10	+2.2	+50	+4.9	+0.8	+1.0	+0.4	+1.2
71%	66%	62%	63%	55%	48%	57%	52%	45%	49%	53%	47%	49%
Selection Index Values:		SSR: +\$110	NSR: +\$98	SBM: +\$103	NBT: +\$77							

Traits Observed: CE,BWT,200WT

Notes: A Feminine Calibre heifer that is long and deep. Great topline and neck extension. EP 100/100.

Purchaser: Price \$:.....

Lot 26 RAYLEIGH L CHANEL Q022 (P)

Tattoo: Q022

Rego No: AHCQ022

Born: 11/04/2019

ALLENDALE WATERHOUSE D1 (PP)

DAYS CALIBRE G74 (PP)

ALLENDALE DAWN C62 (AI) (P)

Sire: BOWEN CALIBRE K207 (AI) (ET) (PP)

MAUNGAHINA KINGDOM BAY 070073 (IMP NZL) (P)

BOWEN HILDA F8 (AI) (P)

BOWEN HILDA A101 (AI) (P)

TYCOLAH H-BOMB (PP)

THE RANCH MARKSMAN H14 (P)

THE RANCH DUCHESS A37 (AI) (P)

Dam: RAYLEIGH L MARVEL L91 (P)

ALLENDALE POSEIDON Z110 (P)

RAYLEIGH L POSIE C88 (P)

RAYLEIGH L SUZIE 14 V55 (P)

May 2020 Hereford BREEDPLAN

BW	200	400	600	MCW	Milk	SS	Cwt	EMA	Rib	RUMP	RBY%	IMF%
+6.7	+32	+57	+83	+96	+6	+2.4	+45	+3.8	-0.4	-0.7	+1.0	+0.6
71%	66%	61%	63%	54%	45%	57%	51%	43%	48%	52%	46%	48%
Selection Index Values:		SSR: +\$107		NSR: +\$92		SBM: +\$104		NBT: +\$78				

Traits Observed: CE,BWT,200WT

Notes: A moderate framed heifer with soft dark coat and a well set eye. Smooth through the shoulders. EP 100/100.

Purchaser: Price \$:.....

Lot 27 RAYLEIGH K LILLY Q020 (H#)

Tattoo: Q020

Rego No: AHCQ020

Born: 11/04/2019

SOUTH BUKALONG WALLACE 2 (P)

YAVENVALE BENCHMARK B278 (P)

YAVENVALE MISS MINERVA W051 (AI) (H)

Sire: RAYLEIGH LANDSLIDE L118 (TW) (P)

RAYLEIGH ALBERTA A4 (AI) (P)

RAYLEIGH ALYSIA E103 (TW) (P)

RAYLEIGH L SHAMROCK A26 (P)

VALMA PRESTIGE E60 (P)

TYCOLAH LYNWOOD H184 (P)

TYCOLAH ASTERET A129 (P)

Dam: RAYLEIGH K LYLA M3 (AI) (ET) (P)

CANNAWIGRA S5 BATMAN X08 (AI) (ET) (S)

CANNAWIGRA X8 ANABEL A51 (P)

CANNAWIGRA ANABEL V108 (P)

May 2020 Hereford BREEDPLAN

BW	200	400	600	MCW	Milk	SS	Cwt	EMA	Rib	RUMP	RBY%	IMF%
+1.2	+24	+41	+55	+51	+14	+1.3	+40	+2.3	+0.4	+0.6	+0.7	+0.1
67%	62%	55%	55%	46%	41%	45%	43%	33%	36%	39%	34%	37%
Selection Index Values:		SSR: +\$108		NSR: +\$103		SBM: +\$127		NBT: +\$99				

Traits Observed: CE,BWT,200WT

Notes: A good skinned heifer carry loads of extra length. Out of a good young cow. Would have been retained in the herd if she was polled. Great temperament. EP 100/100.

Purchaser: Price \$:.....

Lot 28 RAYLEIGH U CHANEL Q016 (P)

Tattoo: Q016

Rego No: AHCQ016

Born: 08/04/2019

ALLEDALE WATERHOUSE D1 (PP)
DAYS CALIBRE G74 (PP)

ALLEDALE DAWN C62 (AI) (P)
Sire: **BOWEN CALIBRE K207 (AI) (ET) (PP)**
MAUNGAHINA KINGDOM BAY 070073 (IMP NZL) (P)

BOWEN HILDA F8 (AI) (P)
BOWEN HILDA A101 (AI) (P)

SOUTH BUKALONG WALLACE 2 (P)
GLENTREVOR WALLACE H427 (AI) (PP)
GLENTREVOR MARITANA F240 (P)

Dam: **COURALLIE PRUDENCE L503 (AI) (P)**
COURALLIE ROCKET D074 (AI) (S)
COURALLIE D074 PRUDENCE H116 (TW) (H#)
COURALLIE U244 PRUDENCE Y314 (H)

May 2020 Hereford BREEDPLAN												
BW	200	400	600	MCW	Milk	SS	Cwt	EMA	Rib	RUMP	RBY%	IMF%
+4.7	+34	+61	+87	+87	+6	+3.2	+58	+4.7	+0.4	+0.6	+0.9	+1.4
71%	66%	61%	62%	54%	46%	59%	51%	45%	49%	53%	47%	49%
Selection Index Values:			SSR: +\$163	NSR: +\$157	SBM: +\$177	NBT: +\$132						

Traits Observed: CE,BWT,200WT

Notes: A moderate framed heifer with a beautiful shape and plenty of thickness. Soft and naturally balanced. We used this heifer's maternal half-brother as a heifer bull last year. Very handy set of figures. EP 0/90.

Purchaser: Price \$:

Lot 29 RAYLEIGH L LACEY Q036 (P)

Tattoo: Q036

Rego No: AHCQ036

Born: 20/04/2019

BOWMONT STORM C093 (H)
YALGOO BREAK OUT G075 (AI) (P)

YALGOO BLUSH A036 (P)
Sire: **YALGOO KNICKERBOCKER L205 (PP)**
STUDBROOK D'ARTAGNION V086 (AI) (ET) (S)

YALGOO VANESSA E054 (ET) (P)
YALGOO VANESSA T104 (P)

KAIRURU ABERDEEN 03 0047 (IMP NZL) (P)
KAIRURU FLINT 080058 (IMP NZL) (PP)
KAIRURU LEONORA 01 02 (P)

Dam: **RAYLEIGH L SERENITY K15 (AI) (TW) (P)**
DEBARRY TRIBULUS 2 (P)
RAYLEIGH L TIFFANY C71 (TW) (P)
RAYLEIGH L TANIA W34 (AI) (P)

May 2020 Hereford BREEDPLAN												
BW	200	400	600	MCW	Milk	SS	Cwt	EMA	Rib	RUMP	RBY%	IMF%
+6.1	+39	+64	+97	+89	+14	+2.3	+61	+4.3	+0.6	+1.0	+1.0	+0.5
69%	63%	57%	58%	50%	46%	52%	47%	39%	43%	46%	40%	43%
Selection Index Values:			SSR: +\$148	NSR: +\$131	SBM: +\$141	NBT: +\$103						

Traits Observed: CE,BWT,200WT

Notes: A long bodied Knickerbocker with a very good head and hooded eye. Out of a top cow. EP 100/100.

Purchaser: Price \$:



Helping your herd to
perform at it's best...
Our vets are accredited to
BULLCHECK (VBBSE)
and
PREGCHECK (NCPD tags)

Proudly providing veterinary services to
Rayleigh Poll Herefords

PAIRS OF HEIFERS

Lot 30 RAYLEIGH I LACEY Q063 (P)

Tattoo: Q063

Rego No: AHCQ063

Born: 15/05/2019

BOWMONT STORM C093 (H)

YALGOO BREAK OUT G075 (AI) (P)

YALGOO BLUSH A036 (P)

Sire: YALGOO KNICKERBOCKER L205 (PP)

STUDBROOK D'ARTAGNION V086 (AI) (ET) (S)

YALGOO VANESSA E054 (ET) (P)

YALGOO VANESSA T104 (P)

SOUTH BUKALONG WALLACE 2 (P)

YAVENVALE BENCHMARK B278 (P)

YAVENVALE MISS MINERVA W051 (AI) (H)

Dam: RAYLEIGH I BELLA L102 (P)

ALLENDALE POSEIDON Z110 (P)

RAYLEIGH I POSIE E19 (P)

RAYLEIGH I UABBA Y20 (P)

May 2020 Hereford BREEDPLAN

BW	200	400	600	MCW	Milk	SS	Cwt	EMA	Rib	RUMP	RBY%	IMF%
+3.5	+32	+54	+80	+63	+15	+2.3	+54	+3.9	+0.8	+1.5	+0.9	+0.7
69%	62%	57%	59%	51%	46%	52%	48%	39%	44%	47%	41%	43%
Selection Index Values:			SSR: +\$153	NSR: +\$141	SBM: +\$155	NBT: +\$110						

Traits Observed: CE,BWT,200WT

Notes: SOLD AS A PAIR WITH LOT 31.

Lot 31 RAYLEIGH S LACEY Q068 (P)

Tattoo: Q068

Rego No: AHCQ068

Born: 19/05/2019

BOWMONT STORM C093 (H)

YALGOO BREAK OUT G075 (AI) (P)

YALGOO BLUSH A036 (P)

Sire: YALGOO KNICKERBOCKER L205 (PP)

STUDBROOK D'ARTAGNION V086 (AI) (ET) (S)

YALGOO VANESSA E054 (ET) (P)

YALGOO VANESSA T104 (P)

ALLENDALE ANZAC E114 (PP)

INJEMIRA ANZAC H003 (P)

INJEMIRA HAPPY DAY C097 (P)

Dam: RAYLEIGH S ANASTASIA L90 (P)

BRAYBOOK FEDERER F448 (P)

RAYLEIGH S FREDA J29 (AI) (P)

RAYLEIGH S TIFFANY F68 (P)

May 2020 Hereford BREEDPLAN

BW	200	400	600	MCW	Milk	SS	Cwt	EMA	Rib	RUMP	RBY%	IMF%
+4.8	+36	+61	+92	+80	+15	+2.3	+60	+4.6	+0.3	+0.5	+1.1	+0.6
70%	63%	57%	59%	51%	44%	51%	47%	38%	43%	47%	40%	43%
Selection Index Values:			SSR: +\$151	NSR: +\$134	SBM: +\$151	NBT: +\$109						

Traits Observed: CE,BWT,200WT

Notes: Two very appealing soft, dark, easy doing Knickerbocker heifers. Both heifers are moderate framed with plenty of capacity and well-rounded figures. Q063: EP 0/70, Q068: EP 70/70. SOLD AS A PAIR WITH LOT 30.

Purchaser: Price \$:

Lot 32 RAYLEIGH J CHANEL Q029 (P)

Tattoo: Q029

Rego No: AHCQ029

Born: 16/04/2019

ALLEDALE WATERHOUSE D1 (PP)

DAYS CALIBRE G74 (PP)

ALLEDALE DAWN C62 (AI) (P)

Sire: **BOWEN CALIBRE K207 (AI) (ET) (PP)**

MAUNGAHINA KINGDOM BAY 070073 (IMP NZL) (P)

BOWEN HILDA F8 (AI) (P)

BOWEN HILDA A101 (AI) (P)

CANNAWIGRA COMMANDER Z51 (S)

WHIM PARK DESTROYER D035 (AI) (S)

NOROLLE V1 NIKKI Z78 (AI) (P)

Dam: **RAYLEIGH J DESIRE H53 (P)**

COLUMBIAN SURVIVOR W45 (P)

RAYLEIGH J SHAMROCK Z18 (P)

RAYLEIGH FELICITY 26 N56 (P)

May 2020 Hereford BREEDPLAN

BW	200	400	600	MCW	Milk	SS	Cwt	EMA	Rib	RUMP	RBV%	IMF%
+5.4	+27	+47	+68	+74	+10	+1.7	+41	+4.7	+0.8	+1.1	+0.2	+1.1
71%	66%	61%	62%	53%	48%	59%	51%	44%	47%	50%	45%	47%
Selection Index Values:		SSR: +\$95		NSR: +\$85		SBM: +\$97		NBT: +\$74				

Traits Observed: CE,BWT,200WT

Notes: SOLD AS A PAIR WITH LOT 33.

Lot 33 RAYLEIGH S LACEY Q058 (TW) (P)

Tattoo: Q058

Rego No: AHCQ058

Born: 13/05/2019

BOWMONT STORM C093 (H)

YALGOO BREAK OUT G075 (AI) (P)

YALGOO BLUSH A036 (P)

Sire: **YALGOO KNICKERBOCKER L205 (PP)**

STUDBROOK D'ARTAGNION V086 (AI) (ET) (S)

YALGOO VANESSA E054 (ET) (P)

YALGOO VANESSA T104 (P)

TYCOLAH H-BOMB (PP)

THE RANCH MARKSMAN H14 (P)

THE RANCH DUCHESS A37 (AI) (P)

Dam: **RAYLEIGH S MARVEL L45 (P)**

RAYLEIGH ALBERTA A4 (AI) (P)

RAYLEIGH S ALYSIA D88 (P)

RAYLEIGH S UABBA A59 (P)

May 2020 Hereford BREEDPLAN

BW	200	400	600	MCW	Milk	SS	Cwt	EMA	Rib	RUMP	RBV%	IMF%
+5.1	+34	+58	+89	+79	+13	+2.3	+55	+4.1	-0.2	-0.3	+1.3	+0.7
60%	56%	54%	56%	49%	42%	51%	47%	38%	43%	47%	40%	43%
Selection Index Values:		SSR: +\$146		NSR: +\$129		SBM: +\$145		NBT: +\$105				

Traits Observed: BWT,200WT

Notes: Two good quality heifers that were both small when born. Two soft skinned heifers with good cosmetics and eye. Smooth through the front end. Will grow into very good cows. Q029: EP 100/100, Q058: EP 100/100. **SOLD AS A PAIR WITH LOT 32.**

Purchaser: Price \$:.....

Lot 34 RAYLEIGH S CHANEL Q057 (P)

Tattoo: Q057

Rego No: AHCQ057

Born: 13/05/2019

ALLENDALE WATERHOUSE D1 (PP)

DAYS CALIBRE G74 (PP)

ALLENDALE DAWN C62 (AI) (P)

Sire: BOWEN CALIBRE K207 (AI) (ET) (PP)

MAUNGAHINA KINGDOM BAY 070073 (IMP NZL) (P)

BOWEN HILDA F8 (AI) (P)

BOWEN HILDA A101 (AI) (P)

MOUNTAIN VALLEY ROCKYNE D B1 (P)

CASCADE EL DORADO E27 (P)

CASCADE IRISH MAID A37 (AI) (P)

Dam: RAYLEIGH S ELOISE K7 (AI) (P)

YAVENVALE BENCHMARK B278 (P)

RAYLEIGH S BELLA G74 (P)

RAYLEIGH S SHAMROCK Z47 (P)

May 2020 Hereford BREEDPLAN

BW	200	400	600	MCW	Milk	SS	Cwt	EMA	Rib	RUMP	RBY%	IMF%
+6.6	+38	+64	+93	+97	+9	+3.0	+58	+5.1	+0.6	+1.1	+0.6	+1.3
71%	66%	62%	63%	55%	48%	59%	53%	46%	49%	53%	47%	49%
Selection Index Values:				SSR: +\$139	NSR: +\$128	SBM: +\$140	NBT: +\$105					

Traits Observed: CE,BWT,200WT

Notes: SOLD AS A PAIR WITH LOT 35.

Lot 35 RAYLEIGH L LILLY Q061 (P)

Tattoo: Q061

Rego No: AHCQ061

Born: 14/05/2019

SOUTH BUKALONG WALLACE 2 (P)

YAVENVALE BENCHMARK B278 (P)

YAVENVALE MISS MINERVA W051 (AI) (H)

Sire: RAYLEIGH LANDSLIDE L118 (TW) (P)

RAYLEIGH ALBERTA A4 (AI) (P)

RAYLEIGH ALYSIA E103 (TW) (P)

RAYLEIGH L SHAMROCK A26 (P)

DAYS CALIBRE G74 (PP)

BOWEN CALIBRE K207 (AI) (ET) (PP)

BOWEN HILDA F8 (AI) (P)

Dam: RAYLEIGH L CHANEL N099 (P)

OTAPAWA SPARK 3060 (IMP NZL) (AI) (ET) (P)

RAYLEIGH L SPICE J1 (AI) (P)

RAYLEIGH L ALYSIA F37 (P)

May 2020 Hereford BREEDPLAN

BW	200	400	600	MCW	Milk	SS	Cwt	EMA	Rib	RUMP	RBY%	IMF%
+2.8	+30	+49	+68	+63	+15	+2.2	+47	+3.1	+1.6	+2.4	-0.1	+1.1
66%	62%	56%	57%	48%	41%	46%	45%	35%	40%	43%	37%	39%
Selection Index Values:				SSR: +\$137	NSR: +\$131	SBM: +\$150	NBT: +\$113					

Traits Observed: CE,BWT,200WT

Notes: A Calibre daughter and granddaughter. Q57 a slightly more growth type while Q61 will make a more moderate easy doing cow. Q057: EP 100/100, Q061: EP 100/100. SOLD AS A PAIR WITH LOT 34.

Purchaser:

Price \$:.....

Lot 36 RAYLEIGH L LACEY Q092 (P)

Tattoo: Q092

Rego No: AHCQ092

Born: 02/07/2019

BOWMONT STORM C093 (H)
 YALGOO BREAK OUT G075 (AI) (P)
 YALGOO BLUSH A036 (P)
 Sire: YALGOO KNICKERBOCKER L205 (PP)
 STUDBROOK D'ARTAGNION V086 (AI) (ET) (S)
 YALGOO VANESSA E054 (ET) (P)
 YALGOO VANESSA T104 (P)

CANNAWIGRA COMMANDER Z51 (S)
 WHIM PARK DESTROYER D035 (AI) (S)
 NOROLLE V1 NIKKI Z78 (AI) (P)
 Dam: RAYLEIGH L DESIRE H74 (P)
 LJS 23C DEVIATE U101 (AI) (ET) (P)
 RAYLEIGH L EVA A63 (AI) (P)
 RAYLEIGH L UABBA Y4 (P)

May 2020 Hereford BREEDPLAN												
BW	200	400	600	MCW	Milk	SS	Cwt	EMA	Rib	RUMP	RBV%	IMF%
+6.5	+35	+59	+90	+86	+15	+1.7	+53	+4.1	-0.5	-0.8	+1.4	+0.2
69%	63%	57%	58%	50%	46%	52%	47%	38%	42%	44%	39%	42%
Selection Index Values:			SSR: +\$104	NSR: +\$80	SBM: +\$94	NBT: +\$72						

Traits Observed: CE,BWT,200WT
 Notes: SOLD AS A PAIR WITH LOT 37.

Lot 37 RAYLEIGH S LACEY Q099 (P)

Tattoo: Q099

Rego No: AHCQ099

Born: 16/07/2019

BOWMONT STORM C093 (H)
 YALGOO BREAK OUT G075 (AI) (P)
 YALGOO BLUSH A036 (P)
 Sire: YALGOO KNICKERBOCKER L205 (PP)
 STUDBROOK D'ARTAGNION V086 (AI) (ET) (S)
 YALGOO VANESSA E054 (ET) (P)
 YALGOO VANESSA T104 (P)

KAIRURU ABERDEEN 03 0047 (IMP NZL) (P)
 KAIRURU FLINT 080058 (IMP NZL) (PP)
 KAIRURU LEONORA 01 02 (P)
 Dam: RAYLEIGH S SERENITY J14 (AI) (P)
 BOWEN VINCENT V1 (S)
 RAYLEIGH S VINNIA Z7 (AI) (P)
 RAYLEIGH S. EVA X3 (AI) (P)

May 2020 Hereford BREEDPLAN												
BW	200	400	600	MCW	Milk	SS	Cwt	EMA	Rib	RUMP	RBV%	IMF%
+5.9	+38	+63	+98	+91	+14	+2.9	+61	+4.2	+0.8	+1.4	+0.9	+0.6
69%	64%	58%	59%	52%	46%	53%	49%	41%	45%	48%	42%	45%
Selection Index Values:			SSR: +\$155	NSR: +\$140	SBM: +\$151	NBT: +\$111						

Traits Observed: CE,BWT,200WT
 Notes: Two young knickerbocker heifers with a soft dark skin, good heads and well set eyes. Smooth shouldered. Both out of good old show cows. Q092: EP 100/100, Q099: EP 100/100. SOLD AS A PAIR WITH LOT 36.

Purchaser: Price \$:.....



**RUMEVITE
BEEF FINISHER
PELLET**

*Pelleted grain ration for lot feeding
cattle weighing greater than 300kg
live weight.*



**RUMEVITE
FEEDLOT MINERALS
CONCENTRATE**

*A mineral and vitamin concentrate for
mixing with crushed grains, vegetable
protein source and roughage to provide
a balanced ration for lot feeding cattle.*

NARRABRI FARM CENTRE

Eleanor Street, Narrabri

Phone: 6792 2352

www.narrabrifarm.com.au



*Carrying a comprehensive range of Ridley
Agriproducts stockfeeds and supplements.*



**RUMEVITE
BEEF WEANER
PELLET**

*A pelleted grain ration for
supplementing beef weaners or
lot feeding cattle weighing
between 120-300kg live weight.*



**RUMEVITE
FEEDLOT 80
CONCENTRATE**

*A protein, mineral and vitamin
concentrate designed for mixing with
crushed grain and roughage to provide
a balanced ration for lot feeding cattle.*



ABCD1234
M124

DNA Sampling Simplified

With the ALLFLEX TISSUE SAMPLING UNIT (TSU)



- Easiest way to collect a quality sample
- Vials fit in standard lab well plate (96 vials)
- Efficient and cost effective
- Available with paired NLIS and management tags



Livestock Intelligence™

Questions? 1300 138 247 or
customerservice@allflex.com.au

www.allflex.com.au



RAYLEIGH

POLL HEREFORDS

EST. 1957

The Holcombe family would like to thank all clients and prospective purchasers for their support of our Annual Bull & Female Sale.

We would like to wish you all success in the upcoming sale. Food and Refreshments to be served on Sale Day under Covid 19 restriction rules.

NOTES

EFFICIENCY - ECONOMIC BEEF PRODUCTION

Feeding cattle is the single, largest variable expense in commercial beef production. Profitability depends on costs and revenue.

Hereford cattle can decrease feed requirements and improve feed utilisation to reshape profitability and sustainability for farmers.

What does it mean for the producer?

Whiteface Cattle Consume Less Feed – Their daily feed intake is 1.2kg/day less than Angus cattle.

Whiteface Cattle Maintain Growth & Gain – They consume 6% less feed for the same gain as Angus cattle.

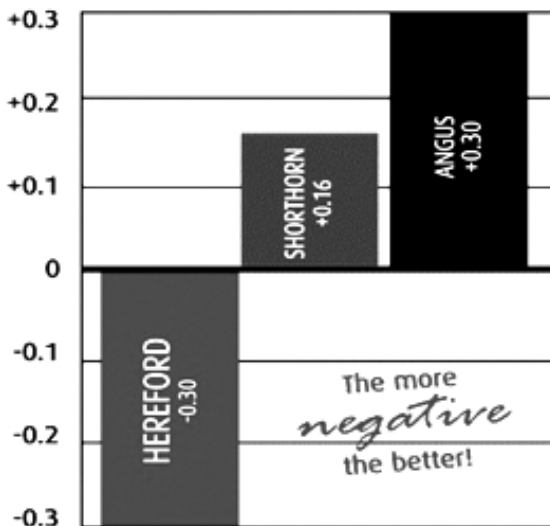
Whiteface Cattle Can Boost Your Herd Size – You run 106 Poll Herefords on the same ground and feed supply as 100 Angus cattle.

Whiteface Cattle Save You \$\$\$\$ And Time – Less feed, means less inputs, means less cost. It takes an extra 61 tonnes of feed annually for a 100-cow Angus herd compared to a 100-cow Hereford herd.

Science has proven it

Practical farmers have always known that Herefords have the genetic potential to improve a herd's feed intake and feed utilisation. Now science has proven it.

Latest industry research, reveals that Hereford is the number one British breed when it comes to net feed intake (NFI).



Conducted by the Cooperative Research Centre for Cattle and Beef Quality (Beef CRC), with collected data analysed by the Animal Genetics and Breeding Unit (AGBU) at the University of New England, Armidale, the research reveals Herefords are ahead of their Angus and Shorthorn competitors with significantly lower NFI.

Simply, Hereford-sired progeny consumed significantly less feed daily, without sacrificing growth and gain.



RAYLEIGH

POLL HEREFORDS

EST. 1957

