



## TR Bale Handler Range



**DESIGNED TO PERFORM • BUILT TO LAST**

## Exceptional Bale Handling Capacity



The TR range of bale handlers by JM Agri-Design makes loading and unloading wrapped or unwrapped bales, whether they are round or square, easy and efficient. The unique patented over-arm design incorporates rotating rollers and a check valve, to ensure a consistent grip at all times.

Using a TR bale handler dramatically reduces the risk of damage to the plastic wrap due to it's ability to grip a round bale on the flat faces, where there is over double the plastic wrap. The TR range also has the ability to grip a bale at **ANY** angle thanks to the patented design of the it's over-arms. With the ability to re-handle stacked bales, without compromising the plastic wrap, the TR range saves time and costs.

The exceptional efficiency in both loading and unloading wrapped or unwrapped bales, whether they are round or square, delivers significant savings in both time and fuel with reduced driver fatigue.

### Easy Loading/Unloading

The slim design of the over-arm allows the TR bale handler to easily slide in-between bales. This same design feature allows TR to move stacked settled bales for resale, without compromising the plastic wrap.

### Independent Arm Control

The TR-8 includes an In-Cab Control Box allowing each arm to be operated independently or operated in tandem. Such flexibility results in exceptional handling capacity in both loading and unloading.

### Grab From ANY Angle

The unique patented over-arm design, fitted with rotating rollers and check valves, allows the TR to grip a bale safely and securely at ANY angle, without damage to the plastic wrap.

## /// TR-8 ///

## DOUBLE BALE HANDLER



- In-cab control box that allows each arm to be operated independently or operated in tandem.
- Over 115% more efficient for both loading and unloading bales than conventional loader mounted single bale handlers.
- Complete control and accuracy.



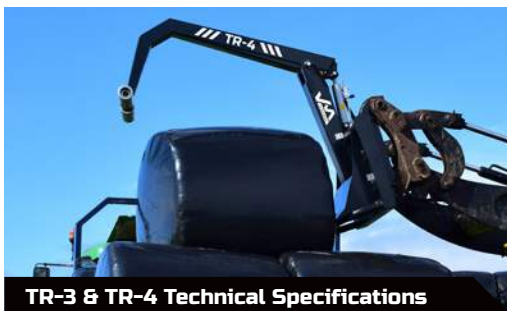
### TR-8 Technical Specifications

Length (Closed)	1.3 m
Length (Opened)	1.78 m
Width	2.4 m
Height (Closed)	1.6 m
Height (Opened)	2.1 m
Weight	500 kg
Max Bale Length	1.3 m
Max Bale Height	1.5 m
Max lifting Weight	2400 kg
Hydraulic Connection	Double Acting
Oil Pressure (Min)	170 bar
Electrical Req.	12v DC, 10 amp fuse
Electrical Connection	3 pole plug
Loader Lift Capacity	2500 kg (min)



## /// TR-3 & TR-4 ///

## SINGLE BALE HANDLERS



**TR-3 & TR-4 Technical Specifications**

Length (Closed)	1.3 m
Length (Opened)	1.8 m
Width	1.23 m
Height (Closed)	1.6 m
Height (Opened)	2.1 m
Weight	220 kg (TR-3), 250 kg (TR-4)
Max Bale Length	1.3 m
Max Bale Height	2 m
Max lifting Weight	1200 kg
Hydraulic Connection	Double Acting
Oil Pressure (Min)	170 bar

- **TR-3** is designed for tractor loaders. **TR-4** is designed for commercial loaders.
- Centrally located over-arm allowing optimum visibility from the tractor cab.
- Over 25% more efficient for both loading /unloading than conventional bale handlers.



TR Bale Handler Range by

**JM AGRI DESIGN**



CE

### Patented Over-Arm Design

The unique design of TR bale handlers over-arms allows gripping of a bale at ANY angle and delivers increased manoeuvrability when operating in confined spaces.

### Check Valve

A check valve is fitted as standard on all TR bale handlers by JM Agri-Design. This ensures a consistent grip is maintained on the bale at all times, ensuring safe transportation and minimum damage.

### Rotating Rollers

The over-arm supports two large rotating rollers to ensure bales are handled without risk of damaging the plastic wrap. These rollers, along with all other pivot points, have composite bushings and grease points fitted as standard.



**ACF EQUIPMENT SUPPLIERS**

Phone: 1300 477 386 Email: [info@acfpenrith.com.au](mailto:info@acfpenrith.com.au)

[www.acfpenrith.com.au](http://www.acfpenrith.com.au)

[WWW.JMAGRIDESIGN.COM](http://WWW.JMAGRIDESIGN.COM)

See more on:

