

Minnie - Vale Charolais

ESTABLISHED 1972

48 Years



17th Annual Bull Sale

Friday 31st July 2020 - 1.00pm
"Bexley" Back Creek Rd., Narrabri NSW

www.minnievalecharolais.com.au

Why Minnie-Vale Bulls are an **Important Investment!**

- Semen Tested
- Predictably Even
- Performance Recorded Herd
- Pestivirus tested
- Scanned EMA, IMFs
- Guaranteed Bulls
- Over 40 years experience



Videos available on some bulls at www.minnievalecharolais.com.au

Minnie-Vale Charolais



17th Annual Bull Sale

Friday 31st July 2020 - 1.00pm

“Bexley” Back Creek Road, NARRABRI NSW

50

**Registered
Charolais Bulls**

Including:

37 Polled Bulls

*(including 9 red factor and
7 Homozygous polled bulls)*

13 Dehorned Bulls *(white)*



CONTACT US:

Jason & Sue Salier

“Bexley”, Back Creek Road,
NARRABRI NSW 2390

M: 0428 065 072

P: 02 6783 4272

E: info@minnievalecharolais.com.au

AGENTS:

Davidson Cameron & Co

Gunnedah: Luke Scicluna 0428 421 828

Narrabri: Hunter Harley 0447 925 700

Moree: Matt Hann 0409 844 773

Quirindi: Tom Tanner 0448 462 177

Please bring your catalogue to the sale

www.minnievalecharolais.com.au

Minnie-Vale Charolais



WELCOME TO THE 2020 ANNUAL BULL SALE

Jason and Sue extend a warm welcome to all attending our Annual Bull Sale at "Bexley" this year.

What an incredible three year period it has been for all in the agricultural sector. As cattle breeders it has been an enormous task for all of us to sustain our cattle numbers through the drought. Little did we know there would be a gentle but substantial turn around mid January 2020. What a welcome sight and such needed relief for the stock and us. We do hope many have received this break.

For the rain to keep falling and the feed to continue to recover has been nothing short of amazing and to watch the cattle perform with that secret ingredient called grass.

Another set back to everyone has been the COVID-19 pandemic. This sale will be absolutely normal, but we will adhere to all Government legislations and rulings on this matter. Social distancing will be practiced and hand sanitisers available. The sale is always held in the open air and all guests will be required to sign in on arrival at the registration desk.

This year we have decided to incorporate the convenience and assistance of AuctionsPlus at our sale for the first time. Those who are not able to attend the sale will be able to bid online on AuctionsPlus. Those people wishing to do this please become familiar with the steps required to use this system. A page of instructions is in the early part of this catalogue and don't hesitate to contact AuctionsPlus by phone if you required assistance, they are very helpful.

The draft comprises of 50 Charolais registered bulls, 37 poll bulls including 9 red factor, and 13 dehorned. Amongst these bulls there are 7 homozygous polled bulls – lots 4, 5, 8, 22, 32, 33 and 40.

We are very happy with the draft this year and how they have come through such tough conditions. They are very even, moderate with great shape and carcass definition. These fellows have plenty of grunt, constitution and finishing about them to infuse their quality into stud and commercial herds.

Jas and Sue would like to thank so many clients who have supported our sale over so many years and sales. It's because of this support that we strive to produce the improved product you see here today. Many thanks to our regular helpers, Lyn, Casey, Nigel, Laura (photography), Butch, Rod, Lorraine and Bec, also the Charolais Office and Lucy Main, our printer Paul McMahon and our Agents for the sale Davidson and Cameron Gunnedah, Narrabri, Moree and Quirindi.

It is strongly recommended that insurance be taken out before transit and maybe the first joining season. It is also advisable to have some stock on hand in the yard to settle the new bull, only because these fellows have all run together in big groups of bulls.

Our stock carry our Breeding Guarantee, so please feel confident with your selection. If you would like an inspection prior to the sale please contact Jason and I will be happy to spend time with you and take you over the bulls, or ring and I can discuss the catalogue with you.

The cattle are able to be inspected from 10am on sale day. Refreshments and lunch will be provided by the Bingara Lions Club, small thanks for their support to all of us during the drought.

Regards,

Jas & Sue

A Brief History of the Stud

MINNIE-VALE CHAROLAIS STUD ESTABLISHED 1972

The stud was established through artificial insemination programs using French and British bloodlines, after very slow and deliberate selection and grading up progress. Some of the bulls used originally included 'Absalon', 'Aga Khan', 'Bent Frederick', 'Carabinier', 'Kersknowe Festival', 'Mearns Enterprise', and 'Salmon', predominantly French.

The graded up breeding herd from these bloodlines was then infused by a Mandalong bull, 'Mandalong Layman', the first polled bull ever sold by Rick Pisaturo at his St. Mary's Sale. In 1980, twelve three quarter grade cows by 'Carabanier' were purchased, boosting the volume capacity of our then female herd.

An embryo transfer program with the ATB at Mittagong, NSW was initiated. The two foundation pure bred matrons included 'Mandalong Confidence 18th' and 'Kenmere Orsova', a Blythe Herald cow purchased from the Hillside Stud, Mittagong (Harry and Bea Wadds). These two females were inseminated very successfully to 'Crown' and 'Power', resulting in 50% female calves, adding to the herd base.

Over a period of time, both out cross females (very few) and bulls have been purchased from many selected studs over a long period of time to compliment the Minnie-Vale herd producing the cattle you see before you today.

Minnie - Vale cattle have been very successful in all aspects of the beef industry, show cattle, Interbreed wins at many shows, including the Horden Trophy, Sydney Show and Brisbane Champion of Champion, steer competitions. Probably the hardest to crack are prices in the sale ring at multi-vendor sales. Top prices and record-breaking prices have been achieved.

The bulls we have sold off farm, also very successful in their respective cross breeding programs, continuing to improve the hip pocket, which is after all, the bottom line, and the reason we breed Charolais cattle and where 98% of our product goes to today's commercial cattleman.

Our cattle over the years, through very strict breeding and culling, have evolved into consistent, well muscled, soft, easy doing cattle, herd improvers, fertility, milking ability and quality are their trademark along with a quiet disposition.

Points of Interest to Perspective Purchasers

On sale day there will be signs on the pens indicating catalogue numbers.

Quads are used for mustering all cattle. The cattle are all handled gently but firmly. Remembering that all our cattle respect electric fencing. Treat them kindly and they will respond kindly. The stud does not use dogs or horses, so bulls should be introduced gently to their new environment if possible. We recommend your new purchases, where possible, be off loaded into yards where there is other stock, preferably cows or steers. Remember, they have been in mobs, not isolated. We think common sense prevails and everybody does things differently, but these few points may help you in settling your new purchases.

DISCLAIMER: People entering upon this property for any purpose whatsoever including at cattle auctions do so at their own risk. We are not liable to you for any personal injury or death suffered by you and for theft loss or damage to any property caused or contributed to us or by any other person whether caused or contributed to by or by negligence deliberate act or unlawful conduct. "We" or "Us" refer to the owners their employees, contractors and agents and each of them. While ever care has been taken in compiling this catalogue to ensure accuracy or information supplied no responsibility is accepted for any errors which may have occurred.

Sale Information

Inspection: Cattle may be inspected any time prior to the sale by arrangement with the vendor or his agents.

Breeding Soundness Evaluation: All bulls offered in this sale have passed their semen test and are sold fertile. They have been examined by the veterinary consultant for structural and physical soundness.

COVID-19: Please follow directions and safety signs on sale day in regards to COVID-19. We will be working within current guidelines as set by the Australian Government. All guests will be required to sign in on arrival and adhere to current social distancing rules. Please be responsible and respectful of others and their health and safety, and do not attend if you are not well. Online bidding and over the phone bidding is available and private inspections are welcomed and encouraged at any time prior to the sale.

Supplementary Sheet: All bulls will be scanned just prior to the sale by the certified scanning technician, David Reid. The bulls will be scanned for eye muscle area, rump and rib fat, marbling (IMF%) as well as sale weight and scrotal size. Supplementary sheets will be available on sale day.

Guarantee: All stock are guaranteed breeders. Any claim against the breeding ability of an animal purchased should be made in writing and accompanied by a veterinary certificate within six months of the date of sale. Any animal failing to breed may either be replaced or credit given to the value of the purchase price at the following sale. This guarantee does not include interest, expenses, costs or damages this process may incur. The purchaser is responsible.

Health: Minnie - Vale is an accredited TB and Brucellosis free herd. The Moree Department of Rural Lands, of which Minnie - Vale, Bexley is part of, is recognised as Johnes Disease Free. All sale cattle have been vaccinated with 7 in 1. All sale cattle have been back lined with Cydectin and inoculated against three day sickness. All bulls have been tested free of pestivirus. These bulls carry the blue PYthon ear tag and are covered for lice, flies and buffalo fly.

Delivery: A delivery instruction slip must be completed in writing - stock awaiting delivery. All care will be taken, but absolutely no responsibility accepted for any injury or loss occasioned during, as a consequence of, or in relation to, any holding.

Insurance: Ownership passes at the fall of the hammer. Check with your Agent on sale day for their company insurance. It is strongly recommended that insurance be taken out for transit and maybe the first joining season.

Telephone link-up: It is advised that anyone who requires telephone link-up, contact their preferred agent or Davidson Cameron & Co (Gunnedah or Narrabri) and they will organise accordingly.

AuctionsPlus: Our sale is conducted livestream in real time and will be interfaced on AuctionsPlus with the physical auction that is being conducted. A computer is used to bring the onsite bid price to the internet screen for remote bidders to observe. Bidders can bid on computers at their location and the bid is immediately transferred to the Auction barn and relayed to the Auctioneer. Bidding is only available if registered with AuctionsPlus. You must register online to their website at least 24 hours prior to the sale - www.auctionsplus.com.au

Rebate: 2.5% for outside agents must be in writing 24 hours prior to the sale and settling on their behalf within 7 days of the sale.

Registration and Transfer: It is the vendor's responsibility to pay for all animals to be transferred on request by the purchaser. Please notify your Agent if you wish transfer. The animal will be transferred to the purchaser through the Charolais Society of Australia Ltd, Armidale, NSW.

Refreshments: Morning tea and lunch will be provided by members of the Bingara Lions Club. All proceeds will be donated to this worthy cause.

Accommodation: There is plenty of accommodation at Inverell, Bingara, Moree and Narrabri, all within one and a half hours from Bexley for Northern and Southern visitors from across the borders.



***Can't make the sale?
Log onto AuctionsPlus to bid from
anywhere on your phone, tablet or desktop.***

1

REGISTER ONLINE

Simply click 'Sign Up' to begin your free registration. To register as a buyer for livestock, you will need to provide us with a few more details.

2

COMPLETE BUYER INDUCTION

The buyer induction will help you understand the roles and responsibilities of everyone on the AuctionsPlus system.

3

VIEW CATALOGUE

Photos, videos, pedigrees and other information will be available in the online catalogue.

4

ENTER AUCTION

Log into the auction anytime, anywhere and bid on your mobile, tablet or computer.

5

AUTO BID

Can't stay for the whole sale? Set your maximum bid on the lot that you want to purchase and let the computer bid for you.

6

CONTACT SELLING AGENT

If successful, contact selling agent directly after the sale to arrange payment.

7

DELIVERY

Arrange transport of livestock at your expense.

*Contact AuctionsPlus on (02) 9262 4222
or www.auctionsplus.com.au*

Estimated Breeding Values (EBVs) Explained

Calving Ease EBVs (%) are based on calving difficulty scores, birth weights and gestation length information. More positive EBVs are favourable and indicate easier calving.

- **CE % Direct** = Direct Calving Ease - The EBV for direct calving ease indicates the influence of the sire on calving ease in purebred females calving at two years of age.

- **CE % Daughters** = Daughters' Calving Ease - The EBV for daughters' calving ease indicates how easily that sire's daughters will calve at two years of age.

Gestation Length EBV (days) is an estimate of the time from conception to the birth of the calf and is based on Artificial Insemination and hand mating records. Lower (negative) Gestation Length EBVs indicate shorter gestation length and therefore easier calving and increased growth after birth.

Birth Weight EBV (kg) is based on the measured birth weight of progeny, adjusted for dam age. The lower the value the lighter the calf at birth and the lower the likelihood of a difficult birth. This is particularly important when selecting sires for use over heifers.

200-Day Growth EBV (kg) is calculated from the weight of progeny taken between 80 and 300 days of age. Values are adjusted to 200 days and for age of dam. This EBV is the best single estimate of an animal's genetic merit for growth to early ages.

400-Day Weight EBV (kg) is calculated from the weight of progeny taken between 301 and 500 days of age, adjusted to 400 days and for age of dam. This EBV is the best single estimate of an animal's genetic merit for yearling weight.

600-Day Weight EBV (kg) is calculated from the weight of progeny taken between 501 and 900 days of age, adjusted to 600 days and for age of dam. This EBV is the best single estimate of an animal's genetic merit for growth beyond yearling age.

Mature Cow Weight EBV (kg) is based on the cow weight when the calf is weighed for weaning, adjusted to 5 years of age. This EBV is an estimate of the genetic difference in cow weight at 5 years of age and is an indicator of growth at later ages and potential feed maintenance requirements of the females in the breeding herd. Steer breeders wishing to grow animals out to a larger weight may also use the Mature Cow Weight EBV.

Milk EBV (kg) is an estimate of an animal's milking ability. For sires, this EBV indicates the effect of the daughter's milking ability, inherited from the sire, on the 200-day weights of her calves. For dams, it indicates her milking ability.

Scrotal Size EBV (cm) is calculated from the circumference of the scrotum taken between 300 and 700 days of age and adjusted to 400 days of age. This EBV is an estimate of an animal's genetic merit for scrotal size. There is also a small negative correlation with age of puberty in female progeny and therefore selection for increased scrotal size will result in reduced age at calving of female progeny.

Carcase Weight EBV (kg) is based on abattoir carcass records and is an indicator of the genetic differences in carcass weight at the standard age of 650 days.

Eye Muscle Area EBV (sq cm) is calculated from measurements from live animal ultrasound scans and from abattoir carcass data, adjusted to a standard 300 kg carcass. This EBV estimates genetic differences in eye muscle area at the 12/13th rib site of a 300 kg dressed carcass. More positive EBVs indicate better muscling on animals. Sires with relatively higher Eye Muscle Area EBVs are expected to produce better muscled and higher percentage yielding progeny at the same carcass weight than will sires with lower Eye Muscle Area EBVs.

Rib Fat and Rump Fat EBVs (mm) are calculated from measurements of subcutaneous fat depth at the 12/13 rib site and the P8 rump site (from live animal ultrasound scans and from abattoir carcasses) and are adjusted to a standard 300 kg carcass. These EBVs are indicators of the genetic differences in fat distribution on a standard 300 kg carcass. Sires with low, or negative, fat EBVs are expected to produce leaner progeny at any particular carcass weight than will sires with higher EBVs.

Retail Beef Yield EBV (%) indicates genetic differences between animals for retail yield percentage in a standard 300 kg carcass. Sires with larger EBVs are expected to produce progeny with higher yielding carcasses.

Intramuscular Fat EBV (%) is an estimate of the genetic difference in the percentage of intramuscular fat (marbling) at the 12/13th rib site in a 300kg carcass. Depending on market targets, larger more positive values are generally more favourable.

Selection Indices

Domestic Index (\$) - Estimates the genetic differences between animals in net profitability per cow joined for an example commercial herd with a British cow base (eg Angus) targeting grass-finished production for the domestic trade. This Index assumes pasture grown & finished steers weighing 430 kg (240 kg HSCW and 6 mm P8 fat depth) at 12 months. Daughters are retained or sold for breeding therefore maternal traits are of importance. In response to industry feedback, positive emphasis has been placed on finishing ability.

Export Index (\$) - Estimates the genetic differences between animals in net profitability per cow joined for an example commercial herd with a British cow base (eg Angus) targeting the production of steers for export markets. This Index assumes pasture grown & finished steers weighing 700 kg (380 kg HSCW and 9 mm P8 fat depth) at 29 months. Daughters are retained or sold for breeding therefore maternal traits are of importance. In response to industry feedback, positive emphasis has been placed on finishing ability.

Northern Terminal Index (\$) - Estimates the genetic differences between animals in net profitability per cow joined for an example commercial herd in Northern Australia (ie Brahman cows) targeting the production of grass finished steers for the Jap Ox market. Steers are sold direct to slaughter at 630 kg (345 kg HSCW and 5 mm P8 fat depth) at 28 months. All progeny are slaughtered. In response to industry feedback positive emphasis has been placed on finishing ability.

Accuracy

Accuracy (%) is based on the amount of performance information available on the animal and its close relatives - particularly the number of progeny analysed. Accuracy is also based on the heritability of the trait and the genetic correlations with other recorded traits. Hence accuracy indicates the "confidence level" of the EBV. The higher the accuracy value the lower the likelihood of change in the animal's EBV as more information is analysed for that animal or its relatives. Even though an EBV with a low accuracy may change in the future, it is still the best estimate of an animal's genetic merit for that trait. As more information becomes available, an EBV is just as likely to increase in value, as it is to decrease.


Accuracy values range from 0-99%. The following guide is given for interpreting accuracy:

- less than 50%: Low accuracy. EBVs are preliminary and could change substantially as more performance information becomes available.
- 50-74%: Medium accuracy. Usually based on the animal's own records and pedigree.
- 75-90%: Medium-high accuracy. Some progeny information included. EBVs may change with addition of more progeny data.
- more than 90%: High accuracy estimate of the animal's true breeding value.

As a rule, animals should be compared on EBVs regardless of accuracy. However, where two animals have similar EBVs the one with higher accuracy could be the safer choice, assuming other factors are equal.

For further information please contact the Charolais Society or Charolais BREEDPLAN.

Breed Avg. EBVs for 2018 Born Calves

	CE Dir	CE Dtrs	GL	BW	200D	400D	600D	MCW	Milk	SS	Carc Wt	EMA	Rib	Rump	RBY	IMF	Selection Index Values		
EBV	+1.6	+0.7	-2.7	+0.3	+12	+24	+32	+32	+7	+1.1	+20	+1.6	+0.3	+0.3	+0.1	+0.2	\$Dom	\$Exp	\$N.Term
																	+\$24	+\$33	+\$18

Minnie-Vale Reference Sires

REFERENCE SIRE

WINCHESTER PEACEMAKER D6E (AI) (ET) (P)

TATTOO: GAV D6E

DOB: 28/08/2008

COLOUR: White

Peacemaker was purchased from the Winchester Stud in 2010. A poll bull with excellent leg structure, good boning, sleek hair type and outstanding disposition.

Peacemaker continues to be an outstanding breeding sire producing excellent sons and standout replacement females. This bull's progeny have really excelled in cross breeding programs.



LT WYOMING WIND 4020 PLD M411450 (OAU P4020E) (P)

IMPAIR 1893102983 (OAF N189F)

SIRE: HARVIE REDEMPTION 36P MC286641 (OAC Z6641E) (P)

DAM: ROSEDALE HONOR X89 (MR X89F)

HARVIE MS MOLSON 53M FC316280 (PED -6280E) (P)

ROSEDALE HONOR R67 (MR R67F)

May 2020 Australasian Charolais BREEDPLAN Analysis

Charolais	CE Dir	CE Dtrs	GL	BW	200D	400D	600D	MCW	Milk	SS	Carc Wt	EMA	Rib	Rump	RBY	IMF	Selection Index Values		
	EBV	+0.3	+0.2	-2.5	-0.2	+10	+25	+36	+29	+13	+0.7	+22	+1.0	+0.8	+0.8	-0.5	+0.2	\$Dom	\$Exp
Acc	60%	53%	65%	82%	94%	92%	94%	90%	86%	65%	81%	51%	53%	53%	53%	48%	+\$24	+\$33	+\$19

REFERENCE SIRE

WINCHESTER RESISTOL H17E (AI) (ET) (P)

TATTOO: GAV H17E

DOB: 29/08/2012

COLOUR: White

We purchased Resistol in 2014. Resistol caught our eye for his length of body, excellent boning and overall sires presence in a poll package. A quietly natured sire stacked with great maternal value on both sides of his pedigree.

His sons continue to have excellent growth and length of body whilst performing well in the commercial arena.



EATONS VALUE ROYAL 2101P M652197 (PED -2101E)

IMPAIR 1893102983 (OAF N189F)

SIRE: EATONS ROYAL DYNASTY 6164 M726505 (OAU M726505) (P)

DAM: ROSEDALE HONOR X89 (MR X89F)

EATONS MISS CADET 2899 F954824 (PED -2899E)

ROSEDALE HONOR R67 (MR R67F)

May 2020 Australasian Charolais BREEDPLAN Analysis

Charolais	CE Dir	CE Dtrs	GL	BW	200D	400D	600D	MCW	Milk	SS	Carc Wt	EMA	Rib	Rump	RBY	IMF	Selection Index Values		
	EBV	+6.9	+9.6	-6.3	-2.0	+8	+20	+21	+18	+13	+0.3	+21	+2.0	+0.6	+0.2	+0.2	-0.2	\$Dom	\$Exp
Acc	49%	40%	61%	74%	82%	80%	84%	72%	59%	55%	68%	40%	41%	41%	40%	38%	+\$39	+\$47	+\$19

Minnie-Vale Reference Sires

REFERENCE SIRE

PALGROVE JAGUAR J629E (AI) (ET) (P)

TATTOO: PK J629E

DOB: 23/08/2013

COLOUR: White

Jaguar was purchased from the Palgrove Stud in 2015. A homozygous Red Factor bull who has slotted in well with our cow herd. Jaguar combines the latest of the industry's leading genetics. We have excellent predictability in the Palgrove maternal lines and the sire leading New Zealand bull in Silverstream Evolution. Jaguar's progeny have well defined shape and confirmation and continue to impress for their thickness and carcass attributes.



SILVERSTREAM BRUMBY B89 083060089E (OAN B89E) (P)

PLATINUM WIND-FALL W75E (AJ1 W75E) (P)

SIRE: SILVERSTREAM EVOLUTION E168 083090168E (OAN E168E) (P)

DAM: PALGROVE LEONIE 23 (PK D13E) (P)

SILVERSTREAM GLOSSY S120 083010120G (OAN W120E)

PALGROVE LEONIE 8 R/F (PK V295E)

May 2020 Australasian Charolais BREEDPLAN Analysis

Charolais	CE Dir	CE Dtrs	GL	BW	200D	400D	600D	MCW	Milk	SS	Carc Wt	EMA	Rib	Rump	RBV	IMF	Selection Index Values		
	EBV	+4.3	-1.9	-1.9	+0.3	+10	+13	+27	+19	+1	+0.1	+12	+0.7	-0.2	-0.5	+0.4	+0.1	\$Dom	\$Exp
Acc	55%	53%	60%	72%	86%	84%	88%	75%	66%	64%	73%	53%	55%	55%	54%	52%	+\$13	+\$22	+\$17

REFERENCE SIRE

PALGROVE LORD (AI) (P)

TATTOO: PK L698E

DOB: 09/09/2015

COLOUR: White

Lord was purchased from the Palgrove stud in 2017. He is a moderately framed polled bull who oozes softness and thickness, and is proving to breed very well.



He passes on his kind disposition, strong reproductive traits and structure, to his progeny who are early maturing and well suited to a wide variety of cattle operations.

PALGROVE CHARM (PK C1043E) (P)

PALGROVE CRUSADER S 251404XBC01355 (PK C321E)

SIRE: PALGROVE HALLMARK (PK H535E) (P)

DAM: PALGROVE DEMETER 167 (PK G688E)

PALGROVE ALYSSA 47 (PK B835E) (P)

PALGROVE DEMETER 101 (PK B805E)

May 2020 Australasian Charolais BREEDPLAN Analysis

Charolais	CE Dir	CE Dtrs	GL	BW	200D	400D	600D	MCW	Milk	SS	Carc Wt	EMA	Rib	Rump	RBV	IMF	Selection Index Values		
	EBV	+8.9	-0.8	-4.1	-0.4	+5	+16	+16	+17	+8	+1.7	+13	+1.3	+0.7	+0.9	-0.3	+0.2	\$Dom	\$Exp
Acc	53%	46%	78%	71%	82%	79%	82%	72%	61%	80%	70%	59%	62%	61%	61%	58%	+\$30	+\$37	+\$17

Minnie-Vale Reference Sires

REFERENCE SIRE

MINNIE-VALE EAST WOOD (AI) (P)

TATTOO: SGS E56E

DOB: 18/07/2009

COLOUR: White

A bull who has bred true to type with good style and softness in his progeny over the years.

An aging bull whose sons are keenly sought after for their easy finishing abilities. Daughters are excellent matrons with high milking value.



LT ASSERTION 1277 M620193 (PED W1277F) (P)

GUNNADOO UNCLE BILL U108E (GN1 U108E)

SIRE: LT BLUEGRASS 4017P M686569 (OAU Z4017E) (P)

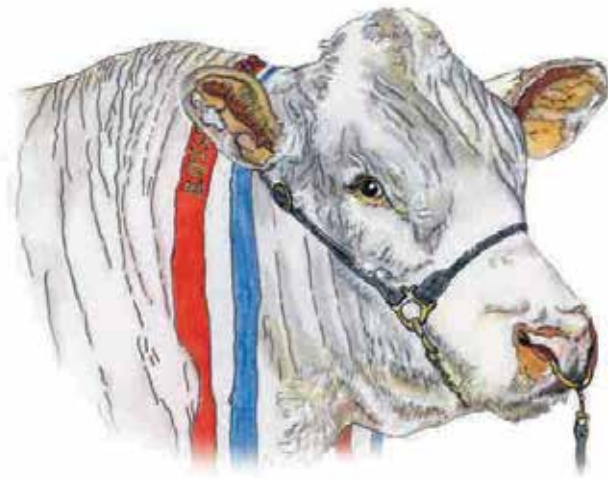
DAM: MINNIE-VALE REAMER A50E (SGS A50E)

LT PEARLS BREEZE 2236 F956080 (PED X2236F) (P)

MINNIE VALE REAMER (SGS R34E)

May 2020 Australasian Charolais BREEDPLAN Analysis

Charolais	CE Dir	CE Dtrs	GL	BW	200D	400D	600D	MCW	Milk	SS	Carc Wt	EMA	Rib	Rump	RBY	IMF	Selection Index Values		
																	\$Dom	\$Exp	\$N.Term
EBV	+12.0	+4.6	-3.3	-0.7	+17	+20	+16	+18	+4	+1.4	+13	+2.2	+1.4	+2.0	-0.7	+0.9	\$Dom	\$Exp	\$N.Term
Acc	51%	50%	67%	65%	83%	80%	82%	74%	68%	59%	70%	49%	51%	51%	50%	48%	+\$46	+\$60	+\$21



2020
Sale Bulls

LOT 1

MINNIE-VALE PORTER (P/S)

TATTOO: SGS P6E

DOB: 12/04/2018

COLOUR: White

COMMENTS:

To start this year's sale 2020 we have chosen a moderate, softly fleshed Peacemaker son. Porter shows good thickness over the loin, terrific boning, smooth, soft hair type plus he has a great disposition.



HARVIE REDEMPTION 36P MC286641 (OAC Z6641E) (P)

MINNIE-VALE EAST WOOD (SGS E56E) (P)

SIRE: WINCHESTER PEACEMAKER D6E (GAV D6E) (P)

DAM: MINNIE-VALE THE PRINCESS H53E (SGS H53E) (P)

ROSEDALE HONOR X89 (MR X89F)

MINNIE-VALE THE PRINCESS E42E (SGS E42E)

May 2020 Australasian Charolais BREEDPLAN Analysis

Charolais	CE Dir	CE Dtrs	GL	BW	200D	400D	600D	MCW	Milk	SS	Carc Wt	EMA	Rib	Rump	RBV	IMF	Selection Index Values		
																	\$Dom	\$Exp	\$N.Term
EBV	+2.2	+0.7	-2.0	+0.1	+10	+20	+28	+25	+10	+0.8	+17	+1.4	+0.7	+0.8	-0.3	+0.3	\$Dom	\$Exp	\$N.Term
Acc	34%	31%	38%	53%	66%	65%	70%	63%	52%	42%	58%	30%	31%	31%	31%	27%	+\$24	+\$32	+\$17

Purchaser / \$:

LOT 2

MINNIE-VALE PAKENHAM (P)

TATTOO: SGS P41E

DOB: 01/06/2018

COLOUR: White

COMMENTS:

Pakenham is a very thickly set Jaguar son who will pass on his high yielding attributes to his progeny. He has the bloodlines of Peachmaker, Evolution and Natone in his pedigree - this is a no miss combination.



SILVERSTREAM EVOLUTION E168 083090168E (OAN E168E) (P)

WINCHESTER PEACEMAKER D6E (GAV D6E) (P)

SIRE: PALGROVE JAGUAR J629E (PK J629E) (P)

DAM: MINNIE-VALE VEEJAY K83E (SGS K83E)

PALGROVE LEONIE 23 (PK D13E) (P)

MINNIE-VALE VEE JAY G108E (SGS G108E)

May 2020 Australasian Charolais BREEDPLAN Analysis

Charolais	CE Dir	CE Dtrs	GL	BW	200D	400D	600D	MCW	Milk	SS	Carc Wt	EMA	Rib	Rump	RBV	IMF	Selection Index Values		
																	\$Dom	\$Exp	\$N.Term
EBV	+2.8	+0.0	-2.0	+0.1	+11	+16	+25	+26	+5	+0.4	+13	+0.8	+0.0	-0.2	+0.1	+0.1	\$Dom	\$Exp	\$N.Term
Acc	32%	30%	35%	51%	64%	63%	69%	59%	44%	41%	56%	31%	32%	32%	32%	29%	+\$16	+\$24	+\$15

Purchaser / \$:

LOT 3

MINNIE-VALE PHOENIX (P)

TATTOO: SGS P12E

DOB: 20/04/2018

COLOUR: White

COMMENTS:

Phoenix is another standout bull for his solid constitution. A sirey masculine headed bull who will really packs kgs into his offspring. His sire, Jaguar, has proven to breed with excellent consistency clearly evident in the sons represented in this sale today. Phoenix's dam is from the Primrose cow line. Great performers in this herd.



SILVERSTREAM EVOLUTION E168 083090168E (OAN E168E) (P)

AYR ABERDEEN'S FREIGHT (AYR D297F)

SIRE: PALGROVE JAGUAR J629E (PK J629E) (P)

DAM: MINNIE-VALE PRIMROSE H86E (SGS H86E) (P)

PALGROVE LEONIE 23 (PK D13E) (P)

MINNIE-VALE PRIMROSE (SGS V102E) (P)

May 2020 Australasian Charolais BREEDPLAN Analysis

Charolais	CE Dir	CE Dtrs	GL	BW	200D	400D	600D	MCW	Milk	SS	Carc Wt	EMA	Rib	Rump	RBV	IMF	Selection Index Values		
																	\$Dom	\$Exp	\$N.Term
EBV	+3.3	-1.2	-1.6	+0.5	+10	+16	+27	+27	+5	+0.3	+15	+1.2	-0.4	-0.7	+0.6	+0.1			
Acc	30%	29%	34%	50%	64%	63%	69%	59%	45%	40%	56%	29%	30%	30%	30%	27%	+\$15	+\$23	+\$16

Purchaser / \$:

LOT 4

ALLEDNAW PRONTO (P)

TATTOO: AKT P75E

DOB: 30/05/2018

COLOUR: White

HOMOZYGOUS POLLED

COMMENTS:

Pronto was purchased as a calf on an outcross cow at the Allednaw Dispersal Sale. His dam is one of our favourites. He also presents with stud sire qualities. A homozygous polled bull with great presence and appeal. Anyone looking for a stud heifer bull, this bull could be your bloke. A difficult decision to sell him!



LT LEDGER 0332 M791626 (OAU F3168E) (P)

VERNOLA JUST RIGHT J6E (VIW J6E) (P/S)

SIRE: CHALLAMBI LEOPOLD (CHA L2E) (P)

DAM: ALLEDNAW JANET L32 (AKT L32E) (P)

CHALLAMBI SPICE H16 (CHA H16E) (P)

ALLEDNAW JANET J18E (AKT J18E) (P)

May 2020 Australasian Charolais BREEDPLAN Analysis

Charolais	CE Dir	CE Dtrs	GL	BW	200D	400D	600D	MCW	Milk	SS	Carc Wt	EMA	Rib	Rump	RBV	IMF	Selection Index Values		
																	\$Dom	\$Exp	\$N.Term
EBV	+12.7	+2.7	-3.8	-1.7	+9	+20	+22	+13	+7	+1.2	+19	+1.4	+0.0	+0.2	+0.1	+0.3			
Acc	37%	31%	38%	49%	54%	47%	47%	45%	38%	35%	37%	28%	32%	32%	30%	28%	+\$42	+\$55	+\$23

Purchaser / \$:

LOT 5

MINNIE-VALE PHARAOH (P)

TATTOO: SGS P9E

DOB: 20/04/2018

COLOUR: White

HOMOZYGOUS POLLED

COMMENTS:

Pharaoh is a homozygous polled bull by Peacemaker who has definite stud sire qualities. A bull who really packs punch and constitution and at the same time maintains terrific cover and softness. His dam F51 is a Peanut great granddaughter. Peanut produced Sundance, Deputy and Sherrif all those years ago. A bull who should stand a strong inspection. Incredible history in this pedigree.



HARVIE REDEMPTION 36P MC286641 (OAC Z6641E) (P)

LT EASY BLEND 5125 PLD M705113 (OAU A5113E) (P)

SIRE: WINCHESTER PEACEMAKER D6E (GAV D6E) (P)

DAM: MINNIE-VALE PEANUT F51E (SGS F51E) (P)

ROSDALE HONOR X89 (MR X89F)

MINNIE-VALE SUNBEAM C35E (SGS C35E) (P/S)

May 2020 Australasian Charolais BREEDPLAN Analysis

Charolais	CE	CE	GL	BW	200D	400D	600D	MCW	Milk	SS	Carc	EMA	Rib	Rump	RBY	IMF	Selection Index Values		
	Dir	Dtrs									Wt						\$Dom	\$Exp	\$N.Term
EBV	+1.5	-1.9	-2.5	-0.1	+12	+28	+39	+31	+8	+0.7	+24	+0.4	+0.6	+0.7	-0.7	+0.2			
Acc	39%	36%	42%	56%	67%	66%	71%	64%	57%	46%	60%	35%	37%	37%	36%	34%	+\$25	+\$34	+\$21

Purchaser / \$:

LOT 6

MINNIE-VALE PIONEER

TATTOO: SGS P16E

DOB: 24/04/2018

COLOUR: White

COMMENTS:

Pioneer is a sirey-headed Peacemaker son who oozes softness. His milk EBV ranks in the high 5% of the breed. He has exceptional hair type, a really sleek coated bull with good boning and width. He display neck extension and presence. He definitely catches your attention.



HARVIE REDEMPTION 36P MC286641 (OAC Z6641E) (P)

MOONGOOL CONDOR (DP2 E169E) (P)

SIRE: WINCHESTER PEACEMAKER D6E (GAV D6E) (P)

DAM: MINNIE-VALE REBEL H160E (SGS H160E)

ROSDALE HONOR X89 (MR X89F)

MINNIE-VALE REBEL D131E (SGS D131E)

May 2020 Australasian Charolais BREEDPLAN Analysis

Charolais	CE	CE	GL	BW	200D	400D	600D	MCW	Milk	SS	Carc	EMA	Rib	Rump	RBY	IMF	Selection Index Values		
	Dir	Dtrs									Wt						\$Dom	\$Exp	\$N.Term
EBV	+0.4	+0.9	-1.8	+0.0	+7	+21	+29	+26	+13	+0.3	+20	+1.2	+0.2	+0.0	+0.1	-0.1			
Acc	34%	30%	37%	54%	66%	65%	71%	64%	54%	43%	58%	30%	31%	31%	31%	28%	+\$19	+\$24	+\$15

Purchaser / \$:

LOT 7

MINNIE-VALE PRESTON

TATTOO: SGS P2E

DOB: 02/04/2018

COLOUR: White

COMMENTS:

Preston is a solid Jaguar son with great depth and excellent hindquarter, a growthy bull with a strong topline and carcass profile. He is a top crossbreeding bull who will pass on his attributes of high yielding genetics to his progeny.



SILVERSTREAM EVOLUTION E168 083090168E (OAN E168E) (P)

AYR ABERDEEN'S FREIGHT (AYR D297F)

SIRE: PALGROVE JAGUAR J629E (PK J629E) (P)

DAM: MINNIE-VALE SANDY H63E (SGS H63E)

PALGROVE LEONIE 23 (PK D13E) (P)

MINNIE-VALE SANDY C69E (SGS C69E)

May 2020 Australasian Charolais BREEDPLAN Analysis

Charolais	CE Dir	CE Dtrs	GL	BW	200D	400D	600D	MCW	Milk	SS	Carc Wt	EMA	Rib	Rump	RBV	IMF	Selection Index Values		
EBV	+3.9	-0.3	-1.5	+0.4	+9	+14	+24	+22	+4	+0.3	+13	+1.3	-0.2	-0.4	+0.4	+0.1	\$Dom	\$Exp	\$N.Term
Acc	30%	29%	33%	50%	64%	63%	69%	60%	46%	40%	56%	29%	30%	30%	30%	27%	+\$16	+\$24	+\$15

Purchaser / \$:

LOT 8

MINNIE-VALE RED FLAG (P/S) (R/F)

TATTOO: SGS P14E

DOB: 22/04/2018

COLOUR: Red factor

HOMOZYGOUS POLLED

COMMENTS:

Red Flag Flyer P14 is a homozygous polled red factor bull, exhibiting great hindquarter definition and thickness over the loin. He will shine in a commercial program and produce those top end weaner calves.



SILVERSTREAM EVOLUTION E168 083090168E (OAN E168E) (P)

MOONGOOL CONDOR (DP2 E169E) (P)

SIRE: PALGROVE JAGUAR J629E (PK J629E) (P)

DAM: MINNIE-VALE SUNSHINE K45E (SGS K45E) (P)

PALGROVE LEONIE 23 (PK D13E) (P)

MINNIE-VALE SUNSHINE D109E (SGS D109E) (P)

May 2020 Australasian Charolais BREEDPLAN Analysis

Charolais	CE Dir	CE Dtrs	GL	BW	200D	400D	600D	MCW	Milk	SS	Carc Wt	EMA	Rib	Rump	RBV	IMF	Selection Index Values		
EBV	+2.2	-2.1	-1.9	+0.1	+9	+14	+20	+24	+5	+0.0	+12	+0.5	-0.2	-0.3	+0.2	-0.1	\$Dom	\$Exp	\$N.Term
Acc	31%	29%	35%	50%	63%	63%	68%	57%	44%	42%	56%	31%	32%	32%	32%	29%	+\$11	+\$14	+\$12

Purchaser / \$:

LOT 9

MINNIE-VALE PROFESSOR (P)

TATTOO: SGS P58E

DOB: 24/06/2018

COLOUR: White

COMMENTS:

Professor is a sleek coated, softly fleshed Eastwood son. One of the last to go through the sales. Eastwood sons have always been well sort after for their lower birthweight calves and doing ability. This fellow is a fine example of these traits.



LT BLUEGRASS 4017P M686569 (OAU Z4017E) (P)

MINNIE-VALE MUSKET (SGS A59E) (P)

SIRE: MINNIE-VALE EAST WOOD (SGS E56E) (P)

DAM: MINNIE-VALE NEAR BY E54E (SGS E54E) (P)

MINNIE-VALE REAMER A50E (SGS A50E)

MINNIE-VALE NEAR-BY B107E (SGS B107E)

May 2020 Australasian Charolais BREEDPLAN Analysis

Charolais	CE	CE	GL	BW	200D	400D	600D	MCW	Milk	SS	Carc	EMA	Rib	Rump	RBV	IMF	Selection Index Values		
	Dir	Dtrs									Wt						\$Dom	\$Exp	\$N.Term
EBV	+5.2	+1.0	-2.7	+0.3	+11	+16	+17	+16	+0	+1.2	+11	+1.9	+1.1	+1.5	-0.3	+0.3			
Acc	30%	29%	38%	45%	62%	58%	58%	55%	49%	37%	48%	28%	29%	29%	29%	27%	+\$27	+\$36	+\$15

Purchaser / \$:

LOT 10

MINNIE-VALE PICADOR

TATTOO: SGS P8E

DOB: 02/04/2018

COLOUR: White

COMMENTS:

Picador is a bull of real substance. He catches your eye every time. He displays terrific capacity and growth as his EBVs would suggest. His bloodlines include Redemption, Impair, Pilgrim and Jager, indicating this bull will be sure to breed on.



HARVIE REDEMPTION 36P MC286641 (OAC Z6641E) (P)

SVY PILGRIM PLD 655S MC303031 (OAC B3031E) (P)

SIRE: WINCHESTER PEACEMAKER D6E (GAV D6E) (P)

DAM: MINNIE-VALE UPTIME J101E (SGS J101E)

ROSDALE HONOR X89 (MR X89F)

MINNIE-VALE UPTIME F2E (SGS F2E) (P)

May 2020 Australasian Charolais BREEDPLAN Analysis

Charolais	CE	CE	GL	BW	200D	400D	600D	MCW	Milk	SS	Carc	EMA	Rib	Rump	RBV	IMF	Selection Index Values		
	Dir	Dtrs									Wt						\$Dom	\$Exp	\$N.Term
EBV	-2.4	-4.5	-2.7	+0.0	+12	+24	+30	+28	+9	+1.3	+19	+1.2	+0.7	+0.8	-0.4	+0.1			
Acc	39%	36%	48%	56%	66%	66%	70%	63%	54%	46%	59%	33%	36%	36%	35%	31%	+\$15	+\$19	+\$14

Purchaser / \$:

LOT 11

MINNIE-VALE PACMAN (P) (R/F)

TATTOO: SGS P42E

DOB: 02/06/2018

COLOUR: Red factor

COMMENTS:

Pacman is an upstanding polled, red factor son of Jaguar. This bull displays tremendous body length and a solid butt profile. He is a high end cross breeding bull with a quiet disposition who will produce those high yielding progeny.



SILVERSTREAM EVOLUTION E168 083090168E (OAN E168E) (P)

ANC DEFIANCE (ANC Y513F)


SIRE: PALGROVE JAGUAR J629E (PK J629E) (P)

DAM: MINNIE-VALE KIT E30E (SGS E30E)

PALGROVE LEONIE 23 (PK D13E) (P)

MINNIE-VALE KIT W8E (SGS W8E)

May 2020 Australasian Charolais BREEDPLAN Analysis

 CE Dir	CE Dtrs	GL	BW	200D	400D	600D	MCW	Milk	SS	Carc Wt	EMA	Rib	Rump	RBV	IMF	Selection Index Values			
EBV	-0.4	-3.4	-0.5	+1.2	+9	+14	+26	+25	+1	+0.2	+13	+1.0	-0.3	-0.5	+0.4	+0.0	\$Dom	\$Exp	\$N.Term
Acc	33%	31%	36%	51%	64%	64%	70%	60%	49%	42%	57%	30%	31%	31%	28%		+\$4	+\$9	+\$11

Purchaser / \$:

LOT 12

MINNIE-VALE PRESLEY (P)

TATTOO: SGS P62E

DOB: 11/07/2018

COLOUR: White

COMMENTS:

Presley is one of the last crop of Resistol sons to sell through the sale. A thickset bull out of one of our leading cow families, Marilyn G72E. There is plenty to like about this bull. He should stand a solid inspection. He is in the highest 10% of the breed for milk value.



EATONS ROYAL DYNASTY 6164 M726505 (OAU M726505) (P)

AYR ABERDEEN'S FREIGHT (AYR D297F)


SIRE: WINCHESTER RESISTOL H17E (GAV H17E) (P)

DAM: MINNIE-VALE MARILYN G72E (SGS G72E)

ROSEDALE HONOR X89 (MR X89F)

MINNIE-VALE MARILYN W37E (SGS W37E)

May 2020 Australasian Charolais BREEDPLAN Analysis

 CE Dir	CE Dtrs	GL	BW	200D	400D	600D	MCW	Milk	SS	Carc Wt	EMA	Rib	Rump	RBV	IMF	Selection Index Values			
EBV	+4.1		-3.3	-0.6	+8	+20	+27	+27	+13	+0.6	+21						\$Dom	\$Exp	\$N.Term
Acc	27%		34%	50%	63%	63%	69%	59%	45%	37%	55%						+\$29	+\$36	+\$19

Purchaser / \$:

LOT 13

MINNIE-VALE PESO

TATTOO: SGS P13E

DOB: 21/04/2018

COLOUR: White

COMMENTS:

Peso is a really square butted bull with terrific depth of flank. An earlier maturing muscle pattern built into a moderate frame. His Dam, D52, is still going strong and is one of our most consistant producing Xplosion daughters.



HARVIE REDEMPTION 36P MC286641 (OAC Z6641E) (P)

GREENWOOD XPLOSION (TSP X32E) (P)

SIRE: WINCHESTER PEACEMAKER D6E (GAV D6E) (P)

DAM: MINNIE-VALE NAND D52E (SGS D52E)

ROSEDALE HONOR X89 (MR X89F)

MINNIE-VALE NAND V26E (SGS V26E)

May 2020 Australasian Charolais BREEDPLAN Analysis

	CE Dir	CE Dtrs	GL	BW	200D	400D	600D	MCW	Milk	SS	Carc Wt	EMA	Rib	Rump	RBV	IMF	Selection Index Values		
EBV	+1.6	+0.8	-2.7	-0.2	+9	+21	+25	+20	+8	+0.6	+17	+1.1	+0.4	+0.3	-0.1	+0.1	\$Dom	\$Exp	\$N.Term
Acc	35%	32%	38%	54%	67%	66%	71%	64%	57%	43%	59%	30%	32%	31%	32%	27%	+\$22	+\$27	+\$15

Purchaser / \$:

LOT 14

MINNIE-VALE PAXTON (P) (R/F)

TATTOO: SGS P27E

DOB: 10/05/2018

COLOUR: Red factor

COMMENTS:

Paxton always draws your attention in the paddock. He is one of the softest Jaguar sons in the sale. Very good hair type and skin. This bull has a terrific body profile and is nice and square from behind. His progeny should be very consistent in their quality.



SILVERSTREAM EVOLUTION E168 083090168E (OAN E168E) (P)

MINNIE-VALE MUSKET (SGS A59E) (P)

SIRE: PALGROVE JAGUAR J629E (PK J629E) (P)

DAM: MINNIE-VALE UPTIME G3E (SGS G3E) (P)

PALGROVE LEONIE 23 (PK D13E) (P)

MINNIE-VALE UPTIME C16E (SGS C16E)

May 2020 Australasian Charolais BREEDPLAN Analysis

	CE Dir	CE Dtrs	GL	BW	200D	400D	600D	MCW	Milk	SS	Carc Wt	EMA	Rib	Rump	RBV	IMF	Selection Index Values		
EBV	+0.5	-2.6	-2.1	+0.8	+8	+14	+22	+22	+1	+0.5	+11	+1.0	+0.2	+0.1	+0.2	+0.0	\$Dom	\$Exp	\$N.Term
Acc	32%	31%	37%	51%	64%	63%	70%	58%	46%	42%	57%	30%	31%	31%	31%	28%	+\$9	+\$14	+\$12

Purchaser / \$:

LOT 15

MINNIE-VALE PIRATE (P)

TATTOO: SGS P7E

DOB: 20/04/2018

COLOUR: White

COMMENTS:

Pirate is a true reflection of his sire Peacemaker, a terrific fellow with a great top line and outlook. He exhibits good body length and boning. A sirey headed polled bull with a quiet disposition. A bull not to be overlooked.



HARVIE REDEMPTION 36P MC286641 (OAC Z6641E) (P)

AYR INCA'S NATONE (AYR C258F)

SIRE: WINCHESTER PEACEMAKER D6E (GAV D6E) (P)

DAM: MINNIE-VALE MOTTO PARK G27E (SGS G27E)

ROSEDALE HONOR X89 (MR X89F)

MINNIE-VALE MOTTO PARK D91E (SGS D91E)

May 2020 Australasian Charolais BREEDPLAN Analysis

	CE Dir	CE Dtrs	GL	BW	200D	400D	600D	MCW	Milk	SS	Carc Wt	EMA	Rib	Rump	RBV	IMF	Selection Index Values		
EBV	+0.7	+0.4	-1.5	+0.1	+12	+21	+26	+31	+7	+0.9	+17	+1.2	+0.3	+0.2	-0.1	+0.1	\$Dom	\$Exp	\$N.Term
Acc	34%	30%	36%	54%	66%	66%	71%	64%	54%	42%	59%	29%	30%	30%	30%	26%	+\$19	+\$25	+\$14

Purchaser / \$:

LOT 16

MINNIE-VALE PEDRO

TATTOO: SGS P28E

DOB: 11/05/2018

COLOUR: White

COMMENTS:

Pedro is a masculine headed bull with terrific growth. A square butted bull with a strong top line and a more moderate muscle pattern. He has a good all round set of EBV data. Pedro has a very quiet disposition.



HARVIE REDEMPTION 36P MC286641 (OAC Z6641E) (P)

ADVANCE CAMBRIDGE C49 (ADV C49E)

SIRE: WINCHESTER PEACEMAKER D6E (GAV D6E) (P)

DAM: MINNIE-VALE THE PRINCESS K95E (SGS K95E)

ROSEDALE HONOR X89 (MR X89F)

MINNIE-VALE THE PRINCESS E42E (SGS E42E)

May 2020 Australasian Charolais BREEDPLAN Analysis

	CE Dir	CE Dtrs	GL	BW	200D	400D	600D	MCW	Milk	SS	Carc Wt	EMA	Rib	Rump	RBV	IMF	Selection Index Values		
EBV	-1.5	-0.8	-1.4	+0.7	+10	+23	+33	+31	+9	+0.7	+19	+1.0	+0.3	+0.2	-0.1	+0.2	\$Dom	\$Exp	\$N.Term
Acc	33%	30%	36%	53%	66%	65%	70%	63%	52%	41%	58%	29%	30%	30%	30%	26%	+\$16	+\$22	+\$15

Purchaser / \$:

LOT 17

MINNIE-VALE PREMIER (P)

TATTOO: SGS P52E

DOB: 11/06/2018

COLOUR: White

COMMENTS:

Premier is polled on both sides of his pedigree. A very easy keeping softly fleshed bull with a lower birthweight. He has longevity in his pedigree coming from his Dam, E67E, who is 11 years old and still breeding well.



HARVIE REDEMPTION 36P MC286641 (OAC Z6641E) (P)

CAMBALONG COMET (RB1 C107E) (P)

SIRE: WINCHESTER PEACEMAKER D6E (GAV D6E) (P)

DAM: MINNIE-VALE TAPIS E67E (SGS E67E) (P)

ROSEDALE HONOR X89 (MR X89F)

MINNIE-VALE TAPIS B105E (SGS B105E) (P)

May 2020 Australasian Charolais BREEDPLAN Analysis

Charolais	CE Dir	CE Dtrs	GL	BW	200D	400D	600D	MCW	Milk	SS	Carc Wt	EMA	Rib	Rump	RBV	IMF	Selection Index Values		
EBV	+0.1	-0.6	-2.2	+0.6	+10	+21	+27	+33	+7	+1.0	+17	+1.3	+0.6	+0.7	-0.2	+0.0	\$Dom	\$Exp	\$N.Term
Acc	34%	30%	36%	54%	67%	66%	71%	64%	57%	42%	59%	30%	31%	31%	31%	27%	+\$18	+\$24	+\$14

Purchaser / \$:

LOT 18

MINNIE-VALE ACE HIGH (P)

TATTOO: SGS P68E

DOB: 17/07/2018

COLOUR: White

COMMENTS:

Ace High is a double polled bull who is out of a terrific milking Dam, G40E. A lighter birth weight bull by Lord, who will develop into a moderate sire at full maturity. He also has an exceptionally quiet nature.



PALGROVE HALLMARK (PK H535E) (P)

WINCHESTER PEACEMAKER D6E (GAV D6E) (P)

SIRE: PALGROVE LORD (PK L698E) (P)

DAM: MINNIE-VALE SONG G40E (SGS G40E) (P)

PALGROVE DEMETER 167 (PK G688E)

MINNIE-VALE SONG D10E (SGS D10E) (P)

May 2020 Australasian Charolais BREEDPLAN Analysis

Charolais	CE Dir	CE Dtrs	GL	BW	200D	400D	600D	MCW	Milk	SS	Carc Wt	EMA	Rib	Rump	RBV	IMF	Selection Index Values		
EBV	+4.7	-0.7	-3.4	-0.3	+6	+15	+14	+18	+7	+1.0	+11	+0.9	+0.6	+0.7	-0.3	+0.2	\$Dom	\$Exp	\$N.Term
Acc	32%	28%	43%	51%	64%	63%	69%	60%	47%	48%	56%	34%	36%	35%	35%	32%	+\$22	+\$27	+\$12

Purchaser / \$:

LOT 19

MINNIE-VALE POT LUCK (P)

TATTOO: SGS P80E

DOB: 02/08/2018

COLOUR: White

COMMENTS:

Pot Luck's Dam and Sire are both polled. His Dam, F18 Regatta, has a picture perfect udder and is still exceptional. He is a standout son of Peacemaker. A very polished bull with a sires head and outlook. He is all class and style from front to back. He has a terrific muscle pattern while maintaining great doing ability. He certainly deserves a good look.



HARVIE REDEMPTION 36P MC286641 (OAC Z6641E) (P)

MINNIE-VALE MUSKET (SGS A59E) (P)

SIRE: WINCHESTER PEACEMAKER D6E (GAV D6E) (P)

DAM: MINNIE-VALE REGATTA F18E (SGS F18E) (P)

ROSEDALE HONOR X89 (MR X89F)

MINNIE-VALE REGATTA V83E (SGS V83E)

May 2020 Australasian Charolais BREEDPLAN Analysis

Charolais	CE Dir	CE Dtrs	GL	BW	200D	400D	600D	MCW	Milk	SS	Carc Wt	EMA	Rib	Rump	RBY	IMF	Selection Index Values		
EBV	-2.6	-4.2	-2.1	+0.5	+9	+19	+27	+25	+8	+0.7	+14	+0.9	+0.9	+1.1	-0.5	+0.1	\$Dom	\$Exp	\$N.Term
Acc	35%	32%	38%	54%	67%	66%	71%	64%	57%	43%	59%	30%	32%	31%	32%	27%	+\$10	+\$15	+\$12

Purchaser / \$:

LOT 20

MINNIE-VALE PIQUET (P)

TATTOO: SGS P50E

DOB: 08/06/2018

COLOUR: White

COMMENTS:

Piquet is another terrific Jaguar son. He has great muscle expression and thickness across the loin with good hair and skin type. A bull who will mature into a top-notch sire. His progeny will excel with early finishing and turnoff.



SILVERSTREAM EVOLUTION E168 083090168E (OAN E168E) (P)

WINCHESTER PEACEMAKER D6E (GAV D6E) (P)

SIRE: PALGROVE JAGUAR J629E (PK J629E) (P)

DAM: MINNIE-VALE KRYSTAL (SGS K94E)

PALGROVE LEONIE 23 (PK D13E) (P)

MINNIE-VALE UNDRAM E87E (SGS E87E)

May 2020 Australasian Charolais BREEDPLAN Analysis

Charolais	CE Dir	CE Dtrs	GL	BW	200D	400D	600D	MCW	Milk	SS	Carc Wt	EMA	Rib	Rump	RBY	IMF	Selection Index Values		
EBV	+2.1	-0.8	-2.3	+0.3	+10	+20	+30	+27	+6	+0.4	+16	+0.8	+0.0	-0.1	+0.1	+0.2	\$Dom	\$Exp	\$N.Term
Acc	33%	31%	35%	51%	64%	64%	69%	58%	46%	42%	57%	31%	32%	32%	32%	29%	+\$19	+\$27	+\$17

Purchaser / \$:

LOT 21

MINNIE-VALE POT BLACK (P)

TATTOO: SGS P66E

DOB: 14/07/2018

COLOUR: White

COMMENTS:

Pot Black is a fine example of the Lord progeny coming through in the future. He is a well-balanced young sire in a moderate frame with great carcass definition, softness and eye appeal. He is a lighter birth weight bull and well natured. A quality bull who we feel will impress on inspection on sale day.



PALGROVE HALLMARK (PK H535E) (P)

WINCHESTER PEACEMAKER D6E (GAV D6E) (P)

SIRE: PALGROVE LORD (PK L698E) (P)

DAM: MINNIE-VALE DEACON K32E (SGS K32E) (P)

PALGROVE DEMETER 167 (PK G688E)

MINNIE-VALE DEACON D96E (SGS D96E)

May 2020 Australasian Charolais BREEDPLAN Analysis

Charolais	CE Dir	CE Dtrs	GL	BW	200D	400D	600D	MCW	Milk	SS	Carc Wt	EMA	Rib	Rump	RBY	IMF	Selection Index Values		
EBV	+3.9	+0.0	-2.7	+0.2	+7	+19	+25	+21	+9	+1.1	+17	+1.5	+0.4	+0.3	+0.1	+0.2	\$Dom	\$Exp	\$N.Term
Acc	32%	28%	43%	50%	63%	62%	68%	58%	43%	48%	55%	34%	35%	35%	35%	32%	+\$24	+\$31	+\$17

Purchaser / \$:

LOT 22

MINNIE-VALE PINAY (P)

TATTOO: SGS P45E

DOB: 03/06/2018

COLOUR: White

HOMOZYGOUS POLLED

COMMENTS:

Pinay is a homozygous polled son of the great breeding bull Peacemaker. His milk value sits in the high 20% of the breed, which reflects the maternal traits this bull carries in his pedigree. A sire headed bull who is as wide as a keg from behind. He is an impressive individual who we really admire.



HARVIE REDEMPTION 36P MC286641 (OAC Z6641E) (P)

MOONGOOL CONDOR (DP2 E169E) (P)

SIRE: WINCHESTER PEACEMAKER D6E (GAV D6E) (P)

DAM: MINNIE-VALE ALETTA J24E (SGS J24E) (P)

ROSEDALE HONOR X89 (MR X89F)

PALGROVE ALETTA 17 (PK Z1E)

May 2020 Australasian Charolais BREEDPLAN Analysis

Charolais	CE Dir	CE Dtrs	GL	BW	200D	400D	600D	MCW	Milk	SS	Carc Wt	EMA	Rib	Rump	RBY	IMF	Selection Index Values		
EBV	-1.1	-0.1	-1.4	+0.3	+9	+20	+24	+29	+10	+0.2	+17	+0.9	+0.4	+0.4	-0.2	+0.0	\$Dom	\$Exp	\$N.Term
Acc	34%	31%	38%	54%	66%	65%	70%	61%	54%	44%	58%	31%	32%	32%	32%	29%	+\$15	+\$17	+\$11

Purchaser / \$:

LOT 23

MINNIE-VALE PATTON (P/S) (R/F)

TATTOO: SGS P81E

DOB: 01/08/2018

COLOUR: Red factor

COMMENTS:

Patton is a polled red factor stylish young sire of Jaguar, he has plenty of performance. A well-defined hindquarter and width in behind. He is a bull perfectly suited to the weaner markets - finish and early turnoff.



SILVERSTREAM EVOLUTION E168 083090168E (OAN E168E) (P)

ADVANCE CAMBRIDGE C49 (ADV C49E)

SIRE: PALGROVE JAGUAR J629E (PK J629E) (P)

DAM: MINNIE-VALE KIT F97E (SGS F97E)

PALGROVE LEONIE 23 (PK D13E) (P)

MINNIE-VALE KIT W8E (SGS W8E)

May 2020 Australasian Charolais BREEDPLAN Analysis

Charolais	CE Dir	CE Dtrs	GL	BW	200D	400D	600D	MCW	Milk	SS	Carc Wt	EMA	Rib	Rump	RBV	IMF	Selection Index Values		
EBV	+1.0	-4.4	-0.8	+0.7	+7	+10	+22	+23	+2	+0.4	+9	+0.6	+0.0	-0.1	+0.1	+0.1	\$Dom	\$Exp	\$N.Term
Acc	30%	30%	34%	51%	65%	64%	70%	60%	49%	42%	57%	30%	31%	31%	31%	28%	+\$5	+\$12	+\$11

Purchaser / \$:

LOT 24

MINNIE-VALE PATRIOT (P)

TATTOO: SGS P31E

DOB: 14/05/2018

COLOUR: White

COMMENTS:

Patriot is another fine son of Peacemaker, he finishes off a really solid pen of bulls very similar in type. Polled genetics with heaps of grunt. Patriot will keep the hybrid vigour and growth traits in his progeny.



HARVIE REDEMPTION 36P MC286641 (OAC Z6641E) (P)

MOONGOOL CONDOR (DP2 E169E) (P)

SIRE: WINCHESTER PEACEMAKER D6E (GAV D6E) (P)

DAM: MINNIE-VALE MOTTO PARK J56E (SGS J56E) (P)

ROSDALE HONOR X89 (MR X89F)

MINNIE-VALE MOTTO PARK C127E (SGS C127E) (P)

May 2020 Australasian Charolais BREEDPLAN Analysis

Charolais	CE Dir	CE Dtrs	GL	BW	200D	400D	600D	MCW	Milk	SS	Carc Wt	EMA	Rib	Rump	RBV	IMF	Selection Index Values		
EBV	+0.9	-0.1	-2.0	-0.1	+9	+19	+22	+31	+8	+0.5	+16	+0.7	+0.2	+0.1	-0.1	-0.1	\$Dom	\$Exp	\$N.Term
Acc	34%	30%	39%	54%	66%	65%	70%	62%	54%	44%	58%	31%	32%	31%	32%	28%	+\$17	+\$21	+\$12

Purchaser / \$:

LOT 25

MINNIE-VALE PICCOLO (P)

TATTOO: SGS P30E

DOB: 11/05/2018

COLOUR: White

COMMENTS:

Piccolo is probably the thickest bull in this years draft. He has colossal constitution and performance. It is sometimes hard to find this volume in a polled package and still maintain the softness he exhibits. He is an exceptional character with a quiet disposition.



SILVERSTREAM EVOLUTION E168 083090168E (OAN E168E) (P)

MOONGOOL CONDOR (DP2 E169E) (P)

SIRE: PALGROVE JAGUAR J629E (PK J629E) (P)

DAM: MINNIE-VALE H13E (SGS H13E) (P)

PALGROVE LEONIE 23 (PK D13E) (P)

MINNIE-VALE THERESA Y56E (SGS Y56E) (P)

May 2020 Australasian Charolais BREEDPLAN Analysis

Charolais	CE	CE	GL	BW	200D	400D	600D	MCW	Milk	SS	Carc	EMA	Rib	Rump	RBV	IMF	Selection Index Values		
	Dir	Dtrs									Wt						\$Dom	\$Exp	\$N.Term
EBV	+1.1	-4.0	-1.2	+0.2	+6	+10	+16	+19	+4	-0.2	+9	+0.3	-0.1	-0.2	+0.1	-0.1	\$Dom	\$Exp	\$N.Term
Acc	31%	30%	35%	51%	64%	63%	69%	59%	45%	43%	56%	31%	32%	32%	32%	30%	+\$5	+\$7	+\$9

Purchaser / \$:

LOT 26

MINNIE-VALE PARTRIDGE

TATTOO: SGS P38E

DOB: 29/05/2018

COLOUR: White

COMMENTS:

Minnie-Vale Partridge is the first of a very good line up of Resistol sons to be offered in this years sale. It is the final offering of his progeny and what a great job he has done. Partridge is another standout in this draft with a moderate frame and exceptional width in behind. A bull who has proven genetics to breed on well.



EATONS ROYAL DYNASTY 6164 M726505 (OAU M726505) (P)

MOONGOOL CONDOR (DP2 E169E) (P)

SIRE: WINCHESTER RESISTOL H17E (GAV H17E) (P)

DAM: MINNIE-VALE RANI K22E (SGS K22E) (P)

ROSEDALE HONOR X89 (MR X89F)

MINNIE-VALE RANI D34E (SGS D34E) (P)

May 2020 Australasian Charolais BREEDPLAN Analysis

Charolais	CE	CE	GL	BW	200D	400D	600D	MCW	Milk	SS	Carc	EMA	Rib	Rump	RBV	IMF	Selection Index Values		
	Dir	Dtrs									Wt						\$Dom	\$Exp	\$N.Term
EBV	+2.4		-3.4	-0.3	+9	+21	+25	+30	+9	+0.1	+21	+1.3	+0.0	-0.3	+0.3		\$Dom	\$Exp	\$N.Term
Acc	28%		35%	51%	63%	62%	69%	59%	41%	40%	55%	25%	26%	26%	26%		+\$24	+\$28	+\$15

Purchaser / \$:

LOT 27

MINNIE-VALE PABLO

TATTOO: SGS P84E

DOB: 02/08/2018

COLOUR: White

COMMENTS:

Pablo is a son of one of our most consistent matrons, Uptime C16E. This is a good mix of Canadian and French genetics to produce this joining here. A bull to be admired for his overall capacity and ability to produce high-end carcass traits in his progeny top drawer cross-breeding bull.



HARVIE REDEMPTION 36P MC286641 (OAC Z6641E) (P)

ANC BOBBY'S FARGO (ANC X538F)

SIRE: WINCHESTER PEACEMAKER D6E (GAV D6E) (P)

DAM: MINNIE-VALE UPTIME C16E (SGS C16E)

ROSDALE HONOR X89 (MR X89F)

MINNIE-VALE UP TIME (SGS U25E) (P)

May 2020 Australasian Charolais BREEDPLAN Analysis

Charolais	CE Dir	CE Dtrs	GL	BW	200D	400D	600D	MCW	Milk	SS	Carc Wt	EMA	Rib	Rump	RBY	IMF	Selection Index Values		
																	\$Dom	\$Exp	\$N.Term
EBV	-0.6	+0.6	-1.9	+0.7	+11	+22	+28	+38	+6	+0.7	+18	+1.1	+0.1	-0.1	+0.1	+0.0			
Acc	34%	31%	42%	55%	66%	65%	71%	64%	57%	42%	59%	29%	30%	30%	30%	25%	+\$16	+\$21	+\$13

Purchaser / \$:

LOT 28

MINNIE-VALE PACO (P/S) (R/F)

TATTOO: SGS P134E

DOB: 03/09/2018

COLOUR: Red factor

COMMENTS:

Paco is a polled scurred, red factor son of Jaguar. Another real meaty bull, tremendous boning and body length. His is a slightly younger sire who should mature into a terrific cross breeding bull.



SILVERSTREAM EVOLUTION E168 083090168E (OAN E168E) (P)

MOONGOOL GOLD DUST (DP2 G473E)

SIRE: PALGROVE JAGUAR J629E (PK J629E) (P)

DAM: MINNIE-VALE MARILYN K37E (SGS K37E)

PALGROVE LEONIE 23 (PK D13E) (P)

MINNIE-VALE MARILYN Z65E (SGS Z65E) (P)

May 2020 Australasian Charolais BREEDPLAN Analysis

Charolais	CE Dir	CE Dtrs	GL	BW	200D	400D	600D	MCW	Milk	SS	Carc Wt	EMA	Rib	Rump	RBY	IMF	Selection Index Values		
																	\$Dom	\$Exp	\$N.Term
EBV	+1.8	-0.1	-1.5	+0.3	+7	+11	+19	+16	+3	+0.2	+10	+1.1	-0.1	-0.3	+0.4	+0.1			
Acc	30%	29%	33%	48%	62%	64%	61%	56%	44%	40%	52%	30%	31%	30%	30%	28%	+\$11	+\$16	+\$11

Purchaser / \$:

LOT 29

MINNIE-VALE PULSAR (P)

TATTOO: SGS P105E

DOB: 15/08/2018

COLOUR: White

COMMENTS:

Pulsar is a moderately framed son of Lord. He is polled on both sides of his pedigree. Pulsar is a low birth weight bull. The Lord progeny are particularly quiet in their disposition. This bull is perfect over British bred cows.



PALGROVE HALLMARK (PK H535E) (P)

SIRE: PALGROVE LORD (PK L698E) (P)

PALGROVE DEMETER 167 (PK G688E)

WINCHESTER PEACEMAKER D6E (GAV D6E) (P)

DAM: MINNIE-VALE PEANUT H156E (SGS H156E) (P)

MINNIE-VALE PEANUT Z73E (SGS Z73E) (P)

May 2020 Australasian Charolais BREEDPLAN Analysis

Charolais	CE Dir	CE Dtrs	GL	BW	200D	400D	600D	MCW	Milk	SS	Carc Wt	EMA	Rib	Rump	RBY	IMF	Selection Index Values		
EBV	+4.1	-0.6	-3.0	-0.2	+6	+16	+17	+18	+7	+1.0	+13	+1.3	+0.6	+0.7	-0.2	+0.1	\$Dom	\$Exp	\$N.Term
Acc	32%	28%	43%	51%	63%	62%	69%	59%	45%	48%	56%	34%	36%	35%	35%	32%	+\$22	+\$26	+\$13

Purchaser / \$:

LOT 30

MINNIE-VALE PANDORA

TATTOO: SGS P124E

DOB: 28/08/2018

COLOUR: White

COMMENTS:

Pandora is a well-boned fellow and again a moderately framed bull. These Lord bulls carry an early maturity pattern, which lends itself to weaner, vealer markets, early finish and turnoff.



PALGROVE HALLMARK (PK H535E) (P)

SIRE: PALGROVE LORD (PK L698E) (P)

PALGROVE DEMETER 167 (PK G688E)

AYR INCA'S NATONE (AYR C258F)

DAM: MINNIE-VALE NICKELLE F45E (SGS F45E) (P)

MINNIE-VALE NICKELLE B120E (SGS B120E) (P)

May 2020 Australasian Charolais BREEDPLAN Analysis

Charolais	CE Dir	CE Dtrs	GL	BW	200D	400D	600D	MCW	Milk	SS	Carc Wt	EMA	Rib	Rump	RBY	IMF	Selection Index Values		
EBV	+5.9	+0.1	-2.2	+0.0	+8	+16	+19	+21	+5	+1.1	+14	+1.5	+0.2	+0.2	+0.2	+0.1	\$Dom	\$Exp	\$N.Term
Acc	30%	26%	42%	49%	63%	62%	68%	57%	45%	47%	55%	32%	33%	32%	33%	30%	+\$24	+\$31	+\$16

Purchaser / \$:

LOT 31

MINNIE-VALE PACEMAKER

TATTOO: SGS P34E

DOB: 22/05/2018

COLOUR: White

COMMENTS:

Pacemaker is a very stylish bull with body length, neck extension and sire outlook. He is typical of what we expect of the Peacemaker progeny. He is a sleek coated bull with a good spread of growth figures, he also has a very quiet nature.



HARVIE REDEMPTION 36P MC286641 (OAC Z6641E) (P)

AYR INCA'S NATONE (AYR C258F)

SIRE: WINCHESTER PEACEMAKER D6E (GAV D6E) (P)

DAM: MINNIE-VALE SPOTLIGHT J40E (SGS J40E)

ROSDALE HONOR X89 (MR X89F)

MINNIE-VALE SPOTLIGHT F11E (SGS F11E)

May 2020 Australasian Charolais BREEDPLAN Analysis

Charolais	CE Dir	CE Dtrs	GL	BW	200D	400D	600D	MCW	Milk	SS	Carc Wt	EMA	Rib	Rump	RBY	IMF	Selection Index Values		
EBV	+0.9	+0.6	-1.4	+0.2	+10	+21	+30	+32	+10	+0.7	+19	+1.2	+0.3	+0.1	+0.0	+0.1	\$Dom	\$Exp	\$N.Term
Acc	32%	29%	35%	53%	66%	65%	70%	63%	54%	41%	58%	28%	29%	29%	29%	25%	+\$20	+\$28	+\$16

Purchaser / \$:

LOT 32

MINNIE-VALE PONTING (P)

TATTOO: SGS P92E

DOB: 04/08/2018

COLOUR: White

HOMOZYGOUS POLLED

COMMENTS:

Ponting is a growthy young bull standing over a little more ground. He has good neck extension and presence with plenty of capacity and growth for age. As a bonus, he carries the homozygous polled gene.



SILVERSTREAM EVOLUTION E168 083090168E (OAN E168E) (P)

AYR ABERDEEN'S FREIGHT (AYR D297F)

SIRE: PALGROVE JAGUAR J629E (PK J629E) (P)

DAM: MINNIE-VALE THRILLER H83E (SGS H83E) (P)

PALGROVE LEONIE 23 (PK D13E) (P)

MINNIE-VALE THRILLER Y57E (SGS Y57E) (P)

May 2020 Australasian Charolais BREEDPLAN Analysis

Charolais	CE Dir	CE Dtrs	GL	BW	200D	400D	600D	MCW	Milk	SS	Carc Wt	EMA	Rib	Rump	RBY	IMF	Selection Index Values		
EBV	+2.4	-2.7	-1.4	-0.1	+6	+10	+15	+11	+5	+0.0	+9	+0.9	-0.1	-0.3	+0.3	+0.1	\$Dom	\$Exp	\$N.Term
Acc	30%	30%	34%	50%	64%	64%	69%	60%	47%	41%	56%	29%	31%	30%	30%	27%	+\$10	+\$12	+\$10

Purchaser / \$:

LOT 33

MINNIE-VALE PUMA (P)

TATTOO: SGS P117E

DOB: 21/08/2018

COLOUR: White

HOMOZYGOUS POLLED

COMMENTS:

Puma really exhibits body length and a strong top line; he is a quietly natured bull with terrific growth coupled with excellent maternal genetics with an EBV milk value in the top 25% of the breed. Puma is homozygous polled.



PALGROVE HALLMARK (PK H535E) (P)

EATONS ROYAL DYNASTY 6164 M726505 (OAU M726505) (P)

SIRE: PALGROVE LORD (PK L698E) (P)

DAM: MINNIE-VALE MERI H126E (SGS H126E) (P)

PALGROVE DEMETER 167 (PK G688E)

MINNIE-VALE MERI E109E (SGS E109E) (P)

May 2020 Australasian Charolais BREEDPLAN Analysis

Charolais	CE Dir	CE Dtrs	GL	BW	200D	400D	600D	MCW	Milk	SS	Carc Wt	EMA	Rib	Rump	RBY	IMF	Selection Index Values		
EBV	+5.0	+1.1	-3.3	+0.0	+9	+25	+31	+27	+9	+1.6	+21	+1.6	+0.9	+1.0	-0.2	+0.1	\$Dom	\$Exp	\$N.Term
Acc	33%	28%	52%	52%	63%	62%	68%	59%	45%	49%	55%	34%	36%	35%	35%	33%	+\$34	+\$45	+\$22

Purchaser / \$:

LOT 34

MINNIE-VALE SKY HIGH P144E (P)

TATTOO: SGS P144E

DOB: 24/09/2018

COLOUR: White

COMMENTS:

Sky High is definitely one of the standout special bulls in this year's draft. He is out of one of our most prolific female lines, Minnie-Vale Regatta J52E, she is exceptional. He is a sirey-headed bull with great structure and volume. A September calf who always drew our attention from the beginning in the paddock. He also comes with a temperament second to none.



SILVERSTREAM EVOLUTION E168 083090168E (OAN E168E) (P)

WINCHESTER PEACEMAKER D6E (GAV D6E) (P)

SIRE: PALGROVE JAGUAR J629E (PK J629E) (P)

DAM: MINNIE-VALE REGATTA J52E (SGS J52E)

PALGROVE LEONIE 23 (PK D13E) (P)

MINNIE-VALE REGATTA F18E (SGS F18E) (P)

May 2020 Australasian Charolais BREEDPLAN Analysis

Charolais	CE Dir	CE Dtrs	GL	BW	200D	400D	600D	MCW	Milk	SS	Carc Wt	EMA	Rib	Rump	RBY	IMF	Selection Index Values		
EBV	+0.9	-3.0	-2.0	+0.5	+10	+18	+30	+25	+5	+0.5	+15	+0.8	+0.3	+0.3	+0.0	+0.1	\$Dom	\$Exp	\$N.Term
Acc	33%	31%	36%	49%	63%	64%	62%	57%	46%	40%	54%	31%	32%	32%	31%	29%	+\$14	+\$22	+\$16

Purchaser / \$:

LOT 35

MINNIE-VALE PAX (P)

TATTOO: SGS P107E

DOB: 13/08/2018

COLOUR: White

COMMENTS:

Pax is another young sire we think a lot of. He is smooth, sleek coated and oozes softness. He has terrific body depth, side profile and constitution. Pax also comes with a good solid line of EBV data.



HARVIE REDEMPTION 36P MC286641 (OAC Z6641E) (P)

ADVANCE CAMBRIDGE C49 (ADV C49E)

SIRE: WINCHESTER PEACEMAKER D6E (GAV D6E) (P)

DAM: MINNIE-VALE REBEL H190E (SGS H190E)

ROSEDALE HONOR X89 (MR X89F)

MINNIE-VALE REBEL Z103E (SGS Z103E)

May 2020 Australasian Charolais BREEDPLAN Analysis

Charolais	CE Dir	CE Dtrs	GL	BW	200D	400D	600D	MCW	Milk	SS	Carc Wt	EMA	Rib	Rump	RBV	IMF	Selection Index Values		
																	\$Dom	\$Exp	\$N.Term
EBV	+0.6	-0.2	-1.3	+0.8	+12	+26	+39	+44	+10	+0.9	+22	+0.9	+0.2	+0.2	-0.1	+0.1			
Acc	33%	30%	36%	52%	64%	64%	69%	60%	54%	41%	57%	29%	30%	30%	30%	26%	+\$22	+\$32	+\$20

Purchaser / \$:

LOT 36

MINNIE-VALE POPEYE (P)

TATTOO: SGS P135E

DOB: 03/09/2018

COLOUR: White

COMMENTS:

Popeye is another top-notch Peacemaker son with strong polling genes on both sides of his pedigree. Good predictable genetics. His Dam, E7E, has always been consistent with all her calves over the years. He is no exception and she is still breeding well for us.



HARVIE REDEMPTION 36P MC286641 (OAC Z6641E) (P)

MINNIE-VALE MUSKET (SGS A59E) (P)

SIRE: WINCHESTER PEACEMAKER D6E (GAV D6E) (P)

DAM: MINNIE-VALE UNIR E7E (SGS E7E) (P)

ROSEDALE HONOR X89 (MR X89F)

MINNIE-VALE UNIR A120E (SGS A120E)

May 2020 Australasian Charolais BREEDPLAN Analysis

Charolais	CE Dir	CE Dtrs	GL	BW	200D	400D	600D	MCW	Milk	SS	Carc Wt	EMA	Rib	Rump	RBV	IMF	Selection Index Values		
																	\$Dom	\$Exp	\$N.Term
EBV	-1.4	-2.5	-2.6	+0.2	+8	+17	+24	+20	+8	+0.8	+13	+1.0	+1.0	+1.1	-0.4	+0.1			
Acc	34%	31%	38%	53%	66%	67%	65%	62%	58%	41%	57%	30%	31%	31%	30%	27%	+\$13	+\$18	+\$12

Purchaser / \$:

LOT 37

MINNIE-VALE POGO

TATTOO: SGS P136E

DOB: 11/09/2018

COLOUR: White

COMMENTS:

Minnie-Vale Pogo is a growthy, square hipped bull with volume, capacity and a gentle disposition. His Dam, G34E, is a moderate cow who is one of the best Cambridge daughters in the herd. Terrific maternal qualities in his pedigree. This bull will excel over British bred cows.



PALGROVE HALLMARK (PK H535E) (P)

ADVANCE CAMBRIDGE C49 (ADV C49E)

SIRE: PALGROVE LORD (PK L698E) (P)

DAM: MINNIE-VALE UNIR G34E (SGS G34E)

PALGROVE DEMETER 167 (PK G688E)

MINNIE-VALE UNIR A120E (SGS A120E)

May 2020 Australasian Charolais BREEDPLAN Analysis

	CE Dir	CE Dtrs	GL	BW	200D	400D	600D	MCW	Milk	SS	Carc Wt	EMA	Rib	Rump	RBY	IMF	Selection Index Values		
EBV	+4.2	-1.6	-2.6	+0.2	+8	+17	+21	+17	+5	+1.3	+13	+1.1	+0.4	+0.5	+0.0	+0.2	\$Dom	\$Exp	\$N.Term
Acc	30%	27%	44%	45%	54%	53%	55%	51%	47%	45%	46%	32%	34%	33%	33%	31%	+\$21	+\$28	+\$15

Purchaser / \$:

LOT 38

MINNIE-VALE PRESIDENT (P)

TATTOO: SGS P176E

DOB: 23/10/2018

COLOUR: White

COMMENTS:

President is typical of the Resistol sons. Great body length, terrific boning and heaps of volume. Top end commercial bull who will pass on his strong growth traits to his progeny. President comes with a milk value which sits in the high 10% of the breed.



EATONS ROYAL DYNASTY 6164 M726505 (OAU M726505) (P)

LT CHEYENNE BLEND 7142 P M742067 (OAU C2067E) (P)

SIRE: WINCHESTER RESISTOL H17E (GAV H17E) (P)

DAM: MINNIE-VALE UNIR K54E (SGS K54E)

ROSDALE HONOR X89 (MR X89F)

MINNIE-VALE UNIR G34E (SGS G34E)

May 2020 Australasian Charolais BREEDPLAN Analysis

	CE Dir	CE Dtrs	GL	BW	200D	400D	600D	MCW	Milk	SS	Carc Wt	EMA	Rib	Rump	RBY	IMF	Selection Index Values		
EBV	+5.3	+5.4	-4.1	-1.5	+10	+22	+25	+24	+12	+0.5	+19	+1.1	+1.2	+1.4	-0.8	+0.2	\$Dom	\$Exp	\$N.Term
Acc	32%	27%	46%	51%	62%	64%	61%	56%	43%	39%	52%	27%	29%	28%	27%	25%	+\$37	+\$47	+\$19

Purchaser / \$:

LOT 39

MINNIE-VALE PROTOCOL (P)

TATTOO: SGS P182E

DOB: 25/10/2018

COLOUR: White

COMMENTS:

Protocol is a very soft fleshy young bull exhibiting good sleek hair type. A polled bull with plenty of presence, outlook and strong reproductive traits. A bull who will catch your eye in the yard.



PALGROVE HALLMARK (PK H535E) (P)

SIRE: PALGROVE LORD (PK L698E) (P)

PALGROVE DEMETER 167 (PK G688E)

MOONGOOL CONDOR (DP2 E169E) (P)

DAM: MINNIE-VALE NAND K11E (SGS K11E) (P)

MINNIE-VALE NAND B24E (SGS B24E)

May 2020 Australasian Charolais BREEDPLAN Analysis

Charolais	CE	CE	GL	BW	200D	400D	600D	MCW	Milk	SS	Carc	EMA	Rib	Rump	RBV	IMF	Selection Index Values		
	Dir	Dtrs									Wt						\$Dom	\$Exp	\$N.Term
EBV	+5.1	+0.2	-2.7	-0.1	+4	+16	+15	+19	+7	+0.8	+15	+1.2	+0.1	+0.1	+0.2	-0.1			
Acc	30%	25%	42%	48%	62%	63%	61%	56%	43%	47%	53%	33%	34%	34%	34%	32%	+\$23	+\$26	+\$13

Purchaser / \$:

LOT 40

MINNIE-VALE PONCHO (P)

TATTOO: SGS P139E

DOB: 17/09/2018

COLOUR: White

HOMOZYGOUS POLLED

COMMENTS:

Poncho is an upstanding young Resistol son with good presence, terrific capacity from front to back and sleek skinned. He carries strong maternal qualities with his milk EBV's sitting in the high 5% of the breed. A homozygous polled bull with terrific disposition and overall quality. A bull who really ticks all the boxes.



EATONS ROYAL DYNASTY 6164 M726505 (OAU M726505) (P)

SIRE: WINCHESTER RESISTOL H17E (GAV H17E) (P)

ROSEDALE HONOR X89 (MR X89F)

MOONGOOL CONDOR (DP2 E169E) (P)

DAM: MINNIE-VALE SLUMBER K18E (SGS K18E) (P)

MINNIE-VALE SLUMBER D106E (SGS D106E) (P)

May 2020 Australasian Charolais BREEDPLAN Analysis

Charolais	CE	CE	GL	BW	200D	400D	600D	MCW	Milk	SS	Carc	EMA	Rib	Rump	RBV	IMF	Selection Index Values		
	Dir	Dtrs									Wt						\$Dom	\$Exp	\$N.Term
EBV	+3.1		-4.0	-1.3	+3	+12	+8	+16	+13	-0.1	+13	+1.3	+0.4	+0.2	+0.0				
Acc	28%		35%	49%	62%	63%	61%	56%	43%	38%	52%	25%	26%	25%	25%		+\$21	+\$21	+\$8

Purchaser / \$:

LOT 41

MINNIE-VALE PRINCETON (P)

TATTOO: SGS P152E

DOB: 06/10/2018

COLOUR: White

COMMENTS:

Princeton is square butted with great hindquarter definition and thickness from front to back. His progeny are sure to be high yielding. He exhibits huge capacity and doing ability. Princeton will mature into a really solid unit. A top end cross-breeding bull.



SILVERSTREAM EVOLUTION E168 083090168E (OAN E168E) (P)

WINCHESTER PEACEMAKER D6E (GAV D6E) (P)

SIRE: PALGROVE JAGUAR J629E (PK J629E) (P)

DAM: MINNIE-VALE TINGLE H36E (SGS H36E)

PALGROVE LEONIE 23 (PK D13E) (P)

MINNIE-VALE TINGLE E38E (SGS E38E)

May 2020 Australasian Charolais BREEDPLAN Analysis

	CE Dir	CE Dtrs	GL	BW	200D	400D	600D	MCW	Milk	SS	Carc Wt	EMA	Rib	Rump	RBV	IMF	Selection Index Values		
EBV	+0.6	-2.6	-2.1	+0.1	+7	+15	+24	+12	+5	+0.3	+13	+0.9	+0.3	+0.3	+0.0	+0.1	\$Dom	\$Exp	\$N.Term
Acc	33%	31%	36%	49%	63%	65%	63%	58%	47%	40%	54%	31%	32%	32%	31%	29%	+\$12	+\$17	+\$13

Purchaser / \$:

LOT 42

MINNIE-VALE PANAMA P121E

TATTOO: SGS P121E

DOB: 27/08/2018

COLOUR: White

COMMENTS:

Panama is a top-drawer commercial bull. A very long bull with a strong top line. He has a masculine head with good neck extension and outlook. His Dam is a deep-bodied moderately framed cow. He has a great mixture of French and Canadian genetics in his pedigree.



HARVIE REDEMPTION 36P MC286641 (OAC Z6641E) (P)

AYR ABERDEEN'S FREIGHT (AYR D297F)

SIRE: WINCHESTER PEACEMAKER D6E (GAV D6E) (P)

DAM: MINNIE-VALE THRILLER G132E (SGS G132E)

ROSDALE HONOR X89 (MR X89F)

MINNIE-VALE THRILLER (SGS T74E)

Expected Average Progeny Value - May 2020

	CE Dir	CE Dtrs	GL	BW	200D	400D	600D	MCW	Milk	SS	Carc Wt	EMA	Rib	Rump	RBV	IMF	Selection Index Values		
EBV	+1.3		-1.7	-0.3	+6	+15	+22	+17	+11	+0.4	+16						\$Dom	\$Exp	\$N.Term
																	+\$17	+\$22	+\$13

Full EBV figures for Panama will be available on sale day.

Purchaser / \$:

LOT 43

MINNIE-VALE RED FLAME (P) (R/F)

TATTOO: SGS P150E

DOB: 06/10/2018

COLOUR: Red factor

COMMENTS:

Red Flame is a younger bull who is hitting his straps. These younger red factor bulls towards the back have terrific potential. Red Flame has a sires head, great bone, body length and constitution all in a younger package. He is a top-notch commercial bull.



SILVERSTREAM EVOLUTION E168 083090168E (OAN E168E) (P)

MOONGOOL CONDOR (DP2 E169E) (P)

SIRE: PALGROVE JAGUAR J629E (PK J629E) (P)

DAM: MINNIE-VALE PRIMROSE L113E (SGS L113E)

PALGROVE LEONIE 23 (PK D13E) (P)

MINNIE-VALE PRIMROSE F77E (SGS F77E)

May 2020 Australasian Charolais BREEDPLAN Analysis

Charolais	CE	CE	GL	BW	200D	400D	600D	MCW	Milk	SS	Carc	EMA	Rib	Rump	RBV	IMF	Selection Index Values		
	Dir	Dtrs									Wt						\$Dom	\$Exp	\$N.Term
EBV	+2.1	-0.5	-1.4	+0.5	+8	+14	+20	+26	+5	-0.2	+13	+0.7	-0.5	-0.8	+0.4	-0.2			
Acc	31%	29%	35%	48%	63%	64%	61%	56%	44%	41%	53%	30%	31%	31%	31%	29%	+\$10	+\$12	+\$11

Purchaser / \$:

LOT 44

MINNIE-VALE PEGASUS (P) (R/F)

TATTOO: SGS P172E

DOB: 15/10/2018

COLOUR: Red factor

COMMENTS:

Pegasus is a top of the line Jaguar son. He is a stoutly made young fellow with a very good future. He has an early maturity pattern and exhibits tremendous carcass attributes. He could be one of the best hind quartered young bulls in the draft. An absolute vealer specialist.



SILVERSTREAM EVOLUTION E168 083090168E (OAN E168E) (P)

WINCHESTER PEACEMAKER D6E (GAV D6E) (P)

SIRE: PALGROVE JAGUAR J629E (PK J629E) (P)

DAM: MINNIE-VALE MILLY L115E (SGS L115E)

PALGROVE LEONIE 23 (PK D13E) (P)

MINNIE-VALE MILLY E105E (SGS E105E)

May 2020 Australasian Charolais BREEDPLAN Analysis

Charolais	CE	CE	GL	BW	200D	400D	600D	MCW	Milk	SS	Carc	EMA	Rib	Rump	RBV	IMF	Selection Index Values		
	Dir	Dtrs									Wt						\$Dom	\$Exp	\$N.Term
EBV	+2.9	-0.4	-2.3	+0.3	+12	+19	+30	+28	+4	+0.4	+15	+0.8	+0.1	-0.1	+0.2	+0.1			
Acc	33%	31%	36%	49%	63%	64%	62%	57%	45%	40%	54%	31%	32%	32%	31%	29%	+\$19	+\$28	+\$18

Purchaser / \$:

LOT 45

MINNIE-VALE PB

TATTOO: SGS P195E

DOB: 16/11/2018

COLOUR: White

COMMENTS:

PB starts off the last of the Resistol sons to be sold through our sale ring. Resistol has served us well and these bulls are a fine legacy of their sires. PB is a November calf showing great potential. He displays great balance, bone and cover.



EATONS ROYAL DYNASTY 6164 M726505 (OAU M726505) (P)

MOONGOOL CONDOR (DP2 E169E) (P)

SIRE: WINCHESTER RESISTOL H17E (GAV H17E) (P)

DAM: MINNIE-VALE VEEJAY K2E (SGS K2E)

ROSEDALE HONOR X89 (MR X89F)

MINNIE-VALE VEEJAY D85E (SGS D85E)

May 2020 Australasian Charolais BREEDPLAN Analysis

Charolais	CE Dir	CE Dtrs	GL	BW	200D	400D	600D	MCW	Milk	SS	Carc Wt	EMA	Rib	Rump	RBY	IMF	Selection Index Values		
																	\$Dom	\$Exp	\$N.Term
EBV	+4.6		-4.5	-1.4	+8	+16	+13	+23	+10	+0.1	+15	+1.1	+0.1	-0.1	+0.1		\$27	\$30	\$12
Acc	28%		35%	49%	62%	63%	61%	56%	43%	38%	52%	25%	26%	26%	26%		+\$27	+\$30	+\$12

Purchaser / \$:

LOT 46

MINNIE-VALE PANAM (P) (R/F)

TATTOO: SGS P88E

DOB: 03/08/2018

COLOUR: Red factor

COMMENTS:

Panam is a double polled son of Jaguar. He exhibits terrific thickness and hindquarter definition. He will pass on solid muscle expression to his progeny. His dam, A143E, has been a consistent performer with longevity on her side at 15 years old.



SILVERSTREAM EVOLUTION E168 083090168E (OAN E168E) (P)

GREENWOOD XPLOSION (TSP X32E) (P)

SIRE: PALGROVE JAGUAR J629E (PK J629E) (P)

DAM: MINNIE-VALE URELLA A143E (SGS A143E)

PALGROVE LEONIE 23 (PK D13E) (P)

MINNIE-VALE URELLA (SGS U35E)

May 2020 Australasian Charolais BREEDPLAN Analysis

Charolais	CE Dir	CE Dtrs	GL	BW	200D	400D	600D	MCW	Milk	SS	Carc Wt	EMA	Rib	Rump	RBY	IMF	Selection Index Values		
																	\$Dom	\$Exp	\$N.Term
EBV	+2.9	-0.9	-2.2	+0.4	+11	+15	+23	+21	+1	+0.3	+12	+0.8	-0.1	-0.3	+0.3	+0.1	\$14	\$21	\$14
Acc	34%	34%	39%	51%	64%	63%	70%	58%	51%	43%	57%	32%	34%	33%	33%	30%	+\$14	+\$21	+\$14

Purchaser / \$:

LOT 47

MINNIE-VALE PISTOL (P/S)

TATTOO: SGS P202E

DOB: 30/11/2018

COLOUR: White

COMMENTS:

Pistol is another younger bull with terrific body length. A good sirey head with a deep hindquarter. We like this bull for his colossal carcass attributes and growth for age. His milk EBV sits in the high 5% of the breed.



EATONS ROYAL DYNASTY 6164 M726505 (OAU M726505) (P)

AYR ABERDEEN'S FREIGHT (AYR D297F)

SIRE: WINCHESTER RESISTOL H17E (GAV H17E) (P)

DAM: MINNIE-VALE JOSH (SGS J36E)

ROSEDALE HONOR X89 (MR X89F)

MINNIE-VALE MICHELLE E2E (SGS E2E) (P)

May 2020 Australasian Charolais BREEDPLAN Analysis

Charolais	CE Dir	CE Dtrs	GL	BW	200D	400D	600D	MCW	Milk	SS	Carc Wt	EMA	Rib	Rump	RBY	IMF	Selection Index Values			
																	\$Dom	\$Exp	\$N.Term	
EBV	+4.5		-4.5	-1.3	+8	+17	+18	+19	+15	+0.4	+16									
Acc	27%		34%	48%	62%	64%	61%	56%	44%	36%	52%						+\$30	+\$34	+\$15	

Purchaser / \$:

LOT 48

MINNIE-VALE PERIWINKLE (P)

TATTOO: SGS P154E

DOB: 07/10/2018

COLOUR: White

COMMENTS:

Periwinkle is the final son of Lord to be offered in this year's draft. A moderately framed bull with a lovely smooth hair type, which we like to see. He is a particularly well balanced young sire, with good neck extension and smooth through the front end. A lower birthweight bull with strong reproduction traits.



PALGROVE HALLMARK (PK H535E) (P)

FERNVALE XTRA IMPACT (FEN X63E)

SIRE: PALGROVE LORD (PK L698E) (P)

DAM: MINNIE-VALE LUCY E118E (SGS E118E)

PALGROVE DEMETER 167 (PK G688E)

MINNIE-VALE LUCY W67E (SGS W67E)

May 2020 Australasian Charolais BREEDPLAN Analysis

Charolais	CE Dir	CE Dtrs	GL	BW	200D	400D	600D	MCW	Milk	SS	Carc Wt	EMA	Rib	Rump	RBY	IMF	Selection Index Values		
																	\$Dom	\$Exp	\$N.Term
EBV	+2.9	-1.8	-1.8	+0.2	+4	+13	+19	+17	+9	+0.9	+13	+1.9	+0.4	+0.5	+0.3	+0.2			
Acc	33%	31%	44%	49%	63%	64%	61%	57%	48%	48%	54%	34%	36%	35%	35%	33%	+\$18	+\$24	+\$14

Purchaser / \$:

LOT 49

MINNIE-VALE PONDEROSA

TATTOO: SGS P200E

DOB: 20/11/2018

COLOUR: White

COMMENTS:

Ponderosa is another eye catching young bull on the paddock. Weight for age and capacity makes him one of the strongest Resistol sons in this year's offering and the last one! What a fine example of the Resistol line.



EATONS ROYAL DYNASTY 6164 M726505 (OAU M726505) (P)

GUNNADOO UNCLE BILL U108E (GN1 U108E)

SIRE: WINCHESTER RESISTOL H17E (GAV H17E) (P)

DAM: MINNIE-VALE SANDY C69E (SGS C69E)

ROSEDALE HONOR X89 (MR X89F)

MINNIE-VALE SANDY W110E (SGS W110E)

May 2020 Australasian Charolais BREEDPLAN Analysis

Charolais	CE Dir	CE Dtrs	GL	BW	200D	400D	600D	MCW	Milk	SS	Carc Wt	EMA	Rib	Rump	RBV	IMF	Selection Index Values		
	EBV	+4.4	+5.8	-3.3	-0.3	+10	+20	+25	+22	+6	+0.5	+18	+1.9	+0.4	+0.3	+0.2		\$Dom	\$Exp
Acc	30%	26%	35%	50%	62%	64%	62%	57%	49%	38%	53%	25%	26%	25%	25%		+\$29	+\$38	+\$18

Purchaser / \$:

LOT 50

MINNIE-VALE RED JACK (P) (R/F)

TATTOO: SGS P185E

DOB: 29/10/2018

COLOUR: Red factor

COMMENTS:

To finish this year's draft, we chose a young red factor bull, polled on both sides of his pedigree. Red Jack has excellent body shape and thickness throughout and will produce solid vealer calves with growth and muscle for domestic markets. He is a quietly natured bull who will breed on.



PALGROVE HALLMARK (PK H535E) (P)

WINCHESTER PEACEMAKER D6E (GAV D6E) (P)

SIRE: PALGROVE LORD (PK L698E) (P)

DAM: MINNIE-VALE MOONLIGHT H17E (SGS H17E) (P)

PALGROVE DEMETER 167 (PK G688E)

MINNIE-VALE MOONLIGHT A78E (SGS A78E) (P)

May 2020 Australasian Charolais BREEDPLAN Analysis

Charolais	CE Dir	CE Dtrs	GL	BW	200D	400D	600D	MCW	Milk	SS	Carc Wt	EMA	Rib	Rump	RBV	IMF	Selection Index Values		
	EBV	+4.7	-1.4	-2.8	+0.0	+6	+17	+22	+23	+8	+1.2	+15	+0.9	+0.5	+0.7	-0.3	+0.2	\$Dom	\$Exp
Acc	32%	28%	43%	48%	62%	63%	60%	56%	44%	47%	53%	34%	35%	35%	34%	32%	+\$23	+\$31	+\$16

Purchaser / \$:

Why Minnie-Vale Bulls are an **Important Investment!**

- Semen Tested
- Predictably Even
- Performance Recorded Herd
- Pestivirus tested
- Scanned EMA, IMFs
- Guaranteed Bulls
- Over 40 years experience



POSTAGE
PAID
AUSTRALIA

Jason, and Sue and family would like to thank everybody for their attendance at today's sale. We thank you all for your support and wish you a very safe trip home.

