



GLENWARRAH

HEREFORDS



BROOKSBY

ANGUS

BULL SALE

Wednesday 22nd July 2020

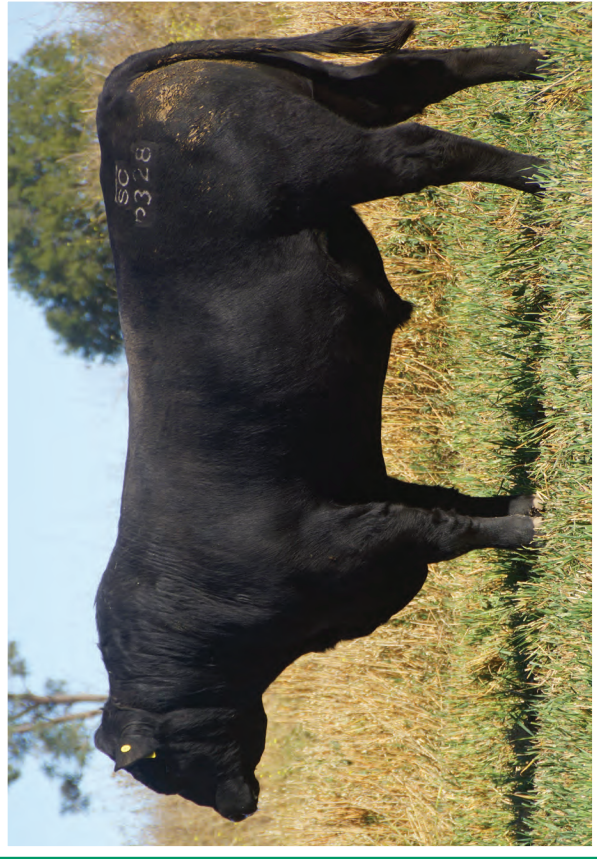
at 11.30am

at "Brooksby" Bundarra





Lot 37 Brooksby Capitalist P043



Lot 40 Brooksby Regent P328



Lot 1 Glenwarrah Kooragong P159 (P)



Lot 5 Glenwarrah Kooragong P285 (H)

GLENWARRAH HEREFORDS & BROOKSBY ANGUS



BULL SALE

30 Hereford Bulls
28 Angus Bulls
13 Yearling Angus Bulls

11.30 am
Wednesday 22nd July 2020
at "Brooksby" Bundarra

The Collins Family
"Brooksby"
Bundarra NSW 2359
Ph 02 6723 7225
Steve & Leanne: 0428 680 814
David & Kate: 0497 270 455
Email: glenwarrah@ipstarmail.com.au
Web: www.glenwarrah.com.au


AuctionsPlus
Buy and Sell stock nationally

SELLING AGENTS


Feeding the Future™

Amanda Lockyer 0429 787 355
Cody van Heerwaad 0421 272 223
John Teitzel 0428 659 435
Joel Fleming 0467 725 195
John Settree 0408 297 368.



**ARMITAGE
& BUCKLEY**

Luke Heagney
0459 044 447
Tom Piddington
0429 525 797



AuctionsPlus™

Can't make the sale?

Log onto AuctionsPlus and bid on your phone, tablet or computer

REGISTER

1

FREE once off registration for all auctions.

VIEW CATALOGUE

2

Stock history, photos, videos, pedigrees and more.

LIMIT BID

3

Can't make the auction? Set your maximum bid prior to the auction and let the system bid for you.

ENTER AUCTION

4

Log into the auction anytime, anywhere and bid on your mobile, tablet or computer.

CONTACT SELLER

5

Contact selling agent to arrange payment and delivery.

PAYMENT

6

Via the selling agent's terms and conditions.

Log in today at auctionsplus.com.au or call 02 9262 4222

SALE INFORMATION

- GST:** GST is to be added onto the purchase price at the fall of the auctioneer's hammer. You will be invoiced purchased price plus GST.
- REBATE:** 2% rebate to outside Agents introducing buyers in writing 24 hours prior to the Sale.
- AUCTIONSPLUS:** This sale will be interfaced with AuctionsPlus. Register online at auctionsplus.com.au or call 02 9262 4222. Or bid through your preferred agent.
- TRANSPORT:** All transport to be co-ordinated through Peter Kratz Livestock Transport unless you have your own truck.
- CATTLE HEALTH:** All bulls were semen tested and are fully vaccinated with 7 in 1.
- JOHNES:** We are accredited J-BAS 7.
- INSPECTION:** Bulls may be inspected prior to the sale or on the morning of the sale.
- INSURANCE:** We recommend bulls are insured against injury and death.
- ACCOMMODATION:** Motels are situated in Armidale, Uralla and Inverell.
- REFRESHMENTS:** Sale day refreshments will be supplied by the Grace Munro Ladies Auxillary.
- DISCLAIMER:** The owners, employees, sale staff and representatives accept no liability for accidents that occur, although these are rare at cattle sales, any person attending does so at their own risk. While all care has been taken in the preparation of this sale catalogue, Glenwarrah principals accepts no responsibility for any errors or omissions contained in this publication.
- CATALOGUES:** Catalogues can be viewed online at www.glenwarrah.com.au or the Breed Society websites.

UNDERSTANDING EBVS

A BRIEF GUIDE TO BREEDPLAN

BREEDPLAN is a performance valuation program that describes the genetic profile of bulls for a number of commercially important traits. This profile is given as an Estimated Breeding Value (EBV), expressed as a figure (+/-) relative to the breed benchmark of zero (0) for each trait.

Accuracies - The accuracy provides a measure of the reliability of the EBV. The higher the value, the less likelihood of the EBV changing with the addition of more performance records on the animal.

Birth Weight - is based on the measured birth weight of animals, adjusted for dam age. The lower the value the lighter the calf at birth and the lower the likelihood of a difficult birth. This is particularly important when selecting sires for use over heifers.

200 Day Weight - is calculated from the weight of animals taken between 80 and 300 days of age. Values are adjusted to an animal's genetic merit for growth to early ages.

400 Day Weight - is calculated from the weight of progeny taken between 301 and 500 days of age, adjusted to 400 days and for age of dam. This EBV is the best single estimate of an animal's genetic merit for yearling weight.

600 Day Weight - is calculated from the weight of progeny taken between 501 and 900 days of age, adjusted to 600 days and for age of dam. This EBV is the best single estimate of an animal's genetic merit for growth beyond yearling age.

Milk - is an estimate of an animal's milking ability. For sires, this EBV is indicative of their daughter's milking ability as it affects the 200 day weight of their calves.

Scrotal Size - is calculated from the circumference of the scrotum taken between 300 and 700 days of age and adjusted to 400 days of age. This EBV is an estimate of an animal's genetic merit for scrotal size. There is also a small negative correlation with age of puberty in female progeny and therefore selection for increased scrotal size will result in reduced age at calving of female progeny.

EMA - estimates the genetic difference in carcass weight at a standard age of 650 days.

RIB - estimates the genetic differences in fat depth at the 12/13th rib in a 300kg dressed carcass. More positive EBVs indicate more subcutaneous fat and earlier maturity.

Rump - estimates the genetic differences in fat depth at the P8 site of a 300kg dressed carcass. More positive EBVs indicate more subcutaneous fat and earlier maturity.

IMF% - is an estimate of the genetic difference in the percentage of intra-muscular fat at the 12/13th rib site in a 300kg carcass. Depending on market targets, larger more positive values are generally more favourable.



HEREFORD AUSTRALIA

MAY 2020 HEREFORD BREEDPLAN
BREEDPLAN AVERAGE EBVS
FOR 2018 BORN CALVES

BW	200D	400D	600D	Milk	SS	EMA	RIB	Rump	IMF
+4.3	+33	+55	+78	+16	+2.0	+3.4	+0.6	+0.7	+0.5



ANGUS AUSTRALIA

JUNE 2020 TRANSTASMAN ANGUS
CATTLE EVALUATION AVERAGE EBVS
FOR 2018 BORN CALVES

BW	200D	400D	600D	Milk	SS	EMA	RIB	Rump	IMF
+4.3	+48	+86	+112	+17	+1.9	+5.7	-0.1	-0.4	+2.0

NOTE: BREEDPLAN EBVS CANNOT BE COMPARED BETWEEN BREEDS.



HEREFORD REFERENCE SIRES

GLENWARRAH MUMBAI M029 (H)

Born: 8/07/2016

Ident: SLCM029

KALUDAH SAMBO 2 (H)
 KALUDAH GREASEPOT (H)
 KALUDAH LINNET 195 (AI) (H)
SIRE: S BOOROOK MUMBAI (AI) (H)
 S BOOROOK CONARA (AI) (H)
 S BOOROOK MATCHLESS W49 (AI) (H)
 S BOOROOK MATCHLESS R158 (H)
 CURRACABARK CRUSADER (AI) (H)
 CURRACABARK SATELLITE (H)
 FAULKLAND EMPRESS 89 (TW) (H)
DAM: GLENWARRAH LIONESS G345 (H)
 GLENWARRAH MOREE (AI) (H)
 GLENWARRAH LIONESS 31 (H)
 GLENWARRAH LIONESS 10 (H)



MAY 2020 HEREFORD BREEDPLAN

	BW	200D	400D	600D	Milk	SS	EMA	RIB	Rump	IMF
EBV	+7.2	+38	+61	+95	+7	+1.2	+3.5	-0.1	+0.1	+0.4
Acc	80%	72%	70%	75%	40%	74%	50%	53%	58%	49%

Traits Observed: BWT,200WT,600WT(x2),SS,FAT,EMA,IMF,Genomics

STANFORD KIEV K053 (P)

Born: 21/08/2014

Ident: RNRK053

BROOKLYND DYNASTY Z31 (P)
 BROOKLYND CHAMPAGNE (P)
 BROOKLYND PRINCESS ALEX Y23 (P)
SIRE: STANFORD GLASGOW G112 (P)
 COOTA PARK U123 (AI) (P)
 STANFORD MOTH Y169 (AI) (P)
 STANFORD MOTH V87 (P)
 ALLENDALE ROBIN HOOD (AI) (P)
 LLANDILLO Z138 (P)
 LLANDILLO S152 COUNTESS V88 (P)
DAM: STANFORD MOTH G061 (P)
 CROFT-AMBREY DEVEREAUX (P)
 STANFORD MOTH Y143 (P)
 STANFORD MOTH V159 (P)

MAY 2020 HEREFORD BREEDPLAN

	BW	200D	400D	600D	Milk	SS	EMA	RIB	Rump	IMF
EBV	+4.2	+26	+48	+70	+8	+1.2	+2.7	+1.4	+2.6	+0.6
Acc	86%	76%	76%	79%	52%	83%	56%	61%	66%	56%

Traits Observed: CE,BWT,200WT,400WT,SS,FAT,EMA,IMF,Genomics

WYREGALL KOORAGANG K46 (P)

Born: 1/08/2014

Ident: WINK46

MINLACOWIE VALIANT NICK (AI) (ET) (P)
 KERLSON PINES AMBASSADOR A27 (P)
 KERLSON PINES PAULINE V4 (P)
SIRE: WYREGALL GOLDMINER G83 (P)
 WILLOX HOLBROOK V52 (P)
 WYREGALL QUEENIE B38 (P)
 WYREGALL QUEENIE W27 (P)
 MINLACOWIE VALIANT NICK (AI) (ET) (P)
 KERLSON PINES AMBASSADOR A27 (P)
 KERLSON PINES PAULINE V4 (P)
DAM: WYREGALL LIONESS F68 (P)
 KIDMAN MENINGA V79 (AI) (S)
 WYREGALL LIONESS Z47 (P)
 WYREGALL LIONESS W25 (P)

MAY 2020 HEREFORD BREEDPLAN

	BW	200D	400D	600D	Milk	SS	EMA	RIB	Rump	IMF
EBV	+6.6	+30	+53	+77	+10	+1.0	+2.6	+0.1	+0.1	+0.1
Acc	89%	78%	78%	84%	41%	85%	56%	58%	64%	52%

Traits Observed: BWT,200WT,600WT(x2),SS,FAT,EMA,IMF



HEREFORD REFERENCE SIRES

KAROONDA REGENT (AI) (H)

Born: 18/07/2014

Ident: SKSK421

LLANGLOTHAN STORM U964 (H)
 GLENDAN PARK STORM W134 (H)
 ZUM PARK ATHENA (H)

SIRE: BOWMONT STORM B720 (H)

VENA PARK SHARKA (H)
 BOWMONT QUEEN Y341 (AI) (TW) (H)
 BOWMONT QUEEN 190 (AI) (H)

RED HILL IDLE RICH ET (AI) (ET) (H)
 GLENWARRAH MEN AT WORK (H)
 GLENWARRAH MINERVA U44 (H)

DAM: KAROONDA MARITANA E352 (H)

COOTHARABA HARTLEY (H)
 KAROONDA MARITANA Y709 (AI) (H)
 KAROONDA MARITANA 252 (H)

MAY 2020 HEREFORD BREEDPLAN

	BW	200D	400D	600D	Milk	SS	EMA	RIB	Rump	IMF
EBV	+3.9	+34	+52	+74	+20	+0.1	+3.3	+0.2	+0.8	-0.4
Acc	91%	87%	87%	88%	60%	86%	64%	67%	72%	67%

Traits Observed: GL,BWT,400WT,600WT,SS,FAT,EMA,IMF,Genomics

AMOS VALE DELUX (H)

Born: 27/08/2015

Ident: NBCL35

COOTHARABA MAGNUM (H)
 GLENDAN PARK ECLIPSE E040 (AI) (ET) (H)
 GLENDAN PARK MOONBEAM Z124 (H)

SIRE: DEVON COURT ECLIPSE H190 (H)

GLENDAN PARK STORM W134 (H)
 DEVON COURT LIONESS A207 (H)
 DEVON COURT LIONESS U376 (H)

MAWARRA TRAIL BLAZER (AI) (H)
 TALBALBA YONKI (AI) (H)
 TALBALBA CHOICE 77 (AI) (H)

DAM: AMOS VALE FAVOURITE 240 (H)

EURANGATUCK AWE (H)
 AMOS VALE FAVOURITE 190 (H)
 AMOS VALE FAVOURITE 167 (H)

MAY 2020 HEREFORD BREEDPLAN

	BW	200D	400D	600D	Milk	SS	EMA	RIB	Rump	IMF
EBV	+6.2	+32	+50	+75	+10	+0.3	+3.3	+0.3	+0.7	+0.5
Acc	61%	59%	64%	69%	40%	59%	39%	43%	46%	42%

Traits Observed: CE,600WT,Genomics

DUNDEE BALLAD (H)

Born: 19/08/2015

Ident: RK2L11

REEDY CREEK DEBONAIR 206 (H)
 KAROONDA LINGO (AI) (H)
 KAROONDA MINERVA 89 (H)

SIRE: SOUTH BOOROOK BOMBAY (H)

COURALLIE ASCOT (AI) (H)
 S BOOROOK BRIDESMAID D34 (AI) (H)
 S BOOROOK BRIDESMAID Z18 (H)

YAVENVALE COLOSSAL (H)
 BATTALION COLUMBO (H)
 COURALLIE CONSTANCE V086 (H)

DAM: DUNDEE SUNDAE 48 (H)

LOTUS QUEBEC (H)
 DUNDEE SUNDAE 39 (H)
 DUNDEE SUNDAE 36 (H)

MAY 2020 HEREFORD BREEDPLAN

	BW	200D	400D	600D	Milk	SS	EMA	RIB	Rump	IMF
EBV	+5.2	+34	+61	+88	+11	+0.5	+2.8	-1.1	-1.5	-0.4
Acc	79%	73%	73%	77%	45%	79%	51%	54%	59%	49%

Traits Observed: 200WT,400WT,600WT,SS,FAT,EMA,IMF,Genomics



ARMITAGE & BUCKLEY

Armidale's Auctioneers

*Servicing Armidale and the
New England area since 1974*

Experts in the sale of cattle, sheep, goats, pigs, poultry, furniture and farm equipment. Specialising in all facets of livestock sales and marketing.

At Armitage & Buckley, we have an expert team of experienced and qualified livestock marketing specialists, eager to market your livestock to your best possible advantage. We can advise you on the best method of marketing your livestock in order to achieve the optimum return for your stock.

We are a family owned business, employing local people, to service local people. We are very conscious of supporting the community that supports us, and pride ourselves on the high level of service we provide.



Office 6772 1255

Unit 2, 11 Marsh Street, Armidale NSW 2350
Email: admin@armitagebuckley.com.au
www.armitagebuckley.com.au

**Tom Piddington
0429 525 797**

**Luke Heagney
0459 044 447**



HEREFORD BULLS

1 **GLENWARRAH KOORAGANG P159 (P)**
 Born: 2/08/2018 Ident: SLCP159

KERLSON PINES AMBASSADOR A27 (P)
 WYREGALL GOLDMINER G83 (P)
 WYREGALL QUEENIE B38 (P)
SIRE: WYREGALL KOORAGANG K46 (P)
 KERLSON PINES AMBASSADOR A27 (P)
 WYREGALL LIONESS F68 (P)
 WYREGALL LIONESS Z47 (P)

MONREID P EXPRESS X001 ET1 (AI) (ET) (H)
 COOTHARABA MIDDLETON (H)
 COOTHARABA QUEEN 120 (H)
DAM: GLENWARRAH FANCY E003 (H)
 MONREID STATESMAN (H)
 GLENWARRAH FANCY 11 (AI) (H)
 GLENWARRAH FANCY T10 (H)

MAY 2020 HEREFORD BREEDPLAN

	BW	200D	400D	600D	Milk	SS	EMA	RIB	Rump	IMF
EBV	+7.0	+37	+65	+99	+12	+1.0	+3.8	+0.1	+0.2	+0.4
Acc	71%	63%	64%	69%	37%	71%	44%	46%	51%	40%

Traits Observed: BWT,600WT,SS,FAT,EMA,IMF

Purchaser \$.....

2 **GLENWARRAH KOORAGANG P201 (P)**
 Born: 23/08/2018 Ident: SLCP201

KERLSON PINES AMBASSADOR A27 (P)
 WYREGALL GOLDMINER G83 (P)
 WYREGALL QUEENIE B38 (P)
SIRE: WYREGALL KOORAGANG K46 (P)
 KERLSON PINES AMBASSADOR A27 (P)
 WYREGALL LIONESS F68 (P)
 WYREGALL LIONESS Z47 (P)

BUNDARRA VALIANT Y58 (H)
 WRL DINGO (H)
 COURALLIE S342 OYSTER GIRL Y062 (AI) (H)
DAM: GLENWARRAH ROSETTE K276 (H)
 CHARVEL ULYSSES (H)
 GLENWARRAH ROSETTE D087 (H)
 CHARVEL ROSETTE X087 (H)

MAY 2020 HEREFORD BREEDPLAN

	BW	200D	400D	600D	Milk	SS	EMA	RIB	Rump	IMF
EBV	+6.9	+36	+62	+91	+11	+1.1	+3.7	-0.1	0.0	-0.2
Acc	70%	61%	62%	67%	30%	71%	43%	45%	50%	40%

Traits Observed: BWT,600WT,SS,FAT,EMA,IMF

Purchaser \$.....

3 **GLENWARRAH BALLAD P265 (P)**
 Born: 27/07/2018 Ident: SLCP265

KAROONDA LINGO (AI) (H)
 SOUTH BOOROOK BOMBAY (H)
 S BOOROOK BRIDESMAID D34 (AI) (H)
SIRE: DUNDEE BALLAD (H)
 BATTALION COLUMBO (H)
 DUNDEE SUNDAE 48 (H)
 DUNDEE SUNDAE 39 (H)

MERAWAH ALL STAR Y103 (AI) (ET) (P)
 LINDENDALE BEAU 1 (P)
 LINDENDALE LEONI 29 (P)
DAM: GLENWARRAH RUTH J127 (P)
 HUNDAY KANSAS (H)
 GLENWARRAH RUTH 12 (H)
 GLENWARRAH RUTH 11 (H)

MAY 2020 HEREFORD BREEDPLAN

	BW	200D	400D	600D	Milk	SS	EMA	RIB	Rump	IMF
EBV	+5.5	+32	+52	+78	+13	+0.3	+3.8	+0.0	+0.0	+0.4
Acc	68%	60%	61%	66%	33%	70%	41%	44%	48%	38%

Traits Observed: BWT,600WT,SS,FAT,EMA,IMF

Purchaser \$.....

4 **GLENWARRAH MUMBAI P204 (H)**
 Born: 8/07/2018 Unregistered

KALUDAH GREASEPOT (H)
 S BOOROOK MUMBAI (AI) (H)
 S BOOROOK MATCHLESS W49 (AI) (H)
SIRE: GLENWARRAH MUMBAI M029 (H)
 CURRACABARK SATELLITE (H)
 GLENWARRAH LIONESS G345 (H)
 GLENWARRAH LIONESS 31 (H)

CHARNOCK HAYMAKER (H)
 WALLAN CREEK D155 (H)
 WALLAN CREEK BARONESS U206 (H)
DAM: GLENWARRAH SATISFACTION H43 (H)
 COOTHARABA ELGIN 2 (H)
 GLENWARRAH SATISFACTION 88 (H)
 GLENWARRAH SATISFACTION 65 (H)

MAY 2020 HEREFORD BREEDPLAN

	BW	200D	400D	600D	Milk	SS	EMA	RIB	Rump	IMF
EBV	+5.4	+33	+57	+91	+10	+1.2	+2.9	+0.0	+0.2	+0.7
Acc	69%	62%	63%	68%	34%	70%	42%	45%	49%	40%

Traits Observed: BWT,600WT,SS,FAT,EMA,IMF

Purchaser \$.....



HEREFORD BULLS

5

GLENWARRAH KOORAGANG P285 (P)

Born: 21/07/2018

Ident: SLCP285

KERLSON PINES AMBASSADOR A27 (P)
 WYREGALL GOLDMINER G83 (P)
 WYREGALL QUEENIE B38 (P)

SIRE: WYREGALL KOORAGANG K46 (P)

KERLSON PINES AMBASSADOR A27 (P)
 WYREGALL LIONESS F68 (P)
 WYREGALL LIONESS Z47 (P)

CURRACABARK CRUSADER (AI) (H)
 CURRACABARK SATELLITE (H)
 FAULKLAND EMPRESS 89 (TW) (H)

DAM: GLENWARRAH LIONESS G345 (H)

GLENWARRAH MOREE (AI) (H)
 GLENWARRAH LIONESS 31 (H)
 GLENWARRAH LIONESS 10 (H)

MAY 2020 HEREFORD BREEDPLAN

	BW	200D	400D	600D	Milk	SS	EMA	RIB	Rump	IMF
EBV	+5.8	+32	+52	+77	+7	+0.8	+3.5	-0.4	-0.5	+0.1
Acc	71%	63%	63%	69%	36%	72%	44%	47%	52%	42%

Traits Observed: BWT,600WT,SS,FAT,EMA,IMF

Purchaser \$.....

6

GLENWARRAH MUMBAI P232 (H)

Born: 24/08/2018

Ident: SLCP232

KALUDAH GREASEPOT (H)
 S BOOROOK MUMBAI (AI) (H)
 S BOOROOK MATCHLESS W49 (AI) (H)

SIRE: GLENWARRAH MUMBAI M029 (H)

CURRACABARK SATELLITE (H)
 GLENWARRAH LIONESS G345 (H)
 GLENWARRAH LIONESS 31 (H)

HRT XCEL ET (AI) (ET) (H)
 DALKEITH Z514 (AI) (H)
 DALKEITH MINERVA Q 56 (H)

DAM: GLENWARRAH LIONESS E143 (H)

J & B SEDUCTION S146 (H)
 GLENWARRAH LIONESS 11 (H)
 GLENWARRAH LIONESS S3 (AI) (H)

MAY 2020 HEREFORD BREEDPLAN

	BW	200D	400D	600D	Milk	SS	EMA	RIB	Rump	IMF
EBV	+6.2	+34	+55	+85	+9	+0.8	+3.1	-0.6	-0.7	+0.1
Acc	68%	61%	62%	67%	35%	69%	41%	44%	48%	39%

Traits Observed: BWT,600WT,SS,FAT,EMA,IMF

Purchaser \$.....

7

GLENWARRAH KOORAGANG P184 (P)

Born: 13/07/2018

Ident: SLCP184

KERLSON PINES AMBASSADOR A27 (P)
 WYREGALL GOLDMINER G83 (P)
 WYREGALL QUEENIE B38 (P)

SIRE: WYREGALL KOORAGANG K46 (P)

KERLSON PINES AMBASSADOR A27 (P)
 WYREGALL LIONESS F68 (P)
 WYREGALL LIONESS Z47 (P)

BUNDARRA VALIANT Y58 (H)
 WRL DINGO (H)
 COURALLIE S342 OYSTER GIRL Y062 (AI) (H)

DAM: GLENWARRAH PRUNELLA H188 (H)

CHARVEL ULYSSES (H)
 CHARVEL PRUNELLA B060 (H)
 CHARVEL PRUNELLA U090 (H)

MAY 2020 HEREFORD BREEDPLAN

	BW	200D	400D	600D	Milk	SS	EMA	RIB	Rump	IMF
EBV	+5.9	+31	+52	+76	+12	+1.0	+2.4	-0.3	-0.3	-0.3
Acc	70%	62%	63%	68%	32%	71%	42%	45%	50%	39%

Traits Observed: BWT,600WT,SS,FAT,EMA,IMF

Purchaser \$.....

8

GLENWARRAH KIEV P163 (P)

Born: 2/08/2018

Ident: SLCP163

BROOKLYND CHAMPAGNE (P)
 STANFORD GLASGOW G112 (P)
 STANFORD MOTH Y169 (AI) (P)

SIRE: STANFORD KIEV K053 (P)

LLANDILLO Z138 (P)
 STANFORD MOTH G061 (P)
 STANFORD MOTH Y143 (P)

CHARNOCK HAYMAKER (H)
 WALLAN CREEK D155 (H)
 WALLAN CREEK BARONESS U206 (H)

DAM: GLENWARRAH ROSETTE L092 (H)

KAROONDA LUMBERJACK (H)
 GLENWARRAH ROSETTE G9 (H)
 GLENWARRAH ROSETTE D087 (H)

MAY 2020 HEREFORD BREEDPLAN

	BW	200D	400D	600D	Milk	SS	EMA	RIB	Rump	IMF
EBV	+4.3	+26	+45	+64	+8	+1.5	+2.3	+0.8	+1.6	+0.4
Acc	67%	61%	63%	68%	35%	71%	44%	47%	51%	41%

Traits Observed: BWT,600WT,SS,FAT,EMA,IMF

Purchaser \$.....



HEREFORD BULLS

9

GLENWARRAH BALLAD P127 (H)

Born: 8/09/2018 Ident: SLCP127

KAROONDA LINGO (AI) (H)
 SOUTH BOOROOK BOMBAY (H)
 S BOOROOK BRIDESMAID D34 (AI) (H)
SIRE: DUNDEE BALLAD (H)
 BATTALION COLUMBO (H)
 DUNDEE SUNDAE 48 (H)
 DUNDEE SUNDAE 39 (H)

COOTHARABA OGILVIE (H)
 STRATHLEIGH OLGIVE F594 (H)
 STRATHLEIGH SUNBEAM C799 (H)
DAM: GLENWARRAH LADYBIRD K027 (H)
 GLENDAN PARK YARDMAN Y045 (AI) (H)
 GLENWARRAH LADYBIRD 32 (H)
 GLENWARRAH LADYBIRD 26 (H)

MAY 2020 HEREFORD BREEDPLAN

	BW	200D	400D	600D	Milk	SS	EMA	RIB	Rump	IMF
EBV	+6.1	+31	+55	+79	+12	+1.0	+3.4	-0.3	-0.3	+0.1
Acc	69%	61%	62%	67%	34%	70%	42%	45%	49%	40%

Traits Observed: BWT,600WT,SS,FAT,EMA,IMF

Purchaser \$.....

10

GLENWARRAH MUMBAI P162 (H)

Born: 30/08/2018 Ident: SLCP162

KALUDAH GREASEPOT (H)
 S BOOROOK MUMBAI (AI) (H)
 S BOOROOK MATCHLESS W49 (AI) (H)
SIRE: GLENWARRAH MUMBAI M029 (H)
 CURRACABARK SATELLITE (H)
 GLENWARRAH LIONESS G345 (H)
 GLENWARRAH LIONESS 31 (H)

GLENWARRAH MEN AT WORK (H)
 KAROONDA LUMBERJACK (H)
 CHARVEL REBECCA U014 (H)
DAM: GLENWARRAH DORO H184 (H)
 CHARVEL ULYSSES (H)
 GLENWARRAH DORO 17 (H)
 GLENWARRAH DORO 15 (H)

MAY 2020 HEREFORD BREEDPLAN

	BW	200D	400D	600D	Milk	SS	EMA	RIB	Rump	IMF
EBV	+4.7	+30	+52	+80	+6	+1.2	+4.0	-0.1	+0.1	+0.4
Acc	69%	62%	62%	67%	34%	69%	41%	44%	49%	39%

Traits Observed: BWT,600WT,SS,FAT,EMA,IMF

Purchaser \$.....

11

GLENWARRAH BALLAD P269 (S)

Born: 2/08/2018 Ident: SLCP269

KAROONDA LINGO (AI) (H)
 SOUTH BOOROOK BOMBAY (H)
 S BOOROOK BRIDESMAID D34 (AI) (H)
SIRE: DUNDEE BALLAD (H)
 BATTALION COLUMBO (H)
 DUNDEE SUNDAE 48 (H)
 DUNDEE SUNDAE 39 (H)

CHARNOCK HAYMAKER (H)
 WALLAN CREEK D155 (H)
 WALLAN CREEK BARONESS U206 (H)
DAM: GLENWARRAH SATISFACTION J162 (H)
 COOTHARABA ELGIN 2 (H)
 GLENWARRAH SATISFACTION 73 (H)
 GLENWARRAH SATISFACTION R38 (H)

MAY 2020 HEREFORD BREEDPLAN

	BW	200D	400D	600D	Milk	SS	EMA	RIB	Rump	IMF
EBV	+5.4	+30	+56	+83	+13	+1.3	+3.8	-0.8	-1.1	-0.2
Acc	69%	61%	61%	67%	37%	70%	42%	45%	49%	40%

Traits Observed: BWT,600WT,SS,FAT,EMA,IMF

Purchaser \$.....

12

GLENWARRAH BALLAD P237 (H)

Born: 4/07/2018 Ident: SLCP237

KAROONDA LINGO (AI) (H)
 SOUTH BOOROOK BOMBAY (H)
 S BOOROOK BRIDESMAID D34 (AI) (H)
SIRE: DUNDEE BALLAD (H)
 BATTALION COLUMBO (H)
 DUNDEE SUNDAE 48 (H)
 DUNDEE SUNDAE 39 (H)

COOTHARABA OGILVIE (H)
 STRATHLEIGH OLGIVE F594 (H)
 STRATHLEIGH SUNBEAM C799 (H)
DAM: GLENWARRAH MOONBEAM K293 (H)
 DALKEITH Z514 (AI) (H)
 GLENWARRAH MOONBEAM F50 (H)
 GLENWARRAH MOONBEAM C010 (H)

MAY 2020 HEREFORD BREEDPLAN

	BW	200D	400D	600D	Milk	SS	EMA	RIB	Rump	IMF
EBV	+6.1	+34	+59	+88	+11	+0.2	+2.6	-1.2	-1.6	-0.3
Acc	68%	60%	61%	66%	32%	70%	41%	44%	49%	39%

Traits Observed: BWT,600WT,SS,FAT,EMA,IMF

Purchaser \$.....



HEREFORD BULLS

13 GLENWARRAH KOORAGANG P080 (P)
 Born: 17/08/2018 Ident: SLCP080

KERLSON PINES AMBASSADOR A27 (P)
 WYREGALL GOLDMINER G83 (P)
 WYREGALL QUEENIE B38 (P)
SIRE: WYREGALL KOORAGANG K46 (P)
 KERLSON PINES AMBASSADOR A27 (P)
 WYREGALL LIONESS F68 (P)
 WYREGALL LIONESS Z47 (P)

GLENWARRAH MEN AT WORK (H)
 KAROONDA LUMBERJACK (H)
 CHARVEL REBECCA U014 (H)
DAM: GLENWARRAH VICTORIA G23 (H)
 RED HILL IDLE RICH ET (AI) (ET) (H)
 GLENWARRAH VICTORIA 5 (H)
 GLENWARRAH VICTORIA U1 (H)

MAY 2020 HEREFORD BREEDPLAN

	BW	200D	400D	600D	Milk	SS	EMA	RIB	Rump	IMF
EBV	+5.7	+31	+54	+81	+8	+1.1	+3.7	+0.1	+0.3	+0.0
Acc	70%	62%	62%	68%	34%	71%	44%	46%	51%	41%

Traits Observed: BWT,600WT,SS,FAT,EMA,IMF

Purchaser \$.....

14 GLENWARRAH BALLAD P233 (H)
 Born: 13/07/2018 Ident: SLCP233

KAROONDA LINGO (AI) (H)
 SOUTH BOOROOK BOMBAY (H)
 S BOOROOK BRIDESMAID D34 (AI) (H)
SIRE: DUNDEE BALLAD (H)
 BATTALION COLUMBO (H)
 DUNDEE SUNDAE 48 (H)
 DUNDEE SUNDAE 39 (H)

CHARNOCK HAYMAKER (H)
 WALLAN CREEK D155 (H)
 WALLAN CREEK BARONESS U206 (H)
DAM: GLENWARRAH SATISFACTION K11 (H)
 GLENWARRAH MOREE (AI) (H)
 GLENWARRAH SATISFACTION 98 (H)
 GLENWARRAH SATISFACTION 91 (H)

MAY 2020 HEREFORD BREEDPLAN

	BW	200D	400D	600D	Milk	SS	EMA	RIB	Rump	IMF
EBV	+6.5	+38	+64	+94	+12	+1.2	+2.3	-0.7	-0.8	+0.0
Acc	68%	60%	61%	66%	32%	70%	42%	44%	49%	39%

Traits Observed: BWT,600WT,SS,FAT,EMA,IMF

Purchaser \$.....

15 GLENWARRAH KOORAGANG P238 (P)
 Born: 5/08/2018 Ident: SLCP238

KERLSON PINES AMBASSADOR A27 (P)
 WYREGALL GOLDMINER G83 (P)
 WYREGALL QUEENIE B38 (P)
SIRE: WYREGALL KOORAGANG K46 (P)
 KERLSON PINES AMBASSADOR A27 (P)
 WYREGALL LIONESS F68 (P)
 WYREGALL LIONESS Z47 (P)

CL 1 DOMINO 888H 1ET (IMP USA) (ET) (H)
 COURALLIE 888H DOMINO Z192 (AI) (H)
 COURALLIE PRUDENCE V104 (H)
DAM: GLENWARRAH PRUNELLA C649 (H)
 MONREID QUIRK (H)
 CHARVEL PRUNELLA V017 (HPR) (AI) (H)
 CHARVEL PRUNELLA N022 (H)

MAY 2020 HEREFORD BREEDPLAN

	BW	200D	400D	600D	Milk	SS	EMA	RIB	Rump	IMF
EBV	+6.4	+31	+51	+75	+12	+0.9	+3.9	+0.2	+0.4	+0.5
Acc	70%	63%	63%	69%	38%	72%	44%	47%	51%	41%

Traits Observed: BWT,600WT,SS,FAT,EMA,IMF

Purchaser \$.....

16 GLENWARRAH REGENT P700 (H)
 Born: 25/09/2018 Ident: SLCP700

GLENDAN PARK STORM W134 (H)
 BOWMONT STORM B720 (H)
 BOWMONT QUEEN Y341 (AI) (TW) (H)
SIRE: KAROONDA REGENT (AI) (H)
 GLENWARRAH MEN AT WORK (H)
 KAROONDA MARITANA E352 (H)
 KAROONDA MARITANA Y709 (AI) (H)

COOTHARABA OGILVIE (H)
 STRATHLEIGH OLGIVE F594 (H)
 STRATHLEIGH SUNBEAM C799 (H)
DAM: GLENWARRAH SATISFACTION K208 (H)
 CHARVEL APOLLO (H)
 GLENWARRAH SATISFACTION D148 (H)
 GLENWARRAH SATISFACTION 83 (H)

MAY 2020 HEREFORD BREEDPLAN

	BW	200D	400D	600D	Milk	SS	EMA	RIB	Rump	IMF
EBV	+5.2	+32	+51	+76	+17	+1.2	+3.0	-0.4	-0.2	-0.4
Acc	59%	59%	63%	67%	41%	70%	46%	48%	52%	45%

Traits Observed: BWT,600WT,SS,FAT,EMA,IMF

Purchaser \$.....



HEREFORD BULLS

17 GLENWARRAH KOORAGANG P182 (P)
Born: 4/07/2018 Ident: SLCP182

KERLSON PINES AMBASSADOR A27 (P)
WYREGALL GOLDMINER G83 (P)
WYREGALL QUEENIE B38 (P)
SIRE: WYREGALL KOORAGANG K46 (P)
KERLSON PINES AMBASSADOR A27 (P)
WYREGALL LIONESS F68 (P)
WYREGALL LIONESS Z47 (P)

MERAWAH ALL STAR Y103 (AI) (ET) (P)
LINDENDALE BEAU 1 (P)
LINDENDALE LEONI 29 (P)
DAM: GLENWARRAH LADY ALICE 4 (H#)
EMU HOLES RADAR W43 (H)
GLENWARRAH LADY ALICE 2 (H)
DOOLACHAH ALICE R087 (H)

MAY 2020 HEREFORD BREEDPLAN

	BW	200D	400D	600D	Milk	SS	EMA	RIB	Rump	IMF
EBV	+6.2	+26	+40	+58	+9	+1.0	+0.8	+0.4	+0.6	+0.1
Acc	71%	63%	64%	68%	36%	71%	43%	46%	50%	40%

Traits Observed: BWT,600WT,SS,FAT,EMA,IMF

Purchaser \$.....

18 GLENWARRAH MUMBAI P284 (H)
Born: 4/07/2018 Ident: SLCP284

KALUDAH GREASEPOT (H)
S BOOROOK MUMBAI (AI) (H)
S BOOROOK MATCHLESS W49 (AI) (H)
SIRE: GLENWARRAH MUMBAI M029 (H)
CURRACABARK SATELLITE (H)
GLENWARRAH LIONESS G345 (H)
GLENWARRAH LIONESS 31 (H)

GLENWARRAH MEN AT WORK (H)
KAROONDA LUMBERJACK (H)
CHARVEL REBECCA U014 (H)
DAM: GLENWARRAH RUTH G14 (H)
HUNDAY KANSAS (H)
GLENWARRAH RUTH 12 (H)
GLENWARRAH RUTH 11 (H)

MAY 2020 HEREFORD BREEDPLAN

	BW	200D	400D	600D	Milk	SS	EMA	RIB	Rump	IMF
EBV	+5.1	+31	+50	+76	+8	+1.1	+3.5	+0.2	+0.6	+0.4
Acc	69%	60%	61%	66%	34%	69%	41%	44%	48%	39%

Traits Observed: BWT,600WT,SS,FAT,EMA,IMF

Purchaser \$.....

19 GLENWARRAH REGENT P272 (H)
Born: 28/07/2018 Ident: SLCP272

GLENDAN PARK STORM W134 (H)
BOWMONT STORM B720 (H)
BOWMONT QUEEN Y341 (AI) (TW) (H)
SIRE: KAROONDA REGENT (AI) (H)
GLENWARRAH MEN AT WORK (H)
KAROONDA MARITANA E352 (H)
KAROONDA MARITANA Y709 (AI) (H)

BUNDARRA VALIANT Y58 (H)
WRL DINGO (H)
COURALLIE S342 OYSTER GIRL Y062 (AI) (H)
DAM: GLENWARRAH LIONESS J247 (H)
GLENWARRAH LAYLAND (H)
GLENWARRAH LIONESS 20 (H)
GLENWARRAH LIONESS U7 (H)

MAY 2020 HEREFORD BREEDPLAN

	BW	200D	400D	600D	Milk	SS	EMA	RIB	Rump	IMF
EBV	+3.8	+29	+41	+55	+17	+0.3	+2.6	+0.5	+1.2	-0.1
Acc	71%	64%	65%	69%	42%	72%	46%	49%	54%	45%

Traits Observed: BWT,600WT,SS,FAT,EMA,IMF

Purchaser \$.....

20 GLENWARRAH MUMBAI P129 (H)
Born: 29/06/2018 Ident: SLCP129

KALUDAH GREASEPOT (H)
S BOOROOK MUMBAI (AI) (H)
S BOOROOK MATCHLESS W49 (AI) (H)
SIRE: GLENWARRAH MUMBAI M029 (H)
CURRACABARK SATELLITE (H)
GLENWARRAH LIONESS G345 (H)
GLENWARRAH LIONESS 31 (H)

MONREID P EXPRESS X001 ET1 (AI) (ET) (H)
COOTHARABA MIDDLETON (H)
COOTHARABA QUEEN 120 (H)
DAM: GLENWARRAH MISS MELISSA E101 (H)
COOTHARABA FOXLEY W930 (H)
GLENWARRAH MISS MELISSA C094 (H)
GLENWARRAH MISS MELISSA 11 (AI) (H)

MAY 2020 HEREFORD BREEDPLAN

	BW	200D	400D	600D	Milk	SS	EMA	RIB	Rump	IMF
EBV	+6.6	+35	+48	+77	+8	+1.3	+3.3	+0.2	+0.4	+0.4
Acc	69%	61%	62%	67%	34%	70%	41%	44%	49%	39%

Traits Observed: BWT,600WT,SS,FAT,EMA,IMF

Purchaser \$.....



HEREFORD BULLS

21 **GLENWARRAH MUMBAI P164 (H)**
Born: 15/08/2018 Ident: SLCP164

KALUDAH GREASEPOT (H)
S BOOROOK MUMBAI (AI) (H)
S BOOROOK MATCHLESS W49 (AI) (H)
SIRE: GLENWARRAH MUMBAI M029 (H)
CURRACABARK SATELLITE (H)
GLENWARRAH LIONESS G345 (H)
GLENWARRAH LIONESS 31 (H)

MAWARRA KAHLUA (AI) (H)
MAWARRA OFF LIMITS (AI) (H)
MAWARRA MINERVA 368 (H)
DAM: GLENWARRAH FANCY 17 (H)
MONREID STATESMAN (H)
GLENWARRAH FANCY 11 (AI) (H)
GLENWARRAH FANCY T10 (H)

MAY 2020 HEREFORD BREEDPLAN

	BW	200D	400D	600D	Milk	SS	EMA	RIB	Rump	IMF
EBV	+7.5	+36	+58	+86	+10	+1.6	+2.6	-0.2	-0.1	+0.0
Acc	69%	62%	63%	67%	39%	71%	42%	45%	50%	40%

Traits Observed: BWT,600WT,SS,FAT,EMA,IMF

Purchaser \$.....

22 **GLENWARRAH MUMBAI P161 (H)**
Born: 29/07/2018 Ident: SLCP161

KALUDAH GREASEPOT (H)
S BOOROOK MUMBAI (AI) (H)
S BOOROOK MATCHLESS W49 (AI) (H)
SIRE: GLENWARRAH MUMBAI M029 (H)
CURRACABARK SATELLITE (H)
GLENWARRAH LIONESS G345 (H)
GLENWARRAH LIONESS 31 (H)

GH NEON 17N (IMP CAN) (H)
MAWARRA TRAIL BLAZER (AI) (H)
MAWARRA MINERVA 554 ET1 (AI) (ET) (H)
DAM: GLENWARRAH SATISFACTION E114 (H)
COOTHARABA ELGIN 2 (H)
GLENWARRAH SATISFACTION 80 (H)
GLENWARRAH SATISFACTION U53 (H)

MAY 2020 HEREFORD BREEDPLAN

	BW	200D	400D	600D	Milk	SS	EMA	RIB	Rump	IMF
EBV	+6.3	+35	+54	+84	+9	+0.9	+2.6	-0.2	-0.1	+0.4
Acc	69%	62%	62%	67%	40%	71%	44%	47%	51%	43%

Traits Observed: BWT,600WT,SS,FAT,EMA,IMF

Purchaser \$.....

23 **GLENWARRAH MUMBAI P234 (H)**
Born: 4/09/2018 Ident: SLCP234

GLENDAN PARK ECLIPSE E040 (AI) (ET) (H)
DEVON COURT ECLIPSE H190 (H)
DEVON COURT LIONESS A207 (H)
SIRE: AMOS VALE DELUX (H)
TALBALBA YONKI (AI) (H)
AMOS VALE FAVOURITE 240 (H)
AMOS VALE FAVOURITE 190 (H)

COOTHARABA OGILVIE (H)
STRATHLEIGH OLGIVE F594 (H)
STRATHLEIGH SUNBEAM C799 (H)
DAM: GLENWARRAH FANCY J109 (H)
FAULKLAND IMPULSE (AI) (H)
GLENWARRAH FANCY 16 (H)
GLENWARRAH FANCY 11 (AI) (H)

MAY 2020 HEREFORD BREEDPLAN

	BW	200D	400D	600D	Milk	SS	EMA	RIB	Rump	IMF
EBV	+6.4	+33	+56	+88	+10	+0.6	+4.1	+0.2	+0.6	+0.5
Acc	69%	61%	61%	67%	33%	69%	42%	45%	49%	40%

Traits Observed: BWT,600WT,SS,FAT,EMA,IMF

Purchaser \$.....

24 **GLENWARRAH BALLAD P120 (H)**
Born: 22/07/2018 Ident: SLCP120

KAROONDA LINGO (AI) (H)
SOUTH BOOROOK BOMBAY (H)
S BOOROOK BRIDESMAID D34 (AI) (H)
SIRE: DUNDEE BALLAD (H)
BATTALION COLUMBO (H)
DUNDEE SUNDAE 48 (H)
DUNDEE SUNDAE 39 (H)

MONREID P EXPRESS X001 ET1 (AI) (ET) (H)
COOTHARABA MIDDLETON (H)
COOTHARABA QUEEN 120 (H)
DAM: GLENWARRAH MOONBEAM G8 (H)
RED HILL IDLE RICH ET (AI) (ET) (H)
GLENWARRAH MOONBEAM B156 (H)
GLENWARRAH MOONBEAM T17 (H)

MAY 2020 HEREFORD BREEDPLAN

	BW	200D	400D	600D	Milk	SS	EMA	RIB	Rump	IMF
EBV	+5.8	+34	+53	+78	+13	+1.0	+3.0	-1.0	-1.4	-0.4
Acc	69%	61%	62%	67%	38%	71%	43%	45%	50%	40%

Traits Observed: BWT,600WT,SS,FAT,EMA,IMF

Purchaser \$.....



HEREFORD BULLS

25 **GLENWARRAH REGENT P070 (H)**
Born: 27/06/2018 Ident: SLCP070

GLENDAN PARK STORM W134 (H)
BOWMONT STORM B720 (H)
BOWMONT QUEEN Y341 (AI) (TW) (H)
SIRE: KAROONDA REGENT (AI) (H)
GLENWARRAH MEN AT WORK (H)
KAROONDA MARITANA E352 (H)
KAROONDA MARITANA Y709 (AI) (H)

J & B ADVANCE B754 (H)
J & B ADVANCE E601 (H)
J & B CARISSIMA B327 (AI) (H)
DAM: GLENWARRAH PRUNELLA H92 (H)
CHARVEL SAN FRANCISCO (H)
CHARVEL PRUNELLA U090 (H)
CHARVEL PRUNELLA S011 (H)

MAY 2020 HEREFORD BREEDPLAN

	BW	200D	400D	600D	Milk	SS	EMA	RIB	Rump	IMF
EBV	+3.5	+29	+43	+59	+17	-0.1	+2.4	-0.6	-0.6	-0.8
Acc	70%	64%	66%	70%	41%	71%	37%	47%	52%	43%

Traits Observed: BWT,600WT,SS,FAT,IMF

Purchaser \$.....

26 **GLENWARRAH REGENT P489 (P)**
Born: 9/09/2018 Ident: SLCP489

GLENDAN PARK STORM W134 (H)
BOWMONT STORM B720 (H)
BOWMONT QUEEN Y341 (AI) (TW) (H)
SIRE: KAROONDA REGENT (AI) (H)
GLENWARRAH MEN AT WORK (H)
KAROONDA MARITANA E352 (H)
KAROONDA MARITANA Y709 (AI) (H)

CHARNOCK HAYMAKER (H)
WALLAN CREEK D155 (H)
WALLAN CREEK BARONESS U206 (H)
DAM: GLENWARRAH LASS L168 (H)
YAVENVALE DRAWCARD (AI) (H)
GLENWARRAH LASS 8 (AI) (H)
DOOLACHAH LASS R144 (H)

MAY 2020 HEREFORD BREEDPLAN

	BW	200D	400D	600D	Milk	SS	EMA	RIB	Rump	IMF
EBV	+5.7	+33	+56	+85	+12	+1.3	+1.7	+0.2	+0.6	+0.4
Acc	70%	61%	62%	67%	36%	53%	36%	39%	42%	36%

Traits Observed: BWT,600WT,SS,FAT,EMA,IMF

Purchaser \$.....

27 **GLENWARRAH HAILSTONE P236 (H#)**
Born: 24/08/2018 Ident: SLCP236

GLENDAN PARK ECLIPSE E040 (AI) (ET) (H)
DEVON COURT ECLIPSE H190 (H)
DEVON COURT LIONESS A207 (H)
SIRE: AMOS VALE DELUX (H)
TALBALBA YONKI (AI) (H)
AMOS VALE FAVOURITE 240 (H)
AMOS VALE FAVOURITE 190 (H)

GLENDAN PARK EVEREST E126 (AI) (ET) (H)
GLENDAN PARK HOT SHOT (AI) (P)
OSULLIVANS FANCY C18 (AI) (PP)
DAM: GLENWARRAH L030 (P)
WALLAN CREEK D155 (H)
GLENWARRAH SATISFACTION H149 (H)
GLENWARRAH SATISFACTION 72 (H)

MAY 2020 HEREFORD BREEDPLAN

	BW	200D	400D	600D	Milk	SS	EMA	RIB	Rump	IMF
EBV	+6.8	+35	+54	+79	+11	+1.5	+2.9	+0.2	+0.3	+0.1
Acc	66%	58%	60%	66%	34%	45%	30%	35%	38%	35%

Traits Observed: BWT,600WT,Genomics

Purchaser \$.....

28 **GLENWARRAH DRAKE P248 (H)**
Born: 12/09/2018 Ident: SLCP248

KALUDAH JERRY (AI) (TW) (H)
THORNLEIGH X942 JERRY D299 (H)
MERLANIE SNOWFLAKE V201 (H)
SIRE: AMOS VALE DRAKE (H)
TALBALBA WALLOP (H)
AMOS VALE PR ROYAL 276 (H)
AMOS VALE PR ROYAL 247 (H)

MONREID P EXPRESS X001 ET1 (AI) (ET) (H)
COOTHARABA MIDDLETON (H)
COOTHARABA QUEEN 120 (H)
DAM: GLENWARRAH SATISFACTION G3 (H)
COOTHARABA ELGIN 2 (H)
GLENWARRAH SATISFACTION 68 (H)
GLENWARRAH SATISFACTION S43 (AI) (H)

MAY 2020 HEREFORD BREEDPLAN

	BW	200D	400D	600D	Milk	SS	EMA	RIB	Rump	IMF
EBV	+7.4	+39	+59	+94	+13	+1.4	+2.9	-1.4	-2.1	-0.3
Acc	68%	59%	61%	66%	37%	68%	40%	44%	48%	38%

Traits Observed: BWT,600WT,SS,FAT,EMA,IMF

Purchaser \$.....



HEREFORD BULLS

29

GLENWARRAH KIEV P154 (H#)

Born: 16/08/2018

Ident: SLCP154

BROOKLYND CHAMPAGNE (P)
 STANFORD GLASGOW G112 (P)
 STANFORD MOTH Y169 (AI) (P)
SIRE: STANFORD KIEV K053 (P)
 LLANDILLO Z138 (P)
 STANFORD MOTH G061 (P)
 STANFORD MOTH Y143 (P)

COOTHARABA OGILVIE (H)
 STRATHLEIGH OLGIVE F594 (H)
 STRATHLEIGH SUNBEAM C799 (H)
DAM: GLENWARRAH LAST DAY L042 (H)
 EMU HOLES RADAR W43 (H)
 GLENWARRAH LAST DAY 64 (H)
 LLANGLOTHAN LAST DAY 110 (AI) (H)

MAY 2020 HEREFORD BREEDPLAN

	BW	200D	400D	600D	Milk	SS	EMA	RIB	Rump	IMF
EBV	+5.2	+27	+45	+64	+10	+1.5	+1.6	+0.7	+1.4	+0.4
Acc	67%	61%	63%	68%	37%	71%	44%	47%	51%	42%

Traits Observed: BWT,600WT,SS,FAT,EMA,IMF

30

GLENWARRAH DRAKE P249 (H#)

Born: 11/09/2018

Ident: SLCP249

KALUDAH JERRY (AI) (TW) (H)
 THORNLEIGH X942 JERRY D299 (H)
 MERLANIE SNOWFLAKE V201 (H)
SIRE: AMOS VALE DRAKE (H)
 TALBALBA WALLOP (H)
 AMOS VALE PR ROYAL 276 (H)
 AMOS VALE PR ROYAL 247 (H)

WIRANYA EDSON (PP)
 KESWICK EDSON A242 (P)
 KESWICK FAVOURITE W066 (AI) (TW) (P)
DAM: GLENWARRAH VANITY H195 (P)
 BUNDARRA ZAMBIA (H)
 GLENWARRAH VANITY 15 (H)
 GLENWARRAH VANITY 8 (H)

MAY 2020 HEREFORD BREEDPLAN

	BW	200D	400D	600D	Milk	SS	EMA	RIB	Rump	IMF
EBV	+5.4	+28	+41	+55	+9	+1.8	+3.5	+0.2	+0.3	-0.1
Acc	67%	59%	61%	66%	31%	66%	38%	41%	45%	36%

Traits Observed: BWT,600WT,SS,FAT,EMA,IMF

Purchaser \$.....

Purchaser \$.....

SOFT
 AGRICULTURE



SOFT Agriculture's Green Cow Dry Loose Lick delivers superior health for cattle

- Improvements in weight gain, feed conversion ratios, worm and fly control leading to increased profitability
- Environmental benefits include reduction in methane emissions
- Nutrition - provides all the essential minerals and vitamins for every age and stage of production
- Phone: 02 6664 5145 or visit www.softagriculture.com.au
- Office: 7696 Bruxner Highway, Mallangane NSW 2469



SPECIALISING IN:

Commercial Livestock
Marketing

Stud Stock Marketing
and Acquisitions

Rural Property
Marketing

Wool
Marketing

Rural Merchandise
Sales

Agronomy
Services

Insurance
Broking

Seasonal
Finance

Animal
Nutrition

Come in and visit the friendly team at
Nutrien Ag Solutions™ Armidale.

Livestock

John Teitzel
0428 659 435

Cody Van Heerwaarden
0421 272 223

Janet Carter
(02) 6772 8188

Helen Hine
(02) 6772 8188

Stud Stock

John Settree
0408 297 368

Joel Fleming
0467 725 195

Steve Ward
0407 197 760

Rural Merchandise

John Ryan
(02) 6772 8188

Sarah Hunt
0448 981 259

Agronomy

Greg Nies
0459 037 974

Georgie Van Heerwaarden
0437 510 208

Insurance

Brian Doyle
0447 676 484

Branch Manager/Animal Nutrition

Amanda Lockyer
0429 787 355



ANGUS REFERENCE SIRES

BOOROOMOOKA NEW DAY G648^{SV}

Born: 29/10/2011 Ident:NGMG648

GENETIC CONDITIONS: AMFU,CAFU,DDF,NHFU

A A R NEW TREND[#]

BOYD NEW DAY 8005[#]

S V F FOREVER LADY 57D[#]

SIRE: B/R NEW DAY 454[#]

B/R NEW DESIGN 323[#]

B/R RUBY 1224[#]

H F RUBY 036-951[#]

B/R NEW DESIGN 036[#]

LEMMON NEWSLINE C804[#]

WHITE FENCE PRIDE H1[#]

DAM: BOOROOMOOKA WAGINA A102[#]

GLENOCH MEGAFORCE+92^{SV}

BOOROOMOOKA WAGINA W365[#]

BOOROOMOOKA TAKARI T068[#]

JUNE 2020 TRANSTASMAN ANGUS CATTLE EVALUATION

	BW	200D	400D	600D	Milk	SS	EMA	RIB	Rump	IMF
EBV	+4.7	+50	+93	+129	+18	+1.9	+9.3	-2.0	-3.2	+1.3
Acc	92%	86%	84%	88%	75%	85%	74%	73%	75%	66%

Traits Observed: GL,CE,BWT,200WT,600WT,SC,Scan(EMA,Rib,Rump,IMF),DOC,Structure(FA,FC,RA,RH,RS)

GLENOCH KALLI K115^{SV}

Born: 26/08/2014 Ident:QBGK115

GENETIC CONDITIONS: AMFU,CAFU,DDF,NHFU

TE MANIA YORKSHIRE Y437^{PV}

TE MANIA BERKLEY B1^{SV}

TE MANIA LOWAN Z53[#]

SIRE: AYRVALE GENERAL G18^{PV}

TE MANIA BARTEL B219^{PV}

AYRVALE EASE E3^{PV}

EAGLEHAWK JEDDA B32^{SV}

SCR PROMISE 4042[#]

SYDGEN TRUST 6228[#]

SYDGEN FOREVER LADY 4413[#]

DAM: GLENOCH FLOWER H90[#]

TE MANIA INFINITY 04 379 AB[#]

GLENOCH FLOWER F214[#]

GLENOCH FLOWER Z82[#]

JUNE 2020 TRANSTASMAN ANGUS CATTLE EVALUATION

	BW	200D	400D	600D	Milk	SS	EMA	RIB	Rump	IMF
EBV	+6.5	+57	+104	+145	+15	+1.8	+5.7	-1.8	-1.1	+2.0
Acc	90%	83%	84%	84%	67%	80%	69%	71%	72%	66%

Traits Observed: GL,BWT,200WT,400WT,600WT,SC,Scan(EMA,Rib,Rump,IMF)

KO G18 GENERAL N37^{SV}

Born: 1/03/2017 Ident:NZCN37

GENETIC CONDITIONS: AMFU,CAFU,DDF,NHFU

TE MANIA YORKSHIRE Y437^{PV}

TE MANIA BERKLEY B1^{SV}

TE MANIA LOWAN Z53[#]

SIRE: AYRVALE GENERAL G18^{PV}

TE MANIA BARTEL B219^{PV}

AYRVALE EASE E3^{PV}

EAGLEHAWK JEDDA B32^{SV}

CONNELY CONSENSUS 7229^{SV}

CONNELY UNITED 1116[#]

BREETA OF CONANGA 5403 985L[#]

DAM: KO ANNIE L37[#]

KO A241 MERIDIAN F83^{PV}

KO ANNIE J8[#]

KANSAS ANNIE Y71^{SV}

JUNE 2020 TRANSTASMAN ANGUS CATTLE EVALUATION

	BW	200D	400D	600D	Milk	SS	EMA	RIB	Rump	IMF
EBV	+2.6	+48	+84	+110	+14	+1.2	+7.4	+1.5	+0.8	+2.5
Acc	73%	69%	70%	68%	62%	73%	61%	62%	63%	59%

Traits Observed: GL,BWT,200WT,400WT(x2),SC,Scan(EMA,Rib,Rump,IMF)

LD CAPITALIST 316^{SV}

Born: 26/01/2013 Ident:USA17666102

GENETIC CONDITIONS: AMF,CAF,DDF,NHF,DWF,MAF,MHF,OHF,OSF

SITZ TRAVELER 8180[#]

S A V FINAL ANSWER 0035[#]

S A V EMULOUS 8145[#]

SIRE: CONNEALY CAPITALIST 028[#]

C R A BEXTOR 872 5205 608[#]

PRIDES PITA OF CONANGA 8821[#]

PRIDES TRAV OF CONANGA 6499[#]

G A R PRECISION 1680[#]

C A FUTURE DIRECTION 5321[#]

C A MISS POWER FIX 308[#]

DAM: LD DIXIE ERICA 2053[#]

LD ROYCE ONAROLL 810[#]

LD DIXIE ERICA OAR 0853[#]

DIXIE ERICA OF R R 8553[#]

JUNE 2020 TRANSTASMAN ANGUS CATTLE EVALUATION

	BW	200D	400D	600D	Milk	SS	EMA	RIB	Rump	IMF
EBV	+1.8	+52	+92	+116	+14	+1.4	+8.4	+0.9	+0.4	+2.1
Acc	99%	98%	98%	98%	81%	98%	89%	89%	85%	87%

Traits Observed: Genomics



HEREFORD BULLS



Lot 2 - Glenwarrah Kooragang P201 (P)



Lot 6 - Glenwarrah Mumbai P232 (H)



**Lot 10 Glenwarrah Mumbai P162 (H)
& Lot 3 Glenwarrah Ballad P265 (P)**



Lot 14 Glenwarrah Ballad P233 (H)



Lot 60 - Brooksby Durham Q092



Lot 61 - Brooksby General Q217



ANGUS BULLS



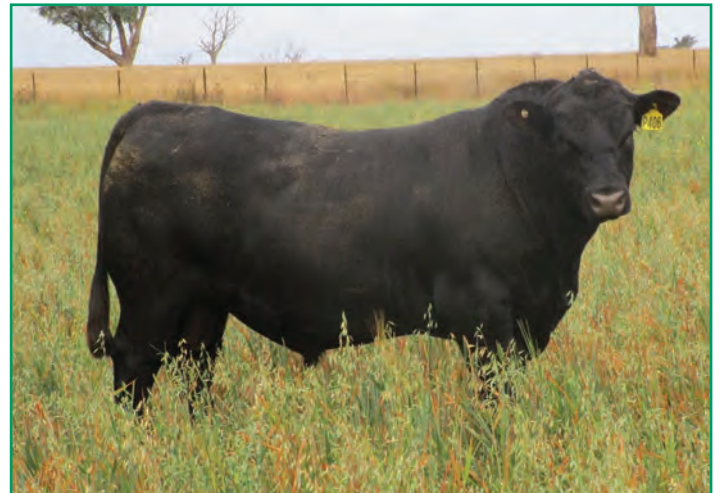
Lot 31 - Brooksby Andy P039



Lot 32 - Brooksby Andy P009



Lot 34 - Brooksby Kennard P402



Lot 35 - Brooksby Kerr P406



Lot 64 - Brooksby Jermaine Q218



Lot 64A - Brooksby General Q048



ANGUS REFERENCE SIREs

TALIS JERMAINE J802^{SV}

Born: 7/09/2013

Ident: BMLJ802

GENETIC CONDITIONS: AMFU, CAFU, DDFU, NHFU

ARDROSSAN DIRECTION W109^{PV}

ARDROSSAN ADMIRAL A2^{PV}

KENNY'S CREEK ROSEBUD W171[#]

SIRE: LANDFALL COMMANDER C47^{SV}

DUNOON REAGAN R093+96^{SV}

LANDFALL ARCHER X9^{PV}

LANDFALL ARCHER T74[#]

V D A R NEW TREND 315[#]

SCHURRTOP SUPREME[#]

SCHURRTOP PAM 3449[#]

DAM: TALIS LILAC V563[#]

BALLANEE A35[#]

SPARTA FLOWER J24+89[#]

SPARTA FLOWER E79[#]

JUNE 2020 TRANSTASMAN ANGUS CATTLE EVALUATION

	BW	200D	400D	600D	Milk	SS	EMA	RIB	Rump	IMF
EBV	+1.9	+34	+65	+82	+13	+1.3	+7.2	+0.4	-0.8	+1.1
Acc	88%	79%	75%	80%	65%	68%	62%	63%	64%	58%

Traits Observed: GL, BWT, 200WT, 400WT, 600WT, SC, Scan(EMA, Rib, Rump, IMF)

TALIS KENNARD K406^{SV}

Born: 26/09/2014

Ident: BMLK406

GENETIC CONDITIONS: AM2%, CA3%, DDFU, NHFU, RGC

TALIS ZEUS Z542^{PV}

TALIS BUDDHA B591^{PV}

TALIS MILICENT S501[#]

SIRE: TALIS FALKEN F357[#]

S A V 5175 BANDO 0699[#]

TALIS HIGH JINX A557^{SV}

TALIS HIGH JINX T504[#]

SCHURRTOP SUPREME[#]

TALIS B600^{SV}

TALIS ADVENTURE Z530[#]

DAM: TALIS PRINCESS F380[#]

TALIS A589^{SV}

TALIS PRINCESS D573[#]

TALIS PRINCESS A591[#]

JUNE 2020 TRANSTASMAN ANGUS CATTLE EVALUATION

	BW	200D	400D	600D	Milk	SS	EMA	RIB	Rump	IMF
EBV	+6.6	+51	+91	+121	+14	+1.5	+2.3	+2.6	+3.5	+0.8
Acc	77%	67%	67%	70%	41%	72%	54%	51%	55%	43%

Traits Observed: BWT, 200WT, 400WT, SC, Scan(EMA, Rib, Rump, IMF)

TALIS KERR K379^{SV}

Born: 2/09/2014

Ident: BMLK379

GENETIC CONDITIONS: AMFU, CA6%, DDFU, NHFU, RGF

CONNELLY CONSENSUS[#]

CONNELLY CONSENSUS 7229^{SV}

BLUE LILLY OF CONANGA 16[#]

SIRE: CONNELLY UNITED 1116[#]

G A R NEW DESIGN 5050[#]

BREETA OF CONANGA 5403 985L[#]

BREELA OF CONANGA 3991[#]

SHADY BROOK EXPLORER 015E[#]

TALIS WOOMERA W554[#]

TALIS TIARA U503[#]

DAM: TALIS ADVENTURE A587[#]

ALBERDA TRAVELER 416[#]

TALIS ADVENTURE V504[#]

TALIS ADVENTURE S523[#]

JUNE 2020 TRANSTASMAN ANGUS CATTLE EVALUATION

	BW	200D	400D	600D	Milk	SS	EMA	RIB	Rump	IMF
EBV	+4.5	+39	+64	+81	+9	+1.8	+6.6	+0.8	+1.0	+1.4
Acc	80%	72%	70%	69%	55%	70%	56%	57%	58%	50%

Traits Observed: GL, BWT, 200WT, 400WT, SC, Scan(EMA, Rib, Rump, IMF)

WATTLETOP ANDY F216 H468^{SV}

Born: 20/09/2012

Ident: NWP468

GENETIC CONDITIONS: AMFU, CAFU, DDF, NHFU

BON VIEW NEW DESIGN 1407[#]

SITZ NEW DESIGN 458N[#]

SITZ ELLUNAS ELITE 3308[#]

SIRE: WATTLETOP BULL DURHAM F85^{PV}

C A FUTURE DIRECTION 5321[#]

WATTLETOP Z101^{PV}

WATTLETOP V3[#]

G A R PRECISION 1680[#]

G A R RETAIL PRODUCT[#]

G A R EXT 4927[#]

DAM: WATTLETOP USUAL C191[#]

BUTCHS MAXIMUM 3130[#]

WATTLETOP USUAL Z74[#]

WATTLETOP USUAL U86[#]

JUNE 2020 TRANSTASMAN ANGUS CATTLE EVALUATION

	BW	200D	400D	600D	Milk	SS	EMA	RIB	Rump	IMF
EBV	+4.0	+43	+79	+105	+16	+1.8	+2.3	-0.1	+0.5	+1.2
Acc	93%	86%	82%	89%	69%	81%	70%	69%	72%	61%

Traits Observed: BWT, 200WT(x2), 600WT, Scan(EMA, Rib, Rump, IMF)



ANGUS REFERENCE SIREs

WATTLETOP BULL DURHAM G21^{SV}

Born: 3/07/2011

Ident: NWPG21

GENETIC CONDITIONS: AMFU, CAFU, DD51%, NHFU

B/R NEW DESIGN 036[#]

BON VIEW NEW DESIGN 1407[#]

BON VIEW PRIDE 664[#]

SIRE: SITZ NEW DESIGN 458N[#]

SITZ TRAVELER 9929[#]

SITZ ELLUNAS ELITE 3308[#]

SITZ ELLUNAS ELITE 2872[#]

S A V FINAL ANSWER 0035[#]

HARB PENDLETON 765 J H^{SV}

H A R B BLACK LADY 375 J H[#]

DAM: WATTLETOP BARUNAH E45[#]

ARDROSSAN CONNECTION X15^{SV}

WATTLETOP BARUNAH C69[#]

WATTLETOP BARUNAH A166[#]

JUNE 2020 TRANSTASMAN ANGUS CATTLE EVALUATION

	BW	200D	400D	600D	Milk	SS	EMA	RIB	Rump	IMF
EBV	+2.1	+44	+81	+102	+18	+2.4	+3.1	+0.8	+0.8	+1.9
Acc	91%	85%	83%	86%	78%	77%	71%	71%	72%	66%

Traits Observed: GL, CE, BWT, 400WT, Scan(EMA, Rib, Rump, IMF)

WATTLETOP REGENT L78^{PV}

Born: 27/07/2015

Ident: NWPL78

GENETIC CONDITIONS: AMFU, CAFU, DDFU, NHFU

RENNYLEA XPONENTIAL X555[#]

TE MANIA AMBASSADOR A134^{SV}

TE MANIA LOWAN Y211[#]

SIRE: TUWHARETOA REGENT D145^{PV}

YTHANBRAE HENRY VIII U8^{SV}

LAWSONS HENRY VIII Y5^{SV}

YTHANBRAE DIRECTION T270[#]

TE MANIA UNLIMITED U3271[#]

TE MANIA INFINITY 04 379 AB[#]

TE MANIA 95102[#]

DAM: WATTLETOP ANN F40^{SV}

WATTLETOP OB45 X75[#]

WATTLETOP ANN Z397^{SV}

WATTLETOP ANN T105[#]

JUNE 2020 TRANSTASMAN ANGUS CATTLE EVALUATION

	BW	200D	400D	600D	Milk	SS	EMA	RIB	Rump	IMF
EBV	+6.0	+49	+89	+123	+19	+3.7	+5.1	-2.0	-1.8	+3.3
Acc	92%	85%	82%	82%	71%	76%	72%	74%	73%	70%

Traits Observed: BWT, 200WT, 400WT(x2), 600WT, SC, Scan(EMA, Rib, Rump, IMF), Genomics



2 YEAR OLD ANGUS BULLS

31

BROOKSBY ANDY P039^{SV}

Born: 16/07/2018

Ident: AHPP039

GENETIC CONDITIONS: AMFU, CAFU, DD25%, NHFU

SITZ NEW DESIGN 458N[#]

WATTLETOP BULL DURHAM F85^{PV}

WATTLETOP Z101^{PV}

SIRE: WATTLETOP ANDY F216 H468^{SV}

G A R RETAIL PRODUCT[#]

WATTLETOP USUAL C191[#]

WATTLETOP USUAL Z74[#]

ARDROSSAN ADMIRAL A2^{PV}

GLENAVON C140^{SV}

GLENAVON X107[#]

DAM: BROOKSBY DANDILOO J90[#]

BULLIAC ZAMBEZI Z7^{PV}

BULLIAC DANDLOO C33[#]

BULLIAC DANDLOO X23[#]

JUNE 2020 TRANSTASMAN ANGUS CATTLE EVALUATION

	BW	200D	400D	600D	Milk	SS	EMA	RIB	Rump	IMF
EBV	+4.1	+42	+76	+101	+16	+1.8	+2.7	-0.2	+0.1	+1.3
Acc	72%	63%	59%	62%	49%	53%	47%	48%	49%	43%

Traits Observed: BWT, 200WT, 600WT, Scan(EMA, Rib, Rump, IMF)

Birth Weight: 34kgs

Purchaser \$.....

32

BROOKSBY ANDY P009^{SV}

Born: 24/06/2018

Ident: AHPP009

GENETIC CONDITIONS: AMFU, CAFU, DD19%, NHFU

SITZ NEW DESIGN 458N[#]

WATTLETOP BULL DURHAM F85^{PV}

WATTLETOP Z101^{PV}

SIRE: WATTLETOP ANDY F216 H468^{SV}

G A R RETAIL PRODUCT[#]

WATTLETOP USUAL C191[#]

WATTLETOP USUAL Z74[#]

PC TC STOCKMAN A49^{SV}

BLACK DIAMOND A49 STOCKMAN G401^{SV}

BLACK DIAMOND MS ARCHER U1^{SV}

DAM: BROOKSBY ABIGAIL J191[#]

RICHMOND HILL NEW DESIGN V45[#]

BROOKSBY ABIGAIL D349[#]

HOPETOUN PARK Z03[#]

JUNE 2020 TRANSTASMAN ANGUS CATTLE EVALUATION

	BW	200D	400D	600D	Milk	SS	EMA	RIB	Rump	IMF
EBV	+4.9	+43	+81	+108	+17	+1.8	+4.0	+0.6	+1.1	+1.0
Acc	72%	65%	63%	71%	46%	52%	53%	52%	55%	44%

Traits Observed: BWT, 200WT, 600WT, Scan(EMA, Rib, Rump, IMF)

Birth Weight: 37kgs

Purchaser \$.....

33

BROOKSBY KERR P340[#]

Born: 11/08/2018

Ident: AHPP340

GENETIC CONDITIONS: AMFU, CA3%, DDFU, NHFU

CONNEALY CONSENSUS 7229^{SV}

CONNEALY UNITED 1116[#]

BREETA OF CONANGA 5403 985L[#]

SIRE: TALIS KERR K379^{SV}

TALIS WOOMERA W554[#]

TALIS ADVENTURE A587[#]

TALIS ADVENTURE V504[#]

FAIRVALE COOLAH C40^{SV}

FAIRVALE FERRARI F7^{SV}

FAIRVALE ANTHEA Z45[#]

DAM: FAIRVALE H48[#]

B/R NEW DESIGN 036[#]

MILLAH MURRAH PRUE X39[#]

MILLAH MURRAH PRUE M108+92[#]

JUNE 2020 TRANSTASMAN ANGUS CATTLE EVALUATION

	BW	200D	400D	600D	Milk	SS	EMA	RIB	Rump	IMF
EBV	+5.1	+40	+73	+101	+11	+1.5	+5.5	-0.6	-1.1	+1.6
Acc	71%	64%	62%	68%	42%	49%	51%	52%	54%	43%

Traits Observed: BWT, 200WT, 600WT, Scan(EMA, Rib, Rump, IMF)

Birth Weight: 32kgs

Purchaser \$.....

34

BROOKSBY KENNARD P402[#]

Born: 3/08/2018

Ident: AHPP402

GENETIC CONDITIONS: AM13%, CA14%, DDFU, NH13%

TALIS BUDDHA B591^{PV}

TALIS FALKEN F357[#]

TALIS HIGH JINX A557^{SV}

SIRE: TALIS KENNARD K406^{SV}

TALIS B600^{SV}

TALIS PRINCESS F380[#]

TALIS PRINCESS D573[#]

C A FUTURE DIRECTION 5321[#]

CAMPTON Y13^{PV}

TE MANIA MOONGARA Q301+95[#]

DAM: BROOKSBY PANDA F151[#]

BON VIEW BANDO 598[#]

HOPETOUN PARK PANDA U08[#]

KANSAS PANDA N30+93[#]

JUNE 2020 TRANSTASMAN ANGUS CATTLE EVALUATION

	BW	200D	400D	600D	Milk	SS	EMA	RIB	Rump	IMF
EBV	+5.5	+47	+78	+106	+14	+1.5	+2.7	+0.8	+1.1	+0.9
Acc	70%	63%	61%	68%	41%	47%	48%	39%	39%	39%

Traits Observed: BWT, 200WT, 600WT, Scan(EMA, IMF)

Birth Weight: 36kgs

Purchaser \$.....



2 YEAR OLD ANGUS BULLS

35

BROOKSBY KERR P406^{SV}

Born: 5/08/2018

Ident: AHPP406

GENETIC CONDITIONS: AM6%, CAFU, DD27%, NH6%

CONNELLY CONSENSUS 7229^{SV}

CONNELLY UNITED 1116[#]

BREETA OF CONANGA 5403 985L[#]

SIRE: TALIS KERR K379^{SV}

TALIS WOOMERA W554[#]

TALIS ADVENTURE A587[#]

TALIS ADVENTURE V504[#]

BOORAGUL ZULU Z45^{PV}

SKAGWAY ZAMBER C2^{SV}

SKAGWAY AMBER 3 Z30[#]

DAM: BROOKSBY BURNETTE G245[#]

CAMPTON Y13^{PV}

BROOKSBY BURNETTE E66[#]

HOPETOUN PARK Z13[#]

JUNE 2020 TRANSTASMAN ANGUS CATTLE EVALUATION

	BW	200D	400D	600D	Milk	SS	EMA	RIB	Rump	IMF
EBV	+3.5	+46	+87	+111	+18	+2.0	+4.0	+1.2	+1.5	+1.2
Acc	72%	65%	63%	70%	50%	48%	52%	51%	54%	44%

Traits Observed: BWT, 200WT, 600WT, Scan(EMA, Rump, IMF)

Birth Weight: 33kgs

Purchaser \$.....

36

BROOKSBY NEW DAY P334[#]

Born: 1/08/2018

Ident: AHPP334

GENETIC CONDITIONS: AMFU, CAFU, DD13%, NHFU

BOYD NEW DAY 8005[#]

B/R NEW DAY 454[#]

B/R RUBY 1224[#]

SIRE: BOOROOMOOKA NEW DAY G648^{SV}

LEMMON NEWSLINE C804[#]

BOOROOMOOKA WAGINA A102[#]

BOOROOMOOKA WAGINA W365[#]

SITZ NEW DESIGN 458N[#]

WATTLETOP BULL DURHAM G21^{SV}

WATTLETOP BARUNAH E45[#]

DAM: BROOKSBY EMPRESS J78[#]

S A V 8180 TRAVELER 004[#]

TUCKLAN TRAVELER 004 D102[#]

LAWSONS FUTURE DIRECTION Z971^{SV}

JUNE 2020 TRANSTASMAN ANGUS CATTLE EVALUATION

	BW	200D	400D	600D	Milk	SS	EMA	RIB	Rump	IMF
EBV	+4.2	+48	+86	+117	+17	+2.0	+5.4	-0.7	-1.4	+1.5
Acc	63%	65%	64%	70%	51%	54%	55%	54%	57%	47%

Traits Observed: 200WT, 600WT, Scan(EMA, Rib, Rump, IMF)

Birth Weight: kgs

Purchaser \$.....

37

BROOKSBY CAPITALIST P043^{SV}

Born: 18/07/2018

Ident: AHPP043

GENETIC CONDITIONS: AM6%, CAFU, DD28%, NHFU

S A V FINAL ANSWER 0035[#]

CONNELLY CAPITALIST 028[#]

PRIDES PITA OF CONANGA 8821[#]

SIRE: LD CAPITALIST 316^{SV}

C A FUTURE DIRECTION 5321[#]

LD DIXIE ERICA 2053[#]

LD DIXIE ERICA OAR 0853[#]

ARDROSSAN ADMIRAL A2^{PV}

GLENAVON C140^{SV}

GLENAVON X107[#]

DAM: BROOKSBY DELL J68[#]

ARDROSSAN DIRECTION B4^{PV}

TUCKLAN DELL D73[#]

TUCKLAN DELL B38[#]

JUNE 2020 TRANSTASMAN ANGUS CATTLE EVALUATION

	BW	200D	400D	600D	Milk	SS	EMA	RIB	Rump	IMF
EBV	+3.5	+47	+83	+109	+15	+1.6	+8.1	-0.4	-1.5	+1.6
Acc	74%	69%	68%	73%	55%	61%	60%	60%	60%	56%

Traits Observed: GL, BWT, 200WT, 600WT, Scan(EMA, Rib, Rump, IMF)

Birth Weight: 38kgs

Purchaser \$.....

38

BROOKSBY NEW DAY P339[#]

Born: 11/08/2018

Ident: AHPP339

GENETIC CONDITIONS: AMFU, CAFU, DD1%, NH13%

BOYD NEW DAY 8005[#]

B/R NEW DAY 454[#]

B/R RUBY 1224[#]

SIRE: BOOROOMOOKA NEW DAY G648^{SV}

LEMMON NEWSLINE C804[#]

BOOROOMOOKA WAGINA A102[#]

BOOROOMOOKA WAGINA W365[#]

MF DESTROYER 093[#]

ABBOTT DOMINATOR D47^{SV}

ABBOTT VICKY A34[#]

DAM: ABBOTT DRUCILLA G50[#]

GLENCAIRN MAXIMUS W36^{PV}

ABBOTT Z44[#]

MERRIC RIVERS R81+96[#]

JUNE 2020 TRANSTASMAN ANGUS CATTLE EVALUATION

	BW	200D	400D	600D	Milk	SS	EMA	RIB	Rump	IMF
EBV	+5.5	+48	+88	+129	+14	+1.7	+4.8	-1.8	-2.6	+1.1
Acc	73%	66%	65%	71%	50%	51%	54%	55%	57%	47%

Traits Observed: BWT, 200WT, 600WT, Scan(EMA, Rib, Rump, IMF)

Birth Weight: 33kgs

Purchaser \$.....



2 YEAR OLD ANGUS BULLS

39

BROOKSBY REGENT P374#

Born: 4/08/2018

Ident: AHPP374

GENETIC CONDITIONS: AMFU, CAFU, DDFU, NHFU

TE MANIA AMBASSADOR A134^{SV}

TUWHARETOA REGENT D145^{PV}

LAWSONS HENRY VIII Y5^{SV}

SIRE: WATTLETOP REGENT L78^{PV}

TE MANIA INFINITY 04 379 AB#

WATTLETOP ANN F40^{SV}

WATTLETOP ANN Z397^{SV}

B/R NEW DAY 454#

BOOROOMOOKA NEW DAY G648^{SV}

BOOROOMOOKA WAGINA A102#

DAM: BROOKSBY THISTLE L022 #

B T ULTRAVOX 297E#

ABBOTT THISTLE A21#

GLENCAIRN THISTLE W82#

JUNE 2020 TRANSTASMAN ANGUS CATTLE EVALUATION

	BW	200D	400D	600D	Milk	SS	EMA	RIB	Rump	IMF
EBV	+4.7	+43	+76	+102	+16	+2.4	+5.5	-1.2	-1.4	+2.2
Acc	73%	66%	64%	69%	51%	51%	52%	53%	54%	49%

Traits Observed: BWT, 200WT, 600WT, Scan(EMA, Rib, Rump, IMF)

Birth Weight: 31kgs

Purchaser \$.....

40

BROOKSBY KENNARD P328^{SV}

Born: 3/08/2018

Ident: AHPP328

GENETIC CONDITIONS: AMFU, CA2%, DDFU, NH25%, RGF

TALIS BUDDHA B591^{PV}

TALIS FALKEN F357#

TALIS HIGH JINX A557^{SV}

SIRE: TALIS KENNARD K406^{SV}

TALIS B600^{SV}

TALIS PRINCESS F380#

TALIS PRINCESS D573#

GLENCAIRN MAXIMUS W36^{PV}

ABBOTT MAXIMUS A60^{PV}

GLENCAIRN VICKY V63#

DAM: BROOKSBY ABBA G145 #

S V F HI ROAD#

HOPETOUN PARK ABBA U34#

EASTERN PLAINS ABBA N38+93#

JUNE 2020 TRANSTASMAN ANGUS CATTLE EVALUATION

	BW	200D	400D	600D	Milk	SS	EMA	RIB	Rump	IMF
EBV	+4.7	+44	+78	+107	+17	+1.4	+3.8	+1.0	+1.3	+0.8
Acc	67%	59%	55%	55%	39%	47%	36%	36%	37%	32%

Traits Observed: BWT, 200WT, Scan(EMA, Rib, Rump, IMF)

Birth Weight: 33kgs

Purchaser \$.....

41

BROOKSBY REGENT P082#

Born: 5/08/2018

Ident: AHPP082

GENETIC CONDITIONS: AMFU, CAFU, DD13%, NHFU

TE MANIA AMBASSADOR A134^{SV}

TUWHARETOA REGENT D145^{PV}

LAWSONS HENRY VIII Y5^{SV}

SIRE: WATTLETOP REGENT L78^{PV}

TE MANIA INFINITY 04 379 AB#

WATTLETOP ANN F40^{SV}

WATTLETOP ANN Z397^{SV}

SITZ NEW DESIGN 458N#

WATTLETOP BULL DURHAM G21^{SV}

WATTLETOP BARUNAH E45#

DAM: BROOKSBY VICKI L001 #

RITO 9FB3 OF 5H11 FULLBACK#

ABBOTT FULLBACK G37#

ABBOTT WHITE TRAVELLER B57#

JUNE 2020 TRANSTASMAN ANGUS CATTLE EVALUATION

	BW	200D	400D	600D	Milk	SS	EMA	RIB	Rump	IMF
EBV	+3.9	+40	+72	+89	+18	+2.2	+3.9	+0.4	+0.9	+2.3
Acc	73%	66%	63%	70%	51%	50%	54%	54%	56%	48%

Traits Observed: BWT, 200WT, 600WT, Scan(EMA, Rib, Rump, IMF)

Birth Weight: 31kgs

Purchaser \$.....

42

BROOKSBY P188#

Born: 01/08/2018

Unregistered

ARDROSSAN ADMIRAL A2

LANDFALL COMMANDER C47

LANDFALL ARCHER X9

SIRE: TALIS JERMAINE J802

SCHURRTOP SUPREME

TALIS LILAC V563

SPARTA FLOWER J24+89

B/R NEW DAY 454

BOOROOMOOKA NEW DAY G648

BOOROOMOOKA WAGINA A102

DAM: BROOKSBY M4251 COMMERCIAL HEIFER

BROOKSBY COMMERCIAL COW 64

JUNE 2020 TRANSTASMAN ANGUS CATTLE EVALUATION

SIRE EBVS										
	BW	200D	400D	600D	Milk	SS	EMA	RIB	Rump	IMF
EBV	+1.9	+34	+65	+82	+13	+1.3	+7.2	+0.4	-0.8	+1.1
Acc	88%	79%	75%	80%	65%	68%	62%	63%	64%	58%

Purchaser \$.....



2 YEAR OLD ANGUS BULLS

43

BROOKSBY JERMAINE P090#

Born: 16/08/2018

Ident: AHPP090

GENETIC CONDITIONS: AMFU, CAFU, DD1%, NHFU

ARDROSSAN ADMIRAL A2^{PV}

LANDFALL COMMANDER C47^{SV}

LANDFALL ARCHER X9^{PV}

SIRE: TALIS JERMAINE J802^{SV}

SCHURRTOP SUPREME#

TALIS LILAC V563#

SPARTA FLOWER J24+89#

WATTLETOP BULL DURHAM F85^{PV}

WATTLETOP ANDY F216 H468^{SV}

WATTLETOP USUAL C191#

DAM: BROOKSBY DRUCILLA M376 #

ABBOTT DOMINATOR D47^{SV}

ABBOTT DRUCILLA G33#

ABBOTT VICKY Z25#

JUNE 2020 TRANSTASMAN ANGUS CATTLE EVALUATION

	BW	200D	400D	600D	Milk	SS	EMA	RIB	Rump	IMF
EBV	+4.9	+42	+78	+103	+13	+1.8	+5.3	-0.3	-0.6	+1.2
Acc	71%	64%	62%	69%	44%	45%	48%	48%	50%	41%

Traits Observed: BWT, 200WT, 600WT, Scan(EMA, Rib, Rump, IMF)

Birth Weight: 37kgs

Purchaser \$.....

44

BROOKSBY NEW DAY P287#

Born: 10/09/2018

Ident: AHPP287

GENETIC CONDITIONS: AMFU, CAFU, DD13%, NHFU

BOYD NEW DAY 8005#

B/R NEW DAY 454#

B/R RUBY 1224#

SIRE: BOOROOMOOKA NEW DAY G648^{SV}

LEMMON NEWSLINE C804#

BOOROOMOOKA WAGINA A102#

BOOROOMOOKA WAGINA W365#

B/R NEW DAY 454#

BOOROOMOOKA NEW DAY G648^{SV}

BOOROOMOOKA WAGINA A102#

DAM: BROOKSBY ROBE L351 #

B/R NEW DIMENSION 7127^{SV}

HOPETOUN PARK Z09#

GLENAVON X206#

JUNE 2020 TRANSTASMAN ANGUS CATTLE EVALUATION

	BW	200D	400D	600D	Milk	SS	EMA	RIB	Rump	IMF
EBV	+4.3	+43	+79	+105	+16	+1.4	+8.8	-1.3	-2.6	+1.4
Acc	67%	67%	66%	73%	54%	58%	57%	57%	59%	50%

Traits Observed: BWT, 200WT, 600WT, Scan(EMA, Rib, Rump, IMF)

Birth Weight: 32kgs

Purchaser \$.....

45

BROOKSBY REGENT P335#

Born: 23/08/2018

Ident: AHPP335

GENETIC CONDITIONS: AMFU, CAFU, DDFU, NHFU

TE MANIA AMBASSADOR A134^{SV}

TUWHARETOA REGENT D145^{PV}

LAWSONS HENRY VIII Y5^{SV}

SIRE: WATTLETOP REGENT L78^{PV}

TE MANIA INFINITY 04 379 AB#

WATTLETOP ANN F40^{SV}

WATTLETOP ANN Z397^{SV}

WATTLETOP BULL DURHAM F85^{PV}

WATTLETOP ANDY F216 H468^{SV}

WATTLETOP USUAL C191#

DAM: BROOKSBY NINAH L149 #

TE MANIA ADA A149^{PV}

KENNY'S CREEK NINAH F660#

KENNY'S CREEK C826^{PV}

JUNE 2020 TRANSTASMAN ANGUS CATTLE EVALUATION

	BW	200D	400D	600D	Milk	SS	EMA	RIB	Rump	IMF
EBV	+4.8	+44	+82	+113	+18	+2.5	+4.5	-1.7	-1.5	+2.1
Acc	72%	65%	62%	67%	51%	51%	51%	53%	53%	49%

Traits Observed: BWT, 200WT, 600WT, Scan(EMA, Rib, Rump, IMF)

Birth Weight: 31kgs

Purchaser \$.....

46

BROOKSBY ANDY P337#

Born: 1/08/2018

Ident: AHPP337

GENETIC CONDITIONS: AMFU, CAFU, DD3%, NHFU

SITZ NEW DESIGN 458N#

WATTLETOP BULL DURHAM F85^{PV}

WATTLETOP Z101^{PV}

SIRE: WATTLETOP ANDY F216 H468^{SV}

G A R RETAIL PRODUCT#

WATTLETOP USUAL C191#

WATTLETOP USUAL Z74#

L T 598 BANDO 9074#

WATTLETOP USA9074 C103^{PV}

WATTLETOP USUAL U86#

DAM: WATTLETOP USUAL E316 #

WATTLETOP WORKING CLASS W139#

WATTLETOP USUAL Y351#

WATTLETOP USUAL U19#

JUNE 2020 TRANSTASMAN ANGUS CATTLE EVALUATION

	BW	200D	400D	600D	Milk	SS	EMA	RIB	Rump	IMF
EBV	+3.5	+40	+69	+83	+12	+1.4	+5.1	-1.4	-2.1	+1.0
Acc	74%	68%	66%	73%	51%	54%	55%	56%	58%	47%

Traits Observed: BWT, 200WT, 600WT, Scan(EMA, Rib, Rump, IMF)

Birth Weight: 35kgs

Purchaser \$.....



2 YEAR OLD ANGUS BULLS

47

BROOKSBY ANDY P341#

Born: 1/08/2018

Ident: AHPP341

GENETIC CONDITIONS: AM6%,CA6%,DD6%,NH6%

SITZ NEW DESIGN 458N#

WATTLETOP BULL DURHAM F85^{PV}

WATTLETOP Z101^{PV}

SIRE: WATTLETOP ANDY F216 H468^{SV}

G A R RETAIL PRODUCT#

WATTLETOP USUAL C191#

WATTLETOP USUAL Z74#

UNKNOWN

DAM: BROOKSBY B53 #

UNKNOWN

JUNE 2020 TRANSTASMAN ANGUS CATTLE EVALUATION

	BW	200D	400D	600D	Milk	SS	EMA	RIB	Rump	IMF
EBV	+3.0	+36	+65	+77	+15	+1.3	+3.7	+0.0	+0.6	+1.4
Acc	70%	63%	60%	68%	44%	46%	48%	47%	51%	38%

Traits Observed: BWT,200WT,600WT,Scan(EMA,Rib,Rump,IMF)

Birth Weight: 34kgs

Purchaser \$.....

48

BROOKSBY ANDY P326#

Born: 4/07/2018

Ident: AHPP326

GENETIC CONDITIONS: AM13%,CAFU,DDFU,NH13%

SITZ NEW DESIGN 458N#

WATTLETOP BULL DURHAM F85^{PV}

WATTLETOP Z101^{PV}

SIRE: WATTLETOP ANDY F216 H468^{SV}

G A R RETAIL PRODUCT#

WATTLETOP USUAL C191#

WATTLETOP USUAL Z74#

C A FUTURE DIRECTION 5321#

CAMPTON Y13^{PV}

TE MANIA MOONGARA Q301+95#

DAM: BROOKSBY DELIMA E454 #

S A F PHANTOM#

HOPETOUN PARK W68#

HOPETOUN PARK DELIMA U28#

JUNE 2020 TRANSTASMAN ANGUS CATTLE EVALUATION

	BW	200D	400D	600D	Milk	SS	EMA	RIB	Rump	IMF
EBV	+5.5	+43	+76	+106	+13	+1.8	+2.8	-0.9	-0.7	+1.2
Acc	72%	66%	64%	70%	50%	51%	44%	45%	45%	41%

Traits Observed: BWT,200WT,600WT,Scan(EMA,Rib,Rump,IMF)

Birth Weight: 38kgs

Purchaser \$.....

49

BROOKSBY ANDY P332#

Born: 14/08/2018

Ident: AHPP332

GENETIC CONDITIONS: AMFU,CAFU,DDFU,NHFU

SITZ NEW DESIGN 458N#

WATTLETOP BULL DURHAM F85^{PV}

WATTLETOP Z101^{PV}

SIRE: WATTLETOP ANDY F216 H468^{SV}

G A R RETAIL PRODUCT#

WATTLETOP USUAL C191#

WATTLETOP USUAL Z74#

LEACHMAN FULLBACK#

RITO 9FB3 OF 5H11 FULLBACK#

RITA 5H11 OF 1B14 RITO 9J9#

DAM: ABBOTT FULLBACK G37 #

VERMILION YELLOWSTONE#

ABBOTT WHITE TRAVELLER B57#

GLENCAIRN VICKY V63#

JUNE 2020 TRANSTASMAN ANGUS CATTLE EVALUATION

	BW	200D	400D	600D	Milk	SS	EMA	RIB	Rump	IMF
EBV	+4.5	+41	+70	+91	+15	+1.1	+2.8	-0.5	-0.1	+0.6
Acc	74%	68%	66%	72%	51%	54%	56%	55%	56%	49%

Traits Observed: BWT,200WT,600WT,Scan(EMA,Rib,IMF)

Birth Weight: 33kgs

Purchaser \$.....

50

BROOKSBY ANDY P408#

Born: 29/07/2018

Ident: AHPP408

GENETIC CONDITIONS: AMFU,CAFU,DDFU,NHFU

SITZ NEW DESIGN 458N#

WATTLETOP BULL DURHAM F85^{PV}

WATTLETOP Z101^{PV}

SIRE: WATTLETOP ANDY F216 H468^{SV}

G A R RETAIL PRODUCT#

WATTLETOP USUAL C191#

WATTLETOP USUAL Z74#

NOONEE BYRON B38^{SV}

NOONEE DEAN D69^{SV}

NOONEE QUALITY B86#

DAM: TUCKLAN DEAN F100 #

S A V 8180 TRAVELER 004#

TUCKLAN TRAVELER 004 D93#

LAWSONS FUTURE DIRECTION Z971^{SV}

JUNE 2020 TRANSTASMAN ANGUS CATTLE EVALUATION

	BW	200D	400D	600D	Milk	SS	EMA	RIB	Rump	IMF
EBV	+4.0	+40	+73	+95	+16	+1.8	+2.9	+0.5	+0.8	+1.1
Acc	74%	67%	65%	72%	51%	53%	54%	53%	56%	45%

Traits Observed: BWT,200WT,600WT,Scan(EMA,Rib,Rump,IMF)

Birth Weight: 36kgs

Purchaser \$.....



2 YEAR OLD ANGUS BULLS

51

BROOKSBY REGENT P323#

Born: 27/08/2018

Ident: AHPP323

GENETIC CONDITIONS: AMFU, CAFU, DD13%, NHFU

TE MANIA AMBASSADOR A134^{SV}

TUWHARETOA REGENT D145^{PV}

LAWSONS HENRY VIII Y5^{SV}

SIRE: WATTLETOP REGENT L78^{PV}

TE MANIA INFINITY 04 379 AB[#]

WATTLETOP ANN F40^{SV}

WATTLETOP ANN Z397^{SV}

SITZ NEW DESIGN 458N[#]

WATTLETOP BULL DURHAM G21^{SV}

WATTLETOP BARUNAH E45[#]

DAM: BROOKSBY VALLEY L039 #

ABBOTT DESTROYER D53^{SV}

BROOKSBY VALLEY J368[#]

HOPETOUN PARK Z39[#]

JUNE 2020 TRANSTASMAN ANGUS CATTLE EVALUATION

	BW	200D	400D	600D	Milk	SS	EMA	RIB	Rump	IMF
EBV	+4.6	+45	+82	+109	+16	+2.8	+4.0	-0.5	-0.3	+2.4
Acc	72%	64%	61%	67%	50%	49%	49%	51%	51%	47%

Traits Observed: BWT, 200WT, 600WT, Scan(EMA, Rib, Rump, IMF)

Birth Weight: 33kgs

Purchaser \$.....

52

BROOKSBY ANDY P343#

Born: 3/08/2018

Ident: AHPP343

GENETIC CONDITIONS: AMFU, CAFU, DD6%, NH25%

SITZ NEW DESIGN 458N[#]

WATTLETOP BULL DURHAM F85^{PV}

WATTLETOP Z101^{PV}

SIRE: WATTLETOP ANDY F216 H468^{SV}

G A R RETAIL PRODUCT[#]

WATTLETOP USUAL C191[#]

WATTLETOP USUAL Z74[#]

GLENCAIRN MAXIMUS W36^{PV}

ABBOTT MAXIMUS A60^{PV}

GLENCAIRN VICKY V63[#]

DAM: BROOKSBY ALLIE H204 #

YTHANBRAE NEW DESIGN 036 U84[#]

WATTLETOP Y91[#]

WATTLETOP W295[#]

JUNE 2020 TRANSTASMAN ANGUS CATTLE EVALUATION

	BW	200D	400D	600D	Milk	SS	EMA	RIB	Rump	IMF
EBV	+3.4	+36	+65	+83	+16	+1.3	+4.7	-0.3	-0.4	+1.0
Acc	74%	67%	65%	72%	48%	51%	53%	52%	55%	44%

Traits Observed: BWT, 200WT, 600WT, Scan(EMA, Rib, Rump, IMF)

Birth Weight: 34kgs

Purchaser \$.....

53

BROOKSBY JERMAINE P465#

Born: 23/07/2018

Ident: AHPP465

GENETIC CONDITIONS: AM6%, CAFU, DD14%, NH6%

ARDROSSAN ADMIRAL A2^{PV}

LANDFALL COMMANDER C47^{SV}

LANDFALL ARCHER X9^{PV}

SIRE: TALIS JERMAINE J802^{SV}

SCHURRTOP SUPREME[#]

TALIS LILAC V563[#]

SPARTA FLOWER J24+89[#]

GLENAVON C140^{SV}

WATTLETOP ADMIRAL F156^{SV}

WATTLETOP USUAL Y93[#]

DAM: BROOKSBY BURNETTE J188 #

CAMPTON Y13^{PV}

BROOKSBY BURNETTE E66[#]

HOPETOUN PARK Z13[#]

JUNE 2020 TRANSTASMAN ANGUS CATTLE EVALUATION

	BW	200D	400D	600D	Milk	SS	EMA	RIB	Rump	IMF
EBV	+2.3	+38	+71	+93	+15	+1.3	+6.0	+0.2	-0.8	+1.0
Acc	71%	64%	62%	69%	46%	46%	51%	50%	53%	43%

Traits Observed: BWT, 200WT, 600WT, Scan(EMA, Rib, Rump, IMF)

Birth Weight: 30kgs

Purchaser \$.....

54

BROOKSBY NEW DAY P342#

Born: 30/07/2018

Ident: AHPP342

GENETIC CONDITIONS: AMFU, CAFU, DD13%, NHFU

BOYD NEW DAY 8005[#]

B/R NEW DAY 454[#]

B/R RUBY 1224[#]

SIRE: BOOROOMOOKA NEW DAY G648^{SV}

LEMMON NEWSLINE C804[#]

BOOROOMOOKA WAGINA A102[#]

BOOROOMOOKA WAGINA W365[#]

SITZ NEW DESIGN 458N[#]

WATTLETOP BULL DURHAM G21^{SV}

WATTLETOP BARUNAH E45[#]

DAM: BROOKSBY THISTLE J77 #

B T ULTRAVOX 297E[#]

ABBOTT THISTLE A21[#]

GLENCAIRN THISTLE W82[#]

JUNE 2020 TRANSTASMAN ANGUS CATTLE EVALUATION

	BW	200D	400D	600D	Milk	SS	EMA	RIB	Rump	IMF
EBV	+4.3	+46	+83	+113	+17	+1.9	+5.7	-0.3	-0.7	+1.5
Acc	72%	66%	64%	71%	51%	52%	54%	54%	56%	47%

Traits Observed: BWT, 200WT, 600WT, Scan(EMA, Rib, Rump, IMF)

Birth Weight: 34kgs

Purchaser \$.....



2 YEAR OLD ANGUS BULLS

55

BROOKSBY JERMAINE P466#

Born: 9/08/2018

Ident: AHPP466

GENETIC CONDITIONS: AMFU, CAFU, DDFU, NHFU

ARDROSSAN ADMIRAL A2^{PV}

LANDFALL COMMANDER C47^{SV}

LANDFALL ARCHER X9^{PV}

SIRE: TALIS JERMAINE J802^{SV}

SCHURRTOP SUPREME[#]

TALIS LILAC V563[#]

SPARTA FLOWER J24+89[#]

WATTLETOP BULL DURHAM F85^{PV}

WATTLETOP ANDY F216 H468^{SV}

WATTLETOP USUAL C191[#]

DAM: BROOKSBY GAIL M221 #

BOOROOMOOKA DESIGN 120 A634^{SV}

FAIRVALE GAIL D70[#]

FAIRVALE GAIL[#]

JUNE 2020 TRANSTASMAN ANGUS CATTLE EVALUATION

	BW	200D	400D	600D	Milk	SS	EMA	RIB	Rump	IMF
EBV	+3.4	+38	+70	+92	+15	+1.6	+4.5	-0.1	-0.6	+1.3
Acc	71%	62%	60%	66%	43%	45%	47%	47%	49%	40%

Traits Observed: BWT,200WT,600WT,Scan(EMA,Rib,Rump,IMF)

Birth Weight: 30kgs

Purchaser \$.....

56

BROOKSBY DURHAM P344#

Born: 19/08/2018

Ident: AHPP344

GENETIC CONDITIONS: AMFU, CAFU, DD26%, NHFU

BON VIEW NEW DESIGN 1407[#]

SITZ NEW DESIGN 458N[#]

SITZ ELLUNAS ELITE 3308[#]

SIRE: WATTLETOP BULL DURHAM G21^{SV}

HARB PENDLETON 765 J H^{SV}

WATTLETOP BARUNAH E45[#]

WATTLETOP BARUNAH C69[#]

PC NEBRASKA D22^{SV}

FAIRVALE FLEXOR F66^{SV}

MILLAH MURRAH BRENDA V100[#]

DAM: FAIRVALE ESTELLA J17 #

BOOROOMOOKA DESIGN 120 A634^{SV}

FAIRVALE ESTELLA F58[#]

FAIRVALE ESTELLA B11[#]

JUNE 2020 TRANSTASMAN ANGUS CATTLE EVALUATION

	BW	200D	400D	600D	Milk	SS	EMA	RIB	Rump	IMF
EBV	+4.7	+43	+79	+105	+14	+2.6	+2.1	-0.2	-0.4	+1.8
Acc	72%	63%	62%	67%	50%	48%	50%	52%	53%	45%

Traits Observed: BWT,200WT,600WT,Scan(EMA,Rib,Rump,IMF)

Birth Weight: 36kgs

Purchaser \$.....

57

BROOKSBY KERR P186^{SV}

Born: 14/08/2018

Ident: AHPP186

GENETIC CONDITIONS: AMFU, CA4%, DDFU, NHFU

CONNEALY CONSENSUS 7229^{SV}

CONNEALY UNITED 1116[#]

BREETA OF CONANGA 5403 985L[#]

SIRE: TALIS KERR K379^{SV}

TALIS WOOMERA W554[#]

TALIS ADVENTURE A587[#]

TALIS ADVENTURE V504[#]

N BAR EMULATION EXT[#]

NICHOLS EXTRA H6[#]

NICHOLS EILEEN MAY F261[#]

DAM: HOPETOUN PARK Z19 #

SCOTCH CAP[#]

HOPETOUN PARK U40[#]

RAINBOW VALLEY Q24+95[#]

JUNE 2020 TRANSTASMAN ANGUS CATTLE EVALUATION

	BW	200D	400D	600D	Milk	SS	EMA	RIB	Rump	IMF
EBV	+4.9	+39	+68	+85	+12	+1.4	+4.8	-0.3	+0.0	+1.0
Acc	69%	56%	53%	55%	47%	48%	41%	43%	42%	39%

Traits Observed: BWT,600WT,Scan(EMA,Rib,Rump,IMF)

Birth Weight: 34kgs

Purchaser \$.....

58

BROOKSBY ANDY P037^{SV}

Born: 13/07/2018

Ident: AHPP037

GENETIC CONDITIONS: AMFU, CAFU, DDFU, NHFU

SITZ NEW DESIGN 458N[#]

WATTLETOP BULL DURHAM F85^{PV}

WATTLETOP Z101^{PV}

SIRE: WATTLETOP ANDY F216 H468^{SV}

G A R RETAIL PRODUCT[#]

WATTLETOP USUAL C191[#]

WATTLETOP USUAL Z74[#]

VERMILION YELLOWSTONE[#]

HOPETOUN PARK YELLOWSTONE W85[#]

DAVYN PARK RAINA R12+96[#]

DAM: HOPETOUN PARK Z35 #

BON VIEW EMULATION EXT 473[#]

DAVYN PARK RAINA R12+96[#]

FORRES BURNETTE P86+94[#]

JUNE 2020 TRANSTASMAN ANGUS CATTLE EVALUATION

	BW	200D	400D	600D	Milk	SS	EMA	RIB	Rump	IMF
EBV	+5.6	+45	+82	+109	+12	+1.5	+3.5	-0.5	-0.2	+1.0
Acc	73%	67%	65%	71%	53%	55%	46%	47%	48%	42%

Traits Observed: BWT,200WT,600WT,Scan(EMA,Rib,Rump,IMF)

Birth Weight: 39kgs

Purchaser \$.....



YEARLING ANGUS BULLS

59

BROOKSBY JERMAINE Q219#

Born: 12/07/2019

Ident: AHPQ219

GENETIC CONDITIONS:

ARDROSSAN ADMIRAL A2^{PV}
 LANDFALL COMMANDER C47^{SV}
 LANDFALL ARCHER X9^{PV}

SIRE: TALIS JERMAINE J802^{SV}

SCHURRTOP SUPREME#
 TALIS LILAC V563#
 SPARTA FLOWER J24+89#

WATTLETOP BULL DURHAM F85^{PV}
 WATTLETOP ANDY F216 H468^{SV}
 WATTLETOP USUAL C191#

DAM: BROOKSBY DRUCILLA N217 #

ABBOTT DOMINATOR D47^{SV}
 ABBOTT DRUCILLA G50#
 ABBOTT Z44#

JUNE 2020 TRANSTASMAN ANGUS CATTLE EVALUATION

	BW	200D	400D	600D	Milk	SS	EMA	RIB	Rump	IMF
EBV	+3.9	+39	+71	+94	+13	+1.4	+4.8	-0.4	-1.0	+1.1
Acc	69%	57%	53%	56%	42%	43%	40%	42%	42%	38%

Traits Observed: BWT,200WT,600WT,Scan(EMA,Rib,Rump,IMF)

Birth Weight: 30kgs

Purchaser \$.....

60

BROOKSBY DURHAM Q092#

Born: 4/08/2019

Ident: AHPQ092

GENETIC CONDITIONS: AMFU,CAFU,DD27%,NHFU

BON VIEW NEW DESIGN 1407#
 SITZ NEW DESIGN 458N#
 SITZ ELLUNAS ELITE 3308#

SIRE: WATTLETOP BULL DURHAM G21^{SV}

HARB PENDLETON 765 J H^{SV}
 WATTLETOP BARUNAH E45#
 WATTLETOP BARUNAH C69#

PAPA EQUATOR 2928#
 ARDROSSAN EQUATOR A241^{PV}
 ARDROSSAN PRINCESS W38^{PV}

DAM: BROOKSBY USUAL H41 #

G A R RETAIL PRODUCT#
 WATTLETOP USUAL B160#
 WATTLETOP USUAL U86#

JUNE 2020 TRANSTASMAN ANGUS CATTLE EVALUATION

	BW	200D	400D	600D	Milk	SS	EMA	RIB	Rump	IMF
EBV	+2.5	+42	+80	+98	+18	+2.2	+4.6	-1.1	-1.5	+1.7
Acc	72%	61%	59%	62%	55%	54%	52%	54%	53%	51%

Traits Observed: BWT,200WT,600WT,Scan(EMA,Rib,Rump,IMF)

Birth Weight: 30kgs

Purchaser \$.....

61

BROOKSBY GENERAL Q217#

Born: 12/07/2019

Ident: AHPQ217

GENETIC CONDITIONS:

TE MANIA BERKLEY B1^{SV}
 AYRVALE GENERAL G18^{PV}
 AYRVALE EASE E3^{PV}

SIRE: KO G18 GENERAL N37^{SV}

CONNELLY UNITED 1116#
 KO ANNIE L37#
 KO ANNIE J8#

SITZ NEW DESIGN 458N#
 WATTLETOP BULL DURHAM G21^{SV}
 WATTLETOP BARUNAH E45#

DAM: BROOKSBY MARGO N330 #

BOOROOMOOKA NEW DAY G648^{SV}
 BROOKSBY MARGO L457#
 GLENLACHIE HI ROAD MARGO Z9#

JUNE 2020 TRANSTASMAN ANGUS CATTLE EVALUATION

	BW	200D	400D	600D	Milk	SS	EMA	RIB	Rump	IMF
EBV	+1.6	+42	+78	+100	+17	+1.5	+6.0	+0.9	+0.5	+2.0
Acc	67%	54%	51%	52%	44%	46%	41%	44%	43%	40%

Traits Observed: BWT,200WT,600WT,Scan(EMA,Rib,Rump,IMF)

Birth Weight: 25kgs

Purchaser \$.....

62

BROOKSBY GENERAL Q2#

Born: 22/06/2019

Ident: AHPQ002

GENETIC CONDITIONS:

TE MANIA BERKLEY B1^{SV}
 AYRVALE GENERAL G18^{PV}
 AYRVALE EASE E3^{PV}

SIRE: KO G18 GENERAL N37^{SV}

CONNELLY UNITED 1116#
 KO ANNIE L37#
 KO ANNIE J8#

TE MANIA BARTEL B219^{PV}
 AYRVALE BARTEL E7^{PV}
 EAGLEHAWK JEDDA B32^{SV}

DAM: BROOKSBY DRUCILLA N004 #

ABBOTT DOMINATOR D47^{SV}
 ABBOTT DRUCILLA G33#
 ABBOTT VICKY Z25#

JUNE 2020 TRANSTASMAN ANGUS CATTLE EVALUATION

	BW	200D	400D	600D	Milk	SS	EMA	RIB	Rump	IMF
EBV	+2.6	+44	+79	+102	+18	+1.6	+6.2	+0.4	+0.3	+2.1
Acc	58%	54%	53%	54%	49%	51%	48%	52%	50%	48%

Traits Observed: BWT,200WT,600WT,Scan(EMA,Rib,Rump,IMF)

Birth Weight: 31kgs

Purchaser \$.....



YEARLING ANGUS BULLS

63

BROOKSBY JERMAINE Q021#

Born: 22/06/2019

Ident:AHPQ021

GENETIC CONDITIONS: AMFU,CAFU,DD14%,NHFU

ARDROSSAN ADMIRAL A2^{PV}

LANDFALL COMMANDER C47^{SV}

LANDFALL ARCHER X9^{PV}

SIRE:TALIS JERMAINE J802^{SV}

SCHURRTOP SUPREME#

TALIS LILAC V563#

SPARTA FLOWER J24+89#

GLENAVON C140^{SV}

WATTLETOP ADMIRAL F156^{SV}

WATTLETOP USUAL Y93#

DAM: BROOKSBY BURNETTE J66 #

NICHOLS EXTRA H6#

HOPETOUN PARK Z13#

HOPETOUN PARK RAINA U04#

JUNE 2020 TRANSTASMAN ANGUS CATTLE EVALUATION

	BW	200D	400D	600D	Milk	SS	EMA	RIB	Rump	IMF
EBV	+2.6	+36	+68	+84	+14	+1.0	+5.1	+0.1	-0.6	+1.0
Acc	69%	56%	53%	55%	45%	45%	41%	43%	42%	39%

Traits Observed: BWT,200WT,600WT,Scan(EMA,Rib,Rump,IMF)

Birth Weight: 29kgs

Purchaser \$.....

64

BROOKSBY JERMAINE Q218#

Born: 13/07/2019

Ident:AHPQ218

GENETIC CONDITIONS:

ARDROSSAN ADMIRAL A2^{PV}

LANDFALL COMMANDER C47^{SV}

LANDFALL ARCHER X9^{PV}

SIRE:TALIS JERMAINE J802^{SV}

SCHURRTOP SUPREME#

TALIS LILAC V563#

SPARTA FLOWER J24+89#

TE MANIA BARTEL B219^{PV}

AYRVALE BARTEL E7^{PV}

EAGLEHAWK JEDDA B32^{SV}

DAM: BROOKSBY JULIA N021 #

ABBOTT DOMINATOR D47^{SV}

ABBOTT JULIA G40#

ABBOTT JULIA A50#

JUNE 2020 TRANSTASMAN ANGUS CATTLE EVALUATION

	BW	200D	400D	600D	Milk	SS	EMA	RIB	Rump	IMF
EBV	+2.7	+39	+72	+95	+17	+1.7	+5.9	-0.1	-0.3	+1.6
Acc	69%	58%	54%	57%	48%	47%	47%	50%	48%	46%

Traits Observed: BWT,200WT,600WT,Scan(EMA,Rib,Rump,IMF)

Birth Weight: 29kgs

Purchaser \$.....

64A

BROOKSBY GENERAL Q048#

Born: 29/07/2019

Ident:AHPQ048

GENETIC CONDITIONS: AMFU,CAFU,DDFU,NHFU

TE MANIA BERKLEY B1^{SV}

AYRVALE GENERAL G18^{PV}

AYRVALE EASE E3^{PV}

SIRE:KO G18 GENERAL N37^{SV}

CONNELLY UNITED 1116#

KO ANNIE L37#

KO ANNIE J8#

SITZ NEW DESIGN 458N#

WATTLETOP BULL DURHAM G21^{SV}

WATTLETOP BARUNAH E45#

DAM: BROOKSBY PANDA L367#

WATTLETOP ADMIRAL F156^{SV}

BROOKSBY PANDA J176#

BROOKSBY PANDA F151#

JUNE 2020 TRANSTASMAN ANGUS CATTLE EVALUATION

SIRE EBVS										
	BW	200D	400D	600D	Milk	SS	EMA	RIB	Rump	IMF
EBV	+2.6	+48	+84	+110	+14	+1.2	+7.4	+1.5	+0.8	+2.5
Acc	73%	69%	70%	68%	62%	73%	61%	62%	63%	59%

Birth Weight: 31kgs

Purchaser \$.....

65

BROOKSBY KALLI Q122#

Born: 27/09/2019

Ident:AHPQ122

GENETIC CONDITIONS: AMFU,CAFU,DD7%,NHFU

TE MANIA BERKLEY B1^{SV}

AYRVALE GENERAL G18^{PV}

AYRVALE EASE E3^{PV}

SIRE:GLENCH KALLI K115^{SV}

SYDGEN TRUST 6228#

GLENCH FLOWER H90#

GLENCH FLOWER F214#

R/M ULTRA CASH FLOW 102#

ABBOTT CASH FLOW D36^{SV}

GLENCAIRN ACE X88#

DAM: ABBOTT FORRES G42^{SV}

CONNELLY THUNDER#

ABBOTT DANDALOO D39#

FORRES DORIS X266#

JUNE 2020 TRANSTASMAN ANGUS CATTLE EVALUATION

	BW	200D	400D	600D	Milk	SS	EMA	RIB	Rump	IMF
EBV	+5.0	+48	+86	+115	+12	+1.0	+4.2	-0.8	-0.9	+1.8
Acc	62%	57%	58%	58%	49%	51%	47%	51%	50%	46%

Traits Observed: BWT,200WT,600WT,Scan(EMA,Rib,Rump,IMF)

Birth Weight: 31kgs

Purchaser \$.....



YEARLING ANGUS BULLS

66

BROOKSBY Q049

Born:

Unregistered

GENETIC CONDITIONS:

TC FRANKLIN 619#
 WATTLETOP FRANKLIN G188^{SV}
 WATTLETOP BARUNAH E295^{DV}

SIRE:WATTLETOP N6#

WATTLETOP FRANKEL J173^{SV}
 WATTLETOP ANN L376#
 WATTLETOP ANN G91#

WATTLETOP BULL DURHAM F85^{PV}
 WATTLETOP ANDY F216 H468^{SV}
 WATTLETOP USUAL C191#

DAM: BROOKSBY DELL N232#

GLENAVON C140^{SV}
 BROOKSBY DELL J68#
 TUCKLAN DELL D73#

JUNE 2020 TRANSTASMAN ANGUS CATTLE EVALUATION

SIRE EBVS										
	BW	200D	400D	600D	Milk	SS	EMA	RIB	Rump	IMF
EBV	+4.0	+42	+74	+99	+17	+1.7	+4.1	-0.8	-1.1	+1.2
Acc	72%	65%	60%	63%	51%	52%	48%	49%	49%	44%

Birth Weight: 30kgs

Purchaser \$.....

67

BROOKSBY GENERAL Q025#

Born: 6/08/2019

Ident:AHPQ025

GENETIC CONDITIONS: AMFU,CAFU,DDFU,NHFU

TE MANIA BERKLEY B1^{SV}
 AYRVALE GENERAL G18^{PV}
 AYRVALE EASE E3^{PV}

SIRE:KO G18 GENERAL N37^{SV}

CONNELLY UNITED 1116#
 KO ANNIE L37#
 KO ANNIE J8#

G A R PRECISION 1680#
 G A R RETAIL PRODUCT#
 G A R EXT 4927#

DAM: WATTLETOP USUAL B160 #

B/R NEW DESIGN 036#
 WATTLETOP USUAL U86#
 WATTLETOP USUAL P22+94#

JUNE 2020 TRANSTASMAN ANGUS CATTLE EVALUATION

	BW	200D	400D	600D	Milk	SS	EMA	RIB	Rump	IMF
EBV	+2.4	+41	+77	+93	+14	+1.4	+7.0	-0.8	-1.9	+1.7
Acc	70%	59%	58%	59%	54%	54%	49%	53%	51%	49%

Traits Observed: BWT,200WT,600WT,Scan(EMA,Rib,Rump,IMF)

Birth Weight: 30kgs

Purchaser \$.....

68

BROOKSBY Q202

Born:

Unregistered

GENETIC CONDITIONS:

TC FRANKLIN 619#
 WATTLETOP FRANKLIN G188^{SV}
 WATTLETOP BARUNAH E295^{DV}

SIRE:WATTLETOP N6#

WATTLETOP FRANKEL J173^{SV}
 WATTLETOP ANN L376#
 WATTLETOP ANN G91#

SITZ NEW DESIGN 458N#
 WATTLETOP BULL DURHAM G21^{SV}
 WATTLETOP BARUNAH E45#

DAM: BROOKSBY EMPRESS J78#

S A V 8180 TRAVELER 004#
 TUCKLAN TRAVELER 004 D102#
 LAWSONS FUTURE DIRECTION Z971^{SV}

JUNE 2020 TRANSTASMAN ANGUS CATTLE EVALUATION

SIRE EBVS										
	BW	200D	400D	600D	Milk	SS	EMA	RIB	Rump	IMF
EBV	+3.1	+41	+73	+92	+16	+1.9	+3.4	+0.8	+0.7	+1.5
Acc	71%	66%	65%	69%	63%	60%	55%	57%	57%	52%

Birth Weight: 32kgs

Purchaser \$.....

69

BROOKSBY GENERAL Q063 #

Born: 16/09/2019

Ident: AHPQ063

GENETIC CONDITIONS: AMFU,CAFU,DDFU,NH13%

TE MANIA BERKLEY B1^{SV}
 AYRVALE GENERAL G18^{PV}
 AYRVALE EASE E3^{PV}

SIRE:KO G18 GENERAL N37^{SV}

CONNELLY UNITED 1116#
 KO ANNIE L37#
 KO ANNIE J8#

LANDFALL COMMANDER C47#
 TALIS JERMAINE J802#
 TALIS LILAC V563#

DAM: BROOKSBY ABIGAIL M364#

ABBOTT MAXIMUS A60#
 BROOKSBY ABIGAIL K349#
 HOPETOUN PARK Z19#

JUNE 2020 TRANSTASMAN ANGUS CATTLE EVALUATION

SIRE EBVS										
	BW	200D	400D	600D	Milk	SS	EMA	RIB	Rump	IMF
EBV	+2.4	+40	+71	+90	+15	+1.1	+6.6	+0.7	+0.2	+1.7
Acc	67%	55%	52%	54%	42%	45%	40%	42%	41%	39%

Birth Weight: 34kgs

Purchaser \$.....



YEARLING ANGUS BULLS

70

BROOKSBY Q216

Born:

Unregistered

TC FRANKLIN 619#
 WATTLETOP FRANKLIN G188^{SV}
 WATTLETOP BARUNAH E295^{DV}

SIRE: WATTLETOP N6#

WATTLETOP FRANKEL J173^{SV}
 WATTLETOP ANN L376#
 WATTLETOP ANN G91#

LANDFALL COMMANDER C47^{SV}
 TALIS JERMAINE J802^{SV}
 TALIS LILAC V563#

DAM: BROOKSBY N083#

GLENAVON C140^{SV}
 BROOKSBY J56#
 BROOKSBY B6#

JUNE 2020 TRANSTASMAN ANGUS CATTLE EVALUATION

SIRE EBVS										
	BW	200D	400D	600D	Milk	SS	EMA	RIB	Rump	IMF
EBV	+4.0	+42	+74	+99	+17	+1.7	+4.1	-0.8	-1.1	+1.2
Acc	72%	65%	60%	63%	51%	52%	48%	49%	49%	44%

Birth Weight: 31kgs

Purchaser \$.....

71

BROOKSBY JERMAINE Q39#

Born: 15/08/2019

Ident: AHPQ039

GENETIC CONDITIONS:

ARDROSSAN ADMIRAL A2^{PV}
 LANDFALL COMMANDER C47^{SV}
 LANDFALL ARCHER X9^{PV}

SIRE: TALIS JERMAINE J802^{SV}

SCHURRTOP SUPREME#
 TALIS LILAC V563#
 SPARTA FLOWER J24+89#

B/R NEW DAY 454#
 BOOROOMOOKA NEW DAY G648^{SV}
 BOOROOMOOKA WAGINA A102#

DAM: BROOKSBY DELIMA N207 #

CAMPTON Y13^{PV}
 BROOKSBY DELIMA E454#
 HOPETOUN PARK W68#

JUNE 2020 TRANSTASMAN ANGUS CATTLE EVALUATION

	BW	200D	400D	600D	Milk	SS	EMA	RIB	Rump	IMF
EBV	+4.5	+42	+75	+101	+13	+1.6	+6.8	-0.8	-1.7	+1.2
Acc	69%	57%	53%	56%	44%	44%	41%	43%	42%	39%

Traits Observed: BWT,200WT,600WT,Scan(EMA,Rib,Rump,IMF)

Birth Weight: 31kgs

Purchaser \$.....

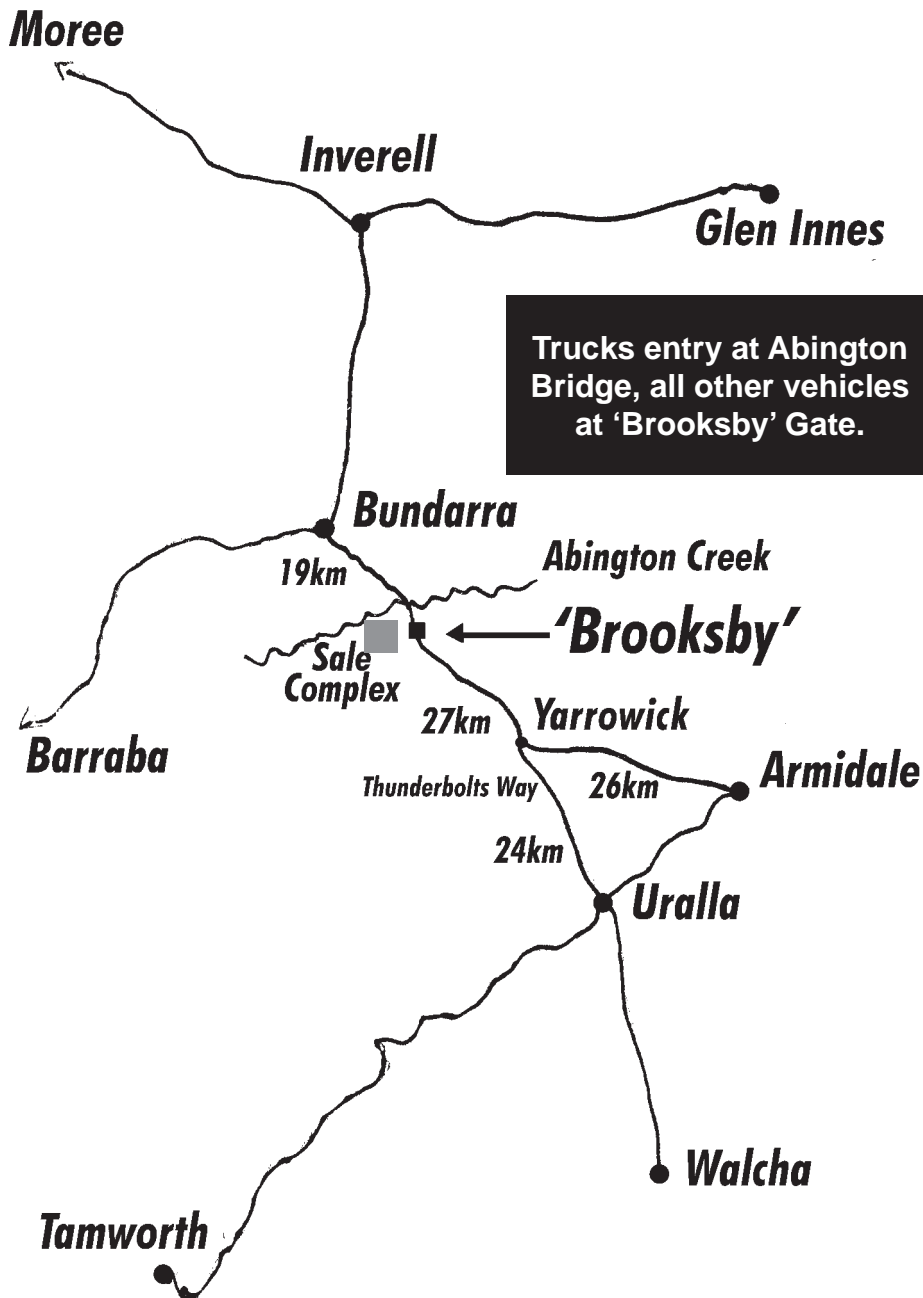
NOTES

NOTES

DIRECTIONS TO 'BROOKSBY'



GLENWARRAH HEREFORDS & BROOKSBY ANGUS



**Thank you for attending the Glenwarrah Herefords
& Brooksby Angus Bull Sale.**

Steve, Leanne & David Collins

BUYERS INSTRUCTION SLIP



GLENWARRAH HEREFORDS & BROOKSBY ANGUS 2020 BULL SALE



Purchaser.....

Address:

..... Postcode:.....

PIC

Phone:..... Mobile.....

Fax:

Lots Purchased:

Please mail my Pedigree direct, or

I require transfer through Breed Society.

Prefix to which Stud Stock are to be transferred:

.....

Transport - carrier:.....

.....

Proposed date of pick-up:

.....

Invoice to:.....

.....

Signature of buyer:.....

NO VERBAL INSTRUCTIONS WILL BE ACCEPTED

Steers by Glenwarrah & Brooksby Bulls



Kaye and Jim Bock, Wandoan



Kraige Lavelle



John & Libby Martin



**Steers owned by
Jeff & Kim Liddle**



Steers owned by Welbatch Pastoral Co.



Steers owned by Clyde Davidson



Steers owned by Richard and Jacqui Green



**Stewart & Tina Hayes
Heifers, Taroom**

