

BH
BATTALION
HEREFORDS
CARA PARK

EST. **HEREFORDS** 1975



2nd
Annual

Battalion & Cara Park Bull Sale
Mon 6th July 2020 - 1pm
Glen Innes Showground

Sale Location: **Glen Innes Showground**
 Torrington St, Glen Innes NSW 2370
 Entry to the showground is by Torrington Street gate
 Truck entry via Hunter Street



Second Annual Battalion & Cara Park Bull Sale

SALE MONDAY 6TH JULY 2020
Sale at 1pm, Inspection from 10am
Offering 24 Hereford Bulls

Complimentary lunch provided



Grant & Kylie Kneipp
 T/AS GE & KM Kneipp
 "Wattle Dale"
 1259 Nine Mile Road
 Dundee NSW 2370

Ph: 02 6734 4134
 Mob: 0428 726 771
grant@battalion.com.au
www.battalionherefords.com.au



AUCTIONEER
 Paul Dooley
 0458 662 646



Graeme & Natalie Newnham
 T/AS JE Newnham & Co
 "Cara"
 285 Reserve Creek Road
 Myall Creek, Delungra NSW 2403

Ph: 02 6723 6446
 Mob: 0428 236 446
g.n.newnham@gmail.com



AGENTS
 Nathan Purvis 0427 324 078
 Shad Bailey 0458 322 283
 Craig Thomas 0428 669 500



Sale Information

INSPECTION

Bulls are available for inspection from 10am on sale day. We encourage inspection of both Battalion and Cara Park bulls on property prior to sale day by appointment. This gives you the opportunity to view the bulls in their natural environment and possibly inspect other animals in the pedigree to assist you in making your decision. **Battalion Herefords will also be holding an on property open day on Monday 29th June 2020, 9am to 4pm.**

BUYERS REGISTRATION

The Buyers number system will be in operation. All prospective purchasers are asked to register prior to the sale.

PHONE BIDDING

If you are unable to attend on sale day and wish to bid, please contact Colin Say & Co prior to sale day to organise phone bidding.

VISITOR SAFETY

All of the sale bulls have been screened for temperament and are a quiet under normal circumstances, however **Visitors enter the cattle pens at their own risk. Children/Prams must not enter the sale pens.**

DISABLED ACCESS

Disabled access is available at the showground and into the stands at the sale yards.

OUTSIDE AGENT REBATE

A rebate of 2% is offered to outside agents who introduce buyers to the selling agent in writing at least 24hrs prior to the sale and settle accounts on the purchaser's behalf within 7 days of the sale

GST: All animals are sold exclusive of GST. GST is added to your invoice.

TRANSPORT

Carriers will be available on sale day. If you wish to bring your own truck, we will accommodate the release of your animal at the completion of the auction. All animals need to be transported from the sale venue by 5pm Tuesday the 7th of July 2020 unless prior arrangements have been made with the vendors. Formal possession, risk and expenses pass to the buyer at the fall of the hammer. We recommend having a quiet animal (e.g. cow, steer etc.) yarded and ready to greet your bull when he arrives home to minimise stress on the bull and help it adjust to its new environment.

INSURANCE

Bulls are a valuable and vulnerable asset to your business. We highly recommend insuring your new purchase at the completion of the sale. Insurance will be available on site.

Recommended Accommodation:

Rest Point Motor Inn

72 New England Hwy, Glen Innes NSW 2370

Ph: (02) 6732 2255

www.restpointmotel.com.au

Book direct and mention our sale for best rates

Camp at the Glen Innes Showground

Campers with pets, or travelling with horses are always welcome. Reasonable overnight rates and available for large groups.

The Showground is close to all Glen Innes town facilities, in a quiet off-highway location. It is easy to access with large vehicles and caravans.

www.gleninnesshowground.com



RPG
Rest Point Group

Rest Point Motor Inn
Hereford Steakhouse
Char Grill

The only choice in Glen Innes...

A place to sleep ~ A place to eat ~ A place to meet ~ A place to celebrate

Ph: 02 6732 2255

72 New England Hwy
Glen Innes NSW 2370

[https://restpointmotel.com.au/
info@restpointmotel.com.au](https://restpointmotel.com.au/info@restpointmotel.com.au)



Herd Health

BATTALION – HERD HEALTH

All Battalion bulls have been sire verified and tested negative for Pestivirus. They have received:

- 7 in 1 – Booster due Feb 2021
- BEF Vaccine (3 day sickness) – Booster due Feb 2021
- Cattlepro pour-on May 2020
- Exi-Fluke May 2020

CARA PARK – HERD HEALTH

All Cara Park bulls have been tested negative for Pestivirus

- 7 in1 booster
- Cydectin Pour-on
- Vibrio

Hereford Group Breedplan

The Breedplan values in this catalogue were calculated in the 2018 Hereford Group Breedplan evaluation. Each reported trait shows an EBV (estimated breeding value) and its accuracy level. The EBV provides the current estimate of the bulls genetic merit for that trait, relative to the overall base for the Hereford breed. It indicates how its progeny should perform relative to those of other bulls in the breed. The accuracy of an EBV will be higher for traits with higher heritability and will increase as more performance information on an animal and its relatives become available. The Accuracy of an EBV is reported as a percentage. EBV's with higher accuracy will change less than EBV's of low accuracy when more performance records are analysed.

EBV Percentile table (abbreviated) for Hereford Animals born in 2018

Percentile Band	Weight Traits				Milk	Carcase Traits				
	BW	200	400	600	MILK	EMA	RIB	RUMP	RBY	IMF
Breed Avg	+4.3 KG	+33 KG	+55 KG	+78 KG	+16 KG	+3.4 SQCM	+0.6 MM	+0.7 MM	+0.8 %	+0.5 %



Performance supplements for beef cattle



Deliver protein and minerals to optimise production

Improving results in beef cattle systems requires year-round nutrition planning. Performance Feeds provides convenient, custom nutrition supplements that optimises available forage, minerals, and protein for herd health and profitability:

Anipro Liquid Supplements

- Molasses based liquid supplement
- Provides essential protein, minerals and vitamins
- Up to 27% improvement in forage intake
- Fully serviced PCAS approved program saves time and money

WeatherPro

- Waterproof and highly palatable loose lick
- Effectively manage mineral and vitamin deficiencies
- Suits all classes of grazing cattle
- Improve fertility, growth and immunity

Call 1800 300 593
performancefeeds.com.au





Welcome to our second Annual Sale

We would like to welcome you to the 2nd Annual Battalion & Cara Park Bull Sale to be held at 1pm on Monday 6th July at the Glen Innes showgrounds.

As we write this letter it is late April and the dreaded Covid-19 virus is at its peak. This year is undoubtedly uncharted waters for us all with the virus causing major disruptions to basically every industry across Australia and across the globe. Although most farmers in general have been less affected by the social distancing regulations, it does however have the potential to cause issues for us on sale day. At this stage we are planning the sale to be business as usual hoping by the time July comes around the travel and distancing regulations may have relaxed. However as sale day approaches and if it appears we are unable to have a physical presence at the sale, we will add an online bidding platform and have plenty of agents able to be on the phone should you wish to bid.

We will do our best to inform everyone of any changes to sale day proceeding's well in advance. We do sincerely urge any prospective purchasers to make contact with us to inspect the bulls on farm prior and establish a connection with either ourselves or one of the agents to insure we can accommodate your preferred method of bidding.

This year's draft have undoubtedly had a very tough start with the majority of their lives having been in extreme drought. In recent months with the sudden change to very favourable grass growing weather and clean water once again, the bulls are now coming along very nicely and by sale time they will be a very respectable draft, by no means overdone with the feed bucket but ready to go straight to work.

The outlook for livestock sales in general has certainly seen a rapid rise with many herds now rebuilding and cattle prices at record highs. The salvage value of an aged sire is now very respectable and returning a high percentage of the purchase price of a new bull. As seen at our first sale our genetics are very affordable whilst maintaining proven breed leading genetics that perform in many climates. Our genetics have been carefully selected to drive performance and have the ability to add financial gain for the commercial or stud breeder.

The bulls have all passed a Bull Breeding Soundness Evaluation by a certified Veterinarian.

We hope everyone is remaining in good health and are feeling lucky that social distancing for many of us is very easy to maintain. Spending time out in the paddock is easy and once again, very pleasant with green grass all around.

We welcome and encourage on farm inspections and are happy to discuss any animals at your convenience.

Grant, Kylie, Graeme & Natalie



www.jamesiesfuelandfix.repco-service.net

Ph: 02 6732 1171



MVRL35318

All new car Servicing
(Retaining your Statutory Warranty)

Roadworthy Inspections

Wheel Alignments

Brake & Clutch Services

Batteries

Exhaust Repair & Manufacture

Child Restraints

4x4 Exhaust Systems

Norco Rural Glen Innes

Has everything you need for a Happy Health Herd



- Animal Health & Nutrition
- Wide range of Norco Stockfeed
- Seed & Ag Chem
- Fencing Materials
- On-Farm advice



When you shop with Norco Rural you're supporting Aussie farmers, not overseas investors .. That makes great sense!

Norco Rural is proud to support the Annual Battalion and Cara Park Herefords Bull Sale

Glen Innes 165 Lang Street Ph: 6739 7400

Norco Rural - Because there's a farmer in all of us
Norco - an Australian, farmer owned dairy co-operative since 1895





Our History

Four generations of proud Hereford breeders have called our family property home. "Wattle Dale", 37kms North East of Glen Innes is situated in a cool climate area of the high country in Northern NSW. A location well suited for the production of quality Hereford cattle.

I have been a passionate Hereford breeder since my earliest memories as a child and purchased my first stud female (Emu Hills Cath S724) at the age of 14. In 2006 the Battalion stud was registered and further stud females were purchased from dispersal sales in its early years of establishment. Subsequent females including Moorlands Cherry Ripe W155, Courallie Constance V086, Courallie PR Christian Y312 and Smithston Silky Z231 became just some of the foundation females of the stud and to this day two of those cows have proven to be some of the most influential females within the Battalion herd. Our two most prolific female lines Constance and Cherry Ripe are still producing our top animals each year with arguably our best bulls in this year's sale draft descending from the original females purchased.

Realising how valuable some of our original females were proving to be, we decided to begin flushing our elite matrons with great results. This has allowed us to dramatically lift our bottom line. No expense was spared in developing our herd with a solid foundation of elite females. Purchasing the best on offer from dispersal sales and then flushing those individuals is the method that has dramatically accelerated our rate of improvement and subsequently been a major factor in delivering our strong sale results in recent years.

We have previously marketed our bulls privately and at the Casino Bull sale although our top results have undoubtedly been experienced at the Glen Innes Hereford Bull sale where we currently hold the record top price of \$45,000. That particular sale has been operating for over 70 years, some of the best and a large portion of Hereford studs in Australia have offered bulls through that sale and to say we hold the record is still hard to believe. In our last 3 years at that sale we had sold the top price bull and had the top vendor average with a combined average of \$14,000 for those 3 years.

Now working together with the well renowned Cara Park stud we are more excited and motivated than ever before. Having our own sale allows us to become more in tune with our clients and experiment with new ideas for the future. During this early stage of establishing this sale we are focusing our attention on working with fellow beef producers to assist in improving genetic gains as well as implementing valuable feedback into our own business. My wife Kylie and I now have two extra Hereford enthusiasts Travis and Grace along for the ride. More so now than ever our business needs to be successful. Not only are we passionate about Herefords, it is our bread and butter. We pride ourselves on our customer service and back our genetics to deliver. We look forward to seeing you at the 2nd annual Battalion & Cara Park Bull Sale.

Grant Kneipp



CARA PARK

EST. **HEREFORDS** 1975

Our History

We have been breeding registered Herefords for 45 years for structural soundness doing ability and on farm performance.

The Cara Park Hereford stud was founded in 1975 with the purchase of a small group of cows & heifers from the famous Bexley stud. These were quickly followed by females from renowned studs such as Windsor, South Caramut, Hillcrest, Thornleigh & Alma Downs.

Windsor Maurice (Grand Champion 1972 Sydney Royal Show), after being retained for use by the Windsor Hereford stud was purchased as a foundation sire. Two years later (during the Beef price slump) in September 1978 we purchased Yarram Boswell at the age of 18 months from Yarram Park. Boswell played an important part in the early development of our stud. We used Boswell for nine joining seasons and sold him as an aged sire for almost double his original purchase price. Over the next few years sires used of note were Invernaion Yukon who sired Cara Park Impact selling at the 1985 Annual Glen Innes Hereford Bull Sale for top price in the unled section to Iolanthe Hereford stud. After securing a quarter share semen rights in Injemira Quest we commenced an annual AI & ET program, Quest left us with a terrific line of females. Also used in our AI program very successfully was Injemira Outback, a son Cara Park Playboy selling for top price at the 1992 Glen Innes Bull Sale to Bundarra Hereford stud.

Since then over the years we have used the very best genetics available including Yarram Energizer P241 (top price 1996 Wodonga Bull Sale) sire of Cara Park Xpress T311 who sold for a new record price at the Glen Innes Bull Sale in 2000 to Charvel, Yavenvale & Bowmont Hereford Studs. Academy Columbus (Sydney Junior Champion 1993, Senior & Grand Champion 1994). Yarram Pompeii V055 used by AI, with sons selling to Amos Vale, Curracabark & Red Hill studs. Yavenvale Freedom Z008 (top price Yavenvale Annual Sale 2006), sire of Cara Park Freedom C727 selling at the Glen Innes Bull Sale 2009 to Foxforth

Hereford Stud. These bulls were followed by two more AI sires in Injemira Advance V093 sire of Cara Park Advance B631 selling at Glen Innes 2008 to Emu Holes Hereford stud. Also Bowmont Storm C093, he has been one of the most influential sires used in our herd, leaving us with big roomy productive females they make up more than 25% of our herd today. Mawarra Unique C041 (Grand Champion Wodonga 2009) sire of Cara Park Unique



Cara Park Xpress T311

J324 the record selling bull at the 2015 Annual Glen Innes Hereford Bull Sale selling to the Ardno Hereford Stud. J324's dam is by Storm C093. Also by Mawarra Unique C041 out of Storm C093 cows and selling for the second top price at their respective Annual Glen Innes Hereford Bull Sales, 2017 & 2018 was Cara Park Unique L581 selling to Avon View Hereford Stud & Cara Park Monarch M647 to Battalion Hereford Stud. The Unique / Storm cross has proven to be a very successful one, producing progeny with moderate birth weight, high growth and excellent carcass, these traits are major profit drivers for the beef producer. At the 2013 Glen Innes Bull Sale we purchased the top priced bull in Battalion Buckshot G02, from his first crop of calves a son Cara Park Buckshot K490 sold in 2016 for the third top price of that sale to Hylands Hereford Stud.

Sires introduced in recent years are Glendan Park Knockout K160, (Junior & Grand Champion 2016 Wodonga Bull Sale) he has a very good son in this year's sale. Talbalba Advance L131 (Top price Horn bull at the 2017 Annual Talbalba Bull sale) has six very good bulls catalogued for this year's sale. The most recent sire introduced is EDR Mojo M164 (Intermediate Champion & second top price at 2018 Wodonga Bull Sale). He has eight weaner bull calves retained for the 2021 Bull Sale.

Our Hereford cattle are run in conjunction with a merino sheep operation under commercial conditions and they receive little or no supplementary feeding. Although during joining (from October 2019 until January 2020) our cows and calves received a daily hay ration and had access to Anipro Liquid Supplement.

Again this year the sale bulls have not been grazed on oats to date. After weaning in February 2019 the bulls were grazed on native grasses with a small daily ration of Riverina pellets and they also had access to Anipro Liquid Supplement. We have planted oats this year for the first time since 2017 and we are hoping to finish the sale bulls on the oats.

We are proud of our cattle and welcome enquiries and on property inspections.

We also look forward to seeing you on sale day.

Kind Regards

*Kind Regards
Graeme, Natalie, Harry, Jack & Jane.*



Battalion Black Hawk K7 (H)



D.O.B.
13/09/2014

Rego No.
BHEK7

Account.
GE & KM Kneipp

Reference Sire

- REEDY CREEK DEBONAIR 206 (H)
 KAROONDA LINGO (AI) (H)
 KAROONDA MINERVA 89 (H)
SIRE: SOUTH BOOROOK BOMBAY (H)
 COURALLIE ASCOT (AI) (H)
 S BOOROOK BRIDESMAID D34 (AI) (H)
 S BOOROOK BRIDESMAID Z18 (H)
 COOTHARABA MAGNUM (H)
 MAWARRA VIRGINIAN (H)
 MAWARRA CHERRY RIPE 263 (H)
DAM: BATTALION CHERRY RIPE 6 (AI) (H)
 ONSLOW SHARKA T019 (H)
 MOORLANDS CHERRY RIPE W155 (H)
 MOORLANDS CHERRY RIPE Q028 (H)



BW	200	400	600	MCW	Milk	SS	CWT	EMA	Rib	Rump	RBV%	IMF%
+3.7	+31	+70	+105	+89	+16	+2.2	+73	+5.1	+0.5	+1.0	+1.7	+0.1
87%	90%	88%	90%	77%	48%	81%	76%	64%	68%	74%	65%	69%

INDEX: Southern Self-Replacing +\$180 Northern Self-Replacing +\$164 Southern Baldy Maternal +\$189 Northern Baldy Terminal +\$141

TRAITS OBSERVED: BWT,200WT,400WT,600WT,SS,FAT,EMA,IMF,Genomics **GENETIC CONDITION:** GGPLD,HYF,DLF,IEF,IEF,HYF,DLF,

NOTES: REFERENCE SIRE: Sold in 2016 for the record top price of \$45,000 to Franco and Thornleigh Hereford Studs at the Glen Innes Bull Sale. A bull with an exceptional muscle pattern, emphasised by a broad flat top line and plenty of butt shape, an eye catching sire who has proven to breed consistent draft leading animals at numerous studs. He scanned a raw IMF measurement of 6.5 at 21months of age. His Dam is one of our best and offers superior udder shape. A sire we believe offers a lot to the advancement of the breed.

South Boorook Bombay (H)



D.O.B.
01/04/2011

Rego No.
S-BG302

Account.
GE & KM Kneipp

Reference Sire

- REEDY CREEK DEBONAIR 35 (H)
 REEDY CREEK DEBONAIR 206 (H)
 REEDY CREEK MARITANA 20 (AI) (H)
SIRE: KAROONDA LINGO (AI) (H)
 MAWARRA JUSTICE S112 (AI) (H)
 KAROONDA MINERVA 89 (H)
 KAROONDA MINERVA 21 (H)
 COORA CAMOOWEAL Q081 (AI) (H)
 COURALLIE ASCOT (AI) (H)
 COURALLIE U736 MINERVA X123 (AI) (H)
DAM: S BOOROOK BRIDESMAID D34 (AI) (H)
 S BOOROOK LIMA (AI) (H)
 S BOOROOK BRIDESMAID Z18 (H)
 S BOOROOK BRIDESMAID W117 (H)



BW	200	400	600	MCW	Milk	SS	CWT	EMA	Rib	Rump	RBV%	IMF%
+4.6	+35	+63	+94	+95	+14	+0.4	+56	+1.8	-0.7	-0.8	+1.4	-0.9
89%	86%	87%	88%	77%	60%	84%	76%	61%	65%	70%	63%	63%

INDEX: Southern Self-Replacing +\$134 Northern Self-Replacing +\$114 Southern Baldy Maternal +\$151 Northern Baldy Terminal +\$117

TRAITS OBSERVED: CE,BWT,200WT,400WT,600WT(x2),SS,FAT,EMA,IMF,Genomics **GENETIC CONDITION:** GGPHD,IEF,HYF,DLF,

NOTES: REFERENCE SIRE: Purchased by Dundee Echo Park Herefords in 2013 for \$23,000 Bombay was a big free moving bull with great constitution. He had a large frame yet maintained great depth and width of body, cosmetically very appealing and oozed softness. For a big powerful bull that had no special handling his quiet temperament was defiantly a trait desirable to most breeders.

Battalion Hurricane M020 (H)



D.O.B.
20/07/2016

Rego No.
BHEM020

Account.
GE & KM Kneipp

Reference Sire

COOTHARABA MAGNUM (H)
 GLENDAN PARK EMPIRE E002 (AI) (ET) (H)
 GLENDAN PARK MINERVA W164 (AI) (H)
SIRE: SUGARLOAF HAYMAKER H126 (AI) (H)
 COURALLIE LOGO ET5 (ET) (H)
 SUGARLOAF LAST DAY D41 (AI) (H)
 ALTON LAST DAY Y012 (AI) (H)
 FRANCO YAGES Y980 ET5 (AI) (ET) (H)
 FRANCO BAZOOKA B250 (H)
 FRANCO MISS MINERVA Y201 (H)
DAM: FRANCO CORISANDE E801 (H)
 MOORLANDS NATIONAL R055 AI ET (ET) (H)
 EURANGATUCK CORISANDE 2 (H)
 EURANGATUCK CORISANDE (H)



BW	200	400	600	MCW	Milk	SS	CWT	EMA	Rib	Rump	RBV%	IMF%
+7.7	+38	+73	+105	+105	+20	+2.6	+63	+5.1	-1.2	-1.8	+2.8	+0.0
74%	71%	70%	73%	65%	50%	78%	60%	51%	53%	58%	52%	51%

INDEX: Southern Self-Replacing +\$127 Northern Self-Replacing +\$103 Southern Baldy Maternal +\$127 Northern Baldy Terminal +\$99

TRAITS OBSERVED: BWT,200WT,400WT,600WT,SS,FAT,EMA,IMF,Genomics **GENETIC CONDITION:** GGPLD,DLF,HYF,IEF,

NOTES: REFERENCE SIRE: Hurricane M020 was sold to JT & S Sloman in 2018. We used him lightly as a yearling as we admired his great length of body and impressive extension and lift through the front end. His dam offered extra milk and quality udder shape.

Karoonda Regent (AI)(H)



D.O.B.
18/07/2014

Rego No.
SKSK421

Account.
GE & KM Kneipp

Reference Sire

LLANGLOTHAN STORM U964 (H)
 GLENDAN PARK STORM W134 (H)
 ZUM PARK ATHENA (H)
SIRE: BOWMONT STORM B720 (H)
 VENA PARK SHARKA (H)
 BOWMONT QUEEN Y341 (AI) (TW) (H)
 BOWMONT QUEEN 190 (AI) (H)
 RED HILL IDLE RICH ET (AI) (ET) (H)
 GLENWARRAH MEN AT WORK (H)
 GLENWARRAH MINERVA U44 (H)
DAM: KAROONDA MARITANA E352 (H)
 COOTHARABA HARTLEY (H)
 KAROONDA MARITANA Y709 (AI) (H)
 KAROONDA MARITANA 252 (H)



BW	200	400	600	MCW	Milk	SS	CWT	EMA	Rib	Rump	RBV%	IMF%
+4.0	+34	+53	+76	+70	+20	+0.1	+53	+3.0	+0.3	+1.0	+0.8	-0.3
91%	86%	86%	87%	76%	60%	84%	74%	61%	65%	69%	63%	65%

INDEX: Southern Self-Replacing +\$99 Northern Self-Replacing +\$85 Southern Baldy Maternal +\$117 Northern Baldy Terminal +\$99

TRAITS OBSERVED: GL,BWT,400WT,600WT,SS,FAT,EMA,IMF,Genomics **GENETIC CONDITION:** GGPHD,GGPHD,IEF,HYF,DLF,

NOTES: REFERENCE SIRE: Owned by the Karoonda and Glenwarrah studs Battalion Herefords purchased semen in Regent for select use over some of our better females. Regent was a bull that caught our eye for his length and shape through the back end. He comes from a herd with a strong reputation for quality females with Regents mother standing among the elite.

Battalion Archer

(H)



D.O.B.
01/07/2014

Rego No.
BHEK5

Account.
GE & KM Kneipp

Reference Sire

COOTHARABA MAGNUM (H)
 MAWARRA VICE ADMIRAL (H)
 MAWARRA MINERVA 554 ET1 (AI) (ET) (H)
SIRE: MAWARRA AUTUMN SPIRIT (H)
 MAWARRA RISING STAR (AI) (TW) (H)
 MAWARRA MISS TITANIA 354 (AI) (ET) (H)
 MAWARRA MISS TITANIA 123 ET6 (AI) (ET) (H)
 RED HILL INSIGHT (H)
 BATTALION INNSBRUCK (H)
 MOORLANDS CHERRY RIPE W155 (H)
DAM: DUNDEE BETTY 36 (H)
 WIDGIEWA JABIRU ET6 (ET) (H)
 ECHO PARK BETTY 23 (AI) (H)
 ECHO PARK BETTY 15 (H)



BW	200	400	600	MCW	Milk	SS	CWT	EMA	Rib	Rump	RBV%	IMF%
+6.5	+31	+52	+81	+79	+16	+2.4	+45	+4.4	+0.0	+0.1	+1.4	+0.2
77%	74%	72%	74%	64%	50%	77%	61%	49%	52%	56%	50%	48%

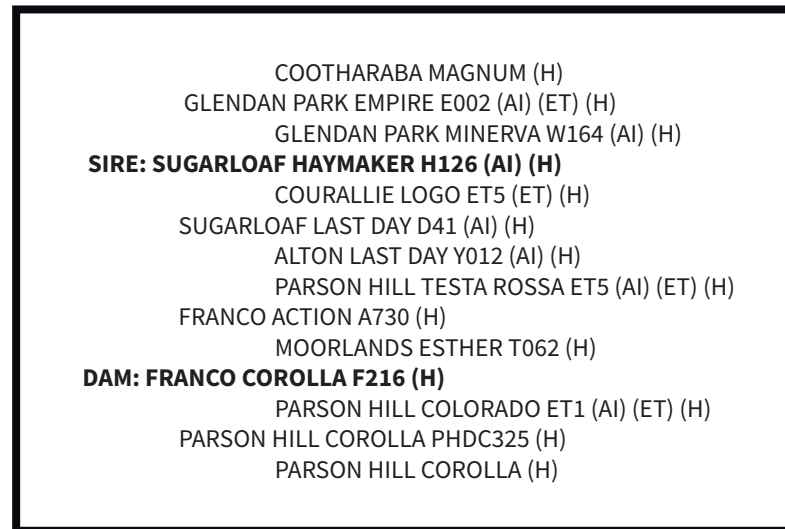
INDEX: Southern Self-Replacing +\$99 Northern Self-Replacing +\$79 Southern Baldy Maternal +\$86 Northern Baldy Terminal +\$63

TRAITS OBSERVED: BWT,200WT,400WT,600WT,SS,FAT,EMA,IMF,Genomics **GENETIC CONDITION:** GGPHD,IEF,HYF,DLF,

NOTES: REFERENCE SIRE: We unfortunately lost this sire before we had the chance to get many by him. He was a very well structured animal with great strength of spine, his dark slick coat and great cosmetics made him a very appealing well put together young sire.

Franco Magnetic M637

(H)



D.O.B.
16/05/2016

Rego No.
LMHM635

Account.
GE & KM Kneipp

COOTHARABA MAGNUM (H)
 GLENDAN PARK EMPIRE E002 (AI) (ET) (H)
 GLENDAN PARK MINERVA W164 (AI) (H)
SIRE: SUGARLOAF HAYMAKER H126 (AI) (H)
 COURALLIE LOGO ET5 (ET) (H)
 SUGARLOAF LAST DAY D41 (AI) (H)
 ALTON LAST DAY Y012 (AI) (H)
 PARSON HILL TESTA ROSSA ET5 (AI) (ET) (H)
 FRANCO ACTION A730 (H)
 MOORLANDS ESTHER T062 (H)
DAM: FRANCO COROLLA F216 (H)
 PARSON HILL COLORADO ET1 (AI) (ET) (H)
 PARSON HILL COROLLA PHDC325 (H)
 PARSON HILL COROLLA (H)

BW	200	400	600	MCW	Milk	SS	CWT	EMA	Rib	Rump	RBV%	IMF%
+7.4	+39	+71	+105	+101	+18	+1.8	+67	+4.9	-0.5	-0.7	+2.1	+0.2
64%	66%	67%	64%	59%	48%	61%	57%	45%	49%	53%	47%	49%

INDEX:

TRAITS OBSERVED: 200WT, 400WT, 600WT(x2), FAT, EMA, IMF, Genomics **GENETIC CONDITION:**

NOTES: REFERENCE SIRE: Used as a yearling, Magnetic offered length of body and plenty of width through the hind quarters consistent with the same quality attributes displayed by his sire Sugarloaf Haymaker



Campbells Butchery

Open:
Monday - Friday
7am - 5.30pm
Saturday
7am - 12pm



Photo: WR Photography
193 Grey St Glen Innes

Proud supporters of the
Battalion & Cara Park
Bull Sale

HOME DELIVERY Ph: 02 6732 3047

Attenborough FERTILISER SERVICES

"Your Local Incitec Pivot key dealer team"

SPECIALISING IN:

- **Plant Nutrition**
Bulk, bagged & blended fertilizer
- **Quality Pasture Seeds**
Annual, biennial & perennial systems
- **Soil Analysis Systems**
Accredited nutrient advantage licence
- **Agronomic Advice**

Armidale Road
(PO Box 138) Glen Innes NSW 2370
Ph: 02 6732 2085 ~ Fax: 02 6732 2851
attenboroughferts@gmail.com



After hours:
David Miller: 02 6732 2085 ~ 0428 659 694
Ben Lockwood: 0421 755 113



LIFT IT OR MIX IT



WITH A RANGE
OF FARESIN
TELEHANDLERS
AND MIXER
WAGONS



For more information contact the Faresin Equipment Specialists at
Chesterfield Australia, 12 Swanbrook Road Inverell NSW 2360

Andrew Legge 0427 255 497
Peter Kourahanis 0428 666 161

chesterfieldaustralia.com.au



Mawarra Unique C041

(AI)(H)



D.O.B.
01/04/2007

Rego No.
HRPC041

Account.
JE Newnham & Co

Reference Sire

GH MR DIFFERENCE 73J (H)
GH DIFFERENCE BRITISHER 45L (IMP CAN) (H)
FA BRITISHER LADY 59F (H)

SIRE: GH NEON 17N (IMP CAN) (H)

FA BRITISHER 59G (H)
GH SIR SIMBA LASS 107K (H)
FA BRITISHER LADY 138G (H)
KALUDAH MIRACLE (H)

MAWARRA KAHLUA (AI) (H)
MAWARRA MINERVA 298 (AI) (H)

DAM: MAWARRA MINERVA 554 ET1 (AI) (ET) (H)

CHARVEL LAWFUL (H)
MAWARRA MINERVA 357 (H)
MAWARRA MINERVA 259 (H)

CARA PARK
EST. HEREFORDS 1975

BW	200	400	600	MCW	Milk	SS	CWT	EMA	Rib	Rump	RBV%	IMF%
+4.2	+36	+70	+102	+83	+21	+1.3	+77	+7.0	-0.6	-0.8	+2.7	+0.6
98%	96%	95%	95%	89%	90%	95%	88%	81%	82%	85%	80%	81%

INDEX: Southern Self-Replacing +\$185 Northern Self-Replacing +\$165 Southern Baldy Maternal +\$184 Northern Baldy Terminal +\$137

TRAITS OBSERVED: GL,CE,BWT,200WT(x2),400WT,600WT(x2),SS,FAT,EMA,IMF,Genomics **GENETIC CONDITION:** GGPHD,IEF,HYF,DLF,POLL C-HH,

NOTES: REFERENCE SIRE: Purchased in partnership with Yarram Park at the Wodonga National Hereford Show & Sale in 2009 for \$32,000, after being awarded Grand Champion. C041 has proven to be one of the most significant sires within the industry. His sons from Yarram Park & Cara Park studs are continuing to influence herds throughout Australia.

Battalion Buckshot

(AI)(ET)(H)



D.O.B.
08/04/2011

Rego No.
BHEG02

Account.
JE Newnham & Co

Reference Sire

YALLAROO TORNADO T008 (AI) (H)
MAWARRA NOSTALGIA (H)
MAWARRA MISS TITANIA 123 ET6 (AI) (ET) (H)

SIRE: RED HILL BLUE BOY (H)

RED HILL ROCKFORD ROY (AI) (H)
RED HILL EARLY MORN U925 ET (AI) (ET) (H)
RED HILL EARLY MORN 18 (H)
LYONBANK PHANTOM (AI) (H)
PARRAWEENA OCTAGONAL ET (ET) (H)
WIDGIEWA HILLARY K377 ET6 (ET) (H)

DAM: COURALLIE CONSTANCE V086 (H)

COURALLIE M266 (AI) (H)
COURALLIE CONSTANCE P456 (H)
COURALLIE CONSTANCE M269 (H)

CARA PARK
EST. HEREFORDS 1975

BW	200	400	600	MCW	Milk	SS	CWT	EMA	Rib	Rump	RBV%	IMF%
+5.3	+29	+49	+72	+70	+9	+1.6	+41	+3.3	-0.1	+0.1	+0.7	+0.7
93%	88%	87%	88%	79%	72%	86%	75%	63%	66%	71%	64%	65%

INDEX: Southern Self-Replacing +\$119 Northern Self-Replacing +\$107 Southern Baldy Maternal +\$128 Northern Baldy Terminal +\$97

TRAITS OBSERVED: BWT,200WT,400WT,600WT(x2),SS,FAT,EMA,IMF,Genomics **GENETIC CONDITION:** GGPLD,DLF,IEF,HYF,

NOTES: REFERENCE SIRE: Purchased at the 2013 Glen Innes Bull Sale for the top price of \$13,000. An attractive well structured sire with a great head & eye, butt shape, spring of rib and an ideal skin. In his first drop of calves a son Cara Park Buckshot K490 sold in 2016 to Hylands Herefords Stud for \$19,000.

Glendan Park Knockout K160 (ET)(H)



D.O.B.
25/07/2014

Rego No.
FSAK160

Account.
JE Newnham & Co

Reference Sire

GLENDAN PARK STORM W134 (H)
BOWMONT STORM B720 (H)
BOWMONT QUEEN Y341 (AI) (TW) (H)

SIRE: WARRINGA GOOGLE G23 (H)

RACOVOLIS TOM THUMB Y555 (H)
WARRINGA FERN D10 (H)
WARRINGA FERN A9 (H)
COOTHARABA ELGIN 2 (H)
COOTHARABA MAGNUM (H)
COOTHARABA PAULINE 279 (H)

DAM: GLENDAN PARK LASS G013 (AI) (H)

RED HILL VALOUR (H)
GLENDAN PARK LASS B107 (H)
MAWARRA LASS 92 (H)

CARA PARK
EST. HEREFORDS 1975

BW	200	400	600	MCW	Milk	SS	CWT	EMA	Rib	Rump	RYB%	IMF%
+8.3	+44	+75	+111	+107	+20	+2.8	+68	+5.4	+0.1	+0.3	+2.1	+0.2
94%	85%	85%	88%	76%	61%	86%	73%	64%	68%	73%	65%	69%

INDEX: Southern Self-Replacing +\$139 Northern Self-Replacing +\$118 Southern Baldy Maternal +\$123 Northern Baldy Terminal +\$87

TRAITS OBSERVED: BWT,200WT(x2),400WT,SS,FAT,EMA,IMF,Genomics **GENETIC CONDITION:** GGPLD,IEF,HYF,DLF,

NOTES: REFERENCE SIRE: Purchased in partnership with Yarram Park at the Wodonga National Hereford Show & Sale in 2016 for \$52,000, after being awarded Junior & Grand Champion. Knockout has developed into an impressive sire exhibiting excellent structure, balance, length & thickness.

Talbalba Advance L131 (H)



D.O.B.
03/10/2015

Rego No.
R5XL131

Account.
JE Newnham & Co

Reference Sire

INJEMIRA ADVANCE Z080 (AI) (H)
INJEMIRA ADVANCE C085 (H)
INJEMIRA MARINDA Y142 (H)

SIRE: DEVON COURT ADVANCE F052 (H)

GLENDAN PARK STORM W134 (H)
DEVON COURT LIONESS A207 (H)
DEVON COURT LIONESS U376 (H)
COOTHARABA ELGIN 2 (H)
COOTHARABA MAGNUM (H)
COOTHARABA PAULINE 279 (H)

DAM: TALBALBA CHOICE D058 (AI) (H)

TARCOMBE CAPTAIN (H)
TALBALBA CHOICE 77 (AI) (H)
TALBALBA CHOICE 38 (AI) (H)

CARA PARK
EST. HEREFORDS 1975

BW	200	400	600	MCW	Milk	SS	CWT	EMA	Rib	Rump	RYB%	IMF%
+8.6	+39	+62	+98	+103	+17	+0.7	+51	+3.8	-0.6	-1.1	+1.2	+1.2
89%	78%	74%	75%	68%	57%	77%	61%	53%	57%	61%	55%	56%

INDEX: Southern Self-Replacing +\$97 Northern Self-Replacing +\$69 Southern Baldy Maternal +\$94 Northern Baldy Terminal +\$76

TRAITS OBSERVED: CE,BWT,200WT,400WT,SS,FAT,EMA,IMF,Genomics **GENETIC CONDITION:** GGPLD,IEF,HYF,DLF,

NOTES: REFERENCE SIRE: Purchased at the Talbalba On Property Bull Sale in 2017 for \$24,000. He is an attractive well balanced sire displaying a good muscle pattern. His first sons will be offered in this year sale.



SUNDERLANDS

CLEANING SUPPLIES



At Sunderlands Cleaning Supplies, we offer a large range of products to cater to anyone's needs. We stock paper products, disposable packaging, cleaning chemicals, animal shampoo, janitorial equipment, Gulf Western oils, cleaning accessories, Bioguard pool chemicals and water testing. We also have a free delivery service throughout north-west NSW.



11B SWANBROOK RD, INVERELL - PH 02 6722 1130

EMAIL- admin@sunderlands.com.au

www.sunderlands.com.au

Delungra's
Locally Owned Fuel & Convenience Store



NORTH WEST PETROLEUM



For Quotes & Deliveries
Call Brian on 0267 248 484 or 0428 637 091

FARM FUEL DELIVERIES MECHANICAL REPAIRS
REGO CHECKS BATTERIES TYRES
SERVICING SHELL OILS
GULF WESTERN OILS VALVOLINE OILS



Fresh Bread Newspapers Groceries Frozen Goods Farm Produce
BBQ Gas Bait Ice Phone Credit Cold Drinks

KILL THE CATTLE PARASITES THAT COUNT

zoetis

Cooperia spp. infections can decrease average daily weight gain by 7.5%¹

65%
of worms are
Cooperia
spp.²

Cooperia spp. (Small Intestinal worm) is the most prevalent worm type in Australia.

Dectomax has broad spectrum efficacy and provides outstanding persistent days of activity on both *Cooperia* spp. and *Ostertagia ostertagi* (one of the most pathogenic worms), as well as other key cattle worms. Injectable and Pour On available.

Worm **TRAX** Identify the mixture of worm types in your local area:
Check your count www.wormtrax.com.au

1. Kloosterman A, Albers G, van den Brink R. Negative interactions between *Ostertagia ostertagi* and *Cooperia oncophora* in calves. Veterinary Parasitology. Vet Parasitology 1984; 15: 135-150. 2. Australian national average of FEC results from 70,000 dung samples. Wormtrax™ - wormtrax.com.au *Refer to product label for registered claims.

Zoetis Australia Pty Ltd. ABN 94 156 476 425. Level 6, 5 Rider Boulevard Rhodes, NSW 2138. © 2019 Zoetis Inc. All rights reserved. ZL1080. 03/19



AVAILABLE AT YOUR LOCAL RURAL SUPPLIER

Achmea, Australia's specialist farm insurer, is delighted to support The Battalion & Cara Park Bull Sale on 6th July 2020

With competitive rates, insure your stud bulls with Achmea today. To finalise your cover, contact me directly.

Local Risk Specialist,
ALLAN COWAN



Local Risk Specialist Allan Cowan | 0417 156 837 | allan.cowan@achmea.com.au

achmea.com.au



The information in this advertisement is general advice only and does not take into account your individual objectives, financial situation or needs (your personal circumstances). Before using this information to decide whether to purchase the insurance policy, you should consider your personal circumstances and the relevant Product Disclosure Statement available from the 'Downloads' section of our website www.achmea.com.au. Achmea Schadeverzekeringen NV. ABN 86 158 237 702 AFSL 433984.

Cara Park Monarch M647 (H)



D.O.B.
12/07/2016

Rego.No.
JENM647

Account.
GE & KM Kneipp

Future Sire

GH DIFFERENCE BRITISHER 45L (IMP CAN) (H)
GH NEON 17N (IMP CAN) (H)
GH SIR SIMBA LASS 107K (H)

SIRE: MAWARRA UNIQUE C041 (AI) (H)

MAWARRA KAHLUA (AI) (H)
MAWARRA MINERVA 554 ET1 (AI) (ET) (H)
MAWARRA MINERVA 357 (H)
GLEDAN PARK STORM W134 (H)

BOWMONT STORM C093 (H)
BOWMONT MARITANA W168 (AI) (H)

DAM: CARA PARK WONDER L H220 (AI) (H)

CARA PARK PLAYBOY K672 ET1 (ET) (H)
CARA PARK WONDER LASS C714 (AI) (H)
CARA PARK WONDER L Z424 (H)



BW	200	400	600	MCW	Milk	SS	CWT	EMA	Rib	Rump	RBV%	IMF%
+6.8	+42	+75	+111	+100	+18	+2.0	+74	+6.0	-0.9	-1.0	+2.2	+0.8
74%	69%	69%	72%	64%	58%	77%	61%	54%	56%	60%	55%	55%

INDEX: Southern Self-Replacing +\$164 Northern Self-Replacing +\$140 Southern Baldy Maternal +\$156 Northern Baldy Terminal +\$117

TRAITS OBSERVED: BWT,200WT,400WT,600WT,SS,FAT,EMA,IMF,Genomics **GENETIC CONDITION:** POLL C-HH,DLF,IEF,HYF,GGPLD,

NOTES: FUTURE SIRE: Monarch was purchased for \$16,000 by Battalion Herefords in 2018. Having inspected this bull when he was just 4 months old on his mother we knew we had found a real exciting prospect. Lightly prepared for sale in the middle of a drought this bull has as much natural muscle expression as we could imagine. A very strong top line with great shape and width through his hindquarters he is a sire that we think ticks all the boxes. He has the best feet we have seen and one of the quieter animals we have ever bred or owned.

EDR Mojo (H)



D.O.B.
14/05/2016

Rego.No.
EDRM164

Account.
JE Newnham & Co

Future Sire

GH NEON 17N (IMP CAN) (H)
MAWARRA UNIQUE C041 (AI) (H)
MAWARRA MINERVA 554 ET1 (AI) (ET) (H)

SIRE: YARRAM UNIQUE F107 (AI) (H)

YARRAM EXTRA 57U M629 ET1 (AI) (ET) (H)
YARRAM BLESSING A187 (H)
YARRAM BLESSING W291 (H)
CL 1 DOMINO 637S 1ET (H)
CL 1 DOMINO 9121W 1ET (IMP USA) (AI) (ET) (H)
CL 1 DOMINETTE 440P 1ET (H)

DAM: EDR GOLDEN J133 (AI) (H)

YAVENVALE EMPIRE (AI) (H)
EDR GOLDEN C702 (AI) (H)
STRELLEY GOLDEN 2 (H)



BW	200	400	600	MCW	Milk	SS	CWT	EMA	Rib	Rump	RBV%	IMF%
+2.8	+34	+59	+86	+60	+27	+1.1	+65	+6.3	-0.6	-1.3	+2.5	+0.9
86%	76%	70%	71%	62%	50%	60%	58%	46%	50%	53%	47%	51%

INDEX: Southern Self-Replacing +\$163 Northern Self-Replacing +\$143 Southern Baldy Maternal +\$183 Northern Baldy Terminal +\$141

TRAITS OBSERVED: BWT,200WT,400WT,600WT(x2),SS,FAT,EMA,IMF,Genomics **GENETIC CONDITION:** GGPLD,DLF,IEF,HYF,

NOTES: FUTURE SIRE: Purchased in partnership with Yarram Park at the Wodonga National Hereford Show & Sale in 2018 for \$34,000, after being awarded Intermediate Champion. He is a well balanced structurally correct young sire displaying great depth and thickness of body while retaining a good shoulder. He has an impressive group of weaner bull calves for sale in 2021.



Est. 1958

- » Regular Cattle Sales
- » Stud Stock Sales
- » Consignment of Stock
- » Rural Property Sales
- » Regular Prime Lamb & Sheep Sales
- » Selling to Feedlots
- » Auctions Plus
- » Market Appraisals

PERSONALISED SERVICE

“Leading by Results”

Licensed Auctioneers - Stock, Station & Real Estate Agents

118 Wentworth St (PO Box 189), Glen Innes. NSW 2370

www.colinsay.com.au

office@colinsay.com.au



Steve Daley

0400 406 667

Shad Bailey

0458 322 283

Nathan Purvis

0427 324 078

Craig Thomas

0428 669 500

1 *Battalion Big Mac P057* (AI)(ET)(H)



D.O.B.
01/08/2018

Rego No.
BHEP057

Account.
GE & KM Kneipp



KAROONDA LINGO (AI) (H)
SOUTH BOOROOK BOMBAY (H)
S BOOROOK BRIDESMAID D34 (AI) (H)
SIRE: BATTALION BLACK HAWK K7 (H)
MAWARRA VIRGINIAN (H)
BATTALION CHERRY RIPE 6 (AI) (H)
MOORLANDS CHERRY RIPE W155 (H)
HAVEN WIZARD (DH) (IMP GBR) (H)
BOWMONT WIZARD C076 (AI) (H)
BOWMONT L MINERVA X208 (AI) (H)
DAM: BOWMONT QUEEN F024 (AI) (H)
GLENDAN PARK STORM W134 (H)
BOWMONT QUEEN C117 (H)
BOWMONT QUEEN X253 (H)

BW	200	400	600	MCW	Milk	SS	CWT	EMA	Rib	Rump	RBV%	IMF%
+7.7	+40	+76	+110	+98	+14	+1.9	+65	+4.2	-0.2	-0.3	+1.6	+0.1
66%	64%	64%	67%	59%	47%	69%	55%	45%	51%	55%	48%	50%

INDEX: Southern Self-Replacing +\$147 Northern Self-Replacing +\$122 Southern Baldy Maternal +\$137 Northern Baldy Terminal +\$100

TRAITS OBSERVED: BWT,200WT,600WT,SS,FAT,EMA,IMF,Genomics **GENETIC CONDITION:** GGPLD,DLF,IEF,HYF,

NOTES: A powerful thick Black Hawk son with extreme butt shape and muscle expression. The natural eye appeal of this bull saw him awarded Grand Champion Hereford exhibit in a highly contested Australian online show competition. A heavy set bull that should breed extra shape and weight into his progeny whilst maintaining softness. (Full ET brother to Lot 2)

PURCHASER..... **PRICE \$**.....31.

2 Battalion Blackjack P058 (AI)(ET)



D.O.B.
02/08/2018

Rego No.
BHEP058

Account.
GE & KM Kneipp

KAROONDA LINGO (AI) (H)
SOUTH BOOROOK BOMBAY (H)
S BOOROOK BRIDESMAID D34 (AI) (H)
SIRE: BATTALION BLACK HAWK K7 (H)
MAWARRA VIRGINIAN (H)
BATTALION CHERRY RIPE 6 (AI) (H)
MOORLANDS CHERRY RIPE W155 (H)
HAVEN WIZARD (DH) (IMP GBR) (H)
BOWMONT WIZARD C076 (AI) (H)
BOWMONT L MINERVA X208 (AI) (H)
DAM: BOWMONT QUEEN F024 (AI) (H)
GLENDAN PARK STORM W134 (H)
BOWMONT QUEEN C117 (H)
BOWMONT QUEEN X253 (H)



BW	200	400	600	MCW	Milk	SS	CWT	EMA	Rib	Rump	RBV%	IMF%
+5.6	+35	+64	+95	+82	+12	+2.5	+56	+3.0	+0.1	+0.0	+0.7	+0.2
66%	65%	65%	67%	59%	48%	69%	56%	45%	52%	56%	49%	51%

INDEX: Southern Self-Replacing +\$131 Northern Self-Replacing +\$108 Southern Baldy Maternal +\$125 Northern Baldy Terminal +\$92

TRAITS OBSERVED: BWT,200WT,600WT,SS,FAT,EMA,IMF,Genomics **GENETIC CONDITION:** GGPLD,DLF,IEF,HYF,

NOTES: A personal favorite from birth with a real sires outlook. The structure and mobility of this bull coupled with a great muscle pattern gives us confidence that he will deliver consistent quality like his sire. His broad top and terrific butt shape are exactly the traits we are trying to breed. (Full ET brother to Lot 1)

PURCHASER..... **PRICE \$**.....

3 Battalion Rimfire P054 (AI)(H)



D.O.B.
03/06/2018

Rego No.
BHEP054

Account.
GE & KM Kneipp

GLENDAN PARK STORM W134 (H)
BOWMONT STORM B720 (H)
BOWMONT QUEEN Y341 (AI) (TW) (H)
SIRE: KAROONDA REGENT (AI) (H)
GLENWARRAH MEN AT WORK (H)
KAROONDA MARITANA E352 (H)
KAROONDA MARITANA Y709 (AI) (H)
FAULKLAND HAMILTON (AI) (H)
SUGARLOAF JIM JIM B302 (AI) (H)
SUGARLOAF JEWEL W098 (H)
DAM: BATTALION PR CHRISTIAN K35 (H)
SMITHSTON YOU BEAUT (H)
BATTALION PR CHRISTIAN 3 (AI) (H)
COURALLIE U244 PR CHRISTIAN Y312 (H)



BW	200	400	600	MCW	Milk	SS	CWT	EMA	Rib	Rump	RBV%	IMF%
+6.4	+40	+63	+93	+89	+18	+1.0	+60	+3.5	+0.0	+0.5	+1.3	-0.2
59%	62%	62%	65%	55%	42%	71%	54%	44%	41%	44%	41%	43%

INDEX: Southern Self-Replacing +\$125 Northern Self-Replacing +\$108 Southern Baldy Maternal +\$135 Northern Baldy Terminal +\$106

TRAITS OBSERVED: BWT,200WT,600WT,SS,EMA,IMF **GENETIC CONDITION:**

NOTES: Long and deep with a bit of a different genetic package, The only bull to be offered by Karoonda Regent. His Dam PR Christian K35 would be the easiest doing female we have with extra width and depth.

PURCHASER..... **PRICE \$**..... 33

4 *Battalion Bombay P051* (AI)(ET)(H)



D.O.B.
14/04/2018

Rego No.
BHEP051

Account.
GE & KM Kneipp

REEDY CREEK DEBONAIR 206 (H)
 KAROONDA LINGO (AI) (H)
 KAROONDA MINERVA 89 (H)
SIRE: SOUTH BOOROOK BOMBAY (H)
 COURALLIE ASCOT (AI) (H)
 S BOOROOK BRIDESMAID D34 (AI) (H)
 S BOOROOK BRIDESMAID Z18 (H)
 COOTHARABA MAGNUM (H)
 MAWARRA VIRGINIAN (H)
 MAWARRA CHERRY RIPE 263 (H)
DAM: BATTALION CHERRY RIPE 6 (AI) (H)
 ONSLOW SHARKA T019 (H)
 MOORLANDS CHERRY RIPE W155 (H)
 MOORLANDS CHERRY RIPE Q028 (H)



BW	200	400	600	MCW	Milk	SS	CWT	EMA	Rib	Rump	RBV%	IMF%
+5.4	+35	+72	+108	+101	+15	+1.4	+67	+3.6	-0.2	+0.0	+1.4	+0.0
62%	60%	60%	62%	54%	46%	58%	53%	43%	46%	50%	45%	46%

INDEX: Southern Self-Replacing +\$160 Northern Self-Replacing +\$138 Southern Baldy Maternal +\$164 Northern Baldy Terminal +\$123

TRAITS OBSERVED: 200WT,600WT,SS,FAT,EMA,IMF **GENETIC CONDITION:**

NOTES: This pedigree needs no introduction, His ET brothers have been consistent high sellers. A moderate framed bull with extra shape and width. The dam Cherry Ripe G11 never disappoints, she will be very well represented again next year with some of our best 2019 ET drop calves. She has sold sons to a top of \$45,000

PURCHASER **PRICE \$**

5 *Battalion Archer P053* (H)

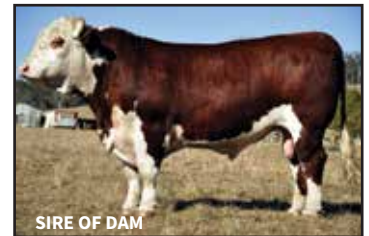


D.O.B.
08/05/2018

Rego No.
BHEP053

Account.
GE & KM Kneipp

MAWARRA VICE ADMIRAL (H)
 MAWARRA AUTUMN SPIRIT (H)
 MAWARRA MISS TITANIA 354 (AI) (ET) (H)
SIRE: BATTALION ARCHER (H)
 BATTALION INNSBRUCK (H)
 DUNDEE BETTY 36 (H)
 ECHO PARK BETTY 23 (AI) (H)
 SMITHSTON YOU BEAUT (H)
 BATTALION VAN DIEMEN (ET) (H)
 COURALLIE SPRUCE W144 (AI) (H)
DAM: BATTALION CHERRY RIPE K39 (H)
 ONSLOW SHARKA T019 (H)
 MOORLANDS CHERRY RIPE W155 (H)
 MOORLANDS CHERRY RIPE Q028 (H)



BW	200	400	600	MCW	Milk	SS	CWT	EMA	Rib	Rump	RBV%	IMF%
+7.3	+36	+57	+91	+90	+16	+1.6	+51	+3.3	+0.0	+0.3	+1.0	+0.1
56%	60%	60%	65%	55%	39%	72%	52%	41%	43%	47%	42%	39%

INDEX: Southern Self-Replacing +\$108 Northern Self-Replacing +\$86 Southern Baldy Maternal +\$100 Northern Baldy Terminal +\$74

TRAITS OBSERVED: 200WT,600WT,SS,FAT,EMA,IMF **GENETIC CONDITION:**

NOTES: Larger later maturing type with extra depth and a great side profile. His sire was breeding well but unfortunately lost him too soon.

PURCHASER **PRICE \$** 35

6 Battalion Hurricane P055 (H)



D.O.B.
02/06/2018

Rego No.
BHEP055

Account.
GE & KM Kneipp

GLENDAN PARK EMPIRE E002 (AI) (ET) (H)
SUGARLOAF HAYMAKER H126 (AI) (H)
SUGARLOAF LAST DAY D41 (AI) (H)
SIRE: BATTALION HURRICANE M020 (H)
FRANCO BAZOOKA B250 (H)
FRANCO CORISANDE E801 (H)
EURANGATUCK CORISANDE 2 (H)
RED HILL IDLE RICH ET (AI) (ET) (H)
BATTALION ICELAND (H)
SMITHSTON SILKY Z231 (H)
DAM: BATTALION CONSTANCE 4 (H)
ECHO PARK WARATAH (AI) (H)
BATTALION CONSTANCE 42 (H)
COURALLIE CONSTANCE V086 (H)



BW	200	400	600	MCW	Milk	SS	CWT	EMA	Rib	Rump	RBV%	IMF%
+7.2	+38	+67	+100	+99	+17	+1.8	+60	+4.3	-0.6	-0.8	+2.1	+0.0
57%	59%	59%	64%	54%	42%	70%	51%	40%	41%	46%	40%	38%

INDEX: Southern Self-Replacing +\$130 Northern Self-Replacing +\$110 Southern Baldy Maternal +\$133 Northern Baldy Terminal +\$101

TRAITS OBSERVED: 200WT,600WT,SS,FAT,EMA,IMF **GENETIC CONDITION:**

NOTES: The sire Hurricane M020 was used lightly as a yearling before being sold for \$8000 to JT & S Sloman. He sired 5 calves for us with all 3 of the males being kept as bulls and in this sale. This bull carries the same extension through the front end as the sire. The dam recently weaned one of our top bull prospects for the 2019 drop

PURCHASER..... **PRICE \$**.....

7 Battalion Hurricane P059 (H)



D.O.B.
15/07/2018

Rego No.
BHEP059

Account.
GE & KM Kneipp

GLENDAN PARK EMPIRE E002 (AI) (ET) (H)
SUGARLOAF HAYMAKER H126 (AI) (H)
SUGARLOAF LAST DAY D41 (AI) (H)
SIRE: BATTALION HURRICANE M020 (H)
FRANCO BAZOOKA B250 (H)
FRANCO CORISANDE E801 (H)
EURANGATUCK CORISANDE 2 (H)
YARRAM LOTTERY U047 (AI) (H)
YARRAM LOTTERY X122 (H)
YARRAM ANGELA P099 (H)
DAM: DUNOON FIRST DAY E094 (AI) (H)
CENTENNIAL TRIBUTE (AI) (H)
DUNOON FIRST DAY W146 (AI) (H)
DUNOON FIRST DAY S039 (AI) (H)



BW	200	400	600	MCW	Milk	SS	CWT	EMA	Rib	Rump	RBV%	IMF%
+6.4	+39	+68	+97	+100	+19	+1.3	+62	+4.9	-1.0	-1.4	+2.5	-0.2
59%	60%	59%	62%	54%	44%	68%	52%	44%	47%	51%	46%	44%

INDEX: Southern Self-Replacing +\$133 Northern Self-Replacing +\$114 Southern Baldy Maternal +\$134 Northern Baldy Terminal +\$103

TRAITS OBSERVED: 200WT,600WT,SS,FAT,EMA,IMF **GENETIC CONDITION:**

NOTES: Extra growth potential in this bull. He is long and dark which is consistent with what his Dam has produced in the past. She has produced sons to a top of \$9000

PURCHASER..... **PRICE \$**.....37

8 Cara Park Unique P8038

(H)



D.O.B.
13/07/2018

Rego No.
JENP8038

Account.
JE Newnham & Co

GH DIFFERENCE BRITISHER 45L (IMP CAN) (H)
GH NEON 17N (IMP CAN) (H)
GH SIR SIMBA LASS 107K (H)

SIRE: MAWARRA UNIQUE C041 (AI) (H)

MAWARRA KAHLUA (AI) (H)
MAWARRA MINERVA 554 ET1 (AI) (ET) (H)
MAWARRA MINERVA 357 (H)
GLEDAN PARK STORM W134 (H)
BOWMONT STORM C093 (H)

DAM: CARA PARK LOYALTY F039 (AI) (H)

BOWMONT MARITANA W168 (AI) (H)
CARA PARK CAPTAIN Y315 (H)
CARA PARK LOYALTY B638 (AI) (H)
CARA PARK LOYALTY X285 (H)

CARA PARK
EST. **HEREFORDS** 1975

BW	200	400	600	MCW	Milk	SS	CWT	EMA	Rib	Rump	RBV%	IMF%
+7.7	+43	+76	+115	+101	+15	+2.2	+73	+6.2	-0.3	+0.0	+1.9	+0.7
74%	69%	69%	71%	63%	57%	75%	60%	53%	55%	58%	53%	53%

INDEX: Southern Self-Replacing +\$152 Northern Self-Replacing +\$127 Southern Baldy Maternal +\$124 Northern Baldy Terminal +\$85

TRAITS OBSERVED: BWT,200WT,400WT,600WT,SS,FAT,EMA,IMF **GENETIC CONDITION:**

NOTES: Larger framed well structured bull with extra length and volume combined with a great hind end. Top 2% of the breed for 400 & 600 day weight, top 5% for EMA and very good for IMF. He is out of a top notch Storm C093 cow.

PURCHASER..... **PRICE \$**.....

9 Cara Park Knockout P8033

(H)



D.O.B.
11/07/2018

Rego No.
JENP8033

Account.
JE Newnham & Co

BOWMONT STORM B720 (H)
WARRINGA GOOGLE G23 (H)
WARRINGA FERN D10 (H)

SIRE: GLEDAN PARK KNOCKOUT K160 (ET) (H)

COOTHARABA MAGNUM (H)
GLEDAN PARK LASS G013 (AI) (H)
GLEDAN PARK LASS B107 (H)
BOWMONT STORM C093 (H)
CARA PARK STORM F041 (AI) (H)
CARA PARK WONDER L Z424 (H)

DAM: CARA PARK MARSHALL L H258 (H)

INJEMIRA ADVANCE V093 (H)
CARA PARK MARSHALL L E948 (AI) (H)
CARA PARK MARSHALL L W190 (H)

CARA PARK
EST. **HEREFORDS** 1975

BW	200	400	600	MCW	Milk	SS	CWT	EMA	Rib	Rump	RBV%	IMF%
+7.1	+39	+70	+104	+97	+19	+2.3	+63	+4.6	+0.1	+0.2	+1.5	+0.3
72%	64%	59%	61%	52%	45%	56%	48%	41%	44%	47%	42%	44%

INDEX: Southern Self-Replacing +\$135 Northern Self-Replacing +\$112 Southern Baldy Maternal +\$127 Northern Baldy Terminal +\$93

TRAITS OBSERVED: BWT,200WT,400WT,600WT,SS,FAT,EMA,IMF **GENETIC CONDITION:**

NOTES: Attractive well marked bull, the heaviest in our draft to date, backed up by good Breedplan figures across the board. Top 5% of the breed for 400 & 600 day weight.

PURCHASER..... **PRICE \$**.....39

10 Cara Park Advance P8055

(H)



D.O.B.
18/07/2018

Rego No.
JENP8055

Account.
JE Newnham & Co

INJEMIRA ADVANCE C085 (H)
DEVON COURT ADVANCE F052 (H)
DEVON COURT LIONESS A207 (H)

SIRE: TALBALBA ADVANCE L131 (H)

COOTHARABA MAGNUM (H)
TALBALBA CHOICE D058 (AI) (H)
TALBALBA CHOICE 77 (AI) (H)
GH NEON 17N (IMP CAN) (H)
MAWARRA UNIQUE C041 (AI) (H)

MAWARRA MINERVA 554 ET1 (AI) (ET) (H)

DAM: CARA PARK PEARL K442 (H)

INJEMIRA ADVANCE V093 (H)
CARA PARK PEARL C707 (AI) (H)
CARA PARK PEARL Z434 (AI) (H)

CARA PARK
EST. **HEREFORDS** 1975

BW	200	400	600	MCW	Milk	SS	CWT	EMA	Rib	Rump	RBV%	IMF%
+5.8	+34	+58	+90	+87	+18	+1.4	+54	+3.7	-0.3	-0.5	+1.1	+0.7
72%	63%	61%	64%	55%	42%	68%	50%	42%	45%	49%	44%	43%

INDEX: Southern Self-Replacing +\$122 Northern Self-Replacing +\$99 Southern Baldy Maternal +\$128 Northern Baldy Terminal +\$100

TRAITS OBSERVED: BWT,200WT,400WT,600WT,SS,FAT,EMA,IMF **GENETIC CONDITION:**

NOTES: Attractive bull, good head & eye, with plenty of substance.

PURCHASER..... **PRICE \$**.....

11 Cara Park Unique P8071

(H)



D.O.B.
23/07/2018

Rego No.
JENP8071

Account.
JE Newnham & Co

GH DIFFERENCE BRITISHER 45L (IMP CAN) (H)
GH NEON 17N (IMP CAN) (H)
GH SIR SIMBA LASS 107K (H)

SIRE: MAWARRA UNIQUE C041 (AI) (H)

MAWARRA KAHLUA (AI) (H)
MAWARRA MINERVA 554 ET1 (AI) (ET) (H)
MAWARRA MINERVA 357 (H)
GLEDAN PARK STORM W134 (H)
BOWMONT STORM C093 (H)

BOWMONT MARITANA W168 (AI) (H)

DAM: CARA PARK ALETHEA K423 (AI) (H)

CARA PARK ADVANCE B631 (AI) (H)
CARA PARK ALETHEA F015 (AI) (H)
CARA PARK ALETHEA Z429 (AI) (H)

CARA PARK
EST. **HEREFORDS** 1975

BW	200	400	600	MCW	Milk	SS	CWT	EMA	Rib	Rump	RBV%	IMF%
+5.3	+38	+72	+105	+92	+19	+1.2	+72	+5.6	-0.2	+0.0	+1.7	+0.6
74%	68%	67%	69%	62%	55%	71%	58%	51%	53%	56%	52%	51%

INDEX: Southern Self-Replacing +\$154 Northern Self-Replacing +\$132 Southern Baldy Maternal +\$149 Northern Baldy Terminal +\$113

TRAITS OBSERVED: BWT,200WT,400WT,600WT,SS,FAT,EMA,IMF **GENETIC CONDITION:**

NOTES: Low birth weight. Would be suitable to join to heifers. Moderately framed well structured bull with plenty of thickness. Excellent set of Breedplan figures with the desirable combination of low birth, high growth. Ranked in the top 5% of the breed for 600 day weight.

PURCHASER..... **PRICE \$**.....41.

12 Cara Park Advance P8028

(H)



D.O.B.
08/07/2018

Rego No.
JENP8028

Account.
JE Newnham & Co

INJEMIRA ADVANCE C085 (H)
DEVON COURT ADVANCE F052 (H)
DEVON COURT LIONESS A207 (H)

SIRE: TALBALBA ADVANCE L131 (H)

COOTHARABA MAGNUM (H)
TALBALBA CHOICE D058 (AI) (H)
TALBALBA CHOICE 77 (AI) (H)
GH NEON 17N (IMP CAN) (H)
MAWARRA UNIQUE C041 (AI) (H)

MAWARRA MINERVA 554 ET1 (AI) (ET) (H)

DAM: CARA PARK PEARL K477 (H)

YARRAM STAR GENERAL W251 (H)
CARA PARK PEARL F019 (AI) (H)
CARA PARK PEARL Z482 (H)

CARA PARK
EST. **HEREFORDS** 1975

BW	200	400	600	MCW	Milk	SS	CWT	EMA	Rib	Rump	RBV%	IMF%
+5.0	+30	+54	+81	+75	+17	+0.9	+51	+4.6	-0.4	-0.6	+1.5	+0.9
72%	63%	61%	63%	55%	42%	68%	49%	42%	45%	48%	43%	42%

INDEX: Southern Self-Replacing +\$123 Northern Self-Replacing +\$104 Southern Baldy Maternal +\$129 Northern Baldy Terminal +\$100

TRAITS OBSERVED: BWT,200WT,400WT,600WT,SS,FAT,EMA,IMF **GENETIC CONDITION:**

NOTES: Low Birth Weight. Would be suitable to join to heifers. Smaller framed easy doing bull with thickness throughout, good carcase figures. His IMF EBV is ranked in the top 20% of the breed.

PURCHASER..... **PRICE \$**.....

13 Cara Park Advance P8085

(H)



D.O.B.
27/07/2018

Rego No.
JENP8085

Account.
JE Newnham & Co

INJEMIRA ADVANCE C085 (H)
DEVON COURT ADVANCE F052 (H)
DEVON COURT LIONESS A207 (H)

SIRE: TALBALBA ADVANCE L131 (H)

COOTHARABA MAGNUM (H)
TALBALBA CHOICE D058 (AI) (H)
TALBALBA CHOICE 77 (AI) (H)
GH NEON 17N (IMP CAN) (H)
MAWARRA UNIQUE C041 (AI) (H)

MAWARRA MINERVA 554 ET1 (AI) (ET) (H)

DAM: CARA PARK CURLEY K468 (H)

CARA PARK PLAYBOY K672 ET1 (ET) (H)
CARA PARK CURLEY C709 (AI) (H)
CARA PARK CURLEY Z445 (H)

CARA PARK
EST. **HEREFORDS** 1975

BW	200	400	600	MCW	Milk	SS	CWT	EMA	Rib	Rump	RBV%	IMF%
+8.6	+41	+65	+99	+100	+15	+1.2	+55	+4.1	-0.6	-1.0	+1.5	+0.8
72%	65%	64%	66%	57%	43%	71%	52%	43%	46%	50%	44%	43%

INDEX: Southern Self-Replacing +\$102 Northern Self-Replacing +\$76 Southern Baldy Maternal +\$85 Northern Baldy Terminal +\$64

TRAITS OBSERVED: BWT,200WT,400WT,600WT,SS,FAT,EMA,IMF **GENETIC CONDITION:**

NOTES: Attractive, well balanced young bull, with an impressive hind leg and quarter, out of a very good Unique C041 cow. Top 5% of the breed for 600 day weight.

PURCHASER..... **PRICE \$**..... 43

14 Cara Park Unique P8088

(H)



D.O.B.
01/08/2018

Rego No.
JENP8088

Account.
JE Newnham & Co

GH DIFFERENCE BRITISHER 45L (IMP CAN) (H)
GH NEON 17N (IMP CAN) (H)
GH SIR SIMBA LASS 107K (H)

SIRE: MAWARRA UNIQUE C041 (AI) (H)

MAWARRA KAHLUA (AI) (H)
MAWARRA MINERVA 554 ET1 (AI) (ET) (H)
MAWARRA MINERVA 357 (H)
YAVENVALE FREEDOM (H)
CARA PARK FREEDOM C788 (H)
CARA PARK ALETHEA W114 (H)

DAM: CARA PARK CURLEY J328 (H)

YARRAM STAR GENERAL W251 (H)
CARA PARK CURLEY F012 (AI) (H)
CARA PARK CURLEY C706 (AI) (H)

CARA PARK
EST. **HEREFORDS** 1975

BW	200	400	600	MCW	Milk	SS	CWT	EMA	Rib	Rump	RBV%	IMF%
+4.7	+35	+61	+86	+75	+19	+0.6	+58	+3.8	-0.4	-0.4	+1.4	+0.2
74%	69%	68%	70%	62%	54%	74%	58%	50%	52%	56%	51%	50%

INDEX: Southern Self-Replacing +\$125 Northern Self-Replacing +\$104 Southern Baldy Maternal +\$125 Northern Baldy Terminal +\$96

TRAITS OBSERVED: BWT,200WT,400WT,600WT,SS,FAT,EMA,IMF **GENETIC CONDITION:**

NOTES: Stylish, well balanced bull. The youngest in our draft, has the potential to grow into a big powerful bull. His dam displays size, length and volume.

PURCHASER..... **PRICE \$**.....



Say & Co Rural

118 Wentworth Street, Glen Innes NSW 2370

Email: saycorural@bigpond.com.au

- ☒ BULK FERTILISER
- ☒ SEED SPECIALISTS
- ☒ AGROMONY SERVICES
- ☒ AGRICULTURAL CHEMICAL
- ☒ LIVESTOCK EQUIPMENT
- ☒ FENCING MATERIALS
- ☒ STEEL & PIPE
- ☒ PET HEALTH CARE
- ☒ ANIMAL HEALTH PRODUCTS
- ☒ ANIMAL NUTRITION
- ☒ STOCK FEED
- ☒ HOUSEHOLD DETERGENTS
- ☒ PET FOOD
- ☒ NURSERY STOCKS
- ☒ GARDEN SUPPLIES
- ☒ POTS & ORNAMENTS
- ☒ WATER TANKS
- ☒ IRRIGATION SUPPLIES
- ☒ HANDYMAN TOOLS
- ☒ WORK BOOTS
- ☒ CASTROL OILS

OPENING HOURS


Monday to Friday
8.00am – 5.30pm
Saturday
8.00am – 12.00pm

PHONE SHOP


(02) 67322287
[WILL NEWBERRY](http://www.saycorural.com.au)
0427322287



Embryo Transfer | Semen Collection | Artificial Insemination | Repro Consultation



Ced Wise
Artificial Breeding Services

Ced Wise Artificial Breeding Services
providing artificial bovine reproduction for
40 years. Operating in DAWR approved
export laboratories on-farm and in-centre.

EXPERIENCE | KNOWLEDGE | RESULTS

CED WISE | 0428 718 640 **ADAM WISE** | 0424 964 675 **GERMAN AMAYA** | 0439 673 960
(07) 4683 4275 | office@cedwiseabsservices.com.au | 27466 New England Highway, Glen Aplin Qld 4381 Australia

www.cedwiseabsservices.com.au



Australian owned & operated on-line farm merchandise store
One lucky sale attendee will win 5L of CattlePro!!

Cattle Products Include:

- Broad Spectrum drench
- Tick, buffalo fly & lice control
- Liver fluke control
- Nutrition products
- Cattle handling equipment



Visit our website for a full range of products
www.SpecialistSales.com.au

Ph: 1800 780 317

office@specialistsales.com.au

259 BYRON ST, INVERELL NSW 2360 - 02 67210610



OVER 40 YEARS OF SALES & SERVICE TO NORTHERN NSW & AUSTRALIA



15 Battalion Magnetic P062 (H)



D.O.B.
22/08/2018

Rego No.
BHEP062

Account.
GE & KM Kneipp

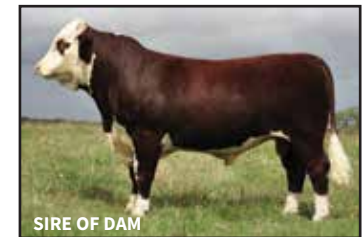
GLENDAN PARK EMPIRE E002 (AI) (ET) (H)
 SUGARLOAF HAYMAKER H126 (AI) (H)
 SUGARLOAF LAST DAY D41 (AI) (H)

SIRE: FRANCO MAGNETIC M635 (H)

FRANCO ACTION A730 (H)
 FRANCO COROLLA F216 (H)
 PARSON HILL COROLLA PHDC325 (H)
 SUGARLOAF JELLY BEAN A220 (H)
 BATTALION JACKHAMMER (H)
 COURALLIE CONSTANCE V086 (H)

DAM: BATTALION CATH 20 (AI) (H)

SMITHSTON YOU BEAUT (H)
 BATTALION CATH 10 (AI) (H)
 EMU HILLS CATH 31 (H)



BW	200	400	600	MCW	Milk	SS	CWT	EMA	Rib	Rump	RBV%	IMF%
+6.0	+32	+58	+86	+87	+14	+2.3	+53	+4.1	-0.3	-0.2	+1.6	-0.1
51%	56%	56%	59%	49%	35%	63%	47%	35%	38%	42%	37%	35%

INDEX: Southern Self-Replacing +\$116 Northern Self-Replacing +\$100 Southern Baldy Maternal +\$117 Northern Baldy Terminal +\$89

TRAITS OBSERVED: 200WT,600WT,SS,FAT,EMA,IMF **GENETIC CONDITION:**

NOTES: A wide based bull with a good top and plenty of width through the backend. His sire was used as a yearling and carried the same width through the hips. The dam was one of our heavier females, rarely fitting up the cattle race for treatments.

PURCHASER **PRICE \$** 47.

16 Battalion Hurricane P056

(H)



D.O.B.
21/06/2018

Rego No.
BHEP056

Account.
GE & KM Kneipp

GLENDAN PARK EMPIRE E002 (AI) (ET) (H)
 SUGARLOAF HAYMAKER H126 (AI) (H)
 SUGARLOAF LAST DAY D41 (AI) (H)
SIRE: BATTALION HURRICANE M020 (H)
 FRANCO BAZOOKA B250 (H)
 FRANCO CORISANDE E801 (H)
 EURANGATUCK CORISANDE 2 (H)
 FAULKLAND HAMILTON (AI) (H)
 SUGARLOAF JIM JIM B302 (AI) (H)
 SUGARLOAF JEWEL W098 (H)
DAM: BATTALION FIRST DAY 1 (H)
 KALUDAH TURPS (AI) (H)
 STRATHLEIGH FIRST DAY E353 (H)
 STRATHLEIGH FIRST DAY B888 (H)



BW	200	400	600	MCW	Milk	SS	CWT	EMA	Rib	Rump	RBV%	IMF%
+5.8	+29	+52	+72	+76	+15	+2.9	+41	+3.7	-0.8	-1.1	+1.7	-0.1
55%	58%	59%	63%	53%	39%	71%	51%	41%	42%	47%	41%	38%

INDEX: Southern Self-Replacing +\$75 Northern Self-Replacing +\$58 Southern Baldy Maternal +\$67 Northern Baldy Terminal +\$53

TRAITS OBSERVED: 200WT,600WT,SS,FAT,EMA,IMF **GENETIC CONDITION:**

NOTES: Another long thick topped Hurricane M020 son. His dam produces bulls with extra scrotal development, with her sons often measuring the largest in the group. Her current heifer calf will most likely be our top heifer for the year. She has sold sons to a top of \$10,000

PURCHASER..... **PRICE \$**.....

17 Battalion #8

(UNREGISTERED)(H)



D.O.B.
10/10/2018

Rego No.
UNREG

Account.
GE & KM Kneipp

GLENDAN PARK EMPIRE E002 (AI) (ET) (H)
 SUGARLOAF HAYMAKER H126 (AI) (H)
 SUGARLOAF LAST DAY D41 (AI) (H)
SIRE: FRANCO MAGNETIC M636 (H)
 FRANCO ACTION A730 (H)
 FRANCO COROLLA F216 (H)
 PARSON HILL COROLLA C325 (H)
 CHURCHHILL TITANIC ET2 (H)
 DUNDEE TRIDENT D951 (H)
 DUNDEE CHILLY 53 (H)
DAM: UNREG COW #8 (H)
 DUNDEE JACKSON U811 (H)
 DUNDEE HERD COW 605 (H)
 DUNDEE HERD COW 442 (H)



BW	200	400	600	MCW	Milk	SS	CWT	EMA	Rib	Rump	RBV%	IMF%

INDEX:

TRAITS OBSERVED: **GENETIC CONDITION:**

NOTES: A much younger bull and won't be 2 years until mid-October. His dam was extremely thick and heavy built, she was a dark well-marked female with plenty of milk

PURCHASER..... **PRICE \$**..... 49

18/ Cara Park Advance P8024 (H)



D.O.B.
06/07/2018

Rego No.
JENP8024

Account.
JE Newnham & Co
GE & KM Kneipp

INJEMIRA ADVANCE C085 (H)
DEVON COURT ADVANCE F052 (H)
DEVON COURT LIONESS A207 (H)
SIRE: TALBALBA ADVANCE L131 (H)
COOTHARABA MAGNUM (H)
TALBALBA CHOICE D058 (AI) (H)
TALBALBA CHOICE 77 (AI) (H)
GH NEON 17N (IMP CAN) (H)
MAWARRA UNIQUE C041 (AI) (H)
MAWARRA MINERVA 554 ET1 (AI) (ET) (H)
DAM: CARA PARK WONDER LASS G181 (H)
YARRAM ENERGIZER P241 (AI) (H)
CARA PARK WONDER L V038 (H)
CARA PARK WONDER L P982 (H)

CARA PARK
EST. 1975



BW	200	400	600	MCW	Milk	SS	CWT	EMA	Rib	Rump	RBY%	IMF%
+5.8	+36	+60	+89	+87	+18	+1.0	+56	+4.0	-0.7	-1.2	+1.6	+0.7
72%	64%	58%	58%	51%	45%	52%	46%	38%	41%	43%	39%	40%

INDEX: Southern Self-Replacing +\$119 Northern Self-Replacing +\$98 Southern Baldy Maternal +\$125 Northern Baldy Terminal +\$100

TRAITS OBSERVED: BWT,200WT **GENETIC CONDITION:**

NOTES: This bull has been running with the Battalion bulls since weaning. A dark thickset bull with a very even muscle pattern. He has a terrific quiet temperament.

PURCHASER..... **PRICE \$**.....

19/ Cara Park Knockout P8106 (H)



D.O.B.
30/08/2018

Rego No.
JENP8106

Account.
JE Newnham & Co
GE & KM Kneipp

BOWMONT STORM B720 (H)
WARRINGA GOOGLE G23 (H)
WARRINGA FERN D10 (H)
SIRE: GLENDAN PARK KNOCKOUT K160 (ET) (H)
COOTHARABA MAGNUM (H)
GLENDAN PARK LASS G013 (AI) (H)
GLENDAN PARK LASS B107 (H)
GH NEON 17N (IMP CAN) (H)
MAWARRA UNIQUE C041 (AI) (H)
MAWARRA MINERVA 554 ET1 (AI) (ET) (H)
DAM: CARA PARK WONDER J364 (H)
CARA PARK POMPEII Z453 (AI) (TW) (H)
CARA PARK WONDER LASS D811 (AI) (H)
CARA PARK WONDER L Z424 (H)

CARA PARK
EST. 1975



BW	200	400	600	MCW	Milk	SS	CWT	EMA	Rib	Rump	RBY%	IMF%
+6.8	+39	+70	+102	+96	+19	+2.0	+65	+5.0	-0.2	-0.1	+1.9	+0.4
72%	64%	59%	61%	52%	44%	56%	48%	41%	45%	48%	43%	45%

INDEX: Southern Self-Replacing +\$142 Northern Self-Replacing +\$120 Southern Baldy Maternal +\$132 Northern Baldy Terminal +\$96

TRAITS OBSERVED: BWT,200WT **GENETIC CONDITION:**

NOTES: This bull has been running with the Battalion bulls since weaning. He is deep sided with extra length and should continue to grow and mature into a very handy bull.

PURCHASER..... **PRICE \$**.....51.

20 Cara Park Advance P8032 (H)



D.O.B.
10/07/2018

Rego No.
JENP8032

Account.
JE Newnham & Co
GE & KM Kneipp

INJEMIRA ADVANCE C085 (H)
DEVON COURT ADVANCE F052 (H)
DEVON COURT LIONESS A207 (H)
SIRE: TALBALBA ADVANCE L131 (H)
COOTHARABA MAGNUM (H)
TALBALBA CHOICE D058 (AI) (H)
TALBALBA CHOICE 77 (AI) (H)
YAVENVALE FREEDOM (H)
CARA PARK FREEDOM G148 (H)
CARA PARK MATCHLESS B654 (H)
DAM: CARA PARK WONDER LASS K444 (H)
MAWARRA UNIQUE C041 (AI) (H)
CARA PARK WONDER LASS G181 (H)
CARA PARK WONDER L V038 (H)

CARA PARK
EST. HEREFORDS 1975



BW	200	400	600	MCW	Milk	SS	CWT	EMA	Rib	Rump	RBV%	IMF%
+7.8	+40	+65	+98	+97	+15	+1.0	+56	+3.9	-0.6	-1.0	+1.6	+0.7
71%	62%	55%	56%	48%	39%	50%	42%	34%	37%	40%	36%	36%

INDEX: Southern Self-Replacing +\$112 Northern Self-Replacing +\$88 Southern Baldy Maternal +\$105 Northern Baldy Terminal +\$81

TRAITS OBSERVED: BWT,200WT **GENETIC CONDITION:**

NOTES: This bull has been running with the Battalion bulls since weaning. A dark and soft Advance L131 son

PURCHASER..... **PRICE \$**.....

21 Cara Park Unique P8056 (H)



D.O.B.
18/07/2018

Rego No.
JENP8056

Account.
JE Newnham & Co

GH DIFFERENCE BRITISHER 45L (IMP CAN) (H)
GH NEON 17N (IMP CAN) (H)
GH SIR SIMBA LASS 107K (H)
SIRE: MAWARRA UNIQUE C041 (AI) (H)
MAWARRA KAHLUA (AI) (H)
MAWARRA MINERVA 554 ET1 (AI) (ET) (H)
MAWARRA MINERVA 357 (H)
GLEDAN PARK STORM W134 (H)
BOWMONT STORM C093 (H)
BOWMONT MARITANA W168 (AI) (H)
DAM: CARA PARK CURLEY K428 (AI) (H)
YAVENVALE FREEDOM (H)
CARA PARK CURLEY D884 (H)
CARA PARK CURLEY Z452 (AI) (H)

CARA PARK
EST. HEREFORDS 1975

BW	200	400	600	MCW	Milk	SS	CWT	EMA	Rib	Rump	RBV%	IMF%
+7.5	+41	+71	+106	+95	+15	+1.7	+66	+5.5	-0.6	-0.6	+1.9	+0.5
73%	68%	67%	69%	62%	55%	71%	58%	51%	53%	56%	52%	51%

INDEX: Southern Self-Replacing +\$128 Northern Self-Replacing +\$102 Southern Baldy Maternal +\$103 Northern Baldy Terminal +\$73

TRAITS OBSERVED: BWT,200WT,400WT,600WT,SS,FAT,EMA,IMF **GENETIC CONDITION:**

NOTES: Good bull, plenty of muscle in him and out of a very good young Storm C093 cow. Top 5% of the breed for 600 day weight, EMA & RBV.

PURCHASER..... **PRICE \$**.....53.

22 Cara Park Unique P8035

(H)



D.O.B.
12/07/2018

Rego No.
JENP8035

Account.
JE Newnham & Co

GH DIFFERENCE BRITISHER 45L (IMP CAN) (H)
GH NEON 17N (IMP CAN) (H)
GH SIR SIMBA LASS 107K (H)

SIRE: MAWARRA UNIQUE C041 (AI) (H)

MAWARRA KAHLUA (AI) (H)
MAWARRA MINERVA 554 ET1 (AI) (ET) (H)
MAWARRA MINERVA 357 (H)
GLEDAN PARK STORM W134 (H)
BOWMONT STORM C093 (H)

DAM: CARA PARK TREASURE F037 (AI) (H)

BOWMONT MARITANA W168 (AI) (H)
INJEMIRA ADVANCE V093 (H)
CARA PARK TREASURE B607 (AI) (H)
CARA PARK TREASURE U923 (H)

CARA PARK
EST. HEREFORDS 1975

BW	200	400	600	MCW	Milk	SS	CWT	EMA	Rib	Rump	RBV%	IMF%
+7.0	+39	+73	+110	+97	+20	+1.7	+71	+6.1	-0.2	-0.1	+1.9	+0.7
75%	70%	69%	71%	64%	58%	76%	61%	54%	56%	59%	54%	54%

INDEX: Southern Self-Replacing +\$143 Northern Self-Replacing +\$116 Southern Baldy Maternal +\$124 Northern Baldy Terminal +\$91

TRAITS OBSERVED: BWT,200WT,400WT,600WT,SS,FAT,EMA,IMF **GENETIC CONDITION:**

NOTES: Good all-round bull. Excellent Breedplan figures. Top 2% of the breed for 600 day weight, top 3% for EMA and top 5% for Retail Beef Yield. Out of a high performing Storm C093 cow

PURCHASER **PRICE \$**

23 Cara Park Advance P8039

(H)



D.O.B.
13/07/2018

Rego No.
JENP8039

Account.
JE Newnham & Co

INJEMIRA ADVANCE C085 (H)
DEVON COURT ADVANCE F052 (H)
DEVON COURT LIONESS A207 (H)

SIRE: TALBALBA ADVANCE L131 (H)

COOTHARABA MAGNUM (H)
TALBALBA CHOICE D058 (AI) (H)
TALBALBA CHOICE 77 (AI) (H)
INJEMIRA ADVANCE T019 (AI) (H)
INJEMIRA ADVANCE V093 (H)

DAM: CARA PARK MARSHALL L E948 (AI) (H)

INJEMIRA PATTIE R467 (H)
YARRAM ENERGIZER P241 (AI) (H)
CARA PARK MARSHALL L W190 (H)
CARA PARK MARSHALL L M834 (H)

CARA PARK
EST. HEREFORDS 1975

BW	200	400	600	MCW	Milk	SS	CWT	EMA	Rib	Rump	RBV%	IMF%
+8.1	+37	+64	+103	+102	+18	+1.6	+54	+3.5	-0.3	-0.7	+1.2	+0.6
73%	66%	65%	68%	59%	47%	73%	54%	46%	50%	53%	48%	47%

INDEX: Southern Self-Replacing +\$115 Northern Self-Replacing +\$86 Southern Baldy Maternal +\$113 Northern Baldy Terminal +\$88

TRAITS OBSERVED: BWT,200WT,400WT,600WT,SS,FAT,EMA,IMF **GENETIC CONDITION:**

NOTES: Extra length of body, smooth shoulder with a good butt. Top 5% of the breed for 600 day weight.

PURCHASER **PRICE \$**55.

24 Cara Park Unique P8059

(H)

GH DIFFERENCE BRITISHER 45L (IMP CAN) (H)
 GH NEON 17N (IMP CAN) (H)
 GH SIR SIMBA LASS 107K (H)
SIRE: MAWARRA UNIQUE C041 (AI) (H)
 MAWARRA KAHLUA (AI) (H)
 MAWARRA MINERVA 554 ET1 (AI) (ET) (H)
 MAWARRA MINERVA 357 (H)
 GLENDAN PARK STORM W134 (H)
 BOWMONT STORM C093 (H)
 BOWMONT MARITANA W168 (AI) (H)
DAM: CARA PARK PEARL H211 (AI) (H)
 YARRAM ENERGIZER P241 (AI) (H)
 CARA PARK PEARL Z448 (AI) (H)
 CARA PARK PEARL R159 (H)

D.O.B.
19/07/2018

Rego No.
JENP8059

Account.
JE Newnham & Co

BW	200	400	600	MCW	Milk	SS	CWT	EMA	Rib	Rump	RBV%	IMF%
+6.6	+40	+72	+107	+98	+18	+1.4	+70	+5.9	-0.9	-1.1	+2.2	+0.6
74%	69%	69%	71%	64%	57%	75%	60%	53%	55%	59%	54%	53%

INDEX: Southern Self-Replacing +\$142 Northern Self-Replacing +\$116 Southern Baldy Maternal +\$129 Northern Baldy Terminal +\$98

TRAITS OBSERVED: BWT,200WT,400WT,600WT,SS,FAT,EMA,IMF **GENETIC CONDITION:**

NOTES: Very good bull with an excellent set of Breedplan figures. At the time of cataloguing 8059 was recovering from 3 day sickness.

CARA PARK
EST. **HEREFORDS** 1975



**LIVESTOCK
CARRIERS**

ALSO CARRYING

WOOL * HAY * MACHINERY

Locally owned & operated

Daryl has been in business in the local area for over 50 years. He and wife Lyn operate their business from "Lakeside" Glen Innes, where they will continue to serve the local community.

Daryl & Lyn now have a 30ft tabletop with a non-bruise sheep and cattle float.



Ph. (02) 6732 5610

Daryl 0429 342 206 / Lyn 0427 010 916

"Lakeside" Shannon Vale Road, Glen Innes NSW
daryl.lynmeehan@activ8.net.au

PURCHASER..... PRICE \$.....



Killarney Co-operative Limited
Phone 07 4664 1188

Fax 07 4664 1377
www.killarneycoop.com



For all your stockfeed requirements.



Community owned: Profits returned to shareholders

INSIGNIA

Company

*GROW YOUR BUSINESS WITH YOUR OWN
CUSTOMISED PROMOTIONAL MERCHANDISE*



TRUCKER HATS • STUBBY COOLERS • ENAMEL MUGS



WWW.INSIGNIACO.COM.AU

Grant & Kylie Kneipp admin@insigniaco.com.au Ph: 02 6734 4134



Notes

Thank you

Thank you to all successful purchasers, under bidders and all who attended the sale for your support. Any inspection and consideration of our cattle is much appreciated.

Grant, Kylie, Graeme & Natalie

Purchaser Details

NAME: _____

Trading Name: _____

Address: _____

Phone: _____ Mobile: _____

Email: _____

PIC Number: _____ Bid Card Number: _____

AGENT DETAILS

Company Name: _____

Agent Name: _____

Phone: _____ Mobile: _____

PURCHASE DETAILS

Lots Purchased: _____

Transport Required: Yes No

Insurance Required: Yes No

Society Transfer Required: Yes No

Herd Ident (if applicable): _____

Signature: _____

Date: _____



*“Pleasure in the job puts perfection
in the work”* -Aristotle

