

**Wallawong**  
PREMIUM BEEF

*Carcase Quality Sale*



BEEF WEEK GRAND CHAMPION CARCASES

**30 Bulls**

Silver, Grey, Black  
The Choice Is Yours

Thursday 9 July 2020  
1pm

**Consistent Carcase  
Performance**

[www.wallawong.com.au](http://www.wallawong.com.au)

## Consistent Carcase Performance



**3 Wallawong Heavyweight Entries at  
2020 Wingham Beef Week (132 entries)**  
Grand Champ and Res Grand Champ Carcases  
Champion and Res Heavyweight Carcases  
Champion and Res Pen of Two Carcases



**2018 RAS Feedlot Challenge**  
Champion and Res Champion Pen of 6  
100Day Fed. Wallawong Black Angus Steers



## **23<sup>rd</sup> ANNUAL SALE**

**1pm**

**THURSDAY 9<sup>th</sup> JULY 2020**

**On Property  
'Marriot Park'  
Gunnedah, NSW**

**Lachlan & Kate James  
0402 839 373**

**Elders Gunnedah**



**Nik Hannaford - 0417 201 460  
Jon Glover - 0428 486 887  
Brian Kennedy - 0427 844 047**

**Paul Dooley – Auctioneer  
0458 662 646**

**Sale interfaced with  
 AuctionsPlus™**

3% rebate to stock and station agents nominating buyers, personally attending the sale (or facilitating the purchase and nominating the buyer 24hrs prior to the sale) and settling accounts within 7 days

The sale will be conducted exclusive of GST  
**PLEASE BRING THIS CATALOG TO THE SALE**

## SALE INFORMATION

**INSPECTIONS:** Welcomed from 10.30am on sale day or prior to sale by contacting vendors, Lachlan & Kate James, on phone 0402 839 373.

**REBATE:** 3% on bulls to outside agents nominating buyers, personally attending the sale (or facilitating the purchase and nominating the buyer 24hrs prior to the sale) and settling account within 7 days. This will be strictly enforced.

**DELIVERY:** Delivery will be given at the completion of the sale.

**BUYER'S INSTRUCTION SLIP:** Must be completed by all successful purchasers and registered with the selling agent prior to delivery.

**TRANSPORT:** Wallawong Premium Beef are again offering generous transport assistance (further details next page).

**TRANSFERS:** All registered lots will be transferred to the respective purchaser free of charge.

**HERD HEALTH:** The Wallawong herd is TB and Brucellosis free. The herd held an MN2 protected accreditation as part of the now defunct Johnne's Market Assurance Program. We have a vet overseen biosecurity plan in place and hold a JBAS score of 8, with our latest negative faecal test conducted in June 2018. Based on the above, all bulls (ex Lot 1), are eligible for entry into WA. All bulls have been vaccinated against Clostridial diseases and Leptospirosis in May/June 2020. They have also been treated against internal parasites in May/June 2020. Furthermore, all bulls were vaccinated against Vibriosis and Three-Day Sickness in May/June 2020.

All bulls (ex Lot 1) have been vaccinated with 3 germ 'tick fever' vaccine for direct entry into ticky country.

All bulls have been hair tested negative for PI pestivirus.

All bulls have undergone a crush side semen test and physical penile examination by Excel Genetics.

Additional genetic tests and sire verification can be conducted on specific lots at the vendor's expense upon purchaser's request.

**GUARANTEE:** All bulls offered for sale are guaranteed to be fertile and capable of natural service. Any claim made must be in writing and accompanied by a veterinary certificate within two (2) years of the date of sale (see inside next page for details).

**ACCOMMODATION:** There are numerous motels in Gunnedah, book early to avoid disappointment.

Gunnedah Motor Inn	02 67422377	Harvest Lodge Motel	02 67423400
Red Chief Motel	02 67420833	Plains Motor Inn	02 67422511

**TRAVEL:** Qantas and Virgin provide flights between Sydney and Tamworth. Tamworth is located 74km East of Gunnedah. Contact Qantas on 131313 to arrange bookings.

## Transport Assistance

Wallawong Premium Beef is offering **FREE TRANSPORT**, within 200 km of Gunnedah, for any bull purchased at the sale.

As we will be using a paid courier to deliver some of the sale bulls, purchasers outside the 200km limit will be billed the extra mileage (if greater than 200km) at a rate of \$2.00/km per delivery.

We are also offering guaranteed maximum delivery prices (+gst) per bull for interstate bull buyers. WA/Tas - \$500, SA \$450, Vic \$400, Sth/Central QLD \$400.

In addition, a free delivery service to Goondiwindi/Mungindi, Qld is being offered on purchase of 3 or more bulls.

Buyer's instruction slip must indicate the intention to undertake the free/subsidised transport offer.

Purchasers should note that the bulls are at the purchaser's risk at the fall of the hammer and all transport offered by Wallawong is at the purchaser's risk.

## Consistent Carcase Performance



**2019 Wingham Beef Week**  
Reserve Champion Heavyweight Steer  
Sire: Wallawong Ripsnorter



**2018 Beef Australia**  
First - Open Fed Pen of Three Carcases  
Exhibited by Wallawong & H Birchall



## Consistent Carcase Performance



**2019 Upper Hunter Beef Bonanza (432 entries).**  
Supreme Champion Carcase  
(Wallawong and Groveleigh P/S)  
3 Highest Scoring Carcases  
Champion Unled Steer (above)  
(Wallawong and H Birchall)



**2019 Upper Hunter Beef Bonanza**  
Champion Heavyweight Led Steer  
(Wallawong and H Birchall)  
Sire: Wallawong Yearbook

## Fertility Guarantee

We guarantee all bulls to be structurally sound, fertile and capable of natural service. Bulls are guaranteed for up to two years from the date of sale. However, should a bull prove not to be able to perform the above duties we will:

- Replace the bull with an agreed substitute if available, or
- Issue a credit equal to the purchase price less salvage value. This credit may be used at future Wallawong sales.

The guarantee covers the purchase value of the bull, without interest, costs or damages. The guarantee shall apply providing the bull's incapacity is not caused by injury, misadventure or disease contracted since leaving Wallawong and is calculated on the basis that the guarantee is reduced by half of the purchase price for each year of service from the sale date. A veterinary certificate must also be supplied by the purchaser.



**2018 Upper Hunter Beef Bonanza** (420 entries).

Supreme Champion Steer  
3<sup>rd</sup> Highest scoring carcass  
Sired by Wallawong Yearbook.  
Bred by Heath Birchall.



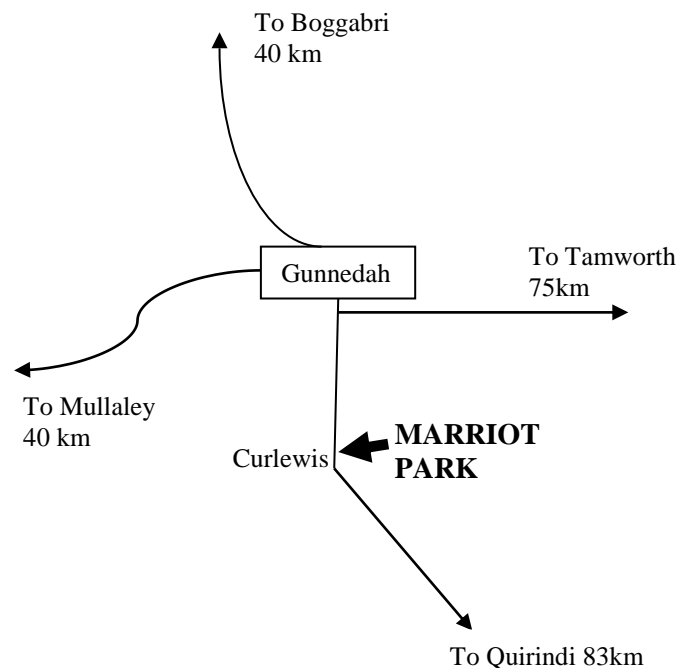
# Directions to Marriot Park

## From Tamworth (90 km)

- Take Oxley Highway to Gunnedah. Just before reaching Gunnedah township, turn left (on to Kamilaroi Hwy) at large roundabout and continue toward Quirindi. Marriot Park is located 12 km from roundabout on the LHS of the Kamilaroi Hwy. Look for Wallawong signs.

## From Gunnedah (15 km)

- Take Kamilaroi Highway South toward Quirindi. Marriot Park is located 12 km from Gunnedah on the left hand side of the highway. Look for signs.



**CATERING:** Morning tea, tea and coffee, cold drinks and BBQ lunch available at the sale if permitted. We will be observing the most current Covid requirements.

# Achmea, Australia's specialist farm insurer, is delighted to support 23rd Anniversary of the Carcase Quality Sale

With competitive rates, insure your stud bulls with Achmea today.  
To finalise your cover, contact your local Risk Specialist.

**Stuart Maidment**  
call 0417 285 827 or email  
[stuart.maidment@achmea.com.au](mailto:stuart.maidment@achmea.com.au)

**Desley Galvin**  
call 0428 543 189 or email  
[desley.galvin@achmea.com.au](mailto:desley.galvin@achmea.com.au)

[achmea.com.au](http://achmea.com.au)



The information in this advertisement is general advice only and does not take into account your individual objectives, financial situation or needs (your personal circumstances). Before using this information to decide whether to purchase the insurance policy, you should consider your personal circumstances and the relevant Product Disclosure Statement available from the 'Downloads' section of our website [www.achmea.com.au](http://www.achmea.com.au). Achmea Schadeverzekerings NV, ABN 86 158 237702, AFSL 433984.

# WALLAWONG INTRODUCTION

Welcome to our 2020 Annual Sale event.

Well what a turn around there has been in the season, after enduring 2.5years of drought, dust and decimation, it looks like we have exited out the other side. A little battered around the edges but still with our core breeding females and a very good line of drought tolerant bulls.

What hasn't changed over the last 3 years is the Wallawong genetic ability to produce Consistent Carcase Performance. As it currently stands, Wallawong Genetics have produced 5 of the 6 highest scoring carcasses in MSA based competitions across Australia, and all breeds, in the last 7 months. Reinforcing the genetic carcase strength in the herd is that the 5 carcasses represented 5 different Wallawong sires.

You will not find documented results like these in any other herd of any breed across Australia.

But, a good carcase is not all that is required for a sound breeding bull. We are constantly looking at structural correctness, growth and fertility traits so that bulls purchased from Wallawong have a long and functional life delivering their genetic carcase traits to their new owner's herd.

We look forward to discussing your bull requirements whether they be Silver, Grey or Black. Our emphasis is on delivering what our clients require, and making sure they receive the highest level of satisfaction from their new bull, our service, and our partnership in helping make their business more profitable.

The sale will be interfaced through AuctionsPlus, and due to the uncertainty of the Covid situation, we advise clients to come and look at the bulls prior to the sale date, at either of our open days on Sunday 5<sup>th</sup> July or Monday 6<sup>th</sup> July, or at any other time by appointment.

We look forward to your involvement in the sale.

Lachlan, Kate, Stirling and Fraser James.

## **COMPARING ANIMALS USING EBVs**

EBVs are a tool that will help you to make more educated decisions when you are choosing breeding stock. The best way to make use of this information is to first decide **YOUR** breeding goals and secondly to select animals with EBVs that match those criteria.

**Birth Weight EBV** (kg) is based on the measured birth weight of progeny, adjusted for dam age. The lower the value the lighter the calf at birth and the lower the likelihood of a difficult birth. This is particularly important when selecting sires for use over heifers.

**200-Day Milk EBV** (kg) is an estimate of an animal's milking ability. For sires, this EBV indicates the effect of the daughter's milking ability, inherited from the sire, on the 200-day weight of her calves. For dams, it indicates her own milking ability.

**200 Day Growth EBV** (kg) is calculated from the weight of progeny taken between 80 and 300 days of age. Values are adjusted to 200 days and for age of dam. This EBV is the best single estimate of an animal's genetic merit for growth to early ages.

**400-Day Weight EBV** (kg) is calculated from the weight of progeny taken between 301 and 500 days of age, adjusted to 400 days and for age of dam. This EBV is the best single estimate of an animal's genetic merit for yearling weight.

**600-Day Weight EBV** (kg) is calculated from the weight of progeny taken between 501 and 900 days of age, adjusted to 600 days and for age of dam. This EBV is the best single estimate of an animal's genetic merit for growth beyond yearling age.

**Mature Cow Weight EBV** (kg) is based on the cow weight when the calf is weighed for weaning. This EBV is an estimate of the genetic difference in cow weight at 5 years of age and is an indicator of growth at later ages and potential feed maintenance requirements of the females in the breeding herd. Smaller, or more moderate EBVs are generally more favourable.

The Mature Cow Weight EBV may also be used by steer breeders wishing to grow animals out to a larger weight.


**Scrotal Size EBV** (cm) is calculated from the circumference of the scrotum, measured in centimetres and adjusted to 400 days of age. This EBV is an estimate of a sire's genetic merit for scrotal size and is positively correlated to age of puberty in female progeny.

**Carcass Weight EBV** (kg) is based on abattoir carcass records and is an indicator of the genetic differences in carcass weight at the standard age of 650 days.

**Eye Muscle Area EBV** (sq cm) is calculated from measurements from live animal scans and from abattoir carcass data. This EBV estimates genetic differences in eye muscle area at the 12/13<sup>th</sup> rib site of a 300 kg dressed carcass. More positive EBVs indicate better muscling on animals. Sires with relatively higher EMA EBVs are expected to produce better muscled and higher percentage yielding progeny at the same carcass weight than will sires with lower EMA EBVs.

**Rib Fat and Rump Fat EBVs** (mm) are calculated from measurements of subcutaneous fat depth at the 12/13 rib site and the P8 rump site (from live animal scans and from abattoir carcasses) and are adjusted to a standard 300 kg carcass. These EBVs are indicators of the genetic differences in fat depth on a standard 300 kg carcass. Sires with low, or negative, fat EBVs are expected to produce leaner progeny at any particular carcass weight than will sires with higher EBVs.

Please note that Murray Grey and Angus Australia EBVs are NOT directly comparable and operate from different bases. Society averages are shown below.

	April 2020 Murray Grey GROUP BREEDPLAN Averages for 2018 born calves								
	CED	CEM	GL	BW	200D	400D	600D	MCW	MILK
<b>EBV</b>	<b>-1.1</b>	<b>-0.2</b>	<b>-0.7</b>	<b>+3.5</b>	<b>+23</b>	<b>+37</b>	<b>+52</b>	<b>+54</b>	<b>+4</b>
SS	CWT	EMA	RIB	RUM	RBY	IMF	\$VT	\$SM	\$HG
<b>+0.5</b>	<b>+33</b>	<b>+1.7</b>	<b>-0.2</b>	<b>-0.2</b>	<b>+0.9</b>	<b>+0.0</b>	<b>+\$38</b>	<b>+\$39</b>	<b>+\$55</b>

	Mid May Trans Tasman Angus Cattle Evaluation. Averages for 2018 born calves								
	CED	CEM	GL	BW	200D	400D	600D	MCW	MILK
<b>EBV</b>	<b>+1.8</b>	<b>+2.4</b>	<b>-4.4</b>	<b>+4.3</b>	<b>+48</b>	<b>+86</b>	<b>+112</b>	<b>+98</b>	<b>+17</b>
SS	CWT	EMA	RIB	RUM	RBY	IMF	\$DI	\$HGI	\$HGI
<b>+1.9</b>	<b>+64</b>	<b>+5.7</b>	<b>-0.1</b>	<b>-0.4</b>	<b>+0.5</b>	<b>+2.0</b>	<b>+\$110</b>	<b>+\$124</b>	<b>+\$114</b>

*Simply the Best.*



**FREE CHOICE  
SUPPLEMENTS**

CONTACT US 1800 804 096





## 30 BULLS

Additional sale bull videos will be available at

[www.wallawong.com.au](http://www.wallawong.com.au)

**Silver and Grey Bulls**

### Lot 1 **WALLAWONG PRIME TIME**

**Born:** 13/05/2018      **LEJ P14**      **Colour:** Silver

TULLIBARDINE JEOPARDY J14 (PB) (AI)

**Sire:** WALLAWONG MASTERCLASS M22 (PB)

BUNDALEER T.T. B33 (PB)

WALLAWONG WINCHESTER (PB) (ET)

**Dam:** WALLAWONG GALE K116 (PB)

WALLAWONG GALE 2ND (PB) (AI)

	April 2020 Murray Grey BREEDPLAN								
	200D	400D	600D	EMA	RIB	RUM	RBY	\$VT	\$SM
<b>EBV</b>	<b>+27</b>	<b>+42</b>	<b>+59</b>	<b>+2.3</b>	<b>-0.7</b>	<b>-1.0</b>	<b>+1.6</b>	<b>+\$37</b>	<b>+\$36</b>
Acc	42%	41%	41%	28%	34%	34%	31%		

*Notes: Prime Time is a great example of the Wallawong genetic program. A high growth bull who has excellent depth of body and hindquarter muscularity. EBVs support his phenotype, being above average for all growth traits and top 20% EMA. A very quiet bull who was a class winner at Melbourne Royal. His dam is a very correct cow with excellent udder shape. An excellent option as a heavy supermarket sire or for stud duties. Selling on behalf of Maefair MGS. JBas 6.*

Purchaser: \_\_\_\_\_ \$ \_\_\_\_\_



Wallawong Prime Time at 21 months



**Lot 3 WALLAWONG PERSEVERANCE P32**

**Born: 15/06/2018      LEJ P32      Colour: Silver**

EYLWARRA SANDS FALCON F33 (PB)

**Sire: TULLIBARDINE JEOPARDY J14 (PB) (AI)**

TULLIBARDINE KATIE E46 (PB) (AI)

ONDIONG DENTON (PB)

**Dam: ONDIONG EVELYN 267TH (PB)**

ONDIONG EVELYN 153RD (PB)

April 2020 Murray Grey BREEDPLAN									
	CED	GL	BW	200D	400D	600D	MCW	MILK	SS
<b>EBV</b>	<b>-1.6</b>	<b>-0.5</b>	<b>+5.2</b>	<b>+29</b>	<b>+48</b>	<b>+70</b>	<b>+71</b>	<b>+4</b>	<b>+1.3</b>
<i>Acc</i>	40%	50%	67%	67%	70%	70%	59%	43%	69%
	CWT	EMA	RIB	RUMP	RBV	IMF	\$VT	\$SM	\$HG
	<b>+41</b>	<b>+2.4</b>	<b>-0.5</b>	<b>-0.7</b>	<b>+1.3</b>	<b>-0.1</b>	<b>+\$44</b>	<b>+\$44</b>	<b>+\$65</b>
	61%	48%	55%	55%	51%	44%			

*Notes: Perseverance epitomises the fantastic line of Jeopardy bulls available in the sale. Outstanding muscular proportion while still maintaining industry relevant softness. A bull with a deep EMA and exceptional hindquarter dimension. Great EBV spread being top 10-20% for many traits including 600 Day Weight, Scrotal Size and EMA. A very quiet bull that will make a positive impact on all commercial herds.*

Purchaser: \_\_\_\_\_ \$ \_\_\_\_\_



Wallawong Perseverance P32 at 23 months

**Lot 4 WALLAWONG PEPPERPOT P22**

**Born: 26/05/2018 LEJ P22 Colour: Silver**

EYLWARRA SANDS FALCON F33 (PB)

**Sire: TULLIBARDINE JEOPARDY J14 (PB) (AI)**

TULLIBARDINE KATIE E46 (PB) (AI)

ONDIONG Z70 (PB)

**Dam: ONDIONG JENNIFER 339TH (PB)**

ONDIONG JENNIFER 211ST (PB)

April 2020 Murray Grey BREEDPLAN									
	CED	GL	BW	200D	400D	600D	MCW	MILK	SS
<b>EBV</b>	<b>-1.9</b>	<b>-0.4</b>	<b>+5.6</b>	<b>+31</b>	<b>+51</b>	<b>+77</b>	<b>+78</b>	<b>+1</b>	<b>+1.3</b>
<i>Acc</i>	<i>41%</i>	<i>51%</i>	<i>67%</i>	<i>67%</i>	<i>70%</i>	<i>70%</i>	<i>60%</i>	<i>46%</i>	<i>69%</i>
	CWT	EMA	RIB	RUMP	RBV	IMF	\$VT	\$SM	\$HG
	<b>+44</b>	<b>+1.9</b>	<b>-0.7</b>	<b>-1.0</b>	<b>+1.3</b>	<b>-0.2</b>	<b>+\$44</b>	<b>+\$44</b>	<b>+\$69</b>
	<i>61%</i>	<i>48%</i>	<i>56%</i>	<i>56%</i>	<i>52%</i>	<i>44%</i>			

*Notes: Pepperpot is a splitting image of the previous lot. Perfect muscular proportion with full topline and wide, convex hindquarter. Top 10% for 600 Day Weight and Scrotal Size EBVs are also an asset to his physical appearance. Another great example of a Jeopardy bull best suited to producing supermarket offspring with that extra bit of yield. You will not buy a quieter bull anywhere this season.*

Purchaser: \_\_\_\_\_ \$ \_\_\_\_\_



Wallawong Pepperpot P22 at 24 months

**Lot 5 GLENLIAM FARM POSSESSION P59**

**Born: 01/07/2018      KEC P59      Colour: Silver**

EYLWARRA SANDS FALCON F33 (PB)


**Sire: TULLIBARDINE JEOPARDY J14 (PB) (AI)**

TULLIBARDINE KATIE E46 (PB) (AI)

GLENLIAM FARM DOMINATOR D28 (PB)

**Dam: GLENLIAM FARM GREYMIST J50 (PB)**

GLENLIAM FARM GREYMIST B68 (PB)

	April 2020 Murray Grey BREEDPLAN								
	CED	CEM	GL	BW	200D	400D	600D	MCW	MILK
<b>EBV</b>	<b>-2.1</b>	<b>-0.7</b>	<b>-1.0</b>	<b>+5.5</b>	<b>+31</b>	<b>+50</b>	<b>+75</b>	<b>+75</b>	<b>+1</b>
<i>Acc</i>	<i>38%</i>	<i>29%</i>	<i>52%</i>	<i>77%</i>	<i>67%</i>	<i>63%</i>	<i>64%</i>	<i>54%</i>	<i>43%</i>
SS	CWT	EMA	RIB	RUMP	RBV	IMF	\$VT	\$SM	\$HG
<b>+1.6</b>	<b>+41</b>	<b>+1.3</b>	<b>-0.6</b>	<b>-0.8</b>	<b>+1.0</b>	<b>-0.1</b>	<b>+\$42</b>	<b>+\$44</b>	<b>+\$67</b>
<i>48%</i>	<i>52%</i>	<i>40%</i>	<i>49%</i>	<i>49%</i>	<i>46%</i>	<i>42%</i>			

*Notes: Possession was purchased as a calf at foot at the Glenliam Dispersal. Another high quality, very docile bull by Jeopardy. A maternal bull from a very well uddered female. Top 5% for Scrotal Size and top 10% for 600 Day Weight are also reflected in his phenotype. Provides ample growth and softness to make a high quality domestic sire.*

Purchaser: \_\_\_\_\_ \$ \_\_\_\_\_



Glenliam Farm Possession P59 at 22 months



**Lot 6 WALLAWONG PRETTY PENNY P55**

**Born: 02/07/2018 LEJ P55 Colour: Silver**

EYLWARRA SANDS FALCON F33 (PB)

**Sire: TULLIBARDINE JEOPARDY J14 (PB) (AI)**

TULLIBARDINE KATIE E46 (PB) (AI)

MONTEREY FREIGHT TRAIN B275 (PB)

**Dam: BUNDALEER IMPOST H36 (PB)**

BUNDALEER IMPOST Z31 (PB)

April 2020 Murray Grey BREEDPLAN									
	CED	BW	200D	400D	600D	MCW	MIL	SS	CWT
<b>EBV</b>	<b>-2.8</b>	<b>+5.0</b>	<b>+31</b>	<b>+52</b>	<b>+77</b>	<b>+75</b>	<b>+1</b>	<b>+1.3</b>	<b>+46</b>
<i>Acc</i>	<i>37%</i>	<i>65%</i>	<i>65%</i>	<i>69%</i>	<i>69%</i>	<i>58%</i>	<i>42%</i>	<i>70%</i>	<i>60%</i>
	EMA	RIB	RUMP	RY	IMF	\$VT	\$SM	\$HG	
	<b>+2.8</b>	<b>+0.2</b>	<b>+0.2</b>	<b>+0.9</b>	<b>+0.3</b>				
	<i>48%</i>	<i>55%</i>	<i>55%</i>	<i>52%</i>	<i>44%</i>	<b>+\$43</b>	<b>+\$50</b>	<b>+\$73</b>	

*Notes: Pretty Penny might well be the combination bull of the sale. Very easy on the eye, with added fleshing and softness. His impressive physical appearance is supported by an excellent pedigree and great EBVs being in the top 10% for most Weight traits and Scrotal Size. But it is the combination of top 10% EMA EBV and positive Fats which is the hard to find, highly desirable feature that holds him in high regard. Best for producing easy to finish heavy domestic offspring.*

Purchaser: \_\_\_\_\_ \$ \_\_\_\_\_



Tullibardine Jeopardy at 24months.  
Sire of Lots 3, 4, 5, 6, 8, 9, 10, 11, 12



**Lot 7 WALLAWONG POWERBAND P13**

**Born: 04/05/2018 LEJ P13 Colour: Grey**

EYLWARRA SANDS FALCON F33 (PB)

**Sire: BOTTLESFORD KUDOS (PB) (AI)**

BOTTLESFORD ANNABELLA C20 (PB)

BUNDALEER CASH FLOW Y6 (PB)

**Dam: BUNDALEER LOLITA C32 (PB)**

BUNDALEER LOLITA W10 (PB) (AI)

	May 2020 Murray Grey BREEDPLAN								
	CED	GL	BW	200D	400D	600D	MCW	MILK	SS
<b>EBV</b>	<b>-3.2</b>	<b>0.0</b>	<b>+4.9</b>	<b>+32</b>	<b>+53</b>	<b>+68</b>	<b>+67</b>	<b>+3</b>	<b>+1.4</b>
<i>Acc</i>	<i>38%</i>	<i>52%</i>	<i>65%</i>	<i>66%</i>	<i>68%</i>	<i>70%</i>	<i>61%</i>	<i>46%</i>	<i>70%</i>
	CWT	EMA	RIB	RUMP	RBV	IMF	\$VT	\$SM	\$HG
	<b>+43</b>	<b>+2.6</b>	<b>+1.7</b>	<b>+2.3</b>	<b>-0.3</b>	<b>+1.1</b>	<b>+\$41</b>	<b>+\$56</b>	<b>+\$71</b>
	<i>60%</i>	<i>50%</i>	<i>59%</i>	<i>59%</i>	<i>55%</i>	<i>48%</i>			

*Notes: Powerband has a combination of muscularity and fat depth that is second to none. He may not be the biggest frame score bull, but his weight to size is ratio is ultra impressive. Great parentage with both sire and dam used in export embryo collections. An outstanding choice for those producers wanting calves that finish easily and weigh like lead. Extra impressive performance data, being in the top 10% for 600 Day Weight, Scrotal Size and EMA, while also being in the top 5% for IMF. A combination that is nearly impossible to find.*

Purchaser: \_\_\_\_\_ \$ \_\_\_\_\_



Wallawong Powerband P13 at 24 months

**Lot 8 WALLAWONG PADSTOW P29**

**Born: 26/05/2018 LEJ P29 Colour: Silver**

EYLWARRA SANDS FALCON F33 (PB)

**Sire: TULLIBARDINE JEOPARDY J14 (PB) (AI)**

TULLIBARDINE KATIE E46 (PB) (AI)

WILLALOOKA MAIN BREAK V856 (PB)

**Dam: BUNDALEER ESMERALDA A32 (PB)**

BUNDALEER ESMERALD V19 (PB)

April 2020 Murray Grey BREEDPLAN									
	CED	GL	BW	200D	400D	600D	MCW	MILK	SS
<b>EBV</b>	<b>-3.2</b>	<b>-1.7</b>	<b>+4.8</b>	<b>+31</b>	<b>+47</b>	<b>+70</b>	<b>+66</b>	<b>+1</b>	<b>+1.5</b>
<i>Acc</i>	42%	53%	67%	68%	70%	71%	62%	47%	70%
	CWT	EMA	RIB	RUMP	RBY	IMF	\$VT	\$SM	\$HG
	<b>+40</b>	<b>+2.0</b>	<b>-0.1</b>	<b>-0.2</b>	<b>+1.1</b>	<b>+0.0</b>			
	62%	52%	60%	60%	56%	50%	<b>+\$41</b>	<b>+\$44</b>	<b>+\$66</b>

*Notes: Padstow is a solidly built bull combining characteristics of Jeopardy and his highly regarded dam, JOS A32. A bull that displays great volume and squareness, while still having above average muscularity. Top 20% for Growth EBVs, top 5% for Scrotal Size and an above average EMA EBV complete the package. A half maternal brother to Xyris who has been breeding exceptionally well for Southend in Western Australia. Great option for producing easy care domestic offspring.*

Purchaser: \_\_\_\_\_ \$ \_\_\_\_\_



Wallawong Padstow P29 at 23 months

**Lot 9 WALLAWONG PRIME CUT P33**

**Born: 15/06/2018 LEJ P33 Colour: Silver**

EYLWARRA SANDS FALCON F33 (PB)


**Sire: TULLIBARDINE JEOPARDY J14 (PB) (AI)**

TULLIBARDINE KATIE E46 (PB) (AI)

LINDSAY STARBRIGHT S117 (PB) (AI)

**Dam: WALLAWONG ESMERALDA 20TH (PB)**

WALLAWONG ESMERALDA 6TH (PB)

	April 2020 Murray Grey BREEDPLAN								
	CED	CEM	GL	BW	200D	400D	600D	MCW	MILK
<b>EBV</b>	<b>-0.7</b>	<b>-1.0</b>	<b>-0.5</b>	<b>+4.4</b>	<b>+28</b>	<b>+42</b>	<b>+63</b>	<b>+57</b>	<b>+2</b>
<i>Acc</i>	<i>43%</i>	<i>35%</i>	<i>53%</i>	<i>67%</i>	<i>68%</i>	<i>71%</i>	<i>71%</i>	<i>61%</i>	<i>50%</i>
SS	DC	CWT	EMA	RIB	RUMP	RBY	IMF	\$VT	\$SM
<b>+0.6</b>	<b>-1.0</b>	<b>+42</b>	<b>+3.1</b>	<b>-1.1</b>	<b>-1.6</b>	<b>+2.5</b>	<b>-0.7</b>	<b>+\$50</b>	<b>+\$44</b>
<i>71%</i>	<i>35%</i>	<i>63%</i>	<i>52%</i>	<i>60%</i>	<i>60%</i>	<i>56%</i>	<i>49%</i>		

*Notes: Prime Cut by name and nature. Tremendous industry appeal in this bull. Above average Growth EBVs and great EMA EBV in the top 5%. The maternal side of his pedigree boasts unrivalled female brilliance with his dam producing several stud sires and high end commercial bulls. Not to mention her ability to produce top of the drop sale females as well. A very good bull for all-round domestic production.*

Purchaser: \_\_\_\_\_ \$ \_\_\_\_\_



Wallawong Prime Cut P33 at 23 months

**Lot 10 WALLAWONG PEMBERLEY P65**

**Born: 13/07/2018 LEJ P65 Colour: Silver**

EYLWARRA SANDS FALCON F33 (PB)

**Sire: TULLIBARDINE JEOPARDY J14 (PB) (AI)**

TULLIBARDINE KATIE E46 (PB) (AI)

ONDIONG Z70 (PB)

**Dam: ONDIONG JENNIFER 332ND (PB)**

ONDIONG JENNIFER 198TH (PB)

April 2020 Murray Grey BREEDPLAN									
	CED	GL	BW	200D	400D	600D	MCW	MILK	SS
<b>EBV</b>	<b>-1.4</b>	<b>-0.8</b>	<b>+5.1</b>	<b>+30</b>	<b>+48</b>	<b>+71</b>	<b>+75</b>	<b>+4</b>	<b>+1.2</b>
<i>Acc</i>	42%	51%	67%	67%	70%	69%	59%	46%	67%
	CWT	EMA	RIB	RUMP	RBV	IMF	\$VT	\$SM	\$HG
	<b>+41</b>	<b>+1.5</b>	<b>-0.3</b>	<b>-0.5</b>	<b>+0.8</b>	<b>+0.1</b>			
	61%	47%	53%	52%	50%	43%	<b>+\$42</b>	<b>+\$41</b>	<b>+\$62</b>

*Notes: Pemberley shows that the quality of the Jeopardy sons is no fluke. A bull that combines added length with desirable muscularity and presence. Performance data shows above average growth and marbling. A very versatile bull suited to heavy domestic or export production.*

Purchaser: \_\_\_\_\_ \$ \_\_\_\_\_



Wallawong Pemberley P65 at 22 months

**Lot 11 WALLAWONG PENDLEBURY P66**

**Born: 25/07/2018 LEJ P66 Colour: Silver**

EYLWARRA SANDS FALCON F33 (PB)

**Sire: TULLIBARDINE JEOPARDY J14 (PB) (AI)**

TULLIBARDINE KATIE E46 (PB) (AI)

ONDIONG Z70 (PB)

**Dam: ONDIONG RUA 57TH (PB)**

ONDIONG RUA 42ND (PB)

April 2020 Murray Grey BREEDPLAN									
	CED	GL	BW	200D	400D	600D	MCW	MILK	SS
<b>EBV</b>	<b>-2.6</b>	<b>-0.8</b>	<b>+6.3</b>	<b>+34</b>	<b>+60</b>	<b>+83</b>	<b>+85</b>	<b>+3</b>	<b>+1.8</b>
<i>Acc</i>	<i>41%</i>	<i>50%</i>	<i>65%</i>	<i>66%</i>	<i>69%</i>	<i>69%</i>	<i>59%</i>	<i>46%</i>	<i>66%</i>
	CWT	EMA	RIB	RUMP	RBV	IMF	\$VT	\$SM	\$HG
	<b>+48</b>	<b>+1.3</b>	<b>-1.0</b>	<b>-1.4</b>	<b>+1.2</b>	<b>+0.0</b>	<b>+\$45</b>	<b>+\$49</b>	<b>+\$69</b>
	<i>61%</i>	<i>46%</i>	<i>52%</i>	<i>52%</i>	<i>49%</i>	<i>42%</i>			

*Notes: Pendlebury displays all the Jeopardy characteristics in a slightly later maturing package. Great outlook and structure with desired muscularity and finishing ability. If you're looking to improve your 600 Day Weight then here is your bull, top 5% for 600 Day Weight while also being above average for Scrotal Size, Yield and IMF. A wise purchase for using over cows to produce heavy, desirable feeder or export slaughter cattle.*

Purchaser: \_\_\_\_\_ \$ \_\_\_\_\_



Wallawong Pendlebury P66 at 22 months



**Lot 12 WALLAWONG PIN POINT P21**

**Born: 28/05/2018 LEJ P21 Colour: Silver**

EYLWARRA SANDS FALCON F33 (PB)

**Sire: TULLIBARDINE JEOPARDY J14 (PB) (AI)**

TULLIBARDINE KATIE E46 (PB) (AI)

BUNDALEER BIG BANG B5 (PB) (AI)

**Dam: BUNDALEER CALDORA F39 (PB)**

WALLAWONG CALDORA 2ND (PB)

April 2020 Murray Grey BREEDPLAN									
	CED	GL	BW	200D	400D	600D	MCW	MILK	SS
<b>EBV</b>	<b>-1.9</b>	<b>-1.3</b>	<b>+5.3</b>	<b>+33</b>	<b>+53</b>	<b>+76</b>	<b>+75</b>	<b>+2</b>	<b>+0.8</b>
<i>Acc</i>	39%	51%	65%	66%	69%	70%	60%	45%	70%
	CWT	EMA	RIB	RUMP	RBV	IMF	\$VT	\$SM	\$HG
	<b>+47</b>	<b>+2.4</b>	<b>-1.1</b>	<b>-1.6</b>	<b>+2.0</b>	<b>-0.4</b>	<b>+\$50</b>	<b>+\$50</b>	<b>+\$72</b>
	61%	51%	59%	59%	55%	48%			

*Notes: Pin Point the improvements you want to make in your herd and this might well be the bull for you. A little added frame, but still retaining a solid topline and adequate hindquarter fleshing. Top 10 - 20% for Growth and Muscle EBVs are an excellent combination. A bull well suited to producing feeder or heavy domestic offspring.*

Purchaser: \_\_\_\_\_ \$ \_\_\_\_\_



Wallawong Pin Point P21 at 24 months



**Lot 13 WALLAWONG POLE VAULTER P4**

**Born: 16/02/2018 LEJ P4 Colour: Grey**

EYLWARRA SANDS FALCON F33 (PB)

**Sire: BOTTLESFORD KUDOS (PB) (AI)**

BOTTLESFORD ANNABELLA C20 (PB)

LINDSAY STARBRIGHT S117 (PB) (AI)

**Dam: WALLAWONG GALE F4 (PB) (AI)**

WALLAWONG GALE 2ND (PB) (AI)

April 2020 Murray Grey BREEDPLAN									
	CED	GL	BW	200D	400D	600D	MCW	MILK	SS
<b>EBV</b>	<b>-4.0</b>	<b>+1.4</b>	<b>+5.7</b>	<b>+34</b>	<b>+53</b>	<b>+76</b>	<b>+75</b>	<b>+3</b>	<b>+0.4</b>
<i>Acc</i>	39%	53%	60%	58%	57%	56%	50%	46%	52%
	CWT	EMA	RIB	RUMP	RBV	IMF	\$VT	\$SM	\$HG
	<b>+55</b>	<b>+3.9</b>	<b>-0.6</b>	<b>-0.8</b>	<b>+2.2</b>	<b>+0.1</b>			
	50%	42%	49%	49%	46%	43%	<b>+\$50</b>	<b>+\$50</b>	<b>+\$71</b>

*Notes: Pole Vaulters will jump you to the next level of performance. The pedigree of this bull is as solid as they come. Both parents have been selected for export genetics into several countries. A bull with desirable physical characteristics, but his value well and truly lies in his genetics. Top 10% for growth, but being in the top 1% of EMA and above average for IMF is a rare and valuable combination. Great bull for producing domestic offspring that excel in the chiller. Note that he does have slight blue clouding on left eye due to an old pinkeye episode, not detrimental to his function.*

Purchaser: \_\_\_\_\_ \$ \_\_\_\_\_



Wallawong Pole Vaulters P4 at 27 months

**Lot 14 WALLAWONG POSITIVE PETE P5**

**Born: 19/02/2018 LEJ P5 Colour: Silver**

EYLWARRA SANDS FALCON F33 (PB)

**Sire: BOTTLESFORD KUDOS (PB) (AI)**

BOTTLESFORD ANNABELLA C20 (PB)

ORCADIA PARK ASCOT P73 (PB) (ET)

**Dam: WALLAWONG MATILDA 2ND (PB) (AI) (ET)**

DOUBLE D MATILDA M20 (PB)

April 2020 Murray Grey BREEDPLAN								
	CED	BW	200D	400D	600D	MCW	MILK	
<b>EBV</b>	<b>-4.4</b>	<b>+6.2</b>	<b>+31</b>	<b>+53</b>	<b>+74</b>	<b>+79</b>	<b>+4</b>	
<i>Acc</i>	<i>36%</i>	<i>59%</i>	<i>57%</i>	<i>56%</i>	<i>56%</i>	<i>52%</i>	<i>46%</i>	
	EMA	RIB	RUM	RBY	IMF	\$VT	\$SM	\$HG
	<b>+2.6</b>	<b>-0.2</b>	<b>-0.2</b>	<b>+1.2</b>	<b>+0.4</b>	<b>+\$40</b>	<b>+\$44</b>	<b>+\$63</b>
	<i>37%</i>	<i>46%</i>	<i>45%</i>	<i>42%</i>	<i>37%</i>			

*Notes: Positive Pete was born into some of the harshest local conditions seen. However, he thrived and is now a bull displaying great volume and proportion. This is also mirrored by his performance data being in the top 10% for 600 Day Weight and top 15% for EMA. Combine this with positive IMF and he becomes a valuable asset to domestic market focussed commercial herds.*

Purchaser: \_\_\_\_\_ \$ \_\_\_\_\_



Bottlesford Kudos – Sire of Lots 2, 7, 13, 14

**Lot 15 WALLAWONG PLAIN SAILING**

**Born: 27/06/2018 LEJ P48 Colour: Silver**

LINDSAY STARBRIGHT S117 (PB) (AI)

**Sire: WALLAWONG RIPSNOTER (PB)**

WALLAWONG ALETTA (GR1) (AI)

BUNDALEER TRUE BLUE A68 (PB)

**Dam: BUNDALEER LOLITA D69 (PB)**

BUNDALEER LOLITA U1 (PB)

April 2020 Murray Grey BREEDPLAN									
	CED	CEM	BW	200D	400D	600D	MCW	MILK	SS
<b>EBV</b>	<b>-1.3</b>	<b>-2.0</b>	<b>+3.6</b>	<b>+30</b>	<b>+47</b>	<b>+64</b>	<b>+58</b>	<b>+7</b>	<b>+1.1</b>
<i>Acc</i>	<i>41%</i>	<i>35%</i>	<i>64%</i>	<i>64%</i>	<i>64%</i>	<i>69%</i>	<i>61%</i>	<i>51%</i>	<i>68%</i>
	CWT	EMA	RIB	RUMP	RBV	IMF	\$VT	\$SM	\$HG
	<b>+50</b>	<b>+4.9</b>	<b>+0.0</b>	<b>+0.1</b>	<b>+2.5</b>	<b>-0.3</b>	<b>+\$56</b>	<b>+\$58</b>	<b>+\$79</b>
	<i>59%</i>	<i>49%</i>	<i>56%</i>	<i>56%</i>	<i>52%</i>	<i>46%</i>			

*Notes: Plain Sailing, is exactly that. He is a very well muscled, moderately framed sire that excels when it comes to carcase yield. His physical performance is mirrored by his performance data, being in the top 1% for EMA EBV, and above average for both Rump and Rib Fat. An outstanding combination bull with a very moderate Birthweight EBV make him hard to go past for producing early to mid domestic offspring with that extra muscular proportion.*

Purchaser: \_\_\_\_\_ \$ \_\_\_\_\_



Wallawong Plain Sailing P48 at 23 months

**Lot 16 WALLAWONG PRIZE MAKER P44**

**Born: 05/06/2018 LEJ P44 Colour: Silver**

LINDSAY STARBRIGHT S117 (PB) (AI)


**Sire: WALLAWONG RIPSNOTER (PB)**

WALLAWONG ALETTA (GR1) (AI)

WOODBOURN EMPOWER E21 (PB)

**Dam: BUNDALEER LOLITA H78 (PB)**

BUNDALEER LOLITA A16 (PB)

	April 2020 Murray Grey BREEDPLAN								
	CED	BW	200D	400D	600D	MCW	MILK	SS	
<b>EBV</b>	+2.7	+3.0	+28	+41	+70	+79	+7	+0.5	
<i>Acc</i>	38%	63%	63%	63%	67%	57%	48%	67%	
	CWT	EMA	RIB	RUMP	RBY	IMF	\$VT	\$SM	\$HG
	+43	+1.5	-0.9	-1.2	+1.3	+0.1	+\$53	+\$43	+\$70
	57%	48%	55%	55%	51%	44%			

*Notes: Prize Maker is a larger framed bull with adequate muscularity and softness. He displays very good body volume and well laid in shoulders. A bull that has a great spread of performance data, being below breed average for Birthweight EBV, and in the top 15% for 600 Day Weight. A great option for those producers wanting to increase frame score without sacrificing performance, yield or IMF.*

Purchaser: \_\_\_\_\_ \$ \_\_\_\_\_



Wallawong Ripsnorter – Sire of Lots 15, 16, 17, 18

**Lot 17 WALLAWONG PRISTINE P46**

**Born: 27/06/2018 LEJ P46 Colour: Silver**

LINDSAY STARBRIGHT S117 (PB) (AI)


**Sire: WALLAWONG RIPSNOTER (PB)**

WALLAWONG ALETTA (GR1) (AI)

LINDSAY STARBRIGHT S117 (PB) (AI)

**Dam: WALLAWONG CALDORA 2ND (PB)**

COBBORA SPRINGS CALDORA U4 (PB)

	April 2020 Murray Grey BREEDPLAN								
	CED	CEM	GL	BW	200D	400D	600D	MCW	MILK
<b>EBV</b>	+2.1	+1.5	-0.8	+2.6	+27	+41	+67	+67	+8
<i>Acc</i>	46%	40%	53%	67%	67%	67%	71%	62%	55%
SS	DC	CWT	EMA	RIB	RUMP	RBY	IMF	\$VT	\$SM
<b>-0.7</b>	<b>-0.8</b>	<b>+53</b>	<b>+4.5</b>	<b>-1.1</b>	<b>-1.4</b>	<b>+3.1</b>	<b>-0.6</b>	<b>+\$62</b>	<b>+\$53</b>
<i>70%</i>	<i>38%</i>	<i>62%</i>	<i>53%</i>	<i>61%</i>	<i>61%</i>	<i>57%</i>	<i>51%</i>		

*Notes: Pristine is another of the Ripsnorter sons that displays very good physical appearance and ideal performance data. Bending the curve to be below average for Birthweight EBV, and above average for 600 Day Weight. He doesn't stop there, top 5% for Milk EBV and top 1% for EMA make him hard to go past. Very versatile bull for those wanting easy care cattle for the high end domestic market.*

Purchaser: \_\_\_\_\_ \$ \_\_\_\_\_

**Lot 18 WALLAWONG PITCH PERFECT P45**

**Born: 05/06/2018 LEJ P45 Colour: Silver**

LINDSAY STARBRIGHT S117 (PB) (AI)


**Sire: WALLAWONG RIPSNOTER (PB)**

WALLAWONG ALETTA (GR1) (AI)

WALLAWONG QUARTERBACK (PB)

**Dam: WALLAWONG MISS IMPRESSIVE F47 (PB)**

WALLAWONG MISS IMPRESSIVE4TH (PB)

	April 2020 Murray Grey BREEDPLAN								
	CED	BW	200D	400D	600D	MCW	MILK	SS	
<b>EBV</b>	-0.2	+4.0	+27	+37	+63	+68	+8	+0.3	
<i>Acc</i>	40%	65%	64%	65%	69%	59%	51%	69%	
CWT	EMA	RIB	RUMP	RBY	IMF	\$VT	\$SM	\$HG	
<b>+42</b>	<b>+2.5</b>	<b>-1.6</b>	<b>-2.1</b>	<b>+2.6</b>	<b>-0.7</b>	<b>+\$49</b>	<b>+\$37</b>	<b>+\$63</b>	
<i>59%</i>	<i>50%</i>	<i>57%</i>	<i>57%</i>	<i>53%</i>	<i>46%</i>				

*Notes: Pitch Perfect will mature into a highly desirable bull. He shows volume and squareness in a performance package. Above average for many traits including 600 Day Weight, EMA and Yield, while possessing a moderate Birthweight EBV are his positive attributes. From a very productive female, and from the great, proven sire in Ripsnorter. Excellent choice for producing heavy domestic or feeder offspring.*

Purchaser: \_\_\_\_\_ \$ \_\_\_\_\_





**Proud sponsor of  
the Wallawong 2020  
Carcase Quality Sale**

139010 / MAY 2020

**Call 1300 30 30 33 or visit  
[www.rabobank.com.au](http://www.rabobank.com.au)**



## 12 Black Angus Bulls

### Lot 19 WALLAWONG PIONEER P23 HBR

**Born:** 09/08/2018    **LEJP23**    **Colour:** Black

COONAMBLE HECTOR H249

**Sire:** MILLAH MURRAH HECTOR M153

MILLAH MURRAH PRUE H113

KOOJAN HILLS ULTRAVOX X113

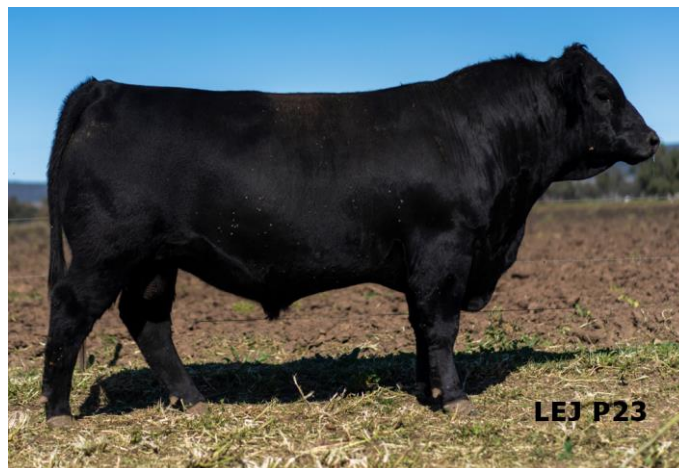
**Dam:** WOODBOURN MANDY A132

WOODBOURN MANDY U60

	Mid May Trans Tasman Angus Cattle Evaluation								
	CED	CEM	GL	BW	200D	400D	600D	MCW	MILK
<b>EBV</b>	<b>+1.2</b>	<b>-0.4</b>	<b>-2.9</b>	<b>+3.0</b>	<b>+36</b>	<b>+70</b>	<b>+82</b>	<b>+64</b>	<b>+12</b>
<i>Acc</i>	46%	38%	82%	61%	61%	64%	67%	59%	51%
SS	DC	CWT	EMA	RIB	RUMP	RBY	IMF	\$DI	\$HGI
<b>+1.4</b>	<b>-6.1</b>	<b>+45</b>	<b>+3.3</b>	<b>+2.4</b>	<b>+3.6</b>	<b>-1.2</b>	<b>+1.3</b>	<b>+\$95</b>	<b>+\$78</b>
66%	32%	54%	52%	52%	54%	48%	45%		

*Notes: Pioneer is a very docile, well structured, hassle free bull. He displays above average muscularity and great softness. Coupled with these visual traits, his low Birthweight EBV and positive Calving Ease EBVs make him an excellent choice as a versatile heifer bull with a bit of added style. Sired by the \$40k Millah Murrah Hector M153, and a raw IMF scan of 7.1% in April, add to his genetic appeal.*

Purchaser: \_\_\_\_\_ \$ \_\_\_\_\_



Wallawong Pioneer P23 at 21 months

**Lot 20 WALLAWONG POSTMASTER P10 HBR**

**Born: 19/07/2018 LEJ P10 Colour: Black**

SAF 598 BANDO 5175

**Sire: SAV 5175 BANDO 0699**

LLA GEORGINA 419

SAV INITIATIVE 4406

**Dam: ABBOTT ACE K35**

ABBOTT D59

Mid May Trans Tasman Angus Cattle Evaluation									
	CED	CEM	GL	BW	200D	400D	600D	MCW	MILK
<b>EBV</b>	<b>-3.8</b>	<b>-3.3</b>	<b>-6.4</b>	<b>+5.2</b>	<b>+43</b>	<b>+74</b>	<b>+101</b>	<b>+89</b>	<b>+13</b>
<i>Acc</i>	58%	52%	84%	67%	68%	70%	73%	67%	61%
SS	DC	CWT	EMA	RIB	RUMP	RBY	IMF	\$DI	\$HGI
<b>+1.1</b>	<b>-3.4</b>	<b>+55</b>	<b>+6.7</b>	<b>-1.0</b>	<b>-1.5</b>	<b>+1.6</b>	<b>+1.4</b>	<b>+\$97</b>	<b>+\$99</b>
72%	49%	62%	62%	63%	64%	60%	58%		

*Notes: Postmaster will deliver exactly what you require. A very well structured bull with wide topline and square hindquarter. Also supporting his muscularity are EBVs for EMA and Retail Beef Yield in the top 25% and 10% respectively. Excellent choice for producing heavy domestic or feeder offspring*

Purchaser: \_\_\_\_\_ \$ \_\_\_\_\_



Wallawong Postmaster P10 at 22 months

**Lot 21 WALLAWONG PLAYBOY P17 HBR**

**Born: 22/07/2018 LEJ P17 Colour: Black**

KCF BENNETT PERFORMER

**Sire: ABBOTT PERFORMER E32**

ABBOTT VICKY Z31

ABBOTT MAXIMUS A60

**Dam: ABBOTT PATRICIA E44**

GLENCAIRN KIWI Y8

	Mid May Trans Tasman Angus Cattle Evaluation								
	CED	CEM	GL	BW	200D	400D	600D	MCW	MILK
<b>EBV</b>	<b>-2.0</b>	<b>+1.9</b>	<b>-4.1</b>	<b>+5.8</b>	<b>+49</b>	<b>+85</b>	<b>+121</b>	<b>+111</b>	<b>+19</b>
Acc	51%	44%	83%	67%	71%	70%	72%	65%	59%
SS	DC	CWT	EMA	RIB	RUMP	RBV	IMF	\$DI	\$HGI
<b>+2.3</b>	<b>-2.7</b>	<b>+75</b>	<b>+1.3</b>	<b>-0.8</b>	<b>-0.9</b>	<b>+0.7</b>	<b>+0.5</b>	<b>+\$92</b>	<b>+\$87</b>
71%	40%	61%	59%	65%	62%	61%	57%		

*Notes: Playboy is sure to impress with his growth, structure and eye appeal. A high growth bull both phenotypically and on paper with a 600 Day Weight EBV in the top 25%. From an excellent female that is proving to be one of our best breeders.*

Purchaser: \_\_\_\_\_ \$ \_\_\_\_\_



Wallawong Playboy P17 at 22 months

**Lot 22 WALLAWONG PLUGGER P52 APR**

**Born: 08/09/2018 LEJ P52 Colour: Black**

S CHISUM 6175

**Sire: BURENDA LEGIBLE L446**

BURENDA DIANE D39

ANGUS SIRE

**Dam: WALLAWONG MARY L4**

WOODBURN MARY V12

June 2019 Angus GROUP BREEDPLAN									
	CED	CEM	GL	BW	200D	400D	600D	MCW	MILK
<b>EBV</b>	<b>+0.1</b>	<b>+2.5</b>	<b>-3.2</b>	<b>+4.2</b>	<b>+45</b>	<b>+79</b>	<b>+100</b>	<b>+75</b>	<b>+16</b>
<i>Acc</i>	38%	34%	48%	50%	54%	58%	62%	53%	42%
SS	DC	CWT	EMA	RIB	RUMP	RBY	IMF	\$DI	\$HGI
<b>+0.9</b>	<b>-1.9</b>	<b>+59</b>	<b>+5.9</b>	<b>+0.1</b>	<b>+0.5</b>	<b>+0.8</b>	<b>+0.6</b>	<b>+\$100</b>	<b>+\$75</b>
63%	30%	48%	47%	47%	49%	43%	40%		

*Notes: Plugger will fill the holes in your breeding program. A standout for carcass shape and hindquarter squareness. A moderately framed bull with added style and the ability to increase carcass yield in most commercial herds. Above average EMA EBV and positive Fat EBVs are an added bonuses to an already impressive bull.*

Purchaser: \_\_\_\_\_ \$ \_\_\_\_\_



Wallawong Plugger P52 at 20 months

**Lot 23 WALLAWONG POLYMER P53 HBR**

**Born: 29/08/2018 LEJ P53 Colour: Black**

S CHISUM 6175

**Sire: BURENDA LEGIBLE L446**

BURENDA DIANE D39

ABBOTT DOMINATOR D47

**Dam: ABBOTT DUSTY G49**

ABBOTT DUSTY A56

Mid May Trans Tasman Angus Cattle Evaluation									
	CED	CEM	GL	BW	200D	400D	600D	MCW	MILK
<b>EBV</b>	<b>-1.3</b>	<b>+4.4</b>	<b>-4.6</b>	<b>+6.1</b>	<b>+58</b>	<b>+100</b>	<b>+139</b>	<b>+119</b>	<b>+20</b>
Acc	45%	40%	55%	58%	60%	63%	66%	59%	48%
SS	DC	CWT	EMA	RIB	RUMP	RBY	IMF	\$DI	\$HGI
<b>+1.7</b>	<b>-3.4</b>	<b>+79</b>	<b>+5.0</b>	<b>-0.8</b>	<b>-0.6</b>	<b>+1.2</b>	<b>+0.6</b>	<b>+\$112</b>	<b>+\$118</b>
66%	35%	53%	52%	54%	55%	50%	47%		

*Notes: Polymer is a high growth bull both in the flesh and on paper. A bull in the top 5% for all growth traits. A quiet, sound bull for those wishing to inject some added size and weight into their breeding program. Top 5%-10% for all Growth EBVs make him an excellent option for heavy domestic progeny or feeder offspring.*

Purchaser: \_\_\_\_\_ \$ \_\_\_\_\_



Wallawong Polymer P53 at 21 months

**Lot 24 WALLAWONG PASSWORD P38 COM**

**Born: 01/09/2018 LEJ P38 Colour: Black**

ABBOTT EMPEROR E48

**Sire: ABBOTT M28**

ABBOTT D59

ARYVALE BARTEL E7

**Dam: WALLAWONG AMELIA M4**

WOODBOURN AMELIA E171

	Mid May Trans Tasman Angus Cattle Evaluation – Expected Progeny EBVs								
	CED	CEM	BW	200D	400D	600D	MCW	MILK	
<b>EBV</b>	<b>+4.4</b>	<b>+4.9</b>	<b>+2.9</b>	<b>+40</b>	<b>+70</b>	<b>+93</b>	<b>+70</b>	<b>+19</b>	
<i>Acc</i>	55%	47%	70%	66%	66%	66%	63%	59%	
SS	DC	CWT	EMA	RIB	RUMP	RBY	IMF	\$DI	\$HGI
<b>+2.1</b>	<b>-5.6</b>	<b>+55</b>	<b>+5.8</b>	<b>-0.5</b>	<b>-0.4</b>	<b>+0.8</b>	<b>+1.6</b>	<b>+\$106</b>	<b>+\$110</b>
56%	41%	59%	58%	56%	55%	54%	53%		

*Notes: Pyramid is a heifer's first calf and sired by the same bull as the Reserve Champion Carcase (with a marble score of 5 and MSA index of 68.34) at the 2020 Wingham Beef Week. His parents are both Herdbook registered, however, due to a paperwork oversight, he is being sold as a herd bull. A very good option for those looking for easy care cattle that suit the domestic or feeder market. EBVs shown are half parental means.*

Purchaser: \_\_\_\_\_ \$ \_\_\_\_\_



Wallawong P59 – Paternal ½ brother to lot 24.  
 Reserve Grand Champion Carcase,  
 Wingham Beef Week 2020.  
 MSA marble score 720, MSA index 68.34



**Lot 25 WALLAWONG PALACE MUSIC P76 APR**

**Born: 05/11/2018 LEJ P76 Colour: Black**

S CHISUM 6175

**Sire: BURENDA LEGIBLE L446**

BURENDA DIANE D39

LAWSONS HENRY VIII Z1584

**Dam: DANCE HENRY D233**

DANCE X94

Mid May Trans Tasman Angus Cattle Evaluation									
	CED	CEM	GL	BW	200D	400D	600D	MCW	MILK
<b>EBV</b>	<b>-2.3</b>	<b>+2.8</b>	<b>-3.5</b>	<b>+5.4</b>	<b>+51</b>	<b>+85</b>	<b>+113</b>	<b>+89</b>	<b>+15</b>
Acc	45%	40%	58%	58%	54%	55%	54%	52%	50%
SS	DC	CWT	EMA	RIB	RUMP	RBV	IMF	\$DI	\$HGI
<b>+1.5</b>	<b>-4.5</b>	<b>+65</b>	<b>+3.9</b>	<b>+0.0</b>	<b>+0.6</b>	<b>+0.3</b>	<b>+1.0</b>	<b>+\$102</b>	<b>+\$97</b>
52%	33%	49%	46%	48%	47%	46%	44%		

*Notes: Palace Music is the youngest bull in the sale, but he definitely keeps up when it comes to a combination of muscularity and softness. The offspring of two very sound and industry relevant parents, he is sure to continue to develop as he matures. He shows solid performance data across all traits, making him a desirable supermarket sire.*

Purchaser: \_\_\_\_\_ \$ \_\_\_\_\_



Burenda Legible L446 – Sire of Lots 22, 23, 25, 28



**Lot 26 WALLAWONG PAYMENT P44 HBR**

**Born: 30/08/2018 LEJ P44 Colour: Black**

COONAMBLE HECTOR H249

**Sire: MILLAH MURRAH HECTOR M153**

MILLAH MURRAH PRUE H113

PATHFINDER DIRECTION C564

**Dam: WOODBOURN QUEEN F24**

WOODBOURN QUEEN B8

Mid May Trans Tasman Angus Cattle Evaluation									
	CED	CEM	GL	BW	200D	400D	600D	MCW	MILK
<b>EBV</b>	<b>+5.3</b>	<b>+2.9</b>	<b>-2.5</b>	<b>+3.1</b>	<b>+39</b>	<b>+71</b>	<b>+93</b>	<b>+73</b>	<b>+8</b>
Acc	46%	40%	53%	59%	59%	62%	65%	58%	50%
SS	DC	CWT	EMA	RIB	RUMP	RBV	IMF	\$DI	\$HGI
<b>+1.9</b>	<b>-4.1</b>	<b>+49</b>	<b>+4.6</b>	<b>+1.6</b>	<b>+1.3</b>	<b>-0.5</b>	<b>+1.4</b>	<b>+\$99</b>	<b>+\$93</b>
65%	32%	53%	51%	54%	54%	51%	48%		

*Notes: Payment is another easy care MM Hector M153 son. He shows depth of body and sound structure. A highlight of this bull is the phenotype of his dam. She is one of the most eye catching Angus females we have seen and has been used in our ET program. His raw IMF scan taken in April was the highest in his contemporary group at 6.4%. A very good choice for anyone wanting a versatile, easy calving sire for producing supermarket offspring with added carcass quality.*

Purchaser: \_\_\_\_\_ \$ \_\_\_\_\_



Millah Murrah Hector M153 - \$40K  
Sire of lots 19, 26, 27, 29, 30

**Lot 27 WALLAWONG P.I.N. P39****Born: 01/09/2018 LEJ P39 Colour: Black**

COONAMBLE HECTOR H249

**Sire: MILLAH MURRAH HECTOR M153**

MILLAH MURRAH PRUE H113

ABBOTT PERFORMER E32

**Dam: ABBOTT KAREN K65**

ABBOTT KAREN B44

	Mid May Trans Tasman Angus Cattle Evaluation – Expected Progeny EBVs								
	CED	CEM	BW	200D	400D	600D	MCW	MILK	
<b>EBV</b>	<b>-0.1</b>	<b>+2.6</b>	<b>+4.0</b>	<b>+43</b>	<b>+77</b>	<b>+103</b>	<b>+83</b>	<b>+15</b>	
Acc	59%	50%	75%	71%	72%	73%	69%	62%	
SS	DC	CWT	EMA	RIB	RUMP	RBV	IMF	\$DI	\$HGI
<b>+1.5</b>	<b>-3.5</b>	<b>+64</b>	<b>+4.9</b>	<b>-0.6</b>	<b>-1.0</b>	<b>+0.9</b>	<b>+1.0</b>	<b>+\$99</b>	<b>+\$93</b>
66%	44%	65%	62%	67%	65%	63%	62%		

Notes: P.I.N. is an embryo transfer bull from a moderate, easy care donor female. Combining this with his sire's attributes of easy calving and structural correctness, he is sure to be a useful, multipurpose sire. His raw IMF scan taken in April was one of the highest in his contemporary group at 6.3%. If you want calving ease, and functional cattle with that bit of extra carcass quality, here is a very good option.

Purchaser: \_\_\_\_\_ \$ \_\_\_\_\_

**Lot 28 WALLAWONG PADLOCK P61 HBR****Born: 22/09/2018 LEJ P61 Colour: Black**

S CHISUM 6175

**Sire: BURENDA LEGIBLE L446**

BURENDA DIANE D39

PATHFINDER DIMENSION A435

**Dam: WOODBOURN ALICE E80**

WOODBOURN ALICE W64

	Mid May Trans Tasman Angus Cattle Evaluation								
	CED	CEM	GL	BW	200D	400D	600D	MCW	MILK
<b>EBV</b>	<b>-2.8</b>	<b>+3.7</b>	<b>-2.9</b>	<b>+5.1</b>	<b>+50</b>	<b>+84</b>	<b>+114</b>	<b>+88</b>	<b>+18</b>
Acc	45%	40%	56%	59%	60%	63%	66%	58%	50%
SS	DC	CWT	EMA	RIB	RUMP	RBV	IMF	\$DI	\$HGI
<b>+1.4</b>	<b>-4.2</b>	<b>+67</b>	<b>+7.4</b>	<b>+0.3</b>	<b>+0.3</b>	<b>+0.9</b>	<b>+0.9</b>	<b>+\$104</b>	<b>+\$102</b>
66%	35%	54%	53%	54%	55%	50%	48%		

Notes: Padlock will secure your future breeding success. A correct and functional bull that possesses an above average EMA EBV, while also having positive Fat EBVs. This is a rare but beneficial combination that makes him a valuable sire.

Purchaser: \_\_\_\_\_ \$ \_\_\_\_\_

**Lot 29 WALLAWONG PERFORM P46 HBR**

**Born: 01/09/2018 LEJ P46 Colour: Black**

COONAMBLE HECTOR H249

**Sire: MILLAH MURRAH HECTOR M153**

MILLAH MURRAH PRUE H113

ABBOTT EMPEROR E48

**Dam: ABBOTT ACE H72**

ABBOTT ACE Z1

Mid May Trans Tasman Angus Cattle Evaluation									
	CED	CEM	GL	BW	200D	400D	600D	MCW	MILK
<b>EBV</b>	<b>+3.5</b>	<b>+4.3</b>	<b>-3.9</b>	<b>+2.8</b>	<b>+39</b>	<b>+74</b>	<b>+101</b>	<b>+77</b>	<b>+13</b>
<i>Acc</i>	<i>46%</i>	<i>40%</i>	<i>56%</i>	<i>60%</i>	<i>60%</i>	<i>62%</i>	<i>65%</i>	<i>59%</i>	<i>50%</i>
SS	DC	CWT	EMA	RIB	RUMP	RBY	IMF	\$DI	\$HGI
<b>+1.7</b>	<b>-3.3</b>	<b>+54</b>	<b>+6.0</b>	<b>-0.9</b>	<b>-1.1</b>	<b>+0.9</b>	<b>+1.4</b>	<b>+\$105</b>	<b>+\$108</b>
<i>65%</i>	<i>32%</i>	<i>53%</i>	<i>52%</i>	<i>55%</i>	<i>55%</i>	<i>52%</i>	<i>50%</i>		

*Notes: Perform is another bull from a visually stunning donor female. He may not be the biggest bull, but he combines calving ease on both sides of his pedigree. This is a feature, along with his low Birthweight EBV and positive Calving Ease EBV, that make him a very suitable option for heifer matings.*

Purchaser: \_\_\_\_\_ \$ \_\_\_\_\_



Wallawong Perform P46 at 20 months

**Lot 30 WALLAWONG PREMIUM P34 HBR**

**Born: 22/08/2018 LEJ P34 Colour: Black**

COONAMBLE HECTOR H249

**Sire: MILLAH MURRAH HECTOR M153**

MILLAH MURRAH PRUE H113

ABBOTT PERFORMER E32

**Dam: ABBOTT VICTORIA K61**

GLENCAIRN VICTORIA Y15

	Mid May Trans Tasman Angus Cattle Evaluation – Expected Progeny EBVs								
	CED	CEM	BW	200D	400D	600D	MCW	MILK	
<b>EBV</b>	<b>-0.6</b>	<b>+2.6</b>	<b>+4.5</b>	<b>+48</b>	<b>+87</b>	<b>+112</b>	<b>+100</b>	<b>+14</b>	
Acc	60%	51%	75%	72%	73%	74%	70%	65%	
SS	DC	CWT	EMA	RIB	RUMP	RBY	IMF	\$DI	\$HGI
<b>+1.8</b>	<b>-5.0</b>	<b>+70</b>	<b>+3.9</b>	<b>+0.3</b>	<b>0.0</b>	<b>+0.3</b>	<b>+1.0</b>	<b>+\$103</b>	<b>+\$99</b>
69%	46%	66%	64%	68%	66%	64%	63%		

*Notes: Premium is another hassle free, easy care sire that will be an asset to any commercial herd. Structurally sound and with good volume and fleshing, he is a good option for those producers looking to supply the supermarket trade.*

Purchaser: \_\_\_\_\_ \$ \_\_\_\_\_



**2018 RAS Beef Challenge**  
 Champion and Reserve Champion Pen of 6  
 100 Day Fed  
 Wallawong Black Angus steers

## New Sires for Wallawong



### **Hansons Platinum Black P01**

Purchased in 2019, Platinum Black was selected for his outstanding phenotype and actual data, being 17mths, 735kg with a 123cm<sup>2</sup> EMA and 6.0 IMF%. Combining this with a very docile temperament and excellent skin and hair type made him a desirable choice. Being a  $\frac{3}{4}$  brother to the \$160k Paratrooper also adds interest.



### **Woodbourn Paringa P49**

Purchased in partnership in May 2020 for \$14k, Paringa was selected for his quality phenotype and excellent EBV data. While maintaining moderate Birthweight and muscularity EBVs, his Growth, Fat and IMF EBVs are outstanding. We look forward to Paringa AI calves in 2021 while he undergoes his export quarantine for international semen clients.

**BUYER'S INSTRUCTION SLIP**

**WALLAWONG 23<sup>rd</sup> ANNUAL SALE  
9<sup>th</sup> JULY 2020**

PURCHASER'S NAME:.....

TRADING AS:.....

ADDRESS:.....

.....

.....POST CODE:.....

PIC:.....

PHONE:.....

EMAIL:.....

LOT PURCHASED:.....PRICE:.....

LOT PURCHASED:.....PRICE:.....

LOT PURCHASED:.....PRICE:.....

LOT PURCHASED:.....PRICE:.....

LOT PURCHASED:.....PRICE:.....

TRANSPORT ARRANGEMENTS:.....

.....

.....

.....

CATTLE TO BE TRANSFERRED TO:.....

.....

.....

BUYER'S SIGNATURE:.....

**NO VERBAL INSTRUCTIONS WILL BE ACCEPTED**



## **TERMS AND CONDITIONS OF SALE**

**The Stock** - As all lots are open for inspection prior to the commencement of the sale, the stock offered are to be sold with all faults and the buyer must satisfy themselves as to the condition, quality and fitness thereof before offering a bid. No error or misdescription shall invalidate any sale or give rise to any claim for compensation.

The vendor guarantees no animal has been given growth promotants of any kind.

All bulls are sold as being fertile and capable of natural service. The Wallawong Fertility Guarantee will occur if within two (2) years of the date of sale the purchaser submits a veterinary report certifying that the bull is infertile and/or not capable of natural service. The veterinarian will also be required to state that in their opinion the bull has not had any physical injury or illness since leaving the vendor's property, which injury or illness could have affected the bull's breeding ability. The circumstances of such an illness or injury must be notified by the purchaser to the vendor within one week of occurrence and the vendor will have the right to arrange a veterinary inspection if required. No claim will necessarily be recognised unless presented within two (2) years of the date of sale.

### **The Sale.**

The stock shall be at the risk of the buyer from the fall of the hammer whether delivered or not.

The sale is at the vendor's discretion subject to a floor price. Subject to the aforesaid the highest bidder shall be the buyer.

Bids will be exclusive of GST, with GST being added to the final sale price and invoiced to the purchaser.

No bid shall be less than the previous bid. If any dispute arises respecting a bid, the lot shall be put up again at the last undisputed bid.

**Payment** - Unless otherwise stipulated, all lots shall be sold for cash.

Interest at the rate from time to time charged by vendor shall be paid in any case where a purchaser makes default on due payment.

### **DISCLAIMER**

Whilst all due care and attention has been paid to the accuracy in the compilation of this catalogue, neither the vendor nor the selling agents or representatives therefore assume any responsibility whatsoever for the correctness, use or interpretation of the information on animals included in this catalogue.

## Maternal Strength



Bundaleer T.T. B33 – Grand Dam of Lot 1



Bundaleer Esmeralda A32 – Dam of Lot 8



Woodbourn Queen F24 – Dam of Lot 26

