

# *Burrawang*

DORPER & WHITE DORPER STUD

COMMITTED TO BREED EXCELLENCE

*Inaugural Stud Ewe Sale*

*Only on AuctionsPlus*

*Wednesday June 17 2020*

*4pm Australian Eastern Standard Time*

All Ewes Scanned in Lamb to Burrawang Stud Sires

32 Stud Type 5 Ewes

45 Stud Type 4 Ewes

15 Commercial T3 Ewes

On Farm Viewing by Appointment only on

Sunday June 15 or Monday June 16

9am-4pm



Contact

Darren Old 0459 980 591 at BR&C Agents

Mal Brady 0428 5000 027 or Wicus Cronje 0475 892 862

## There's Always a First Time

The first half of 2020 brought many “first times” for most people around the world; some good firsts and some, not-so-wonderful, firsts. No question that we've all been reminded that the only thing we can really count on, is change.

So, as always at Burrawang Dorper and White Dorper Stud, we're responding to changes in our industry. This sale is an example of some of the changes we're making.

We're expanding the ways in which we conduct our business to ensure you continue to have access to the best of what Burrawang offers... high quality, sound animals to give you greater stock longevity and improved meat yields that increase your profitability.

But some things won't change. We're still committed to **breed excellence**. We're still “...*all about the meat mate*”. And our animals still deliver outstanding **value for money**.

Welcome to one of our stud's firsts. Burrawang Dorper and White Dorper Stud has never conducted a sale that consists **exclusively of ewes** and we've never conducted an **exclusively online sale**...before now.

## Introducing Agents

Introducing livestock agents are entitled to a 5% commission on sales if written notice of introduced client(s) details are provided to [dold@brcagents.com.au](mailto:dold@brcagents.com.au) no later than 4pm on June 16<sup>th</sup>.

## Scanned in-lamb Ewes

We are pleased to offer this selection of high-quality stud ewes; all have been scanned in lamb to a variety of our most recently selected group of Burrawang sires. The ewes are due to lamb between mid-July and mid-September. Please refer to the sire profiles contained in this catalogue and on the Stud Sires tab of our website [www.burrawangdorpers.com.au](http://www.burrawangdorpers.com.au).

## Pre-Sale Viewing

You are welcome to come to Burrawang at Ootha, NSW to see the selection of ewes on offer. Please contact Mal Brady on 0428 500 027 by 5pm on Saturday June 13<sup>th</sup> to arrange a viewing. Viewings can be scheduled for Sunday or Monday, June 14<sup>th</sup> or 15<sup>th</sup> between 9am and 4pm.

## Post Purchase Pick Up or Delivery Arrangements

Purchases of fewer than 5 lots must be picked up from Burrawang West Station no later than Sunday, June 21<sup>st</sup>. Purchases of 5 or more lots will be delivered no later than Wednesday, June 24<sup>th</sup> and free of charge within a 500km radius of Condobolin, NSW. Pick up and delivery arrangements are to be made through Mal Brady, who can be reached on 0428 500 027.

## Breeders' Comments

Burrawang's Stud Master, Wicus Cronje, has provided a comment about each ewe. His assessment is contained in Breeder's Comments within the catalogue and as commentary on each Lot's video (available to view online via AuctionsPlus).

His assessment of the stud sires, used to join the ewes on offer in this sale, is included in the Stud Sire Profiles of the catalogue and on the Stud Sire tab of our website at [www.burrawangdorpers.com.au](http://www.burrawangdorpers.com.au).

Wicus is internationally recognised as one of the world's most experienced dorper breeders, inspectors and judges. He is a qualified inspector of The Dorper Breeders Society of South Africa and of Dorper Sheep Society of Australia and has over 40 years of experience as a dorper breeder in both countries.

## DNA Parentage Testing

Beginning in 2017, Burrawang has used DNA testing to determine parentage of our stud offspring. Though testing is not 100% foolproof, it is the way of the future to validate pedigrees. Most top livestock breeders around the world use this method to ensure accurate bloodline information while enabling greater natural hybrid vigour to be created through natural joinings with multiple sires than can be created through artificial or single sire matings. The result is an expanded genetic variation in offspring.

Interestingly, for those unfamiliar with multiple sire group joining, lambs born from a single dam, may be sired by different rams in the group joining mob, much as a canine bitch can birth pups to different dogs in the same litter. Nature will have her way.

## Parentage Confirmation

For buyers who purchase 5 or more ewes and who need to validate parentage for registration or other purposes, we provide free DNA testing upon written request for this service. Please send the request to [mbrady@murraydarlingfoodco.com](mailto:mbrady@murraydarlingfoodco.com) no later than the date on which purchased ewes are picked up or delivered. Tissue samples will be collected by one of Burrawang's trained staff members by arrangement sometime between marking and weaning of the purchased ewes' progeny and subject to the following conditions:

- 1) the purchaser agrees to ensure the purchased ewes can lamb down and remain apart from other stock for at least 2 weeks after lambing to ensure no "lamb stealing" can take place,
- 2) tissue samples will be collected on-site at the purchaser's place of business/lambing yards no later than when the lamb is weaned, and
- 3) the purchaser accepts that DNA testing results may take up to 8 weeks after tissue samples are collected.

## Animal Health

Subject to purchaser's approval, all ewes will receive a weight-appropriate dose of CYDECTIN® EWEGUARD at time of pick up or delivery.

Burrawang flock is Accredited Ovine Brucellosis Free; Certificate OB-TR expiring Feb 28, 2022.

Burrawang's OJD status is MN1; clear of OJD with certificate NS18176

**SAVE THIS DATE**

**Monday October 12 2020**

**Burrawang's 16th On Farm Sale**

**160 Dorper & White Dorper Rams**

Watch for details on

[www.burrawangdorpers.com.au](http://www.burrawangdorpers.com.au)

# CATALOGUE GUIDE

## Lots

All ewes are presented for sale in individual lots.

## Scanned In Lamb

All ewes were scanned by a qualified scanner on June 2 2020 and determined to be in lamb. The number of embryos detected at scanning is designated as **SIL** Single or **SIL** Twin for each ewe in the sale.

## Type

Ewes were independently classed by experienced, well respected, internationally qualified inspectors; Philip van Schalkwyk on May 29 2020 and on Feb 22 2020, and/or by Raymond Reid on April 1 2019.

## Weight

Weights were recorded on June 4 2020 with the result reflected in the history section of each lot listing.

## Joining Sires

Dorper ewes offered for sale were joined to the Dorper rams and White Dorper ewes offered for sale were joined to the White Dorper sires listed in the sire section of this catalogue. Photos of the sires in this catalogue show the rams as they appear in their usual working conditions.

## Multiple Sire Group Joinings

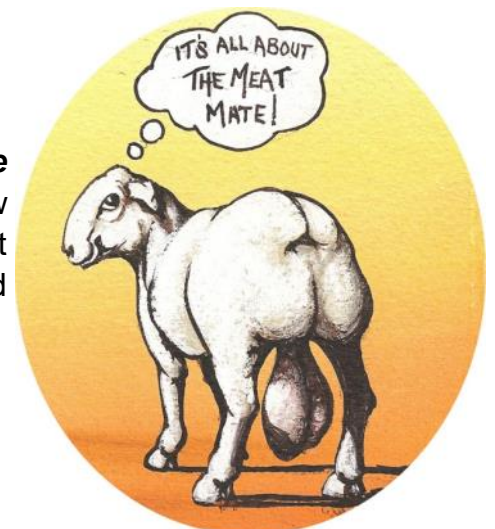
In 2017, Burrawang began using DNA testing to determine parentage of all progeny. By doing so, multiple sire group joinings became a viable option to include in our breeding programs.

By selectively multiple sires to join with a specific group of ewes, thereby mitigating excessive inbreeding, we are able to

1. leverage the power of natural selection
2. maximise genetic variance in offspring
3. allow ewes to lamb down in a natural setting without interference
4. remove parentage recording errors that result from lamb stealing
5. eliminate human error in recording parentage.

As stud operators with extensive breeding experience, we continue to use modern tracking systems, trait scanning and proven breeding predictors to select our stud breeding animals.

***For Burrawang customers to maximise productivity, enhance sustainability and improve profits using our animals,*** we know that our breeding experience and the power of mother nature must come together to produce animals that can deliver all of the breed benefits in a commercial setting.



## BURRAWANG DORPER AND WHITE DORPER SIRE PROFILES

### BURRAWANG DORPER 170915 6GUN

An eye-catching, stylish, high quality Dorper ram, 6GUN is big, strong, and amazingly easy moving. He breeds very appealing offspring with good balance, length, and a lot of muscle.

6GUN'S genetics are exceedingly rare outside of South Africa. He has earned extensive use as a sire in our stud breeding programs.



### BURRAWANG DORPER 172409 RODEO

RODEO is a good example of how carefully selected genetics pool together. We are excited about this young sire's offspring; they tick all the right boxes for growth and meat production, structural integrity, and free flowing movement.

Photos cannot do justice to this ram...he is even more impressive in the flesh. RODEO is a very well-balanced animal with a great head, extraordinarily strong topline and remarkable outer twist.



### BURRAWANG DORPER 172416 RUSSIAN

RUSSIAN, son of BORIS, is long, very deep, and very wide with remarkable muscling. He has been selected and used as a Burrawang sire especially for his muscling qualities. RUSSIAN is an extremely aggressive joiner which complements his fertility and is signalled by his visibly high level of masculinity.



### BURRAWANG DORPER 180012 BLACK GOLD

BLACK GOLD's pedigree is like striking gold...the best of Cronje and Mickey Phillips lines coming together in a rare and valuable find. This is a very wet ram with tremendous growth for his age.

True to his breeding, he is extremely strong and masculine with a particularly good topline. His long deep muscling and exceptionally deep rump give him outstanding carcass qualities.



### **BURRAWANG DORPER 180774 GENERAL**

GENERAL is a big masculine ram with a lot of capacity and spring of rib. He is very wide throughout his body.

Born relatively early in 2018, General was one of the first of his year drop to be used as a stud sire. From this first joining, he proved his virility and that he breeds very even quality offspring.



### **BURRAWANG DORPER 181150 PISTOL**

PISTOL (on left in photo) is a unique ram and has been a show off with his remarkable carcass quality since he was a young ram. PISTOL's pedigree is heavy with Cronje bloodlines and it shows.

He is long, wide, and deep with a superior rump and developed loins. With his balance and meat qualities and easy walking style, he is an obvious choice as a sire.



### **BURRAWANG DORPER 181699 BULLSEYE**

His name says it all; we think this ram has what it takes to be "spot on" as a sire. He certainly has the breeding, with a strong Cronje presence throughout his bloodline.

He has the length, a great outer twist, exceptionally good topline, and a remarkable high-quality head. He has the balance and an easy moving style.

BULLSEYE is shown on the right in this photo.



### **BURRAWANG DORPER 181700 THOROUGHbred**

THOROUGHbred was selected at a young age to become a Burrawang sire when he presented himself as a real standout with incredible meat qualities, a remarkable head, long deep and wide body, and a strong masculine shape. He carries a lot of long muscle that comes way down onto his chest and flank and has exceptionally well-developed loins.

This ram is an easy moving animal with outstanding overall quality making him an obvious choice as a stud sire.

Photo unavailable; sire at work in the joining paddock

### **BURRAWANG DORPER 181719 THRILLER**

THRILLER is among the elite group of rams of the breed that has extraordinarily long muscling in the back with a very deep flank.

Shown in the photo at just 10 months old, THRILLER is a big T5 ram of outstanding weight for age with particularly good balance, a good head, and a long, deep body.

THRILLER's pedigree brings together Cronje and Mickey Phillips bloodlines, a combination proven to generate quality offspring. THRILLER'S dam is a MICHAEL JACKSON daughter. Seven of her eight lambs were rams, including four T5/T4 studs and two T3.



### **BURRAWANG DORPER 181743 STEED**

STEED is a full brother of THOROUGHbred and was used in just one joining prior to his death from snakebite. We look forward with great anticipation to his offspring's arrival.

STEED was a T5 stud ram with outstanding structure and breeding. His sire BRUMBY has been extensively used in our stud as he produces reliably consistent quality offspring including several sires and top breeding ewes.

Photo unavailable

### **BURRAWANG DORPER 182004 WINK**

WINK, with his good topline and structural integrity, is a great example of his sire BLINKI's consistent breeding. WINK also takes after his sire in the joining paddock by wasting no time getting right on the job.

WINK is a remarkably long ram with a great outer twist and well-developed loins. He has an easy, free flowing gait, a high-quality head and, importantly, a safe forequarter. WINK was a sure choice as a stud sire.

Photo unavailable; sire at work in the joining paddock

### **BURRAWANG WHITE DORPER 170229 CRUMBLE**

CRUMBLE breeds well above average and has produced many of our On-Farm Sale rams. He is very well balanced, has a good head, long body, long muscles, and exceptionally good top-line.

Like his sire, CRUNCHY, CRUMBLE breeds high quality, structurally sound animals; his ram offspring are performing well for our customers and his ewe offspring are performing well for our stud.

Even in his "working clothes" straight from the joining paddock, as shown in the photo, Crumble is an impressive ram.



### **BURRAWANG WHITE DORPER 172086 RAPPER**

RAPPER comes from one of Burrawang's most successful ewes, Burrawang 120020, who also features in the background of sires PALE ALE and HOMEBREW from different sire lines. RAPPER demonstrates all the quality we came to expect from 120020 which made her a "go to" dam; he is well balanced and has a great masculine head.

Like his sire, EMINEM, distinguishing features of RAPPER's structure are his strong, thick legs and his free-flowing movement. He breeds consistent quality offspring with nice soft, wet coats.



### **BURRAWANG WHITE DORPER 180435 IRON JACK**

This sire has it all and so he should, given the strength of his pedigree. We expect a lot from this young sire as he inherited his sire, KEG's, truly remarkable body depth and muscling, and his dam's balance, length and topline.

IRON JACK's maternal granddam, Burrawang 120190, was an outstanding breeder who consistently produced high quality offspring with several Burrawang sires over her 6 years of breeding.



### **BURRAWANG WHITE DORPER 180448 PHILL**

PHILL is a son of PIET, the 2019 Australian National Supreme Champion. PHILL is an exceptional ram in his own right with remarkable width over his body, an outstanding outer twist, particularly good loins, and a great masculine head. He has immense capacity in his spring of rib and a very deep body.

Not only is PHILL a strikingly muscular ram, he is also a real pleasure to watch as he moves...smooth and easy.



### **BURRAWANG WHITE DORPER 180469 APE**

A son of TARZAN, APE is a well-balanced ram with a very good head. He has an incredibly soft, wet coat and nice thick legs and carries a lot of meat.

We anticipate great things from this ram based on his meat production qualities and balance and on his breeding, which features stars of the meat sheep industry such as Rabie, DOC, Burrawang 111129, and Terraweena Loftus.

Photo unavailable; sire at work in the joining paddock



### **BURRAWANG WHITE DORPER 181611 BARRIE**

BARRIE is a son of PIET, the 2019 Australian National Supreme Champion, and of one of Burrawang's most reliable dams. BARRIE demonstrates all the trademark qualities of his pedigree including a good head, long, wide body and meat.... lots of meat!



### **BURRAWANG WHITE DORPER 190240 BIG SHOT**

He is called BIG SHOT for his noticeably meaty carcass. This ram is long, wide, and deep, carries a lot of meat and has an exceptionally good quality head.

BIG SHOT is still a lamb but that did not stop him from holding his own amongst the older sires while working hard in his first joining. The accompanying picture was taken as he came out of the joining paddock.



### **BURRAWANG WHITE DORPER 190245 CARLTON**

CARLTON has an exceptionally high-quality head. Still a lamb when photographed, this young sire is unusually strong and masculine and shows great balance and quality, especially for his age. CARLTON has a wide, long, and deep body and moves very easily.

CARLTON's pedigree packs a real punch and we are expecting a lot from him and his half-brothers from the same drop, PALE ALE, HOMEBREW and FOSTER. Their sire, LOCO has proven to be one of Burrawang's most successful breeding sires with 7 of 8 rams born in a single drop, achieving Type 5 in independent classing.



### **BURRAWANG WHITE DORPER 190270 MCGREGOR**

MCGREGOR, like his half-brothers, PHILL and BARRIE, is a son of the 2019 Australian National Supreme Champion, PIET. MCGREGOR has a really good head, exceptional balance, and his bloodline's great outer twist and loins.



### **BURRAWANG WHITE DORPER 190447 PALE ALE**

PALE ALE is a special ram for many reasons including his exceptionally sound structure, outstanding carcass qualities and proven pedigree. His forequarter is remarkably safe, and he boasts an outstanding topline. PALE ALE also has an exceptionally long, deep body with great spring of rib, well developed loins, and long muscles.

Like fellow sires, PIET, RAPPER and HOMEBREW, PALE ALE's pedigree features one of Burrawang's most successful ewes, Burrawang 120020, from whom he inherited great balance along with other qualities. His sire, LOCO, is an extraordinary ram who has produced many of our current sires and top-of-the line breeding ewes. LOCO consistently breeds offspring, like PALE ALE, with very deep bodies and immense meat producing capacity.



### **BURRAWANG WHITE DORPER 190459 HOMEBREW**

HOMEBREW has been a performance leader from the beginning with his growth, weight, and quality. He and his half-brothers CARLTON, PALE ALE AND FOSTER are amongst the many stud rams sired by LOCO.

HOMEBREW's dam is one of 2019 Australian National Supreme Champion PIET's daughters; her influence is evident in HOMEBREW's unique head quality. He is very well balanced, has a strong masculine shape and very safe shoulders. In addition, he has good spring of rib and very well-developed loins, all of which made HOMEBREW a sure choice as a stud sire.

Photo unavailable; at work  
in the joining paddock

### **BURRAWANG WHITE DORPER 190507 DUSTY**

DUSTY has exceptional growth for his age along with particularly good carcass qualities. His loins are very well developed, and he is long, wide, and deep, especially in the hindquarter. He has a remarkably deep flank. DUSTY is still a lamb and, based on his growth and pedigree, he is going to be a very big boy.

This sire's pedigree varies considerably from many of Burrawang's sires, while including some of our top performing sires and dams. Evident in DUSTY's conformation are the muscle depth of Burrawang 140373 BARREL and the trademark forequarter of DOC. We anticipate this line to continue to develop well within Burrawang's White Dorper range.



### **BURRAWANG WHITE DORPER 190508 BRADLEY**

BRADLEY, like DUSTY, has an unusual mix of strong breeders in his pedigree including three of Burrawang's most reliable dams. BRADLEY's T5 conformation features remarkable outer twist and loins as well as an exceptional spring of rib. He has a nice soft and wet coat and plenty of healthy body fat.

### **BURRAWANG DORPER 190525 FOSTER**

FOSTER is still a lamb, but he has taken well to his role in the joining paddock. Our choice to use FOSTER as a stud sire was an easy one as he has been blessed with the look and the breeding of a champion sire.

FOSTER is extremely well balanced and, from end to end, is a standout. He has a particularly good, high quality head. His body is long, deep, and wide. He has well developed loins with an exceptionally long rump. The depth, quality, and muscle length of his hindquarter along with his ability to walk so easily, are truly impressive.

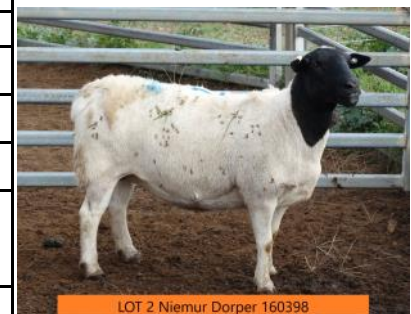
Photo unavailable; at work  
in the joining paddock



<b>LOT 1</b>	<b>BURRAWANG DORPER 190149</b>		
<b>SIL Twins</b>	<b>Stud T5</b>		
	PGSire	BURRAWANG DORPER 153130 MICHAEL JACKSON	<b>History</b>
<b>Sire</b>		<b>BURRAWANG DORPER 172221 MICKY</b>	Wt 57kg
	PGDam	BURRAWANG DORPER 153172	DOB 5/13/2019
	MGSire	Matchless D452	Natural conception
<b>Dam</b>		<b>BURRAWANG DORPER 171613</b>	
	MGDam	Dorper Stud Park 111939	Single birth
<b>Breeder's Comments:</b> A very feminine, long bodied ewe with very good topline; still with lambs teeth.			



<b>LOT 2</b>	<b>Niemur Dorper 160398</b>		
<b>SIL Twins</b>	<b>Stud T5</b>		
	PGSire	Kaya 110931	<b>History</b>
<b>Sire</b>		<b>BURRAWANG DORPER 130591</b>	Wt 69.5kg
	PGDam	BURRAWANG DORPER 102151 (Cronje/Cronje)	DOB 10/17/2016
	MGSire	Niemur 120061	AI conception; Embryo Transfer
<b>Dam</b>		<b>Niemur 140010</b>	
	MGDam	Newstead 90164	Single birth
<b>Breeder's Comments:</b> This ewe has a very feminine head, good topline & lots of meat.			



<b>LOT 3</b>	<b>BURRAWANG DORPER 160181</b>		
<b>SIL Twins</b>	<b>Stud T5</b>		
	PGSire	BURRAWANG DORPER 130591	<b>History</b>
<b>Sire</b>		<b>BURRAWANG DORPER 153130 MICHAEL JACKSON</b>	Wt 74kg
	PGDam	BURRAWANG DORPER 102057 (Cronje/Cronje)	DOB 4/22/2016
	MGSire	Why Not 10044	AI conception; Embryo Transfer
<b>Dam</b>		<b>BURRAWANG DORPER 122023</b>	
	MGDam	BURRAWANG DORPER 102070 (Cronje/Cronje)	Single birth
<b>Breeder's Comments:</b> This very feminine ewe has a long body, high quality head & lots of meat.			



<b>LOT 4</b>	<b>BURRAWANG DORPER 161561</b>		
<b>SIL Twins</b>	<b>Stud T5</b>		
	PGSire	Kaya 100485 (Cronje/Cronje)	<b>History</b>
<b>Sire</b>		<b>Kaya 130403 Getafix</b>	Wt 75kg
	PGDam	Kaya 100804 (Cronje/Cronje)	DOB 10/29/2016
	MGSire	Why Not 10065	AI conception; Embryo Transfer
<b>Dam</b>		<b>BURRAWANG DORPER 130557</b>	
	MGDam	BURRAWANG DORPER 102175 (Cronje/Cronje)	Single birth
<b>Breeder's Comments:</b> A ewe carrying a lot of meat with a great outer twist, big barrel and lots of capacity.			

**Please view video for  
this lot available via  
AuctionsPlus**

<b>LOT 5</b>		<b>BURRAWANG DORPER 190706</b> <b>Stud T5</b>	
<b>SIL Single</b>			
	PGSire	Kaya 130403 Getafix (Cronje/Cronje)	<b>History</b>
<b>Sire</b>		<b>BURRAWANG DORPER 160329 DRUID</b>	Wt 48kg
	PGDam	BURRAWANG DORPER 112019	DOB 6/26/2019
	MGSire	BURRAWANG DORPER 153359 YOUNG MATE	Natural conception
<b>Dam</b>		<b>BURRAWANG DORPER 170943</b>	
	MGDam	BURRAWANG DORPER 153295	Single birth
<b>Breeder's Comments:</b> A very well balanced ewe carrying a lot of meat; still with lambs teeth.			

Please view video for  
this lot available via  
**AuctionsPlus**

<b>LOT 6</b>		<b>BURRAWANG DORPER 181103</b> <b>Stud T5</b>	
<b>SIL Single</b>			
	PGSire	BURRAWANG DORPER 153130 MICHAEL JACKSON	<b>History</b>
<b>Sire</b>		<b>BURRAWANG DORPER 170424 MOONWALK</b>	Wt 74kg
	PGDam	Kaya 120704	DOB 7/1/2018
	MGSire	BURRAWANG DORPER 130591	AI conception; Embryo Transfer
<b>Dam</b>		<b>BURRAWANG DORPER 153433</b>	
	MGDam	Dorper Stud Park 101759	Single birth
<b>Breeder's Comments:</b> Very feminine ewe.			



<b>LOT 7</b>		<b>BURRAWANG DORPER 180821</b> <b>Stud T5</b>	
<b>SIL Single</b>			
	PGSire	Kaya 130403 Getafix (Cronje/Cronje)	<b>History</b>
<b>Sire</b>		<b>BURRAWANG DORPER 160329 DRUID</b>	Wt 71kg
	PGDam	BURRAWANG DORPER 112019	DOB 4/20/2018
	MGSire	PRIESKA 120037	AI conception; Embryo Transfer
<b>Dam</b>		<b>BURRAWANG DORPER 153185</b>	
	MGDam	BURRAWANG DORPER 102085 (Cronje/Cronje)	Single birth
<b>Breeder's Comments:</b> This ewe is very feminine with a very good topline, big barrel & lots of capacity.			

Please view video for  
this lot available via  
**AuctionsPlus**

<b>LOT 8</b>		<b>BURRAWANG DORPER 181135</b> <b>Stud T5</b>	
<b>SIL Single</b>			
	PGSire	Kaya 130403 Getafix (Cronje/Cronje)	<b>History</b>
<b>Sire</b>		<b>BURRAWANG DORPER 170915 6GUN</b>	Wt 70kg
	PGDam	BURRAWANG DORPER 130673 (Cronje/Cronje)	DOB 7/1/2018
	MGSire	Prieska 120037 Bliksem (Cronje/Kaya)	AI conception; Embryo Transfer
<b>Dam</b>		<b>BURRAWANG DORPER 153295</b>	
	MGDam	BURRAWANG DORPER 139098	Single birth
<b>Breeder's Comments:</b> An easy walking ewe with lots of meat + very good width.			



<b>LOT 9</b>	<b>BURRAWANG DORPER 170892</b> <b>Stud T5</b>		
<b>SIL Single</b>			
	PGSire	Cronje 050407	<b>History</b>
<b>Sire</b>	<b>BURRAWANG DORPER 102086 OLD MATE</b>		Wt 74kg
	PGDam	Cronje 050041	DOB 5/30/2017
	MGSire	BURRAWANG DORPER 130591	Natural conception
<b>Dam</b>	<b>BURRAWANG DORPER 153438</b>		
	MGDam	Dorper Stud Park 081380	Single birth
<b>Breeder's Comments:</b> Long bodied ewe with good balance			



<b>LOT 10</b>	<b>BURRAWANG DORPER 171216</b> <b>Stud T5</b>		
<b>SIL Single</b>			
	PGSire	Kaya 100485 (Cronje/Cronje)	<b>History</b>
<b>Sire</b>	<b>Kaya 130403 Getafix</b>		Wt 69kg
	PGDam	Kaya 100804 (Cronje/Cronje)	DOB 8/25/2017
	MGSire	BURRAWANG DORPER 130591	Natural conception
<b>Dam</b>	<b>BURRAWANG DORPER 153554</b>		
	MGDam	BURRAWANG DORPER 139335	Triple birth
<b>Breeder's Comments:</b> This ewe has a very good quality head and is easy walking.			



<b>LOT 11</b>	<b>Niemur Dorper 160298</b> <b>Stud T5</b>		
<b>SIL Single</b>			
	PGSire	Cronje 050407	<b>History</b>
<b>Sire</b>	<b>BURRAWANG DORPER 102086 OLD MATE</b>		Wt 70kg
	PGDam	Cronje 050041	DOB 10/17/2016
	MGSire	Dell 100002	AI conception; Embryo Transfer
<b>Dam</b>	<b>Niemur 120483</b>		
	MGDam	Niemur 110378	Single birth
<b>Breeder's Comments:</b> She has a very long body, good loins & a very feminine shape.			



<b>LOT 12</b>	<b>BURRAWANG DORPER 161400</b> <b>Stud T5</b>		
<b>SIL Single</b>			
	PGSire	BURRAWANG DORPER 130591	<b>History</b>
<b>Sire</b>	<b>BURRAWANG DORPER 153130 MICHAEL JACKSON</b>		Wt 66kg
	PGDam	BURRAWANG DORPER 102057 (Cronje/Cronje)	DOB 9/13/2016
	MGSire	BURRAWANG DORPER 102086 OLD MATE	Natural conception
<b>Dam</b>	<b>BURRAWANG DORPER 153299</b>		
	MGDam	BURRAWANG DORPER 122023	Single birth
<b>Breeder's Comments:</b> Quality, balanced ewe with great outer twist and feminine head.			



<b>LOT 13</b>	<b>BURRAWANG DORPER 153393</b> <b>Stud T5</b>		
<b>SIL Single</b>			
	PGSire	Cronje 050407	<b>History</b>
<b>Sire</b>	<b>BURRAWANG DORPER 102086 OLD MATE</b>		
	PGDam	Cronje 050041	DOB 8/10/2015
	MGSire	Why Not 10044	AI conception; Embryo Transfer
<b>Dam</b>	<b>BURRAWANG DORPER 122023</b>		
	MGDam	BURRAWANG DORPER 102070 (Cronje/Cronje)	Single birth
<b>Breeder's Comments:</b> Very wide, meaty ewe with lots of capacity.			



<b>LOT 14</b>	<b>BURRAWANG DORPER 153291</b> <b>Stud T5</b>		
<b>SIL Single</b>			
	PGSire	Kaya 100478 (Cronje/Cronje)	<b>History</b>
<b>Sire</b>	<b>Prieska 120037 Bliksem (Cronje/Kaya)</b>		
	PGDam	Kaya 080216	DOB 8/6/2015
	MGSire	Kaya 100806	AI conception; Embryo Transfer
<b>Dam</b>	<b>BURRAWANG DORPER 139185</b>		
	MGDam	Kaya 90414 (Mickey Phillips/Mickey Phillips)	Single birth
<b>Breeder's Comments:</b> Very well balanced ewe with very good quality head.			



<b>LOT 15</b>	<b>BURRAWANG DORPER 190713</b> <b>Stud T4</b>		
<b>SIL Twins</b>			
	PGSire	BURRAWANG DORPER 153309 DIGGER	<b>History</b>
<b>Sire</b>	<b>BURRAWANG DORPER 170996 GREATMATE</b>		
	PGDam	BURRAWANG DORPER 160009	DOB 6/10/2019
	MGSire	Kaya 130403 Getafix (Cronje/Cronje)	Natural conception
<b>Dam</b>	<b>BURRAWANG DORPER 160959</b>		
	MGDam	BURRAWANG DORPER 130544	Single birth
<b>Breeder's Comments:</b> High quality ewe with a lot of meat.			



<b>LOT 16</b>	<b>BURRAWANG DORPER 180885</b> <b>Stud T4</b>		
<b>SIL Twins</b>			
	PGSire	Kaya 130403 Getafix (Cronje/Cronje)	<b>History</b>
<b>Sire</b>	<b>BURRAWANG DORPER 160871 OBELIX</b>		
	PGDam	BURRAWANG DORPER 122009	DOB 4/20/2018
	MGSire	BURRAWANG DORPER 130591	AI conception; Embryo Transfer
<b>Dam</b>	<b>BURRAWANG DORPER 153480</b>		
	MGDam	Dorper Stud Park 130099	Single birth
<b>Breeder's Comments:</b> Lots of meat and a big barrel.			



<b>LOT 17</b>	<b>BURRAWANG DORPER 170420</b> <b>Stud T4</b>		
<b>SIL Twins</b>			
	PGSire	Prieska 120037 Bliksem (Cronje/Kaya)	<b>History</b>
<b>Sire</b>		<b>BURRAWANG DORPER 153118 BLINKI</b>	Wt 77kg
	PGDam	BURRAWANG DORPER 122046	DOB 4/14/2017
	MGSire	Kaya 100818 (Mickey Phillips/Mickey Phillips)	AI conception; Embryo Transfer
<b>Dam</b>		<b>BURRAWANG DORPER 139057</b>	
	MGDam	Kaya 90200 (Mickey Phillips/Mickey Phillips)	Single birth
<b>Breeder's Comments:</b> A long, high quality ewe with nice outer twist.			



LOT 17 BURRAWANG DORPER 170420

<b>LOT 18</b>	<b>BURRAWANG DORPER 172242</b> <b>Stud T4</b>		
<b>SIL Twins</b>			
	PGSire	BURRAWANG DORPER 102086 OLD MATE	<b>History</b>
<b>Sire</b>		<b>BURRAWANG DORPER 153524 BORIS</b>	Wt 64.5kg
	PGDam	Dorper Stud Park 123097	DOB 11/10/2017
	MGSire	Global 090044	AI conception; Embryo Transfer
<b>Dam</b>		<b>BURRAWANG DORPER 122046</b>	
	MGDam	BURRAWANG DORPER 102029 (Cronje/Cronje)	Single birth
<b>Breeder's Comments:</b> Big ewe with long muscle and deep flank.			



LOT 18 BURRAWANG DORPER 172242

<b>LOT 19</b>	<b>BURRAWANG DORPER 171061</b> <b>Stud T4</b>		
<b>SIL Twins</b>			
	PGSire	BURRAWANG DORPER 130591	<b>History</b>
<b>Sire</b>		<b>BURRAWANG DORPER 153311 TOOLBOX</b>	Wt 68kg
	PGDam	BURRAWANG DORPER 130557	DOB 9/20/2017
	MGSire	BURRAWANG DORPER 130591	Natural conception
<b>Dam</b>		<b>BURRAWANG DORPER 160308</b>	
	MGDam	Dorper Stud Park 123071	Single birth
<b>Breeder's Comments:</b> Stylish ewe with a deep barrel and lots of capacity.			



LOT 19 BURRAWANG DORPER 171061

<b>LOT 20</b>	<b>BURRAWANG DORPER 171805</b> <b>Stud T4</b>		
<b>SIL Twins</b>			
	PGSire	BURRAWANG DORPER 153120 BOLT	<b>History</b>
<b>Sire</b>		<b>BURRAWANG DORPER 160232 NUT</b>	Wt 68.5kg
	PGDam	BURRAWANG DORPER 139298	DOB 9/15/2017
	MGSire	Cronje 020199	AI conception; Embryo Transfer
<b>Dam</b>		<b>BURRAWANG DORPER 102011</b>	
	MGDam	Cronje 020216	Single birth
<b>Breeder's Comments:</b> Very sound ewe with good head, nice loins and topline.			



LOT 20 BURRAWANG DORPER 171805



<b>LOT 21</b>	<b>Niemur Dorper 170031 Stud T4</b>		
<b>SIL Twins</b>			
	PGSire	Niemur 130185	<b>History</b>
<b>Sire</b>	<b>Niemur Two 150056</b>		Wt 62kg
	PGDam	Niemur Two 110141	DOB 1/2/2017
	MGSire	Amarula 113293	Natural conception
<b>Dam</b>	<b>Niemur 130340</b>		
	MGDam	Newstead 90273	Single birth
<b>Breeder's Comments:</b> Long, free moving ewe with a good head.			

Please view video for  
this lot available via  
**AuctionsPlus**

<b>LOT 22</b>	<b>BURRAWANG DORPER 171207 Stud T4</b>		
<b>SIL Twins</b>			
	PGSire	BURRAWANG DORPER 130591	<b>History</b>
<b>Sire</b>	<b>BURRAWANG DORPER 153311 TOOLBOX</b>		Wt 66kg
	PGDam	BURRAWANG DORPER 130557	DOB 8/25/2017
	MGSire	Why Not 10044	Natural conception
<b>Dam</b>	<b>BURRAWANG DORPER 122028</b>		
	MGDam	BURRAWANG DORPER 102162(Cronje/Cronje)	Single birth
<b>Breeder's Comments:</b> Deep ewe with wide outer twist and well developed loins.			



LOT 22 BURRAWANG DORPER 171207

<b>LOT 23</b>	<b>BURRAWANG DORPER 171776 Stud T4</b>		
<b>SIL Twins</b>			
	PGSire	BURRAWANG DORPER 130591	<b>History</b>
<b>Sire</b>	<b>BURRAWANG DORPER 153130 MICHAEL JACKSON</b>		Wt 70kg
	PGDam	BURRAWANG DORPER 102057 (Cronje/Cronje)	DOB 9/15/2017
	MGSire	Kaya 091162	AI conception; Embryo Transfer
<b>Dam</b>	<b>Kaya 120133</b>		
	MGDam	Kaya 101729	Single birth
<b>Breeder's Comments:</b> Very wide spring of rib and deep barrel.			



LOT 23 BURRAWANG DORPER 171776

<b>LOT 24</b>	<b>BURRAWANG DORPER 153323 Stud T4</b>		
<b>SIL Twins</b>			
	PGSire	Kaya 100478 (Cronje/Cronje)	<b>History</b>
<b>Sire</b>	<b>Prieska 120037 Bliksem (Cronje/Kaya)</b>		Wt 78kg
	PGDam	Kaya 080216	DOB 8/7/2015
	MGSire	Kaya 100818 (Mickey Phillips/Mickey Phillips)	AI conception; Embryo Transfer
<b>Dam</b>	<b>BURRAWANG DORPER 139026</b>		
	MGDam	Kaya 90200 (Mickey Phillips/Mickey Phillips)	Single birth
<b>Breeder's Comments:</b> Long body and feminine shape; lots of meat.			



LOT 24 BURRAWANG DORPER 153323

<b>LOT 25</b>	<b>BURRAWANG DORPER 190751</b>		
<b>SIL Single</b>	<b>Stud T4</b>		
	PGSire	Kaya 130403 Getafix (Cronje/Cronje)	<b>History</b>
<b>Sire</b>	<b>BURRAWANG DORPER 160329 DRUID</b>		Wt 64kg
	PGDam	BURRAWANG DORPER 112019	DOB 6/10/2019
	MGSire	BURRAWANG DORPER 102086 OLD MATE	Natural conception
<b>Dam</b>	<b>BURRAWANG DORPER 170953</b>		
	MGDam	BURRAWANG DORPER 153024	Single birth
<b>Breeder's Comments:</b> High quality ewe with good balance, good head, long body and lots of meat. Wicus's pick!			



<b>LOT 26</b>	<b>BURRAWANG DORPER 180842</b>		
<b>SIL Single</b>	<b>Stud T4</b>		
	PGSire	Dell 130202	<b>History</b>
<b>Sire</b>	<b>Dell 150069 Rumble</b>		Wt 65kg
	PGDam	Dell 120357	DOB 4/20/2018
	MGSire	BURRAWANG DORPER 130591	AI conception; Embryo Transfer
<b>Dam</b>	<b>BURRAWANG DORPER 153482</b>		
	MGDam	Dorper Stud Park 130219	Single birth
<b>Breeder's Comments:</b> Meaty ewe with very good loins and deep body. May not be registerable as her MGD is not yet registered.			



<b>LOT 27</b>	<b>BURRAWANG DORPER 181079</b>		
<b>SIL Single</b>	<b>Stud T4</b>		
	PGSire	BURRAWANG DORPER 153130 MICHAEL JACKSON	<b>History</b>
<b>Sire</b>	<b>BURRAWANG DORPER 170424 MOONWALK</b>		Wt 66kg
	PGDam	Kaya 120704	DOB 7/1/2018
	MGSire	BURRAWANG DORPER 130591	AI conception; Embryo Transfer
<b>Dam</b>	<b>BURRAWANG DORPER 153371</b>		
	MGDam	Dorper Stud Park 101759	Single birth
<b>Breeder's Comments:</b> Very feminine ewe with long body and rump, very wet and well balanced.			



<b>LOT 28</b>	<b>BURRAWANG DORPER 181182</b>		
<b>SIL Single</b>	<b>Stud T4</b>		
	PGSire	BURRAWANG DORPER 153130 MICHAEL JACKSON	<b>History</b>
<b>Sire</b>	<b>BURRAWANG DORPER 170424 MOONWALK</b>		Wt 72kg
	PGDam	Kaya 120704	DOB 7/1/2018
	MGSire	BURRAWANG DORPER 102086 OLD MATE	AI conception; Embryo Transfer
<b>Dam</b>	<b>BURRAWANG DORPER 160258</b>		
	MGDam	BOK 110048	Single birth
<b>Breeder's Comments:</b> This ewe has a deep and very long body; she's carrying a lot of meat.			



<b>LOT 29</b>		<b>BURRAWANG DORPER 180410</b> <b>Stud T4</b>	
<b>SIL Single</b>			
	PGSire	BURRAWANG DORPER 102086 OLD MATE	<b>History</b>
<b>Sire</b>		<b>BURRAWANG DORPER 161181 CAPTAIN</b>	
	PGDam	BURRAWANG DORPER 141145	DOB 5/31/2018
	MGSire	BURRAWANG DORPER 153163	Natural conception
<b>Dam</b>		<b>BURRAWANG DORPER 161522</b>	
	MGDam	Kaya 120034	Single birth
<b>Breeder's Comments:</b> Well balanced, deep body and flank with big outer twist.			



<b>LOT 30</b>		<b>BURRAWANG DORPER 181238</b> <b>Stud T4</b>	
<b>SIL Single</b>			
	PGSire	Kaya 130403 Getafix (Cronje/Cronje)	<b>History</b>
<b>Sire</b>		<b>BURRAWANG DORPER 170915 6GUN</b>	
	PGDam	BURRAWANG DORPER 130673 (Cronje/Cronje)	DOB 7/1/2018
	MGSire	Prieska 120037 Bliksem (Cronje/Kaya)	AI conception; Embryo Transfer
<b>Dam</b>		<b>BURRAWANG DORPER 153293</b>	
	MGDam	BURRAWANG DORPER 139098	Single birth
<b>Breeder's Comments:</b> Feminine ewe with nice spring of rib, wide at the back and good head.			



<b>LOT 31</b>		<b>BURRAWANG DORPER 171649</b> <b>Stud T4</b>	
<b>SIL Single</b>			
	PGSire	BURRAWANG DORPER 130591	<b>History</b>
<b>Sire</b>		<b>BURRAWANG DORPER 153130 MICHAEL JACKSON</b>	
	PGDam	BURRAWANG DORPER 102057 (Cronje/Cronje)	DOB 9/15/2017
	MGSire	Prieska 120037 Bliksem (Cronje/Kaya)	AI conception; Embryo Transfer
<b>Dam</b>		<b>BURRAWANG DORPER 153282</b>	
	MGDam	BURRAWANG DORPER 139026	Single birth
<b>Breeder's Comments:</b> Big barrel, deep body and strong, but feminine, with lots of body fat. A real ram producer!			



<b>LOT 32</b>		<b>BURRAWANG DORPER 172215</b> <b>Stud T4</b>	
<b>SIL Single</b>			
	PGSire	Prieska 120037 Bliksem (Cronje/Kaya)	<b>History</b>
<b>Sire</b>		<b>BURRAWANG DORPER 153118 BLINKI</b>	
	PGDam	BURRAWANG DORPER 122046	DOB 11/10/2017
	MGSire	Kaya 120099	AI conception; Embryo Transfer
<b>Dam</b>		<b>Kaya 140263</b>	
	MGDam	Kaya 121182	Single birth
<b>Breeder's Comments:</b> An easy moving ewe with good head and very safe forequarter.			



<b>LOT 33</b>	<b>BURRAWANG DORPER 171637</b>		
<b>SIL Single</b>	<b>Stud T4</b>		
	PGSire	BURRAWANG DORPER 102086 OLD MATE	<b>History</b>
<b>Sire</b>	<b>BURRAWANG DORPER 153524 BORIS</b>		Wt 60kg
	PGDam	Dorper Stud Park 123097	DOB 9/15/2017
	MGSire	Kaya 100657	AI conception; Embryo Transfer
<b>Dam</b>	<b>Kaya 120010</b>		
	MGDam	Kaya 101098	Single birth
<b>Breeder's Comments:</b> A well balanced, free moving ewe with good topline.			



<b>LOT 34</b>	<b>BURRAWANG DORPER 161307</b>		
<b>SIL Single</b>	<b>Stud T4</b>		
	PGSire	BURRAWANG DORPER 130591	<b>History</b>
<b>Sire</b>	<b>BURRAWANG DORPER 153130 MICHAEL JACKSON</b>		Wt 63.5kg
	PGDam	BURRAWANG DORPER 102057 (Cronje/Cronje)	DOB 9/5/2016
	MGSire	BURRAWANG DORPER 130591	Natural conception
<b>Dam</b>	<b>BURRAWANG DORPER 153554</b>		
	MGDam	BURRAWANG DORPER 139335	Single birth
<b>Breeder's Comments:</b> Very feminine ewe with a lot of depth, strong rump, well developed loins and good cover.			



<b>LOT 35</b>	<b>BURRAWANG WHITE DORPER 170770</b>		
<b>SIL Twins</b>	<b>Stud T5</b>		
	PGSire	BURRAWANG WHITE DORPER 120078	<b>History</b>
<b>Sire</b>	<b>BURRAWANG WHITE DORPER 151420 PIET</b>		Wt 60.5kg
	PGDam	BURRAWANG WHITE DORPER 120020	DOB 5/30/2017
	MGSire	BURRAWANG WHITE DORPER 111403	Natural conception
<b>Dam</b>	<b>BURRAWANG WHITE DORPER 130244</b>		
	MGDam	BURRAWANG WHITE DORPER 101537	Single birth
<b>Breeder's Comments:</b> Sired by PIET (the 2019 Australian National Supreme Champion), this is a very feminine ewe, long through the body with sound, free moving shoulders.			

**Please view video for  
this lot available via  
AuctionsPlus**

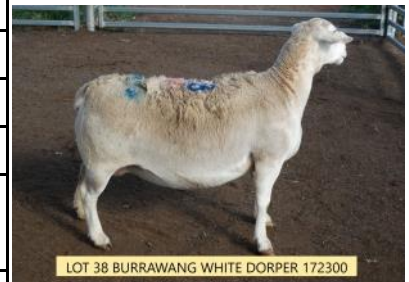
<b>LOT 36</b>	<b>BURRAWANG WHITE DORPER 172503</b>		
<b>SIL Twins</b>	<b>Stud T5</b>		
	PGSire	BURRAWANG WHITE DORPER 140373 BARREL	<b>History</b>
<b>Sire</b>	<b>BURRAWANG WHITE DORPER 151216 KEG</b>		Wt 58.5kg
	PGDam	BURRAWANG WHITE DORPER 111394	DOB 11/24/2017
	MGSire	BURRAWANG WHITE DORPER 151420 PIET	Natural conception
<b>Dam</b>	<b>BURRAWANG WHITE DORPER 161702</b>		
	MGDam	BURRAWANG WHITE DORPER 101022	Single birth
<b>Breeder's Comments:</b> A very feminine ewe with character.			



<b>LOT 37</b>	<b>BURRAWANG WHITE DORPER 171487</b>		
<b>SIL Twins</b>	<b>Stud T5</b>		
	PGSire	BURRAWANG WHITE DORPER 111129	<b>History</b>
<b>Sire</b>		<b>BURRAWANG WHITE DORPER 151023 BOSTIK</b>	Wt 68kg
	PGDam	BURRAWANG WHITE DORPER 120190	DOB 9/15/2017
	MGSire	BURRAWANG WHITE DORPER 120412	AI conception; Embryo Transfer
<b>Dam</b>		<b>BURRAWANG WHITE DORPER 140210</b>	
	MGDam	BURRAWANG WHITE DORPER 120582	Single birth
<b>Breeder's Comments:</b> A wide/deep ewe with loads of capacity.			



<b>LOT 38</b>	<b>BURRAWANG WHITE DORPER 172300</b>		
<b>SIL Twins</b>	<b>Stud T5</b>		
	PGSire	BURRAWANG WHITE DORPER 140373 BARREL	<b>History</b>
<b>Sire</b>		<b>BURRAWANG WHITE DORPER 151288 JUG</b>	Wt 62kg
	PGDam	BURRAWANG WHITE DORPER 130070	DOB 11/10/2017
	MGSire	BURRAWANG WHITE DORPER 120412	AI conception; Embryo Transfer
<b>Dam</b>		<b>BURRAWANG WHITE DORPER 140172</b>	
	MGDam	BURRAWANG WHITE DORPER 101355	Single birth
<b>Breeder's Comments:</b> This ewe has a good head, is well balanced and is deep and wide in her body.			



<b>LOT 39</b>	<b>BURRAWANG WHITE DORPER 160436</b>		
<b>SIL Twins</b>	<b>Stud T5</b>		
	PGSire	BURRAWANG WHITE DORPER 111129	<b>History</b>
<b>Sire</b>		<b>BURRAWANG WHITE DORPER 130160</b>	Wt 64kg
	PGDam	BURRAWANG WHITE DORPER 080406	DOB 4/20/2016
	MGSire	African G041	AI conception; Embryo Transfer
<b>Dam</b>		<b>BURRAWANG WHITE DORPER 130070</b>	
	MGDam	BURRAWANG WHITE DORPER 111018	Single birth
<b>Breeder's Comments:</b> Very long, deep ewe who is very well balanced.			



<b>LOT 40</b>	<b>BURRAWANG WHITE DORPER 160030</b>		
<b>SIL Twins</b>	<b>Stud T5</b>		
	PGSire	BURRAWANG WHITE DORPER 111129	<b>History</b>
<b>Sire</b>		<b>BURRAWANG WHITE DORPER 140430 AWESOME</b>	Wt 75kg
	PGDam	BURRAWANG WHITE DORPER 130211	DOB 4/14/2016
	MGSire	BURRAWANG WHITE DORPER 111129	AI conception; Embryo Transfer
<b>Dam</b>		<b>BURRAWANG WHITE DORPER 120413</b>	
	MGDam	BURRAWANG WHITE DORPER 111101	Single birth
<b>Breeder's Comments:</b> Wide, deep ewe with huge capacity and extremely long rump.			



<b>LOT 41</b>	<b>BURRAWANG WHITE DORPER 180127</b> <b>Stud T5</b>		
<b>SIL Single</b>			
	PGSire	BURRAWANG WHITE DORPER 140373 BARREL	<b>History</b>
<b>Sire</b>	<b>BURRAWANG WHITE DORPER 151288 JUG</b>		Wt 65.5kg
	PGDam	BURRAWANG WHITE DORPER 130070	DOB 3/31/2018
	MGSire	BURRAWANG WHITE DORPER 111129	Natural conception
<b>Dam</b>	<b>BURRAWANG WHITE DORPER 151004</b>		
	MGDam	BURRAWANG WHITE DORPER 120190	Single birth
<b>Breeder's Comments:</b> Very deep bodied ewe carrying a lot of meat and with good balance.			



<b>LOT 42</b>	<b>BURRAWANG WHITE DORPER 181004</b> <b>Stud T5</b>		
<b>SIL Single</b>			
	PGSire	Kaya White 060036	<b>History</b>
<b>Sire</b>	<b>BURRAWANG WHITE DORPER 170179 TARZAN</b>		Wt 57kg
	PGDam	BURRAWANG WHITE DORPER 090084	DOB 7/1/2018
	MGSire	BURRAWANG WHITE DORPER 120129	AI conception; Embryo Transfer
<b>Dam</b>	<b>BURRAWANG WHITE DORPER 151067</b>		
	MGDam	BURRAWANG WHITE DORPER 111029	Single birth
<b>Breeder's Comments:</b> Very strong, yet feminine, ewe with a very good topline.			



<b>LOT 43</b>	<b>BURRAWANG WHITE DORPER 181766</b> <b>Stud T5</b>		
<b>SIL Single</b>			
	PGSire	Kaya White 060036	<b>History</b>
<b>Sire</b>	<b>BURRAWANG WHITE DORPER 170179 TARZAN</b>		Wt 63.5kg
	PGDam	BURRAWANG WHITE DORPER 090084	DOB 9/1/2018
	MGSire	BURRAWANG WHITE DORPER 120220	AI conception; Embryo Transfer
<b>Dam</b>	<b>BURRAWANG WHITE DORPER 140076</b>		
	MGDam	BURRAWANG WHITE DORPER 101425	Single birth
<b>Breeder's Comments:</b> Long ewe with good topline and head; long muscles.			



<b>LOT 44</b>	<b>BURRAWANG WHITE DORPER 180072</b> <b>Stud T5</b>		
<b>SIL Single</b>			
	PGSire	Kaya White 060036	<b>History</b>
<b>Sire</b>	<b>BURRAWANG WHITE DORPER 170179 TARZAN</b>		Wt 52.5kg
	PGDam	BURRAWANG WHITE DORPER 090084	DOB 9/1/2018
	MGSire	BURRAWANG WHITE DORPER 140430 AWESOME	Natural conception
<b>Dam</b>	<b>BURRAWANG WHITE DORPER 160773</b>		
	MGDam	BURRAWANG WHITE DORPER 120305	Single birth
<b>Breeder's Comments:</b> Good outer twist and loins; a well developed young ewe.			



<b>LOT 45</b>	<b>BURRAWANG WHITE DORPER 182189</b>		
<b>SIL Single</b>	<b>Stud T5</b>		
	PGSire	BURRAWANG WHITE DORPER 120078	<b>History</b>
<b>Sire</b>	<b>BURRAWANG WHITE DORPER 151420 PIET</b>		Wt 66.5kg
	PGDam	BURRAWANG WHITE DORPER 120020	DOB 12/15/2018
	MGSire	BURRAWANG WHITE DORPER 111129	Natural conception
<b>Dam</b>	<b>BURRAWANG WHITE DORPER 151162</b>		
	MGDam	BURRAWANG WHITE DORPER 130204	Single birth
<b>Breeder's Comments:</b> Sired by PIET (the 2019 Australian National Supreme Champion), this is a high quality ewe with good development and balance; she could win any show. An amazing outer twist and loins. Wicus's pick of the whites.			



<b>LOT 46</b>	<b>BURRAWANG WHITE DORPER 170063</b>		
<b>SIL Single</b>	<b>Stud T5</b>		
	PGSire	BURRAWANG WHITE DORPER 120078	<b>History</b>
<b>Sire</b>	<b>BURRAWANG WHITE DORPER 151420 PIET</b>		Wt 68.5kg
	PGDam	BURRAWANG WHITE DORPER 120020	DOB 4/14/2017
	MGSire	Kasteel 4411	AI conception; Embryo Transfer
<b>Dam</b>	<b>BURRAWANG WHITE DORPER 080059</b>		
	MGDam	Kasteel 4419	Single birth
<b>Breeder's Comments:</b> Sired by PIET (the 2019 Australian National Supreme Champion), this is a very feminine ewe with good covering and a lot of body fat. Good depth and muscling.			



<b>LOT 47</b>	<b>BURRAWANG WHITE DORPER 170745</b>		
<b>SIL Single</b>	<b>Stud T5</b>		
	PGSire	BURRAWANG WHITE DORPER 111129	<b>History</b>
<b>Sire</b>	<b>BURRAWANG WHITE DORPER 151023 BOSTIK</b>		Wt 71.5kg
	PGDam	BURRAWANG WHITE DORPER 120190	DOB 5/30/2017
	MGSire	BURRAWANG WHITE DORPER 130160	Natural conception
<b>Dam</b>	<b>BURRAWANG WHITE DORPER 151366</b>		
	MGDam	BURRAWANG WHITE DORPER 050045	Single birth
<b>Breeder's Comments:</b> A high quality ewe with good balance; a very safe ewe.			



<b>LOT 48</b>	<b>BURRAWANG WHITE DORPER 172161</b>		
<b>SIL Single</b>	<b>Stud T5</b>		
	PGSire	BURRAWANG WHITE DORPER 111129	<b>History</b>
<b>Sire</b>	<b>BURRAWANG WHITE DORPER 130160</b>		Wt 65kg
	PGDam	BURRAWANG WHITE DORPER 080406	DOB 11/10/2017
	MGSire	BURRAWANG WHITE DORPER 120412	AI conception; Embryo Transfer
<b>Dam</b>	<b>BURRAWANG WHITE DORPER 140074</b>		
	MGDam	BURRAWANG WHITE DORPER 101002	Single birth
<b>Breeder's Comments:</b> This ewe has a very good forequarter and moves smoothly and easily. She has a notably strong jaw.			



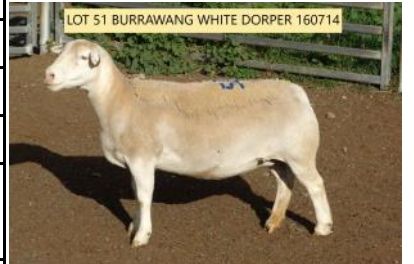
<b>LOT 49</b>	<b>BURRAWANG WHITE DORPER 170773</b>		
<b>SIL Single</b>	<b>Stud T5</b>		
	PGSire	BURRAWANG WHITE DORPER 111129	<b>History</b>
<b>Sire</b>	<b>BURRAWANG WHITE DORPER 151023 BOSTIK</b>		Wt 63kg
	PGDam	BURRAWANG WHITE DORPER 120190	DOB 5/30/2017
	MGSire	BURRAWANG WHITE DORPER 130160	Natural conception
<b>Dam</b>	<b>BURRAWANG WHITE DORPER 151338</b>		
	MGDam	BURRAWANG WHITE DORPER 101431	Single birth
<b>Breeder's Comments:</b> A well balanced and wet ewe who's deep bodied and has a deep flank.			



<b>LOT 50</b>	<b>BURRAWANG WHITE DORPER 161266</b>		
<b>SIL Single</b>	<b>Stud T5</b>		
	PGSire	BURRAWANG WHITE DORPER 140299 GHOST	<b>History</b>
<b>Sire</b>	<b>BURRAWANG WHITE DORPER 151417 CASPER</b>		Wt 58kg
	PGDam	BURRAWANG WHITE DORPER 120585	DOB 8/26/2016
	MGSire	BURRAWANG WHITE DORPER 120038	AI conception
<b>Dam</b>	<b>BURRAWANG WHITE DORPER 140429</b>		
	MGDam	BURRAWANG WHITE DORPER 130251	Single birth
<b>Breeder's Comments:</b> Feminine, quality ewe with a long rump.			



<b>LOT 51</b>	<b>BURRAWANG WHITE DORPER 160714</b>		
<b>SIL Single</b>	<b>Stud T5</b>		
	PGSire	BURRAWANG WHITE DORPER 111129	<b>History</b>
<b>Sire</b>	<b>BURRAWANG WHITE DORPER 120412</b>		Wt 72kg
	PGDam	BURRAWANG WHITE DORPER 080296	DOB 5/20/2016
	MGSire	BURRAWANG WHITE DORPER 120210	Natural conception
<b>Dam</b>	<b>BURRAWANG WHITE DORPER 130102</b>		
	MGDam	BURRAWANG WHITE DORPER 101531	Single birth
<b>Breeder's Comments:</b> Very strong, meaty ewe who's a real ram producer. Very wide at the back.			



<b>LOT 52</b>	<b>BURRAWANG WHITE DORPER 140412</b>		
<b>SIL Single</b>	<b>Stud T5</b>		
	PGSire	BURRAWANG WHITE DORPER 111129	<b>History</b>
<b>Sire</b>	<b>BURRAWANG WHITE DORPER 130139</b>		Wt 74.5kg
	PGDam	BURRAWANG WHITE DORPER 090110	DOB 9/13/2014
	MGSire	Kaya White 080078	Natural conception
<b>Dam</b>	<b>BURRAWANG WHITE DORPER 101554</b>		
	MGDam	BURRAWANG WHITE DORPER 060208	Single birth
<b>Breeder's Comments:</b> A wide and deep barrelled ewe.			





<b>LOT 53</b>	<b>BURRAWANG WHITE DORPER 180642</b>		
<b>SIL Twins</b>	<b>Stud T4</b>		
	PGSire	Kaya White 060036	<b>History</b>
<b>Sire</b>	<b>BURRAWANG WHITE DORPER 170179 TARZAN</b>		Wt 65kg
	PGDam	BURRAWANG WHITE DORPER 090084	DOB 5/12/2018
	MGSire	BURRAWANG WHITE DORPER 111129	AI conception; Embryo Transfer
<b>Dam</b>	<b>BURRAWANG WHITE DORPER 151007</b>		
	MGDam	BURRAWANG WHITE DORPER 101513 (Peet Cilliers/Peet Cilliers)	Single birth
<b>Breeder's Comments:</b> Lots of feminine shape, good rump and topline. A top ewe.			



<b>LOT 54</b>	<b>BURRAWANG WHITE DORPER 170671</b>		
<b>SIL Twins</b>	<b>Stud T4</b>		
	PGSire	BURRAWANG WHITE DORPER 111129	<b>History</b>
<b>Sire</b>	<b>BURRAWANG WHITE DORPER 151256 ALAN</b>		Wt 66kg
	PGDam	BURRAWANG WHITE DORPER 120190	DOB 5/30/2017
	MGSire	BURRAWANG WHITE DORPER 120038	Natural conception
<b>Dam</b>	<b>BURRAWANG WHITE DORPER 140351</b>		
	MGDam	BURRAWANG WHITE DORPER 080062	Single birth
<b>Breeder's Comments:</b> A really beautiful ewe, feminine and balanced. Everything you need.			



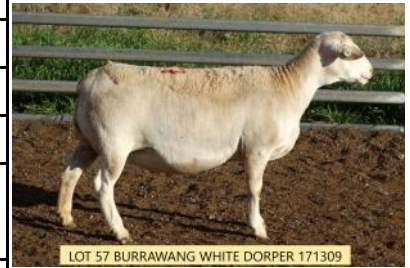
<b>LOT 55</b>	<b>BURRAWANG WHITE DORPER 170312</b>		
<b>SIL Twins</b>	<b>Stud T4</b>		
	PGSire	Kaya White 060036	<b>History</b>
<b>Sire</b>	<b>BURRAWANG WHITE DORPER 101020</b>		Wt 69kg
	PGDam	BURRAWANG WHITE DORPER 080308	DOB 4/14/2017
	MGSire	BURRAWANG WHITE DORPER 101455	AI conception; Embryo Transfer
<b>Dam</b>	<b>BURRAWANG WHITE DORPER 111425</b>		
	MGDam	BURRAWANG WHITE DORPER 090263	Single birth
<b>Breeder's Comments:</b> A long, soft-coated ewe, she has a good topline and is very free moving.			



<b>LOT 56</b>	<b>BURRAWANG WHITE DORPER 171098</b>		
<b>SIL Twins</b>	<b>Stud T4</b>		
	PGSire	BURRAWANG WHITE DORPER 140299 GHOST	<b>History</b>
<b>Sire</b>	<b>BURRAWANG WHITE DORPER 151417 CASPER</b>		Wt 58.5kg
	PGDam	BURRAWANG WHITE DORPER 120585	DOB 9/20/2017
	MGSire	Kaya White 130303	Natural conception
<b>Dam</b>	<b>BURRAWANG WHITE DORPER 160159</b>		
	MGDam	BURRAWANG WHITE DORPER 120448	Single birth
<b>Breeder's Comments:</b> High quality ewe with width and a long rump, she's very safe in the shoulders.			



<b>LOT 57</b>	<b>BURRAWANG WHITE DORPER 171309</b>		
<b>SIL Twins</b>	<b>Stud T4</b>		
	PGSire	BURRAWANG WHITE DORPER 140373 BARREL	<b>History</b>
<b>Sire</b>	<b>BURRAWANG WHITE DORPER 151321</b>		Wt 68kg
	PGDam	BURRAWANG WHITE DORPER 080201	DOB 8/25/2017
	MGSire	BURRAWANG WHITE DORPER 111129	Natural conception
<b>Dam</b>	<b>BURRAWANG WHITE DORPER 130285</b>		
	MGDam	BURRAWANG WHITE DORPER 101506	Single birth
<b>Breeder's Comments:</b> Well balanced ewe with lots of meat and capacity.			



<b>LOT 58</b>	<b>BURRAWANG WHITE DORPER 161131</b>		
<b>SIL Twins</b>	<b>Stud T4</b>		
	PGSire	BURRAWANG WHITE DORPER 140299 GHOST	<b>History</b>
<b>Sire</b>	<b>BURRAWANG WHITE DORPER 151417 CASPER</b>		Wt 64.5kg
	PGDam	BURRAWANG WHITE DORPER 120585	DOB 8/25/2016
	MGSire	BURRAWANG WHITE DORPER 120129	AI conception
<b>Dam</b>	<b>BURRAWANG WHITE DORPER 140337</b>		
	MGDam	BURRAWANG WHITE DORPER 111425	Single birth
<b>Breeder's Comments:</b> This ewe has a very good head, outer twist and topline plus a lot of character.			



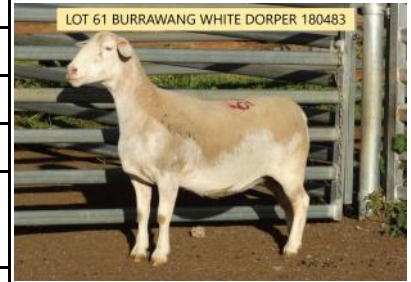
<b>LOT 59</b>	<b>BURRAWANG WHITE DORPER 160751</b>		
<b>SIL Twins</b>	<b>Stud T4</b>		
	PGSire	BURRAWANG WHITE DORPER 111129	<b>History</b>
<b>Sire</b>	<b>BURRAWANG WHITE DORPER 140430 AWESOME</b>		Wt 67.5kg
	PGDam	BURRAWANG WHITE DORPER 130211	DOB 8/22/2016
	MGSire	BURRAWANG WHITE DORPER 101455	AI conception; Embryo Transfer
<b>Dam</b>	<b>BURRAWANG WHITE DORPER 111425</b>		
	MGDam	BURRAWANG WHITE DORPER 090263	Single birth
<b>Breeder's Comments:</b> A ewe with good spring of rib and exceptional width in her body.			



<b>LOT 60</b>	<b>BURRAWANG WHITE DORPER 180978</b>		
<b>SIL Single</b>	<b>Stud T4</b>		
	PGSire	BURRAWANG WHITE DORPER 080101 CARBON	<b>History</b>
<b>Sire</b>	<b>BURRAWANG WHITE DORPER 170272 XEROX</b>		Wt 58kg
	PGDam	BURRAWANG WHITE DORPER 120534	DOB 7/1/2018
	MGSire	Uley 100152	AI conception; Embryo Transfer
<b>Dam</b>	<b>BURRAWANG WHITE DORPER 140022</b>		
	MGDam	BURRAWANG WHITE DORPER 111452	Single birth
<b>Breeder's Comments:</b> A long ewe with a lot of quality; nice and thick in the bone.			



<b>LOT 61</b>	<b>BURRAWANG WHITE DORPER 180483</b>		
<b>SIL Single</b>	<b>Stud T4</b>		
	PGSire	BURRAWANG WHITE DORPER 140373 BARREL	<b>History</b>
<b>Sire</b>	<b>BURRAWANG WHITE DORPER 151216 KEG</b>		Wt 55.5kg
	PGDam	BURRAWANG WHITE DORPER 111394	DOB 5/20/2018
	MGSire	BURRAWANG WHITE DORPER 130160	Natural conception
<b>Dam</b>	<b>BURRAWANG WHITE DORPER 151329</b>		
	MGDam	BURRAWANG WHITE DORPER 090246	Single birth
<b>Breeder's Comments:</b> Well balanced ewe with a lot of meat; she's an easy walking type.			



<b>LOT 62</b>	<b>BURRAWANG WHITE DORPER 181531</b>		
<b>SIL Single</b>	<b>Stud T4</b>		
	PGSire	BURRAWANG WHITE DORPER 111129	<b>History</b>
<b>Sire</b>	<b>BURRAWANG WHITE DORPER 161145 SUNDANCE</b>		Wt 65kg
	PGDam	BURRAWANG WHITE DORPER 080201	DOB 9/1/2018
	MGSire	BURRAWANG WHITE DORPER 130160	Natural conception
<b>Dam</b>	<b>BURRAWANG WHITE DORPER 140448</b>		
	MGDam	BURRAWANG WHITE DORPER 111112	Single birth
<b>Breeder's Comments:</b> Strong ewe with lots of meat and capacity.			



<b>LOT 63</b>	<b>BURRAWANG WHITE DORPER 180111</b>		
<b>SIL Single</b>	<b>Stud T4</b>		
	PGSire	BURRAWANG WHITE DORPER 111129	<b>History</b>
<b>Sire</b>	<b>BURRAWANG WHITE DORPER 151033 CRUNCHY</b>		Wt 58kg
	PGDam	BURRAWANG WHITE DORPER 101513 (Peet Cilliers/Peet Cilliers)	DOB 3/31/2018
	MGSire	Matchless D452	Natural conception
<b>Dam</b>	<b>BURRAWANG WHITE DORPER 111251</b>		
	MGDam	BURRAWANG WHITE DORPER 101051	Single birth
<b>Breeder's Comments:</b> A ewe with a long body and good head.			

**Please view video for  
this lot available via  
AuctionsPlus**

<b>LOT 64</b>	<b>BURRAWANG WHITE DORPER 181042</b>		
<b>SIL Single</b>	<b>Stud T4</b>		
	PGSire	BURRAWANG WHITE DORPER 080101 CARBON	<b>History</b>
<b>Sire</b>	<b>BURRAWANG WHITE DORPER 170272 XEROX</b>		Wt 71kg
	PGDam	BURRAWANG WHITE DORPER 120534	DOB 7/1/2018
	MGSire	Kaya White 130303	AI conception; Embryo Transfer
<b>Dam</b>	<b>BURRAWANG WHITE DORPER 160155</b>		
	MGDam	BURRAWANG WHITE DORPER 101022	Single birth
<b>Breeder's Comments:</b> Long, deep body with good topline.			



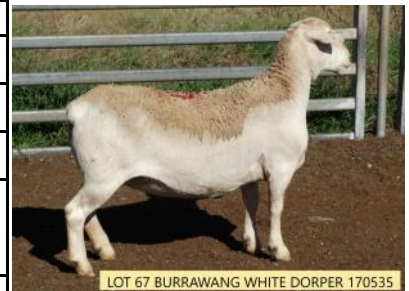
<b>LOT 65</b>	<b>BURRAWANG WHITE DORPER 181038</b>		
<b>SIL Single</b>	<b>Stud T4</b>		
	PGSire	Kaya White 060036	<b>History</b>
<b>Sire</b>	<b>BURRAWANG WHITE DORPER 170179 TARZAN</b>		Wt 58kg
	PGDam	BURRAWANG WHITE DORPER 090084	DOB 7/1/2018
	MGSire	BURRAWANG WHITE DORPER 140299 GHOST	AI conception; Embryo Transfer
<b>Dam</b>	<b>BURRAWANG WHITE DORPER 151298</b>		
	MGDam	BURRAWANG WHITE DORPER 140282	Single birth
<b>Breeder's Comments:</b> A wide ewe with good loins.			



<b>LOT 66</b>	<b>BURRAWANG WHITE DORPER 172505</b>		
<b>SIL Single</b>	<b>Stud T4</b>		
	PGSire	Kaya White 130303	<b>History</b>
<b>Sire</b>	<b>BURRAWANG WHITE DORPER 160063 WESTIE</b>		Wt 58kg
	PGDam	BURRAWANG WHITE DORPER 101022	DOB 11/24/2017
	MGSire	BURRAWANG WHITE DORPER 151013	Natural conception
<b>Dam</b>	<b>BURRAWANG WHITE DORPER 161710</b>		
	MGDam	BURRAWANG WHITE DORPER 140076	Single birth
<b>Breeder's Comments:</b> A long ewe with good outer twist.			



<b>LOT 67</b>	<b>BURRAWANG WHITE DORPER 170535</b>		
<b>SIL Single</b>	<b>Stud T4</b>		
	PGSire	Terraweena 9293 Loftus	<b>History</b>
<b>Sire</b>	<b>BURRAWANG WHITE DORPER 120129</b>		Wt 65kg
	PGDam	BURRAWANG WHITE DORPER 080296	DOB 5/4/2017
	MGSire	Galaxy 090301	AI conception
<b>Dam</b>	<b>BURRAWANG WHITE DORPER 120167</b>		
	MGDam	BURRAWANG WHITE DORPER 101331	Single birth
<b>Breeder's Comments:</b> Long ewe with strong head and thick bones.			



<b>LOT 68</b>	<b>BURRAWANG WHITE DORPER 170746</b>		
<b>SIL Single</b>	<b>Stud T4</b>		
	PGSire	BURRAWANG WHITE DORPER 140373 BARREL	<b>History</b>
<b>Sire</b>	<b>BURRAWANG WHITE DORPER 151321</b>		Wt 64kg
	PGDam	BURRAWANG WHITE DORPER 080201	DOB 5/30/2017
	MGSire	BURRAWANG WHITE DORPER 140299 GHOST	Natural conception
<b>Dam</b>	<b>BURRAWANG WHITE DORPER 151291</b>		
	MGDam	BURRAWANG WHITE DORPER 101513 (Peet Cilliers/Peet Cilliers)	Single birth
<b>Breeder's Comments:</b> This ewe has lots of spring of rib and depth.			

**Please view video for  
this lot available via  
AuctionsPlus**

<b>LOT 69</b>	<b>BURRAWANG WHITE DORPER 172129</b> <b>Stud T4</b>		
<b>SIL Single</b>			
	PGSire	BURRAWANG WHITE DORPER 111129	<b>History</b>
<b>Sire</b>		<b>BURRAWANG WHITE DORPER 130160</b>	Wt 64kg
	PGDam	BURRAWANG WHITE DORPER 080406	DOB 11/10/2017
	MGSire	BURRAWANG WHITE DORPER 120412	AI conception; Embryo Transfer
<b>Dam</b>		<b>BURRAWANG WHITE DORPER 140074</b>	
	MGDam	BURRAWANG WHITE DORPER 101002	Single birth
<b>Breeder's Comments:</b> A ewe with long rump, wide outer twist and long muscles. She's a balanced, safe ewe.			



<b>LOT 70</b>	<b>BURRAWANG WHITE DORPER 170033</b> <b>Stud T4</b>		
<b>SIL Single</b>			
	PGSire	BURRAWANG WHITE DORPER 111129	<b>History</b>
<b>Sire</b>		<b>BURRAWANG WHITE DORPER 151033 CRUNCHY</b>	Wt 65kg
	PGDam	BURRAWANG WHITE DORPER 101513 (Peet Cilliers/Peet Cilliers)	DOB 4/14/2017
	MGSire	Kaya White 060036	AI conception; Embryo Transfer
<b>Dam</b>		<b>BURRAWANG WHITE DORPER 101022</b>	
	MGDam	BURRAWANG WHITE DORPER 080308	Single birth
<b>Breeder's Comments:</b> This ewe is balanced with a lot of meat, great outer twist and good topline.			



<b>LOT 71</b>	<b>BURRAWANG WHITE DORPER 170754</b> <b>Stud T4</b>		
<b>SIL Single</b>			
	PGSire	BURRAWANG WHITE DORPER 120078	<b>History</b>
<b>Sire</b>		<b>BURRAWANG WHITE DORPER 151420 PIET</b>	Wt 68kg
	PGDam	BURRAWANG WHITE DORPER 120020	DOB 5/30/2017
	MGSire	BURRAWANG WHITE DORPER 120210	Natural conception
<b>Dam</b>		<b>BURRAWANG WHITE DORPER 130049</b>	
	MGDam	BURRAWANG WHITE DORPER 111152	Single birth
<b>Breeder's Comments:</b> Sired by PIET (2019 Australian National Supreme Champion), this ewe is a very long, meaty ewe with a good head.			



<b>LOT 72</b>	<b>BURRAWANG WHITE DORPER 171359</b> <b>Stud T4</b>		
<b>SIL Single</b>			
	PGSire	BURRAWANG WHITE DORPER 111129	<b>History</b>
<b>Sire</b>		<b>BURRAWANG WHITE DORPER 151023 BOSTIK</b>	Wt 56kg
	PGDam	BURRAWANG WHITE DORPER 120190	DOB 9/15/2017
	MGSire	Galaxy 090301	AI conception; Embryo Transfer
<b>Dam</b>		<b>BURRAWANG WHITE DORPER 120224</b>	
	MGDam	BURRAWANG WHITE DORPER 090343	Single birth
<b>Breeder's Comments:</b> Nice, well balanced and feminine ewe.			



<b>LOT 73</b>	<b>BURRAWANG WHITE DORPER 160165</b>		
<b>SIL Single</b>	<b>Stud T4</b>		
	PGSire	Inyama 11694	<b>History</b>
<b>Sire</b>	<b>Kaya White 130303</b>		Wt 56kg
	PGDam	Kaya White 080627	DOB 4/22/2016
	MGSire	BURRAWANG WHITE DORPER 080101 CARBON	AI conception
<b>Dam</b>	<b>BURRAWANG WHITE DORPER 111055</b>		
	MGDam	BURRAWANG WHITE DORPER 080252	Single birth
<b>Breeder's Comments:</b> Deep ewe with lots of meat and body fat.			



<b>LOT 74</b>	<b>BURRAWANG WHITE DORPER 161263</b>		
<b>SIL Single</b>	<b>Stud T4</b>		
	PGSire	BURRAWANG WHITE DORPER 140299 GHOST	<b>History</b>
<b>Sire</b>	<b>BURRAWANG WHITE DORPER 151417 CASPER</b>		Wt 62kg
	PGDam	BURRAWANG WHITE DORPER 120585	DOB 8/26/2016
	MGSire	BURRAWANG WHITE DORPER 111403	AI conception
<b>Dam</b>	<b>BURRAWANG WHITE DORPER 130244</b>		
	MGDam	BURRAWANG WHITE DORPER 101537	Single birth
<b>Breeder's Comments:</b> A long ewe with lots of character in the head; good meat quality.			



<b>LOT 75</b>	<b>BURRAWANG WHITE DORPER 160069</b>		
<b>SIL Single</b>	<b>Stud T4</b>		
	PGSire	BURRAWANG WHITE DORPER 130033	<b>History</b>
<b>Sire</b>	<b>BURRAWANG WHITE DORPER 140373 BARREL</b>		Wt 58kg
	PGDam	BURRAWANG WHITE DORPER 130037	DOB 4/14/2016
	MGSire	BURRAWANG WHITE DORPER 120210	AI conception; Embryo Transfer
<b>Dam</b>	<b>BURRAWANG WHITE DORPER 130079</b>		
	MGDam	BURRAWANG WHITE DORPER 101360	Single birth
<b>Breeder's Comments:</b> Very feminine ewe with good balance.			



<b>LOT 76</b>	<b>BURRAWANG WHITE DORPER 161437</b>		
<b>SIL Single</b>	<b>Stud T4</b>		
	PGSire	BURRAWANG WHITE DORPER 111129	<b>History</b>
<b>Sire</b>	<b>BURRAWANG WHITE DORPER 130160</b>		Wt 74kg
	PGDam	BURRAWANG WHITE DORPER 080406	DOB 9/1/2016
	MGSire	BURRAWANG WHITE DORPER 080386 PhD	Natural conception
<b>Dam</b>	<b>BURRAWANG WHITE DORPER 101203</b>		
	MGDam	BURRAWANG WHITE DORPER 070272	Triple birth
<b>Breeder's Comments:</b> Very wet, deep ewe with lots of meat.			



<b>LOT 77</b>	<b>BURRAWANG WHITE DORPER 151161</b> <b>Stud T4</b>		
<b>SIL Single</b>			
	PGSire	Matchless D452	<b>History</b>
<b>Sire</b>	<b>BURRAWANG WHITE DORPER 111129</b>		Wt 68kg
	PGDam	BURRAWANG WHITE DORPER 080059 (Kasteel/Kasteel)	DOB 5/12/2015
	MGSire	BURRAWANG WHITE DORPER 120038	Natural conception
<b>Dam</b>	<b>BURRAWANG WHITE DORPER 140065</b>		
	MGDam	BURRAWANG WHITE DORPER 111385	Single birth
<b>Breeder's Comments:</b> Good quality, deep body, deep flank and lots of meat. She's been a good ewe for us.			



<b>LOT 78</b>	<b>BURRAWANG WHITE DORPER 171491</b> <b>Commercial T3</b>		
<b>SIL Single</b>			
	PGSire	White Dorper Sire	<b>History</b>
<b>Sire</b>	<b>White Dorper Sire</b>		Wt 59kg
	PGDam	White Dorper Dam	DOB 9/15/2017
	MGSire	White Dorper Sire	Natural conception
<b>Dam</b>	<b>BURRAWANG WHITE DORPER DAM</b>		
	MGDam	BURRAWANG WHITE DORPER DAM	Single birth
<b>Breeder's Comments:</b> A balanced, high quality ewe. May not be registerable; dam is a full blood white dorper ewe but specific ID is unknown.			



<b>LOT 79</b>	<b>BURRAWANG WHITE DORPER 181810</b> <b>Commercial T3</b>		
<b>SIL Single</b>			
	PGSire	BURRAWANG WHITE DORPER 080101 CARBON	<b>History</b>
<b>Sire</b>	<b>BURRAWANG WHITE DORPER 170272 XEROX</b>		Wt 61kg
	PGDam	BURRAWANG WHITE DORPER 120534	DOB 9/1/2018
	MGSire	White Dorper Sire	Natural conception
<b>Dam</b>	<b>BURRAWANG WHITE DORPER DAM</b>		
	MGDam	BURRAWANG White Dorper Dam	U/K # in birth
<b>Breeder's Comments:</b> A high quality, balanced ewe with a lot of meat quality. May not be registerable; dam is a full blood white dorper ewe but specific ID is unknown.			



<b>LOT 80</b>	<b>Niemur Dorper 150327</b> <b>Commercial T3</b>		
<b>SIL Twins</b>			
	PGSire	Dell Dorpers 10116	<b>History</b>
<b>Sire</b>	<b>Olsen Park 120027</b>		Wt 84kg
	PGDam	Roslynmead 3698	DOB 10/25/2015
	MGSire	Niemur Two 110154	AI conception; Embryo Transfer
<b>Dam</b>	<b>Niemur 130234</b>		
	MGDam	Niemur 110236	Single birth
<b>Breeder's Comments:</b> This ewe, carrying twins, has a deep body and a lot of capacity.			



<b>LOT 81</b>	<b>BURRAWANG DORPER 180304</b> <b>Commercial T3</b>		
<b>SIL Single</b>			
	PGSire	Dorper sire to be confirmed	<b>History</b>
<b>Sire</b>		<b>Niemur 160383</b>	
	PGDam	Dorper dam to be confirmed	Wt 64kg
	MGSire	Amarula 113293	DOB 3/1/2018
<b>Dam</b>		<b>Niemur 130376</b>	Natural conception
	MGDam	Niemur 110172	Single birth
<b>Breeder's Comments:</b> A long bodied ewe with long muscles, good topline and great outer twist. Registration may be subject to confirmation.			



<b>LOT 82</b>	<b>BURRAWANG DORPER 181268</b> <b>Commercial T3</b>		
<b>SIL Single</b>			
	PGSire	BURRAWANG DORPER 102086 OLD MATE	<b>History</b>
<b>Sire</b>		<b>BURRAWANG DORPER 153359 YOUNG MATE</b>	
	PGDam	BURRAWANG DORPER 139067	Wt 64kg
	MGSire	Dorper Sire	DOB 8/1/2018
<b>Dam</b>		<b>Dorper Ewe</b>	Natural conception
	MGDam	Dorper Ewe	U/K
<b>Breeder's Comments:</b> An exceptionally wide and deep ewe with a lot of body fat. She's from the OLD MATE bloodline but may not be registerable; dam is a full blood dorper ewe but specific ID is unknown.			



<b>LOT 83</b>	<b>BURRAWANG DORPER 180364</b> <b>Commercial T3</b>		
<b>SIL Twins</b>			
	PGSire	BURRAWANG DORPER 102086 OLD MATE	<b>History</b>
<b>Sire</b>		<b>BURRAWANG DORPER 153309 DIGGER</b>	
	PGDam	BURRAWANG DORPER 139184	Wt 63.5kg
	MGSire	Kaya 90400	DOB 5/1/2018
<b>Dam</b>		<b>BOK 120065</b>	AI conception; Embryo Transfer
	MGDam	BOK 090002	Single birth
<b>Breeder's Comments:</b> Long, free moving ewe with good head.			



<b>LOT 84</b>	<b>BURRAWANG DORPER 181155</b> <b>Commercial T3</b>		
<b>SIL Twins</b>			
	PGSire	BURRAWANG DORPER 153130 MICHAEL JACKSON	<b>History</b>
<b>Sire</b>		<b>BURRAWANG DORPER 170424 MOONWALK</b>	
	PGDam	Kaya 120704	Wt 60kg
	MGSire	BURRAWANG DORPER 102086 OLD MATE	DOB 7/1/2018
<b>Dam</b>		<b>BURRAWANG DORPER 160364</b>	AI conception; Embryo Transfer
	MGDam	BURRAWANG DORPER 122050	Single birth
<b>Breeder's Comments:</b> Safe, deep bodied ewe with good outer twist.			





<b>LOT 85</b>	<b>BURRAWANG DORPER 181220</b> <b>Commercial T3</b>		
<b>SIL Twins</b>			
	PGSire	Kaya 130403 Getafix (Cronje/Cronje)	<b>History</b>
<b>Sire</b>		<b>BURRAWANG DORPER 160329 DRUID</b>	Wt 69kg
	PGDam	BURRAWANG DORPER 112019	DOB 7/1/2018
	MGSire	Kaya 110931	AI conception; Embryo Transfer
<b>Dam</b>		<b>BURRAWANG DORPER 141032</b>	
	MGDam	BURRAWANG DORPER 122080	Single birth
<b>Breeder's Comments:</b> This ewe is long, deep and wet. She will breed some good sheep.			



<b>LOT 86</b>	<b>BURRAWANG DORPER 160205</b> <b>Commercial T3</b>		
<b>SIL Twins</b>			
	PGSire	Kaya 110931	<b>History</b>
<b>Sire</b>		<b>BURRAWANG DORPER 130591</b>	Wt 72kg
	PGDam	BURRAWANG DORPER 102151 (Cronje/Cronje)	DOB 4/23/2016
	MGSire	Cronje 070590	AI conception; Embryo Transfer
<b>Dam</b>		<b>BURRAWANG DORPER 102123</b>	
	MGDam	Cronje 040455	Single birth
<b>Breeder's Comments:</b> A wide, deep and long ewe who will breed some heavy rams.			



<b>LOT 87</b>	<b>Withdrawn from sale</b> <b>Commercial T3</b>		
<b>SIL Single</b>			
	PGSire		<b>History</b>
<b>Sire</b>			Wt
	PGDam		DOB
	MGSire		
<b>Dam</b>			
	MGDam		
<b>Breeder's Comments:</b>			

<b>LOT 88</b>	<b>BURRAWANG DORPER 180830</b> <b>Commercial T3</b>		
<b>SIL Single</b>			
	PGSire	Dell 130202	<b>History</b>
<b>Sire</b>		<b>Dell 150069 Rumble</b>	Wt 66kg
	PGDam	Dell 120357	DOB 4/20/2018
	MGSire	BURRAWANG DORPER 130591	AI conception; Embryo Transfer
<b>Dam</b>		<b>BURRAWANG DORPER 153438</b>	
	MGDam	Dorper Stud Park 081380	Single birth
<b>Breeder's Comments:</b> Deep ewe with lots of meat.			



<b>LOT 89</b>	<b>BURRAWANG DORPER 171633</b> <b>Commercial T3</b>		
<b>SIL Single</b>			
	PGSire	BURRAWANG DORPER 130591	<b>History</b>
<b>Sire</b>	<b>BURRAWANG DORPER 153130 MICHAEL JACKSON</b>		Wt 59kg
	PGDam	BURRAWANG DORPER 102057 (Cronje/Cronje)	DOB 9/15/2017
	MGsire	Kaya 100806	AI conception; Embryo Transfer
<b>Dam</b>	<b>BURRAWANG DORPER 139308</b>		
	MGDam	Kaya 90374 (Mickey Phillips/Mickey Phillips)	Single birth
<b>Breeder's Comments:</b> Nice, feminine ewe with great loins and cover.			



<b>LOT 90</b>	<b>BURRAWANG WHITE DORPER 171284</b> <b>Commercial T3</b>		
<b>SIL Single</b>			
	PGSire	Kaya White 130303	<b>History</b>
<b>Sire</b>	<b>BURRAWANG WHITE DORPER 160063 WESTIE</b>		Wt 62kg
	PGDam	BURRAWANG WHITE DORPER 101022	DOB 8/25/2017
	MGsire	BURRAWANG WHITE DORPER 140430 AWESOME	Natural conception
<b>Dam</b>	<b>BURRAWANG WHITE DORPER 160575</b>		
	MGDam	BURRAWANG WHITE DORPER 140527	Single birth
<b>Breeder's Comments:</b> Long ewe with good loins and outer twist.			



<b>LOT 91</b>	<b>BURRAWANG WHITE DORPER 170615</b> <b>Commercial T3</b>		
<b>SIL Single</b>			
	PGSire	Terraweena 9293 Loftus	<b>History</b>
<b>Sire</b>	<b>BURRAWANG WHITE DORPER 120129</b>		Wt 76kg
	PGDam	BURRAWANG WHITE DORPER 080296	DOB 5/4/2017
	MGsire	BURRAWANG WHITE DORPER 120129	AI conception
<b>Dam</b>	<b>BURRAWANG WHITE DORPER 140337</b>		
	MGDam	BURRAWANG WHITE DORPER 111425	Single birth
<b>Breeder's Comments:</b> This ewe is wide, deep and long with a lot of body fat....an impressive ewe.			



<b>LOT 92</b>	<b>BURRAWANG WHITE DORPER 180485</b> <b>Commercial T3</b>		
<b>SIL Single</b>			
	PGSire	BURRAWANG WHITE DORPER 140373 BARREL	<b>History</b>
<b>Sire</b>	<b>BURRAWANG WHITE DORPER 151288 JUG</b>		Wt 62kg
	PGDam	BURRAWANG WHITE DORPER 130070	DOB 5/20/2018
	MGsire	BURRAWANG WHITE DORPER 130160	Natural conception
<b>Dam</b>	<b>BURRAWANG WHITE DORPER 161174</b>		
	MGDam	BURRAWANG WHITE DORPER 111018	Single birth
<b>Breeder's Comments:</b> A balanced, feminine ewe.			



# SAVE THIS DATE

**Monday October 12 2020**

Burrawang's 16th On Farm Sale

**160 Dorper & White Dorper Rams**

Watch for details on

[www.burrawangdorpers.com.au](http://www.burrawangdorpers.com.au)

