



32 BULLS

**27 March 2020 at 12:00pm
On Property Sale**



LOT 1
MERLEWOOD
OUTLIER P53



LOT 2
MERLEWOOD
CLUNIE LEGEND P8



LOT 9
MERLEWOOD
CLUNIE LEGEND P126

MERLEWOOD ANGUS

FOURTH AUTUMN BULL SALE

27 March 2020 at 12:00pm
On Property Sale

880 Berrys Creek Rd, Mirboo North Victoria 3871

View videos of the bulls prior to auction day
on our website merlewoodangus.com.au

Stud Principals

Daniel and Anne Marie Barrow
M. 0425 862 941
E. merlewoodangus@bigpond.com

Farm Manager

Luke Buchanan
M. 0458 588 810

Breed Consultant :

Wille Milne M.0428 793 521

Nutrien
Livestock™

Ray Attwell M.0428 836 136
Peter Godbolt M. 0457 591 929
Brian McCormack 0407 931 735

Elders

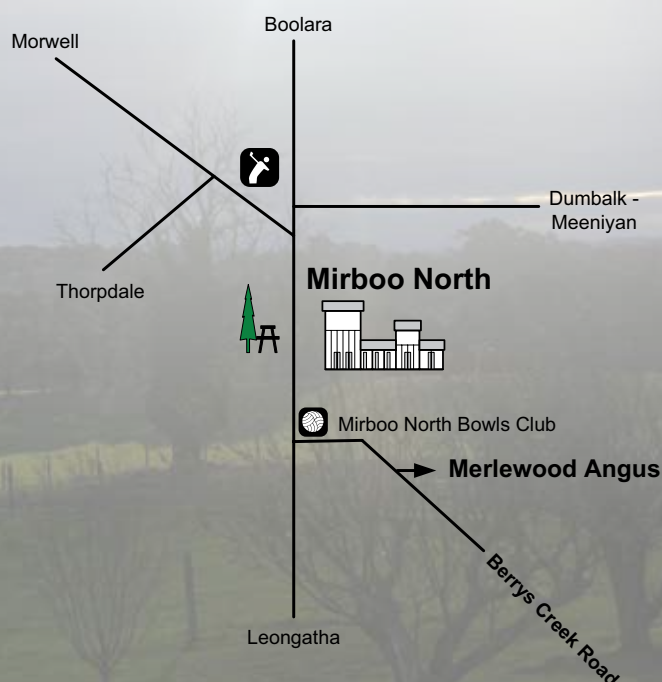
Ross Milne M. 0408 057 558
Dennis Linley M. 0417 052 445
Peter Rollason M. 0419 600 323



Follow us

Blog merlewoodangus.com.au/chewing-the-cud
Facebook [/merlewoodangusblackcattle](https://www.facebook.com/merlewoodangusblackcattle)
Twitter [/merlewoodangus](https://twitter.com/merlewoodangus)
Instagram [/merlewoodangus](https://www.instagram.com/merlewoodangus)

www.merlewoodangus.com.au



Sale Information

VENUE:

Merlewood Angus, 880 Berrys Creek Road, Mirboo North 3871

INSPECTION:

Sale commences at 12:00pm on Friday 27 March 2020 with sale bulls being penned and available for viewing from 8:00am onwards on sale day. The bulls will be sold by open-cry auction with video footage of each sale bull displayed on large screens in the background.

With the welfare of our animals being our utmost priority along with health and safety of both humans and cattle, we believe viewing the animals in their pen prior to the auction and recapping each lot with a live video segment during the auction makes for a pleasurable day for farmers and bulls alike.

Ben Hooper from Clear Vision Imaging will be filming the bulls and delivering the video footage on the day.

If for some reason you missed us at our Beef Week Open Day and wish to inspect the bulls prior to our sale day, please feel free to call Anne Marie & Daniel on 0425 862 941 to arrange a private inspection. General queries welcome at all times too.

SAFETY ON SALE DAY:

All our sale bulls have been screened for safety and are quiet to handle under normal circumstances. Please note that sale day is not a normal environment for cattle and as such we ask you to exercise caution and be alert of fighting bulls. Visitors enter pens at their own discretion. Children are prohibited from entering the bull pens at all times.

TELEPHONE BIDDING:

Picked out your favourite bull at our Beef Week Open Day or at a private inspection and can't make the sale day. Not a problem, just contact Ross Milne of Elders on 0408 057 558 or Ray Attwell of Nutrien Livestock on 0428 836 126 to arrange telephone bidding up to 24 hours prior to our sale.

HERD HEALTH:

All sale bulls are vaccinated for Vibriosis and Pestivirus

(BVDV). Please note that your bull is due his Vibrovax and Pestiguard annual booster in February 2021. These are important annual vaccinations (one shot booster) to ensure continued immunity against both the reproductive diseases of Vibriosis and Pestivirus respectively.

All our bulls receive 7-in-1 vaccination at weaning with their annual booster being administered pre-sale. Please note that your bulls is due his 7-in1 vaccination (one shot booster) in February 2021.

All cattle at Merlewood Angus are drenched on as-needed basis and we practice drench rotation – current drench Cydectin.

All sale bulls have been fertility tested and independently structurally assessed by Ian Moreland of Studcare Genetics.

All sale bulls are performance recorded HBR or APR with Angus Breedplan and are registered with Angus Society. We will arrange for transfer of ownership with the Angus Society of all sale bulls. Purchasing a registered bull enables you to sell his offspring into select export markets – speak to your local stock agent for more details. IF you have an Angus Society prefix, please provide it when you register for the bull sale.

Merlewood Angus cattle are J-BAS 8 accredited. This means that in addition to the implementation of our biosecurity plan, we are audited yearly by an accredited vet and our animals are blood-tested every three years in accordance with industry best practice.

GENOMIC TESTING:

All sale bulls are DNA tested using the ANGUS GS test. This ensures DNA sire verification of all bulls in our catalogue. Furthermore, the testing allows additional information to be incorporated into the EBV calculations providing greater accuracy and more information available behind the EBV data shown in the catalogue.

GENETIC CONDITIONS:

The gene status of all sale bulls is clearly displayed for each individual lot.



**OUTSIDE AGENT REBATE:**

3% rebate will be paid to outside agents that accompany the purchaser to the sale and settle within 7 days of sale date.

1.5% rebate will be paid to outside agents that introduce a client in writing 48 hrs prior to the sale and settle within 7 days of sale date.

0.5% rebate will be paid to outside agents that handle the sale transaction only and settle within 7 days of sale date.

GST:

As is common industry practice, all bulls are sold GST exclusive.

DELIVERY:

Courtesy of Merlewood Angus free freight will be provided for distances within 150km of our property.

INSURING YOUR BREEDING ASSET:

Please note that at the fall of the hammer the bull belongs to you. As such we strongly recommend that you take out insurance. Merlewood Angus recommend insuring all bulls for at least the first 2 years of their working life.

BRINGING YOUR BULL HOME:

When your newly purchased bull arrives home to your farm, ensure that they are unloaded at the cattle yards into a group of house cows, steers or herd cows. Bulls from different seedstock producers should be put in separate yards with other cattle for company. We do not recommend placing newly purchased young bulls with older herd bulls for multiple-joining. For more information please visit angusaustralia.com.au

SELLING AGENTS:

Nutrien Livestock and Elders are Merlewood Angus' selling agents. This year our auctioneer will be Ross Milne of Elders.

PRE & POST SALES SERVICE:

We believe that purchasing your Merlewood Angus bull is only the start of the cattle conversation.

We encourage open and honest communication at all times. We are here to answer all your breeding queries and assist you with choosing a bull each year for your commercial breeding program and as we get to know both you and your herd we can offer a more tailored-service. For all your pre-sale queries contact Anne Marie & Daniel on 0425 862 941.

MERLEWOOD ANGUS GUARANTEE:

Merlewood Angus sale bulls are backed with a 12-month guarantee. In the event of a sale bull proving to be structurally unsound, infertile or incapable of service during this period we will:

1) Replace the bull with a satisfactory replacement

Or

2) If no replacement bull is available, we will issue a refund equal to the value remaining (i.e. sale price minus salvage value)

A veterinary certificate must be supplied by the purchaser on request. The guarantee covers the purchase value of the bull without interest, cost and damages.

This guarantee is in addition to normal terms and conditions governing auction sales and as such the vendors decision will be final.

Merlewood Angus bulls are rigorously checked and continually monitored and evaluated. Only the best get to make it to sale day.

SEMEN RIGHTS:

Merlewood Angus retains the right to collect semen from all sale bulls for use within their own herd. In the event of the semen collection right being exercised, this will be at a time convenient to the owner and at Merlewood Angus' cost. In the event of the bull being on-sold, this right carries forward.

DISCLAIMER:

Whilst all due care and attention has been paid to accuracy in the compilation of this catalogue and the information, neither the vendors, selling agents or representatives there of assume any responsibility for the correctness, use or interpretation of this information on animals included herein.



Welcome

Dear Fellow Farmers

As we enter a new decade and reflect on the decade we leave behind, we are filled with hope and incipient emotions. When we look back on our stud journey which began in February 2009 with the purchase of 20 stud cows we are filled with excitement about what is possible.

The landscape over the last decade has been challenging for farmers but with challenging situations also comes opportunities for new ways of doing things. Technological advances over the last couple of years – in particular the smart phone – have ushered almost every last farmer into the technological age.

We have easier, better and more accurate ways of monitoring and recording performance data.

We are more in touch than ever with social media and low cost telephone communication.

The distance between stud breeder, commercial farmer and the consumer is not only narrowing but becoming more transparent.

With this, comes great opportunities for us as breeders to share our stories and share our knowledge. A chance, like never before in history, to create circles of connection with one another to enable our performance data to flow smoothly through the beef chain. This allows us together to continually improve and maintain the quality of our product.

Having an even greater data set facilitates the gentle steering and nudging of the rudder of our breeding program in the direction that is most profitable for everyone.

Here at Merlewood Angus our brand and breeding is built on transparency, trust and open communication. We partner with leading industry experts and companies who share our vision and ethos and are delighted to be attracting farmers as clients who share our pride and passion whilst running profitable enterprises.

We know through our conversations with you all that challenging times have resulted in continual paradigm shifts and that what has become clear is that genetics is priority for you all when it comes to having a profitable farming enterprise. We look forward to journeying with you to make this goal a continuing reality.

We thank you for your continued support and trust in our product as we continue to sell leading industry registered black angus bulls here in the heart of the Gippsland.

Warmly

Anne Marie, Daniel, Luke and Willie
The Merlewood Angus Team



EBV Quick Reference for Merlewood Angus 4th Annual Autumn Bull Sale

Animal Ident	Calving Ease				Birth			Growth				Fertility				Carcass				Other				Selection Indexes			
	CED	CEM	GL	BW	200	400	600	MCW	Milk	SS	DC	CWT	EMA	Rib	Rump	RBY	IMF	NFI-F	Doc	ABI	DOM	GRN	GRS				
1	HODP53	-0.6	+3.3	-6.7	+5.6	+103	+136	+136	+14	+1.7	-4.6	+7.0	+3.7	+1.5	+0.4	-0.4	+1.1	+0.04	-	\$118	\$109	\$119	\$118				
2	HODP8	-1.7	+4.5	-6.8	+5.8	+107	+140	+147	+17	+4.1	-5.7	+7.7	+6.5	+0.7	-1.0	-0.3	+3.3	+0.25	-	\$143	\$122	\$169	\$130				
3	HODP80	+4.8	+2.6	-3.8	+4.2	+100	+135	+115	+19	+1.8	-4.9	+7.2	+6.1	+0.4	+0.1	+0.5	+1.7	+0.50	-	\$140	\$123	\$149	\$136				
4	HODP14	+6.1	+0.9	-4.4	+3.1	+78	+104	+78	+24	+3.0	-6.7	+4.9	+8.1	+1.2	+1.9	+0.3	+2.5	+0.38	-	\$131	\$116	\$140	\$125				
5	HODP79	+0.4	+5.3	-2.7	+4.9	+90	+123	+113	+18	+2.1	-2.8	+6.5	+4.3	+0.7	-0.4	-0.3	+1.6	-0.04	-	\$108	\$102	\$110	\$109				
6	HODP49	-0.9	+5.9	-4.4	+6.7	+107	+144	+136	+13	+4.2	-4.3	+8.1	+5.2	-2.4	-3.0	+2.7	+1.1	-0.15	-	\$140	\$128	\$151	\$135				
7	HODP148	+0.2	+1.4	-3.7	+4.6	+87	+114	+91	+16	+2.2	-2.1	+7.5	+8.1	-1.6	-3.2	+1.8	+2.4	+0.09	-	\$121	\$116	\$135	\$116				
8	HODP96	-2.6	+8.3	-5.5	+5.4	+95	+119	+98	+17	+5.7	-8.0	+6.7	+6.7	+1.6	+1.6	+0.9	+2.7	+0.71	-	\$146	\$130	\$163	\$135				
9	HODP126	-4.7	+6.0	-6.2	+6.5	+98	+129	+135	+5	+3.2	-6.6	+6.9	+4.6	+1.9	+0.7	-0.6	+2.2	-0.15	-	\$126	\$111	\$139	\$120				
10	HODP129	-6.3	-8.7	-4.7	+7.3	+96	+127	+106	+20	+2.1	-4.9	+7.4	+9.7	-1.6	-2.2	+2.0	+2.6	+0.15	-	\$132	\$117	\$152	\$123				
11	HODP31	+2.8	+9.7	-5.3	+5.8	+88	+113	+95	+13	+2.6	-7.8	+5.6	+8.6	+0.5	-0.1	+1.8	+1.3	+0.21	-	\$139	\$128	\$143	\$134				
12	HODP86	-6.2	+1.9	-5.2	+7.3	+52	+87	+109	+86	+1.7	-4.9	+8.4	+7.7	-0.5	-0.7	+2.0	+1.0	-0.16	-	\$111	\$111	\$108	\$111				
13	HODP2	-2.5	+4.2	-10.3	+6.3	+93	+122	+129	+7	+3.1	-7.6	+6.9	+5.3	+1.8	-1.1	+0.6	+1.4	+0.22	-	\$122	\$111	\$130	\$117				
14	HODP59	+5.5	+3.0	-5.6	+4.2	+106	+132	+113	+22	+1.7	-3.4	+7.5	+7.6	-0.7	-1.7	+1.9	+0.4	-0.39	-	\$125	\$126	\$119	\$128				
15	HODP149	+1.1	+2.5	-1.9	+3.8	+47	+82	+115	+84	+2.4	-6.8	+6.7	+2.8	+0.2	-0.2	-0.1	+1.8	+0.13	-	\$119	\$105	\$124	\$116				
16	HODP104	+1.3	+4.7	-3.7	+5.3	+58	+88	+113	+95	+2.6	-7.8	+5.6	+8.6	+0.5	-0.1	+1.8	+1.3	+0.21	-	\$137	\$126	\$145	\$131				
17	HODP141	+2.9	+1.7	-3.4	+3.9	+44	+82	+107	+83	+19	+2.6	-5.1	+4.9	+5.7	+0.0	+0.5	+3.1	-0.04	-	\$134	\$120	\$150	\$125				
18	HODP36	+3.1	+5.7	-8.1	+2.5	+42	+84	+111	+105	+2.2	-5.1	+5.7	+3.9	+1.6	+1.5	-1.3	+2.2	+0.09	-	\$112	\$102	\$117	\$109				
19	HODP1	+5.5	+7.3	-9.9	+3.5	+45	+78	+109	+84	+19	+2.8	-6.0	+5.2	-0.1	+1.8	+0.0	+2.7	+0.35	-	\$134	\$116	\$145	\$127				
20	HODP111	+5.9	+6.6	-6.1	+4.0	+45	+85	+112	+97	+2.6	-8.1	+7.2	+6.2	+3.2	+2.8	+0.3	+0.8	+0.33	-	\$126	\$115	\$122	\$126				
21	HODP98	-17.3	-0.9	-0.7	+7.4	+50	+96	+131	+120	+2.7	-6.1	+8.2	+3.8	-1.1	-2.9	+1.0	+0.8	-0.29	-	\$91	\$84	\$94	\$90				
22	HODP85	+0.1	+5.0	-5.5	+6.5	+56	+99	+132	+135	+17	+3.7	+6.8	+1.0	-1.3	-1.7	+1.2	+1.5	-0.45	-	\$127	\$116	\$139	\$120				
23	HODP115	+2.2	+8.3	-8.4	+6.2	+58	+95	+124	+109	+2.0	-6.3	+6.5	+4.7	-0.6	+0.1	+0.9	+1.4	-0.20	-	\$130	\$121	\$134	\$128				
24	HODP121	+0.5	-0.6	-7.8	+4.6	+48	+96	+132	+123	+16	+2.9	+7.1	+9.5	-1.7	-1.8	+2.9	+0.3	+0.07	-	\$122	\$116	\$121	\$125				
25	HODP58	+8.5	+4.2	-4.8	+1.0	+34	+68	+92	+85	+1.5	-2.7	+4.9	+4.6	-0.6	-1.3	+0.1	+1.9	-0.20	-	\$96	\$96	\$98	\$96				
26	HODP136	-7.2	-8.4	-6.7	+7.9	+47	+77	+104	+87	+2.4	-5.5	+5.8	+4.5	+0.4	-0.4	+0.0	+3.3	+0.18	-	\$105	\$94	\$122	\$97				
27	HODP156	-0.8	-4.0	-4.1	+5.3	+45	+80	+109	+99	+2.4	-5.3	+6.1	+4.9	+1.4	+0.3	+0.0	+2.7	+0.20	-	\$115	\$103	\$128	\$109				
28	HODP133	-14.4	-4.1	-3.5	+8.6	+66	+105	+144	+146	+3.7	-5.6	+7.9	+6.3	-0.5	-1.3	+1.9	+0.9	-0.07	-	\$110	\$99	\$113	\$109				
29	HODP50	-0.4	+1.9	-4.6	+3.2	+37	+75	+97	+86	+19	+2.5	+5.0	+0.2	+1.1	+1.8	-0.7	+1.4	+0.00	-	\$94	\$93	\$91	\$95				
30	HODP113	+1.1	+5.6	-5.3	+3.8	+53	+86	+111	+95	+2.6	-6.2	+5.9	+6.1	+0.4	+0.6	+0.5	+1.7	+0.12	-	\$120	\$114	\$121	\$118				
31	HODP190	+6.4	+6.6	-6.1	+2.3	+40	+73	+93	+63	+2.3	-3.3	+5.7	+6.2	+1.8	+0.9	+0.8	+1.8	+0.50	-	\$110	\$111	\$108	\$111				
32	HODP90	-0.2	-1.6	-4.3	+2.3	+39	+84	+101	+78	+3.2	-3.3	+5.7	+2.7	+0.4	+2.2	-1.0	+2.3	+0.39	-	\$100	\$102	\$101	\$100				



CED	+2.0	CEM	+2.4	GL	-4.4	BW	+4.3	200	+48	400	+86	600	+112	MCW	+98	Milk	+16	SS	+1.9	DC	-4.7	CWT	+64	EMA	+5.8	Rib	-0.1	Rump	-0.4	RBY	+0.6	IMF	+1.9	NFI-F	+0.18	Doc	+5	ABI	+118	DOM	+111	GRN	+124	GRS	+115
-----	------	-----	------	----	------	----	------	-----	-----	-----	-----	-----	------	-----	-----	------	-----	----	------	----	------	-----	-----	-----	------	-----	------	------	------	-----	------	-----	------	-------	-------	-----	----	-----	------	-----	------	-----	------	-----	------

TransTasman Angus Cattle Evaluation - February 2020 Reference Tables



BREED AVERAGE EBVs																											
Calving Ease			Birth			Growth			Fertility			Carcase			Other			Structure			Selection Indexes						
CEDr	CEDrS	GL	BW	200	400	600	MCW	Milk	SS	DTC	CWT	EMA	RIB	P8	RBV	IMF	NF-F	DOC	FA	FC	RA	RH	RS	ABI	DOM	GRN	GRS
Brd Avg	+2.0	+2.4	-4.4	+4.3	+4.8	+8.6	+11.2	+9.8	+1.9	-4.7	+6.4	+5.8	-0.1	-0.4	+0.6	+1.9	+0.18	+5	+1	+1	+0	-0.3	-0.3	+1.18	+1.11	+1.24	+1.15

* Breed average represents the average EBV of all 2018 drop Australian Angus and Angus-influenced seedstock animals analysed in the February 2020 TransTasman Angus Cattle Evaluation .

% Band	Calving Ease		Birth		Growth			Fertility			Carcase			Other			Structure			Selection Indexes								
	CEDr	CEDrS	GL	BW	200	400	600	MCW	Milk	SS	DTC	CWT	EMA	RIB	P8	RBV	IMF	NF-F	DOC	FA	FC	RA	RH	RS	ABI	DOM	GRN	GRS
1%	+11.8	+10.4	-9.4	+0.7	+6.0	+10.7	+14.4	+14.3	+2.6	+3.7	-8.9	+8.4	+11.0	+3.1	+3.1	+2.7	+3.9	-0.55	+31	+22	+22	+15	+4.3	+0.4	+1.52	+1.32	+1.76	+1.41
1%	+12.4	+10.8	-10.1	+0.4	+6.3	+11.2	+15.1	+14.7	+2.6	+4.1	-9.1	+8.8	+11.5	+2.9	+2.9	+2.6	+4.2	-0.49	+33	+24	+24	+16	+3.8	+0.4	+1.59	+1.36	+1.47	+1.32
5%	+9.3	+8.3	-7.6	+1.8	+5.5	+9.8	+13.2	+12.6	+2.2	+3.1	-7.5	+7.6	+9.0	+1.8	+1.9	+2.0	+3.2	-0.35	+23	+15	+17	+10	+3.0	+0.4	+1.48	+1.25	+1.58	+1.32
5%	+10.1	+8.7	-8.2	+1.6	+5.8	+10.4	+13.8	+13.0	+2.3	+3.3	-7.8	+8.0	+9.5	+1.8	+1.8	+2.0	+3.6	-0.29	+25	+17	+19	+12	+2.7	+0.4	+1.40	+1.30	+1.70	+1.38
10%	+8.7	+7.5	-7.3	+2.2	+5.6	+10.0	+13.2	+12.2	+2.2	+3.0	-7.1	+7.6	+8.6	+1.3	+1.2	+1.6	+3.2	-0.19	+21	+14	+16	+9	+2.0	+0.4	+1.42	+1.26	+1.60	+1.33
10%	+7.7	+7.1	-6.7	+2.4	+5.3	+9.4	+12.5	+11.8	+2.1	+2.8	-6.8	+7.3	+8.0	+1.3	+1.4	+1.7	+2.9	-0.24	+19	+11	+13	+8	+2.2	+0.4	+1.33	+1.20	+1.48	+1.26
15%	+6.6	+6.1	-6.1	+2.8	+5.1	+9.1	+12.1	+11.2	+2.0	+2.5	-6.3	+7.0	+7.4	+0.9	+1.0	+1.5	+2.6	-0.17	+15	+9	+10	+6	+1.7	+0.3	+1.28	+1.17	+1.41	+1.23
15%	+7.7	+6.7	-6.7	+2.6	+5.4	+9.7	+12.8	+11.7	+2.1	+2.8	-6.7	+7.4	+8.0	+1.0	+0.9	+1.4	+2.9	-0.12	+17	+12	+14	+8	+1.6	+0.4	+1.38	+1.23	+1.54	+1.30
20%	+5.6	+5.3	-5.6	+3.1	+5.0	+8.9	+11.8	+10.8	+1.9	+2.4	-5.9	+6.8	+7.0	+0.7	+1.3	+1.3	+2.4	-0.12	+13	+7	+8	+5	+1.3	+0.3	+1.25	+1.15	+1.35	+1.20
20%	+6.8	+6.0	-6.3	+2.9	+5.3	+9.5	+12.5	+11.4	+2.0	+2.6	-6.3	+7.2	+7.5	+0.8	+0.6	+1.2	+2.7	-0.06	+15	+10	+12	+6	+1.2	+0.3	+1.34	+1.21	+1.49	+1.27
25%	+6.1	+5.4	-5.9	+3.2	+5.2	+9.3	+12.2	+11.0	+1.9	+2.4	-6.0	+7.1	+7.1	+0.6	+0.4	+1.1	+2.5	-0.01	+13	+9	+9	+5	+1.0	+0.3	+1.31	+1.19	+1.44	+1.25
25%	+4.8	+4.7	-5.2	+3.4	+4.9	+8.7	+11.5	+10.5	+1.8	+2.3	-5.6	+6.6	+6.6	+0.5	+0.5	+1.2	+2.2	-0.07	+11	+6	+6	+4	+1.0	+0.2	+1.21	+1.13	+1.30	+1.17
30%	+5.3	+4.8	-5.5	+3.4	+5.1	+9.1	+12.0	+10.7	+1.9	+2.3	-5.7	+6.9	+6.8	+0.4	+0.2	+1.0	+2.4	+0.03	+11	+8	+9	+4	+0.8	+0.3	+1.29	+1.18	+1.40	+1.23
30%	+4.0	+4.0	-4.9	+3.6	+4.8	+8.6	+11.3	+10.2	+1.7	+2.1	-5.3	+6.5	+6.2	+0.3	+0.3	+1.0	+2.1	-0.03	+9	+4	+5	+3	+0.7	+0.2	+1.18	+1.11	+1.25	+1.15
35%	+4.6	+4.3	-5.2	+3.7	+5.0	+8.4	+11.8	+10.4	+1.8	+2.2	-5.5	+6.8	+6.5	+0.2	+0.1	+0.9	+2.2	+0.07	+10	+7	+7	+3	+0.6	+0.3	+1.26	+1.16	+1.36	+1.21
35%	+3.3	+3.4	-4.6	+3.8	+4.7	+8.4	+11.1	+9.9	+1.7	+2.0	-5.1	+6.3	+5.9	+0.1	+0.1	+0.9	+2.0	+0.01	+7	+3	+4	+2	+0.5	+0.1	+1.15	+1.09	+1.21	+1.12
40%	+3.9	+3.8	-4.9	+3.9	+4.9	+8.9	+11.6	+10.2	+1.7	+2.1	-5.2	+6.6	+6.3	+0.1	+0.1	+0.8	+2.1	+0.10	+8	+5	+6	+2	+0.5	+0.2	+1.14	+1.15	+1.32	+1.20
40%	+2.6	+2.9	-4.3	+4.0	+4.6	+8.3	+10.9	+9.6	+1.6	+1.9	-4.8	+6.2	+5.7	+0.0	-0.1	+0.8	+1.8	+0.05	+6	+3	+3	+2	+0.3	+0.1	+1.13	+1.07	+1.17	+1.10
45%	+3.2	+3.3	-4.7	+4.1	+4.9	+8.7	+11.4	+10.0	+1.7	+2.0	-5.0	+6.5	+6.0	+0.0	-0.3	+0.7	+2.0	+0.14	+7	+4	+4	+5	+0.2	+0.2	+1.22	+1.13	+1.29	+1.18
45%	+1.9	+2.3	-4.0	+4.2	+4.5	+8.1	+10.6	+9.4	+1.5	+1.8	-4.6	+6.1	+5.4	-0.2	-0.3	+0.7	+1.7	+0.09	+5	+2	+2	+1	+0.2	+0.1	+1.10	+1.06	+1.13	+1.08
50%	+1.2	+1.7	-3.7	+4.4	+4.4	+8.0	+10.4	+9.1	+1.5	+1.7	-4.3	+5.9	+5.1	-0.3	-0.4	+0.6	+1.6	+0.12	+3	+2	+2	+1	+0.1	+0.0	+1.07	+1.04	+1.09	+1.06

* The percentile bands represent the distribution of EBVs across the 2018 drop Australian Angus and Angus-influenced seedstock animals analysed in the February 2020 TransTasman Angus Cattle Evaluation .

PERCENTILE BANDS TABLE

DISCLAIMER AND PRIVACY INFORMATION

IMPORTANT NOTICES FOR PURCHASERS



ATTENTION BUYER: *Animal details included in this catalogue, including but not limited to pedigree, DNA information, Estimated Breeding Values (EBVs) and Index values, are based on information provided by the breeder or owner of the animal. Whilst all reasonable care has been taken to ensure that the information provided in this catalogue was correct at the time of publication, Angus Australia will assume no responsibility for the accuracy or completeness of the information, nor for the outcome (including consequential loss) of any action taken based on this information.*

Parent Verification Suffixes

The animals listed within this catalogue including its pedigree, are displaying a Parent Verification Suffix which indicates the DNA parent verification status that has been conducted on the animal. The Parent Verification Suffixes that will appear at the end of each animal's name are as follows:

PV: both parents have been verified by DNA

SV: the sire has been verified by DNA

DV: the dam has been verified by DNA

#: DNA verification has not yet been conducted

E: DNA verification has identified that the sire and/or dam may possibly be incorrect, but this cannot be confirmed conclusively.

Privacy Information

In order for Angus Australia to process the transfer of a registered animal in this catalogue, the vendor will need to provide certain information to Angus Australia and the buyer consents to the collection and disclosure of that information by Angus Australia in certain circumstances. If the buyer does not wish for his or her information to be stored and disclosed by Angus Australia, the buyer must complete the form included below and forward it to Angus Australia. If the form is not completed, the buyer will be taken to have consented to the disclosure of such information.

BUYERS OPTION TO OPT OUT OF DISCLOSING PERSONAL INFORMATION TO ANGUS AUSTRALIA

If you do not complete this form, you will be taken to have consented to Angus Australia using your name, address and phone number for the purposes of effecting a change of registration of the animal(s) that you have purchased, maintaining its database and disclosing that information to its members on its website.

I, the buyer of animals with the following idents.....

.....(name) do not consent to Angus Australia using my name, address and phone number for the purposes of effecting a change of registration of the animals I have mentioned above that I have purchased, maintaining its database and disclosing that information to its members on its website.

Name: Signature:

Date:

Please forward this completed consent form to Angus Australia, 86 Glen Innes Road, Armidale NSW 2350.

If you have any questions or queries regarding any of the above, please contact Angus Australia on (02) 6773 4600 or email office@angusaustralia.com.au



Sale Lots

Lot 1 MERLEWOOD OUTLIER P53^{SV} (HBR) HODP53

DOB: 19/08/2018 Traits Observed: GL,200WT,400WT(x2),SC,Scan(EMA,Rib,Rump,IMF),Genomics Genetic Status: AMFU,CAFU,DDFU,NHFU

SCHURRTOP REALITY X723# CONNEALY PRODUCT 568#
MATAURI REALITY 839# CONNEALY FINAL PRODUCT^{PV}
MATAURI 06663# EBONISTA OF CONANGA 471#
SIRE: NZE14647010F031 MATAURI OUTLIER F031^{SV} DAM: HODJ35 MERLEWOOD BLACKBIRD J35#
KAROO W109 DIRECTION Z181^{SV} VERMILION YELLOWSTONE#
MATAURI 08860# MERLEWOOD GAR BLACKBIRD E28#
MATAURI 105583# BLACK LABEL NEW DIRECTION X121^{PV}

TACE February 2020 TransTasman Angus Cattle Evaluation

Calving Ease		Birth		Growth				Fertility		Carcase						Other			
Dir	Dtrs	Gest	BW	200 W	400 W	600 W	MCW	Milk	Scrot.	D t C	CWT	EMA	Rib	Rump	RBY	IMF	NFI-F	Doc	
EBVs	-0.6	+3.3	-6.7	+5.6	+56	+103	+136	+136	+14	+1.7	-4.6	+70	+3.7	+1.5	+0.4	-0.4	+1.1	+0.04	-
Acc	60%	54%	84%	67%	68%	69%	68%	68%	64%	73%	49%	65%	63%	66%	64%	64%	62%	56%	-

Selection Indexes Structural Assessments

Angus Breeding	Domestic	Heavy Grain	Heavy Grass	F	R	F	R	Muscle	Fat	
\$118	\$109	\$119	\$118	6	5	5	6	6	5	C+ 2 5

Notes:
Purchaser:.....\$

Lot 2 MERLEWOOD CLUNIE LEGEND P8^{SV} (HBR) HODP8

DOB: 24/07/2018 Traits Observed: GL,200WT,400WT(x2),SC,Scan(EMA,Rib,Rump,IMF),Genomics Genetic Status: AMF,CAF,DDF,NHF

SCHURRTOP REALITY X723# TE MANIA GENERAL G429^{SV}
MATAURI REALITY 839# TE MANIA JINDRA J1153^{SV}
MATAURI 06663# TE MANIA JEDDA F786#
SIRE: NBHL348 CLUNIE RANGE LEGEND L348^{PV} DAM: HODM5 MERLEWOOD JAPARA M5#
CONNEALY EARNAN 076E^{PV} MERLEWOOD UNLIMITED F30^{SV}
ABERDEEN ESTATE LAURA J81^{PV} MERLEWOOD JAPARA K89#
TUWHARETOA E111^{PV} MERLEWOOD JAPARA F31#

TACE February 2020 TransTasman Angus Cattle Evaluation

Calving Ease		Birth		Growth				Fertility		Carcase						Other			
Dir	Dtrs	Gest	BW	200 W	400 W	600 W	MCW	Milk	Scrot.	D t C	CWT	EMA	Rib	Rump	RBY	IMF	NFI-F	Doc	
EBVs	-1.7	+4.5	-6.8	+5.8	+58	+107	+140	+147	+17	+4.1	-5.7	+77	+6.5	+0.7	-1.0	-0.3	+3.3	+0.25	-
Acc	54%	45%	84%	66%	67%	69%	68%	64%	54%	72%	40%	62%	60%	64%	61%	62%	59%	53%	-

Selection Indexes Structural Assessments

Angus Breeding	Domestic	Heavy Grain	Heavy Grass	F	R	F	R	Muscle	Fat	
\$143	\$122	\$169	\$130	6	5	5	5	5	5	C+ 2 4

Notes:
Purchaser:.....\$

Lot 3 MERLEWOOD ENFORCER P80^{SV} (HBR) HODP80

DOB: 25/08/2018 Traits Observed: GL,200WT,400WT(x2),SC,Scan(EMA,Rib,Rump,IMF),Genomics Genetic Status: AMFU,CAFU,DDFU,NHFU

CONNEALY ONWARD# GAR SOLUTION^{SV}
SITZ UPWARD 307R^{SV} LAWSONS INVINCIBLE C402^{PV}
SITZ HENRIETTA PRIDE 81M# LAWSONS PREDESTINED A598#
SIRE: HBUE183 ANVIL ENFORCER E183^{PV} DAM: HODH3 MERLEWOOD BLACKBIRD H3#
SITZ ALLIANCE 6595# TE MANIA ULONG U41^{SV}
EA EMBLYNETTE 434# MERLEWOOD BLACKBIRD F33#
S A V SKY DIAMOND 2582# THE GRANGE BLACKBIRD B149#

TACE February 2020 TransTasman Angus Cattle Evaluation

Calving Ease		Birth		Growth				Fertility		Carcase						Other			
Dir	Dtrs	Gest	BW	200 W	400 W	600 W	MCW	Milk	Scrot.	D t C	CWT	EMA	Rib	Rump	RBY	IMF	NFI-F	Doc	
EBVs	+4.8	+2.6	-3.8	+4.2	+52	+100	+135	+115	+19	+1.8	-4.9	+72	+6.1	+0.4	+0.1	+0.5	+1.7	+0.50	-
Acc	56%	51%	84%	67%	67%	68%	68%	65%	60%	71%	43%	64%	60%	65%	62%	61%	61%	55%	-

Selection Indexes Structural Assessments

Angus Breeding	Domestic	Heavy Grain	Heavy Grass	F	R	F	R	Muscle	Fat	
\$140	\$123	\$149	\$136	6	5	5	5	5	5	C 2 5

Notes:
Purchaser:.....\$

Lot 4 MERLEWOOD ABERDEEN P14^{SV} (HBR) HODP14

DOB: 27/07/2018 *Traits Observed: GL,200WT,400WT(x2),SC,Scan(EMA,Rib,Rump,IMF),Genomics* Genetic Status: AMFCAFDDFNHF

C R A BEXTOR 872 5205 608* TE MANIA GENERAL G429^{SV}
 TC ABERDEEN 759* TE MANIA JINDRA J1153^{SV}
 TC BLACKBIRD 4034* TE MANIA JEDDA F786*
SIRE: SRKJ302 BOWMONT ABERDEEN J302^{PV} **DAM: HODM2 MERLEWOOD EDWINA M2[#]**
 K C F BENNETT PERFORMER* MERLEWOOD EQUATOR G2 (AI)^{SV}
 THE GRANGE BLACKBIRD E172^{PV} MERLEWOOD PAYLOAD K32*
 THE GRANGE YR BLACKBIRD A207^{PV} MERLEWOOD EDWINA H14*



February 2020 TransTasman Angus Cattle Evaluation

	Calving Ease		Birth		Growth				Fertility		Carcase					Other			
	Dir	Dtrs	Gest	BW	200 W	400 W	600 W	MCW	Milk	Scrot.	D t C	CWT	EMA	Rib	Rump	RBV	IMF	NFI-F	Doc
EBVs	+6.1	+0.9	-4.4	+3.1	+43	+78	+104	+78	+24	+3.0	-6.7	+49	+8.1	+1.2	+1.9	+0.3	+2.5	+0.38	-
Acc	50%	45%	83%	64%	64%	66%	64%	62%	53%	70%	38%	57%	55%	58%	56%	55%	53%	45%	-

Selection Indexes

Angus Breeding	Domestic	Heavy Grain	Heavy Grass
\$131	\$116	\$140	\$125

Structural Assessments

F	R	F	R			Muscle	Fat	
6	5	5	5	5	5	C+	2	4

Notes: Purchaser:.....\$.....

Lot 5 MERLEWOOD OUTLIER P79^{SV} (HBR) HODP79

DOB: 25/08/2018 *Traits Observed: GL,200WT,400WT(x2),SC,Scan(EMA,Rib,Rump,IMF),Genomics* Genetic Status: AMFCAFDDCNHF

SCHURRTOP REALITY X723* BON VIEW NEW DESIGN 1407*
 MATAURI REALITY 839* SITZ NEW DESIGN 458N*
 MATAURI 06663* SITZ ELLUNAS ELITE 3308*
SIRE: NZE14647010F031 MATAURI OUTLIER F031^{SV} **DAM: HODG22 MERLEWOOD ALISON G22[#]**
 KAROO W109 DIRECTION Z181^{SV} BT EQUATOR 395M*
 MATAURI 08860* THE GRANGE ALISON D185*
 MATAURI 105583* THE GRANGE ALISON A43^{SV}



February 2020 TransTasman Angus Cattle Evaluation

	Calving Ease		Birth		Growth				Fertility		Carcase					Other			
	Dir	Dtrs	Gest	BW	200 W	400 W	600 W	MCW	Milk	Scrot.	D t C	CWT	EMA	Rib	Rump	RBV	IMF	NFI-F	Doc
EBVs	+0.4	+5.3	-2.7	+4.9	+49	+90	+123	+113	+18	+2.1	-2.8	+65	+4.3	+0.7	-0.4	-0.3	+1.6	-0.04	-
Acc	61%	56%	84%	68%	69%	70%	69%	69%	66%	73%	52%	66%	64%	67%	65%	65%	64%	58%	-

Selection Indexes

Angus Breeding	Domestic	Heavy Grain	Heavy Grass
\$108	\$102	\$110	\$109

Structural Assessments

F	R	F	R			Muscle	Fat	
5	5	5	5	5	5	C	2	5

Notes: Purchaser:.....\$.....

Lot 6 MERLEWOOD REPLAY P49^{SV} (HBR) HODP49

DOB: 27/08/2018 *Traits Observed: 200WT,400WT(x2),SC,Scan(EMA,Rib,Rump,IMF),Genomics* Genetic Status: AMFCAFDDFNHF

WK VEGAS* TE MANIA EMPEROR E343^{PV}
 WK REPLAY* MERLEWOOD EMPEROR H43^{SV}
 S A F PENELOPE P020* THE GRANGE BLACKBIRD B149*
SIRE: HBUM077 ANVIL M077^{PV} **DAM: HODL127 MERLEWOOD BLACKBIRD L127[#]**
 SITZ UPWARD 307R^{SV} CONNEALY THUNDER*
 ANVIL EMBLYNETTE E199^{SV} MERLEWOOD BLACKBIRD F2*
 EA EMBLYNETTE 434* THE GRANGE YR BLACKBIRD A207^{PV}



February 2020 TransTasman Angus Cattle Evaluation

	Calving Ease		Birth		Growth				Fertility		Carcase					Other			
	Dir	Dtrs	Gest	BW	200 W	400 W	600 W	MCW	Milk	Scrot.	D t C	CWT	EMA	Rib	Rump	RBV	IMF	NFI-F	Doc
EBVs	-0.9	+5.9	-4.4	+6.7	+62	+107	+144	+136	+13	+4.2	-4.3	+81	+5.2	-2.4	-3.0	+2.7	+1.1	-0.15	-
Acc	48%	43%	54%	59%	63%	64%	62%	59%	52%	67%	37%	56%	51%	54%	52%	51%	49%	42%	-

Selection Indexes

Angus Breeding	Domestic	Heavy Grain	Heavy Grass
\$140	\$128	\$151	\$135

Structural Assessments

F	R	F	R			Muscle	Fat	
6	5	5	5	4	3	C+	2	5

Notes: Purchaser:.....\$.....



Sale Lots

Lot 7 MERLEWOOD JARCEVO P148^{SV} (HBR) HODP148

DOB: 13/09/2018 Traits Observed: 200WT,400WT(x2),SC,Scan(EMA,Rib,Rump,IMF),Genomics Genetic Status: AMF,CAF,DDC,NHC

TE MANIA AMBASSADOR A134^{SV} BALDRIDGE KABOOM K243 KCF#
TUWHARETOA REGENT D145^{PV} CONNEALY THUNDER#
LAWSONSHENRY VIII Y5^{SV} PARKA OF CONANGA 241#
SIRE: VTMJ545 TE MANIA JARCEVO J545^{PV} **DAM: HODF2 MERLEWOOD BLACKBIRD F2#**
BT ULTRA VOX 297E# B/R NEW DIMENSION 7127^{SV}
TE MANIA LOWAN Z74^{PV} THE GRANGE YR BLACKBIRD A207^{PV}
TE MANIA LOWAN V201# DAVIS YR BLACKBIRD 558H#



February 2020 TransTasman Angus Cattle Evaluation

	Calving Ease		Birth		Growth				Fertility			Carcase					Other		
	Dir	Dtrs	Gest	BW	200 W	400 W	600 W	MCW	Milk	Scrot.	D t C	CWT	EMA	Rib	Rump	RBY	IMF	NFI-F	Doc
EBVs	+0.2	+1.4	-3.7	+4.6	+47	+87	+114	+91	+16	+2.2	-2.1	+75	+8.1	-1.6	-3.2	+1.8	+2.4	+0.09	-
Acc	52%	48%	58%	64%	66%	69%	66%	64%	59%	72%	43%	60%	57%	60%	58%	58%	56%	49%	-

Selection Indexes

Angus Breeding	Domestic	Heavy Grain	Heavy Grass
\$121	\$116	\$135	\$116

Structural Assessments

F	R	F	R	F	R	Muscle	Fat	
6	6	5	5	5	5	C+	2	4

Notes:

Purchaser:.....\$.....

Lot 8 MERLEWOOD REPLAY P96^{SV} (HBR) HODP96

DOB: 29/08/2018 Traits Observed: 200WT,400WT(x2),SC,Scan(EMA,Rib,Rump,IMF),Genomics Genetic Status: AMFU,CAFU,DDFU,NHFU

WK VEGAS# PAPA EQUATOR 2928#
WK REPLAY# ARDROSSAN EQUATOR A241^{PV}
S A F PENELOPE P020# ARDROSSAN PRINCESS W38^{PV}
SIRE: HBUM077 ANVIL M077^{PV} **DAM: HODK23 MERLEWOOD BEEAC K23 (AI)#**
SITZ UPWARD 307R^{SV} TE MANIA NEW DESIGN Z496^{PV}
ANVIL EMBLYNETTE E199^{SV} MERLEWOOD BEEAC E3#
EA EMBLYNETTE 434# TE MANIA BEEAC A239#



February 2020 TransTasman Angus Cattle Evaluation

	Calving Ease		Birth		Growth				Fertility			Carcase					Other		
	Dir	Dtrs	Gest	BW	200 W	400 W	600 W	MCW	Milk	Scrot.	D t C	CWT	EMA	Rib	Rump	RBY	IMF	NFI-F	Doc
EBVs	-2.6	+8.3	-5.5	+5.5	+54	+95	+119	+98	+17	+5.7	-8.0	+67	+6.7	+1.6	+1.6	+0.9	+2.7	+0.71	-
Acc	52%	48%	62%	62%	64%	65%	64%	62%	56%	68%	41%	59%	54%	59%	56%	56%	55%	48%	-

Selection Indexes

Angus Breeding	Domestic	Heavy Grain	Heavy Grass
\$146	\$130	\$163	\$135

Structural Assessments

F	R	F	R	F	R	Muscle	Fat	
6	6	5	5	5	5	C+	2	5

Notes:

Purchaser:.....\$.....

Lot 9 MERLEWOOD CLUNIE LEGEND P126^{PV} (APR) HODP126

DOB: 9/09/2018 Traits Observed: 200WT,400WT(x2),SC,Scan(EMA,Rib,Rump,IMF),Genomics Genetic Status: AMFU,CAFU,DDFU,NHFU

SCHURRTOP REALITY X723# HINGAIA 469#
MATAURI REALITY 839# MILLAH MURRAH KINGDOM K35^{PV}
MATAURI 06663# MILLAH MURRAH FLOWER G41^{PV}
SIRE: NBHL348 CLUNIE RANGE LEGEND L348^{PV} **DAM: HODM41 MERLEWOOD ANNABELL M41^{SV}**
CONNEALY EARNAN 076E^{PV} COOLANA WHITWORTH C58^{SV}
ABERDEEN ESTATE LAURA J81^{PV} COOLANA ANNABELL G069#
TUWHARETOA E111^{PV} COOLANA ANNABELL E40#



February 2020 TransTasman Angus Cattle Evaluation

	Calving Ease		Birth		Growth				Fertility			Carcase					Other		
	Dir	Dtrs	Gest	BW	200 W	400 W	600 W	MCW	Milk	Scrot.	D t C	CWT	EMA	Rib	Rump	RBY	IMF	NFI-F	Doc
EBVs	-4.7	+6.0	-6.2	+6.5	+56	+98	+129	+135	+5	+3.2	-6.6	+69	+4.6	+1.9	+0.7	-0.6	+2.2	-0.15	-
Acc	57%	48%	66%	67%	67%	67%	67%	62%	54%	69%	40%	62%	61%	65%	61%	62%	60%	54%	-

Selection Indexes

Angus Breeding	Domestic	Heavy Grain	Heavy Grass
\$126	\$111	\$139	\$120

Structural Assessments

F	R	F	R	F	R	Muscle	Fat	
6	6	5	5	4	5	C+	2	5

Notes:

Purchaser:.....\$.....

Lot 10 MERLEWOOD JARCEVO P129^{SV} (HBR) HODP129

DOB: 10/09/2018 Traits Observed: 200WT,400WT(x2),SC,Scan(EMA,Rib,Rump,IMF),Genomics Genetic Status: AMF,CAF,DDC,NHF

TE MANIA AMBASSADOR A134^{SV} TE MANIA UNLIMITED U3271[#]
 TUWHARETOA REGENT D145^{PV} MERLEWOOD UNLIMITED F30^{SV}
 LAWSONS HENRY VIII Y5^{SV} ARDROSSAN WILCOOLA U20[#]
SIRE: VTMJ545 TE MANIA JARCEVO J545^{PV} **DAM: HODK89 MERLEWOOD JAPARA K89[#]**
 B T ULTRAVOX 297E[#] ARDROSSAN CASINO C18^{SV}
 TE MANIA LOWAN Z74^{PV} MERLEWOOD JAPARA F31[#]
 TE MANIA LOWAN V201[#] TE MANIA JAPARA A215^{SV}



February 2020 TransTasman Angus Cattle Evaluation

	Calving Ease		Birth		Growth				Fertility		Carcase					Other			
	Dir	Dtrs	Gest	BW	200 W	400 W	600 W	MCW	Milk	Scrot.	D t C	CWT	EMA	Rib	Rump	RBY	IMF	NFI-F	Doc
EBVs	-6.3	-8.7	-4.7	+7.3	+53	+96	+127	+106	+20	+2.1	-4.9	+74	+9.7	-1.6	-2.2	+2.0	+2.6	+0.15	-
Acc	51%	48%	58%	63%	66%	69%	67%	65%	58%	72%	44%	61%	57%	61%	58%	59%	56%	50%	-

Selection Indexes

Angus Breeding	Domestic	Heavy Grain	Heavy Grass
\$132	\$117	\$152	\$123

Structural Assessments

F	R	F	R			Muscle	Fat	
5	5	6	5	5	5	C	2	3

Notes:

Purchaser: \$.....

Lot 11 MERLEWOOD REPLAY P31^{SV} (HBR) HODP31

DOB: 12/08/2018 Traits Observed: 200WT,400WT(x2),SC,Scan(EMA,Rib,Rump,IMF),Genomics Genetic Status: AMF,CAF,DDF,NHF

WK VEGAS[#] TE MANIA EMPEROR E343^{PV}
 WK REPLAY[#] MERLEWOOD EMPEROR H43^{SV}
 S A F PENELOPE P020[#] THE GRANGE BLACKBIRD B149[#]
SIRE: HBUM077 ANVIL M077^{PV} **DAM: HODL130 MERLEWOOD WILCOOLA L130[#]**
 SITZ UPWARD 307R^{SV} MERLEWOOD SAF STRATEGY F34^{SV}
 ANVIL EMBLYNETTE E199^{SV} MERLEWOOD WILCOOLA H40[#]
 EA EMBLYNETTE 434[#] MERLEWOOD WILCOOLA F28[#]



February 2020 TransTasman Angus Cattle Evaluation

	Calving Ease		Birth		Growth				Fertility		Carcase					Other			
	Dir	Dtrs	Gest	BW	200 W	400 W	600 W	MCW	Milk	Scrot.	D t C	CWT	EMA	Rib	Rump	RBY	IMF	NFI-F	Doc
EBVs	+2.8	+9.7	-5.3	+5.8	+54	+88	+113	+95	+13	+2.6	-7.8	+56	+8.6	+0.5	-0.1	+1.8	+1.3	+0.21	-
Acc	47%	42%	54%	59%	63%	64%	62%	59%	52%	67%	36%	55%	51%	54%	52%	51%	49%	42%	-

Selection Indexes

Angus Breeding	Domestic	Heavy Grain	Heavy Grass
\$139	\$128	\$143	\$134

Structural Assessments

F	R	F	R			Muscle	Fat	
6	5	5	5	6	5	C	2	5

Notes:

Purchaser: \$.....

Lot 12 MERLEWOOD INNOVATION P86^{SV} (HBR) HODP86

DOB: 26/08/2018 Traits Observed: 200WT,400WT(x2),SC,Scan(EMA,Rib,Rump,IMF),Genomics Genetic Status: AMF,CAF,DDC,NHF

CONNELLY REFLECTION[#] BON VIEW NEW DESIGN 1407[#]
 CONNELLY IMPRESSION[#] SITZ NEW DESIGN 458N[#]
 PEARL PAMMY OF CONANGA 194[#] SITZ ELLUNAS ELITE 3308[#]
SIRE: USA16983331 MAR INNOVATION 251^{PV} **DAM: HODH24 MERLEWOOD BURNETTE H24[#]**
 S A V FINAL ANSWER 0035[#] KENNY'S CREEK ECLIPSE W111^{SV}
 MAR FINAL KAHUNA 856[#] FORRES BURNETTE Z36^{SV}
 MAR KAHUNA PRECISION 328 674[#] FORRES BURNETTE M40+92[#]



February 2020 TransTasman Angus Cattle Evaluation

	Calving Ease		Birth		Growth				Fertility		Carcase					Other			
	Dir	Dtrs	Gest	BW	200 W	400 W	600 W	MCW	Milk	Scrot.	D t C	CWT	EMA	Rib	Rump	RBY	IMF	NFI-F	Doc
EBVs	-6.2	+1.9	-5.2	+7.3	+52	+87	+109	+86	+12	+1.7	-4.9	+64	+7.7	-0.5	-0.7	+2.0	+1.0	-0.16	-
Acc	57%	48%	66%	68%	68%	70%	69%	66%	62%	73%	41%	62%	61%	63%	61%	60%	59%	49%	-

Selection Indexes

Angus Breeding	Domestic	Heavy Grain	Heavy Grass
\$111	\$111	\$108	\$111

Structural Assessments

F	R	F	R			Muscle	Fat	
6	5	5	5	5	5	C	2	5

Notes:

Purchaser: \$.....



Sale Lots

Lot 13 MERLEWOOD CLUNIE LEGEND P2^{SV} (HBR) HODP2

DOB: 18/07/2018 Traits Observed: GL,200WT,400WT(x2),SC,Scan(EMA,Rib,Rump,IMF),Genomics Genetic Status: AMF,CAF,DDF,NHF

SCHURRTOP REALITY X723* K C F BENNETT TOTAL*
MATAURI REALITY 839* MERLEWOOD BENNETT TOTAL J2^{SV}
MATAURI 06663* MERLEWOOD BEEAC G27*
SIRE: NBHL348 CLUNIE RANGE LEGEND L348^{PV} **DAM: HODM8 MERLEWOOD WILCOOLA M8[#]**
CONNEALY EARNAN 076E^{VV} CARABAR DOCKLANDS D62^{PV}
ABERDEEN ESTATE LAURA J81^{PV} MERLEWOOD WILCOOLA K26 (A1)[#]
TUWHARETOA E111^{PV} MERLEWOOD WILCOOLA E25[#]



February 2020 TransTasman Angus Cattle Evaluation

	Calving Ease		Birth		Growth				Fertility			Carcase					Other		
	Dir	Dtrs	Gest	BW	200 W	400 W	600 W	MCW	Milk	Scrot.	D t C	CWT	EMA	Rib	Rump	RBY	IMF	NFI-F	Doc
EBVs	-2.5	+4.2	-10.3	+6.3	+56	+93	+122	+129	+7	+3.1	-7.6	+69	+5.3	+1.8	-1.1	+0.6	+1.4	+0.22	-
Acc	54%	45%	84%	66%	67%	68%	68%	64%	54%	72%	40%	62%	59%	63%	60%	61%	58%	52%	-

Selection Indexes

Angus Breeding	Domestic	Heavy Grain	Heavy Grass
\$122	\$111	\$130	\$117

Structural Assessments

F	R	F	R	F	R	Muscle	Fat	
6	5	5	5	5	5	C+	2	4

Notes:

Purchaser:..... \$

Lot 14 MERLEWOOD UP RIVER P59^{SV} (HBR) HODP59

DOB: 21/08/2018 Traits Observed: GL,200WT,400WT(x2),SC,Scan(EMA,Rib,Rump,IMF),Genomics Genetic Status: AMF,CAF,DDF,NHF

CONNEALY ONWARD* G A R PREDESTINED*
SITZ UPWARD 307R^{SV} RITO 9M25 OF RITA 5F56 PRED^{SV}
SITZ HENRIETTA PRIDE 81M* RITA 5F56 OF 1198 FD*
SIRE: USA17091363 THOMAS UP RIVER 1614^{PV} **DAM: HODJ18 MERLEWOOD ANNABELL J18[#]**
RITO 112 OF 2536 RITO 616* COOLANA WHITWORTH C58^{SV}
THOMAS CAROL 7595* COOLANA ANNABELL G069*
THOMAS CAROL 1246* COOLANA ANNABELL E40*



February 2020 TransTasman Angus Cattle Evaluation

	Calving Ease		Birth		Growth				Fertility			Carcase					Other		
	Dir	Dtrs	Gest	BW	200 W	400 W	600 W	MCW	Milk	Scrot.	D t C	CWT	EMA	Rib	Rump	RBY	IMF	NFI-F	Doc
EBVs	+5.5	+3.0	-5.6	+4.2	+59	+106	+132	+113	+22	+1.7	-3.4	+75	+7.6	-0.7	-1.7	+1.9	+0.4	-0.39	-
Acc	59%	52%	85%	69%	69%	70%	70%	68%	63%	73%	42%	64%	62%	65%	63%	63%	61%	53%	-

Selection Indexes

Angus Breeding	Domestic	Heavy Grain	Heavy Grass
\$125	\$126	\$119	\$128

Structural Assessments

F	R	F	R	F	R	Muscle	Fat	
6	6	5	5	5	5	B-	2	5

Notes:

Purchaser:..... \$

Lot 15 MERLEWOOD JARCEVO P149^{SV} (HBR) HODP149

DOB: 13/09/2018 Traits Observed: 200WT,400WT(x2),SC,Scan(EMA,Rib,Rump,IMF),Genomics Genetic Status: AMF,CAF,DDF,NHF

TE MANIA AMBASSADOR A134^{SV} S A F 598 BANDO 5175*
TUWHARETOA REGENT D145^{PV} L T 598 BANDO 9074*
LAWSONS HENRY VIII Y5^{SV} MILL COULEE BARBARA K 323*
SIRE: VTMJ545 TE MANIA JARCEVO J545^{PV} **DAM: HODH12 MERLEWOOD JAPARA H12[#]**
B T ULTRAVOX 297E* ARDROSSAN CASINO C18^{PV}
TE MANIA LOWAN Z74^{PV} MERLEWOOD JAPARA F31*
TE MANIA LOWAN V201* TE MANIA JAPARA A215^{SV}



February 2020 TransTasman Angus Cattle Evaluation

	Calving Ease		Birth		Growth				Fertility			Carcase					Other		
	Dir	Dtrs	Gest	BW	200 W	400 W	600 W	MCW	Milk	Scrot.	D t C	CWT	EMA	Rib	Rump	RBY	IMF	NFI-F	Doc
EBVs	+1.1	+2.5	-1.9	+3.8	+47	+82	+115	+84	+21	+2.4	-6.8	+67	+2.8	+0.2	-0.2	-0.1	+1.8	+0.13	-
Acc	53%	50%	62%	63%	66%	68%	66%	64%	59%	71%	46%	60%	56%	60%	58%	58%	56%	50%	-

Selection Indexes

Angus Breeding	Domestic	Heavy Grain	Heavy Grass
\$119	\$105	\$124	\$116

Structural Assessments

F	R	F	R	F	R	Muscle	Fat	
6	5	5	5	5	5	C+	2	4

Notes:

Purchaser:..... \$

Need top nutrition for optimum production?

See us at the Merlewood Bull Sale Mirboo North!

Bio-Boost delivers systemic NPK & Trace Elements economically!

Bio-Boost NPK Foliage Spray is high in energy, with premium levels of Phosphorous, Nitrogen, Potassium and trace elements for good pasture or crop nutrition. Within seconds of application the spray starts to work systemically, helping to correct deficiencies and improve the health of pasture.

- Reduces the need for supplements

- Helps with weight gain and productivity. **Bio-Boost NPK Foliage Spray** travels down into the roots to compensate soil 'lock-up' and deficiencies in pasture and crops. An excellent natural agent for fast pasture recovery.

Composition: Nitrogen 22.5%, Phosphorus 5.85%, Potassium 9.01%, with trace elements.



Call (03) 5153 0277 for more info or visit gfssolutions.com.au

ARE YOUR STOCK REACHING THEIR FULL POTENTIAL?

CONSIDER MEGATRACE

Lack of Production, Poor Performance, and Health Constraints can often be attributed to missing nutrients.

MegaTrace is a concentrated and chelated trace mineral supplement suitable for all livestock.

This complete all-in-one balanced liquid mineral package is a unique formulation of organically protected bio-available minerals in a seaweed base.

Trials have shown that can MegaTrace can substantially improve the general health of your livestock

See us at the Merlewood Bull Sale, Mirboo North ...or call now for free information.



STOCKHEALTH
PRODUCTS AUSTRALIA

FREECALL 1800 255 288

sales@stockhealth.com.au www.stockhealth.com.au

MegaTrace

**BROWNS
STOCK FEED**
PTY LTD



**FOR ALL YOUR DAIRY,
BEEF, CALF & SHEEP FEED
REQUIREMENTS**



Leongatha Mill



Tinamba Mill

We Supply:

**> All your Farm
Requirements**

**> All your Livestock Feed
Requirements**

**> Free delivery in
Gippsland**



Gippsland

Chris Lawton
0439 959 899



Gippsland

Lindsay Davies
0428 361 231



Gippsland

Matt James
0488 623 159

Call one of our nutritional team direct or contact the office to have one of our nutritional team contact you

'Meals on Wheels for your Farm'

Leongatha - 86 Yarragon Rd
Ph: 03 5662 3199
e: admin@brownssf.com.au

Tinamba West - 620 Heyfield, Upper Maffra Rd
Ph: 03 5145 1345
e: tinamba@brownssf.com.au

Discover the **Bio-Boost** benefits that no other fertiliser can offer!

Specially formulated for low Calcium/Magnesium soils to increase leaf size and productivity.

Calcium has long been recognized as an important soil amendment.

Using a highly soluble source of calcium like Cal/Mag5:1 can:

- quickly remove harmful sodium salts from the root zone
- establish valuable calcium, magnesium and nitrogen levels
- provide proper nutrition for rapid recovery and vegetative regrowth.

Low Magnesium soils produce weak plants with small leaves, By applying the highly concentrated multi-purpose Cal/Mag 5:1 at only 5 ltrs/Ha, the leaf size and productivity will increase.



Ca:10.5, Mg:2.1, Liquid Sea Minerals + Boron, Molybdenum, Molasses + Seaweed + Silica



For more information visit gfssolutions.com.au or call (03) 5153 0277

"Your future is our vision"

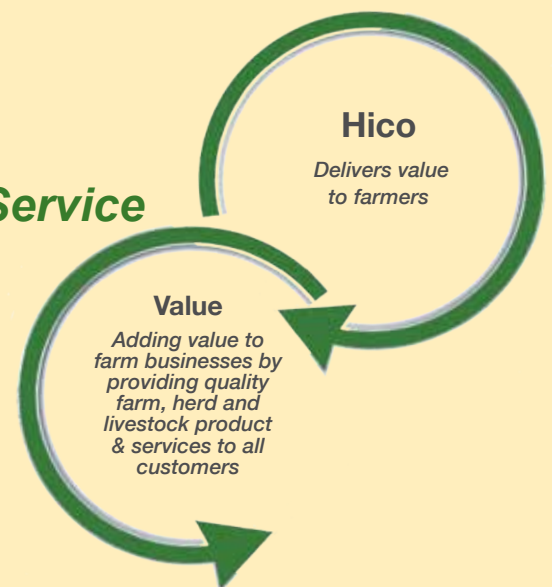


HERD IMPROVEMENT
CO-OPERATIVE AUSTRALIA LTD



We offer a quality range of products and services including:

- ***Pregnancy Testing***
- ***Qualified AI Technicians***
- ***Semen Sales***
- ***Freeze Branding***
- ***Liquid Nitrogen Service***
- ***Farm Chemicals***
- ***Merchandise***



Contact Hico today:

KORUMBURRA

Phone: 03 5658 131

MAFFRA

Phone: 5147 1633

WARRAGUL

Phone: 03 5623 2207

Helping producers profitably regenerate **LAND, SOIL, BUSINESSES** and **LIVES** for over 30 years.



Find out how we can help you...

Grazing for Profit™

Farming & Grazing for Profit™

ProfitProbe™

Short Courses

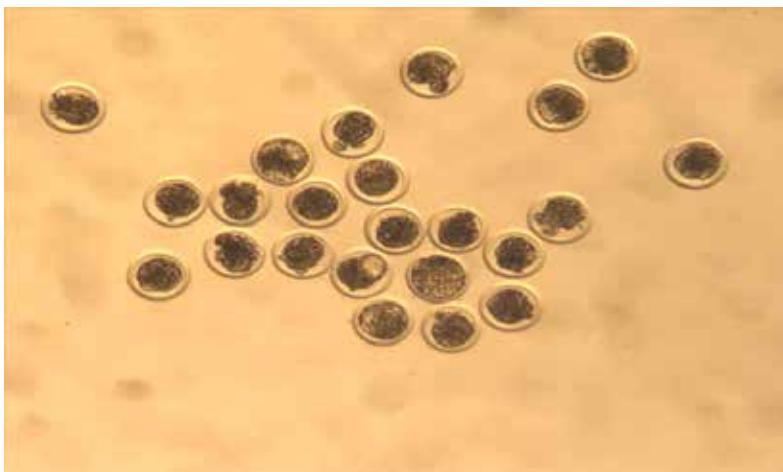
Professional Advice

Call **1800 356 004** Email info@rcsaustralia.com.au

Visit www.rcsaustralia.com.au

VETERINARY EMBRYO TRANSFER SERVICES

- Providing bovine embryo collection, transfer and freezing services.
- Embryo splitting options.
- Donor and recipient management advice including programming and nutritional management.
- Manual and ultrasound pregnancy testing.
- Donor collection facilities in Leongatha South for domestic embryo collection.



Contact : Dr Doug Watson (0422452316) or email vetembryotransfer@gmail.com

Lot 16 MERLEWOOD REPLAY P104^{SV} (HBR) HODP104

DOB: 3/09/2018 **Traits Observed:** 200WT,400WT(x2),SC,Scan(EMA,Rib,Rump,IMF),Genomics **Genetic Status:** AMFCAF,DDFNHF

WK VEGAS[#] K C F BENNETT TOTAL[#]
 WK REPLAY[#] MERLEWOOD BENNETT TOTAL J2^{SV}
 S A F PENELOPE P020[#] MERLEWOOD BEEAC G27[#]
SIRE: HBUM077 ANVIL M077^{PV} **DAM: HODL138 MERLEWOOD JAPARA L138[#]**
 SITZ UPWARD 307R^{SV} L T 598 BANDO 9074[#]
 ANVIL EMBLYNETTE E199^{SV} MERLEWOOD JAPARA H12[#]
 EA EMBLYNETTE 434[#] MERLEWOOD JAPARA F31[#]



February 2020 Trans Tasman Angus Cattle Evaluation

	Calving Ease		Birth		Growth				Fertility		Carcase						Other		
	Dir	Dtrs	Gest	BW	200 W	400 W	600 W	MCW	Milk	Scrot.	D t C	CWT	EMA	Rib	Rump	RBV	IMF	NFI-F	Doc
EBVs	+1.3	+4.7	-3.7	+5.3	+58	+97	+124	+102	+18	+4.0	-8.6	+67	+4.7	-0.4	-1.4	+1.4	+1.4	+0.00	-
Acc	48%	43%	56%	59%	63%	64%	62%	60%	53%	67%	37%	56%	50%	54%	52%	51%	49%	42%	-

Selection Indexes

Structural Assessments

Angus Breeding	Domestic	Heavy Grain	Heavy Grass	F	R	F	R	F	R	Muscle	Fat	
\$137	\$126	\$145	\$131	6	5	5	5	5	5	C+	2	5

Notes:
 Purchaser:.....\$.....

Lot 17 MERLEWOOD JARCEVO P141^{SV} (APR) HODP141

DOB: 12/09/2018 **Traits Observed:** 200WT,400WT(x2),SC,Scan(EMA,Rib,Rump,IMF),Genomics **Genetic Status:** AMFCAF,DDFNHF

TE MANIA AMBASSADOR A134^{SV} TE MANIA ULONG U41^{SV}
 TUWHARETOA REGENT D145^{PV} TE MANIA AFRICA A217^{PV}
 LAWSONS HENRY VIII Y5^{SV} TE MANIA JEDDA Y32^{SV}
SIRE: VTMJ545 TE MANIA JARCEVO J545^{PV} **DAM: VCCG643 COOLANA G643[#]**
 B T ULTRAVOX 297E[#] LAWSONS DINKY-DI Z191^{SV}
 TE MANIA LOWAN Z74^{PV} COOLANA E656[#]
 TE MANIA LOWAN V201[#] COOLANA Y331[#]



February 2020 Trans Tasman Angus Cattle Evaluation

	Calving Ease		Birth		Growth				Fertility		Carcase						Other		
	Dir	Dtrs	Gest	BW	200 W	400 W	600 W	MCW	Milk	Scrot.	D t C	CWT	EMA	Rib	Rump	RBV	IMF	NFI-F	Doc
EBVs	+2.9	+1.7	-3.4	+3.9	+44	+82	+107	+83	+19	+2.6	-5.1	+49	+5.7	+0.0	+1.5	+0.5	+3.1	-0.04	-
Acc	54%	51%	63%	65%	67%	69%	67%	64%	60%	72%	46%	61%	58%	62%	60%	60%	57%	51%	-

Selection Indexes

Structural Assessments

Angus Breeding	Domestic	Heavy Grain	Heavy Grass	F	R	F	R	F	R	Muscle	Fat	
\$134	\$120	\$150	\$125	6	7	5	5	5	5	C+	2	5

Notes:
 Purchaser:.....\$.....

Lot 18 MERLEWOOD OUTLIER P36^{PV} (HBR) HODP36

DOB: 15/08/2018 **Traits Observed:** GL,200WT,400WT(x2),SC,Scan(EMA,Rib,Rump,IMF),Genomics **Genetic Status:** AMFUCAF,DDFU,NHFU

SCHURRTOP REALITY X723[#] TE MANIA UNLIMITED U3271[#]
 MATAURI REALITY 839[#] TE MANIA INFINITY 04 379 AB[#]
 MATAURI 06663[#] TE MANIA 95102[#]
SIRE: NZE14647010F031 MATAURI OUTLIER F031^{SV} **DAM: HODF9 MERLEWOOD RITA F9^{SV}**
 KAROO W109 DIRECTION Z181^{SV} HYLINE RIGHT TIME 338[#]
 MATAURI 08860[#] THE GRANGE RITA 2811 B238^{SV}
 MATAURI 105583[#] RITA 2811 OF 2536 BVND 878[#]



February 2020 Trans Tasman Angus Cattle Evaluation

	Calving Ease		Birth		Growth				Fertility		Carcase						Other		
	Dir	Dtrs	Gest	BW	200 W	400 W	600 W	MCW	Milk	Scrot.	D t C	CWT	EMA	Rib	Rump	RBV	IMF	NFI-F	Doc
EBVs	+3.1	+5.7	-8.1	+2.5	+42	+84	+111	+105	+22	+2.2	-5.1	+57	+3.9	+1.6	+1.5	-1.3	+2.2	+0.09	-
Acc	61%	56%	84%	69%	70%	71%	71%	69%	67%	73%	54%	67%	65%	68%	66%	66%	64%	59%	-

Selection Indexes

Structural Assessments

Angus Breeding	Domestic	Heavy Grain	Heavy Grass	F	R	F	R	F	R	Muscle	Fat	
\$112	\$102	\$117	\$109	6	6	6	5	5	5	C	2	4

Notes:
 Purchaser:.....\$.....



Sale Lots

Lot 19 MERLEWOOD ABERDEEN P1^{SV} (HBR) HODP1

DOB: 18/07/2018 Traits Observed: GL,200WT,400WT(x2),SC,Scan(EMA,Rib,Rump,IMF),Genomics Genetic Status: AM,FCAF,DDF,NHF

C.R.A.BEXTOR 872 5205 608# TE MANIA GENERAL G429^{SV}
TC.ABERDEEN 759# TE MANIA JINDRA J1153^{SV}
TC BLACKBIRD 4034# TE MANIA JEDDA F786#
SIRE: SRKJ302 BOWMONT ABERDEEN J302^{PV} **DAM: HODM15 MERLEWOOD GERBERA M15#**
K.C.F.BENNETT PERFORMER# MERLEWOOD EQUATOR G2 (AI)^{SV}
THE GRANGE BLACKBIRD E172^{PV} MERLEWOOD NEW DESIGN K13#
THE GRANGE YR BLACKBIRD A207^{PV} MERLEWOOD NEW DESIGN H29#



February 2020 TransTasman Angus Cattle Evaluation

	Calving Ease		Birth		Growth				Fertility			Carcase					Other		
	Dir	Dtrs	Gest	BW	200 W	400 W	600 W	MCW	Milk	Scrot.	D t C	CWT	EMA	Rib	Rump	RBY	IMF	NFI-F	Doc
EBVs	+5.5	+7.3	-9.9	+3.5	+45	+78	+109	+84	+19	+2.8	-6.0	+50	+5.2	-0.1	+1.8	+0.0	+2.7	+0.35	-
Acc	50%	45%	83%	64%	63%	66%	64%	62%	53%	70%	38%	57%	55%	58%	56%	55%	53%	45%	-

Selection Indexes

Angus Breeding	Domestic	Heavy Grain	Heavy Grass
\$134	\$116	\$145	\$127

Structural Assessments

F	R	F	R	F	R	Muscle	Fat	
5	5	5	5	5	5	C	2	5

Notes:

Purchaser:.....\$

Lot 20 MERLEWOOD GENESIS P111^{SV} (HBR) HODP111

DOB: 6/09/2018 Traits Observed: 200WT,400WT(x2),SC,Scan(EMA,Rib,Rump,IMF),Genomics Genetic Status: AM,FCAF,DDF,NHF

TE MANIA YORKSHIRE Y437^{PV} B/R NEW DESIGN 036#
TE MANIA BERKLEY B1^{PV} KENNY'S CREEK ECLIPSE W111^{SV}
TE MANIA LOWAN Z53# IMRAN MISS VEGAS U20#
SIRE: SMPG357 PATHFINDER GENESIS G357^{PV} **DAM: NFJZ36 FORRES BURNETTE Z36^{SV}**
ARDROSSAN DIRECTION W109^{PV} G.D.A.R.OSCAR 711#
PATHFINDER DIRECTION D245^{SV} FORRES BURNETTE M40+92#
PATHFINDER ADAVALE A433# FORRES BURNETTE H93+88#



February 2020 TransTasman Angus Cattle Evaluation

	Calving Ease		Birth		Growth				Fertility			Carcase					Other		
	Dir	Dtrs	Gest	BW	200 W	400 W	600 W	MCW	Milk	Scrot.	D t C	CWT	EMA	Rib	Rump	RBY	IMF	NFI-F	Doc
EBVs	+5.9	+6.6	-6.1	+4.0	+45	+85	+112	+97	+26	+2.2	-8.1	+72	+6.2	+3.2	+2.8	+0.3	+0.8	+0.33	-
Acc	61%	54%	68%	70%	71%	71%	71%	70%	68%	71%	50%	67%	64%	67%	65%	64%	63%	57%	-

Selection Indexes

Angus Breeding	Domestic	Heavy Grain	Heavy Grass
\$126	\$115	\$122	\$126

Structural Assessments

F	R	F	R	F	R	Muscle	Fat	
6	5	5	6	5	5	C	2	5

Notes:

Purchaser:.....\$

Lot 21 MERLEWOOD JOVIAL P98^{SV} (HBR) HODP98

DOB: 31/08/2018 Traits Observed: GL,200WT,400WT(x2),SC,Scan(EMA,Rib,Rump,IMF),Genomics Genetic Status: AM,FCAF,DDF,NHF

WAITARA VALLEY TEX# PAPA EQUATOR 2928#
HINGAIA 469# ARDROSSAN EQUATOR A241^{PV}
HINGAIA 910# ARDROSSAN PRINCESS W38^{PV}
SIRE: QRFJ350 RAFF JOVIAL J350^{PV} **DAM: HODJ65 MERLEWOOD BURNETTE J65#**
ONEILLS EXPEDITION# KENNY'S CREEK ECLIPSE W111^{SV}
RAFF BLACKBIRD F14# FORRES BURNETTE Z36^{SV}
HOFF BLACKBIRD 594 5217# FORRES BURNETTE M40+92#



February 2020 TransTasman Angus Cattle Evaluation

	Calving Ease		Birth		Growth				Fertility			Carcase					Other		
	Dir	Dtrs	Gest	BW	200 W	400 W	600 W	MCW	Milk	Scrot.	D t C	CWT	EMA	Rib	Rump	RBY	IMF	NFI-F	Doc
EBVs	-17.3	-0.9	-0.7	+7.4	+50	+96	+131	+120	+21	+2.7	-6.1	+82	+3.8	-1.1	-2.9	+1.0	+0.8	-0.29	-
Acc	56%	51%	84%	67%	67%	68%	67%	65%	58%	72%	44%	61%	59%	63%	61%	60%	59%	51%	-

Selection Indexes

Angus Breeding	Domestic	Heavy Grain	Heavy Grass
\$91	\$84	\$94	\$90

Structural Assessments

F	R	F	R	F	R	Muscle	Fat	
7	5	6	5	5	5	C+	2	4

Notes:

Purchaser:.....\$

Lot 22 MERLEWOOD REPLAY P85^{SV} (APR) HODP85

DOB: 26/08/2018 Traits Observed: 200WT,400WT(x2),SC,Scan(EMA,Rib,Rump,IMF),Genomics Genetic Status: AMFCAFDDFNHF

WK VEGAS* IRELANDS FLETCHER F1^{PV}
 WK REPLAY# IRELANDS HEIRLOOM H343^{SV}
 S A F PENELOPE P020# IRELANDS ROSEBUD B12^{PV}
SIRE: HBUM077 ANVIL M077^{PV} **DAM: HODL93 MERLEWOOD PREDESTINED L93[#]**
 SITZ UPWARD 307R^{SV} G A R PREDESTINED*
 ANVIL EMBLYNETTE E199^{SV} MERLEWOOD PREDESTINED F17#
 EA EMBLYNETTE 434# LAWSONS FAIR DINKUM B1173#



February 2020 TransTasman Angus Cattle Evaluation

	Calving Ease		Birth		Growth				Fertility			Carcase					Other		
	Dir	Dtrs	Gest	BW	200 W	400 W	600 W	MCW	Milk	Scrot.	D t C	CWT	EMA	Rib	Rump	RBY	IMF	NFI-F	Doc
EBVs	+0.1	+5.0	-5.5	+6.5	+56	+99	+132	+135	+17	+3.7	-6.0	+68	+1.0	-1.3	-1.7	+1.2	+1.5	-0.45	-
Acc	48%	43%	55%	59%	63%	65%	62%	59%	53%	67%	37%	55%	51%	54%	53%	51%	49%	42%	-

Selection Indexes

Structural Assessments

Angus Breeding	Domestic	Heavy Grain	Heavy Grass	F	R	F	R	F	R	Muscle	Fat	Other
\$127	\$116	\$139	\$120	6	6	5	5	5	5	C	2	5

Notes: Purchaser:.....\$.....

Lot 23 MERLEWOOD REPLAY P115^{SV} (HBR) HODP115

DOB: 7/09/2018 Traits Observed: 200WT,400WT(x2),SC,Scan(EMA,Rib,Rump,IMF),Genomics Genetic Status: AMFUCAFU,DDFU,NHFU

WK VEGAS# BASIN FRANCHISE P142#
 WK REPLAY# EF COMPLEMENT 8088^{PV}
 S A F PENELOPE P020# EF EVERELDA ENTENSE 6117#
SIRE: HBUM077 ANVIL M077^{PV} **DAM: HODL8 MERLEWOOD EMPRESS L8#**
 SITZ UPWARD 307R^{SV} MF DESTROYER 093#
 ANVIL EMBLYNETTE E199^{SV} MERLEWOOD EMPRESS J62#
 EA EMBLYNETTE 434# CARRINGTON PARK EMPRESS Z30^{PV}



February 2020 TransTasman Angus Cattle Evaluation

	Calving Ease		Birth		Growth				Fertility			Carcase					Other		
	Dir	Dtrs	Gest	BW	200 W	400 W	600 W	MCW	Milk	Scrot.	D t C	CWT	EMA	Rib	Rump	RBY	IMF	NFI-F	Doc
EBVs	+2.2	+8.3	-8.4	+6.2	+58	+95	+124	+109	+17	+2.0	-6.3	+65	+4.7	-0.6	+0.1	+0.9	+1.4	-0.20	-
Acc	51%	46%	61%	61%	63%	65%	63%	60%	54%	68%	37%	57%	53%	56%	54%	53%	51%	44%	-

Selection Indexes

Structural Assessments

Angus Breeding	Domestic	Heavy Grain	Heavy Grass	F	R	F	R	F	R	Muscle	Fat	Other
\$130	\$121	\$134	\$128	6	5	5	5	5	4	C+	2	5

Notes: Purchaser:.....\$.....

Lot 24 MERLEWOOD BRAVEHEART P121^{PV} (HBR) HODP121

DOB: 9/09/2018 Traits Observed: 200WT,400WT(x2),SC,Scan(EMA,Rib,Rump,IMF),Genomics Genetic Status: AMFUCAFU,DDFU,NHFU

TE MANIA UNLIMITED U3271# IRELANDS FLETCHER F1^{PV}
 HIGHLANDER OF STERN AB# IRELANDS HEIRLOOM H343^{SV}
 STERN 2664# IRELANDS ROSEBUD B12^{PV}
SIRE: NZE1217000784 BRAVEHEART OF STERN^{SV} **DAM: HODM66 MERLEWOOD BLACKBIRD M66^{SV}**
 STERN 947# CONNEALY THUNDER#
 STERN 3886# MERLEWOOD BLACKBIRD F3#
 STERN 1486# THE GRANGE YR BLACKBIRD A207^{PV}



February 2020 TransTasman Angus Cattle Evaluation

	Calving Ease		Birth		Growth				Fertility			Carcase					Other		
	Dir	Dtrs	Gest	BW	200 W	400 W	600 W	MCW	Milk	Scrot.	D t C	CWT	EMA	Rib	Rump	RBY	IMF	NFI-F	Doc
EBVs	+0.5	-0.6	-7.8	+4.6	+48	+96	+132	+123	+16	+2.9	-1.0	+71	+9.5	-1.7	-1.8	+2.9	+0.3	+0.07	-
Acc	59%	54%	65%	67%	68%	68%	69%	66%	63%	70%	48%	63%	61%	64%	62%	61%	60%	53%	-

Selection Indexes

Structural Assessments

Angus Breeding	Domestic	Heavy Grain	Heavy Grass	F	R	F	R	F	R	Muscle	Fat	Other
\$122	\$116	\$121	\$125	5	5	5	5	5	5	C+	2	5

Notes: Purchaser:.....\$.....



Sale Lots

Lot 25 MERLEWOOD HEIRLOOM P58^{SV} (HBR) HODP58

DOB: 20/08/2018 *Traits Observed:* GL,200WT,400WT(x2),SC,Scan(EMA,Rib,Rump,IMF),Genomics *Genetic Status:* AMFCAF,DDFNHF

RENNYLEA C277^{PV} S A F STRATEGY 9015[#]
 IRELANDS FLETCHER F1^{PV} MERLEWOOD SAF STRATEGY F34^{SV}
 TE MANIA WARGOONA Z31^{PV} LAWSONS GAR NEW DESIGN 1407 A717[#]

SIRE: VICH343 IRELANDS HEIRLOOM H343^{SV} **DAM: HODH68 MERLEWOOD SUNBEAM H68[#]**
 G A R GRID MAKER[#] LEACHMAN BOOM TIME[#]
 IRELANDS ROSEBUD B12^{PV} MERLEWOOD SUNBEAM E16[#]
 IMRAN ROSEBUD U17[#] STRATHEWEN XPO SUNBEAM B26^{PV}

TACE February 2020 TransTasman Angus Cattle Evaluation

	Calving Ease		Birth		Growth				Fertility			Carcase					Other		
	Dir	Dtrs	Gest	BW	200 W	400 W	600 W	MCW	Milk	Scrot.	D t C	CWT	EMA	Rib	Rump	RBY	IMF	NFI-F	Doc
EBVs	+8.5	+4.2	-4.8	+1.0	+34	+68	+92	+85	+15	+1.2	-2.7	+49	+4.6	-0.6	-1.3	+0.1	+1.9	-0.20	-
Acc	48%	42%	82%	60%	65%	67%	63%	62%	56%	70%	38%	56%	54%	55%	56%	51%	49%	41%	-

Selection Indexes				Structural Assessments								
Angus Breeding	Domestic	Heavy Grain	Heavy Grass	F	R	F	R			Muscle	Fat	
\$96	\$96	\$98	\$96	6	5	5	5	5	5	C+	2	5

Notes:
 Purchaser:.....\$.....

Lot 26 MERLEWOOD JARCEVO P136^{SV} (HBR) HODP136

DOB: 11/09/2018 *Traits Observed:* 200WT,400WT(x2),SC,Scan(EMA,Rib,Rump,IMF),Genomics *Genetic Status:* AMFCAF,DDFNHF

TE MANIA AMBASSADOR A134^{SV} HYLINE RIGHT TIME 338[#]
 TUWHARETOA REGENT D145^{PV} ALPINE RIGHTTIME D126^{PV}
 LAWSONS HENRY VIII Y5^{SV} YTHANBRAE NEW DESIGN 036 V803[#]

SIRE: VTMJ545 TE MANIA JARCEVO J545^{PV} **DAM: HODG27 MERLEWOOD BEEAC G27[#]**
 B T ULTRAVOX 297E[#] TE MANIA ULONG U41^{SV}
 TE MANIA LOWAN Z74^{PV} TE MANIA BEEAC A29[#]
 TE MANIA LOWAN V201[#] TE MANIA BEEAC Y673[#]

TACE February 2020 TransTasman Angus Cattle Evaluation

	Calving Ease		Birth		Growth				Fertility			Carcase					Other		
	Dir	Dtrs	Gest	BW	200 W	400 W	600 W	MCW	Milk	Scrot.	D t C	CWT	EMA	Rib	Rump	RBY	IMF	NFI-F	Doc
EBVs	-7.2	-8.4	-6.7	+7.9	+47	+77	+104	+87	+17	+2.4	-5.5	+58	+4.5	+0.4	-0.4	+0.0	+3.3	+0.18	-
Acc	50%	48%	59%	62%	66%	69%	66%	64%	58%	71%	43%	59%	55%	59%	56%	56%	54%	47%	-

Selection Indexes				Structural Assessments								
Angus Breeding	Domestic	Heavy Grain	Heavy Grass	F	R	F	R			Muscle	Fat	
\$105	\$94	\$122	\$97	6	5	5	5	6	5	C	2	4

Notes:
 Purchaser:.....\$.....

Lot 27 MERLEWOOD JARCEVO P156^{SV} (HBR) HODP156

DOB: 15/09/2018 *Traits Observed:* 200WT,400WT(x2),SC,Scan(EMA,Rib,Rump,IMF) *Genetic Status:* AMFCAF,DDFNHF

TE MANIA AMBASSADOR A134^{SV} TE MANIA BERKLEY B1^{PV}
 TUWHARETOA REGENT D145^{PV} TE MANIA EMPEROR E343^{PV}
 LAWSONS HENRY VIII Y5^{SV} TE MANIA LOWAN Z74^{PV}

SIRE: VTMJ545 TE MANIA JARCEVO J545^{PV} **DAM: HODH21 MERLEWOOD JAPARA H21[#]**
 B T ULTRAVOX 297E[#] B/R NEW DESIGN 036[#]
 TE MANIA LOWAN Z74^{PV} TE MANIA JAPARA A215^{SV}
 TE MANIA LOWAN V201[#] TE MANIA JAPARA T55[#]

TACE February 2020 TransTasman Angus Cattle Evaluation

	Calving Ease		Birth		Growth				Fertility			Carcase					Other		
	Dir	Dtrs	Gest	BW	200 W	400 W	600 W	MCW	Milk	Scrot.	D t C	CWT	EMA	Rib	Rump	RBY	IMF	NFI-F	Doc
EBVs	-0.8	-4.0	-4.1	+5.3	+45	+80	+109	+99	+17	+2.4	-5.3	+61	+4.9	+1.4	+0.3	+0.0	+2.7	+0.20	-
Acc	49%	47%	56%	60%	68%	70%	66%	62%	57%	73%	47%	60%	60%	59%	61%	57%	55%	50%	-

Selection Indexes				Structural Assessments								
Angus Breeding	Domestic	Heavy Grain	Heavy Grass	F	R	F	R			Muscle	Fat	
\$115	\$103	\$128	\$109	6	5	6	5	5	4	C	2	4

Notes:
 Purchaser:.....\$.....

Lot 28 MERLEWOOD REPLAY P133^{SV} (HBR) HODP133

DOB: 11/09/2018 **Traits Observed:** 200WT,400WT(x2),SC,Scan(EMA,Rib,Rump,IMF),Genomics **Genetic Status:** AMFCAFDDFNHF

WK VEGAS* LEACHMAN BOOM TIME#
 WK REPLAY# MERRIDALE ENTREVOIR E50^{PV}
 SA F PENELOPE P020# MERRIDALE ESTER C131^{PV}
SIRE: HBUM077 ANVIL M077^{PV} **DAM: HODK6 MERLEWOOD ROYAL-LINE K6 (AI)#**
 SITZ UPWARD 307R^{SV} MERLEWOOD SITZ 458 NEW DESIGN F4^{PV}
 ANVIL EMBLYNETTE E199^{SV} MERLEWOOD ROYAL-LINE H73#
 EA EMBLYNETTE 434# FORRES ROYAL-LINE C14^{PV}



February 2020 TransTasman Angus Cattle Evaluation

	Calving Ease		Birth		Growth				Fertility			Carcase				Other			
	Dir	Dtrs	Gest	BW	200 W	400 W	600 W	MCW	Milk	Scrot.	D t C	CWT	EMA	Rib	Rump	RBY	IMF	NFI-F	Doc
EBVs	-14.4	-4.1	-3.5	+8.6	+66	+105	+144	+146	+20	+3.7	-5.6	+79	+6.3	-0.5	-1.3	+1.9	+0.9	-0.07	-
Acc	49%	43%	55%	60%	63%	65%	62%	60%	53%	67%	35%	56%	51%	55%	53%	51%	50%	42%	-

Selection Indexes

Angus Breeding	Domestic	Heavy Grain	Heavy Grass
\$110	\$99	\$113	\$109

Structural Assessments

F	R	F	R			Muscle	Fat	
6	6	5	5	5	5	C+	2	5

Notes: Purchaser:.....\$.....

Lot 29 MERLEWOOD RAFF LEGAND P50^{SV} (HBR) HODP50

DOB: 18/08/2018 **Traits Observed:** GL,200WT,400WT(x2),SC,Scan(EMA,Rib,Rump,IMF),Genomics **Genetic Status:** AMFCAFDDFNHF

HYLINE RIGHT TIME 338# SA F 598 BANDO 5175#
 CHERYLTON STEWIE D19^{PV} BANQUET ABODE A005^{PV}
 SINCLAIR LADY 2P60 4465# BANQUET NANNY V44#
SIRE: QRFL178 RAFF LEGAND L178^{SV} **DAM: NFJG14 FORRES BURNETTE G14#**
 RAFF EMPIRE E269^{SV} KENNY'S CREEK ECLIPSE W111^{SV}
 RAFF BLACKBIRD H4# FORRES BURNETTE Z36^{SV}
 RAFF BLACKBIRD F14# FORRES BURNETTE M40+92#



February 2020 TransTasman Angus Cattle Evaluation

	Calving Ease		Birth		Growth				Fertility			Carcase				Other			
	Dir	Dtrs	Gest	BW	200 W	400 W	600 W	MCW	Milk	Scrot.	D t C	CWT	EMA	Rib	Rump	RBY	IMF	NFI-F	Doc
EBVs	-0.4	+1.9	-4.6	+3.2	+37	+75	+97	+86	+19	+2.5	-5.8	+50	+0.2	+1.1	+1.8	-0.7	+1.4	+0.00	-
Acc	52%	45%	83%	63%	65%	66%	65%	61%	56%	71%	36%	58%	55%	57%	57%	54%	52%	45%	-

Selection Indexes

Angus Breeding	Domestic	Heavy Grain	Heavy Grass
\$94	\$93	\$91	\$95

Structural Assessments

F	R	F	R			Muscle	Fat	
6	5	5	5	5	5	C+	2	5

Notes: Purchaser:.....\$.....

Lot 30 MERLEWOOD REPLAY P113^{SV} (HBR) HODP113

DOB: 7/09/2018 **Traits Observed:** 200WT,400WT(x2),SC,Scan(EMA,Rib,Rump,IMF) **Genetic Status:** AMFUCAFU,DDFNU,NHFU

WK VEGAS* SUMMITCREST COMPLETE 1P55#
 WK REPLAY# KM BROKEN BOW 002^{PV}
 SA F PENELOPE P020# SUMMITCREST PRINCESS 0P12#
SIRE: HBUM077 ANVIL M077^{PV} **DAM: HODJ56 MERLEWOOD RITA J56#**
 SITZ UPWARD 307R^{SV} TE MANIA INFINITY 04 379 AB#
 ANVIL EMBLYNETTE E199^{SV} MERLEWOOD RITA F9^{SV}
 EA EMBLYNETTE 434# THE GRANGE RITA 2811 B238^{SV}



February 2020 TransTasman Angus Cattle Evaluation

	Calving Ease		Birth		Growth				Fertility			Carcase				Other			
	Dir	Dtrs	Gest	BW	200 W	400 W	600 W	MCW	Milk	Scrot.	D t C	CWT	EMA	Rib	Rump	RBY	IMF	NFI-F	Doc
EBVs	+1.1	+5.6	-5.3	+3.8	+53	+86	+111	+95	+18	+2.6	-6.2	+59	+6.1	+0.4	+0.6	+0.5	+1.7	+0.12	-
Acc	47%	42%	53%	55%	63%	65%	61%	57%	52%	68%	36%	55%	53%	53%	54%	50%	48%	42%	-

Selection Indexes

Angus Breeding	Domestic	Heavy Grain	Heavy Grass
\$120	\$114	\$121	\$118

Structural Assessments

F	R	F	R			Muscle	Fat	
7	6	5	5	5	5	C	2	5

Notes: Purchaser:.....\$.....



Sale Lots

Lot 31 MERLEWOOD REPLAY P190 PV (HBR) HODP190

DOB: 9/10/2018 Traits Observed: 200WT,400WT(x2),SC,Scan(EMA,Rib,Rump,IMF),Genomics Genetic Status: AMFCAF,DDF,NHF
WVK VEGAS* BON VIEW NEW DESIGN 1407#
WJK REPLAY# SITZ NEW DESIGN 458N#
S A F PENELOPE P020# SITZ ELLUNAS ELITE 3308#
SIRE: HBUM077 ANVIL M077PV DAM: HODL85 MERLEWOOD BURNETTE L85#
SITZ UPWARD 307R^{SV} KENNY'S CREEK ECLIPSE W111^{SV}
ANVIL EMBLYNETTE E199^{SV} FORRES BURNETTE Z36^{SV}
EA EMBLYNETTE 434# FORRES BURNETTE M40+92#

TACE February 2020 TransTasman Angus Cattle Evaluation

	Calving Ease		Birth		Growth				Fertility		Carcase					Other			
	Dir	Dtrs	Gest	BW	200 W	400 W	600 W	MCW	Milk	Scrot.	D t C	CWT	EMA	Rib	Rump	RBY	IMF	NFI-F	Doc
EBVs	+6.4	+6.6	-6.1	+2.3	+40	+73	+93	+63	+20	+2.3	-3.3	+57	+6.2	+1.8	+0.9	+0.8	+1.8	+0.50	-
Acc	52%	47%	59%	63%	65%	65%	65%	62%	57%	59%	42%	59%	56%	60%	57%	57%	55%	48%	-

Selection Indexes Structural Assessments

Angus Breeding	Domestic	Heavy Grain	Heavy Grass	F	R	F	R	Muscle	Fat	
\$110	\$111	\$108	\$111	6	5	5	5	C	2	5

Notes:
Purchaser:.....\$.....

Lot 32 MERLEWOOD RAFF LEGAND P90 SV (HBR) HODP90

DOB: 27/08/2018 Traits Observed: GL,200WT,400WT(x2),SC,Scan(EMA,Rib,Rump,IMF),Genomics Genetic Status: AMFCAF,DDF,NHF
HYLINE RIGHT TIME 338# TE MANIA UNLIMITED U3271#
CHERYLTON STEWIE D19^{PV} TE MANIA INFINITY 04-379 AB#
SINCLAIR LADY 2P60 4465# TE MANIA 95102#
SIRE: QRFL178 RAFF LEGAND L178SV DAM: HODF35 MERLEWOOD HENRY VIII F35#
RAFF EMPIRE E269^{SV} G A R EVAS CONVERGENCE 3403#
RAFF BLACKBIRD H4# LAWSONS CONVERGENCE B940#
RAFF BLACKBIRD F14# LAWSONS HENRY VIII X1078#

TACE February 2020 TransTasman Angus Cattle Evaluation

	Calving Ease		Birth		Growth				Fertility		Carcase					Other			
	Dir	Dtrs	Gest	BW	200 W	400 W	600 W	MCW	Milk	Scrot.	D t C	CWT	EMA	Rib	Rump	RBY	IMF	NFI-F	Doc
EBVs	-0.2	-1.6	-4.3	+2.3	+39	+84	+101	+78	+20	+3.2	-3.3	+57	+2.7	+0.4	+2.2	-1.0	+2.3	+0.39	-
Acc	53%	48%	83%	63%	65%	66%	65%	63%	56%	70%	40%	59%	56%	60%	58%	57%	55%	49%	-

Selection Indexes Structural Assessments

Angus Breeding	Domestic	Heavy Grain	Heavy Grass	F	R	F	R	Muscle	Fat	
\$100	\$102	\$101	\$100	6	5	5	5	C+	2	5

Notes:
Purchaser:.....\$.....



LOT 3 Merlewood Enforcer P80



RS ANVIL ENFORCER E183^{PV} (HBR) HBUE183

DOB: 01/09/2009 Traits Observed: BWT,200WT,400WT,SC,Scan(EMA,Rib,Rump,IMF),Genomics Genetic Status: AMFU,CAFU,DDF,NHFU

CONNEALY LEAD ON[#] SITZ TRAVELER 8180[#]
CONNEALY ONWARD[#] SITZ ALLIANCE 6595[#]
ALTUNE OF CONANGA 6104[#] SITZ BARBARAMERE JET 2698[#]
SIRE: USA14963730 SITZ UPWARD 307R^{SV} **DAM: USA14742276 EA EMBLYNETTE 434[#]**
SITZ VALUE 7097[#] ELLANIN SKY DIVER[#]
SITZ HENRIETTA PRIDE 81M[#] S A V SKY DIAMOND 2582[#]
SITZ HENRIETTA PRIDE 1370[#] S A V BLACK DIAMOND 562[#]

TACE February 2020 TransTasman Angus Cattle Evaluation

Calving Ease		Birth		Growth				Fertility			Carcase				Other				
Dir	Dtrs	Gest	BW	200 W	400 W	600 W	MCW	Milk	Scrot.	D t C	CWT	EMA	Rib	Rump	RBY	IMF	NFI-F	Doc	
EBVs	+3.5	+4.2	-5.7	+3.8	+50	+89	+112	+83	+20	+2.3	-2.9	+72	+5.4	+0.3	-0.9	+1.7	-0.1	+0.59	+9
Acc	77%	65%	95%	96%	92%	92%	92%	85%	80%	89%	59%	88%	86%	89%	86%	83%	85%	81%	80%

Selection Indexes

Angus Breeding	Domestic	Heavy Grain	Heavy Grass
\$102	\$111	\$87	\$111

Statistics: Number of Herds: 12, Prog Analysed: 221, Genomic Prog: 31

RS ANVIL M077^{PV} (HBR) HBUM077

DOB: 26/02/2016 Traits Observed: BWT,200WT,400WT,Scan(EMA,Rib,Rump,IMF) Genetic Status: AMFU,CAFU,DDF,NHFU

BON VIEW NEW DESIGN 1407[#] CONNEALY ONWARD[#]
WK VEGAS[#] SITZ UPWARD 307R^{SV}
WK BLACKCAP 3138[#] SITZ HENRIETTA PRIDE 81M[#]
SIRE: USA16154968 WK REPLAY[#] **DAM: HBUE199 ANVIL EMBLYNETTE E199^{SV}**
K F PRECISION 361[#] SITZ ALLIANCE 6595[#]
S A F PENELOPE P020[#] EA EMBLYNETTE 434[#]
S A F PENELOPE 0013[#] S A V SKY DIAMOND 2582[#]

TACE February 2020 TransTasman Angus Cattle Evaluation

Calving Ease		Birth		Growth				Fertility			Carcase				Other				
Dir	Dtrs	Gest	BW	200 W	400 W	600 W	MCW	Milk	Scrot.	D t C	CWT	EMA	Rib	Rump	RBY	IMF	NFI-F	Doc	
EBVs	-1.4	+5.3	-4.7	+6.9	+62	+101	+133	+120	+18	+4.3	-6.8	+69	+5.8	-0.4	-1.0	+2.1	+1.3	+0.04	-
Acc	63%	55%	68%	77%	84%	84%	78%	73%	67%	77%	50%	73%	68%	70%	69%	67%	65%	58%	-

Selection Indexes

Angus Breeding	Domestic	Heavy Grain	Heavy Grass
\$139	\$126	\$147	\$133

Statistics: Number of Herds: 1, Prog Analysed: 53, Genomic Prog: 0

RS BOWMONT ABERDEEN J302^{PV} (HBR) SRKJ302

DOB: 19/08/2013 Traits Observed: BWT,200WT,400WT(x2),SC,Scan(EMA,Rib,Rump,IMF),Genomics Genetic Status: AMFU,CAFU,DDF,NHFU

B A R EXT TRAVELER 205[#] HYLINE RIGHT TIME 338[#]
C R A BEXTOR 872 5205 608[#] K C F BENNETT PERFORMER[#]
C R A L A D Y J A Y E 608 498 S E A S Y[#] K C F M I S S 589 L 182[#]
SIRE: USA15840414 TC ABERDEEN 759[#] **DAM: EFTE172 THE GRANGE BLACKBIRD E172^{PV}**
B O N V I E W N E W D E S I G N 208^{SV} B / R N E W D I M E N S I O N 7127^{SV}
T C B L A C K B I R D 4034[#] T H E G R A N G E Y R B L A C K B I R D A 207^{PV}
T C B L A C K B I R D 1013[#] D A V I S Y R B L A C K B I R D 558H[#]

TACE February 2020 TransTasman Angus Cattle Evaluation

Calving Ease		Birth		Growth				Fertility			Carcase				Other				
Dir	Dtrs	Gest	BW	200 W	400 W	600 W	MCW	Milk	Scrot.	D t C	CWT	EMA	Rib	Rump	RBY	IMF	NFI-F	Doc	
EBVs	+0.2	+2.5	-6.6	+5.6	+58	+105	+143	+128	+22	+2.8	-5.4	+75	+5.6	-0.1	-0.2	+0.4	+1.7	-0.04	-7
Acc	72%	63%	89%	93%	87%	88%	86%	81%	74%	87%	56%	77%	76%	78%	77%	74%	73%	64%	62%

Selection Indexes

Angus Breeding	Domestic	Heavy Grain	Heavy Grass
\$137	\$119	\$147	\$133

Statistics: Number of Herds: 8, Prog Analysed: 121, Genomic Prog: 5



RS MAR INNOVATION 251^{PV} (HBR) USA16983331

DOB: 03/02/2011 Traits Observed: Genomics Genetic Status: AMFCAF,DDF,NHF

BON VIEW NEW DESIGN 878* SITZ TRAVELER 8180*
 CONNEALY REFLECTION# SA V FINAL ANSWER 0035#
 HAPPY GRILL OF CONANGA 6260* SA V EMULOUS 8145*
SIRE: USA15543702 CONNEALY IMPRESSION# DAM: USA16450035 MAR FINAL KAHUNA 856#
 VERMILION DATELINE 7078* RIVER HILLS KAHUNA 175M#
 PEARL PAMMY OF CONANGA 194# MAR KAHUNA PRECISION 328 674#
 PEARL JAM OF CONANGA 6114# MAR PRECISION 328 BUSH 700#

TACE

February 2020 TransTasman Angus Cattle Evaluation

	Calving Ease		Birth		Growth				Fertility		Carcase					Other			
	Dir	Dtrs	Gest	BW	200 W	400 W	600 W	MCW	Milk	Scrot.	D t C	CWT	EMA	Rib	Rump	RBY	IMF	NFI-F	Doc
EBVs	-4.0	+2.7	-6.9	+6.4	+57	+94	+119	+103	+12	+3.3	-5.7	+67	+8.7	-1.6	-1.6	+3.1	+0.7	+0.02	+25
Acc	83%	65%	98%	98%	97%	97%	97%	89%	87%	96%	53%	86%	88%	88%	85%	82%	86%	67%	93%

Selection Indexes

Angus Breeding	Domestic	Heavy Grain	Heavy Grass
\$126	\$123	\$127	\$125

Statistics: Number of Herds: 54, Prog Analysed: 699, Genomic Prog: 49

RS MATAURI OUTLIER F031^{SV} (HBR) NZE14647010F031

DOB: 28/08/2010 Traits Observed: BWT,200WT,400WT,SC,Scan(EMA,Rib,Rump,IMF),Genomics Genetic Status: AMFCAF,DDF,NHF

SCHURR 77 1346 EXCEL# ARDROSSAN DIRECTION W109^{PV}
 SCHURRTOP REALITY X723# KAROO W109 DIRECTION Z181^{SV}
 SCHURRTOP 8019 V141# KAROO FLATS MADONNA V56#
SIRE: NZE14647008839 MATAURI REALITY 839# DAM: NZE14647108860 MATAURI 08860#
 TE MANIA ULONG U41^{SV} MAINSTREAM BAKER 202#
 MATAURI 06663# MATAURI 105583#
 MATAURI 04456 AB# MATAURI 022#

TACE

February 2020 TransTasman Angus Cattle Evaluation

	Calving Ease		Birth		Growth				Fertility		Carcase					Other			
	Dir	Dtrs	Gest	BW	200 W	400 W	600 W	MCW	Milk	Scrot.	D t C	CWT	EMA	Rib	Rump	RBY	IMF	NFI-F	Doc
EBVs	-2.9	+3.2	-4.8	+6.9	+54	+103	+141	+147	+16	+2.5	-5.1	+71	+2.0	+3.0	+0.8	-1.5	+1.4	+0.10	+1
Acc	93%	81%	98%	98%	98%	98%	98%	97%	97%	98%	82%	95%	94%	95%	94%	93%	93%	88%	92%

Selection Indexes

Angus Breeding	Domestic	Heavy Grain	Heavy Grass
\$113	\$99	\$118	\$112

Statistics: Number of Herds: 35, Prog Analysed: 248, Genomic Prog: 49

RS PATHFINDER GENESIS G357^{PV} (HBR) SMPG357

DOB: 23/03/2011 Traits Observed: BWT,200WT,400WT,600WT,SC,Scan(EMA,Rib,Rump,IMF),Genomics Genetic Status: AMFCAF,DDF,NHF

SA F FOCUS OF ER# C A FUTURE DIRECTION 5321#
 TE MANIA YORKSHIRE Y437^{PV} ARDROSSAN DIRECTION W109^{PV}
 TE MANIA LOWAN U275# ARDROSSAN WILCOOLA Q71+95#
SIRE: VTMB1 TE MANIA BERKLEY B1^{PV} DAM: SMPD245 PATHFINDER DIRECTION D245^{SV}
 KENNY'S CREEK SANDY S15^{SV} PATHFINDER VINE V107#
 TE MANIA LOWAN Z53# PATHFINDER ADAVALE A433#
 TE MANIA LOWAN V129# PATHFINDER V31#

TACE

February 2020 TransTasman Angus Cattle Evaluation

	Calving Ease		Birth		Growth				Fertility		Carcase					Other			
	Dir	Dtrs	Gest	BW	200 W	400 W	600 W	MCW	Milk	Scrot.	D t C	CWT	EMA	Rib	Rump	RBY	IMF	NFI-F	Doc
EBVs	+5.1	+5.5	-7.8	+6.6	+62	+110	+146	+151	+24	+4.0	-5.2	+95	+11.2	+1.2	+0.1	+1.9	+1.5	+0.73	+18
Acc	91%	76%	99%	99%	98%	98%	98%	95%	94%	98%	73%	93%	92%	93%	92%	89%	91%	84%	97%

Selection Indexes

Angus Breeding	Domestic	Heavy Grain	Heavy Grass
\$154	\$136	\$166	\$148

Statistics: Number of Herds: 104, Prog Analysed: 2167, Genomic Prog: 572

RS BRAVEHEART OF STERN^{SV} (HBR) NZE1217000784

DOB: 29/08/2007 **Traits Observed:** BWT,200WT,400WT,600WT,SC,Scan(EMA,Rib,Rump,IMF),Genomics **Genetic Status:** AMFCAFDDFNHF

B/R NEW DESIGN 036# STERN FITZPATRICK 665#
 TE MANIA UNLIMITED U3271# STERN 947#
 TE MANIA LOWAN R426# STERN 8143#
SIRE: NZE12170004408 HIGHLANDER OF STERN AB# DAM: NZE121701033886 STERN 3886#
 STERN 00844# STERN FITZPATRICK 665#
 STERN 2664# STERN 1486#
 STERN 7377# STERN 884#



February 2020 TransTasman Angus Cattle Evaluation

	Calving Ease		Birth		Growth				Fertility		Carcase					Other			
	Dir	Dtrs	Gest	BW	200 W	400 W	600 W	MCW	Milk	Scrot.	D t C	CWT	EMA	Rib	Rump	RBV	IMF	NFI-F	Doc
EBVs	-1.5	-1.5	-6.0	+4.7	+37	+74	+101	+80	+17	+3.0	-2.6	+44	+8.9	+0.6	+0.8	+1.1	+1.0	+0.66	+17
Acc	96%	89%	99%	99%	98%	98%	98%	98%	98%	98%	81%	96%	95%	96%	96%	94%	94%	88%	94%

Selection Indexes

Angus Breeding	Domestic	Heavy Grain	Heavy Grass
\$100	\$98	\$94	\$104

Statistics: Number of Herds: 107, Prog Analysed: 1159, Genomic Prog: 98

RS CLUNIE RANGE LEGEND L348^{PV} (HBR) NBHL348

DOB: 09/07/2015 **Traits Observed:** BWT,200WT,400WT,600WT,SC,Scan(EMA,Rib,Rump,IMF),Genomics **Genetic Status:** AMFCAFDDFNHF

SCHURR 77 1346 EXCEL# CONNEALY CONSENSUS#
 SCHURRTOP REALITY X723# CONNEALY EARNAN 076E^{PV}
 SCHURRTOP 8019 V141# BRAZILA OF CONANGA 3991 839A#
SIRE: NZE14647008839 MATAURI REALITY 839# DAM: AHWJ81 ABERDEEN ESTATE LAURA J81^{PV}
 TE MANIA ULONG U41^{SV} B/R AMBUSH 28#
 MATAURI 06663# TUWHARETOA E111^{PV}
 MATAURI 04456 AB# TUWHARETOA A52^{PV}



February 2020 TransTasman Angus Cattle Evaluation

	Calving Ease		Birth		Growth				Fertility		Carcase					Other			
	Dir	Dtrs	Gest	BW	200 W	400 W	600 W	MCW	Milk	Scrot.	D t C	CWT	EMA	Rib	Rump	RBV	IMF	NFI-F	Doc
EBVs	-2.2	+8.2	-8.3	+6.3	+60	+102	+135	+152	+4	+3.4	-7.7	+75	+2.8	+3.5	-0.2	-1.2	+2.9	+0.23	+13
Acc	82%	65%	98%	98%	97%	97%	96%	84%	73%	96%	58%	88%	88%	89%	87%	86%	86%	80%	93%

Selection Indexes

Angus Breeding	Domestic	Heavy Grain	Heavy Grass
\$135	\$115	\$157	\$123

Statistics: Number of Herds: 76, Prog Analysed: 900, Genomic Prog: 155

RS IRELANDS HEIRLOOM H343^{SV} (HBR) VICH343

DOB: 16/08/2012 **Traits Observed:** BWT,600WT,SC,Scan(EMA,Rib,Rump,IMF),Genomics **Genetic Status:** AMFUCAFUDDFUNDHFU

BOOROOMOOKA UNDERTAKEN Y145^{PV} G D A R TRAVELER 044#
 RENNYLEA C277^{PV} G A R GRID MAKER#
 BOORHAMAN Y55^{SV} G A R PRECISION 2536#
SIRE: VICF1 IRELANDS FLETCHER F1^{PV} DAM: VICB12 IRELANDS ROSEBUD B12^{PV}
 VERMILION YELLOWSTONE# PAPA EQUATOR 2928#
 TE MANIA WARGOONA Z31^{PV} IMRAN ROSEBUD U17#
 TE MANIA WARGOONA T285# SOUTH CROSS L11+91#



February 2020 TransTasman Angus Cattle Evaluation

	Calving Ease		Birth		Growth				Fertility		Carcase					Other			
	Dir	Dtrs	Gest	BW	200 W	400 W	600 W	MCW	Milk	Scrot.	D t C	CWT	EMA	Rib	Rump	RBV	IMF	NFI-F	Doc
EBVs	-1.4	-0.8	-5.5	+7.5	+63	+118	+159	+175	+5	+2.0	+0.7	+94	+1.0	-3.1	-3.7	+1.0	+0.9	-0.77	-
Acc	65%	56%	79%	82%	89%	89%	88%	85%	77%	86%	61%	76%	73%	73%	74%	69%	67%	57%	-

Selection Indexes

Angus Breeding	Domestic	Heavy Grain	Heavy Grass
\$114	\$110	\$121	\$115

Statistics: Number of Herds: 1, Prog Analysed: 87, Genomic Prog: 3



RS RAFF JOVIAL J350^{PV} (HBR) QRFJ350

DOB: 21/07/2013 **Traits Observed:** BWT,200WT(x2),400WT,600WT(x2),SC,Scan(EMA,Rib,Rump,IMF),Genomics **Genetic Status:** AMFU,CAFU,DDFU,NHFU

WAITARA VALLEY BIG MAX* CIRCLE A ADVENTURE 0124#
 WAITARA VALLEY TEX* ONEILLS EXPEDITION#
 WAITARA VALLEY L578# ONEILLS DELIA 718#

SIRE: NZE469 HINGAIA 469# DAM: QRFF14 RAFF BLACKBIRD F14#

BACK TRACK P&P ROYAL 28# SV F BANDOLIER#
 HINGAIA 910# HOFF BLACKBIRD 594 5217#
 HINGAIA D208# HOFF BOSS LADY S C 3V9#

TACE February 2020 TransTasman Angus Cattle Evaluation

	Calving Ease		Birth		Growth				Fertility			Carcase					Other		
	Dir	Dtrs	Gest	BW	200 W	400 W	600 W	MCW	Milk	Scrot.	D t C	CWT	EMA	Rib	Rump	RBY	IMF	NFI-F	Doc
EBVs	-6.3	+2.0	-4.8	+6.7	+48	+93	+132	+126	+16	+1.9	-4.1	+72	+8.2	+0.0	-1.1	+1.4	+0.1	-0.10	+33
Acc	79%	69%	96%	95%	94%	94%	94%	88%	77%	91%	60%	82%	82%	83%	82%	79%	80%	68%	80%

Selection Indexes

Angus Breeding	Domestic	Heavy Grain	Heavy Grass
\$110	\$100	\$107	\$113

Statistics: Number of Herds: 8, Prog Analysed: 309, Genomic Prog: 43

RS RAFF LEGAND L178^{SV} (HBR) QRFL178

DOB: 21/05/2015 **Traits Observed:** BWT,600WT,SC,Scan(EMA,Rib,Rump,IMF) **Genetic Status:** AMFU,CAFU,DDFU,NHFU

LEACHMAN RIGHT TIME^{SV} J & C APPEAL A10^{PV}
 HYLINE RIGHT TIME 338# RAFF EMPIRE E269^{SV}
 HYLINE PRIDE 265# RAFF DORIS A55#

SIRE: WLHD19 CHERYLTON STEWIE D19^{PV} DAM: QRFH4 RAFF BLACKBIRD H4#

NBAR,PRIME TIME D806# ONEILLS EXPEDITION#
 SINCLAIR LADY 2P60 4465# RAFF BLACKBIRD F14#
 IDEAL 4465 OF 6807 4286# HOFF BLACKBIRD 594 5217#

TACE February 2020 TransTasman Angus Cattle Evaluation

	Calving Ease		Birth		Growth				Fertility			Carcase					Other		
	Dir	Dtrs	Gest	BW	200 W	400 W	600 W	MCW	Milk	Scrot.	D t C	CWT	EMA	Rib	Rump	RBY	IMF	NFI-F	Doc
EBVs	+0.6	+2.5	-4.8	+2.8	+45	+91	+118	+97	+23	+2.6	-2.8	+66	+3.5	+0.5	+2.3	-0.6	+2.3	+0.30	-
Acc	68%	56%	78%	83%	87%	84%	84%	77%	65%	82%	46%	73%	69%	71%	71%	67%	65%	59%	-

Selection Indexes

Angus Breeding	Domestic	Heavy Grain	Heavy Grass
\$116	\$109	\$120	\$115

Statistics: Number of Herds: 3, Prog Analysed: 60, Genomic Prog: 0

RS TE MANIA JARCEVO J545^{PV} (HBR) VTMJ545

DOB: 15/08/2013 **Traits Observed:** BWT,200WT,400WT(x2),SC,Scan(EMA,Rib,Rump,IMF),DOC **Genetic Status:** AMFU,CAFU,DDFU,NHFU

RENNYLEA XPONENTIAL X555# OSU 6T6 ULTRA#
 TE MANIA AMBASSADOR A134^{SV} B T ULTRAVOX 297E#
 TE MANIA LOWAN Y211# FINKS VIXON 788#

SIRE: BNAD145 TUWHARETOA REGENT D145^{PV} DAM: VTMZ74 TE MANIA LOWAN Z74^{PV}

YTHANBRAE HENRY VIII U8^{SV} B/R NEW DESIGN 036#
 LAWSONS HENRY VIII Y5^{SV} TE MANIA LOWAN V201#
 YTHANBRAE DIRECTION T270# TE MANIA LOWAN R426#

TACE February 2020 TransTasman Angus Cattle Evaluation

	Calving Ease		Birth		Growth				Fertility			Carcase					Other		
	Dir	Dtrs	Gest	BW	200 W	400 W	600 W	MCW	Milk	Scrot.	D t C	CWT	EMA	Rib	Rump	RBY	IMF	NFI-F	Doc
EBVs	-3.5	-7.7	-3.7	+5.2	+44	+77	+104	+87	+18	+2.3	-5.5	+63	+7.0	+1.1	+0.5	+0.7	+2.9	+0.30	+3
Acc	67%	65%	70%	81%	91%	92%	87%	82%	74%	87%	64%	77%	75%	75%	76%	73%	72%	66%	66%

Selection Indexes

Angus Breeding	Domestic	Heavy Grain	Heavy Grass
\$118	\$104	\$132	\$110

Statistics: Number of Herds: 1, Prog Analysed: 119, Genomic Prog: 0

CONNEALY LEAD ON*
 CONNEALY ONWARD*
 ALTUNE OF CONANGA 6104*
SIRE: USA14963730 SITZ UPWARD 307R^{SV}
 SITZ VALUE 7097*
 SITZ HENRIETTA PRIDE 81M*
 SITZ HENRIETTA PRIDE 1370*

RITO 616 OF 4B20 6807*
 RITO 112 OF 2536 RITO 616*
 GARPRECISION 2536*
DAM: USA15743336 THOMAS CAROL 7595*
 PAPA FORTE 1921*
 THOMAS CAROL 1246*
 THOMAS CAROL 9436*

TACE

February 2020 Trans Tasman Angus Cattle Evaluation

	Calving Ease		Birth		Growth				Fertility			Carcase				Other			
	Dir	Dtrs	Gest	BW	200 W	400 W	600 W	MCW	Milk	Scrot.	D t C	CWT	EMA	Rib	Rump	RBY	IMF	NFI-F	Doc
EBVs	+12.2	-0.6	-5.9	+3.3	+59	+110	+132	+100	+27	+2.9	-5.2	+78	+4.4	+1.5	+0.7	+0.5	+1.3	+0.22	-4
Acc	89%	77%	99%	98%	98%	98%	98%	95%	93%	97%	65%	91%	92%	92%	91%	89%	90%	78%	94%

Selection Indexes

Angus Breeding	Domestic	Heavy Grain	Heavy Grass
\$129	\$127	\$128	\$130

Statistics: Number of Herds: 65, Prog Analysed: 719, Genomic Prog: 148

2021 WORLD ANGUS FORUM Australia

Join us for the

2021 WORLD ANGUS FORUM IN AUSTRALIA!

INTERNATIONAL ANGUS YOUTH COMPETITION
 With Angus Youth teams from around the world competing throughout the forum to be crowned the champions of the Angus world

POST TOUR, FROM TOOWOOMBA TO ROCKHAMPTON
 Through Queensland, renowned for its northern beef industry, culminating in Beef Australia 2021, the southern hemisphere's largest beef exposition

PRE TOUR THROUGH CENTRAL WEST NSW
 Showcasing world class Angus properties and one of Australia's best known food and wine regions

WELCOME FUNCTION IN SYDNEY
 Renowned for its stunning harbour setting, temperate climate, and world class restaurants

TECHNICAL FORUM IN CANBERRA
 Australia's capital city, the heart of the nation and home to many of Australia's inspirational landmarks and renowned cultural attractions

APRIL - MAY 2021

#WAFdownunder

www.worldangusforum2021.com



CLUNIE RANGE LEGEND L348



BOWMONT ABERDEEN J302



MATAURI OUTLIER F031



PATHFINDER GENESIS G357



BRAVEHEART OF STERN



MAR INNOVATION

LOT 14
MERLEWOOD
UP RIVER P59



LOT 18
MERLEWOOD
OUTLIER P36



LOT 32
MERLEWOOD
RAFF LEGAND P90





LOT 2 MERLEWOOD
CLUNIE LEGEND P8

