

# Bonnydale | Black Simmentals

## 24th ANNUAL BULL SALE

Monday 10th February 2020 at 1.00pm (WST)  
Offering 75 Black Simmental & Simangus Bulls



**J-BAS 8**

 **AuctionsPlus**  
Buy and Sell stock nationally

Free Delivery Australia Wide



COVER IMAGE  
COURTESY OF  
**Countryman**



# REFERENCE SIRES



**Bonnydale Kruiser**



**RCR Augustus R54**



**Koch Big Timber 685D**



**Bonnydale Augustus L84**



**Bonnydale SA Elevator**



**Bonnydale SA Tank**



**Bonnydale Nevada**



**Bonnydale Nashville**



## TWENTY-FOURTH ON-PROPERTY BULL SALE

ACCOUNT  
INTROVIGNE GRAZING CO  
"BONNYDALE BLACK SIMMENTALS"  
197 DeZotti Road, Bridgetown WA 6255

**ENQUIRIES:**

**Mike & Julie Introvigne**  
Ph: 08 9764 4012  
Mobile: 0428 644 012  
Email: mjintro@bigpond.com

**Rob & Diane Introvigne**  
Ph: 08 9764 4082  
Mobile: 0427 644 082  
Email: rdintro@bigpond.com

CONDUCTING AGENT

INTERFACED WITH



STUD STOCK **Tim Spicer** 0427 812 194  
Elders Bridgetown **Deane Allen** 0427 421 306  
**Pearce Watling** 0437 844 528

### Sale Day Safety Disclaimer

Please be advised when entering the pens people must be aware of the potential risk involved and enter at their own risk. Children under the age of 16 are not permitted to enter the pens on sale day. Visitors must use common sense when entering the pens and be mindful of all the bulls in the pen and other visitors inspecting the bulls. While all care has been taken when selecting the bulls for sale to ensure quiet temperament under normal handling circumstances they have not been accustomed to large numbers of people in their vicinity. Bonnydale and Elders staff will be available on sale day to assist you when entering the pens or to move the bulls closer should you prefer to inspect the bulls from outside the pen.



**Bonnydale SA Matauri**





# THE SMART START FOR YOUNG CATTLE.



### What does an extra 5kg/head mean to you?

That's the difference making the smart choice for worm control in young cattle can have on productivity!

In a recent, multi-farm, study, weaners treated with Eclipse® - Australia's only dual active, broad spectrum pour-on - gained on average 5.1kg more than those treated with a single active ML over a period of 90 days<sup>1</sup>.

For effective worm control in young cattle, choose your drench with confidence. Choose Eclipse for smarter productivity.

**FOR MORE INFORMATION, CALL 1800 808 691  
OR TALK TO YOUR BOEHRINGER INGELHEIM  
TERRITORY MANAGER.**



<sup>1</sup>Information contained in this document is based on trial results based on research conducted in partnership with Charles Sturt University. Data on file. Eclipse® is a registered trademark of the Boehringer Ingelheim Group. See product label for full claim details and directions for use. Boehringer Ingelheim Animal Health Australia Pty. Ltd., Level 1, 78 Waterloo Road, North Ryde, NSW 2113 Australia. ABN 53 071 187 285. All rights reserved. AUS/ECLP-181005 FP



# RICHFEEDS AND RURAL SUPPLIERS

Your local agents in Bridgetown and surrounding areas for all your rural needs. Family owned and operated for over 25 years.

P: (08) 97 611520 E: richfeedsrural@westnet.com.au

- \*Drench/Vaccine
- \*Water fittings
- \*Ag-Chem
- \*Stockfeed
- \*Pumps
- \*Southern Wire
- \*Electric fencing
- \*Water Tanks (Inc. FREE delivery)
- \*Livestock Supplements
- \*Optima Lime
- \*CSBP Fertiliser
- \*Fire Fighting





# TRUSTED AND PROVEN – BACKED BY SCIENCE AND DATA

## Welcome to Bonnydale Black Simmentals 24th Annual On-Property Bull Sale.

We are proud to offer another outstanding line-up of 75 Black Simmental and Simangus sires with trusted and proven genetics backed by science and data. At no other time in the history of the beef industry have we seen the rate of change as we are seeing now. The creation of new technologies and the demand for more value and accountability from the beef genetics business continues to drive the Bonnydale program. While some continue to follow long held traditions at Bonnydale we thrive on innovation and investment to deliver product integrity. In any business improvement is paramount to stay ahead of the game.

As Marty Ropp of Allied Genetic Resources, USA recently wrote- ***“No one I know would buy average seed corn, strive to send their child to an average school and certainly not accept an average steak. We can’t afford to promote average or even below average genetics anymore”.***

It is this philosophy that drives the team at Bonnydale to produce the best genetics we possibly can for the success of our clients. This is why we continue to invest heavily in DNA testing to provide DNA verified pedigrees and Genomic Enhanced EPD’s so we can offer sires with more accurate and predictable genetic potential.

Bonnydale sires can deliver enhanced productivity, performance and end product value for the Australian beef industry. Hybrid vigour is a very powerful productivity tool which comes free with every Bonnydale sire utilised in any commercial breeding program. Bonnydale utilises the latest genetics via collaboration with one of USA’s leading Black Simmental herds, Altenburg Simmental Ranch owned by Willie and Sharon Altenburg of Fort Collins, Colorado. The long association with Willie allows us to utilise new and proven genetics sooner than other Australian seedstock operations due to his widespread contacts and respect throughout the USA beef industry providing him with up to date on the ground knowledge on how new sires are performing.

Bonnydale has built an Australia wide client base due to the performance of Bonnydale genetics and the after sales service provided to clients. A strong reputation for delivering cattle that perform with market suitability has led to strong feedlot and processor demand for cattle with Bonnydale infused genetics. The maternal power of Bonnydale genetics is also providing clients with the ability to retain females that deliver on maternal hybrid vigour leading to additional life time productivity of their female herd.

Herd health is a major component of the Bonnydale program so as to provide sires that will thrive throughout a diverse range of Australian environments where they may face potential disease challenges so we feel it is essential to have the bulls well prepared for anything that is thrown at them. The entire stud herd undergoes an annual vaccination program that includes, 7in1, Pestiguard and Longrange (Botulism). In addition to this program bulls are also vaccinated with Vibrovac, Bovishield and Rhinoguard in order to deliver the bulls in a ready to work, in any environmental condition they encounter.

This year’s offering includes sons of renowned sires such as the perennial powerhouse RCR Augustus R54, the game changing Bonnydale Augustus L84, proven Simangus sires Bonnydale SA Tank and Bonnydale SA Elevator and the last crop of Bonnydale’s elite sire Cruiser. Add to this, new sires, Bonnydale Nevada a flush brother to Augustus L84, elite outcross sire Bonnydale Nashville and the new star Simangus sire Bonnydale SA Matauri. USA sire Koch Big Timber 685D will have his first sons offered in Australia. Big Timber offers performance with calving ease, carcass quality and top 1% API and TI.

We look forward to seeing you on sale day February 10th 2020 at 1.00PM WST. Please join us for a complimentary lunch prior to the sale and refreshments afterwards. As usual the sale will be conducted by the professional Elders team and interfaced with AuctionsPlus.

Inspection of the sale team and the herd is welcome at any time.



2019 - INTROVIGNE FAMILY  
Back; Tyson, Julie, Nathan,  
Stella, Rowen, Cora & Diane.  
Front; Mike, Rita & Rob.

## TESTIMONIAL

“ Hello Willie, I just came back from checking our calves and feel the need to contact you. We have been a co-operator herd with the Carcass Merit Program with the ASA for 3 years and will be using your bulls again this year in the program. We began breeding some heifers to Western Justice two years ago, whose feedlot calves are out performing another Simmental sire herd-mates who is highly touted in the breed. Last year we bred to Black Nomad and after checking them this morning they are easily the

most powerful sire group in the pasture, once again in comparison to some highly promoted bulls. We just signed up to use ASR American Patriot for this upcoming breeding season. If it wasn’t for your participation in CMP program I am certain we wouldn’t have used any of these bulls and I am very thankful we have. Just wanted to let you know what your doing is having a major impact in places you don’t always see. Thank you!

– Brandon Wagner, Utica, South Dakota, USA





# Improve your pastures with Super Phos and Super Phos Extra.

Super phos is vital for your pasture's performance and your grazing profitability. Our fertiliser range including the new Super Phos Extra which contains trace elements in every granule, is manufactured locally and ideal for WA pastures.

To discuss your fertiliser requirements contact your local CSBP area manager today.



Dan Glover  
Area Manager South  
West  
0428589281

**SUPERPHOS**  
EXTRA



## We wish to thank the following companies for their support:

**Richfeeds & Rural Supplies Bridgetown**  
Lucky Buyer Prize

**Boehringer Ingelheim**  
Lucky Buyer Prize

**Zoetis**  
Top Price Buyer Prize

Catalogue Sponsors  
**Boyup Brook Farm Supplies**  
**CSBP**

**Bunbury Machinery**  
**EBM Insurance Brokers**

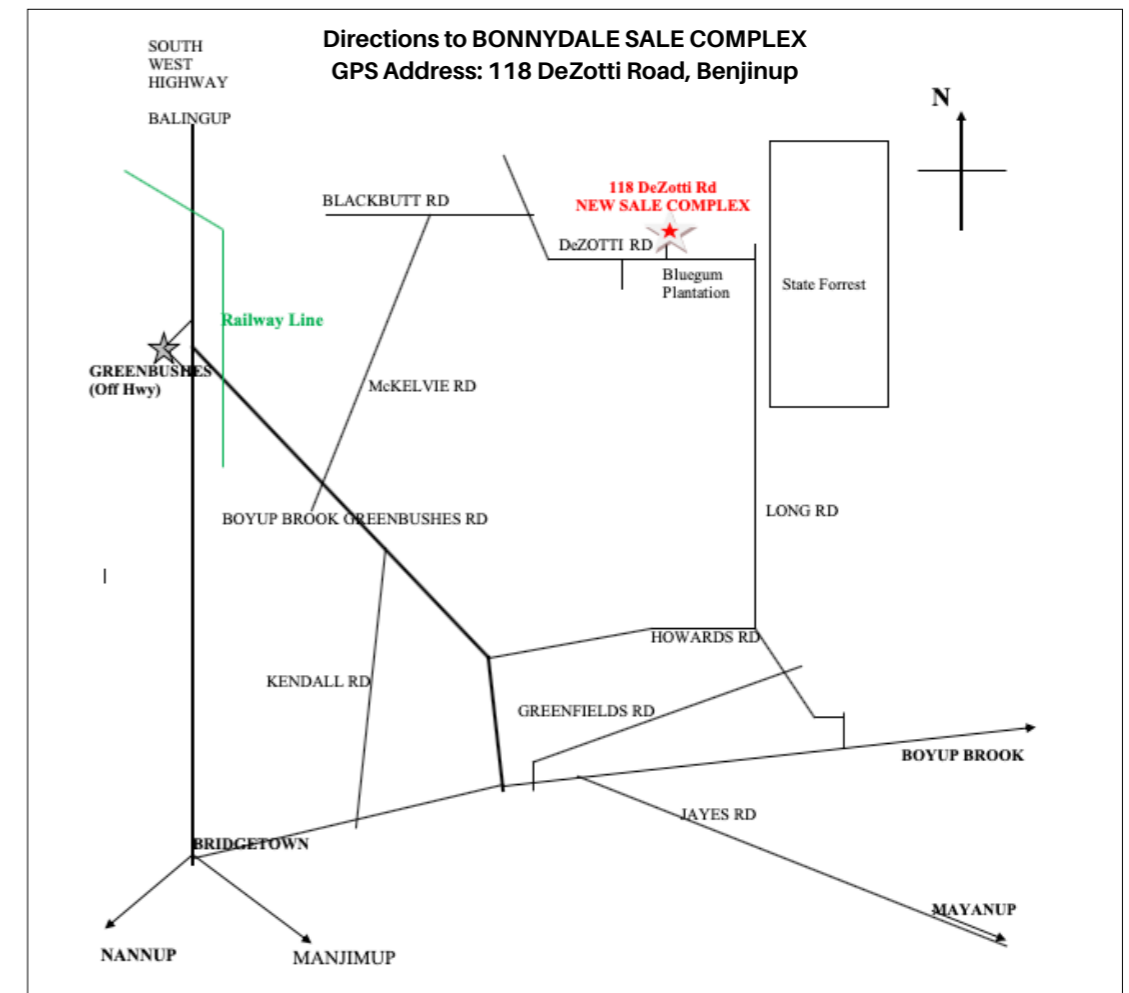
**Elders**

**Kettridges**

**Pascoes Accounting & Advisory**

**Fertitech**

**PGG Wrightson Seeds**



**Accommodation** - For sale visitors requiring accommodation please contact:  
Bridgetown Motel on 08 9761 1641, 38 Hampton Street, Bridgetown WA 6255



## BONNYDALE BLACK SIMMENTALS - THE DEPENDABLE BRAND

### Integrity

1. Every animal is registered with Simmental Australia and the American Simmental Association.
2. Records taken for Calving Ease, Birth Weight, Weaning Weight, Yearling Weight, Docility, EMA, Fat, IMF& Mature Cow Weight.
3. All sale bulls Zoetis Star Accredited.
4. All sale bulls semen tested and breeding soundness examined by an accredited vet.
5. No sale credits utilised ensuring every prospective purchaser is on a level bidding field.
6. All bulls covered by our comprehensive guarantee and after sales service program.

### Innovation

1. The first Western Australian seedstock operation to offer yearling bulls to benefit the industry. All bulls sold as yearlings.
2. Offering free delivery Australia wide.
3. Utilisation of additional science to back every animal bred at Bonnydale (American Simmental Association's massive data base).
4. Utilising a partnership with Altenburg Simmental Ranch, Fort Collins, Colorado, USA to provide industry leading genetics.
5. Utilising Genomic testing to enhance performance data - all bulls offered with Genomic Enhanced EPDs.
6. Every stud female DNA tested with ASA's CHR program to improve cow herd genetic predictability.

### Investment

1. Imported embryos from Altenburg Simmental Ranch with leading USA genetics utilised on an ongoing basis.
2. Purchase of semen rights to new proven sires.
3. All stud females registered with Simmental Australia and the American Simmental Association.
4. Regular visits to the USA to identify new genetics that will enhance our client's commercial operations.
5. Continued investment in animal recording technology and linked livestock weighing systems.



### ROAST BEEF LUNCHEON AND REFRESHMENTS PROVIDED

#### BONNYDALE'S PROTOCOLS

- All bulls semen tested by Landmark Breeding Services
- All bulls to be ultra sound carcass scanned on 22nd January 2019
- All bulls guaranteed for temperament, structural soundness and fertility
  - All bulls Zoetis Star accredited and tested negative for BVDV
- All bulls vaccinated with, 7in1, Pestiguard, Vibrovax, Longrange (Botulism), Bovillus & Rhinoguard.
- Bulls destined for Queensland will also be vaccinated free of charge for 3 Day Sickness and Tick Fever where required.

#### AGENTS REBATE

A 3% rebate will be paid to any Outside Agent who introduces new clients to the stud in writing to both the Vendor and their Agent 24hrs prior to the sale. The Agent must accompany and assist their client on the sale day.

#### FREE DELIVERY AUSTRALIA WIDE

The vendors will provide free delivery, to all mainland states, for bulls purchased at auction. The vendors will deliver bulls as soon as possible after the sale.

**INSURANCE DISCLAIMER** - Insurance risk of stud animals sold at auction transfers to the purchaser at the fall of the hammer including animals remaining on the vendor's property. Purchasers therefore are advised to insure their animals at the completion of the sale. Stud Animals are not covered by commercial livestock insurance at any point.

# CSBP are proud sponsors of the Bonnydale Bull Sale.

CSBP would like to wish the Introvigne Family and prospective buyers all the best for this years sale.

For more sponsorship information please contact your local CSBP area manager.



Dan Glover  
Area Manager South West  
0428589281



CSBP-FERTILISERS.COM.AU





## YEARLING BULLS

### Why Use Yearling Bulls

To ensure you achieve the best from your yearling bull they have been specially selected and specially prepared for service this season. With a little extra care, post mating season, your yearling will grow into the sire you expect and provides the opportunity to access his genetics a year earlier. In the long term the decision you have made to secure a yearling sire will enable you to achieve a higher return on your bull investment dollar.

### Using Yearling Bulls

The yearling bulls have been specially prepared for use this season. We recommend that they be used on no more than 30 to 35 cows in the first year. At Bonnydale we have been using yearling bulls for many years with excellent results. Reports from clients who have purchased yearlings in previous years confirm our recommendations. By giving your yearling bull some special attention you have the opportunity of maximising the use of your sire for his full productive lifetime

### Carcase Scanning

All yearling bulls will be carcase scanned and weighed prior to sale day. This information and updated performance data will be available on our website prior to sale or you can request it be emailed to you. To comply with performance recording systems bulls must be a minimum 300 days of age at time of scanning. All bulls will also have scrotal size measured and undergo a veterinary health check and semen test prior to sale.



**Bonnydale Black Simmentals continues its policy of not utilising sale credits, therefore prospective buyers at Bonnydale's Annual On-Property Bull Sale can bid with confidence and can rest assured that no one bidding at the sale has a credit inducement providing them with an unfair bidding advantage.**

### Can't make the sale?

*Purchasing online in eight simple steps!*

*Log on to AuctionsPlus and bid on your phone, tablet or computer.*

- 1 REGISTER ONLINE**  
Free once off registration for all auctions.
- 2 COMPLETE BUYER INDUCTION**  
The buyer induction will help you understand the roles and responsibilities of everyone on the AuctionsPlus system.
- 3 VIEW CATALOGUE**  
View photos, videos, pedigrees and more.
- 4 ENTER AUCTION**  
Log into the auction anytime, anywhere and bid on your mobile, tablet or computer.
- 5 AUTO BID**  
Can't stay for the whole sale? Set your maximum bid on the lot that you want to purchase and let the computer bid for you.
- 6 CONTACT SELLING AGENT**  
If successful, contact selling agent to arrange payment and delivery. The correct agent details will be in the catalogue header, contact after the sale to arrange payment and delivery.
- 7 PAYMENT**  
Via the selling agent's terms and conditions.
- 8 DELIVERY**  
Arrange transport of livestock at your expense.

Contact AuctionsPlus on (02) 9262 4222  
or email [studsales@auctionsplus.com.au](mailto:studsales@auctionsplus.com.au)  
or [www.auctionsplus.com.au](http://www.auctionsplus.com.au)

Check us out on:    

# AMERICAN SIMMENTAL ASSOCIATION

## QUICK REFERENCE TO ASA EPDS AND \$ INDEXES

### Expected Progeny Differences (EPDs):

EPDs are the most accurate and effective tool available for comparing genetic levels. In using EPDs, the difference between two sires' EPDs represents the unit difference expected in the performance of their progeny. For example, if sires A and B have EPDs of +10 and -5, a 15-unit difference would be expected in their progeny (moving from -5 to +10 yields 15 units). Key to using EPDs is knowing what units they are expressed in. For example, if the above case referred to weaning weight EPDs, A would be expected to sire 15-pounds more weaning weight than B. If calving ease were the trait, A would be expected to sire 15-percent more unassisted births in first-calf heifers; in other words, if B sired 30 assists in a group of 100 heifers, we'd expect A to require 15 assists.

A percentile-ranking chart is required to determine where a bull's EPDs rank him relative to other bulls in the breed. For percentile rankings or more detailed information about EPDs and \$ indexes visit [www.simmental.org](http://www.simmental.org).

Listed below are the units ASA EPDs are expressed in:

**All-Purpose Index (API):** Dollars per cow exposed under an all-purpose-sire scenario. (See below for more details.)

**Back Fat (BF):** Inches of backfat.

**Birth Weight (BW):** Pounds of birth weight.

**Calving Ease (CE):** Percent of unassisted births when used on heifers.

**Carcass Weight (CW):** Pounds of carcass weight.

**Maternal Calving Ease (MCE):** Percent of unassisted births in first-calving daughters.

**Milk (MLK):** Pounds of weaning weight due to milk.

**Marbling (MRB):** Marbling score.

**Maternal Weaning Weight (MWW):** Pounds of weaning weight due to milk and growth.

**Ribeye Area (REA):** Square inches of ribeye.

**Warner-Bratzler Shear Force (WBSF):** Pounds of force required to shear a steak.

**Stayability (STAY):** Percent of daughters remaining in the cowherd at 6 years of age.

**Terminal Index (TI):** Dollars per cow exposed under a terminal-sire scenario. (See below for more details.)

**Weaning Weight (WW):** Pounds of weaning weight.

**Yearling Weight (YW):** Pounds of yearling weight.

**Yield Grade (YG):** Yield grade score, the lower the better.

**\$ Indexes:** Though EPDs allow for the comparison of genetic levels for many economically important traits, they only provide a piece of the economic puzzle. That's where \$ indexes come in. Through well-conceived, rigorous mathematical computation, \$ indexes blend EPDs and economics to estimate an animal's overall impact on your bottom line. The same technology that led to the dramatic progress in swine, poultry and dairy genetics over the last several decades was used to develop the following \$ indexes:

**All-Purpose Index (API):** Evaluates sires for use on the entire cow herd (bred to both Angus first-calf heifers and mature cows) with the portion of their daughters required to maintain herd size retained and the remaining heifers and steers put on feed and sold grade and yield.

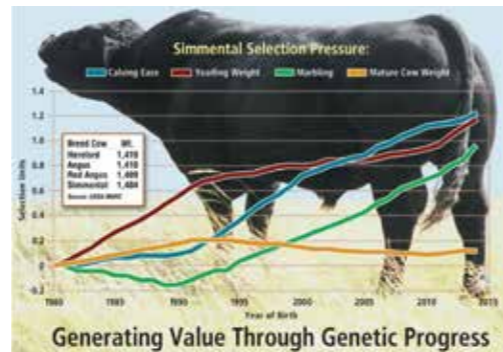
**Terminal Index (TI):** Evaluates sire for use on mature Angus cows with all offspring put on feed and sold grade and yield.

**Using API and TI:** First, determine which index to use; if you're keeping replacements use API, if not, TI.

Then, just as with EPDs, zero in on the unit difference between bulls. (As described above, index units are in dollars per cow exposed.) The difference can be used to determine how much a bull is worth compared to another. Or, put another way, how much you can pay for one bull compared to another. For example, when buying an all-purpose-type sire, you can quickly figure a bull scoring +100 for API is worth an extra \$6,000 over a +50 bull if both are exposed to 30 cows over 4 years (\$50 diff. x 30 hd. x 4 yr. = \$6,000).

A percentile-ranking chart is required to determine where a bull's index value ranks him relative to other bulls in the breed. For percentile rankings or more detailed information about EPDs and \$ indexes visit [www.simmental.org](http://www.simmental.org).

The genetic trends displayed right have a direct impact on the Bonnydale herd because we have chosen to exclusively utilize superior USA Black Simmental genetics.



## 2019 PUREBRED SIMMENTAL PERCENTILE TABLE

%	API	TI	CE	BW	WW	PWG	YW	MCE	MLK	MWW	STY	DOC	CWT	YG	MRB	BF	REA	SF
1	158.57	85.63	17.10	-2.50	89.30	0.31	136.10	10.40	32.00	69.90	22.30	17.00	48.60	-0.60	0.41	-0.15	1.22	-0.51
2	153.89	83.39	16.10	-1.80	86.20	0.29	131.00	9.70	30.60	68.10	21.70	16.10	45.60	-0.59	0.35	-0.14	1.17	-0.49
3	150.85	82.11	15.40	-1.50	84.40	0.29	128.20	9.30	29.70	67.10	21.40	15.60	44.10	-0.58	0.32	-0.14	1.14	-0.47
4	148.60	81.14	15.00	-1.20	83.10	0.28	126.00	9.00	29.00	66.20	21.10	15.20	42.90	-0.57	0.30	-0.14	1.12	-0.46
5	146.66	80.33	14.70	-1.00	82.20	0.28	124.50	8.80	28.50	65.60	20.90	14.90	41.90	-0.56	0.28	-0.14	1.10	-0.45
10	141.26	77.70	13.60	-0.30	78.90	0.26	119.30	7.90	26.90	63.20	20.20	13.80	38.70	-0.54	0.21	-0.13	1.03	-0.42
15	137.72	76.03	12.80	0.20	76.80	0.25	115.70	7.40	25.80	61.70	19.70	13.10	36.70	-0.53	0.17	-0.13	0.99	-0.40
20	134.97	74.62	12.30	0.50	75.00	0.24	112.90	7.00	25.00	60.50	19.30	12.60	35.00	-0.51	0.13	-0.12	0.95	-0.39
25	132.73	73.46	11.80	0.80	73.60	0.23	110.40	6.60	24.30	59.50	19.00	12.20	33.70	-0.50	0.11	-0.12	0.93	-0.37
30	130.70	72.43	11.40	1.00	72.30	0.23	108.20	6.30	23.70	58.60	18.60	11.80	32.50	-0.49	0.08	-0.12	0.90	-0.36
35	128.83	71.48	11.00	1.20	71.10	0.22	106.20	6.00	23.10	57.80	18.30	11.40	31.40	-0.49	0.06	-0.12	0.88	-0.35
40	127.04	70.58	10.60	1.40	70.00	0.21	104.30	5.70	22.60	57.00	18.00	11.10	30.30	-0.48	0.05	-0.12	0.86	-0.34
45	125.39	69.77	10.30	1.60	68.90	0.21	102.50	5.50	22.10	56.30	17.70	10.80	29.30	-0.47	0.03	-0.11	0.84	-0.33
50	123.77	68.93	10.00	1.80	67.80	0.20	100.60	5.20	21.60	55.60	17.40	10.50	28.30	-0.46	0.01	-0.11	0.82	-0.33
55	122.22	68.14	9.60	2.00	66.80	0.20	98.70	4.90	21.10	54.80	17.10	10.20	27.30	-0.45	0.00	-0.11	0.80	-0.32
60	120.65	67.34	9.30	2.20	65.70	0.19	97.00	4.70	20.60	54.10	16.80	9.90	26.30	-0.44	-0.02	-0.11	0.79	-0.31
65	119.01	66.48	8.90	2.30	64.70	0.19	95.10	4.40	20.10	53.30	16.50	9.50	25.30	-0.43	-0.03	-0.10	0.76	-0.30
70	117.31	65.64	8.50	2.50	63.60	0.18	93.20	4.10	19.60	52.60	16.10	9.20	24.30	-0.42	-0.05	-0.10	0.75	-0.29
75	115.46	64.73	8.10	2.80	62.50	0.18	91.10	3.80	19.10	51.70	15.70	8.70	23.20	-0.41	-0.06	-0.10	0.72	-0.28
80	113.37	63.67	7.60	3.00	61.20	0.17	89.00	3.40	18.50	50.90	15.30	8.30	22.00	-0.40	-0.08	-0.09	0.70	-0.27
85	111.00	62.51	7.00	3.30	59.80	0.16	86.70	3.00	17.80	49.90	14.70	7.70	20.50	-0.39	-0.11	-0.09	0.67	-0.25
90	107.98	61.15	6.20	3.70	58.00	0.15	83.70	2.50	16.90	48.80	14.00	6.80	18.60	-0.37	-0.13	-0.08	0.63	-0.24
95	102.95	59.27	5.10	4.30	55.10	0.14	78.80	1.70	15.60	47.20	13.00	5.10	15.60	-0.34	-0.17	-0.08	0.58	-0.21
Avg	123.77	68.93	10.00	1.80	67.80	0.20	100.60	5.20	21.60	55.60	17.40	10.50	28.30	-0.46	0.01	-0.11	0.82	-0.33

## 2019 HYBRID SIMMENTAL PERCENTILE TABLE

%	API	TI	CE	BW	WW	PWG	YW	MCE	MLK	MWW	STY	DOC	CWT	YG	MRB	BF	REA	SF
1	164.21	86.95	19.60	-4.40	87.40	0.32	136.60	11.70	32.20	70.50	21.80	18.00	53.40	-0.52	0.77	-0.13	1.09	-0.52
2	159.04	84.85	18.50	-3.70	84.30	0.31	131.80	11.00	30.80	68.20	21.00	17.00	50.20	-0.49	0.70	-0.12	1.04	-0.50
3	155.66	83.63	17.90	-3.30	82.60	0.30	128.80	10.60	30.00	66.90	20.60	16.40	48.20	-0.47	0.66	-0.11	1.00	-0.48
4	153.38	82.70	17.50	-2.90	81.30	0.29	126.80	10.20	29.40	65.80	20.30	16.00	46.70	-0.45	0.64	-0.10	0.97	-0.47
5	151.52	81.93	17.10	-2.70	80.20	0.29	125.00	10.00	28.90	65.00	20.00	15.70	45.50	-0.43	0.62	-0.10	0.94	-0.46
10	145.34	79.22	15.80	-1.80	76.80	0.27	119.10	9.10	27.30	62.50	19.10	14.60	41.70	-0.39	0.54	-0.09	0.86	-0.43
15	141.08	77.43	14.90	-1.30	74.50	0.26	115.20	8.60	26.20	60.90	18.50	14.00	39.20	-0.36	0.49	-0.08	0.82	-0.41
20	137.83	75.94	14.20	-0.90	72.60	0.25	112.20	8.10	25.40	59.60	18.00	13.40	37.30	-0.34	0.45	-0.07	0.78	-0.39
25	135.13	74.68	13.70	-0.50	71.10	0.24	109.60	7.80	24.60	58.60	17.50	13.00	35.60	-0.32	0.42	-0.07	0.75	-0.38
30	132.64	73.50	13.30	-0.30	69.70	0.24	107.30	7.40	24.00	57.70	17.10	12.60	34.20	-0.30	0.39	-0.06	0.72	-0.37
35	130.38	72.41	12.90	0.00	68.30	0.23	105.00	7.10	23.40	56.80	16.60	12.20	32.90	-0.28	0.36	-0.06	0.69	-0.35
40	128.11	71.35	12.50	0.20	67.00	0.22	102.90	6.90	22.80	56.00	16.20	11.90	31.80	-0.26	0.33	-0.05	0.67	-0.34
45	126.00	70.28	12.10	0.40	65.80	0.22	100.70	6.60	22.30	55.20	15.80	11.60	30.60	-0.25	0.30	-0.05	0.64	-0.33
50	123.83	69.24	11.70	0.60	64.50	0.21	98.50	6.30	21.70	54.40	15.40	11.20	29.50	-0.23	0.28	-0.04	0.62	-0.32
55	121.63	68.16	11.40	0.80	63.30	0.20	96.30	6.00	21.20	53.50	14.90	10.90	28.40	-0.21	0.26	-0.04	0.60	-0.31
60	119.37	67.10	11.00	1.00	62.10	0.20	94.00	5.80	20.70	52.60	14.50	10.60	27.20	-0.20	0.23	-0.04	0.57	-0.31
65	117.05	65.97	10.60	1.20	60.80	0.19	91.60	5.50	20.10	51.70	14.00	10.20	26.10	-0.18	0.21	-0.03	0.55	-0.30
70	114.63	64.80	10.20	1.40	59.40	0.18	89.10	5.20	19.60	50.60	13.40	9.80	24.80	-0.17	0.18	-0.03	0.52	-0.29
75	112.05	63.55	9.70	1.60	57.90	0.17	86.30	4.80	19.00	49.40	12.70	9.40	23.40	-0.15	0.15	-0.03	0.49	-0.28
80	109.14	62.16	9.20	1.90	56.20	0.16	83.20	4.40	18.30	48.10	12.00	8.90	21.90	-0.13	0.12	-0.02	0.46	-0.26
85	105.81	60.63	8.60	2.20	54.20	0.15	79.80	3.90	17.50	46.60	11.20	8.30	20.00	-0.11	0.09	-0.02	0.43	-0.25
90	101.64	58.82	7.80	2.60	51.70	0.14	75.40	3.40	16.60	44.70	10.20	7.40	17.50	-0.08	0.05	-0.01	0.38	-0.24
95	94.73	56.26	6.60	3.20	47.90	0.13	69.00	2.40	15.20	42.20	8.70	5.70	13.80	-0.03	-0.01	0.00	0.32	-0.21
Avg	123.83	69.24	11.70	0.60	64.50	0.21	98.50	6.30	21.70	54.40	15.40	11.20	29.50	-0.23	0.28	-0.04	0.62	-0.32







**1 BONNYDALE LINCOLN Q18** Verified to both Sire and Dam

AUS#: MBBPQ018      ASA#: (3610400)      Tattoo: Q018  
 BD: 15/1/19      Colour: Homo Black

RCR AUGUSTUS R54  
 Sire: BONNYDALE AUGUSTUS L84  
 BONNYDALE JOSSIE G204

**Black Simmental**

SAND RANCH HAND  
 Dam: BONNYDALE GLITTER M30  
 BONNYDALE GLITTER K170

BW	\$ Index Values	
kg	\$API	\$TI
34	132	72.3

	CE	BW	WW	YW	ADG	MCE	MILK	MWW	STAY	DOC	CW	YG	MB	BF	REA	Shr
EPDs	14	0.9	74.4	114.2	0.25	8	17.4	54.5	18.5	11.5	41.8	-0.46	-0.07	-0.124	0.88	-0.38
%	10	30	25	20	20	10	90	60	35	35	10	55	80	20	40	25

Traits Observed: BW, WW

Purchaser: ..... Price: .....

**2 BONNYDALE KRUISER Q116** Verified to both Sire and Dam

AUS#: MBBPQ116      ASA#: (3610467)      Tattoo: Q116  
 BD: 30/1/19      Colour: Hetero Black

TNT TANKER U263  
 Sire: BONNYDALE KRUISER  
 ASR BLACK CARLENE P421

**Black Simmental**

KAPPES UNIQUE P27  
 Dam: BONNYDALE LIL DESSI H220  
 BONNYDALE LIL DESSI F203

BW	\$ Index Values	
kg	\$API	\$TI
38	112.4	70.1

	CE	BW	WW	YW	ADG	MCE	MILK	MWW	STAY	DOC	CW	YG	MB	BF	REA	Shr
EPDs	6.4	3.3	80.4	120.2	0.25	5.2	23.8	64	17.3	12.7	41.2	-0.52	-0.16	-0.123	1.06	-0.32
%	90	90	10	10	20	55	30	10	55	20	10	20	95	20	10	60

Traits Observed: BW, WW

Purchaser: ..... Price: .....

**3 BONNYDALE BIG TIMBER Q103** Verified to both Sire and Dam

AUS#: MBBPQ103      ASA#: (3610440)      Tattoo: Q103  
 BD: 24/1/19      Colour: Homo Black

HOOK'S YELLOWSTONE 97Y  
 Sire: KOCH BIG TIMBER 685D  
 KOCH MS HOOKS BOY

**Black Simmental**

W/C WIDE TRACK 694Y  
 Dam: ASR FINE ART A3205  
 ASR FINE ART U838

BW	\$ Index Values	
kg	\$API	\$TI
46	151.5	82.1

	CE	BW	WW	YW	ADG	MCE	MILK	MWW	STAY	DOC	CW	YG	MB	BF	REA	Shr
EPDs	14.4	-0.7	73.8	113	0.25	7.4	23.2	60	18	10.6	40.8	-0.32	0.27	-0.081	0.78	-0.37
%	10	10	25	20	20	20	35	25	45	50	10	99	10	90	65	30

Traits Observed: BW, WW

Purchaser: ..... Price: .....

**4 BONNYDALE NEVADA Q145** Verified to both Sire and Dam

AUS#: MBBPQ145      ASA#: (3610472)      Tattoo: Q145  
 BD: 8/2/19      Colour:

RCR AUGUSTUS R54  
 Sire: BONNYDALE NEVADA N160  
 BONNYDALE JOSSIE G204

**Black Simmental**

BONNYDALE JASPER  
 Dam: BONNYDALE GLEBE H249  
 BONNYDALE GLEBE E210

BW	\$ Index Values	
kg	\$API	\$TI
35	116.6	65.4

	CE	BW	WW	YW	ADG	MCE	MILK	MWW	STAY	DOC	CW	YG	MB	BF	REA	Shr
EPDs	7.3	3.1	71.8	106.3	0.22	2.9	13.8	49.6	19	8.8	37.4	-0.45	-0.09	-0.121	0.81	-0.31
%	85	85	35	35	40	90	99	90	30	75	15	60	85	20	55	65

Traits Observed: BW, WW

Purchaser: ..... Price: .....

**5 BONNYDALE SA MATAURI Q307** Verified to both Sire and Dam

AUS#: MBBDQ307      ASA#: (3610607)      DD%      Tattoo: Q307  
 BD: 11/1/19      Colour: Hetero Black

MATAURI RESOLUTION F030  
 Sire: BONNYDALE SA MATAURI N304  
 BONNYDALE GOLDIE L75

**SimAngus - 5/8 Simm 3/8 Angus**

BONNYDALE JASPER  
 Dam: BONNYDALE SA INDIGO K376  
 BONNYDALE SA INDIGO G309

BW	\$ Index Values	
kg	\$API	\$TI
42	113.2	67.3

	CE	BW	WW	YW	ADG	MCE	MILK	MWW	STAY	DOC	CW	YG	MB	BF	REA	Shr
EPDs	9.2	0.5	67.6	103.6	0.22	4.9	20.7	54.5	13.9	12.7	39.5	-0.23	0.12	-0.054	0.71	
%	85	50	40	40	50	75	65	50	70	30	15	55	85	40	35	

Traits Observed: BW, WW

Purchaser: ..... Price: .....

**6 BONNYDALE SA MATAURI Q310** Verified to both Sire and Dam

AUS#: MBBDQ310      ASA#: (3610508)      DD%      Tattoo: Q310  
 BD: 12/1/19      Colour: Homo Black

MATAURI RESOLUTION F030  
 Sire: BONNYDALE SA MATAURI N304  
 BONNYDALE GOLDIE L75

**SimAngus - 1/2 Simm 1/2 Angus**

CIRCLE PLUS JOKER F4  
 Dam: BONNYDALE SA JEALOUS K337  
 BONNYDALE SA JEALOUS

BW	\$ Index Values	
kg	\$API	\$TI
39	119	75.4

	CE	BW	WW	YW	ADG	MCE	MILK	MWW	STAY	DOC	CW	YG	MB	BF	REA	Shr
EPDs	8.1	2.5	76.6	120	0.27	5.3	26	64.2	11.9	13.9	44.5	-0.07	0.33	-0.014	0.58	
%	90	90	15	10	15	70	20	10	85	20	10	95	45	90	60	

Traits Observed: BW, WW

Purchaser: ..... Price: .....





**7 BONNYDALE LINCOLN Q090** Verified to both Sire and Dam

AUS#: MBBPQ090      ASA#: (3610578)      Tattoo: Q090  
 BD: 23/1/19      Colour: Homo Black

Sire: RCR AUGUSTUS R54  
 BONNYDALE AUGUSTUS L84  
 BONNYDALE JOSSIE G204  
**Black Simmental**

Dam: W/C WIDE TRACK 694Y  
 BONNYDALE FINE ART L01  
 ASR FINE ART L132

BW	\$ Index Values	
kg	\$API	\$TI
43	125.5	72.4

	CE	BW	WW	YW	ADG	MCE	MILK	MWW	STAY	DOC	CW	YG	MB	BF	REA	Shr
EPDs	8.2	4.2	79.7	125.6	0.29	2.8	12.4	52.2	18.2	11.2	45.1	-0.43	0.03	-0.117	0.88	-0.34
%	75	95	10	5	4	90	99	75	40	40	3	70	50	45	40	45

Traits Observed: BW, WW

Purchaser: ..... Price: .....

**8 BONNYDALE UNLIMITED Q030** Verified to both Sire and Dam

AUS#: MBBPQ030      ASA#: (3610458)      Tattoo: Q030  
 BD: 17/1/19      Colour: Homo Black

Sire: MCM TOP GRADE 018X  
 LRS UNLIMITED 752A  
 LRS MS DAKOTA 559R  
**Black Simmental**

Dam: TRIPLE C BETTIS S72J  
 BONNYDALE LIL DESSI F213  
 BONNYDALE LIL DESSI D225

BW	\$ Index Values	
kg	\$API	\$TI
33	133.6	71.2

	CE	BW	WW	YW	ADG	MCE	MILK	MWW	STAY	DOC	CW	YG	MB	BF	REA	Shr
EPDs	13.5	-0.1	66.6	99.1	0.2	7.8	32.1	65.3	19.7	9.2	34.1	-0.66	-0.05	-0.137	1.3	-0.34
%	15	15	60	55	60	15	1	10	20	75	25	1	75	10	1	45

Traits Observed: BW, WW

Purchaser: ..... Price: .....

**9 BONNYDALE LINCOLN Q080** Verified to both Sire and Dam

AUS#: MBBPQ080      ASA#: (3610423)      Tattoo: Q080  
 BD: 22/1/19      Colour: Homo Black

Sire: RCR AUGUSTUS R54  
 BONNYDALE AUGUSTUS L84  
 BONNYDALE JOSSIE G204  
**Black Simmental**

Dam: TJF LUCKY JESS J224  
 BONNYDALE GOLDIE G256  
 BONNYDALE GOLDIE HAWN

BW	\$ Index Values	
kg	\$API	\$TI
31	135.6	75.8

	CE	BW	WW	YW	ADG	MCE	MILK	MWW	STAY	DOC	CW	YG	MB	BF	REA	Shr
EPDs	12.2	0.5	76.1	116.9	0.26	6.3	17.7	55.6	18.1	3.6	50.6	-0.37	0.04	-0.108	0.84	-0.37
%	25	25	20	15	15	35	90	55	40	99	1	95	45	65	50	30

Traits Observed: BW, WW

Purchaser: ..... Price: .....

**10 BONNYDALE BIG TIMBER Q111** Verified to both Sire and Dam

AUS#: MBBPQ111      ASA#: (3610337)      Tattoo: Q111  
 BD: 26/1/19      Colour: Homo Black

Sire: HOOK'S YELLOWSTONE 97Y  
 KOCH BIG TIMBER 685D  
 KOCH MS HOOKS BOY  
**Black Simmental**

Dam: W/C WIDE TRACK 694Y  
 ASR FINE ART A3205  
 ASR FINE ART U838

BW	\$ Index Values	
kg	\$API	\$TI
45	153.5	86.2

	CE	BW	WW	YW	ADG	MCE	MILK	MWW	STAY	DOC	CW	YG	MB	BF	REA	Shr
EPDs	14.4	0.1	82.6	125.6	0.27	7.4	21.1	62.4	18	10.6	48.3	-0.33	0.27	-0.081	0.88	-0.37
%	10	15	5	5	10	20	60	15	45	50	2	99	10	90	40	30

Traits Observed: BW, WW

Purchaser: ..... Price: .....

**11 BONNYDALE KRUISER Q108** Verified to both Sire and Dam

AUS#: MBBPQ108      ASA#: (3610447)      Tattoo: Q108  
 BD: 25/1/19      Colour: Hetero Black

Sire: TNT TANKER U263  
 BONNYDALE KRUISER  
 ASR BLACK CARLENE P421  
**Black Simmental**

Dam: HC HUMMER 12M  
 BONNYDALE GUAVE H231  
 BONNYDALE GUAVA E240

BW	\$ Index Values	
kg	\$API	\$TI
38	121.8	71.2

	CE	BW	WW	YW	ADG	MCE	MILK	MWW	STAY	DOC	CW	YG	MB	BF	REA	Shr
EPDs	7.9	3	76.3	115.6	0.25	5.4	24.3	62.4	18.3	13	41.3	-0.48	-0.04	-0.122	0.97	-0.34
%	80	85	20	20	20	50	30	15	40	20	10	45	70	20	20	45

Traits Observed: BW, WW

Purchaser: ..... Price: .....

**12 BONNYDALE LINCOLN Q040** Verified to both Sire and Dam

AUS#: MBBPQ040      ASA#: (3610403)      Tattoo: Q040  
 BD: 17/1/19      Colour: Homo Black

Sire: RCR AUGUSTUS R54  
 BONNYDALE AUGUSTUS L84  
 BONNYDALE JOSSIE G204  
**Black Simmental**

Dam: BONNYDALE JIM BEAM  
 BONNYDALE GEORGIA M18  
 BONNYDALE GEORGIA H209

BW	\$ Index Values	
kg	\$API	\$TI
39	126.8	72.7

	CE	BW	WW	YW	ADG	MCE	MILK	MWW	STAY	DOC	CW	YG	MB	BF	REA	Shr
EPDs	10.8	3	80.5	123	0.27	5	15.8	56	18.7	14.7	42.3	-0.42	-0.06	-0.118	0.82	-0.38
%	40	85	10	10	10	55	95	50	30	10	5	75	80	45	55	25

Traits Observed: BW, WW

Purchaser: ..... Price: .....





# PASCOES ACCOUNTING & ADVISORY

INTEGRITY - INNOVATION - SERVICE

Pascoes Accounting & Advisory is your locally based accounting firm with a variety of industry experience with a specialisation in Agribusiness. Our dedicated team of accountants and staff can assist you not only in your accounts and taxation preparation but in all aspects of your business with business advisory services, succession planning and access to industry relevant government subsidies and benefits.

When it comes to your income taxes we've got your total tax position covered, we'll integrate optimal tax strategies into a dynamic business plan. While your next tax return is firmly in our sights, we're focused on long term hassle free compliance. As well as making this happen, we identify tax opportunities that support your big picture goals for profitability and growth.

If you are looking for an accounting firm to give you grounded, practical, up to the minute advice on tax and business matters in your business please contact any of our offices.

**BUNBURY**  
155 Spencer Street,  
Bunbury WA 6230  
PO Box 6181,  
South Bunbury WA 6230  
[reception.bunbury@pascoesaa.com.au](mailto:reception.bunbury@pascoesaa.com.au)  
Tel: 9792 1300 Fax: 9792 1399

**KOJONUP**  
123 Albany Hwy  
Kojonup WA 6395  
PO Box 206  
Kojonup WA 6395  
[reception.kojonup@pascoesaa.com.au](mailto:reception.kojonup@pascoesaa.com.au)  
Tel: 9831 2000 Fax: 9831 2099

**PERTH**  
PO Box 893  
West Perth WA 6872  
[reception.perth@pascoesaa.com.au](mailto:reception.perth@pascoesaa.com.au)  
Tel: 9831 2000 Fax: 9323 7499

Bonnydale Black Simmentals continues its policy of not utilising sale credits, therefore prospective buyers at Bonnydale's Annual On-Property Bull Sale can bid with confidence and can rest assured that no one bidding at the sale has a credit inducement providing them with an unfair bidding advantage.

## 13 BONNYDALE SA MATAURI Q352 Verified to both Sire and Dam

AUS#: MBBDQ352 ASA#: (3610307) AMFU NHFU CAFU DD% Tattuo: Q352  
BD: 25/1/19 Colour: Homo Black

MATAURI RESOLUTION F030 **SimAngus - 1/2 Simm 1/2 Angus**  
Sire: BONNYDALE SA MATAURI N304  
BONNYDALE GOLDIE L75

COONAMBLE H156  
Dam: BONNYDALE SA JOSSIE L334  
BONNYDALE JOSSIE J108

BW	\$ Index Values	
kg	\$API	\$TI
36	116.4	68.8

	CE	BW	WW	YW	ADG	MCE	MILK	MWW	STAY	DOC	CW	YG	MB	BF	REA	Shr
EPDs	9.3	1.9	65.9	102	0.23	6.5	26.5	59.4	12.7	12	38.1	-0.13	0.29	-0.026	0.57	
%	80	85	45	45	40	50	15	25	80	40	20	85	50	80	65	

Traits Observed: BW, WW

Purchaser: ..... Price: .....

## 14 BONNYDALE AUGUSTUS Q071 Verified to both Sire and Dam

AUS#: MBBPQ071 ASA#: (3610429) Tattuo: Q071  
BD: 20/1/19 Colour: Homo Black

ESNK31 **Black Simmental**  
Sire: RCR AUGUSTUS R54  
RCR NICOLE N32

W/C WIDE TRACK 694Y  
Dam: BONNYDALE JOSIE M141  
ASR JOSIE W965

BW	\$ Index Values	
kg	\$API	\$TI
41	127	71.4

	CE	BW	WW	YW	ADG	MCE	MILK	MWW	STAY	DOC	CW	YG	MB	BF	REA	Shr
EPDs	9.1	3.8	76.5	121.1	0.28	2.6	11.6	49.8	18.2	13.8	46.1	-0.42	0.04	-0.116	0.87	-0.34
%	65	95	20	10	10	90	99	90	40	15	2	75	45	45	40	45

Traits Observed: BW, WW

Purchaser: ..... Price: .....

## 15 BONNYDALE SA MATAURI Q309 Verified to both Sire and Dam

AUS#: MBBDQ309 ASA#: (3610499) AMFU NHFU CAFU DD% Tattuo: Q309  
BD: 12/1/19 Colour: Homo Black

MATAURI RESOLUTION F030 **SimAngus - 1/2 Simm 1/2 Angus**  
Sire: BONNYDALE SA MATAURI N304  
BONNYDALE GOLDIE L75

TNT TANKER U263  
Dam: BONNYDALE SA REBECCA K309  
STRATHTAY REBECCA E167

BW	\$ Index Values	
kg	\$API	\$TI
36	111	67.5

	CE	BW	WW	YW	ADG	MCE	MILK	MWW	STAY	DOC	CW	YG	MB	BF	REA	Shr
EPDs	9.2	1.4	70.2	108.1	0.24	7.3	21.2	56.2	13.2	15.3	38.3	-0.15	0.12	-0.025	0.66	
%	85	75	30	30	35	35	60	40	75	10	20	80	85	80	45	

Traits Observed: BW, WW

Purchaser: ..... Price: .....



**16 BONNYDALE KRUISER Q158** Verified to both Sire and Dam

AUS#: MBBPQ158      ASA#: (3610471)      Tattoo: Q158  
 BD: 11/2/19      Colour: Hetero Black

TNT TANKER U263  
 Sire: BONNYDALE KRUISER  
 ASR BLACK CARLENE P421

**Black Simmental**

HC HUMMER 12M  
 Dam: BONNYDALE GEORGIA H244  
 BONNYDALE GEORGIA

BW	\$ Index Values	
kg	\$API	\$TI
40	113.7	69.3

	CE	BW	WW	YW	ADG	MCE	MILK	MWW	STAY	DOC	CW	YG	MB	BF	REA	Shr
EPDs	5.4	4.1	79.9	120.5	0.25	4	24.1	63.9	18.7	13.3	40.6	-0.52	-0.13	-0.126	1.05	-0.33
%	95	95	10	10	20	75	30	10	30	15	10	20	95	20	10	55

Traits Observed: BW, WW

Purchaser: ..... Price: .....

**17 BONNYDALE BIG TIMBER Q34** Verified to both Sire and Dam

AUS#: MBBPQ034      ASA#: (3610409)      Tattoo: Q034  
 BD: 17/1/19      Colour: Homo Black

HOOK'S YELLOWSTONE 97Y  
 Sire: KOCH BIG TIMBER 685D  
 KOCH MS HOOKS BOY

**Black Simmental**

W/C WIDE TRACK 694Y  
 Dam: ASR FINE ART A3205  
 ASR FINE ART U838

BW	\$ Index Values	
kg	\$API	\$TI
40	151.5	82

	CE	BW	WW	YW	ADG	MCE	MILK	MWW	STAY	DOC	CW	YG	MB	BF	REA	Shr
EPDs	14.4	-0.7	73.6	112.8	0.24	7.4	23.2	60	18	5.1	39.7	-0.32	0.27	-0.081	0.76	-0.37
%	10	10	30	25	25	20	35	25	45	99	10	99	10	90	70	30

Traits Observed: BW, WW

Purchaser: ..... Price: .....

**18 BONNYDALE BIG TIMBER Q61** Verified to both Sire and Dam

AUS#: MBBPQ061      ASA#: (3610288)      Tattoo: Q061  
 BD: 19/1/19      Colour: Homo Black

HOOK'S YELLOWSTONE 97Y  
 Sire: KOCH BIG TIMBER 685D  
 KOCH MS HOOKS BOY

**Black Simmental**

W/C WIDE TRACK 694Y  
 Dam: BONNYDALE JOSIE N83  
 ASR JOSIE W965

BW	\$ Index Values	
kg	\$API	\$TI
42	135.4	79.1

	CE	BW	WW	YW	ADG	MCE	MILK	MWW	STAY	DOC	CW	YG	MB	BF	REA	Shr
EPDs	8.4	1.9	77.8	115.7	0.24	3.6	22.5	61.4	17	12.8	40.2	-0.37	0.22	-0.088	0.87	-0.4
%	75	55	15	20	25	80	45	20	60	20	10	95	10	90	40	20

Traits Observed: BW, WW

Purchaser: ..... Price: .....

**19 BONNYDALE SA TANK Q316** Verified to Sire

AUS#: MBBDQ316      ASA#: (3610317)      AMFU NHFU CAFU      Tattoo: Q316  
 BD: 14/1/19      Colour: Homo Black

TNT TANKER U263  
 Sire: BONNYDALE SA TANK K299  
 BONNYDALE SA INNESVALE

**SimAngus - 5/8 Simm 3/8 Angus**

BONNYDALE GOLDEN GATE  
 Dam: BONNYDALE SA IMOGEN G383  
 BONNYDALE BASE ANGUS DAM E001

BW	\$ Index Values	
kg	\$API	\$TI
42	107.2	64.2

	CE	BW	WW	YW	ADG	MCE	MILK	MWW	STAY	DOC	CW	YG	MB	BF	REA	Shr
EPDs	7.8	4	71.9	109.7	0.24	6	20	55.9	15.6	15.9	38.7	-0.35	0.06	-0.071	0.91	-0.19
%	95	99	25	25	35	60	70	45	50	5	20	20	90	20	10	99

Traits Observed: BW, WW

Purchaser: ..... Price: .....

**20 BONNYDALE SA MATAURI Q399** Verified to both Sire and Dam

AUS#: MBBDQ399      ASA#: (3610380)      Tattoo: Q399  
 BD: 14/2/19      Colour: Homo Black

MATAURI RESOLUTION F030  
 Sire: BONNYDALE SA MATAURI N304  
 BONNYDALE GOLDIE L75

**SimAngus - 1/2 Simm 1/2 Angus**

GLS COMBINATION R2  
 Dam: BONNYDALE SA NODDY M335  
 BONNYDALE SA NODDY G314

BW	\$ Index Values	
kg	\$API	\$TI
45	106.4	68.8

	CE	BW	WW	YW	ADG	MCE	MILK	MWW	STAY	DOC	CW	YG	MB	BF	REA	Shr
EPDs	5.9	4.7	76.5	119.5	0.27	3.9	21.6	59.8	12.7	6.6	40	-0.21	0.19	-0.038	0.77	
%	99	99	15	10	15	90	55	20	80	95	15	60	70	65	25	

Traits Observed: BW, WW

Purchaser: ..... Price: .....

**21 BONNYDALE LINCOLN Q076** Verified to both Sire and Dam

AUS#: MBBPQ076      ASA#: (3610443)      Tattoo: Q076  
 BD: 21/1/19      Colour: Homo Black

RCR AUGUSTUS R54  
 Sire: BONNYDALE AUGUSTUS L84  
 BONNYDALE JOSSIE G204

**Black Simmental**

TRIPLE C BETTIS S72J  
 Dam: BONNYDALE GEROGIA H268  
 BONNYDALE GEORGIA

BW	\$ Index Values	
kg	\$API	\$TI
40	127	72.2

	CE	BW	WW	YW	ADG	MCE	MILK	MWW	STAY	DOC	CW	YG	MB	BF	REA	Shr
EPDs	11.2	2.6	77.5	119.9	0.27	5.8	21	59.7	18.7	13.2	39.1	-0.49	-0.07	-0.127	0.92	-0.37
%	35	75	15	10	10	40	60	25	30	15	10	40	80	20	30	30

Traits Observed: BW, WW

Purchaser: ..... Price: .....





**22 BONNYDALE AUGUSTUS Q104** Verified to both Sire and Dam

AUS#: MBBPQ104      ASA#: (3610595)      Tattoo: Q104  
 BD: 24/1/19      Colour: Homo Black

ESNK31  
 Sire: RCR AUGUSTUS R54  
       RCR NICOLE N32  
 KAPPES TRAILBLAZER S516  
 Dam: BONNYDALE JOSSIE G204  
       GLS S82

**Black Simmental**

BW	\$ Index Values	
kg	\$API	\$TI
40	127.7	70.7

	CE	BW	WW	YW	ADG	MCE	MILK	MWW	STAY	DOC	CW	YG	MB	BF	REA	Shr
EPDs	11.3	1.9	75.6	116.9	0.26	5.9	13.3	51.1	19	2.5	45.6	-0.41	-0.07	-0.118	0.82	-0.35
%	35	55	20	15	15	40	99	80	30	99	3	80	80	45	55	40

*Traits Observed: BW, WW*

Purchaser: ..... Price: .....

**23 BONNYDALE AUGUSTUS Q085** Verified to both Sire and Dam

AUS#: MBBPQ085      ASA#: (3610436)      Tattoo: Q085  
 BD: 22/1/19      Colour:

ESNK31  
 Sire: RCR AUGUSTUS R54  
       RCR NICOLE N32  
 BONNYDALE JIM BEAM  
 Dam: BONNYDALE LIL DESSI H292  
       BONNYDALE LIL DESSI D205

**Black Simmental**

BW	\$ Index Values	
kg	\$API	\$TI
38	136.6	73.6

	CE	BW	WW	YW	ADG	MCE	MILK	MWW	STAY	DOC	CW	YG	MB	BF	REA	Shr
EPDs	12	2.4	76.6	117.9	0.26	4.4	14	52.2	20.2	17	46.9	-0.39	0.05	-0.111	0.82	-0.36
%	25	70	20	15	15	70	99	75	15	2	2	90	45	45	55	35

*Traits Observed: BW, WW*

Purchaser: ..... Price: .....

**24 BONNYDALE HECTOR Q317** Verified to Dam

AUS#: MBBDQ317      ASA#: (3610414)      AMFU NHFU CAFU      Tattoo: Q317  
 BD: 14/1/19      Colour: Homo Black

K C F BENNETT PERFORMER  
 Sire: COONAMBLE HECTOR H249  
       COONAMBLE E9  
 TNT TANKER U263  
 Dam: BONNYDALE CARLENE K185  
       ASR BLACK CARLENE P421

**SimAngus - 1/2 Simm 1/2 Angus**  
 Parent verification delay update available on sale day

BW	\$ Index Values	
kg	\$API	\$TI
39		

	CE	BW	WW	YW	ADG	MCE	MILK	MWW	STAY	DOC	CW	YG	MB	BF	REA	Shr
EPDs																
%																

*Traits Observed: BW, WW*

Purchaser: ..... Price: .....

**531-70 T3 and  
531-70 T4 AGRI  
Super Telehandlers**

For further details call  
**GARY GISLINGHAM** on 0408 931 030  
**BEN JOHNSTON** on 0429 684 778

Cnr Picton Road & Forrest Avenue, Bunbury  
[www.bunburymachinery.com.au](http://www.bunburymachinery.com.au)  
 (08) 9792 3923

Australia's No 1 Telehandler just got more competitive





**25 BONNYDALE ELEMENT Q93** Verified to both Sire and Dam

AUS#: MBBPQ093      ASA#: (3610411)      Tattoo: Q093  
 BD: 23/1/19      Colour: Homo Black

GW-WBF SUBSTANCE 820Y  
 Sire: GIBBS 3009A ELEMENT  
       GIBBS 9128W MABELLE N341  
 HSF BETTER THAN EVER  
 Dam: ASR BLACK MIRANDA Y198  
       ASR BLACK MIRANDA W993

**Black Simmental**

BW	\$ Index Values	
kg	\$API	\$TI
39	120.1	69.2

	CE	BW	WW	YW	ADG	MCE	MILK	MWW	STAY	DOC	CW	YG	MB	BF	REA	Shr
EPDs	7.8	1.8	66.2	100.5	0.21	4	19.5	52.6	15.1	11.1	29.3	-0.53	0.08	-0.118	1	-0.36
%	80	55	60	55	50	75	75	75	85	45	50	20	35	45	15	35

Traits Observed: BW, WW

Purchaser: ..... Price: .....

**26 BONNYDALE SA TANK Q416** Verified to both Sire and Dam

AUS#: MBBDQ416      ASA#: (3610415)      NH%      Tattoo: Q416  
 BD: 23/2/19      Colour: Hetero Black

TNT TANKER U263  
 Sire: BONNYDALE SA TANK K299  
       BONNYDALE SA INNESVALE  
 BONNYDALE GOLDEN GATE  
 Dam: BONNYDALE SA KATE H348  
       BONNYDALE SA KATE F305

**SimAngus - 3/4 Simm 1/4 Angus**

BW	\$ Index Values	
kg	\$API	\$TI
38	113.8	70.1

	CE	BW	WW	YW	ADG	MCE	MILK	MWW	STAY	DOC	CW	YG	MB	BF	REA	Shr
EPDs	9.1	3.1	81.3	125.1	0.27	7	23.1	63.7	17.1	17.4	50.1	-0.39	-0.02	-0.084	1.1	-0.28
%	85	95	5	5	15	40	40	10	35	2	3	15	99	15	1	80

Traits Observed: BW, WW

Purchaser: ..... Price: .....

**27 BONNYDALE SA MATAURI Q305** Verified to Sire

AUS#: MBBDQ305      ASA#: (3610308)      AMFU NHFU CAFU DD%      Tattoo: Q305  
 BD: 9/1/19      Colour: Homo Black

MATAURI RESOLUTION F030  
 Sire: BONNYDALE SA MATAURI N304  
       BONNYDALE GOLDIE L75  
 COONAMBLE H156  
 Dam: BONNYDALE SA GEORGIA L346  
       BONNYDALE GEORGIA J166

**SimAngus - 1/2 Simm 1/2 Angus**

BW	\$ Index Values	
kg	\$API	\$TI
33	117	65.4

	CE	BW	WW	YW	ADG	MCE	MILK	MWW	STAY	DOC	CW	YG	MB	BF	REA	Shr
EPDs	10.8	0.6	56.5	88	0.2	6.9	29.6	57.8	12.7	13.4	31.2	-0.2	0.28	-0.035	0.63	
%	65	55	80	75	65	45	4	30	80	25	45	65	55	65	50	

Traits Observed: BW, WW

Purchaser: ..... Price: .....

**28 BONNYDALE SA ELEVATOR Q394** Verified to both Sire and Dam

AUS#: MBBDQ394      ASA#: (3610350)      AMFU NHFU CAFU      Tattoo: Q394  
 BD: 11/2/19      Colour: Homo Black

COONAMBLE H156  
 Sire: BONNYDALE SA ELEVATOR L389  
       BONNYDALE LIL DESSI J115  
 BONNYDALE TANKER H200  
 Dam: BONNYDALE SA INGA M305  
       BONNYDALE SA INGA

**SimAngus - 5/8 Simm 3/8 Angus**

BW	\$ Index Values	
kg	\$API	\$TI
36	123.1	72.5

	CE	BW	WW	YW	ADG	MCE	MILK	MWW	STAY	DOC	CW	YG	MB	BF	REA	Shr
EPDs	11.3	1.9	72.9	107.5	0.22	6	22	58.5	14.3	16.4	39.5	-0.27	0.25	-0.06	0.77	
%	60	85	20	30	50	60	50	30	65	4	15	40	60	40	25	

Traits Observed: BW, WW

Purchaser: ..... Price: .....

**29 BONNYDALE KRUISER Q142** Verified to both Sire and Dam

AUS#: MBBPQ142      ASA#: (3610433)      Tattoo: Q142  
 BD: 6/2/19      Colour: Hetero Black

TNT TANKER U263  
 Sire: BONNYDALE KRUISER  
       ASR BLACK CARLENE P421  
 TJF LUCKY JESS J224  
 Dam: BONNYDALE GYPSY H241  
       BONNYDALE GYPSY

**Black Simmental**

BW	\$ Index Values	
kg	\$API	\$TI
38	113.7	64.2

	CE	BW	WW	YW	ADG	MCE	MILK	MWW	STAY	DOC	CW	YG	MB	BF	REA	Shr
EPDs	5.4	3.3	66.4	99	0.2	4.5	21.2	54.3	18	6.2	35.8	-0.48	-0.03	-0.117	0.92	-0.31
%	95	90	60	55	60	65	55	60	45	95	20	45	70	45	30	65

Traits Observed: BW, WW

Purchaser: ..... Price: .....

**30 BONNYDALE NEVADA Q182** Verified to both Sire and Dam

AUS#: MBBPQ182      ASA#: (3610457)      Tattoo: Q182  
 BD: 28/2/19      Colour: Homo Black

RCR AUGUSTUS R54  
 Sire: BONNYDALE NEVADA N160  
       BONNYDALE JOSSIE G204  
 TRIPLE C BETTIS S72J  
 Dam: BONNYDALE LIL DESSI F203  
       BONNYDALE LIL DESSI D226

**Black Simmental**

BW	\$ Index Values	
kg	\$API	\$TI
39	121	70.2

	CE	BW	WW	YW	ADG	MCE	MILK	MWW	STAY	DOC	CW	YG	MB	BF	REA	Shr
EPDs	9.9	2.6	78	118.7	0.25	5.1	20	58.9	18.7	7.5	40.9	-0.51	-0.14	-0.125	1.02	-0.33
%	55	75	15	15	20	55	70	30	30	90	10	25	95	20	15	55

Traits Observed: BW, WW

Purchaser: ..... Price: .....



**31 BONNYDALE LINCOLN Q2** Verified to both Sire and Dam

AUS#: MBBPQ002      ASA#: (3610314)      Tattoo: Q002  
 BD: 9/1/19      Colour: Homo Black

Sire: RCR AUGUSTUS R54  
 BONNYDALE AUGUSTUS L84  
 BONNYDALE JOSSIE G204

**Black Simmental**

Dam: TRIPLE C BETTIS S72J  
 BONNYDALE GOLDIE J112  
 BONNYDALE GOLDIE G205

BW	\$ Index Values	
kg	SAPI	\$TI
28	134	72.7

	CE	BW	WW	YW	ADG	MCE	MILK	MWW	STAY	DOC	CW	YG	MB	BF	REA	Shr
EPDs	14.6	0.2	71.8	108.9	0.23	7.8	17.5	53.4	17.8	8.8	38.4	-0.42	-0.01	-0.114	0.79	-0.4
%	10	20	35	30	35	15	90	65	45	75	15	75	60	45	65	20

*Traits Observed: BW, WW*

Purchaser: ..... Price: .....

**32 BONNYDALE NASHVILLE Q066** Verified to both Sire and Dam

AUS#: MBBPQ066      ASA#: (3610460)      Tattoo: Q066  
 BD: 20/1/19      Colour: Hetero Black

Sire: W/C WIDE TRACK 694Y  
 BONNYDALE NASHVILLE N70  
 ASR BLACK MIRANDA Y1121

**Black Simmental**

Dam: ES DAKOTA NK68  
 BONNYDALE LIL DESSI G227  
 BONNYDALE LIL DESSI D202

BW	\$ Index Values	
kg	SAPI	\$TI
41	122.5	68.6

	CE	BW	WW	YW	ADG	MCE	MILK	MWW	STAY	DOC	CW	YG	MB	BF	REA	Shr
EPDs	9.5	3.5	71.1	109.6	0.24	3.5	21.7	57.2	18	13.1	40.4	-0.53	-0.01	-0.126	1.06	-0.22
%	60	90	40	30	25	80	50	40	45	20	10	20	60	20	10	95

*Traits Observed: BW, WW*

Purchaser: ..... Price: .....

**33 BONNYDALE AUGUSTUS Q50** Verified to both Sire and Dam

AUS#: MBBPQ050      ASA#: (3610358)      Tattoo: Q050  
 BD: 19/1/19      Colour: Homo Black

Sire: ESNK31  
 RCR AUGUSTUS R54  
 RCR NICOLE N32

**Black Simmental**

Dam: SAND RANCH HAND  
 BONNYDALE GLENDIVE J111  
 BONNYDALE GLENDIVE G222

BW	\$ Index Values	
kg	SAPI	\$TI
38	136.3	73.2

	CE	BW	WW	YW	ADG	MCE	MILK	MWW	STAY	DOC	CW	YG	MB	BF	REA	Shr
EPDs	13.6	-1.4	70.1	104.2	0.21	7.9	21.1	56.1	19.1	8.5	39.7	-0.32	0.17	-0.084	0.75	-0.41
%	15	4	40	45	50	15	60	50	25	80	10	99	20	90	75	15

*Traits Observed: BW, WW*

Purchaser: ..... Price: .....

**SHAPE YOUR SEASON WITH KRONE PRE SEASON**



**1.9% FINANCE  
 ACROSS THE ENTIRE RANGE!**  
 \*Terms & Conditions Apply\*



**Krone Pre-Season Program Monthly Repayments**

No repayments for the first 6 months with the balance of finance over the remainder of the item, Term up to 60 months, minimum 20% deposit, no residual payments, offer is only available for ABN holders who are using the equipment predominately for business purposes. Credit provided by Kubota Australia Pty Ltd ABN 72005300621, Australian Credit License Number 442007. Terms, conditions, fees charges and credit criteria apply.



Real Machinery - Real Service - Real People

Contact **GARY GISLINGHAM** on 0408 931 030

**OR BEN JOHNSTON** on 0429 684 778

Cnr Picton Road & Forrest Avenue,  
 Bunbury WA 6230

www.bunburymachinery.com.au  
 (08) 9792 3923

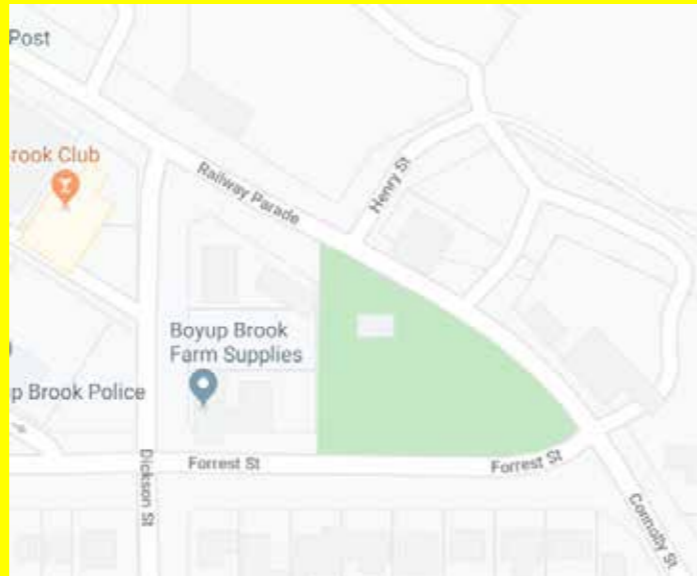




# BOYUP BROOK

## FARM SUPPLIES

- \*Agronomy
- \*Animal Health
- \*Chemicals
- \*Fertilizer
- \*Fencing
- \*Firearms & ammunition
- \*Grain storage equipment & hire
- \*Hardi Sprayer sales & service
- \*Household & Industrial Gas
- \*Mobil Oils
- \*Seed
- \*Stock Feed
- \*Water Fittings



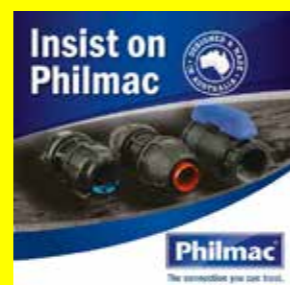
All other merchandise requirements 36 Forrest St Boyup Brook WA 6244

Call in & see our friendly staff today! Phone – 08 9765 1017 Fax 08 9765 1403

**We are your local agents for**  
**Star Track Express & Toll Ipec**  
 Opening hours:  
 Mon-Fri 8am-5.30pm  
 Sat 8.00am-12noon

After Hours Contact

Greg O'Neil 0491 211 732  
 David Lane 0427 651 289  
 Peter Chilwell 0429 688 229  
 info@boyupfarmsupplies.com.au



### 34 BONNYDALE SA TANK Q384 Verified to both Sire and Dam

AUS#: MBBDQ384 ASA#: (3610441) Tattoo: Q384  
 BD: 7/2/19 Colour: Homo Black

TNT TANKER U263  
 Sire: BONNYDALE SA TANK K299  
 BONNYDALE SA INNESVALE

**SimAngus - 5/8 Simm 3/8 Angus**

BONNYDALE SA IDEAL  
 Dam: BONNYDALE SA IRIS J350  
 BONNYDALE SA IRIS

BW	\$ Index Values	
kg	SAPI	STI
35	114.9	63

	CE	BW	WW	YW	ADG	MCE	MILK	MWW	STAY	DOC	CW	YG	MB	BF	REA	Shr
EPDs	10.9	1.3	61.8	92.7	0.19	8.1	19	49.9	15.7	18.2	35.4	-0.31	0.12	-0.067	0.79	-0.13
%	65	70	65	65	70	25	80	75	50	1	30	30	85	30	20	99

Traits Observed: BW, WW

Purchaser: ..... Price: .....

### 35 BONNYDALE SA MATAURI Q436 Verified to both Sire and Dam

AUS#: MBBDQ436 ASA#: (3610301) Tattoo: Q436  
 BD: 17/3/19 Colour: Homo Black

MATAURI RESOLUTION F030  
 Sire: BONNYDALE SA MATAURI N304  
 BONNYDALE GOLDIE L75

**SimAngus - 1/2 Simm 1/2 Angus**

COONAMBLE ELEVATOR E11  
 Dam: BONNYDALE SA GALAXY L318  
 BONNYDALE GALAXY J119

BW	\$ Index Values	
kg	SAPI	STI
46	106.3	66.2

	CE	BW	WW	YW	ADG	MCE	MILK	MWW	STAY	DOC	CW	YG	MB	BF	REA	Shr
EPDs	7.2	5.4	79	118.9	0.25	3.7	15.4	54.9	15.5	13.4	42.8	-0.31	0.06	-0.075	0.81	-0.16
%	95	99	10	15	25	90	95	50	50	25	10	30	90	20	20	99

Traits Observed: BW, WW

Purchaser: ..... Price: .....

### 36 BONNYDALE KRUISER Q204 Verified to both Sire and Dam

AUS#: MBBPQ204 ASA#: (3610442) Tattoo: Q204  
 BD: 27/3/19 Colour: Hetero Black

TNT TANKER U263  
 Sire: BONNYDALE KRUISER  
 ASR BLACK CARLENE P421

**Black Simmental**

BONNYDALE JASPER  
 Dam: BONNYDALE GRANGE H266  
 BONNYDALE GRANGE

BW	\$ Index Values	
kg	SAPI	STI
43	104.3	65.5

	CE	BW	WW	YW	ADG	MCE	MILK	MWW	STAY	DOC	CW	YG	MB	BF	REA	Shr
EPDs	3.4	5.6	81.1	120.2	0.24	2.5	18.7	59.2	18.4	12.7	43.5	-0.51	-0.2	-0.125	1.04	-0.31
%	99	99	10	10	25	95	80	30	35	20	4	25	99	20	10	65

Traits Observed: BW, WW

Purchaser: ..... Price: .....

**37 BONNYDALE BIG TIMBER Q89** Verified to both Sire and Dam

AUS#: MBBPQ089      ASA#: (3610329)      Tattoo: Q089  
 BD: 22/1/19      Colour: Homo Black

HOOK'S YELLOWSTONE 97Y  
 Sire: KOCH BIG TIMBER 685D  
       KOCH MS HOOKS BOY

W/C WIDE TRACK 694Y  
 Dam: ASR FINE ART A3205  
       ASR FINE ART U838

**Black Simmental**

BW	\$ Index Values	
kg	\$API	\$TI
39	151.3	81.5

	CE	BW	WW	YW	ADG	MCE	MILK	MWW	STAY	DOC	CW	YG	MB	BF	REA	Shr
EPDs	14.4	-0.8	72.5	111.2	0.24	7.4	23.5	59.7	18	10.6	41.8	-0.32	0.27	-0.081	0.79	-0.37
%	10	10	30	25	25	20	35	25	45	50	10	99	10	90	65	30

Traits Observed: BW, WW

Purchaser: ..... Price: .....

**38 BONNYDALE BIG TIMBER Q059** Verified to both Sire and Dam

AUS#: MBBPQ059      ASA#: (3610222)      Tattoo: Q059  
 BD: 19/1/19      Colour: Homo Black

HOOK'S YELLOWSTONE 97Y  
 Sire: KOCH BIG TIMBER 685D  
       KOCH MS HOOKS BOY

BONNYDALE LOAD TRACK  
 Dam: BONNYDALE GOLDIE N140  
       BONNYDALE GOLDIE K106

**Black Simmental**  
 THIS BULL HAS BEEN SPECIALLY  
 SELECTED FOR USE ON HEIFERS

BW	\$ Index Values	
kg	\$API	\$TI
25	152	77.7

	CE	BW	WW	YW	ADG	MCE	MILK	MWW	STAY	DOC	CW	YG	MB	BF	REA	Shr
EPDs	17	-3.9	61.8	90.5	0.18	9.6	27.5	58.4	18.2	11.2	32.7	-0.37	0.2	-0.084	0.79	-0.4
%	2	1	80	80	80	3	10	35	40	40	30	95	15	90	65	20

Traits Observed: BW, WW

Purchaser: ..... Price: .....

**39 BONNYDALE SA BIG TIMBER Q346** Verified to both Sire and Dam

AUS#: MBBDQ346      ASA#: (3610396)      DD%      Tattoo: Q346  
 BD: 22/1/19      Colour: Homo Black

HOOK'S YELLOWSTONE 97Y  
 Sire: KOCH BIG TIMBER 685D  
       KOCH MS HOOKS BOY

BONNYDALE SA IDEAL J377  
 Dam: BONNYDALE SA JOSIE M363  
       BONNYDALE JOSIE K208

**Black Simmental**  
 THIS BULL HAS BEEN SPECIALLY  
 SELECTED FOR USE ON HEIFERS

BW	\$ Index Values	
kg	\$API	\$TI
31	148.9	78.6

	CE	BW	WW	YW	ADG	MCE	MILK	MWW	STAY	DOC	CW	YG	MB	BF	REA	Shr
EPDs	13.8	-1.6	64.5	95.4	0.19	9	27.1	59.3	17.2	12.2	34.4	-0.27	0.32	-0.066	0.65	-0.23
%	10	3	70	65	70	5	10	30	55	30	25	99	4	99	90	95

Traits Observed: BW, WW

Purchaser: ..... Price: .....

**40 BONNYDALE SA BIG TIMBER Q322** Verified to both Sire and Dam

AUS#: MBBDQ322      ASA#: (3610286)      DD%      Tattoo: Q322  
 BD: 15/1/19      Colour: Homo Black

HOOK'S YELLOWSTONE 97Y  
 Sire: KOCH BIG TIMBER 685D  
       KOCH MS HOOKS BOY

BONNYDALE SA ELEVATOR L348  
 Dam: BONNYDALE SA TRMBLE N323  
       BONNYDALE SA IPOD K320

**SimAngus - 3/4 Simm 1/4 Angus**  
 THIS BULL HAS BEEN SPECIALLY  
 SELECTED FOR USE ON HEIFERS

BW	\$ Index Values	
kg	\$API	\$TI
32	133.7	70.8

	CE	BW	WW	YW	ADG	MCE	MILK	MWW	STAY	DOC	CW	YG	MB	BF	REA	Shr
EPDs	13.5	-1.2	61.6	90.3	0.18	8.8	25.5	56.2	16.8	14	32.2	-0.26	0.29	-0.054	0.67	-0.23
%	30	20	65	70	75	15	20	40	35	20	40	45	50	40	45	95

Traits Observed: BW, WW

Purchaser: ..... Price: .....

**41 BONNYDALE SA BIG TIMBER Q327** Verified to both Sire and Dam

AUS#: MBBDQ327      ASA#: (3610215)      Tattoo: Q327  
 BD: 17/1/19      Colour: Homo Black

HOOK'S YELLOWSTONE 97Y  
 Sire: KOCH BIG TIMBER 685D  
       KOCH MS HOOKS BOY

MATAURI RESOLUTION F030  
 Dam: BONNYDALE SA GOWN N306  
       BONNYDALE SA GOWN L341

**SimAngus - 3/4 Simm 1/4 Angus**  
 THIS BULL HAS BEEN SPECIALLY  
 SELECTED FOR USE ON HEIFERS

BW	\$ Index Values	
kg	\$API	\$TI
30	140.2	76.2

	CE	BW	WW	YW	ADG	MCE	MILK	MWW	STAY	DOC	CW	YG	MB	BF	REA	Shr
EPDs	15.2	-2.4	65.7	97.4	0.2	9.5	26.4	59.2	15.6	6.2	32.8	-0.18	0.35	-0.035	0.59	-0.23
%	15	10	50	55	65	10	15	25	50	95	40	70	40	65	60	95

Traits Observed: BW, WW

Purchaser: ..... Price: .....

**42 BONNYDALE SA BIG TIMBER Q335** Verified to both Sire and Dam

AUS#: MBBDQ335      ASA#: (3610218)      CA%      Tattoo: Q335  
 BD: 19/1/19      Colour: Homo Black

HOOK'S YELLOWSTONE 97Y  
 Sire: KOCH BIG TIMBER 685D  
       KOCH MS HOOKS BOY

MATAURI RESOLUTION F030  
 Dam: BONNYDALE SA IPOD N305  
       BONNYDALE SA IRIS L301

**SimAngus - 5/8 Simm 3/8 Angus**  
 THIS BULL HAS BEEN SPECIALLY  
 SELECTED FOR USE ON HEIFERS

BW	\$ Index Values	
kg	\$API	\$TI
33	134.3	71.6

	CE	BW	WW	YW	ADG	MCE	MILK	MWW	STAY	DOC	CW	YG	MB	BF	REA	Shr
EPDs	14.5	-1.7	60.6	90.2	0.18	9.6	26.1	56.4	15.3	13.6	31.7	-0.17	0.32	-0.032	0.59	-0.23
%	20	15	70	70	75	10	20	40	55	20	45	75	45	65	60	95

Traits Observed: BW, WW

Purchaser: ..... Price: .....





**A complete stockfeed range. Available in bags and bulk. Call us today on 9724 6888**



— QUALITY ASSURED —



### 43 BONNYDALE SA RANCH HAND Q409

Verified to Dam

AUS#: MBBDQ409 ASA#: (3610243) AM% NH% Tattoo: Q409  
BD: 18/2/19 Colour: Homo Black

SAND RANCH HAND  
Sire: BONNYDALE RANCH HAND K101  
BONNYDALE GEORGIA H279

MATAURI RESOLUTION F030  
Dam: BONNYDALE SA LIL DESSI N300  
BONNYDALE SA LIL DESSI L355

**SimAngus - 5/8 Simm 3/8 Angus**  
THIS BULL HAS BEEN SPECIALLY SE-  
LECTED FOR USE ON HEIFERS - Parent  
verification delay update available on sale day

BW	\$ Index Values
kg	\$API \$TI
30	

	CE	BW	WW	YW	ADG	MCE	MILK	MWW	STAY	DOC	CW	YG	MB	BF	REA	Shr
EPDs																
%																

Traits Observed: BW, WW

Purchaser: ..... Price: .....

### 44 BONNYDALE SA BIG TIMBER Q359

Verified to both Sire and Dam

AUS#: MBBDQ359 ASA#: (3610246) DD% Tattoo: Q359  
BD: 27/1/19 Colour: Homo Black

HOOK'S YELLOWSTONE 97Y  
Sire: KOCH BIG TIMBER 685D  
KOCH MS HOOKS BOY

BONNYDALE SA IDEAL J377  
Dam: BONNYDALE SA JAPARA N396  
BONNYDALE SA JAPARA F301

**SimAngus - 3/4 Simm 1/4 Angus**  
THIS BULL HAS BEEN SPECIALLY  
SELECTED FOR USE ON HEIFERS

BW	\$ Index Values
kg	\$API \$TI
33	134 70.6

	CE	BW	WW	YW	ADG	MCE	MILK	MWW	STAY	DOC	CW	YG	MB	BF	REA	Shr
EPDs	14.4	-1.3	58.5	86.7	0.18	8.9	26.1	55.3	15.2	6.4	30.7	-0.18	0.35	-0.045	0.49	-0.23
%	20	20	75	75	75	15	20	45	55	95	45	70	40	50	80	95

Traits Observed: BW, WW

Purchaser: ..... Price: .....

### 45 BONNYDALE BIG TIMBER Q4

Verified to both Sire and Dam

AUS#: MBBPQ004 ASA#: (3610359) Tattoo: Q004  
BD: 12/1/19 Colour: Homo Black

HOOK'S YELLOWSTONE 97Y  
Sire: KOCH BIG TIMBER 685D  
KOCH MS HOOKS BOY

RCR AUGUSTUS R54  
Dam: BONNYDALE JOSIE N158  
BONNYDALE JOSSIE G204

**Black Simmental**  
THIS BULL HAS BEEN SPECIALLY  
SELECTED FOR USE ON HEIFERS

BW	\$ Index Values
kg	\$API \$TI
25	151.8 77.8

	CE	BW	WW	YW	ADG	MCE	MILK	MWW	STAY	DOC	CW	YG	MB	BF	REA	Shr
EPDs	16.4	-3.3	65.5	97.3	0.2	9.5	22.3	55	19.1	11.8	38.1	-0.32	0.17	-0.084	0.73	-0.41
%	2	1	65	60	60	3	45	55	25	35	15	99	20	90	75	15

Traits Observed: BW, WW

Purchaser: ..... Price: .....



**46 BONNYDALE AUGUSTUS Q045** Verified to both Sire and Dam

AUS#: MBBPQ045      ASA#: (3610573)      Tattoo: Q045  
 BD: 18/1/19      Colour: Hetero Black

Sire: RCR AUGUSTUS R54      **Black Simmental**  
 RCR NICOLE N32

Dam: BONNYDALE LIL DESSI K114  
 BONNYDALE LIL DESSI D202

BW	\$ Index Values	
kg	\$API	\$TI
37	133.6	71.3

	CE	BW	WW	YW	ADG	MCE	MILK	MWW	STAY	DOC	CW	YG	MB	BF	REA	Shr
EPDs	12.8	1.3	73.1	113.2	0.25	6.7	15.8	52.2	19.9	14.3	42.5	-0.41	-0.03	-0.116	0.81	-0.32
%	20	40	30	20	20	25	95	75	15	10	5	80	70	45	55	60

Traits Observed: BW, WW

Purchaser: ..... Price: .....

**47 BONNYDALE AUGUSTUS Q057** Verified to both Sire and Dam

AUS#: MBBPQ057      ASA#: (3610560)      Tattoo: Q057  
 BD: 19/1/19      Colour: Hetero Black

Sire: RCR AUGUSTUS R54      **Black Simmental**  
 RCR NICOLE N32

Dam: BONNYDALE LIL DESSI K178  
 BONNYDALE LIL DESSI G227

BW	\$ Index Values	
kg	\$API	\$TI
37	127.5	70.1

	CE	BW	WW	YW	ADG	MCE	MILK	MWW	STAY	DOC	CW	YG	MB	BF	REA	Shr
EPDs	10.2	2.5	75.4	118.7	0.27	4.1	13.7	51.4	19.6	13.6	46.9	-0.42	-0.06	-0.116	0.89	-0.3
%	50	75	20	15	10	75	99	80	20	15	2	75	80	45	35	70

Traits Observed: BW, WW

Purchaser: ..... Price: .....

**48 BONNYDALE SA ELEVATOR Q367** Verified to both Sire and Dam

AUS#: MBBDQ367      ASA#: (3610395)      DD%      Tattoo: Q367  
 BD: 2/2/19      Colour: Homo Black

Sire: BONNYDALE SA ELEVATOR L389      **SimAngus - 5/8 Simm 3/8 Angus**  
 BONNYDALE LIL DESSI J115

Dam: BONNYDALE SA IDEAL J377  
 BONNYDALE SA JENNY M351  
 BONNYDALE JENNY K192

BW	\$ Index Values	
kg	\$API	\$TI
34	122.7	70

	CE	BW	WW	YW	ADG	MCE	MILK	MWW	STAY	DOC	CW	YG	MB	BF	REA	Shr
EPDs	11.9	1.8	67.6	98.7	0.19	6	20.1	53.9	13.9	15	32	-0.21	0.29	-0.058	0.49	
%	50	80	40	50	70	60	70	55	70	10	40	60	50	40	80	

Traits Observed: BW, WW

Purchaser: ..... Price: .....

# BIGGER IS BETTER

Take your farming operation to the next level.

Simple to operate yet incredibly powerful, the economical M7171 tractor is ideal for a wide variety of applications from property maintenance to commercial landscaping and professional farming.



## M7171 Premium Power Shift

RRP \$216,534.00 Inc GST

**1 ONLY SPECIAL \$119,990.00 Inc GST**

**0% FINANCE Available**

20% Deposit over 36months

\*Terms & Conditions Apply\*

\*Terms & Conditions Apply\*

Contact **Ben Johnston** on **0429 684 778**

**OR Gary Gislingham** on **0408 931 030**

Cnr Picton Road & Forrest Avenue,  
 Bunbury WA 6230

[www.bunburymachinery.com.au](http://www.bunburymachinery.com.au)

**(08) 9792 3923**



Real Machinery - Real Service - Real People



SELLING & SERVICING  
 KUBOTA PRODUCTS FOR OVER 35 YEARS!



**49 BONNYDALE SA MISSOURI Q357**

Verified to both Sire and Dam

AUS#: MBBDQ357      ASA#: (3610512)      Tattoo: Q357  
 BD: 26/1/19      Colour: Homo Black

Sire: BONNYDALE MISSOURI M60  
 BONNYDALE SCAMP J101

**SimAngus - 3/4 Simm 1/4 Angus**

Dam: BONNYDALE SA IONESCO K305  
 BONNYDALE SA IONESCO

BW	\$ Index Values	
kg	\$API	\$TI
32	132.7	71.7

	CE	BW	WW	YW	ADG	MCE	MILK	MWW	STAY	DOC	CW	YG	MB	BF	REA	Shr
EPDs	12.4	-0.5	69.1	105.1	0.22	7.5	15.2	49.7	17.8	12.5	40.7	-0.29	0.03	-0.084	0.67	-0.33
%	45	30	35	35	50	30	99	75	25	35	15	35	95	15	45	50

Traits Observed: BW, WW

Purchaser: ..... Price: .....

**50 BONNYDALE KRUISER Q113**

Verified to both Sire and Dam

AUS#: MBBPQ113      ASA#: (3610538)      Tattoo: Q113  
 BD: 28/1/19      Colour: Hetero Black

Sire: BONNYDALE KRUISER  
 ASR BLACK CARLENE P421

**Black Simmental**

Dam: BONNYDALE LIL DESSI L57  
 BONNYDALE LIL DESSI F201

BW	\$ Index Values	
kg	\$API	\$TI
37	116.3	70.9

	CE	BW	WW	YW	ADG	MCE	MILK	MWW	STAY	DOC	CW	YG	MB	BF	REA	Shr
EPDs	6.9	3.4	80.4	119.6	0.25	4.8	23.8	63.9	18.1	9.5	41.3	-0.52	-0.12	-0.124	1.08	-0.34
%	90	90	10	10	20	60	30	10	40	70	10	20	90	20	10	45

Traits Observed: BW, WW

Purchaser: ..... Price: .....

**51 BONNYDALE AUGUSTUS Q016**

Verified to both Sire and Dam

AUS#: MBBPQ016      ASA#: (3610528)      Tattoo: Q016  
 BD: 15/1/19      Colour: Homo Black

Sire: RCR AUGUSTUS R54  
 RCR NICOLE N32

**Black Simmental**

Dam: BONNYDALE GEORGIA L24  
 BONNYDALE GEORGIA H238

BW	\$ Index Values	
kg	\$API	\$TI
38	129.4	68.9

	CE	BW	WW	YW	ADG	MCE	MILK	MWW	STAY	DOC	CW	YG	MB	BF	REA	Shr
EPDs	11.4	1.8	70.1	109.4	0.25	6.1	16.6	51.6	19.5	13.6	39.1	-0.4	-0.03	-0.116	0.72	-0.32
%	35	55	40	30	20	35	95	80	20	15	10	85	70	45	80	60

Traits Observed: BW, WW

Purchaser: ..... Price: .....

**BRED IN AUSTRALIA.**

**BRED TOUGH TO TOLERATE  
 DROUGHT, RESIST PESTS  
 AND KEEP HOLDING ON  
 LATE INTO THE SEASON.**

**A GREAT PASTURE  
 NEEDS A GOOD BASE.**



**VISIT PGGWRIGHTSONSEEDS.COM.AU FOR YOUR PASTURE OPTIONS**

**PERFORMANCE BRED**

[pggwrightsonseeds.com.au](http://pggwrightsonseeds.com.au)





**As Australia's leading privately owned insurance broker, EBM's regional offices give Western Australians access to personalised service and insurance solutions.**

**Rural, Commercial and Business Insurance**

- Farms
- Crop & Livestock
- Workers' Compensation
- Property Assets
- Plant & Machinery
- Motor Fleet
- Tradespeople
- Liability (public & products)
- Professional Indemnity
- Directors & Officers Liability
- Injury Management Service
- Offices

**Personal Insurance**

- Home & Contents & Valuables
- Motor Vehicle
- Personal Accident/Illness
- Pleasure Craft
- Landlords

*"Spending time on-site with local business owners allows me to understand their business and the risks they face."* Murray Johnson, Regional Manager - South West

**Contact Murray on 9781 4744 to discuss your insurance needs today**



**52 BONNYDALE LINCOLN Q5** Verified to both Sire and Dam

AUS#: MBBPQ005      ASA#: (3610605)      Tattoo: Q005  
BD: 9/1/19      Colour: Homo Black

Sire: BONNYDALE AUGUSTUS L84      **Black Simmental**  
BONNYDALE JOSSIE G204

Dam: BONNYDALE GOLDIE J112  
BONNYDALE GOLDIE G205

BW	\$ Index Values	
kg	\$API	\$TI
29	134	72.7

	CE	BW	WW	YW	ADG	MCE	MILK	MWW	STAY	DOC	CW	YG	MB	BF	REA	Shr
EPDs	14.6	0.2	71.8	108.9	0.23	7.8	17.5	53.4	17.8	8.8	38.4	-0.42	-0.01	-0.114	0.79	-0.4
%	10	20	35	30	35	15	90	65	45	75	15	75	60	45	65	20

Traits Observed: BW, WW

Purchaser: ..... Price: .....

**53 BONNYDALE SA TANK Q403** Verified to both Sire and Dam

AUS#: MBBQ403      ASA#: (3610343)      AMFU NHFU CAFU      Tattoo: Q403  
BD: 15/2/19      Colour: Homo Black

Sire: BONNYDALE SA TANK K299      **SimAngus - 3/4 Simm 1/4 Angus**  
BONNYDALE SA INNESVALE

Dam: BONNYDALE SA GOBLET H329  
BONNYDALE SA GOBLET

BW	\$ Index Values	
kg	\$API	\$TI
36	113.9	63.3

	CE	BW	WW	YW	ADG	MCE	MILK	MWW	STAY	DOC	CW	YG	MB	BF	REA	Shr
EPDs	11.7	1.8	66.8	103.2	0.23	8.5	24	57.3	17.4	15.5	35.8	-0.41	-0.02	-0.088	0.92	-0.24
%	55	80	45	40	40	20	35	35	30	10	25	10	99	15	10	95

Traits Observed: BW, WW

Purchaser: ..... Price: .....

**54 BONNYDALE BIG TIMBER Q101** Verified to both Sire and Dam

AUS#: MBBPQ101      ASA#: (3610323)      Tattoo: Q101  
BD: 24/1/19      Colour: Homo Black

Sire: KOCH BIG TIMBER 685D      **Black Simmental**  
KOCH MS HOOKS BOY

Dam: ASR FINE ART A3205  
ASR FINE ART U838

BW	\$ Index Values	
kg	\$API	\$TI
35	149.4	77.6

	CE	BW	WW	YW	ADG	MCE	MILK	MWW	STAY	DOC	CW	YG	MB	BF	REA	Shr
EPDs	14.4	-1.6	64.2	99.5	0.22	7.4	25.4	57.5	18	5.1	34.4	-0.32	0.27	-0.081	0.69	-0.37
%	10	3	70	55	40	20	20	40	45	99	25	99	10	90	85	30

Traits Observed: BW, WW

Purchaser: ..... Price: .....





**55 BONNYDALE MONTANA Q152** Verified to both Sire and Dam

AUS#: MBBPQ152      ASA#: (3610220)      Tattoo: Q152  
 BD: 11/2/19      Colour: Homo Black

RCR AUGUSTUS R54  
 Sire: BONNYDALE MONTANA M49  
       BONNYDALE GUAVA G226

BONNYDALE WIDE TRACK L11  
 Dam: BONNYDALE BLACK SCAMP N15  
       BONNYDALE SCAMP J127

**Black Simmental**

BW	\$ Index Values	
kg	\$API	\$TI
40	128.1	71.7

	CE	BW	WW	YW	ADG	MCE	MILK	MWW	STAY	DOC	CW	YG	MB	BF	REA	Shr
EPDs	10.8	3.1	76.9	119.5	0.27	6	17.4	55.8	19	16.4	42.1	-0.45	-0.03	-0.113	0.95	-0.27
%	40	85	15	10	10	40	90	50	30	2	5	60	70	45	25	85

Traits Observed: BW, WW

Purchaser: ..... Price: .....

**56 BONNYDALE UNLIMITED Q058** Verified to both Sire and Dam

AUS#: MBBPQ058      ASA#: (3610570)      Tattoo: Q058  
 BD: 19/1/19      Colour: Homo Black

MCM TOP GRADE 018X  
 Sire: LRS UNLIMITED 752A  
       LRS MS DAKOTA 559R

HC HUMMER 12M  
 Dam: BONNYDALE GEORGIA K110  
       BONNYDALE GEORGIA H270

**Black Simmental**

BW	\$ Index Values	
kg	\$API	\$TI
32	130	68.6

	CE	BW	WW	YW	ADG	MCE	MILK	MWW	STAY	DOC	CW	YG	MB	BF	REA	Shr
EPDs	12.2	0.5	64.2	97.5	0.21	7.4	28.8	60.8	19.6	3.2	32.4	-0.62	-0.05	-0.137	1.17	-0.33
%	25	25	70	60	50	20	5	20	20	99	35	1	75	10	3	55

Traits Observed: BW, WW

Purchaser: ..... Price: .....

**57 BONNYDALE BIG TIMBER Q11** Verified to both Sire and Dam

AUS#: MBBPQ011      ASA#: (3610328)      Tattoo: Q011  
 BD: 13/1/19      Colour: Homo Black

HOOK'S YELLOWSTONE 97Y  
 Sire: KOCH BIG TIMBER 685D  
       KOCH MS HOOKS BOY

W/C WIDE TRACK 694Y  
 Dam: ASR FINE ART A3205  
       ASR FINE ART U838

**Black Simmental**

**THIS BULL HAS BEEN SPECIALLY  
 SELECTED FOR USE ON HEIFERS**

BW	\$ Index Values	
kg	\$API	\$TI
26	150.6	80

	CE	BW	WW	YW	ADG	MCE	MILK	MWW	STAY	DOC	CW	YG	MB	BF	REA	Shr
EPDs	14.4	-1.1	69.4	106.8	0.23	7.4	24.2	58.9	18	10.6	39.2	-0.32	0.27	-0.081	0.76	-0.37
%	10	5	45	35	35	20	30	30	45	50	10	99	10	90	70	30

Traits Observed: BW, WW

Purchaser: ..... Price: .....

**58 BONNYDALE NEVADA Q154** Verified to both Sire and Dam

AUS#: MBBPQ154      ASA#: (3610535)      Tattoo: Q154  
 BD: 11/2/19      Colour: Hetero Black

RCR AUGUSTUS R54  
 Sire: BONNYDALE NEVADA N160  
       BONNYDALE JOSSIE G204

TNT TANKER U263  
 Dam: BONNYDALE LIL DESSI L45  
       BONNYDALE LIL DESSI F202

**Black Simmental**

BW	\$ Index Values	
kg	\$API	\$TI
33	125.8	71.6

	CE	BW	WW	YW	ADG	MCE	MILK	MWW	STAY	DOC	CW	YG	MB	BF	REA	Shr
EPDs	10.5	1.3	76.9	117.4	0.25	6.6	21.4	59.8	19.4	12.2	48.1	-0.47	-0.13	-0.124	1	-0.31
%	45	40	15	15	20	30	55	25	20	30	2	50	95	20	15	65

Traits Observed: BW, WW

Purchaser: ..... Price: .....

**59 BONNYDALE SA ELEVATOR Q362** Verified to both Sire and Dam

AUS#: MBBQ362      ASA#: (3610372)      AMFU NHFU CAFU DD%      Tattoo: Q362  
 BD: 28/1/19      Colour: Homo Black

COONAMBLE H156  
 Sire: BONNYDALE SA ELEVATOR L389  
       BONNYDALE LIL DESSI J115

BONNYDALE TANKER H200  
 Dam: BONNYDALE SA IPOD L310  
       BONNYDALE SA IPOD

**SimAngus - 5/8 Simm 3/8 Angus**

BW	\$ Index Values	
kg	\$API	\$TI
39	121	66.6

	CE	BW	WW	YW	ADG	MCE	MILK	MWW	STAY	DOC	CW	YG	MB	BF	REA	Shr
EPDs	11.7	2	62.9	94	0.19	5.8	21.9	53.3	14.8	14.6	30.5	-0.27	0.26	-0.058	0.67	
%	55	85	60	65	70	65	50	60	60	15	50	40	60	40	45	

Traits Observed: BW, WW

Purchaser: ..... Price: .....

**60 BONNYDALE SA ELEVATOR Q383** Verified to both Sire and Dam

AUS#: MBBQ383      ASA#: (3610302)      DD%      Tattoo: Q383  
 BD: 7/2/19      Colour: Homo Black

COONAMBLE H156  
 Sire: BONNYDALE SA ELEVATOR L389  
       BONNYDALE LIL DESSI J115

ASR AUGUSTUS Z2165  
 Dam: BONNYDALE SA SUPERIOR M328  
       BONNYDALE SA SATURN K318

**SimAngus - 5/8 Simm 1/4 Angus 1/8 AM**

BW	\$ Index Values	
kg	\$API	\$TI
34	126.3	72.2

	CE	BW	WW	YW	ADG	MCE	MILK	MWW	STAY	DOC	CW	YG	MB	BF	REA	Shr
EPDs	14.5	0.8	69	99.5	0.19	6.8	20	54.4	13.3	15.9	30.6	-0.3	0.27	-0.062	0.72	
%	20	60	35	50	70	45	70	55	75	5	50	35	55	30	35	

Traits Observed: BW, WW

Purchaser: ..... Price: .....



**61 BONNYDALE KRUGER Q022** Verified to both Sire and Dam

AUS#: MBBPQ022      ASA#: (3610432)      Tattoo: Q022  
 BD: 16/1/19      Colour: Homo Black

Sire: BONNYDALE KRUGER  
 TNT TANKER U263  
 ASR BLACK CARLENE P421

**Black Simmental**

Dam: BONNYDALE MS DESI M131  
 KOCH LC MONTE 803U  
 ASR MS DESI U8154

BW	\$ Index Values	
kg	SAPI	\$TI
38	102.3	63.9

	CE	BW	WW	YW	ADG	MCE	MILK	MWW	STAY	DOC	CW	YG	MB	BF	REA	Shr
EPDs	7.8	3	77.2	116.3	0.24	5.6	19.8	58.4	16.7	13.4	34.3	-0.49	-0.16	-0.125	0.87	-0.36
%	80	85	15	15	25	45	70	35	65	15	25	40	95	20	40	35

*Traits Observed: BW, WW*

Purchaser: ..... Price: .....

**62 BONNYDALE LINCOLN Q064** Verified to both Sire and Dam

AUS#: MBBPQ064      ASA#: (3610418)      Tattoo: Q064  
 BD: 20/1/19      Colour: Hetero Black

Sire: BONNYDALE AUGUSTUS L84  
 RCR AUGUSTUS R54  
 BONNYDALE JOSSIE G204

**Black Simmental**

Dam: BONNYDALE DREAM CATCHER M88  
 BONNYDALE BLACK HAWK H274  
 BONNYDALE DREAM CATCHER H264

BW	\$ Index Values	
kg	SAPI	\$TI
36	124.9	71.1

	CE	BW	WW	YW	ADG	MCE	MILK	MWW	STAY	DOC	CW	YG	MB	BF	REA	Shr
EPDs	10.2	2.6	78.2	118.8	0.25	5.4	16.8	55.8	19	12.8	39.9	-0.43	-0.08	-0.117	0.82	-0.35
%	50	75	15	15	20	50	95	50	30	20	10	70	85	45	55	40

*Traits Observed: BW, WW*

Purchaser: ..... Price: .....

**63 BONNYDALE SA MISSOURI Q427** Verified to both Sire and Dam

AUS#: MBBDQ427      ASA#: (3610502)      AM% NH% DD%      Tattoo: Q427  
 BD: 10/3/19      Colour: Homo Black

Sire: BONNYDALE MISSOURI M60  
 RCR AUGUSTUS R54  
 BONNYDALE SCAMP J101

**SimAngus - 3/4 Simm 1/4 Angus**

Dam: BONNYDALE SA REBECCA K307  
 BONNYDALE SA KANSAS  
 BONNYDALE SA REBECCA G320

BW	\$ Index Values	
kg	SAPI	\$TI
45	105.6	62.6

	CE	BW	WW	YW	ADG	MCE	MILK	MWW	STAY	DOC	CW	YG	MB	BF	REA	Shr
EPDs	7.5	4.3	71.8	110.4	0.24	3	17.7	53.6	16.3	15.5	37.1	-0.34	0.01	-0.08	0.81	
%	95	99	25	25	35	95	85	55	40	10	25	25	95	20	20	

*Traits Observed: BW, WW*

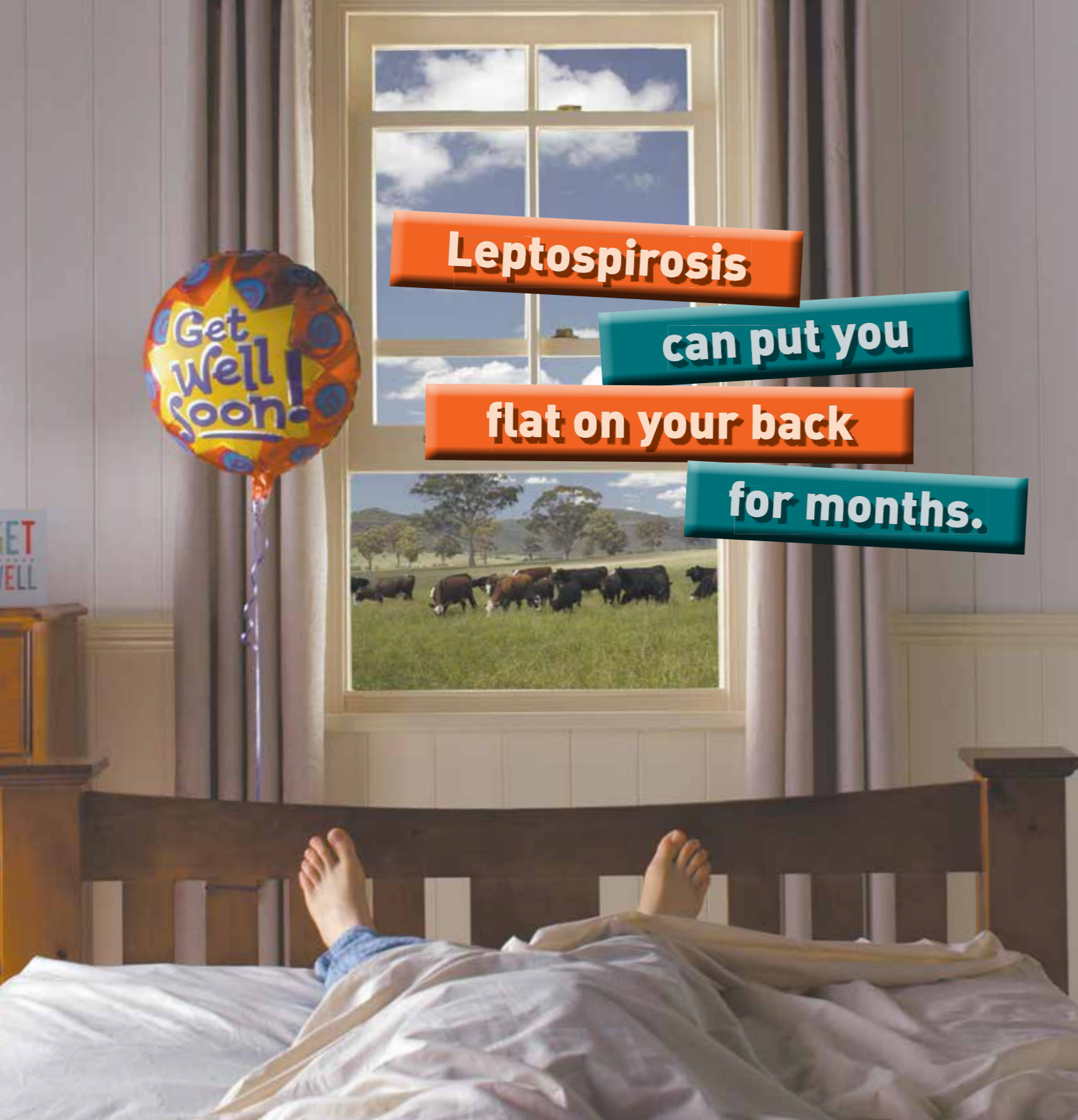
Purchaser: ..... Price: .....

# THE BEST FARMS START FROM THE GROUND UP!

We provide the soil and plant science you need to fix problems and increase farm productivity. Our soil tests provide the proper insights and answers to build fertility; our farming programs ensure **Better Soils, Crops and Profits You Can Measure and See!** We have the Science, Skills & Products to Deliver.

www.fertitech.com





Most beef producers know leptospirosis can damage the performance of their herd, but many forget it can also make people extremely ill as well. If you pick up lepto when handling cattle, you could be out of action for months with severe flu-like symptoms that often develop into an ongoing chronic fatigue like illness. Who would look after your property if that happened? Protect your herd, your family, employees and yourself. Vaccinate your cattle with Ultravac® 7in1.\*



Protecting much more than cattle.

\*See product leaflet for details of administration and product claims. For more information talk to your Zoetis Cattle Product Specialist on 1800 814 883. © 2013 Zoetis Inc. All rights reserved. Zoetis Australia Pty Ltd ABN 94 156 476 425. 38-42 Wharf Road, West Ryde, NSW, 2114. AM596 03/13 PAL0980/A4

**64 BONNYDALE SA MISSOURI Q363** Verified to both Sire and Dam

AUS#: MBBDQ363 ASA#: (3610297) DD% Tattoo: Q363  
 BD: 28/1/19 Colour: Homo Black

Sire: RCR AUGUSTUS R54 **SimAngus - 3/4 Simm 1/4 Angus**  
 BONNYDALE MISSOURI M60  
 BONNYDALE SCAMP J101

Dam: BONNYDALE SA IDEAL J377  
 BONNYDALE SA JANUARY L386  
 BONNYDALE SA JANUARY J361

BW	\$ Index Values	
kg	\$API	\$TI
39	109.3	62.2

	CE	BW	WW	YW	ADG	MCE	MILK	MWW	STAY	DOC	CW	YG	MB	BF	REA	Shr
EPDs	9	2.7	66.8	102.7	0.22	4.4	14.8	48.1	15.8	15.2	44.3	-0.3	0.06	-0.075	0.8	-0.16
%	85	95	45	45	50	85	99	85	50	10	10	35	90	20	20	99

Traits Observed: BW, WW

Purchaser: ..... Price: .....

**65 BONNYDALE AUGUSTUS Q72** Verified to both Sire and Dam

AUS#: MBBPQ072 ASA#: (3610334) Tattoo: Q072  
 BD: 21/1/19 Colour: Homo Black

Sire: RCR AUGUSTUS R54 **Black Simmental**  
 RCR NICOLE N32

Dam: BONNYDALE JOSSIE G204  
 KAPPES TRAILBLAZER S516  
 GLS S82

BW	\$ Index Values	
kg	\$API	\$TI
33	126.6	68.2

	CE	BW	WW	YW	ADG	MCE	MILK	MWW	STAY	DOC	CW	YG	MB	BF	REA	Shr
EPDs	11.3	1.4	70.4	109.5	0.24	5.9	14.5	49.7	19	8	44.2	-0.41	-0.07	-0.118	0.8	-0.35
%	35	45	40	30	25	40	99	90	30	85	3	80	80	45	60	40

Traits Observed: BW, WW

Purchaser: ..... Price: .....

**66 BONNYDALE NEVADA Q188** Verified to both Sire and Dam

AUS#: MBBPQ188 ASA#: (3610566) Tattoo: Q188  
 BD: 5/3/19 Colour: Homo Black

Sire: RCR AUGUSTUS R54 **Black Simmental**  
 BONNYDALE NEVADA N160  
 BONNYDALE JOSSIE G204

Dam: BONNYDALE GEORGIA K200  
 MR NLC ICON X0104  
 BONNYDALE GEORGIA

BW	\$ Index Values	
kg	\$API	\$TI
44	117.6	66.4

	CE	BW	WW	YW	ADG	MCE	MILK	MWW	STAY	DOC	CW	YG	MB	BF	REA	Shr
EPDs	8.3	3.7	73	112.7	0.25	5.5	19.7	56.2	18.9	4.6	38.2	-0.46	-0.11	-0.123	0.86	-0.27
%	75	95	30	25	20	50	70	50	30	99	15	55	90	20	45	85

Traits Observed: BW, WW

Purchaser: ..... Price: .....





**67 BONNYDALE NEVADA Q106** Verified to both Sire and Dam

AUS#: MBBPQ106 ASA#: (3610444) Tattoo: Q106  
 BD: 24/1/19 Colour: Homo Black

Sire: RCR AUGUSTUS R54 **Black Simmental**  
 BONNYDALE NEVADA N160  
 BONNYDALE JOSSIE G204

Dam: TRIPLE C BETTIS S72J  
 BONNYDALE GEORGIA H270  
 BONNYDALE GEORGIA

BW	\$ Index Values	
kg	\$API	\$TI
34	122.9	63.1

	CE	BW	WW	YW	ADG	MCE	MILK	MWW	STAY	DOC	CW	YG	MB	BF	REA	Shr
EPDs	12.3	0.9	60	92.1	0.2	6.8	20.8	50.7	18.7	13.6	29.2	-0.51	-0.09	-0.129	0.84	-0.37
%	25	30	85	75	60	25	60	85	30	15	50	25	85	20	50	30

Traits Observed: BW, WW

Purchaser: ..... Price: .....

**68 BONNYDALE NASHVILLE Q172** Verified to both Sire and Dam

AUS#: MBBPQ172 ASA#: (3610557) Tattoo: Q172  
 BD: 18/2/19 Colour: Homo Black

Sire: W/C WIDE TRACK 694Y **Black Simmental**  
 BONNYDALE NASHVILLE N70  
 ASR BLACK MIRANDA Y1121

Dam: BONNYDALE BLACK HAWK H274  
 BONNYDALE GRENADA K165  
 BONNYDALE GRENADA

BW	\$ Index Values	
kg	\$API	\$TI
33	125	65.7

	CE	BW	WW	YW	ADG	MCE	MILK	MWW	STAY	DOC	CW	YG	MB	BF	REA	Shr
EPDs	11.7	2.1	63.5	94.6	0.19	5.7	21	52.7	18.4	10.4	30.1	-0.51	-0.01	-0.11	1	-0.24
%	30	60	75	70	70	45	60	70	35	55	45	25	60	65	15	95

Traits Observed: BW, WW

Purchaser: ..... Price: .....

**69 BONNYDALE NEVADA Q159** Verified to both Sire and Dam

AUS#: MBBPQ159 ASA#: (3610565) Tattoo: Q159  
 BD: 12/2/19 Colour: Homo Black

Sire: RCR AUGUSTUS R54 **Black Simmental**  
 BONNYDALE NEVADA N160  
 BONNYDALE JOSSIE G204

Dam: TNT TANKER U263  
 BONNYDALE JENNY K192  
 MTRR JENNY 521W

BW	\$ Index Values	
kg	\$API	\$TI
34	124.3	68.4

	CE	BW	WW	YW	ADG	MCE	MILK	MWW	STAY	DOC	CW	YG	MB	BF	REA	Shr
EPDs	8.7	1.8	71.4	109.1	0.24	5.8	17.4	53.1	19.5	11.5	42	-0.42	-0.06	-0.121	0.8	-0.31
%	70	55	35	30	25	40	90	70	20	35	5	75	80	20	60	65

Traits Observed: BW, WW

Purchaser: ..... Price: .....

**70 BONNYDALE SA BIG TIMBER Q356** Verified to both Sire and Dam

AUS#: MBBQ356 ASA#: (3610226) DD% Tattoo: Q356  
 BD: 26/1/19 Colour: Homo Black

Sire: HOOK'S YELLOWSTONE 97Y **Black Simmental**  
 KOCH BIG TIMBER 685D  
 KOCH MS HOOKS BOY

Dam: BONNYDALE SA ELEVATOR L348  
 BONNYDALE SA HOLLY N311  
 BONNYDALE SA HOLLY K328

BW	\$ Index Values	
kg	\$API	\$TI
30	146.6	82.1

	CE	BW	WW	YW	ADG	MCE	MILK	MWW	STAY	DOC	CW	YG	MB	BF	REA	Shr
EPDs	12.7	-0.9	73.4	106.6	0.21	8	26.5	63.1	16.5	7.7	35.8	-0.25	0.3	-0.048	0.74	-0.23
%	20	10	30	35	50	10	15	15	70	90	20	99	5	99	75	95

Traits Observed: BW, WW

Purchaser: ..... Price: .....

**71 BONNYDALE NEVADA Q146** Verified to both Sire and Dam

AUS#: MBBPQ146 ASA#: (3610419) Tattoo: Q146  
 BD: 8/2/19 Colour:

Sire: RCR AUGUSTUS R54 **Black Simmental**  
 BONNYDALE NEVADA N160  
 BONNYDALE JOSSIE G204

Dam: BONNYDALE BLACK HAWK H274  
 BONNYDALE DREAM CATCHER M89  
 BONNYDALE DREAM CATCHER H264

BW	\$ Index Values	
kg	\$API	\$TI
41	115.1	66.8

	CE	BW	WW	YW	ADG	MCE	MILK	MWW	STAY	DOC	CW	YG	MB	BF	REA	Shr
EPDs	6.5	4.3	76	114.2	0.24	3.1	18	56	19	5.4	37.8	-0.46	-0.1	-0.119	0.88	-0.31
%	90	99	20	20	25	85	85	50	30	95	15	55	85	45	40	65

Traits Observed: BW, WW

Purchaser: ..... Price: .....

**72 BONNYDALE LOAD TRACK Q189** Verified to Dam

AUS#: MBBPQ189 ASA#: (3610596) Tattoo: Q189  
 BD: 6/2/19 Colour: Homo Black

Sire: W/C WIDE TRACK 694Y **Black Simmental \* Parent verification delay update available on sale day**  
 BONNYDALE LOAD TRACK  
 ASR FINE ART L132

Dam: HC HUMMER 12M  
 BONNYDALE GEORGIA H239  
 BONNYDALE GEORGIA

BW	\$ Index Values	
kg	\$API	\$TI
39		

	CE	BW	WW	YW	ADG	MCE	MILK	MWW	STAY	DOC	CW	YG	MB	BF	REA	Shr
EPDs																
%																

Traits Observed: BW, WW

Purchaser: ..... Price: .....



**73 BONNYDALE RANCH HAND Q118** Verified to Dam

AUS#: MBBPQ118      ASA#: (3610283)      Tattoo: Q118  
 BD: 31/1/19      Colour: Homo Black

SAND RANCH HAND  
 Sire: BONNYDALE RANCH HAND K101  
 BONNYDALE GEORGIA H279

WLE LAST CALL Y716  
 Dam: BONNYDALE GRENADA N33  
 BONNYDALE LIL DESSI L23

**Black Simmental**  
 THIS BULL HAS BEEN SPECIALLY SE-  
 LECTED FOR USE ON HEIFERS - Parent  
 verification delay update available on sale day

BW	\$ Index Values	
kg	\$API	\$TI
27		

	CE	BW	WW	YW	ADG	MCE	MILK	MWW	STAY	DOC	CW	YG	MB	BF	REA	Shr
EPDs																
%																

Traits Observed: BW, WW

Purchaser: ..... Price: .....

**74 BONNYDALE SA MONTANA Q375** Verified to both Sire and Dam

AUS#: MBBDQ375      ASA#: (3610273)      Tattoo: Q375  
 BD: 4/2/19      Colour: Homo Black

RCR AUGUSTUS R54  
 Sire: BONNYDALE MONTANA M49  
 BONNYDALE GUAVA G226

BONNYDALE SA ELEVATOR L389  
 Dam: BONNYDALE SA GEORGIA N366  
 BONNYDALE GEORGIA L24

**Black Simmental**  
 THIS BULL HAS BEEN SPECIALLY  
 SELECTED FOR USE ON HEIFERS

BW	\$ Index Values	
kg	\$API	\$TI
31	135.5	69.3

	CE	BW	WW	YW	ADG	MCE	MILK	MWW	STAY	DOC	CW	YG	MB	BF	REA	Shr
EPDs	15.1	-0.4	59.8	89.8	0.19	7.9	20.4	50.2	16.9	17.1	26.9	-0.37	0.11	-0.094	0.65	-0.14
%	4	10	90	80	70	15	65	85	60	1	60	95	30	80	90	99

Traits Observed: BW, WW

Purchaser: ..... Price: .....

**75 BONNYDALE BIG TIMBER Q36** Verified to both Sire and Dam

AUS#: MBBPQ036      ASA#: (3610353)      Tattoo: Q036  
 BD: 17/1/19      Colour: Homo Black

HOOK'S YELLOWSTONE 97Y  
 Sire: KOCH BIG TIMBER 685D  
 KOCH MS HOOKS BOY

RCR AUGUSTUS R54  
 Dam: BONNYDALE JOSIE N154  
 BONNYDALE JOSSIE G204

**Black Simmental**  
 THIS BULL HAS BEEN SPECIALLY  
 SELECTED FOR USE ON HEIFERS

BW	\$ Index Values	
kg	\$API	\$TI
33	146.7	76.6

	CE	BW	WW	YW	ADG	MCE	MILK	MWW	STAY	DOC	CW	YG	MB	BF	REA	Shr
EPDs	14.6	-1.1	68.8	102.6	0.21	8.7	20.8	55.1	19.1	5.2	37.9	-0.32	0.17	-0.084	0.73	-0.41
%	10	5	50	45	50	10	60	55	25	95	15	99	20	90	75	15

Traits Observed: BW, WW

Purchaser: ..... Price: .....

**POWERFUL PERFORMANCE.**

**\$139,900 Inc. GST**

Includes FL4323 Loader and 2400mm GP Bucket  
 \*Terms & Conditions Apply\*

**1 ONLY Available at this price**

**MF 7615 Dyna 6**



**150HP OF REAL DEAL POWER AND PERFORMANCE**

- The Latest Tier2, 6 Cylinder AGCO Power Engine with exceptional fuel economy.
- Optimum performance including 24 forward and 24 reverse speeds with AutoDrive.
  - Closed centre 110L/Min hydraulics
- Exceptional cabin comfort including air suspended swivel seat, cab suspension, air conditioning and radio.
  - Built in Europe for outstanding quality and reliability.
- MFFL4323 Loader, designed and built to industry leading standards, with Max Height 4.25m, Max Lift 2,310kg
- Thoughtful loader design means there is plenty of space between the loader arms and the bonnet, providing excellent access to the engine area and air filter.
  - A range of loader implements available to suit the widest range of tasks.

Contact **BEN JOHNSTON** on 0429 684 778  
 Or **GARY GISLINGHAM** on 0408 931 030  
 Cnr Picton Road & Forrest Avenue, Bunbury  
[www.bunburymachinery.com.au](http://www.bunburymachinery.com.au)  
 (08) 9792 3923



**MASSEY FERGUSON**



**WORKING WITH YOU 24/7**

Real Machinery - Real Service - Real People

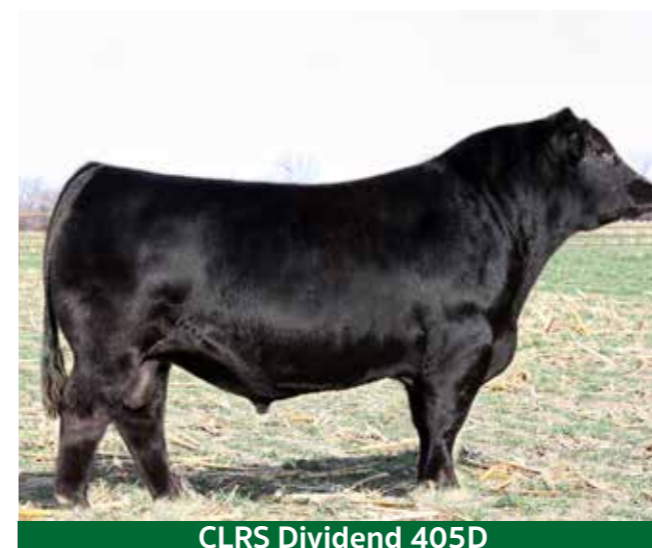




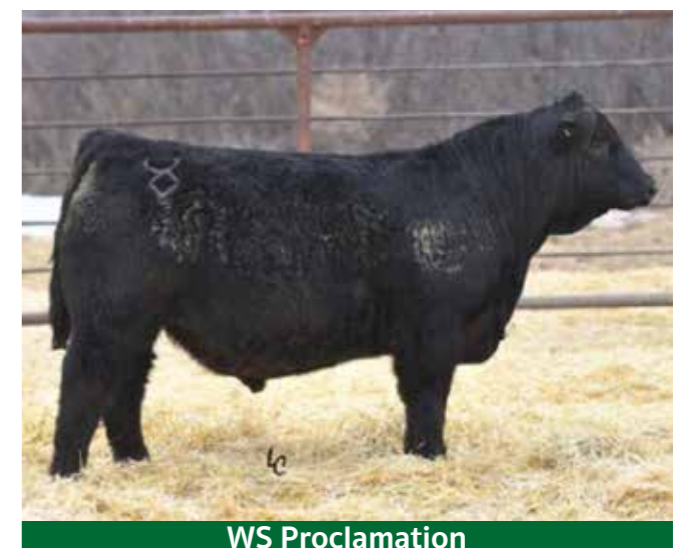
## FUTURE SIRES



ASR American Patriot F843



CLRS Dividend 405D



WS Proclamation







# PURCHASER'S INSTRUCTION SLIP

(to be handed to agents before leaving the Sale Venue, NO VERBAL INSTRUCTIONS CAN BE ACCEPTED)

Name.....

Address.....

Phone.....

Email.....

Contact Person.....

Account to.....

Lots Purchased.....

Total No. of Lots.....

Destination.....

Insure for (period).....

Other instructions.....

Signature of buyer.....

Delivery Directions to Property: (please draw map on back of this slip)

**INSURANCE DISCLAIMER** - Insurance risk of stud animals sold at auction transfers to the purchaser at the fall of the hammer including animals remaining on the vendor's property. Purchasers therefore are advised to insure their animals at the completion of the sale. Stud Animals are not covered by commercial livestock insurance at any point.

**SPECIAL NOTICE TO BUYERS**

- 1) In the interest of buyers and to prevent the occurrence of mistakes, all instructions concerning delivery, trucking or shipping of cattle must be given in writing and signed by the buyer or his representative.
- 2) Instruction for despatch of consignments comprising more than one owner must be signed by each buyer, no instruction slip will be considered complete until all have signed.

**NO VERBAL INSTRUCTIONS CAN BE ACCEPTED CONDITIONS OF SALE**

The conditions of sale are those laid down and displayed by the selling agents.



**To find out more contact your local Elders Stud Stock representative.**

**Tim Spicer WA Stud Stock Manager 0427 812 194**

**Nathan King WA Stud Stock Specialist 0488 582 455**

**Don Morgan WA Senior Livestock Auctioneer 0429 721 156**

**Tom Marron WA Commercial Cattle Manager 0427 936 301**

**Michael Carroll South West WA 0427 975 620**

**Wayne Mitchell South Coast WA 0429 447 144**

**Gary Preston Mid West WA 0427 303 678**

**Clint Avery Pilbara / Gascoyne 0428 826 331**

**Alan Browning Goldfields 0427 998 024**

**Kelvin Hancey Kimberley 0429 914 400**





# Bonnydale Black Simmentals

## NUKARA

29SM0493



Reg No.	MBBPN073
<b>Born</b>	<b>23/01/2017</b>
<b>BW</b>	<b>36kg</b>
<b>Y/365</b>	<b>616kg</b>
<b>21mo Wt</b>	<b>875kg</b>
<b>12mo SS</b>	<b>44cm</b>
<b>Poll</b>	<b>Homo Polled</b>
<b>Colour</b>	<b>Homo Black</b>
<b>Grade</b>	<b>Purebred</b>
<b>FS</b>	<b>6</b>

- Nukara was the top selling bull, at \$19,000, at the 2018 Bonnydale Sale
- Featuring impeccable structure, sound, well shaped feet with good heel depth
- His EBV should identify him as a safe CE bull. Initial calving in the field confirm this. He is a heifer's first calf
- His depth, muscle, body capacity and strong top are the features that many admire, combined with his docile nature
- His sire is the Australian highest selling Black Simmental bull
- His grand dam is the EBV profile cow, Georgia
- Nukara is the no-holes homo polled, homo black purebred Simmental the industry has been looking for!

BONNYDALE NUKARA (P) (AI) (B)



RCR Augustus R54 (P) (B)

Triple C Bettis S72J (P) (B)

**Bonnydale Augustus L84 (P) (AI) (B)**

**Bonnydale Georgia H279 (P) (ET) (AI) (B)**

Bonnydale Jossie G204 (P) (ET) (AI) (B)

Bonnydale Georgia (P) (ET) (AI) (B)

	CE-Dir	CE-DT	GL	BW	200D	400D	600D	MCW	MILK	SS	DTC	CWT	EMA	RIB	RUMP	RBV%	IMF%	DOC	DMI	EMI	NTI	VTI
<b>EBV</b>	<b>+6.2</b>	<b>+6.9</b>	<b>-1.0</b>	<b>-2.1</b>	<b>+23</b>	<b>+48</b>	<b>+55</b>	<b>+49</b>	<b>+2</b>	<b>+1.9</b>	<b>0.0</b>	<b>+40</b>	<b>+4.4</b>	<b>0.0</b>	<b>-0.6</b>	<b>+0.7</b>	<b>+0.5</b>	<b>+16</b>	<b>+\$63</b>	<b>+\$87</b>	<b>+\$38</b>	<b>+\$51</b>
Acc	45%	41%	73%	72%	66%	69%	64%	56%	44%	72%	26%	56%	53%	54%	53%	54%	46%	54%				
%Rank	23	11	55	9	27	10	22	35	90	2	80	8	9	55	70	45	30	25	2	2	1	3

EBVS as at July 2019 **TOP 20%**