

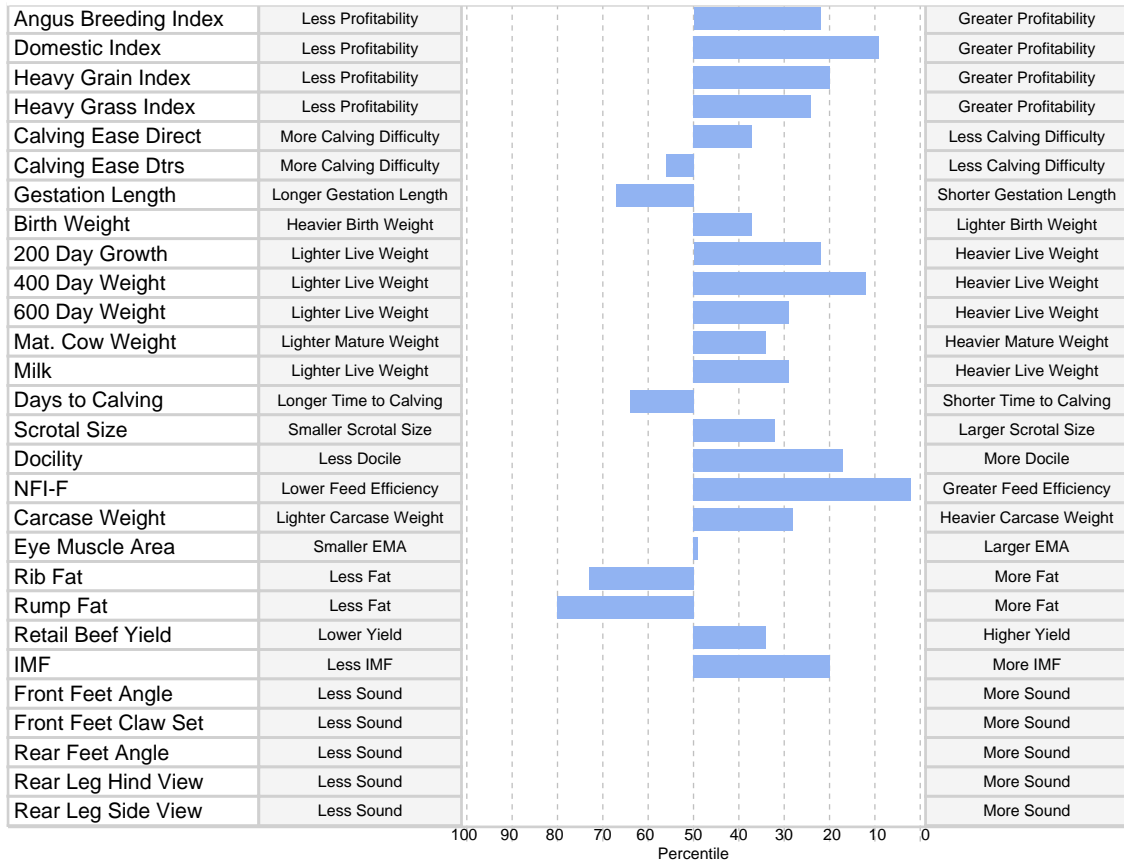
Angus Australia - Embryo Details

Sire ID USA18170041
Sire Name SYDGEN ENHANCE^{SV}
Date of Birth 27/01/2015
Genetic Conditions AMF,CAF,DDF,NHF,DWF,MAF,MHF,OHF,
Dam ID NLRZ509
Dam Name REILAND BLACKLIZ Z509^{PV}
Date of Birth 03/10/2004
Inventory Season Spring
Genetic Conditions AMFU,CAFU,DDFU,NHFU
Inbreeding Coeff. 3%

SYDGEN GOOGOL#
 SYDGEN EXCEED 3223^{PV}
 SYDGEN FOREVER LADY 12#
Sire: SYDGEN ENHANCE^{SV}
 SYDGEN LIBERTY GA 8627#
 SYDGEN RITA 2618#
 FOX RUN RITA 9308#
 B/R NEW DESIGN 036#
 NARRACALCA VALIANT V7^{SV}
 NARRACALCA Q1+95#
Dam: REILAND BLACKLIZ Z509^{PV}
 S A F FOCUS OF E R#
 WOOLAMIA W90^{SV}
 WOOLAMIA BLACK BEAUTY S91#



Expected Average Progeny Values															
TACE Trans Tasman Angus Cattle Evaluation	Calving Ease				Growth					Fertility		Temp	Feed		
	Calving Ease Dir	Calving Ease Dtrs	Gest. Length	Birth Wt	200 Day Growth	400 Day Weight	600 Day Weight	Mat. Cow Weight	Milk	Days to Calving	Scrotal Size	Docility	NFI-F		
EBV	+4.1	+2.1	-3.4	+3.7	+52	+98	+120	+105	+19	-4.0	+2.3	+16	-0.41		
Acc	65%	43%	89%	93%	90%	90%	86%	81%	78%	47%	88%	69%	62%		
Perc	37	56	67	37	22	12	29	34	29	64	32	17	2		
	Carcase						Structural					Selection Index			
	Carcase Weight	EMA	Rib Fat	Rump Fat	RBV	IMF	FA	FC	RA	RH	RS	Angus Breeding	Domestic	Heavy Grain	Heavy Grass
EBV	+69	+5.6	-0.8	-1.5	+0.9	+2.8	-	-	-	-	-	\$132	\$126	\$148	\$125
Acc	79%	78%	81%	78%	76%	77%						-	-	-	-
Perc	28	50	73	80	34	20	-	-	-	-	-	22	9	20	24



Important Notices Expected average progeny values are provided to assist breeders estimate the outcome of particular mating combinations. The actual TransTasman Angus Cattle Evaluation EBVs for any individual progeny resulting from a particular mating are likely to vary from the expected average values.

The information contained in this animal listing has been compiled from databases owned by Angus Australia and has been designed, created and published by Angus Australia. The information is owned by Angus Australia and has been published for information purposes only. No section or individual item may be reproduced or used by any person or other legal entity for any commercial purpose whatsoever, without the prior express consent of Angus Australia.

Angus Australia - Embryo Details

Sire ID SYAM911
Sire Name STONEY POINT REALITY M911^{PV}
Date of Birth 04/07/2016
Genetic Conditions AMFU,CAFU,DDFU,NHFU

Dam ID NLRZ413
Dam Name REILAND NICKY Z413^{PV}
Date of Birth 15/08/2004
Inventory Season Spring
Genetic Conditions AMF,CAFU,DDF,NHFU

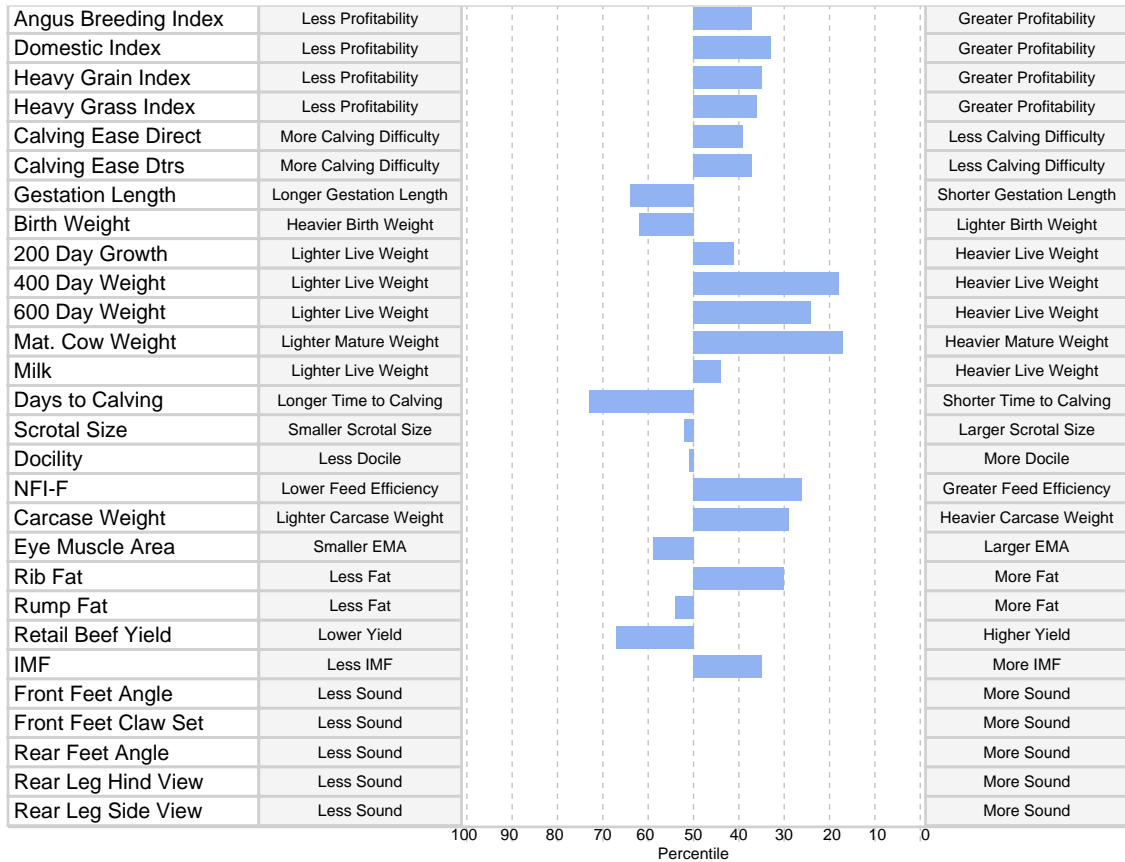
Inbreeding Coeff. 3%

SCHURRTOP REALITY X723#
 MATAURI REALITY 839#
 MATAURI 06663#
Sire: STONEY POINT REALITY M911^{PV}
 ARDROSSAN EQUATOR A241#
 STONEY POINT DREAM F302^{PV}
 VERMONT DREAM B227^{PV}

 B/R NEW DESIGN 036#
 NARRACALCA VALIANT V7^{SV}
 NARRACALCA Q1+95#
Dam: REILAND NICKY Z413^{PV}
 B T ULTRAVOX 297E#
 REILAND NICKIE W167#
 KINNAIRDS NIKOSCAR N1+93#



Expected Average Progeny Values															
TACE Trans Tasman Angus Cattle Evaluation	Calving Ease				Growth					Fertility		Temp	Feed		
	Calving Ease Dir	Calving Ease Dtrs	Gest. Length	Birth Wt	200 Day Growth	400 Day Weight	600 Day Weight	Mat. Cow Weight	Milk	Days to Calving	Scrotal Size	Docility	NFI-F		
EBV	+3.8	+4.1	-3.6	+4.8	+49	+95	+123	+116	+17	-3.5	+1.9	+5	-0.03		
Acc	58%	48%	85%	89%	84%	84%	83%	79%	76%	56%	80%	51%	63%		
Perc	39	37	64	62	41	18	24	17	44	73	52	51	26		
	Carcase						Structural					Selection Index			
	Carcase Weight	EMA	Rib Fat	Rump Fat	RBV	IMF	FA	FC	RA	RH	RS	Angus Breeding	Domestic	Heavy Grain	Heavy Grass
EBV	+69	+5.1	+0.5	-0.6	+0.2	+2.3	-	-	-	-	-	\$124	\$116	\$135	\$120
Acc	76%	73%	77%	75%	74%	72%						-	-	-	-
Perc	29	59	30	54	67	35	-	-	-	-	-	37	33	35	36



Important Notices Expected average progeny values are provided to assist breeders estimate the outcome of particular mating combinations. The actual TransTasman Angus Cattle Evaluation EBVs for any individual progeny resulting from a particular mating are likely to vary from the expected average values.

The information contained in this animal listing has been compiled from databases owned by Angus Australia and has been designed, created and published by Angus Australia. The information is owned by Angus Australia and has been published for information purposes only. No section or individual item may be reproduced or used by any person or other legal entity for any commercial purpose whatsoever, without the prior express consent of Angus Australia.

Angus Australia - Embryo Details

Sire ID VSNH70
Sire Name STRATHEWEN REGENT E23 H70^{PV}
Date of Birth 11/12/2012
Genetic Conditions AMFU,CAFU,DDF,NHFU

Dam ID NLRJ563
Dam Name REILAND BRAEBELL J563^{SV}
Date of Birth 24/08/2013
Inventory Season Autumn
Genetic Conditions AMF,CAFU,DDFU,NHFU

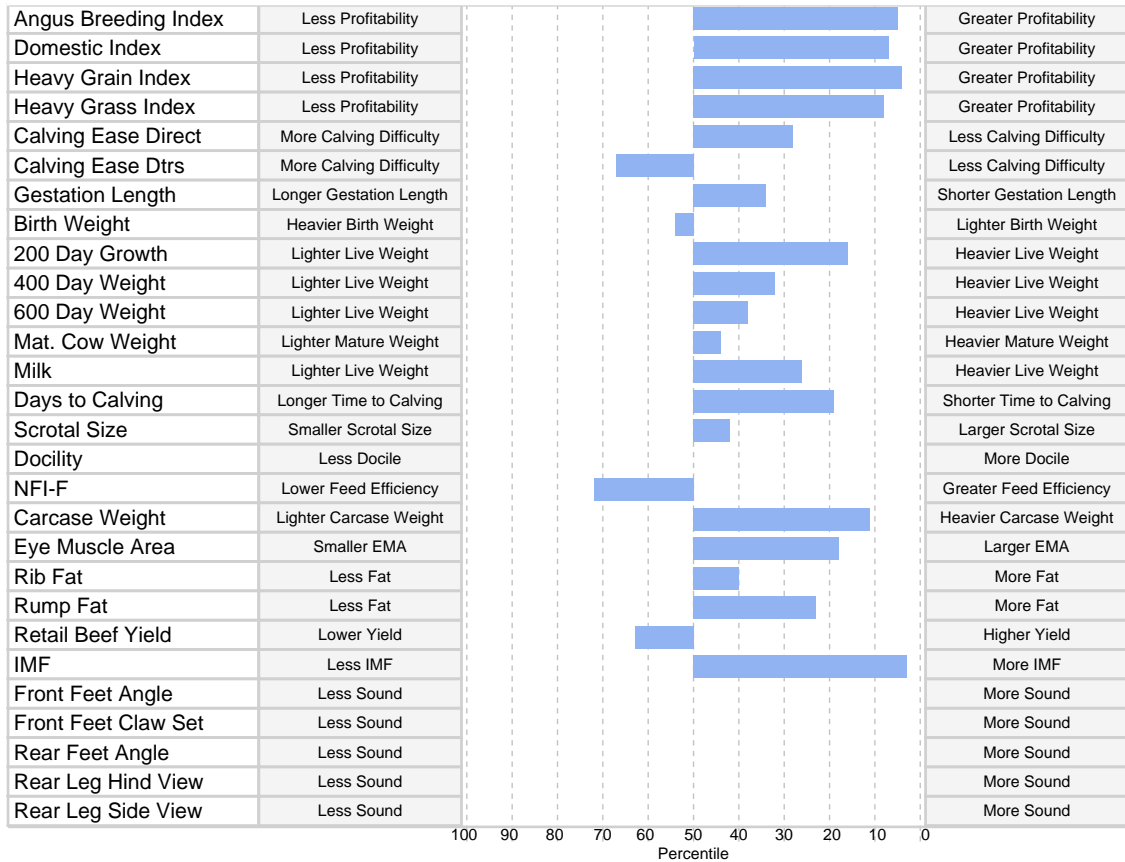
Inbreeding Coeff. 6%

TE MANIA AMBASSADOR A1:
TUWHARETOA REGENT D145^{PV}
LAWSONS HENRY VIII Y5^{SV}
Sire: STRATHEWEN REGENT E23 H70^{PV}
LAWSONS DINKY-DI Z191^{SV}
STRATHEWEN DINKY-DI MITTAGONG E23^{PV}
STRATHEWEN J244 MITTAGONG C46^{PV}

TE MANIA BARTEL B219^{PV}
AYRVALE BARTEL E7^{PV}
EAGLEHAWK JEDDA B32^{SV}
Dam: REILAND BRAEBELL J563^{SV}
NARRACALCA VALIANT V7^{SV}
REILAND BRAEBELL C37#
LAWSONS PARAMOUNT X62#



Expected Average Progeny Values															
TACE Trans Tasman Angus Cattle Evaluation	Calving Ease				Growth					Fertility		Temp	Feed		
	Calving Ease Dir	Calving Ease Dtrs	Gest. Length	Birth Wt	200 Day Growth	400 Day Weight	600 Day Weight	Mat. Cow Weight	Milk	Days to Calving	Scrotal Size	Docility	NFI-F		
EBV	+5.3	+0.7	-5.3	+4.5	+54	+90	+116	+100	+19	-6.5	+2.1	-	+0.34		
Acc	60%	51%	88%	90%	85%	85%	85%	80%	78%	58%	80%		65%		
Perc	28	67	34	54	16	32	38	44	26	19	42	-	72		
	Carcase						Structural					Selection Index			
	Carcase Weight	EMA	Rib Fat	Rump Fat	RBV	IMF	FA	FC	RA	RH	RS	Angus Breeding	Domestic	Heavy Grain	Heavy Grass
EBV	+75	+7.6	+0.2	+0.6	+0.3	+3.9	-	-	-	-	-	\$147	\$127	\$172	\$134
Acc	77%	75%	78%	76%	75%	74%						-	-	-	-
Perc	11	18	40	23	63	3	-	-	-	-	-	5	7	4	8



Important Notices Expected average progeny values are provided to assist breeders estimate the outcome of particular mating combinations. The actual TransTasman Angus Cattle Evaluation EBVs for any individual progeny resulting from a particular mating are likely to vary from the expected average values.

The information contained in this animal listing has been compiled from databases owned by Angus Australia and has been designed, created and published by Angus Australia. The information is owned by Angus Australia and has been published for information purposes only. No section or individual item may be reproduced or used by any person or other legal entity for any commercial purpose whatsoever, without the prior express consent of Angus Australia.

Angus Australia - Embryo Details

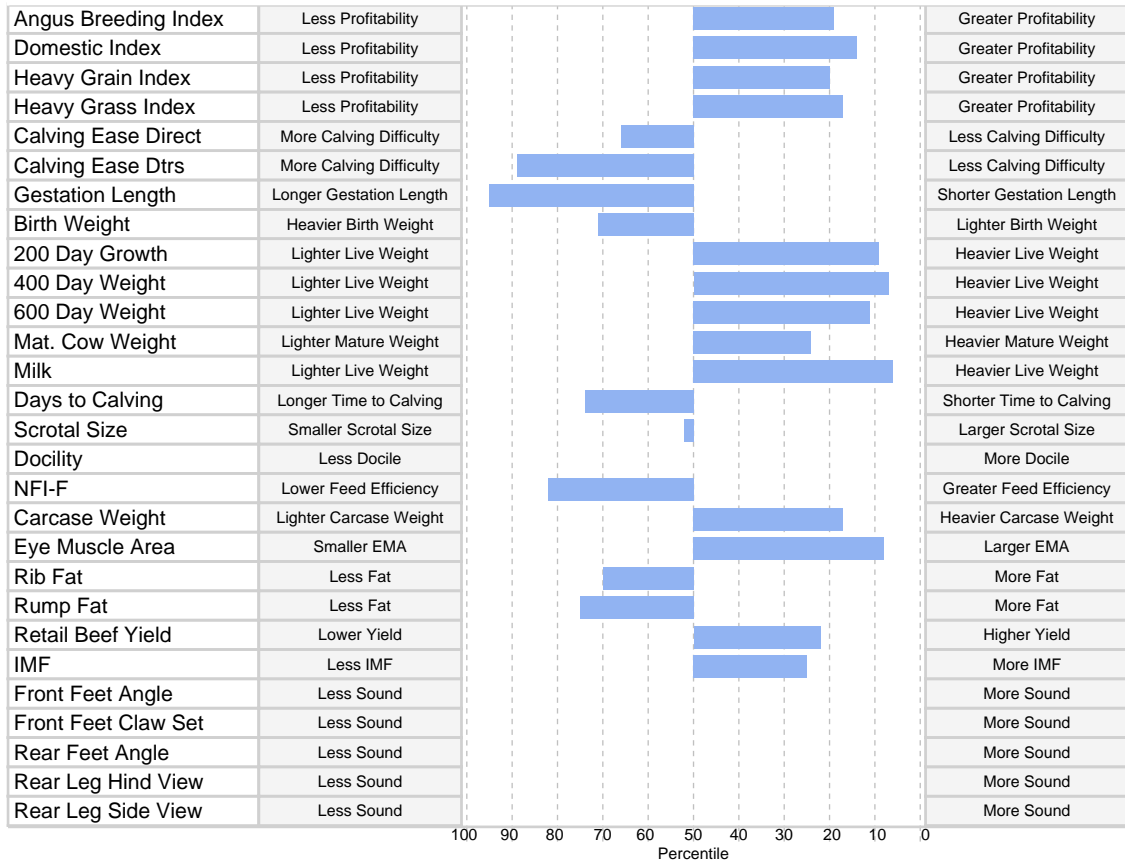
Sire ID USA17262374
Sire Name JMB TRACTION 292^{PV}
Date of Birth 11/03/2012
Genetic Conditions AMF,CAF,DDF,NHF,MAF,MHF,OHF,OSF

Dam ID NLRL921
Dam Name REILAND NICKY L921^{PV}
Date of Birth 16/08/2015
Inventory Season Spring
Genetic Conditions AMFU,CAFU,DDFU,NHFU
Inbreeding Coeff. 3%

GDAR GAME DAY 449[#]
 SITZ TOP GAME 561X[#]
 SITZ PRIDE 88T[#]
Sire: JMB TRACTION 292^{PV}
 S A V 004 PREDOMINANT 445^o
 JMB EMULOTA 013[#]
 BAR S EMULOTA 5426[#]
 TUWHARETOA REGENT D145^{PV}
 STRATHEWEN REGENT E23 H70^{PV}
 STRATHEWEN DINKY-DI MITTAGONG E23^{PV}
Dam: REILAND NICKY L921^{PV}
 NARRACALCA VALIANT V7^{SV}
 REILAND NICKY Z413^{PV}
 REILAND NICKIE W167[#]



Expected Average Progeny Values															
TACE Trans Tasman Angus Cattle Evaluation	Calving Ease				Growth					Fertility		Temp	Feed		
	Calving Ease Dir	Calving Ease Dtrs	Gest. Length	Birth Wt	200 Day Growth	400 Day Weight	600 Day Weight	Mat. Cow Weight	Milk	Days to Calving	Scrotal Size	Docility	NFI-F		
EBV	-0.2	-3.4	-0.5	+5.1	+56	+102	+130	+111	+23	-3.4	+1.9	-	+0.44		
Acc	65%	51%	84%	87%	84%	84%	83%	79%	78%	48%	80%		61%		
Perc	66	89	95	71	9	7	11	24	6	74	52	-	82		
	Carcase						Structural					Selection Index			
	Carcase Weight	EMA	Rib Fat	Rump Fat	RBV	IMF	FA	FC	RA	RH	RS	Angus Breeding	Domestic	Heavy Grain	Heavy Grass
EBV	+73	+8.9	-0.7	-1.3	+1.2	+2.6	-	-	-	-	-	\$134	\$123	\$148	\$128
Acc	77%	75%	78%	76%	73%	74%						-	-	-	-
Perc	17	8	70	75	22	25	-	-	-	-	-	19	14	20	17



Important Notices Expected average progeny values are provided to assist breeders estimate the outcome of particular mating combinations. The actual TransTasman Angus Cattle Evaluation EBVs for any individual progeny resulting from a particular mating are likely to vary from the expected average values.

The information contained in this animal listing has been compiled from databases owned by Angus Australia and has been designed, created and published by Angus Australia. The information is owned by Angus Australia and has been published for information purposes only. No section or individual item may be reproduced or used by any person or other legal entity for any commercial purpose whatsoever, without the prior express consent of Angus Australia.

Angus Australia - Embryo Details

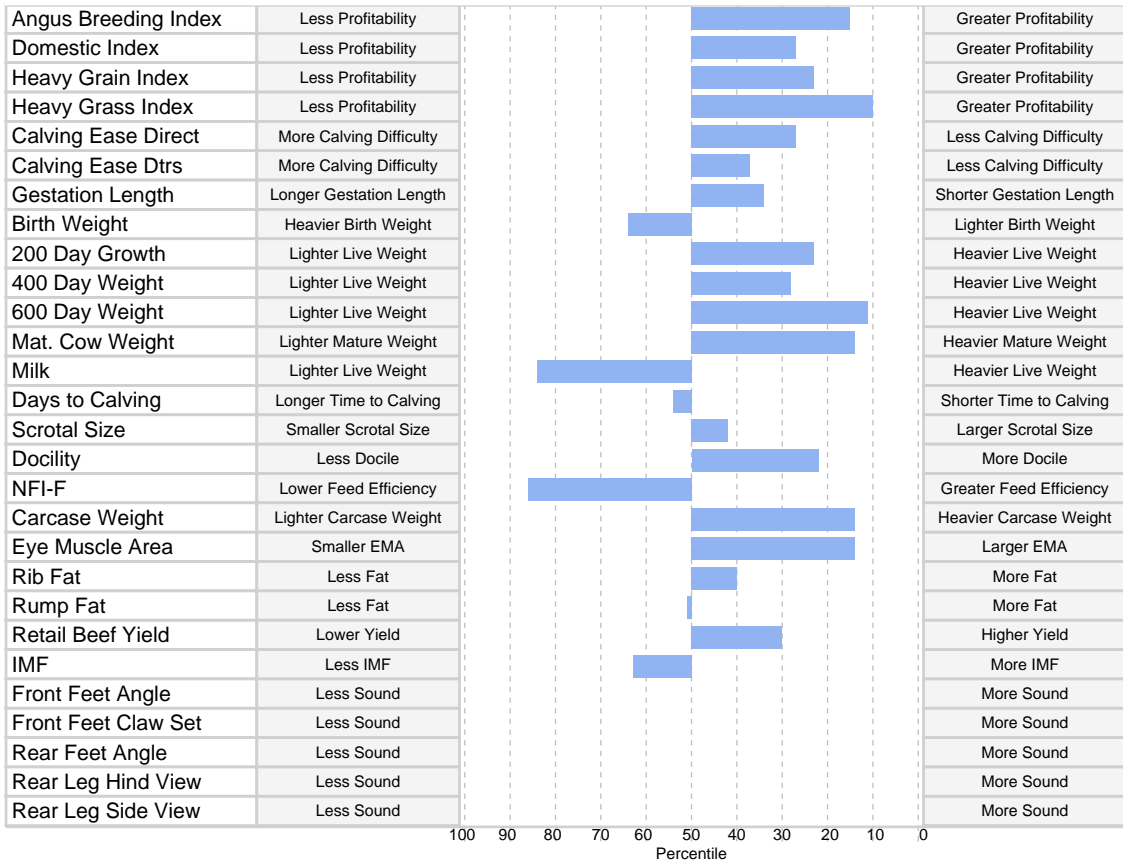
Sire ID DXTP632
Sire Name TEXAS POWERSHIFT P632^{PV}
Date of Birth 10/07/2018
Genetic Conditions AMFU,CAFU,DDFU,NHFU

Dam ID WGAD4
Dam Name LITTLE MEADOWS EDWINA D4^{PV}
Date of Birth 08/01/2008
Inventory Season Autumn
Genetic Conditions AMFU,CAFU,DDFU,NHF
Inbreeding Coeff. 3%

AYRVALE BARTEL E7^{PV}
 AYRVALE HERCULES H9^{PV}
 LAWSONS INVINCIBLE F338^S
Sire: TEXAS POWERSHIFT P632^{PV}
 BANGDANG WESTERN EXPRESS E10
 TEXAS UNDINE H647^{SV}
 TEXAS UNDINE Z183^{PV}
 C A FUTURE DIRECTION 5321[#]
 ARDROSSAN DIRECTION W109^{PV}
 ARDROSSAN WILCOOLA Q71+95[#]
Dam: LITTLE MEADOWS EDWINA D4^{PV}
 BT RIGHT TIME 24J[#]
 LITTLE MEADOWS EDWINA B11[#]
 LITTLE MEADOWS EDWINA R6+96[#]



Expected Average Progeny Values															
TACE Trans Tasman Angus Cattle Evaluation	Calving Ease				Growth					Fertility		Temp	Feed		
	Calving Ease Dir	Calving Ease Dtrs	Gest. Length	Birth Wt	200 Day Growth	400 Day Weight	600 Day Weight	Mat. Cow Weight	Milk	Days to Calving	Scrotal Size	Docility	NFI-F		
EBV	+5.4	+4.1	-5.3	+4.8	+52	+91	+130	+119	+12	-4.5	+2.1	+14	+0.49		
Acc	59%	51%	77%	80%	77%	76%	77%	73%	73%	51%	74%	61%	60%		
Perc	27	37	34	64	23	28	11	14	84	54	42	22	86		
	Carcase						Structural					Selection Index			
	Carcase Weight	EMA	Rib Fat	Rump Fat	RBV	IMF	FA	FC	RA	RH	RS	Angus Breeding	Domestic	Heavy Grain	Heavy Grass
EBV	+74	+8.0	+0.2	-0.4	+1.0	+1.6	-	-	-	-	-	\$137	\$118	\$145	\$133
Acc	71%	68%	71%	69%	69%	67%						-	-	-	-
Perc	14	14	40	51	30	63	-	-	-	-	-	15	27	23	10



Important Notices Expected average progeny values are provided to assist breeders estimate the outcome of particular mating combinations. The actual TransTasman Angus Cattle Evaluation EBVs for any individual progeny resulting from a particular mating are likely to vary from the expected average values.

The information contained in this animal listing has been compiled from databases owned by Angus Australia and has been designed, created and published by Angus Australia. The information is owned by Angus Australia and has been published for information purposes only. No section or individual item may be reproduced or used by any person or other legal entity for any commercial purpose whatsoever, without the prior express consent of Angus Australia.

Angus Australia - Embryo Details

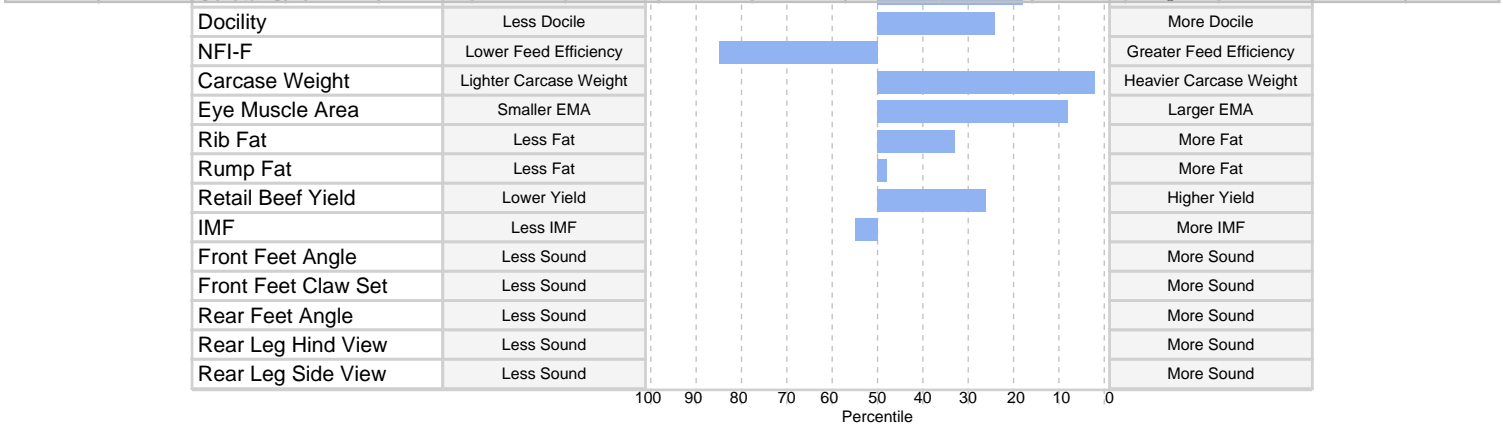
Sire ID DXTP632
Sire Name TEXAS POWERSHIFT P632^{PV}
Date of Birth 10/07/2018
Genetic Conditions AMFU,CAFU,DDFU,NHFU
Dam ID WGAP9
Dam Name LITTLE MEADOWS WILCOOLA P9^{PV}
Date of Birth 06/04/2018
Inventory Season Autumn
Genetic Conditions AMFU,CAFU,DDFU,NHFU
Inbreeding Coeff. 3%

AYRVALE BARTEL E7^{PV}
 AYRVALE HERCULES H9^{PV}
 LAWSONS INVINCIBLE F338^S
Sire: TEXAS POWERSHIFT P632^{PV}
 BANGADANG WESTERN EXPRESS E10
 TEXAS UNDINE H647^{SV}
 TEXAS UNDINE Z183^{PV}
 TE MANIA BERKLEY B1^{PV}
 PATHFINDER GENESIS G357^{PV}
 PATHFINDER DIRECTION D245^{SV}
Dam: LITTLE MEADOWS WILCOOLA P9^{PV}
 PAPA EQUATOR 2928[#]
 COONAMBLE D252^{SV}
 COONAMBLE Z107^{SV}



Expected Average Progeny Values													
TACE	Calving Ease				Growth					Fertility		Temp	Feed
	Calving Ease Dir	Calving Ease Dtrs	Gest. Length	Birth Wt	200 Day Growth	400 Day Weight	600 Day Weight	Mat. Cow Weight	Milk	Days to Calving	Scrotal Size	Docility	NFI-F
EBV	+4.2	+8.0	-5.9	+4.7	+57	+102	+141	+137	+17	-3.5	+2.7	+13	+0.48
Acc	54%	45%	71%	75%	72%	70%	71%	69%	65%	47%	70%	57%	57%
Perc	36	9	25	62	6	6	3	3	41	73	18	24	85

Expected Average Progeny Values															
TACE	Carcase				Structural					Selection Index					
	Carcase Weight	EMA	Rib Fat	Rump Fat	RBV	IMF	FA	FC	RA	RH	RS	Angus Breeding	Domestic	Heavy Grain	Heavy Grass
EBV	+85	+8.8	+0.4	-0.4	+1.1	+1.8	-	-	-	-	-	\$143	\$125	\$153	\$139
Acc	67%	65%	68%	66%	66%	65%						-	-	-	-
Perc	2	8	33	48	26	55	-	-	-	-	-	9	11	15	4



Important Notices Expected average progeny values are provided to assist breeders estimate the outcome of particular mating combinations. The actual TransTasman Angus Cattle Evaluation EBVs for any individual progeny resulting from a particular mating are likely to vary from the expected average values.

The information contained in this animal listing has been compiled from databases owned by Angus Australia and has been designed, created and published by Angus Australia. The information is owned by Angus Australia and has been published for information purposes only. No section or individual item may be reproduced or used by any person or other legal entity for any commercial purpose whatsoever, without the prior express consent of Angus Australia.

Angus Australia - Embryo Details

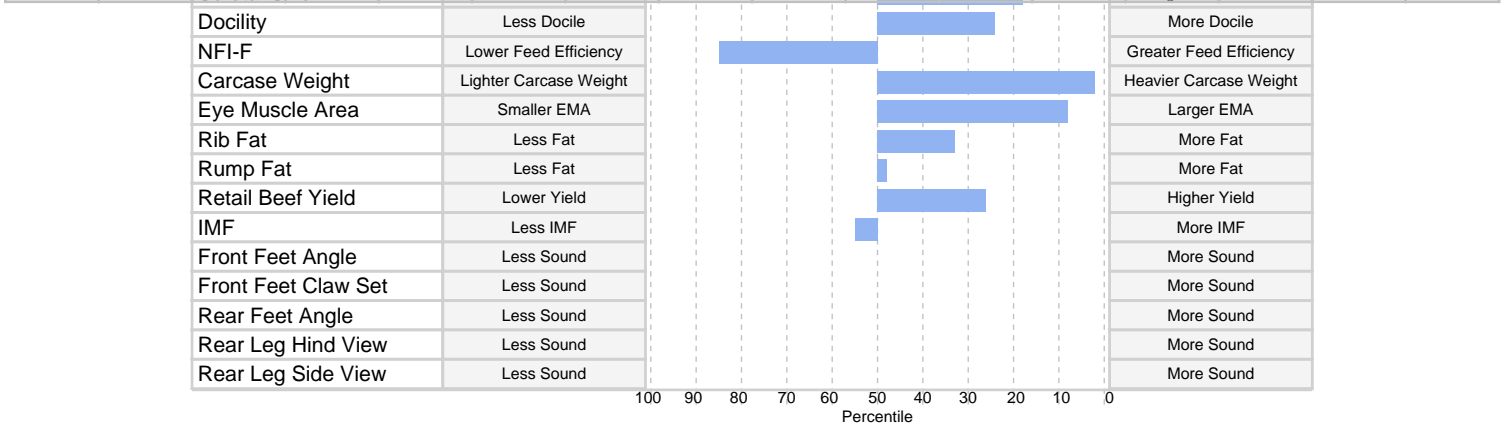
Sire ID DXTP632
Sire Name TEXAS POWERSHIFT P632^{PV}
Date of Birth 10/07/2018
Genetic Conditions AMFU,CAFU,DDFU,NHFU
Dam ID WGAP9
Dam Name LITTLE MEADOWS WILCOOLA P9^{PV}
Date of Birth 06/04/2018
Inventory Season Autumn
Genetic Conditions AMFU,CAFU,DDFU,NHFU
Inbreeding Coeff. 3%

AYRVALE BARTEL E7^{PV}
 AYRVALE HERCULES H9^{PV}
 LAWSONS INVINCIBLE F338^S
Sire: TEXAS POWERSHIFT P632^{PV}
 BANGADANG WESTERN EXPRESS E10
 TEXAS UNDINE H647^{SV}
 TEXAS UNDINE Z183^{PV}
 TE MANIA BERKLEY B1^{PV}
 PATHFINDER GENESIS G357^{PV}
 PATHFINDER DIRECTION D245^{SV}
Dam: LITTLE MEADOWS WILCOOLA P9^{PV}
 PAPA EQUATOR 2928[#]
 COONAMBLE D252^{SV}
 COONAMBLE Z107^{SV}



Expected Average Progeny Values													
TACE	Calving Ease				Growth					Fertility		Temp	Feed
	Calving Ease Dir	Calving Ease Dtrs	Gest. Length	Birth Wt	200 Day Growth	400 Day Weight	600 Day Weight	Mat. Cow Weight	Milk	Days to Calving	Scrotal Size	Docility	NFI-F
EBV	+4.2	+8.0	-5.9	+4.7	+57	+102	+141	+137	+17	-3.5	+2.7	+13	+0.48
Acc	54%	45%	71%	75%	72%	70%	71%	69%	65%	47%	70%	57%	57%
Perc	36	9	25	62	6	6	3	3	41	73	18	24	85

Expected Average Progeny Values															
TACE	Carcase				Structural					Selection Index					
	Carcase Weight	EMA	Rib Fat	Rump Fat	RBV	IMF	FA	FC	RA	RH	RS	Angus Breeding	Domestic	Heavy Grain	Heavy Grass
EBV	+85	+8.8	+0.4	-0.4	+1.1	+1.8	-	-	-	-	-	\$143	\$125	\$153	\$139
Acc	67%	65%	68%	66%	66%	65%						-	-	-	-
Perc	2	8	33	48	26	55	-	-	-	-	-	9	11	15	4



Angus Australia - Embryo Details

Sire ID CSWQ011
Sire Name MURDEDUKE QUARTERBACK Q011^{PV}
Date of Birth 10/07/2019
Genetic Conditions AMF,CAF,DDF,NHF,DWF,MAF,MHF,OHF,
Dam ID WDCG48
Dam Name COONAMBLE G48#
Date of Birth 01/04/2011
Inventory Season Autumn
Genetic Conditions AMFU,CAFU,DDFU,NHFU
Inbreeding Coeff. 2%

G A R MOMENTUM^{PV}
 LAWSONS MOMENTOUS M518^{PV}
 LAWSONS AFRICA H229^{SV}
Sire: MURDEDUKE QUARTERBACK Q011
 CARABAR DOCKLANDS D62^P
 MURDEDUKE BARUNAH N026^{PV}
 MURDEDUKE K304^{SV}
 COONAMBLE Z3^{PV}
 COONAMBLE B280^{PV}
 COONAMBLE PORTIA+94^{SV}
Dam: COONAMBLE G48#
 MATAURI STOCKMAN 526 AB^{SV}
 COONAMBLE D242#
 COONAMBLE NAN Q140+95^{SV}



Expected Average Progeny Values													
TACE Trans Tasman Angus Cattle Evaluation	Calving Ease				Growth					Fertility		Temp	Feed
	Calving Ease Dir	Calving Ease Dtrs	Gest. Length	Birth Wt	200 Day Growth	400 Day Weight	600 Day Weight	Mat. Cow Weight	Milk	Days to Calving	Scrotal Size	Docility	NFI-F
EBV	-3.1	-4.7	-6.4	+5.5	+53	+102	+140	+139	+16	-4.1	+3.2	+10	+0.29
Acc	46%	36%	84%	77%	75%	73%	75%	71%	68%	45%	68%	53%	56%
Perc	81	93	18	77	18	7	4	2	51	62	7	32	66

Expected Average Progeny Values															
TACE Trans Tasman Angus Cattle Evaluation	Carcase				Structural					Selection Index					
	Carcase Weight	EMA	Rib Fat	Rump Fat	RBV	IMF	FA	FC	RA	RH	RS	Angus Breeding	Domestic	Heavy Grain	Heavy Grass
EBV	+75	+6.7	+0.1	+0.4	+0.1	+2.4	-	-	-	-	-	\$129	\$109	\$143	\$123
Acc	69%	65%	69%	67%	67%	65%						-	-	-	-
Perc	12	31	43	28	71	31	-	-	-	-	-	28	57	25	28

Important Notices Expected average progeny values are provided to assist breeders estimate the outcome of particular mating combinations. The actual TransTasman Angus Cattle Evaluation EBVs for any individual progeny resulting from a particular mating are likely to vary from the expected average values.

The information contained in this animal listing has been compiled from databases owned by Angus Australia and has been designed, created and published by Angus Australia. The information is owned by Angus Australia and has been published for information purposes only. No section or individual item may be reproduced or used by any person or other legal entity for any commercial purpose whatsoever, without the prior express consent of Angus Australia.

Angus Australia - Embryo Details

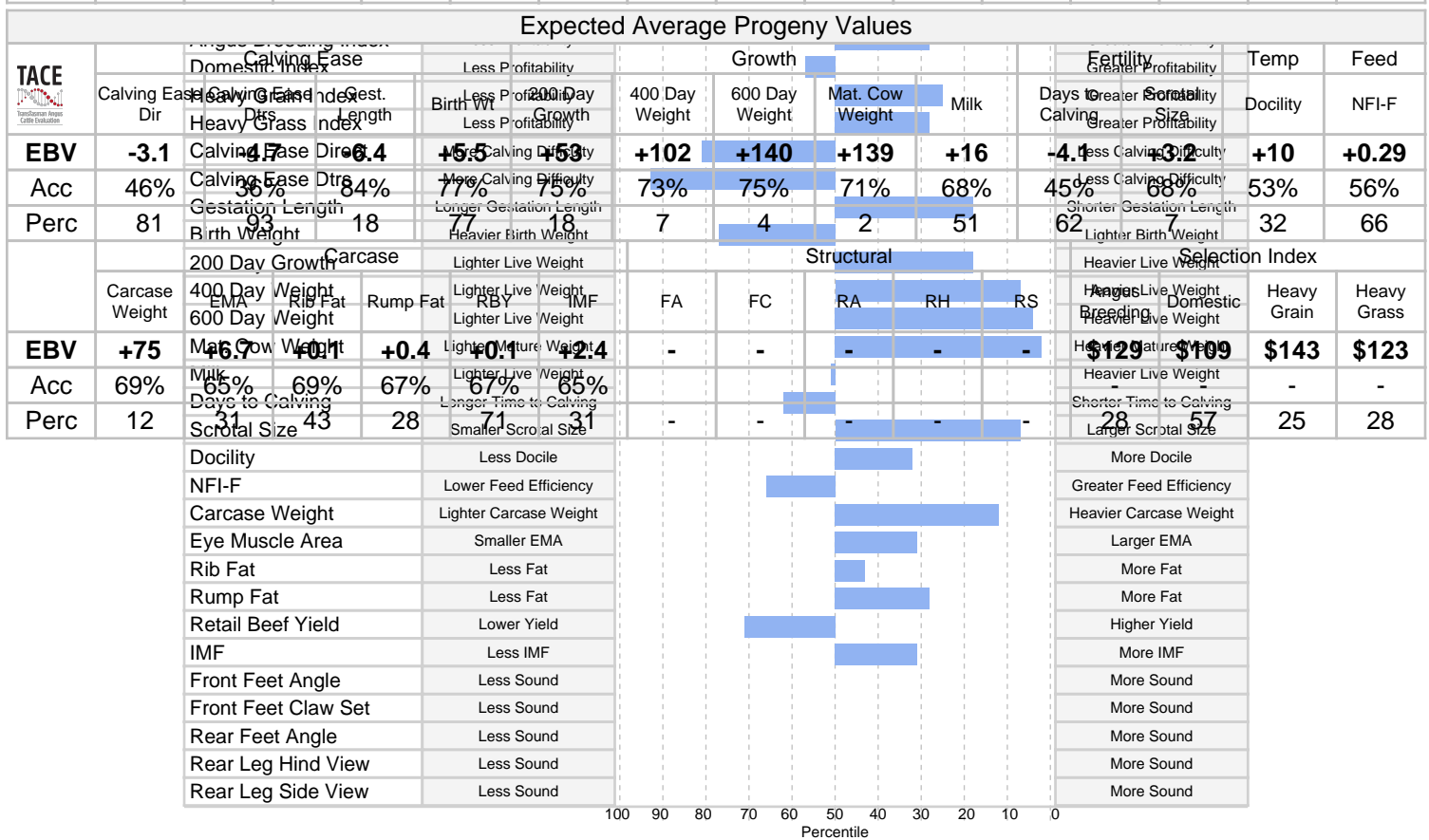
Sire ID CSWQ011
Sire Name MURDEDUKE QUARTERBACK Q011^{PV}
Date of Birth 10/07/2019
Genetic Conditions AMF,CAF,DDF,NHF,DWF,MAF,MHF,OHF,
Dam ID WDCG48
Dam Name COONAMBLE G48#
Date of Birth 01/04/2011
Inventory Season Autumn
Genetic Conditions AMFU,CAFU,DDFU,NHFU
Inbreeding Coeff. 2%

G A R MOMENTUM^{PV}
 LAWSONS MOMENTOUS M518^{PV}
 LAWSONS AFRICA H229^{SV}
Sire: MURDEDUKE QUARTERBACK Q011
 CARABAR DOCKLANDS D62^P
 MURDEDUKE BARUNAH N026^{PV}
 MURDEDUKE K304^{SV}
 COONAMBLE Z3^{PV}
 COONAMBLE B280^{PV}
 COONAMBLE PORTIA+94^{SV}
Dam: COONAMBLE G48#
 MATAURI STOCKMAN 526 AB^{SV}
 COONAMBLE D242#
 COONAMBLE NAN Q140+95^{SV}



Expected Average Progeny Values													
TACE	Calving Ease				Growth					Fertility		Temp	Feed
	Calving Ease Dir	Calving Ease Dtrs	Gest. Length	Birth Wt	200 Day Growth	400 Day Weight	600 Day Weight	Mat. Cow Weight	Milk	Days to Calving	Scrotal Size	Docility	NFI-F
EBV	-3.1	-4.7	-6.4	+5.5	+53	+102	+140	+139	+16	-4.1	+3.2	+10	+0.29
Acc	46%	36%	84%	77%	75%	73%	75%	71%	68%	45%	68%	53%	56%
Perc	81	93	18	77	18	7	4	2	51	62	7	32	66

Expected Average Progeny Values															
TACE	Carcase						Structural					Selection Index			
	Carcase Weight	EMA	Rib Fat	Rump Fat	RBV	IMF	FA	FC	RA	RH	RS	Angus Breeding	Domestic	Heavy Grain	Heavy Grass
EBV	+75	+6.7	+0.1	+0.4	+0.1	+2.4	-	-	-	-	-	\$129	\$109	\$143	\$123
Acc	69%	65%	69%	67%	67%	65%						-	-	-	-
Perc	12	31	43	28	71	31	-	-	-	-	-	28	57	25	28



Important Notices Expected average progeny values are provided to assist breeders estimate the outcome of particular mating combinations. The actual TransTasman Angus Cattle Evaluation EBVs for any individual progeny resulting from a particular mating are likely to vary from the expected average values.

The information contained in this animal listing has been compiled from databases owned by Angus Australia and has been designed, created and published by Angus Australia. The information is owned by Angus Australia and has been published for information purposes only. No section or individual item may be reproduced or used by any person or other legal entity for any commercial purpose whatsoever, without the prior express consent of Angus Australia.

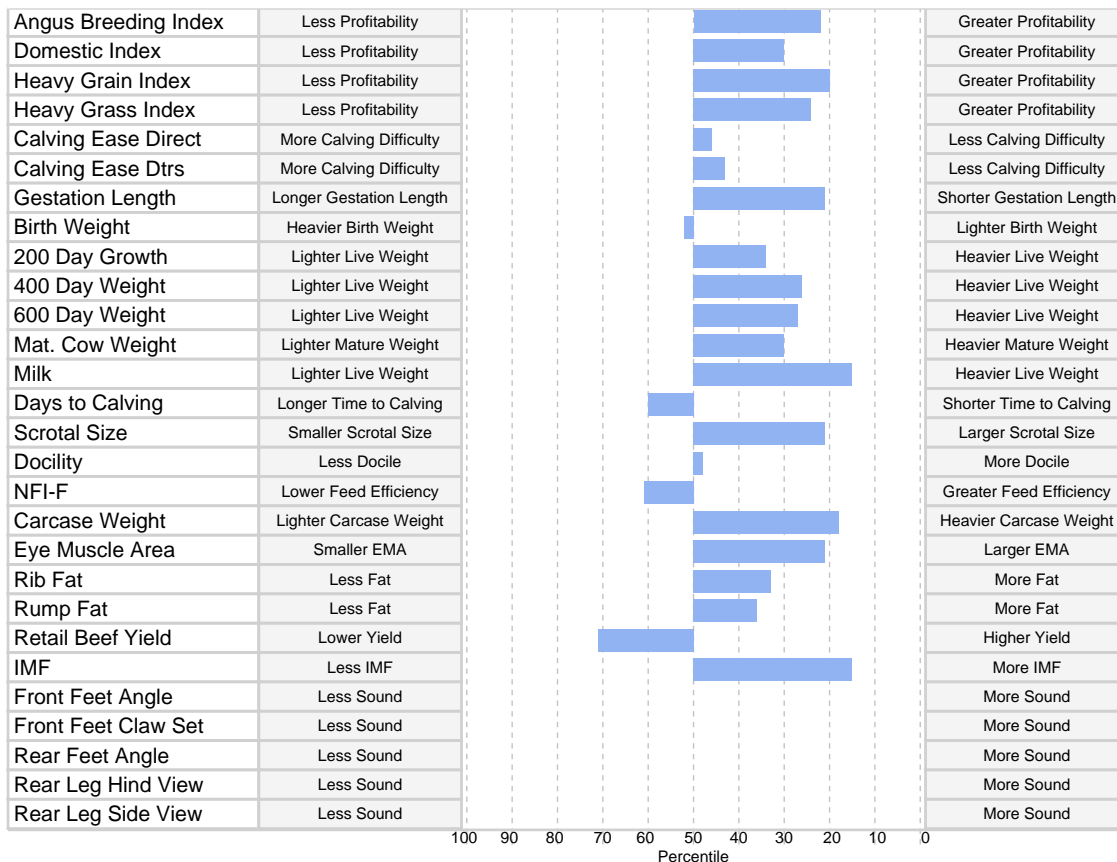
Angus Australia - Embryo Details

Sire ID CSWQ011
Sire Name MURDEDUKE QUARTERBACK Q011^{PV}
Date of Birth 10/07/2019
Genetic Conditions AMF,CAF,DDF,NHF,DWF,MAF,MHF,OHF,
Dam ID WGAJ28
Dam Name LITTLE MEADOWS EDWINA J28^{SV}
Date of Birth 13/06/2013
Inventory Season Spring
Genetic Conditions AMFU,CAFU,DDF,NHFU
Inbreeding Coeff. 4%

G A R MOMENTUM^{PV}
 LAWSONS MOMENTOUS M518^{PV}
 LAWSONS AFRICA H229^{SV}
Sire: MURDEDUKE QUARTERBACK Q011
 CARABAR DOCKLANDS D62^P
 MURDEDUKE BARUNAH N026^{PV}
 MURDEDUKE K304^{SV}
 KENNY'S CREEK ECLIPSE W111^{SV}
 LITTLE MEADOWS COHEN C75^{PV}
 LITTLE MEADOWS EDWINA Z6^{PV}
Dam: LITTLE MEADOWS EDWINA J28^{SV}
 LITTLE MEADOWS YANTABULLA Y8^{PV}
 LITTLE MEADOWS EDWINA F59[#]
 LITTLE MEADOWS EDWINA W3[#]



Expected Average Progeny Values															
TACE Trans Tasman Angus Cattle Evaluation	Calving Ease				Growth					Fertility		Temp	Feed		
	Calving Ease Dir	Calving Ease Dtrs	Gest. Length	Birth Wt	200 Day Growth	400 Day Weight	600 Day Weight	Mat. Cow Weight	Milk	Days to Calving	Scrotal Size	Docility	NFI-F		
EBV	+2.8	+3.5	-6.2	+4.3	+50	+92	+121	+107	+21	-4.2	+2.6	+6	+0.24		
Acc	52%	42%	76%	78%	74%	74%	75%	70%	64%	42%	70%	57%	51%		
Perc	46	43	21	52	34	26	27	30	15	60	21	48	61		
	Carcase						Structural					Selection Index			
	Carcase Weight	EMA	Rib Fat	Rump Fat	RBV	IMF	FA	FC	RA	RH	RS	Angus Breeding	Domestic	Heavy Grain	Heavy Grass
EBV	+72	+7.4	+0.4	+0.1	+0.1	+3.0	-	-	-	-	-	\$132	\$117	\$148	\$125
Acc	66%	63%	67%	65%	63%	60%						-	-	-	-
Perc	18	21	33	36	71	15	-	-	-	-	-	22	30	20	24



Important Notices Expected average progeny values are provided to assist breeders estimate the outcome of particular mating combinations. The actual TransTasman Angus Cattle Evaluation EBVs for any individual progeny resulting from a particular mating are likely to vary from the expected average values.

The information contained in this animal listing has been compiled from databases owned by Angus Australia and has been designed, created and published by Angus Australia. The information is owned by Angus Australia and has been published for information purposes only. No section or individual item may be reproduced or used by any person or other legal entity for any commercial purpose whatsoever, without the prior express consent of Angus Australia.