

# 16th Annual On-Property Sale



213 Lots

BRUCellosis  
FREE

## Thursday November 12th 2020

Sale 1.30 pm | Inspection from 11.00am



SALE INTERFACED  
WITH AUCTIONS PLUS

**SOUTHDOWN | WHITE SUFFOLK | POLL DORSET**

F.H Badcock & Son  
174 Hagley Station Lane, Hagley, TAS

# FAIRBANK

PRIME LAMB SIREs

- SINCE 1903 -



**Agents:**



(4% rebate to outside agents)

Written introduction 24 hours  
prior to sale applies.  
Settlement within 7 days.

**Nutrien Contacts:**

Jock Gibson - 0418 133 595  
Drew Skinner - 0418 122 422  
Warren Johnston - 0419 326 348  
David Bennett - 0439 632 374  
Cooper Lamprey - 0429 304 110

**Fairbank Contacts:**

Chris Badcock - 0438 775 285  
Frank Badcock - 0419 922 227

# Welcome to our 16th Annual On-Property Ram Sale

Prime lamb sires have been bred at Fairbank since the property was purchased by our family in 1903 and continue to be the major enterprise on the property. We aim to breed structurally superior rams that contain balanced ASBVs with Lambplan being utilised since its inception.

Well hasn't 2020 thrown up some challenges. Due to this ever changing landscape, we have decided to this year interface our sale with Auctions Plus. We still encourage attendance to view the rams either on the day or prior to sale, but the Auctions Plus platform will ensure those that cannot attend on the day can still be a part of the auction. COVID protocols will be exercised on the day.

This years offering of high performance rams are of exceptional quality and feature our new product launch - Charollais x Poll Dorset/Southdown. A cross designed for the ewe lamb and maiden ewe market. We welcome your feedback on these rams.

- All rams are vaccinated with 6 in 1. Ensure annual boosters are administered
- Drenched with Startect - October 2020
- Fairbank is ovine brucellosis accredited free
- OJD MN1V Status and are a 2nd generation approved vaccinated flock being vaccinated against OJD since 2003
- Southdown Stud breeders note that Lots 1-22 have been tested for Gaucher disease and are non carriers

**All ram LOTS are offered as flock rams, however should a transfer be required a minimum price of \$2500 will apply and nominated at the fall of the hammer.**

We would be happy to personally deliver within mainland Tasmania any rams not taken on the day. We thank you all for your interest in our sheep.

***Chris, Megan, Frank and Cynthia Badcock***

**Lambplan** has been used since its inception at Fairbank and whilst some selection criteria is placed on Lambplan ASBV's it is well known that we will not compromise structure or breed type to gain additional estimated breeding values. Lambplan is a guide to assist you in making decisions based on the genetic merit of each animal but should not replace visual selection. Balanced ASBV's are important for consistency of progeny but most importantly rams should be both fertile and structurally correct.

**Bwt – Birth Weight.** Rams with lower ASBV's for birth weight (BWT) produce lambs with lower birth weight. Both low (lamb survival) and high (lambing difficulties) should be avoided.

**Wwt – Weaning Weight.** Rams with a more positive ASBV for weaning weight (WWT) will, on average, produce lambs that grow quicker to weaning.

**Pwwt – Post weaning weight.** Rams with more positive ASBVs for post weaning weight (PWT) produce lambs that grow quicker and reach target weights in a shorter time.

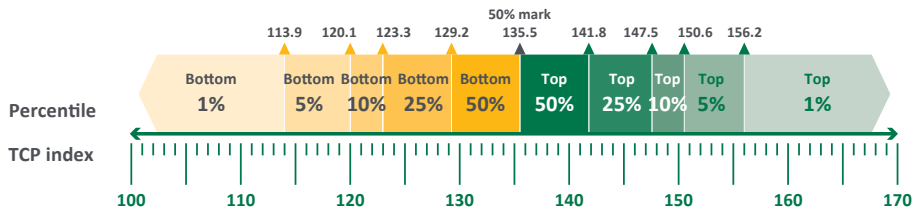
**Pemd – Post eye muscle depth.** Rams with a more positive ASBV for post weaning eye muscle depth produce lambs that have more muscle, independent of weight, and a higher lean meat yield.

**Pfat – Post fat.** Rams with a more negative ASBV for post weaning fat (PFAT) will produce lambs that are leaner at the same weight.

**TCP** The TCP Index has been created to assist producers to achieve both gains in their major production traits, such as post-weaning weight and muscling, as well as ensuring consumer satisfaction from lamb is maintained through focusing on key eating quality traits such as shear force (tenderness) and intramuscular fat (marbling).

**The TCP Index, unlike Carcase Plus, is on a scale that is aligned with other Sheep Genetics' indexes and is represented in economic terms with a unity index reflecting an additional dollar per ewe joined per year. To assist in comparing rams, Sheep Genetics recommends using a percentile band table as reference. The figure below, which is based on the percentile band table, highlights the TCP Index value for significant percentiles for the 2019 drop animals.**

TCP has been developed by using extensive research using mainly Poll Dorset and White Suffolk genetics. Therefore we believe this new index is not the most appropriate index for the Southdown and should not be used to compare between breeds. We are actively working with Sheep Genetics on a solution to find the most appropriate Southdown index.



# SOUTHDOWN EWES



# SOUTHDOWN RAMS



Southdowns have been a successful enterprise at Fairbank since 1922 spanning four generations, with both ram and ewe sales to all states during this time. This year's offering consists of progeny from our elite home bred sires that have been retained as they were the top sires of each drop.

This years Southdown offering include progeny of:

- **Fairbank 17/831** - Unshown, but retained for his high muscle ASBV and unique all Australian pedigree. He is a moderate, well muscled ram. 13 rams and 5 ewes on offer.
- **Fairbank 17/821** - 2nd Geelong. An extremely long, open faced and good shouldered ram by an outcross sire, Clear Hills 13/341. 11 rams and 3 ewes on offer.
- **Kirkdale 16/206** - Reserve Champion Geelong 2018. Very long ram and out of an exceptional ewe. Another outcross sire for the stud. 6 rams on offer by Kirkdale 16/206 as well as breeding a keeper ram.
- **Fairbank 17/881** - 1st Bendigo, 2nd Geelong. A very correct ram with exceptional top line and tail setting. By Fairbank 15/629 (Reserve Ch. Bendigo, sold \$5,000 2016 on-property sale). 12 rams and 2 ewes on offer.
- **Fairbank 17/903** - By Fairbank 15/608 (Reserve Ch. Geelong). He was retained for his exceptional ASBV muscling. 11 rams and 1 ewe on offer.



- **Fairbank 14/603** - Champion Melbourne Royal Feature Show. A moderate ram with tremendous length and hind quarter. Sire of our 2020 keeper ram. 6 rams on offer from a limited joining.
- **Chandpara 16/155** - Purchased for equal top price at Chandpara on property sale. This ram is very correct with great muscling and a proven pedigree. Used again as a pick over our AI program so just the 1 ewe and 3 rams on offer.

### SOUTHDOWN AVERAGE

Bwt	Wwt	Pwwt	Pemd	Pfat	LEQ	TCP
0.21	6.5	9.6	0.4	-0.1	104.3	107.4

### OUR SOUTHDOWN SALE RAMS

Bwt	Wwt	Pwwt	Pemd	Pfat	LEQ	TCP
0.19	6.8	10.6	0.9	0.18	106.7	109.8

## 13 FAIRBANK SOUTHDOWN EWES

8

LOT	TAG	SIRE	Bwt	Wwt	Pwwt	Pemd	Pfat	LEQ	TCP	\$	Purchaser
1	191016Tw	F170831Tw	0.09	5.5	9.4	1.9	0.7	106.5	108.8		
2	191019Tw	F170821Tw	0.16	8.4	13.1	0.2	-0.1	104.7	109.3		
3	190865Tw	F170831Tw	0.19	5.3	8.8	-0.1	-0.5	102.1	103.0		
4	190999Tr	F170881Tr	0.42	8.5	12.6	-0.1	0.0	103.1	107.3		
5	191028Tw	F170821Tw	0.08	7.1	11.0	0.3	-0.3	102.3	106.9		
6	191172Tw	F170831Tw	0.13	5.6	8.7	1.1	0.4	102.3	104.8		
<b>Southdown Average</b>			0.21	6.5	9.6	0.4	-0.1	104.3	107.4		

Tw - Twin

Q - Quad

F - Fairbank

C - Chandpara

 Top 20%

## 13 FAIRBANK SOUTHDOWN EWES

9

LOT	TAG	SIRE	Bwt	Wwt	Pwwt	Pemd	Pfat	LEQ	TCP	\$	Purchaser	
7	191153	F170881Tw	0.35	7.2	10.3	-0.6	-0.8	97.8	103.9			
8	191160Tw	C160155	0.21	6.2	9.5	1.0	1.2	99.7	102.0			
9	191015Tw	F170903	-0.10	3.7	5.9	1.7	1.1	100.4	100.9			
10	191023Tw	F170831Tw	0.22	6.7	10.5	1.1	0.0	107.4	111.8			
11	190992	F170831Tw	0.15	6.0	9.6	0.3	-0.4	103.4	106.8			
12	190944Q	F170821Tw	0.00	6.3	9.4	0.8	-0.1	99.9	105.2			
13	191045	Unknown Pedigree Figures not available										
<b>Southdown Average</b>			0.21	6.5	9.6	0.4	-0.1	104.3	107.4			

## 70 FAIRBANK SOUTHDOWN RAMS

10

LOT	TAG	SIRE	Bwt	Wwt	Pwwt	Pemd	Pfat	LEQ	TCP	\$	Purchaser
14	190797Tw	F140603	0.18	7.0	11.2	0.6	-0.1	112.0	114.6		
Semen to be retained for in flock use and MLA resource flock if selected.											
15	191007Tw	F170831Tw	0.15	7.1	11.4	1.9	0.6	112.6	116.4		
Semen to be retained for in flock use and MLA resource flock if selected.											
16	190994Tw	F170831Tw	0.36	8.4	12.9	0.6	0.1	114.0	114.5		
17	190770	F140603	0.31	5.7	9.2	0.6	0.3	108.3	107.6		
18	190789Tw	K160206Tw	0.18	6.7	10.8	0.7	-0.7	112.1	115.1		
<b>Southdown Average</b>			0.21	6.5	9.6	0.4	-0.1	104.3	107.4		

Tw - Twin

Tr - Triplet

F - Fairbank

K - Kirkdale

C - Chandpara

Top 20%

## 70 FAIRBANK SOUTHDOWN RAMS

11

LOT	TAG	SIRE	Bwt	Wwt	Pwwt	Pemd	Pfat	LEQ	TCP	\$	Purchaser
19	190783Tw	K160206Tw	0.28	7.9	11.9	1.0	0.0	114.4	116.7		
20	190843Tw	F170903	0.14	7.5	11.6	1.0	0.5	109.1	109.5		
21	190787Tw	K160206Tw	0.14	6.5	10.5	1.6	0.3	111.7	115.2		
22	191001	F170881Tr	0.24	7.0	10.8	1.0	0.1	110.8	113.7		
23	190764	K160206Tw	0.22	6.5	9.7	0.9	0.0	106.6	109.8		
24	190954Tw	F170881Tr	0.52	8.2	12.4	0.0	0.1	106.1	109.6		
<b>Southdown Average</b>			0.21	6.5	9.6	0.4	-0.1	104.3	107.4		

Tw - Twin

Tr - Triplet

F - Fairbank

K - Kirkdale

C - Chandpara

 Top 20%

## 70 FAIRBANK SOUTHDOWN RAMS

12

LOT	TAG	SIRE	Bwt	Wwt	Pwwt	Pemd	Pfat	LEQ	TCP	\$	Purchaser
25	190778	K160206Tw	0.24	7.5	11.3	0.1	-0.1	104.6	107.0		
26	190919Tr	F170881Tr	0.19	7.5	11.3	0.4	0.1	101.6	106.5		
27	190889Tw	F170831Tw	0.35	8.1	12.9	1.1	-0.1	112.1	117.3		
28	191003Tr	F170821Tw	-0.02	7.4	11.5	1.9	1.0	110.5	115.1		
29	190801Tw	K160206Tw	0.16	6.6	10.8	1.3	0.2	111.2	114.7		
30	190916Tw	F170881Tw	0.31	8.5	12.8	0.7	-0.2	107.5	114.1		
<b>Southdown Average</b>			0.21	6.5	9.6	0.4	-0.1	104.3	107.4		

Tw - Twin

Tr - Triplet

F - Fairbank

K - Kirkdale

C - Chandpara

Top 20%

## 70 FAIRBANK SOUTHDOWN RAMS

13

LOT	TAG	SIRE	Bwt	Wwt	Pwwt	Pemd	Pfat	LEQ	TCP	\$	Purchaser
31	190911Tw	F170821Tw	0.13	7.3	11.7	1.0	0.0	108.8	113.7		
32	190989Tw	F170821Tw	0.11	6.0	10.0	1.6	0.5	108.7	112.6		
33	190953	F170821Tw	0.26	8.7	12.9	0.6	0.1	106.3	111.4		
34	190824	K160206Tw	0.21	6.9	10.3	0.4	-0.7	105.8	111.0		
35	190924	F170821Tw	0.08	7.5	11.1	1.1	0.0	105.5	110.7		
36	190981Tw	F170831Tw	0.30	7.4	11.4	0.7	0.0	107.0	109.5		
<b>Southdown Average</b>			0.21	6.5	9.6	0.4	-0.1	104.3	107.4		

Tw - Twin

Tr - Triplet

F - Fairbank

K - Kirkdale

C - Chandpara

 Top 20%

## 70 FAIRBANK SOUTHDOWN RAMS

14

LOT	TAG	SIRE	Bwt	Wwt	Pwwt	Pemd	Pfat	LEQ	TCP	\$	Purchaser
37	190921	F170831Tw	0.23	6.8	10.6	0.8	0.5	104.0	106.3		
38	191005Tw	F170903	0.14	5.6	8.5	0.7	0.0	100.8	102.5		
39	190774Tw	F140603	0.23	6.3	10.7	1.7	1.0	114.9	115.4		
40	190768Tw	K160206Tw	0.13	6.4	10.5	1.2	0.0	109.8	113.4		
41	191158Tw	F170831Tw	0.25	7.1	11.0	0.9	-0.3	109.3	113.1		
42	191163Tw	F170831Tw	0.22	7.1	11.1	1.1	0.2	109.0	112.9		
<b>Southdown Average</b>			0.21	6.5	9.6	0.4	-0.1	104.3	107.4		

Tw - Twin

Tr - Triplet

F - Fairbank

K - Kirkdale

C - Chandpara

Top 20%



## 70 FAIRBANK SOUTHDOWN RAMS

15

LOT	TAG	SIRE	Bwt	Wwt	Pwwt	Pemd	Pfat	LEQ	TCP	\$	Purchaser
43	190974Tw	F170821Tw	0.09	7.7	11.9	0.9	0.1	106.0	112.2		
44	190790Tw	K160206Tw	0.17	6.2	10.1	0.7	-0.3	108.7	111.4		
45	190988	F170821Tw	0.03	6.5	10.7	1.4	0.4	106.7	111.3		
46	190962Tr	F170881Tr	0.45	8.3	12.4	0.5	0.2	105.0	110.5		
47	191024Tw	F170821Tw	0.14	7.0	11.2	0.5	-0.1	105.4	110.1		
48	190808Tw	K160206Tw	0.25	6.0	9.1	0.5	-0.5	107.1	109.5		
<b>Southdown Average</b>			0.21	6.5	9.6	0.4	-0.1	104.3	107.4		

Tw - Twin

Tr - Triplet

F - Fairbank

K - Kirkdale

C - Chandpara

Top 20%

## 70 FAIRBANK SOUTHDOWN RAMS

16

LOT	TAG	SIRE	Bwt	Wwt	Pwwt	Pemd	Pfat	LEQ	TCP	\$	Purchaser
49	190855Tw	F170903	0.04	6.5	10.5	0.9	-0.1	106.0	108.7		
50	190918Tr	F170881Tr	0.22	6.8	10.7	0.7	0.5	104.7	108.1		
51	191034Tw	F170881Tr	0.45	8.8	12.7	-0.3	-0.5	102.0	107.8		
52	190837	F170831Tw	0.26	7.2	11.1	1.1	1.0	106.0	106.7		
53	191169Tw	C160155	0.14	6.3	9.6	0.7	0.4	99.7	104.3		
54	190965Tw	F170903	0.06	5.6	8.6	1.2	1.0	101.5	102.4		
<b>Southdown Average</b>			0.21	6.5	9.6	0.4	-0.1	104.3	107.4		

Tw - Twin

Tr - Triplet

F - Fairbank

K - Kirkdale

C - Chandpara

Top 20%

## 70 FAIRBANK SOUTHDOWN RAMS

17

LOT	TAG	SIRE	Bwt	Wwt	Pwwt	Pemd	Pfat	LEQ	TCP	\$	Purchaser
55	190909Tw	F170903	0.02	6.0	9.9	1.8	0.1	109.1	113.3		
56	190804Tw	K160206	0.22	7.3	10.9	0.8	-0.3	107.6	113.1		
57	191037	F170831Tw	0.17	6.0	9.8	1.7	0.6	109.5	112.6		
58	190976Tw	F170821Tw	0.00	6.1	10.2	1.8	0.8	108.0	111.5		
59	190852Tw	F170821Tw	0.20	7.2	10.9	0.7	-0.2	106.2	110.8		
60	190813Tw	K160206Tw	0.26	7.0	10.9	0.2	-0.5	107.6	110.6		
<b>Southdown Average</b>			0.21	6.5	9.6	0.4	-0.1	104.3	107.4		

Tw - Twin

Tr - Triplet

F - Fairbank

K - Kirkdale

C - Chandpara

Top 20%

## 70 FAIRBANK SOUTHDOWN RAMS

18

LOT	TAG	SIRE	Bwt	Wwt	Pwwt	Pemd	Pfat	LEQ	TCP	\$	Purchaser
61	190952Tw	F170881Tr	0.42	8.7	12.8	0.1	-0.4	105.1	110.6		
62	190968Tw	F170831Tw	0.26	7.1	10.9	1.3	0.8	108.7	109.8		
63	190757	K160206Tw	0.17	7.5	11.0	1.1	0.4	106.5	109.3		
64	190900Tw	F170881Tr	0.33	8.9	13.1	0.1	0.0	103.2	109.1		
65	191012Tw	F170821Tw	0.08	7.1	11.3	0.3	-0.4	103.5	108.4		
66	190982	F170903	0.15	6.5	10.3	0.9	0.2	104.5	107.4		
<b>Southdown Average</b>			0.21	6.5	9.6	0.4	-0.1	104.3	107.4		

Tw - Twin

Tr - Triplet

F - Fairbank

K - Kirkdale

C - Chandpara

Top 20%

## 70 FAIRBANK SOUTHDOWN RAMS

19

LOT	TAG	SIRE	Bwt	Wwt	Pwwt	Pemd	Pfat	LEQ	TCP	\$	Purchaser
<b>67</b>	191027Tw	F170821Tw	0.09	6.8	10.6	0.6	0.0	102.3	106.2		
<b>68</b>	191154Tw	F170903	0.00	4.0	6.6	1.2	0.5	102.4	101.7		
<b>69</b>	190987	F170903	0.09	5.7	9.1	1.4	0.5	105.8	107.9		
<b>70</b>	190818Tw	F140603	0.37	5.8	9.8	0.8	0.0	110.2	113.1		
<b>71</b>	191035Tw	F170831Tw	0.22	6.5	10.6	1.2	0.4	109.6	110.8		
<b>72</b>	191020Tw	F170881Tr	0.35	8.1	11.6	0.4	0.0	103.7	109.0		
<b>Southdown Average</b>			0.21	6.5	9.6	0.4	-0.1	104.3	107.4		

Tw - Twin

Tr - Triplet

F - Fairbank

K - Kirkdale

C - Chandpara

Top 20%

## 70 FAIRBANK SOUTHDOWN RAMS

20

LOT	TAG	SIRE	Bwt	Wwt	Pwwt	Pemd	Pfat	LEQ	TCP	\$	Purchaser
<b>73</b>	190793	F140603	0.28	6.1	9.6	0.8	0.4	107.4	108.1		
<b>74</b>	191159Tw	C160155	0.19	6.4	10.0	1.8	1.4	104.7	107.8		
<b>75</b>	190796	F140603	0.38	5.3	8.6	0.3	-0.3	106.7	107.7		
<b>76</b>	190880Tr	F170903	0.00	5.9	9.7	1.5	0.9	105.2	107.2		
<b>77</b>	190864Tw	F170831Tw	0.15	5.9	9.5	0.2	-0.2	103.7	104.7		
<b>78</b>	191032Tw	F170903	-0.07	4.6	7.5	1.1	0.0	101.4	102.7		
<b>Southdown Average</b>			0.21	6.5	9.6	0.4	-0.1	104.3	107.4		

Tw - Twin

Tr - Triplet

F - Fairbank

K - Kirkdale

C - Chandpara

Top 20%

## 70 FAIRBANK SOUTHDOWN RAMS

21

LOT	TAG	SIRE	Bwt	Wwt	Pwwt	Pemd	Pfat	LEQ	TCP	\$	Purchaser
<b>79</b>	190885	C160155	0.11	6.4	9.7	1.1	1.3	99.4	102.3		
<b>80</b>	191038	F170903	-0.08	4.1	7.3	1.7	1.1	101.5	102.1		
<b>81</b>	191031Tw	F170903	-0.06	3.7	6.5	0.9	-0.1	100.2	101.3		
<b>82</b>	190905Tw	F170881Tr	0.18	7.0	11.2	0.4	-0.1	105.4	109.1		
<b>83</b>	191048Tw	F170831Tw	0.16	5.7	9.1	0.7	0.2	104.9	105.6		
<b>Southdown Average</b>			0.21	6.5	9.6	0.4	-0.1	104.3	107.4		


Tw - Twin

Tr - Triplet

F - Fairbank

K - Kirkdale

C - Chandpara

 Top 20%

# FIRST CROSS





In an attempt to tighten the gestation length on our pure stud lines we have since 2014 utilised a Southdown ram to pick up Poll Dorset ewes after the pure bred mating period has been completed. As a result some of these rams are not born until late September. We also use a selected number of ewes to be specifically placed in the first cross program.


LOT	TAG	SIRE	Bwt	Wwt	Pwwt	Pemd	Pfat	LEQ	TCP	\$	Purchaser
84	190935Tw	F170364	0.46	9.8	14.5	1.3	-0.2	122.2	127.9		
85	190069Tw	C160155	0.21	7.8	11.5	1.7	0.4	113.3	118.6		
86	190041Tw	F170821Tw	0.34	8.6	12.4	1.2	-0.7	115.3	123.8		
87	190078Tw	F170881Tr	0.38	8.7	12.9	1.0	-0.9	115.9	124.2		
<b>Terminal Average</b>			0.35	9.1	13.9	1.6	-0.3	128.6	135.7		

Tw - Twin

F - Fairbank

C - Chandpara

L - Lambpro

 Top 20%

## 13 FAIRBANK SOUTHDOWN X POLL DORSET FIRST CROSS RAMS

24


LOT	TAG	SIRE	Bwt	Wwt	Pwwt	Pemd	Pfat	LEQ	TCP	\$	Purchaser
88	190086Tr	C160155	0.20	6.5	9.9	1.1	0.3	107.9	112.2		
89	190007Tw	C160155	0.22	6.3	10.1	1.0	0.7	108.2	111.6		
90	190102	F170831Tw	0.26	6.5	10.3	1.8	0.6	116.7	118.7		
91	190084	C160155	0.25	7.3	10.3	1.5	0.6	108.3	113.3		
92	190082Tw	F170881Tr	0.30	6.6	10.2	1.2	-0.4	112.4	119.0		
93	190863Tw	F170364	0.41	10.4	15.2	1.2	-0.5	122.8	128.9		
<b>Terminal Average</b>			0.35	9.1	13.9	1.6	-0.3	128.6	135.7		

Tw - Twin

F - Fairbank

C - Chandpara

L - Lambpro

 Top 20%

## 13 FAIRBANK SOUTHDOWN X POLL DORSET FIRST CROSS RAMS

25

LOT	TAG	SIRE	Bwt	Wwt	Pwwt	Pemd	Pfat	LEQ	TCP	\$	Purchaser
<b>94</b>	190849Tw	F170364	0.41	10.2	14.8	1.7	0.1	123.5	128.1		
<b>95</b>	190841Tw	LP140859	0.33	8.8	12.9	1.9	-0.5	127.4	132.6		
<b>96</b>	190832Tw	LP140859	0.45	10.1	14.6	1.8	0.2	132.2	136.8		
<b>Terminal Average</b>			0.35	9.1	13.9	1.6	-0.3	128.6	135.7		

Tw - Twin

F - Fairbank

C - Chandpara

L - Lambpro

 Top 20%

# CHAROLLAIS X POLL DORSET/SOUTHDOWN



The Charollais cross project came about due to having some outstanding ewes coming out of our first cross program. We identified the Charollais had exceptional hind quarters and natural low birth weights. We wanted to back this up with some Lambplan ASBV's, but also add some body length to the Charollais and improve the face colouring. These rams are ideal for specific ewe lamb joinings. Our entire 2020 offering are out of ewe lambs.

LOT	TAG	SIRE	Bwt	Wwt	Pwwt	Pemd	Pfat	LEQ	TCP	\$	Purchaser
97	191245	SL170002	0.35	6.3	9.1	0.9	-0.5	113.0	118.8		
98	191237Tw	SL170002	0.34	7.2	10.5	0.4	-1.0	115.1	121.0		
99	191247Tw	SL170002	0.28	7.6	10.9	1.3	-0.7	115.7	123.0		
100	191250Tw	SL170002	0.30	7.2	10.2	0.9	-0.8	112.6	119.5		
<b>Terminal Average</b>			0.35	9.1	13.9	1.6	-0.3	128.6	135.7		

Tw - Twin

SL - Sunnylands

Top 20%

## 9 FAIRBANK CHAROLLAIS X POLL DORSET/SOUTHDOWN RAMS

28

LOT	TAG	SIRE	Bwt	Wwt	Pwwt	Pemd	Pfat	LEQ	TCP	\$	Purchaser
101	191243Q	SL170002	0.08	5.0	7.5	1.0	-0.8	114.8	122.2		
102	191248Tw	SL170002	0.16	6.5	9.4	1.6	-0.3	113.5	119.4		
103	191232Tw	SL170002	0.29	8.3	11.6	0.8	-1.3	113.5	122.1		
104	191239Tw	SL170002	0.06	6.6	9.4	1.3	-0.2	114.9	119.8		
105	191224Tw	SL170002	0.23	6.5	9.4	0.3	-0.1	109.7	113.3		
<b>Terminal Average</b>			0.35	9.1	13.9	1.6	-0.3	128.6	135.7		

Tw - Twin

SL - Sunnylands

 Top 20%

# WHITE SUFFOLK



Our White Suffolks commenced in 1996 using Fairbank Poll Dorset ewes and the proven South Australian White Suffolk genetics. Since then carefully selected mainland and Tasmanian sires have been utilised to produce structurally correct and well muscled rams suited to a wide range of conditions and locations. Our White Suffolk's are very consistent and express great breed type, structural correctness and muscling

This years White Suffolk offering include progeny of:

- **Fairbank 17/532** - By Farrer 14/188, this long, correct, stylish ram was reserve interbreed at Deloraine. Excellent White Suffolk type with good balanced figures to suit. 13 rams on offer.
- **Ashmore 16/516** - Used by AI, this ram is an outcross link sire with terrific ASBV's, particularly for eating quality. Low Birth Weight sire and also sired our keeper ram for 2020. 12 rams on offer.
- **Gemini 16/103** - Used as another high performing link sire. Excellent growth figures. Powerful proven sire. Sons sold to \$20,000. 12 rams on offer.
- **Fairbank 16/549** - Our best son by Gemini 12/006. Structurally very correct with lots of length. He has bred a magnificent keeper ram this year and will have 4 rams on offer due to limited joining.
- **Days 16/213** - Purchased for \$6,000 at the successful Day family on property sale in South Australia. A very moderate ram with a heavy hind quarter. His twin brother was retained in the Day flock. We have retained a son for breeding purposes and will have 3 rams on offer by Days 16/213.



**TERMINAL AVERAGE**

Bwt	Wwt	Pwwt	Pemd	Pfat	LEQ	TCP
0.35	9.1	13.9	1.6	-0.3	128.6	135.7

**OUR WHITE SUFFOLK SALE RAMS**

Bwt	Wwt	Pwwt	Pemd	Pfat	LEQ	TCP
0.33	9.6	15.0	1.9	-0.2	138.8	142

LOT	TAG	SIRE	Bwt	Wwt	Pwwt	Pemd	Pfat	LEQ	TCP	\$	Purchaser
106	190568Tw	F170532Tw	0.34	9.6	15.2	2.5	-0.1	144.5	146.8		
107	190547Tw	G160103	0.42	11.4	18.0	1.7	0.0	140.3	144.6		
<b>Terminal Average</b>			0.35	9.1	13.9	1.6	-0.3	128.6	135.7		

Tw - Twin


Tr - Triplet

F - Fairbank

G - Gemini

A - Ashmore

D - Days Whiteface

 Top 20%

## 44 FAIRBANK WHITE SUFFOLK RAMS

32

LOT	TAG	SIRE	Bwt	Wwt	Pwwt	Pemd	Pfat	LEQ	TCP	\$	Purchaser
108	190562Tw	G160103	0.30	10.6	17.1	2.1	-0.1	138.1	143.7		
109	190710Tw	F170532	0.40	9.8	15.2	2.2	-0.5	137.0	143.1		
110	190584Tw	G160103	0.39	11.2	17.8	2.1	0.8	140.0	142.6		
111	190598	G160103	0.44	10.9	17.0	1.4	-0.6	135.7	142.0		
112	190519Tw	A160516	0.30	10.3	16.4	2.6	0.3	152.2	153.6		
113	190499Tw	A160516	0.26	10.7	16.3	2.1	0.1	148.4	150.0		
<b>Terminal Average</b>			0.35	9.1	13.9	1.6	-0.3	128.6	135.7		

Tw - Twin

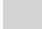
Tr - Triplet

F - Fairbank

G - Gemini

A - Ashmore

D - Days Whiteface

 Top 20%

## 44 FAIRBANK WHITE SUFFOLK RAMS

33

LOT	TAG	SIRE	Bwt	Wwt	Pwwt	Pemd	Pfat	LEQ	TCP	\$	Purchaser
114	190491Tw	A160516	0.35	11.5	17.5	2.1	0.5	145.8	147.7		
115	190605Tw	G160103	0.28	10.3	16.5	2.3	0.3	140.9	144.7		
116	190557Tw	G160103	0.39	10.9	16.7	2.0	-0.5	137.0	143.8		
117	190575Tw	G160103	0.44	11.2	17.4	1.4	-0.4	138.3	143.3		
118	190676Tr	D160213Tw	0.51	8.4	12.7	2.1	0.1	137.2	138.6		
119	190727	F170532	0.31	7.9	12.2	1.5	-0.9	129.4	133.5		
<b>Terminal Average</b>			0.35	9.1	13.9	1.6	-0.3	128.6	135.7		

Tw - Twin

Tr - Triplet

F - Fairbank

G - Gemini

A - Ashmore

D - Days Whiteface

Top 20%

## 44 FAIRBANK WHITE SUFFOLK RAMS

34

LOT	TAG	SIRE	Bwt	Wwt	Pwwt	Pemd	Pfat	LEQ	TCP	\$	Purchaser
120	190714	F160549	0.21	7.9	11.6	1.3	-0.4	128.4	133.2		
121	190671Tr	F170532	0.54	9.1	13.0	0.8	-1.0	126.3	131.4		
122	190505Tw	A160516	0.25	8.4	13.2	2.0	-0.4	145.0	145.7		
123	190551	G160103	0.26	11.3	17.6	1.8	0.3	142.3	143.5		
124	190609Tw	F170532	0.38	9.7	15.3	1.8	-0.7	137.3	143.3		
125	190642Tw	F170532	0.45	9.4	14.2	2.1	-0.4	136.0	141.4		
<b>Terminal Average</b>			0.35	9.1	13.9	1.6	-0.3	128.6	135.7		

Tw - Twin

Tr - Triplet

F - Fairbank

G - Gemini

A - Ashmore

D - Days Whiteface

Top 20%

## 44 FAIRBANK WHITE SUFFOLK RAMS

35

LOT	TAG	SIRE	Bwt	Wwt	Pwwt	Pemd	Pfat	LEQ	TCP	\$	Purchaser
126	190601Tw	G160103	0.35	10.1	16.4	1.8	0.0	136.3	139.7		
127	190702Tw	F170532	0.39	9.1	13.9	2.1	-0.2	134.1	139.2		
128	190736Tw	F160549	0.30	9.5	14.5	1.4	-0.3	135.5	138.9		
129	190726	F160549	0.38	10.2	15.5	0.9	-0.5	135.1	138.3		
130	190517Tw	A160516	0.43	11.1	17.2	1.7	-0.6	151.6	153.7		
131	190516Tr	A160516	0.16	9.8	15.3	2.8	0.0	151.7	153.5		
<b>Terminal Average</b>			0.35	9.1	13.9	1.6	-0.3	128.6	135.7		

Tw - Twin

Tr - Triplet

F - Fairbank

G - Gemini

A - Ashmore

D - Days Whiteface

Top 20%

## 44 FAIRBANK WHITE SUFFOLK RAMS

36

LOT	TAG	SIRE	Bwt	Wwt	Pwwt	Pemd	Pfat	LEQ	TCP	\$	Purchaser
132	190514Tr	A160516	0.32	10.1	15.5	2.0	-0.3	148.6	150.1		
133	190509Tw	A160516	0.27	9.8	15.6	2.0	-0.1	146.3	145.8		
134	190546Tw	G160103	0.29	10.0	16.0	2.5	0.3	141.0	144.7		
135	190504Tw	A160516	0.32	8.6	13.2	1.5	-0.8	143.3	144.1		
136	190511Tw	A160516	0.17	8.9	14.7	1.5	-0.4	143.3	143.7		
137	190560Tw	G160103	0.25	9.8	16.1	2.1	-0.2	136.6	142.0		
<b>Terminal Average</b>			0.35	9.1	13.9	1.6	-0.3	128.6	135.7		

Tw - Twin

Tr - Triplet

F - Fairbank

G - Gemini

A - Ashmore

D - Days Whiteface

Top 20%

## 44 FAIRBANK WHITE SUFFOLK RAMS

37

LOT	TAG	SIRE	Bwt	Wwt	Pwwt	Pemd	Pfat	LEQ	TCP	\$	Purchaser
138	190585Tw	G160103	0.38	10.6	17.0	2.1	1.1	138.3	139.8		
139	191207Tw	D160213	0.39	6.5	10.7	1.6	-0.1	131.3	131.7		
140	190510Tw	A160516	0.28	10.1	15.9	2.1	0.0	146.8	146.3		
141	190481	A160516	0.11	9.0	14.2	2.2	0.2	143.0	145.3		
142	190722Tw	F170532	0.29	9.0	14.5	1.6	-0.7	137.8	141.9		
143	190582Tw	F170532	0.29	8.1	12.8	2.7	-0.1	137.0	140.9		
<b>Terminal Average</b>			0.35	9.1	13.9	1.6	-0.3	128.6	135.7		

Tw - Twin

Tr - Triplet

F - Fairbank

G - Gemini

A - Ashmore

D - Days Whiteface

Top 20%

## 44 FAIRBANK WHITE SUFFOLK RAMS

38

LOT	TAG	SIRE	Bwt	Wwt	Pwwt	Pemd	Pfat	LEQ	TCP	\$	Purchaser
144	190630Tw	F170532	0.30	9.2	14.5	1.8	-0.4	135.1	139.7		
145	190646Tw	F170532	0.29	8.9	14.1	1.9	-0.4	134.1	139.0		
146	190581Tw	F170532	0.31	9.1	14.0	1.9	-0.2	133.8	138.7		
147	190672Tr	F170532	0.38	8.7	13.2	1.9	-0.4	131.7	136.8		
148	190674Tw	F160549	0.12	8.4	13.3	1.7	0.2	129.8	132.6		
149	190745Tw	D160213	0.45	7.1	10.5	1.5	-0.3	125.8	127.6		
<b>Terminal Average</b>			0.35	9.1	13.9	1.6	-0.3	128.6	135.7		

Tw - Twin


Tr - Triplet

F - Fairbank

G - Gemini

A - Ashmore

D - Days Whiteface

 Top 20%



# POLL DORSET



Our Poll Dorsets were established in 1969 by selecting the top ewes from leading Tasmanian studs. Since then we have carefully selected the best available genetics by either natural mating or A.I as well as our own top rams to produce commercially relevant industry sires.

- **Marocara 15/049** - Industry leading sire for several traits. Used by AI. 15 rams on offer, as well as sire of our keeper ram.
- **Fairbank 17/364** - A very correct, balanced and high growth son of Lambpro 14/859. 13 rams on offer.
- **Valma 17/289** - Purchased for sale top of \$14,200 in conjunction with Sunnybanks and Capelands studs. Used in Valma stud as a lamb. Excellent length and shoulder setting. Also offered some outcross genetics. 11 rams on offer.
- **Fairbank 16/433** - Another excellent structured ram by industry leading sire, Lambpro 14/859. Proven breeder, 10 rams on offer.
- **Lambpro 14/859** - Proven sire at Fairbank and also at other studs. Sons have now sold to \$17,000. He continues to have a strong influence. Limited joinings due to other sons retained and high number of daughters in our flock but still has 9 rams on offer.
- **Rangeview 17/107** - 1st Melbourne and Bendigo. This classy, correct, balanced ram has great breed type. 5 rams on offer with 3 of them at the top end of the catalogue.
- **Fairbank 13/185** - Reliable breeder. Very correct ram with daughters producing top end rams each year. Only used as a late pick up so just the 1 ram on offer this year.

## TERMINAL AVERAGE

Bwt	Wwt	Pwwt	Pemd	Pfat	LEQ	TCP
0.35	9.1	13.9	1.6	-0.3	128.6	135.7

## OUR POLL DORSET SALE RAMS

Bwt	Wwt	Pwwt	Pemd	Pfat	LEQ	TCP
0.39	9.7	14.4	2.5	-0.5	136.9	142.8

LOT	TAG	SIRE	Bwt	Wwt	Pwwt	Pemd	Pfat	LEQ	TCP	\$	Purchaser
<b>150</b>	190360Tw	M150049Tw	0.31	9.9	14.8	3.3	-0.9	145.8	151.6		
<b>151</b>	190323	LP140859Tw	0.57	11.0	16.3	2.9	-0.5	146.6	150.9		
<b>152</b>	190415Tw	F160433	0.47	10.0	14.6	2.7	-0.3	138.3	144.5		
<b>153</b>	19241	RV170107Tw	0.61	10.4	15.8	2.2	-0.3	135.2	141.2		
<b>Terminal Average</b>			0.35	9.1	13.9	1.6	-0.3	128.6	135.7		

Tw - Twin

Tr - Triplet

F - Fairbank

M - Marocara

LP - Lambpro

V - Valma

R - Rangeview

Top 20%

## 64 FAIRBANK POLL DORSET RAMS

42

LOT	TAG	SIRE	Bwt	Wwt	Pwwt	Pemd	Pfat	LEQ	TCP	\$	Purchaser
154	190175Tw	RV170107Tw	0.59	11.2	17.0	1.4	-1.1	135.3	140.0		
155	190467Tw	RV170107Tw	0.38	10.5	16.2	2.6	-0.2	131.7	139.5		
156	190371Tw	M150049Tw	0.33	10.3	15.8	3.6	-0.6	151.1	155.7		
157	190319Tw	M150049Tw	0.28	8.9	13.4	2.9	-0.7	146.7	147.9		
158	190335Tw	M150049Tw	0.33	9.2	14.1	3.2	-0.4	142.7	147.1		
159	191072	F160433	0.44	9.9	14.0	2.6	-0.7	138.6	145.4		
<b>Terminal Average</b>			0.35	9.1	13.9	1.6	-0.3	128.6	135.7		

Tw - Twin

Tr - Triplet


F - Fairbank

M - Marocara

LP - Lambpro

V - Valma

R - Rangeview

 Top 20%

## 64 FAIRBANK POLL DORSET RAMS

43

LOT	TAG	SIRE	Bwt	Wwt	Pwwt	Pemd	Pfat	LEQ	TCP	\$	Purchaser
160	190338Tw	M150049Tw	0.35	9.3	13.6	2.6	-0.6	141.5	144.5		
161	190233Tw	F160433	0.63	9.8	14.1	1.8	-0.7	140.0	144.3		
162	191052Tw	LP140859Tw	0.57	9.9	14.5	2.2	-0.3	137.4	142.9		
163	190286Tw	F170364	0.69	12.7	17.5	1.7	-0.4	136.4	142.7		
164	190348Tw	F170364	0.53	12.1	17.4	1.9	-0.4	135.8	142.2		
165	190160	F160433	0.47	9.6	14.0	2.0	-0.9	134.0	141.3		
<b>Terminal Average</b>			0.35	9.1	13.9	1.6	-0.3	128.6	135.7		

Tw - Twin

Tr - Triplet

F - Fairbank

M - Marocara

LP - Lambpro

V - Valma

R - Rangeview

Top 20%

## 64 FAIRBANK POLL DORSET RAMS

44

LOT	TAG	SIRE	Bwt	Wwt	Pwwt	Pemd	Pfat	LEQ	TCP	\$	Purchaser
166	190406	F170364	0.45	10.5	15.1	2.4	-0.4	135.1	141.3		
167	190324Tw	F170364	0.41	10.5	15.1	1.8	-1.2	131.1	139.3		
168	190425	V170289Tw	0.28	8.9	13.6	2.9	-0.3	135.1	141.1		
169	190355	V170289Tw	0.25	8.8	12.9	2.1	-0.8	129.0	134.2		
170	190336Tw	M150049Tw	0.36	9.3	14.2	2.9	-0.3	145.0	148.9		
171	190380	M150049Tw	0.32	9.0	13.2	3.5	-0.4	142.4	147.1		
<b>Terminal Average</b>			0.35	9.1	13.9	1.6	-0.3	128.6	135.7		

Tw - Twin

Tr - Triplet

F - Fairbank

M - Marocara

LP - Lambpro

V - Valma

R - Rangeview

 Top 20%

## 64 FAIRBANK POLL DORSET RAMS

45

LOT	TAG	SIRE	Bwt	Wwt	Pwwt	Pemd	Pfat	LEQ	TCP	\$	Purchaser
172	190389Tw	M150049Tw	0.29	8.5	13.5	2.9	-0.6	143.2	146.9		
173	190390Tw	M150049Tw	0.26	8.4	12.9	2.9	-0.5	141.5	144.9		
174	190139Tw	F160433	0.42	9.8	14.1	1.8	-1.1	134.3	141.3		
175	190196	F160433	0.34	8.1	11.8	2.7	-0.6	134.8	140.4		
176	190328Tw	F170364	0.44	10.6	15.5	1.9	-0.9	132.4	140.3		
177	190133Tr	V170289Tw	0.22	9.1	13.9	2.9	-0.5	130.2	138.5		
<b>Terminal Average</b>			0.35	9.1	13.9	1.6	-0.3	128.6	135.7		

Tw - Twin

Tr - Triplet

F - Fairbank

M - Marocara

LP - Lambpro

V - Valma

R - Rangeview

Top 20%

## 64 FAIRBANK POLL DORSET RAMS

46

LOT	TAG	SIRE	Bwt	Wwt	Pwwt	Pemd	Pfat	LEQ	TCP	\$	Purchaser
178	190161	F170364	0.52	10.9	15.8	1.6	-0.6	132.2	138.4		
179	190181Tw	V170289Tw	0.38	9.7	14.3	2.3	-0.8	129.6	137.6		
180	190157Tr	V170289Tw	0.38	9.2	13.9	1.9	-0.5	127.6	134.0		
181	190155Tw	RV170107Tw	0.32	9.8	14.5	2.1	-0.3	125.8	133.0		
182	190276Tw	M150049Tw	0.37	8.9	14.0	3.8	-0.2	147.7	151.6		
183	190439Tw	LP140859Tw	0.45	9.9	15.3	3.2	-0.4	141.9	150.2		
<b>Terminal Average</b>			0.35	9.1	13.9	1.6	-0.3	128.6	135.7		

Tw - Twin

Tr - Triplet

F - Fairbank

M - Marocara

LP - Lambpro

V - Valma

R - Rangeview

Top 20%



## 64 FAIRBANK POLL DORSET RAMS

47

LOT	TAG	SIRE	Bwt	Wwt	Pwwt	Pemd	Pfat	LEQ	TCP	\$	Purchaser
184	190317Tw	M150049Tw	0.19	9.0	13.5	3.1	-0.7	142.8	147.0		
185	190228Tw	F170364	0.49	10.7	15.8	2.9	-0.3	138.9	146.6		
186	190318Tw	M150049Tw	0.18	9.4	13.9	3.0	-0.7	142.3	146.4		
187	190138Tw	F160433	0.39	9.7	14.2	2.1	-0.9	135.2	142.1		
188	190245Tw	LP140859Tw	0.45	9.2	13.5	2.5	-0.3	135.9	142.1		
189	190149Tw	LP140859Tw	0.52	9.7	14.3	1.8	-0.7	135.6	141.5		
<b>Terminal Average</b>			0.35	9.1	13.9	1.6	-0.3	128.6	135.7		

Tw - Twin

Tr - Triplet


F - Fairbank

M - Marocara

LP - Lambpro

V - Valma

R - Rangeview

 Top 20%

## 64 FAIRBANK POLL DORSET RAMS

48

LOT	TAG	SIRE	Bwt	Wwt	Pwwt	Pemd	Pfat	LEQ	TCP	\$	Purchaser
190	191071Tw	F160433	0.35	9.1	13.4	2.2	-0.8	135.9	141.6		
191	190211	LP140859Tw	0.55	9.9	14.6	2.0	-0.5	135.9	141.3		
192	190295	F160433	0.36	8.5	12.9	2.6	-0.2	135.6	140.6		
193	190402Tw	F170364	0.56	10.9	15.9	2.0	-0.4	134.1	140.6		
194	190266Tw	F170364	0.42	10.7	15.5	2.1	-0.8	132.3	140.4		
195	190109Tw	V170289Tw	0.21	9.0	13.3	2.7	-0.7	132.6	139.6		
<b>Terminal Average</b>			0.35	9.1	13.9	1.6	-0.3	128.6	135.7		

Tw - Twin

Tr - Triplet

F - Fairbank

M - Marocara

LP - Lambpro

V - Valma

R - Rangeview

Top 20%

## 64 FAIRBANK POLL DORSET RAMS

49

LOT	TAG	SIRE	Bwt	Wwt	Pwwt	Pemd	Pfat	LEQ	TCP	\$	Purchaser
196	190191	F170364	0.52	10.9	16.1	1.7	-0.2	132.9	138.5		
197	190433Tw	V170289Tw	0.36	8.5	13.0	2.3	-1.0	130.8	138.2		
198	190463Tw	RV170107Tw	0.48	11.0	16.4	1.7	-0.5	126.7	134.9		
199	190136Tw	V170289Tw	0.39	9.3	13.8	2.2	-0.8	129.4	134.8		
200	190378Tw	M150049Tw	0.35	9.5	14.4	3.3	-0.3	149.2	152.1		
201	191057Tw	F160433	0.35	9.1	12.9	2.8	-0.8	144.4	149.7		
<b>Terminal Average</b>			0.35	9.1	13.9	1.6	-0.3	128.6	135.7		

Tw - Twin

Tr - Triplet

F - Fairbank

M - Marocara

LP - Lambpro

V - Valma

R - Rangeview

Top 20%

## 64 FAIRBANK POLL DORSET RAMS

50

LOT	TAG	SIRE	Bwt	Wwt	Pwwt	Pemd	Pfat	LEQ	TCP	\$	Purchaser
202	190366Tw	M150049Tw	0.24	8.5	13.0	4.3	0.5	147.4	149.3		
203	190205Tw	LP140859Tw	0.30	9.8	14.9	2.9	-0.8	140.5	148.4		
204	190363Tw	M150049Tw	0.23	8.3	12.4	3.1	-0.5	142.0	144.9		
205	190166Tr	V170289Tw	0.23	9.0	14.3	2.9	-0.6	137.3	144.3		
206	191097	F130185	0.33	10.1	14.9	2.8	-0.4	136.5	143.6		
207	190479Tw	LP140859Tw	0.44	9.5	13.5	2.6	-0.5	136.9	143.2		
<b>Terminal Average</b>			0.35	9.1	13.9	1.6	-0.3	128.6	135.7		

Tw - Twin

Tr - Triplet

F - Fairbank

M - Marocara

LP - Lambpro

V - Valma

R - Rangeview

Top 20%

## 64 FAIRBANK POLL DORSET RAMS

51

LOT	TAG	SIRE	Bwt	Wwt	Pwwt	Pemd	Pfat	LEQ	TCP	\$	Purchaser
208	190103Tw	V170289Tw	0.26	9.5	13.9	2.9	-0.6	136.3	143.1		
209	190246Tw	LP140859Tw	0.46	8.8	12.5	2.7	-0.1	134.8	140.7		
210	190474Tw	F170364	0.47	10.2	14.9	2.1	-0.4	133.5	139.4		
211	190263Tw	F170364	0.48	10.4	15.4	1.9	-0.5	131.8	138.8		
212	190273Tw	V170289Tw	0.20	8.5	12.9	2.8	-0.8	131.0	138.7		
213	191063Tw	F170364	0.50	10.5	15.8	1.6	-0.4	132.4	138.0		
<b>Terminal Average</b>			0.35	9.1	13.9	1.6	-0.3	128.6	135.7		

Tw - Twin

Tr - Triplet

F - Fairbank

M - Marocara

LP - Lambpro

V - Valma

R - Rangeview

Top 20%

## NOTES

---

## NOTES

---

**BUYER'S INSTRUCTION SLIP**

Trading Name: .....

Contact Name: .....

Postal Address: .....

.....Post Code .....

Phone: .....

Agent's Name: .....

Lots Purchased

Lot	Price	Lot	Price

Delivery Instructions: .....

.....

Transfer: Y / N

Insurance: Y / N      30 days      3 months

6 months      12 months

Transit

Expected Delivery Date: .....

Carrier: .....

Buyers Signature: .....

**Payment Due 26th November 2020.**

**No verbal instructions can be accepted.**





## Fairbank 19/807

Keeper ram by Fairbank 14/603  
(Champion Melbourne Royal Feature Show)

**Semen available.**

<b>Bwt</b>	<b>Wwt</b>	<b>Pwwt</b>	<b>Pemd</b>	<b>Pfat</b>	<b>TCP</b>
0.27	6.0	9.6	0.5	0.1	107

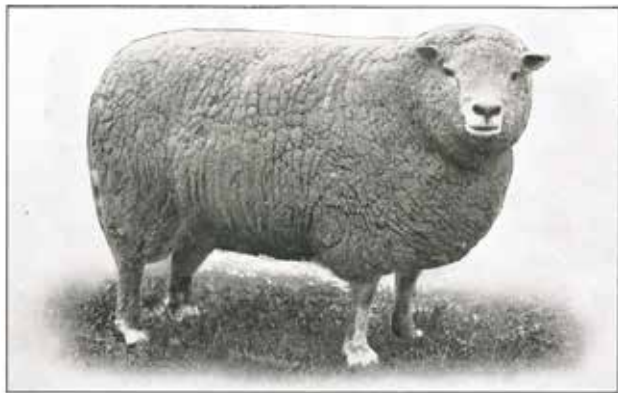


## Fairbank 19/506

Keeper ram by Ashmore 16/516  
Top 1% for TCP and Shear Force.

**Semen available.**

<b>Bwt</b>	<b>Wwt</b>	<b>Pwwt</b>	<b>Pemd</b>	<b>Pfat</b>	<b>TCP</b>
0.30	9.8	16.2	2.6	-0.2	158



**Fairbank “PETER”**

Champion Southdown Ram,  
Melbourne Royal Show, 1926.

**Fairbank 16/821**  
Champion Southdown Ram,  
Aust. Sheep & Wool Show, 2018



---

**After over 90 years and 5 generations, breeding quality sheep still remains our focus!**



## 174 Hagley Station Lane, Hagley, TAS

**From the North West** - Take Hagley exit, first left past the poppy factory, travel through Hagley, past school to roundabout. Turn right into Station Lane, (C507), Fairbank is approximately 2.5kms on right.

**From Northern Midlands** - Travel on Bass Highway, take Hagley exit, turn left at top of ramp (C507) over the railway line, Fairbank is 1.74kms on right.