



Celebrating
10 YEARS
OF STUD BREEDING IN 2020

On property
RAM SALE

Thursday 29th October 2020

Inspection 1pm, Sale 2pm - Offering 75 RAMS

4642 Hamilton - Port Fairy Road, Macarthur VIC



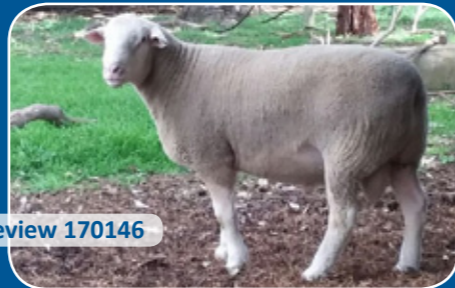
Farrer 150092

Bwt: 0.15 Wwt: 8.5 Pwwt: 14.3 Pfat: 0.0 Pemd: 1.9
C+193 TCP: 142.4 LEQ: 150.5



Bundara Downs 181755

Bwt: 0.37 Wwt: 10.1 Pwwt: 15.6 Pfat: 0.4 Pemd: 3.3 C+ 214
TCP: 151.5 LEQ: 151.4 *First sons available



Rangeview 170146

Bwt: 0.42 Wwt: 8.5 Pwwt: 13.4 Pfat: -0.3 Pemd: 2.0
C+191 TCP: 135.3 LEQ: 121.8



Somerset 160197

Bwt: 0.42 Wwt: 10.7 Pwwt: 17.6 Pfat: -1.1
Pemd: 2.1 C+: 215 TCP: 150 LEQ: 142.1

Introduction

Welcome to our 4th spring ram sale. We're thrilled with how Yendora rams are working in programs and value all feed-back. Keep it coming!

2020 marks 10 years of stud breeding for Yendora White Suffolks. In recent times we've worked really hard in our breeding program to increase the muscling, carcass shape and yield of animals, without compromising growth or birth ease. We expect all 2020 drop lambs to be well above breed average for muscling, carcass yield and weaning weight.

This year our sale day format is a Helmsman sale, interfaced with A+. Information on how a Helmsman sale works is listed in this catalogue. If you are unsure or have questions, please be in touch with us or selling agents - Elders and Nutrien.

We're proud to offer you a catalogue packed with varying pedigrees, including the first sons of BD181755 (PEMD +3.3) purchased as the top priced ram lamb from the Bundara on-property sale in February 2019. We can't wait to see what you think of his progeny.

Other sires represented are: Rangeview 170146, Somerset 160197 (last sons available) and Farrer 150092 (last sons available)

We seek to introduce new genetics each year - primarily to reduce stagnation and the flow on effect of in-breeding in flocks, for those using Yendora rams in maternal programs. We keep detailed records of rams purchased each year, so if you ever want advise on new bloodlines for your program, we're here to help.

Fresh genetics will be available at our next sale in January 2021, with new sires represented: Yendora 190037(by Felix170275) and Yendora 190132(by DG180374Qu 'Noble' by Warburn 160048 \$16000) both purchased in-utero from Detpa Grove. Also AI lambs sired by Bundara Downs 181462 and Ashmore 180080.

Some of the rams offered in this catalogue have successfully been used in the stud as ram lambs, with live lambs now on the ground. This is noted against their tag numbers further in the catalogue.

We look forward to sharing a coffee, cake and chat on Thursday 29th October.



Andrew Button 0428 545 664
Ashley Crow 0419 711 405



Sam Savin 0407 939 910

Abbreviations

WeanWT	Weight at weaning	War	Warburn
Fat	Fat depth at scanning (mm)	DG	Detpa Grove
EMD	Eye muscle depth (mm)	BD	Bundara Downs
Wt kg	Weight on specified date	Fe	Felix
BWT	Lambplan birthweight	F	Farrer
WWT	Lambplan growth to weaning	Wo	Woolumbool
PWWT	Lambplan growth to 9mths	Som	Somerset
Pfat	Fat cover	Mer	Mertex
PEMD	Red Meat Yield	LH	Langley Heights
C+	Carcase plus index	B	Burwood
TCP	Terminal index	AV	Anna Villa
LEQ	Eating quality index	W	Wingamin
S	Single	AF	Aylesbury Farm
T	Twin	AI	Allendale
Tr	Triplet	GP	Galaxy Park
AI	Bred by AI	EM	Ella Matta
DS	Double stud. Our classing status given to the top 5% ewes from each drop.	Gem	Gemini
		III	Illoura
		Wa	Waratah

Flock Health

Dec 16 2019 Vet checked

Apr 28 2020. Drench WSD combo.

July 16 2020 Multimin injection

August 29 2020: Shorn and treated with Avenge.

Ovine Johnes Disease Vaccinated

Ovine Brucellosis Accredited Free (No 3694)



Brucellosis Free



Flock Performance Figures

Performance figures in this catalogue are provided by Lambplan from information collected on our flock by Steve Milne of Richmond Hill Agribusiness, Branhholme Victoria. The figures shown are estimated breeding values (EBV's) for growth, fat depth and eye muscle depth. They are compared with all White Suffolk sheep in the Lambplan database. The Lambplan production indexes TCP and LEQ are also shown, along with actual raw data from scanning.

Integration of EBV's to target market objectives are encouraged together with structural assessment and overall visual appraisal.

All Yendorra sheep are available for public search on the Lambplan website. Our flock code is 230788 and animal ID is in 6 digits (eg 180040)

**NATIONAL VENDOR DECLARATION
(SHEEP AND LAMBS) AND WAYBILL - eNVD**

S0720 40140175

Part A To be completed by the owner or person who is responsible for the husbandry of the sheep or lambs.

Owner of sheep or lambs Yendora White Suffolks (FULL TRADING NAME)
 Property/place where the journey commenced 5304 Hamilton Port Fairy Road (ADDRESS)
 (ADDRESS CONTINUED) MACARTHUR VIC (STATE)
 Property Identification Code (PIC) of this property
 This MUST be the PIC of the property that the stock is being moved from 3MYGW124

Number	Year born (PROP)	Description (BREED, SEX & TYPE E.G. CROSS-BRED, WETHER, LAMB)	Month of shearing	PIC or Brand on Ear Tags (IF DIFFERENT TO PIC SHOWN ABOVE)	Earmarks (IF PRESENT OR REQUIRED)
75	2019	White Suffolk Rams - M	8		
75	Total Use the Attachment Forms for consignments that require more lines to describe the stock. (See Explanatory Notes)				

A. Have PICs on all of the NLS tags only on sheep in this consignment been listed in the Description table above (other than the PIC printed on this NVD)? – Yes OR
B. Have all sheep in this consignment been tagged with an NLS tag with the PIC printed on this NVD or the associated WA brand as listed in the description table above – Yes AND/OR

Number of electronic NLS devices in this consignment 75
 Hours off feed and water before transporting 10

Consigned to Various ram sale clients (NAME OF PERSON OR BUSINESS)
 (ADDRESS) (TOWN/SUBURB) (STATE)
 Destination (if different) of sheep or lambs (LOCATION ADDRESS)
 Destination PIC (REQ: WA & TAS) AAAAAAA

Details of other statutory documents relating to this movement e.g. health statement
 DOCUMENT TYPE NUMBER OFFICE OF ISSUE / 20 EXPIRY DATE

1 Have these sheep or lambs been raised consistent with the rules of an independently audited QA program on the property the PIC of which is shown above?
 Yes No If Yes, give details: _____

2 Have all the sheep or lambs in this consignment been treated with a Scabby Mouth Vaccination either at marking or at least 14 days prior to their presentation for sale?
 Yes No

3 Were all of these sheep or lambs bred by the owner or vendor?
 Yes No If No, how long ago were the sheep or lambs obtained or purchased?
 (If purchased at different times, tick the box corresponding to the time of the most recent purchase.)
 A. Less than 2 months B. 2-6 months C. 6-12 months D. more than 12 months

Print date/time: _____

4 Are any of the sheep or lambs in this consignment still within a Withholding Period (WHP) or Export Slaughter Interval (ESI) as set by APVMA or SAFEMEAT, following treatment with any veterinary drug or chemical?
 Yes No If Yes, give details: (Record additional details in question 7)
 Average CHEMICAL PRODUCT 29/08/2020 21 63 (DATE APPLIED) (DAYS) (EST. # OF SHEEP)

5 In the past 60 days, have any of the sheep or lambs in this consignment consumed any material that was still within a withholding period when harvested, collected or first grazed?
 Yes No If Yes, give details:
 CHEMICAL PRODUCT / DATE APPLIED / GRAZING WHP / DATE FIRST FEED/GRAZED / DATE FEED/INGRAZED / DATE FEED/INGRAZED CROPPED

6 Have the sheep or lambs in this consignment ever in their lives been fed feed containing animal fats?
 (See Explanatory Notes)
 Yes No

7 Please include any additional information below
 eg: vaccination programs, animal health certification, additional declarations, etc.

Declaration

I Sara Morgan 5304 Hamilton Port Fairy Road (FULL NAME) (FULL ADDRESS)
MACARTHUR VIC (ADDRESS CONT) (STATE) (L P A)

declare that, I am the owner or the person responsible for the husbandry of the sheep or lambs and that all the information in part A of this document is true and correct.
 I also declare that I have read and understood all the questions that I have answered, that I have read and understood the explanatory notes, and that, while under my control, the sheep or lambs were not fed restricted animal material (including meat and bone meal) in breach of State or Territory legislation.

Signature* [Signature] Date* 01/09/2020
 *Only the person whose name appears above may sign this declaration, or make amendments which must be initialed.

Tel no. 0437985245 Fax no. _____
 Email. rodneysara@activ8.net.au

Part B To be completed by the person in charge of the sheep or lambs while they are being moved. Completion of this part is optional in SA and VIC.

Movement commenced: 29/10/2020 (am/pm)
 Vehicle registration number(s)*: _____

I _____ am the person in charge of the sheep or lambs during the movement
 (FULL NAME)
 and declare all the information in Part B is true and correct.

Signature _____ Date / / 20 Tel no. _____
 *When more than one truck is carrying the sheep or lambs, other vehicle registration numbers are to be recorded.

Answers that are too long to fit within the printable space are marked with "Refer to attachments page". The attachments page is available from page 2 of the print-out provided. You can also access this declaration record, including the attachments page, electronically. To find out how you can do this, go to www.mla.com.au/pa

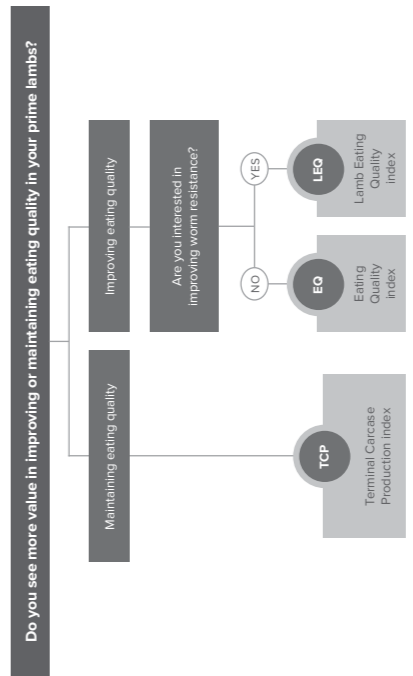


**LAMBPLAN terminal indexes
A ram buyer's guide**

Indexes help producers select animals for use within a breeding program when there are a range of traits of economic or functional importance, so that genetic gain in one trait is not made in isolation from other traits. Using indexes in your ram purchasing decisions allows you to make balanced genetic progress towards more profitable sheep. A ram with a higher index will produce progeny that are more profitable in that production system.

Choosing the right index

The following flowchart helps producers determine the best index for their terminal production system:



How to use the chosen index to assist in purchasing decisions:

Before the sale:

- Rank animals in the sale on the value of your chosen index.
- Consider the individual ASBVs which are important to you to create a short list of rams to look at on sale day.

At the sale:

- Look through your short list of rams to find the ones that meet your structural and type requirements.

To assist in benchmarking sale rams relative to the current year drop of animals in the Sheep Genetics database, use the percentile band tables, which are found on the Sheep Genetics website: www.sheepgenetics.org.au/Getting-started/ASBVs-and-Indexes. The animals in the top 10th percentile rank the highest on the index, and those in the 90th percentile rank the lowest.

A brief overview of each of the indexes is included below. If you would like further information on how these selection indexes are generated, please refer to the *Terminal Indexes – ram breeder guide* at sheepgenetics.org.au/terminal-breeder.

Terminal Carcass Production (TCP)

The TCP index is for a prime lamb production system where terminal sires are joined to ewes of a Merino/maternal breed or cross. The TCP index focuses on increasing weight and muscle while reducing carcass fat. These are changes which contribute to higher lean meat yield. TCP also has emphasis on modest improvements in eating quality.

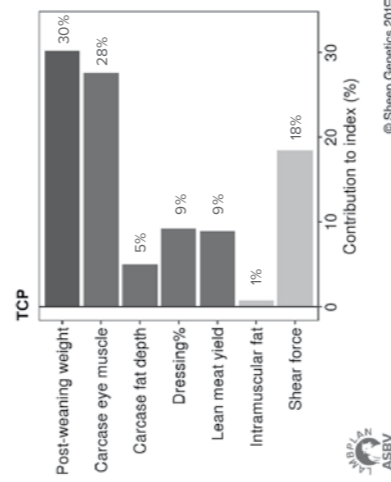
Typical trait changes for the TCP index include:

- increasing post weaning weight
- increasing carcass eye muscle depth
- decreasing carcass fat depth
- increasing dressing percentage
- increasing lean meat yield
- slightly improving eating quality.

Sheep with better eating quality will have higher ASBVs for intramuscular fat (more marbling) and lower ASBVs for shear force (better tenderness).

Figure 1 illustrates which traits are in the index and how much they contribute to the overall balance of the index. The longer the bar, the greater the impact on the index, and the greater impact on the profitability of the production system.

Figure 1: The traits in the TCP index and how they contribute to the overall balance of the index



Eating Quality (EQ)

The EQ index is for a prime lamb operation where terminal sires are joined to ewes of a Merino/maternal breed or cross, and where producers are interested in improving the eating quality of their lambs to a greater degree than is possible with the TCP index. Because of the added emphasis on eating quality, there is less emphasis on growth and carcass traits, although they will still improve.

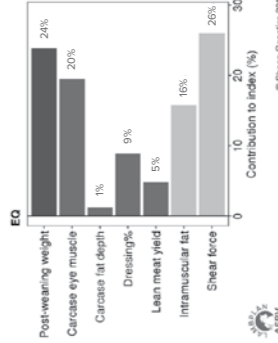
Typical trait changes for the EQ index include:

- increasing post weaning weight
- increasing eye muscle depth
- maintaining/small reduction in carcass fat
- increasing dressing percentage
- increasing lean meat yield
- large improvement in eating quality.

Sheep with better eating quality will have higher ASBVs for intramuscular fat (more marbling) and lower ASBVs for shear force (better tenderness).

Figure 2 illustrates which traits are in the index and how much they contribute to the overall balance of the index. The longer the bar, the greater the impact on the index, and the greater impact on the profitability of the production system.

Figure 2: The traits in the EQ index and how they contribute to the overall balance of the index



Lamb Eating Quality (LEQ)

The LEQ index is for a prime lamb operation where terminal sires are joined to ewes of a Merino/maternal breed or cross in high rainfall and/or high input management systems where internal parasites may cause significant economic losses.

Producers who select this index are interested in improving the eating quality of their lambs to a greater degree than is possible with the TCP index. Growth and carcass traits will still improve, and inclusion of worm egg count will aid in control of internal parasites.

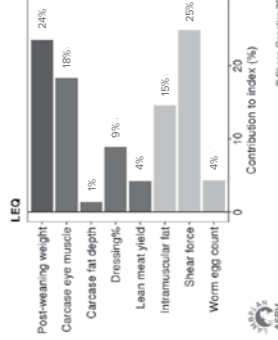
Typical trait changes for the LEQ index include:

- increasing post weaning weight
- increasing eye muscle depth
- maintaining/small reduction in carcass fat
- increasing dressing percentage
- increasing lean meat yield
- large improvement in eating quality
- increasing resistance to worms.

Sheep with better eating quality will have higher ASBVs for intramuscular fat (more marbling) and lower ASBVs for shear force (better tenderness).

Figure 3 illustrates which traits are in the index and how much they contribute to the overall balance of the index. The longer the bar, the greater the impact on the index, and the greater impact on the profitability of the production system.

Figure 3: The traits in the LEQ index and how they contribute to the overall balance of the index



Terminal Carcass Production (TCP) index

Replacement for Carcass Plus

Key points

- ✓ Carcass Plus has been an important index for the sheepmeat industry but it has been found to have a negative impact on eating quality. Because of this and the industry's focus on delivering high eating quality outcomes for consumers, the index will be retired in March 2020.
- ✓ Carcass Plus will be replaced with the Terminal Carcass Production Index. To assist in the transition between indexes both Carcass Plus and Terminal Carcass Production will be available for the 2019 ram buying season.
- ✓ The Terminal Carcass Production (TCP) index will give similar improvements in growth and lean meat yield as Carcass Plus while also maintaining eating quality.

What is the new TCP index?

Indexes help producers select animals for use within a breeding program when there are a range of traits of economic or functional importance. This ensures that genetic gain in one trait is not made in isolation from other traits. Using indexes in ram purchasing decisions allow producers to make balanced genetic progress towards more profitable sheep.

The TCP index has been created to assist producers to achieve both gains in their major production traits, such as post-weaning weight and muscling, as well as ensuring consumer satisfaction from lamb is maintained through focusing on key eating quality traits such as shear force (tenderness) and intramuscular fat (marbling).

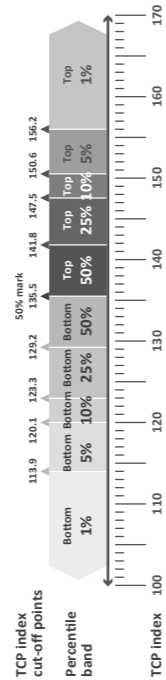
The TCP index is designed to suit a production system where:

- ✓ all progeny are terminal
- ✓ improving growth and muscle is of commercial benefit
- ✓ increasing lean meat yield has a positive financial impact
- ✓ a small degree of emphasis is included to maintain or improve eating quality.

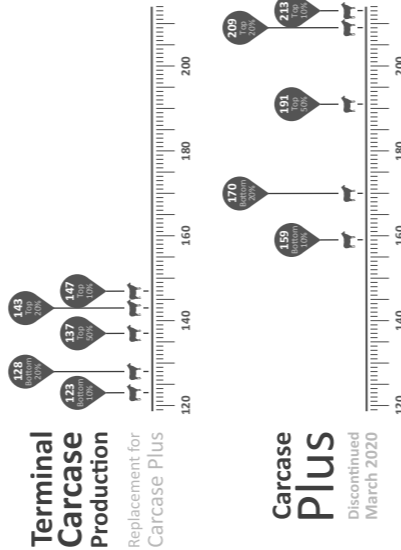
Using the TCP index

The TCP index, unlike Carcass Plus, is on a scale that is aligned with other Sheep Genetics' indexes and is represented in economic terms with a unit increase in the index reflecting an additional dollar per ewe joined per year. To assist in comparing rams, Sheep Genetics recommends using a percentile band table as reference. The figure below, which is based on the percentile band table, highlights the TCP index value for significant percentiles for the 2018 drop animals.

Percentile band range graphic for TCP index 2018 drop animals



Comparison of TCP and Carcass Plus index values for significant percentiles for 2018 drop animals




Helmsman - a client friendly buying system.

Helmsman combines the best features of both the auction system and sale by private treaty: you get first pick and pay market value without any pressure:

- Prospective buyers need to register prior to the start of the sale, indicating their trading details and whether or not they have been introduced by an agent. Each is given a buyer number.
- The sale animals are on display as usual, with all relevant Lambplan information presented in your catalogue.
- When the sale commences, all sale lots are on the market simultaneously. You may bid on any lot, regardless of lot number. You can also bid on multiple lots at once. A large, easy-to-read board will be located nearby, displaying tag number, buyer number and bid value (or Reserve Price). This allows you to see at a glance whether your bid still stands or has been overbid.
- Bids are written on a card and presented to a "runner", and the board is updated. A "Sale Presenter" will announce each bid as it is recorded.
- You may open bidding on any animal at its reserve price and further bids in multiples of the minimum bid amount will be accepted. Minimum bid amounts are \$50
- A bid once submitted and recorded cannot be retracted, and the person submitting such bid will be responsible for it until it is overbid.

7. All animals are for sale simultaneously for a period of 30 minutes. Further bidding will then result in one minute extensions until a full one minute "no bid" period which will conclude the sale.

8. The sale is interfaced with  AuctionsPlus with the Helmsman system meshing perfectly with the simultaneous on-line auction in real time. Remote & onsite bidding is available via your computer, ipad or smart phone. For those not able to attend the sale, you should register within 24 hours prior to the sale in order to bid. www.auctionsplus.com.au or Phone 02 9262 4222.

9. In an effort to help the sale reach a timely conclusion, Yendora White Suffolks reserves the right to double the minimum bid amount once the sale has been running for 45 minutes. The option would be announced by the sale commentator and would also include the minimum bid amounts on Auctions Plus.

THE BENEFITS

- You have more time to consider lodging a bid. You can place genuine bids on any animal of your choice at any time during the sale period.
- You have the opportunity to re-assess each lot during the sale period and move freely between one lot and another depending on what you could afford without any pressure to make an instant decision.
- You take home the animals you want, irrespective of lot order.
- If you need more than one ram, Helmsman gives you a better chance to average your purchase costs.

White Suffolk Stud History

The Yendor White Suffolk Stud was founded in 2010. Foundation ewes were sourced at the SA Foundation Breeder Invitation Sale from respected studs Wingamin, Aylesbury Farm, Illoura and Ashmore. Further ewes have been purchased from highly successful studs within Australia at dispersals, mated ewe sales and on-property sales.

We strive for continual improvement. Considerable money has been spent since inception, sourcing both elite ewes and sires annually to enhance our breeding objectives, with the aim to have a positive impact on the prime lamb industry and your bottom line.

Our focus is to breed structurally correct animals, with moderate birth weight, high early growth, carcass shape and performance carcass traits (high muscling and moderate fat with meat eating quality traits) to suit early maturing lambs. Selection pressure is

also placed on easy lambing and fecundity in-flock. All ewes must lamb as ewe lambs to be retained in the stud flock.

To help speed our genetic progress within the stud, we use our best DNA analysed ram lambs (7-9mths) and lamb down ewe lambs from as young as 12 months of age.

We evaluate our stock using visual assessments (first and foremost!) as well as Lambplan data, weaning weights, measuring muscle and fat and dag scores.

We are performance tested through Lambplan. Lambplan data is compared across studs within Australia to give a fair comparison of performance across flocks.

Memo of sires represented

Detpa Grove Noble 180374	By Warburn 160048 (\$16000)	Detpa Grove 140549 Twin	By Detpa Grove 130130 from Tapton ewe. Purchased on-property 2015. Has had a huge influence on our flock.
Bundara Downs 181755	By LH130572. Top priced at BD summer ram sale. Sons available Spring 2020	Langley Heights 130572	Over 1200 progeny across >27 flocks. AI mating
Felix 170275	By Fe150721. Top priced Felix sale 2018.	Bundara Downs 122261	Most used AI white suffolk ram. >2800 progeny from >59 flocks. AI mating
Rangeview 170146	By Warburn "Icon" 130399. Purchased Bendigo Elite Sale 2018. Sons available Summer 2020	Burwood 110980	By Langley Heights 060073. AI mating
Bundara Downs 179821	By Waratah 150110. AI mating.	Burwood 111091	By B100210. AI mating
Woolumbool 173980	By Ella Matta 150097. AI mating	Burwood 100245	By B095610. AI mating
Somerset 160197	By Som130153. Purchased Bendigo Elite 2017	Anna Villa 110097Tr	By Gem090298 (champion Hamilton 2010) Purchased SAFBI sale 2012 \$3000
Mertex 160461	By Wingamin 122714. Purchased Bendigo Elite 2017	Wingamin 112522	By W101867 (first group rams Adelaide) Purchased SAFBI sale 2012
Farrer 150121	By Farrer 120026. Purchased Farrer on-property 2016	Aylesbury Farm 100217	By DG050328. Purchased SAFBI sale 2011
Farrer 150092	By GP110210. Purchased Farrer on-property 2016	Allendale 090162	By TV060250. Purchased Days on-property 2010 \$3750

YENDORA WHITE SUFFOLK RAM CATALOGUE October 2020

Lot	Tag	DOB	Dam	Sire	Sire of Dam	BWT	WWT	PWWT	PFAT	PEMD	TCP	LEQ	IMF	SHRF5	Dress	LMY	Progeny	Purchaser / Price
1 (Reserve \$1500)	7	20/06/19	AV170108	Som160197	EM130054	0.69	12.7	19.7	-0.8	1.4	153	146	-0.6	1.2	2.5	4.1	
DNA tested. Used in stud as ram lamb. Awaiting progeny. Fantastic growth. 90kgs at 7mths off pasture. Eligible for registration.																		
2	37	23/05	DG130794	Fel170275	DG110059	0.29	9.6	16.3	-1.2	1.5	146	138	-0.7	1.6	1.6	4.2	20
DNA tested. Used in stud as ram lamb. Eligible for registration.																		
3	50	10/06	Illoura 170806	Farrer92	IL150742	0.26	11.0	17.9	0.1	2.2	148	152	0.2	1.8	2.6	3.1	27
DNA tested. Used in stud as ram lamb. Eligible for registration.																		
4	84	20/06	Waratah 170545	Som160197	Fel151229	0.59	11.2	17.8	-0.4	2.4	156	153	-0.4	0.0	2.9	3.6	
DNA tested. Used in stud as ram lamb. Awaiting progeny. Eligible for registration																		
5	131	14/06	Illoura 170233	Rang146	Warb140289	0.59	10.9	17.1	-0.8	2.1	150	139	-0.9	2.6	2.4	4.5	
DNA tested.																		
6	132	27/05	DG150700	DG Noble 180374	DG140180Tw	0.57	10.2	16.7	-0.1	2.2	149	145	-0.4	0.8	2.5	3.6	53
DNA tested. Used in stud as ram lamb. Stud sire worthy. Eligible for registration. Very appealing ram.																		

Shaded data indicates trait leaders (top 20%)

Average terminal BWT WWT PWWT PFAT PEMD TCP LEQ IMF SHRF5 Dress LMY
0.35 9.1 14.0 -0.5 1.7 136 129 -0.5 2.9 1.9 3.1

Reserve \$1250

Reserve \$1000

2019 drop

Lot	Tag	DOB	Sire	BWT	WWT	PWWT	PFAT	PEMD	TCP	LEQ	Purchaser / Price
-----	-----	-----	------	-----	-----	------	------	------	-----	-----	-------------------

Lot	Tag	DOB	Sire	BWT	WWT	PWWT	PFAT	PEMD	TCP	LEQ	Purchaser / Price
-----	-----	-----	------	-----	-----	------	------	------	-----	-----	-------------------

7	80	28/06	Som160197	0.45	10.3	15.5	-1.1	1.4	144	138
8	134	20/06	Som160197	0.46	10.3	16.0	-1.1	1.6	146	139
9	135tw	15/06	Som160197	0.33	9.5	15.8	-0.4	2.5	149	146
10	167	30/09	BD181755	0.37	9.5	14.5	-0.1	2.5	145	142
11	183	27/09	BD181755	0.35	9.3	14.5	0.0	2.3	144	142
12	191tw	10/09	BD181755	0.35	9.3	14.2	0.1	2.8	144	142
13	203	09/09	BD181755	0.42	9.9	15.2	-0.1	2.2	144	142

18	91	06/06	Som160197	0.41	9.6	15.2	-0.6	1.7	143	138
19	98	30/06	Som160197	0.44	10.1	15.7	-0.9	1.3	141	135
20	104tw	01/06	Som160197	0.38	9.2	14.5	-1.1	1.7	143	138
21	113	14/06	Som160197	0.35	9.5	15.1	-0.6	1.9	143	141
22	120	10/06	Som160197	0.34	9.1	14.4	-0.9	1.5	142	141
23	122	14/06	Som160197	0.50	9.6	15.6	-0.5	1.5	140	136
24	125tw	14/06	Som160197	0.26	8.6	14.1	-0.3	2.0	141	140
25	126tw	08/06	Farrer92	0.27	8.8	14.3	-0.4	1.6	139	141
26	130	27/05	Rang146	0.33	8.6	13.8	0.0	2.1	139	134
27	136tw	18/06	Som160197	0.46	10.5	16.4	-0.8	1.2	141	136
28	145	15/06	Som160197	0.39	9.6	15.0	-0.4	1.8	142	137

Reserve \$1000

14	5	20/06	Som160197	0.38	9.3	14.6	-1.0	1.5	143	138
15	15	15/06	Som160197	0.32	8.4	13.9	-0.6	1.6	139	134
16	45tw	06/06	Rang146	0.39	9.4	15.0	-0.1	2.1	139	129
17	66tw	07/06	Farrer92	0.28	9.0	14.3	-0.3	1.5	139	141

Average terminal 0.35 9.1 14.0 -0.5 1.7 136 129

Shaded data indicates trait leaders (top 20%)

Lot	Tag	DOB	Sire	BWT	WWT	PWWT	PFAT	PEMD	TCP	LEQ	Purchaser / Price	Lot	Tag	DOB	Sire	BWT	WWT	PWWT	PFAT	PEMD	TCP	LEQ	Purchaser / Price				
29	157tw	01/06	Som160197	0.34	8.8	13.8	-0.9	1.9	142	137	39	4	30/06	Farrer92	0.21	7.9	12.6	-0.5	0.9	132	135				
30	161tw	30/06	Farrer92	0.35	9.8	16.1	-0.1	1.5	143	145	40	22tw	06/06	Rang146	0.29	6.7	10.3	-0.6	0.4	122	115				
31	169	25/09	BD181755	0.37	9.2	14.0	0.0	2.2	142	141	41	24tw	08/06	Rang146	0.30	7.7	11.9	-0.1	1.7	132	123				
32	173	10/09	BD181755	0.39	9.4	14.4	0.2	2.4	142	140	42	25tw	20/06	Rang146	0.36	8.5	13.0	-0.5	1.8	134	123				
33	175	01/10	BD181755	0.39	9.6	14.7	-0.1	1.9	142	140	43	32tw	30/06	Som160197	0.25	8.0	12.6	-0.5	2.0	137	133				
34	176tw	03/09	BD181755	0.31	9.1	14.3	-0.2	2.1	142	144	44	33tw	30/06	Rang146	0.37	8.3	12.9	0.2	1.7	131	121				
35	177tw	03/09	BD181755	0.31	9.1	14.3	-0.2	2.1	142	144	45	34tw	08/06	Rang146	0.28	7.6	11.7	0.0	2.1	133	124				
36	190	27/09	BD181755	0.38	9.6	14.9	-0.1	2.1	142	140	46	40tw	07/06	Rang146	0.34	7.3	11.1	-0.8	0.4	125	117				
37	197	16/09	BD181755	0.33	8.9	13.7	0.1	2.3	142	141	47	44tw	06/06	Som160197	0.23	8.0	12.8	0.0	2.7	137	133				
<i>Reserve \$750</i>												48	54tw	08/06	Rang146	0.39	8.1	12.3	0.0	1.4	131	123				
38	1tw	30/06	Rang146	0.43	8.7	12.8	0.0	1.5	131	122	49	60tw	03/06	Farrer92	0.15	7.4	12.0	0.0	1.5	132	136				
												Average terminal			0.35	9.1	14.0	-0.5	1.7	136	129						

Shaded data indicates trait leaders (top 20%)

Lot	Tag	DOB	Sire	BWT	WWT	PWWT	PFAT	PEMD	TCP	LEQ	Purchaser / Price	Lot	Tag	DOB	Sire	BWT	WWT	PWWT	PFAT	PEMD	TCP	LEQ	Purchaser / Price						
51	67tw	30/05	Rang146	0.38	8.4	12.3	-0.2	1.6	131	121	63	148tw	24/06	Rang146	0.28	7.7	12.2	0.5	2.2	133	125						
52	71	04/06	Rang146	0.33	7.5	11.6	-0.1	1.8	129	121	64	149tw	06/06	Rang146	0.33	8.7	13.9	0.0	2.1	137	127						
53	73tw	10/06	Rang146	0.47	9.3	14.1	-0.5	1.1	132	123	65	155	14/06	Farrer92	0.26	8.5	13.4	-0.6	1.1	136	138						
54	78tw	03/06	Farrer92	0.19	7.9	12.7	-0.2	1.3	133	137	66	158tw	20/06	Som160197	0.34	8.5	13.1	-0.8	1.1	133	128						
55	96	08/06	Rang146	0.38	8.1	12.5	-0.6	0.9	130	121	67	159tw	15/06	Rang146	0.36	8.1	12.3	-0.2	1.2	127	119						
56	101	15/06	Rang146	0.24	8.8	14.0	-0.5	1.2	134	132	68	162tw	08/06	Farrer92	0.25	7.9	12.8	-0.4	0.7	130	134						
DNA tested												69	163tw	15/06	Rang146	0.43	9.2	14.2	-0.1	1.4	133	123						
57	119tw	20/06	Rang146	0.41	9.4	14.2	0.0	2.0	137	127	70	165tw	08/06	Rang146	0.26	7.7	12.2	-0.3	1.8	134	129						
58	128	06/06	Rang146	0.35	8.5	13.7	-0.1	1.9	137	128	71	181	21/09	BD181755	0.24	7.8	12.1	0.2	2.1	134	134						
59	129tw	30/06	Rang146	0.42	8.8	13.0	0.2	1.8	133	124	72	182	09/09	BD181755	0.27	8.2	12.6	0.0	2.3	138	137						
60	133tw	04/06	Rang146	0.29	8.9	13.3	-0.4	2.0	136	127	73	187tw	01/09	BD181755	0.35	9.2	13.7	-0.5	1.5	137	135						
61	137tw	07/06	Rang146	0.26	6.4	9.8	-0.6	0.8	123	116	74	196tw	03/09	BD181755	0.23	7.9	12.2	0.2	2.4	137	136						
62	147	12/06	Farrer92	0.19	7.6	12.2	-0.3	1.1	132	136	Average terminal											0.35	9.1	14.0	-0.5	1.7	136	129

All rams totally pasture raised. Lots 3,4 and 6 have had some pellets during Aug for show preparation.




**Department of Economic Development,
Jobs, Transport and Resources**

Owner Name: S Morgan
Address: 5304 Hamilton- Port Fairy Road
Macarthur VIC 3286

Flock Name: Yendora

Accreditation No.: 3694
Breeds: White Suffolk

**OVINE BRUCELLOSIS-FREE
ACCREDITED FLOCK
CERTIFICATE**


Kate Robertson
Animal Health Officer

Date Issued: 8 January 2019
Expiry Date: 31 October 2020

*This certificate remains valid while the conditions of the Ovine Brucellosis Free Accreditation Scheme are complied with.


AuctionsPlus

How to Register and Bid on AuctionsPlus

- 1** Go to www.auctionsplus.com.au to register at least 48 hours before the sale.
- 2** Select "Sign Up" in the top right hand corner.
- 3** Fill out your name, mobile number, email address and create a password.
- 4** Go to your emails and confirm the account.
- 5** Return to AuctionsPlus and log in.
- 6** Select "Dashboard" and then select "Request Approval to Buy".

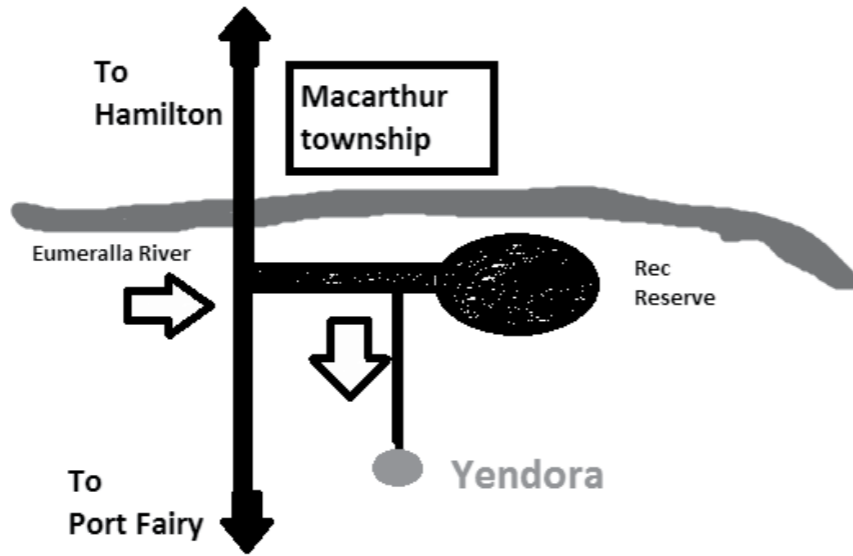
- 7** Fill in buyer details and once completed go back to Dashboard.
- 8** Complete buyer induction module (approx. 30 minutes).
- 9** AuctionsPlus will email you to let you know that your account has been approved.
- 10** Log in on sale day and connect to auction.
- 11** Bid using the two-step process – unlock the bid button and bid at that price.
- 12** If you are successful, the selling agent will contact you post sale to organise delivery and payment.

For more information please contact us on:
Phone: (02) 9262 4222
Email: info@auctionsplus.com.au

Map

On-property address: 4642 Hamilton
- Port Fairy Road, Macarthur

Adjacent southern side of Macarthur township, bordering the Macarthur Recreation Reserve. Take the Rec Reserve entrance from highway and follow the signs.



2021 SUMMER Ram Selection Day

Thursday January 28th

2-5pm

Offering approx 50 rams

Further details to follow.

Thank-you

Thank-you for taking an interest in our stock. Your confidence in our breeding program inspires us.

We wish you success with your purchases, trust they will meet your expectations and value ALL feed-back.

Regards, Rodney and Sara Morgan





ENQUIRIES *always*
WELCOME

Ask us about our **CONTRACT RAM**
breeding program?



Brucellosis Free



Rodney 0458 961 226 | Sara 0437 985 245
4642 Hamilton - Port Fairy Road Macathur Vic 3286 E rodneyandsara@activ8.net.au
Stud Est 2010 | Reg 788 | PIC NO. 3MYGW124

