

THE "TELPARA TYPE"



Genetics
that
Perform

5th ANNUAL SHEEP SALE

Friday 9th October, 2020

Inspection 11:00am, Auction 1:00pm



56 Rams (48 Suffolk & 8 Ramsay Park Hampshire Downs), 23 Ewes 2019 Drop

Guest Vendor Ramsay Park Suffolks & Hampshire Downs

SALE LOCATION "Telpara - Hartley" 800 Harvey Road, Hartley, SA

Enquiries: Anthony Pearce 0467 600 061, Peter Button 0419 842 246 or David Whittenbury 0455 600 488



TELPARA SALE DETAILS

79 Lots comprising:
48 Suffolk Rams & 8 Hampshire Down Rams
23 2019 Drop Suffolk Ewes

Sale to be held on property "Telpara Hartley" (see directions on last page)
Light lunch & drinks supplied

Purchased sheep may be held on property awaiting delivery following the sale at the "Purchasers Risk"
Stud registration of rams will require a minimum \$2000 bid
For further information contact selling agents:



David Whittenbury 0455 600 488
5% rebate to outside agents in attendance

Inspection of stock from 11:00am on sale day or prior arrangement with:



Antony & Jude Pearce

Antony 0467 600 061 or anthony@hillsfarmsupplies.com.au



Peter & Julie Button

Peter Button 0419 842 246 or ramsaypark@internode.on.net

TELPARA SUFFOLK STUD

Telpara has focussed on a breeding program that has been about understanding who our customer is and then focusing on breeding a type of sheep that meets those needs. We have placed a strong emphasis on performance whilst never losing sight of breeding the right type of sheep. On the outside they are thick, meaty, moderate, good on their feet and legs, quiet and easy doing. On the inside we have been building real performance into our sheep. Strict management of groups has improved the quality of data with no sheep no matter how good the phenotype being selected out until all data is collected. Our continual investment in high performance genetics is paying dividends and it can be seen in the overall performance of the flock compared to the Suffolk breed averages. Our constant challenge is how can we keep pushing higher performance but not compromise on the “Telpara Type” our rams are known for.

With no shows, or entire ram drop has been run as one management group, the best rams are those that rose to the top of the group. We have prepared these rams with a real focus on performance on grass, they are not necessarily the biggest rams as a result but they are the best rams, fit, fertile and carrying the genetics needed to add value to every operation.

Again we would like to welcome fellow vendors and good friends Peter & Julie Button of Ramsay Park Sheep Studs to the sale. Ramsay Park & Telpara have partnered in many rams over the years with the aim of both breeding a similar type of Suffolk for the market. The 2019 Adelaide Royal **Champion Interbreed Short Wool Ram** was a Suffolk ram bred and owned by Ramsay Park, no mean feat! Many of his sire's progeny feature in both our programs. With closely aligned breeding programs, we strongly believe that both studs can jointly offer quality genetics side by side. This year Ramsay Park has their first Hampshire Down rams on offer since the rebirth of their Hampshire Downs and the quality of rams on offer is second to none.

We are grateful to the support we have had in the past and look forward to seeing many of clients at the sale. If you can't make the sale but still need rams please feel free to call me, arrange a time and we will always do our best to help.

Thanks & kind regards
Anthony & Jude Pearce

Lambplan ASBV Definitions (Traits)

The below comments in relation to breeding objectives should only be used as a guide. Ram buyers should understand their individual markets/breeding aims and select accordingly.

- **Birth Weight (kg) BWT** Estimates the genetic difference between animals in weight at birth.
- **Weaning Weight (kg) WWT** Estimates the genetic difference between animals in live-weight at 100 days of age. The higher the better.
- **Post Weaning Weight (kg) PWWT** Estimates the genetic difference between animals in live-weight at 225 days of age. The higher the better.
- **Post Weaning Fat Depth (mm) PFAT** Estimates the genetic difference in GR fat depth at 45kg live-weight Desired level depends on breeding aims. Should not be extreme either way.
- **Post Weaning Eye Muscle Depth (mm) PEMD** Estimates the genetic difference in eye muscle depth at the C site in a 45kg live-weight animal. The higher the better.
- **Terminal Carcase Production Index (TCP)** The TCP index has been created to assist producers to achieve both gains in their major production traits, such as post-weaning weight and muscling, as well as ensuring consumer satisfaction from lamb is maintained through focusing on key eating quality traits such as shear force (tenderness) and intramuscular fat (marbling). The higher the better.
- **Shearforce (SF5) & IntraMuscular Fat (IMF)** Higher or more positive IntraMuscular Fat (IMF) breeding values are favourable. Lower or more negative Shear Force (SF5) values are favourable. SF5 & IMF has been shown to have a significant impact on the flavour, juiciness, tenderness and overall likeability of lamb.

Telpara Health Status

OJD Market Assurance Program Status MN 1V
Brucellosis Accredited Free

Ramsay Park Health Status

OJD Market Assurance Program Status MN 3
Brucellosis Accredited Free

2020 Telpara & Ramsay Park Reference Sires

SIRE CODE	Animal ID	Breed	BWT	WWT	PWT	PEMD	PFAT	IMF	SF	TCP
OAK 177075	OAKWOOD-177075	Suffolk	0.79	11.8	17.5	0.0	-0.8	-0.67	2.4	134.3
OAK 177011	OAKWOOD-177011	Suffolk	0.50	8.4	12.1	1.0	-0.5	-0.49	0.5	127.8
GC 150411	GLENCRAIG-150411	Suffolk	0.45	9.0	15.2	0.0	-0.5	-0.76	2.6	126.3
TEL 180013	TELPARA-180013	Suffolk	0.55	9.3	14.3	0.3	-0.8	-0.6	1.2	130.9
TEL 180008	TELPARA-180008	Suffolk	0.42	8.1	12.5	1.1	-0.3	-0.4	-0.7	132.3
ALL 141418	ALLENDALE-141418	Suffolk	0.52	9.5	13.5	0.0	-0.5	0.09	1.3	128.2
OAK 177011	OAKWOOD-177011	Suffolk	0.50	8.4	12.1	1.0	-0.5	-0.49	0.5	127.8
OAK 177050	OAKWOOD-177050	Suffolk	0.51	8.5	13.0	1.1	-0.3	-0.56	0.2	130.0

2020 Suffolk Rams

Lot	TAG	BT	DOB	Sire	BWT	WWT	PWT	PEMD	PFAT	IMF	SF	TCP	Purchaser & Price
1	TEL	190137	TW	Aug-19	GC 150411	0.47	8.3	13.6	0.1	-0.3	-0.38	0.63	125.8
2	TEL	190002	TW	Jun-19	OAK 177011	0.50	9.0	14.1	0.9	-0.4	-0.54	0.19	132.5
3	TEL	190039	TW	Aug-19	OAK 177075	0.67	10.9	17.2	0.0	-0.8	-0.63	2.04	133.9
4	TEL	190102	TW	Jul-19	GC 150411	0.43	8.0	13.1	0.4	-0.3	-0.34	0.24	127.4
5	TEL	190008	S	Jul-19	TEL 180013	0.50	8.7	12.9	0.4	-0.9	-0.41	-0.13	130.2
6	TEL	190012	TW	Jul-19	TEL 180013	0.52	9.4	14.4	-0.3	-1.1	-0.33	0.52	131.3
7	TEL	190139	TW	Aug-19	GC 150411	0.50	8.1	12.7	-0.2	-0.6	-0.34	1.37	122.0
8	TEL	190122	TW	Aug-19	GC 150411	0.49	7.9	11.9	0.0	-0.5	-0.29	0.51	121.9
9	TEL	190104	S	Jul-19	OAK 177075	0.62	10.1	15.1	0.3	-0.7	-0.41	0.45	134.1
10	TEL	190105	TW	Jul-19	GC 150411	0.44	8.1	13.2	0.0	-0.6	-0.42	1.83	124.5
11	TEL	190049	S	Aug-19	TEL 180013	0.60	8.6	12.9	0.3	-1.0	-0.39	-0.24	132.9
12	TEL	190018	TW	Aug-19	OAK 177075	0.69	10.5	16.0	0.0	-0.9	-0.57	1.63	132.3
13	TEL	190149	TW	Sep-19	OAK 177011	0.60	9.8	14.7	0.3	-0.5	-0.51	0.77	130.0
14	TEL	190157	S	Sep-19	OAK 177011	0.57	10.0	15.4	0.7	-0.6	-0.65	1.27	133.2
15	TEL	190024	TW	Aug-19	TEL 180013	0.54	9.0	14.2	0.5	-0.4	-0.41	0.96	131.7
16	TEL	190009	TW	Jul-19	OAK 177075	0.57	9.3	14.0	-0.2	-0.7	-0.29	0.82	126.9
17	TEL	190031	TW	Aug-19	OAK 177075	0.55	9.7	14.7	0.2	-0.6	-0.38	1.24	130.9
18	TEL	190033	S	Aug-19	OAK 177075	0.58	9.6	15.0	0.1	-0.5	-0.52	1.41	128.6
19	TEL	190112	TW	Aug-19	GC 150411	0.39	7.6	12.5	0.7	-0.2	-0.53	1.71	123.5
20	TEL	190120	TW	Aug-19	GC 150411	0.35	7.9	12.0	0.6	-0.4	-0.36	0.70	124.5

2020 Suffolk Rams

Lot	TAG	BT	DOB	Sire	BWT	WWT	PWT	PEMD	PFAT	IMF	SF	TCP	Purchaser & Price
21	TEL	190145	TW	Aug-19	GC 150411	0.44	7.5	12.3	0.7	-0.4	-0.39	0.09	126.8
22	TEL	190115	TR	Aug-19	GC 150411	0.55	8.4	13.6	0.2	-0.5	-0.43	0.39	128.9
23	TEL	190062	TW	Aug-19	TEL 180013	0.52	8.5	13.5	0.4	-0.5	-0.43	0.52	129.7
24	TEL	190114	TW	Aug-19	GC 150411	0.43	7.6	12.6	0.2	-0.2	-0.47	1.43	121.5
25	TEL	190141	TW	Aug-19	GC 150411	0.37	7.8	12.4	0.1	-0.5	-0.39	1.00	122.6
26	TEL	190020	TW	Aug-19	OAK 177075	0.40	8.0	11.9	0.9	0.0	-0.22	0.69	126.0
27	TEL	190142	TW	Aug-19	GC 150411	0.41	7.4	12.6	0.1	-0.4	-0.32	0.23	123.9
28	TEL	190151	S	Sep-19	OAK 177011	0.59	8.5	12.5	0.2	-0.9	-0.35		128.3
29	TEL	190159	TW	Sep-19	OAK 177011	0.48	8.9	13.6	1.0	-0.2	-0.49	0.58	129.8
30	TEL	190108	TW	Jul-19	GC 150411	0.58	9.6	14.8	0.2	-0.9	-0.51	2.15	130.8
31	RP	199501	S	May-19	OAK 177050	0.3	7.4	12	0.8	-0.5	-0.4	-0.24	128.5
32	RP	199500	S	May-19	OAK 177050	0.5	8.6	13	0.6	-0.4	-0.39	1.08	126.6
33	RP	199561	S	Jun-19	ALL 141418	0.43	7.7	10.9	0.6	-0.1	0.09	-0.23	123.6
34	RP	199586	TW	Jun-19	OAK 177050	0.63	7.8	11.2	0.6	-0.5	-0.38	-0.43	126.2
35	RP	199568	S	Jun-19	OAK177050	0.47	7.8	11.6	0.2	-0.9	-0.59	1.6	121.3
36	RP	199660	S	Aug-19	TEL 180008	0.5	8.8	14.1	1	-0.4	-0.61	0.75	132.4
37	RP	199650	S	Jul-19	TEL 180008	0.38	6.7	10.9	1.6	0.1	-0.33	-1.51	130.1
38	RP	199574	TW	Jun-19	ALL 141418	0.4	8.2	11.7	0.7	-0.5	-0.02	1.27	127.7
39	RP	190004	S	Jun-19	OAK 177011	0.54	8.5	12.1	0.7	-0.7	-0.53	0.63	126.8
40	RP	190010	TW	Jul-19	OAK 177075	0.55	9.9	14.7	-0.3	-0.9	-0.34	1.36	127.8

2020 Suffolk Rams

Lot	TAG	BT	DOB	Sire	BWT	WWT	PWT	PEMD	PFAT	IMF	SF	TCP	Purchaser & Price
41	TEL	190045	TW	Aug-19	OAK 177075	0.74	10.0	14.7	-0.8	0.0	-0.33	0.99	131.2
42	TEL	190043	TW	Aug-19	OAK 177075	0.73	10.1	15.6	-0.6	-1.0	-0.36	1.77	129.8
43	TEL	190030	TW	Aug-19	OAK 177075	0.64	9.5	14.5	-0.3	-0.8	-0.36	1.16	128.6
44	TEL	190035	TW	Aug-19	TEL 180013	0.52	7.9	12.5	0.4	-0.4	-0.47	0.31	126.9
45	TEL	190057	TW	Aug-19	TEL 180013	0.58	9.1	13.0	0.1	-1.1	-0.31	0.94	129.2
46	TEL	190075	TW	Aug-19	OAK 177075	0.57	9.0	12.6	0.0	-0.9	-0.41	1.31	124.5
47	TEL	190164	TR	Sep-19	OAK 177011	0.52	8.7	13.0	0.8	-0.1	-0.25	-0.88	128.3
48	TEL	190118	S	Aug-19	GC 150411	0.46	8.0	12.2	-0.4	-0.8	-0.42	2.01	119.7

2020 Ramsay Park Hampshire Down Rams

49	RP	199604	S	Jun-19	RP010077	0.49	6.8	9.8	0.64	-0.6	0.39	-2.85	126.6
50	RP	199623	S	Jul-19	WOLL 130311	0.29	7.2	9.2	1.04	0.22	0.18	-0.6	123.6
51	RP	199550	TW	Jun-19	ALL 141418	0.5	9	12.3	-0.18	-0.57	0.37	-0.17	128
52	RP	199595	TW	Jun-19	RP 010077	0.32	5.5	8.1	0.29	0.04	0.5	-2.94	119.8
53	RP	199664	S	Aug-19	WOLL 130311	0.24	6.5	8.7	1.06	-0.11	0.05	-0.27	124
54	RP	199598	S	Jun-19	RP010077	0.49	5.4	7.1	-0.16	-0.22	0.7	-3.61	117.8
55	RP	199603	S	Jun-19	RP 010077	0.3	4.8	6.6	1.2	0.34	0.51	-3.36	121.7
56	RP	199592	TW	Jun-19	RP 010077	0.32	6.1	8	1	0.47	0.41	-2.01	120

2020 Suffolk Ewes

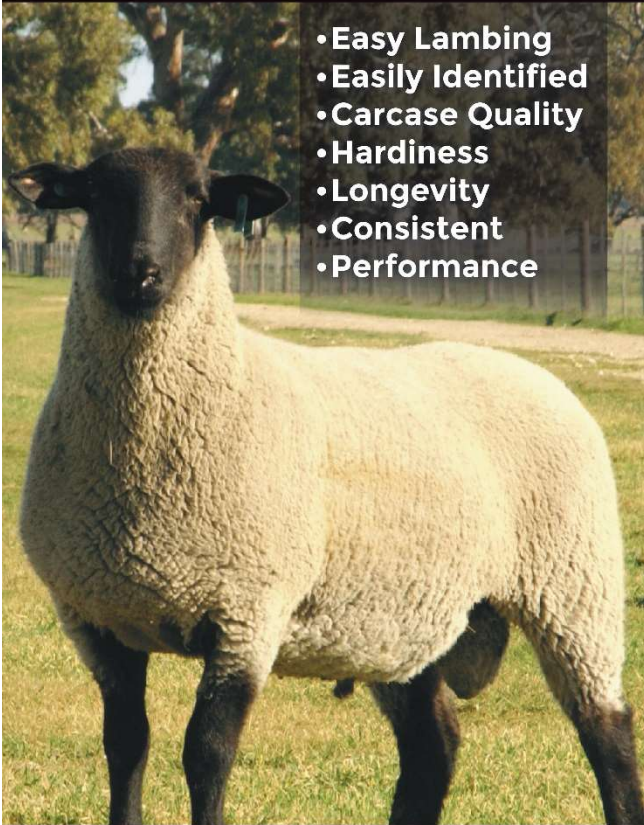
Lot	TAG	BT	DOB	Sire	BWT	WWT	PWT	PEMD	PFAT	IMF	SF	TCP	Purchaser & Price
61	TEL	190053	TW	Aug-19	OAK 177075	0.70	9.8	14.2	0.3	-0.9	-0.49	1.23	130.6
62	TEL	190037	TW	Aug-19	OAK 177075	0.66	9.3	13.5	0.4	-0.6	-0.42	0.80	130.9
63	TEL	190047	S	Aug-19	OAK 177075	0.70	10.3	15.3	-0.4	-0.9	-0.35	1.36	130.9
64	TEL	190109	TW	Jul-19	GC 150411	0.58	9.8	15.2	0.4	-0.6	-0.49	2.00	131.9
65	TEL	190005	S	Jun-19	OAK 177011	0.68	9.7	14.6	0.3	-0.7	-0.51	0.65	132.6
66	TEL	190001	S	Jun-19	OAK 177011	0.39	7.0	10.1	0.4	-0.9	-0.52	0.20	120.4
67	TEL	190124	TW	Aug-19	GC 150411	0.53	8.1	13.3	-0.3	-0.5	-0.33	0.18	124.2
68	TEL	190162	TW	Sep-19	OAK 177011	0.70	9.5	14.7	0.5	-0.3	-0.54	0.96	130.2
69	TEL	190153	TW	Sep-19	OAK 177011	0.60	9.9	15.1	0.8	-0.8	-0.55	0.21	137.2
70	TEL	190172	TW	Sep-19	OAK 177011	0.48	9.0	13.0	0.7	-0.8	-0.51	1.01	127.8
71	RP	199544	TW	Jun-19	ALL 141418	0.57	8.8	12.0	0.0	-0.4	0.23	-0.11	126.4
72	RP	199529	S	Jun-19	GC 150411	0.58	9.3	14.7	-0.1	-0.5	-0.38	2.13	127.2
73	RP	199559	S	Jun-19	ALL 141418	0.46	7.7	11.6	0.0	-0.7	0.00	0.52	124.9
74	RP	199602	TW	Jun-19	GC 150411	0.41	7.0	11.0	-0.1	-0.7	-0.36	1.57	119.8
75	RP	199628	S	Jul-19	GC 150411	0.39	7.1	11.1	-0.3	-0.4	-0.24	1.55	116.3
76	RP	199631	TW	Jul-19	ALL 141418	0.48	8.1	11.7	0.3	-0.5	0.03	0.04	126.3
77	RP	199658	S	Aug-19	RP 188574	0.50	7.6	12.6	0.1	-0.9	-0.49	1.34	126.0
78	RP	199665	S	Aug-19	GC 150403	0.35	6.6	10.3	0.5	-0.3	-0.26	0.47	120.8
79	TEL	190173	TW	Sep-19	OAK 177011	0.40	7.7	11.2	0.9	-0.5	-0.43	0.11	125.0
80	TEL	190155	TR	Sep-19	OAK 177011	0.54	8.9	12.9	-0.1	-0.5	-0.26	0.00	123.1

2020 Suffolk Ewes

81	TEL	190174	S	Sep-19	OAK 177011	0.44	7.3	10.4	0.5	-0.6	-0.39	0.99	121.6
82	TEL	190175	S	Sep-19	OAK 177011	0.49	8.4	11.9	0.7	-0.3	-0.29	-0.02	126.9
83	TEL	190184	S	Oct-19	OAK 177011	0.54	8.6	12.9	0.7	-0.4	-0.44	0.30	129.3

THE SUFFOLK ADVANTAGE

- Easy Lambing
- Easily Identified
- Carcase Quality
- Hardiness
- Longevity
- Consistent
- Performance



To find your local, registered Suffolk breeder visit:

www.suffolks.com.au

Sale location: 800 Harvey Road, Hartley SA.

Or copy and paste the link below into your browser for a Google Maps view;

<https://www.google.com.au/maps/@-35.2376083,139.0467585,5052m/data=!3m1!1e3>

Or please give Anthony, Peter or David a call and we'll give you directions.

