



# 52nd ANNUAL BULL SALE

## 2019 CATALOGUE

65 SHORTHORN BULLS FOR SALE

Friday 13 September 2019



# WEEBOLLABOLLA ANNUAL BULL SALE 2018





# 52nd ANNUAL BULL SALE

Friday 13 September 2019 - 1pm



## CONTACTS

### JEN JEFFREYS

M. 0427 700 244

E. jen.munro@weebollabolla.com.au

OFFICE

### CHERYL HOFFMAN

P. 02 6752 2319

### SANDY MUNRO

M. 0429 700 244

E. sandy.munro@weebollabolla.com.au

### ANDREW LAWERENCE

M. 0409 086 347

E. office@weebollabolla.com.au

## LIVE STREAMING

NOW AVAILABLE FROM OUR WEBSITE

[weebollabolla.com.au](http://weebollabolla.com.au)

Follow us



## AUCTIONEER

PAUL DOOLEY M. 0458 662 646



ONLINE SALES



AuctionsPlus

## SELLING AGENTS

BRUCE SHEPPARD M. 0428 531 883

ANDY McGEACH M. 0418 737 470

PAUL JAMESON M. 0428 667 998

ANDREW MEARA M. 0427 210 634

BLAKE MUNRO M. 0428 862 469

MICHAEL SMITH M. 0428 541 711

BRIAN KENNEDY M. 0427 844 047

BEN HISCOX M. 0429 669 313

BOB JAMIESON M. 0428 669 313

KEIRAN TE VELDE M. 0427 669 097

**bj** | BOB JAMIESON AGENCIES  
Stock & Station Agents



## CONTENTS

CONTACTS	1	SALE BULL PHOTOS	23, 26, 27	NH FOODS CHINESE VISIT	35
WELCOME	2	EBV QUICK REFERENCE	24, 25	SOUTHERN MULTI-BREED PROJECT	36
SALE INFORMATION	3	SALE BULLS (CONTINUED)	28	THANK YOU	37
SUMMARY REFERENCE SIRES	4	FIELD DAY 2019	33	USEFUL GUIDELINES / NOTES	38
REFERENCE SIRES	5	WINGHAM BEEF WEEK	34	PERFORMANCE HERD AUSTRALIA	40
SALE BULLS	6	VENDORS	35		



# WELCOME TO OUR 52ND ANNUAL BULL SALE



Weebollabolla Bull Sale will present an exceptional quality draft of 65 bulls for 2019. The draft started as a very large contemporary group as many saw at our 2018 Bull Sale. The decision to cut back was extremely tough, especially given the significant investment in AI programs and bull acquisitions in 2016. Further we understand many of our clients have had to scale back their breeder numbers.

Thanks to those who were able to supply steers and heifers for the Wingham Beef Exports branded product 'Australian Shorthorn Weebollabolla est 1873'. Performance of your cattle in our feedlot and Wingham's chillers has been testament to your management and our breeding program. Buying your progeny back has been powerful direct feedback. We have been so pleased with their performance. The importance of marbling has become increasingly evident with many processors providing incentives for higher MSA indexes. Wingham Beef has also introduced a 10 cent premium. We will continue to work hard to improve performance in this area- along with balancing all the important maternal traits our herd is well renowned for.

#### Sires of note are:

- Weebollabolla Jackpot J87 balanced performance has seen him sire the most sons in the sale.
- Weebollabolla Lignum L14's fat cover and marbling capability are a standout.
- The Grove K0182 produced powerhouse sons with top 1% in numerous traits- very impressive.
- Turanville Informer K126 has been another high achiever with the second highest number of sons in the sale.

In 2019 we again offer our clients the choice and confidence to buy either homozygous or heterozygous poll bulls plus a handful of horned that exceeded peer performance.

We would like to also thank the many staff in the years 2013 – 2017 who helped contribute to our 4.5 out of 5 rating for 'Completeness of Information Summary' from ABRI. The stud game is not for the faint hearted and it is certainly tough going in drought years such as 2018 and 2019 but under Andrew Lawrence's hard working efforts we look set to be on track to continue our high standards.

I would like to highlight Ben Hiscox from BJA's involvement in orchestrating Weebollabolla's massive donation of 12 Steers to 12 different high schools for the Wingham Beef Week. Grant Coleman did a fantastic job ensuring the kids understood the difference between animals that may do well in a show ring and meat quality attributes they are chasing in the chiller. A very worthy industry initiative by Wingham Beef, who should also be commended because it provides real commercial education for the next generation.

In June 2019 saw Weebollabolla participate in an R&D program to better the Australian Beef Industry through the Southern Australia Multi Breed EBV project. A project that has massive long term beneficial outcomes for the Australian beef industry. Well done to Andrew Lawrence from Weebollabolla, Jason Siddell from DPI, Matias Suarez from ABRI, Mal Burke from Tocal Ag College who helped ensure Weebollabolla genetics took part in this excellent industry initiative. This project is in-line with the foundation of Performance Herds Australia (PHA) to allow the numbers do the talking to make better genetic decisions for better industry relevant outcomes. The like-minded, forward-thinking and collaborative approach amongst our Shorthorn PHA peers has been rewarding.

In August 2019 Jason Trompf presented a *Bred Well Fed Well* workshop open to all cattle people. It was very timely given joining will soon be upon us and some will be acquiring bulls. We would highly recommend all our clients attend a session and we would be happy to offer our clients this service in 2020. The positive feedback was overwhelming. Please let us know if you have any interest.

Who knows what 2020 will bring but hopefully some moisture - it is great to see some parts of QLD and NSW out of drought but the majority of soil profiles have a long way to go. For this reason the beef industry outlook is very solid due to a substantial reduction in female numbers. However sanity and financial consideration must be adhered too when feeding livestock - it is expensive and at times mentally challenging given the many uncertainties. Look after yourself and family wellbeing first.

**We look forward to your feedback on the bulls and our beef on the day.**

**The Munro Family**



# SALE INFORMATION

## DIRECTIONS

From Moree take the Gwydir Highway (Inverell Road) and travel 3.2km after the 100km speed zone (next to Weebolla Bulls Rugby Fields). Turn right onto Terry Hie Hie road. Travel another 2km, Weebollabolla sale complex is on your right.

From Inverell heading West Turn left at Terry Hie Hie sign and travel 2km the sale complex is on your right. If you hit the Weebolla Bulls Rugby Fields you missed the turn off.

## INSPECTION

Cattle will be available for inspection from 8.30am on the morning of the sale. Inspections are most welcome prior to the sale, please contact **Andrew Lawrence 0409 086 347** to arrange a time.

## START TIME

1pm sharp.

## BREEDING GUARANTEE

Our bulls have a breeding guarantee. Any issues please contact **Jen 0427 700 244** or **Andrew 0409 086 347**.

## REBATE

A rebate of 4% to outside agents and 1% to those who do not attend the sale.

## BUYER INSTRUCTION SLIP

No verbal instructions will be accepted. In the interest of buyers all instructions concerning the delivery of stock purchased at this sale must be given in writing and signed by the buyer or their representative.

## ACCOMMODATION

We recommend the Spa Village Travel Inn 02 6752 4033 or the Albert Motel 02 6751 1040.

## INSURANCE

Representatives will be available. We do recommend insurance for at least the first joining ie 6 months particularly for expensive bulls in the case of an unforeseen accident.

## FREIGHT

We will deliver free to major Regional centres.

## REFRESHMENTS

Morning tea will be available from 9am and our famous Weebollabolla steak and drinks will be provided from 11am.

## MANAGEMENT

2019 Sale Draft were finished on a failed barley crop.

On 16th July 2019 the bulls scrotals were measured, semen tested and examined for structure by Peter Brown Bovine Breeders. Please note the ideal time to semen test is within 6 weeks of joining.

We maintain the minimum circumference for Scrotal Measurement is 35cm.

On 4th September 2019 bulls were scanned (EMA, Fat Depth and IMF%) and weighed by Roger Evans.

In 2019 all bulls have been treated for lice with Incarcerate and received 7 in 1 booster, and both Vibrio and Pestiguard shots.

## SAFETY AROUND BULLS

Reminder visitors enter the cattle pens at their own risk. Children are not permitted to enter the pens.

All the sale bulls have been assessed for temperament and are quiet to handle under normal circumstances. However, they are used to being in a large contemporary group and we cannot predict nor guarantee their behaviour on Sale Day. Be especially alert for bulls fighting. We do not expect the bulls to be aggressive with humans, but sale day places abnormal pressure on them as they experience an entirely foreign environment. Please do not crowd the bulls or loiter inside the pens. Even the quietest of bull is an unpredictable animal.

## DISCLAIMER

Whilst all care and attention to detail has been made in accurately compiling this catalogue, neither the vendor, selling agents or representatives will assume any responsibility for the correctness, use or interpretation of information included in this sale catalogue.

We reserve the right to use semen either already collected or when convenient for new owner to collect.

## WE'RE ONLINE

We will be live streaming our sale. Representatives will be available on Sale Day with mobiles. Please call Jen to discuss 0427 700 244. Videos of sample lots will be available on Bulls available on Auctions Plus at [auctionsplus.com.au](http://auctionsplus.com.au)

Follow us on Facebook and Instagram - Weebollabolla Shorthorns or visit our webpage [weebollabolla.com.au](http://weebollabolla.com.au) to view latest news and sign up to our mailing list ensuring you don't miss out on any updates.



Follow us  

## SUMMARY REFERENCE SIREs

Sire	Identity	Colour	CED	CEM	GL	BWt	200D	400D	600D	MCW	MILK	SS	DTC	CWT	EMA	RIB	RUMP	RBV%	IMF%	Docility	LOT NUMBERS
ARUBIAL K43 (P)	MYMK43	RED	-5	-1.9	-1.5	3.9	27	33	50	56	7	2	-1.1	40	7.4	-1.1	-2.3	2.5	0.5	2	48, 50
THE GROVE K0182 (P)	BDBK0182	RED	3.1	2.4	-3.5	3.9	34	47	74	50	8	3.4	-5.7	45	4.9	-1.4	-2.7	2.6	0.3	6.7	4, 10, 11, 46, 65
THE GROVE L0140 (P) (AI)	BDBL0140	RED	3.4	3.6	-3.7	0.7	27	31	43	30	7	2.2	-5.3	36	1.9	-0.5	-1	0.8	0.5	9.7	27, 34
MARELLAN NUCLEAR F215 (P) (AI)	JOBF215	ROAN	2.5	-0.7	-1.1	4	32	43	60	49	7	1.2	4.1	45	5.5	0.9	-0.1	0.7	0.2	13.1	8, 55
ROYALLA ROMEO K267 (P) (AI)	JSNK267	RLW	5.1	2.6	-3.1	1.3	25	31	44	30	8	1.9	-2.6	36	2.5	-0.5	-0.9	1.1	0.4		3, 63
TURANVILLE INFORMER K126 (P) (AI)	DRRK126	ROAN	-9.2	-3.7	-0.7	5.9	37	49	70	80	5	2.8	-0.5	48	5.2	-0.7	-1.2	1	0.6	-6.9	2, 9, 24, 30, 52, 58, 62, 64
WEEBOLLABOLLA GOODAR G105 (P) (AI)	AGFG105	R&W	7.6	4.6	-6.1	0	29	33	56	37	11	2.6	-4.8	42	3.4	-1.1	-1.7	1.5	0.4	-2.4	40, 44, 51
WEEBOLLABOLLA HALLMARK H206 (P)	AGFH206	RED	-6.9	-0.6	-1.2	5.4	35	47	80	62	7	1.7	2.3	44	6.2	-1.2	-2.7	2.1	0.2		22
WEEBOLLABOLLA HERCULES H20 (P) (AI)	AGFH20	RED	4.6	3.9	0.9	1.7	27	29	45	19	8	0.3	4.3	35	2.9	0	-0.2	1.1	0.3	0.3	16, 17, 41, 54, 57
WEEBOLLABOLLA JACKPOT J87 (S)	AGFJ87	RED	-2.2	1.7	-1.5	4.6	33	54	85	80	5	2.8	-2	48	5.7	-1.1	-1.1	2.1	0.1	10.4	5, 6, 12, 14, 18, 19, 20, 21, 23, 33, 36, 43, 56, 60
WEEBOLLABOLLA KAMILAROI K152 (P)	AGFK152	ROAN	-1.5	-0.8	-0.1	3.8	30	37	49	37	8	0.3	3.9	36	4.8	0.9	0.5	0.4	0.5	14.4	7, 25, 32, 37, 38, 59
WEEBOLLABOLLA KINDRED K7 (S) (AI)	AGFK7	ROAN	0.7	0.3	0.2	2.1	23	24	37	10	11	0.7	3.6	29	5.5	0.4	-0.3	1.7	0.4	3.8	29, 39
WEEBOLLABOLLA LEISHMAN L34 (P) (AI)	AGFL34	RLW	6.9	3.8	-6.5	-1.1	20	26	32	33	8	2.2	-5.1	33	2.7	-1	-0.7	0.9	0.3	-9	45
WEEBOLLABOLLA LIGNUM L14 (P) (AI)	AGFL14	ROAN	6.9	3.2	-1	-0.4	22	36	49	19	7	1.5	-1.3	36	0.9	0.4	0.6	0.4	1.1	-6.9	1, 13, 15, 28, 31, 35, 47, 61
YAMBURGAN OSSIE G10 (P)	YY G10	RED	5.6	1.2	-3.8	1.1	24	41	49	50	3	1.9	-6.5	33	4.1	0.1	0.7	0.9	0.7	4.8	26, 42
Perf Herd Breed Average			0.2	0.3	-1.2	3.1	29	39	52	46	7	1.8	-1.2	37	3.8	-0.5	-0.6	1.1	0.5	3.7	

BASED ON RESULTS FROM JULY 2019 GROUP BREEDPLAN

■ Top 1% EBVs and Indices   
 ■ Top 5% EBVs and Indices   
 ■ Top 10% EBVs and Indices   
 ■ Top 20% EBVs and Indices   
 ■ MCW less than 600 day growth







**LOT 1**

**WEEBOLLABOLLA NAPCO N123 (P)**

BORN:	23/07/2017	THE GROVE J0598 (P)	WEEBOLLABOLLA FINLAY F120 (S)
IDENTITY:	AGFN123	SIRE: WEEBOLLABOLLA LIGNUM L14 (P) (AI)	DAM: WEEBOLLABOLLA DAYLIGHT K63 (P)
COLOUR:	RED	WEEBOLLABOLLA VIGILANCE J112 (P)	WEEBOLLABOLLA DAYLIGHT D15 (P)

DAM NO. OF PROGENY: 2 DNA BARCODE: 13109126 TRAITS OBSERVED: CE, BWT, 200WT, 400WT(X2), 600WT(X2), SS, FAT, EMA, IMF, DOC

**AUGUST 2019 PERFORMANCE HERDS AUSTRALIA BREEDPLAN**

CED	CEM	GL	BWt	200D	400D	600D	MCW	MILK	SS	DTC	CWT	EMA	RIB	RUMP	RBV%	IMF%	Docility
3.8	1.9	-1.1	2.2	30	46	73	53	4	2.1	-0.5	45	3.1	-0.7	-0.9	1.3	0.5	-21.7
38%	29%	41%	73%	68%	70%	72%	60%	35%	69%	42%	56%	54%	60%	61%	54%	45%	46%

**RAW DATA**

SUPPLIED ON SALE DAY **zoetis** HOMOZYGOUS POLL

Scrotal Size*	Weight	P8	RIB	EMA	IFM%
38					

**LOT 1**  
PURCHASER: \$

NOTES / COMMENTS:

**LOT 2**

**WEEBOLLABOLLA NEWTON N139 (P)**

BORN:	27/07/2017	THE GROVE F516 (H)	YAMBURGAN LOCKYER C8 (P)
IDENTITY:	AGFN139	SIRE: TURANVILLE INFORMER K126 (P) (AI)	DAM: WEEBOLLABOLLA WORKABLE H42 (P) (AI)
COLOUR:	ROAN	TURANVILLE G95 (P) (AI)	WEEBOLLABOLLA WORKABLE Z9 (P)

DAM NO. OF PROGENY: 4 DNA BARCODE: 13109141 TRAITS OBSERVED: CE, BWT, 200WT, 400WT(X2), 600WT(X2), SS, FAT, EMA, IMF, DOC

**AUGUST 2019 PERFORMANCE HERDS AUSTRALIA BREEDPLAN**

CED	CEM	GL	BWt	200D	400D	600D	MCW	MILK	SS	DTC	CWT	EMA	RIB	RUMP	RBV%	IMF%	Docility
-6.2	-2.5	-1.2	5.4	34	50	64	80	4	1.7	1.4	45	5.2	-1	-1.5	1.3	0.3	-2.8
37%	29%	48%	72%	67%	69%	71%	59%	38%	70%	42%	53%	51%	57%	57%	51%	42%	43%

**RAW DATA**

SUPPLIED ON SALE DAY **zoetis** HETEROZYGOUS POLL

Scrotal Size*	Weight	P8	RIB	EMA	IFM%
40					

**LOT 2**  
PURCHASER: \$

NOTES / COMMENTS:

**LOT 3**

**WEEBOLLABOLLA NIC N54 (S)**

BORN:	06/07/2017	WEEBOLLABOLLA GOODAR G105 (P) (AI)	THE GROVE G0377 (P)
IDENTITY:	AGFN54	SIRE: ROYALLA ROMEO K267 (P) (AI)	DAM: WEEBOLLABOLLA BEAUTY L10 (P) (AI)
COLOUR:	RED & WHITE	ROYALLA SUSAN 9200M (P)	WEEBOLLABOLLA BEAUTY J111 (P)

DAM NO. OF PROGENY: 2 DNA BARCODE: 13109055 TRAITS OBSERVED: CE, BWT, 200WT, 400WT(X2), 600WT(X2), SS, FAT, EMA, IMF, DOC

**AUGUST 2019 PERFORMANCE HERDS AUSTRALIA BREEDPLAN**

CED	CEM	GL	BWt	200D	400D	600D	MCW	MILK	SS	DTC	CWT	EMA	RIB	RUMP	RBV%	IMF%	Docility
		-0.7	4.2	34	54	62	52	6	2.9	-4.6	37	1.6	-0.4	-0.4	0.5	0.1	6
		35%	66%	61%	63%	67%	51%	26%	65%	33%	44%	45%	54%	54%	47%	35%	26%

**RAW DATA**

SUPPLIED ON SALE DAY **zoetis** HETEROZYGOUS POLL

Scrotal Size*	Weight	P8	RIB	EMA	IFM%
42					

**LOT 3**  
PURCHASER: \$

NOTES / COMMENTS:

Top 1% EBVs and Indicies Top 5% EBVs and Indicies Top 10% EBVs and Indicies Top 20% EBVs and Indicies MCW less than 600 day growth





**LOT 4 WEEBOLLABOLLA NORTON N94 (P)**

BORN:	17/07/2017	WEEBOLLABOLLA GOODAR G105 (P) (AI)	FUTURITY DOZER (P) (AI)
IDENTITY:	AGFN94	SIRE: THE GROVE K0182 (P)	DAM: WEEBOLLABOLLA DEFINE G215 (P)
COLOUR:	RED LITTLE WHITE	THE GROVE F526 (P)	WEEBOLLABOLLA DEFINE D148 (P)

DAM NO. OF PROGENY: 6 DNA BARCODE: 13109101 TRAITS OBSERVED: CE, BWT, 200WT, 400WT(X2), 600WT(X2), SS, FAT, EMA, IMF, DOC

**AUGUST 2019 PERFORMANCE HERDS AUSTRALIA BREEDPLAN**

CED	CEM	GL	BWt	200D	400D	600D	MCW	MILK	SS	DTC	CWT	EMA	RIB	RUMP	RBV%	IMF%	Docility
2.4	1.5	-1.8	3.4	34	56	72	50	7	2.1	-3.1	44	3.8	-1.5	-2.8	2.1	0.3	1
39%	28%	48%	74%	69%	70%	73%	60%	38%	68%	42%	55%	54%	61%	61%	54%	44%	46%

**RAW DATA** SUPPLIED ON SALE DAY *zoetis* HOMOZYGOUS POLL

Scrotal Size*	Weight	P8	RIB	EMA	IFM%
38					

**LOT 4**  
PURCHASER: \$

NOTES / COMMENTS:

**LOT 5 WEEBOLLABOLLA NOVEMBER RAIN N74 (P)**

BORN:	12/07/2017	WEEBOLLABOLLA FINLAY F120 (S)	BUNDALEER UNITED CHIEF U21 (P)
IDENTITY:	AGFN74	SIRE: WEEBOLLABOLLA JACKPOT J87 (S)	DAM: WEEBOLLABOLLA BUSH BALLAD K2 (AI)
COLOUR:	ROAN	WEEBOLLABOLLA CIRROCUMULUS C117 (P)	WEEBOLLABOLLA BUSH BALLAD H129 (P)

DAM NO. OF PROGENY: 2 DNA BARCODE: 13198552 TRAITS OBSERVED: CE, BWT, 200WT, 400WT(X2), 600WT(X2), SS, FAT, EMA, IMF, DOC

**AUGUST 2019 PERFORMANCE HERDS AUSTRALIA BREEDPLAN**

CED	CEM	GL	BWt	200D	400D	600D	MCW	MILK	SS	DTC	CWT	EMA	RIB	RUMP	RBV%	IMF%	Docility
3.2	4.1	-0.9	0.7	24	34	55	42	9	1.6	-0.9	38	3.7	0.3	1.5	1	0.3	3.2
41%	30%	40%	74%	69%	71%	73%	61%	40%	71%	45%	57%	56%	62%	62%	56%	47%	49%

**RAW DATA** SUPPLIED ON SALE DAY *zoetis* HOMOZYGOUS POLL

Scrotal Size*	Weight	P8	RIB	EMA	IFM%
35					

**LOT 5**  
PURCHASER: \$

NOTES / COMMENTS:

**LOT 6 WEEBOLLABOLLA NUCLEAR N233 (P)**

BORN:	14/08/2017	WEEBOLLABOLLA FINLAY F120 (S)	YAMBURGAN TOBERMOREY F090 (P)
IDENTITY:	AGFN233	SIRE: WEEBOLLABOLLA JACKPOT J87 (S)	DAM: WEEBOLLABOLLA CHEMISTRY K4014 (P) (AI) (ET)
COLOUR:	RED & WHITE	WEEBOLLABOLLA CIRROCUMULUS C117 (P)	WEEBOLLABOLLA CHEMISTRY C123 (P)

DAM NO. OF PROGENY: 4 DNA BARCODE: 13109241 TRAITS OBSERVED: CE, BWT, 200WT, 400WT(X2), 600WT(X2), SS, FAT, EMA, IMF, DOC

**AUGUST 2019 PERFORMANCE HERDS AUSTRALIA BREEDPLAN**

CED	CEM	GL	BWt	200D	400D	600D	MCW	MILK	SS	DTC	CWT	EMA	RIB	RUMP	RBV%	IMF%	Docility
-3.5	1.5	-0.6	5.7	39	59	97	83	5	1.9	1.4	53	6.4	-1	-1.8	2.3	0	8.7
40%	29%	32%	74%	70%	71%	74%	61%	40%	71%	43%	57%	56%	63%	63%	57%	47%	46%

**RAW DATA** SUPPLIED ON SALE DAY *zoetis* HOMOZYGOUS POLL

Scrotal Size*	Weight	P8	RIB	EMA	IFM%
37					

**LOT 6**  
PURCHASER: \$

NOTES / COMMENTS:

Top 1% EBVs and Indicies Top 5% EBVs and Indicies Top 10% EBVs and Indicies Top 20% EBVs and Indicies MCW less than 600 day growth



**LOT 7**

**WEEBOLLABOLLA NULLAMANNA N221 (P)**

BORN:	11/08/2017	MARELLAN NUCLEAR F215 (P) (AI)	WEEBOLLABOLLA EXCEPTIONAL E110 (P)
IDENTITY:	AGFN221	SIRE: WEEBOLLABOLLA KAMILAROI K152 (P)	DAM: WEEBOLLABOLLA YONDER J316 (P)
COLOUR:	ROAN	WEEBOLLABOLLA WATERFALL G224 (P)	WEEBOLLABOLLA YONDER F390 (P)

DAM NO. OF PROGENY: 5 DNA BARCODE: 13109229 TRAITS OBSERVED: CE, BWT, 200WT, 400WT(X2), 600WT(X2), SS, FAT, EMA, IMF, DOC

**AUGUST 2019 PERFORMANCE HERDS AUSTRALIA BREEDPLAN**

CED	CEM	GL	BWt	200D	400D	600D	MCW	MILK	SS	DTC	CWT	EMA	RIB	RUMP	RBV%	IMF%	Docility
-7	-3.3	0.2	6.8	38	56	79	65	8	1.1	3.8	43	6.2	-0.1	-1	1.3	0.4	19
36%	26%	28%	72%	68%	69%	72%	59%	38%	68%	39%	53%	51%	59%	59%	52%	42%	39%

**RAW DATA** SUPPLIED ON SALE DAY **zoetis** HOMOZYGOUS POLL

Scrotal Size*	Weight	P8	RIB	EMA	IFM%
36					

**LOT 7**  
PURCHASER: \$

NOTES / COMMENTS:

**LOT 8**

**WEEBOLLABOLLA NICOL N340 (P)**

BORN:	14/07/2017	WEEBOLLABOLLA THEODORE T85 (P)	WEEBOLLABOLLA FERRINTOSH F123 (H)
IDENTITY:	AGFN340	SIRE: MARELLAN NUCLEAR F215 (P) (AI)	DAM: WEEBOLLABOLLA ARDULLIE H378 (H)
COLOUR:	ROAN	MARELLAN SUSAN 8228L (P)	WEEBOLLABOLLA ARDULLIE F582 (P)

DAM NO. OF PROGENY: 2 DNA BARCODE: 13082314 TRAITS OBSERVED: CE, BWT, 200WT, 400WT(X2), 600WT, SS, FAT, EMA, IMF, DOC

**AUGUST 2019 PERFORMANCE HERDS AUSTRALIA BREEDPLAN**

CED	CEM	GL	BWt	200D	400D	600D	MCW	MILK	SS	DTC	CWT	EMA	RIB	RUMP	RBV%	IMF%	Docility
-2.8	-3.5	-0.4	6.1	36	56	79	68	5	1.2	3.3	46	5.3	0.5	-0.2	0.8	0.4	5.7
42%	34%	35%	74%	69%	71%	72%	61%	47%	70%	46%	57%	55%	61%	61%	54%	47%	49%

**RAW DATA** SUPPLIED ON SALE DAY **zoetis** HETEROZYGOUS POLL

Scrotal Size*	Weight	P8	RIB	EMA	IFM%
37					

**LOT 8**  
PURCHASER: \$

NOTES / COMMENTS:

**LOT 9**

**WEEBOLLABOLLA NATION N172 (P)**

BORN:	03/08/2017	THE GROVE F516 (H)	WEEBOLLABOLLA GUNTHORPE G166 (P) (AI)
IDENTITY:	AGFN172	SIRE: TURANVILLE INFORMER K126 (P) (AI)	DAM: WEEBOLLABOLLA WIKIPEDIA K376 (H)
COLOUR:	ROAN	TURANVILLE G95 (P) (AI)	WEEBOLLABOLLA WIKIPEDIA F255 (P)

DAM NO. OF PROGENY: 5 DNA BARCODE: 13109178 TRAITS OBSERVED: CE, BWT, 200WT, 400WT(X2), 600WT(X2), SS, FAT, EMA, IMF, DOC

**AUGUST 2019 PERFORMANCE HERDS AUSTRALIA BREEDPLAN**

CED	CEM	GL	BWt	200D	400D	600D	MCW	MILK	SS	DTC	CWT	EMA	RIB	RUMP	RBV%	IMF%	Docility
-5.6	-4.2	0.3	5.9	36	49	74	62	7	1.7	3.7	45	5.2	-1	-2.3	1.6	0.5	2.8
35%	27%	41%	71%	67%	68%	72%	57%	34%	68%	40%	53%	52%	60%	60%	53%	43%	41%

**RAW DATA** SUPPLIED ON SALE DAY **zoetis** HETEROZYGOUS POLL

Scrotal Size*	Weight	P8	RIB	EMA	IFM%
39					

**LOT 9**  
PURCHASER: \$

NOTES / COMMENTS:

Top 1% EBVs and Indicies Top 5% EBVs and Indicies Top 10% EBVs and Indicies Top 20% EBVs and Indicies MCW less than 600 day growth





**LOT 10** WEEBOLLABOLLA NULLABOR N129 (P)

BORN:	25/07/2017	WEEBOLLABOLLA GOODAR G105 (P) (AI)	WEEBOLLABOLLA CENTURION C149 (P)
IDENTITY:	AGFN129	SIRE: THE GROVE K0182 (P)	DAM: WEEBOLLABOLLA DAYLIGHT J124 (P)
COLOUR:	ROAN	THE GROVE F526 (P)	WEEBOLLABOLLA DAYLIGHT D15 (P)

DAM NO. OF PROGENY: 7 DNA BARCODE: 13109133 TRAITS OBSERVED: CE, BWT, 200WT, 400WT(X2), 600WT, SS, FAT, EMA, IMF, DOC

**AUGUST 2019 PERFORMANCE HERDS AUSTRALIA BREEDPLAN**

CED	CEM	GL	BWt	200D	400D	600D	MCW	MILK	SS	DTC	CWT	EMA	RIB	RUMP	RBV%	IMF%	Docility
0.3	1.6	-1.2	5.1	37	56	87	76	6	2.5	-1.9	50	5.3	-1.4	-2	2.1	0.2	-12.2
42%	31%	50%	74%	69%	70%	71%	60%	39%	70%	45%	55%	52%	58%	58%	52%	44%	47%

**RAW DATA** SUPPLIED ON SALE DAY *zoetis* HOMOZYGOUS POLL

Scrotal Size*	Weight	P8	RIB	EMA	IFM%
37					

**LOT 10**  
PURCHASER: \$

NOTES / COMMENTS:

**LOT 11** WEEBOLLABOLLA NARRALDA N127 (P)

BORN:	24/07/2017	WEEBOLLABOLLA GOODAR G105 (P) (AI)	YAMBURGAN LOCKYER 29TH (P)
IDENTITY:	AGFN127	SIRE: THE GROVE K0182 (P)	DAM: WEEBOLLABOLLA BUSH BALLAD E92 (P)
COLOUR:	RED	THE GROVE F526 (P)	WEEBOLLABOLLA BUSH BALLAD B97 (P)

DAM NO. OF PROGENY: 3 DNA BARCODE: 13109129 TRAITS OBSERVED: CE, BWT, 200WT, 400WT(X2), 600WT(X2), SS, FAT, EMA, IMF, DOC

**AUGUST 2019 PERFORMANCE HERDS AUSTRALIA BREEDPLAN**

CED	CEM	GL	BWt	200D	400D	600D	MCW	MILK	SS	DTC	CWT	EMA	RIB	RUMP	RBV%	IMF%	Docility
1.2	0.7	-2	3.3	28	34	56	46	6	2.1	-1.2	37	4.5	-0.5	-0.4	1.5	0.4	-7.5
41%	30%	47%	74%	70%	71%	74%	61%	41%	70%	45%	56%	55%	62%	62%	55%	45%	46%

**RAW DATA** SUPPLIED ON SALE DAY *zoetis* HETEROZYGOUS POLL

Scrotal Size*	Weight	P8	RIB	EMA	IFM%
37					

**LOT 11**  
PURCHASER: \$

NOTES / COMMENTS:

**LOT 12** WEEBOLLABOLLA NUNDELE N45 (P)

BORN:	03/07/2017	WEEBOLLABOLLA FINLAY F120 (S)	THE GROVE OSCAR A748 (P)
IDENTITY:	AGFN45	SIRE: WEEBOLLABOLLA JACKPOT J87 (S)	DAM: WEEBOLLABOLLA NINDETHANA K4002 (P) (AI) (ET)
COLOUR:	ROAN	WEEBOLLABOLLA CIRROCUMULUS C117 (P)	WEEBOLLABOLLA NINDETHANA Z169 (P) (AI) (ET)

DAM NO. OF PROGENY: 4 DNA BARCODE: 13198551 TRAITS OBSERVED: CE, BWT, 200WT, 400WT(X2), 600WT(X2), SS, FAT, EMA, IMF, DOC

**AUGUST 2019 PERFORMANCE HERDS AUSTRALIA BREEDPLAN**

CED	CEM	GL	BWt	200D	400D	600D	MCW	MILK	SS	DTC	CWT	EMA	RIB	RUMP	RBV%	IMF%	Docility
2	3.4	-2.5	2	27	44	70	65	4	2.4	-4	44	4.2	-1.2	-1.6	2.1	0.3	4.9
41%	33%	35%	73%	70%	71%	74%	61%	42%	71%	45%	58%	56%	63%	63%	57%	48%	48%

**RAW DATA** SUPPLIED ON SALE DAY *zoetis* POLLHORN TEST RESUBMIT TBA

Scrotal Size*	Weight	P8	RIB	EMA	IFM%
37					

**LOT 12**  
PURCHASER: \$

NOTES / COMMENTS:

Top 1% EBVs and Indicies Top 5% EBVs and Indicies Top 10% EBVs and Indicies Top 20% EBVs and Indicies MCW less than 600 day growth



**LOT 13 WEEBOLLABOLLA NED N97 (P)**

BORN:	18/07/2017	THE GROVE J0598 (P)	MARELLAN NUCLEAR F215 (P) (AI)
IDENTITY:	AGFN97	SIRE: WEEBOLLABOLLA LIGNUM L14 (P) (AI)	DAM: WEEBOLLABOLLA CAROL K87 (H)
COLOUR:	RED	WEEBOLLABOLLA VIGILANCE J112 (P)	WEEBOLLABOLLA CAROL F219 (P)

DAM NO. OF PROGENY: 3 DNA BARCODE: 13109100 TRAITS OBSERVED: CE, BWT, 200WT, 400WT(X2), 600WT(X2), SS, FAT, EMA, IMF, DOC

**AUGUST 2019 PERFORMANCE HERDS AUSTRALIA BREEDPLAN**

CED	CEM	GL	BWt	200D	400D	600D	MCW	MILK	SS	DTC	CWT	EMA	RIB	RUMP	RBV%	IMF%	Docility
2.4	0.1	-0.7	4	32	50	63	45	8	0.8	2.9	38	3.2	-0.5	-1.3	0.9	0.6	3.6
39%	28%	41%	74%	69%	71%	73%	60%	36%	70%	43%	56%	55%	62%	62%	55%	46%	46%

**RAW DATA** SUPPLIED ON SALE DAY **zoetis** HETEROZYGOUS POLL

Scrotal Size*	Weight	P8	RIB	EMA	IFM%
37					

**LOT 13**  
PURCHASER: \$

NOTES / COMMENTS:

**LOT 14 WEEBOLLABOLLA NEWINGA N83 (P)**

BORN:	14/07/2017	WEEBOLLABOLLA FINLAY F120 (S)	WEEBOLLABOLLA HERCULES H20 (P) (AI)
IDENTITY:	AGFN83	SIRE: WEEBOLLABOLLA JACKPOT J87 (S)	DAM: WEEBOLLABOLLA SYMPHONY K186 (P)
COLOUR:	ROAN	WEEBOLLABOLLA CIRROCUMULUS C117 (P)	WEEBOLLABOLLA SYMPHONY H215 (P)

DAM NO. OF PROGENY: 3 DNA BARCODE: 13109085 TRAITS OBSERVED: CE, BWT, 200WT, 400WT(X2), 600WT, FAT, EMA, IMF, DOC

**AUGUST 2019 PERFORMANCE HERDS AUSTRALIA BREEDPLAN**

CED	CEM	GL	BWt	200D	400D	600D	MCW	MILK	SS	DTC	CWT	EMA	RIB	RUMP	RBV%	IMF%	Docility
-2.2	1.4	-0.8	4.3	30	41	72	52	5	1.6	0.5	40	5.1	-0.2	-0.1	1.6	0.2	6.9
39%	27%	33%	73%	69%	71%	73%	60%	39%	54%	38%	56%	55%	61%	61%	55%	46%	46%

**RAW DATA** SUPPLIED ON SALE DAY **zoetis** HETEROZYGOUS POLL

Scrotal Size*	Weight	P8	RIB	EMA	IFM%
39					

**LOT 14**  
PURCHASER: \$

NOTES / COMMENTS:

**LOT 15 WEEBOLLABOLLA NYMBOIDA N120 (P)**

BORN:	23/07/2017	THE GROVE J0598 (P)	THE GROVE OSCAR A748 (P)
IDENTITY:	AGFN120	SIRE: WEEBOLLABOLLA LIGNUM L14 (P) (AI)	DAM: WEEBOLLABOLLA NINDETHANA K4001 (P) (AI) (ET)
COLOUR:	ROAN	WEEBOLLABOLLA VIGILANCE J112 (P)	WEEBOLLABOLLA NINDETHANA Z169 (P) (AI) (ET)

DAM NO. OF PROGENY: 3 DNA BARCODE: 13109123 TRAITS OBSERVED: CE, BWT, 200WT, 400WT(X2), 600WT(X2), SS, FAT, EMA, IMF, DOC

**AUGUST 2019 PERFORMANCE HERDS AUSTRALIA BREEDPLAN**

CED	CEM	GL	BWt	200D	400D	600D	MCW	MILK	SS	DTC	CWT	EMA	RIB	RUMP	RBV%	IMF%	Docility
3.2	2.4	-1.5	1.2	24	28	51	38	5	1.5	-2.6	34	3.4	0.9	1.7	0.5	0.8	-3.3
41%	33%	44%	73%	69%	71%	74%	61%	39%	71%	45%	57%	56%	62%	62%	56%	47%	47%

**RAW DATA** SUPPLIED ON SALE DAY **zoetis** HETEROZYGOUS POLL

Scrotal Size*	Weight	P8	RIB	EMA	IFM%
36					

**LOT 15**  
PURCHASER: \$

NOTES / COMMENTS:

Top 1% EBVs and Indicies Top 5% EBVs and Indicies Top 10% EBVs and Indicies Top 20% EBVs and Indicies MCW less than 600 day growth





**LOT 16 WEEBOLLABOLLA NEBREAN N32 (P) (AI)**

BORN:	02/07/2017	BUNDALEER UNITED CHIEF U21 (P)	WOOLCOTT H287 (P)
IDENTITY:	AGFN32	SIRE: WEEBOLLABOLLA HERCULES H20 (P) (AI)	DAM: WEEBOLLABOLLA DARWIN L248 (P)
COLOUR:	RED	WEEBOLLABOLLA TALE F292 (P)	WEEBOLLABOLLA DARWIN D136 (P)

DAM NO. OF PROGENY: 2 DNA BARCODE: 13198553 TRAITS OBSERVED: CE, BWT, 200WT, 400WT(X2), 600WT(X2), SS, FAT, EMA, IMF, DOC

**AUGUST 2019 PERFORMANCE HERDS AUSTRALIA BREEDPLAN**

CED	CEM	GL	BWt	200D	400D	600D	MCW	MILK	SS	DTC	CWT	EMA	RIB	RUMP	RBV%	IMF%	Docility
1	0.1	0.1	4	30	39	54	34	6	1.4	1.5	33	3.2	0.1	0.1	0.7	0.4	5.5
40%	28%	43%	73%	69%	70%	73%	61%	41%	69%	42%	56%	54%	61%	61%	54%	45%	44%

**RAW DATA** SUPPLIED ON SALE DAY **zoetis** HETEROZYGOUS POLL

Scrotal Size*	Weight	P8	RIB	EMA	IFM%
37					

**LOT 16**  
PURCHASER: \$

NOTES / COMMENTS:

**LOT 17 WEEBOLLABOLLA NULLICA N39 (S) (AI)**

BORN:	03/07/2017	BUNDALEER UNITED CHIEF U21 (P)	YAMBURGAN OSSIE G10 (P)
IDENTITY:	AGFN39	SIRE: WEEBOLLABOLLA HERCULES H20 (P) (AI)	DAM: WEEBOLLABOLLA BOOLA L236 (P)
COLOUR:	RED	WEEBOLLABOLLA TALE F292 (P)	WEEBOLLABOLLA BOOLA H355 (P) (AI)

DAM NO. OF PROGENY: 3 DNA BARCODE: 13109038 TRAITS OBSERVED: CE, BWT, 200WT, 400WT(X2), 600WT(X2), SS, FAT, EMA, IMF, DOC

**AUGUST 2019 PERFORMANCE HERDS AUSTRALIA BREEDPLAN**

CED	CEM	GL	BWt	200D	400D	600D	MCW	MILK	SS	DTC	CWT	EMA	RIB	RUMP	RBV%	IMF%	Docility
6.1	4.2	-1	0.2	23	34	54	25	6	0.8	-0.3	38	2.5	1	2.3	0.5	0.4	5.8
41%	30%	47%	73%	69%	70%	73%	61%	42%	69%	44%	56%	55%	62%	62%	55%	46%	45%

**RAW DATA** SUPPLIED ON SALE DAY **zoetis** HETEROZYGOUS POLL

Scrotal Size*	Weight	P8	RIB	EMA	IFM%
36					

**LOT 17**  
PURCHASER: \$

NOTES / COMMENTS:

**LOT 18 WEEBOLLABOLLA NOORINDOO N177 (P)**

BORN:	04/08/2017	WEEBOLLABOLLA FINLAY F120 (S)	THE GROVE OSCAR A748 (P)
IDENTITY:	AGFN177	SIRE: WEEBOLLABOLLA JACKPOT J87 (S)	DAM: WEEBOLLABOLLA NINDETHANA K4001 (P) (AI) (ET)
COLOUR:	ROAN	WEEBOLLABOLLA CIRROCUMULUS C117 (P)	WEEBOLLABOLLA NINDETHANA Z169 (P) (AI) (ET)

DAM NO. OF PROGENY: 3 DNA BARCODE: 13109183 TRAITS OBSERVED: CE, BWT, 200WT, 400WT(X2), 600WT(X2), SS, FAT, EMA, IMF, DOC

**AUGUST 2019 PERFORMANCE HERDS AUSTRALIA BREEDPLAN**

CED	CEM	GL	BWt	200D	400D	600D	MCW	MILK	SS	DTC	CWT	EMA	RIB	RUMP	RBV%	IMF%	Docility
-0.9	2.1	-2	4.2	34	46	85	82	4	2.6	-2.4	49	5.1	-1.7	-2.7	2.5	0.2	-9.2
41%	33%	35%	73%	70%	71%	74%	61%	43%	70%	45%	58%	56%	63%	63%	57%	48%	49%

**RAW DATA** SUPPLIED ON SALE DAY **zoetis** HETEROZYGOUS POLL

Scrotal Size*	Weight	P8	RIB	EMA	IFM%
37					

**LOT 18**  
PURCHASER: \$

NOTES / COMMENTS:

Top 1% EBVs and Indicies Top 5% EBVs and Indicies Top 10% EBVs and Indicies Top 20% EBVs and Indicies MCW less than 600 day growth



**LOT 19 WEEBOLLABOLLA NARRATOR N102 (S)**

BORN:	19/07/2017	WEEBOLLABOLLA FINLAY F120 (S)	WEEBOLLABOLLA GALLAGHER G32 (P)
IDENTITY:	AGFN102	SIRE: WEEBOLLABOLLA JACKPOT J87 (S)	DAM: WEEBOLLABOLLA VIVIAN K314 (P)
COLOUR:	ROAN	WEEBOLLABOLLA CIRROCUMULUS C117 (P)	WEEBOLLABOLLA VIVIAN C802 (P)

DAM NO. OF PROGENY: 3 DNA BARCODE: 13109106 TRAITS OBSERVED: CE, BWT, 200WT, 400WT(X2), 600WT(X2), SS, FAT, EMA, IMF, DOC

**AUGUST 2019 PERFORMANCE HERDS AUSTRALIA BREEDPLAN**

CED	CEM	GL	BWt	200D	400D	600D	MCW	MILK	SS	DTC	CWT	EMA	RIB	RUMP	RBV%	IMF%	Docility
-3.5	-0.6	-0.9	5.4	34	53	79	81	8	1.7	1.2	44	4.5	-2	-3.8	2.3	0.1	3.6
38%	26%	29%	74%	69%	71%	73%	60%	39%	70%	42%	56%	55%	62%	62%	55%	45%	45%

**RAW DATA** SUPPLIED ON SALE DAY **zoetis** HETEROZYGOUS POLL

Scrotal Size*	Weight	P8	RIB	EMA	IFM%
38					

**LOT 19**  
PURCHASER: \$

NOTES / COMMENTS:

**LOT 20 WEEBOLLABOLLA NEWFORCE N117 (P)**

BORN:	23/07/2017	WEEBOLLABOLLA FINLAY F120 (S)	WEEBOLLABOLLA GALLAHAD G62 (P)
IDENTITY:	AGFN117	SIRE: WEEBOLLABOLLA JACKPOT J87 (S)	DAM: WEEBOLLABOLLA BLIZZARD K169 (H)
COLOUR:	RED	WEEBOLLABOLLA CIRROCUMULUS C117 (P)	WEEBOLLABOLLA BLIZZARD F179 (P)

DAM NO. OF PROGENY: 4 DNA BARCODE: 13109120 TRAITS OBSERVED: CE, BWT, 200WT, 400WT(X2), 600WT(X2), SS, FAT, EMA, IMF, DOC

**AUGUST 2019 PERFORMANCE HERDS AUSTRALIA BREEDPLAN**

CED	CEM	GL	BWt	200D	400D	600D	MCW	MILK	SS	DTC	CWT	EMA	RIB	RUMP	RBV%	IMF%	Docility
-5.5	-1.4	-1.2	6.6	38	59	98	77	7	3.2	-1.9	49	5.3	-1.1	-1.3	2	0.1	-8.2
38%	27%	30%	74%	69%	71%	74%	61%	39%	70%	42%	56%	55%	62%	62%	55%	45%	45%

**RAW DATA** SUPPLIED ON SALE DAY **zoetis** HETEROZYGOUS POLL

Scrotal Size*	Weight	P8	RIB	EMA	IFM%
40					

**LOT 20**  
PURCHASER: \$

NOTES / COMMENTS:

**LOT 21 WEEBOLLABOLLA NORRIS N141 (S)**

BORN:	27/07/2017	WEEBOLLABOLLA FINLAY F120 (S)	MARELLAN OSTENTATIOUS G404
IDENTITY:	AGFN141	SIRE: WEEBOLLABOLLA JACKPOT J87 (S)	DAM: WEEBOLLABOLLA COMMITTEE K51 (P) (AI)
COLOUR:	ROAN	WEEBOLLABOLLA CIRROCUMULUS C117 (P)	WEEBOLLABOLLA COMMITTEE C177 (P)

DAM NO. OF PROGENY: 3 DNA BARCODE: 13109143 TRAITS OBSERVED: CE, BWT, 200WT, 400WT(X2), 600WT(X2), SS, FAT, EMA, IMF, DOC

**AUGUST 2019 PERFORMANCE HERDS AUSTRALIA BREEDPLAN**

CED	CEM	GL	BWt	200D	400D	600D	MCW	MILK	SS	DTC	CWT	EMA	RIB	RUMP	RBV%	IMF%	Docility
0.6	1.8	-1.3	3.4	28	36	58	53	7	2.8	-2.9	38	4.3	-0.7	-0.7	1.6	0.2	8.2
37%	26%	30%	74%	70%	71%	74%	61%	39%	70%	42%	56%	55%	62%	62%	55%	45%	45%

**RAW DATA** SUPPLIED ON SALE DAY **zoetis** HETEROZYGOUS POLL

Scrotal Size*	Weight	P8	RIB	EMA	IFM%
41					

**LOT 21**  
PURCHASER: \$

NOTES / COMMENTS:

Top 1% EBVs and Indicies Top 5% EBVs and Indicies Top 10% EBVs and Indicies Top 20% EBVs and Indicies MCW less than 600 day growth





**LOT 22** WEEBOLLABOLLA NEPEAN N241 (P)

BORN:	15/08/2017	YAMBURGAN OSSIE E93	WEEBOLLABOLLA ERUDITE E14 (P) (AI) (ET)
IDENTITY:	AGFN241	SIRE: WEEBOLLABOLLA HALLMARK H206 (P)	DAM: WEEBOLLABOLLA DELIVERY J24 (P) (AI)
COLOUR:	ROAN	WEEBOLLABOLLA DECORATE D73 (P)	WEEBOLLABOLLA DELIVERY G63 (P)

DAM NO. OF PROGENY: 4 DNA BARCODE: 13109249 TRAITS OBSERVED: CE, BWT, 200WT, 400WT(X2), 600WT(X2), SS, FAT, EMA, IMF, DOC

**AUGUST 2019 PERFORMANCE HERDS AUSTRALIA BREEDPLAN**

CED	CEM	GL	BWt	200D	400D	600D	MCW	MILK	SS	DTC	CWT	EMA	RIB	RUMP	RBV%	IMF%	Docility
0.8		-0.2	2.8	25	34	45	21	5	1.9	-0.5	30	2.1	0.3	1.2	0.4	0.4	3.5
26%		35%	67%	61%	63%	66%	51%	28%	64%	35%	46%	44%	53%	52%	46%	35%	27%

**RAW DATA** SUPPLIED ON SALE DAY *zoetis* HETEROZYGOUS POLL

Scrotal Size*	Weight	P8	RIB	EMA	IFM%
40					

**LOT 22**  
PURCHASER: \$

NOTES / COMMENTS:

**LOT 23** WEEBOLLABOLLA NAVIGATOR N201 (P)

BORN:	08/08/2017	WEEBOLLABOLLA FINLAY F120 (S)	YAMBURGAN EMPEROR E103
IDENTITY:	AGFN201	SIRE: WEEBOLLABOLLA JACKPOT J87 (S)	DAM: WEEBOLLABOLLA ANGEL H79 (P) (AI)
COLOUR:	RED	WEEBOLLABOLLA CIRROCUMULUS C117 (P)	WEEBOLLABOLLA ANGEL A44 (P)

DAM NO. OF PROGENY: 4 DNA BARCODE: 13109209 TRAITS OBSERVED: CE, BWT, 200WT, 400WT(X2), 600WT(X2), SS, FAT, EMA, IMF, DOC

**AUGUST 2019 PERFORMANCE HERDS AUSTRALIA BREEDPLAN**

CED	CEM	GL	BWt	200D	400D	600D	MCW	MILK	SS	DTC	CWT	EMA	RIB	RUMP	RBV%	IMF%	Docility
-2.6	0.6	-1.7	2.8	24	31	53	54	2	2.4	-2.8	37	4.8	0.3	1.5	0.9	0.3	1.3
39%	29%	41%	66%	69%	71%	73%	60%	42%	71%	42%	57%	55%	62%	62%	56%	46%	47%

**RAW DATA** SUPPLIED ON SALE DAY *zoetis* HETEROZYGOUS POLL

Scrotal Size*	Weight	P8	RIB	EMA	IFM%
39					

**LOT 23**  
PURCHASER: \$

NOTES / COMMENTS:

**LOT 24** WEEBOLLABOLLA NAMOI N162 (P)

BORN:	01/08/2017	THE GROVE F516 (H)	WEEBOLLABOLLA BREAKAWAY B95 (P)
IDENTITY:	AGFN162	SIRE: TURANVILLE INFORMER K126 (P) (AI)	DAM: WEEBOLLABOLLA WORDS H197 (P)
COLOUR:	RED LITTLE WHITE	TURANVILLE G95 (P) (AI)	WEEBOLLABOLLA WORDS Z39 (P)

DAM NO. OF PROGENY: 5 DNA BARCODE: 13109167 TRAITS OBSERVED: CE, BWT, 200WT, 400WT(X2), 600WT, FAT, EMA, IMF, DOC

**AUGUST 2019 PERFORMANCE HERDS AUSTRALIA BREEDPLAN**

CED	CEM	GL	BWt	200D	400D	600D	MCW	MILK	SS	DTC	CWT	EMA	RIB	RUMP	RBV%	IMF%	Docility
-1.3	-0.8	-1	2.5	27	34	52	50	6	1.9	-0.6	37	3.7	0.8	1.8	0.2	0.5	-6.4
38%	29%	40%	72%	68%	69%	72%	59%	40%	52%	38%	55%	54%	61%	61%	55%	45%	44%

**RAW DATA** SUPPLIED ON SALE DAY *zoetis* HOMOZYGOUS POLL

Scrotal Size*	Weight	P8	RIB	EMA	IFM%
41					

**LOT 24**  
PURCHASER: \$

NOTES / COMMENTS:

Top 1% EBVs and Indicies Top 5% EBVs and Indicies Top 10% EBVs and Indicies Top 20% EBVs and Indicies MCW less than 600 day growth



**LOT 25 WEEBOLLABOLLA NOSTALGIC N243 (P)**

BORN:	16/08/2017	MARELLAN NUCLEAR F215 (P) (AI)	YAMBURGAN LOCKYER C8 (P)
IDENTITY:	AGFN243	SIRE: WEEBOLLABOLLA KAMILAROI K152 (P)	DAM: WEEBOLLABOLLA WEALTH F70 (P)
COLOUR:	RED	WEEBOLLABOLLA WATERFALL G224 (P)	WEEBOLLABOLLA WEALTH W105 (P)

DAM NO. OF PROGENY: 7 DNA BARCODE: 13109251 TRAITS OBSERVED: CE, BWT, 200WT, 400WT(X2), 600WT(X2), SS, FAT, EMA, IMF, DOC

**AUGUST 2019 PERFORMANCE HERDS AUSTRALIA BREEDPLAN**

CED	CEM	GL	BWt	200D	400D	600D	MCW	MILK	SS	DTC	CWT	EMA	RIB	RUMP	RBV%	IMF%	Docility
-1.4	-1.7	-0.5	3.8	29	36	55	49	6	0.6	3.8	38	4.8	0.4	0.6	0.7	0.4	-5.9
38%	29%	33%	73%	68%	70%	73%	60%	41%	69%	42%	55%	54%	61%	61%	54%	44%	42%

**RAW DATA** SUPPLIED ON SALE DAY **zoetis** HETEROZYGOUS POLL

Scrotal Size*	Weight	P8	RIB	EMA	IFM%
37					

**LOT 25**  
PURCHASER: \$

NOTES / COMMENTS:

**LOT 26 WEEBOLLABOLLA NBN N498 (P)**

BORN:	21/07/2017	THE GROVE OSCAR A748 (P)	ROYALLA KUDOS (P) (AI)
IDENTITY:	AGFN498	SIRE: YAMBURGAN OSSIE G10 (P)	DAM: WEEBOLLABOLLA RASPBERRY H457 (P)
COLOUR:	ROAN	YAMBURGAN CLOUDY 493 <sup>RD</sup> (P)	WEEBOLLABOLLA RASPBERRY 2ND (P)

DAM NO. OF PROGENY: 1 DNA BARCODE: 13082398 TRAITS OBSERVED: CE, BWT, 200WT, 400WT, 600WT(X2), SS, FAT, EMA, IMF

**AUGUST 2019 PERFORMANCE HERDS AUSTRALIA BREEDPLAN**

CED	CEM	GL	BWt	200D	400D	600D	MCW	MILK	SS	DTC	CWT	EMA	RIB	RUMP	RBV%	IMF%	Docility
4	0.7	-3	1.9	23	33	43	40	5	1.9	-3.1	32	6	0.1	1.8	0.9	0.3	0.6
41%	33%	35%	72%	67%	68%	71%	59%	46%	66%	44%	56%	55%	60%	62%	54%	47%	46%

**RAW DATA** SUPPLIED ON SALE DAY **zoetis** HOMOZYGOUS POLL

Scrotal Size*	Weight	P8	RIB	EMA	IFM%
41					

**LOT 26**  
PURCHASER: \$

NOTES / COMMENTS:

**LOT 27 WEEBOLLABOLLA NARROMINE N227 (S)**

BORN:	12/08/2017	THE GROVE J0598 (P)	WOOLCOTT H287 (P)
IDENTITY:	AGFN227	SIRE: THE GROVE L0140 (P) (AI)	DAM: WEEBOLLABOLLA CHEMISTRY L298 (P)
COLOUR:	RED	THE GROVE H0393 (P)	WEEBOLLABOLLA CHEMISTRY G256 (P)

DAM NO. OF PROGENY: 2 DNA BARCODE: 13109235 TRAITS OBSERVED: CE, BWT, 200WT, 400WT(X2), 600WT(X2), SS, FAT, EMA, IMF, DOC

**AUGUST 2019 PERFORMANCE HERDS AUSTRALIA BREEDPLAN**

CED	CEM	GL	BWt	200D	400D	600D	MCW	MILK	SS	DTC	CWT	EMA	RIB	RUMP	RBV%	IMF%	Docility
2.1	1.4	-1.8	1.8	29	34	48	38	7	1.6	-2	38	4.1	0.5	0.6	0.8	0.5	9.4
37%	29%	50%	70%	68%	70%	72%	58%	34%	69%	40%	55%	54%	62%	62%	55%	45%	39%

**RAW DATA** SUPPLIED ON SALE DAY **zoetis** HETEROZYGOUS POLL

Scrotal Size*	Weight	P8	RIB	EMA	IFM%
36					

**LOT 27**  
PURCHASER: \$

NOTES / COMMENTS:

Top 1% EBVs and Indices Top 5% EBVs and Indices Top 10% EBVs and Indices Top 20% EBVs and Indices MCW less than 600 day growth





**LOT 28 WEEBOLLABOLLA NORLAND N106 (P)**

BORN:	20/07/2017	THE GROVE J0598 (P)	WEEBOLLABOLLA EXPLOSIVE E11 (P) (AI) (ET)
IDENTITY:	AGFN106	SIRE: WEEBOLLABOLLA LIGNUM L14 (P) (AI)	DAM: WEEBOLLABOLLA DELORIS K113 (P)
COLOUR:	RED	WEEBOLLABOLLA VIGILANCE J112 (P)	WEEBOLLABOLLA DELORIS G87 (P)

DAM NO. OF PROGENY: 2 DNA BARCODE: 13109111 TRAITS OBSERVED: CE, BWT, 200WT, 400WT(X2), 600WT(X2), SS, FAT, EMA, IMF, DOC

**AUGUST 2019 PERFORMANCE HERDS AUSTRALIA BREEDPLAN**

CED	CEM	GL	BWt	200D	400D	600D	MCW	MILK	SS	DTC	CWT	EMA	RIB	RUMP	RBV%	IMF%	Docility
1.6	0.3	0	2.8	30	47	61	33	8	1.6	1.3	36	2.2	0.2	0.4	0.4	0.6	-0.3
41%	29%	41%	75%	70%	71%	73%	61%	34%	70%	43%	56%	54%	60%	60%	54%	45%	45%

**RAW DATA** SUPPLIED ON SALE DAY *zoetis* HOMOZYGOUS POLL

Scrotal Size*	Weight	P8	RIB	EMA	IFM%
38					

**LOT 28**  
PURCHASER: \$

NOTES / COMMENTS:

**LOT 29 WEEBOLLABOLLA NEBO N75 (S)**

BORN:	13/07/2017	BROUGHTON PARK THUNDER C023 (P) (AI)	WEEBOLLABOLLA JOHN J434 (P)
IDENTITY:	AGFN75	SIRE: WEEBOLLABOLLA KINDRED K7 (S) (AI)	DAM: WEEBOLLABOLLA DAYLIGHT L24 (P)
COLOUR:	WHITE	WEEBOLLABOLLA CLAUDIA H176 (P)	WEEBOLLABOLLA DAYLIGHT J124 (P)

DAM NO. OF PROGENY: 2 DNA BARCODE: 13109077 TRAITS OBSERVED: CE, BWT, 200WT, 400WT(X2), 600WT(X2), SS, FAT, EMA, IMF, DOC

**AUGUST 2019 PERFORMANCE HERDS AUSTRALIA BREEDPLAN**

CED	CEM	GL	BWt	200D	400D	600D	MCW	MILK	SS	DTC	CWT	EMA	RIB	RUMP	RBV%	IMF%	Docility
-1.6	-1.2	0.4	4.3	31	39	59	44	8	1.2	2.6	37	5.4	-0.4	-1.2	1.7	0.3	0.7
37%	26%	45%	72%	68%	70%	72%	59%	35%	69%	41%	55%	53%	60%	60%	54%	44%	39%

**RAW DATA** SUPPLIED ON SALE DAY

Scrotal Size*	Weight	P8	RIB	EMA	IFM%
35					

**LOT 29**  
PURCHASER: \$

NOTES / COMMENTS:

**LOT 30 WEEBOLLABOLLA NEIL N138 (S)**

BORN:	27/07/2017	THE GROVE F516 (H)	WEEBOLLABOLLA CENTURION C149 (P)
IDENTITY:	AGFN138	SIRE: TURANVILLE INFORMER K126 (P) (AI)	DAM: WEEBOLLABOLLA CHAMBER J75 (P)
COLOUR:	RED LITTLE WHITE	TURANVILLE G95 (P) (AI)	WEEBOLLABOLLA CHAMBER F138 (P)

DAM NO. OF PROGENY: 3 DNA BARCODE: 13109140 TRAITS OBSERVED: CE, BWT, 200WT, 400WT(X2), 600WT, FAT, EMA, IMF, DOC

**AUGUST 2019 PERFORMANCE HERDS AUSTRALIA BREEDPLAN**

CED	CEM	GL	BWt	200D	400D	600D	MCW	MILK	SS	DTC	CWT	EMA	RIB	RUMP	RBV%	IMF%	Docility
-8.2	-2	1	5.7	35	49	66	74	5	2	1.3	43	5	-0.6	-0.4	0.8	0.4	-5.7
38%	30%	44%	72%	68%	69%	72%	59%	38%	52%	39%	55%	54%	61%	61%	55%	45%	44%

**RAW DATA** SUPPLIED ON SALE DAY

Scrotal Size*	Weight	P8	RIB	EMA	IFM%
40					

**LOT 30**  
PURCHASER: \$

NOTES / COMMENTS:

Top 1% EBVs and Indicies Top 5% EBVs and Indicies Top 10% EBVs and Indicies Top 20% EBVs and Indicies MCW less than 600 day growth



**LOT 31 WEEBOLLABOLLA NORTH STAR N86 (P)**

BORN:	16/07/2017	THE GROVE J0598 (P)	BUNDALEER UNITED CHIEF U21 (P)
IDENTITY:	AGFN86	SIRE: WEEBOLLABOLLA LIGNUM L14 (P) (AI)	DAM: WEEBOLLABOLLA EDITH K6 (P)
COLOUR:	ROAN	WEEBOLLABOLLA VIGILANCE J112 (P)	WEEBOLLABOLLA EDITH H54 (P)

DAM NO. OF PROGENY: 3 DNA BARCODE: 13109089 TRAITS OBSERVED: CE, BWT, 200WT, 400WT(X2), 600WT(X2), SS, FAT, EMA, IMF, DOC

**AUGUST 2019 PERFORMANCE HERDS AUSTRALIA BREEDPLAN**

CED	CEM	GL	BWt	200D	400D	600D	MCW	MILK	SS	DTC	CWT	EMA	RIB	RUMP	RBY%	IMF%	Docility
3.1	3.5	-0.1	1.7	31	46	53	28	9	2.5	-4.1	35	1.8	-0.5	-1.1	1	0.6	-15.1
46%	32%	46%	78%	71%	72%	74%	63%	37%	70%	44%	57%	55%	61%	61%	55%	46%	47%

**RAW DATA** SUPPLIED ON SALE DAY **zoetis** HOMOZYGOUS POLL

Scrotal Size*	Weight	P8	RIB	EMA	IFM%
40					

**LOT 31**  
PURCHASER: \$

NOTES / COMMENTS:

**LOT 32 WEEBOLLABOLLA NATTAI N217 (P)**

BORN:	11/08/2017	MARELLAN NUCLEAR F215 (P) (AI)	FUTURITY FLIRT F105 (P)
IDENTITY:	AGFN217	SIRE: MARELLAN NUCLEAR F215 (P) (AI)	DAM: WEEBOLLABOLLA BLIZZARD J128 (P)
COLOUR:	ROAN	WEEBOLLABOLLA WATERFALL G224 (P)	WEEBOLLABOLLA BLIZZARD F179 (P)

DAM NO. OF PROGENY: 4 DNA BARCODE: 13109225 TRAITS OBSERVED: CE, BWT, 200WT, 400WT(X2), 600WT(X2), SS, FAT, EMA, IMF, DOC

**AUGUST 2019 PERFORMANCE HERDS AUSTRALIA BREEDPLAN**

CED	CEM	GL	BWt	200D	400D	600D	MCW	MILK	SS	DTC	CWT	EMA	RIB	RUMP	RBY%	IMF%	Docility
-5.2	-2.7	-0.6	5	28	36	47	33	7	1	2.6	31	5.1	-0.4	-1.4	1.3	0.6	13.1
36%	26%	32%	72%	67%	69%	72%	59%	38%	68%	40%	53%	52%	60%	59%	53%	42%	38%

**RAW DATA** SUPPLIED ON SALE DAY **zoetis** HOMOZYGOUS POLL

Scrotal Size*	Weight	P8	RIB	EMA	IFM%
35					

**LOT 32**  
PURCHASER: \$

NOTES / COMMENTS:

**LOT 33 WEEBOLLABOLLA NEVILLE N170 (S)**

BORN:	02/08/2017	WEEBOLLABOLLA FINLAY F120 (S)	YAMBURGAN OSSIE D284 (P)
IDENTITY:	AGFN170	SIRE: WEEBOLLABOLLA JACKPOT J87 (S)	DAM: WEEBOLLABOLLA CHA CHA G12 (P)
COLOUR:	RED	WEEBOLLABOLLA CIRROCUMULUS C117 (P)	WEEBOLLABOLLA CHA CHA C32 (P)

DAM NO. OF PROGENY: 6 DNA BARCODE: 13109176 TRAITS OBSERVED: CE, BWT, 200WT, 400WT(X2), 600WT(X2), SS, FAT, EMA, IMF, DOC

**AUGUST 2019 PERFORMANCE HERDS AUSTRALIA BREEDPLAN**

CED	CEM	GL	BWt	200D	400D	600D	MCW	MILK	SS	DTC	CWT	EMA	RIB	RUMP	RBY%	IMF%	Docility
-0.2	1.7	-2.1	1.9	19	35	46	35	7	1.6	-1.8	30	3.4	0.9	2.5	0.3	0.4	6.9
41%	30%	36%	74%	70%	71%	74%	61%	42%	71%	44%	57%	56%	63%	63%	56%	47%	49%

**RAW DATA** SUPPLIED ON SALE DAY **zoetis** HETEROZYGOUS POLL

Scrotal Size*	Weight	P8	RIB	EMA	IFM%
38					

**LOT 33**  
PURCHASER: \$

NOTES / COMMENTS:

Top 1% EBVs and Indices Top 5% EBVs and Indices Top 10% EBVs and Indices Top 20% EBVs and Indices MCW less than 600 day growth



**LOT 34 WEEBOLLABOLLA NEPEAN N241 (P)**

BORN:	09/08/2017	THE GROVE J0598 (P)	YAMBURGAN OSSIE E93 (P)
IDENTITY:	AGFN204	SIRE: THE GROVE L0140 (P) (AI)	DAM: WEEBOLLABOLLA EAST L325 (DR) (P)
COLOUR:	RED	THE GROVE H0393 (P)	WEEBOLLABOLLA EAST D485 (DR) (S)

DAM NO. OF PROGENY: 2 DNA BARCODE: 13109211 TRAITS OBSERVED: CE, BWT, 200WT, 400WT(X2), 600WT(X2), SS, FAT, EMA, IMF, DOC

**AUGUST 2019 PERFORMANCE HERDS AUSTRALIA BREEDPLAN**

CED	CEM	GL	BWt	200D	400D	600D	MCW	MILK	SS	DTC	CWT	EMA	RIB	RUMP	RBV%	IMF%	Docility
-0.3	2.1	-2.4	2.5	29	38	49	39	9	2	-3	37	3.3	-0.3	-0.8	0.9	0.5	2.1
34%	26%	39%	54%	51%	52%	53%	47%	31%	46%	33%	42%	42%	46%	46%	41%	36%	40%

**RAW DATA** SUPPLIED ON SALE DAY *zoetis* HOMOZYGOUS POLL

Scrotal Size*	Weight	P8	RIB	EMA	IFM%
35					

**LOT 34**  
PURCHASER: \$

NOTES / COMMENTS:

**LOT 35 WEEBOLLABOLLA NAVIGATOR N201 (P)**

BORN:	09/07/2017	THE GROVE J0598 (P)	WEEBOLLABOLLA GUNTHORPE G166 (P) (AI)
IDENTITY:	AGFN68	SIRE: WEEBOLLABOLLA LIGNUM L14 (P) (AI)	DAM: WEEBOLLABOLLA YONDER K261 (P)
COLOUR:	RED	WEEBOLLABOLLA VIGILANCE J112 (P)	WEEBOLLABOLLA YONDER F390 (P)

DAM NO. OF PROGENY: 3 DNA BARCODE: 13109069 TRAITS OBSERVED: CE, BWT, 200WT, 400WT(X2), 600WT(X2), SS, FAT, EMA, IMF, DOC

**AUGUST 2019 PERFORMANCE HERDS AUSTRALIA BREEDPLAN**

CED	CEM	GL	BWt	200D	400D	600D	MCW	MILK	SS	DTC	CWT	EMA	RIB	RUMP	RBV%	IMF%	Docility
5.7	2.6	-1	-0.5	20	29	37	12	11	1.1	-2.1	30	1.3	0.8	1.7	0.2	0.9	3.9
37%	26%	40%	71%	66%	68%	70%	58%	34%	66%	41%	53%	46%	49%	49%	44%	39%	43%

**RAW DATA** SUPPLIED ON SALE DAY *zoetis* HOMOZYGOUS POLL

Scrotal Size*	Weight	P8	RIB	EMA	IFM%
38					

**LOT 35**  
PURCHASER: \$

NOTES / COMMENTS:

**LOT 36 WEEBOLLABOLLA NORTHCOTT N104 (P)**

BORN:	20/07/2017	WEEBOLLABOLLA FINLAY F120 (S)	THE GROVE INFORMANT Y463 (P)
IDENTITY:	AGFN104	SIRE: WEEBOLLABOLLA JACKPOT J87 (S)	DAM: WEEBOLLABOLLA BEACON K96 (P) (AI)
COLOUR:	ROAN	WEEBOLLABOLLA CIRROCUMULUS C117 (P)	WEEBOLLABOLLA BEACON F171 (P) (TW)

DAM NO. OF PROGENY: 4 DNA BARCODE: 13198557 TRAITS OBSERVED: CE, BWT, 200WT, 400WT(X2), 600WT, FAT, EMA, IMF, DOC

**AUGUST 2019 PERFORMANCE HERDS AUSTRALIA BREEDPLAN**

CED	CEM	GL	BWt	200D	400D	600D	MCW	MILK	SS	DTC	CWT	EMA	RIB	RUMP	RBV%	IMF%	Docility
-1.6	0.6	-1.1	4.2	28	36	70	66	4	1.9	0.7	41	3.9	-1.5	-1.2	1.6	0.3	3.6
41%	32%	36%	74%	70%	71%	74%	61%	42%	70%	45%	58%	57%	63%	63%	57%	48%	49%

**RAW DATA** SUPPLIED ON SALE DAY *zoetis* HOMOZYGOUS POLL

Scrotal Size*	Weight	P8	RIB	EMA	IFM%
38					

**LOT 36**  
PURCHASER: \$

NOTES / COMMENTS:

Top 1% EBVs and Indicies Top 5% EBVs and Indicies Top 10% EBVs and Indicies Top 20% EBVs and Indicies MCW less than 600 day growth





**LOT 37 WEEBOLLABOLLA NOWENDOC N237 (P)**

BORN:	14/08/2017	MARELLAN NUCLEAR F215 (P) (AI)	WEEBOLLABOLLA EXCEPTIONAL E110 (P)
IDENTITY:	AGFN237	SIRE: WEEBOLLABOLLA KAMILARO I K152 (P)	DAM: WEEBOLLABOLLA XTENDABLE J353 (P)
COLOUR:	RED	WEEBOLLABOLLA WATERFALL G224 (P)	WEEBOLLABOLLA XTENDABLE F201 (P)

DAM NO. OF PROGENY: 4 DNA BARCODE: 13109245 TRAITS OBSERVED: CE, BWT, 200WT, 400WT(X2), 600WT(X2), SS, FAT, EMA, IMF, DOC

**AUGUST 2019 PERFORMANCE HERDS AUSTRALIA BREEDPLAN**

CED	CEM	GL	BWt	200D	400D	600D	MCW	MILK	SS	DTC	CWT	EMA	RIB	RUMP	RBY%	IMF%	Docility
1.9	-1.1	-0.6	2.6	30	35	54	35	6	1.6	1.3	38	5.3	0.4	0.1	1	0.6	14.6
36%	27%	29%	72%	68%	69%	72%	59%	37%	68%	41%	54%	53%	60%	60%	53%	43%	39%

**RAW DATA** SUPPLIED ON SALE DAY **zoetis** HOMOZYGOUS POLL

Scrotal Size*	Weight	P8	RIB	EMA	IFM%
39					

**LOT 37**  
PURCHASER: \$

NOTES / COMMENTS:

**LOT 38 WEEBOLLABOLLA NUNNOCK N262 (P)**

BORN:	26/08/2017	MARELLAN NUCLEAR F215 (P) (AI)	WEEBOLLABOLLA EXCEPTIONAL E110 (P)
IDENTITY:	AGFN262	SIRE: WEEBOLLABOLLA KAMILARO I K152 (P)	DAM: WEEBOLLABOLLA CARDINAL H101 (P)
COLOUR:	ROAN	WEEBOLLABOLLA WATERFALL G224 (P)	WEEBOLLABOLLA CARDINAL E224 (P)

DAM NO. OF PROGENY: 5 DNA BARCODE: 13109271 TRAITS OBSERVED: CE, BWT, 200WT, 400WT(X2), 600WT(X2), SS, FAT, EMA, IMF, DOC

**AUGUST 2019 PERFORMANCE HERDS AUSTRALIA BREEDPLAN**

CED	CEM	GL	BWt	200D	400D	600D	MCW	MILK	SS	DTC	CWT	EMA	RIB	RUMP	RBY%	IMF%	Docility
-2.6	-3.4	0	4.6	31	35	55	41	6	2.1	1.6	37	5.6	-0.2	-0.9	1.4	0.5	18.6
37%	27%	30%	72%	68%	70%	72%	60%	39%	69%	43%	55%	53%	60%	60%	54%	44%	42%

**RAW DATA** SUPPLIED ON SALE DAY **zoetis** HOMOZYGOUS POLL

Scrotal Size*	Weight	P8	RIB	EMA	IFM%
36					

**LOT 38**  
PURCHASER: \$

NOTES / COMMENTS:

**LOT 39 WEEBOLLABOLLA NEWSOME N55 (P)**

BORN:	7/07/2017	WEEBOLLABOLLA CLAUDIA H176 (P)	DUNBEACON KOORDA H042 (P) (AI)
IDENTITY:	AGFN55	SIRE: BROUGHTON PARK THUNDER C023 (P)	DAM: WEEBOLLABOLLA DELIVERY L97 (P)
COLOUR:	ROAN	WEEBOLLABOLLA CLAUDIA H176 (P)	WEEBOLLABOLLA DELIVERY G63 (P)

DAM NO. OF PROGENY: 2 DNA BARCODE: 13109054 TRAITS OBSERVED: CE, BWT, 200WT, 400WT(X2), 600WT(X2), SS, FAT, EMA, IMF, DOC

**AUGUST 2019 PERFORMANCE HERDS AUSTRALIA BREEDPLAN**

CED	CEM	GL	BWt	200D	400D	600D	MCW	MILK	SS	DTC	CWT	EMA	RIB	RUMP	RBY%	IMF%	Docility
-6.4	-1.2	0.6	5.7	33	39	53	39	9	1.4	2.9	34	6.1	-0.8	-2.4	2.1	0.1	3.8
37%	26%	45%	72%	68%	70%	73%	59%	36%	69%	41%	55%	54%	61%	61%	54%	44%	40%

**RAW DATA** SUPPLIED ON SALE DAY **zoetis** HETEROZYGOUS POLL

Scrotal Size*	Weight	P8	RIB	EMA	IFM%
38					

**LOT 39**  
PURCHASER: \$

NOTES / COMMENTS:

Top 1% EBVs and Indices Top 5% EBVs and Indices Top 10% EBVs and Indices Top 20% EBVs and Indices MCW less than 600 day growth



**LOT 40** WEEBOLLABOLLA NERANG N37 (P) (AI)

BORN:	3/07/2017	BUNDALEER UNITED CHIEF U21 (P)	WEEBOLLABOLLA HALLMARK H206 (P)
IDENTITY:	AGFN37	SIRE: WEEBOLLABOLLA GOODAR G105 (P) (AI)	DAM: WEEBOLLABOLLA ANGEL L75 (P)
COLOUR:	RED LITTLE WHITE	WEEBOLLABOLLA CLARE E25 (P)	WEEBOLLABOLLA ANGEL H79 (P) (AI)

DAM NO. OF PROGENY: 2 DNA BARCODE: 13109036 TRAITS OBSERVED: CE, BWT, 200WT, 400WT(X2), 600WT(X2), SS, FAT, EMA, IMF, DOC

**AUGUST 2019 PERFORMANCE HERDS AUSTRALIA BREEDPLAN**

CED	CEM	GL	BWt	200D	400D	600D	MCW	MILK	SS	DTC	CWT	EMA	RIB	RUMP	RBV%	IMF%	Docility
3.1	1.8	-3.2	2.7	28	38	54	49	6	2.2	-2.8	40	4.2	0	0.1	1	0.4	0.8
39%	33%	50%	73%	69%	70%	74%	61%	38%	70%	43%	56%	56%	62%	62%	56%	46%	49%

**RAW DATA** SUPPLIED ON SALE DAY *zoetis* HETEROZYGOUS POLL

Scrotal Size*	Weight	P8	RIB	EMA	IFM%
37					

**LOT 40**  
PURCHASER: \$

NOTES / COMMENTS:

**LOT 41** WEEBOLLABOLLA NUNGAROI N2 (P) (AI)

BORN:	21/06/2017	BUNDALEER UNITED CHIEF U21 (P)	YAMBURGAN ZEUS H140 (P)
IDENTITY:	AGFN2	SIRE: WEEBOLLABOLLA HERCULES H20 (P) (AI)	DAM: WEEBOLLABOLLA SUCCESS L3 (P) (AI) (TW)
COLOUR:	RED	WEEBOLLABOLLA TALE F292 (P)	WEEBOLLABOLLA SUCCESS J16 (P)

DAM NO. OF PROGENY: 2 DNA BARCODE: 13198644 TRAITS OBSERVED: CE, BWT, 200WT, 400WT(X2), 600WT, FAT, EMA, IMF, DOC

**AUGUST 2019 PERFORMANCE HERDS AUSTRALIA BREEDPLAN**

CED	CEM	GL	BWt	200D	400D	600D	MCW	MILK	SS	DTC	CWT	EMA	RIB	RUMP	RBV%	IMF%	Docility
4.7	3.7	-1.4	0.8	25	31	39	31	8	1.3	-0.7	37	3.2	-1	-2	1.8	0.3	9.2
40%	28%	47%	72%	68%	70%	72%	60%	39%	50%	37%	55%	53%	60%	60%	53%	44%	44%

**RAW DATA** SUPPLIED ON SALE DAY *zoetis* POLLHORN TEST RESUBMIT TBA

Scrotal Size*	Weight	P8	RIB	EMA	IFM%
35					

**LOT 41**  
PURCHASER: \$

NOTES / COMMENTS:

**LOT 42** WEEBOLLABOLLA NORTH WEST N484 (P)

BORN:	19/07/2017	THE GROVE OSCAR A748 (P)	
IDENTITY:	AGFN484	SIRE: YAMBURGAN OSSIE G10 (P)	DAM: WEEBOLLABOLLA CLEVELAND C546 (P)
COLOUR:	RED	YAMBURGAN CLOUDY 493 <sup>RD</sup> (P)	

DAM NO. OF PROGENY: 5 DNA BARCODE: 13198557 TRAITS OBSERVED: CE, BWT, 200WT, 400WT(X2), 600WT, FAT, EMA, IMF, DOC

**AUGUST 2019 PERFORMANCE HERDS AUSTRALIA BREEDPLAN**

CED	CEM	GL	BWt	200D	400D	600D	MCW	MILK	SS	DTC	CWT	EMA	RIB	RUMP	RBV%	IMF%	Docility
3.6	0.8	-1.6	1.4	20	28	32	26	5	1.3	-3.1	26	2.8	0.4	0.7	0.6	0.7	0.4
40%	32%	36%	72%	67%	68%	71%	59%	46%	66%	44%	54%	51%	57%	57%	51%	43%	44%

**RAW DATA** SUPPLIED ON SALE DAY *zoetis* HOMOZYGOUS POLL

Scrotal Size*	Weight	P8	RIB	EMA	IFM%
37					

**LOT 42**  
PURCHASER: \$

NOTES / COMMENTS:

Top 1% EBVs and Indicies Top 5% EBVs and Indicies Top 10% EBVs and Indicies Top 20% EBVs and Indicies MCW less than 600 day growth



**LOT 43 WEEBOLLABOLLA NEROKEWA N178 (P)**

BORN:	4/08/2017	WEEBOLLABOLLA FINLAY F120 (S)	WEEBOLLABOLLA THEODORE T85 (P)
IDENTITY:	AGFN178	SIRE: WEEBOLLABOLLA JACKPOT J87 (S)	DAM: WEEBOLLABOLLA KRAFT H1 (P) (AI)
COLOUR:	RED	WEEBOLLABOLLA CIRROCUMULUS C117 (P)	WEEBOLLABOLLA KRAFT F113 (P)

DAM NO. OF PROGENY: 4 DNA BARCODE: 13109185 TRAITS OBSERVED: CE, BWT, 200WT, 400WT(X2), 600WT(X2), SS, FAT, EMA, IMF, DOC

**AUGUST 2019 PERFORMANCE HERDS AUSTRALIA BREEDPLAN**

CED	CEM	GL	BWt	200D	400D	600D	MCW	MILK	SS	DTC	CWT	EMA	RIB	RUMP	RBY%	IMF%	Docility
3	2.1	-3.1	2.5	31	42	65	59	3	2.3	-2	42	4.3	-0.8	-0.7	1.3	0.1	-6.1
41%	32%	42%	74%	70%	71%	74%	61%	42%	71%	45%	57%	56%	63%	63%	57%	47%	48%

**RAW DATA** SUPPLIED ON SALE DAY **zoetis** HETEROZYGOUS POLL

Scrotal Size*	Weight	P8	RIB	EMA	IFM%
37					

**LOT 43**  
PURCHASER: \$

NOTES / COMMENTS:

**LOT 44 WEEBOLLABOLLA NOBLE N13 (P) (AI)**

BORN:	27/06/2017	BUNDALEER UNITED CHIEF U21 (P)	YAMBURGAN OSSIE G10 (P)
IDENTITY:	AGFN13	SIRE: WEEBOLLABOLLA GOODAR G105 (P) (AI)	DAM: WEEBOLLABOLLA HEIRESS L295 (P)
COLOUR:	RED LITTLE WHITE	WEEBOLLABOLLA CLARE E25 (P)	WEEBOLLABOLLA HEIRESS H391 (P) (AI)

DAM NO. OF PROGENY: 2 DNA BARCODE: 13109012 TRAITS OBSERVED: CE, BWT, 200WT, 400WT(X2), 600WT(X2), SS, FAT, EMA, IMF, DOC

**AUGUST 2019 PERFORMANCE HERDS AUSTRALIA BREEDPLAN**

CED	CEM	GL	BWt	200D	400D	600D	MCW	MILK	SS	DTC	CWT	EMA	RIB	RUMP	RBY%	IMF%	Docility
5.7	3	-3.9	1.3	29	39	53	40	9	2.2	-3.9	38	3.2	-1	-1.4	1.3	0.4	2.2
43%	36%	52%	73%	70%	71%	74%	62%	40%	71%	46%	57%	57%	63%	63%	57%	48%	53%

**RAW DATA** SUPPLIED ON SALE DAY **zoetis** HOMOZYGOUS POLL

Scrotal Size*	Weight	P8	RIB	EMA	IFM%
38					

**LOT 44**  
PURCHASER: \$

NOTES / COMMENTS:

**LOT 45 WEEBOLLABOLLA NATAL DOWNS N432 (P)**

BORN:	15/07/2017	WEEBOLLABOLLA FINLAY F120 (S)	WOOLCOTT H287 (P)
IDENTITY:	AGFN432	SIRE: WEEBOLLABOLLA JACKPOT J87 (S)	DAM: WEEBOLLABOLLA VICTORIA L326 (P)
COLOUR:	RED & WHITE	WEEBOLLABOLLA CIRROCUMULUS C117 (P)	WEEBOLLABOLLA VICTORIA F447 (P)

DAM NO. OF PROGENY: 1 DNA BARCODE: 13082304 TRAITS OBSERVED: CE, 200WT, 400WT, 600WT(X2), SS, FAT, EMA, IMF

**AUGUST 2019 PERFORMANCE HERDS AUSTRALIA BREEDPLAN**

CED	CEM	GL	BWt	200D	400D	600D	MCW	MILK	SS	DTC	CWT	EMA	RIB	RUMP	RBY%	IMF%	Docility
4		-3.8	1.8	27	37	43	39	7	1.9	-3.3	34	3.1	-0.9	-1.4	1.2	0.3	0.1
28%		36%	57%	59%	61%	64%	50%	31%	63%	35%	47%	44%	52%	53%	46%	36%	33%

**RAW DATA** SUPPLIED ON SALE DAY **zoetis** HETEROZYGOUS POLL

Scrotal Size*	Weight	P8	RIB	EMA	IFM%
39					

**LOT 45**  
PURCHASER: \$

NOTES / COMMENTS:

Top 1% EBVs and Indices Top 5% EBVs and Indices Top 10% EBVs and Indices Top 20% EBVs and Indices MCW less than 600 day growth





**LOT 46 WEEBOLLABOLLA NOTTINGHAM N130 (P)**

BORN:	25/07/2017	WEEBOLLABOLLA GOODAR G105 (P) (AI)	WEEBOLLABOLLA IMPACT Y156 (P)
IDENTITY:	AGFN130	SIRE: THE GROVE K0182 (P)	DAM: WEEBOLLABOLLA BRITANNICA B139 (S)
COLOUR:	ROAN	THE GROVE F526 (P)	WEEBOLLABOLLA XTROVERT X39 (P) (AI)

DAM NO. OF PROGENY: 10 DNA BARCODE: 13109134 TRAITS OBSERVED: CE, BWT, 200WT, 400WT(X2), 600WT(X2), SS, FAT, EMA, IMF, DOC

**AUGUST 2019 PERFORMANCE HERDS AUSTRALIA BREEDPLAN**

CED	CEM	GL	BWt	200D	400D	600D	MCW	MILK	SS	DTC	CWT	EMA	RIB	RUMP	RBV%	IMF%	Docility
1.1	1.2	-2	3.4	29	39	54	44	6	2.1	-0.8	36	3.9	-1.8	-3	2	0.2	5.1
42%	31%	48%	74%	70%	71%	74%	60%	42%	70%	44%	56%	53%	60%	60%	54%	44%	47%

**RAW DATA** SUPPLIED ON SALE DAY **zoetis** HETEROZYGOUS POLL

Scrotal Size*	Weight	P8	RIB	EMA	IFM%
38					

**LOT 46**  
PURCHASER: \$

NOTES / COMMENTS:

**LOT 47 WEEBOLLABOLLA NORMAN N63 (P)**

BORN:	8/07/2017	THE GROVE J0598 (P)	THE GROVE OSCAR A748 (P)
IDENTITY:	AGFN63	SIRE: WEEBOLLABOLLA LIGNUM L14 (P) (AI)	DAM: WEEBOLLABOLLA QUIVER G128 (P) (AI)
COLOUR:	ROAN	WEEBOLLABOLLA VIGILANCE J112 (P)	WEEBOLLABOLLA QUIVER Z7 (P)

DAM NO. OF PROGENY: 6 DNA BARCODE: 13109064 TRAITS OBSERVED: CE, BWT, 200WT, 400WT(X2), 600WT(X2), SS, FAT, EMA, IMF, DOC

**AUGUST 2019 PERFORMANCE HERDS AUSTRALIA BREEDPLAN**

CED	CEM	GL	BWt	200D	400D	600D	MCW	MILK	SS	DTC	CWT	EMA	RIB	RUMP	RBV%	IMF%	Docility
2.6	2.8	-2.2	1.5	23	41	45	47	5	2	-3.9	36	2.9	0.1	0.6	0.5	0.8	-2
42%	34%	50%	74%	70%	71%	73%	61%	41%	71%	46%	57%	55%	62%	62%	56%	47%	49%

**RAW DATA** SUPPLIED ON SALE DAY **zoetis** HOMOZYGOUS POLL

Scrotal Size*	Weight	P8	RIB	EMA	IFM%
43					

**LOT 47**  
PURCHASER: \$

NOTES / COMMENTS:

**LOT 48 WEEBOLLABOLLA NANDILLYAN N377 (S)**

BORN:	29/07/2017	WOOLCOTT G172 (P)	YAMBURGAN LOCKYER C8
IDENTITY:	AGFN377	SIRE: ARUBIAL K43 (P)	DAM: WEEBOLLABOLLA FRANCIS F174 (P)
COLOUR:	RED	ARUBIAL CILLA C083 (P) (AI)	WEEBOLLABOLLA DINGWALL D192 (H)

DAM NO. OF PROGENY: 3 DNA BARCODE: 13082473 TRAITS OBSERVED: CE, BWT, 200WT, 400WT(X2), 600WT(X2), SS, FAT, EMA, IMF, DOC

**AUGUST 2019 PERFORMANCE HERDS AUSTRALIA BREEDPLAN**

CED	CEM	GL	BWt	200D	400D	600D	MCW	MILK	SS	DTC	CWT	EMA	RIB	RUMP	RBV%	IMF%	Docility
0		-1.2	2.8	26	41	48	46	7	1.8	-1.4	36	4	-0.3	-0.1	1	0.5	-10.8
33%		30%	70%	63%	66%	62%	54%	31%	46%	32%	47%	42%	46%	46%	41%	35%	32%

**RAW DATA** SUPPLIED ON SALE DAY **zoetis** HETEROZYGOUS POLL

Scrotal Size*	Weight	P8	RIB	EMA	IFM%
39					

**LOT 48**  
PURCHASER: \$

NOTES / COMMENTS:

Top 1% EBVs and Indicies Top 5% EBVs and Indicies Top 10% EBVs and Indicies Top 20% EBVs and Indicies MCW less than 600 day growth



**LOT 49**

**WEEBOLLABOLLA NILES N211 (P)**

BORN:	10/08/2017	WEEBOLLABOLLA GOODAR G105 (P) (AI)	YAMBURGAN OSSIE E93 (P)
IDENTITY:	AGFN211	SIRE: THE GROVE K0245 (P)	DAM: WEEBOLLABOLLA WILMA H217 (P)
COLOUR:	RED	THE GROVE F941 (P)	WEEBOLLABOLLA WILMA E4 (P) (AI) (ET)

DAM NO. OF PROGENY: 6 DNA BARCODE: 13109219 TRAITS OBSERVED: CE, BWT, 200WT, 400WT(X2), 600WT(X2), SS, FAT, EMA, IMF, DOC

**AUGUST 2019 PERFORMANCE HERDS AUSTRALIA BREEDPLAN**

CED	CEM	GL	BWt	200D	400D	600D	MCW	MILK	SS	DTC	CWT	EMA	RIB	RUMP	RBV%	IMF%	Docility
-2.2	-0.4	-2.2	3.7	28	38	45	50	6	2.1	-0.8	34	4.9	-0.7	-1.6	1.2	0.5	5.5
38%	29%	36%	72%	68%	70%	73%	59%	39%	70%	43%	55%	53%	61%	61%	54%	45%	43%

**RAW DATA** SUPPLIED ON SALE DAY *zoetis* HOMOZYGOUS POLL

Scrotal Size*	Weight	P8	RIB	EMA	IFM%
38					

**LOT 49**  
PURCHASER: \$

NOTES / COMMENTS:

**LOT 50**

**WEEBOLLABOLLA NATURAL N369 (P)**

BORN:	25/07/2017	WOOLCOTT G172 (P)	KEVLIN DOWNS DANDALOO D202 (P) (AI) (ET)
IDENTITY:	AGFN369	SIRE: ARUBIAL K43 (P)	DAM: WEEBOLLABOLLA GIRL H347 (P) (AI)
COLOUR:	RED	ARUBIAL CILLA C083 (P) (AI)	WEEBOLLABOLLA GIRL D602 (P)

DAM NO. OF PROGENY: 4 DNA BARCODE: 13082432 TRAITS OBSERVED: CE, BWT, 200WT, 400WT(X2), 600WT(X2), SS, FAT, EMA, IMF, DOC

**AUGUST 2019 PERFORMANCE HERDS AUSTRALIA BREEDPLAN**

CED	CEM	GL	BWt	200D	400D	600D	MCW	MILK	SS	DTC	CWT	EMA	RIB	RUMP	RBV%	IMF%	Docility
-1.6	-1.2	-2.9	2.8	27	34	51	44	8	1.9	-2.2	39	5.1	-0.8	-1.1	1.5	0.4	1.1
37%	26%	41%	71%	67%	68%	71%	56%	34%	68%	39%	52%	51%	58%	58%	51%	41%	37%

**RAW DATA** SUPPLIED ON SALE DAY *zoetis* POLLHORN TEST RESUBMIT TBA

Scrotal Size*	Weight	P8	RIB	EMA	IFM%
38					

**LOT 50**  
PURCHASER: \$

NOTES / COMMENTS:

**LOT 51**

**WEEBOLLABOLLA NATHANIAL N21 (P) (AI)**

BORN:	29/06/2017	BUNDALEER UNITED CHIEF U21 (P)	DUNBEACON KOORDA H042 (P) (AI)
IDENTITY:	AGFN21	SIRE: WEEBOLLABOLLA GOODAR G105 (P) (AI)	DAM: WEEBOLLABOLLA APHRODITE L94 (P)
COLOUR:	ROAN	WEEBOLLABOLLA CLARE E25 (P)	WEEBOLLABOLLA APHRODITE H30 (P) (AI)

DAM NO. OF PROGENY: 1 DNA BARCODE: 13109024 TRAITS OBSERVED: CE, BWT, 200WT, 400WT(X2), 600WT(X2), SS, FAT, EMA, IMF, DOC

**AUGUST 2019 PERFORMANCE HERDS AUSTRALIA BREEDPLAN**

CED	CEM	GL	BWt	200D	400D	600D	MCW	MILK	SS	DTC	CWT	EMA	RIB	RUMP	RBV%	IMF%	Docility
4.9	2.8	-4	1.6	27	30	48	32	9	1.7	-1.4	37	3.7	-1	-2	1.7	0.3	-5.2
41%	33%	50%	73%	69%	71%	73%	61%	38%	70%	43%	56%	55%	61%	61%	55%	46%	51%

**RAW DATA** SUPPLIED ON SALE DAY *zoetis* HOMOZYGOUS POLL

Scrotal Size*	Weight	P8	RIB	EMA	IFM%
35					

**LOT 51**  
PURCHASER: \$

NOTES / COMMENTS:

Top 1% EBVs and Indicies Top 5% EBVs and Indicies Top 10% EBVs and Indicies Top 20% EBVs and Indicies MCW less than 600 day growth



**LOT 1 / N123**



**LOT 6 / N233**



**LOT 2 / N139**



**LOT 8 / N340**



**LOT 4 / N094**



**LOT 9 / N172**



**LOT 5 / N074**



**LOT 10 / N129**







LOT	IDENT	SIRE	CED	CEM	GL	BWt	200D	400D	600D	MCW	MILK	SS	DTC	CWT	EMA	RIB	RUMP	RBY%	IMF%	Docility
1	AGFN123	L14	3.8	1.9	-1.1	2.2	30	46	73	53	4	2.1	-0.5	45	3.1	-0.7	-0.9	1.3	0.5	-21.7
2	AGFN139	K126	-6.2	-2.5	-1.2	5.4	34	50	64	80	4	1.7	1.4	45	5.2	-1	-1.5	1.3	0.3	-2.8
3	AGFN54	K267			-0.7	4.2	34	54	62	52	6	2.9	-4.6	37	1.6	-0.4	-0.4	0.5	0.1	6
4	AGFN94	K0182	2.4	1.5	-1.8	3.4	34	56	72	50	7	2.1	-3.1	44	3.8	-1.5	-2.8	2.1	0.3	1
5	AGFN74	J87	3.2	4.1	-0.9	0.7	24	34	55	42	9	1.6	-0.9	38	3.7	0.3	1.5	1	0.3	3.2
6	AGFN233	J87	-3.5	1.5	-0.6	5.7	39	59	97	83	5	1.9	1.4	53	6.4	-1	-1.8	2.3	0	8.7
7	AGFN221	K152	-7	-3.3	0.2	6.8	38	56	79	65	8	1.1	3.8	43	6.2	-0.1	-1	1.3	0.4	19
8	AGFN340	F215	-2.8	-3.5	-0.4	6.1	36	56	79	68	5	1.2	3.3	46	5.3	0.5	-0.2	0.8	0.4	5.7
9	AGFN172	K126	-5.6	-4.2	0.3	5.9	36	49	74	62	7	1.7	3.7	45	5.2	-1	-2.3	1.6	0.5	2.8
10	AGFN129	K0182	0.3	1.6	-1.2	5.1	37	56	87	76	6	2.5	-1.9	50	5.3	-1.4	-2	2.1	0.2	-12.2
11	AGFN127	K0182	1.2	0.7	-2	3.3	28	34	56	46	6	2.1	-1.2	37	4.5	-0.5	-0.4	1.5	0.4	-7.5
12	AGFN45	J87	2	3.4	-2.5	2	27	44	70	65	4	2.4	-4	44	4.2	-1.2	-1.6	2.1	0.3	4.9
13	AGFN97	L14	2.4	0.1	-0.7	4	32	50	63	45	8	0.8	2.9	38	3.2	-0.5	-1.3	0.9	0.6	3.6
14	AGFN83	J87	-2.2	1.4	-0.8	4.3	30	41	72	52	5	1.6	0.5	40	5.1	-0.2	-0.1	1.6	0.2	6.9
15	AGFN120	L14	3.2	2.4	-1.5	1.2	24	28	51	38	5	1.5	-2.6	34	3.4	0.9	1.7	0.5	0.8	-3.3
16	AGFN32	H20	1	0.1	0.1	4	30	39	54	34	6	1.4	1.5	33	3.2	0.1	0.1	0.7	0.4	5.5
17	AGFN39	H20	6.1	4.2	-1	0.2	23	34	54	25	6	0.8	-0.3	38	2.5	1	2.3	0.5	0.4	5.8
18	AGFN177	J87	-0.9	2.1	-2	4.2	34	46	85	82	4	2.6	-2.4	49	5.1	-1.7	-2.7	2.5	0.2	-9.2
19	AGFN102	J87	-3.5	-0.6	-0.9	5.4	34	53	79	81	8	1.7	1.2	44	4.5	-2	-3.8	2.3	0.1	3.6
20	AGFN117	J87	-5.5	-1.4	-1.2	6.6	38	59	98	77	7	3.2	-1.9	49	5.3	-1.1	-1.3	2	0.1	-8.2
21	AGFN141	J87	0.6	1.8	-1.3	3.4	28	36	58	53	7	2.8	-2.9	38	4.3	-0.7	-0.7	1.6	0.2	8.2
22	AGFN241	H206	0.8		-0.2	2.8	25	34	45	21	5	1.9	-0.5	30	2.1	0.3	1.2	0.4	0.4	3.5
23	AGFN201	J87	-2.6	0.6	-1.7	2.8	24	31	53	54	2	2.4	-2.8	37	4.8	0.3	1.5	0.9	0.3	1.3
24	AGFN162	K126	-1.3	-0.8	-1	2.5	27	34	52	50	6	1.9	-0.6	37	3.7	0.8	1.8	0.2	0.5	-6.4
25	AGFN243	K152	-1.4	-1.7	-0.5	3.8	29	36	55	49	6	0.6	3.8	38	4.8	0.4	0.6	0.7	0.4	-5.9
26	AGFN498	G10	4	0.7	-3	1.9	23	33	43	40	5	1.9	-3.1	32	6	0.1	1.8	0.9	0.3	0.6
27	AGFN227	L0140	2.1	1.4	-1.8	1.8	29	34	48	38	7	1.6	-2	38	4.1	0.5	0.6	0.8	0.5	9.4
28	AGFN106	L14	1.6	0.3	0	2.8	30	47	61	33	8	1.6	1.3	36	2.2	0.2	0.4	0.4	0.6	-0.3
29	AGFN75	K7	-1.6	-1.2	0.4	4.3	31	39	59	44	8	1.2	2.6	37	5.4	-0.4	-1.2	1.7	0.3	0.7
30	AGFN138	K126	-8.2	-2	1	5.7	35	49	66	74	5	2	1.3	43	5	-0.6	-0.4	0.8	0.4	-5.7
31	AGFN86	L14	3.1	3.5	-0.1	1.7	31	46	53	28	9	2.5	-4.1	35	1.8	-0.5	-1.1	1	0.6	-15.1
32	AGFN217	K152	-5.2	-2.7	-0.6	5	28	36	47	33	7	1	2.6	31	5.1	-0.4	-1.4	1.3	0.6	13.1
33	AGFN170	J87	-0.2	1.7	-2.1	1.9	19	35	46	35	7	1.6	-1.8	30	3.4	0.9	2.5	0.3	0.4	6.9
34	AGFN204	L0140	-0.3	2.1	-2.4	2.5	29	38	49	39	9	2	-3	37	3.3	-0.3	-0.8	0.9	0.5	2.1
35	AGFN68	L14	5.7	2.6	-1	-0.5	20	29	37	12	11	1.1	-2.1	30	1.3	0.8	1.7	0.2	0.9	3.9



LOT	IDENT	SIRE	CED	CEM	GL	BWt	200D	400D	600D	MCW	MILK	SS	DTC	CWT	EMA	RIB	RUMP	RBY%	IMF%	Docility
36	AGFN104	J87	-1.6	0.6	-1.1	4.2	28	36	70	66	4	1.9	0.7	41	3.9	-1.5	-1.2	1.6	0.3	3.6
37	AGFN237	K152	1.9	-1.1	-0.6	2.6	30	35	54	35	6	1.6	1.3	38	5.3	0.4	0.1	1	0.6	14.6
38	AGFN262	K152	-2.6	-3.4	0	4.6	31	35	55	41	6	2.1	1.6	37	5.6	-0.2	-0.9	1.4	0.5	18.6
39	AGFN55	K7	-6.4	-1.2	0.6	5.7	33	39	53	39	9	1.4	2.9	34	6.1	-0.8	-2.4	2.1	0.1	3.8
40	AGFN37	G105	3.1	1.8	-3.2	2.7	28	38	54	49	6	2.2	-2.8	40	4.2	0	0.1	1	0.4	0.8
41	AGFN2	H20	4.7	3.7	-1.4	0.8	25	31	39	31	8	1.3	-0.7	37	3.2	-1	-2	1.8	0.3	9.2
42	AGFN484	G10	3.6	0.8	-1.6	1.4	20	28	32	26	5	1.3	-3.1	26	2.8	0.4	0.7	0.6	0.7	0.4
43	AGFN178	J87	3	2.1	-3.1	2.5	31	42	65	59	3	2.3	-2	42	4.3	-0.8	-0.7	1.3	0.1	-6.1
44	AGFN13	G105	5.7	3	-3.9	1.3	29	39	53	40	9	2.2	-3.9	38	3.2	-1	-1.4	1.3	0.4	2.2
45	AGFN432	L34	4		-3.8	1.8	27	37	43	39	7	1.9	-3.3	34	3.1	-0.9	-1.4	1.2	0.3	0.1
46	AGFN130	K0182	1.1	1.2	-2	3.4	29	39	54	44	6	2.1	-0.8	36	3.9	-1.8	-3	2	0.2	5.1
47	AGFN63	L14	2.6	2.8	-2.2	1.5	23	41	45	47	5	2	-3.9	36	2.9	0.1	0.6	0.5	0.8	-2
48	AGFN377	K43	0		-1.2	2.8	26	41	48	46	7	1.8	-1.4	36	4	-0.3	-0.1	1	0.5	-10.8
49	AGFN211	K0245	-2.2	-0.4	-2.2	3.7	28	38	45	50	6	2.1	-0.8	34	4.9	-0.7	-1.6	1.2	0.5	5.5
50	AGFN369	K43	-1.6	-1.2	-2.9	2.8	27	34	51	44	8	1.9	-2.2	39	5.1	-0.8	-1.1	1.5	0.4	1.1
51	AGFN21	G105	4.9	2.8	-4	1.6	27	30	48	32	9	1.7	-1.4	37	3.7	-1	-2	1.7	0.3	-5.2
52	AGFN142	K126	-2.1	0.8	-0.8	3.1	30	37	47	38	10	2.9	-2.9	36	4.1	-0.8	-1.3	1.4	0.5	-2.5
53	AGFN133	K0245	4.6	1.1	-2.2	0.9	23	34	35	24	7	1.6	-1.4	31	2.5	-0.2	0.1	0.6	0.7	7.9
54	AGFN49	H20	2.7	2	0.4	2.3	26	34	44	23	7	0.6	1.7	28	1.6	1.4	3	-0.4	0.4	3.7
55	AGFN336	F215	0.4	-0.4	-0.8	5	36	48	72	72	6	0.5	3.4	47	4.6	-0.2	-1.1	0.8	0.2	11.4
56	AGFN173	J87	4.4	2.8	-2.6	1.7	25	40	61	67	5	1.6	-2.8	42	4.6	-1.4	-1.7	2.2	0.3	-2.7
57	AGFN60	H20	1	-0.6	0.4	4.4	31	40	58	34	7	1.4	4.3	37	4.3	-0.8	-2.2	1.6	0.3	3.5
58	AGFN234	K126	-1.4	2	-2	2.6	28	32	38	43	8	1.7	-1.4	34	4.2	-1.2	-2.5	1.5	0.5	-6
59	AGFN180	K152	-1.5	-1.5	-0.7	4.5	33	51	63	70	4	1.5	0.2	43	5.2	-0.3	-0.5	1	0.4	8.7
60	AGFN236	J87	-3.4	-0.2	-1.1	5.3	32	48	69	78	6	2.3	-2.5	41	4.9	-0.9	-1.3	1.6	0.2	2.3
61	AGFN78	L14	3.4	3	-1.5	0.6	20	25	37	17	6	1.8	-2.6	29	2.4	1	2.1	0.2	0.8	-10.1
62	AGFN280	K126	-5	-3.3	-1.3	5.2	34	42	60	69	5	2.3	-1.4	42	5.6	-1.1	-2.1	1.5	0.5	-11.3
63	AGFN341	K267				3.2	30	46	55	42	7	1.8	0.1	38	2.6	-0.9	-1.8	1.4		2.4
64	AGFN257	K126	-1.4	-2.4	-1.3	4.5	32	48	58	62	6	2	1.1	43	4.5	-0.7	-1.5	1	0.5	2.2
65	AGFN152	K0182	4.1	2	-3.4	2.7	32	46	65	43	7	2.9	-4.8	41	3.6	-0.8	-1.2	1.5	0.3	5.1

<b>Perf Herd Breed Average</b>	0.2	0.3	-1.2	3.1	29	39	52	46	7	1.8	-1.2	37	3.8	-0.5	-0.6	1.1	0.5	<b>3.7</b>
--------------------------------	-----	-----	------	-----	----	----	----	----	---	-----	------	----	-----	------	------	-----	-----	------------

\*BASED ON RESULTS FROM JULY 2019 GROUP BREEDPLAN

  Top 1% EBVs and Indices  
   Top 5% EBVs and Indices  
   Top 10% EBVs and Indices  
   Top 20% EBVs and Indices  
   MCW less than 600 day growth



**LOT 15 / N120**



**LOT 24 / N162**



**LOT 19 / N102**



**LOT 26 / N498**



**LOT 20 / N117**



**LOT 31 / N086**



**LOT 21 / N141**



**LOT 37 / N237**





**LOT 38 / N262**



**LOT 47 / N063**



**LOT 39 / N055**



**LOT 48 / N377**



**LOT 41 / N002**



**LOT 50 / N369**



**LOT 44 / N013**



**LOT 60 / N236**





**LOT 52 WEEBOLLABOLLA NARACOORTE N142 (P)**

BORN:	27/07/2017	THE GROVE F516 (H)	BUNDALEER UNITED CHIEF U21 (P)
IDENTITY:	AGFN142	SIRE: <b>TURANVILLE INFORMER K126 (P) (AI)</b>	DAM: <b>WEEBOLLABOLLA BELIEF H221 (P) (AI)</b>
COLOUR:	<b>RED</b>	TURANVILLE G95 (P) (AI)	WEEBOLLABOLLA BELIEF F194 (H)

DAM NO. OF PROGENY: 6 DNA BARCODE: **13109148** TRAITS OBSERVED: CE, BWT, 200WT, 400WT(X2), 600WT(X2), SS, FAT, EMA, IMF, DOC

**AUGUST 2019 PERFORMANCE HERDS AUSTRALIA BREEDPLAN**

CED	CEM	GL	BWt	200D	400D	600D	MCW	MILK	SS	DTC	CWT	EMA	RIB	RUMP	RBV%	IMF%	Docility
-2.1	0.8	-0.8	3.1	30	37	47	38	10	2.9	-2.9	36	4.1	-0.8	-1.3	1.4	0.5	-2.5
39%	30%	43%	72%	68%	70%	73%	60%	39%	69%	43%	55%	55%	62%	62%	56%	45%	44%

**RAW DATA** SUPPLIED ON SALE DAY **zoetis** HOMOZYGOUS POLL

Scrotal Size*	Weight	P8	RIB	EMA	IFM%
38					

**LOT 52**  
PURCHASER: \$

NOTES / COMMENTS:

**LOT 53 WEEBOLLABOLLA NYNGAN N133 (P)**

BORN:	26/07/2017	WEEBOLLABOLLA GOODAR G105 (P) (AI)	WEEBOLLABOLLA CAPE YORK C2 (P) (AI) (ET)
IDENTITY:	AGFN133	SIRE: <b>THE GROVE K0245 (P)</b>	DAM: <b>WEEBOLLABOLLA FAB F257 (P)</b>
COLOUR:	<b>RED LITTLE WHITE</b>	THE GROVE F941 (P)	WEEBOLLABOLLA FAB D218 (H)

DAM NO. OF PROGENY: 6 DNA BARCODE: **13109136** TRAITS OBSERVED: CE, BWT, 200WT, 400WT(X2), 600WT(X2), SS, FAT, EMA, IMF, DOC

**AUGUST 2019 PERFORMANCE HERDS AUSTRALIA BREEDPLAN**

CED	CEM	GL	BWt	200D	400D	600D	MCW	MILK	SS	DTC	CWT	EMA	RIB	RUMP	RBV%	IMF%	Docility
4.6	1.1	-2.2	0.9	23	34	35	24	7	1.6	-1.4	31	2.5	-0.2	0.1	0.6	0.7	7.9
36%	26%	33%	72%	68%	69%	72%	59%	37%	69%	42%	54%	52%	60%	60%	53%	43%	40%

**RAW DATA** SUPPLIED ON SALE DAY **zoetis** HOMOZYGOUS POLL

Scrotal Size*	Weight	P8	RIB	EMA	IFM%
38					

**LOT 53**  
PURCHASER: \$

NOTES / COMMENTS:

**LOT 54 WEEBOLLABOLLA NANDEWAR N49 (P)**

BORN:	4/07/2017	BUNDALEER UNITED CHIEF U21 (P)	WEEBOLLABOLLA JOHN J434 (P)
IDENTITY:	AGFN49	SIRE: <b>WEEBOLLABOLLA HERCULES H20 (P) (AI)</b>	DAM: <b>WEEBOLLABOLLA DELIVERY L87 (P)</b>
COLOUR:	<b>RED</b>	WEEBOLLABOLLA TALE F292 (P)	WEEBOLLABOLLA DELIVERY J24 (P) (AI)

DAM NO. OF PROGENY: 2 DNA BARCODE: **13109048** TRAITS OBSERVED: CE, BWT, 200WT, 400WT(X2), 600WT(X2), SS, FAT, EMA, IMF, DOC

**AUGUST 2019 PERFORMANCE HERDS AUSTRALIA BREEDPLAN**

CED	CEM	GL	BWt	200D	400D	600D	MCW	MILK	SS	DTC	CWT	EMA	RIB	RUMP	RBV%	IMF%	Docility
2.7	2	0.4	2.3	26	34	44	23	7	0.6	1.7	28	1.6	1.4	3	-0.4	0.4	3.7
39%	28%	45%	72%	68%	70%	73%	61%	39%	69%	42%	55%	54%	61%	61%	54%	44%	43%

**RAW DATA** SUPPLIED ON SALE DAY **zoetis** HOMOZYGOUS POLL

Scrotal Size*	Weight	P8	RIB	EMA	IFM%
36					

**LOT 54**  
PURCHASER: \$

NOTES / COMMENTS:

Top 1% EBVs and Indicies Top 5% EBVs and Indicies Top 10% EBVs and Indicies Top 20% EBVs and Indicies MCW less than 600 day growth





**LOT 55 WEEBOLLABOLLA NEWCASTLE N336 (P)**

BORN:	12/07/2017	WEEBOLLABOLLA THEODORE T85 (P)	WEEBOLLABOLLA URBENVILLE (P)
IDENTITY:	AGFN336	SIRE: MARELLAN NUCLEAR F215 (P) (AI)	DAM: WEEBOLLABOLLA VANESSA C415 (P)
COLOUR:	ROAN	MARELLAN SUSAN 8228L (P)	WEEBOLLABOLLA VANESSA V295 (P)

DAM NO. OF PROGENY: 7 DNA BARCODE: 13082303 TRAITS OBSERVED: CE, BWT, 200WT, 400WT(X2), 600WT(X2), SS, FAT, EMA, IMF, DOC

**AUGUST 2019 PERFORMANCE HERDS AUSTRALIA BREEDPLAN**

CED	CEM	GL	BWt	200D	400D	600D	MCW	MILK	SS	DTC	CWT	EMA	RIB	RUMP	RBV%	IMF%	Docility
0.4	-0.4	-0.8	5	36	48	72	72	6	0.5	3.4	47	4.6	-0.2	-1.1	0.8	0.2	11.4
42%	34%	37%	74%	69%	71%	74%	63%	49%	70%	46%	57%	54%	60%	60%	53%	45%	47%

**RAW DATA** SUPPLIED ON SALE DAY *zoetis* HETEROZYGOUS POLL

Scrotal Size*	Weight	P8	RIB	EMA	IFM%
36					

**LOT 55**  
PURCHASER: \$

NOTES / COMMENTS:

**LOT 56 WEEBOLLABOLLA NANANGO N173 (P)**

BORN:	3/08/2017	WEEBOLLABOLLA FINLAY F120 (S)	YAMBURGAN OSSIE G10 (P)
IDENTITY:	AGFN173	SIRE: WEEBOLLABOLLA JACKPOT J87 (S)	DAM: WEEBOLLABOLLA CHA CHA J67 (P)
COLOUR:	RED	WEEBOLLABOLLA CIRROCUMULUS C117 (P)	WEEBOLLABOLLA CHA CHA C32 (P)

DAM NO. OF PROGENY: 4 DNA BARCODE: 13109179 TRAITS OBSERVED: CE, BWT, 200WT, 400WT(X2), 600WT(X2), SS, FAT, EMA, IMF, DOC

**AUGUST 2019 PERFORMANCE HERDS AUSTRALIA BREEDPLAN**

CED	CEM	GL	BWt	200D	400D	600D	MCW	MILK	SS	DTC	CWT	EMA	RIB	RUMP	RBV%	IMF%	Docility
4.4	2.8	-2.6	1.7	25	40	61	67	5	1.6	-2.8	42	4.6	-1.4	-1.7	2.2	0.3	-2.7
41%	30%	35%	74%	70%	71%	74%	61%	41%	70%	44%	57%	56%	63%	63%	56%	47%	48%

**RAW DATA** SUPPLIED ON SALE DAY *zoetis* HOMOZYGOUS POLL

Scrotal Size*	Weight	P8	RIB	EMA	IFM%
37					

**LOT 56**  
PURCHASER: \$

NOTES / COMMENTS:

**LOT 57 WEEBOLLABOLLA NORQUARY N60 (P)**

BORN:	8/07/2017	BUNDALEER UNITED CHIEF U21 (P)	MARELLAN NUCLEAR F215 (P) (AI)
IDENTITY:	AGFN60	SIRE: WEEBOLLABOLLA HERCULES H20 (P) (AI)	DAM: WEEBOLLABOLLA DEPENDENCY L96 (P)
COLOUR:	ROAN	WEEBOLLABOLLA TALE F292 (P)	WEEBOLLABOLLA DEPENDENCY H63 (P) (AI)

DAM NO. OF PROGENY: 1 DNA BARCODE: 13198641 TRAITS OBSERVED: CE, BWT, 200WT, 400WT(X2), 600WT(X2), SS, FAT, EMA, IMF, DOC

**AUGUST 2019 PERFORMANCE HERDS AUSTRALIA BREEDPLAN**

CED	CEM	GL	BWt	200D	400D	600D	MCW	MILK	SS	DTC	CWT	EMA	RIB	RUMP	RBV%	IMF%	Docility
1	-0.6	0.4	4.4	31	40	58	34	7	1.4	4.3	37	4.3	-0.8	-2.2	1.6	0.3	3.5
41%	30%	47%	73%	68%	70%	72%	61%	41%	69%	44%	56%	54%	61%	60%	54%	45%	45%

**RAW DATA** SUPPLIED ON SALE DAY *zoetis* POLLHORN TEST RESUBMIT TBA

Scrotal Size*	Weight	P8	RIB	EMA	IFM%
38					

**LOT 57**  
PURCHASER: \$

NOTES / COMMENTS:

Top 1% EBVs and Indices Top 5% EBVs and Indices Top 10% EBVs and Indices Top 20% EBVs and Indices MCW less than 600 day growth



**LOT 58 WEEBOLLABOLLA NEWCOMEN N234 (P)**

BORN:	14/08/2017	THE GROVE F516 (H)	WEEBOLLABOLLA GORDON G125 (P) (AI)
IDENTITY:	AGFN234	SIRE: TURANVILLE INFORMER K126 (P) (AI)	DAM: WEEBOLLABOLLA ZIRCON J89 (P)
COLOUR:	WHITE	TURANVILLE G95 (P) (AI)	WEEBOLLABOLLA ZIRCON G100 (P) (AI)

DAM NO. OF PROGENY: 5 DNA BARCODE: 13109242 TRAITS OBSERVED: CE, BWT, 200WT, 400WT(X2), 600WT(X2), SS, FAT, EMA, IMF, DOC

**AUGUST 2019 PERFORMANCE HERDS AUSTRALIA BREEDPLAN**

CED	CEM	GL	BWt	200D	400D	600D	MCW	MILK	SS	DTC	CWT	EMA	RIB	RUMP	RBV%	IMF%	Docility
-1.4	2	-2	2.6	28	32	38	43	8	1.7	-1.4	34	4.2	-1.2	-2.5	1.5	0.5	-6
37%	29%	44%	72%	68%	69%	72%	59%	36%	68%	42%	54%	53%	60%	60%	54%	43%	42%

**RAW DATA** SUPPLIED ON SALE DAY **zoetis** HETEROZYGOUS POLL

Scrotal Size*	Weight	P8	RIB	EMA	IFM%
38					

**LOT 58**  
PURCHASER: \$

NOTES / COMMENTS:

**LOT 59 WEEBOLLABOLLA NAMGOORI N180 (P)**

BORN:	5/08/2017	MARELLAN NUCLEAR F215 (P) (AI)	YAMBURGAN LOCKYER C8 (P)
IDENTITY:	AGFN180	SIRE: WEEBOLLABOLLA KAMILAROI K152 (P)	DAM: WEEBOLLABOLLA XTENDABLE G46 (P)
COLOUR:	RED	WEEBOLLABOLLA WATERFALL G224 (P)	WEEBOLLABOLLA XTENDABLE X33 (P) (AI)

DAM NO. OF PROGENY: 7 DNA BARCODE: 13109187 TRAITS OBSERVED: CE, BWT, 200WT, 400WT(X2), 600WT(X2), SS, FAT, EMA, IMF, DOC

**AUGUST 2019 PERFORMANCE HERDS AUSTRALIA BREEDPLAN**

CED	CEM	GL	BWt	200D	400D	600D	MCW	MILK	SS	DTC	CWT	EMA	RIB	RUMP	RBV%	IMF%	Docility
-1.5	-1.5	-0.7	4.5	33	51	63	70	4	1.5	0.2	43	5.2	-0.3	-0.5	1	0.4	8.7
37%	28%	34%	72%	68%	69%	72%	59%	41%	69%	42%	55%	53%	60%	60%	54%	43%	41%

**RAW DATA** SUPPLIED ON SALE DAY **zoetis** HOMOZYGOUS POLL

Scrotal Size*	Weight	P8	RIB	EMA	IFM%
38					

**LOT 59**  
PURCHASER: \$

NOTES / COMMENTS:

**LOT 60 WEEBOLLABOLLA NEWNHAM N236 (P)**

BORN:	14/08/2017	WEEBOLLABOLLA FINLAY F120 (S)	WEEBOLLABOLLA GREGORY G160 (P) (AI) (ET)
IDENTITY:	AGFN236	SIRE: WEEBOLLABOLLA JACKPOT J87 (S)	DAM: WEEBOLLABOLLA KISS K252 (P)
COLOUR:	RED LITTLE WHITE	WEEBOLLABOLLA CIRROCUMULUS C117 (P)	

DAM NO. OF PROGENY: 2 DNA BARCODE: 13109244 TRAITS OBSERVED: CE, BWT, 200WT, 400WT(X2), 600WT(X2), SS, FAT, EMA, IMF, DOC

**AUGUST 2019 PERFORMANCE HERDS AUSTRALIA BREEDPLAN**

CED	CEM	GL	BWt	200D	400D	600D	MCW	MILK	SS	DTC	CWT	EMA	RIB	RUMP	RBV%	IMF%	Docility
-3.4	-0.2	-1.1	5.3	32	48	69	78	6	2.3	-2.5	41	4.9	-0.9	-1.3	1.6	0.2	2.3
36%	25%	28%	72%	68%	69%	72%	59%	36%	69%	39%	53%	51%	58%	58%	52%	42%	43%

**RAW DATA** SUPPLIED ON SALE DAY **zoetis** HOMOZYGOUS POLL

Scrotal Size*	Weight	P8	RIB	EMA	IFM%
42					

**LOT 60**  
PURCHASER: \$

NOTES / COMMENTS:

Top 1% EBVs and Indicies Top 5% EBVs and Indicies Top 10% EBVs and Indicies Top 20% EBVs and Indicies MCW less than 600 day growth





**LOT 61 WEEBOLLABOLLA NARRANDERA N78 (P)**

BORN:	13/07/2017	THE GROVE J0598 (P)	YAMBURGAN OSSIE E93 (P)
IDENTITY:	AGFN78	SIRE: WEEBOLLABOLLA LIGNUM L14 (P) (AI)	DAM: WEEBOLLABOLLA BODACIOUS K174 (P)
COLOUR:	ROAN	WEEBOLLABOLLA VIGILANCE J112 (P)	WEEBOLLABOLLA BODACIOUS B112 (P)

DAM NO. OF PROGENY: 5 DNA BARCODE: 13109080 TRAITS OBSERVED: CE, BWT, 200WT, 400WT(X2), 600WT(X2), SS, FAT, EMA, IMF, DOC

**AUGUST 2019 PERFORMANCE HERDS AUSTRALIA BREEDPLAN**

CED	CEM	GL	BWt	200D	400D	600D	MCW	MILK	SS	DTC	CWT	EMA	RIB	RUMP	RBV%	IMF%	Docility
3.4	3	-1.5	0.6	20	25	37	17	6	1.8	-2.6	29	2.4	1	2.1	0.2	0.8	-10.1
39%	29%	41%	73%	69%	70%	72%	60%	37%	70%	43%	56%	54%	61%	61%	54%	45%	47%

RAW DATA SUPPLIED ON SALE DAY **zoetis** HOMOZYGOUS POLL

Scrotal Size*	Weight	P8	RIB	EMA	IFM%
40					

LOT 61 PURCHASER: \$

NOTES / COMMENTS:

**LOT 62 WEEBOLLABOLLA NARRAPORT N280 (S)**

BORN:	5/09/2017	THE GROVE F516 (H)	FUTURITY FLIRT F105 (P)
IDENTITY:	AGFN280	SIRE: TURANVILLE INFORMER K126 (P) (AI)	DAM: WEEBOLLABOLLA ROWENA J186 (P)
COLOUR:	RED	TURANVILLE G95 (P) (AI)	WEEBOLLABOLLA ROWENA E439 (P)

DAM NO. OF PROGENY: 4 DNA BARCODE: 13109290 TRAITS OBSERVED: CE, BWT, 200WT, 400WT(X2), 600WT(X2), SS, FAT, EMA, IMF, DOC

**AUGUST 2019 PERFORMANCE HERDS AUSTRALIA BREEDPLAN**

CED	CEM	GL	BWt	200D	400D	600D	MCW	MILK	SS	DTC	CWT	EMA	RIB	RUMP	RBV%	IMF%	Docility
-5	-3.3	-1.3	5.2	34	42	60	69	5	2.3	-1.4	42	5.6	-1.1	-2.1	1.5	0.5	-11.3
36%	28%	40%	72%	68%	69%	72%	59%	37%	69%	43%	54%	53%	60%	60%	54%	44%	42%

RAW DATA SUPPLIED ON SALE DAY **zoetis** POLLHORN TEST RESUBMIT TBA

Scrotal Size*	Weight	P8	RIB	EMA	IFM%
38					

LOT 62 PURCHASER: \$

NOTES / COMMENTS:

**LOT 63 WEEBOLLABOLLA NEILSON N341 (S)**

BORN:	15/07/2017	WEEBOLLABOLLA GOODAR G105 (P) (AI)	WEEBOLLABOLLA EXPLOSIVE E11 (P) (AI) (ET)
IDENTITY:	AGFN341	SIRE: ROYALLA ROMEO K267 (P) (AI)	DAM: WEEBOLLABOLLA TESTAMENT H375 (H)
COLOUR:	RED & WHITE	ROYALLA SUSAN 9200M (P)	WEEBOLLABOLLA TESTAMENT E1114 (H)

DAM NO. OF PROGENY: 4 DNA BARCODE: 13082315 TRAITS OBSERVED: CE, BWT, 200WT, 400WT, 600WT, SS, FAT, EMA, IMF, DOC

**AUGUST 2019 PERFORMANCE HERDS AUSTRALIA BREEDPLAN**

CED	CEM	GL	BWt	200D	400D	600D	MCW	MILK	SS	DTC	CWT	EMA	RIB	RUMP	RBV%	IMF%	Docility
			3.2	30	46	55	42	7	1.8	0.1	38	2.6	-0.9	-1.8	1.4		2.4
			65%	56%	56%	52%	46%	27%	55%	31%	36%	29%	30%	31%	26%		25%

RAW DATA SUPPLIED ON SALE DAY **zoetis** HETEROZYGOUS POLL

Scrotal Size*	Weight	P8	RIB	EMA	IFM%
40					

LOT 63 PURCHASER: \$

NOTES / COMMENTS:

Top 1% EBVs and Indicies Top 5% EBVs and Indicies Top 10% EBVs and Indicies Top 20% EBVs and Indicies MCW less than 600 day growth

**LOT 64 WEEBOLLABOLLA NOBBY N257 (H)**

BORN:	24/08/2017	THE GROVE F516 (H)	MARELLAN NUCLEAR F215 (P) (AI)
IDENTITY:	AGFN257	SIRE: TURANVILLE INFORMER K126 (P) (AI)	DAM: WEEBOLLABOLLA AUBURN J76 (H)
COLOUR:	ROAN	TURANVILLE G95 (P) (AI)	WEEBOLLABOLLA AUBURN F132 (P)

DAM NO. OF PROGENY: 5 DNA BARCODE: 13109265 TRAITS OBSERVED: CE, BWT, 200WT, 400WT(X2), 600WT, SS, FAT, EMA, IMF, DOC

**AUGUST 2019 PERFORMANCE HERDS AUSTRALIA BREEDPLAN**

CED	CEM	GL	BWt	200D	400D	600D	MCW	MILK	SS	DTC	CWT	EMA	RIB	RUMP	RBV%	IMF%	Docility
-1.4	-2.4	-1.3	4.5	32	48	58	62	6	2	1.1	43	4.5	-0.7	-1.5	1	0.5	2.2
38%	29%	41%	72%	67%	69%	70%	59%	37%	70%	43%	53%	51%	58%	57%	52%	43%	43%

**RAW DATA** SUPPLIED ON SALE DAY

Scrotal Size*	Weight	P8	RIB	EMA	IFM%
36					

**LOT 64**  
PURCHASER: \$

NOTES / COMMENTS:

**LOT 65 WEEBOLLABOLLA NORMANTON N152 (S)**

BORN:	30/07/2017	WEEBOLLABOLLA GOODAR G105 (P) (AI)	SPRYS PRESIDENT Z023 (P) (AI) (ET)
IDENTITY:	AGFN217	SIRE: THE GROVE K0182 (P)	DAM: WEEBOLLABOLLA CLARE C62 (P)
COLOUR:	RED LITTLE WHITE	THE GROVE F526 (P)	WEEBOLLABOLLA ULANDA U27 (P)

DAM NO. OF PROGENY: 10 DNA BARCODE: 13109157 TRAITS OBSERVED: CE, BWT, 200WT, 400WT, 600WT(X2), SS, FAT, EMA, IMF, DO

**AUGUST 2019 PERFORMANCE HERDS AUSTRALIA BREEDPLAN**

CED	CEM	GL	BWt	200D	400D	600D	MCW	MILK	SS	DTC	CWT	EMA	RIB	RUMP	RBV%	IMF%	Docility
4.1	2	-3.4	2.7	32	46	65	43	7	2.9	-4.8	41	3.6	-0.8	-1.2	1.5	0.3	5.1
43%	32%	51%	74%	69%	71%	68%	59%	44%	57%	41%	53%	47%	49%	49%	45%	40%	47%

**RAW DATA** SUPPLIED ON SALE DAY *zoetis* HETEROZYGOUS POLL

Scrotal Size*	Weight	P8	RIB	EMA	IFM%
41					

**LOT 65**  
PURCHASER: \$

NOTES / COMMENTS:

Top 1% EBVs and Indicies
Top 5% EBVs and Indicies
Top 10% EBVs and Indicies
Top 20% EBVs and Indicies
MCW less than 600 day growth

**Disclaimer:** Whilst all care and attention to detail has been made in accurately compiling this catalogue, neither the vendor, selling agents or representatives will assume any responsibility for the correctness, use or interpretation of information included in this sale catalogue.



## BRED WELL FED WELL WORKSHOPS

On Friday 8 August Weebollabolla hosted **Bred Well Fed Well** lead by Jason Trompf.

Apart from the wild dust storm the day was extremely well received. It was very timely given joining will soon be upon us and everyone is wondering which breeders to retain and what market options they have given the impact of the drought. The day was very practical and included walking through the key traits to benefit production and the role of genetics, plus feed management for improved reproductive performance and livestock productivity.



The day really help producers clarify:

- how to use EBVs to improve enterprise profitability
- developing a breeding objective for your cattle enterprise
- the impact of better management of breeder nutrition on reproductive performance and profitability

The aim was for producers to walk away with a plan for their future genetics and nutrition regime suited to their environment and markets to boost profitability. Not one plan is suited to everyone but there are definitely common themes that have a direct impact. We highly recommend this workshop day and would be happy to host this again in 2020, especially for our clients. Thanks must go to the LLS who sponsored food on the day - Kate Goodhew it was excellent. Please email Jen if you are interested.







### Judge splits hairs in led steer



ST. JOHNS' High School, Queensland, presented their Wingham Beef Week with a long list of steers, including good champions that had earned with their top...

### Beef experience attracts record numbers



ST. JOHNS' High School, Queensland, presented their Wingham Beef Week with a long list of steers, including good champions that had earned with their top...



**WEEBOLLABOLLA SHORTHORNS**  
*Proudly Supporting Beef's Quality Future*  
**52<sup>ND</sup> ANNUAL BULL SALE**  
 FRIDAY 13 SEPTEMBER MOREE 1PM  
 Jon Jeffreys 0427 730 244 • Andrew Lawrence 0400 906 347  
 Sandy Moore 0428 730 244 • www.weebollabolla.com.au

### Students gifted led steer



Wingham Beef Week's 52nd Annual Bull Sale will see a record number of steers gifted to schools...



**Wingham Beef Week continues**  
 The 52nd Annual Bull Sale will see a record number of steers gifted to schools...

MAY 16TH 2019

## Weebollabolla supports Wingham Beef Week and it's quality beef focus of the future

Weebollabolla donated 12 steers to Wingham Beef Week as a show of respect for this initiative as it is vital to educate young people about a quality beef future industry.

With the past 18 months being particularly tough in the beef industry due to the drought that continues it was imperative somebody stepped up and Weebollabolla did. The steers went, at random to 12 different high schools who participated in the program.

The partnership came about on the back of Weebollabolla's three-year association with Wingham Beef Exports where 130 head per month is supplied for a premium quality beef product 'Australian Shorthorn Weebollabolla est 1873'.

This partnership has been essential for improving our genetic program and we have been able to submit some carcass data to ABRI for analysis. For the Australian beef industry to make future gains supplying bulls with proven performance from the paddock to the plate is crucial. Closer relationships along the whole supply chain and increased information flow is key.

We are so impressed with Wingham Beef Week's commercial focus with live assessment, carcass assessment and evaluation, meat judging and beef appreciation workshops we believe that this is a crucial part to the future success of the Australian Beef industry. The focus on genetics and the follow through of genetic performance can mean a lot more dollars in back pockets.

Thanks to Ben Hiscox from BJA who was behind the scenes getting the steers to the schools and making this happen. Grant Coleman from Wingham Beef who did a fantastic job ensuring the students understood the difference between performance in the show ring and what attributes are important when assessing carcasses for meat quality.





# Congratulations to Vendors

## INDIVIDUAL HIGHEST SCORES

### Highest MSA Marbling

AF Still	9 Ausmeat   1170 MSA	Steer
CB O'Neill	7 Ausmeat   950 MSA	Steer

### HEAVIEST CARCASE WEIGHT

Weebollabolla	528.5	Heifer
SM Tym	512.5	Heifer

### LARGEST EMA

Sandy McColl	113	Steer
DR McLeish	110	Heifer

### HIGHEST MSA INDEX

Weebollabolla	70.44	Steer
AF Still	69.93	Steer

### GROUP HIGHEST SCORES

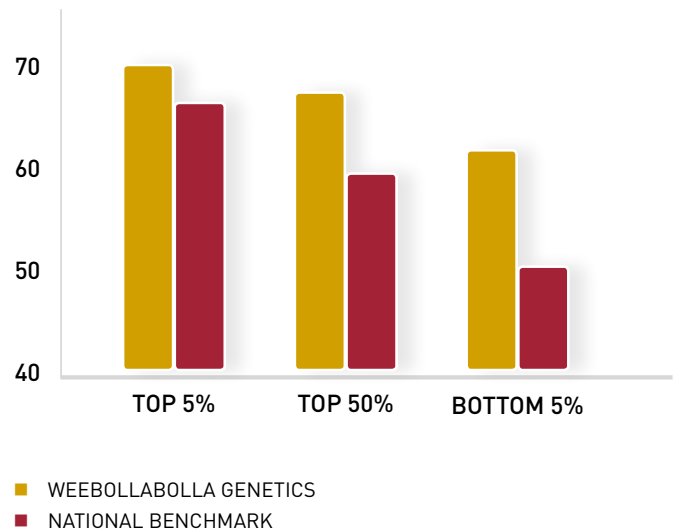
#### Highest average MSA Index score performing in the top 1% Nationally

1	Weebollabolla	68.58
2	AF Still	68.04
3	D Stuckey	67.17
4	CB O'Neill	67.15
5	RAL Pearse	67.15
6	DG Hone	67.14
7	Derra Pastoral	67.14
8	A. Hill-Sth	67.08

Of the 1581 cattle sent to Wingham Beef from Weebollabolla feedlot sent between August 2018 and July 2019 the below graph shows how we performed compare to the 3,334,699 carcasses that graded MSA Nationally in the same period. A great team effort. Thank you to those who supplied steers and heifers.

### MSA INDEX BENCHMARK

#### WEEBOLLABOLLA GENETICS VS NATIONAL PERFORMANCE



## NH Foods Chinese Visit MAY 1ST 2019



### CHINESE AND NH FOODS WINGHAM BEEF VISITORS TO WEEBOLLABOLLA

MIN XIE TENDER PLUS, CHEN YONG CHEF EDITION SANYA, JUNHAO XU CHEF M1NT RESTAURANT, HUIYIN CHEN YONGXIANG TRADING CO SUPPLIES 250 5 STAR HOTELS, YONGLU XIAO CHEF SHERATON GUANGZHOU, YIMIN YAN RESTAURANT OWNER SHENZHEN, TONY MESIANO EX TOP CUT, CHINESE TRANSLATOR, BEN HISCOX BJA, SANDY MUNRO WEEBOLLABOLLA, ANDREW LAWRENCE WEEBOLLABOLLA.

# SOUTHERN MULTI-BREED PROJECT



CHAROLAIS



ANGUS



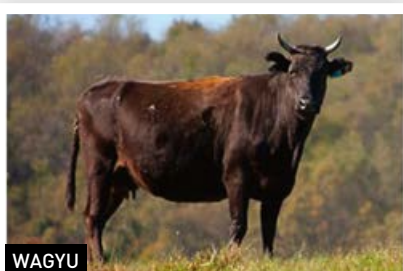
SHORTHORN



HEREFORD



BRAHMAN



WAGYU

Weebollabolla are proudly associated and supportive of the Southern Multi-Breed Project.

The Sheep EBV equivalent commenced its life without breed interference and we look forward to the cattle industry forging ahead with a Multi-Breed EBV. In June 2019 Weebollabolla sent 17 PTIC cows and 13 PTIC heifers to green grass at Tocal. The cattle were assessed for structure, pedigree linkage and EBV accuracies. We also nominated AI sires on July 31st to be apart of this program well into the future. Thank you to Andrew Lawrence and Jason Siddell for doing their job with great care.

## Delivering resource populations for multi-breed genomic evaluation in beef cattle

This project will enable producers across Australia to directly compare bulls of different breeds for all BREEDPLAN traits and assess their genetic merit irrespective of hide colour. Currently BREEDPLAN EBVs and \$Indices are breed specific, and cannot be compared across different breeds. Up to 5 breeds (Angus, Hereford, Shorthorn, Wagyu, Charolais and Brahman) representing the most popular breeds in Southern Australia will be part of the project.

### EXPERIMENTAL DESIGN

The aim of this project is to obtain calves which are born in a multi-breed context, which means that they are born head to head with other purebred animals from different breeds. This allows for similar environmental effects to be identified at the moment of recording, therefore allowing for the calculation of direct breed effects on all phenotypes recorded that will later be used for genetic evaluations. This is a mandatory requirement for establishing a multi-breed BREEDPLAN evaluation. The number cows and the number of breeds will depend on the location and size of the research station.

Foundation cattle sourced widely from the beef industry will be tested head to head on NSW DPI research stations from conception to slaughter over the 5 years (2018 -2023) of the project. A total of more than 8,000 (head to head) calves will be born, 2,600 steers and close to 3,000 heifers retained for joining. A large number of traits will be recorded during the project.

### Traits to be recorded within the project

Growth	Birth & Reproduction	Carcase & EQ	Hard to Measure	Others
Birth Wt	Gestation Length	Carcase Wt	NFI	Temperament
Weaning Wt	Calving Ease	IMF%	Methane	Structure
Yearling Wt	Days to Calving	Fat Depth	Eating Quality	Body Muscle
Final Wt	Age at Puberty	Muscling	Faecal egg count	Body condition score
Mature Wt	2nd Lactation anoestrous	Scanning (live)	Bovine respiratory disease	



## Looking out for each other in tough times

The drought is taking its toll on farming families and rural communities across NSW and Queensland as farmers struggle to maintain stock numbers and sustain feeding regimes.

Perhaps the biggest toll though is the impact of the drought on mental health and wellbeing of people across the industry. We've all heard stories of families struggling and it is hard to maintain a positive outlook with no sign of the drought breaking.

Annually 2500 people commit suicide across the country and with suicide rates in regional Australia more than double those of the metro areas it is vital that we support each other, particularly during tough times like now. Together we need to continue to remove the traditional and perceived stigmas around mental health and encourage people who need support to access health services.

The Beyond Blue national #youcantalk campaign provides practical information about what to look out for and how to talk to a mate if you think they're at risk of suicide. Visit [beyondblue.com.au](http://beyondblue.com.au) for more information.



Other support can be accessed through Rural Adversity Mental Health Program (RAMHP). Also consider talking to your local Rural Financial Counselling Service for support and information about financial planning and options and government support.



*In memory of Chris Lahrs*



## THANK YOU

On behalf of the team at Weebollabolla thank you for attending our sale. Your support is greatly appreciated and we wish you well with your purchases. We look forward to seeing you next year for our 52nd Sale.

**Thank you Sandy, Jen, the Munro Family and the team at Weebollabolla**







Photo Credit: Claudia Hiscox Photography

**bj**a | **BOB JAMIESON AGENCIES**  
**Stock & Station Agents**

*Proudly Associated with*  
**Weebollabolla Shorthorns**

Ben Hiscox - 0429 669 313 | Keiran te Velde - 0427 669 097 | Bob Jamieson - 0428 669 313  
 Shop 2, 18 Sweaney Street Inverell NSW | Email: admin@bobjamiesonagencies.com.au | Ph: 02 6721 0477

## Ahead of the Rest



**Our national network offers a range of products and services tailored to the needs of primary producers including:**

**Cropping | Livestock & Wool | Dairy | Horticulture | Financial Services | Real Estate**

**Contact the livestock team who can help you access buyers across Australia**

New South Wales  
 Andy McGeoch | 0418 737 470  
 Paul Jameson | 0428 667 998  
 Brian Kennedy | 0427 844 047

Queensland  
 Blake Munro | 0428 862 469  
 Andrew Meara | 0427 210 634  
 Bruce Sheppard | 0428 531 883

Victoria  
 Ross Milne | 0408 057 558  
 Jenni O'Sullivan | 0428 222 080

South Australia  
 Tom Penna | 0428 854 708  
 Western Australia  
 Tim Spicer | 0427 812 194



**PERCENTILE BANDS FOR 2017 BORN CALVES**

Percentile Band	CED	CEM	GL	BWt	200D	400D	600D	MCW	MILK	SS	DTC	CWT	EMA	RIB	RUMP	RBV%	IMF%	Docility
Top Value	+7.5	+4.9	-5.9	-1.7	+44	+79	+98	+92	+15	+4.3	-8.7	+55	+9.3	+2.4	+5.0	+3.3	+1.2	+28.1
Top 1%	+6.1	+3.9	-4.1	-0.5	+40	+66	+83	+84	+13	+3.5	-6.7	+50	+7.0	+1.3	+2.7	+2.5	+1.0	+23.2
Top 5%	+4.8	+3.0	-3.3	+0.6	+37	+57	+74	+75	+11	+2.9	-5.0	+47	+6.0	+0.8	+1.8	+2.1	+0.8	+18.5
Top 10%	+3.9	+2.6	-2.9	+1.2	+35	+52	+69	+69	+10	+2.7	-4.1	+45	+5.5	+0.4	+1.1	+1.9	+0.7	+16.3
Top 15%	+3.3	+2.2	-2.6	+1.6	+34	+50	+66	+65	+9	+2.5	-3.5	+44	+5.2	+0.2	+0.7	+1.7	+0.7	+14.1
Top 20%	+2.7	+1.8	-2.3	+1.9	+33	+47	+64	+61	+8	+2.4	-3.0	+43	+4.9	+0.1	+0.5	+1.6	+0.6	+11.7
Top 25%	+2.2	+1.5	-2.0	+2.1	+32	+46	+62	+58	+8	+2.3	-2.6	+42	+4.7	+0.0	+0.3	+1.5	+0.6	+10.5
Top 30%	+1.8	+1.3	-1.8	+2.3	+31	+44	+60	+55	+7	+2.2	-2.2	+41	+4.5	-0.1	+0.0	+1.4	+0.6	+9.3
Top 35%	+1.5	+1.1	-1.6	+2.5	+31	+43	+58	+53	+7	+2.1	-2.0	+40	+4.4	-0.2	-0.1	+1.3	+0.5	+8.0
Top 40%	+1.2	+0.8	-1.4	+2.8	+30	+41	+56	+51	+7	+2.0	-1.7	+39	+4.2	-0.3	-0.3	+1.2	+0.5	+6.9
Top 45%	+0.9	+0.6	-1.3	+2.9	+29	+40	+55	+48	+7	+1.9	-1.4	+39	+4.0	-0.4	-0.5	+1.2	+0.5	+5.7
Top 50%	+0.6	+0.5	-1.1	+3.1	+29	+39	+53	+46	+6	+1.8	-1.1	+38	+3.9	-0.5	-0.7	+1.1	+0.5	+4.6
Top 55%	+0.2	+0.3	-0.9	+3.3	+28	+38	+51	+44	+6	+1.8	-0.8	+37	+3.7	-0.6	-0.8	+1.0	+0.4	+3.3
Top 60%	-0.2	+0.1	-0.8	+3.5	+27	+36	+49	+42	+6	+1.7	-0.6	+36	+3.5	-0.7	-0.9	+0.9	+0.4	+2.1
Top 65%	-0.5	-0.2	-0.6	+3.7	+27	+35	+47	+40	+6	+1.6	-0.3	+35	+3.3	-0.7	-1.1	+0.9	+0.4	+0.8
Top 70%	-1.0	-0.5	-0.4	+3.8	+26	+34	+45	+38	+5	+1.5	+0.1	+34	+3.2	-0.8	-1.3	+0.8	+0.4	-0.6
Top 75%	-1.4	-0.8	-0.3	+4.0	+25	+32	+43	+34	+5	+1.4	+0.4	+33	+2.9	-0.9	-1.5	+0.7	+0.3	-2.3
Top 80%	-2.0	-1.2	-0.1	+4.2	+24	+30	+40	+31	+5	+1.3	+0.7	+32	+2.7	-1.0	-1.7	+0.6	+0.3	-4.3
Top 85%	-2.8	-1.6	+0.1	+4.5	+23	+29	+37	+27	+4	+1.2	+1.1	+31	+2.4	-1.1	-1.9	+0.5	+0.3	-6.6
Top 90%	-3.8	-2.1	+0.3	+4.8	+22	+26	+34	+23	+4	+1.0	+1.6	+29	+2.1	-1.3	-2.2	+0.3	+0.2	-10.2
Top 95%	-5.2	-2.9	+0.7	+5.4	+20	+23	+28	+16	+3	+0.8	+2.3	+27	+1.7	-1.5	-2.7	+0.1	+0.2	-13.7
Top 99%	-8.6	-4.8	+1.9	+6.4	+16	+17	+19	+7	+2	+0.3	+4.0	+22	+0.9	-2.0	-3.8	-0.3	+0.1	-22.6
Low Value	-16.2	-8.9	+4.0	+8.1	+12	+2	+5	-9	-1	-0.3	+5.7	+17	-0.3	-2.7	-5.1	-1.3	-0.1	-27.0

**EBVS** - Estimated Breeding Values (EBVs) are the best estimate of an animal's genetic merit, for that trait, half of which will be passed on to its progeny.

**Calving Ease EBVs (%)** - Based on calving difficulty scores, birth weights and gestation length information. More positive EBVs are favourable and indicate easier calving.

**CE % Direct = Direct Calving Ease** - The EBV for direct calving ease indicates the influence of the sire on calving ease in purebred females calving at two years of age.

**CE % Daughters = Daughters' Calving Ease** - The EBV for daughters' calving ease indicates how easily that sire's daughters will calve at two years of age.

**Gestation Length EBV (days)** - An estimate of the time from conception to the birth of the calf and is based on Artificial Insemination and hand mating records. Lower (negative) Gestation Length EBVs indicate shorter gestation length and therefore easier calving and increased growth after birth.

**Birth Weight EBV (kg)** - Based on the measured birth weight of progeny, adjusted for dam age. The lower the value the lighter the calf at birth.

**200-Day Growth EBV (kg)** - Calculated from the weight of progeny taken between 80 and 300 days of age. Values are adjusted to 200 days and for age of dam.

**400-Day Weight EBV (kg)** - Calculated from the weight of progeny taken between 301 and 500 days of age, adjusted to 400 days and for age of dam.

**600-Day Weight EBV (kg)** - Calculated from the weight of progeny taken between 501 and 900 days of age, adjusted to 600 days and for age of dam.

**Mature Cow Weight EBV (kg)** - Based on the cow weight when the calf is weighed for weaning, adjusted to 5 years of age.

**Milk EBV (kg)** - An estimate of an animal's milking ability. For sires, this EBV indicates the effect of the daughter's milking ability, inherited from the sire, on the 200-day weights of her calves. For dams, it indicates her milking ability.

**Scrotal Size EBV (cm)** - Calculated from the circumference of the scrotum taken between 300 and 700 days of age and adjusted to 400 days of age.

**Carcase Weight EBV (kg)** - Based on abattoir carcase records and is an indicator of the genetic differences in carcase weight at the standard age of 650 days.

**Eye Muscle Area EBV (sq cm)** - Calculated from measurements from live animal ultrasound scans and from abattoir carcase data, adjusted to a standard 300kg carcase. This EBV estimates genetic differences in eye muscle area at the 12/13th rib site of a 300kg dressed carcase.

**Rib Fat and Rump Fat EBVs (mm)** - Calculated from measurements of subcutaneous fat depth at the 12/13 rib site and the P8 rump site (from live animal ultrasound scans and from abattoir carcasses) and are adjusted to a standard 300kg carcase.

**Retail Beef Yield EBV (%)** - Indicates genetic differences between animals for retail yield percentage in a standard 300 kg carcase.

**Intramuscular Fat EBV (%)** is an estimate of the genetic difference in the percentage of intramuscular fat (marbling) at the 12/13th rib site in a 300 kg carcase. Depending on market targets, larger more positive values are generally more favourable.

**ACCURACY** Accuracy (%) is based on the amount of performance information available on the animal and its close relatives - particularly the number of progeny analysed. Accuracy is also based on the heritability of the trait and the genetic correlations with other recorded traits. Hence accuracy indicates the 'confidence level' of the EBV. The higher the accuracy value the lower the likelihood of change in the animal's EBV as more information is analysed for that animal or its relatives. Even though an EBV with a low accuracy may change in the future, it is still the best estimate of an animal's genetic merit for that trait. As more information becomes available, an EBV is just as likely to increase in value, as it is to decrease.

**DISCLAIMER** Unfortunately we do not have our PHA MSA Index printed in our catalogue. 'AGBU have almost completed an exhaustive investigation of existing datasets to provide the best genetic parameters relevant to the PHA analysis. Upon completion of this work AGBU will provide PHA with an update of their analysis and conclusions and simultaneously provide ABRI with the parameter files required to provide updated EBVs and Index values' Steve Skinner Manager International Beef Recording Scheme Agricultural Business Research Institute University of New England. We will provide Sale Day if available.



# WEEBOLLABOLLA ANNUAL BULL SALE 2018







WEBOLLABOLLA CONTACT

PHONE 02 6752 2319 / [weebollabolla.com.au](http://weebollabolla.com.au) / Follow us  