



2019

SPRING BULL SALE

THURSDAY 26TH SEPTEMBER 1PM



WWW.PARINGALIVESTOCK.COM.AU



WELCOME

Thank you for spending the time to engage in our 2019 Spring Bull Sale at Paringa. Looking back on the last year, Paringa bred bulls have found new homes in every state and territory of Australia, as well as elite sires exported to the USA. Our contract tailor made bulls for customers have successfully reached their destinations across the country, and it has been pleasing to see them thrive even in the most difficult of environments.

Paringa genetics are designed to perform off grass, grow quickly with high yield and marbling. This year's sale bulls represent the top of their class in their respective breeds, which makes for some exciting highlights individually. In the Black Angus offering the Dusty sons have truly set a benchmark for the Angus breed, they are exceptional. Again this year we have standout bulls sired by TCA Visionary, as well as GAR Fail Safe and Texas Mount K2.

The Red Angus bulls are rippers, with P6 & P7 bringing much early attention for their unique pedigrees, phenomenal genetic profiles and good looks. Backing these up are our red Stabilizer® group, arguably our best line up of all time, sired by the great 18 Karat, Bullseye and Crow Bar J55.

Our Black Stabilizer® group have come together nicely, with some new sire lines. Advance sons are the highlight along with some top Rissington Resolved and Dusty sons. The black Stabilizer® sons are off unique maternal packages that excel off grass and achieve MSA grades faster!

As you know our breeding program only retains those breeding cattle that achieve the upper echelons of performance, and so these sale bulls have had to jump through many hoops to get to sale day. Born unassisted, weight for age, independently assessed for structural soundness, temperament, and fertility by semen testing - and all by 12 months of age.

Each bull is backed by proven genetics sourced globally, and described and measured to the highest standard so you as beef breeders can make well informed choices on what suits your breeding program. We welcome pre-sale inspections at the BULL WALK OPEN DAY ON 12th SEPTEMBER. Bulls will be penned up for inspection by 10am on SALE DAY 26th SEPTEMBER. As always if you have any questions, we would love to hear from you.

Kind Regards,

Tom & Olivia



PARINGA

LIVESTOCK GENETICS

YEARLING BULL SALE

THURSDAY 26TH
SEPTEMBER 2019

On property "Miss Young's" 93 Creeds Rd, Yea Victoria

TPM SALE BY HELMSMAN AUCTION

Interfaced with AuctionsPlus

63 BULLS

Auction Conducted by



Emily Rabone (02) 9262 4222
or 0437 388 481



Michael Glasser 0403 526 702
Lincoln McKinlay 0400 552 458



PRE-REGISTER ONLINE WWW.GTSM.NET.AU

5% REBATE TO AGENTS - SEE SALE INFORMATION PAGE FOR DETAILS

Disclaimer: Every care has been taken in compiling this catalogue to ensure accuracy of information supplied, but no responsibility is accepted for any errors which may have occurred.

PARINGA LIVESTOCK GENETICS PTY LTD

Contact Tom and Olivia Lawson

Olivia 0407 978 317 **Tom** 0434 146 795

Email info@paringalivestock.com.au **Website** www.paringalivestock.com.au



SALE INFORMATION

SALE DATE AND PRIOR INSPECTION

Selling will commence at 1PM on Thursday 26th September, 2019. Bulls may be inspected from 9am on the morning of the sale, or at another time by prior arrangement with the agents or vendors.

OPEN DAY BULL WALK

The sale bulls will also be available to inspect on Thursday 12th September 2019 on property from 1-4pm.

SELLING SYSTEM

Sale of animals will be conducted under Helmsman auction terms and conditions, and interfaced simultaneously online with AuctionsPlus . Please ensure to register with the selling agents and/or AuctionsPlus to obtain a buyers number if you are considering making a purchase. Successful purchasers are requested to give written advice to the selling agents regarding transport arrangements at the conclusion of the sale.

AUCTIONSPLUS

Buyers will have the option of bidding off site, or on site using AuctionsPlus if they wish. An AuctionsPlus APP is now available on iPhones to download prior to sale day, and help will be available on the day using this optional bidding system. The traditional Helmsman cards will also be used on sale day.

DELIVERY

Delivery can be organised by the vendor or the purchaser but please advise the selling agents of your requirements on sale day on the buyer sheet including full contact details. Delivery is at the cost of the purchaser. Please note: no transport is permitted during the auction.

GST

All animals are sold exclusive of GST.

INSURANCE

All due care is taken in the delivery of animals purchased however buyers are responsible for the insurance of animals against injury or death from the fall of the hammer. Insurance is available on the day or arrangements can be made prior to the sale. We strongly recommend taking out insurance on bulls for the first 6 months and especially during joining.

PAYMENT OPTIONS

Settling of accounts will be facilitated by the selling agents. Payment options include payment by cheque, EFT or credit card on day of purchase, or within normal trading terms. More details on rebates and payments on page 30.

REBATE

A 5% rebate is claimable to all livestock agents who attend the sale and make purchase, or register introduction of the successful purchaser in writing at least 24 hours PRIOR to the sale start time.

BREED SOCIETY TRANSFERS

For stud ownership, the transfer of ownership of the animals at Angus Society will be organised by the vendors if requested. Please ensure accurate herd prefix, and transferee details are supplied on the buyer registration form. There is no obligation for commercial buyers to transfer animals.

BULL GUARANTEE

All breeding cattle bred by Paringa are fertile and structurally sound to the best of our knowledge.

If an issue arises with a bull within 12 months of purchase Paringa are willing to discuss options for a refund or replacement on a case by case basis based on fertility and structure. Important to make contact with us directly in the first instance. This is not an insurance policy – we recommend each purchaser takes out their own bull insurance and to avoid single sire mating their yearling bull. To be eligible for the guarantee the purchaser must lodge an application to Paringa in writing within 12 months of date of purchase, provide a full veterinary report, photos and in some cases inspection by the vendor.

This guarantee is additional to the normal terms and conditions governing auction sales, and as such the vendors decision will be final. Paringa Livestock Genetics Pty Ltd reserves the right to refuse a guarantee in some cases. Please note, Paringa Livestock Genetics Pty Ltd is not liable for genetic defects, either current or future.

PLEASE NOTE

OUR CATTLE ARE NATURALLY QUIET, HOWEVER VISITORS ENTER THE CATTLE PENS AT THEIR OWN RISK. FOR THEIR OWN SAFETY CHILDREN MUST NOT ENTER THE PENS AND YARDS AT ANY TIME.



BULL INFORMATION

BREEDPLAN & \$PROFIT DATA

All pure bred Angus and Red Angus sale bulls are recorded using the Australian Breedplan EBV system, and are also sold with their set of \$Profit data comparing them to Angus worldwide. All Angus are 100% genomics tested and parent verified. Breeding systems that rank animals in their population on heritable economic traits are our most powerful tools, particularly indexes. By submitting our data into both systems keeps everything in check and balance, and keeps us as seed stock breeders accountable, with added traits such as Intake, Cow Maintenance and Maternal calving ease. An added advantage of \$Profit system is the extra “cow sense” behind it, not published in the data set here. With no breed bias it aims to assist traits to move in the right direction and recognises the “all breeds” potential.

Breeding indexes are the most powerful tool for the commercial producer. Once we understand what an Index takes into account, in terms of traits, it takes the guesswork out of analysing the data set yourself. Genomics, on farm measurements and a bit of cow sense are all vital inputs into breeding indexes.

CATALOGUE ORDER

Our buyer friendly Helmsman Auction means for simplicity the lots are categorised in order of:

- BREED then
- TAG ID ORDER

As always we have strived to provide as much information as possible to the highest standard to help you make well informed choices. Aside from individual commentary from Tom on each lot, their structural and temperament scores are also listed.

HEALTH & PHYSICAL EXAMINATION

All bulls have received the following health treatments:

- Vaccinations up to date for Pestigard, booster 7 in 1, Selovin, B12
- Drenched with Eclipse Pour On
- Access to mineral licks and pasture

Bulls have been handled using quad bikes, horses and dogs. Note: foot trimming has not been performed on any animal.

INDEPENDENTLY ASSESSED

Assessed on 2nd August 2019 for structure and temperament by Jim Green.

JOHNES STATUS

Paringa Livestock is accredited J-BAS 8 (Johnes Beef Assurance Score 8). Animals are eligible to travel to all States and Territories.

USING YEARLING BULLS

BULL HEALTH PROGRAM

- All bulls have had their health treatments as per above. They will also be fertility tested before sale day.
- They have been running in large groups of 20+ on grass and are used to horses, dogs, and motorbikes
- When you get them home, give them a few weeks to acclimatise to their new environment. Keep an eye on them if they are put in with older bulls
- Try to avoid single sire mating at all times, no matter the bulls age
- Yearlings can handle between 30-50 females at one time, but the bigger the cows, smaller the group per bull
- Bulls can lose some weight after joining but recover to normal weight in time
- Keep an eye on the bulls during joining, and don't hesitate to call us with questions

THE BENEFITS OF BUYING YEARLING VS 2 YEAR OLD BULLS

- Yearling bulls are generally aged 12-15 months of age weighing in good health 450-550kgs
- Faster genetic gain - source the latest and the best genetics 6 - 12 months earlier. The benefits of using new genetics earlier means getting more generations over a given period of time, which accumulates
- Better value for customers, they are more affordable to buy
- Will adapt to your environment quicker as big heavy bulls can crash and lose a lot of weight, making it harder to recover post joining
- No need to buy a big fat bull to get good genetics - what you see is not always what you get, check out their performance data
- You will be surprised what these young bulls can do!

AUSTRALIA'S \$PROFIT INDEX

The unique \$Profit breeding value ranking system, not only compares all breeds equally, but compares hybrid composite multi breed animals as well.

What makes this \$Profit selection even more unique is, in addition to the standard traits such as birth, weaning weights and carcass assessments which are revenue traits, it also looks at feed efficiency and cow maintenance; which can impact costs significantly. The biggest improvement is its balance; it recognises the benefits of hybrid vigour in a breeding system, and does not assume "more is better". Traits are not linear, and realising this and that more is not better is an important component of this index.

We will continue to work with ABRI for Breedplan Analysis EBVs on the pure bred registered animals, and now can also offer an additional selection tool, \$Profit Index. Internally in the Paringa breeding program, we have been observing the impact \$Profit Index has had in the USA over a number of years; then carefully selected AI sires to use within our herd here in Australia. \$Profit sires have worked extremely well over our herd, while customers using Paringa bred sons have achieved similar results in the progeny.

To deliver positive outcomes to livestock producers, and in particular being able to offer our customers the best available global genetics, providing a \$Profit Index is the perfect tool. By linking our herd in, and comparing them to 1.4 million plus animals currently on the system, buyers can be confident we are comparing apples with apples. Buying quality yearling bulls can be the most rapid genetic gain achievable. Effectively, the bulls are purchased at an age that their progeny are sold, so this gives a simple picture of what they will breed.

Visiting commercial producers in recent times, using yearling bulls in their herds, the genetic gain was obvious – these bulls bought a year ago as yearlings, now a two year old, had amazing calves on the ground. The neighbour, who purchased a 2 year old bull same time last year, is essentially a year behind in genetic progress. It is easy to see why the 2 year olds are attractive; they are grown out and always look impressive. But remember good genetics compound quickly. Why wait?

This year's Spring Sale features 63 lots of Stabilizer®, and registered Angus and Red Angus bulls. exciting sire lines include TCA Visionary, GAR Fail Safe, Dusty M13, 18 Karat and Rissington Bulls Eye. Current weights suggest the yearling bulls will be 500kgs+ off grass.

EXPLANATION FOR ACROSS BREED EBVS (ABE)

Across Breed EBVs are published for all the Stabilizer® bulls in this catalogue. These Across Breed EBVs predict differences expected in performance of future progeny of these bulls. All the Across Breed EBVs can be used to compare the Stabilizers® within this catalogue.

Birth Weight (BW) ABE

is the weight of progeny at birth, expressed in kg.

Weaning Weight (WW) ABE

is the weight of progeny at weaning, expressed in kg.

Yearling Weight (YW) ABE

is the weight of progeny at yearling age (12 months of age) expressed in kg.

Milk (MK) ABE

This is the best indicator of a bull's daughter ability to milk. It measures the difference in weaning weight between bulls' progeny solely due to milk.

Scrotal (SC) ABE

is calculated from the circumference of the bulls' scrotum.

Back Fat (BF) ABE

is the ultrasound based ABE for back fat in mm.

Rib Eye (RE) ABE

is the ultrasound based ABE for rib eye area, expressed in cm squared.

Marbling (MB) ABE

is the ultrasound based ABE for marbling.

Carcass Weight (CW) ABE

is the expected progeny differences in bulls progeny for carcass weight, expressed in kgs.

Mature Weight (MW) ABE

is the predicted mature weight of daughters. This ABE is the best indicator of daughter size.

Intake (IN) ABE

Is an estimate of the amount of feed that the bull's progeny will consume over a 112 day feeding period. Animals with lower IN ABE figures will consume less throughout their life.

Feeder Gain (FG) ABE

predicts the feedlot efficiency of the bulls' offspring. Bulls with lower FG ABE figures will produce progeny that feed more efficiently.



WHY \$PROFIT HELPS

“With over 20 traits and so many measurements, buying the best bull has become really confusing. Every bull is good on some traits and weak on others. The challenge is figuring out how each of those traits is going to impact your bottom line. This is where \$Profit value comes in.”

HOW \$PROFIT WORKS

“\$Profit assumes that the average commercial bull will have 100 progeny over its lifetime. The model assumes you will keep 30% of your heifers as replacements and that you retain ownership on the remainder of calves through finishing and sale.

The model then factors in all of the effects on both income and expense to come up with a net profit figure for each bull. \$Profit allows you to compare any two bulls and calculate the difference in profit that they are expected to generate in your herd.”

- Leachman Cattle, Colorado

WHAT TRAITS ARE INCLUDED IN \$PROFIT?

\$Profit includes nearly every trait that impacts profitability. The effect of most traits on profit is fairly simple to understand. Here is a list of what is included and its effect:

REVENUE TRAITS

Calving ease = more calves

Weaning & yearling EBV = more weight

Fertility (days to conception) = more weight and more calves

Carcase weight = worth more

Marbling = value based premiums

Eye muscle area = more yield is more meat

COST TRAITS

Cow mature size = bigger eats more

Cow intake = more intake costs more

Feedlot feed efficiency = cost of gain

Some traits are not so easily characterised for \$Profit. Milk, for example, is a good thing until you get too much. When over +25, milk has a more negative effect on fertility that it has a positive effect on weaning weight.

WHY WE JOINED THE \$PROFIT DATABASE

- Essentially we needed an index that did the following:
- Reflects the true benefits of cross breeding systems; and Heterosis. The Pork and Poultry industries have used similar indexes for years.
- It is one index that genuinely reflects the best cattle, looking at all cost and revenue traits
- Includes feed efficiency data and fertility inputs
- Is focussed on the end product and profitability, without sacrificing livestock producer business
- Helps bull buyers make better breeding decisions, simplifies all the important data into one easy to identify index
- Database is managed and operated by professional cattle breeders, not by a board of directors
- More is not always better

\$Profit has been commercially tested and verified in the USA for 14 years, we have analysed our cattle for the last 7 years and the results are conclusive. “It consistently highlights the best cattle”.

Tom Lawson 2019

“Optimal is always best in nature”





REFERENCE SIREs

ANGUS **CLUNES CROSSING DUSTY M13**

DOB: 07/08/16 Soc. ID: QMUM13 ASA: HBR Breed: AA

AMFU | NHFU | CAF | DDF

AUGUST 2019 ANGUS AUSTRALIA BREED PLAN												\$PROFIT INDEX	\$PROFIT %
CALVING EASE				GROWTH & MATERNAL						FERTILITY			
	DIR	DTRS	GL	BWT	200	400	600	MCW	MILK	SS	DC		
EBVs	4.7	4.1	-7.0	3.7	63	110	132	94	20	1.3	-8.6		
% Rank	2	2	9	35	1	1	6	48	12	72	2		
CARCASS						INDEX VALUES						FEED: GAIN	FEED: GAIN %
	CWT	EMA	RIB	RUMP	RBV	IMF%	ABI	DOM	GRN	GRS			
EBVs	81	12.1	0.6	-0.5	1.6	2.7	176	156	195	163			
% Rank	2	1	30	60	9	15	1	1	1	1			
												INTAKE	INTAKE %
												161.97	99



We identified Dusty as a young calf with freakishly good data set and plenty of potential, and he is breeding true to our prediction. He is TOP 0.1% on ALL INDEXES and the number one ranked bull on the Angus database for all indexes. Incredible feat given his mature cow weight is only breed average. Structurally he is free moving, good footed, deep bodied, long, and deceptively thick top.

Dusty is the ONLY Angus bull that ranks in the top 2% of the breed for calving ease, top 1% for growth whilst still only breed average Mature Cow Weight. Dusty also ranks in the top 1% for fertility and EMA, and he has some great Angus and Stabilizer™ sons in these sale groups.

C R A BEXTOR 872 5205 608

SIRE GAR PROPHET
GAR OBJECTIVE 1885

TE MANIA BERKLEY B1
DAM CLUNES CROSSING GLORIOUS G1
TE MANIA LOWAN A1

ANGUS **GAR FAIL SAFE**

DOB: 16/08/14 Soc. ID: USA18181757 ASA: HBR Breed: AA

AMF | NHF | CAF | DDF

AUGUST 2019 ANGUS AUSTRALIA BREED PLAN												\$PROFIT INDEX	\$PROFIT %
CALVING EASE				GROWTH & MATERNAL						FERTILITY			
	DIR	DTRS	GL	BWT	200	400	600	MCW	MILK	SS	DC		
EBVs	5.3	4.4	-5.5	1.4	45	84	99	67	25	2.5	-7.7		
% Rank	1	1	24	4	49	41	67	91	1	18	4		
CARCASS						INDEX VALUES						FEED: GAIN	FEED: GAIN %
	CWT	EMA	RIB	RUMP	RBV	IMF%	ABI	DOM	GRN	GRS			
EBVs	77	6.4	0.9	1.2	-0.4	3.9	142	129	163	130			
% Rank	38	28	23	15	83	1	6	3	5	10			
												INTAKE	INTAKE %
												-73.03	12



Fail Safe is all over the USA as a breed leading calving ease and marbling sire with an outstanding combination of muscle and substance. A wide tracking, thick made bull Fail Safe has added capacity and a very pleasing phenotype. His dam is one of the highest selling females in Angus history.

MYTTY IN FOCUS
SIRE CONNEALY IN SURE 8524
ENTREENA OF CONANGA 657

GAR PROGRESS
DAM GAR PROGRESS 830
GAR III RITO 3346

ANGUS TCA VISIONARY 158

DOB: 14/03/11 Soc. ID: USA16972676 ASA: HBR Breed: AA

AMF | NHF | CAF | DDF

AUGUST 2019 ANGUS AUSTRALIA BREED PLAN												\$PROFIT INDEX	\$PROFIT %
CALVING EASE				GROWTH & MATERNAL					FERTILITY				
	DIR	DTRS	GL	BWT	200	400	600	MCW	MILK	SS	DC		
EBVs	4.5	-0.8	-4.4	1.9	47	78	104	83	16	2.0	-4.4		
% Rank	2	74	42	7	38	62	56	71	42	40	47		
CARCASS						INDEX VALUES						FEED: GAIN	FEED: GAIN %
	CWT	EMA	RIB	RUMP	RBY	IMF%	ABI	DOM	GRN	GRS			
EBVs	60	11.6	-0.4	-1.5	2.5	1.6	126	119	129	123			
% Rank	49	1	65	85	1	53	27	18	37	22			
												INTAKE	INTAKE %
												-78.03	10



The TCA Visionary 158 calves are born easily and have good temperaments with plenty of style. They are deep bodied, muscular calves that are growing well. We have talked often about this bull; he is proven high \$Profit index, and is THE highly feed efficient choice of Angus sires. Rarely do producers have the genetic advantage to strengthen every economic trait in one package. There are several Angus sires that are true heifer bulls, but we don't know of ANY others that can compete with his feed efficiency values, while maintaining the growth & carcass merit that Visionary does.

SAF CONNECTION
SIRE SYDGEN C C & 7
 SYDGEN FOREVER LADY 4087
 SAV 5175 BANDO 4597
DAM TCA TREASURE 0699 601
 SWEETWATER TREASURE 73M

ANGUS MILLWILLAH COMPLEMENT K108

DOB: 26/07/14 Soc. ID: NJWK108 ASA: HBR Breed: AA

AMFU | NHFU | CAFU | DDFU

AUGUST 2019 ANGUS AUSTRALIA BREED PLAN												\$PROFIT INDEX	\$PROFIT %
CALVING EASE				GROWTH & MATERNAL					FERTILITY				
	DIR	DTRS	GL	BWT	200	400	600	MCW	MILK	SS	DC		
EBVs	2.2	3.0	-3.9	4.7	55	98	127	116	12	0.4	-3.2		
% Rank	23	9	52	60	7	7	10	12	79	96	70		
CARCASS						INDEX VALUES						FEED: GAIN	FEED: GAIN %
	CWT	EMA	RIB	RUMP	RBY	IMF%	ABI	DOM	GRN	GRS			
EBVs	77	14.4	-0.6	-1.6	2.3	1.1	140	132	144	139			
% Rank	5	1	70	86	2	70	8	2	19	2			
												INTAKE	INTAKE %
												-	-



Writing these comments having just processed 120 Spring bulls with Jim Green, we assessed for all over excellence and recorded data that contributes to \$Profit and Angus Australia breeding indexes and so get a more accurate picture of each bulls potential. After measuring scan data, temperament scores and structural scores, I was particularly impressed with the K108 sons. Visually they are impressive, with well-balanced genetic profiles while scanned very high on both EMA and marbling, supported by their Breedplan data to date. Owned by Hazeldene, K108 appears to be doing a fantastic job and is competing with the big name high profile Angus sires. The Red and Black Angus sons sired by K108 might just be the best sire group in this sale.

BASIN FRANCHISE P142
SIRE EF COMPLEMENT 8088
 EF EVERELDA ENTENSE 6117
 TE MANIA EMPEROR E343
DAM MILWILLAH MITTAGONG H257
 MILWILLAH MITTAGONG D171

ANGUS MILLWILLAH REALITY L98

DOB: 18/7/15 Soc. ID: NJWL98 ASA: HBR Breed: AA

AMFU | NHFU | CAFU | DDFU

AUGUST 2019 ANGUS AUSTRALIA BREED PLAN												\$PROFIT INDEX	\$PROFIT %
CALVING EASE				GROWTH & MATERNAL					FERTILITY				
	DIR	DTRS	GL	BWT	200	400	600	MCW	MILK	SS	DC		
EBVs	3.7	3.3	-7.2	3.6	46	83	105	106	11	3.3	-5.7		
% Rank	6	7	8	33	43	44	53	25	85	4	23		
CARCASS						INDEX VALUES						FEED: GAIN	FEED: GAIN %
	CWT	EMA	RIB	RUMP	RBY	IMF%	ABI	DOM	GRN	GRS			
EBVs	58	8.8	1.5	1.1	0.2	2.0	125	117	131	121			
% Rank	56	6	12	18	60	35	28	23	34	25			
												INTAKE	INTAKE %
												-	-



Reality L98 was used selectively over some powerful growth Angus females that needed some added maternal calving ease and fleshing ability. Reality has given us added genetic diversity in both our Red and Black Angus programs, and bred well above our expectations. We rate L98 as one of the best Reality sons going around, with more EMA than most, whilst still maintaining calving ease. A handsome sire; his Black Angus sons in this sale group also are visually appealing. These L98 types are the perfect Angus with ideal balanced data profiles. We will continue to use Millwillah Reality L98 this breeding season.

SCHURRTOP REALITY X723
SIRE MATAURI REALITY 839
 MATAURI 06663
 MILWILLAH TOTAL G36
DAM MILWILLAH LOWAN J289
 MILWILLAH LOWAN F173

ANGUS RISSINGTON RESOLVED C116

DOB: 24/08/15 Soc. ID: NZE14572015C116 ASA: HBR Breed: AA

AMFU | NHFU | CAFU | DDFU

AUGUST 2019 ANGUS AUSTRALIA BREED PLAN												\$PROFIT INDEX	\$PROFIT %
CALVING EASE				GROWTH & MATERNAL					FERTILITY				
	DIR	DTRS	GL	BWT	200	400	600	MCW	MILK	SS	DC		
EBVs	1.7	0.0	-2.9	3.8	51	87	100	89	15	2.0	-6.5		
% Rank	30	60	70	37	18	31	65	59	52	40	13		
CARCASS						INDEX VALUES						FEED: GAIN	FEED: GAIN %
	CWT	EMA	RIB	RUMP	RBV	IMF%	ABI	DOM	GRN	GRS			
EBVs	66	4.5	1.6	3.0	-2.4	3.6	116	111	126	110			
% Rank	28	60	10	2	99	2	48	40	41	55			
												INTAKE	INTAKE %
												9.24	77



An Angus bull out of an Ayrvale Bartel E7 two year old heifer, sired by Leachman Resolution who is a proven maternal and feed efficiency leader. Resolved offers excellent scrotal EBV and positive fat EBVs combined with a 3.6% IMF EBV. We have used Resolved selectively to balance some high performance lines, and to add some serious carcass potential. Check out his sons in this sale group.

DR J ANALYST M250
SIRE LEACHMAN RESOLUTION G228U
 LA GAMMER PRIDE LG 291

AYRVALE BARTEL E7
DAM ELLERTON 135317
 RISSINGTON 090332

RED ANGUS MILLWILLAH CROW BAR J55

DOB: 06/09/13 Soc. ID: NJWJ55 ASA: HBR Breed: RA

AMFU | NHFU | CAFU | DDF

AUGUST 2019 ANGUS AUSTRALIA BREED PLAN												\$PROFIT INDEX	\$PROFIT %
CALVING EASE				GROWTH & MATERNAL					FERTILITY				
	DIR	DTRS	GL	BWT	200	400	600	MCW	MILK	SS	DC		
EBVs	3.4	3.3	-10.0	3.0	47	79	106	102	13	2.0	-8.6		
% Rank	9	7	1	20	38	58	51	32	71	40	2		
CARCASS						INDEX VALUES						FEED: GAIN	FEED: GAIN %
	CWT	EMA	RIB	RUMP	RBV	IMF%	ABI	DOM	GRN	GRS			
EBVs	60	5.3	1.3	1.6	-0.6	2.7	134	115	147	124			
% Rank	49	45	15	10	88	15	14	28	16	20			
												INTAKE	INTAKE %
												-	-



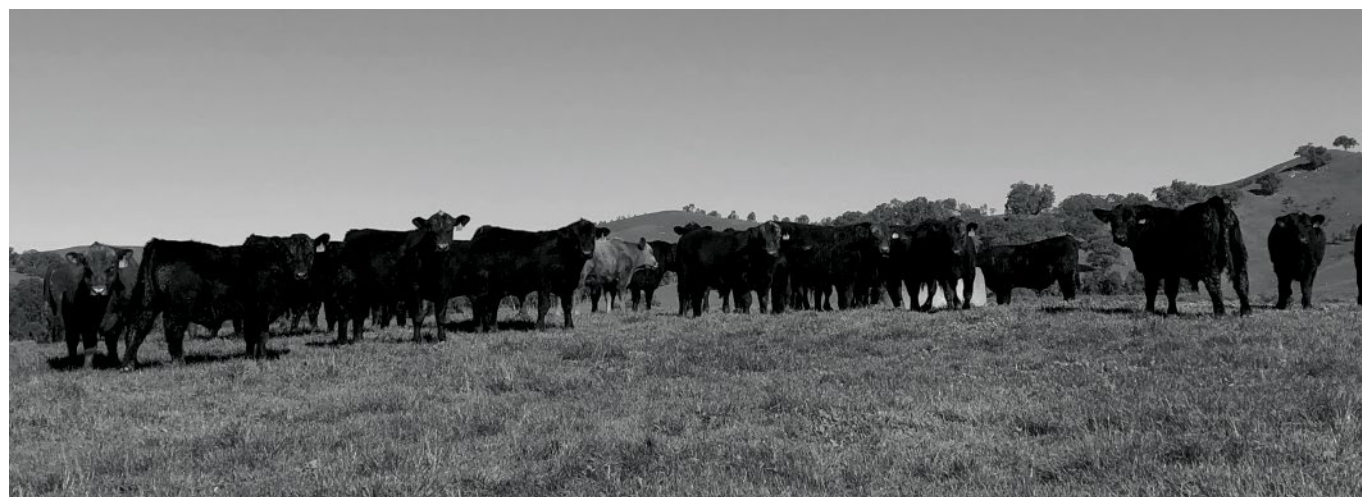
What an impressive job Crow Bar (alongside brother Marble Bar) has done in continuing to improve Red Angus genetics in Australia and globally. Crow Bar has been used extensively in commercial herds with great success. This will be our last major offering by this great sire as we enter a period over the next few years with their daughters breeding. We are confident these girls will take us to a new level with some ripping bull calves coming through now from these female lines.

TE MANIA BERKLEY B1
SIRE MILWILLAH FEVOLA F37
 MILWILLAH BARUNAH B36

TE MANIA DAIQUIRI D19
DAM MILWILLAH BARUNAH G295
 TE MANIA BARUNAH X48

Crow Bar J55 has some outstanding pure Red Angus sons in this sale that scanned very high for marbling and EMA. He is also the feature sire in the Red Stabilizer sale group, and these bulls are exceptional.

What makes the Crow Bar J55 progeny so unique, particularly the Red Stabilizer® sons, is their genetic strength and the way he complements many commercial beef producers herds in diverse areas of Australia. J55 sons add maternal excellence through added calving ease, super high fertility, positive fats, and very high marbling and carcass weights. Look no further for MSA grading bonuses, and his biggest asset? His milk figure - about perfect for high stocking rate systems, particularly extensive northern beef programs. J55 also has the ideal maturity pattern for highly productive seasons and those targeting high quality grass fed systems in southern Australia.



STABILIZER® LEACHMAN ADVANCE

DOB: 26/02/13 Breed Comp: 57AA | 26SD | 11SI | 1HH | 1RA | 1RA | 1GV | 1TA

BW	WW	YW	MILK	IMF	REA	MWT	F.G	INTAKE	YHT	SCR	
-0.9	45	994	28	0.59	1.06	-1	-0.43	60.24	0.41	0.93	
							\$Profit	\$19,550			

\$PROFIT INDEX	\$PROFIT %
\$19,550	1
FEED: GAIN	FEED: GAIN %
-0.43	1
INTAKE	INTAKE %
60.24	98



In terms of highly proven Stabilizer® sires that rank supremely across the board, none do it better than ADVANCE. Advance has a unique breed make up, and his Angus component is generally unrelated to most Angus herds. He has a nice blend of modern South Devon component in him which has worked well, particularly when crossed with the Simm/Angus type cattle. He is now up there with highest ranked \$Profit progeny proven bulls. His profile will complement all commercial beef operations, and continue to drive sustainable production systems forward. If your serious about heavy carcasses off grass that blitz MSA and cattle that are fast to market then Advanve sons take it to a new level.

S A V FINAL ANSWER 0035
SIRE K C F BENNETT ABSOLUTE
 THOMAS MISS LUCY 5152
 BC PROGRESS 315U
DAM TES MISS PRECISION X5533
 TES MISS PRECISION SL074

RED STABILIZER® RISSINGTON BULLS EYE

DOB: 16/08/13 Breed Comp: 60SI | 25AA | 16RA | 11GV | 7HH

BW	WW	YW	MILK	IMF	REA	MWT	F.G	INTAKE	YHT	SCR	
0.2	54	92	25	0.46	0.78	11	0.09	-54.76	1.14	1	
							\$Profit	\$19,065			

\$PROFIT INDEX	\$PROFIT %
\$19,065	1
FEED: GAIN	FEED: GAIN %
0.09	76
INTAKE	INTAKE %
-54.76	15



We are truly excited about this group of super slick Bullseye sons coming through. BullsEye himself is one of the highest \$Profit and \$Ranch Sires globally as he was exported to Australia and the USA and used at Leachman Cattle. He offers the ideal balance of traits, with nice breed combination and huge potential to sire high yielding and high MSA indexing carcasses. In 2018 we viewed BullsEye as a mature aged bull, and he was a crowd favourite amongst our Australian group of producers.

Recently BullsEye was tested in the NZ Beef progeny test program compared to all breeds, coming up as one of the highest ranked for Carcase EMA and marbling, with exceptional eating quality according to the MSA type tasting panels.

HOOKS SHEAR FORCE 38K
SIRE LEACHMAN FORCEFUL L155W
 PG719
 STABILIZER 080136
DAM STABILIZER 100589
 STABILIZER 070214

RED STABILIZER® LEACHMAN 18 KARAT

DOB: 27/02/15 Breed Comp: 54RA | 37SI | 5GV | 1SD

BW	WW	YW	MILK	IMF	REA	MWT	F.G	INTAKE	YHT	SCR	
2.1	58	114	23	0.7	0.6	42	-0.3	47.24	1.04	0.57	
							\$Profit	\$20,484			

\$PROFIT INDEX	\$PROFIT %
\$20,484	1
FEED: GAIN	FEED: GAIN %
-0.30	1
INTAKE	INTAKE %
47.24	95



We were fortunate to purchase the Australian Semen rights at the LCoC Auction in 2016 when 450 bulls sold that day. Karat was a record selling Stabilizer® bull at over \$100,000 USD. 18 Karat is now well proven, with his progeny bred even better that we had hoped for. Exceptional calves with that extra bonus knowing that they are highly proven for Feed Efficiency, carcase quality and beautiful docility. 18 Karat has really clicked with our female base and sons coming through are some of the most phenotypically impressive red bulls we have produced. The 18 Karat sons excel off grass and in the yard. These sons are sensational.

HOOKS TRINITY 9T
SIRE LEACHMAN TESTIFY D003Z
 HXC 582R
 LCOE SHEAR FORCE LT19W
DAM RGR STABILIZER YX518
 RGR STABILIZER UX437



ANGUS SALE LOTS

1 ANGUS PARINGA COMPLEMENT P3

DOB: 11/08/18 Tag: P0003 Soc.ID: HKFP3 ASA: HBR Join Type: AI

TRAITS OBSERVED
BW, 200, 400, SS, SCAN, GENOMICS

AUGUST 2019 ANGUS AUSTRALIA BREED PLAN											
CALVING EASE				GROWTH & MATERNAL					FERTILITY		
DIR	DTRS	GL	BWT	200	400	600	MCW	MILK	SS	DC	
EBVs	3.3	2.5	-3.6	3.7	53	93	116	111	16	0.8	-3.8
% Rank	10	15	58	43	12	15	27	18	3	90	58
CARCASS						INDEX VALUES					
CWT	EMA	RIB	RUMP	RBV	IMF%	DOM	GRN	GRS	ABI		
EBVs	75	11.7	-0.2	-1.2	1.3	2.4	127	147	129	135	
% Rank	7	1	58	78	15	23	4	16	10	13	

\$PROFIT
\$16,189

SIRE EF COMPLEMENT 8088
MILWILLAH COMPLEMENT K108
WILWILLAH MITAGONG H257

TOP 5%

DAM PARINGA ABSOLUTE J87
PARINGA ABSOLUTE
PARINGA BARTEL J46

STRUCTURAL ASSESSMENT

FC	RC	FA	RA	RS	RH	LM	TP	SN
6	6	6	6	5	5	C+	2	5

A bull who pushes the boundaries with superb calving ease, plus growth and carcass traits. Outcross Angus genetics loaded with maternal and efficiency.

2 ANGUS PARINGA DUSTY P8

DOB: 13/09/18 Tag: P0008 Soc.ID: HKFP8 ASA: APR Join Type: AI

TRAITS OBSERVED
BW, 200, 400, SS, SCAN, GENOMICS

AUGUST 2019 ANGUS AUSTRALIA BREED PLAN											
CALVING EASE				GROWTH & MATERNAL					FERTILITY		
DIR	DTRS	GL	BWT	200	400	600	MCW	MILK	SS	DC	
EBVs	4.1	3.3	-2.1	3.0	59	97	124	80	23	2.6	-7.6
% Rank	4	6	83	20	2	8	14	76	3	15	5
CARCASS						INDEX VALUES					
CWT	EMA	RIB	RUMP	RBV	IMF%	DOM	GRN	GRS	ABI		
EBVs	74	10.1	1.3	0.3	0.7	2.3	136	161	146	153	
% Rank	8	2	15	38	38	25	1	6	1	2	

\$PROFIT
\$23,880

SIRE GAR PROPHET
CLUNES CROSSING DUSTY M13
CLUNES CROSSING GLORIOUS G1

TOP 1%

DAM AYRVALE BARTEL E7
LARNOO E7 K277
LARNOO H907

STRUCTURAL ASSESSMENT

FC	RC	FA	RA	RS	RH	LM	TP	SN
6	5	6	6	5	6	C	2	4

STAR LOT P8 is an incredible bull. Note his Dam K277 is also Dam of the 2018 top priced bull who made \$15,000. K277 is a magnificent Angus breeding female; she again calved first round AI this month with a ripper heifer calf. This bull is ranked equal highest for ABI and is the highest \$Profit® bull in this sale. Say no more!

3 ANGUS PARINGA EARNAN P11

DOB: 06/07/18 Tag: P0011 Soc.ID: HKFP11 ASA: APR Join Type: AI

TRAITS OBSERVED
BW, 200, 400, SS, SCAN, GENOMICS

AUGUST 2019 ANGUS AUSTRALIA BREED PLAN											
CALVING EASE				GROWTH & MATERNAL					FERTILITY		
DIR	DTRS	GL	BWT	200	400	600	MCW	MILK	SS	DC	
EBVs	-2.6	0.5	-6.7	4.0	50	86	108	99	10	0.0	-3.7
% Rank	86	50	12	43	22	34	46	38	90	98	60
CARCASS						INDEX VALUES					
CWT	EMA	RIB	RUMP	RBV	IMF%	DOM	GRN	GRS	ABI		
EBVs	66	3.7	-0.6	-1.8	-0.2	2.3	101	106	98	100	
% Rank	28	73	70	89	78	25	75	68	82	77	

\$PROFIT
\$14,435

SIRE CONNEALY CONSENSUS
CONNEALY EARNAN O76E
BRAZILA OF CINANGA 3991 839A

TOP 8%

DAM LAWONS INVINCIBLE C402
TWYNAM K012
TWYNHAM H162

STRUCTURAL ASSESSMENT

FC	RC	FA	RA	RS	RH	LM	TP	SN
6	6	6	6	5	6	C+	2	4

This bull would be perfect to use over cows to create the ultimate weaners. This is the ONLY bull in this year's Angus line up who is NOT suited for heifers. He still comes up high on \$Profit® Index because of his high feed efficiency prediction.

4 ANGUS PARINGA FAILSAFE P13

DOB: 12/07/18 Tag: P0013 Soc.ID: HKFP13 ASA: APR Join Type: AI

TRAITS OBSERVED
BW, 200, 400, SS, SCAN, GENOMICS

AUGUST 2019 ANGUS AUSTRALIA BREED PLAN											
CALVING EASE				GROWTH & MATERNAL					FERTILITY		
DIR	DTRS	GL	BWT	200	400	600	MCW	MILK	SS	DC	
EBVs	2.0	1.6	-3.2	3.7	46	90	113	86	21	4.0	-8.1
% Rank	25	30	65	35	43	22	34	65	8	1	3
CARCASE						INDEX VALUES					
CWT	EMA	RIB	RUMP	RBY	IMF%	DOM	GRN	GRS	ABI		
EBVs	65	5.8	1.8	2.2	-0.6	3.2	126	164	135	146	
% Rank	31	23	7	4	88	6	5	5	4	4	

\$PROFIT
\$16,025

SIRE CONNEALY IN SURE 8524
GAR FAIL SAFE
GAR PROGRESS 830

TOP 5%

DAM TE MANIA EMPORER E343
TWYNAM K071
TWYNAMC76

STRUCTURAL ASSESSMENT									
FC	RC	FA	RA	RS	RH	LM	TP	SN	
7	6	6	6	6	5	C+	2	5	

In our opinion GAR Fail Safe is currently the top multi trait sire from the esteemed GAR sire team, who captures it all. Aside from their exceptional genetic profiles his progeny are very docile and structurally sound. P13 is a very good bull with high fertility predictions.

5 ANGUS PARINGA TWYNAM P15

DOB: 06/07/18 Tag: P0015 Soc.ID: HKFP15 ASA: APR Join Type: AI

TRAITS OBSERVED
BW, 200, 400, SS, SCAN, GENOMICS

AUGUST 2019 ANGUS AUSTRALIA BREED PLAN											
CALVING EASE				GROWTH & MATERNAL					FERTILITY		
DIR	DTRS	GL	BWT	200	400	600	MCW	MILK	SS	DC	
EBVs	2.8	4.0	-5.9	3.4	47	87	122	111	18	2.0	-5.5
% Rank	15	2	19	28	38	31	17	18	24	40	27
CARCASE						INDEX VALUES					
CWT	EMA	RIB	RUMP	RBY	IMF%	DOM	GRN	GRS	ABI		
EBVs	67	7.7	0.9	0.0	0.8	1.9	120	149	133	138	
% Rank	24	13	23	45	35	40	15	14	6	10	

\$PROFIT
\$8,972

SIRE MURRAY 1407 Z366
TWYNAM F53
TWYNAM D55

TOP 35%

DAM EF COMPLEMENT 8088
TWYNAM M065
TWYNAM K131

STRUCTURAL ASSESSMENT									
FC	RC	FA	RA	RS	RH	LM	TP	SN	
7	6	7	6	5	6	C	2	4	

P15 is outstanding for breeding highly profitable replacement females with his high ranking maternal calving ease, high fertility, good carcass and nicely balanced fat cover.

6 ANGUS PARINGA REALITY P21

DOB: 12/08/18 Tag: P0021 Soc.ID: HKFP21 ASA: APR Join Type: AI

TRAITS OBSERVED
BW, 200, 400, SS, SCAN, GENOMICS

AUGUST 2019 ANGUS AUSTRALIA BREED PLAN											
CALVING EASE				GROWTH & MATERNAL					FERTILITY		
DIR	DTRS	GL	BWT	200	400	600	MCW	MILK	SS	DC	
EBVs	1.1	1.0	-7.1	4.8	53	96	124	120	14	1.6	-4.2
% Rank	39	40	9	62	12	9	14	9	61	60	50
CARCASE						INDEX VALUES					
CWT	EMA	RIB	RUMP	RBY	IMF%	DOM	GRN	GRS	ABI		
EBVs	80	9.3	0.0	-0.7	0.2	2.9	122	153	128	136	
% Rank	3	4	50	65	60	10	12	11	12	12	

\$PROFIT
\$16,053

SIRE MATAURI REALITY 839
MILWILLAH REALITY L98
MILWILLAH LOWAN J289

TOP 5%

DAM TUWHARETOA REGENTD145
PARINGA REGENT J48
PARINGA BLACK AMBUSH E38

STRUCTURAL ASSESSMENT									
FC	RC	FA	RA	RS	RH	LM	TP	SN	
6	6	6	6	5	5	C	2	5	

P21 is one of the best looking bulls in this year's sale group. His dam is a powerhouse of an Angus cow. P21 excels on both ABI and \$Profit® Indexes.

7 ANGUS PARINGA DUSTY P22

DOB: 11/08/18 Tag: P0022 Soc.ID: HKFP22 ASA: APR Join Type: AI

TRAITS OBSERVED
BW, 200, 400, SS, SCAN, GENOMICS

AUGUST 2019 ANGUS AUSTRALIA BREED PLAN											
CALVING EASE				GROWTH & MATERNAL					FERTILITY		
DIR	DTRS	GL	BWT	200	400	600	MCW	MILK	SS	DC	
EBVs	1.8	1.0	-3.2	5.8	52	94	113	81	16	2.5	-10.1
% Rank	28	40	65	83	15	13	34	74	42	18	1
CARCASE						INDEX VALUES					
CWT	EMA	RIB	RUMP	RBY	IMF%	DOM	GRN	GRS	ABI		
EBVs	68	6.5	1.8	1.6	-1.3	3.5	129	170	135	149	
% Rank	21	26	7	10	97	3	3	3	4	3	

\$PROFIT
\$15,456

SIRE GAR PROPHET
CLUNES CROSSING DUSTY M13
CLUNES CROSSING GLORIOUS G1

TOP 11%

DAM PARINGA BLACK LABEL G51
LARNOO G51 K274
LARNOO H905

STRUCTURAL ASSESSMENT									
FC	RC	FA	RA	RS	RH	LM	TP	SN	
5	5	6	6	5	6	C	2	5	

Another outstanding Dusty son who pushes every trait in the right direction. P22 is THE number 1 DC Fertility bull who ranks in the top 3% on both ABI and \$Profit® Indexes.

8 ANGUS PARINGA VISIONARY P24

DOB: 14/08/18 Tag: P0024 Soc.ID: HKFP24 ASA: APR Join Type: AI

TRAITS OBSERVED
BW, 200, 400, SS, SCAN, GENOMICS

AUGUST 2019 ANGUS AUSTRALIA BREED PLAN											
CALVING EASE				GROWTH & MATERNAL					FERTILITY		
DIR	DTRS	GL	BWT	200	400	600	MCW	MILK	SS	DC	
EBVs	3.5	1.0	-3.2	3.5	52	96	128	103	15	2.3	-5.5
% Rank	8	40	65	30	15	9	9	30	52	25	27
CARCASS						INDEX VALUES					
CWT	EMA	RIB	RUMP	RBY	IMF%	DOM	GRN	GRS	ABI		
EBVs	73	8.4	-1.2	-1.6	1.8	2.0	132	164	141	149	
% Rank	10	8	85	86	6	35	2	5	2	3	

\$PROFIT \$20,585
TOP 2%

SIRE SYDGEN CC & 7
TCA VISIONARY 158
TCA TREASURE 0699 601

DAM AYRVALE BARTEL E7
LARNOO E7 K282
LAWSON'S NEW DESIGN 1407 Z1476

STRUCTURAL ASSESSMENT								
FC	RC	FA	RA	RS	RH	LM	TP	SN
7	6	6	6	6	6	C	2	4

This genetic combination with TCA Visionary over this beautiful proven Bartel E7 daughter. P24 is a sensational Visionary son, strong across the board and top 1% on \$Profit® and top 3% on ABI Index.

9 ANGUS PARINGA COMPLEMENT P37

DOB: 15/08/18 Tag: P0037 Soc.ID: HKFP37 ASA: APR Join Type: AI

TRAITS OBSERVED
BW, 200, 400, SS, SCAN, GENOMICS

AUGUST 2019 ANGUS AUSTRALIA BREED PLAN											
CALVING EASE				GROWTH & MATERNAL					FERTILITY		
DIR	DTRS	GL	BWT	200	400	600	MCW	MILK	SS	DC	
EBVs	2.2	2.4	-6.4	0.9	34	64	78	62	14	2.1	-5.6
% Rank	23	17	14	2	91	92	94	94	61	35	25
CARCASS						INDEX VALUES					
CWT	EMA	RIB	RUMP	RBY	IMF%	DOM	GRN	GRS	ABI		
EBVs	54	11.7	2.2	1.7	-0.2	2.6	108	115	109	112	
% Rank	69	1	4	9	78	18	50	56	58	55	

\$PROFIT \$9,870
TOP 29%

SIRE EF COMPLEMENT 8088
MILWILLAH COMPLEMENT K108
MILWILLAH MITTAGONG H257

DAM PARINGA PILBARA H114
PARINGA RED PILBARA K159
PARINGA RED IRON ORE G141

STRUCTURAL ASSESSMENT								
FC	RC	FA	RA	RS	RH	LM	TP	SN
5	5	6	6	5	5	C	2	5

P37 is a fascinating young bull. If you are looking for a guaranteed calving ease bull that will produce steers that will excel off grass under high stocking rates, or to produce the ideal breeding females, then this is your bull. Check out his EMA, fat scores and marbling.

10 ANGUS PARINGA COMPLEMENT P44

DOB: 14/08/18 Tag: P0044 Soc.ID: HKFP44 ASA: APR Join Type: AI

TRAITS OBSERVED
BW, 200, 400, SS, SCAN, GENOMICS

AUGUST 2019 ANGUS AUSTRALIA BREED PLAN											
CALVING EASE				GROWTH & MATERNAL					FERTILITY		
DIR	DTRS	GL	BWT	200	400	600	MCW	MILK	SS	DC	
EBVs	1.7	2.6	-5.0	4.8	46	82	101	96	10	1.4	-5.3
% Rank	30	14	32	62	43	48	63	44	90	70	30
CARCASS						INDEX VALUES					
CWT	EMA	RIB	RUMP	RBY	IMF%	DOM	GRN	GRS	ABI		
EBVs	58	8.5	-0.9	-0.4	1.8	1.0	119	119	118	119	
% Rank	56	7	78	58	6	75	18	50	33	40	

\$PROFIT \$5,929
TOP 29%

SIRE EF COMPLEMENT 8088
MILWILLAH COMPLEMENT K108
MILWILLAH MITTAGONG H257

DAM PARINGA IRON ORE E27
PARINGA IRON ORE J200
PARINGA BLACK NEW MAN F84

STRUCTURAL ASSESSMENT								
FC	RC	FA	RA	RS	RH	LM	TP	SN
5	5	6	6	5	5	C	1	5

Here is another top K108 son with excellent type. These bulls show plenty of muscle with high calving ease potential.

11 ANGUS PARINGA DUSTY P60

DOB: 13/09/18 Tag: P0060 Soc.ID: HKFP60 ASA: APR Join Type: AI

TRAITS OBSERVED
BW, 200, 400, SS, SCAN, GENOMICS

AUGUST 2019 ANGUS AUSTRALIA BREED PLAN											
CALVING EASE				GROWTH & MATERNAL					FERTILITY		
DIR	DTRS	GL	BWT	200	400	600	MCW	MILK	SS	DC	
EBVs	1.9	0.4	-3.5	4.4	48	85	105	85	17	1.3	-6.0
% Rank	27	53	60	53	32	37	53	67	33	75	19
CARCASS						INDEX VALUES					
CWT	EMA	RIB	RUMP	RBY	IMF%	DOM	GRN	GRS	ABI		
EBVs	61	9.9	1.3	0.3	0.1	4.0	126	166	129	142	
% Rank	45	3	15	38	65	1	5	4	10	6	

\$PROFIT \$11,272
TOP 56%

SIRE GAR PROPHET
CLUNES CROSSING DUSTY M13
CLUNES CROSSING GLORIOUS G1

DAM MILWILLAH GATSBY G279
LARNOO GATSBY K275
LAWSON'S ROCKN D AMBUSH W129 Z723

STRUCTURAL ASSESSMENT								
FC	RC	FA	RA	RS	RH	LM	TP	SN
6	6	6	6	5	6	C	2	5

P60 the real sleeper and one our top picks in the sale group. P60 is strong across the board and ranked one of the highest for marbling at +4 EBV, while EMA and fats are also very strong.

12 ANGUS PARINGA DUSTY P61

DOB: 12/08/18 Tag: P0061 Soc.ID: HKFP61 ASA: HBR Join Type: AI

TRAITS OBSERVED
BW, 200, 400, SS, SCAN, GENOMICS

AUGUST 2019 ANGUS AUSTRALIA BREED PLAN											
CALVING EASE				GROWTH & MATERNAL					FERTILITY		
DIR	DTRS	GL	BWT	200	400	600	MCW	MILK	SS	DC	
EBVs	3.7	3.0	-3.8	4.2	52	81	101	81	11	1.1	-7.9
% Rank	6	9	53	48	15	51	63	74	85	80	3
CARCASS						INDEX VALUES					
CWT	EMA	RIB	RUMP	RBY	IMF%	DOM	GRN	GRS	ABI		
EBVs	66	9.3	0.3	-0.8	0.9	3.1	129	160	131	142	
% Rank	28	4	40	70	30	8	3	6	8	6	

\$PROFIT
\$14,004

SIRE GAR PROPHET
CLUNES CROSSING DUSTY M13
CLUNES CROSSING GLORIOUS G1

TOP 16%

DAM AYRVALE BARTEL E7
PARINGA BARTEL M227
LARNOO GATSBY K275

STRUCTURAL ASSESSMENT									
FC	RC	FA	RA	RS	RH	LM	TP	SN	
6	6	6	6	5	6	C	2	5	

Wow, another outstanding Dusty bull from a cracking 1st calf heifer. Top 6% calving ease, whilst top 15% weaning and growth. Top 6% ABI and \$Profit® Indexes.

13 ANGUS PARINGA DUSTY P62

DOB: 11/08/18 Tag: P0062 Soc.ID: HKFP62 ASA: HBR Join Type: AI

TRAITS OBSERVED
BW, 200, 400, SS, SCAN, GENOMICS

AUGUST 2019 ANGUS AUSTRALIA BREED PLAN											
CALVING EASE				GROWTH & MATERNAL					FERTILITY		
DIR	DTRS	GL	BWT	200	400	600	MCW	MILK	SS	DC	
EBVs	1.8	0.9	-5.0	5.3	57	93	116	87	18	1.3	-6.4
% Rank	28	43	32	75	4	15	27	63	24	75	14
CARCASS						INDEX VALUES					
CWT	EMA	RIB	RUMP	RBY	IMF%	DOM	GRN	GRS	ABI		
EBVs	72	8.7	2.2	2.1	0.2	3.0	130	157	137	145	
% Rank	12	6	4	5	60	9	2	8	3	4	

\$PROFIT
\$12,174

SIRE GAR PROPHET
CLUNES CROSSING DUSTY M13
CLUNES CROSSING GLORIOUS G1

TOP 8%

DAM PARINGA REGENT J109
PARINGA REGENT J109 L79
PARINGA EDMUND H105

STRUCTURAL ASSESSMENT									
FC	RC	FA	RA	RS	RH	LM	TP	SN	
6	6	6	6	5	5	C	2	5	

Wonderful team of Dusty sons in this sale; you can see why we regard Dusty as one of the greatest Angus sires.

14 ANGUS PARINGA MOUNT P71

DOB: 08/08/18 Tag: P0071 Soc.ID: HKFP71 ASA: HBR Join Type: AI

TRAITS OBSERVED
BW, 200, 400, SS, SCAN, GENOMICS

AUGUST 2019 ANGUS AUSTRALIA BREED PLAN											
CALVING EASE				GROWTH & MATERNAL					FERTILITY		
DIR	DTRS	GL	BWT	200	400	600	MCW	MILK	SS	DC	
EBVs	5.0	5.3	-8.1	2.9	51	104	134	119	18	3.4	-3.9
% Rank	1	1	4	19	18	2	5	9	24	3	57
CARCASS						INDEX VALUES					
CWT	EMA	RIB	RUMP	RBY	IMF%	DOM	GRN	GRS	ABI		
EBVs	70	3.7	-1.5	-2.4	0.8	2.1	129	156	133	140	
% Rank	16	73	90	95	35	33	3	9	6	8	

\$PROFIT
\$13,617

SIRE KC HAAS GPS
TEXAS MOUNT KO02
TEXAS UNDINE Z183

TOP 11%

DAM SYDGEN BLACK PEARL 2006
PARINGA PEARL L74
STRATHEWEN BERKLEY WILPENA F30

STRUCTURAL ASSESSMENT									
FC	RC	FA	RA	RS	RH	LM	TP	SN	
6	6	6	6	5	6	C	2	5	

P71 is one of our favourite bulls in this sale. There are a myriad of possibilities with this bull, he is so strong in the traits that drive profitability and with eye catching style. Note his Grand Dam is Paringa F30, also dam of the legend Paringa Judd J5. Awesome package.

15 ANGUS PARINGA DUSTY P72

DOB: 09/09/18 Tag: P0072 Soc.ID: HKFP72 ASA: APR Join Type: AI

TRAITS OBSERVED
BW, 200, 400, SS, SCAN, GENOMICS

AUGUST 2019 ANGUS AUSTRALIA BREED PLAN											
CALVING EASE				GROWTH & MATERNAL					FERTILITY		
DIR	DTRS	GL	BWT	200	400	600	MCW	MILK	SS	DC	
EBVs	4.2	4.1	-7.3	3.2	57	102	132	99	20	1.2	-9.6
% Rank	4	2	8	25	4	4	6	38	13	78	1
CARCASS						INDEX VALUES					
CWT	EMA	RIB	RUMP	RBY	IMF%	DOM	GRN	GRS	ABI		
EBVs	77	3.7	2.4	1.9	-1.1	2.4	131	166	146	154	
% Rank	5	73	3	7	96	23	2	4	1	1	

\$PROFIT
\$14,021

SIRE GAR PROPHET
CLUNES CROSSING DUSTY M13
CLUNES CROSSING GLORIOUS G1

TOP 16%

DAM LEACHMAN ANNUITY G178Z
LARNOO ANNUITY K292
LAWSONS GAR NEW DESIGN 1407 A715

STRUCTURAL ASSESSMENT									
FC	RC	FA	RA	RS	RH	LM	TP	SN	
5	6	6	6	5	5	C	2	5	

We really like the genetic make-up of this bull. He is loaded for traits that drive \$Profit®. We just tagged his dam's bull calf again this week as we write this catalogue. His dam K292 is a beautiful breeding female with a sensational udder, feet and legs that will keep her around for many years to come. Outstanding bull - top 2% daughter calving ease, whilst top 4% growth! P72 is ranked the highest ABI bull in this sale and top 3% \$Profit® Index.

16 ANGUS **PARINGA MONARCH P85**

DOB: 06/08/18 Tag: P0085 Soc.ID: HKFP85 ASA: HBR Join Type: AI

TRAITS OBSERVED
BW, 200, 400, SS, SCAN, GENOMICS

AUGUST 2019 ANGUS AUSTRALIA BREED PLAN											
CALVING EASE				GROWTH & MATERNAL					FERTILITY		
	DIR	DTRS	GL	BWT	200	400	600	MCW	MILK	SS	DC
EBVs	2.7	1.7	-2.6	2.2	48	93	123	90	28	3.1	-7.6
% Rank	16	28	75	10	32	15	15	57	1	6	5
CARCASS						INDEX VALUES					
	CWT	EMA	RIB	RUMP	REY	IMF%	DOM	GRN	GRS	ABI	
EBVs	73	7.7	-0.9	-0.9	0.7	2.9	130	172	140	152	
% Rank	10	13	78	73	38	10	2	2	2	2	

\$PROFIT
\$19,907

TOP 3%

PARINGA JUDD J5
SIRE **PARINGA MONARCH M103**
LAWSONS BARTEL E7 J1290

LAWSONS BARTEL E7 J1290
DAM **LAWSONS BARTEL E7 H270**
LAWSONS PONO V346 D517

STRUCTURAL ASSESSMENT									
FC	RC	FA	RA	RS	RH	LM	TP	SN	
6	5	6	6	5	6	C	2	5	

P85 is a beautiful slick skinned easy doing Angus bull. He is one of the highest \$Profit® Index bulls in the sale and top 2% ABI.



BLACK STABILIZER®
SALE LOTS

17 PARINGA **BLACK STABILIZER® P109**

DOB: 28/07/18 Tag: P0109 Breed Comp: 54AA | 20SI | 14SD | 6GV | 6RA

TRAITS OBSERVED
BW, WW, YW, SS, SCAN, HIP HEIGHT

AUGUST 2019 \$PROFIT ACROSS BREED EBVs												
	BW	WW	YW	MILK	IMF	REA	MWT	F:G	INTAKE	YHT	SCR	\$PROFIT
	1.4	45	87	28	0.44	1.18	18	-0.15	43.25	0.08	0.96	\$15,796
% Rank	34	33	16	9	6	0	59	13	93	99	12	5

An excellent way to start off the Black Stabilizer® lots P109 is a real stand out amongst his peers with an excellent balance across the board. He is thick and powerful with very good \$Profit® Index. A cool breed combination.

STRUCTURAL ASSESSMENT									
FC	RC	FA	RA	RS	RH	LM	TP	SN	
6	5	6	6	6	5	C+	2	4	

KCF BENNETT ABSOLUTE
SIRE **LEACHMAN ADVANCE S019A**
CLUNES CROSSING GLORIOUS G1

AYRVALE BARTEL E7
DAM **LARNOO STABILIZER J739**
PARINGA DREAM G657

18 PARINGA **BLACK STABILIZER® P657**

DOB: 09/08/18 Tag: P0657 Breed Comp: 75AA | 12SS | 13SI

TRAITS OBSERVED
BW, WW, YW, SS, SCAN, HIP HEIGHT

AUGUST 2019 \$PROFIT ACROSS BREED EBVs												
	BW	WW	YW	MILK	IMF	REA	MWT	F:G	INTAKE	YHT	SCR	\$PROFIT
	2.2	43	79	19	0.61	0.72	9	-0.04	89.25	-0.17	0.57	\$8,523
% Rank	49	38	26	54	1	15	47	39	99	100	41	38

This Dusty Stabilizer bull represents a great opportunity to inject some new breeds into your program whilst still maintaining traits and looks that make Angus marketable.

STRUCTURAL ASSESSMENT									
FC	RC	FA	RA	RS	RH	LM	TP	SN	
6	5	6	6	5	5	B-	2	5	

GAR PROPHET
SIRE **CLUNES CROSSING DUSTY M13**
THOMAS MISS LUCY 5152

COOTA PARK BLUE-E G214
DAM **PARINGA BLACK STABILIZER L643**
PARINGA BLACK STABILIZER H647

19 PARINGA BLACK STABILIZER® P679

DOB: 01/08/18 Tag: P0679 Breed Comp: 75AA | 12SI | 13RP

TRAITS OBSERVED
BW, WW, YW, SS, SCAN, HIP HEIGHT

AUGUST 2019 \$PROFIT ACROSS BREED EBVs												
	BW	WW	YW	MILK	IMF	REA	MWT	F:G	INTAKE	YHT	SCR	\$PROFIT
	4.2	56	93	29	0.83	0.61	46	0.09	86.25	0.61	1.15	\$12,690
% Rank	83	11	11	6	0	31	89	77	99	62	5	14

P679 is an interesting Black Stabilizer® bull with a higher Angus component. This bull has the looks backed with an excellent \$Profit® Index. Sire Paringa Messiah M142 sold to Texas Angus in 2017 as a stud sire.

STRUCTURAL ASSESSMENT									
FC	RC	FA	RA	RS	RH	LM	TP	SN	
6	6	6	6	5	5	C	2	5	

GAR PROPHET
SIRE PARINGA MESSIAH M142
LAWSON'S BARTEL E7 H1061

AYRVALE BARTEL E7
DAM LARNOO STABILIZER H685
LARNOO F615L

20 PARINGA BLACK STABILIZER® P682

DOB: 04/08/18 Tag: P0682 Breed Comp: 40AA | 20RA | 18GV | 18SI | 4HH

TRAITS OBSERVED
BW, WW, YW, SS, SCAN, HIP HEIGHT

AUGUST 2019 \$PROFIT ACROSS BREED EBVs												
	BW	WW	YW	MILK	IMF	REA	MWT	F:G	INTAKE	YHT	SCR	\$PROFIT
	4.3	52	85	28	0.42	0.85	48	0.12	-16.75	0.71	0.65	\$13,800
% Rank	84	17	18	9	7	5	90	83	46	45	33	10

P682 offers breeders the opportunity to inject profitable genetics into their beef program in one generation.

STRUCTURAL ASSESSMENT									
FC	RC	FA	RA	RS	RH	LM	TP	SN	
6	5	6	5	5	6	C	2	5	

KCF BENNETT ABSOLUTE
SIRE LEACHMAN ADVANCE S019A
TES MISS PRECISION XS533

AYRVALE BARTEL E7
DAM LARNOO STABILIZER J897
LARNOO BALANCER F862

21 PARINGA BLACK STABILIZER® P691

DOB: 04/08/18 Tag: P0691 Breed Comp: 88AA | 12SI

TRAITS OBSERVED
BW, WW, YW, SS, SCAN, HIP HEIGHT

AUGUST 2019 \$PROFIT ACROSS BREED EBVs												
	BW	WW	YW	MILK	IMF	REA	MWT	F:G	INTAKE	YHT	SCR	\$PROFIT
	-1.6	60	10	28	0.43	0.83	-8	0.10	71.25	0.18	1.07	\$15,133
% Rank	2	7	10	15	63	2	19	96	91	87	12	13

P691 is definitely a highlight in this sale. He is a super safe calving ease bull with leading growth and carcass attributes. At \$15,133 \$Profit® it makes him an attractive package.

STRUCTURAL ASSESSMENT									
FC	RC	FA	RA	RS	RH	LM	TP	SN	
6	6	6	6	5	5	C+	2	5	

GAR PROPHET
SIRE PARINGA MESSIAH M142
LAWSON'S BARTEL E7 H1061

LCOC SHEAR FORCE L056W
DAM LARNOO STABILIZER H802
LAWSON'S TANK A1737

22 PARINGA BLACK STABILIZER® P694

DOB: 11/08/18 Tag: P0694 Breed Comp: 59AA | 20GV | 13RA | 8SI

TRAITS OBSERVED
BW, WW, YW, SS, SCAN, HIP HEIGHT

AUGUST 2019 \$PROFIT ACROSS BREED EBVs												
	BW	WW	YW	MILK	IMF	REA	MWT	F:G	INTAKE	YHT	SCR	\$PROFIT
	4.5	60	98	24	0.54	1.11	55	-0.07	12.25	0.65	1.24	\$14,938
% Rank	87	7	8	24	2	0	94	31	75	55	3	7

This bull has been the pick when visitors have inspected the bulls. In the flesh he is an absolute powerhouse. His sire Rissington Resolved is an Angus bull we will be using a lot more of in the future. P694 offers an interesting breed combination with 70% Angus/20% Gelbvieh/10% Simmental. Genetically he offers tremendous growth for age, carcass, and strong maternal and feed efficiency.

STRUCTURAL ASSESSMENT									
FC	RC	FA	RA	RS	RH	LM	TP	SN	
5	5	6	6	5	5	C+	2	4	

LEACHMAN RESOLUTION G228U
SIRE RISSINGTON RESOLVED CT16
ELLERTON 135317

PARINGA STABILIZER E472 (ET)
DAM PARINGA BLACK STABILIZER M839
LARNOO STABILIZER H680

23 PARINGA BLACK STABILIZER® P696

DOB: 04/08/18 Tag: P0696 Breed Comp: 75AA | 25SI

TRAITS OBSERVED
BW, WW, YW, SS, SCAN, HIP HEIGHT

AUGUST 2019 \$PROFIT ACROSS BREED EBVs												
	BW	WW	YW	MILK	IMF	REA	MWT	F:G	INTAKE	YHT	SCR	\$PROFIT
	1.2	56	94	27	0.57	0.78	14	0.00	70.25	0.92	0.79	\$14,113
% Rank	30	11	10	12	1	9	53	51	98	15	21	9

GAR PROPHET
SIRE PARINGA MESSIAH M142
LAWSON'S BARTEL E7 H1061

DIKEMANS SURE BET
DAM LARNOO STABILIZER H733
LAWSON'S NEW DESIGN 1407 Z1252

P696 is a handy bull suitable for heifers with good growth and carcase traits across the board.

STRUCTURAL ASSESSMENT									
FC	RC	FA	RA	RS	RH	LM	TP	SN	
6	5	6	6	5	5	C+	2	4	

24 PARINGA BLACK STABILIZER® P704

DOB: 13/08/18 Tag: P0704 Breed Comp: 74AA | 20SI | 6GV

TRAITS OBSERVED
BW, WW, YW, SS, SCAN, HIP HEIGHT

AUGUST 2019 \$PROFIT ACROSS BREED EBVs												
	BW	WW	YW	MILK	IMF	REA	MWT	F:G	INTAKE	YHT	SCR	\$PROFIT
	-3.6	35	62	22	0.31	0.49	-53	0.01	-3.75	0.40	0.46	\$10,974
% Rank	0	59	52	35	15	53	1	54	59	88	51	22

TE MANIA EMPEROR E343
SIRE RENNYLEA J178
RENNYLEA E372

LEACHMAN YOSEMITE X730Y
DAM PARINGA BLACK STABILIZER L714
LARNOO STABILIZER H736

One of the lowest birth weight bulls in the sale, hence a terrific heifer bull option. J178 came about through a local breeder to add some diverse Angus genetics to our Stabilizer® program with proven calving ease and high marbling.

STRUCTURAL ASSESSMENT									
FC	RC	FA	RA	RS	RH	LM	TP	SN	
6	5	6	6	5	6	C+	2	5	

25 PARINGA BLACK STABILIZER® P705

DOB: 13/08/18 Tag: P0705 Breed Comp: 55AA | 30SI | 15SD

TRAITS OBSERVED
BW, WW, YW, SS, SCAN, HIP HEIGHT

AUGUST 2019 \$PROFIT ACROSS BREED EBVs												
	BW	WW	YW	MILK	IMF	REA	MWT	F:G	INTAKE	YHT	SCR	\$PROFIT
	1.1	49	92	26	0.57	0.97	18	-0.40	1.25	-0.42	0.25	\$19,199
% Rank	28	23	11	15	1	1	59	0	64	100	71	1

S A V FINAL ANSWER 0035
SIRE LEACHMAN ADVANCE S019A
THOMAS MISS LUCY 5152

CCR BOULDER 1339A
DAM PARINGA BLACK STABILIZER M860
LARNOO SURE BET K664

P705 is another potential heifer bull option. Wait until you see the Advance sons in the flesh; they are the ideal multi breed combination excelling in multiple traits that together drive profitability.

STRUCTURAL ASSESSMENT									
FC	RC	FA	RA	RS	RH	LM	TP	SN	
7	6	6	6	6	6	C+	2	5	

26 PARINGA BLACK STABILIZER® P710

DOB: 16/08/18 Tag: P0710 Breed Comp: 55AA | 20SI | 13SD | 6GV | 6RA

TRAITS OBSERVED
BW, WW, YW, SS, SCAN, HIP HEIGHT

AUGUST 2019 \$PROFIT ACROSS BREED EBVs												
	BW	WW	YW	MILK	IMF	REA	MWT	F:G	INTAKE	YHT	SCR	\$PROFIT
	-3.7	40	82	27	0.41	0.51	-39	-0.30	38.25	0.10	0.18	\$16,190
% Rank	0	46	22	12	7	49	4	1	91	99	77	5

KCF BENNETT ABSOLUTE
SIRE LEACHMAN ADVANCE S019A
TES MISS PRECISION XS533

EF COMPLEMENT 8088
DAM PARINGA BLACK STABILIZER L824
LARNOO STABILIZER H926

This Advance son is again a perfect choice over heifers. At \$16K \$Profit® Index means his key traits are well balanced and rank accordingly.

STRUCTURAL ASSESSMENT									
FC	RC	FA	RA	RS	RH	LM	TP	SN	
7	6	6	6	6	6	C	2	5	

27 PARINGA BLACK STABILIZER® P712

DOB: 17/08/18 Tag: P0712 Breed Comp: 54AA | 16GV | 16SI | 14SD

TRAITS OBSERVED
BW, WW, YW, SS, SCAN, HIP HEIGHT

AUGUST 2019 \$PROFIT ACROSS BREED EBVs												
	BW	WW	YW	MILK	IMF	REA	MWT	F:G	INTAKE	YHT	SCR	\$PROFIT
	0.1	49	89	24	0.43	0.85	6	-0.23	29.25	0.67	0.36	\$16,467
% Rank	14	23	14	24	6	5	42	4	86	52	61	4

Heifer Stabilizer® bull choice. We love this breed combination in the Advance sons and the many benefits he brings.

STRUCTURAL ASSESSMENT									
FC	RC	FA	RA	RS	RH	LM	TP	SN	
7	6	7	7	6	6	C	2	4	

KCF BENNETT ABSOLUTE
SIRE LEACHMAN ADVANCE S019A
TES MISS PRECISION XS533

PARINGA STABILIZER E472 (ET)
DAM PARINGA BLACK STABILIZER M765
LARNOO YOSEMITE K848

28 PARINGA BLACK STABILIZER® P715

DOB: 17/08/18 Tag: P0715 Breed Comp: 55AA | 18SI | 14SD | 7GV | 6RA

TRAITS OBSERVED
BW, WW, YW, SS, SCAN, HIP HEIGHT

AUGUST 2019 \$PROFIT ACROSS BREED EBVs												
	BW	WW	YW	MILK	IMF	REA	MWT	F:G	INTAKE	YHT	SCR	\$PROFIT
	0.1	46	85	31	0.49	0.89	2	-0.14	43.25	0.62	0.34	\$17,162
% Rank	14	30	18	3	3	3	37	15	93	60	63	3

Heifer Stabilizer® bull; similar to Lot 27 but even higher at \$17K \$Profit® Index. The possibilities in using these Advance sons is endless.

STRUCTURAL ASSESSMENT									
FC	RC	FA	RA	RS	RH	LM	TP	SN	
6	6	6	6	6	6	C	2	4	

KCF BENNETT ABSOLUTE
SIRE LEACHMAN ADVANCE S019A
TES MISS PRECISION XS533

AYRVALE BARTEL E7
DAM LARNOO STABILIZER J740
PARINGA DREAM G687

29 PARINGA BLACK STABILIZER® P717

DOB: 18/08/18 Tag: P0717 Breed Comp: 54AA | 21SI | 13SD | 6GV | 6RA

TRAITS OBSERVED
BW, WW, YW, SS, SCAN, HIP HEIGHT

AUGUST 2019 \$PROFIT ACROSS BREED EBVs												
	BW	WW	YW	MILK	IMF	REA	MWT	F:G	INTAKE	YHT	SCR	\$PROFIT
	-1.5	41	77	25	0.70	0.87	-18	-0.23	29.25	0.65	0.77	\$17,318
% Rank	3	43	28	19	0	4	15	4	86	55	23	3

You can use these bulls over heifers, and be confident these Advance sons will outperform any breed in any environment. Another top \$Profit® bull at \$17,380 Index.

STRUCTURAL ASSESSMENT									
FC	RC	FA	RA	RS	RH	LM	TP	SN	
6	6	6	6	5	5	C+	2	5	

PARINGA BLACK STABILIZER L746
SIRE LEACHMAN ADVANCE S019A
TES MISS PRECISION XS533

LEACHMAN YOSEMITE X730Y
DAM PARINGA BLACK STABILIZER L746
LARNOO STABILIZER H684

30 PARINGA BLACK STABILIZER® P718

DOB: 18/08/18 Tag: P0718 Breed Comp: 75AA | 15SI | 2GV | 2RA | 60O

TRAITS OBSERVED
BW, WW, YW, SS, SCAN, HIP HEIGHT

AUGUST 2019 \$PROFIT ACROSS BREED EBVs												
	BW	WW	YW	MILK	IMF	REA	MWT	F:G	INTAKE	YHT	SCR	\$PROFIT
	-3	42	74	24	0.17	0.49	-38	0.06	2.25	0.12	0.30	\$10,844
% Rank	1	41	32	24	35	53	4	69	66	99	66	23

Rest assured this bull is a calving ease specialist. Do not overlook the fact that these bulls are the top of the drop and have the potential to perform well above average on growth.

STRUCTURAL ASSESSMENT									
FC	RC	FA	RA	RS	RH	LM	TP	SN	
6	6	6	6	5	6	C	2	5	

TE MANIA EMPEROR E343
SIRE RENNYLEA J178
RENNYLEA E372

PARINGA STABILIZER H954
DAM PARINGA BLACK STABILIZER M865
PARINGA PORTERHOUSE G633

31 PARINGA BLACK STABILIZER® P721

DOB: 19/08/18 Tag: P0721 Breed Comp: 68AA | 13SD | 13GV | 6SI

TRAITS OBSERVED
BW, WW, YW, SS, SCAN, HIP HEIGHT

AUGUST 2019 \$PROFIT ACROSS BREED EBVs												
	BW	WW	YW	MILK	IMF	REA	MWT	F:G	INTAKE	YHT	SCR	\$PROFIT
	-1.7	48	88	27	0.46	0.43	-8	-0.26	33.25	0.22	-0.45	\$15,583
% Rank	3	25	15	12	5	65	24	3	89	97	99	6

This Advance son again really pushes the boundaries in terms of calving ease, while at the same time pushing the growth and carcase curve.

STRUCTURAL ASSESSMENT									
FC	RC	FA	RA	RS	RH	LM	TP	SN	
6	6	6	6	6	6	C	2	5	

SIRE KCF BENNETT ABSOLUTE
LEACHMAN ADVANCE S019A
TES MISS PRECISION XS533

DAM SYDGEN TRUST 6228)
PARINGA BLACK STABILIZER L740
PARINGA DINKY-DI G833

32 PARINGA BLACK STABILIZER® P727

DOB: 21/08/18 Tag: P0727 Breed Comp: 54AA | 20SI | 13SD | 13GV

TRAITS OBSERVED
BW, WW, YW, SS, SCAN, HIP HEIGHT

AUGUST 2019 \$PROFIT ACROSS BREED EBVs												
	BW	WW	YW	MILK	IMF	REA	MWT	F:G	INTAKE	YHT	SCR	\$PROFIT
	0.3	45	84	24	0.32	0.66	4	-0.28	25.25	-0.48	0.21	\$13,309
% Rank	17	33	19	24	14	23	39	2	84	100	74	12

Another Advance heifer bull specialist. These Advance sons carry the genes to speed up time to market and dramatically improve reproductive potential in beef breeding programs. With added proven feed efficiency dramatically reduces intensity of GHG emissions per output.

STRUCTURAL ASSESSMENT									
FC	RC	FA	RA	RS	RH	LM	TP	SN	
6	5	6	6	6	6	C	2	4	

SIRE KCF BENNETT ABSOLUTE
LEACHMAN ADVANCE S019A
TES MISS PRECISION XS533

DAM TNT DUAL FOCUS T249(MBR)
LARNOO STABILIZER J727
PARINGA DINKY-DI G833

33 PARINGA BLACK STABILIZER® P731

DOB: 22/08/18 Tag: P0731 Breed Comp: 54AA | 20SI | 13SD | 13GV

TRAITS OBSERVED
BW, WW, YW, SS, SCAN, HIP HEIGHT

AUGUST 2019 \$PROFIT ACROSS BREED EBVs												
	BW	WW	YW	MILK	IMF	REA	MWT	F:G	INTAKE	YHT	SCR	\$PROFIT
	-1.2	46	84	24	0.44	0.66	-12	-0.19	5.25	0.54	0.26	\$16,637
% Rank	5	30	19	24	6	23	20	8	68	73	70	4

For heifer bulls the Advance sons have tremendous depth and fleshing ability. At -1.2BW through to +84YW with high feed efficiency make for a high \$Profit® Index bull.

STRUCTURAL ASSESSMENT									
FC	RC	FA	RA	RS	RH	LM	TP	SN	
6	5	6	6	6	6	C	2	5	

SIRE KCF BENNETT ABSOLUTE
LEACHMAN ADVANCE S019A
TES MISS PRECISION XS533

DAM PARINGA STABILIZER E472 (ET)
PARINGA BLACK STABILIZER M770
LARNOO STABILIZER J747

34 PARINGA BLACK STABILIZER® P735

DOB: 23/08/18 Tag: P0735 Breed Comp: 54AA | 25GV | 13SD | 5SI | 3RA

TRAITS OBSERVED
BW, WW, YW, SS, SCAN, HIP HEIGHT

AUGUST 2019 \$PROFIT ACROSS BREED EBVs												
	BW	WW	YW	MILK	IMF	REA	MWT	F:G	INTAKE	YHT	SCR	\$PROFIT
	1.3	46	81	27	0.60	0.75	12	-0.26	16.25	0.86	0.10	\$16,637
% Rank	32	30	23	12	1	12	50	3	78	22	82	4

The Advance line up is consistently good. P735 is another bull that has 7 breeds in his make-up. This in turn gives you a more consistent product through heterosis and the dominant genes. P735 is balanced across the board, and with his high marbling and EMA pushes his \$Profit® to over \$16,000.

STRUCTURAL ASSESSMENT									
FC	RC	FA	RA	RS	RH	LM	TP	SN	
6	5	6	6	6	6	C	2	5	

SIRE KCF BENNETT ABSOLUTE
LEACHMAN ADVANCE S019A
TES MISS PRECISION XS533

DAM RENNYLEA EDMUND E11(AI)(ET)
PARINGA BLACK STABILIZER L816
EBONY LODGE D10

35 PARINGA BLACK STABILIZER® P736

DOB: 24/08/18 Tag: P0736 Breed Comp: 47AA | 22SI | 14SD | 13RA | 2GV | 2TA

TRAITS OBSERVED
BW, WW, YW, SS, SCAN, HIP HEIGHT

AUGUST 2019 \$PROFIT ACROSS BREED EBVs												
	BW	WW	YW	MILK	IMF	REA	MWT	F:G	INTAKE	YHT	SCR	\$PROFIT
	-1	40	70	19	0.45	0.47	-20	-0.03	-3.75	0.08	0.06	\$10,888
% Rank	5	45	38	54	5	55	12	38	61	99	85	23

These young bulls have come through a challenging six months; a handy bull.

STRUCTURAL ASSESSMENT									
FC	RC	FA	RA	RS	RH	LM	TP	SN	
6	6	6	6	6	6	C	2	5	

SIRE KCF BENNETT ABSOLUTE
LEACHMAN ADVANCE S019A
TES MISS PRECISION XS533

DAM RENNYLEA EDMUND ET1(AI)(ET)
PARINGA BLACK STABILIZER L816
EBONY LODGE D10

36 PARINGA BLACK STABILIZER® P738

DOB: 25/08/18 Tag: P0738 Breed Comp: 16AA | 30SI | 3SD | 51RA

TRAITS OBSERVED
BW, WW, YW, SS, SCAN, HIP HEIGHT

AUGUST 2019 \$PROFIT ACROSS BREED EBVs												
	BW	WW	YW	MILK	IMF	REA	MWT	F:G	INTAKE	YHT	SCR	\$PROFIT
	1.7	50	95	25	0.35	0.76	25	-0.18	33.25	0.52	1.06	\$14,960
% Rank	39	21	9	19	11	11	68	9	88	75	7	7

P738 is the highest growth Advance son in the sale, but still has an acceptable birth weight.

STRUCTURAL ASSESSMENT									
FC	RC	FA	RA	RS	RH	LM	TP	SN	
6	5	6	6	5	5	C+	2	5	

SIRE KCF BENNETT ABSOLUTE
LEACHMAN ADVANCE S019A
TES MISS PRECISION XS533

DAM DIKEMANS SURE BET
LARNOO STABILIZER H373
LAWSONS ROMEO C1160

37 PARINGA BLACK STABILIZER® P739

DOB: 25/08/18 Tag: P0739 Breed Comp: 23AA | 25SI | 2GV | 50RA

TRAITS OBSERVED
BW, WW, YW, SS, SCAN, HIP HEIGHT

AUGUST 2019 \$PROFIT ACROSS BREED EBVs												
	BW	WW	YW	MILK	IMF	REA	MWT	F:G	INTAKE	YHT	SCR	\$PROFIT
	-0.4	53	88	25	0.41	0.68	-4	0.08	13.25	0.25	0.22	\$13,310
% Rank	9	15	15	19	7	20	29	74	75	96	73	12

An excellent low birth weight Stabilizer® bull with high growth.

STRUCTURAL ASSESSMENT									
FC	RC	FA	RA	RS	RH	LM	TP	SN	
7	6	7	6	5	5	C	2	5	

SIRE MILWILLAH FEVOLA F37
MILWILLAH CROW BAR J55
MILWILLAH BARUNAH G295

DAM PARINGA STABILIZER H954
PARINGA BLACK STABILIZER L872
LARNOO STABILIZER H748

38 PARINGA BLACK STABILIZER® P754

DOB: 11/09/18 Tag: P0754 Breed Comp: 53AA | 25SI | 13SD | 6GV | 300

TRAITS OBSERVED
BW, WW, YW, SS, SCAN, HIP HEIGHT

AUGUST 2019 \$PROFIT ACROSS BREED EBVs												
	BW	WW	YW	MILK	IMF	REA	MWT	F:G	INTAKE	YHT	SCR	\$PROFIT
	-1.9	42	80	22	0.35	1.09	-22	-0.23	28.25	0.46	0.38	\$16,533
% Rank	2	40	24	35	12	0	11	4	86	82	59	4

P754 represents a cutting edge Stabilizer® genetic package. Advance X Yosemite daughter makes for a royal pedigree. No wonder his genetic profile is strong across the board and at \$16,533 \$Profit® makes for a top package.

STRUCTURAL ASSESSMENT									
FC	RC	FA	RA	RS	RH	LM	TP	SN	
6	5	6	6	6	6	C+	2	5	

SIRE KCF BENNETT ABSOLUTE
LEACHMAN ADVANCE S019A
TES MISS PRECISION XS533

DAM LEACHMAN YOSEMITE X730Y
LARNOO YOSEMITE K848
LARNOO H707

39 PARINGA BLACK STABILIZER® P756

DOB: 12/09/18 Tag: P0756 Breed Comp: 42AA | 19SI | 13SD | 13SS | 6GV | 7RA

TRAITS OBSERVED
BW, WW, YW, SS, SCAN, HIP HEIGHT

AUGUST 2019 \$PROFIT ACROSS BREED EBVs												
	BW	WW	YW	MILK	IMF	REA	MWT	F:G	INTAKE	YHT	SCR	\$PROFIT
	1.1	54	100	25	0.43	0.83	25	-0.14	33.25	0.71	0.61	\$17,264
% Rank	28	14	6	19	6	6	68	15	89	45	37	3

KCF BENNETT ABSOLUTE
SIRE LEACHMAN ADVANCE S019A
TES MISS PRECISION XS533

COOTA PARK BLUE-E G214
DAM LARNOO G214 K672
PARINGA RED BEEF MAKER G622

This bull has one of the biggest birth to yearling weight spreads with an ideal breed combination of all bulls in this sale. A taster from Leachman Cattle, Coota Park BlueE and Paringa genetics. This bull may be one of the top bulls in the group with that genetic blend, and a top \$Profit® Index he has the potential to makes any livestock program more profitable.

STRUCTURAL ASSESSMENT									
FC	RC	FA	RA	RS	RH	LM	TP	SN	
7	6	7	6	6	6	C+	2	5	

40 PARINGA BLACK STABILIZER® P771

DOB: 23/08/18 Tag: P0771 Breed Comp: 54AA | 19SI | 13SD | 7GV | 7RA

TRAITS OBSERVED
BW, WW, YW, SS, SCAN, HIP HEIGHT

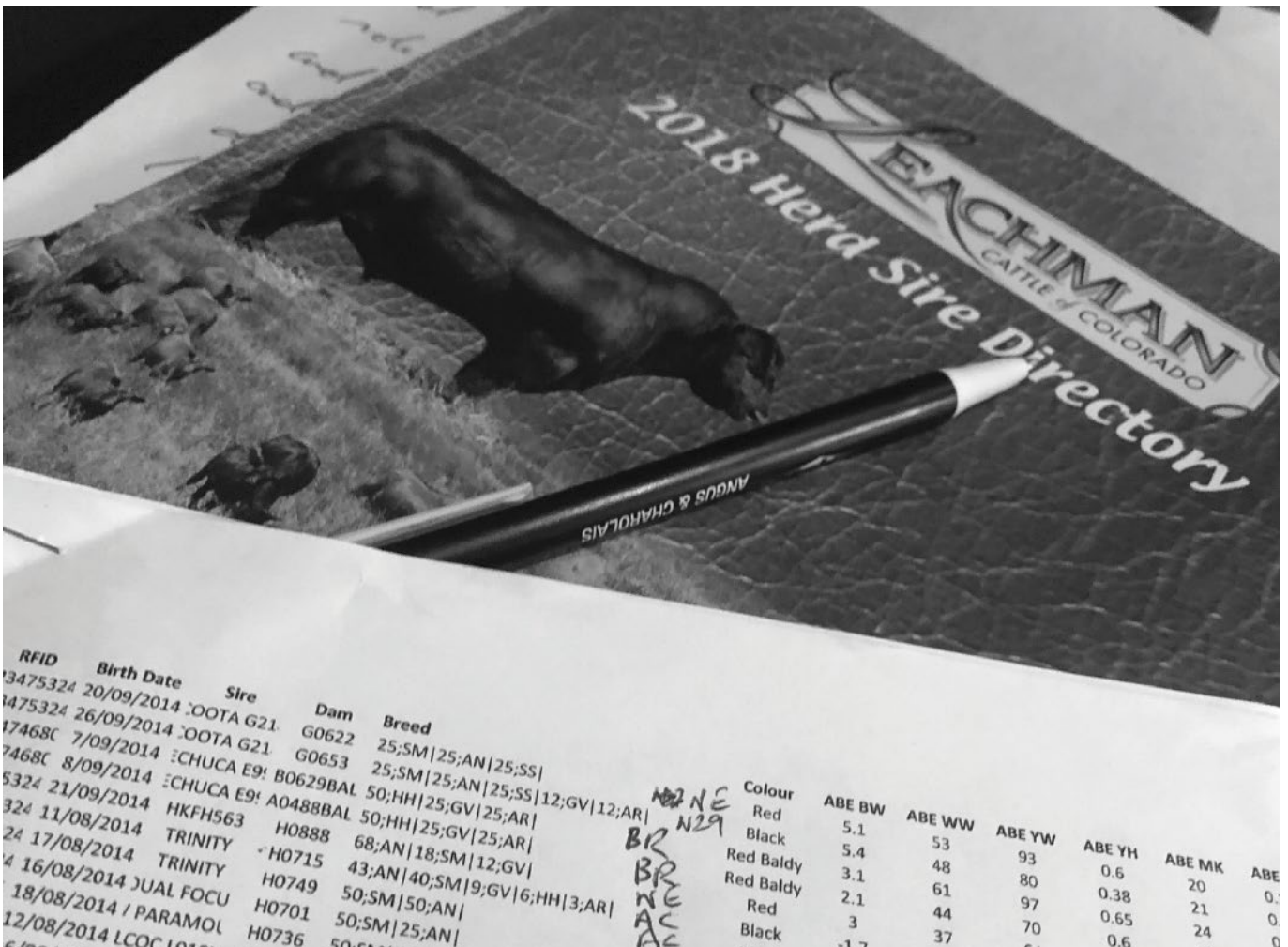
AUGUST 2019 \$PROFIT ACROSS BREED EBVs												
	BW	WW	YW	MILK	IMF	REA	MWT	F:G	INTAKE	YHT	SCR	\$PROFIT
	-0.2	52	95	31	0.42	0.88	8	-0.14	47.25	0.51	0.77	\$18,724
% Rank	11	17	9	3	6	3	45	15	94	77	23	2

KCF BENNETT ABSOLUTE
SIRE LEACHMAN ADVANCE S019A
TES MISS PRECISION XS533

LEACHMAN YOSEMITE X730Y
DAM LARNOO YOSEMITE K848
LARNOO H707

Suitable for either cows or heifers, and ranked very high for all the important traits makes P771 a flexible bull choice. Top \$Profit® performance.

STRUCTURAL ASSESSMENT									
FC	RC	FA	RA	RS	RH	LM	TP	SN	
7	6	6	6	6	6	C	2	5	





RED ANGUS

SALE LOTS

41 ANGUS PARINGA RED COMPLEMENT P6

DOB: 07/08/18 Tag: P0006 Soc.ID: HKFP6 ASA: APR Join Type: AI

TRAITS OBSERVED
BW, 200, 400, SS, SCAN, GENOMICS

AUGUST 2019 ANGUS AUSTRALIA BREED PLAN											
CALVING EASE				GROWTH & MATERNAL					FERTILITY		
DIR	DTRS	GL	BWT	200	400	600	MCW	MILK	SS	DC	
EBVs	3.6	3.0	-4.7	3.6	51	89	109	90	12	0.5	-5.9
% Rank	7	9	37	33	18	25	44	57	79	95	20
CARCASS						INDEX VALUES					
CWT	EMA	RIB	RUMP	RBY	IMF%	DOM	GRN	GRS	ABI		
EBVs	63	8.9	1.1	1.0	1.1	0.5	122	114	126	123	
% Rank	38	5	18	20	20	88	12	58	15	32	

\$PROFIT
\$10,751

SIRE EF COMPLEMENT 8088
MILWALLAH COMPLEMENT K108
MILWALLAH MITTAGONG H257

TOP 24%

DAM ANDRAS NEW DIRECTION R240
PARINGA NEW DIRECTION R240 L52
PARINGA IRON ORE J200

STRUCTURAL ASSESSMENT

FC	RC	FA	RA	RS	RH	LM	TP	SN
6	5	6	6	5	5	C+	2	5

This bull is impressive; and knowing his data is backed by on farm measurement under real commercial conditions, reinforced by genomics and \$Profit® analysis making him even more exciting. A unique performance package that ranks high on DIR and DTR calving ease traits, while still expressing growth and muscle. A super docile and lovely bull. P6 is all class.

42 ANGUS PARINGA RED COMPLEMENT P7

DOB: 14/08/18 Tag: P0007 Soc.ID: HKFP7 ASA: APR Join Type: AI

TRAITS OBSERVED
BW, 200, 400, SS, SCAN, GENOMICS

AUGUST 2019 ANGUS AUSTRALIA BREED PLAN											
CALVING EASE				GROWTH & MATERNAL					FERTILITY		
DIR	DTRS	GL	BWT	200	400	600	MCW	MILK	SS	DC	
EBVs	3.0	2.9	-2.1	3.8	52	95	116	91	13	2.3	-3.8
% Rank	13	10	83	37	15	11	27	55	71	25	58
CARCASS						INDEX VALUES					
CWT	EMA	RIB	RUMP	RBY	IMF%	DOM	GRN	GRS	ABI		
EBVs	68	18.1	-0.4	-0.5	3.6	0.4	141	140	146	144	
% Rank	21	1	65	60	1	90	1	23	1	5	

\$PROFIT
\$14,695

SIRE EF COMPLEMENT 8088
MILWALLAH COMPLEMENT K108
MILWALLAH MITTAGONG H257

TOP 7%

DAM ANDRAS NEW DIRECTION R240
PARINGA NEW DIRECTION R240 L32
PARINGA FLUENT J219

STRUCTURAL ASSESSMENT

FC	RC	FA	RA	RS	RH	LM	TP	SN
6	5	6	6	5	5	C+	2	4

O. M. G! Check out the EMA +18! With real scan data combined with genomics, and still one of the best direct and daughter calving ease bulls in the sale. P7 ranks in the top 5% of \$Profit® and top 5% ABI Indexes. Across Australia he is the highest ranked Red Angus bull born in 2018. His dam is always well admired by our visitors.

43 ANGUS PARINGA RED COMPLEMENT P46

DOB: 11/08/18 Tag: P0046 Soc.ID: HKFP46 ASA: APR Join Type: AI

TRAITS OBSERVED
BW, 200, 400, SS, SCAN, GENOMICS

AUGUST 2019 ANGUS AUSTRALIA BREED PLAN											
CALVING EASE				GROWTH & MATERNAL					FERTILITY		
DIR	DTRS	GL	BWT	200	400	600	MCW	MILK	SS	DC	
EBVs	1.9	1.8	-4.3	4.3	50	93	114	109	16	2.8	-7.9
% Rank	27	25	43	50	22	15	32	20	42	10	3
CARCASS						INDEX VALUES					
CWT	EMA	RIB	RUMP	RBY	IMF%	DOM	GRN	GRS	ABI		
EBVs	67	7.1	1.0	1.7	0.6	1.6	126	142	130	136	
% Rank	24	19	20	9	40	53	5	20	9	12	

\$PROFIT
\$6,972

SIRE EF COMPLEMENT 8088
MILWALLAH COMPLEMENT K108
MILWALLAH MITTAGONG H257

TOP 33%

DAM ANDRAS NEW DIRECTION R240
PARINGA NEW DIRECTION R240 L34
PARINGA LABEL G121

STRUCTURAL ASSESSMENT

FC	RC	FA	RA	RS	RH	LM	TP	SN
6	6	6	6	5	5	C+	2	5

Again like many of these K108 sons, P46 ticks the boxes. He has a very strong profile with good fat cover and big EMA. Please note that almost all these Red Angus bulls are a total outcross to our Crow Bar and Marble Bar sire lines.

44 ANGUS PARINGA RED COMPLEMENT P47

DOB: 14/08/18 Tag: P0047 Soc.ID: HKFP86 ASA: HBR Join Type: AI

TRAITS OBSERVED
BW, 200, 400, SS, SCAN, GENOMICS

AUGUST 2019 ANGUS AUSTRALIA BREED PLAN											
CALVING EASE				GROWTH & MATERNAL					FERTILITY		
	DIR	DTRS	GL	BWT	200	400	600	MCW	MILK	SS	DC
EBVs	3.2	2.8	-3.4	2.9	44	76	92	67	10	0.7	-5.1
% Rank	11	11	62	19	55	68	80	91	90	92	33
CARCASS						INDEX VALUES					
	CWT	EMA	RIB	RUMP	RBY	IMF%	DOM	GRN	GRS	ABI	
EBVs	58	7.6	0.1	1.5	-0.2	2.1	114	114	114	115	
% Rank	56	13	48	12	78	33	30	58	45	48	

\$PROFIT \$10,865
TOP 23%

SIRE EF COMPLEMENT 8088
MILLWILLAH COMPLEMENT K108
MILLWILLAH MITTAGONG H257

DAM PARINGA PIBARA H114
PARINGA RED PILBARA K151
PARINGA RED LABEL G42

STRUCTURAL ASSESSMENT								
FC	RC	FA	RA	RS	RH	LM	TP	SN
6	6	6	6	5	5	C	2	5

P47 is exceptional on both his and his daughter's maternal strength; his buyer can be confident he will have the propensity to breed cattle with large EMA, good fat cover and plenty of marbling to excel in MSA graded grass or grain programs. While his calving ease predictions mean P47 will sire plentiful live calves; as will his daughters.

45 ANGUS PARINGA RED CROW BAR P86

DOB: 06/08/18 Tag: P0086 Soc.ID: HKFP46 ASA: HBR Join Type: AI

TRAITS OBSERVED
BW, 200, 400, SS, SCAN, GENOMICS

AUGUST 2019 ANGUS AUSTRALIA BREED PLAN											
CALVING EASE				GROWTH & MATERNAL					FERTILITY		
	DIR	DTRS	GL	BWT	200	400	600	MCW	MILK	SS	DC
EBVs	3.0	2.0	-6.2	3.3	44	80	103	87	16	1.7	-8.2
% Rank	13	23	16	27	55	55	58	63	42	55	2
CARCASS						INDEX VALUES					
	CWT	EMA	RIB	RUMP	RBY	IMF%	DOM	GRN	GRS	ABI	
EBVs	58	4.1	1.1	1.5	-1.4	3.4	114	149	121	131	
% Rank	55	67	18	12	98	4	30	14	25	18	

\$PROFIT \$13,952 Mid Parent
TOP 7%

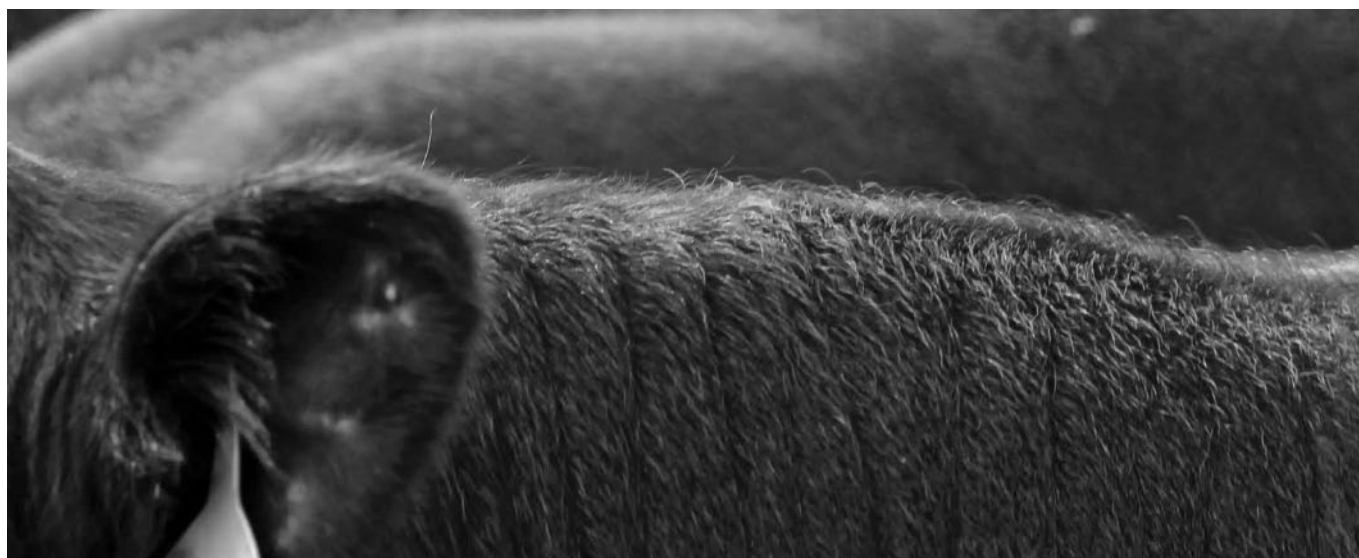
SIRE MILWILLAH FEVOLA F37
MILLWILLAH CROW BAR J55
MILLWILLAH BARUNAH G295

DAM TE MANIA RED LABEL Z1023
PARINGA BLACK LABEL G35
PARINGA BLACK 1407 C216

STRUCTURAL ASSESSMENT								
FC	RC	FA	RA	RS	RH	LM	TP	SN
6	5	6	6	5	6	C+	2	5

P86 has a royal pedigree and is one of the highest sale bulls scanned for marbling. As a breeder of both, it is very rewarding to see our Red Angus compete with and match the Angus in the Angus Australia Progeny test programs. Often in the top echelons for maternal and MSA index scores.

AUGUST 2019 \$PROFIT ACROSS BREED EBVs											
CALVING EASE				GROWTH & MATERNAL					FERTILITY		
	DIR	DTRS	GL	BWT	200	400	600	MCW	MILK	SS	DC
Paringa ANGUS Sale Average	2.6	2.3	-4.6	3.7	50	89	113	93	16	1.8	-6.3
Breed Average EBVs (2017 born Calves)	0.2	0.4	-4.0	4.3	44	81	106	93	15	1.8	-4.2
CARCASS						INDEX VALUES					
	CWT	EMA	RIB	RUMP	RBY	IMF%	DOM	GRN	GRS	ABI	
Paringa ANGUS Sale Average	58	4.1	1.1	1.5	-1.4	3.4	114	149	121	131	
Breed Average EBVs (2017 born Calves)	59	5.1	0.0	-0.1	0.4	1.7	108	118	111	113	





RED STABILIZER®

SALE LOTS

46 PARINGA RED STABILIZER® P650

DOB: 13/09/18 Tag: P0650 Breed Comp: 70AA | 30SI

TRAITS OBSERVED
BW, WW, YW, SS, SCAN, HIP HEIGHT

AUGUST 2019 \$PROFIT ACROSS BREED EBVs												
BW	WW	YW	MILK	IMF	REA	MWT	F:G	INTAKE	YHT	SCR	\$PROFIT	
3.9	54	97	25	0.44	0.57	50	0.12	1.25	0.67	0.25	\$11,956	

MILWILLAH FEVOLA F37
SIRE MILWILLAH CROW BAR J55
MILWILLAH BARUNAH G295

WS BEEF MAKER R13
DAM PARINGA RED STABILIZER L620
PARINGA STABILIZER J644

% Rank

79	14	8	19	5	38	92	83	92	52	71	17
----	----	---	----	---	----	----	----	----	----	----	----

P650 is a nice bull; his dam L620 has been a consistent breeder with her bull last year topping the Red Stabilizer® sale.

STRUCTURAL ASSESSMENT									
FC	RC	FA	RA	RS	RH	LM	TP	SN	
6	6	6	6	5	5	C+	2	5	

47 PARINGA RED STABILIZER® P675

DOB: 06/08/18 Tag: P0675 Breed Comp: 58AA | 17SI | 13SD | 12RP

TRAITS OBSERVED
BW, WW, YW, SS, SCAN, HIP HEIGHT

AUGUST 2019 \$PROFIT ACROSS BREED EBVs												
BW	WW	YW	MILK	IMF	REA	MWT	F:G	INTAKE	YHT	SCR	\$PROFIT	
1.3	49	92	27	0.39	1.02	21	-0.12	27.25	1.03	0.50	\$16,942	

LEACHMAN FORCEFUL L155W
SIRE RISSINGTON BULLSEYE 135159
STABILIZER 100589

PARINGA IRON ORE E27
DAM LARNOO STABILIZER J712
PARINGA RED SHEAR FORCE G519

% Rank

32	23	11	12	9	1	63	19	86	7	47	3
----	----	----	----	---	---	----	----	----	---	----	---

These cattle have and will excel off grass. This is the first major offering of Rissington BullsEye sons and we are pleased with how the group has come together.

STRUCTURAL ASSESSMENT									
FC	RC	FA	RA	RS	RH	LM	TP	SN	
6	5	6	6	6	7	C+	1	5	

48 PARINGA RED STABILIZER® P678

DOB: 03/08/18 Tag: P0678 Breed Comp: 50AA | 25GV | 25RA

TRAITS OBSERVED
BW, WW, YW, SS, SCAN, HIP HEIGHT

AUGUST 2019 \$PROFIT ACROSS BREED EBVs												
BW	WW	YW	MILK	IMF	REA	MWT	F:G	INTAKE	YHT	SCR	\$PROFIT	
1.2	65	110	29	0.54	0.90	25	0.11	68.25	0.95	1.03	\$19,460	

LEACHMAN FORCEFUL L155W
SIRE RISSINGTON BULLSEYE 135159
STABILIZER 100589

PARINGA IRON ORE E27
DAM LARNOO STABILIZER H689
LARNOO SHERATON F199GV

% Rank

31	3	3	6	2	3	63	81	68	12	8	1
----	---	---	---	---	---	----	----	----	----	---	---

Suitable for use over heifers and possibly one of the best bulls, Red or Black, in the sale line up. He is the sort of bull we will consider using back in our own program over Red Angus or higher Angus component females. With his stunning good looks and \$19,460 \$Profit® makes for an ideal combination; he is unmatched.

STRUCTURAL ASSESSMENT									
FC	RC	FA	RA	RS	RH	LM	TP	SN	
6	6	6	6	5	5	C+	2	4	

49 PARINGA RED STABILIZER® P701

DOB: 13/08/18 Tag: P0701 Breed Comp: 38AA | 28SI | 21RA | 10GV | 3HH

TRAITS OBSERVED
BW, WW, YW, SS, SCAN, HIP HEIGHT

AUGUST 2019 \$PROFIT ACROSS BREED EBVs												
	BW	WW	YW	MILK	IMF	REA	MWT	F:G	INTAKE	YHT	SCR	\$PROFIT
	1.4	58	92	25	0.52	0.41	20	0.04	-2.75	0.64	0.50	\$14,305
% Rank	34	8	11	20	3	68	62	63	61	57	47	8

P701 is suitable for use over heifers. A typical Rissington BullsEye son who is well balanced across the board. Excellent breed make up to optimise retained heterosis; which maintain particularly fitness traits such as fertility and longevity.

STRUCTURAL ASSESSMENT									
FC	RC	FA	RA	RS	RH	LM	TP	SN	
6	6	6	6	6	6	C	2	5	

LEACHMAN FORCEFUL L155W
SIRE RISSINGTON BULLSEYE 135159
STABILIZER 100589

MILWILLAH MARBLE BAR J53
DAM PARINGA RED STABILIZER M848
LARNOO BIG GENE K752

50 PARINGA RED STABILIZER® P702

DOB: 13/08/18 Tag: P0702 Breed Comp: 55AA | 22SI | 9GV | 8RA | 4HH | 200

TRAITS OBSERVED
BW, WW, YW, SS, SCAN, HIP HEIGHT

AUGUST 2019 \$PROFIT ACROSS BREED EBVs												
	BW	WW	YW	MILK	IMF	REA	MWT	F:G	INTAKE	YHT	SCR	\$PROFIT
	2	51	81	22	0.56	0.43	20	0.02	-28.75	0.61	0.51	\$12,653
% Rank	45	19	23	35	2	65	62	57	34	62	46	14

Another excellent son of Rissington BullsEye out of a terrific first calf heifer. It is interesting to note that in the NZ Beef All Breeds Trial for productivity and eating quality, BullsEye was one of the few bulls who sired progeny who topped the charts for all traits, including tasting magnificently.

STRUCTURAL ASSESSMENT									
FC	RC	FA	RA	RS	RH	LM	TP	SN	
6	5	6	6	5	5	C	2	5	

LEACHMAN FORCEFUL L155W
SIRE RISSINGTON BULLSEYE 135159
STABILIZER 100589

MILWILLAH MARBLE BAR J53
DAM PARINGA RED STABILIZER M844
LARNOO LITTLE BILL K698

51 PARINGA RED STABILIZER® P703

DOB: 13/08/18 Tag: P0703 Breed Comp: 38AA | 28SI | 21RA | 10GV | 3HH

TRAITS OBSERVED
BW, WW, YW, SS, SCAN, HIP HEIGHT

AUGUST 2019 \$PROFIT ACROSS BREED EBVs												
	BW	WW	YW	MILK	IMF	REA	MWT	F:G	INTAKE	YHT	SCR	\$PROFIT
	-0.2	43	72	23	0.31	0.35	-15	0.00	0.00	-0.03	0.51	\$10,612
% Rank	11	37	35	29	15	77	17	-	-	99	46	24

P703 is also born from a first calf heifer, and represents a solid choice for heifer programs.

STRUCTURAL ASSESSMENT									
FC	RC	FA	RA	RS	RH	LM	TP	SN	
6	6	6	6	5	6	C	2	5	

MILWILLAH FEVOLA F37
SIRE MILWILLAH CROW BAR J55
MILWILLAH BARUNAH G295

PARINGA RED STABILIZER M854
DAM PARINGA RED STABILIZER M859
LARNOO STABILIZER H676

52 PARINGA RED STABILIZER® P707

DOB: 13/09/18 Tag: P0707 Breed Comp: 15AA | 12SI | 9RP | 7GV | 54RA | 3HH

TRAITS OBSERVED
BW, WW, YW, SS, SCAN, HIP HEIGHT

AUGUST 2019 \$PROFIT ACROSS BREED EBVs												
	BW	WW	YW	MILK	IMF	REA	MWT	F:G	INTAKE	YHT	SCR	\$PROFIT
	-1.8	53	87	24	0.28	0.41	-20	0.16	3.25	0.19	0.93	\$12,728
% Rank	2	15	16	24	19	68	13	89	67	98	13	14

This bull is one of our top picks. If we look back at the Breedplan data for Crow Bar J55 for carcass and fertility traits we expect these sons to dramatically improve as more data is submitted. Now proven over the commercial herd at Coolongalook, P707 has proven himself as a cracker heifer bull with beautiful docility, and moves like a cat.

STRUCTURAL ASSESSMENT									
FC	RC	FA	RA	RS	RH	LM	TP	SN	
7	6	6	6	6	5	C+	2	5	

MILWILLAH FEVOLA F37
SIRE MILWILLAH CROW BAR J55
MILWILLAH BARUNAH G295

PARINGA STABILIZER H954
DAM PARINGA RED STABILIZER L873
LARNOO STABILIZER H676

53 PARINGA RED STABILIZER® P708

DOB: 14/08/18 Tag: P0708 Breed Comp: 38AA | 35SI | 11RA | 8GV | 6RP | 2HH

TRAITS OBSERVED
BW, WW, YW, SS, SCAN, HIP HEIGHT

AUGUST 2019 \$PROFIT ACROSS BREED EBVs												
	BW	WW	YW	MILK	IMF	REA	MWT	F:G	INTAKE	YHT	SCR	\$PROFIT
	1.6	53	88	25	0.52	0.42	17	0.00	5.25	0.69	1.25	\$14,777
% Rank	37	15	15	19	2	66	57	51	68	48	3	7

P708 offers good breadth of breed diversity with excellent growth and carcase traits.

STRUCTURAL ASSESSMENT								
FC	RC	FA	RA	RS	RH	LM	TP	SN
6	6	6	6	6	6	C	2	5

PARINGA BEEF MAKER K613
SIRE PARINGA RED STABILIZER M724
LARNOO STABILIZER H682

PARINGA RED PILBARA K146
DAM PARINGA RED STABILIZER M743
LARNOO FOCUS FORCEFUL K837

54 PARINGA RED STABILIZER® P724

DOB: 20/08/18 Tag: P0724 Breed Comp: 18AA | 16SI | 6RP | 2GV | 51RA | 700

TRAITS OBSERVED
BW, WW, YW, SS, SCAN, HIP HEIGHT

AUGUST 2019 \$PROFIT ACROSS BREED EBVs												
	BW	WW	YW	MILK	IMF	REA	MWT	F:G	INTAKE	YHT	SCR	\$PROFIT
	0.4	47	83	23	0.36	0.34	2	0.08	-7.75	-0.58	0.20	\$11,016
% Rank	18	27	20	29	11	79	37	74	55	100	75	22

Another outstanding Crow Bar son ideal for heifers and loaded with hybrid vigour.

STRUCTURAL ASSESSMENT								
FC	RC	FA	RA	RS	RH	LM	TP	SN
6	5	6	6	5	5	C	2	5

MILWILLAH FEVOLA F37
SIRE MILWILLAH CROW BAR J55
MILWILLAH BARUNAH G295

PARINGA STABILIZER H954
DAM PARINGA BLACK STABILIZER L870
LARNOO STABILIZER H870

55 PARINGA RED STABILIZER® P730

DOB: 22/08/18 Tag: P0730 Breed Comp: 37SI | 30AA | 18RA | 7GV | 6RP | 2HH

TRAITS OBSERVED
BW, WW, YW, SS, SCAN, HIP HEIGHT

AUGUST 2019 \$PROFIT ACROSS BREED EBVs												
	BW	WW	YW	MILK	IMF	REA	MWT	F:G	INTAKE	YHT	SCR	\$PROFIT
	0.5	53	95	23	0.55	0.44	12	-0.17	20.25	0.43	0.62	\$16,626
% Rank	19	15	9	29	2	63	51	10	81	86	36	4

This Leachman 18 Karat son from a beautiful 1st calf heifer offers purchasers the potential to use in their heifer or mature cow programs.

STRUCTURAL ASSESSMENT								
FC	RC	FA	RA	RS	RH	LM	TP	SN
6	6	6	6	5	5	C+	2	4

LEACHMAN TESTIFY D003Z
SIRE LEACHMAN 18 CARAT X235C
RGR STABILIZER YX518

PARINGA TRINITY K721
DAM PARINGA RED STABILIZER M892
LARNOO EDMUND K796

56 PARINGA RED STABILIZER® P732

DOB: 22/09/18 Tag: P0732 Breed Comp: 10AA | 13SI | 9GV | 56RA | 3HH | 900

TRAITS OBSERVED
BW, WW, YW, SS, SCAN, HIP HEIGHT

AUGUST 2019 \$PROFIT ACROSS BREED EBVs												
	BW	WW	YW	MILK	IMF	REA	MWT	F:G	INTAKE	YHT	SCR	\$PROFIT
	0.8	49	82	23	0.43	0.72	5	0.09	-5.75	0.05	0.17	\$13,106
% Rank	24	23	21	29	6	15	41	76	57	99	77	12

P732 is another high \$Profit® Crow Bar son. It is pretty exciting when you visualise that extra muscle and just how powerful hybrid vigour gives bulls an extra edge; progeny grow and finish faster under all conditions, but particularly well in a grazing system where their tough immunity helps such issues as worms or grass nutrient imbalance.

STRUCTURAL ASSESSMENT								
FC	RC	FA	RA	RS	RH	LM	TP	SN
7	6	6	6	5	5	C	2	5

MILWILLAH FEVOLA F37
SIRE MILWILLAH CROW BAR J55
MILWILLAH BARUNAH G295

PARINGA STABILIZER H954
DAM PARINGA RED STABILIZER M864
PARINGA RED INSTIGATOR G618

57 PARINGA RED STABILIZER® P733

DOB: 22/08/18 Tag: P0733 6AA | 62RA | 18GV | 14SI

TRAITS OBSERVED
BW, WW, YW, SS, SCAN, HIP HEIGHT

AUGUST 2019 \$PROFIT ACROSS BREED EBVs												
	BW	WW	YW	MILK	IMF	REA	MWT	F:G	INTAKE	YHT	SCR	\$PROFIT
	2.3	34	61	21	0.35	0.25	9	0.00	0.00	0.41	-0.29	\$5,905
% Rank	51	62	53	41	12	89	56	-	-	87	97	57

P733 is another handy Crow Bar son with a nice mix of Angus/Simmental and Gelbvieh for added bonuses.

STRUCTURAL ASSESSMENT									
FC	RC	FA	RA	RS	RH	LM	TP	SN	
6	6	6	6	6	6	C	2	5	

MILWILLAH FEVOLA F37
SIRE MILWILLAH CROW BAR J55
MILWILLAH BARUNAH G295

RISSINGTON FORCEFUL 121189
DAM PARINGA RED STABILIZER L890
LARNOO BALANCER F867

58 PARINGA RED STABILIZER® P737

DOB: 24/08/18 Tag: P0737 Breed Comp: 50AA | 25SI | 25RP

TRAITS OBSERVED
BW, WW, YW, SS, SCAN, HIP HEIGHT

AUGUST 2019 \$PROFIT ACROSS BREED EBVs												
	BW	WW	YW	MILK	IMF	REA	MWT	F:G	INTAKE	YHT	SCR	\$PROFIT
	1.9	48	80	21	0.40	0.45	15	0.14	-34.75	0.37	0.04	\$12,605
% Rank	43	25	24	41	8	61	55	86	28	91	86	14

A very good bull with a very decent \$Profit® index to boot. This bulls dam is a magnificent Sim/Red Poll female, and combined with Crow Bar J55 produced a bull that will boost any program.

STRUCTURAL ASSESSMENT									
FC	RC	FA	RA	RS	RH	LM	TP	SN	
6	6	6	6	6	5	C	2	5	

MILWILLAH FEVOLA F37
SIRE MILWILLAH CROW BAR J55
MILWILLAH BARUNAH G295

WS BEEF MAKER R13
DAM LARNOO STABILIZER J902
LARNOO RED POLL D0715RP

59 PARINGA RED STABILIZER® P741

DOB: 24/08/18 Tag: P0741 Breed Comp: 38AA | 18SI | 15GV | 14RA | 12SS | 300

TRAITS OBSERVED
BW, WW, YW, SS, SCAN, HIP HEIGHT

AUGUST 2019 \$PROFIT ACROSS BREED EBVs												
	BW	WW	YW	MILK	IMF	REA	MWT	F:G	INTAKE	YHT	SCR	\$PROFIT
	1.2	48	91	22	0.32	0.31	18	-0.20	29.25	0.93	-0.14	\$12,598
% Rank	30	25	12	35	14	83	59	7	87	14	93	14

P741 offers the ultimate in diverse breed combination with intense selection pressure. A TRUE Stabilizer® bull. At \$12,500 \$Profit® this 18 Karat son from a Coota Blue E G214 female makes P741 a bull not to overlook.

STRUCTURAL ASSESSMENT									
FC	RC	FA	RA	RS	RH	LM	TP	SN	
7	6	6	6	5	5	C	1	4	

LEACHMAN TESTIFY D003Z
SIRE LEACHMAN 18 CARAT X235C
RGR STABILIZER YX518

COOTA PARK BLUE-E G214
DAM LARNOO G214 K822
PARINGA PURE POWER G698

60 PARINGA RED STABILIZER® P742

DOB: 25/09/18 Tag: P0742 Breed Comp: 12AA | 15SI | 13GV | 57RA | 3HH

TRAITS OBSERVED
BW, WW, YW, SS, SCAN, HIP HEIGHT

AUGUST 2019 \$PROFIT ACROSS BREED EBVs												
	BW	WW	YW	MILK	IMF	REA	MWT	F:G	INTAKE	YHT	SCR	\$PROFIT
	0.9	36	62	22	0.27	0.40	-8	-0.02	-10.75	0.47	0.37	\$6,422
% Rank	25	57	52	35	20	70	24	45	52	81	60	53

P742 is an excellent heifer bull with a heap of muscle.

STRUCTURAL ASSESSMENT									
FC	RC	FA	RA	RS	RH	LM	TP	SN	
7	6	6	6	5	5	C	2	5	

MILWILLAH FEVOLA F37
SIRE MILWILLAH CROW BAR J55
MILWILLAH BARUNAH G295

RISSINGTON FORCEFUL 121189
DAM PARINGA RED STABILIZER L777
LARNOO STABILIZER H857

61 PARINGA RED STABILIZER® P747

DOB: 27/08/18 Tag: P0747 Breed Comp: 32SI | 19AA | 19GV | 14RA | 13RP | 4HH

TRAITS OBSERVED
BW, WW, YW, SS, SCAN, HIP HEIGHT

AUGUST 2019 \$PROFIT ACROSS BREED EBVs												
	BW	WW	YW	MILK	IMF	REA	MWT	F:G	INTAKE	YHT	SCR	\$PROFIT
	2.1	42	70	22	0.21	0.73	12	0.06	19.25	0.30	0.02	\$10,721
% Rank	47	40	38	35	29	14	50	69	80	95	86	24

The Trinity lineage bull does very well across production traits, and comes up well on \$Profit® Index.

STRUCTURAL ASSESSMENT									
FC	RC	FA	RA	RS	RH	LM	TP	SN	
6	5	6	6	6	6	C	2	5	

HOOKS TRINITY 9T
SIRE PARINGA TRINITY K721
LARNOO STABILIZER H711

RISSINGTON BIG GENE 12292
DAM PARINGA RED STABILIZER L751
LARNOO BALANCER F863

62 PARINGA RED STABILIZER® P749

DOB: 28/08/18 Tag: P0749 Breed Comp: 14AA | 13GV | 63RA | 10SI

TRAITS OBSERVED
BW, WW, YW, SS, SCAN, HIP HEIGHT

AUGUST 2019 \$PROFIT ACROSS BREED EBVs												
	BW	WW	YW	MILK	IMF	REA	MWT	F:G	INTAKE	YHT	SCR	\$PROFIT
	1.5	57	94	24	0.22	0.25	20	0.11	12.25	0.31	-0.13	\$9,859
% Rank	35	10	10	24	27	89	62	81	74	94	93	29

Selecting only the top of the 2018 drop for this sale means we have sorted through a large group to come up with only the best. A result of this is bulls like P749, who is double the average on \$Profit®. An excellent low birth weight to high growth Crow Bar son.

STRUCTURAL ASSESSMENT									
FC	RC	FA	RA	RS	RH	LM	TP	SN	
7	6	7	6	6	6	C	2	5	

MILWILLAH FEVOLA F37
SIRE MILWILLAH CROW BAR J55
MILWILLAH BARUNAH G295

PARINGA STABILIZER H954
DAM LARNOO STABILIZER K860
LARNOO BALANCER F867

63 PARINGA RED STABILIZER® P751

DOB: 02/09/18 Tag: P0751 Breed Comp: 26SI | 31AA | 18GV | 13RP | 12RA

TRAITS OBSERVED
BW, WW, YW, SS, SCAN, HIP HEIGHT

AUGUST 2019 \$PROFIT ACROSS BREED EBVs												
	BW	WW	YW	MILK	IMF	REA	MWT	F:G	INTAKE	YHT	SCR	\$PROFIT
	4.1	37	71	22	0.25	0.26	34	0.06	-1.75	0.42	0.07	\$5,947
% Rank	81	54	37	35	23	88	79	69	62	87	84	56

P751 - the best of the Red Stabilizer® bulls that is above breed average on yearling growth and marbling. A nice way to finish the catalogue offering.

STRUCTURAL ASSESSMENT									
FC	RC	FA	RA	RS	RH	LM	TP	SN	
6	5	6	6	6	6	C	2	5	

STRATHEWEN RED DAIQUIRI H40
SIRE PARINGA RED STABILIZER M751
LARNOO STABILIZER H702

RISSINGTON FORCEFUL 121189
DAM LARNOO FOCUS FORCEFUL K872
LARNOO BALANCER F831BAL

AUGUST 2019 \$PROFIT ACROSS BREED EBVs												
	BW	WW	YW	MILK	IMF	REA	MWT	F:G	INTAKE	YHT	SCR	\$PROFIT
Paringa Stabilizer BSS19 Average	0.7	48	85	25	0.43	0.64	7	-0.06	20	0.40	0.45	\$13,696
ABE Stabilizer Breed Average (2016 Calves)	2.1	38	63	16	0.11	0.43	18	0.05	36	0.80	0.44	\$5,440



REBATES & PAYMENT INSTRUCTIONS

2%

Purchasers who choose to pay by cheque, EFT or Credit Card on the day of sale will be entitled to a 2% rebate on their purchases.

CREDIT CARD

Clients may pay by credit card on the day of the sale (Please note: a 1% surcharge applies for credit card transactions)

5%

5% rebate to all agents that attend the sale and purchase with/on behalf of their clients, and settle within 5 working days, with payment received no later than Friday 4th of October 2019

SAVE TIME PRE-REGISTER

ONLINE BUYERS REGISTRATION FORM AT: www.gtsm.net.au



You can now register online before you get to the sale, once you arrive please pick up your buyers number from the sale office.

PLEASE NOTE: Registration on sale day is still available as normal.



For online bidding you can register first with GTSM online, then log in to AuctionsPlus as per usual.

Or if you are short on time you can log in and bid directly on AuctionsPlus.





BULL WALK PREVIEW
THURSDAY 12TH SEPTEMBER 2019
FROM 1PM - 4PM
ON PROPERTY YEA VICTORIA

WWW.PARINGALIVESTOCK.COM.AU