



# KAROO ANGUS 2019 BULL SALE

*High performance is still affordable*

**72 BULLS**

**Friday 6th September 2019, 1pm  
On-Property at 'Karoo' Bathurst NSW**

**Phenotype *with* Carcase**





**LOT 1 KAROO 839 REALITY N314 (AI)**



**LOT 4 KAROO H176 COONAMBLE N126 (AI)**



**LOT 7 KAROO J266 JUNIOR N315 (AI)**

# Welcome

## TO OUR 21ST ANNUAL BULL SALE



We have 72 bulls on offer, including 23 yearling bulls. We feel the bulls have the commercial attributes that will see them present in forward condition ready to go out and work. The bulls have been grazing on a wheat crop and present in good order to go out and work your female herd. They are thick, full of meat, have top quality carcase, are structurally sound, whilst adding softness and do ability to their progeny.

We are a family based beef cattle business that is focused on efficiency and profitability. We breed practical cattle, which shows in the evenness of these bulls. This is due to the high selection pressure we put on both our females and the A.I. sires we choose for each individual mating. Our female herd is full of maternally strong females that are structurally correct, easy fleshing, thick, and have the ability to rear a calf each year. A docile temperament is also important as well as market suitability that will allow our clients to finish their stock on grass or in feedlots with great success. Our aim is to breed bulls that perform under demanding conditions. The Karoo philosophy has always been to run the cattle under commercial conditions to ensure the relevance of the genetics to the commercial beef sector.

We endeavour to supply our clients with high quality Angus genetics that are fertile, structurally sound, easy doing and low maintenance without compromising the importance of growth and carcase performance. Karoo blood weaners continue to dominate the CTLX Weaner Sale. With over 8,800 head offered, our pen of heifers topped the sale at \$1,150 per head. We also had several clients do extremely well. Congratulations to John and Michelle Condon, Mitera Trading, O'Connell, for topping the steers at \$1,145 per head. Also, Andrew and Sarah Martin, "Talawa", Rydal who sold a pen of 60 steers averaging 322kgs for \$1,050 per head.

This year we have a lineup of nine Lotto sons that will really add growth to your herd. He is breeding cattle that are long, thick and well-muscled. They are strong topped, thick and ooze muscle and depth. L3 himself is in the top 1% for carcase weight, IMF and two selection indexes – Angus Breeding and Heavy Grain.

He is in the top 2% for 200 and 400 day weight and top 3% for 600 day weight and days to calving. He is also positive for rib and rump fat. The sons on offer will impress, if you are looking for a bull that is an all-rounder!

We have seven sons of Coonamble H176 on offer this year. His sons are heavy boned, soft, extremely placid and have great growth for age. Two, in particular, are worthy of a special mention, lots 4 and 5. They are standout bulls for phenotype, weight for age and overall performance.

Coonamble Junior has seven sons in the sale also. We introduced this bull into our herd for the maternal attributes. His dam A61 is highly sought after in any pedigree and is said to be one of the breed's greatest cows! Combine this with Regent, and the package is complete. Standout sons include lot 6, 7 and 12.

Reality again features in this year's line up with six sons for sale. He has worked so well for us by adding thickness and softness and his sons are full of depth and capacity. Lot 1 is a great example of this. We also have six sons of Milwillah Reality K12 who featured in last year's sale.

Another new sire this year is Wattletop Franklin G188 – we have three sons in this sale and more to come in the years ahead. He is a bull that we used on our bigger framed cows and heifers as he is +2.4 for birth weight, while being in the top 1% for all growth EBVs.

Amongst the 72 bulls on offer is a selection of bulls that are suitable for heifer joinings. In fact, 38 bulls – more than half the catalogue – have a birth weight EBV lower than the breed average, while our 600 day growth average is in the top 25% of the breed.

All bulls have been sire verified, tested Pestivirus negative, vaccinated, drenched and semen tested by Ian Moreland, Stud Care Genetics, Victoria

We welcome your visit anytime prior to sale day, or on sale day for a complimentary morning tea and lunch.

Best wishes to all,

*John, Tony,  
Annie and Riley*

# SALE INFORMATION

## LOCATION

'Karoo' is situated at 2641 Great Western Highway, Meadow Flat NSW; 32km east of Bathurst and 27km west of Lithgow. The sale will be held undercover.



## INSPECTIONS

Cattle will be yarded in pens at 'Karoo' from 10.00am sale day, or inspections can be arranged any time prior to the sale by appointment with the agent or vendor.

## REFRESHMENTS

Morning tea and lunch will be served by Meadow Flat Public School. Join us for a complimentary steak.

## SUPPLEMENTARY SHEET

Will be available on sale day, including scrotal size measurements and weights.

## INSURANCE

Will be available on sale day through Ray White Emms Mooney.

## REBATE

2% is allowed to all reciprocating agents accompanying buyer to the sale and settling within 7 days of invoice.

## CARTAGE/TRANSPORT

All instructions for transport must be in writing. Our agent Ray White Emms Mooney will be coordinating all transport. Buyers instruction slip must be completed prior to departure from sale.

## SAFETY

At the sale, please do not enter pens unnecessarily and do not crowd around the bulls. No children are permitted to enter pens.

## MOBILE PHONE BIDDING

There will be mobile phones available for bidding. To ensure you get a line, please contact Ben Emms - 0428 639 381 to arrange phone bidding.

## AUCTIONSPLUS

This year the sale will be interfaced with AuctionsPlus. Please visit [www.auctionsplus.com.au](http://www.auctionsplus.com.au) to sign up and access the sale.



## ACCOMMODATION

Bathurst Visitor Information Centre 1800 681 000  
Lithgow Visitor Information Centre 02 6353 1859

## AGENT CONTACTS

Ray White Emms Mooney	02 6331 0744
Ben Emms	0428 639 381
Steve Mooney	0428 683 152
Pat Bird	0438 361 109
Matt Byrnes	0427 259 529
Ben Redfern	0457 770 062
Harry Larnach	0428 637 540
Sam D'Arcy	0401 612 996

## CONTACT US

John Reen	P 02 6359 5227
Annie Scott	M 0413 584 453
	E <a href="mailto:karooangus@bigpond.com">karooangus@bigpond.com</a>
Facebook:	<a href="http://www.facebook.com/karoo.angus">www.facebook.com/karoo.angus</a>

## CATALOGUE & VIDEOS ONLINE

You can access the Karoo sale catalogue online. Go to [www.karooangus.com.au](http://www.karooangus.com.au) and click on the 'Sales' page. Follow the links to either download a PDF catalogue to print or view on your computer, or follow the link to the Angus Australia online catalogue.

This online catalogue enables you to electronically search and sort the catalogue, as well as view calving information of females back in the sale bull's pedigrees, amongst many other options.

The pre-sale video can also be found on our website.

**PLEASE BRING THIS CATALOGUE TO THE SALE**

# ABOUT THE BULLS



## HEALTH

The "Karoo" herd holds a J-BAS 8 status. All bulls are offered with our quality assurance guarantee.

In addition we take the following steps at 'Karoo', against reproductive losses.

This means that all bulls have:

- Been tested (via tail hair samples) to prove they are not Persistently Infected (PI) or Shedders of Pestivirus (BVDV)
- Received two shots of Pestiguard to provide protection in the event they come into contact with a Persistently Infected animal at their new home
- Received two shots of 7 in 1 vaccine

All bulls have either been tested free of genetic mutations (AM,NH,CA,DD), or are pedigree free from such mutations.

## FERTILITY

All bulls have been inspected for physical soundness and palpitation of the sexual anatomy, and measurement and examination of testes. Any claim against fertility must be forwarded to the vendor or agent within nine (9) months accompanied by a veterinary certificate.

## VISUAL ASSESSMENT

When choosing bulls you need to use both the EBVs and visual assessment. Visual assessment is essential to assess physical and structural soundness and is a reasonable indicator of health and temperament. EBVs are a tool that will help you to make more 'educated' decisions when you are choosing breeding stock. Do your homework well before the sale when you have plenty of time. Set some parameters for your EBVs that fall within your market requirements to narrow down potential purchases. Use this 'suitable list' of bulls and spend time looking, assessing the physical characteristics that you require.

## THE KAROO GUARANTEE

All sale bulls have been examined for fertility. This examination includes a semen test and palpitation of the sexual anatomy, measurement and examination of the testes.

At Karoo we are proud of the product that we offer to our customers. We guarantee the fertility of all the bulls. If a bull should prove infertile or breaks down due to reasons other than injury, misadventure or negligence, Karoo will provide you with a satisfactory replacement if available, or issue you with a credit equal to the purchase price minus any salvage value.

Any request for replacement or refund must be lodged with the vendor or agent within nine months from the date of purchase, accompanied by a veterinary certificate. We wish you every success with your purchase and we believe that the bulls will enhance your breeding programme, however if you have any problems, please don't hesitate to contact us.

## ANGUS SIRE ASSURED

All bulls in this catalogue are DNA sire verified. This improves the integrity of the pedigree, genetic condition and Angus BREEDPLAN EBV information that is provided.





**AuctionsPlus**<sup>®</sup>

*Australia's Livestock Marketplace*

## Can't make the sale?

*Purchasing online in eight simple steps!*

*Log on to AuctionsPlus and bid on your phone, tablet or computer.*

- 1 REGISTER ONLINE**  
Free once off registration for all auctions.
- 2 COMPLETE BUYER INDUCTION**  
The buyer induction will help you understand the roles and responsibilities of everyone on the AuctionsPlus system.
- 3 VIEW CATALOGUE**  
View photos, videos, pedigrees and more.
- 4 ENTER AUCTION**  
Log into the auction anytime, anywhere and bid on your mobile, tablet or computer.
- 5 AUTO BID**  
Can't stay for the whole sale? Set your maximum bid on the lot that you want to purchase and let the computer bid for you.
- 6 CONTACT SELLING AGENT**  
If successful, contact selling agent to arrange payment and delivery. The correct agent details will be in the catalogue header, contact after the sale to arrange payment and delivery.
- 7 PAYMENT**  
Via the selling agent's terms and conditions.
- 8 DELIVERY**  
Arrange transport of livestock at your expense.

Contact AuctionsPlus on (02) 9262 4222  
or email [studsales@auctionsplus.com.au](mailto:studsales@auctionsplus.com.au)  
or [www.auctionsplus.com.au](http://www.auctionsplus.com.au)

Check us out on:    

# EBVS & \$INDEX VALUES

## WHAT IS ANGUS BREEDPLAN?

Angus BREEDPLAN is the genetic evaluation program adopted by Angus Australia for Angus and Angus influenced beef cattle.

Angus BREEDPLAN uses Best Linear Unbiased Prediction (BLUP) technology to produce Estimated Breeding Values (EBVs) of recorded cattle for a range of important production traits (e.g. weight, carcass, fertility).

Angus BREEDPLAN includes pedigree, performance and genomic information from the Angus Australia and New Zealand Angus Association databases to evaluate the genetics of animals across Australia and New Zealand.

Angus BREEDPLAN analyses are conducted by the Agricultural Business Research Institute (ABRI), using software developed by the Animal Genetics and Breeding Unit (AGBU), a joint institute of NSW Agriculture and the University of New England. Ongoing BREEDPLAN research and development is supported by Meat and Livestock Australia.

## WHAT IS AN EBV?

An animal's breeding value can be defined as its genetic merit for each trait. While it is not possible to determine an animal's true breeding value, it is possible to estimate it. These estimates of an animal's true breeding value are called EBVs (Estimated Breeding Values).

## USING EBVS TO COMPARE THE GENETICS OF TWO ANIMALS

Angus BREEDPLAN EBVs can be used to estimate the expected difference in the genetics of two animals, with the expected difference equating to half the difference in the EBVs of the animals, all other things being equal (e.g. they are joined to the same animal/s).

For example, a bull with a 200 Day Growth EBV of +60 would be expected to produce progeny that are, on average, 10 kg heavier at 200 days of age than a bull with a 200 Day Growth EBV of +40 kg

(i.e. 20 kg difference between the sire's EBVs, then halved as the sire only contributes half the genetics).

Or similarly, a bull with an IMF EBV of +3.0 would be expected to produce progeny with on average, 1% more intramuscular fat in a 400 kg carcass than a bull with a IMF EBV of +1.0 (i.e. 2% difference between the sire's EBVs, then halved as the sire only contributes half the genetics).

## USING EBVS TO BENCHMARK AN ANIMAL'S GENETICS WITH THE BREED

EBVs can also be used to benchmark an animal's genetics relative to the genetics of other Angus or Angus infused animals in Australia and New Zealand.

To benchmark an animal's genetics relative to other Angus animals, an animal's EBV can be compared to:

- the breed average EBV
- the percentile table

The current breed average EBV table is below. The percentile table is at the back of the catalogue.

## CONSIDERING ACCURACY

An accuracy value is published in association with each EBV, which is usually displayed as a percentage value immediately below the EBV. The accuracy value provides an indication of the reliability of the EBV in estimating the animal's genetics (or true breeding value), and is an indication of the amount of information that has been used in the calculation of the EBV.

EBVs with accuracy values below 50% should be considered as preliminary or of low accuracy, 50-74% as of medium accuracy, 75-90% of medium to high accuracy, and 90% or greater as high accuracy.

## DESCRIPTION OF ANGUS BREEDPLAN EBVS

EBVs are calculated for a range of traits within Angus BREEDPLAN, covering calving ease, growth, fertility, maternal performance, carcass merit, feed efficiency and structural soundness. A description of each EBV included in this sale catalogue is provided.

## BREED AVERAGE EBVS

Mid July 2019 Angus Australia BREEDPLAN

	CED	CEM	GL (days)	BW (kg)	200 (kg)	400 (kg)	600 (kg)	MCW (kg)	MILK (kg)	SS	DC	CW (kg)	EMA (sq cm)	RIB (mm)	RMP (mm)	RBY (%)	IMF (%)	NFI-F (kg/d)	Doc-ility
EBV	+0.2	+0.4	-4.0	+4.3	+44	+81	+106	+91	+15	+1.8	-4.2	+59	+5.1	+0.0	-0.2	+0.4	+1.7	+0.14	+4

Angus Breeding Index (\$ABI)	Domestic Index \$DOM	Heavy Grain Index \$GRN	Heavy Grass Index \$GRA
+\$114	+\$109	+\$119	+\$111

## BIRTH

Calving Ease Direct	(%)	Genetic differences in the ability of a sire's calves to be born unassisted from 2 year old heifers.	Higher EBVs indicate fewer calving difficulties in 2 year old heifers.
Calving Ease Daughters	(%)	Genetic differences in the ability of a sire's daughters to calve unassisted at 2 years of age.	Higher EBVs indicate fewer calving difficulties in 2 year old heifers.
Gestation Length	days	Genetic differences between animals in the length of time from the date of conception to the birth of the calf.	Lower EBVs indicate shorter gestation length.
Birth Weight	kg	Genetic differences between animals in calf weight at birth.	Lower EBVs indicate lighter birth weight.

## GROWTH

200 Day Growth	kg	Genetic differences between animals in live weight at 200 days of age due to genetics for growth.	Higher EBVs indicate heavier live weight.
400 Day Weight	kg	Genetic differences between animals in live weight at 400 days of age.	Higher EBVs indicate heavier live weight.
600 Day Weight	kg	Genetic differences between animals in live weight at 600 days of age.	Higher EBVs indicate heavier live weight.
Mature Cow Weight	kg	Genetic differences between animals in live weight of cows at 5 years of age.	Higher EBVs indicate heavier mature weight.
Milk	kg	Genetic differences between animals in live weight at 200 days of age due to the maternal contribution of its dam.	Higher EBVs indicate heavier live weight.

## FERTILITY

Days to Calving	kg	Genetic differences between animals in the time from the start of the joining period (i.e. when the female is introduced to a bull) until subsequent calving.	Lower EBVs indicate shorter time to calving.
Scrotal Size	cm	Genetic differences between animals in scrotal circumference at 400 days of age.	Higher EBVs indicate larger scrotal circumference.

## CARCASE

Carcase Weight	kg	Genetic differences between animals in hot standard carcass weight at 750 days of age.	Higher EBVs indicate heavier carcass weight.
Eye Muscle Area	cm <sup>2</sup>	Genetic differences between animals in eye muscle area at the 12/13th rib site in a 400 kg carcass.	Higher EBVs indicate larger eye muscle area.
Rib Fat	mm	Genetic differences between animals in fat depth at the 12/13th rib site in a 400 kg carcass.	Higher EBVs indicate more fat.
Rump Fat	mm	Genetic differences between animals in fat depth at the P8 rump site in a 400 kg carcass.	Higher EBVs indicate more fat.
Retail Beef Yield	%	Genetic differences between animals in boned out saleable meat from a 400 kg carcass.	Higher EBVs indicate higher yield.
Intramuscular Fat	%	Genetic differences between animals in intramuscular fat (marbling) at the 12/13th rib site in a 400 kg carcass.	Higher EBVs indicate more intramuscular fat.

## SELECTION INDEXES

Angus Breeding Index	\$	Genetic differences between animals in net profitability per cow joined in a typical commercial self replacing herd using Angus bulls. This selection index is not specific to a particular production system or market end-point, but identifies animals that will improve overall profitability in the majority of commercial grass and grain finishing beef production systems.	Higher selection index values indicate greater profitability.
Domestic Index	\$	Genetic differences between animals in net profitability per cow joined in a commercial self replacing herd targeting the domestic supermarket trade.	Higher selection index values indicate greater profitability.
Heavy Grain Index	\$	Genetic differences between animals in net profitability per cow joined in a commercial self replacing herd targeting pasture grown steers with a 200 day feedlot finishing period for the grain fed high quality, highly marbled markets.	Higher selection index values indicate greater profitability.
Heavy Grass Index	\$	Genetic differences between animals in net profitability per cow joined in a commercial self replacing herd targeting pasture finished steers.	Higher selection index values indicate greater profitability.



# 1

## KAROO 839 REALITY N314<sup>SV</sup> (AI)

IDENT: NENN314 DOB: 8/9/17 HBR AMFU,CAFU,DDFU,NHFU

SCHURR 77 1346 EXCEL#  
SCHURRTOP REALITY X723#  
SCHURRTOP 8019 V141#

PAPA EQUATOR 2928#  
ARDROSSAN EQUATOR A241<sup>PV</sup>  
ARDROSSAN PRINCESS W38<sup>PV</sup>

**SIRE: MATAURI REALITY 839#**

**DAM: KAROO WILCOOLA F168#**

TE MANIA ULONG U41<sup>SV</sup>  
MATAURI 06663#  
MATAURI 04456 AB#

BANQUET XPLANATION X060#  
KAROO WILCOOLA C5#  
KAROO WILCOOLA Y59#

Mid-July 2019 Angus Australia BREEDPLAN

Traits Observed: BWT,200WT,400WT,600WT,SC,Scan(EMA,Rib,Rump,IMF)

	CALVING EASE		BIRTH		GROWTH					FERTILITY		CARCASE						INDEX VALUES			
	CED	CEM	GL	BW	200	400	600	MCW	MILK	SS	DC	CW	EMA	RIB	RMP	RBY	IMF	\$ABI	\$DOM	\$GRN	\$GRA
EBV	+4.3	+3.4	-6.4	+3.4	+44	+83	+108	+103	+16	+3.5	-5.9	+60	+4.1	+0.5	+0.1	-0.1	+2.4	\$124	\$113	\$136	\$117
ACC	58%	55%	70%	75%	71%	71%	74%	69%	65%	71%	53%	65%	63%	65%	65%	62%	62%				

What a bull to start the sale with! N314 is a bull to pack a punch into your cow herd. A true Reality son that is soft and thick and very quiet. He has fertility to boot too, at +3.5 for scrotal size - top 2%.

Purchaser: ..... \$ .....

# 2

## KAROO L3 LOTTO N144<sup>SV</sup> (AI)

IDENT: NENN144 DOB: 1/8/17 HBR AMFU,CAFU,DDFU,NHFU

TE MANIA BERKLEY B1<sup>PV</sup>  
AYRVALE GENERAL G18<sup>PV</sup>  
AYRVALE EASE E3<sup>PV</sup>

COONAMBLE Z3<sup>PV</sup>  
COONAMBLE ELEVATOR E11<sup>PV</sup>  
BANGADANG B31<sup>SV</sup>

**SIRE: ESSLEMONT LOTTO L3<sup>PV</sup>**

**DAM: KAROO WILCOOLA K62#**

TUWHARETOA REGENT D145<sup>PV</sup>  
ESSLEMONT JENNY J8<sup>PV</sup>  
ESSLEMONT CHERRY C16<sup>PV</sup>

BT RIGHT TIME 24J#  
KAROO WILCOOLA D326<sup>SV</sup>  
KAROO WILCOOLA A281#

Mid-July 2019 Angus Australia BREEDPLAN

Traits Observed: GL,BWT,200WT,400WT,600WT,SC,Scan(EMA,Rib,Rump,IMF)

	CALVING EASE		BIRTH		GROWTH					FERTILITY		CARCASE						INDEX VALUES			
	CED	CEM	GL	BW	200	400	600	MCW	MILK	SS	DC	CW	EMA	RIB	RMP	RBY	IMF	\$ABI	\$DOM	\$GRN	\$GRA
EBV	-3.0	-1.4	-5.5	+4.4	+57	+99	+136	+121	+20	+3.2	-5.5	+79	+7.7	+1.2	+1.2	+0.2	+2.3	\$135	\$115	\$146	\$130
ACC	52%	39%	84%	75%	70%	71%	73%	65%	53%	73%	39%	59%	60%	61%	61%	56%	57%				

N144 was born to impress all that have come to inspect him, and he doesn't disappoint. Great muscle and style, backed by a great cow family. Great birth to 600 day weight spread.

Purchaser: ..... \$ .....

# 3

## KAROO K12 REALITY N278<sup>SV</sup>

IDENT: NENN278 DOB: 1/9/17 HBR AMFU,CAFU,DDFU,NHFU

SCHURRTOP REALITY X723#  
MATAURI REALITY 839#  
MATAURI 06663#

PAPA EQUATOR 2928#  
ARDROSSAN EQUATOR A241<sup>PV</sup>  
ARDROSSAN PRINCESS W38<sup>PV</sup>

**SIRE: MILWILLAH REALITY K12<sup>PV</sup>**

**DAM: KAROO DORIS F42#**

COONAMBLE ELEVATOR E11<sup>PV</sup>  
MILWILLAH BARUNAH H8<sup>SV</sup>  
MILWILLAH BARUNAH A44#

THREE TREES ROCK ON 0059#  
KAROO DORIS Y137<sup>SV</sup>  
KAROO FLATS DORIS V96#

Mid-July 2019 Angus Australia BREEDPLAN

Traits Observed: BWT,200WT,400WT,600WT,SC,Scan(EMA,IMF)

	CALVING EASE		BIRTH		GROWTH					FERTILITY		CARCASE						INDEX VALUES			
	CED	CEM	GL	BW	200	400	600	MCW	MILK	SS	DC	CW	EMA	RIB	RMP	RBY	IMF	\$ABI	\$DOM	\$GRN	\$GRA
EBV	+1.6	+2.4	-6.7	+4.5	+51	+97	+138	+134	+18	+3.1	-4.3	+76	+4.5	+0.3	+0.5	-0.1	+2.1	\$137	\$116	\$150	\$131
ACC	50%	43%	66%	75%	70%	71%	73%	66%	58%	71%	42%	60%	60%	60%	58%	55%	57%				

Those that have been following our program know that K12 produced some extraordinary bulls last year. N278 is no exception! A really smooth, larger framed K12 that will breed great replacement females or steers to go into the feedlot job.

Purchaser: ..... \$ .....

# 4

## KAROO H176 COONAMBLE N126<sup>SV</sup> (AI)

IDENT: NENN126    DOB: 31/7/17    HBR    AMFU,CAFU,DDFU,NHFU

COONAMBLE Z3<sup>PV</sup>  
COONAMBLE ELEVATOR E11<sup>PV</sup>  
BANGADANG B31<sup>SV</sup>

TUWHARETOA REGENT D145<sup>PV</sup>  
KAROO D145 REGENT G47<sup>PV</sup>  
KAROO FLATS MONTANA X23<sup>#</sup>

**SIRE: COONAMBLE H176<sup>PV</sup>**

**DAM: KAROO ELSA J174<sup>#</sup>**

BOOROOMOOKA WARWICK W245<sup>E</sup>  
COONAMBLE D94<sup>SV</sup>  
COONAMBLE B170<sup>#</sup>

KAROO 338 RIGHT TIME C22<sup>PV</sup>  
KAROO ELSA G188<sup>#</sup>  
KAROO ELSA E26<sup>#</sup>

Mid-July 2019 Angus Australia BREEDPLAN

Traits Observed: GL,BWT,200WT,400WT,600WT,SC,Scan(EMA,IMF)

	CALVING EASE		BIRTH		GROWTH					FERTILITY		CARCASE						INDEX VALUES			
	CED	CEM	GL	BW	200	400	600	MCW	MILK	SS	DC	CW	EMA	RIB	RMP	RBY	IMF	\$ABI	\$DOM	\$GRN	\$GRA
EBV	-1.6	-0.7	-4.4	+5.6	+55	+91	+138	+129	+15	+1.5	-1.3	+74	+7.0	+0.4	+0.4	+0.5	+1.3	\$116	\$100	\$116	\$119
ACC	43%	34%	84%	74%	69%	70%	73%	65%	52%	71%	35%	59%	58%	57%	55%	52%	53%				

N126 really catches your eye in the paddock . He walks well with his head up, has great capacity and is a true sire. A bull that will add weight and bone to your cow heard as well as carcase weight - top 9%.

Purchaser: ..... \$ .....

# 5

## KAROO H176 COONAMBLE N327<sup>SV</sup> (AI)

IDENT: NENN327    DOB: 11/9/17    HBR    AMFU,CAFU,DDFU,NHFU

COONAMBLE Z3<sup>PV</sup>  
COONAMBLE ELEVATOR E11<sup>PV</sup>  
BANGADANG B31<sup>SV</sup>

TE MANIA AMBASSADOR A134<sup>SV</sup>  
TUWHARETOA REGENT D145<sup>PV</sup>  
LAWSONS HENRY VIII Y5<sup>SV</sup>

**SIRE: COONAMBLE H176<sup>PV</sup>**

**DAM: KAROO DORIS H123<sup>#</sup>**

BOOROOMOOKA WARWICK W245<sup>E</sup>  
COONAMBLE D94<sup>SV</sup>  
COONAMBLE B170<sup>#</sup>

ARDROSSAN MODEST W37<sup>SV</sup>  
KAROO DORIS D1<sup>PV</sup>  
KAROO DORIS Y137<sup>SV</sup>

Mid-July 2019 Angus Australia BREEDPLAN

Traits Observed: GL,BWT,200WT,400WT,600WT,SC,Scan(EMA,Rib,Rump,IMF)

	CALVING EASE		BIRTH		GROWTH					FERTILITY		CARCASE						INDEX VALUES			
	CED	CEM	GL	BW	200	400	600	MCW	MILK	SS	DC	CW	EMA	RIB	RMP	RBY	IMF	\$ABI	\$DOM	\$GRN	\$GRA
EBV	-6.6	-4.9	-1.8	+6.8	+60	+103	+145	+137	+17	+2.9	-3.1	+80	+7.3	+0.6	+1.0	+0.6	+1.4	\$117	\$101	\$119	\$117
ACC	48%	39%	84%	75%	70%	70%	72%	65%	54%	70%	41%	61%	60%	61%	61%	56%	57%				

One of the standout bulls in this year's draft for phenotype! N327 is thick from behind, stylish and has great capacity and shape. Again, backed by our strong Doris cow family. Top 3% for carcase weight.

Purchaser: ..... \$ .....

# 6

## KAROO J266 JUNIOR N246<sup>SV</sup> (AI)

IDENT: NENN246    DOB: 24/8/17    HBR    AMFU,CAFU,DDFU,NHFU

TE MANIA AMBASSADOR A134<sup>SV</sup>  
TUWHARETOA REGENT D145<sup>PV</sup>  
LAWSONS HENRY VIII Y5<sup>SV</sup>

COONAMBLE Z3<sup>PV</sup>  
COONAMBLE ELEVATOR E11<sup>PV</sup>  
BANGADANG B31<sup>SV</sup>

**SIRE: COONAMBLE JUNIOR J266<sup>PV</sup>**

**DAM: KAROO FLOWER K340<sup>#</sup>**

VERMILION DATELINE 7078<sup>#</sup>  
BANGADANG LOWAN A61<sup>PV</sup>  
BANGADANG KATE W19<sup>#</sup>

TE MANIA INFINITY 04 379 AB<sup>#</sup>  
KAROO 04379 FLOWER E65<sup>#</sup>  
KAROO FLOWER C126<sup>#</sup>

Mid-July 2019 Angus Australia BREEDPLAN

Traits Observed: GL,BWT,200WT,400WT,600WT,SC,Scan(EMA,Rib,Rump,IMF)

	CALVING EASE		BIRTH		GROWTH					FERTILITY		CARCASE						INDEX VALUES			
	CED	CEM	GL	BW	200	400	600	MCW	MILK	SS	DC	CW	EMA	RIB	RMP	RBY	IMF	\$ABI	\$DOM	\$GRN	\$GRA
EBV	-10.8	-7.1	+0.2	+7.5	+58	+107	+148	+145	+16	+2.5	-3.6	+87	+6.6	-1.7	-1.4	+1.2	+2.6	\$122	\$102	\$142	\$113
ACC	49%	43%	85%	74%	69%	70%	73%	66%	55%	72%	44%	62%	61%	62%	63%	58%	59%				

The Junior bulls on offer are all similar in type. The weight is enormous, but the package is not too big! Top 3% for 200 day growth and top 1% for 400 and 600 day weight. Also, top 1% for carcase weight and top 18% for IMF.

Purchaser: ..... \$ .....

# 7

## KAROO J266 JUNIOR N315<sup>SV</sup> (AI)

IDENT: NENN315    DOB: 8/9/17    HBR    AMFU,CAFU,DDFU,NHFU

TE MANIA AMBASSADOR A134<sup>SV</sup>  
TUWHARETOA REGENT D145<sup>PV</sup>  
LAWSONS HENRY VIII Y5<sup>SV</sup>

SITZ UPWARD 307R<sup>SV</sup>  
EXAR UPSHOT 0562B<sup>#</sup>  
EXAR BARBARA T020<sup>#</sup>

**SIRE: COONAMBLE JUNIOR J266<sup>PV</sup>**

**DAM: KAROO FLOWER H337<sup>#</sup>**

VERMILION DATELINE 7078<sup>#</sup>  
BANGADANG LOWAN A61<sup>PV</sup>  
BANGADANG KATE W19<sup>#</sup>

TE MANIA INFINITY 04 379 AB<sup>#</sup>  
KAROO 04379 FLOWER E65<sup>#</sup>  
KAROO FLOWER C126<sup>#</sup>

Mid-July 2019 Angus Australia BREEDPLAN

Traits Observed: GL,BWT,200WT,400WT,600WT,SC,Scan(EMA,Rib,Rump,IMF)

	CALVING EASE		BIRTH		GROWTH					FERTILITY		CARCASE						INDEX VALUES			
	CED	CEM	GL	BW	200	400	600	MCW	MILK	SS	DC	CW	EMA	RIB	RMP	RBY	IMF	\$ABI	\$DOM	\$GRN	\$GRA
EBV	-4.1	-5.0	-1.9	+4.9	+51	+91	+122	+102	+17	+1.1	-5.1	+76	+6.8	-0.2	+0.0	+0.5	+2.5	\$122	\$108	\$134	\$116
ACC	50%	44%	85%	75%	70%	70%	72%	66%	57%	70%	44%	61%	60%	62%	62%	58%	59%				

Junior has worked really well in our herd. N315 is no exception, being very thick and meaty. He is a bull to use on mature cows, and will add weight, EMA, carcass weight and IMF.

Purchaser: ..... \$ .....

# 8

## KAROO H176 COONAMBLE N296<sup>SV</sup> (AI)

IDENT: NENN296    DOB: 5/9/17    HBR    AMFU,CAFU,DDFU,NHFU

COONAMBLE Z3<sup>PV</sup>  
COONAMBLE ELEVATOR E11<sup>PV</sup>  
BANGADANG B31<sup>SV</sup>

TE MANIA BERKLEY B1<sup>PV</sup>  
TE MANIA EMPEROR E343<sup>PV</sup>  
TE MANIA LOWAN Z74<sup>PV</sup>

**SIRE: COONAMBLE H176<sup>PV</sup>**

**DAM: KAROO DORIS J266<sup>#</sup>**

BOOROOMOOKA WARWICK W245<sup>#</sup>  
COONAMBLE D94<sup>SV</sup>  
COONAMBLE B170<sup>#</sup>

BT RIGHT TIME 24J<sup>#</sup>  
KAROO DORIS D83<sup>#</sup>  
KAROO DORIS Z60<sup>SV</sup>

Mid-July 2019 Angus Australia BREEDPLAN

Traits Observed: GL,BWT,200WT,400WT,600WT,SC,Scan(EMA,Rib,Rump,IMF)

	CALVING EASE		BIRTH		GROWTH					FERTILITY		CARCASE						INDEX VALUES			
	CED	CEM	GL	BW	200	400	600	MCW	MILK	SS	DC	CW	EMA	RIB	RMP	RBY	IMF	\$ABI	\$DOM	\$GRN	\$GRA
EBV	-1.3	+0.8	-3.8	+5.1	+54	+101	+130	+115	+16	+2.0	-4.6	+68	+5.7	+2.6	+3.3	-0.5	+1.1	\$122	\$113	\$117	\$124
ACC	47%	39%	85%	75%	69%	70%	73%	66%	54%	72%	40%	61%	60%	61%	62%	56%	56%				

N296 is really long and you know what they say - "length weighs and pays"! Great spread of numbers from birth 600 day weight. Great carcass weight and positive for fat, which puts him in the top 2% or better.

Purchaser: ..... \$ .....

# 9

## KAROO E11 ELEVATOR N220<sup>SV</sup> (AI)

IDENT: NENN220    DOB: 15/8/17    HBR    AMFU,CAFU,DDFU,NHFU

B S S LIMITED DESIGN<sup>#</sup>  
COONAMBLE Z3<sup>PV</sup>  
IMRAN ROSEBUD U17<sup>#</sup>

SCHURRTOP REALITY X723<sup>#</sup>  
MATAURI REALITY 839<sup>#</sup>  
MATAURI 06663<sup>#</sup>

**SIRE: COONAMBLE ELEVATOR E11<sup>PV</sup>**

**DAM: KAROO DORIS K139<sup>#</sup>**

KOOJAN HILLS XCELL W29<sup>#</sup>  
BANGADANG B31<sup>SV</sup>  
BANGADANG WILCOOLA Y1<sup>#</sup>

KAROO A241 EQUATOR E39<sup>PV</sup>  
KAROO DORIS H223<sup>#</sup>  
KAROO DORIS E56<sup>SV</sup>

Mid-July 2019 Angus Australia BREEDPLAN

Traits Observed: GL,BWT,200WT,400WT,600WT,SC,Scan(EMA,Rib,Rump,IMF)

	CALVING EASE		BIRTH		GROWTH					FERTILITY		CARCASE						INDEX VALUES			
	CED	CEM	GL	BW	200	400	600	MCW	MILK	SS	DC	CW	EMA	RIB	RMP	RBY	IMF	\$ABI	\$DOM	\$GRN	\$GRA
EBV	-0.1	+1.0	-4.5	+5.9	+56	+104	+142	+147	+14	+1.4	-1.4	+75	+5.1	-0.8	-0.4	+0.2	+1.3	\$119	\$109	\$122	\$120
ACC	56%	48%	85%	74%	70%	71%	74%	68%	62%	73%	46%	63%	63%	64%	65%	60%	60%				

A really soft, clean skinned Elevator son that is easy on the eye. N220 will add grunt to your cows at +142 for 600 day weight - top 2%, while still having a moderate birth weight.

Purchaser: ..... \$ .....

# 10

## KAROO L3 LOTTO N290<sup>SV</sup> (AI)

IDENT: NENN290 DOB: 5/9/17 HBR AMFU,CAFU,DDFU,NHFU

TE MANIA BERKLEY B1<sup>PV</sup>  
AYRVALE GENERAL G18<sup>PV</sup>  
AYRVALE EASE E3<sup>PV</sup>

KAROO W109 DIRECTION Z181<sup>SV</sup>  
CARABAR DOCKLANDS D62<sup>PV</sup>  
CARABAR BLACKCAP MARY B12<sup>PV</sup>

**SIRE: ESSELMONT LOTTO L3<sup>PV</sup>**

**DAM: KAROO WILCOOLA H167<sup>#</sup>**

TUWHARETOA REGENT D145<sup>PV</sup>  
ESSELMONT JENNY J8<sup>PV</sup>  
ESSELMONT CHERRY C16<sup>PV</sup>

ARDROSSAN MODEST W37<sup>SV</sup>  
KAROO WILCOOLA D16<sup>#</sup>  
KAROO FLATS WILCOOLA W86<sup>#</sup>

Mid-July 2019 Angus Australia BREEDPLAN

Traits Observed: GL,BWT,200WT,400WT,600WT,SC,Scan(EMA,Rib,Rump,IMF)

	CALVING EASE		BIRTH		GROWTH					FERTILITY		CARCASE						INDEX VALUES			
	CED	CEM	GL	BW	200	400	600	MCW	MILK	SS	DC	CW	EMA	RIB	RMP	RBY	IMF	\$ABI	\$DOM	\$GRN	\$GRA
EBV	-4.1	-1.7	-6.6	+6.5	+60	+106	+154	+133	+21	+3.8	-6.1	+89	+6.8	+0.3	+0.0	+0.3	+2.7	\$150	\$118	\$172	\$140
ACC	53%	41%	85%	76%	71%	72%	74%	67%	54%	73%	41%	60%	61%	62%	63%	57%	58%				

N290 has a really strong pedigree to back up his solid EBVs. Direction, Modest and Docklands were all bulls that did a great job to lay the foundation in our 350 strong stud herd. Top 1% for 200 and 600 day growth, scrotal size and carcass weight.

Purchaser: ..... \$ .....

# 11

## KAROO D62 DOCKLANDS N107<sup>SV</sup> (AI)

IDENT: NENN107 DOB: 14/7/17 HBR AMFU,CAFU,DDFU,NHFU

ARDROSSAN DIRECTION W109<sup>PV</sup>  
KAROO W109 DIRECTION Z181<sup>SV</sup>  
KAROO FLATS MADONNA V56<sup>#</sup>

BOOROOMOOKA UNDERTAKEN Y145<sup>SV</sup>  
RENNYLEA EDMUND E11<sup>PV</sup>  
LAWSONS HENRY VIII Y5<sup>SV</sup>

**SIRE: CARABAR DOCKLANDS D62<sup>PV</sup>**

**DAM: KAROO WILCOOLA L223<sup>#</sup>**

BON VIEW NEW DESIGN 1407<sup>#</sup>  
CARABAR BLACKCAP MARY B12<sup>PV</sup>  
BOOROOMOOKA TRACY T4<sup>SV</sup>

SYDGEN TRUST 6228<sup>#</sup>  
KAROO WILCOOLA H257<sup>#</sup>  
KAROO FLATS WILCOOLA X37<sup>#</sup>

Mid-July 2019 Angus Australia BREEDPLAN

Traits Observed: GL,BWT,200WT,400WT,600WT,SC,Scan(EMA,Rib,Rump,IMF)

	CALVING EASE		BIRTH		GROWTH					FERTILITY		CARCASE						INDEX VALUES			
	CED	CEM	GL	BW	200	400	600	MCW	MILK	SS	DC	CW	EMA	RIB	RMP	RBY	IMF	\$ABI	\$DOM	\$GRN	\$GRA
EBV	+4.3	+2.3	-6.7	+2.7	+45	+82	+116	+87	+20	+2.3	-7.8	+66	+6.4	+1.8	+1.3	-0.2	+1.9	\$136	\$115	\$143	\$131
ACC	58%	55%	85%	75%	71%	72%	75%	69%	63%	74%	53%	65%	65%	65%	66%	63%	63%				

A true heifer bull is N107. He is soft, has great laid in shoulders and style to boot. Docklands has really made a mark on our herd and is a bull we think highly of. Top 15% for birth weight and top 4% for days to calving. Positive fat and good IMF.

Purchaser: ..... \$ .....

# 12

## KAROO J266 JUNIOR N287<sup>SV</sup> (AI)

IDENT: NENN287 DOB: 2/9/17 HBR AMFU,CAFU,DDFU,NHFU

TE MANIA AMBASSADOR A134<sup>SV</sup>  
TUWHARETOA REGENT D145<sup>PV</sup>  
LAWSONS HENRY VIII Y5<sup>SV</sup>

BOOROOMOOKA DESIGN Y120<sup>SV</sup>  
BOOROOMOOKA DULCIFY D98<sup>PV</sup>  
BOOROOMOOKA URSINE B155<sup>SV</sup>

**SIRE: COONAMBLE JUNIOR J266<sup>PV</sup>**

**DAM: KAROO FROSTING G158<sup>#</sup>**

VERMILION DATELINE 7078<sup>#</sup>  
BANGADANG LOWAN A61<sup>PV</sup>  
BANGADANG KATE W19<sup>#</sup>

TE MANIA INFINITY 04 379 AB<sup>#</sup>  
KAROO FROSTING E5<sup>#</sup>  
KAROO FROSTING C75<sup>#</sup>

Mid-July 2019 Angus Australia BREEDPLAN

Traits Observed: GL,BWT,200WT,400WT,600WT,SC,Scan(EMA,Rib,Rump,IMF)

	CALVING EASE		BIRTH		GROWTH					FERTILITY		CARCASE						INDEX VALUES			
	CED	CEM	GL	BW	200	400	600	MCW	MILK	SS	DC	CW	EMA	RIB	RMP	RBY	IMF	\$ABI	\$DOM	\$GRN	\$GRA
EBV	-2.7	-1.1	-5.5	+5.3	+53	+95	+130	+111	+16	+2.0	-4.9	+83	+7.2	-2.1	-2.6	+1.7	+2.3	\$135	\$118	\$153	\$126
ACC	50%	43%	85%	75%	71%	71%	74%	67%	58%	73%	44%	62%	62%	63%	64%	59%	59%				

N287 is a powerhouse with heaps of capacity. Great depth of pedigree - Regent, Dulcify and Infinity. A bull that should not be overlooked. Top 2% for carcass weight and top 11% for 200 and 400 day growth.

Purchaser: ..... \$ .....

# 13

## KAROO D62 DOCKLANDS N297<sup>SV</sup> (AI)

IDENT: NENN297    DOB: 5/9/17    HBR    AMFU,CAFU,DDFU,NHFU

ARDROSSAN DIRECTION W109<sup>PV</sup>  
 KAROO W109 DIRECTION Z181<sup>SV</sup>  
 KAROO FLATS MADONNA V56<sup>#</sup>

WK VEGAS<sup>#</sup>  
 WK REPLAY<sup>#</sup>  
 S A F PENELOPE P020<sup>#</sup>

**SIRE: CARABAR DOCKLANDS D62<sup>PV</sup>**

**DAM: KAROO JEDDA H178<sup>#</sup>**

BON VIEW NEW DESIGN 1407<sup>#</sup>  
 CARABAR BLACKCAP MARY B12<sup>PV</sup>  
 BOOROOMOOKA TRACY T4<sup>SV</sup>

CONNEALY ALL AROUND<sup>#</sup>  
 KAROO JEDDA E6<sup>#</sup>  
 KAROO JEDDA X83<sup>#</sup>

Mid-July 2019 Angus Australia BREEDPLAN

Traits Observed: GL,BWT,200WT,400WT,600WT,SC,Scan(EMA,Rib,Rump,IMF)

	CALVING EASE		BIRTH		GROWTH					FERTILITY		CARCASE						INDEX VALUES			
	CED	CEM	GL	BW	200	400	600	MCW	MILK	SS	DC	CW	EMA	RIB	RMP	RBY	IMF	\$ABI	\$DOM	\$GRN	\$GRA
EBV	+1.1	+1.4	-5.9	+5.4	+50	+86	+121	+96	+17	+2.9	-5.7	+68	+7.6	-0.9	-1.1	+1.1	+1.7	\$132	\$116	\$140	\$127
ACC	58%	52%	85%	75%	71%	72%	75%	70%	64%	73%	50%	65%	64%	65%	66%	62%	62%				

A great soft and easy doing son of Docklands with plenty of volume. If you want cattle with extra body depth, length and capacity don't go past N297. Top 9% for scrotal size.

Purchaser: ..... \$ .....

# 14

## KAROO L3 LOTTO N207<sup>SV</sup> (AI)

IDENT: NENN207    DOB: 12/8/17    HBR    AMFU,CAFU,DDFU,NHFU

TE MANIA BERKLEY B1<sup>PV</sup>  
 AYRVALE GENERAL G18<sup>PV</sup>  
 AYRVALE EASE E3<sup>PV</sup>

TC TOTAL 410<sup>#</sup>  
 TC FRANKLIN 619<sup>#</sup>  
 TC MARCIA 1069<sup>#</sup>

**SIRE: ESSLEMONT LOTTO L3<sup>PV</sup>**

**DAM: KAROO FLOWER K142<sup>#</sup>**

TUWHARETOA REGENT D145<sup>PV</sup>  
 ESSLEMONT JENNY J8<sup>PV</sup>  
 ESSLEMONT CHERRY C16<sup>PV</sup>

BOOROOMOOKA DULCIFY D98<sup>PV</sup>  
 KAROO FLOWER H155<sup>#</sup>  
 KAROO FLOWER F102<sup>#</sup>

Mid-July 2019 Angus Australia BREEDPLAN

Traits Observed: GL,BWT,200WT,400WT,600WT,SC,Scan(EMA,Rib,Rump,IMF)

	CALVING EASE		BIRTH		GROWTH					FERTILITY		CARCASE						INDEX VALUES			
	CED	CEM	GL	BW	200	400	600	MCW	MILK	SS	DC	CW	EMA	RIB	RMP	RBY	IMF	\$ABI	\$DOM	\$GRN	\$GRA
EBV	-0.6	+1.6	-6.3	+3.6	+54	+100	+131	+109	+18	+1.9	-5.2	+77	+4.8	-0.5	-0.8	-0.1	+3.0	\$139	\$122	\$158	\$130
ACC	51%	40%	85%	75%	70%	71%	74%	66%	52%	73%	38%	59%	60%	61%	62%	56%	57%				

This Lotto son is soft and thick with excellent shape and muscle. N207 is suitable for heifer matings and is in the top 6% for 600 day weight. Great spread of EBVs with all four \$Index values in top 13% or better.

Purchaser: ..... \$ .....

# 15

## KAROO G357 GENESIS N150<sup>SV</sup> (AI)

IDENT: NENN150    DOB: 2/8/17    HBR    AMFU,CAFU,DDFU,NHFU

TE MANIA YORKSHIRE Y437<sup>PV</sup>  
 TE MANIA BERKLEY B1<sup>PV</sup>  
 TE MANIA LOWAN Z53<sup>#</sup>

TE MANIA UNLIMITED U3271<sup>#</sup>  
 TE MANIA INFINITY 04 379 AB<sup>#</sup>  
 TE MANIA 95102<sup>#</sup>

**SIRE: PATHFINDER GENESIS G357<sup>PV</sup>**

**DAM: KAROO ADELAIDE C94<sup>#</sup>**

ARDROSSAN DIRECTION W109<sup>PV</sup>  
 PATHFINDER DIRECTION D245<sup>SV</sup>  
 PATHFINDER ADAVALE A433<sup>#</sup>

ARDROSSAN DIRECTION W109<sup>PV</sup>  
 KAROO ADELAIDE A45<sup>#</sup>  
 KAROO FLATS ADELAIDE S89<sup>#</sup>

Mid-July 2019 Angus Australia BREEDPLAN

Traits Observed: GL,BWT,200WT,400WT,600WT,SC,Scan(EMA,Rib,Rump,IMF)

	CALVING EASE		BIRTH		GROWTH					FERTILITY		CARCASE						INDEX VALUES			
	CED	CEM	GL	BW	200	400	600	MCW	MILK	SS	DC	CW	EMA	RIB	RMP	RBY	IMF	\$ABI	\$DOM	\$GRN	\$GRA
EBV	-1.3	+0.2	-5.1	+5.8	+50	+85	+119	+119	+17	+2.8	-3.7	+74	+8.2	+0.3	-0.7	+0.5	+1.7	\$111	\$101	\$115	\$109
ACC	56%	48%	85%	76%	72%	73%	75%	70%	65%	74%	49%	64%	64%	65%	65%	60%	62%				

N150 has a great combination of tried and tested genetics in his pedigree. Berkley, Direction and Infinity all laid a foundation for us at Karoo. N150 would be the bull to use to add carcase weight or EMA into your herd. Top 9% for both traits.

Purchaser: ..... \$ .....

# 16

## KAROO L3 LOTTO N137<sup>SV</sup> (AI)

IDENT: NENN137 DOB: 31/7/17 HBR AMFU,CAFU,DDFU,NHFU

TE MANIA BERKLEY B1<sup>PV</sup>  
AYRVALE GENERAL G18<sup>PV</sup>  
AYRVALE EASE E3<sup>PV</sup>

LEACHMAN RIGHT TIME<sup>SV</sup>  
HYLINE RIGHT TIME 338<sup>#</sup>  
HYLINE PRIDE 265<sup>#</sup>

**SIRE: ESSLEMONT LOTTO L3<sup>PV</sup>**

**DAM: KAROO DORIS E165<sup>#</sup>**

TUWHARETOA REGENT D145<sup>PV</sup>  
ESSLEMONT JENNY J8<sup>PV</sup>  
ESSLEMONT CHERRY C16<sup>PV</sup>

THREE TREES ROCK ON 0059<sup>#</sup>  
KAROO DORIS Y137<sup>SV</sup>  
KAROO FLATS DORIS V96<sup>#</sup>

Mid-July 2019 Angus Australia BREEDPLAN

Traits Observed: GL,BWT,200WT,400WT,600WT,SC,Scan(EMA,Rib,Rump,IMF)

	CALVING EASE		BIRTH		GROWTH					FERTILITY		CARCASE						INDEX VALUES			
	CED	CEM	GL	BW	200	400	600	MCW	MILK	SS	DC	CW	EMA	RIB	RMP	RBY	IMF	\$ABI	\$DOM	\$GRN	\$GRA
EBV	-2.9	+0.0	-5.4	+4.3	+55	+104	+135	+110	+24	+3.2	-6.1	+83	+5.6	-0.1	+0.3	+0.0	+2.6	\$137	\$120	\$152	\$130
ACC	54%	42%	85%	76%	71%	72%	75%	67%	56%	74%	42%	61%	61%	62%	63%	57%	58%				

A great type of bull with plenty of volume and weight for age. Another bull that is suitable for heifer matings whilst not sacrificing growth. Top 4% or better for 400 and 600 day weight, milk, scrotal size and carcass weight.

Purchaser: ..... \$ .....

# 17

## KAROO L37 NOVAK N90<sup>SV</sup>

IDENT: NENN90 DOB: 10/7/17 HBR AMFU,CAFU,DDFU,NHFU

TC TOTAL 410<sup>#</sup>  
LAWSONS NOVAK E313<sup>SV</sup>  
LAWSONS PREDESTINED B770<sup>SV</sup>

TE MANIA UNLIMITED U3271<sup>#</sup>  
TE MANIA INFINITY 04 379 AB<sup>#</sup>  
TE MANIA 95102<sup>#</sup>

**SIRE: KAROO E313 NOVAK L37<sup>SV</sup>**

**DAM: KAROO WILCOOLA F82<sup>#</sup>**

ARDROSSAN DIRECTION W109<sup>PV</sup>  
KAROO STEPHI Z209<sup>SV</sup>  
KAROO FLATS STEPHI S51<sup>#</sup>

HINGAIA 469<sup>#</sup>  
KAROO WILCOOLA A59<sup>PV</sup>  
KAROO FLATS WILCOOLA W86<sup>#</sup>

Mid-July 2019 Angus Australia BREEDPLAN

Traits Observed: BWT,200WT,400WT,600WT,SC,Scan(EMA,Rib,Rump,IMF)

	CALVING EASE		BIRTH		GROWTH					FERTILITY		CARCASE						INDEX VALUES			
	CED	CEM	GL	BW	200	400	600	MCW	MILK	SS	DC	CW	EMA	RIB	RMP	RBY	IMF	\$ABI	\$DOM	\$GRN	\$GRA
EBV	-0.5	+1.4	-4.4	+3.7	+40	+73	+107	+100	+16	+1.4	-3.6	+55	+4.4	-0.6	-0.1	-0.4	+2.0	\$102	\$92	\$107	\$101
ACC	46%	41%	61%	73%	67%	67%	71%	64%	52%	70%	41%	58%	57%	57%	59%	53%	51%				

N90 certainly covers some ground - he is long, thick and powerful, with great shape. A safe bull to use on heifers at +3.7 for birth weight.

Purchaser: ..... \$ .....

# 18

## KAROO H176 COONAMBLE N117<sup>SV</sup> (AI)

IDENT: NENN117 DOB: 22/7/17 HBR AMFU,CAFU,DDFU,NHFU

COONAMBLE Z3<sup>PV</sup>  
COONAMBLE ELEVATOR E11<sup>PV</sup>  
BANGADANG B31<sup>SV</sup>

BOOROOMOOKA DESIGN Y120<sup>SV</sup>  
BOOROOMOOKA DULCIFY D98<sup>PV</sup>  
BOOROOMOOKA URSINE B155<sup>SV</sup>

**SIRE: COONAMBLE H176<sup>PV</sup>**

**DAM: KAROO ALICE H163<sup>#</sup>**

BOOROOMOOKA WARWICK W245<sup>E</sup>  
COONAMBLE D94<sup>SV</sup>  
COONAMBLE B170<sup>#</sup>

BT EQUATOR 395M<sup>#</sup>  
KAROO ALICE F32<sup>#</sup>  
KAROO ALICE A40<sup>PV</sup>

Mid-July 2019 Angus Australia BREEDPLAN

Traits Observed: GL,BWT,200WT,400WT,600WT,SC,Scan(EMA,Rib,Rump,IMF)

	CALVING EASE		BIRTH		GROWTH					FERTILITY		CARCASE						INDEX VALUES			
	CED	CEM	GL	BW	200	400	600	MCW	MILK	SS	DC	CW	EMA	RIB	RMP	RBY	IMF	\$ABI	\$DOM	\$GRN	\$GRA
EBV	+1.6	+3.7	-9.0	+3.4	+45	+80	+107	+91	+15	+0.9	-2.2	+60	+4.5	-0.2	-0.1	+0.7	+1.0	\$103	\$105	\$97	\$108
ACC	46%	37%	84%	75%	70%	70%	73%	66%	53%	72%	37%	60%	60%	61%	62%	56%	55%				

If you want your calves to come early and light, then N117 is for you. Top 4% for calving ease, top 2% for gestation length and below breed average for birth weight.

Purchaser: ..... \$ .....

# 19

## KAROO L3 LOTTO N95<sup>SV</sup> (AI)

IDENT: NENN95    DOB: 10/7/17    HBR    AMFU,CAFU,DDFU,NHFU

TE MANIA BERKLEY B1<sup>PV</sup>  
 AYRVALE GENERAL G18<sup>PV</sup>  
 AYRVALE EASE E3<sup>PV</sup>

SYDGEN TRUST 6228<sup>#</sup>  
 SYDGEN BLACK PEARL 2006<sup>PV</sup>  
 SYDGEN ANITA 8611<sup>#</sup>

**SIRE: ESSLEMONT LOTTO L3<sup>PV</sup>**

**DAM: KAROO PRINCESS L174<sup>#</sup>**

TUWHARETOA REGENT D145<sup>PV</sup>  
 ESSLEMONT JENNY J8<sup>PV</sup>  
 ESSLEMONT CHERRY C16<sup>PV</sup>

BOOROOMOOKA DULCIFY D98<sup>PV</sup>  
 KAROO PRINCESS H158<sup>#</sup>  
 KAROO PRINCESS F125<sup>#</sup>

Mid-July 2019 Angus Australia BREEDPLAN

Traits Observed: GL,BWT,200WT,400WT,600WT,SC,Scan(EMA,Rib,Rump,IMF)

	CALVING EASE		BIRTH		GROWTH					FERTILITY		CARCASE						INDEX VALUES			
	CED	CEM	GL	BW	200	400	600	MCW	MILK	SS	DC	CW	EMA	RIB	RMP	RBY	IMF	\$ABI	\$DOM	\$GRN	\$GRA
EBV	-1.4	+1.7	-7.1	+4.7	+58	+96	+134	+105	+20	+3.0	-6.5	+86	+9.0	+0.8	-0.3	+0.4	+2.7	\$147	\$122	\$163	\$138
ACC	52%	40%	85%	75%	70%	71%	74%	66%	52%	73%	38%	59%	60%	61%	62%	56%	57%				

N95 has great length and exhibits great carcass, with carcass weight at +86 - top 1%. His is a money maker too with all \$Index values top 13% or better.

Purchaser: ..... \$ .....

# 20

## KAROO G188 FRANKLIN P65<sup>SV</sup> (AI)

IDENT: NENP65    DOB: 12/3/18    HBR    AMFU,CAFU,DDFU,NHFU

TC TOTAL 410<sup>#</sup>  
 TC FRANKLIN 619<sup>#</sup>  
 TC MARCIA 1069<sup>#</sup>

SCR PROMISE 4042<sup>#</sup>  
 SYDGEN TRUST 6228<sup>#</sup>  
 SYDGEN FOREVER LADY 4413<sup>#</sup>

**SIRE: WATTLETOP FRANKLIN G188<sup>SV</sup>**

**DAM: KAROO WILCOOLA H258<sup>#</sup>**

WATTLETOP USA9074 C118<sup>PV</sup>  
 WATTLETOP BARUNAH E295<sup>#</sup>  
 WATTLETOP BARUNAH C136<sup>SV</sup>

SUMMITCREST SCOTCH CAP 0B45<sup>#</sup>  
 KAROO FLATS WILCOOLA X37<sup>#</sup>  
 KAROO FLATS WILCOOLA R21<sup>#</sup>

Mid-July 2019 Angus Australia BREEDPLAN

Traits Observed: GL,BWT,400WT(x2),SC,Scan(EMA,Rib,Rump,IMF)

	CALVING EASE		BIRTH		GROWTH					FERTILITY		CARCASE						INDEX VALUES			
	CED	CEM	GL	BW	200	400	600	MCW	MILK	SS	DC	CW	EMA	RIB	RMP	RBY	IMF	\$ABI	\$DOM	\$GRN	\$GRA
EBV	-0.7	+1.8	-1.9	+5.3	+62	+108	+141	+118	+18	+2.0	-3.5	+82	+6.3	-1.0	-1.6	+0.7	+1.4	\$128	\$121	\$132	\$128
ACC	55%	49%	84%	74%	69%	71%	69%	64%	59%	74%	43%	62%	63%	64%	64%	59%	60%				

We used G188 on our larger framed cows. P65 is a really nice result with EBVs to match. Well worth an inspection as he is backed by a really strong cow family. Top 1% for 200 and 400 day weight.

Purchaser: ..... \$ .....

# 21

## KAROO L245 PEARL P96<sup>SV</sup>

IDENT: NENP96    DOB: 24/4/18    HBR    AMFU,CAFU,DDFU,NHFU

SYDGEN TRUST 6228<sup>#</sup>  
 SYDGEN BLACK PEARL 2006<sup>PV</sup>  
 SYDGEN ANITA 8611<sup>#</sup>

ARDROSSAN EQUATOR A241<sup>PV</sup>  
 KAROO A241 EQUATOR F35<sup>PV</sup>  
 KAROO DORIS Y137<sup>SV</sup>

**SIRE: KAROO BLACK PEARL L245<sup>SV</sup>**

**DAM: KAROO MONTANA H344<sup>#</sup>**

ARDROSSAN EQUATOR A241<sup>PV</sup>  
 KAROO PRINCESS F139<sup>#</sup>  
 KAROO PRINCESS A84<sup>PV</sup>

ARDROSSAN CONNECTION X15<sup>SV</sup>  
 KAROO MONTANA C178<sup>#</sup>  
 KAROO MONTANA A191<sup>#</sup>

Mid-July 2019 Angus Australia BREEDPLAN

Traits Observed: BWT,400WT(x2),SC,Scan(EMA,Rib,Rump,IMF)

	CALVING EASE		BIRTH		GROWTH					FERTILITY		CARCASE						INDEX VALUES			
	CED	CEM	GL	BW	200	400	600	MCW	MILK	SS	DC	CW	EMA	RIB	RMP	RBY	IMF	\$ABI	\$DOM	\$GRN	\$GRA
EBV	-1.0	+1.7	-4.3	+5.9	+59	+104	+143	+118	+19	+3.5	-4.9	+85	+6.0	-0.5	-0.4	+0.8	+1.8	\$141	\$122	\$152	\$136
ACC	43%	36%	64%	71%	65%	66%	64%	59%	50%	69%	35%	55%	55%	56%	57%	52%	49%				

Black Pearl produces bulls that we find easy doing and P96 is no different. A bull to use over mature cows that will add punch to your bottom line.

Purchaser: ..... \$ .....

# 22

## KAROO F96 DESIGN P3<sup>SV</sup> (AI)

IDENT: NENP3      DOB: 27/2/18      HBR      AMFU,CAFU,DDFU,NHFU

BOOROOMOOKA DESIGN Y120<sup>SV</sup>  
ARDCAIRNIE B59<sup>PV</sup>  
ARDCAIRNIE ELMA Z71<sup>#</sup>

CONNELY EARNAN 076<sup>PV</sup>  
MUSGRAVE BIG SKY<sup>#</sup>  
SAV PRIMROSE 7861<sup>#</sup>

**SIRE: ARDCAIRNIE F96<sup>SV</sup>**

**DAM: KAROO WILCOOLA M2<sup>#</sup>**

KAROO W109 DIRECTION Z181<sup>SV</sup>  
ARDCAIRNIE DIANARAM D25<sup>#</sup>  
ARDCAIRNIE DIANARAM B39<sup>#</sup>

TE MANIA INFINITY 04 379 AB<sup>#</sup>  
KAROO WILCOOLA F60<sup>#</sup>  
KAROO WILCOOLA D73<sup>#</sup>

Mid-July 2019 Angus Australia BREEDPLAN

Traits Observed: GL,BWT,400WT(x2),SC,Scan(EMA,Rib,Rump,IMF)

	CALVING EASE		BIRTH		GROWTH					FERTILITY		CARCASE						INDEX VALUES			
	CED	CEM	GL	BW	200	400	600	MCW	MILK	SS	DC	CW	EMA	RIB	RMP	RBY	IMF	\$ABI	\$DOM	\$GRN	\$GRA
EBV	+3.2	+3.6	-9.0	+2.7	+48	+87	+114	+94	+15	+1.4	-4.9	+64	+6.0	-0.7	+0.3	+0.6	+1.2	\$123	\$117	\$122	\$124
ACC	49%	41%	84%	73%	67%	69%	67%	62%	57%	72%	39%	60%	60%	60%	61%	56%	57%				

P3 is a bull that will develop into his frame. He is long and has great bone. Good all round EBVs that are easily placed on heifers or cows. A standout bull for a heifer's first calf!

Purchaser: ..... \$ .....

# 23

## KAROO K176 KNOCKOUT P35<sup>SV</sup> (AI)

IDENT: NENP35      DOB: 5/3/18      HBR      AMFU,CAFU,DDFU,NHFU

SCHURRTOP REALITY X723<sup>#</sup>  
MATAURI REALITY 839<sup>#</sup>  
MATAURI 06663<sup>#</sup>

CONNELY REFLECTION<sup>#</sup>  
JINDRA DOUBLE VISION<sup>SV</sup>  
HOFF RACHEL 8312 405<sup>#</sup>

**SIRE: KAROO KNOCKOUT K176<sup>SV</sup>**

**DAM: KAROO WILCOOLA L39<sup>#</sup>**

KAROO Z3 CONNAMBLE F12<sup>PV</sup>  
KAROO JEDDA H213<sup>#</sup>  
KAROO JEDDA F204<sup>#</sup>

ARDROSSAN DIRECTION W109<sup>PV</sup>  
KAROO WILCOOLA A281<sup>#</sup>  
COMFORT HILL WILCOOLA T34<sup>#</sup>

Mid-July 2019 Angus Australia BREEDPLAN

Traits Observed: GL,BWT,400WT(x2),SC,Scan(EMA,Rib,Rump,IMF)

	CALVING EASE		BIRTH		GROWTH					FERTILITY		CARCASE						INDEX VALUES			
	CED	CEM	GL	BW	200	400	600	MCW	MILK	SS	DC	CW	EMA	RIB	RMP	RBY	IMF	\$ABI	\$DOM	\$GRN	\$GRA
EBV	+2.7	+3.3	-5.0	+4.5	+48	+90	+120	+121	+13	+3.2	-4.4	+69	+6.2	+0.4	+0.0	+0.4	+1.5	\$124	\$114	\$129	\$121
ACC	48%	37%	84%	74%	68%	69%	66%	60%	49%	71%	36%	57%	57%	59%	59%	54%	52%				

Knockout sold to Alpine Angus and Texas Angus and is now an AI sire. P35 is the only K176 available this year. He is like his sire - easy doing, soft, thick and stands out in his mob as one of the best!

Purchaser: ..... \$ .....

# 24

## KAROO M97 BIG SKY P91<sup>SV</sup>

IDENT: NENP91      DOB: 13/4/18      HBR      AMFU,CAFU,DDFU,NHFU

CONNELY EARNAN 076<sup>PV</sup>  
MUSGRAVE BIG SKY<sup>#</sup>  
SAV PRIMROSE 7861<sup>#</sup>

KAROO W109 DIRECTION Z181<sup>SV</sup>  
CARABAR DOCKLANDS D62<sup>PV</sup>  
CARABAR BLACKCAP MARY B12<sup>PV</sup>

**SIRE: KAROO BIG SKY M97<sup>PV</sup>**

**DAM: KAROO DORIS M125<sup>#</sup>**

KAROO Y145 UNDERTAKEN C53<sup>PV</sup>  
KAROO WILCOOLA E89<sup>#</sup>  
KAROO WILCOOLA C113<sup>#</sup>

WATTLETOP ANDY C109<sup>PV</sup>  
KAROO DORIS H59<sup>#</sup>  
KAROO DORIS F9<sup>#</sup>

Mid-July 2019 Angus Australia BREEDPLAN

Traits Observed: BWT,400WT(x2),SC,Scan(EMA,Rib,Rump,IMF)

	CALVING EASE		BIRTH		GROWTH					FERTILITY		CARCASE						INDEX VALUES			
	CED	CEM	GL	BW	200	400	600	MCW	MILK	SS	DC	CW	EMA	RIB	RMP	RBY	IMF	\$ABI	\$DOM	\$GRN	\$GRA
EBV	+0.0	+2.0	-4.9	+4.2	+50	+89	+120	+104	+15	+3.1	-5.3	+63	+3.1	-0.3	-0.1	+0.4	+1.4	\$119	\$110	\$122	\$117
ACC	43%	37%	58%	70%	63%	65%	62%	57%	48%	69%	34%	54%	53%	53%	55%	50%	47%				

A no nonsense type of sire with a pedigree stacked full of breed greats. The cows by Docklands are rock solid matrons. A great spread of EBVs from birth to 600 day weight. Top 6% for scrotal size.

Purchaser: ..... \$ .....



# 25

## KAROO D62 DOCKLANDS P60<sup>SV</sup> (AI)

IDENT: NENP60    DOB: 9/3/18    HBR    AMFU,CAFU,DDFU,NHFU

ARDROSSAN DIRECTION W109<sup>PV</sup>  
KAROO W109 DIRECTION Z181<sup>SV</sup>  
KAROO FLATS MADONNA V56<sup>#</sup>

TE MANIA INFINITY 04 379 AB<sup>#</sup>  
KAROO 04379 INFINITY E54<sup>PV</sup>  
KAROO FLATS WILCOOLA W86<sup>#</sup>

**SIRE: CARABAR DOCKLANDS D62<sup>PV</sup>**

**DAM: KAROO JEDDA G342<sup>#</sup>**

BON VIEW NEW DESIGN 1407<sup>#</sup>  
CARABAR BLACKCAP MARY B12<sup>PV</sup>  
BOOROOMOOKA TRACY T4<sup>SV</sup>

BANQUET XPLANATION X060<sup>#</sup>  
KAROO JEDDA D68<sup>SV</sup>  
KAROO JEDDA Z143<sup>#</sup>

Mid-July 2019 Angus Australia BREEDPLAN

Traits Observed: GL,BWT,400WT(x2),SC,Scan(EMA,Rib,Rump,IMF)

	CALVING EASE		BIRTH		GROWTH					FERTILITY		CARCASE						INDEX VALUES			
	CED	CEM	GL	BW	200	400	600	MCW	MILK	SS	DC	CW	EMA	RIB	RMP	RBY	IMF	\$ABI	\$DOM	\$GRN	\$GRA
EBV	+0.6	-0.7	-4.1	+5.2	+46	+84	+117	+100	+20	+3.1	-4.8	+66	+5.9	-0.2	-0.5	+0.7	+1.3	\$115	\$105	\$117	\$114
ACC	57%	52%	84%	75%	69%	71%	69%	66%	62%	73%	49%	63%	63%	64%	65%	61%	61%				

We are really pleased with the line up of 4 Docklands sons on offer. P60 is clean underneath and walks freely. Top 6% for scrotal size and top 12% for milk.

Purchaser: ..... \$ .....

# 26

## KAROO J266 JUNIOR P52<sup>SV</sup> (AI)

IDENT: NENP52    DOB: 7/3/18    HBR    AMFU,CAFU,DDFU,NHFU

TE MANIA AMBASSADOR A134<sup>SV</sup>  
TUWHARETOA REGENT D145<sup>PV</sup>  
LAWSONS HENRY VIII Y5<sup>SV</sup>

PAPA EQUATOR 2928<sup>#</sup>  
ARDROSSAN EQUATOR A241<sup>PV</sup>  
ARDROSSAN PRINCESS W38<sup>PV</sup>

**SIRE: COONAMBLE JUNIOR J266<sup>PV</sup>**

**DAM: KAROO WILCOOLA G8<sup>#</sup>**

VERMILION DATELINE 7078<sup>#</sup>  
BANGADANG LOWAN A61<sup>PV</sup>  
BANGADANG KATE W19<sup>#</sup>

BOOROOMOOKA WARWICK W245<sup>E</sup>  
KAROO WILCOOLA A50<sup>PV</sup>  
KAROO FLATS WILCOOLA U38<sup>#</sup>

Mid-July 2019 Angus Australia BREEDPLAN

Traits Observed: GL,BWT,400WT(x2),SC,Scan(EMA,Rib,Rump,IMF)

	CALVING EASE		BIRTH		GROWTH					FERTILITY		CARCASE						INDEX VALUES			
	CED	CEM	GL	BW	200	400	600	MCW	MILK	SS	DC	CW	EMA	RIB	RMP	RBY	IMF	\$ABI	\$DOM	\$GRN	\$GRA
EBV	-1.2	-0.2	-3.0	+4.1	+48	+89	+121	+107	+16	+3.2	-7.0	+77	+6.2	-1.2	-1.6	+1.7	+2.5	\$142	\$122	\$163	\$130
ACC	51%	45%	84%	74%	68%	70%	67%	62%	57%	73%	47%	61%	62%	63%	63%	59%	60%				

P52 is larger in frame, but long as a wet week (wish we had a few more of them)!! Top 13% or better for all \$Index values.

Purchaser: ..... \$ .....

# 27

## KAROO M97 BIG SKY P73<sup>SV</sup>

IDENT: NENP73    DOB: 26/3/18    HBR    AMFU,CAFU,DDFU,NHFU

CONNELLY EARNAN 076<sup>EV</sup>  
MUSGRAVE BIG SKY<sup>#</sup>  
SAV PRIMROSE 7861<sup>#</sup>

BOOROOMOOKA UNDERTAKEN Y145<sup>PV</sup>  
RENNYLEA EDMUND E11<sup>PV</sup>  
LAWSONS HENRY VIII Y5<sup>SV</sup>

**SIRE: KAROO BIG SKY M97<sup>PV</sup>**

**DAM: KAROO KERRY M88<sup>#</sup>**

KAROO Y145 UNDERTAKEN C53<sup>PV</sup>  
KAROO WILCOOLA E89<sup>#</sup>  
KAROO WILCOOLA C113<sup>#</sup>

SITZ NEW DESIGN 458N<sup>#</sup>  
KAROO KERRY G124<sup>SV</sup>  
KAROO KERRY D71<sup>PV</sup>

Mid-July 2019 Angus Australia BREEDPLAN

Traits Observed: BWT,400WT(x2),SC,Scan(EMA,Rib,Rump,IMF)

	CALVING EASE		BIRTH		GROWTH					FERTILITY		CARCASE						INDEX VALUES			
	CED	CEM	GL	BW	200	400	600	MCW	MILK	SS	DC	CW	EMA	RIB	RMP	RBY	IMF	\$ABI	\$DOM	\$GRN	\$GRA
EBV	+1.0	+1.3	-4.9	+3.8	+48	+88	+113	+93	+13	+2.6	-5.9	+62	+4.9	-0.2	-0.8	+0.9	+2.5	\$134	\$123	\$149	\$126
ACC	44%	38%	54%	72%	64%	65%	62%	58%	49%	69%	36%	55%	55%	54%	56%	51%	49%				

A smaller framed bull with versatility to be used on heifers or larger framed mature cows.

Purchaser: ..... \$ .....

# 28

## KAROO L245 PEARL P97<sup>SV</sup>

IDENT: NENP97    DOB: 24/4/18    HBR    AMFU,CAFU,DDFU,NHFU

SYDGEN TRUST 6228\*  
SYDGEN BLACK PEARL 2006<sup>PV</sup>  
SYDGEN ANITA 8611\*

LT 598 BANDO 9074\*  
WATTLETOP ANDY C109<sup>PV</sup>  
WATTLETOP ANN V58<sup>SV</sup>

**SIRE: KAROO BLACK PEARL L245<sup>SV</sup>**

**DAM: KAROO DORIS H59<sup>#</sup>**

ARDROSSAN EQUATOR A241<sup>PV</sup>  
KAROO PRINCESS F139\*  
KAROO PRINCESS A84<sup>PV</sup>

LEACHMAN BOOM TIME\*  
KAROO DORIS F9\*  
KAROO DORIS Y137<sup>SV</sup>

Mid-July 2019 Angus Australia BREEDPLAN

Traits Observed: BWT,400WT(x2),SC,Scan(EMA,Rib,Rump,IMF)

	CALVING EASE		BIRTH		GROWTH					FERTILITY		CARCASE						INDEX VALUES			
	CED	CEM	GL	BW	200	400	600	MCW	MILK	SS	DC	CW	EMA	RIB	RMP	RBY	IMF	\$ABI	\$DOM	\$GRN	\$GRA
EBV	-0.7	+2.5	-4.1	+4.8	+53	+92	+128	+112	+17	+2.3	-3.4	+76	+4.6	-1.2	-2.0	+0.8	+1.3	\$115	\$107	\$118	\$115
ACC	45%	38%	63%	71%	65%	66%	63%	58%	51%	69%	36%	55%	55%	55%	57%	51%	49%				

L245 was the standout Pearl bull in his group. P97 is also backed by the great Doris family.

Purchaser: ..... \$ .....

# 29

## KAROO M97 BIG SKY P74<sup>SV</sup>

IDENT: NENP74    DOB: 29/3/18    HBR    AMFU,CAFU,DDFU,NHFU

CONNELLY EARNAN 076E<sup>PV</sup>  
MUSGRAVE BIG SKY\*  
SAV PRIMROSE 7861\*

TUWHARETOA REGENT D145<sup>PV</sup>  
KAROO D145 REGENT H109<sup>SV</sup>  
KAROO ALICE A40<sup>PV</sup>

**SIRE: KAROO BIG SKY M97<sup>PV</sup>**

**DAM: KAROO MONTANA M108<sup>#</sup>**

KAROO Y145 UNDERTAKEN C53<sup>PV</sup>  
KAROO WILCOOLA E89\*  
KAROO WILCOOLA C113\*

ARDROSSAN EQUATOR A241<sup>PV</sup>  
KAROO MONTANA G19\*  
KAROO FLATS MONTANA X23\*

Mid-July 2019 Angus Australia BREEDPLAN

Traits Observed: BWT,400WT(x2),SC,Scan(EMA,Rib,Rump,IMF)

	CALVING EASE		BIRTH		GROWTH					FERTILITY		CARCASE						INDEX VALUES			
	CED	CEM	GL	BW	200	400	600	MCW	MILK	SS	DC	CW	EMA	RIB	RMP	RBY	IMF	\$ABI	\$DOM	\$GRN	\$GRA
EBV	-0.5	+1.1	-3.6	+3.9	+48	+89	+112	+98	+15	+1.6	-4.9	+69	+5.1	-0.9	-1.2	+0.8	+1.8	\$117	\$114	\$124	\$114
ACC	41%	33%	50%	71%	63%	65%	61%	56%	45%	68%	32%	53%	52%	52%	54%	48%	46%				

P74 is a long, smooth son of Big Sky M97. He is moderate in frame and quiet in nature. A bull to use on heifers.

Purchaser: ..... \$ .....

# 30

## KAROO K46 REALITY P28<sup>SV</sup> (AI)

IDENT: NENP28    DOB: 3/3/18    HBR    AMFU,CAFU,DDFU,NHFU

SCHURRTOP REALITY X723\*  
MATAURI REALITY 839\*  
MATAURI 06663\*

TC TOTAL 410\*  
TC FRANKLIN 619\*  
TC MARCIA 1069\*

**SIRE: KOOJAN HILLS REALITY K46<sup>SV</sup>**

**DAM: KAROO KERRY L22<sup>#</sup>**

ARDROSSAN DIRECTION Z248<sup>SV</sup>  
KOOJAN HILLS E266\*  
KOOJAN HILLS A141\*

ARDROSSAN EQUATOR A241<sup>PV</sup>  
KAROO KERRY D71<sup>PV</sup>  
KAROO KERRY Z59<sup>SV</sup>

Mid-July 2019 Angus Australia BREEDPLAN

Traits Observed: GL,BWT,400WT(x2),SC,Scan(EMA,Rib,Rump,IMF)

	CALVING EASE		BIRTH		GROWTH					FERTILITY		CARCASE						INDEX VALUES			
	CED	CEM	GL	BW	200	400	600	MCW	MILK	SS	DC	CW	EMA	RIB	RMP	RBY	IMF	\$ABI	\$DOM	\$GRN	\$GRA
EBV	+1.1	+2.9	-7.3	+4.7	+50	+91	+120	+110	+14	+1.8	-4.0	+64	+6.1	-1.8	-1.3	+1.2	+1.7	\$127	\$119	\$135	\$123
ACC	48%	39%	84%	73%	67%	69%	67%	61%	51%	72%	39%	58%	59%	59%	61%	55%	53%				

A high growth son of Koojan Hills Reality with a silky smooth coat.

Purchaser: ..... \$ .....

# 31

## KAROO F84 ABERDEEN P63<sup>SV</sup> (AI)

IDENT: NENP63    DOB: 10/3/18    HBR    AMFU,CAFU,DDFU,NHFU

C R A BEXTOR 872 5205 608\*  
TC ABERDEEN 759#  
TC BLACKBIRD 4034#

TE MANIA AMBASSADOR A134<sup>SV</sup>  
TUWHARETOA REGENT D145<sup>PV</sup>  
LAWSONS HENRY VIII Y5<sup>SV</sup>

**SIRE: KANSAS ABERDEEN F84<sup>SV</sup>**

**DAM: KAROO WILCOOLA G151#**

S A V NET WORTH 4200#  
KANSAS ANNIE D62#  
KANSAS ANNIE Y71<sup>SV</sup>

BOOROOMOOKA THEO T030<sup>SV</sup>  
KAROO ARCHER Y36<sup>SV</sup>  
KAROO FLATS ARCHER W7#

Mid-July 2019 Angus Australia BREEDPLAN

Traits Observed: GL,BWT,400WT(x2),SC,Scan(EMA,Rib,Rump,IMF)

	CALVING EASE		BIRTH		GROWTH					FERTILITY		CARCASE						INDEX VALUES			
	CED	CEM	GL	BW	200	400	600	MCW	MILK	SS	DC	CW	EMA	RIB	RMP	RBY	IMF	\$ABI	\$DOM	\$GRN	\$GRA
EBV	-2.3	-3.5	-1.5	+6.4	+51	+92	+126	+109	+18	+0.4	-3.6	+67	+6.3	+0.7	-0.2	-0.1	+2.2	\$116	\$103	\$124	\$113
ACC	50%	44%	84%	74%	68%	70%	67%	62%	56%	72%	43%	59%	59%	60%	61%	56%	55%				

P63 is the only F84 son in this year's catalogue. We will have more to come next year. We really like this bull and his data. Well worth that second look!

Purchaser: ..... \$ .....

# 32

## KAROO D62 DOCKLANDS P6<sup>SV</sup> (AI)

IDENT: NENP6    DOB: 28/2/18    HBR    AMFU,CAFU,DDFU,NHFU

ARDROSSAN DIRECTION W109<sup>PV</sup>  
KAROO W109 DIRECTION Z181<sup>SV</sup>  
KAROO FLATS MADONNA V56#

TE MANIA AMBASSADOR A134<sup>SV</sup>  
TUWHARETOA REGENT D145<sup>PV</sup>  
LAWSONS HENRY VIII Y5<sup>SV</sup>

**SIRE: CARABAR DOCKLANDS D62<sup>PV</sup>**

**DAM: KAROO ADELAIDE J24#**

BON VIEW NEW DESIGN 1407#  
CARABAR BLACKCAP MARY B12<sup>PV</sup>  
BOOROOMOOKA TRACY T4<sup>SV</sup>

ARDROSSAN DIRECTION W109<sup>PV</sup>  
KAROO ADELAIDE D209#  
KAROO FLATS ADELAIDE U129#

Mid-July 2019 Angus Australia BREEDPLAN

Traits Observed: GL,BWT,400WT(x2),SC,Scan(EMA,Rib,Rump,IMF)

	CALVING EASE		BIRTH		GROWTH					FERTILITY		CARCASE						INDEX VALUES			
	CED	CEM	GL	BW	200	400	600	MCW	MILK	SS	DC	CW	EMA	RIB	RMP	RBY	IMF	\$ABI	\$DOM	\$GRN	\$GRA
EBV	+3.2	+1.3	-8.6	+3.7	+44	+81	+111	+87	+18	+2.7	-8.2	+71	+6.9	+1.5	+1.1	+0.0	+1.8	\$133	\$115	\$139	\$127
ACC	60%	55%	85%	75%	70%	72%	69%	67%	65%	74%	54%	65%	65%	66%	67%	64%	63%				

Another one of the heifer bulls on offer with that short gestation and lower days to calving - both in the top 3%.

Purchaser: ..... \$ .....

# 33

## KAROO H249 HECTOR P27<sup>SV</sup> (AI)

IDENT: NENP27    DOB: 3/3/18    HBR    AMFU,CAFU,DDFU,NHFU

HYLINE RIGHT TIME 338#  
K C F BENNETT PERFORMER#  
K C F MISS 589 L182#

TE MANIA AMBASSADOR A134<sup>SV</sup>  
TUWHARETOA REGENT D145<sup>PV</sup>  
LAWSONS HENRY VIII Y5<sup>SV</sup>

**SIRE: COONAMBLE HECTOR H249<sup>SV</sup>**

**DAM: KAROO MONTANA L5#**

COONAMBLE Z3<sup>PV</sup>  
COONAMBLE E9<sup>PV</sup>  
BANGADANG LOWAN A61<sup>PV</sup>

ARDROSSAN EQUATOR A241<sup>PV</sup>  
KAROO MONTANA G19#  
KAROO FLATS MONTANA X23#

Mid-July 2019 Angus Australia BREEDPLAN

Traits Observed: GL,BWT,400WT(x2),SC,Scan(EMA,Rib,Rump,IMF)

	CALVING EASE		BIRTH		GROWTH					FERTILITY		CARCASE						INDEX VALUES			
	CED	CEM	GL	BW	200	400	600	MCW	MILK	SS	DC	CW	EMA	RIB	RMP	RBY	IMF	\$ABI	\$DOM	\$GRN	\$GRA
EBV	+0.1	-1.9	-8.5	+4.6	+47	+82	+110	+98	+11	+1.3	-5.8	+72	+8.0	+1.7	+1.8	+0.6	+1.6	\$123	\$111	\$125	\$121
ACC	53%	48%	84%	74%	68%	70%	68%	63%	57%	73%	46%	62%	62%	64%	63%	60%	60%				

P27 will add softness (being positive for both rib and rump fat) and shorten up your calving period with a gestation length in the top 3%.

Purchaser: ..... \$ .....

# 34

## KAROO G188 FRANKLIN P1<sup>SV</sup> (AI)

IDENT: NENP1      DOB: 27/2/18      HBR      AMFU,CAFU,DDFU,NHFU

TC TOTAL 410#  
TC FRANKLIN 619#  
TC MARCIA 1069#

KAROO W109 DIRECTION Z181<sup>SV</sup>  
CARABAR DOCKLANDS D62<sup>PV</sup>  
CARABAR BLACKCAP MARY B12<sup>PV</sup>

**SIRE: WATTLETOP FRANKLIN G188<sup>SV</sup>**

**DAM: KAROO DORIS M45#**

WATTLETOP USA9074 C118<sup>PV</sup>  
WATTLETOP BARUNAH E295#  
WATTLETOP BARUNAH C136<sup>SV</sup>

LEACHMAN BOOM TIME#  
KAROO DORIS E56<sup>SV</sup>  
KAROO DORIS Y137<sup>SV</sup>

Mid-July 2019 Angus Australia BREEDPLAN

Traits Observed: GL,BWT,400WT(x2),SC,Scan(EMA,Rib,Rump,IMF)

	CALVING EASE		BIRTH		GROWTH					FERTILITY		CARCASE						INDEX VALUES			
	CED	CEM	GL	BW	200	400	600	MCW	MILK	SS	DC	CW	EMA	RIB	RMP	RBY	IMF	\$ABI	\$DOM	\$GRN	\$GRA
EBV	+4.0	+3.9	-9.3	+1.8	+52	+91	+119	+90	+18	+2.4	-6.0	+67	+2.7	+1.4	+1.3	-0.9	+1.4	\$120	\$113	\$117	\$122
ACC	53%	48%	84%	73%	68%	70%	67%	62%	57%	73%	42%	61%	61%	62%	62%	58%	59%				

A heifer's first calf that with really give you lighter calves at birth whilst still exploding for growth at 600 days. A nice, neat package.

Purchaser: ..... \$ .....

# 35

## KAROO H134 REGENT P40<sup>SV</sup> (AI)

IDENT: NENP40      DOB: 5/3/18      HBR      AMFU,CAFU,DDFU,NHFU

TE MANIA AMBASSADOR A134<sup>SV</sup>  
TUWHARETOA REGENT D145<sup>PV</sup>  
LAWSONS HENRY VIII Y5<sup>SV</sup>

HYLINE RIGHT TIME 338#  
KAROO 338 RIGHT TIME C22<sup>PV</sup>  
KAROO PENNY Y237#

**SIRE: KAROO D145 REGENT H134<sup>SV</sup>**

**DAM: KAROO DORIS G172#**

ARDROSSAN MODEST W37<sup>SV</sup>  
KAROO DORIS D1<sup>PV</sup>  
KAROO DORIS Y137<sup>SV</sup>

LEACHMAN BOOM TIME#  
KAROO DORIS E36#  
KAROO DORIS Y137<sup>SV</sup>

Mid-July 2019 Angus Australia BREEDPLAN

Traits Observed: GL,BWT,400WT(x2),SC,Scan(EMA,Rib,Rump,IMF)

	CALVING EASE		BIRTH		GROWTH					FERTILITY		CARCASE						INDEX VALUES			
	CED	CEM	GL	BW	200	400	600	MCW	MILK	SS	DC	CW	EMA	RIB	RMP	RBY	IMF	\$ABI	\$DOM	\$GRN	\$GRA
EBV	+1.6	-0.5	-5.1	+2.3	+40	+69	+99	+77	+18	+1.4	-5.4	+58	+4.8	+2.7	+2.9	-1.5	+2.0	\$104	\$93	\$100	\$105
ACC	48%	40%	84%	75%	69%	70%	68%	62%	57%	71%	40%	58%	57%	59%	60%	55%	53%				

His sire H134 was sold to Waverly Station, who now have over 400 progeny recorded. P40 is a larger framed bull that will need to develop into this frame. Top 2% for rib and rump fat.

Purchaser: ..... \$ .....

# 36

## KAROO M97 BIG SKY P81<sup>SV</sup>

IDENT: NENP81      DOB: 2/4/18      HBR      AMFU,CAFU,DDFU,NHFU

CONNELLY EARNAN 076<sup>PV</sup>  
MUSGRAVE BIG SKY#  
SAV PRIMROSE 7861#

SYDGEN TRUST 6228#  
KAROO 6228 TRUST J38<sup>SV</sup>  
KAROO KERRY D71<sup>PV</sup>

**SIRE: KAROO BIG SKY M97<sup>PV</sup>**

**DAM: KAROO VICKY M137#**

KAROO Y145 UNDERTAKEN C53<sup>PV</sup>  
KAROO WILCOOLA E89#  
KAROO WILCOOLA C113#

BT RIGHT TIME 24J#  
KAROO VICKY K60#  
KAROO JEDDA D60<sup>SV</sup>

Mid-July 2019 Angus Australia BREEDPLAN

Traits Observed: BWT,400WT(x2),SC,Scan(EMA,Rib,Rump,IMF)

	CALVING EASE		BIRTH		GROWTH					FERTILITY		CARCASE						INDEX VALUES			
	CED	CEM	GL	BW	200	400	600	MCW	MILK	SS	DC	CW	EMA	RIB	RMP	RBY	IMF	\$ABI	\$DOM	\$GRN	\$GRA
EBV	+2.1	+2.6	-5.3	+2.5	+44	+77	+100	+78	+13	+2.6	-6.6	+54	+3.8	+1.1	+1.9	-0.4	+1.7	\$116	\$109	\$115	\$115
ACC	40%	32%	50%	70%	63%	64%	61%	55%	45%	68%	31%	53%	52%	51%	53%	48%	45%				

One of four M97 bulls to be offered this year. Top 7% for rump fat. P81 exhibits great muscle.

Purchaser: ..... \$ .....

# 37

## KAROO L245 PEARL P80<sup>SV</sup>

IDENT: NENP80    DOB: 1/4/18    HBR    AMFU,CAFU,DDFU,NHFU

SYDGEN TRUST 6228\*  
SYDGEN BLACK PEARL 2006<sup>PV</sup>  
SYDGEN ANITA 8611\*

COONAMBLE Z3<sup>PV</sup>  
KAROO Z3 CONNAMBLE F12<sup>PV</sup>  
KAROO DORIS Y137<sup>SV</sup>

**SIRE: KAROO BLACK PEARL L245<sup>SV</sup>**

**DAM: KAROO JEDDA H213<sup>#</sup>**

ARDROSSAN EQUATOR A241<sup>PV</sup>  
KAROO PRINCESS F139\*  
KAROO PRINCESS A84<sup>PV</sup>

KAROO W37 MODEST D26<sup>PV</sup>  
KAROO JEDDA F204\*  
KAROO JEDDA D68<sup>SV</sup>

Mid-July 2019 Angus Australia BREEDPLAN

Traits Observed: BWT,400WT(x2),SC,Scan(EMA,Rib,Rump,IMF)

	CALVING EASE		BIRTH		GROWTH					FERTILITY		CARCASE						INDEX VALUES			
	CED	CEM	GL	BW	200	400	600	MCW	MILK	SS	DC	CW	EMA	RIB	RMP	RBY	IMF	\$ABI	\$DOM	\$GRN	\$GRA
EBV	+1.8	+1.6	-5.8	+4.3	+51	+92	+126	+115	+15	+3.1	-4.3	+74	+5.9	-0.3	-0.5	+0.8	+1.5	\$128	\$116	\$134	\$126
ACC	44%	35%	59%	72%	65%	67%	65%	59%	48%	69%	33%	55%	55%	56%	57%	51%	49%				

This is how we like to breed our heifer bulls. Short gestation, low birth and excellent growth, whilst not leaving behind carcass data. P80 ticks all these boxes.

Purchaser: ..... \$ .....

# 38

## KAROO M24 PEARL P102<sup>SV</sup>

IDENT: NENP102    DOB: 12/5/18    APR    AMFU,CAFU,DDFU,NHFU

SYDGEN TRUST 6228\*  
SYDGEN BLACK PEARL 2006<sup>PV</sup>  
SYDGEN ANITA 8611\*

TUWHARETOA REGENT D145<sup>PV</sup>  
KAROO D145 REGENT H109<sup>SV</sup>  
KAROO ALICE A40<sup>PV</sup>

**SIRE: KAROO BLACK PEARL M24<sup>SV</sup>**

**DAM: KAROO NEDDIE L81<sup>#</sup>**

KAROO 04379 INFINITY E54<sup>PV</sup>  
KAROO JEDDA G342\*  
KAROO JEDDA D68<sup>SV</sup>

COONAMBLE Z3<sup>PV</sup>  
KAROO NEDDIE F105\*  
KAROO NEDDIE B41\*

Mid-July 2019 Angus Australia BREEDPLAN

Traits Observed: BWT,400WT(x2),SC,Scan(EMA,Rib,Rump,IMF)

	CALVING EASE		BIRTH		GROWTH					FERTILITY		CARCASE						INDEX VALUES			
	CED	CEM	GL	BW	200	400	600	MCW	MILK	SS	DC	CW	EMA	RIB	RMP	RBY	IMF	\$ABI	\$DOM	\$GRN	\$GRA
EBV	+1.6	+1.4	-4.9	+4.1	+44	+79	+101	+86	+14	+1.7	-4.4	+67	+5.7	+0.4	-0.2	+0.1	+2.1	\$111	\$108	\$115	\$109
ACC	41%	34%	57%	70%	59%	56%	57%	55%	45%	49%	32%	48%	46%	50%	49%	45%	45%				

P102 has terrific body length and a great nature. A bull that is suitable for heifer matings.

Purchaser: ..... \$ .....

# 39

## KAROO G188 FRANKLIN P46<sup>SV</sup> (AI)

IDENT: NENP46    DOB: 6/3/18    HBR    AMFU,CAFU,DDFU,NHFU

TC TOTAL 410\*  
TC FRANKLIN 619\*  
TC MARCIA 1069\*

CONNEALY EARNAN 076<sup>PV</sup>  
MUSGRAVE BIG SKY\*  
SAV PRIMROSE 7861\*

**SIRE: WATTLETOP FRANKLIN G188<sup>SV</sup>**

**DAM: KAROO MONTANA M36<sup>#</sup>**

WATTLETOP USA9074 C118<sup>PV</sup>  
WATTLETOP BARUNAH E295\*  
WATTLETOP BARUNAH C136<sup>SV</sup>

KAROO A241 EQUATOR F35<sup>PV</sup>  
KAROO MONTANA H344\*  
KAROO MONTANA C178\*

Mid-July 2019 Angus Australia BREEDPLAN

Traits Observed: GL,BWT,400WT(x2),SC,Scan(EMA,Rib,Rump,IMF)

	CALVING EASE		BIRTH		GROWTH					FERTILITY		CARCASE						INDEX VALUES			
	CED	CEM	GL	BW	200	400	600	MCW	MILK	SS	DC	CW	EMA	RIB	RMP	RBY	IMF	\$ABI	\$DOM	\$GRN	\$GRA
EBV	+2.1	+4.0	-5.0	+2.1	+52	+91	+116	+90	+16	+1.8	-4.9	+63	+2.6	+0.5	+0.8	-0.9	+1.8	\$117	\$113	\$116	\$118
ACC	52%	46%	84%	73%	67%	69%	67%	62%	56%	72%	38%	60%	60%	61%	61%	56%	58%				

Another bull suitable for heifer joining.

Purchaser: ..... \$ .....

# 40

## KAROO K22 COMPLETE P38<sup>SV</sup> (AI)

IDENT: NENP38    DOB: 5/3/18    HBR    AMFU,CAFU,DDFU,NHFU

TE MANIA BERKLEY B1<sup>PV</sup>  
 PATHFINDER GENESIS G357<sup>PV</sup>  
 PATHFINDER DIRECTION D245<sup>SV</sup>

CONNEALY REFLECTION<sup>#</sup>  
 JINDRA DOUBLE VISION<sup>SV</sup>  
 HOFF RACHEL 8312 405<sup>#</sup>

**SIRE: PATHFINDER COMPLETE K22<sup>SV</sup>**

**DAM: KAROO PENNY L38<sup>#</sup>**

ARDROSSAN EQUATOR A241<sup>PV</sup>  
 PATHFINDER EQUATOR H756<sup>#</sup>  
 PATHFINDER D194<sup>#</sup>

TE MANIA INFINITY 04 379 AB<sup>#</sup>  
 KAROO PENNY D2<sup>PV</sup>  
 KAROO PENNY X246<sup>#</sup>

Mid-July 2019 Angus Australia BREEDPLAN

Traits Observed: GL,BWT,400WT(x2),SC,Scan(EMA,Rib,Rump,IMF)

	CALVING EASE		BIRTH		GROWTH					FERTILITY		CARCASE						INDEX VALUES			
	CED	CEM	GL	BW	200	400	600	MCW	MILK	SS	DC	CW	EMA	RIB	RMP	RBY	IMF	\$ABI	\$DOM	\$GRN	\$GRA
EBV	+4.2	+3.4	-6.2	+1.0	+37	+71	+84	+67	+21	+1.5	-4.4	+57	+5.3	+2.5	+1.8	-0.8	+1.7	\$94	\$100	\$86	\$97
ACC	47%	36%	84%	74%	68%	69%	68%	61%	50%	72%	36%	57%	59%	60%	60%	55%	55%				

K22 offers real piece of mind when calving. They are born small and early. P38 will add that weight to your weaners by adding that extra bit of milk into your cows at +21 - top 8%.

Purchaser: ..... \$ .....

# 41

## KAROO K22 COMPLETE P24<sup>SV</sup> (AI)

IDENT: NENP24    DOB: 2/3/18    HBR    AMFU,CAFU,DDFU,NHFU

TE MANIA BERKLEY B1<sup>PV</sup>  
 PATHFINDER GENESIS G357<sup>PV</sup>  
 PATHFINDER DIRECTION D245<sup>SV</sup>

TC FRANKLIN 619<sup>#</sup>  
 CLUDEN NEWRY FRANKLIN H78<sup>SV</sup>  
 CLUDEN NEWRY ALICE F137<sup>#</sup>

**SIRE: PATHFINDER COMPLETE K22<sup>SV</sup>**

**DAM: KAROO MONTANA L4<sup>#</sup>**

ARDROSSAN EQUATOR A241<sup>PV</sup>  
 PATHFINDER EQUATOR H756<sup>#</sup>  
 PATHFINDER D194<sup>#</sup>

KAROO Z3 CONNAMBLE F12<sup>PV</sup>  
 KAROO MONTANA H154<sup>#</sup>  
 KAROO MONTANA F312<sup>#</sup>

Mid-July 2019 Angus Australia BREEDPLAN

Traits Observed: GL,BWT,400WT(x2),SC,Scan(EMA,Rib,Rump,IMF)

	CALVING EASE		BIRTH		GROWTH					FERTILITY		CARCASE						INDEX VALUES			
	CED	CEM	GL	BW	200	400	600	MCW	MILK	SS	DC	CW	EMA	RIB	RMP	RBY	IMF	\$ABI	\$DOM	\$GRN	\$GRA
EBV	+1.5	+1.1	-8.7	+4.5	+48	+84	+108	+98	+18	+1.9	-4.3	+70	+5.8	+1.4	+0.5	-0.1	+1.7	\$108	\$106	\$108	\$109
ACC	45%	34%	84%	74%	68%	69%	67%	60%	48%	71%	34%	56%	58%	59%	60%	54%	53%				

P24's pedigree is packed with sires on both sides that are well muscled while having calving ease. Top 2% for gestation length and easy doing with positive for both rib and rump fat.

Purchaser: ..... \$ .....

# 42

## KAROO J266 JUNIOR P66<sup>SV</sup> (AI)

IDENT: NENP66    DOB: 13/3/18    HBR    AMFU,CAFU,DDFU,NHFU

TE MANIA AMBASSADOR A134<sup>SV</sup>  
 TUWHARETOA REGENT D145<sup>PV</sup>  
 LAWSONS HENRY VIII Y5<sup>SV</sup>

TE MANIA MODEST M126+92<sup>SV</sup>  
 ARDROSSAN MODEST W37<sup>SV</sup>  
 ARDROSSAN WILCOOLA U21<sup>#</sup>

**SIRE: COONAMBLE JUNIOR J266<sup>PV</sup>**

**DAM: KAROO WILCOOLA D10<sup>#</sup>**

VERMILION DATELINE 7078<sup>#</sup>  
 BANGADANG LOWAN A61<sup>PV</sup>  
 BANGADANG KATE W19<sup>#</sup>

B/R NEW DESIGN 036<sup>#</sup>  
 KAROO FLATS WILCOOLA U7<sup>#</sup>  
 KAROO FLATS WILCOOLA P1+94<sup>#</sup>

Mid-July 2019 Angus Australia BREEDPLAN

Traits Observed: GL,BWT,400WT(x2),SC,Scan(EMA,Rib,Rump,IMF)

	CALVING EASE		BIRTH		GROWTH					FERTILITY		CARCASE						INDEX VALUES			
	CED	CEM	GL	BW	200	400	600	MCW	MILK	SS	DC	CW	EMA	RIB	RMP	RBY	IMF	\$ABI	\$DOM	\$GRN	\$GRA
EBV	-3.3	-3.1	+0.3	+4.8	+46	+85	+120	+109	+18	+1.5	-3.7	+72	+5.3	-1.3	-2.1	+1.0	+2.4	\$115	\$102	\$129	\$108
ACC	52%	45%	84%	75%	69%	71%	69%	64%	59%	73%	47%	62%	62%	64%	64%	60%	60%				

P66 is a medium framed bull. His mature cow weight is lower than his 600 day weight. Something we try to achieve to make our female herd more efficient.

Purchaser: ..... \$ .....

# REFERENCE SIRES

## COONAMBLE JUNIOR J266<sup>PV</sup>

IDENT: WDCJ266 DOB: 16/7/13 HBR AMFU,CAFU,DDFU,NHFU

**7 SONS**

RENNYLEA XPONENTIAL X555<sup>#</sup>  
TE MANIA AMBASSADOR A134<sup>SV</sup>  
TE MANIA LOWAN Y211<sup>#</sup>

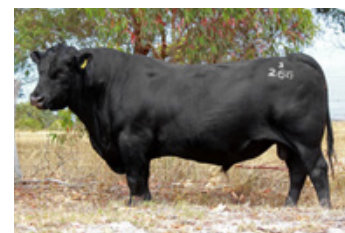
CONNEALY DATELINE<sup>#</sup>  
VERMILION DATELINE 7078<sup>#</sup>  
VERMILION BLACKBIRD 5044<sup>#</sup>

**SIRE: TUWHARETOA REGENT D145<sup>PV</sup>**

**DAM: BANGADANG LOWAN A61<sup>PV</sup>**

YTHANBRAE HENRY VIII U8<sup>SV</sup>  
LAWSONS HENRY VIII Y5<sup>SV</sup>  
YTHANBRAE DIRECTION T270<sup>#</sup>

C A FUTURE DIRECTION 5321<sup>#</sup>  
BANGADANG KATE W19<sup>#</sup>  
BANGADANG KATE U3<sup>#</sup>



Mid-July 2019 Angus Australia BREEDPLAN

Traits Observed: BWT,200WT,400WT,SC,Scan(EMA,Rib,Rump,IMF),Genomics(CE,S-Step)

	CALVING EASE		BIRTH		GROWTH					FERTILITY		CARCASE						INDEX VALUES			
	CED	CEM	GL	BW	200	400	600	MCW	MILK	SS	DC	CW	EMA	RIB	RMP	RBY	IMF	\$ABI	\$DOM	\$GRN	\$GRA
EBV	-4.5	-3.1	-0.3	+5.3	+54	+100	+142	+131	+17	+1.8	-5.9	+96	+8.5	-2.5	-3.3	+2.3	+3.1	\$154	\$124	\$187	\$138
ACC	79%	68%	97%	97%	94%	94%	94%	85%	77%	91%	67%	88%	87%	89%	86%	84%	86%				

Number of Herds: 17, Prog Analysed: 348, Genomic Prog: 54

## ESBLEMONT LOTTO L3<sup>PV</sup>

IDENT: WWEL3 DOB: 3/1/15 HBR AMFU,CAFU,DDFU,NHFU

**9 SONS**

TE MANIA YORKSHIRE Y437<sup>PV</sup>  
TE MANIA BERKLEY B1<sup>PV</sup>  
TE MANIA LOWAN Z53<sup>#</sup>

TE MANIA AMBASSADOR A134<sup>SV</sup>  
TUWHARETOA REGENT D145<sup>PV</sup>  
LAWSONS HENRY VIII Y5<sup>SV</sup>

**SIRE: AYRVALE GENERAL G18<sup>PV</sup>**

**DAM: ESBLEMONT JENNY J8<sup>PV</sup>**

TE MANIA BARTEL B219<sup>PV</sup>  
AYRVALE EASE E3<sup>PV</sup>  
EAGLEHAWK JEDDA B32<sup>SV</sup>

BR MIDLAND<sup>#</sup>  
ESBLEMONT CHERRY C16<sup>PV</sup>  
ESBLEMONT ATINO A20<sup>PV</sup>



Mid-July 2019 Angus Australia BREEDPLAN

Traits Observed: GL,BWT,200WT,400WT,DOC,Genomics(CE,S-Step)

	CALVING EASE		BIRTH		GROWTH					FERTILITY		CARCASE						INDEX VALUES			
	CED	CEM	GL	BW	200	400	600	MCW	MILK	SS	DC	CW	EMA	RIB	RMP	RBY	IMF	\$ABI	\$DOM	\$GRN	\$GRA
EBV	-3.6	-1.6	-5.8	+4.1	+59	+105	+137	+112	+22	+3.3	-8.1	+92	+8.7	+0.9	+0.0	-0.3	+4.0	\$156	\$128	\$185	\$140
ACC	84%	59%	99%	98%	98%	97%	97%	84%	71%	95%	54%	79%	84%	84%	82%	77%	82%				

Number of Herds: 68, Prog Analysed: 1073, Genomic Prog: 217

## MATAURI REALITY 839<sup>#</sup>

IDENT: NZE14647008839 DOB: 15/9/08 HBR AMF,CAF,DDF,NHF

**6 SONS  
10 GRANDSONS**

SCHURRTOP WWR REGENCY<sup>#</sup>  
SCHURR 77 1346 EXCEL<sup>#</sup>  
SCHURR 77 SANDRA 1413 1033<sup>#</sup>

TE MANIA KNIGHT K206+90<sup>SV</sup>  
TE MANIA ULONG U41<sup>SV</sup>  
TE MANIA LOWAN Q42+95<sup>#</sup>

**SIRE: SCHURRTOP REALITY X723<sup>#</sup>**

**DAM: MATAURI 06663<sup>#</sup>**

SCHURRTOP SUPREME<sup>#</sup>  
SCHURRTOP 8019 V141<sup>#</sup>  
SCHURRTOP 4460<sup>#</sup>

TE MANIA MODEST M126+92<sup>SV</sup>  
MATAURI 04456 AB<sup>#</sup>  
MATAURI 240<sup>#</sup>



Mid-July 2019 Angus Australia BREEDPLAN

Traits Observed: BWT,200WT,400WT,SC,Scan(EMA,Rib,Rump,IMF),Genomics(CE,S-Step)

	CALVING EASE		BIRTH		GROWTH					FERTILITY		CARCASE						INDEX VALUES			
	CED	CEM	GL	BW	200	400	600	MCW	MILK	SS	DC	CW	EMA	RIB	RMP	RBY	IMF	\$ABI	\$DOM	\$GRN	\$GRA
EBV	+6.7	+6.2	-10.5	+1.0	+42	+78	+95	+89	+11	+3.8	-7.1	+48	+4.0	+5.3	+4.4	-2.5	+2.9	\$119	\$110	\$124	\$114
ACC	97%	92%	99%	99%	99%	99%	99%	98%	98%	99%	84%	97%	96%	96%	96%	95%	95%				

Number of Herds: 215, Prog Analysed: 5149, Genomic Prog: 491

# TWO YEAR OLD BULLS



LOT 1 KAROO 839 REALITY N314 (AI)



LOT 4 KAROO H176 COONAMBLE N126 (AI)



LOT 5 KAROO H176 COONAMBLE N327 (AI)



LOT 6 KAROO J266 JUNIOR N246 (AI)



LOT 7 KAROO J266 JUNIOR N315 (AI)



LOT 8 KAROO H176 COONAMBLE N296 (AI)



LOT 9 KAROO E11 ELEVATOR N220 (AI)



LOT 13 KAROO D62 DOCKLANDS N297 (AI)



LOT 15 KAROO G357 GENESIS N150 (AI)

# 18 MONTH OLD BULLS



LOT 20 KAROO G188 FRANKLIN P65 (AI)



LOT 21 KAROO L245 PEARL P96



LOT 23 KAROO K176 KNOCKOUT P35 (AI)



LOT 29 KAROO M97 BIG SKY P74



LOT 32 KAROO D62 DOCKLANDS P6 (AI)



LOT 42 KAROO J266 JUNIOR P66 (AI)



# TWO YEAR OLD BULLS



LOT 17 KAROO L37 NOVAK N90



LOT 18 KAROO H176 COONAMBLE N117 (AI)



LOT 43 KAROO K12 REALITY N275 (AI)



LOT 44 KAROO K46 REALITY N184 (AI)



LOT 45 KAROO L37 NOVAK N166



LOT 47 KAROO H176 COONAMBLE N196 (AI)



LOT 48 KAROO H176 COONAMBLE N171 (AI)



LOT 53 KAROO 839 REALITY N202 (AI)



LOT 56 KAROO L3 LOTTO N119 (AI)







 AuctionsPlus®

Can't make the sale?

Log on to AuctionsPlus and bid on your phone, tablet or computer.

Contact AuctionsPlus on (02) 9262 4222

or email [studsales@auctionsplus.com.au](mailto:studsales@auctionsplus.com.au) or [www.auctionsplus.com.au](http://www.auctionsplus.com.au)

Check us out on:    



## CLIENT SPOTLIGHT

Congratulations to Andrew and Emma Martin, Talawa, Rydal, who sold a pen of 60 head for \$1,050 at the Carcoar Cold Country Blue Ribbon Weaner Sale in March 2019. The August/September drop, Karoo blood Angus steers averaged 322kg.

*Photo: The Land Newspaper*

# KAROO CLIENTS FEATURING IN SPRING ANGUS 2019



**Hugh and Sheridan Brown** have been breeding Angus cattle for about 25 years and now run 500 breeders, as well as a crossbred prime lamb enterprise, on 1200-hectare property Crosshills, on the eastern side of Blayney, NSW.

The best heifers are retained, and most of the steers are sold as weaners, through Carcoar's blue ribbon sale. For that reason, the Browns focus on maternal traits and good growth rates, particularly 200-day and 400-day estimated breeding values.

"We retain about 100 heifers a year and either sell the cull heifers at the same weaner sale or we might keep them for a little longer, but they're still turned off before the winter."

"With Karoo we've been buying from there for three years," Mr Brown said.

"They've got exceptional growth rates."

Calves are weaned in the yards for three days on silage.

"We use a natural magnesium supplement as well, which settles them down to reduce stress of weaning, so that by day four they are out in the paddock very happy and content. The hard work is done, so all the purchaser has to do is put them out and watch them grow".



**John and Marg Lowe** have a simple, but effective philosophy for their beef cattle operation - keep it simple and straightforward.

"We want a trouble-free herd," Mr Lowe said.

"We look for the estimated breeding values which will produce an efficient trouble-free cow ... like calving ease and a shorter gestation length.

"We also concentrate on temperament and have no tolerance for stirry cattle. We adhere by low-stress stock handling principles, so any animal that can't fit in with that is no good to us."

The Lowes' headquarters is 800-hectare Lowther Park, between Lithgow and Oberon, NSW, which has been part of Mr Lowe's family since the 1920s. In 2017 the family expanded the operation with the purchase of Dungarvan, between Forbes and Condobolin.

The majority of bulls have come from Karoo Angus Stud at Meadow Flat near Bathurst.

"We look for a good self-replacing herd bull as a rule, good above average EBVs, good cartability is also important and good temperament is vitally important to us," Mr Lowe said.

"We do look at intramuscular fat statistics when we buy bulls but that's far from the most important thing. What is reproductive traits. Anything else is a bonus."

*Images and article extracts courtesy of Spring Angus, published in The Land 18/07/2019.*

# 43

## KAROO K12 REALITY N275<sup>SV</sup> (AI)

IDENT: NENN275    DOB: 1/9/17    HBR    AMFU,CAFU,DDFU,NHFU

SCHURRTOP REALITY X723<sup>#</sup>  
MATAURI REALITY 839<sup>#</sup>  
MATAURI 06663<sup>#</sup>

KAROO W109 DIRECTION Z181<sup>SV</sup>  
CARABAR DOCKLANDS D62<sup>PV</sup>  
CARABAR BLACKCAP MARY B12<sup>PV</sup>

**SIRE: MILWILLAH REALITY K12<sup>PV</sup>**

**DAM: KAROO LORETTA K184<sup>#</sup>**

COONAMBLE ELEVATOR E11<sup>PV</sup>  
MILWILLAH BARUNAH H8<sup>SV</sup>  
MILWILLAH BARUNAH A44<sup>#</sup>

ARDROSSAN CONNECTION X15<sup>SV</sup>  
KAROO LORETTA Z19<sup>#</sup>  
KAROO LORETTA X114<sup>#</sup>

Mid-July 2019 Angus Australia BREEDPLAN

Traits Observed: GL,BWT,200WT,400WT,600WT,SC,Scan(EMA,Rib,Rump,IMF)

	CALVING EASE		BIRTH		GROWTH					FERTILITY		CARCASE						INDEX VALUES			
	CED	CEM	GL	BW	200	400	600	MCW	MILK	SS	DC	CW	EMA	RIB	RMP	RBY	IMF	\$ABI	\$DOM	\$GRN	\$GRA
EBV	+2.0	+2.2	-10.4	+6.1	+55	+104	+142	+130	+17	+3.2	-4.5	+77	+3.9	+0.9	+1.4	-0.3	+2.2	\$143	\$123	\$157	\$137
ACC	49%	42%	84%	75%	70%	71%	73%	66%	56%	72%	41%	60%	60%	61%	62%	56%	56%				

A bull to add stature and weight to your weaners. A little birth weight but power at the other end. Great calving ease - top 1% for gestation length and excellent fertility at top 4% for scrotal size.

Purchaser: ..... \$ .....

# 44

## KAROO K46 REALITY N184<sup>SV</sup> (AI)

IDENT: NENN184    DOB: 8/8/17    HBR    AMFU,CAFU,DDFU,NHFU

SCHURRTOP REALITY X723<sup>#</sup>  
MATAURI REALITY 839<sup>#</sup>  
MATAURI 06663<sup>#</sup>

ARDROSSAN ADMIRAL A2<sup>PV</sup>  
KAROO A2 ADMIRAL D32<sup>PV</sup>  
KAROO FLATS ALICE W62<sup>#</sup>

**SIRE: KOOJAN HILLS REALITY K46<sup>SV</sup>**

**DAM: KAROO WILCOOLA H83<sup>#</sup>**

ARDROSSAN DIRECTION Z248<sup>SV</sup>  
KOOJAN HILLS E266<sup>#</sup>  
KOOJAN HILLS A141<sup>#</sup>

ARDROSSAN DIRECTION W109<sup>PV</sup>  
KAROO WILCOOLA B36<sup>#</sup>  
KAROO FLATS WILCOOLA X37<sup>#</sup>

Mid-July 2019 Angus Australia BREEDPLAN

Traits Observed: GL,BWT,200WT,400WT,600WT,SC,Scan(EMA,Rib,Rump,IMF)

	CALVING EASE		BIRTH		GROWTH					FERTILITY		CARCASE						INDEX VALUES			
	CED	CEM	GL	BW	200	400	600	MCW	MILK	SS	DC	CW	EMA	RIB	RMP	RBY	IMF	\$ABI	\$DOM	\$GRN	\$GRA
EBV	-5.1	-1.5	-2.0	+7.8	+49	+84	+122	+120	+13	+1.9	-3.2	+65	+6.3	-1.7	-2.4	+1.4	+1.6	\$105	\$95	\$114	\$102
ACC	45%	36%	84%	74%	69%	70%	72%	64%	51%	72%	38%	58%	57%	57%	59%	53%	51%				

N184 will add style and power. Great capacity - he would really suit that terminal sire tag line. A very solid and sound son of Reality K46, with a very long barrel.

Purchaser: ..... \$ .....

# 45

## KAROO L37 NOVAK N166<sup>PV</sup>

IDENT: NENN166    DOB: 3/8/17    HBR    AMFU,CAFU,DDFU,NHFU

TC TOTAL 410<sup>#</sup>  
LAWSONS NOVAK E313<sup>SV</sup>  
LAWSONS PREDESTINED B770<sup>SV</sup>

TE MANIA YORKSHIRE Y437<sup>PV</sup>  
TE MANIA BERKLEY B1<sup>PV</sup>  
TE MANIA LOWAN Z53<sup>#</sup>

**SIRE: KAROO E313 NOVAK L37<sup>SV</sup>**

**DAM: KAROO WILCOOLA G214<sup>SV</sup>**

ARDROSSAN DIRECTION W109<sup>PV</sup>  
KAROO STEPHI Z209<sup>SV</sup>  
KAROO FLATS STEPHI S51<sup>#</sup>

ARDROSSAN DIRECTION W109<sup>PV</sup>  
KAROO WILCOOLA D30<sup>#</sup>  
KAROO FLATS WILCOOLA V91<sup>#</sup>

Mid-July 2019 Angus Australia BREEDPLAN

Traits Observed: BWT,200WT,400WT,600WT,SC,Scan(EMA,Rib,Rump,IMF)

	CALVING EASE		BIRTH		GROWTH					FERTILITY		CARCASE						INDEX VALUES			
	CED	CEM	GL	BW	200	400	600	MCW	MILK	SS	DC	CW	EMA	RIB	RMP	RBY	IMF	\$ABI	\$DOM	\$GRN	\$GRA
EBV	+0.1	+1.9	-3.9	+5.8	+50	+93	+130	+130	+15	+2.2	-4.2	+77	+4.4	-2.4	-3.9	+1.3	+2.0	\$127	\$113	\$145	\$119
ACC	46%	41%	64%	74%	68%	69%	72%	65%	52%	70%	42%	58%	57%	58%	60%	54%	52%				

Novak puts a bit of scale into the cattle. N166 is no exception. Smooth, clean topped bull suitable for the heavy grain feed \$Index.

Purchaser: ..... \$ .....

# 46

## KAROO H176 COONAMBLE N156<sup>SV</sup> (AI)

IDENT: NENN156    DOB: 2/8/17    HBR    AMFU,CAFU,DDFU,NHFU

COONAMBLE Z3<sup>PV</sup>  
COONAMBLE ELEVATOR E11<sup>PV</sup>  
BANGADANG B31<sup>SV</sup>

SITZ UPWARD 307R<sup>SV</sup>  
EXAR UPSHOT 0562B<sup>#</sup>  
EXAR BARBARA T020<sup>#</sup>

**SIRE: COONAMBLE H176<sup>PV</sup>**

**DAM: KAROO JEDDA J62<sup>#</sup>**

BOOROOMOOKA WARWICK W245<sup>E</sup>  
COONAMBLE D94<sup>SV</sup>  
COONAMBLE B170<sup>#</sup>

BANQUET XPLANATION X060<sup>#</sup>  
KAROO JEDDA C222<sup>SV</sup>  
KAROO JEDDA X118<sup>#</sup>

Mid-July 2019 Angus Australia BREEDPLAN

Traits Observed: GL,BWT,200WT,400WT,600WT,SC,Scan(EMA,Rib,Rump,IMF)

	CALVING EASE		BIRTH		GROWTH					FERTILITY		CARCASE						INDEX VALUES			
	CED	CEM	GL	BW	200	400	600	MCW	MILK	SS	DC	CW	EMA	RIB	RMP	RBY	IMF	\$ABI	\$DOM	\$GRN	\$GRA
EBV	-1.6	-1.0	-3.0	+6.0	+54	+100	+128	+115	+16	+2.1	-0.8	+71	+6.6	-1.3	-1.1	+1.5	+0.8	\$108	\$111	\$103	\$112
ACC	46%	38%	84%	74%	69%	70%	72%	65%	53%	72%	39%	60%	60%	61%	61%	56%	55%				

N156 has great body length and capacity. His sire is going to leave some really good, productive females in our herd.

Purchaser: ..... \$ .....

# 47

## KAROO H176 COONAMBLE N196<sup>SV</sup> (AI)

IDENT: NENN196    DOB: 10/8/17    HBR    AMFU,CAFU,DDFU,NHFU

COONAMBLE Z3<sup>PV</sup>  
COONAMBLE ELEVATOR E11<sup>PV</sup>  
BANGADANG B31<sup>SV</sup>

TE MANIA AMBASSADOR A134<sup>SV</sup>  
TUWHARETOA REGENT D145<sup>PV</sup>  
LAWSONS HENRY VIII Y5<sup>SV</sup>

**SIRE: COONAMBLE H176<sup>PV</sup>**

**DAM: KAROO ALICE J354<sup>#</sup>**

BOOROOMOOKA WARWICK W245<sup>E</sup>  
COONAMBLE D94<sup>SV</sup>  
COONAMBLE B170<sup>#</sup>

VERMILION DATELINE 7078<sup>#</sup>  
KAROO ALICE A64<sup>PV</sup>  
KAROO FLATS FLOWER W68<sup>#</sup>

Mid-July 2019 Angus Australia BREEDPLAN

Traits Observed: GL,BWT,200WT,400WT,600WT,SC,Scan(EMA,Rib,Rump,IMF)

	CALVING EASE		BIRTH		GROWTH					FERTILITY		CARCASE						INDEX VALUES			
	CED	CEM	GL	BW	200	400	600	MCW	MILK	SS	DC	CW	EMA	RIB	RMP	RBY	IMF	\$ABI	\$DOM	\$GRN	\$GRA
EBV	-7.9	-4.3	+0.3	+7.6	+53	+94	+131	+127	+10	+1.6	-2.6	+72	+7.0	-1.0	-0.6	+1.4	+1.5	\$108	\$98	\$114	\$107
ACC	47%	39%	84%	75%	69%	70%	73%	66%	53%	73%	42%	61%	60%	61%	62%	56%	56%				

A long H176 son that will grow into a larger framed bull. Nice big muscle with plenty of engine room. Backed by a tried and trusted cow line.

Purchaser: ..... \$ .....

# 48

## KAROO H176 COONAMBLE N171<sup>SV</sup> (AI)

IDENT: NENN171    DOB: 5/8/17    HBR    AMFU,CAFU,DDFU,NHFU

COONAMBLE Z3<sup>PV</sup>  
COONAMBLE ELEVATOR E11<sup>PV</sup>  
BANGADANG B31<sup>SV</sup>

SCR PROMISE 4042<sup>#</sup>  
SYDGEN TRUST 6228<sup>#</sup>  
SYDGEN FOREVER LADY 4413<sup>#</sup>

**SIRE: COONAMBLE H176<sup>PV</sup>**

**DAM: KAROO MONTANA H231<sup>#</sup>**

BOOROOMOOKA WARWICK W245<sup>E</sup>  
COONAMBLE D94<sup>SV</sup>  
COONAMBLE B170<sup>#</sup>

ARDROSSAN EQUATOR A227<sup>PV</sup>  
KAROO MONTANA E293<sup>#</sup>  
KAROO MONTANA B62<sup>#</sup>

Mid-July 2019 Angus Australia BREEDPLAN

Traits Observed: GL,BWT,200WT,400WT,600WT,SC,Scan(EMA,Rib,Rump,IMF)

	CALVING EASE		BIRTH		GROWTH					FERTILITY		CARCASE						INDEX VALUES			
	CED	CEM	GL	BW	200	400	600	MCW	MILK	SS	DC	CW	EMA	RIB	RMP	RBY	IMF	\$ABI	\$DOM	\$GRN	\$GRA
EBV	-4.2	+0.4	-3.5	+6.8	+58	+100	+142	+132	+13	+2.9	-2.3	+75	+7.0	-0.2	+0.4	+1.0	+0.8	\$118	\$106	\$116	\$121
ACC	47%	38%	85%	75%	70%	71%	74%	66%	55%	72%	39%	61%	60%	62%	62%	57%	56%				

This H176 son will grow into a powerful sire, from the maternally great Montana cow line. Great weight to get your weaners off early. Top 3% 200 day, top 5% 400 day and top 2% 600 day weight.

Purchaser: ..... \$ .....

# 49

## KAROO L37 NOVAK N242<sup>SV</sup>

IDENT: NENN242    DOB: 23/8/17    HBR    AMFU,CAFU,DDFU,NHFU

TC TOTAL 410<sup>#</sup>  
LAWSONS NOVAK E313<sup>SV</sup>  
LAWSONS PREDESTINED B770<sup>SV</sup>

TE MANIA AMBASSADOR A134<sup>SV</sup>  
TUWHARETOA REGENT D145<sup>PV</sup>  
LAWSONS HENRY VIII Y5<sup>SV</sup>

**SIRE: KAROO E313 NOVAK L37<sup>SV</sup>**

**DAM: KAROO WILCOOLA K76<sup>#</sup>**

ARDROSSAN DIRECTION W109<sup>PV</sup>  
KAROO STEPHI Z209<sup>SV</sup>  
KAROO FLATS STEPHI S51<sup>#</sup>

HYLINE RIGHT TIME 338<sup>#</sup>  
KAROO WILCOOLA E201<sup>#</sup>  
KAROO FLATS WILCOOLA V91<sup>#</sup>

Mid-July 2019 Angus Australia BREEDPLAN

Traits Observed: BWT,200WT,400WT,600WT,SC,Scan(EMA,Rib,Rump,IMF)

	CALVING EASE		BIRTH		GROWTH					FERTILITY		CARCASE						INDEX VALUES			
	CED	CEM	GL	BW	200	400	600	MCW	MILK	SS	DC	CW	EMA	RIB	RMP	RBY	IMF	\$ABI	\$DOM	\$GRN	\$GRA
EBV	-5.5	-1.8	-1.7	+6.7	+52	+98	+130	+117	+17	+1.9	-4.2	+79	+4.9	-2.7	-3.3	+1.4	+2.5	\$122	\$110	\$142	\$113
ACC	45%	40%	63%	73%	67%	68%	71%	63%	51%	69%	41%	57%	57%	58%	59%	53%	51%				

N242 is an up standing sire with excellent length and weight for age.

Purchaser: ..... \$ .....

# 50

## KAROO H249 HECTOR H249 N100<sup>SV</sup> (AI)

IDENT: NENN100    DOB: 11/7/17    HBR    AMFU,CAFU,DDFU,NHFU

HYLINE RIGHT TIME 338<sup>#</sup>  
K C F BENNETT PERFORMER<sup>#</sup>  
K C F MISS 589 L182<sup>#</sup>

TE MANIA AMBASSADOR A134<sup>SV</sup>  
TUWHARETOA REGENT D145<sup>PV</sup>  
LAWSONS HENRY VIII Y5<sup>SV</sup>

**SIRE: COONAMBLE HECTOR H249<sup>SV</sup>**

**DAM: KAROO DORIS L157<sup>#</sup>**

COONAMBLE Z3<sup>PV</sup>  
COONAMBLE E9<sup>PV</sup>  
BANGADANG LOWAN A61<sup>PV</sup>

LEACHMAN BOOM TIME<sup>#</sup>  
KAROO DORIS E56<sup>SV</sup>  
KAROO DORIS Y137<sup>SV</sup>

Mid-July 2019 Angus Australia BREEDPLAN

Traits Observed: GL,BWT,200WT,400WT,600WT,SC,Scan(EMA,Rib,Rump,IMF)

	CALVING EASE		BIRTH		GROWTH					FERTILITY		CARCASE						INDEX VALUES			
	CED	CEM	GL	BW	200	400	600	MCW	MILK	SS	DC	CW	EMA	RIB	RMP	RBY	IMF	\$ABI	\$DOM	\$GRN	\$GRA
EBV	-0.5	-2.6	-6.9	+5.1	+52	+95	+123	+107	+13	+1.6	-5.1	+80	+6.9	+1.2	+1.1	+0.4	+1.7	\$126	\$116	\$131	\$124
ACC	53%	48%	84%	75%	70%	71%	74%	67%	58%	73%	46%	63%	62%	64%	64%	60%	60%				

A standout Hector young sire. A heifer's first calf with good solid EBVs. N100 is smooth with a medium frame. Top 3% for carcass weight.

Purchaser: ..... \$ .....

# 51

## KAROO K218 DOCKLANDS N199<sup>SV</sup>

IDENT: NENN199    DOB: 10/8/17    HBR    AMFU,CAFU,DDFU,NHFU

KAROO W109 DIRECTION Z181<sup>SV</sup>  
CARABAR DOCKLANDS D62<sup>PV</sup>  
CARABAR BLACKCAP MARY B12<sup>PV</sup>

C A FUTURE DIRECTION 5321<sup>#</sup>  
ARDROSSAN CONNECTION X15<sup>SV</sup>  
ARDROSSAN WILCOOLA V9<sup>#</sup>

**SIRE: KAROO D62 DOCKLANDS K218<sup>PV</sup>**

**DAM: KAROO LORETTA Z19<sup>#</sup>**

KAROO Y145 UNDERTAKEN C53<sup>PV</sup>  
KAROO WILCOOLA E89<sup>#</sup>  
KAROO WILCOOLA C113<sup>#</sup>

R A SPECTRE 4F<sup>#</sup>  
KAROO LORETTA X114<sup>#</sup>  
KAROO FLATS LORETTA V104<sup>#</sup>

Mid-July 2019 Angus Australia BREEDPLAN

Traits Observed: BWT,200WT,400WT,600WT,SC,Scan(EMA,Rib,IMF)

	CALVING EASE		BIRTH		GROWTH					FERTILITY		CARCASE						INDEX VALUES			
	CED	CEM	GL	BW	200	400	600	MCW	MILK	SS	DC	CW	EMA	RIB	RMP	RBY	IMF	\$ABI	\$DOM	\$GRN	\$GRA
EBV	+5.8	+3.2	-10.3	+1.0	+39	+76	+97	+63	+19	+2.1	-3.6	+56	+5.1	+0.8	+1.4	+0.0	+1.7	\$109	\$109	\$105	\$111
ACC	47%	41%	65%	75%	69%	70%	73%	66%	56%	70%	42%	60%	58%	59%	58%	54%	54%				

A true heifer bull at -10.3 for gestation length and +1.0 for birth weight. He is easy doing with both positive rib and rump fat.

Purchaser: ..... \$ .....

# 52

## KAROO K22 COMPLETE N92<sup>SV</sup> (AI)

IDENT: NENN92    DOB: 10/7/17    HBR    AMFU,CAFU,DDFU,NHFU

TE MANIA BERKLEY B1<sup>PV</sup>  
PATHFINDER GENESIS G357<sup>PV</sup>  
PATHFINDER DIRECTION D245<sup>SV</sup>

TC TOTAL 410<sup>#</sup>  
LAWSONS NOVAK E313<sup>SV</sup>  
LAWSONS PREDESTINED B770<sup>SV</sup>

**SIRE: PATHFINDER COMPLETE K22<sup>SV</sup>**

**DAM: KAROO DORIS L232<sup>#</sup>**

ARDROSSAN EQUATOR A241<sup>PV</sup>  
PATHFINDER EQUATOR H756<sup>#</sup>  
PATHFINDER D194<sup>#</sup>

HYLINE RIGHT TIME 338<sup>#</sup>  
KAROO DORIS E165<sup>#</sup>  
KAROO DORIS Y137<sup>SV</sup>

Mid-July 2019 Angus Australia BREEDPLAN

Traits Observed: GL,BWT,200WT,400WT,600WT,SC,Scan(EMA,Rib,Rump,IMF)

	CALVING EASE		BIRTH		GROWTH					FERTILITY		CARCASE						INDEX VALUES			
	CED	CEM	GL	BW	200	400	600	MCW	MILK	SS	DC	CW	EMA	RIB	RMP	RBY	IMF	\$ABI	\$DOM	\$GRN	\$GRA
EBV	+1.2	+2.8	-8.2	+3.3	+48	+86	+113	+95	+23	+2.3	-5.5	+69	+5.3	+2.2	+1.8	-0.5	+1.9	\$119	\$110	\$120	\$118
ACC	48%	39%	85%	75%	70%	71%	73%	66%	52%	72%	39%	59%	59%	60%	61%	55%	56%				

N92 is a great heifer's first calf by K22. Suitable for heifer joining.

Purchaser: ..... \$ .....

# 53

## KAROO 839 REALITY N202<sup>SV</sup> (AI)

IDENT: NENN202    DOB: 11/8/17    HBR    AMFU,CAFU,DDFU,NHFU

SCHURR 77 1346 EXCEL<sup>#</sup>  
SCHURRTOP REALITY X723<sup>#</sup>  
SCHURRTOP 8019 V141<sup>#</sup>

KAROO W109 DIRECTION Z181<sup>SV</sup>  
CARABAR DOCKLANDS D62<sup>PV</sup>  
CARABAR BLACKCAP MARY B12<sup>PV</sup>

**SIRE: MATAURI REALITY 839<sup>#</sup>**

**DAM: KAROO WILCOOLA K115<sup>#</sup>**

TE MANIA ULONG U41<sup>SV</sup>  
MATAURI 06663<sup>#</sup>  
MATAURI 04456 AB<sup>#</sup>

ARDROSSAN EQUATOR A241<sup>PV</sup>  
KAROO WILCOOLA E167<sup>#</sup>  
KAROO WILCOOLA B114<sup>#</sup>

Mid-July 2019 Angus Australia BREEDPLAN

Traits Observed: GL,BWT,200WT,400WT,600WT,SC,Scan(EMA,Rib,Rump,IMF)

	CALVING EASE		BIRTH		GROWTH					FERTILITY		CARCASE						INDEX VALUES			
	CED	CEM	GL	BW	200	400	600	MCW	MILK	SS	DC	CW	EMA	RIB	RMP	RBY	IMF	\$ABI	\$DOM	\$GRN	\$GRA
EBV	+5.8	+5.0	-10.3	+2.1	+45	+85	+111	+94	+16	+3.6	-6.5	+63	+4.9	+2.4	+1.8	-0.7	+2.3	\$130	\$117	\$138	\$125
ACC	58%	54%	85%	75%	70%	71%	74%	69%	63%	73%	52%	64%	64%	65%	66%	62%	61%				

Bred with strong maternal bulls in his pedigree. A very thick bull that has a nice set of EBVs across the board.

Purchaser: ..... \$ .....

# 54

## KAROO L198 GASKIN N169<sup>SV</sup>

IDENT: NENN169    DOB: 4/8/17    HBR    AMFU,CAFU,DDFU,NHFU

TUWHARETOA REGENT D145<sup>PV</sup>  
TE MANIA GASKIN G555<sup>SV</sup>  
TE MANIA LOWAN D66<sup>#</sup>

BOOROOMOOKA UNDERTAKEN Y145<sup>PV</sup>  
RENNYLEA EDMUND E11<sup>PV</sup>  
LAWSONS HENRY VIII Y5<sup>SV</sup>

**SIRE: KAROO G555 GASKIN L198<sup>SV</sup>**

**DAM: KAROO ARCHER L132<sup>#</sup>**

ARDROSSAN MODEST W37<sup>SV</sup>  
KAROO DORIS D1<sup>PV</sup>  
KAROO DORIS Y137<sup>SV</sup>

TUWHARETOA REGENT D145<sup>PV</sup>  
KAROO ARCHER J264<sup>#</sup>  
KAROO ARCHER D157<sup>#</sup>

Mid-July 2019 Angus Australia BREEDPLAN

Traits Observed: BWT,200WT,400WT,600WT,SC,Scan(EMA,Rump,IMF)

	CALVING EASE		BIRTH		GROWTH					FERTILITY		CARCASE						INDEX VALUES			
	CED	CEM	GL	BW	200	400	600	MCW	MILK	SS	DC	CW	EMA	RIB	RMP	RBY	IMF	\$ABI	\$DOM	\$GRN	\$GRA
EBV	-0.3	-5.0	-5.0	+3.8	+48	+82	+116	+98	+16	+1.5	-7.6	+71	+7.1	+2.7	+2.1	-0.6	+2.7	\$131	\$107	\$143	\$123
ACC	46%	41%	60%	73%	68%	69%	72%	65%	52%	70%	42%	58%	57%	58%	60%	55%	53%				

It is hard to get a bull with low birth weight, good growth, positive carcass and IMF that is in the top 15%. N169 has it all.

Purchaser: ..... \$ .....

# 55

## KAROO K12 REALITY N263<sup>SV</sup>

IDENT: NENN263    DOB: 29/8/17    HBR    AMFU,CAFU,DDFU,NHFU

SCHURRTOP REALITY X723<sup>#</sup>  
MATAURI REALITY 839<sup>#</sup>  
MATAURI 06663<sup>#</sup>

BON VIEW NEW DESIGN 1407<sup>#</sup>  
SITZ NEW DESIGN 458N<sup>#</sup>  
SITZ ELLUNAS ELITE 3308<sup>#</sup>

**SIRE: MILWILLAH REALITY K12<sup>PV</sup>**

**DAM: KAROO PRINCESS G110<sup>#</sup>**

COONAMBLE ELEVATOR E11<sup>PV</sup>  
MILWILLAH BARUNAH H8<sup>SV</sup>  
MILWILLAH BARUNAH A44<sup>#</sup>

LEACHMAN RIGHT TIME<sup>SV</sup>  
KAROO PRINCESS A84<sup>PV</sup>  
ARDROSSAN PRINCESS U102<sup>#</sup>

Mid-July 2019 Angus Australia BREEDPLAN

Traits Observed: BWT,200WT,400WT,600WT,SC,Scan(EMA,Rib,Rump,IMF)

	CALVING EASE		BIRTH		GROWTH					FERTILITY		CARCASE						INDEX VALUES			
	CED	CEM	GL	BW	200	400	600	MCW	MILK	SS	DC	CW	EMA	RIB	RMP	RBY	IMF	\$ABI	\$DOM	\$GRN	\$GRA
EBV	+2.6	+3.3	-7.5	+3.0	+45	+84	+109	+92	+14	+2.1	-6.7	+57	+2.4	+3.2	+4.7	-2.1	+1.9	\$118	\$107	\$116	\$118
ACC	49%	42%	65%	75%	70%	71%	74%	66%	58%	72%	42%	60%	60%	61%	61%	56%	56%				

N263 is a moderate framed K12 son that is soft and easy doing, with a beautiful nature.

Purchaser: ..... \$ .....

# 56

## KAROO L3 LOTTO N119<sup>SV</sup> (AI)

IDENT: NENN119    DOB: 30/7/17    HBR    AMFU,CAFU,DDFU,NHFU

TE MANIA BERKLEY B1<sup>PV</sup>  
AYRVALE GENERAL G18<sup>PV</sup>  
AYRVALE EASE E3<sup>PV</sup>

PAPA EQUATOR 2928<sup>#</sup>  
ARDROSSAN EQUATOR A241<sup>PV</sup>  
ARDROSSAN PRINCESS W38<sup>PV</sup>

**SIRE: ESSLEMONT LOTTO L3<sup>PV</sup>**

**DAM: KAROO DORIS K16<sup>#</sup>**

TUWHARETOA REGENT D145<sup>PV</sup>  
ESSLEMONT JENNY J8<sup>PV</sup>  
ESSLEMONT CHERRY C16<sup>PV</sup>

DUNOON EVIDENT E614<sup>PV</sup>  
KAROO DORIS H22<sup>#</sup>  
KAROO DORIS Z60<sup>SV</sup>

Mid-July 2019 Angus Australia BREEDPLAN

Traits Observed: GL,BWT,200WT,400WT,600WT,SC,Scan(EMA,IMF)

	CALVING EASE		BIRTH		GROWTH					FERTILITY		CARCASE						INDEX VALUES			
	CED	CEM	GL	BW	200	400	600	MCW	MILK	SS	DC	CW	EMA	RIB	RMP	RBY	IMF	\$ABI	\$DOM	\$GRN	\$GRA
EBV	-3.4	-2.7	-5.7	+5.5	+58	+101	+139	+121	+18	+3.2	-6.5	+87	+8.3	-0.5	-0.8	+0.8	+2.9	\$147	\$121	\$169	\$135
ACC	53%	41%	85%	75%	70%	71%	73%	65%	53%	73%	42%	59%	60%	61%	59%	55%	58%				

N119 is out of a very attractive A241 cow. Top 1% carcass weight. Three of the four \$Index values top 5% or better.

Purchaser: ..... \$ .....

# 57

## KAROO 839 REALITY N310<sup>SV</sup> (AI)

IDENT: NENN310    DOB: 7/9/17    HBR    AMFU,CAFU,DDF,NHFU

SCHURR 77 1346 EXCEL<sup>#</sup>  
SCHURRTOP REALITY X723<sup>#</sup>  
SCHURRTOP 8019 V141<sup>#</sup>

ARDROSSAN DIRECTION W109<sup>PV</sup>  
ARDROSSAN ADMIRAL A2<sup>PV</sup>  
KENNY'S CREEK ROSEBUD W171<sup>#</sup>

**SIRE: MATAURI REALITY 839<sup>#</sup>**

**DAM: KAROO WILCOOLA E205<sup>#</sup>**

TE MANIA ULONG U41<sup>SV</sup>  
MATAURI 06663<sup>#</sup>  
MATAURI 04456 AB<sup>#</sup>

TC STOCKMAN 365<sup>#</sup>  
KAROO FLATS WILCOOLA T1<sup>#</sup>  
WILLOW FIELDS WILCOOLA L9+91<sup>#</sup>

Mid-July 2019 Angus Australia BREEDPLAN

Traits Observed: BWT,200WT,400WT,600WT,SC,Scan(EMA,Rib,Rump,IMF)

	CALVING EASE		BIRTH		GROWTH					FERTILITY		CARCASE						INDEX VALUES			
	CED	CEM	GL	BW	200	400	600	MCW	MILK	SS	DC	CW	EMA	RIB	RMP	RBY	IMF	\$ABI	\$DOM	\$GRN	\$GRA
EBV	+3.5	+3.0	-7.0	+3.8	+43	+70	+92	+90	+11	+2.4	-4.7	+54	+4.7	+1.1	-0.4	-0.4	+2.2	\$101	\$99	\$104	\$99
ACC	59%	55%	70%	75%	71%	72%	75%	70%	65%	73%	53%	65%	64%	65%	66%	62%	62%				

Another eye catching Reality son out of an older A2 cow that goes back to one of our foundation Wilcoola cows. Suitable for heifer joining with light birth weight and calving ease.

Purchaser: ..... \$ .....

**58****KAROO K12 REALITY N304<sup>SV</sup>**

IDENT: NENN304 DOB: 5/9/17 HBR AMFU,CAFU,DDFU,NHFU

SCHURRTOP REALITY X723<sup>#</sup>  
MATAURI REALITY 839<sup>#</sup>  
MATAURI 06663<sup>#</sup>TUWHARETOA REGENT D145<sup>PV</sup>  
TE MANIA GASKIN G555<sup>SV</sup>  
TE MANIA LOWAN D66<sup>#</sup>**SIRE: MILWILLAH REALITY K12<sup>PV</sup>****DAM: KAROO DORIS K350<sup>#</sup>**COONAMBLE ELEVATOR E11<sup>PV</sup>  
MILWILLAH BARUNAH H8<sup>SV</sup>  
MILWILLAH BARUNAH A44<sup>#</sup>HYLINE RIGHT TIME 338<sup>#</sup>  
KAROO DORIS E211<sup>#</sup>  
KAROO DORIS Y137<sup>SV</sup>

Mid-July 2019 Angus Australia BREEDPLAN

Traits Observed: BWT,200WT,400WT,600WT,SC,Scan(EMA,Rib,Rump,IMF)

	CALVING EASE		BIRTH		GROWTH					FERTILITY		CARCASE						INDEX VALUES			
	CED	CEM	GL	BW	200	400	600	MCW	MILK	SS	DC	CW	EMA	RIB	RMP	RBY	IMF	\$ABI	\$DOM	\$GRN	\$GRA
EBV	+0.8	+0.8	-5.9	+3.8	+47	+86	+117	+109	+18	+2.0	-4.3	+66	+2.9	+0.7	+1.0	-0.6	+2.4	\$117	\$106	\$126	\$113
ACC	48%	41%	67%	74%	69%	70%	73%	66%	56%	71%	40%	59%	59%	60%	61%	55%	55%				

K12 certainly breeds a type. Great nature, easy doing and generally lower in birth weight but still able to produce the heavy calf out the other end. N304 typifies all of this.

Purchaser: ..... \$ .....

**59****KAROO 839 REALITY N109<sup>SV</sup> (AI)**

IDENT: NENN109 DOB: 16/7/17 HBR AMFU,CAFU,DDFU,NHFU

SCHURR 77 1346 EXCEL<sup>#</sup>  
SCHURRTOP REALITY X723<sup>#</sup>  
SCHURRTOP 8019 V141<sup>#</sup>TC TOTAL 410<sup>#</sup>  
TC FRANKLIN 619<sup>#</sup>  
TC MARCIA 1069<sup>#</sup>**SIRE: MATAURI REALITY 839<sup>#</sup>****DAM: KAROO JEDDA L156<sup>#</sup>**TE MANIA ULONG U41<sup>SV</sup>  
MATAURI 06663<sup>#</sup>  
MATAURI 04456 AB<sup>#</sup>ARDROSSAN EQUATOR A241<sup>PV</sup>  
KAROO JEDDA D60<sup>SV</sup>  
KAROO JEDDA X65<sup>#</sup>

Mid-July 2019 Angus Australia BREEDPLAN

Traits Observed: GL,BWT,200WT,400WT,600WT,SC,Scan(EMA,Rib,Rump,IMF)

	CALVING EASE		BIRTH		GROWTH					FERTILITY		CARCASE						INDEX VALUES			
	CED	CEM	GL	BW	200	400	600	MCW	MILK	SS	DC	CW	EMA	RIB	RMP	RBY	IMF	\$ABI	\$DOM	\$GRN	\$GRA
EBV	+5.6	+5.2	-4.7	+0.7	+40	+73	+91	+83	+14	+2.8	-4.6	+47	+2.3	+1.1	+0.7	-0.8	+2.2	\$102	\$103	\$103	\$101
ACC	57%	54%	84%	74%	70%	71%	74%	68%	62%	73%	50%	64%	63%	64%	65%	61%	61%				

A true heifer bull.

Purchaser: ..... \$ .....

**60****KAROO L3 LOTTO N121<sup>SV</sup> (AI)**

IDENT: NENN121 DOB: 31/7/17 HBR AMFU,CAFU,DDFU,NHFU

TE MANIA BERKLEY B1<sup>PV</sup>  
AYRVALE GENERAL G18<sup>PV</sup>  
AYRVALE EASE E3<sup>PV</sup>LEACHMAN RIGHT TIME<sup>SV</sup>  
LEACHMAN BOOM TIME<sup>#</sup>  
LEACHMAN BURGESS 5004<sup>#</sup>**SIRE: ESSLEMONT LOTTO L3<sup>PV</sup>****DAM: KAROO DORIS F9<sup>#</sup>**TUWHARETOA REGENT D145<sup>PV</sup>  
ESSLEMONT JENNY J8<sup>PV</sup>  
ESSLEMONT CHERRY C16<sup>PV</sup>THREE TREES ROCK ON 0059<sup>#</sup>  
KAROO DORIS Y137<sup>SV</sup>  
KAROO FLATS DORIS V96<sup>#</sup>

Mid-July 2019 Angus Australia BREEDPLAN

Traits Observed: GL,BWT,200WT,400WT,600WT,SC,Scan(EMA,Rib,Rump,IMF)

	CALVING EASE		BIRTH		GROWTH					FERTILITY		CARCASE						INDEX VALUES			
	CED	CEM	GL	BW	200	400	600	MCW	MILK	SS	DC	CW	EMA	RIB	RMP	RBY	IMF	\$ABI	\$DOM	\$GRN	\$GRA
EBV	-2.7	-1.1	-5.4	+3.6	+51	+87	+114	+95	+21	+2.7	-6.1	+73	+4.7	+0.2	-0.1	-0.4	+2.5	\$113	\$103	\$121	\$108
ACC	54%	42%	85%	75%	71%	72%	74%	67%	56%	73%	41%	61%	61%	62%	62%	57%	58%				

Another Lotto son with the typical thickness and softness. Top 8% for milk.

Purchaser: ..... \$ .....



**61****KAROO K12 REALITY N276<sup>SV</sup>**

IDENT: NENN276 DOB: 1/9/17 HBR AMFU,CAFU,DDFU,NHFU

SCHURRTOP REALITY X723<sup>#</sup>  
MATAURI REALITY 839<sup>#</sup>  
MATAURI 06663<sup>#</sup>TC TOTAL 410<sup>#</sup>  
TC FRANKLIN 619<sup>#</sup>  
TC MARCIA 1069<sup>#</sup>**SIRE: MILWILLAH REALITY K12<sup>PV</sup>****DAM: KAROO WILCOOLA K130<sup>#</sup>**COONAMBLE ELEVATOR E11<sup>PV</sup>  
MILWILLAH BARUNAH H8<sup>SV</sup>  
MILWILLAH BARUNAH A44<sup>#</sup>K C F BENNETT TOTAL<sup>#</sup>  
KAROO WILCOOLA H96<sup>#</sup>  
KAROO WILCOOLA F60<sup>#</sup>

Mid-July 2019 Angus Australia BREEDPLAN

Traits Observed: BWT,200WT,400WT,600WT,SC,Scan(EMA,Rib,Rump,IMF)

	CALVING EASE		BIRTH		GROWTH					FERTILITY		CARCASE						INDEX VALUES			
	CED	CEM	GL	BW	200	400	600	MCW	MILK	SS	DC	CW	EMA	RIB	RMP	RBY	IMF	\$ABI	\$DOM	\$GRN	\$GRA
EBV	+1.7	+2.7	-8.1	+4.8	+52	+100	+131	+127	+15	+2.0	-3.6	+69	+3.1	-0.6	+0.3	-0.6	+2.2	\$127	\$116	\$138	\$123
ACC	48%	41%	67%	74%	69%	70%	73%	65%	55%	71%	39%	59%	59%	60%	60%	55%	55%				

The K12's are attractive and very thick when you get behind them. Moderate birth with explosive growth!

Purchaser: ..... \$ .....

**62****KAROO J266 JUNIOR N316<sup>SV</sup> (AI)**

IDENT: NENN316 DOB: 9/9/17 HBR AMFU,CAFU,DDFU,NHFU

TE MANIA AMBASSADOR A134<sup>SV</sup>  
TUWHARETOA REGENT D145<sup>PV</sup>  
LAWSONS HENRY VIII Y5<sup>SV</sup>TE MANIA YORKSHIRE Y437<sup>PV</sup>  
TE MANIA BERKLEY B1<sup>PV</sup>  
TE MANIA LOWAN Z53<sup>#</sup>**SIRE: COONAMBLE JUNIOR J266<sup>PV</sup>****DAM: KAROO WILCOOLA J285<sup>#</sup>**VERMILION DATELINE 7078<sup>#</sup>  
BANGADANG LOWAN A61<sup>PV</sup>  
BANGADANG KATE W19<sup>#</sup>BT RIGHT TIME 24J<sup>#</sup>  
KAROO WILCOOLA D326<sup>SV</sup>  
KAROO WILCOOLA A281<sup>#</sup>

Mid-July 2019 Angus Australia BREEDPLAN

Traits Observed: GL,BWT,200WT,400WT,600WT,SC,Scan(EMA,Rib,Rump,IMF)

	CALVING EASE		BIRTH		GROWTH					FERTILITY		CARCASE						INDEX VALUES			
	CED	CEM	GL	BW	200	400	600	MCW	MILK	SS	DC	CW	EMA	RIB	RMP	RBY	IMF	\$ABI	\$DOM	\$GRN	\$GRA
EBV	-0.3	+0.4	-2.6	+3.8	+48	+90	+124	+119	+18	+1.6	-6.0	+82	+8.0	-1.3	-2.7	+1.4	+2.6	\$139	\$119	\$162	\$128
ACC	50%	45%	84%	75%	70%	70%	72%	66%	56%	70%	47%	62%	60%	63%	62%	59%	60%				

Junior adds muscle to his progeny, and N316 is no exception. A bull to be used over heifers or cows to add capacity and weight.

Purchaser: ..... \$ .....

**63****KAROO K12 REALITY N269<sup>SV</sup>**

IDENT: NENN269 DOB: 31/8/17 HBR AMFU,CAFU,DDFU,NHFU

SCHURRTOP REALITY X723<sup>#</sup>  
MATAURI REALITY 839<sup>#</sup>  
MATAURI 06663<sup>#</sup>PAPA EQUATOR 2928<sup>#</sup>  
ARDROSSAN EQUATOR A241<sup>PV</sup>  
ARDROSSAN PRINCESS W38<sup>PV</sup>**SIRE: MILWILLAH REALITY K12<sup>PV</sup>****DAM: KAROO STEPHI H181<sup>#</sup>**COONAMBLE ELEVATOR E11<sup>PV</sup>  
MILWILLAH BARUNAH H8<sup>SV</sup>  
MILWILLAH BARUNAH A44<sup>#</sup>KAROO Y145 UNDERTAKEN C53<sup>PV</sup>  
KAROO STEPHI E80<sup>#</sup>  
KAROO STEPHI C181<sup>#</sup>

Mid-July 2019 Angus Australia BREEDPLAN

Traits Observed: BWT,200WT,400WT,600WT,SC,Scan(EMA,Rib,Rump,IMF)

	CALVING EASE		BIRTH		GROWTH					FERTILITY		CARCASE						INDEX VALUES			
	CED	CEM	GL	BW	200	400	600	MCW	MILK	SS	DC	CW	EMA	RIB	RMP	RBY	IMF	\$ABI	\$DOM	\$GRN	\$GRA
EBV	+2.1	+3.0	-7.0	+3.9	+50	+97	+127	+118	+19	+3.1	-5.7	+75	+4.1	+0.0	+0.2	+0.2	+2.2	\$137	\$123	\$151	\$130
ACC	49%	42%	67%	75%	70%	71%	73%	66%	56%	71%	41%	60%	60%	61%	61%	56%	56%				

A heavy boned son of K12 who is very clean underneath and has a great hindquarter. N269 has herd improving EBVs right across the board.

Purchaser: ..... \$ .....

**64****KAROO 839 REALITY N154<sup>SV</sup> (AI)**

IDENT: NENN154    DOB: 2/8/17    HBR    AMFU,CAFU,DDFU,NHFU

SCHURR 77 1346 EXCEL#  
SCHURRTOP REALITY X723#  
SCHURRTOP 8019 V141#TE MANIA AMBASSADOR A134<sup>SV</sup>  
TUWHARETOA REGENT D145<sup>PV</sup>  
LAWSONS HENRY VIII Y5<sup>SV</sup>**SIRE: MATAURI REALITY 839#****DAM: KAROO WILCOOLA J332#**TE MANIA ULONG U41<sup>SV</sup>  
MATAURI 06663#  
MATAURI 04456 AB#ARDROSSAN MODEST W37<sup>SV</sup>  
KAROO WILCOOLA D10#  
KAROO FLATS WILCOOLA U7#

Mid-July 2019 Angus Australia BREEDPLAN

Traits Observed: GL,BWT,200WT,400WT,600WT,SC,Scan(EMA,Rib,Rump,IMF)

	CALVING EASE		BIRTH		GROWTH					FERTILITY		CARCASE						INDEX VALUES			
	CED	CEM	GL	BW	200	400	600	MCW	MILK	SS	DC	CW	EMA	RIB	RMP	RBY	IMF	\$ABI	\$DOM	\$GRN	\$GRA
EBV	+3.1	+1.9	-6.1	+3.6	+45	+81	+104	+98	+14	+2.0	-5.2	+60	+4.5	+2.0	+0.7	-0.8	+2.9	\$118	\$109	\$130	\$112
ACC	59%	55%	85%	75%	71%	72%	74%	69%	64%	73%	53%	65%	64%	65%	66%	62%	62%				

This bull could be used on heifers while still maintaining growth over +100. His pedigree is backed by the famous Wilcoola family.

Purchaser: ..... \$ .....

**65****KAROO L37 NOVAK N116<sup>PV</sup>**

IDENT: NENN116    DOB: 22/7/17    HBR    AMFU,CAFU,DDFU,NHFU

TC TOTAL 410#  
LAWSONS NOVAK E313<sup>SV</sup>  
LAWSONS PREDESTINED B770<sup>SV</sup>BOOROOMOOKA UNDERTAKEN Y145<sup>PV</sup>  
KAROO Y145 UNDERTAKEN C53<sup>PV</sup>  
KAROO FLATS WILCOOLA W86#**SIRE: KAROO E313 NOVAK L37<sup>SV</sup>****DAM: KAROO WILCOOLA E89#**ARDROSSAN DIRECTION W109<sup>PV</sup>  
KAROO STEPHI Z209<sup>SV</sup>  
KAROO FLATS STEPHI S51#TE MANIA UNLIMITED U3271#  
KAROO WILCOOLA C113#  
KAROO WILCOOLA A177#

Mid-July 2019 Angus Australia BREEDPLAN

Traits Observed: BWT,200WT,400WT,600WT,SC,Scan(EMA,Rib,Rump,IMF)

	CALVING EASE		BIRTH		GROWTH					FERTILITY		CARCASE						INDEX VALUES			
	CED	CEM	GL	BW	200	400	600	MCW	MILK	SS	DC	CW	EMA	RIB	RMP	RBY	IMF	\$ABI	\$DOM	\$GRN	\$GRA
EBV	+0.3	+1.8	-2.2	+3.9	+42	+82	+106	+93	+16	+1.8	-3.9	+60	+4.6	-1.9	-2.2	+0.9	+2.2	\$114	\$110	\$125	\$109
ACC	46%	37%	61%	74%	69%	69%	72%	65%	53%	70%	38%	59%	57%	59%	60%	54%	52%				

N116 is a larger framed L37 son.

Purchaser: ..... \$ .....

**66****KAROO J38 TRUST N252<sup>SV</sup>**

IDENT: NENN252    DOB: 25/8/17    HBR    AMFU,CAFU,DDFU,NHFU

SCR PROMISE 4042#  
SYDGEN TRUST 6228#  
SYDGEN FOREVER LADY 4413#TE MANIA AMBASSADOR A134<sup>SV</sup>  
TUWHARETOA REGENT D145<sup>PV</sup>  
LAWSONS HENRY VIII Y5<sup>SV</sup>**SIRE: KAROO 6228 TRUST J38<sup>SV</sup>****DAM: KAROO DORRIS J293#**ARDROSSAN EQUATOR A241<sup>PV</sup>  
KAROO KERRY D71<sup>PV</sup>  
KAROO KERRY Z59<sup>SV</sup>HYLINE RIGHT TIME 338#  
KAROO DORIS E211#  
KAROO DORIS Y137<sup>SV</sup>

Mid-July 2019 Angus Australia BREEDPLAN

Traits Observed: BWT,200WT,400WT,600WT,SC,Scan(EMA,Rib,Rump,IMF)

	CALVING EASE		BIRTH		GROWTH					FERTILITY		CARCASE						INDEX VALUES			
	CED	CEM	GL	BW	200	400	600	MCW	MILK	SS	DC	CW	EMA	RIB	RMP	RBY	IMF	\$ABI	\$DOM	\$GRN	\$GRA
EBV	-1.3	-0.5	-5.8	+4.5	+48	+81	+105	+85	+15	+2.2	-6.6	+69	+6.7	+0.6	+0.5	+0.2	+2.4	\$120	\$110	\$128	\$114
ACC	47%	42%	62%	74%	69%	70%	73%	65%	55%	72%	43%	59%	58%	59%	60%	55%	53%				

Trust produces soft, easy doing calves.

Purchaser: ..... \$ .....

**67****KAROO H249 HECTOR N112<sup>SV</sup> (AI)**

IDENT: NENN112 DOB: 18/7/17 HBR AMFU,CAFU,DDFU,NHFU

HYLINE RIGHT TIME 338#  
K C F BENNETT PERFORMER#  
K C F MISS 589 L182#SYDGEN TRUST 6228#  
KAROO 6228 TRUST J38<sup>SV</sup>  
KAROO KERRY D71<sup>PV</sup>**SIRE: COONAMBLE HECTOR H249<sup>SV</sup>****DAM: KAROO WILCOOLA L299#**COONAMBLE Z3<sup>PV</sup>  
COONAMBLE E9<sup>PV</sup>  
BANGADANG LOWAN A61<sup>PV</sup>ARDROSSAN EQUATOR A241<sup>PV</sup>  
KAROO WILCOOLA G280#  
KAROO WILCOOLA B18#

Mid-July 2019 Angus Australia BREEDPLAN

Traits Observed: GL,BWT,200WT,400WT,600WT,SC,Scan(EMA,Rib,Rump,IMF)

	CALVING EASE		BIRTH		GROWTH					FERTILITY		CARCASE						INDEX VALUES			
	CED	CEM	GL	BW	200	400	600	MCW	MILK	SS	DC	CW	EMA	RIB	RMP	RBY	IMF	\$ABI	\$DOM	\$GRN	\$GRA
EBV	+0.4	-0.4	-4.0	+4.9	+46	+81	+108	+93	+10	+2.7	-4.6	+67	+7.5	-0.2	-0.1	+1.3	+1.3	\$117	\$111	\$118	\$116
ACC	49%	43%	84%	74%	70%	70%	73%	66%	55%	72%	42%	61%	61%	62%	62%	58%	58%				

This bull is a ball of muscle that will suit the short term grass fed market. He has a very tight sheath.

Purchaser: ..... \$ .....

**68****KAROO 839 REALITY N205<sup>SV</sup> (AI)**

IDENT: NENN205 DOB: 11/8/17 HBR AMFU,CAFU,DDFU,NHFU

SCHURR 77 1346 EXCEL#  
SCHURRTOP REALITY X723#  
SCHURRTOP 8019 V141#COONAMBLE Z3<sup>PV</sup>  
COONAMBLE ELEVATOR E11<sup>PV</sup>  
BANGADANG B31<sup>SV</sup>**SIRE: MATAURI REALITY 839#****DAM: KAROO ALICE J10#**TE MANIA ULONG U41<sup>SV</sup>  
MATAURI 06663#  
MATAURI 04456 AB#ARDROSSAN DIRECTION W109<sup>PV</sup>  
KAROO ALICE A40<sup>PV</sup>  
KAROO FLATS ALICE W62#

Mid-July 2019 Angus Australia BREEDPLAN

Traits Observed: GL,BWT,200WT,400WT,600WT,SC,Scan(EMA,Rib,Rump,IMF)

	CALVING EASE		BIRTH		GROWTH					FERTILITY		CARCASE						INDEX VALUES			
	CED	CEM	GL	BW	200	400	600	MCW	MILK	SS	DC	CW	EMA	RIB	RMP	RBY	IMF	\$ABI	\$DOM	\$GRN	\$GRA
EBV	+4.2	+3.8	-8.1	+3.5	+45	+86	+106	+106	+14	+2.6	-3.6	+59	+3.8	+1.2	+0.9	-0.5	+2.0	\$110	\$110	\$113	\$109
ACC	58%	53%	84%	75%	71%	72%	74%	69%	64%	74%	51%	65%	64%	65%	66%	62%	61%				

Reality has worked really well for us and is a bull that will be looked favorably on in any pedigree for years to come.

Purchaser: ..... \$ .....

**69****KAROO J266 JUNIOR N138<sup>SV</sup> (AI)**

IDENT: NENN138 DOB: 1/8/17 HBR AMFU,CAFU,DDFU,NHFU

TE MANIA AMBASSADOR A134<sup>SV</sup>  
TUWHARETOA REGENT D145<sup>PV</sup>  
LAWSONS HENRY VIII Y5<sup>SV</sup>PAPA EQUATOR 2928#  
ARDROSSAN EQUATOR A241<sup>PV</sup>  
ARDROSSAN PRINCESS W38<sup>PV</sup>**SIRE: COONAMBLE JUNIOR J266<sup>PV</sup>****DAM: KAROO ALICE G7#**VERMILION DATELINE 7078#  
BANGADANG LOWAN A61<sup>PV</sup>  
BANGADANG KATE W19#ARDROSSAN DIRECTION W109<sup>PV</sup>  
KAROO ALICE A40<sup>PV</sup>  
KAROO FLATS ALICE W62#

Mid-July 2019 Angus Australia BREEDPLAN

Traits Observed: GL,BWT,200WT,400WT,600WT,SC,Scan(EMA,Rib,Rump,IMF)

	CALVING EASE		BIRTH		GROWTH					FERTILITY		CARCASE						INDEX VALUES			
	CED	CEM	GL	BW	200	400	600	MCW	MILK	SS	DC	CW	EMA	RIB	RMP	RBY	IMF	\$ABI	\$DOM	\$GRN	\$GRA
EBV	+0.4	+0.0	-3.9	+3.2	+42	+76	+102	+92	+18	+2.0	-5.9	+74	+5.7	-2.1	-2.6	+1.8	+2.3	\$121	\$112	\$136	\$113
ACC	52%	46%	85%	76%	71%	71%	74%	67%	58%	73%	47%	63%	63%	64%	64%	60%	61%				

One of the 38 heifer bulls we have to offer this year. It is testament to our program that we can get low to moderate birth weight, with high growth and carcase over such a large number of animals.

Purchaser: ..... \$ .....

# 70

## KAROO L3 LOTTO N86<sup>SV</sup> (AI)

IDENT: NENN86    DOB: 10/7/17    HBR    AMFU,CAFU,DDFU,NHFU

TE MANIA BERKLEY B1<sup>PV</sup>  
 AYRVALE GENERAL G18<sup>PV</sup>  
 AYRVALE EASE E3<sup>PV</sup>

LEACHMAN RIGHT TIME<sup>SV</sup>  
 BT RIGHT TIME 24J<sup>#</sup>  
 SITZ EVERELDA ENTENSE 1905<sup>#</sup>

**SIRE: ESSLEMONT LOTTO L3<sup>PV</sup>**

**DAM: KAROO ELSA L225<sup>#</sup>**

TUWHARETOA REGENT D145<sup>PV</sup>  
 ESSLEMONT JENNY J8<sup>PV</sup>  
 ESSLEMONT CHERRY C16<sup>PV</sup>

KAROO 04379 INFINITY D35<sup>PV</sup>  
 KAROO ELSA F321<sup>#</sup>  
 KAROO ELSA A181<sup>PV</sup>

Mid-July 2019 Angus Australia BREEDPLAN

Traits Observed: GL,BWT,200WT,400WT,600WT,SC,Scan(EMA,Rib,Rump,IMF)

	CALVING EASE		BIRTH		GROWTH					FERTILITY		CARCASE						INDEX VALUES			
	CED	CEM	GL	BW	200	400	600	MCW	MILK	SS	DC	CW	EMA	RIB	RMP	RBY	IMF	\$ABI	\$DOM	\$GRN	\$GRA
EBV	+0.0	-0.5	-7.1	+3.6	+48	+89	+118	+100	+19	+2.1	-5.6	+72	+6.4	-0.5	-0.9	+0.6	+2.3	\$128	\$115	\$140	\$121
ACC	51%	40%	85%	74%	70%	71%	74%	65%	52%	72%	40%	59%	60%	61%	61%	56%	57%				

If you need a carcass injection into your herd, an L3 son is the bull to use. Very solid, all round bull that is quiet.

Purchaser: ..... \$ .....

# 71

## KAROO H249 HECTOR N203<sup>SV</sup> (AI)

IDENT: NENN203    DOB: 11/8/17    HBR    AMFU,CAFU,DDFU,NHFU

HYLINE RIGHT TIME 338<sup>#</sup>  
 K C F BENNETT PERFORMER<sup>#</sup>  
 K C F MISS 589 L182<sup>#</sup>

TC TOTAL 410<sup>#</sup>  
 TC FRANKLIN 619<sup>#</sup>  
 TC MARCIA 1069<sup>#</sup>

**SIRE: COONAMBLE HECTOR H249<sup>SV</sup>**

**DAM: KAROO WILCOOLA K143<sup>#</sup>**

COONAMBLE Z3<sup>PV</sup>  
 COONAMBLE E9<sup>PV</sup>  
 BANGADANG LOWAN A61<sup>PV</sup>

WK REPLAY<sup>#</sup>  
 KAROO WILCOOLA H340<sup>#</sup>  
 KAROO WILCOOLA B18<sup>#</sup>

Mid-July 2019 Angus Australia BREEDPLAN

Traits Observed: GL,BWT,200WT,400WT,600WT,SC,Scan(EMA,Rib,Rump,IMF)

	CALVING EASE		BIRTH		GROWTH					FERTILITY		CARCASE						INDEX VALUES			
	CED	CEM	GL	BW	200	400	600	MCW	MILK	SS	DC	CW	EMA	RIB	RMP	RBY	IMF	\$ABI	\$DOM	\$GRN	\$GRA
EBV	+3.5	+2.5	-7.5	+2.5	+44	+80	+102	+86	+12	+2.2	-4.5	+59	+6.5	+0.0	+0.7	+0.7	+1.5	\$117	\$114	\$116	\$117
ACC	52%	46%	85%	75%	70%	71%	74%	67%	57%	73%	43%	62%	62%	63%	63%	59%	60%				

A bull that can be used on heifers with +2.5 for birth.

Purchaser: ..... \$ .....

# 72

## KAROO L3 LOTTO N83<sup>SV</sup> (AI)

IDENT: NENN83    DOB: 10/7/17    HBR    AMFU,CAFU,DDFU,NHFU

TE MANIA BERKLEY B1<sup>PV</sup>  
 AYRVALE GENERAL G18<sup>PV</sup>  
 AYRVALE EASE E3<sup>PV</sup>

CONNEALY REFLECTION<sup>#</sup>  
 JINDRA DOUBLE VISION<sup>SV</sup>  
 HOFF RACHEL 8312 405<sup>#</sup>

**SIRE: ESSLEMONT LOTTO L3<sup>PV</sup>**

**DAM: KAROO ALICE L178<sup>#</sup>**

TUWHARETOA REGENT D145<sup>PV</sup>  
 ESSLEMONT JENNY J8<sup>PV</sup>  
 ESSLEMONT CHERRY C16<sup>PV</sup>

ARDROSSAN EQUATOR A241<sup>PV</sup>  
 KAROO ALICE G7<sup>#</sup>  
 KAROO ALICE A40<sup>PV</sup>

Mid-July 2019 Angus Australia BREEDPLAN

Traits Observed: GL,BWT,200WT,400WT,600WT,SC,Scan(EMA,Rib,Rump,IMF)

	CALVING EASE		BIRTH		GROWTH					FERTILITY		CARCASE						INDEX VALUES			
	CED	CEM	GL	BW	200	400	600	MCW	MILK	SS	DC	CW	EMA	RIB	RMP	RBY	IMF	\$ABI	\$DOM	\$GRN	\$GRA
EBV	+0.6	+1.4	-6.5	+3.3	+50	+89	+112	+93	+20	+1.6	-5.6	+78	+6.9	-0.3	-1.0	+0.5	+2.5	\$126	\$118	\$138	\$120
ACC	51%	38%	85%	75%	70%	71%	74%	65%	52%	73%	37%	59%	60%	61%	61%	55%	56%				

Possibly the thickest made of the Lotto's in this year's draft. High IMF% coupled with top 4% for carcass weight which makes him a valuable 'contributor'.

Purchaser: ..... \$ .....

*Thank you for your support.  
We wish you all the best with your purchases.*

TOP PRICE: ..... AVERAGE: ..... CLEARANCE: .....

## CARING FOR YOUR NEW BULL

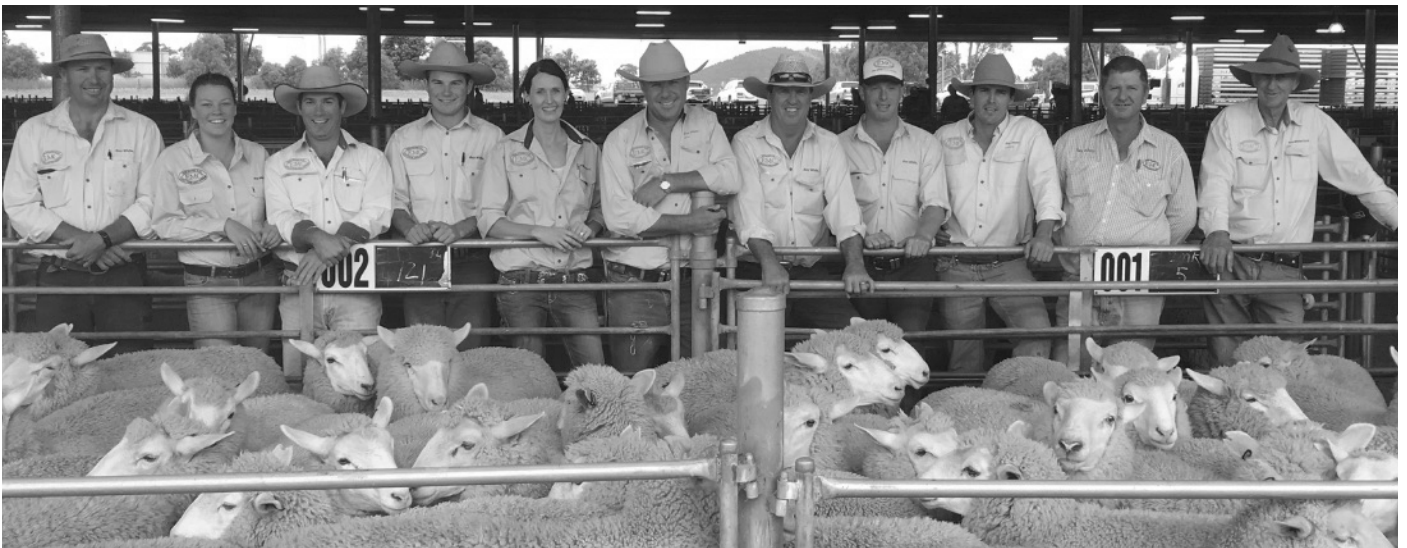
Always be considerate to your new bull/s and handle them with respect and kindness. Handle them quietly, walk them rather than rushing them, treat them with care and in a gentle manner and they will do likewise to you.

A bull leaving 'Karoo' is leaving the security of a large mob, and will arrive in a strange environment at the purchaser's property. When the bull/s are unloaded it is recommended you have a steer or cow as a companion waiting for him in the yard.

A young bull can move in with older bulls and settle well, but remember, being the youngest, he will get the last of any feed available, because of the pecking order. The paddock needs to be reasonably large so he can keep away from the others and find adequate feed. Young bulls are still growing fast and need enough feed to maintain their growth pattern.

'Karoo' bulls are used to being handled by stockmen with four wheel motorbikes, utes and dogs.

Disclaimer: All reasonable care has been taken by the vendor to ensure that the information provided in this catalogue is correct at the time of publication. However, neither the vendor nor the selling agents make no representations about the accuracy, reliability or completeness of any information provided in this catalogue and do not assume any responsibility for the use or interpretation of the information included in this catalogue. You are encouraged to seek independent verification of any information contained in this catalogue before relying on such information.



## LIVESTOCK & PROPERTY SALES

Ben Emms            0428 639 381  
Steve Mooney      0428 683 152  
Pat Bird             0438 361 109

Matt Byrnes        0427 259 529  
Ben Redfern        0457 770 062  
Harry Larnach      0428 637 540  
Sam D'Arcy         0401 612 996



**Ray White** Rural  
Emms Mooney

Mid July 2019 Angus Australia BREEDPLAN						CALV EASE		BIRTH		GROWTH					FERTILITY		CARCASE					\$INDEX VALUES				
LOT	ID	DOB	SIRE	DAM	DAM SIRE	DIR	DTR	GL	BW	200	400	600	MCW	MILK	SS	DC	CWT	EMA	RIB	RMP	RBY	IMF	ABI	DOM	HGRN	HGRS
1	N314	8/9/17	REALITY	F168	NAQA241	+4.3	+3.4	-6.4	+3.4	+44	+83	+108	+103	+16	+3.5	-5.9	+60	+4.1	+0.5	+0.1	-0.1	+2.4	\$124	\$113	\$136	\$117
2	N144	1/8/17	LOTTO	K62	WDCE11	-3.0	-1.4	-5.5	+4.4	+57	+99	+136	+121	+20	+3.2	-5.5	+79	+7.7	+1.2	+1.2	+0.2	+2.3	\$135	\$115	\$146	\$130
3	N278	1/9/17	REALITY K12	F42	NAQA241	+1.6	+2.4	-6.7	+4.5	+51	+97	+138	+134	+18	+3.1	-4.3	+76	+4.5	+0.3	+0.5	-0.1	+2.1	\$137	\$116	\$150	\$131
4	N126	31/7/17	CNMBLE H176	J174	NENG47	-1.6	-0.7	-4.4	+5.6	+55	+91	+138	+129	+15	+1.5	-1.3	+74	+7.0	+0.4	+0.4	+0.5	+1.3	\$116	\$100	\$116	\$119
5	N327	11/9/17	CNMBLE H176	H123	BNAD145	-6.6	-4.9	-1.8	+6.8	+60	+103	+145	+137	+17	+2.9	-3.1	+80	+7.3	+0.6	+1.0	+0.6	+1.4	\$117	\$101	\$119	\$117
6	N246	24/8/17	C.JUNIOR J266	K340	WDCE11	-10.8	-7.1	+0.2	+7.5	+58	+107	+148	+145	+16	+2.5	-3.6	+87	+6.6	-1.7	-1.4	+1.2	+2.6	\$122	\$102	\$142	\$113
7	N315	8/9/17	C.JUNIOR J266	H337	USA 16541214	-4.1	-5.0	-1.9	+4.9	+51	+91	+122	+102	+17	+1.1	-5.1	+76	+6.8	-0.2	+0.0	+0.5	+2.5	\$122	\$108	\$134	\$116
8	N296	5/9/17	CNMBLE H176	J266	VTME343	-1.3	+0.8	-3.8	+5.1	+54	+101	+130	+115	+16	+2.0	-4.6	+68	+5.7	+2.6	+3.3	-0.5	+1.1	\$122	\$113	\$117	\$124
9	N220	15/8/17	ELEVATOR	K139	NZE 14647008839	-0.1	+1.0	-4.5	+5.9	+56	+104	+142	+147	+14	+1.4	-1.4	+75	+5.1	-0.8	-0.4	+0.2	+1.3	\$119	\$109	\$122	\$120
10	N290	5/9/17	LOTTO	H167	QHED62	-4.1	-1.7	-6.6	+6.5	+60	+106	+154	+133	+21	+3.8	-6.1	+89	+6.8	+0.3	+0.0	+0.3	+2.7	\$150	\$118	\$172	\$140
11	N107	14/7/17	DOCK LANDS	L223	NORE11	+4.3	+2.3	-6.7	+2.7	+45	+82	+116	+87	+20	+2.3	-7.8	+66	+6.4	+1.8	+1.3	-0.2	+1.9	\$136	\$115	\$143	\$131
12	N287	2/9/17	C.JUNIOR J266	G158	NGMD98	-2.7	-1.1	-5.5	+5.3	+53	+95	+130	+111	+16	+2.0	-4.9	+83	+7.2	-2.1	-2.6	+1.7	+2.3	\$135	\$118	\$153	\$126
13	N297	5/9/17	DOCK LANDS	H178	USA 16154968	+1.1	+1.4	-5.9	+5.4	+50	+86	+121	+96	+17	+2.9	-5.7	+68	+7.6	-0.9	-1.1	+1.1	+1.7	\$132	\$116	\$140	\$127
14	N207	12/8/17	LOTTO	K142	USA 15462648	-0.6	+1.6	-6.3	+3.6	+54	+100	+131	+109	+18	+1.9	-5.2	+77	+4.8	-0.5	-0.8	-0.1	+3.0	\$139	\$122	\$158	\$130
15	N150	2/8/17	GENESIS	C94	NZE 04379	-1.3	+0.2	-5.1	+5.8	+50	+85	+119	+119	+17	+2.8	-3.7	+74	+8.2	+0.3	-0.7	+0.5	+1.7	\$111	\$101	\$115	\$109
16	N137	31/7/17	LOTTO	E165	USA 13058662	-2.9	+0.0	-5.4	+4.3	+55	+104	+135	+110	+24	+3.2	-6.1	+83	+5.6	-0.1	+0.3	+0.0	+2.6	\$137	\$120	\$152	\$130
17	N90	10/7/17	K.NOVAK L37	F82	NZE04379	-0.5	+1.4	-4.4	+3.7	+40	+73	+107	+100	+16	+1.4	-3.6	+55	+4.4	-0.6	-0.1	-0.4	+2.0	\$102	\$92	\$107	\$101
18	N117	22/7/17	CNMBLE H176	H163	NGMD98	+1.6	+3.7	-9.0	+3.4	+45	+80	+107	+91	+15	+0.9	-2.2	+60	+4.5	-0.2	-0.1	+0.7	+1.0	\$103	\$105	\$97	\$108
19	N95	10/7/17	LOTTO	L174	USA 17236055	-1.4	+1.7	-7.1	+4.7	+58	+96	+134	+105	+20	+3.0	-6.5	+86	+9.0	+0.8	-0.3	+0.4	+2.7	\$147	\$122	\$163	\$138
20	P65	12/3/18	FRANKLIN G188	H258	USA 15354674	-0.7	+1.8	-1.9	+5.3	+62	+108	+141	+118	+18	+2.0	-3.5	+82	+6.3	-1.0	-1.6	+0.7	+1.4	\$128	\$121	\$132	\$128
21	P96	24/4/18	K.B.PEARL L245	H344	NENF35	-1.0	+1.7	-4.3	+5.9	+59	+104	+143	+118	+19	+3.5	-4.9	+85	+6.0	-0.5	-0.4	+0.8	+1.8	\$141	\$122	\$152	\$136
22	P3	27/2/18	WJMF96	M2	USA 17614813	+3.2	+3.6	-9.0	+2.7	+48	+87	+114	+94	+15	+1.4	-4.9	+64	+6.0	-0.7	+0.3	+0.6	+1.2	\$123	\$117	\$122	\$124
23	P35	5/3/18	K.KNOCK OUT K176	L39	USA 16748826	+2.7	+3.3	-5.0	+4.5	+48	+90	+120	+121	+13	+3.2	-4.4	+69	+6.2	+0.4	+0.0	+0.4	+1.5	\$124	\$114	\$129	\$121
24	P91	13/4/18	K.BIG SKY M97	M125	QHED62	+0.0	+2.0	-4.9	+4.2	+50	+89	+120	+104	+15	+3.1	-5.3	+63	+3.1	-0.3	-0.1	+0.4	+1.4	\$119	\$110	\$122	\$117
25	P60	9/3/18	DOCK LANDS	G342	NENE54	+0.6	-0.7	-4.1	+5.2	+46	+84	+117	+100	+20	+3.1	-4.8	+66	+5.9	-0.2	-0.5	+0.7	+1.3	\$115	\$105	\$117	\$114
26	P52	7/3/18	C.JUNIOR J266	G8	NAQA241	-1.2	-0.2	-3.0	+4.1	+48	+89	+121	+107	+16	+3.2	-7.0	+77	+6.2	-1.2	-1.6	+1.7	+2.5	\$142	\$122	\$163	\$130
27	P73	26/3/18	K.BIG SKY M97	M88	NORE11	+1.0	+1.3	-4.9	+3.8	+48	+88	+113	+93	+13	+2.6	-5.9	+62	+4.9	-0.2	-0.8	+0.9	+2.5	\$134	\$123	\$149	\$126
28	P97	24/4/18	K.B.PEARL L245	H59	NWPC109	-0.7	+2.5	-4.1	+4.8	+53	+92	+128	+112	+17	+2.3	-3.4	+76	+4.6	-1.2	-2.0	+0.8	+1.3	\$115	\$107	\$118	\$115
29	P74	29/3/18	K.BIG SKY M97	M108	NENH109	-0.5	+1.1	-3.6	+3.9	+48	+89	+112	+98	+15	+1.6	-4.9	+69	+5.1	-0.9	-1.2	+0.8	+1.8	\$117	\$114	\$124	\$114
30	P28	3/3/18	KH REALITY K46	L22	USA 15462648	+1.1	+2.9	-7.3	+4.7	+50	+91	+120	+110	+14	+1.8	-4.0	+64	+6.1	-1.8	-1.3	+1.2	+1.7	\$127	\$119	\$135	\$123
31	P63	10/3/18	NKLF84	G151	BNAD145	-2.3	-3.5	-1.5	+6.4	+51	+92	+126	+109	+18	+0.4	-3.6	+67	+6.3	+0.7	-0.2	-0.1	+2.2	\$116	\$103	\$124	\$113
32	P6	28/2/18	DOCK LANDS	J24	BNAD145	+3.2	+1.3	-8.6	+3.7	+44	+81	+111	+87	+18	+2.7	-8.2	+71	+6.9	+1.5	+1.1	+0.0	+1.8	\$133	\$115	\$139	\$127
33	P27	3/3/18	C.HECTOR H249	L5	BNAD145	+0.1	-1.9	-8.5	+4.6	+47	+82	+110	+98	+11	+1.3	-5.8	+72	+8.0	+1.7	+1.8	+0.6	+1.6	\$123	\$111	\$125	\$121
34	P1	27/2/18	FRANKLIN G188	M45	QHED62	+4.0	+3.9	-9.3	+1.8	+52	+91	+119	+90	+18	+2.4	-6.0	+67	+2.7	+1.4	+1.3	-0.9	+1.4	\$120	\$113	\$117	\$122
35	P40	5/3/18	K.REGENT H134	G172	NENC22	+1.6	-0.5	-5.1	+2.3	+40	+69	+99	+77	+18	+1.4	-5.4	+58	+4.8	+2.7	+2.9	-1.5	+2.0	\$104	\$93	\$100	\$105
36	P81	2/4/18	K.BIG SKY M97	M137	NENJ38	+2.1	+2.6	-5.3	+2.5	+44	+77	+100	+78	+13	+2.6	-6.6	+54	+3.8	+1.1	+1.9	-0.4	+1.7	\$116	\$109	\$115	\$115
37	P80	1/4/18	K.B.PEARL L245	H213	NENF12	+1.8	+1.6	-5.8	+4.3	+51	+92	+126	+115	+15	+3.1	-4.3	+74	+5.9	-0.3	-0.5	+0.8	+1.5	\$128	\$116	\$134	\$126

Mid July 2019 Angus Australia BREEDPLAN						CALV EASE		BIRTH		GROWTH				FERTILITY		CARCASE					\$/INDEX VALUES					
LOT	ID	DOB	SIRE	DAM	DAM SIRE	DIR	DTR	GL	BW	200	400	600	MCW	MILK	SS	DC	CWT	EMA	RIB	RMP	RBY	IMF	ABI	DOM	HGRN	HGRS
38	P102	12/5/18	K.B.PEARL M24	L81	NENH109	+1.6	+1.4	-4.9	+4.1	+44	+79	+101	+86	+14	+1.7	-4.4	+67	+5.7	+0.4	-0.2	+0.1	+2.1	\$111	\$108	\$115	\$109
39	P46	6/3/18	FRANKLIN G188	M36	USA 17614813	+2.1	+4.0	-5.0	+2.1	+52	+91	+116	+90	+16	+1.8	-4.9	+63	+2.6	+0.5	+0.8	-0.9	+1.8	\$117	\$113	\$116	\$118
40	P38	5/3/18	KOMLETE	L38	USA 16748826	+4.2	+3.4	-6.2	+1.0	+37	+71	+84	+67	+21	+1.5	-4.4	+57	+5.3	+2.5	+1.8	-0.8	+1.7	\$94	\$100	\$86	\$97
41	P24	2/3/18	KOMLETE	L4	THCH78	+1.5	+1.1	-8.7	+4.5	+48	+84	+108	+98	+18	+1.9	-4.3	+70	+5.8	+1.4	+0.5	-0.1	+1.7	\$108	\$106	\$108	\$109
42	P66	13/3/18	C.JUNIOR J266	D10	NAQW37	-3.3	-3.1	+0.3	+4.8	+46	+85	+120	+109	+18	+1.5	-3.7	+72	+5.3	-1.3	-2.1	+1.0	+2.4	\$115	\$102	\$129	\$108
43	N275	1/9/17	REALITY K12	K184	QHED62	+2.0	+2.2	-10.4	+6.1	+55	+104	+142	+130	+17	+3.2	-4.5	+77	+3.9	+0.9	+1.4	-0.3	+2.2	\$143	\$123	\$157	\$137
44	N184	8/8/17	KH REALITY K46	H83	NEND32	-5.1	-1.5	-2.0	+7.8	+49	+84	+122	+120	+13	+1.9	-3.2	+65	+6.3	-1.7	-2.4	+1.4	+1.6	\$105	\$95	\$114	\$102
45	N166	3/8/17	K.NOVAK L37	G214	VTMB1	+0.1	+1.9	-3.9	+5.8	+50	+93	+130	+130	+15	+2.2	-4.2	+77	+4.4	-2.4	-3.9	+1.3	+2.0	\$127	\$113	\$145	\$119
46	N156	2/8/17	CNMBLE H176	J62	USA 16541214	-1.6	-1.0	-3.0	+6.0	+54	+100	+128	+115	+16	+2.1	-0.8	+71	+6.6	-1.3	-1.1	+1.5	+0.8	\$108	\$111	\$103	\$112
47	N196	10/8/17	CNMBLE H176	J354	BNAD145	-7.9	-4.3	+0.3	+7.6	+53	+94	+131	+127	+10	+1.6	-2.6	+72	+7.0	-1.0	-0.6	+1.4	+1.5	\$108	\$98	\$114	\$107
48	N171	5/8/17	CNMBLE H176	H231	USA 15354674	-4.2	+0.4	-3.5	+6.8	+58	+100	+142	+132	+13	+2.9	-2.3	+75	+7.0	-0.2	+0.4	+1.0	+0.8	\$118	\$106	\$116	\$121
49	N242	23/8/17	K.NOVAK L37	K76	BNAD145	-5.5	-1.8	-1.7	+6.7	+52	+98	+130	+117	+17	+1.9	-4.2	+79	+4.9	-2.7	-3.3	+1.4	+2.5	\$122	\$110	\$142	\$113
50	N100	11/7/17	C.HECTOR H249	L157	BNAD145	-0.5	-2.6	-6.9	+5.1	+52	+95	+123	+107	+13	+1.6	-5.1	+80	+6.9	+1.2	+1.1	+0.4	+1.7	\$126	\$116	\$131	\$124
51	N199	10/8/17	K.DOCK LNDS K218	Z19	NAQX15	+5.8	+3.2	-10.3	+1.0	+39	+76	+97	+63	+19	+2.1	-3.6	+56	+5.1	+0.8	+1.4	+0.0	+1.7	\$109	\$109	\$105	\$111
52	N92	10/7/17	KOMLETE	L232	VLYE313	+1.2	+2.8	-8.2	+3.3	+48	+86	+113	+95	+23	+2.3	-5.5	+69	+5.3	+2.2	+1.8	-0.5	+1.9	\$119	\$110	\$120	\$118
53	N202	11/8/17	REALITY	K115	QHED62	+5.8	+5.0	-10.3	+2.1	+45	+85	+111	+94	+16	+3.6	-6.5	+63	+4.9	+2.4	+1.8	-0.7	+2.3	\$130	\$117	\$138	\$125
54	N169	4/8/17	K.GASKIN L198	L132	NORE11	-0.3	-5.0	-5.0	+3.8	+48	+82	+116	+98	+16	+1.5	-7.6	+71	+7.1	+2.7	+2.1	-0.6	+2.7	\$131	\$107	\$143	\$123
55	N263	29/8/17	REALITY K12	G110	USA 14474596	+2.6	+3.3	-7.5	+3.0	+45	+84	+109	+92	+14	+2.1	-6.7	+57	+2.4	+3.2	+4.7	-2.1	+1.9	\$118	\$107	\$116	\$118
56	N119	30/7/17	LOTTO	K16	NAQA241	-3.4	-2.7	-5.7	+5.5	+58	+101	+139	+121	+18	+3.2	-6.5	+87	+8.3	-0.5	-0.8	+0.8	+2.9	\$147	\$121	\$169	\$135
57	N310	7/9/17	REALITY	E205	NAQA2	+3.5	+3.0	-7.0	+3.8	+43	+70	+92	+90	+11	+2.4	-4.7	+54	+4.7	+1.1	-0.4	-0.4	+2.2	\$101	\$99	\$104	\$99
58	N304	5/9/17	REALITY K12	K350	VTMG555	+0.8	+0.8	-5.9	+3.8	+47	+86	+117	+109	+18	+2.0	-4.3	+66	+2.9	+0.7	+1.0	-0.6	+2.4	\$117	\$106	\$126	\$113
59	N109	16/7/17	REALITY	L156	USA 15462648	+5.6	+5.2	-4.7	+0.7	+40	+73	+91	+83	+14	+2.8	-4.6	+47	+2.3	+1.1	+0.7	-0.8	+2.2	\$102	\$103	\$103	\$101
60	N121	31/7/17	LOTTO	F9	USA 13361440	-2.7	-1.1	-5.4	+3.6	+51	+87	+114	+95	+21	+2.7	-6.1	+73	+4.7	+0.2	-0.1	-0.4	+2.5	\$113	\$103	\$121	\$108
61	N276	1/9/17	REALITY K12	K130	USA 15462648	+1.7	+2.7	-8.1	+4.8	+52	+100	+131	+127	+15	+2.0	-3.6	+69	+3.1	-0.6	+0.3	-0.6	+2.2	\$127	\$116	\$138	\$123
62	N316	9/9/17	C.JUNIOR J266	J285	VTMB1	-0.3	+0.4	-2.6	+3.8	+48	+90	+124	+119	+18	+1.6	-6.0	+82	+8.0	-1.3	-2.7	+1.4	+2.6	\$139	\$119	\$162	\$128
63	N269	31/8/17	REALITY K12	H181	NAQA241	+2.1	+3.0	-7.0	+3.9	+50	+97	+127	+118	+19	+3.1	-5.7	+75	+4.1	+0.0	+0.2	+0.2	+2.2	\$137	\$123	\$151	\$130
64	N154	2/8/17	REALITY	J332	BNAD145	+3.1	+1.9	-6.1	+3.6	+45	+81	+104	+98	+14	+2.0	-5.2	+60	+4.5	+2.0	+0.7	-0.8	+2.9	\$118	\$109	\$130	\$112
65	N116	22/7/17	K.NOVAK L37	E89	NENC53	+0.3	+1.8	-2.2	+3.9	+42	+82	+106	+93	+16	+1.8	-3.9	+60	+4.6	-1.9	-2.2	+0.9	+2.2	\$114	\$110	\$125	\$109
66	N252	25/8/17	K.TRUST J38	J293	BNAD145	-1.3	-0.5	-5.8	+4.5	+48	+81	+105	+85	+15	+2.2	-6.6	+69	+6.7	+0.6	+0.5	+0.2	+2.4	\$120	\$110	\$128	\$114
67	N112	18/7/17	C.HECTOR H249	L299	NENJ38	+0.4	-0.4	-4.0	+4.9	+46	+81	+108	+93	+10	+2.7	-4.6	+67	+7.5	-0.2	-0.1	+1.3	+1.3	\$117	\$111	\$118	\$116
68	N205	11/8/17	REALITY	J10	WDCE11	+4.2	+3.8	-8.1	+3.5	+45	+86	+106	+106	+14	+2.6	-3.6	+59	+3.8	+1.2	+0.9	-0.5	+2.0	\$110	\$110	\$113	\$109
69	N138	1/8/17	C.JUNIOR J266	G7	NAQA241	+0.4	+0.0	-3.9	+3.2	+42	+76	+102	+92	+18	+2.0	-5.9	+74	+5.7	-2.1	-2.6	+1.8	+2.3	\$121	\$112	\$136	\$113
70	N86	10/7/17	LOTTO	L225	USA24J	+0.0	-0.5	-7.1	+3.6	+48	+89	+118	+100	+19	+2.1	-5.6	+72	+6.4	-0.5	-0.9	+0.6	+2.3	\$128	\$115	\$140	\$121
71	N203	11/8/17	C.HECTOR H249	K143	USA 15462648	+3.5	+2.5	-7.5	+2.5	+44	+80	+102	+86	+12	+2.2	-4.5	+59	+6.5	+0.0	+0.7	+0.7	+1.5	\$117	\$114	\$116	\$117
72	N83	10/7/17	LOTTO	L178	USA 16748826	+0.6	+1.4	-6.5	+3.3	+50	+89	+112	+93	+20	+1.6	-5.6	+78	+6.9	-0.3	-1.0	+0.5	+2.5	\$126	\$118	\$138	\$120
ANGUS BREED AVERAGE EBVS FOR 2017 BORN CALVES						+0.2	+0.4	-4.0	+4.3	+44	+81	+106	+91	+15	+1.8	-4.2	+59	+5.1	+0.0	-0.2	+0.4	+1.7	+\$114	+\$109	+\$119	+\$111
<b>KAROO 2019 SALE BULLS AVERAGE EBVS</b>						<b>+0.1</b>	<b>+0.7</b>	<b>-5.4</b>	<b>+4.3</b>	<b>+49</b>	<b>+89</b>	<b>+120</b>	<b>+106</b>	<b>+16</b>	<b>+2.3</b>	<b>-4.8</b>	<b>+70</b>	<b>+5.6</b>	<b>+0.1</b>	<b>-0.0</b>	<b>+0.3</b>	<b>+2.0</b>	<b>+\$122</b>	<b>+\$111</b>	<b>+\$129</b>	<b>+\$119</b>



# MID-JULY 2019 ANGUS AUSTRALIA BREEDPLAN REFERENCE TABLES

BREED AVERAGE EBVs																																
Brd Avg	Calving Ease				Birth				Growth				Fertility				Carcase				Other				Structure				Selection Indexes			
	CEDir	CEDir	CEDir	CEDir	GL	BW	200	400	600	MCW	Milk	SS	DTC	CWT	EMA	RIB	P8	RBV	IMF	NFI-F	DOC	FA	FC	RA	RH	RS	ABI	DOM	GRN	GRS		
+0.2	+0.4	-4.0	+4.3	+44	+81	+106	+91	+15	+1.8	-4.2	+59	+5.1	+0.0	-0.2	+0.4	+1.7	+0.14	+4	+0	-1	-2	-0.3	-0.4	+114	+109	+119	+111					

\* Breed average represents the average EBV of all 2017 drop Angus and Angus influenced animals analysed in the Mid-July 2019 Angus Australia BREEDPLAN genetic evaluation.

PERCENTILE BANDS TABLE																																														
% Band	Calving Ease				Birth				Growth				Fertility				Carcase				Other				Structure				Selection Indexes																	
	Less	More	Less	More	Longer	Shorter	Lighter	Heavier	Lighter	Heavier	Lighter	Heavier	Lighter	Heavier	Lighter	Heavier	Lighter	Heavier	Lighter	Heavier	Lighter	Heavier	Lighter	Heavier	Lighter	Heavier	Lighter	Heavier	Less	More	Less	More	Less	More	Less	More	Less	More								
1%	+5.0	+4.5	-9.7	+0.4	+61	+109	+146	+139	+26	+3.8	-8.9	+85	+11.1	+3.1	+3.2	+2.6	+4.0	-0.51	+31	+21	+24	+14	+4.7	+0.4	+157	+135	+182	+145	+145	+0.4	+3.5	+3.2	+1.9	+3.3	-0.33	+24	+16	+18	+11	+3.5	+0.4	+145	+128	+165	+135	
5%	+3.9	+3.5	-7.8	+1.6	+56	+100	+133	+124	+22	+3.1	-7.6	+77	+9.0	+2.1	+2.1	+1.9	+3.0	-0.22	+19	+13	+15	+9	+2.4	+0.4	+138	+124	+155	+130	+130	+0.4	+2.7	+1.6	+1.6	+3.0	-0.22	+16	+11	+15	+9	+2.4	+0.4	+134	+121	+149	+127	
10%	+3.3	+2.9	-6.9	+2.3	+54	+96	+127	+115	+21	+2.8	-6.8	+73	+8.0	+1.5	+1.6	+1.6	+2.7	-0.16	+19	+13	+13	+7	+2.4	+0.4	+134	+121	+149	+127	+127	+0.4	+2.0	+0.9	+1.2	+2.5	-0.10	+14	+10	+11	+6	+2.0	+0.4	+130	+119	+143	+124	
15%	+2.8	+2.5	-6.3	+2.7	+52	+93	+123	+110	+19	+2.6	-6.3	+71	+7.4	+1.2	+1.2	+1.3	+2.7	-0.16	+19	+13	+13	+5	+2.4	+0.4	+134	+121	+149	+127	+127	+0.4	+1.6	+0.3	+1.0	+2.3	-0.05	+12	+8	+9	+5	+1.6	+0.3	+128	+117	+139	+122	
20%	+2.4	+2.2	-5.8	+3.0	+51	+89	+117	+103	+18	+2.3	-5.6	+67	+6.6	+0.8	+0.7	+1.0	+2.3	-0.05	+12	+8	+9	+3	+1.3	+0.3	+125	+115	+134	+120	+120	+0.3	+1.3	+0.3	+0.9	+2.2	-0.01	+10	+7	+8	+3	+1.3	+0.3	+125	+115	+134	+120	
25%	+2.0	+1.9	-5.4	+3.2	+49	+87	+114	+100	+17	+2.2	-5.3	+66	+6.3	+0.6	+0.5	+0.9	+2.2	-0.01	+10	+7	+8	+3	+1.3	+0.3	+125	+115	+134	+120	+120	+0.3	+1.1	+0.3	+0.8	+2.0	+0.03	+8	+6	+6	+2	+1.1	+0.3	+122	+114	+131	+118	
30%	+1.7	+1.6	-5.1	+3.5	+48	+86	+112	+98	+17	+2.1	-5.0	+64	+5.9	+0.4	+0.3	+0.8	+2.0	+0.03	+8	+6	+5	+1	+0.8	+0.2	+120	+112	+127	+116	+116	+0.2	+0.8	+0.2	+0.7	+1.9	+0.07	+7	+4	+5	+1	+0.8	+0.2	+120	+112	+127	+116	
35%	+1.3	+1.3	-4.8	+3.7	+48	+84	+110	+95	+16	+2.0	-4.8	+63	+5.6	+0.3	+0.2	+0.7	+1.9	+0.07	+7	+4	+3	+0	+0.4	+0.2	+117	+111	+123	+114	+114	+0.2	+0.4	+0.2	+0.6	+1.8	+0.11	+5	+3	+3	+0	+0.4	+0.2	+117	+111	+123	+114	
40%	+1.0	+1.1	-4.5	+3.9	+47	+83	+108	+93	+15	+1.9	-4.5	+62	+5.4	+0.1	+0.0	+0.6	+1.8	+0.11	+5	+3	+3	+0	+0.1	+0.1	+115	+109	+123	+114	+114	+0.1	+0.1	+0.1	+1.7	+1.7	+0.14	+4	+2	+1	-1	-1	+0.1	+0.0	+113	+108	+116	+111
45%	+0.7	+0.8	-4.2	+4.1	+46	+81	+106	+91	+15	+1.8	-4.3	+60	+5.1	+0.0	-0.2	+0.5	+1.7	+0.14	+4	+2	+1	-1	-1	-1	+115	+109	+123	+114	+114	+0.1	+0.1	+0.1	+1.5	+1.5	+0.18	+3	+1	-1	-2	-0.1	+0.0	+113	+108	+116	+111	
50%	+0.4	+0.5	-4.0	+4.3	+45	+80	+104	+88	+15	+1.7	-4.0	+59	+4.8	-0.2	-0.3	+0.3	+1.5	+0.18	+3	+1	-1	-2	-3	-3	+110	+106	+113	+109	+109	+0.0	-0.1	-0.1	+1.4	+1.4	+0.22	+1	-1	-3	-3	-0.5	-0.1	+110	+106	+113	+109	
55%	+0.1	+0.3	-3.7	+4.5	+44	+79	+102	+86	+14	+1.6	-3.8	+57	+4.5	-0.3	-0.5	+0.2	+1.4	+0.22	+1	-1	-3	-5	-5	-4	+108	+105	+109	+107	+107	-0.2	-0.2	-0.2	+1.3	+1.3	+0.25	+0	-2	-4	-4	-0.9	-0.2	+108	+105	+109	+107	
60%	-0.2	+0.0	-3.5	+4.7	+43	+77	+100	+84	+14	+1.5	-3.5	+56	+4.2	-0.5	-0.7	+0.1	+1.3	+0.25	+0	-2	-5	-4	-4	-6	+105	+103	+105	+105	+105	-0.4	-0.4	-0.4	+1.2	+1.2	+0.29	-2	-4	-8	-1.4	-0.4	+105	+103	+105	+105		
65%	-0.6	-0.2	-3.2	+4.9	+42	+75	+97	+81	+13	+1.4	-3.2	+54	+3.9	-0.6	-0.9	+0.0	+1.2	+0.29	-2	-4	-6	-6	-7	-7	+102	+101	+101	+101	+101	-0.5	-0.5	-0.5	+1.0	+1.0	+0.34	-3	-6	-11	-1.1	-0.5	+102	+101	+101	+101		
70%	-0.9	-0.5	-2.9	+5.1	+41	+75	+95	+78	+13	+1.3	-2.9	+52	+3.6	-0.8	-1.1	-0.1	+1.0	+0.34	-3	-6	-9	-9	-9	-9	+98	+96	+96	+96	+96	-0.9	-0.9	-0.9	+0.8	+0.8	+0.38	-5	-9	-14	-1.4	-0.9	+98	+99	+96	+100		
75%	-1.3	-0.9	-2.6	+5.3	+40	+74	+95	+75	+12	+1.1	-2.5	+50	+3.2	-1.0	-1.3	-0.3	+0.8	+0.38	-5	-9	-13	-13	-13	-13	+94	+92	+92	+92	+92	-1.3	-1.3	-1.3	+0.6	+0.6	+0.43	-7	-13	-17	-1.2	-0.9	+94	+96	+90	+96		
80%	-1.8	-1.3	-2.3	+5.6	+39	+72	+92	+75	+11	+1.0	-2.1	+47	+2.8	-1.2	-1.6	-0.4	+0.6	+0.43	-7	-13	-19	-19	-19	-19	+89	+88	+88	+88	+88	-1.7	-1.7	-1.7	+0.4	+0.4	+0.50	-9	-19	-21	-1.5	-1.7	+89	+93	+82	+92		
85%	-2.4	-1.7	-1.9	+5.9	+37	+69	+89	+71	+10	+0.8	-1.5	+42	+2.2	-1.5	-1.9	-0.7	+0.4	+0.50	-9	-19	-26	-26	-26	-26	+84	+84	+84	+84	+84	-1.7	-1.7	-1.7	+0.1	+0.1	+0.61	-13	-26	-26	-2.8	-2.8	+79	+87	+69	+84		
90%	-3.2	-2.3	-1.4	+6.3	+35	+66	+84	+66	+9	+0.5	-0.5	+36	+1.4	-1.9	-2.5	-1.0	+0.1	+0.61	-13	-26	-33	-33	-33	-33	+69	+69	+69	+69	+69	-5.8	-5.8	-5.8	-0.4	-0.4	+0.84	-20	-35	-35	-5.5	-5.5	+53	+63	+33	+64		
95%	-4.5	-3.3	-0.5	+6.9	+31	+60	+76	+58	+6	-0.1	+1.5	+25	-0.1	-2.8	-3.5	-1.7	-0.4	+0.84	-20	-35	-41	-41	-41	-41	+64	+64	+64	+64	+64	-10.7	-10.7	-10.7	-0.4	-0.4	+0.84	-20	-35	-35	-10.7	-10.7	+53	+63	+33	+64		
99%	-7.4	-5.2	+1.3	+8.2	+24	+50	+60	+41	+6	-0.1	+1.5	+25	-0.1	-2.8	-3.5	-1.7	-0.4	+0.84	-20	-35	-41	-41	-41	-41	+64	+64	+64	+64	+64	-10.7	-10.7	-10.7	-0.4	-0.4	+0.84	-20	-35	-35	-10.7	-10.7	+53	+63	+33	+64		

\* The percentile bands represent the distribution of EBVs across the 2017 drop Angus and Angus influenced animals analysed in the Mid-July 2019 Angus Australia BREEDPLAN genetic evaluation.



## DISCLAIMER AND PRIVACY INFORMATION

### IMPORTANT NOTICES FOR PURCHASERS



*Animal details included in this catalogue, including but not limited to pedigree, DNA information, Estimated Breeding Values (EBVs) and Index values, are based on information provided by the breeder nor owner of the animal. Whilst all reasonable care has been taken to ensure that the information provided in this catalogue was correct at the time of publication, neither the vendor, Angus Australia or the selling agents assume any responsibility for the accuracy or completeness of the information, nor for the outcome (including consequential loss) of any action taken based on this information.*

#### **Parent Verification Suffixes**

The animals listed within this catalogue including its pedigree, are displaying a Parent Verification Suffix which indicates the DNA parent verification status that has been conducted on the animal. The Parent Verification Suffixes that will appear at the end of each animal's name are as follows:

*PV: both parents have been verified by DNA*

*SV: the sire has been verified by DNA*

*DV: the dam has been verified by DNA*

*#: DNA verification has not yet been conducted*

*E: DNA verification has identified that the sire and/or dam may possibly be incorrect, but this cannot be confirmed conclusively.*

#### **Privacy Information**

In order for Angus Australia to process the transfer of a registered animal in this catalogue, the vendor will need to provide certain information to Angus Australia and the buyer consents to the collection and disclosure of that information by Angus Australia in certain circumstances. If the buyer does not wish for his or her information to be stored and disclosed by Angus Australia, the buyer must complete the form included below and forward it to Angus Australia. If the form is not completed, the buyer will be taken to have consented to the disclosure of such information.

#### **BUYERS OPTION TO OPT OUT OF DISCLOSING PERSONAL INFORMATION TO ANGUS AUSTRALIA**

If you do not complete this form, you will be taken to have consented to Angus Australia using your name, address and phone number for the purposes of effecting a change of registration of the animal(s) that you have purchased, maintaining its database and disclosing that information to its members on its website.

*I, the buyer of animals with the following idents.....  
.....  
from member.....(name) do not consent to Angus Australia using my name, address and phone number for the purposes of effecting a change of registration of the animals I have mentioned above that I have purchased, maintaining its database and disclosing that information to its members on its website.*

*Name: ..... Signature: .....*

*Date: .....*

Please forward this completed consent form to Angus Australia, 86 Glen Innes Road, Armidale NSW 2350.

If you have any questions or queries regarding any of the above, please contact Angus Australia on (02) 6773 4600 or email [office@angusaustralia.com.au](mailto:office@angusaustralia.com.au)

# NATIONAL VENDOR DECLARATION (CATTLE) AND WAYBILL - eDEC

**Purchaser (Receiver) Duplicate**

C0413

*This form cannot be used where eligibility for the EU market is required.*



34702918

**Part A** To be completed by the owner or person who is responsible for the husbandry of the cattle.

Owner of cattle Karoo Angus

Property/place where the journey commenced Karoo 2641 Great Western Highway

**MEADOW FLAT** (ADDRESS CONTINUED) (TOWN/SUBURB) (STATE) NSW 2795

Property Identification Code (PIC) of this property NE040546  
This MUST be the PIC of the property that the stock is being moved from

**Description of cattle**

Number	Description (BREED, SEX, E.G. HEREFORD CROSS STEERS)	Brands or Earmarks (IF PRESENT OR REQUIRED)
72	Angus bulls	
72	Total	

Consigned to Ray White Emms Mooney (NAME OF PERSON OR BUSINESS) (ADDRESS) ben.emms@raywhite.com.au

28 Adelaide Street (ADDRESS) Blayney (TOWN/SUBURB) NSW (STATE)

Destination (if different) of cattle \_\_\_\_\_ (LOCATION ADDRESS)

NLIS devices used on these cattle 72 Number of ear tags 72 Number of rumen devices \_\_\_\_\_

Details of other statutory documents relating to this movement e.g. health statement \_\_\_\_\_

DOCUMENT TYPE \_\_\_\_\_ NUMBER \_\_\_\_\_ OFFICE OF ISSUE \_\_\_\_\_ EXPIRY DATE \_\_\_\_\_

- Have any of the cattle in this consignment ever in their lives been treated with a hormonal growth promotant (HGP)? (Use a second document for mixed consignments.)  
Yes  No
- Have the cattle in this consignment ever in their lives been fed feed containing animal fats?  
Yes  No  (See Explanatory Notes)
- Has the owner stated above owned these cattle since their birth?  
Yes  No  If No, how long ago were the cattle obtained or purchased? (If purchased at different times, tick the box corresponding to the time of the most recent purchase.)  
A. Less than 2 months  B. 2-6 months  C. 6-12 months  D. more than 12 months
- In the past 60 days, have any of these cattle been fed by-product stockfeeds?  
Yes  No  If Yes, attach a list of the by-product stockfeeds, date when last fed and a copy of an analyst's report if available.
- In the past 6 months have any of these animals been on a property listed on the ERP database or placed under any restrictions because of chemical residues?  
Yes  No  If Yes, give details: \_\_\_\_\_

Printed at: Karoo Angus eFORM ID: 11191550  
Print date/time: 24/07/2019 11:04  
Phone: 0413584453

**6** Are any of the cattle in this consignment still within a Withholding Period (WHP) or Export Slaughter Interval (ESI) as set by APVMA or SAFE MEAT, following treatment with any veterinary drug or chemical?  
Yes  No  If Yes, give details: (Record additional details in question 9) \_\_\_\_\_ WHP ESI (if ESI)

**7** In the past 60 days, have any of the cattle in this consignment consumed any material that was still within a withholding period when harvested, collected or first grazed?  
Yes  No  If Yes, give details: \_\_\_\_\_ TREATMENT DATE

**8** In the past 42 days, were any of these cattle:  
a) grazed in a spray risk area; or  
b) fed fodder cut from a spray drift risk area? (See Explanatory Notes for definition of spray drift risk area.)  
Yes  No  If Yes Date sprayed: \_\_\_\_\_ DAY MONTH YEAR

**9** Additional information: see requirements in Explanatory Notes for completing this document. \_\_\_\_\_ DATE APPLIED \_\_\_\_\_ GRAZING WHP \_\_\_\_\_ DATE FIRST FEEDGRAZED \_\_\_\_\_ DATE FEEDING/GRAZING CEASED \_\_\_\_\_

**Declaration**  
I, Annie Scott FULL NAME Karoo 2641 Great Western Highway FULL ADDRESS  
MEADOW FLAT NSW 2795 karooangus@bigpond.com ADDRESS CONT.

declare that, I am the owner or the person responsible for the husbandry of the cattle and that all the information in part A of this document is true and correct. I also declare that I have read and understood all the questions that I have answered, I have read and understood the explanatory notes, and that, while under my control, the cattle were not fed restricted animal material (including meat and bone meal) in breach of State or Territory legislation.

Signature\* [Signature] Date\* 24/07/2019  
\*Only the person whose name appears above may sign this declaration, or make amendments which must be initialled.

Tel no. 0413584453 Fax no. \_\_\_\_\_

**Part B** To be completed by the person in charge of the cattle while they are being moved. Completion of this part is optional in SA and VIC.

**Movement commenced:** \_\_\_\_\_ DAY MONTH YEAR \_\_\_\_\_ TIME (to min 24 hr time)

**Vehicle registration number(s)\*:** \_\_\_\_\_

**Full name** \_\_\_\_\_ **Date** \_\_\_\_\_ / \_\_\_\_\_ /20 \_\_\_\_\_ **Tel no.** \_\_\_\_\_

**movement and declare all the information in Part B is true and correct.**

**Signature** \_\_\_\_\_ **Date** \_\_\_\_\_ / \_\_\_\_\_ /20 \_\_\_\_\_ **Tel no.** \_\_\_\_\_

\*When more than one truck is carrying the cattle, other vehicle registration numbers are to be recorded.

**Part C** Agents declaration for cattle sold at auction. (Completion of Part C is optional.)

Agents completing Part C should retain the original or a scanned copy of the original declaration or a summary for a minimum of two (2) years, or three (3) years in WA and supply a copy or summary to any buyer on request.

**Vendor code / No.'s** \_\_\_\_\_ **Agent's code** \_\_\_\_\_

**Stock agent company** \_\_\_\_\_

**Buyer's name** \_\_\_\_\_ **Destination PIC** \_\_\_\_\_

**No. of cattle purchased** \_\_\_\_\_ **Saleyard arrival time** (to min 24 hr) \_\_\_\_\_ / \_\_\_\_\_ /20 \_\_\_\_\_

**Agent's signature** \_\_\_\_\_ **Date** \_\_\_\_\_ DAY MONTH YEAR \_\_\_\_\_

# NATIONAL CATTLE HEALTH DECLARATION

V: 02/05/18

Property Identification Code (PIC) of this property  
This MUST be the PIC of the property that  
the stock is being moved from

N E 0 4 0 5 4 6

Attached to accompanying NVD/Waybill No.

3 4 7 0 2 9 1 8

## Biosecurity and health information

- Has the owner stated above owned all the cattle in this consignment since birth? Y  N
- Does the property of origin have a completed on-farm biosecurity plan? Y  N
- Have these cattle been tested for the presence of pestivirus antigen? If tested, were any cattle found to be persistently infected? Y  N   
Y  N
  - Have these cattle been tested for the presence of pestivirus antibody? If tested what percentage of the tested cattle were antibody positive? Y  N   
Y  N

4. Has the property of origin had an occurrence of clinical Johne's disease (JD) in any species in the past five years? Y  N  Unsure   
J-BAS of ..... 8 ..... (Optional)

5. On the property of origin, have cattle been co-grazed with dairy cattle? Y  N  Unsure   
*See explanatory note for advice on co-grazing with non-bovine species*

6. Has the source herd had a JD test? Y  N  Pending   
If so, which test? Check Test  Sample Test  Date 27 / 6 / 18  
Was the result negative? Y  N

7. If dairy cattle, the consignment has a Dairy Assurance Score of: Part A (herd base score) ..... Part B (calf credits) ..... Part C (total Dairy Score) .....

8. Any other relevant health information

## Treatments

Treatment type	Product	Date of treatment within last 6 months
Drench or pour-on	Stampede	04th June 2019
Liver fluke		
Other treatments		

## Current vaccinations for the cattle being moved (see explanatory note)

Clostridial (e.g. 5 in 1): Y  Botulism: Y

Leptospira (e.g. 7 in 1): Y  Bovine ephemeral fever: Y

Pestivirus: Y  Tick fever: Y

JD (Silirum): Y  Vibrio: Y

Other vaccinations (specify):

## Declaration (see explanatory notes for further information)

I Annie Scott (Full name)

Karoo, 2641 Great Western Highway (Address) Meadow Flat (Town/suburb) NSW 2795 (State) (Postcode)

declare that I am the owner or the person responsible for the husbandry of the cattle and that all the information in this document is true and correct. I also declare that I have read and understood all the questions that I have answered, that I have read and understood the explanatory notes, and that I have inspected the animals and deem them to be healthy, free of signs of disease and fit to travel.

Signature\*  Date 24 / 7 / 19

\*Only the person whose name appears above may sign this declaration, or make amendments which must be initialed

Tel. No. ( ) 0413584453 Email karooangus@bigpond.com

## NOTES

# BUYER'S INSTRUCTION SLIP

TRADING NAME .....

STUD PREFIX ..... PIC.....

CONTACT PERSON .....

ADDRESS .....

.....

PHONE NUMBER .....

FAX NUMBER .....

EMAIL ADDRESS .....

PURCHASING AGENT .....

INSURANCE .....

SPECIAL INSTRUCTIONS .....

.....

.....

.....

TRANSPORT .....

.....

.....

LOTS PURCHASED      Lot ..... \$.....      Lot ..... \$.....      Lot ..... \$.....

Lot ..... \$.....      Lot ..... \$.....      Lot ..... \$.....

SIGNATURE ..... DATE .....





**LOT 20 KAROO G188 FRANKLIN P65 (AI)**



**LOT 32 KAROO D62 DOCKLANDS P6 (AI)**



**LOT 42 KAROO J266 JUNIOR P66 (AI)**



### Ray White Emms Mooney

Ben Emms	0428 639 381
Steve Mooney	0428 683 152
Pat Bird	0438 361 109
Matt Byrnes	0427 259 529
Ben Redfern	0457 770 062
Harry Larnach	0428 637 540
Sam D'Arcy	0401 612 996

