



2019 SALE
SATURDAY 21st September
Commencing 12 noon

Comprising:

81 Classified Santa Gertrudis Bulls
16 Purebred Santa Gertrudis Bulls

Information Day & Pre-Sale Inspection
Thursday 15th August 2019
9.00 am at Gyranda Saleyards

Enquiries:

Peter Mahony or Burnett Joyce
Gyranda, Theodore Q 4719
(07) 4993 7144 0438 931 657
peter@gyranda.com.au
www.gyranda.com.au



We offer appealing rebate options to all outside agents who introduce clients. Enquire at your local agent of choice or alternatively contact the settling agents below.

Selling Agents:



Taroom - Ph (07) 4627 3027 Fax (07) 4627 3048
Graeme McAdam 0428 273 028 | Jordan Wenham 0437 715 017
GDL Stud Stock - Mark Duthie 0448 016 950 | Georgie Connor 0428 347 550

QUALITY **X3X** CATTLE



The Gyranda Blue Ribbon Guarantee



All bulls have passed a stringent soundness evaluation. Over a decade of selection at Gyranda means that our bulls naturally and consistently meet these breeding standards at a younger age.



Four and a half star (out of 5) rating for data accuracy. We measure more traits, more accurately, more often and our herd has been measured longer ensuring that the figures presented are a true representation of the animal purchased.



We have utilised EBV data for selection for nearly 30 years... and it shows. Figures for growth, fertility and carcass characteristics are consistently in the top tier of the breed and improving annually.

Classified 'S'

Most bulls sold at the Gyranda annual sale have been classified.

Structure and Temperament

Few other studs have been more rigorous for longer in selecting against poor structure and temperament than Gyranda. Feet, leg structure, sheath and temperament are consistently good across the herd.

Fertility

The bull you buy comes from a cow whose primary selection criteria has been her capacity to produce a calf every year. Joined as a yearling she has demonstrated the capacity to fall pregnant early and be back in calf after a three month joining period.



Libido

All Gyranda stud sires are joined in multi-sire herds that replicate the joining conditions faced by the vast majority of their sons. They must be able to compete for cows and deliver calves in this environment or they are culled. This sex drive has been demonstrated to be highly heritable. Gyranda is unique in pressuring our bulls in this way, and we have been doing it since 2009.



The bulls presented at this sale are selected to perform within your herd; to improve your genetic gain and your profitability. A Gyranda bull is an indispensable tool for bettering your business.

We take pride in being able to offer a blue ribbon guarantee on all bulls provided at the Gyranda sale. Our measurement and selection pressure on this bull and the generations of cattle before him leave you free to sharpen your selection criteria and choose the bull best suited to your herd based on EBV data, coat, poll characteristics, muscling, weight for age, depth of body, frame score or other criteria you may have.

The bulls presented here today are well balanced animals; a trait we see as essential to push the barriers of growth and yield whilst working within the boundaries of nature. They are young herd builders with the full genetic toolbox of the Gyranda herd at their disposal and maintain an enviable variety of characteristics within what remains a distinctly Santa Gertrudis herd of superior growth and adaptability.



We commend them to you.



The Gyranda Operation

Gyranda History – A Family Affair

The Gyranda property originally formed part of the Joyce & Joyce operation founded by Fitzpierce and Eileen Joyce and, later, run in partnership with his sons E.B. 'Barney' Joyce and Raoul Joyce. In 1967, the Eidsvold Station based partnership was divided. Gyranda Pastoral Company was established as a partnership between Raoul and Ida Joyce and their four sons to run the Properties situated on the Dawson River.

Gyranda Pastoral Company was owned and operated by Burnett and Louise Joyce until 2011 when the fourth generation - Peter and Nikki Mahony took over the reins.

Gyranda & Santa Gertrudis

In 1953 three Santa Gertrudis bulls were purchased by Joyce & Joyce from King Ranch Australia (imported from the ranch headquarters in Texas, USA). In 1954 purebred Santa Gertrudis females were imported from the Armstrong Ranch, Texas, USA.

This was the beginning of the Santa Gertrudis operation on Gyranda. A grading-up program was commenced using existing high quality Hereford females. A subsequent crossbreeding and grading-up program was begun in 1972.

Purebred Brahman bulls were used over Santa Gertrudis females. Their progeny was crossed back to Classified Santa Gertrudis Bulls and the best of the third cross animals were introduced back into the stud herd.

Our current operation retains Gyranda Bulls as sires in the Stud herd as well as the substantial commercial herds. Progressive bloodlines from other Santa Gertrudis Studs are also sourced.



First Cross Yearlings 1955

Our Current Operation & Future

Our business is ultimately about the production of high quality beef; in our own commercial operation and those of our clients. The highest priority is placed on increased productivity and decreased costs. In our management this translates to selection for high performance in reproduction and growth under paddock conditions.

Carcass traits are monitored through ultrasound scanning and feedback from slaughter cattle. Feedlot daily weight gains and feed conversion ratios are monitored from several hundred steers and heifers finished in feedlots annually.

Our stud operation functions as a tool through which a high standard of excellence is achieved and maintained across the entire herd.

Growth, fertility and carcass EBV's generated since 1985 through Breedplan provide a valuable tool for our own selection of cattle and to aid our clients in more accurately selecting for their operation.

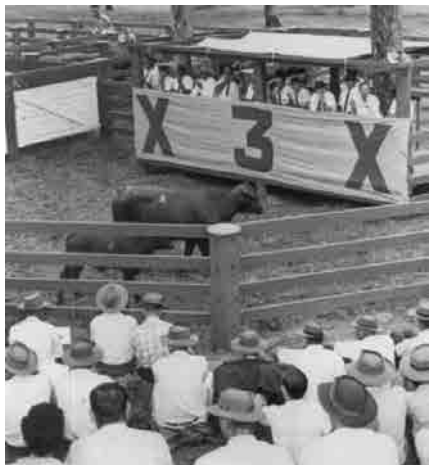
Ongoing involvement in research, including trials run by the CRC (Co-operative Research Centre), the DPI and The University of Queensland, reflect our commitment to the future of the beef industry and give direction to our commercial and stud operations. Results have helped us identify more accurate and progressive ways to refine our selection for highly fertile, fast growing, efficient beef cattle.

All Sires used in the Gyranda breeding herd undergo a series of fertility evaluations prior to joining.

In multiple sire herds all calves are assigned sires using DNA technology.

This creates a direct link between the test results and the number of calves each bull actually sires.

Bulls must pass a thorough soundness evaluation prior to being offered for sale.



First Gyranda Sale 1968

Important Notices

The Selling Agent, its members, subsidiary or related corporations, officers, agents and employees for themselves and for those for whom they act, while exercising due care, provide all information without responsibility and give no guarantee whatsoever as to its accuracy.

All persons who attend the sale do so entirely at their risk and the Selling Agent, its members, subsidiary or related corporations, officers, agents employees and its principals, for themselves and for those for whom they act, do not assume or accept any responsibility or liability of whatever nature for any injury or damage whatsoever which may occur.

NOTICE TO BUYERS: In the interest of buyers all instructions covering the delivery of cattle purchased at the sale must be given in writing and signed by the buyer or his representative.

HEALTH: Gyranda herds are situated in a TB and C AB free area and all bulls have been inoculated for Redwater (Tickfever) and 5 in 1. They have also been inoculated for Vibriosis, Botulism and Three Day Sickness (Bovine Ephemeral Fever; yearly booster recommended due June 2020). The Gyranda herd was tested negative for Bovine Johnes Disease BJD in May 2019 and currently carries a JBAS 7 standard.

REBATE: The vendor agrees to pay 4% rebate on Bull Purchases to outside agents under the following conditions:

- **Buyers must be accompanied in person by the agent to either the sale or the open day and noted as such.**
- **Invoices must be paid in full by 5pm on 4th October 2019.**
Alternatively the vendor agrees to pay 3% rebate on Bull Purchases to outside agents under the following conditions:
- **Buyers must be introduced in writing to Gyranda Pastoral Company or Selling Agents at least 24 hours prior to sale.**
- **Invoices must be paid in full by 5pm on 4th October 2019.**

Note: VENDOR will pay rebate after invoices have been paid in full.
Rebate will not be allowed outside these conditions.

FREE FREIGHT AND FREIGHT REBATE: Gyranda will deliver bulls free to local areas including Theodore, Moura, Biloela, Monto, Eidsvold and Taroom. For those outside of these areas we offer a freight rebate to those purchasing five or more bulls of up to \$500, GST inclusive, upon presentation of the paid freight invoice to either their preferred agent or Gyranda Pastoral Co.

SEMEN MORPHOLOGY TESTING

A Semen morphology examination on the sale bulls was conducted by Ms. Kelli Prosser (Australian Cattle Veterinarians Sperm Morphology Accreditation Number SME0709).

The Total Normal Percentage of sperm for each bull is stated on the supplementary sheet. All bulls with abnormal sperm percentages above the recommended Australian Cattle Veterinarians' thresholds for specific and total abnormalities have been removed from the sale.

Bulls with morphology results from 70% - 100% Normal Sperm are deemed as fertile for single sire mating. Bulls with results from 50% - 69% Normal Sperm are deemed as acceptable for multiple sire mating.

Evidence supports that sperm morphology is highly related to fertility and reflects the status of the testes and the transportation and maturation process in the epididymis.

The Bull Power Project found that semen quality, particularly the percentage of normal sperm, was consistently related to the number of calves sired by the bull in a limited joining period.

After Today – Our Guarantee – Your Obligations

Our Guarantee

All bulls have undergone rigorous and independent assessment for structural soundness and fertility, including a semen morphology test and physical evaluation of the bull's reproductive tract.

On top of this we offer one of the strongest guarantees of any Santa Gertrudis seed stock breeders.

All bulls sold by us are fertile and structurally sound to the best of our knowledge.

If a bull becomes infertile or breaks down due to reasons other than injury or misadventure, at any time within nine month from date of sale we will:

- Provide you with a satisfactory replacement if available, or
- Issue you with a credit (equal to the purchase price minus salvage value) that may be used to purchase any bull at our next sale.

This is not a life insurance policy. Normal care needs to be taken as we cannot replace an animal that is injured or dies for any reason. We recommend you insure animals for full loss of use – an insurance service will be available on Sale Day.

The guarantee strictly covers the purchase value of the bull, without interest cost and damages.

Given the often ambiguous nature of claims, a veterinary inspection (and appropriate testing) of the bulls and a certificate / letter from the vet confirming the infertility or physical 'break down' must accompany any guarantee claim.

This guarantee is in addition to normal terms and conditions governing livestock auctions, printed in your catalogue and such the vendor's decision will be final.



After Today – Our Guarantee – Your Obligations

Your Obligations

Our guarantee is not a replacement for good management. It is aimed at appropriately covering the performance of the bull where the cows are diligently managed to recognised industry standards including vaccination for reproductive diseases. The bull owner has a duty to observe joining, monitor late cycling, and communicate any problems with the vendor as soon as possible, to resolve problems.

We outline below a number of factors you may wish to consider in the management of fertility in your investment in Gyranda sires, because like any investment bulls should be looked after to perform to their maximum, to improve the productivity of your herd.

- Bulls are due for a booster vaccine of 3 Day Sickness (Bovine Ephemeral Fever) and Vibriosis in June 2020.
- If a bull suffers extreme stress, it can take 70 days before normal sperm is delivered again.
- Whilst these bulls have been vet checked with a positive semen test, it is a known fact that if management changes, bull fertility levels can change. Some changes that can cause stress include: mixing with new and particularly older bulls, a change of diet, transport, different stock handling techniques and personnel, exposure to new diseases and a different environment and temperature.
- Allow your bull to acclimatize before mating, and avoid mixing different age bulls. Their ability to cope will depend largely on temperament, genotype and body condition.
- Bulls, like any high performance athletes, do benefit from an “off-season”. If at all possible, spell the bulls after mating to let them re-gain body weight and ultimately health. You may be surprised with the extra years and fertility you can obtain from your bulls.



June 2019 Santa Gertrudis GROUP BREEDPLAN - Percentile Bands for all 2017 born animals

Use this table as a guide to compare individual animals with the current genetic level of the breed

| | Birth | | | Growth | | | | Fert | | | | Carcase | | | | Extra | | Indexes | |
|----------|-------|------|-----|--------|-----|------|------|-------|-------|-----|------|---------|------|------|------|-------|-----|---------|--|
| | GL | Bwt | 200 | 400 | 600 | Mwt | Milk | SS | DC | Cwt | EMA | Rib | Rump | RBV | IMF | FT | DOM | EXP | |
| | days | | kg | kg | cm | days | kg | sq.cm | mm | % | secs | \$ | | | | | | | |
| High 1% | -2.2 | -1.4 | +24 | +38 | +48 | +63 | +6 | +2.8 | -12.0 | +24 | +5.3 | +2.1 | +2.2 | +1.8 | +0.7 | +0.35 | +32 | +45 | |
| High 5% | -1.4 | -0.6 | +20 | +31 | +41 | +53 | +4 | +2.2 | -8.1 | +19 | +4.2 | +1.3 | +1.3 | +1.3 | +0.5 | +0.21 | +27 | +36 | |
| High 10% | -1.1 | -0.1 | +18 | +27 | +36 | +46 | +3 | +1.8 | -5.8 | +17 | +3.7 | +1.0 | +0.9 | +1.2 | +0.3 | +0.15 | +24 | +31 | |
| High 20% | -0.7 | +0.4 | +15 | +23 | +31 | +39 | +2 | +1.5 | -3.2 | +14 | +3.1 | +0.7 | +0.4 | +0.9 | +0.2 | +0.10 | +20 | +25 | |
| High 30% | -0.5 | +0.8 | +13 | +20 | +27 | +34 | +1 | +1.2 | -1.7 | +12 | +2.7 | +0.5 | +0.2 | +0.8 | +0.2 | +0.06 | +18 | +21 | |
| High 40% | -0.4 | +1.1 | +12 | +18 | +24 | +29 | +1 | +1.0 | -0.5 | +11 | +2.4 | +0.3 | +0.0 | +0.7 | +0.1 | +0.05 | +16 | +18 | |
| 50% | -0.2 | +1.3 | +11 | +16 | +22 | +25 | +0 | +0.8 | +0.6 | +9 | +2.1 | +0.2 | -0.2 | +0.6 | +0.0 | +0.03 | +14 | +15 | |
| Low 40% | +0.0 | +1.6 | +9 | +14 | +19 | +22 | -1 | +0.6 | +1.5 | +8 | +1.8 | +0.0 | -0.4 | +0.5 | +0.0 | +0.02 | +12 | +13 | |
| Low 30% | +0.2 | +1.8 | +8 | +12 | +17 | +18 | -1 | +0.5 | +2.3 | +6 | +1.6 | -0.1 | -0.6 | +0.4 | -0.0 | +0.00 | +10 | +11 | |
| Low 20% | +0.5 | +2.2 | +6 | +10 | +13 | +14 | -2 | +0.3 | +3.3 | +5 | +1.2 | -0.3 | -0.8 | +0.3 | -0.1 | -0.03 | +9 | +8 | |
| Low 10% | +0.8 | +2.6 | +3 | +6 | +8 | +6 | -3 | -0.1 | +4.7 | +2 | +0.8 | -0.6 | -1.2 | +0.1 | -0.3 | -0.06 | +5 | +4 | |
| Low 5% | +1.2 | +3.1 | +0 | +2 | +4 | +1 | -4 | -0.5 | +5.9 | -2 | +0.4 | -0.9 | -1.5 | +0.0 | -0.4 | -0.10 | +3 | +1 | |
| Low 1% | +1.9 | +4.0 | -5 | -4 | -4 | -8 | -6 | -1.2 | +8.0 | -7 | -0.3 | -1.5 | -2.2 | -0.3 | -0.5 | -0.17 | -1 | -2 | |

Group BreedPLAN EBVs – How to use them

NOTES ON GROUP BREEDPLAN EBVS

BREEDPLAN is a genetic evaluation system for beef cattle that uses all pedigree and performance information known about an animal and its relatives to calculate Estimated Breeding Values (EBVs). EBVs are the best estimate of the genetic merit of an animal for each trait measured. EBVs are free from environmental influences that play a significant part in the observed performance of an animal. Units of measurement for EBVs depend on the trait; for example, growth traits are in kilograms and fat depth in millimeters.

The GROUP analysis for Santa Gertrudis BREEDPLAN is processed by ABRI (Agricultural Business Research Institute) from the integrated pedigree/performance database of the Santa Gertrudis Breeder's (Australia) Association.

NB: GROUP BREEDPLAN EBVs can be compared with animals in other Santa Gertrudis Herds but not with animals in other breeds. It is important when assessing GROUP EBVs of a particular animal, to compare them with the average of the breed. The average of 2017 drop calves is used as the measurement of the current genetic level of the breed.

Average EBVs for the 2017 born animals analysed in the July 2019 Santa Gertrudis GROUP BREEDPLAN

| 200D | 400D | 600D | MWT | MILK | SS | DTC |
|------|------|------|------|-------------|----------|--------|
| +11 | +16 | +22 | +25 | +0 | +0.8 | +0.6 |
| EMA | RIB | RUMP | IMF | FLIGHT TIME | DOMESTIC | EXPORT |
| +2.1 | +0.2 | -0.2 | +0.0 | +0.03 | +14 | +15 |

HOW TO USE EBVs:

The first step is to decide what characteristics are important in your breeding program, and then select EBVs which fit the bill for your herd. For example, if you are selling 14 month old steers and the last draft you sold could have been heavier without prejudicing your market, then you should look for a bull with a high EBV for 400 day weight.

ARE BULLS WITH BELOW AVERAGE EBVs WORTH BUYING?

Yes. They can be. EBVs are a guide to help in selection – not the only selection criteria you should use.

200 DAY MILK and GROWTH:

The vealer producer should place emphasis on the 200 day growth and milk genes. If the bull is to be used as a terminal sire, growth is most important. If the bull is to be used to breed replacement heifers and superior milking and mothering ability is required then pay close attention to the EBVs for milk (kg). The estimate in kg milk is not the yield of milk of the dam, but the growth of the calf due to more milk and better mothering in the dam.

400 DAY WEIGHT:

400 Day Weight EBVs are a measure of the animal's ability to grow to 400 days of age (can be measured from 301 – 500 days). It should be used by producers who wish to turn off yearling cattle.

600 DAY WEIGHT:

600 Day Weight EBVs are computed for growth to 600 days of age (can be measured at 501 – 900 days of age). In production systems for heavy steers, this is important. It is the best prediction of an animal's ability to grow on to maturity.

Group BreedPLAN EBVs – How to use them

SCROTAL SIZE:

Scrotal Size EBV is an indicator of male fertility in regards to semen quality and quantity. Higher (positive) EBVs indicate higher fertility. There is also a small negative correlation with age at puberty of female progeny.

DAYS TO CALVING:

Days to Calving EBV is an indicator of female fertility based on the time between a cow's first exposure to a bull and when she subsequently calves. Cows that calve late in the season or fail to calve are penalised. This is more useful as a sire trait. Lower, or more negative, Days to Calving EBVs are generally more favourable. For example, a bull with a Days to Calving EBV of -5 days would be expected to produce daughters that conceive earlier in the joining period than the daughters of a bull with a Days to Calving EBV of +5 days.

CARCASE EBVS:

Carcase EBVs are currently calculated from scanning information on live animals. Fat scans at rib and rump are used to calculate fat depth EBVs. Scanned eye muscle area at 12/13 rib section is used to calculate EMA (eye muscle area) EBV. Scanned fat, scanned EMA and liveweight are used to estimate Meat Yield EBVs.

FAT DEPTH:

Usually expressed as a single EBV for Rump Fat (P8) in mm and adjusted to 450 days of age. An EBV above the GROUP average indicates animals which will breed progeny fatter or fattening earlier than the Santa Gertrudis average. An EBV below the GROUP average will indicate animals that tend to produce progeny leaner or fattening later than the Santa Gertrudis average. While emphasis in the industry is towards the production of lean carcasses, it must be remembered that selection for extreme leanness may result in breeding females with reduced drought tolerance and lower fertility in harsh environments.

EYE MUSCLE AREA (EMA):

Expressed in square cm, predicts the size of eye muscle in progeny at 450 days of age. The EMA EBV is adjusted for age. Therefore high EBV values are generally derived more from high growth rate potential (i.e. total weight), rather than from heavy muscling. Because of a positive association with liveweight, EMA EBV is seen more as a predictor of Total Yield than an indicator of muscling.

ESTIMATED TOTAL MEAT YIELD (ETMY):

Predicts the total meat yield produced by progeny at 450 days of age. Prediction of total meat yield is based on liveweight and scan EMA. Total meat yield has a high positive correlation with 450 day weight EBV. Initially this EBV should be used to fine tune selection decisions, i.e. for animals of desired growth and fertility, select the highest ETMY EBV.

FLIGHT TIME EBVS:

Flight Time EBV's are estimates of genetic differences between animals in temperament. Flight Time EBV's are expressed as differences in the number of seconds taken for an animal to travel approximately 2.0 metres after leaving the crush. Higher (i.e. Longer) Flight Time EBV's are more favourable. That is, higher EBVs indicate a longer time taken to exit the crush and hence better temperament. For example, a bull with an EBV of +0.80 would be expected to on average produce progeny that took 0.7 of a second longer to exit the crush than a bull with an EBV of -0.60.

Group BreedPLAN EBVs – How to use them

SELECTION INDEXES:

There are currently two different selection indexes calculated for Australian Santa Gertrudis animals. These are:

- Domestic Production Index
- Export Production Index

Each selection index describes a different production/market scenario and relates to a typical, self replacing Santa Gertrudis herd targeting the following specifications. Domestic Production Index - Estimates the genetic differences between animals in net profitability per cow joined for an example self replacing commercial herd (run in a temperate environment) producing steers for the domestic trade. This Index assumes that the steer progeny are pasture grown and finished and marketed at 500 kg live weight (280 kg HSCW and 12 mm P8 fat depth) at 16 months of age. Daughters are retained for breeding.

EXPORT PRODUCTION INDEX:

Estimates the genetic differences between animals in net profitability per cow joined for an example commercial herd (run in a sub-tropical environment) producing steers for the export trade. This Index assumes that the steer progeny are pasture grown and finished and are marketed at 620 kg live weight (340 kg HSCW and 15 mm P8 fat depth) at 28 months of age. Daughters are retained for breeding. All selection indexes are reported as an EBV, in units of relative earning capacity (\$) for a given production/market scenario. They reflect both the short term profit generated by a sire through the sale of his progeny, and the longer term profit generated by his daughters in a self replacing cow herd. All selection index values have been derived using Breed Object technology.

ACCURACY:

An accuracy on EBVs gives an indication of the amount of information that has been used in the calculation of that EBV. The higher the accuracy, the less the animal's EBVs are likely to change as more information is analysed for that animal and its relatives.

Homozygous Poll (PP) Gene Test



Most of the poll bulls in this catalogue have been genetically tested for the homozygous poll gene. Those that are genetically PP with a double poll gene will deliver more poll calves than a normal (heterozygous) poll bull and substantially more than a horned bull. Just how many poll calves are born depends on your cows but it is not uncommon for a PP bull to father all poll calves.

CREE KOMATSU K144 (P)

CRE14MK144 DOB

27/10/2013



SIRE: 1944MULT12

ROSEVALE NODDY Z26 (P)

DAM: CREE H017 (PS)

MULTIPLE DAM

NOTES:

Komatsu has evolved into one of our leading sires with this, his second crop of calves to be offered for sale. A beautiful head and slick coat combines perfectly with data that mixes huge growth with exceptional carcase and just continues to get better. Unfortunately Komatsu died last year meaning that next year's Q calves will be his last.

| | | | |
|-----------|-------------|--------|-----|
| GROWTH | 200D | +19 | 88% |
| | 400D | +23 | 87% |
| | 600D | +42 | 89% |
| | MWT | +39 | 77% |
| | MILK | -1 | 44% |
| FERTILITY | SS | +1.0 | 86% |
| | DTC | +4.1 | 61% |
| CARCASE | EMA | +3.4 | 67% |
| | RIB | +1.7 | 73% |
| | RUMP | +1.5 | 72% |
| | RBV | +0.3 | 56% |
| | IMF | -0.3 | 71% |
| | Flight Time | -0.26 | 69% |
| \$ INDEX | DOM | +\$ 14 | |
| | EXP | +\$ 20 | |

SIRE OF LOTS:

3, 4, 10, 20, 26, 42, 51, 67, 71, 82

Sire Reference

GYRANDA FOR REAL F136 (PS)

287349 DOB18/08/2009



EIDSVOLD STATION V162 (PS)

SIRE: EIDSVOLD STATION A166 (PS)

EIDSVOLD STATION U85

GYRANDA CRACKERJACK V532

DAM: GYRANDA CALAMITY C113

GYRANDA Z537

NOTES:

This is a big framed, deep flanked bull with dark, slick coat and a quiet demeanor. His calves have consistently been in the top grade for a long time.

SIRE OF LOTS:

1, 9, 39, 57, 69

| | | | |
|-----------|-------------|--------------|------------|
| GROWTH | 200D | +13 | 94% |
| | 400D | +20 | 94% |
| | 600D | +26 | 95% |
| | MWT | +39 | 89% |
| | MILK | -7 | 78% |
| FERTILITY | SS | +1.1 | 94% |
| | DTC | -2.2 | 83% |
| CARCASS | EMA | +1.6 | 78% |
| | RIB | +0.7 | 83% |
| | RUMP | +0.9 | 82% |
| | RBV | +0.3 | 69% |
| | IMF | -0.1 | 76% |
| | Flight Time | +0.30 | 94% |
| \$ INDEX | DOM | +\$ 18 | |
| | EXP | +\$ 24 | |

GYRANDA LONGSHOT L110 (P)

GYR15ML110 DOB 01/07/2014



WILGARROON JESTER (AI)(P)

SIRE: WARENDA D696 (P)

WILGARROON KIT KAT K19 (P)

GYRANDA BOMBER

DAM: GYRANDA H663

GYRANDA Z537

NOTES:

One of the new generation sires here at Gyranda creating plenty of excitement. Longshot is a genuine low birthweight, high growth bull. A medium framed, thick set bull with a perfect sheath and muscle in the top 5% of the breed. Longshot was used as a yearling but this is his first full crop of calves. We have kept one son to use in herd.

SIRE OF LOTS:

7, 8, 37, 53, 56, 94

| | | | |
|-----------|-------------|---------------|------------|
| GROWTH | 200D | +16 | 83% |
| | 400D | +28 | 81% |
| | 600D | +34 | 83% |
| | MWT | +47 | 75% |
| | MILK | +2 | 50% |
| FERTILITY | SS | +1.7 | 81% |
| | DTC | +0.4 | 59% |
| CARCASS | EMA | +4.5 | 67% |
| | RIB | +0.3 | 72% |
| | RUMP | -0.7 | 71% |
| | RBV | +1.2 | 58% |
| | IMF | +0.1 | 67% |
| | Flight Time | -0.06 | 85% |
| \$ INDEX | DOM | +\$ 25 | |
| | EXP | +\$ 26 | |

Sire Reference

GYRANDA COSMIC C476 (P)

266501 DOB 21/09/2006



WAVE HILL MAJOR (P)

SIRE: STRATHMORE WARDEN (P)

STRATHMORE 020

EIDSVOLD STATION T118

DAM: GYRANDA X499

PUREBRED SANTA GERTRUDIS COW

NOTES:

Gyranda Cosmic is one of the highest fertility sires in Santa Gertrudis with a pedigree going back to Wave Hill Major. He is a growthy, dark coated bull whose sons continue the tradition of combining growth, fertility and functionality.

SIRE OF LOTS:

5, 31, 45, 46, 63, 65

| | | | |
|-----------|-------------|---------------|------------|
| GROWTH | 200D | +6 | 95% |
| | 400D | +12 | 94% |
| | 600D | +25 | 95% |
| | MWT | +23 | 91% |
| | MILK | +1 | 86% |
| FERTILITY | SS | +2.0 | 93% |
| | DTC | -14.9 | 86% |
| CARCASS | EMA | +2.9 | 87% |
| | RIB | -0.2 | 85% |
| | RUMP | -0.9 | 85% |
| | RBV | +1.8 | 73% |
| | IMF | -0.3 | 79% |
| | Flight Time | +0.08 | 95% |
| \$ INDEX | DOM | +\$ 31 | |
| | EXP | +\$ 51 | |

GYRANDA LIGNUM L164 (PS)

GYR15ML164 DOB 03/09/2014



SUJO DASHING (PS)

SIRE: ROWANLEA DUNTRON D24 (PS)

ROWANLEA XCUSE X105

EIDSVOLD STATION B188

DAM: GYRANDA E177

GYRANDA C167

NOTES:

Gylanda Lignum is another of the new generation Gylanda sires with his first sons on offer this year. By Rowanlea Duntroon D24 and with Gylanda Crackerjack on his Dam side this bull has an impeccable fertility pedigree. What catches your eye though is the growth and power of his progeny. This young bull combines growth and fertility at a level that will push the breed to new heights in the years ahead.

SIRE OF LOTS:

6, 27, 96

| | | | |
|-----------|-------------|--------|------|
| GROWTH | 200D | +18 | 84% |
| | 400D | +33 | 9481 |
| | 600D | +51 | 83% |
| | MWT | +58 | 76% |
| | MILK | +1 | 55% |
| FERTILITY | SS | +3.1 | 78% |
| | DTC | -6.3 | 62% |
| CARCASS | EMA | +2.2 | 65% |
| | RIB | -0.5 | 69% |
| | RUMP | -1.2 | 69% |
| | RBV | +1.3 | 56% |
| | IMF | -0.5 | 63% |
| | Flight Time | +0.42 | 78% |
| \$ INDEX | DOM | +\$ 33 | |
| | EXP | +\$ 48 | |

Sire Reference

ROWANLEA KLUGER K32 (P)

ROW14MK32 DOB 14/09/2013



ROSEVALE BATTALION B150 (P)

SIRE: ROSEVALE BATTALION E622 (P)

ROSEVALE AFRA B37 (P)

ROWANLEA ATOMIC A02 (P)

DAM: ROWANLEA E31

ROWANLEA Y73

NOTES:

Kluger is a young sire with massive growth. In fact he is currently the highest growth sire in Santa Gertrudis. We have used him across lower growth and higher fat cows but his progeny retain much of the frame and growth of their sire along with his lovely quiet temperament.

SIRE OF LOTS:

33, 86, 88, 89

| | | | |
|-----------|-------------|--------|------|
| GROWTH | 200D | +29 | 89% |
| | 400D | +52 | 87% |
| | 600D | +66 | 88% |
| | MWT | +91 | 79% |
| | MILK | 0 | 61% |
| FERTILITY | SS | +2.9 | 83% |
| | DTC | +4.5 | 68% |
| CARCASS | EMA | +3.3 | 69% |
| | RIB | -2.4 | 73% |
| | RUMP | -3.5 | 725% |
| | RBV | +0.9 | 67% |
| | IMF | -0.1 | 73% |
| | Flight Time | +0.23 | 83% |
| \$ INDEX | DOM | +\$ 32 | |
| | EXP | +\$ 36 | |

GYRANDA GARFIELD G302 (P)

294411 DOB 26/09/2010



WACO FREEMAN (P)

SIRE: TYNDALE REPLAY (AI)(P)

BOWENFELS DANELLE 2ND

270 MSMU M

DAM: GYRANDA Z131

PUREBRED SANTA GERTRUDIS COW

NOTES:

Garfield is an early maturing bull with an amazing constitution and the highest fat data in the Santa Breed. Slick coated with an excellent sheath we have used him across higher growth cows in our herd. His progeny retain much of his exceptional carcass characteristics. His son – Gyranda Calvin K582 – is also delivering some excellent calves – including two in this sale.

| | | | |
|-----------|-------------|-------------|------------|
| GROWTH | 200D | +3 | 90% |
| | 400D | +5 | 90% |
| | 600D | +20 | 91% |
| | MWT | +2 | 83% |
| | MILK | +7 | 65% |
| FERTILITY | SS | +0.5 | 88% |
| | DTC | -2.2 | 74% |
| CARCASS | EMA | +2.0 | 73% |
| | RIB | +3.3 | 78% |
| | RUMP | +3.7 | 77% |
| | RBV | -1.2 | 64% |
| | IMF | +0.8 | 71% |
| | Flight Time | -0.25 | 88% |
| \$ INDEX | DOM | +\$ 0 | |
| | EXP | +\$ 10 | |

SIRE OF LOTS:

18, 48, 52

X3X
GYRANDA
SANTA GERTRUDIS





GYRANDA PACIFIC P362

'S' BULL
 GYR18MP362
 28/8/17 (25 mths)



LOT 1.

EIDSVOLD STATION A166 (PS)

SIRE: GYRANDA FOR REAL F136 (PS)

GYRANDA CALAMITY C113

GYRANDA ACLAND A134

DAM: GYRANDA D217

GYRANDA W599

Notes: Pacific is a big; soft gentle giant with a massive engine. Deep through the flank; heavy boned and with a lovely topline. This bull was broken in for the junior show in Warwick and led around by Simeon Cook from NZ. His data backs what you see - putting him in the top echelon of the breed for both growth and fertility. Pacific's Dam D217 calved at two and maintains a perfect record; weaning her tenth calf this year. Likewise her dam W599 weaned 8/8 before being sold in 2010.

Dam: C.I. 361 days – 10 calves **Morphology:** 74%

Wt _____ Sc _____

| | | | |
|-----------|-------------|-------|-----|
| GROWTH | 200D | +18 | 69% |
| | 400D | +28 | 67% |
| | 600D | +39 | 69% |
| | MWT | +63 | 65% |
| | MILK | -2 | 53% |
| FERTILITY | SS | +0.8 | 66% |
| | DTC | -3.1 | 54% |
| CARCASE | EMA | +2.8 | 54% |
| | RIB | -0.9 | 59% |
| | RUMP | -1.2 | 58% |
| | RBY | +1.2 | 48% |
| | IMF | -0.4 | 54% |
| | Flight Time | +0.07 | 70% |
| \$ INDEX | DOM | +27 | |
| | EXP | +36 | |

\$ _____



GYRANDA PHANTOM P506

'S' BULL
 GYR18MP506
 4/9/17 (24 mths)



LOT 2.

ROSEVALE DEMOCRAT G268 (P)

SIRE: GYRANDA KIT K154 (P)

GYRANDA A635 (P)

DANGARFIELD PENROSE P194 (P)

DAM: GYRANDA H341

GYRANDA C123

Notes: Big; soft; deep through the flank with a tidy sheath. Talk about a heavy boned carcass bull that will deliver kilos like no other! Phantom was broken in for the junior show & led around by Patrick Mahony. He is the best natured bull. I took him up to Richmond for a road trip in June & had to fight a couple of keen eyed cattlemen to get him back on the truck. Plenty of business in the engine room though. He carries EBV data for growth & EMA in the top 1% of the breed. Dam H341 calved at two & has weaned five calves in six years including a \$9000 bull sold to John Knights. Her dam C123 weaned 6/6 & her dam in turn Y303 was one of my favourite cows that only went last year at 15 years old having weaned 13 calves including a \$21,000 bull.

Dam: C.I. 454 days – 5 calves **Morphology:** 67%

Wt _____ Sc _____

| | | | |
|-----------|-------------|-------|-----|
| GROWTH | 200D | +28 | 67% |
| | 400D | +36 | 65% |
| | 600D | +52 | 68% |
| | MWT | +68 | 62% |
| | MILK | -4 | 42% |
| FERTILITY | SS | +1.8 | 67% |
| | DTC | +3.1 | 50% |
| CARCASS | EMA | +5.6 | 51% |
| | RIB | -0.9 | 58% |
| | RUMP | -1.6 | 57% |
| | RBV | +2.0 | 46% |
| | IMF | -0.4 | 56% |
| | Flight Time | +0.07 | 67% |
| \$ INDEX | DOM | +32 | |
| | EXP | +36 | |

\$ _____



GYRANDA PENTAGON P632 (P)

'S' BULL
 GYR18MP632
 28/9/17 (24 mths)



LOT 3.

CREE MULTI SIRE

SIRE: CREE KOMATSU K144 (PP)

CREE H107 (P)

GYRANDA D176

DAM: GYRANDA J383

GYRANDA Y401

Notes: With his clean coat; sirey outlook and excellent sheath this bull will always be a head turner ; but it is his power and muscle that makes him truly unique and a standout for the 2019 sale. Exceptional data gives you every confidence that what you see is what you get. His Dam was pregnant as a yearling but failed to wean a calf. It has been her only blemish as she has gone on to wean four calves in the last four years. Her Dam Y401 also calved first at three and then weaned eight without fault before going missing in 2013.

Dam: C.I. 357 days – 4 calves **Morphology:** 67%

Wt _____ Sc _____

| | | | |
|-----------|-------------|-------|-----|
| GROWTH | 200D | +19 | 66% |
| | 400D | +27 | 65% |
| | 600D | +38 | 68% |
| | MWT | +47 | 61% |
| | MILK | +1 | 38% |
| FERTILITY | SS | +1.4 | 67% |
| | DTC | +6.3 | 49% |
| CARCASS | EMA | +4.8 | 51% |
| | RIB | -0.6 | 57% |
| | RUMP | -1.1 | 57% |
| | RBV | +1.3 | 45% |
| | IMF | -0.4 | 55% |
| | Flight Time | -0.06 | 67% |
| \$ INDEX | DOM | +19 | |
| | EXP | +18 | |

\$ _____



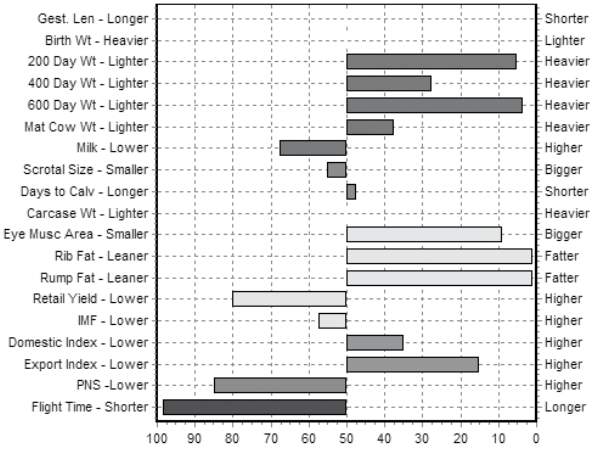
GYRANDA PALEO P254 (PP)

'S' BULL

GYR18MP254

25/10/17 (23 mths)

EBV Percentiles for GYRANDA P254 (P)



50th Percentile is the Breed Avg. EBVs for 2017 Born Calves

CREE MULTI SIRE

SIRE: CREE KOMATSU K144 (PP)

CREE H107 (P)

GYRANDA DEADLY D178 (PS)

DAM: GYRANDA G507 (P)

GLENAAN S\$184



| | | | |
|-----------|-------------|-------|-----|
| GROWTH | 200D | +20 | 67% |
| | 400D | +21 | 68% |
| | 600D | +43 | 70% |
| | MWT | +31 | 63% |
| | MILK | -1 | 39% |
| FERTILITY | SS | +0.7 | 70% |
| | DTC | +0.3 | 50% |
| CARCASE | EMA | +3.8 | 53% |
| | RIB | +2.1 | 60% |
| | RUMP | +2.2 | 59% |
| | RBV | +0.3 | 46% |
| | IMF | +0 | 57% |
| | Flight Time | -0.12 | 68% |
| \$ INDEX | DOM | +17 | |
| | EXP | +27 | |

Notes: Soft; Homozygous poll bull with a clean coat and excellent carcase. This bull is a real heard changer. PP with fat data in the top 1% of the breed. He can markedly improve your grass finishing whilst loosing nothing in growth; fertility or muscle. Dam G507 is about to calve out for the eighth time to maintain her perfect record.

Dam: C.I. 354 days – 7 calves

Morphology: 78%

Wt _____

Sc _____

\$ _____



GYRANDA PANCHO P416 (P)

'S' BULL
 GYR18MP416
 21/8/17 (25 mths)



LOT 5.

STRATHMORE WARDEN W152 (P)

SIRE: GYRANDA COSMIC C476

GYRANDA X499

RAYTEK DEMOCRAT D46 (P)

DAM: GYRANDA K151 (P)

GYRANDA E501

Notes: An impressively powerful big polley bull with slick; dark coat and muscle to burn. Coming from Gyranda Cosmic his sire line is one of the most fertile in the business. Dam K151 calved at two and has weaned three calves in four years.

| | | | |
|------------------|-------------|-------------|------------|
| GROWTH | 200D | +9 | 67% |
| | 400D | +15 | 66% |
| | 600D | +19 | 68% |
| | MWT | +17 | 64% |
| | MILK | -2 | 53% |
| FERTILITY | SS | +2.1 | 65% |
| | DTC | -8.8 | 57% |
| CARCASE | EMA | +3.4 | 53% |
| | RIB | +0.3 | 58% |
| | RUMP | -0.1 | 58% |
| | RBY | +1.3 | 48% |
| | IMF | -0.2 | 55% |
| | Flight Time | +0.07 | 69% |
| \$ INDEX | DOM | +27 | |
| | EXP | +35 | |

Dam: C.I. 553 days – 3 calves **Morphology:** 83%

Wt _____ Sc _____

\$ _____



GYRANDA PADDINGTON P526 (P)

'S' BULL
 GYR18MP526
 11/9/17 (24 mths)



LOT 6.

ROWANLEA DUNTRON D24 (PS)

SIRE: GYRANDA LIGNUM L164 (P)

GYRANDA E177

EIDSVOLD STATION Z342 (P)

DAM: GYRANDA C585

GYRANDA W193

Notes: Undoubtedly the quietest bull in the draft & certainly one of the biggest framed. Paddington carries those droopy ears & loose skin that scream out massive weight gain. He is the first son of Gyranda Lignum L164 to be offered & along with lots 96 & 27 offer a glimpse into why we think this young sire will have such an impact on the breed. Paddington was broken in for the junior camp where he was led by Beth Barrett & Alex Wilson. He has also done a trip to Richmond & Charters Towers last year for some bull schools. Dam C585 calved at two & has weaned ten calves in eleven years. Her Dam W193 weaned 6/6.

Dam: C.I. 408 days – 10 calves **Morphology:** 63%

Wt _____ Sc _____

| | | | |
|------------------|-------------|--------------|------------|
| GROWTH | 200D | +15 | 66% |
| | 400D | +23 | 65% |
| | 600D | +34 | 67% |
| | MWT | +47 | 62% |
| | MILK | -1 | 47% |
| FERTILITY | SS | +2.2 | 65% |
| | DTC | -7.4 | 51% |
| CARCASE | EMA | +1.3 | 52% |
| | RIB | -0.2 | 58% |
| | RUMP | -1 | 57% |
| | RBV | +1.2 | 46% |
| | IMF | -0.2 | 54% |
| | Flight Time | +0.34 | 66% |
| \$ INDEX | DOM | +27 | |
| | EXP | +40 | |

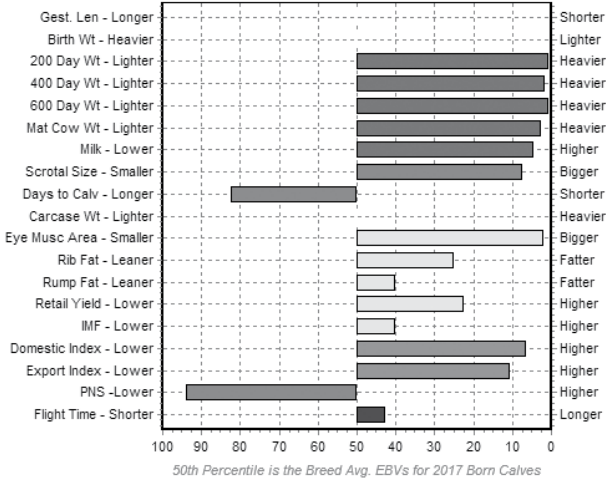
\$ _____



GYRANDA PROVERB P678 (PP)

'S' BULL
 GYR18MP678
 24/10/17 (23 mths)

EBV Percentiles for GYRANDA P678 (P)



WARENDA D696 (P)

SIRE: GYRANDA LONGSHOT L110(P)(AI)

GYRANDA H663

GYRANDA HUMMER H274 (P)

DAM: GYRANDA M727 (P)

GYRANDA H643



Notes: What a package! Homozygous poll; dark coat and the perfect sheath. This is a much younger bull but get behind him and you will see why growth and muscle are at the very peak of the breed. Although we have no birthweight the fact that he is a Longshot calf would suggest that he will be a low birthweight; high growth bull. Genuine sire potential. His dam M727 was a maiden heifer that failed to get back into calf last year. She is pregnant again this year.

Dam: C.I. N/A – 1 calf

Morphology: 91%

Wt _____

Sc _____

| | | | |
|-----------|-------------|-------|-----|
| GROWTH | 200D | +25 | 62% |
| | 400D | +37 | 62% |
| | 600D | +50 | 63% |
| | MWT | +58 | 57% |
| | MILK | +4 | 34% |
| FERTILITY | SS | +2 | 64% |
| | DTC | +3.4 | 44% |
| CARCASE | EMA | +4.9 | 47% |
| | RIB | +0.6 | 52% |
| | RUMP | +0 | 51% |
| | RBV | +0.9 | 41% |
| | IMF | +0.1 | 50% |
| | Flight Time | +0.04 | 66% |
| \$ INDEX | DOM | +26 | |
| | EXP | +28 | |

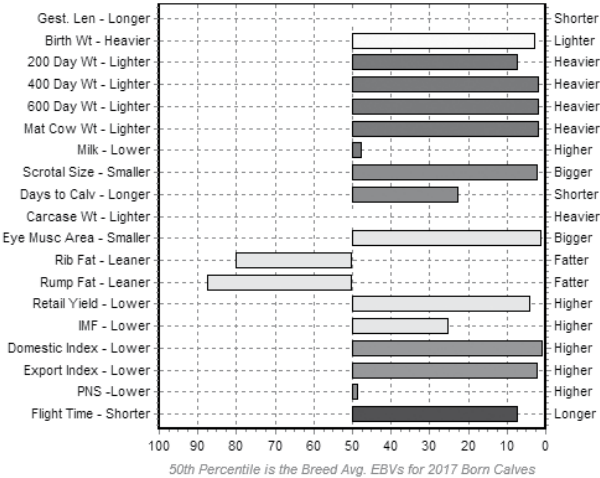
\$ _____



GYRANDA PAYMASTER P156 (P)

'S' BULL
GYR18MP156
9/9/17 (24 mths)

EBV Percentiles for GYRANDA P156 (P)



WARENDA D696 (P)

SIRE: GYRANDA LONGSHOT L110(P)(AI)

GYRANDA H663

GYRANDA EDITOR E572

DAM: GYRANDA M513

GYRANDA F1049 (P)

Notes: The perfect heifer bull. Low birthweight (29kg) and with the gymnastic contortion of both birth and 600 Day growth EBVs in the top 3% of the breed. Unheard of! A slick coated; medium framed poll bull with the perfect sheath; muscle in the top 1% of the breed and quiet to boot. His Dam - M513 - was a maiden heifer that weaned a second calf last year and is pregnant again.

Dam: C.I. 415 days – 2 calves

Morphology: 92%

Wt _____

Sc _____

| | | | |
|------------------|--------------------|-------------|------------|
| GROWTH | 200D | +19 | 67% |
| | 400D | +37 | 66% |
| | 600D | +46 | 68% |
| | MWT | +63 | 61% |
| | MILK | +0 | 37% |
| FERTILITY | SS | +2.5 | 67% |
| | DTC | -3 | 47% |
| CARCASE | EMA | +5.3 | 50% |
| | RIB | -0.3 | 57% |
| | RUMP | -1.1 | 56% |
| | RBV | +1.4 | 45% |
| | IMF | +0.2 | 55% |
| | Flight Time | +0.2 | 65% |
| \$ INDEX | DOM | +35 | |
| | EXP | +42 | |

\$ _____



GYRANDA PERSEUS P580 (P)

'S' BULL
 GYR18MP580
 7/10/17 (23 mths)



LOT 9.

EIDSVOLD STATION A166 (PS)

SIRE: GYRANDA FOR REAL F136 (PS)

GYRANDA CALAMITY C113

GYRANDA C106

DAM: GYRANDA F407

HARTWOOD B-113

Notes: No doubt you will notice this bull. Powerful; proud and productive; the type of bull you want your neighbours to see...every time they drive past. In Greek mythology Perseus vanquished the snake headed Medusa. Not lacking courage; perhaps this bull will vanquish weaknesses in your herd. His Dam F407 calved at two and has weaned seven calves in eight years. Her Dam was a Hartwood cow that weaned 5/5.

Dam: C.I. 416 days – 7 calves **Morphology:** 83%

Wt _____ Sc _____

| | | | |
|------------------|-------------|-------|-----|
| GROWTH | 200D | +21 | 68% |
| | 400D | +24 | 67% |
| | 600D | +35 | 70% |
| | MWT | +58 | 64% |
| | MILK | -2 | 50% |
| FERTILITY | SS | +0.8 | 69% |
| | DTC | -1.8 | 56% |
| CARCASE | EMA | +1.8 | 54% |
| | RIB | +0.6 | 60% |
| | RUMP | +0.4 | 59% |
| | RBY | +0.2 | 48% |
| | IMF | +0.2 | 56% |
| | Flight Time | +0.08 | 69% |
| \$ INDEX | DOM | +18 | |
| | EXP | +27 | |

\$ _____



GYRANDA PUZZLE P596 (P)

'S' BULL

GYR18MP596

13/9/17 (24 mths)



LOT 10.

CREE MULTI SIRE

SIRE: CREE KOMATSU K144 (PP)

CREE H107 (P)

ROSEVALE NODDY A18 (P)

DAM: GYRANDA H285

GYRANDA C219

Notes: Puzzle is a slick coated; stylish poll bull with a quiet disposition and sirey outlook. He was broken in for the Warwick junior camp (led by Tom Cook) and has been taken to the local Theodore show as well as a bit of a roadtrip up north during June. A bull with real eye appeal and fantastic growth and carcass data to back it up. Dam H285 calved at two and has weaned six calves in six years. Her dam C219 also had a perfect record to wean nine before being culled for age last year.

Dam: C.I. 355 days – 6 calves **Morphology:** %

Wt _____ **Sc** _____

| | | | |
|------------------|-------------|-------------|------------|
| GROWTH | 200D | +15 | 67% |
| | 400D | +19 | 66% |
| | 600D | +34 | 69% |
| | MWT | +45 | 62% |
| | MILK | +0 | 40% |
| FERTILITY | SS | +0.1 | 68% |
| | DTC | +1.2 | 51% |
| CARCASS | EMA | +2.1 | 52% |
| | RIB | +1.5 | 58% |
| | RUMP | +1.6 | 57% |
| | RBY | +0.2 | 46% |
| | IMF | -0.1 | 56% |
| | Flight Time | -0.04 | 68% |
| \$ INDEX | DOM | +13 | |
| | EXP | +21 | |

\$ _____



GYRANDA PATRIOT P242 (PS)

'S' BULL
 GYR18MP242
 17/10/17 (23 mths)



LOT 11.

ROSEVALE DEMOCRAT G268 (P)

SIRE: GYRANDA KIT K154 (P)

GYRANDA A635 (P)

GYRANDA C160

DAM: GYRANDA G849

GYRANDA C855

Notes: An eye catching young bull with a sirey outlook; great skin and carrying that powerful growth and muscle (both in the top 1% of the breed) that will lift any herd. Dam G849 calved at two and maintains a perfect record; weaning seven so far.

Dam: C.I. 366 days – 6 calves **Morphology:** 86%

Wt _____ **Sc** _____

| | | | |
|------------------|--------------------|-------------|------------|
| GROWTH | 200D | +26 | 67% |
| | 400D | +33 | 68% |
| | 600D | +51 | 69% |
| | MWT | +71 | 63% |
| | MILK | -2 | 42% |
| FERTILITY | SS | +1.9 | 69% |
| | DTC | +0.6 | 51% |
| CARCASE | EMA | +5.1 | 53% |
| | RIB | -0.7 | 60% |
| | RUMP | -1.5 | 59% |
| | RBV | +1.7 | 47% |
| | IMF | -0.2 | 57% |
| | Flight Time | +0.1 | 68% |
| \$ INDEX | DOM | +30 | |
| | EXP | +39 | |

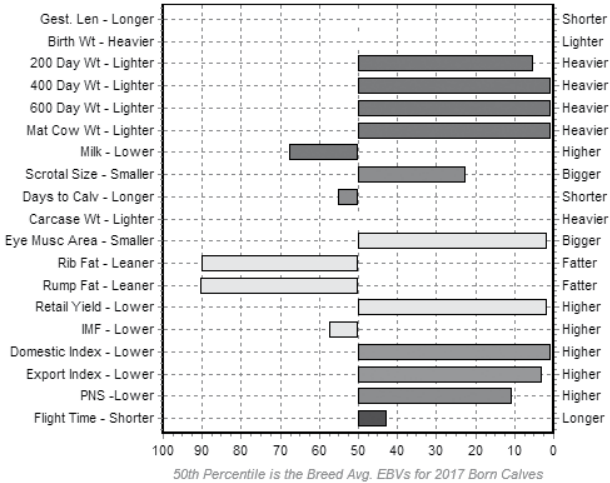
\$ _____



GYRANDA PROSPECTOR P462

'S' BULL
GYR18MP462
18/9/17 (24 mths)

EBV Percentiles for GYRANDA P462



GYRANDA D562 (PS)

SIRE: GYRANDA HARVARD H394

GYRANDA C831

GYRANDA CESAR C422 (PS)

DAM: GYRANDA K133 (PS)

GYRANDA G279

Notes: Long as a train and quiet as a mouse. This bull is a real sire prospect. He has a perfect sheath and muscle from tip to toe. By sale day he will undoubtedly be one of the stars of the show. Growth and EMA are both in the top 1% of the breed and yet his fertility data is substantially better than average. His dam K133 calved at two and has weaned three calves in four years. Her Dam G279 has weaned six calves in six years.

| | | | |
|------------------|--------------------|--------------|------------|
| GROWTH | 200D | +20 | 66% |
| | 400D | +39 | 67% |
| | 600D | +52 | 69% |
| | MWT | +75 | 63% |
| | MILK | -1 | 42% |
| FERTILITY | SS | +1.4 | 68% |
| | DTC | +1.1 | 51% |
| CARCASE | EMA | +5.2 | 52% |
| | RIB | -0.6 | 60% |
| | RUMP | -1.2 | 59% |
| | RBV | +1.7 | 47% |
| | IMF | +0 | 57% |
| | Flight Time | +0.02 | 67% |
| \$ INDEX | DOM | +34 | |
| | EXP | +39 | |

Dam: C.I. 699 days – 2 calves

Morphology: 89%

Wt _____

Sc _____

\$ _____



GYRANDA PERU P352 (PS)

'S' BULL
 GYR18MP352
 28/9/17 (24 mths)



LOT 13.

CELAMBA ZACK

SIRE: FISHINGTON JOGLA J031 (PP)

FISHINGTON CORA E046 (P)

GYRANDA CRACKERJACK V532

DAM: GYRANDA BUBBLES B157

GYRANDA V353

Notes: An outstanding dark poll bull with a sirey outlook and good attitude. If you want to lift your carcass; this is the bull for you! Massive fat data; growth in the top 5% of the breed and muscle not far behind. His Dam - Gylanda Bubbles B157 - was a Crackerjack cow that weaned ten calves in eleven years before being culled for age last year.

Dam: C.I. 405 days – 10 calves **Morphology:** 86%

Wt _____ Sc _____

| | | | |
|-----------|-------------|-------|-----|
| GROWTH | 200D | +20 | 68% |
| | 400D | +27 | 68% |
| | 600D | +44 | 70% |
| | MWT | +46 | 64% |
| | MILK | -1 | 46% |
| FERTILITY | SS | +2.4 | 70% |
| | DTC | +1.3 | 52% |
| CARCASS | EMA | +3.8 | 55% |
| | RIB | +2.3 | 61% |
| | RUMP | +2.1 | 60% |
| | RBV | +0.9 | 49% |
| | IMF | -0.6 | 59% |
| | Flight Time | -0.19 | 68% |
| \$ INDEX | DOM | +24 | |
| | EXP | +30 | |

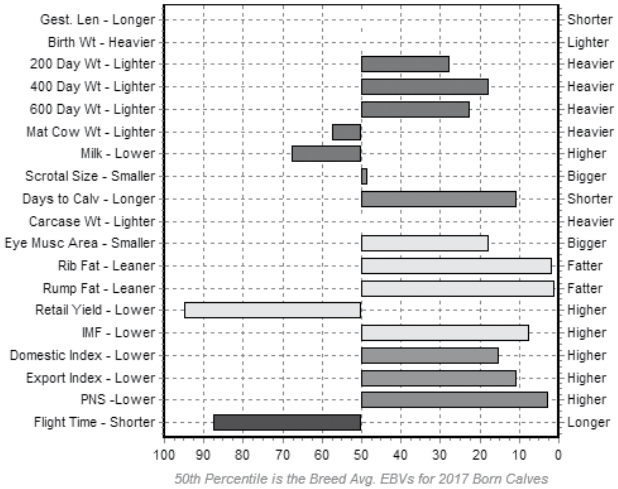
\$ _____



GYRANDA PERCIVAL P314 (P)

'S' BULL
GYR18MP314
31/8/17 (25 mths)

EBV Percentiles for GYRANDA P314 (P)



TOOKEY CREEK GURU G34 (P)

SIRE: GYRANDA LORAX L794 (PP)

GYRANDA J359

THE LAKES J1

DAM: GYRANDA C653

GYRANDA Y331

Notes: A tidy poll bull with a clean coat and a tidy sheath. This bull provides herd changing fat improvement including exceptional IMF data whilst giving nothing away for growth; fertility or muscle. Dam C653 weaned eight calves in nine years before being culled last year.

| | | | |
|------------------|-------------|-------------|------------|
| GROWTH | 200D | +14 | 68% |
| | 400D | +23 | 68% |
| | 600D | +30 | 70% |
| | MWT | +22 | 64% |
| | MILK | -1 | 41% |
| FERTILITY | SS | +0.8 | 71% |
| | DTC | -5.1 | 50% |
| CARCASE | EMA | +3.3 | 53% |
| | RIB | +1.9 | 61% |
| | RUMP | +2.2 | 60% |
| | RBV | +0 | 47% |
| | IMF | +0.4 | 57% |
| | Flight Time | -0.08 | 69% |
| \$ INDEX | DOM | +22 | |
| | EXP | +29 | |

Dam: C.I. 466 days – 8 calves

Morphology: 78%

Wt _____

Sc _____

\$ _____



GYRANDA PARADIGM P520 (P)

'S' BULL
 GYR18MP520
 14/8/17 (25 mths)



LOT 15.

CELAMBA ZACK

SIRE: FISHINGTON JOGLA J031 (PP)

FISHINGTON CORA E046 (P)

GYRANDA BANJO B256

DAM: GYRANDA H399

GYRANDA ABSINTH

Notes: A lovely long and soft bull with a quiet temperament. Excellent carcass and fertility data throughout. His Dam H399 calved at two and has weaned six calves in six years. Her Dam A507 also maintained a perfect record; weaning ten.

Dam: C.I. 365 days – 6 calves **Morphology:** 82%

Wt _____ Sc _____

| | | | |
|------------------|-------------|-------------|------------|
| GROWTH | 200D | +13 | 66% |
| | 400D | +20 | 65% |
| | 600D | +26 | 68% |
| | MWT | +41 | 62% |
| | MILK | +0 | 43% |
| FERTILITY | SS | +1.5 | 67% |
| | DTC | -4.9 | 50% |
| CARCASS | EMA | +3.1 | 51% |
| | RIB | +1.6 | 57% |
| | RUMP | +1.3 | 56% |
| | RBV | +1.1 | 45% |
| | IMF | -0.2 | 55% |
| | Flight Time | -0.24 | 66% |
| \$ INDEX | DOM | +25 | |
| | EXP | +32 | |

\$ _____



GYRANDA PARAGUAY P486 (P)

'S' BULL
 GYR18MP486
 4/9/17 (24 mths)



LOT 16.

CELAMBA ZACK

SIRE: FISHINGTON JOGLA J031 (PP)

FISHINGTON CORA E046 (P)

EIDSVOLD STATION W62

DAM: GYRANDA F751

HARTWOOD 442

Notes: A beautiful big polley bull; thick across the topline with an excellent hindquarter. Growth; fertility and fat cover in the top echelon of the breed. Dam F751 calved at two and has weaned 8/8 including a bull sold to Donald Joyce last year for \$5,500.

Dam: C.I. 358 days – 8 calves **Morphology:** 92%

Wt _____ **Sc** _____

| | | | |
|------------------|-------------|-------------|------------|
| GROWTH | 200D | +8 | 66% |
| | 400D | +24 | 67% |
| | 600D | +34 | 69% |
| | MWT | +30 | 63% |
| | MILK | +0 | 44% |
| FERTILITY | SS | +2.5 | 69% |
| | DTC | -8.4 | 51% |
| CARCASE | EMA | +2.2 | 52% |
| | RIB | +2.2 | 59% |
| | RUMP | +2.1 | 58% |
| | RBV | +0.5 | 47% |
| | IMF | -0.1 | 57% |
| | Flight Time | -0.21 | 67% |
| \$ INDEX | DOM | +28 | |
| | EXP | +40 | |

\$ _____



GYRANDA PINOCCHIO P534 (P)

'S' BULL
 GYR18MP534
 10/9/17 (24 mths)



LOT 17.

ROSEVALE FRONTIER F584 (P)

SIRE: ROSEVALE KINSMAN K162 (P)

ROSEVALE CEPRANO W553

GYRANDA C834

DAM: GYRANDA H221 (P)

GYRANDA U231

Notes: A soft; quiet bull with an excellent sheath Pinocchio is something of a quiet achiever. He was broken in for the junior show & led by Mack Sing. Underneath that unassuming exterior lies a massive engine. Growth; Fertility; Fats & muscle all in the top 10% of the breed but it is his IMF that bears close scrutiny. 4.2% at scanning & an EBV of +0.7 puts him in the top 1% of the breed. Looking for a safe bull to lift your MSA compliance? His Dam H221 calved at two & has weaned seven calves in seven years.

Dam: C.I. 363 days – 7 calves **Morphology:** 73%

Wt _____ **Sc** _____

| | | | |
|------------------|-------------|-------------|------------|
| GROWTH | 200D | +17 | 65% |
| | 400D | +27 | 64% |
| | 600D | +33 | 67% |
| | MWT | +32 | 61% |
| | MILK | +0 | 44% |
| FERTILITY | SS | +3.1 | 67% |
| | DTC | -7.2 | 50% |
| CARCASE | EMA | +3.3 | 49% |
| | RIB | +1.6 | 56% |
| | RUMP | +1.7 | 56% |
| | RBV | -0.2 | 44% |
| | IMF | +0.7 | 54% |
| | Flight Time | +0.09 | 65% |
| \$ INDEX | DOM | +25 | |
| | EXP | +34 | |

\$ _____



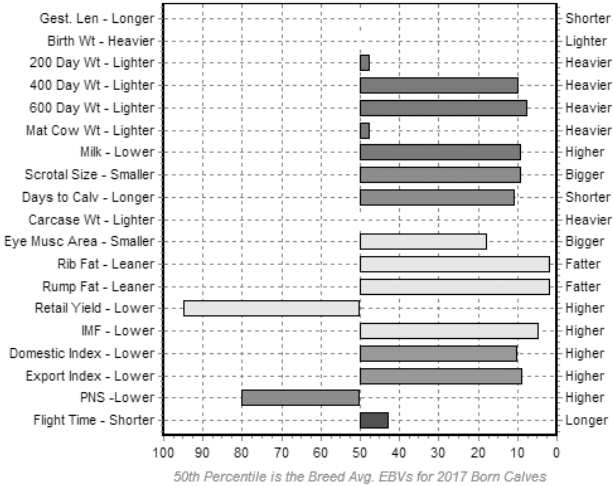
GYRANDA PADRE P402 (PS)

'S' BULL

GYR18MP402

11/9/17 (24 mths)

EBV Percentiles for GYRANDA P402 (PS)



TYNDALE REPLAY 167 (AI) (P)

SIRE: GYRANDA GARFIELD G302 (P)

GYRANDA Z131

GYRANDA FLYNN Y226

DAM: GYRANDA E551

GYRANDA V477

Notes: A big deep-bodied poll scur bull with a lovely dark coat. Fat; IMF and fertility data are all in the top 1 to 5% of the breed; which of itself is not extraordinary; but combine that with growth in the top 10% and muscle data not far behind and you really do have the complete package. The perfect animal to take your herd to the next level. Dam E551 calved at two and has weaned eight calves in nine years.

| | | | |
|-----------|-------------|-------------|------------|
| GROWTH | 200D | +11 | 68% |
| | 400D | +27 | 68% |
| | 600D | +38 | 70% |
| | MWT | +27 | 64% |
| | MILK | +3 | 48% |
| FERTILITY | SS | +1.9 | 71% |
| | DTC | -4.6 | 54% |
| CARCASS | EMA | +3.3 | 54% |
| | RIB | +1.9 | 54% |
| | RUMP | +1.9 | 53% |
| | RBV | +0 | 48% |
| | IMF | +0.5 | 56% |
| | Flight Time | +0.02 | 68% |
| \$ INDEX | DOM | +24 | |
| | EXP | +32 | |

Dam: C.I. 420 days – 8 calves

Morphology: 86%

Wt _____

Sc _____

\$ _____



GYRANDA PUBLICAN P218 (PP)

'S' BULL
 GYR18MP218
 5/10/17 (23 mths)



LOT 19.

EIDSVOLD STN ES/D648 DINGO
SIRE: GYRANDA GARWOOD G684 (PS)
 GYRANDA E165 (P)
 ROSEVALE NODDY A18 (P)
DAM: GYRANDA J339 (P)
 GYRANDA V119



Notes: An outstanding Homozygous poll bull. Massive growth in a clean coated; tight sheathed poll package. Dam J339 has a perfect record weaning five so far.

Dam: C.I. 354 days – 5 calves **Morphology:** 75%
 Wt _____ Sc _____

| | | | |
|-----------|-------------|------------|-----|
| GROWTH | 200D | +22 | 68% |
| | 400D | +35 | 68% |
| | 600D | +45 | 70% |
| | MWT | +46 | 64% |
| | MILK | +2 | 47% |
| FERTILITY | SS | +1 | 70% |
| | DTC | +0.9 | 55% |
| CARCASE | EMA | +3.4 | 54% |
| | RIB | +0 | 60% |
| | RUMP | -0.3 | 59% |
| | RBV | +0.5 | 48% |
| | IMF | +0 | 57% |
| | Flight Time | -0.02 | 69% |
| \$ INDEX | DOM | +25 | |
| | EXP | +27 | |

\$ _____



GYRANDA P258 (P)

'S' BULL
 GYR18MP258
 28/9/17 (24 mths)



LOT 20.

CREE MULTI SIRE

SIRE: CREE KOMATSU K144 (PP)

CREE H107 (P)

GYRANDA C834

DAM: GYRANDA F353

GYRANDA B225

Notes: A beautiful soft bull; thick across the top from head to tail; lovely loose skin; good sheath and well behaved. A combination of growth and carcass that makes this bull very hard to beat. Dam F353 calved at two; weaned seven from seven before having a holiday last year. She is due to calve out a Rosevale Jackaroo Calf this spring.

Dam: C.I. 358 days – 7 calves **Morphology:** %

Wt _____ **Sc** _____

| | | | |
|------------------|-------------|-------|-----|
| GROWTH | 200D | +19 | 67% |
| | 400D | +27 | 68% |
| | 600D | +40 | 70% |
| | MWT | +40 | 62% |
| | MILK | +2 | 41% |
| FERTILITY | SS | +1.2 | 69% |
| | DTC | +0.8 | 51% |
| CARCASS | EMA | +3.9 | 54% |
| | RIB | +1.1 | 53% |
| | RUMP | +0.6 | 52% |
| | RBV | +0.9 | 46% |
| | IMF | +0 | 57% |
| | Flight Time | -0.15 | 68% |
| \$ INDEX | DOM | +23 | |
| | EXP | +27 | |

\$ _____



GYRANDA P142 (PS)

'S' BULL

GYR18MP142

3/9/17 (24 mths)

TOOKEY CREEK GURU G34 (P)

SIRE: GYRANDA LORAX L794 (PP)

GYRANDA J359

ROSEVALE GUMPER X546 (P)

DAM: GYRANDA G423

GYRANDA Y461

Notes: A big framed; clean coated poll scur bull. Growth and muscle in spades! A big calf at birth - 47kg. His Dam calved at three but has had five calves in five years and is pregnant through the A.I program to leading sire Gyranda Monto M272.

Dam: C.I. 349 days – 5 calves **Morphology:** 63%

Wt _____ Sc _____

| | | | |
|-----------|-------------|------------|------------|
| GROWTH | 200D | +16 | 69% |
| | 400D | +30 | 68% |
| | 600D | +36 | 70% |
| | MWT | +36 | 63% |
| | MILK | +1 | 39% |
| FERTILITY | SS | +1.4 | 69% |
| | DTC | -3.3 | 50% |
| CARCASE | EMA | +2.9 | 53% |
| | RIB | +0.2 | 60% |
| | RUMP | +0.1 | 59% |
| | RBY | +0.2 | 47% |
| | IMF | +0.2 | 57% |
| | Flight Time | +0.01 | 68% |
| \$ INDEX | DOM | +24 | |
| | EXP | +29 | |

\$ _____



GYRANDA P482

'S' BULL

GYR18MP482

21/8/17 (25 mths)

GYRANDA DYNAMIC D444 (P)

SIRE: GYRANDA HAMISH H450

GYRANDA A323

ROWANLEA DUNTRON D24 (PS)

DAM: GYRANDA J409

GYRANDA D371

Notes: An impressive large framed horn bull with a really good sheath and quiet demena. Dam J409 calved at two and has weaned four calves in five years.

Dam: C.I. 476 days – 4 calves **Morphology:** 78%

Wt _____ Sc _____

| | | | |
|-----------|-------------|-------------|------------|
| GROWTH | 200D | +8 | 64% |
| | 400D | +13 | 65% |
| | 600D | +19 | 67% |
| | MWT | +25 | 62% |
| | MILK | +2 | 39% |
| FERTILITY | SS | +2.7 | 68% |
| | DTC | -4.8 | 49% |
| CARCASE | EMA | +1.5 | 52% |
| | RIB | +0.8 | 59% |
| | RUMP | +0.3 | 58% |
| | RBY | +0.4 | 46% |
| | IMF | +0.1 | 56% |
| | Flight Time | +0.12 | 66% |
| \$ INDEX | DOM | +15 | |
| | EXP | +23 | |

\$ _____



GYRANDA P238

'S' BULL

GYR18MP238

2/10/17 (23 mths)

ROSEVALE DEMOCRAT G268 (P)

SIRE: GYRANDA KIT K154 (P)

GYRANDA A635 (P)

ROSEVALE BRIGADIER B422 (P)

DAM: GYRANDA G349

GYRANDA V457

Notes: Dark coated bull with impressive topline and muscle throughout. His dam G349 calved at two and has not missed to wean seven calves so far. Her Dam V457 also weaned 11 with a faultless record.

| | | | |
|-----------|-------------|-------|-----|
| GROWTH | 200D | +14 | 67% |
| | 400D | +13 | 68% |
| | 600D | +26 | 70% |
| | MWT | +18 | 63% |
| | MILK | -1 | 43% |
| FERTILITY | SS | +0.3 | 69% |
| | DTC | -4.4 | 51% |
| CARCASE | EMA | +3.1 | 53% |
| | RIB | +0.4 | 60% |
| | RUMP | +0.1 | 59% |
| | RBY | +1.1 | 47% |
| | IMF | +0 | 56% |
| | Flight Time | +0.14 | 68% |
| \$ INDEX | DOM | +19 | |
| | EXP | +28 | |

Dam: C.I. 364 days – 7 calves **Morphology:** 78%

Wt _____ Sc _____

\$ _____



GYRANDA P658

'S' BULL

GYR18MP658

21/11/17 (22 mths)

ROSEVALE DEMOCRAT G268 (P)

SIRE: GYRANDA KIT K154 (P)

GYRANDA A635 (P)

SANTA GERTRUDIS MULTIPLE SIRE

DAM: SANTA GERTRUDIS MULTIPLE DAM

SANTA GERTRUDIS MULTIPLE DAM

Notes: A well muscled bull; clean coat and loose skin. This bull is a good two months younger than most of those around him. One of the handful in the Gyranda herd that we were unable to mother up; but his sire line screams growth and muscle.

| | | | |
|-----------|-------------|------------|------------|
| GROWTH | 200D | +18 | 61% |
| | 400D | +23 | 61% |
| | 600D | +37 | 64% |
| | MWT | +47 | 55% |
| | MILK | - | - |
| FERTILITY | SS | +1.6 | 66% |
| | DTC | +5 | 41% |
| CARCASE | EMA | +2.4 | 45% |
| | RIB | +0.1 | 53% |
| | RUMP | -0.7 | 52% |
| | RBY | +1.1 | 41% |
| | IMF | -0.4 | 53% |
| | Flight Time | +0 | 62% |
| \$ INDEX | DOM | +17 | |
| | EXP | +19 | |

Dam: C.I. N/A **Morphology:** 72%

Wt _____ Sc _____

\$ _____



GYRANDA P432 (P)

'S' BULL

GYR18MP432

18/10/17 (23 mths)



LOT 25.

STRATHMORE STR/D182

SIRE: ROCKINGHAM JACE J228

MACAIRE MCA/F41

GYRANDA FENWICK F582 (P)

DAM: GYRANDA L193 (P)

GYRANDA H373 (P)

Notes: A clean coated poll bull with plenty of style. A younger bull out of a young cow L193 that calved at two and has weaned three calves in three years. Her dam H373 has weaned six from six and her Dam in turn W303 calved at two and weaned ten from eleven. One miss in three generations!!

Dam: C.I. 365 days – 3 calves

Morphology: 88%

Wt _____

Sc _____

| | | | |
|-----------|-------------|-------------|------------|
| GROWTH | 200D | +15 | 65% |
| | 400D | +15 | 65% |
| | 600D | +28 | 67% |
| | MWT | +37 | 60% |
| | MILK | – | – |
| FERTILITY | SS | +1.3 | 66% |
| | DTC | -2.3 | 44% |
| CARCASE | EMA | +3.3 | 49% |
| | RIB | +0.1 | 56% |
| | RUMP | -0.4 | 55% |
| | RBY | +1.4 | 42% |
| | IMF | -0.2 | 54% |
| | Flight Time | +0.06 | 63% |
| \$ INDEX | DOM | +19 | |
| | EXP | +28 | |

\$ _____



GYRANDA P426 (P)

'S' BULL

GYR18MP426

30/10/17 (23 mths)

CREE MULTI SIRE

SIRE: CREE KOMATSU K144 (PP)

CREE H107 (P)

GYRANDA C688 (P)

DAM: GYRANDA G557 (P)

GYRANDA E195

Notes: A young poll bull with style and finesse. Slick coated and with a good balance of traits. His dam G557 calved at two and has weaned six calves in seven years.

Dam: C.I. 444 days – 6 calves **Morphology:** 75%

Wt _____ Sc _____

| | | | |
|-------------|-------|------|-----|
| GROWTH | 200D | +12 | 66% |
| | 400D | +20 | 66% |
| | 600D | +33 | 68% |
| | MWT | +36 | 62% |
| | MILK | -1 | 39% |
| FERTILITY | SS | +0.4 | 66% |
| | DTC | -0.7 | 49% |
| CARCASE | EMA | +2.9 | 51% |
| | RIB | +0.9 | 58% |
| | RUMP | +0.6 | 57% |
| | RBY | +0.7 | 44% |
| | IMF | -0.2 | 54% |
| Flight Time | -0.23 | 67% | |
| \$ INDEX | DOM | +18 | |
| | EXP | +25 | |

\$ _____



GYRANDA P510 (P)

'S' BULL

GYR18MP510

18/10/17 (23 mths)

ROWANLEA DUNTRON D24 (PS)

SIRE: GYRANDA LIGNUM L164 (P)

GYRANDA E177

GYRANDA FINDERS KEEPERS F176

DAM: GYRANDA K353

GYRANDA D375

Notes: A big framed bull with excellent growth and fertility. A younger bull and the second of our Lignum L164 calves he carries some exciting new genetics. His dam K353 calved at two and has weaned four calves in four years. Her Dam D375 weaned ten calves with a perfect record. Her Dam Y307 had a faultless record also weaning ten. Her Dam - Gyranda 50M - weaned nine in nine years etc. etc. You get the picture!

Dam: C.I. 353 days – 4 calves **Morphology:** 87%

Wt _____ Sc _____

| | | | |
|-------------|-------|------|-----|
| GROWTH | 200D | +12 | 66% |
| | 400D | +22 | 66% |
| | 600D | +33 | 68% |
| | MWT | +45 | 62% |
| | MILK | +2 | 40% |
| FERTILITY | SS | +1.4 | 67% |
| | DTC | -4 | 49% |
| CARCASE | EMA | +1.8 | 50% |
| | RIB | -1 | 58% |
| | RUMP | -1.7 | 57% |
| | RBY | +1.4 | 44% |
| | IMF | -0.5 | 54% |
| Flight Time | +0.13 | 65% | |
| \$ INDEX | DOM | +24 | |
| | EXP | +33 | |

\$ _____



#28

GYRANDA P200 (P)**'S' BULL**

GYR18MP200

9/10/17 (23 mths)

MUNNABAH P1936 (P)

SIRE: MUNNABAH P2367 (P)

MUNNABAH P1565

GYRANDA ALCATRAZ A140 (P)

DAM: GYRANDA F529

GYRANDA A409

Notes: A quiet; clean coated poll bull with a good topline. Dam F529 calved at two and has weaned seven calves in eight years. Her Dam A409 calved at two and weaned eight calves in eight years before moving to the commercial herd.

Dam: C.I. 418 days – 7 calves **Morphology:** 79%

Wt _____ Sc _____

| | | | |
|-----------|-------------|--------------|------------|
| GROWTH | 200D | +8 | 61% |
| | 400D | +17 | 62% |
| | 600D | +14 | 64% |
| | MWT | +22 | 57% |
| | MILK | +0 | 35% |
| FERTILITY | SS | +1.7 | 64% |
| | DTC | -3.6 | 43% |
| CARCASE | EMA | +2.2 | 45% |
| | RIB | -0.8 | 53% |
| | RUMP | -1.5 | 52% |
| | RBY | +1.3 | 40% |
| | IMF | -0.1 | 50% |
| | Flight Time | +0.28 | 63% |
| \$ INDEX | DOM | +22 | |
| | EXP | +21 | |

\$ _____



#29

GYRANDA P214 (P)**'S' BULL**

GYR18MP214

25/9/17 (24 mths)

TOOKEY CREEK GURU G34 (P)

SIRE: GYRANDA LORAX L794 (PP)

GYRANDA J359

ROSEVALE NODDY A18 (P)

DAM: GYRANDA J289

GYRANDA E229

Notes: Clean; dark coated polley bull with a tidy sheath. Dam J289 weaned four calves in five years.

Dam: C.I. 465 days – 4 calves **Morphology:** 92%

Wt _____ Sc _____

| | | | |
|-----------|-------------|-------|-----|
| GROWTH | 200D | +12 | 67% |
| | 400D | +21 | 67% |
| | 600D | +23 | 69% |
| | MWT | +30 | 63% |
| | MILK | +0 | 37% |
| FERTILITY | SS | +1 | 69% |
| | DTC | +0.7 | 48% |
| CARCASE | EMA | +2.9 | 52% |
| | RIB | +0.3 | 60% |
| | RUMP | +0.1 | 59% |
| | RBY | +0.8 | 47% |
| | IMF | -0.1 | 57% |
| | Flight Time | -0.02 | 67% |
| \$ INDEX | DOM | +18 | |
| | EXP | +17 | |

\$ _____



GYRANDA P140 (P)

'S' BULL

GYR18MP140

2/9/17 (24 mths)

RAYTEK DEMOCRAT D46 (P)

SIRE: ROSEVALE DEMOCRAT G268 (P)

ROSEVALE HONEY Y165

EIDSVOLD STN DANCER D164 (PS)

DAM: GYRANDA G555 (P)

GYRANDA E519

Notes: Quiet; long polly bull. Good muscle definition and a sirey outlook. Dam G555 calved at two and has never missed. She mothered a \$9500 bull sold to John Knights in 2015. Her Dam; E519; had eight calves including a \$12,000 and a \$6,000 sale bull.

Dam: C.I. 363 days – 7 calves **Morphology:** 70%

Wt _____ Sc _____

| | | | |
|-----------|-------------|--------------|------------|
| GROWTH | 200D | +15 | 71% |
| | 400D | +16 | 70% |
| | 600D | +17 | 72% |
| | MWT | +24 | 66% |
| | MILK | -8 | 50% |
| FERTILITY | SS | +1.3 | 71% |
| | DTC | -3 | 57% |
| CARCASE | EMA | +2.3 | 56% |
| | RIB | -0.1 | 62% |
| | RUMP | -0.2 | 61% |
| | RBV | +0.8 | 50% |
| | IMF | -0.3 | 59% |
| | Flight Time | +0.16 | 69% |
| \$ INDEX | DOM | +19 | |
| | EXP | +22 | |

\$ _____



GYRANDA P406 (P)

'S' BULL

GYR18MP406

4/9/17 (24 mths)

GYRANDA GARFIELD G302 (P)

SIRE: GYRANDA KALVIN K582 (P)

GYRANDA C735 (P)

EIDSVOLD STATION W62

DAM: GYRANDA F181

GYRANDA Y417

Notes: Take a good look at this clean coated polly bull from behind and you will see a real carcass improver. Muscle throughout but soft as butter. He is a great combination of growth; fertility and carcass. Dam F181 calved at two and weaned six in seven years before being culled last year.

Dam: C.I. 426 days – 6 calves **Morphology:** 95%

Wt _____ Sc _____

| | | | |
|-----------|-------------|-------------|------------|
| GROWTH | 200D | +9 | 66% |
| | 400D | +14 | 63% |
| | 600D | +30 | 66% |
| | MWT | +34 | 60% |
| | MILK | +5 | 42% |
| FERTILITY | SS | +1.9 | 62% |
| | DTC | -7.3 | 49% |
| CARCASE | EMA | +1.9 | 50% |
| | RIB | +0.6 | 55% |
| | RUMP | +0.2 | 54% |
| | RBV | +0.6 | 43% |
| | IMF | +0 | 51% |
| | Flight Time | -0.08 | 67% |
| \$ INDEX | DOM | +18 | |
| | EXP | +34 | |

\$ _____



GYRANDA P270

'S' BULL

GYR18MP270

20/11/17 (22 mths)

STRATHMORE WARDEN W152 (P)

SIRE: GYRANDA COSMIC C476

GYRANDA X499

GYRANDA EGON E232 (PS)

DAM: GYRANDA K555 (P)

GYRANDA E587 (P)

Notes: This quiet; horned bull has fertility data off the charts tracing back to Gyranda Cosmic. He is a much younger bull than his peers. A long; growthy bull with an excellent sheath. Dam K555 weaned two calves in the last two years before being transferred to the commercial mob.

Dam: C.I. N/A – 1 calf

Morphology: 84%

Wt _____

Sc _____

| | | | |
|-----------|-------------|-------------|------------|
| GROWTH | 200D | +14 | 67% |
| | 400D | +20 | 68% |
| | 600D | +28 | 70% |
| | MWT | +35 | 64% |
| | MILK | +1 | 50% |
| FERTILITY | SS | +1.6 | 70% |
| | DTC | -9.4 | 54% |
| CARCASE | EMA | +2.8 | 54% |
| | RIB | +0.4 | 62% |
| | RUMP | -0.1 | 61% |
| | RBV | +1 | 49% |
| | IMF | +0.3 | 58% |
| | Flight Time | +0.3 | 69% |
| \$ INDEX | DOM | +27 | |
| | EXP | +39 | |

\$ _____



GYRANDA P384

'S' BULL

GYR18MP384

18/9/17 (24 mths)

GYRANDA ALIBI A546

SIRE: GYRANDA EDITOR E572

GYRANDA C653

GYRANDA C834

DAM: GYRANDA J609

GYRANDA C849

Notes: A very quite; relaxed horned bull. Good muscle definition and well formed hind quarters. One of the leading bulls in the sale for IMF if you are looking to lift your MSA compliance. Dam J609 calved at two and has weaned four calves in five years.

Dam: C.I. 489 days – 4 calves

Morphology: 86%

Wt _____

Sc _____

| | | | |
|-----------|-------------|--------------|------------|
| GROWTH | 200D | +14 | 69% |
| | 400D | +20 | 70% |
| | 600D | +24 | 71% |
| | MWT | +50 | 66% |
| | MILK | -2 | 51% |
| FERTILITY | SS | +1.5 | 71% |
| | DTC | +2.1 | 58% |
| CARCASE | EMA | +2.6 | 57% |
| | RIB | +0.1 | 63% |
| | RUMP | -0.3 | 62% |
| | RBV | +0.7 | 51% |
| | IMF | +0.5 | 59% |
| | Flight Time | +0.38 | 70% |
| \$ INDEX | DOM | +15 | |
| | EXP | +17 | |

\$ _____



GYRANDA P260

'S' BULL

GYR18MP260

9/10/17 (23 mths)

ROSEVALE BATTALLION E622 (P)

SIRE: ROWANLEA KLUGER K32 (P)

ROWANLEA E31 (P)

DANGARFIELD PENROSE P194 (P)

DAM: GYRANDA G279

GYRANDA C305

Notes: A really quiet; big framed bull that will just keep growing for you. This is a younger bull with growth data in the top 1% of the breed. His Dam G279 calved at three but has had six calves in six years; including a \$4000 calf sold to Stuart and Joy Hamilton in 2017.

Dam: C.I. 367 days – 6 calves **Morphology:** 87%

Wt _____ Sc _____

| | | | |
|-----------|-------------|-------|-----|
| GROWTH | 200D | +27 | 68% |
| | 400D | +40 | 68% |
| | 600D | +53 | 70% |
| | MWT | +82 | 64% |
| | MILK | -2 | 46% |
| FERTILITY | SS | +1.4 | 69% |
| | DTC | +2.2 | 53% |
| CARCASE | EMA | +3.2 | 54% |
| | RIB | -1.4 | 60% |
| | RUMP | -1.9 | 59% |
| | RBV | +1 | 48% |
| | IMF | -0.2 | 58% |
| | Flight Time | +0.28 | 67% |
| \$ INDEX | DOM | +28 | |
| | EXP | +34 | |

\$ _____



GYRANDA P264 (PS)

'S' BULL

GYR18MP264

14/9/17 (24 mths)

CARDONA LISTER L93 (P)

SIRE: COOINDA LUCKY PHIL L298 (P)

COOINDA G205

GYRANDA DIGGER D100

DAM: GYRANDA H635

GYRANDA F295

Notes: This massive poll bull has a lighter coat but lovely loose skin. Long; deep; wide and very quite. Growth and carcass data are amongst the best in the breed. His Dam H635 calved at two and has weaned four calves in five years.

Dam: C.I. 478 days – 4 calves **Morphology:** 74%

Wt _____ Sc _____

| | | | |
|-----------|-------------|-------|-----|
| GROWTH | 200D | +24 | 62% |
| | 400D | +25 | 63% |
| | 600D | +42 | 66% |
| | MWT | +40 | 59% |
| | MILK | +3 | 31% |
| FERTILITY | SS | +1.3 | 67% |
| | DTC | +6.3 | 44% |
| CARCASE | EMA | +3.7 | 47% |
| | RIB | +0.9 | 56% |
| | RUMP | +0.8 | 55% |
| | RBV | +0.2 | 42% |
| | IMF | +0.1 | 51% |
| | Flight Time | +0.16 | 60% |
| \$ INDEX | DOM | +12 | |
| | EXP | +14 | |

\$ _____











GYRANDA P490

'S' BULL

GYR18MP490

18/9/17 (24 mths)

GYRANDA DYNAMIC D444 (P)

SIRE: GYRANDA HAMISH H450

GYRANDA A323

GYRANDA COSMIC C476

DAM: GYRANDA G149

GYRANDA Y401

Notes: An eye catching dark coated bull. Calm and maintaining great fat and fertility. Dam G149 calved at two and has weaned six calves in seven years. Her Dam Y401 weaned eight from eight before going missing in 2013.

Dam: C.I. 437 days – 6 calves **Morphology:** 85%

Wt _____

Sc _____

| | | | |
|-----------|-------------|--------------|------------|
| GROWTH | 200D | +6 | 65% |
| | 400D | +12 | 66% |
| | 600D | +17 | 68% |
| | MWT | +19 | 62% |
| | MILK | +1 | 41% |
| FERTILITY | SS | +1.9 | 68% |
| | DTC | -4.7 | 50% |
| CARCASE | EMA | +2.6 | 52% |
| | RIB | +1.1 | 59% |
| | RUMP | +1.0 | 58% |
| | RBY | +0.9 | 46% |
| | IMF | -0.1 | 55% |
| | Flight Time | +0.33 | 66% |
| \$ INDEX | DOM | +19 | |
| | EXP | +24 | |

\$ _____



GYRANDA P100

'S' BULL

GYR18MP100

17/8/17 (25 mths)

GYRANDA DYNAMIC D444 (P)

SIRE: GYRANDA HAMISH H450

GYRANDA A323

GYRANDA EDITOR E572

DAM: GYRANDA J525

GYRANDA E855

Notes: A quiet, compact bull; sporting a tidy sheath and a slick dark coat. His Dam J525 calved as a two year old and had three calves in four years before being culled in 2018.

Dam: C.I. 513 days – 3 calves **Morphology:** 87%

Wt _____

Sc _____

| | | | |
|-----------|-------------|--------------|------------|
| GROWTH | 200D | +10 | 64% |
| | 400D | +6 | 65% |
| | 600D | +15 | 67% |
| | MWT | +20 | 61% |
| | MILK | +0 | 38% |
| FERTILITY | SS | +1.1 | 68% |
| | DTC | -7.2 | 48% |
| CARCASE | EMA | +0.6 | 51% |
| | RIB | +2.3 | 59% |
| | RUMP | +2.4 | 58% |
| | RBY | -0.7 | 46% |
| | IMF | +1.0 | 55% |
| | Flight Time | +0.17 | 66% |
| \$ INDEX | DOM | +7 | |
| | EXP | +21 | |

\$ _____



GYRANDA P118 (P)

'S' BULL

GYR18MP118

26/8/17 (25 mths)

WARENDA D696 (P)

SIRE: GYRANDA LONGSHOT L110(P)(AI)

GYRANDA H663

ROSEVALE DEMOCRAT G268 (P)

DAM: GYRANDA M269 (P)

GYRANDA F603

Notes: A dark coated polley son of Gyranda Longshot (L110); this bull is a low birth weight bull out of a maiden heifer. His actual birth weight was 27kg. Dam M269 had a second calf last year and is pregnant again.

Dam: C.I. 387 days – 2 calves **Morphology:** 79%

Wt _____ Sc _____

| | | | |
|-----------|-------------|-------------|------------|
| GROWTH | 200D | +6 | 67% |
| | 400D | +14 | 66% |
| | 600D | +11 | 68% |
| | MWT | +29 | 62% |
| | MILK | -1 | 37% |
| FERTILITY | SS | +1.9 | 67% |
| | DTC | -9.9 | 48% |
| CARCASE | EMA | +2.1 | 51% |
| | RIB | +1.5 | 58% |
| | RUMP | +1.0 | 57% |
| | RBY | +0.2 | 46% |
| | IMF | +0.6 | 55% |
| | Flight Time | -0.06 | 66% |
| \$ INDEX | DOM | +21 | |
| | EXP | +29 | |

\$ _____



GYRANDA P454 (P)

'S' BULL

GYR18MP454

2/9/17 (24 mths)

CELAMBA ZACK

SIRE: FISHINGTON JOGLA J031 (PP)

FISHINGTON CORA E046 (P)

GYRANDA ALCATRAZ A140 (P)

DAM: GYRANDA F359 (P)

GYRANDA X413

Notes: A stylish poll bull. Medium frame but plenty of carcass with exceptional fat data. His Dam F359 calved at two and has weaned seven calves in eight years.

Dam: C.I. 413 days – 7 calves **Morphology:** 74%

Wt _____ Sc _____

| | | | |
|-----------|-------------|-------------|------------|
| GROWTH | 200D | +9 | 67% |
| | 400D | +12 | 67% |
| | 600D | +14 | 70% |
| | MWT | +22 | 63% |
| | MILK | -1 | 44% |
| FERTILITY | SS | +1 | 69% |
| | DTC | -8.1 | 51% |
| CARCASE | EMA | +2.1 | 53% |
| | RIB | +2.0 | 60% |
| | RUMP | +2.1 | 59% |
| | RBY | +0.5 | 48% |
| | IMF | -0.1 | 57% |
| | Flight Time | -0.22 | 67% |
| \$ INDEX | DOM | +20 | |
| | EXP | +28 | |

\$ _____



#39

GYRANDA P568 (PP)**'S' BULL**

GYR18MP568

1/10/17 (23 mths)

EIDSVOLD STATION A166 (PS)

SIRE: GYRANDA FOR REAL F136 (PS)

GYRANDA CALAMITY C113

ROSEVALE NODDY A18 (P)

DAM: GYRANDA K529 (P)

GYRANDA G657 (P)



Notes: A really quite homozygous poll bull with explosive growth; dark coat and excellent bone throughout. What is not to like? His Dam K529 calved at three and has had three calves in three years.

Dam: C.I. 374 days – 3 calves **Morphology:** 61%

Wt _____ Sc _____

| | | | |
|-----------|-------------|-------|-----|
| GROWTH | 200D | +19 | 68% |
| | 400D | +25 | 69% |
| | 600D | +36 | 71% |
| | MWT | +61 | 65% |
| | MILK | -5 | 49% |
| FERTILITY | SS | +1.6 | 71% |
| | DTC | +4 | 56% |
| CARCASE | EMA | +3.4 | 55% |
| | RIB | -0.7 | 62% |
| | RUMP | -0.8 | 61% |
| | RBY | +1.4 | 50% |
| | IMF | -0.5 | 58% |
| | Flight Time | +0.46 | 69% |
| \$ INDEX | DOM | +21 | |
| | EXP | +23 | |

\$ _____



#40

GYRANDA P244 (PS)**'S' BULL**

GYR18MP244

14/9/17 (24 mths)

ROSEVALE DEMOCRAT G268 (P)

SIRE: GYRANDA KIT K154 (P)

GYRANDA A635 (P)

ROSEVALE NODDY A18 (P)

DAM: GYRANDA K455

GYRANDA G339

Notes: An impressive large frame bull with a tidy sheath and a deep flank. Tremendous punch in his growth and muscle data. Dam K455 calved at two and had twins. She missed the following year but has weaned her last two calves and is due to calve again this spring.

Dam: C.I. 349 days – 4 calves **Morphology:** 85%

Wt _____ Sc _____

| | | | |
|-----------|-------------|-------|-----|
| GROWTH | 200D | +21 | 67% |
| | 400D | +21 | 67% |
| | 600D | +32 | 69% |
| | MWT | +47 | 63% |
| | MILK | -1 | 40% |
| FERTILITY | SS | +1 | 69% |
| | DTC | +5.7 | 50% |
| CARCASE | EMA | +4.9 | 52% |
| | RIB | -0.2 | 60% |
| | RUMP | -0.5 | 59% |
| | RBY | +1.8 | 47% |
| | IMF | -0.6 | 57% |
| | Flight Time | +0.13 | 67% |
| \$ INDEX | DOM | +19 | |
| | EXP | +18 | |

\$ _____



GYRANDA P256 (PP)

'S' BULL

GYR18MP256

2/10/17 (23 mths)



LOT 41.

ROSEVALE DEMOCRAT G268 (P)

SIRE: GYRANDA KIT K154 (P)

GYRANDA A635 (P)

GYRANDA EXPERT E192

DAM: GYRANDA K317 (P)

GYRANDA F159 (P)



Notes: A striking bull with lots of clean features from tip to tail. An excellent sheath and bulging with muscle. His Dam K317 calved at two and has weaned four calves in four years.

| | | | |
|-----------|-------------|-------|-----|
| GROWTH | 200D | +19 | 67% |
| | 400D | +25 | 67% |
| | 600D | +38 | 69% |
| | MWT | +44 | 63% |
| | MILK | -4 | 39% |
| FERTILITY | SS | +2.2 | 68% |
| | DTC | -2.7 | 50% |
| CARCASE | EMA | +4.4 | 51% |
| | RIB | +0.1 | 59% |
| | RUMP | -0.4 | 58% |
| | RBY | +1.5 | 46% |
| | IMF | +0.2 | 56% |
| | Flight Time | +0.21 | 67% |
| \$ INDEX | DOM | +28 | |
| | EXP | +36 | |

Dam: C.I. 366 days – 4 calves

Morphology: 67%

Wt _____

Sc _____

\$ _____



GYRANDA P396 (PS)

'S' BULL
 GYR18MP396
 18/9/17 (24 mths)



LOT 42.

CREE MULTI SIRE

SIRE: CREE KOMATSU K144 (PP)

CREE H107 (P)

ROSEVALE NODDY A18 (P)

DAM: GYRANDA G299

GYRANDA Y491

Notes: A tall; full bodied bull with a dynamic combination of growth and fertility. Dam G299 calved at two and weaned six calves in seven years ; including a \$12,000 bull sold to Paul Woodhouse last year.

Dam: C.I. 446 days – 6 calves **Morphology:** 78%

Wt _____

Sc _____

| | | | |
|------------------|-------------|-------|-----|
| GROWTH | 200D | +18 | 68% |
| | 400D | +27 | 68% |
| | 600D | +45 | 70% |
| | MWT | +63 | 63% |
| | MILK | +1 | 41% |
| FERTILITY | SS | +0.7 | 70% |
| | DTC | -3.3 | 51% |
| CARCASE | EMA | +2.7 | 53% |
| | RIB | +0.7 | 60% |
| | RUMP | +0.5 | 59% |
| | RBY | +0.5 | 47% |
| | IMF | +0.1 | 58% |
| | Flight Time | -0.05 | 68% |
| \$ INDEX | DOM | +22 | |
| | EXP | +37 | |

\$ _____



#43

GYRANDA P134 (P)**'S' BULL**

GYR18MP134

2/9/17 (24 mths)

ROSEVALE DEMOCRAT G268 (P)

SIRE: GYRANDA KIT K154 (P)

GYRANDA A635 (P)

TYNDALE REPLAY 167 (AI) (P)

DAM: GYRANDA K537

IBROX FARMS A14

Notes: Tall; long and deep in the flank. A poll bull with a good sheath that will grow you bullocks all day long. Dam K537 calved at two and has had three calves in four years.

Dam: C.I. 518 days – 3 calves **Morphology:** 83%

Wt _____ Sc _____

| | | | |
|-----------|-------------|-------|-----|
| GROWTH | 200D | +23 | 69% |
| | 400D | +27 | 68% |
| | 600D | +43 | 70% |
| | MWT | +60 | 63% |
| | MILK | +0 | 41% |
| FERTILITY | SS | +0.4 | 69% |
| | DTC | +6.3 | 50% |
| CARCASE | EMA | +2.7 | 52% |
| | RIB | +0.1 | 58% |
| | RUMP | -0.3 | 57% |
| | RBY | +0.5 | 47% |
| | IMF | +0 | 57% |
| | Flight Time | -0.19 | 68% |
| \$ INDEX | DOM | +14 | |
| | EXP | +17 | |

\$ _____



#44

GYRANDA P388 (P)**'S' BULL**

GYR18MP388

11/9/17 (24 mths)

CREE MULTI SIRE

SIRE: CREE KOMATSU K144 (PP)

CREE H107 (P)

GYRANDA C834

DAM: GYRANDA H207

GYRANDA B285

Notes: Clean coated polley bull with a good carcass; backed by a great set of figures excelling in both growth and carcass. His Dam H207 calved at three and has weaned five calves in five years since.

Dam: C.I. 367 days – 5 calves **Morphology:** 82%

Wt _____ Sc _____

| | | | |
|-----------|-------------|-------|-----|
| GROWTH | 200D | +16 | 67% |
| | 400D | +26 | 68% |
| | 600D | +37 | 70% |
| | MWT | +48 | 63% |
| | MILK | +0 | 40% |
| FERTILITY | SS | +1.3 | 69% |
| | DTC | -0.1 | 51% |
| CARCASE | EMA | +3.1 | 52% |
| | RIB | +0.9 | 60% |
| | RUMP | +0.5 | 59% |
| | RBY | +0.6 | 46% |
| | IMF | +0.1 | 57% |
| | Flight Time | -0.04 | 67% |
| \$ INDEX | DOM | +21 | |
| | EXP | +27 | |

\$ _____



#45

GYRANDA P104**'S' BULL**

GYR18MP104

19/8/17 (25 mths)

STRATHMORE WARDEN W152 (P)

SIRE: GYRANDA COSMIC C476

GYRANDA X499

EIDSVOLD STATION A166 (PS)

DAM: GYRANDA K257

GYRANDA B709

Notes: A big framed bull; tidy throughout with an excellent fertility pedigree. Watchful and should handle big areas well. His Dam K257 calved as a two year old and has had three calves in four years. Her dam (B709) had eight calves in eight years before being found dead in 2015. Sire Gyranda Cosmic C476 was one of the top bulls in Santas for Fertility.

Dam: C.I. 544 days – 3 calves Morphology: 79%

Wt _____

Sc _____

| | | | |
|-----------|-------------|-------------|------------|
| GROWTH | 200D | +16 | 68% |
| | 400D | +23 | 69% |
| | 600D | +36 | 71% |
| | MWT | +54 | 66% |
| | MILK | -1 | 53% |
| FERTILITY | SS | +1.9 | 71% |
| | DTC | -7.7 | 56% |
| CARCASE | EMA | +2.1 | 55% |
| | RIB | -0.8 | 61% |
| | RUMP | -1.2 | 60% |
| | RBV | +1.2 | 50% |
| | IMF | -0.3 | 58% |
| | Flight Time | +0.09 | 69% |
| \$ INDEX | DOM | +27 | |
| | EXP | +42 | |

\$ _____



#46

GYRANDA P240**'S' BULL**

GYR18MP240

1/10/17 (23 mths)

STRATHMORE WARDEN W152 (P)

SIRE: GYRANDA COSMIC C476

GYRANDA X499

EIDSVOLD STATION A166 (PS)

DAM: GYRANDA K287 (P)

GYRANDA E439

Notes: A quiet; thick set Cosmic calf with a tidy sheath and clean coat. A solid combination of growth and fertility. His dam K287 has weaned two calves in the last two years. Her dam E439 calved at two and has weaned eight calves in nine years.

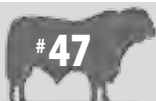
Dam: C.I. 393 days – 2 calves Morphology: 67%

Wt _____

Sc _____

| | | | |
|-----------|-------------|------------|-----|
| GROWTH | 200D | +14 | 68% |
| | 400D | +21 | 69% |
| | 600D | +34 | 70% |
| | MWT | +38 | 66% |
| | MILK | -1 | 53% |
| FERTILITY | SS | +1.4 | 70% |
| | DTC | -3.6 | 57% |
| CARCASE | EMA | +2.4 | 55% |
| | RIB | -0.5 | 61% |
| | RUMP | -0.8 | 60% |
| | RBV | +1 | 50% |
| | IMF | -0.3 | 58% |
| | Flight Time | +0.13 | 69% |
| \$ INDEX | DOM | +22 | |
| | EXP | +32 | |

\$ _____



#47

GYRANDA P108 (P)**'S' BULL**

GYR18MP108

19/8/17 (25 mths)

CELAMBA ZACK

SIRE: FISHINGTON JOGLA J031 (PP)

FISHINGTON CORA E046 (P)

EIDSVOLD STATION W62

DAM: GYRANDA F203

GYRANDA Z179

Notes: A stylish polled bull with a sirey outlook; retaining the loose skin and clean coat so desirable in Santas. Well balanced across all data. His dam F203 calved at three and has had seven calves without fault so far. Her dam Z179 calved at two and never missed before her premature death in 2011.

Dam: C.I. 363 days – 7 calves **Morphology:** 88%

Wt _____ Sc _____

| | | | |
|-----------|-------------|-------------|------------|
| GROWTH | 200D | +6 | 67% |
| | 400D | +17 | 68% |
| | 600D | +23 | 70% |
| | MWT | +25 | 63% |
| | MILK | +2 | 45% |
| FERTILITY | SS | +1.2 | 70% |
| | DTC | -5.7 | 52% |
| CARCASE | EMA | +3.1 | 50% |
| | RIB | +1.1 | 60% |
| | RUMP | +1.2 | 59% |
| | RBY | +1 | 46% |
| | IMF | -0.4 | 58% |
| | Flight Time | -0.13 | 67% |
| \$ INDEX | DOM | +23 | |
| | EXP | +30 | |

\$ _____



#48

GYRANDA P370 (P)**'S' BULL**

GYR18MP370

16/10/17 (23 mths)

TYNDALE REPLAY 167 (AI) (P)

SIRE: GYRANDA GARFIELD G302 (P)

GYRANDA Z131

GYRANDA C160

DAM: GYRANDA G921

GYRANDA B385

Notes: A medium framed poll bull; thick across the hindquarter and deep in the flank. Exceptional fat cover and fertility data. Dam G921 calved at three but has weaned 6/6 since including a bull sold to Consuelo for \$7000.

Dam: C.I. 366 days – 6 calves **Morphology:** 93%

Wt _____ Sc _____

| | | | |
|-----------|-------------|-------------|------------|
| GROWTH | 200D | +9 | 68% |
| | 400D | +12 | 69% |
| | 600D | +30 | 71% |
| | MWT | +30 | 65% |
| | MILK | +5 | 47% |
| FERTILITY | SS | +1 | 71% |
| | DTC | -5.3 | 55% |
| CARCASE | EMA | +1.5 | 55% |
| | RIB | +2.1 | 62% |
| | RUMP | +2.0 | 61% |
| | RBY | -0.4 | 49% |
| | IMF | +0.5 | 57% |
| | Flight Time | -0.21 | 69% |
| \$ INDEX | DOM | +10 | |
| | EXP | +26 | |

\$ _____



#49

GYRANDA P508 (PS)**'S' BULL**

GYR18MP508

25/9/17 (24 mths)

EIDSVOLD STATION DONALD D34

SIRE: GREENUP GIZZA G218 (P)

GREENUP DAPHNE D133 (P)

EIDSVOLD STATION A166 (PS)

DAM: GYRANDA L571 (P)

GYRANDA A581

Notes: A medium frame poll scur bull with a tidy sheath. He packs plenty of meat into his highly efficient frame. Dam L571 calved at two and has weaned three calves in three years. Her Dam A581 calved at two and weaned 12 calves in 12 years.

Dam: C.I. 366 days – 3 calves **Morphology:** 74%

Wt _____ Sc _____

| | | | |
|-----------|-------------|-------------|------------|
| GROWTH | 200D | +9 | 68% |
| | 400D | +24 | 69% |
| | 600D | +27 | 70% |
| | MWT | +25 | 65% |
| | MILK | -2 | 48% |
| FERTILITY | SS | +1.5 | 70% |
| | DTC | -5.3 | 55% |
| CARCASE | EMA | +2.3 | 54% |
| | RIB | +0.1 | 61% |
| | RUMP | -0.1 | 60% |
| | RBY | +0.4 | 48% |
| | IMF | +0.3 | 57% |
| | Flight Time | +0.1 | 67% |
| \$ INDEX | DOM | +24 | |
| | EXP | +29 | |

\$ _____



#50

GYRANDA P592 (PS)**'S' BULL**

GYR18MP592

7/9/17 (24 mths)

ROSEVALE EMPIRE E464

SIRE: ROSEVALE LENNOX L256 (PS)

ROSEVALE SCARLET E247 (P)

GYRANDA ENIGMA E124

DAM: GYRANDA L425 (PS)

GYRANDA F391

Notes: Exceptionally quite poll scur bull. Excellent growth data. Unfortunately dam L425 only weaned this one calf and was culled. Her dam F391 weaned 6/6 before being culled last year.

Dam: C.I. N/A – 1 calf **Morphology:** 85%

Wt _____ Sc _____

| | | | |
|-----------|-------------|-------------|------------|
| GROWTH | 200D | +20 | 61% |
| | 400D | +29 | 61% |
| | 600D | +41 | 63% |
| | MWT | +71 | 57% |
| | MILK | +1 | 38% |
| FERTILITY | SS | +1.8 | 60% |
| | DTC | -5 | 47% |
| CARCASE | EMA | +1.9 | 49% |
| | RIB | -1.4 | 54% |
| | RUMP | -1.8 | 53% |
| | RBY | +1 | 43% |
| | IMF | +0 | 51% |
| | Flight Time | - | - |
| \$ INDEX | DOM | +26 | |
| | EXP | +40 | |

\$ _____



GYRANDA P532 (P)

'S' BULL
 GYR18MP532
 26/9/17 (24 mths)



LOT 51.

CREE MULTI SIRE

SIRE: CREE KOMATSU K144 (PP)

CREE H107 (P)

GYRANDA ASSASSIN A406

DAM: GYRANDA J393

GYRANDA Y545

Notes: Stylish poll bull with slick coat; great bone and bursting with fertility. Dam J393 calved at two and has actually had five calves in four years - her last being twins last year.

Dam: C.I. 256 days – 5 calves **Morphology:** 65%

Wt _____

Sc _____

| | | | |
|------------------|-------------|-------------|------------|
| GROWTH | 200D | +13 | 66% |
| | 400D | +16 | 67% |
| | 600D | +29 | 69% |
| | MWT | +33 | 61% |
| | MILK | +0 | 38% |
| FERTILITY | SS | +0.2 | 69% |
| | DTC | -3.7 | 49% |
| CARCASE | EMA | +2 | 52% |
| | RIB | +0.3 | 59% |
| | RUMP | -0.1 | 59% |
| | RBY | +0.1 | 46% |
| | IMF | +0.3 | 56% |
| | Flight Time | -0.33 | 67% |
| \$ INDEX | DOM | +14 | |
| | EXP | +25 | |

\$ _____



GYRANDA P400 (P)

'S' BULL

GYR18MP400

2/10/17 (23 mths)



LOT 52.

TYNDALE REPLAY 167 (AI) (P)

SIRE: GYRANDA GARFIELD G302 (P)

GYRANDA Z131

GYRANDA X126

DAM: GYRANDA C693

GYRANDA Y605

Notes: A long stylish polled bull with a clean coat and excellent fats. His Dam C693 calved at two and weaned ten calves in ten years before being culled for age last year. She had a bull calf that sold to Allan and Maree green for \$13,500 in 2016.

| | | | |
|-----------|-------------|-------------|------------|
| GROWTH | 200D | +7 | 68% |
| | 400D | +14 | 69% |
| | 600D | +22 | 71% |
| | MWT | +13 | 65% |
| | MILK | +5 | 48% |
| FERTILITY | SS | +1 | 71% |
| | DTC | -1.3 | 55% |
| CARCASE | EMA | +2.7 | 55% |
| | RIB | +1 | 62% |
| | RUMP | +0.7 | 61% |
| | RBV | +0.2 | 49% |
| | IMF | +0.4 | 58% |
| | Flight Time | +0.04 | 69% |
| \$ INDEX | DOM | +12 | |
| | EXP | +16 | |

Dam: C.I. 367 days – 10 calves **Morphology:** 78%

Wt _____

Sc _____

\$ _____



GYRANDA P170 (PS)

'S' BULL

GYR18MP170

23/9/17 (24 mths)

WARENDA D696 (P)

SIRE: GYRANDA LONGSHOT L110(P)(AI)

GYRANDA H663

ROSEVALE BATTALION F446 (P)

DAM: GYRANDA M259 (P)

GYRANDA CALAMITY C113

Notes: Dark coated poll bull with low birth weight (35kg) combined with good carcass and fertility. His Dam M259 was a maiden heifer that weaned her second calf last year and fell pregnant in the A.I. program to lead sire Gyranda Monto M272. Her Dam Gyranda Calamity C113 weaned eight calves including an \$8500 bull sold to David Greenup in 2013.

| | | | |
|-----------|-------------|-------------|------------|
| GROWTH | 200D | +13 | 68% |
| | 400D | +13 | 66% |
| | 600D | +17 | 69% |
| | MWT | +21 | 61% |
| | MILK | +2 | 37% |
| FERTILITY | SS | +0.6 | 68% |
| | DTC | -1 | 48% |
| CARCASS | EMA | +3.9 | 52% |
| | RIB | +1.1 | 59% |
| | RUMP | +0.6 | 58% |
| | RBV | +1.2 | 46% |
| | IMF | -0.1 | 56% |
| | Flight Time | -0.21 | 67% |
| \$ INDEX | DOM | +17 | |
| | EXP | +18 | |

Dam: C.I. 367 days – 2 calves **Morphology:** 82%

Wt _____

Sc _____

\$ _____



At Gyranda we have been taking birth weights since 2014. Our average calf weighs 39kg.



GYRANDA P504 (P)

'S' BULL
 GYR18MP504
 25/9/17 (24 mths)



LOT 54.

ROSEVALE DEMOCRAT G268 (P)

SIRE: GYRANDA KIT K154 (P)

GYRANDA A635 (P)

GYRANDA ALCATRAZ A140 (P)

DAM: GYRANDA F803 (P)

GYRANDA D293

Notes: A powerfully built poll bull. Dam F803 calved at two and has weaned eight calves in eight years. Her Dam D293 has weaned nine calves in ten years.

| | | | |
|------------------|-------------|-------------|------------|
| GROWTH | 200D | +17 | 67% |
| | 400D | +17 | 68% |
| | 600D | +26 | 69% |
| | MWT | +39 | 63% |
| | MILK | -4 | 43% |
| FERTILITY | SS | +1.1 | 70% |
| | DTC | -2.3 | 51% |
| CARCASE | EMA | +3.6 | 54% |
| | RIB | -0.4 | 60% |
| | RUMP | -1 | 59% |
| | RBY | +1.5 | 48% |
| | IMF | -0.2 | 57% |
| | Flight Time | +0.06 | 68% |
| \$ INDEX | DOM | +22 | |
| | EXP | +28 | |

Dam: C.I. 356 days – 8 calves **Morphology:** 75%

Wt _____ **Sc** _____

\$ _____



GYRANDA P418

'S' BULL

GYR18MP418

9/10/17 (23 mths)

STRATHMORE STR/D182

SIRE: ROCKINGHAM JACE J228

MACAIRE MCA/F41

GYRANDA HARVARD H394

DAM: GYRANDA L385

HARTWOOD B-535

Notes: Clean coated; stylish horned bull with a lovely nature. Dam L385 calved at two and has weaned three calves in three years. Her dam was a Hartwood cow that weaned nine calves in nine years here at Gylanda before being culled for age last year at 14.

Dam: C.I. 374 days – 3 calves **Morphology:** 95%

Wt _____ Sc _____

| | | | |
|-------------|-------|-------------|------------|
| GROWTH | 200D | +11 | 65% |
| | 400D | +9 | 65% |
| | 600D | +23 | 67% |
| | MWT | +33 | 60% |
| | MILK | – | – |
| FERTILITY | SS | +1 | 66% |
| | DTC | +3.8 | 43% |
| CARCASE | EMA | +2.1 | 48% |
| | RIB | -1.6 | 55% |
| | RUMP | -2.8 | 54% |
| | RBY | +1.8 | 41% |
| | IMF | -0.5 | 54% |
| Flight Time | -0.08 | 63% | |
| \$ INDEX | DOM | +10 | |
| | EXP | +14 | |

\$ _____



GYRANDA P174

'S' BULL

GYR18MP174

21/9/17 (24 mths)

WARENDA D696 (P)

SIRE: GYRANDA LONGSHOT L110(P)(AI)

GYRANDA H663

GYRANDA EXPECTATION E472

DAM: GYRANDA M273

GYRANDA D611

Notes: A tidy horned bull with a clean coat; excellent sheath and plenty of muscle. His Dam M273 was a maiden heifer that has since gone on to wean a second calf and is due to calve out again in spring.

Dam: C.I. 354 days – 2 calves **Morphology:** 92%

Wt _____ Sc _____

| | | | |
|-------------|--------------|-------------|------------|
| GROWTH | 200D | +12 | 67% |
| | 400D | +20 | 64% |
| | 600D | +25 | 68% |
| | MWT | +40 | 59% |
| | MILK | +3 | 36% |
| FERTILITY | SS | +1.2 | 67% |
| | DTC | -5.4 | 45% |
| CARCASE | EMA | +2.2 | 49% |
| | RIB | +0 | 55% |
| | RUMP | -0.5 | 55% |
| | RBY | +0.7 | 44% |
| | IMF | +0.5 | 54% |
| Flight Time | +0.19 | 66% | |
| \$ INDEX | DOM | +21 | |
| | EXP | +29 | |

\$ _____



GYRANDA P566 (P)

'S' BULL
 GYR18MP566
 26/9/17 (24 mths)



LOT 57.

EIDSVOLD STATION A166 (PS)

SIRE: GYRANDA FOR REAL F136 (PS)

GYRANDA CALAMITY C113

GYRANDA FOLSOM Y186

DAM: GYRANDA F747

GLENAAN S181

Notes: A big framed polly bull; an excellent combination of growth and fertility with the added bonus of excellent fat cover. His Dam F747 has given birth to seven calves in eight years but only weaned six. She had twins in 2016; one of which was sold to Darcy and Kara Knudsen and the other became a poddy.

| | | | |
|------------------|-------------|-------------|------------|
| GROWTH | 200D | +14 | 69% |
| | 400D | +20 | 70% |
| | 600D | +31 | 71% |
| | MWT | +41 | 66% |
| | MILK | -3 | 51% |
| FERTILITY | SS | +1.3 | 72% |
| | DTC | -7.8 | 56% |
| CARCASE | EMA | +1.5 | 56% |
| | RIB | +1.5 | 62% |
| | RUMP | +1.9 | 61% |
| | RBV | -0.1 | 50% |
| | IMF | +0.3 | 58% |
| | Flight Time | +0.05 | 70% |
| \$ INDEX | DOM | +21 | |
| | EXP | +35 | |

Dam: C.I. 429 days – 7 calves **Morphology:** 67%

Wt _____

Sc _____

\$ _____



GYRANDA P180 (P)

'S' BULL

GYR18MP180

25/9/17 (24 mths)



LOT 58.

ROWANLEA DUNTRON D24 (PS)

SIRE: GYRANDA KAMIKAZE K132 (PP)

GYRANDA E103 (P)

GYRANDA JEREMIAH J164 (PS)

DAM: GYRANDA M629 (P)

GYRANDA K251 (P)

Notes: A big framed polley bull. There are no weaknesses to this bull's data. In the top echelon for Growth; Fertility; Fat and Temperament. From a sire line going back to Rowanlea Duntroon D24 and out of a maiden heifer - M629 - that weaned a second calf last year and is about to calve out her third.

Dam: C.I. 406 days – 2 calves

Morphology: 97%

Wt _____

Sc _____

| | | | |
|-----------|-------------|-------|-----|
| GROWTH | 200D | +20 | 67% |
| | 400D | +23 | 66% |
| | 600D | +35 | 68% |
| | MWT | +41 | 61% |
| | MILK | +0 | 37% |
| FERTILITY | SS | +0.5 | 66% |
| | DTC | -6.8 | 47% |
| CARCASE | EMA | +2.9 | 48% |
| | RIB | +1 | 56% |
| | RUMP | +1.3 | 55% |
| | RBV | +0.8 | 43% |
| | IMF | +0.2 | 53% |
| | Flight Time | +0.32 | 66% |
| \$ INDEX | DOM | +26 | |
| | EXP | +38 | |

\$ _____



GYRANDA P164 (PS)

'S' BULL
 GYR18MP164
 11/9/17 (24 mths)



LOT 59.

GYRANDA COMMANDER C240

SIRE: GYRANDA GAMBLE G680 (P)

GYRANDA E737 (P)

ROSEVALE BATTALION F446 (P)

DAM: GYRANDA M245 (P)

GYRANDA E343 (P)

Notes: A striking bull. Long in the body; dark coat and oozing character. His growth data places him in the top 3% of the breed and is combined with good fertility statistics. Dam M245 was a maiden heifer that failed her second joining but is pregnant again to calve out this spring. Her Dam E343 has weaned eight from eight so far.

| | | | |
|-----------|-------------|-------|-----|
| GROWTH | 200D | +22 | 69% |
| | 400D | +30 | 67% |
| | 600D | +44 | 70% |
| | MWT | +48 | 62% |
| | MILK | +2 | 39% |
| FERTILITY | SS | +2.4 | 69% |
| | DTC | -2.5 | 49% |
| CARCASS | EMA | +2.5 | 52% |
| | RIB | -0.6 | 59% |
| | RUMP | -1.1 | 58% |
| | RBV | +1 | 46% |
| | IMF | -0.2 | 55% |
| | Flight Time | +0.23 | 67% |
| \$ INDEX | DOM | +26 | |
| | EXP | +35 | |

Dam: C.I. N/A – 1 calf

Morphology: %

Wt _____

Sc _____

\$ _____



GYRANDA P406 (P)

'S' BULL

GYR18MP406

4/9/17 (24 mths)

GYRANDA GARFIELD G302

SIRE: GYRANDA KALVIN K582 (P)

GYRANDA C735 (P)

EIDSVOLD STATION W62

DAM: GYRANDA F181

GYRANDA Y417A

Notes: Take a good look at this clean coated polly bull from behind and you will see a real carcass improver. Muscle throughout but soft as butter. He is a great combination of growth, fertility and carcass. Dam F181 calved at two and weaned six in seven years before being culled last year.

| | | | |
|-----------|-------------|-------------|------------|
| GROWTH | 200D | +9 | 66% |
| | 400D | +14 | 63% |
| | 600D | +30 | 66% |
| | MWT | +34 | 60% |
| | MILK | +5 | 42% |
| FERTILITY | SS | +1.9 | 62% |
| | DTC | -7.3 | 49% |
| CARCASS | EMA | +1.9 | 50% |
| | RIB | +0.6 | 55% |
| | RUMP | +0.2 | 54% |
| | RBY | +0.6 | 43% |
| | IMF | -0.0 | 51% |
| | Flight Time | -0.08 | 67% |
| \$ INDEX | DOM | +18 | |
| | EXP | +34 | |

Dam: C.I. 426 days – 6 calves **Morphology:** 95%

Wt _____

Sc _____

\$ _____





GYRANDA P574

'S' BULL

GYR18MP574

12/9/17 (24 mths)



LOT 61.

ROSEVALE FRONTIER F584 (P)

SIRE: ROSEVALE KINSMAN K162 (P)

ROSEVALE CEPRANO W553

GYRANDA BANJO B256

DAM: GYRANDA H283 (P)

GYRANDA A617

Notes: Medium framed soft bull; wide across the loin with a very tidy sheath. Dam H283 first calved at two and has weaned six calves in six years.

Dam: C.I. 358 days – 6 calves

Morphology: 77%

Wt _____

Sc _____

| | | | |
|-----------|-------------|--------------|------------|
| GROWTH | 200D | +14 | 65% |
| | 400D | +27 | 66% |
| | 600D | +34 | 68% |
| | MWT | +62 | 62% |
| | MILK | -2 | 43% |
| FERTILITY | SS | +1.8 | 68% |
| | DTC | -6.4 | 50% |
| CARCASE | EMA | +3.2 | 51% |
| | RIB | +0.5 | 59% |
| | RUMP | +0.4 | 58% |
| | RBY | +1 | 46% |
| | IMF | +0.1 | 56% |
| | Flight Time | +0.21 | 66% |
| \$ INDEX | DOM | +29 | |
| | EXP | +40 | |

\$ _____



GYRANDA P392

'S' BULL

GYR18MP392

28/8/17 (25 mths)

ROSEVALE FRONTIER F584 (P)

SIRE: ROSEVALE KINSMAN K162 (P)

ROSEVALE CEPRANO W553

GYRANDA D176

DAM: GYRANDA G761

GYRANDA C929

Notes: Quiet; good framed bull with a clean coat; plenty of length and a tidy sheath. Dam G761 calved at two and has weaned seven calves in seven years. Her Dam C929 also maintained a perfect record to wean seven before being culled in 2016.

| | | | |
|-----------|-------------|-------|-----|
| GROWTH | 200D | +8 | 65% |
| | 400D | +19 | 66% |
| | 600D | +26 | 68% |
| | MWT | +41 | 62% |
| | MILK | -1 | 43% |
| FERTILITY | SS | +0.4 | 69% |
| | DTC | -5 | 50% |
| CARCASE | EMA | +1.2 | 51% |
| | RIB | +0.2 | 59% |
| | RUMP | +0.5 | 57% |
| | RBV | -0.2 | 46% |
| | IMF | +0.2 | 56% |
| | Flight Time | +0.08 | 66% |
| \$ INDEX | DOM | +16 | |
| | EXP | +26 | |

Dam: C.I. 363 days – 7 calves **Morphology:** %

Wt _____ Sc _____

\$ _____



GYRANDA P250

'S' BULL

GYR18MP250

14/9/17 (24 mths)

STRATHMORE WARDEN W152 (P)

SIRE: GYRANDA COSMIC C476

GYRANDA X499

EIDSVOLD STATION FLETCH F24

DAM: GYRANDA K611

GYRANDA Y537

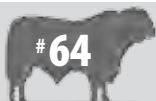
Notes: What a meat machine! Get behind this bull and have a good look. Tidy sheath with a Rod Stewart look that will have your cows crying out for more! Dam K611 went AWOL for a time but has weaned two calves in the last two years.

| | | | |
|-----------|-------------|-------|-----|
| GROWTH | 200D | +12 | 68% |
| | 400D | +15 | 69% |
| | 600D | +32 | 70% |
| | MWT | +29 | 66% |
| | MILK | +2 | 51% |
| FERTILITY | SS | +1 | 70% |
| | DTC | -6.3 | 56% |
| CARCASE | EMA | +2.6 | 54% |
| | RIB | +1.2 | 62% |
| | RUMP | +1.3 | 61% |
| | RBV | +0.7 | 49% |
| | IMF | +0.1 | 58% |
| | Flight Time | +0.23 | 69% |
| \$ INDEX | DOM | +20 | |
| | EXP | +34 | |

Dam: C.I. 420 days – 2 calves **Morphology:** 57%

Wt _____ Sc _____

\$ _____



GYRANDA P380

'S' BULL

GYR18MP380

9/10/17 (23 mths)

STRATHMORE STR/D182

SIRE: ROCKINGHAM JACE J228

MACAIRE MCA/F41

ROSEVALE NODDY A18 (P)

DAM: GYRANDA L517 (P)

GYRANDA D391

Notes: Big framed horn bull; deep in the flank. His dam L517 had twins at two year old; one died but she has gone on to wean another 2/2 to retain a perfect record.

Dam: C.I. 370 days – 4 calves **Morphology:** 82%

Wt _____ Sc _____

| | | | |
|-----------|-------------|--------------|------------|
| GROWTH | 200D | +12 | 65% |
| | 400D | +2 | 66% |
| | 600D | +20 | 68% |
| | MWT | +29 | 60% |
| | MILK | +0 | 32% |
| FERTILITY | SS | +0.8 | 67% |
| | DTC | -1 | 45% |
| CARCASE | EMA | +1.1 | 50% |
| | RIB | -0.5 | 57% |
| | RUMP | -1.2 | 56% |
| | RBY | +1 | 44% |
| | IMF | -0.3 | 55% |
| | Flight Time | +0.15 | 65% |
| \$ INDEX | DOM | +6 | |
| | EXP | +18 | |

\$ _____



GYRANDA P110

'S' BULL

GYR18MP110

19/8/17 (25 mths)

STRATHMORE WARDEN W152 (P)

SIRE: GYRANDA COSMIC C476

GYRANDA X499

GYRANDA EDITOR E572

DAM: GYRANDA K235

GYRANDA A283

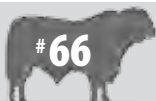
Notes: Quiet; fantastic carcase data and a fertility pedigree famous throughout the breed. His Dam K235 calved at two and has had three calves in four years.

Dam: C.I. 535 days – 3 calves **Morphology:** 95%

Wt _____ Sc _____

| | | | |
|-----------|-------------|-------------|------------|
| GROWTH | 200D | +7 | 68% |
| | 400D | +10 | 69% |
| | 600D | +16 | 71% |
| | MWT | +15 | 66% |
| | MILK | -2 | 53% |
| FERTILITY | SS | +1.6 | 71% |
| | DTC | -7.4 | 57% |
| CARCASE | EMA | +3.1 | 55% |
| | RIB | +1.1 | 62% |
| | RUMP | +1.0 | 62% |
| | RBY | +1.2 | 50% |
| | IMF | +0.1 | 58% |
| | Flight Time | +0.4 | 69% |
| \$ INDEX | DOM | +22 | |
| | EXP | +30 | |

\$ _____



GYRANDA P224

'S' BULL

GYR18MP224

21/9/17 (24 mths)

ROSEVALE DEMOCRAT G268 (P)

SIRE: GYRANDA KIT K154 (P)

GYRANDA A635 (P)

GYRANDA C160

DAM: GYRANDA H429

GYRANDA V285

Notes: Clean coated; square bull with a good sheath. Carrying all the growth and power of his sire line. This calf was an exceptional calf at weaning. He may have plateaued out but would be of interest to those chasing the weaner market. His Dam H429 calved at three but has weaned 5/5 since; including a \$9000 bull sold to John Knights in 2016 and a \$4000 bull sold to Rob and Annie Donoghue last year. Her Dam V285 maintained a perfect record; weaning twelve calves; including a \$16,000 bull sold to Andrew and Lesley Cowper in 2008.

Dam: C.I. 363 days – 5 calves **Morphology:** %

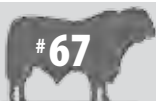
Wt _____

Sc _____

| | | | |
|------------------|--------------------|-------------|------------|
| GROWTH | 200D | +20 | 67% |
| | 400D | +22 | 67% |
| | 600D | +35 | 69% |
| | MWT | +57 | 63% |
| | MILK | -3 | 41% |
| FERTILITY | SS | +1.9 | 69% |
| | DTC | +0.2 | 51% |
| CARCASE | EMA | +3.5 | 52% |
| | RIB | +0.3 | 60% |
| | RUMP | -0.4 | 59% |
| | RBV | +1.2 | 47% |
| | IMF | +0 | 57% |
| | Flight Time | -0.1 | 67% |
| \$ INDEX | DOM | +21 | |
| | EXP | +29 | |

\$ _____





GYRANDA P536 (PS)

'S' BULL
 GYR18MP536
 19/9/17 (24 mths)



LOT 67.

CREE MULTI SIRE

SIRE: CREE KOMATSU K144 (PP)

CREE H107 (P)

DANGARFIELD SPINIFEX S204

DAM: GYRANDA J143

GYRANDA F121

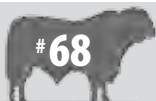
Notes: A long; tall Cree Komatsu calf with a sirey outlook and plenty of growth. Dam J143 calved at two and weaned four calves in five years.

| | | | |
|-----------|-------------|------------|------------|
| GROWTH | 200D | +16 | 67% |
| | 400D | +25 | 67% |
| | 600D | +37 | 69% |
| | MWT | +53 | 63% |
| | MILK | +2 | 37% |
| FERTILITY | SS | +1.1 | 69% |
| | DTC | -0.4 | 49% |
| CARCASE | EMA | +2.1 | 52% |
| | RIB | +0.4 | 60% |
| | RUMP | -0.1 | 59% |
| | RBY | +0.5 | 45% |
| | IMF | +0.1 | 57% |
| | Flight Time | -0.06 | 67% |
| \$ INDEX | DOM | +18 | |
| | EXP | +26 | |

Dam: C.I. 472 days – 4 calves **Morphology:** 87%

Wt _____ Sc _____

\$ _____



GYRANDA P294 (P)

'S' BULL
 GYR18MP294
 30/8/17 (25 mths)



LOT 68.

RAYTEK DEMOCRAT D46 (P)

SIRE: ROSEVALE DEMOCRAT G268 (P)

ROSEVALE HONEY Y165

GYRANDA CRACKERJACK V532

DAM: GYRANDA D549

MARSTON G1123 (P)

Notes: Poll bull with real eye appeal. Tidy sheath; well formed rump; thick across the loin with plenty of fat cover. Dam D549 is a Crackerjack cow that calved at two; has weaned nine calves in ten years and is about to calve out a tenth time.

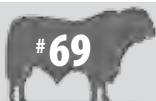
Dam: C.I. 407 days – 9 calves **Morphology:** 91%

Wt _____

Sc _____

| | | | |
|-----------|-------------|-------------|------------|
| GROWTH | 200D | +17 | 69% |
| | 400D | +20 | 70% |
| | 600D | +28 | 71% |
| | MWT | +37 | 66% |
| | MILK | -7 | 51% |
| FERTILITY | SS | +1.7 | 72% |
| | DTC | +0.6 | 54% |
| CARCASE | EMA | +4.4 | 56% |
| | RIB | +1 | 62% |
| | RUMP | +0.9 | 61% |
| | RBV | +1.1 | 51% |
| | IMF | -0.2 | 59% |
| | Flight Time | -0.01 | 70% |
| \$ INDEX | DOM | +22 | |
| | EXP | +24 | |

\$ _____



GYRANDA P556 (PP)

'S' BULL

GYR18MP556

16/11/17 (22 mths)

EIDSVOLD STATION A166 (PS)

SIRE: GYRANDA FOR REAL F136 (PS)

GYRANDA CALAMITY C113

GYRANDA DEADLY D178 (PS)

DAM: GYRANDA H119 (P)

HARTWOOD B-535



Notes: Another Homozygous poll bull and much younger than his contemporaries. A big framed growthy bull; sporting a tidy underline and slick coat. Dam H119 calved at two and weaned five calves in six years.

Dam: C.I. 509 days – 4 calves **Morphology:** 87%

Wt _____ Sc _____

| | | | |
|-------------|-------|------|-----|
| GROWTH | 200D | +19 | 68% |
| | 400D | +28 | 69% |
| | 600D | +35 | 70% |
| | MWT | +44 | 65% |
| | MILK | -3 | 49% |
| FERTILITY | SS | +1.4 | 71% |
| | DTC | +4.4 | 55% |
| CARCASE | EMA | +2.8 | 54% |
| | RIB | -1.2 | 61% |
| | RUMP | -1.5 | 60% |
| | RBY | +0.8 | 48% |
| | IMF | -0.3 | 57% |
| Flight Time | +0.38 | 67% | |
| \$ INDEX | DOM | +19 | |
| | EXP | +17 | |

\$ _____



GYRANDA P676 (P)

'S' BULL

GYR18MP676

18/12/17 (21 mths)

ROWANLEA DUNTRON D24 (PS)

SIRE: GYRANDA KAMIKAZE K132 (PP)

GYRANDA E103 (P)

GYRANDA EXPECTATION E472

DAM: GYRANDA M261

GYRANDA D411

Notes: Clean coated polley bull with a great mix of growth and fertility. Medium frame but an out of season calf three months younger than those bulls around him. Out of a maiden heifer M261 she has gone on to wean another calf this year and is pregnant again.

Dam: C.I. 305 days – 2 calves **Morphology:** 94%

Wt _____ Sc _____

| | | | |
|-------------|-------|------|-----|
| GROWTH | 200D | +8 | 62% |
| | 400D | +12 | 62% |
| | 600D | +23 | 64% |
| | MWT | +30 | 59% |
| | MILK | +3 | 38% |
| FERTILITY | SS | +1.2 | 64% |
| | DTC | -8.6 | 46% |
| CARCASE | EMA | +0.3 | 48% |
| | RIB | -0.2 | 54% |
| | RUMP | -0.7 | 53% |
| | RBY | +0 | 42% |
| | IMF | +0.5 | 49% |
| Flight Time | -0.03 | 65% | |
| \$ INDEX | DOM | +13 | |
| | EXP | +29 | |

\$ _____



GYRANDA P412 (PS)

'S' BULL

GYR18MP412

2/10/17 (23 mths)

CREE MULTI SIRE

SIRE: CREE KOMATSU K144 (PP)

CREE H107 (P)

GYRANDA ASSASSIN A406

DAM: GYRANDA E481

GYRANDA A177

Notes: An attractive; medium frame bull. Retaining a tidy sheath; loose skin and a clean coat; he has exceptional growth and carcass characteristics. Dam E481 calved at three and has weaned eight calves in eight years so far.

| | | | |
|-----------|-------------|-------|-----|
| GROWTH | 200D | +21 | 67% |
| | 400D | +32 | 68% |
| | 600D | +47 | 70% |
| | MWT | +57 | 63% |
| | MILK | +2 | 41% |
| FERTILITY | SS | +0.6 | 69% |
| | DTC | +2.5 | 49% |
| CARCASS | EMA | +4.5 | 53% |
| | RIB | -0.4 | 60% |
| | RUMP | -0.7 | 59% |
| | RBY | +1.1 | 47% |
| | IMF | -0.3 | 57% |
| | Flight Time | -0.11 | 68% |
| \$ INDEX | DOM | +24 | |
| | EXP | +29 | |

Dam: C.I. 362 days – 8 calves **Morphology:** 78%

Wt _____

Sc _____

\$ _____



The average Gyranda Dam has fertility (DTC) EBV data in the top 10% of the breed.



GYRANDA P366 (P)

'S' BULL
 GYR18MP366
 11/9/17 (24 mths)



LOT 72.

TYNDALE REPLAY 167 (AI) (P)

SIRE: GYRANDA HUMMER H274 (P)

GYRANDA D363 (P)

GYRANDA FLYNN Y226

DAM: GYRANDA E535

GYRANDA V613

Notes: Dark coated polley bull. Clean coated with a tidy sheath and good carcass data. Dam E535 calved at two and weaned eight calves in nine years including a \$15,000 bull sold to Stuart and Anna Weir and a \$10,500 bull sold to Tony and Sue Killen. Her Dam - V613 weaned 10/10.

Dam: C.I. 419 days – 8 calves **Morphology:** 66%

Wt _____

Sc _____

| | | | |
|------------------|-------------|-------------|------------|
| GROWTH | 200D | +8 | 68% |
| | 400D | +15 | 66% |
| | 600D | +22 | 68% |
| | MWT | +12 | 63% |
| | MILK | +5 | 47% |
| FERTILITY | SS | +0.6 | 66% |
| | DTC | -1.1 | 52% |
| CARCASS | EMA | +2.1 | 52% |
| | RIB | +1.4 | 57% |
| | RUMP | +1.4 | 56% |
| | RBY | -0.1 | 46% |
| | IMF | +0.4 | 52% |
| | Flight Time | -0.04 | 69% |
| \$ INDEX | DOM | +11 | |
| | EXP | +14 | |

\$ _____



GYRANDA P292 (PS)

'S' BULL

GYR18MP292

20/9/17 (24 mths)

TOOKEY CREEK GURU G34 (P)

SIRE: GYRANDA LORAX L794 (PP)

GYRANDA J359

EIDSVOLD STATION W62

DAM: GYRANDA C207

GYRANDA Z387

Notes: Dark coated polley bull with excellent fertility and carcass data. Dam C207 calved at two; weaned her eleventh calf this year (no misses) and will calve out her twelfth this spring. Those previous calves include a \$7000 bull sold to Grant Johnston in 2017. Her Dam Z387 also had a perfect record before being sold to Celia Mackay in 2011 where she weaned another five calves.

Dam: C.I. 366 days – 11 calves **Morphology:** 84%

Wt _____ Sc _____

| | | | |
|-----------|-------------|-------------|------------|
| GROWTH | 200D | +8 | 68% |
| | 400D | +15 | 68% |
| | 600D | +18 | 70% |
| | MWT | +6 | 64% |
| | MILK | +0 | 43% |
| FERTILITY | SS | +1.9 | 70% |
| | DTC | -5.8 | 51% |
| CARCASS | EMA | +4.0 | 54% |
| | RIB | +1.6 | 61% |
| | RUMP | +1.5 | 60% |
| | RBV | +1.3 | 48% |
| | IMF | -0.2 | 58% |
| | Flight Time | -0.1 | 69% |
| \$ INDEX | DOM | +25 | |
| | EXP | +28 | |

\$ _____



GYRANDA P122 (PP)

'S' BULL

GYR18MP122

27/8/17 (25 mths)

TOOKEY CREEK GURU G34 (P)

SIRE: GYRANDA LORAX L794 (PP)

GYRANDA J359

DANGARFIELD PANAMA P056 (P)

DAM: GYRANDA E171 (P)

GYRANDA CALAMITY C113

Notes: A smooth coated stylish homozygous poll bull with sirey outlook; calm demeanour and exceptional carcass qualities. His Dam E171 calved at two and had eight calves in nine years. Her Dam in turn Gylanda Calamity C113 has just weaned her 10th calf.

Dam: C.I. 412 days – 8 calves **Morphology:** 78%

Wt _____ Sc _____



| | | | |
|-----------|-------------|-------------|------------|
| GROWTH | 200D | +7 | 67% |
| | 400D | +15 | 67% |
| | 600D | +15 | 69% |
| | MWT | +17 | 63% |
| | MILK | +0 | 40% |
| FERTILITY | SS | +0 | 68% |
| | DTC | -2.1 | 50% |
| CARCASS | EMA | +3.1 | 53% |
| | RIB | +1.5 | 60% |
| | RUMP | +1.9 | 59% |
| | RBV | +0.6 | 46% |
| | IMF | -0.1 | 57% |
| | Flight Time | +0.14 | 68% |
| \$ INDEX | DOM | +18 | |
| | EXP | +17 | |

\$ _____



GYRANDA P584 (P)

'S' BULL

GYR18MP584

19/9/17 (24 mths)

TYNDALE REPLAY 167 (AI) (P)

SIRE: GYRANDA HUMMER H274 (P)

GYRANDA D363 (P)

GYRANDA FAWKES Y146

DAM: GYRANDA E355

GYRANDA X459

Notes: Tidy polly bull with a clean coat and good sheath. Dam E355 calved at two and has had eight calves in nine years.

Dam: C.I. 401 days – 8 calves **Morphology:** 87%

Wt _____ Sc _____

| | | | |
|-----------|-------------|-------------|------------|
| GROWTH | 200D | +12 | 68% |
| | 400D | +21 | 67% |
| | 600D | +27 | 70% |
| | MWT | +35 | 64% |
| | MILK | +4 | 46% |
| FERTILITY | SS | +0.6 | 69% |
| | DTC | +1.3 | 51% |
| CARCASE | EMA | +2.2 | 54% |
| | RIB | +0.9 | 59% |
| | RUMP | +0.6 | 59% |
| | RBY | +0 | 48% |
| | IMF | +0.7 | 55% |
| | Flight Time | -0.17 | 69% |
| \$ INDEX | DOM | +12 | |
| | EXP | +14 | |

\$ _____



GYRANDA P280 (P)

'S' BULL

GYR18MP280

6/9/17 (24 mths)

TOOKEY CREEK GURU G34 (P)

SIRE: GYRANDA LORAX L794 (PP)

GYRANDA J359

ROSEVALE NODDY A18 (P)

DAM: GYRANDA H261 (P)

GYRANDA C367 (P)

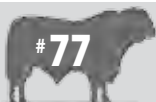
Notes: Dark coated polley bull. Loose skin; sirey outlook and a good sheath. His Dam H261 calved at three and has had five calves in five years. Her Dam C367 calved at two; weaned eleven calves including four bull calves for \$7500 - \$8500 before coming in empty this year.

Dam: C.I. 376 days – 5 calves **Morphology:** 74%

Wt _____ Sc _____

| | | | |
|-----------|-------------|-------|-----|
| GROWTH | 200D | +8 | 67% |
| | 400D | +19 | 67% |
| | 600D | +17 | 69% |
| | MWT | +31 | 63% |
| | MILK | +1 | 39% |
| FERTILITY | SS | +0.4 | 69% |
| | DTC | -4.0 | 50% |
| CARCASE | EMA | +2.5 | 53% |
| | RIB | -0.3 | 60% |
| | RUMP | -0.5 | 59% |
| | RBY | +0.9 | 47% |
| | IMF | +0.2 | 57% |
| | Flight Time | +0.05 | 68% |
| \$ INDEX | DOM | +21 | |
| | EXP | +23 | |

\$ _____



GYRANDA P326 (P)

'S' BULL

GYR18MP326

7/9/17 (24 mths)



LOT 77.

ROSEVALE NODDY A18 (P)

SIRE: GYRANDA FRANKLIN F238 (P)

GYRANDA C361 (P)

GYRANDA FOLSOM Y186

DAM: GYRANDA C561

MARSTON I1084 (P)

Notes: Really thick bull; beautifully calm; excellent growth and a tidy sheath. His Dam C561 calved at two and weaned eight calves in nine years before being culled last year.

| | | | |
|-----------|-------------|-------|-----|
| GROWTH | 200D | +21 | 68% |
| | 400D | +27 | 69% |
| | 600D | +41 | 71% |
| | MWT | +64 | 65% |
| | MILK | -2 | 49% |
| FERTILITY | SS | +2.0 | 71% |
| | DTC | +3.9 | 55% |
| CARCASE | EMA | +2.7 | 54% |
| | RIB | -0.6 | 61% |
| | RUMP | -0.8 | 60% |
| | RBY | +0.9 | 48% |
| | IMF | -0.6 | 56% |
| | Flight Time | +0.23 | 69% |
| \$ INDEX | DOM | +18 | |
| | EXP | +23 | |

Dam: C.I. 459 days – 8 calves

Morphology: 72%

Wt _____

Sc _____

\$ _____



GYRANDA P172 (P)

'S' BULL
 GYR18MP172
 28/9/17 (24 mths)



LOT 78.

ROWANLEA DUNTRON D24 (PS)

SIRE: GYRANDA KAMIKAZE K132 (PP)

GYRANDA E103 (P)

GYRANDA CESAR C422 (PS)

DAM: GYRANDA M597 (P)

GYRANDA K103

Notes: A big framed growthy bull out of a maiden mother. He is very quiet and carries an amazing combination of growth and fertility. Dam M597 missed her second pregnancy but is due to calve out a Wightfields Downpour calf this spring.

| | | | |
|-----------|-------------|-------|-----|
| GROWTH | 200D | +19 | 67% |
| | 400D | +32 | 66% |
| | 600D | +45 | 68% |
| | MWT | +62 | 60% |
| | MILK | +1 | 38% |
| FERTILITY | SS | +1.6 | 67% |
| | DTC | -8.3 | 48% |
| CARCASE | EMA | +4.0 | 50% |
| | RIB | +0.2 | 58% |
| | RUMP | +0.2 | 57% |
| | RBV | +0.8 | 45% |
| | IMF | +0.4 | 54% |
| | Flight Time | +0.32 | 65% |
| \$ INDEX | DOM | +33 | |
| | EXP | +48 | |

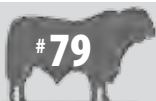
Dam: C.I. N/A – 1 calf

Morphology: 85%

Wt _____

Sc _____

\$ _____



GYRANDA P226 (P)

'S' BULL

GYR18MP226

28/9/17 (24 mths)



LOT 79.

TOOKEY CREEK GURU G34 (P)

SIRE: GYRANDA LORAX L794 (PP)

GYRANDA J359

GYRANDA C224

DAM: GYRANDA F567

GYRANDA B457 (P)

Notes: A tidy poll bull; soft throughout. An excellent combination of quiet temperament; fertility and fat. His Dam F567 calved at two and has weaned seven calves in eight years. Her Dam B457 maintained a perfect record; weaning nine calves before being culled in 2016.

Dam: C.I. 415 days – 7 calves

Morphology: 80%

Wt _____

Sc _____

| | | | |
|-----------|-------------|--------------|------------|
| GROWTH | 200D | +8 | 67% |
| | 400D | +16 | 67% |
| | 600D | +22 | 69% |
| | MWT | +12 | 63% |
| | MILK | +0 | 38% |
| FERTILITY | SS | +1.8 | 69% |
| | DTC | -7.4 | 50% |
| CARCASE | EMA | +3 | 52% |
| | RIB | +0.7 | 60% |
| | RUMP | +0.8 | 59% |
| | RBY | +0.6 | 46% |
| | IMF | +0.2 | 57% |
| | Flight Time | +0.35 | 68% |
| \$ INDEX | DOM | +22 | |
| | EXP | +30 | |

\$ _____



GYRANDA P500 (P)

'S' BULL

GYR18MP500

18/9/17 (24 mths)

GYRANDA ALIBI A546

SIRE: GYRANDA EDITOR E572

GYRANDA C653

ROSEVALE GUMPER X546 (P)

DAM: GYRANDA E271 (P)

GYRANDA 49Q

Notes: This bull has real eye appeal. Poll; dark coat; tight sheath and sirey outlook. Very quiet and carrying excellent growth and carcass data. Dam E271 calved at three but has weaned seven calves in seven years. Her dam - Gyranada 49Q - calved at two and weaned an amazing 13 calves without fault before being culled for age in 2010.

Dam: C.I. 359 days – 7 calves **Morphology:** 61%

Wt _____

Sc _____

| | | | |
|------------------|--------------------|--------------|------------|
| GROWTH | 200D | +16 | 69% |
| | 400D | +21 | 70% |
| | 600D | +29 | 72% |
| | MWT | +39 | 66% |
| | MILK | -1 | 51% |
| FERTILITY | SS | +1.1 | 72% |
| | DTC | +0.6 | 58% |
| CARCASS | EMA | +3.8 | 57% |
| | RIB | +0.9 | 63% |
| | RUMP | +1.0 | 62% |
| | RBV | +0.5 | 51% |
| | IMF | +0.5 | 58% |
| | Flight Time | +0.31 | 70% |
| \$ INDEX | DOM | +17 | |
| | EXP | +21 | |

\$ _____





GYRANDA P114 (PS)

'S' BULL
 GYR18MP114
 22/8/17 (25 mths)



LOT 81.

DANGARFIELD DF/ULTRA

SIRE: DANGARFIELD X-CEL X325 (P)

DANGARFIELD DF/0514

GYRANDA FOR REAL F136 (PS)

DAM: GYRANDA M275 (P)

GYRANDA C931

Notes: A medium framed bull with a superb topline and beautiful dark coat. This is a small birthweight bull. He was 30kg at birth and is out of a maiden heifer. His Dam M275 calved again last year and fell pregnant to our first round of A.I. to Wave Hill Jaguar. Her Dam C931 calved at two and had eleven calves without a miss before being culled for age last year.

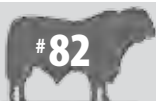
Dam: C.I. 383 days – 2 calves **Morphology:** 78%

Wt _____

Sc _____

| | | | |
|------------------|-------------|-------------|------------|
| GROWTH | 200D | +3 | 58% |
| | 400D | +5 | 53% |
| | 600D | +4 | 56% |
| | MWT | – | – |
| | MILK | -2 | 30% |
| FERTILITY | SS | +1 | 41% |
| | DTC | -8.0 | 36% |
| CARCASE | EMA | +0.8 | 36% |
| | RIB | +0.9 | 38% |
| | RUMP | +0.6 | 37% |
| | RBV | +0.4 | 29% |
| | IMF | +0.2 | 33% |
| | Flight Time | – | – |
| \$ INDEX | DOM | +14 | |
| | EXP | +20 | |

\$ _____



GYRANDA P266 (PS)

PUREBRED

GYR18MP266
5/9/17 (24 mths)

ROSEVALE EMPIRE E464

SIRE: ROSEVALE LENNOX L256 (PS)

ROSEVALE SCARLET E247 (P)

GYRANDA GARWOOD G684 (PS)

DAM: GYRANDA K407

GYRANDA B201 (P)

Notes: A long bull with a good frame and tidy sheath. His Dam K407 is a commercial cow that calved out at two and had two calves in three years before moving to the Commercial herd.

Dam: C.I. 732 days – 2 calves **Morphology:** 72%

Wt _____ Sc _____

| | | | |
|-----------|-------------|--------------|------------|
| GROWTH | 200D | +13 | 66% |
| | 400D | +18 | 66% |
| | 600D | +29 | 68% |
| | MWT | +35 | 61% |
| | MILK | +2 | 40% |
| FERTILITY | SS | +1.2 | 68% |
| | DTC | -7.3 | 50% |
| CARCASE | EMA | +1.7 | 51% |
| | RIB | -1.0 | 59% |
| | RUMP | -1.4 | 58% |
| | RBY | +0.6 | 46% |
| | IMF | +0.1 | 57% |
| | Flight Time | +0.19 | 66% |
| \$ INDEX | DOM | +20 | |
| | EXP | +33 | |

\$ _____



GYRANDA P376

PUREBRED

GYR18MP376
2/10/17 (23 mths)

GYRANDA GARFIELD G302 (P)

SIRE: GYRANDA KALVIN K582 (P)

GYRANDA C735 (P)

EIDSVOLD STATION B188

DAM: GYRANDA F519

GYRANDA C575

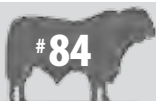
Notes: An ideal bullock bull; really deep across the hindquarter; full in the flank; quiet. Exceptional data from one end to the other. In fact apart from the obvious black pigment that excludes him from breeding Stud animals there is not a weak point to him. Growth; fertility; fat; muscle and temperament all in the top 1-20% of the breed. Dam F519 calved at two and maintains a perfect 8/8 record.

Dam: C.I. 362 days – 8 calves **Morphology:** 75%

Wt _____ Sc _____

| | | | |
|-----------|-------------|--------------|------------|
| GROWTH | 200D | +16 | 67% |
| | 400D | +18 | 67% |
| | 600D | +37 | 69% |
| | MWT | +34 | 63% |
| | MILK | +3 | 42% |
| FERTILITY | SS | +1.5 | 53% |
| | DTC | -4.2 | 49% |
| CARCASE | EMA | +3.1 | 52% |
| | RIB | +1.0 | 59% |
| | RUMP | +0.8 | 58% |
| | RBY | +0.6 | 46% |
| | IMF | +0.1 | 55% |
| | Flight Time | +0.35 | 67% |
| \$ INDEX | DOM | +19 | |
| | EXP | +32 | |

\$ _____



GYRANDA P116

PUREBRED

GYR18MP116

24/8/17 (25 mths)

DANGARFIELD DF/TAROOM

SIRE: DANGARFIELD X-CAVATE X337 (PS)

DANGARFIELD DF/4639

GREENUP GIZZA G218 (P)

DAM: GYRANDA M389 (P)

GYRANDA E177

Notes: Soft; quiet bull. A 35kg calf at birth; out of a maiden heifer his data tells you he carries huge growth and a quiet temperament. Dam M389 had a second calf last year and is pregnant again in our A.I. program.

Dam: C.I. 375 days – 2 calves **Morphology:** 83%

Wt _____ Sc _____

| | | | |
|-----------|-------------|--------------|------------|
| GROWTH | 200D | +16 | 65% |
| | 400D | +29 | 64% |
| | 600D | +36 | 66% |
| | MWT | +43 | 58% |
| | MILK | +3 | 33% |
| FERTILITY | SS | +1.4 | 65% |
| | DTC | -1.3 | 43% |
| CARCASE | EMA | +2.8 | 46% |
| | RIB | -0.4 | 53% |
| | RUMP | -0.8 | 52% |
| | RBY | +1 | 40% |
| | IMF | -0.1 | 51% |
| | Flight Time | +0.47 | 61% |
| \$ INDEX | DOM | +25 | |
| | EXP | +28 | |

\$ _____



GYRANDA P484

PUREBRED

GYR18MP484

4/9/17 (24 mths)

EIDSVOLD STN ES/D648 DINGO

SIRE: GYRANDA GARWOOD G684 (PS)

GYRANDA E165 (P)

GYRANDA EXPECTATION E472

DAM: GYRANDA J443

GYRANDA G111

Notes: Horned bull; perfect for bullocks; good sheath and deep in the flank. A great combination of growth and fertility. Dam J443 calved at two and has weaned four calves in five years. Her Dam G111 calved at two and has weaned seven from seven so far.

Dam: C.I. 495 days – 4 calves **Morphology:** 84%

Wt _____ Sc _____

| | | | |
|-----------|-------------|--------------|------------|
| GROWTH | 200D | +16 | 68% |
| | 400D | +26 | 69% |
| | 600D | +37 | 70% |
| | MWT | +18 | 65% |
| | MILK | +4 | 46% |
| FERTILITY | SS | +3.2 | 71% |
| | DTC | -3.2 | 55% |
| CARCASE | EMA | +1.4 | 54% |
| | RIB | -0.6 | 61% |
| | RUMP | -1.6 | 60% |
| | RBY | +0.5 | 48% |
| | IMF | -0.2 | 57% |
| | Flight Time | +0.18 | 69% |
| \$ INDEX | DOM | +21 | |
| | EXP | +27 | |



GYRANDA P358

PUREBRED

GYR18MP358

5/10/17 (23 mths)

ROSEVALE BATTALLION E622 (P)

SIRE: ROWANLEA KLUGER K32 (P)

ROWANLEA E31 (P)

ROSEVALE EDGAR X578

DAM: GYRANDA C573

MARSTON G1163

Notes: A powerful horned bull; thick across the hind quarter and very quite. This bull is a little younger than his contemporaries but retains the massive growth data of his sire line. Dam C573 calved at two and weaned nine calves in ten years before being culled for age this year.

| | | | |
|-----------|-------------|-------|-----|
| GROWTH | 200D | +18 | 68% |
| | 400D | +25 | 68% |
| | 600D | +33 | 70% |
| | MWT | +50 | 63% |
| | MILK | +1 | 45% |
| FERTILITY | SS | +1.2 | 69% |
| | DTC | +2.9 | 51% |
| CARCASE | EMA | +2.5 | 53% |
| | RIB | -1.0 | 60% |
| | RUMP | -1.7 | 59% |
| | RBY | +0.8 | 47% |
| | IMF | -0.1 | 56% |
| | Flight Time | +0.09 | 67% |
| \$ INDEX | DOM | +17 | |
| | EXP | +18 | |

Dam: C.I. 413 days – 9 calves **Morphology:** 89%

Wt _____ Sc _____

\$ _____



GYRANDA P334 (P)

PUREBRED

GYR18MP334

21/9/17 (24 mths)

TOOKEY CREEK GURU G34 (P)

SIRE: GYRANDA LORAX L794 (PP)

GYRANDA J359

GYRANDA CRACKERJACK V532

DAM: GYRANDA BOUNTIFUL B541

GYRANDA U147

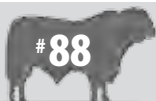
Notes: A dark coated growthy poll bull. Dam B541 calved at two and weaned eleven calves for the perfect record before being culled for age this year.

| | | | |
|-----------|-------------|-------|-----|
| GROWTH | 200D | +18 | 68% |
| | 400D | +24 | 68% |
| | 600D | +36 | 70% |
| | MWT | +50 | 64% |
| | MILK | +1 | 42% |
| FERTILITY | SS | +0.4 | 70% |
| | DTC | +2.1 | 51% |
| CARCASE | EMA | +4.3 | 54% |
| | RIB | -0.9 | 61% |
| | RUMP | -1.4 | 60% |
| | RBY | +1.7 | 48% |
| | IMF | -0.4 | 58% |
| | Flight Time | -0.06 | 68% |
| \$ INDEX | DOM | +22 | |
| | EXP | +26 | |

Dam: C.I. 365 days – 11 calves **Morphology:** 61%

Wt _____ Sc _____

\$ _____



GYRANDA P112 (P)

PUREBRED

GYR18MP112
21/8/17 (25 mths)

ROSEVALE BATTALLION E622 (P)

SIRE: ROWANLEA KLUGER K32 (P)

ROWANLEA E31 (P)

ROSEVALE NODDY A18 (P)

DAM: GYRANDA J243 (P)

GYRANDA Z233

Notes: A clean coated polley bull. Big framed and a good example of a low birth weight; high growth bull suitable for heifers. This calf was 25kg at birth. His Dam J243 calved at two and has had four calves in five years; missing her second. Her dam Z233 calved at three but had ten calves without a miss.

Dam: C.I. 481 days – 4 calves **Morphology:** 92%

Wt _____ Sc _____

| | | | |
|-----------|-------------|--------------|------------|
| GROWTH | 200D | +14 | 67% |
| | 400D | +24 | 68% |
| | 600D | +29 | 70% |
| | MWT | +58 | 64% |
| | MILK | +0 | 44% |
| FERTILITY | SS | +0.5 | 69% |
| | DTC | +2.6 | 52% |
| CARCASE | EMA | +1.7 | 54% |
| | RIB | -1.7 | 60% |
| | RUMP | -2.2 | 59% |
| | RBV | +0.9 | 49% |
| | IMF | -0.1 | 58% |
| | Flight Time | +0.22 | 67% |
| \$ INDEX | DOM | +16 | |
| | EXP | +18 | |

\$ _____



GYRANDA P234 (P)

PUREBRED

GYR18MP234
5/10/17 (23 mths)

ROSEVALE BATTALLION E622 (P)

SIRE: ROWANLEA KLUGER K32 (P)

ROWANLEA E31 (P)

GYRANDA C834

DAM: GYRANDA J123

GYRANDA A409

Notes: A big framed bull; long and heavy. Huge growth data in keeping with his Rowanlea Kluger pedigree but not lacking either in fertility. His Dam J123 calved at two and maintains a perfect record. She has weaned five so far and her last bull calf sold for \$10,000 to John Knights in 2016. Her dam A409 also maintained a perfect record weaning eight before being culled in 2017.

Dam: C.I. 368 days – 5 calves **Morphology:** 92%

Wt _____ Sc _____

| | | | |
|-----------|-------------|-------------|------------|
| GROWTH | 200D | +20 | 67% |
| | 400D | +30 | 68% |
| | 600D | +43 | 69% |
| | MWT | +47 | 62% |
| | MILK | +1 | 44% |
| FERTILITY | SS | +1.9 | 69% |
| | DTC | +0.5 | 52% |
| CARCASE | EMA | +2.6 | 53% |
| | RIB | -0.6 | 60% |
| | RUMP | -1.4 | 59% |
| | RBV | +0.5 | 47% |
| | IMF | +0.3 | 57% |
| | Flight Time | +0.06 | 67% |
| \$ INDEX | DOM | +21 | |
| | EXP | +27 | |

\$ _____



GYRANDA P656 (P)

PUREBRED

GYR18MP656
20/11/17 (22 mths)

ROSEVALE FRONTIER F584 (P)

SIRE: ROSEVALE KINSMAN K162 (P)

ROSEVALE CEPRANO W553

GYRANDA FOOTLOOSE F102

DAM: GYRANDA K767

GYRANDA G771 (P)

Notes: A soft; polley bull; younger than his colleagues with excellent carcass and fertility. Dam K767 was a commercial cow that calved at two and weaned three from three before being culled last year.

Dam: C.I. 370 days – 3 calves **Morphology:** 71%

Wt _____ Sc _____

| | | | |
|-------------|------|--------------|------------|
| GROWTH | 200D | +8 | 64% |
| | 400D | +20 | 66% |
| | 600D | +31 | 68% |
| | MWT | +39 | 61% |
| | MILK | +0 | 40% |
| FERTILITY | SS | +2.2 | 69% |
| | DTC | -10.7 | 48% |
| CARCASS | EMA | +3.8 | 49% |
| | RIB | +0.5 | 58% |
| | RUMP | +0.5 | 57% |
| | RBY | +0.8 | 44% |
| | IMF | +0.3 | 55% |
| Flight Time | +0 | 65% | |
| \$ INDEX | DOM | +28 | |
| | EXP | +44 | |

\$ _____



GYRANDA P528 (P)

PUREBRED

GYR18MP528
11/9/17 (24 mths)

CELAMBA ZACK

SIRE: FISHINGTON JOGLA J031 (PP)

FISHINGTON CORA E046 (P)

CLANRICARD CONARA Z408

DAM: GYRANDA F911

GYRANDA Y513

Notes: A thick; deep bodied poll bull; with lovely loose skin. Excellent growth and carcass data. Dam F911 calved at two and had seven calves in eight years.

Dam: C.I. 417 days – 7 calves **Morphology:** 88%

Wt _____ Sc _____

| | | | |
|-------------|-------|-------------|------------|
| GROWTH | 200D | +7 | 66% |
| | 400D | +15 | 67% |
| | 600D | +25 | 69% |
| | MWT | +13 | 63% |
| | MILK | +1 | 42% |
| FERTILITY | SS | +1.0 | 69% |
| | DTC | -2.1 | 50% |
| CARCASS | EMA | +2.6 | 52% |
| | RIB | +1.5 | 59% |
| | RUMP | +1.5 | 58% |
| | RBY | +0.6 | 46% |
| | IMF | -0.3 | 56% |
| Flight Time | -0.14 | 67% | |
| \$ INDEX | DOM | +17 | |
| | EXP | +22 | |

\$ _____



GYRANDA P300 (PS)

PUREBRED

GYR18MP300
13/9/17 (24 mths)

EIDSVOLD STATION DONALD D34

SIRE: GREENUP GIZZA G218 (P)

GREENUP DAPHNE D133 (P)

ROWANLEA DUNTRON D24 (PS)

DAM: GYRANDA L109

GYRANDA E537

Notes: Good natured; dark coated young bull. He is medium framed but packs some punch; delivering a real combination of growth and fertility. In fact this bull combines growth and fertility; both in the top 5% of the breed with temperament in the top 2%. His Dam L109 is a young cow that calved at two and has weaned three calves in three years with a fourth on the way.

Dam: C.I. 375 days – 3 calves **Morphology:** 90%

Wt _____ **Sc** _____

| | | | |
|------------------|--------------------|--------------|------------|
| GROWTH | 200D | +16 | 68% |
| | 400D | +29 | 69% |
| | 600D | +42 | 70% |
| | MWT | +49 | 65% |
| | MILK | +5 | 49% |
| FERTILITY | SS | +3.0 | 70% |
| | DTC | -7.6 | 56% |
| CARCASE | EMA | +0.9 | 55% |
| | RIB | -0.2 | 62% |
| | RUMP | -0.7 | 61% |
| | RBV | +0.5 | 49% |
| | IMF | +0 | 58% |
| | Flight Time | +0.32 | 68% |
| \$ INDEX | DOM | +26 | |
| | EXP | +41 | |

\$ _____



GYRANDA P158 (P)

PUREBRED

GYR18MP158
8/9/17 (24 mths)

DANGARFIELD DF/TAROOM

SIRE: DANGARFIELD X-CAVATE X337 (PS)

DANGARFIELD DF/4639

ROSEVALE NODDY A18 (P)

DAM: GYRANDA M437

GYRANDA H399

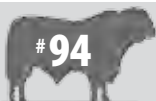
Notes: A well muscled; medium frame bull with a light sheath. His Dam M437 was a maiden heifer. She missed her second calf last year but is pregnant to calve out in September. Her Dam H399 calved at two and maintains a perfect calving record with six weaned so far including one of the Elite bulls of the sale Lot 15. P520 (P).

Dam: C.I. N/A – 1 calf **Morphology:** 70%

Wt _____ **Sc** _____

| | | | |
|------------------|--------------------|--------------|------------|
| GROWTH | 200D | +18 | 65% |
| | 400D | +21 | 63% |
| | 600D | +30 | 66% |
| | MWT | +52 | 57% |
| | MILK | +1 | 34% |
| FERTILITY | SS | +0.5 | 65% |
| | DTC | +2.9 | 43% |
| CARCASE | EMA | +4.0 | 46% |
| | RIB | -0.3 | 53% |
| | RUMP | -0.7 | 52% |
| | RBV | +1.8 | 40% |
| | IMF | -0.4 | 51% |
| | Flight Time | +0.37 | 61% |
| \$ INDEX | DOM | +21 | |
| | EXP | +22 | |

\$ _____



GYRANDA P148 (P)

PUREBRED

GYR18MP148
5/9/17 (24 mths)

WARENDA D696 (P)

SIRE: GYRANDA LONGSHOT L110(P)(AI)

GYRANDA H663

GREENUP GIZZA G218 (P)

DAM: GYRANDA M589 (P)

GYRANDA G287

Notes: Beautiful; eye catching polley bull with a dark coat; tidy underline and performance you can only dream of. Well worth the wait. Commercial only because of a retained frendulum which will not impact his ability to work at all but makes him ineligible to breed future sires. A 40kg calf out of a maiden heifer - M589 - who went on to wean another calf last year and fall pregnant in our A.I. program to Wave Hill Jaggar. Her dam Gyranda G287 has weaned seven calves in seven years.

Dam: C.I. 351 days – 2 calves **Morphology:** %

Wt _____ Sc _____

| | | | |
|-----------|-------------|-------|-----|
| GROWTH | 200D | +23 | 68% |
| | 400D | +40 | 66% |
| | 600D | +53 | 69% |
| | MWT | +62 | 61% |
| | MILK | +2 | 38% |
| FERTILITY | SS | +2.5 | 67% |
| | DTC | -5.9 | 46% |
| CARCASE | EMA | +3.5 | 51% |
| | RIB | +1.0 | 58% |
| | RUMP | +0.4 | 58% |
| | RBV | +0.5 | 44% |
| | IMF | – | – |
| | Flight Time | +0.09 | 65% |
| \$ INDEX | DOM | +34 | |
| | EXP | +46 | |

\$ _____



GYRANDA P274 (P)

PUREBRED

GYR18MP274
20/9/17 (24 mths)

RAYTEK DEMOCRAT D46 (P)

SIRE: ROSEVALE DEMOCRAT G268 (P)

ROSEVALE HONEY Y165

GYRANDA GONZO Z334

DAM: GYRANDA CAMEL C431

GYRANDA Z817

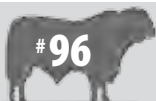
Notes: A polley bull with muscle to burn. Dam Gyranda Carmel C431 is in our Elite cow group. The Best of the best. She calved at two; has never missed and is about to calve out for the 12th time. Donald Joyce bought an \$8000 calf last year but she has sold seven bull calves so far to a top of \$11,000.

Dam: C.I. 367 days – 11 calves **Morphology:** 92%

Wt _____ Sc _____

| | | | |
|-----------|-------------|-------|-----|
| GROWTH | 200D | +19 | 69% |
| | 400D | +18 | 70% |
| | 600D | +31 | 71% |
| | MWT | +39 | 66% |
| | MILK | -6 | 51% |
| FERTILITY | SS | +0.7 | 72% |
| | DTC | +1.4 | 57% |
| CARCASE | EMA | +3.9 | 56% |
| | RIB | +0 | 63% |
| | RUMP | -0.1 | 62% |
| | RBV | +1.3 | 50% |
| | IMF | -0.6 | 59% |
| | Flight Time | +0.03 | 70% |
| \$ INDEX | DOM | +19 | |
| | EXP | +24 | |

\$ _____



GYRANDA P478 (P)

PUREBRED

GYR18MP478
18/9/17 (24 mths)

ROWANLEA DUNTRON D24 (PS)

SIRE: GYRANDA LIGNUM L164 (P)

GYRANDA E177

GYRANDA CESAR C422 (PS)

DAM: GYRANDA JAWON J183

GYRANDA X345

Notes: Big frame polley bull. Growth; fertility and docile to boot. His Dam Gyranda Jawon calved at two and has weaned five calves in five years. Her last calf actually died at birth but interestingly she fostered another calf whose own dam has a track record for being a poor mother (and subsequently culled).

Dam: C.I. 367 days – 5 calves **Morphology:** 70%

Wt _____

Sc _____

| | | | |
|-----------|-------------|--------------|------------|
| GROWTH | 200D | +13 | 66% |
| | 400D | +27 | 66% |
| | 600D | +39 | 69% |
| | MWT | +50 | 62% |
| | MILK | +1 | 42% |
| FERTILITY | SS | +2.3 | 68% |
| | DTC | -5.7 | 51% |
| CARCASE | EMA | +1.6 | 52% |
| | RIB | -0.3 | 60% |
| | RUMP | -0.8 | 59% |
| | RBV | +0.9 | 47% |
| | IMF | -0.2 | 56% |
| \$ INDEX | Flight Time | +0.23 | 66% |
| | DOM | +27 | |
| | EXP | +39 | |

\$ _____



The average Gyranda Dam has a flight time EBV in the top 25% of the breed.



GYRANDA P442 (P)

PUREBRED

GYR18MP442
2/11/17 (22 mths)



LOT 97.

TOOKEY CREEK GURU G34 (P)

SIRE: GYRANDA LORAX L794 (PP)

GYRANDA J359

ROSEVALE GUMPER X546 (P)

DAM: GYRANDA E277

GYRANDA X123

Notes: A stylish poll bull with outstanding hindquarter and exceptional carcass data. What a way to finish the sale! The highest fat data in the sale; great fertility; growth and EMA data. A little too much sheath to classify but what a bull! Dam E277 calved at two and has weaned seven calves in eight years. Her Dam X123 weaned eleven calves in eleven years.

| | | | |
|-----------|-------------|-------------|------------|
| GROWTH | 200D | +14 | 67% |
| | 400D | +21 | 68% |
| | 600D | +30 | 70% |
| | MWT | +23 | 63% |
| | MILK | -1 | 40% |
| FERTILITY | SS | +2.6 | 70% |
| | DTC | -4.6 | 50% |
| CARCASS | EMA | +3.4 | 53% |
| | RIB | +2.3 | 60% |
| | RUMP | +2.3 | 59% |
| | RBV | +0.1 | 47% |
| | IMF | +0.2 | 57% |
| | Flight Time | -0.29 | 68% |
| \$ INDEX | DOM | +21 | |
| | EXP | +29 | |

Dam: C.I. 424 days – 7 calves **Morphology:** 93%

Wt _____

Sc _____

\$ _____

X3X
GYRANDA
SANTA GERTRUDIS



Sale Summary 2019

| | NO. | GROSS \$ | TOP \$ | AVG \$ |
|----------------------|-----|----------|--------|--------|
| GYRANDA ELITE BULLS | | | | |
| CLASSIFIED 'S' BULLS | | | | |
| PUREBRED HERD BULLS | | | | |
| TOTAL | | | | |



“Thank you for your support”

Nikki, Peter, Josephine, Patrick, Dominic and Christopher Mahony

STUD STOCK — AUCTION TERMS AND CONDITIONS OF SALE

IMPORTANT NOTICE: All bids shall be treated as offers made upon the following Terms and Conditions of Sale and all persons present are admitted to attend the sale on the basis that they have notice of these Terms and Conditions.

1. The highest bidder shall, subject to Condition 2, be the Purchaser provided that the Vendor reserves the right to bid either by himself or through his Agent or Auctioneer and should any dispute arise among the bidders for any lot, during or immediately after the sale of the lot, it shall be settled at the Auctioneers absolute discretion who may, should one of the disputants advance, put the lot or lots up again. The bidding from time to time shall be regulated by the Auctioneer and no bid shall be retracted.
 2. The sale will be conducted on a "Sale" or "No Sale" basis whereby the lot for sale shall be knocked down to the highest bidder, but the sale will be subject to the acceptance of the highest bid by the Vendor who will immediately after the fall of the hammer declare "Sale" or "No Sale". Should the Vendor reject the bid of the highest bidder such bidder will have the right of first refusal of the lot at the Vendor's nominated price for one hour after the lot has been passed out of the ring on the Terms and Conditions herein set forth in so far as they shall apply.
 3. The details of the Purchaser, the purchase price and the lot sold as recorded by the sale clerk for and on behalf of the Auctioneer shall be equally binding on both Purchaser and Vendor.
 4. The Auctioneer expressly reserves the right, without giving any reasons therefore, to:
 - (a) Refuse to acknowledge any bid;
 - (b) Withdraw any lot or lots before or during the sale;
 - (c) Exclude any person from the auction venue should it think fit.
 5. Each lot in all cases shall be at the risk and expense of the Purchaser upon acceptance of his bid by the Vendor or upon acceptance of the highest bidder's offer by the Vendor whichever shall be the earlier.
 6. Except as expressly provided in these Terms and Conditions of Sale no guarantee or warranty shall be given in respect of any lot sold under these Conditions as to pedigree, sex, age, breeding condition or otherwise howsoever, and no guarantee, warranty or condition whatsoever shall be implied from any affirmation made before or at the time of the sale, or from any circumstances of the sale, but in all cases where a guarantee is intended the same shall attach and be enforceable only if reduced to writing before delivery of the lot and signed by the Vendor or by the Auctioneer acting as agent for the Vendor, and the absence of such writing shall be conclusive evidence in case of dispute that no guarantee, warranty or condition whatsoever was given or implied.
 7. In the event of any dispute in respect to the sale of any lot:
 - (i) The Purchaser shall nevertheless be obliged to pay to the Auctioneer the full purchase price and any other monies or interest payable by the Purchaser in accordance with these terms and conditions;
 - (ii) The Vendor and the Purchaser shall resolve the dispute between themselves;
 - (iii) The Auctioneer shall have no liability or responsibility in regard to the dispute; and
 - (iv) No lot shall be returned to the Auctioneer and the Purchaser shall indemnify the Auctioneer for all costs, expenses and damages which the Auctioneer is put to or incurs by reason of the Purchaser so doing.
 8. The name of the Vendor for whom the Auctioneer acts is acknowledged to have been furnished to Purchasers prior to the sale and further particulars will in all cases be furnished to a Purchaser if required. In the case of any disputes the remedy of the Purchaser shall be against the Vendor only and in no case or under any circumstances against the Auctioneer who is to be regarded for all intents and purposes as agent for a disclosed principal.
 9. (a) **PAYMENT** — Unless prior credit arrangements have been made in writing with the Auctioneer the full purchase price for each lot shall be due and payable to the Auctioneer in cash upon acceptance of the highest bid or the highest bidder's offer by the Vendor and prior to delivery. Notwithstanding that delivery is given to or possession obtained by the purchaser or his representative prior to the payment of the purchase money in full the property in any lot which is sold shall not pass to the Purchaser until the full purchase price and all cheques, promissory notes, bills of exchange, acceptance orders or drafts given in connection with such payment have been paid and liquidated, and until property shall pass, the Purchaser shall hold such lot as bailee, provided that in all cases should such payment not have been made and liquidated within 14 days of the date of the sale the Auctioneer reserves the right to:—
 - (i) Rescind the contract on behalf of the Vendor and repossess and resell any lot;
 - (ii) Recover from the Purchaser interest upon the purchase price at a rate per annum which aggregates the AMBA Bill Rate plus two percentum. For the purposes of this condition, the expression "the AMBA Bill Rate" is the rate published by the Australian Merchant Bankers Association in good faith as at the date of the sale as its bill rate for 180 day bills of exchange expressed as a percentage per annum. If at any time the AMBA Bill Rate becomes unavailable for any reason, the Auctioneer shall determine and advise the Purchaser of the interest rate to apply for the purposes of this condition.
 - (b) The Auctioneer is selling as the del credere agent of the Vendor and the full purchase price of any lot sold shall be payable by the Purchaser to the Auctioneer and be fully recoverable by the Auctioneer in its own name.
10. If the Purchaser shall neglect or fail to comply with any of the within conditions, any lot purchased by him may be immediately resold by public auction or private contract, with or without notice, at the risk of the former Purchaser, who will be held responsible for all loss and expenses arising out of such resale, and shall not participate in any profit accruing therefrom.
11. Any Vendor or Purchaser removing the sale number from any lot after it has been sold will fully indemnify all affected parties for any loss, costs or damage should the lot be wrongly delivered.
12. The Purchasers, if any more than one, shall be jointly and severally bound by these Terms and Conditions, and shall jointly and severally carry out and perform same.
13. Any person who advances a bid on a lot shall do so on the expressed condition and understanding that should that person's bid be the highest bid and such bid is accepted by the Vendor, then that person will be held personally liable for the price so agreed upon, regardless of the fact that that person may be acting on behalf of another party, either disclosed or undisclosed to the Vendor or Auctioneer, provided however, that this Condition shall not in any way negate the Vendor's right to claim against any principal and in such case the bidder's liability shall be construed to be by way of guarantee.
14. The Auctioneer may, should it think fit, make arrangements on a Purchaser's behalf for the feeding, watering, trucking, shipping of and general attendance to any lot after sale but no responsibility will be accepted by the Auctioneer and all such service will be at the Purchaser's risk and expense.
15. No lot will be delivered until the sales invoice has been checked and signed by the Purchaser or his duly authorised representative.
16. (a) Each lot in all cases shall be sold with all faults, if any, and excepting those conditions and warranties implied by the Trade Practices Act or any applicable State legislation which cannot be contractually excluded and excepting conditions and warranties expressly contained in these Terms and Conditions of Sale, any express or implied condition, statement of warranty, statutory or otherwise, is hereby excluded. The Auctioneer is not liable in respect of any error, misdescription or omission in any particulars appearing or stated regarding the description of pedigrees of any lot offered for sale and no such error, misdescription or omission shall entitle the Purchaser to annul the sale or reject the lot or claim any compensation, damage or abatement in price.
- (b) Each lot will be sold subject to passing all veterinary tests required by the law of the state or country to which the Purchaser intends to transport that particular lot, such tests to be undertaken at the Purchaser's expense and concluded immediately following the sale. In the

event of a lot failing to pass these tests, the sale shall be null and void, any purchase moneys paid by the Purchaser shall be refunded and property in the lot shall revert to or remain with the Vendor.

17. Guarantees of Fertility:—

- (1) BULLS - Save and except for calves at foot, all bulls are guaranteed breeders and to so prove by the later of:
 - (a) six months after the date of sale or
 - (b) the animal reaching the age of 24 months
- (2) FEMALES - Save and except for female calves at foot, all females are guaranteed to be in calf or go into calf by the later of:
 - (a) 6 months of the date of sale
 - (b) the animal reaching the age of 30 months

A positive pregnancy test certified by a qualified veterinary surgeon shall be sufficient evidence that the animal is in calf.
- (3) Claims under Clauses 17(1) and 17(2). A claim that an animal has failed to satisfy a guarantee of fertility under Clause 17(1) or 17(2) must be made to the Vendor within the relevant guarantee period but prior to the animal entering a quarantine area other than on the Vendor's property.
 - (a) All claims must be accompanied by a certificate from a registered veterinarian surgeon in accordance with the guidelines established by the Australian Association of Cattle Veterinarians which must clearly identify the basis of the claim.
 - (b) Subject to Clause 17(9), infertility resulting from injury or disease occurring after the sale of the animal is not covered by this guarantee.
 - (c) The Vendor retains the right to have the animal placed on a property nominated by him or returned to his own property for further assessment of fertility for a period not exceeding six months. If the animal proves fertile within the period such status must be confirmed by a certificate issued by a registered veterinary surgeon in accordance with the guideline established by the Australian Association of Cattle Veterinarians and costs incurred must be borne by the Purchaser. If the animal is not proven fertile within the period, the costs incurred must be borne by the Vendor.
- (4) LIABILITY OF A VENDOR - Except for costs defined elsewhere in the conditions of sale, the liability of a Vendor in respect of claims relating to fertility shall not exceed the purchase price of the animal(s) or provide mutually agreed upon replacement animal(s).
- (5) In the event of a claim being substantiated:
 - (a) The purchase price shall be refunded within 14 days unless a mutually agreed upon replacement animal has been provided.
 - (b) The animal/s which are the subject of the claim shall automatically become the property of the Vendor and be returned to him or disposed of according to his instruction at his expense.
- (6) Subject to Clause 17(9), this guarantee is of no effect if:
 - (a) The animal is returned to the Vendor.
 - (i) In poor physical condition or with any injury;
 - (ii) Tests carried out on behalf of the Vendor within fourteen days of such return proved positive to any diseases which may affect the animal's fertility or ability to breed naturally; or
 - (b) The Purchaser has collected and stored semen from a bull or
 - (c) The Purchaser attempted any form of embryo collection from a female.
- (7) In the event of a dispute as to whether a lot is a breeder, such dispute shall be resolved by the Vendor and the Purchaser. The Auctioneer, while he will use his best endeavours to assist, shall have no liability or responsibility in that regard. If an animal is alleged or proved not to be a breeder, the Purchaser must nevertheless pay the Auctioneer the full purchase price and any other monies or interest payable by the Purchaser in accordance with these Terms and Conditions.
- (8) EVIDENCE OF FERTILITY — A Certificate issued by a registered veterinary surgeon at or before the time of sale than an animal is fertile (unless it is a certificate stating in respect of a female that she is in calf at the time of sale) does not, of itself, satisfy or discharge the Vendor's obligations under the guarantee of fertility given under this Clause 17. All animals, except calves at foot, must prove their fertility within the relevant guarantee period.
- (9) RELIEF FROM GUARANTEE — If the Vendor seeks to be relieved from the obligations which would otherwise be imposed upon him by this clause by virtue of Clauses 17(3)(b) or 17(6)(a), the onus of proof is upon the Vendor to establish that:
 - (a) The animal suffered the injury or disease or is in poor physical condition due to circumstances and events occurring after the sale, and
 - (b) The injury, disease or physical condition is the sole cause of the animal's infertility or failure to prove fertility within the guarantee period.
- (10) DEFINITION — For the purpose of this Clause 17, the expression "guarantee period" means:
 - (a) in relation to bulls — the period specified in Clause 17(1) as being the period in which the bull must prove his fertility; and
 - (b) in relation to females — the period specified in Clause 17(2) as being the period in which the female must go into calf.
18. (a) Each lot shall be at the risk of the Vendor in respect of any damage or injury, whether by disease, accident or otherwise, or whether caused by the negligence of the Auctioneer for the period that the lot be in the custody of the Auctioneer, unless such lots shall have been sold in which latter case such lot shall be at the risk of the Purchaser in all such respects.
- (b) If any Vendor brings to the sale premises any lot which is dangerous, or infected with any disease, that Vendor shall be liable for all injury, damages, costs, losses or expenses which the Auctioneer may sustain, incur or be put to either directly or indirectly as a result of the Vendor so doing. The Auctioneer reserves the right, at its absolute discretion, to exclude from the sale, or put out of the sale venue or dispose of, any lot which in its opinion shows signs of any disease, whether infectious, contagious or not, or of any serious fault or of being dangerous.
19. DELIVERY — Except at the discretion of the Auctioneer no lot shall be delivered to the Purchaser unless payment of the purchase money together with any additional charges incurred including those expenses incurred by the Auctioneer pursuant to Condition 14 hereof, is first made by the Purchaser to the Auctioneer. Release of lots may be withheld by the Auctioneer until personal cheques are cleared.
20. In these Conditions:—
 - (a) References to "Auctioneer" shall be taken to mean as the context so admits, the Selling Agent or any member, subsidiary or related corporation or body, officer, agent or employee thereof, authorised by the Vendor to conduct the sale of the lot;
 - (b) "Purchaser" shall have the meaning ascribed to it in Condition 1;
 - (c) "Vendor" shall mean the person or corporation upon whose account lots are offered for sale and where a stud or farm is named shall mean the proprietor of that stud or farm;
 - (d) "Lot" shall be taken to mean the animal offered for sale and/or sold by the Auctioneer on behalf of a Vendor.

IMPORTANT NOTICE

The Selling Agent, its members, subsidiary or related corporations, officers, agents, and employees for themselves and for those for whom they act while exercising due care provide all information without responsibility and give no guarantee whatsoever as to its accuracy.

All persons who attend the Sale do so entirely at their risk and the Selling Agent, its members, subsidiary or related corporations, officers, agents, employees and its principals, for themselves and for those for whom they act, do not assume or accept any responsibility or liability of whatever nature for any injury or damage whatsoever which may occur.

The hammer price is exclusive of GST but GST will be applied to the final hammer price and included in the invoice.

