



# **FARRER**

**WHITE SUFFOLKS**  
*PRODUCT OF DISTINCTION*

**25th Annual On - Property**

# **RAM SALE**

**11.30am Wednesday, 11th September 2019**

**55 WHITE SUFFOLK**  
**PERFORMANCE RAMS**

**FARRER MEMORIAL AGRICULTURAL HIGH SCHOOL**  
585 Calala Lane, Tamworth NSW 2340

### **Genetic Condition: Hypotrichosis**

Hypotrichosis is not a new genetic condition in the Australian sheep flock and there are published scientific papers on this condition in the Poll Dorset flock in the 1960's.

**Symptoms:** Affected lambs are generally born with little or no hair on the head and legs and develop leathery skin.

The symptoms are a result of a recessive gene and both parents must carry that gene for a lamb to be born Hypotrichotic.

Fortunately, the South Australian Research and Development Institute (SARDI) has developed a DNA test for this genetic condition. Farrer has undertaken DNA testing of all females in April 2011. All ewes testing positive as carriers of Hypotrichosis have been culled. Farrer has retained ONLY those testing HrF negative or Hypotrichosis free. All sires used are HrF tested free. Thus, all resulting progeny in the future should be free of Hypotrichosis.

Some limited testing has occurred in 2019 with the results shown in the catalogue;

HrF ( \_ \_ \_ \_ ) indicates a Negative DNA test for Hypotrichosis

What does this mean for individual purchasers of Farrer White Suffolk Rams?

#### **Commercial producers:**

As ALL retained Farrer females are free of Hypotrichosis and ALL sires are tested HrF negative The genetic condition has been eliminated from the Farrer White Suffolk Stud.

#### **White Suffolks Studs:**

To ensure that all rams used for stud purposes have a HrF(-----) reference number as suggested by the Australian White Suffolk Association, Farrer will take a nasal swab from rams to be used as White Suffolk stud sires on sale day and send it off to SADRI for testing at Farrer's expense. In the highly unlikely event of the rams not returning HrF, Farrer will immediately refund the cost of the ram.

Hopefully, soon Hypotrichosis will be part of the 15K genomic DNA test and all animals will be tested as part of this process.

Finally, remember if you are unsure **please don't hesitate to ask.**

# **FARRER**

**WHITE SUFFOLKS**

PRODUCT OF DISTINCTION

25th ANNUAL On-Property

## **WHITE SUFFOLK RAM SALE**

(Est. 1984, Flock No. 139)

### **55 RAMS**

Held undercover in the Trade Training Centre,  
Farrer Memorial Agricultural High School  
585 Calala Lane, Tamworth, NSW

Wednesday, 11th September 2019

Inspection 10.30 am

Sale 11.30 am

Superwhites  
Member

Independently  
Structurally Assessed

Sale on  
AuctionsPlus

Please bring this catalogue to the sale.

*Inspection prior to sale is most welcome.*

[www.farrer.nsw.edu.au/white-suffolk-stud](http://www.farrer.nsw.edu.au/white-suffolk-stud)

Phone: School (02) 67648600

Darren Smith 0413 911 182 E: [darren.smith80@det.nsw.edu.au](mailto:darren.smith80@det.nsw.edu.au)

## SALE INFORMATION

### PRE – SALE INSPECTIONS:

The rams will be penned and available for inspection by 10.30am on the morning of the sale. Inspection prior to the sale day is most welcome and can be arranged by contacting Darren Smith at school on 0413 911182 the agent Andrew Warden 0467 662 901.

### LOT ORDER:

Rams are catalogued **in order of birth**, except for Lots 1 & 2 which Farrer has previously used in the stud and / or wishes to retain a 100% of the semen marketing rights.

**Star Lots** are dispersed throughout the catalogue. These are selected by the students from a combination of performance and structural attributes. No more than two rams can be sired by the same ram.

### RAM HEALTH:

Farrer's White Suffolk Stud (Flock No. 0139) is an:

Accredited Ovine Brucellosis Free (Cert. No. NW 82/40)      Expiry: 28/02/2021

Accredited Ovine John's Disease MN3 NS17149      Expiry: 30/11/2019

A vendor declaration will be supplied for:-      Footrot Status  
Lice

Booster vaccination:      6th August 2019 (6 in 1 vaccine)

Shorn:      1st - 3rd July 2019

Veterinarian Checked:      General health within a week of the sale  
(Piper Street Veterinary Clinic 02 67663088)

### LUNCH:

Complimentary BBQ will be provided.

### AGENTS:

# GARVIN & COUSENS

**Garvin & Cousens, Tamworth**

**Telephone: (02) 6766 2901      Fax: (02) 6762 8957**

Andrew Warden      0467 662 901

Phillip Hetherington      0428 680028

E: sales@garvin.com.au

**Please remember to bring your PIC number to the sale for ease of transfer.**

### PHONE BIDDING:

Phone bidding will be available on the day by contacting either Andrew Warden 0467 662901 or Phil Hetherington 0428 680 028.

### REBATE:

A rebate of 2% will be paid on any purchase influenced by a registered agent – provided they advise the agents in writing [Fax: (02) 67628957] prior to the sale **OR** accompany the purchaser to the sale.

## Welcome to Farrer's Annual Ram Sale 2019

Welcome to the 25th Annual Farrer White Suffolk Performance Ram Sale. Highlights since last year's Ram Sale include;

- Congratulations to Peter Wiseman, Attunga for setting a new record price at TRLX price of \$354 for his grain assisted August/ September drop lambs on the 23rd July 2019.
- Farrer was involved with the production of the latest MLA video on Lamb Detention.
- The NSW Department of Education has also been taking a video of the schools White Suffolk program over that last year. When finally edited it will be distributed to other schools to enable better facilitation of measurement and testing of animals.
- Farrer is in the progress of exporting semen to FaLa White Suffolks, Ulles, Magyarors.Ájg Hungary. Special thanks to Lincoln University in New Zealand who tested 20 potential rams for Scrapies as part of the semen export protocol to the European Union (EU). Mr Levenete Lajko then identified Farrer 180135, Farrer 180159 and Farrer 180235. These rams are now currently at Apiam Genetic Services, Dubbo. Unfortunately, due to the lengthy export semen requirements to EU means it is not possible to offer these rams at this year's sale. They will be available in 2020.
- Currently Farrer has 45 sires at various studs across Australia that have progeny in the current drop with Sheep Genetics and of these sires 20 have been used in more than one Lambplan flock. This not only places us amongst elite company in the White Suffolk breed but also helps significantly improve the accuracy of all our Lambplan figures.
- Farrer again successfully exhibited at the Dubbo Show. Congratulations to Thomas Rains, Lachlan Smith, Jack Teague, Billy Swain, Hugh Shadwell and Jack Almond.
- Farrer achieved 3rd in the export class at the Dubbo Prime Lamb Hoof & Hook Competition and Champion School Pen.
- Farrer 180273 was selected in the Series 24 Superwhite® team.
- Currently Farrer has six sires, eleven male progeny, eight female progeny and ten dams ranked in the Top 20 on the Lambplan's LEQ index in Australia.

As usual, Farrer also has on offer rams by leading White Suffolk Lambplan® performance sires from across Australia. These include; Felix 151229, Galaxy Park 110210 (APP), Farrer 140137, Hillcroft Farms 130156 (PD), Farrer 170027, Farrer 170211, Farrer 1700093 and SuperWhites® rams Felix 150721, Waratah 160253 and Farrer 170015.

### **Over 50% of the Farrer Sale Rams on offer are in the top 1% on Lambplan LEQ index.**

Finally, thanks to the Year 10 Wool Science students who have been actively involved in the direction and management of the stud. Their contributions include; sire selection, DNA testing, crutching, shearing the sheep including sale rams, vaccinating, drenching, lambing supervision and helping conduct the annual ram sale. I thank the students for their commitment, effort and interest in striving to continually improve the Farrer White Suffolk Stud.

*Darren Smith*

*White Suffolk Stud Manager*

## FARRER'S BREEDING PROGRAM

Using **LAMBPLAN** to make consistent genetic improvement.

The Farrer breeding program is centered on a sound combination of genetic principles and practical experience with the aim of breeding modern, profit making sires for **commercial lamb production**.

Farrer uses **LAMBPLAN** to provide accurate information on the genetic merit of individuals in our flock. In **LAMBPLAN**, performance and pedigree information is combined to give Australian Sheep Breeding Values. ASBV's are calculated from systematic combinations of performance information on individuals plus their relatives. They are expressed as the difference between an individual's genetic merit and the genetic base to which the animal is compared.

**Australian Sheep Breeding Values are provided in this catalogue for nine main traits:**

**Birth weight (BWT):** Estimates the genetic difference between animals in liveweight at birth.

**Weaning weight (WWT):** Estimates the genetic difference between in liveweight at 100 days of age.

**Post Weaning Weight: (PWWT):** Estimates the genetic difference between animals in liveweight at 225 days of age.

**Fat: (PFAT):** Estimates the genetic difference in GR fat depth at 45kg liveweight.

**Eye Muscle Depth (PEMD):** Estimates the genetic difference in eye muscle depth at the C site in a 45kg liveweight animal

**Worm Egg Count: (PWEC):** Estimates the genetic difference between animals in worm burden at 225 days of age.

**Lean Meat Yield (LMY):** Estimates the genetic difference in the percentage of lean meat at slaughter.

**Intramuscular Fat (IMF):** Estimates the genetic difference between the chemical fat percentage in the loin muscle of a lamb, and is often referred to as marbling. IMF has been shown to have a significant impact on the flavour, juiciness, tenderness and overall likeability of lamb.

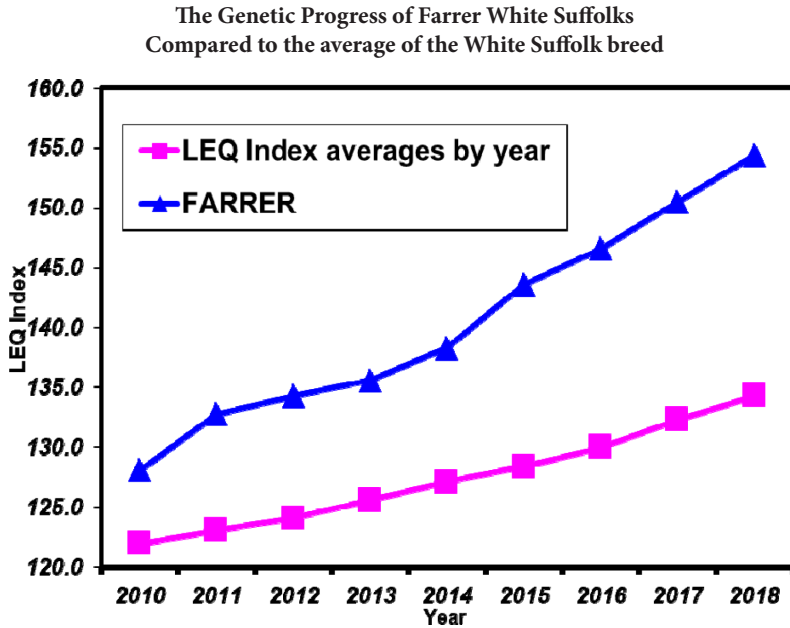
**Shear Force (SHEARF5)** Estimate the genetic difference in the force or energy required to cut through the loin muscle of lamb after 5 days of ageing, the ASBV is reported in deviations of kilograms of force.

In addition the catalogue includes **15th July 2019** Lambplan LEQ index. **LEQ index** is targeted at progressive terminal lamb producers interested in improving the meat eating quality of their prime lambs while continuing to improve production in a balanced way including Birth Weight (BWT) and Worm Egg Count (WEC).

**LAMBPLAN** reports are prepared using data supplied by breeders and/or accredited operators. **LAMBPLAN** cannot guarantee the accuracy of this data. **LAMBPLAN** ASBV's are designed to estimate genetic merit of sheep from data supplied. **LAMBPLAN** reports are provided to assist breeders but no liability is accepted for any outcomes resulting from the use of this information.

## Using LAMPLAN to monitor Farrer's genetic progress against the White Suffolk Breed

The graph below indicates Farrer's genetic progress compared to the White Suffolk breed average for all animals measured by Lambplan.



The table below gives a summary of the genetic merit of this years Farrer sale rams compared to the average of all terminal sire breeds (i.e. White Suffolk, Poll Dorsets, Texels, Suffolks etc.) measured by Lambplan in 2018.

### Terminal Sires (15th July 2018) Australian Sheep Breeding Values

DROP AVERAGE	BWT	WWT	PWWT	PFAT	PEMD	PWEC	LMY	IMF	SF5	LEQ
Farrer Sale Rams	0.28	10.4	16.4	-0.3	2.9	-39	3.46	-0.30	0.3	153.9
Terminal Sire	0.36	9.0	13.9	-0.5	1.6	-20	3.08	-0.45	2.9	129.4
Difference	-0.08	+1.4	+2.5	+0.2	+1.3	-19	+0.38	+0.15	-2.6	+24.5

## SELECTING AN INDIVIDUAL RAM USING ASBV'S FOR YOUR MARKET SPECIFICATIONS

### Step 1. Understand your market requirements / specifications

#### Example:

Market Specifications: 24 - 26 Kg carcass and 2 fat score, positive muscling  
Marketing Option: Over the Hook on the Grid  
Dams: Medium Poll Merino ewes

### Step 2. Select the most appropriate ASBV's for your market requirements.

It's is **extremely important** to check the individual ASBV's to select your ram(s):

#### \* Birth Weight EBV (BWT)

This trait is becoming increasingly important as birth weight is positively correlated with post weaning weight. This means as post weaning weight ASBV's increase there tends to be a slight increase in birth weight ASBV's. To negate this phenomenon producer's should aim to select rams with lower birth weight ASBV's compared to the current years terminal sire average.

#### \* Weaning Weight ASBV (WWT)

The higher the ASBV figure the better for superior earlier growth (100 days) of lambs.

#### \* Post Weight ASBV (PWWT)

The higher the ASBV figure the better for superior later growth (225 days) of lambs.

#### \* Post Weaning Fat ASBV (PFAT)

The higher growth rate lambs, a more moderate fat level is desired to meet the desired turnoff weight.

Factors where **increasingly positive ASBV's** for fat are possibly required;

- Extremely lean dams e.g. Finns and East Friesians.
- Lambs have trouble "finishing" at the desired market weight

Factors where **increasingly negative ASBV's** for fat are possibly required;

- Fatter type dams e.g. Crossbreeds
- Lambs are commonly marketed at 9 – 11 months of age
- Heavier carcass weights (32+ Kg DWT)
- Lambs often receive a discount due to excessive fat.

**Note:** Please ensure your selected ram(s) fit into your target market as each individual producer's requirements will be slightly different depending on their individual circumstances.



#### \*Post Weaning Eye Muscle Depth (PEMD)

Lamb producers requiring good muscling in the carcasses will need to select animals with above average post weaning eye muscle depth ASBV's compared to the current years Terminal Sire average in an effort to help meet the market specifications.

#### \*Post Weaning Worm Egg Counts (PWEC)

This trait is especially important for producers who wish to decrease their future reliance on chemicals. Select those animals with a more **negative** PWEC.

#### \*Lean Meat Yield (LMY)

This trait is a measure of the commercial yield of lean meat as a percentage of hot carcass weight. Lean meat yield is estimated from a combination of weight, muscle and fat dimensions and has been validated by either CT scanning or through direct commercial bone-outs. Select those animals with the most positive LMY

#### \*Intramuscular Fat (IMF)

This trait is a measure of the chemical fat percentage in the loin muscle of a lamb, and is often referred to as marbling. IMF has been shown to have a significant impact on flavour, juiciness, tenderness and overall likeability of lamb. Select those animals with the most **positive** IMF

#### \*Shear Force (SHEARF5)

This trait is a measure of the force or energy required to cut through the loin muscle of a lamb after 5 days of ageing, and is recorded in kilograms of force. The trait has moderate / high heritability, and a moderate correlation with tenderness in lamb. Thus, the most negative SHEARF5 figure indicates more tender lamb loin muscle. Select those animals with the most **negative** SHEARF5

#### Step 3. Check if ONE of the Indexes is appropriate to **your** market requirements.

Lambplan indices are developed to meet the requirements of selecting animals for different production systems. You should use the index that best suits **your** production systems, environment and market requirements.

One of the current terminal sire indices used by LAMBPLAN are shown in the table below. This table illustrates the expected response for traits influenced by the LEQ Index over 10 years.

Trait	LEQ
BWT (Kg)	0.07
WWT (Kg)	1.28
PWT (Kg)	2.6
PEMD (mm)	1.17
PFAT (mm)	0.33
PWEC (%)	-35.83
CEMD (mm)	1.25
CCFAT (mm)	-0.12
DRESS (%)	1.03
LMY (%)	0.87
SF5 (nM)	-2.06
IMF (%)	0.1

- **LEQ index** is targeted at progressive terminal lamb producers interested in improving the meat eating quality of their prime lambs while continuing to improve production in a balanced way including Birth Weight (BWT) and Worm Egg Count (WEC). Farrer now selects and breeds using LEQ index as meat eating quality is becoming increasingly important to consumers..
- If the LEQ index is similar to your target market you can use this Index to help screen your previously selected rams. Select those with **higher** values.
- If your production system is **significantly different** (i.e. requires **positive** fat ASBV's, earlier or later turn off, lighter or heavier carcass weights) go to step 4.

#### **Step 4: Final assessment**

The ASBV figures are important and the LEQ index can be useful, but they are only a tool in helping you select the best ram(s) suited to your production system. You should always consider the individual breeding values in the index and also other traits of interest. Importantly, you should also check that the animal meets your requirements for maturity pattern, breed type, conformation and structural correctness.

Finally, remember if you are unsure **please don't hesitate to ask.**

#### **Farrer White Suffolks Continually Striving to Improving Accuracy of ASBV's**

In order to improve the accuracy of our ASBV's Farrer has undertaken a DNA Parentage Verification Program. Since the 2017 drop all our sheep have been Parentage Verified for both dam and sire. This is possible as all of our ewes have been DNA tested using the 15K DNA test. All rams used in the artificial insemination program have also been 15K DNA tested. This will help enhanced accuracy of pedigrees going into Sheep Genetics and subsequently higher ASBV's accuracies.



**Reference Sire: Farrer 170211**



# SUPERWHITES

*"The highest performing White Suffolks in Australia"*



## About Superwhites:

- The Superwhites genetic improvement group was formed in 1995 and comprises 19 members across Australia
- The group has a strong commercial focus and is committed to producing the highest performing White Suffolk rams in Australia
- The group select rams that perform in the paddock under commercial conditions
- The group identify the best genetics in Australia each year and use these within member flocks
- Collectively the group represent 5,000 breeding ewes and produces around 15% of Australia's White Suffolk rams

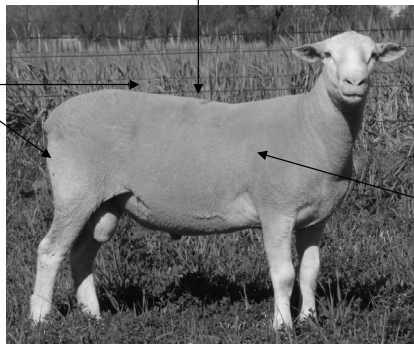
Contact your local Superwhites Breeder for the highest performing White Suffolk rams:



**FARRER WHITE SUFFOLKS**

Rams are bred for high growth. After all, weight is what you get paid for!

Rams are selected for muscling in the loin and leg. They are the most expensive cuts.



Rams are bred from the best genetics in Australia and then performance tested to identify the best

<http://www.whitesuffolk.org.au/superwhites/index.htm>

## Sheep Structural Assessment

Assessment Date: 23/8/2019

Since 2011 the Farrer Sale rams have been independently structurally assessed by Tim Lawrence of Advanced Livestock Services (02) 67755783 or 0419147419. The system uses the Visual Sheep Scores developed by Australian Wool Innovation Limited (AWI) and Meat and Livestock Australia (MLA). All females have been and will continue to be structurally assessed to ensure the Farrer flock maintains a structurally sound breeding base. Any animals deemed inadequate will be culled.

### How to use The Visual Sheep Scores

The sheep Structural Assessment System uses a 1-5 scoring system.

- A score of 1 is **very good**.
- A score of 2 is **good** with animals showing slight variation from the ideal.
- A score of 3 is **average** with animals showing greater variation from the ideal.
- A score of 4 is **poor**. Farrer doesn't catalogue these animals.
- A score of 5 is **very poor**.

#### \* EXCEPT Side view

- A score of 1 is **very straight**. Farrer doesn't catalogue these animals
- A score of 2 is animals showing slight variation from the ideal.
- A score of 3 is **ideal**
- A score of 4 is animals showing slight variation from the ideal
- A score of 5 is **very sickled**. Farrer doesn't catalogue these animals

Lot	Tag No.	SIRE	Front Pasterns	Back Pasterns	Front Legs	Back Legs	Front Claws	Back Claws	*Side View
1	180178	Felix 151229	1	1	1	1	2	2	3
2	180273	Farer 170015	1	1	1	1	2	2	3
3	180004	Farrer 140137	2	2	1	2	2	3	3
4	180013	Hillcroft Farms 130156	2	2	1	1	1	2	3
5	180026	Hillcroft Farms 130156	2	2	2	1	2	2	3
6	180052	Farrer 140137	2	3	1	2	1	1	2
7	180055	Farrer 140137	1	2	3	1	1	3	3
8	180056	Farrer 140137	1	2	1	1	1	2	2
9	180062	Felix 150721	1	2	1	1	1	3	3
10	180063	Felix 150721	1	2	2	1	2	2	3
11	180069	Hillcroft Farms 130156	2	2	1	1	2	3	3
12	180070	Hillcroft Farms 130156	1	2	1	1	1	3	3
13	180073	Hillcroft Farms 130156	2	1	2	1	1	1	3
14	180077	Hillcroft Farms 130156	1	1	2	1	1	1	3
15	180090	Waratah 160253	1	1	1	2	2	2	3
16	180092	Waratah 160253	2	1	1	1	2	2	3

Lot	Tag No.	SIRE	Front Pasterns	Back Pasterns	Front Legs	Back Legs	Front Claws	Back Claws	*Side View
17	180103	Hillcroft Farms 130156	1	2	1	1	1	3	3
18	180106	Hillcroft Farms 130156	1	2	1	1	1	2	3
19	180109	Hillcroft Farms 130156	2	2	2	1	1	2	3
20	180115	Hillcroft Farms 130156	1	2	1	2	1	2	3
21	180117	Felix 151229	2	2	1	1	2	3	3
22	180120	Felix 151229	1	2	1	2	2	2	3
23	180124	Felix 151229	1	1	1	3	1	2	2
24	180125	Felix 151229	1	2	1	2	1	1	2
25	180136	Felix 151229	2	1	1	1	1	1	3
26	180137	Felix 151229	1	3	1	1	1	2	2
27	180150	Hillcroft Farms 130156	1	2	1	1	2	2	4
28	180156	Hillcroft Farms 130156	1	1	1	2	1	2	3
29	180164	Felix 150721	1	1	1	1	1	3	3
30	180170	Hillcroft Farms 130156	1	1	2	1	1	1	3
31	180173	Galaxy Park 110210	2	2	2	1	1	2	3
32	180174	Waratah 160253	2	2	2	1	2	2	3
33	180177	Felix 151229	1	1	1	2	1	1	3
34	180179	Felix 151229	1	2	2	1	3	3	3
35	180183	Hillcroft Farms 130156	1	1	1	1	1	1	3
36	180184	Waratah 160253	1	2	2	1	1	2	3
37	180185	Felix 151229	3	3	2	2	2	2	3
38	180194	Hillcroft Farms 130156	1	2	1	1	1	2	3
39	180197	Hillcroft Farms 130156	2	3	2	1	2	2	3
40	180220	Farrer 170211	2	3	2	1	2	3	3
41	180222	Farrer 170211	1	1	1	1	2	2	3
42	180226	Farrer 170093	2	2	1	2	1	2	3
43	180228	Farrer 170093	1	2	1	2	1	1	4
44	180231	Farrer 170093	1	2	1	1	2	2	2
45	180234	Farrer 170027	1	2	1	1	1	2	2
46	180239	Farrer 170211	2	1	1	1	1	2	3
47	180240	Farrer 170211	1	2	1	1	1	2	3
48	180243	Farrer 170093	1	1	1	1	1	2	3
49	180245	Farrer 170093	2	1	1	2	2	2	3
50	180251	Farrer 170093	1	2	1	1	1	2	3
51	180254	Farrer 170211	3	3	1	1	2	3	3
52	180264	Farrer 170211	3	2	2	2	3	2	3
53	180267	Farrer 170211	1	1	1	1	1	2	3
54	180270	Farrer 170211	1	2	1	1	1	2	3
55	180272	Farrer 170093	2	2	1	2	1	2	3

## Reference Sires:

### Felix 151229 (AI)

**Lots: 1, 21, 22, 23, 24, 25, 26, 33, 34, 37**

Lot	Ram ID	BWT	WWT	PWWT	PFAT	PEMD	PWEC	LEQ
	151229	0.44	10.7	18.1	1.1	3.0	-52	166.6
<b>Reference sire</b>		96%	96%	95%	95%	95%	91%	80%
		<b>LMY</b>		<b>IMF</b>		<b>SHEARF5</b>		
		0.87		0.08		-5.8		
		85%		81%		77%		

Sire: Felix 130742

Dam: Felix 110837

Progeny: Flocks 423:10

**Comments:** This is an outstanding White Suffolk sire that consistently produces progeny that are easy doing and early maturing on a moderate frame. Felix 151229 has outstanding growth (top 5%), muscle (top 10%), fat (fattest top 1%), worm resistance (top 5%), IMF (top 5%) and Shear Force (top 1%). Farrer has used outstanding twin brothers Farrer 170178 (lot 1) and Farrer 180177 (Lot 33) and will have more Felix 151229 sons available in 2020. The students also selected many sons and daughters in their Dubbo Show team. Sons will produce progeny that are highly versatile and can suit both trade and export lambs.

### Farrer 140137 (AI)

**Lots: 3, 6, 7, 8**

Lot	Ram ID	BWT	WWT	PWWT	PFAT	PEMD	PWEC	LEQ
	140137	0.30	10.6	15.2	-1.2	2.9	-54	159.6
<b>Reference sire</b>		94%	95%	95%	95%	95%	89%	75%
		<b>LMY</b>		<b>IMF</b>		<b>SHEARF5</b>		
		3.83		-0.20		-0.7		
		87%		73%		71%		

Sire: Farrer 110155

Dam: Farrer 130218

Progeny: Flocks 203:9

**Comments:** An excellent son of Farrer 110155 was selected in the Superwhite Series 20 team. Farrer 140137 has good growth (top 30%), fat (leanest 10%), muscle (top 10%), worm resistance (top 5%) LMY (top 30%) and shear force (top 5%). Sons will produce progeny that are highly versatile and can suit both trade and export lambs.

**Galaxy Park 110210 (APP) (AI)****Lots: 31**

Lot	Ram ID	BWT	WWT	PWWT	PFAT	PEMD	PWEC	LEQ
	110210	0.29	11.2	16.9	-0.6	2.5	-66	170.7
	<b>Reference sire</b>	96%	96%	978%	96%	97%	92%	89%
		<b>LMY</b>		<b>IMF</b>		<b>SHEARF5</b>		
		3.56		0.70		2.0		
		92%		89%		87%		

Sire: Hillcroft Farms 071082 (PD)

Dam: Galaxy Park 08B146

Progeny: Flocks 324:8

**Comments:** One of the highest White Suffolk performance rams in Australia in regards to the LEQ index. Galaxy Park 110210 has good growth (top 10%), outstanding worm resistance (top 1%) and IMF (top 1%). Galaxy Park 110210 sons will produce progeny that are highly versatile and can suit export lambs.

**Felix 150721 (AI)****Lots: 9, 10, 29**

Lot	Ram ID	BWT	WWT	PWWT	PFAT	PEMD	PWEC	LEQ
	150721	0.02	10.4	16.6	-0.5	4.0	-47	156.1
	<b>Reference sire</b>	97%	97%	98%	97%	98%	93%	
		<b>LMY</b>		<b>IMF</b>		<b>SHEARF5</b>		
		4.79		-0.73		0.9		
		90%		86%		83%		

Sire: Langley Heights 090160

Dam: Felix 130391

Progeny: Flocks 769:20

**Comments:** Felix 150721 has been widely used across Australia and has low birth weight (top 10%) and outstanding muscle (top 1%). His progeny have a moderate maturing pattern with an excellent carcass. Sons will produce progeny that are highly versatile and can suit both trade and export lambs.

**Waratah 160253 (AI)****Lots: 15, 16, 32, 36,**

Lot	Ram ID	BWT	WWT	PWWT	PFAT	PEMD	PWEC	LEQ
	160253	0.34	9.6	15.7	-0.2	4.1	-61	152.9
	<b>Reference sire</b>	94%	94%	95%	94%	98%	91%	64%
		<b>LMY</b>		<b>IMF</b>		<b>SHEARF5</b>		
		3.64		-0.69		-0.6		
		82%		60%		58%		

Sire: Waratah 150055

Dam: Waratah 140805

Progeny: Flocks 230:9

**Comments:** Waratah 160253 was selected in the Superwhites Series 22. Good growth (top 30%) fat (fattest 30%), outstanding muscle (top 1%), worm resistance (top 1%) LMY (top 30%) and shear force (top 10%). Waratah 160253 sons will produce progeny that are highly versatile and can suit both trade and export lambs.

**Hillcroft Farms 130156 (PD) (AI)****Lots: 4, 5, 11, 12, 13, 14, 17, 18, 19, 20, 27, 28, 30, 35, 38, 39,**

Lot	Ram ID	BWT	WWT	PWWT	PFAT	PEMD	PWEC	LEQ
	130156	0.21	10.1	15.6	-0.2	4.2	-31	168.4
	<b>Reference sire</b>	98%	98%	98%	98%	98%	93%	89%
		<b>LMY</b>		<b>IMF</b>		<b>SHEARF5</b>		
		4.47		-0.29		-1.2		
		95%		88%		86%		

Sire: Hillcroft Farms 110548

Dam: Hillcroft Farm 100257

Progeny: Flocks1250:29

**Comments:** This performance Poll Dorset ram was used to increase genetic linkage across the Lambplan database. Hillcroft Farms 130156 has low birth weight (lowest 20%), outstanding muscle (top 1%), LMY (top 10%) and shear force (top 5%). His sons are early to moderate maturing and exhibit excellent muscle in loin and hindquarters. Numerous daughters have been retained in the Farrer stud. Please note that the 2019 cohort of students did not select any Poll Dorset genetics for use in their artificial insemination program. Therefore this will be the last lot of PD x WS sons for those producers that favour them. Hillcroft Farms 130156 sons will produce progeny that are highly versatile and can suit both trade and export lambs.

**Farrer 170015 (Natural)****Lots: 2**

Lot	Ram ID	BWT	WWT	PWWT	PFAT	PEMD	PWEC	LEQ
	1170015	0.23	10.1	15.9	1.0	4.8	-23	158.5
	<b>Reference sire</b>	80%	73%	74%	72%	74%	66%	55%
		<b>LMY</b>		<b>IMF</b>		<b>SHEARF5</b>		
		3.22		-0.08		-0.8		
		65%		58%		55%		

Sire: Marocara 150049 (PD)

Dam: Farrer 140041

Progeny: Flocks 31:33

**Comments** Farrer 170015 was selected in the Superwhites Series 23 program. Farrer 170015 has excellent growth (top 20%), outstanding muscle (top 1%), fat (fattest 1%), IMF (top 10%) and shear force (top 5%). Farrer has used a tremendous later born son Farrer 180273 (Lot 2) who has subsequently been selected into Superwhites program Series 24. His progeny are very easy doing, smooth shouldered and have muscle in the loin and hindquarters. Farrer 170015 progeny can suit both trade and export lambs.



**Farrer 170027 (Natural)****Lots: 45**

Lot	Ram ID	BWT	WWT	PWWT	PFAT	PEMD	PWEC	LEQ
	170027	0.42	12.8	18.9	-1.1	2.60	-27	160.1
<b>Reference sire</b>		71%	73%	74%	74%	76%	68%	53%
		<b>LMY</b>		<b>IMF</b>		<b>SHEARF5</b>		
		4.51		-0.33		0.7		
		66%		55%		52%		

Sire: Farrer 140137

Dam: Farrer 150061

Progeny: Flocks 5:1

**Comments:** Farrer 170027 has outstanding growth (top 1%), muscle (top 20%), fat (leanest 10%) and LMY (top 10%). Farrer 170027 progeny are long bodied, smooth shouldered with muscle in the loin and hindquarters. His progeny are highly versatile and can suit both trade and export lambs.

**Farrer 170093 (Natural)****Lots: 42, 43, 44, 48, 49, 50, 55**

Lot	Ram ID	BWT	WWT	PWWT	PFAT	PEMD	PWEC	LEQ
	170093	0.38	12.2	17.9	-1.0	3.0	-60	153.9
<b>Reference sire</b>		76%	79%	82%	80%	82%	75%	57%
		<b>LMY</b>		<b>IMF</b>		<b>SHEARF5</b>		
		4.83		-0.55		4.2		
		70%		58%		55%		

Sire: Farrer 140137

Dam: Farrer 160129

Progeny: Flocks 21:1

**Comments:** Farrer 170093 has produced some impressive large framed sons with brilliant growth (top 5%), muscle (top 10%), fat (leanest 20%), worm resistance (top 1%) and LMY (top 5%). His progeny excels with added stretch and depth of body. Farrer 170093 sons will produce progeny that are better suited to later maturing heavy export lambs.

**Farrer 170211 (Natural)****Lots: 40, 41, 46, 47, 51, 52, 53, 54**

Lot	Ram ID	BWT	WWT	PWWT	PFAT	PEMD	PWEC	LEQ
	170211	0.28	11.7	18.1	-1.3	2.5	-61	156.1
<b>Reference sire</b>		88%	85%	84%	80%	82%	75%	56%
		<b>LMY</b>		<b>IMF</b>		<b>SHEARF5</b>		
		5.25		-0.62		2.7		
		71%		56%		54%		

Sire: Farrer 160068

Dam: Farrer 140165

Progeny: Flocks 97:3

**Comments:** Farrer 170211 was the standout ram from the 2017 drop. He has tremendous growth (top 5%), good muscle (top 20%), is very lean (leanest 10%), worm resistance (top 1%) and LMY (top 1%). His progeny are consistently long bodied, smooth shouldered and have muscle in the loin and hindquarters. Farrer 170211 progeny can suit both trade and export lambs.



LOT 1: Farrer 180178



LOT 2: Farrer 180273

Lot	Ram ID	BWT	WWT	PWWT	PFAT	PEMD	PWEC	LEQ
-----	--------	-----	-----	------	------	------	------	-----

1	180178	0.35	11.6	18.5	0.0	2.3	-51	164.9
<b>STAR LOT</b>		66%	69%	69%	-70%	71%	65%	54%

LMY	IMF	SHEARF5
2.70	0.16	-2.1
61%	58%	55%

DOB: 05/08/2018

Sire: Felix 151229

Dam: Farrer 150056

Tests: HrF (23484), DNA

Purchaser:

Price:

- Selected as a back-up ram for Farrer's 2019 artificial insemination program
- Well balanced figures with a superb carcase
- Tremendous growth (top 5%) and worm resistance (top 5%)
- Outstanding IMF (top 5%) and shear force (top 5%)
- LEQ (top 1%)
- **Farrer retains a 100% share of the semen marketing rights on this ram**
- **Intending purchasers should read the Semen Retention Rights Notice**

2	180273	0.17	10.0	16.2	1.2	4.7	-27	159.8
<b>STAR LOT</b>		61%	63%	64%	64%	64%	58%	45%

LMY	IMF	SHEARF5
3.04	-0.02	-0.8
49%	49%	45%

DOB: 07/09/2018

Sire: Farrer 170015 APP

Dam: Farrer 170041

Tests: HrF (22311), DNA

Purchaser:

Price:

- Selected as a back-up ram for Farrer's 2019 artificial insemination program
- Selected in the Series 24 Superwhite Program
- Low birth weight (lowest 20%) and outstanding muscle (top 1%)
- Easy doing ram with extra fat (fattest 1%)
- Outstanding IMF (top 5%) and shear force (top 5%)
- LEQ (top 1%)
- **Farrer retains a 100% share of the semen marketing rights on this ram**
- **Intending purchasers should read the Semen Retention Rights Notice**

3	180004	0.26	11.4	16.7	-1.2	2.2	-27	144.7
		66%	69%	69%	70%	72%	64%	51%

LMY	IMF	SHEARF5
4.50	-0.62	3.5
62%	55%	52%

DOB: 31/07/2018

Sire: Farrer 140137

Dam: Farrer 160074

Tests: DNA

Purchaser:

Price:

- Long bodied ram with and a strong topline
- Low birth weight (top 30%), Good growth (top 20%) and LMY (top 10%)

Lot	Ram ID	BWT	WWT	PWWT	PFAT	PEMD	PWEC	LEQ
-----	--------	-----	-----	------	------	------	------	-----

4	180013	0.32	10.5	16.3	-0.3	2.5	-28	151.4
		67%	70%	71%	71%	73%	66%	55%

LMY	IMF	SHEARF5
3.01	-0.34	0.8
65%	59%	56%

DOB: 31/07/2018

Sire: Hillcroft Farms 130156 (PD)

Dam: Farrer 130232

Tests: DNA

Purchaser:

Price:

- Excellent thickness and volume with smooth shoulders
- Easy doing, medium maturing ram with good growth (top 20%)
- Fat (fattest 40%) and shear force (top 20%)

5	180026	0.06	10.4	16.2	-0.4	2.5	-35	157.1
		67%	69%	70%	70%	72%	66%	55%

LMY	IMF	SHEARF5
3.26	0.09	0.2
64%	59%	56%

DOB: 01/08/2018

Sire: Hillcroft Farms 130156 (PD)

Dam: Farrer 150191

Tests: DNA

Purchaser:

Price:

- Low birth weight (top 10%) and large framed ram with growth (top 20%)
- Muscle (top 20%), IMF (top 5%) and shear force (top 20%)

6	180052	0.00	8.7	13.5	0.0	3.3	-53	152.0
		66%	69%	70%	70%	72%	65%	52%

LMY	IMF	SHEARF5
2.62	-0.18	-1.7
62%	55%	52%

DOB: 02/08/2018

Sire: Farrer 140137

Dam: Farrer 150195

Tests: DNA

Purchaser:

Price:

- Low birth weight (top 10%) and excellent muscle (top 5%)
- Worm resistance (top 5%), IMF (top 20%) and shear force (top 5%)

7	180055	0.24	10.0	15.0	-0.4	2.7	-25	153.5
		65%	68%	69%	70%	71%	64%	51%

LMY	IMF	SHEARF5
2.84	0.06	-1.1
62%	55%	52%

DOB: 02/08/2018

Sire: Farrer 140137

Dam: Farrer 170111

Tests: DNA

Purchaser:

Price:

- Low birth weight (top 30%) with an excellent muscle in loin and twist
- Medium maturity pattern with adequate fat coverage (top 50%)
- IMF (top 5%) and shear force (top 5%)

Lot	Ram ID	BWT	WWT	PWWT	PFAT	PEMD	PWEC	LEQ
-----	--------	-----	-----	------	------	------	------	-----

8	180056	0.35	11.3	17.0	-1.0	1.8	-26	155.7
<b>STAR LOT</b>		65%	68%	69%	70%	71%	64%	51%

LMY	IMF	SHEARF5
3.53	0.03	-0.9
62%	55%	52%

DOB: 02/08/2018

Sire: Farrer 140137

Dam: Farrer 170111

Tests: DNA

Purchaser:

Price:

- Well balanced figures with growth (top 10%),
- Excellent IMF (top 5%) and shear force (top 5%)
- LEQ (top 1%)

9	180062	0.15	10.9	18.1	-0.3	3.3	-35	151.2
		66%	69%	70%	70%	72%	65%	55%

LMY	IMF	SHEARF5
4.07	-0.56	1.7
62%	59%	56%

DOB: 02/08/2018

Sire: Felix 150721

Dam: Farrer 160142

Tests: DNA

Purchaser:

Price:

- Low birth weight (top 20%) with excellent muscle in loin and twist
- Superb growth (top 5%), muscle (top 5%) and worm resistance (top 20%)

10	180063	0.16	10.4	17.1	-0.7	3.1	-29	146.6
		66%	69%	70%	70%	72%	65%	55%

LMY	IMF	SHEARF5
4.30	-0.77	1.5
62%	59%	56%

DOB: 02/08/2018

Sire: Felix 150721

Dam: Farrer 160142

Tests: DNA

Purchaser:

Price:

- Low birth weight (top 20%) with a strong topline
- Growth (top 10%), muscle (top 10%) and LMY (top 10%)

11	180069	0.11	10.4	16.7	0.3	4.7	-43	161.2
		66%	69%	70%	70%	72%	64%	54%

LMY	IMF	SHEARF5
4.47	-0.67	-0.5
64%	58%	55%

DOB: 02/08/2018

Sire: Hillcroft Farms 130156 (PD)

Dam: Farrer 140042

Tests: DNA

Purchaser:

Price:

- Low birth weight (top 20%) with thickness and volume
- Growth (top 20%), outstanding muscle (top 1%) and LMY (top 10%)
- Dam of Farrer 170082 sold \$2400 to "Ryefield" White Suffolks



LOT 8: Farrer 180056



LOT 14: Farrer 180077 APP

Lot	Ram ID	BWT	WWT	PWWT	PFAT	PEMD	PWEC	LEQ
-----	--------	-----	-----	------	------	------	------	-----

12	180070	0.10	10.1	16.7	0.0	4.5	-35	162.5
		66%	69%	70%	70%	72%	64%	53%

LMY	IMF	SHEARF5
4.20	-0.61	-1.7
64%	57%	54%

DOB: 02/08/2018

Sire: Hillcroft Farms 130156 (PD)

Dam: Farrer 140042

Tests: DNA

Purchaser:

Price:

- Low birth weight (top 10%) with muscle in the loin and hindquarters
- Growth (top 20%) and outstanding muscle (top 1%)
- Dam of Farrer 170082 sold \$2400 to "Ryefield" White Suffolks

13	180073	0.03	9.7	15.6	0.3	4.5	-3	157.6
		66%	69%	69%	70%	71%	63%	53%

LMY	IMF	SHEARF5
3.97	-0.29	0.3
63%	57%	54%

DOB: 02/08/2018

Sire: Hillcroft Farms 130156 (PD)

Dam: Farrer 140209

Tests: DNA

Purchaser:

Price:

- Medium maturing ram with tremendous muscle (top 1%)
- Low birth weight (top 10%) with growth (top 30%)
- Avoid if you are concerned with worm resistance (worst 20%)

14	180077	0.16	10.8	16.4	-0.4	3.5	-37	158.8
	<b>STAR LOT</b>	68%	70%	71%	71%	73%	66%	56%

LMY	IMF	SHEARF5
4.36	-0.31	1.0
65%	59%	5.7

DOB: 02/08/2018

Sire: Hillcroft Farms 130156 (PD)

Dam: Farrer 130082

Tests: DNA

Purchaser:

Price:

- Superb muscle in loin and hindquarters
- Well balanced figures with low birth weight (top 20%)
- Growth (top 20%), muscle (top 5%) and worm resistance (top 20%)
- Dam of Farrer 160161 sold \$3100 to "Providence Farms" White Suffolks

15	180090	0.27	9.6	15.7	-0.1	3.4	-56	156.0
		66%	69%	70%	70%	72%	65%	49%

LMY	IMF	SHEARF5
2.69	-0.23	-1.6
61%	51%	48%

DOB: 03/08/2018

Sire: Waratah 160253

Dam: Farrer 120199

Tests: DNA

Purchaser:

Price:

- Low birth weight (top 30%) with growth (top 30%)
- Fat coverage (fattest 30%), muscle (top 5%) and worm resistance (top 5%)

Lot	Ram ID	BWT	WWT	PWWT	PFAT	PEMD	PWEC	LEQ
16	180092	0.38	11.6	18.1	-0.9	3.5	-32	145.3
		65%	68%	69%	69%	71%	65%	48%

LMY	IMF	SHEARF5
5.02	-1.08	3.3
60%	51%	47%

DOB: 03/08/2018  
Tests: DNA

Sire: Waratah 160253  
Purchaser:

Dam: Farrer 160115  
Price:

- Exhibited at the Dubbo Show
- Long bodied ram with smooth shoulders and a very good carcase
- Growth (top 5%), muscle (top 5%) and LMY (top 5%)

17	180103	0.16	8.9	14.6	0.0	3.8	-32	152.5
		68%	71%	71%	72%	73%	66%	54%

LMY	IMF	SHEARF5
3.69	-0.52	0.5
65%	57%	55%

DOB: 03/08/2018  
Tests: DNA

Sire: Hillcroft Farms 130156 (PD)  
Purchaser:

Dam: Farrer 130126  
Price:

- Medium maturing ram with excellent muscle (top 5%)
- Low birth weight (top 20%) with worm resistance (top 30%)
- Dam of Farrer 150196 sold \$6000 to “Wilsons Creek” White Suffolks

18	180106	0.29	10.7	16.1	-0.6	3.6	-48	163.5
		66%	69%	70%	70%	72%	65%	54%

LMY	IMF	SHEARF5
4.29	-0.29	0.3
64%	58%	55%

DOB: 03/08/2018  
Tests: DNA

Sire: Hillcroft Farms 130156 (PD)  
Purchaser:

Dam: Farrer 160150  
Price:

- Medium maturing ram with muscle (top 5%) and growth (top 20%)
- Worm resistance (top 10%) and LMY (top 10%)

19	180109	0.11	9.0	14.7	0.0	3.6	-21	152.3
		66%	69%	69%	70%	71%	64%	54%

LMY	IMF	SHEARF5
2.97	-0.15	-0.1
63%	57%	55%

DOB: 03/08/2018  
Tests: DNA

Sire: Hillcroft Farms 130156 (PD)  
Purchaser:

Dam: Farrer 160198  
Price:

- Low birth weight (lowest 20%) and excellent muscle (top 5%)
- Fat (fattest 20%) and shear force (top 10%)



Lot	Ram ID	BWT	WWT	PWWT	PFAT	PEMD	PWEC	LEQ
20	180115	0.44	12.1	17.4	-0.9	2.6	-16	145.3
		66%	69%	70%	70%	72%	65%	54%

LMY	IMF	SHEARF5
4.80	-0.66	5.0
64%	58%	55%

DOB: 03/08/2018

Sire: Hillcroft Farms 130156 (PD)

Dam: Farrer 160125

Tests: DNA

Purchaser:

Price:

- Excellent growth (top 10%), lean (leanest 20%) and muscle (top 20%)
- LMY (top 5%)

21	180117	0.65	12.2	19.9	0.8	2.6	-45	157.5
		65%	68%	68%	68%	70%	63%	51%

LMY	IMF	SHEARF5
2.26	-0.13	0.7
60%	56%	52%

DOB: 03/08/2018

Sire: Felix 151229

Dam: Farrer 170221

Tests: DNA

Purchaser:

Price:

- Easy doing, smooth shouldered ram with a strong topline
- Outstanding growth (top 1%) and extra fat (fattest 5%)
- Muscle (top 20%), worm resistance (top 10%)
- IMF (top 10% and shear force (top 20%))

22	180120	0.37	9.7	16.0	0.6	3.0	-38	153.7
		67%	69%	70%	70%	72%	65%	53%

LMY	IMF	SHEARF5
1.33	-0.12	-3.0
62%	58%	54%

DOB: 03/08/2018

Sire: Felix 151229

Dam: Farrer 130131

Tests: DNA

Purchaser:

Price:

- Long bodied, easy doing ram with growth (top 20%)
- Strong topline and muscle (top 10%)
- Extra fat coverage (top 5%) and worm resistance (top 20%)
- IMF (10%) and shear force (top 1%)

Lot	Ram ID	BWT	WWT	PWWT	PFAT	PEMD	PWEC	LEQ
-----	--------	-----	-----	------	------	------	------	-----

23	180124	0.21	9.6	15.4	1.0	2.8	-48	157.5
		67%	69%	70%	70%	72%	65%	54%

LMY	IMF	SHEARF5
0.95	0.39	-3.5
62%	58%	55%

DOB: 03/08/2018  
Tests: DNA

Sire: Felix 151229  
Purchaser:

Dam: Farrer 140069  
Price:

- Exhibited at the Dubbo Show
- Low birth weight (top 20%) and good muscle (top 20%)
- Extra fat coverage (top 1%) and worm resistance (top 10%)
- Outstanding eat quality traits with IMF (top 1%) and shear force (top 1%)
- Dam of Farrer 160037 sold \$2000 to “Kohat” White Suffolks

24	180125	0.46	11.2	17.3	-0.2	2.8	-38	153.3
		67%	69%	70%	70%	72%	65%	53%

LMY	IMF	SHEARF5
3.06	-0.58	-1.5
62%	58%	54%

DOB: 03/08/2018  
Tests: DNA

Sire: Felix 151229  
Purchaser:

Dam: Farrer 130131  
Price:

- Exhibited at the Dubbo Show
- Long bodied ram with great muscling in loin and hindquarters
- Growth (top 10%), muscle (top 20%) and shear force (top 5%)

25	180136	0.24	9.0	15.5	0.2	2.2	-33	153.5
		66%	69%	69%	69%	71%	64%	52%

LMY	IMF	SHEARF5
1.64	0.11	-3.7
61%	56%	53%

DOB: 04/08/2018  
Tests: DNA

Sire: Felix 151229  
Purchaser:

Dam: Farrer 160208  
Price:

- Long bodied ram with muscle in loin and hindquarters
- Low birth weight (top 30%) and growth (top 300%)
- IMF (top 5%) and shear force (top 1%)

Lot	Ram ID	BWT	WWT	PWWT	PFAT	PEMD	PWEC	LEQ
26	180137	0.43	10.2	17.1	0.5	2.1	-24	153.8
		66%	69%	69%	69%	71%	64%	51%

LMY	IMF	SHEARF5
1.42	0.10	-3.1
61%	56%	52%

DOB: 04/08/2018  
Tests: DNA

Sire: Felix 151229  
Purchaser:

Dam: Farrer 160208  
Price:

- Deep bodied ram with excellent growth (top 10%)
- Extra fat coverage (fattest 5%), IMF (top 5%) and shear force (top 1%)

27	180150	0.20	10.5	15.6	-1.1	3.1	-38	150.7
		67%	69%	70%	71%	72%	66%	54%

LMY	IMF	SHEARF5
4.80	-0.81	2.8
64%	58%	55%

DOB: 04/08/2018  
Tests: DNA

Sire: Hillcroft Farms 130156 (PD)  
Purchaser:

Dam: Farrer 160193  
Price:

- Later maturing ram with low birth weight (top 20%) and muscle (top 10%)
- Worm resistance (top 20%) and superb LMY (top 5%)

28	180156	0.12	9.2	14.8	-0.5	3.3	-29	149.9
		68%	70%	71%	71%	72%	66%	55%

LMY	IMF	SHEARF5
4.26	-0.60	2.1
65%	58%	56%

DOB: 04/08/2018  
Tests: DNA

Sire: Hillcroft Farms 130156 (PD)  
Purchaser:

Dam: Farrer 140104  
Price:

- Smooth shouldered ram with low birth weight (top 20%)
- Worm Resistance (top 30%), muscle (top 5%) and LMY (top 10%)

29	180164	0.28	10.9	17.4	0.0	4.1	-48	162.1
		68%	70%	71%	71%	73%	66%	55%

LMY	IMF	SHEARF5
4.12	-0.45	-1.2
64%	59%	56%

DOB: 04/08/2018  
Tests: DNA

Sire: Felix 150721  
Purchaser:

Dam: Farrer 140052  
Price:

- Growth (top 10%) and Worm Resistance (top 10%)
- Outstanding muscle (top 1%), LMY (top 20%) and shear force (top 5%)
- Dam of Farrer 160026 sold \$6100 to "Glen Gray" White Suffolks



LOT 30: Farrer 180170 APP



LOT 33: Farrer 180177

Lot	Ram ID	BWT	WWT	PWWT	PFAT	PEMD	PWEC	LEQ
-----	--------	-----	-----	------	------	------	------	-----

30	180170	0.42	10.3	15.9	-0.1	2.9	-31	163.2
<b>STAR LOT</b>		65%	68%	69%	69%	71%	64%	53%

LMY	IMF	SHEARF5
3.38	0.09	-2.1
63%	57%	54%

DOB: 04/08/2018  
Tests: DNA

Sire: Hillcroft Farms 130156 (PD)  
Purchaser:

Dam: Farrer 160122  
Price:

- Long bodied ram with a strong topline
- Smooth shouldered with a good twist
- Excellent IMF (top 5%) and shear force (top 5%)
- LEQ (top 1%)

31	180173	0.54	10.8	16.5	-0.4	2.7	-55	164.7
		66%	69%	70%	70%	72%	68%	55%

LMY	IMF	SHEARF5
3.18	0.28	-0.6
63%	59%	56%

DOB: 05/08/2018  
Tests: DNA

Sire: Galaxy Park 110210  
Purchaser:

Dam: Farrer 140140  
Price:

- Long bodied ram with a strong topline
- Growth (top 20%), muscle (top 20%) and worm resistance (top 5%)
- Outstanding IMF (top1%) and shear force (top 10%)
- Dam of Farrer 160064 sold \$6500 to “Yasloc & Wymeanda” White Suffolks

32	180174	0.30	8.8	15.2	-0.5	3.0	-44	147.4
		65%	68%	69%	69%	71%	65%	48%

LMY	IMF	SHEARF5
3.36	-0.60	-0.6
60%	50%	47%

DOB: 05/08/2018  
Tests: DNA

Sire: Waratah 160253  
Purchaser:

Dam: Farrer 150188  
Price:

- Muscle (top 10%), worm resistance (top 10%) and shear force (top 10%)

Lot	Ram ID	BWT	WWT	PWWT	PFAT	PEMD	PWEC	LEQ
-----	--------	-----	-----	------	------	------	------	-----

33	180177	0.30	10.3	16.4	0.3	2.5	-74	164.4
<b>STAR LOT</b>		66%	69%	69%	70%	71%	65%	53%

LMY	IMF	SHEARF5
1.54	0.41	-2.6
62%	58%	55%

DOB: 05/08/2018

Sire: Felix 151229

Dam: Farrer 150056

Tests: HrF(23395), DNA

Purchaser:

Price:

- Selected as a back-up ram for Farrer's 2019 artificial insemination program
- Stylish twin of Farrer 180178 (lot 1) with tremendous worm resistance (top 1%)
- Well balanced figures with a superb carcase and excellent structure
- Growth (top 20%), fat (fattest 10%) and muscle (top 20%)
- Superior meat eating characteristics with IMF (top 1%) and shear force (top 1%)
- LEQ (top 1%)

34	180179	0.33	9.8	16.5	1.0	3.8	-41	166.7
		65%	68%	69%	69%	71%	64%	52%

LMY	IMF	SHEARF5
1.84	0.25	-4.7
61%	56%	52%

DOB: 05/08/2018

Sire: Felix 151229

Dam: Farrer 170159

Tests: DNA

Purchaser:

Price:

- A good commercial ram with outstanding figures.

35	180183	0.63	12.2	17.6	-0.7	2.5	-35	156.8
		66%	68%	69%	69%	71%	64%	52%

LMY	IMF	SHEARF5
4.23	-0.31	1.9
63%	56%	53%

DOB: 05/08/2018

Sire: Hillcroft Farms 130156 (PD)

Dam: Farrer 150061

Tests: DNA

Purchaser:

Price:

- Long late maturing ram with thickness and volume
- Growth (top 5%), muscle (top 20%), worm resistance (top 20%)
- Avoid if using over maiden ewes as birth weight is a concern (top 90%)

36	180184	0.25	10.6	16.6	0.1	3.8	-50	155.0
		67%	70%	70%	71%	72%	66%	50%

LMY	IMF	SHEARF5
3.48	-0.55	-0.6
62%	52%	49%

DOB: 05/08/2018

Sire: Hillcroft Farms 130156 (PD)

Dam: Farrer 140068

Tests: DNA

Purchaser:

Price:

- Low birth weight (lowest 30%), growth (top 20%) and muscle (top 5%)
- Dam of Farrer 160068 sold \$4500 to "Kyanga" White Suffolks

Lot	Ram ID	BWT	WWT	PWWT	PFAT	PEMD	PWEC	LEQ
37	180185	0.38	9.2	15.2	0.4	2.8	-45	161.6
		66%	69%	69%	70%	72%	64%	54%

LMY	IMF	SHEARF5
1.00	0.39	-3.6
62%	59%	55%

DOB: 05/08/2018  
Tests: DNA

Sire: Felix 151229  
Purchaser:

Dam: Farrer 150097  
Price:

- Growth (top 30%), fat (fattest 5%) and muscle (top 20%)
- Terrific IMF (top 1%) and shear force (top 1%)

38	180194	0.59	11.2	16.7	-1.0	2.1	-38	158.1
		66%	68%	69%	69%	71%	64%	53%

LMY	IMF	SHEARF5
4.00	-0.36	-0.6
63%	56%	54%

DOB: 05/8/2018  
Tests: DNA

Sire: Hillcroft Farms 130156 (PD)  
Purchaser:

Dam: Farrer 150061  
Price:

- Growth (top 20%), fat (leanest 20%) and worm resistance (top 20%)
- LMY (top 20%) and shear force (top 10%)
- Avoid if using over maiden ewes as birth weight is a concern (top 90%)

39	180197	0.00	9.8	16.0	0.8	4.9	-65	165.6
		66%	69%	72%	70%	72%	65%	54%

LMY	IMF	SHEARF5
3.18	-0.09	-0.7
63%	57%	54%

DOB: 05/8/2018  
Tests: DNA

Sire: Hillcroft Farms 130156 (PD)  
Purchaser:

Dam: Farrer 160168  
Price:

- Long bodied, medium maturing ram with outstanding muscle (top 1%)
- Birth weight (lowest 10%) and good growth (top 20%)
- Superb worm resistance (top 1%) IMF (top 10%) and shear force (top 5%)

40	180220	0.42	9.3	15.6	-1.1	1.3	13	142.6
		63%	66%	66%	65%	68%	60%	45%

LMY	IMF	SHEARF5
3.40	-0.36	0.7
56%	48%	44%

DOB: 17/08/2018  
Tests: DNA

Sire: Farrer 170211  
Purchaser:

Dam: Farrer 160080  
Price:

- Growth (top 30%) and lean (leanest 10%)
- Avoid if you are concerned with worm resistance (worst 10%)



LOT 43: Farrer 180228



LOT 46: Farrer 180239



Lot	Ram ID	BWT	WWT	PWWT	PFAT	PEMD	PWEC	LEQ
-----	--------	-----	-----	------	------	------	------	-----

41	180222	0.26	10.0	15.8	-1.3	2.0	-46	156.3
		65%	67%	67%	67%	69%	61%	47%

LMY	IMF	SHEARF5
3.83	-0.20	-0.3
58%	51%	47%

DOB: 18/08/2018  
Tests: DNA

Sire: Farrer 170211  
Purchaser:

Dam: Farrer 120201  
Price:

- Exhibited at the Dubbo Show
- Thick, deep bodied ram with an excellent loin and hindquarters
- Birth weight (lowest 30%) and growth (top 20%)
- Worm resistance (top 10%) and shear force (top 10%)

42	180226	0.20	10.3	15.7	-0.9	2.4	-38	150.3
		61%	65%	66%	67%	69%	61%	48%

LMY	IMF	SHEARF5
3.87	-0.29	1.6
57%	51%	47%

DOB: 18/08/2018  
Tests: DNA

Sire: Farrer 170093  
Purchaser:

Dam: Farrer 140139  
Price:

- Long bodied, medium maturing ram with muscle (top 20%)
- Birth weight (lowest 20%) and worm resistance (top 20%)

43	180228	0.42	11.3	17.2	0.0	3.0	-57	152.6
<b>STAR LOT</b>		62%	66%	66%	67%	69%	61%	49%

LMY	IMF	SHEARF5
3.07	-0.35	1.1
58%	53%	49%

DOB: 18/08/2018  
Tests:

Sire: Farrer 170093  
Purchaser:

Dam: Farrer 130120  
Price:

- Exhibited at the Dubbo Show
- Easy doing ram with depth and thickness
- Tremendous growth (top 10%) and muscle (top 10%)
- Extra fat coverage (fattest 20%) and excellent worm resistance (top 5%)
- Dam of Farrer 150194 sold \$4500 to "Kyanga" White Suffolks
- Dam of Farrer 160004 sold \$3600 to "Lambpro" Poll Dorset's

Lot	Ram ID	BWT	WWT	PWWT	PFAT	PEMD	PWEC	LEQ
-----	--------	-----	-----	------	------	------	------	-----

44	180231	0.25	12.0	17.6	-0.9	2.6	-51	144.0
		61%	65%	66%	67%	69%	61%	49%

LMY	IMF	SHEARF5
4.66	-0.66	6.3
57%	53%	49%

DOB: 18/08/2018  
Tests: DNA

Sire: Farrer 170093  
Purchaser:

Dam: Farrer 160133  
Price:

- Long bodied, low birth weight ram (lowest 30%) with superb growth (top 5%)
- Muscle (top 20%), excellent worm resistance (top 5%) and LMY (top 5%)

45	180234	0.54	13.5	19.5	-1.4	1.9	-32	148.4
		58%	63%	64%	64%	67%	58%	45%

LMY	IMF	SHEARF5
4.92	-0.67	4.4
54%	48%	44%

DOB: 18/08/2018  
Tests: DNA

Sire: Farrer 170027  
Purchaser:

Dam: Farrer 170158  
Price:

- Long bodied, later maturing ram with terrific growth (top 1%)
- Very lean (leanest 10%), worm resistance (top 30%) LMY (top 5%)
- Avoid if using over maiden ewes as birth weight is a concern (top 90%)

46	180239	0.20	10.4	17.3	0.0	2.8	-57	156.3
	<b>STAR LOT</b>	63%	66%	66%	65%	67%	59%	45%

LMY	IMF	SHEARF5
3.12	-0.12	-0.3
56%	49%	45%

DOB: 19/08/2018  
Tests: DNA

Sire: Farrer 170211  
Purchaser:

Dam: Farrer 160141  
Price:

- Exhibited at the Dubbo Show
- Easy doing ram with tremendous volume
- Low birth weight ram (top 20%) with a superb carcase
- Growth (top 10%), muscle (top 20%) and excellent worm resistance (top 5%)
- IMF (top 10%) and shear force (top 10%)
- LEQ (top 1%)

Lot	Ram ID	BWT	WWT	PWWT	PFAT	PEMD	PWEC	LEQ
47	180240	0.22	9.9	16.4	-0.9	2.0	-48	151.4
		63%	66%	66%	65%	67%	59%	46%
		<b>LMY</b>		<b>IMF</b>		<b>SHEARF5</b>		
		3.81		-0.36		0.7		
		56%		49%		46%		

DOB: 19/08/2018  
Tests: DNA

Sire: Farrer 170211  
Purchaser:

Dam: Farrer 160141  
Price:

- Low birth weight ram (top 30%) with a superb depth of carcase
- Growth (top 20%), muscle (top 40%) and excellent worm resistance (top 5%)



**Lot 47 Farrer 180240**

Lot	Ram ID	BWT	WWT	PWWT	PFAT	PEMD	PWEC	LEQ
48	180243	0.25	11.1	16.3	-0.8	2.6	-50	144.4
		61%	64%	65%	66%	68%	59%	47%
		<b>LMY</b>		<b>IMF</b>		<b>SHEARF5</b>		
		3.97		-0.49		4.3		
		56%		50%		47%		

DOB: 19/08/2018  
Tests: DNA

Sire: Farrer 170093  
Purchaser:

Dam: Farrer 140185  
Price:

- Medium maturing, low birth weight (lowest 30%) and growth (top 20%)
- Muscle (top 20%), fat (leanest 30%) and worm resistance (top 5%)

Lot	Ram ID	BWT	WWT	PWWT	PFAT	PEMD	PWEC	LEQ
-----	--------	-----	-----	------	------	------	------	-----

49	180245	0.41	11.5	17.0	-0.9	1.9	-39	138.4
		61%	65%	66%	67%	69%	61%	49%

LMY	IMF	SHEARF5
3.88	-0.58	5.1
58%	54%	50%

DOB: 19/08/2018  
Tests: DNA

Sire: Farrer 170093  
Purchaser:

Dam: Farrer 140039  
Price:

- Long bodied ram with strong topline and thickness
- Growth (top 10%), worm resistance (top 20%) and LMY (top 30%)

50	180251	0.57	12.8	19.4	-1.2	1.8	-44	148.9
		60%	64%	65%	66%	68%	60%	46%

LMY	IMF	SHEARF5
4.77	-0.65	4.0
56%	49%	45%

DOB: 20/08/2018  
Tests: DNA

Sire: Farrer 170093  
Purchaser:

Dam: Farrer 150018  
Price:

- Long bodied, later maturing ram with strong topline and thickness
- Tremendous growth (top 1%), fat (leanest 10%) and LMY (top 5%)
- Excellent worm resistance (top 10%)
- Avoid if using over maiden ewes as birth weight is a concern (top 90%)
- Dam of Farrer 160116 sold \$7000 to "Lonsdale" White Suffolks

51	180254	0.05	10.6	16.3	-0.3	3.0	-53	147.6
		65%	67%	67%	66%	68%	60%	48%

LMY	IMF	SHEARF5
3.85	-0.49	3.2
57%	52%	48%

DOB: 20/08/2018  
Tests: DNA

Sire: Farrer 170211  
Purchaser:

Dam: Farrer 140035  
Price:

- Long bodied ram with strong topline and thickness
- Low birth weight (top 10%), growth (top 20%), fat (fattest 40%)
- Muscle (top 10%), worm resistance (top 5%) and LMY (top 30%)

Lot	Ram ID	BWT	WWT	PWWT	PFAT	PEMD	PWEC	LEQ
-----	--------	-----	-----	------	------	------	------	-----

52	180264	0.05	8.0	13.3	-0.5	2.9	-49	151.4
		67%	69%	69%	68%	70%	61%	49%

LMY	IMF	SHEARF5
3.41	-0.35	-0.5
60%	52%	49%

DOB: 25/08/2018  
Tests: DNA

Sire: Farrer 170211  
Purchaser:

Dam: Farrer 130217  
Price:

- Long bodied, low birth weight ram (lowest 10%) with muscle (top 10%)
- Worm resistance (top 10%) and shear force (top 10%)
- Dam of Farrer 140078 sold \$11000 to "Oakwood" White Suffolks
- Dam of Farrer 150136 sold \$4000 to "Yasloc" White Suffolks
- Dam of Farrer 160167 sold \$6000 to "Jusak" White Suffolks

53	180267	0.08	8.1	13.3	-1.1	2.1	-42	149.8
		65%	67%	67%	66%	69%	61%	47%

LMY	IMF	SHEARF5
3.65	-0.09	0.1
57%	50%	47%

DOB: 27/08/2018  
Tests: DNA

Sire: Farrer 170211  
Purchaser:

Dam: Farrer 120202  
Price:

- Low birth weight (lowest 10%), fat (leanest 10%) and muscle (top 30%)
- Worm resistance (top 20%) and LMY (top 30%)

54	180270	0.26	11.5	16.3	-0.7	2.0	-49	142.3
		65%	67%	67%	66%	69%	60%	48%

LMY	IMF	SHEARF5
3.76	-0.39	3.2
57%	52%	48%

DOB: 31/08/2018  
Tests: DNA

Sire: Farrer 170211  
Purchaser:

Dam: Farrer 140061  
Price:

- Long bodied, later maturing, smooth shouldered ram with strong topline
- Low birth weight (lowest 30%) and good growth (top 20%)
- Worm resistance (top 10%) and LMY (top 30%)

55	180272	0.33	10.6	16.2	-1.1	2.7	-53	150.8
		60%	64%	65%	65%	68%	60%	48%

LMY	IMF	SHEARF5
4.48	-0.58	2.4
56%	51%	48%

DOB: 2/09/2018  
Tests: DNA

Sire: Farrer 170093  
Purchaser:

Dam: Farrer 150138  
Price:

- Smooth shouldered ram with muscle in the loin and hindquarters
- Growth (top 20%), Muscle (top20%) and worm resistance (top 5%)

## MODE OF SALE:

Helmsman Buying System.

The first Helmsman sale was conducted in 1990 by its originator Mr. Bruce Milne of "Helm View" Hereford stud, Coleriene Vic and was voted an outstanding success by buyers, and has now spread to other states. This method of purchasing livestock has earned the name of the "Buyer Friendly" sale. Farrer White Suffolks have used the Helmsman system since 1997 and AuctionsPlus since 2016.

## THE BENEFITS TO INTENDING PURCHASERS

1. You have more time to consider lodging a bid. You can place genuine bids on any sheep of your choice at any time during the sale period.
2. You have the opportunity to re-assess each lot during the sale period without any pressure to make an instant decision.
3. You take home ram/s you want, irrespective of the lot order.
4. You may use the buyers suggested price guide, which is based on measured production merit to give you a good estimate of each rams genetic worth in relation to other rams.
5. If you are considering buying a number of rams, "HELMSMAN" will give you a better chance to average your purchase costs in order to meet your total budget.

## HOW "HELMSMAN" WORKS

\*On arrival intending purchasers register at the bid table and receive a buying number

\*All rams are displayed for your inspection as usual, with relevant information provided in the catalogue.

\*When the sale commences all the ram lots are in the market simultaneously. You may bid on any ram lot/s, regardless of lot number, by filling in a card and handing it to the receptionist at the bid table, or to a "runner"

## FARRER WHITE SUFFOLK BID CARD

<b>Lot Number</b>	
<b>Bid Value</b>	\$
<b>Rams minimal bid increments of \$100</b>	
<b>Buyer Number</b>	

\*You may open bidding on any lot(s) and bids are in multiples of \$100

\*Bids are recorded with the Buyer's number on a large board (Helmsman sale board) adjacent to the sheep display area. You can bid on any number of rams / lots at once and see at glance whether your bid still stands or has been over bid.

Farrer White Suffolks SALE BOARD				
<b>Lot Number</b>	<b>1</b>	<b>2</b>	<b>3</b>	<b>4</b>
<b>Bid Value</b>				
<b>Bidders Number</b>				

\*There is no pressure to commit yourself to another bid, and if your "first" choice ram goes beyond your limit, you can still bid on another ram in the sale.

\*A bid once submitted and recorded cannot be retracted, and a person submitting such bid will be responsible for it until it is overbid.

\*The sale will remain open for a minimum of 30 minutes. A bid registered in the last 1 minute will result in a 1 minute extension of selling time. Any further bids trigger the same process until a full 1 minute "No bid" period concludes the sale.

NB: The approximate sale time is 60 minutes: i.e. 30 minute sale open and approximately 30 minutes in the last minute trigger section until 1 minute of "no bids"

**DISCLAIMER:** All the information contained in the catalogue is supplied in good faith. However, the correctness, reliability and usefulness cannot be fully guaranteed and therefore should only to be used as a guide.

**ACKNOWLEDGMENTS:** Thanks to the Year 10 Sheep Husbandry and Wool Science students for help in preparing and conducting the sale.

# FARRER'S

## GOLD Quality Data

**Lambplan's Highest Standard of Data Quality  
for more accurate ASBV's**

## **HOW TO MAXIMIZE THE POTENTIAL FROM YOUR FARRER WHITE SUFFOLK RAMS**

These Farrer White Suffolk rams having been recently checked by a veterinarian and are free of disease but are still actively growing. On arrival home we suggest they are kept away from older rams to avoid any risk of injury from fighting.

### **YEAR ROUND MANAGEMENT**

- Maintain weight within  $\pm$  10 Kilograms of the rams individual optimum weight .(i.e. 100 Kilograms) and a fat score of 3 all year round. Thus this ram should stay between 90 – 110 Kilograms. Over fat rams are more prone to breakdown due to excessive weight on limbs and are less mobile around the paddock.
- Shearing rams 8 - 10 weeks prior to joining is recommended. Shearing too close to joining can be detrimental to semen quality in hot weather, as the fleece protects the animal against high radiant temperatures.
- Ringing around the pizzle is warranted especially if belly wool is burry.
- Ensure rams are drenched (with an effective drench) at strategic times along with the rest of the flock.
- Maintain an annual booster vaccination of 6 in 1.
- Keep rams feet trimmed if necessary to reduce the risk of lameness or foot abscess. A ram with feet problems will seek out and mount ewes less actively than normal.
- Jetting ram on the poll during fly season may help to avoid strike and losses.
- Avoid handling of rams in such a way they are “tonguing” within 6 weeks before mating as this may cause reduced fertility. These practices include; excessive speed in moving the ram or limited rest periods especially in hot weather, shearing, crutching and foot trimming

### **PRE-MATING MANAGEMENT**

- Carry out a pre mating physical examination prior to mating to ensure there are no problems with feet, teeth, testicles, penis and scrotum
- Supplementary feeding of rams 6 - 8 weeks prior to joining can have a marked effect on the semen quality and volume. Feeding lupins approximately 0.5 - 1 Kg / head / day after an initial introduction program should be plenty to achieve a result.
- Ideally ram should be in condition score 3.5 - 4 prior to joining.
- If joining rams after a long dry spell without green feed, supplementation with vitamin A may be necessary 8 weeks prior to joining and just before mating.
- Farrer White Suffolk rams can be safely joined at 1.5 - 2 % unless the geography, pasture availability, paddock size and high ambient temperatures require an increase in the ram percentage. The optimum joining period is for 2 cycles: that is five weeks. Longer joining period may be required for autumn drop lambs. e.g. 8 weeks
- If possible, do not mate old rams and young rams together because of domination. Also, mate older rams with maiden ewes and young rams to older ewes

**We hope the above information helps you to get the best from your Farrer White Suffolk rams. For more detailed information please don't hesitate to ask.**



## Using LAMBPLAN to compare individual animals with ASBV'S

The table below allows the comparison of individual rams against the performance of all other 2018 drop terminal Sire animals measured on Lambplan irrespective of breed.

### Percentile bands for all Terminal sires animals born in 2018

Percentile Band	BWT	WWT	PWWT	PFAT **	PEMD	PWEC *	LMY	IMF	SF5 *	LEQ
0	-0.83	15.2	23.4	2.7	5.6	-82	7.31	2.58	-11.2	171.8
1	-0.46	12.2	18.9	0.9	3.9	-59	5.23	0.23	-2.3	153.4
5	-0.10	11.3	17.5	0.4	3.2	-50	4.61	-0.04	-0.7	146.1
10	0.10	10.9	16.8	0.2	2.9	-43	4.29	-0.13	0.1	142.1
20	0.21	10.3	15.8	0.0	2.4	-35	3.89	-0.24	1.0	137.3
30	0.27	9.8	15.1	-0.2	2.1	-29	3.60	-0.32	1.7	134.1
40	0.32	9.4	14.5	-0.3	1.9	-24	3.34	-0.38	2.3	131.6
50	<b>0.36</b>	<b>9.0</b>	<b>13.9</b>	<b>-0.5</b>	<b>1.6</b>	<b>-20</b>	<b>3.08</b>	<b>-0.45</b>	<b>2.9</b>	<b>129.4</b>
60	0.40	8.5	13.1	-0.6	1.4	-15	2.80	-0.51	3.6	127.3
70	0.43	8.0	12.2	-0.7	1.2	-9	2.47	-0.59	4.4	125.0
80	0.48	7.2	11.0	-0.9	0.9	-2	2.01	-0.68	5.4	122.4
90	0.54	6.1	9.3	-1.1	0.5	7	1.31	-0.81	6.5	119.0
100	1.13	-5.5	-8.6	-2.8	-2.5	108	-5.26	-1.77	13.5	79.8

Dotted areas are more favourable for Superfine / Fine Merino ewes

Shaded values are more favourable

\* Lowest values more favourable

\*\* Varies with the genetic potential of the dam, target market specifications and your properties production system.

**For Example:** Lot Number 33: FARRER 180177

Lambplan Characteristics	ASBV's	Percentile Band
Birth weight	0.30	Top 40%
Weaning Weight	10.3	Top 20%
Post Weaning Weight	16.4	Top 20%
Post Weaning Fat	0.3	Top 10%
Post Weaning Eye Muscle Depth	2.5	Top 20%
Post Weaning Worm Egg Count	-74	Top 1%
LMY	1.54	Lowest 10%
IMF	0.41	Top 1%
SHEARF5	-2.6	Top 1%
LEQ	164.4	Top 1%

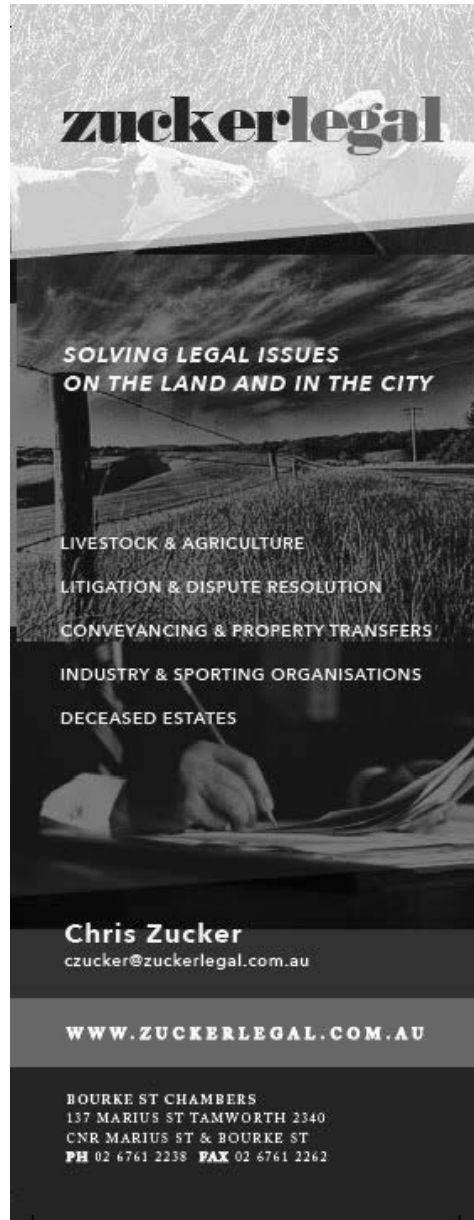
## SEMEN RETENTION RIGHTS NOTICE

This Notice forms part of the Terms and Conditions of Sale of Angus bulls/White Suffolk rams at the Farrer Memorial Agricultural High School Annual On-Property Sale. A Purchaser who bids for any bull or ram at the sale agrees that, by bidding, the Purchaser is bound by the provisions of this Notice and, if the Purchaser is bidding for someone else, the principal is also bound.

1. The vendor of all livestock is the *State of New South Wales by its Department of Education* through Farrer Memorial Agricultural High School (**Farrer**).
2. Any rights that are preserved or created by this Notice in favour of Farrer are rights of the *State New South Wales by its Department of Education through Farrer Memorial Agricultural High School*.
3. The auctioneer may declare that Semen Retention Rights apply to a particular animal. If no such declaration is made, or if the auctioneer declares **Outright Sale**, or words to that effect, then:
  - (a) The Purchaser may take immediate delivery of the animal;
  - (b) Farrer has no Semen Retention Rights; and
  - (c) The Purchaser buys the animal and all the semen rights of the animal outright.
4. If the auctioneer declares that **Semen Retention Rights - Delayed Delivery** applies to a particular animal then the Purchaser does not obtain immediate possession of the animal and the following provisions apply:
  - 4.1 Farrer will deliver the animal to a Semen Collection Centre determined by Farrer for extraction of semen;
  - 4.2 Not later than 8 weeks after the sale Farrer will deliver the animal from the Semen Collection Centre to the Purchaser at such address in Queensland, New South Wales, Victoria or South Australia as the Purchaser notifies to Farrer; and
  - 4.3 All of the rules in paragraph 6 apply.
5. If the auctioneer declares that **Semen Retention Rights - Immediate Delivery** applies to a particular animal then the Purchaser is entitled to immediate possession of the animal but the rules in paragraph 6 apply.
6. The rules for Semen Retention Rights are:
  - i. The commercial rights to the semen of the animal are forever owned by Farrer and the rights of the Purchaser as to semen of the animal are limited to use, naturally or by way of artificial insemination, on the Purchaser's own herd or flock. The Purchaser does not have any right to sell or otherwise commercially deal with the semen or semen rights of the animal.

- ii. The names of all members of any syndicate, partnership or some other joint arrangement of ownership of the animal must be listed on the bidder card at registration prior to the sale.
  - iii. The Purchaser (which includes all members of any syndicate, partnership or other joint arrangement) does not have the right or legal ability to sell, lease, transfer or otherwise deal with fractions or portions of the Purchaser's interest in the animal and can only sell, lease, transfer or otherwise deal with the whole of the interest in the animal.
  - iv. If the Purchaser transfers the animal whether by way of sale, gift or otherwise then the transferee is bound by these rules and the Purchaser agrees to obtain the agreement of the transferee to these rules and to guarantee the performance of the rules by the transferee and Farrer.
  - v. Farrer can, at any time during the life of the animal, by notice to the Purchaser or the person in possession of the animal, require the animal to be delivered, at the cost of Farrer, to a Semen Collection Centre for the purpose of extraction of semen and thereafter return, at the cost of Farrer, to the place from which the animal was collected. Any semen so extracted becomes and remains the property of Farrer.
  - vi. The decision as to when to call in an animal for semen extraction and where to take the animal is that of Farrer.
  - vii. Farrer has unrestricted rights to the use, which includes sale or breeding, of the semen of any animal to which Semen Retention Rights apply.
  - viii. The Purchaser has no right to clone the animal.
7. Any notification concerning Semen Retention Rights may be sent:
- In the case of Farrer to the School at Tamworth by mail or email to the address which the School will notify to the Purchaser upon request; or
  - In the case of the Purchaser to the name and address notified by the Purchaser at the time of sale or such other name and address as may be notified by the Purchaser to Farrer from time to time.
8. If an animal is purchased by a syndicate, partnership or some other joint arrangement then all members are taken, by authorising the bidder, to agree to be bound by the terms of this Notice.
9. The risk of any animal while Farrer is exercising its rights pursuant to these rules is that of Farrer but any liability of Farrer only arises in the case of fault on the part of Farrer and damages are limited to the value of the animal as at the date of any injury to it or the amount paid at the sale for its purchase whichever is the lesser.
10. Neither the auctioneer, Farrer nor the Purchaser are entitled to vary the terms of this Notice unless such variation is recorded in writing and agreed in writing by all parties.

Farrer Memorial Agricultural High School thanks Christopher Zucker from ZUCKER LEGAL, Tamworth for their assistance in complying this Semen Retention Rights Notice.

A vertical business card for Zuckerlegal. The top section features the company name 'zuckerlegal' in a bold, lowercase, sans-serif font, overlaid on a background image of a dog's head. Below this, the tagline 'SOLVING LEGAL ISSUES ON THE LAND AND IN THE CITY' is centered in a smaller, uppercase font. A list of services follows: 'LIVESTOCK & AGRICULTURE', 'LITIGATION & DISPUTE RESOLUTION', 'CONVEYANCING & PROPERTY TRANSFERS', 'INDUSTRY & SPORTING ORGANISATIONS', and 'DECEASED ESTATES'. The bottom section contains the name 'Chris Zucker', the email 'czucker@zuckerlegal.com.au', the website 'WWW.ZUCKERLEGAL.COM.AU', and the physical address: 'BOURKE ST CHAMBERS, 137 MARIUS ST TAMWORTH 2340, CNR MARIUS ST & BOURKE ST, PH 02 6761 2238, FAX 02 6761 2262'. The card uses a grayscale color scheme with various shades of gray and black.

**zuckerlegal**

**SOLVING LEGAL ISSUES  
ON THE LAND AND IN THE CITY**

LIVESTOCK & AGRICULTURE  
LITIGATION & DISPUTE RESOLUTION  
CONVEYANCING & PROPERTY TRANSFERS  
INDUSTRY & SPORTING ORGANISATIONS  
DECEASED ESTATES

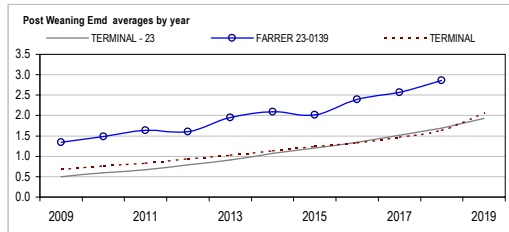
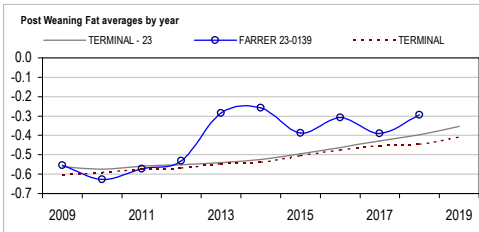
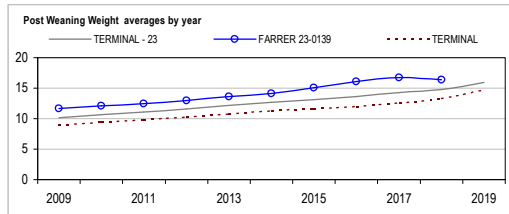
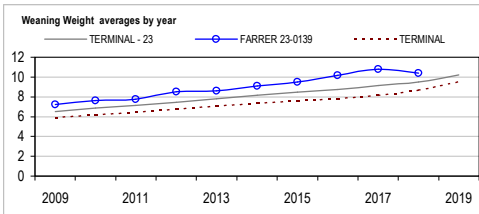
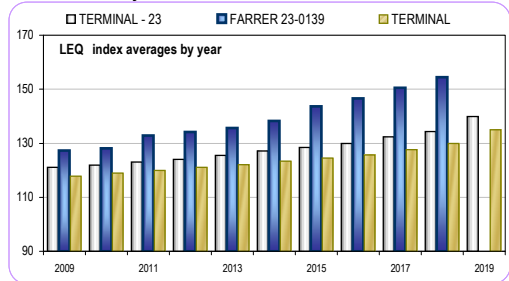
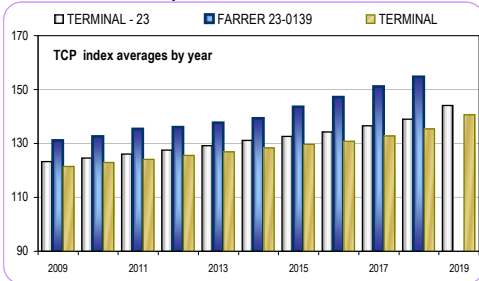
**Chris Zucker**  
czucker@zuckerlegal.com.au

**WWW.ZUCKERLEGAL.COM.AU**

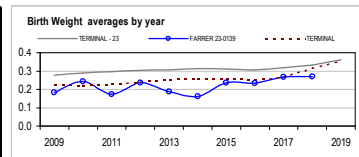
BOURKE ST CHAMBERS  
137 MARIUS ST TAMWORTH 2340  
CNR MARIUS ST & BOURKE ST  
PH 02 6761 2238 FAX 02 6761 2262

Analysis : **TERMINAL - 23**

Dated : **15 July 2019**



TERMINAL - 23								
	Bwt	Wwt	Pwwt	Pfat	Pemd	TCP	LEQ	Counts
2010	0.29	6.87	10.66	-0.57	0.60	<b>124.7</b>	122.0	44451
2011	0.30	7.14	11.12	-0.56	0.68	<b>126.1</b>	123.1	48253
2012	0.30	7.47	11.58	-0.55	0.80	<b>127.5</b>	124.1	48346
2013	0.31	7.82	12.15	-0.54	0.91	<b>129.3</b>	125.6	46563
2014	0.31	8.16	12.67	-0.53	1.07	<b>131.1</b>	127.1	44821
2015	0.31	8.45	13.14	-0.49	1.21	<b>132.6</b>	128.4	46848
2016	0.31	8.77	13.65	-0.46	1.35	<b>134.3</b>	130.0	47759
2017	0.32	9.14	14.26	-0.43	1.52	<b>136.6</b>	132.3	53714
2018	0.33	9.49	14.81	-0.40	1.69	<b>138.9</b>	134.3	46641
2019	0.36	10.21	15.95	-0.35	1.93	<b>144.1</b>	139.9	3467



Reports are prepared using data supplied by breeders and/or accredited operators for the analysis. SheepGenetics cannot guarantee the accuracy of this data. ASBV's are designed to estimate genetic merit of animals from the data supplied. Reports are provided to assist breeders but no liability is accepted for the outcome resulting from the use of this information.

FARRER 23-0139								
	Bwt	Wwt	Pwwt	Pfat	Pemd	TCP	LEQ	Counts
2010	0.24	7.61	12.10	-0.63	1.48	<b>132.6</b>	128.1	219
2011	0.17	7.76	12.50	-0.57	1.64	<b>135.4</b>	132.8	238
2012	0.24	8.52	12.99	-0.53	1.61	<b>136.1</b>	134.3	246
2013	0.19	8.60	13.64	-0.28	1.95	<b>137.8</b>	135.6	255
2014	0.16	9.12	14.14	-0.26	2.09	<b>139.4</b>	138.3	240
2015	0.24	9.50	15.08	-0.39	2.02	<b>143.6</b>	143.6	245
2016	0.23	10.18	16.05	-0.31	2.39	<b>147.3</b>	146.6	216
2017	0.27	10.79	16.75	-0.39	2.57	<b>151.2</b>	160.5	256
2018	0.27	10.39	16.39	-0.29	2.86	<b>154.8</b>	154.4	274
2019								0

Linkage Summary	
FARRER 23-0139	
Weights	Yes
Carcase	Yes
WEC	Yes
Reproduction	Yes
Site Code	230139





**FARRER  
ANGUS**

PRODUCT OF DISTINCTION

**18<sup>th</sup> ANNUAL ON – PROPERTY  
BULL SALE**

**Wednesday 24th June 2020  
12.30 pm, Trade Training Centre**

- **DNA Parental Verification**
- **Angus Breedplan Assured**
- **Mix of leading USA and Australian Sires**
- **Independently structurally assessed**
- **Vet checked**
- **Fully vaccinated**
- **Extensively handled by students**
- **Leading educational cattle stud**
- **Helmsman Buying system**
- **AuctionsPlus**

**Contact: Marty Peeters 0428 686 738**



Year 10 Animal Management recording at the Farrer Annual Artificial Insemination Program

## Farrer's White Suffolk - Buyer Instruction Slip

This slip must be completed by the buyer, and handed to the auctioneers prior to leaving the sale. No verbal instructions can be accepted

Name .....

Address .....

..... Post code.....

Phone ..... Fax.....

Agent ..... PIC: .....

Lot Number	Tag Number

Stud Transfer Required    No....    Yes.....    Flock Number.....

Delivery Instruction .....

.....

.....

.....

Signature of Purchaser or Agent: ..... Date.....

**In the event of any stock remaining for late delivery, all care and no responsibility is taken by vendors.**





Dubbo Show Team 2019



Dubbo Show Hoof and Hook Competition 2019



Amy Crosby Central Queensland University teaching students about Herddog Technology



Year 9 Animal Management at the annual Northern Schools

# FARRER WHITE SUFFOLKS

## PRODUCT OF DISTINCTION

### DIRECTIONS

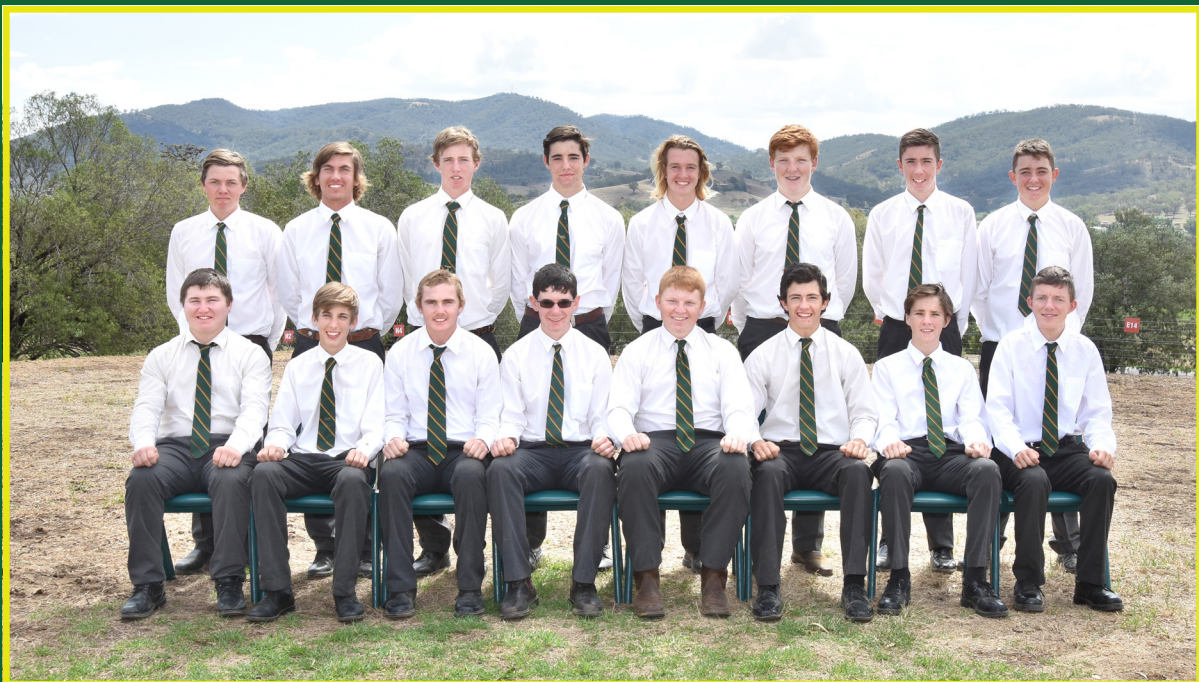
Farrer Memorial Agricultural High School is located 5.85 kilometres from Tamworth on Calala Lane. It can also be reached from the north by turning off the highway at the Nemingha Hotel, crossing the bridge over the Cockburn River and turning right at the first roundabout onto O'Briens Lane. Farrer's back gate is the first turn right after crossing over the Peel River.



Map from Google Maps.

## FARRER MEMORIAL AGRICULTURAL HIGH SCHOOL TAMWORTH

*"Proudly committed to producing thinking, well-educated, skilled, flexible  
and caring people capable of confident and effective participation in society"*



### Year 7 to 12 Day and Boarding School for Boys

**Join the Farrer Family! 2020 applications now available**

**Contact:** The Enrolments Officer, FMAHS  
585 Calala Lane, via Tamworth 2340

**Telephone:** (02) 6764 8611 • **Fax:** (02) 6760 9451

**Website:** [www.farrer.nsw.edu.au](http://www.farrer.nsw.edu.au)

**Email:** [farreragri-h.school@det.nsw.edu.au](mailto:farreragri-h.school@det.nsw.edu.au)