


DALKEITH

**POLL HEREFORDS
& HEREFORDS**

BULL AND FEMALE SALE



JULY 2019 HEREFORD GROUP BREEDPLAN														S/MKT	146
	CE Dir	CE DTRS	GL	BWT	200D	400D	600D	MILK	SS	EMA	RIB	RUMP	IMF	GRASS	144
	2.7	6.8	-2.7	5.4	43	73	106	11	3.2	6.1	1.1	1.5	1.4	GRAIN	179
	43%	36%	58%	72%	66%	67%	69%	50%	76%	49%	53%	57%	51%	EU	162

49th Annual Spring Sale



THURSDAY 12th SEPTEMBER 2019

COMMENCING AT 1.30pm



N108 Lot 2



N040 Lot 3



N030 Lot 5



N002 Lot 11

DALKEITH

POLL HEREFORDS & HEREFORDS

↓ Offering ↓

65 STUD 1ST CALVED HEIFERS/COWS WITH CALVES **65**
45 3 & 4 YR OLD COMMERCIAL COWS WITH CALVES **45**
80 PTIC STUD & COMMERCIAL 2 YR OLD HEIFERS **80**
40 DAN MORICE PTIC HEIFER **40**
30 2 YR OLD POLL HEREFORD BULLS **30**

(ALL BULLS USED AS YEARLINGS AT DALKEITH)

49th Annual Spring Sale



**TO BE HELD AT THE THELMA McMASTER SELLING COMPLEX
 ON THE PROPERTY "DALKEITH", SITUATED 1KM NORTH-WEST
 OF CASSILIS ON THE ROTHERWOOD ROAD, 37KM EAST OF
 COOLAH AND 43KM WEST OF MERRIWA.**



PRIVATE AIRCRAFT: All weather strips are at Mudgee (85km). A dry weather strip is adjacent to the Thelma McMaster Complex (1050m East-West).

PLEASE NOTE: Notification of landing times. Airstrip readings 25 & 07. Elev 1500ft.

HERD HEALTH STATUS: 3 x 7-1, Vibrio, Pesti Virus Vaccines - All bulls have 3 doses JBAS 7

INSPECTION AND LUNCH: from 10.00am, lunch 11.30am

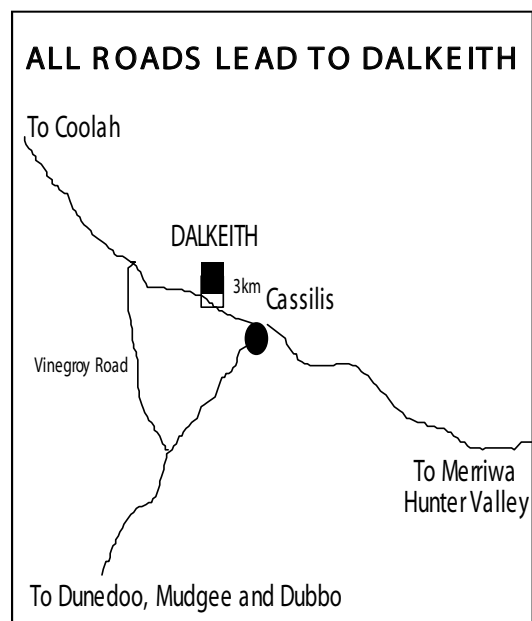
SALE STARTING TIME: 1.30pm

CONTACTS:

Antony Martin	(02) 63 76 4624 ah
	0427 761 123 mob
Charlie Martin	(02) 63 76 4606
	0427 649 980 mob
Damon Soster	(02) 63 76 1159 ah
Troy Rose	(02) 63 76 4623
Selling Complex	(02) 63 76 1123
	(02) 63 76 1149 fax

AGENTS: Milling Stuart Pty Ltd Dunedoo

	(02) 63 75 1009 work
	(02) 63 75 1528 fax
Angus Stuart	0427 751 009 mob
Jamie Stuart	0427 467 322 mob
Paul Dooley	(0458) 662 646 mob
Elders Pastoral (Mudgee)	
Phill Davis	0429 453 710 mob
Jason Pearce	0438 144 702 mob
Brian Kennedy	0427 844 047 mob



WEB: dalkeithpollherefords.com.au **EMAIL:** charlie@dalkeithpollherefords.com.au



POLL HEREFORDS & HEREFORDS

Welcome to Dalkeith's 49th Annual Bull & Female Sale. Thank you for taking the time to read this. The last couple of years have been very tough for all farming in Australia. Mother Nature has thrown everything at us, which has shown that women rule the world.

Because of this extended drought we have had to make some very tough & hard decisions; including how long, could we survive feeding all our livestock. Last year we were feeding nearly every animal on the place. This year we have made the hard decision to destock and stop doing Embryo Transfer (ET) work. This has seen all the Recipient cows (Recips) that were to be used in this year's ET program being sold & all those with calves at foot this year will be sold once the calves are weaned. Another tough decision that was made due to the lack of feed, was to sell the 3yr old Commercial Heifers, that were on agistment at Bonshaw QLD before the 2019 sale. We were forced to sell them up there as PTIC heifers. This has meant we have fewer commercial heifers for sale this year.

In the sale this year, there are:

- 45 X 3 & 4yr old Commercial Heifers.
- 80 PTIC Stud & Commercial 2yr old Heifers for sale.
- 35 Stud Heifers &
- 45 Commercial Heifers, pre-domically Turee Vale bred heifers.
- Dan Morice is putting up 40 PTIC Heifers, that were joined to Dalkeith bulls.

The next tough decision we have made, was to cut the Stud Cow numbers in half. We are offering 65 Stud Heifer/Cows with Registered calves at foot in this year's sale. The Stud Cows will be sold first, followed by the Commercial Cows & Heifers, then the Bulls. The break of Stud Cow's for sale are:

- There are 33 joined Stud Cows. They have been joined to the Kerlson Pines bull – Keystone M004, that we purchased with Curracabark Herefords last year. They have been joined from between 1/8/19 & 6/8/19 until a couple of days before the sale (1 & 1/2 cycles).
- There are 10 Stud cows not joined, due to having younger calves.
- There are 22 X 3yr Old Stud Heifers with their 1st or 2nd calf at foot.

In hindsight, we are having a forced drought reduction sale.

There are 30 X 2yr old Polled Hereford bulls for sale this year. It's amazing how much 'doing ability' these bulls have. They have never been fed any gain or pellets in their life; they have been fed hay intermittently. All bulls that have been put up for sale at Dalkeith since 1997 have been joined as yearlings as our herd bulls for the Commercial & Stud operation. Since that time, we have not had to refund any bulls for breakdowns. All bulls are run as one mob from weaning to sale day (except while they are joined). This takes a lot of the guess work out of trying to buy a bull - 'what you see is what you get'. "Darwin's Law" is put in place here, the bulls that have better 'doing ability'-basic survival instincts are the bulls that make the sale team (it must be noted that they have had different joining times). We have been weighing every stud calf at birth for the last 9 years & you will notice again this year we have put in the actual birth weights of each bull into the Catalogue to aid buyers with selection. We believe that Gestation Length (GL) also has a bearing on calving issues. We have put the number of days each bull is born early (this has been calculated on a 283 Day Gestation Length). Please note that with ET bred Bulls; - the Recip Dam has a bearing on the Gestation Length. There are no Bulls in the sale assisted at birth. All calves that are assisted at birth in the Stud are culled.

This year sees our best calving record ever (the drought has helped), we have had 300 odd calves born this year out of Stud & Commercial Heifers/Cows & Recips cows. We have only pulled one calf all year, this was a Recip cow that was a breach birth with the hind legs down. All the time & money that we have been putting into the Stud over the last 20 years, sees this year as the first year that there are 18 out of the 30 bulls (60%) put up for sale are sired by Dalkeith bred bulls. I would like to take this opportunity to thank Mark Scown - "Markowen", Ian Durkin - "Mountain Valley" & Tom Honner - "Minlacowie", for giving us the opportunity to

flush some of their best cows over the last 6 years. We feel that we now have some very good new female bloodlines in our system to keep the Stud going forward & rebuilding in the future.

We believe we have set up management systems second to none throughout our operation that you, as a cattle producer can have confidence in buying Dalkeith bulls that will meet your needs, - because we have got the fundamental breeding basics right. On a personal note, I would like to take this opportunity to let everyone know that myself and family – Phoebes, Chloe & Jack are planning to move to the coast next year while succession planning is worked out. I made this decision at the start of this year, for us to focus on the Terry Towelling Hat business. I would like to publicly thank Bryson & Aimee Porter on behalf of everyone at Dalkeith for being loyal & dedicated employees for the last 12 years, the commitment to improving the Stud herd on an everyday basis has been second to none. The quality of the cattle put up for sale this year, shows the hard work that they have put into improving the Dalkeith Cattle over the last 12 years, we would like to show our recognition for this to them.

Let's hope our 50th Annual Sale next year sees a wet year had by all. We hope to see you on Thursday the 12th of September 2019. Please join us after the Sale for refreshments and enjoy a few quiet ales with us all at Dalkeith.

Yours Sincerely

Charlie Martin

HORNED HEREFORD GENES WITHIN THESE BULLS

We would like all buyers to be aware that within this catalogue there are some bulls with horned Hereford genetics in their pedigree.

We would like to show our appreciation & thank all the staff

for all that they do throughout the year & in preparing for the sale. The staff at Dalkeith: - Damon & Sophie Soster, Dave & Wendy Mountford, Eddie Shirley, Brady Nairne, Ant & Barb Martin, Dave & Amy Ghent, Selwyn Tisdell & Tamika George, Troy & Sara Rose, Justin Rusten, Aimee & Bryson Porter, Charlie & Phoebe Martin, a special thanks to Bryce, Amy & Justin for their time & commitment to the breeding program of the Stud operation.

DALKEITH

COWS WITH CALVES Lots 34 - 63

LOT	ANIMALS	PURCHASER	Prices \$
34	ACME046, ACMF004, ACMH102, ACMJ164		
35	ACMH214, ACMH219, ACMK062, ACMK072, ACMK119, ACMK167, ACMK197, ACMK252		
36	ACML036, ACML051, ACML110, ACML123, ACML188, ACML194		
37	ACML211, ACML266, ACML274, ACML288, ACML332, ACML359		
38	ACMM080, ACMM189, ACMM196, ACMM318		
39	ACME286, ACMF055, ACMG053, ACMG197, ACMH002, ACMH091, ACMH119, ACMH294		
40	ACMJ089, ACMK276, ACML089, ACML131, ACML330, ACML331		
41	ACMM020, ACMM049, ACMM082, ACMM099, ACMM154		
42	ACMM214, ACMM271, ACMM312, ACMM343, HRTM953		
43	ACMM164, ACMM177, ACMM226, ACMM231, ACMM232, ACMM266		
44	ACMM241, ACMM279, ACMM304, ACMM317, ACMM348, ACMM353		
45	8 X 4yr Old Commercial Cows & Calves		
46	8 X 4yr Old Commercial Cows & Calves		
47	10 X 3yr Old Commercial Cows & Calves		
48	9 X 3yr Old Commercial Cows & Calves		
49	9 X 3yr Old Commercial Cows & Calves		
50	3 X 2yr Old Commercial Cows & Calves		
51	10 X PTIC 2yr Old Stud Heifers		
52	10 X PTIC 2yr Old Stud Heifers		
53	10 X PTIC 2yr Old Stud Heifers		
54	5 X PTIC 2yr Old Stud Heifers		
55	10 X PTIC 2yr Old Commercial Heifers		
56	10 X PTIC 2yr Old Commercial Heifers		
57	10 X PTIC 2yr Old Commercial Heifers		
58	10 X PTIC 2yr Old Commercial Heifers		
59	5 X PTIC 2yr Old Commercial Heifers		
60	10 X Dan Morice's PTIC Commercial Heifers		
61	10 X Dan Morice's PTIC Commercial Heifers		
62	10 X Dan Morice's PTIC Commercial Heifers		
63	10 X Dan Morice's PTIC Commercial Heifers		

EXPLANATORY NOTES OF EBV'S

The EBVs contained within this catalogue can be validly compared with other Hereford GROUP BREEDPLAN EBVs in other herds. These EBVs cannot be used to compare animals of another breed.

ESTIMATED BREEDING VALUES (EBVs)

An animal's breeding value is its genetic merit, half of which will be passed on to its progeny. While we will never know the exact breeding value, for performance traits it is possible to make good estimates. These are called Estimated Breeding Values (EBVs). The EBV is therefore the best estimate of an animal's genetic merit for that trait. EBVs are expressed as the difference between an individual animal's genetics and the genetic base to which the animal is compared.

ACCURACY

An accuracy value is presented with every EBV and gives an indication of the amount of information that has been used in the calculation of that EBV. The higher the accuracy, the lower the likelihood of change in the animal's EBV as more information is analysed for that animal or its relatives.

Accuracy Range	Interpretation
Less than 50%	The EBVs are preliminary. EBVs in this range will have been calculated based on very little information. These EBVs could change substantially as more direct performance information becomes available on the animal.
50 – 74%	The EBVs are of medium accuracy. EBVs in this range will usually have been calculated based on the animal's own performance and some limited pedigree information.
75 – 90%	The EBVs are of medium-high accuracy. EBVs in this range will usually have been calculated based on the animal's own performance coupled with the performance for a small number of the animal's progeny.
90% and above	The EBVs are a high accuracy estimate of the animal's true breeding value. It is unlikely that EBVs will change considerably with addition of more progeny data.

CALVING EASE

Calving Ease EBVs are based on calving difficulty scores, birth weights and gestation length information. More positive EBVs are favourable and indicate easier calving.

Direct: Direct calving ease indicates how this animal influences the birth of its progeny.

Daughters: Calving Ease-Daughter's indicates how well the animal produces daughters that have easier calving.

BIRTH

Gestation Length: The GL EBV (days) is based on AI records. Lower (negative) GL EBVs indicate shorter gestation length and generally easier calving.

Birth Weight: The Birth Weight EBV (kg) is based on the measured birth weight of animals, adjusted the dam age. The lower the value, the lighter the calf at birth & the lower the likelihood of a difficult birth. This is particularly important when selecting sires for use over heifers.

FERTILITY

Scrotal Size: The SS EBV (cm) is an indicator of male fertility in regards to semen quality and quantity. Higher (positive) EBVs indicate higher fertility. SS is also positively associated with female fertility.

Days to Calving: The DC EBV (days) is an indicator of female fertility based on the time between a cow's first exposure to a bull and when she subsequently calves. Cows that calve late in the season or fail to calve are penalised. This is more useful as a sire trait. Lower (negative) EBVs are preferred indicating shorter days to calving for the sire's daughters.

GROWTH

Milk: 200-Day Milk EBV (kg) is an estimate of an animal's milking ability. For sires, this EBV is indicative of their daughter's milking ability as it affects the 200-day weight of their calves.

200-Day Growth: The 200-Day EBV (kg) is calculated from the weight of animals taken between 80 and 300 days of age. Values are adjusted to 200 days and for dam age. This EBV is the best single estimate of an animal's genetic merit for growth to early ages.

400-Day Weight: The 400-Day Weight EBV (kg) is calculated from the weight of progeny taken between 301 and 500 days of age, adjusted to 400 days and for dam age. This EBV is the best single estimate of an animal's genetic merit for yearling weight.

600-Day Weight: The 600-Day Weight EBV (kg) is calculated from the weight of progeny taken between 501 and 900 days of age, adjusted to 600 days and for dam age. This EBV is the best single estimate of an animal's genetic merit for growth beyond yearling age.

Mature Cow Weight: The Mature Cow Weight EBV (kg) is an estimate of the genetic difference in cow weight at 5 years of age. Smaller or more moderate EBVs are generally more favourable.

CARCASE

Carcase Weight: The Carcase Weight EBV (kg) estimates the genetic difference in carcase weight at a standard age of 650 days.

Eye Muscle Area: The EMA EBV (cm²) estimates genetic differences in eye muscle area at the 12/13th rib site of a 300kg dressed carcase. More positive EBVs indicate better muscling on animals.

Rib Fat: The Rib Fat EBV (mm) estimates the genetic differences in fat depth at the 12/13th rib in a 300kg dressed carcase. More positive EBVs indicate more subcutaneous fat and earlier maturity.

Rump Fat: The Rump Fat EBV (mm) estimates the genetic differences in fat depth at the P8 site of a 300kg dressed carcase. More positive EBVs indicate more subcutaneous fat and earlier maturity.

Retail Beef Yield %: The RBY% EBV (%) represents total (boned out) meat yield as a percentage of a 300kg dressed carcase. A more positive EBV indicates higher percentage yield for the 300kg carcase size.

Intramuscular Fat %: The IMF% EBV (%) is an estimate of the genetic difference in the percentage of intra-muscular fat at the 12/13th rib site in a 300kg carcase. Depending on market targets, larger more positive values are generally more favourable.

SELECTION INDICES

Supermarket: The Supermarket Index estimates the genetic differences between animals in net profitability per cow joined for an example commercial herd targeting the domestic supermarket trade. Steers are either finished on grass or grain (eg 50-70 days). Steers are assumed marketed at 450kg live weight (250kg HSCW and 12mm P8 fat depth) at 17 months of age. Daughters are retained for breeding. In response to industry feedback regarding eating quality and tenderness, a small premium has been placed on marbling.

Grass Fed Steer: The Grass Fed Steer Index estimates the genetic differences between animals in net profitability per cow joined for an example commercial herd targeting pasture finished steers. Steers are assumed marketed at 600kg live weight (330kg HSCW and 8mm P8 fat depth) at 23 months of age. Daughters are retained for breeding. In response to industry feedback regarding eating quality and tenderness, a small premium has been placed on marbling.

Grain Fed Steer: The Grain Fed Steer Index estimates the genetic differences between animals in net profitability per cow joined for an example commercial herd targeting pasture grown steers with a 125day feedlot finishing period for the grain fed markets. Steers are assumed marketed at 600kg live weight (330kg HSCW and 20mm P8 fat) at 20 months of age. Daughters are retained for breeding. There is a significant premium if steers reach a marble score of 2 or greater.

EU: The EU Index estimates the genetic differences between animals in net profitability per cow joined for an example commercial herd targeting pasture finished steers for the EU market. Steers are assumed marketed at 620kg live weight (340kg HSCW and 14mm P8 fat depth) at 24 months of age. Daughters are retained for breeding. There is no marbling requirement.

The Hereford GROUP BREEDPLAN Estimated Breeding Values contained in this Sale Catalogue were compiled by the Agricultural Business Research Institute (ABRI) from data supplied by the breeders. Neither Herefords Australia Limited nor the ABRI oversee or audit the collection of the data.

The “Completeness of Performance” Herd Rating System

The “Completeness of Performance” herd rating system assesses the quantity of pedigree and performance information that has been submitted to BREEDPLAN by an individual seedstock herd.

While ultimately EBV accuracy values provide an indication of the reliability of an animals EBV’s, one of the key factors underpinning the accuracy of EBV’s is the quantity of performance information that has been recorded with BREEDPLAN by a herd.

The star rating for a herd is calculated based on the proportion of calves within the herd born in a fixed five year period that have performance recorded for each trait. Different criteria are used within each individual breed depending on the traits for which EBV’s are calculated within the breed. Each herd receives a star rating on a 0 – 5 scale (including half stars) that summarized the relative “completeness” of their performance information.

Following is a description of each star rating:

Star Rating	Description
5	Herds with a star rating of “5” are gold standard. They are considered to be recording “complete” performance information with BREEDPLAN for all animals across all traits for which EBV’s are available.
4 or 4.5	Herds with a star rating of “4” or “4.5” are silver standard. They are considered to be recording comprehensive performance information with BREEDPLAN for most animals and traits, but are recording less performance than a 5 star herd.
3 or 3.5	Herds with a star rating of “3” or “3.5” are considered bronze standard. They are considered to be recording performance information with BREEDPLAN for a reasonable number of traits or animals, but are recording less performance information than a 4 or 5 star herd.
2.5 or less	Herds with a rating of “2.5” or less are recording information with BREEDPLAN but not for all animals or traits. They are recording less performance information than a 3, 4 or 5 star herd.

Some interesting facts on the 2019 Sale Bulls

- 11/30 or 1/3 of the Bulls have a Birth EBV less than 10% of their 200 Day Growth EBV’s.
- 25/30 or 83% of the Bulls have a Birth EBV less than 10% of their 400 Day Growth EBV – real curve benders from start to finish.
- 24/30 or 80% of the Bulls EBV’s for IMF% (Intra Muscle Fat) are on or above the Breed Average. 19/30 or 63% of the Bulls EBV’s for IMF% are in the top 25% of the Breed.
- 18/30 or 60% of the Bulls are Sired by Dalkeith bred bulls. 28/30 or 93% of the Bulls have Donors in their Pedigree.
- Dalkeith has had a 5 Star Rating for “Completeness of Performance” with Breedplan since 2010 (9 years).
- 22/30 or 73% of the Bulls are above Breed average for all Indexes.

Lot 1 **DALKEITH NUMBER1 N117** **Born: 22/04/2017** **EP: 100 / 100** **Tattoo N117**
Birth Weight: 35.0 **Polled**


ALLENDALE SUPERSTAR (B28)
 ALLENDALE YALLAROI 2 (E25)
 ALLENDALE FANCY (A181)
 OKAWA COMMODORE 2076
 ALLENDALE FANCY (C210)
 ALLENDALE FANCY (Y98)
 ALLENDALE NATIONAL (W168)
 ALLENDALE PICKERING (A28)
 WIRANYA PURITY (Q19)
 YALGOO ENGINEER (N95)
 DALKEITH CHRISTINA 42 (S201)

Born 1day early.
 2018 joined to blue tag 1st calvers on Yarrowonga.

Dam: DALKEITH CHRISTINA 90 (E109)

DALKEITH CHRISTINA 62 (W065)
 DALKEITH CHRISTINA 90 (E109)

JULY 2019 HEREFORD GROUP BREEDPLAN

	CE Dir	CE DTRS	GL	BWT	200D	400D	600D	MILK	SS	EMA	RIB	RUMP	IMF
	2.2	-0.2	-1.5	3.3	35	55	71	8	2.4	2.8	0.5	0.9	0.5
	47%	38%	76%	75%	70%	71%	73%	52%	78%	52%	56%	60%	55%

S/MKT	87
GRASS	84
GRAIN	96
EU	97

Purchaser..... Price.....

Lot 2 **DALKEITH NED KELLY N108** **Born: 21/04/2017** **EP: 100 / 100** **Tattoo N108**
Birth Weight: 37.5 **Polled**


CANNAWIGRA S5 BATMAN (X08)
 CANNAWIGRA COMMANDER (Z51)
 CANNAWIGRA ANABEL (V108)
 MOUNTAIN VALLEY OOZY (Y45)
 MOUNTAIN VALLEY (B44)
 MOUNTAIN VALLEY GLITTER (Y79)
 WIRRUNA ECHUCA (E99)
 DALKEITH HARDON (H041)
 MOUNTAIN VALLEY MATCHLESS (A23)
 HEATHERDALE SOVEREIGN (V11)
 DALKEITH DEAREST 231 (W470)

Born 2days early.
 2018 joined to blue tag 1st calvers on Yarrowonga.

Dam: DALKEITH DEAREST (K331)

DALKEITH DEAREST 260 (A224)
 DALKEITH DEAREST 231 (W470)

JULY 2019 HEREFORD GROUP BREEDPLAN

	CE Dir	CE DTRS	GL	BWT	200D	400D	600D	MILK	SS	EMA	RIB	RUMP	IMF
	1.2	-4.0	-0.5	4.5	35	61	88	8	1.3	4.7	0.4	0.9	0.1
	45%	37%	73%	74%	69%	69%	72%	51%	77%	52%	55%	60%	54%

S/MKT	98
GRASS	94
GRAIN	101
EU	107

Purchaser..... Price.....

Lot 3 **DALKEITH NOBLE N040** **Born: 23/03/2017** **EP: 100 / 100** **Tattoo N040**
Birth Weight: 38.5 **Polled**


LEELANDS TRANSITION T7
 KAIRURU ABERDEEN 3047
 KAIRURU PLUM T44
 DOONBIDDIE HUSTLER (R51)
 KAIRURU LEONORA P30
 BELLCO BOWEN (R074)
 HEATHERDALE SOVEREIGN (V11)
 HEATHERDALE JANICE (R65)
 HOME HILL TEO (U015)
 DALKEITH PANSY 134 (U452)

2018 used as Dalkeith Stud Sire-used over Stud Cows.
 2019 has 24 Stud calves on the ground, with an average actual birth weight of 35kg-none pulled .
 Semen will be used within the herd in the future.
 Potential Stud Sire.

Dam: DALKEITH PANSY 194 (D158)

DALKEITH PANSY 155 (X400)
 DALKEITH PANSY 194 (D158)

JULY 2019 HEREFORD GROUP BREEDPLAN

	CE Dir	CE DTRS	GL	BWT	200D	400D	600D	MILK	SS	EMA	RIB	RUMP	IMF
	1.4	-1.6	0.7	6.2	35	58	85	13	1.0	2.7	0.6	1.2	0.3
	52%	45%	65%	75%	70%	71%	73%	57%	77%	54%	58%	62%	57%

S/MKT	82
GRASS	75
GRAIN	78
EU	87

Purchaser..... Price.....


Breed Averages	1.10	1.20	-0.30	4.40	33.00	54.00	77.00	16.00	2.00	3.20	0.50	0.50	0.40	Practical Systems STOCKBOOK
														Top 10% Top 25% Above Av

Lot 4 DALKEITH NIPPER N082 Born: 10/04/2017 EP: 100 / 100 Tattoo N082
 SOUTH BUKALONG WALKER 6 (W688) Birth Weight: 37.0 Polled
 SOUTH BUKALONG WALLACE 2 (Y781)

Sire: DALKEITH LEMON (L012)
 SOUTH BUKALONG VICTORIA 152 (V510) 2yr Old Heifers 1st calf. 2018 used as Dalkeith Stud Sire-used over Stud Heifers/Cows. 2019 has 26 Stud calves on the ground, with an average actual birth weight of 35kg-none pulled. If you like figures, he is a ripper. Top 1% of breed for all Indexes, top 5% for CE DTRS, 200/400/600 day, SS, EMA & IMF EBVs. Semen will be used within the herd in the future. Potential Stud Sire.
 MARKOWEN INVINCIBLE (X34)
 MARKOWEN LADYBIRD (A18)
 MARKOWEN LADYBIRD 4 (U9)
 MATARIKI HOLY-SMOKE 0390
 MATARIKI 0380
 MATARIKI BRACELET 050223

Dam: DALKEITH MINERVA LASS (L175)
 DALKEITH (Y103)
 DALKEITH MINERVA LASS 99 (C217)
 DALKEITH MINERVA LASS 87 (X509)

JULY 2019 HEREFORD GROUP BREEDPLAN

	CE Dir	CE DTRS	GL	BWT	200D	400D	600D	MILK	SS	EMA	RIB	RUMP	IMF
	2.7	6.8	-2.7	5.4	43	73	106	11	3.2	6.1	1.1	1.5	1.4
	43%	36%	58%	72%	66%	67%	69%	50%	76%	49%	53%	57%	51%

S/MKT	146
GRASS	144
GRAIN	179
EU	162


Purchaser..... Price.....

Lot 5 DALKEITH NUDE N030 Born: 22/03/2017 EP: 100 / 100 Tattoo N030
 ALLENDALE SUPERSTAR (B28) Birth Weight: 42.0 Polled
 ALLENDALE YALLAROI 2 (E25)

Sire: ALLENDALE FCF BARKLY (H127)
 2018 used as Dalkeith Stud Sire-used over Stud Heifers/Cows.
 2019 has 28 Stud calves on the ground, with an average actual birth weight of 35kg-none pulled. Top 5% of breed for 200day EBVs. Semen will be used within the herd in the future. Potential Stud Sire.
 OKAWA COMMODORE 2076
 ALLENDALE FANCY (C210)
 ALLENDALE FANCY (Y98)
 GRASSMERE SPARK 330
 GRASSMERE SPARK 555
 GRASSMERE PRINCESS 245

Dam: MOUNTAIN VALLEY MATCHLESS (H161)
 BOBANKEN X-MARK (X157)
 MOUNTAIN VALLEY MATCHLESS (A23)
 MOUNTAIN VALLEY MATCHLESS (W27)

JULY 2019 HEREFORD GROUP BREEDPLAN

	CE Dir	CE DTRS	GL	BWT	200D	400D	600D	MILK	SS	EMA	RIB	RUMP	IMF
	-4.5	-1.2	-0.7	6.7	47	69	90	9	0.7	3.6	0.8	1.2	0.9
	48%	38%	61%	75%	70%	70%	73%	50%	77%	53%	56%	61%	56%

S/MKT	87
GRASS	82
GRAIN	96
EU	95


Purchaser..... Price.....

Lot 6 DALKEITH NINJA N133 Born: 25/04/2017 EP: 100 / 100 Tattoo N133
 EBBX CALGARY Birth Weight: 48.5 Polled
 DEBARRY CALGARY (C58)

Sire: ALLENDALE ANZAC (H175)
 2018 sent to Bonshaw Qld on adjustment-joined to Dalkeith Com/Barbs/Turee Vale cows.
 DEBARRY DALLAS X75
 ALLENDALE NATIONAL (W168)
 ALLENDALE DAWN (B22)
 ALLENDALE DAWN T60
 MARKOWEN EXECUTIVE (Q2)
 MARKOWEN NO EXCUSE (A29)

Dam: DALKEITH LADYBIRD (K050)
 MARKOWEN LYDIA 4 (V15)
 MARKOWEN INVINCIBLE (X34)
 MARKOWEN LADYBIRD (A18)
 MARKOWEN LADYBIRD 4 (U9)

JULY 2019 HEREFORD GROUP BREEDPLAN

	CE Dir	CE DTRS	GL	BWT	200D	400D	600D	MILK	SS	EMA	RIB	RUMP	IMF
	-6.0	-1.7	-1.1	6.1	35	62	82	11	2.6	2.0	0.5	0.5	1.0
	48%	39%	74%	74%	70%	70%	72%	53%	78%	52%	56%	60%	55%

S/MKT	71
GRASS	65
GRAIN	83
EU	79

Purchaser..... Price.....

Breed Averages	CE Dir	CE DTRS	GL	BWT	200D	400D	600D	MILK	SS	EMA	RIB	RUMP	IMF	<i>Practical Systems STOCKBOOK</i>		
	1.10	1.20	-0.30	4.40	33.00	54.00	77.00	16.00	2.00	3.20	0.50	0.50	0.40	Top 10%	Top 25%	Above Av

Lot 7 DALKEITH BPP NATHAN N161 Born: 1/05/2017 EP: 100 / 100 Tattoo N161
 CANNAWIGRA S5 BATMAN (X08) Birth Weight: 46.5 Polled
 CANNAWIGRA COMMANDER (Z51)

Sire: MOUNTAIN VALLEY GAMBLER (G14)
 CANNAWIGRA ANABEL (V108)
 MOUNTAIN VALLEY OOZY (Y45)
 MOUNTAIN VALLEY (B44)
 MOUNTAIN VALLEY GLITTER (Y79)
 OKAWA COMMODORE 2076
 2018 joined to blue tag 1st calvers on Yarrawonga.

Dam: PORTER JANE BPP (J13-075)
 CHESTER COMMODORE (D32)
 QUAMBY PLAINS JESS (X102)
 DALKEITH DIVIDEND 598 (F004)
 ALLENDALE OPINION (U122)
 DALKEITH DIVIDEND 513 (A267)

JULY 2019 HEREFORD GROUP BREEDPLAN

	CE Dir	CE DTRS	GL	BWT	200D	400D	600D	MILK	SS	EMA	RIB	RUMP	IMF
	-2.4	-3.7	1.4	5.2	35	63	88	11	0.7	4.0	-0.2	-0.2	-0.3
	45%	37%	74%	74%	69%	69%	72%	52%	78%	52%	55%	60%	54%

S/MKT	81
GRASS	74
GRAIN	73
EU	87

Purchaser..... Price.....

Lot 8 DALKEITH NOGGIN N042 Born: 24/03/2017 EP: 100 / 100 Tattoo N042
 YARRAM HOT SHOT (P028) Birth Weight: 39.5 Polled
 CAPETHORNE HOT SHOT 03 22

Sire: MATARIKI HOLY-SMOKE 0390
 CAPETHORNE AMETHYST U21
 KOANUI BULL'S EYE R60
 MATARIKI GIRLIE 00323
 MATARKI GIRLIE 3 Born on due date.
 KARINA BEN LOMOND (W20) 2018 joined to black tag heifers on Yarrawonga.

Dam: DALKEITH PANSY (K114)
 KARINA CHERRY (Z8)
 KARINA MARSALA (S18)
 DALKEITH PANSY 215 (F106)
 MARKOWEN BROKER (B30)
 DALKEITH PANSY 176 (Z284)

JULY 2019 HEREFORD GROUP BREEDPLAN

	CE Dir	CE DTRS	GL	BWT	200D	400D	600D	MILK	SS	EMA	RIB	RUMP	IMF
	-2.0	-1.8	-2.5	4.8	37	64	86	12	2.6	3.3	0.5	0.6	0.8
	55%	52%	76%	74%	70%	70%	73%	60%	78%	57%	60%	63%	59%

S/MKT	96
GRASS	92
GRAIN	110
EU	108

Purchaser..... Price.....

Lot 9 DALKEITH NAKED N190 Born: 20/05/2017 EP: 100 / 100 Tattoo N190
 MATARIKI HOLY-SMOKE 0390 Birth Weight: 41.0 Scurred
 MATARIKI 0380

Sire: DALKEITH LEO (L190)
 MATARIKI BRACELET 050223
 YAMBRO CONRAD (C26)
 DALKEITH DOREEN (G182)
 DUNOON DOREEN (C019) 2yr Old Heifers 1st calf.
 SOUTH BUKALONG WALKER 6 (W688) Top 5% of breed for all Indexes & IMF% EBVs.
 SOUTH BUKALONG WALLACE 2 (Y781) 2018 joined to black tag heifers on Yarrawonga.

Dam: DALKEITH DIVIDEND (L018)
 SOUTH BUKALONG VICTORIA 152 (V510)
 DALKEITH DIVIDEND (J119)
 MARKOWEN NO EXCUSE (A29)
 DALKEITH INNOCENT 107 (F194)

JULY 2019 HEREFORD GROUP BREEDPLAN

	CE Dir	CE DTRS	GL	BWT	200D	400D	600D	MILK	SS	EMA	RIB	RUMP	IMF
	7.2	4.9	-2.7	3.4	36	60	89	13	2.4	4.5	1.3	1.6	1.5
	42%	35%	57%	71%	65%	66%	69%	44%	76%	48%	53%	57%	49%

S/MKT	133
GRASS	132
GRAIN	166
EU	148

Purchaser..... Price.....

Breed Averages	CE Dir	CE DTRS	GL	BWT	200D	400D	600D	MILK	SS	EMA	RIB	RUMP	IMF	Practical Systems STOCKBOOK
	1.10	1.20	-0.30	4.40	33.00	54.00	77.00	16.00	2.00	3.20	0.50	0.50	0.40	Top 10%
														Top 25%
														Above Av

Lot
10

DALKEITH NIGGA N288

Born: 11/06/2017 EP: 100 / 100

Tattoo N288

MATARIKI HOLY-SMOKE 0390 **Birth Weight: 36.0** Scurred
MATARIKI 0380


Sire: DALKEITH LEO (L190)

MATARIKI BRACELET 050223
YAMBRO CONRAD (C26)
DALKEITH DOREEN (G182)
DUNOON DOREEN (C019)
SOUTH BUKALONG WALLACE 2 (Y781)
WIRRUNA ECHUCA (E99)
2018 joined to Barbs heifers at Tangaratta.
Top 5% of breed for Calving Ease DTRS EBVs.
Potential Heifer Bull.

Dam: DALKEITH MARINDA (J093)

WIRRUNA GOLDEN VANITY (C32)
MARKOWEN CLASSIC (C49)
DALKEITH MARINDA 398 (F045)
DALKEITH MARINDA 362 (C174)

JULY 2019 HEREFORD GROUP BREEDPLAN

	CE Dir	CE DTRS	GL	BWT	200D	400D	600D	MILK	SS	EMA	RIB	RUMP	IMF
	9.3	7.2	0.0	1.9	32	52	81	13	1.3	3.5	0.5	0.8	1.0
	42%	34%	57%	72%	66%	67%	70%	47%	76%	48%	53%	57%	50%

S/MKT	116
GRASS	114
GRAIN	135
EU	127

Purchaser..... Price.....

Lot
11

DALKEITH NYMPHO N002

Born: 10/03/2017 EP: 100 / 100

Tattoo N002

MATARIKI HOLY-SMOKE 0390 **Birth Weight: 25.5** Scurred
MATARIKI 0380


Sire: DALKEITH LEO (L190)

MATARIKI BRACELET 050223
YAMBRO CONRAD (C26)
DALKEITH DOREEN (G182)
DUNOON DOREEN (C019)
SOUTH BUKALONG WALKER 6 (W688)
SOUTH BUKALONG WALLACE 2 (Y781)
SOUTH BUKALONG VICTORIA 152 (V510)
2yr Old Heifers 1st calf.
Top 1% of breed for IMF%, top 5% of breed for all Indexes, CE Dir/CE DTRS, Birth Weight, SS, Rib & Rump EBVs.
2018 joined to heifers at Dalkeith.
Potential Heifer Bull.

Dam: DALKEITH CURLEY (L031)

KARINA CHERRY (Z8)
MERAWAH SHAMROCK (C73)
DALKEITH CURLEY (J094)

JULY 2019 HEREFORD GROUP BREEDPLAN

	CE Dir	CE DTRS	GL	BWT	200D	400D	600D	MILK	SS	EMA	RIB	RUMP	IMF
	11.2	7.6	-2.5	0.1	25	51	73	13	3.6	4.6	1.7	2.4	1.9
	42%	35%	56%	72%	66%	67%	70%	45%	76%	49%	53%	57%	50%

S/MKT	133
GRASS	136
GRAIN	175
EU	151

Purchaser..... Price.....

Lot
12

DALKEITH NOODLE N089

Born: 14/04/2017 EP: 100 / 100

Tattoo N089

SOUTH BUKALONG WALKER 6 (W688) **Birth Weight: 29.0** Polled
SOUTH BUKALONG WALLACE 2 (Y781)


Sire: DALKEITH LIKEABULL (L017)

SOUTH BUKALONG VICTORIA 152 (V510)
DALKEITH FRED (F075)
DALKEITH LIONESS (H285)
DUNOON LIONESS (B045)
KOANUI ROCKET 0219
MARKOWEN FEDERER (F6)
2yr Old Heifers 1st calf.
Top 5% of breed for Birth Weight EBVs.
2018 joined to heifers at Dalkeith.
Potential Heifer Bull.

Dam: DALKEITH MARINDA (L158)

MARKOWEN DIANA (D19)
MINLACOWIE XCITEMENT (X127)
DALKEITH MARINDA 443 (H105)
DALKEITH MARINDA 348 (C073)

JULY 2019 HEREFORD GROUP BREEDPLAN

	CE Dir	CE DTRS	GL	BWT	200D	400D	600D	MILK	SS	EMA	RIB	RUMP	IMF
	9.7	6.1	-2.8	0.9	28	49	68	17	2.4	1.1	0.9	1.6	0.8
	39%	32%	58%	71%	66%	66%	69%	44%	76%	48%	53%	57%	50%

S/MKT	98
GRASS	97
GRAIN	112
EU	106

Purchaser..... Price.....

Breed Averages	1.10	1.20	-0.30	4.40	33.00	54.00	77.00	16.00	2.00	3.20	0.50	0.50	0.40
-----------------------	------	------	-------	------	-------	-------	-------	-------	------	------	------	------	------

Practical Systems STOCKBOOK
Top 10% Top 25% Above Av

Lot 13 DALKEITH NUT SACK N176 Born: 11/05/2017 EP: 100 / 100 Tattoo N176
 SOUTH BUKALONG WALKER 6 (W688) Birth Weight: 36.5 Polled
 SOUTH BUKALONG WALLACE 2 (Y781)
 SOUTH BUKALONG VICTORIA 152 (V510)

Sire: DALKEITH LIKEABULL (L017)
 DALKEITH LIONESS (H285) DALKEITH FRED (F075)
 DUNOON LIONESS (B045) 2yr Old Heifers 1st calf.
 ALLENDALE YALLAROI 2 (E25) Top 5% of breed for Gestation Length EBVs.
 ALLENDALE FCF BARKLY (H127) 2018 joined to heifers at Dalkeith.
 Potential Heifer Bull.

Dam: DALKEITH DEAREST (L165)
 DALKEITH DEAREST 303 (G024) KARINA CHERRY (Z8)
 DALKEITH DEAREST 286 (D234)

JULY 2019 HEREFORD GROUP BREEDPLAN

	CE Dir	CE DTRS	GL	BWT	200D	400D	600D	MILK	SS	EMA	RIB	RUMP	IMF
	9.0	6.2	-4.2	2.4	36	57	77	14	2.7	2.1	1.0	1.8	0.8
	40%	32%	58%	71%	66%	67%	70%	43%	76%	48%	53%	57%	50%

S/MKT	114
GRASS	113
GRAIN	131
EU	125

Purchaser..... Price.....

Lot 14 DALKEITH NATIVE N091 Born: 15/04/2017 EP: 100 / 100 Tattoo N091
 CLOVERLEE SPOT ON (E92) OLDFIELD ACHILLIES (B22) Birth Weight: 31.0 Polled

Sire: DALKEITH LEADER (L169)
 DALKEITH PANSY 236 (G515) DEBARRY LAST DAY (A168)
 YARRAM LOTTERY (X122)
 DALKEITH PANSY 155 (X400) 2yr Old Heifers 1st calf.
 CAPETHORNE HOT SHOT 03 22 2018 joined to heifers at Dalkeith.
 MATARIKI HOLY-SMOKE 0390 Potential Heifer Bull.

Dam: DALKEITH MINERVA (L145)
 DALKEITH MINERVA (J104) MATARIKI GIRLIE 00323
 KAIRURU FLINT 8058
 MERAWAH MINERVA (V31)

JULY 2019 HEREFORD GROUP BREEDPLAN

	CE Dir	CE DTRS	GL	BWT	200D	400D	600D	MILK	SS	EMA	RIB	RUMP	IMF
	6.7	2.4	-1.4	2.1	28	44	64	14	1.9	3.5	1.3	1.8	0.7
	41%	33%	56%	71%	65%	66%	69%	43%	76%	48%	52%	56%	49%

S/MKT	100
GRASS	100
GRAIN	115
EU	113

Purchaser..... Price.....

Lot 15 DALKEITH NIPPLE N150 Born: 28/04/2017 EP: 100 / 100 Tattoo N150
 CLOVERLEE SPOT ON (E92) OLDFIELD ACHILLIES (B22) Birth Weight: 34.5 Polled

Sire: DALKEITH LEADER (L169)
 DALKEITH PANSY 236 (G515) DEBARRY LAST DAY (A168)
 YARRAM LOTTERY (X122)
 DALKEITH PANSY 155 (X400) 2yr Old Heifers 1st calf.
 MARKOWEN TABOR (X10) 2018 joined to heifers at Dalkeith.
 MARKOWEN INTRUDER (Z33) Potential Heifer Bull.

Dam: DALKEITH DEAREST (L026)
 DALKEITH DEAREST 254 (Z345) MARKOWEN LYDIA 5 (X13)
 ALLENDALE OPINION (U122)
 DALKEITH DEAREST 217 (U349)

JULY 2019 HEREFORD GROUP BREEDPLAN

	CE Dir	CE DTRS	GL	BWT	200D	400D	600D	MILK	SS	EMA	RIB	RUMP	IMF
	7.8	3.3	-1.6	2.3	25	40	53	11	1.4	2.3	0.5	0.6	0.5
	41%	33%	53%	71%	66%	67%	70%	45%	76%	48%	52%	57%	49%

S/MKT	76
GRASS	76
GRAIN	86
EU	88

Purchaser..... Price.....


Breed Averages	1.10	1.20	-0.30	4.40	33.00	54.00	77.00	16.00	2.00	3.20	0.50	0.50	0.40	Practical Systems STOCKBOOK
														Top 10%
														Top 25%
														Above Av

Lot 16 DALKEITH NITWIT N173 Born: 9/05/2017 EP: 100 / 100 Tattoo N173
 SOUTH BUKALONG WALKER 6 (W688) Birth Weight: 33.0 Polled
 SOUTH BUKALONG WALLACE 2 (Y781)
 SOUTH BUKALONG VICTORIA 152 (V510)

Sire: DALKEITH LEMON (L012)
 MARKOWEN INVINCIBLE (X34)
 MARKOWEN LADYBIRD (A18)
 MARKOWEN LADYBIRD 4 (U9)
 MT. RAVEN HIJACKER (W36)
 DALKEITH GIN (G037)
 MT. RAVEN HIJACKER (W36)
 Twin to N174 (Lot 17).
 2018 joined to heifers at Dalkeith.

Dam: DALKEITH PANSY (J144)
 DALKEITH INNOCENT 85 (B259)
 MARKOWEN BROKER (B30)
 DALKEITH PANSY 215 (F106)
 DALKEITH PANSY 176 (Z284)

JULY 2019 HEREFORD GROUP BREEDPLAN

	CE Dir	CE DTRS	GL	BWT	200D	400D	600D	MILK	SS	EMA	RIB	RUMP	IMF
	2.5	3.9	-1.7	3.9	33	54	77	12	2.0	3.2	0.8	1.0	1.0
	41%	34%	47%	69%	60%	57%	59%	46%	55%	42%	48%	51%	48%

S/MKT	101
GRASS	99
GRAIN	121
EU	112


Purchaser..... Price.....

Lot 17 DALKEITH NUMSKULL N174 Born: 9/05/2017 EP: 100 / 100 Tattoo N174
 SOUTH BUKALONG WALKER 6 (W688) Birth Weight: 35.0 Polled
 SOUTH BUKALONG WALLACE 2 (Y781)
 SOUTH BUKALONG VICTORIA 152 (V510)

Sire: DALKEITH LEMON (L012)
 MARKOWEN INVINCIBLE (X34)
 MARKOWEN LADYBIRD (A18)
 MARKOWEN LADYBIRD 4 (U9)
 MT. RAVEN HIJACKER (W36)
 DALKEITH GIN (G037)
 MT. RAVEN HIJACKER (W36)
 Twin to N173 (Lot 16).
 2018 joined to heifers at Dalkeith.

Dam: DALKEITH PANSY (J144)
 DALKEITH INNOCENT 85 (B259)
 MARKOWEN BROKER (B30)
 DALKEITH PANSY 215 (F106)
 DALKEITH PANSY 176 (Z284)

JULY 2019 HEREFORD GROUP BREEDPLAN

	CE Dir	CE DTRS	GL	BWT	200D	400D	600D	MILK	SS	EMA	RIB	RUMP	IMF
	1.3	3.7	-1.6	4.4	34	55	79	12	1.8	2.9	0.9	1.1	0.9
	41%	34%	47%	69%	62%	62%	61%	46%	69%	45%	50%	53%	48%

S/MKT	98
GRASS	95
GRAIN	115
EU	107


Purchaser..... Price.....

Lot 18 DALKEITH NOOKEY N271 Born: 3/06/2017 EP: 100 / 100 Tattoo N271
 MORGANVALE CRAMPTON (C82) Birth Weight: 40.0 Polled
 MORGANVALE FORSYTH (F203)
 MORGANVALE LADY ALMOND (B310)

Sire: DALKEITH LOTTO (L064)
 MARKOWEN CLASSIC (C49)
 DALKEITH MARINDA 447 (H153)
 DALKEITH MARINDA 374 (D138)
 ALLENDALE KENWORTH 2 (R126)
 TYCOLAH CHIEF (Y62)
 ALLENDALE KENWORTH 2 (R126)
 2018 joined to black tag heifers on Yarrowonga.

Dam: DALKEITH FROLIC 184 (E154)
 TYCOLAH PERSONAL (V05)
 ALLENDALE NATIONAL (W168)
 DALKEITH FROLIC 132 (A245)
 DALKEITH FROLIC 62 (U187)

JULY 2019 HEREFORD GROUP BREEDPLAN

	CE Dir	CE DTRS	GL	BWT	200D	400D	600D	MILK	SS	EMA	RIB	RUMP	IMF
	2.7	3.3	-2.7	4.5	34	52	74	11	2.1	3.1	0.8	1.4	0.5
	42%	31%	56%	73%	67%	67%	71%	46%	76%	49%	53%	58%	50%

S/MKT	90
GRASS	87
GRAIN	96
EU	99

Purchaser..... Price.....

Breed Averages	CE Dir	CE DTRS	GL	BWT	200D	400D	600D	MILK	SS	EMA	RIB	RUMP	IMF	Practical Systems STOCKBOOK		
	1.10	1.20	-0.30	4.40	33.00	54.00	77.00	16.00	2.00	3.20	0.50	0.50	0.40	Top 10%	Top 25%	Above Av

Lot 19 DALKEITH NUGGET N270 Born: 3/06/2017 EP: 100 / 100 Tattoo N270
 MORGANVALE CRAMPTON (C82) Birth Weight: 38.5 Polled

MORGANVALE FORSYTH (F203)
 MORGANVALE LADY ALMOND (B310)
 Sire: **DALKEITH LOTTO (L064)**
 MARKOWEN CLASSIC (C49)
 DALKEITH MARINDA 447 (H153)
 DALKEITH MARINDA 374 (D138) 2018 joined to black tag heifers on Yarrawonga.
 KOANUI ROCKET 0219
 BOWEN ESPLANADE (E332)

Dam: DALKEITH PAGON (K072)
 BOWEN ROLLINA (B347)
 MOUNTAIN VALLEY QUICKSTIX (A71)
 MOUNTAIN VALLEY PAGON (D492)
 MOUNTAIN VALLEY PAGON (W30)

JULY 2019 HEREFORD GROUP BREEDPLAN

	CE Dir	CE DTRS	GL	BWT	200D	400D	600D	MILK	SS	EMA	RIB	RUMP	IMF
	3.0	3.9	-1.3	3.5	33	57	80	15	2.0	3.9	0.5	0.9	0.3
	41%	30%	53%	72%	66%	67%	70%	43%	76%	48%	53%	57%	50%

S/MKT	96
GRASS	93
GRAIN	101
EU	103

Purchaser..... Price.....

Lot 20 DALKEITH NEMO N236 Born: 28/05/2017 EP: 100 / 100 Tattoo N236
 MATARIKI HOLY-SMOKE 0390 Birth Weight: 39.5 Polled

MATARIKI 0380
 MATARIKI BRACELET 050223
 Sire: **DALKEITH LEO (L190)**
 YAMBRO CONRAD (C26)
 DALKEITH DOREEN (G182)
 DUNOON DOREEN (C019) 2018 joined to black tag heifers on Yarrawonga.
 STUDBROOK DARTAGNION (V086)
 OTAPAWA SPARK 3060

Dam: DALKEITH CHRISTINA 99 (F162)
 OTAPAWA SPOT P30
 YALGOO ENGINEER (N95)
 DALKEITH CHRISTINA 62 (W065)
 DALKEITH CHRISTINA 42 (S201)

JULY 2019 HEREFORD GROUP BREEDPLAN

	CE Dir	CE DTRS	GL	BWT	200D	400D	600D	MILK	SS	EMA	RIB	RUMP	IMF
	4.5	3.4	-1.0	3.3	34	55	80	14	0.9	4.5	0.9	1.2	1.1
	44%	36%	58%	73%	67%	67%	71%	50%	76%	49%	54%	58%	51%

S/MKT	115
GRASS	113
GRAIN	137
EU	129

Purchaser..... Price.....

Lot 21 DALKEITH NOMAD N124 Born: 24/04/2017 EP: 100 / 100 Tattoo N124
 MATARIKI HOLY-SMOKE 0390 Birth Weight: 35.5 Polled

MATARIKI 0380
 MATARIKI BRACELET 050223
 Sire: **DALKEITH LEO (L190)**
 YAMBRO CONRAD (C26)
 DALKEITH DOREEN (G182)
 DUNOON DOREEN (C019) 2yr Old Heifers 1st calf.
 CANNAWIGRA COMMANDER (Z51) Top 5% of breed for IMF% EBV's.
 MOUNTAIN VALLEY GAMBLER (G14) 2018 joined to heifers at Dalkeith.

Dam: DALKEITH RHODA (L292)
 MOUNTAIN VALLEY (B44)
 MARKOWEN NO EXCUSE (A29)
 MARKOWEN RHODA (E56)
 MARKOWEN RHODA (C52)

JULY 2019 HEREFORD GROUP BREEDPLAN

	CE Dir	CE DTRS	GL	BWT	200D	400D	600D	MILK	SS	EMA	RIB	RUMP	IMF
	5.5	-0.7	-1.1	3.2	32	55	82	9	2.6	4.8	1.4	1.9	1.4
	40%	31%	53%	71%	66%	66%	70%	42%	76%	47%	52%	56%	49%

S/MKT	118
GRASS	117
GRAIN	146
EU	133

Purchaser..... Price.....

Breed Averages	CE Dir	CE DTRS	GL	BWT	200D	400D	600D	MILK	SS	EMA	RIB	RUMP	IMF	Practical Systems STOCKBOOK		
	1.10	1.20	-0.30	4.40	33.00	54.00	77.00	16.00	2.00	3.20	0.50	0.50	0.40	Top 10%	Top 25%	Above Av

Lot 22 DALKEITH NOBBY N015 Born: 20/03/2017 EP: 100 / 100 Tattoo N015
 KARINA BEN LOMOND (W20) KOANUI SPY T15 Birth Weight: 36.0 Polled

Sire: **KARINA CHERRY (Z8)**

KARINA MARSALA (S18)

YALGOO CHERRYRIPE (R43)

LLANDILLO NASHVILLE (N92)

KARINA MARSALA (P61)

CAPETHORNE HOT SHOT 03 22

Born 4days early.

Top 5% of breed for Gestation Length EBVs.

2018 joined to black tag heifers on Yarrowonga.

Dam: **DALKEITH MARINDA (L003)**

DALKEITH MARINDA (J120)

MATARIKI GIRLIE 00323

YAMBRO CONRAD (C26)

DALKEITH MARINDA 404 (F100)

JULY 2019 HEREFORD GROUP BREEDPLAN

BREEDPLAN COMPLETENESS	CE Dir	CE DTRS	GL	BWT	200D	400D	600D	MILK	SS	EMA	RIB	RUMP	IMF
	2.9	2.4	-4.2	4.0	33	54	69	14	2.1	2.6	0.8	1.1	0.7
	55%	51%	76%	74%	70%	70%	72%	59%	78%	57%	60%	63%	58%

S/MKT	93
GRASS	91
GRAIN	108
EU	105

Purchaser.....

Price.....

Lot 23 DALKEITH NERD N172 Born: 8/05/2017 EP: 100 / 100 Tattoo N172
 ALLENDALE VAGABOND (A74) ALLENDALE ROSEMOUNT 2 (X55) Birth Weight: 43.0 Polled

Sire: **DALKEITH LIBIDO (L034)**

MOUNTAIN VALLEY GLITTER (D67)

SUZELLE MARLINE (U54)

CASCADE ZIRCON (Z07)

MOUNTAIN VALLEY GLITTER (V62)

MARKOWEN INTRUDER (Z33)

2018 sent to Bonshaw Qld on adjustment-joined to Dalkeith Com/Barbs/Turee Vale cows.

MARKOWEN CLASSIC (C49)

Dam: **DALKEITH FROLIC 196 (G006)**

DALKEITH FROLIC 178 (D085)

MARKOWEN MARLINE 7 (Y28)

TYCOLAH CHIEF (Y62)

DALKEITH FROLIC 113 (Z057)

JULY 2019 HEREFORD GROUP BREEDPLAN

BREEDPLAN COMPLETENESS	CE Dir	CE DTRS	GL	BWT	200D	400D	600D	MILK	SS	EMA	RIB	RUMP	IMF
	3.3	4.3	-3.0	4.4	29	51	72	9	2.7	5.0	0.6	1.0	0.5
	45%	35%	59%	73%	68%	69%	71%	49%	77%	50%	55%	59%	53%

S/MKT	97
GRASS	95
GRAIN	108
EU	111

Purchaser.....

Price.....

Lot 24 DALKEITH NITZ N080 Born: 7/04/2017 EP: 100 / 100 Tattoo N080
 SOUTH BUKALONG WALLACE 2 (Y781) SOUTH BUKALONG WALKER 6 (W688) Birth Weight: 33.5 Polled

Sire: **DALKEITH LEMON (L012)**

MARKOWEN LADYBIRD (A18)

SOUTH BUKALONG VICTORIA 152 (V510)

MARKOWEN INVINCIBLE (X34)

MARKOWEN LADYBIRD 4 (U9)

YAMBRO VELOCITY (X78)

2018 joined to blue tag 1st calvers on Yarrowonga.

YAMBRO CONRAD (B88)

Dam: **DALKEITH MARLINE (K081)**

MARKOWEN MARLINE 7 (Y28)

YAMBRO SPOT (W123)

MARKOWEN AWESOME (W3)

ALLENDALE MARLINE (R48)

JULY 2019 HEREFORD GROUP BREEDPLAN

BREEDPLAN COMPLETENESS	CE Dir	CE DTRS	GL	BWT	200D	400D	600D	MILK	SS	EMA	RIB	RUMP	IMF
	6.3	5.2	-2.0	4.2	37	60	86	18	2.1	3.0	0.5	0.5	0.9
	44%	38%	51%	72%	66%	66%	69%	48%	76%	50%	53%	57%	51%

S/MKT	113
GRASS	109
GRAIN	131
EU	123

Purchaser.....

Price.....

Breed Averages	CE Dir	CE DTRS	GL	BWT	200D	400D	600D	MILK	SS	EMA	RIB	RUMP	IMF	Practical Systems STOCKBOOK		
	1.10	1.20	-0.30	4.40	33.00	54.00	77.00	16.00	2.00	3.20	0.50	0.50	0.40	Top 10%	Top 25%	Above Av

Lot 25 DALKEITH NAILED N168 Born: 5/05/2017 EP: 100 / 98 Tattoo N168
 SOUTH BUKALONG WALKER 6 (W688) Birth Weight: 47.5 Polled
 SOUTH BUKALONG WALLACE 2 (Y781)
 SOUTH BUKALONG VICTORIA 152 (V510)

Sire: **DALKEITH LEMON (L012)**
 MARKOWEN INVINCIBLE (X34)
 MARKOWEN LADYBIRD (A18)
 MARKOWEN LADYBIRD 4 (U9)
 OKAWA COMMODORE 2076
 ALLENDALE WASHINGTON (C77)
 ALLENDALE FANCY (Z59)
 DALKEITH TRADER (T119)
 DALKEITH MARINDA 352 (C102)
 DALKEITH MARINDA 227 (X292)
 2018 sent to Bonshaw Qld on adjustment-joined to Dalkeith Com/Barbs/Turee Vale cows.

Dam: **DALKEITH MARINDA (J261)**
 DALKEITH MARINDA 352 (C102)
 DALKEITH MARINDA 227 (X292)

JULY 2019 HEREFORD GROUP BREEDPLAN

	CE Dir	CE DTRS	GL	BWT	200D	400D	600D	MILK	SS	EMA	RIB	RUMP	IMF
	-1.0	1.4	-0.4	5.0	36	61	85	13	3.6	3.6	1.4	1.9	1.1
	44%	38%	54%	72%	66%	67%	70%	49%	76%	50%	54%	58%	51%

S/MKT	110
GRASS	107
GRAIN	135
EU	122

Purchaser..... Price.....

Lot 26 DALKEITH NICOTINE N056 Born: 25/03/2017 EP: 100 / 100 Tattoo N056
 CANNAWIGRA S5 BATMAN (X08) Birth Weight: 39.0 Polled
 CANNAWIGRA COMMANDER (Z51)
 CANNAWIGRA ANABEL (V108)

Sire: **MOUNTAIN VALLEY GAMBLER (G14)**
 MOUNTAIN VALLEY OOZY (Y45)
 MOUNTAIN VALLEY (B44)
 MOUNTAIN VALLEY GLITTER (Y79)
 MARKOWEN INTRUDER (Z33)
 MARKOWEN CLASSIC (C49)
 MARKOWEN MARLINE 7 (Y28)
 MARKOWEN NO EXCUSE (A29)
 MARKOWEN LADYBIRD (D7)
 MARKOWEN LADYBIRD (A18)
 2yr Old Heifers 1st calf.
 2018 joined to black tag heifers on Yarrowonga.

Dam: **DALKEITH LADYBIRD (L025)**
 MARKOWEN LADYBIRD (D7)
 MARKOWEN LADYBIRD (A18)

JULY 2019 HEREFORD GROUP BREEDPLAN

	CE Dir	CE DTRS	GL	BWT	200D	400D	600D	MILK	SS	EMA	RIB	RUMP	IMF
	2.1	-3.4	-0.7	5.2	35	58	87	8	1.3	3.2	0.1	-0.1	0.1
	48%	39%	74%	74%	70%	70%	73%	53%	78%	53%	56%	61%	56%

S/MKT	91
GRASS	85
GRAIN	92
EU	100

Purchaser..... Price.....

Lot 27 DALKEITH NIGGLE N061 Born: 27/03/2017 EP: 100 / 100 Tattoo N061
 OTAPAWA SPARK 3060 Birth Weight: 47.0 Polled
 GRASSMERE SPARK 330
 GRASSMERE PRINCESS 195

Sire: **GRASSMERE SPARK 555**
 GRASSMERE NIBBS 991
 GRASSMERE PRINCESS 245
 GRASSMERE PRINCESS 60
 BRAXTON DYNASTY K243
 MARKOWEN EXECUTIVE (Q2)
 HEATHERDALE ALMOND (K129)
 CAMDENVIEW WILD CARD 2Z
 MARKOWEN LADY HURON 2 (T23)
 MARKOWEN LADY HURON (Q8)
 IVF Bred.
 Top 5% of breed for IMF% EBV's.
 2018 sent to Bonshaw Qld on adjustment-joined to Dalkeith Com/Barbs/Turee Vale cows.

Dam: **MARKOWEN LADY HURON 7 (Z48)**
 MARKOWEN LADY HURON 2 (T23)
 MARKOWEN LADY HURON (Q8)

JULY 2019 HEREFORD GROUP BREEDPLAN

	CE Dir	CE DTRS	GL	BWT	200D	400D	600D	MILK	SS	EMA	RIB	RUMP	IMF
	-4.5	5.5	-1.1	5.5	32	53	71	13	-0.2	4.5	1.4	1.5	1.6
	58%	51%	64%	76%	73%	73%	75%	64%	79%	59%	62%	65%	62%

S/MKT	80
GRASS	78
GRAIN	103
EU	90

Purchaser..... Price.....

Breed Averages	CE Dir	CE DTRS	GL	BWT	200D	400D	600D	MILK	SS	EMA	RIB	RUMP	IMF	<i>Practical Systems STOCKBOOK</i>		
	1.10	1.20	-0.30	4.40	33.00	54.00	77.00	16.00	2.00	3.20	0.50	0.50	0.40	Top 10%	Top 25%	Above Av

Lot 28 **DALKEITH NEEDLE N115** Born: 22/04/2017 EP: 100 / 100 Tattoo N115
 ALLENDALE WATERHOUSE (D1) Birth Weight: 48.5 Scurred

DAYS CALIBRE G74

ALLENDALE DAWN (C62)

Sire: MOUNTAIN VALLEY KAPUTAR (K52)

MOUNTAIN VALLEY MATCHLESS (A23)

BOBANKEN X-MARK (X157)

MOUNTAIN VALLEY MATCHLESS (W27)

KAIRURU ABERDEEN 3047

Born 1day early.
 Top 5% of breed for Scotol Size EBV's.
 2018 sent to Bonshaw Qld on adjustment-joined to Dalkeith Com/Barbs/Turee Vale cows.

KAIRURU FLINT 8058

KAIRURU LEONORA 01 02


Dam: DALKEITH MARINDA 460 (H289)

DALKEITH MARINDA 363 (D015)

TYCOLAH CUNNAMULLA FELLA (Y59)

DALKEITH MARINDA 309 (A418)

JULY 2019 HEREFORD GROUP BREEDPLAN

	CE Dir	CE DTRS	GL	BWT	200D	400D	600D	MILK	SS	EMA	RIB	RUMP	IMF
	-0.5	0.1	-0.6	6.8	31	56	82	11	3.4	4.7	0.7	1.4	0.5
	43%	35%	73%	73%	67%	68%	71%	49%	77%	50%	54%	58%	51%

S/MKT	90
GRASS	85
GRAIN	95
EU	102

Purchaser.....

Price.....

Lot 29 **DALKEITH NAUGHTY N009** Born: 18/03/2017 EP: 100 / 100 Tattoo N009
 LEELANDS TRANSITION T7 Birth Weight: 44.5 Polled

KAIRURU ABERDEEN 3047

KAIRURU PLUM T44

Sire: KAIRURU FLINT 8058

KAIRURU LEONORA 01 02

DOONBIDDIE HUSTLER (R51)

KAIRURU LEONORA P30

ET Bred.
 Born 6days early.
 2018 joined to black tag heifers on Yarrowonga.

OTAPAWA SPARK 3060

OTAPAWA SPOT P30


Dam: DALKEITH DIVIDEND 648 (G084)

DALKEITH DIVIDEND 447 (X449)

YALGOO ENGINEER (N95)

DALKEITH DIVIDEND 283 (R385)

JULY 2019 HEREFORD GROUP BREEDPLAN

	CE Dir	CE DTRS	GL	BWT	200D	400D	600D	MILK	SS	EMA	RIB	RUMP	IMF
	2.4	1.5	-1.3	6.6	39	61	91	12	1.8	3.2	0.0	-0.2	0.1
	53%	47%	64%	75%	71%	71%	73%	60%	78%	55%	58%	62%	57%

S/MKT	97
GRASS	89
GRAIN	93
EU	108

Purchaser.....

Price.....

Lot 30 **DALKEITH NOTICE N131** Born: 25/04/2017 EP: 95 / 100 Tattoo N131
 KOANUI ROCKET Q334 Birth Weight: 42.5 Polled

KOANUI ROCKET 0219

KOANUI ANGEL R187

Sire: DALKEITH GIGOLO (G034)

DALKEITH VICTORIA 64 (B039)

CALLENUP LEONARD

DALKEITH VICTORIA 62 (Z027)

DALKEITH DANNY (D082)

Johno Martin has used this bull. He has being run seperate to the rest of the bulls-he has kindly being look after by Johno & Emma.

DALKEITH FRED (F075)

DALKEITH FROLIC 171 (C056)


Dam: DALKEITH LIONESS (H285)

DUNOON LIONESS (B045)

MOUNT EMU SAGE

DUNOON LIONESS (S079)

JULY 2019 HEREFORD GROUP BREEDPLAN

	CE Dir	CE DTRS	GL	BWT	200D	400D	600D	MILK	SS	EMA	RIB	RUMP	IMF
	4.9	1.6	-1.5	2.4	32	62	80	16	1.5	3.5	1.4	2.6	1.2
	42%	34%	73%	72%	66%	67%	66%	48%	77%	49%	53%	57%	51%

S/MKT	96
GRASS	93
GRAIN	107
EU	99

Purchaser.....

Price.....

Breed	CE Dir	CE DTRS	GL	BWT	200D	400D	600D	MILK	SS	EMA	RIB	RUMP	IMF	Practical Systems STOCKBOOK		
Averages	1.10	1.20	-0.30	4.40	33.00	54.00	77.00	16.00	2.00	3.20	0.50	0.50	0.40	Top 10%	Top 25%	Above Av

Lot 31 DALKEITH DIVIDEND 630 ET1 (G142) Born: 3/06/2011 EP: 100 / 99 Tattoo G142
 ALLENDALE MUSKETEER (S56) Birth Weight: 34.3 Polled
 STUDBROOK DARTAGNION (V086)

Sire: OTAPAWA SPARK 3060


OTAPAWA SPOT P30

YALGOO ENGINEER (N95)

Dam: DALKEITH DIVIDEND 490 (Z320)

DALKEITH DIVIDEND 341 (U108)

JULY 2019 HEREFORD GROUP BREEDPLAN

	CE Dir	CE DTRS	GL	BWT	200D	400D	600D	MILK	SS	EMA	RIB	RUMP	IMF
	5.6	3.0	1.4	3.5	30	50	72	10	2.0	3.7	1.6	2.3	1.5
	62%	57%	75%	81%	77%	77%	78%	75%	67%	62%	69%	72%	68%

S/MKT	110
GRASS	110
GRAIN	137
EU	126

Purchaser.....

Price.....

Lot 32 DALKEITH INNOCENT 117 ET1 (G143) Born: 3/06/2011 EP: 100 / 100 Tattoo G143
 FELTONS 524 Birth Weight: 36.2 Polled
 EF F524 FELLIS 821C

Sire: MOUNT DIFFICULT FELLIS (Y12)


MOUNT DIFFICULT TIGRESS U5

HEATHERDALE SOVEREIGN (V11)

Dam: DALKEITH INNOCENT 85 (B259)

DALKEITH INNOCENT 43 (T153)

JULY 2019 HEREFORD GROUP BREEDPLAN

	CE Dir	CE DTRS	GL	BWT	200D	400D	600D	MILK	SS	EMA	RIB	RUMP	IMF
	0.5	-1.0	-0.5	3.6	32	50	66	10	1.9	7.7	1.1	1.9	1.3
	65%	59%	76%	85%	81%	81%	82%	72%	77%	63%	69%	72%	69%

S/MKT	113
GRASS	115
GRAIN	146
EU	135

Purchaser.....

Price.....

Lot 33 DALKEITH DIVIDEND 632 (G153) Born: 4/06/2011 EP: 100 / 100 Tattoo G153
 ALLENDALE MUSKETEER (S56) Birth Weight: 40.1 Polled
 STUDBROOK DARTAGNION (V086)

Sire: OTAPAWA SPARK 3060


OTAPAWA SPOT P30

YALGOO ENGINEER (N95)

Dam: DALKEITH DIVIDEND 490 (Z320)

DALKEITH DIVIDEND 341 (U108)

JULY 2019 HEREFORD GROUP BREEDPLAN

	CE Dir	CE DTRS	GL	BWT	200D	400D	600D	MILK	SS	EMA	RIB	RUMP	IMF
	2.7	2.3	0.1	4.2	28	45	68	13	3.5	3.4	2.6	3.8	2.1
	65%	59%	71%	84%	80%	80%	82%	75%	78%	64%	70%	74%	71%

S/MKT	112
GRASS	114
GRAIN	152
EU	129

Purchaser.....

Price.....

Breed	CE Dir	CE DTRS	GL	BWT	200D	400D	600D	MILK	SS	EMA	RIB	RUMP	IMF
Averages	1.10	1.20	-0.30	4.40	33.00	54.00	77.00	16.00	2.00	3.20	0.50	0.50	0.40

Practical Systems STOCKBOOK
 Top 10% Top 25% Above Av

Outback PRESS.

We Create & Print:
The all new **Coolah District** Diary
Home of the Black Stump
all new **Dunedoo District** Diary
Home of the Black Swan
The all new **Merriwa District** Diary
Home of the Pony Club

Contact us for
advertising

For all your Printing & Graphic Needs



27,000 HITS
PER MONTH
ON OUR WEBPAGE

**ARCHIVED STATE &
NATIONAL LIBRARIES OF
AUSTRALIA**

10,000 COPIES
DISTRIBUTED BY
AUSTRALIA POST PER MONTH

We Print and Design:

- Local Newspapers
- NCR Books
- Order Books
- Tax Invoice Books
- Receipt Books
- Agricultural Show Books
- Sale Catalogues
- Letterheads
- Envelopes
- Brochures
- Mailers
- Business Cards

54 Binnia Street, Coolah, NSW. 2843.

Ph: (02) 6377 1950

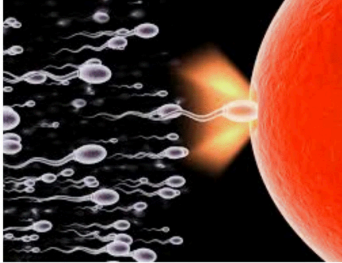
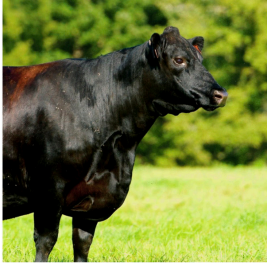
Mob: 0429 771 629

coolahdiary@outbackpress.com.au



FOR ALL YOUR ARTIFICIAL BREEDING NEEDS

Artificial Insemination Ultrasound Preg Testing Semen Collection Semen & Embryo Storage Ear Tags Supplements



www.northernab.com.au

brendan@northernab.com.au

02 6545 2465

0427 417 148

Notes



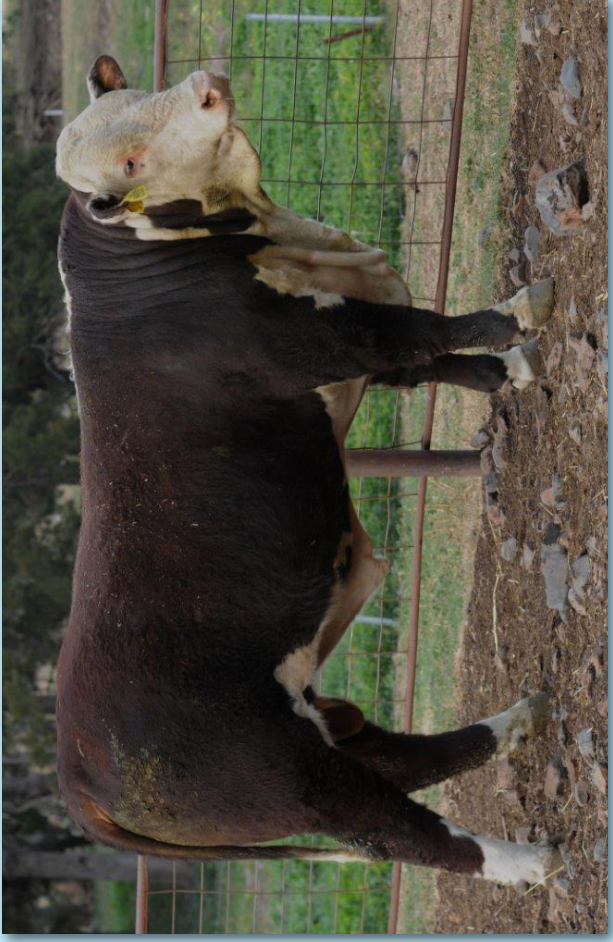
N173 Lot 16



N174 Lot 17



N061 Lot 27



N009 Lot 29

On Offer At The 49th Annual Dalkeith Spring Sale



**30
Grassfed
Bulls
No Grain
Joined as
yearlings**

N172 Lot 23

All Sale Bulls Prepared On Green Oats Only

**All joined
as yearlings**



N288 Lot10