



BEN NEVIS ANGUS **ANNUAL BULL SALE**

WEDNESDAY 11 SEPTEMBER 2019
'MINGARY' 645 BRACKENDALE ROAD
WALCHA

12.30PM: 80 BEN NEVIS BLOOD
TOP OF THE DROP COMMERCIAL HEIFERS
interfaced with AuctionsPlus

1.00PM: 74 YEARLING ANGUS BULLS

Inspection from 10.00am sale day.
Please note, from 12.45pm bulls will be moving to pen-up yards.

Over 70 years

Stu and Erica Halliday
Erica 0427 780 154 Stu 0417 674 412
Ben Nevis Angus 'Mingary', Walcha NSW 2354
bennevisangus@bigpond.com www.bennevisangus.com.au

JBAS 7



Miles Archdale, Walcha 0428 660 326
Mat Larkings, Walcha0427 002 427
Simon Newton, Walcha 0467 660 320
John Setree, Stud Stock 0408 297 368

Guest Auctioneer

Paul Dooley 0458 662 646



WELCOME TO BEN NEVIS

Recently we reformed our brand (just a little bigger numbers and brand to counter that little factor called aging). It's easy to get caught up in the moment but we realised that droughts have come and gone and yet this brand has endured since 1860 when the Steels first came to Ben Nevis. Like our cow herd this triangle represents the strongest structure there is with the most integrity and is made from the highest quality material. This is a mantra we can take heart in from here on.

This year's sale bulls reflect the traditional quality of our cow herd injected with higher levels of marbling to put our clients in the box seat to target the high value markets in Japan, the growing middle market in China and the premium brands domestically. These markets all have very strong outlooks with increasing value and scale globally.

Specifically we have Fire-Ice bred our powerful phenotype animals with higher marbling, easier doing lines to create a fast growing animal, stacked with IMF and constitution.

Because we breed yearling bulls we have focussed on animals that grow faster, are easier doing and marble not only better but express it earlier than their contemporaries. Ultimately we believe this will best place our clients for a future that demands quality but with less days on feed, whether in the feedlot or off pasture.

If you are going to do something we believe in doing it well so we have added our own stringent requirements for a good temperament and type including a funky front end (upheaded with a good Angus head), soft slick skin, a strong spine, deep flank and muscle that ties deep into their quarter. Anyone can breed numbers, but we like to see that backed up in the flesh so with the use of ET we are trying to breed cattle that we and our clients are exceptionally proud of. That is our difference.

We welcome you to our little slice of Siberia for the sale or before if you would like an inspection. We do have one oat crop which is where we hang out with the bulls and that has been such a blessing. We have also been more than blessed to have an amazing team of people around us, and despite the challenges we still love what we do and are very grateful.

Stu and Erica (Hap) Halliday



FREE DELIVERY TO MAJOR CENTRES AUSTRALIA WIDE
J-BAS 7, SIRE VERIFIED AND GENOMICS

THIS YEAR'S BULLS

THERE HAS NEVER BEEN A BETTER TIME TO INVEST IN QUALITY

THE BULLS

We are very proud of this year's bulls. Every one has been Sire Verified and has Genomically enhanced EBV's that more accurately reflect their breeding value and give you greater confidence and choice than ever before. Given our commitment to type, we feel very positive about our direction and the value that we can add to our clients' herds.

There will be twenty eight 18 month old bulls and forty seven 12 month old bulls in the catalogue. Our Fire-Ice breeding program of combining power with carcase is working really well for us, with a number of stud sire prospects throughout the sale. **Please remember when looking at the raw scan and weight data that the 18mo and the 12mo old are different contemporary groups and have been colour coded accordingly in the EBV Summary.**

As always, we have kept semen on a number of bulls to progeny test in our commercial herd. We guarantee the bulls and have been rigorously culled them for temperament and feet. Structure and temperament scores as well as Ultrasound Carcase Scanning on the boys has been independently assessed by Roger Evans Accreditation No – 1018 and can be found on pages 7 and 8.

PHYSICAL EXAMINATION OF BULLS

All bulls have passed a semen test and physical examination by Dr Chris Hallet, Coolah Veterinary Clinic including;

- Semen motility
- Palpation of internal genitalia
- Palpation of Scrotal contents
- Visual inspection of overall structure, including feet
- Visual inspection of locomotive ability.

MANAGEMENT

We take great pride in our established reputation for quiet cattle. These yearling bulls have had consistent contact with humans and dogs since weaning.

The bulls have been handled with dogs, horses, utilities, ATVs and on foot. We know each bull's temperament and are confident that under normal circumstances they are of sound temperament. However, these are still animals and we ask that you treat them kindly and with respect, especially on Sale day with the pressures of new people invading their space.

HEALTH

The bulls are ready for immediate use and we recommend using a yearling bull at a rate of 1 to 35 cows in their first year and 1 to 50 for every year after.

All bulls have been tested PI (pestivirus) negative and vaccinated with 7 in 1 (Lepto), Pestiguard and Vibriosis. They have had regular doses of Vitamin A, D, E, Vitamin B12 and drenched with Eprinex pour-on and Fasinex Oral on 17 May 2019. Bulls sold to Queensland will be blooded and vaccinated for three day sickness at our expense.

80 TOP PICK HEIFERS

These heifers represent an unprecedented opportunity to invest in the heart of our program, which has always attracted premiums in the market place. They are Spring drop and ready to join, vaccinated with 7 in 1 and Pestiguard, drenched with Fasinex Oral and Eprinex, early yard weaned, bunk trained, dog, bike, horse, calm man and mad woman trained.

These heifers will be auctioned in live time before the bull sale at 12.30 pm sharp on sale day and will physically be run through the ring. They will also be interfaced with AuctionsPlus in live time. Look for details on AuctionsPlus from the end of August 2019

WHY RAW DATA?

The academic purists get upset when we include raw data. Our logic is this- When everything is treated the same it is important to us which ones do the best especially for IMF and growth. This is, after all, the basis of BREEDPLAN. Practically speaking if an animal says it is in the top 5% of the breed for IMF EBV we like to check that it performed in a commensurate way within its contemporary. Please note raw data is only useful within a contemporary group, you cannot compare raw data between herds or animals within herd that have been treated differently. In our sale there are two contemporary groups – the 12mo old bulls and the 18 mo old bulls. When looking at their raw data you cannot compare the two groups.

WHY SCANNING?

Scanning is the most commercially viable and time effective way to measure carcase traits because you don't have to kill the animal to get it, and it's easily measured when they are yearlings and in good enough condition. In animals with more than 6mls of fat the correlation between scanned and actual traits is 0.7. This is meaningful and very useful.

In heifers this fat level is usually achieved at scanning but in young bulls this isn't the case where fat levels are often less than 6mls, there correlation of scanned to real traits drops to 0.4. The issue here is that many bulls when they are scanned don't have enough fat on them to scan so they have not yet triggered marbling and the differences are not evident. This is not the case with our yearling bulls as most average over 6 mls of fat.

Age is another trigger for marbling. We scan at 10 – 12 months and are aware there are some bulls that will marble later on but it has not yet been triggered. However we are targeting the ones who express marbling earlier as well as the actual levels of marbling they achieve. These will be the animals who, in the future, will reach their targets more quickly and reduce costs while increasing turnover. We consider this very valuable information as we aggressively target the premium high marbling markets.

PREPARATION

The bulls were early weaned using the innovative AIM protocol at four months because of the drought. Due to Stu's dogged determination, they have had the only feeble oats crop in about the whole of the New England. They have been supplemented with a hay-based mix with small amounts of well balanced, buffered grains and minerals. We are very proud that we have been able to present them to express their genetic potential and have them fit, strong and well grown, ready to go straight to work.

We are happy to blood bulls and give three day vaccine for bulls sold to Queensland and will work in with you for the best delivery time so they adapt.

SALE INFORMATION

SALE DATE AND PRIOR INSPECTION TIME

The annual Ben Nevis Angus Sale will take place on Wednesday 11 September 2019. Undercover shelter is provided.

10.00am – Inspection

Bulls may be inspected from 10.00am on the morning of the Sale, or at any other time by arrangement with the agents or vendors.

12.30pm – Ben Nevis Heifer Sale

80 heifers.

The heifers will be top-quality, front-paddock heifers and will be preg tested empty.

1.00pm – Ben Nevis Angus Yearling Bull Sale

74 yearling Angus bulls.

System will be live auction on site interfaced with AuctionPlus. See details at www.auctionsplus.com.au.

SELLING SYSTEM

Sale of the bulls will be conducted under normal auction conditions. Sale of the heifers will be conducted by AuctionsPlus with live bidding (NOT Helmsman). Please check with the Selling Agents to obtain a buyer's number if you are considering making a purchase. Successful purchasers are requested to give written advice to the Selling Agents regarding transport arrangements at the conclusion of the Sale.

HOW TO GET TO THE MINGARY SALE COMPLEX

645 Brackendale Road, Walcha. From Walcha take the Oxley Highway and head east towards Port Macquarie. Approximately 4kms out of Walcha turn right onto the Brackendale Road.

The Mingary woolshed and yards are approximately 6kms along the Brackendale Road on the left hand side, and will be well sign posted on Sale day!



TRAVEL, ACCOMODATION AND DINING

There are two Hotels and two Motels in Walcha and we are just an hour's drive from Armidale and 1 ¼ hour's drive from Tamworth. Both of these regional centres have Airports, car hire, extensive accommodation and restaurants.

FREE DELIVERY

We will provide free delivery to major centres in New South Wales, the Australian Capital Territory, Victoria, South Australia, the Northern Territory and Queensland. If you purchase three or more bulls we will deliver free of charge to your door. Please contact us directly to arrange.

REBATE

2% rebate to outside Agents registering BULL BUYERS, in writing, '24 hours' PRIOR to the Sale and settling on their behalf within seven days of the date of Invoice.

PHONE BIDDING

The Sale will also be on AuctionsPlus or contact the Selling Agents.

CATERING

We invite you to enjoy a free lunch and morning tea on us including steak and sausage sandwiches, tea, coffee, cold drinks and cakes and slices.

A big thank you to hostesses with the mostesses Colleen Green, Cherry and Kylie Steel.

INSURANCE

Bulls are like any other piece of valuable farm equipment and it's wise to insure them, especially for the first six months of their working life. There are a number of options available through CGU and WFI at the Sale venue.

REGISTRATION

Ownership transfer of bulls will be registered by the vendors with Angus Australia, provided accurate transfer details are supplied with the Buyer's Instruction form.

GST

All animals are sold excluding GST.

RECESSIVE GENETIC CONDITIONS

All bulls over a 10% risk of being a CA, NH, AM or DD carriers have been tested with published results in the Lot information. We do not consider these to be significant commercial issues, but clients wishing any further information are welcome to contact us at any time.

SEMEN RIGHTS

All bulls sell with 100% semen marketing rights. Ben Nevis reserves the right to collect semen for within herd use from any bulls in this year's catalogue. This will be done at the vendors expense and the purchasers convenience.



Lots marked in this catalogue with this symbol have already had semen collected by Ben Nevis Angus Stud.

WARRANTY

The vendor warrants that:

Bulls are fertile and capable of natural service within six months of the date of Sale to the purchaser (Warranty Period).

The vendor will either:

1. Provide a satisfactory replacement; or
2. Provide a credit for use at the next Ben Nevis Angus Bull Sale equal to the purchase price (excluding any costs and expenses of the purchaser in taking delivery) minus salvage value.

Where:

1. The purchaser claims a bull is infertile, upon purchaser submitting a 2 x Veterinary Reports 10 weeks apart stating the bull is infertile (semen) OR 1 x Veterinary Report stating the bull is incapable of natural service, and a Statutory declaration by the purchaser to the effect that the substance of the report is true and correct. The Veterinarian must state that in their opinion there is no evidence that the bull has suffered any injury or illness during the Warranty Period which could have affected his breeding ability. The Veterinary Report and the Statutory Declaration must be forwarded to the vendor within 14 days of the Warranty Period expiring.

BULL HANDLING

On arrival at their new home it is important a suitable mob of animals is yarded to greet the bull to minimise his stress. Suitable animals include pregnant cows, steers, but certainly not other bulls.

The bulls are in good joining condition at the point of Sale, but it is imperative to ensure good nutrition for the bull during the joining period. You should check bulls regularly to see they are working, especially in the early stages when most problems occur and early intervention can minimise the damage to the bull and conception rates. After joining, bulls should be drenched and placed on good pasture to get back into good condition.

HEALTH AND SAFETY OF VISITORS AT OUR SALE (RULES AND ADVICE)

All the sale bulls have been screened for temperament and are quiet to handle under normal circumstances; however there are inherent risks associated with cattle handling.

VISITORS ENTER THE CATTLE PENS AT THEIR OWN RISK. CHILDREN MUST NOT ENTER THE YARDS.

People entering the yards are at risk of injury. Be especially alert for bulls fighting. We do not expect the bulls to be aggressive with humans, but Sale Day places extraordinary pressure on them. Remember, even the quietest bull is in fact an unpredictable animal.

Do not crowd the bulls or loiter inside the pens. We cannot cover every example of the dangers of cattle handling so please use common sense and be alert at all times. Please call on any of the Landmark Agents for an escort through the bulls if required.

All persons who attend the sale do so at their own risk and the vendor assumes no liability, legal or otherwise, for any accidents which may occur.

Disclaimer: Every effort and all reasonable care has been taken by the vendor to ensure that the information provided in this catalogue is correct at the time of printing. However, neither the vendor or selling agents take responsibility in regards to the accuracy, reliability or completeness of the information provided, and do not assume any responsibility for the use or interpretation of this information. You are encouraged to seek independent verification of any information contained in this catalogue.

Animal details included in this catalogue, including but not limited to pedigree, DNA information, Estimated Breeding Values (EBVs) and Index values, are based on information provided by the breeder or owner of the animal. Whilst all reasonable care has been taken to ensure that the information provided in this catalogue was correct at the time of publication, neither the vendor, Angus Australia or the selling agents assume any responsibility for the accuracy or completeness of the information, nor for the outcome (including consequential loss) of any action taken based on this information.



**PRE-REGISTER FOR OUR SALE
BY 8PM 10 SEPTEMBER 2019
AND GO IN THE DRAW TO WIN A
FREE \$1,000 BID AT THE SALE.**

For more details go to bennevisangus.com.au

AM I NOT PRETTY ENOUGH?

THE REAL BENEFITS OF YEARLING BULLS

STU AND ERICA HALLIDAY

Nature intended bulls to work at 12 – 14 months of age. This is when they become sexually mature but they're still light and agile so they can learn their new trade without a high risk of injuring themselves. This is not the case for bulls first used as two year olds who are often fed up to big weights for auction and therefore run a higher risk of injury while gaining sexual experience.

LOWER COSTS PER CALF

According to research by NSW Agriculture in the 1990's bulls used as yearlings not only have a lower incidence of breakdown or injury but a proven longer working life. This equates to:

- More calves over a longer period and,
- Lower costs per calf

	Average price	Average working life	Number of calves	Price per calf
Average yearling at auction	\$4,500	* 5 Years	230 <i>(30 in year one, 50 thereafter)</i>	\$20
Average 2 year old at auction	\$5,500	* 3 years	150	\$37

* Statistic taken from NSW Agriculture Better Bull Buying, edition 1996

EASIER TO MANAGE

At Ben Nevis we have been using yearling bulls for over 20 years. Our experience is backed by our clients and suggests that bulls used as yearlings are much easier to manage both in and out of the cows. Why? We believe it's because they are out working as their testosterone kicks in instead of being in a big mob with other bulls learning to fight and bully out of sexual frustration.

AM I NOT PRETTY ENOUGH?

Because yearling bulls are working and still growing (they can get a little too enthusiastic about their work) they can come out of the cows looking ragged. Rather than a bad sign it's a good sign that he had been working for you. They don't need special treatment just a good paddock and a dose. If not fed up at this stage (ie put on rye grass) then he will still eventually recover but probably won't make his mature weight potential until he is 3 or 4 years of age (if at all). The up side of this is that less stress is placed on his skeleton for life so he will always be more agile and less injury prone. In the words of reputable cattle producer and educator Sandy Yeates. "If our beef industry is to make progress, we must purge our minds of the belief that a bull has to be fat and well grown to be any good. The value of a bull should be measured by the performance of his offspring, not on what he looks like".

CAN I REACH A COW?

Short answer is yes, but the laws of physics apply and you should use well grown yearling bulls. Most of our bulls go over cows. Angus by nature have high libidos and are very resourceful.

HEIFER BULLS

Just because he is a yearling does not make him a 'heifer bull'. As with any bull his effect on calving ease is determined by genetics for birthweight and shape and other factors like nutrition and environment. However suitable heifer bulls used as yearlings will mean less injuries in heifers as well, due to their lower weight and they can be used over heifers for more years as they take longer to reach their mature weight.

HEALTH

Not everyone can produce yearling bulls. It is critical that the bulls are rigorously culled and well grown and that they are tested for reproductive soundness. To ensure this we employ a disciplined weaning, nutrition and bull education program to ensure they are:

- Extremely docile and manageable
- Well grown (averaging 500kgs + at 12 months); and
- Sexually mature with scrotal >30cm at 12 months and semen tested.

GUIDELINES FOR USE

Don't put yearling bulls out with older bulls or bulls that are significantly bigger in size in the first year. These bulls will significantly injure him while he is learning to serve.

In our commercial herd we put groups of yearling bulls out together and often put four brothers in with a mob of 100 cows. This has improved not only our conception rates in some of our steep, rugged country but also increased the uniformity of our calves and reduced the calving spread. Despite the large distances and terrain there is always someone on duty.

Other guidelines:

- Join to 35 females in the first year and normal levels thereafter
- Join for no longer than six weeks
- Make sure he is up to date for Parasites, 5 in 1
- Added boosts come from Selenium, Vitamin B12 and Vitamin A, D and E shots

Eventually your yearling bull will grow into a bull we can be proud of because of his calves, his contribution to your gross margin and his dashing good looks. With the money saved this can be put towards buying an even higher performance bull in the future and maximising genetic gain.

ANGUS BREEDPLAN EBV

GROUP BREEDPLAN AVERAGE EBVS

MID MAY 2019 ANGUS AUSTRALIA GROUP BREEDPLAN

Average EBVs from all 2018 drop calves

																SELECTION INDEXES			
CED	CEM	GL	BW	200	400	600	MCW	MILK	SS	CWT	EMA	RIB	RMP	RBV	IMF	SM	DOM	GRN	GRS
0.2	0.4	-4.0	4.3	44	81	106	91	15	1.8	59	5.1	0.0	-0.2	0.4	1.7	\$114	\$109	\$119	\$112



PERCENTILES

USING EBV PERCENTILES

Selecting the right bull for your business needs to be as easy as possible. So we have incorporated percentiles into our catalogue as an extra tool to help you.

A percentile value allows you to see where an animal sits in the breed for each trait. This gives you more information than an EBV figure alone. For example, if an animal sits in the 30th percentile for IMF it means it is in the top 30% of the breed. But, if an animal sits in the 80th percentile it means that 80% of animals are better than it. Generally the lower the percentile figure the better, except in the case of some traits where moderation or balance is preferred like Mature Cow Weight and Scrotal Size (can be too big), or BW (too small and frail at birth).

The 600 day weight of this bull sits in the 80th percentile, meaning 80% of animals are better than him for the trait.

BEN NEVIS KEVIN					
	600	EMA	RIB	RMP	IMF
EBV	90	4.5	2.3	2.3	2.1
PERC	80%	55%	5%	5%	30%

The IMF of this bull sits in the 30th percentile, meaning he sits in the top 30% of the breed for this trait.

Information on Percentiles courtesy of Trio Angus.

2019 BEN NEVIS BULL SUMMARY

ID	Lot	Sire	BW kg	EBV SUMMARY					\$ INDEX				SCAN DATA				FRAME	DAM	MGS
				BW	600	SS	EMA	P8	ABI	DOM	GRN	GRS	P8	RIB	EMA	IMF			
P114	1	Command	1.1	120	6.7	-2.2	1.8	+123	+120	+127	+\$124	10	8	91	6.6	5.5	M63	BN Front Row	NBNP114
P360	2	Command	5.9	123	5.1	-1	1.6	+119	+114	+124	+\$118	10	6	79	5.8	5.5	J16	Bn G Maker	NBNP360
P188	3	Lionheart	5.5	126	6.2	-1.2	2.1	+123	+112	+135	+\$118	10	6	87	5.8	6	K62	Bn G Maker	NBNP188
P242	4	Lionheart	4.2	135	9	-1.9	2.7	+164	+142	+190	+\$150	9	5	90	5.9	6.5	J121	Ayrvale Bartel	NBNP242
P186	5	Lionheart	5.2	128	6.7	-3.1	2.4	+141	+126	+164	+\$130	7	6	86	5.7	6	K18	Ayrvale Bartel	NBNP186
P199	6	Beast Mode	3.1	136	3.4	-0.2	2.2	+134	+124	+141	+\$131	10	8	85	5.8	5	M88	Ayrvale Bartel	NBNP199
P160	7	Beast Mode	3.8	129	4.6	0.2	1.7	+119	+113	+118	+\$121	11	6	88	5.6	5.5	H10	BN Front Row	NBNP160
P212	8	Beast Mode	3.3	113	4.4	0.9	1.9	+115	+110	+112	+\$116	9	6	86	5.4	5.5	D94	BN Bruiser	NBNP212
P009	9	Compass	4.1	138	7	1.2	1.2	+128	+123	+124	+\$132	13	10	102	5.6	4.5	H103	Raff Empire	NBNP9
P011	10	Compass	5.6	155	5.6	-1	1	+131	+122	+133	+\$133	12	9	101	6.6	6	H103	Raff Empire	NBNP11
P057	11	Proceed	5.4	146	2.9	-1.2	2.8	+137	+118	+157	+\$130	11	8	100	6.6	6	H215	BN Front Row	NBNP57
P037	12	Command	6.1	151	5.7	-1	2.6	+159	+137	+180	+\$149	13	8	106	7.1	6.5	J134	MM D78	NBNP37
P016	13	Command	5.8	137	11.9	-3.9	1.6	+131	+124	+140	+\$130	10	7	109	5.7	5.5	D63	Right Way 781	NBNP16
P019	14	Hallmark	6.9	138	5.3	-0.5	1.9	+141	+122	+156	+\$133	10	7	98	5.6	6	G77	Infinity	NBNP19
P035	15	Lionheart	7	152	6.2	-3.7	0.9	+146	+129	+163	+\$137	10	7	104	5.9	5.5	J100	MM D78	NBNP35
P069	16	Hallmark	6.9	119	-1.2	4.1	1.5	+107	+91	+107	+\$105	13	7	94	5.1	6.5	H50	Crusader	NBNP69
P265	17	Command	6.4	144	8.6	-3.2	1.2	+140	+133	+151	+\$136	7	5	89	6.3	5.5	M146	Jacks Joker	NBNP265
P177	18	Lionheart	7.4	142	3.4	-0.9	1.2	+128	+114	+138	+\$122	10	7	85	6.2	6	J102	MM D78	NBNP177
P183	19	Lionheart	7.1	134	3.4	-1.1	1.6	+122	+108	+134	+\$116	9	5	88	5.4	6	J159	Poss Impact	NBNP183
P133	20	Prophet	3.1	117	0.9	1.2	3.1	+125	+117	+136	+\$119	13	7	80	6.4	6	M228	Dal Johnno	NBNP133
P259	21	Prophet	5.8	124	6.9	-2.5	2.5	+125	+118	+137	+\$121	9	6	81	5.6	6	G4	B Dandy	NBNP259
P215	22	M Proceed	4.9	121	7.9	-2	2	+116	+112	+123	+\$115	10	6	83	5.9	6	G201	BN Frontier	NBNP215
P189	23	M Realty	4.3	104	1.2	-0.9	2.7	+109	+106	+122	+\$103	7	6	83	5.7	6	K81	BN Gmaker	NBNP189
P223	24	M Realty	6.1	130	5.3	-0.5	1.5	+124	+114	+132	+\$122	8	5	81	5.4	6.5	J32	BN Eritrea	NBNP223
P131	25	Judo	5.9	142	2.4	-1	0.9	+107	+103	+106	+\$111	8	6	84	5.8	6.5	M214	BN Jabba	NBNP131
P132	26	Judo	3.1	114	-0.1	0.1	2.1	+98	+93	+102	+\$97	11	7	85	6.3	6	M222	BN Jabba	NBNP132
P061	28	Unanimous	7.2	111	1.9	1.7	1.1	+108	+102	+107	+\$107	14	8	92	6.4	5.5	H50	Crusader	NBNP61
P064	29	Unanimous	3.9	126	2.3	0	0.6	+113	+108	+106	+\$117	10	7	97	5.7	5.5	H215	BN Frontrow	NBNP64
P070	30	Unanimous	3.9	115	3.4	2.2	0.5	+107	+104	+94	+\$114	13	12	99	5.8	5	H215	Bn Frontrow	NBNP70
P050	31	Command	2.7	120	7.1	0.1	2	+123	+118	+125	+\$124	11	7	96	6.4	5	L45	Jacks Joker	NBNP50
P047	32	Command	2.4	115	7.7	-1.5	2.3	+126	+124	+135	+\$123	9	6	97	6.2	5	K112	BN Hooligan	NBNP47
P048	33	Command	3.6	114	4.7	-2.9	2	+117	+116	+125	+\$114	9	7	94	6.6	5	L2	BN Judo	NBNP48
P051	34	Command	3.4	107	3.4	-0.7	2.1	+105	+112	+104	+\$107	8	7	96	6.3	4.5	L65	BN Judo	NBNP51
P006	35	Hallmark	5.5	134	0.1	0.3	1.7	+118	+103	+123	+\$117	10	7	94	6.1	5	K3	Comrade	NBNP6
P065	36	Hallmark	3.9	103	-0.8	4.2	2	+111	+94	+113	+\$107	16	8	92	6.3	5	H50	Crusader	NBNP65
P038	37	Lionheart	4.2	119	5.6	-3.3	2.8	+135	+119	+160	+\$123	9	6	96	6.6	5.5	J157	Ayrvale Bartel	NBNP38

ID	Lot	Sire	BW kg	EBV SUMMARY					\$ INDEX				SCAN DATA				FRAME	DAM	MGS		
				BW	600	SS	EMA	P8	ABI	DOM	GRN	GRS	P8	RIB	EMA	IMF					
P122	38	Beast Mode	08/07/18	3.1	125	4.6	2.7	3.5	3.5	+\$146	+\$125	+\$160	+\$138	13	9	82	6.7	6	M115	Ayrvale Bartel	NBNP122
P208	39	Beast Mode	23/06/18	3.5	124	8.9	-0.8	2	2	+\$131	+\$123	+\$133	+\$130	9	6	86	5.3	5.5	M202	Ayrvale Bartel	NBNP208
P197	40	Prophet	23/07/18	3.1	118	6.7	1.8	2.7	2.7	+\$125	+\$121	+\$128	+\$123	12	7	84	5.9	5	M47	Infinity	NBNP197
P102	41	Prophet	28/06/18	3	115	8.2	-0.8	2	2	+\$134	+\$126	+\$140	+\$130	10	6	84	4.9	5	M10	Braveheart	NBNP102
P201	42	Command	24/07/18	2.9	114	6.2	-1.3	1.7	1.7	+\$125	+\$122	+\$130	+\$123	11	7	82	5.5	6	M150	Jacks Joker	NBNP201
P180	43	Compass	20/07/18	5	138	5.1	0.7	1.1	1.1	+\$131	+\$118	+\$134	+\$130	13	8	84	6	6	J145	MM D78	NBNP180
P137	44	M Realty	12/07/18	3.5	86	5.1	2.5	2	2	+\$103	+\$109	+\$98	+\$104	9	6	77	6.1	5.5	L228	Comrade	NBNP137
P205	45	Beast Mode	28/07/18	5.1	143	4.3	-3.6	0.7	0.7	+\$127	+\$120	+\$129	+\$128	5	4	80	5.8	5.5	M186	Jacks Joker	NBNP205
P368	46	Beast Mode	26/07/18	1.7	102	6	0.8	2.3	2.3	+\$111	+\$111	+\$110	+\$112	10	6	85	5.8	5.5	E35	BN Bruiser	NBNP368
P193	47	Lionheart	24/07/18	5	107	5.9	1.3	1.6	1.6	+\$111	+\$108	+\$115	+\$106	12	7	78	5.9	6	K168	Bn Hooligan	NBNP193
P077	48	Command	02/03/18	7.3	152	8	-1.5	1.2	1.2	+\$138	+\$131	+\$143	+\$138	8	5	96	5.9	5.5	H103	Raff Empire	NBNP77
P094	49	Command	03/04/18	4.2	127	7.3	0.6	1.7	1.7	+\$126	+\$117	+\$125	+\$127	14	8	93	6.7	5	H215	BN frontrow	NBNP94
P093	50	Command	03/04/18	2.7	117	6.7	0.1	1.3	1.3	+\$106	+\$106	+\$98	+\$113	13	9	90	6.8	5	H215	Bn Frontrow	NBNP93
P081	51	Unanimous	05/03/18	4.8	139	2.5	-1	1.4	1.4	+\$128	+\$114	+\$133	+\$127	10	7	94	6.3	5.5	H215	Bn Frontrow	NBNP81
P001	52	Hallmark	15/02/18	4.5	120	2.6	0.9	1.9	1.9	+\$128	+\$117	+\$134	+\$123	12	7	93	6	5	K3	Comrade	NBNP1
P039	53	Hallmark	12/02/18	4.6	124	3.9	-0.8	1.4	1.4	+\$127	+\$113	+\$134	+\$123	9	6	98	5.5	4.5	K4	Ayrvale Bartel	NBNP39
P075	54	Command	25/02/18	2.7	116	8	0.2	1.4	1.4	+\$116	+\$115	+\$111	+\$120	12	7	94	5.9	5	H103	Raff Empire	NBNP75
P074	55	Command	21/02/18	4.4	132	7.8	-0.6	1.1	1.1	+\$132	+\$129	+\$131	+\$134	10	7	98	6.2	4.5	H103	Raff Empire	NBNP74
P078	56	Lionheart	05/03/18	3.2	119	6.3	-3.4	1.8	1.8	+\$123	+\$121	+\$135	+\$118	10	6	101	6.3	5.5	J82	Bn Eritrea	NBNP78
P369	57	Ascot Global	03/08/18	8.8	142	-1.7	-1.5	1.7	1.7	+\$92	+\$89	+\$96	+\$94	6	5	82	5.1	5.5	E124	BN Bruiser	NBNP369
P230	58	Prophet	13/08/18	5.7	106	6.6	0.4	2	2	+\$94	+\$99	+\$90	+\$98	8	5	79	5.9	6.5	D55	B Zealful	NBNP230
P412	59	Proceed	26/07/18	5.0	126	1.8	5.7	-1.0	-1.0					6	4	82	4.9	6	L31	Stewie	NBNP412
P168	60	M Realty	19/07/18	3.2	86	0.7	3.1	1.8	1.8	+\$100	+\$98	+\$98	+\$99	11	7	78	5.7	6.5	H166	Bn Dino	NBNP168
P209	61	Command	22/07/18	4	129	6.8	-2.6	1.1	1.1	+\$123	+\$120	+\$126	+\$124	10	6	82	5	6	M204	Bn Kibah	NBNP209
P225	62	Beast Mode	11/08/18	6.8	146	5	-3	0.7	0.7	+\$113	+\$116	+\$109	+\$118	6	5	83	4.9	6	A18	Bn Xerox	NBNP225
P417	63	Stewie	08/08/18	7.1	138	2.9	0.6	2.8	2.8	+\$153	+\$128	+\$177	+\$141	10	6	80	5.9	6	H151	Stewie	NBNP417
P202	65	Command	10/07/2018	1.7	111	5.1	-0.2	2.2	2.2	+\$119	+\$116	+\$123	+\$119	12	8	80	6.2	4.5	M181	BN Jabba	NBNP202
P264	66	Command	10/08/2018	4.3	143	6.5	-1.2	1.9	1.9	+\$150	+\$132	+\$164	+\$144	7	5	85	4.9	5	M134	Hallmark	NBNP264
P175	67	Lionheart	20/07/2018	4.3	105	5.1	0	1.7	1.7	+\$108	+\$102	+\$112	+\$105	9	5	84	5.6	5	J23	Poss Impact	NBNP175
P108	68	Command	1/07/2018	4.8	129	5.2	-1.9	1.8	1.8	+\$121	+\$120	+\$127	+\$120	9	7	84	5.5	5	M29	Jacks Joker	NBNP108
P251	69	Monarch	6/08/2018	4.3	104	5.8	-0.4	2.6	2.6	+\$122	+\$110	+\$135	+\$114	8	5	78	6.1	5	M31	Ayrvale Bartel	NBNP251
P195	70	Judo	20/07/2018	3.8	115	1.2	-0.6	1.8	1.8	+\$107	+\$103	+\$113	+\$105	8	6	83	5.7	5	M36	Jacks Joker	NBNP195
P115	71	Judo	3/07/2018	3.6	109	3.4	-2	1.1	1.1	+\$93	+\$97	+\$90	+\$97	10	8	82	6.0	5	M64	Ascot Hallmark	NBNP115
P198	72	Monarch	17/08/2018	6.3	107	4.3	1.9	2.8	2.8	+\$122	+\$108	+\$135	+\$114	11	7	80	5.9	5	M54	Ayrvale Bartel	NBNP198
P236	73	Prophet	19/08/2018	4.4	112	4.4	-0.4	2.9	2.9	+\$114	+\$108	+\$124	+\$110	8	5	76	6.4	5	H97	Raff Empire	NBNP236
P163	74	Lionheart	18/07/2018	5.9	88	5.3	-2.9	1.9	1.9	+\$93	+\$95	+\$100	+\$89	7	4	78	5.3	5	H91	Raff Empire	NBNP163

Ben Nevis Average:
Breed Average:

4.6	124	5.4	-0.5	1.9
4.3	106	5.1	-0.2	1.7

Lot 1 BEN NEVIS PREMISE P114^{SV}

HBR 23/06/2018 AMFU,CAFU,DDFU,NHFU ID NBNP114 TATTOO BN P114

PATERNAL PEDIGREE

EF COMPLEMENT 8088^{TV}
 EF COMMANDO 1366^{TV}
 RIVERBEND YOUNG LUCY W1470⁺
BALDRIDGE COMMAND C036^{TV}
 HOOVER DAM⁺
 BALDRIDGE BLACKBIRD A030⁺
 BALDRIDGE BLACKBIRD X89⁺

MATERNAL PEDIGREE

HARB PENDLETON 765 J H^{SV}
 BEN NEVIS FRONTROW F41^{SV}
 BEN NEVIS PERFECTION A103⁺
BEN NEVIS GERANIUM M63⁺
 BEN NEVIS FRONTROW F41^{SV}
 BEN NEVIS K176⁺
 BEN NEVIS GERANIUM Z119⁺

August 2018 Angus Australia Breedplans

	Calving Ease %				Growth (kg)			
	Direct	Dtrs	GL	BW	200	400	600	M
EBV	4.6	3.3	-6.7	1.1	46	90	120	85
PERC	2%	7%	12%	3%	43%	22%	20%	67%

Fertility		Carcase						Milk
SC	DC	WGT	EMA	RIB	P8	RBV%	IMF%	
1.5	-0.2	61	6.7	-1.6	-2.2	1.6	1.8	21
65%	96%	45%	24%	92%	93%	9%	45%	8%

Index Value

ABI	DOM	HGN	HGS
+\$123	+\$120	+\$127	+\$124



We believe you have to have a very special bull to start the sale as he reflects your intention with your breeding program. It is usually a group decision and this guy was picked unanimously. With phenotypic excellence and a pedigree back to our famous Geranium E40 Donor Dam he is just a cracker of a heifers first calf. His actual performance in his contemporary is freaky being the second smallest born, the heaviest grown and scanning first for EMA and second for IMF. He has our highest recommendation. Stud Sire potential.

Purchased by:

\$



LOT 1. BEN NEVIS PREMISE P114



LOT 3. BEN NEVIS PRESTIGE P188

www.bennevisangus.com.au

Lot 2 BEN NEVIS PREMIUM P360^{SV}

HBR 25/07/2018 AMFU,CA5%,DDFU,NH1% ID NBNP360 TATTOO BN P360

PATERNAL PEDIGREE

EF COMPLEMENT 8088^{TV}
 EF COMMANDO 1366^{TV}
 RIVERBEND YOUNG LUCY W1470⁺
BALDRIDGE COMMAND C036^{TV}
 HOOVER DAM⁺
 BALDRIDGE BLACKBIRD A030⁺
 BALDRIDGE BLACKBIRD X89⁺

MATERNAL PEDIGREE

TE MANIA INFINITY 04 379 AB⁺
 BEN NEVIS GAMEMAKER G56^{TV}
 BEN NEVIS GERANIUM E127^{SV}
BEN NEVIS JEAN J16⁺
 BEN NEVIS ZEXAR Z86^{TV}
 BEN NEVIS JEAN F90⁺
 BEN NEVIS JEAN A36 A37⁺

August 2018 Angus Australia Breedplans

	Calving Ease %				Growth (kg)			
	Direct	Dtrs	GL	BW	200	400	600	M
EBV	1.3	1	-5.7	5.9	54	93	123	116
PERC	36%	42%	21%	85%	9%	15%	15%	12%

Fertility		Carcase						Milk
SC	DC	WGT	EMA	RIB	P8	RBV%	IMF%	
1.6	-2.7	67	5.1	-1.1	-1	0.9	1.6	11
60%	78%	24%	50%	83%	75%	30%	53%	85%

Index Value

ABI	DOM	HGN	HGS
+\$119	+\$114	+\$124	+\$118

Over the years it has become obvious to us that our cows are our best investment. Ben Nevis bloodlines dominate our top pen bulls. Premium is a cracking bull in anyones book with an athletic and supple physique wrapped in a thick cover of quality muscle. We love his Sires Appeal and quality skin and softness. Structurally he is hard to fault and is an easy pick.

Purchased by:

\$

Lot 3 BEN NEVIS PRESTIGE P188^{SV}

HBR 21/07/2018 AMFU,CAFU,DDFU,NHF ID NBNP188 TATTOO BN P188

PATERNAL PEDIGREE

TE MANIA EMPEROR E343^{TV}
 ASCOT HALLMARK H147^{TV}
 MILLAH MURRAH BRENDA F123^{TV}
ASCOT LION HEART L305^{TV}
 DUNOON EVIDENT E614^{TV}
 ASCOT H148^{SV}
 MILLAH MURRAH FLOWER F126^{TV}

MATERNAL PEDIGREE

TE MANIA INFINITY 04 379 AB⁺
 BEN NEVIS GAMEMAKER G56^{TV}
 BEN NEVIS GERANIUM E127^{SV}
BEN NEVIS GERANIUM K62⁺
 BEN NEVIS ERITREA E6^{TV}
 BEN NEVIS GERANIUM G160⁺
 BEN NEVIS ROXY C85⁺

August 2018 Angus Australia Breedplans

	Calving Ease %				Growth (kg)			
	Direct	Dtrs	GL	BW	200	400	600	M
EBV	-2.8	-2.7	-1	5.5	51	96	126	106
PERC	88%	93%	93%	78%	18%	10%	11%	25%

Fertility		Carcase						Milk
SC	DC	WGT	EMA	RIB	P8	RBV%	IMF%	
3.8	-4.9	71	6.2	-1.4	-1.2	0.7	2.1	17
1%	37%	14%	30%	88%	78%	38%	33%	33%

Index Value

ABI	DOM	HGN	HGS
+\$123	+\$112	+\$135	+\$118



Lionheart has been an excellent investment for us and is a bull that is really good for the breed. Prestige is every bit as good as his Sire with extra power and length that belies his heavy muscle and strength of spine. It is a rare gem to have his physical prowess matched by a Stud Sire worthy set of EBVs and he represents everything we are working to achieve. This is Mags' favourite bull and she is a mean judge of cattle that never accepts compromise.

Purchased by:

\$

Lot 4 BEN NEVIS PODIUM P242^{SV}

HBR 26/07/2018 AMFU,CAFU,DDF,NHFU ID NBNP242 TATTOO BN P242

PATERNAL PEDIGREE

TE MANIA EMPEROR E343^{TV}
 ASCOT HALLMARK H147^{TV}
 MILLAH MURRAH BRENDA F123^{TV}
ASCOT LION HEART L305^{TV}
 DUNOON EVIDENT E614^{TV}
 ASCOT H148^{SV}
 MILLAH MURRAH FLOWER F126^{TV}

MATERNAL PEDIGREE

TE MANIA BARTEL B219^{TV}
 AYRVALE BARTEL E7^{TV}
 EAGLEHAWK JEDDA B32^{TV}
BEN NEVIS CELESTE J121*
 TE MANIA INFINITY 04 379 AB*
 BEN NEVIS CELESTE G77*
 BEN NEVIS CELESTE E25*

August 2018 Angus Australia Breedplans

Angus	Calving Ease %				Growth (kg)			
	Direct	Dtrs	GL	BW	200	400	600	M
EBV	1.1	1.4	-6.4	4.2	56	104	135	110
PERC	39%	33%	14%	48%	5%	2%	4%	19%

Fertility		Carcase						Milk
SC	DC	WGT	EMA	RIB	P8	RBY%	IMF%	
5	-7.5	80	9	-2.4	-1.9	2	2.7	22
1%	5%	3%	5%	98%	90%	4%	15%	5%

Index Value

ABI	DOM	HGN	HGS
+\$164	+\$142	+\$190	+\$150



Podium is a ripping good bull in anyones book combining structural, carcase and genetic excellence. He is an easy favourite of many who have inspected the bulls, and of ours. He is a carbon copy of the \$70k Ascot Lionheart and he boasts a Stud Sire set of EBVs and top 1% indexes across the board. He is very quiet and a very hard bull to fault. We have collected semen for in herd use. If you miss him he has a Genetical (3/4 brother) in the following lot. Stud Sire potential.

Purchased by: _____

\$



LOT 4. BEN NEVIS PODIUM P242



LOT 6. BEN NEVIS POWDERKEG P199 (see page 12)

Lot 5 BEN NEVIS PORSCHE P186[#]

HBR 4/07/2018 AMFU,CAFU,DDFU,NHFU ID NBNP186 TATTOO BN P186

PATERNAL PEDIGREE

TE MANIA EMPEROR E343^{TV}
 ASCOT HALLMARK H147^{TV}
 MILLAH MURRAH BRENDA F123^{TV}
ASCOT LION HEART L305^{TV}
 DUNOON EVIDENT E614^{TV}
 ASCOT H148^{SV}
 MILLAH MURRAH FLOWER F126^{TV}

MATERNAL PEDIGREE

TE MANIA BARTEL B219^{TV}
 AYRVALE BARTEL E7^{TV}
 EAGLEHAWK JEDDA B32^{TV}
BEN NEVIS GERANIUM K18*
 TE MANIA INFINITY 04 379 AB*
 BEN NEVIS GERANIUM H84*
 BEN NEVIS GERANIUM B77*

August 2018 Angus Australia Breedplans

Angus	Calving Ease %				Growth (kg)			
	Direct	Dtrs	GL	BW	200	400	600	M
EBV	-1.3	-0.2	-4.2	5.2	53	98	128	118
PERC	75%	65%	45%	73%	12%	7%	9%	10%

Fertility		Carcase						Milk
SC	DC	WGT	EMA	RIB	P8	RBY%	IMF%	
3.8	-6.4	75	6.7	-3	-3.1	1.9	2.4	16
1%	14%	7%	24%	99%	98%	5%	23%	42%

Index Value

ABI	DOM	HGN	HGS
+\$141	+\$126	+\$164	+\$130



Porsche is quite simply a beautiful and quiet bull who is extra long, thick, stylish and powerful. Unbelievably Porsche was the smallest born bull in the contemporary and grew to be one of the heaviest in the sale group. His depth of flank, strength of spine and length from hip to pin set him up as a massive herd improver. His full brother sold to astute cattleman Jamie Edmonds from Coolie Angus Stud for \$18,000. His dam is in our Donor Program. Stud Sire potential.

Purchased by: _____

\$



LOT 5. BEN NEVIS PORSCHE P186



LOT 7. BEN NEVIS PURE BEAST P160 (see page 12)

Lot 6 BEN NEVIS POWDERKEG P199^{SV}

HBR 23/07/2018 AMFU,CAFU,DDF,NHFU ID NBNP199 TATTOO BN P199

PATERNAL PEDIGREE

C R A BEXTOR 872 5205 608*
G A R PROPHETTM
G A R OBJECTIVE 1885*
BALDRIDGE BEAST MODE B074TM
STYLES UPGRADE J59*
BALDRIDGE ISABEL Y69*
BALDRIDGE ISABEL T935*

MATERNAL PEDIGREE

TE MANIA BARTEL B219TM
AYRVALE BARTEL E7TM
EAGLEHAWK JEDDA B32TM
BEN NEVIS DORYX M88*
TE MANIA INFINITY 04 379 AB*
BEN NEVIS DORYX K2TM
BEN NEVIS JEAN H93*

August 2018 Angus Australia Breedplans

	Calving Ease %				Growth (kg)			
	Direct	Dtrs	GL	BW	200	400	600	M
EBV	3.2	2.2	-2.9	3.1	64	106	136	112
PERC	11%	20%	70%	23%	1%	2%	4%	16%

Fertility		Carcase						Milk
SC	DC	WGT	EMA	RIB	P8	RBV%	IMF%	
1.3	-5.4	74	3.4	-0.6	-0.2	-0.6	2.2	19
75%	28%	8%	78%	70%	50%	88%	30%	18%

Index Value			
ABI	DOM	HGN	HGS
+\$134	+\$124	+\$141	+\$131



Every now and then you produce something really different and special. Powderkeg is an extraordinary young bull that is as thick and expressive in his shape as he is soft. He just oozes quality. He moves like a cat with his head held high with a wealth of juicy quality muscle gliding behind. His hindquarter is a billow of muscle covered in the finest quality silk. Genetically he has a stud worthy portfolio of EBVs and actual performance. His Grandam and Great Grandam are both donors for us. Pictured on page 11. Stud Sire Potential.

Purchased by: \$

Lot 7 BEN NEVIS PURE BEAST P160^{SV}

HBR 10/07/2018 AMFU,CAFU,DDFU,NH2% ID NBNP160 TATTOO BN P160

PATERNAL PEDIGREE

C R A BEXTOR 872 5205 608*
G A R PROPHETTM
G A R OBJECTIVE 1885*
BALDRIDGE BEAST MODE B074TM
STYLES UPGRADE J59*
BALDRIDGE ISABEL Y69*
BALDRIDGE ISABEL T935*

MATERNAL PEDIGREE

HARB PENDLETON 765 J HTM
BEN NEVIS FRONTROW F41TM
BEN NEVIS PERFECTION A103*
BEN NEVIS VIOLIN H10*
BANQUET ZEALFUL Z021TM
BEN NEVIS VIOLIN F115*
BEN NEVIS VIOLIN A2*

August 2018 Angus Australia Breedplans

	Calving Ease %				Growth (kg)			
	Direct	Dtrs	GL	BW	200	400	600	M
EBV	1.8	1.6	-3.1	3.8	59	97	129	107
PERC	28%	30%	67%	37%	2%	8%	8%	23%

Fertility		Carcase						Milk
SC	DC	WGT	EMA	RIB	P8	RBV%	IMF%	
1.4	-3.1	69	4.6	0.4	0.2	-0.3	1.7	18
70%	72%	19%	58%	38%	40%	80%	50%	24%

Index Value			
ABI	DOM	HGN	HGS
+\$119	+\$113	+\$118	+\$121



Every since he was a calf Pure Beast has moved to the front of the mob and stood up like a champion and a bull that is in charge. We called him Pure Beast because he is such a thumper and belies the fact he is so solid when you see him on the move. With tremendous depth of rib and capacity he has the constitution of an ox but is pure quality. He ranked equal third on fat cover and equal fourth on EMA and will be one of the heaviest ADG bulls in the sale – all of which spell pure profitability. Stud Potential. Pictured on page 11.

Purchased by: \$

Lot 8 BEN NEVIS POSEIDON P212^{SV}

HBR 20/07/2018 AMFU,CAF,DDFU,NHFU ID NBNP212 TATTOO BN P212

PATERNAL PEDIGREE

C R A BEXTOR 872 5205 608*
G A R PROPHETTM
G A R OBJECTIVE 1885*
BALDRIDGE BEAST MODE B074TM
STYLES UPGRADE J59*
BALDRIDGE ISABEL Y69*
BALDRIDGE ISABEL T935*

MATERNAL PEDIGREE

VERMILION YELLOWSTONE*
BEN NEVIS BRUISER B33TM
BEN NEVIS GERANIUM V107*
BEN NEVIS D94*
CRUSADER OF STERN AB*
BEN NEVIS FLORINA B47*
BEN NEVIS FLORINA Y79*

August 2018 Angus Australia Breedplans

	Calving Ease %				Growth (kg)			
	Direct	Dtrs	GL	BW	200	400	600	M
EBV	2.6	1.3	-2.8	3.3	54	86	113	85
PERC	18%	35%	72%	27%	9%	34%	34%	67%

Fertility		Carcase						Milk
SC	DC	WGT	EMA	RIB	P8	RBV%	IMF%	
2.3	-4.1	58	4.4	0.1	0.9	-0.3	1.9	17
25%	53%	56%	62%	48%	22%	80%	40%	33%

Index Value			
ABI	DOM	HGN	HGS
+\$115	+\$110	+\$112	+\$116

Poseidon has been mesmerising since he was a calf with a proud and lofty head carriage and thumping hindquarter. As he has grown he has just thickened up and got even deeper while maintaining his mobility and soft deep fleshing. These traits will make him an awesome cowmaker. Is suitable for heifers.

Purchased by: \$



LOT 9. BEN NEVIS PINNACLE P9 ET (Full ET brother of Lot 10)



LOT 10. BEN NEVIS PERFECTION P11 ET (Full ET brother of Lot 9)

Lot 9 BEN NEVIS PINNACLE P9^{PV} ET

HBR 10/02/2018 AMFU,CAFU,DDFU,NHFU ID NBNP9 TATTOO BN P9

PATERNAL PEDIGREE

EF COMPLEMENT 8088^{TV}
 EF COMMANDO 1366^{TV}
 RIVERBEND YOUNG LUCY W1470^{*}
BALDRIDGE COMPASS C041^{TV}
 STYLES UPGRADE J59^{*}
 BALDRIDGE ISABEL Y69^{*}
 BALDRIDGE ISABEL T935^{*}

MATERNAL PEDIGREE

J & C APPEAL A10^{TV}
 RAFF EMPIRE E269^{TV}
 RAFF DORIS A55^{*}
BEN NEVIS JEAN H103^{TV}
 BEN NEVIS XEROX X101^{TV}
 BEN NEVIS JEAN B16^{*}
 BEN NEVIS JEAN U32^{*}

August 2018 Angus Australia Breedplans

Calving Ease %	Growth (kg)							
	Direct	Dtrs	GL	BW	200	400	600	M
EBV	-0.4	-0.8	-3.2	4.1	57	108	138	97
PERC	63%	74%	65%	45%	4%	1%	3%	42%

Fertility		Carcase						Milk
SC	DC	WGT	EMA	RIB	P8	RBV%	IMF%	
1.9	-2.1	72	7	0.8	1.2	0.6	1.2	22
45%	85%	12%	20%	25%	15%	40%	68%	5%

Index Value			
ABI	DOM	HGN	HGS
+\$128	+\$123	+\$124	+\$132



When I picture a perfectly constructed Angus bull Pinnacles picture now comes to mind. He stands out in the mob of 18 month old bulls and has since he was a calf with his show ring style and strong, straight spine. His dam is our supercow Jean H103 whose sons have averaged \$12,000 for us over the last three sales. Pinnacle scanned equal third highest Fat cover which is no surprise as he has just powered on despite the conditions handed to us, he also ranked with the fourth highest EMA. Very docile. Stud potential.

Purchased by: \$

Lot 10 BEN NEVIS PERFECTION P11^{PV} ET

HBR 10/02/2018 AMFU,CAFU,DDFU,NHFU ID NBNP11 TATTOO BN P11

PATERNAL PEDIGREE

EF COMPLEMENT 8088^{TV}
 EF COMMANDO 1366^{TV}
 RIVERBEND YOUNG LUCY W1470^{*}
BALDRIDGE COMPASS C041^{TV}
 STYLES UPGRADE J59^{*}
 BALDRIDGE ISABEL Y69^{*}
 BALDRIDGE ISABEL T935^{*}

MATERNAL PEDIGREE

J & C APPEAL A10^{TV}
 RAFF EMPIRE E269^{TV}
 RAFF DORIS A55^{*}
BEN NEVIS JEAN H103^{TV}
 BEN NEVIS XEROX X101^{TV}
 BEN NEVIS JEAN B16^{*}
 BEN NEVIS JEAN U32^{*}

August 2018 Angus Australia Breedplans

Calving Ease %	Growth (kg)							
	Direct	Dtrs	GL	BW	200	400	600	M
EBV	-0.2	-0.7	-1.4	5.6	63	116	155	136
PERC	60%	73%	90%	80%	1%	1%	1%	2%

Fertility		Carcase						Milk
SC	DC	WGT	EMA	RIB	P8	RBV%	IMF%	
0.8	-1.2	85	5.6	-1.3	-1	1	1	18
90%	92%	1%	40%	87%	75%	25%	75%	24%

Index Value			
ABI	DOM	HGN	HGS
+\$131	+\$122	+\$133	+\$133

Just a cracking good bull in anyones language and he stands out like King Kong in this mob of bulls. He is a full ET brother to the previous Lot and while not quite as refined he makes up for it with sheer power and rugged good looks. Right up the top of his contemporary for growth and scans being equal fourth for Fat and IMF, and fifth for EMA.

Purchased by: \$

Lot 11 BEN NEVIS PRIMUS P57^{PV} ET

HBR 2/03/2018 AMFU,CAFU,DDFU,NHFU ID NBNP57 TATTOO BN P57

PATERNAL PEDIGREE

G A R PREDESTINED^{*}
 G A R PROGRESS^{TV}
 G A R OBJECTIVE 2345^{*}
H P C A PROCEED^{*}
 B/R AMBUSH 28^{*}
 G A R 28 AMBUSH L119^{*}
 G A R PREDESTINED N05^{*}

MATERNAL PEDIGREE

HARB PENDLETON 765 J H^{TV}
 BEN NEVIS FRONTROW F41^{TV}
 BEN NEVIS PERFECTION A103^{*}
BEN NEVIS JEAN H215^{TV}
 BULLIAC X-RAY X10^{*}
 BEN NEVIS JEAN D71^{*}
 BEN NEVIS JEAN B21^{*}

August 2018 Angus Australia Breedplans

Calving Ease %	Growth (kg)							
	Direct	Dtrs	GL	BW	200	400	600	M
EBV	0.7	2	-6.6	5.4	60	105	146	141
PERC	45%	23%	13%	77%	1%	2%	1%	1%

Fertility		Carcase						Milk
SC	DC	WGT	EMA	RIB	P8	RBV%	IMF%	
1.5	-3.6	78	2.9	0.2	-1.2	-0.2	2.8	20
65%	63%	4%	83%	45%	78%	75%	13%	12%

Index Value			
ABI	DOM	HGN	HGS
+\$137	+\$118	+\$157	+\$130



The Stud on the front cover. We think Primus is a very special bull with a commanding presence and Stud Sire appeal. His stunning phenotype is matched by his EBVs for herd improvement and outcross excellence. He moves like a cat. His full brother sold last year to Bannaby for \$24,000. His dam and two sisters are our most prized donor cow and his sister K80 is the dam of Metamorphic who sold to Banquet and a NZ syndicate for \$32,000. We believe strongly in this bull – he will be used heavily by us in the AI Program this Spring.

Purchased by: \$



LOT 11. BEN NEVIS PRIMUS P57 ET



LOT 12. BEN NEVIS PROPOGATE P37 (see page 14)

Lot 12 BEN NEVIS PROPOGATE P37^{SV}

HBR 13/02/2018 AMFU,CA2%,DD1%,NHFU ID NBNP37 TATTOO BN P37

PATERNAL PEDIGREE

EF COMPLEMENT 8088^{TV}
 EF COMMANDO 1366^{TV}
 RIVERBEND YOUNG LUCY W1470⁺
BALDRIDGE COMMAND C036^{TV}
 HOOVER DAM⁺
 BALDRIDGE BLACKBIRD A030⁺
 BALDRIDGE BLACKBIRD X89⁺

MATERNAL PEDIGREE

BT EQUATOR 395M⁺
 MILLAH MURRAH EQUATOR D78^{TV}
 MILLAH MURRAH RADO Y119⁺
BEN NEVIS GERANIUM J134⁺
 BEN NEVIS ZEXAR Z86^{TV}
 BEN NEVIS GERANIUM B77⁺
 BEN NEVIS GERANIUM Z46⁺

August 2018 Angus Australia Breedplans

	Calving Ease %				Growth (kg)			
	Direct	Dtrs	GL	BW	200	400	600	M
EBV	1.7	2.2	-6.5	6.1	63	115	151	130
PERC	30%	20%	13%	88%	1%	1%	1%	4%

Fertility		Carcase						Milk
SC	DC	WGT	EMA	RIB	P8	RBV%	IMF%	
3.1	-5.8	82	5.7	-1.8	-1	0.4	2.6	20
6%	22%	2%	38%	94%	75%	50%	18%	12%

Index Value			
ABI	DOM	HGN	HGS
+\$159	+\$137	+\$180	+\$149



Perhaps the most unique bull in the sale, and as far as actual performance he is hard to beat topping the IMF at a massive 7.1 while also being the second heaviest, second biggest EMA and third fattest. He is a larger frame bull with beautiful neck extension and is flat boned and soft coated. He backs this all up with a huge set of EBVs and punches a straight set of top 1% indexes across the board. He has a birthmark on his face that is not genetic and will not be passed onto his calves. Picture on page 13.

Purchased by: \$

Lot 14 BEN NEVIS PERENNIAL P19^{SV}

HBR 13/02/2018 AMFU,CAFU,DDF,NHFU ID NBNP19 TATTOO BN P19

PATERNAL PEDIGREE

TE MANIA BERKLEY B1^{TV}
 TE MANIA EMPEROR E343^{TV}
 TE MANIA LOWAN Z74^{TV}
ASCOT HALLMARK H147^{TV}
 MILLAH MURRAH DIGBY D108^{TV}
 MILLAH MURRAH BRENDA F123^{TV}
 MILLAH MURRAH BRENDA D113^{TV}

MATERNAL PEDIGREE

TE MANIA UNLIMITED U3271⁺
 TE MANIA INFINITY 04 379 AB⁺
 TE MANIA 95102⁺
BEN NEVIS CELESTE G77⁺
 DUNOON MIDLAND A017^{TV}
 BEN NEVIS CELESTE E25⁺
 BEN NEVIS CELESTE V068⁺

August 2018 Angus Australia Breedplans

	Calving Ease %				Growth (kg)			
	Direct	Dtrs	GL	BW	200	400	600	M
EBV	-1.1	-0.6	-3.4	6.9	56	103	138	124
PERC	73%	71%	62%	95%	5%	3%	3%	6%

Fertility		Carcase						Milk
SC	DC	WGT	EMA	RIB	P8	RBV%	IMF%	
3.7	-6.4	78	5.3	-0.1	-0.5	0.5	1.9	9
1%	14%	4%	45%	55%	60%	45%	40%	94%

Index Value			
ABI	DOM	HGN	HGS
+\$141	+\$122	+\$156	+\$133

There is lovely breed character in Perennial and he has extra shape and bone for a Hallmark while still maintaining the classic soft skin and carcass quality traits but with more thump. He is a solid contender this bull and an easy choice.

Purchased by: \$

Lot 13 BEN NEVIS PIRATE P16^{SV}

HBR 23/02/2018 AMFU,CA2%,DDFU,NHFU ID NBNP16 TATTOO BN P16

PATERNAL PEDIGREE

EF COMPLEMENT 8088^{TV}
 EF COMMANDO 1366^{TV}
 RIVERBEND YOUNG LUCY W1470⁺
BALDRIDGE COMMAND C036^{TV}
 HOOVER DAM⁺
 BALDRIDGE BLACKBIRD A030⁺
 BALDRIDGE BLACKBIRD X89⁺

MATERNAL PEDIGREE

HYLINE RIGHT TIME 338⁺
 HYLINE RIGHT WAY 781⁺
 HYLINE ELLEN 86⁺
BEN NEVIS DORMIST D63⁺
 VERMILION YELLOWSTONE⁺
 BEN NEVIS DORMIST A61⁺
 BEN NEVIS DIANA W096⁺

August 2018 Angus Australia Breedplans

	Calving Ease %				Growth (kg)			
	Direct	Dtrs	GL	BW	200	400	600	M
EBV	0.5	2.1	-1.3	5.8	57	100	137	124
PERC	48%	22%	90%	83%	4%	5%	3%	6%

Fertility		Carcase						Milk
SC	DC	WGT	EMA	RIB	P8	RBV%	IMF%	
1.2	0.8	72	11.9	-2.1	-3.9	2.8	1.6	15
78%	98%	12%	1%	96%	99%	1%	53%	52%

Index Value			
ABI	DOM	HGN	HGS
+\$131	+\$124	+\$140	+\$130

Pirate has stolen more than a few hearts with the cattlemen and women that have come to look at him pre-sale. When Roger Evans scanned him for EMA his comments were woah – big boy. He ranked number one for EMA in his contemporary and boasts a breed leading EBV for EMA. To appreciate this just get over the top of him as he is built like a picnic table and one with pretty solid legs as well. He wouldn't trash your picnic either as he is very easy going.

Purchased by: \$



LOT 13. BEN NEVIS PIRATE P16



LOT 14. BEN NEVIS PERENNIAL P19

Lot 15 BEN NEVIS PYGMALION P35^{SV}

HBR 15/02/2018 AMFU,CAFU,DD1%,NHFU ID NBNP35 TATTOO BN P35

PATERNAL PEDIGREE

TE MANIA EMPEROR E343^{TV}
 ASCOT HALLMARK H147^{TV}
 MILLAH MURRAH BRENDA F123^{TV}
ASCOT LION HEART L305^{TV}
 DUNOON EVIDENT E614^{TV}
 ASCOT H148^{TV}
 MILLAH MURRAH FLOWER F126^{TV}

MATERNAL PEDIGREE

BT EQUATOR 395M^{*}
 MILLAH MURRAH EQUATOR D78^{TV}
 MILLAH MURRAH RADO Y119^{*}
BEN NEVIS DORMIST J100^{*}
 BEN NEVIS AROD A97^{TV}
 BEN NEVIS DORMIST E149^{*}
 BEN NEVIS DORMIST A116^{*}

August 2018 Angus Australia Breedplans

	Calving Ease %				Growth (kg)			
	Direct	Dtrs	GL	BW	200	400	600	M
EBV	-1.3	0.5	-5.5	7	61	112	152	172
PERC	75%	52%	24%	95%	1%	1%	1%	1%

Fertility		Carcase						Milk
SC	DC	WGT	EMA	RIB	P8	RBV%	IMF%	
5.2	-5.3	88	6.2	-3.3	-3.7	3	0.9	8
1%	30%	1%	30%	99%	99%	1%	78%	96%

Index Value			
ABI	DOM	HGN	HGS
+\$146	+\$129	+\$163	+\$137

A very powerful bull right at the top of the contemporary for his explosive growth and he has a lot more fuel in the tank yet. Mostly his weight comes through his length and he would work well over cows that need more frame and stretch for more kilos on the rail. He posted the third highest EMA and was the equal fourth fattest in his scans among his contemporaries.

Purchased by: \$

Lot 17 BEN NEVIS PROMETHEUS P265^{SV}

HBR 3/07/2018 AMFU,CAFU,DDF,NHFU ID NBNP265 TATTOO BN P265

PATERNAL PEDIGREE

EF COMPLEMENT 8088^{TV}
 EF COMMANDO 1366^{TV}
 RIVERBEND YOUNG LUCY W1470^{*}
BALDRIDGE COMMAND C036^{TV}
 HOOVER DAM^{*}
 BALDRIDGE BLACKBIRD A030^{*}
 BALDRIDGE BLACKBIRD X89^{*}

MATERNAL PEDIGREE

POSS TOTAL IMPACT 745^{*}
 JSRL JACK'S JOKER J1^{TV}
 DSK RR PANDA F120^{TV}
BEN NEVIS CELESTE M146^{*}
 MILLAH MURRAH EQUATOR D78^{TV}
 BEN NEVIS CELESTE J84^{*}
 BEN NEVIS CELESTE E25^{*}

August 2018 Angus Australia Breedplans

	Calving Ease %				Growth (kg)			
	Direct	Dtrs	GL	BW	200	400	600	M
EBV	-1.3	1.1	-4.1	6.4	61	114	144	135
PERC	75%	40%	48%	91%	1%	1%	1%	2%

Fertility		Carcase						Milk
SC	DC	WGT	EMA	RIB	P8	RBV%	IMF%	
1.4	-2.9	79	8.6	-3.1	-3.2	2.7	1.2	14
70%	75%	3%	6%	99%	98%	1%	68%	61%

Index Value			
ABI	DOM	HGN	HGS
+\$140	+\$133	+\$151	+\$136



I wanted to keep this bull for a show bull and to use for ourselves but Stu assures me he loves to AI cows so all the bulls are for sale. Prometheus has extra frame and power and has one of the biggest racks of rib in the sale that extends with thickness out to a huge hindquarter. No surprise that he ranks third in the contemporary for scanned EMA but he has also outperformed other more known pedigrees for marbling by ranking equal fourth for scanned IMF. He has a divine nature and will be a bull to treasure.

Purchased by: \$

Lot 16 BEN NEVIS PRINCIPAL P69^{PV}

HBR 1/03/2018 AMFU,CAFU,DDFU,NHFU ID NBNP69 TATTOO BN P69

PATERNAL PEDIGREE

TE MANIA BERKLEY B1^{TV}
 TE MANIA EMPEROR E343^{TV}
 TE MANIA LOWAN Z74^{TV}
ASCOT HALLMARK H147^{TV}
 MILLAH MURRAH DIGBY D108^{TV}
 MILLAH MURRAH BRENDA F123^{TV}
 MILLAH MURRAH BRENDA D113^{TV}

MATERNAL PEDIGREE

TE MANIA UNLIMITED U3271^{*}
 HIGHLANDER OF STERN AB^{*}
 STERN 2664^{*}
NEMONAVILLE BANDETTA H50^{TV}
 NEMONAVILLE WORKABULL W15^{*}
 NEMONAVILLE BANDETTA Z2^{*}
 NEMONAVILLE BANDETTA^{*}

August 2018 Angus Australia Breedplans

	Calving Ease %				Growth (kg)			
	Direct	Dtrs	GL	BW	200	400	600	M
EBV	-4.1	-2.3	-3.3	6.9	46	85	119	107
PERC	94%	90%	63%	95%	43%	37%	21%	23%

Fertility		Carcase						Milk
SC	DC	WGT	EMA	RIB	P8	RBV%	IMF%	
2.9	-7.6	54	-1.2	1.3	4.1	-1.8	1.5	10
9%	5%	69%	99%	15%	1%	99%	55%	90%

Index Value			
ABI	DOM	HGN	HGS
+\$107	+\$91	+\$107	+\$105

Principal will grow into a big, deep sided bull with a very gentle nature and tons of volume. He is ideal for breeding females of the same type that will be easy care, fast growing and have an ability to meet a wide range of markets. Like his fabulous donor dam he runs on the smell of an oily rag and scanned third highest for fat. If you miss out on him his full ET brother sells as Lot 36, and maternal brother in Lot 28.

Purchased by: \$



LOT 17. BEN NEVIS PROMETHEUS P265



LOT 18. BEN NEVIS PANTHER P177 (see page 16)

Lot 18 BEN NEVIS PANTHER P177^{SV}

HBR 18/07/2018 AMFU,CAFU,DD1%,NHFU ID NBNP177 TATTOO BN P177

PATERNAL PEDIGREE

TE MANIA EMPEROR E343^{TV}
 ASCOT HALLMARK H147^{TV}
 MILLAH MURRAH BRENDA F123^{TV}
ASCOT LION HEART L305^{TV}
 DUNOON EVIDENT E614^{TV}
 ASCOT H148^{SV}
 MILLAH MURRAH FLOWER F126^{TV}

MATERNAL PEDIGREE

BT EQUATOR 395M^{*}
 MILLAH MURRAH EQUATOR D78^{TV}
 MILLAH MURRAH RADO Y119^{*}
BEN NEVIS DORMIST J102^{*}
 CRUSADER OF STERN AB^{*}
 BEN NEVIS DORMIST B37^{*}
 BEN NEVIS DORMIST Z1^{*}

August 2018 Angus Australia Breedplans

	Calving Ease %				Growth (kg)			
	Direct	Dtrs	GL	BW	200	400	600	M
EBV	-3.3	-1	-4.2	7.4	58	108	142	147
PERC	90%	77%	45%	97%	3%	1%	2%	1%

Fertility		Carcase						Milk
SC	DC	WGT	EMA	RIB	P8	RBY%	IMF%	
3	-6.5	83	3.4	-0.9	-0.9	0.7	1.2	13
7%	13%	2%	78%	78%	73%	38%	68%	71%

Index Value			
ABI	DOM	HGN	HGS
+\$128	+\$114	+\$138	+\$122



Panther is an absolute knockout of a bull and a genuine herd changer. We love this gentle giant for his soft, deep muscle pattern, pure thump and his extra style. He is an absolute gentleman and it will be very hard to part with him. He has the same shape as the Lionhearts but with extra capacity making him weigh like lead and at the top of the breed as well as the top of his contemporary for ADG. He is our style of bull and will breed the house down. Semen collected. Pictured on page 15.

Purchased by: \$

Lot 20 BEN NEVIS PRODUCTION P133^{SV}

HBR 25/06/2018 AMFU,CAFU,DDFU,NHFU ID NBNP133 TATTOO BN P133

PATERNAL PEDIGREE

B A R EXT TRAVELER 205^{*}
 C R A BEXTOR 872 5205 608^{*}
 CRA LADY JAYE 608 498 S EASY^{*}
G A R PROPHET^{TV}
 S S OBJECTIVE T510 OT26^{*}
 G A R OBJECTIVE 1885^{*}
 G A R 1407 NEW DESIGN 2232^{*}

MATERNAL PEDIGREE

SITZ NEW DESIGN 458N^{*}
 DALWHINNIE 458N JOHNO J5^{TV}
 DALWHINNIE 2928 FLOWER F3^{TV}
BEN NEVIS JUNE M228^{*}
 POSS TOTAL IMPACT 745^{*}
 BEN NEVIS JUNE J122^{*}
 BEN NEVIS JUNE G84^{*}

August 2018 Angus Australia Breedplans

	Calving Ease %				Growth (kg)			
	Direct	Dtrs	GL	BW	200	400	600	M
EBV	0.4	2.1	-4.8	3.1	57	97	117	95
PERC	50%	22%	35%	23%	4%	8%	25%	46%

Fertility		Carcase						Milk
SC	DC	WGT	EMA	RIB	P8	RBY%	IMF%	
1.8	-6.9	70	0.9	0.4	1.2	-1.6	3.1	17
50%	9%	16%	97%	38%	15%	99%	8%	33%

Index Value			
ABI	DOM	HGN	HGS
+\$125	+\$117	+\$136	+\$119

A very square, structurally sound young sire who nails his operative of being soft and thick like his dam with extra IMF and neck extension from his famous sire. He is a heifers first calf and was born the smallest in his contemporary while pulling away for growth. He ranked equal first for scanned Fat and equal third for scanned IMF. He is suitable to use on heifers and offers excellent diversity.

Purchased by: \$

Lot 19 BEN NEVIS PRIVATEER P183^{SV}

HBR 16/07/2018 AMFU,CAFU,DDFU,NHFU ID NBNP183 TATTOO BN P183

PATERNAL PEDIGREE

TE MANIA EMPEROR E343^{TV}
 ASCOT HALLMARK H147^{TV}
 MILLAH MURRAH BRENDA F123^{TV}
ASCOT LION HEART L305^{TV}
 DUNOON EVIDENT E614^{TV}
 ASCOT H148^{SV}
 MILLAH MURRAH FLOWER F126^{TV}

MATERNAL PEDIGREE

TC TOTAL 410^{*}
 POSS TOTAL IMPACT 745^{*}
 POSS BLACKCAP 5116^{*}
BEN NEVIS JEAN J159^{*}
 BEN NEVIS AROD A97^{TV}
 BEN NEVIS JEAN G2^{*}
 BEN NEVIS JEAN Y74^{*}

August 2018 Angus Australia Breedplans

	Calving Ease %				Growth (kg)			
	Direct	Dtrs	GL	BW	200	400	600	M
EBV	-4.3	0.7	-2.5	7.1	54	100	134	140
PERC	94%	48%	77%	96%	9%	5%	5%	1%

Fertility		Carcase						Milk
SC	DC	WGT	EMA	RIB	P8	RBY%	IMF%	
2.9	-6.1	75	3.4	-1.2	-1.1	0.4	1.6	9
9%	18%	7%	78%	85%	77%	50%	53%	94%

Index Value			
ABI	DOM	HGN	HGS
+\$122	+\$108	+\$134	+\$116

We love the muscle pattern and length of our Lionhearts. In addition Privateer stands down on more bone and is muscled right down through the lower thigh to the hock. Like all the Lionhearts he has a beautiful nature. He posted an equal fourth highest scanned EMA.

Purchased by: \$

Lot 21 BEN NEVIS PROTOCOL P259^{SV}

HBR 2/08/2018 AMFU,CAFU,DDF,NHF ID NBNP259 TATTOO BN P259

PATERNAL PEDIGREE

B A R EXT TRAVELER 205^{*}
 C R A BEXTOR 872 5205 608^{*}
 CRA LADY JAYE 608 498 S EASY^{*}
G A R PROPHET^{TV}
 S S OBJECTIVE T510 OT26^{*}
 G A R OBJECTIVE 1885^{*}
 G A R 1407 NEW DESIGN 2232^{*}

MATERNAL PEDIGREE

ARDROSSAN ADMIRAL A2^{TV}
 BANQUET DANDY D274^{TV}
 BANQUET DREAM V104^{*}
BEN NEVIS WILCOOLA G4^{*}
 BEN NEVIS XEROX X101^{TV}
 LONGFORD WILCOOLA C14^{*}
 VERMONT WILCOOLA Z334^{*}

August 2018 Angus Australia Breedplans

	Calving Ease %				Growth (kg)			
	Direct	Dtrs	GL	BW	200	400	600	M
EBV	1.3	0.3	-3.1	5.8	59	94	124	107
PERC	36%	55%	67%	83%	2%	13%	14%	23%

Fertility		Carcase						Milk
SC	DC	WGT	EMA	RIB	P8	RBY%	IMF%	
0.1	-2.4	73	6.9	-1.8	-2.5	1.2	2.5	18
98%	81%	10%	21%	94%	95%	18%	20%	24%

Index Value			
ABI	DOM	HGN	HGS
+\$125	+\$118	+\$137	+\$121



The first thing that strikes you about Protocol is the solid bone he stands down on and his presence and sire appeal- he is always showing off. He will grow into his hindquarter to be a very big bull and one that has a ton of potential. His Dam and sisters are from the famous Wilcoola line are in our Donor Program and are breeding the house down continually punching above average growth and IMF into our herd. Stud Sire potential.

Purchased by: \$

Lot 22 BEN NEVIS PROFESSOR P215^{SV}

HBR 20/07/2018 AMFU,CAFU,DDFU,NHFU ID NBNP215 TATTOO BN P215

PATERNAL PEDIGREE

G A R PROGRESS^{SV}
 H P C A PROCEED*
 G A R 28 AMBUSH L119*
MILWILLAH PROCEED L117^{SV}
 ARDOSSAN EQUATOR A241^{TV}
 MILWILLAH LOWAN J04*
 MILWILLAH LOWAN G114^{TV}

MATERNAL PEDIGREE

B/R NEW FRONTIER 095*
 BEN NEVIS FRONTIER B88^{SV}
 BEN NEVIS KIWI V48*
BEN NEVIS GOLIATH G201*
 VERMILION YELLOWSTONE*
 BEN NEVIS GERANIUM A84*
 BEN NEVIS GERANIUM V29*

August 2018 Angus Australia Breedplans

	Calving Ease %				Growth (kg)			
	Direct	Dtrs	GL	BW	200	400	600	M
EBV	-2.4	0.4	-6.3	4.9	52	92	121	102
PERC	85%	53%	15%	65%	15%	17%	18%	32%

Fertility		Carcase						Milk
SC	DC	WGT	EMA	RIB	P8	RBV%	IMF%	
2.3	-1.5	70	7.9	-2.1	-2	1.5	2	14
25%	90%	16%	11%	96%	91%	10%	35%	61%

Index Value			
ABI	DOM	HGN	HGS
+\$116	+\$112	+\$123	+\$115

Again the natural son of a Donor cow and showing the constitution, doing ability and skin that we are trying to replicate through our herd. Professor is a mid maturity bull who will continue to grow and fill out as he does. He is very stylish and showy with extra depth of rib and flank.

Purchased by: \$

Lot 24 BEN NEVIS PIOUS P223^{SV}

HBR 4/08/2018 AMFU,CAF,DDFU,NHFU ID NBNP223 TATTOO BN P223

PATERNAL PEDIGREE

SCHURRTOP REALITY X723*
 MATAURI REALITY 839*
 MATAURI 06663*
MILWILLAH REALITY L19^{TV}
 ARDOSSAN EQUATOR A241^{TV}
 MILWILLAH DREAM G71^{TV}
 VERMONT DREAM Y301^{TV}

MATERNAL PEDIGREE

MYTTY IN FOCUS*
 BEN NEVIS ERITREA E6^{SV}
 BEN NEVIS DORMIST C46*
BEN NEVIS DORMIST J32*
 HYLINE RIGHT WAY 781*
 BEN NEVIS DORMIST D63*
 BEN NEVIS DORMIST A61*

August 2018 Angus Australia Breedplans

	Calving Ease %				Growth (kg)			
	Direct	Dtrs	GL	BW	200	400	600	M
EBV	2.3	2.3	-7.3	6.1	55	95	130	147
PERC	21%	18%	8%	88%	7%	11%	7%	1%

Fertility		Carcase						Milk
SC	DC	WGT	EMA	RIB	P8	RBV%	IMF%	
2.6	-3.1	68	5.3	-0.1	-0.5	0.9	1.5	10
15%	72%	21%	45%	55%	60%	30%	55%	90%

Index Value			
ABI	DOM	HGN	HGS
+\$124	+\$114	+\$132	+\$122

A different style of bull offering a beautiful loose skin, long rein and large frame. He has a superb temperament. There is no doubt that he will breed beautiful daughters as soft and deep ribbed as he is with extra capacity. He is one of the fastest growing (ADG) bulls in the sale.

Purchased by: \$

Lot 23 BEN NEVIS PANORAMIC P189^{SV}

HBR 12/07/2018 AMFU,CAFU,DDFU,NHFU ID NBNP189 TATTOO BN P189

PATERNAL PEDIGREE

SCHURRTOP REALITY X723*
 MATAURI REALITY 839*
 MATAURI 06663*
MILWILLAH REALITY L19^{TV}
 ARDOSSAN EQUATOR A241^{TV}
 MILWILLAH DREAM G71^{TV}
 VERMONT DREAM Y301^{TV}

MATERNAL PEDIGREE

TE MANIA INFINITY 04 379 AB*
 BEN NEVIS GAMEMAKER G56^{TV}
 BEN NEVIS GERANIUM E127^{TV}
BEN NEVIS KIWI K81*
 J & C APPEAL A10^{TV}
 BEN NEVIS KIWI G64*
 BEN NEVIS KIWI B54*

August 2018 Angus Australia Breedplans

	Calving Ease %				Growth (kg)			
	Direct	Dtrs	GL	BW	200	400	600	M
EBV	2.3	1.7	-4.2	4.3	43	82	104	108
PERC	21%	28%	45%	50%	61%	48%	56%	22%

Fertility		Carcase						Milk
SC	DC	WGT	EMA	RIB	P8	RBV%	IMF%	
2.6	-3.4	62	1.2	-0.8	-0.9	-0.3	2.7	9
15%	67%	42%	96%	75%	73%	80%	15%	94%

Index Value			
ABI	DOM	HGN	HGS
+\$109	+\$106	+\$122	+\$103

Panoramic is a larger frame bull with a silky soft skin and phenomenal head carriage and neck extension. He and his paternal brother in the following lot will be very beneficial over smaller, earlier maturing cows to put the weight and volume back into them while injecting IMF. Panoramic is very, very quiet and will breed super cows.

Purchased by: \$



LOT 25. BEN NEVIS POWERPLAY P131 (see page 18)



LOT 26. BEN NEVIS PRIMAL P132 (see page 18)

Lot 25 BEN NEVIS POWERPLAY P131^{SV}

HBR 1/07/2018 AMFU,CA2%,DDFU,NHFU ID NBNP131 TATTOO BN P131

PATERNAL PEDIGREE

REMITALL NIGHTHAWK 37N*
REMITALL H RACHIS 21R*
HENDERSON MISSIE 32*02*
BEN NEVIS JUDO J158^{SV}
TE MANIA INFINITY 04 379 AB*
BEN NEVIS GERANIUM G26^{SV}
BEN NEVIS GERANIUM E79*

MATERNAL PEDIGREE

POSS TOTAL IMPACT 745*
BEN NEVIS JABBA J12^{SV}
BEN NEVIS GERANIUM B103^{SV}
BEN NEVIS YOLANDE M214*
TE MANIA INFINITY 04 379 AB*
BEN NEVIS YOLANDE H12*
BEN NEVIS YOLANDE F75*

August 2018 Angus Australia Breedplans								
Calving Ease %	Growth (kg)							
	Direct	Dtrs	GL	BW	200	400	600	M
EBV	-4.5	-2.4	-1.8	5.9	58	103	142	125
PERC	95%	91%	86%	85%	3%	3%	2%	6%

Fertility		Carcase						Milk
SC	DC	WGT	EMA	RIB	P8	RBV%	IMF%	
3.8	-1.6	71	2.4	-1.5	-1	1.2	0.9	
1%	89%	14%	88%	90%	75%	18%	78%	

Index Value			
ABI	DOM	HGN	HGS
+\$107	+\$103	+\$106	+\$111

Powerplay is an eyecatcher and has lots of ticks with astute cattlemen and women. Being an outcross his sire Judo was never rated by BREEDPLAN but they have been phenomenal for us and renowned for their doing ability and productivity. They are now shining as dams. With tons of heart room and capacity Powerplay will breed his own generation of front paddock cows and high value sons. Perfect to target the Jap B3, but he has the doability and maturity type to nail lower weight markets too. Pictured on page 17.

Purchased by: \$

Lot 28 BEN NEVIS PHENOMENAL P61^{PV} ET

HBR 3/03/2018 AMFU,CAFU,DDFU,NHFU ID NBNP61 TATTOO BN P61

PATERNAL PEDIGREE

GAMBLES ROYAL FLUSH*
VISIONTOPLINE ROYAL STOCKMAN*
LAGRAND PRIDE 7140*
VISION UNANIMOUS 1418^{SV}
BOYD ON TARGET 1083*
VISION EDELLA 665*
VISION EDELLA 337*

MATERNAL PEDIGREE

TE MANIA UNLIMITED U3271*
HIGHLANDER OF STERN AB*
STERN 2664*
NEMONAVILLE BANDETTA H50^{SV}
NEMONAVILLE WORKABULL W15*
NEMONAVILLE BANDETTA Z2*
NEMONAVILLE BANDETTA*

August 2018 Angus Australia Breedplans								
Calving Ease %	Growth (kg)							
	Direct	Dtrs	GL	BW	200	400	600	M
EBV	-2.1	-1.7	-3.1	7.2	50	84	111	107
PERC	83%	85%	67%	96%	23%	41%	39%	23%

Fertility		Carcase						Milk
SC	DC	WGT	EMA	RIB	P8	RBV%	IMF%	
2.3	-6.6	54	1.9	-0.8	1.7	0.3	1.1	
25%	12%	69%	92%	75%	9%	55%	70%	

Index Value			
ABI	DOM	HGN	HGS
+\$108	+\$102	+\$107	+\$107

An absolute thumper of a bull and a contender for the front row. Unlike many heavy muscled animals Phenomenal has exceptional softness as well which is reflected in his beautiful fine skin and coat and his scan for fat being the second highest in the contemporary. BREEDPLAN probably does not have a good grasp on his Canadian outcross genetics and we feel Unanimous's growth numbers will improve as more animals are analysed. His maternal brothers are Lots 16 and 36.

Purchased by: \$

Lot 26 BEN NEVIS PRIMAL P132^{SV}

HBR 26/06/2018 AMFU,CAC,DDFU,NHFU ID NBNP132 TATTOO BN P132

PATERNAL PEDIGREE

REMITALL NIGHTHAWK 37N*
REMITALL H RACHIS 21R*
HENDERSON MISSIE 32*02*
BEN NEVIS JUDO J158^{SV}
TE MANIA INFINITY 04 379 AB*
BEN NEVIS GERANIUM G26^{SV}
BEN NEVIS GERANIUM E79*

MATERNAL PEDIGREE

POSS TOTAL IMPACT 745*
BEN NEVIS JABBA J12^{SV}
BEN NEVIS GERANIUM B103^{SV}
BEN NEVIS GERANIUM M222*
BEN NEVIS DINO F6^{SV}
BEN NEVIS GERANIUM H168*
BEN NEVIS GERANIUM C35*

August 2018 Angus Australia Breedplans								
Calving Ease %	Growth (kg)							
	Direct	Dtrs	GL	BW	200	400	600	M
EBV	-1.9	0	-4	3.1	43	84	114	100
PERC	81%	60%	50%	23%	61%	41%	32%	36%

Fertility		Carcase						Milk
SC	DC	WGT	EMA	RIB	P8	RBV%	IMF%	
2.3	-3.2	60	-0.1	-0.7	0.1	-0.8	2.1	
25%	70%	49%	99%	73%	43%	92%	33%	

Index Value			
ABI	DOM	HGN	HGS
+\$98	+\$93	+\$102	+\$97



Primal is a heifers first calf and was one of the smallest born at just 30 kilos which meant he ratioed 80 for birthweight in the contemporary and this along with his shape make him an ideal choice for heifers. The bonus is that he is stunning bull in the flesh, extra long with pure style and quality injecting more IMF under the hide. Pictured on page 17.

Purchased by: \$

Lot 29 BEN NEVIS PROFESSIONAL P64^{PV} ET

HBR 4/03/2018 AMFU,CAFU,DDFU,NHFU ID NBNP64 TATTOO BN P64

PATERNAL PEDIGREE

GAMBLES ROYAL FLUSH*
VISIONTOPLINE ROYAL STOCKMAN*
LAGRAND PRIDE 7140*
VISION UNANIMOUS 1418^{SV}
BOYD ON TARGET 1083*
VISION EDELLA 665*
VISION EDELLA 337*

MATERNAL PEDIGREE

HARB PENDLETON 765 J H^{SV}
BEN NEVIS FRONTROW F41^{SV}
BEN NEVIS PERFECTION A103*
BEN NEVIS JEAN H215^{SV}
BULLIAC X-RAY X10*
BEN NEVIS JEAN D71*
BEN NEVIS JEAN B21*

August 2018 Angus Australia Breedplans								
Calving Ease %	Growth (kg)							
	Direct	Dtrs	GL	BW	200	400	600	M
EBV	1.8	1.2	-5.3	3.9	54	93	126	110
PERC	28%	38%	27%	40%	9%	15%	11%	19%

Fertility		Carcase						Milk
SC	DC	WGT	EMA	RIB	P8	RBV%	IMF%	
1.1	-4.7	73	2.3	0.7	0	0.1	0.6	
80%	42%	10%	89%	28%	45%	65%	85%	

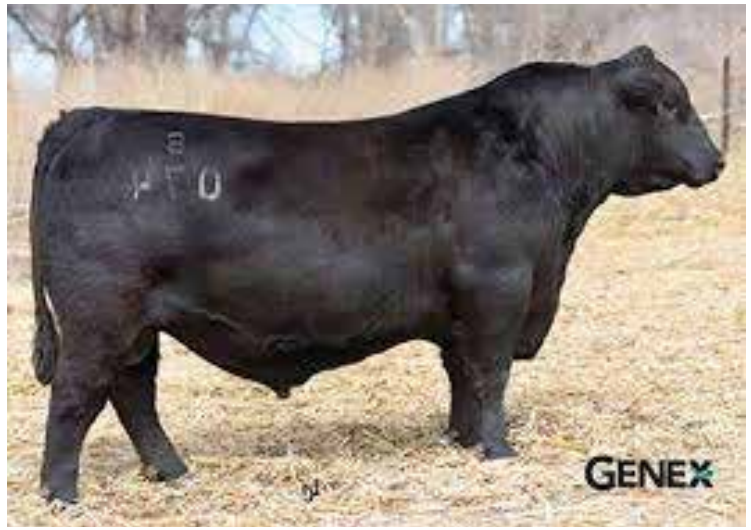
Index Value			
ABI	DOM	HGN	HGS
+\$113	+\$108	+\$106	+\$117

Along with his full ET brother in the following Lot these two bulls are complete outcross pedigrees and have been among Haps favourites since they were calves. Professional is movie star handsome with extra bone and style as well as a beautiful nature. He loves a scratch. He boasts an incredible birth to growth spread and ratioed just 94 for his actual birth making him safe for heifers before he puts on the turbo for growth. The sisters from this flush have already been marked as donors. Pictured on page 23.

Purchased by: \$



ASCOT LIONHEART



BALDRIDGE BEAST MODE

REFERENCE SIRE

With all the bulls we use and buy we ensure they have a highly regarded cow and cow family behind them. This explains why 70% of our catalogue has a maternal grandsire that goes back to our own stable.

Of the others we have been delighted with the performance of Jack's Joker and Ascot Lionheart in our herd who descend from superb donors in the DSK and Millah Murrah herds respectively.

We have been stalking the US Baldrige Isabel cow for some time now and she has amassed millions of dollars of sales in her progeny. Phenotypically she is a masterpiece with huge capacity, soft skin, a strong spine and a beautiful head carriage. We have used two of her sons in Baldrige Beast Mode and Baldrige Compass. Beast Mode's daughters in particular have inherited the massive capacity and traditional doing ability of their granddam and are very suitable for Australian conditions.

BALDRIDGE BEAST MODE

It's like Beast Mode has been custom bred for Australian conditions. They add extra heavy muscle but they are freakily soft and easy doing which is a rare and valuable combination. They have extra presence and sire appeal with a deep rib and flank and smoking numbers. They add the carcass excellence of GAR Prophet with the capacity and quality of Baldrige Isabel.

ASCOT LIONHEART

The \$70,000 QLD record breaking Ascot Lionheart offers our clients a breed leading combination of growth and marbling in a heavily muscle package with a superb temperament. Lionheart has bred so well for us and Trio and his feet and temperament are the icing on the cake of a very valuable and worthwhile investment. We love this bull.

BALDRIDGE COMMAND

Baldrige Command has been hugely popular around the country because of the shape he puts into his progeny. They have great heads, thick tops and are heavyweights in the hindquarter department. Command consistently breeds good ones with great temperament and they weigh like lead.

VISION UNANIMOUS

We flushed to Unanimous to fold a little spice into our breeding program after seeing the enormous success he had at Peak Dot in Canada. His sons are extra long with strong spines, expressive muscle and show ring looks. His daughters have already been earmarked for our Donor Program as they come from the great Ben Nevis Jean H215. They are the most docile sire group in the sale.



VISION UNANIMOUS



BALDRIDGE COMMAND



Baldrige Isabel Y69 – Dam of Baldrige Beast Mode and Baldrige Compass.

2019 SALE LOTS 1 – 24



LOT 1. P114 Command x BN Frontrow

BW	600	EMA	P8	IMF
1.1	120	6.7	-2.2	1.8



LOT 2. P360 Command x BN Gamemaker

BW	600	EMA	P8	IMF
5.9	123	5.1	-1.0	1.6



LOT 3. P188 Lionheart x BN Gamemaker

BW	600	EMA	P8	IMF
5.5	126	6.2	-1.2	2.1



LOT 4. P242 Lionheart x Bartel

BW	600	EMA	P8	IMF
4.2	135	9.0	-1.9	2.7



LOT 5. P186 Lionheart x Bartel

BW	600	EMA	P8	IMF
5.2	128	6.7	-3.1	2.4



LOT 6. P199 Beast Mode x Bartel

BW	600	EMA	P8	IMF
3.1	136	3.4	-0.2	2.2



LOT 7. P160 Beast Mode x BN Frontrow

BW	600	EMA	P8	IMF
3.8	129	4.6	0.2	1.7



LOT 8. P212 Beast Mode x BN Bruiser

BW	600	EMA	P8	IMF
3.3	113	4.4	0.9	1.9



LOT 9. P9 Compass x Empire ET

BW	600	EMA	P8	IMF
4.1	138	7.0	1.2	1.2



LOT 10. P11 Compass x Empire ET

BW	600	EMA	P8	IMF
5.6	155	5.6	-1.0	1.0



LOT 11. P57 Proceed x BN Frontrow ET

BW	600	EMA	P8	IMF
5.4	146	2.9	-1.2	2.8



LOT 12. P37 Command x MMD78

BW	600	EMA	P8	IMF
6.1	151	5.7	-1.0	2.6



LOT 13. P16 Command x Right Way

BW	600	EMA	P8	IMF
5.8	137	11.9	-3.9	1.6



LOT 14. P19 Hallmark x Infinity

BW	600	EMA	P8	IMF
6.9	138	5.3	-0.5	1.9



LOT 15. P35 Lionheart x MM D78

BW	600	EMA	P8	IMF
7.0	152	6.2	-3.7	0.9



LOT 16. P69 Hallmark x Crusader

BW	600	EMA	P8	IMF
6.9	119	-1.2	4.1	1.5



LOT 17. P265 Command x Jacks Joker

BW	600	EMA	P8	IMF
6.4	144	8.6	-3.2	1.2



LOT 18. P177 Lionheart x MMD78

BW	600	EMA	P8	IMF
7.4	142	3.4	-0.9	1.2



LOT 19. P183 Lionheart x Poss Impact

BW	600	EMA	P8	IMF
7.1	134	3.4	-1.1	1.6



LOT 20. P133 Profit x Dal Johno

BW	600	EMA	P8	IMF
3.1	117	0.9	1.2	3.1



LOT 21. P259 Prophet x B Dandy

BW	600	EMA	P8	IMF
5.8	124	6.9	-2.5	2.5



LOT 22. P215 M Proceed x BN Frontier

BW	600	EMA	P8	IMF
4.9	121	7.9	-2.0	2.0



LOT 23. P189 M Realty x BN Gmaker

BW	600	EMA	P8	IMF
4.3	104	1.2	-0.9	2.7



LOT 24. P223 M Realty x BN Eritrea

BW	600	EMA	P8	IMF
6.1	130	5.3	-0.5	1.5

2019 SALE LOTS 25 – 49



LOT 25. P131 Judo x BN Jabba

BW	600	EMA	P8	IMF
5.9	142	2.4	-1.0	0.9



LOT 26. P132 Judo x BN Jabba

BW	600	EMA	P8	IMF
3.1	114	-0.1	0.1	2.1



LOT 28. P61 Unanimous x Crusader ET

BW	600	EMA	P8	IMF
7.2	111	1.9	1.7	1.1



LOT 29. P64 Unanimous x BN Frontrow ET

BW	600	EMA	P8	IMF
3.9	126	2.3	0.0	0.6



LOT 30. P70 Unanimous x BN Frontrow ET

BW	600	EMA	P8	IMF
3.9	115	3.4	2.2	0.5



LOT 31. P50 Command x Jacks Joker

BW	600	EMA	P8	IMF
2.7	120	7.1	0.1	2.0



LOT 32. P47 Command x BN Hooligan

BW	600	EMA	P8	IMF
2.4	115	7.7	-1.5	2.3



LOT 33. P48 Command x BN Judo

BW	600	EMA	P8	IMF
3.6	114	4.7	-2.9	2.0



LOT 34. P51 Command x BN Judo

BW	600	EMA	P8	IMF
3.4	107	3.4	-0.7	2.1



LOT 35. P6 Hallmark x Raff Empire

BW	600	EMA	P8	IMF
5.5	134	0.1	0.3	1.7



LOT 36. P65 Hallmark x Crusader

BW	600	EMA	P8	IMF
3.9	103	-0.8	4.2	2.0



LOT 37. P38 Lionheart x Ayrvale Bartel

BW	600	EMA	P8	IMF
4.2	119	5.6	-3.3	2.8



LOT 38. P122 Beast Mode x Ayrvale Bartel

BW	600	EMA	P8	IMF
3.1	125	4.6	2.7	3.5



LOT 39. P208 Beast Mode x Ayrvale Bartel

BW	600	EMA	P8	IMF
3.5	124	8.9	-0.8	2.0



LOT 40. P197 Prophet x Infinity

BW	600	EMA	P8	IMF
3.1	118	6.7	1.8	2.7



LOT 41. P102 Profit x Braveheart

BW	600	EMA	P8	IMF
3.0	115	8.2	-0.8	2.0



LOT 42. P201 Command x Jacks Joker

BW	600	EMA	P8	IMF
2.9	114	6.2	-1.3	1.7



LOT 43. P180 Compass x MM D78

BW	600	EMA	P8	IMF
5.0	138	5.1	0.7	1.1



LOT 44. P137 M Realty x Comrade

BW	600	EMA	P8	IMF
3.5	86	5.1	2.5	2.0



LOT 45. P205 Beast Mode x Jacks Joker

BW	600	EMA	P8	IMF
5.1	143	4.3	-3.6	0.7



LOT 46. P368 Beast Mode x BN Bruiser

BW	600	EMA	P8	IMF
1.7	102	6.0	0.8	2.3



LOT 47. P193 Lionheart x BN Hooligan

BW	600	EMA	P8	IMF
5.0	107	5.9	1.3	1.6



LOT 48. P77 Command x Raff Empire ET

BW	600	EMA	P8	IMF
7.3	152	8.0	-1.5	1.2



LOT 49. P94 Command x BN Front Row

BW	600	EMA	P8	IMF
4.2	127	7.3	0.6	1.7

2019 SALE LOTS 50 – 74



LOT 50. P93 Command x BN Frontrow

BW	600	EMA	P8	IMF
2.7	117	6.7	0.1	1.3



LOT 51. P81 Unanimous x BN Frontrow ET

BW	600	EMA	P8	IMF
4.8	139	2.5	-1.0	1.4



LOT 52. P1 Hallmark x Comrade ET

BW	600	EMA	P8	IMF
4.5	120	2.6	0.9	1.9



LOT 53. P39 Hallmark x Ayrvale Bartel

BW	600	EMA	P8	IMF
4.6	124	3.9	-0.8	1.4



LOT 54. P75 Command x Raff Empire ET

BW	600	EMA	P8	IMF
2.7	116	8.0	0.2	1.4



LOT 55. P74 Command x Raff Empire ET

BW	600	EMA	P8	IMF
4.4	132	7.8	-0.6	1.1



LOT 56. P78 Lionheart x BN Eritrea

BW	600	EMA	P8	IMF
3.2	119	6.3	-3.4	1.8



LOT 57. P369 Ascot Global x BN Bruiser

BW	600	EMA	P8	IMF
8.8	142	-1.7	-1.5	1.7



LOT 58. P230 Prophet x B Zealful

BW	600	EMA	P8	IMF
5.7	106	6.6	0.4	2.0



LOT 59. P412 Proceed x Stewie

BW	600	EMA	P8	IMF
4.1	118	5.8	-0.5	3.4



LOT 60. P168 M Realty x BN Dino

BW	600	EMA	P8	IMF
3.2	86	0.7	3.1	1.8



LOT 61. P209 Command x BN Kibah

BW	600	EMA	P8	IMF
4.0	129	6.8	-2.6	1.1



LOT 62. P225 Beast Mode x BN Xerox

BW	600	EMA	P8	IMF
6.8	146	5.0	-3.0	0.7



LOT 63. P417 Stewie x Stewie

BW	600	EMA	P8	IMF
7.1	138	2.9	0.6	2.8



LOT 65. P202 Command x BN Jabba

BW	600	EMA	P8	IMF
1.7	111	5.1	-0.2	2.2



LOT 66. P264 Command x Hallmark

BW	600	EMA	P8	IMF
4.3	143	6.5	-1.2	1.9



LOT 67. P175 Lionheart x Poss Impact

BW	600	EMA	P8	IMF
4.3	105	5.1	0.0	1.7



LOT 68. P108 Command x Jacks Joker

BW	600	EMA	P8	IMF
4.8	129	5.2	-1.9	1.8



LOT 69. P251 Monarch x Ayrvale Bartel

BW	600	EMA	P8	IMF
4.3	104	5.8	-0.4	2.6



LOT 70. P195 Judo x Jacks Joker

BW	600	EMA	P8	IMF
3.8	115	1.2	-0.6	1.8



LOT 71. P115 Judo x Hallmark

BW	600	EMA	P8	IMF
3.6	109	3.4	-2.0	1.1



LOT 72. P198 Monarch x Bartel

BW	600	EMA	P8	IMF
6.3	107	4.3	1.9	2.8



LOT 73. P236 Prophet x Raff Empire

BW	600	EMA	P8	IMF
4.4	112	4.4	-0.4	2.9



LOT 74. P163 Lionheart x Raff Empire

BW	600	EMA	P8	IMF
5.9	88	5.3	-2.9	1.9

Lot 30 BEN NEVIS PROXY P70^{PV} ET

HBR 1/03/2018 AMFU,CAFU,DDFU,NHFU ID NBNP70 TATTOO BN P70

PATERNAL PEDIGREE

GAMBLES ROYAL FLUSH*
 VISIONTOPLINE ROYAL STOCKMAN*
 LAGRAND PRIDE 7140*
VISION UNANIMOUS 1418*
 BOYD ON TARGET 1083*
 VISION EDELLA 665*
 VISION EDELLA 337*

MATERNAL PEDIGREE

HARB PENDLETON 765 J H^{PV}
 BEN NEVIS FRONTROW F41^{PV}
 BEN NEVIS PERFECTION A103*
BEN NEVIS JEAN H215*
 BULLIAC X-RAY X10*
 BEN NEVIS JEAN D71*
 BEN NEVIS JEAN B21*

August 2018 Angus Australia Breedplans

	Calving Ease %				Growth (kg)			
	Direct	Dtrs	GL	BW	200	400	600	M
EBV	1.9	1.2	-4.8	3.9	48	86	115	92
PERC	27%	38%	35%	40%	32%	34%	29%	53%

Fertility		Carcase						Milk
SC	DC	WGT	EMA	RIB	P8	RBY%	IMF%	
0.3	-4	67	3.4	2.4	2.2	-0.3	0.5	
97%	55%	24%	78%	3%	4%	80%	88%	

Index Value			
ABI	DOM	HGN	HGS
+\$107	+\$104	+\$94	+\$114

The show stopping looks that we have come to expect of Jean H215s progeny and one of the quietest, most structurally correct bulls in the sale. He is one of Haps favourite bulls in the sale. His outcross Canadian genetics are very low accuracy with BREEDPLAN but we expect Unanimous growth to go up while he is safe to use on heifers. Proxy is a full ET brother to Lot 29 and Lot 51 and a maternal brother to Lots 11, 49 and 50.

Purchased by: \$



LOT 29. BEN NEVIS PROFESSIONAL P64 ET (see page 18)



LOT 30. BEN NEVIS PROXY P70 ET

Lot 31 BEN NEVIS PYRE P50^{SV}

HBR 13/02/2018 AMFU,CAFU,DDF,NHFU ID NBNP50 TATTOO BN P50

PATERNAL PEDIGREE

EF COMPLEMENT 8088^{PV}
 EF COMMANDO 1366^{PV}
 RIVERBEND YOUNG LUCY W1470*
BALDRIDGE COMMAND C036*
 HOOVER DAM*
 BALDRIDGE BLACKBIRD A030*
 BALDRIDGE BLACKBIRD X89*

MATERNAL PEDIGREE

POSS TOTAL IMPACT 745*
 JSRL JACK'S JOKER J1^{PV}
 DSK RR PANDA F120^{PV}
BEN NEVIS UMBRA L45*
 RAFF EMPIRE E269^{PV}
 BEN NEVIS UMBRA H94*
 BEN NEVIS UMBRA A81*

August 2018 Angus Australia Breedplans

	Calving Ease %				Growth (kg)			
	Direct	Dtrs	GL	BW	200	400	600	M
EBV	2.1	2.1	-4.9	2.7	50	92	120	88
PERC	24%	22%	33%	16%	23%	17%	20%	61%

Fertility		Carcase						Milk
SC	DC	WGT	EMA	RIB	P8	RBY%	IMF%	
0	-2	65	7.1	-0.2	0.1	0.4	2	
98%	86%	31%	19%	58%	43%	50%	35%	

Index Value			
ABI	DOM	HGN	HGS
+\$123	+\$118	+\$125	+\$124

Pyre stands down on more bone and is very well balanced with a strong spine, a big deep rib and is a long barrel of meat throughout. We love his softness and his combination of a smooth shoulder, extended neck and head shape along with his EBVs and actual birth weight make him an ideal bull for heifers.

Purchased by: \$

Lot 32 BEN NEVIS PARAGUAY P47^{PV}

HBR 12/02/2018 AMFU,CAFU,DDF,NHFU ID NBNP47 TATTOO BN P47

PATERNAL PEDIGREE

EF COMPLEMENT 8088^{PV}
 EF COMMANDO 1366^{PV}
 RIVERBEND YOUNG LUCY W1470*
BALDRIDGE COMMAND C036*
 HOOVER DAM*
 BALDRIDGE BLACKBIRD A030*
 BALDRIDGE BLACKBIRD X89*

MATERNAL PEDIGREE

J & C EVIDENCE E11^{PV}
 BEN NEVIS HOOLIGAN H116^{PV}
 BEN NEVIS GERANIUM E78*
BEN NEVIS GERANIUM K112*
 TE MANIA INFINITY 04 379 AB*
 BEN NEVIS GERANIUM G19*
 BEN NEVIS GERANIUM E64*

August 2018 Angus Australia Breedplans

	Calving Ease %				Growth (kg)			
	Direct	Dtrs	GL	BW	200	400	600	M
EBV	3	1.4	-4.3	2.4	48	93	115	92
PERC	13%	33%	43%	12%	32%	15%	29%	53%

Fertility		Carcase						Milk
SC	DC	WGT	EMA	RIB	P8	RBY%	IMF%	
2.2	-2.1	63	7.7	-1.3	-1.5	1.3	2.3	
30%	85%	38%	13%	87%	85%	15%	25%	

Index Value			
ABI	DOM	HGN	HGS
+\$126	+\$124	+\$135	+\$123

Paraguay is an absolute Sherman tank of a bull with real guts and swagger about him. Sometimes heavy muscled bulls tie up in their movement but this guy just glides and has a commanding presence about him as he knows he is good. Born tiny and ratioing just 80 on birthweight he then grew like the clappers. He would be suitable for heifers and will produce sappy, heavy muscled calves with a marbling background.

Purchased by: \$

Lot 33 BEN NEVIS PAYCHEQUE P48^{SV}

HBR 13/02/2018 AMFU,CAF,DDFU,NHFU ID NBNP48 TATTOO BN P48

PATERNAL PEDIGREE

EF COMPLEMENT 8088^{TV}
 EF COMMANDO 1366^{TV}
 RIVERBEND YOUNG LUCY W1470^{*}
BALDRIDGE COMMAND C036^{TV}
 HOOVER DAM^{*}
 BALDRIDGE BLACKBIRD A030^{*}
 BALDRIDGE BLACKBIRD X89^{*}

MATERNAL PEDIGREE

REMITALL H RACHIS 21R^{*}
 BEN NEVIS JUDO J158^{TV}
 BEN NEVIS GERANIUM G26^{TV}
BEN NEVIS GERANIUM L2^{*}
 BEN NEVIS ERITREA E6^{TV}
 BEN NEVIS GERANIUM J72^{*}
 BEN NEVIS GERANIUM D40^{TV}

August 2018 Angus Australia Breedplans

	Calving Ease %				Growth (kg)			
	Direct	Dtrs	GL	BW	200	400	600	M
EBV	2.6	1.3	-4.3	3.6	49	89	114	94
PERC	18%	35%	43%	33%	27%	25%	32%	48%

Fertility		Carcase						Milk
SC	DC	WGT	EMA	RIB	P8	RBV%	IMF%	
1	-2.5	61	4.7	-1.9	-2.9	1.4	2	19
85%	80%	45%	57%	95%	97%	13%	35%	18%

Index Value			
ABI	DOM	HGN	HGS
+\$117	+\$116	+\$125	+\$114

A bull with a fair bit of spunk and sire appeal about him who ranks equal fourth for scanned IMF in the contemporary. In recent years high IMF usually meant less muscle, but we are pretty excited to find and breed sires now that have both. Paycheque is a fairly apt name for this fella being suitable for heifers, then delivering the goods for both muscle content and IMF.

Purchased by: \$

Lot 35 BEN NEVIS PRIDE P6^{PV} ET

HBR 20/02/2018 AMFU,CAFU,DDFU,NHFU ID NBNP6 TATTOO BN P6

PATERNAL PEDIGREE

TE MANIA BERKLEY B1^{TV}
 TE MANIA EMPEROR E343^{TV}
 TE MANIA LOWAN Z74^{TV}
ASCOT HALLMARK H147^{TV}
 MILLAH MURRAH DIGBY D108^{TV}
 MILLAH MURRAH BRENDA F123^{TV}
 MILLAH MURRAH BRENDA D113^{TV}

MATERNAL PEDIGREE

CONNELLY CONSENSUS 7229^{TV}
 CONNELLY COMRADE 1385^{*}
 HAPPY GEE OF CONANGA 919^{*}
BEN NEVIS VIOLIN K3^{TV}
 BEN NEVIS FRONTROW F41^{TV}
 BEN NEVIS VIOLIN H10^{*}
 BEN NEVIS VIOLIN F115^{*}

August 2018 Angus Australia Breedplans

	Calving Ease %				Growth (kg)			
	Direct	Dtrs	GL	BW	200	400	600	M
EBV	0.8	0.6	-4.2	5.5	54	94	134	122
PERC	43%	50%	45%	78%	9%	13%	5%	7%

Fertility		Carcase						Milk
SC	DC	WGT	EMA	RIB	P8	RBV%	IMF%	
1.6	-4.2	67	0.1	0.6	0.3	-0.9	1.7	13
60%	50%	24%	99%	30%	38%	94%	50%	71%

Index Value			
ABI	DOM	HGN	HGS
+\$118	+\$103	+\$123	+\$117

A solid bull that combines the structure and doing ability of his dam with the weight and substance of his sire. He has a delightful nature and a beautiful soft, quality skin. He is a full ET brother to Lot 52, and has two maternal brothers sold to Stud including Stuart and Natalie Hahn of Nampara last year for \$14,000.

Purchased by: \$

Lot 34 BEN NEVIS POTENT P51^{SV}

HBR 12/02/2018 AMFU,CAF,DDFU,NHFU ID NBNP51 TATTOO BN P51

PATERNAL PEDIGREE

EF COMPLEMENT 8088^{TV}
 EF COMMANDO 1366^{TV}
 RIVERBEND YOUNG LUCY W1470^{*}
BALDRIDGE COMMAND C036^{TV}
 HOOVER DAM^{*}
 BALDRIDGE BLACKBIRD A030^{*}
 BALDRIDGE BLACKBIRD X89^{*}

MATERNAL PEDIGREE

REMITALL H RACHIS 21R^{*}
 BEN NEVIS JUDO J158^{TV}
 BEN NEVIS GERANIUM G26^{TV}
BEN NEVIS JEAN L65^{*}
 POSS TOTAL IMPACT 745^{*}
 BEN NEVIS JEAN J124^{*}
 BEN NEVIS JEAN G3^{*}

August 2018 Angus Australia Breedplans

	Calving Ease %				Growth (kg)			
	Direct	Dtrs	GL	BW	200	400	600	M
EBV	2.2	2.4	-3.2	3.4	49	89	107	78
PERC	23%	17%	65%	28%	27%	25%	48%	79%

Fertility		Carcase						Milk
SC	DC	WGT	EMA	RIB	P8	RBV%	IMF%	
0.9	-1	54	3.4	-0.3	-0.7	0.2	2.1	19
88%	93%	69%	78%	60%	65%	60%	33%	18%

Index Value			
ABI	DOM	HGN	HGS
+\$105	+\$112	+\$104	+\$107

Potent is an absolute freight train of a bull being chock full of butterfly muscle over his top which extends in the same dimension all the way to his outside lower thigh. There are plenty of carriages of extra length in this bull and a showy engine up front. Amazingly he was the second smallest born in his contemporary and is suitable for heifers while packing in extra IMF.

Purchased by: \$

Lot 36 BEN NEVIS PATHWAY P65^{TV} ET

HBR 4/03/2018 AMFU,CAFU,DDFU,NHFU ID NBNP65 TATTOO BN P65

PATERNAL PEDIGREE

TE MANIA BERKLEY B1^{TV}
 TE MANIA EMPEROR E343^{TV}
 TE MANIA LOWAN Z74^{TV}
ASCOT HALLMARK H147^{TV}
 MILLAH MURRAH DIGBY D108^{TV}
 MILLAH MURRAH BRENDA F123^{TV}
 RIVERBEND YOUNG LUCY W1470^{*}

MATERNAL PEDIGREE

TE MANIA UNLIMITED U3271^{*}
 HIGHLANDER OF STERN AB^{*}
 STERN 2664^{*}
NEMONAVILLE BANDETTA H50^{TV}
 NEMONAVILLE WORKABULL W15^{*}
 NEMONAVILLE BANDETTA Z2^{*}
 NEMONAVILLE BANDETTA^{*}

August 2018 Angus Australia Breedplans

	Calving Ease %				Growth (kg)			
	Direct	Dtrs	GL	BW	200	400	600	M
EBV	-1.1	-1	-4.7	3.9	40	75	103	80
PERC	73%	77%	37%	40%	75%	71%	58%	76%

Fertility		Carcase						Milk
SC	DC	WGT	EMA	RIB	P8	RBV%	IMF%	
3.7	-10	48	-0.8	2.6	4.2	-2.3	2	15
1%	1%	82%	99%	2%	1%	99%	35%	52%

Index Value			
ABI	DOM	HGN	HGS
+\$111	+\$94	+\$113	+\$107

A full ET brother to Lot 16 and while earlier maturing he possesses extra depth of body, and has one of the best skins of the bulls in the sale with extra fleshing as displayed by his number one scan for Fat. With his shape and neck extension he would be ideal as a heifer bull while stacking in extra IMF in the process.

Purchased by: \$

Lot 37 BEN NEVIS PROSPEROUS P38^{SV}

HBR 25/02/2018 AMFU,CAFU,DDFU,NHFU ID NBNP38 TATTOO BN P38

PATERNAL PEDIGREE

TE MANIA EMPEROR E343^{TV}
 ASCOT HALLMARK H147^{TV}
 MILLAH MURRAH BRENDA F123^{TV}
ASCOT LION HEART L305^{TV}
 DUNOON EVIDENT E614^{TV}
 ASCOT H148^{TV}
 MILLAH MURRAH FLOWER F126^{TV}

MATERNAL PEDIGREE

TE MANIA BARTEL B219^{TV}
 AYRVALE BARTEL E7^{TV}
 EAGLEHAWK JEDDA B32^{TV}
BEN NEVIS DORMIST J157⁺
 TE MANIA INFINITY 04 379 AB⁺
 BEN NEVIS DORMIST G20⁺
 BEN NEVIS DORMIST E149⁺

August 2018 Angus Australia Breedplans

	Calving Ease %				Growth (kg)			
	Direct	Dtrs	GL	BW	200	400	600	M
EBV	-1.1	0.1	-4	4.2	47	89	119	106
PERC	73%	58%	50%	48%	38%	25%	21%	25%

Fertility		Carcase						Milk
SC	DC	WGT	EMA	RIB	P8	RBV%	IMF%	
2.9	-6.4	66	5.6	-3.4	-3.3	1.2	2.8	12
9%	14%	28%	40%	99%	98%	18%	13%	79%

Index Value

ABI	DOM	HGN	HGS
+\$135	+\$119	+\$160	+\$123

Very structurally correct and square with a good skin, and strong sires outlook. He has a smoking set of EBVs backed by equally impressive scan data for IMF. He is the same genetic combination as Lots 4 and 5 blending the power of Lionheart with extra IMF and softness from his Bartel dam.

Purchased by:

\$



LOT 38. BEN NEVIS PRIME P122



LOT 39. BEN NEVIS PATCH P208

Lot 38 BEN NEVIS PRIME P122^{SV}

HBR 8/07/2018 AMFU,CAFU,DDFU,NHFU ID NBNP122 TATTOO BN P122

PATERNAL PEDIGREE

C R A BEXTOR 872 5205 608⁺
 G A R PROPHET^{TV}
 G A R OBJECTIVE 1885⁺
BALDRIDGE BEAST MODE B074^{TV}
 STYLES UPGRADE J59⁺
 BALDRIDGE ISABEL Y69⁺
 BALDRIDGE ISABEL T935⁺

MATERNAL PEDIGREE

TE MANIA BARTEL B219^{TV}
 AYRVALE BARTEL E7^{TV}
 EAGLEHAWK JEDDA B32^{TV}
BEN NEVIS DORMIST M115⁺
 CONNEALY COMRADE 1385⁺
 BEN NEVIS DORMIST K59⁺
 BEN NEVIS DORMIST H97⁺

August 2018 Angus Australia Breedplans

	Calving Ease %				Growth (kg)			
	Direct	Dtrs	GL	BW	200	400	600	M
EBV	2.9	2.2	-1.4	3.1	57	95	125	86
PERC	14%	20%	90%	23%	4%	11%	13%	65%

Fertility		Carcase						Milk
SC	DC	WGT	EMA	RIB	P8	RBV%	IMF%	
2.5	-6.5	66	4.6	1	2.7	-1.6	3.5	17
18%	13%	28%	58%	20%	2%	99%	3%	33%

Index Value

ABI	DOM	HGN	HGS
+\$146	+\$125	+\$160	+\$138



A Genetical (3/4 brother) to Powderkerk Lot 6 and the following lot Prime is all quality and one of the highlights of the sale. He has blitzed his contemporary being 1st for both scanned IMF and Fat for the whole yearling group. In the flesh he is a long bodied, soft skinned bull with a strong spine and a deep, thick hindquarter. He is also one of the quietest bulls in the sale and loves a scratch. We feel he will continue to grow into a very big bull. Stud worthy. We have collected him for in-herd use and will use him over our heifers this year.

Purchased by:

\$

Lot 39 BEN NEVIS PATCH P208^{SV}

HBR 23/06/2018 AMFU,CAFU,DDFU,NHFU ID NBNP208 TATTOO BN P208

PATERNAL PEDIGREE

C R A BEXTOR 872 5205 608⁺
 G A R PROPHET^{TV}
 G A R OBJECTIVE 1885⁺
BALDRIDGE BEAST MODE B074^{TV}
 STYLES UPGRADE J59⁺
 BALDRIDGE ISABEL Y69⁺
 BALDRIDGE ISABEL T935⁺

MATERNAL PEDIGREE

TE MANIA BARTEL B219^{TV}
 AYRVALE BARTEL E7^{TV}
 EAGLEHAWK JEDDA B32^{TV}
BEN NEVIS JEAN M202^{TV}
 RAFF EMPIRE E269^{TV}
 BEN NEVIS JEAN H103^{TV}
 BEN NEVIS JEAN B16⁺

August 2018 Angus Australia Breedplans

	Calving Ease %				Growth (kg)			
	Direct	Dtrs	GL	BW	200	400	600	M
EBV	2.4	1.9	-3.3	3.5	59	94	124	91
PERC	20%	25%	63%	30%	2%	13%	14%	55%

Fertility		Carcase						Milk
SC	DC	WGT	EMA	RIB	P8	RBV%	IMF%	
1.3	-3	68	8.9	-0.6	-0.8	1	2	19
75%	73%	21%	5%	70%	70%	25%	35%	18%

Index Value

ABI	DOM	HGN	HGS
+\$131	+\$123	+\$133	+\$130



If you missed out on Lot 6 or the previous Lot then Patch is their Genetical (3/4 brother) and is so similar with his balanced and correct structure that allows him to hold himself and his head so proudly. He has a Stud Sire combination of phenotype and genotype and the thickness and softness we have come to expect of this beautiful combination. His granddam is our famous donor Jean H103, and his dams full brothers sold for an average of \$17,000 at last years sale. Semen Collected. Suitable for heifers. Stud Sire Potential.

Purchased by:

\$

Lot 40 BEN NEVIS PROFITATEER P197^{SV}

HBR 23/07/2018 AMFU,CAFU,DDFU,NHFU ID NBNP197 TATTOO BN P197

PATERNAL PEDIGREE

B A R EXT TRAVELER 205*
C R A BEXTOR 872 5205 608*
CRA LADY JAYE 608 498 S EASY*

G A R PROPHET^{SV}

S S OBJECTIVE T510 0T26*
G A R OBJECTIVE 1885*
G A R 1407 NEW DESIGN 2232*

MATERNAL PEDIGREE

TE MANIA UNLIMITED U3271*
TE MANIA INFINITY 04 379 AB*
TE MANIA 95102*

BEN NEVIS KIWI M47*

CONNELLY COMRADE 1385*
BEN NEVIS KIWI K20*
BEN NEVIS KIWI H191*

August 2018 Angus Australia Breedplans

	Calving Ease %				Growth (kg)			
	Direct	Dtrs	GL	BW	200	400	600	M
EBV	1	-0.3	-5.7	3.1	58	101	118	84
PERC	40%	67%	21%	23%	3%	4%	23%	69%

Fertility		Carcase						Milk
SC	DC	WGT	EMA	RIB	P8	RBY%	IMF%	
0.6	-5.2	67	6.7	1.4	1.8	-1.3	2.7	21
94%	32%	24%	24%	13%	8%	97%	15%	8%

Index Value			
ABI	DOM	HGN	HGS
+\$125	+\$121	+\$128	+\$123



Profitateer is a favourite and is regularly picked out from the crowd of bulls that greet visitors to knock off their side mirrors in the paddock. He has extra style, smoothness and quality while being highly credentialed for curve bending performance and carcass excellence. We particularly love his Angus head, Sire Appeal and deep smooth muscle pattern though his hindquarter. He ranked equal second in Fat in the mob and will breed front paddock daughters. Stud Sire potential. Stud Sire potential.

Purchased by:

\$



LOT 40. BEN NEVIS PROFITATEER P197



LOT 44. BEN NEVIS PREMIER P137

Lot 41 BEN NEVIS PRONOUNCED P102^{SV}

HBR 28/06/2018 AMFU,CAF,DDFU,NHF ID NBNP102 TATTOO BN P102

PATERNAL PEDIGREE

B A R EXT TRAVELER 205*
C R A BEXTOR 872 5205 608*
CRA LADY JAYE 608 498 S EASY*

G A R PROPHET^{SV}

S S OBJECTIVE T510 0T26*
G A R OBJECTIVE 1885*
G A R 1407 NEW DESIGN 2232*

MATERNAL PEDIGREE

HIGHLANDER OF STERN AB*
BRAVEHEART OF STERN^{SV}
STERN 3886*

BEN NEVIS JEAN M10*

RAFF MIDLAND Z204^{SV}
BEN NEVIS JEAN F60*
BEN NEVIS JEAN A22*

August 2018 Angus Australia Breedplans

	Calving Ease %				Growth (kg)			
	Direct	Dtrs	GL	BW	200	400	600	M
EBV	1.9	1.4	-4.7	3	54	92	115	84
PERC	27%	33%	37%	20%	9%	17%	29%	69%

Fertility		Carcase						Milk
SC	DC	WGT	EMA	RIB	P8	RBY%	IMF%	
1.9	-6.2	61	8.2	-0.5	-0.8	1	2	19
45%	16%	45%	9%	68%	70%	25%	35%	18%

Index Value			
ABI	DOM	HGN	HGS
+\$134	+\$126	+\$140	+\$130

This is a pretty funky pedigree taking the constitution of Braveheart and folding in extra IMF. It is a testament to our breeding program that our heifers first calves have excelled this year. He was born at well below the group average for birthweight and this combined with his smooth shoulder and extension through the front end should make him ideal for heifers. Good skin and head.

Purchased by:

\$

Lot 42 BEN NEVIS PLUTO P201^{SV}

HBR 24/07/2018 AMFU,CAFU,DDFU,NHFU ID NBNP201 TATTOO BN P201

PATERNAL PEDIGREE

EF COMPLEMENT 8088^{SV}
EF COMMANDO 1366^{SV}
RIVERBEND YOUNG LUCY W1470*

BALDRIDGE COMMAND C036^{SV}

HOOVER DAM*
BALDRIDGE BLACKBIRD A030*
BALDRIDGE BLACKBIRD X89*

MATERNAL PEDIGREE

POSS TOTAL IMPACT 745*
JSRL JACK'S JOKER J1^{SV}
DSK RR PANDA F120^{SV}

BEN NEVIS GERANIUM M150*

TE MANIA INFINITY 04 379 AB*
BEN NEVIS GERANIUM J126*
BEN NEVIS GERANIUM G140*

August 2018 Angus Australia Breedplans

	Calving Ease %				Growth (kg)			
	Direct	Dtrs	GL	BW	200	400	600	M
EBV	2.1	2.1	-5.6	2.9	50	91	114	87
PERC	24%	22%	23%	19%	23%	20%	32%	63%

Fertility		Carcase						Milk
SC	DC	WGT	EMA	RIB	P8	RBY%	IMF%	
1.1	-4.6	61	6.2	-1.1	-1.3	1.1	1.7	19
80%	43%	45%	30%	83%	80%	20%	50%	18%

Index Value			
ABI	DOM	HGN	HGS
+\$125	+\$122	+\$130	+\$123

This chunky hunk is an eye catcher being as structurally correct as he is thick. His relative length from hip to pin gives him more balance and his strength of spine is thick with juicy muscle. He has a really good set of numbers being suitable for heifers but with extra punch and muscle at weaning and extra IMF for marketing. Out of a first calf heifer he is the equal second easiest doing bull in the draft.

Purchased by:

\$

Lot 43 BEN NEVIS PREDOMINANT P180^{SV}

HBR 20/07/2018 AMFU,CAF,DDFU,NHF ID NBNP180 TATTOO BN P180

PATERNAL PEDIGREE

EF COMPLEMENT 8088^{TV}
 EF COMMANDO 1366^{TV}
 RIVERBEND YOUNG LUCY W1470⁺
BALDRIDGE COMPASS C041^{SV}
 STYLES UPGRADE J59⁺
 BALDRIDGE ISABEL Y69⁺
 BALDRIDGE ISABEL T935⁺

MATERNAL PEDIGREE

BT EQUATOR 395M⁺
 MILLAH MURRAH EQUATOR D78^{TV}
 MILLAH MURRAH RADO Y119⁺
BEN NEVIS GERANIUM J145⁺
 BEN NEVIS XEROX X101^{TV}
 BEN NEVIS AXIS A18⁺
 BEN NEVIS GERANIUM Q43+95⁺

August 2018 Angus Australia Breedplans								
Angus	Calving Ease %				Growth (kg)			
	Direct	Dtrs	GL	BW	200	400	600	M
EBV	0.3	0.9	-3.2	5	57	104	138	131
PERC	52%	43%	65%	68%	4%	2%	3%	3%

Fertility		Carcase						Milk
SC	DC	WGT	EMA	RIB	P8	RBY%	IMF%	
1.7	-5.8	71	5.1	0.3	0.7	0.1	1.1	16
55%	22%	14%	50%	40%	25%	65%	70%	42%

Index Value			
ABI	DOM	HGN	HGS
+\$131	+\$118	+\$134	+\$130

Predominant is one the bulls that stands out in the mob because of his excellent front end extension, large frame and mobility. He has beautiful skin and is an easy doing bull who will breed easy keeping but larger framed females which is unique and will give you extra market flexibility. He scanned the highest P8 in his contemporary.

Purchased by: \$

Lot 45 BEN NEVIS PHILOSOPHER P205^{SV}

HBR 28/07/2018 AMFU,CAFU,DDFU,NHFU ID NBNP205 TATTOO BN P205

PATERNAL PEDIGREE

C R A BEXTOR 872 5205 608⁺
 G A R PROPHET^{TV}
 G A R OBJECTIVE 1885⁺
BALDRIDGE BEAST MODE B074^{TV}
 STYLES UPGRADE J59⁺
 BALDRIDGE ISABEL Y69⁺
 BALDRIDGE ISABEL T935⁺

MATERNAL PEDIGREE

POSS TOTAL IMPACT 745⁺
 JSRL JACK'S JOKER J1^{TV}
 DSK RR PANDA F120^{TV}
BEN NEVIS DORMIST M186⁺
 BEN NEVIS ERITREA E6^{TV}
 BEN NEVIS DORMIST J32⁺
 BEN NEVIS DORMIST D63⁺

August 2018 Angus Australia Breedplans								
Angus	Calving Ease %				Growth (kg)			
	Direct	Dtrs	GL	BW	200	400	600	M
EBV	0.8	1.6	-2.2	5.1	64	104	143	130
PERC	43%	30%	81%	70%	1%	2%	2%	4%

Fertility		Carcase						Milk
SC	DC	WGT	EMA	RIB	P8	RBY%	IMF%	
1.5	-2.7	70	4.3	-3.4	-3.6	2.3	0.7	16
65%	78%	16%	63%	99%	99%	2%	83%	42%

Index Value			
ABI	DOM	HGN	HGS
+\$127	+\$120	+\$129	+\$128

Philosopher is a heifers first calf who is very square and balanced with a deep soft rib cage and a great outlook. He has a phenomenal birth to final weight spread and has heaps of potential.

Purchased by: \$

Lot 44 BEN NEVIS PREMIER P137^{SV}

HBR 12/07/2018 AMFU,CAFU,DDFU,NHFU ID NBNP137 TATTOO PN P137

PATERNAL PEDIGREE

SCHURRTOP REALITY X723⁺
 MATAURI REALITY 839⁺
 MATAURI 06663⁺
MILWILLAH REALITY L19^{TV}
 ARDROSSAN EQUATOR A241^{TV}
 MILWILLAH DREAM G71^{TV}
 VERMONT DREAM Y301^{TV}

MATERNAL PEDIGREE

CONNELLY CONSENSUS 7229^{TV}
 CONNELLY COMRADE 1385⁺
 HAPPY GEE OF CONANGA 919⁺
BEN NEVIS JEAN L228⁺
 RAFF EMPIRE E269^{TV}
 BEN NEVIS JEAN H103^{SV}
 BEN NEVIS JEAN B16⁺

August 2018 Angus Australia Breedplans								
Angus	Calving Ease %				Growth (kg)			
	Direct	Dtrs	GL	BW	200	400	600	M
EBV	3.6	2	-6.7	3.5	45	77	86	72
PERC	7%	23%	12%	30%	49%	65%	88%	87%

Fertility		Carcase						Milk
SC	DC	WGT	EMA	RIB	P8	RBY%	IMF%	
1.5	-5.3	54	5.1	2.2	2.5	-0.6	2	13
65%	30%	69%	50%	4%	3%	88%	35%	71%

Index Value			
ABI	DOM	HGN	HGS
+\$103	+\$109	+\$98	+\$104

Is there a better skinned bull in the sale? With his superb outlook, excellent structure and extended front end he will breed stunning daughters and sons with extra IMF to target the Jap B3 market. He has our super-productive donor dam Jean H103 as his maternal granddam and one of the most famous cows in the breed Vermont Dream Y301 as his paternal Grandam. We feel that our Milwillah Realties should correct for more growth into the future as they are later maturing, larger framed animals.

Purchased by: \$

Lot 46 BEN NEVIS PALEO P368^{SV}

HBR 26/07/2018 AMFU,CA1%,DDFU,NHFU ID NBNP368 TATTOO BN P368

PATERNAL PEDIGREE

C R A BEXTOR 872 5205 608⁺
 G A R PROPHET^{TV}
 G A R OBJECTIVE 1885⁺
BALDRIDGE BEAST MODE B074^{TV}
 STYLES UPGRADE J59⁺
 BALDRIDGE ISABEL Y69⁺
 BALDRIDGE ISABEL T935⁺

MATERNAL PEDIGREE

VERMILION YELLOWSTONE⁺
 BEN NEVIS BRUISER B33^{TV}
 BEN NEVIS GERANIUM V107⁺
BEN NEVIS DORMIST E35⁺
 GARDENS HIGHMARK⁺
 BEN NEVIS DORMIST C69⁺
 BEN NEVIS DORMIST V090⁺

August 2018 Angus Australia Breedplans								
Angus	Calving Ease %				Growth (kg)			
	Direct	Dtrs	GL	BW	200	400	600	M
EBV	2.8	1.7	-3.8	1.7	51	83	102	82
PERC	15%	28%	53%	5%	18%	44%	60%	73%

Fertility		Carcase						Milk
SC	DC	WGT	EMA	RIB	P8	RBY%	IMF%	
1.6	-3.9	54	6	0.7	0.8	-0.5	2.3	12
60%	57%	69%	33%	28%	23%	85%	25%	79%

Index Value			
ABI	DOM	HGN	HGS
+\$111	+\$111	+\$110	+\$112

A big volume of meat presses out the entire structure of this bull. He has more bone and substance and his progeny will weight like lead. Like all the Beast Mode he combines his natural thickness with natural softness which is not only unique but the way forward for the breed for earlier finishing animals with higher meat quality. He scanned with the sixth highest EMA but is suitable for heifers.

Purchased by: \$

Lot 47 BEN NEVIS PACIFIC P193^{SV}

HBR 24/07/2018 AMFU,CAF,DDF,NHFU ID NBNP193 TATTOO BN P193

PATERNAL PEDIGREE

TE MANIA EMPEROR E343^{TV}
 ASCOT HALLMARK H147^{TV}
 MILLAH MURRAH BRENDA F123^{TV}
ASCOT LION HEART L305^{TV}
 DUNOON EVIDENT E614^{TV}
 ASCOT H148^{TV}
 MILLAH MURRAH FLOWER F126^{TV}

MATERNAL PEDIGREE

J & C EVIDENCE E11^{TV}
 BEN NEVIS HOOLIGAN H116^{TV}
 BEN NEVIS GERANIUM E78^{*}
BEN NEVIS CELESTE K168^{*}
 TE MANIA INFINITY 04 379 AB^{*}
 BEN NEVIS CELESTE G97^{*}
 BEN NEVIS CELESTE E11^{*}

August 2018 Angus Australia Breedplans

	Calving Ease %				Growth (kg)			
	Direct	Dtrs	GL	BW	200	400	600	M
EBV	-5.6	-3.3	-1.9	5	50	92	107	111
PERC	97%	95%	85%	68%	23%	17%	48%	18%

Fertility		Carcase						Milk
SC	DC	WGT	EMA	RIB	P8	RBY%	IMF%	
4.1	-8.8	67	5.9	-0.1	1.3	0.3	1.6	10
1%	1%	24%	35%	55%	14%	55%	53%	90%

Index Value			
ABI	DOM	HGN	HGS
+\$111	+\$108	+\$115	+\$106

Classic Lionheart length and thickness with a broad muzzle and jaw. Pacific also boast being one of the easiest doing bulls in the draft scanning second highest for fat while having one on the bigger EMAs in the group which is a winning combination.

Purchased by: \$

Lot 48 BEN NEVIS PAN PACIFIC P77^{TV} ET

HBR 2/03/2018 AMFU,CAFU,DDFU,NHFU ID NBNP77 TATTOO BN P77

PATERNAL PEDIGREE

EF COMPLEMENT 8088^{TV}
 EF COMMANDO 1366^{TV}
 RIVERBEND YOUNG LUCY W1470^{*}
BALDRIDGE COMMAND C036^{TV}
 HOOVER DAM^{*}
 BALDRIDGE BLACKBIRD A030^{*}
 BALDRIDGE BLACKBIRD X89^{*}

MATERNAL PEDIGREE

J & C APPEAL A10^{TV}
 RAFF EMPIRE E269^{TV}
 RAFF DORIS A55^{*}
BEN NEVIS JEAN H103^{TV}
 BEN NEVIS XEROX X101^{TV}
 BEN NEVIS JEAN B16^{*}
 BEN NEVIS JEAN U32^{*}

August 2018 Angus Australia Breedplans

	Calving Ease %				Growth (kg)			
	Direct	Dtrs	GL	BW	200	400	600	M
EBV	-1.2	-1.4	-3.2	7.3	64	119	152	127
PERC	74%	82%	65%	97%	1%	1%	1%	5%

Fertility		Carcase						Milk
SC	DC	WGT	EMA	RIB	P8	RBY%	IMF%	
1.3	-1.3	86	8	-2.7	-1.5	2.1	1.2	21
75%	91%	1%	10%	99%	85%	3%	68%	8%

Index Value			
ABI	DOM	HGN	HGS
+\$138	+\$131	+\$143	+\$138

Pan Pacific has really locked into the powerful growth of his dams genetics punching in extra kilos of performance and being at the top of the breed for growth and EMA. He is a little later maturing than his flush brothers and we expect him to grow into a big powerful bull with a strong sires outlook and jaw that reflects his substance throughout. He is very quiet with a long body, deep hindquarter and good skin. Full ET brother to Lots 54 and 55 and maternal brother to Lots 9 and 10.

Purchased by: \$

Lot 49 BEN NEVIS PERIDOT P94^{TV}

HBR 3/04/2018 AMFU,CAFU,DDFU,NHFU ID NBNP94 TATTOO BN P94

PATERNAL PEDIGREE

EF COMPLEMENT 8088^{TV}
 EF COMMANDO 1366^{TV}
 RIVERBEND YOUNG LUCY W1470^{*}
BALDRIDGE COMMAND C036^{TV}
 HOOVER DAM^{*}
 BALDRIDGE BLACKBIRD A030^{*}
 BALDRIDGE BLACKBIRD X89^{*}

MATERNAL PEDIGREE

HARB PENDLETON 765 J H^{TV}
 BEN NEVIS FRONTROW F41^{TV}
 BEN NEVIS PERFECTION A103^{*}
BEN NEVIS JEAN H215^{TV}
 BULLIAC X-RAY X10^{*}
 BEN NEVIS JEAN D71^{*}
 BEN NEVIS JEAN B21^{*}

August 2018 Angus Australia Breedplans

	Calving Ease %				Growth (kg)			
	Direct	Dtrs	GL	BW	200	400	600	M
EBV	3.8	2.6	-4.1	4.2	54	96	127	93
PERC	6%	14%	48%	48%	9%	10%	10%	51%

Fertility		Carcase						Milk
SC	DC	WGT	EMA	RIB	P8	RBY%	IMF%	
0.7	-3	67	7.3	1	0.6	-0.2	1.7	22
92%	73%	24%	16%	20%	28%	75%	50%	5%

Index Value			
ABI	DOM	HGN	HGS
+\$126	+\$117	+\$125	+\$127

Peridot and the following lot are twin brothers the natural calves from our treasured donor cow Jean H215. Although they are the youngest bulls in their group at 15mths they both blitzed the contemporary for Fat and IMF with Peridot ranking second and third respectively. Both offer an exceptional blend of structural correctness and natural thickness with very kind natures. Both are suitable for heifers. They are maternal brothers to Lot 11, 29, 30 and 51 and the \$24,000 Newsflash who sold to Bannaby in 2018.

Purchased by: \$



LOT 49. BEN NEVIS PERIDOT P94



LOT 50. BEN NEVIS PRISM P93

Lot 50 BEN NEVIS PRISM P93^{SV}

HBR 3/04/2018 AMFU,CAFU,DDFU,NHFU ID NBNP93 TATTOO BN P93

PATERNAL PEDIGREE

EF COMPLEMENT 8088^{SV}
 EF COMMANDO 1366^{SV}
 RIVERBEND YOUNG LUCY W1470^{SV}
BALDRIDGE COMMAND C036^{SV}
 HOOVER DAM⁺
 BALDRIDGE BLACKBIRD A030⁺
 BALDRIDGE BLACKBIRD X89⁺

MATERNAL PEDIGREE

HARB PENDLETON 765 J H^{SV}
 BEN NEVIS FRONTROW F41^{SV}
 BEN NEVIS PERFECTION A103⁺
BEN NEVIS JEAN H215^{SV}
 BULLIAC X-RAY X10⁺
 BEN NEVIS JEAN D71⁺
 BEN NEVIS JEAN B21⁺

Angus	August 2018 Angus Australia Breedplans							
	Calving Ease %				Growth (kg)			
	Direct	Dtrs	GL	BW	200	400	600	M
EBV	4.2	2.8	-3.3	2.7	50	87	117	91
PERC	3%	11%	63%	16%	23%	31%	25%	55%

Fertility		Carcase						Milk
SC	DC	WGT	EMA	RIB	P8	RBV%	IMF%	
-0.1	-0.6	63	6.7	0.7	0.1	0.2	1.3	23
99%	95%	38%	24%	28%	43%	60%	65%	3%

Index Value			
ABI	DOM	HGN	HGS
+\$106	+\$106	+\$98	+\$113

Like his twin brother in the lot before him (who were the natural calves from Jean H215), and maternal brother to Lots 11, 29, 30 and 51 Prism displays impeccable structure and style. At only 15 mths of age compared to his contemporaries at 18 months he ranked third behind his brother for EMA and second (just ahead of his twin brother) for IMF. He is a meat machine with a superb structure and quiet disposition. Ratioing just 86% on birthweight he is safe to use on heifers.

Purchased by: \$

Lot 52 BEN NEVIS PROXIMITY P1^{SV} ET

HBR 15/02/2018 AMFU,CAFU,DDFU,NHFU ID NBNP1 TATTOO BN P1

PATERNAL PEDIGREE

TE MANIA BERKLEY B1^{SV}
 TE MANIA EMPEROR E343^{SV}
 TE MANIA LOWAN Z74^{SV}
ASCOT HALLMARK H147^{SV}
 MILLAH MURRAH DIGBY D108^{SV}
 MILLAH MURRAH BRENDA F123^{SV}
 MILLAH MURRAH BRENDA D113^{SV}

MATERNAL PEDIGREE

CONNELLY CONSENSUS 7229^{SV}
 CONNELLY COMRADE 1385⁺
 HAPPY GEE OF CONANGA 919⁺
BEN NEVIS VIOLIN K3^{SV}
 BEN NEVIS FRONTROW F41^{SV}
 BEN NEVIS VIOLIN H10⁺
 BEN NEVIS VIOLIN F115⁺

Angus	August 2018 Angus Australia Breedplans							
	Calving Ease %				Growth (kg)			
	Direct	Dtrs	GL	BW	200	400	600	M
EBV	1.5	0.9	-4.9	4.5	54	94	120	106
PERC	33%	43%	33%	55%	9%	13%	20%	25%

Fertility		Carcase						Milk
SC	DC	WGT	EMA	RIB	P8	RBV%	IMF%	
1.5	-6.8	66	2.6	0.5	0.9	-0.4	1.9	11
65%	10%	28%	86%	35%	22%	83%	40%	85%

Index Value			
ABI	DOM	HGN	HGS
+\$128	+\$117	+\$134	+\$123

You can see the pure quality when looking at the volume of meat and softness in this bloodline. It is reflected in the silky coat and the depth of muscling down to the hock. Proximity is a very easy doing bull who would put the constitution back into your cow herd. He would produce very happy weaners and high quality replacement heifers. He is a full ET brother to lot 35.

Purchased by: \$

Lot 51 BEN NEVIS PHANTOM P81^{SV} ET

HBR 5/03/2018 AMFU,CAFU,DDFU,NHFU ID NBNP81 TATTOO BN P81

PATERNAL PEDIGREE

GAMBLES ROYAL FLUSH⁺
 VISIONTOPLINE ROYAL STOCKMAN⁺
 LAGRAND PRIDE 7140⁺
VISION UNANIMOUS 1418^{SV}
 BOYD ON TARGET 1083⁺
 VISION EDELLA 665⁺
 VISION EDELLA 337⁺

MATERNAL PEDIGREE

HARB PENDLETON 765 J H^{SV}
 BEN NEVIS FRONTROW F41^{SV}
 BEN NEVIS PERFECTION A103⁺
BEN NEVIS JEAN H215^{SV}
 BULLIAC X-RAY X10⁺
 BEN NEVIS JEAN D71⁺
 BEN NEVIS JEAN B21⁺

Angus	August 2018 Angus Australia Breedplans							
	Calving Ease %				Growth (kg)			
	Direct	Dtrs	GL	BW	200	400	600	M
EBV	1.1	0.9	-5.2	4.8	57	100	139	118
PERC	39%	43%	28%	62%	4%	5%	3%	10%

Fertility		Carcase						Milk
SC	DC	WGT	EMA	RIB	P8	RBV%	IMF%	
0.6	-4.5	76	2.5	-0.4	-1	0.1	1.4	15
94%	45%	6%	87%	65%	75%	65%	60%	52%

Index Value			
ABI	DOM	HGN	HGS
+\$128	+\$114	+\$133	+\$127

Phantom is a carbon copy in style to his two full ET brothers in the sale Lots 29 and 30 and maternal brothers in the two previous lots showing the extra length and thump of quarter we expect from Unanimous but he is slightly larger frame and more rugged in his outlook. He is super docile. His dam Jean H215 is our secret weapon always stamping her progeny with a special style. This is the last chance to get one in this sale.

Purchased by: \$

Lot 53 BEN NEVIS PANAMA P39^{SV}

HBR 12/02/2018 AMFU,CA2%,DDFU,NHFU ID NBNP39 TATTOO BN P39

PATERNAL PEDIGREE

TE MANIA BERKLEY B1^{SV}
 TE MANIA EMPEROR E343^{SV}
 TE MANIA LOWAN Z74^{SV}
ASCOT HALLMARK H147^{SV}
 MILLAH MURRAH DIGBY D108^{SV}
 MILLAH MURRAH BRENDA F123^{SV}
 RIVERBEND YOUNG LUCY W1470^{SV}

MATERNAL PEDIGREE

TE MANIA BARTEL B219^{SV}
 AYRVALE BARTEL E7^{SV}
 EAGLEHAWK JEDDA B32^{SV}
BEN NEVIS YOLANDE K4⁺
 TE MANIA INFINITY 04 379 AB⁺
 BEN NEVIS YOLANDE H12⁺
 BEN NEVIS YOLANDE F75⁺

Angus	August 2018 Angus Australia Breedplans							
	Calving Ease %				Growth (kg)			
	Direct	Dtrs	GL	BW	200	400	600	M
EBV	1	1.4	-5.3	4.6	50	90	124	111
PERC	40%	33%	27%	57%	23%	22%	14%	18%

Fertility		Carcase						Milk
SC	DC	WGT	EMA	RIB	P8	RBV%	IMF%	
1.3	-6.1	69	3.9	-1.4	-0.8	0.6	1.4	15
75%	18%	19%	70%	88%	70%	40%	60%	52%

Index Value			
ABI	DOM	HGN	HGS
+\$127	+\$113	+\$134	+\$123

Panama is a larger frame, longer bodied bull which is classic Hallmark and why they weigh so well and produce such beautiful daughters. He is ideally suited to the longer fed Jap B3 and will leave you with very productive females.

Purchased by: \$

Lot 54 BEN NEVIS PISTOL PETE P75^{SV} ET

HBR 25/02/2018 AMFU,CAFU,DDFU,NHFU ID NBNP75 TATTOO BN P75

PATERNAL PEDIGREE

EF COMPLEMENT 8088^{SV}
 EF COMMANDO 1366^{SV}
 RIVERBEND YOUNG LUCY W1470^{*}
BALDRIDGE COMMAND C036^{SV}
 HOOVER DAM^{*}
 BALDRIDGE BLACKBIRD A030^{*}
 BALDRIDGE BLACKBIRD X89^{*}

MATERNAL PEDIGREE

J & C APPEAL A10^{SV}
 RAFF EMPIRE E269^{SV}
 RAFF DORIS A55^{*}
BEN NEVIS JEAN H103^{SV}
 BEN NEVIS XEROX X101^{SV}
 BEN NEVIS JEAN B16^{*}
 BEN NEVIS JEAN U32^{*}

August 2018 Angus Australia Breedplans								
Angus	Calving Ease %				Growth (kg)			
	Direct	Dtrs	GL	BW	200	400	600	M
EBV	1	-0.3	-3.4	2.7	50	91	116	80
PERC	40%	67%	62%	16%	23%	20%	27%	76%

Fertility		Carcase						Milk
SC	DC	WGT	EMA	RIB	P8	RBY%	IMF%	
1.5	-2.7	67	8	-0.3	0.2	0.7	1.4	21
65%	78%	24%	10%	60%	40%	38%	60%	8%

Index Value			
ABI	DOM	HGN	HGS
+\$116	+\$115	+\$111	+\$120

Pistol Pete was born very small and then powered to weaning with a massive top and huge EMA. He is one of the best skinned bulls in the sale and his combination of low birth weight EBV, actual low birthweight as well as laid in shoulder and extended neck make him an ideal candidate for heifers. He is an ET brother to the following lot and a maternal brother to Lot 9 and 10.

Purchased by: \$



LOT 55. BEN NEVIS POWERSURGE P74 ET



LOT 56. BEN NEVIS POUNDMAKER P78 ET

www.bennevisangus.com.au

Lot 55 BEN NEVIS POWERSURGE P74[#] ET

HBR 21/02/2018 AMFU,CAFU,DDFU,NHFU ID NBNP74 TATTOO BN P74

PATERNAL PEDIGREE

EF COMPLEMENT 8088^{SV}
 EF COMMANDO 1366^{SV}
 RIVERBEND YOUNG LUCY W1470^{*}
BALDRIDGE COMMAND C036^{SV}
 HOOVER DAM^{*}
 BALDRIDGE BLACKBIRD A030^{*}
 BALDRIDGE BLACKBIRD X89^{*}

MATERNAL PEDIGREE

J & C APPEAL A10^{SV}
 RAFF EMPIRE E269^{SV}
 RAFF DORIS A55^{*}
BEN NEVIS JEAN H103^{SV}
 BEN NEVIS XEROX X101^{SV}
 BEN NEVIS JEAN B16^{*}
 BEN NEVIS JEAN U32^{*}

August 2018 Angus Australia Breedplans								
Angus	Calving Ease %				Growth (kg)			
	Direct	Dtrs	GL	BW	200	400	600	M
EBV	1.9	0.2	-5.7	4.4	57	106	132	96
PERC	27%	57%	21%	53%	4%	2%	6%	44%

Fertility		Carcase						Milk
SC	DC	WGT	EMA	RIB	P8	RBY%	IMF%	
1.5	-3	77	7.8	-1	-0.6	1.5	1.1	22
65%	73%	5%	12%	80%	63%	10%	70%	5%

Index Value			
ABI	DOM	HGN	HGS
+\$132	+\$129	+\$131	+\$134

Powersurge is a maternal brother to Lots 9 and 10 and ET brother to the previous Lot. He is a thumper with a ton of muscle down his top and out though his hindquarter with a slick skin and impeccable structure. He is such a beautiful bull to watch on the move as he is so proud and athletic. He has a super donor dam in Jean H103 as well as a great set of data backing up his EBV profile making him a real catch.

Purchased by: \$

Lot 56 BEN NEVIS POUNDMAKER P78^{SV} ET

HBR 3/05/2018 AMFU,CAFU,DD2%,NHFU ID NBNP78 TATTOO BN P78

PATERNAL PEDIGREE

TE MANIA EMPEROR E343^{SV}
 ASCOT HALLMARK H147^{SV}
 MILLAH MURRAH BRENDA F123^{SV}
ASCOT LION HEART L305^{SV}
 DUNOON EVIDENT E614^{SV}
 ASCOT H148^{SV}
 MILLAH MURRAH FLOWER F126^{SV}

MATERNAL PEDIGREE

MYTTY IN FOCUS^{*}
 BEN NEVIS ERITREA E6^{SV}
 BEN NEVIS DORMIST C46^{*}
BEN NEVIS GERANIUM J82^{SV}
 TE MANIA INFINITY 04 379 AB^{*}
 BEN NEVIS GERANIUM C19^{*}
 BEN NEVIS GERANIUM E64^{*}

August 2018 Angus Australia Breedplans								
Angus	Calving Ease %				Growth (kg)			
	Direct	Dtrs	GL	BW	200	400	600	M
EBV	0.1	-1.4	-5.5	3.2	52	95	119	113
PERC	55%	82%	24%	25%	15%	11%	21%	15%

Fertility		Carcase						Milk
SC	DC	WGT	EMA	RIB	P8	RBY%	IMF%	
3.6	-4.4	73	6.3	-2.6	-3.4	2	1.8	13
2%	47%	10%	29%	99%	99%	4%	45%	71%

Index Value			
ABI	DOM	HGN	HGS
+\$123	+\$121	+\$135	+\$118

Not too many holes in this strong and powerful young bull who is the natural calf of a Donor. His performance across the board for growth and carcass traits is excellent and he had the fifth highest EMA while well above the average for scanned IMF. He has inherited the very kind Lionheart temperament and skin.

Purchased by: \$

Lot 57 BEN NEVIS PHENOMENON P369^{SV}

HBR 3/08/2018 AMFU,CA1%,DDFU,NHFU ID NBNP369 TATTOO BN P369

PATERNAL PEDIGREE

SITZ NEW DESIGN 458N*
TEXAS GLOBAL G563^{SV}
TEXAS UNDINE Z036^{SV}
ASCOT GLOBAL L369^{SV}
HYLINE RIGHT TIME 338*
PERTANGUS RIGHTTIME B145*
PERTANGUS V90*

MATERNAL PEDIGREE

VERMILION YELLOWSTONE*
BEN NEVIS BRUISER B33^{SV}
BEN NEVIS GERANIUM V107*
BEN NEVIS KIWI E124*
BEN NEVIS USEFUL U68*
BEN NEVIS KIWI Y40*
BEN NEVIS KIWI M94+92*

August 2018 Angus Australia Breedplans								
Angus	Calving Ease %				Growth (kg)			
	Direct	Dtrs	GL	BW	200	400	600	M
EBV	-3.4	-2.2	-2.3	8.8	58	103	142	148
PERC	91%	89%	80%	99%	3%	3%	2%	1%

Fertility		Carcase						Milk
SC	DC	WGT	EMA	RIB	P8	RBV%	IMF%	
0.7	0	79	-1.7	-1.9	-1.5	-0.9	1.7	
92%	96%	3%	99%	95%	85%	94%	50%	

Index Value			
ABI	DOM	HGN	HGS
+\$92	+\$89	+\$96	+\$94

One of the best put together young sires in the sale with extra depth through his flank and rib giving him extra weight over the scales. His quality and doing ability is reflected in his soft, silky skin. With his massive growth and IMF he would do a great job targeting the high value Jap B3 and branded beef market over cows. Very kind disposition.

Purchased by: \$

Lot 59 BEN NEVIS PROC P412 ET

26/07/2018 ID NBNP412 TATTOO BN P412

PATERNAL PEDIGREE

G A R PREDESTINED*
G A R PROGRESS^{SV}
G A R OBJECTIVE 2345*
H P C A PROCEED*
B/R AMBUSH 28*
G A R 28 AMBUSH L119*
G A R PREDESTINED N05*

MATERNAL PEDIGREE

HYLINE RIGHT TIME 338*
CHERYLTON STEWIE D19^{SV}
SINCLAIR LADY 2P60 4465*
BEN NEVIS NBNL31
BANQUET DANDY D274^{SV}
BEN NEVIS WILCOOLA G4*
LONGFORD WILCOOLA C14*

August 2019 Angus Australia Breedplans								
Angus	Calving Ease %				Growth (kg)			
	Direct	Dtrs	GL	BW	200	400	600	M
EBV	-0.7			5.0	52	95	126	116
PERC								

Fertility		Carcase						Milk
SC	DC	WGT	EMA	RIB	P8	RBV%	IMF%	
1.8		69	5.7	-1.2	-1.0	0.5	3.4	

Index Value			
ABI	DOM	HGN	HGS

Proc's dam is a Donor and needs a DNA on file which is currently being processed and should be available by sale. We guarantee his registration and the figures shown here are his mid parent values and he has been Sire Verified and has Genomics. His Grandam and dam are both donors injecting growth and IMF from the famous Wilcoola line into our herd. Proc is a big, strong bull with a deep rib and has heaps of potential.

Purchased by: \$

Lot 58 BEN NEVIS PARAMOUNT P230^{PV}

HBR 13/08/2018 AMFU,CAFU,DDFU,NHFU ID NBNP230 TATTOO BN P230

PATERNAL PEDIGREE

B A R EXT TRAVELER 205*
C R A BEXTOR 872 5205 608*
CRA LADY JAYE 608 498 S EASY*
G A R PROPHET^{SV}
S S OBJECTIVE T510 0T26*
G A R OBJECTIVE 1885*
G A R 1407 NEW DESIGN 2232*

MATERNAL PEDIGREE

BANQUET MERLOT X135*
BANQUET ZEALFUL Z021^{SV}
BANQUET DREAM X087*
BEN NEVIS GERANIUM D55*
TC STOCKMAN 2164*
BEN NEVIS GERANIUM T101*
BEN NEVIS GERANIUM E40.*

August 2018 Angus Australia Breedplans								
Angus	Calving Ease %				Growth (kg)			
	Direct	Dtrs	GL	BW	200	400	600	M
EBV	-3.4	-1.1	1.4	5.7	52	86	106	77
PERC	91%	78%	99%	82%	15%	34%	51%	81%

Fertility		Carcase						Milk
SC	DC	WGT	EMA	RIB	P8	RBV%	IMF%	
1.9	-2.6	59	6.6	0.8	0.4	-0.3	2	
45%	79%	53%	25%	25%	35%	80%	35%	

Index Value			
ABI	DOM	HGN	HGS
+\$94	+\$99	+\$90	+\$98

The natural calf out of our Geranium D55 Donor Dam Paramount offers extra frame and IMF that is ideal to target the high quality Jap B3 market. In addition the maternal strength behind him will consistently deliver high quality daughters with his soft skin and docility.

Purchased by: \$

Lot 60 BEN NEVIS PROCREATE P168^{SV}

HBR 19/07/2018 AMFU,CAF,DDF,NHFU ID NBNP168 TATTOO BN P168

PATERNAL PEDIGREE

SCHURRTOP REALITY X723*
MATAURI REALITY 839*
MATAURI 06663*
MILWILLAH REALITY L19^{SV}
ARDROSSAN EQUATOR A241^{SV}
MILWILLAH DREAM G71^{SV}
VERMONT DREAM Y301^{SV}

MATERNAL PEDIGREE

TE MANIA INFINITY 04 379 AB*
BEN NEVIS DINO F6^{SV}
BEN NEVIS JEAN D114*
BEN NEVIS GERANIUM H166*
DSK HLE AHEAD OF THE PACK A57^{SV}
BEN NEVIS GERANIUM D83*
BEN NEVIS GERANIUM Y108*

August 2018 Angus Australia Breedplans								
Angus	Calving Ease %				Growth (kg)			
	Direct	Dtrs	GL	BW	200	400	600	M
EBV	2.8	1.6	-7.3	3.2	37	70	86	77
PERC	15%	30%	8%	25%	85%	83%	88%	81%

Fertility		Carcase						Milk
SC	DC	WGT	EMA	RIB	P8	RBV%	IMF%	
1.7	-7.3	45	0.7	3.2	3.1	-1.6	1.8	
55%	7%	86%	98%	1%	1%	99%	45%	

Index Value			
ABI	DOM	HGN	HGS
+\$100	+\$98	+\$98	+\$99

A really good looking bull with supple structure, soft skin and lovely natural thickness. He is what we call a cow maker and has such great doing ability that he ranks equal third for it in his contemporary. We feel his BREEDPLAN figures for growth will improve as he will grow into a very big bull. He is very quiet. Pictured on page 32.

Purchased by: \$

Lot 61 BEN NEVIS PATENT P209^{SV}

HBR 22/07/2018 AMFU,CAC,DDFU,NHFU ID NBNP209 TATTOO BN P209

PATERNAL PEDIGREE

EF COMPLEMENT 8088^{SV}
 EF COMMANDO 1366^{SV}
 RIVERBEND YOUNG LUCY W1470⁺
BALDRIDGE COMMAND C036^{SV}
 HOOVER DAM⁺
 BALDRIDGE BLACKBIRD A030⁺
 BALDRIDGE BLACKBIRD X89⁺

MATERNAL PEDIGREE

BRAVEHEART OF STERN^{SV}
 BEN NEVIS KIBAH K37^{SV}
 BEN NEVIS DORMIST F80⁺
BEN NEVIS GERANIUM M204⁺
 BEN NEVIS ZEXAR Z86^{SV}
 BEN NEVIS GERANIUM D40^{SV}
 BEN NEVIS GERANIUM W035⁺

August 2018 Angus Australia Breedplans

	Calving Ease %				Growth (kg)			
	Direct	Dtrs	GL	BW	200	400	600	M
EBV	3.7	2.3	-7.3	4	53	98	129	117
PERC	6%	18%	8%	43%	12%	7%	8%	11%

Fertility		Carcase						Milk
SC	DC	WGT	EMA	RIB	P8	RBV%	IMF%	
0.9	-1.7	65	6.8	-2.1	-2.6	1.9	1.1	20
88%	88%	31%	23%	96%	96%	5%	70%	12%

Index Value

ABI	DOM	HGN	HGS
+\$123	+\$120	+\$126	+\$124

As the second smallest actual born calf in the contemporary Patent boasts an impressive BW ratio of 75. This is reflected in his EBVs and we feel he is a really good choice for heifers. When they are born so small you sometimes wonder if they will amount to anything but Patent knocked our socks off with his subsequent growth. On top of this he has a great butterfly muscle along his spine with a big rib and do-ability.

Purchased by:

\$



LOT 60. BEN NEVIS PROCREATE P168 (see page 31)



LOT 61. BEN NEVIS PATENT P209

www.bennevisangus.com.au

Lot 62 BEN NEVIS PATRIARCH P225^{SV}

HBR 11/08/2018 AMFU,CA2%,DDFU,NH18% ID NBNP225 TATTOO BN P225

PATERNAL PEDIGREE

C R A BEXTOR 872 5205 608⁺
 G A R PROPHET^{SV}
 G A R OBJECTIVE 1885⁺
BALDRIDGE BEAST MODE B074^{SV}
 STYLES UPGRADE J59⁺
 BALDRIDGE ISABEL Y69⁺
 BALDRIDGE ISABEL T935⁺

MATERNAL PEDIGREE

C A FUTURE DIRECTION 5321⁺
 BEN NEVIS XEROX X101^{SV}
 BEN NEVIS GERANIUM Q55+95^{SV}
BEN NEVIS AXIS A18⁺
 PINE CREEK NUDGE N36+93⁺
 BEN NEVIS GERANIUM Q43+95⁺
 BEN NEVIS GERANIUM L6+91⁺

August 2018 Angus Australia Breedplans

	Calving Ease %				Growth (kg)			
	Direct	Dtrs	GL	BW	200	400	600	M
EBV	-1.6	-2	-1	6.8	65	112	146	123
PERC	78%	88%	93%	94%	1%	1%	1%	7%

Fertility		Carcase						Milk
SC	DC	WGT	EMA	RIB	P8	RBV%	IMF%	
2.2	0.6	77	5	-2.8	-3	2.2	0.7	20
30%	98%	5%	52%	99%	98%	2%	83%	12%

Index Value

ABI	DOM	HGN	HGS
+\$113	+\$116	+\$109	+\$118

Patriarch is one of the fastest growing bulls in the sale that will grow into a big bull with a ton of power behind him. We love his outlook and his supple and showy style with a big rib and plenty of capacity. His dam is one of our oldest and dearest stemming back to our famous Geranium E40 donor.

Purchased by:

\$

Lot 63 BEN NEVIS PREFECT P417^{SV} ET

HBR 8/08/2018 AMFU,CAF,DDFU,NHFU ID NBNP417 TATTOO BN P417

PATERNAL PEDIGREE

LEACHMAN RIGHT TIME^{SV}
 HYLINE RIGHT TIME 338⁺
 HYLINE PRIDE 265⁺
CHERYLTON STEWIE D19^{SV}
 N BAR PRIME TIME D806⁺
 SINCLAIR LADY 2P60 4465⁺
 IDEAL 4465 OF 6807 4286⁺

MATERNAL PEDIGREE

MYTTY IN FOCUS⁺
 BEN NEVIS ERITREA E6^{SV}
 BEN NEVIS DORMIST C46⁺
BEN NEVIS JEAN H151^{SV}
 BEN NEVIS ZEXAR Z86^{SV}
 BEN NEVIS JEAN D114⁺
 BEN NEVIS JEAN Y80⁺

August 2018 Angus Australia Breedplans

	Calving Ease %				Growth (kg)			
	Direct	Dtrs	GL	BW	200	400	600	M
EBV	1.7	1.3	-6.3	7.1	56	101	138	127
PERC	30%	35%	15%	96%	5%	4%	3%	5%

Fertility		Carcase						Milk
SC	DC	WGT	EMA	RIB	P8	RBV%	IMF%	
2	-6.8	70	2.9	-1.6	0.6	0.2	2.8	16
40%	10%	16%	83%	92%	28%	60%	13%	42%

Index Value

ABI	DOM	HGN	HGS
+\$153	+\$128	+\$177	+\$141

One group of our ET calves had such a tough run in a co-operator herd that we never thought we would salvage them and had to wean them at two months of age. You wouldn't tell with Prefect as he has thrived and shown what he is really made of. He has so much more of his potential to fill and will continue to grow into a very big bull with a pre-potency for high growth and IMF. He has a very proud stance, deep rib and substance.

Purchased by:

\$

Lot 65 BEN NEVIS PROTON P202^{SV}

HBR 10/07/2018 AMFU,CAC,DDFU,NHFU ID NBNP202 TATTOO BN P202

PATERNAL PEDIGREE

EF COMPLEMENT 8088^{TV}
 EF COMMANDO 1366^{TV}
 RIVERBEND YOUNG LUCY W1470⁺
BALDRIDGE COMMAND C036^{TV}
 HOOVER DAM⁺
 BALDRIDGE BLACKBIRD A030⁺
 BALDRIDGE BLACKBIRD X89⁺

MATERNAL PEDIGREE

POSS TOTAL IMPACT 745⁺
 BEN NEVIS JABBA J12^{SV}
 BEN NEVIS GERANIUM B103^{SV}
BEN NEVIS UMBRA M162⁺
 BEN NEVIS ZEXAR Z86^{TV}
 BEN NEVIS UMBRA D96⁺
 BEN NEVIS UMBRA V27⁺

August 2018 Angus Australia Breedplans

	Calving Ease %				Growth (kg)			
	Direct	Dtrs	GL	BW	200	400	600	M
EBV	2.7	2.8	-7.2	1.7	48	87	111	83
PERC	16%	11%	8%	5%	32%	31%	39%	71%

Fertility		Carcase						Milk
SC	DC	WGT	EMA	RIB	P8	RBV%	IMF%	
0.3	-3.2	60	5.1	-0.4	-0.2	0.1	2.2	18
97%	70%	49%	50%	65%	50%	65%	30%	24%

Index Value

ABI	DOM	HGN	HGS
+\$119	+\$116	+\$123	+\$119

Proton is an excellent shape for heifers and is mobile and athletic to boot just in case they decided to run away. Of course they wont because he is a good looking rooster with plenty of Sire Appeal and a strong spine. He ratioed just 80 on actual birthweight – well below the group average and his EBVs back this up. He will also fold well above average IMF into his progeny.

Purchased by: \$

Lot 66 BEN NEVIS PRIVILEGE P264^{SV}

HBR 10/08/2018 AMFU,CAFU,DDF,NHFU ID NBNP264 TATTOO BN P264

PATERNAL PEDIGREE

EF COMPLEMENT 8088^{TV}
 EF COMMANDO 1366^{TV}
 RIVERBEND YOUNG LUCY W1470⁺
BALDRIDGE COMMAND C036^{TV}
 HOOVER DAM⁺
 BALDRIDGE BLACKBIRD A030⁺
 BALDRIDGE BLACKBIRD X89⁺

MATERNAL PEDIGREE

TE MANIA EMPEROR E343^{TV}
 ASCOT HALLMARK H147^{TV}
 MILLAH MURRAH BRENDA F123^{TV}
BEN NEVIS UMBRA M134⁺
 RAFF EMPIRE E269^{SV}
 BEN NEVIS UMBRA H94⁺
 BEN NEVIS UMBRA A81⁺

August 2018 Angus Australia Breedplans

	Calving Ease %				Growth (kg)			
	Direct	Dtrs	GL	BW	200	400	600	M
EBV	3	1.8	-6.6	4.3	58	107	143	125
PERC	13%	27%	13%	50%	3%	1%	2%	6%

Fertility		Carcase						Milk
SC	DC	WGT	EMA	RIB	P8	RBV%	IMF%	
0.4	-4.9	81	6.5	-0.5	-1.2	0.9	1.9	15
96%	37%	2%	26%	68%	78%	30%	40%	52%

Index Value

ABI	DOM	HGN	HGS
+\$150	+\$132	+\$164	+\$144

Privilege is pure carcase – being very square across the top and out through to his lower outside thigh. He has lots of shape and an excellent head carriage. It's no surprise he ranked equal sixth for scanned EMA in his large contemporary. His numbers support his all rounder ability having a smoking set of EBVs and every Index ranking him in the top 5% or better within the breed.

Purchased by: \$

Lot 67 BEN NEVIS PILOT P175^{SV}

HBR 20/07/2018 AM2%,CAFU,DDFU,NH2% ID NBNP175 TATTOO BN P175

PATERNAL PEDIGREE

TE MANIA EMPEROR E343^{TV}
 ASCOT HALLMARK H147^{TV}
 MILLAH MURRAH BRENDA F123^{TV}
ASCOT LION HEART L305^{TV}
 DUNOON EVIDENT E614^{TV}
 ASCOT H148^{SV}
 MILLAH MURRAH FLOWER F126^{TV}

MATERNAL PEDIGREE

TC TOTAL 410⁺
 POSS TOTAL IMPACT 745⁺
 POSS BLACKCAP 5116⁺
BEN NEVIS JEAN J23⁺
 CRUSADER OF STERN AB⁺
 BEN NEVIS JEAN B32⁺
 BEN NEVIS JEAN X91⁺

August 2018 Angus Australia Breedplans

	Calving Ease %				Growth (kg)			
	Direct	Dtrs	GL	BW	200	400	600	M
EBV	-2.9	0.7	0.4	4.3	45	81	105	96
PERC	88%	48%	98%	50%	49%	51%	53%	44%

Fertility		Carcase						Milk
SC	DC	WGT	EMA	RIB	P8	RBV%	IMF%	
4	-6.4	59	5.1	-0.7	0	0.3	1.7	12
1%	14%	53%	50%	73%	45%	55%	50%	79%

Index Value

ABI	DOM	HGN	HGS
+\$108	+\$102	+\$112	+\$105

A contender for the front row here, he is such a solid character. Pilot is easy doing, well balanced and naturally thick throughout with an earlier maturity pattern. He will certainly add the constitution and thump back into your weaners. Pictured on page 34.

Purchased by: \$

Lot 68 BEN NEVIS PREHISTORY P108^{SV}

HBR 1/07/2018 AMFU,CAFU,DDFU,NHFU ID NBNP108 TATTOO BN P108

PATERNAL PEDIGREE

EF COMPLEMENT 8088^{TV}
 EF COMMANDO 1366^{TV}
 RIVERBEND YOUNG LUCY W1470⁺
BALDRIDGE COMMAND C036^{TV}
 HOOVER DAM⁺
 BALDRIDGE BLACKBIRD A030⁺
 BALDRIDGE BLACKBIRD X89⁺

MATERNAL PEDIGREE

POSS TOTAL IMPACT 745⁺
 JSRL JACK'S JOKER J1^{TV}
 DSK RR PANDA F120^{TV}
BEN NEVIS FLORYX M29⁺
 J & C EVIDENCE E11^{TV}
 BEN NEVIS H200⁺
 BEN NEVIS FLORYX E123⁺

August 2018 Angus Australia Breedplans

	Calving Ease %				Growth (kg)			
	Direct	Dtrs	GL	BW	200	400	600	M
EBV	0.1	1.2	-4.1	4.8	57	102	129	117
PERC	55%	38%	48%	62%	4%	4%	8%	11%

Fertility		Carcase						Milk
SC	DC	WGT	EMA	RIB	P8	RBV%	IMF%	
0.5	-1.6	72	5.2	-1.5	-1.9	1.3	1.8	18
95%	89%	12%	47%	90%	90%	15%	45%	24%

Index Value

ABI	DOM	HGN	HGS
+\$121	+\$120	+\$127	+\$120

These Commands pack a real punch and Prehistory is no exception with a massive hindquarter and extra rib depth and softness. He is a very showy bull with a terrific set of numbers and his granddam is Donor E123 who is one of our most successful cows whose sons never missed the top pen. We are delighted with how our extensive ET program has given us quality consistency right through the sale. Pictured on page 34.

Purchased by: \$

Lot 69 BEN NEVIS PREFIX P251^{SV}

HBR 6/08/2018 AMFU,CAF,DDF,NHFU ID NBNP251 TATTOO BN P251

PATERNAL PEDIGREE

TE MANIA EMPEROR E343^{TV}
 ASCOT HALLMARK H147^{TV}
 MILLAH MURRAH BRENDA F123^{TV}
BEN NEVIS MONARCH M128^{SV}
 TE MANIA INFINITY 04 379 AB*
 BEN NEVIS DORMIST G76*
 BEN NEVIS DORMIST E35*

MATERNAL PEDIGREE

TE MANIA BARTEL B219^{TV}
 AYRVALE BARTEL E7^{TV}
 EAGLEHAWK JEDDA B32^{TV}
BEN NEVIS DENMIST M31*
 RAFF EMPIRE E269^{SV}
 BEN NEVIS DENMIST H220*
 BEN NEVIS PATRICIA D117*

August 2018 Angus Australia Breedplans

	Calving Ease %				Growth (kg)			
	Direct	Dtrs	GL	BW	200	400	600	M
EBV	1.1	0.9	-4.1	4.3	46	79	104	101
PERC	39%	43%	48%	50%	43%	58%	56%	34%

Fertility		Carcase						Milk
SC	DC	WGT	EMA	RIB	P8	RBY%	IMF%	
1.8	-6.8	64	5.8	-0.8	-0.4	0.1	2.6	14
50%	10%	35%	37%	75%	58%	65%	18%	61%

Index Value			
ABI	DOM	HGN	HGS
+\$122	+\$110	+\$135	+\$114

The quietest bull in the sale and such a character. We call him the handbag sniffer because he is into everything and is a real busy body. Born unassisted out of a heifer he is an ideal heifer bull in shape and with his low birthweight credentials- then he stacks more IMF in under the hide. He has a beautiful skin. Like his sire Monarch he and his progeny will run on the smell of an oily rag.

Purchased by: \$



LOT 67. BEN NEVIS PILOT P175 (see page 33)



LOT 68. BEN NEVIS PREHISTORY P108 (see page 33)

www.benvisangus.com.au

Lot 70 BEN NEVIS PANORAMA P195^{SV}

HBR 20/07/2018 AMFU,CAFU,DDFU,NHF ID NBNP195 TATTOO BN P195

PATERNAL PEDIGREE

REMITALL NIGHTHAWK 37N*
 REMITALL H RACHIS 21R*
 HENDERSON MISSIE 32*02*
BEN NEVIS JUDO J158^{SV}
 TE MANIA INFINITY 04 379 AB*
 BEN NEVIS GERANIUM G26^{SV}
 BEN NEVIS GERANIUM E79*

MATERNAL PEDIGREE

POSS TOTAL IMPACT 745*
 JSRL JACK'S JOKER J1^{TV}
 DSK RR PANDA F120^{TV}
BEN NEVIS GERANIUM M36*
 MILLAH MURRAH EQUATOR D78^{TV}
 BEN NEVIS GERANIUM J135*
 BEN NEVIS GERANIUM C101*

August 2018 Angus Australia Breedplans

	Calving Ease %				Growth (kg)			
	Direct	Dtrs	GL	BW	200	400	600	M
EBV	-2	0.2	0.2	3.8	41	89	115	95
PERC	82%	57%	97%	37%	70%	25%	29%	46%

Fertility		Carcase						Milk
SC	DC	WGT	EMA	RIB	P8	RBY%	IMF%	
2.1	-3.9	67	1.2	-1	-0.6	0	1.8	19
35%	57%	24%	96%	80%	63%	70%	45%	18%

Index Value			
ABI	DOM	HGN	HGS
+\$107	+\$103	+\$113	+\$105

Panorama is a heifers first calf and is beautifully constructed to be a heifer bull himself backed by a 90 ratio for BW and an equivalent BW EBV. On top of this he is very thick over the spine and throughout his hindquarter and is very quiet. He has a lovely quality skin and style about him.

Purchased by: \$

Lot 71 BEN NEVIS POLITIC P115^{SV}

HBR 3/07/2018 AMFU,CAFU,DDFU,NHFU ID NBNP115 TATTOO BN P115

PATERNAL PEDIGREE

REMITALL NIGHTHAWK 37N*
 REMITALL H RACHIS 21R*
 HENDERSON MISSIE 32*02*
BEN NEVIS JUDO J158^{SV}
 TE MANIA INFINITY 04 379 AB*
 BEN NEVIS GERANIUM G26^{SV}
 BEN NEVIS GERANIUM E79*

MATERNAL PEDIGREE

TE MANIA EMPEROR E343^{TV}
 ASCOT HALLMARK H147^{TV}
 MILLAH MURRAH BRENDA F123^{TV}
BEN NEVIS GERANIUM M64*
 BEN NEVIS FRONTIER B88^{SV}
 BEN NEVIS GOLIATH G201*
 BEN NEVIS GERANIUM A84*

August 2018 Angus Australia Breedplans

	Calving Ease %				Growth (kg)			
	Direct	Dtrs	GL	BW	200	400	600	M
EBV	-0.4	-0.3	-1.5	3.6	42	80	109	94
PERC	63%	67%	89%	33%	66%	55%	44%	48%

Fertility		Carcase						Milk
SC	DC	WGT	EMA	RIB	P8	RBY%	IMF%	
1.8	-0.4	55	3.4	-0.7	-2	1.3	1.1	16
50%	95%	66%	78%	73%	91%	15%	70%	42%

Index Value			
ABI	DOM	HGN	HGS
+\$93	+\$97	+\$90	+\$97

This is a wonderful cross combining the scale of Hallmark with the softness and quality of the Judo line. With his excellent shape, small actual birthweight and birthweight EBV he would make an ideal heifer bull. Lovely slick skin and quiet nature.

Purchased by: \$

Lot 72 BEN NEVIS PAPAZZI P198^{SV}

HBR 17/08/2018 AMFU,CAFU,DDF,NHFU ID NBNP198 TATTOO BN P198

PATERNAL PEDIGREE

TE MANIA EMPEROR E343^{TV}
 ASCOT HALLMARK H147^{TV}
 MILLAH MURRAH BRENDA F123^{TV}
BEN NEVIS MONARCH M128^{SV}
 TE MANIA INFINITY 04 379 AB⁺
 BEN NEVIS DORMIST G76⁺
 BEN NEVIS DORMIST E35⁺

MATERNAL PEDIGREE

TE MANIA BARTEL B219^{TV}
 AYRVALE BARTEL E7^{TV}
 EAGLEHAWK JEDDA B32^{TV}
BEN NEVIS KIWI M54⁺
 BEN NEVIS GEMEMAKER G56^{TV}
 BEN NEVIS KIWI K100⁺
 BEN NEVIS KIWI G128⁺

Angus	August 2018 Angus Australia Breedplans							
	Calving Ease %				Growth (kg)			
	Direct	Dtrs	GL	BW	200	400	600	M
EBV	0.8	1	-0.7	6.3	46	82	107	101
PERC	43%	42%	94%	90%	43%	48%	48%	34%

Fertility			Carcase					Milk
SC	DC	WGT	EMA	RIB	P8	RBY%	IMF%	
2	-6.8	64	4.3	0.4	1.9	-1.2	2.8	11
40%	10%	35%	63%	38%	7%	96%	13%	85%

Index Value			
ABI	DOM	HGN	HGS
+\$122	+\$108	+\$135	+\$114

Papazzis is a genetical (3/4 brother) to Lot 69 and we are simply delighted with the quality of this genetic combination adding extra softness, extra docility and extra IMF into our program. This young sire has excellent strength of spine and thickness and squareness over his top and is very structurally correct.

Purchased by: _____ \$

Lot 74 BEN NEVIS PISTOL P163^{SV}

HBR 18/07/2018 AMFU,CAFU,DDFU,NHFU ID NBNP163 TATTOO BN P163

PATERNAL PEDIGREE

TE MANIA EMPEROR E343^{TV}
 ASCOT HALLMARK H147^{TV}
 MILLAH MURRAH BRENDA F123^{TV}
ASCOT LION HEART L305^{TV}
 DUNOON EVIDENT E614^{TV}
 ASCOT H148^{SV}
 MILLAH MURRAH FLOWER F126^{TV}

MATERNAL PEDIGREE

J & C APPEAL A10^{TV}
 RAFF EMPIRE E269^{TV}
 RAFF DORIS A55⁺
BEN NEVIS GERANIUM H91⁺
 B/R NEW FRONTIER 095⁺
 BEN NEVIS GERANIUM B46⁺
 BEN NEVIS GERANIUM X87⁺

Angus	August 2018 Angus Australia Breedplans							
	Calving Ease %				Growth (kg)			
	Direct	Dtrs	GL	BW	200	400	600	M
EBV	-2.6	-3.2	-1	5.9	40	69	88	78
PERC	86%	95%	93%	85%	75%	85%	86%	79%

Fertility			Carcase					Milk
SC	DC	WGT	EMA	RIB	P8	RBY%	IMF%	
3.2	-5.8	56	5.3	-1.5	-2.9	1.3	1.9	12
4%	22%	63%	45%	90%	97%	15%	40%	79%

Index Value			
ABI	DOM	HGN	HGS
+\$93	+\$95	+\$100	+\$89

Super solid and mobile with a good head and square jaw. Very square from hip-pin and down through his lower hindquarter. This is the last Lionheart available in the sale.

Purchased by: _____ \$

Lot 73 BEN NEVIS PARAMILITARY P236⁺

HBR 19/08/2018 AMFU,CAFU,DDFU,NHFU ID NBNP236 TATTOO BN P236

PATERNAL PEDIGREE

B A R EXT TRAVELER 205⁺
 C R A BEXTOR 872 5205 608⁺
 CRA LADY JAYE 608 498 S EASY⁺
G A R PROPHET^{SV}
 S S OBJECTIVE T510 0T26⁺
 G A R OBJECTIVE 1885⁺
 G A R 1407 NEW DESIGN 2232⁺

MATERNAL PEDIGREE

J & C APPEAL A10^{TV}
 RAFF EMPIRE E269^{TV}
 RAFF DORIS A55⁺
BEN NEVIS DORMIST H97⁺
 EXAR EXPAND 1241⁺
 BEN NEVIS DORMIST Z130⁺
 BEN NEVIS DORMIST W004⁺

Angus	August 2018 Angus Australia Breedplans							
	Calving Ease %				Growth (kg)			
	Direct	Dtrs	GL	BW	200	400	600	M
EBV	0	-0.5	-0.2	4.4	52	87	112	89
PERC	57%	70%	96%	53%	15%	31%	36%	59%

Fertility			Carcase					Milk
SC	DC	WGT	EMA	RIB	P8	RBY%	IMF%	
0.7	-4	63	4.4	-0.7	-0.4	-0.5	2.9	18
92%	55%	38%	62%	73%	58%	85%	12%	24%

Index Value			
ABI	DOM	HGN	HGS
+\$114	+\$108	+\$124	+\$110

Ultra deep volume and constitution in this young bull. He has a great front end and combined with his actual low birthweight and EBV he is a really safe option for heifers while folding in more IMF under the hide. His fine coat and skin reflects his third highest IMF scan. Skin is an old fashioned way to select for quality beef but correlates very highly with our scans for IMF.

Purchased by: _____ \$

THANK YOU

Thank you to all who attended our 2019 sale. We wish successful purchasers all the best with their Ben Nevis yearling bulls.

Thank you to our guest auctioneer Paul Dooley for his sound and practical advice, and his ability to judge cattle.





LOW STRESS STOCKHANDLING

The guru out the back working the bulls is our friend and LSS trainer Chook Kealey. Chook grew up on a cattle and farming property in the South Burnett region of Queensland before spending the next eight years training performance horses for a variety of events. North West Queensland was home for the next seven years in a number of roles – from stock camps where helicopter mustering was a weekly occurrence, through to managing large mobs in intensive cell grazing operations. Walcha in the New England of NSW is now home, where he runs sheep and cattle.

A passion for animal psychology got him involved in Low Stress Stockhandling, however it is the amazing impact on people's lives that gives him the greatest enjoyment now.

Chook Kealey
Phone: 0428 418 795
Email: kealey.marinka@gmail.com

Attitude is everything



OUR EXPERIENCE WITH CHOOK

Recently Chook helped us out by breaking in a 1,100kg rising two year old bull that Hap thought she'd like to take to support the regional shows. The bull as it turned out had better idea's and jumped out of the 6ft high yards. A total of 12 hours of working with him, Chook not only had him ready for show but went swimming in a river with him and took him to the floor of his shearing shed.

When we did bull video's and photos Chook was amazing getting groups of bulls to stand and stay at certain parts of a 250 acre paddock so they could act as two separate holding mobs for the photo bulls to walk between. He had those bulls on a string and between working his dog and getting the bulls to stand up perfectly (complete with a smile) we were all gobsmacked.

Quiet cattle and happy people are really important to us. We have all attended the Low Stress Stockhandling Course and while some of us are slow learners (Hap mainly), we have an amazing teacher in Chook Kealey and highly recommend his course.



TOP FORM: Ben Nevis co-principle and veterinarian Stu Halliday and Erica Halliday. Ben Nevis is known as the premier supplier of yearling Angus bulls in Australia.

Fit and agile: why yearling bulls work

These beasts adapt to changing conditions

BEN NEVIS
Brackendale Road,
Walcha

WHILE Ben Nevis has been selling yearling bulls for more than 20 of their 72 years in the bull business, there are still people who aren't sure of the concept.

But according to co-principle and veterinarian Stu Halliday, "as long as they are well grown, bulls were meant to work as yearlings, and to learn the art of serving cows while they are fit, light and agile".

This theory is backed by DPI Research, where yearling bulls were proven to have significantly less rates of injury and longer working lives than bulls used initially as two-year-olds.

According to Erica Halliday, "it makes sense as sending over-fed, two-year-olds out to work for the first time is like sending a sumo wres-



STANDOUT: This years sale includes some of the first Baldrige Beast Mode bulls in the country, a breed leader for growth, marbling and doing ability off grass.

tlar out to run a marathon". This helps explain Ben Nevis's success in providing yearling bulls from temperate into extensive pastoral situations where the yearling bulls have been proven to be more adaptable to the changing conditions".

So are there downsides to using a yearling bull? According to Erica none, apart

from the fact they can look ugly at 18 months to two years, however, she hastens to add this won't affect the quality of their calves, and they will eventually grow out.

Stu says there are basic rules which are common sense. These include don't put a yearling out with two-year-olds.

Instead, have a yearling

bull sire group or single sire mate in more intensive areas. Also mating loads in year one should be one to 35 cows, although they move to one to 50 cows in year two.

"Bulls must be well grown (at least 550kgs at 12- 14 mths) to use, otherwise you run the risk of them not being sexually mature or of never growing out," Stu says.

Research tells us yearling bulls have on average an 18 month longer working life than bulls used first as two-year-olds, so theoretically you will get 55 more calves in his lifetime which lowers the cost per calf.

Ben Nevis is known as the premier supplier of yearling Angus bulls in Australia.

This year's sale of 85 bulls includes a draft of the first Baldrige Beast Mode bulls in the country, a breed leader for growth, marbling and doing ability off grass.

BUYER'S INSTRUCTION SLIP

BUYER NUMBER

BEN NEVIS BULL SALE – WEDNESDAY 11 SEPTEMBER 2019

PLEASE NOTE, VERBAL INSTRUCTIONS WILL NOT BE ACCEPTED.

First Name/s (not initials): Surname:

Key Contact Person and Number (if not purchaser)

Company Name (if applicable): PIC:

Address:

..... Postcode:

Mobile (must be included): Phone:

Email:

BILLING DETAILS – select from one of the following:

- Please send the account direct to me.
 Please send the account to my agent, who is

LOTS PURCHASED

TRANSFER OF BULL REGISTRATION/S REQUIRED

- Yes No

TRANSPORT ARRANGEMENTS

- Free delivery to major centres in NSW, ACT, VIC, QLD, SA, NT.
– Free delivery to door for purchases of three (3) bulls or more.

INSURANCE PERIOD

- 3 months 6 months 12 months

Signature of Purchaser or Agent: Date:

SPECIAL NOTICE TO BUYERS

In the interest of buyers and to prevent the occurrence of mistakes, all instructions concerning the delivery, trucking or shipping of cattle must be given IN WRITING and signed by the buyer or his/her representative.

THANK YOU

With the lowest rainfall on record for 18 months now, it has been a massive challenge for us as we have had to sell over 600 head, and are feeding daily the remaining 600 head which is our core breeders and bulls. Given this, we are reminded on a daily basis how blessed we are to be surrounded by great people who work hard, laugh often and care about the land and the cattle as much as we do.

Special mention to Hamish Worthing – it's been over two years now since you came to weigh calves for a week and we are very grateful to you. Along with Dorro and Lionel we get a lot done, and it's always a good place to be. Also a big thank you to Jay who came for a week's work experience and stayed three months to help. Also thank you to our family and friends who magically help us pull off a bull sale, your generosity and kindness overwhelms us. Specifically Gram, Ky, Frater, Jo, Colleen and Roger.

We believe in employing professional people throughout the year who are specialist in their fields, but whose

company we enjoy immensely – along with the occasional whisky or wine. Ben Simpson and the gang from OGA Creative, Paul Dooley, Chook Kealey, Chris Hallet, Roger Evans, Colin Keevers, Miles and the gang from Landmark – Matt, Simon, Trish, Bruce and Peta, and the guys from Hobbs Livestock – Hobbsy, Mitch and Jess.

Jack and Mags we realise that no parent should put their child through the psychological scarring of bull photography but we feel it has made you better people. Thankyou for all your help, patience and your sense of fun. You have such greater purpose in this world that what you were bred for (gate openers) and we are very proud of you.

Megan Scrivener – as long as you block out Ben Nevis time on your calendar every year (to make sure we still get you), we are very happy to shout to the world that you are the very best. It helps that you know cattle and you understand gobbledygook, but you are as efficient and smart as you are gifted.





BULL FERTILITY TESTING DEGREE'S OF CONFIDENCE

Many aspects of Veterinary Science are cut and dry. Pregnancy testing for example is either pregnant or not pregnant. Unfortunately, Bull Fertility Testing is not as cut and dry.

We like to tell our clients that Bull Fertility Testing is all about Degrees of Confidence. The greater the range of bull fertility tests that we look at, the greater the degree of confidence we have that your bull fertile.

If we look at the bull in a paddock and see he is not lame and has testicles we could say we have 50% confidence he is going to do the job. We start to improve our confidence level by doing some fertility examination. We firstly feel and measure his testicles, eliminating undersize or abnormal testicles. We perform an examination of the internal sex organs removing congenital abnormalities or acquired conditions such as seminal vesiculitis.

Electro-ejaculation examination is utilised for visualisation of the penis and semen. Penile examination is to identify normal appearance and exteriorisation of the penis. Penile abnormalities include such conditions as trauma, warts, adhesions, infections or retained frenulums.

Semen examination under the microscope is utilised to check motility, crush-side morphology and ensuring it is free of infection.

Crush side semen analysis is a screening test for semen morphology analysis. At this stage one can make an educated assessment that the bull is fertile or for greater confidence we can submit a sample to a Semen Morphology Laboratory. A Sperm Morphology Laboratory assesses the semen under higher magnification identifying possible intra sperm-head problems that may not be as identified in a crush-side morphology assessment.

Semen morphological abnormalities may have genotypic (genetic) and phenotypic (environmental) influences hence repeated morphological tests are required to truly assess the true fertility assessment of a bull if morphological abnormalities are present. The timing between morphological assessments is ideally 70-days apart.

Semen assessment and visualisation of the penis are not necessarily an indication of the serving ability of a bull ie the ability of the bull to gain intromission to the cow. So, a satisfactory serving ability test would further increase our confidence and this test needs to be repeatable and the frequency may give us an additional indication of the bull's libido. Often this test is done by the buyer at the start of joining (if just an observation).

A fertility test is potentially only good for the day that it is performed. Semen production works on a 70-day cycle if anything upsets the bull it may take a full semen cycle for normal semen to be produced again. In this time the bull may go through a transient period of sub or infertility.

Events that upset the semen cycle and production can include disease, stress, transport, environment and nutritional changes. So, if you purchase a bull and move the bull to a completely different environment, we strongly recommend you do your own fertility examination prior to use.

During the joining period we strongly recommend regular bull inspections to ensure bull is in good health, suffering no lameness, penile or fighting injury and that he is still achieving intromission.

Chris Hallet BVSc MVSt

FOR CALVING EASE, GREEN FEED MANAGEMENT AND
OTHER TECHNICAL ARTICLES PLEASE GO TO OUR WEBSITE

www.bennevisangus.com.au



LIVING THE DREAM



**BEN NEVIS
ANGUS STUD**

FOLLOW US ON FACEBOOK
AND INSTAGRAM

