

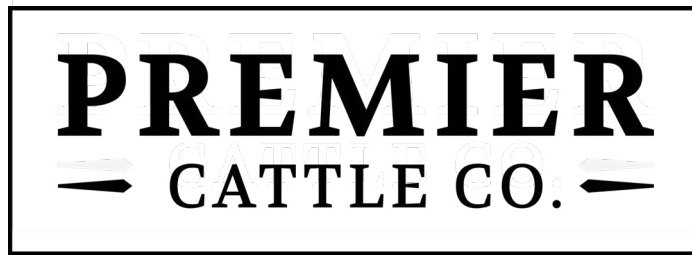


PREMIER
— CATTLE CO. —

YEARLING SPECKLE PARK SALE

Wednesday, 2nd October 2019, 12pm | 400 Brunskill Road, Cambridge





YEARLING SPECKLE PARK BULL SALE

PHOTOS & VIDEOS OF SALE BULLS ON-LINE AT:

WWW.PREMIERCATTLECO.CO.NZ

WEDNESDAY, 2ND OCTOBER, 2019

400 BRUNSKILL ROAD, CAMBRIDGE, NZ

PRE SALE VIEWING FROM 10:00AM

SALE WILL BE LIVE-STREAMED VIA AUCTIONS-PLUS

VISIT AUCTIONSPLUS.COM.AU FOR MORE INFORMATION

COMPRISING OF:

16 x Registered Speckle Park Bulls

6 x Registered Park Females

3 x Embryo packages

11 x Semen Packages

SALES CONTACTS:

Derek Hayward: +64 272 266 686

AUCTIONEER CARRFIELDS LIVESTOCK

Kelly Higgins - 027 600 2374

CARRFIELDS LIVESTOCK

Brent Espin- 027 551 3660
Ben Deroles- 027 702 4196
Andy Donaldson- 021 628 094
Callum Dunnett- 027 587 0131
Tom Suttor- 027 616 4504
Chris McBride- 027 587 1145
Roger Leach- 027 417 8641

STUD STOCK SERVICES:

Bruce Orr - 027 492 2122

PREMIER'S HISTORY



Derek first registered the Premier prefix in 1993 when he established Premier Polled Herefords with two heifers from Koanui & later several heifers were purchased from Maungahina. With many purchases from Maungahina over the years, not only did these females develop the foundation of the Premier herd but also the association with the McKenzie family was established.

1999 the 12 month old Premier PQ Irane T9 won the prestigious Meat & Wool Cup (Supreme All Breeds Exhibit) at the Hawkes Bay Show, she was the youngest beef exhibit entered.

2001 would be the year that Premier and Derek achieved two of the greatest successes, in June at the NZ Hereford National Premier 25C Stand-out U43, after not placing in the top six bulls sold for the top price of \$43,000 to Maungahina. This would be the highest selling bull of any breed in NZ in 2001, he went on to leave his mark in the Maungahina program as one of their most influential sires. Later that year Derek accepted the invitation to be sole All Breeds Judge at the NZ Royal Show in Canterbury, at the time he was the youngest to have the honour.

In 2002 after being heavily involved with the family livestock operation Derek ceased the opportunity to purchase his parents dairy herd which included a Jersey content backed by 35 years of breeding and the more recently developed Oakview Ayrshires, it was at this time Premier Jersey and Ayrshire's were added to the Premier business.

Premier Ayrshires have enjoyed many awards including 2nd highest Ayrshire Production Herd in NZ and then at the 2013 NZ Dairy Event Premier Danehill Frost was awarded Senior & Grand Champion & Senior Best Udder Ayrshire while her stable mate Premier Pardna A Emanu-

el was awarded Intermediate Champion & Best Udder.

Not to be out done Premier Jersey's produced the 2013 NZ Royal Jersey & All Breed Intermediate Champion with Premier B'Stone Cameo a young that traced back to one of Derek school calves. After genomic testing was done Premier Cent Synergy was selected as a potential bull mother by Semex which resulted in the collection of Premier SCD Simba.

In 2008 Derek & Catherine were married and "Premier Cattle Co" began, a move to Fencourt Road which has now allowed the dairy herd to expand to 450 cows.

The decision was made in 2011 to disperse the Hereford's to allow us to focus on the dairy side of the business. 2014, "Premier is Back in Beef". The opportunity to purchase 'Speckle Park' was presented to us by Mark & Melissa McKenzie, the original purchase of 7 females and a focussed embryo transfer program Premier Speckles grow to over 50 purebred females.

2016 we sold our first Speckle when a 6 month old bull made \$8500 to a commercial producer. The growth and the interest in our program has seen us already export genetics, with embryos going into some of the leading programs in Australia and in 2017 semen from Premier 101Y Logic L11 selling to cover Nth & Sth America as well we the UK & EU. June 2018, Premier 60A Molly N8 sold for \$23,000, eight heifers offered by Premier & Maungahina sold with an average of \$21,750. We have been fortunate to work with Mark & Melissa McKenzie to grow the strength of our program and to secure breed leading genetics to enable us to produce a quality product for our clients.

SALE FORWARD



It with pleasure Catherine and I welcome you to our 2nd on farm bull sale.

It has been an exciting year for Premier Cattle Co with the opportunity for growth in our cattle business. The dairy and heifer growing side of the business remains based on the Fencourt Road properties with the dairy herd now nearing 420 milk cows. All replacement dairy heifers are joined to Speckle Park bulls.

The acquisition of the lease property on Brunskill Road has allowed us to bring our beef operation to one property as well as provide us a platform for continued growth in this part of our business. The 300 acres of rolling to medium contour with some steeper areas provides an environment where we can continue to develop and prove our genetics.

At Premier our focus is on producing a consistent line of bulls that will suit both the beef and dairy industry. Structural correctness is extremely important to us as it correlation to longevity will add value to any livestock business, with this in mind we only use bulls we have had the opportunity to assess ourselves. We aim to produce bulls with moderate birth weight, growth and optimal carcass traits that will produce progeny capable of adding value to your business.

Speckle Park cattle have made an impact on the beef industry in both NZ & Australia since their introduction. NZ dairy farmer's have been ahead of the game with their use of Speckle genetics to

value add to their business and after many discussions with other producers involved with Speckles it is my opinion that there are more opportunities to be realised. With the breed now having performance recording in the form of Breedplan it offers both seedstock & commercial producer a valuable tool to aid in selecting genetics.

The bulls catalogued represent the whole line of 2018 bull calves and includes some young sires with outstanding potential. We are excited by the quality and consistency of the offering, they are sired by a group of well proven sires from around the world. What I believe is equally as important is the quality of the dams that produced this sale draft and their contribution to our program is evident in that quality and consistency.

We have worked closely with our vet to ensure we present our cattle to you with the highest health status necessary especially relative to M'Bovis.

We are extremely thankful and humbled by the support our family and friends. We also acknowledge the dedication to our business of our team at "Premier".

We look forward to you joining us on 2nd October for our 2nd on Farm Sale"

Regards

Derek, Catherine, Max & Jake Hayward

HEALTH & SAFETY

As occupiers of the land (400 Brunskill Road, Cambridge, NZ) & hosts of the Premier Cattle Co bull sale it is our responsibility to make sure that every care has been taken to ensure your safety while on the property.

We ask that you wear appropriate footwear as you will be walking in paddocks, on gravel and should the weather be wet these areas can become very muddy & slippery. During the sale you will be able to move around, we ask that you be considerate of others especially the auctioneer by waiting until the lot in the ring has sold before moving. We ask that you avoid climbing up on any rails of the yards, if you need to enter please use the gate and be respectful of those working in the yards.

As you can appreciate we ask you to take every precaution while walking around the paddocks amongst the cattle, whilst we will try to minimise any possible area of hazard animals are unpredictable and have a mind of their own. Also give consideration to the fact that the cattle are not used to large groups of people, we ask you to please keep this in mind while moving through the mobs.



NOTICE & CONDITIONS

INSPECTION: Cattle will be available for inspection prior to the sale by contacting the Agents or the Vendor.

DELIVERY: Please leave clear delivery instructions for your purchase, Derek can be contacted to arrange deliveries.

SELLING ORDER: The vendor reserves the right to alter the lot order. The highest bidder for any lot shall be the purchaser, should any dispute arise, the dispute maybe settled by the auctioneer at his opinion or the lot maybe put up again & resold.

BUYER REGISTRATION: A buyer's number will operate at the sale therefore it will be necessary to for all prospective purchasers to register prior to the sale commencing.

REBATE: Outside companies to contact Kelly Higgins, Carrfields Livestock 027 600 2374 to discuss.

GST: All lots sold exclusive of GST.

INSURANCE: All care will be taken with the cattle awaiting delivery, but they become the responsibility of the purchaser at the fall of the hammer, therefore insurance is strongly advised.

TERMS & CONDITIONS: The NZ Stock & Station Agents Association Conditions of Sale and, to the extent deemed relevant by Farm Source Livestock (FSL), FSL's Term's of Sale apply to this sale. These terms can be inspected at the registration desk and on the wall in the auction room.

FAULTS: While all care & responsibility has been taken by the vendors, agents and CubeMedia, no responsibility can be taken for any errors or omissions. All animals are sold in an as is where is condition and any perceived faults cannot be readdressed by the above parties.



The bulls listed below to be offered for sale by the Premier Cattle Company have been tested and vaccinated as follows by me on the 3rd September 2019

- A direct tonsil swab for Mycoplasma bovis processed with the PCR test and giving a “Not detected” result.
- A blood test processed for BVD virus with a PCR test giving a negative result.
- A caudal fold test for TB giving a negative result.
- Vaccination for BVD and Leptospirosis.
- A testicular examination for abnormalities.

The direct tonsil swab processed with the PCR test is currently the most accurate way of detecting M bovis with a high confidence level in lines of yearling bulls.

Bull details

P1 P5 P7 P9 P10 P11 P13 P15 P16 P17 P18 P20 P23
P28 P30 P34

W.B.Hancock B.V.Sc

Veteinarian

0274518848

Cambridge Veterinary Services

41 Empire Street

Cambridge

ALL OVER WAIIPA



Proving that she offers the cutting edge in terms of unsurpassed local knowledge, clients rave about Catherine's eternal positivity, confident delivery and focus in the pursuit of results. Utilising the latest marketing techniques, industry intelligence and a warm, capable persona, Catherine prides herself on referral business. Evidence of her ability to take the stress out of the sale process, through her unique blend of personality and practicality - she never fails to add value.

Pro-active, professional and motivated, Catherine offers an accountable approach to real estate sales. Should you require and appraisal of your property or wish to discuss the local market in more detail, she welcomes your call.

Catherine Hayward

P 07 834 3823 | 027 562 4598 E catherine.hayward@bayleys.co.nz

SUCCESS REALTY LTD, BAYLEYS, LICENSED UNDER THE REA ACT 2008



ALTOGETHER BETTER

Residential / Commercial / Rural / Property Services

PERCENTILE BANDS

September 2019 Speckle Park GROUP BREEDPLAN - Percentile Bands for all 2017 born animals

Use this table as a guide to compare individual animals with the current genetic level of the breed

SPECKLE PARK PERCENTILE BANDS FOR 2017 BORN CALVES														
	GESTATION LENGTH (DAYS)	BIRTH WT (KG)	200 DAY WT (KGS)	400 DAY WT (KGS)	600 DAY WT (KGS)	MATURE COW WT (KGS)	MILK (KGS)	SCROTAL SIZE (CM)	CARCASE WT (KGS)	EYE MUSCLE AREA (SQ CM)	RIB FAT (MM)	RUMP FAT (MM)	RETAIL BEEF YIELD (%)	IMF (%)
TOP VALUE	-3.2	-2.5	+41	+52	+66	+70	+8	+1.6	+47	+2.4	+4.4	+6.0	+2.3	+1.3
TOP 1%	-2.7	-1.4	+31	+41	+53	+53	+7	+1.1	+34	+1.7	+2.4	+3.3	+1.5	+0.8
TOP 5%	-2.0	-0.6	+25	+35	+45	+45	+6	+0.8	+29	+1.3	+1.2	+1.7	+1.1	+0.5
TOP 10%	-1.3	-0.2	+22	+32	+40	+39	+5	+0.7	+26	+1.2	+0.7	+0.9	+0.8	+0.4
TOP 15%	-1.0	+0.1	+20	+29	+37	+36	+5	+0.6	+24	+1.1	+0.6	+0.7	+0.6	+0.3
TOP 20%	-0.8	+0.3	+19	+27	+34	+34	+5	+0.5	+22	+1.0	+0.5	+0.6	+0.5	+0.2
TOP 25%	-0.6	+0.5	+18	+26	+33	+32	+4	+0.4	+21	+0.9	+0.4	+0.5	+0.4	+0.2
TOP 30%	-0.5	+0.6	+17	+24	+32	+31	+4	+0.4	+20	+0.9	+0.3	+0.4	+0.3	+0.1
TOP 35%	-0.4	+0.8	+16	+23	+30	+29	+4	+0.4	+19	+0.8	+0.3	+0.3	+0.3	+0.1
TOP 40%	-0.3	+1.0	+15	+22	+29	+28	+3	+0.3	+18	+0.8	+0.2	+0.2	+0.2	+0.1
TOP 45%	-0.2	+1.1	+14	+21	+27	+27	+3	+0.3	+17	+0.7	+0.2	+0.1	+0.1	+0.0
TOP 50%	-0.1	+1.2	+14	+20	+26	+26	+3	+0.3	+16	+0.7	+0.1	+0.0	+0.1	+0.0
TOP 55%	+0.0	+1.3	+13	+19	+25	+24	+3	+0.2	+15	+0.6	+0.0	-0.1	+0.0	+0.0
TOP 60%	+0.1	+1.4	+12	+18	+23	+23	+2	+0.2	+15	+0.6	-0.1	-0.2	+0.0	-0.1
TOP 65%	+0.2	+1.6	+12	+17	+22	+22	+2	+0.1	+14	+0.5	-0.1	-0.3	-0.1	-0.1
TOP 70%	+0.3	+1.7	+11	+16	+21	+20	+2	+0.1	+13	+0.5	-0.2	-0.4	-0.2	-0.1
TOP 75%	+0.4	+1.9	+10	+15	+19	+18	+2	+0.0	+12	+0.4	-0.3	-0.5	-0.3	-0.2
TOP 80%	+0.5	+2.1	+9	+14	+17	+17	+1	-0.1	+11	+0.3	-0.3	-0.5	-0.4	-0.2
TOP 85%	+0.6	+2.3	+8	+12	+15	+15	+1	-0.2	+10	+0.2	-0.4	-0.7	-0.5	-0.2
TOP 90%	+0.8	+2.6	+7	+10	+13	+12	+1	-0.3	+8	+0.2	-0.6	-0.9	-0.6	-0.3
TOP 95%	+1.0	+3.2	+5	+7	+9	+8	+0	-0.5	+6	+0.0	-1.0	-1.5	-1.0	-0.4
TOP 99%	+1.5	+4.5	+2	+3	+3	+2	-2	-1.1	+0	-0.3	-1.3	-1.9	-2.1	-0.6
LOW VALUE	+3.5	+5.6	-2	-5	-10	-11	-4	-2.3	-9	-1.1	-2.2	-3.2	-3.6	-1.3

UNDERSTANDING GENE TEST

The presence of two copies of the Red Gene will result in a Red coat colour. The results you will see for this gene are:

RGF	FREE	NO COPIES OF RED GENE
RGF	CARRIER	ONE COPY OF RED GENE
RGA	AFFECTED	TWO COPIES OF RED GENE

The presence of two copies of the Myostatin nt821 gene result in double muscling of an animal and cause health issues. The results you will see for this gene are:

NT821F	FREE	NO COPIES OF MYOSTATIN GENE
NT821C	CARRIER	ONE COPY OF MYOSTATIN GENE
NT821A	AFFECTED	TWO COPIES OF MYOSTATIN GENE

The Polled gene is dominant to the recessive Horn gene. The presence of two copies of the horn gene (HH) will result in a horned animal. The results you will see for this gene are:

PCPC	HOMOZYGOUS POLLED
HPC	HETEROZYGOUS POLLED *COULD BE SCURRED
HH	HOMOZYGOUS HORNS

*Only HPC animals will show scurs and, this is more common in males than females. Not all HPC animals will have scurs.

REFERENCE SIRES

REF

MAUNGAHINA KIDMAN'S COVE

ID: MAU K247 | DOB: 23/09/2014 | Colour: Leopard



GRAND SIRE: A & W 15R (WAG 15R) (Leopard)

SIRE: SPKNZ Falcon (SPN F20) (Speckled)

GRAND DAM: Codiak Teresa GNK 12T (GNK 12T) (Speckled)

GRAND SIRE: HWY.4 Speckle Park 2H (PJJ 2H) (Speckled)

DAM: Mainstream E12 (MSM E12) (Speckled)

GRAND DAM: Notta Pho-Finish 54P (JMG 54P) (Speckled)

Cove, through his pedigree and ability as a sire to produce industry-relevant cattle, is a household name in the world of 'Speckle Park'. A Combination of maternal and carcass genetic, we are excited by Coves contribution to our program.

SEPTEMBER 2019 SPECKLE PARK GROUP BREEDPLAN

	GESTATION LENGTH (DAYS)	BWT (KGS)	200 DAY WT (KGS)	400 DAY WT (KGS)	600 DAY WT (KGS)	MATURE COW WT (KGS)	MILK (KGS)	SCROTAL SIZE (CM)	CARCASS WT (KGS)	EMA (SQ CM)	RIB FAT (MM)	RUMP FAT (MM)	RETAIL BEEF YIELD (%)	IMF (%)
EBV	+0.2	+0.3	+8	+8	+9	+11	+3	-0.3	+7	+0.3	+1.2	+1.5	-0.9	+0.6
ACCURACY	57%	89%	84%	73%	75%	59%	41%	59%	60%	42%	51%	51%	48%	42%

REF

RIVER HILL 60W LINE DRIVE 54Z (AI)

ID: BED 54Z | DOB: 06/03/2012 | Colour: Leopard



GRAND SIRE: RIVER HILL TRAFFIC JAM 26T (P) (Speckled)

SIRE: RIVER HILL 26T WALKER 60W (P) (Speckled)

GRAND DAM: RIVER HILL SHOW ME OFF 60S (P) (Speckled)

GRAND SIRE: STAR BANK LACERTA 68L (Speckled)

DAM: NOTTA PHO-FINISH 54P (Speckled)

GRAND DAM: STAR BANK LEONID NIGHT 54L (Speckled)

Semen rights imported by Premier and Maungahina.

On our visit to 'Riverhill', we felt 'Linedrive' was the standout in the sire yard. I feel his dam has made an incomparable contribution to the breed. Linedrive's progeny continues to perform around the globe.

SEPTEMBER 2019 SPECKLE PARK GROUP BREEDPLAN

	GESTATION LENGTH (DAYS)	BWT (KGS)	200 DAY WT (KGS)	400 DAY WT (KGS)	600 DAY WT (KGS)	MATURE COW WT (KGS)	MILK (KGS)	SCROTAL SIZE (CM)	CARCASS WT (KGS)	EMA (SQ CM)	RIB FAT (MM)	RUMP FAT (MM)	RETAIL BEEF YIELD (%)	IMF (%)
EBV	-0.6	+1.8	+22	+38	+45	+39	+6	+0.8	+30	+2.0	+0.4	+0.4	+0.2	+0.1
ACCURACY	63%	92%	86%	82%	82%	68%	51%	77%	69%	53%	66%	65%	63%	58%

REFERENCE SIRES

REF

SIX STAR 82U ROYAL FLESH 101Y (AI) (ET)

ID: SIX 101Y | DOB: 22/02/2011 | Colour: Speckled



GRAND SIRE: SPOTS 'N SPROUTS NEFROM 101N (Speckled)

SIRE: STAR BANK KING GEORGE 82U (P) (Speckled)

GRAND DAM: STAR BANK 11H (Speckled)

GRAND SIRE: STAR BANK 58L (Speckled)

DAM: STAR BANK 53R (P) (White)

GRAND DAM: STAR BANK 9E

Royal Flesh's influence on the 'Premier' program has been truly amazing, siring sons with growth + power and length, daughters with added frame and volume.

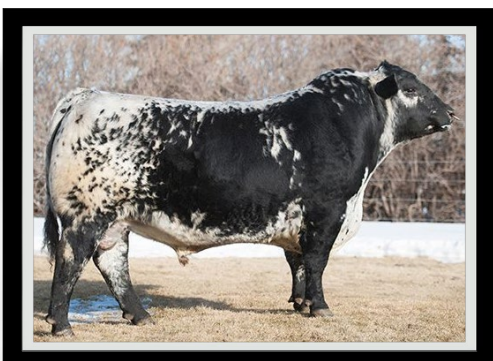
SEPTEMBER 2019 SPECKLE PARK GROUP BREEDPLAN

	GESTATION LENGTH (DAYS)	BWT (KGS)	200 DAY WT (KGS)	400 DAY WT (KGS)	600 DAY WT (KGS)	MATURE COW WT (KGS)	MILK (KGS)	SCROTAL SIZE (CM)	CARCASE WT (KGS)	EMA (SQ CM)	RIB FAT (MM)	RUMP FAT (MM)	RETAIL BEEF YIELD (%)	IMF (%)
EBV	+0.8	+5.1	+29	+30	+44	+43	-1	+1.1	+21	+0.9	-0.8	-1.2	+1.1	-0.3
ACCURACY	69%	91%	85%	82%	84%	72%	56%	73%	71%	55%	69%	69%	66%	61%

REF

AVERY CREEK BANJO 01B

ID: LMT 01B | DOB: 25/03/2014 | Colour: Speckled



GRAND SIRE: RIVER HILL SKIPPER 6S (P) (Speckled)

SIRE: ZORO MATTERS 1Z (Speckled)

GRAND DAM: SPOTS 'N SPROUTS 1T (P) (Speckled)

GRAND SIRE: CODIAK WILLY 15W (P) (Speckled)

DAM: TUMBLEWEED ACRES LULU 18Y (Speckled)

GRAND DAM: TUMBLEWEED ACRES CHINOOK 12U

Semen rights imported by Premier and Maungahina. We selected Banjo as a yearling in the bullpen at Codiak Acres. After watching his development through Agribition Grand Champion we secured this sire for his added performance and outstanding mobility.

SEPTEMBER 2019 SPECKLE PARK GROUP BREEDPLAN

	GESTATION LENGTH (DAYS)	BWT (KGS)	200 DAY WT (KGS)	400 DAY WT (KGS)	600 DAY WT (KGS)	MATURE COW WT (KGS)	MILK (KGS)	SCROTAL SIZE (CM)	CARCASE WT (KGS)	EMA (SQ CM)	RIB FAT (MM)	RUMP FAT (MM)	RETAIL BEEF YIELD (%)	IMF (%)
EBV	0.0	+1.4	+15	+17	+25	+25	-	-	+16	-	-	-	-	-
ACCURACY	43%	81%	74%	62%	58%	37%	-	-	42%	-	-	-	-	-

REFERENCE SIRES

REF

CODIAK ACRES OH MY GOSH

ID: GNK 60A | DOB: 17/05/2013 | Colour: Leopard



GRAND SIRE: RIVER HILL HU 5L (Speckled)

SIRE: CLEAR VIEW TY 205R (P) (Speckled)

GRAND DAM: CODIAK KIBITZ RKW 12K (Speckled)

GRAND SIRE: CODIAK MR. BLACK RKW 13M (Black)

DAM: CODIAK UNIQUE GNK 8R (P) (Speckled)

GRAND DAM: CODIAK RKW 07J (Speckled)

Semen rights imported by Premier & Maungahina in 2016, his first bulls sell in this year's sale, his first daughter to sell in NZ made \$23,000. His dam 8R has been one of the most influential cows in the breed.

SEPTEMBER 2019 SPECKLE PARK GROUP BREEDPLAN

	GESTATION LENGTH (DAYS)	BWT (KGS)	200 DAY WT (KGS)	400 DAY WT (KGS)	600 DAY WT (KGS)	MATURE COW WT (KGS)	MILK (KGS)	SCROTAL SIZE (CM)	CARCASE WT (KGS)	EMA (SQ CM)	RIB FAT (MM)	RUMP FAT (MM)	RETAIL BEEF YIELD (%)	IMF (%)
EBV	+0.3	+1.9	+14	+17	+24	+22	-1	-1.4	+12	+0.3	+0.6	+0.7	-0.7	+0.5
ACCURACY	59%	95%	90%	85%	81%	63%	31%	81%	70%	55%	66%	66%	64%	58%

REF

UPTO SPECS ULYSSES 25U

ID: MBG 25U | DOB: 19/06/2008 | Colour: Speckled



GRAND SIRE: SPRUCE LANE VENTURE 3J (Speckled)

SIRE: RAVEN MEADOWS MAGNUM 10N (Speckled)

GRAND DAM: PARKLAND SPECKLE PARK 10J (Speckled)

GRAND SIRE: THUNDER 1C (Speckled)

DAM: PRAIRIE HILL REBA 154F (Speckled)

GRAND DAM: SPOTS 'N SPROUTS 1D (White)

Semen rights imported by Premier and Maungahina. Ulysses was selected after we viewed him at 9 years old. The sound feet and leg structure and easy fleshing would be an asset to any beef operation. His longevity made him a 'must-have' Sire.

SEPTEMBER 2019 SPECKLE PARK GROUP BREEDPLAN

	GESTATION LENGTH (DAYS)	BWT (KGS)	200 DAY WT (KGS)	400 DAY WT (KGS)	600 DAY WT (KGS)	MATURE COW WT (KGS)	MILK (KGS)	SCROTAL SIZE (CM)	CARCASE WT (KGS)	EMA (SQ CM)	RIB FAT (MM)	RUMP FAT (MM)	RETAIL BEEF YIELD (%)	IMF (%)
EBV	+1.3	+3.1	+17	+29	+32	+31	+1	+0.6	+19	+1.1	+0.6	+0.7	-0.2	+0.2
ACCURACY	55%	90%	78%	74%	71%	56%	31%	45%	57%	34%	41%	41%	39%	36%

REFERENCE SIRES

REF

PREMIER 101Y LOGIC L11 (AI) (ET)

ID: PMR L11 | DOB: 09/08/2015 | Colour: Leopard



GRAND SIRE: STAR BANK KING GEORGE 82U (P) (Speckled)
SIRE: SIX STAR 82U ROYAL FLESH 101Y (AI) (ET) (P) (Speckled)
GRAND DAM: STAR BANK 53R (P) (White)

GRAND SIRE: MAINSTREAM ELDORADO E11 (ET) (P) (White)
DAM: SPKNZ H2 (P) (White)
GRAND DAM: SPKNZ E36 (ET) (P) (Speckled)

As quoted by a long time professional in the stud industry "one of the best bulls of any breed in NZ in 2017". From one of our best cows Logic will be used heavily and I believe will have a major impact on our program. Nth & Sth American and UK & EU semen rights secured by Riverhill Farm & INC Cattle Co, Canada.

SEPTEMBER 2019 SPECKLE PARK GROUP BREEDPLAN

	GESTATION LENGTH (DAYS)	BWT (KGS)	200 DAY WT (KGS)	400 DAY WT (KGS)	600 DAY WT (KGS)	MATURE COW WT (KGS)	MILK (KGS)	SCROTAL SIZE (CM)	CARCASE WT (KGS)	EMA (SQ CM)	RIB FAT (MM)	RUMP FAT (MM)	RETAIL BEEF YIELD (%)	IMF (%)
EBV	+0.1	+4.6	+32	+37	+47	+45	+1	+0.7	+25	+0.6	-0.2	-0.3	+0.3	-0.2
ACCURACY	53%	77%	71%	68%	66%	53%	40%	53%	55%	38%	47%	47%	45%	40%

REF

MAUNGAHINA LORD STARS

ID: MAU L265 | DOB: 24/08/2015 | Colour: White



GRAND SIRE: RIVER HILL TRAFFIC JAM 26T (P) (Speckled)
SIRE: SPKNZ GRAND SLAM (AI) (ET) (P) (Leopard)
GRAND DAM: UPTO SPECS TEEKA 8T (P) (Leopard)

GRAND SIRE: HWY. 4 SPECKLE PARK 2H (Speckled)
DAM: MAINSTREAM E12 (ET) (P) (Speckled)
GRAND DAM: NOTTA PHO-FINISH 54P (Speckled)

This maternal brother to Kidmans Cove was the high seller in the 2016 Maungahina Yearling sale purchased as a heifer mating specialist Stars has certainly delivered on that expectation. His quality pedigree includes outstanding females in Pho Finish 54P, Teeka 8T & Reba 154F.

SEPTEMBER 2019 SPECKLE PARK GROUP BREEDPLAN

	GESTATION LENGTH (DAYS)	BWT (KGS)	200 DAY WT (KGS)	400 DAY WT (KGS)	600 DAY WT (KGS)	MATURE COW WT (KGS)	MILK (KGS)	SCROTAL SIZE (CM)	CARCASE WT (KGS)	EMA (SQ CM)	RIB FAT (MM)	RUMP FAT (MM)	RETAIL BEEF YIELD (%)	IMF (%)
EBV	-0.3	-0.9	+2	+4	+1	-1	+5	+0.4	+4	+0.6	+0.5	+0.6	-0.3	+0.2
ACCURACY	46%	74%	65%	61%	61%	49%	38%	52%	49%	37%	45%	45%	43%	37%



1

PREMIER K247 PATRON P18 (AI) (ET)

ID: PMR P18 | DOB: 03/09/2018 | Colour: Speckled

Genetest Results: RGC, NT821F, PcPc

SIRE: MAUNGAHINA KIDMANS COVE (P) (Leopard)

GRAND SIRE: SPKNZ FALCON (AI) (ET) (P) (Speckled)

GRAND DAM: MAINSTREAM E12 (ET) (P) (Speckled)

DAM: SPKNZ H2 (P) (White)

GRAND SIRE: MAINSTREAM ELDORADO E11 (ET) (P) (White)

GRAND DAM: SPKNZ E36 (ET) (P) (Speckled)

RAW DATA

BIRTH WT (KGS)	24/01/19 WT (KGS)	WEIGHT (KGS)
35	214	411

TOP 10% RIB, RUMP & IMF

An ideal heifer bull to start the sale, smooth shouldered, deep bodied Cove son. Patron has always stood out with his tremendous balance and depth of rear quarter.

SEPTEMBER 2019 SPECKLE PARK GROUP BREEDPLAN

	GESTATION LENGTH (DAYS)	BWT (KGS)	200 DAY WT (KGS)	400 DAY WT (KGS)	600 DAY WT (KGS)	MATURE COW WT (KGS)	MILK (KGS)	SCROTAL SIZE (CM)	CARCASE WT (KGS)	EMA (SQ CM)	RIB FAT (MM)	RUMP FAT (MM)	RETAIL BEEF YIELD (%)	IMF (%)
EBV	0.0	+0.7	+9	+12	+13	+15	+3	-0.1	+8	+0.1	+1.1	+1.4	-0.9	+0.4
ACCURACY	47%	75%	70%	61%	61%	47%	36%	39%	47%	30%	38%	38%	36%	31%

PURCHASER:

PRICE:



2

PREMIER K247 POUNAMU P30 (AI) (ET)

ID: PMR P30 | DOB: 14/09/2018 | Colour: Leopard

Genetest Results: RGC, NT821F, HPc

SIRE: MAUNGAHINA KIDMANS COVE (P) (Leopard)

GRAND SIRE: SPKNZ FALCON (AI) (ET) (P) (Speckled)

GRAND DAM: MAINSTREAM E12 (ET) (P) (Speckled)

DAM: SPKNZ H2 (P) (White)

GRAND SIRE: MAINSTREAM ELDORADO E11 (ET) (P) (White)

GRAND DAM: SPKNZ E36 (ET) (P) (Speckled)

RAW DATA

BIRTH WT (KGS)	24/01/19 WT (KGS)	WEIGHT (KGS)
38	221	442

TOP 10% RIB, RUMP AND IMF

Pounamu P30 is a bull that I rate very highly. His Dam is the outstanding SPKNZ H2, this maternal brother to Logic has excellent structure and mobility exhibiting tremendous carcass and softness. Note the birth date. P30 is Scurred.

SEPTEMBER 2019 SPECKLE PARK GROUP BREEDPLAN

	GESTATION LENGTH (DAYS)	BWT (KGS)	200 DAY WT (KGS)	400 DAY WT (KGS)	600 DAY WT (KGS)	MATURE COW WT (KGS)	MILK (KGS)	SCROTAL SIZE (CM)	CARCASS WT (KGS)	EMA (SQ CM)	RIB FAT (MM)	RUMP FAT (MM)	RETAIL BEEF YIELD (%)	IMF (%)
EBV	+0.2	+1.4	+13	+15	+18	+19	+3	0.0	+10	+0.1	+1.1	+1.4	-0.9	+0.4
ACCURACY	47%	75%	70%	61%	61%	47%	36%	39%	47%	30%	38%	38%	36%	31%

PURCHASER:

PRICE:



3

PREMIER 54Z PLATINUM P5 (AI) (ET)

ID: PMR P5 | DOB: 19/08/2018 | Colour: Speckled

Genetest Results: RGF, NT821C, PcPc

SIRE: RIVER HILL 60W LINE DRIVE 54Z (AI) (Leopard)

GRAND SIRE: RIVER HILL 26T WALKER 60W (P) (Speckled)

GRAND DAM: NOTTA PHO-FINISH 54P (Speckled)

DAM: PREMIER E25 MELISA K249 (Leopard)

GRAND SIRE: SPKNZ ERUPTION E25 (ET) (P) (White)

GRAND DAM: SPKNZ E12 (ET) (P) (Black)

TOP 5% 400 DAY + EMA TOP 10% 200 + 400 DAY.

RAW DATA

BIRTH WT (KGS)	24/01/19 WT (KGS)	WEIGHT (KGS)
34	270	503

Platinum P5 is one of the most exciting bulls bred at 'Premier' and we believe he will enhance breeding programs wherever he goes. A Deep Bodied, a wide-hipped bull with natural eye appeal and is athletic in his structure. His Dam exhibits an exceptional balance of structural correctness and carcass while remaining feminine with an outstanding udder. His Sire continues to produce outstanding progeny around the world.

P5 is the first Linderive son to sell in NZ.

SEPTEMBER 2019 SPECKLE PARK GROUP BREEDPLAN

	GESTATION LENGTH (DAYS)	BWT (KGS)	200 DAY WT (KGS)	400 DAY WT (KGS)	600 DAY WT (KGS)	MATURE COW WT (KGS)	MILK (KGS)	SCROTAL SIZE (CM)	CARCASS WT (KGS)	EMA (SQ CM)	RIB FAT (MM)	RUMP FAT (MM)	RETAIL BEEF YIELD (%)	IMF (%)
EBV	-1.3	+0.9	+23	+35	+41	+38	+4	+0.4	+30	+1.3	+0.1	0.0	+0.3	0.0
ACCURACY	46%	75%	69%	61%	61%	48%	34%	44%	48%	32%	40%	40%	38%	35%

PURCHASER:

PRICE:



4

PREMIER 101Y PAYLOAD P9 (AI) (ET)

ID: PMR P9 | DOB: 19/08/2018 | Colour: Speckled

Genetest Results: RGF, NT821F, PcPc

SIRE: SIX STAR 82U ROYAL FLESH 101Y (AI) (ET) (P)
(Speckled)

GRAND SIRE: STAR BANK KING GEORGE 82U (P) (Speckled)

GRAND DAM: STAR BANK 53R (P) (White)

DAM: SPKNZ E34 (ET) (P) (White)

GRAND SIRE: PRAIRIE HILL JOHN WAYNE 50S (P) (Speckled)

GRAND DAM: CODIAK NICE LADY RKW 25N (Leopard)

TOP 15% 200, 400 AND 600 DAY WEIGHTS.

Payload P9 is a bull that I believe is herd sire material. He is a smooth fronted, long-bodied, thick bull with great structure. His dam is the outstanding brood cow, SPKNZ E34, who has the reputation of producing low birth weight genetics. Sired by "Royal Flesh", a sire who has stamped his progeny within our program, consistently siring calves with beautiful length through the front quarter and super leg and foot structure.

RAW DATA

BIRTH WT (KGS)	24/01/19 WT (KGS)	WEIGHT (KGS)
35	246	456

SEPTEMBER 2019 SPECKLE PARK GROUP BREEDPLAN

	GESTATION LENGTH (DAYS)	BWT (KGS)	200 DAY WT (KGS)	400 DAY WT (KGS)	600 DAY WT (KGS)	MATURE COW WT (KGS)	MILK (KGS)	SCROTAL SIZE (CM)	CARCASE WT (KGS)	EMA (SQ CM)	RIB FAT (MM)	RUMP FAT (MM)	RETAIL BEEF YIELD (%)	IMF (%)
EBV	-0.7	+1.6	+21	+28	+38	+39	-3	+0.3	+25	+0.5	-0.6	-1.0	+0.5	0.0
ACCURACY	51%	76%	71%	64%	65%	53%	42%	48%	53%	38%	49%	49%	47%	43%

PURCHASER:

PRICE:



5

PREMIER 01B PATRIOT P7 (AI)

ID: PMR P7 | DOB: 19/08/2018 | Colour: Speckled

Genetest Results: RGC , NT821F, HPc

SIRE: AVERY CREEK BANJO 01B (Speckled)

GRAND SIRE: ZORO MATTERS 1Z (Speckled)

GRAND DAM: TUMBLEWEED ACRES LULU 18Y (Speckled)

DAM: PREMIER E11 DREAM M2 (AI) (P) (White)

GRAND SIRE: MAINSTREAM ELDORADO E11 (ET) (P) (White)

GRAND DAM: SPKNZ SPN H36 (ET) (P) (Speckled)

RAW DATA

BIRTH WT (KGS)	24/01/19 WT (KGS)	WEIGHT (KGS)
33	215	416

Patriot P7 is the first Banjo Son to be offered in NZ. A square hipped, wide-based bull, P7 will produce cattle with above-average performance. A Pedigree with proven sires (Eldorado & Extreme) from a very good female line.

SEPTEMBER 2019 SPECKLE PARK GROUP BREEDPLAN

	GESTATION LENGTH (DAYS)	BWT (KGS)	200 DAY WT (KGS)	400 DAY WT (KGS)	600 DAY WT (KGS)	MATURE COW WT (KGS)	MILK (KGS)	SCROTAL SIZE (CM)	CARCASE WT (KGS)	EMA (SQ CM)	RIB FAT (MM)	RUMP FAT (MM)	RETAIL BEEF YIELD (%)	IMF (%)
EBV	-0.3	+1.5	+18	+22	+27	+26	+3	-	+18	-	-	-	-	-
ACCURACY	48%	67%	65%	55%	54%	38%	25%	-	40%	-	-	-	-	-

PURCHASER:

PRICE:



6

PREMIER L11 PASSWORD P1 (P)

ID: PMR P1 | DOB: 18/03/2018 | Colour: Leopard

Genetest Results: RGF, NT821F, PcPc

SIRE: PREMIER 101Y LOGIC L11 (AI) (ET) (Leopard)

GRAND SIRE: SIX STAR 82U ROYAL FLESH 101Y (AI) (ET) (P) (Speckled)

GRAND DAM: SPKNZ H2 (P) (White)

DAM: PREMIER 300X MOLLY L3 (AI) (ET) (White)

GRAND SIRE: SPOTS 'N SPROUTS STANDS ALONE (P) (White)

GRAND DAM: SPKNZ SPN H20 (ET) (P) (Speckled)

RAW DATA

BIRTH WT (KGS)	24/09/18 WT (KGS)	WEIGHT (KGS)
37	263	604

TOP 1% 200, 400 & 600 DAY TOP 10% EMA.

A Logic son from the "Performance" family of the Speckle Park breed. Password P1 is the #1 2018 born bull on the SPI register for 200, 400 & 600-day weight. His Grandam and Dam are the #1 and #2 in the breed for 200 & 400-day weight and #2 and #3 for 600-day weight respectively, with his dam being #1 for RBY. Password P1 is more suited for use over cows.

SEPTEMBER 2019 SPECKLE PARK GROUP BREEDPLAN

	GESTATION LENGTH (DAYS)	BWT (KGS)	200 DAY WT (KGS)	400 DAY WT (KGS)	600 DAY WT (KGS)	MATURE COW WT (KGS)	MILK (KGS)	SCROTAL SIZE (CM)	CARCASE WT (KGS)	EMA (SQ CM)	RIB FAT (MM)	RUMP FAT (MM)	RETAIL BEEF YIELD (%)	IMF (%)
EBV	-0.7	+4.0	+35	+46	+59	+56	+4	+0.5	+37	+1.2	-1.4	-2.0	+1.5	-0.6
ACCURACY	39%	56%	52%	50%	50%	41%	30%	38%	42%	31%	41%	41%	38%	35%

PURCHASER:

PRICE:



7

PREMIER 101Y PAYDOWN P15 (AI) (ET)

ID: PMR P15 | DOB: 29/08/2018 | Colour: White

Genetest Results: RGF, NT821F, PcPc

SIRE: SIX STAR 82U ROYAL FLESH 101Y (AI) (ET) (P)
(Speckled)

GRAND SIRE: STAR BANK KING GEORGE 82U (P) (Speckled)

GRAND DAM: STAR BANK 53R (P) (White)

DAM: SPKNZ E34 (ET) (P) (White)

GRAND SIRE: PRAIRIE HILL JOHN WAYNE 50S (P) (Speckled)

GRAND DAM: CODIAK NICE LADY RKW 25N (Leopard)

RAW DATA

BIRTH WT (KGS)	24/01/19 WT (KGS)	WEIGHT (KGS)
33	238	426

TOP 15% FOR 200, 400 & 600 DAY WEIGHT.

Paydown P15 is a very eye appealing bull, long fronted with superb structure and softness of carcass. A combination of low birth and performance genetics, P15 will colour mark his progeny.

SEPTEMBER 2019 SPECKLE PARK GROUP BREEDPLAN

	GESTATION LENGTH (DAYS)	BWT (KGS)	200 DAY WT (KGS)	400 DAY WT (KGS)	600 DAY WT (KGS)	MATURE COW WT (KGS)	MILK (KGS)	SCROTAL SIZE (CM)	CARCASS WT (KGS)	EMA (SQ CM)	RIB FAT (MM)	RUMP FAT (MM)	RETAIL BEEF YIELD (%)	IMF (%)
EBV	-0.7	+1.6	+21	+28	+38	+39	-3	+0.3	+25	+0.5	-0.6	-1.0	+0.5	0.0
ACCURACY	51%	76%	71%	64%	65%	53%	42%	48%	53%	38%	49%	49%	47%	43%

PURCHASER:

PRICE:



8

PREMIER 60A PEACE MAKER P20 (AI) (ET)

ID: PMR P20 | DOB: 05/09/2018 | Colour: White

Genetest Results: RGF, NT821F, PcPc

SIRE: CODIAK ACRES OH MY GOSH (Leopard)

GRAND SIRE: CLEAR VIEW TY 205R (P) (Speckled)

GRAND DAM: CODIAK UNIQUE GNK 8R (P) (Speckled)

DAM: SPKNZ H2 (P) (White)

GRAND SIRE: MAINSTREAM ELDORADO E11 (ET) (P) (White)

GRAND DAM: SPKNZ E36 (ET) (P) (Speckled)

RAW DATA

BIRTH WT (KGS)	24/01/19 WT (KGS)	WEIGHT (KGS)
41	210	431

TOP 10% RIB & RUMP, TOP 15% IMF

Peace Maker P20 is a deep-bodied, big volume bull. His dam has produced several bulls in this sale, she is also the dam of "Logic". Oh My Gosh progeny have consistently had good IMF's.

SEPTEMBER 2019 SPECKLE PARK GROUP BREEDPLAN

	GESTATION LENGTH (DAYS)	BWT (KGS)	200 DAY WT (KGS)	400 DAY WT (KGS)	600 DAY WT (KGS)	MATURE COW WT (KGS)	MILK (KGS)	SCROTAL SIZE (CM)	CARCASE WT (KGS)	EMA (SQ CM)	RIB FAT (MM)	RUMP FAT (MM)	RETAIL BEEF YIELD (%)	IMF (%)
EBV	+0.7	+2.6	+15	+19	+25	+25	+1	-0.6	+11	+0.1	+0.8	+1.0	-0.8	+0.3
ACCURACY	47%	76%	71%	64%	63%	49%	33%	48%	51%	35%	44%	44%	42%	38%

PURCHASER:

PRICE:



9

PREMIER 101Y PAYDIRT P16 (AI) (ET)

ID: PMR P16 | DOB: 30/08/2018 | Colour: White

Genetest Results: RGF, NT821F, PcPc

SIRE: SIX STAR 82U ROYAL FLESH 101Y (AI) (ET) (P)
(Speckled)

GRAND SIRE: STAR BANK KING GEORGE 82U (P)
(Speckled)

GRAND DAM: STAR BANK 53R (P) (White)

DAM: SPKNZ E34 (ET) (P) (White)

GRAND SIRE: PRAIRIE HILL JOHN WAYNE 50S (P) (Speckled)

GRAND DAM: CODIAK NICE LADY RKW 25N (Leopard)

RAW DATA

BIRTH WT (KGS)	24/01/19 WT (KGS)	WEIGHT (KGS)
37	224	418

TOP 15% 200, 400 & 600 DAY WEIGHT.

Paydirt P16 is a very stylish bull. Structurally very correct, a well-balanced bull who will colour mark. From the proven E34/Royal Flesh joining.

SEPTEMBER 2019 SPECKLE PARK GROUP BREEDPLAN

	GESTATION LENGTH (DAYS)	BWT (KGS)	200 DAY WT (KGS)	400 DAY WT (KGS)	600 DAY WT (KGS)	MATURE COW WT (KGS)	MILK (KGS)	SCROTAL SIZE (CM)	CARCASE WT (KGS)	EMA (SQ CM)	RIB FAT (MM)	RUMP FAT (MM)	RETAIL BEEF YIELD (%)	IMF (%)
EBV	-0.3	+1.9	+21	+28	+38	+40	-3	+0.3	+24	+0.5	-0.6	-0.9	+0.5	+0.1
ACCURACY	51%	76%	71%	64%	65%	53%	42%	48%	53%	38%	49%	49%	47%	43%

PURCHASER:

PRICE:



10

PREMIER K247 PARTY BOY P28 (AI) (ET)

ID: PMR P28 | DOB: 13/09/2018 | Colour: White

Genetest Results: RGF, NT821F, PcPc

SIRE: MAUNGAHINA KIDMANS COVE (P) (Leopard)

GRAND SIRE: SPKNZ FALCON (AI) (ET) (P) (Speckled)

GRAND DAM: MAINSTREAM E12 (ET) (P) (Speckled)

DAM: SPKNZ H2 (P) (White)

GRAND SIRE: MAINSTREAM ELDORADO E11 (ET) (P) (White)

GRAND DAM: SPKNZ E36 (ET) (P) (Speckled)

RAW DATA

BIRTH WT (KGS)	24/01/19 WT (KGS)	WEIGHT (KGS)
40	251	504

TOP 10% RIB, RUMP AND IMF

A Cove son who exhibits added frame. Party Boy P28 is a younger born bull showing tremendous growth. P28 should easily cover larger-framed cows.

SEPTEMBER 2019 SPECKLE PARK GROUP BREEDPLAN

	GESTATION LENGTH (DAYS)	BWT (KGS)	200 DAY WT (KGS)	400 DAY WT (KGS)	600 DAY WT (KGS)	MATURE COW WT (KGS)	MILK (KGS)	SCROTAL SIZE (CM)	CARCASE WT (KGS)	EMA (SQ CM)	RIB FAT (MM)	RUMP FAT (MM)	RETAIL BEEF YIELD (%)	IMF (%)
EBV	+0.2	+2.0	+18	+20	+24	+24	+3	0.0	+13	+0.1	+1.0	+1.3	-0.9	+0.4
ACCURACY	47%	75%	70%	61%	61%	47%	36%	39%	47%	30%	38%	38%	36%	31%

PURCHASER:

PRICE:



11

PREMIER 01B PATRIARCH P13 (AI)

ID: PMR P13 | DOB: 24/08/2018 | Colour: White

Genetest Results: RGF, NT821F, HPC

SIRE: AVERY CREEK BANJO 01B (Speckled)

GRAND SIRE: ZORO MATTERS 1Z (Speckled)

GRAND DAM: TUMBLEWEED ACRES LULU 18Y (Speckled)

DAM: PREMIER F20 PRAIRE L8 (White)

GRAND SIRE: SPKNZ FALCON (AI) (ET) (P) (Speckled)

GRAND DAM: SPKNZ H2 (P) (White)

RAW DATA

BIRTH WT (KGS)	24/01/19 WT (KGS)	WEIGHT (KGS)
38	221	439

TOP 15% RIB & RUMP.

Patriarch P13 is from our favourite "Falcon" daughter in Prairie L8, who has been in our donor group as we rate her highly. The combination with Banjo has resulted in a great natured young sire who will colour mark his progeny.

SEPTEMBER 2019 SPECKLE PARK GROUP BREEDPLAN

	GESTATION LENGTH (DAYS)	BWT (KGS)	200 DAY WT (KGS)	400 DAY WT (KGS)	600 DAY WT (KGS)	MATURE COW WT (KGS)	MILK (KGS)	SCROTAL SIZE (CM)	CARCASE WT (KGS)	EMA (SQ CM)	RIB FAT (MM)	RUMP FAT (MM)	RETAIL BEEF YIELD (%)	IMF (%)
EBV	+0.2	+1.5	+14	+17	+23	+24	-	-	+13	-	+0.6	+0.8	-0.4	-
ACCURACY	32%	59%	62%	53%	52%	37%	-	-	40%	-	29%	29%	27%	-

PURCHASER:

PRICE:



12

PREMIER 54Z BEN TEN P10 (AI)

ID: PMR P10 | DOB: 20/08/2018 | Colour: White

Genetest Results: RGF, NT821F, PcPc

SIRE: RIVER HILL 60W LINE DRIVE 54Z (AI) (Leopard)

GRAND SIRE: RIVER HILL 26T WALKER 60W (P) (Speckled)

GRAND DAM: NOTTA PHO-FINISH 54P (Speckled)

DAM: PREMIER F20 CINDER L7 (AI) (ET) (Speckled)

GRAND SIRE: SPKNZ FALCON (AI) (ET) (P) (Speckled)

GRAND DAM: SPN H1 (AI) (ET) (P) (White)

RAW DATA

BIRTH WT (KGS)	24/01/19 WT (KGS)	WEIGHT (KGS)
34	207	407

TOP 5% EMA

Ben Ten P10 is very functional, low birth weight Linedrive son from a very fertile "Falcon" daughter who produced the top seller in last years sale. A great combination of maternal and carcass genetics.

SEPTEMBER 2019 SPECKLE PARK GROUP BREEDPLAN

	GESTATION LENGTH (DAYS)	BWT (KGS)	200 DAY WT (KGS)	400 DAY WT (KGS)	600 DAY WT (KGS)	MATURE COW WT (KGS)	MILK (KGS)	SCROTAL SIZE (CM)	CARCASS WT (KGS)	EMA (SQ CM)	RIB FAT (MM)	RUMP FAT (MM)	RETAIL BEEF YIELD (%)	IMF (%)
EBV	-0.1	+1.5	+17	+28	+35	+33	+2	+0.4	+23	+1.4	+0.1	0.0	+0.2	+0.2
ACCURACY	52%	70%	68%	61%	61%	48%	35%	44%	49%	34%	45%	45%	42%	39%

PURCHASER:

PRICE:



13

PREMIER 101Y PAYMASTER P11 (AI) (ET)

ID: PMR P11 | DOB: 21/08/2018 | Colour: White

Genetest Results: RGF, NT821F, PcPc

SIRE: SIX STAR 82U ROYAL FLESH 101Y (AI) (ET) (P)
(Speckled)

GRAND SIRE: STAR BANK KING GEORGE 82U (P) (Speckled)

GRAND DAM: STAR BANK 53R (P) (White)

DAM: SPKNZ E34 (ET) (P) (White)

GRAND SIRE: PRAIRIE HILL JOHN WAYNE 50S (P) (Speckled)

GRAND DAM: CODIAK NICE LADY RKW 25N (Leopard)

RAW DATA

BIRTH WT (KGS)	24/01/19 WT (KGS)	WEIGHT (KGS)
33	246	405

TOP 15% 200 & 600 DAY WEIGHT.

Paymaster P11 is a later maturing, clean fronted bull. His dam is the great E34 cow who has performed exceptionally well in our program as has his sire. With a below-average birth weight, EBV P11 will colour mark his calves.

SEPTEMBER 2019 SPECKLE PARK GROUP BREEDPLAN

	GESTATION LENGTH (DAYS)	BWT (KGS)	200 DAY WT (KGS)	400 DAY WT (KGS)	600 DAY WT (KGS)	MATURE COW WT (KGS)	MILK (KGS)	SCROTAL SIZE (CM)	CARCASE WT (KGS)	EMA (SQ CM)	RIB FAT (MM)	RUMP FAT (MM)	RETAIL BEEF YIELD (%)	IMF (%)
EBV	-0.9	+1.1	+20	+27	+36	+37	-3	+0.2	+25	+0.5	-0.6	-1.0	+0.5	0.0
ACCURACY	51%	76%	71%	64%	65%	53%	42%	48%	53%	38%	49%	49%	47%	43%

PURCHASER:

PRICE:



14

PREMIER 60A PORTER P23 (AI) (ET)

ID: PMR P23 | DOB: 09/09/2018 | Colour: White

Genetest Results: RGF, NT821F, PcPc

SIRE: CODIAK ACRES OH MY GOSH (Leopard)

GRAND SIRE: CLEAR VIEW TY 205R (P) (Speckled)

GRAND DAM: CODIAK UNIQUE GNK 8R (P) (Speckled)

DAM: SPKNZ H2 (P) (White)

GRAND SIRE: MAINSTREAM ELDORADO E11 (ET) (P) (White)

GRAND DAM: SPKNZ E36 (ET) (P) (Speckled)

RAW DATA

BIRTH WT (KGS)	24/01/19 WT (KGS)	WEIGHT (KGS)
36	206	411

TOP 10% RIB & RUMP TOP 15% IMF

Porter P23 is a sound structured, moderate framed carcass bull. With positive fats. His dam SPKNZ H2 continues to perform as a brood cow in our program.

SEPTEMBER 2019 SPECKLE PARK GROUP BREEDPLAN

	GESTATION LENGTH (DAYS)	BWT (KGS)	200 DAY WT (KGS)	400 DAY WT (KGS)	600 DAY WT (KGS)	MATURE COW WT (KGS)	MILK (KGS)	SCROTAL SIZE (CM)	CARCASS WT (KGS)	EMA (SQ CM)	RIB FAT (MM)	RUMP FAT (MM)	RETAIL BEEF YIELD (%)	IMF (%)
EBV	+0.5	+2.1	+14	+18	+23	+23	+1	-0.6	+11	+0.1	+0.8	+1.0	-0.8	+0.3
ACCURACY	47%	76%	71%	64%	63%	49%	33%	48%	51%	35%	44%	44%	42%	38%

PURCHASER:

PRICE:



15

PREMIER 60A PASSPORT P17 (AI) (ET)

ID: PMR P17 | DOB: 02/09/2018 | Colour: White

Genetest Results: RGF, NT821F, PcPc

SIRE: CODIAK ACRES OH MY GOSH (Leopard)

GRAND SIRE: CLEAR VIEW TY 205R (P) (Speckled)

GRAND DAM: CODIAK UNIQUE GNK 8R (P) (Speckled)

DAM: SPKNZ H2 (P) (White)

GRAND SIRE: MAINSTREAM ELDORADO E11 (ET) (P) (White)

GRAND DAM: SPKNZ E36 (ET) (P) (Speckled)

RAW DATA

BIRTH WT (KGS)	24/01/19 WT (KGS)	WEIGHT (KGS)
35	224	413

TOP 10% RIB & RUMP TOP 15% IMF

Passport P17 is a clean fronted bull who should colour mark his calves. Sired by Oh My Gosh P17 has positive fat & IMF EBV's.

SEPTEMBER 2019 SPECKLE PARK GROUP BREEDPLAN

	GESTATION LENGTH (DAYS)	BWT (KGS)	200 DAY WT (KGS)	400 DAY WT (KGS)	600 DAY WT (KGS)	MATURE COW WT (KGS)	MILK (KGS)	SCROTAL SIZE (CM)	CARCASE WT (KGS)	EMA (SQ CM)	RIB FAT (MM)	RUMP FAT (MM)	RETAIL BEEF YIELD (%)	IMF (%)
EBV	0.0	+1.6	+13	+17	+22	+22	+1	-0.6	+11	+0.1	+0.8	+1.0	-0.8	+0.3
ACCURACY	47%	76%	71%	64%	63%	49%	33%	48%	51%	35%	44%	44%	42%	38%

PURCHASER:

PRICE:



16

PREMIER SMOKIN GUN P34 (P)

ID: PMR P34 | DOB: 03/10/2018 | Colour: Leopard

Genetest Results: RGF, NT821C, PcPc

SIRE: PREMIER E11 GUNSMOKE M3 (AI) (P) (White)

GRAND SIRE: MAINSTREAM ELDORADO E11 (ET) (P) (White)

GRAND DAM: SPKNZ SPN H14 (ET) (P) (Speckled)

DAM: PREMIER E11 NICE LADY L18 (White)

GRAND SIRE: MAINSTREAM ELDORADO E11 (ET) (P) (White)

GRAND DAM: SPKNZ E34 (ET) (P) (White)

RAW DATA

BIRTH WT (KGS)	24/01/19 WT (KGS)	WEIGHT (KGS)
37	178	355

Smokin Gun P34 is the youngest bull in the sale a very functional moderate framed bull with so many great cows in his pedigree.

SEPTEMBER 2019 SPECKLE PARK GROUP BREEDPLAN

	GESTATION LENGTH (DAYS)	BWT (KGS)	200 DAY WT (KGS)	400 DAY WT (KGS)	600 DAY WT (KGS)	MATURE COW WT (KGS)	MILK (KGS)	SCROTAL SIZE (CM)	CARCASE WT (KGS)	EMA (SQ CM)	RIB FAT (MM)	RUMP FAT (MM)	RETAIL BEEF YIELD (%)	IMF (%)
EBV	-0.5	+1.3	+17	+27	+32	+30	-1	0.0	+21	+0.8	+0.3	+0.3	-0.3	+0.2
ACCURACY	35%	50%	49%	47%	47%	39%	35%	35%	40%	30%	40%	40%	37%	34%

PURCHASER:

PRICE:



17A

PICK OF PAIR- PREMIER 101Y NICE LADY P6 (AI) (ET)

ID: PMR P6 | DOB: 19/08/2018 | Colour: Leopard

Genetest Results: RGF, NT821F, PcPc

FEMALE

SIRE: SIX STAR 82U ROYAL FLESH 101Y (AI) (ET) (P)
(Speckled)

GRAND SIRE: STAR BANK KING GEORGE 82U (P) (Speckled)

GRAND DAM: STAR BANK 53R (P) (White)

DAM: SPKNZ E34 (ET) (P) (White)

GRAND SIRE: PRAIRIE HILL JOHN WAYNE 50S (P) (Speckled)

GRAND DAM: CODIAK NICE LADY RKW 25N (Leopard)

RAW DATA

BIRTH WT (KGS)	24/01/19 WT (KGS)	WEIGHT (KGS)
33	238	331

SEPTEMBER 2019 SPECKLE PARK GROUP BREEDPLAN

	GESTATION LENGTH (DAYS)	BWT (KGS)	200 DAY WT (KGS)	400 DAY WT (KGS)	600 DAY WT (KGS)	MATURE COW WT (KGS)	MILK (KGS)	SCROTAL SIZE (CM)	CARCASE WT (KGS)	EMA (SQ CM)	RIB FAT (MM)	RUMP FAT (MM)	RETAIL BEEF YIELD (%)	IMF (%)
EBV	-0.8	+1.4	+22	+29	+39	+39	-3	+0.3	+26	+0.5	-0.6	-1.0	+0.5	0.0
ACCURACY	51%	75%	71%	64%	65%	53%	42%	48%	53%	38%	49%	49%	47%	43%

PURCHASER:

PRICE:



17B

PICK OF PAIR- PREMIER 101Y NICE LADY P12 (AI) (ET)

ID: PMR P12 | DOB: 23/08/2018 | Colour: Leopard

Genetest Results: RGF, NT821F, PcPc

FEMALE

“TAKE YOUR PICK”

These super stylish, deep-bodied, powerful heifers have been eye-catchers from day one. Their Dam has been an exceptional brood cow and at 10yrs old has another calf at side and has been rejoined. The grandam is one of the foundation cows of the breed “Codiak Nice Lady 25N”. Their sire “Royal Flesh” has performed well in our program as he continues to do around the world.

RAW DATA

BIRTH WT (KGS)	24/01/19 WT (KGS)	WEIGHT (KGS)
36	231	355

SEPTEMBER 2019 SPECKLE PARK GROUP BREEDPLAN

	GESTATION LENGTH (DAYS)	BWT (KGS)	200 DAY WT (KGS)	400 DAY WT (KGS)	600 DAY WT (KGS)	MATURE COW WT (KGS)	MILK (KGS)	SCROTAL SIZE (CM)	CARCASE WT (KGS)	EMA (SQ CM)	RIB FAT (MM)	RUMP FAT (MM)	RETAIL BEEF YIELD (%)	IMF (%)
EBV	0.5	+2.1	+23	+30	+41	+42	-3	+0.3	+26	+0.5	-0.6	-1.0	+0.5	0.0
ACCURACY	51%	75%	71%	64%	65%	53%	42%	48%	53%	38%	49%	49%	47%	43%

PURCHASER:

PRICE:



18A

PICK OF PAIR- PREMIER 54Z MELISA P2 (AI) (ET)

ID: PMR P2 | DOB: 16/08/2018 | Colour: White

Genetest Results: RGF, NT821F, PcPc

FEMALE

SIRE: RIVER HILL 60W LINE DRIVE 54Z (AI) (Leopard)

GRAND SIRE: RIVER HILL 26T WALKER 60W (P) (Speckled)

GRAND DAM: NOTTA PHO-FINISH 54P (Speckled)

DAM: PREMIER E25 MELISA K249 (Leopard)

GRAND SIRE: SPKNZ ERUPTION E25 (ET) (P) (White)

GRAND DAM: SPKNZ E12 (ET) (P) (Black)

RAW DATA

BIRTH WT (KGS)	24/01/19 WT (KGS)	WEIGHT (KGS)
34	224	365

SEPTEMBER 2019 SPECKLE PARK GROUP BREEDPLAN

	GESTATION LENGTH (DAYS)	BWT (KGS)	200 DAY WT (KGS)	400 DAY WT (KGS)	600 DAY WT (KGS)	MATURE COW WT (KGS)	MILK (KGS)	SCROTAL SIZE (CM)	CARCASE WT (KGS)	EMA (SQ CM)	RIB FAT (MM)	RUMP FAT (MM)	RETAIL BEEF YIELD (%)	IMF (%)
EBV	-1.0	+1.0	+20	+32	+39	+37	+4	+0.4	+28	+1.3	+0.1	0.0	+0.2	+0.1
ACCURACY	45%	74%	69%	60%	61%	47%	34%	44%	47%	32%	40%	40%	38%	35%

PURCHASER:

PRICE:



18B

PICK OF PAIR- PREMIER 54Z MELISA P8 (AI) (ET)

ID: PMR P8 | DOB: 19/08/2018 | Colour: White

Genetest Results: RGF, NT821F, PcPc

FEMALE

“THE PICK IS YOURS”

With exceptional eye appeal, balance and style these heifers have performance and that soft, easy fleshing look we demand in today’s female. Full sisters to Platinum P5 (lot 3) these are the only two heifers from the flush.

Their dam K249 typifies what we are looking for in our cows - moderate frame, sound structured feet + legs beautiful udder, wide-hipped, carcass and yet all “lady”. Their sire “Linedrive”, I believe is from the most influential cow in the Speckle Park breed, “Notta Pho Finish 54P”

RAW DATA

BIRTH WT (KGS)	24/01/19 WT (KGS)	WEIGHT (KGS)
35	188	310

SEPTEMBER 2019 SPECKLE PARK GROUP BREEDPLAN

	GESTATION LENGTH (DAYS)	BWT (KGS)	200 DAY WT (KGS)	400 DAY WT (KGS)	600 DAY WT (KGS)	MATURE COW WT (KGS)	MILK (KGS)	SCROTAL SIZE (CM)	CARCASS WT (KGS)	EMA (SQ CM)	RIB FAT (MM)	RUMP FAT (MM)	RETAIL BEEF YIELD (%)	IMF (%)
EBV	-0.8	+1.2	+20	+32	+39	+37	+4	+0.4	+28	+1.3	+0.1	0.0	+0.2	+0.1
ACCURACY	45%	74%	69%	60%	61%	47%	34%	44%	47%	32%	40%	40%	38%	35%

PURCHASER:

PRICE:



19

PREMIER 25U LASS P26 (AI)

ID: PMR P26 | DOB: 11/09/2018 | Colour: Speckled

Genetest Results: RGF, NT821F, PcPc

FEMALE

SIRE: UPTO SPECS ULYSSES 25U (P) (Speckled)

GRAND SIRE: RAVEN MEADOWS MAGNUM 10N (Speckled)

GRAND DAM: PRAIRIE HILL REBA 154F (Speckled)

DAM: PREMIER 300X LASS L4 (AI) (ET) (Speckled)

GRAND SIRE: SPOTS 'N SPROUTS STANDS ALONE (P) (White)

GRAND DAM: SPKNZ SPN H22 (ET) (P) (White)

RAW DATA

BIRTH WT (KGS)	24/01/19 WT (KGS)	WEIGHT (KGS)
34	155	304

Lass P26 is a super stylish female with a pedigree to match Sired by Ulysses who has bred extremely well across the globe with semen selling over \$500 straw. Her dam is the #3 cow in the breed for EMA & her grandam is one of the lead brood cows in the Maungahina program.

SEPTEMBER 2019 SPECKLE PARK GROUP BREEDPLAN

	GESTATION LENGTH (DAYS)	BWT (KGS)	200 DAY WT (KGS)	400 DAY WT (KGS)	600 DAY WT (KGS)	MATURE COW WT (KGS)	MILK (KGS)	SCROTAL SIZE (CM)	CARCASE WT (KGS)	EMA (SQ CM)	RIB FAT (MM)	RUMP FAT (MM)	RETAIL BEEF YIELD (%)	IMF (%)
EBV	-0.1	+1.7	+17	+30	+35	+33	+4	+0.3	+26	+1.5	-0.1	-0.3	+0.5	+0.2
ACCURACY	43%	70%	65%	59%	58%	46%	31%	37%	47%	30%	39%	39%	37%	34%

PURCHASER:

PRICE:



20

PREMIER 60A PRAIRIE P22 (AI) (ET)

ID: PMR P22 | DOB: 08/09/2018 | Colour: White

Genetest Results: RGF, NT821F, PcPc

FEMALE

SIRE: CODIAK ACRES OH MY GOSH (Leopard)

GRAND SIRE: CLEAR VIEW TY 205R (P) (Speckled)

GRAND DAM: CODIAK UNIQUE GNK 8R (P) (Speckled)

DAM: SPKNZ H2 (P) (White)

GRAND SIRE: MAINSTREAM ELDORADO E11 (ET) (P) (White)

GRAND DAM: SPKNZ E36 (ET) (P) (Speckled)

RAW DATA

BIRTH WT (KGS)	24/01/19 WT (KGS)	WEIGHT (KGS)
36	185	293

Prairie P22 is a very well made foundation female in the making. Her dam 'SPKNZ H2' has proven herself as brood cow in our program, the dam of 'Logic' she also has several sons in this sale, such as lot 1 + 2. Add to this her sire's dam '8R' you have a maternal powerhouse on offer.

SEPTEMBER 2019 SPECKLE PARK GROUP BREEDPLAN

	GESTATION LENGTH (DAYS)	BWT (KGS)	200 DAY WT (KGS)	400 DAY WT (KGS)	600 DAY WT (KGS)	MATURE COW WT (KGS)	MILK (KGS)	SCROTAL SIZE (CM)	CARCASE WT (KGS)	EMA (SQ CM)	RIB FAT (MM)	RUMP FAT (MM)	RETAIL BEEF YIELD (%)	IMF (%)
EBV	+0.4	+1.9	+13	+17	+22	+22	+1	-0.6	+10	+0.1	+0.8	+1.0	-0.8	+0.3
ACCURACY	48%	76%	72%	64%	63%	49%	33%	48%	51%	35%	44%	44%	42%	38%

PURCHASER:

PRICE:



21

PREMIER 60A NICE LADY P21 (AI) (ET)

ID: PMR P21 | DOB: 07/09/2018 | Colour: White

Genetest Results: RGF, NT821F, PcPc

FEMALE

SIRE: CODIAK ACRES OH MY GOSH (Leopard)

GRAND SIRE: CLEAR VIEW TY 205R (P) (Speckled)

GRAND DAM: CODIAK UNIQUE GNK 8R (P) (Speckled)

DAM: SPKNZ E34 (ET) (P) (White)

GRAND SIRE: PRAIRIE HILL JOHN WAYNE 50S (P) (Speckled)

GRAND DAM: CODIAK NICE LADY RKW 25N (Leopard)

RAW DATA

BIRTH WT (KGS)	24/01/19 WT (KGS)	WEIGHT (KGS)
37	178	302

Nice Lady P21 is a sweet, stylish young heifer. This daughter of 'SPKNZ E34' is only available as we have full sisters already in the herd. From a cow family that is proving to be one of the best in the breed, her full brothers were the highest IMF bulls in our 'N' drop group.

SEPTEMBER 2019 SPECKLE PARK GROUP BREEDPLAN

	GESTATION LENGTH (DAYS)	BWT (KGS)	200 DAY WT (KGS)	400 DAY WT (KGS)	600 DAY WT (KGS)	MATURE COW WT (KGS)	MILK (KGS)	SCROTAL SIZE (CM)	CARCASE WT (KGS)	EMA (SQ CM)	RIB FAT (MM)	RUMP FAT (MM)	RETAIL BEEF YIELD (%)	IMF (%)
EBV	-0.2	+0.9	+14	+22	+30	+31	-3	-1.0	+19	+0.3	+0.1	0.0	-0.4	+0.5
ACCURACY	49%	77%	72%	66%	65%	51%	35%	52%	54%	39%	49%	49%	47%	43%

PURCHASER:

PRICE:



22

PREMIER M3 LASSIE P27 (P)

ID: PMR P27 | DOB: 12/09/2018 | Colour: Leopard

Genetest Results: RGF, NT821F, PcPc

FEMALE

SIRE: PREMIER E11 GUNSMOKE M3 (AI) (P) (White)

GRAND SIRE: MAINSTREAM ELDORADO E11 (ET) (P) (White)

GRAND DAM: SPKNZ SPN H14 (ET) (P) (Speckled)

DAM: PREMIER 101Y LASSIE L15 (AI) (ET) (Leopard)

GRAND SIRE: SIX STAR 82U ROYAL FLESH 101Y (AI) (ET) (P) (Speckled)

GRAND DAM: SPKNZ H50 (AI) (ET) (P) (White)

RAW DATA

BIRTH WT (KGS)	24/01/19 WT (KGS)	WEIGHT (KGS)
37	167	306

Lassie P27 is a powerful young female. again back to 'Codiak Nice Lady 25N'. Her sire's dam 'SPKNZ H14' is a big volume cow who is breeding extremely well. A pedigree with so many of the best sires and dams in it, P27 will make a great brood cow.

SEPTEMBER 2019 SPECKLE PARK GROUP BREEDPLAN

	GESTATION LENGTH (DAYS)	BWT (KGS)	200 DAY WT (KGS)	400 DAY WT (KGS)	600 DAY WT (KGS)	MATURE COW WT (KGS)	MILK (KGS)	SCROTAL SIZE (CM)	CARCASE WT (KGS)	EMA (SQ CM)	RIB FAT (MM)	RUMP FAT (MM)	RETAIL BEEF YIELD (%)	IMF (%)
EBV	+0.4	+3.3	+23	+31	+41	+39	0	+0.5	+23	+1.1	-0.2	-0.4	+0.3	+0.1
ACCURACY	34%	55%	60%	53%	52%	40%	33%	32%	42%	25%	31%	31%	30%	27%

PURCHASER:

PRICE:

EMBRYOS PACKAGES

****All embryo lots qualify for New Zealand and Australia only and dispatched the day after sale. All shipping costs to be paid by the purchaser.**

23

MBG 25U X PMR L4, 4 EMBRYOS

SIRE: UPTO SPECS ULYSSES 25U (P) (Speckled)

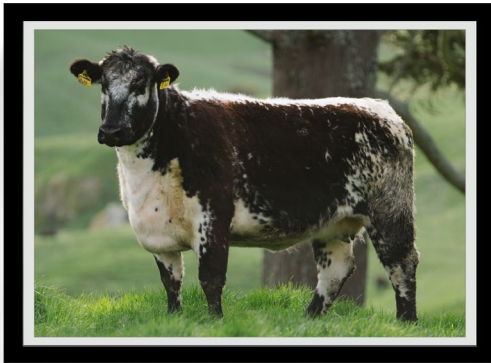
GRAND SIRE: RAVEN MEADOWS MAGNUM 10N (Speckled)

GRAND DAM: PRAIRIE HILL REBA 154F (Speckled)

DAM: PREMIER 300X LASS L4 (AI) (ET) (Speckled)

GRAND SIRE: SPOTS 'N SPROUTS STANDS ALONE (P) (White)

GRAND DAM: SPKNZ SPN H22 (ET) (P) (White)



Lass L4 is the #3 cow in the breed for EMA. She is an outstanding female, super correct, great udder, well balanced, Stands Alone daughter of one of the top cows in the Maungahina program. these embryos are the first 'Ulysses' available in NZ. We saw Ulysses on centre in Canada at nine years old, sound, functional, big volume bull.

PURCHASER: _____

PRICE: _____

24

LMT 01B X PMR L8, 3 EMBRYOS

SIRE: AVERY CREEK BANJO 01B

GRAND SIRE: ZORO MATTERS 1Z (Speckled)

GRAND DAM: TUMBLEWEED ACRES LULU 18Y (Speckled)

DAM: PREMIER F20 PRAIRE L8 (White)

GRAND SIRE: SPKNZ FALCON (AI) (ET) (P) (Speckled)

GRAND DAM: SPKNZ H2 (P) (White)



First Banjo embryos offered in NZ, from our favourite 'Falcon' daughter, Prairie L8. this maternal sister to Logic is a super functional young cow who is breeding very well. Banjo, this Agribition champion is an impressive sire who is truly appreciated when you see him move. Big volume bull and so free moving.

PURCHASER: _____

PRICE: _____

25

BED 54Z X PMR L15, 3 EMBRYOS

SIRE: RIVER HILL 60W LINE DRIVE 54Z (AI)

GRAND SIRE: RIVER HILL 26T WALKER 60W (P) (Speckled)

GRAND DAM: NOTTA PHO-FINISH 54P (Speckled)

DAM: PREMIER 101Y LASSIE L15 (AI) (ET)

GRAND SIRE: SIX STAR 82U ROYAL FLESH 101Y (AI) (ET) (P) (Speckled)

GRAND DAM: SPKNZ H50 (AI) (ET) (P) (White)



Lassie L15 is a big powerful young 'Royal Flesh' cow from one of the breeds greatest female families, 'Codiak Nice Lady 25N'. Linedrive's progeny continues to impress me with both son and daughters excelling around the world. Consider the sires (Linedrive, Royal Flesh, Traffic Jam) and dams (Notta Pho Finish 54P, Starbank 53R, Codiak Nice Lady 25N) in the resultant calves pedigree.

PURCHASER: _____

PRICE: _____

SEMEN PACKAGES

****All semen lots will be dispatched the day after sale. All shipping costs to be paid by the purchaser.**

26

10 X PREMIER 101Y LOGIC L11 (AI) (ET)

****AUSTRALIA ONLY STORED AT AGRI GENE AUSTRALIA**

PURCHASER: _____

PRICE: _____

27

10 X PREMIER 101Y LOGIC L11 (AI) (ET)

****AUSTRALIA ONLY STORED AT AGRI GENE AUSTRALIA**

PURCHASER: _____

PRICE: _____

28

5 X PREMIER 101Y LOGIC L11 (AI) (ET)

****AVAILABLE FOR AUSTRALIA OR NEW ZEALAND ALL FUNDS WILL GO TO SPI WORLD CONFERENCE 2021 FUND**

PURCHASER: _____

PRICE: _____

29

25 X PREMIER 101Y LOGIC L11 (AI) (ET)

**SEMEN IS FOR COMMERCIAL USE ONLY, STORED AT TARAUA BREEDERS AND SEMEX

PURCHASER: _____

PRICE: _____

30

25 X PREMIER 101Y LOGIC L11 (AI) (ET)

**SEMEN IS FOR COMMERCIAL USE ONLY, STORED AT TARAUA BREEDERS AND SEMEX

PURCHASER: _____

PRICE: _____

31

50 X PREMIER 101Y LOGIC L11 (AI) (ET)

**SEMEN IS FOR COMMERCIAL USE ONLY, STORED AT TARAUA BREEDERS AND SEMEX

PURCHASER: _____

PRICE: _____

32

50 X PREMIER 101Y LOGIC L11 (AI) (ET)

**SEMEN IS FOR COMMERCIAL USE ONLY, STORED AT TARAUA BREEDERS AND SEMEX

PURCHASER: _____

PRICE: _____

33

25 X MAUNGAHINA LORD STARS L265

**SEMEN IS FOR COMMERCIAL USE ONLY, STORED AT TARAUA BREEDERS AND SEMEX

PURCHASER: _____

PRICE: _____

34

25 X MAUNGAHINA LORD STARS L265

**SEMEN IS FOR COMMERCIAL USE ONLY, STORED AT TARAUA BREEDERS AND SEMEX

PURCHASER: _____

PRICE: _____

35

50 X MAUNGAHINA LORD STARS L265

**SEMEN IS FOR COMMERCIAL USE ONLY, STORED AT TARAUA BREEDERS AND SEMEX

PURCHASER: _____

PRICE: _____

36

50 X MAUNGAHINA LORD STARS L265

**SEMEN IS FOR COMMERCIAL USE ONLY, STORED AT TARAUA BREEDERS AND SEMEX

PURCHASER: _____

PRICE: _____

Exclusive Bull Cover

What is Exclusive Bull cover?

All bulls auctioned at this sale up to the value of \$50,000 will automatically be covered under FMG's Exclusive Bull cover for 14 days at no cost to the purchaser.

Length of cover

To extend cover for the specified bull beyond 14 days you need to tick Exclusive Bull cover 12 months on the Purchaser Instruction and Insurance Slip in this catalogue. The specified bull is then covered for the remaining period of 12 months. The premium is payable to FMG and is in addition to the purchase price of the bull.

If you require an alternative cover period talk to an FMG representative.

Your bull's value

Any bull covered under this policy must be purchased for \$50,000 or less. For any bull purchased over \$50,000 talk to an FMG representative.

During the period of insurance, the specified animal is covered for:

- Death or infertility as a result of accident, disease or illness.
- Transit.
- Theft.

What we will pay

Fair market value of your specified bull, less any amount you receive for the sale of the carcass, up to the amount shown on the insurance certificate.

Disclaimer

Please note this is only a summary of the product and is subject to our specific product documentation. For full details, you should refer to the policy document. You can get these documents, and any other information you need, from your FMG representative, by calling us or visiting our website.

WE'VE MADE BULLS MORE ATTRACTIVE.

14 days
FREE
cover

6.5%
for 12
months

The handsome beasts in this catalogue will look even more appealing on sale day, thanks to FMG – the country's leading rural insurer. With 14 days free Exclusive Bull Cover, they'll be automatically insured from the fall of the hammer, covering their transit and infertility. And you can keep that cover going for the remaining 12 months for just 6.5% of the purchase price, for bulls up to the value of \$50,000. So don't miss this chance to buy bulls covered by FMG. It's a mighty attractive offer.

Please note this is only a summary of FMG products and services and is subject to our specific product documentation. For full details, refer to the relevant policy wordings at fmg.co.nz

We're here for the good of the country.

FMG
Advice & Insurance



PREMIER
— CATTLE CO. —

Our team would like to thank you for your attendance and wish you all the best with your new purchases.