

*Celebrating 40 years of stud breeding*



# DEIPA GROVE

WHITE SUFFOLK

**31st Annual Sale**

**Thursday, 10th October 2019**

Commencing 11.30am with Stud Ewes, all Rams from 1pm  
Vendors; David and Michelle Pipkorn



**AuctionsPlus**

*Buy and Sell stock nationally*

*Live Streaming*

# Abbreviations

AN – Anden BG – Baringa BW – Burwood DA – Days FA – Farrer HF – Hillcroft Farms LH – Langley Heights  
NM - Noremac WB – Woolumbool WR - Warburn  
§ - HrF and Genomics Tested Bwt – Birth Weight Wwt – Growth to weaning Pwwt - Growth to 6 months  
Pfat - Fat Cover Pemd - Red Meat Yield C+ - Carcass Plus index TCP – Terminal Carcass Production Index  
Tw – Twin TR – Triplet QU – Quadruplet ET—Embryo Transfer APP – Appendix Breeding.  
DS – Double Stud - our classing status allocated to the very elite top 2-5% of ewes from each drop.

# Flock health

Ovine Johnes Disease MN3 Status (No. VS1211)

Ovine Brucellosis Accredited Free (No. 2194)

\* Interstate Health Clearances available.

\* International Logistics can be arranged.

Foot rot and Lice Free

All sheep fully vaccinated with 6 in 1, Eryvac and BovilisMH

Vendor declarations are available on sale day from agents.

## **DISCLAIMER;**

*Whilst the highest level of care and attention has been paid to accuracy in the collection of all data and the compilation of this catalogue, neither the vendors nor the selling agents assume any responsibility for the correctness, use or interpretation of the information of animals included in this sale catalogue.*

*If you find a discrepancy, please contact the stud principal for clarification of the information.*

# Sale details

250 LOTS comprising: **20 Specially Selected Stud Ewes** (offered in pens of 2), **40 Stud Ewes** (offered in pens of 4), **30 Stud Rams** (offered individually) **20 Selected Rams** (offered in pens of 2) and **140 Flock Rams** (offered in pens of 3).

Sale to be held on-property **Detpa Grove, 961 Lorquon Road, Jeparit**. See map on back cover.  
Or search 'Detpa Grove' on 'Google Maps'.

Inspection of stock available from 9.30am sale day or during the weeks prior, by arrangement with...  
David and Michelle Pipkorn phone 0353 91 8202, **David mobile 0428 91 8372**, Michelle mobile 0408 01 8202  
or email **info@detpagrove.com**

Videos and Photos of all Stud Ewes, Stud Rams and Specially Selected Rams are on our website [www.detpagrove.com](http://www.detpagrove.com)

**Light luncheon and drinks will be catered by the Yanac Hockey Club**

*Purchased sheep may be held on property for a reasonable period of time awaiting delivery following the sale at purchaser's risk.*

4% rebate to outside agents.

For further information, contact Elders selling agents.

Stud stock – Ross Milne mobile 0408 05 7558,

Elders Jeparit - Peter Gebert mobile 0427 97 2138,

**SALE DAY LANDLINE 03 5391 8372**



# White Suffolk stud history

Founded in 1981, using our Suffolk stud as a base, we selectively purchased Poll Dorsets to introduce the “white gene”. Over the next ten years we sourced outstanding White Suffolk sires and selected ewes from various other studs to help build up a high-quality flock quickly.

We continually aim to improve performance and productivity on sound structured sheep, and so provide high quality flock rams to prime lamb producers, and sound breeding stock to stud breeders.

Balanced breeding strategies have been set in place to achieve these goals. Modern technology has been utilized - Artificial Insemination to introduce useful genetics and Lambplan for performance assessment. We maintain a small but very influential appendix breeding sector within the stud. We consider maintaining accurate and detailed records alongside sound management practices essential. Participation in health and quality assurance programs such as Ovine Brucellosis Accreditation and Ovine Johnes Disease, Market Assurance Program and DNA testing have been keenly sought.

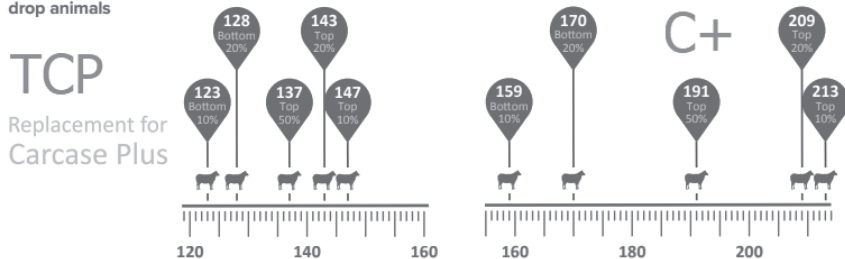
To help speed our genetic progress, generation turnover is enhanced by using the best DNA analyzed ram lambs (7 months old) each year and lambing down our ewes from as young as 12 months. Various embryo transfer programs have also been undertaken to make best use of our top ewes. High lambing percentages are also encouraged in the stud to give an even greater selection and in the last few years we have realized above 165% live lambs.

Our progress is measured by - Lambplan through across-flock SBVs, the results of trial work conducted both within flock and participation in public ones, client feedback and the performance of our stock within other studs. To see our sires featuring at the top end of Lambplan rankings and the outstanding show, sale and production results by our clients gives us great confidence to continue our direction diligently.

# New Index - Total Carcase Production (TCP)

Indexes help producers select animals for use within a breeding program when there are a range of traits of economic or functional importance. This ensures that genetic gain in one trait is not made in isolation from other traits. Using indexes in ram purchasing decisions allow producers to make balanced genetic progress towards more profitable sheep. The TCP index has been created to assist producers to achieve both gains in their major production traits, such as post-weaning weight and muscling, as well as ensuring consumer satisfaction from lamb is maintained through focusing on key eating quality traits such as shear force (tenderness) and intramuscular fat (marbling). The C+ index will be phased out.

Comparison of TCP and Carcase Plus index values for significant percentiles for 2018 drop animals



We strongly encourage the integration of ASBVs to target market objectives, together with structural assessment and overall visual appraisal. For more detail on any Detpa Grove animals, enter search site at address; <http://sgsearch.sheepgenetics.org.au/Search/Advanced.aspx?AnalysisId=2> Submit our stud name/flock code **230043** and Animal ID in 6 digits (eg. **180123**).

The performance information presented in this catalogue is based on the 15th August 2019 analysis.

# Memo of sires represented

<b>Detpa Grove PRIORITY 170180ET</b>	By HF.130156 out of top SONIC daughter
<b>Detpa Grove 170008</b>	By An.140293
<b>Detpa Grove 170037</b>	By CODE
<b>Detpa Grove 170069</b>	By AN.140293 out of top 110059 daughter
<b>Detpa Grove 170421</b>	By AN.140293
<b>Woolumbool 173980</b>	By Ella Matta 150097. ½ share sold for \$10,000 (AI)
<b>Detpa Grove 160027Tw</b>	By AN.140293. Exclusive semen package sold for \$5,125. Sons sold to \$6,000, daughters to \$1,100
<b>Detpa Grove CODE 160247ET</b>	By 140180. Very specially bred and out of our best CRACKER daughter. Sons sold to \$12,000, daughters to \$1,200
<b>Detpa Grove 160295</b>	By 140180
<b>Detpa Grove 160297</b>	By FA.140188 out of a top AN.080276 daughter. Daughters sold to \$1,200
<b>Detpa Grove 160717</b>	By 140101.
<b>Baringa MAGNUM 16W300</b>	By BG.TRIUMPH. ½ share purchased for \$20,000
<b>Warburn 160048</b>	By SM.130153 out of WG.TRIFECTA daughter. Sold for \$16,000 (AI)
<b>Detpa Grove 150008</b>	By 140108 out of BW.110959 daughter
<b>Detpa Grove 150042</b>	By 140148. Line bred out of BW.110959 daughter. Sons sold to \$16,000, daughters to \$1,600
<b>Detpa Grove 150076</b>	By 130583
<b>Detpa Grove 150090</b>	By BW.110959 out of a STORM FORCE daughter
<b>Detpa Grove 150211ET</b>	By 130592. ¾ share sold for \$19,000. Daughters sold to \$1,200
<b>Detpa Grove 150676</b>	By 140180
<b>Detpa Grove 140029</b>	By 120657. ¾ share sold for \$6,000
<b>Detpa Grove 140101Tw</b>	By AN.120321 out of a MAESTRO daughter. Daughters to \$2,600
<b>Detpa Grove 140108Tw</b>	By AN.120321.
<b>Detpa Grove SONIC 140119Tw</b>	By AN.120321 out of STORM FORCE daughter. Sons to \$13,500. Daughters to \$1,500
<b>Detpa Grove 140148</b>	By AN.120321 out of maternal sister to BW.110959

# Memo of sires cont.

**Detpa Grove 140180Tw**

By AN.120321 out of LH.060073 daughter. ¼ share sold for \$10,000. Daughters to \$1,100

**Detpa Grove 140300**

By 110059 out of An.080276 daughter. Sons to \$14,000. Daughters to \$2,300

**Anden 140293**

By AN.130041 out of a Pollambi 451 daughter. Sons sold to \$5,000, daughters to \$1,400

**Farrer 140188**

By FA.130254. Sold for \$17,000 (AI)

**Noremac 140042**

By NM.130010 out of DG ewe. Sons sold to \$6,000 (AI)

**Detpa Grove 130130ET**

By An.090168 out of top 070121 daughter. Daughters sold to \$2,700

**Detpa Grove 130148ET**

By BW.110959 out of top BW.095774 daughter. ¼ share sold for \$9,500. Sons to \$7,000

**Detpa Grove 130583**

By 110059 out of STORM FORCE sister

**Detpa Grove 130592**

By BW.110959 out of AC.050605 daughter

**Langley Heights 130572**

By LH.110587 (AI)

**Hillcroft Farms 130156**

Purchased in p/ship for \$10,000. Sons sold to \$12,000 (AI)

**Detpa Grove 120214**

By STORM FORCE

**Detpa Grove 120419**

Daughters to \$1,100

**Detpa Grove 120657TR**

By AN.080276 out of a SOVEREIGN daughter. Sons to \$8,250

**Detpa Grove 120760**

By 110084TR out of GE.090298 daughter. Sold for \$5,500

**Anden 120321**

By AN.110370. Sons sold to \$10,000 (AI)

**Hillcroft Farms 120028**

By HF.110780. Sons sold to \$31,000 (AI)

**Detpa Grove 110059**

By 100065 out of our top PE.043050 daughter. Sons sold to \$7,000. Daughters to \$3,000

**Detpa Grove 110084TR**

By AN.080276. ¼ share sold for \$16,000. Sons to \$16,000. Daughters to \$2,200

**Detpa Grove 110091**

By BW.095774 out of a SHOCKWAVE daughter. Sold for \$10,000. Daughters to \$3,500

**Burwood 110959ET**

By AN.090206 out of AC.050605 daughter. Purchased in p/ship with Anden for \$21,000 sons sold to \$36,000. Daughters sold \$2,100

**Days 110071**

By GE.090298 out of a DISTINCTION daughter. (AI)

**Burwood 095774**

By BW.074914. ½ share purchased. Sons sold to \$10,000, daughters to \$4,000

**Langley Heights 060073**

By Farrer 040074 (AI)

# Auctions Plus with Live Streaming

Stud Rams again offered individually. Stud Ewes and Specially Selected Rams will be offered utilizing the new 'picks of the pen' options of A+ Online bidding is available only to registered users. Registration is free - visit [www.auctionsplus.com.au](http://www.auctionsplus.com.au) to register.

***Please register at least 48 hours prior to the sale.***

For lots **1-60**  
commencing at  
**11.30am** and lots  
**61-110** commencing at  
**1.00pm**







 AuctionsPlus®

## Can't make the sale?

Log on to AuctionsPlus and bid on your phone, tablet or computer.

Contact AuctionsPlus on (02) 9262 4222  
or email [studsales@auctionsplus.com.au](mailto:studsales@auctionsplus.com.au) or [www.auctionsplus.com.au](http://www.auctionsplus.com.au)

Check us out on:    





# 20 Specially Selected Stud Ewes – Pens of 2



Lot	Tag		DOB	Sire	Dam	S/Dam	Bwt	Wwt	Pwt	Pft	Pemd	C+	TCP	Purchaser/Price
1	180529	Tw	9-Jun	170421	160157TR	FA.140188	0.48	12.45	18.77	-1.13	0.70	207	138	.....
2	180550	TR	11-Jun	170421	130253TwDS	110059	0.52	11.32	17.00	-1.41	1.38	207	144	.....
3	180348		1-Jun	WR.160048	160314TwDS	140300	0.49	11.47	17.56	-1.07	2.20	218	149	.....
4	180590	Tw	14-Jun	170008	160249	140180Tw	0.50	11.48	17.97	-0.70	0.89	203	140	.....
5	180156	Tw	27-May	160717Tw	130215ET	BW.110959	0.43	9.58	15.08	-0.57	1.80	198	140	.....
6	180793	Tw	12-Aug	170421	160447Tw	150042	0.49	11.04	17.33	-1.28	1.07	204	140	.....
7	180599	Tw	15-Jun	170008	150388Tw	130592TR	0.34	9.82	15.43	-0.08	1.82	198	137	.....
8	180143		26-May	170037	160517Tw	150090	0.45	10.08	15.06	-0.50	1.46	195	135	.....
9	180132	Tw	25-May	140300	130601Tw	120760	0.49	10.03	15.44	-0.71	1.97	203	140	.....
10	180396	Tw	2-Jun	140180Tw	160024Tw	140300	0.39	9.59	15.31	-0.51	1.94	200	139	.....

# 20 Specially Selected Stud Ewes continued



Lot	Tag	DOB	Sire	Dam	S/Dam	Bwt	Wwt	Pwt	Pft	Pemd	C+	TCP	Purchaser/Price
			BG.MAGNUM										
11	180706	25-Jul	16W300	170376Tw	140300	0.37	10.32	14.88	-0.45	1.77	198	137	.....
12	180765	4-Aug	170008	140022	120657TR	0.46	11.28	16.93	-0.66	0.96	199	138	.....
13	180541	Tw 11-Jun	170008	130452TR	110059	0.46	10.50	16.53	-0.67	1.40	201	141	.....
14	180494	Tw 6-Jun	170037	130240Tw	110059	0.45	9.09	14.26	-0.65	1.60	192	138	.....
15	180016	Tw 17-May	140300	160727	140101Tw	0.47	10.97	16.64	-0.88	2.58	217	149	.....
16	180472	Tw 4-Jun	160717Tw	160637TR	150676	0.41	9.92	15.93	-0.63	2.57	211	149	.....
17	180169	28-May	170037	150751TwDS	130130ET	0.40	9.62	14.65	-0.71	1.36	192	135	.....
18	180047	TR 18-May	160717Tw	150088Tw	BW.110959	0.43	9.78	15.35	-0.54	2.48	207	145	.....
19	180085	TR 20-May	170037	160126Tw	FA.140188	0.43	10.28	16.02	-0.43	1.38	198	137	.....
20	180554	Tw 12-Jun	170037	140223Tw	120419Tw	0.45	9.26	14.04	-0.57	1.26	187	137	.....

# 40 Stud Ewes - Pens of 4



Lot	Tag	DOB	Sire	Dam	S/Dam	Bwt	Wwt	Pwt	Pft	Pemd	C+	TCP	Purchaser/Price
21	180342	Tw	1-Jun	WR.160048	160189TR DS	FA.140188	0.44	11.64	18.96	-0.39	2.35	222	152 .....
22	180427		2-Jun	WR.160048	120424	110084TR	0.45	10.94	16.38	-0.71	2.20	211	145 .....
23	180035	Tw	18-May	140300	140190APP	HF.130156PD	0.46	10.96	16.27	-1.01	2.42	214	151 .....
24	180424	Tw	2-Jun	170008	160257Tw	FA.140188	0.45	11.84	18.39	-0.85	1.73	215	148 .....
<hr/>													
25	180182	Tw	29-May	LH.130572	160532Tw	150008	0.49	10.74	16.93	0.22	2.66	214	150 .....
26	180197	TR	29-May	WR.160048	150296APP	HF.120028PD	0.60	11.14	17.16	-0.46	2.38	215	150 .....
27	180295	Tw	31-May	LH.130572	150195ET	130148ET	0.50	10.15	15.28	0.25	2.46	204	145 .....
28	180437	Tw	2-Jun	LH.130572	160692	140300	0.48	10.16	16.06	-0.24	2.27	207	147 .....

# 40 Stud Ewes continued



Lot	Tag	DOB	Sire	Dam	S/Dam	Bwt	Wwt	Pwt	Pft	Pemd	C+	TCP	Purchaser/Price
29	180527	Tw 9-Jun	160295Tw	160106Tw	NM.140042	0.42	9.75	15.70	-0.79	2.37	208	147	.....
30	180145	TR 26-May	160717Tw	150018Tw	BW.110959	0.52	10.34	15.47	-0.90	1.87	203	142	.....
31	180148	Tw 26-May	140300	120278ET	110091	0.35	9.87	14.62	-0.58	2.11	201	141	.....
32	180861	Tw 1-Sep	160297	160300Tw	140180Tw	0.36	10.32	16.36	-1.07	1.29	200	139	.....
<hr/>													
33	180341	Tw 1-Jun	WR.160048	160189TR DS	FA.140188	0.52	12.43	19.93	-0.79	1.79	222	153	.....
34	180155	Tw 27-May	160717Tw	130215ET	BW.110959	0.49	10.34	16.13	-0.64	1.52	200	140	.....
35	180346	Tw 1-Jun	150211ET	160263Tw	NM.140042	0.43	9.89	15.48	-0.37	2.12	203	142	.....
36	180305	Tw 31-May	140180Tw	140676Tw	110059	0.42	9.46	15.40	-0.78	2.05	202	143	.....

# Baringa MAGNUM 16W300



**(pictured at 13 months) ½ share purchased for \$20,000  
MAGNUM is sire of 5 stud rams and 2 stud ewes in this sale**

# 40 Stud Ewes continued



Lot	Tag	DOB	Sire	Dam	S/Dam	Bwt	Wwt	Pwt	Pft	Pemd	C+	TCP	Purchaser/Price
37	180327	1-Jun	WR.160048	160228ET	NM.140042	0.53	11.10	18.04	-0.61	1.79	212	148	.....
38	180478	Tw 4-Jun	160717Tw	140725TR	BW.110959	0.41	9.27	14.79	-0.59	1.85	197	139	.....
39	180476	4-Jun	BG.MAGNUM 16W300	120398ET	LH.060073	0.26	9.25	13.30	-0.56	1.83	191	137	.....
40	180165	Tw 27-May	170421	150407Tw	SONIC 140119Tw	0.41	10.60	16.25	-1.10	1.06	198	137	.....
41	180598	15-Jun	160297	110520TR	BW.095774	0.34	9.00	14.20	-0.77	1.23	188	137	.....
42	180580	Tw 14-Jun	170008	160131	NM.140042	0.35	9.67	15.72	-0.21	1.53	196	137	.....
43	180134	Tw 25-May	170421	160541Tw	150008	0.43	10.61	16.44	-0.95	1.09	199	138	.....
44	180110	Tw 22-May	160717Tw	130419	BW.110959	0.42	8.98	14.65	-0.30	2.05	197	141	.....

# 40 Stud Ewes continued



Lot	Tag		DOB	Sire	Dam	S/Dam	Bwt	Wwt	Pwt	Pft	Pemd	C+	TCP	Purchaser/Price
45	180233	TR	30-May	LH.130572	130356TwDS	110059	0.48	9.23	14.60	-0.51	1.87	196	142	.....
46	180005	Tw	15-May	170037	140181ET	AN.120321	0.36	9.17	14.04	-0.50	2.04	196	138	.....
47	180553	Tw	11-Jun	160297	130596Tw	BW.110959	0.36	9.83	15.62	-0.21	1.50	196	135	.....
48	180632	Tw	19-Jun	160297	120489DS	110084TR	0.35	9.65	15.10	-0.05	1.30	190	131	.....
<hr/>														
49	180161	Tw	27-May	170421	140566Tw	130130ET	0.40	10.12	16.00	-1.08	0.64	191	134	.....
50	180544		11-Jun	170037	130188ET	DA.110071	0.36	8.98	13.78	-0.54	1.70	191	137	.....
						SONIC								
51	180206		29-May	170037	150423Tw	140119Tw	0.38	8.95	13.98	-0.46	2.00	194	141	.....
52	180615	Tw	16-Jun	170037	140532TwDS	110059	0.51	10.42	15.96	-1.16	1.07	197	139	.....

# 40 Stud Ewes continued



Lot	Tag	DOB	Sire	Dam	S/Dam	Bwt	Wwt	Pwt	Pft	Pemd	C+	TCP	Purchaser/Price
53	180874	6-Sep	170037	150784TR	140108Tw	0.36	8.95	14.37	-0.47	1.50	190	135	.....
54	180579	Tw 14-Jun	160295Tw	150146Tw	130148ET	0.34	8.90	13.73	-0.30	2.22	195	139	.....
55	180601	16-Jun	160295Tw	160289	AN.140293	0.27	8.49	13.46	-0.64	2.00	192	138	.....
56	180647	3-Jul	170037	160128TwDS	140029	0.37	9.36	13.73	-0.35	1.56	189	133	.....
<hr/>													
57	180263	APP 31-May	HF.130156PD	120799Tw	110084TR	0.21	7.74	12.14	-0.22	2.14	186	139	.....
58	180078	Tw 20-May	AN.140293	160615Tw	150076	0.19	9.14	14.74	-0.26	1.73	194	134	.....
59	180477	Tw 4-Jun	160717Tw	140725TR	BW.110959	0.33	8.28	13.35	-0.48	1.86	189	135	.....
60	180881	Tw 5-Aug	160717Tw	150728w	140148	0.34	8.66	13.94	-0.34	2.40	198	143	.....



## Detpa Grove 160717Tw



**Sired by 140101TR**

**(Pictured aged 11 months)**

**160717 is sire of 2 stud  
rams and 8 stud ewes in  
this sale**



**Lot 61 - 180275**



**Lot 62 - 180729**



**Lot 63 - 180324**



**Lot 64 - 180291**

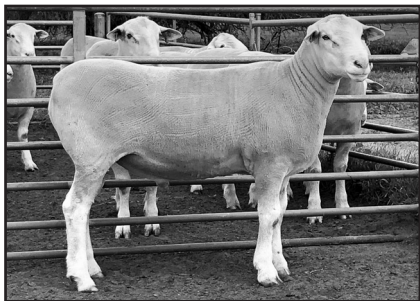


**Lot 65 - 180831**

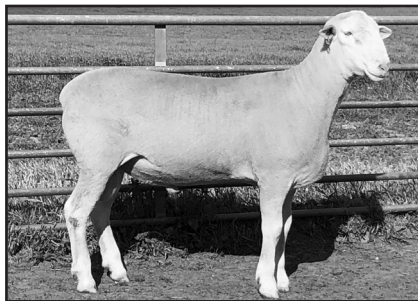


**Lot 66 - 180629**

Lot	Tag	DNA	DOB	Sire	Dam	S/Dam	Bwt	Wwt	Pwt	Pft	Pemd	C+	TCP	Purchaser/Price
61	180275	§	31-May	16W300 BG.MAGNUM	150724TwDS	BW.110959	0.47	11.48	16.12	-0.76	1.30	201	137	.....
62	180729	§	25-Jul	170421	130291TwDS	110059	0.47	9.51	14.34	-0.80	0.86	185	127	.....
63	180324	TR §	1-Jun	WR.160048	140229ET	120657TR	0.64	12.50	19.94	-0.59	2.07	225	154	.....
64	180291	§	31-May	WR.160048	140882TwDS	110059	0.49	11.57	18.36	-0.97	2.20	220	153	.....
65	180831	Tw §	26-Aug	170180ET PRIORITY	160453	150676	0.49	10.74	16.18	-0.86	1.91	207	150	.....
66	180629	§	18-Jun	160297	160450Tw	140300	0.63	12.50	19.75	-1.26	0.64	211	145	.....



**Lot 67 - 180138**



**Lot 68 - 180643**



**Lot 69 - 180154**



**Lot 70 - 180744**



**Lot 71 - 180422**



**Lot 72 - 180833**

# 30 Stud Rams continued



Lot	Tag	DNA	DOB	Sire	Dam	S/Dam	Bwt	Wwt	Pwt	Pft	Pemd	C+	TCP	Purchaser/Price
67	180138	TR §	25-May	170037	150023Tw	130130ET	0.52	10.97	17.50	-0.21	1.64	206	142	.....
68	180643	§	1-Jul	170421	150202APP	HF.130156PD	0.38	10.59	16.09	-1.16	1.71	205	147	.....
69	180154	§	26-May	140300	120204TwDS	110084TR	0.38	10.97	16.27	-1.02	2.41	214	145	.....
70	180744	Tw §	26-Jul	BG.MAGNUM 16W300	170352Tw	150042	0.38	9.74	14.64	-0.50	1.75	196	138	.....
71	180422	Tw §	2-Jun	160295Tw	160712Tw	AN.140293	0.32	9.99	16.23	-0.61	2.60	212	149	.....
72	180833	Tw §	27-Aug	PRIORITY 170180ET	130431Tw	120214Tw	0.36	8.31	13.00	-0.10	2.75	197	144	.....



**Lot 73 - 180811**



**Lot 74 - 180713**



**Lot 75 - 180691**



**Lot 76 - 180692**



**Lot 77 - 180188**



**Lot 78 - 180798**

# 30 Stud Rams continued



Lot	Tag	DNA	DOB	Sire	Dam	S/Dam	Bwt	Wwt	Pwt	Pft	Pemd	C+	TCP	Purchaser/Price
73	180811 TR §		19-Aug	160717Tw	160058TwDS	AN.140293	0.40	9.75	15.55	-0.38	2.11	203	142	.....
74	180713 Tw §		25-Jul	WB.173980	170050Tw	160297	0.42	10.73	17.38	-0.50	2.47	216	154	.....
75	180691 Tw §		24-Jul	WB.173980	170294Tw	160027Tw	0.45	11.24	17.72	0.08	2.19	213	151	.....
76	180692 Tw §		24-Jul	WB.173980	170294Tw	160027Tw	0.48	11.97	18.54	0.19	2.37	219	151	.....
77	180188 Tw §		29-May	LH.130572	150492TwDS	130583Tw	0.38	9.35	15.03	-0.22	2.82	207	149	.....
78	180798 Tw §		12-Aug	170069	170056Tw	CODE 160247ET	0.51	11.51	18.23	-0.86	1.62	213	143	.....



**Lot 79 - 180785**



**Lot 80 - 180207**



**Lot 81 - 180503**



**Lot 82 - 180466**



**Lot 83 - 180432**



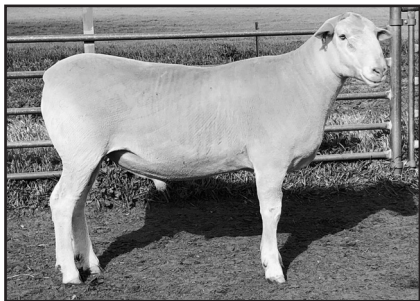
**Lot 84 - 180546**



# 30 Stud Rams continued



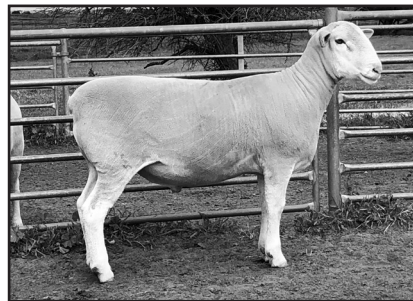
Lot	Tag	DNA	DOB	Sire	Dam	S/Dam	Bwt	Wwt	Pwt	Pft	Pemd	C+	TCP	Purchaser/Price
79	180785	§	12-Aug	160717Tw	130624Tw	110059	0.55	9.72	15.25	-1.07	2.22	206	148	.....
80	180207	Tw §	29-May	160027Tw	140652Tw	120657TR	0.50	11.13	17.24	-0.24	2.20	212	142	.....
81	180503	Tw §	6-Jun	170421	140204Tw	120419Tw	0.24	8.69	13.51	-0.68	1.46	187	132	.....
82	180466	§	4-Jun	BG.MAGNUM 16W300	160142	140180Tw	0.31	10.63	15.84	0.02	1.54	198	134	.....
83	180432	Tw §	2-Jun	BG.MAGNUM 16W300	150091Tw	BW.110959	0.41	10.36	14.83	-0.12	1.65	195	134	.....
84	180546	Tw §	11-Jun	160297	150421	140148	0.44	10.05	15.83	-0.90	1.35	198	136	.....



**Lot 85 - 180413**



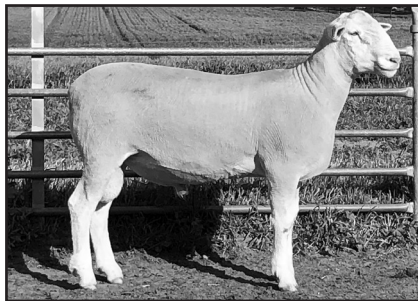
**Lot 86 - 180689**



**Lot 87 - 180288**



**Lot 88 - 180149**



**Lot 89 - 180752**



**Lot 90 - 180627**

# 30 Stud Rams continued



Lot	Tag	DNA	DOB	Sire	Dam	S/Dam	Bwt	Wwt	Pwt	Pft	Pemd	C+	TCP	Purchaser/Price
85	180413	§	2-Jun	WR.160048	160298ET	NM.140042	0.53	11.22	17.60	-0.63	2.27	216	152	.....
86	180689	Tw §	24-Jul	WR.160048	170095Tw	160027Tw	0.43	11.32	17.51	-0.19	2.64	219	152	.....
				BG.MAGNUM										
87	180288	Tw §	31-May	16W300	140811Tw	BW.110959	0.39	10.71	14.98	-0.54	1.74	199	137	.....
88	180149	Tw §	26-May	170037	160521	150676	0.35	9.74	15.99	-0.39	1.97	203	143	.....
89	180752	Tw §	29-Jul	170008	160252TR	140029	0.45	11.25	17.51	-0.42	2.06	213	143	.....
90	180627	§	18-Jun	160717Tw	150719Tw	140180Tw	0.36	8.50	13.67	-0.62	2.43	198	143	.....

# 20 Specially Selected Rams – Pens of 2



Lot	Tag	DNA	DOB	Sire	Dam	S/Dam	Bwt	Wwt	Pwt	Pft	Pemd	C+	TCP	Purchaser/Price	
91	180073	Tw	§	20-May	140300	160124	NM.140042	0.40	11.03	17.24	-0.77	1.74	209	141	.....
92	180100		§	21-May	140300	110554	BW.095774	0.43	9.49	15.06	-0.40	2.27	202	143	.....
93	180357	Tw	§	1-Jun	160297	160032	AN.140293 STORM FORCE	0.43	11.95	18.71	-0.97	0.85	207	133	.....
94	180043	Tw		18-May	AN.140293	120725	100346ET	0.34	11.02	16.83	-0.76	1.12	200	136	.....
95	180098	Tw	§	21-May	160717Tw	160002	AN.140293	0.37	9.46	15.26	-0.34	2.12	201	142	.....
96	180167	Tw		28-May	170421	150331	130130ET	0.44	11.18	16.71	-1.14	0.95	200	135	.....
97	180166	Tw		28-May	170421	150331	130130ET	0.46	11.34	16.85	-1.23	0.81	200	135	.....
98	180242	TR	§	30-May	WR.160048	140116	120657TR	0.65	12.54	19.56	-0.84	1.64	220	152	.....
99	180640	TR	§	29-Jun	PRIORITY 170180ET	150276	SONIC 140119Tw	0.48	9.93	16.07	-0.52	2.45	209	156	.....
100	180255			31-May	WR.160048	160600	140300	0.44	10.95	17.01	-0.79	2.30	214	147	.....

# 20 Specially Selected Rams continued



Lot	Tag	DNA	DOB	Sire	Dam	S/Dam	Bwt	Wwt	Pwt	Pft	Pemd	C+	TCP	Purchaser/Price	
101	180516	TR	7-Jun	170421	130080	110059	0.47	10.87	16.76	-1.25	0.84	199	137	.....	
102	180140	TR	§ 25-May	170037	150023	130130ET	0.44	9.75	15.97	-0.41	1.34	196	138	.....	
103	180031	TR	18-May	AN.140293	140793	110059	0.40	11.32	17.46	-0.86	1.48	208	142	.....	
104	180499	Tw	6-Jun	AN.140293	130246	120149Tw	0.36	10.96	16.68	-0.67	1.41	203	139	.....	
				BG.MAGNUM											
105	180464	TR	4-Jun	16W300	150680	140180Tw	0.44	11.54	17.01	-0.59	1.73	209	143	.....	
106	180821	Tw	22-Aug	170069	160127	140029	0.44	12.07	17.68	-1.07	1.35	210	141	.....	
107	180074	Tw	20-May	140300	160124	NM.140042	0.49	10.82	17.45	-0.78	1.91	211	145	.....	
108	180592	Tw	15-Jun	170037	150184APP	HF.130156PD	0.34	9.68	15.58	-0.07	3.07	212	153	.....	
109	180588	Tw	14-Jun	160297	160504	150613	0.47	11.47	17.43	-1.12	0.72	200	138	.....	
110	180329	TR	1-Jun	WR.160048	140742	120657TR	0.48	10.29	16.68	-0.24	1.87	205	142	.....	

# 140 Flock Rams - Pens of 3

Lot	Tag		DOB	Sire	Bwt	Wwt	Pwt	Pft	Pemd	C+	TCP	Purchaser/Price
111	180300	TR	31-May	WR.160048	0.68	12.36	19.33	-0.52	1.73	218	151	.....
112	180551		11-Jun	170421	0.44	10.75	16.00	-1.21	1.47	203	138	.....
113	180502	Tw	6-Jun	170421	0.45	10.84	16.86	-1.03	0.98	200	136	.....
114	180381		1-Jun	160027Tw	0.36	10.99	16.92	-0.44	2.51	215	145	.....
115	180231	TR	30-May	LH.130572	0.54	10.30	15.97	-0.45	2.15	206	147	.....
116	180428		2-Jun	BG.MAGNUM 16W300	0.35	10.35	15.31	-0.34	1.91	201	139	.....
117	180405	Tw	2-Jun	BG.MAGNUM 16W300	0.35	10.61	15.82	-0.17	2.23	206	147	.....
118	180458		3-Jun	BG.MAGNUM 16W300	0.32	10.72	15.68	-0.21	2.17	205	144	.....
119	180262	APP	31-May	HF.130156PD	0.35	10.03	15.07	-0.31	2.63	207	149	.....
120	180764	Tw	3-Aug	170421	0.44	10.81	16.47	-1.25	1.06	200	138	.....
121	180518	Tw	8-Jun	170421	0.46	10.91	17.17	-1.16	1.17	204	141	.....
122	180406	Tw	2-Jun	BG.MAGNUM 16W300	0.35	10.56	15.65	-0.23	2.18	205	147	.....
123	180843	TR	29-Aug	170187	0.27	9.55	15.45	-0.17	2.78	209	146	.....
124	180830		24-Aug	160297	0.37	10.79	16.80	-0.88	1.19	201	138	.....
125	180423	Tw	2-Jun	170008	0.49	12.19	18.82	-0.98	1.27	213	146	.....

# 140 Flock Rams continued

Lot	Tag		DOB	Sire	Bwt	Wwt	Pwt	Pft	Pemd	C+	TCP	Purchaser/Price
126	180064	Tw	19-May	160297	0.33	11.37	17.87	-0.88	1.69	212	142	.....
127	180803		18-Aug	160297	0.45	11.09	17.28	-0.97	0.83	200	136	.....
128	180123		24-May	140300	0.50	10.56	15.93	-1.05	1.87	206	142	.....
129	180407	Tw	2-Jun	LH.130572	0.56	11.42	17.27	-0.74	1.92	212	150	.....
130	180319	Tw	1-Jun	WR.160048	0.54	10.90	16.95	-0.36	2.01	209	147	.....
131	180401	Tw	2-Jun	BG.MAGNUM 16W300	0.53	12.42	17.40	-0.95	0.61	201	137	.....
132	180656	Tw	19-Jul	170421	0.61	11.99	17.24	-1.10	0.96	204	138	.....
133	180115		22-May	140300	0.41	10.52	15.98	-0.73	2.14	208	143	.....
134	180038	Tw	18-May	160297	0.50	11.79	18.30	-0.79	1.24	209	140	.....
135	180875	Tw	6-Sep	170421	0.48	11.51	17.55	-1.20	1.10	206	140	.....
136	180722	Tw	25-Jul	170069	0.48	11.79	18.66	-0.83	1.38	212	145	.....
137	180219	Tw	30-May	BG.MAGNUM 16W300	0.38	10.82	15.86	-0.25	1.57	200	137	.....
138	180800	Tw	14-Aug	170421	0.39	10.48	16.53	-1.08	1.80	207	142	.....
139	180488	TR	5-Jun	170421	0.47	11.04	17.49	-1.13	1.24	206	139	.....
140	180607	TR	16-Jun	PRIORITY 170180ET	0.53	10.06	15.79	-0.95	2.36	209	152	.....

# 140 Flock Rams continued

Lot	Tag		DOB	Sire	Bwt	Wwt	Pwt	Pft	Pemd	C+	TCP	Purchaser/Price
141	180748	Tw	25-Jul	WB.173980	0.52	11.95	19.06	-0.14	2.58	225	157	.....
142	180434	Tw	2-Jun	WR.160048	0.52	11.04	17.90	-0.78	1.88	213	149	.....
143	180037	Tw	18-May	160297	0.46	11.37	17.42	-0.81	1.29	205	138	.....
144	180389		1-Jun	LH.130572	0.61	11.48	17.21	-0.16	1.74	207	146	.....
145	180521	Tw	8-Jun	160295Tw	0.38	9.75	15.27	-0.44	2.17	203	141	.....
146	180212	Tw	30-May	160295Tw	0.31	8.75	14.42	-0.63	2.42	201	144	.....
147	180321	APP	1-Jun	HF.130156PD	0.34	9.80	15.40	-0.61	2.66	209	153	.....
148	180245	Tw	31-May	LH.130572	0.52	11.01	17.26	0.21	2.51	214	150	.....
149	180672	TR	22-Jul	PRIORITY 170180ET	0.40	10.10	15.97	-0.50	2.14	206	147	.....
150	180272	Tw	31-May	WR.160048	0.46	10.96	17.67	-0.34	2.81	221	152	.....
151	180817	TR	20-Aug	170187	0.26	9.36	15.29	0.14	3.01	209	148	.....
152	180773	Tw	7-Aug	PRIORITY 170180ET	0.35	8.85	14.61	-0.43	2.41	201	147	.....
153	180522	Tw	8-Jun	170421	0.31	9.90	15.52	-0.50	2.35	206	147	.....
154	180347		1-Jun	WR.160048	0.52	11.12	16.93	-0.53	1.74	207	146	.....
155	180663	Tw	20-Jul	WB.173980	0.40	11.38	18.25	0.27	2.81	221	154	.....



# 140 Flock Rams continued

Lot	Tag		DOB	Sire	Bwt	Wwt	Pwt	Pft	Pemd	C+	TCP	Purchaser/Price
156	180277	Tw	31-May	WR.160048	0.57	11.92	19.61	-0.97	2.05	224	157	.....
157	180792	Tw	12-Aug	170421	0.43	10.40	16.33	-0.97	1.33	200	138	.....
158	180411	APP	2-Jun	HF.130156PD	0.22	8.45	13.71	-0.24	3.13	204	151	.....
159	180448		3-Jun	BG.MAGNUM 16W300	0.33	10.17	14.27	-0.37	1.92	197	138	.....
160	180371	Tw	1-Jun	BG.MAGNUM 16W300	0.28	9.65	14.36	-0.23	1.58	192	134	.....
161	180046	Tw	18-May	170421	0.42	10.56	16.48	-1.33	0.89	198	137	.....
162	180573	TR	13-Jun	170008	0.35	9.20	15.18	-0.29	1.68	195	137	.....
163	180572	TR	13-Jun	170008	0.33	9.09	14.75	-0.24	1.87	195	137	.....
164	180419		2-Jun	170037	0.34	9.83	15.22	-0.23	1.48	194	134	.....
165	180509	Tw	7-Jun	160297	0.35	11.09	16.53	-0.84	1.02	199	135	.....
166	180055		19-May	AN.140293	0.24	9.34	14.33	-0.28	1.93	195	133	.....
167	180474	Tw	4-Jun	140180Tw	0.39	9.34	15.64	-0.71	1.37	195	138	.....
168	180126	Tw	24-May	170037	0.32	9.11	13.89	-0.49	1.70	191	134	.....
169	180556	Tw	12-Jun	160297	0.36	9.80	15.12	-0.91	0.79	188	130	.....
170	180507		7-Jun	170037	0.37	9.14	13.78	-0.70	1.48	189	136	.....

# 140 Flock Rams continued

Lot	Tag		DOB	Sire	Bwt	Wwt	Pwt	Pft	Pemd	C+	TCP	Purchaser/Price
171	180545	Tw	11-Jun	160297	0.42	10.38	15.80	-0.93	1.15	196	135	.....
172	180567		12-Jun	160297	0.38	10.71	15.62	-0.68	1.17	196	135	.....
173	180109	Tw	22-May	160717Tw	0.45	9.45	15.67	-0.62	1.57	197	142	.....
174	180127	Tw	24-May	160295Tw	0.43	9.24	14.21	-0.83	2.17	199	141	.....
175	180426		2-Jun	150211ET	0.28	8.33	13.86	-0.56	1.70	190	136	.....
176	180533		10-Jun	170037	0.38	9.44	14.36	-0.55	1.82	195	138	.....
177	180139	TR	25-May	170037	0.33	8.91	14.51	-0.13	2.08	196	138	.....
178	180575	TR	13-Jun	160297	0.47	11.27	16.66	-0.93	0.93	199	135	.....
179	180631	Tw	19-Jun	160297	0.35	9.93	15.29	0.12	1.62	195	133	.....
180	180004	Tw	15-May	170037	0.37	9.17	13.99	-0.53	1.87	194	137	.....
181	180256	TR	31-May	160297	0.45	10.67	16.62	-0.92	1.44	199	140	.....
182	180239	TR	30-May	BG.MAGNUM 16W300	0.33	9.78	15.17	-0.48	1.48	195	136	.....
183	180360	Tw	1-Jun	170421	0.40	10.06	15.44	-0.96	1.26	196	134	.....
184	180077	Tw	20-May	AN.140293	0.26	10.01	16.25	-0.56	1.47	199	137	.....
185	180449		3-Jun	170037	0.32	9.21	14.42	-0.46	1.82	194	138	.....

# Warburn 160048



**Purchased by  
WINGAMIN for \$16,000**

**WR.160048(AI) is sire of  
4 stud rams and 6 stud  
ewes in this sale**

# 140 Flock Rams continued

Lot	Tag		DOB	Sire	Bwt	Wwt	Pwt	Pft	Pemd	C+	TCP	Purchaser/Price
186	180082	TR	20-May	AN.140293	0.27	9.79	16.00	-0.50	0.81	190	132	.....
187	180380		1-Jun	140180Tw	0.31	7.97	12.67	-0.48	2.68	195	141	.....
188	180513	TR	7-Jun	170037	0.39	9.15	14.79	-0.66	1.87	197	139	.....
189	180858	Tw	1-Sep	160297	0.38	10.48	16.52	-0.54	1.28	199	137	.....
190	180614	Tw	16-Jun	170037	0.42	9.20	14.60	-1.01	1.20	190	137	.....
191	180795		11-Aug	160717Tw	0.49	9.99	14.76	-0.88	1.49	196	139	.....
192	180510	Tw	7-Jun	170421	0.37	9.74	15.46	-0.77	1.51	197	136	.....
193	180491	Tw	5-Jun	170037	0.42	9.61	13.88	-1.00	1.22	189	134	.....
194	180289	Tw	31-May	BG.MAGNUM 16W300	0.39	10.89	15.47	-0.62	1.31	197	135	.....
195	180353		1-Jun	BG.MAGNUM 16W300	0.49	11.51	16.47	-0.64	1.20	201	139	.....
196	180754	Tw	29-Jul	PRIORITY 170180ET	0.29	8.88	14.81	-0.32	2.29	200	144	.....
197	180695	Tw	23-Jul	WB.173980	0.49	11.82	18.75	-0.27	2.31	221	156	.....
198	180851	Tw	30-Aug	170421	0.35	10.41	16.31	-0.92	1.64	204	142	.....
199	180683		24-Jul	BG.MAGNUM 16W300	0.42	11.02	16.15	-0.29	1.56	201	137	.....
200	180720	Tw	25-Jul	140180Tw	0.28	9.51	15.91	-0.25	2.31	205	142	.....

# 140 Flock Rams continued

Lot	Tag		DOB	Sire	Bwt	Wwt	Pwt	Pft	Pemd	C+	TCP	Purchaser/Price
201	180741	Tw	26-Jul	170187	0.41	10.34	16.03	-0.62	2.35	209	143	.....
202	180372	Tw	1-Jun	BG.MAGNUM 16W300	0.35	10.96	15.96	-0.41	1.76	203	139	.....
203	180375	QU	1-Jun	WR.160048	0.58	10.89	16.56	-0.34	2.47	213	147	.....
204	180801	Tw	14-Aug	170421	0.38	10.33	16.09	-0.86	1.89	205	141	.....
205	180402	Tw	2-Jun	BG.MAGNUM 16W300	0.50	12.17	17.27	-0.76	0.97	203	139	.....
206	180610	Tw	16-Jun	160297	0.41	10.34	16.70	-0.31	1.53	201	140	.....
207	180670	Tw	22-Jul	170069	0.34	10.98	17.00	-0.89	1.52	206	140	.....
208	180010	Tw	16-May	160717Tw	0.42	10.34	16.27	-0.78	1.88	206	145	.....
209	180596	Tw	15-Jun	PRIORITY 170180ET	0.34	9.70	15.75	-0.31	2.62	209	151	.....
210	180819	TR	20-Aug	170187	0.28	9.34	14.86	-0.36	2.49	204	145	.....
211	180285	TR	31-May	BG.MAGNUM 16W300	0.41	11.47	16.50	-0.74	1.32	203	143	.....
212	180662	Tw	20-Jul	WB.173980	0.39	11.14	17.61	0.22	2.70	217	153	.....
213	180641	TR	29-Jun	PRIORITY 170180ET	0.41	9.21	14.58	-0.35	2.84	206	151	.....
214	180731		26-Jul	PRIORITY 170180ET	0.21	8.82	14.29	0.20	2.85	202	144	.....
215	180818	TR	20-Aug	170187	0.31	9.87	15.42	-0.51	2.54	208	148	.....

# 140 Flock Rams continued

Lot	Tag		DOB	Sire	Bwt	Wwt	Pwt	Pft	Pemd	C+	TCP	Purchaser/Price
216	180018	TR	17-May	AN.140293	0.32	10.16	15.51	-0.50	1.67	199	135	.....
217	180193		29-May	140180Tw	0.28	8.09	13.11	0.01	2.10	189	135	.....
218	180279	Tw	31-May	140180Tw	0.41	9.56	15.32	-0.37	1.54	195	137	.....
219	180538	TR	11-Jun	PRIORITY 170180ET	0.38	8.92	14.06	-0.41	2.08	195	143	.....
220	180558		12-Jun	170008	0.30	8.84	14.20	-0.41	1.72	192	136	.....
221	180776	Tw	8-Aug	160717Tw	0.43	9.22	14.64	-0.84	1.98	199	142	.....
222	180675		23-Jul	170037	0.38	9.56	14.37	-0.55	1.62	193	136	.....
223	180794		11-Aug	170421	0.35	9.97	14.51	-0.78	1.72	197	134	.....
224	180655		18-Jul	170421	0.40	9.89	15.15	-1.05	1.15	193	134	.....
225	180534	TR	10-Jun	170037	0.45	9.86	15.09	-0.91	1.30	194	138	.....
226	180651	Tw	13-Jul	170037	0.45	10.04	15.51	-0.78	1.36	196	140	.....
227	180868	Tw	2-Sep	160297	0.34	10.29	15.70	-0.77	0.65	189	131	.....
228	180240	TR	30-May	BG.MAGNUM 16W300	0.29	9.30	14.04	-0.51	1.50	190	134	.....
229	180429	TR	2-Jun	BG.MAGNUM 16W300	0.41	10.59	15.45	-0.32	1.20	194	134	.....
230	180605	Tw	16-Jun	160297	0.41	10.31	16.69	-0.93	1.15	199	139	.....

# 140 Flock Rams continued

Lot	Tag		DOB	Sire	Bwt	Wwt	Pwt	Pft	Pemd	C+	TCP	Purchaser/Price
231	180777	Tw	8-Aug	160717Tw	0.32	7.98	13.21	-0.46	2.45	195	140	.....
232	180862	Tw	1-Sep	170421	0.39	9.89	15.14	-0.55	1.28	193	134	.....
233	180824	Tw	22-Aug	160717Tw	0.35	8.30	13.72	-0.21	2.11	192	138	.....
234	180136	TR	25-May	160717Tw	0.43	9.41	14.93	-0.50	1.98	199	143	.....
235	180531	Tw	10-Jun	170037	0.43	9.48	14.60	-0.86	1.59	195	138	.....
236	180150	Tw	26-May	170037	0.34	9.18	14.70	-0.55	2.01	198	141	.....
237	180804	QU	19-Aug	160717Tw	0.47	9.09	13.99	-0.50	1.68	191	136	.....
238	180738	Tw	26-Jul	PRIORITY 170180ET	0.37	9.17	13.28	-0.38	2.32	196	142	.....
239	180732	Tw	26-Jul	140180Tw	0.22	8.50	13.72	0.00	2.58	197	137	.....
240	180710	TR	25-Jul	140180Tw	0.33	8.58	14.64	-0.24	2.17	197	139	.....
241	180298	Tw	31-May	140180Tw	0.23	7.86	13.78	-0.27	2.51	196	142	.....
242	180260	Tw	31-May	140180Tw	0.18	8.50	14.39	0.04	2.51	199	138	.....

# 140 Flock Rams continued

Lot	Tag	DOB	Sire	Bwt	Wwt	Pwt	Pft	Pemd	C+	TCP	Purchaser/Price	
243	180865	TR	2-Sep	170421	0.36	9.62	15.46	-1.02	0.86	191	134	.....
244	180758	Tw	1-Aug	PRIORITY 170180ET	0.34	8.78	13.59	-0.59	2.38	198	142	.....
245	180846	TR	29-Aug	PRIORITY 170180ET	0.39	9.21	14.74	-0.32	2.58	204	149	.....
246	180637	TR	22-Jun	160295Tw	0.34	7.51	12.56	-0.13	2.64	192	140	.....
<hr/>												
247	180883	Tw	29-Nov	160717Tw	0.35	9.27	14.84	-0.31	2.04	198	140	.....
248	180884	Tw	29-Nov	160717Tw	0.34	9.14	14.57	0.01	2.17	197	139	.....
249	180885		1-Dec	160717Tw	0.39	8.84	13.16	-0.76	1.78	190	136	.....
250	180886		2-Dec	160717Tw	0.49	9.54	15.16	-0.27	2.05	200	142	.....



# Buyer's instruction slip - October 2019

Buyer:.....

Address:.....

.....

..... Postcode: .....

Agent .....

Lots Price

.....

.....

.....

.....

Insure      yes / no

Insurance company name: .....

Period .....

Clearly state if own transport..... and when:.....

Send account to:.....

Address .....

(if different to above) .....

Buyer No.....

Stud Flock Number.....

Telephone: .....

Mobile: .....

Email: .....

Lots Price

.....

.....

.....

.....

Buyer's signature.....

<b>Office use;</b> Checked by .....
--

# Thank you

*A sincere thank you to all buyers and underbidders for your support today.*

*We wish you every success with your purchases and look forward to hearing of your future achievements.*

*Further, we wish to thank all those who helped in the lead-up and during the sale; your ongoing assistance is very much appreciated.*

*Sincerely,  
The Pipkorn Families*

# Detpa Grove Flock Rams



## AUCTION

## DIRECTIONS

