



CED. WISE AB SERVICES PTY. LTD.

VETERINARIAN:-

Ced. Wise, B.V.Sc., M.S., Diplomate A.C.T., M.A.C.V.Sc.
ABN 32 109 624 062 ACN 107 826 737
"Glenisa", PO Box 79, Glen Aplin, Qld 4381

M: 0428 718 640
E: ced.wise@gmail.com
P: 07 4683 4275
F: 07 4683 4235

CERTIFICATE OF EMBRYO RECOVERY, TRANSFER AND FREEZING

Date: 20-07-18

RECOVERY RECORD:- 3837

Owner/Address: WOODVIEW.

Email: Phone:

DONOR NAME: WESTHOLME ASH SHIGEYASH Rego No: AACFD0439 Breed: Wagyu

SIRE NAME: SUMOSE ISAKUSHU C221 Rego No: SMOFC0221 Breed: Wagyu

Heat onset date: 13-7-18 Time: 2400hrs

Flush Media: 498848 Exp: 09/19

Holding Media: 497539 Exp: 10/18

FSH # No. Dose:

Frozen - GLY / DT / IVF Cane No. Emb. Remaining: Date Frozen:

Total embryos recovered: 26 Transferred: 0 Frozen: 19 Degenerates: 6 Non Fertile: 1

TRANSFER RECORDS:- FRESH - ET / IVF FROZEN - GLY/DT/IVF Surgical / Non Surgical

Table with columns: No., Emb Stage, Emb Qual, Recipient I.D., Side CL, Sync, Comments, Preg. Test Date. Includes handwritten entries for embryo transfers and a 'Male DNA' note on the left.

FREEZING RECORD:-

Domestic / Export Country: RSA

CRYOPROTECTANT - 10% Glycerol / Ethelene Glycol
Embryo Age
Goblet Colour: Yellow A 7E B 6E
Cane Marking: E907 3837.C D0439 6E
LN2 Unit No. 66 Bucket No. 9

Table with columns: Straw No., Plug Colour, No. Emb/Straw, Emb Stage, Emb Qual. Contains handwritten entries for straw numbers and plug colors.

NOTES:-

THE WORLD'S BEST TASTING TENDER BEEF

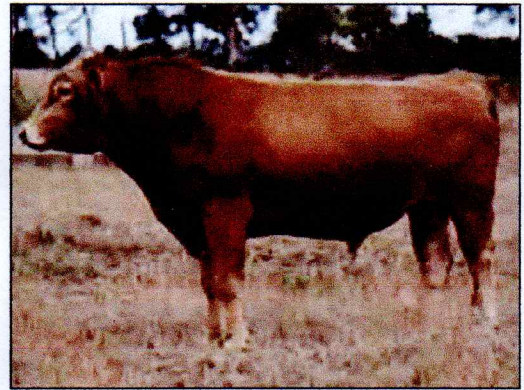
## The Australian Wagyu Association

## Wagyu Animal Details

### SUMO CATTLE CO SEISAKUSHU C221 (AI) (ET)

[Home](#)
[Animal Enquiry](#)
[EBV Enquiry](#)
[Mating Predictor](#)
[Member Enquiry](#)
[Sale Catalogues](#)
[Semen/Embryo Catalogues](#)
[Download Files](#)
[Online Transactions](#)
[Tag Orders](#)

**Identifier:** SMOFC0221  
**Sex:** Male  
**Tattoo:** C221  
**Birth Date:** 29/12/2007  
**Calving Year:** 2007  
**Status:** SOLD  
**Registration Status:** Herdbook Registered  
**Grade:** Fullblood  
**Horn:** Dehorned  
**Wagyu Blood%:** 100.0  
**Colour:** Red  
**Genetic Test Status**  
 (Click for explanation): [B3F](#), [CHSF](#), [CL16F](#), [F11F](#), [F13F](#)  
**Sire:** [HIKARI J251830R \(IMP JAP\)](#)  
**Dam:** [TWA ONESAN \(AI\).\(ET\)](#)  
**Breeder:** COATES CATTLE COMPANY  
**Current Owner:** SOLD FOR BREEDING  
**Genotype for PV:** SNP and Microsatellite  
**MiP #:** 143553  
**SNP #:** 317343  
 Verified to Mating  
**Gene Tests:** B3-Free, CHS-Free, CL16-Free, F11-Free, F13-Free  
**OS Herdbook#:** FB12682  
**Progeny:** [\[14 - View\]](#) [\[View by Herd\]](#)  
**EBV Graph:** [\[View\]](#)



[View Other Images](#)

— [PEDFAFB426 DAI 2 MITSUMARU FB426](#)  
 — [PEDPAMITSU DAI 10 MITSUMAU 76 FB424](#)  
 — [PEDFAGODAI GODAI J2739R](#)  
 — **Sire:** [IMUFN2455 HIKARI J251830R \(IMP JAP\)](#)  
 — [PEDFANAMIM NAMIMARU J74R](#)  
 — [PEDFAKAZUT KAZUTOMO 92958](#)  
 — [PEDFAKUMI KUMI](#)  
**Animal:** [SMOFC0221 SUMO CATTLE CO SEISAKUSHU C221 \(AI\) \(ET\)](#)  
 — [PEDFA445 DAI 2 SHIGENAMI 27](#)  
 — [IMUFN2124 SHIGEMARU \(IMP USA\)](#)  
 — [PEDFA442 DAI 4 AKIBARE 3357](#)  
 — **Dam:** [TWAFS0344 TWA ONESAN \(AI\).\(ET\)](#)

— [PEDFKU2454 DAI 8 MARUNAMI FB2454](#)

— [PEDFAJ14289 DAI 7 MARUNAMI 14289](#)

June 2019 Wagyu GROUP BREEDPLAN														
	Gestation Length (days)	Birth Wt (kg)	200 Day Wt (kg)	400 Day Wt (kg)	600 Day Wt (kg)	Mat Cow Wt (kg)	Milk (kg)	Scrotal Size (cm)	Carcase Wt (kg)	Eye Muscle Area (sq cm)	Rump Fat (mm)	Retail Beef Yield (%)	Marble Score	Marble Fineness (%)
EBV	0.0	+2.5	+18	+25	+43	+43	+5	+2.5	+35	-1.1	+0.2	-0.2	-0.4	-0.05
Acc	30%	56%	52%	52%	52%	46%	49%	37%	46%	33%	36%	33%	36%	30%
Breed Avg. EBVs for 2017 Born Calves <a href="#">Click for Percentiles</a>														
EBV	+0.2	+1.0	+9	+15	+18	+19	+0	+0.0	+13	+0.9	+0.2	-0.1	+0.6	+0.13

Statistics: Number of Herds: 1, Progeny Analysed: 4,

[Show Index Values](#)



Online Contact [Wagyu Information](#)

3 July 2019

[Australian Wagyu Association Limited](#)

Site Designed & Supported by: [ABRI](#) i4 8.9.5, [Disclaimer](#)

© Copyright 2019 All Rights Reserved.

THE WORLD'S BEST TASTING TENDER BEEF

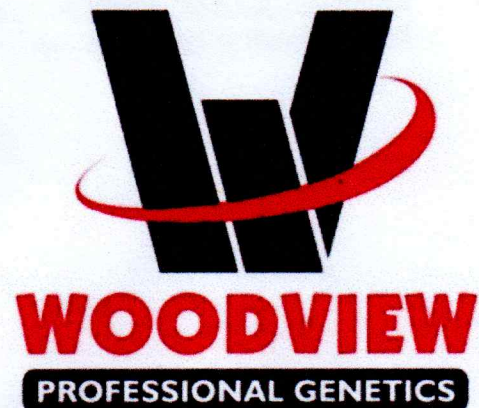
## The Australian Wagyu Association

## Wagyu Animal Details

### WESTHOLME ASH SHIGEYASU [CC]

[Home](#)  
 [Animal Enquiry](#)  
 [EBV Enquiry](#)  
 [Mating Predictor](#)  
 [Member Enquiry](#)  
 [Sale Catalogues](#)  
 [Semen/Embryo Catalogues](#)  
 [Download Files](#)  
 [Online Transactions](#)  
 [Tag Orders](#)

**Identifier:** AACFD0439  
**Sex:** Female  
**Tattoo:** D0439  
**Birth Date:** 11/09/2008  
**Calving Year:** 2008  
**Status:** Active  
**Registration Status:** Herdbook Registered  
**Grade:** Fullblood  
**Horn:** Dehorned  
**Wagyu Blood%:** 100.0  
**Colour:** Black [Composite]  
**Genetic Test Status**  
 ([Click for explanation](#)): B3FU, CHSFU, CL16FU, F1150%  
**Sire:** [ASHWOOD F X014 \(AI\).\(ET\)](#)  
**Dam:** [WESTHOLME SHIGECHIKA \(AI\).\(ET\)](#)  
**Breeder:** [WESTHOLME WAGYU](#)  
**Current Owner:** [WOODVIEW WAGYUS](#)  
**Genotype for PV:** Microsatellite  
**MiP #:** 223911  
 Verified to Mating  
**Progeny:** [\[6 - View\]](#)  
**EBV Graph:** [\[View\]](#)



— [PEDPAMITSU DAI 10 MITSUMAU 76 FB424](#)  
 — [IMUFQ0502 HB BIG AL Q502 FB2998](#)  
 — [PEDFA2120 MTA AKIKO FB2120](#)  
 — **Sire:** [HS FX0014 ASHWOOD F X014 \(AI\).\(ET\)](#)  
 — [IMUFN2455 HIKARI J251830R \(IMP JAP\)](#)  
 — [TWAFS0341 TWA MEKATA \(AI\).\(ET\)](#)  
 — [PEDFMU2118 NAMIKO](#)  
**Animal:** [AACFD0439 WESTHOLME ASH SHIGEYASU \[CC\]](#)  
 — [PEDFAJ1742 TERUNAGADOI 1742](#)  
 — [IMJFAJ2810 KITATERUYASUDOI J2810 HONGEN \(IMP JAP\)](#)  
 — [PEDFAJ601124 YOSHIMI 3 601124](#)  
 — **Dam:** [WESFX0037 WESTHOLME SHIGECHIKA \(AI\).\(ET\)](#)  
 — [IMJFAJ2351 HIRASHIGETAYASU J2351 HONGEN \(IMP JAP\)](#)  
 — [WESFTH008 WESTHOLME TAYASUFUJI 98/1 \(IMP USA\).\(AI\).\(ET\)](#)  
 — [IMJFNR013 YAMAFUJI J1946229 R13 \(IMP JAP\)](#)

	Gestation Length (days)	Birth Wt (kg)	200 Day Wt (kg)	400 Day Wt (kg)	600 Day Wt (kg)	Mat Cow Wt (kg)	Milk (kg)	Scrotal Size (cm)	Carcase Wt (kg)	Eye Muscle Area (sq cm)	Rump Fat (mm)	Retail Beef Yield (%)	Marble Score	Marble Fineness (%)
EBV	+0.1	+4.8	+26	+48	+74	+67	+7	+3.2	+57	-1.1	-3.7	+0.8	+0.2	+0.08
Acc	55%	79%	75%	77%	73%	64%	68%	66%	65%	60%	65%	62%	59%	50%
Breed Avg. EBVs for 2017 Born Calves <a href="#">Click for Percentiles</a>														
EBV	+0.2	+1.0	+9	+15	+18	+19	+0	+0.0	+13	+0.9	+0.2	-0.1	+0.6	+0.13

Traits Observed: BWT,200WT,400WT,FAT,EMA,IMF

Statistics: Number of Herds: 1, Progeny Analysed: 3, Scan Progeny: 3, [Show Index Values](#)



Online Contact [Wagyu Information](#)

3 July 2019

[Australian Wagyu Association Limited](#)

Site Designed & Supported by: [ABRI](#) i4 8.9.5, [Disclaimer](#)

© Copyright 2019 All Rights Reserved.