

**2019 ANNUAL  
ON PROPERTY SALE**

Friday 15th March 2019

*Rangan*  
CHAROLAIS





# RANGAN WELCOMES 2019

Dear Clients,

Welcome to our 2019 sale. The year has certainly got off to a very hot start with record temperatures and plenty of lightning strikes starting fires in our area. A real pat on the back must go to local CFA members who where possible stop what they are doing to go and help others. But as I write this there is a little rain falling which should give us a bit of a reprieve. Farmers are a resilient lot!

On the home front Ellen continues to work for Ben & Julia Simpson at OGA in Albury where she is doing very well. Claire is into her second year of Agriculture at Melbourne Uni and wants to head down an agronomy path, which is a bit of a worry as Claire being Claire is not backward in telling me what I should be doing. Jess finished year 12 last year and has taken up a trainee position with an accounting firm in Albury and studying at CSU. Jess continues to run her own cattle stud and will never be too far away from a cow or horse. Laura has just gone into year 10 and with part time work, Netball, Basketball and cattle showing she is not sure she has time for school! I could not do what I do without the help of the Liz & the Girls.

The January weaner sales kicked the year off and it was very pleasing to see the quality of the Rangan sired calves offered in many sale yards around the state. Euroa, Pakenham, Wangaratta & NVLX Barnawatha all had very good pens of Rangan blood calves offered with many winning awards and being right at the top of the sale averages. A pen of calves offered by our very good local clients the Turner family of Red Bluff won the best pen of weaners in a yarding of over 6000 head. The Turner's put a lot of thought into their bull purchases and you only need to view their calves to see the results. We can win lots of show ribbons and be a finalist in the 2017 and 2018 Beefweek Heifer Challenge but it is the success that our clients have that gives us the greatest pleasure.

This year's sale see's the first of some new genetics from France in the Castor bull as well as from the very good New Zealand stud Silverstream. We are constantly on the lookout all around the world for out cross genetics that we believe will add value to our herd as well as our client's herds. As cattle breeders, we really look forward to each new drop of calves just to see the results of our mating decisions. In the coming year we will have calves by two new American sires, as well as another from the Silverstream stud.

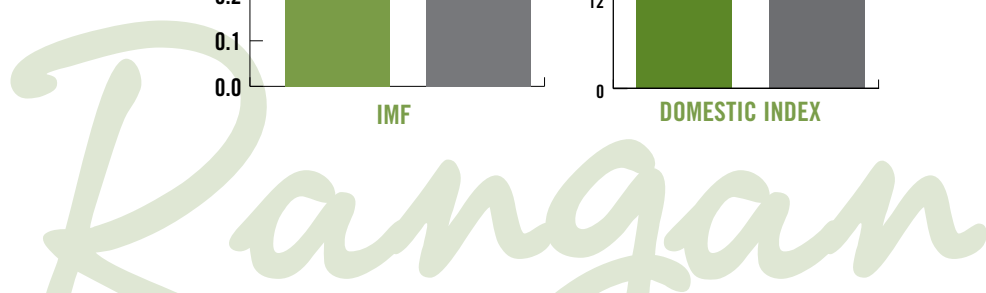
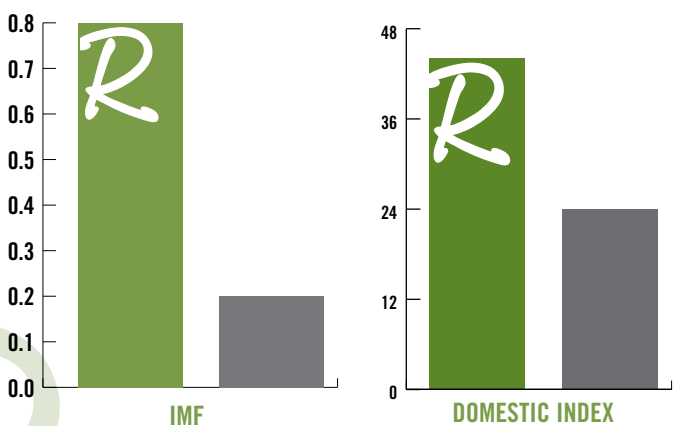
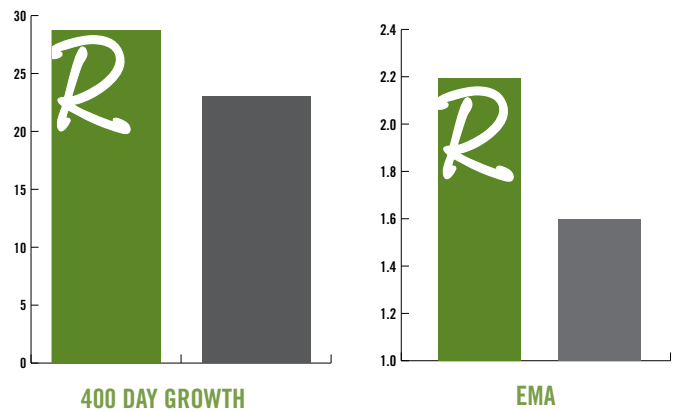
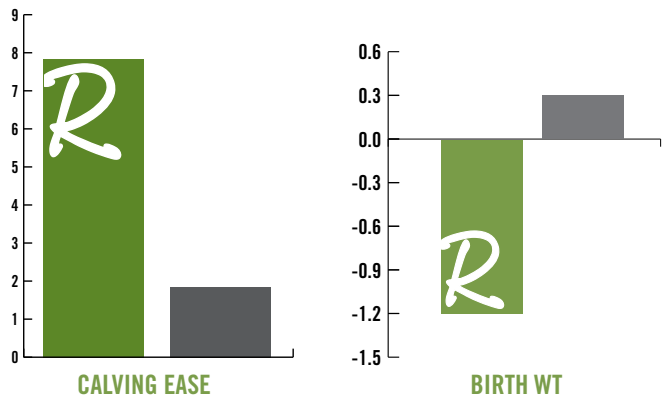
This year to celebrate our 10th on-property sale, we will be offering for first time in a many years some females for sale. This decision was not taken lightly and we have gone right to the top of the Rangan herd to select these females. We believe that if it leaves here with a Rangan tag in its ear it should do us proud where ever it goes.

To all of our valued clients good luck for the coming year and let's hope for a great Autumn break.

*Thank you*

Graeme, Liz, Ellen, Claire, Jess & Laura

## 2017 BORN CALVES Rangan vs Charolais Breed Average



# the PERFECT colour combination



*Rangan*  
CHAROLAIS

## ANNUAL ON PROPERTY SALE

FRIDAY 15TH MARCH 2019

### 44 CHAROLAIS BULLS + 10 ELITE FEMALE LOTS

Auction Sale commences 11am - Inspections from 9am sale day or by appointment  
"Rangan Park" Miller Lane Charleroi Victoria

 **AuctionsPlus**  
Buy and Sell stock nationally

Sale to be interfaced with Auctions Plus.  
Go to [auctionsplus.com.au](http://auctionsplus.com.au)

**Directions:** Take Tallangatta exit from Hume Freeway, follow directions to Mt Beauty (C531), 14km from Wodonga turn left through Tangambalanga, stay on this road for 12km & you will pass a football ground on your right, 1km further take Miller Lane to your right. (30 minutes travel time from Albury/Wodonga).

**Accommodation:** Comfort Inn & Suites Blazing Stump Wodonga Ph: 02 6056 3433

*Rangan*  
CHAROLAIS

Graeme Cook M 0419 429 696 E [ranganpark@gmail.com](mailto:ranganpark@gmail.com)  
[www.rangancharolais.com.au](http://www.rangancharolais.com.au)

**Corcoran  
Parker**

David Meehan | 0418 628 945  
Leigh McEvoy | 0428 225 748  
Kevin Corcoran | 0428 695 615  
Justin Keane | 0427 927 500

**Paul & Scollard**  
**LANDMARK**

Tim Robinson | 0408 868 582  
Peter Godbolt | 0457 591 929  
Luke Deimel | 0439 775 112  
Richard Wynne | 0427 899 438  
Pat Kindellan | 0407 066 797

  
A·M·L

John Atkins | 0428 690 267



**GTSM**

Michael Glasser | 0403 526 702  
Lincoln McKinlay | 0400 552 458





### Health Information

- All sale animals tested negative for pestivirus
- Fully vaccinated Pestiguard 7in1 & Vibrio
- Ivomec Plus March 2019
- All bulls have been independently vet checked by Seumas McKillop BVSc of the Holbrook Veterinary Centre. They have all passed an examination of the reproductive organs and structural assessment.
- J-BAS 6

### Sale Preparation

Bulls have been prepared for sale on Pasture, Silage and Hay with no grain supplementation or hoof trimming.

### Rangan Charolais Guarantee

In the event of a bull proving to be infertile or incapable of natural service in the 12 months from sale date, the vendor will offer to supply a suitable replacement if available, or credit the purchase price to be used at the next sale, less any salvage value of the bull provided the problem is not caused by injury or disease contracted since delivery. Any claim must be accompanied by a relevant Veterinary Certificate. We also offer a two year structural warranty, please see Graeme Cook for details.

### Transport

Bulls will be transported free of charge to major selling centre's within 300km of Rangan Park and where possible delivered direct on farm.

For all your cattle transport requirements please contact:

- Dennis Cardwell: 0428 691 387
- Joe Wilton: 0408 739 559

***Remember it is extremely important on arrival at your property to have a few steers or cows in the yards to help your new investment settle in.***

### Catering

Complimentary morning tea and light lunch will be provided.

### Insurance

We recommend that you insure your new investment for transit and loss of use insurance for the first breeding season. Please see selling agents for any insurance requirements.

### Independent Assessment

As part of our quality assurance programme, Rangan Charolais has contracted Liam Cardile of **BEEFXCEL** to carry out independent structural and temperament assessments of all our sale lots.

**BEEFXCEL's** assessments will be available on sale day.



### Agents Rebate

All agents are entitled to a 3% rebate. To qualify they must introduce their client to Rangan Charolais no later than 5pm on the day prior to sale by text or email (preferred) and must settle within 7 days of date of invoice. This clause will be strictly adhered to.

*Disclaimer: Any persons entering this property for any purpose what so ever including the attendance at cattle auctions do so at their own risk. We are not liable to you for any personal injury or death suffered by you and for the theft, loss or damage to any property caused or contributed to by us or by negligence deliberate act or unlawful conduct. "We" or "us" or "our" refer to the owners their employees contractors or agents and each of them. Whilst all care and attention has been paid to the accuracy in the compilation of this catalogue, neither the vendor nor the agents or representatives thereof assume any responsibility whatsoever for the correctness use or interpretation of the information included in this sale catalogue.*

# BEEF CLASS STRUCTURAL ASSESSMENT SYSTEM

Structural problems in cattle have a substantial effect on both the reproductive and growth performance of a beef herd. It is widely recognised that structural problems in sires have detrimental effects on conception rates, calving patterns and thus profitability. Similarly, females with inadequate structural characteristics are more prone to weaning lighter calves or conceiving later in the breeding season than their more functional counterparts. These structural problems are filtered through the supply chain resulting in reduced income for the producer, feedlot and thus reducing the overall productivity of the Australian Beef Industry.

Over the past decade, use of the Beef Class Structural Assessment System in the seedstock industry has produced a marked improvement in herds which have shown commitment to using the information appropriately. Through these dedicated breeders, there has been a flow on affect of structural improvement through out all sectors of the beef cattle industry.

Liam Cardile of **BEEFXCEL** service many of the leading seedstock herds in Australia. **BEEFXCEL** is not involved in any genetic marketing or specific breeding advice and therefore has no conflict of interests to influence their stock appraisal. The integrity of the structural data provided by **BEEFXCEL** is recognised throughout the industry as Liam is a fully INDEPENDENT assessor.

## Assessment System

The Beef Class Structural Assessment System uses a 1-9 scoring system;

- A score of 5 is ideal. (Note: Temperament Score of 1 is preferable)
- A score of 4 or 6 shows slight variation from ideal, but this includes most animals. An animal scoring 4 or 6 would be acceptable in any breeding program.
- A score of 3 or 7 shows greater variation but would be acceptable in most commercial programs. However, seedstock producers should be vigilant and understand that this score indicates greater variation from ideal.
- A score of 2 or 8 are low scoring animals and should be looked closely before purchasing.
- A score of 1 or 9 should not be catalogued and are considered culls.

Or Call **Liam Cardile** on 0409 572 570 (*Pictured below left*)

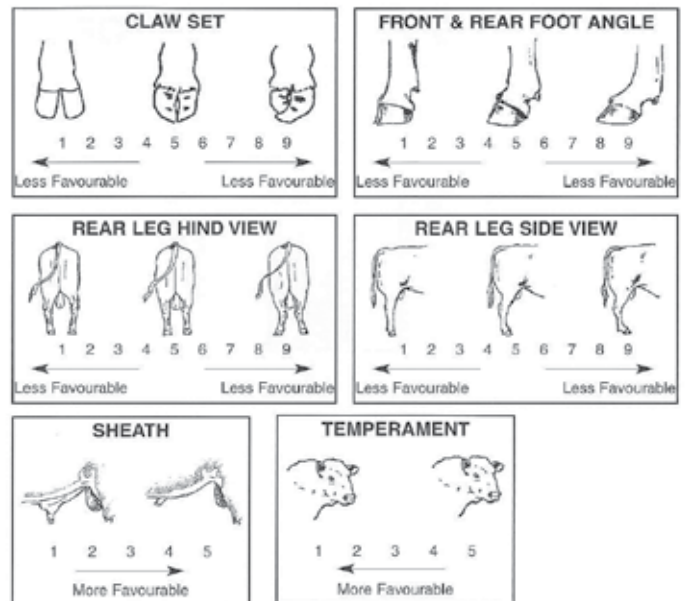


## Rangan Charolais STRUCTURAL PROGRAM:

The 2019 'Rangan Charolais' Sale Bulls have been independently structurally assessed to maximise the quality of stock on offer. Any animals deemed inadequate have been removed from the sale draft.



Liam Cardile - BEEFXCEL Assessor



The Beef Class Structural Assessment System - scoring diagram

EBV Quick Reference Guide for Rangan Charolais 2019 Sale Bulls

Lot	Animal Ident	Calving Ease Direct (%)	Calving Ease DTRS (%)	Gest' Length (days)	Birth Weight (kg)	200 day Wt. (kg)	400 Day Wt. (kg)	600 Day Wt. (kg)	Milk (kg)	Scrotal Size (cm)	Eye Muscle Area (sq.cm)	Rib Fat (mm)	Rump Fat (mm)	IMF (%)	Domestic Index (\$)	Export Index (\$)
1	Rann188e	-0.9	-1.9	-3.5	1.4	15	36	48	7	2.0	3.1	0.5	0.3	-0.1	\$29	\$41
2	Rann154e	10.7	3.7	-5.2	-1.5	18	39	51	13	2.4	2.3	0.3	1.1	1.8	\$63	\$85
3	Rann34e	1.1	-4.2	-4.0	0.1	25	51	72	11	3.7	1.2	-0.1	0.0	0.2	\$44	\$66
4	Rann118e	11.1	0.3	-6.5	-1.6	9	33	40	19	1.8	0.3	2.6	3.9	0.7	\$58	\$77
5	Rann22e	16.8	1.3	-8.4	-3.1	12	37	43	18	2.0	2.4	0.9	1.9	1.2	\$70	\$88
6	Rann171e	10.3	5.1	-6.2	-0.6	17	42	52	11	2.2	2.0	-0.4	-0.1	0.8	\$61	\$80
7	Rann67e	0.2	-6.8	-5.0	0.9	26	45	63	8	1.2	0.7	1.6	2.9	2.8	\$41	\$60
8	Rann100e	5.8	-3.4	-6.8	-0.2	18	40	49	7	3.7	0.7	-0.5	0.0	0.5	\$43	\$58
9	Rann46e	14.6	5.3	-8.0	-2.3	9	29	34	16	0.5	2.8	0.3	1.0	0.5	\$60	\$73
10	Rann18e	14.0	6.5	-7.5	-3.0	11	26	32	15	0.0	2.4	0.5	1.3	1.7	\$61	\$76
11	Rann117e	-1.7	6.3	-3.8	0.2	17	41	59	16	0.6	2.7	-0.3	-0.4	0.5	\$39	\$50
12	Rann38e	4.8	-2.9	-4.9	-0.2	18	38	48	11	1.1	2.0	0.5	1.2	1.3	\$45	\$58
13	Rann87e	0.4	-0.2	-6.6	0.7	17	34	44	6	2.8	1.2	-0.7	-0.7	-0.7	\$28	\$38
14	Rann29e	17.5	8.3	-6.2	-4.2	4	17	19	17	0.4	1.7	0.6	1.6	1.6	\$62	\$78
15	Rann9e	16.6	6.4	-10.9	-3.6	12	31	37	13	2.2	1.2	2.2	3.6	0.8	\$73	\$97
16	Rann136e	-3.1	-2.3	-4.5	1.1	16	33	44	6	1.2	4.2	0.6	0.4	-0.1	\$24	\$33
17	Rann52e	7.9	1.3	-6.5	-0.7	20	42	55	10	3.0	2.7	-0.5	-0.2	0.9	\$54	\$72
18	Rann85e	14.0	6.5	-4.9	-1.6	14	35	40	16	0.0	5.5	0.4	0.9	0.1	\$64	\$77
19	Rann166e	12.9	3.7	-5.3	-2.8	10	28	31	19	1.7	3.1	1.9	2.7	0.7	\$63	\$80
20	Rann170e	10.8	0.0	-5.1	-1.5	7	21	25	17	1.1	1.2	1.0	2.0	0.2	\$43	\$53
21	Rann163e	10.0	5.0	-5.4	0.2	14	32	39	10	1.0	1.7	-0.6	-0.5	0.2	\$47	\$60
22	Rann143e	12.9	0.5	-6.9	-3.7	14	26	28	12	1.3	3.1	0.3	0.7	1.2	\$56	\$70
Breed Average		1.9	1.1	-2.8	0.3	12	24	32	7	1.1	1.6	0.3	0.3	0.2	\$26	\$35

Shading = Breed Top 20%



EBV Quick Reference Guide for Rangan Charolais 2019 Sale Bulls

Lot	Animal Ident	Calving Ease Direct (%)	Calving Ease DTRS (%)	Gest' Length (days)	Birth Weight (kg)	200 day Wt. (kg)	400 Day Wt. (kg)	600 Day Wt. (kg)	Milk (kg)	Scrotal Size (cm)	Eye Muscle Area (sq.cm)	Rib Fat (mm)	Rump Fat (mm)	IMF (%)	Domestic Index (\$)	Export Index (\$)
23	Rann80e	3.3	5.6	-6.8	-1.2	17	25	27	2	2.4	0.1	-0.2	-0.2	0.0	\$32	\$43
24	Rann68e	4.8	-5.2	-5.6	0.1	21	36	49	9	1.5	0.1	1.2	2.1	1.3	\$38	\$53
25	Rann89e	-2.8	2.3	-1.9	0.3	12	20	37	2	2.2	-1.9	0.4	1.2	1.7	\$19	\$30
26	Rann92e	12.7	7.5	-6.7	1.8	16	33	40	15	0.8	0.6	-0.3	-0.2	1.3	\$57	\$73
27	Rann82e	2.3	9.1	-6.2	0.1	19	33	45	6	0.7	3.4	0.2	0.0	0.4	\$41	\$53
28	Rann83e	14.0	8.0	-7.4	-2.9	13	33	40	18	1.8	2.6	-0.4	-0.2	1.0	\$65	\$83
29	Rann162e	9.5	-0.9	-5.6	-1.3	11	22	31	17	1.6	2.6	0.8	1.4	0.4	\$41	\$54
30	Rann179e	0.5	-3.3	-3.0	0.4	16	30	47	13	1.6	3.3	0.2	0.6	0.7	\$29	\$42
31	Rann69e	14.3	7.0	-5.5	-2.4	12	25	36	15	1.4	4.2	0.2	0.8	1.0	\$61	\$81
32	Rann127e	12.7	4.8	-6.2	-1.6	11	22	28	15	0.6	3.2	0.7	1.2	0.8	\$51	\$64
33	Rann37e	12.6	0.8	-5.2	-2.0	6	20	21	12	-0.7	0.9	0.5	1.3	1.3	\$45	\$53
34	Rann129e	1.2	4.0	-5.7	-0.1	16	33	45	13	1.3	1.2	-0.3	0.0	1.4	\$37	\$49
35	Rann137e	-2.6	-2.9	-5.8	0.2	8	18	22	3	0.7	1.7	0.7	0.6	-0.5	\$10	\$12
36	Rann77e	10.7	9.0	-7.3	-2.4	16	22	26	1	2.6	0.4	-0.1	0.2	0.1	\$47	\$66
37	Rann96e	5.1	9.8	-6.5	-0.1	22	38	51	6	0.8	3.4	-0.3	-0.1	0.7	\$50	\$67
38	Rann126e	5.2	5.2	-6.4	-0.5	19	46	60	15	2.5	2.3	-0.6	-0.4	1.5	\$58	\$76
39	Rann123e	-0.1	-0.6	-7.2	-0.7	10	17	28	1	2.1	2.9	0.7	0.7	-0.3	\$18	\$29
40	Rann56e	9.7	5.3	-8.1	-1.7	10	23	32	11	1.1	4.1	-1.0	-1.2	0.2	\$45	\$58
41	Rann120e	5.7	3.6	-5.4	-0.5	11	24	30	2	3.3	0.0	-0.5	-0.1	0.3	\$35	\$50
42	Rann184e	-2.9	0.4	-3.1	0.5	15	30	44	6	2.9	-0.9	0.0	0.1	0.8	\$22	\$35
43	Rann164e	10.3	5.1	-5.6	-0.5	14	28	38	10	1.5	2.4	-0.7	-0.5	0.5	\$47	\$63
44	Rann189e	5.8	0.2	-4.1	0.2	13	32	41	8	2.1	3.1	0.5	0.4	-0.4	\$40	\$54
Breed Average		1.9	1.1	-2.8	0.3	12	24	32	7	1.1	1.6	0.3	0.3	0.2	\$26	\$35

Shading = Breed Top 20%

## Estimated Breeding Values (EBVs)

**Calving Ease EBVs (%)** are based on calving difficulty scores, birth weights and gestation length information. More positive EBVs are favourable and indicate easier calving.

**CE % Dir = Direct Calving Ease** - The EBV for direct calving ease indicates the influence of the sire on calving ease in purebred females calving at two years of age.

**CE % Daughters = Daughters' Calving Ease** - The EBV for daughters' calving ease indicates how easily that sire's daughters will calve at two years of age.

**Gestation Length EBV (days)** is an estimate of the time from conception to the birth of the calf and is based on Artificial Insemination & hand mating records. Lower (negative) Gestation Length EBVs indicate shorter gestation length & therefore easier calving & increased growth after birth.

**Birth Weight EBV (kg)** is based on the measured birth weight of progeny, adjusted for dam age. The lower the value the lighter the calf at birth and the lower the likelihood of a difficult birth. This is particularly important when selecting sires for use over heifers.

**200-Day Growth EBV (kg)** is calculated from the weight of progeny taken between 80 and 300 days of age. Values are adjusted to 200 days and for age of dam. This EBV is the best single estimate of an animal's genetic merit for growth to early ages.

**400-Day Weight EBV (kg)** is calculated from the weight of progeny taken between 301 and 500 days of age, adjusted to 400 days and for age of dam. This EBV is the best single estimate of an animal's genetic merit for yearling weight.

**600-Day Weight EBV (kg)** is calculated from the weight of progeny taken between 501 and 900 days of age, adjusted to 600 days and for age of dam. This EBV is the best single estimate of an animal's genetic merit for growth beyond yearling age.

**Mature Cow Weight EBV (kg)** is based on the cow weight when the calf is weighed for weaning, adjusted to 5 years of age. This EBV is an estimate of the genetic difference in cow weight at 5 years of age and is an indicator of growth at later ages and potential feed maintenance requirements of the females in the breeding herd. Steer breeders wishing to grow animals out to a larger weight may also use the Mature Cow Weight EBV.

**Milk EBV (kg)** is an estimate of an animal's milking ability. For sires, this EBV indicates the effect of the daughter's milking ability, inherited from the sire, on the 200-day weights of her calves. For dams, it indicates her milking ability.

**Scrotal Size EBV (cm)** is calculated from the circumference of the scrotum taken between 300 and 700 days of age and adjusted to 400 days of age. This EBV is an estimate of an animal's genetic merit for scrotal size. There is also a small negative correlation with age of puberty in female progeny and therefore selection for increased scrotal size will result in reduced age at calving of female progeny.

**Eye Muscle Area EBV (sq cm)** is calculated from measurements from live animal ultrasound scans and from abattoir carcass data, adjusted to a standard 300 kg carcass. This EBV estimates genetic

differences in eye muscle area at the 12/13th rib site of a 300 kg dressed carcass. More positive EBVs indicate better muscling on animals. Sires with relatively higher Eye Muscle Area EBVs are expected to produce better muscled and higher percentage yielding progeny at the same carcass weight than will sires with lower Eye Muscle Area EBVs.

**Rib Fat and Rump Fat EBVs (mm)** are calculated from measurements of subcutaneous fat depth at the 12/13 rib site and the P8 rump site (from live animal ultrasound scans and from abattoir carcasses) and are adjusted to a standard 300 kg carcass. These EBVs are indicators of the genetic differences in fat distribution on a standard 300 kg carcass. Sires with low, or negative, fat EBVs are expected to produce leaner progeny at any particular carcass weight than will sires with higher EBVs.

**Retail Beef Yield EBV (%)** indicates genetic differences between animals for retail yield percentage in a standard 300 kg carcass. Sires with larger EBVs are expected to produce progeny with higher yielding carcasses.

**Intramuscular Fat EBV (%)** is an estimate of the genetic difference in the percentage of intramuscular fat (marbling) at the 12/13th rib site in a 300 kg carcass. Depending on market targets, larger more positive values are generally more favourable.

## Selection Indices

**Domestic Index (\$)** - Estimates the genetic differences between animals in net profitability per cow joined for an example commercial herd with a British cow base (eg Angus) targeting grass-finished production for the domestic trade. This Index assumes pasture grown & finished steers weighing 430 kg (240 kg HSCW and 6 mm P8 fat depth) at 12 months. Daughters are retained or sold for breeding therefore maternal traits are of importance. In response to industry feedback, positive emphasis has been placed on finishing ability.

**Export Index (\$)** - Estimates the genetic differences between animals in net profitability per cow joined for an example commercial herd with a British cow base (eg Angus) targeting the production of steers for export markets. This Index assumes pasture grown & finished steers weighing 700 kg (380 kg HSCW and 9 mm P8 fat depth) at 29 months. Daughters are retained or sold for breeding therefore maternal traits are of importance. In response to industry feedback, positive emphasis has been placed on finishing ability.

## Accuracy

**Accuracy (%)** is based on the amount of performance information available on the animal and its close relatives - particularly the number of progeny analysed. Accuracy is also based on the heritability of the trait and the genetic correlations with other recorded traits. Hence accuracy indicates the "confidence level" of the EBV. The higher the accuracy value the lower the likelihood of change in the animal's EBV as more information is analysed for that animal or its relatives.

For further information, contact the Charolais Society (02 6771 1666)

or Charolais BREEDPLAN (02 6773 3059).

Charolais Breed Av. EBVs for 2017 Born Calves																	Selection Index Values		
	CE-DIR	CE-DTR	GL	BW	200DW	400DW	600DW	MCW	MILK	SS	CWT	EMA	RIB	RUMP	RBV	IMF	DOM	EXPORT	NTH TER
<b>EBV</b>	<b>+1.9</b>	<b>+1.1</b>	<b>-2.8</b>	<b>+0.3</b>	<b>+2</b>	<b>+24</b>	<b>+32</b>	<b>+33</b>	<b>+7</b>	<b>+1.1</b>	<b>+20</b>	<b>+1.6</b>	<b>+0.3</b>	<b>+0.3</b>	<b>+0.2</b>	<b>+0.2</b>	<b>+\$26</b>	<b>+\$35</b>	<b>+\$19</b>



# Reference Sires

Reference Sire **RANGAN PARK PINAY F21 (AI) (ET) (P)**

Ident: RANF21E

Calved: 25/03/2010

Tattoo: RANF21E

Colour: White

Horn: Polled

LT ASSERTION 1277 PEDW1277F (H)

**SIRE: PINAY 8552394134 OAFU4134F (H)**

MARY OAFR8596F (H)

WCR SIR FA MAC 2244 M234430 (P) OAUB2244E (P)

**DAM: PALGROVE SHOW GIRL 6 (AI) (P) PKP82E (P)**

PALGROVE SHOW GIRL 5 (AI) (ET) PKL123E (H)



January 2019 Australasian Charolais GROUP BREEDPLAN																
	Calving Ease DIR (%)	Calving Ease DTRS (%)	Gestation Length (days)	Birth Weight (kg)	200 Day Weight (kg)	400 Day Weight (kg)	600 Day Weight (kg)	Mat Cow Weight (kg)	Milk (kg)	Scrotal Size (cm)	Carcase Weight (kg)	EMA (sq cm)	Rib Fat (mm)	Rump Fat (mm)	Retail Beef Yield (%)	IMF (%)
<b>EBV</b>	<b>+5.8</b>	<b>+92</b>	<b>-8.5</b>	<b>-0.4</b>	<b>+15</b>	<b>+25</b>	<b>+33</b>	<b>+32</b>	<b>+6</b>	<b>0.0</b>	<b>+29</b>	<b>+3.3</b>	<b>-1.5</b>	<b>-1.8</b>	<b>+2.6</b>	<b>-0.1</b>
Acc	81%	73%	93%	95%	91%	91%	88%	85%	84%	91%	81%	76%	82%	82%	78%	76%

*Traits Observed: BWT, 200WT, 400WT, SS, FAT, EMA, IMF*

Notes: **Just a super consistent breeding bull that we have been using by AI since he was sold here back in 2012. He breeds calving ease, good growth bulls and females with quiet natures and structural soundness. He possesses breed leading EMA and carcass yield.**

SELECTION INDEX VALUES		
Domestic Index (\$)	Export Index (\$)	Nth Term Index (\$)
<b>+\$35</b>	<b>+\$43</b>	<b>+\$25</b>

Reference Sire **MERIT ROUNDUP 9508W (P)**

Ident: OACE6558E

Calved: 28/01/2009

Tattoo: OACE6558E

Colour: White

Horn: Polled

SOS POLLED DETONATOR 8M (P) OACX7034E (P)

**SIRE: MXS VERMILLION 527R (P) OACA9214E (P)**

MXS ESPEON 122L PED-5308E

MERIT 1058L PED-8317E

**DAM: MERIT YOLANDA 7244T PED-1301E**

MERIT YOLANDA 6116F PED-2626E



January 2019 Australasian Charolais GROUP BREEDPLAN																
	Calving Ease DIR (%)	Calving Ease DTRS (%)	Gestation Length (days)	Birth Weight (kg)	200 Day Weight (kg)	400 Day Weight (kg)	600 Day Weight (kg)	Mat Cow Weight (kg)	Milk (kg)	Scrotal Size (cm)	Carcase Weight (kg)	EMA (sq cm)	Rib Fat (mm)	Rump Fat (mm)	Retail Beef Yield (%)	IMF (%)
<b>EBV</b>	<b>+6.5</b>	<b>+4.0</b>	<b>-8.1</b>	<b>-1.5</b>	<b>+20</b>	<b>+30</b>	<b>+37</b>	<b>+20</b>	<b>-1</b>	<b>+5.3</b>	<b>+17</b>	<b>-1.1</b>	<b>-1.3</b>	<b>-1.6</b>	<b>+0.9</b>	<b>-0.7</b>
Acc	80%	68%	96%	96%	93%	93%	90%	82%	77%	92%	79%	67%	79%	78%	70%	66%

Notes: **Breed trait leader 200d weight & scrotal. A Canadian bull that has been used very heavily in Australia, his progeny excel for calving ease, early growth and scrotal size.**

SELECTION INDEX VALUES		
Domestic Index (\$)	Export Index (\$)	Nth Term Index (\$)
<b>+\$37</b>	<b>+\$55</b>	<b>+\$24</b>

Reference Sire **CASTOR**

Ident: O AFC1641F

Calved: 28/10/2007

Tattoo: O AFC1641F

Colour: White

Horn: Horned

PICADOR FR7121349662 PEDR9662F (H)

**SIRE: SESAME FR5703388462 PEDW8462F (H)**

NEFLE FR5797003064 PEDR3064F (H)

MAGENTA PED-5603F

**DAM: TRAGEDIE FR14791345 PEDW1345F (H)**

OPA FR6105133404 PEDR3404F (H)



January 2019 Australasian Charolais GROUP BREEDPLAN																
	Calving Ease DIR (%)	Calving Ease DTRS (%)	Gestation Length (days)	Birth Weight (kg)	200 Day Weight (kg)	400 Day Weight (kg)	600 Day Weight (kg)	Mat Cow Weight (kg)	Milk (kg)	Scrotal Size (cm)	Carcase Weight (kg)	EMA (sq cm)	Rib Fat (mm)	Rump Fat (mm)	Retail Beef Yield (%)	IMF (%)
<b>EBV</b>	<b>-10.1</b>	<b>-</b>	<b>-4.9</b>	<b>+1.5</b>	<b>+9</b>	<b>+19</b>	<b>+27</b>	<b>+20</b>	<b>-</b>	<b>+1.3</b>	<b>+24</b>	<b>+3.8</b>	<b>+0.7</b>	<b>-0.1</b>	<b>+1.7</b>	<b>-1.3</b>
Acc	38%	-	63%	63%	51%	52%	47%	42%	-	60%	36%	33%	34%	32%	34%	32%

Notes: **Castor was a Full French bull that we had imported from France to add a bit of "Charolainess" back into some of our double polled females. As you will see from his sons he has done exactly that, they possess that extra muscle and thickness that the French cattle are known for.**

SELECTION INDEX VALUES		
Domestic Index (\$)	Export Index (\$)	Nth Term Index (\$)
<b>-\$5</b>	<b>-\$4</b>	<b>+\$5</b>

Charolais Breed Av. EBVs for 2017 Born Calves																Selection Index Values			
	CE-DIR	CE-DTR	GL	BW	200DW	400DW	600DW	MCW	MILK	SS	CWT	EMA	RIB	RUMP	RBY	IMF	DOM	EXPORT	NTH TER
<b>EBV</b>	<b>+1.9</b>	<b>+1.1</b>	<b>-2.8</b>	<b>+0.3</b>	<b>+2</b>	<b>+24</b>	<b>+32</b>	<b>+33</b>	<b>+7</b>	<b>+1.1</b>	<b>+20</b>	<b>+1.6</b>	<b>+0.3</b>	<b>+0.3</b>	<b>+0.2</b>	<b>+0.2</b>	<b>+\$26</b>	<b>+\$35</b>	<b>+\$19</b>

# Reference Sires

Reference Sire **ASCOT GOLDRUSH J37E (AI) (P/S)**

Ident: JAJJ37E

Calved: 28/08/2013

Tattoo: JAJJ37E

Colour: White

Horn: Scurred

LT RIO BRAVO 3181 P M665507 (P) OAU5507E (P)  
**SIRE: ASCOT GOLDRUSH G136E (AI) (ET) (P) JAJG136E (P)**  
 PARINGA BLUEGRASS D125 (AI) (ET) (P) TOLD125E (P)

HARVIE JAGER 65J PMC228759 (P) OACU8759E (P)  
**DAM: GOBONGO REBBY D205E (AI) (ET) (P) GOD205E (P)**  
 GOBONGO REBBY W100E GOW100E (D)



January 2019 Australasian Charolais GROUP BREEDPLAN																
	Calving Ease DIR (%)	Calving Ease DTRS (%)	Gestation Length (days)	Birth Weight (kg)	200 Day Weight (kg)	400 Day Weight (kg)	600 Day Weight (kg)	Mat Cow Weight (kg)	Milk (kg)	Scrotal Size (cm)	Carcase Weight (kg)	EMA (sq cm)	Rib Fat (mm)	Rump Fat (mm)	Retail Beef Yield (%)	IMF (%)
<b>EBV</b>	<b>+18.3</b>	<b>+4.3</b>	<b>-5.9</b>	<b>-3.6</b>	<b>+11</b>	<b>+26</b>	<b>+34</b>	<b>+4</b>	<b>+8</b>	<b>+1.9</b>	<b>+28</b>	<b>+4.8</b>	<b>+0.7</b>	<b>+1.5</b>	<b>+0.5</b>	<b>+1.1</b>
Acc	68%	53%	80%	91%	85%	87%	81%	77%	64%	88%	73%	66%	74%	73%	69%	65%

Traits Observed: GL, CE, BWT, 200WT, 400WT, SS, FAT, EMA, IMF

Notes: **Breed trait leader low birthweight. A bull purchased from the Ascot stud in 2014. J37 is a calving ease bull that can be used on heifers with ease, he possess a wonderful disposition that he passes onto his progeny and is extremely sound at rising 6yo. His homo-polled lot 19 son is one of my sale picks.**

SELECTION INDEX VALUES		
Domestic Index (\$)	Export Index (\$)	Nth Term Index (\$)
<b>+\$67</b>	<b>+\$88</b>	<b>+\$38</b>

Reference Sire **JC LANNISTER L1 (AI) (P)**

Ident: CJCL1E

Calved: 26/07/2015

Tattoo: CJCL1E

Colour: White

Horn: Polled

GAUGUIN O AFL859F (H)  
**SIRE: RANGAN PARK GAUGUIN C15 (AI) (ET) (P) RANC15E (P)**  
 PALGROVE SHOW GIRL 6 (AI) (P) PKP82E (P)

LT BLUEGRASS 4017P M686569 (P) OAUZ4017E (P)  
**DAM: RANGAN PARK NANETTE H102 (AI) (P) RANH102E (P)**  
 RANGAN PARK NANETTE D34 (AI) (ET) (P/S) RAND34E (S)



January 2019 Australasian Charolais GROUP BREEDPLAN																
	Calving Ease DIR (%)	Calving Ease DTRS (%)	Gestation Length (days)	Birth Weight (kg)	200 Day Weight (kg)	400 Day Weight (kg)	600 Day Weight (kg)	Mat Cow Weight (kg)	Milk (kg)	Scrotal Size (cm)	Carcase Weight (kg)	EMA (sq cm)	Rib Fat (mm)	Rump Fat (mm)	Retail Beef Yield (%)	IMF (%)
<b>EBV</b>	<b>+4.9</b>	<b>-1.8</b>	<b>-5.6</b>	<b>-0.3</b>	<b>+19</b>	<b>+29</b>	<b>+35</b>	<b>+43</b>	<b>+6</b>	<b>+1.5</b>	<b>+16</b>	<b>+1.0</b>	<b>+0.3</b>	<b>+0.9</b>	<b>-1.1</b>	<b>+1.9</b>
Acc	62%	52%	84%	84%	72%	73%	70%	67%	58%	63%	61%	50%	57%	57%	54%	50%

Traits Observed: GL, CE, BWT, 200WT, 400WT, SS, FAT, EMA, IMF

Notes: **The top priced bull from our 2017 sale at \$15000. A bull with growth, softness and carcass, with a breed leading IMF. His lot 7 son in this sale is the #1 IMF bull in Australia.**

SELECTION INDEX VALUES		
Domestic Index (\$)	Export Index (\$)	Nth Term Index (\$)
<b>+\$36</b>	<b>+\$48</b>	<b>+\$22</b>

Reference Sire **ASHWOOD PARK RIO D213 F56E (P)**

Ident: HASF56E

Calved: 28/03/2010

Tattoo: HASF56E

Colour: White

Horn: Polled

LT RIO BRAVO 3181 P M665507 (P) OAU5507E (P)  
**SIRE: PARINGA RIO BRAVO D213E (AI) (P) TOLD213E (P)**  
 PARINGA CIGAR B064 (AI) (ET) TOLDB64E

S\$ MONTANA SILVER M454024 (P) OAU4024E (P)  
**DAM: ASHWOOD PARK ANGEL 1 (AI) (ET) (P) HASD3E (P)**  
 ASHWOOD PARK ANGEL (AI) (ET) (P) HASA6E (P)



January 2019 Australasian Charolais GROUP BREEDPLAN																
	Calving Ease DIR (%)	Calving Ease DTRS (%)	Gestation Length (days)	Birth Weight (kg)	200 Day Weight (kg)	400 Day Weight (kg)	600 Day Weight (kg)	Mat Cow Weight (kg)	Milk (kg)	Scrotal Size (cm)	Carcase Weight (kg)	EMA (sq cm)	Rib Fat (mm)	Rump Fat (mm)	Retail Beef Yield (%)	IMF (%)
<b>EBV</b>	<b>+18.2</b>	<b>+0.4</b>	<b>-7.0</b>	<b>-3.5</b>	<b>+5</b>	<b>+22</b>	<b>+24</b>	<b>+6</b>	<b>+20</b>	<b>+0.5</b>	<b>+10</b>	<b>+1.1</b>	<b>+1.9</b>	<b>+3.6</b>	<b>-1.8</b>	<b>+1.3</b>
Acc	76%	63%	92%	94%	89%	90%	86%	81%	73%	88%	78%	70%	78%	77%	71%	70%

Traits Observed: CE, BWT, 200WT, 600WT, FAT, EMA, IMF

Notes: **Breed trait leader low birthweight. We purchased the walking rights to F56 after first using him by AI. He breeds wonderful maternal females and bulls with plenty of softness and performance. His calving ease is first rate.**

SELECTION INDEX VALUES		
Domestic Index (\$)	Export Index (\$)	Nth Term Index (\$)
<b>+\$61</b>	<b>+\$75</b>	<b>+\$32</b>

Charolais Breed Av. EBVs for 2017 Born Calves																Selection Index Values			
	CE-DIR	CE-DTR	GL	BW	200DW	400DW	600DW	MCW	MILK	SS	CWT	EMA	RIB	RUMP	RBY	IMF	DOM	EXPORT	NTH TER
<b>EBV</b>	<b>+1.9</b>	<b>+1.1</b>	<b>-2.8</b>	<b>+0.3</b>	<b>+2</b>	<b>+24</b>	<b>+32</b>	<b>+33</b>	<b>+7</b>	<b>+1.1</b>	<b>+20</b>	<b>+1.6</b>	<b>+0.3</b>	<b>+0.3</b>	<b>+0.2</b>	<b>+0.2</b>	<b>+\$26</b>	<b>+\$35</b>	<b>+\$19</b>

# Lots

## LOT 1      RANGAN CASTOR N188 (AI) (ET) (P)      Ident: RANN188E

**Calved:** 25/11/2017    **Tattoo:** RANN188E    **Colour:** White    **Age:** 14 Mths    **Horn:** Polled

SESAME FR5703388462 PEDW8462F (H)  
**SIRE: CASTOR OAF1641F (H)**  
 TRAGEDIE FR14791345 PEDW1345F (H)  
 NWMSU DOC SILVER 362 PLD M669488 (P) OAU9488E (P)  
**DAM: RANGAN ALETTA J67 (AI) (ET) (P) RANJ67E (P)**  
 RANGAN PARK ALETTA E20 (P) RANE20E (P)



Charolais	CED	BW	200D	400D	600D	Milk	SS	EMA	RUMP	IMF	DOM\$	EXP\$
<b>EBV</b>	<b>-0.9</b>	<b>+1.4</b>	<b>+15</b>	<b>+36</b>	<b>+48</b>	<b>+7</b>	<b>+2.0</b>	<b>+3.1</b>	<b>+0.3</b>	<b>-0.1</b>	<b>\$29</b>	<b>\$41</b>
Acc	36%	66%	53%	58%	54%	35%	69%	43%	43%	42%		

*Traits Observed: BWT, 400WT, SS, FAT, EMA, IMF*

Notes: **Breed top 5% EMA, top 10% 400d, 600d weight, scrotal & carcass weight.** We believe this is the first bull to be offered at auction in Australia sired by Full French bull Castor and semen is no longer available. He is a clean polled, slick coated, growthy young bull that we think very highly of and will be retaining some semen for in herd use. N188 is a late November ET calf the result of a flush from our super donor cow J67. We do think this bull has stud potential.

Purchaser ..... Price \$ .....

## LOT 2      RANGAN GOLDRUSH J37 N154 (P)      Ident: RANN154E

**Calved:** 09/08/2017    **Tattoo:** RANN154E    **Colour:** White    **Age:** 18 Mths    **Horn:** Polled

ASCOT GOLDRUSH G136E (AI) (ET) (P) JAJG136E (P)  
**SIRE: ASCOT GOLDRUSH J37E (AI) (P/S) JAJJ37E (S)**  
 GOBONGO REBBY D205E (AI) (ET) (P) GOD205E (P)  
 RANGAN PARK GAUGUIN C15 (AI) (ET) (P) RANC15E (P)  
**DAM: RANGAN NANETTE J92 (AI) (P) RANJ92E (P)**  
 RANGAN PARK NANETTE D35 (AI) (ET) (P) RAND35E (P)



Charolais	CED	BW	200D	400D	600D	Milk	SS	EMA	RUMP	IMF	DOM\$	EXP\$
<b>EBV</b>	<b>+10.7</b>	<b>-1.5</b>	<b>+18</b>	<b>+39</b>	<b>+51</b>	<b>+13</b>	<b>+2.4</b>	<b>+2.3</b>	<b>+1.1</b>	<b>+1.8</b>	<b>\$63</b>	<b>\$85</b>
Acc	45%	72%	65%	68%	63%	47%	75%	52%	56%	52%		

*Traits Observed: CE, BWT, 200WT, 400WT(x2), SS, FAT, EMA, IMF*

Notes: **Breed top 1% IMF, all indexes, top 5% 400d weight, scrotal & carcass weight, top 10% calving ease, gest' length, low birthweight, 200d weight, 600d weight & milk.** One of my personal sale picks, thick, long, deep and quiet. N154 is very hard to fault and he backs up his physical appearance with great EBV's.

Purchaser ..... Price \$ .....

## LOT 3      RANGAN ROUNDUP K36 N34 (AI) (P)      Ident: RANN34E

**Calved:** 25/06/2017    **Tattoo:** RANN34E    **Colour:** White    **Age:** 19 Mths    **Horn:** Polled

MERIT ROUNDUP 9508W (P) OACE6558E (P)  
**SIRE: RANGAN ROUNDUP K36 (AI) (P) (R/F) RANK36E (P)**  
 RANGAN PARK BELLE H125 (AI) (ET) (P) (R/F) RANH125E (P)  
 ROSEDALE GRANGE (P) MRG6E (P)  
**DAM: RANGAN DELIGHT L12 (AI) (P/S) RANL12E (S)**  
 RANGAN PARK DELIGHT D59 RAND59E (H)



Charolais	CED	BW	200D	400D	600D	Milk	SS	EMA	RUMP	IMF	DOM\$	EXP\$
<b>EBV</b>	<b>+1.1</b>	<b>+0.1</b>	<b>+25</b>	<b>+51</b>	<b>+72</b>	<b>+11</b>	<b>+3.7</b>	<b>+1.2</b>	<b>0.0</b>	<b>+0.2</b>	<b>\$44</b>	<b>\$66</b>
Acc	41%	70%	62%	64%	63%	39%	74%	49%	52%	48%		

*Traits Observed: GL, CE, BWT, 200WT, 400WT(x2), SS, FAT, EMA, IMF*

Notes: **Breed top 1% 200d, 400d, 600d weights, scrotal & carcass weight, top 10% milk, domestic & export index.** The powerhouse bull in the sale, weaned off a maiden 2yo heifer 80kg heavier than the average at 7 months of age and has just kept on going. This bull will be close to 900kg by 20 months of age. His sire Roundup K36 sold to the Mount William stud and at their 2019 sale a son was second top price at \$9500.

Purchaser ..... Price \$ .....

Charolais Breed Av. EBVs for 2017 Born Calves																Selection Index Values			
	CE-DIR	CE-DTR	GL	BW	200DW	400DW	600DW	MCW	MILK	SS	CWT	EMA	RIB	RUMP	RBY	IMF	DOM	EXPORT	NTH TER
<b>EBV</b>	<b>+1.9</b>	<b>+1.1</b>	<b>-2.8</b>	<b>+0.3</b>	<b>+2</b>	<b>+24</b>	<b>+32</b>	<b>+33</b>	<b>+7</b>	<b>+1.1</b>	<b>+20</b>	<b>+1.6</b>	<b>+0.3</b>	<b>+0.3</b>	<b>+0.2</b>	<b>+0.2</b>	<b>+\$26</b>	<b>+\$35</b>	<b>+\$19</b>



# Lots

**LOT 4**      **RANGAN ASHWOOD F56 N118 (P)**      **Ident: RANN118E**

**Calved:** 26/07/2017    **Tattoo:** RANN118E    **Colour:** White    **Age:** 18 Mths    **Horn:** Polled

PARINGA RIO BRAVO D213E (AI) (P) TOLD213E (P)  
**SIRE: ASHWOOD PARK RIO D213 F56E (P) HASF56E (P)**  
 ASHWOOD PARK ANGEL 1 (AI) (ET) (P) HASD3E (P)  
 LT WESTERN EDGE 4057 PLD M6866616 (P) OAUZ6616E (P)  
**DAM: RANGAN ALETTA J26 (AI) (ET) (P) RANJ26E (P)**  
 RANGAN PARK ALETTA C1 (P) RANC1E (P)



	CED	BW	200D	400D	600D	Milk	SS	EMA	RUMP	IMF	DOM\$	EXP\$
<b>EBV</b>	<b>+11.1</b>	<b>-1.6</b>	<b>+9</b>	<b>+33</b>	<b>+40</b>	<b>+19</b>	<b>+1.8</b>	<b>+0.3</b>	<b>+3.9</b>	<b>+0.7</b>	<b>\$58</b>	<b>\$77</b>
Acc	48%	73%	65%	67%	64%	50%	75%	52%	55%	51%		

Traits Observed: CE, BWT, 200WT, 400WT(x2), SS, FAT, EMA, IMF

Notes: **Homozygous Polled. Breed top 1% milk & fat cover, top 5% gest' length, domestic & export index, top 10% low birthweight, 400d weight & IMF.** Another bull with plenty of frame and thickness. N118 has a growth spread we really like, going from breed top 10% low birthweight to then go on to breed top 10% 400d weight. A bull that has softness that will breed easier finishing weaners with the bonus of plenty of IMF potential to help with MSA grading.

Purchaser ..... Price \$ .....

**LOT 5**      **RANGAN ASHWOOD F56 N22 (AI) (P)**      **Ident: RANN22E**

**Calved:** 21/06/2017    **Tattoo:** RANN22E    **Colour:** White    **Age:** 19 Mths    **Horn:** Polled

PARINGA RIO BRAVO D213E (AI) (P) TOLD213E (P)  
**SIRE: ASHWOOD PARK RIO D213 F56E (P) HASF56E (P)**  
 ASHWOOD PARK ANGEL 1 (AI) (ET) (P) HASD3E (P)  
 LT LEDGER O332 (P) OAU3168E (P)  
**DAM: RANGAN SHOWGIRL L46 (AI) (P) RANL46E (P)**  
 RANGAN PARK SHOWGIRL G16 (AI) (ET) (P) RANG16E (P)



	CED	BW	200D	400D	600D	Milk	SS	EMA	RUMP	IMF	DOM\$	EXP\$
<b>EBV</b>	<b>+16.8</b>	<b>-3.1</b>	<b>+12</b>	<b>+37</b>	<b>+43</b>	<b>+18</b>	<b>+2.0</b>	<b>+2.4</b>	<b>+1.9</b>	<b>+1.2</b>	<b>\$70</b>	<b>\$88</b>
Acc	49%	73%	66%	67%	64%	49%	75%	52%	55%	52%		

Traits Observed: GL, CE, BWT, 200WT, 400WT(x2), SS, FAT, EMA, IMF

Notes: **Homozygous Polled. Breed top 1% calving ease, gest' length, milk & all indexes, top 5% low birthweight, 400d weight & IMF, top 10% scrotal, carcass weight, EMA & rump fat.** A very good complete package in this bull, he backs up a breed leading set of EBV's with his appearance. He is very smooth made, long and thick with that slick coat we do like. Hard to find a bull that has breed top 1% calving ease then to go all the way to breed top 10% yearling weight. Born at 38kg out of a maiden LT Ledger heifer going back to one of our best Pinay/Showgirl cows that continue to produce every year.

Purchaser ..... Price \$ .....

**LOT 6**      **RANGAN PINAY F21 N171 (AI) (ET) (P)**      **Ident: RANN171E**

**Calved:** 19/08/2017    **Tattoo:** RANN171E    **Colour:** White    **Age:** 17 Mths    **Horn:** Polled

PINAY 8552394134 OAFU4134F (H)  
**SIRE: RANGAN PARK PINAY F21 (AI) (ET) (P) RANF21E (P)**  
 PALGROVE SHOW GIRL 6 (AI) (P) PKP82E (P)  
 NWMSU DOC SILVER 362 PLD M669488 (P) OAU9488E (P)  
**DAM: RANGAN ALETTA J67 (AI) (ET) (P) RANJ67E (P)**  
 RANGAN PARK ALETTA E20 (P) RANE20E (P)



	CED	BW	200D	400D	600D	Milk	SS	EMA	RUMP	IMF	DOM\$	EXP\$
<b>EBV</b>	<b>+10.3</b>	<b>-0.6</b>	<b>+17</b>	<b>+42</b>	<b>+52</b>	<b>+11</b>	<b>+2.2</b>	<b>+2.0</b>	<b>-0.1</b>	<b>+0.8</b>	<b>\$61</b>	<b>\$80</b>
Acc	51%	73%	65%	67%	64%	54%	75%	54%	56%	54%		

Traits Observed: BWT, 200WT, 400WT(x2), SS, FAT, EMA, IMF

Notes: **Homozygous Polled. Breed top 2% 400d weight, carcass weight & all indexes, top 5% gest' length, top 10% calving ease, 200d & 600d weights, milk, scrotal & IMF.** An ET bull out of the same donor cow as the lot 1 bull. A bull that displays plenty of frame with a smooth coat that has the bonus of being homo-polled. Near perfect structural scores sired by the F21 Pinay/Showgirl bull that just continues to breed.

Purchaser ..... Price \$ .....

Charolais Breed Av. EBVs for 2017 Born Calves																	Selection Index Values		
	CE-DIR	CE-DTR	GL	BW	200DW	400DW	600DW	MCW	MILK	SS	CWT	EMA	RIB	RUMP	RBY	IMF	DOM	EXPORT	NTH TER
<b>EBV</b>	<b>+1.9</b>	<b>+1.1</b>	<b>-2.8</b>	<b>+0.3</b>	<b>+2</b>	<b>+24</b>	<b>+32</b>	<b>+33</b>	<b>+7</b>	<b>+1.1</b>	<b>+20</b>	<b>+1.6</b>	<b>+0.3</b>	<b>+0.3</b>	<b>+0.2</b>	<b>+0.2</b>	<b>+\$26</b>	<b>+\$35</b>	<b>+\$19</b>

# Lots

## LOT 7      RANGAN LANNISTER N67 (AI) (P) (TW)      Ident: RANN67E

**Calved:** 17/07/2017    **Tattoo:** RANN67E    **Colour:** White    **Age:** 18 Mths    **Horn:** Polled

RANGAN PARK GAUGUIN C15 (AI) (ET) (P) RANC15E (P)  
**SIRE: JC LANNISTER L1 (AI) (P) CJCL1E (P)**  
 RANGAN PARK NANETTE H102 (AI) (P) RANH102E (P)  
 LT EASY BLEND 5125 PLD (P) OAU5113E (P)  
**DAM: RANGAN PARK NANETTE F47 (AI) (P) RANF47E (P)**  
 RANGAN PARK NANETTE D35 (AI) (ET) (P) RAND35E (P)



	CED	BW	200D	400D	600D	Milk	SS	EMA	RUMP	IMF	DOM\$	EXP\$
<b>EBV</b>	<b>+0.2</b>	<b>+0.9</b>	<b>+26</b>	<b>+45</b>	<b>+63</b>	<b>+8</b>	<b>+1.2</b>	<b>+0.7</b>	<b>+2.9</b>	<b>+2.8</b>	<b>\$41</b>	<b>\$60</b>
Acc	46%	70%	62%	64%	61%	48%	70%	49%	52%	49%		

*Traits Observed: BWT, 200WT, 400WT(x2), SS, FAT, EMA, IMF*

Notes: **Homozygous Polled. Breed top 1% 200d & 400d weights & IMF, top 2% 600d weight & rump fat, top 10% gest' length.** This bull is the #1 IMF bull recorded in Australia at present. He is a long made bull with plenty of softness. N67's dam is one of our top matrons and has been used as a donor within our herd. A bull that has a lovely disposition that would make a great bull in a harder environment or a pure Charolais herd to ad finish and IMF potential to his progeny.

Purchaser ..... Price \$ .....

## LOT 8      RANGAN LEDGER N100 (AI) (P)      Ident: RANN100E

**Calved:** 21/07/2017    **Tattoo:** RANN100E    **Colour:** White    **Age:** 18 Mths    **Horn:** Polled

LT BLUEGRASS 4017P M686569 (P) OAUZ4017E (P)  
**SIRE: LT LEDGER 0332 (P) OAU3168E (P)**  
 LT BRENDA 6120 PLD PED-6992E  
 LT WESTERN SPUR 2061 PLD M645786 (P) OAU2061E (P)  
**DAM: RANGAN PARK SHOWGIRL C29 (AI) (ET) (P) RANC29E (P)**  
 PALGROVE SHOW GIRL 6 (AI) (P) PKP82E (P)



	CED	BW	200D	400D	600D	Milk	SS	EMA	RUMP	IMF	DOM\$	EXP\$
<b>EBV</b>	<b>+5.8</b>	<b>-0.2</b>	<b>+18</b>	<b>+40</b>	<b>+49</b>	<b>+7</b>	<b>+3.7</b>	<b>+0.7</b>	<b>0.0</b>	<b>+0.5</b>	<b>\$43</b>	<b>\$58</b>
Acc	58%	76%	70%	72%	69%	60%	78%	59%	62%	59%		

*Traits Observed: GL, CE, BWT, 200WT, 400WT(x2), SS, FAT, EMA, IMF*

Notes: **Breed top 1% scrotal, top 5% gest' length & 400d weight, top 10% 200d & 600d weights, carcass weight, domestic & export index.** A big heavy bull with plenty of frame to hang those kilos' off. A bull we do like for his good structure, temperament and natural growth. His dam is one of our original Western Spur/Showgirls and continues in the herd at rising 12yo. We believe there is plenty of breed potential in this bull.

Purchaser ..... Price \$ .....

## LOT 9      RANGAN ASHWOOD F56 N46 (P)      Ident: RANN46E

**Calved:** 26/06/2017    **Tattoo:** RANN46E    **Colour:** White    **Age:** 19 Mths    **Horn:** Polled

PARINGA RIO BRAVO D213E (AI) (P) TOLD213E (P)  
**SIRE: ASHWOOD PARK RIO D213 F56E (P) HASF56E (P)**  
 ASHWOOD PARK ANGEL 1 (AI) (ET) (P) HASD3E (P)  
 PINAY 8552394134 OAFU4134F (H)  
**DAM: RANGAN PARK SHOWGIRL G71 (AI) RANG71E (H)**  
 RANGAN PARK SHOWGIRL C26 (AI) (ET) (P) RANC26E (P)



	CED	BW	200D	400D	600D	Milk	SS	EMA	RUMP	IMF	DOM\$	EXP\$
<b>EBV</b>	<b>+14.6</b>	<b>-2.3</b>	<b>+9</b>	<b>+29</b>	<b>+34</b>	<b>+16</b>	<b>+0.5</b>	<b>+2.8</b>	<b>+1.0</b>	<b>+0.5</b>	<b>\$60</b>	<b>\$73</b>
Acc	50%	74%	66%	68%	65%	52%	75%	54%	57%	53%		

*Traits Observed: CE, BWT, 200WT, 400WT(x2), SS, FAT, EMA, IMF*

Notes: **Breed top 2% calving ease, gest' length, milk & domestic index, top 5% low birthweight, EMA & export index.** A nicely made bull that is typical of the bulls sired by the F56 sire. Very smooth with plenty of frame, a big EMA scan and near perfect structural scores. The dam of N46 is an exceptional Pinay female from the Showgirl line. The Pinay females would have been our most consistent producers over the years.

Purchaser ..... Price \$ .....

Charolais Breed Av. EBVs for 2017 Born Calves																Selection Index Values			
	CE-DIR	CE-DTR	GL	BW	200DW	400DW	600DW	MCW	MILK	SS	CWT	EMA	RIB	RUMP	RBY	IMF	DOM	EXPORT	NTH TER
<b>EBV</b>	<b>+1.9</b>	<b>+1.1</b>	<b>-2.8</b>	<b>+0.3</b>	<b>+2</b>	<b>+24</b>	<b>+32</b>	<b>+33</b>	<b>+7</b>	<b>+1.1</b>	<b>+20</b>	<b>+1.6</b>	<b>+0.3</b>	<b>+0.3</b>	<b>+0.2</b>	<b>+0.2</b>	<b>+\$26</b>	<b>+\$35</b>	<b>+\$19</b>



# Lots

## LOT 10      RANGAN ASHWOOD F56 N18 (AI) (P)      Ident: RANN18E

**Calved:** 20/06/2017    **Tattoo:** RANN18E    **Colour:** White    **Age:** 19 Mths    **Horn:** Polled

PARINGA RIO BRAVO D213E (AI) (P) TOLD213E (P)  
**SIRE: ASHWOOD PARK RIO D213 F56E (P) HASF56E (P)**  
 ASHWOOD PARK ANGEL 1 (AI) (ET) (P) HASD3E (P)  
 PINAY 8552394134 OAFU4134F (H)  
**DAM: RANGAN SHOWGIRL K56 (AI) (ET) (P/S) RANK56E (S)**  
 PALGROVE SHOW GIRL 6 (AI) (P) PKP82E (P)



	CED	BW	200D	400D	600D	Milk	SS	EMA	RUMP	IMF	DOM\$	EXP\$
<b>EBV</b>	<b>+14.0</b>	<b>-3.0</b>	<b>+11</b>	<b>+26</b>	<b>+32</b>	<b>+15</b>	<b>0.0</b>	<b>+2.4</b>	<b>+1.3</b>	<b>+1.7</b>	<b>\$61</b>	<b>\$76</b>
Acc	51%	73%	66%	68%	65%	51%	75%	54%	57%	54%		

*Traits Observed: GL, CE, BWT, 200WT, 400WT(x2), SS, FAT, EMA, IMF*

Notes: **Breed top 2% calving ease, gest' length, low birthweight, milk, IMF & domestic index.** Again by the F56 sire. N18 is very similar in appearance to the previous lot, absolute calving ease being born at only 37kg and then to make it to well above breed average for yearling weight should see him suit plenty of commercial programs.

Purchaser ..... Price \$ .....

## LOT 11      RANGAN GALAXY N117 (AI) (ET) (P)      Ident: RANN117E

**Calved:** 25/07/2017    **Tattoo:** RANN117E    **Colour:** White    **Age:** 18 Mths    **Horn:** Polled

LT WESTERN EDGE 4057 PLD M686616 (P) OAUZ6616E (P)  
**SIRE: ASCOT GALAXY G131 (AI) (ET) (P) JAJG131E (P)**  
 ROSDALE BOBBIN Y74 (P) MRY74E (P)  
 PINAY 8552394134 OAFU4134F (H)  
**DAM: RANGAN PARK SHOWGIRL F25 (AI) (ET) RANF25E (H)**  
 PALGROVE SHOW GIRL 6 (AI) (P) PKP82E (P)



	CED	BW	200D	400D	600D	Milk	SS	EMA	RUMP	IMF	DOM\$	EXP\$
<b>EBV</b>	<b>-1.7</b>	<b>+0.2</b>	<b>+17</b>	<b>+41</b>	<b>+59</b>	<b>+16</b>	<b>+0.6</b>	<b>+2.7</b>	<b>-0.4</b>	<b>+0.5</b>	<b>\$39</b>	<b>\$50</b>
Acc	52%	74%	68%	69%	67%	53%	76%	57%	60%	56%		

*Traits Observed: BWT, 200WT, 400WT(x2), SS, FAT, EMA, IMF*

Notes: **Breed top 2% 400d & 600d weight, milk & carcass weight, top 10% 200d weight & EMA.** The only bull in the sale by homo-polled Ascot Galaxy out of one of our best Pinay/Showgirl donors in F25. N117 is a larger framed bull that displays a quiet nature and near perfect structural scores. He will be one of the heaviest and longest bulls in this year's sale. A bull that would breed fantastic quick growing bullocks.

Purchaser ..... Price \$ .....

## LOT 12      RANGAN ASHWOOD F56 N38 (AI) (P)      Ident: RANN38E

**Calved:** 27/06/2017    **Tattoo:** RANN38E    **Colour:** White    **Age:** 19 Mths    **Horn:** Polled

PARINGA RIO BRAVO D213E (AI) (P) TOLD213E (P)  
**SIRE: ASHWOOD PARK RIO D213 F56E (P) HASF56E (P)**  
 ASHWOOD PARK ANGEL 1 (AI) (ET) (P) HASD3E (P)  
 MERIT ROUNDUP 9508W (P) OACE6558E (P)  
**DAM: RANGAN SHOWGIRL K15 (AI) (P) RANK15E (P)**  
 RANGAN PARK SHOWGIRL H130 (AI) (ET) (P) (R/F) RANH130E (P)



	CED	BW	200D	400D	600D	Milk	SS	EMA	RUMP	IMF	DOM\$	EXP\$
<b>EBV</b>	<b>+4.8</b>	<b>-0.2</b>	<b>+18</b>	<b>+38</b>	<b>+48</b>	<b>+11</b>	<b>+1.1</b>	<b>+2.0</b>	<b>+1.2</b>	<b>+1.3</b>	<b>\$45</b>	<b>\$58</b>
Acc	48%	73%	65%	66%	63%	46%	74%	50%	52%	49%		

*Traits Observed: GL, CE, BWT, 200WT, 400WT(x2), SS, FAT, EMA, IMF*

Notes: **Breed top 1% IMF, top 5% 400d weight, top 10% 200d & 600d weight, milk, domestic & export index.** A bull that I think will suit a lot of programs. N38 is that smooth polled early maturing type that just suits our southern grass finishing systems. He has the all important calving ease then explosive growth with fat cover for finish and breed top 1% IMF to help with MSA grading. The dam of this bull was junior champion Charolais heifer at the Royal Melbourne Show as a yearling and is becoming one of our most productive young matrons. Worth a close inspection.

Purchaser ..... Price \$ .....

Charolais Breed Av. EBVs for 2017 Born Calves																Selection Index Values			
	CE-DIR	CE-DTR	GL	BW	200DW	400DW	600DW	MCW	MILK	SS	CWT	EMA	RIB	RUMP	RBY	IMF	DOM	EXPORT	NTH TER
<b>EBV</b>	<b>+1.9</b>	<b>+1.1</b>	<b>-2.8</b>	<b>+0.3</b>	<b>+2</b>	<b>+24</b>	<b>+32</b>	<b>+33</b>	<b>+7</b>	<b>+1.1</b>	<b>+20</b>	<b>+1.6</b>	<b>+0.3</b>	<b>+0.3</b>	<b>+0.2</b>	<b>+0.2</b>	<b>+\$26</b>	<b>+\$35</b>	<b>+\$19</b>



# Lots

## LOT 13      RANGAN ROUNDUP N87 (AI) (P)      Ident: RANN87E

**Calved:** 21/07/2017    **Tattoo:** RANN87E    **Colour:** White    **Age:** 18 Mths    **Horn:** Polled

MXS VERMILLION 527R (P) OACA9214E (P)  
**SIRE: MERIT ROUNDUP 9508W (P) OACE6558E (P)**  
 MERIT YOLANDA 7244T PED-1301E  
 HIGH BLUFF HANK 41R MC297682 (P) OACA7682E (P)  
**DAM: RANGAN PARK SHOWGIRL H30 (AI) (ET) (P) RANH30E (P)**  
 PALGROVE SHOW GIRL 6 (AI) (P) PKP82E (P)



Charolais	CED	BW	200D	400D	600D	Milk	SS	EMA	RUMP	IMF	DOM\$	EXP\$
<b>EBV</b>	<b>+0.4</b>	<b>+0.7</b>	<b>+17</b>	<b>+34</b>	<b>+44</b>	<b>+6</b>	<b>+2.8</b>	<b>+1.2</b>	<b>-0.7</b>	<b>-0.7</b>	<b>\$28</b>	<b>\$38</b>
Acc	52%	74%	68%	69%	66%	53%	76%	54%	57%	53%		

*Traits Observed: GL, CE, BWT, 200WT, 400WT(x2), SS, FAT, EMA, IMF*

Notes: **Breed top 2% scrotal & retail yield, top 5% gest' length, top 10% 200d & 400d weights.** This Merit Roundup son is a real powerhouse, thickness, length and bone in a medium frame. N87 is out of a High Bluff Hank/Showgirl female who has already bred a stud sire. He is a quiet natured bull that has a very good leg and hoof structure.

Purchaser ..... Price \$ .....

## LOT 14      RANGAN ASHWOOD F56 N29 (AI) (P)      Ident: RANN29E

**Calved:** 23/06/2017    **Tattoo:** RANN29E    **Colour:** White    **Age:** 19 Mths    **Horn:** Polled

PARINGA RIO BRAVO D213E (AI) (P) TOLD213E (P)  
**SIRE: ASHWOOD PARK RIO D213 F56E (P) HASF56E (P)**  
 ASHWOOD PARK ANGEL 1 (AI) (ET) (P) HASD3E (P)  
 RANGAN PARK BRAVO E18 G91 (AI) (P) RANG91E (P)  
**DAM: RANGAN SHOWGIRL K144 RANK144E (H)**  
 RANGAN PARK SHOWGIRL F25 (AI) (ET) RANF25E (H)



Charolais	CED	BW	200D	400D	600D	Milk	SS	EMA	RUMP	IMF	DOM\$	EXP\$
<b>EBV</b>	<b>+17.5</b>	<b>-4.2</b>	<b>+4</b>	<b>+17</b>	<b>+19</b>	<b>+17</b>	<b>+0.4</b>	<b>+1.7</b>	<b>+1.6</b>	<b>+1.6</b>	<b>\$62</b>	<b>\$78</b>
Acc	47%	73%	65%	68%	64%	47%	75%	53%	56%	52%		

*Traits Observed: GL, CE, BWT, 200WT, 400WT(x2), SS, FAT, EMA, IMF*

Notes: **Breed top 1% calving ease, low birthweight, milk, IMF & domestic index, top 5% gest' length, top 10% rump fat.** Another by the F56 bull, again smooth made with plenty of natural growth. Again very good structural scores and should breed those early finishing calves that get off to market quickly.

Purchaser ..... Price \$ .....

## LOT 15      RANGAN ASHWOOD F56 N9 (AI) (P)      Ident: RANN9E

**Calved:** 15/06/2017    **Tattoo:** RANN9E    **Colour:** White    **Age:** 19 Mths    **Horn:** Polled

PARINGA RIO BRAVO D213E (AI) (P) TOLD213E (P)  
**SIRE: ASHWOOD PARK RIO D213 F56E (P) HASF56E (P)**  
 ASHWOOD PARK ANGEL 1 (AI) (ET) (P) HASD3E (P)  
 EC NO DOUBT 2022 P M685500 (P) OAUZ2022E (P)  
**DAM: RANGAN SHOWGIRL L41 (AI) (P) RANL41E (P)**  
 RANGAN PARK SHOWGIRL C40 (AI) (ET) (P) RANC40E (P)



Charolais	CED	BW	200D	400D	600D	Milk	SS	EMA	RUMP	IMF	DOM\$	EXP\$
<b>EBV</b>	<b>+16.6</b>	<b>-3.6</b>	<b>+12</b>	<b>+31</b>	<b>+37</b>	<b>+13</b>	<b>+2.2</b>	<b>+1.2</b>	<b>+3.6</b>	<b>+0.8</b>	<b>\$73</b>	<b>\$97</b>
Acc	49%	73%	66%	68%	64%	50%	75%	53%	56%	52%		

*Traits Observed: GL, CE, BWT, 200WT, 400WT(x2), SS, FAT, EMA, IMF*

Notes: **Breed top 1% calving ease, gest' length, low birthweight, fat cover & all indexes, top 10% milk, IMF & scrotal, top 20% 400d weight.** N9 is a compact thick bull with breed leading calving ease along with breed top 20% yearling weight. Born at only 38kg out of a maiden 2yo heifer he should sire calves that are born easily and then grow out and finish quickly in a grass based system.

Purchaser ..... Price \$ .....

Charolais Breed Av. EBVs for 2017 Born Calves																Selection Index Values			
	CE-DIR	CE-DTR	GL	BW	200DW	400DW	600DW	MCW	MILK	SS	CWT	EMA	RIB	RUMP	RBY	IMF	DOM	EXPORT	NTH TER
<b>EBV</b>	<b>+1.9</b>	<b>+1.1</b>	<b>-2.8</b>	<b>+0.3</b>	<b>+2</b>	<b>+24</b>	<b>+32</b>	<b>+33</b>	<b>+7</b>	<b>+1.1</b>	<b>+20</b>	<b>+1.6</b>	<b>+0.3</b>	<b>+0.3</b>	<b>+0.2</b>	<b>+0.2</b>	<b>+\$26</b>	<b>+\$35</b>	<b>+\$19</b>

# Lots

## LOT 16      RANGAN CASTOR N136 (AI) (P)      Ident: RANN136E

**Calved:** 30/07/2017    **Tattoo:** RANN136E    **Colour:** White    **Age:** 18 Mths    **Horn:** Polled

SESAME FR5703388462 PEDW8462F (H)  
**SIRE: CASTOR OAF1641F (H)**  
 TRAGEDIE FR14791345 PEDW1345F (H)  
 NWMSU DOC SILVER 362 PLD M669488 (P) OAU9488E (P)  
**DAM: RANGAN SHOWGIRL J20 (AI) (P) (TW) RANJ20E (P)**  
 RANGAN PARK SHOWGIRL E40 (AI) (ET) (P) (R/F) RANE40E (P)



	CED	BW	200D	400D	600D	Milk	SS	EMA	RUMP	IMF	DOM\$	EXP\$
<b>EBV</b>	<b>-3.1</b>	<b>+1.1</b>	<b>+16</b>	<b>+33</b>	<b>+44</b>	<b>+6</b>	<b>+1.2</b>	<b>+4.2</b>	<b>+0.4</b>	<b>-0.1</b>	<b>\$24</b>	<b>\$33</b>
Acc	35%	67%	59%	59%	55%	37%	71%	43%	43%	42%		

Traits Observed: CE, GL, BWT, 200WT, 400WT(x2), SS, FAT, EMA, IMF

Notes: **Breed top 1% EMA, top 5% carcass weight & retail yield, top 10% 400d weight.** The second polled castor bull to be offered in this year's sale out of a very moderate Doc Silver female that goes back to the super breeding Redemption/C7 line. N136 is a powerhouse of a bull, thick with an amazing muscle pattern.

Purchaser ..... Price \$ .....

## LOT 17      RANGAN GOLDRUSH J37 N52 (P)      Ident: RANN52E

**Calved:** 11/07/2017    **Tattoo:** RANN52E    **Colour:** White    **Age:** 19 Mths    **Horn:** Polled

ASCOT GOLDRUSH G136E (AI) (ET) (P) JAJG136E (P)  
**SIRE: ASCOT GOLDRUSH J37E (AI) (P/S) JAJ37E (S)**  
 GOBONGO REBBY D205E (AI) (ET) (P) GOD205E (P)  
 MERIT ROUNDUP 9508W (P) OACE6558E (P)  
**DAM: RANGAN SHOWGIRL L74 (AI) (ET) (P) RANL74E (P)**  
 RANGAN PARK SHOWGIRL F26 (AI) (ET) RANF26E (H)



	CED	BW	200D	400D	600D	Milk	SS	EMA	RUMP	IMF	DOM\$	EXP\$
<b>EBV</b>	<b>+7.9</b>	<b>-0.7</b>	<b>+20</b>	<b>+42</b>	<b>+55</b>	<b>+10</b>	<b>+3.0</b>	<b>+2.7</b>	<b>-0.2</b>	<b>+0.9</b>	<b>\$54</b>	<b>\$72</b>
Acc	45%	72%	64%	67%	63%	44%	75%	51%	54%	50%		

Traits Observed: CE, BWT, 200WT, 400WT(x2), SS, FAT, EMA, IMF

Notes: **Homozygous Polled. Breed top 2% 400d weight, scrotal, carcass weight, top 5% 200d & 600d weight, EMA, IMF & all indexes.** As thick as a brick is a great way to describe this young bull, he possesses a quiet nature and good structural scores. He would suit a vealer producer looking for all polled thick early maturing calves. His dam is a very good Merit Roundup/Showgirl whose ET sister sold at the Royal Melbourne Show Feature Breed sale in 2016 for \$9500.

Purchaser ..... Price \$ .....

## LOT 18      RANGAN GOLDRUSH J37 N85 (P)      Ident: RANN85E

**Calved:** 21/07/2017    **Tattoo:** RANN85E    **Colour:** White    **Age:** 18 Mths    **Horn:** Polled

ASCOT GOLDRUSH G136E (AI) (ET) (P) JAJG136E (P)  
**SIRE: ASCOT GOLDRUSH J37E (AI) (P/S) JAJ37E (S)**  
 GOBONGO REBBY D205E (AI) (ET) (P) GOD205E (P)  
 RANGAN PARK BRAVO E18 G91 (AI) (P) RANG91E (P)  
**DAM: RANGAN SHOWGIRL L134 (P) RANL134E (P)**  
 RANGAN PARK SHOWGIRL G10 (AI) (ET) RANG10E (H)



	CED	BW	200D	400D	600D	Milk	SS	EMA	RUMP	IMF	DOM\$	EXP\$
<b>EBV</b>	<b>+14.0</b>	<b>-1.6</b>	<b>+14</b>	<b>+35</b>	<b>+40</b>	<b>+16</b>	<b>0.0</b>	<b>+5.5</b>	<b>+0.9</b>	<b>+0.1</b>	<b>\$64</b>	<b>\$77</b>
Acc	44%	72%	65%	67%	63%	44%	75%	52%	55%	51%		

Traits Observed: CE, BWT, 200WT, 400WT(x2), SS, FAT, EMA, IMF

Notes: **Homozygous Polled. Breed top 1% EMA & domestic index, top 2% calving ease, milk, carcass weight, retail yield & export index, top 10% low birthweight & 400d weight.** Again very similar to the previous lot, extremely thick made with plenty of muscle. If a producer is looking for a couple of bulls to breed all polled, even lines of calves lot 17 and 18 would do very well.

Purchaser ..... Price \$ .....

Charolais Breed Av. EBVs for 2017 Born Calves																	Selection Index Values		
	CE-DIR	CE-DTR	GL	BW	200DW	400DW	600DW	MCW	MILK	SS	CWT	EMA	RIB	RUMP	RBY	IMF	DOM	EXPORT	NTH TER
<b>EBV</b>	<b>+1.9</b>	<b>+1.1</b>	<b>-2.8</b>	<b>+0.3</b>	<b>+2</b>	<b>+24</b>	<b>+32</b>	<b>+33</b>	<b>+7</b>	<b>+1.1</b>	<b>+20</b>	<b>+1.6</b>	<b>+0.3</b>	<b>+0.3</b>	<b>+0.2</b>	<b>+0.2</b>	<b>+\$26</b>	<b>+\$35</b>	<b>+\$19</b>



# Lots

## LOT 19      RANGAN GOLDRUSH J37 N166 (P)      Ident: RANN166E

Calved: 15/08/2017    Tattoo: RANN166E    Colour: White    Age: 17 Mths    Horn: Polled

ASCOT GOLDRUSH G136E (AI) (ET) (P) JAJG136E (P)  
**SIRE: ASCOT GOLDRUSH J37E (AI) (P/S) JAJJ37E (S)**  
 GOBONGO REBBY D205E (AI) (ET) (P) GOD205E (P)  
 LT WESTERN EDGE 4057 PLD M686616 (P) OAUZ6616E (P)  
**DAM: RANGAN ALETTA K27 (AI) (P) RANK27E (P)**  
 RANGAN PARK ALETTA H61 (AI) (P) FANH61E (P)



	CED	BW	200D	400D	600D	Milk	SS	EMA	RUMP	IMF	DOM\$	EXP\$
<b>EBV</b>	<b>+12.9</b>	<b>-2.8</b>	<b>+10</b>	<b>+28</b>	<b>+31</b>	<b>+19</b>	<b>+1.7</b>	<b>+3.1</b>	<b>+2.7</b>	<b>+0.7</b>	<b>\$63</b>	<b>\$80</b>
Acc	45%	71%	65%	66%	62%	47%	73%	52%	55%	51%		

Traits Observed: BWT, 200WT, 400WT(x2), SS, FAT, EMA, IMF

Notes: **Homozygous Polled. Breed top 1% milk, top 2% low birthweight, EMA, fat cover, domestic & export index, top 5% gest' length.** One of my favourite bulls in the entire draft. N166 with calving ease and good growth with big EMA and fat covers would make a top end commercial bull or even suit a stud heifer job. His structural scores are first rate and the ability to poll horned cows is a bonus. The only reason that he is this far down the order was because the mob was split as yearlings and have run that way ever since. We will be retaining some semen to use over our stud heifers and larger framed females.

Purchaser ..... Price \$ .....

## LOT 20      RANGAN ASHWOOD F56 N170 (P)      Ident: RANN170E

Calved: 19/08/2017    Tattoo: RANN170E    Colour: White    Age: 17 Mths    Horn: Polled

PARINGA RIO BRAVO D213E (AI) (P) TOLD213E (P)  
**SIRE: ASHWOOD PARK RIO D213 F56E (P) HASF56E (P)**  
 ASHWOOD PARK ANGEL 1 (AI) (ET) (P) HASD3E (P)  
 RANGAN PARK BLUEGRASS D39 (AI) (ET) (P) RAND39E (P)  
**DAM: RANGAN PARK SHOWGIRL H92 (AI) (P) RANH92E (PO)**  
 RANGAN PARK SHOWGIRL C26 (AI) (ET) (P) RANC26E (P)



	CED	BW	200D	400D	600D	Milk	SS	EMA	RUMP	IMF	DOM\$	EXP\$
<b>EBV</b>	<b>+10.8</b>	<b>-1.5</b>	<b>+7</b>	<b>+21</b>	<b>+25</b>	<b>+17</b>	<b>+1.1</b>	<b>+1.2</b>	<b>+2.0</b>	<b>+0.2</b>	<b>\$43</b>	<b>\$53</b>
Acc	47%	72%	65%	67%	63%	50%	73%	52%	56%	52%		

Traits Observed: CE, BWT, 200WT, 400WT(x2), SS, FAT, EMA, IMF

Notes: **Homozygous Polled. Breed top 1% milk, top 10% calving ease, gest' length, low birthweight, rump fat & domestic index.** N170 is a very smooth, nice headed young bull with a very good structure and quiet temperament. He possesses great calving ease and his dam is one we rate very highly within our herd.

Purchaser ..... Price \$ .....

## LOT 21      RANGAN PINAY F21 N163 (AI) (ET) (P)      Ident: RANN163E

Calved: 15/08/2017    Tattoo: RANN163E    Colour: White    Age: 17 Mths    Horn: Polled

PINAY 8552394134 OAFU4134F (H)  
**SIRE: RANGAN PARK PINAY F21 (AI) (ET) (P) RANF21E (PO)**  
 PALGROVE SHOW GIRL 6 (AI) (P) PKP82E (P)  
 NWMSU DOC SILVER 362 PLD M669488 (P) OAU9488E (P)  
**DAM: RANGAN ALETTA J67 (AI) (ET) (P) RANJ67E (P)**  
 RANGAN PARK ALETTA E20 (P) RANE20E (P)



	CED	BW	200D	400D	600D	Milk	SS	EMA	RUMP	IMF	DOM\$	EXP\$
<b>EBV</b>	<b>+10.0</b>	<b>-0.2</b>	<b>+14</b>	<b>+32</b>	<b>+39</b>	<b>+10</b>	<b>+1.0</b>	<b>+1.7</b>	<b>-0.5</b>	<b>+0.2</b>	<b>\$47</b>	<b>\$60</b>
Acc	51%	73%	65%	67%	64%	54%	75%	54%	56%	54%		

Traits Observed: BWT, 200WT, 400WT(x2), SS, FAT, EMA, IMF

Notes: **Homozygous Polled. Breed top 10% calving ease, gest' length, retail yield & all indexes, top 20% 400d weight.** A full ET brother to lot 6 and maternal brother to Lot 1. Nice smooth bull with a sires head, he has breed leading calving ease along with very good growth numbers. Being sired by the F21 bull we would expect him to breed very consistently.

Purchaser ..... Price \$ .....

Charolais Breed Av. EBVs for 2017 Born Calves																	Selection Index Values		
	CE-DIR	CE-DTR	GL	BW	200DW	400DW	600DW	MCW	MILK	SS	CWT	EMA	RIB	RUMP	RBY	IMF	DOM	EXPORT	NTH TER
<b>EBV</b>	<b>+1.9</b>	<b>+1.1</b>	<b>-2.8</b>	<b>+0.3</b>	<b>+2</b>	<b>+24</b>	<b>+32</b>	<b>+33</b>	<b>+7</b>	<b>+1.1</b>	<b>+20</b>	<b>+1.6</b>	<b>+0.3</b>	<b>+0.3</b>	<b>+0.2</b>	<b>+0.2</b>	<b>+\$26</b>	<b>+\$35</b>	<b>+\$19</b>



# Lots

## LOT 22      RANGAN LEDGER N143 (AI) (P)      Ident: RANN143E

Calved: 02/08/2017    Tattoo: RANN143E    Colour: White    Age: 18 Mths    Horn: Polled

LT BLUEGRASS 4017P M686569 (P) OAUZ4017E (PO)  
**SIRE: LT LEDGER 0332 (P) OAU3168E (P)**  
 LT BRENDA 6120 PLD PED-6992E  
 M6 GRID MAKER 104 PET M633377 (P) OAUW3377E (P)  
**DAM: RANGAN PARK SHOWGIRL G59 (AI) RANG59E (H)**  
 RANGAN PARK SHOWGIRL C7 (AI) (ET) RANC7E (H)



	CED	BW	200D	400D	600D	Milk	SS	EMA	RUMP	IMF	DOM\$	EXP\$
<b>EBV</b>	<b>+12.9</b>	<b>-3.7</b>	<b>+14</b>	<b>+26</b>	<b>+28</b>	<b>+2</b>	<b>+1.3</b>	<b>+3.1</b>	<b>+0.7</b>	<b>+1.2</b>	<b>\$56</b>	<b>\$70</b>
Acc	54%	74%	68%	70%	67%	56%	77%	56%	58%	55%		

Traits Observed: GL, CE, BWT, 200WT, 400WT(x2), SS, FAT, EMA, IMF

Notes: **Breed top 1% low birthweight, top 2% calving ease, gest' length & IMF, top 5% EMA, domestic & export index, top 30% 400d weight.** A low birthweight calving ease young bull out of a very good Grid Maker dam that goes back to old C7. N143 has plenty of fat cover and IMF to finish your calves early.

Purchaser ..... Price \$ .....

## LOT 23      RANGAN ROUNDUP N80 (AI) (P)      Ident: RANN80E

Calved: 20/07/2017    Tattoo: RANN80E    Colour: White    Age: 18 Mths    Horn: Polled

MXS VERMILLION 527R (P) OACA9214E (P)  
**SIRE: MERIT ROUNDUP 9508W (P) OACE6558E (P)**  
 MERIT YOLANDA 7244T PED-1301E  
 PLATINUM WIND-FALL W75E (ET) (P) AJ1W75E (P)  
**DAM: RANGAN PARK SHOWGIRL F38 (AI) (ET) (P) RANF38E (P)**  
 RANGAN PARK SHOWGIRL C7 (AI) (ET) RANC7E (H)



	CED	BW	200D	400D	600D	Milk	SS	EMA	RUMP	IMF	DOM\$	EXP\$
<b>EBV</b>	<b>+3.3</b>	<b>-1.2</b>	<b>+17</b>	<b>+25</b>	<b>+27</b>	<b>+2</b>	<b>+2.4</b>	<b>+0.1</b>	<b>-0.2</b>	<b>0.0</b>	<b>\$32</b>	<b>\$43</b>
Acc	52%	74%	68%	70%	67%	54%	76%	54%	58%	53%		

Traits Observed: GL, CE, BWT, 200WT, 400WT(x2), SS, FAT, EMA, IMF

Notes: **Breed top 5% gest' length & scrotal, top 10% low birthweight & 200d weight.** N80 is a bull that possesses a little extra frame and good body length, he would breed nice stretchy weaners and vealers. His dam is a very sound Platinum Wind-Fall/C7 combination that breeds very well every year.

Purchaser ..... Price \$ .....

## LOT 24      RANGAN LANNISTER N68 (AI) (P) (TW)      Ident: RANN68E

Calved: 17/07/2017    Tattoo: RANN68E    Colour: White    Age: 18 Mths    Horn: Polled

RANGAN PARK GAUGUIN C15 (AI) (ET) (P) RANC15E (P)  
**SIRE: JC LANNISTER L1 (AI) (P) CJCL1E (P)**  
 RANGAN PARK NANETTE H102 (AI) (P) RANH102E (P)  
 LT EASY BLEND 5125 PLD (P) OAU5113E (P)  
**DAM: RANGAN PARK NANETTE F47 (AI) (P) RANF47E (P)**  
 RANGAN PARK NANETTE D35 (AI) (ET) (P) RAND35E (P)



	CED	BW	200D	400D	600D	Milk	SS	EMA	RUMP	IMF	DOM\$	EXP\$
<b>EBV</b>	<b>+4.8</b>	<b>+0.1</b>	<b>+21</b>	<b>+36</b>	<b>+49</b>	<b>+9</b>	<b>+1.5</b>	<b>+0.1</b>	<b>+2.1</b>	<b>+1.3</b>	<b>\$38</b>	<b>\$53</b>
Acc	46%	70%	62%	64%	61%	48%	70%	49%	52%	49%		

Traits Observed: BWT, 200WT, 400WT(x2), SS, FAT, EMA, IMF

Notes: **Breed top 1% IMF, top 2% 200d weight, top 5% rump fat, top 10% gest length, 400d & 600d weight, top 20% domestic & export index.** A twin with lot 7. N68 has great length in a very smooth body pattern, he has very good growth numbers with plenty of fat cover and breed leading IMF. His F47 dam has already bred a stud sire we use ourselves as well as being a donor for our herd.

Purchaser ..... Price \$ .....

Charolais Breed Av. EBVs for 2017 Born Calves																	Selection Index Values		
	CE-DIR	CE-DTR	GL	BW	200DW	400DW	600DW	MCW	MILK	SS	CWT	EMA	RIB	RUMP	RBY	IMF	DOM	EXPORT	NTH TER
<b>EBV</b>	<b>+1.9</b>	<b>+1.1</b>	<b>-2.8</b>	<b>+0.3</b>	<b>+2</b>	<b>+24</b>	<b>+32</b>	<b>+33</b>	<b>+7</b>	<b>+1.1</b>	<b>+20</b>	<b>+1.6</b>	<b>+0.3</b>	<b>+0.3</b>	<b>+0.2</b>	<b>+0.2</b>	<b>+\$26</b>	<b>+\$35</b>	<b>+\$19</b>

# Lots

## LOT 25      RANGAN LANNISTER N89 (AI) (P)      Ident: RANN89E

**Calved:** 22/07/2017    **Tattoo:** RANN89E    **Colour:** White    **Age:** 18 Mths    **Horn:** Polled

RANGAN PARK GAUGUIN C15 (AI) (ET) (P) RANC15E (P)  
**SIRE: JC LANNISTER L1 (AI) (P) CJCL1E (P)**  
 RANGAN PARK NANETTE H102 (AI) (P) RANH102E (P)  
 PALGROVE CHUCKA PKC671E (H)  
**DAM: RANGAN PARK SHOWGIRL F53 (AI) (P) RANF53E (P)**  
 RANGAN PARK SHOWGIRL C40 (AI) (ET) (P) RANC40E (P)



	CED	BW	200D	400D	600D	Milk	SS	EMA	RUMP	IMF	DOM\$	EXP\$
<b>EBV</b>	<b>-2.8</b>	<b>+0.3</b>	<b>+12</b>	<b>+20</b>	<b>+27</b>	<b>+2</b>	<b>+2.2</b>	<b>-1.9</b>	<b>+1.2</b>	<b>+1.7</b>	<b>\$19</b>	<b>\$30</b>
Acc	44%	73%	64%	66%	63%	49%	74%	50%	53%	49%		

*Traits Observed: GL, CE, BWT, 200WT, 400WT(x2), SS, FAT, EMA, IMF*

Notes: **Breed top 1% IMF, top 10% scrotal, top 20% rump fat.** N89 is sired by Jess's JC Lannister that was the top priced bull at our on property sale 2 years ago. Again just like Lannister himself very smooth muscle pattern with nice structure. He possesses above breed average weaning weight with the same as the previous lot plenty of fat cover and IMF.

Purchaser ..... Price \$ .....

## LOT 26      RANGAN DOC SILVER H32 N92 (AI) (ET) (P)      Ident: RANN92E

**Calved:** 23/07/2017    **Tattoo:** RANN92E    **Colour:** White    **Age:** 18 Mths    **Horn:** Polled

NWMSU DOC SILVER 362 PLD M669488 (P) OAU9488E (P)  
**SIRE: RANGAN PARK DOC SILVER H32 (AI) (P) RANH32E (P)**  
 RANGAN PARK ESTELLA F72 (AI) (P) RANF72E (P)  
 PINAY 8552394134 OAFU4134F (H)  
**DAM: RANGAN PARK SHOWGIRL F25 (AI) (ET) RANF25E (H)**  
 PALGROVE SHOW GIRL 6 (AI) (P) PKP82E (P)



	CED	BW	200D	400D	600D	Milk	SS	EMA	RUMP	IMF	DOM\$	EXP\$
<b>EBV</b>	<b>+12.7</b>	<b>-1.8</b>	<b>+16</b>	<b>+33</b>	<b>+40</b>	<b>+15</b>	<b>+0.8</b>	<b>+0.6</b>	<b>-0.2</b>	<b>+1.3</b>	<b>\$57</b>	<b>\$73</b>
Acc	50%	73%	65%	68%	64%	52%	75%	54%	57%	53%		

*Traits Observed: BWT, 200WT, 400WT(x2), SS, FAT, EMA, IMF*

Notes: **Breed top 1% IMF, top 2% milk & domestic index, top 5% calving ease, gest' length & export index, top 10% low birthweight & 400d weight.** N92 is another growth curve bender going from both top 10% low birthweight through to top 10% yearling weight. These type of growth figures are what we strive for, ease of calving them to grow quicker than 90% of the breed. A long smooth bull with plenty of muscle on a medium frame.

Purchaser ..... Price \$ .....

## LOT 27      RANGAN PINAY F21 N82 (AI) (ET)      Ident: RANN82E

**Calved:** 20/07/2017    **Tattoo:** RANN82E    **Colour:** White    **Age:** 18 Mths    **Horn:** Horned

PINAY 8552394134 OAFU4134F (H)  
**SIRE: RANGAN PARK PINAY F21 (AI) (ET) (P) RANF21E (P)**  
 PALGROVE SHOW GIRL 6 (AI) (P) PKP82E (P)  
 SILVERSTREAM PERFORMER P38EF (AI) (ET) 83U38F  
**DAM: RANGAN PARK NANETTE G61 (AI) (ET) RANG61E (H)**  
 RANGAN PARK NANETTE D35 (AI) (ET) (P) RAND35E (P)



	CED	BW	200D	400D	600D	Milk	SS	EMA	RUMP	IMF	DOM\$	EXP\$
<b>EBV</b>	<b>+2.3</b>	<b>+0.1</b>	<b>+19</b>	<b>+33</b>	<b>+45</b>	<b>+6</b>	<b>+0.7</b>	<b>+3.4</b>	<b>0.0</b>	<b>+0.4</b>	<b>\$41</b>	<b>\$53</b>
Acc	53%	74%	67%	69%	66%	57%	75%	56%	59%	56%		

*Traits Observed: BWT, 200WT, 400WT(x2), SS, FAT, EMA, IMF*

Notes: **Breed top 2% carcass weight & EMA, top 5% gest' length, 200d weight & retail yield, top 10% 400d weight.** A thick strong made bull with plenty of muscle expression. Would be a great bull to breed those big heavy weaners and vealers. He is an ET calf out of a very good Silverstream Performer donor dam.

Purchaser ..... Price \$ .....

Charolais Breed Av. EBVs for 2017 Born Calves																Selection Index Values			
	CE-DIR	CE-DTR	GL	BW	200DW	400DW	600DW	MCW	MILK	SS	CWT	EMA	RIB	RUMP	RBY	IMF	DOM	EXPORT	NTH TER
<b>EBV</b>	<b>+1.9</b>	<b>+1.1</b>	<b>-2.8</b>	<b>+0.3</b>	<b>+2</b>	<b>+24</b>	<b>+32</b>	<b>+33</b>	<b>+7</b>	<b>+1.1</b>	<b>+20</b>	<b>+1.6</b>	<b>+0.3</b>	<b>+0.3</b>	<b>+0.2</b>	<b>+0.2</b>	<b>+\$26</b>	<b>+\$35</b>	<b>+\$19</b>



# Lots

## LOT 28      RANGAN DOC SILVER H32 N83 (AI) (ET) (P)      Ident: RANN83E

**Calved:** 21/07/2017    **Tattoo:** RANN83E    **Colour:** White    **Age:** 18 Mths    **Horn:** Polled

NWMSU DOC SILVER 362 PLD M669488 (P) OAU9488E (P)  
**SIRE: RANGAN PARK DOC SILVER H32 (AI) (P) RANH32E (P)**  
 RANGAN PARK ESTELLA F72 (AI) (P) RANF72E (P)  
 PINAY 8552394134 OAFU4134F (H)  
**DAM: RANGAN PARK SHOWGIRL F25 (AI) (ET) RANF25E (H)**  
 PALGROVE SHOW GIRL 6 (AI) (P) PKP82E (P)



	CED	BW	200D	400D	600D	Milk	SS	EMA	RUMP	IMF	DOM\$	EXP\$
<b>EBV</b>	<b>+14.0</b>	<b>-2.9</b>	<b>+13</b>	<b>+33</b>	<b>+40</b>	<b>+18</b>	<b>+8</b>	<b>+2.6</b>	<b>-0.2</b>	<b>+1.0</b>	<b>\$65</b>	<b>\$83</b>
Acc	50%	73%	65%	68%	64%	52%	75%	54%	57%	53%		

*Traits Observed: BWT, 200WT, 400WT(x2), SS, FAT, EMA, IMF*

Notes: **Breed top 1% milk & domestic index, top 2% calving ease, gest length & low birthweight, top 5% carcass weight, IMF & export index, top 10% 400d weight.** N83 is another very good young sire out of the Pinay/Showgirl F25. The consistency of these bulls should ensure they breed on. Again smooth made with breed leading calving ease and growth. We do think quite a bit of this bull and believe he is worth a close inspection.

Purchaser ..... Price \$ .....

## LOT 29      RANGAN GOLDRUSH J37 N162 (P)      Ident: RANN162E

**Calved:** 14/08/2017    **Tattoo:** RANN162E    **Colour:** White    **Age:** 17 Mths    **Horn:** Polled

ASCOT GOLDRUSH G136E (AI) (ET) (P) JAJG136E (P)  
**SIRE: ASCOT GOLDRUSH J37E (AI) (P/S) JAJJ37E (S)**  
 GOBONGO REBBY D205E (AI) (ET) (P) GOD205E (P)  
 DBAR SYNERGY 721T PMC310075 (P) OACC3100E (P)  
**DAM: ASHWOOD PARK GRAPEVINE (AI) (ET) (P) HASG89E (P)**  
 ASHWOOD PARK ANGEL (AI) (ET) (P) HASAGE (P)



	CED	BW	200D	400D	600D	Milk	SS	EMA	RUMP	IMF	DOM\$	EXP\$
<b>EBV</b>	<b>+9.5</b>	<b>-1.3</b>	<b>+11</b>	<b>+22</b>	<b>+31</b>	<b>+17</b>	<b>+1.6</b>	<b>+2.6</b>	<b>+1.4</b>	<b>+0.4</b>	<b>\$41</b>	<b>\$54</b>
Acc	46%	72%	65%	66%	62%	48%	73%	50%	52%	49%		

*Traits Observed: CE, BWT, 200WT, 400WT(x2), SS, FAT, EMA, IMF*

Notes: **Breed top 1% milk, top 10% calving ease, gest' length & EMA.** A really solid made quiet bull that would suit vealer producers looking to add a bit of bone and muscle into their calves.

Purchaser ..... Price \$ .....

## LOT 30      RANGAN GOLDRUSH J37 N179 (P)      Ident: RANN179E

**Calved:** 07/09/2017    **Tattoo:** RANN179E    **Colour:** White    **Age:** 17 Mths    **Horn:** Polled

ASCOT GOLDRUSH G136E (AI) (ET) (P) JAJG136E (P)  
**SIRE: ASCOT GOLDRUSH J37E (AI) (P/S) JAJJ37E (S)**  
 GOBONGO REBBY D205E (AI) (ET) (P) GOD205E (P)  
 RANGAN PARK HOMER H24 (AI) (ET) (P) RANH24E (P)  
**DAM: RANGAN BRONWIN K148 RANK148E (H)**  
 PALGROVE BRONWIN 83 PKZ249E (H)



	CED	BW	200D	400D	600D	Milk	SS	EMA	RUMP	IMF	DOM\$	EXP\$
<b>EBV</b>	<b>+0.5</b>	<b>+0.4</b>	<b>+16</b>	<b>+30</b>	<b>+47</b>	<b>+13</b>	<b>+1.6</b>	<b>+3.3</b>	<b>+0.6</b>	<b>+0.7</b>	<b>\$29</b>	<b>\$42</b>
Acc	43%	69%	62%	64%	60%	43%	73%	49%	50%	48%		

*Traits Observed: BWT, 200WT, 400WT(x2), SS, FAT, EMA, IMF*

Notes: **Breed top 2% EMA, top 10% 600d weight, milk, carcass weight & IMF.** A similar type of bull to the previous lot, quiet and thick made with plenty of muscle. His grand dam Bronwin 83 bred the Rangan D55 bull that sold back to Palgrove and has had over 300 registered progeny.

Purchaser ..... Price \$ .....

Charolais Breed Av. EBVs for 2017 Born Calves																	Selection Index Values		
	CE-DIR	CE-DTR	GL	BW	200DW	400DW	600DW	MCW	MILK	SS	CWT	EMA	RIB	RUMP	RBV	IMF	DOM	EXPORT	NTH TER
<b>EBV</b>	<b>+1.9</b>	<b>+1.1</b>	<b>-2.8</b>	<b>+0.3</b>	<b>+2</b>	<b>+24</b>	<b>+32</b>	<b>+33</b>	<b>+7</b>	<b>+1.1</b>	<b>+20</b>	<b>+1.6</b>	<b>+0.3</b>	<b>+0.3</b>	<b>+0.2</b>	<b>+0.2</b>	<b>+\$26</b>	<b>+\$35</b>	<b>+\$19</b>



# Lots

## LOT 31      RANGAN GOLDRUSH J37 N69      Ident: RANN69E

**Calved:** 18/07/2017    **Tattoo:** RANN69E    **Colour:** White

**Age:** 18 Mths    **Horn:** Horned

ASCOT GOLDRUSH G136E (AI) (ET) (P) JAJG136E (P)  
**SIRE: ASCOT GOLDRUSH J37E (AI) (P/S) JAJJ37E (S)**  
 GOBONGO REBBY D205E (AI) (ET) (P) GOD205E (P)  
 RANGAN PARK BRAVO E18 G91 (AI) (P) RANG91E (P)  
**DAM: RANGAN SHOWGIRL L18 RANL18E (H)**  
 RANGAN PARK SHOWGIRL E28 (AI) (ET) RANE28E (H)



	CED	BW	200D	400D	600D	Milk	SS	EMA	RUMP	IMF	DOM\$	EXP\$
<b>EBV</b>	<b>+14.3</b>	<b>-2.4</b>	<b>+12</b>	<b>+25</b>	<b>+36</b>	<b>+15</b>	<b>+1.4</b>	<b>+4.2</b>	<b>+0.8</b>	<b>+1.0</b>	<b>\$61</b>	<b>\$81</b>
Acc	44%	72%	64%	67%	64%	44%	75%	51%	55%	51%		

*Traits Observed: CE, BWT, 200WT, 400WT(x2), SS, FAT, EMA, IMF*

Notes: **Breed top 1% EMA, top 2% calving ease, milk & all indexes, top 5% IMF, top 10% carcass weight & retail yield.** Another really solid made son of Goldrush J37. J37 just continues to produce these calving ease, well muscled industry focused bulls that go out and do the Charolais breed proud. N69 is above breed average for all growth EBV's as well as having a massive EMA.

Purchaser ..... Price \$ .....

## LOT 32      RANGAN GOLDRUSH J37 N127 (P)      Ident: RANN127E

**Calved:** 26/07/2017    **Tattoo:** RANN127E    **Colour:** White

**Age:** 18 Mths    **Horn:** Polled

ASCOT GOLDRUSH G136E (AI) (ET) (P) JAJG136E (P)  
**SIRE: ASCOT GOLDRUSH J37E (AI) (P/S) JAJJ37E (S)**  
 GOBONGO REBBY D205E (AI) (ET) (P) GOD205E (P)  
 RANGAN PARK PINAY F21 (AI) (ET) (P) RANF21E (P)  
**DAM: RANGAN ALETTA L87 (AI) (P) RANL87E (P)**  
 RANGAN PARK ALETTA G123 (AI) (ET) (P) RANG123E (P)



	CED	BW	200D	400D	600D	Milk	SS	EMA	RUMP	IMF	DOM\$	EXP\$
<b>EBV</b>	<b>+12.7</b>	<b>-1.6</b>	<b>+11</b>	<b>+22</b>	<b>+28</b>	<b>+15</b>	<b>+0.6</b>	<b>+3.2</b>	<b>+1.2</b>	<b>+0.8</b>	<b>\$51</b>	<b>\$64</b>
Acc	45%	72%	65%	67%	63%	44%	75%	52%	55%	51%		

*Traits Observed: CE, BWT, 200WT, 400WT(x2), SS, FAT, EMA, IMF*

Notes: **Breed top 5% calving ease, gest length, milk & EMA, top 10% low birthweight, IMF & all indexes.** A bull that displays a smooth muscle pattern with plenty of length. The dam of this bull is one we really rate and who goes back to one of our very good dams in Aletta G123.

Purchaser ..... Price \$ .....

## LOT 33      RANGAN ASHWOOD F56 N37 (AI) (P)      Ident: RANN37E

**Calved:** 27/06/2017    **Tattoo:** RANN37E    **Colour:** White

**Age:** 19 Mths    **Horn:** Polled

PARINGA RIO BRAVO D213E (AI) (P) TOLD213E (P)  
**SIRE: ASHWOOD PARK RIO D213 F56E (P) HASF56E (P)**  
 ASHWOOD PARK ANGEL 1 (AI) (ET) (P) HASD3E (P)  
 RANGAN PARK PINAY F21 (AI) (ET) (P) RANF21E (P)  
**DAM: RANGAN BELLE L44 (AI) (P) (TW) RANL44E (P)**  
 RANGAN PARK BELLE F11 (AI) (ET) (P) RANF11E (P)



	CED	BW	200D	400D	600D	Milk	SS	EMA	RUMP	IMF	DOM\$	EXP\$
<b>EBV</b>	<b>+12.6</b>	<b>-2.0</b>	<b>+6</b>	<b>+20</b>	<b>+21</b>	<b>+12</b>	<b>-0.7</b>	<b>+0.9</b>	<b>+1.3</b>	<b>+1.3</b>	<b>\$45</b>	<b>\$53</b>
Acc	47%	72%	65%	66%	63%	48%	74%	51%	53%	50%		

*Traits Observed: GL, CE, BWT, 200WT, 400WT(x2), SS, FAT, EMA, IMF*

Notes: **Homozygous Polled. Breed top 1% IMF, top 5% calving ease, top 10% gest' length, low birthweight, milk & domestic index.** An upstanding son of Ashwood F56, plenty of frame and length with that smooth muscle pattern that F56 stamps on his progeny.

Purchaser ..... Price \$ .....

Charolais Breed Av. EBVs for 2017 Born Calves																	Selection Index Values		
	CE-DIR	CE-DTR	GL	BW	200DW	400DW	600DW	MCW	MILK	SS	CWT	EMA	RIB	RUMP	RBY	IMF	DOM	EXPORT	NTH TER
<b>EBV</b>	<b>+1.9</b>	<b>+1.1</b>	<b>-2.8</b>	<b>+0.3</b>	<b>+2</b>	<b>+24</b>	<b>+32</b>	<b>+33</b>	<b>+7</b>	<b>+1.1</b>	<b>+20</b>	<b>+1.6</b>	<b>+0.3</b>	<b>+0.3</b>	<b>+0.2</b>	<b>+0.2</b>	<b>+\$26</b>	<b>+\$35</b>	<b>+\$19</b>

# Lots

## LOT 34      RANGAN DOC SILVER H32 N129 (AI) (ET) (P)      Ident: RANN129E

**Calved:** 27/07/2017    **Tattoo:** RANN129E    **Colour:** White    **Age:** 18 Mths    **Horn:** Polled

NWMSU DOC SILVER 362 PLD M669488 (P) OAU9488E (P)  
**SIRE: RANGAN PARK DOC SILVER H32 (AI) (P) RANH32E (P)**  
 RANGAN PARK ESTELLA F72 (AI) (P) RANF72E (P)  
 PINAY 8552394134 OAFU4134F (H)  
**DAM: RANGAN PARK SHOWGIRL F25 (AI) (ET) RANF25E (H)**  
 PALGROVE SHOW GIRL 6 (AI) (P) PKP82E (P)



	CED	BW	200D	400D	600D	Milk	SS	EMA	RUMP	IMF	DOM\$	EXP\$
<b>EBV</b>	<b>+1.2</b>	<b>-0.1</b>	<b>+16</b>	<b>+33</b>	<b>+45</b>	<b>+13</b>	<b>+1.3</b>	<b>+1.2</b>	<b>0.0</b>	<b>+1.4</b>	<b>\$37</b>	<b>\$49</b>
Acc	50%	73%	65%	68%	64%	52%	75%	54%	57%	53%		

*Traits Observed: BWT, 200WT, 400WT(x2), SS, FAT, EMA, IMF*

Notes: **Breed top 1% IMF, top 10% gest' length, 400d weight & milk.** A full ET brother to the very good lot 28 bull. The dam of these bulls the Pinay/Showgirl F25 is one of our best and will continue in our ET programme. This bull is very similar in type to his full brother, medium frame, with length and smooth muscling. He carries well above breed average numbers for calving ease and growth.

Purchaser ..... Price \$ .....

## LOT 35      RANGAN CASTOR N137 (AI) (P/S)      Ident: RANN137E

**Calved:** 30/07/2017    **Tattoo:** RANN137E    **Colour:** White    **Age:** 18 Mths    **Horn:** Scurred

SESAME FR5703388462 PEDW8462F (H)  
**SIRE: CASTOR O AFC1641F (H)**  
 TRAGEDIE FR14791345 PEDW1345F (H)  
 LT BRIDGER 9191 (P) OAUE0188E (P)  
**DAM: RANGAN PARK SHOWGIRL H35 (AI) (ET) (P/S) RANH35E (S)**  
 PALGROVE SHOW GIRL 6 (AI) (P) PKP82E (P)



	CED	BW	200D	400D	600D	Milk	SS	EMA	RUMP	IMF	DOM\$	EXP\$
<b>EBV</b>	<b>-2.6</b>	<b>+0.2</b>	<b>+8</b>	<b>+18</b>	<b>+22</b>	<b>+3</b>	<b>+0.7</b>	<b>+1.7</b>	<b>+0.6</b>	<b>-0.5</b>	<b>\$10</b>	<b>\$12</b>
Acc	37%	67%	58%	60%	55%	38%	72%	44%	43%	43%		

*Traits Observed: GL, CE, BWT, 200WT, 400WT(x2), SS, FAT, EMA, IMF*

Notes: **Breed top 10% gest' length.** A very interesting young sire in this lot 35 bull. N137 is just so thick made with unbelievable muscle. He would be best suited for a vealer herd that runs dairy cross cows to add plenty of weight, bone and muscle to the progeny.

Purchaser ..... Price \$ .....

## LOT 36      RANGAN ROUNDUP N77 (AI) (P)      Ident: RANN77E

**Calved:** 19/07/2017    **Tattoo:** RANN77E    **Colour:** White    **Age:** 18 Mths    **Horn:** Polled

MXS VERMILLION 527R (P) OACA9214E (P)  
**SIRE: MERIT ROUNDUP 9508W (P) OACE6558E (P)**  
 MERIT YOLANDA 7244T PED-1301E  
 RANGAN PARK WESTERN SPUR E12 (AI) (ET) (P) RANE12E (P)  
**DAM: RANGAN NANETTE J34 (AI) (P) RANJ34E (P)**  
 RANGAN PARK NANETTE G61 (AI) (ET) RANG61E (H)



	CED	BW	200D	400D	600D	Milk	SS	EMA	RUMP	IMF	DOM\$	EXP\$
<b>EBV</b>	<b>+10.7</b>	<b>-2.4</b>	<b>+16</b>	<b>+22</b>	<b>+26</b>	<b>+1</b>	<b>+2.6</b>	<b>+0.4</b>	<b>+0.2</b>	<b>+0.1</b>	<b>\$47</b>	<b>\$66</b>
Acc	49%	73%	67%	69%	65%	51%	76%	51%	54%	50%		

*Traits Observed: GL, CE, BWT, 200WT, 400WT(x2), SS, FAT, EMA, IMF*

Notes: **Homozygous Polled. Breed top 5% low birthweight, gest' length & scrotal, top 10% calving ease, domestic & export index, top 20% 200d weight.** A very structurally correct, medium framed young bull with plenty of length. A calving ease bull that then has a weaning EBV in the top 20% of the breed. He has the added bonus of being able to take the horns off horned cows.

Purchaser ..... Price \$ .....

Charolais Breed Av. EBVs for 2017 Born Calves																Selection Index Values			
	CE-DIR	CE-DTR	GL	BW	200DW	400DW	600DW	MCW	MILK	SS	CWT	EMA	RIB	RUMP	RBY	IMF	DOM	EXPORT	NTH TER
<b>EBV</b>	<b>+1.9</b>	<b>+1.1</b>	<b>-2.8</b>	<b>+0.3</b>	<b>+2</b>	<b>+24</b>	<b>+32</b>	<b>+33</b>	<b>+7</b>	<b>+1.1</b>	<b>+20</b>	<b>+1.6</b>	<b>+0.3</b>	<b>+0.3</b>	<b>+0.2</b>	<b>+0.2</b>	<b>+\$26</b>	<b>+\$35</b>	<b>+\$19</b>

# Lots

## LOT 37      RANGAN PINAY F21 N96 (AI) (ET)      Ident: RANN96E

**Calved:** 23/07/2017    **Tattoo:** RANN96E    **Colour:** White    **Age:** 18 Mths    **Horn:** Horned

PINAY 8552394134 OAFU4134F (H)  
**SIRE: RANGAN PARK PINAY F21 (AI) (ET) (P) RANF21E (P)**  
 PALGROVE SHOW GIRL 6 (AI) (P) PKP82E (P)  
 SILVERSTREAM PERFORMER P38EF (AI) (ET) 83U38F  
**DAM: RANGAN PARK NANETTE G61 (AI) (ET) RANG61E (H)**  
 RANGAN PARK NANETTE D35 (AI) (ET) (P) RAND35E (P)



	CED	BW	200D	400D	600D	Milk	SS	EMA	RUMP	IMF	DOM\$	EXP\$
<b>EBV</b>	<b>+5.1</b>	<b>-0.1</b>	<b>+22</b>	<b>+38</b>	<b>+51</b>	<b>+6</b>	<b>+08</b>	<b>+3.4</b>	<b>-0.1</b>	<b>+0.7</b>	<b>\$50</b>	<b>\$67</b>
Acc	53%	71%	65%	66%	64%	57%	59%	50%	55%	49%		

*Traits Observed: BWT, 200WT, 400WT(x2), SS, FAT, EMA, IMF*

Notes: **Breed top 2% 200d weight, carcass weight & EMA, top 5% gest' length, 400d weight, retail yield, domestic & export index.** A full ET brother to the lot 27 bull. A very similar bull, strong made with plenty of frame, length and muscle. Very good growth figures with well above breed average calving ease as well.

Purchaser ..... Price \$ .....

## LOT 38      RANGAN DOC SILVER H32 N126 (AI) (ET) (P)      Ident: RANN126E

**Calved:** 26/07/2017    **Tattoo:** RANN126E    **Colour:** White    **Age:** 18 Mths    **Horn:** Polled

NWMSU DOC SILVER 362 PLD M669488 (P) OAU4024E (P)  
**SIRE: RANGAN PARK DOC SILVER H32 (AI) (P) RANH32E (P)**  
 RANGAN PARK ESTELLA F72 (AI) (P) RANF72E (P)  
 PINAY 8552394134 OAFU4134F (H)  
**DAM: RANGAN PARK SHOWGIRL F25 (AI) (ET) RANF25E (H)**  
 PALGROVE SHOW GIRL 6 (AI) (P) PKP82E (P)



	CED	BW	200D	400D	600D	Milk	SS	EMA	RUMP	IMF	DOM\$	EXP\$
<b>EBV</b>	<b>+5.2</b>	<b>-0.5</b>	<b>+19</b>	<b>+46</b>	<b>+60</b>	<b>+15</b>	<b>+2.5</b>	<b>+2.3</b>	<b>-0.4</b>	<b>+1.5</b>	<b>\$58</b>	<b>\$76</b>
Acc	50%	73%	65%	68%	64%	52%	75%	54%	57%	53%		

*Traits Observed: BWT, 200WT, 400WT(x2), SS, FAT, EMA, IMF*

Notes: **Breed top 1% 400d weight, carcass weight & IMF, top 2% 600d weight, milk & domestic index, top 5% gest' length, 200d weight, scrotal & export index.** A full ET brother to lots 28 and 34. You can see the consistency in these flush brothers. His EBV's are some of the best in the sale, low birthweight with explosive growth with big EMA and IMF potential.

Purchaser ..... Price \$ .....

## LOT 39      RANGAN CASTOR N123 (AI) (P)      Ident: RANN123E

**Calved:** 26/07/2017    **Tattoo:** RANN123E    **Colour:** White    **Age:** 18 Mths    **Horn:** Polled

SESAME FR5703388462 PEDW8462F (H)  
**SIRE: CASTOR OAF1641F (H)**  
 TRAGEDIE FR14791345 PEDW1345F (H)  
 LT EASY BLEND 5125 PLD (P) OAU5113E (P)  
**DAM: RANGAN PARK SHOWGIRL H7 (AI) (ET) (P) RANH7E (P)**  
 RANGAN PARK SHOWGIRL F26 (AI) (ET) RANF26E (H)



	CED	BW	200D	400D	600D	Milk	SS	EMA	RUMP	IMF	DOM\$	EXP\$
<b>EBV</b>	<b>-0.1</b>	<b>-0.7</b>	<b>+10</b>	<b>+17</b>	<b>+28</b>	<b>+1</b>	<b>+2.1</b>	<b>+2.9</b>	<b>+0.7</b>	<b>-0.3</b>	<b>\$18</b>	<b>\$29</b>
Acc	37%	68%	59%	61%	56%	38%	72%	45%	46%	45%		

*Traits Observed: GL, CE, BWT, 200WT, 400WT(x2), SS, FAT, EMA, IMF*

Notes: **Breed top 2% gest' length, top 5% EMA, top 10% scrotal.** Another bull by the new Full French sire Castor. Like the lot 35 just full of thickness and muscle.

Purchaser ..... Price \$ .....

Charolais Breed Av. EBVs for 2017 Born Calves																	Selection Index Values		
	CE-DIR	CE-DTR	GL	BW	200DW	400DW	600DW	MCW	MILK	SS	CWT	EMA	RIB	RUMP	RBY	IMF	DOM	EXPORT	NTH TER
<b>EBV</b>	<b>+1.9</b>	<b>+1.1</b>	<b>-2.8</b>	<b>+0.3</b>	<b>+2</b>	<b>+24</b>	<b>+32</b>	<b>+33</b>	<b>+7</b>	<b>+1.1</b>	<b>+20</b>	<b>+1.6</b>	<b>+0.3</b>	<b>+0.3</b>	<b>+0.2</b>	<b>+0.2</b>	<b>+\$26</b>	<b>+\$35</b>	<b>+\$19</b>



# Lots

## LOT 40      RANGAN PINAY F21 N56 (AI) (P) (TW)      Ident: RANN56E

Calved: 13/07/2017    Tattoo: RANN56E    Colour: White    Age: 18 Mths    Horn: Polled

PINAY 8552394134 OAFU4134F (H)  
**SIRE: RANGAN PARK PINAY F21 (AI) (ET) (P) RANF21E (P)**  
 PALGROVE SHOW GIRL 6 (AI) (P) PKP82E (P)  
 M6 GRID MAKER 104 PET M633377 (P) OAUW33773 (P)  
**DAM: RANGAN PARK DELIGHT G42 (AI) (P) RANG42E (P)**  
 RANGAN PARK DELIGHT E81 (P) RANES81E (P)



	CED	BW	200D	400D	600D	Milk	SS	EMA	RUMP	IMF	DOM\$	EXP\$
<b>EBV</b>	<b>+9.7</b>	<b>-1.7</b>	<b>+10</b>	<b>+23</b>	<b>+32</b>	<b>+11</b>	<b>+1.1</b>	<b>+4.1</b>	<b>-1.2</b>	<b>+0.2</b>	<b>\$45</b>	<b>\$58</b>
Acc	52%	72%	66%	67%	64%	57%	73%	54%	58%	54%		

Traits Observed: BWT, 200WT, 400WT(x2), SS, FAT, EMA, IMF

Notes: **Breed top 1% EMA & retail yield, top 2% gest' length, top 10% calving ease, low birthweight, milk, carcass weight & all indexes.** A really thick, structurally very good and quiet natured young bull here. N56 has a low birthweight and around breed average growth numbers, he also has one of the biggest EMA's in the entire draft.

Purchaser ..... Price \$ .....

## LOT 41      RANGAN ROUNDUP N120 (AI) (P)      Ident: RANN120E

Calved: 26/07/2017    Tattoo: RANN120E    Colour: White    Age: 18 Mths    Horn: Polled

MXS VERMILLION 527R (P) OACA9214E (P)  
**SIRE: MERIT ROUNDUP 9508W (P) OACE6558E (P)**  
 MERIT YOLANDA 7244T PED-1301E  
 RANGAN PARK BRAVO E18 G91 (AI) (P) RANG91E (P)  
**DAM: RANGAN BELLE K139 (P) RANK139E (P)**  
 RANGAN PARK BELLE C49 (AI) (P) RANC49E (P)



	CED	BW	200D	400D	600D	Milk	SS	EMA	RUMP	IMF	DOM\$	EXP\$
<b>EBV</b>	<b>+5.7</b>	<b>-0.5</b>	<b>+11</b>	<b>+24</b>	<b>+30</b>	<b>+2</b>	<b>+3.3</b>	<b>0.0</b>	<b>-0.1</b>	<b>+0.3</b>	<b>\$35</b>	<b>\$50</b>
Acc	48%	73%	66%	68%	64%	48%	75%	52%	56%	51%		

Traits Observed: CE, BWT, 200WT, 400WT(x2), SS, FAT, EMA, IMF

Notes: **Homozygous Polled. Breed top 1% scrotal, top 10% gest' length, top 25% domestic index.** Another bull by the heavily used Canadian sire Merit Roundup. Very similar in type to the lot 36, medium framed with length.

Purchaser ..... Price \$ .....

## LOT 42      RANGAN ROUNDUP K36 N184      Ident: RANN184E

Calved: 27/09/2017    Tattoo: RANN184E    Colour: White    Age: 16 Mths    Horn: Horned

MERIT ROUNDUP 9508W (P) OACE6558E (P)  
**SIRE: RANGAN ROUNDUP K36 (AI) (P) (R/F) RANK36E (P)**  
 RANGAN PARK BELLE H125 (AI) (ET) (P) (R/F) RANH125E (P)  
 MOUNT WILLIAM FREEWHEELER (AI) BSF6E (D)  
**DAM: MOUNT WILLIAM LIVINIA (P) BSL39E (P)**  
 MOUNT WILLIAM DAPHNE D5 BSD5E



	CED	BW	200D	400D	600D	Milk	SS	EMA	RUMP	IMF	DOM\$	EXP\$
<b>EBV</b>	<b>-2.9</b>	<b>+0.5</b>	<b>+15</b>	<b>+30</b>	<b>+44</b>	<b>+6</b>	<b>+2.9</b>	<b>-0.9</b>	<b>+0.1</b>	<b>+0.8</b>	<b>\$22</b>	<b>\$35</b>
Acc	37%	53%	56%	62%	59%	35%	72%	47%	50%	46%		

Traits Observed: BWT, 200WT, 400WT(x2), SS, FAT, EMA, IMF

Notes: **Breed top 2% scrotal, top 10% IMF, top 20% 200d & 400d growth.** A really interesting young bull in the lot 42. His dam was purchased from the Mt William stud in calf to our Rangan Roundup K36 bull that Mt William brought as the top priced bull back in our 2016 sale. N184 is a late September calf and has done extremely well to make the sale. He has plenty of growth, frame and length and will grow out into a very nice bull. A Roundup K36 son was the second top priced bull at the recent Mt William sale at \$9500.

Purchaser ..... Price \$ .....

Charolais Breed Av. EBVs for 2017 Born Calves																	Selection Index Values		
	CE-DIR	CE-DTR	GL	BW	200DW	400DW	600DW	MCW	MILK	SS	CWT	EMA	RIB	RUMP	RBY	IMF	DOM	EXPORT	NTH TER
<b>EBV</b>	<b>+1.9</b>	<b>+1.1</b>	<b>-2.8</b>	<b>+0.3</b>	<b>+2</b>	<b>+24</b>	<b>+32</b>	<b>+33</b>	<b>+7</b>	<b>+1.1</b>	<b>+20</b>	<b>+1.6</b>	<b>+0.3</b>	<b>+0.3</b>	<b>+0.2</b>	<b>+0.2</b>	<b>+\$26</b>	<b>+\$35</b>	<b>+\$19</b>

# Lots

## LOT 43      RANGAN PINAY F21 N164 (AI) (ET) (P)      Ident: RANN164E

**Calved:** 15/08/2017    **Tattoo:** RANN164E    **Colour:** White    **Age:** 17 Mths    **Horn:** Polled

PINAY 8552394134 OAFU4134F (H)  
**SIRE: RANGAN PARK PINAY F21 (AI) (ET) (P) RANF21E (P)**  
 PALGROVE SHOW GIRL 6 (AI) (P) PKP82E (P)  
 NWMSU DOC SILVER 362 PLD M669488 (P) OAU9488E (P)  
**DAM: RANGAN ALETTA J67 (AI) (ET) (P) RANJ67E (P)**  
 RANGAN PARK ALETTA E20 (P) RANE20E (P)



	CED	BW	200D	400D	600D	Milk	SS	EMA	RUMP	IMF	DOM\$	EXP\$
<b>EBV</b>	<b>+10.3</b>	<b>-0.5</b>	<b>+14</b>	<b>+28</b>	<b>+38</b>	<b>+10</b>	<b>+1.5</b>	<b>+2.4</b>	<b>-0.5</b>	<b>+0.5</b>	<b>\$47</b>	<b>\$63</b>
Acc	51%	73%	65%	67%	64%	54%	75%	54%	56%	54%		

*Traits Observed: BWT, 200WT, 400WT(x2), SS, FAT, EMA, IMF*

Notes: **Breed top 10% calving ease, gest' length, EMA, retail yield & all indexes.** An ET calf from the very good J67 dam by the no miss F21 sire. This bull had a hard start to life accidentally weaning himself and has done extremely well to get to where he has. This is a bull that you need to refer to his EBV's and his full brothers to realise his potential. He carries near perfect structural scores and we are sure he will go on to breed very well.

Purchaser ..... Price \$ .....

## LOT 44      RANGAN CASTOR N189 (AI) (ET) (P)      Ident: RANN189E

**Calved:** 26/11/2017    **Tattoo:** RANN189E    **Colour:** White    **Age:** 14 Mths    **Horn:** Polled

SESAME FR5703388462 PEDW8462F (H)  
**SIRE: CASTOR O AFC1641F (H)**  
 TRAGEDIE FR14791345 PEDW1345F (H)  
 NWMSU DOC SILVER 362 PLD M669488 (P) OAU9488E (P)  
**DAM: RANGAN ALETTA J67 (AI) (ET) (P) RANJ67E (P)**  
 RANGAN PARK ALETTA E20 (P) RANE20E (P)



	CED	BW	200D	400D	600D	Milk	SS	EMA	RUMP	IMF	DOM\$	EXP\$
<b>EBV</b>	<b>+5.8</b>	<b>+0.2</b>	<b>+13</b>	<b>+32</b>	<b>+41</b>	<b>+8</b>	<b>+2.1</b>	<b>+3.1</b>	<b>+0.4</b>	<b>-0.4</b>	<b>\$40</b>	<b>\$54</b>
Acc	36%	66%	53%	58%	54%	35%	69%	43%	43%	42%		

*Traits Observed: BWT, 400WT, SS, FAT, EMA, IMF*

Notes: **Breed top 5% EMA, top 10% scrotal, carcass weight & retail yield, top 20% 400d weight, domestic & export index.** Someone in the bull draft has to come last and this bloke drew the short straw. A full ET brother to the very good Lot 1 bull. N189 is sired by the Castor bull again who adds massive thickness and muscle to his progeny. N189 is quite a bit younger than most of the draft being a late November calf.

Purchaser ..... Price \$ .....

Charolais Breed Av. EBVs for 2017 Born Calves																	Selection Index Values		
	CE-DIR	CE-DTR	GL	BW	200DW	400DW	600DW	MCW	MILK	SS	CWT	EMA	RIB	RUMP	RBY	IMF	DOM	EXPORT	NTH TER
<b>EBV</b>	<b>+1.9</b>	<b>+1.1</b>	<b>-2.8</b>	<b>+0.3</b>	<b>+2</b>	<b>+24</b>	<b>+32</b>	<b>+33</b>	<b>+7</b>	<b>+1.1</b>	<b>+20</b>	<b>+1.6</b>	<b>+0.3</b>	<b>+0.3</b>	<b>+0.2</b>	<b>+0.2</b>	<b>+\$26</b>	<b>+\$35</b>	<b>+\$19</b>

# 10 Elite Female Lots

**LOT 45**

**SELLING THE PICK OF 4 CASTOR HEIFERS**

SESAME FR5703388462 PEDW8462F (H)

**SIRE: CASTOR O AFC1641F (H)**

TRAGEDIE FR14791345 PEDW1345F (H)

NWMSU DOC SILVER 362 PLD M669488 (P) OAU9488E (P)

**DAM: RANGAN ALETTA J67 (AI) (ET) (P) RANJ67E (P)**

RANGAN PARK ALETTA E20 (P) RANE202E (P)



**CASTOR HEIFERS**

**45A**

**Ident: RANN190E**

Calved: 27/11/2017

	CED	BW	200D	400D	600D	Milk	SS	EMA	RUMP	IMF	DOM\$	EXP\$
<b>EBV</b>	<b>+1.3</b>	<b>+1</b>	<b>+14</b>	<b>+34</b>	<b>+44</b>	<b>+7</b>	<b>+2.1</b>	<b>+2.6</b>	<b>+0.8</b>	<b>-0.1</b>	<b>\$32</b>	<b>\$45</b>
Acc	36%	65%	52%	56%	52%	35%	47%	39%	50%	40%		

Traits Observed: BWT, 400WT, FAT, EMA, IMF

**45B**

**Ident: RANN191E**

Calved: 28/11/2017

	CED	BW	200D	400D	600D	Milk	SS	EMA	RUMP	IMF	DOM\$	EXP\$
<b>EBV</b>	<b>-2.4</b>	<b>+1.7</b>	<b>+15</b>	<b>+37</b>	<b>+49</b>	<b>+6</b>	<b>+2.1</b>	<b>+2.7</b>	<b>+0.7</b>	<b>-0.2</b>	<b>\$27</b>	<b>\$38</b>
Acc	36%	65%	52%	56%	52%	35%	47%	39%	50%	40%		

Traits Observed: BWT, 400WT, FAT, EMA, IMF



**SIRE CASTOR**

**45C**

**Ident: RANN196E**

Calved: 29/11/2017

	CED	BW	200D	400D	600D	Milk	SS	EMA	RUMP	IMF	DOM\$	EXP\$
<b>EBV</b>	<b>+7.3</b>	<b>-0.3</b>	<b>+8</b>	<b>+24</b>	<b>+30</b>	<b>+9</b>	<b>+1.8</b>	<b>+2.4</b>	<b>+0.3</b>	<b>-0.3</b>	<b>\$37</b>	<b>\$50</b>
Acc	36%	65%	52%	56%	52%	35%	47%	39%	50%	40%		

Traits Observed: BWT, 400WT, FAT, EMA, IMF



**FULL BROTHER SALE LOT 1**

**45D**

**Ident: RANN199E**

Calved: 01/12/2017

	CED	BW	200D	400D	600D	Milk	SS	EMA	RUMP	IMF	DOM\$	EXP\$
<b>EBV</b>	<b>+1.9</b>	<b>+0.7</b>	<b>+11</b>	<b>+28</b>	<b>+36</b>	<b>+8</b>	<b>+1.8</b>	<b>+2.5</b>	<b>+0.2</b>	<b>-0.3</b>	<b>\$28</b>	<b>\$39</b>
Acc	36%	65%	52%	56%	52%	35%	47%	39%	50%	40%		

Traits Observed: BWT, 400WT, FAT, EMA, IMF

Notes: Opportunities like this are a once off. Here you have the choice of 4 magnificent full sister yearling heifers with their whole breeding life ahead of them. They are sired by new to Australia Full French bull Castor. We had a limited number of semen units imported and that supply is exhausted. We will be continuing on with the full ET brother to these heifers in the sale Lot 1 bull. All possess quiet dispositions, great smooth skin types, plenty of growth, polled heads and are more feminine in type than most half French females. We are offering a flush in there J67 dam as lot 47. We were only willing to offer 1 of these as we keep 3 to go on with. Video of this quartet is available on our website.

Purchaser ..... Price \$ .....

Charolais Breed Av. EBVs for 2017 Born Calves																	Selection Index Values		
	CE-DIR	CE-DTR	GL	BW	200DW	400DW	600DW	MCW	MILK	SS	CWT	EMA	RIB	RUMP	RBY	IMF	DOM	EXPORT	NTH TER
<b>EBV</b>	<b>+1.9</b>	<b>+1.1</b>	<b>-2.8</b>	<b>+0.3</b>	<b>+2</b>	<b>+24</b>	<b>+32</b>	<b>+33</b>	<b>+7</b>	<b>+1.1</b>	<b>+20</b>	<b>+1.6</b>	<b>+0.3</b>	<b>+0.3</b>	<b>+0.2</b>	<b>+0.2</b>	<b>+\$26</b>	<b>+\$35</b>	<b>+\$19</b>



# 10 Elite Female Lots

## LOT 46

### Selling the right to flush RANGAN PARK SHOWGIRL G84 (AI) (ET) (P) (R/F)

Calved: 22/07/2011 Tattoo: RANG84E Colour: Red factor

Age: 90 Mths Horn: Polled

LT WYOMING WIND 4020 PLD (P) OAUP4020E (P)  
**SIRE: HARVIE REDEMPTION 36P MC286641 (P) (R/F) OACZ6641E (P)**  
 HARVIE MS MOLSON 53M (P) PED-6280E (P)  
 GAUGUIN O AFL859F (H)  
**DAM: RANGAN PARK SHOWGIRL C7 (AI) (ET) RANC7E (H)**  
 PALGROVE SHOW GIRL 6 (AI) (P) PKP82E (P)



RANGAN PARK SHOWGIRL G84

	CED	BW	200D	400D	600D	Milk	SS	EMA	RUMP	IMF	DOM\$	EXP\$
<b>EBV</b>	<b>-14.1</b>	<b>+1.7</b>	<b>+19</b>	<b>+42</b>	<b>+49</b>	<b>+5</b>	<b>+0.8</b>	<b>+1.4</b>	<b>+0.9</b>	<b>+0.9</b>	<b>\$11</b>	<b>\$10</b>
Acc	61%	76%	69%	71%	69%	65%	62%	54%	59%	54%		

Traits Observed: BWT, 200WT, 400WT, FAT, EMA, IMF

Notes: **Offering for sale the right to flush Rangan Showgirl G84.** Just the most wonderful rising 8 yo cow, Judged by Brent Fisher of the Silverstream Stud as the Supreme Charolais exhibit of the 2016 feature breed show at Royal Melbourne. Brents comments on G84 are "A cow with tremendous width and depth that is soft made and really sound. She is the type of cow that is so versatile in her make up and could be bred to so many types of bulls depending on markets and make cattle that fit so many production systems". 4 progeny, 2 females retained in stud and 1 bull, Rangan Melman used in our stud herd with progeny due this year. One heifer Rangan Showgirl K150 was reserve junior champion female at Royal Melbourne in 2015, who has bred extremely well herself, giving us 2 very good heifers so far. We are willing to allow the purchaser of this lot to pick into our AI tank for a joining if they wish, they may wish to use Silverstream Lazarus. Showgirl G84 has just weaned a ripping Lazarus heifer calf and is due to calve to Lazarus again in April. The purchaser of this lot is responsible for all costs associated with this flush to be carried out by the Holbrook Vet Centre.



RANGAN MELMAN



RANGAN SHOWGIRL K150

Purchaser ..... Price \$ .....

## LOT 47

### Selling the right to flush RANGAN ALETTA J67 (AI) (ET) (P)

Calved: 19/07/2013 Tattoo: RANJ67E Colour: White

Age: 66 Mths Horn: Polled

S\$ MONTANA SILVER M454024 (P) OAU4024E (P)  
**SIRE: NWMSU DOC SILVER 362 PLD M669488 (P) OAU9488E (P)**  
 NWMSU DOLORES ET 0035 PED-8646E (H)  
 RANGAN PARK GAUGUIN C15 (AI) (ET) (P) RANC15E (P)  
**DAM: RANGAN PARK ALETTA E20 (P) RANE20E (P)**  
 RANGAN PARK ALETTA C1 (P) RANC1E (P)

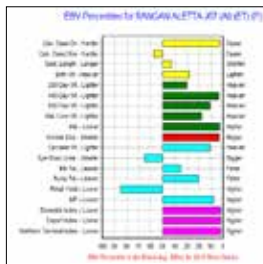


RANGAN ALETTA J67

	CED	BW	200D	400D	600D	Milk	SS	EMA	RUMP	IMF	DOM\$	EXP\$
<b>EBV</b>	<b>+13.6</b>	<b>-0.4</b>	<b>+14</b>	<b>+40</b>	<b>+49</b>	<b>+15</b>	<b>+2.7</b>	<b>+1.3</b>	<b>+1.1</b>	<b>+0.8</b>	<b>\$62</b>	<b>\$83</b>
Acc	60%	80%	70%	72%	70%	67%	69%	55%	61%	55%		

Traits Observed: BWT, 200WT, 400WT, FAT, EMA, IMF

Notes: **Offering for sale the right to flush Rangan Aletta J67.** A donor cow of the highest quality. We are very targeted with our ET programme now as we do not need great numbers of ET calves, so we choose extremely carefully when we decide on a female to flush as well as the sire that we use. When you look closely at this great cow you will see why she has been chosen and then how we have bred her. Perfect hoof structure as a rising 6 yo, great performance numbers, homozygous polled and quiet disposition are just some of the reasons. We think this cow is perfect to flush to the best horned bulls in the breed, hence that is why we chose to flush to Castor and the results can be seen in this sale. Pick the best horn bull available, we are offering 2 straws of Silverstream semen with this flush, the purchaser may like to choose from either Silverstream Lazarus, Landis or the bull we will be flushing her next to when we can, Silverstream Frampton. Aletta has been flushed twice previously for 12 transferable embryos. Due to calve again in April, Aletta would be perfect to set up for Winter/Spring implants. The purchaser is responsible for all costs associated with this flush to be carried out by the Holbrook Vet Centre.



EBV GRAPH J67



SALE LOT 1

Purchaser ..... Price \$ .....

Charolais Breed Av. EBVs for 2017 Born Calves																	Selection Index Values		
	CE-DIR	CE-DTR	GL	BW	200DW	400DW	600DW	MCW	MILK	SS	CWT	EMA	RIB	RUMP	RYB	IMF	DOM	EXPORT	NTH TER
<b>EBV</b>	<b>+1.9</b>	<b>+1.1</b>	<b>-2.8</b>	<b>+0.3</b>	<b>+2</b>	<b>+24</b>	<b>+32</b>	<b>+33</b>	<b>+7</b>	<b>+1.1</b>	<b>+20</b>	<b>+1.6</b>	<b>+0.3</b>	<b>+0.3</b>	<b>+0.2</b>	<b>+0.2</b>	<b>+\$26</b>	<b>+\$35</b>	<b>+\$19</b>

# 10 Elite Female Lots

**LOT 48**

**RANGAN SHOWGIRL P109 (AI) (ET) (P)**

**Calved:** 31/07/2018 **Tattoo:** RANP109E **Colour:** White

**Age:** 6 Mths

**Horn:** Polled

LT WYOMING WIND 4020 PLD (P) OAUP4020E (P)  
**SIRE: PLATINUM WIND-FALL W75E (ET) (P) AJ1W75E (P)**  
 DOWNUNDER GERALDINE 1LPG1D  
 WCR SIR FA MAC 2244 M234430 (P) OAUB2244E (P)  
**DAM: PALGROVE SHOW GIRL 6 (AI) (P) PKP82E (P)**  
 PALGROVE SHOW GIRL 5 (AI) (ET) PKL123E (H)



**RANGAN SHOWGIRL P109**

	CED	BW	200D	400D	600D	Milk	SS	EMA	RUMP	IMF	DOM\$	EXP\$
<b>EBV</b>	<b>-6.5</b>	<b>+0.7</b>	<b>+14</b>	<b>+21</b>	<b>+32</b>	<b>+6</b>	<b>+1.4</b>	<b>+0.4</b>	<b>+1.0</b>	<b>+0.9</b>	<b>\$14</b>	<b>\$22</b>
Acc	64%	76%	69%	69%	69%	68%	67%	61%	64%	61%		

Traits Observed: BWT, 200WT

Notes: This is definitely a once in a lifetime opportunity, the joining of 2 breed legends Platinum Wind-Fall with nearly 500 registered progeny and Palgrove Showgirl 6 with 155 registered progeny herself. I doubt that a joining with these sorts of numbers will ever be presented for sale again. These embryos were harvested a number of years ago, and it was decided in 2017 it was time. Out of the implanted embryos we received 5 heifers & 1 bull, Showgirl P109 was the only clean polled heifer in the group, and that is why we are offering her.

Firstly, on the old Showgirl cow. The amount of joy that cow has given us cannot be understated. Showgirl has had a big impact on our herd and the Charolais breed, giving over 300 embryos and nearly \$328,000 here in progeny sales is nothing short of amazing, after having been purchased from the Palgrove herd as an 11yo. To quote a couple of her progeny, Rangan Pinay F21 has bred the house down here and at many other studs. She is the dam of Rangan Gauguin C15 who was our first ever bull to go to stud, selling to Dr Shirley Barker in South Australia. She is the dam of Showgirl C7 who has bred many champions including Rangan Redemption E42 equal Champion of Champions at the 2011 Brisbane Ekka and who continues to have enormous success in the Liberty Charolais stud in Western Australia. We often wonder what would have been, had we not purchased the old Showgirl cow, but that is history now.



**DAM PALGROVE SHOW GIRL 6**

For the sire of this lovely young female comments are best left to David Bondfield himself: "Wind-Fall has been a "go to" sire at Palgrove for many years. When we're not sure what sire to use over a particular female we will pick Wind-Fall as he will always improves any cow he's joined to. We have sold his sons for up to \$37,500 with many used in stud herds, however, most importantly is the value of his daughters. They are easy doing, with plenty of milk, volume, great fertility and temperament. We have used many as ET donor dams. At Palgrove we have over 250 of his female descendants still in our herd. He has, without doubt, been one of the Charolais breed's influential sires."



**SIRE PLATINUM WIND-FALL**

Now for young Showgirl P109 herself, she has the most wonderful quiet disposition, Jess had her walking the second day on the halter. P109 is extremely feminine, which is what you would expect from this joining and has her whole productive life ahead of her. If someone is looking for a heifer to start a young person off cattle showing this is your lot not to be missed.

We wish the purchaser of this lot the same amount of joy we have had out of the quite extraordinary Showgirl line.

Purchaser ..... Price \$ .....

Charolais Breed Av. EBVs for 2017 Born Calves																	Selection Index Values		
	CE-DIR	CE-DTR	GL	BW	200DW	400DW	600DW	MCW	MILK	SS	CWT	EMA	RIB	RUMP	RBY	IMF	DOM	EXPORT	NTH TER
<b>EBV</b>	<b>+1.9</b>	<b>+1.1</b>	<b>-2.8</b>	<b>+0.3</b>	<b>+2</b>	<b>+24</b>	<b>+32</b>	<b>+33</b>	<b>+7</b>	<b>+1.1</b>	<b>+20</b>	<b>+1.6</b>	<b>+0.3</b>	<b>+0.3</b>	<b>+0.2</b>	<b>+0.2</b>	<b>+\$26</b>	<b>+\$35</b>	<b>+\$19</b>



# 10 Elite Female Lots

## LOT 49

## RANGAN ALETTA P2 (AI) (P)

Ident: RANP2E

Calved: 02/02/2018 Tattoo: RANP2E Colour: White

Age: 12 Mths

Horn: Polled

SILVERSTREAM EVOLUTION E168 (P) OANE168E (P)  
**SIRE: SILVERSTREAM LAZARUS L111 (P) OANL111E (P)**  
 SILVERSTREAM CHANDLER D145 OAND145E (H)  
 MERIT ROUNDUP 9508W (P) OACE6558E (P)  
**DAM: RANGAN ALETTA M11 (AI) (P) RANM11E (P)**  
 RANGAN ALETTA J5 (AI) (ET) (P) RANJ5E (P)



RANGAN ALETTA P2

	CED	BW	200D	400D	600D	Milk	SS	EMA	RUMP	IMF	DOM\$	EXP\$
<b>EBV</b>	<b>+3.0</b>	<b>+0.1</b>	<b>+12</b>	<b>+22</b>	<b>+31</b>	<b>+1</b>	<b>+2.1</b>	<b>+1.1</b>	<b>+0.2</b>	<b>-0.2</b>	<b>\$26</b>	<b>\$39</b>
Acc	42%	69%	57%	61%	57%	40%	43%	33%	37%	31%		

Traits Observed: GL, BWT, 400WT

Notes: What a ripping good young heifer. Aletta is sired by our new impact sire from New Zealand Silverstream Lazarus, who is bred from one of Silverstreams best female lines, and her paternal grandsire is the mighty Silverstream Evolution. We are one of only 5 studs in Australia to have access to Lazarus. She just oozes quality and is a heifer that we would be more than happy to leave in our herd. Her dam is a very good Merit Roundup daughter who has the very good Montana Silver in her genetics. Take a close look at this heifer as she is near impossible to fault. A heifer that we are proud to send off with the "RAN" tattoo in her ear.



SIRE SILVERSTREAM LAZARUS L111

Purchaser ..... Price \$ .....

## LOT 50

## RANGAN DELIGHT P4 (AI) (P)

Ident: RANP4E

Calved: 06/02/2018 Tattoo: RANP4E Colour: White

Age: 12 Mths

Horn: Polled

ASHWOOD PARK RIO D213 F56E (P) HASF56E (P)  
**SIRE: RANGAN ASHWOOD F56 L84 (AI) (P) RANL84E (P)**  
 RANGAN PARK DELIGHT G42 (AI) (P) RANG42E (P)  
 RANGAN PARK PERFORMER G73 (AI) (ET) (P) RANG73E (P)  
**DAM: RANGAN DELIGHT M20 (AI) (P) RANM20E (P)**  
 RANGAN PARK DELIGHT D59 RAND59E (H)



RANGAN DELIGHT P4

	CED	BW	200D	400D	600D	Milk	SS	EMA	RUMP	IMF	DOM\$	EXP\$
<b>EBV</b>	<b>+11.1</b>	<b>-1.8</b>	<b>+10</b>	<b>+25</b>	<b>+35</b>	<b>+15</b>	<b>+1.9</b>	<b>+3.2</b>	<b>+1.2</b>	<b>+0.6</b>	<b>\$49</b>	<b>\$67</b>
Acc	39%	68%	56%	60%	56%	36%	48%	33%	36%	33%		

Traits Observed: GL, BWT, 400WT

Notes: When we were choosing a couple of yearling heifers for this sale we looked at the group and picked what we would of picked ourselves. This heifer has "pick me" written all over her. Genetically she is superb, delve into her genetics and you will see plenty of Charolais breed legends, Silverstream Performer, WCR Prime Cut, Rio Bravo, M6 Grid Maker, Palgrove Tribute as well as the very good Ashwood Park female lines, Miss Universe & Angel. An extremely pretty headed heifer with plenty of length & growth. Another good one to send off with the "RAN" tattoo.



GRANDSIRE ASHWOOD PARK RIO D213 F56E

Purchaser ..... Price \$ .....

Charolais Breed Av. EBVs for 2017 Born Calves																Selection Index Values			
	CE-DIR	CE-DTR	GL	BW	200DW	400DW	600DW	MCW	MILK	SS	CWT	EMA	RIB	RUMP	RBY	IMF	DOM	EXPORT	NTH TER
<b>EBV</b>	<b>+1.9</b>	<b>+1.1</b>	<b>-2.8</b>	<b>+0.3</b>	<b>+2</b>	<b>+24</b>	<b>+32</b>	<b>+33</b>	<b>+7</b>	<b>+1.1</b>	<b>+20</b>	<b>+1.6</b>	<b>+0.3</b>	<b>+0.3</b>	<b>+0.2</b>	<b>+0.2</b>	<b>+\$26</b>	<b>+\$35</b>	<b>+\$19</b>



# 10 Elite Female Lots

## **LOT 51****RANGAN SHOWGIRL N66 (P)****Ident: RANN66E**

**Calved:** 17/07/2017    **Tattoo:** RANN66E    **Colour:** White    **Age:** 18 Mths    **Horn:** Polled

PARINGA RIO BRAVO D213E (AI) (P) ROLD213E (P)  
**SIRE: ASHWOOD PARK RIO D213 F56E (P) HASF56E (P)**  
 ASHWOOD PARK ANGEL 1 (AI) (ET) (P) HASD3E (P)  
 SILVERSTREAM PERFORMER P38EF (AI) (ET) 83U38F  
**DAM: RANGAN PARK SHOWGIRL E27 (AI) (ET) RANE27E (H)**  
 RANGAN PARK SHOWGIRL C29 (AI) (ET) (P) RANC29E (P)



**RANGAN SHOWGIRL N66**

	CED	BW	200D	400D	600D	Milk	SS	EMA	RUMP	IMF	DOM\$	EXP\$
<b>EBV</b>	<b>+13.3</b>	<b>-1.6</b>	<b>+9</b>	<b>+21</b>	<b>+30</b>	<b>+13</b>	<b>+1.2</b>	<b>+1.9</b>	<b>-0.2</b>	<b>+1.0</b>	<b>\$42</b>	<b>\$53</b>
Acc	51%	74%	67%	69%	66%	54%	59%	54%	65%	54%		

*Traits Observed: CE, BWT, 200WT, 400WT, FAT, EMA, IMF*

Notes: The first of the PTIC heifers to be offered. This Showgirl heifer is superb, sired by the very good maternal breeding Ashwood F56 out of one of our best females in the Silverstream Performer sired Showgirl E27, who is still performing in our herd at rising 10yo. Her Granddam Showgirl C29 was our first ever Supreme Interbreed Exhibit and is still active within our herd and obviously her great granddam needs no introduction. Showgirl N66 is very feminine with plenty of frame and softness, she would be an asset to any Charolais herd. **PTIC with a heifer pregnancy to Ascot Goldrush J37.**



**SIRE ASHWOOD PARK RIO D213 F56E**

Purchaser ..... Price \$ .....

## **LOT 52****RANGAN SHOWGIRL N81 (AI) (P)****Ident: RANN81E**

**Calved:** 20/07/2017    **Tattoo:** RANN81E    **Colour:** White    **Age:** 18 Mths    **Horn:** Polled

RANGAN PARK GAUGUIN C15 (AI) (ET) (P) RANC15E (P)  
**SIRE: JC LANNISTER L1 (AI) (P) CJCL1E (P)**  
 RANGAN PARK NANETTE H102 (AI) (P) RANH102E (P)  
 MERIT ROUNDUP 9508W (P) OACE6558E (P)  
**DAM: RANGAN SHOWGIRL K12 (AI) (P) RANK12E (P)**  
 RANGAN PARK SHOWGIRL H85 (AI) (P/S) RANH85E (S)



**RANGAN SHOWGIRL N81**

	CED	BW	200D	400D	600D	Milk	SS	EMA	RUMP	IMF	DOM\$	EXP\$
<b>EBV</b>	<b>+8.8</b>	<b>-2.0</b>	<b>+17</b>	<b>+27</b>	<b>+31</b>	<b>+4</b>	<b>+2.3</b>	<b>+0.4</b>	<b>+1.5</b>	<b>+1.2</b>	<b>\$47</b>	<b>\$64</b>
Acc	42%	71%	61%	59%	57%	43%	46%	42%	54%	43%		

*Traits Observed: GL, CE, BWT, 200WT, FAT, EMA, IMF*

Notes: Another Showgirl heifer this time sired by Jess's JC Lannister bull the \$15000 top priced bull from our 2017 sale. A real quality heifer that has been halter broken. Plenty of natural thickness and length, with well above breed average calving ease and growth in her genetics. These 3 PTIC heifers were chosen for sale from the best 10 heifers we selected for the Beefweek heifer challenge as they were able to have sexed female pregnancies detected. That way the purchaser knows they are getting 2 females to add to their herd. **PTIC with a heifer pregnancy to Ascot Goldrush J37 M151.**



**SIRE JC LANNISTER L1**

Purchaser ..... Price \$ .....

Charolais Breed Av. EBVs for 2017 Born Calves																Selection Index Values			
	CE-DIR	CE-DTR	GL	BW	200DW	400DW	600DW	MCW	MILK	SS	CWT	EMA	RIB	RUMP	RBY	IMF	DOM	EXPORT	NTH TER
<b>EBV</b>	<b>+1.9</b>	<b>+1.1</b>	<b>-2.8</b>	<b>+0.3</b>	<b>+2</b>	<b>+24</b>	<b>+32</b>	<b>+33</b>	<b>+7</b>	<b>+1.1</b>	<b>+20</b>	<b>+1.6</b>	<b>+0.3</b>	<b>+0.3</b>	<b>+0.2</b>	<b>+0.2</b>	<b>+\$26</b>	<b>+\$35</b>	<b>+\$19</b>

# 10 Elite Female Lots

## LOT 53      RANGAN BELLE N15 (AI) (P)      Ident: RANN15E

**Calved:** 20/06/2017    **Tattoo:** RANN15E    **Colour:** White

**Age:** 19 Mths    **Horn:** Polled

PARINGA RIO BRAVO D213E (AI) (P) ROLD213E (P)  
**SIRE: ASHWOOD PARK RIO D213 F56E (P) HASF56E (P)**  
 ASHWOOD PARK ANGEL 1 (AI) (ET) (P) HASD3E (P)  
 RANGAN PARK PINAY F21 (AI) (ET) (P) RANF21E (P)  
**DAM: RANGAN BELLE L64 (AI) RANL64E (H)**  
 RANGAN PARK BELLE F83 (AI) (P/S) RANF83E (S)



**RANGAN BELLE N15**

Charolais	CED	BW	200D	400D	600D	Milk	SS	EMA	RUMP	IMF	DOM\$	EXP\$
<b>EBV</b>	<b>+16.4</b>	<b>-4.1</b>	<b>+8</b>	<b>+21</b>	<b>+25</b>	<b>+13</b>	<b>+0.7</b>	<b>+0.4</b>	<b>+1.6</b>	<b>+1.6</b>	<b>\$60</b>	<b>\$76</b>
<i>Acc</i>	47%	73%	66%	68%	64%	47%	56%	51%	63%	52%		

*Traits Observed: GL, CE, BWT, 200WT, 400WT, FAT, EMA, IMF*

Notes: A special heifer that we do think quite a bit of. Sired by the Ashwood F56 who is just a super female breeder, which is no surprise being double bred to the Ashwood Park Miss Universe line. Her dam is sired by our own Pinay F21 bull, who's females sold so well in the recent Allednaw sale and add in as well breed legends in Montana Silver and LT Rio Bravo and you have massive potential in this young heifer. Belle N15's EBV's show breed top 1% for calving ease, gestation length, low birthweight and IMF with breed top 5% milk. **PTIC with a heifer pregnancy to Ascot Goldrush J37 M151.**



**GRANDSIRE RANGAN PINAY F21**

Purchaser ..... Price \$ .....

## LOT 54      RANGAN SHOWGIRL N195 (P)      Ident: RANN195E

**Calved:** 29/11/2017    **Tattoo:** RANN195E    **Colour:** White

**Age:** 14 Mths    **Horn:** Polled

PARINGA RIO BRAVO D213E (AI) (P) ROLD213E (P)  
**SIRE: ASHWOOD PARK RIO D213 F56E (P) HASF56E (P)**  
 ASHWOOD PARK ANGEL 1 (AI) (ET) (P) HASD3E (P)  
 HARVIE REDEMPTION 36P MC286641 (P) (R/F) OACZ6641E (P)  
**DAM: RANGAN PARK SHOWGIRL E41 (AI) (ET) (P) (R/F) RANE41E (P)**  
 RANGAN PARK SHOWGIRL C7 (AI) (ET) RANC7E (H)



**RANGAN SHOWGIRL N195**

Charolais	CED	BW	200D	400D	600D	Milk	SS	EMA	RUMP	IMF	DOM\$	EXP\$
<b>EBV</b>	<b>+5.0</b>	<b>-0.7</b>	<b>+13</b>	<b>+32</b>	<b>+38</b>	<b>+12</b>	<b>+0.8</b>	<b>+0.9</b>	<b>+2.1</b>	<b>+1.2</b>	<b>\$45</b>	<b>\$57</b>
<i>Acc</i>	50%	72%	60%	60%	59%	51%	56%	45%	51%	46%		

*Traits Observed: BWT*

Notes: A very good lot to finish the live sale lots, again a Showgirl heifer of the highest quality and a heifer we thought long and hard about offering. But again we wanted to send off quality with that RAN tattoo. Showgirl N195's dam was the Supreme Charolais exhibit from the 2017 Royal Melbourne show, a wonderful big, soft cow with great natural volume. The Showgirl E41 is a flush sibling to the lot 46 Showgirl G84 and the Ekka winning Rangan Redemption E42. The Showgirl C7/Harvie Redemption flush has been an absolute winner for our stud and we actually have a young red bull from this line born just last year. N195 has the most wonderful disposition for a heifer that was never halter broken and wouldn't take a lot to halter break her if the purchaser decided. Again sired by the Ashwood F56, she has no miss maternal genetics to go on and do our stud and the breed proud. N195 was a late November calf and sells ready to join at the purchasers convenience.



**DAM RANGAN PARK SHOWGIRL E41**

Purchaser ..... Price \$ .....

Charolais Breed Av. EBVs for 2017 Born Calves																Selection Index Values			
EBV	CE-DIR	CE-DTR	GL	BW	200DW	400DW	600DW	MCW	MILK	SS	CWT	EMA	RIB	RUMP	RBY	IMF	DOM	EXPORT	NTH TER
<b>EBV</b>	<b>+1.9</b>	<b>+1.1</b>	<b>-2.8</b>	<b>+0.3</b>	<b>+2</b>	<b>+24</b>	<b>+32</b>	<b>+33</b>	<b>+7</b>	<b>+1.1</b>	<b>+20</b>	<b>+1.6</b>	<b>+0.3</b>	<b>+0.3</b>	<b>+0.2</b>	<b>+0.2</b>	<b>+\$26</b>	<b>+\$35</b>	<b>+\$19</b>



# SEMEN LOTS

**LOT 55**      **CASTOR**      **Ident: O AFC1641F**

**Calved:** 28/10/2007    **Tattoo:** O AFC1641F    **Colour:** White

**Age:** 135 Mths    **Horn:** Horned

PICADOR FR7121349662 PEDR9662F (H)  
**SIRE: SESAME FR5703388462 PEDW8462F (H)**  
 NEFLE FR5797003064 PEDR3064F (H)  
 MAGENTA PED-5603F  
**DAM: TRAGEDIE FR14791345 PEDW1345F (H)**  
 OPA FR6105133404 PEDR3404F (H)



	CED	BW	200D	400D	600D	Milk	SS	EMA	RUMP	IMF	DOM\$	EXP\$
<b>EBV</b>	<b>-10.1</b>	<b>+1.5</b>	<b>+9</b>	<b>+19</b>	<b>+27</b>	<b>-</b>	<b>+1.3</b>	<b>+3.8</b>	<b>-0.1</b>	<b>-1.3</b>	<b>-\$5</b>	<b>-\$4</b>
Acc	38%	63%	51%	52%	47%	-	60%	33%	32%	32%		

Notes: Selling 5 units of semen in the Full French bull Castor. Sold per straw.

Purchaser ..... Price \$ .....

**LOT 56**      **PINAY 8552394134**      **Ident: O AFU4134F**

**Calved:** 04/12/1999    **Tattoo:** O AFU4134F    **Colour:** White

**Age:** 230 Mths    **Horn:** Horned

BLASON 4286100325 PEDX286F (H)  
**SIRE: IMPAIR OAFN189F**  
 OFFICINE PED-945F (H)  
 HOMERE PED-7561F (H)  
**DAM: MARY OAFR8596F (H)**  
 JACINTHE PED-4550F (H)



	CED	BW	200D	400D	600D	Milk	SS	EMA	RUMP	IMF	DOM\$	EXP\$
<b>EBV</b>	<b>+1.8</b>	<b>+0.1</b>	<b>+16</b>	<b>+35</b>	<b>+49</b>	<b>+12</b>	<b>-0.3</b>	<b>+5.9</b>	<b>-3.0</b>	<b>+0.3</b>	<b>\$37</b>	<b>\$43</b>
Acc	94%	98%	97%	97%	97%	97%	97%	88%	92%	87%		

Notes: Selling 1 unit of semen in Full French bull Pinay. Sold per straw.

Purchaser ..... Price \$ .....

**LOT 57**      **HARVIE REDEMPTION 36P MC286641 (P) (R/F)**      **Ident: O ACZ6641E**

**Calved:** 26/02/2004    **Tattoo:** O ACZ6641E    **Colour:** Red factor

**Age:** 179 Mths    **Horn:** Polled

SCHURRTOP 5627 PED-5627E (H)  
**SIRE: LT WYOMING WIND 4020 PLD (P) OAUP4020E (P)**  
 LT CHAP'S LADY 217 OP PED-2170E (H)  
 HARVIE JAGER 65J PMC228759 (P) OACU8759E (P)  
**DAM: HARVIE MS MOLSON 53M (P) PED-6280E (P)**  
 HARVIE MISS FIREFLY 31F (P) PED-4926E (P)



	CED	BW	200D	400D	600D	Milk	SS	EMA	RUMP	IMF	DOM\$	EXP\$
<b>EBV</b>	<b>-8.4</b>	<b>+0.9</b>	<b>+18</b>	<b>+42</b>	<b>+49</b>	<b>+8</b>	<b>+2.8</b>	<b>+0.5</b>	<b>+2.7</b>	<b>+0.5</b>	<b>\$24</b>	<b>\$31</b>
Acc	87%	96%	93%	93%	93%	93%	92%	79%	85%	79%		

Notes: Selling 2 units of semen in Canadian sire Harvie Redemption. Sold per straw.

Purchaser ..... Price \$ .....

Charolais Breed Av. EBVs for 2017 Born Calves																	Selection Index Values		
	CE-DIR	CE-DTR	GL	BW	200DW	400DW	600DW	MCW	MILK	SS	CWT	EMA	RIB	RUMP	RBY	IMF	DOM	EXPORT	NTH TER
<b>EBV</b>	<b>+1.9</b>	<b>+1.1</b>	<b>-2.8</b>	<b>+0.3</b>	<b>+2</b>	<b>+24</b>	<b>+32</b>	<b>+33</b>	<b>+7</b>	<b>+1.1</b>	<b>+20</b>	<b>+1.6</b>	<b>+0.3</b>	<b>+0.3</b>	<b>+0.2</b>	<b>+0.2</b>	<b>+\$26</b>	<b>+\$35</b>	<b>+\$19</b>







*Danq*

CHAROLAIS





**LOT 1**

**RANGAN CASTOR N188 (AI) (ET) (P)**

**RANGAN ASHWOOD F56 N22 (AI) (P)**

**LOT 5**



**LOT 7**

**RANGAN LANNISTER N67 (AI) (P) (TW)**

**RANGAN ASHWOOD F56 N18 (AI) (P)**

**LOT 10**



**LOT 14**

**RANGAN ASHWOOD F56 N29 (AI) (P)**

**RANGAN ASHWOOD F56 N9 (AI) (P)**

**LOT 15**

Photography by Maddison Dundas & Jessica Cook

**Rangan**  
CHAROLAIS

**ANNUAL ON PROPERTY BULL SALE**  
Friday 15th March 2019 at 11am  
*Inspections welcome from 9am*

Rangan Charolais | 41 Miller Lane Sandy Creek VIC 3695 | PO BOX 930 Wodonga VIC 3689  
M 0419 429 696 | P 0260 718 453 | E ranganpark@gmail.com | W [www.rangancharolais.com.au](http://www.rangancharolais.com.au)



Cover Design by OGA Creative Agency

Printed by Graphpress 02 6041 1466