



KENMERE CHAROLAIS

6th ANNUAL ON PROPERTY BULL SALE

“Moorak” Rankins Lane, Holbrook NSW



Friday 8th March 2019

Sale commences 1pm

45 Bulls
featuring

**HOMOZYGOUS
POLL BULLS**

Welcome

Kenmere Charolais welcomes everyone to attend our 6th annual bull sale at “Moorak” Rankins Lane, Holbrook ,NSW. We are delighted to offer this draft of bulls included in our sale catalogue.

During 2018 Kenmere successfully completed the relocation of our cattle operations to the Holbrook district following the sale of the family property at “Cobbitty” that was where Charolais cattle breeding commenced in the 1970’s.

At Holbrook the Kenmere Charolais female herd and bull production is based at “Moorak” and we relocate cattle as necessary to our second property at “Ellambah” where in addition to stud cattle, commercial Charolais production is undertaken.

These property changes have necessitated close attention to our Johne’s Beef Assurance score (J - BAS 7) specifically in relation to the procurement of two successive negative sample tests two years apart . These negative results are testimony to the practical implementation of on-farm Biosecurity Plan. Kenmere maintains a Johne’s and Brucellosis free herd . In addition all animals are tested pestivirus free.

This sale catalogue offers forty five industry focused Charolais bulls sired by some of the best genetics around the country. A large selection of bulls is focused on the vealer production exhibiting soft meaty bulls with great rib and rump characteristics. Our alternative selection focuses on strong powerful bulls capable of producing outstanding steers with extra length and volume.

Kenmere has an established commercial crossbreeding programme that enables us to ground truth our genetics by breeding cattle from our purebred Charolais herd and utilising Kenmere Charolais bulls as sires. This provides invaluable data to us on calving ability , birth weight , and the time period taken between birth and sale day. The information obtained through this commercial operation gives the background and confidence in making statements that are based on our actual experiences in the market where our customers trade and sell their cattle.

Our stud has a strong track record of performance recording and we are a member of Breed Plan. Our breed plan data is methodically observed , measured, recorded and transmitted to ABRI to ensure that the data you read in this catalogue provides information that has been collected properly. The herd averages’ include data that has been collected over the last thirteen years. We acknowledge that EBV figures can be a useful guide and understand there are many factors you need to consider when choosing your sale bull.



Kenmere Synergy’s Man
Junior & Grand Champion Melbourne Royal 2017
Retained in stud

All bulls will be available for inspection prior to the sale by appointment at Holbrook by contacting Ann-Marie Collins 0412 608 043 or Glenn Trout 0409 322 420.

www.kenmerecharolais.com.au



KENMERE CHAROLAIS

6th ANNUAL ON PROPERTY BULL SALE

“Moorak” Rankins Lane, Holbrook NSW

Friday 8th March 2019

Inspection 10.30am

Sale commences 1.00pm

Lunch, Tea & Coffee provided

45 Bulls

Kenmere Charolais

Ann-Marie Collins 0412 608 043

Glenn & Susie Trout 0409 322 420

www.kenmerecharolais.com.au



Peter Godbolt: 0457 591 929
Tim Woodham 0436 015 115
Matt Pitzen: 0428 362 030



Peter Ruaro: 0447 600 825



Scott Campbell 0428 686 072

FREE DELIVERY

Kenmere Charolais are offering successful purchasers **FREE DELIVERY** for bulls purchased at auction in the sale. We offer free delivery to

- ▶ **Dubbo**
- ▶ **Hay**
- ▶ **Yea**

Freight assistances available to other areas
Conditions apply, please discuss with Matt Collins on Sale Day.



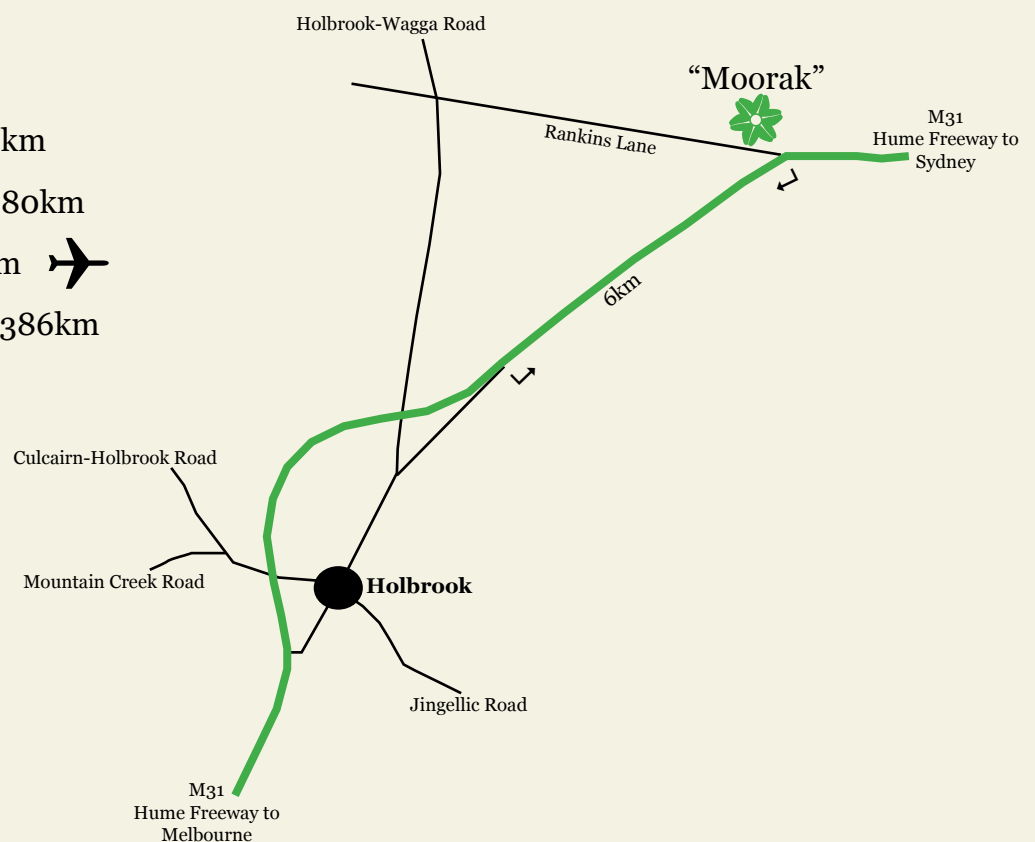
All bulls will be available for inspection prior to the sale by appointment at Holbrook by contacting Ann-Marie Collins 0412 608 043 or Glenn Trout 0409 322 420.

Holbrook to Sydney 450km

Holbrook to Canberra 280km

Holbrook to Albury 62km ✈️

Holbrook to Melbourne 386km



Disclaimer : People entering onto this property for any purpose whatsoever including attendance at cattle auctions do so at their own risk. We are not liable to you for any personal injury or death suffered by you and for theft loss or damage to any property caused or contributed to by us or by any other person whether caused or contributed to by or by negligence deliberate act or unlawful conduct. "We" or "us" or "our" refer to the owners their employees contractors and agents and each of them. While every care has been taken in compiling this catalogue to ensure accuracy of information supplied no responsibility is accepted for any errors which may have occurred.

Sale Information

Inspection: Inspections will be available two weeks prior to the sale by appointment with Landmark agents Matt Pitzen and Peter Godbolt, agents Peter Ruaro, Rodwells, and Scott Campbell or Kenmere, Ann-Marie Collins and Glenn Trout. Cattle will be on display and available for inspection in the yard on sale day from 10.30AM onwards.

Lunch: Will be available on the day

Health: All sale bulls catalogued have been semen tested and examined for structural soundness. All our cattle receive 7 in 1 vaccinations and are drenched for worms and lice and botulism. All sale bulls have been DNA tested and are all PI negative.

Johne's Beef Assurance Score (J-BAS)

Kenmere has enrolled in J-BAS 7 specifically in relation to Johne's Disease and the relevant procedures for cattle. Our registered approved veterinarian has overseen the development of our bio-security plan and we have completed the triennial check test that returned negative results to Johne's disease when tested by an approved laboratory.

Raw Data: All bulls will have Scan Data available prior to the sale for eye muscle area (EMA), rump and rib fat, marbling (IMF%) as well as sale weight and scrotal measurement.

Telephone Link-Up: Mobile telephones will be available. Please arrange with the Vendor or Agent to ensure a line number is available.

Terms And Conditions: Terms of the sale are as per Conditions of Sale, NSW Stud Stock. A copy will be available sale day.

Guarantee: All stock have been evaluated for structural soundness and fertility and to the best of our knowledge the bulls are in sound working order at the time of the sale. Any claim against a structural breakdown of any animal must be made in writing and accompanied by a Veterinary Certificate within 12 months of the sale date. Any bull failing to breed when joined at a single mating within six months of the sale may be either replaced with an animal of similar value or credit made available to the value of the purchase price, minus salvage value, for use at a future sale. The Purchaser will be responsible for any costs incurred.

Delivery: A delivery instruction slip must be completed and signed by successful purchasers. Stock awaiting delivery will be held free of charge – all care will be taken, but absolutely no responsibility will be accepted for any injury or loss considered during, as a consequence of, or in relation to any holding.

Transport: Stock carriers will be available at the sale to deliver your bulls. Please provide written instructions to the Sale Agents.

Insurance: Ownership passes at the fall of the hammer. An insurance representative will be in attendance on Sale day.

Rebate: 4% rebate will be offered to all agents on the condition that a letter of introduction is received 24 hours prior to the sale or the Agent accompanies the purchaser to the sale and settles on their behalf within 7 days. (This clause will be strictly adhered to).

PLEASE NOTE: It is unethical for anyone to promote, advertise or arrange the sale of any cattle, other than those in this sale on this sale premises.



Buy and Sell stock nationally

Auctionsplus

Auctions plus is an alternative bidding platform option if you cannot attend the sale in person. However it is only available to registered users. We recommend registering as soon as possible at least 48 hours prior to the sale.

Register at www.auctionsplus.com.au

Kenmere History

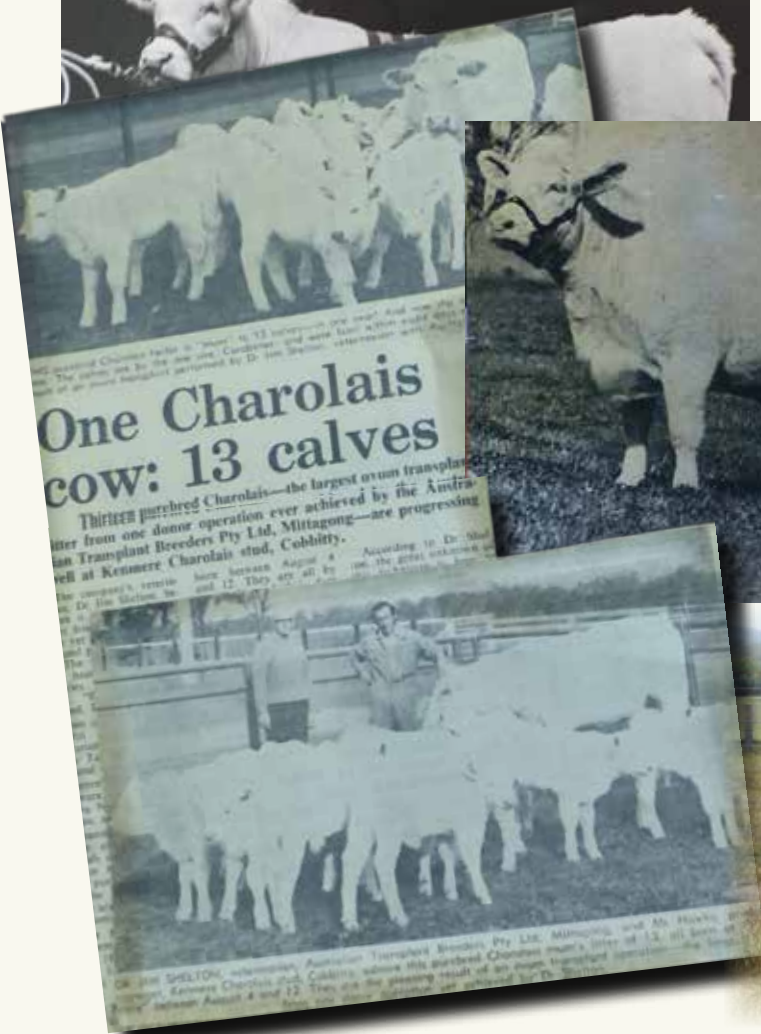
Kenmere Charolais was established in the early 1970's with original French bloodlines imported via New Zealand to Australia. This provided a genetically sound base from which we could increase numbers & quality traits that were associated with Charolais.

In 1998 John Collins changed the focus of the stud and in 2004 Matthew and Ann-Marie Collins purchased all the cattle and began the work of rebuilding the stud to the original standards set by John Collins in its inception. We began by purchasing a young bull from Rosedale Stud. This young bull was a son of Selector, a prominent sire of Rosedale. The Kenmere females provided us with heifers which were once again to become part of our foundation herd. Heifers were purchased from quality studs many with bloodlines that went back to original Kenmere genetics'.

In 2006 it was decided to begin using the Kenmere dams for embryo transfer. Kenmere Kristina 111 the first to be flushed, however with limited success at first. Since then the stud runs two embryo programmes a year with the focus on flushing the great dams with our original genetics'. Kenmere Kristina 111 herself was the progeny of Kenmere Kristina 1 and Mandalong Chock. Mandalong Chock was a sire who held the Australian record for the highest selling bull @\$165,000.

In 2008 Kristina had a bull calf (Kenmere Gilman Kristo MCS D17E). This young sire possesses many of the qualities of his mother. Kristo is sired by Lt Western Spur and John Atkins sold the bull to Milton Turner at Albury Wodonga All Breeds sale in 2010.

When we sold Kristo in 2010 we decided to keep Kenmere Dakota Spur also a Western Spur bull who features and a trait leader within the Charolais breed in the top 1% for rib and rump fat and an IMF of 147 and Dakota has sired twelve sons that we have sold to leading commercial cattlemen.



In 2009 another four embryo calves were born to Kristina. This time Lt Bluegrass was the Sire in the embryo campaign. This campaign again gave us great success with two bulls and two heifer calves. One bull was retained by Kenmere and has been one of our most outstanding sires over the years. Kenmere Chock MCS E12E produces outstanding calves for vealer production and he himself topping many vealer markets with commercial heifers and steers, including the 2015 blue ribbon vealer sale held at Wodonga in January. He is extremely versatile and we now retain many stud heifers and bulls bred by him along with two bulls retained at Moorak, Holbrook over our commercial cows.

The other young Kenmere Kristina bull was sold to the Muller Family at Nagambie. Fred and Joyce have been great supporters of Kenmere bulls now having bought eight sires for their herd.

The Kenmere Kristina heifers provided us the bloodlines with genetics' that date back to our original cattle in the 1970's. Kenmere Tinkerbelle bred six embryo calves. The Sires used with this cow were LT Easy Blend and Lt Blue Grass.

Other females used in embryo programmes are Kenmere Nicola, Kenmere Navarro and Kenmere Perlina. In 2008 nearly all the original dams produced heifers. This gave us a great boost for our Kenmere female genetics into the future.

The genetics' of these great females mixed with the imported Semen from the Lt Ranch has provided us with new foundations to begin our Kenmere cattle numbers once again. In our early years of breeding we used AI campaigns so as to broaden our female base and provide a large genetic diversity that enabled us to produce high quality sires to use within our own herd.

Today we have females lines within our breeding that possess the stringent qualities of milk values, temperaments, focusing on moderate easy doing females. Our stud now consists of 200 breeders for the 2019 year. Our objectives are to produce bulls with a genetic difference and of a high standard when compared to the Charolais breed.



Ann-Marie Collins



Matthew Collins



Kenmere History cont...

In this years sale our breed sires include Kenmere Chock MCS E12E, Kenmere Pinay MCS J57E, Ashwood Park Synergy G29, MD Sentinal Ruler, LT Long Distance 9001, PCC Spartan 4Y, PCC Sudden Impact 848U and SVY Pilgrim 655S, Kenmere Hericho MCS H103E, Kenmere Sir Lawrence MCS L12E and DSK Kakadu K69E.

Kenmere's future is now centred in the Holbrook district . Our stud cattle breeding programs are carried out at "Moorak" and our stud females and calves are raised on irrigated permanent pasture supplemented by highly improved dryland paddocks. The Kenmere sale bulls are also now raised and grown out on the pasture at Moorak.

An important focus for us is to breed cattle suitable for commercial markets. This is carried out at Cookardina where we use Kenmere sires over a herd of commercial cows to groundtruth the crossbreeding qualities of our genetics . This breeding strategy enables us to be better informed from our own results about the true commercial value of our genetics in a crossbreeding enterprise.

Kenmere Sale Bulls

Kenmere Sale Bulls

Kenmere Charolais specialises in the production of small numbers of quality bulls that are typically early finishing bulls suitable for commercial cattleman. The scale of production enables us to concentrate on raising bulls and attending to minimising the risks of something going wrong with their health through an intensive vaccination program.

The Charolais bulls on sale have been bred from Kenmere Stud Sires and several international AI sires. All the sires have been selected to join with Kenmere dams that comprise the backbone of our stud.

At Kenmere our breeding programmes are carried out at the farm in order to retain control over the total operation including the hand selection of recipients. The Kenmere bull scanning provides an indication on the animal itself and should be closely considered during your evaluation. The most important assessment should be your visual inspection to look at the physical traits that you are seeking. We have included EBV's on our bulls that originate from a small herd that does not comprise a large group that may provide a higher percentage accuracy due to the sample size.

Kenmere Sale Bulls Preparation

At Kenmere after weaning , young bulls are fed on a grain supplement ration to enable them to slowly begin to learn about being handled and to ensure that they are given every opportunity to prove they possess the temperament that Kenmere bulls are renown for in the industry.

These sale bulls have been raised in a paddock environment with other bulls where they have had plenty of exercise to develop and be maintained on a consistent ration of nutrition.

Our growth plan is to achieve consistency with our bulls to ensure they are ready to commence their working life on sale day.

All sale bulls have scan data supplied for Eye Muscle Area, Rib and Rump fat, Marbling (IMF%) and will also have the sale weight and measurements of scrotal size included in a portfolio for each individual bull on sale day. Each bull has undergone a structural assessment and a semen count that has been Vet certified.

Kenmere Performance



Image courtesy Stock & Land

Sale Report January 2019

Kenmere Charolais Steer sales at Wodonga- Autumn Silver Calves

The predictability and performance of Kenmere genetics was highlighted at the multi breed sale at Barnawatha on Friday 11th January, 2019. Kenmere sold a pen of 18 Charolais commercial steers at eight to nine months of age weighing 392 kgs for \$1,140 per head. These steers were weaned straight off their mothers that morning. This price was second to the top price of \$1,150 per head at that sale.

The Victorian Branch of the Charolais Society awarded Kenmere the best presented pen of Charolais cattle sold on the day to further commend the quality of the sale draft and the result.

Further sales on that day included a pen of 18 steers Kenmere - blood that weighed 337kgs sold for \$1020 per head offered by the Horton family, a Kenmere client.

Kenmere returned to the Barnawatha saleyards on the following Tuesday 15th January, 2019 offering one pen of 9 Charolais steers at eight to nine months of age that weighed 365 kgs for \$1,092 per head returning \$2.99 per kg that was the second highest price on the day at that sale.

Our overall draft of 44 head averaged \$1,092 weaned straight off their mothers. These calves are reared in true commercial conditions and in many cases Charolais cross dams with multi generation sire lines.



CHAROLAIS BREEDPLAN

EBV's, How to use them

Charolais Group Breedplan is an advanced genetic evaluation system that provides a genetic description of Charolais cattle for a range of traits influencing fertility, growth and carcase performance. It provides predictions of the genetic merit of individual animals called Estimated Breeding Values (EBVs). EBVs are based on all the available pedigree and performance records provided by breeders in Australia and New Zealand along with available overseas genetic information. EBVs are expressed in the units of measurement for each particular trait and are shown as +ive or -ive values. The Charolais breed average EBV for different traits changes over time as the breed makes genetic progress. The absolute value of any EBV is not critical, but rather the differences in EBVs between animals. Particular animals should be viewed as being "above or below breed average" for a particular trait. The averages for calves born in 2015 are shown below and at the bottom of the Performance Data Summary. Please note that each breed has their own EBVs and cannot be compared across breeds.

How to use EBV's

To use these figures successfully you must first determine which characteristics you desire to breed for and then select the EBV which best supports these qualities. It is important to note that in a successful breeding programme it is advisable to maintain balance and not to direct effort toward gaining a single, higher EBV for one particular trait.

Birth Weight is a major factor in calving difficulty. Use this EBV to select against birth weight if calving is a problem. The lower the EBV the lighter the calves are expected to be at birth.

200 Day Growth and Milk is of particular interest to those targeting high weight gains at an early age to supply to the Domestic and Restaurant trade. Milk should be emphasised if the bull is being used to breed replacement progeny.

400 and 600 Day Growth indicates animals with superior weight gains from 12 months to 2 years of age, which would optimise profits in the domestic to Jap Ox Markets.

Scrotal Size is a good indicator of the bull's ability to produce sperm. A 2 year old bull with a testicle size of 34cm or more is regarded as satisfactory. Actual measurements will be available sale day.

Accuracy (Acc.%) provides an indication of the reliability of an EBV. As more performance information becomes available on an animal, its progeny and relatives, the accuracy of its EBVs for particular traits increases. The higher the accuracy the less chance the figure for each EBV will vary.

December 2018 Charolais BREEDPLAN Breed Avg EBVs for 2016 Born Calves.

Percentile Range available at <http://breedplan.une.edu.au>

	CE DIR	CE DTR	GL	BW	200	400	600	MCW	MILK	SS
EBV	+1.2	+0.8	-2.5	+0.4	+12	+23	+33	+33	+7	+1.0

	CW	EMA	RIB	RUMP	RBY	IMF
EBV	+19	+1.6	+0.2	+0.3	+0.2	+0.2

\$ Index Values	
Dom (\$)	Exp (\$)
+\$23	+\$31

All EBVs quoted in this catalogue are Charolais Group Breedplan EBVs and are directly comparable with the EBVs from other Charolais Group Breedplan herds.



Poll Genetics

Index Values are reported as EBVs, in units of relative earning capacity (\$'s) for a given market. They reflect both the short-term profit generated by a sire through the sale of his progeny, and the longer-term profit generated by his daughters in a self-replacing cow herd. A selection index combines the EBVs with economic information (costs and returns) for specific market and production systems to rank animals based on relative profit values. Note that different types of animals can give similar profit values, so consideration should be given to both the index and the component EBVs when selecting animals for a particular production system.

Domestic Index (\$) Estimates the genetic differences between animals in net profitability per cow joined for an example commercial herd with a British cow base targeting grass-finished production for the domestic trade. This index assumes pasture grown and finished steers weighing 430kgs (240kg HSCW and 6mm P8 fat) at 12 months. Daughters are retained or sold for breeding. Therefore maternal traits are of importance. In response to industry feedback, positive emphasis has been placed on finishing ability.

Export Index (\$) Estimates the genetic difference between animals in net profitability per cow joined for an example commercial herd with a British cow base targeting the production of steers for export markets. This index assumes pasture grown & finished steers weighing 700kg (380kg HSCW and 9mm P8 fat) at 29 months. Daughters are retained or sold for breeding therefore maternal traits are of importance. In response to industry feedback, positive emphasis has been placed on finishing ability.



Poll Inheritance

Understanding the Horn/Poll status of a bull is important when determining whether a potential new bull meets your breeding objectives. A poll bull can be either 'true polled' (homozygous PP), or is a carrier of horned genetics (heterozygous Ph). The polled variant of the gene (P) is usually dominant to the horned variant of the gene (h), which means polled animals may be either PP or Ph. Homozygous PP animals will always pass a copy of the polled variant to their offspring, increasing the likelihood that the offspring will be polled. Identifying breeding animals that carry two copies of the polled variant will dramatically reduce the requirement for dehorning in subsequent generations. Kenmere have tested via DNA poll animals in this sale to determine their poll status.

Genotype	Status	Explanation
PP Homozygous Polled	Polled	This animal possesses two copies of the polled variant of the gene. This animal is highly likely to be polled and will always pass a poll variant to its progeny.
Ph Heterozygous Polled	Carrier	This animal carries one copy of the polled variant and one copy of the horned variant of the gene. This animal is likely to be polled but in some instances may be scurred or horned. This animal will transmit either the horned or polled variant to its progeny.
hh Homozygous Horned	Horned	This animal carries two copies of the horned variant of the gene. This animal is highly likely to be horned and will always transmit the horned variant to its progeny.

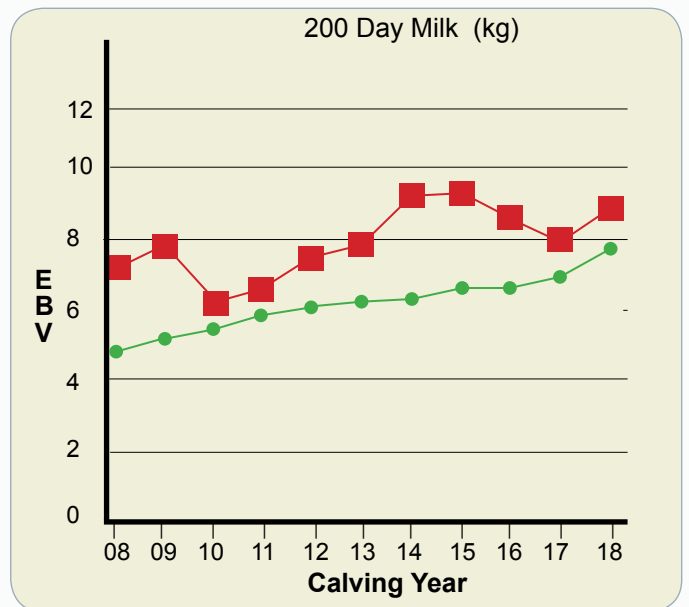
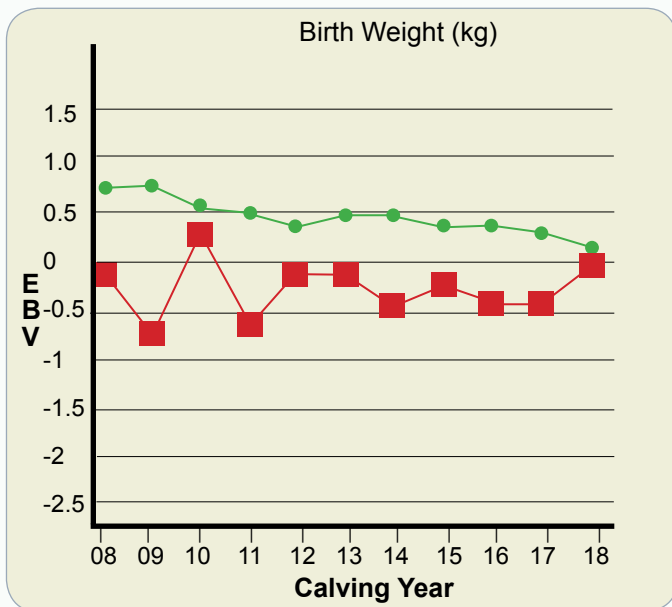
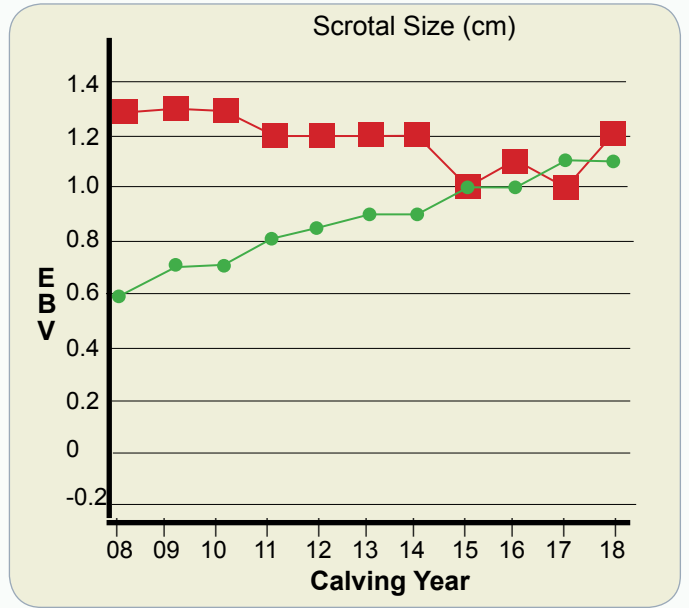
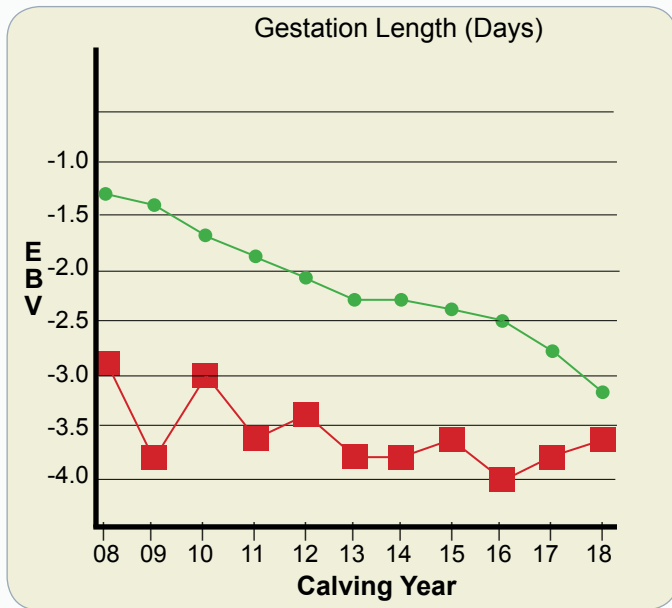
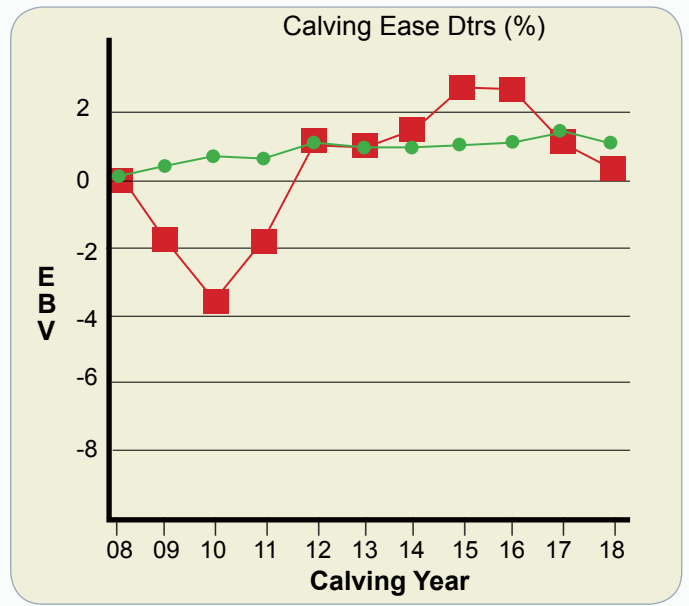
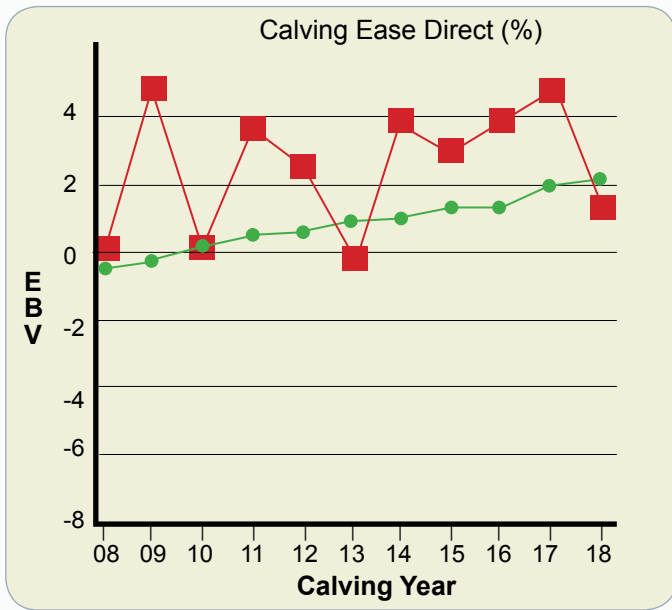
Is polled always dominant to horned?

In *Bos taurus* breeds, polled is almost always dominant to horned; -PP- animals are always polled and -Ph- animals are usually always polled (they are sometimes scurred). In *Bos indicus* influenced breeds, such as Brahman and Droughtmaster, this is not necessarily the case. Whilst -PP- animals are usually always polled, -Ph- animals can be polled, scurred and sometimes horned. For example, an Angus bull bred to horned Brahman cows will produce offspring that all have a genotype of -Ph- but can be a mixture of polled, scurred and horned. Whilst the vast majority will be polled and scurred, some horned animals are usually observed due to the influence of other genes interacting with the poll gene.

Kenmere Sale Bulls

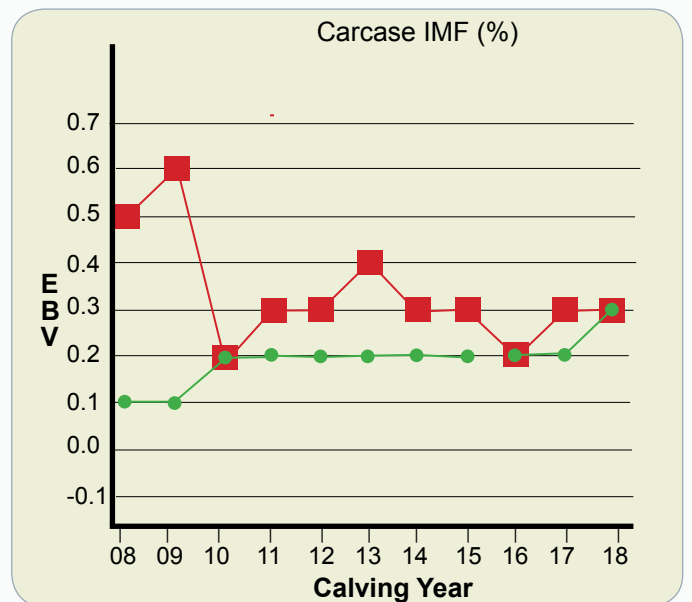
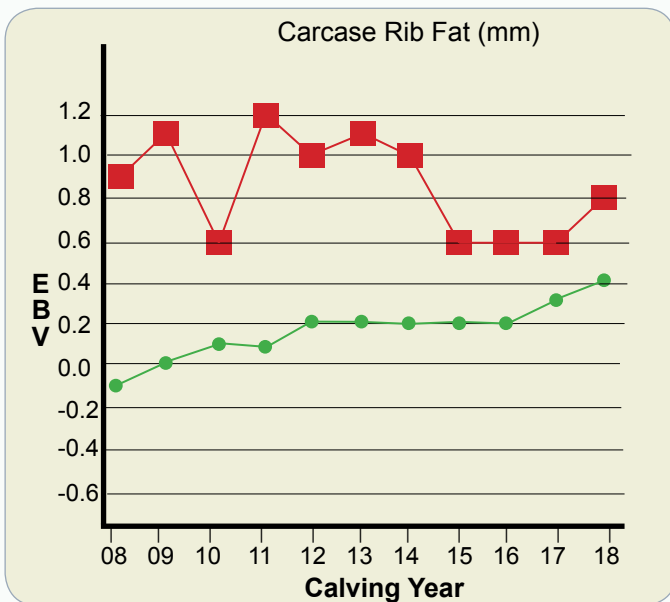
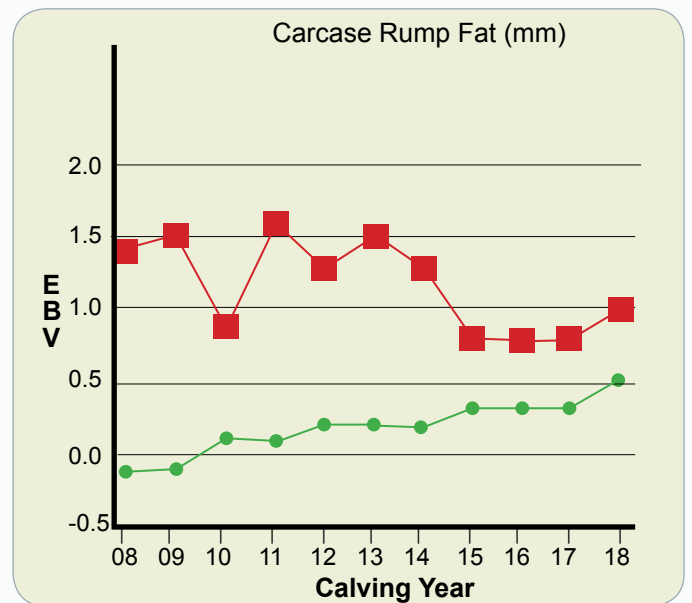
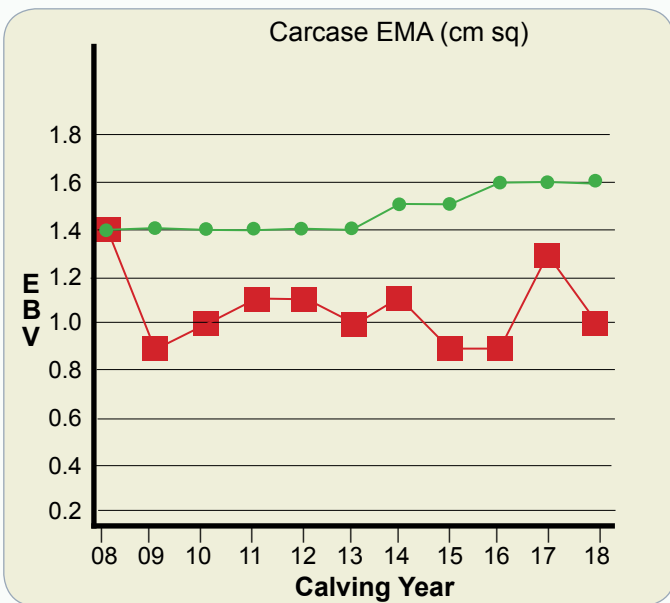
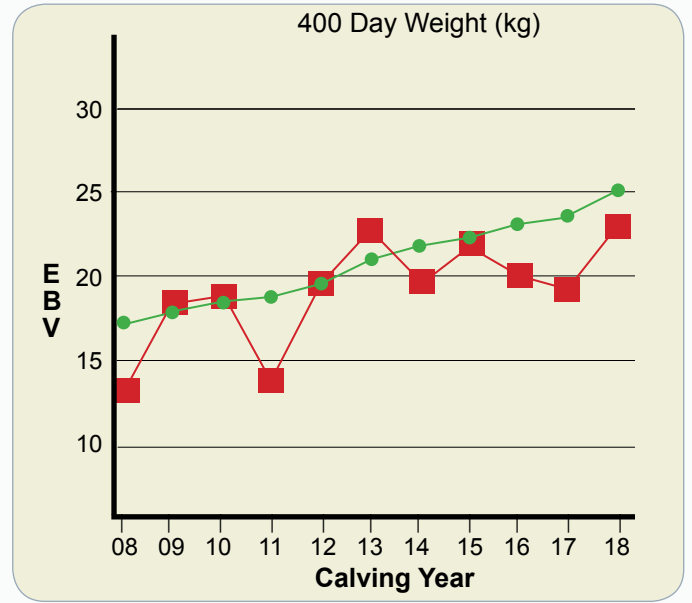
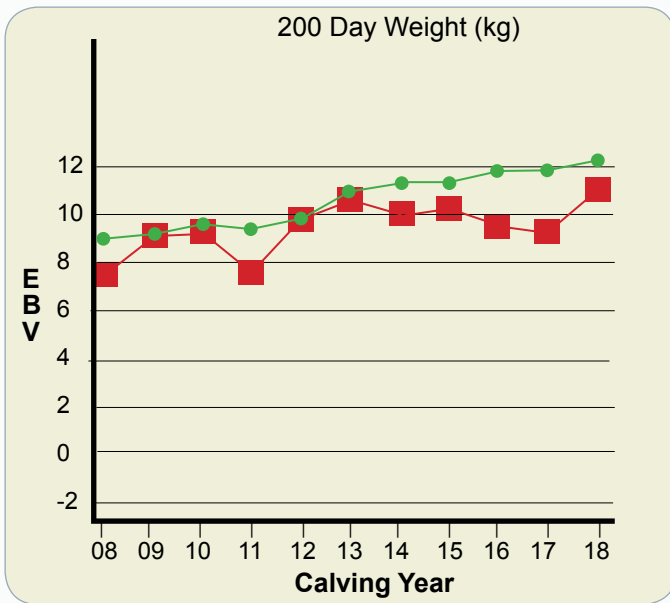
Homozygous Poll animals in this sale have been DNA tested at Neogen and their Poll Status is indicated where a test result is available.

KENMERE GENETIC TRENDS



■ Kenmere

● Charolais Breed



Kenmere Reference Sires



Trait Leader
Birthweight

KENMERE CHOCK E12E (MCS E12E) (P)

Chock is in the top 5% calving ease, and IMF, and Domestic and Export Index, top 10% for 200 day weight, Rib Fat and Rump Fat, top 20% Milk. Chock is breeding progeny that are easy calving, carry moderate frame and abundant rump. Kenmere intends to continue using Chock as a stud sire as his dam Kenmere Kristina III is a descendant of Kenmere Kristina a foundation dam within our stud. We recommend you look closely at Chock's 13 sons in this sale who would suit commercial cattlemen looking for early finishing cattle. We are confident Chock progeny will calve down mature heifers where the grazing is carefully restricted.



Trait Leader
Birthweight

KENMERE PINAY J57E (P) (MCS J57E)

This sire is in the top 5% of the breed for calving ease, gestation length, birth weight and EMA. Our breeding experience with this bull is that calves are born easily and normally prior to their due date that assists their safe start in life. We record every cow calf's date of birth and weight so we know our records independent of BREEDPLAN are correct. This bull's progeny have adequate muscling and rump and will suit commercial markets at sale time and producers targeting meat quality standards.



Trait Leader
400 & 600 Wt

ASHWOOD PARK SYNERGY G29E (HAS G29E) (P)

This Bull was purchased from the Ashwood Park Charolais Dispersal sale in 2013. Kenmere have used this bull in the stud as a polled outcross for his D Bar Synergy and LHD Cigar bloodlines. Synergy breeds polled calves that suit our southern bull buyers. The bull has excellent docility, length and height of body with tremendous depth to suit our breeding herd.



Trait Leader
200 Wt & Milk

MD SENTINAL RULER G1520 M509416 (P/S)

We selected this bull for his outcross genetics and his worldwide reputation for breeding thick meaty bulls that stand on sound bone structure with reliable fet and legs. This sire is a trait leader for 200 Day Weight, Calving Ease, Milk, Rib and Rump fat. Sentinel Ruler is a super carcase bull and this trait is evident in the progeny he has in this sale.



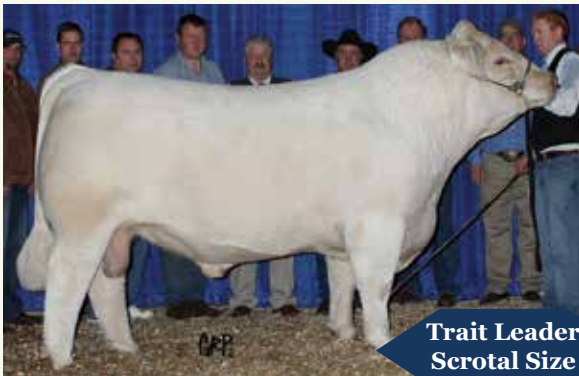
LT LONG DISTANCE 9001 (OAU E143E) (P)

Kenmere selected this North American sire for his worldwide acclaim for calving ease and low birth weight. The bull has a proven reputation for shorter gestations and lower calving ease. The structure of the bull and his conformation selectively suited mating with Kenmere dams.



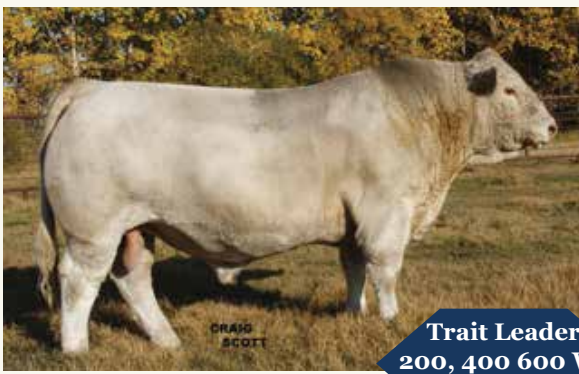
PCC SPARTAN 4Y (OAC G6672E) (P)

This polled sire was bred at Prairie Cove Charolais, a leading Canadian stud stock producer. Selected as an outcross from Kenmere genetics that carries the desired softness and length of body that suits our dams. Spartan has thickness from head to tail with an impressive topline that ensures the bull catches your eye. The bull carries adequate rump muscle that blends evenly into the body that completes his appearance. Spartan progeny are easy calvers that catch your eye in the paddock and are easy doing cattle.



PCC SUDDEN IMPACT 848U (P) (OAC D1017E)

Sudden Impact is a polled Canadian sire who we selected for his moderate frame and strong carcass traits including EMA, Rib and Rump. The bull carries the softness that we look for in a sire who is a trait leader in Scrotal Size. We envisage this sire will continue joinings with our mature cows to produce commercial bulls for future sales. Kenmere is pleased to include one Sudden Impact son in this sale to provide one of our customers the opportunity to purchase an outcross bull well worthy of your inspection.



SVY PILGRIM 655S (P) (OAC B3031E)

Pilgrim was bred by Gerrard Cattle Co in Canada and Kenmere has used the bull for his high performance growth that he passes onto his progeny. Pilgrim sons have length, muscle and performance that place them at the heavy end of the scales at weaning time. They also have carcasses with premium meat qualities. Kenmere has used Pilgrim to breed bulls and replacement commercial females that have grown to be successful breeders.

1 KENMERE NUCLEAR ENERGY (P)

Tattoo: MCS N112E Born: 11/08/2017

LT ASSERTION 1277 (PED W1277F) (P)
 LT BLUEGRASS 4017P (OAU Z4017E) (P)
 LT PEARLS BREEZE 2236 (PED X2236F) (P)

SIRE: KENMERE CHOCK E12E (MCS E12E) (P)

MANDALONG CHOCK (RP C59E) (P/S)
 KENMERE KRISTINA III FL87 (MCS M18E)
 GILMANDYKE PARK KRISTINA 2ND (AGP N17F)

BALDRIDGE FASTTRACK 82E (OAU R82E) (P)
 SIRRAH ANAKIN (4BV A3E) (P)
 SIRRAH XCITE (4BV X5E) (P)

DAM: NARGOON CUTTING EDGE G114E (J5Y G114E) (P)

AYR EXTRA'S HEIDAL 2ND (AYR W455E)
 NARGOON CUTTING EDGE (J5Y C54E) (P)
 KENMERE SPECIALTY (KNC S75E) (P)

Comments: **Top 1% for calving ease and birthweight, Top 5% for calving ease daughters, Domestic and Export indexes, Top 10% for Rib fat and Gestation, Top15% for Rump fat and milk, Top 25% for IMF.** Nuclear Energy is an impressive Chock son who may suit stud duties including being used as a heifer bull - softness, smooth skin with thickness, power, muscle and performance. Kenmere has retained semen to use in our stud and commercial herd and has no further call on semen collection.

Purchaser:

\$:

	CE DIR	CE DTR	GL	BW	200	400	600	MCW	MILK	SS
EBV	+19.5	+8.2	-5.1	-3.4	+12	+17	+25	+21	+11	+1.0
Acc	46%	43%	50%	70%	63%	65%	63%	59%	50%	74%

	CW	EMA	RIB	RUMP	RBV	IMF
EBV	+18	+0.6	+1.3	+1.6	-1.2	+0.4
Acc	55%	50%	53%	52%	52%	49%

\$ Index Values

Dom (\$)	Exp (\$)
+\$56	+\$78



2 KENMERE NUPTUNE (P)

Tattoo: MCS N34E Born: 07/03/2017

IMPAIR (OAF N189F)
 PINAY (OAF U4134F)
 MARY (OAF R8596F)

SIRE: KENMERE PINAY J57E (MCS J57E) (P)

LT WESTERN SPUR 2061 PLD (OAU X2061E) (P)
 KENMERE GOLDEN SPUR (MCS G3E) (P)
 KARINA INVESTMENTS WINDY WENDY (GPK A15E) (P)

GOBONGO DECOY D85E (GO D85E) (P)
 GOBONGO BOY G196E (GO G196E) (P)
 GOBONGO ELODIE E117E (GO E117E) (P)

DAM: KENMERE TINKERBELLE K35E (MCS K35E) (P)

KENMERE CHOCK E12E (MCS E12E) (P)
 KENMERE TINKERBELLE H8E (MCS H8E) (P)
 KENMERE TINKERBELLE E91E (MCS E91E) (P)

Comments: **Top 5% for calving ease and gestation length, Top 10 % for birth weight, calving ease daughters and domestic indexes, Top 15% for Milk and Export index. Top 30% for EMA and Rib fat.** Neptune's dams mother Kenmere Tinkerbelle H8E bred the top priced Synergy son that sold to Seriston Pastoral Company at our 2017 sale. This bull is well worthy of your consideration as a sire carrying easy calving ability with carcass and meat quality suiting commercial cattlemen. He has been one of our favourites since he was a calf. Kenmere has retained semen to use in our stud and commercial herd and has no further call on semen collection

Purchaser:

\$:

	CE DIR	CE DTR	GL	BW	200	400	600	MCW	MILK	SS
EBV	+12.7	+7.2	-6.2	-1.9	+10	+17	+25	+13	+11	+0.3
Acc	44%	37%	44%	71%	63%	66%	70%	63%	43%	74%

	CW	EMA	RIB	RUMP	RBV	IMF
EBV	+18	+2.0	+0.6	+0.6	+0.0	+0.2
Acc	57%	49%	52%	51%	51%	48%

\$ Index Values

Dom (\$)	Exp (\$)
+\$42	+\$55



3 KENMERE NEX US (P)

Tattoo: MCS N23E Born: 25/02/2017

LT ASSERTION 1277 (PED W1277F) (P)
 LT BLUEGRASS 4017P (OAU Z4017E) (P)
 LT PEARLS BREEZE 2236 (PED X2236F) (P)

SIRE: KENMERE CHOCK E12E (MCS E12E) (P)

MANDALONG CHOCK (RP C59E) (P/S)
 KENMERE KRISTINA III FL87 (MCS M18E)
 GILMANDYKE PARK KRISTINA 2ND (AGP N17F)

DAM: MINNIE-VALE PING A49E (SGS A49E) (P)

MINNIE VALE QANTAS (SGS Q20E)
 MINNIE-VALE PING W132E (SGS W132E)
 MINNIE VALE PING (SGS P57E)

Comments: **Top 5% for Rib and Rump fat and Calving ease direct, Top 20% for Milk, Birth weight and IMF.** Nexus is an impressive smooth bodied bull with plenty of growth and adequate muscle and thickness, who has inherited many traits from his sire Kenmere Chock who is renown for producing meaty calves on sale day. Nexus dam has bred nine polled progeny including females that are amongst our best cow families. Kenmere has collected semen for use in our herd and has no further call on semen collection

	CE DIR	CE DTR	GL	BW	200	400	600	MCW	MILK	SS
EBV	+13.0	-9.5	-2.2	-0.7	+6	+13	+26	+27	+10	+0.4
Acc	51%	49%	54%	72%	63%	65%	68%	63%	56%	69%

	CW	EMA	RIB	RUMP	RBV	IMF
EBV	+13	+0.5	+1.7	+2.3	-1.5	+0.5
Acc	57%	49%	54%	53%	52%	49%

\$ Index Values

Dom (\$) Exp (\$)

+\$28 +\$44



Purchaser:

\$:

4 KENMERE NELIUS (AI) (P)

Tattoo: MCS N43E Born: 01/04/2017

HOMOZYGOUS POLL

RAINBOW MR CYRANO 32D (PED -1187E)
 MVX COUGARHILL HANK 720G (PED -52E)
 MVX EDITH 806X (PED -1304E)

SIRE: PCC SUDDEN IMPACT 848U (OAC D1017E) (P)

SPARROWS ADVANTAGE 230H (PED -5580E)
 SPARROWS TEMPEST 174K (PED -732E) (P)
 SPARROWS SPARKEL 74F (PED -8148E) (P)

DAM: KENMERE PERLINA J12E (MCS J12E) (P)

KENMERE DAKOTA SPUR D9E (MCS D9E)
 KENMERE PERLINA F37E (MCS F37E)
 KENMERE PERLINA (MCS P78E)

Comments: **Top 5% for Rib and Rump fat, Top 10% for Birthweight, Top 15% for Gestation.** Nelius is the first PCC Sudden Impact sire we have offered for sale - a soft smooth poll headed sire that is moderate in size with even thickness throughout the body and a tidy topline. Would suit stud duties where out cross genetics are being sought after to breed improved progeny from mature cows. Perlina dam family are original Kenmere bloodlines. Semen has been retained to use in our stud and commercial herd and Kenmere has no further call on collection.

	CE DIR	CE DTR	GL	BW	200	400	600	MCW	MILK	SS
EBV	+0.6	+3.1	-4.9	-1.3	+3	+5	+0	-8	+6	+0.8
Acc	41%	34%	71%	71%	64%	66%	70%	62%	46%	73%

	CW	EMA	RIB	RUMP	RBV	IMF
EBV	+4	+1.4	+1.8	+2.1	-0.9	+0.4
Acc	56%	47%	52%	51%	51%	46%

\$ Index Values

Dom (\$) Exp (\$)

+\$16 +\$18



Purchaser:

\$:

5

KENMERE PILGRAM N55E (AI) (P)

Tattoo: MCS N55E Born: 11/04/2017

LT RIO BLANCO 1234 P (OAU W591E) (P)
 SVY PIONEER 402P (PED -8416E)
 SVY JINGLES 153L (PED -3049E)

SIRE: SVY PILGRIM PLD 655S MC303031 (OAC B3031E) (P)

RGP EUREKA 17E (OAC Q17E) (P)
 HFCC FRENCHKISS 919J (PED -9584E)
 QCR FRENCHKISS 33F (PED -8979E)

LT ASSERTION 1277 (PED W1277F) (P)
 LT BLUEGRASS 4017P (OAU Z4017E) (P)
 LT PEARLS BREEZE 2236 (PED X2236F) (P)

DAM: KENMERE PING E20E (MCS E20E) (P)

COBRABALD PICASSO (ASH P82E) (P)
 MINNIE-VALE PING A49E (SGS A49E) (P)
 MINNIE-VALE PING W132E (SGS W132E)

Comments: **Top 1% for Rib and Rump fat, Top 5% for IMF, Top 10% for 200, Top 15% for 600 and Maternal cow weight, Top 20% for 400 and Scrotal, top 25% for Milk and EMA.** This Bull is the only SVY Pilgrim progeny offered for sale today. The bull has EBV's that suggest easier calving and positive rib and rump qualities and is an eye catching mobile sire well worthy of your inspection. Kenmere used this sire for his outcross genetics and compatibility with Kenmere Dam qualities. The Bull's dam E20E bred Kenmere Synergys Man who won Grand Champion and Junior champion Charolais Bull at 2017 Melbourne Show and was retained as a stud sire in the Kenmere Herd . Kenmere has collected semen from this bull for use in our stud and the commercial herd and has no further call on semen collection

	CE DIR	CE DTR	GL	BW	200	400	600	MCW	MILK	SS
EBV	-7.1	-19.6	-1.7	+1.0	+18	+30	+45	+50	+9	+1.7
Acc	54%	52%	74%	74%	68%	70%	73%	66%	59%	76%

	CW	EMA	RIB	RUMP	RBV	IMF
EBV	+22	+2.1	+2.9	+4.0	-1.7	+1.1
Acc	62%	55%	60%	59%	57%	54%

\$ Index Values

Dom (\$) Exp (\$)

+\$10 +\$20



Purchaser:

\$:

6

KENMERE NATIONAL (P)

Tattoo: MCS N95E Born: 22/07/2017

YACCAMOO COWBOY (PIK C15E) (P)
 TEMANA GOLDEN LOGIE G66E (TJ G66E) (P)
 TEMANA X104 (TJ X104E)

SIRE: DSK TGL KAKADU K69E (DSK K69E) (P)

MOONGOOL YOKEL (DP2 Y218E)
 DSK MY BEATRIX C69E (DSK C69E) (P)
 DSK WW BEATRIX Z23E (DSK Z23E) (P)

EATONS LEADER 2233 P (OAU X2217E) (P)
 AIRLIE FRECKLE (A1S F189E) (P/S)
 AIRLIE KATRINA U139E R/F (A1S U139E) (P)

DAM: AIRLIE REBECCA H51E (A1S H51E)

AIRLIE ACADEMY (A1S A728F) (P)
 AIRLIE REBECCA E174F (A1S E174F)
 AIRLIE REBECCA B18F (A1S B18F)

Comments: **Top 30% for RBV.** National's sire was purchased at the 2016 Charolais National sale and this is his first son we have sold. The Dam Airlie Rebecca is also an outcross from Kenmere genetics. National has a sire's head with width all along his eye catching topline, standing on a thick boned structure. National would suit vealer and steer production. Semen has been retained by Kenmere to use in our stud and commercial herd and has no further call on semen collection

	CE DIR	CE DTR	GL	BW	200	400	600	MCW	MILK	SS
EBV	+1.1	-1.0	-1.5	+1.2	+10	+20	+29	+25	+4	+0.8
Acc	40%	28%	41%	69%	59%	61%	58%	54%	37%	70%

	CW	EMA	RIB	RUMP	RBV	IMF
EBV	+16	+1.6	+0.0	-0.1	+0.5	+0.1
Acc	49%	44%	46%	45%	46%	43%

\$ Index Values

Dom (\$) Exp (\$)

+\$16 +\$23



Purchaser:

\$:

7 KENMERE NICK-NACK (P)

Tattoo: MCS N71E Born: 17/06/2017

IMPAIR (OAF N189F)
PINAY (OAF U4134F)
MARY (OAF R8596F)

SIRE: KENMERE PINAY J57E (MCS J57E) (P)

LT WESTERN SPUR 2061 PLD (OAU X2061E) (P)
KENMERE GOLDEN SPUR (MCS G3E) (P)
KARINA INVESTMENTS WINDY WENDY (GPK A15E) (P)

LT BLUEGRASS 4017P (OAU Z4017E) (P)
KENMERE CHOCK E12E (MCS E12E) (P)
KENMERE KRISTINA III FL87 (MCS M18E)

DAM: KENMERE MICHELLE H101E (MCS H101E) (P)

ROSEDALE Y106E (MR Y106E) (P)
KENMERE MICHELLE MCS D20E (MCS D20E) (P)
MINNIE-VALE MICHELLE B28E (SGS B28E) (P)

Comments: **Top 5% for Calving ease direct, Top 10% for Birth weight, Gestation Length, EMA, Domestic Value, Top 15% for Export value, Top 20% for Calving ease daughters, Top 25% for IMF, Top 30% for Rib fat.** Nick-Nack is the complete package with even fat cover throughout his compact body, standing on sound feet. His Dam Kenmere Michelle bred Kenmere Legwork L93E who we retained for breeding commercial vealer cattle in our herd following his retirement at the 2017 Melbourne Show where he won Senior Champion Bull.

	CE DIR	CE DTR	GL	BW	200	400	600	MCW	MILK	SS
EBV	+13.6	+4.7	-5.5	-1.8	+10	+17	+19	+17	+12	-0.7
Acc	46%	39%	46%	72%	64%	67%	70%	63%	45%	72%

	CW	EMA	RIB	RUMP	RBV	IMF
EBV	+18	+2.6	+0.6	+0.6	+0.2	+0.4
Acc	59%	50%	55%	54%	53%	50%

\$ Index Values

Dom (\$) Exp (\$)

+\$43 +\$52



Purchaser: _____

\$: _____

8 KENMERE SENTINEL RULER N52E (AI) (P)

Tattoo: MCS N52E Born: 08/04/2017

LHD ALIRULER W31 (PED -9968E)
LHD MR RULER D310 (PED -5954E)
LHD MS BAMARK 259 S214 (PED -3447E)

SIRE: MD SENTINAL RULER G1520 (OAU S9416E) (P/S)

LHD SENTINALJON X491 (PED -5175E) (P/S)
MD MS SENTINELJON B389 (PED -9947E)
OCR MISS HIGH FIRE Y21 (PED -3041E) (P)

LIBERTY UNFORGETABULL (Y1K U4E) (P)
LIBERTY EXHIBITIONIST (Y1K E24E) (P)
LIBERTY XTRA TANTALIZING (Y1K X3E) (P)

DAM: KENMERE QUE SERA H34E (MCS H34E) (P)

ROSEDALE Y106E (MR Y106E) (P)
KENMERE QUE SERA B9E (MCS B9E)
KENMERE TRES BONNE (KNC T49E) (P)

Comments: **Top 5% for Milk, Rib and Rump fat , Top 10% for IMF, Top 20% for Export values and top 25% for Domestic Values.** This Sentinel Ruler son is smooth skinned with fullness of body throughout who has adequate power and length who should suit producers breeding meaty bulls where rib, rump and weight counts on sale day. Sentinel Ruler sons carry super carcass traits in the Charolais breed.

	CE DIR	CE DTR	GL	BW	200	400	600	MCW	MILK	SS
EBV	+3.6	+4.0	-1.6	-0.4	+15	+18	+26	+30	+14	+1.0
Acc	47%	43%	71%	73%	66%	68%	71%	64%	54%	74%

	CW	EMA	RIB	RUMP	RBV	IMF
EBV	+11	+1.0	+1.7	+2.4	-0.9	+0.7
Acc	59%	50%	55%	54%	53%	49%

\$ Index Values

Dom (\$) Exp (\$)

+\$33 +\$47



Purchaser: _____

\$: _____

9 KENMERE NEWTON

Tattoo: MCS N70E Born: 16/06/2017

LT ASSERTION 1277 (PED W1277F) (P)
 LT BLUEGRASS 4017P (OAU Z4017E) (P)
 LT PEARLS BREEZE 2236 (PED X2236F) (P)

SIRE: KENMERE CHOCK E12E (MCS E12E) (P)

MANDALONG CHOCK (RP C59E) (P/S)
 KENMERE KRISTINA III FL87 (MCS M18E)
 GILMANDYKE PARK KRISTINA 2ND (AGP N17F)

LT EASY BLEND 5125 PLD (OAU A5113E) (P)
 KENMERE RADIATOR E90E (MCS E90E) (P)
 MINNIE-VALE RADIANCE B34E (SGS B34E) (P)

DAM: KENMERE KINCOPPAL (MCS K1E) (P)

COBRABALD WINSTON (ASH W51E) (P)
 ROSEDALE HONOR Z118 (MR Z118E) (P)
 ROSEDALE HONOUR 21 (MR N91F)

Comments: **Top 5% for Calving ease direct and Calving ease daughters, 10% for Birth weight, Domestic and Export indexes, Top 15% for IMF, Top 20% for Milk and Gestation.** Newton has EBV's on the right side of the curve throughout and scan data that aligns the traits in the bull. This mobile soft fleshy sire displays all the credentials we strive to display in our breeding program.

	CE DIR	CE DTR	GL	BW	200	400	600	MCW	MILK	SS
EBV	+12.9	+8.2	-4.2	-1.4	+8	+19	+28	+27	+10	+1.1
Acc	49%	45%	52%	73%	66%	68%	71%	65%	53%	73%

	CW	EMA	RIB	RUMP	RBV	IMF
EBV	+17	+0.5	+0.3	+0.4	-0.9	+0.6
Acc	60%	52%	57%	56%	55%	51%

\$ Index Values	
Dom (\$)	Exp (\$)
+\$46	+\$64



Purchaser:

\$:

10 KENMERE NOVA

Tattoo: MCS N2E Born: 01/02/2017

MXV COUGARHILL HANK 720G (PED -52E)
 DBAR SYNERGY 721T (OAC C3100E) (P)
 KALA'S FROSTY 121H (PED -1971E)

SIRE: ASHWOOD PARK SYNERGY G29E (HAS G29E) (P)

S\$ MONTANA SILVER (OAU R4024E) (P)
 ASHWOOD PARK ANGEL 2 (HAS D22E) (P)
 ASHWOOD PARK ANGEL (HAS A6E) (P)

LT WESTERN SPUR 2061 PLD (OAU X2061E) (P)
 KENMERE DAKOTA SPUR D9E (MCS D9E)
 KARINA INVESTMENTS WINDY WENDY (GPK A15E) (P)

DAM: KENMERE QUE SERA F91E (MCS F91E)

ROSEDALE Y106E (MR Y106E) (P)
 KENMERE QUE SERA B8E (MCS B8E) (P)
 KENMERE TRES BONNE (KNC T49E) (P)

Comments: **Top 20% Scrotal, Top 25% for Milk, Top 30% for Gestation.** Nova is a moderate, long bodied soft skinned Synergy son with adequate size, power and thickness to suit a commercial producer. The dam is a Que Sera cow who we have retained in our herd since 1995 for their milk qualities inherited from LHD Mr Perfect in 1995.

	CE DIR	CE DTR	GL	BW	200	400	600	MCW	MILK	SS
EBV	-8.3	+1.2	-3.4	+0.6	+5	+15	+20	+9	+9	+1.6
Acc	46%	41%	51%	69%	65%	67%	71%	63%	50%	73%

	CW	EMA	RIB	RUMP	RBV	IMF
EBV	+8	+0.0	-0.3	-0.2	+0.2	-0.3
Acc	59%	50%	55%	54%	53%	49%

\$ Index Values	
Dom (\$)	Exp (\$)
-\$2	-\$4



Purchaser:

\$:

11 KENMERE NATURALIST (P)

Tattoo: MCS N134E Born: 24/08/2017

IMPAIR (OAF N189F)
 PINAY (OAF U4134F)
 MARY (OAF R8596F)

SIRE: KENMERE PINAY J57E (MCS J57E) (P)

LT WESTERN SPUR 2061 PLD (OAU X2061E) (P)
 KENMERE GOLDEN SPUR (MCS G3E) (P)
 KARINA INVESTMENTS WINDY WENDY (GPK A15E) (P)

LT BLUEGRASS 4017P (OAU Z4017E) (P)
 KENMERE CHOCK E12E (MCS E12E) (P)
 KENMERE KRISTINA III FL87 (MCS M18E)

DAM: KENMERE KATELYN (MCS K109E) (P)

CALOONA PARK CANON (LSF C62E)
 KENMERE GARNISH (MCS G57E)
 QUICKSILVER BREE (1QS B7E) (P)

Comments: **Top 10% for Calving ease direct and RBY, Top 15% for EMA, Gestation length, Top 20% for Domestic index.** This eighteen month old bull has a moderate frame with adequate muscle and a square rump. The bull's EBV's suggest calving ease with strong meat quality traits that will suit commercial cattlemen chasing improved grass fed beef yields and MSA high end premium markets.

	CE DIR	CE DTR	GL	BW	200	400	600	MCW	MILK	SS
EBV	+9.0	+0.6	-4.4	+0.1	+11	+21	+24	+27	+6	+0.0
Acc	45%	38%	45%	70%	63%	66%	64%	60%	44%	74%

	CW	EMA	RIB	RUMP	RBV	IMF
EBV	+18	+2.4	-0.9	-1.3	+1.1	+0.0
Acc	56%	51%	56%	55%	54%	50%

\$ Index Values	
Dom (\$)	Exp (\$)
+\$28	+\$32



Purchaser:

\$:

12 KENMERE NUTRIENT (P)

Tattoo: MCS N131E Born: 23/08/2017

IMPAIR (OAF N189F)
 PINAY (OAF U4134F)
 MARY (OAF R8596F)

SIRE: KENMERE PINAY J57E (MCS J57E) (P)

LT WESTERN SPUR 2061 PLD (OAU X2061E) (P)
 KENMERE GOLDEN SPUR (MCS G3E) (P)
 KARINA INVESTMENTS WINDY WENDY (GPK A15E) (P)

NELSON (OAF S8304F)
 SEDALIA BORN WINNER (DEG B15F)
 SEDALIA ULTIMATE FT27 (DEG U3F)

DAM: NARGOON WILMUR H017F (J5Y H17F)

INDIANA (OAF N393F)
 NARGOON WILMUR 1 (J5Y B43F)
 NARGOON WILMUR (J5Y W16F)

Comments: **Top 10% for RBV, Top 15% for gestation length.** Kenmere bred Nutrient sired by Kenmere Pinay from a full French outcross cow Nargoan Wilmur. The bull should suit breeders trying to improve retail beef yield.

	CE DIR	CE DTR	GL	BW	200	400	600	MCW	MILK	SS
EBV	+2.9	+2.6	-4.7	-0.4	+10	+14	+16	+27	+6	+0.3
Acc	43%	35%	45%	69%	61%	64%	61%	56%	44%	73%

	CW	EMA	RIB	RUMP	RBV	IMF
EBV	+14	+1.8	-1.2	-1.8	+1.2	+0.0
Acc	53%	48%	50%	49%	49%	46%

\$ Index Values	
Dom (\$)	Exp (\$)
+\$14	+\$14



Purchaser:

\$:

13

KENMERE NORMANDY (P)

HOMOZYGOUS
POLL

Tattoo: MCS N119E Born: 15/08/2017

IMPAIR (OAF N189F)

PINAY (OAF U4134F)

MARY (OAF R8596F)

SIRE: KENMERE PINAY J57E (MCS J57E) (P)

LT WESTERN SPUR 2061 PLD (OAU X2061E) (P)

KENMERE GOLDEN SPUR (MCS G3E) (P)

KARINA INVESTMENTS WINDY WENDY (GPK A15E) (P)

LT BLUEGRASS 4017P (OAU Z4017E) (P)

KENMERE CHOCK E12E (MCS E12E) (P)

KENMERE KRISTINA III FL87 (MCS M18E)

DAM: KENMERE BLISSFUL H38E (MCS H38E) (P)

LT EASY BLEND 5125 PLD (OAU A5113E) (P)

KENMERE BLISSFUL (MCS E18E) (P)

ROSEDALE BLISSFUL B178 (MR B178E) (P)

Comments: **Top 5% for Calving ease direct, Top 10% for Birth weight, Top 15% for IMF, Domestic Value and Gestation length, Top 20% for Export value and Calving ease daughters. Top 25% for Milk.** This Pinay son is a moderate and thick bodied soft sire with strong topline at the heavy end of the weights for the young bulls. Kenmere has a high opinion of the Blissful dam line for their longevity, fertility, docility and commercial strength on sale day.

	CE DIR	CE DTR	GL	BW	200	400	600	MCW	MILK	SS
EBV	+13.2	+4.6	-4.9	-1.8	+7	+16	+15	+12	+9	-0.5
Acc	46%	39%	48%	71%	64%	66%	65%	60%	46%	74%

	CW	EMA	RIB	RUMP	RBV	IMF
EBV	+16	+2.0	+0.4	+0.3	-0.3	+0.6
Acc	57%	52%	56%	55%	54%	51%

\$ Index Values

Dom (\$) Exp (\$)

+\$40 +\$47



Purchaser:

\$:

14

KENMERE NAPOLEON

Tattoo: MCS N143E Born: 31/08/2017

LT ASSERTION 1277 (PED W1277F) (P)

LT BLUEGRASS 4017P (OAU Z4017E) (P)

LT PEARLS BREEZE 2236 (PED X2236F) (P)

SIRE: KENMERE CHOCK E12E (MCS E12E) (P)

MANDALONG CHOCK (RP C59E) (P/S)

KENMERE KRISTINA III FL87 (MCS M18E)

GILMANDYKE PARK KRISTINA 2ND (AGP N17F)

LIBERTY UNFORGETABULL (Y1K U4E) (P)

LIBERTY EXHIBITIONIST (Y1K E24E) (P)

LIBERTY XTRA TANTALIZING (Y1K X3E) (P)

DAM: KENMERE QUE SERA H33E (MCS H33E) (P)

ROSEDALE Y106E (MR Y106E) (P)

KENMERE QUE SERA B9E (MCS B9E)

KENMERE TRES BONNE (KNC T49E) (P)

Comments: **Top 5% for Calving ease direct, Rib and Rump fat, Top 10% for Birth weight, milk, Domestic and Export values, Top 15% for Scrotal, Top 20% for IMF.** Napoleon is an all round performer across all indexes who is one of our favourite Chock sons, with eye appeal, strength of spine and even thickness of muscle throughout. This bull will suit domestic markets where red meat quality and yield is important on sale day. Calving ease should suit heifers

	CE DIR	CE DTR	GL	BW	200	400	600	MCW	MILK	SS
EBV	+15.1	+3.2	-3.9	-1.7	+7	+8	+20	+9	+12	+2.0
Acc	48%	45%	51%	73%	65%	67%	66%	63%	52%	75%

	CW	EMA	RIB	RUMP	RBV	IMF
EBV	+8	+1.1	+1.7	+2.4	-1.1	+0.5
Acc	57%	52%	56%	55%	54%	51%

\$ Index Values

Dom (\$) Exp (\$)

+\$42 +\$64



Purchaser:

\$:

15 KENMERE NULLIFY

Tattoo: MCS N137E Born: 25/08/2017

LT WYOMING WIND 4020 PLD (OAU P4020E) (P)
 PLATINUM WIND-FALL W75E (AJ1 W75E) (P)
 DOWNUNDER GERALDINE (1LP G1D)

SIRE: KENMERE SIR LAWRENCE (MCS L12E) (P)

MINNIE-VALE DEPUTY (SGS V78E) (P)
 ROSEDALE BLISSFUL Z210 (MR Z210E) (P)
 ROSEDALE BLISSFUL X91 (MR X91E) (P)

LT WESTERN SPUR 2061 PLD (OAU X2061E) (P)
 KENMERE DAKOTA SPUR D9E (MCS D9E)
 KARINA INVESTMENTS WINDY WENDY (GPK A15E) (P)

DAM: KENMERE BLISSFUL K71E (MCS K71E) (P)

LT EASY BLEND 5125 PLD (OAU A5113E) (P)
 KENMERE BLISSFUL (MCS E18E) (P)
 ROSEDALE BLISSFUL B178 (MR B178E) (P)

Comments: **Top 20% for Milk, Top 25% for IMF.** Nullify is an eighteen month old son of Kenmere Sir Lawrence with a sires head and eye catching appeal with a moderate body that has thickness and muscle. Bloodlines suggest he should add growth and carcase quality finishing on grass.

	CE DIR	CE DTR	GL	BW	200	400	600	MCW	MILK	SS
EBV	-0.9	+0.6	-2.9	+0.2	+10	+26	+32	+27	+10	+0.8
Acc	45%	40%	50%	70%	60%	64%	62%	58%	45%	71%

	CW	EMA	RIB	RUMP	RBV	IMF
EBV	+19	-0.4	-0.2	-0.2	-0.5	+0.4
Acc	54%	49%	53%	52%	52%	48%

\$ Index Values

Dom (\$) Exp (\$)

+\$21 +\$27



Purchaser:

\$:

16 KENMERE NACHMAN (P)

Tattoo: MCS N48E Born: 06/04/2017

IMPAIR (OAF N189F)
 PINAY (OAF U4134F)
 MARY (OAF R8596F)

SIRE: KENMERE PINAY J57E (MCS J57E) (P)

LT WESTERN SPUR 2061 PLD (OAU X2061E) (P)
 KENMERE GOLDEN SPUR (MCS G3E) (P)
 KARINA INVESTMENTS WINDY WENDY (GPK A15E) (P)

SVY PIONEER 402P (PED -8416E)
 SVY PILGRIM PLD 655S (OAC B3031E) (P)
 HFCC FRENCHKISS 919J (PED -9584E)

DAM: KENMERE RADIANCE J49E (MCS J49E) (P)

ROSEDALE Y106E (MR Y106E) (P)
 KENMERE RADIANCE D21E (MCS D21E) (P)
 MINNIE-VALE RADIANCE B34E (SGS B34E) (P)

Comments: **Top 10% for Gestation length, Top 15% for 200 Day weight and Maternal cow weight, Top 20% for 400 day weight, EMA and IMF, Top 25% for Milk and 600 Day weight.** Kenmere bred Nachman from a Radiance dam that gives us the confidence that he will breed true to type suiting replacement females and steers where carcase weight is important.

	CE DIR	CE DTR	GL	BW	200	400	600	MCW	MILK	SS
EBV	-2.9	-2.1	-5.1	+0.9	+17	+31	+40	+50	+9	+1.1
Acc	46%	41%	52%	71%	64%	67%	70%	63%	46%	74%

	CW	EMA	RIB	RUMP	RBV	IMF
EBV	+23	+2.3	+0.9	+0.9	-0.1	+0.5
Acc	59%	51%	56%	55%	54%	51%

\$ Index Values

Dom (\$) Exp (\$)

+\$21 +\$27



Purchaser:

\$:

17 KENMERE NESTOR (P)

Tattoo: MCS N18E Born: 22/02/2017

LT EASY BLEND 5125 PLD (OAU A5113E) (P)
 KENMERE RADIATOR E90E (MCS E90E) (P)
 MINNIE-VALE RADIANCE B34E (SGS B34E) (P)

SIRE: KENMERE HERICHIO (MCS H103E) (P)

LT WESTERN SPUR 2061 PLD (OAU X2061E) (P)
 KENMERE DIAMOND SPUR D8E (MCS D8E) (P)
 MINNIE-VALE QUEENIE A68E (SGS A68E) (P)

ROSEDALE SELECTOR (MR S39E) (P)
 ROSEDALE Y106E (MR Y106E) (P)
 ROSEDALE GAIETY R40 (MR R40E) (P)

DAM: KENMERE MICHELLE MCS D20E (MCS D20E) (P)

GREENWOOD XPLOSION (TSP X32E) (P)
 MINNIE-VALE MICHELLE B28E (SGS B28E) (P)
 MINNIE-VALE MICHELLE V93E (SGS V93E)

Comments: **Top 10% for 400 day growth, Maternal cow weight and IMF, Top 15% for 600 day and Carcase weights, Top 25% for Calving ease daughters, Gestation length and 200 Day weight.** This bull is sired by Kenmere Hericho who is a tall long bodied bull with even thickness from head to tail whose progeny have a high standard of carcase data that suggests this bull would be suitable for breeding steers and replacement females.

	CE DIR	CE DTR	GL	BW	200	400	600	MCW	MILK	SS
EBV	-8.6	+4.2	-2.6	+1.3	+13	+35	+47	+44	+10	+0.0
Acc	44%	39%	44%	72%	64%	66%	70%	62%	48%	72%

	CW	EMA	RIB	RUMP	RBV	IMF
EBV	+26	+1.0	+0.1	+0.3	-0.1	+0.7
Acc	57%	47%	51%	50%	50%	46%

\$ Index Values	
Dom (\$)	Exp (\$)
+\$19	+\$24



Purchaser:

\$:

18 KENMERE NOBILITY N78E (P)

Tattoo: MCS N78E Born: 28/06/2017

YACCAMOO COWBOY (PIK C15E) (P)
 TEMANA GOLDEN LOGIE G66E (TJ G66E) (P)
 TEMANA X104 (TJ X104E)

SIRE: DSK TGL KAKADU K69E (DSK K69E) (P)

MOONGOOL YOKEL (DP2 Y218E)
 DSK MY BEATRIX C69E (DSK C69E) (P)
 DSK WW BEATRIX Z23E (DSK Z23E) (P)

LT WYOMING WIND 4020 PLD (OAU P4020E) (P)
 PLATINUM WIND-FALL W75E (AJ1 W75E) (P)
 DOWNUNDER GERALDINE (1LP G1D)

DAM: KENMERE RADIANCE F78E (MCS F78E)

FERNVALE XTRA IMPACT (FEN X63E)
 MINNIE-VALE RADIANCE B34E (SGS B34E) (P)
 KENMERE RADIANCE (KNC R33E) (P)

Comments: **Top 5% for Scrotal, Top15% for RBV, Top 20% for EMA, 600 day and Carcase weights, Top 25% for Milk, Calving ease daughters and Gestation length, Export value, Top 30% for 400 day weight, Domestic index.** Nobility is a well made bull with length of body, power, muscle and structure who stands out in the paddock with his smooth skin, rump and muscling. His sire DSK Kakadu breeds progeny with growth and carcase traits and the dam is a fertile cow that has bred six progeny in including five bulls in the last six years.

	CE DIR	CE DTR	GL	BW	200	400	600	MCW	MILK	SS
EBV	+0.2	+3.6	-3.8	+0.6	+11	+28	+43	+30	+9	+2.8
Acc	45%	36%	49%	73%	64%	66%	69%	62%	44%	72%

	CW	EMA	RIB	RUMP	RBV	IMF
EBV	+25	+2.2	-0.2	-0.2	+0.9	+0.1
Acc	57%	48%	53%	52%	52%	48%

\$ Index Values	
Dom (\$)	Exp (\$)
+\$30	+\$45



Purchaser:

\$:

19 KENMERE NOE (P)

Tattoo: MCS N65E Born: 11/06/2017

GOBONGO DECOY D85E (GO D85E) (P)
 GOBONGO BOY G196E (GO G196E) (P)
 GOBONGO ELODIE E117E (GO E117E) (P)

SIRE: KENMERE KAKADU (MCS K96E) (P)

KENMERE RADIATOR E90E (MCS E90E) (P)
 KENMERE BLISSFUL H79E (MCS H79E) (P)
 KENMERE BLISSFUL MCS C53E (MCS C53E) (P)

WCR SIR FAB MAC 809 (OAU -57E) (P)
 WCR SIR FA MAC 2244 (OAU B2244E) (P)
 WCR MISS CENTURY 920 TWN (OAU -58) (P)

DAM: QUICKSILVER BREE (1QS B7E) (P)

TRINITY FARM HERVE (BVH H9F)
 TRINITY FARM NOLA (TF1 N4E)
 TRINITY FARM LA LUNE (TF1 L3E)

Comments: **Top 15% for Calving ease daughters and Milk, Top 20% for 600 Day weight, Top 25% for 400 Day weight. Top 30% Carcase weight.** Noe is bred from one of our top cows who consistently breeds progeny with quiet temperament that are easy doing, stand out from a young age and carry performance figures in growth and carcase that are on the right side of the curve - well worthy of your inspection.

	CE DIR	CE DTR	GL	BW	200	400	600	MCW	MILK	SS
EBV	-4.7	+5.3	-2.8	+1.0	+12	+29	+43	+38	+11	+0.1
Acc	41%	39%	43%	69%	53%	54%	56%	54%	48%	52%

	CW	EMA	RIB	RUMP	RBV	IMF
EBV	+23	+1.4	+0.2	+0.3	+0.2	+0.3
Acc	46%	39%	44%	43%	42%	39%

\$ Index Values	
Dom (\$)	Exp (\$)
+\$21	+\$28



Purchaser:

\$:

20 KENMERE NOTARY

Tattoo: MCS N68E Born: 14/06/2017

LT ASSERTION 1277 (PED W1277F) (P)
 LT BLUEGRASS 4017P (OAU Z4017E) (P)
 LT PEARLS BREEZE 2236 (PED X2236F) (P)

SIRE: KENMERE CHOCK E12E (MCS E12E) (P)

MANDALONG CHOCK (RP C59E) (P/S)
 KENMERE KRISTINA III FL87 (MCS M18E)
 GILMANDYKE PARK KRISTINA 2ND (AGP N17F)

LT WESTERN SPUR 2061 PLD (OAU X2061E) (P)
 KENMERE DAKOTA SPUR D9E (MCS D9E)
 KARINA INVESTMENTS WINDY WENDY (GPK A15E) (P)

DAM: KENMERE RADIANCE G14E (MCS G14E) (P)

ROSEDALE Y106E (MR Y106E) (P)
 KENMERE RADIANCE D21E (MCS D21E) (P)
 MINNIE-VALE RADIANCE B34E (SGS B34E) (P)

Comments: **Top 5% for Calving ease direct, Rib and Rump fat, Top 15% for Gestation length, Milk, Domestic and Export values, Top 20% for Birth weight and top 25% for IMF.** Notary has always stood out in the paddock as a bull with a great future. He has a good temperament and very impressive structure. This bull should suit breeders that are looking for a vealer sire that can finish calves early and where carcase traits are sought after. Semen has been collected from this bull for use in our stud and commercial herd and Kenmere has no further call on semen collection

	CE DIR	CE DTR	GL	BW	200	400	600	MCW	MILK	SS
EBV	+10.8	+2.2	-4.8	-0.8	+11	+19	+26	+29	+11	+0.9
Acc	50%	48%	53%	73%	67%	69%	71%	66%	55%	73%

	CW	EMA	RIB	RUMP	RBV	IMF
EBV	+15	+1.0	+2.0	+2.5	-1.3	+0.4
Acc	61%	53%	58%	58%	56%	52%

\$ Index Values	
Dom (\$)	Exp (\$)
+\$41	+\$56



Purchaser:

\$:

21 KENMERE NEMO (P/S)

Tattoo: MCS N12E Born: 17/02/2017

IMPAIR (OAF N189F)
PINAY (OAF U4134F)
MARY (OAF R8596F)

SIRE: KENMERE PINAY J57E (MCS J57E) (P)

LT WESTERN SPUR 2061 PLD (OAU X2061E) (P)
KENMERE GOLDEN SPUR (MCS G3E) (P)
KARINA INVESTMENTS WINDY WENDY (GPK A15E) (P)

DBAR SYNERGY 721T (OAC C3100E) (P)
ASHWOOD PARK SYNERGY G29E (HAS G29E) (P)
ASHWOOD PARK ANGEL 2 (HAS D22E) (P)

DAM: KENMERE MITCHELL K110E (MCS K110E) (P)

ROSEDALE Y106E (MR Y106E) (P)
KENMERE MICHELLE MCS D20E (MCS D20E) (P)
MINNIE-VALE MICHELLE B28E (SGS B28E) (P)

Comments: **Top 5% for Birth weight, EMA and Retail beef yield , Top 10% for Calving ease daughters and Gestation length, Top 15 % for Calving ease direct and Milk, Top 20% for Domestic index.** Nemo carries the traits of even depth of fat cover through his thick body from head to tail and muscle down into the hind quarter. The temperament and deep body rounds off the appeal of this sire. Progeny should suit southern and domestic markets.

	CE DIR	CE DTR	GL	BW	200	400	600	MCW	MILK	SS
EBV	+7.5	+6.7	-5.7	-1.9	+5	+15	+13	-1	+11	+0.7
Acc	45%	37%	47%	72%	64%	67%	70%	61%	44%	73%

	CW	EMA	RIB	RUMP	RBY	IMF
EBV	+16	+3.0	-1.1	-1.4	+1.7	+0.0
Acc	58%	50%	55%	54%	53%	49%

\$ Index Values	
Dom (\$)	Exp (\$)
+\$34	+\$37



Purchaser:

\$:

22 KENMERE NEOPOLO (P)

Tattoo: MCS N58E Born: 20/04/2017

IMPAIR (OAF N189F)
PINAY (OAF U4134F)
MARY (OAF R8596F)

SIRE: KENMERE PINAY J57E (MCS J57E) (P)

LT WESTERN SPUR 2061 PLD (OAU X2061E) (P)
KENMERE GOLDEN SPUR (MCS G3E) (P)
KARINA INVESTMENTS WINDY WENDY (GPK A15E) (P)

LT BLUEGRASS 4017P (OAU Z4017E) (P)
KENMERE CHOCK E12E (MCS E12E) (P)
KENMERE KRISTINA III FL87 (MCS M18E)

DAM: KENMERE KORELLE (MCS K62E) (P)

ROSEDALE Y106E (MR Y106E) (P)
KENMERE DOROTHEA D38E P (MCS D38E) (P)
MINNIE-VALE QUEENIE A68E (SGS A68E) (P)

Comments: **Top 5% for RBY, Top 10% for EMA, Top 15% for Calving ease direct and Gestation length, Top 25% for Birth weight and Milk.** Neopolo is a low birthweight sire that would suit commercial cattlemen looking for an easy doing sire who will suit British crossbreeding programs.

	CE DIR	CE DTR	GL	BW	200	400	600	MCW	MILK	SS
EBV	+7.9	+1.9	-4.4	-0.3	+6	+13	+10	+9	+9	+0.0
Acc	46%	39%	45%	68%	64%	67%	70%	63%	44%	74%

	CW	EMA	RIB	RUMP	RBY	IMF
EBV	+12	+2.6	-0.9	-1.3	+1.3	+0.1
Acc	59%	51%	56%	55%	54%	50%

\$ Index Values	
Dom (\$)	Exp (\$)
+\$24	+\$23



Purchaser:

\$:

23 KENMERE NICE GUY

Tattoo: MCS N96E Born: 24/07/2017

IMPAIR (OAF N189F)
 PINAY (OAF U4134F)
 MARY (OAF R8596F)

SIRE: KENMERE PINAY J57E (MCS J57E) (P)

LT WESTERN SPUR 2061 PLD (OAU X2061E) (P)
 KENMERE GOLDEN SPUR (MCS G3E) (P)
 KARINA INVESTMENTS WINDY WENDY (GPK A15E) (P)

IJOUFFLU (OAF N6327F)
 RAI (OAF V8611F)
 NOUMBA (PED -3210F)

DAM: NARGOON VAMPIRE H004F (J5Y H4F)

FERNVALE ZAMBO (FEN Z73F)
 NARGOON VAMPIRE 3 (J5Y C37F)
 NARGOON VAMPIRE (J5Y V37F)

Comments: **Top 1% for RBV, Top 5% for EMA, Top 20% for Gestation, Top 25% Calving ease direct.** Nice Guy is sired by Kenmere Pinay and the dam is an outcross cow Nargoon Vampire who is a full French daughter of RAI. The bull has fullness of body along his entire length, depth of muscle and a square rump. The bulls' ebv's suggest he would be suited to breeders chasing ema and looking to improve their retail beef yield.

	CE DIR	CE DTR	GL	BW	200	400	600	MCW	MILK	SS
EBV	+4.6	-5.7	-4.0	+0.0	+9	+15	+19	+22	+6	+0.6
Acc	44%	38%	50%	69%	61%	64%	61%	58%	43%	72%

	CW	EMA	RIB	RUMP	RBV	IMF
EBV	+17	+3.0	-1.6	-2.3	+1.9	-0.1
Acc	53%	48%	50%	48%	49%	47%

\$ Index Values	
Dom (\$)	Exp (\$)
+\$10	+\$9



Purchaser:

\$:

24 KENMERE NINJA (P)

Tattoo: MCS N97E Born: 25/07/2017

YACCAMOO COWBOY (PIK C15E) (P)
 TEMANA GOLDEN LOGIE G66E (TJ G66E) (P)
 TEMANA X104 (TJ X104E)

SIRE: DSK TGL KAKADU K69E (DSK K69E) (P)

MOONGOOL YOKEL (DP2 Y218E)
 DSK MY BEATRIX C69E (DSK C69E) (P)
 DSK WW BEATRIX Z23E (DSK Z23E) (P)

LT WESTERN SPUR 2061 PLD (OAU X2061E) (P)
 KENMERE DAKOTA SPUR D9E (MCS D9E)
 KARINA INVESTMENTS WINDY WENDY (GPK A15E) (P)

DAM: KENMERE GRACE (MCS G73E)

COBRABALD WINSTON (ASH W51E) (P)
 ROSEDALE BEATRIX Y46 (MR Y46E) (P)
 ROSEDALE BEATRIX S68 (MR S68E)

Comments: **Top 1% for Rib and Rump Fat, Top 15% for IMF, Top 20% for Birth weight and Export Value and top 25% for Scrotal and Domestic Value.** Ninja has developed into a topline bull in this catalogue with an impressive topline and even thickness and depth throughout his body with a thick boned structure who will suit producers looking to improve the rib and rump yield from their progeny. Mark your catalogue to inspect this sire.

	CE DIR	CE DTR	GL	BW	200	400	600	MCW	MILK	SS
EBV	+4.7	+1.0	-3.3	-0.7	+11	+17	+28	+22	+5	+1.5
Acc	43%	35%	43%	71%	62%	64%	61%	57%	43%	71%

	CW	EMA	RIB	RUMP	RBV	IMF
EBV	+13	+0.6	+2.3	+3.1	-1.6	+0.6
Acc	52%	46%	49%	48%	49%	45%

\$ Index Values	
Dom (\$)	Exp (\$)
+\$31	+\$48



Purchaser:

\$:

25 KENMERE NOMADE (AI) (P) (TW)

Tattoo: MCS N39E Born: 28/03/2017

LT SILVER YIELD 3196 (PED Y5495E) (P)
 LT SILVER DISTANCE 5342 (OAU A7559E) (P)
 LT MATTIE 9026 (OAU U2542E) (P)

SIRE: LT LONG DISTANCE 9001 (OAU E143E) (P)

LT EASY PRO 1158 PLD (OAU W6203E) (P)
 LT BELLE 7026 (OAU C9133E) (P)
 LT BELLE 5110 (OAU A5415E) (P)

LT WESTERN SPUR 2061 PLD (OAU X2061E) (P)
 KENMERE DAKOTA SPUR D9E (MCS D9E)
 KARINA INVESTMENTS WINDY WENDY (GPK A15E) (P)

DAM: KENMERE QUE SERA H104E (MCS H104E) (P)

ROSEDALE Y106E (MR Y106E) (P)
 KENMERE QUE SERA B8E (MCS B8E) (P)
 KENMERE TRES BONNE (KNC T49E) (P)

Comments: **Top 5% for Gestation length, Rib and Rump, Top 10% for Birth weight, Top 15% for Milk and IMF and top 20% for Calving ease direct.** Kenmere selected Nomade's sire Long Distance as a trait leader for birth weight and milk qualities. Nomade stands with an impressive top line with softness throughout the body. The bulls' dam genetics include fertility and strong maternal traits - consider for use over heifers

	CE DIR	CE DTR	GL	BW	200	400	600	MCW	MILK	SS
EBV	+5.9	-1.7	-6.5	-1.5	+9	+12	+22	+0	+11	+1.5
Acc	50%	44%	56%	69%	59%	59%	60%	57%	54%	55%

	CW	EMA	RIB	RUMP	RBV	IMF
EBV	+8	+0.5	+2.0	+2.8	-1.3	+0.6
Acc	51%	43%	51%	50%	46%	43%

\$ Index Values	
Dom (\$)	Exp (\$)
+\$29	+\$43



Purchaser:

\$:

26 KENMERE NOTATION

Tattoo: MCS N85E Born: 05/07/2017

YACCAMOO COWBOY (PIK C15E) (P)
 TEMANA GOLDEN LOGIE G66E (TJ G66E) (P)
 TEMANA X104 (TJ X104E)

SIRE: DSK TGL KAKADU K69E (DSK K69E) (P)

MOONGOOL YOKEL (DP2 Y218E)
 DSK MY BEATRIX C69E (DSK C69E) (P)
 DSK WW BEATRIX Z23E (DSK Z23E) (P)

ROSEDALE SELECTOR (MR S39E) (P)
 ROSEDALE Y106E (MR Y106E) (P)
 ROSEDALE GAIETY R40 (MR R40E) (P)

DAM: KENMERE BLISSFUL MCS C53E (MCS C53E) (P)

MINNIE-VALE DEPUTY (SGS V78E) (P)
 ROSEDALE BLISSFUL Z210 (MR Z210E) (P)
 ROSEDALE BLISSFUL X91 (MR X91E) (P)

Comments: **Top 10% for Milk, Top 25% for Rib fat, Top 30% for Rump fat.** Notation is a vealer type bull with long length of body, an impressive topline and powerful jump muscle and thickness from head to toe. Notation should suit a variety of commercial vealer markets where red meat and eating quality are sought after. Bulls' dam Kenmere Blissful C53E is highly regarded breeder in the Kenmere herd.

	CE DIR	CE DTR	GL	BW	200	400	600	MCW	MILK	SS
EBV	+2.1	+0.4	-1.2	+0.2	+6	+14	+28	+21	+12	+1.1
Acc	44%	35%	44%	72%	63%	65%	63%	59%	45%	72%

	CW	EMA	RIB	RUMP	RBV	IMF
EBV	+14	+1.8	+0.7	+0.9	+0.1	+0.2
Acc	54%	47%	51%	50%	50%	46%

\$ Index Values	
Dom (\$)	Exp (\$)
+\$21	+\$33



Purchaser:

\$:

27 KENMERE NEWSFLASH

Tattoo: MCS N156E Born: 13/09/2017

LT EASY BLEND 5125 PLD (OAU A5113E) (P)
 KENMERE RADIATOR E90E (MCS E90E) (P)
 MINNIE-VALE RADIANCE B34E (SGS B34E) (P)

SIRE: KENMERE HERICHIO (MCS H103E) (P)

LT WESTERN SPUR 2061 PLD (OAU X2061E) (P)
 KENMERE DIAMOND SPUR D8E (MCS D8E) (P)
 MINNIE-VALE QUEENIE A68E (SGS A68E) (P)

LT WESTERN SPUR 2061 PLD (OAU X2061E) (P)
 KENMERE DAKOTA SPUR D9E (MCS D9E)
 KARINA INVESTMENTS WINDY WENDY (GPK A15E) (P)

DAM: KENMERE GLORY (MCS G13E) (P)

COBRABALD WINSTON (ASH W51E) (P)
 ROSEDALE HONOR Z118 (MR Z118E) (P)
 ROSEDALE HONOUR 21 (MR N91F)

Comments: **Top 1% for Rib fat, Top 5% for Rump fat, Top 10% for Calving ease daughters, Top 20% for Gestation length and IMF, Top 25% for Milk.** Newsflash is a Hericho son with smooth skin, thickness and length of body. He should breed mobile meaty bulls with carcase quality that will suit a variety of markets.

	CE DIR	CE DTR	GL	BW	200	400	600	MCW	MILK	SS
EBV	-4.2	+7.5	-4.2	-0.5	+4	+15	+19	+9	+5	+0.7
Acc	44%	37%	45%	72%	60%	62%	61%	59%	47%	67%

	CW	EMA	RIB	RUMP	RBV	IMF
EBV	+11	+0.3	+2.2	+2.9	-1.8	+0.5
Acc	52%	46%	51%	50%	50%	45%

\$ Index Values	
Dom (\$)	Exp (\$)
+\$19	+\$25



Purchaser:

\$:

28 KENMERE NOLAN (P)

Tattoo: MCS N163E Born: 23/09/2017

IMPAIR (OAF N189F)
 PINAY (OAF U4134F)
 MARY (OAF R8596F)

SIRE: KENMERE PINAY J57E (MCS J57E) (P)

LT WESTERN SPUR 2061 PLD (OAU X2061E) (P)
 KENMERE GOLDEN SPUR (MCS G3E) (P)
 KARINA INVESTMENTS WINDY WENDY (GPK A15E) (P)

SVY FREEDOM PLD 307N (OAC Y2808E) (P)
 GERRARD MONTEZUMA 6T (OAC C3106E) (P)
 GERRARD ROXANNE 18P (PED -4620E)

DAM: KENMERE TANT MIEUX K91E (MCS K91E) (P)

LT BLUEGRASS 4017P (OAU Z4017E) (P)
 KENMERE TANT MIEUX D25E (MCS D25E) (P)
 KENMERE TANT MIEUX (KNC T42E)

Comments: **Top 5% for Gestation, Top 10% for Birth weight, Rib fat, Calving ease direct, Top 15% for Rump fat and Scrotal, Top 20% for EMA and Calving ease daughters, Top 25% for IMF and Domestic value.** Nolan has smooth muscled pattern with natural balance whose progeny should finish easily on grass.

	CE DIR	CE DTR	GL	BW	200	400	600	MCW	MILK	SS
EBV	+9.4	+4.5	-6.6	-2.0	+5	+5	+2	+2	+5	+1.9
Acc	45%	39%	52%	70%	60%	65%	63%	58%	42%	72%

	CW	EMA	RIB	RUMP	RBV	IMF
EBV	+5	+2.2	+1.2	+1.5	-0.3	+0.4
Acc	56%	50%	55%	54%	53%	50%

\$ Index Values	
Dom (\$)	Exp (\$)
+\$32	+\$42



Purchaser:

\$:

29 KENMERE NITTY GRITTY

Tattoo: MCS N136E Born: 25/08/2017

LT WYOMING WIND 4020 PLD (OAU P4020E) (P)
 PLATINUM WIND-FALL W75E (AJ1 W75E) (P)
 DOWNUNDER GERALDINE (1LP G1D)

SIRE: KENMERE SIR LAWRENCE (MCS L12E) (P)

MINNIE-VALE DEPUTY (SGS V78E) (P)
 ROSEDALE BLISSFUL Z210 (MR Z210E) (P)
 ROSEDALE BLISSFUL X91 (MR X91E) (P)

LT WESTERN SPUR 2061 PLD (OAU X2061E) (P)
 KENMERE DAKOTA SPUR D9E (MCS D9E)
 KARINA INVESTMENTS WINDY WENDY (GPK A15E) (P)

DAM: KENMERE QUE SERA G66E (MCS G66E) (P)

ROSEDALE Y106E (MR Y106E) (P)
 KENMERE QUE SERA B6E (MCS B6E) (P)
 KENMERE QUE SERA (KNC Q18E) (P)

Comments: **Top 5% for Milk, Top 20% for Rib fat and Gestation length, Top 25% for Birth weight, Top 30% for Rump fat.** Nitty Gritty is full of thickness throughout his body and should produce meaty calves yielding quality meat. A well bred easy doing bull who should provide plenty of options.

	CE DIR	CE DTR	GL	BW	200	400	600	MCW	MILK	SS
EBV	+1.2	+2.1	-4.0	-0.5	+8	+20	+21	+12	+14	+0.7
Acc	45%	40%	50%	71%	63%	65%	63%	61%	49%	73%

	CW	EMA	RIB	RUMP	RBY	IMF
EBV	+12	-0.1	+0.8	+0.9	-0.7	+0.2
Acc	55%	49%	52%	51%	52%	48%

\$ Index Values

Dom (\$)	Exp (\$)
+\$24	+\$27



Purchaser:

\$:

30 KENMERE NOTICE ME N130E

Tattoo: MCS N130E Born: 22/08/2017

LT ASSERTION 1277 (PED W1277F) (P)
 LT BLUEGRASS 4017P (OAU Z4017E) (P)
 LT PEARLS BREEZE 2236 (PED X2236F) (P)

SIRE: KENMERE CHOCK E12E (MCS E12E) (P)

MANDALONG CHOCK (RP C59E) (P/S)
 KENMERE KRISTINA III FL87 (MCS M18E)
 GILMANDYKE PARK KRISTINA 2ND (AGP N17F)

LT UNLIMITED EASE 9108 (OAU J9108E)
 LT EASY BLEND 5125 PLD (OAU A5113E) (P)
 LT BRENDA 1014 PLD (PED -4572E)

DAM: KENMERE TINKERBELLE E53E (MCS E53E) (P)

SUMMER KOSCIOSKO (SU K78F)
 KENMERE TINKERBELLE (KNC T60E)
 SUMMER KISS'N'TELL (SU K1E)

Comments: **Top 1% Calving ease direct, Top 10% for Birth weight, Domestic and Export values, Top 20% for Gestation length.** Notice Me is a typical Chock son with a low birth weight that may suit heifers. The sire is at the heavy end of the scales so options for his progeny should be versatile. His Dam line Tinkerbelle goes back to 1988, that is testimony to our confidence in the maternal traits.

	CE DIR	CE DTR	GL	BW	200	400	600	MCW	MILK	SS
EBV	+17.3	-0.5	-4.2	-1.8	+8	+21	+29	+24	+6	+1.0
Acc	51%	48%	54%	73%	66%	68%	66%	64%	55%	75%

	CW	EMA	RIB	RUMP	RBY	IMF
EBV	+21	+0.4	+0.1	+0.2	-0.7	+0.4
Acc	59%	54%	58%	57%	56%	53%

\$ Index Values

Dom (\$)	Exp (\$)
+\$43	+\$61



Purchaser:

\$:

31 KENMERE NIGHTSTACKER

Tattoo: MCS N168E Born: 28/09/2017

LT WYOMING WIND 4020 PLD (OAU P4020E) (P)
 PLATINUM WIND-FALL W75E (AJ1 W75E) (P)
 DOWNUNDER GERALDINE (1LP G1D)

SIRE: KENMERE SIR LAWRENCE (MCS L12E) (P)

MINNIE-VALE DEPUTY (SGS V78E) (P)
 ROSEDALE BLISSFUL Z210 (MR Z210E) (P)
 ROSEDALE BLISSFUL X91 (MR X91E) (P)

GOBONGO DECOY D85E (GO D85E) (P)
 GOBONGO BOY G196E (GO G196E) (P)
 GOBONGO ELODIE E117E (GO E117E) (P)
DAM: KENMERE PERLINA K11E (MCS K11E) (P)
 KENMERE DAKOTA SPUR D9E (MCS D9E)
 KENMERE PERLINA F37E (MCS F37E)
 KENMERE PERLINA (MCS P78E)

Comments: **Top 10% for Milk, Top 15% for Calving Ease Direct, Calving ease daughters, Top 25% for Gestation Length, IMF and Domestic value.** Nightstacker is a bull who impresses with the strength in his loin and hindquarter who carries the easy calving, rib and rump traits that will suit a breeder producing cattle where MSA standards are important.

	CE DIR	CE DTR	GL	BW	200	400	600	MCW	MILK	SS
EBV	+6.6	+5.9	-3.8	-1.7	+7	+14	+14	+5	+12	+0.8
Acc	43%	38%	46%	68%	54%	55%	57%	55%	44%	45%

	CW	EMA	RIB	RUMP	RBY	IMF
EBV	+9	+0.0	+0.6	+0.7	-0.7	+0.4
Acc	47%	37%	44%	44%	41%	37%

\$ Index Values

Dom (\$)	Exp (\$)
+\$33	+\$40



Purchaser:

\$:

32 KENMERE NOTEBOOK

Tattoo: MCS N164E Born: 23/09/2017

LT ASSERTION 1277 (PED W1277F) (P)
 LT BLUEGRASS 4017P (OAU Z4017E) (P)
 LT PEARLS BREEZE 2236 (PED X2236F) (P)

SIRE: KENMERE CHOCK E12E (MCS E12E) (P)

MANDALONG CHOCK (RP C59E) (P/S)
 KENMERE KRISTINA III FL87 (MCS M18E)
 GILMANDYKE PARK KRISTINA 2ND (AGP N17F)

LT WESTERN SPUR 2061 PLD (OAU X2061E) (P)
 KENMERE DAKOTA SPUR D9E (MCS D9E)
 KARINA INVESTMENTS WINDY WENDY (GPK A15E) (P)

DAM: KENMERE KOLOGNE (MCS K43E) (P)

SEDALIA YARDLEY (DEG Y13F)
 SEDALIA ANNABELLA (DEG B6E) (P)
 SEDALIA UREN FR110 (DEG U8E) (P)

Comments: **Top 1% for Calving Ease Direct, Top 10% for Birth weight, gestation, Domestic and Export indexes, Top 15% for Rib fat, Top 20% for Rump fat, Top 25% for Milk.** Notebook is a Chock son who oozes softness with depth of muscle throughout typical of the bloodline. This bull has plenty to offer from his scans and ebvs suggesting the progeny will suit producers where calving ease and rib and rump fat are important.

	CE DIR	CE DTR	GL	BW	200	400	600	MCW	MILK	SS
EBV	+16.1	+2.6	-5.1	-1.4	+13	+22	+30	+29	+9	+1.1
Acc	49%	45%	51%	71%	63%	66%	65%	61%	50%	73%

	CW	EMA	RIB	RUMP	RBY	IMF
EBV	+21	+1.6	+1.0	+1.1	-0.3	-0.1
Acc	57%	52%	57%	56%	55%	51%

\$ Index Values

Dom (\$)	Exp (\$)
+\$47	+\$65



Purchaser:

\$:

33

KENMERE NAVIGATOR (P/S) (TW)

Tattoo: MCS N108E Born: 08/08/2017

LT EASY BLEND 5125 PLD (OAU A5113E) (P)
 KENMERE RADIATOR E90E (MCS E90E) (P)
 MINNIE-VALE RADIANCE B34E (SGS B34E) (P)

SIRE: KENMERE HERICHIO (MCS H103E) (P)

LT WESTERN SPUR 2061 PLD (OAU X2061E) (P)
 KENMERE DIAMOND SPUR D8E (MCS D8E) (P)
 MINNIE-VALE QUEENIE A68E (SGS A68E) (P)

LT ASSERTION 1277 (PED W1277F) (P)
 LT BLUEGRASS 4017P (OAU Z4017E) (P)
 LT PEARLS BREEZE 2236 (PED X2236F) (P)

DAM: KENMERE KRISTINA E19E (MCS E19E) (P)

MANDALONG CHOCK (RP C59E) (P/S)
 KENMERE KRISTINA III FL87 (MCS M18E)
 GILMANDYKE PARK KRISTINA 2ND (AGP N17F)

Comments: **Top 15% for Mature cow weight, Top 20% for Rib and Rump fat and IMF, Top 30% for Gestation and 400 and 600 Day weights.** Navigator is an impressive long bodied bull with plenty of growth, thickness and softness. Navigator's Sire Kenmere Hericho is a sire with strong carcass traits and correct structure and feet. The Kristina dam family are original Kenmere genetics whose progeny are renowned for longevity, docility and fertility. Navigator would suit a breeding program with large frame mature cows.

Purchaser:

\$:

	CE DIR	CE DTR	GL	BW	200	400	600	MCW	MILK	SS
EBV	-0.8	+0.9	-3.3	+1.8	+13	+28	+38	+50	+1	+0.8
Acc	46%	41%	45%	70%	55%	56%	57%	56%	47%	49%

	CW	EMA	RIB	RUMP	RBV	IMF
EBV	+19	+0.4	+0.9	+1.3	-1.0	+0.5
Acc	48%	40%	46%	46%	43%	40%

\$ Index Values

Dom (\$) Exp (\$)

+\$22 +\$33



34

KENMERE NUTS AND BOLTS (ET) (P)

Tattoo: MCS N155E Born: 30/08/2017

LT ASSERTION 1277 (PED W1277F) (P)
 LT BLUEGRASS 4017P M68669 (OAU Z4017E) (P)
 LT PEARLS BREEZE 2236 (PED X2236F) (P)

SIRE: KENMERE GRENADE (MCS G8E) (P)

COBRABALD PICASSO (ASH P82E) (P)
 MINNIE-VALE PING A49E (SGS A49E) (P)
 MINNIE-VALE PING W132E (SGS W132E)

ROSEDALE SELECTOR (MR S39E) (P)
 ROSEDALE Y106E (MR Y106E) (P)
 ROSEDALE GAIETY R40 (MR R40E) (P)

DAM: KENMERE NAVARRO B14E (MCS B14E)

ROSEDALE GALANT (MR G52E)
 KENMERE NAVARRO (MCS N35D)
 AYR REGENT'S NOREEN 2ND (AYR G72C)

Comments: **Top 1% for Scrotal, Top 5% for Rib and Rump fat, Top 10% for IMF.** Nuts and Bolts would suit a breeder producing vealers that show muscle and rump on sale day that attract the buyer's eye. Kenmere used Grenade extensively in the commercial side of our cattle business breeding early finishing vealer calves - well worthy of your inspection.

Purchaser:

\$:

	CE DIR	CE DTR	GL	BW	200	400	600	MCW	MILK	SS
EBV	-3.8	-11.6	-1.9	+1.0	+7	+13	+23	+27	+8	+3.3
Acc	41%	38%	43%	67%	59%	61%	58%	56%	47%	69%

	CW	EMA	RIB	RUMP	RBV	IMF
EBV	+9	+1.9	+1.8	+2.7	-0.8	+0.7
Acc	50%	45%	47%	46%	47%	44%

\$ Index Values

Dom (\$) Exp (\$)

+\$7 +\$18



35 KENMERE NITRATE

Tattoo: MCS N113E Born: 11/08/2017

LT ASSERTION 1277 (PED W1277F) (P)
 LT BLUEGRASS 4017P (OAU Z4017E) (P)
 LT PEARLS BREEZE 2236 (PED X2236F) (P)

SIRE: KENMERE CHOCK E12E (MCS E12E) (P)

MANDALONG CHOCK (RP C59E) (P/S)
 KENMERE KRISTINA III FL87 (MCS M18E)
 GILMANDYKE PARK KRISTINA 2ND (AGP N17F)

LT WESTERN SPUR 2061 PLD (OAU X2061E) (P)
 KENMERE DAKOTA SPUR D9E (MCS D9E)
 KARINA INVESTMENTS WINDY WENDY (GPK A15E) (P)

DAM: KENMERE QUE SERA G16E (MCS G16E) (P)

LHD MR PERFECT Y416 (OAC J416E) (P)
 KENMERE QUE SERA (KNC Q18E) (P)
 KENMERE ALICIA (MCS A7D)

Comments: **Top 1% for Calving Ease Direct, Top 5% for Birth weight, Calving ease daughters, Rib and Rump fat, Top 10% for Gestation length, Domestic and Export Indexes.** Nitrate will suit breeders looking to crossbreed for low birth weight calves that finish early and are bell ringers on sale day for rib and rump fat - The Chock and Que Sera combination has been very successful commercially for Kenmere - highly sought after cattle.

	CE DIR	CE DTR	GL	BW	200	400	600	MCW	MILK	SS
EBV	+16.9	+9.2	-5.3	-2.6	+7	+7	+6	+3	+8	+0.0
Acc	51%	47%	54%	73%	66%	68%	67%	64%	54%	75%

	CW	EMA	RIB	RUMP	RBY	IMF
EBV	+8	+0.5	+1.9	+2.4	-1.2	+0.0
Acc	59%	54%	58%	57%	56%	53%

\$ Index Values

Dom (\$)	Exp (\$)
+\$45	+\$60



Purchaser:

\$:

36 KENMERE NORTON

Tattoo: MCS N165E Born: 24/09/2017

IMPAIR (OAF N189F)
 PINAY (OAF U4134F)
 MARY (OAF R8596F)

SIRE: KENMERE PINAY J57E (MCS J57E) (P)

LT WESTERN SPUR 2061 PLD (OAU X2061E) (P)
 KENMERE GOLDEN SPUR (MCS G3E) (P)
 KARINA INVESTMENTS WINDY WENDY (GPK A15E) (P)

LT BLUEGRASS 4017P (OAU Z4017E) (P)
 KENMERE CHOCK E12E (MCS E12E) (P)
 KENMERE KRISTINA III FL87 (MCS M18E)

DAM: KENMERE KASSIE (MCS K108E) (P/S)

CS PLD JUNCTION 4J (OAC U8742E) (P)
 GOBONGO LUCY E86E (GO E86E)
 GOBONGO LUCY C42E (GO C42E)

Comments: **Top 10% for Calving ease, Gestation and Birth weight, Top 15% EMA, Top 20% for Milk, Top 30% Domestic value.** Norton is an eighteen month old son of Kenmere Pinay who has a fleshy carcass with adequate length of body and deep rump muscle expression. This sire still has growth ahead of him and he should suit producers where msa meat quality is important.

	CE DIR	CE DTR	GL	BW	200	400	600	MCW	MILK	SS
EBV	+10.5	+1.3	-5.2	-1.6	+7	+11	+17	+12	+10	+0.6
Acc	45%	38%	45%	69%	63%	66%	64%	60%	44%	74%

	CW	EMA	RIB	RUMP	RBY	IMF
EBV	+15	+2.5	+0.0	-0.1	+0.4	+0.4
Acc	56%	51%	55%	54%	54%	50%

\$ Index Values

Dom (\$)	Exp (\$)
+\$30	+\$39



Purchaser:

\$:

37 KENMERE NOTRA DAME (P)

Tattoo: MCS N169E Born: 06/10/2017

MX COUGARHILL HANK 720G (PED -52E)
 DBAR SYNERGY 721T (OAC C3100E) (P)
 KALA'S FROSTY 121H (PED -1971E)

SIRE: ASHWOOD PARK SYNERGY G29E (HAS G29E) (P)

S\$ MONTANA SILVER (OAU R4024E) (P)
 ASHWOOD PARK ANGEL 2 (HAS D22E) (P)
 ASHWOOD PARK ANGEL (HAS A6E) (P)

EATONS PREDICTOR 9230 (PED J9230E)
 LT WESTERN SPUR 2061 PLD (OAU X2061E) (P)
 LT MAIDEN'S BREEZE 8242P (PED T8242E) (P)

DAM: KENMERE DIAMOND SPUR D8E (MCS D8E) (P)

GREENWOOD XPLOSION (TSP X32E) (P)
 MINNIE-VALE QUEENIE A68E (SGS A68E) (P)
 MINNIE VALE QUEENIE (SGS Q7E) (P)

Comments: **Top 5% Calving ease direct and top 30% Gestation length, Scrotal and RBV.** Notra Dame is a seventeen month Synergy son who has entered this sale on the credentials of his pedigree and performance. Will suit many cattle breeding operations when he reaches maturity. Synergy progeny are later developing however the wait is worth the result.

	CE DIR	CE DTR	GL	BW	200	400	600	MCW	MILK	SS
EBV	-11.4	+6.7	-3.4	+2.0	+9	+24	+30	+28	+3	+1.4
Acc	48%	41%	51%	70%	62%	63%	63%	59%	52%	69%

	CW	EMA	RIB	RUMP	RBV	IMF
EBV	+14	-0.1	-0.5	-0.5	+0.5	-0.5
Acc	54%	48%	52%	51%	50%	48%

\$ Index Values

Dom (\$)	Exp (\$)
+\$0	-\$1



Purchaser:

\$:

38 KENMERE NUCLEAR REACTOR (P)

Tattoo: MCS N170E Born: 09/10/2017

LT ASSERTION 1277 (PED W1277F) (P)
 LT BLUEGRASS 4017P (OAU Z4017E) (P)
 LT PEARLS BREEZE 2236 (PED X2236F) (P)

SIRE: KENMERE CHOCK E12E (MCS E12E) (P)

MANDALONG CHOCK (RP C59E) (P/S)
 KENMERE KRISTINA III FL87 (MCS M18E)
 GILMANDYKE PARK KRISTINA 2ND (AGP N17F)

S\$ MONTANA SILVER (OAU R4024E) (P)
 LT SILVER VALUE 2122 P (OAU X5761E) (P)
 LT UNLIMITED MAID 7184 (PED -7184E) (P)

DAM: KENMERE QUE SERA D59E (MCS D59E) (P)

ROSDALE Y106E (MR Y106E) (P)
 KENMERE QUE SERA B9E (MCS B9E)
 KENMERE TRES BONNE (KNC T49E) (P)

Comments: **Top 5% for Calving ease direct, Top 10% for Birth weight, milk, Domestic and Export index, Calving ease daughters, Top 15% for IMF, Top 20% for Rib and Rump fat, Top 25% for Gestation length.** Nuclear Reactor is a smooth skinned Chocky son who has adequate length of body and depth with thickness of muscle and rump to produce meaty calves where rib, rump and weight count on sale day. Dam Que Sera D59 is highly regarded in the herd.

	CE DIR	CE DTR	GL	BW	200	400	600	MCW	MILK	SS
EBV	+14.0	+6.5	-3.7	-1.6	+9	+13	+22	+14	+12	+0.7
Acc	50%	47%	56%	71%	63%	67%	65%	62%	54%	74%

	CW	EMA	RIB	RUMP	RBV	IMF
EBV	+13	+1.1	+0.9	+1.3	-0.7	+0.6
Acc	57%	51%	55%	54%	54%	51%

\$ Index Values

Dom (\$)	Exp (\$)
+\$44	+\$63



Purchaser:

\$:

39 KENMERE NORWEST (P)

Tattoo: MCS N173E Born: 02/11/2017

LT ASSERTION 1277 (PED W1277F) (P)
 LT BLUEGRASS 4017P (OAU Z4017E) (P)
 LT PEARLS BREEZE 2236 (PED X2236F) (P)

SIRE: KENMERE CHOCK E12E (MCS E12E) (P)

MANDALONG CHOCK (RP C59E) (P/S)
 KENMERE KRISTINA III FL87 (MCS M18E)
 GILMANDYKE PARK KRISTINA 2ND (AGP N17F)

GOBONGO DECOY D85E (GO D85E) (P)
 GOBONGO BOY G196E (GO G196E) (P)
 GOBONGO ELODIE E117E (GO E117E) (P)

DAM: KENMERE BLISSFUL J67E (MCS J67E) (P)

KENMERE DAKOTA SPUR D9E (MCS D9E)
 KENMERE BLISSFUL G76E (MCS G76E) (P)
 ROSEDALE BLISSFUL Z210 (MR Z210E) (P)

Comments: **Top 1% for Calving ease direct, Top 5% for Domestic and Export Values, Top 10% for Gestation length, Birth weight, Milk and Rib fat, Top 15% for Calving ease daughters and Rump fat.** Norwest is a sixteen month old Chocky son who is a rising star with low birthweight and curve bending ebv's indicating he should breed early finishing cattle that are at the top end of the market. He has inherited the positive traits from both his sire and dam who breed true to type. May suit heifers with calving ease .

	CE DIR	CE DTR	GL	BW	200	400	600	MCW	MILK	SS
EBV	+16.0	+5.8	-5.5	-1.7	+14	+22	+35	+29	+12	+0.9
Acc	48%	44%	51%	71%	63%	64%	63%	62%	51%	69%

	CW	EMA	RIB	RUMP	RBY	IMF
EBV	+22	+1.2	+1.2	+1.4	-0.7	+0.2
Acc	55%	49%	55%	54%	53%	49%

\$ Index Values

Dom (\$)	Exp (\$)
+\$51	+\$72



Purchaser:

\$:

40 KENMERE NUTSHELL (P)

Tattoo: MCS N120E Born: 16/08/2017

LT ASSERTION 1277 (PED W1277F) (P)
 LT BLUEGRASS 4017P (OAU Z4017E) (P)
 LT PEARLS BREEZE 2236 (PED X2236F) (P)

SIRE: KENMERE CHOCK E12E (MCS E12E) (P)

MANDALONG CHOCK (RP C59E) (P/S)
 KENMERE KRISTINA III FL87 (MCS M18E)
 GILMANDYKE PARK KRISTINA 2ND (AGP N17F)

LT EASY BLEND 5125 PLD (OAU A5113E) (P)
 KENMERE RADIATOR E90E (MCS E90E) (P)
 MINNIE-VALE RADIANCE B34E (SGS B34E) (P)

DAM: KENMERE JOSEPHINE (MCS J31E) (P)

SEDALIA YARDLEY (DEG Y13F)
 SEDALIA ANNABELLA (DEG B6E) (P)
 SEDALIA UREN FR110 (DEG U8E) (P)

Comments: **Top 5% for calving ease direct, Top 15% for Calving Ease daughters, Top 20% for IMF. Top 25% for Gestation.** Nutshell has always stood out in the paddock as a bull with a smooth long body with even fat cover throughout. The bull has inherited his sire's low birth weight and carcass traits from his scans - mark your catalogue to inspect this sire.

	CE DIR	CE DTR	GL	BW	200	400	600	MCW	MILK	SS
EBV	+11.7	+5.9	-3.8	-0.1	+12	+27	+35	+39	+9	+0.2
Acc	48%	44%	53%	72%	65%	67%	65%	63%	52%	75%

	CW	EMA	RIB	RUMP	RBY	IMF
EBV	+23	+1.1	-0.1	-0.2	-0.2	+0.5
Acc	57%	52%	55%	54%	53%	51%

\$ Index Values

Dom (\$)	Exp (\$)
+\$45	+\$60



Purchaser:

\$:

41 KENMERE SPARTAN N151E (AI) (ET)

Tattoo: MCS N151E Born: 29/08/2017

JSR TRUMP 7N (OAC Y508E) (P)
 JSR TROPHY 88T (OAC C9184E) (P)
 JSR KNOCKOUT 93M (OAC X4263E) (P)

SIRE: PCC SPARTAN 4Y (OAC G6672E) (P)

SPARROWS ADVANTAGE 230H (PED -5580E)
 SPARROWS TEMPEST 174K (PED -732E) (P)
 SPARROWS SPARKEL 74F (PED -8148E) (P)

WCR SIR FAB MAC 809 (OAU -57E) (P)
 WCR SIR FA MAC 2244 (OAU B2244E) (P)
 WCR MISS CENTURY 920 TWN (OAU -58) (P)

DAM: QUICKSILVER BREE (1QS B7E) (P)

TRINITY FARM HERVE (BVH H9F)
 TRINITY FARM NOLA (TF1 N4E)
 TRINITY FARM LA LUNE (TF1 L3E)

Comments: **Top 20% for RBV, Top 30% for Gestation length and Calving ease daughters.** Kenmere selected PCC Spartan a Canadian sire for his softness, length and depth of body and suitability for our breeding programmes. Take a close look at this sire who offers outcross genetics of renown quality. The dam Quicksilver Bree has bred high performance animals in our herd.

	CE DIR	CE DTR	GL	BW	200	400	600	MCW	MILK	SS
EBV	-0.1	+3.1	-3.5	+0.3	+8	+21	+25	+20	+5	-0.5
Acc	43%	35%	55%	71%	60%	61%	59%	55%	43%	68%

	CW	EMA	RIB	RUMP	RBV	IMF
EBV	+20	+1.4	-0.2	-0.8	+0.8	-0.2
Acc	49%	44%	48%	47%	47%	44%

\$ Index Values

Dom (\$)	Exp (\$)
+\$18	+\$22



Purchaser:

\$:

42 KENMERE NIGEL (P/S)

Tattoo: MCS N162E Born: 20/09/2017

LT WYOMING WIND 4020 PLD (OAU P4020E) (P)
 PLATINUM WIND-FALL W75E (AJ1 W75E) (P)
 DOWNUNDER GERALDINE (1LP G1D)

SIRE: KENMERE SIR LAWRENCE (MCS L12E) (P)

MINNIE-VALE DEPUTY (SGS V78E) (P)
 ROSEDALE BLISSFUL Z210 (MR Z210E) (P)
 ROSEDALE BLISSFUL X91 (MR X91E) (P)

GUNNADOO KING K144D (GN1 K144D)
 GUNNADOO NUGGET N166D R/F (GN1 N166D)
 PALGROVE BRIDGETTE 2 (PK B2D)

DAM: KENMERE HAITI (MCS H94E) (P)

NANDILLYAN PEUGEOT (F U1E) (P)
 CALOONA PARK A0091 (LSF A91E) (P)
 CALOONA PARK WILMA (LSF W4E)

Comments: **Top 10% for Birth weight, Top 15% for Calving Ease Direct, Top 25% for Milk, Top 30% for Domestic index.** Nigel is a smooth soft, moderate shaped bull who is well made. He carries the easy calving, rib and rump traits combined with genetics that will suit your commercial breeding programmes. Nigel's sire was a trait leader for birth weight.

	CE DIR	CE DTR	GL	BW	200	400	600	MCW	MILK	SS
EBV	+7.7	+2.1	-1.9	-1.3	+7	+16	+8	+15	+9	-0.3
Acc	43%	38%	49%	71%	60%	64%	63%	59%	45%	71%

	CW	EMA	RIB	RUMP	RBV	IMF
EBV	+10	+0.5	-0.6	-0.8	+0.1	+0.4
Acc	54%	47%	51%	50%	50%	46%

\$ Index Values

Dom (\$)	Exp (\$)
+\$29	+\$30



Purchaser:

\$:

43 KENMERE NASSER (P) (TW)

Tattoo: MCS N110E Born: 08/08/2017

LT ASSERTION 1277 (PED W1277F) (P)
 LT BLUEGRASS 4017P (OAU Z4017E) (P)
 LT PEARLS BREEZE 2236 (PED X2236F) (P)

SIRE: KENMERE CHOCK E12E (MCS E12E) (P)

MANDALONG CHOCK (RP C59E) (P/S)
 KENMERE KRISTINA III FL87 (MCS M18E)
 GILMANDYKE PARK KRISTINA 2ND (AGP N17F)

EXCLUSIF (OAF J858F)

SILVERSTREAM PERFORMER P38EF (83 U38F)
 SILVERSTREAM HOUGHTY H83E (83 M83F)

DAM: KENMERE PING MCS G23E (MCS G23E) (P)

COBRABALD PICASSO (ASH P82E) (P)
 MINNIE-VALE PING A49E (SGS A49E) (P)
 MINNIE-VALE PING W132E (SGS W132E)

Comments: **Top 5% for Calving ease direct and Rib fat, Top 10% for Rump fat and Export Index, Top 15% for Birth weight, IMF and Domestic value, Top 25% for Gestation length.** Nasser is a soft moderate frame sire with adequate muscle and thickness that would suit a commercial breeding operation looking to improve the value of crossbred calves on sale day.

	CE DIR	CE DTR	GL	BW	200	400	600	MCW	MILK	SS
EBV	+14.8	+1.9	-3.8	-1.0	+10	+12	+26	+32	+6	+0.4
Acc	51%	49%	57%	71%	64%	65%	65%	63%	55%	69%

	CW	EMA	RIB	RUMP	RBV	IMF
EBV	+12	+0.9	+1.6	+1.9	-1.3	+0.6
Acc	57%	52%	57%	56%	54%	51%

\$ Index Values

Dom (\$)	Exp (\$)
+\$37	+\$58



Purchaser:

\$:

44 KENMERE NOTARIZE (P)

Tattoo: MCS N121E Born: 16/08/2017

LT EASY BLEND 5125 PLD (OAU A5113E) (P)
 KENMERE RADIATOR E90E (MCS E90E) (P)
 MINNIE-VALE RADIANCE B34E (SGS B34E) (P)

SIRE: KENMERE HERICHIO (MCS H103E) (P)

LT WESTERN SPUR 2061 PLD (OAU X2061E) (P)
 KENMERE DIAMOND SPUR D8E (MCS D8E) (P)
 MINNIE-VALE QUEENIE A68E (SGS A68E) (P)

LT ASSERTION 1277 (PED W1277F) (P)

LT BLUEGRASS 4017P (OAU Z4017E) (P)
 LT PEARLS BREEZE 2236 (PED X2236F) (P)

DAM: KENMERE NICOLA F70E (MCS F70E) (P)

ROSEDALE GALANT (MR G52E)
 KENMERE NICOLA (MCS N56E)
 PALGROVE EXPRESS J102E (PK J102E)

Comments: **Top 30% for 400 and 600 day weights and IMF.** Notarize is an impressive long bodied bull with plenty of growth and adequate muscle and thickness whose sire has produced steers and replacement females carrying strong carcass traits.

	CE DIR	CE DTR	GL	BW	200	400	600	MCW	MILK	SS
EBV	-6.1	-2.1	-2.6	+2.3	+11	+27	+39	+40	+1	+1.2
Acc	46%	41%	45%	71%	62%	65%	62%	58%	46%	73%

	CW	EMA	RIB	RUMP	RBV	IMF
EBV	+20	+1.1	-0.4	-0.3	+0.0	+0.3
Acc	54%	50%	53%	52%	53%	49%

\$ Index Values

Dom (\$)	Exp (\$)
+\$7	+\$12



Purchaser:

\$:

45 KENMERE NIGHTFALL (TW)

Tattoo: MCS N175E Born: 03/11/2017

YACCAMOO COWBOY (PIK C15E) (P)
 TEMANA GOLDEN LOGIE G66E (TJ G66E) (P)
 TEMANA X104 (TJ X104E)

SIRE: DSK TGL KAKADU K69E (DSK K69E) (P)

MOONGOOL YOKEL (DP2 Y218E)
 DSK MY BEATRIX C69E (DSK C69E) (P)
 DSK WW BEATRIX Z23E (DSK Z23E) (P)

LT WESTERN SPUR 2061 PLD (OAU X2061E) (P)
 KENMERE DAKOTA SPUR D9E (MCS D9E)
 KARINA INVESTMENTS WINDY WENDY (GPK A15E) (P)

DAM: KENMERE TANT MIEUX H102E (MCS H102E) (P)

LT BLUEGRASS 4017P (OAU Z4017E) (P)
 KENMERE TANT MIEUX D25E (MCS D25E) (P)
 KENMERE TANT MIEUX (KNC T42E)

Comments: **Top 10% for Calving ease direct, Top 15 % for Rib and Rump fat, Scrotal and Domestic and Export values.** Nightfall is the youngest sire being sold today - he has made the grade to satisfy us on the strength of his pedigree, performance data and scans that he is ready to commence sire duties with his traits suggesting he would suit producers seeking to improve meat quality in their progeny.

	CE DIR	CE DTR	GL	BW	200	400	600	MCW	MILK	SS
EBV	+8.9	-0.2	-3.6	-0.5	+10	+21	+28	+22	+6	+2.0
Acc	42%	33%	39%	58%	52%	52%	53%	49%	40%	47%

	CW	EMA	RIB	RUMP	RBY	IMF
EBV	+17	+1.3	+1.1	+1.6	-0.6	+0.3
Acc	45%	36%	44%	44%	41%	36%

\$ Index Values	
Dom (\$)	Exp (\$)
+\$37	+\$52



Purchaser:

\$:





Local advice that makes a world of difference.

At Landmark, you can rely on a vast network of committed advisors who have the resources and the expertise for all your livestock needs. Our combined experience and our knowledge of the livestock industry, means we can add real value to your business and help you make the most of every opportunity. We understand the buying and selling of sheep and cattle, and with access to more domestic markets and international partnerships, we can secure better prices for you. That's why more Australian farmers look to us.

NEW SOUTH WALES	Rick Power Tim Woodham	0437 131 925 0436 015 115	John Settree	0408 297 368
VICTORIA	Ray Attwell Peter Godbolt	0428 836 136 0457 591 929	Stephen Chalmers Andrew Sloan	0427 908 831 0428 522 204
QUEENSLAND	Colby Ede	0417 265 980	Mark Scholes	0409 229 651
SOUTH AUSTRALIA	Richard Miller	0428 849 327	Gordon Wood	0408 813 215



Kenmere Autumn 2016 Silver Calves pictured at "Moorak" 27th January 2017



Spring 2016 Silver Calves pictured at Moorak 27th January 2017.