

JAROBEE

• ANGUS •



Genetics for
Commercial
Impact

Proceeds of the
SALE OF LOT 1
N263 to go to the
NORTH QLD Flood
Relief Fund.

AUTUMN BULL SALE

FRIDAY 15TH MARCH at 1.30pm

• 40 HBR BULLS •

Alan & Jan Robinson
Ph/Fax: 02 6032 4124 Mobile: 0429 324 124
or Greg White 0417 215 883
Email: jarobee@bigpond.com

INSPECTION WELCOME ANY TIME BY APPOINTMENT

Jarobee Angus Stud

Contact Alan & Jan Robinson Phone 02 6032 4124, Mobile 0429 324 124
Greg White 0417 215 883
Email: jarobee@bigpond.com

Agents



Elders Limited (Albury)

Stephen Street 0428 579 338 Brett Shea 0428 691 489



Peter Ruaro Livestock & Real Estate (Wodonga)

Peter Ruaro 0447 600 825

Auctioneer



Michael Glasser 0403 526 702

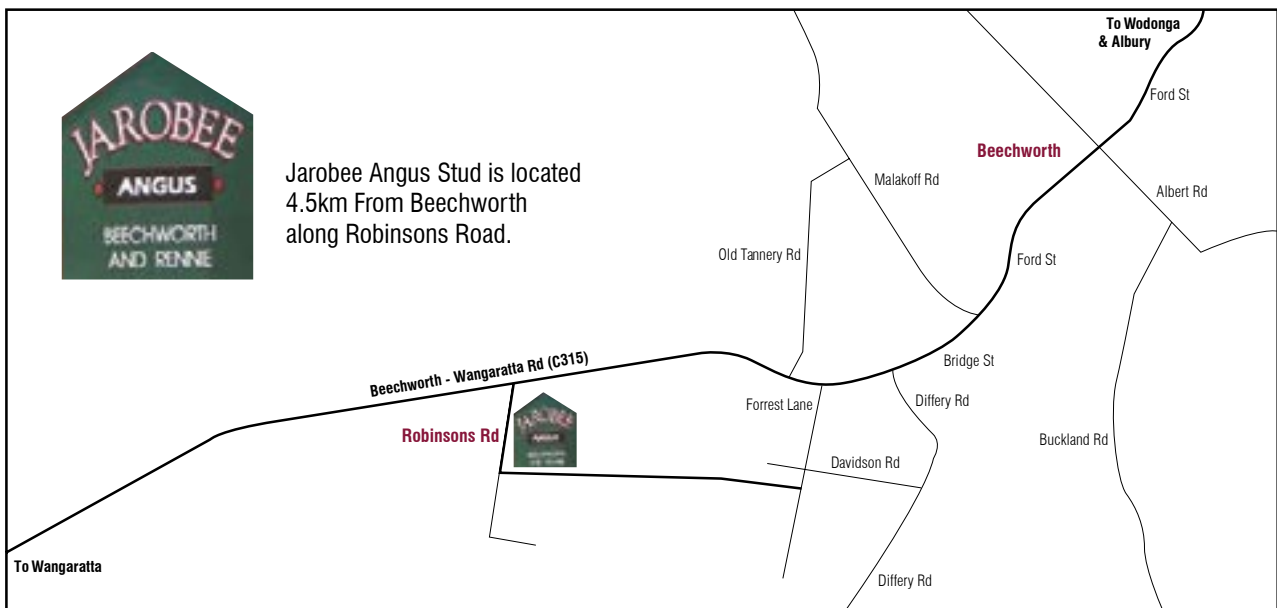
Lincoln McKinlay 0400 552 458

Phone Bidding

Please contact Elders Albury Office 24 hours prior to the sale or one of the agents listed.

Directions

Jarobee Angus is 4.5km west of Beechworth on the Wangaratta Road.
Turn left into Robinsons Road.



Sale Terms

All lots to be governed by the usual sale conditions available on sale day - 4% rebate is offered to outside agents introducing buyers prior to the sale. For this rebate they must do two things.

1. Introduce the client in writing to the vendor or agents via fax or email prior to the sale.
2. Settle within 7 days.

Agents not meeting the above terms will be entitled to 1% rebate.

Disclaimer

All reasonable care and attention has been paid to accuracy in the compilation of this catalogue, neither the vendors nor the selling agents or representatives there of resume any responsibility what so ever for the correctness use or interpretation of the information on animals included in this sale catalogue.

Foreword

We welcome you to our Autumn Bull Sale to be held at:
Jarobee Sale Complex, 79 Robinson Road, Beechworth. VIC. 3747 at 1.30pm 2019.

Dear Fellow Breeder,

While we are still challenged with drought conditions: Our Heartfelt Thoughts are with All in QLD that have endured seven years of horific drought and recently experienced torrential rain and the ongoing horror that has unfolded.

Jarobee will donate the proceeds of the sale of Lot 1 : JAROBEE UP RIVER N263 our small token towards a mammoth task confronting all affected by this disaster.

This sale offers a very even line up of 40 HBR Bulls. All Bulls have been Vet Checked for Breeding Soundness as well as Independently inspected for structure, feet and temperament. We have targeted genetics that will offer our clients a range of cattle to consistently return profitable outcomes in your chosen markets.

Kaiser's progeny recently shone out again topping sales in WA ,SA and VIC. our line up of Kaiser Sons are no exception.

We remain optimistic for a normal autumn break : LET'S HOPE. We welcome inspection any time by appointment.

Join us on Sale Day even for a day out. Lunch and Refreshments are provided.

Kind Regards The **JAROBEE** Team.

Sale Information

Pre Sale Inspection

We invite you to come to Jarobee at Beechworth, Pre Sale Inspections welcome by appointment by contacting Alan or Jan 0429 324 124 or Greg 0417 215 883.

Sale Day Inspection

Bulls will be penned for inspection from 10am on day of sale.

Animal Health

All bulls have received regular vaccinations of 7 in 1 over their life.

2 Injections of Vibrovax

2 Injections of Pestigard

Drenched with Bomectin

Scanned & Assessed

Bulls scanned and assessed by Jim Green 0402 003 137



Beef Xcel
www.c2cbeef.com.au



Fertility Examination including Animal Health

All bulls have passed a thorough fertility examination conducted by Dr. Seumus McKillop, Holbrook Vet Centre. This examination included an assessment of structural soundness, palpation of reproductive organs and penile inspection. The bulls have been tested to be Pestivirus (PI, or carrier state) free and have received their full course of 7-in-1, vibrovax and Pestigard vaccinations.



In the unlikely event of a bull proving to be infertile or incapable of natural service, the vendor will offer to supply a suitable replacement, if available or credit the purchase price, less the salvage value of the bull. This is, provided the problem is not caused by injury, disease, mismanagement or negligence which was contracted since taking delivery of the bull. Any claim must be lodged to the vendor accompanied by a relevant veterinary certificate within 12 months of purchase.

Delivery

Free delivery offered by Jarobee within 200km.

Guarantee

JAROBEE 2 YEAR GUARANTEE

All breeding cattle sold by Jarobee are fertile and structurally sound to the best of our knowledge. If an animal becomes infertile or breaks down due to reason other than injury or misadventure at anytime in the 24 months we will:

1. Provide you with a satisfactory replacement if available, or
2. Issue you with a credit equal to the purchase price less the salvage value that may be used to purchase an animal from Jarobee.

Any claims are to be accompanied by a certificate from a registered vet.
All vet cost are the responsibility of the purchaser.

Refreshments

Complimentary morning tea and lunch.

Accommodation

Newton Park Motel, Ph: 03 5728 2244

Golden Heritage Motor Inn, Ph: 03 5728 1404

UNDERSTANDING ANGUS BREEDPLAN EBVs

What is Angus BREEDPLAN?

Angus BREEDPLAN is the genetic evaluation program adopted by Angus Australia for Angus and Angus influenced beef cattle. Angus BREEDPLAN uses Best Linear Unbiased Prediction (BLUP) technology to produce Estimated Breeding Values (EBVs) of recorded cattle for a range of important production traits (e.g. weight, carcase, fertility).

Angus BREEDPLAN includes pedigree, performance and genomic information from the Angus Australia and New Zealand Angus Association databases to evaluate the genetics of animals across Australia and New Zealand.

Angus BREEDPLAN analyses are conducted by the Agricultural Business Research Institute (ABRI), using software developed by the Animal Genetics and Breeding Unit (AGBU), a joint institute of NSW Agriculture and the University of New England. Ongoing BREEDPLAN research and development is supported by Meat and Livestock Australia.

What is an EBV?

An animal's breeding value can be defined as its genetic merit for each trait. While it is not possible to determine an animal's true breeding value, it is possible to estimate it. These estimates of an animal's true breeding value are called EBVs (Estimated Breeding Values).

Using EBVs to Compare the Genetics of Two Animals

Angus BREEDPLAN EBVs can be used to estimate the expected difference in the genetics of two animals, with the expected difference equating to half the difference in the EBVs of the animals, all other things being equal (e.g. they are joined to the same animal/s).

For example, a bull with a 200 Day Growth EBV of +60 would be expected to produce progeny that are, on average, 10 kg heavier at 200 days of age than a bull with a 200 Day Growth EBV of +40 kg (i.e. 20 kg difference between the sire's EBVs, then halved as the sire only contributes half the genetics).

Or similarly, a bull with an IMF EBV of +3.0 would be expected to produce progeny with on average, 1% more intramuscular fat in a 400 kg carcase than a bull with a IMF EBV of +1.0 (i.e. 2% difference between the sire's EBVs, then halved as the sire only contributes half the genetics).

Using EBVs to Benchmark an Animal's Genetics with the Breed

EBVs can also be used to benchmark an animal's genetics relative to the genetics of other Angus or Angus infused animals in Australia and New Zealand.

To benchmark an animal's genetics relative to other Angus animals, an animal's EBV can be compared to:

- ◆ the breed average EBV
- ◆ the percentile table

The current breed average EBV and percentile table is provided in these explanatory notes.

Considering Accuracy

An accuracy value is published in association with each EBV, which is usually displayed as a percentage value immediately below the EBV.

The accuracy value provides an indication of the reliability of the EBV in estimating the animal's genetics (or true breeding value), and is an indication of the amount of information that has been used in the calculation of the EBV.

EBVs with accuracy values below 50% should be considered as preliminary or of low accuracy, 50- 74% as of medium accuracy, 75-90% of medium to high accuracy, and 90% or greater as high accuracy.

Description of Angus BREEDPLAN EBVs

EBVs are calculated for a range of traits within Angus BREEDPLAN, covering calving ease, growth, fertility, maternal performance, carcase merit, feed efficiency and structural soundness. A description of each EBV included in this sale catalogue is provided on the following pages.

BIRTH

Calving Ease Direct	(%)	Genetic differences in the ability of a sire's calves to be born unassisted from 2 year old heifers.	Higher EBVs indicate fewer calving difficulties in 2 year old heifers.
Calving Ease Daughters	(%)	Genetic differences in the ability of a sire's daughters to calve unassisted at 2 years of age.	Higher EBVs indicate fewer calving difficulties in 2 year old heifers.
Gestation Length	days	Genetic differences between animals in the length of time from the date of conception to the birth of the calf.	Lower EBVs indicate shorter gestation length.
Birth Weight	kg	Genetic differences between animals in calf weight at birth.	Lower EBVs indicate lighter birth weight.

GROWTH

200 Day Growth	kg	Genetic differences between animals in live weight at 200 days of age due to genetics for growth.	Higher EBVs indicate heavier live weight.
400 Day Weight	kg	Genetic differences between animals in live weight at 400 days of age.	Higher EBVs indicate heavier live weight.
600 Day Weight	kg	Genetic differences between animals in live weight at 600 days of age.	Higher EBVs indicate heavier live weight.
Mature Cow Weight	kg	Genetic differences between animals in live weight of cows at 5 years of age.	Higher EBVs indicate heavier mature weight.
Milk	kg	Genetic differences between animals in live weight at 200 days of age due to the maternal contribution of its dam.	Higher EBVs indicate heavier live weight.

FERTILITY

Days to Calving	days	Genetic differences between animals in the time from the start of the joining period (i.e. when the female is introduced to a bull) until subsequent calving.	Lower EBVs indicate shorter time to calving.
Scrotal Size	cm	Genetic differences between animals in scrotal circumference at 400 days of age.	Higher EBVs indicate larger scrotal circumference.

CARCASE

Carcase Weight	kg	Genetic differences between animals in hot standard carcass weight at 750 days of age.	Higher EBVs indicate heavier carcass weight.
Eye Muscle Area	cm ²	Genetic differences between animals in eye muscle area at the 12/13th rib site in a 400 kg carcass.	Higher EBVs indicate larger eye muscle area.
Rib Fat	mm	Genetic differences between animals in fat depth at the 12/13th rib site in a 400 kg carcass.	Higher EBVs indicate more fat.
Rump Fat	mm	Genetic differences between animals in fat depth at the P8 rump site in a 400 kg carcass.	Higher EBVs indicate more fat.
Retail Beef Yield	%	Genetic differences between animals in boned out saleable meat from a 400 kg carcass.	Higher EBVs indicate higher yield.
Intramuscular Fat	%	Genetic differences between animals in intramuscular fat (marbling) at the 12/13th rib site in a 400 kg carcass.	Higher EBVs indicate more intramuscular fat.

FEED EFFICIENCY

Net Feed Intake (Feedlot)	kg/day	Genetic differences between animals in feed intake at a standard weight and rate of weight gain when animals are in a feedlot finishing phase.	Lower EBVs indicate more feed efficiency.
----------------------------------	--------	--	---

TEMPERAMENT

Dociility	%	Genetic differences between animals in temperament.	Higher EBVs indicate better temperament.
------------------	---	---	--

STRUCTURE

Front Feet Angle	%	Genetic differences between animals in desirable front feet angle (strength of pastern, depth of heel).	Higher EBVs indicate more desirable structure.
Front Feet Claw Set	%	Genetic differences between animals in desirable front feet claw set structure (shape and evenness of claw).	Higher EBVs indicate more desirable structure.
Rear Feet Angle	%	Genetic differences between animals in desirable rear feet angle (strength of pastern, depth of heel).	Higher EBVs indicate more desirable structure.
Rear Leg Hind View	%	Genetic differences between animals in desirable rear leg structure when viewed from behind.	Higher EBVs indicate more desirable structure.
Rear Leg Side View	%	Genetic differences between animals in desirable rear leg structure when viewed from the side.	Higher EBVs indicate more desirable structure.

SELECTION INDEXES

Angus Breeding Index	\$	Genetic differences between animals in net profitability per cow joined in a typical commercial self replacing herd using Angus bulls. This selection index is not specific to a particular production system or market end-point, but identifies animals that will improve overall profitability in the majority of commercial grass and grain finishing beef production systems.	Higher selection index values indicate greater profitability.
Domestic Index	\$	Genetic differences between animals in net profitability per cow joined in a commercial self replacing herd targeting the domestic supermarket trade.	Higher selection index values indicate greater profitability.
Heavy Grain Index	\$	Genetic differences between animals in net profitability per cow joined in a commercial self replacing herd targeting pasture grown steers with a 200 day feedlot finishing period for the grain fed high quality, highly marbled markets.	Higher selection index values indicate greater profitability.
Heavy Grass Index	\$	Genetic differences between animals in net profitability per cow joined in a commercial self replacing herd targeting pasture finished steers.	Higher selection index values indicate greater profitability.

REFERENCE SIRES



MILLAH MURRAH LOCH UP NNML133



RENNYLEA KODAK NORK522



PATHFINDER GENESIS SMPG357



BRUNS BLASTER USA17991528



GRANITE RIDGE KAISER SJKK26



THOMAS UP RIVER USA17091363

RS GRANITE RIDGE KAISER K26^{SV} AMFU NHFU CAFU DDF HBR

DOB: 24/03/2014

Tattoo: GCP K26 (T&F)

Ident: SJKK26

BONGONGO BULLETPROOF Z3
TE MANIA CALAMUS C46
TE MANIA LOWAN A626
SIRE: VTMF734 TE MANIA FOE F734
TE MANIA AFRICA A217
TE MANIA DANDLOO D700
TE MANIA DANDLOO X330

NICHOLS NEXT STEP P129
NICHOLS QUIET LAD T9
NICHOLS STACY M352
DAM: SJKF158 GRANITE RIDGE SUPREME F158
S S TRAVELER 6807 T510
GRANITE RIDGE SUPREME D85
LAWSONS ROCKN D AMBUSH X1667

Mid-February 2019 Angus Australia BREEDPLAN

Angus	BIRTH				GROWTH				FERTILITY				CARCASE				OTHER		
	Dir	Dtrs	Gest	BW	200 W	400 W	600 W	MCW	Milk	D t C	SS	CWT	EMA	Rib	Rump	RBY%	IMF%	NFI-F	Doc
EBV'S	+2.4	+1.0	-6.8	+4.9	+59	+105	+145	+120	+24	-6.1	+2.3	+83	+8.8	+0.7	-0.7	+0.7	+1.9	-0.06	+25
Acc	73%	51%	98%	97%	94%	94%	93%	82%	69%	47%	93%	81%	82%	80%	74%	78%	61%	92%	

\$Index Values			
Angus Breeding	Domestic	Heavy Grain	Heavy Grass
+\$152	+\$129	+\$165	+\$146

Traits Observed: GL,CE,BWT,200WT,400WT,600WT,SS,FAT,EMA,IMF,Genomics
BREEDPLAN Statistics: Num of Herds 17, Progeny Analysed 359, Scan Progeny 135, Num of Dtrs 0

RS THOMAS UP RIVER 1614^{PV} AMF NHF CAF DDF HBR

DOB: 31/07/2011

Tattoo: 1614

Ident: USA17091363

CONNEALY LEAD ON
CONNEALY ONWARD
ALTUNE OF CONANGA 6104
SIRE: USA14963730 SITZ UPWARD 307R
SITZ VALUE 7097
SITZ HENRIETTA PRIDE 81M
SITZ HENRIETTA PRIDE 1370

RITO 616 OF 4B20 6807
RITO 112 OF 2536 RITO 616
G A R PRECISION 2536
DAM: USA15743336 THOMAS CAROL 7595
PAPA FORTE 1921
THOMAS CAROL 1246
THOMAS CAROL 9436

Mid-February 2019 Angus Australia BREEDPLAN

Angus	BIRTH				GROWTH				FERTILITY				CARCASE				OTHER		
	Dir	Dtrs	Gest	BW	200 W	400 W	600 W	MCW	Milk	D t C	SS	CWT	EMA	Rib	Rump	RBY%	IMF%	NFI-F	Doc
EBV'S	+3.1	+2.3	-5.8	+3.5	+61	+115	+138	+101	+25	-4.9	+2.9	+83	+4.1	+1.1	+0.8	+0.5	+1.3	+0.33	-7
Acc	86%	72%	98%	98%	97%	97%	97%	93%	90%	60%	97%	89%	90%	90%	88%	86%	88%	74%	93%

\$Index Values			
Angus Breeding	Domestic	Heavy Grain	Heavy Grass
+\$139	+\$136	+\$139	+\$139

Traits Observed: Genomics
BREEDPLAN Statistics: Num of Herds 63, Progeny Analysed 842, Scan Progeny 402, Num of Dtrs 62

RS MILLAH MURRAH LOCH UP L133^{PV} AMF NHF CAF DDF HBR

DOB: 14/03/2015

Tattoo: JRT (CONJOINED) L133 (T&F)

Ident: NMML133

CONNEALY ONWARD
SITZ UPWARD 307R
SITZ HENRIETTA PRIDE 81M
SIRE: USA17091363 THOMAS UP RIVER 1614
RITO 112 OF 2536 RITO 616
THOMAS CAROL 7595
THOMAS CAROL 1246

TE MANIA BERKLEY B1
TE MANIA EMPEROR E343
TE MANIA LOWAN Z74
DAM: NMMH49 MILLAH MURRAH BRENDA H49
BT EQUATOR 395M
MILLAH MURRAH BRENDA E64
MILLAH MURRAH BRENDA A32

Mid-February 2019 Angus Australia BREEDPLAN

Angus	BIRTH				GROWTH				FERTILITY				CARCASE				OTHER		
	Dir	Dtrs	Gest	BW	200 W	400 W	600 W	MCW	Milk	D t C	SS	CWT	EMA	Rib	Rump	RBY%	IMF%	NFI-F	Doc
EBV'S	-2.4	+1.3	-5.5	+5.3	+60	+101	+134	+114	+19	-6.0	+2.5	+79	+1.5	-1.2	-1.4	+0.2	+1.8	-0.42	+16
Acc	76%	54%	98%	98%	96%	96%	91%	81%	68%	49%	94%	78%	82%	83%	81%	75%	80%	64%	96%

\$Index Values			
Angus Breeding	Domestic	Heavy Grain	Heavy Grass
+\$123	+\$112	+\$130	+\$119

Traits Observed: BWT,200WT,400WT,SS,FAT,EMA,IMF,DOC,Genomics
BREEDPLAN Statistics: Num of Herds 50, Progeny Analysed 820, Scan Progeny 193, Num of Dtrs 0

RS PATHFINDER GENESIS G357^{PV} AMF NHF CAF DDF HBR

DOB: 23/03/2011

Tattoo: M IN SQUARE G357 (T&F)

Ident: SMPG357

S A F FOCUS OF E R
TE MANIA YORKSHIRE Y437
TE MANIA LOWAN U275
SIRE: VTMB1 TE MANIA BERKLEY B1
KENNY'S CREEK SANDY S15
TE MANIA LOWAN Z53
TE MANIA LOWAN V129

C A FUTURE DIRECTION 5321
ARDROSSAN DIRECTION W109
ARDROSSAN WILCOOLA Q71
DAM: SMPD245 PATHFINDER DIRECTION D245
PATHFINDER VINE V107
PATHFINDER ADAVALE A433
PATHFINDER V31

Mid-February 2019 Angus Australia BREEDPLAN

Angus	BIRTH				GROWTH				FERTILITY				CARCASE				OTHER		
	Dir	Dtrs	Gest	BW	200 W	400 W	600 W	MCW	Milk	D t C	SS	CWT	EMA	Rib	Rump	RBY%	IMF%	NFI-F	Doc
EBV'S	+1.8	+3.1	-7.2	+6.6	+64	+112	+148	+159	+20	-6.0	+4.1	+100	+11.4	+2.7	+0.0	+1.0	+1.6	+1.07	+23
Acc	88%	75%	99%	99%	98%	98%	98%	94%	91%	70%	97%	90%	90%	91%	89%	85%	88%	81%	96%

\$Index Values			
Angus Breeding	Domestic	Heavy Grain	Heavy Grass
+\$152	+\$133	+\$165	+\$146

Traits Observed: BWT,200WT,400WT,600WT,SS,FAT,EMA,IMF,Genomics
BREEDPLAN Statistics: Num of Herds 82, Progeny Analysed 1770, Scan Progeny 775, Num of Dtrs 73

RS RENNYLEA KODAK K522^{SV} AMFU NHFU CAFU DDF HBR

DOB: 11/08/2014 Tattoo: K522 (F) Ident: NOR522

BOOROOMOOKA UNDERTAKEN U170 TE MANIA YORKSHIRE Y437
 BOOROOMOOKA UNDERTAKEN Y145 TE MANIA BERKLEY B1
 BOOROOMOOKA UAAISE U101 TE MANIA LOWAN Z53
SIRE: NORE11 RENNYLEA EDMUND E11 **DAM: NORF810 RENNYLEA EISA ERICA F810**
 YTHANBRAE HENRY VIII U8 HYLINE RIGHT TIME 338
 LAWSONS HENRY VIII Y5 RENNYLEA EISA ERICA C299
 YTHANBRAE DIRECTION T270 RENNYLEA EISA ERICA X571

Mid-February 2019 Angus Australia BREEDPLAN																			
Dir	BIRTH			GROWTH				FERTILITY				CARCASE				OTHER			
	Dtrs	Gest	BW	200 W	400 W	600 W	MCW	Milk	D t C	SS	CWT	EMA	Rib	Rump	RBY%	IMF%	NFI-F	Doc	
EBV'S	+5.2	+3.7	-6.7	+1.1	+45	+86	+109	+113	+13	-11.1	+3.9	+68	+2.9	+2.8	+0.6	-0.9	+4.2	+0.91	-12
Acc	76%	61%	98%	97%	95%	94%	88%	80%	71%	58%	89%	79%	80%	81%	80%	75%	78%	67%	92%

\$Index Values			
Angus Breeding	Domestic	Heavy Grain	Heavy Grass
+\$154	+\$128	+\$189	+\$133

Traits Observed: GL,CE,BWT,200WT,400WT,600WT,SS,FAT,EMA,IMF,DOC,Genomics
 BREEDPLAN Statistics: Num of Herds 26, Progeny Analysed 463, Scan Progeny 83, Num of Dtrs 0

RS BRUNS BLASTER^{PV} AMF NHF CAF DDF HBR

DOB: 21/01/2014 Tattoo: Ident: USA17991528

MYTTY IN FOCUS S A V FINAL ANSWER 0035
 MOGCK SURE SHOT CONNEALY RIGHT ANSWER 746
 MOGCK BLACK LASS 2065 HAPPY DELL OF CONANGA 262
SIRE: USA17102085 MOGCK BULLSEYE **DAM: USA17065559 BALDRIDGE BLACKBIRD 11 BAF**
 K C F BENNETT COALITION SCC TC TOTAL 410
 MOGCK MARY 1255 BALDRIDGE BLACKBIRD 549 BAF
 MOGCK MARY C 1757 BALDRIDGE BLACKBIRD M565

Mid-February 2019 Angus Australia BREEDPLAN																			
Dir	BIRTH			GROWTH				FERTILITY				CARCASE				OTHER			
	Dtrs	Gest	BW	200 W	400 W	600 W	MCW	Milk	D t C	SS	CWT	EMA	Rib	Rump	RBY%	IMF%	NFI-F	Doc	
EBV'S	+2.2	+1.7	-4.8	+5.3	+65	+116	+142	+116	+21	-4.0	+1.1	+86	+9.2	-0.5	-2.5	+1.7	+0.8	-0.08	--
Acc	60%	36%	88%	83%	77%	79%	75%	71%	69%	35%	79%	73%	70%	71%	65%	65%	67%	48%	--

\$Index Values			
Angus Breeding	Domestic	Heavy Grain	Heavy Grass
+\$138	+\$135	+\$138	+\$138

Traits Observed: Genomics
 BREEDPLAN Statistics: Num of Herds 3, Progeny Analysed 24, Scan Progeny 15, Num of Dtrs 0

RS PRIME GPS L32^{SV} AMFU NHFU CAFU DDF HBR

DOB: 4/02/2015 Tattoo: L32 (F) Ident: CXBL32

N BAR PRIME TIME D806 TE MANIA ULONG U41
 GARDENS PRIME STAR TE MANIA AFRICA A217
 GREEN GARDEN JILT C242 S1 TE MANIA JEDDA Y32
SIRE: USA15848590 KC HAAS GPS **DAM: CXBH6 PRIME MOONGARA H6**
 B/R DESTINATION 727-928 TE MANIA YORKSHIRE Y437
 KCH ELINE 549 PRIME MOONGARA F55
 K C H ELINE 263 TE MANIA MOONGARA X333

Mid-February 2019 Angus Australia BREEDPLAN																			
Dir	BIRTH			GROWTH				FERTILITY				CARCASE				OTHER			
	Dtrs	Gest	BW	200 W	400 W	600 W	MCW	Milk	D t C	SS	CWT	EMA	Rib	Rump	RBY%	IMF%	NFI-F	Doc	
EBV'S	+6.1	+6.0	-10.0	+2.3	+45	+84	+118	+112	+13	-5.9	+2.5	+58	+8.1	+1.4	+1.6	+0.5	+2.2	+0.50	-19
Acc	68%	53%	86%	86%	76%	75%	76%	73%	66%	48%	71%	69%	67%	69%	68%	64%	65%	58%	59%

\$Index Values			
Angus Breeding	Domestic	Heavy Grain	Heavy Grass
+\$145	+\$124	+\$158	+\$138

Traits Observed: GL,BWT,200WT,400WT,FAT,EMA,IMF,DOC,Genomics
 BREEDPLAN Statistics: Num of Herds 1, Progeny Analysed 25, Scan Progeny 4, Num of Dtrs 0

RS PRIME GPS L68^{SV} AMFU NHFU CAFU DDF HBR

DOB: 17/02/2015 Tattoo: L68 (F) Ident: CXBL68

N BAR PRIME TIME D806 PAPA EQUATOR 2928
 GARDENS PRIME STAR ARDROSSAN EQUATOR A241
 GREEN GARDEN JILT C242 S1 ARDROSSAN PRINCESS W38
SIRE: USA15848590 KC HAAS GPS **DAM: CXBG41 PRIME ZANDY G41**
 B/R DESTINATION 727-928 TE MANIA ULTRA U367
 KCH ELINE 549 PRIME XANDYA52
 K C H ELINE 263 PRIME SANDY X7

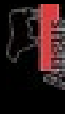
Mid-February 2019 Angus Australia BREEDPLAN																			
Dir	BIRTH			GROWTH				FERTILITY				CARCASE				OTHER			
	Dtrs	Gest	BW	200 W	400 W	600 W	MCW	Milk	D t C	SS	CWT	EMA	Rib	Rump	RBY%	IMF%	NFI-F	Doc	
EBV'S	+2.1	+3.9	-5.0	+5.5	+52	+95	+128	+134	+17	-5.7	+3.3	+74	+0.5	-1.6	-0.5	+0.2	+1.9	-0.16	-18
Acc	66%	52%	85%	81%	74%	72%	73%	70%	65%	46%	66%	66%	64%	67%	65%	62%	63%	56%	57%

\$Index Values			
Angus Breeding	Domestic	Heavy Grain	Heavy Grass
+\$128	+\$115	+\$141	+\$122

Traits Observed: GL,BWT,200WT,400WT,FAT,EMA,IMF,DOC,Genomics
 BREEDPLAN Statistics: Num of Herds 1, Progeny Analysed 9, Scan Progeny 0, Num of Dtrs 0

EBV Quick Reference for Jarabee Angus Bull Sale

Animal Ident	Calving Ease				Birth				Growth				Fertility				Carcase				Other				Selection Indexes																						
	CEDir	CEDtrs	GL	BWT	200	400	600	MCW	Milk	SS	DTC	CWT	EWA	RIB	P8	RBV	IMF	NFI-F	DOC	ABI	DOM	GRN	GRS	CEDir	CEDtrs	GL	BWT	200	400	600	MCW	Milk	SS	DTC	CWT	EWA	RIB	P8	RBV	IMF	NFI-F	DOC	ABI	DOM	GRN	GRS	
	1	CRON263	+1.1	+1.5	-5.8	+4.4	+55	+103	+131	+120	+21	+2.4	-4.6	+76	+3.9	+0.4	+0.1	+0.7	+1.0	-0.10	--	+\$124	+\$119	+\$124	+\$124	+1.1	+1.5	-5.8	+4.4	+55	+103	+131	+120	+21	+2.4	-4.6	+76	+3.9	+0.4	+0.1	+0.7	+1.0	-0.10	--	+\$124	+\$119	+\$124
2	CRON83	-0.5	+0.9	-3.1	+4.8	+57	+102	+130	+106	+21	+1.8	-3.2	+74	+7.5	-0.8	-2.1	+1.5	+1.3	-0.04	--	+\$124	+\$120	+\$126	+\$124	+1.3	+1.5	-3.1	+4.8	+57	+102	+130	+106	+21	+1.8	-3.2	+74	+7.5	-0.8	-2.1	+1.5	+1.3	-0.04	--	+\$124	+\$120	+\$126	+\$124
3	CRON153	-2.1	-1.8	-5.2	+6.7	+57	+98	+132	+136	+17	+2.6	-6.0	+89	+9.1	+1.3	-0.4	+0.6	+2.5	+0.78	--	+\$135	+\$116	+\$152	+\$126	+2.5	+0.6	-5.2	+6.7	+57	+98	+132	+136	+17	+2.6	-6.0	+89	+9.1	+1.3	-0.4	+0.6	+2.5	+0.78	--	+\$135	+\$116	+\$152	+\$126
4	CRON119	-4.7	-2.5	-4.1	+6.2	+56	+95	+129	+116	+17	+2.4	-6.4	+80	+3.4	-0.9	-1.3	+0.4	+2.4	-0.04	--	+\$122	+\$106	+\$137	+\$114	+2.4	+0.4	-6.4	+6.2	+56	+95	+129	+116	+17	+2.4	-6.4	+80	+3.4	-0.9	-1.3	+0.4	+2.4	-0.04	--	+\$122	+\$106	+\$137	+\$114
5	CRON325	-2.0	+0.3	-4.2	+5.0	+52	+88	+116	+100	+15	+1.8	-5.1	+69	+4.5	-0.6	-0.6	+0.4	+1.7	-0.08	--	+\$112	+\$106	+\$115	+\$110	+1.7	+0.4	-5.1	+5.0	+52	+88	+116	+100	+15	+1.8	-5.1	+69	+4.5	-0.6	-0.6	+0.4	+1.7	-0.08	--	+\$112	+\$106	+\$115	+\$110
6	CRON349	+2.9	+2.0	-5.6	+4.0	+52	+93	+125	+118	+18	+2.1	-7.4	+72	+6.0	+1.0	+0.1	-0.1	+2.3	+0.23	--	+\$139	+\$120	+\$154	+\$131	+2.3	-0.1	-7.4	+4.0	+52	+93	+125	+118	+18	+2.1	-7.4	+72	+6.0	+1.0	+0.1	-0.1	+2.3	+0.23	--	+\$139	+\$120	+\$154	+\$131
7	CRON233	+3.9	+3.9	-7.2	+3.3	+46	+83	+116	+108	+14	+2.4	-4.7	+61	+5.9	+0.4	+0.2	+0.4	+2.0	+0.34	--	+\$129	+\$114	+\$138	+\$124	+2.0	+0.4	-4.7	+3.3	+46	+83	+116	+108	+14	+2.4	-4.7	+61	+5.9	+0.4	+0.2	+0.4	+2.0	+0.34	--	+\$129	+\$114	+\$138	+\$124
8	CRON110	-0.5	+1.4	-3.9	+6.2	+57	+104	+141	+139	+17	+2.8	-4.8	+86	+8.7	+1.4	-0.2	+0.9	+0.9	+0.42	--	+\$132	+\$118	+\$135	+\$131	+0.9	+0.9	-4.8	+6.2	+57	+104	+141	+139	+17	+2.8	-4.8	+86	+8.7	+1.4	-0.2	+0.9	+0.9	+0.42	--	+\$132	+\$118	+\$135	+\$131
9	CRON305	+0.6	+0.0	-5.4	+5.0	+50	+88	+118	+102	+19	+2.0	-4.8	+70	+6.7	+0.9	+0.6	+0.7	+1.1	-0.08	--	+\$117	+\$110	+\$115	+\$118	+1.1	+0.7	-4.8	+5.0	+50	+88	+118	+102	+19	+2.0	-4.8	+70	+6.7	+0.9	+0.6	+0.7	+1.1	-0.08	--	+\$117	+\$110	+\$115	+\$118
10	CRON193	+3.5	+2.3	-5.8	+3.5	+53	+95	+122	+92	+21	+2.1	-5.3	+70	+3.6	+0.0	-0.2	+0.7	+1.4	+0.06	--	+\$128	+\$121	+\$129	+\$127	+1.4	+0.7	-5.3	+3.5	+53	+95	+122	+92	+21	+2.1	-5.3	+70	+3.6	+0.0	-0.2	+0.7	+1.4	+0.06	--	+\$128	+\$121	+\$129	+\$127
11	CRON84	+4.3	+4.6	-7.7	+3.0	+48	+88	+122	+112	+16	+2.7	-7.9	+67	+6.3	+0.8	+1.2	+0.2	+2.5	+0.50	--	+\$151	+\$126	+\$168	+\$140	+2.5	+0.2	-7.9	+3.0	+48	+88	+122	+112	+16	+2.7	-7.9	+67	+6.3	+0.8	+1.2	+0.2	+2.5	+0.50	--	+\$151	+\$126	+\$168	+\$140
12	CRON113	-4.9	-3.4	-3.9	+6.4	+54	+91	+124	+111	+14	+2.0	-5.2	+75	+4.2	-0.8	-1.4	+0.6	+2.3	-0.04	--	+\$115	+\$103	+\$128	+\$109	+2.3	+0.6	-5.2	+6.4	+54	+91	+124	+111	+14	+2.0	-5.2	+75	+4.2	-0.8	-1.4	+0.6	+2.3	-0.04	--	+\$115	+\$103	+\$128	+\$109
13	CRON303	+1.6	+1.1	-5.2	+4.5	+50	+90	+119	+103	+20	+1.4	-5.4	+67	+4.4	-0.3	-0.5	+0.6	+1.1	-0.27	--	+\$118	+\$112	+\$118	+\$118	+1.1	+0.6	-5.4	+4.5	+50	+90	+119	+103	+20	+1.4	-5.4	+67	+4.4	-0.3	-0.5	+0.6	+1.1	-0.27	--	+\$118	+\$112	+\$118	+\$118
14	CRON82	+3.9	+3.9	-7.0	+2.8	+44	+82	+115	+106	+16	+1.6	-4.7	+65	+6.4	-0.6	-0.7	+1.0	+1.8	+0.23	--	+\$129	+\$116	+\$139	+\$125	+1.8	+1.0	-4.7	+2.8	+44	+82	+115	+106	+16	+1.6	-4.7	+65	+6.4	-0.6	-0.7	+1.0	+1.8	+0.23	--	+\$129	+\$116	+\$139	+\$125
15	CRON260	+1.0	+2.4	-6.0	+4.5	+56	+103	+132	+117	+22	+2.3	-4.7	+77	+3.9	+0.2	-0.1	+0.7	+1.0	-0.08	--	+\$125	+\$120	+\$125	+\$126	+1.0	+0.7	-4.7	+4.5	+56	+103	+132	+117	+22	+2.3	-4.7	+77	+3.9	+0.2	-0.1	+0.7	+1.0	-0.08	--	+\$125	+\$120	+\$125	+\$126
16	CRON116	-7.2	-2.2	-3.8	+5.6	+54	+93	+125	+111	+15	+2.1	-5.4	+72	+2.9	-0.5	-0.9	+0.1	+1.9	+0.06	--	+\$105	+\$96	+\$111	+\$102	+1.9	+0.1	-5.4	+5.6	+54	+93	+125	+111	+15	+2.1	-5.4	+72	+2.9	-0.5	-0.9	+0.1	+1.9	+0.06	--	+\$105	+\$96	+\$111	+\$102
17	CRON248	+0.4	+0.8	-5.9	+4.8	+54	+97	+135	+115	+21	+2.3	-4.8	+74	+6.3	+0.1	-0.6	+0.6	+1.8	-0.12	--	+\$134	+\$117	+\$144	+\$130	+1.8	+0.6	-4.8	+4.8	+54	+97	+135	+115	+21	+2.3	-4.8	+74	+6.3	+0.1	-0.6	+0.6	+1.8	-0.12	--	+\$134	+\$117	+\$144	+\$130
18	CRON321	-0.4	+1.1	-5.1	+4.1	+53	+92	+123	+108	+18	+2.5	-6.8	+76	+2.9	-0.9	-1.2	+0.6	+1.8	-0.05	--	+\$126	+\$114	+\$135	+\$120	+1.8	+0.6	-6.8	+4.1	+53	+92	+123	+108	+18	+2.5	-6.8	+76	+2.9	-0.9	-1.2	+0.6	+1.8	-0.05	--	+\$126	+\$114	+\$135	+\$120
19	CRON161	+1.3	-0.6	-5.2	+4.1	+48	+86	+114	+97	+18	+1.6	-5.9	+68	+6.2	-0.2	-0.5	+0.5	+2.0	+0.17	--	+\$124	+\$113	+\$133	+\$119	+2.0	+0.5	-5.9	+4.1	+48	+86	+114	+97	+18	+1.6	-5.9	+68	+6.2	-0.2	-0.5	+0.5	+2.0	+0.17	--	+\$124	+\$113	+\$133	+\$119
20	CRON129	+0.2	+1.3	-3.8	+4.5	+53	+97	+121	+96	+20	+2.6	-4.1	+72	+5.0	+1.1	+1.4	+0.8	+0.6	+0.07	--	+\$116	+\$116	+\$107	+\$120	+0.6	+0.8	-4.1	+4.5	+53	+97	+121	+96	+20	+2.6	-4.1	+72	+5.0	+1.1	+1.4	+0.8	+0.6	+0.07	--	+\$116	+\$116	+\$107	+\$120
21	CRON134	+0.6	+1.7	-5.0	+4.4	+53	+99	+126	+105	+20	+2.5	-5.5	+75	+2.7	+0.1	-0.4	+0.5	+1.2	-0.02	--	+\$123	+\$118	+\$125	+\$122	+1.2	+0.5	-5.5	+4.4	+53	+99	+126	+105	+20	+2.5	-5.5	+75	+2.7	+0.1	-0.4	+0.5	+1.2	-0.02	--	+\$123	+\$118	+\$125	+\$122
22	CRON331	+4.1	+3.9	-8.1	+2.8	+44	+81	+108	+107	+13	+2.1	-6.8	+61	+7.0	+1.0	+0.1	+0.2	+2.5	+0.57	--	+\$134	+\$118	+\$148	+\$125	+2.5	+0.2	-6.8	+2.8	+44	+81	+108	+107	+13	+2.1	-6.8	+61	+7.0	+1.0	+0.1	+0.2	+2.5	+0.57	--	+\$134	+\$118	+\$148	+\$125
23	CRON157	+1.9	+1.3	-4.7	+4.0	+50	+92	+111	+85	+19	+2.1	-3.9	+67	+3.8	+0.2	+0.2	+0.8	+0.9	+0.16	--	+\$110	+\$116	+\$103	+\$114	+0.9	+0.8	-3.9	+4.0	+50	+92	+111	+85	+19	+2.1	-3.9	+67	+3.8	+0.2	+0.2	+0.8	+0.9	+0.16	--	+\$110	+\$116	+\$103	+\$114
24	CRON125	-0.9	+0.2	-3.9	+4.6	+51	+89	+117	+109	+15	+2.1	-5.8	+65	+1.5	-0.5	+0.2	-0.1	+1.9	-0.16	--	+\$114	+\$107	+\$121	+\$111	+1.9	-0.1	-5.8	+4.6	+51	+89	+117	+109	+15	+2.1	-5.8	+65	+1.5	-0.5	+0.2	-0.1	+1.9	-0.16	--	+\$114	+\$107	+\$121	+\$111
25	CRON146	+1.2	+2.8	-5.3	+6.1	+56	+99	+131	+141	+15	+2.9	-6.7	+83	+8.1	+0.9	-1.4	+0.9	+2.0	+0.74	--	+\$141	+\$124	+\$158	+\$132	+2.0	+0.9	-6.7	+6.1	+56	+99	+131	+141	+15	+2.9	-6.7	+83	+8.1	+0.9	-1.4	+0.9	+2.0	+0.74	--	+\$141	+\$124	+\$158	+\$132
26	CRON108	+2.5	+2.5	-4.6	+5.0	+50	+85	+114	+107	+17	+2.7	-5.3	+70	+7.7	+0.7	-0.9	+1.0	+1.6	+0.49	--	+\$123	+\$115	+\$129	+\$120	+1.6	+1.0	-5.3	+5.0	+50	+85	+114	+107	+17	+2.7	-5.3	+70	+7.7	+0.7	-0.9	+1.0	+1.6	+0.49	--	+\$123	+\$115	+\$129	+\$120
27	CRON222	+1.4	+2.2	-6.3	+4.3	+46	+82	+111	+105	+13	+2.5	-4.7	+60	+7.2	+1.2	+1.7	+0.7	+1.5	+0.19	--	+\$123	+\$113	+\$125	+\$122	+1.5	+0.7	-4.7	+4.3	+46	+82	+111	+105	+13	+2.5	-4.7	+60	+7.2	+1.2	+1.7	+0.7	+1.5	+0.19	--	+\$123	+\$113	+\$125	+\$122
28	CRON239	+3.1	+3.0	-7.1	+3.8	+52	+97	+120	+104	+18	+2.4	-6.7	+72	+4.4	+1.1	+0.7	+0.1	+1.7	+0.39	--	+\$132	+\$124	+\$138	+\$128	+1.7	+0.1	-6.7	+3.8	+52	+97	+120	+104	+18	+2.4	-6.7	+72	+4.4	+1.1	+0.7	+0.1	+1.7	+0.39	--	+\$132	+\$124	+\$138	+\$128
29	CRON218	+0.8	+1.6	-4.3	+4.7	+45	+82	+109	+103	+16	+2.5	-5.1	+64	+2.9	-0.2	+0.8	+0.3	+1.4	-0.02	--	+\$111	+\$105	+\$112	+\$110	+1.4	+0.3	-5.1	+4.7	+45	+82	+109	+103	+16	+2.5	-5.1	+64	+2.9	-0.2	+0.8	+0.3	+1.4	-0.02	--	+\$111	+\$105	+\$112	+\$110
30	CRON324	-0.6	+0.6	-5.8	+4.8	+52	+91	+122	+100	+19	+2.5	-5.6	+71	+4.2	+0.0	+0.1	+0.4	+1.3	+0.00	--	+\$119	+\$110	+\$119	+\$118	+1.3	+0.4	-5.6	+4.8	+52	+91	+122	+100	+19	+2.5	-5.6	+71	+4.2	+0.0	+0.1	+0.4	+1.3	+0.00	--	+\$119	+\$110	+\$119	+\$118
31	CRON235	+1.0	+1.1	-5.4	+5.3	+54	+93	+125	+121	+14	+2.6	-7.0	+73	+5.0	+2.0	+1.3	+0.3	+1.8	+0.25	--	+\$135	+\$119	+\$144	+\$129																							

Animal Ident	Calving Ease				Birth			Growth				Fertility				Carcass				Other				Selection Indexes			
	CEDirs		CEDirs		GL	BWT	200	400	600	MCW	Milk	SS	DTC	CWT	EMA	RIB	P8	RBY	IMF	NFI-F	DOC	ABI	DOM	GRN	GRS		
	CEDir	CEDirs	CEDirs	CEDirs																							
33	CRON236	+2.9	+1.7	-8.0	+4.7	+50	+86	+116	+126	+09	+2.1	-9.0	+71	+5.2	+2.1	+0.9	-0.2	+2.6	+0.43	--	+\$141	+\$119	+\$160	+\$129			
34	CRON178	+1.1	+2.4	-4.6	+3.1	+47	+83	+106	+101	+14	+2.5	-8.0	+63	+3.0	+0.8	-0.2	-0.3	+3.0	+0.37	--	+\$129	+\$115	+\$147	+\$118			
35	CRON301	+0.0	-1.5	-5.9	+5.0	+51	+92	+125	+106	+19	+2.0	-4.8	+70	+5.4	+0.1	-0.4	+0.3	+1.7	-0.02	--	+\$121	+\$109	+\$126	+\$119			
36	CRON306	+0.2	+1.3	-6.5	+5.6	+54	+96	+127	+128	+17	+2.8	-5.0	+84	+8.6	+0.7	-1.1	+1.3	+1.6	+0.60	--	+\$130	+\$119	+\$139	+\$126			
37	CRON242	+1.9	-0.4	-5.8	+4.4	+49	+85	+116	+112	+12	+1.9	-7.8	+72	+5.8	+0.9	+0.6	+0.1	+2.8	+0.55	--	+\$140	+\$118	+\$159	+\$129			
38	CRON250	+2.4	+2.0	-5.4	+4.2	+51	+92	+124	+112	+19	+1.9	-6.8	+74	+7.4	+1.0	-0.3	+0.2	+2.3	+0.28	--	+\$140	+\$121	+\$154	+\$132			
39	CRON320	+1.0	+2.5	-5.2	+3.7	+54	+93	+122	+91	+21	+2.2	-7.4	+71	+3.5	-1.0	-0.5	+0.1	+2.4	-0.06	--	+\$137	+\$122	+\$149	+\$129			
40	CRON254	+2.2	+1.3	-6.3	+4.7	+52	+94	+126	+119	+18	+2.3	-7.0	+72	+6.6	+1.1	+0.1	+0.1	+2.1	+0.20	--	+\$138	+\$120	+\$151	+\$131			
41	CRON299	+0.4	-1.9	-5.2	+5.3	+52	+95	+129	+115	+19	+2.0	-4.5	+71	+5.7	+0.5	+0.0	+0.3	+1.9	-0.03	--	+\$126	+\$112	+\$134	+\$122			
		CEDir	CEDirs	GL	BWT	200	400	600	MCW	Milk	SS	DTC	CWT	EMA	RIB	P8	RBY	IMF	NFI-F	DOC	ABI	DOM	GRN	GRS			
		+0.2	+0.4	-4.0	+4.3	+44	+81	+106	+91	+15	+1.8	-4.2	+59	+5.1	+0.0	-0.2	+0.4	+1.7	+0.18	+4	+\$114	+\$109	+\$119	+\$112			



BEEFCLASS STRUCTURAL ASSESSMENT

How to use:

The Beef Class Structural Assessment System uses a 1-9 scoring system for feet and leg structure:

- A score of 5 is ideal
- 4 and 6 show slight variation from ideal, but this includes most animals. Any animal scoring 4 and 6 would be acceptable in any breeding program
- 3 and 7 shows greater variation, but would be acceptable in most commercial breeding programs, however seedstock producers should be wary
- 2 and 8 are low scoring animals and should be looked at carefully before purchasing

A 1-5 scoring system is used for sheath attachment. For feet and leg assessment, animals need to be on a hard, flat and even surface where animal can move/stand naturally.

Traits:

	<i>Scoring Range</i>	<i>Description</i>
Front Feet Claw Set	1 - 9	1 - open divergent; 5 - good; 9 - extreme scissor claw
Rear Feet Claw Set	1 - 9	1 - open divergent; 5 - good; 9 - extreme scissor claw



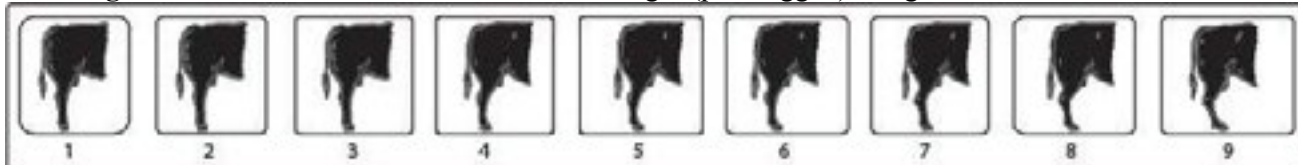
Reference: Shape (primarily curl) and evenness of the claw set.

Front Feet Angle	1 - 9	1 - steep (stubbed toe); 5 - good; 9 - shallow heel
Rear Feet Angle	1 - 9	1 - steep (stubbed toe); 5 - good; 9 - shallow heel



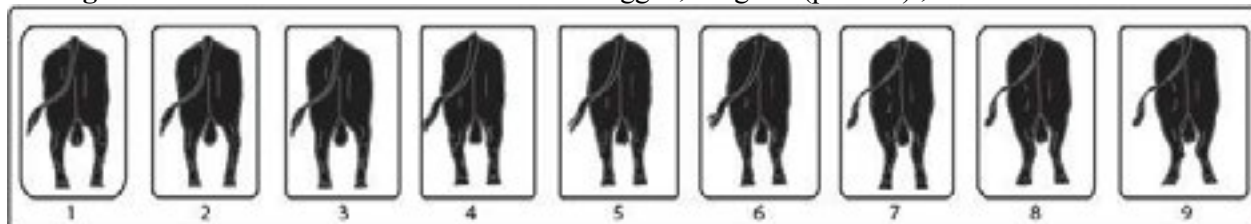
Reference: Strength of pastern, depth of heel and length of foot.

Rear Legs Side View	1 - 9	1 - straight (post legged); 5 - good; 9 - sickle hocked
----------------------------	-------	---



Reference: Angle measured at the front of the hock.

Rear Leg Hind View	1 - 9	1 - bow legged; 5 - good (parallel) ; 9 - cow hocked
---------------------------	-------	--



Reference: Direction of the feet when viewed from the rear.

Muscle Score:

A - E (includes + and -)

A+ = Double-muscled

A = Extremely heavy muscle

- pronounced creasing between muscles

B = Heavily muscled

- well rounded hindquarter

C = Average muscle

- hindquarter slightly rounded

D = Poor muscle

- narrow concave hindquarter

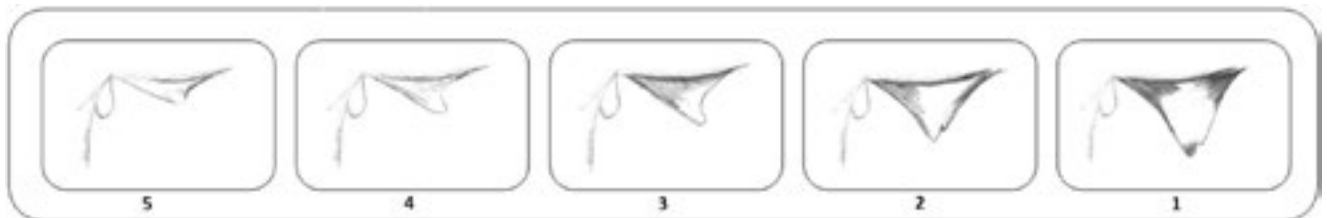
E = Extremely poor muscle

- angular

Reference: Primarily hindquarter roundness or convexity, width across the stifle and width of stance. Also width and muscle expression across the back, particularly behind the shoulder and in the loin. Jump muscle (about the P8 site) and forearm bulge may be taken into consideration.

Sheath and Naval Scores

5 - 1 5 - extremely clean/tight to body; 1 - extremely pendulous



Reference: Sheath attachment

Temperament

Reference: 1-5 (half scores permitted) using yard test scale below:

1. Docile
The animal is easily held in the corner and the handler can get close enough to put their stick on the animal.
2. Restless
The animal can be held in the corner but exhibits some restlessness and flicking of the tail. The handler cannot get close enough to put their stick on the animal before it moves away.
3. Nervous
The animal is not easily held in the corner even when the handler is some distance back from the animal, continual movement and tail flicking.
4. Flighty (wild)
The animal cannot be held in the corner, frantically runs the fence line and may jump when penned individually, exhibits long flight distance.
5. Aggressive
Similar behavior to score 4 but is also aggressive towards the handler, stares at the handler and threatens to charge or charges (Handler is advised to exit the yard before the animal actually charges).

LOTS



LOT 6 N349 & LOT 9 N305 BY GRANITE RIDGE KAISER



LOT 10 N193



LOT 16 N116



LOT 8 N110



LOT 2 N83

Lot 1 JAROBEE UP RIVER N263 # AMFU NHFU CAFU DDFU HBR

DOB: 15/07/2017 Tattoo: ROB N263 (T&F) Traits Observed: CE,BWT Ident: CRON263

CONNEALY ONWARD BT EQUATOR 395M
 SITZ UPWARD 307R MILLAH MURRAH EQUATOR D78
 SITZ HENRIETTA PRIDE 81M MILLAH MURRAH RADO Y119
SIRE: USA17091363 THOMAS UP RIVER 1614 **DAM: CROL238 JAROBEE D78 L238**
 RITO 112 OF 2536 RITO 616 B T ULTRAVOX 297E
 THOMAS CAROL 7595 JAROBEE ULTRAVOX Z52
 THOMAS CAROL 1246 JAROBEE PRINCESS MAXINE 524



Mid-February 2019 Angus Australia BREEDPLAN																				
Angus	BIRTH				GROWTH				FERTILITY				CARCASE				OTHER			
	Dir	Dtrs	Gest	BW	200 W	400 W	600 W	MCW	Milk	DTC	SS	CWT	EMA	Rib	Rump	RBV%	IMF%	NFI-F	Doc	
EBV'S	+1.1	+1.5	-5.8	+4.4	+55	+103	+131	+120	+21	-4.6	+2.4	+76	+3.9	+0.4	+0.1	+0.7	+1.0	-0.10	--	
Acc	52%	45%	69%	70%	65%	64%	64%	61%	57%	39%	62%	59%	59%	61%	59%	56%	57%	50%		

\$Index Values			
Angus Breeding	Domestic	Heavy Grain	Heavy Grass
+\$124	+\$119	+\$124	+\$124

Raw Structural Assessments - 22/11/2018									
F	R	F	R				Muscle	Temp	
6	5	6	6	5	6	5	C+	2	

Notes: A Thomas Up River son full of muscle without losing softness. Top 5% for 400 day Growth.
 All proceeds will go as a donation to those affected by the floods in Northern QLD

Purchaser:..... \$.....

Lot 2 JAROBEE BLASTER N83 # AMFU NHFU CAFU DDFU HBR

DOB: 4/05/2017 Tattoo: ROB N83 (T&F) Traits Observed: Ident: CRON83

MOGCK SURE SHOT TC TOTAL 410
 MOGCK BULLSEYE LAWSONS NOVAK E313
 MOGCK MARY 1255 LAWSONS PREDESTINED B770
SIRE: USA17991528 BRUNS BLASTER **DAM: CROL7 JAROBEE NOVAK L7**
 CONNEALY RIGHT ANSWER 746 ARDROSSAN CONNECTION X15
 BALDRIDGE BLACKBIRD 11 BAF JAROBEE X15 C25
 BALDRIDGE BLACKBIRD 549 BAF JAROBEE ULTRAVOX A24

Mid-February 2019 Angus Australia BREEDPLAN																				
Angus	BIRTH				GROWTH				FERTILITY				CARCASE				OTHER			
	Dir	Dtrs	Gest	BW	200 W	400 W	600 W	MCW	Milk	DTC	SS	CWT	EMA	Rib	Rump	RBV%	IMF%	NFI-F	Doc	
EBV'S	-0.5	+0.9	-3.1	+4.8	+57	+102	+130	+106	+21	-3.2	+1.8	+74	+7.5	-0.8	-2.1	+1.5	+1.3	-0.04	--	
Acc	40%	32%	84%	72%	63%	63%	68%	62%	50%	33%	68%	56%	55%	55%	51%	51%	42%			

\$Index Values			
Angus Breeding	Domestic	Heavy Grain	Heavy Grass
+\$124	+\$120	+\$126	+\$124

Raw Structural Assessments - 22/11/2018									
F	R	F	R				Muscle	Temp	
7	5	7	6	6	5	4	C+	1	

Notes: Bruns Blaster stamps his progeny with thickness. N83 is in the top 5% for 200 and 400 day Growth.

Purchaser:..... \$.....

Lot 3 JAROBEE GENESIS N153 # AMFU NHFU CAFU DDFU HBR

DOB: 14/04/2017 Tattoo: ROB N153 (T&F) Traits Observed: GL,BWT Ident: CRON153

TE MANIA YORKSHIRE Y437 TE MANIA AMBASSADOR A134
 TE MANIA BERKLEY B1 TUWHARETOA REGENT D145
 TE MANIA LOWAN Z53 LAWSONS HENRY VIII Y5
SIRE: SMPG357 PATHFINDER GENESIS G357 **DAM: CROK79 JAROBEE REGENT K79**
 ARDROSSAN DIRECTION W109 LAWSONS INVINCIBLE C402
 PATHFINDER DIRECTION D245 JAROBEE INVINCIBLE F90
 PATHFINDER ADAVALE A433 JAROBEE ULTRAVOX Z16

Mid-February 2019 Angus Australia BREEDPLAN																				
Angus	BIRTH				GROWTH				FERTILITY				CARCASE				OTHER			
	Dir	Dtrs	Gest	BW	200 W	400 W	600 W	MCW	Milk	DTC	SS	CWT	EMA	Rib	Rump	RBV%	IMF%	NFI-F	Doc	
EBV'S	-2.1	-1.8	-5.2	+6.7	+57	+98	+132	+136	+17	-6.0	+2.6	+89	+9.1	+1.3	-0.4	+0.6	+2.5	+0.78	--	
Acc	54%	47%	85%	73%	66%	65%	65%	62%	58%	45%	63%	61%	56%	63%	61%	58%	55%	55%		

\$Index Values			
Angus Breeding	Domestic	Heavy Grain	Heavy Grass
+\$135	+\$116	+\$152	+\$126

Raw Structural Assessments - 22/11/2018									
F	R	F	R				Muscle	Temp	
6	7	6	7	7	7	5	C	1	

Notes: Red meat Genesis son.

Purchaser:..... \$.....

Lot 4 JAROBEE LOCH UP N119 # AMFU NHFU CAFU DDFU HBR

DOB: 7/07/2017 Tattoo: ROB N119 (T&F) Traits Observed: GL,CE,BWT Ident: CRON119

SITZ UPWARD 307R
THOMAS UP RIVER 1614
THOMAS CAROL 7595

TE MANIA AMBASSADOR A134
TUWHARETOA REGENT D145
LAWSONS HENRY VIII Y5

SIRE: NMML133 MILLAH MURRAH LOCH UP L133

DAM: CROJ29 JAROBEE REGENT J29

TE MANIA EMPEROR E343
MILLAH MURRAH BRENDA H49
MILLAH MURRAH BRENDA E64

ARDROSSAN EQUATOR A241
JAROBEE EQUATOR D85
JAROBEE X37

Mid-February 2019 Angus Australia BREEDPLAN																				
Angus	BIRTH				GROWTH				FERTILITY				CARCASE				OTHER			
	Dir	Dtrs	Gest	BW	200 W	400 W	600 W	MCW	Milk	DTC	SS	CWT	EMA	Rib	Rump	RBV%	IMF%	NFI-F	Doc	
EBV'S	-4.7	-2.5	-4.1	+6.2	+56	+95	+129	+116	+17	-6.4	+2.4	+80	+3.4	-0.9	-1.3	+0.4	+2.4	-0.04	--	
Acc	48%	39%	84%	73%	65%	64%	62%	58%	50%	37%	62%	57%	57%	59%	57%	54%	57%	48%	--	

Index Values				Raw Structural Assessments - 22/11/2018									
Angus Breeding	Domestic	Heavy Grain	Heavy Grass	F	R	F	R	F	R	F	R	Muscle	Temp
+\$122	+\$106	+\$137	+\$114	6	5	7	6	6	5	5	5	C+	1

Notes: A standout Loch Up son with loads of carcass, combined with muscle, structure and softness.

Purchaser:..... \$.....

Lot 5 JAROBEE LOCH UP N325 # AMFU NHF CAFU DDF HBR

DOB: 1/09/2017 Tattoo: ROB N325 (T&F) Traits Observed: BWT Ident: CRON325

SITZ UPWARD 307R
THOMAS UP RIVER 1614
THOMAS CAROL 7595

BT CROSSOVER 758N
FLAG CROSS COUNTRY 90052
SCR QUEEN IDELETTE 50596

SIRE: NMML133 MILLAH MURRAH LOCH UP L133

DAM: CROK147 JAROBEE CROSS COUNTRY K147

TE MANIA EMPEROR E343
MILLAH MURRAH BRENDA H49
MILLAH MURRAH BRENDA E64

JAROBEE C.A.FUTURE DIRECTION Z63
JAROBEE DIRECTION D186
JAROBEE NEW ULTRA W20

Mid-February 2019 Angus Australia BREEDPLAN																				
Angus	BIRTH				GROWTH				FERTILITY				CARCASE				OTHER			
	Dir	Dtrs	Gest	BW	200 W	400 W	600 W	MCW	Milk	DTC	SS	CWT	EMA	Rib	Rump	RBV%	IMF%	NFI-F	Doc	
EBV'S	-2.0	+0.3	-4.2	+5.0	+52	+88	+116	+100	+15	-5.1	+1.8	+69	+4.5	-0.6	-0.6	+0.4	+1.7	-0.08	--	
Acc	45%	33%	64%	73%	64%	62%	61%	56%	47%	30%	60%	53%	50%	56%	54%	50%	48%	43%	--	

Index Values				Raw Structural Assessments - 22/11/2018									
Angus Breeding	Domestic	Heavy Grain	Heavy Grass	F	R	F	R	F	R	F	R	Muscle	Temp
+\$112	+\$106	+\$115	+\$110	--	--	--	--	--	--	--	--	--	--

Notes: Another impressive Loch Up son.

Purchaser:..... \$.....

Lot 6 JAROBEE KAISER N349 # AMFU NHFU CAFU DDFU HBR

DOB: 11/09/2017 Tattoo: ROB N349 (T&F) Traits Observed: BWT Ident: CRON349

TE MANIA CALAMUS C46
TE MANIA FOE F734
TE MANIA DANDLOO D700

TE MANIA YORKSHIRE Y437
TE MANIA BERKLEY B1
TE MANIA LOWAN Z53

SIRE: SJJK26 GRANITE RIDGE KAISER K26

DAM: CROG181 JAROBEE BERKLEY G181

NICHOLS QUIET LAD T9
GRANITE RIDGE SUPREME F158
GRANITE RIDGE SUPREME D85

S S TRAVELER 6807 T510
JAROBEE T510 C33
JAROBEE YELLOWSTONE A6

Mid-February 2019 Angus Australia BREEDPLAN																				
Angus	BIRTH				GROWTH				FERTILITY				CARCASE				OTHER			
	Dir	Dtrs	Gest	BW	200 W	400 W	600 W	MCW	Milk	DTC	SS	CWT	EMA	Rib	Rump	RBV%	IMF%	NFI-F	Doc	
EBV'S	+2.9	+2.0	-5.6	+4.0	+52	+93	+125	+118	+18	-7.4	+2.1	+72	+6.0	+1.0	+0.1	-0.1	+2.3	+0.23	--	
Acc	46%	38%	65%	68%	64%	62%	62%	57%	49%	36%	60%	55%	56%	58%	56%	53%	55%	46%	--	

Index Values				Raw Structural Assessments - 22/11/2018									
Angus Breeding	Domestic	Heavy Grain	Heavy Grass	F	R	F	R	F	R	F	R	Muscle	Temp
+\$139	+\$120	+\$154	+\$131	6	5	6	6	6	5	4	4	C	2

Notes: Granite Ridge Kaiser continues to sire impressive calves, always on the heavier weight range in their groups.

Purchaser:..... \$.....

Lot 7 JAROBEE HAAS N233 # AMFU NHFU CAFU DD6% HBR

DOB: 3/07/2017 Tattoo: ROB N233 (T&F) Traits Observed: CE,BWT Ident: CRON233

GARDENS PRIME STAR RENNYLEA C277
 KC HAAS GPS IRELANDS FLETCHER F1
 KCH ELINE 549 TE MANIA WARGOONA Z31
SIRE: CXBL32 PRIME GPS L32 DAM: CROJ136 JAROBEE FLETCHER J136
 TE MANIA AFRICA A217 ARDROSSAN EQUATOR D19
 PRIME MOONGARA H6 JAROBEE EQUATOR D19 F41
 PRIME MOONGARA F55 JAROBEE NEW DESIGN 878 Z29



Mid-February 2019 Angus Australia BREEDPLAN																				
Dir	BIRTH				GROWTH				FERTILITY				CARCASE				OTHER			
	Dtrs	Gest	BW	200 W	400 W	600 W	MCW	Milk	DTC	SS	CWT	EMA	Rib	Rump	RBV%	IMF%	NFI-F	Doc		
EBV'S	+3.9	+3.9	-7.2	+3.3	+46	+83	+116	+108	+14	-4.7	+2.4	+61	+5.9	+0.4	+0.2	+0.4	+2.0	+0.34	--	
Acc	42%	35%	61%	70%	58%	56%	56%	54%	48%	31%	53%	52%	45%	53%	51%	48%	49%	42%	--	

Index Values				Raw Structural Assessments - 22/11/2018									
Angus Breeding	Domestic	Heavy Grain	Heavy Grass	F	R	F	R	F	R	F	R	Muscle	Temp
+\$129	+\$114	+\$138	+\$124	6	5	6	6	5	5	4	C	1	

Notes: Low bith weight Prime GPS son, ideal to mate with heifers.

Purchaser:..... \$.....

Lot 8 JAROBEE GENESIS N110 # AMFU NHFU CAFU DDFU HBR

DOB: 10/07/2017 Tattoo: ROB N110 (T&F) Traits Observed: Ident: CRON110

TE MANIA YORKSHIRE Y437 LEACHMAN RIGHT TIME
 TE MANIA BERKLEY B1 BT RIGHT TIME 24J
 TE MANIA LOWAN Z53 SITZ EVERELDA ENTENSE 1905
SIRE: SMPG357 PATHFINDER GENESIS G357 DAM: CROD17 JAROBEE 24J D17
 ARDROSSAN DIRECTION W109 R R SCOTCHCAP 9440
 PATHFINDER DIRECTION D245 JAROBEE SCOTCH LAURA V33
 PATHFINDER ADAVALE A433 ST. PAULS LAURA R25

Mid-February 2019 Angus Australia BREEDPLAN																				
Dir	BIRTH				GROWTH				FERTILITY				CARCASE				OTHER			
	Dtrs	Gest	BW	200 W	400 W	600 W	MCW	Milk	DTC	SS	CWT	EMA	Rib	Rump	RBV%	IMF%	NFI-F	Doc		
EBV'S	-0.5	+1.4	-3.9	+6.2	+57	+104	+141	+139	+17	-4.8	+2.8	+86	+8.7	+1.4	-0.2	+0.9	+0.9	+0.42	--	
Acc	54%	47%	85%	75%	67%	67%	70%	65%	58%	47%	69%	61%	63%	61%	58%	60%	55%	--		

Index Values				Raw Structural Assessments - 22/11/2018									
Angus Breeding	Domestic	Heavy Grain	Heavy Grass	F	R	F	R	F	R	F	R	Muscle	Temp
+\$132	+\$118	+\$135	+\$131	6	6	7	7	6	5	5	C+	2	

Notes: N110 is a thick Genesis son with growth figures in the high 5% for 200, 400 and 600 day Growth.

Purchaser:..... \$.....

Lot 9 JAROBEE KAISER N305 # AMFU NHFU CAFU DDFU HBR

DOB: 3/09/2017 Tattoo: ROB N305 (T&F) Traits Observed: GL,BWT Ident: CRON305

TE MANIA CALAMUS C46 HYLINE RIGHT TIME 338
 TE MANIA FOE F734 K C F BENNETT PERFORMER
 TE MANIA DANDLOO D700 K C F MISS 589 L182
SIRE: SJJK26 GRANITE RIDGE KAISER K26 DAM: CROE83 JAROBEE PERFORMER E83
 NICHOLS QUIET LAD T9 JAROBEE BLACK MAX S26
 GRANITE RIDGE SUPREME F158 JAROBEE PRINCESS MAXINE V29
 GRANITE RIDGE SUPREME D85 JAROBEE PRINCESS RITA Q7

Mid-February 2019 Angus Australia BREEDPLAN																				
Dir	BIRTH				GROWTH				FERTILITY				CARCASE				OTHER			
	Dtrs	Gest	BW	200 W	400 W	600 W	MCW	Milk	DTC	SS	CWT	EMA	Rib	Rump	RBV%	IMF%	NFI-F	Doc		
EBV'S	+0.6	+0.0	-5.4	+5.0	+50	+88	+118	+102	+19	-4.8	+2.0	+70	+6.7	+0.9	+0.6	+0.7	+1.1	-0.08	--	
Acc	46%	36%	84%	73%	64%	63%	63%	58%	48%	34%	61%	55%	51%	57%	56%	52%	48%	45%	--	

Index Values				Raw Structural Assessments - 22/11/2018									
Angus Breeding	Domestic	Heavy Grain	Heavy Grass	F	R	F	R	F	R	F	R	Muscle	Temp
+\$117	+\$110	+\$115	+\$118	6	6	6	6	6	6	4	C	2	

Notes: Free moving Kaiser son with length and growth.

Purchaser:..... \$.....

Lot 10 JAROBEE UP RIVER N193 # AMFU NHFU CAFU DD50% HBR

DOB: 19/08/2017 Tattoo: ROB N193 (T&F) Traits Observed: GL,CE,BWT Ident: CRON193

HFR CONNEALY ONWARD BON VIEW NEW DESIGN 1407
 SITZ UPWARD 307R LAWSONS DINKY-DI Z191
 SITZ HENRIETTA PRIDE 81M G A R PRECISION 1900
SIRE: USA17091363 THOMAS UP RIVER 1614 **DAM: CROF60 JAROBEE DINKY DI F60**
 RITO 112 OF 2536 RITO 616 WHITSTONE WIDESPREAD MB
 THOMAS CAROL 7595 JAROBEE WHITSTONE WIDESPREAD Y9
 THOMAS CAROL 1246 JAROBEE KRUGER MAXINE V10

Mid-February 2019 Angus Australia BREEDPLAN																				
Angus	BIRTH				GROWTH				FERTILITY				CARCASE				OTHER			
	Dir	Dtrs	Gest	BW	200 W	400 W	600 W	MCW	Milk	DTC	SS	CWT	EMA	Rib	Rump	RBV%	IMF%	NFI-F	Doc	
EBV'S	+3.5	+2.3	-5.8	+3.5	+53	+95	+122	+92	+21	-5.3	+2.1	+70	+3.6	+0.0	-0.2	+0.7	+1.4	+0.06	--	
Acc	54%	46%	85%	73%	65%	64%	64%	61%	57%	41%	62%	59%	58%	61%	59%	57%	57%	50%	--	

\$Index Values				Raw Structural Assessments - 22/11/2018									
Angus Breeding	Domestic	Heavy Grain	Heavy Grass	F	R	F	R	F	R	F	R	Muscle	Temp
+\$128	+\$121	+\$129	+\$127	6	5	6	6	6	5	5	5	C	1

Notes: N193 is a good topped smooth Up River son stacked with grunt, as well as suitable four heifer mating.

Purchaser:..... \$.....

Lot 11 JAROBEE HAAS N84 # AMFU NHFU CAFU DDFU HBR

DOB: 6/05/2017 Tattoo: ROB N84 (T&F) Traits Observed: CE,BWT,600WT,SS,FAT,EMA,IMF Ident: CRON84

HFR GARDENS PRIME STAR TE MANIA BARTEL B219
 KC HAAS GPS AYRVALE BARTEL E7
 KCH ELINE 549 EAGLEHAWK JEDDA B32
SIRE: CXBL32 PRIME GPS L32 **DAM: CROK40 JAROBEE BARTEL K40**
 TE MANIA AFRICA A217 TE MANIA BERKLEY B1
 PRIME MOONGARA H6 JAROBEE BERKLEY F108
 PRIME MOONGARA F55 JAROBEE S.S.TRAVELER T 510 Z24

Mid-February 2019 Angus Australia BREEDPLAN																				
Angus	BIRTH				GROWTH				FERTILITY				CARCASE				OTHER			
	Dir	Dtrs	Gest	BW	200 W	400 W	600 W	MCW	Milk	DTC	SS	CWT	EMA	Rib	Rump	RBV%	IMF%	NFI-F	Doc	
EBV'S	+4.3	+4.6	-7.7	+3.0	+48	+88	+122	+112	+16	-7.9	+2.7	+67	+6.3	+0.8	+1.2	+0.2	+2.5	+0.50	--	
Acc	44%	39%	66%	72%	63%	62%	68%	62%	50%	38%	67%	55%	54%	56%	51%	52%	47%	--		

\$Index Values				Raw Structural Assessments - 22/11/2018									
Angus Breeding	Domestic	Heavy Grain	Heavy Grass	F	R	F	R	F	R	F	R	Muscle	Temp
+\$151	+\$126	+\$168	+\$140	7	7	6	6	5	5	5	5	C+	1

Notes: Top 5% in all indexes and backed by Bartel E7 dam indicates the potential for this bull. He too would be ok with heifers.

Purchaser:..... \$.....

Lot 12 JAROBEE LOCH UP N113 # AMFU NHFU CAFU DDFU HBR

DOB: 29/07/2017 Tattoo: ROB N113 (T&F) Traits Observed: GL,CE,BWT Ident: CRON113

SITZ UPWARD 307R TE MANIA AMBASSADOR A134
 THOMAS UP RIVER 1614 TUWHARETOA REGENT D145
 THOMAS CAROL 7595 LAWSONS HENRY VIII Y5
SIRE: NMML133 MILLAH MURRAH LOCH UP L133 **DAM: CROJ49 JAROBEE REGENT J49**
 TE MANIA EMPEROR E343 B S S LIMITED DESIGN
 MILLAH MURRAH BRENDA H49 JAROBEE X29
 MILLAH MURRAH BRENDA E64 JAROBEE WILZU T55

Mid-February 2019 Angus Australia BREEDPLAN																				
Angus	BIRTH				GROWTH				FERTILITY				CARCASE				OTHER			
	Dir	Dtrs	Gest	BW	200 W	400 W	600 W	MCW	Milk	DTC	SS	CWT	EMA	Rib	Rump	RBV%	IMF%	NFI-F	Doc	
EBV'S	-4.9	-3.4	-3.9	+6.4	+54	+91	+124	+111	+14	-5.2	+2.0	+75	+4.2	-0.8	-1.4	+0.6	+2.3	-0.04	--	
Acc	48%	39%	84%	73%	65%	64%	62%	57%	50%	37%	62%	56%	57%	59%	57%	54%	56%	48%	--	

\$Index Values				Raw Structural Assessments - 22/11/2018									
Angus Breeding	Domestic	Heavy Grain	Heavy Grass	F	R	F	R	F	R	F	R	Muscle	Temp
+\$115	+\$103	+\$128	+\$109	6	5	7	6	6	5	5	5	C	1

Notes: Sired by Loch Up and combined with the solid pedigree of his dam, indicates growth aligned with weight.

Purchaser:..... \$.....

Lot 13 JAROBEE KAISER N303 # AMFU NHFU CAFU DDFU HBR

DOB: 24/08/2017 Tattoo: ROB N303 (T&F) Traits Observed: GL,CE,BWT Ident: CRON303

TE MANIA CALAMUS C46 S A F 598 BANDO 5175
 TE MANIA FOE F734 H S A F BANDO 1961
 TE MANIA DANDLOO D700 J K S MISS CHEYENNE 196
SIRE: SJKK26 GRANITE RIDGE KAISER K26 **DAM: CROC132 JAROBEE BANDO1961 C132**
 NICHOLS QUIET LAD T9 KRUGERRAND OF DONAMERE 490
 GRANITE RIDGE SUPREME F158 JAROBEE BUNFORMER T56
 GRANITE RIDGE SUPREME D85 GERAMY BUNYIP Q65

Mid-February 2019 Angus Australia BREEDPLAN																				
BIRTH					GROWTH					FERTILITY				CARCASE				OTHER		
Dir	Dtrs	Gest	BW	200 W	400 W	600 W	MCW	Milk	DTC	SS	CWT	EMA	Rib	Rump	RBY%	IMF%	NFI-F	Doc		
EBV'S	+1.6	+1.1	-5.2	+4.5	+50	+90	+119	+103	+20	-5.4	+1.4	+67	+4.4	-0.3	-0.5	+0.6	+1.1	-0.27	--	
Acc	45%	34%	85%	73%	63%	62%	61%	57%	47%	31%	59%	53%	49%	54%	53%	49%	47%	41%	--	

\$Index Values				Raw Structural Assessments - 22/11/2018											
Angus Breeding	Domestic	Heavy Grain	Heavy Grass	F	R	F	R							Muscle	Temp
+\$118	+\$112	+\$118	+\$118	7	6	7	6	5	5	5	5	5	5	C+	2

Notes: This slick and soft Kaiser son has his stamp. Kaiser progeny have been sale toppers at two recent bull sales.

Purchaser:..... \$.....

Lot 14 JAROBEE HAAS N82 # AM1% NHF CAFU DDFU HBR

DOB: 8/05/2017 Tattoo: ROB N82 (T&F) Traits Observed: CE,BWT,600WT,SS,FAT,EMA,IMF Ident: CRON82

GARDENS PRIME STAR PAPA EQUATOR 2928
 KC HAAS GPS ARDROSSAN EQUATOR A241
 KCH ELINE 549 ARDROSSAN PRINCESS W38
SIRE: CXBL32 PRIME GPS L32 **DAM: CROK74 JAROBEE A241 K74**
 TE MANIA AFRICA A217 JAROBEE C.A.FUTURE DIRECTION Z63
 PRIME MOONGARA H6 JAROBEE DIRECTION D96
 PRIME MOONGARA F55 JAROBEE YELLOWSTONE A64



Mid-February 2019 Angus Australia BREEDPLAN																				
BIRTH					GROWTH					FERTILITY				CARCASE				OTHER		
Dir	Dtrs	Gest	BW	200 W	400 W	600 W	MCW	Milk	DTC	SS	CWT	EMA	Rib	Rump	RBY%	IMF%	NFI-F	Doc		
EBV'S	+3.9	+3.9	-7.0	+2.8	+44	+82	+115	+106	+16	-4.7	+1.6	+65	+6.4	-0.6	-0.7	+1.0	+1.8	+0.23	--	
Acc	43%	38%	65%	71%	62%	61%	67%	61%	48%	38%	66%	54%	53%	54%	55%	50%	51%	45%	--	

\$Index Values				Raw Structural Assessments - 22/11/2018											
Angus Breeding	Domestic	Heavy Grain	Heavy Grass	F	R	F	R							Muscle	Temp
+\$129	+\$116	+\$139	+\$125	6	5	6	6	5	5	5	5	5	5	C+	2

Notes: Another young bull suited for heifer mating, his dam by A241 backing him.

Purchaser:..... \$.....

Lot 15 JAROBEE UP RIVER N260 # AMFU NHFU CAFU DDFU HBR

DOB: 15/07/2017 Tattoo: ROB N260 (T&F) Traits Observed: Ident: CRON260

CONNELLY ONWARD BT EQUATOR 395M
 SITZ UPWARD 307R MILLAH MURRAH EQUATOR D78
 SITZ HENRIETTA PRIDE 81M MILLAH MURRAH RADO Y119
SIRE: USA17091363 THOMAS UP RIVER 1614 **DAM: CROL234 JAROBEE D78 L234**
 RITO 112 OF 2536 RITO 616 BON VIEW NEW DESIGN 878
 THOMAS CAROL 7595 JAROBEE NEW DESIGN 878 Z28
 THOMAS CAROL 1246 JAROBEE WIDESPREAD X38

Mid-February 2019 Angus Australia BREEDPLAN																				
BIRTH					GROWTH					FERTILITY				CARCASE				OTHER		
Dir	Dtrs	Gest	BW	200 W	400 W	600 W	MCW	Milk	DTC	SS	CWT	EMA	Rib	Rump	RBY%	IMF%	NFI-F	Doc		
EBV'S	+1.0	+2.4	-6.0	+4.5	+56	+103	+132	+117	+22	-4.7	+2.3	+77	+3.9	+0.2	-0.1	+0.7	+1.0	-0.08	--	
Acc	52%	44%	69%	66%	65%	64%	64%	60%	57%	40%	62%	59%	58%	60%	59%	56%	58%	50%	--	

\$Index Values				Raw Structural Assessments - 22/11/2018											
Angus Breeding	Domestic	Heavy Grain	Heavy Grass	F	R	F	R							Muscle	Temp
+\$125	+\$120	+\$125	+\$126	7	6	7	7	5	5	5	5	5	5	C+	2

Notes: N260 is packed with genetics that are evident in both flesh and figures. He is in the High 5% for 200, 400 and 600 day growth. An up River son with Millah Murrah D78 on his dams side.

Purchaser:..... \$.....

Lot 16 JAROBEE LOCH UP N116 # AMFU NHFU CA7% DD50% **HBR**

DOB: 29/07/2017 Tattoo: ROB N116 (T&F) Traits Observed: GL,CE,BWT Ident: CRON116

SITZ UPWARD 307R
THOMAS UP RIVER 1614
THOMAS CAROL 7595

TE MANIA YORKSHIRE Y437
JAROBEE YORKSHIRE E85
JAROBEE X29

SIRE: NMML133 MILLAH MURRAH LOCH UP L133

DAM: CROJ106 JAROBEE YORKSHIRE J106

TE MANIA EMPEROR E343
MILLAH MURRAH BRENDA H49
MILLAH MURRAH BRENDA E64

KAROO W109 DIRECTION Z181
JAROBEE DIRECTION D82
JAROBEE ULTRAVOX Y16

Mid-February 2019 Angus Australia BREEDPLAN																				
EBV'S	BIRTH				GROWTH				FERTILITY				CARCASE				OTHER			
	Dir	Dtrs	Gest	BW	200 W	400 W	600 W	MCW	Milk	DTC	SS	CWT	EMA	Rib	Rump	RBY%	IMF%	NFI-F	Doc	
-7.2	-2.2	-3.8	+5.6	+54	+93	+125	+111	+15	-5.4	+2.1	+72	+2.9	-0.5	-0.9	+0.1	+1.9	+0.06	--		
Acc	45%	34%	84%	73%	63%	61%	59%	55%	45%	31%	58%	52%	49%	54%	53%	49%	47%	42%		

\$Index Values				Raw Structural Assessments - 22/11/2018									
Angus Breeding	Domestic	Heavy Grain	Heavy Grass	F	R	F	R	F	R	F	R	Muscle	Temp
+\$105	+\$96	+\$111	+\$102	6	6	6	6	6	6	5	4	C+	1

Notes: Loch Up loads his progeny with thickness and softness. N116 is another example.

Purchaser:..... \$.....

Lot 17 JAROBEE KAISER N248 # AMFU NHFU CAFU DDF **HBR**

DOB: 23/07/2017 Tattoo: ROB N248 (T&F) Traits Observed: CE,BWT Ident: CRON248

TE MANIA CALAMUS C46
TE MANIA FOE F734
TE MANIA DANDLOO D700

SITZ NEW DESIGN 458N
MERRIDALE GEM G80
VERMONT DREAM E096

SIRE: SJJK26 GRANITE RIDGE KAISER K26

DAM: CROK96 JAROBEE GEM K96

NICHOLS QUIET LAD T9
GRANITE RIDGE SUPREME F158
GRANITE RIDGE SUPREME D85

BT EQUATOR 395M
JAROBEE EQUATOR F43
JAROBEE ULTRAVOX Y6

Mid-February 2019 Angus Australia BREEDPLAN																				
EBV'S	BIRTH				GROWTH				FERTILITY				CARCASE				OTHER			
	Dir	Dtrs	Gest	BW	200 W	400 W	600 W	MCW	Milk	DTC	SS	CWT	EMA	Rib	Rump	RBY%	IMF%	NFI-F	Doc	
+0.4	+0.8	-5.9	+4.8	+54	+97	+135	+115	+21	-4.8	+2.3	+74	+6.3	+0.1	-0.6	+0.6	+1.8	-0.12	--		
Acc	43%	33%	65%	68%	63%	62%	61%	56%	48%	31%	59%	54%	56%	54%	50%	53%	43%			

\$Index Values				Raw Structural Assessments - 22/11/2018									
Angus Breeding	Domestic	Heavy Grain	Heavy Grass	F	R	F	R	F	R	F	R	Muscle	Temp
+\$134	+\$117	+\$144	+\$130	6	5	6	6	5	5	4	C+	2	

Notes: A stretchy bull with presence and bone, in the top 5% for 600 day growth.

Purchaser:..... \$.....

Lot 18 JAROBEE LOCH UP N321 # AMFU NHF CAFU DD8% **HBR**

DOB: 1/09/2017 Tattoo: ROB N321 (T&F) Traits Observed: BWT Ident: CRON321

SITZ UPWARD 307R
THOMAS UP RIVER 1614
THOMAS CAROL 7595

PAPA EQUATOR 2928
ARDROSSAN EQUATOR A241
ARDROSSAN PRINCESS W38

SIRE: NMML133 MILLAH MURRAH LOCH UP L133

DAM: CROK75 JAROBEE A241 K75

TE MANIA EMPEROR E343
MILLAH MURRAH BRENDA H49
MILLAH MURRAH BRENDA E64

TE MANIA YORKSHIRE Y437
JAROBEE YORKSHIRE D28
JAROBEE ULTRAVOX B20

Mid-February 2019 Angus Australia BREEDPLAN																				
EBV'S	BIRTH				GROWTH				FERTILITY				CARCASE				OTHER			
	Dir	Dtrs	Gest	BW	200 W	400 W	600 W	MCW	Milk	DTC	SS	CWT	EMA	Rib	Rump	RBY%	IMF%	NFI-F	Doc	
-0.4	+1.1	-5.1	+4.1	+53	+92	+123	+108	+18	-6.8	+2.5	+76	+2.9	-0.9	-1.2	+0.6	+1.8	-0.05	--		
Acc	48%	39%	69%	72%	65%	64%	62%	58%	50%	37%	61%	56%	57%	59%	57%	54%	56%	48%		

\$Index Values				Raw Structural Assessments - 22/11/2018									
Angus Breeding	Domestic	Heavy Grain	Heavy Grass	F	R	F	R	F	R	F	R	Muscle	Temp
+\$126	+\$114	+\$135	+\$120	6	6	6	6	6	6	6	5	C+	2

Notes: N321 is a bull with natural balance, he is wide topped with soft easy doing ability.

Purchaser:..... \$.....

Lot 19 JAROBEE KAISER N161 # AMFU NHFU CAFU DDFU HBR

DOB: 18/03/2017 Tattoo: ROB N161 (T&F) Traits Observed: BWT Ident: CRON161
 TE MANIA CALAMUS C46 G A R SOLUTION
 TE MANIA FOE F734 LAWSONS INVINCIBLE C402
 TE MANIA DANDLOO D700 LAWSONS PREDESTINED A598
SIRE: SJKK26 GRANITE RIDGE KAISER C26 **DAM: CROH521 JAROBEE INVINCIBLE H521**
 NICHOLS QUIET LAD T9 F A R KRUGERRAND 410H
 GRANITE RIDGE SUPREME F158 JAROBEE KRUGERRAND 410H A80
 GRANITE RIDGE SUPREME D85 ST. PAULS IRIS R26

test pending

Mid-February 2019 Angus Australia BREEDPLAN																					
Angus	BIRTH				GROWTH				FERTILITY				CARCASE				OTHER				
	Dir	Dtrs	Gest	BW	200 W	400 W	600 W	MCW	Milk	DTC	SS	CWT	EMA	Rib	Rump	RBY%	IMF%	NFI-F	Doc		
EBV'S	+1.3	-0.6	-5.2	+4.1	+48	+86	+114	+97	+18	-5.9	+1.6	+68	+6.2	-0.2	-0.5	+0.5	+2.0	+0.17	--		
Acc	46%	37%	68%	72%	64%	62%	62%	57%	49%	34%	59%	54%	54%	56%	55%	51%	52%	44%	--		

Index Values				Raw Structural Assessments - 22/11/2018									
Angus Breeding	Domestic	Heavy Grain	Heavy Grass	F	R	F	R	F	R	F	R	Muscle	Temp
+\$124	+\$113	+\$133	+\$119	6	5	6	6	6	6	6	6	4	2

Notes: N161 has a strong set of indexes and is out of a solid invincible daughter and sired by Kaiser.

Purchaser:..... \$.....

Lot 20 JAROBEE UP RIVER N129 # AMFU NHFU CAFU DDFU HBR

DOB: 29/07/2017 Tattoo: ROB N129 (T&F) Traits Observed: GL,CE,BWT Ident: CRON129
 CONNEALY ONWARD HYLIN RIGHT TIME 338
 SITZ UPWARD 307R K C F BENNETT PERFORMER
 SITZ HENRIETTA PRIDE 81M K C F MISS 589 L182
SIRE: USA17091363 THOMAS UP RIVER 1614 **DAM: CROE126 JAROBEE PERFORMER E126**
 RITO 112 OF 2536 RITO 616 WHITESTONE WIDESPREAD MB
 THOMAS CAROL 7595 JAROBEE W25
 THOMAS CAROL 1246 JAROBEE PANDA S29

Mid-February 2019 Angus Australia BREEDPLAN																					
Angus	BIRTH				GROWTH				FERTILITY				CARCASE				OTHER				
	Dir	Dtrs	Gest	BW	200 W	400 W	600 W	MCW	Milk	DTC	SS	CWT	EMA	Rib	Rump	RBY%	IMF%	NFI-F	Doc		
EBV'S	+0.2	+1.3	-3.8	+4.5	+53	+97	+121	+96	+20	-4.1	+2.6	+72	+5.0	+1.1	+1.4	+0.8	+0.6	+0.07	--		
Acc	53%	46%	85%	73%	65%	64%	64%	61%	57%	40%	62%	59%	59%	60%	59%	56%	57%	50%	--		

Index Values				Raw Structural Assessments - 22/11/2018									
Angus Breeding	Domestic	Heavy Grain	Heavy Grass	F	R	F	R	F	R	F	R	Muscle	Temp
+\$116	+\$116	+\$107	+\$120	7	6	6	6	6	6	6	6	5	2

Notes: Thomas Up River son with loads of muscle, softness and length coupled with positive rib and rump EBV's.

Purchaser:..... \$.....

Lot 21 JAROBEE THOMAS UP RIVER N134 AMFU NHFU CAFU DDFU HBR

DOB: 27/07/2017 Tattoo: ROB N134 (T&F) Traits Observed: GL,CE,BWT Ident: CRON134
 CONNEALY ONWARD PAPA EQUATOR 2928
 SITZ UPWARD 307R BT EQUATOR 395M
 SITZ HENRIETTA PRIDE 81M RM BLACK MAGIC 7574 E A R
SIRE: USA17091363 THOMAS UP RIVER 1614 **DAM: CROF29 JAROBEE BT EQUATOR F29**
 RITO 112 OF 2536 RITO 616 B/R NEW FRONTIER 095
 THOMAS CAROL 7595 JAROBEE NEW FRONTIER Z32
 THOMAS CAROL 1246 JAROBEE WILLS THREAT T58

Mid-February 2019 Angus Australia BREEDPLAN																					
Angus	BIRTH				GROWTH				FERTILITY				CARCASE				OTHER				
	Dir	Dtrs	Gest	BW	200 W	400 W	600 W	MCW	Milk	DTC	SS	CWT	EMA	Rib	Rump	RBY%	IMF%	NFI-F	Doc		
EBV'S	+0.6	+1.7	-5.0	+4.4	+53	+99	+126	+105	+20	-5.5	+2.5	+75	+2.7	+0.1	-0.4	+0.5	+1.2	-0.02	--		
Acc	53%	46%	85%	74%	66%	64%	64%	61%	57%	40%	63%	59%	58%	61%	59%	56%	57%	50%	--		

Index Values				Raw Structural Assessments - 22/11/2018									
Angus Breeding	Domestic	Heavy Grain	Heavy Grass	F	R	F	R	F	R	F	R	Muscle	Temp
+\$123	+\$118	+\$125	+\$122	6	5	6	6	5	5	5	5	C+	2

Notes: Top 5% for 400 day growth and top 10% for 600 day growth. This Up River son is loaded with depth and muscle.

Purchaser:..... \$.....

Lot 22 JAROBEE HAAS N331 # AMFU NHFU CAFU DD2% HBR

DOB: 15/08/2017 Tattoo: ROB N331 (T&F) Traits Observed: CE,BWT Ident: CRON331



GARDENS PRIME STAR
 KC HAAS GPS
 KCH ELINE 549
SIRE: CXBL32 PRIME GPS L32
 TE MANIA AFRICA A217
 PRIME MOONGARA H6
 PRIME MOONGARA F55

TE MANIA YORKSHIRE Y437
 TE MANIA BERKLEY B1
 TE MANIA LOWAN Z53
DAM: CROF32 JAROBEE BERKLEY F32
 ARDROSSAN ADMIRAL A2
 JAROBEE ADMIRAL C194
 JAROBEE ULTRAVOX X30

Mid-February 2019 Angus Australia BREEDPLAN																				
Angus	BIRTH				GROWTH				FERTILITY				CARCASE				OTHER			
	Dir	Dtrs	Gest	BW	200 W	400 W	600 W	MCW	Milk	DTC	SS	CWT	EMA	Rib	Rump	RBY%	IMF%	NFI-F	Doc	
EBV'S	+4.1	+3.9	-8.1	+2.8	+44	+81	+108	+107	+13	-6.8	+2.1	+61	+7.0	+1.0	+0.1	+0.2	+2.5	+0.57	--	
Acc	45%	40%	65%	71%	60%	58%	58%	56%	50%	37%	55%	54%	53%	56%	54%	51%	52%	47%	--	

\$Index Values				Raw Structural Assessments - 22/11/2018									
Angus Breeding	Domestic	Heavy Grain	Heavy Grass	F	R	F	R	F	R	F	R	Muscle	Temp
+\$134	+\$118	+\$148	+\$125	6	5	6	6	5	6	5	6	C	2

Notes: N331 is a low birth weight bull ideal for heifer mating, he is in the top 15% for all of his indexes.

Purchaser:..... \$.....

Lot 23 JAROBEE UP RIVER N157 # AMFU NHFU CAF DDF HBR

DOB: 7/07/2017 Tattoo: ROB N157 (T&F) Traits Observed: CE,BWT Ident: CRON157

CONNEALY ONWARD
 SITZ UPWARD 307R
 SITZ HENRIETTA PRIDE 81M
SIRE: USA17091363 THOMAS UP RIVER 1614
 RITO 112 OF 2536 RITO 616
 THOMAS CAROL 7595
 THOMAS CAROL 1246

S A F 598 BANDO 5175
 H S A F BANDO 1961
 J K S MISS CHEYENNE 196
DAM: CROC94 JAROBEE BANDO1961 C94
 JAROBEE TRAVEST T44
 JAROBEE TRAVELER 011 X49
 JAROBEE QUEEN MAXI T39

Mid-February 2019 Angus Australia BREEDPLAN																				
Angus	BIRTH				GROWTH				FERTILITY				CARCASE				OTHER			
	Dir	Dtrs	Gest	BW	200 W	400 W	600 W	MCW	Milk	DTC	SS	CWT	EMA	Rib	Rump	RBY%	IMF%	NFI-F	Doc	
EBV'S	+1.9	+1.3	-4.7	+4.0	+50	+92	+111	+85	+19	-3.9	+2.1	+67	+3.8	+0.2	+0.2	+0.8	+0.9	+0.16	--	
Acc	52%	43%	69%	73%	64%	63%	63%	60%	55%	36%	62%	57%	57%	58%	57%	54%	55%	46%	--	

\$Index Values				Raw Structural Assessments - 22/11/2018									
Angus Breeding	Domestic	Heavy Grain	Heavy Grass	F	R	F	R	F	R	F	R	Muscle	Temp
+\$110	+\$116	+\$103	+\$114	6	5	7	6	6	5	5	5	C	2

Notes: A smooth skinned Up River son with Bando 1961 on his dams pedigree.

Purchaser:..... \$.....

Lot 24 JAROBEE LOCH UP N125 # AMFU NHFU CAFU DDFU HBR

DOB: 4/08/2017 Tattoo: ROB N125 (T&F) Traits Observed: GL,CE,BWT Ident: CRON125

SITZ UPWARD 307R
 THOMAS UP RIVER 1614
 THOMAS CAROL 7595
SIRE: NMML133 MILLAH MURRAH LOCH UP L133
 TE MANIA EMPEROR E343
 MILLAH MURRAH BRENDA H49
 MILLAH MURRAH BRENDA E64

D H D TRAVELER 6807
 S S TRAVELER 6807 T510
 S S MISS HI SPADE A114
DAM: CROC33 JAROBEE T510 C33
 VERMILION YELLOWSTONE
 JAROBEE YELLOWSTONE A6
 JAROBEE PANDA S29

Mid-February 2019 Angus Australia BREEDPLAN																				
Angus	BIRTH				GROWTH				FERTILITY				CARCASE				OTHER			
	Dir	Dtrs	Gest	BW	200 W	400 W	600 W	MCW	Milk	DTC	SS	CWT	EMA	Rib	Rump	RBY%	IMF%	NFI-F	Doc	
EBV'S	-0.9	+0.2	-3.9	+4.6	+51	+89	+117	+109	+15	-5.8	+2.1	+65	+1.5	-0.5	+0.2	-0.1	+1.9	-0.16	--	
Acc	48%	38%	85%	73%	64%	62%	61%	57%	48%	36%	60%	54%	54%	56%	55%	51%	49%	45%	--	

\$Index Values				Raw Structural Assessments - 22/11/2018									
Angus Breeding	Domestic	Heavy Grain	Heavy Grass	F	R	F	R	F	R	F	R	Muscle	Temp
+\$114	+\$107	+\$121	+\$111	6	6	6	6	6	5	5	5	C	2

Notes: N125s dam is a sound breeder by T510 coupled with Loch Up is a larger framed bull.

Purchaser:..... \$.....

Lot 25 JAROBEE GENESIS N146 # AMFU NHFU CAFU DDFU **HBR**

DOB: 8/03/2017 Tattoo: ROB N146 (T&F) Traits Observed: GL,BWT Ident: CRON146

TE MANIA YORKSHIRE Y437 TE MANIA YORKSHIRE Y437
 TE MANIA BERKLEY B1 TE MANIA BERKLEY B1
 TE MANIA LOWAN Z53 TE MANIA LOWAN Z53
SIRE: SMPG357 PATHFINDER GENESIS G357 **DAM: CROH216 JAROBEE BERKLEY H216**
 ARDROSSAN DIRECTION W109 B/R NEW FRONTIER 095
 PATHFINDER DIRECTION D245 JAROBEE WILSTILI ROAD Z81
 PATHFINDER ADAVALE A433 JAROBEE WILSTLI ROAD V40

Mid-February 2019 Angus Australia BREEDPLAN																				
Angus	BIRTH				GROWTH				FERTILITY				CARCASE				OTHER			
	Dir	Dtrs	Gest	BW	200 W	400 W	600 W	MCW	Milk	DTC	SS	CWT	EMA	Rib	Rump	RBV%	IMF%	NFI-F	Doc	
EBV'S	+1.2	+2.8	-5.3	+6.1	+56	+99	+131	+141	+15	-6.7	+2.9	+83	+8.1	+0.9	-1.4	+0.9	+2.0	+0.74	--	
Acc	55%	49%	85%	75%	68%	67%	64%	60%	47%	64%	63%	62%	65%	63%	60%	57%	57%			

Index Values				Raw Structural Assessments - 22/11/2018									
Angus Breeding	Domestic	Heavy Grain	Heavy Grass	F	R	F	R					Muscle	Temp
+\$141	+\$124	+\$158	+\$132	6	5	6	6	5	5	5	5	C	2

Notes: Top 10% in 3 out of 4 indexes as well as top 10% for EMA and Scrotal.

Purchaser:..... \$.....

Lot 26 JAROBEE GENESIS N108 # AMFU NHFU CAFU DDFU **HBR**

DOB: 30/08/2017 Tattoo: ROB N108 (T&F) Traits Observed: GL,CE,BWT Ident: CRON108

TE MANIA YORKSHIRE Y437 BON VIEW NEW DESIGN 1407
 TE MANIA BERKLEY B1 LAWSONS DINKY-DI Z191
 TE MANIA LOWAN Z53 G A R PRECISION 1900
SIRE: SMPG357 PATHFINDER GENESIS G357 **DAM: CROE133 JAROBEE DINKYDI E133**
 ARDROSSAN DIRECTION W109 R&J CRUZ 109
 PATHFINDER DIRECTION D245 JAROBEE LEECRUZ U9
 PATHFINDER ADAVALE A433 ROSELEIGH RUTH R20

Mid-February 2019 Angus Australia BREEDPLAN																				
Angus	BIRTH				GROWTH				FERTILITY				CARCASE				OTHER			
	Dir	Dtrs	Gest	BW	200 W	400 W	600 W	MCW	Milk	DTC	SS	CWT	EMA	Rib	Rump	RBV%	IMF%	NFI-F	Doc	
EBV'S	+2.5	+2.5	-4.6	+5.0	+50	+85	+114	+107	+17	-5.3	+2.7	+70	+7.7	+0.7	-0.9	+1.0	+1.6	+0.49	--	
Acc	53%	46%	85%	73%	66%	64%	64%	62%	58%	44%	62%	60%	59%	62%	60%	56%	52%	53%		

Index Values				Raw Structural Assessments - 22/11/2018									
Angus Breeding	Domestic	Heavy Grain	Heavy Grass	F	R	F	R					Muscle	Temp
+\$123	+\$115	+\$129	+\$120	6	6	6	6	5	6	5	5	C	2

Notes: Wide topped, thick meat producer. Genesis son.

Purchaser:..... \$.....

Lot 27 JAROBEE HAAS N222 # AMFU NHFU CAFU DDFU **HBR**

DOB: 28/07/2017 Tattoo: ROB N222 (T&F) Traits Observed: GL,CE,BWT Ident: CRON222

GARDENS PRIME STAR HYLINE RIGHT TIME 338
 KC HAAS GPS K C F BENNETT PERFORMER
 KCH ELINE 549 K C F MISS 589 L182
SIRE: CXBL32 PRIME GPS L32 **DAM: CROF212 JAROBEE PERFORMER F212**
 TE MANIA AFRICA A217 B T ULTRAVOX 297E
 PRIME MOONGARA H6 JAROBEE ULTRAVOX Z52
 PRIME MOONGARA F55 JAROBEE PRINCESS MAXINE S24

Mid-February 2019 Angus Australia BREEDPLAN																				
Angus	BIRTH				GROWTH				FERTILITY				CARCASE				OTHER			
	Dir	Dtrs	Gest	BW	200 W	400 W	600 W	MCW	Milk	DTC	SS	CWT	EMA	Rib	Rump	RBV%	IMF%	NFI-F	Doc	
EBV'S	+1.4	+2.2	-6.3	+4.3	+46	+82	+111	+105	+13	-4.7	+2.5	+60	+7.2	+1.2	+1.7	+0.7	+1.5	+0.19	--	
Acc	44%	39%	84%	70%	59%	57%	57%	55%	49%	35%	54%	52%	46%	54%	53%	49%	43%	45%		

Index Values				Raw Structural Assessments - 22/11/2018									
Angus Breeding	Domestic	Heavy Grain	Heavy Grass	F	R	F	R					Muscle	Temp
+\$123	+\$113	+\$125	+\$122	5	5	6	6	6	6	5	5	C	1

Notes: Thickness from his dams genetics with sire GPS, as well as positive rib and rump are evident in this young bull.

Purchaser:..... \$.....

Lot 28 JAROBEE THOMAS UP RIVER N239 AMFU NHFU CAFU DDFU **HBR**

DOB: 15/07/2017 Tattoo: ROB N239 (T&F) Traits Observed: GL,BWT Ident: CRON239

HFR CONNEALY ONWARD TE MANIA YORKSHIRE Y437
 SITZ UPWARD 307R TE MANIA BERKLEY B1
 SITZ HENRIETTA PRIDE 81M TE MANIA LOWAN Z53
SIRE: USA17091363 THOMAS UP RIVER 1614 **DAM: CROG170 JAROBEE BERKLEY G170**
 RITO 112 OF 2536 RITO 616 WHITESTONE WIDESPREAD MB
 THOMAS CAROL 7595 JAROBEE WIDESPREAD X38
 THOMAS CAROL 1246 JAROBEE LASSIES TRENDY R15

Mid-February 2019 Angus Australia BREEDPLAN																				
Angus	BIRTH				GROWTH				FERTILITY				CARCASE				OTHER			
	Dir	Dtrs	Gest	BW	200 W	400 W	600 W	MCW	Milk	DTC	SS	CWT	EMA	Rib	Rump	RBV%	IMF%	NFI-F	Doc	
EBV'S	+3.1	+3.0	-7.1	+3.8	+52	+97	+120	+104	+18	-6.7	+2.4	+72	+4.4	+1.1	+0.7	+0.1	+1.7	+0.39	--	
Acc	53%	46%	84%	73%	65%	64%	64%	61%	57%	41%	62%	60%	55%	61%	59%	57%	54%	51%		

\$Index Values				Raw Structural Assessments - 22/11/2018										
Angus Breeding	Domestic	Heavy Grain	Heavy Grass	F	R	F	R					Muscle	Temp	
+\$132	+\$124	+\$138	+\$128	6	6	6	6	6	6	6	6	4	C	1

Notes: What a package! A Berkley dam, a Thomas Up River sire. N239 displays depth and smooth shoulder, positive rib and rump as well as low Birth Weight.

Purchaser:..... \$.....

Lot 29 JAROBEE HAAS N218 # AMFU NHFU CAFU DD13% **HBR**

DOB: 4/08/2017 Tattoo: ROB N218 (T&F) Traits Observed: CE,BWT Ident: CRON218

GARDENS PRIME STAR HYLINE RIGHT TIME 338
 KC HAAS GPS K C F BENNETT PERFORMER
 KCH ELINE 549 K C F MISS 589 L182
SIRE: CXBL68 PRIME GPS L68 **DAM: CROE81 JAROBEE PERFORMER E81**
 ARDROSSAN EQUATOR A241 B/R NEW DESIGN 323-9150
 PRIME ZANDY G41 JAROBEE NEW DESIGN 9150 A89
 PRIME XANDYA52 JAROBEE COOLBERDA W8

Mid-February 2019 Angus Australia BREEDPLAN																				
Angus	BIRTH				GROWTH				FERTILITY				CARCASE				OTHER			
	Dir	Dtrs	Gest	BW	200 W	400 W	600 W	MCW	Milk	DTC	SS	CWT	EMA	Rib	Rump	RBV%	IMF%	NFI-F	Doc	
EBV'S	+0.8	+1.6	-4.3	+4.7	+45	+82	+109	+103	+16	-5.1	+2.5	+64	+2.9	-0.2	+0.8	+0.3	+1.4	-0.02	--	
Acc	42%	37%	65%	68%	58%	56%	56%	54%	48%	35%	52%	50%	53%	51%	49%	49%	44%			

\$Index Values				Raw Structural Assessments - 22/11/2018									
Angus Breeding	Domestic	Heavy Grain	Heavy Grass	F	R	F	R					Muscle	Temp
+\$111	+\$105	+\$112	+\$110	--	--	--	--	--	--	--	--	--	--

Notes: This bull is a son of a Bennetts Performer dam who has always produced very solid and thick animals.

Purchaser:..... \$.....

Lot 30 JAROBEE LOCH UP N324 # AMFU NHFU CAFU DDFU **HBR**

DOB: 1/09/2017 Tattoo: ROB N324 (T&F) Traits Observed: BWT Ident: CRON324

SITZ UPWARD 307R KAROO W109 DIRECTION Z181
 THOMAS UP RIVER 1614 CARABAR DOCKLANDS D62
 THOMAS CAROL 7595 CARABAR BLACKCAP MARY B12
SIRE: NMML133 MILLAH MURRAH LOCH UP L133 **DAM: CROK166 JAROBEE DOCKLAND K166**
 TE MANIA EMPEROR E343 K C F BENNETT PERFORMER
 MILLAH MURRAH BRENDA H49 JAROBEE PERFORMER D133
 MILLAH MURRAH BRENDA E64 JAROBEE PRINCESS ULTRA W26

Mid-February 2019 Angus Australia BREEDPLAN																				
Angus	BIRTH				GROWTH				FERTILITY				CARCASE				OTHER			
	Dir	Dtrs	Gest	BW	200 W	400 W	600 W	MCW	Milk	DTC	SS	CWT	EMA	Rib	Rump	RBV%	IMF%	NFI-F	Doc	
EBV'S	-0.6	+0.6	-5.8	+4.8	+52	+91	+122	+100	+19	-5.6	+2.5	+71	+4.2	+0.0	+0.1	+0.4	+1.3	+0.00	--	
Acc	48%	38%	66%	72%	65%	63%	62%	57%	49%	35%	61%	55%	52%	58%	56%	53%	55%	46%		

\$Index Values				Raw Structural Assessments - 22/11/2018										
Angus Breeding	Domestic	Heavy Grain	Heavy Grass	F	R	F	R					Muscle	Temp	
+\$119	+\$110	+\$119	+\$118	6	5	6	6	6	6	6	6	5	C	2

Notes: The dam of this bull has a great mix of genetics, sired by Loch Up and a Carabar Docklands dam. He has positive rib and rump.

Purchaser:..... \$.....

Lot 31 JAROBEE K447 N235 # AMFU NHFU CAFU DDF Ident: **HBR**

DOB: 26/07/2017 Tattoo: ROB N235 (T&F) Traits Observed: GL,CE,BWT Ident: CRON235

BOOROOMOOKA UNDERTAKEN Y145 S A V FINAL ANSWER 0035
 RENNYLEA EDMUND E11 CONNEALY RIGHT ANSWER 746
 LAWSONS HENRY VIII Y5 HAPPY DELL OF CONANGA 262
SIRE: NORK447 RENNYLEA K447 **DAM: CROJ141 JAROBEE RIGHT ANSWER J141**
 TE MANIA BERKLEY B1 K C F BENNETT PERFORMER
 RENNYLEA H457 JAROBEE PERFORMER F205
 RENNYLEA E6 HIDDEN-VALE AGENDA A52

Mid-February 2019 Angus Australia BREEDPLAN																				
Dir	BIRTH				GROWTH				FERTILITY				CARCASE				OTHER			
	Dtrs	Gest	BW	200 W	400 W	600 W	MCW	Milk	DTC	SS	CWT	EMA	Rib	Rump	RBY%	IMF%	NFI-F	Doc		
EBV'S	+1.0	+1.1	-5.4	+5.3	+54	+93	+125	+121	+14	-7.0	+2.6	+73	+5.0	+2.0	+1.3	+0.3	+1.8	+0.25	--	
Acc	45%	37%	84%	72%	62%	60%	61%	57%	49%	36%	57%	55%	47%	57%	54%	52%	47%	47%		

Index Values				Raw Structural Assessments - 22/11/2018									
Angus Breeding	Domestic	Heavy Grain	Heavy Grass	F	R	F	R					Muscle	Temp
+\$135	+\$119	+\$144	+\$129	6	5	6	6	6	5	5		C	1

Notes: N235 is in the high 10% for 200 day growth and high 15% for 400 and 600 day growth. Top 15% SS, top 5% positive rib and top 15% rump, as well as top 15% ABI and DOM and 20% GRN and GRS indexes.

Purchaser:..... \$.....

Lot 32 JAROBEE KAISER N347 # AMFU NHFU CAFU DDFU Ident: **HBR**

DOB: 1/04/2017 Tattoo: ROB N347 (T&F) Traits Observed: GL,BWT Ident: CRON347

TE MANIA CALAMUS C46 TE MANIA AMBASSADOR A134
 TE MANIA FOE F734 TUWHARETOA REGENT D145
 TE MANIA DANDLOO D700 LAWSONS HENRY VIII Y5
SIRE: SJKK26 GRANITE RIDGE KAISER K26 **DAM: CROH167 JAROBEE REGENT H167**
 NICHOLS QUIET LAD T9 JAROBEE CIRCLE A V24
 GRANITE RIDGE SUPREME F158 JAROBEE CIRCLE A 2000 Y47
 GRANITE RIDGE SUPREME D85 BOORHAMAN R26

Mid-February 2019 Angus Australia BREEDPLAN																				
Dir	BIRTH				GROWTH				FERTILITY				CARCASE				OTHER			
	Dtrs	Gest	BW	200 W	400 W	600 W	MCW	Milk	DTC	SS	CWT	EMA	Rib	Rump	RBY%	IMF%	NFI-F	Doc		
EBV'S	+1.1	-1.0	-6.2	+4.8	+51	+90	+124	+105	+19	-5.7	+1.7	+75	+7.6	+0.5	-0.6	+0.7	+2.0	+0.12	--	
Acc	46%	37%	85%	73%	64%	63%	62%	58%	49%	35%	60%	55%	54%	57%	56%	52%	53%	45%		

Index Values				Raw Structural Assessments - 22/11/2018									
Angus Breeding	Domestic	Heavy Grain	Heavy Grass	F	R	F	R					Muscle	Temp
+\$133	+\$116	+\$143	+\$127	6	5	6	6	5	6	5		C	2

Notes: A Kaiser son and a Regent dam. Great mix of genetics, length, thickness and growth. High 15% for 600 day growth, 20% for ABI and GRN indexes.

Purchaser:..... \$.....

Lot 33 JAROBEE K447 N236 # AMFU NHFU CAFU DDFU Ident: **HBR**

DOB: 23/07/2017 Tattoo: ROB N236 (T&F) Traits Observed: GL,CE,BWT Ident: CRON236

BOOROOMOOKA UNDERTAKEN Y145 TE MANIA YORKSHIRE Y437
 RENNYLEA EDMUND E11 TE MANIA BERKLEY B1
 LAWSONS HENRY VIII Y5 TE MANIA LOWAN Z53
SIRE: NORK447 RENNYLEA K447 **DAM: CROG15 JAROBEE BERKLEY G15**
 TE MANIA BERKLEY B1 B T ULTRAVOX 297E
 RENNYLEA H457 JAROBEE ULTRAVOX Z52
 RENNYLEA E6 JAROBEE PRINCESS MAXINE S24

Mid-February 2019 Angus Australia BREEDPLAN																				
Dir	BIRTH				GROWTH				FERTILITY				CARCASE				OTHER			
	Dtrs	Gest	BW	200 W	400 W	600 W	MCW	Milk	DTC	SS	CWT	EMA	Rib	Rump	RBY%	IMF%	NFI-F	Doc		
EBV'S	+2.9	+1.7	-8.0	+4.7	+50	+86	+116	+126	+09	-9.0	+2.1	+71	+5.2	+2.1	+0.9	-0.2	+2.6	+0.43	--	
Acc	50%	43%	85%	74%	65%	63%	64%	60%	53%	42%	60%	58%	57%	60%	58%	55%	50%	51%		

Index Values				Raw Structural Assessments - 22/11/2018									
Angus Breeding	Domestic	Heavy Grain	Heavy Grass	F	R	F	R					Muscle	Temp
+\$141	+\$119	+\$160	+\$129	5	5	6	6	5	5	5		C	1

Notes: K447 sire and G15, daughter of Berkley B1, are genetics that should produce a solid growthy animal that wont disappoint. N236 has positive rib and rump, he is in the high 10% for ABI and GRN in the high 15% for GRS.

Purchaser:..... \$.....

Lot 34 JAROBEE N178 # AMFU NHFU CAFU DDF **HBR**

DOB: 8/08/2017 Tattoo: ROB N178 (T&F) Traits Observed: CE,BWT Ident: CRON178



BOOROOMOOKA UNDERTAKEN Y145
 RENNYLEA EDMUND E11
 LAWSONS HENRY VIII Y5
SIRE: NORK522 RENNYLEA KODAK K522
 TE MANIA BERKLEY B1
 RENNYLEA EISA ERICA F810
 RENNYLEA EISA ERICA C299

TC TOTAL 410
 LAWSONS NOVAK E313
 LAWSONS PREDESTINED B770
DAM: CROL140 JAROBEE NOVAK L140
 H S A F BANDO 1961
 JAROBEE BANDO1961 C127
 JAROBEE CIRCLE A Y66

Mid-February 2019 Angus Australia BREEDPLAN

	BIRTH				GROWTH				FERTILITY				CARCASE				OTHER		
	Dir	Dtrs	Gest	BW	200 W	400 W	600 W	MCW	Milk	DTC	SS	CWT	EMA	Rib	Rump	RBV%	IMF%	NFI-F	Doc
EBV'S	+1.1	+2.4	-4.6	+3.1	+47	+83	+106	+101	+14	-8.0	+2.5	+63	+3.0	+0.8	-0.2	-0.3	+3.0	+0.37	--
Acc	47%	39%	69%	70%	64%	63%	61%	57%	50%	36%	58%	56%	55%	58%	56%	52%	47%	48%	

\$Index Values			
Angus Breeding	Domestic	Heavy Grain	Heavy Grass
+\$129	+\$115	+\$147	+\$118

Raw Structural Assessments - 22/11/2018								
F	R	F	R				Muscle	Temp
6	6	6	6	6	5	5	C+	2

Notes: N178s dam L140 is a Novak daughter and sire Kodak are a great combination to mate with heifers.

Purchaser:..... \$.....

Lot 35 JAROBEE KAISER N301 # AMFU NHFU CAFU DDF **HBR**

DOB: 23/08/2017 Tattoo: ROB N301 (T&F) Traits Observed: GL,CE,BWT Ident: CRON301

TE MANIA CALAMUS C46
 TE MANIA FOE F734
 TE MANIA DANDLOO D700
SIRE: SJKK26 GRANITE RIDGE KAISER K26
 NICHOLS QUIET LAD T9
 GRANITE RIDGE SUPREME F158
 GRANITE RIDGE SUPREME D85

TE MANIA INFINITY 04 379 AB
 WELCOME SWALLOW INFINITY F250
 WELCOME SWALLOW DIMENSION DAY D198
DAM: CMAJ395 WELCOME SWALLOW INFINITY J395
 KMK ALLIANCE 6595 I87
 WELCOME SWALLOW ALLIANCE LOWAN B40
 TE MANIA LOWAN X41

Mid-February 2019 Angus Australia BREEDPLAN

	BIRTH				GROWTH				FERTILITY				CARCASE				OTHER		
	Dir	Dtrs	Gest	BW	200 W	400 W	600 W	MCW	Milk	DTC	SS	CWT	EMA	Rib	Rump	RBV%	IMF%	NFI-F	Doc
EBV'S	+0.0	-1.5	-5.9	+5.0	+51	+92	+125	+106	+19	-4.8	+2.0	+70	+5.4	+0.1	-0.4	+0.3	+1.7	-0.02	--
Acc	43%	33%	84%	72%	64%	63%	62%	57%	47%	32%	59%	54%	54%	57%	55%	51%	48%	43%	

\$Index Values			
Angus Breeding	Domestic	Heavy Grain	Heavy Grass
+\$121	+\$109	+\$126	+\$119

Raw Structural Assessments - 22/11/2018								
F	R	F	R				Muscle	Temp
6	6	6	6	5	5	5	C+	2

Notes: Kaiser son with length and thickness. Is in the high 20% for 200 and 400 day growth and the high 15% for 600 day growth.

Purchaser:..... \$.....

Lot 36 JAROBEE GENESIS N306 # AMFU NHFU CAFU DDF **HBR**

DOB: 28/08/2017 Tattoo: ROB N306 (T&F) Traits Observed: GL,CE,BWT Ident: CRON306

TE MANIA YORKSHIRE Y437
 TE MANIA BERKLEY B1
 TE MANIA LOWAN Z53
SIRE: SMPG357 PATHFINDER GENESIS G357
 ARDROSSAN DIRECTION W109
 PATHFINDER DIRECTION D245
 PATHFINDER ADAVALE A433

PAPA EQUATOR 2928
 ARDROSSAN EQUATOR A241
 ARDROSSAN PRINCESS W38
DAM: CROE70 JAROBEE EQUATOR E70
 JAROBEE NEW DESIGN 036 X66
 JAROBEE NEW DESIGN 036 A54
 JAROBEE QUEEN MAXI T39

Mid-February 2019 Angus Australia BREEDPLAN

	BIRTH				GROWTH				FERTILITY				CARCASE				OTHER		
	Dir	Dtrs	Gest	BW	200 W	400 W	600 W	MCW	Milk	DTC	SS	CWT	EMA	Rib	Rump	RBV%	IMF%	NFI-F	Doc
EBV'S	+0.2	+1.3	-6.5	+5.6	+54	+96	+127	+128	+17	-5.0	+2.8	+84	+8.6	+0.7	-1.1	+1.3	+1.6	+0.60	--
Acc	53%	46%	85%	73%	66%	64%	65%	62%	57%	44%	63%	61%	55%	62%	60%	57%	54%	55%	

\$Index Values			
Angus Breeding	Domestic	Heavy Grain	Heavy Grass
+\$130	+\$119	+\$139	+\$126

Raw Structural Assessments - 22/11/2018								
F	R	F	R				Muscle	Temp
6	5	6	6	6	6	5	C	1

Notes: A great Genesis son who is in the high 10% for 200, 400 and 600 day growth as well as in the high 10% for SS and EMA.

Purchaser:..... \$.....

Lot 37 JAROBEE N242 # AMFU NHFU CAFU DDFU **HBR**

DOB: 26/07/2017 Tattoo: ROB N242 (T&F) Traits Observed: GL,CE,BWT Ident: CRON242

BOOROOMOOKA UNDERTAKEN Y145 G A R SOLUTION
 RENNYLEA EDMUND E11 LAWSONS INVINCIBLE C402
 LAWSONS HENRY VIII Y5 LAWSONS PREDESTINED A598
SIRE: NORK447 RENNYLEA K447 **DAM: CROG250 JAROBEE INVINCIBLE G250**
 TE MANIA BERKLEY B1 ARDROSSAN EQUATOR A241
 RENNYLEA H457 JAROBEE EQUATOR D120
 RENNYLEA E6 JAROBEE S.S.TRAVELER T 510 Z24

Mid-February 2019 Angus Australia BREEDPLAN																					
Angus	BIRTH				GROWTH				FERTILITY				CARCASE				OTHER				
	Dir	Dtrs	Gest	BW	200 W	400 W	600 W	MCW	Milk	DTC	SS	CWT	EMA	Rib	Rump	RBY%	IMF%	NFI-F	Doc		
EBV'S	+1.9	-0.4	-5.8	+4.4	+49	+85	+116	+112	+12	-7.8	+1.9	+72	+5.8	+0.9	+0.6	+0.1	+2.8	+0.55	--		
Acc	49%	42%	84%	72%	63%	61%	62%	58%	51%	40%	58%	56%	55%	58%	56%	53%	54%	49%	--		

\$Index Values				Raw Structural Assessments - 22/11/2018									
Angus Breeding	Domestic	Heavy Grain	Heavy Grass	F	R	F	R	F	R	F	R	Muscle	Temp
+\$140	+\$118	+\$159	+\$129	6	5	6	6	5	5	4	C	3	

Notes: N242 is backed by dam G250 x Invincible with sire K447. High 10% for both ABI and GRN indexes.

Purchaser:..... \$.....

Lot 38 JAROBEE KAISER N250 # AMF NHF CAFU DDFU **HBR**

DOB: 25/07/2017 Tattoo: ROB N250 (T&F) Traits Observed: GL,CE,BWT Ident: CRON250

TE MANIA CALAMUS C46 TE MANIA YORKSHIRE Y437
 TE MANIA FOE F734 TE MANIA BERKLEY B1
 TE MANIA DANDLOO D700 TE MANIA LOWAN Z53
SIRE: SJKK26 GRANITE RIDGE KAISER K26 **DAM: CROG263 JAROBEE BERKLEY G263**
 NICHOLS QUIET LAD T9 C A FUTURE DIRECTION 5321
 GRANITE RIDGE SUPREME F158 JAROBEE FUTURE DIRECTION A97
 GRANITE RIDGE SUPREME D85 JAROBEE ULTRAVOX W47

Mid-February 2019 Angus Australia BREEDPLAN																					
Angus	BIRTH				GROWTH				FERTILITY				CARCASE				OTHER				
	Dir	Dtrs	Gest	BW	200 W	400 W	600 W	MCW	Milk	DTC	SS	CWT	EMA	Rib	Rump	RBY%	IMF%	NFI-F	Doc		
EBV'S	+2.4	+2.0	-5.4	+4.2	+51	+92	+124	+112	+19	-6.8	+1.9	+74	+7.4	+1.0	-0.3	+0.2	+2.3	+0.28	--		
Acc	47%	39%	84%	73%	65%	64%	63%	59%	50%	37%	62%	56%	53%	59%	57%	54%	51%	48%	--		

\$Index Values				Raw Structural Assessments - 22/11/2018									
Angus Breeding	Domestic	Heavy Grain	Heavy Grass	F	R	F	R	F	R	F	R	Muscle	Temp
+\$140	+\$121	+\$154	+\$132	6	5	6	6	6	5	4	C	1	

Notes: Kaiser and Berkely B1 genetics combine well to produce the goods, high 10% for GRS, high 15% for DOM and GRN indexes, high 15% for 600 day growth and high 20% for 200 and 400 day growth. High 15% for EMA.

Purchaser:..... \$.....

Lot 39 JAROBEE LOCH UP N320 # AM2% NHFU CAFU DDF **HBR**

DOB: 21/08/2017 Tattoo: ROB N320 (T&F) Traits Observed: GL,BWT Ident: CRON320

SITZ UPWARD 307R TE MANIA BARTEL B219
 THOMAS UP RIVER 1614 AYRVALE BARTEL E7
 THOMAS CAROL 7595 EAGLEHAWK JEDDA B32
SIRE: NMML133 MILLAH MURRAH LOCH UP L133 **DAM: CROK42 JAROBEE BARTEL K42**
 TE MANIA EMPEROR E343 RENNYLEA DIGGER D288
 MILLAH MURRAH BRENDA H49 JAROBEE DIGGER H121
 MILLAH MURRAH BRENDA E64 JAROBEE YORKSHIRE E147



Mid-February 2019 Angus Australia BREEDPLAN																					
Angus	BIRTH				GROWTH				FERTILITY				CARCASE				OTHER				
	Dir	Dtrs	Gest	BW	200 W	400 W	600 W	MCW	Milk	DTC	SS	CWT	EMA	Rib	Rump	RBY%	IMF%	NFI-F	Doc		
EBV'S	+1.0	+2.5	-5.2	+3.7	+54	+93	+122	+91	+21	-7.4	+2.2	+71	+3.5	-1.0	-0.5	+0.1	+2.4	-0.06	--		
Acc	48%	39%	85%	73%	65%	64%	62%	58%	50%	35%	61%	56%	57%	59%	57%	54%	50%	48%	--		

\$Index Values				Raw Structural Assessments - 22/11/2018									
Angus Breeding	Domestic	Heavy Grain	Heavy Grass	F	R	F	R	F	R	F	R	Muscle	Temp
+\$137	+\$122	+\$149	+\$129	6	5	6	6	5	5	5	C	2	

Notes: This is another bull that has a very positive mix of genetics with the thickness and depth of Loch Up with K42 a Bartel E7 dam.

Purchaser:..... \$.....

Lot 40 JAROBEE KAISER N254 # AMFU NHFU CAFU DDFU **HBR**

DOB: 2/07/2017 Tattoo: ROB N254 (T&F) Traits Observed: CE,BWT Ident: CRON254

TE MANIA CALAMUS C46
TE MANIA FOE F734
TE MANIA DANDLOO D700

TE MANIA YORKSHIRE Y437
TE MANIA BERKLEY B1
TE MANIA LOWAN Z53

SIRE: SJKK26 GRANITE RIDGE KAISER K26

DAM: CROG175 JAROBEE BERKLEY G175

NICHOLS QUIET LAD T9
GRANITE RIDGE SUPREME F158
GRANITE RIDGE SUPREME D85

B T ULTRAVOX 297E
JAROBEE ULTRA LASSIE W19
STRATHTAY LASSIE L35+91

Mid-February 2019 Angus Australia BREEDPLAN																				
Angus	BIRTH				GROWTH				FERTILITY				CARCASE				OTHER			
	Dir	Dtrs	Gest	BW	200 W	400 W	600 W	MCW	Milk	DTC	SS	CWT	EMA	Rib	Rump	RBY%	IMF%	NFI-F	Doc	
EBV'S	+2.2	+1.3	-6.3	+4.7	+52	+94	+126	+119	+18	-7.0	+2.3	+72	+6.6	+1.1	+0.1	+0.1	+2.1	+0.20	--	
Acc	47%	39%	65%	72%	65%	63%	63%	58%	50%	37%	61%	56%	52%	58%	57%	53%	55%	47%		

\$Index Values				Raw Structural Assessments - 22/11/2018									
Angus Breeding	Domestic	Heavy Grain	Heavy Grass	F	R	F	R					Muscle	Temp
+\$138	+\$120	+\$151	+\$131	5	5	6	6	5	5	5	5	C	2

Notes: Again the Kaiser and Berkley B1 genetics are notable with indexes in the high 10% for ABI and GRS, high 15% for DOM and GRS, high 10% 600 day growth, 200 and 400 day growth in high 15% as well as positive rib and rump.

Purchaser:..... \$.....

Lot 41 JAROBEE KAISER N299 # AMFU NHFU CAFU DDFU **HBR**

DOB: 4/09/2017 Tattoo: ROB N299 (T&F) Traits Observed: GL,BWT Ident: CRON299

TE MANIA CALAMUS C46
TE MANIA FOE F734
TE MANIA DANDLOO D700

O S U 6T6 ULTRA
B T ULTRAVOX 297E
FINKS VIXON 788

SIRE: SJKK26 GRANITE RIDGE KAISER K26

DAM: CROA24 JAROBEE ULTRAVOX A24

NICHOLS QUIET LAD T9
GRANITE RIDGE SUPREME F158
GRANITE RIDGE SUPREME D85

B S S LIMITED DESIGN
JAROBEE BSS LIMITED DESIGN X18
JAROBEE WILLS THREAT T58

Mid-February 2019 Angus Australia BREEDPLAN																				
Angus	BIRTH				GROWTH				FERTILITY				CARCASE				OTHER			
	Dir	Dtrs	Gest	BW	200 W	400 W	600 W	MCW	Milk	DTC	SS	CWT	EMA	Rib	Rump	RBY%	IMF%	NFI-F	Doc	
EBV'S	+0.4	-1.9	-5.2	+5.3	+52	+95	+129	+115	+19	-4.5	+2.0	+71	+5.7	+0.5	+0.0	+0.3	+1.9	-0.03	--	
Acc	47%	39%	85%	73%	64%	63%	63%	58%	49%	36%	60%	55%	55%	57%	56%	52%	50%	45%		

\$Index Values				Raw Structural Assessments - 22/11/2018									
Angus Breeding	Domestic	Heavy Grain	Heavy Grass	F	R	F	R					Muscle	Temp
+\$126	+\$112	+\$134	+\$122	6	6	6	6	6	5	5	5	C+	2

Notes: Is another Kaiser son combined with an A241 dam for length and volume, with notable growth 200 day in top 15% and 400 and 600 day in the top 10%.

Purchaser:..... \$.....



BRINGING YOUR NEW BULL HOME

WHEN PURCHASING A BULL, CARE AND HANDLING AFTER THE SALE CAN BE AS IMPORTANT AS THE PURCHASE ITSELF.
LOOKING AFTER YOUR BULL WELL DURING THE INITIAL STAGES OF HIS WORKING LIFE MAY ENSURE LONGEVITY
AND SUCCESS WITHIN YOUR BREEDING HERD.

PURCHASE

Temperament is an important characteristic when selecting a bull. Selecting a bull that may be flighty or aggressive will make life difficult for you each time he is handled. Note which bulls continually push to the centre of a mob, run around, or are unreasonably nervous, aggressive or excited.

At the sale, note any changes of temperament by individual bulls. Some bulls that are quiet in the yard or paddock may not like the pressure and noise of the auction and become excited. Others that were excited beforehand get much worse in the sale ring and can really perform. Use the yard or paddock behaviour as a guide, rather than the temperament shown in the ring.

DELIVERY

When transporting your new bull insurance against loss in transit, accidental loss of use, or infertility, is sometimes provided by vendors. Where it is not, it is worth considering. After purchase tips:

- When purchasing, ask which health treatments he has received.
- Treat and handle him quietly at all times - no dogs, no buzzers. Talk to him and give him time and room to make up his mind.
- With more than one bull from different origins, you must be able to separate them on the truck.
- Make sure that the truck floor is covered to prevent bulls from slipping. Sand, sawdust or a floor grid will prevent bulls from being damaged by going down in transit.
- If you can arrange it, put a few quiet cows or steers on the truck with the bull. Let them down into a yard with the bulls for a while before loading and after unloading.
- Unload and reload during the trip as little as possible. If necessary, rest with water and feed. Treat bulls kindly your impatience or nervousness is easily transmitted to an animal unfamiliar to you and unsure of his environment.

IF YOU USE A PROFESSIONAL CARRIER:

- Make sure the carrier knows which bulls can be mixed together.

- Discuss with the carrier, resting procedures for long trips, expected delivery time, truck condition and quiet handling.
- Give ear tag and brand numbers to the carrier and make sure you have the carrier's phone number.
- If buying bulls from interstate, organise any necessary health tests before leaving and work out if any other requirements must be met before cattle can come into another State.

When buying bulls from far away, you may often have to fit in with other delivery arrangements to reduce cost. You should make it clear how you want your bulls handled.

ARRIVAL

When the bull or bulls arrive home, unload them at the yards into a group of house cows, steers or herd cows. Never jump them from the back of a truck directly into a paddock—it may be the last time you see them. Bulls from different origins should be put into separate yards with other cattle for company.

Provide hay and water, then leave them alone until the next morning.

The next day, bulls should receive routine health treatments. If they have not been treated before, all bulls should be vaccinated with:

- 5-in-1 vaccine;
- vibriosis vaccine;
- leptospirosis vaccine (if in areas like the Hunter where leptospirosis exists);
- three-day sickness vaccine (if in areas where this sickness can cause problems).

Give particular attention to preventing new bulls bringing vibriosis into a herd. Vibriosis, a sexually transmitted disease, causes infertility and abortions and is most commonly introduced to a clean herd by an infected bull. These bulls show no signs of the illness. Vaccinated bulls are free from vibriosis, so vaccinating bulls against the disease should be a routine practice.

Vaccination involves two injections, 4–6 weeks apart, at the time of introduction, and then a booster shot every year. Complete the vaccinations 4 weeks before joining.

PURCHASE

**DELIVERY
MANAGING OLDER HERD BULL**

**AFTER PURCHASE TIPS
DURING MATING**

ARRIVAL

**MATING NEW YOUNG BULLS
NORTHERN AUSTRALIA**



BRINGING YOUR NEW BULL HOME

Consult with your veterinarian and draw up a policy for treating bulls on arrival and then annually. Bulls should be drenched to prevent introducing worms and, if necessary, should be treated for lice.

Plan to give follow-up vaccinations 4–6 weeks later. Leave the bulls in the yards for the next day or two on feed and water to allow them to settle down with other stock for company. A bull's behaviour will decide how quickly he can be moved out to paddocks.

MATING NEW YOUNG BULLS

Newly purchased young bulls should not be placed with older herd bulls for multiple-sire joining. The older, dominant bull will not allow the young bulls to work, and will knock them around while keeping them away from the cows.

Use new bulls in either single-sire groups or with young bulls their own age. If a number of young bulls are to be used together, run them together for a few weeks before joining starts. They sort out their pecking order quickly and have few problems later.

When the young bulls are working, inspect them regularly and closely.

MATING NEW YOUNG BULLS

Older working bulls also need special care and attention before mating starts. They should be tested or checked every year for physical soundness, testicle tone, and serving capacity or ability.

All bulls to be used must be free-moving, active and in good condition. Working bulls may need supplementary feeding before the joining season to bring up condition.

DURING MATING

- Check bulls at least twice each week for the first 2 months. Get up close to them and watch each bull walk; check for swellings around the sheath and for lameness.
- Have a spare bull or bulls available to replace any that break down. Replace any suspect bull immediately.
- Rotate bulls in single-sire groups to make sure that any bull infertility is covered. Single-sire joining works well but it has risks. The bulls must be checked regularly and carefully, or the bulls should be rotated every one or two cycles.

Bulls are a large investment for breeding herds and they have a major effect on herd fertility. A little time and attention to make sure they are fit, free from disease and actively working is well worthwhile.

NORTHERN AUSTRALIA

Although the Angus breed originated in a cooler climate, they can adapt to subtropical regions with many straight-bred and cross bred producers finding success in Northern Australia. Some of the following information may also be helpful for new bulls located in more temperate climates.

ADAPTATION

The key to Northern success for Angus is that cattle introduced from the Southern regions of Australia be allowed to adapt to their new environment before commencing their working life. If possible, a break of 3 months is advisable before you set your bull to work.

PURCHASE IN COOLER MONTHS

Ensure your bulls are in good condition before they do commence their working life. The cooler months are an ideal time to purchase and introduce Angus cattle, allowing them plenty of time to acclimatise.

CHANGE OF FEED SOURCE

When inducting Angus cattle into your herd consider their source of feed. Have you taken an animal which has been supplemented on grain straight to a dry pasture? Animals should be gradually changed over to their new feed to ensure they do not lose condition. This may involve using supplements which could include dry lick/urea blocks.

MANAGING CATTLE TICKS

For ticky areas, bulls should be vaccinated prior to transport and given another booster afterwards. Remember males are more susceptible to ticks than females.

Information is provided by the Department of Primary Industries NSW. For further information visit the DPI web site: www.dpi.nsw.gov.au. or www.angusaustralia.com.au. Further reading - Buying Angus Bulls

FOR FURTHER INFORMATION VISIT
www.angusaustralia.com.au

Angus Australia Locked Bag 11, Armidale NSW 2350
Phone: (02) 6772 3011 | Fax: (02) 6772 3095
Email: office@angusaustralia.com.au
Website: www.angusaustralia.com.au

WWW.ANGUSAUSTRALIA.COM.AU

#ANGUSPREMIUM

#ANGUSBULLS



IMPORTANT NOTICES FOR PURCHASERS

~ SALE CATALOGUE DISCLAIMER ~

All reasonable care has been taken by the vendor to ensure that the information provided in this catalogue is correct at the time of publication. However, neither the vendor nor the selling agents make any other representations about the accuracy, reliability or completeness of any information provided in this catalogue and do not assume any responsibility for the use or interpretation of the information included in this catalogue. You are encouraged to seek independent verification of any information contained in this catalogue before relying on such information.

~ DNA PATERNITY VERIFICATION ~

It is a requirement of Angus Australia that all bulls used to sire calves for registration in the Angus Australia Herd Book Register, Red Angus Register or Angus Performance Register must have been DNA paternity verified if they are born in or after the 'Y' year (2003). Buyers intending to use bulls listed in this catalogue to produce calves to be registered in these registers should obtain DNA paternity verification on those bulls before they are used for breeding.

~ PRIVACY INFORMATION ~

In order for Angus Australia to process the transfer of a registered animal in this catalogue, the vendor will need to provide certain information to Angus Australia and the buyer consents to the collection and disclosure of that information by Angus Australia in certain circumstances. If the buyer does not wish for his or her information to be stored and disclosed by Angus Australia, the buyer must complete the form included below and forward it to Angus Australia. If the form is not completed, the buyer will be taken to have consented to the disclosure of such information.

BUYER'S OPTION TO OPT OUT OF DISCLOSING PERSONAL INFORMATION TO THE ANGUS AUSTRALIA

If you do not complete this form, you will be taken to have consented to Angus Australia using your name, address and phone number for the purposes of effecting a change of registration of the animal(s) that you have purchased, maintaining its databases and disclosing that information to its members on its website.

*I, the buyer of animals with the following registration numbers
..... from
member (name) do not consent to Angus Australia
using my name, address and phone number for the purposes of effecting a change of registration of
the following animal(s) that I have purchased, maintaining its databases and disclosing that
information to its members on its website.*

Signature:

Date:

*Please forward this completed consent form to Angus Australia, Glen Innes Road, Locked Bag 11,
Armidale NSW 2350. If you have any queries, please telephone 02 6772 3011 or
e-mail office@angusaustralia.com.au.*

JAROBEE

• ANGUS •



KAISER K26



Reg#: SJJK26
Sire: Te Mania Foe F734
MGS: Nichols Quiet Lad T9

- ▶ Kaiser progeny continue to impress right across the country, with progeny highly sought after and topping the Granite Ridge and Koojan Hills bull sales in 2019
 - ▶ \$52,000 top priced bull in the 2016 Granite Ridge bull sale.
 - ▶ Bred from the outstanding "Supreme" cow family at Granite Ridge Angus.
- ▶ Kaiser K26 offers a unique pedigree with no sacrifice on performance or carcase traits.
- ▶ Kaiser is long bodied with great muscle shape and dimension, with sound feet and legs.
- ▶ A true performance sire ranking in the top 2% of the breed for 200D, 400D and 600D growth EBV's and he ticks all the boxes for Carcase Weight, positive for Rib & Rump Fat and top 5% for 11 individual EBV's & Indexes.
 - ▶ Top 4% of the breed for Docility EBV at +25

	CE Dir	CE Dtrs	GL	BWT	200	400	600	MCW	Milk	DTC	SS	DOC	CWT	EMA	RIB	P8	RBV	IMF	ABI	DOM	GRN	GRS
EBV	2.4	1.0	-6.8	4.9	59	105	145	120	24	-6.1	2.3	25	83	8.8	0.7	-0.7	0.7	1.9	\$152	\$129	\$165	\$146
(Acc)	73%	51%	98%	97%	94%	94%	93%	82%	69%	47%	93%	92%	77%	81%	82%	80%	74%	78%				
Perc	19	40	10	65	2	2	1	6	2	18	25	4	2	5	28	65	40	40	2	3	5	1

Genetics Australia Co-Operative Limited
PO Box 195
BACCHUS MARSH
VIC 3340 AUSTRALIA

Nigel Semmens
M: 0439 417 941
E: nsemmens@genaust.com.au
Freecall: 1800 039 047
www.genaust.com.au

Genetocs
AUSTRALIA
Breeding better Australian herds

JAROBEE
• ANGUS •