

# GLENLIAM FARM *Murray Greys*

*Complete Female Herd Dispersal*



**1:00pm**

**Saturday 2nd March 2019**

@

**'Glenliam Farm'**

**414 Glen William Road, Glen William NSW 2321**

★ **Final opportunity to secure Glenliam's best of the best after 25 years of breeding** ★



Colin Say & Co Pty Ltd

rma network. Accredited Members

AuctionsPlus<sup>®</sup>





*We have supported the next generation for 21 years... now it's your turn*



**MURRAY GREYS**  
**AUSTRALIAN MADE**  
NEW ENGLAND BREED PROMOTION GROUP





# **GLENLIAM FARM MURRAY GREYS**

## **Complete Female Herd Dispersal**

**Saturday 2<sup>nd</sup> March**

**1:00pm @**

**'Glenliam Farm'**

**414 Glen William Road, Glen William NSW 2321**

### **Inspections:**

Cattle will be available for inspection by appointment only prior to sale day.

Sale day inspections commence from 9am.

Complementary morning tea, lunch and refreshments available on sale day.

Bryce Whale: P: 0428 964 583      E: glenliam@bmr.net.au

Annika Whale: P: 0447 130 431      E: annika.whale@gmail.com

**Catalogue online at [www.murraygrey.com.au](http://www.murraygrey.com.au)**



**Colin Say & Co Pty Ltd**

Shad Bailey – 0458 322 283

Nathan Purvis – 0427 324 078



**AuctionsPlus<sup>®</sup>**

Office – 02 6732 1266

### ***CELEBRATION DINNER INVITATION***

*Please join us for a casual dinner & drinks  
at Glenliam Farm on Saturday 2<sup>nd</sup> March  
following the sale to celebrate the end of an era!*

*RSVP by 22<sup>nd</sup> February  
via Facebook Event on Glenliam page OR  
Phone Diane on 0428 964 335*

## **Welcome to the Glenliam Farm Female herd dispersal sale**

After 25 years involvement with the breed and working with these cattle, it is with a heavy heart that we say farewell to the Glenliam herd.

With this happening it allows many breeders the opportunity to secure some of the breeds' best genetics. Securing top females is the foundation to success in the seedstock industry. Purchasing new female lines has allowed us to broaden our genetic base over the past 25 years. Now it is your opportunity!

Glenliam Farm has been able to compete at the highest level of competition throughout Eastern Australia with numerous Championships over the years, though the management focus is very mindful of industry commercial attributes. Glenliam is based in the coastal region of the Hunter Valley and having cattle that thrive in this environment has been paramount. Doing ability is a must and the cattle that have lasted through the years are represented in the females in this catalogue.

We have arranged the catalogue into family lines, by doing this, it recognises some of the foundation female lines that have worked well for us, and through Embryo Transfer have multiplied quickly. Not to forget the smaller families at the end of the catalogue, these contain some exceptional females, though without multiple ET programs, have not multiplied as quickly.

Of the sires used over the years a few stand out. Roborn Mr Muscle was a strong female producer, Glenliam Farm Zeppelin Z80 and his son Glenliam Farm Drover D107, both put some genuine muscle through the herd and produced some strong steer performances. But Tullibardine Jeopardy J14 has made the most impact giving us both growth and muscle in our bulls and females.

To all our past clients we thank you for your support over the years. To our bull buying clients we are only selling the 3 working sires at the dispersal. Yearling bulls and ET 'P' bull calves have been retained for future marketing over the next 2 years. Note that we will be selling 3 exceptional sires at the National (all Jeopardy sons) in April this year followed by a team of 5 bulls for the Top of Range Sale in July at Glen Innes.

For over 25 years our family has been involved with this wonderful breed, and along the way we have made some lifelong friends.

In closing we thank the Cowley family for the opportunity they gave us 25 years ago to develop and work with this wonderful herd.

We hope that the purchasers of these cattle continue to gain the enjoyment and success that we have had with the Glenliam cattle.

Regards

The Whale family

Managers of Glenliam Farm

# **SALE INFORMATION**

**Saturday 2<sup>nd</sup> March**

**9am – Inspections**

**1pm – Cattle Auction interfaced with AuctionsPlus**

**Complementary Morning Tea, Lunch and Refreshments available on sale day.**

**Inspections** – Pre-sale inspections are welcome prior to the sale by phoning the vendor and/or agents or on sale day from 9am.

**Phone Bidding** - Glenliam Farm has strong Telstra mobile phone service. Phone bidding available, contact must be made with the agents 48hrs prior.

**AuctionsPlus** – The sale will be interfaced with AuctionsPlus for those unable to attend.

**Buyers Number System** – will be operating at the sale, all prospective buyers must register prior to the sale.

**Junior Discount** – A 5% discount will be applied to all junior members if they pre-register by phoning the Colin Say & Co office on 02 6732 1266 by Monday 25<sup>th</sup> February. No discount will be given if not pre-registered.

**Herd Health** - Glenliam has conducted a farm biosecurity plan and has faecal tested and is classed at a **J-Bas 8** and therefore **eligible to ALL STATES!** Glenliam was previously a JD MAP herd since 1997 until converted to the J-Bas system.

**ALL LOTS** have been **PI PESTIVIRUS TESTED NEGATIVE!**

All joined lots have had up-to-date 7in1 vacc, unjoined cattle have had 5in1. All lots were given Cydectin pour-on on 21/11/18.

**SPECIAL NOTE regarding SPRING JOININGS**

Spring Joining this year has been very disruptive with the follow up sires having to be swapped twice. Therefore, in the event of birth dates not clearly defining a sire, Glenliam will pay for sire verification if deemed necessary.

**Society Transfers** - transfers of all cattle will be carried out with the Murray Grey Beef Cattle Society upon settlement at the vendors expense.

**Deliveries & Transport – No cattle will be transported until Monday 4<sup>th</sup> March.**

Glenliam Farm recommend using Falls Transport. Lockie Falls will be present on sale day co-ordinating all deliveries. Any inquiries regarding freight please don't hesitate to contact Lockie Falls – 0429 826 342. All care will be given, however, no responsibility is taken during delivery.

**Insurance** – Can be obtained at the fall of the hammer and must be indicated on your buyer's instruction slip.

**Warranty** - As this sale represents the conclusion of Glenliam Farm Female Herd all cattle are being sold in good faith without guarantee or warranty.

**Terms & Conditions** – as displayed on sale day.

**Internet** – Further information and photos available on [www.murraygrey.com.au](http://www.murraygrey.com.au) (then click on sale catalogue). Video footage for all sale lots will be available through AuctionsPlus. Links are also available through our Facebook page.

**Location** – Glenliam is located at **414 Glen William Road, Glen William**; 4km north of Clarence Town. We are located only 45km from Newcastle airport a short 37-minute drive. Newcastle airport has regular flights from Brisbane, Melbourne and Sydney.

**Accommodation** - is also readily available at the following locations:

- Clarence Town (4km): 1 hotel & some BnB's
- Dungog (22km): motel, hotel & BnB's
- Raymond Terrace (39km): numerous hotels & motels
- Maitland (45km): numerous hotels & motels
- Newcastle airport (45km): Mercure Hotel

**Disclaimer** – All care has been taken in compiling this catalogue, however, responsibility lies with the prospective purchasers to determine its accuracy.



The Antoinette family needs little introduction. Orcadia Park Antoinette 1173 was purchased from the Wesley family in our initial year. GW 1173 flushed very successfully, producing 80 recorded progeny and two daughters alone producing over 80 registered progeny. Two daughters went on to win Champion Female at Melbourne Royal and one of those also winning Supreme Exhibit at Sydney Royal Feature in 1995 as a 9 year old against 150 head, whilst numerous descendants have won Championships throughout Australia. Pictured Antoinette son KEC H27.

# Antoinette Family

**1 GLENLIAM FARM ANTOINETTE E25 (PB)**

**Ident: KEC E25**

WELLBROOK FLASH MAC+92 (PB)  
 DEHAVALYN NEW SOUTH WALES (PB) (AI)  
 DEHAVALYN KISS ME QUICK P4 (PB) (AI)

**Born:** 08/08/2009

**Sex:** F

**Colour:** Silver

**Sire: GLENLIAM FARM ZEPPLIN Z80 (PB)**

ORCADIA PARK REMBRANDT (PB)  
 GLENLIAM FARM VALSARI T16 (PB) (AI) (ET)  
 MT VIEW VALSARI J67 (PB)

**Notes:** Star Lot - Donor. Moderate framed, deep bodied female. Has bred multiple stud sires both retained for in herd use and sold to \$11,000. Breeds top of the drop heifers including Lot 2. Dry due to ET work. AI'd to PIE J14 on 4/9/18 then dep'd with LEJ M47 from 19/9/18 to 8/11/18 then to WMM L885 from 9/11/18 then back to LEJ M47 on the 13/12/18 until 9/1/19.

GLENLIAM FARM VALVE V51 (PB)  
 GLENLIAM FARM YOKAHAMA Y56 (PB)  
 GLENLIAM FARM ANTOINETTE Q18 (PB)

**Dam: GLENLIAM FARM ANTOINETTE B11 (PB)**

VICTOREE SCOTCH CAP K46 (AA) (GR0)  
 GLENLIAM FARM ANTOINETTE Y91 (GR1) (AI) (ET)  
 ORCADIA PARK ANTOINETTE 1173 (PB)



December 2018 Murray Grey GROUP BREEDPLAN

	CED (%)	CEM (%)	GL (days)	BW (kg)	200 (kg)	400 (kg)	600 (kg)	MCW (kg)	Milk (kg)	SS (cm)	DTC	CWT (kg)	EMA (sq.cm)	Rib (mm)	Rump (mm)	RBV (%)	IMF %
<b>EBV:</b>	-2.2	-1.6	-0.4	+4.8	+25	+29	+49	+54	+7	+0.2		+24	+0.9	+1.6	+2.3	-0.6	+0.8
<b>Acc:</b>	54%	43%	55%	78%	79%	78%	79%	74%	67%	62%		70%	55%	70%	70%	64%	60%

**Purchaser:** ..... \$ .....



**Lot 1**



**2 GLENLIAM FARM ANTOINETTE M35 (PB) (ET)**

**Ident: KEC M35**

WOODBOURN WARRIOR A69 (PB)  
 EYLWARRA SANDS FALCON F33 (PB)  
 EYLWARRA SANDS MILKMAID Z64 (PB) (AI)  
**Sire: TULLIBARDINE JEOPARDY J14 (PB) (AI)**  
 MONTEREY SENSATIONAL (PB) (AI) (ET)  
 TULLIBARDINE KATIE E46 (PB) (AI)  
 TULLIBARDINE KATIE X50 (PB)  
 DEHAVALYN NEW SOUTH WALES (PB) (AI)  
 GLENLIAM FARM ZEPPLIN Z80 (PB)  
 GLENLIAM FARM VALSARI T16 (PB) (AI) (ET)  
**Dam: GLENLIAM FARM ANTOINETTE E25 (PB)**  
 GLENLIAM FARM YOKAHAMA Y56 (PB)  
 GLENLIAM FARM ANTOINETTE B11 (PB)  
 GLENLIAM FARM ANTOINETTE Y91 (GR1) (AI) (ET)

**Born:** 09/04/2016      **Sex:** F      **Colour:** Silver

**Notes:** Top of the drop 'M' heifer. Youngest cow to be offered for sale. Full embryo brother sold for \$11,000 at Steele Rudd sale. Another Full ET brother top of 'P' drop. Dam Lot 1. Silver heifer calf KEC P55 born 1/7/18 by WMM L885 (Lot 99). Dep'd with LEJ M47 from 19/9/18 to 8/11/18 then to WMM L885 from 9/11/18 then back to LEJ M47 on the 13/12/18 until 9/1/19. Entered for 2019 Sydney Royal Easter Show.



December 2018 Murray Grey GROUP BREEDPLAN																	
	CED (%)	CEM (%)	GL (days)	BW (kg)	200 (kg)	400 (kg)	600 (kg)	MCW (kg)	Milk (kg)	SS (cm)	DTC	CWT (kg)	EMA (sq.cm)	Rib (mm)	Rump (mm)	RBY (%)	IMF %
<b>EBV:</b>	-0.9		-1.1	+4.9	+31	+45	+68	+67	+5	+1.0		+39	+2.0	+0.3	+0.4	+0.8	+0.3
<b>Acc:</b>	42%		50%	65%	62%	61%	61%	54%	42%	52%		53%	41%	50%	50%	47%	44%

**Purchaser:** ..... \$ .....

**3 GLENLIAM FARM ANTOINETTE E36 (PB)**

**Ident: KEC E36**

WELLBROOK FLASH MAC+92 (PB)  
 DEHAVALYN NEW SOUTH WALES (PB) (AI)  
 DEHAVALYN KISS ME QUICK P4 (PB) (AI)  
**Sire: GLENLIAM FARM ZEPPLIN Z80 (PB)**  
 ORCADIA PARK REMBRANDT (PB)  
 GLENLIAM FARM VALSARI T16 (PB) (AI) (ET)  
 MT VIEW VALSARI J67 (PB)  
 SCOTCH CAP (AA) (GR0)  
 VICTOREE SCOTCH CAP K46 (AA) (GR0)  
 VICTOREE QUIET F27 (AA) (GR0)  
**Dam: GLENLIAM FARM ANTOINETTE X125 (GR1) (AI) (ET)**  
 MATAI WATERLOO (PB) (AI)  
 GLENLIAM FARM ANTOINETTE Q56 (PB) (AI) (ET)  
 ORCADIA PARK ANTOINETTE 1173 (PB)

**Born:** 18/08/2009      **Sex:** F      **Colour:** Silver

**Notes:** Very functional, wedge shaped cow with big broad muzzle. Consistent breeder, never missed a beat! Daughters sold to studs. Silver bull calf KEC P70 born 30/7/18 by WMM L885 (Lot 99). AI'd to PIE J14 on 14/11/18 then dep'd with WMM L885 from 16/11/18 to 12/12/18 then to LEJ M47 on the 13/12/18 until 9/1/19.



December 2018 Murray Grey GROUP BREEDPLAN																	
	CED (%)	CEM (%)	GL (days)	BW (kg)	200 (kg)	400 (kg)	600 (kg)	MCW (kg)	Milk (kg)	SS (cm)	DTC	CWT (kg)	EMA (sq.cm)	Rib (mm)	Rump (mm)	RBY (%)	IMF %
<b>EBV:</b>	+0.8	-1.0	+0.4	+3.8	+17	+25	+40	+55	+4	+0.4		+20	+1.0	-1.0	-1.1	+1.3	-0.1
<b>Acc:</b>	50%	40%	53%	79%	77%	76%	76%	73%	71%	51%		67%	51%	67%	67%	61%	57%

**Purchaser:** ..... \$ .....

**4 GLENLIAM FARM ANTOINETTE H14 (PB) (ET)**

**Ident: KEC H14**

WELLBROOK FLASH MAC+92 (PB)  
 DEHAVALYN NEW SOUTH WALES (PB) (AI)  
 DEHAVALYN KISS ME QUICK P4 (PB) (AI)  
**Sire: GLENLIAM FARM ZEPPLIN Z80 (PB)**  
 ORCADIA PARK REMBRANDT (PB)  
 GLENLIAM FARM VALSARI T16 (PB) (AI) (ET)  
 MT VIEW VALSARI J67 (PB)  
 GLENLIAM FARM VALVE V51 (PB)  
 GLENLIAM FARM YOKAHAMA Y56 (PB)  
 GLENLIAM FARM ANTOINETTE Q18 (PB)  
**Dam: GLENLIAM FARM ANTOINETTE B11 (PB)**  
 VICTOREE SCOTCH CAP K46 (AA) (GR0)  
 GLENLIAM FARM ANTOINETTE Y91 (GR1) (AI) (ET)  
 ORCADIA PARK ANTOINETTE 1173 (PB)

**Born:** 28/02/2012      **Sex:** F      **Colour:** Silver

**Notes:** Moderate framed, long tidy unit who consistently breeds better than herself. Full sister to Lot 1. Her daughter, Lot 14, speaks more than enough for her breeding ability. Silver bull calf KEC P71 born 30/7/18 by WMM L885 (Lot 99). Dep'd with WMM L885 from 16/11/18 to 12/12/18 then to LEJ M47 on the 13/12/18 until 9/1/19.



December 2018 Murray Grey GROUP BREEDPLAN																	
	CED (%)	CEM (%)	GL (days)	BW (kg)	200 (kg)	400 (kg)	600 (kg)	MCW (kg)	Milk (kg)	SS (cm)	DTC	CWT (kg)	EMA (sq.cm)	Rib (mm)	Rump (mm)	RBY (%)	IMF %
<b>EBV:</b>	-1.2	-1.4	-0.1	+3.8	+20	+26	+40	+49	+4	+0.4		+22	+1.1	+0.8	+1.3	+0.2	+0.3
<b>Acc:</b>	50%	41%	52%	76%	74%	74%	71%	62%	68%	50%		64%	46%	56%	56%	53%	50%

**Purchaser:** ..... \$ .....



**5 GLENLIAM FARM ANTOINETTE H105 (PB)**

**Ident: KEC H105**

WELLBROOK FLASH MAC+92 (PB)  
 DEHAVALYN NEW SOUTH WALES (PB) (AI)  
 DEHAVALYN KISS ME QUICK P4 (PB) (AI)

**Born:** 02/09/2012

**Sex:** F

**Colour:** Silver

**Sire: GLENLIAM FARM ZEPPLIN Z80 (PB)**

ORCADIA PARK REMBRANDT (PB)  
 GLENLIAM FARM VALSARI T16 (PB) (AI) (ET)  
 MT VIEW VALSARI J67 (PB)

**Notes:** Star 'H' Lot - Exceptional unit who is breeding consistently at the top of her game. Her son was sold to stud duties in 2018 and is a full brother to calf at foot. Another super silver bull calf KEC P60 born 1/7/18 by T. Jeopardy. Retained daughter is Lot 15. Very good unit, not to be missed! Dep'd with WMM L885 from 18/11/18 to 12/12/18 then to LEJ M47 on the 13/12/18 until 9/1/19.

DELOWEN QUAYLINE (PB)  
 MALPARARA ROSEBERRY (PB)  
 MALPARARA ANNABEL N131 (PB)

**Dam: GLENLIAM FARM ANTOINETTE A32 (PB) (AI)**

WILLALOOKA MINYIP (PB)  
 GLENLIAM FARM ANTOINETTE V32 (PB) (ET)  
 ORCADIA PARK ANTOINETTE N42 (PB)



December 2018 Murray Grey GROUP BREEDPLAN

	CED (%)	CEM (%)	GL (days)	BW (kg)	200 (kg)	400 (kg)	600 (kg)	MCW (kg)	Milk (kg)	SS (cm)	DTC	CWT (kg)	EMA (sq.cm)	Rib (mm)	Rump (mm)	RBY (%)	IMF %
<b>EBV:</b>	-3.4	-2.8	+0.7	+5.5	+27	+37	+51	+51	+4	+1.3		+30	+1.4	-0.6	-0.7	+1.6	-0.6
<b>Acc:</b>	48%	39%	56%	82%	76%	75%	76%	66%	65%	48%		65%	50%	66%	66%	60%	56%

**Purchaser:** ..... **\$** .....



**Lot 6**



**Lot 6 calf at foot**

**6 GLENLIAM FARM ANTOINETTE K24 (PB)**

**Ident: KEC K24**

LINDSAY VINNIE V15 (PB)  
 LINDSAY VINNIE Z28 (PB)  
 LINDSAY ANNE V14 (PB)

**Born:** 03/03/2014

**Sex:** F

**Colour:** Silver

**Sire: LINDSAY COMMANDER C121 (PB)**

WILLALOOKA WINDSOR W191 (PB)  
 LINDSAY LEANNE A251 (PB)  
 LINDSAY LEANNE U33 (PB)

**Notes:** Star 'K' Lot - Super functional, easy doing, growthy female. Past show cow. A stand out unit with silver heifer calf KEC P79 born 2/8/18 sired by T. Jeopardy. AI'd to PIE J14 on 17/10/18 then dep'd with LEJ M47 from 19/10/18 to 8/11/18 then to WMM L885 from 9/11/18 then back to LEJ M47 on the 13/12/18 until 9/1/19.

CAS ULYSIS 31U(CAN)(IMP) (PB)  
 MATAI WATERLOO (PB) (AI)  
 MATAI ESTELLE 32ND (PB)

**Dam: GLENLIAM FARM ANTOINETTE G96 (PB) (ET)**

ORCADIA PARK REMBRANDT (PB)  
 ORCADIA PARK ANTOINETTE 1173 (PB)  
 ORCADIA PARK ANTOINETTE 2ND (PB)



December 2018 Murray Grey GROUP BREEDPLAN

	CED (%)	CEM (%)	GL (days)	BW (kg)	200 (kg)	400 (kg)	600 (kg)	MCW (kg)	Milk (kg)	SS (cm)	DTC	CWT (kg)	EMA (sq.cm)	Rib (mm)	Rump (mm)	RBY (%)	IMF %
<b>EBV:</b>	+3.4	+0.0	-1.1	+1.0	+14	+36	+52	+65	+12			+37	+1.8	-1.6	-1.9	+1.9	-0.2
<b>Acc:</b>	47%	38%	52%	75%	71%	70%	70%	61%	56%			60%	47%	62%	62%	56%	52%

**Purchaser:** ..... **\$** .....



**7 GLENLIAM FARM ANTOINETTE D43 (PB)**

**Ident: KEC D43**

WILLALOOKA MINYIP (PB)  
 GLENLIAM FARM VALVE V51 (PB)  
 WILLALOOKA ANNABELLA M261 (PB)  
**Sire: GLENLIAM FARM YOKAHAMA Y56 (PB)**  
 ROBERN MISTER MUSCLE (PB) (AI)  
 GLENLIAM FARM ANTOINETTE Q18 (PB)  
 ORCADIA PARK ANTOINETTE 1173 (PB)

**Born:** 24/08/2008      **Sex:** F      **Colour:** Silver

**Notes:** Star Lot - Donor - Deep bodied, extremely consistent top of the drop breeder. Excellent temperament and udder. Dry due to ET work. ET Daughters are Lot 8 & 9 and speak enough for her breeding abilities! Retained daughter is Lot 10. Other daughters sold at previous NSS. AI'd to PIE J14 2/7/18 then dep'd with WMM L885 from 5/7/18 until 10/9/18. PTIC.

WELLBROOK FLASH MAC+92 (PB)  
 DEHAVALYN NEW SOUTH WALES (PB) (AI)  
 DEHAVALYN KISS ME QUICK P4 (PB) (AI)  
**Dam: GLENLIAM FARM ANTOINETTE Y55 (PB) (ET)**  
 ORCADIA PARK REMBRANDT (PB)  
 ORCADIA PARK ANTOINETTE 1173 (PB)  
 ORCADIA PARK ANTOINETTE 2ND (PB)



December 2018 Murray Grey GROUP BREEDPLAN

	CED (%)	CEM (%)	GL (days)	BW (kg)	200 (kg)	400 (kg)	600 (kg)	MCW (kg)	Milk (kg)	SS (cm)	DTC	CWT (kg)	EMA (sq.cm)	Rib (mm)	Rump (mm)	RBV (%)	IMF %
<b>EBV:</b>	-5.3	-2.4	-1.4	+3.3	+24	+39	+65	+74	+11	+0.4		+41	+1.6	-0.6	-0.8	+1.1	+0.2
<b>Acc:</b>	51%	41%	53%	80%	78%	77%	78%	74%	75%	49%		68%	52%	69%	69%	63%	59%

**Purchaser:** ..... **\$** .....

**8 GLENLIAM FARM ANTOINETTE P108 (PB) (AI) (ET)**

**Ident: KEC P108**

WOODBOURN WARRIOR A69 (PB)  
 EYLWARRA SANDS FALCON F33 (PB)  
 EYLWARRA SANDS MILKMAID Z64 (PB) (AI)  
**Sire: TULLIBARDINE JEOPARDY J14 (PB) (AI)**  
 MONTEREY SENSATIONAL (PB) (AI) (ET)  
 TULLIBARDINE KATIE E46 (PB) (AI)  
 TULLIBARDINE KATIE X50 (PB)

**Born:** 30/10/2018      **Sex:** F      **Colour:** Silver

**Notes:** Phenomenal show prospect heifer calf! Super strong Jeopardy topline with plenty of carcase. The ideal combination of softness, neck extension and femininity! Full ET sister to Lot 8. Dam is Lot 7. Sells on commercial 2013 drop Angus cow J212 who has been dep'd with WMM L885 from 23/11/18 to 12/12/18 then to LEJ M47 from 13/12/18 until 9/1/19.

GLENLIAM FARM VALVE V51 (PB)  
 GLENLIAM FARM YOKAHAMA Y56 (PB)  
 GLENLIAM FARM ANTOINETTE Q18 (PB)  
**Dam: GLENLIAM FARM ANTOINETTE D43 (PB)**  
 DEHAVALYN NEW SOUTH WALES (PB) (AI)  
 GLENLIAM FARM ANTOINETTE Y55 (PB) (ET)  
 ORCADIA PARK ANTOINETTE 1173 (PB)



December 2018 Murray Grey GROUP BREEDPLAN

	CED (%)	CEM (%)	GL (days)	BW (kg)	200 (kg)	400 (kg)	600 (kg)	MCW (kg)	Milk (kg)	SS (cm)	DTC	CWT (kg)	EMA (sq.cm)	Rib (mm)	Rump (mm)	RBV (%)	IMF %
<b>EBV:</b>	-2.9		-1.5	+4.8	+32	+52	+79	+79	+7			+49	+2.3	-0.8	-1.1	+1.7	
<b>Acc:</b>	40%		51%	75%	66%	64%	64%	56%	45%			53%	40%	50%	50%	46%	

**Purchaser:** ..... **\$** .....

**9 GLENLIAM FARM ANTOINETTE P107 (PB) (AI) (ET)**

**Ident: KEC P107**

WOODBOURN WARRIOR A69 (PB)  
 EYLWARRA SANDS FALCON F33 (PB)  
 EYLWARRA SANDS MILKMAID Z64 (PB) (AI)  
**Sire: TULLIBARDINE JEOPARDY J14 (PB) (AI)**  
 MONTEREY SENSATIONAL (PB) (AI) (ET)  
 TULLIBARDINE KATIE E46 (PB) (AI)  
 TULLIBARDINE KATIE X50 (PB)

GLENLIAM FARM VALVE V51 (PB)  
 GLENLIAM FARM YOKAHAMA Y56 (PB)  
 GLENLIAM FARM ANTOINETTE Q18 (PB)  
**Dam: GLENLIAM FARM ANTOINETTE D43 (PB)**  
 DEHAVALYN NEW SOUTH WALES (PB) (AI)  
 GLENLIAM FARM ANTOINETTE Y55 (PB) (ET)  
 ORCADIA PARK ANTOINETTE 1173 (PB)

**Born: 29/10/2018 Sex: F Colour: Silver**

**Notes:** Another very stylish heifer with plenty of carcase, overall balance and doing ability. From a very consistent high end donor dam. Full ET sister to Lot 8. Dam is Lot 7. Sells on commercial 2013 drop Angus x cow J209 who has been dep'd with WMM L885 from 23/11/18 to 12/12/18 then to LEJ M47 from 13/12/18 until 9/1/19.



December 2018 Murray Grey GROUP BREEDPLAN

	CED (%)	CEM (%)	GL (days)	BW (kg)	200 (kg)	400 (kg)	600 (kg)	MCW (kg)	Milk (kg)	SS (cm)	DTC	CWT (kg)	EMA (sq.cm)	Rib (mm)	Rump (mm)	RBV (%)	IMF %
<b>EBV:</b>	-1.5		-1.9	+3.6	+29	+48	+74	+74	+7			+47	+2.3	-0.8	-1.1	+1.7	
<b>Acc:</b>	40%		51%	75%	66%	64%	64%	56%	45%			53%	40%	50%	50%	46%	

**Purchaser:** ..... \$ .....

**10 GLENLIAM FARM ANTOINETTE K63 (PB)**

**Ident: KEC K63**

DEHAVALYN NEW SOUTH WALES (PB) (AI)  
 GLENLIAM FARM ZEPPLIN Z80 (PB)  
 GLENLIAM FARM VALSARI T16 (PB) (AI) (ET)  
**Sire: GLENLIAM FARM DROVER D107 (PB)**  
 SPRINGWELL TRUMP CARD T58 (PB)  
 GLENLIAM FARM CAPRI LASS A28 (PB) (AI) (ET)  
 ORCADIA PARK CAPRI LASS 1112 (PB)

GLENLIAM FARM VALVE V51 (PB)  
 GLENLIAM FARM YOKAHAMA Y56 (PB)  
 GLENLIAM FARM ANTOINETTE Q18 (PB)  
**Dam: GLENLIAM FARM ANTOINETTE D43 (PB)**  
 DEHAVALYN NEW SOUTH WALES (PB) (AI)  
 GLENLIAM FARM ANTOINETTE Y55 (PB) (ET)  
 ORCADIA PARK ANTOINETTE 1173 (PB)

**Born: 29/07/2014 Sex: F Colour: Silver**

**Notes:** Very tidy young cow with beautiful udder. First calf would have been retained, but instead sells here for you as Lot 11. Dam is Lot 7 a star donor cow. AI'd to PIE J14 19/6/18 then dep'd with WMM L885 from 5/7/18 until 10/9/18. PTIC.



December 2018 Murray Grey GROUP BREEDPLAN

	CED (%)	CEM (%)	GL (days)	BW (kg)	200 (kg)	400 (kg)	600 (kg)	MCW (kg)	Milk (kg)	SS (cm)	DTC	CWT (kg)	EMA (sq.cm)	Rib (mm)	Rump (mm)	RBV (%)	IMF %
<b>EBV:</b>	-4.3	-2.5	+0.5	+4.0	+22	+31	+50	+60	+3			+32	+2.1	-0.5	-0.6	+1.6	-0.1
<b>Acc:</b>	43%	35%	50%	79%	73%	72%	73%	63%	57%			62%	46%	65%	64%	58%	54%

**Purchaser:** ..... \$ .....

**11 GLENLIAM FARM ANTOINETTE P21 (PB)**

**Ident: KEC P21**

MONTEREY STARLIGHT (PB)  
 MONTEREY MARVELLOUS (PB) (AI) (ET)  
 MONTEREY MISS MAGNOLIA S90 (PB)  
**Sire: ONDIONG F78 (PB)**  
 THE GLEN MANUEL V126 (PB)  
 ONDIONG BOBO 59TH (PB)  
 ONDIONG BOBO 53RD (PB)

GLENLIAM FARM ZEPPLIN Z80 (PB)  
 GLENLIAM FARM DROVER D107 (PB)  
 GLENLIAM FARM CAPRI LASS A28 (PB) (AI) (ET)  
**Dam: GLENLIAM FARM ANTOINETTE K63 (PB)**  
 GLENLIAM FARM YOKAHAMA Y56 (PB)  
 GLENLIAM FARM ANTOINETTE D43 (PB)  
 GLENLIAM FARM ANTOINETTE Y55 (PB) (ET)

**Born: 12/02/2018 Sex: F Colour: Silver**

**Notes:** A very functional, complete heifer with a good wedge shape and length from hip to pin. Plenty of capacity and style. Dam is Lot 10.



December 2018 Murray Grey GROUP BREEDPLAN

	CED (%)	CEM (%)	GL (days)	BW (kg)	200 (kg)	400 (kg)	600 (kg)	MCW (kg)	Milk (kg)	SS (cm)	DTC	CWT (kg)	EMA (sq.cm)	Rib (mm)	Rump (mm)	RBV (%)	IMF %
<b>EBV:</b>	-2.1			+3.5	+21	+29	+48	+51	+4			+28					
<b>Acc:</b>	39%			76%	69%	64%	63%	51%	42%			52%					

**Purchaser:** ..... \$ .....



**12 GLENLIAM FARM ANTOINETTE L68 (PB)**

**Ident: KEC L68**

DEHAVALYN NEW SOUTH WALES (PB) (AI)  
 GLENLIAM FARM ZEPPLIN Z80 (PB)  
 GLENLIAM FARM VALSARI T16 (PB) (AI) (ET)

**Born:** 25/08/2015

**Sex:** F

**Colour:** Silver

**Sire: GLENLIAM FARM DROVER D107 (PB)**

SPRINGWELL TRUMP CARD T58 (PB)  
 GLENLIAM FARM CAPRI LASS A28 (PB) (AI) (ET)  
 ORCADIA PARK CAPRI LASS 1112 (PB)

**Notes:** Sound young cow who did a good job on first calf that was retained and now sells as Lot 13. Functional type, easy maintenance. AI'd to PIE J14 20/6/18 then dep'd with WMM L885 from 5/7/18 until 10/9/18. PTIC.

GLENLIAM FARM VALVE V51 (PB)  
 GLENLIAM FARM YOKAHAMA Y56 (PB)  
 GLENLIAM FARM ANTOINETTE Q18 (PB)

**Dam: GLENLIAM FARM ANTOINETTE B21 (PB)**

MALPARARA ROSEBERRY (PB)  
 GLENLIAM FARM ANTOINETTE Z38 (PB)  
 GLENLIAM FARM ANTOINETTE V37 (PB) (ET)



December 2018 Murray Grey GROUP BREEDPLAN

	CED (%)	CEM (%)	GL (days)	BW (kg)	200 (kg)	400 (kg)	600 (kg)	MCW (kg)	Milk (kg)	SS (cm)	DTC	CWT (kg)	EMA (sq.cm)	Rib (mm)	Rump (mm)	RBV (%)	IMF %
EBV:	-2.8			+3.5	+20	+25	+37	+41	+5			+22	+1.0	-0.6	-0.6	+1.3	-0.6
Acc:	42%			79%	73%	72%	73%	62%	57%			61%	45%	63%	63%	56%	53%

**Purchaser:** \_\_\_\_\_ \$ \_\_\_\_\_

**13 GLENLIAM FARM ANTOINETTE P33 (PB)**

**Ident: KEC P33**

MONTEREY STARLIGHT (PB)  
 MONTEREY MARVELLOUS (PB) (AI) (ET)  
 MONTEREY MISS MAGNOLIA S90 (PB)

**Born:** 04/03/2018

**Sex:** F

**Colour:** Silver

**Sire: ONDIONG F78 (PB)**

THE GLEN MANUEL V126 (PB)  
 ONDIONG BOBO 59TH (PB)  
 ONDIONG BOBO 53RD (PB)

**Notes:** A smooth balanced young heifer with moderate frame and good width of hip. An easy functional type like her dam Lot 12.

GLENLIAM FARM ZEPPLIN Z80 (PB)  
 GLENLIAM FARM DROVER D107 (PB)  
 GLENLIAM FARM CAPRI LASS A28 (PB) (AI) (ET)

**Dam: GLENLIAM FARM ANTOINETTE L68 (PB)**

GLENLIAM FARM YOKAHAMA Y56 (PB)  
 GLENLIAM FARM ANTOINETTE B21 (PB)  
 GLENLIAM FARM ANTOINETTE Z38 (PB)



December 2018 Murray Grey GROUP BREEDPLAN

	CED (%)	CEM (%)	GL (days)	BW (kg)	200 (kg)	400 (kg)	600 (kg)	MCW (kg)	Milk (kg)	SS (cm)	DTC	CWT (kg)	EMA (sq.cm)	Rib (mm)	Rump (mm)	RBV (%)	IMF %
EBV:	-2.4			+3.7	+23	+29	+44	+45	+5			+25					
Acc:	39%			76%	69%	64%	63%	51%	42%			52%					

**Purchaser:** \_\_\_\_\_ \$ \_\_\_\_\_





**14 GLENLIAM FARM ANTOINETTE M53 (PB) Ident: KEC M53**

WOODBOURN WARRIOR A69 (PB)  
 EYLWARRA SANDS FALCON F33 (PB)  
 EYLWARRA SANDS MILKMAID Z64 (PB) (AI)  
**Sire: TULLIBARDINE JEOPARDY J14 (PB) (AI)**  
 MONTEREY SENSATIONAL (PB) (AI) (ET)  
 TULLIBARDINE KATIE E46 (PB) (AI)  
 TULLIBARDINE KATIE X50 (PB)

DEHAVALYN NEW SOUTH WALES (PB) (AI)  
 GLENLIAM FARM ZEPPLIN Z80 (PB)  
 GLENLIAM FARM VALSARI T16 (PB) (AI) (ET)  
**Dam: GLENLIAM FARM ANTOINETTE H14 (PB) (ET)**  
 GLENLIAM FARM YOKAHAMA Y56 (PB)  
 GLENLIAM FARM ANTOINETTE B11 (PB)  
 GLENLIAM FARM ANTOINETTE Y91 (GR1) (AI) (ET)

**Born:** 06/08/2016      **Sex:** F      **Colour:** Silver

**Notes:** Star 'M' Lot - A moderate framed easy doing silver heifer who oozes capacity. She is thick, long and deep. Always been an eye catcher! She has been the pick 'M' female from a range of visitors. Dep'd with KEC G28 from 21/6/18 to 22/7/18 then with KYM M80 from 23/7/18 to 13/9/18. PTIC.

	December 2018 Murray Grey GROUP BREEDPLAN																
	CED (%)	CEM (%)	GL (days)	BW (kg)	200 (kg)	400 (kg)	600 (kg)	MCW (kg)	Milk (kg)	SS (cm)	DTC	CWT (kg)	EMA (sq.cm)	Rib (mm)	Rump (mm)	RBY (%)	IMF %
EBV:	-0.1		-1.3	+4.5	+30	+49	+68	+73	+3			+45	+2.3	+0.5	+0.8	+1.0	+0.3
Acc:	40%		52%	77%	71%	70%	71%	59%	42%			60%	45%	62%	62%	55%	51%

**Purchaser:** ..... **\$** .....

**15 GLENLIAM FARM ANTOINETTE N31 (PB) Ident: KEC N31**

WOODBOURN WARRIOR A69 (PB)  
 EYLWARRA SANDS FALCON F33 (PB)  
 EYLWARRA SANDS MILKMAID Z64 (PB) (AI)  
**Sire: TULLIBARDINE JEOPARDY J14 (PB) (AI)**  
 MONTEREY SENSATIONAL (PB) (AI) (ET)  
 TULLIBARDINE KATIE E46 (PB) (AI)  
 TULLIBARDINE KATIE X50 (PB)

DEHAVALYN NEW SOUTH WALES (PB) (AI)  
 GLENLIAM FARM ZEPPLIN Z80 (PB)  
 GLENLIAM FARM VALSARI T16 (PB) (AI) (ET)  
**Dam: GLENLIAM FARM ANTOINETTE H105 (PB)**  
 MALPARARA ROSEBERRY (PB)  
 GLENLIAM FARM ANTOINETTE A32 (PB) (AI)  
 GLENLIAM FARM ANTOINETTE V32 (PB) (ET)

**Born:** 11/02/2017      **Sex:** F      **Colour:** Silver

**Notes:** Functional, growthy, easy doing, well balanced heifer with plenty of depth and capacity. Dam is Lot 5 and her calf at foot is a full brother to this lot. Dep'd with KYM M80 from 18/9/18 until 2/1/19.

	December 2018 Murray Grey GROUP BREEDPLAN																
	CED (%)	CEM (%)	GL (days)	BW (kg)	200 (kg)	400 (kg)	600 (kg)	MCW (kg)	Milk (kg)	SS (cm)	DTC	CWT (kg)	EMA (sq.cm)	Rib (mm)	Rump (mm)	RBY (%)	IMF %
EBV:	+0.9		-1.3	+3.9	+29	+47	+69	+67	+4			+44	+2.0	-1.2	-1.6	+2.0	-0.5
Acc:	39%		53%	77%	71%	70%	71%	59%	41%			60%	45%	62%	62%	55%	51%

**Purchaser:** ..... **\$** .....

**16 GLENLIAM FARM ANTOINETTE N47 (PB)**

**Ident: KEC N47**

MONTEREY STARLIGHT (PB)  
 MONTEREY MARVELLOUS (PB) (AI) (ET)  
 MONTEREY MISS MAGNOLIA S90 (PB)  
**Sire: ONDIONG F78 (PB)**  
 THE GLEN MANUEL V126 (PB)  
 ONDIONG BOBO 59TH (PB)  
 ONDIONG BOBO 53RD (PB)

**Born: 11/07/2017**

**Sex: F**

**Colour: Grey**

**Notes:** Well grown, refined fronted, long bodied heifer with plenty of growing left to do. Really strong carcase EBVs with very positive fats and positive EMA and IMF.

GLENLIAM FARM ZEPPLIN Z80 (PB)  
 GLENLIAM FARM HERCULES H27 (PB) (ET)  
 GLENLIAM FARM ANTOINETTE B11 (PB)  
**Dam: GLENLIAM FARM ANTOINETTE L14 (PB)**  
 GLENLIAM FARM YOKAHAMA Y56 (PB)  
 GLENLIAM FARM ANTOINETTE D63 (PB)  
 GLENLIAM FARM ANTOINETTE A32 (PB) (AI)



December 2018 Murray Grey GROUP BREEDPLAN

	CED (%)	CEM (%)	GL (days)	BW (kg)	200 (kg)	400 (kg)	600 (kg)	MCW (kg)	Milk (kg)	SS (cm)	DTC	CWT (kg)	EMA (sq.cm)	Rib (mm)	Rump (mm)	RBV (%)	IMF %
<b>EBV:</b>	+1.9			+1.7	+18	+29	+41	+49	+6			+26	+1.3	+2.1	+3.0	-0.7	+0.8
<b>Acc:</b>	37%			74%	68%	68%	64%	51%	41%			56%	43%	61%	61%	54%	50%

**Purchaser:** ..... \$ .....

**17 GLENLIAM FARM ANTOINETTE N101 (PB) (AI) (ET)**

**Ident: KEC N101**

ORCADIA PARK TYCOON L082 (PB)  
 LINDSAY STARBRIGHT S117 (PB) (AI)  
 LINDSAY EDITH K15+90 (PB)  
**Sire: WALLAWONG RIPSORTER (PB)**  
 STEVENSON BRUNO 561G (AA) (GR0)  
 WALLAWONG ALETTA (GR1) (AI)  
 GLENCAIRN ALETTA Q64 (PB)

**Born: 17/10/2017**

**Sex: F**

**Colour: Grey**

**Notes:** A stand out ET heifer who really is the complete package! Refined front with plenty of width and capacity through the top and down into the hindquarter. Be sure to snap this young female up! Dam is a past donor female. N101 also exhibits the largest EMA EBV in the sale draft.

GLENLIAM FARM VALVE V51 (PB)  
 GLENLIAM FARM YOKAHAMA Y56 (PB)  
 GLENLIAM FARM ANTOINETTE Q18 (PB)  
**Dam: GLENLIAM FARM ANTOINETTE B42 (PB)**  
 MALPARARA ROSEBERRY (PB)  
 GLENLIAM FARM ANTOINETTE Z73 (PB)  
 GLENLIAM FARM ANTOINETTE T38 (PB) (AI) (ET)



December 2018 Murray Grey GROUP BREEDPLAN

	CED (%)	CEM (%)	GL (days)	BW (kg)	200 (kg)	400 (kg)	600 (kg)	MCW (kg)	Milk (kg)	SS (cm)	DTC	CWT (kg)	EMA (sq.cm)	Rib (mm)	Rump (mm)	RBV (%)	IMF %
<b>EBV:</b>	+1.2		-1.4	+1.9	+22	+36	+60	+65	+8			+44	+2.9	-1.6	-2.1	+2.7	-0.5
<b>Acc:</b>	41%		51%	76%	70%	69%	66%	56%	51%			57%	44%	59%	59%	53%	49%

**Purchaser:** ..... \$ .....

**18 GLENLIAM FARM ANTOINETTE P103 (PB) (AI) (ET)**

**Ident: KEC P103**

WOODBURN WARRIOR A69 (PB)  
 EYLWARRA SANDS FALCON F33 (PB)  
 EYLWARRA SANDS MILKMAID Z64 (PB) (AI)  
**Sire: TULLIBARDINE JEOPARDY J14 (PB) (AI)**  
 MONTEREY SENSATIONAL (PB) (AI) (ET)  
 TULLIBARDINE KATIE E46 (PB) (AI)  
 TULLIBARDINE KATIE X50 (PB)

**Born: 20/09/2018**

**Sex: F**

**Colour: Grey**

**Notes:** A stand out show prospect 'P' drop heifer! Dam has produced the 3 top of the drops in a row! Genetics like this are not easy to part with. Final opportunity to get part of our renowned Antoinette family and what a special heifer to finish the line with in the sale! Sells on commercial Murray Grey recipient cow A82 who has been dep'd with LEJ M47 from 1/10/18 to 8/11/18 then to WMM L885 from 9/11/18 then back to LEJ M47 on the 13/12/18 until 9/1/19.

LINDSAY VINNIE Z28 (PB)  
 LINDSAY COMMANDER C121 (PB)  
 LINDSAY LEANNE A251 (PB)  
**Dam: GLENLIAM FARM ANTOINETTE K28 (PB)**  
 GLENLIAM FARM YOKAHAMA Y56 (PB)  
 GLENLIAM FARM ANTOINETTE B42 (PB)  
 GLENLIAM FARM ANTOINETTE Z73 (PB)



December 2018 Murray Grey GROUP BREEDPLAN

	CED (%)	CEM (%)	GL (days)	BW (kg)	200 (kg)	400 (kg)	600 (kg)	MCW (kg)	Milk (kg)	SS (cm)	DTC	CWT (kg)	EMA (sq.cm)	Rib (mm)	Rump (mm)	RBV (%)	IMF %
<b>EBV:</b>	-2.0		-1.2	+5.2	+33	+52	+77	+77	+7								
<b>Acc:</b>	38%		50%	74%	64%	60%	60%	51%	37%								

**Purchaser:** ..... \$ .....





The Annabel family has just come into prominence in the last few years, particularly as a bull breeding line. Founded from Glengarret P246, a grading cow from the Glengarret Dispersal in 1998. Surprisingly another purchase from The Glen's 50th Anniversary Sale was from the same family, both going back to The Glen Annabel 35th. Pictured Annabel son KEC L49.

# Annabel Family

**19 GLENLIAM FARM ANNABEL D53 (PB)**

**Ident: KEC D53**

DELOWEN QUAYLINE (PB)  
 MALPARARA ROSEBERRY (PB)  
 MALPARARA ANNABEL N131 (PB)  
**Sire: GLENLIAM FARM Z70 (PB)**  
 ROBERN MISTER MUSCLE (PB) (AI)  
 GLENLIAM FARM ANTOINETTE Q18 (PB)  
 ORCADIA PARK ANTOINETTE 1173 (PB)

**Born:** 30/08/2008

**Sex:** F

**Colour:** Grey

WELLBROOK FLASH MAC+92 (PB)  
 DEHAVALYN NEW SOUTH WALES (PB) (AI)  
 DEHAVALYN KISS ME QUICK P4 (PB) (AI)

**Dam: GLENLIAM FARM ANNABEL Y87 (PB)**

ROYALINE KING K5 (AA) (GRO)  
 GLENGARRET P246 (GR1)  
 THE GLEN ANNABEL 68TH (PB)

**Notes:** Star Lot - Donor - A silent achiever until a more recent study of our records earned her an easy place in the donor pen. Every daughter was retained in herd. Daughters are lots 20, 21 & 27. Grand daughters are Lot 22, 25 & 26. Moderate framed, big volumed & very structurally sound. An excellent breeder that is dry due to ET work. AI'd to Orcadia Park Rimfire 29/6/18 then dep'd with WMM L885 from 5/7/18 until 10/9/18. PTIC.



December 2018 Murray Grey GROUP BREEDPLAN

	CED (%)	CEM (%)	GL (days)	BW (kg)	200 (kg)	400 (kg)	600 (kg)	MCW (kg)	Milk (kg)	SS (cm)	DTC	CWT (kg)	EMA (sq.cm)	Rib (mm)	Rump (mm)	RBY (%)	IMF %
<b>EBV:</b>	+0.4	+0.0	+0.0	+2.7	+17	+25	+38	+38	+13			+19	+0.8	+2.2	+3.2	-1.2	+0.9
<b>Acc:</b>	47%	37%	50%	79%	77%	77%	77%	73%	75%			67%	50%	69%	69%	62%	58%

**Purchaser:** ..... **\$** .....



**Lot 19**

**20 GLENLIAM FARM ANNABEL G20 (PB)**

**Ident: KEC G20**

MALPARARA ROSEBERRY (PB)  
 GLENLIAM FARM ZANTHER Z94 (PB)  
 GLENLIAM FARM CAPRI LASS W22 (PB)  
**Sire: GLENLIAM FARM CHOPPER C18 (PB)**  
 COROMBY ROCCO V7 (PB)  
 GLENLIAM FARM CAPRI LASS A13 (PB)  
 GLENLIAM FARM CAPRI LASS X32 (PB) (AI)

**Born:** 03/03/2011

**Sex:** F

**Colour:** Grey

MALPARARA ROSEBERRY (PB)  
 GLENLIAM FARM Z70 (PB)  
 GLENLIAM FARM ANTOINETTE Q18 (PB)  
**Dam: GLENLIAM FARM ANNABEL D53 (PB)**  
 DEHAVALYN NEW SOUTH WALES (PB) (AI)  
 GLENLIAM FARM ANNABEL Y87 (PB)  
 GLENGARRET P246 (GR1)

**Notes:** Annika's Pick! Small framed exceptional breeder. Bred top price bull (\$9000) @ TOTR sale 2017. Another stud sire potential silver bull calf at foot KEC P73 born 1/8/18 by T. Jeopardy J14. Daughters are Lots 25 & 26. This cow might not look much but she consistently breeds the house down and as they say proof is in the pudding! AI'd to PIE J14 on 15/11/18 then dep'd with WMM L885 from 17/11/18 to 12/12/18 then to LEJ M47 on the 13/12/18 until 9/1/19.



December 2018 Murray Grey GROUP BREEDPLAN																	
	CED (%)	CEM (%)	GL (days)	BW (kg)	200 (kg)	400 (kg)	600 (kg)	MCW (kg)	Milk (kg)	SS (cm)	DTC	CWT (kg)	EMA (sq.cm)	Rib (mm)	Rump (mm)	RBV (%)	IMF %
EBV:	+2.1			+2.0	+22	+26	+37	+35	+11	-0.2		+24	+1.3	+1.9	+2.8	-0.6	+0.5
Acc:	43%			78%	75%	75%	75%	65%	67%	53%		65%	49%	68%	68%	61%	57%

**Purchaser:** ..... \$ .....



**Lot 20 calf at foot**



**Lot 21 calf at foot**

**21 GLENLIAM FARM ANNABEL H15 (PB)**

**Ident: KEC H15**

WELLBROOK FLASH MAC+92 (PB)  
 DEHAVALYN NEW SOUTH WALES (PB) (AI)  
 DEHAVALYN KISS ME QUICK P4 (PB) (AI)  
**Sire: GLENLIAM FARM ZEPPLIN Z80 (PB)**  
 ORCADIA PARK REMBRANDT (PB)  
 GLENLIAM FARM VALSARI T16 (PB) (AI) (ET)  
 MT VIEW VALSARI J67 (PB)

**Born:** 11/03/2012

**Sex:** F

**Colour:** Grey

MALPARARA ROSEBERRY (PB)  
 GLENLIAM FARM Z70 (PB)  
 GLENLIAM FARM ANTOINETTE Q18 (PB)  
**Dam: GLENLIAM FARM ANNABEL D53 (PB)**  
 DEHAVALYN NEW SOUTH WALES (PB) (AI)  
 GLENLIAM FARM ANNABEL Y87 (PB)  
 GLENGARRET P246 (GR1)

**Notes:** Star Lot - A big volumed, easy doing, very complete package! Consistent breeder that packs the thickness in her calves. Outstanding thick, growthy stud sire potential silver bull calf KEC P89 born 8/8/18 by T. Jeopardy J14. Dep'd with WMM L885 from 18/11/18 to 12/12/18 then to LEJ M47 on the 13/12/18 until 9/1/19.



December 2018 Murray Grey GROUP BREEDPLAN																	
	CED (%)	CEM (%)	GL (days)	BW (kg)	200 (kg)	400 (kg)	600 (kg)	MCW (kg)	Milk (kg)	SS (cm)	DTC	CWT (kg)	EMA (sq.cm)	Rib (mm)	Rump (mm)	RBV (%)	IMF %
EBV:	-0.7	-2.1	+0.8	+4.2	+21	+21	+36	+37	+8			+17	+1.2	+0.6	+1.0	+0.4	+0.0
Acc:	50%	41%	51%	77%	75%	75%	75%	67%	67%			65%	50%	68%	67%	61%	57%

**Purchaser:** ..... \$ .....





**22 GLENLIAM FARM ANNABEL K40 (PB) Ident: KEC K40**

LINDSAY VINNIE Z28 (PB)  
 LINDSAY COMMANDER C121 (PB)  
 LINDSAY LEANNE A251 (PB)  
**Sire: GLENLIAM FARM GRAVITY G28 (PB)**  
 GLENLIAM FARM ZEPPLIN Z80 (PB)  
 GLENLIAM FARM ANTOINETTE E25 (PB)  
 GLENLIAM FARM ANTOINETTE B11 (PB)  
 DEHAVALYN NEW SOUTH WALES (PB) (AI)  
 GLENLIAM FARM ZEPPLIN Z80 (PB)  
 GLENLIAM FARM VALSARI T16 (PB) (AI) (ET)  
**Dam: GLENLIAM FARM ANNABEL H15 (PB)**  
 GLENLIAM FARM Z70 (PB)  
 GLENLIAM FARM ANNABEL D53 (PB)  
 GLENLIAM FARM ANNABEL Y87 (PB)

**Born:** 12/07/2014      **Sex:** F      **Colour:** Grey

**Notes:** Star 'K' Lot - Possibly the best young unit in the sale with an exceptional grey bull calf KEC P65 born 18/7/18 by KEC D107 at foot. (Please note: Bull calf is not to be used with heifers in future breeding programs, EBVs speak for themselves). Easy doing, super functional breeding cow. Dep'd with WMM L885 from 18/11/18 to 12/12/18 then to LEJ M47 on the 13/12/18 until 9/1/19.



December 2018 Murray Grey GROUP BREEDPLAN																	
	CED (%)	CEM (%)	GL (days)	BW (kg)	200 (kg)	400 (kg)	600 (kg)	MCW (kg)	Milk (kg)	SS (cm)	DTC	CWT (kg)	EMA (sq.cm)	Rib (mm)	Rump (mm)	RBY (%)	IMF %
EBV:	-2.1			+4.9	+24	+30	+48	+54	+7			+24	+0.9	+0.5	+0.8	+0.2	+0.4
Acc:	45%			80%	73%	72%	73%	62%	52%			61%	46%	65%	64%	58%	53%

**Purchaser:** \_\_\_\_\_ \$ \_\_\_\_\_

**23 GLENLIAM FARM ANNABEL L31 (PB) (AI) Ident: KEC L31**

TARLINA BUNGEY B3 (PB)  
 TARLINA DELIVER D23 (PB)  
 MONTEREY JESSICA Z182 (PB)  
**Sire: BALLYVAUGHAN GOLD COAST G11 (PB)**  
 OAKLEY AUDACIOUS A729 (PB)  
 OAKLEY MADONNA C32 (PB)  
 OAKLEY MADONNA Z55 (PB)  
 GLENLIAM FARM VALVE V51 (PB)  
 GLENLIAM FARM YOKAHAMA Y56 (PB)  
 GLENLIAM FARM ANTOINETTE Q18 (PB)  
**Dam: GLENLIAM FARM ANNABEL B16 (PB)**  
 DEHAVALYN NEW SOUTH WALES (PB) (AI)  
 GLENLIAM FARM ANNABEL Y87 (PB)  
 GLENGARRET P246 (GR1)

**Born:** 14/07/2015      **Sex:** F      **Colour:** Grey

**Notes:** Moderately framed, deep bodied, functional young breeder. Outcross of genetics in her sire Ballyvaughn Gold Coast. Silver bull calf KEC P62 born 10/7/18 by Bottlesford Kudos. Dep'd with WMM L885 from 18/11/18 to 12/12/18 then to LEJ M47 on the 13/12/18 until 9/1/19.



December 2018 Murray Grey GROUP BREEDPLAN																	
	CED (%)	CEM (%)	GL (days)	BW (kg)	200 (kg)	400 (kg)	600 (kg)	MCW (kg)	Milk (kg)	SS (cm)	DTC	CWT (kg)	EMA (sq.cm)	Rib (mm)	Rump (mm)	RBY (%)	IMF %
EBV:	-1.9		-0.7	+2.8	+19	+28	+45	+42	+3			+27	+2.5	+0.2	+0.4	+0.6	+0.4
Acc:	42%		50%	79%	72%	71%	72%	62%	52%			61%	44%	62%	61%	54%	49%

**Purchaser:** \_\_\_\_\_ \$ \_\_\_\_\_



**24 THE GLEN ANNABEL G64 (TW) (GR2)**

**Ident: G G64**

DUNOON REAGAN R093 (AA) (GRO)  
 CUDGEGONG PARK HINO (GR1) (AI)  
 WILLALOOKA Q182 (PB)

**Born:** 16/03/2011

**Sex:** F

**Colour:** Grey

**Sire: CUDGEGONG PARK BASS (GR1)**

TE MANIA TYPHOON T334 (AA) (GRO)  
 CUDGEGONG PARK BEVERLEY Z41 (GR1) (AI)  
 CUDGEGONG PARK BEVERLEY S51 (PB)

**Notes:** Purchased from The Glen as a heifer and has bred well for us. Clean fronted, wedge shaped cow who milks exceptionally well. AI'd to GF Drover D107 29/6/18 then dep'd with WMM L885 from 5/7/18 until 10/9/18. PTIC.

ROCKN D AMBUSH 1531 (AA) (GRO)  
 WILLALOOKA W814 (GR1) (AI)  
 WILLALOOKA S910 (GR1)

**Dam: THE GLEN ANNABEL Z166 (PB)**

TEMAR LOTUS L62 (PB)  
 THE GLEN ANNABEL T310 (PB)  
 THE GLEN ANNABEL 102ND (PB)



December 2018 Murray Grey GROUP BREEDPLAN

	CED (%)	CEM (%)	GL (days)	BW (kg)	200 (kg)	400 (kg)	600 (kg)	MCW (kg)	Milk (kg)	SS (cm)	DTC	CWT (kg)	EMA (sq.cm)	Rib (mm)	Rump (mm)	RBY (%)	IMF %
<b>EBV:</b>	+0.1		-1.6	+3.6	+28	+49	+60	+51	+6	+0.2		+39	+2.5	+0.8	+1.2	+0.3	+1.1
<b>Acc:</b>	44%		52%	76%	68%	65%	65%	55%	59%	53%		55%	44%	53%	53%	49%	47%

**Purchaser:** ..... \$ .....

**25 GLENLIAM FARM ANNABEL M78 (PB)**

**Ident: KEC M78**

DEHAVALYN NEW SOUTH WALES (PB) (AI)  
 GLENLIAM FARM ZEPPLIN Z80 (PB)  
 GLENLIAM FARM VALSARI T16 (PB) (AI) (ET)

**Born:** 03/09/2016

**Sex:** F

**Colour:** Grey

**Sire: GLENLIAM FARM DROVER D107 (PB)**

SPRINGWELL TRUMP CARD T58 (PB)  
 GLENLIAM FARM CAPRI LASS A28 (PB) (AI) (ET)  
 ORCADIA PARK CAPRI LASS 1112 (PB)

**Notes:** Daughter from Annika's pick of the herd in Lot 20. Positive fats, positive EMA. Easy doing, moderate framed wedge shaped female with beautiful dappling of the coat. Dep'd with KEC G28 from 21/6/18 to 22/7/18 then with KYM M80 from 23/7/18 to 13/9/18. PTIC.

GLENLIAM FARM ZANTHER Z94 (PB)  
 GLENLIAM FARM CHOPPER C18 (PB)  
 GLENLIAM FARM CAPRI LASS A13 (PB)

**Dam: GLENLIAM FARM ANNABEL G20 (PB)**

GLENLIAM FARM Z70 (PB)  
 GLENLIAM FARM ANNABEL D53 (PB)  
 GLENLIAM FARM ANNABEL Y87 (PB)



December 2018 Murray Grey GROUP BREEDPLAN

	CED (%)	CEM (%)	GL (days)	BW (kg)	200 (kg)	400 (kg)	600 (kg)	MCW (kg)	Milk (kg)	SS (cm)	DTC	CWT (kg)	EMA (sq.cm)	Rib (mm)	Rump (mm)	RBY (%)	IMF %
<b>EBV:</b>	-1.5			+4.1	+23	+27	+41	+46	+2			+26	+2.3	+0.5	+0.8	+1.2	-0.3
<b>Acc:</b>	39%			77%	71%	71%	72%	60%	51%			61%	45%	64%	64%	57%	53%

**Purchaser:** ..... \$ .....

**26 GLENLIAM FARM ANNABEL N64 (PB)**

**Ident: KEC N64**

DEHAVALYN NEW SOUTH WALES (PB) (AI)  
 GLENLIAM FARM ZEPPLIN Z80 (PB)  
 GLENLIAM FARM VALSARI T16 (PB) (AI) (ET)

**Born:** 06/08/2017

**Sex:** F

**Colour:** Grey

**Sire: GLENLIAM FARM DROVER D107 (PB)**

SPRINGWELL TRUMP CARD T58 (PB)  
 GLENLIAM FARM CAPRI LASS A28 (PB) (AI) (ET)  
 ORCADIA PARK CAPRI LASS 1112 (PB)

**Notes:** Another daughter from Lot 20 sired by GF Drover D107 our carcass bull! Deep bodied, super sound, and extremely quiet. Dam is breeding the house down so there is no reason why this heifer will not follow in her footsteps.

GLENLIAM FARM ZANTHER Z94 (PB)  
 GLENLIAM FARM CHOPPER C18 (PB)  
 GLENLIAM FARM CAPRI LASS A13 (PB)

**Dam: GLENLIAM FARM ANNABEL G20 (PB)**

GLENLIAM FARM Z70 (PB)  
 GLENLIAM FARM ANNABEL D53 (PB)  
 GLENLIAM FARM ANNABEL Y87 (PB)



December 2018 Murray Grey GROUP BREEDPLAN

	CED (%)	CEM (%)	GL (days)	BW (kg)	200 (kg)	400 (kg)	600 (kg)	MCW (kg)	Milk (kg)	SS (cm)	DTC	CWT (kg)	EMA (sq.cm)	Rib (mm)	Rump (mm)	RBY (%)	IMF %
<b>EBV:</b>	-2.3			+4.4	+24	+27	+41	+44	+2			+25	+2.3	+0.5	+0.8	+1.1	-0.3
<b>Acc:</b>	39%			78%	71%	71%	68%	55%	51%			59%	45%	63%	63%	57%	53%

**Purchaser:** ..... \$ .....

LINDSAY VINNIE Z28 (PB)

Born: 06/08/2017

Sex: F

Colour: Silver

LINDSAY COMMANDER C121 (PB)

LINDSAY LEANNE A251 (PB)

Sire: **GLENLIAM FARM GRAVITY G28 (PB)**

GLENLIAM FARM ZEPPLIN Z80 (PB)

GLENLIAM FARM ANTOINETTE E25 (PB)

GLENLIAM FARM ANTOINETTE B11 (PB)

MALPARARA ROSEBERRY (PB)

GLENLIAM FARM Z70 (PB)

GLENLIAM FARM ANTOINETTE Q18 (PB)

Dam: **GLENLIAM FARM ANNABEL D53 (PB)**

DEHAVALYN NEW SOUTH WALES (PB) (AI)

GLENLIAM FARM ANNABEL Y87 (PB)

GLENGARRET P246 (GR1)

**Notes:** Long bodied and very easy doing heifer as the EBVs indicate. A traditional type of Murray Grey female out of the donor cow Lot 19. Please note: This heifer did break her front leg as a calf, hence the lump on knee. It has not affected her ability to move, or gain weight, only stopped her show career.



December 2018 Murray Grey GROUP BREEDPLAN

	CED (%)	CEM (%)	GL (days)	BW (kg)	200 (kg)	400 (kg)	600 (kg)	MCW (kg)	Milk (kg)	SS (cm)	DTC	CWT (kg)	EMA (sq.cm)	Rib (mm)	Rump (mm)	RY (%)	IMF %
EBV:	+0.0			+3.2	+18	+25	+41	+48	+10			+19	+0.5	+2.1	+3.0	-1.3	+1.1
Acc:	38%			77%	71%	70%	67%	57%	49%			59%	46%	63%	63%	57%	53%

Purchaser: \_\_\_\_\_ \$ \_\_\_\_\_



**AuctionsPlus<sup>®</sup>**

Australia's Livestock Marketplace



**Can't make the sale?**

Log on to AuctionsPlus and bid on your phone, tablet or computer.

Contact AuctionsPlus on (02) 9262 4222

or email [studsales@auctionsplus.com.au](mailto:studsales@auctionsplus.com.au)

or [www.auctionsplus.com.au](http://www.auctionsplus.com.au)

Check us out on:



The Beroleanne line was purchased from the Francis family's Ondiong herd at Dorrigo. Found on a visit to Ondiong in 1994 but later purchased at the Armidale Classic Sale was Ondiong Beroleanne 9th. A family that has produced some wonderful show type females, but also a sire that produced two National Grand Champion carcasses. Pictured Beroleanne son KEC L61.

# Beroleanne Family

**28 GLENLIAM FARM BEROLEANNE J65 (PB) Ident: KEC J65**

LINDSAY VINNIE V15 (PB)  
 LINDSAY VINNIE Z28 (PB)  
 LINDSAY ANNE V14 (PB)  
**Sire: LINDSAY COMMANDER C121 (PB)**  
 WILLALOOKA WINDSOR W191 (PB)  
 LINDSAY LEANNE A251 (PB)  
 LINDSAY LEANNE U33 (PB)

THE GLEN MARSHALL Q166 (PB)  
 THE GLEN MARSHALL V172 (PB)  
 THE GLEN BERANICE S99 (PB)  
**Dam: GLENLIAM FARM BEROLEANNE C85 (PB)**  
 ROBERN MISTER MUSCLE (PB) (AI)  
 GLENLIAM FARM BEROLEANNE W33 (PB) (AI)  
 GLENLIAM FARM BEROLEANE S18 (PB)

**Born:** 23/07/2013      **Sex:** F      **Colour:** Silver

**Notes:** Star Lot - Exceptional Young Donor - Dam of 2018 Syd. Royal Jnr. Champion Female. Outstanding 'P' heifer Lot 29 who speaks for her dam's breeding ability. From a proven donor herself in Lot 38, this cow is certainly something special! An absolute must have! AI'd to PIE J14 20/8/18 then dep'd with WMM L885 from 30/8/18 until 6/11/18. PTIC.

	December 2018 Murray Grey GROUP BREEDPLAN																
	CED (%)	CEM (%)	GL (days)	BW (kg)	200 (kg)	400 (kg)	600 (kg)	MCW (kg)	Milk (kg)	SS (cm)	DTC	CWT (kg)	EMA (sq.cm)	Rib (mm)	Rump (mm)	RBY (%)	IMF %
<b>EBV:</b>	-4.0	+1.1	-0.1	+6.9	+34	+53	+79	+92	+10			+43	+0.8	-2.3	-2.9	+2.1	-0.6
<b>Acc:</b>	47%	36%	54%	81%	75%	74%	75%	66%	63%			64%	50%	67%	67%	60%	57%

**Purchaser:** \_\_\_\_\_ **\$** \_\_\_\_\_



Lot 28



Lot 29



**29 GLENLIAM FARM BEROLEANNE P15 (PB)**

**Ident: KEC P15**

WOODBOURN WARRIOR A69 (PB)  
EYLWARRA SANDS FALCON F33 (PB)  
EYLWARRA SANDS MILKMAID Z64 (PB) (AI)  
**Sire: TULLIBARDINE JEOPARDY J14 (PB) (AI)**  
MONTEREY SENSATIONAL (PB) (AI) (ET)  
TULLIBARDINE KATIE E46 (PB) (AI)  
TULLIBARDINE KATIE X50 (PB)

**Born:** 06/02/2018      **Sex:** F      **Colour:** Silver

**Notes:** Show Heifer Alert! Stunning super quiet, structurally correct deep bodied, adequately muscled heifer who is the full sister to 2018 Sydney Royal Jnr Champion. Dam is lot 28. Entered for 2019 Sydney Royal Easter Show.

LINDSAY VINNIE Z28 (PB)  
LINDSAY COMMANDER C121 (PB)  
LINDSAY LEANNE A251 (PB)  
**Dam: GLENLIAM FARM BEROLEANNE J65 (PB)**  
THE GLEN MARSHALL V172 (PB)  
GLENLIAM FARM BEROLEANNE C85 (PB)  
GLENLIAM FARM BEROLEANNE W33 (PB) (AI)



*December 2018 Murray Grey GROUP BREEDPLAN*

	CED (%)	CEM (%)	GL (days)	BW (kg)	200 (kg)	400 (kg)	600 (kg)	MCW (kg)	Milk (kg)	SS (cm)	DTC	CWT (kg)	EMA (sq.cm)	Rib (mm)	Rump (mm)	RBY (%)	IMF %
<b>EBV:</b>	-3.3		-0.8	+7.2	+39	+62	+90	+92	+7			+52					
<b>Acc:</b>	38%		52%	77%	70%	65%	65%	54%	40%			53%					

**Purchaser:**..... \$ .....

**GLENLIAM FARM BEROLEANNE J65 (PB) KEC J65 / TULLIBARDINE JEOPARDY J14 (PB) (AI) PIE J14**

*Expected Average Progeny Value*



	CED (%)	CEM (%)	GL (days)	BW (kg)	200 (kg)	400 (kg)	600 (kg)	MCW (kg)	Milk (kg)	SS (cm)	DTC	CWT (kg)	EMA (sq.cm)	Rib (mm)	Rump (mm)	RBY (%)	IMF %
<b>EAPV</b>	-2.4	-1.1	-0.9	+6.4	+37	+58	+85	+88	+7			+50	+2.0	-1.7	-2.2	+2.2	-0.4

*Expected average progeny values (EAPV) are provided to assist breeders estimate the outcome of particular mating combinations. These values are NOT GROUP BREEDPLAN EBVs and should not be published as such. The actual EBVs for any individual progeny resulting from a particular mating are likely to vary from the expected average values.*

**30 1 x PTIC Embryo Recipient J205 - KEC J65/PIE J14**

1 x PTIC Embryo Recipient (KEC J65 (Lot 28) x PIE J14 - full sibling to Lot 29 & 2018 Sydney Royal Junior Champion)  
**Embryo details:** Implant date: 9/7/18  
**Expected due date:** April 10th 2019  
**Recipient details:** 2013 drop Angus x Friesian (AAxFF)

**Purchaser:**..... \$ .....

**31 1 x PTIC Embryo Recipient J213 - KEC J65/PIE J14**

1 x PTIC Embryo Recipient (KEC J65 (Lot 28) x PIE J14 - full sibling to Lot 29 & 2018 Sydney Royal Junior Champion)  
**Embryo details:** Implant date: 9/7/18  
**Expected due date:** April 10th 2019  
**Recipient details:** 2013 drop Angus (AAxAA)

**Purchaser:**..... \$ .....

**32 1 x PTIC Embryo Recipient L204 - KEC J65/PIE J14**

1 x PTIC Embryo Recipient (KEC J65 (Lot 28) x PIE J14 - full sibling to Lot 29 & 2018 Sydney Royal Junior Champion)  
**Embryo details:** Implant date: 9/7/18  
**Expected due date:** April 10th 2019  
**Recipient details:** 2015 drop Hereford x Friesian (HHxFF)

**Purchaser:**..... \$ .....

**33 GLENLIAM FARM BEROLEANNE J64 (PB)**

**Ident: KEC J64**

MALPARARA ROSEBERRY (PB)  
 GLENLIAM FARM ZANTHER Z94 (PB)  
 GLENLIAM FARM CAPRI LASS W22 (PB)  
**Sire: GLENLIAM FARM CHOPPER C18 (PB)**  
 COROMBY ROCCO V7 (PB)  
 GLENLIAM FARM CAPRI LASS A13 (PB)  
 GLENLIAM FARM CAPRI LASS X32 (PB) (AI)

**Born: 23/07/2013**

**Sex: F**

**Colour: Grey**

KATUNA COURAGEOUS U8 (PB) (AI) (ET)  
 GLENLIAM FARM XTASY X40 (PB) (AI) (ET)  
 ORCADIA PARK ANTOINETTE 1173 (PB)

**Dam: GLENLIAM FARM BEROLEANE B32 (PB)**

MALPARARA ROSEBERRY (PB)  
 GLENLIAM FARM BEROLEANE Z103 (PB)  
 GLENLIAM FARM BEROLEANNE W33 (PB) (AI)

**Notes:** Star Lot - Exceptional young donor - Growthy refined female who consistently breeds progeny better than herself! Exceptional 'P' heifer Lot 32 that speaks for her breeding ability. A cow not to be missed. AI'd to PIE J14 20/8/18 then dep'd with WMM L885 from 30/8/18 until 6/11/18. PTIC.



*December 2018 Murray Grey GROUP BREEDPLAN*

	CED (%)	CEM (%)	GL (days)	BW (kg)	200 (kg)	400 (kg)	600 (kg)	MCW (kg)	Milk (kg)	SS (cm)	DTC	CWT (kg)	EMA (sq.cm)	Rib (mm)	Rump (mm)	RBY (%)	IMF %
<b>EBV:</b>	+1.5			+2.9	+26	+34	+46	+47	+6			+31	+1.0	+0.3	+0.6	+0.8	-0.3
<b>Acc:</b>	39%			80%	74%	73%	74%	62%	60%			62%	45%	64%	64%	57%	53%

**Purchaser:** ..... \$ .....



**34 GLENLIAM FARM BEROLEANNE P22 (PB)**

**Ident: KEC P22**

WOODBURN WARRIOR A69 (PB)  
 EYLWARRA SANDS FALCON F33 (PB)  
 EYLWARRA SANDS MILKMAID Z64 (PB) (AI)  
**Sire: TULLIBARDINE JEOPARDY J14 (PB) (AI)**  
 MONTEREY SENSATIONAL (PB) (AI) (ET)  
 TULLIBARDINE KATIE E46 (PB) (AI)  
 TULLIBARDINE KATIE X50 (PB)

**Born: 13/02/2018**

**Sex: F**

**Colour: Grey**

GLENLIAM FARM ZANTHER Z94 (PB)  
 GLENLIAM FARM CHOPPER C18 (PB)  
 GLENLIAM FARM CAPRI LASS A13 (PB)

**Dam: GLENLIAM FARM BEROLEANNE J64 (PB)**

GLENLIAM FARM XTASY X40 (PB) (AI) (ET)  
 GLENLIAM FARM BEROLEANE B32 (PB)  
 GLENLIAM FARM BEROLEANE Z103 (PB)

**Notes:** Stand out, show prospect, P heifer! Growthy, adequate muscle, feminine and structurally sound. The complete package.



*December 2018 Murray Grey GROUP BREEDPLAN*

	CED (%)	CEM (%)	GL (days)	BW (kg)	200 (kg)	400 (kg)	600 (kg)	MCW (kg)	Milk (kg)	SS (cm)	DTC	CWT (kg)	EMA (sq.cm)	Rib (mm)	Rump (mm)	RBY (%)	IMF %
<b>EBV:</b>	-1.3		-1.0	+5.6	+36	+53	+75	+71	+5			+46					
<b>Acc:</b>	36%		51%	77%	70%	65%	65%	53%	38%			53%					

**Purchaser:** ..... \$ .....

**GLENLIAM FARM BEROLEANNE J64 (PB) KEC J64 / TULLIBARDINE JEOPARDY J14 (PB) (AI) PIE J14**

*Expected Average Progeny Value*

	CED (%)	CEM (%)	GL (days)	BW (kg)	200 (kg)	400 (kg)	600 (kg)	MCW (kg)	Milk (kg)	SS (cm)	DTC	CWT (kg)	EMA (sq.cm)	Rib (mm)	Rump (mm)	RBV (%)	IMF %
EAPV	+0.4			+4.3	+33	+49	+69	+65	+5			+44	+2.0	-0.4	-0.4	+1.5	-0.3

Expected average progeny values (EAPV) are provided to assist breeders estimate the outcome of particular mating combinations. These values are NOT GROUP BREEDPLAN EBVs and should not be published as such. The actual EBVs for any individual progeny resulting from a particular mating are likely to vary from the expected average values.

**35 1 x PTIC Embryo Recipient E93 - KEC J64/PIE J14**

1 x PTIC Embryo Recipient (KEC J64 (Lot 33) x PIE J14 - full sibling to Lot 34, have no doubt the embryo siblings will be just as good or better!)

**Embryo details:** Implant date: 9/7/18

**Expected due date:** April 10th 2019

**Recipient details:** 2009 Commercial Murray Grey cow (MGxMG)

**Purchaser:**..... \$ .....

**36 1 x PTIC Embryo Recipient L201 - KEC J64/PIE J14**

1 x PTIC Embryo Recipient (KEC J64 (Lot 33) x PIE J14 - full sibling to Lot 34, have no doubt the embryo siblings will be just as good or better!)

**Embryo details:** Implant date: 9/7/18

**Expected due date:** April 10th 2019

**Recipient details:** 2015 drop Hereford x Friesian (HHxFF)

**Purchaser:**..... \$ .....

**37 1 x PTIC Embryo Recipient L205 - KEC J64/PIE J14**

1 x PTIC Embryo Recipient (KEC J64 (Lot 33) x PIE J14 - full sibling to Lot 34, have no doubt the embryo siblings will be just as good or better!)

**Embryo details:** Implant date: 9/7/18

**Expected due date:** April 10th 2019

**Recipient details:** 2015 drop Hereford x Friesian (HHxFF)

**Purchaser:**..... \$ .....







Lot 38

**38 GLENLIAM FARM BEROLEANNE C85 (PB) Ident: KEC C85**

MONTEREY MARSHALL (PB)  
 THE GLEN MARSHALL Q166 (PB)  
 THE GLEN CLARA 34TH (PB)  
**Sire: THE GLEN MARSHALL V172 (PB)**  
 TEMAR LOTUS L62 (PB)  
 THE GLEN BERANICE S99 (PB)  
 THE GLEN BERANICE 50TH (PB)

ORCADIA PARK SYNDICATE (PB)  
 ROBERN MISTER MUSCLE (PB) (AI)  
 ROBGRANTHONY SNOWFLAKE 5TH (PB) (AI)  
**Dam: GLENLIAM FARM BEROLEANNE W33 (PB) (AI)**  
 ORCADIA PARK RIMFIRE N97+93 (PB) (ET)  
 GLENLIAM FARM BEROLEANE S18 (PB)  
 ONDIONG BEROLEANE 9TH (PB)

**Born:** 12/09/2007      **Sex:** F      **Colour:** Grey

**Notes:** Star Lot - Donor - Big framed, very sound. Daughter Lot 28 has also joined the donor pen & her other daughter Lot 40 is breeding stud sires! Consistent top of the drop breeder who earned her donor status easily. Dry due to ET work. Dep'd with WMM L885 from 30/8/18 until 6/11/18. PTIC.

	December 2018 Murray Grey GROUP BREEDPLAN																
	CED (%)	CEM (%)	GL (days)	BW (kg)	200 (kg)	400 (kg)	600 (kg)	MCW (kg)	Milk (kg)	SS (cm)	DTC	CWT (kg)	EMA (sq.cm)	Rib (mm)	Rump (mm)	RBY (%)	IMF %
EBV:	-6.8	-0.3	+0.6	+8.5	+38	+55	+88	+107	+11	+2.4	-1.3	+45	+0.6	-2.0	-2.5	+1.8	-0.7
Acc:	52%	44%	57%	78%	77%	77%	78%	74%	75%	57%	38%	69%	54%	69%	69%	63%	60%

**Purchaser:** ..... \$ .....

**39 GLENLIAM FARM BEROLEANE B26 (PB) Ident: KEC B26**

ORCADIA PARK KNIGHT RIDER K79 (PB)  
 KATUNA COURAGEOUS U8 (PB) (AI) (ET)  
 KALTARA NORA 388 (PB)  
**Sire: GLENLIAM FARM XTASY X40 (PB) (AI) (ET)**  
 ORCADIA PARK REMBRANDT (PB)  
 ORCADIA PARK ANTOINETTE 1173 (PB)  
 ORCADIA PARK ANTOINETTE 2ND (PB)

DELOWEN QUAYLINE (PB)  
 MALPARARA ROSEBERRY (PB)  
 MALPARARA ANNABEL N131 (PB)  
**Dam: GLENLIAM FARM BEROLEANE Z67 (PB)**  
 ORCADIA PARK RIMFIRE N97+93 (PB) (ET)  
 GLENLIAM FARM BEROLEANE S18 (PB)  
 ONDIONG BEROLEANE 9TH (PB)

**Born:** 07/07/2006      **Sex:** F      **Colour:** Silver

**Notes:** One of the oldest cows in the sale, but she has never missed a beat since calving at 2yrs of age! Refined through the front, deep bodied through the middle and wedgy in the back. Exceptional stud sire potential silver bull calf KEC P90 born 8/8/18 by T. Jeopardy at foot. AI'd to PIE J14 on 15/11/18 then dep'd with WMM L885 from 17/11/18 to 12/12/18 then to LEJ M47 on the 13/12/18 until 9/1/19.

	December 2018 Murray Grey GROUP BREEDPLAN																
	CED (%)	CEM (%)	GL (days)	BW (kg)	200 (kg)	400 (kg)	600 (kg)	MCW (kg)	Milk (kg)	SS (cm)	DTC	CWT (kg)	EMA (sq.cm)	Rib (mm)	Rump (mm)	RBY (%)	IMF %
EBV:	+2.0	-0.6		+2.4	+18	+27	+38	+34	+7			+22	+0.7	+0.3	+0.6	+0.5	+0.0
Acc:	45%	36%		79%	77%	76%	77%	73%	75%			66%	44%	58%	57%	52%	49%

**Purchaser:** ..... \$ .....

**40 GLENLIAM FARM BEROLEANNE H80 (PB)**

**Ident: KEC H80**

SPRINGWELL TRUMP CARD T58 (PB)  
 GLENLIAM FARM ALABAMA A23 (PB) (AI) (ET)  
 THOLOGOLONG LINDA 867 (PB) (AI) (ET)

**Born: 15/08/2012**

**Sex: F**

**Colour: Silver**

**Sire: GLENLIAM FARM DOMINATOR D28 (PB)**

GLENLIAM FARM YOKAHAMA Y56 (PB)  
 GLENLIAM FARM ANTOINETTE B11 (PB)  
 GLENLIAM FARM ANTOINETTE Y91 (GR1) (AI) (ET)

**Notes:** Long bodied, great young breeder. Produced one of leading 'N' bull calves who will be sold at TOTR 2019. Silver heifer calf KEC P68 born 26/7/18 by GF Gravity G28 at foot. AI'd to PIE J14 on 5/11/18 then dep'd with WMM L885 from 10/11/18 to 12/12/18 then to LEJ M47 on the 13/12/18 until 9/1/19.

THE GLEN MARSHALL Q166 (PB)  
 THE GLEN MARSHALL V172 (PB)  
 THE GLEN BERANICE S99 (PB)

**Dam: GLENLIAM FARM BEROLEANNE C85 (PB)**

ROBERN MISTER MUSCLE (PB) (AI)  
 GLENLIAM FARM BEROLEANNE W33 (PB) (AI)  
 GLENLIAM FARM BEROLEANE S18 (PB)



**December 2018 Murray Grey GROUP BREEDPLAN**

	CED (%)	CEM (%)	GL (days)	BW (kg)	200 (kg)	400 (kg)	600 (kg)	MCW (kg)	Milk (kg)	SS (cm)	DTC	CWT (kg)	EMA (sq.cm)	Rib (mm)	Rump (mm)	RBY (%)	IMF %
<b>EBV:</b>	-4.4		+0.1	+6.9	+34	+56	+82	+98	+5	+1.6		+43	+0.4	-0.2	-0.1	+0.2	+0.3
<b>Acc:</b>	44%		51%	81%	74%	73%	70%	59%	62%	45%		60%	41%	52%	51%	47%	44%

**Purchaser:** ..... \$ .....

**41 GLENLIAM FARM BEROLEANNE K35 (PB)**

**Ident: KEC K35**

MALPARARA ROSEBERRY (PB)  
 GLENLIAM FARM ZANTHER Z94 (PB)  
 GLENLIAM FARM CAPRI LASS W22 (PB)

**Born: 19/06/2014**

**Sex: F**

**Colour: Silver**

**Sire: GLENLIAM FARM CHOPPER C18 (PB)**

COROMBY ROCCO V7 (PB)  
 GLENLIAM FARM CAPRI LASS A13 (PB)  
 GLENLIAM FARM CAPRI LASS X32 (PB) (AI)

**Notes:** This cow might be small framed, but do not under estimate her breeding abilities! An exceptional show potential grey heifer calf at foot KEC P75 born 1/8/18 by T. Jeopardy who speaks enough for her dam. K35's dam was possibly the best cow bred at Glenliam and was a donor. AI'd to PIE J14 on 15/11/18 then dep'd with WMM L885 from 17/11/18 to 12/12/18 then to LEJ M47 on the 13/12/18 until 9/1/19.

WILLALOOKA MINYIP (PB)  
 GLENLIAM FARM UTOPIA U117 (PB) (AI) (ET)  
 BRANTWOOD CARMEL K8 (PB)

**Dam: GLENLIAM FARM BEROLEANNE X67 (PB)**

ORCADIA PARK RIMFIRE N97+93 (PB) (ET)  
 GLENLIAM FARM BEROLEANE S18 (PB)  
 ONDIONG BEROLEANE 9TH (PB)



**December 2018 Murray Grey GROUP BREEDPLAN**

	CED (%)	CEM (%)	GL (days)	BW (kg)	200 (kg)	400 (kg)	600 (kg)	MCW (kg)	Milk (kg)	SS (cm)	DTC	CWT (kg)	EMA (sq.cm)	Rib (mm)	Rump (mm)	RBY (%)	IMF %
<b>EBV:</b>	-0.4			+3.7	+25	+28	+37	+30	+7	-0.5		+27	+1.8	-0.4	-0.5	+1.7	-0.7
<b>Acc:</b>	41%			80%	71%	67%	67%	56%	60%	50%		54%	39%	49%	49%	45%	42%

**Purchaser:** ..... \$ .....





**42 GLENLIAM FARM BEROLEANNE M62 (PB)**

**Ident: KEC M62**

WOODBOURN WARRIOR A69 (PB)  
 EYLWARRA SANDS FALCON F33 (PB)  
 EYLWARRA SANDS MILKMAID Z64 (PB) (AI)  
**Sire: TULLIBARDINE JEOPARDY J14 (PB) (AI)**  
 MONTEREY SENSATIONAL (PB) (AI) (ET)  
 TULLIBARDINE KATIE E46 (PB) (AI)  
 TULLIBARDINE KATIE X50 (PB)

**Born: 16/08/2016 Sex: F Colour: Silver**

**Notes:** The complete package! Dam Lot 39 proves longevity is in her blood. A tidy fronted female that carries length and muscle right through without being extreme in anyway. Bryce's favourite 'M' heifer. Dep'd with KEC G28 from 21/6/18 to 22/7/18 then with KYM M80 from 23/7/18 to 13/9/18. PTIC.

KATUNA COURAGEOUS U8 (PB) (AI) (ET)  
 GLENLIAM FARM XTASY X40 (PB) (AI) (ET)  
 ORCADIA PARK ANTOINETTE 1173 (PB)  
**Dam: GLENLIAM FARM BEROLEANE B26 (PB)**  
 MALPARARA ROSEBERRY (PB)  
 GLENLIAM FARM BEROLEANE Z67 (PB)  
 GLENLIAM FARM BEROLEANE S18 (PB)



*December 2018 Murray Grey GROUP BREEDPLAN*

	CED (%)	CEM (%)	GL (days)	BW (kg)	200 (kg)	400 (kg)	600 (kg)	MCW (kg)	Milk (kg)	SS (cm)	DTC	CWT (kg)	EMA (sq.cm)	Rib (mm)	Rump (mm)	RBY (%)	IMF %
<b>EBV:</b>	+1.2		-1.3	+3.7	+27	+46	+69	+66	+5			+43	+2.0	-0.4	-0.4	+1.4	+0.0
<b>Acc:</b>	38%		52%	78%	71%	71%	72%	61%	45%			61%	45%	62%	62%	55%	50%

**Purchaser:** ..... **\$** .....



**Lot 42**



**Lot 43**

**43 GLENLIAM FARM BEROLEANNE M93 (PB) (ET)**

**Ident: KEC M93**

WOODBOURN WARRIOR A69 (PB)  
 EYLWARRA SANDS FALCON F33 (PB)  
 EYLWARRA SANDS MILKMAID Z64 (PB) (AI)  
**Sire: TULLIBARDINE JEOPARDY J14 (PB) (AI)**  
 MONTEREY SENSATIONAL (PB) (AI) (ET)  
 TULLIBARDINE KATIE E46 (PB) (AI)  
 TULLIBARDINE KATIE X50 (PB)

**Born: 23/11/2016 Sex: F Colour: Silver**

**Notes:** ET heifer who has been shown. Moderate framed, easy doing, big volumed heifer with plenty of potential. Dep'd with KEC G28 from 21/6/18 to 22/7/18 then with KYM M80 from 23/7/18 to 13/9/18. PTIC.

WILLALOOKA MINYIP (PB)  
 GLENLIAM FARM UTOPIA U117 (PB) (AI) (ET)  
 BRANTWOOD CARMEL K8 (PB)  
**Dam: GLENLIAM FARM BEROLEANNE X67 (PB)**  
 ORCADIA PARK RIMFIRE N97+93 (PB) (ET)  
 GLENLIAM FARM BEROLEANE S18 (PB)  
 ONDIONG BEROLEANE 9TH (PB)



*December 2018 Murray Grey GROUP BREEDPLAN*

	CED (%)	CEM (%)	GL (days)	BW (kg)	200 (kg)	400 (kg)	600 (kg)	MCW (kg)	Milk (kg)	SS (cm)	DTC	CWT (kg)	EMA (sq.cm)	Rib (mm)	Rump (mm)	RBY (%)	IMF %
<b>EBV:</b>	-3.3			+6.5	+33	+49	+71	+63	+5	+0.8		+43	+2.7	-1.2	-1.6	+2.4	-0.6
<b>Acc:</b>	39%			64%	61%	61%	60%	51%	44%	51%		52%	40%	49%	49%	45%	42%

**Purchaser:** ..... **\$** .....





The Capri Lass family go back to Orcadia Park Capri Lass 1112, purchased on our first visit to the Wesley's. This line has been a bull breeding one that has produced the likes of GF Drover D107, a leading sire of the past GF Logistic L90 sold to Paul and Sandra Francis of Ondiong for \$13,500. Pictured Capri Lass son KEC L90.

# Capri Lass Family

**44 GLENLIAM FARM CAPRI LASS A29 (PB) (AI) Ident: KEC A29**

WILLALOOKA JAVA (PB)  
 WILLALOOKA LEOPOLD L192 (PB)  
 WILLALOOKA CATHERINE 2948 (PB)  
**Sire: WILLALOOKA PHARAOH P47 (PB)**  
 WILLALOOKA ROSS (PB)  
 WILLALOOKA CATHERINE M171 (PB)  
 WILLALOOKA CATHERINE 3428 (PB)

**Born: 11/05/2005 Sex: F Colour: Grey**

ORCADIA PARK SYNDICATE (PB)  
 ROBERN MISTER MUSCLE (PB) (AI)  
 ROBGRANTHONY SNOWFLAKE 5TH (PB) (AI)  
**Dam: GLENLIAM FARM CAPRI LASS R32 (PB) (AI) (ET)**  
 ORCADIA PARK BONANZA (PB)  
 ORCADIA PARK CAPRI LASS 1112 (PB)  
 ORCADIA PARK CAPRI LASS 13TH (PB)

**Notes:** Star Lot - Donor. The oldest cow in the sale, but she certainly holds her age well. Exceptional show potential grey heifer calf KEC P52 born 27/6/18 by Bottlesford Kudos who has been broken in and entered for 2019 Sydney Royal. 6 daughters in the sale sell as lots 45, 46, 50, 51, 53 & 54! Sons have sold to a top of \$13,500. As the saying goes proof is in the pudding. Dep'd with WMM L885 from 18/11/18 to 12/12/18 then to LEJ M47 on the 13/12/18 until 9/1/19.



	December 2018 Murray Grey GROUP BREEDPLAN																
	CED (%)	CEM (%)	GL (days)	BW (kg)	200 (kg)	400 (kg)	600 (kg)	MCW (kg)	Milk (kg)	SS (cm)	DTC	CWT (kg)	EMA (sq.cm)	Rib (mm)	Rump (mm)	RBV (%)	IMF %
<b>EBV:</b>	-2.0	+2.6	-1.1	+3.3	+29	+38	+61	+72	+3	+0.9	-2.2	+39	+1.6	-0.4	-0.3	+1.1	-0.2
<b>Acc:</b>	61%	55%	70%	85%	81%	80%	79%	71%	74%	61%	51%	71%	58%	65%	65%	62%	60%

**Purchaser:** ..... **\$** .....



**45 GLENLIAM FARM CAPRI LASS P35 (PB) (AI) (ET)**

**Ident: KEC P35**

ORCADIA PARK TYCOON L082 (PB)  
 LINDSAY STARBRIGHT S117 (PB) (AI)  
 LINDSAY EDITH K15+90 (PB)  
**Sire: WALLAWONG RIPSNOTER (PB)**  
 STEVENSON BRUNO 561G (AA) (GRO)  
 WALLAWONG ALETTA (GR1) (AI)  
 GLENCAIRN ALETTA Q64 (PB)

WILLALOOKA LEOPOLD L192 (PB)  
 WILLALOOKA PHARAOH P47 (PB)  
 WILLALOOKA CATHERINE M171 (PB)  
**Dam: GLENLIAM FARM CAPRI LASS A29 (PB) (AI)**  
 ROBERN MISTER MUSCLE (PB) (AI)  
 GLENLIAM FARM CAPRI LASS R32 (PB) (AI) (ET)  
 ORCADIA PARK CAPRI LASS 1112 (PB)

**Born:** 08/03/2018      **Sex:** F      **Colour:** Silver

**Notes:** Smaller framed, easy doing, economical, sound and balanced young female. Dam is a donor and sells as Lot 44. By one of Australia's leading sires in Wallawong Ripsnorter (\$14,500). Full ET sister sells as Lot 48.



December 2018 Murray Grey GROUP BREEDPLAN																	
	CED (%)	CEM (%)	GL (days)	BW (kg)	200 (kg)	400 (kg)	600 (kg)	MCW (kg)	Milk (kg)	SS (cm)	DTC	CWT (kg)	EMA (sq.cm)	Rib (mm)	Rump (mm)	RBY (%)	IMF %
<b>EBV:</b>	+1.4	+2.1	-1.0	+2.4	+25	+33	+58	+65	+5			+40					
<b>Acc:</b>	45%	39%	55%	75%	69%	64%	64%	54%	53%			54%					

**Purchaser:** ..... \$ .....

**46 GLENLIAM FARM CAPRI LASS P37 (PB) (AI) (ET)**

**Ident: KEC P37**

ORCADIA PARK TYCOON L082 (PB)  
 LINDSAY STARBRIGHT S117 (PB) (AI)  
 LINDSAY EDITH K15+90 (PB)  
**Sire: WALLAWONG RIPSNOTER (PB)**  
 STEVENSON BRUNO 561G (AA) (GRO)  
 WALLAWONG ALETTA (GR1) (AI)  
 GLENCAIRN ALETTA Q64 (PB)

WILLALOOKA LEOPOLD L192 (PB)  
 WILLALOOKA PHARAOH P47 (PB)  
 WILLALOOKA CATHERINE M171 (PB)  
**Dam: GLENLIAM FARM CAPRI LASS A29 (PB) (AI)**  
 ROBERN MISTER MUSCLE (PB) (AI)  
 GLENLIAM FARM CAPRI LASS R32 (PB) (AI) (ET)  
 ORCADIA PARK CAPRI LASS 1112 (PB)

**Born:** 11/03/2018      **Sex:** F      **Colour:** Grey

**Notes:** Good functional, moderate framed, easy doing young female. Dam is a donor and sells as Lot 44. By one of Australia's leading sires in Wallawong Ripsnorter (\$14,500). Full ET sister sells as Lot 45.



December 2018 Murray Grey GROUP BREEDPLAN																	
	CED (%)	CEM (%)	GL (days)	BW (kg)	200 (kg)	400 (kg)	600 (kg)	MCW (kg)	Milk (kg)	SS (cm)	DTC	CWT (kg)	EMA (sq.cm)	Rib (mm)	Rump (mm)	RBY (%)	IMF %
<b>EBV:</b>	+2.4	+2.2	-1.3	+1.8	+25	+33	+57	+64	+5			+40					
<b>Acc:</b>	45%	39%	55%	75%	69%	64%	64%	54%	53%			54%					

**Purchaser:** ..... \$ .....

**47 GLENLIAM FARM CAPRI LASS C52 (PB)**

**Ident: KEC C52**

MONTEREY MARSHALL (PB)  
 THE GLEN MARSHALL Q166 (PB)  
 THE GLEN CLARA 34TH (PB)  
**Sire: THE GLEN MARSHALL V172 (PB)**  
 TEMAR LOTUS L62 (PB)  
 THE GLEN BERANICE S99 (PB)  
 THE GLEN BERANICE 50TH (PB)

ORCADIA PARK SYNDICATE (PB)  
 ROBERN MISTER MUSCLE (PB) (AI)  
 ROBRANTHONY SNOWFLAKE 5TH (PB) (AI)  
**Dam: GLENLIAM FARM CAPRI LASS R32 (PB) (AI) (ET)**  
 ORCADIA PARK BONANZA (PB)  
 ORCADIA PARK CAPRI LASS 1112 (PB)  
 ORCADIA PARK CAPRI LASS 13TH (PB)

**Born:** 29/08/2007      **Sex:** F      **Colour:** Grey

**Notes:** Big framed, structurally sound, deep bodied female who breeds consistent top of the drop females to any sire. Very good grey bull calf KEC P81 born 2/8/18 by KEC G28. Her grand daughter sells as Lot 49. AI'd to PIE J14 on 8/11/18 then dep'd with WMM L885 from 10/11/18 to 12/12/18 then to LEJ M47 on the 13/12/18 until 9/1/19.



December 2018 Murray Grey GROUP BREEDPLAN																	
	CED (%)	CEM (%)	GL (days)	BW (kg)	200 (kg)	400 (kg)	600 (kg)	MCW (kg)	Milk (kg)	SS (cm)	DTC	CWT (kg)	EMA (sq.cm)	Rib (mm)	Rump (mm)	RBY (%)	IMF %
<b>EBV:</b>	-6.5	-0.5	+0.4	+7.2	+33	+50	+78	+94	+8	+2.3	-0.9	+44	+1.2	-2.0	-2.4	+2.1	-0.4
<b>Acc:</b>	55%	47%	58%	79%	78%	77%	78%	73%	75%	53%	39%	69%	55%	70%	70%	64%	61%

**Purchaser:** ..... \$ .....

**48 GLENLIAM FARM CAPRI LASS H38 (PB) (ET)**

**Ident: KEC H38**

WELLBROOK FLASH MAC+92 (PB)  
 DEHAVALYN NEW SOUTH WALES (PB) (AI)  
 DEHAVALYN KISS ME QUICK P4 (PB) (AI)

**Born:** 12/05/2012

**Sex:** F

**Colour:** Grey

**Sire: GLENLIAM FARM ZEPPLIN Z80 (PB)**

ORCADIA PARK REMBRANDT (PB)  
 GLENLIAM FARM VALSARI T16 (PB) (AI) (ET)  
 MT VIEW VALSARI J67 (PB)

**Notes:** A clean fronted, deep bodied wedgy female with a very good silver heifer calf KEC P69 born 29/7/18 by WMM L885. AI'd to PIE J14 on 8/11/18 then dep'd with WMM L885 from 10/11/18 to 12/12/18 then to LEJ M47 on the 13/12/18 until 9/1/19.

ORCADIA PARK SYNDICATE (PB)  
 ROBERN MISTER MUSCLE (PB) (AI)  
 ROBGRANTHONY SNOWFLAKE 5TH (PB) (AI)

**Dam: GLENLIAM FARM CAPRI LASS R32 (PB) (AI) (ET)**

ORCADIA PARK BONANZA (PB)  
 ORCADIA PARK CAPRI LASS 1112 (PB)  
 ORCADIA PARK CAPRI LASS 13TH (PB)



December 2018 Murray Grey GROUP BREEDPLAN																	
	CED (%)	CEM (%)	GL (days)	BW (kg)	200 (kg)	400 (kg)	600 (kg)	MCW (kg)	Milk (kg)	SS (cm)	DTC	CWT (kg)	EMA (sq.cm)	Rib (mm)	Rump (mm)	RBY (%)	IMF %
<b>EBV:</b>	-2.2	-1.9	+1.5	+4.3	+19	+22	+35	+42	+3	+1.4	-1.2	+21	+1.8	-0.5	-0.5	+1.6	-0.7
<b>Acc:</b>	52%	45%	55%	74%	70%	68%	67%	62%	68%	51%	36%	61%	48%	57%	57%	53%	51%

**Purchaser:** ..... \$ .....

**49 GLENLIAM FARM CAPRI LASS K16 (PB)**

**Ident: KEC K16**

LINDSAY VINNIE Z28 (PB)  
 LINDSAY COMMANDER C121 (PB)  
 LINDSAY LEANNE A251 (PB)

**Born:** 09/02/2014

**Sex:** F

**Colour:** Silver

**Sire: GLENLIAM FARM GRAVITY G28 (PB)**

GLENLIAM FARM ZEPPLIN Z80 (PB)  
 GLENLIAM FARM ANTOINETTE E25 (PB)  
 GLENLIAM FARM ANTOINETTE B11 (PB)

**Notes:** Moderate framed, very functional female who is breeding consistently at the top of her game. Grey bull calf KEC P98 born 1/9/18 by WMM L885. Dep'd with WMM L885 from 18/11/18 to 12/12/18 then to LEJ M47 on the 13/12/18 until 9/1/19.

GLENLIAM FARM ZEPPLIN Z80 (PB)  
 GLENLIAM FARM DROVER D107 (PB)  
 GLENLIAM FARM CAPRI LASS A28 (PB) (AI) (ET)

**Dam: GLENLIAM FARM CAPRI LASS H25 (PB)**

THE GLEN MARSHALL V172 (PB)  
 GLENLIAM FARM CAPRI LASS C52 (PB)  
 GLENLIAM FARM CAPRI LASS R32 (PB) (AI) (ET)



December 2018 Murray Grey GROUP BREEDPLAN																	
	CED (%)	CEM (%)	GL (days)	BW (kg)	200 (kg)	400 (kg)	600 (kg)	MCW (kg)	Milk (kg)	SS (cm)	DTC	CWT (kg)	EMA (sq.cm)	Rib (mm)	Rump (mm)	RBY (%)	IMF %
<b>EBV:</b>	-3.3			+5.0	+24	+33	+51	+64	+6			+29	+1.1	-0.3	-0.2	+1.0	+0.1
<b>Acc:</b>	43%			78%	73%	71%	71%	59%	56%			60%	43%	60%	60%	54%	50%

**Purchaser:** ..... \$ .....

**50 GLENLIAM FARM CAPRI LASS L77 (PB) (ET)**

**Ident: KEC L77**

DEHAVALYN NEW SOUTH WALES (PB) (AI)  
 GLENLIAM FARM ZEPPLIN Z80 (PB)  
 GLENLIAM FARM VALSARI T16 (PB) (AI) (ET)

**Born:** 07/09/2015

**Sex:** F

**Colour:** Silver

**Sire: GLENLIAM FARM DROVER D107 (PB)**

SPRINGWELL TRUMP CARD T58 (PB)  
 GLENLIAM FARM CAPRI LASS A28 (PB) (AI) (ET)  
 ORCADIA PARK CAPRI LASS 1112 (PB)

**Notes:** Well structured, refined female who is backed by maternal strength. Full brother sold for \$13,500 to Ondiong MGs in 2017. Dam is a donor and sells as Lot 44. AI'd to PIE J14 1/7/18 then dep'd with WMM L885 from 5/7/18 until 10/9/18. PTIC.

WILLALOOKA LEOPOLD L192 (PB)  
 WILLALOOKA PHARAOH P47 (PB)  
 WILLALOOKA CATHERINE M171 (PB)

**Dam: GLENLIAM FARM CAPRI LASS A29 (PB) (AI)**

ROBERN MISTER MUSCLE (PB) (AI)  
 GLENLIAM FARM CAPRI LASS R32 (PB) (AI) (ET)  
 ORCADIA PARK CAPRI LASS 1112 (PB)



December 2018 Murray Grey GROUP BREEDPLAN																	
	CED (%)	CEM (%)	GL (days)	BW (kg)	200 (kg)	400 (kg)	600 (kg)	MCW (kg)	Milk (kg)	SS (cm)	DTC	CWT (kg)	EMA (sq.cm)	Rib (mm)	Rump (mm)	RBY (%)	IMF %
<b>EBV:</b>	-2.4	+0.1	+0.6	+3.6	+22	+29	+46	+59	-3			+30	+2.0	-0.3	-0.3	+1.5	-0.4
<b>Acc:</b>	46%	39%	54%	77%	72%	70%	68%	57%	57%			59%	46%	59%	59%	54%	51%

**Purchaser:** ..... \$ .....



**51 GLENLIAM FARM CAPRI LASS M73 (PB)**

**Ident: KEC M73**

WOODBURN WARRIOR A69 (PB)  
 EYLWARRA SANDS FALCON F33 (PB)  
 EYLWARRA SANDS MILKMAID Z64 (PB) (AI)  
**Sire: TULLIBARDINE JEOPARDY J14 (PB) (AI)**  
 MONTEREY SENSATIONAL (PB) (AI) (ET)  
 TULLIBARDINE KATIE E46 (PB) (AI)  
 TULLIBARDINE KATIE X50 (PB)

**Born:** 26/08/2016      **Sex:** F      **Colour:** Silver

**Notes:** Later maturing, growthy, sound female with a long future ahead of her. Longevity is in her blood! Dam is a donor and sells as Lot 44. Dep'd with KEC G28 from 21/6/18 to 22/7/18 then with KYM M80 from 23/7/18 to 13/9/18. PTIC.

WILLALOOKA LEOPOLD L192 (PB)  
 WILLALOOKA PHARAOH P47 (PB)  
 WILLALOOKA CATHERINE M171 (PB)  
**Dam: GLENLIAM FARM CAPRI LASS A29 (PB) (AI)**  
 ROBERN MISTER MUSCLE (PB) (AI)  
 GLENLIAM FARM CAPRI LASS R32 (PB) (AI) (ET)  
 ORCADIA PARK CAPRI LASS 1112 (PB)



**December 2018 Murray Grey GROUP BREEDPLAN**

	CED (%)	CEM (%)	GL (days)	BW (kg)	200 (kg)	400 (kg)	600 (kg)	MCW (kg)	Milk (kg)	SS (cm)	DTC	CWT (kg)	EMA (sq.cm)	Rib (mm)	Rump (mm)	RBY (%)	IMF %
<b>EBV:</b>	-1.5	-0.2	-1.6	+4.9	+37	+55	+81	+79	+3	+1.4		+50	+2.2	-1.2	-1.5	+1.9	-0.4
<b>Acc:</b>	43%	36%	56%	78%	72%	71%	72%	61%	44%	52%		61%	48%	63%	63%	57%	53%

**Purchaser:** ..... **\$** .....



**Lot 51**



**Lot 52**

**52 GLENLIAM FARM CAPRI LASS N57 (PB)**

**Ident: KEC N57**

LINDSAY VINNIE Z28 (PB)  
 LINDSAY COMMANDER C121 (PB)  
 LINDSAY LEANNE A251 (PB)  
**Sire: GLENLIAM FARM GRAVITY G28 (PB)**  
 GLENLIAM FARM ZEPPLIN Z80 (PB)  
 GLENLIAM FARM ANTOINETTE E25 (PB)  
 GLENLIAM FARM ANTOINETTE B11 (PB)

**Born:** 01/08/2017      **Sex:** F      **Colour:** Silver

**Notes:** A top of the 'N' drop! A stand out female oozing femininity, capacity, muscle and refinement. This heifer is long & deep, she really is the ultimate package.

THE GLEN MARSHALL Q166 (PB)  
 THE GLEN MARSHALL V172 (PB)  
 THE GLEN BERANICE S99 (PB)  
**Dam: GLENLIAM FARM CAPRI LASS C52 (PB)**  
 ROBERN MISTER MUSCLE (PB) (AI)  
 GLENLIAM FARM CAPRI LASS R32 (PB) (AI) (ET)  
 ORCADIA PARK CAPRI LASS 1112 (PB)



**December 2018 Murray Grey GROUP BREEDPLAN**

	CED (%)	CEM (%)	GL (days)	BW (kg)	200 (kg)	400 (kg)	600 (kg)	MCW (kg)	Milk (kg)	SS (cm)	DTC	CWT (kg)	EMA (sq.cm)	Rib (mm)	Rump (mm)	RBY (%)	IMF %
<b>EBV:</b>	-4.7			+6.2	+29	+44	+69	+81	+7			+37	+1.3	-0.2	-0.1	+0.7	+0.4
<b>Acc:</b>	41%			77%	71%	70%	67%	57%	49%			59%	47%	63%	63%	57%	53%

**Purchaser:** ..... **\$** .....



Lot 53

**53 GLENLIAM FARM CAPRI LASS N105 (PB) (ET)**

**Ident: KEC N105**

MONTEREY STARLIGHT (PB)  
 MONTEREY MARVELLOUS (PB) (AI) (ET)  
 MONTEREY MISS MAGNOLIA S90 (PB)

**Born:** 19/10/2017

**Sex:** F

**Colour:** Grey

**Sire: ONDIONG F78 (PB)**

THE GLEN MANUEL V126 (PB)  
 ONDIONG BOBO 59TH (PB)  
 ONDIONG BOBO 53RD (PB)

**Notes:** A moderate framed deep bodied female. She is square across the hips, is structurally sound and well balanced. Dam is a donor and sells as Lot 44. Positive EMA & Positive Fats!

**Dam: GLENLIAM FARM CAPRI LASS A29 (PB) (AI)**

WILLALOOKA LEOPOLD L192 (PB)  
 WILLALOOKA PHARAOH P47 (PB)  
 WILLALOOKA CATHERINE M171 (PB)  
 ROBERN MISTER MUSCLE (PB) (AI)  
 GLENLIAM FARM CAPRI LASS R32 (PB) (AI) (ET)  
 ORCADIA PARK CAPRI LASS 1112 (PB)



December 2018 Murray Grey GROUP BREEDPLAN

	CED (%)	CEM (%)	GL (days)	BW (kg)	200 (kg)	400 (kg)	600 (kg)	MCW (kg)	Milk (kg)	SS (cm)	DTC	CWT (kg)	EMA (sq.cm)	Rib (mm)	Rump (mm)	RBV (%)	IMF %
EBV:	-5.3	+0.4	-0.5	+5.5	+30	+42	+64	+69	+4			+35	+2.0	+0.9	+1.4	+0.4	+0.2
Acc:	45%	38%	52%	77%	70%	70%	66%	54%	48%			59%	45%	60%	59%	54%	51%

**Purchaser:** ..... \$ .....

**54 GLENLIAM FARM CAPRI LASS N103 (PB) (ET)**

**Ident: KEC N103**

MONTEREY STARLIGHT (PB)  
 MONTEREY MARVELLOUS (PB) (AI) (ET)  
 MONTEREY MISS MAGNOLIA S90 (PB)

**Born:** 18/10/2017

**Sex:** F

**Colour:** Silver

**Sire: ONDIONG F78 (PB)**

THE GLEN MANUEL V126 (PB)  
 ONDIONG BOBO 59TH (PB)  
 ONDIONG BOBO 53RD (PB)

**Notes:** A sweet silver heifer who is sound in every way. A really well balanced young female with plenty of future in her. Positive EMA & Positive Fats.

**Dam: GLENLIAM FARM CAPRI LASS A29 (PB) (AI)**

WILLALOOKA LEOPOLD L192 (PB)  
 WILLALOOKA PHARAOH P47 (PB)  
 WILLALOOKA CATHERINE M171 (PB)  
 ROBERN MISTER MUSCLE (PB) (AI)  
 GLENLIAM FARM CAPRI LASS R32 (PB) (AI) (ET)  
 ORCADIA PARK CAPRI LASS 1112 (PB)



December 2018 Murray Grey GROUP BREEDPLAN

	CED (%)	CEM (%)	GL (days)	BW (kg)	200 (kg)	400 (kg)	600 (kg)	MCW (kg)	Milk (kg)	SS (cm)	DTC	CWT (kg)	EMA (sq.cm)	Rib (mm)	Rump (mm)	RBV (%)	IMF %
EBV:	-2.2	+0.8	-1.2	+4.0	+27	+37	+58	+62	+4			+33	+1.9	+1.0	+1.5	+0.1	+0.3
Acc:	45%	38%	52%	77%	70%	70%	66%	54%	48%			59%	45%	60%	59%	54%	51%

**Purchaser:** ..... \$ .....



*Est. 1958*

- » Regular Cattle Sales
- » Stud Stock Sales
- » Consignment of Stock
- » Rural Property Sales
- » Regular Prime Lamb & Sheep Sales
- » Selling to Feedlots
- » Auctions Plus
- » Market Appraisals

**PERSONALISED SERVICE**

***“Leading by Results”***

Licensed Auctioneers - Stock, Station & Real Estate Agents

118 Wentworth St (PO Box 189), Glen Innes. NSW 2370

[www.colinsay.com.au](http://www.colinsay.com.au)

[office@colinsay.com.au](mailto:office@colinsay.com.au)



Colin Say & Co. Pty Ltd

**rma network.**

Accredited Member

**Steve Daley**

**0400 406 667**

**Shad Bailey**

**0458 322 283**

**Nathan Purvis**

**0427 324 078**

**Craig Thomas**

**0428 669 500**





Our Grey Lady's have always been the quiet achievers of our families. This line came from the Mt View herd with the foundation cow being Mt View Grey Lady K40. With other families often picking up ribbons, this family was always breeding consistently at home. This line 'clicked' in our grading program carried out in the late 90's. Two resulting K40 daughters were Champion Unleds at our National Show & Sale. Pictured Grey Lady son KEC N29.

# Grey Lady Family

**55 GLENLIAM FARM GREY LADY D47 (PB) Ident: KEC D47**

SPRINGWELL JAGUAR L138 (PB)  
 SPRINGWELL TRUMP CARD T58 (PB)  
 SPRINGWELL DAIYA N95 (PB)  
**Sire: GLENLIAM FARM ALABAMA A23 (PB) (AI) (ET)**  
 THOLOGOLONG GOLD RUSH (PB)  
 THOLOGOLONG LINDA 867 (PB) (AI) (ET)  
 THOLOGOLONG LINDA 8TH (PB)

**Born:** 26/08/2008      **Sex:** F      **Colour:** Silver

THE GLEN MARSHALL Q166 (PB)  
 THE GLEN MARSHALL V172 (PB)  
 THE GLEN BERANICE S99 (PB)  
**Dam: GLENLIAM FARM GREY LADY B92 (PB)**  
 BRAELANDS KARAZAN (PB)  
 GLENLIAM FARM GREY LADY T42 (PB)  
 MT VIEW GREY LADY K40 (PB)

**Notes:** Star Lot - Donor. Super deep bodied, wedgy cow with an absolute stand out stud sire silver bull calf KEC P53 born 27/6/18 by T. Jeopardy. P53's full brother sold as yearling at TOTR 2018 for \$7000. AI'd to PIE J14 on 19/10/18 then dep'd with LEJ M47 from 21/10/18 to 8/11/18 then to WMM L885 from 9/11/18 then back to LEJ M47 on the 13/12/18 until 9/1/19.



December 2018 Murray Grey GROUP BREEDPLAN

	CED (%)	CEM (%)	GL (days)	BW (kg)	200 (kg)	400 (kg)	600 (kg)	MCW (kg)	Milk (kg)	SS (cm)	DTC	CWT (kg)	EMA (sq.cm)	Rib (mm)	Rump (mm)	RBV (%)	IMF %
<b>EBV:</b>	-2.8	+0.5		+7.2	+30	+39	+69	+67	-1			+32	+1.0	-1.0	-1.2	+1.2	-0.1
<b>Acc:</b>	45%	37%		76%	76%	76%	76%	70%	71%			66%	47%	65%	65%	58%	54%

**Purchaser:** ..... **\$** .....



Lot 55



Lot 55 calf at foot

**56 GLENLIAM FARM GREY LADY P42 (PB) (AI) (ET)**

**Ident: KEC P42**

MONTEREY STARLIGHT (PB)  
 MONTEREY MARVELLOUS (PB) (AI) (ET)  
 MONTEREY MISS MAGNOLIA S90 (PB)  
**Sire: ONDIONG F78 (PB)**  
 THE GLEN MANUEL V126 (PB)  
 ONDIONG BOBO 59TH (PB)  
 ONDIONG BOBO 53RD (PB)

**Born:** 23/03/2018

**Sex:** F

**Colour:** Silver

**Notes:** Smaller framed, well balanced smooth heifer who takes after her sire. A young female with a long future ahead.

SPRINGWELL TRUMP CARD T58 (PB)  
 GLENLIAM FARM ALABAMA A23 (PB) (AI) (ET)  
 THOLOGOLONG LINDA 867 (PB) (AI) (ET)  
**Dam: GLENLIAM FARM GREY LADY D47 (PB)**  
 THE GLEN MARSHALL V172 (PB)  
 GLENLIAM FARM GREY LADY B92 (PB)  
 GLENLIAM FARM GREY LADY T42 (PB)



December 2018 Murray Grey GROUP BREEDPLAN																	
	CED (%)	CEM (%)	GL (days)	BW (kg)	200 (kg)	400 (kg)	600 (kg)	MCW (kg)	Milk (kg)	SS (cm)	DTC	CWT (kg)	EMA (sq.cm)	Rib (mm)	Rump (mm)	RBY (%)	IMF %
EBV:	-3.5			+5.9	+26	+35	+60	+58	+2			+29					
Acc:	40%			74%	68%	64%	63%	52%	47%			53%					

**Purchaser:** \_\_\_\_\_ \$ \_\_\_\_\_

**57 GLENLIAM FARM GREY LADY E33 (PB)**

**Ident: KEC E33**

MONTEREY MARSHALL (PB)  
 THE GLEN MARSHALL Q166 (PB)  
 THE GLEN CLARA 34TH (PB)  
**Sire: THE GLEN MARSHALL V172 (PB)**  
 TEMAR LOTUS L62 (PB)  
 THE GLEN BERANICE S99 (PB)  
 THE GLEN BERANICE 50TH (PB)

**Born:** 16/08/2009

**Sex:** F

**Colour:** Silver

**Notes:** A super functional breeder, who has bred both stud sires and stud females who have gone into a number of herds. Great silver calf KEC P82 born 2/8/18 by T. Jeopardy. Daughter also sells as Lot 65! AI'd to PIE J14 on 17/10/18 then dep'd with LEJ M47 from 19/10/18 to 8/11/18 then to WMM L885 from 9/11/18 then back to LEJ M47 on the 13/12/18 until 9/1/19.

WILLALOOKA MINYIP (PB)  
 GLENLIAM FARM VENTRICAL V30 (PB) (ET)  
 ORCADIA PARK ANTOINETTE N42 (PB)  
**Dam: GLENLIAM FARM GREY LADY Y41 (PB)**  
 RANUI ALL BLACK (AA) (GR0)  
 GLENLIAM FARM GREY LADY V97 (GR1) (AI) (ET)  
 MT VIEW GREY LADY K40 (PB)



December 2018 Murray Grey GROUP BREEDPLAN																	
	CED (%)	CEM (%)	GL (days)	BW (kg)	200 (kg)	400 (kg)	600 (kg)	MCW (kg)	Milk (kg)	SS (cm)	DTC	CWT (kg)	EMA (sq.cm)	Rib (mm)	Rump (mm)	RBY (%)	IMF %
EBV:	-2.0	+0.0	-1.4	+4.5	+30	+46	+71	+75	+12	+1.4		+41	+1.0	-1.6	-1.9	+1.7	-0.1
Acc:	48%	38%	51%	77%	75%	75%	76%	71%	68%	58%		66%	50%	66%	66%	59%	57%

**Purchaser:** \_\_\_\_\_ \$ \_\_\_\_\_







**58 GLENLIAM FARM GREY LADY K47 (GR2) Ident: KEC K47**

Sire: **GLENLIAM FARM DOMINATOR D28 (PB)**  
 SPRINGWELL TRUMP CARD T58 (PB)  
 GLENLIAM FARM ALABAMA A23 (PB) (AI) (ET)  
 THOLOGOLONG LINDA 867 (PB) (AI) (ET)  
 GLENLIAM FARM YOKAHAMA Y56 (PB)  
 GLENLIAM FARM ANTOINETTE B11 (PB)  
 GLENLIAM FARM ANTOINETTE Y91 (GR1) (AI) (ET)  
 Dam: **GLENLIAM FARM GREY LADY C110 (GR1) (AI) (ET)**  
 SCOTCH CAP (AA) (GR0)  
 VICTOREE SCOTCH CAP K46 (AA) (GR0)  
 VICTOREE QUIET F27 (AA) (GR0)  
 ORCADIA PARK TOYOTA (PB)  
 MT VIEW GREY LADY K40 (PB)  
 MT VIEW GREY LADY 1105 (PB)

Born: 19/07/2014 Sex: F Colour: Silver

**Notes:** Very sound and balanced, broad muzzled cow with a super silver heifer calf KEC P46 born 19/6/18 by T. Jeopardy! AI'd to PIE J14 5/9/18 then dep'd with LEJ M47 from 19/9/18 to 8/11/18 then to WMM L885 from 9/11/18 then back to LEJ M47 on the 13/12/18 until 9/1/19.



December 2018 Murray Grey GROUP BREEDPLAN																	
	CED (%)	CEM (%)	GL (days)	BW (kg)	200 (kg)	400 (kg)	600 (kg)	MCW (kg)	Milk (kg)	SS (cm)	DTC	CWT (kg)	EMA (sq.cm)	Rib (mm)	Rump (mm)	RBY (%)	IMF %
EBV:	+0.1		-0.4	+3.3	+19	+25	+42	+51	+0			+17	-0.3	+1.0	+1.5	-1.2	+1.4
Acc:	43%		50%	79%	72%	71%	72%	61%	57%			61%	46%	64%	64%	57%	53%

Purchaser: \_\_\_\_\_ \$ \_\_\_\_\_

**59 GLENLIAM FARM GREY LADY K70 (PB) Ident: KEC K70**

Sire: **GLENLIAM FARM CHOPPER C18 (PB)**  
 MALPARARA ROSEBERRY (PB)  
 GLENLIAM FARM ZANTHER Z94 (PB)  
 GLENLIAM FARM CAPRI LASS W22 (PB)  
 COROMBY ROCCO V7 (PB)  
 GLENLIAM FARM CAPRI LASS A13 (PB)  
 GLENLIAM FARM CAPRI LASS X32 (PB) (AI)  
 Dam: **GLENLIAM FARM GREY LADY E13 (PB)**  
 SPRINGWELL TRUMP CARD T58 (PB)  
 GLENLIAM FARM ALABAMA A23 (PB) (AI) (ET)  
 THOLOGOLONG LINDA 867 (PB) (AI) (ET)  
 VICTOREE SCOTCH CAP K46 (AA) (GR0)  
 GLENLIAM FARM GREY LADY C110 (GR1) (AI) (ET)  
 MT VIEW GREY LADY K40 (PB)

Born: 08/08/2014 Sex: F Colour: Silver

**Notes:** Super compact, neat unit who looks exactly like her dam who sold at the 2018 NSS to Tasmania. Very functional female with silver heifer calf KEC P47 born 19/6/18 by T Jeopardy. AI'd to PIE J14 on 17/11/18 then dep'd with WMM L885 from 19/11/18 to 12/12/18 then to LEJ M47 on the 13/12/18 until 9/1/19.



December 2018 Murray Grey GROUP BREEDPLAN																	
	CED (%)	CEM (%)	GL (days)	BW (kg)	200 (kg)	400 (kg)	600 (kg)	MCW (kg)	Milk (kg)	SS (cm)	DTC	CWT (kg)	EMA (sq.cm)	Rib (mm)	Rump (mm)	RBY (%)	IMF %
EBV:	+1.5			+2.5	+21	+23	+35	+36	+4			+19	+0.4	+1.1	+1.7	-0.6	+0.5
Acc:	40%			79%	72%	72%	72%	62%	56%			61%	45%	63%	63%	56%	52%

Purchaser: \_\_\_\_\_ \$ \_\_\_\_\_



**60 GLENLIAM FARM GREY LADY K103 (PB)**

**Ident: KEC K103**

LINDSAY VINNIE V15 (PB)  
 LINDSAY VINNIE Z28 (PB)  
 LINDSAY ANNE V14 (PB)  
**Sire: LINDSAY COMMANDER C121 (PB)**  
 WILLALOOKA WINDSOR W191 (PB)  
 LINDSAY LEANNE A251 (PB)  
 LINDSAY LEANNE U33 (PB)  
 BAROONA PARK CENTAUR (PB) (AI)  
 BOOKOOLA DIESEL D1 (PB)  
 BOOKOOLA CHLOE W1 (PB)  
**Dam: GLENLIAM FARM GREY LADY G46 (PB)**  
 GLENLIAM FARM VENTRICAL V30 (PB) (ET)  
 GLENLIAM FARM GREY LADY X57 (PB)  
 GLENLIAM FARM GREY LADY U43 (GR1) (AI) (ET)

**Born:** 18/09/2014      **Sex:** F      **Colour:** Silver

**Notes:** Feminine, functional & balanced with a good silver bull calf KEC P58 born 1/7/18 by GF Drover D107, our carcase bull. Daughter sells as Lot 67. Dep'd with WMM L885 from 18/11/18 to 12/12/18 then to LEJ M47 on the 13/12/18 until 9/1/19.



December 2018 Murray Grey GROUP BREEDPLAN																	
	CED (%)	CEM (%)	GL (days)	BW (kg)	200 (kg)	400 (kg)	600 (kg)	MCW (kg)	Milk (kg)	SS (cm)	DTC	CWT (kg)	EMA (sq.cm)	Rib (mm)	Rump (mm)	RBY (%)	IMF %
<b>EBV:</b>	+1.9		-1.3	+1.6	+17	+25	+39	+47	+8			+25	+1.1	-1.0	-1.2	+1.4	-0.2
<b>Acc:</b>	43%		50%	78%	71%	67%	67%	57%	54%			56%	42%	54%	54%	49%	46%

**Purchaser:** ..... \$ .....

**61 GLENLIAM FARM GREY LADY L41 (PB)**

**Ident: KEC L41**

DEHAVALYN NEW SOUTH WALES (PB) (AI)  
 GLENLIAM FARM ZEPPLIN Z80 (PB)  
 GLENLIAM FARM VALSARI T16 (PB) (AI) (ET)  
**Sire: GLENLIAM FARM DROVER D107 (PB)**  
 SPRINGWELL TRUMP CARD T58 (PB)  
 GLENLIAM FARM CAPRI LASS A28 (PB) (AI) (ET)  
 ORCADIA PARK CAPRI LASS 1112 (PB)  
 SPRINGWELL TRUMP CARD T58 (PB)  
 GLENLIAM FARM ALABAMA A23 (PB) (AI) (ET)  
 THOLOGOLONG LINDA 867 (PB) (AI) (ET)  
**Dam: GLENLIAM FARM GREY LADY E13 (PB)**  
 VICTOREE SCOTCH CAP K46 (AA) (GR0)  
 GLENLIAM FARM GREY LADY C110 (GR1) (AI) (ET)  
 MT VIEW GREY LADY K40 (PB)

**Born:** 01/08/2015      **Sex:** F      **Colour:** Silver

**Notes:** A young first calver who is smaller framed but combined with her super grey heifer calf KEC P50, born 26/6/18, by Bottlesford Kudos, they make a very tidy unit! Ai'd to PIE J14 on 15/11/18 then dep'd with WMM L885 from 17/11/18 to 12/12/18 then to LEJ M47 on the 13/12/18 until 19/1/19.



December 2018 Murray Grey GROUP BREEDPLAN																	
	CED (%)	CEM (%)	GL (days)	BW (kg)	200 (kg)	400 (kg)	600 (kg)	MCW (kg)	Milk (kg)	SS (cm)	DTC	CWT (kg)	EMA (sq.cm)	Rib (mm)	Rump (mm)	RBY (%)	IMF %
<b>EBV:</b>	-2.0			+4.1	+17	+17	+26	+33	-4			+12	+0.8	+0.3	+0.6	+0.4	+0.1
<b>Acc:</b>	43%			79%	72%	72%	73%	62%	52%			61%	46%	65%	64%	58%	54%

**Purchaser:** ..... \$ .....

**62 GLENLIAM FARM GREY LADY K86 (PB)**

**Ident: KEC K86**

DEHAVALYN NEW SOUTH WALES (PB) (AI)  
 GLENLIAM FARM ZEPPLIN Z80 (PB)  
 GLENLIAM FARM VALSARI T16 (PB) (AI) (ET)  
**Sire: GLENLIAM FARM DROVER D107 (PB)**  
 SPRINGWELL TRUMP CARD T58 (PB)  
 GLENLIAM FARM CAPRI LASS A28 (PB) (AI) (ET)  
 ORCADIA PARK CAPRI LASS 1112 (PB)  
 WILLALOOKA MINYIP (PB)  
 GLENLIAM FARM VENTRICAL V30 (PB) (ET)  
 ORCADIA PARK ANTOINETTE N42 (PB)  
**Dam: GLENLIAM FARM GREY LADY X57 (PB)**  
 VICTOREE SCOTCH CAP K46 (AA) (GR0)  
 GLENLIAM FARM GREY LADY U43 (GR1) (AI) (ET)  
 MT VIEW GREY LADY K40 (PB)

**Born:** 22/08/2014      **Sex:** F      **Colour:** Grey

**Notes:** A well balanced, sound female whose P drop bull calf has been retained. Ai'd to PIE J14 30/6/18 then dep'd with WMM L885 from 5/7/18 until 10/9/18. PTIC.



December 2018 Murray Grey GROUP BREEDPLAN																	
	CED (%)	CEM (%)	GL (days)	BW (kg)	200 (kg)	400 (kg)	600 (kg)	MCW (kg)	Milk (kg)	SS (cm)	DTC	CWT (kg)	EMA (sq.cm)	Rib (mm)	Rump (mm)	RBY (%)	IMF %
<b>EBV:</b>	-1.3	-0.8	+0.6	+3.2	+20	+24	+36	+44	+0			+22	+1.6	+0.7	+1.1	+0.6	+0.1
<b>Acc:</b>	44%	35%	51%	79%	73%	72%	73%	61%	57%			62%	46%	64%	64%	57%	54%

**Purchaser:** ..... \$ .....



Lot 63

**63 GLENLIAM FARM GREY LADY L83 (PB) Ident: KEC L83**

DEHAVALYN NEW SOUTH WALES (PB) (AI)  
 GLENLIAM FARM ZEPPLIN Z80 (PB)  
 GLENLIAM FARM VALSARI T16 (PB) (AI) (ET)  
**Sire: GLENLIAM FARM DROVER D107 (PB)**  
 SPRINGWELL TRUMP CARD T58 (PB)  
 GLENLIAM FARM CAPRI LASS A28 (PB) (AI) (ET)  
 ORCADIA PARK CAPRI LASS 1112 (PB)

GLENLIAM FARM VALVE V51 (PB)  
 GLENLIAM FARM YOKAHAMA Y56 (PB)  
 GLENLIAM FARM ANTOINETTE Q18 (PB)  
**Dam: GLENLIAM FARM GREY LADY B22 (PB)**  
 MALPARARA ROSEBERRY (PB)  
 GLENLIAM FARM GREY LADY Z42 (PB)  
 MT VIEW GREY LADY K40 (PB)

**Born:** 11/09/2015      **Sex:** F      **Colour:** Silver

**Notes:** A well fleshed deep bodied young female with a long life ahead of her. AI'd to PIE J14 19/6/18 then dep'd with WMM L885 from 5/7/18 until 10/9/18. PTIC.



December 2018 Murray Grey GROUP BREEDPLAN																	
	CED (%)	CEM (%)	GL (days)	BW (kg)	200 (kg)	400 (kg)	600 (kg)	MCW (kg)	Milk (kg)	SS (cm)	DTC	CWT (kg)	EMA (sq.cm)	Rib (mm)	Rump (mm)	RBY (%)	IMF %
EBV:	-4.0			+4.4	+23	+30	+46	+53	+2			+28	+1.4	-1.2	-1.5	+1.9	-0.7
Acc:	42%			78%	72%	71%	72%	61%	57%			61%	45%	63%	62%	56%	52%

Purchaser: ..... \$ .....

**64 GLENLIAM FARM GREY LADY M68 (PB) Ident: KEC M68**

WOODBURN WARRIOR A69 (PB)  
 EYLWARRA SANDS FALCON F33 (PB)  
 EYLWARRA SANDS MILKMAID Z64 (PB) (AI)  
**Sire: TULLIBARDINE JEOPARDY J14 (PB) (AI)**  
 MONTEREY SENSATIONAL (PB) (AI) (ET)  
 TULLIBARDINE KATIE E46 (PB) (AI)  
 TULLIBARDINE KATIE X50 (PB)

LINDSAY VINNIE Z28 (PB)  
 LINDSAY COMMANDER C121 (PB)  
 LINDSAY LEANNE A251 (PB)  
**Dam: GLENLIAM FARM GREY LADY F98 (GR2)**  
 VICTOREE SCOTCH CAP K46 (AA) (GR0)  
 GLENLIAM FARM GREY LADY C90 (GR1) (AI) (ET)  
 MT VIEW GREY LADY K40 (PB)

**Born:** 21/08/2016      **Sex:** F      **Colour:** Silver

**Notes:** A long, deep bodied, well muscled heifer with a beautiful temperament. Her 2 full sisters that have been sold, have exceptional show potential or have been shown. She was retained to replace her dam who was sold at 2018 NSS. Dep'd with KEC G28 from 21/6/18 to 22/7/18 then with KYM M80 from 23/7/18 to 13/9/18. PTIC.



December 2018 Murray Grey GROUP BREEDPLAN																	
	CED (%)	CEM (%)	GL (days)	BW (kg)	200 (kg)	400 (kg)	600 (kg)	MCW (kg)	Milk (kg)	SS (cm)	DTC	CWT (kg)	EMA (sq.cm)	Rib (mm)	Rump (mm)	RBY (%)	IMF %
EBV:	-0.3		-1.2	+4.3	+28	+46	+67	+64	+5			+39	+1.8	-1.3	-1.7	+1.8	-0.2
Acc:	38%			52%	77%	70%	71%	61%	40%			60%	46%	63%	63%	56%	52%

Purchaser: ..... \$ .....

**65 GLENLIAM FARM GREY LADY M76 (PB)**

**Ident: KEC M76**

BAROONA PARK CENTAUR (PB) (AI)  
 BOOKOOLA DIESEL D1 (PB)  
 BOOKOOLA CHLOE W1 (PB)

**Born:** 30/08/2016

**Sex:** F

**Colour:** Silver

**Sire: GLENLIAM FARM HEWITT H59 (PB)**

GLENLIAM FARM ZEPPLIN Z80 (PB)  
 GLENLIAM FARM ANTOINETTE E25 (PB)  
 GLENLIAM FARM ANTOINETTE B11 (PB)

**Notes:** A clean fronted, very sound well balanced, long bodied female with plenty of future ahead of her. Dep'd with KEC G28 from 21/6/18 to 22/7/18 then with KYM M80 from 23/7/18 to 13/9/18. PTIC.

THE GLEN MARSHALL Q166 (PB)  
 THE GLEN MARSHALL V172 (PB)  
 THE GLEN BERANICE S99 (PB)

**Dam: GLENLIAM FARM GREY LADY E33 (PB)**

GLENLIAM FARM VENTRICAL V30 (PB) (ET)  
 GLENLIAM FARM GREY LADY Y41 (PB)  
 GLENLIAM FARM GREY LADY V97 (GR1) (AI) (ET)



*December 2018 Murray Grey GROUP BREEDPLAN*

	CED (%)	CEM (%)	GL (days)	BW (kg)	200 (kg)	400 (kg)	600 (kg)	MCW (kg)	Milk (kg)	SS (cm)	DTC	CWT (kg)	EMA (sq.cm)	Rib (mm)	Rump (mm)	RBY (%)	IMF %
EBV:				+4.4	+29	+39	+58	+61	+9			+34	+1.0	+0.0	+0.1	+0.7	+0.2
Acc:				76%	69%	68%	70%	58%	41%			58%	42%	61%	61%	53%	49%

**Purchaser:** ..... \$ .....



**66 GLENLIAM FARM GREY LADY M84 (PB)**

**Ident: KEC M84**

LINDSAY VINNIE Z28 (PB)  
 LINDSAY COMMANDER C121 (PB)  
 LINDSAY LEANNE A251 (PB)

**Born:** 16/09/2016

**Sex:** F

**Colour:** Silver

**Sire: GLENLIAM FARM GRAVITY G28 (PB)**

GLENLIAM FARM ZEPPLIN Z80 (PB)  
 GLENLIAM FARM ANTOINETTE E25 (PB)  
 GLENLIAM FARM ANTOINETTE B11 (PB)

**Notes:** Extremely good heifer, was retained as replacement for dam who was sold at 2018 NSS, but now sells for you! She is deep, sound and long bodied. A complete package. Dep'd with KEC G28 from 21/6/18 to 22/7/18 then with KYM M80 from 23/7/18 to 13/9/18. PTIC.

SPRINGWELL TRUMP CARD T58 (PB)  
 GLENLIAM FARM ALABAMA A23 (PB) (AI) (ET)  
 THOLOGOLONG LINDA 867 (PB) (AI) (ET)

**Dam: GLENLIAM FARM GREY LADY E13 (PB)**

VICTOREE SCOTCH CAP K46 (AA) (GR0)  
 GLENLIAM FARM GREY LADY C110 (GR1) (AI) (ET)  
 MT VIEW GREY LADY K40 (PB)



*December 2018 Murray Grey GROUP BREEDPLAN*

	CED (%)	CEM (%)	GL (days)	BW (kg)	200 (kg)	400 (kg)	600 (kg)	MCW (kg)	Milk (kg)	SS (cm)	DTC	CWT (kg)	EMA (sq.cm)	Rib (mm)	Rump (mm)	RBY (%)	IMF %
EBV:	-0.4			+3.9	+20	+29	+50	+60	+3			+23	+0.2	+0.8	+1.1	-0.6	+1.0
Acc:	38%			76%	70%	69%	70%	60%	48%			59%	45%	63%	62%	56%	52%

**Purchaser:** ..... \$ .....



**67 GLENLIAM FARM GREY LADY N27 (PB)**

**Ident: KEC N27**

WOODBOURN WARRIOR A69 (PB)  
 EYLWARRA SANDS FALCON F33 (PB)  
 EYLWARRA SANDS MILKMAID Z64 (PB) (AI)  
**Sire: TULLIBARDINE JEOPARDY J14 (PB) (AI)**  
 MONTEREY SENSATIONAL (PB) (AI) (ET)  
 TULLIBARDINE KATIE E46 (PB) (AI)  
 TULLIBARDINE KATIE X50 (PB)

**Born: 08/02/2017 Sex: F Colour: Silver**

**Notes:** A moderate framed, easy doing young female. Strong muzzled and overall very well balanced. Dep'd with KYM M80 from 18/9/18 until 2/1/19.

LINDSAY VINNIE Z28 (PB)  
 LINDSAY COMMANDER C121 (PB)  
 LINDSAY LEANNE A251 (PB)  
**Dam: GLENLIAM FARM GREY LADY K103 (PB)**  
 BOOKOOLA DIESEL D1 (PB)  
 GLENLIAM FARM GREY LADY G46 (PB)  
 GLENLIAM FARM GREY LADY X57 (PB)



*December 2018 Murray Grey GROUP BREEDPLAN*

	CED (%)	CEM (%)	GL (days)	BW (kg)	200 (kg)	400 (kg)	600 (kg)	MCW (kg)	Milk (kg)	SS (cm)	DTC	CWT (kg)	EMA (sq.cm)	Rib (mm)	Rump (mm)	RBV (%)	IMF %
EBV:	+0.2		-1.4	+4.1	+28	+43	+67	+68	+6			+41	+2.0	-1.4	-1.9	+2.1	-0.3
Acc:	37%		50%	73%	69%	68%	69%	57%	36%			58%	43%	60%	59%	53%	49%

**Purchaser:**..... **\$**.....

**68 GLENLIAM FARM GREY LADY N58 (GR2)**

**Ident: KEC N58**

MONTEREY COUGAR C72 (PB)  
 MELALEUCA GUYRA G29 (PB)  
 MELALEUCA PETUNIA A196 (PB)  
**Sire: MELALEUCA JEFF J181 (PB)**  
 MELALEUCA AQUABA A111 (PB)  
 MELALEUCA LONA D192 (PB)  
 MELALEUCA LONA Y179 (PB)

**Born: 03/08/2017 Sex: F Colour: Grey**

**Notes:** Our only Melaleuca Jeff J181 daughter that gives you an outcross of genetics. N58 is larger framed, feminine and very clean fronted. Out of a very functional, good milking dam who bred consistently well.

SCOTCH CAP (AA) (GR0)  
 VICTOREE SCOTCH CAP K46 (AA) (GR0)  
 VICTOREE QUIET F27 (AA) (GR0)  
**Dam: GLENLIAM FARM GREY LADY C90 (GR1) (AI) (ET)**  
 ORCADIA PARK TOYOTA (PB)  
 MT VIEW GREY LADY K40 (PB)  
 MT VIEW GREY LADY 1105 (PB)



*December 2018 Murray Grey GROUP BREEDPLAN*

	CED (%)	CEM (%)	GL (days)	BW (kg)	200 (kg)	400 (kg)	600 (kg)	MCW (kg)	Milk (kg)	SS (cm)	DTC	CWT (kg)	EMA (sq.cm)	Rib (mm)	Rump (mm)	RBV (%)	IMF %
EBV:	-0.6			+3.1	+18	+25	+38	+35	+2			+17	+0.4	-0.4	-0.5	+0.5	+0.3
Acc:	36%			76%	68%	68%	65%	54%	47%			57%	45%	61%	61%	55%	51%

**Purchaser:**..... **\$**.....





The female lines represented in this section are; Bib originating from Glengarret, Valsari originating from Mt View, Linda originating from Thologolong, Bridget originating from Glencairn, Golden Girl originating from Carlinga, Elizabeth originating from Cranbrook, Greymist originating from Willalooka and last but not least Annabelle originating from Eylwarra Sands. Pictured Elizabeth son KEC G86.

## Spring Calving Females from Other Families

### 69 GLENLIAM FARM BIB B40 (PB) Ident: KEC B40

MONTEREY MARSHALL (PB)  
 THE GLEN MARSHALL Q166 (PB)  
 THE GLEN CLARA 34TH (PB)  
**Sire: THE GLEN MARSHALL V172 (PB)**  
 TEMAR LOTUS L62 (PB)  
 THE GLEN BERANICE S99 (PB)  
 THE GLEN BERANICE 50TH (PB)  
 ONEILLS RENOVATOR (AA) (GR0)  
 ROYALINE KING K5 (AA) (GR0)  
 ROYALINE JEDDA H8 (AA) (GR0)  
**Dam: GLENGARRET Q218 (GR1)**  
 BRIELLEN DYNAMIC (PB)  
 GLENGARRET BIB (PB)  
 THE GLEN BIB 5TH (PB)

**Born:** 08/08/2006      **Sex:** F      **Colour:** Silver

**Notes:** Another one of the Glenliam matrons, proving her longevity. Structurally very sound, deep bodied, big volumed female who sells with silver bull calf KEC P87 born 7/8/18 by Ondiong F78. AI'd to PIE J14 on 17/11/18 then dep'd with WMM L885 from 19/11/18 to 12/12/18 then to LEJ M47 on the 13/12/18 until 9/1/19.



December 2018 Murray Grey GROUP BREEDPLAN																	
	CED (%)	CEM (%)	GL (days)	BW (kg)	200 (kg)	400 (kg)	600 (kg)	MCW (kg)	Milk (kg)	SS (cm)	DTC	CWT (kg)	EMA (sq.cm)	Rib (mm)	Rump (mm)	RBY (%)	IMF %
<b>EBV:</b>	-0.2	+0.9	-1.6	+2.4	+18	+28	+37	+38	+7	+0.6		+22	+0.6	-0.8	-0.7	+1.0	+0.0
<b>Acc:</b>	50%	41%	55%	80%	78%	78%	78%	67%	76%	51%		68%	48%	62%	61%	56%	53%

**Purchaser:** ..... **\$** .....

### 70 WITHDRAWN

### 71 GLENLIAM FARM VALSARI D45 (PB) Ident: KEC D45

BUNDALEER NOMINATOR N37 (PB)  
 MONTEREY SUNDOWNER (PB)  
 ELANI PIXIE (PB)  
**Sire: KARAWI HILL SUNDOWNER (PB) (AI)**  
 ORCADIA PARK DIPLOMAT (PB)  
 MINDARIBBA DEHLIA S14 (PB) (AI)  
 MINDARIBBA DEHLIA 2ND (PB)  
 LOCHABER-BRAES DIPLOMAT (PB)  
 LOCHABER-BRAES FREEDOM (PB) (AI)  
 LOCHABER-BRAES FERN (PB)  
**Dam: GLENLIAM FARM VALSARI U79 (PB) (AI) (ET)**  
 ORCADIA PARK TOYOTA (PB)  
 MT VIEW VALSARI J67 (PB)  
 MT VIEW VALSARI 954 (PB)

**Born:** 25/08/2008      **Sex:** F      **Colour:** Grey

**Notes:** Moderate framed, easy doing, huge volumed cow with silver bull calf KEC P99 born 31/8/18 by Melaleuca Jeff J181. AI'd to PIE J14 on 18/11/18 then dep'd with WMM L885 from 20/11/18 to 12/12/18 then to LEJ M47 on the 13/12/18 until 9/1/19.



December 2018 Murray Grey GROUP BREEDPLAN																	
	CED (%)	CEM (%)	GL (days)	BW (kg)	200 (kg)	400 (kg)	600 (kg)	MCW (kg)	Milk (kg)	SS (cm)	DTC	CWT (kg)	EMA (sq.cm)	Rib (mm)	Rump (mm)	RBY (%)	IMF %
<b>EBV:</b>	+0.6	+0.8	-0.2	+1.1	+11	+16	+21	+43	+6	+0.4		+14	+1.2	+1.5	+2.2	-0.5	+0.3
<b>Acc:</b>	48%	39%	53%	77%	75%	75%	77%	74%	70%	55%		66%	50%	67%	67%	60%	57%

**Purchaser:** ..... **\$** .....





Lot 72

**72 GLENLIAM FARM LINDA F12 (PB)**

**Ident: KEC F12**

LINDSAY VINNIE V15 (PB)  
LINDSAY VINNIE Z28 (PB)  
LINDSAY ANNE V14 (PB)

**Born: 20/02/2010**

**Sex: F**

**Colour: Grey**

**Sire: LINDSAY COMMANDER C121 (PB)**

WILLALOOKA WINDSOR W191 (PB)  
LINDSAY LEANNE A251 (PB)  
LINDSAY LEANNE U33 (PB)

**Notes:** Diane's Pick. Past donor and successful show cow. Sons have sold for stud duties. Linda sells herself, easy doing, deep bodied and correct! Grey bull calf KEC P95 born 20/8/18 by WMM L885 (Lot 99). AI'd to PIE J14 on 24/10/18 then dep'd with LEJ M47 from 26/10/18 to 8/11/18 then to WMM L885 from 9/11/18 then back to LEJ M47 on the 13/12/18 until 9/1/19.

THE GLEN MARSHALL Q166 (PB)  
THE GLEN MARSHALL V172 (PB)  
THE GLEN BERANICE S99 (PB)

**Dam: GLENLIAM FARM LINDA C61 (PB)**

GLENLIAM FARM PROFOUND (PB)  
GLENLIAM FARM LINDA U11 (PB) (AI) (ET)  
THOLOGOLONG LINDA 867 (PB) (AI) (ET)



**December 2018 Murray Grey GROUP BREEDPLAN**

	CED (%)	CEM (%)	GL (days)	BW (kg)	200 (kg)	400 (kg)	600 (kg)	MCW (kg)	Milk (kg)	SS (cm)	DTC	CWT (kg)	EMA (sq.cm)	Rib (mm)	Rump (mm)	RBY (%)	IMF %
<b>EBV:</b>	+1.0	+1.9	-1.5	+2.4	+20	+33	+48	+66	+11	+1.2		+31	+0.6	-1.4	-1.7	+1.4	-0.3
<b>Acc:</b>	47%	36%	51%	77%	74%	72%	75%	73%	64%	53%		64%	47%	63%	62%	57%	53%

**Purchaser:**----- **\$**-----

**73 GLENLIAM FARM BRIDGET H63 (PB)**

**Ident: KEC H63**

WILLALOOKA MINYIP (PB)  
GLENLIAM FARM VALVE V51 (PB)  
WILLALOOKA ANNABELLA M261 (PB)

**Born: 05/08/2012**

**Sex: F**

**Colour: Grey**

**Sire: GLENLIAM FARM YOKAHAMA Y56 (PB)**

ROBERN MISTER MUSCLE (PB) (AI)  
GLENLIAM FARM ANTOINETTE Q18 (PB)  
ORCADIA PARK ANTOINETTE 1173 (PB)

**Notes:** A very sound, wedgy, big volumed cow with a good muzzle. Sells with the youngest calf in the sale, a silver heifer KEC P106 born 1/10/18 by GF Merger M11 (a Jeopardy son). Dep'd with LEJ M47 from 10/10/18 to 8/11/18 then to WMM L885 from 9/11/18 then back to LEJ M47 on the 13/12/18 until 9/1/19.

WELLBROOK FLASH MAC+92 (PB)  
DEHAVALYN NEW SOUTH WALES (PB) (AI)  
DEHAVALYN KISS ME QUICK P4 (PB) (AI)

**Dam: GLENLIAM FARM BRIDGET A47 (PB)**

TC STOCKMAN 2164 (AA) (GRO)  
GLENCAIRN BRIDGET W5 (GR1) (AI)  
GLENCAIRN VALISA R130 (PB)



**December 2018 Murray Grey GROUP BREEDPLAN**

	CED (%)	CEM (%)	GL (days)	BW (kg)	200 (kg)	400 (kg)	600 (kg)	MCW (kg)	Milk (kg)	SS (cm)	DTC	CWT (kg)	EMA (sq.cm)	Rib (mm)	Rump (mm)	RBY (%)	IMF %
<b>EBV:</b>	-1.2	-0.2	-0.9	+2.9	+22	+37	+51	+59	+6			+33	+0.7	+0.7	+1.1	-0.2	+0.5
<b>Acc:</b>	46%	35%	53%	82%	76%	75%	76%	65%	66%			65%	48%	67%	67%	60%	56%

**Purchaser:**----- **\$**-----



**74 CARLINGA GOLDEN GIRL H13 (PB)**

**Ident: KYM H13**

WILLALOOKA PHARAOH P47 (PB)  
 GNOLEDA ADVANCE (PB) (AI)  
 GNOLEDA TRUDY M53 (PB)

**Born:** 29/02/2012

**Sex:** F

**Colour:** Grey

**Sire: GNOLEDA ZAC (PB)**

THE GLEN MARSHALL Q166 (PB)  
 GNOLEDA TRUDY T32 (PB) (AI)  
 GNOLEDA TRUDY M19 (PB)

**Notes:** Purchased at the National Show & Sale as a yearling. Later maturing, large framed female who sells with a very good grey heifer calf KEC P72 born 31/7/18 by WMM L885 (Lot 99). AI'd to PIE J14 on 22/10/18 then dep'd with LEJ M47 from 24/10/18 to 8/11/18 then to WMM L885 from 9/11/18 then back to LEJ M47 on the 13/12/18 until 9/1/19.

TEMAR VENTURESOME V17 (PB)  
 DELOWEN Z3 (PB)

**Dam: CARLINGA GOLDEN GIRL D27 (PB)**

DELOWEN NAIAD T11 W WSP (PB)  
 ROBERN MISTER MUSCLE (PB) (AI)  
 ONDIONG GOLDEN GIRL 57TH (PB)  
 ONDIONG GOLDEN GIRL 21ST (PB)



December 2018 Murray Grey GROUP BREEDPLAN																	
	CED (%)	CEM (%)	GL (days)	BW (kg)	200 (kg)	400 (kg)	600 (kg)	MCW (kg)	Milk (kg)	SS (cm)	DTC	CWT (kg)	EMA (sq.cm)	Rib (mm)	Rump (mm)	RBY (%)	IMF %
EBV:	-3.9	-0.7	-1.2	+4.1	+25	+31	+50	+53	+3	+0.7		+26	+1.0	+0.4	+0.6	+0.2	+0.3
Acc:	51%	43%	59%	80%	74%	69%	69%	62%	64%	51%		59%	45%	52%	52%	49%	47%

**Purchaser:** \_\_\_\_\_ **\$** \_\_\_\_\_

**75 GLENLIAM FARM ELIZABETH J14 (PB)**

**Ident: KEC J14**

LINDSAY VINNIE V15 (PB)  
 LINDSAY VINNIE Z28 (PB)  
 LINDSAY ANNE V14 (PB)

**Born:** 21/02/2013

**Sex:** F

**Colour:** Silver

**Sire: LINDSAY COMMANDER C121 (PB)**

WILLALOOKA WINDSOR W191 (PB)  
 LINDSAY LEANNE A251 (PB)  
 LINDSAY LEANNE U33 (PB)

**Notes:** A great young cow, that although may not look anything exceptional, she surely does breed exceptionally. 2 sons retained, who made up the top 5 of their age groups. Silver heifer calf KEC P83 born 3/8/18 by GF Merger M11 (a Jeopardy son). AI'd to PIE J14 on 15/11/18 then dep'd with WMM L885 from 17/11/18 to 12/12/18 then to LEJ M47 on the 13/12/18 until 9/1/19.

THE GLEN MARSHALL Q166 (PB)  
 THE GLEN MARSHALL V172 (PB)  
 THE GLEN BERANICE S99 (PB)

**Dam: GLENLIAM FARM ELIZABETH E71 (PB)**

DEHAVALYN NEW SOUTH WALES (PB) (AI)  
 GLENLIAM FARM ELIZABETH Z98 (PB)  
 GLENLIAM FARM ELISABETH V48 (PB) (AI) (ET)



December 2018 Murray Grey GROUP BREEDPLAN																	
	CED (%)	CEM (%)	GL (days)	BW (kg)	200 (kg)	400 (kg)	600 (kg)	MCW (kg)	Milk (kg)	SS (cm)	DTC	CWT (kg)	EMA (sq.cm)	Rib (mm)	Rump (mm)	RBY (%)	IMF %
EBV:	-0.7		-0.3	+3.8	+22	+32	+48	+51	+9	+1.8		+26	+0.8	-1.4	-1.7	+1.5	-0.4
Acc:	45%		53%	80%	73%	73%	73%	64%	61%	56%		63%	49%	64%	64%	58%	54%

**Purchaser:** \_\_\_\_\_ **\$** \_\_\_\_\_





Lot 76

**76 GLENLIAM FARM GREYMIST J50 (PB)**

**Ident: KEC J50**

SPRINGWELL TRUMP CARD T58 (PB)  
 GLENLIAM FARM ALABAMA A23 (PB) (AI) (ET)  
 THOLOGOLONG LINDA 867 (PB) (AI) (ET)

**Born:** 19/07/2013

**Sex:** F

**Colour:** Silver

**Sire: GLENLIAM FARM DOMINATOR D28 (PB)**

GLENLIAM FARM YOKAHAMA Y56 (PB)  
 GLENLIAM FARM ANTOINETTE B11 (PB)  
 GLENLIAM FARM ANTOINETTE Y91 (GR1) (AI) (ET)

**Notes:** Very balanced, compact and sound young breeder. Top of the 'N' autumn drop daughter was retained then sold to start a new youth member's stud. Silver bull calf KEC P59 born 1/7/18 by T. Jeopardy. AI'd to PIE J14 on 24/10/18 then dep'd with LEJ M47 from 26/10/18 to 8/11/18 then to WMM L885 from 9/11/18 then back to LEJ M47 on the 13/12/18 until 9/1/19.

THE GLEN MARSHALL Q166 (PB)  
 THE GLEN MARSHALL V172 (PB)  
 THE GLEN BERANICE S99 (PB)

**Dam: GLENLIAM FARM GREYMIST B68 (PB)**

LOCHABER-BRAES FREEDOM (PB) (AI)  
 GLENLIAM FARM GREYMIST Y15 (PB) (AI)  
 WILLALOOKA GREYMIST P260 (PB) (AI)



December 2018 Murray Grey GROUP BREEDPLAN																	
	CED (%)	CEM (%)	GL (days)	BW (kg)	200 (kg)	400 (kg)	600 (kg)	MCW (kg)	Milk (kg)	SS (cm)	DTC	CWT (kg)	EMA (sq.cm)	Rib (mm)	Rump (mm)	RBY (%)	IMF %
EBV:	-4.0			+6.5	+33	+50	+73	+76	+3			+36	+0.0	-0.3	-0.3	+0.3	+0.2
Acc:	42%			80%	73%	72%	73%	62%	57%			60%	43%	61%	61%	54%	50%

**Purchaser:** ..... \$ .....

**77 EYLWARRA SANDS ANNABELLE M13 (PB)**

**Ident: NEW M13**

JYNDARRA WARRIOR W3 (PB) (AI)  
 WOODBOURN WARRIOR A69 (PB)  
 WOODBOURN PEGGY T42 (PB)

**Born:** 10/03/2016

**Sex:** F

**Colour:** Silver

**Sire: EYLWARRA SANDS FALCON F33 (PB)**

MONTEREY TALENT SCOUT (PB)  
 EYLWARRA SANDS MILKMAID Z64 (PB) (AI)  
 MONTEREY MILKMAID V118 (PB)

**Notes:** Purchased at the National Show & Sale, now back up for grabs! First calver who has done everything right. Big volumed, sound female who sells with silver heifer calf KEC P51 born 26/6/18 by heifer bull GF Gravity G28. Dep'd with LEJ M47 from 19/9/18 to 8/11/18 then to WMM L885 from 9/11/18 then back to LEJ M47 on the 13/12/18 until 9/1/19.

EYLWARRA SANDS ZONE Z72 (PB) (AI)  
 EYLWARRA SANDS CHOICE C157 (PB)  
 MONTEREY MISS MAGNOLIA 3RD (PB)

**Dam: EYLWARRA SANDS ANNABELLE F71 (PB)**

WOODBOURN WARRIOR A69 (PB)  
 EYLWARRA SANDS ANNABELLE D72 (PB)  
 EYLWARRA SANDS ANNABELLE A45 (PB)



December 2018 Murray Grey GROUP BREEDPLAN																	
	CED (%)	CEM (%)	GL (days)	BW (kg)	200 (kg)	400 (kg)	600 (kg)	MCW (kg)	Milk (kg)	SS (cm)	DTC	CWT (kg)	EMA (sq.cm)	Rib (mm)	Rump (mm)	RBY (%)	IMF %
EBV:	-1.3		+0.2	+5.3	+36	+62	+83	+82	+8	+1.2		+57	+2.6	-0.5	-0.6	+1.5	+0.2
Acc:	43%		54%	76%	70%	66%	65%	54%	47%	50%		55%	44%	53%	53%	50%	47%

**Purchaser:** ..... \$ .....





The female lines represented in this section are; Tara originating from Glengarret, Anthena originating from Parknook, Nancy originating from The Glen, Linda originating from Thologolong and Annabella from Willalooka. Pictured Anthena son KEC M55.

# Autumn Calving Females from Other Families

**78 GLENLIAM FARM TARA C50 (PB)**

**Ident: KEC C50**

DELOWEN QUAYLINE (PB)

**Born: 29/08/2007**

**Sex: F**

**Colour: Grey**

MALPARARA ROSEBERRY (PB)

MALPARARA ANNABEL N131 (PB)

**Sire: GLENLIAM FARM Z70 (PB)**

ROBERN MISTER MUSCLE (PB) (AI)

GLENLIAM FARM ANTOINETTE Q18 (PB)

ORCADIA PARK ANTOINETTE 1173 (PB)

ORCADIA PARK RIMFIRE N97+93 (PB) (ET)

GLENLIAM FARM ULTIMATUM U15 (PB) (AI) (ET)

ROUND HILL GOSSAMER N13 (PB)

**Dam: GLENLIAM FARM TARA W93 (PB)**

GLENGARRET LEICHHARDT (PB)

GLENGARRET Q204 (PB)

GLENGARRET GG L204 (GR1)

**Notes:** Star Lot - A very genuine breeder, whom we have sold 2 heifers at the NSS from and retained other daughters. Her 'P' calf, Lot 79, sums up her breeding ability! Certainly not a cow to deny a new home to. AI'd to PIE J14 2/7/18 then dep'd with WMM L885 from 5/7/18 until 10/9/18. PTIC.



December 2018 Murray Grey GROUP BREEDPLAN

	CED (%)	CEM (%)	GL (days)	BW (kg)	200 (kg)	400 (kg)	600 (kg)	MCW (kg)	Milk (kg)	SS (cm)	DTC	CWT (kg)	EMA (sq.cm)	Rib (mm)	Rump (mm)	RBV (%)	IMF %
<b>EBV:</b>	-5.3			+5.7	+18	+32	+49	+61	-1			+23	+1.0	+0.5	+0.9	+0.3	+0.2
<b>Acc:</b>	41%			77%	75%	74%	74%	70%	70%			63%	45%	64%	64%	57%	53%

**Purchaser:** ..... **\$** .....



**Lot 78**





Lot 79

**79 GLENLIAM FARM TARA P12 (PB)**

**Ident: KEC P12**

WOODBOURN WARRIOR A69 (PB)

**Born: 02/02/2018**

**Sex: F**

**Colour: Grey**

EYLWARRA SANDS FALCON F33 (PB)

EYLWARRA SANDS MILKMAID Z64 (PB) (AI)

**Sire: TULLIBARDINE JEOPARDY J14 (PB) (AI)**

MONTEREY SENSATIONAL (PB) (AI) (ET)

TULLIBARDINE KATIE E46 (PB) (AI)

TULLIBARDINE KATIE X50 (PB)

**Notes:** Super heifer who has been an eye catcher from the moment she was born. Certainly has show potential. Entered for 2019 Sydney Royal Easter Show.

MALPARARA ROSEBERRY (PB)

GLENLIAM FARM Z70 (PB)

GLENLIAM FARM ANTOINETTE Q18 (PB)

**Dam: GLENLIAM FARM TARA C50 (PB)**

GLENLIAM FARM ULTIMATUM U15 (PB) (AI) (ET)

GLENLIAM FARM TARA W93 (PB)

GLENGARRET Q204 (PB)



**December 2018 Murray Grey GROUP BREEDPLAN**

	CED (%)	CEM (%)	GL (days)	BW (kg)	200 (kg)	400 (kg)	600 (kg)	MCW (kg)	Milk (kg)	SS (cm)	DTC	CWT (kg)	EMA (sq.cm)	Rib (mm)	Rump (mm)	RBV (%)	IMF %
EBV:	-4.7		-0.1	+7.2	+33	+53	+77	+79	+1			+42					
Acc:	37%		50%	76%	70%	65%	65%	55%	43%			53%					

**Purchaser:**..... **\$**.....

**80 GLENLIAM FARM ANTHENA F41 (PB)**

**Ident: KEC F41**

MALPARARA ROSEBERRY (PB)

**Born: 01/08/2010**

**Sex: F**

**Colour: Grey**

GLENLIAM FARM ZANTHER Z94 (PB)

GLENLIAM FARM CAPRI LASS W22 (PB)

**Sire: GLENLIAM FARM CHOPPER C18 (PB)**

COROMBY ROCCO V7 (PB)

GLENLIAM FARM CAPRI LASS A13 (PB)

GLENLIAM FARM CAPRI LASS X32 (PB) (AI)

**Notes:** Star 'F' Lot - Proof is in the pudding in Lot 81! Sold son at TOTR 2018. High quality breeder with plenty of years left, progeny are only getting better the older she gets! AI'd to PIE J14 1/7/18 then dep'd with WMM L885 from 5/7/18 until 10/9/18. PTIC.

GLENLIAM FARM VALVE V51 (PB)

GLENLIAM FARM YOKAHAMA Y56 (PB)

GLENLIAM FARM ANTOINETTE Q18 (PB)

**Dam: GLENLIAM FARM ANTHENA B23 (PB)**

COROMBY ROCCO V7 (PB)

GLENLIAM FARM ANTHENA Y60 (PB)

GLENLIAM FARM ANTHENA W18 (PB) (AI)



**December 2018 Murray Grey GROUP BREEDPLAN**

	CED (%)	CEM (%)	GL (days)	BW (kg)	200 (kg)	400 (kg)	600 (kg)	MCW (kg)	Milk (kg)	SS (cm)	DTC	CWT (kg)	EMA (sq.cm)	Rib (mm)	Rump (mm)	RBV (%)	IMF %
EBV:	-0.2			+3.2	+27	+25	+42	+50	+2	-0.7		+27	+0.9	+0.8	+1.3	+0.3	+0.1
Acc:	42%			77%	75%	76%	73%	73%	68%	53%		65%	45%	62%	62%	55%	50%

**Purchaser:**..... **\$**.....

**81 GLENLIAM FARM ANTHENA P26 (PB)**

**Ident: KEC P26**

LINDSAY VINNIE Z28 (PB)  
 LINDSAY COMMANDER C121 (PB)  
 LINDSAY LEANNE A251 (PB)  
**Sire: GLENLIAM FARM GRAVITY G28 (PB)**  
 GLENLIAM FARM ZEPPLIN Z80 (PB)  
 GLENLIAM FARM ANTOINETTE E25 (PB)  
 GLENLIAM FARM ANTOINETTE B11 (PB)

**Born:** 18/02/2018      **Sex:** F      **Colour:** Grey

**Notes:** Show Heifer Alert! Well muscled, wide topped heifer with plenty of neck extension through the front. Dam is lot 80. Entered for the 2019 Sydney Royal Easter Show.

GLENLIAM FARM ZANTHER Z94 (PB)  
 GLENLIAM FARM CHOPPER C18 (PB)  
 GLENLIAM FARM CAPRI LASS A13 (PB)  
**Dam: GLENLIAM FARM ANTHENA F41 (PB)**  
 GLENLIAM FARM YOKAHAMA Y56 (PB)  
 GLENLIAM FARM ANTHENA B23 (PB)  
 GLENLIAM FARM ANTHENA Y60 (PB)



December 2018 Murray Grey GROUP BREEDPLAN																	
	CED (%)	CEM (%)	GL (days)	BW (kg)	200 (kg)	400 (kg)	600 (kg)	MCW (kg)	Milk (kg)	SS (cm)	DTC	CWT (kg)	EMA (sq.cm)	Rib (mm)	Rump (mm)	RBY (%)	IMF %
EBV:	-2.4			+4.6	+26	+31	+50	+59	+4			+27					
Acc:	37%			76%	70%	65%	64%	56%	47%			53%					

**Purchaser:** ..... \$ .....

**82 GLENLIAM FARM ANTHENA G13 (PB)**

**Ident: KEC G13**

MALPARARA ROSEBERRY (PB)  
 GLENLIAM FARM ZANTHER Z94 (PB)  
 GLENLIAM FARM CAPRI LASS W22 (PB)  
**Sire: GLENLIAM FARM CHOPPER C18 (PB)**  
 COROMBY ROCCO V7 (PB)  
 GLENLIAM FARM CAPRI LASS A13 (PB)  
 GLENLIAM FARM CAPRI LASS X32 (PB) (AI)

**Born:** 16/02/2011      **Sex:** F      **Colour:** Grey

**Notes:** Bryce's Pick! This cow is nothing to look at, but she is an exceptional breeder. 'N' & 'P' bulls retained, both in top 3 of their group! Small framed female who out breeds herself again and again. Another matron who only breeds better with age. AI'd to PIE J14 30/6/18 then dep'd with WMM L885 from 5/7/18 until 6/11/18. PTIC.

MONTEREY SUNDOWNER (PB)  
 KARAWI HILL SUNDOWNER (PB) (AI)  
 MINDARIBBA DEHLIA S14 (PB) (AI)  
**Dam: GLENLIAM FARM ANTHENA D59 (PB)**  
 DEHAVALYN NEW SOUTH WALES (PB) (AI)  
 GLENLIAM FARM ANTHENA Y20 (PB)  
 GLENLIAM FARM ANTHENA T25 (GR1) (AI) (ET)



December 2018 Murray Grey GROUP BREEDPLAN																	
	CED (%)	CEM (%)	GL (days)	BW (kg)	200 (kg)	400 (kg)	600 (kg)	MCW (kg)	Milk (kg)	SS (cm)	DTC	CWT (kg)	EMA (sq.cm)	Rib (mm)	Rump (mm)	RBY (%)	IMF %
EBV:	+2.2			+1.5	+19	+22	+28	+27	+7	-0.6		+23	+1.1	-0.7	-0.9	+1.3	-0.4
Acc:	39%			72%	72%	72%	72%	63%	62%	49%		62%	45%	64%	63%	56%	52%

**Purchaser:** ..... \$ .....



**Lot 83**

**83 THE GLEN NANCY H070 (GR2)**

**Ident: G H70**

DUNOON REAGAN R093 (AA) (GRO)  
 CUDGEGONG PARK HINO (GR1) (AI)  
 WILLALOOKA Q182 (PB)

**Born:** 11/03/2012

**Sex:** F

**Colour:** Grey

**Sire: CUDGEGONG PARK BASS (GR1)**

TE MANIA TYPHOON T334 (AA) (GRO)  
 CUDGEGONG PARK BEVERLEY Z41 (GR1) (AI)  
 CUDGEGONG PARK BEVERLEY S51 (PB)

**Notes:** Purchased out of The Glen sale as a calf at foot. Nancy has a super sound udder, is very feminine and we have retained her 'P' bull calf. Consistent sound breeder. AI'd to PIE J14 20/6/18 then dep'd with WMM L885 from 5/7/18 until 10/9/18. PTIC.

VICTOREE SCOTCH CAP K46 (AA) (GRO)  
 LINDSAY SCOTCH CAP R88 (GR1) (AI) (ET)  
 LINDSAY ELVA N30 (PB)

**Dam: THE GLEN NANCY C105 (PB)**

WOODBURN TANSTAAFL (PB)  
 THE GLEN NANCY U323 (PB)  
 THE GLEN NANCY R115 (PB)



December 2018 Murray Grey GROUP BREEDPLAN

	CED (%)	CEM (%)	GL (days)	BW (kg)	200 (kg)	400 (kg)	600 (kg)	MCW (kg)	Milk (kg)	SS (cm)	DTC	CWT (kg)	EMA (sq.cm)	Rib (mm)	Rump (mm)	RBY (%)	IMF %
<b>EBV:</b>	+0.3	-0.6	-1.3	+4.0	+29	+50	+64	+57	+11	-0.3		+42	+2.5	+0.6	+0.8	+0.5	+0.8
<b>Acc:</b>	49%	38%	55%	82%	73%	69%	68%	58%	66%	54%		58%	46%	55%	55%	52%	49%

**Purchaser:** ..... \$ .....

**84 GLENLIAM FARM LINDA H68 (PB)**

**Ident: KEC H68**

WILLALOOKA MINYIP (PB)  
 GLENLIAM FARM VALVE V51 (PB)  
 WILLALOOKA ANNABELLA M261 (PB)

**Born:** 08/08/2012

**Sex:** F

**Colour:** Black

**Sire: GLENLIAM FARM YOKAHAMA Y56 (PB)**

ROBERN MISTER MUSCLE (PB) (AI)  
 GLENLIAM FARM ANTOINETTE Q18 (PB)  
 ORCADIA PARK ANTOINETTE 1173 (PB)

**Notes:** One of the best udders of the Glenliam herd! Smaller framed but super functional and breeds above and beyond herself. 'N' calf & 'P' calf, Lot 85, a heifer, were top 5 of their drop! AI'd to PIE J14 19/6/18 then dep'd with WMM L885 from 5/7/18 until 10/9/18. PTIC.

LINDSAY VINNIE Z28 (PB)  
 LINDSAY COMMANDER C121 (PB)  
 LINDSAY LEANNE A251 (PB)

**Dam: GLENLIAM FARM LINDA F12 (PB)**

THE GLEN MARSHALL V172 (PB)  
 GLENLIAM FARM LINDA C61 (PB)  
 GLENLIAM FARM LINDA U11 (PB) (AI) (ET)



December 2018 Murray Grey GROUP BREEDPLAN

	CED (%)	CEM (%)	GL (days)	BW (kg)	200 (kg)	400 (kg)	600 (kg)	MCW (kg)	Milk (kg)	SS (cm)	DTC	CWT (kg)	EMA (sq.cm)	Rib (mm)	Rump (mm)	RBY (%)	IMF %
<b>EBV:</b>	+0.1	+1.9	-2.0	+1.3	+18	+25	+39	+51	+11			+25	+0.3	+0.2	+0.5	+0.1	+0.3
<b>Acc:</b>	45%	36%	52%	80%	74%	74%	75%	66%	64%			64%	48%	66%	66%	59%	55%

**Purchaser:** ..... \$ .....

**85 GLENLIAM FARM LINDA P24 (PB)**

**Ident: KEC P24**

WOODBURN WARRIOR A69 (PB)  
 EYLWARRA SANDS FALCON F33 (PB)  
 EYLWARRA SANDS MILKMAID Z64 (PB) (AI)

**Born:** 18/02/2018

**Sex:** F

**Colour:** Grey

**Sire: TULLIBARDINE JEOPARDY J14 (PB) (AI)**

MONTEREY SENSATIONAL (PB) (AI) (ET)  
 TULLIBARDINE KATIE E46 (PB) (AI)  
 TULLIBARDINE KATIE X50 (PB)

**Notes:** A structurally sound, long bodied heifer who is clean through the front. Plenty of length from hip to pin. If she breeds anything like her dam, Lot 84, she is one you will want to take a punt on!

GLENLIAM FARM VALVE V51 (PB)  
 GLENLIAM FARM YOKAHAMA Y56 (PB)  
 GLENLIAM FARM ANTOINETTE Q18 (PB)

**Dam: GLENLIAM FARM LINDA H68 (PB)**

LINDSAY COMMANDER C121 (PB)  
 GLENLIAM FARM LINDA F12 (PB)  
 GLENLIAM FARM LINDA C61 (PB)



December 2018 Murray Grey GROUP BREEDPLAN

	CED (%)	CEM (%)	GL (days)	BW (kg)	200 (kg)	400 (kg)	600 (kg)	MCW (kg)	Milk (kg)	SS (cm)	DTC	CWT (kg)	EMA (sq.cm)	Rib (mm)	Rump (mm)	RBY (%)	IMF %
<b>EBV:</b>	+3.3		-2.9	+1.0	+22	+36	+54	+57	+7			+38					
<b>Acc:</b>	38%		52%	77%	70%	65%	65%	54%	40%			53%					

**Purchaser:** ..... \$ .....



**86 GLENLIAM FARM ANNABELLA J75 (PB)**

**Ident: KEC J75**

LINDSAY VINNIE V15 (PB)  
LINDSAY VINNIE Z28 (PB)  
LINDSAY ANNE V14 (PB)

**Born:** 28/07/2013

**Sex:** F

**Colour:** Silver

**Sire: LINDSAY COMMANDER C121 (PB)**

WILLALOOKA WINDSOR W191 (PB)  
LINDSAY LEANNE A251 (PB)  
LINDSAY LEANNE U33 (PB)

**Notes:** Annabella is a very feminine female, who has bred consistently better than herself! By one of our leading female sires Lindsay Commander C121. Milks well and has produced Lot 87 who made the top 10 yearlings! AI'd to PIE J14 20/6/18 then dep'd with WMM L885 from 5/7/18 until 10/9/18. PTIC.

GLENLIAM FARM VALVE V51 (PB)  
GLENLIAM FARM YOKAHAMA Y56 (PB)  
GLENLIAM FARM ANTOINETTE Q18 (PB)

**Dam: GLENLIAM FARM ANNABELLA E27 (PB)**

DEHAVALYN NEW SOUTH WALES (PB) (AI)  
GLENLIAM FARM ANNABELLA Y95 (PB)  
WILLALOOKA ANNABELLA M261 (PB)



December 2018 Murray Grey GROUP BREEDPLAN																	
	CED (%)	CEM (%)	GL (days)	BW (kg)	200 (kg)	400 (kg)	600 (kg)	MCW (kg)	Milk (kg)	SS (cm)	DTC	CWT (kg)	EMA (sq.cm)	Rib (mm)	Rump (mm)	RBY (%)	IMF %
<b>EBV:</b>	+0.2		-1.2	+2.5	+23	+37	+50	+55	+11			+31	+1.0	+0.6	+1.0	-0.3	+0.5
<b>Acc:</b>	44%		52%	80%	74%	74%	75%	65%	61%			64%	50%	68%	67%	61%	57%

**Purchaser:** ..... \$ .....

**87 GLENLIAM FARM ANNABELLA P31 (PB)**

**Ident: KEC P31**

MONTEREY STARLIGHT (PB)  
MONTEREY MARVELLOUS (PB) (AI) (ET)  
MONTEREY MISS MAGNOLIA S90 (PB)

**Born:** 26/02/2018

**Sex:** F

**Colour:** Grey

**Sire: ONDIONG F78 (PB)**

THE GLEN MANUEL V126 (PB)  
ONDIONG BOBO 59TH (PB)  
ONDIONG BOBO 53RD (PB)

**Notes:** A sound, smooth fronted heifer who has plenty of depth of body. Low BW, Positive EMA and Positive Fats! Dam is Lot 86.

LINDSAY VINNIE Z28 (PB)  
LINDSAY COMMANDER C121 (PB)  
LINDSAY LEANNE A251 (PB)  
**Dam: GLENLIAM FARM ANNABELLA J75 (PB)**  
GLENLIAM FARM YOKAHAMA Y56 (PB)  
GLENLIAM FARM ANNABELLA E27 (PB)  
GLENLIAM FARM ANNABELLA Y95 (PB)



December 2018 Murray Grey GROUP BREEDPLAN																	
	CED (%)	CEM (%)	GL (days)	BW (kg)	200 (kg)	400 (kg)	600 (kg)	MCW (kg)	Milk (kg)	SS (cm)	DTC	CWT (kg)	EMA (sq.cm)	Rib (mm)	Rump (mm)	RBY (%)	IMF %
<b>EBV:</b>	+2.6			+0.9	+17	+27	+40	+41	+8			+26					
<b>Acc:</b>	39%			76%	69%	64%	63%	51%	43%			52%					

**Purchaser:** ..... \$ .....

**88 GLENLIAM FARM NANCY L39 (PB)**

**Ident: KEC L39**

LINDSAY VINNIE Z28 (PB)  
LINDSAY COMMANDER C121 (PB)  
LINDSAY LEANNE A251 (PB)

**Born:** 22/07/2015

**Sex:** F

**Colour:** Silver

**Sire: GLENLIAM FARM GRAVITY G28 (PB)**

GLENLIAM FARM ZEPPLIN Z80 (PB)  
GLENLIAM FARM ANTOINETTE E25 (PB)  
GLENLIAM FARM ANTOINETTE B11 (PB)

**Notes:** Nancy was supreme exhibit at the inaugural youth show at just 8mths old. Exceptional temperament! A deep bodied female who oozes balance and length. Full sister to Lot 90. AI'd to PIE J14 21/8/18 then dep'd with WMM L885 from 30/8/18 until 6/11/18. PTIC.

CUDGEGONG PARK HINO (GR1) (AI)  
CUDGEGONG PARK BASS (GR1)  
CUDGEGONG PARK BEVERLEY Z41 (GR1) (AI)

**Dam: GLENLIAM FARM NANCY J23 (GR2)**

LINDSAY SCOTCH CAP R88 (GR1) (AI) (ET)  
THE GLEN NANCY C105 (PB)  
THE GLEN NANCY U323 (PB)



December 2018 Murray Grey GROUP BREEDPLAN																	
	CED (%)	CEM (%)	GL (days)	BW (kg)	200 (kg)	400 (kg)	600 (kg)	MCW (kg)	Milk (kg)	SS (cm)	DTC	CWT (kg)	EMA (sq.cm)	Rib (mm)	Rump (mm)	RBY (%)	IMF %
<b>EBV:</b>	-0.4			+3.6	+22	+37	+51	+54	+5			+30	+1.4	+0.8	+1.1	+0.0	+0.8
<b>Acc:</b>	38%			72%	64%	61%	61%	51%	49%			51%	39%	49%	49%	45%	42%

**Purchaser:** ..... \$ .....



The female lines represented in this section are: Bridget originating from Glencairn, Nancy originating from The Glen, Nola originating from Onward, Lilian originating from Glengarret, Patience originating from Melaleuca and finally Elizabeth originating from Cranbrook. Pictured Lilian son KEC H78.

## Heifers From Other Families

### 89 GLENLIAM FARM BRIDGET M39 (PB)

Ident: KEC M39

WOODBOURN WARRIOR A69 (PB)  
EYLWARRA SANDS FALCON F33 (PB)  
EYLWARRA SANDS MILKMAID Z64 (PB) (AI)  
**Sire: TULLIBARDINE JEOPARDY J14 (PB) (AI)**  
MONTEREY SENSATIONAL (PB) (AI) (ET)  
TULLIBARDINE KATIE E46 (PB) (AI)  
TULLIBARDINE KATIE X50 (PB)

Born: 12/07/2016

Sex: F

Colour: Silver

WELLBROOK FLASH MAC+92 (PB)  
DEHAVALYN NEW SOUTH WALES (PB) (AI)  
DEHAVALYN KISS ME QUICK P4 (PB) (AI)  
**Dam: GLENLIAM FARM BRIDGET A47 (PB)**  
TC STOCKMAN 2164 (AA) (GR0)  
GLENLIAIRN BRIDGET W5 (GR1) (AI)  
GLENLIAIRN VALISA R130 (PB)

**Notes:** A refined fronted, feminine strong muzzled female. She is a well balanced, stand up, front paddock type of heifer. Dep'd with KEC G28 from 21/6/18 to 22/7/18 then with KYM M80 from 23/7/18 to 13/9/18. PTIC.



December 2018 Murray Grey GROUP BREEDPLAN

	CED (%)	CEM (%)	GL (days)	BW (kg)	200 (kg)	400 (kg)	600 (kg)	MCW (kg)	Milk (kg)	SS (cm)	DTC	CWT (kg)	EMA (sq.cm)	Rib (mm)	Rump (mm)	RBY (%)	IMF %
EBV:	+0.5		-0.7	+3.8	+26	+44	+60	+54	+4			+36	+1.6	-1.0	-1.3	+1.3	-0.2
Acc:	38%		53%	78%	71%	71%	72%	60%	45%			60%	45%	62%	62%	55%	51%

Purchaser: \_\_\_\_\_ \$ \_\_\_\_\_

### 90 GLENLIAM FARM NANCY M49 (PB)

Ident: KEC M49

LINDSAY VINNIE Z28 (PB)  
LINDSAY COMMANDER C121 (PB)  
LINDSAY LEANNE A251 (PB)  
**Sire: GLENLIAM FARM GRAVITY G28 (PB)**  
GLENLIAM FARM ZEPPLIN Z80 (PB)  
GLENLIAM FARM ANTOINETTE E25 (PB)  
GLENLIAM FARM ANTOINETTE B11 (PB)

Born: 05/08/2016

Sex: F

Colour: Silver

CUDGEGONG PARK HINO (GR1) (AI)  
CUDGEGONG PARK BASS (GR1)  
CUDGEGONG PARK BEVERLEY Z41 (GR1) (AI)  
**Dam: GLENLIAM FARM NANCY J23 (GR2)**  
LINDSAY SCOTCH CAP R88 (GR1) (AI) (ET)  
THE GLEN NANCY C105 (PB)  
THE GLEN NANCY U323 (PB)

**Notes:** Moderate framed, tidy heifer from a consistent breeding female line. Full sister to Lot 88. Positive EMA, Positive Fats, very Positive IMF! Dep'd with WMM L885 from 21/6/18 to 13/9/18. PTIC.



December 2018 Murray Grey GROUP BREEDPLAN

	CED (%)	CEM (%)	GL (days)	BW (kg)	200 (kg)	400 (kg)	600 (kg)	MCW (kg)	Milk (kg)	SS (cm)	DTC	CWT (kg)	EMA (sq.cm)	Rib (mm)	Rump (mm)	RBY (%)	IMF %
EBV:	+0.8			+2.9	+19	+35	+47	+50	+8			+28	+1.2	+1.3	+1.8	-0.6	+1.1
Acc:	38%			77%	70%	69%	70%	58%	44%			59%	45%	63%	63%	56%	52%

Purchaser: \_\_\_\_\_ \$ \_\_\_\_\_

**91 GLENLIAM FARM NOLA M60 (PB)**

**Ident: KEC M60**

WOODBOURN WARRIOR A69 (PB)  
 EYLWARRA SANDS FALCON F33 (PB)  
 EYLWARRA SANDS MILKMAID Z64 (PB) (AI)  
**Sire: TULLIBARDINE JEOPARDY J14 (PB) (AI)**  
 MONTEREY SENSATIONAL (PB) (AI) (ET)  
 TULLIBARDINE KATIE E46 (PB) (AI)  
 TULLIBARDINE KATIE X50 (PB)

**Born:** 16/08/2016      **Sex:** F      **Colour:** Silver

**Notes:** Large framed, feminine heifer with a smooth front end and plenty of depth of body. Dam is Lot 70. Dep'd with KEC G28 from 21/6/18 to 22/7/18 then with KYM M80 from 23/7/18 to 13/9/18. PTIC.

GLENLIAM FARM VALVE V51 (PB)  
 GLENLIAM FARM YOKAHAMA Y56 (PB)  
 GLENLIAM FARM ANTOINETTE Q18 (PB)

**Dam: GLENLIAM FARM NOLA D12 (PB)**

ONWARD AUTO (PB)  
 ONWARD NOLA 3RD (PB)  
 ONWARD NOLA (PB)



*December 2018 Murray Grey GROUP BREEDPLAN*

	CED (%)	CEM (%)	GL (days)	BW (kg)	200 (kg)	400 (kg)	600 (kg)	MCW (kg)	Milk (kg)	SS (cm)	DTC	CWT (kg)	EMA (sq.cm)	Rib (mm)	Rump (mm)	RBY (%)	IMF %
<b>EBV:</b>	-4.1		-0.9	+6.1	+33	+51	+77	+70	+6			+44	+2.0	-0.6	-0.7	+1.4	+0.0
<b>Acc:</b>	38%		52%	77%	71%	71%	72%	60%	43%			60%	46%	63%	63%	57%	52%

**Purchaser:** ..... \$ .....



**Lot 92**

**92 GLENLIAM FARM LILIAN M88 (PB)**

**Ident: KEC M88**

WOODBOURN WARRIOR A69 (PB)  
 EYLWARRA SANDS FALCON F33 (PB)  
 EYLWARRA SANDS MILKMAID Z64 (PB) (AI)  
**Sire: TULLIBARDINE JEOPARDY J14 (PB) (AI)**  
 MONTEREY SENSATIONAL (PB) (AI) (ET)  
 TULLIBARDINE KATIE E46 (PB) (AI)  
 TULLIBARDINE KATIE X50 (PB)

**Born:** 23/09/2016      **Sex:** F      **Colour:** Grey

**Notes:** Low birth weight heifer with above average growth! Very balanced female that oozes depth, capacity and doing ability! Maternal sister to Lot 96. Dep'd with KEC G28 from 21/6/18 to 22/7/18 then with KYM M80 from 23/7/18 to 13/9/18. PTIC.

GLENLIAM FARM VALVE V51 (PB)  
 GLENLIAM FARM YOKAHAMA Y56 (PB)  
 GLENLIAM FARM ANTOINETTE Q18 (PB)

**Dam: GLENLIAM FARM LILIAN B46 (PB)**

ROYALINE KING K5 (AA) (GR0)  
 GLENGARRET P233 (GR1)  
 GLENGARRET LILIAN K108 (PB)



*December 2018 Murray Grey GROUP BREEDPLAN*

	CED (%)	CEM (%)	GL (days)	BW (kg)	200 (kg)	400 (kg)	600 (kg)	MCW (kg)	Milk (kg)	SS (cm)	DTC	CWT (kg)	EMA (sq.cm)	Rib (mm)	Rump (mm)	RBY (%)	IMF %
<b>EBV:</b>	+1.1		-2.0	+2.5	+24	+43	+66	+64	+6	+0.5		+42	+2.2	-0.7	-0.8	+1.4	+0.1
<b>Acc:</b>	39%		52%	76%	70%	70%	71%	60%	44%	50%		59%	44%	60%	60%	54%	49%

**Purchaser:** ..... \$ .....



**93 GLENLIAM FARM PATIENCE M91 (PB)**

**Ident: KEC M91**

WOODBOURN WARRIOR A69 (PB)  
 EYLWARRA SANDS FALCON F33 (PB)  
 EYLWARRA SANDS MILKMAID Z64 (PB) (AI)  
**Sire: TULLIBARDINE JEOPARDY J14 (PB) (AI)**  
 MONTEREY SENSATIONAL (PB) (AI) (ET)  
 TULLIBARDINE KATIE E46 (PB) (AI)  
 TULLIBARDINE KATIE X50 (PB)

**Born:** 08/10/2016      **Sex:** F      **Colour:** Silver

**Notes:** Daughter from the MG Youth donation heifer who was purchased out of National Show & Sale team from Melaleuca. Moderate, sound, strong muzzled and overall well balanced. Dep'd with KEC G28 from 21/6/18 to 22/7/18 then with KYM M80 from 23/7/18 to 13/9/18. PTIC.

MELALEUCA ALBY A211 (PB)  
 MELALEUCA EWEN E55 (PB)  
 MELALEUCA ROSEMARY B55 (PB)  
**Dam: MELALEUCA PATIENCE H73 (PB)**  
 MELALEUCA ADMIRAL A105 (PB)  
 MELALEUCA PATIENCE C130 (PB)  
 MELALEUCA PATIENCE A142 (PB)



December 2018 Murray Grey GROUP BREEDPLAN																	
	CED (%)	CEM (%)	GL (days)	BW (kg)	200 (kg)	400 (kg)	600 (kg)	MCW (kg)	Milk (kg)	SS (cm)	DTC	CWT (kg)	EMA (sq.cm)	Rib (mm)	Rump (mm)	RBY (%)	IMF %
<b>EBV:</b>	-3.0			+6.0	+30	+47	+69	+63	+0			+40	+2.7	-0.9	-1.2	+2.0	-0.2
<b>Acc:</b>	35%			76%	70%	68%	70%	57%	39%			58%	44%	61%	61%	54%	50%

**Purchaser:** ..... \$ .....

**94 GLENLIAM FARM ELIZABETH N52 (PB)**

**Ident: KEC N52**

MONTEREY STARLIGHT (PB)  
 MONTEREY MARVELLOUS (PB) (AI) (ET)  
 MONTEREY MISS MAGNOLIA S90 (PB)  
**Sire: ONDIONG F78 (PB)**  
 THE GLEN MANUEL V126 (PB)  
 ONDIONG BOBO 59TH (PB)  
 ONDIONG BOBO 53RD (PB)

**Born:** 28/07/2017      **Sex:** F      **Colour:** Silver

**Notes:** A well balanced, smooth bodied sound young heifer. All positive carcass EBVs that will take your herd in the right direction. A heifers first calf.

GLENLIAM FARM ZEPPLIN Z80 (PB)  
 GLENLIAM FARM HERCULES H27 (PB) (ET)  
 GLENLIAM FARM ANTOINETTE B11 (PB)  
**Dam: GLENLIAM FARM ELIZABETH L13 (PB)**  
 THE GLEN MARSHALL V172 (PB)  
 GLENLIAM FARM ELIZABETH E71 (PB)  
 GLENLIAM FARM ELIZABETH Z98 (PB)



December 2018 Murray Grey GROUP BREEDPLAN																	
	CED (%)	CEM (%)	GL (days)	BW (kg)	200 (kg)	400 (kg)	600 (kg)	MCW (kg)	Milk (kg)	SS (cm)	DTC	CWT (kg)	EMA (sq.cm)	Rib (mm)	Rump (mm)	RBY (%)	IMF %
<b>EBV:</b>	-0.5			+3.8	+24	+31	+48	+48	+8			+25	+1.3	+0.3	+0.5	+0.5	+0.2
<b>Acc:</b>	38%			74%	69%	68%	64%	51%	41%			56%	42%	61%	61%	54%	50%

**Purchaser:** ..... \$ .....

**95 GLENLIAM FARM BRIDGET N54 (PB)**

**Ident: KEC N54**

MONTEREY STARLIGHT (PB)  
 MONTEREY MARVELLOUS (PB) (AI) (ET)  
 MONTEREY MISS MAGNOLIA S90 (PB)  
**Sire: ONDIONG F78 (PB)**  
 THE GLEN MANUEL V126 (PB)  
 ONDIONG BOBO 59TH (PB)  
 ONDIONG BOBO 53RD (PB)

**Born:** 29/07/2017      **Sex:** F      **Colour:** Silver

**Notes:** A clean fronted, good hindquartered, deep bodied young female. From a very sound dam who has consistently produced at the top of the drop every year. 2 maternal sisters sell in the sale as Lots 73 & 89.

WELLBROOK FLASH MAC+92 (PB)  
 DEHAVALYN NEW SOUTH WALES (PB) (AI)  
 DEHAVALYN KISS ME QUICK P4 (PB) (AI)  
**Dam: GLENLIAM FARM BRIDGET A47 (PB)**  
 TC STOCKMAN 2164 (AA) (GRO)  
 GLENCAIRN BRIDGET W5 (GR1) (AI)  
 GLENCAIRN VALISA R130 (PB)



December 2018 Murray Grey GROUP BREEDPLAN																	
	CED (%)	CEM (%)	GL (days)	BW (kg)	200 (kg)	400 (kg)	600 (kg)	MCW (kg)	Milk (kg)	SS (cm)	DTC	CWT (kg)	EMA (sq.cm)	Rib (mm)	Rump (mm)	RBY (%)	IMF %
<b>EBV:</b>	+1.2			+2.1	+18	+27	+37	+37	+6			+23	+1.6	+1.0	+1.5	+0.2	+0.2
<b>Acc:</b>	40%			77%	71%	70%	67%	53%	49%			58%	43%	61%	61%	54%	50%

**Purchaser:** ..... \$ .....

**96 GLENLIAM FARM LILLIAN N77 (PB)**

**Ident: KEC N77**

LINDSAY VINNIE Z28 (PB)  
 LINDSAY COMMANDER C121 (PB)  
 LINDSAY LEANNE A251 (PB)  
**Sire: GLENLIAM FARM GRAVITY G28 (PB)**  
 GLENLIAM FARM ZEPPLIN Z80 (PB)  
 GLENLIAM FARM ANTOINETTE E25 (PB)  
 GLENLIAM FARM ANTOINETTE B11 (PB)

**Born: 12/08/2017      Sex: F      Colour: Grey**

**Notes:** A sweet fronted, long bodied heifer who is well balanced and combines this with plenty of depth. Maternal sister to Lot 92.

GLENLIAM FARM VALVE V51 (PB)  
 GLENLIAM FARM YOKAHAMA Y56 (PB)  
 GLENLIAM FARM ANTOINETTE Q18 (PB)  
**Dam: GLENLIAM FARM LILIAN B46 (PB)**  
 ROYALINE KING K5 (AA) (GR0)  
 GLENGARRET P233 (GR1)  
 GLENGARRET LILIAN K108 (PB)



**December 2018 Murray Grey GROUP BREEDPLAN**

	CED (%)	CEM (%)	GL (days)	BW (kg)	200 (kg)	400 (kg)	600 (kg)	MCW (kg)	Milk (kg)	SS (cm)	DTC	CWT (kg)	EMA (sq.cm)	Rib (mm)	Rump (mm)	RBY (%)	IMF %
<b>EBV:</b>	-2.9			+4.0	+23	+37	+58	+62	+7			+32	+1.0	-0.9	-1.1	+1.0	+0.0
<b>Acc:</b>	39%			77%	71%	71%	68%	57%	49%			59%	45%	62%	62%	55%	51%

**Purchaser:** ..... **\$** .....



**Lot 96**



**Lot 97**

**97 GLENLIAM FARM NANCY N84 (PB)**

**Ident: KEC N84**

MONTEREY STARLIGHT (PB)  
 MONTEREY MARVELLOUS (PB) (AI) (ET)  
 MONTEREY MISS MAGNOLIA S90 (PB)  
**Sire: ONDIONG F78 (PB)**  
 THE GLEN MANUEL V126 (PB)  
 ONDIONG BOBO 59TH (PB)  
 ONDIONG BOBO 53RD (PB)

**Born: 23/08/2017      Sex: F      Colour: Silver**

**Notes:** A well muscled, smooth bodied heifer with plenty of future to bring to your herd. Maternal sister to Lot 88 & 90.

CUDGEGONG PARK HINO (GR1) (AI)  
 CUDGEGONG PARK BASS (GR1)  
 CUDGEGONG PARK BEVERLEY Z41 (GR1) (AI)  
**Dam: GLENLIAM FARM NANCY J23 (GR2)**  
 LINDSAY SCOTCH CAP R88 (GR1) (AI) (ET)  
 THE GLEN NANCY C105 (PB)  
 THE GLEN NANCY U323 (PB)



**December 2018 Murray Grey GROUP BREEDPLAN**

	CED (%)	CEM (%)	GL (days)	BW (kg)	200 (kg)	400 (kg)	600 (kg)	MCW (kg)	Milk (kg)	SS (cm)	DTC	CWT (kg)	EMA (sq.cm)	Rib (mm)	Rump (mm)	RBY (%)	IMF %
<b>EBV:</b>	+3.2			+1.1	+19	+33	+45	+39	+7			+32	+2.5	+0.6	+0.9	+0.6	+0.4
<b>Acc:</b>	40%			77%	69%	69%	65%	52%	43%			57%	44%	61%	61%	55%	51%

**Purchaser:** ..... **\$** .....



In the seedstock industry the investment in the right herd sire is essential. Sires have a large effect on the whole herd, therefore, using a proven sire gives you greater potential with less risk. Pictured Lot 5's son KEC M11. M11 also sires two calves in the sale on Lots 73 & 75.

# Herd Sires

**98 WALLAWONG MAGIC MAN M47 (PB) Ident: LEJ M47**

MONTEREY GOTCHA Z36 (PB) (AI)  
 AYR PARK CISCO KID C64 (PB) (AI)  
 AYR PARK WALLFLOWER Z34 (PB) (AI)  
**Sire: LINDSAY FUSION F94 (PB)**  
 LINDSAY STARBRIGHT Y47 (PB)  
 LINDSAY FIONA C161 (PB)  
 LINDSAY FIONA Q35 (PB)

LINDSAY STARBRIGHT S117 (PB) (AI)  
 WALLAWONG RIPSNOTTER (PB)  
 WALLAWONG ALETTA (GR1) (AI)  
**Dam: WALLAWONG EMERALD F68 (PB)**  
 SPRINGWELL EXCALIBUR X31 (PB)  
 SPRINGWELL EMERALD Z18 (PB)  
 SPRINGWELL EMERALD U62 (PB)

**Born:** 11/07/2016      **Sex:** M      **Colour:** Silver

**Notes:** Purchased at the 2018 Wallawong Sale for \$18,000, making him the equal top priced MG bull sold at auction in 2018. A super quiet bull that has been used extensively as a joining sire to females in this catalogue. Dam has been used as an international donor. He had outstanding actual 2 yr old carcass scans being 910kg and having an EMA of 127cm<sup>2</sup> and IMF of 7.6%, a rare combination of carcass yield and quality! Selling 3/4 share and full possession, domestic semen rights have been retained by Wallawong.



December 2018 Murray Grey GROUP BREEDPLAN																	
	CED (%)	CEM (%)	GL (days)	BW (kg)	200 (kg)	400 (kg)	600 (kg)	MCW (kg)	Milk (kg)	SS (cm)	DTC	CWT (kg)	EMA (sq.cm)	Rib (mm)	Rump (mm)	RBY (%)	IMF %
EBV:				+5.2	+31	+49	+78	+88	+3	+1.5		+45	+1.4	+0.0	+0.1	+0.6	+0.3
Acc:				57%	61%	61%	66%	53%	41%	67%		55%	45%	52%	52%	48%	39%

**Purchaser:** \_\_\_\_\_ **\$** \_\_\_\_\_



Lot 98



**99 SOUTHEND LOGAN (PB)**

**Ident: WMM L885**

BUNDALEER ZULU WARRIOR Z3 (PB)  
 TULLIBARDINE CIVIL C90 (PB)  
 TULLIBARDINE BEVERLEY Y26 (PB)  
**Sire: TULLIBARDINE HELLRAISER H17 (PB)**  
 MONTEREY GOTCHA (PB)  
 TULLIBARDINE RUSTY C34 (PB)  
 TULLIBARDINE RUSTY U26 (PB)

SOUTHEND "WEST ROWAN" (PB)  
 SOUTHEND Y-NAVIGATOR (PB)  
 MONTEREY MANNEQUIN T85 (PB)  
**Dam: SOUTHEND F - JELLY BEAN (PB)**  
 MELALEUCA YELLOWSTONE Y79 (PB)  
 SOUTHEND B-JELLY BEAN (PB)  
 SOUTHEND Y-JELLY BEAN (PB)

**Born: 16/03/2015      Sex: M      Colour: Silver**

**Notes:** Purchased from Southend Bull sale in WA in 2017 for his outstanding weight of 915kg, very positive even fats of 13mm on both rib and rump and EMA of 122cm<sup>2</sup>. Logan provides you a package deal of low birthweight, high growth and all positive carcase EBVs. He has been used on heifers with no issues. Purchased as an outcross for Jeopardy progeny.



**December 2018 Murray Grey GROUP BREEDPLAN**

	CED (%)	CEM (%)	GL (days)	BW (kg)	200 (kg)	400 (kg)	600 (kg)	MCW (kg)	Milk (kg)	SS (cm)	DTC	CWT (kg)	EMA (sq.cm)	Rib (mm)	Rump (mm)	RBY (%)	IMF %
<b>EBV:</b>	+1.2		-1.6	+3.5	+25	+42	+74	+82	+3			+40	+1.7	+0.2	+0.3	+0.4	+0.4
<b>Acc:</b>	45%		51%	85%	74%	72%	73%	60%	44%			58%	45%	52%	52%	48%	38%

**Purchaser:** ..... **\$** .....



**Lot 99**



**Lot 100**

**100 CARLINGA MASTER CRAFTSMAN (PB)**

**Ident: KYM M80**

MONTEREY WHIRLWIND Y176 (PB)  
 MONTEREY DAYTRIPPER (PB)  
 MONTEREY BOUQUET Z164 (PB)  
**Sire: AYR PARK JASPER J42 (PB)**  
 MONTEREY BARCOO (PB)  
 MONTEREY ANNABELLE F319 (PB)  
 MONTEREY ANNABELLE D119 (PB)

GNOLEDA ADVANCE (PB) (AI)  
 GNOLEDA ZAC (PB)  
 GNOLEDA TRUDY T32 (PB) (AI)  
**Dam: CARLINGA JEDDA G113 (PB)**  
 CARLINGA BOBCAT (PB)  
 CARLINGA JEDDA D26 (PB)  
 CARLINGA JEDDA B40 (PB)

**Born: 21/07/2016      Sex: M      Colour: Silver**

**Notes:** Purchased at TOTR 2018 as an outcross heifer bull. Now back up for sale. Used on heifers in this sale. Smooth fronted, deep sided, great testicles and structurally sound. A perfect replacement heifer bull!



**December 2018 Murray Grey GROUP BREEDPLAN**

	CED (%)	CEM (%)	GL (days)	BW (kg)	200 (kg)	400 (kg)	600 (kg)	MCW (kg)	Milk (kg)	SS (cm)	DTC	CWT (kg)	EMA (sq.cm)	Rib (mm)	Rump (mm)	RBY (%)	IMF %
<b>EBV:</b>	-0.3			+2.8	+22	+30	+40	+36	+4	+0.3		+24	+1.1	+0.8	+1.2	+0.0	+0.4
<b>Acc:</b>	36%			76%	67%	66%	66%	53%	39%	67%		55%	43%	51%	51%	47%	39%

**Purchaser:** ..... **\$** .....



An opportunity to purchase semen in genuine stud sires.

Semen is stored at Northern Artificial Breeders at Scone in NSW and will be available for delivery at the purchaser's expense. Contact them direct with your delivery instructions, on 02 6545 2465.

# Semen



## 101 TULLIBARDINE JEOPARDY J14 (PB) (AI)

Ident: PIE J14

JYNDARRA WARRIOR W3 (PB) (AI)  
 WOODBOURN WARRIOR A69 (PB)  
 WOODBOURN PEGGY T42 (PB)  
**Sire: EYLWARRA SANDS FALCON F33 (PB)**  
 MONTEREY TALENT SCOUT (PB)  
 EYLWARRA SANDS MILKMAID Z64 (PB) (AI)  
 MONTEREY MILKMAID V118 (PB)

Born: 05/03/2013

Sex: M

Colour: Silver

MONTEREY STARLIGHT (PB)  
 MONTEREY SENSATIONAL (PB) (AI) (ET)  
 MONTEREY MISS MAGNOLIA S90 (PB)  
**Dam: TULLIBARDINE KATIE E46 (PB) (AI)**  
 MARTINDALE TUCKER T106 (PB)  
 TULLIBARDINE KATIE X50 (PB)  
 TULLIBARDINE KATIE T43 (PB) (AI)

**Notes:** 20 straw package - J14 oozes style and functionality. Weighing 948kg at 23mths and selling for \$15,500, he is a modern sire with great presence, length and hindquarter shape. Actual birthweight of 38kg, scrotal of 44cm, smooth shoulders and his sleek silver coat make him the ideal AI purchase. Jeopardy has been the most influential herd sire ever used at Glenliam Farm. 36 live progeny sell with many AI'd and PTIC back to Jeopardy.



December 2018 Murray Grey GROUP BREEDPLAN

	CED (%)	CEM (%)	GL (days)	BW (kg)	200 (kg)	400 (kg)	600 (kg)	MCW (kg)	Milk (kg)	SS (cm)	DTC	CWT (kg)	EMA (sq.cm)	Rib (mm)	Rump (mm)	RY (%)	IMF %
EBV:	-0.7	-3.2	-1.7	+5.8	+39	+63	+91	+83	+3	+1.9	-2.8	+56	+3.1	-1.0	-1.4	+2.2	-0.2
Acc:	58%	44%	79%	94%	91%	89%	89%	75%	46%	82%	37%	77%	60%	70%	70%	66%	62%

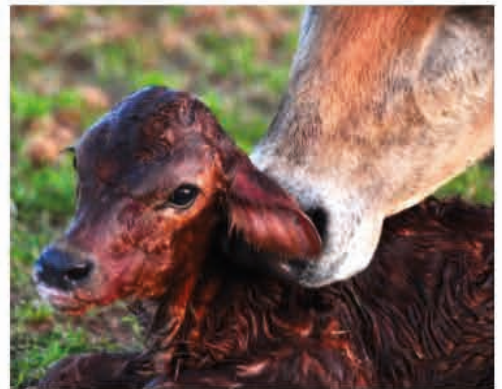
Purchaser: \_\_\_\_\_ \$ \_\_\_\_\_



Northern  
Artificial Breeders  
*Better Results*

## FOR ALL YOUR ARTIFICIAL BREEDING NEEDS

- Semen & Embryo Storage
- Semen & Embryo Dispatch
- Aust. wide
- Semen Collection & Testing
- Artificial Insemination
- Ultrasound Preg Testing
- Ear Tags
- Supplements



**[www.northernab.com.au](http://www.northernab.com.au)**  
**[brendan@northernab.com.au](mailto:brendan@northernab.com.au)**  
**Ph: 0427 417 148**



**102 TULLIBARDINE JEOPARDY J14 (PB) (AI)**

**Ident: PIE J14**

JYNDARRA WARRIOR W3 (PB) (AI)  
 WOODBOURN WARRIOR A69 (PB)  
 WOODBOURN PEGGY T42 (PB)  
**Sire: EYLWARRA SANDS FALCON F33 (PB)**  
 MONTEREY TALENT SCOUT (PB)  
 EYLWARRA SANDS MILKMAID Z64 (PB) (AI)  
 MONTEREY MILKMAID V118 (PB)  
 MONTEREY STARLIGHT (PB)  
 MONTEREY SENSATIONAL (PB) (AI) (ET)  
 MONTEREY MISS MAGNOLIA S90 (PB)  
**Dam: TULLIBARDINE KATIE E46 (PB) (AI)**  
 MARTINDALE TUCKER T106 (PB)  
 TULLIBARDINE KATIE X50 (PB)  
 TULLIBARDINE KATIE T43 (PB) (AI)

**Born:** 05/03/2013      **Sex:** M      **Colour:** Silver

**Notes:** 20 straw package - J14 oozes style and functionality. Weighing 948kg at 23mths and selling for \$15,500, he is a modern sire with great presence, length and hindquarter shape. Actual birthweight of 38kg, scrotal of 44cm, smooth shoulders and his sleek silver coat make him the ideal AI purchase. Jeopardy has been the most influential herd sire ever used at Glenliam Farm. 36 live progeny sell with many AI'd and PTIC back to Jeopardy.



December 2018 Murray Grey GROUP BREEDPLAN																	
	CED (%)	CEM (%)	GL (days)	BW (kg)	200 (kg)	400 (kg)	600 (kg)	MCW (kg)	Milk (kg)	SS (cm)	DTC	CWT (kg)	EMA (sq.cm)	Rib (mm)	Rump (mm)	RBY (%)	IMF %
<b>EBV:</b>	-0.7	-3.2	-1.7	+5.8	+39	+63	+91	+83	+3	+1.9	-2.8	+56	+3.1	-1.0	-1.4	+2.2	-0.2
<b>Acc:</b>	58%	44%	79%	94%	91%	89%	89%	75%	46%	82%	37%	77%	60%	70%	70%	66%	62%

**Purchaser:** ..... \$ .....

**103 WALLAWONG MAGIC MAN M47 (PB)**

**Ident: LEJ M47**

MONTEREY GOTCHA Z36 (PB) (AI)  
 AYR PARK CISCO KID C64 (PB) (AI)  
 AYR PARK WALLFLOWER Z34 (PB) (AI)  
**Sire: LINDSAY FUSION F94 (PB)**  
 LINDSAY STARBRIGHT Y47 (PB)  
 LINDSAY FIONA C161 (PB)  
 LINDSAY FIONA Q35 (PB)  
 LINDSAY STARBRIGHT S117 (PB) (AI)  
 WALLAWONG RIPSNOTER (PB)  
 WALLAWONG ALETTA (GR1) (AI)  
**Dam: WALLAWONG EMERALD F68 (PB)**  
 SPRINGWELL EXCALIBUR X31 (PB)  
 SPRINGWELL EMERALD Z18 (PB)  
 SPRINGWELL EMERALD U62 (PB)

**Born:** 11/07/2016      **Sex:** M      **Colour:** Silver

**Notes:** 20 straw package of domestic collected semen. Magic Man was sold at the 2018 Wallawong Sale for \$18,000, making him the equal top priced MG bull sold at auction in 2018. A super quiet bull that has been used extensively as a joining sire to females in this catalogue. Dam has been used as an international donor. He had outstanding actual 2 yr old carcass scans being 910kg and having an EMA of 127cm<sup>2</sup> and IMF of 7.6%. Be one of the first to access his genetics.



December 2018 Murray Grey GROUP BREEDPLAN																	
	CED (%)	CEM (%)	GL (days)	BW (kg)	200 (kg)	400 (kg)	600 (kg)	MCW (kg)	Milk (kg)	SS (cm)	DTC	CWT (kg)	EMA (sq.cm)	Rib (mm)	Rump (mm)	RBY (%)	IMF %
<b>EBV:</b>				+5.2	+31	+49	+78	+88	+3	+1.5		+45	+1.4	+0.0	+0.1	+0.6	+0.3
<b>Acc:</b>				57%	61%	61%	66%	53%	41%	67%		55%	45%	52%	52%	48%	39%

**Purchaser:** ..... \$ .....

**104 WALLAWONG MAGIC MAN M47 (PB)**

**Ident: LEJ M47**

MONTEREY GOTCHA Z36 (PB) (AI)  
 AYR PARK CISCO KID C64 (PB) (AI)  
 AYR PARK WALLFLOWER Z34 (PB) (AI)  
**Sire: LINDSAY FUSION F94 (PB)**  
 LINDSAY STARBRIGHT Y47 (PB)  
 LINDSAY FIONA C161 (PB)  
 LINDSAY FIONA Q35 (PB)  
 LINDSAY STARBRIGHT S117 (PB) (AI)  
 WALLAWONG RIPSNOTER (PB)  
 WALLAWONG ALETTA (GR1) (AI)  
**Dam: WALLAWONG EMERALD F68 (PB)**  
 SPRINGWELL EXCALIBUR X31 (PB)  
 SPRINGWELL EMERALD Z18 (PB)  
 SPRINGWELL EMERALD U62 (PB)

**Born:** 11/07/2016      **Sex:** M      **Colour:** Silver

**Notes:** 20 straw package of domestic collected semen. Magic Man was sold at the 2018 Wallawong Sale for \$18,000, making him the equal top priced MG bull sold at auction in 2018. A super quiet bull that has been used extensively as a joining sire to females in this catalogue. Dam has been used as an international donor. He had outstanding actual 2 yr old carcass scans being 910kg and having an EMA of 127cm<sup>2</sup> and IMF of 7.6%. Be one of the first to access his genetics.



December 2018 Murray Grey GROUP BREEDPLAN																	
	CED (%)	CEM (%)	GL (days)	BW (kg)	200 (kg)	400 (kg)	600 (kg)	MCW (kg)	Milk (kg)	SS (cm)	DTC	CWT (kg)	EMA (sq.cm)	Rib (mm)	Rump (mm)	RBY (%)	IMF %
<b>EBV:</b>				+5.2	+31	+49	+78	+88	+3	+1.5		+45	+1.4	+0.0	+0.1	+0.6	+0.3
<b>Acc:</b>				57%	61%	61%	66%	53%	41%	67%		55%	45%	52%	52%	48%	39%

**Purchaser:** ..... \$ .....



Glenliam was founded on ET work. It is a great way to achieve some quality stock in a short period.

All lots are sold as A grade embryos, but no guarantee is given on the conception rate achieved. They will be available for delivery at the purchaser's expense from Northern Artificial Breeders at Scone in NSW. Contact them direct with your delivery instructions, on 02 6545 2465.

# Embryos


**105 2 x Frozen A Grade Embryos** **Ident: KEC J65/PIE J14**

EYLWARRA SANDS FALCON F33 (PB)  
**Sire: TULLIBARDINE JEOPARDY J14 (PB) (AI)**  
 TULLIBARDINE KATIE E46 (PB) (AI)

**Notes:** Dam Lot 28, Full sibling Lot 29

LINDSAY COMMANDER C121 (PB)  
**Dam: GLENLIAM FARM BEROLEANNE J65 (PB)**  
 GLENLIAM FARM BEROLEANNE C85 (PB)

*Expected Average Progeny Value*

	CED (%)	CEM (%)	GL (days)	BW (kg)	200 (kg)	400 (kg)	600 (kg)	MCW (kg)	Milk (kg)	SS (cm)	DTC	CWT (kg)	EMA (sq.cm)	Rib (mm)	Rump (mm)	RBY (%)	IMF %
EAPV	-2.4	-1.1	-0.9	+6.4	+37	+58	+85	+88	+7			+50	+2.0	-1.7	-2.2	+2.2	-0.4

Purchaser: \_\_\_\_\_ \$ \_\_\_\_\_


**106 4 x Frozen A Grade Embryos** **Ident: KEC J64/PIE J14**

EYLWARRA SANDS FALCON F33 (PB)  
**Sire: TULLIBARDINE JEOPARDY J14 (PB) (AI)**  
 TULLIBARDINE KATIE E46 (PB) (AI)

**Notes:** Dam Lot 33, Full sibling Lot 34

GLENLIAM FARM CHOPPER C18 (PB)  
**Dam: GLENLIAM FARM BEROLEANNE J64 (PB)**  
 GLENLIAM FARM BEROLEANE B32 (PB)

*Expected Average Progeny Value*

	CED (%)	CEM (%)	GL (days)	BW (kg)	200 (kg)	400 (kg)	600 (kg)	MCW (kg)	Milk (kg)	SS (cm)	DTC	CWT (kg)	EMA (sq.cm)	Rib (mm)	Rump (mm)	RBY (%)	IMF %
EAPV	+0.4			+4.3	+33	+49	+69	+65	+5			+44	+2.0	-0.4	-0.4	+1.5	-0.3

Purchaser: \_\_\_\_\_ \$ \_\_\_\_\_

**107 4 x Frozen A Grade Embryos**


**Ident: KEC E25/PIE J14**

EYLWARRA SANDS FALCON F33 (PB)  
**Sire: TULLIBARDINE JEOPARDY J14 (PB) (AI)**  
 TULLIBARDINE KATIE E46 (PB) (AI)

**Notes:** Full siblings to Lot 2, Dam is Lot 1

GLENLIAM FARM ZEPPLIN Z80 (PB)  
**Dam: GLENLIAM FARM ANTOINETTE E25 (PB)**  
 GLENLIAM FARM ANTOINETTE B11 (PB)

*Expected Average Progeny Value*

	CED (%)	CEM (%)	GL (days)	BW (kg)	200 (kg)	400 (kg)	600 (kg)	MCW (kg)	Milk (kg)	SS (cm)	DTC	CWT (kg)	EMA (sq.cm)	Rib (mm)	Rump (mm)	RBY (%)	IMF %
EAPV	-1.5	-2.4	-1.1	+5.3	+32	+46	+70	+69	+5	+1.1		+40	+2.0	+0.3	+0.4	+0.8	+0.3

Purchaser:..... \$.....

**108 4 x Frozen A Grade Embryos**


**Ident: KEC B11/KEC Z80**

DEHAVALYN NEW SOUTH WALES (PB) (AI)  
**Sire: GLENLIAM FARM ZEPPLIN Z80 (PB)**  
 GLENLIAM FARM VALSARI T16 (PB) (AI) (ET)

**Notes:** Full siblings to Lot 1 & Lot 4

GLENLIAM FARM YOKAHAMA Y56 (PB)  
**Dam: GLENLIAM FARM ANTOINETTE B11 (PB)**  
 GLENLIAM FARM ANTOINETTE Y91 (GR1) (AI) (ET)

*Expected Average Progeny Value*

	CED (%)	CEM (%)	GL (days)	BW (kg)	200 (kg)	400 (kg)	600 (kg)	MCW (kg)	Milk (kg)	SS (cm)	DTC	CWT (kg)	EMA (sq.cm)	Rib (mm)	Rump (mm)	RBY (%)	IMF %
EAPV	-2.7	-2.1	-0.1	+4.9	+25	+32	+48	+55	+6	+0.5	-2.3	+25	+1.1	+0.5	+0.8	+0.4	+0.2

Purchaser:..... \$.....

**109 3 x Frozen A Grade Embryos**

**Ident: KEC B11/KEC Z80**

Purchaser:..... \$.....

**110 4 x Frozen A Grade Embryos**


**Ident: KEC K28 /PIE J14**

EYLWARRA SANDS FALCON F33 (PB)  
**Sire: TULLIBARDINE JEOPARDY J14 (PB) (AI)**  
 TULLIBARDINE KATIE E46 (PB) (AI)

**Notes:** Full sibling Lot 28 & N69 on display

LINDSAY COMMANDER C121 (PB)  
**Dam: GLENLIAM FARM ANTOINETTE K28 (PB)**  
 GLENLIAM FARM ANTOINETTE B42 (PB)

*Expected Average Progeny Value*

	CED (%)	CEM (%)	GL (days)	BW (kg)	200 (kg)	400 (kg)	600 (kg)	MCW (kg)	Milk (kg)	SS (cm)	DTC	CWT (kg)	EMA (sq.cm)	Rib (mm)	Rump (mm)	RBY (%)	IMF %
EAPV	-0.7	-1.0	-1.5	+4.3	+31	+50	+73	+74	+7	+1.5		+45	+2.2	-1.0	-1.3	+1.8	-0.2

Purchaser:..... \$.....

**111 3 x Frozen A Grade Embryos**

**Ident: KEC K28 /PIE J14**

Purchaser:..... \$.....



**112 4 x Frozen A Grade Embryos**

**Ident: KEC K28 /KPN K18**

EYLWARRA SANDS FALCON F33 (PB)  
 Sire: **BOTTLESFORD KUDOS (PB) (AI)**  
 BOTTLESFORD ANNABELLA C20 (PB)

**Notes:** Maternal siblings Lot 28 & N69 on display

LINDSAY COMMANDER C121 (PB)  
 Dam: **GLENLIAM FARM ANTOINETTE K28 (PB)**  
 GLENLIAM FARM ANTOINETTE B42 (PB)

*Expected Average Progeny Value*

	CED (%)	CEM (%)	GL (days)	BW (kg)	200 (kg)	400 (kg)	600 (kg)	MCW (kg)	Milk (kg)	SS (cm)	DTC	CWT (kg)	EMA (sq.cm)	Rib (mm)	Rump (mm)	RBY (%)	IMF %
EAPV	-2.5	+0.2	+0.2	+4.7	+29	+49	+70	+69	+7	+0.6		+47	+2.7	-0.3	-0.4	+1.5	+0.3

Purchaser:..... \$.....

**113 3 x Frozen A Grade Embryos**

**Ident: : KEC K28 /KPN K18**

Purchaser:..... \$.....

**114 5 x Frozen A Grade Embryos**

**Ident: KEC D53/PIE J14**

EYLWARRA SANDS FALCON F33 (PB)  
 Sire: **TULLIBARDINE JEOPARDY J14 (PB) (AI)**  
 TULLIBARDINE KATIE E46 (PB) (AI)

**Notes:** Dam is lot 19

GLENLIAM FARM Z70 (PB)  
 Dam: **GLENLIAM FARM ANNABEL D53 (PB)**  
 GLENLIAM FARM ANNABEL Y87 (PB)

*Expected Average Progeny Value*

	CED (%)	CEM (%)	GL (days)	BW (kg)	200 (kg)	400 (kg)	600 (kg)	MCW (kg)	Milk (kg)	SS (cm)	DTC	CWT (kg)	EMA (sq.cm)	Rib (mm)	Rump (mm)	RBY (%)	IMF %
EAPV	-0.1	-1.6	-0.9	+4.3	+28	+44	+65	+61	+8			+38	+2.0	+0.6	+0.9	+0.5	+0.4

Purchaser:..... \$.....

**115 4 x Frozen A Grade Embryos**

**Ident: KEC D47/2F F78**

MONTEREY MARVELLOUS (PB) (AI) (ET)  
 Sire: **ONDIONG F78**  
 ONDIONG BOBO 59TH (PB)

**Notes:** Dam is Lot 55, Full sibling Lot 56

GLENLIAM FARM ALABAMA A23 (PB) (AI) (ET)  
 Dam: **GLENLIAM FARM GREY LADY D47 (PB)**  
 GLENLIAM FARM GREY LADY B92 (PB)

*Expected Average Progeny Value*

	CED (%)	CEM (%)	GL (days)	BW (kg)	200 (kg)	400 (kg)	600 (kg)	MCW (kg)	Milk (kg)	SS (cm)	DTC	CWT (kg)	EMA (sq.cm)	Rib (mm)	Rump (mm)	RBY (%)	IMF %
EAPV	-1.5	-0.2		+5.0	+25	+33	+57	+54	+2			+28	+1.8	+0.3	+0.5	+0.7	+0.2

Purchaser:..... \$.....

**116 3 x Frozen A Grade Embryos**

**Ident: KEC D47/2F F78**

Purchaser:..... \$.....

**117 6 x Frozen A Grade Embryos**


**Ident: KEC A29/KEC D107**

GLENLIAM FARM ZEPPLIN Z80 (PB)  
**Sire: GLENLIAM FARM DROVER D107 (PB) - KEC D107**  
 GLENLIAM FARM CAPRI LASS A28 (PB) (AI) (ET)

**Notes:** Dam is Lot 44, Full sibling Lot 50

WILLALOOKA PHARAOH P47 (PB)  
**Dam: GLENLIAM FARM CAPRI LASS A29 (PB) (AI)**  
 GLENLIAM FARM CAPRI LASS R32 (PB) (AI) (ET)

*Expected Average Progeny Value*

	CED (%)	CEM (%)	GL (days)	BW (kg)	200 (kg)	400 (kg)	600 (kg)	MCW (kg)	Milk (kg)	SS (cm)	DTC	CWT (kg)	EMA (sq.cm)	Rib (mm)	Rump (mm)	RBY (%)	IMF %
EAPV	-4.1	-0.1	+1.1	+4.7	+26	+31	+50	+60	-2	+1.4	-1.9	+30	+2.0	-0.7	-0.8	+1.8	-0.6

Purchaser:..... \$.....

**118 6 x Frozen A Grade Embryos**

**Ident: KEC A29/KEC D107**

Purchaser:..... \$.....

**119 4 x Frozen A Grade Embryos**


**Ident: KEC A29/2F F78**

MONTEREY MARVELLOUS (PB) (AI) (ET)  
**Sire: ONDIONG F78**  
 ONDIONG BOBO 59TH (PB)

**Notes:** Dam is Lot 44, Full siblings Lot 53 & 54

WILLALOOKA PHARAOH P47 (PB)  
**Dam: GLENLIAM FARM CAPRI LASS A29 (PB) (AI)**  
 GLENLIAM FARM CAPRI LASS R32 (PB) (AI) (ET)

*Expected Average Progeny Value*

	CED (%)	CEM (%)	GL (days)	BW (kg)	200 (kg)	400 (kg)	600 (kg)	MCW (kg)	Milk (kg)	SS (cm)	DTC	CWT (kg)	EMA (sq.cm)	Rib (mm)	Rump (mm)	RBY (%)	IMF %
EAPV	-1.1	+0.9	-1.5	+3.1	+24	+32	+53	+57	+4	+1.4	-3.5	+32	+2.0	+0.6	+1.0	+0.6	+0.1

Purchaser:..... \$.....

**120 4 x Frozen A Grade Embryos**

**Ident: KEC A29/2F F78**

Purchaser:..... \$.....

**121 4 x Frozen A Grade Embryos**

**Ident: KEC A29/2F F78**

Purchaser:..... \$.....

**122 3 x Frozen A Grade Embryos**


**Ident: KEC A29/ LEJ C46**

LINDSAY STARBRIGHT S117 (PB) (AI)  
**Sire: WALLAWONG RIPSNOTER (PB)**  
 WALLAWONG ALETTA (GR1) (AI)

**Notes:** Dam is Lot 44, Full siblings Lot 45 & 46

WILLALOOKA PHARAOH P47 (PB)  
**Dam: GLENLIAM FARM CAPRI LASS A29 (PB) (AI)**  
 GLENLIAM FARM CAPRI LASS R32 (PB) (AI) (ET)

*Expected Average Progeny Value*

	CED (%)	CEM (%)	GL (days)	BW (kg)	200 (kg)	400 (kg)	600 (kg)	MCW (kg)	Milk (kg)	SS (cm)	DTC	CWT (kg)	EMA (sq.cm)	Rib (mm)	Rump (mm)	RBY (%)	IMF %
EAPV	+0.9	+2.0	-1.0	+2.5	+26	+34	+59	+67	+6	+0.5	-1.6	+40	+2.7	-0.6	-0.6	+1.8	-0.3

Purchaser:..... \$.....

# FALLS

Livestock Transport

---

FINLEY

**Lockie Falls – 0429 826 342**  
[www.fallslivestock.com.au](http://www.fallslivestock.com.au) | [flt1@bigpond.com](mailto:flt1@bigpond.com)

*Specialist Stud Stock Transport  
servicing all states Australia Wide*







# Sale Statistics

<b>Cows &amp; Calves:</b>	Offered: .....	Sold: .....
	Top: .....	Average: .....
	Gross: .....	
<b>Joined females:</b>	Offered: .....	Sold: .....
	Top: .....	Average: .....
	Gross: .....	
<b>Unjoined females:</b>	Offered: .....	Sold: .....
	Top: .....	Average: .....
	Gross: .....	
<b>PTIC recipients:</b>	Offered: .....	Sold: .....
	Top: .....	Average: .....
	Gross: .....	
<b>Bulls:</b>	Offered: .....	Sold: .....
	Top: .....	Average: .....
	Gross: .....	
<b>Semen:</b>	Offered: .....	Sold: .....
	Top: .....	Average: .....
	Gross: .....	
<b>Embryos:</b>	Offered: .....	Sold: .....
	Top: .....	Average: .....
	Gross: .....	
<b>Overall:</b>	Offered: .....	Sold: .....
	Top: .....	Average: .....
	Gross: .....	

# GLENLIAM FARM *Murray Greys*

*Murray Grey National Show & Sale*  
*April 29th 2019*

*Offering 3 outstanding Jeopardy sons*



## **Glenliam Farm Natrad N39**

**'Nip into Natrad,  
the herd fixing specialist'**



## **Glenliam Farm Nissan N35**

**'Need a new work horse for your herd?  
Nissan is innovation that excites!'**



## **Glenliam Farm Nintendo N69**

**'Nintendo doesn't play games, he gets on  
with the job!'**

★ **Top of the Range Sale - 12th July 2019**

★ **5 exciting young sires on offer**

**Contact the Agent for more information**



**Colin Say & Co Pty Ltd**

**GLENLIAM FARM**

Contact: Bryce & Diane Whale  
414 Glen William Road, Glen William NSW 2321  
02 4996 4335/ 0428 964 583/ [glenliam@bmr.net.au](mailto:glenliam@bmr.net.au)



# Notes

A series of horizontal dotted lines for writing notes.

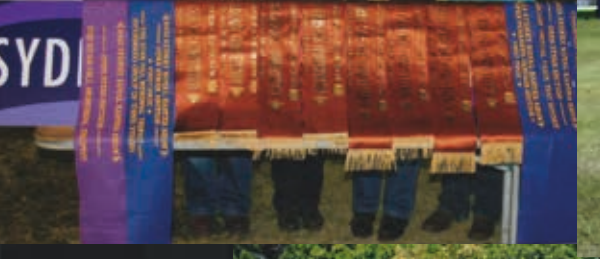




Thank you to Ben Hooper of Clear Vision Imaging for videoing and photographing all of the sale lots. If you need videos or photos taken, contact Ben on 0428 682 804.









A herd of Murray Grey cattle, a mix of black and white, stands in a grassy field. The scene is captured at sunrise, with the sun low on the horizon, creating a warm, golden glow and long shadows. A large tree is on the left, and rolling hills are in the background.

**GLENLIAM**  
**FARM**  
*Murray Greys*

*Farewell*

**Glenliam Farm would like to thank  
their clients new and old for your  
continued support of our program over the last  
25 years. It has been a pleasure.**

**We wish you all the best with your purchases.**