



HEART ANGUS



Lot 12

**3rd ON PROPERTY
BULL SALE**

1pm WEDNESDAY 10th JULY 2019

40 BULLS



Lot 1



J232
DAM OF LOT 3



Lot 4



HEART ANGUS

3rd ON PROPERTY BULL SALE

**WEDNESDAY 10TH
JULY 2019**

At 1pm

On property at "Sandown"
13763 New England Hwy
Timbumburi 2340

40 BULLS



Contact:

Chris Paterson 0428 297 227

Auctioneer:

Paul Dooley 0458 662 646

WELCOME

We would like to thank all who have supported us in our previous sales we value your patronage and would like to welcome you to our 3rd On Property Bull Sale which consists of 24 rising 2-year-old bulls and 16 long yearling bulls (16-17mths)

All in our industry have felt the worry and stress of the dry over the past year or so, in some places it has been the worst they have ever seen it. We all hope that the break comes soon.

This years draft of bulls due to the conditions have meet a stringent culling process. Cattle that are easy doing definitely come to the top in tough times. We have concentrated over the years on purchasing easy doing cattle and this is reflected in our herd today.

We have 2 Millah Murrah sires in Katich and Laker with 3 and 7 bulls respectively in the catalogue. The Katich sons at last years sale averaged a \$1000 above the sale average as well as topping the sale. While these are the first of the Laker sons to sell we are also extremely happy with his female progeny. He will add muscle and doing ability.

The SAV Resource and SAV Renown (full brothers) sons are extremely thick, just like their dads.

The Plattermere Weigh Up sons are very consistent again this year and will add growth.

There is only one LD Capitalist son and he is a very impressive bull.

OUR NAME

Our stud name Heart Angus comes from the brand of the upside down heart over the dumbbell that was handed down through the family from Chris' Great Grandmother Alice May Paterson from the property 'The Glen' at Dyers Crossing.

BREEDING GOALS

Simply, our aim is to produce productive cattle to suit all markets.

With our focus being on breeding easy doing, fertile animals which are deep bodied and well muscled. We are continually seeking to look at new genetics to improve our herd with Chris taking biennial trips to USA to view suitable genetics to improve consistency across our herd.

SALE DETAILS

Directions

From Tamworth - 10km south of AELEC on New England Highway, Sandown is on your right.
From Dungowan - turn left at Dungowan Pub then right onto Duri/Dungowan Rd, at Recreational Ground follow through to New England Hwy, turn left travel for a further 2km Sandown on your right.

From South - approx. 4km north of Goonoo Goonoo Station on your left.

Inspections

Sale bulls may be inspected by prior arrangement with the vendor. All lots will be penned for inspection at 10am on sale day. Sale will commence at 1pm.

Additional Information

A supplementary sheet will be available on sale day. All bulls have been semen tested.

Registration

A card registration system will be used, please allow yourself time prior to the sale to register. Your PIC number will be required. The sale will be conducted under normal auction conditions.

GST

All animals are sold exclusive of GST.

Rebate

2% rebate to outside agents introducing buyers in writing 24hrs prior to sale and settling on their behalf in 7 days of the date of invoice.

Phone Bidding

Mobile phone bidding can be arranged.

Auctions Plus

Our sale will be interfaced with Auctions Plus.

Insurance

It will be the responsibility of buyers to insure their bulls, there will be options on sale day.

Delivery

There will be stock transport options available on the day.

Taking Delivery

Upon taking delivery of your purchase/s it is important to remember that our bulls have been running in mobs since weaning. Arriving in a new environment can be quite traumatic so we recommend on arriving home you have some other cattle in the yards to ease him into his new surroundings.

Catering

Morning tea and lunch will be provided.



IMPORTANT NOTICES FOR PURCHASERS

~ SALE CATALOGUE DISCLAIMER ~

All reasonable care has been taken by the vendor to ensure that the information provided in this catalogue is correct at the time of publication. However, neither the vendor nor the selling agents make any other representations about the accuracy, reliability or completeness of any information provided in this catalogue and do not assume any responsibility for the use or interpretation of the information included in this catalogue. You are encouraged to seek independent verification of any information contained in this catalogue before relying on such information.

~ DNA PATERNITY VERIFICATION ~

It is a requirement of Angus Australia that all bulls used to sire calves for registration in the Angus Australia Herd Book Register, Red Angus Register or Angus Performance Register must have been DNA paternity verified if they are born in or after the 'Y' year (2003). Buyers intending to use bulls listed in this catalogue to produce calves to be registered in these registers should obtain DNA paternity verification on those bulls before they are used for breeding.

~ PRIVACY INFORMATION ~

In order for Angus Australia to process the transfer of a registered animal in this catalogue, the vendor will need to provide certain information to Angus Australia and the buyer consents to the collection and disclosure of that information by Angus Australia in certain circumstances. If the buyer does not wish for his or her information to be stored and disclosed by Angus Australia, the buyer must complete the form included below and forward it to Angus Australia. If the form is not completed, the buyer will be taken to have consented to the disclosure of such information.

BUYER'S OPTION TO OPT OUT OF DISCLOSING PERSONAL INFORMATION TO THE ANGUS AUSTRALIA

If you do not complete this form, you will be taken to have consented to Angus Australia using your name, address and phone number for the purposes of effecting a change of registration of the animal(s) that you have purchased, maintaining its databases and disclosing that information to its members on its website.

*I, the buyer of animals with the following registration numbers
..... from
member (name) do not consent to Angus Australia
using my name, address and phone number for the purposes of effecting a change of registration of
the following animal(s) that I have purchased, maintaining its databases and disclosing that
information to its members on its website.*

Signature:

Date:

*Please forward this completed consent form to Angus Australia, Glen Innes Road, Locked Bag 11,
Armidale NSW 2350. If you have any queries, please telephone 02 6772 3011 or
e-mail office@angusaustralia.com.au.*



JUNE 2019 ANGUS AUSTRALIA BREEDPLAN REFERENCE TABLES

BREED AVERAGE EBVs																															
Bred Avg	Calving Ease			Birth			Growth			Fertility			Carcass			Other			Structure			Selection Indexes									
	CEDiv	CEDiv	CEDiv	GL	BW	BW	200	400	600	MCW	Milk	SS	DTC	CWT	EMA	RIB	P8	RYB	IMF	NFF	DOC	PA	FC	RA	RH	RS	ABI	DOM	GRN	GRS	
+0.2	+0.4	-4.0	-4.0	+4.3	+4.4	+81	+106	+91	+15	+1.8	-4.2	+59	+5.1	+0.0	-0.2	+0.4	+1.7	+0.18	+4	+0	-1	-2	-0.4	-0.3	+1.4	+109	+119	+112			

* Breed average represents the average EBV of all 2017 drop Angus and Angus influenced animals analysed in the June 2019 Angus Australia BREEDPLAN genetic evaluation.

PERCENTILE BANDS TABLE																																
% Band	Calving Ease			Birth			Growth			Fertility			Carcass			Other			Structure			Selection Indexes										
	CEDiv	CEDiv	CEDiv	GL	BW	BW	200	400	600	MCW	Milk	SS	DTC	CWT	EMA	RIB	P8	RYB	IMF	NFF	DOC	PA	FC	RA	RH	RS	ABI	DOM	GRN	GRS		
Less	+5.0	+4.4	-9.7	-0.4	+61	+109	+145	+139	+26	+3.8	-8.9	+85	+11.0	+3.1	+3.2	+2.6	+4.0	-0.48	+31	+20	+22	+14	+4.6	+0.5	+156	+135	+182	+145				
5%	+3.9	+3.5	-7.7	+1.7	+56	+100	+133	+22	+22	+3.1	-7.5	+77	+8.9	+2.1	+2.1	+1.9	+3.3	-0.30	+24	+16	+17	+10	+3.3	+0.5	+145	+128	+165	+135				
10%	+3.2	+2.9	-6.8	+2.3	+53	+96	+127	+15	+21	+2.8	-6.8	+73	+8.0	+1.5	+1.6	+1.5	+3.0	-0.19	+19	+13	+15	+8	+2.6	+0.5	+138	+124	+155	+130				
15%	+2.8	+2.5	-6.2	+2.7	+52	+93	+123	+10	+20	+2.6	-6.3	+71	+7.4	+1.2	+1.2	+1.3	+2.7	-0.12	+16	+11	+12	+6	+2.1	+0.4	+134	+121	+149	+124				
20%	+2.4	+2.1	-5.8	+3.0	+51	+91	+119	+106	+19	+2.4	-5.9	+69	+7.0	+1.0	+0.9	+1.2	+2.5	-0.07	+14	+9	+10	+5	+1.7	+0.4	+131	+119	+143	+124				
25%	+2.0	+1.8	-5.4	+3.2	+49	+89	+117	+103	+18	+2.3	-5.6	+67	+6.6	+0.8	+0.7	+1.0	+2.3	-0.02	+12	+8	+8	+4	+1.6	+0.4	+128	+117	+139	+122				
30%	+1.7	+1.6	-5.1	+3.5	+48	+87	+114	+100	+17	+2.2	-5.3	+66	+6.2	+0.6	+0.5	+0.9	+2.2	+0.02	+10	+7	+7	+3	+1.1	+0.4	+125	+115	+135	+120				
35%	+1.3	+1.3	-4.8	+3.7	+48	+86	+112	+98	+17	+2.1	-5.0	+64	+5.9	+0.4	+0.3	+0.2	+1.0	+0.07	+8	+5	+5	+2	+0.8	+0.3	+122	+114	+131	+118				
40%	+1.0	+1.0	-4.5	+3.9	+47	+84	+110	+95	+16	+2.0	-4.8	+63	+5.6	+0.3	+0.2	+0.7	+1.9	+0.11	+7	+4	+4	+0	+0.5	+0.3	+120	+112	+127	+116				
45%	+0.7	+0.8	-4.2	+4.1	+46	+83	+108	+93	+16	+1.9	-4.5	+62	+5.4	+0.1	+0.0	+0.6	+1.8	+0.14	+5	+3	+2	-1	+0.3	+0.2	+118	+111	+124	+114				
50%	+0.4	+0.5	-4.0	+4.3	+45	+81	+106	+91	+15	+1.8	-4.3	+60	+5.1	+0.0	-0.2	+0.5	+1.7	+0.18	+4	+2	+1	-2	+0.0	+0.2	+115	+109	+120	+112				
55%	+0.1	+0.3	-3.7	+4.5	+44	+80	+104	+88	+15	+1.7	-4.0	+59	+4.8	+0.1	-0.3	+0.3	+1.6	+0.22	+3	+1	-3	-0.4	+0.1	+1.1	+1.1	+108	+117	+111				
60%	-0.2	+0.0	-3.5	+4.7	+43	+79	+102	+86	+14	+1.6	-3.8	+57	+4.5	-0.3	-0.5	+0.2	+1.4	+0.26	+1	-1	-3	-0.4	-0.8	+0.0	+1.0	+106	+113	+109				
65%	-0.6	-0.2	-3.2	+4.9	+42	+77	+100	+84	+14	+1.5	-3.5	+56	+4.2	-0.4	-0.7	+0.1	+1.3	+0.30	+0	-2	-5	-5	-1.2	-0.1	+1.08	+105	+109	+107				
70%	-0.9	-0.5	-2.9	+5.1	+41	+75	+98	+81	+13	+1.4	-3.2	+54	+3.9	-0.6	-0.9	+0.0	+1.2	+0.38	-2	-4	-8	-6	-1.5	-0.3	+1.05	+103	+105	+105				
75%	-1.3	-0.9	-2.6	+5.3	+40	+74	+95	+78	+13	+1.3	-2.9	+52	+3.6	-1.0	-1.0	+0.1	+1.0	+0.94	-3	-6	-11	-7	-1.8	-0.5	+1.02	+101	+101	+102				
80%	-1.8	-1.3	-2.3	+5.6	+39	+72	+92	+75	+12	+1.1	-2.5	+50	+3.2	-1.0	-1.3	-0.3	+0.8	+0.43	-5	-9	-13	-8	-2.1	-0.8	+0.98	+99	+96	+100				
85%	-2.4	-1.7	-1.9	+5.9	+37	+69	+89	+72	+11	+1.0	-2.1	+47	+2.8	-1.2	-1.5	-0.4	+0.6	+0.48	-7	-12	-16	-11	-3.0	-1.2	+0.94	+96	+90	+96				
90%	-3.2	-2.3	-1.4	+6.3	+35	+66	+84	+67	+10	+0.8	-1.5	+42	+2.2	-1.5	-1.9	-0.7	+0.4	+0.55	-9	-17	-21	-14	-3.9	-1.7	+0.89	+93	+82	+92				
95%	-4.5	-3.3	-0.5	+6.9	+31	+61	+77	+58	+9	+0.5	-0.5	+36	+1.4	-1.9	-2.4	-1.0	+0.1	+0.68	-13	-26	-28	-19	-5.7	-2.7	+0.79	+88	+69	+85				
99%	-7.4	-5.2	+1.3	+8.1	+24	+50	+60	+42	+6	-0.1	+1.5	+25	-0.1	-2.8	-3.5	-1.7	-0.4	+0.86	-20	-35	-32	-27	-10.0	-5.3	+0.53	+72	+34	+64				
More	Less	More	Less	More	Less	More	Less	More	Less	More	Less	More	Less	More	Less	More	Less	More	Less	More	Less	More	Less	More	Less	More	Less	More	Less	More	Less	More

* The percentile bands represent the distribution of EBVs across the 2017 drop Angus and Angus influenced animals analysed in the June 2019 Angus Australia BREEDPLAN genetic evaluation.

REFERENCE SIRES

RS

MILLAH MURRAH LAKER L24 ^{PV}

HBR

Tattoo: JRT (CONJOINED) L24 (T&F)

Ident: NMMML24

DOB: 31/01/2015

CONNEALY ONWARD

SITZ UPWARD 307R

SITZ HENRIETTA PRIDE 81M

Sire: USA17091363 THOMAS UP RIVER 1614

RITO 112 OF 2536 RITO 616

THOMAS CAROL 7595

THOMAS CAROL 1246

MILLAH MURRAH EQUATOR D78

MILLAH MURRAH DOC F159

HAZELDEAN Y275

Dam: NMMJ181 MILLAH MURRAH FLOWER J181

HINGAIA 469

MILLAH MURRAH FLOWER F101

MILLAH MURRAH FLOWER Y141

\$Index Values

ABI	DOM	GRN	GRS
+\$148	+\$136	+\$154	+\$145

AMFU NHFU CAFU DDFU
Traits Observed: GL,BWT,200WT,400WT,SS,FAT,EMA,IMF,DOC,Genomics
BREEDPLAN Stats: Num of Herds 1, Progeny Analysed 47, Scan Progeny 0, Num of Dtrs 0

June 2019 Angus Australia BREEDPLAN



	Dir	Dtr	GL	BW	200	400	600	Mwt	Milk	
EBV's	+1.8	+0.8	-5.4	+5.2	+61	+116	+146	+116	+25	
<i>Acc</i>	67%	48%	84%	88%	79%	79%	77%	72%	64%	
	SC	DC	CWT	EMA	Rib	Rump	RBV	IMF%	NFI-F	DOC
	+3.4	-5.2	+88	+6.6	+0.9	+0.2	+0.9	+1.4	+0.22	+4
	74%	42%	69%	63%	66%	63%	59%	62%	54%	58%

Laker was purchased to add thickness and body mass in our herd. He is breeding very consistently. He will have a bigger selection of sires over the next few years. 7 sons sell.

RS

MILLAH MURRAH KATICH K20 ^{PV}

HBR

Tattoo: JRT (CONJOINED) K20 (T&F)

Ident: NMMK20

DOB: 26/01/2014

WAITARA VALLEY BIG MAX

WAITARA VALLEY TEX

WAITARA VALLEY L578

Sire: NZE469 HINGAIA 469

BACK TRACK P&P ROYAL 28

HINGAIA 910

HINGAIA D208

LEACHMAN RIGHT TIME

BT RIGHT TIME 24J

SITZ EVERELDA ENTENSE 1905

Dam: NMMG41 MILLAH MURRAH FLOWER G41

BON VIEW NEW DESIGN 1407

MILLAH MURRAH FLOWER C15

MILLAH MURRAH FLOWER A81

\$Index Values

ABI	DOM	GRN	GRS
+\$89	+\$98	+\$74	+\$96

AMFU NHFU CAFU DDFU
Traits Observed: BWT,200WT,400WT,SS,FAT,EMA,IMF,DOC,Genomics
BREEDPLAN Stats: Num of Herds 1, Progeny Analysed 48, Scan Progeny 17, Num of Dtrs 0

June 2019 Angus Australia BREEDPLAN



	Dir	Dtr	GL	BW	200	400	600	Mwt	Milk	
EBV's	+3.8	+2.3	-7.1	+3.4	+36	+69	+83	+77	+13	
<i>Acc</i>	69%	60%	75%	82%	84%	84%	82%	76%	69%	
	SC	DC	CWT	EMA	Rib	Rump	RBV	IMF%	NFI-F	DOC
	-0.6	-5.6	+45	+6.4	+1.4	+1.1	+0.1	+0.3	-0.56	+12
	75%	59%	75%	72%	74%	72%	70%	71%	65%	62%

Katich is a full brother to Millah Murrah Kingdom, Australias highest priced Angus bull at \$150,000. K20 is a long bull with excellent fleshing. He was purchased for \$26,000 to join to our heifers. All his progeny have been born unassisted. 6 of his sons averaged \$1000 above the sale average at last years sale. 3 sons sell.

MILLAH MURRAH LAKER L24 (HBR)



MILLAH MURRAH KATICH K20 (HBR)



S A V RESOURCE 1441 (HBR)



PLATTEMERE WEIGH UP K360 (HBR)



REFERENCE SIRES

RS

S A V RESOURCE 1441 ^{PV}

HBR

Tattoo: 1441

Ident: USA17016597

DOB: 7/01/2011

RITO N BAR
R R RITO 707
ERISKAY OF ROLLIN ROCK 3
IDEAL 1418 OF 8103 4286
IDEAL 3407 OF 1418 076
IDEAL 076 OF 692 8375
SITZ TRAVELER 8180
S A V 8180 TRAVELER 004

\$Index Values

ABI	DOM	GRN	GRS
+\$119	+\$123	+\$105	+\$128

Sire: USA13066860 RITO 707 OF IDEAL 3407 7075

AMF NHF CAF DDF
Dam: USA14739095 S A V BLACKCAP MAY 4136

BOYD FOREVER LADY 8003
S A F 598 BANDO 5175
S A V MAY 2397
S A V MAY 7238

Traits Observed: Genomics

*BREEDPLAN Stats: Num of Herds 46,
Progeny Analysed 552, Scan Progeny 206,
Num of Dtrs 19*

June 2019 Angus Australia BREEDPLAN



	Dir	Dtr	GL	BW	200	400	600	Mwt	Milk
EBV's	-2.6	-5.6	-2.0	+5.6	+58	+106	+130	+92	+11
Acc	79%	61%	98%	98%	96%	96%	95%	90%	86%
SC	DC	CWT	EMA	Rib	Rump	RBY	IMF%	NFI-F	DOC
+2.2	-2.7	+81	+11.0	+0.5	+0.1	+2.6	-0.3	+0.33	+6
94%	49%	86%	87%	87%	83%	81%	85%	65%	89%

Resource has gained the admiration of cattlemen from all over the world like no other. He is universally admired for his ability to sire body mass, efficient conversion and phenotypic power like few sire the breed has ever seen. I have seen Resource 3 times now and just had to use him. 6 extra thick sons sell.

RS

PLATTEMERE WEIGH UP K360

HBR

Tattoo: K360

Ident: USA16692552

DOB: 8/02/2010

CONNEALY LEAD ON
CONNEALY ONWARD
ALTUNE OF CONANGA 6104
SITZ VALUE 7097
SITZ HENRIETTA PRIDE 81M
SITZ HENRIETTA PRIDE 1370
G A R PRECISION 1680
G A R RETAIL PRODUCT
G A R EXT 4927

\$Index Values

ABI	DOM	GRN	GRS
+\$129	+\$138	+\$135	+\$129

Sire: USA14963730 SITZ UPWARD 307R

AMFU NHFU CAFU DDF
Dam: USA16274856 BARBARA OF PLATTEMERE 337

BON VIEW NEW DESIGN 1407
BARBARA OF PLATTEMERE 311
BARBARA OF PLATTEMERE 286

Traits Observed: Genomics

*BREEDPLAN Stats: Num of Herds 18,
Progeny Analysed 354, Scan Progeny 172,
Num of Dtrs 21*

June 2019 Angus Australia BREEDPLAN



	Dir	Dtr	GL	BW	200	400	600	Mwt	Milk
EBV's	-1.5	+1.2	-6.0	+3.6	+62	+113	+133	+94	+17
Acc	82%	70%	98%	97%	96%	96%	95%	88%	85%
SC	DC	CWT	EMA	Rib	Rump	RBY	IMF%	NFI-F	DOC
+1.0	-0.3	+80	+8.3	-4.3	-6.2	+4.0	+1.2	-0.51	-6
94%	55%	86%	85%	86%	82%	80%	84%	67%	93%

I have viewed a lot of his progeny in the US and they are very impressive. His progeny are as impressive here too. His daughters are making great dams in our stud. 5 sons sell.

REFERENCE SIRES

RS

S A V RENOWN 3439^{PV}

HBR

Tattoo:
Ident: USA17633839

DOB: 7/01/2013

RITO N BAR
R R RITO 707
ERISKAY OF ROLLIN ROCK 3
Sire: **USA13066860 RITO 707 OF IDEAL 3407 7075**
IDEAL 1418 OF 8103 4286
IDEAL 3407 OF 1418 076
IDEAL 076 OF 692 8375
SITZ TRAVELER 8180
S A V 8180 TRAVELER 004
BOYD FOREVER LADY 8003

Dam: USA14739095 S A V BLACKCAP MAY 4136

S A F 598 BANDO 5175
S A V MAY 2397
S A V MAY 7238

\$Index Values

ABI	DOM	GRN	GRS
+\$137	+\$134	+\$124	+\$143

AMFU NHFU CAFU DDFU

Traits Observed: Genomics

*BREEDPLAN Stats: Num of Herds 19,
Progeny Analysed 156, Scan Progeny 26,
Num of Dtrs 0*



June 2019 Angus Australia BREEDPLAN

	Dir	Dtr	GL	BW	200	400	600	Mwt	Milk
EBV's	-0.3	-1.7	-5.0	+5.4	+60	+115	+138	+97	+13
Acc	68%	46%	96%	95%	92%	91%	89%	82%	80%
SC	DC	CWT	EMA	Rib	Rump	RBY	IMF%	NFI-F	DOC
+1.0	-4.9	+82	+8.4	+1.4	+2.7	+1.2	-0.1	+0.18	+7
85%	44%	83%	78%	80%	73%	74%	76%	58%	59%

Full brother to Resource in a longer frame. They are backed by one of the breeds most elite females of all time, Blackcap May 4136.

RS

KAROO D24 RIGHT TIME G166^{SV}

HBR

Tattoo: RE G166 (T)

Ident: NENG166

DOB: 7/08/2011

LEACHMAN RIGHT TIME
BT RIGHT TIME 24J
SITZ EVERELDA ENTENSE 1905
Sire: **NEND24 KAROO 24J RIGHT TIME D24**
SITZ ALLIANCE 6595
KAROO WILCOOLA Y7
KAROO FLATS WILCOOLA U14
N BAR EMULATION EXT
LEACHMAN RIGHT TIME
LEACHMAN ERICA 0025
Dam: **NENA58 KAROO PRINCESS A58**
PAPA EQUATOR 2928
ARDROSSAN PRINCESS U102
ARDROSSAN PRINCESS N6+93

\$Index Values

ABI	DOM	GRN	GRS
+\$116	+\$105	+\$108	+\$118

AMFU NHFU CAFU DDF

*Traits Observed: BWT,200WT,400WT,
600WT,SS,FAT,EMA,IMF*

*BREEDPLAN Stats: Num of Herds 1,
Progeny Analysed 25, Scan Progeny 18,
Num of Dtrs 1*



June 2019 Angus Australia BREEDPLAN

	Dir	Dtr	GL	BW	200	400	600	Mwt	Milk
EBV's	-3.4	-1.4	-6.9	+6.8	+54	+97	+130	+109	+16
Acc	59%	47%	83%	84%	79%	80%	81%	75%	65%
SC	DC	CWT	EMA	Rib	Rump	RBY	IMF%	NFI-F	DOC
+2.4	-6.4	+70	+3.6	+1.3	+3.0	-0.3	+0.6	-0.04	--
73%	47%	69%	68%	70%	70%	64%	64%	53%	

REFERENCE SIRES

RS

LD CAPITALIST 316 ^{SV}

HBR

Tattoo:

Ident: USA17666102

DOB: 26/01/2013

SITZ TRAVELER 8180
 S A V FINAL ANSWER 0035
 S A V EMULOUS 8145
 C R A BEXTOR 872 5205 608
 PRIDES PITA OF CONANGA 8821
 PRIDES TRAV OF CONANGA 6499
 G A R PRECISION 1680
 C A FUTURE DIRECTION 5321
 C A MISS POWER FIX 308
 LD ROYCE ONAROLL 810
 LD DIXIE ERICA OAR 0853
 DIXIE ERICA OF R R 8553

Sire: USA16752262 CONNEALY CAPITALIST 028

Dam: USA14407230 LD DIXIE ERICA 2053

\$Index Values

ABI	DOM	GRN	GRS
+\$125	+\$127	+\$122	+\$128

AMF NHF CAF DDF

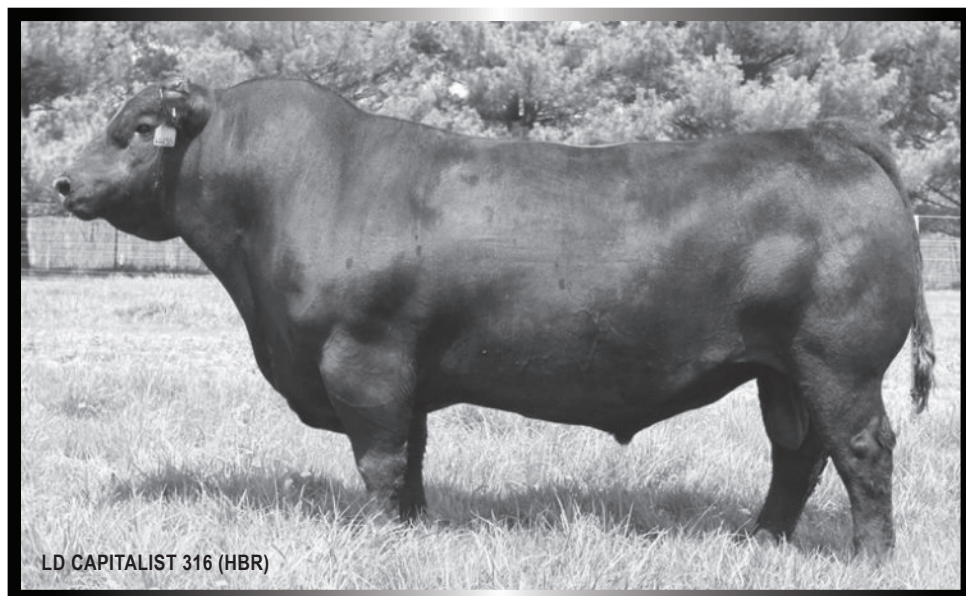
Traits Observed: Genomics

BREEDPLAN Stats: Num of Herds 117,
 Progeny Analysed 1483, Scan Progeny 36,
 Num of Dtrs 0



June 2019 Angus Australia BREEDPLAN

Angus	Dir	Dtr	GL	BW	200	400	600	Mwt	Milk
EBV's	+4.8	+3.1	-3.7	+1.8	+52	+98	+115	+69	+18
Acc	83%	52%	99%	99%	98%	93%	86%	81%	76%
SC	DC	CWT	EMA	Rib	Rump	RBV	IMF%	NFI-F	DOC
+1.8	-2.6	+75	+8.0	+2.0	+1.2	-0.2	+2.0	+0.48	-11
82%	45%	82%	77%	80%	74%	73%	76%	59%	94%



LD CAPITALIST 316 (HBR)

**Lot
1****HEART NERO N52^{PV}****HBR****Tattoo:** HRT N52 (T&F)**Ident:** AZSN52**DOB:** 30/07/2017

CONNEALY ONWARD

SITZ UPWARD 307R

SITZ HENRIETTA PRIDE 81M

Sire: USA16692552 PLATTEMERE WEIGH UP K360

G A R RETAIL PRODUCT

BARBARA OF PLATTEMERE 337

BARBARA OF PLATTEMERE 311

TE MANIA AMBASSADOR A134

TUWHARETOA REGENT D145

LAWSON'S HENRY VIII Y5

Dam: NKLJ54 KANSAS ANNIE J54

MOHNEN DYNAMITE 1356

KANSAS ANNIE E175

KANSAS ANNIE Y656

Index Values

ABI	DOM	GRN	GRS
+\$127	+\$119	+\$142	+\$120

AMFU NHFU CAFU DDFU

*Traits Observed: BWT,200WT,400WT,
Genomics***June 2019 Angus Australia BREEDPLAN**

	Dir	Dtr	GL	BW	200	400	600	Mwt	Milk
EBV's	-2.2	-2.0	-4.2	+5.3	+54	+93	+124	+114	+15
Acc	60%	48%	71%	73%	71%	70%	70%	65%	61%
SC	DC	CWT	EMA	Rib	Rump	RBY	IMF%	NFI-F	DOC
+2.1	-3.4	+70	+7.3	-3.3	-3.8	+3.0	+1.9	-0.19	--
65%	43%	63%	62%	65%	62%	59%	61%	52%	

Maternal brother sold for \$13,000 to Sara Park Angus and 3 brothers sold in last years sale. Thick with good muscle expression.

Purchaser:..... \$:.....**Lot
2****HEART NOMADIC N99^{SV}****HBR****Tattoo:** HRT N99 (T&F)**Ident:** AZSN99**DOB:** 6/09/2017

WAITARA VALLEY TEX

HINGAIA 469

HINGAIA 910

Sire: NMMK20 MILLAH MURRAH KATICH K20

BT RIGHT TIME 24J

MILLAH MURRAH FLOWER G41

MILLAH MURRAH FLOWER C15

CONNEALY TOBIN

CONNEALY CONFIDENCE 0100

BECKA GALA OF CONANGA 8281

Dam: AZSL24 HEART FLOWER L24

BT EQUATOR 395M

MILLAH MURRAH FLOWER E60

MILLAH MURRAH FLOWER A56

Index Values

ABI	DOM	GRN	GRS
+\$118	+\$116	+\$107	+\$124

AMFU NHFU CAFU DDFU

*Traits Observed: BWT,200WT,400WT,
Genomics***June 2019 Angus Australia BREEDPLAN**

	Dir	Dtr	GL	BW	200	400	600	Mwt	Milk
EBV's	+2.6	+3.5	-7.1	+4.2	+53	+97	+128	+109	+19
Acc	54%	40%	66%	69%	68%	66%	66%	63%	55%
SC	DC	CWT	EMA	Rib	Rump	RBY	IMF%	NFI-F	DOC
+0.3	-3.8	+77	+7.1	+0.1	-1.0	+1.2	-0.1	-0.69	--
60%	40%	60%	58%	62%	59%	55%	57%	49%	

Identical breeding to M49 who topped our sale last year, selling to Neil and Colleen Stackman. Easy doing bull and moves very well. Suitable for heifers.

Purchaser:..... \$:.....

**Lot
3****MILLAH MURRAH HALLMARK N308 PV****HBR****Tattoo:** JRT (CONJOINED) N308 (T&F)**Ident:** NMMN308**DOB:** 10/08/2017

TE MANIA BERKLEY B1

TE MANIA EMPEROR E343

TE MANIA LOWAN Z74

Index Values**Sire:** QQFH147 ASCOT HALLMARK H147

ABI	DOM	GRN	GRS
+\$103	+\$91	+\$106	+\$102

MILLAH MURRAH DIGBY D108

MILLAH MURRAH BRENDA F123

MILLAH MURRAH BRENDA D113

KARO W109 DIRECTION Z181

CARABAR DOCKLANDS D62

CARABAR BLACKCAP MARY B12

AMFU NHFU CAFU DDFU**Dam:** NMMJ232 MILLAH MURRAH PRUE J232

CARRINGTON PARK TIME ON B7

MILLAH MURRAH PRUE F207

MILLAH MURRAH PRUE Y28

Traits Observed: GL,CE,BWT,400WT,
Genomics**June 2019 Angus Australia BREEDPLAN****Angus**

	Dir	Dtr	GL	BW	200	400	600	Mwt	Milk
EBV's	-1.7	-1.3	-0.5	+5.2	+46	+78	+116	+94	+15
Acc	61%	46%	85%	74%	72%	71%	71%	68%	61%
SC	DC	CWT	EMA	Rib	Rump	RBY	IMF%	NFI-F	DOC
+3.3	-5.3	+60	+1.4	-0.4	-0.3	-0.6	+1.7	+0.29	--
68%	45%	66%	65%	68%	65%	63%	64%	59%	

Dam purchased from Millah Murrah for \$26,000 as our pick of the cows and calves. A really easy doing thick set athletic Hallmark son. Stud sire potential.

Purchaser:..... \$:.....

**Lot
4****HEART NEXUS N71 SV****HBR****Tattoo:** HRT N71 (T&F)**Ident:** AZSN71**DOB:** 7/08/2017

CONNEALY ONWARD

SITZ UPWARD 307R

SITZ HENRIETTA PRIDE 81M

Index Values**Sire:** USA16692552 PLATTEMERE WEIGH UP K360

ABI	DOM	GRN	GRS
+\$120	+\$125	+\$123	+\$120

G A R RETAIL PRODUCT

BARBARA OF PLATTEMERE 337

BARBARA OF PLATTEMERE 311

TC TOTAL 410

AMFU NHFU CAFU DDFU

TC FRANKLIN 619

TC MARCIA 1069

Dam: AZSH13 HEART ISOBYX H13

REMITALL H RACHIS 21R

DSK RR ISOBYX F12

DSK X1 ISOBYX C115

Traits Observed: GL,CE,BWT,200WT,400WT**June 2019 Angus Australia BREEDPLAN****Angus**

	Dir	Dtr	GL	BW	200	400	600	Mwt	Milk
EBV's	-0.9	+0.8	-6.3	+4.4	+57	+104	+127	+101	+14
Acc	51%	43%	84%	73%	68%	69%	67%	63%	58%
SC	DC	CWT	EMA	Rib	Rump	RBY	IMF%	NFI-F	DOC
+1.1	-1.5	+71	+5.4	-3.2	-3.5	+2.3	+1.3	-0.33	--
60%	38%	59%	56%	59%	56%	54%	56%	46%	

Powerful Weigh Up son that's really gone ahead of late. Weigh Up has really breed very well for us with his daughters breeding the house down.

Purchaser:..... \$:.....

**Lot
5**

HEART NELSON N80^E

APR

Tattoo: HRT N80 (T&F)

Ident: AZSN80

DOB: 10/08/2017

G A R NEW DESIGN 5050

G A R INGENUITY

G A R OBJECTIVE 1067

Sire: USA17513381 V A R INDEX 3282

CONNEALY ONWARD

SANDPOINT BLACKBIRD 8809

RIVERBEND BLACKBIRD 4301

S A F FOCUS OF E R

BALDRIDGE NEBRASKA 901

BALDRIDGE FLOSSIE 367

Dam: DDSE106 N BAR 901 MILDRED E106

\$Index Values

ABI	DOM	GRN	GRS
+\$120	+\$120	+\$125	+\$118

AMFU NHFU CAFU DDFU

Traits Observed: GL, BW, 200WT, 400WT



June 2019 Angus Australia BREEDPLAN

	Dir	Dtr	GL	BW	200	400	600	Mwt	Milk
EBV's	+0.2	+0.0	-2.3	+3.8	+47	+87	+107	+85	+18
Acc	46%	38%	84%	72%	66%	67%	64%	60%	54%
SC	DC	CWT	EMA	Rib	Rump	RBY	IMF%	NFI-F	DOC
+0.5	-2.8	+59	+9.3	-0.8	-1.3	+1.9	+1.9	+0.25	--
56%	37%	57%	54%	56%	55%	52%	54%	43%	

The only Index son in the sale. Long powerful heifer bull with a big EMA of +9.

Purchaser:..... \$:.....

**Lot
6**

HEART NUMEROSITY N103^{SV}

HBR

Tattoo: HRT N103 (T&F)

Ident: AZSN103

DOB: 15/09/2017

SITZ UPWARD 307R

THOMAS UP RIVER 1614

THOMAS CAROL 7595

Sire: NMML24 MILLAH MURRAH LAKER L24

MILLAH MURRAH DOC F159

MILLAH MURRAH FLOWER J181

MILLAH MURRAH FLOWER F101

REMITALL NIGHTHAWK 37N

REMITALL H RACHIS 21R

HENDERSON MISSIE 32'02

Dam: NKSF12 DSK RR ISOBYX F12

DSK HR XTRA X1

DSK X1 ISOBYX C115

ALEX UV ISOBYX W8

\$Index Values

ABI	DOM	GRN	GRS
+\$125	+\$121	+\$126	+\$125

AMFU NHFU CAFU DDFU

Traits Observed: BW, 200WT, 400WT



June 2019 Angus Australia BREEDPLAN

	Dir	Dtr	GL	BW	200	400	600	Mwt	Milk
EBV's	+0.1	-0.2	-4.5	+5.4	+54	+102	+128	+108	+19
Acc	41%	30%	64%	71%	64%	64%	61%	57%	50%
SC	DC	CWT	EMA	Rib	Rump	RBY	IMF%	NFI-F	DOC
+2.3	-4.7	+74	+5.0	+0.4	+0.4	+0.9	+1.1	+0.09	--
52%	30%	53%	48%	51%	49%	45%	47%	39%	

One of the youngest bulls out of the rising 2 years olds and still made the top pen. First of seven Millah Murrah Laker sons in the sale. Will grow out to be a powerful bull.

Purchaser:..... \$:.....

**Lot
7****HEART NOMAD N48^{SV}****HBR****Tattoo:** HRT N48 (T&F)**Ident:** AZSN48**DOB:** 23/07/2017

WAITARA VALLEY TEX

HINGAIA 469

HINGAIA 910

Sire: NMMK20 MILLAH MURRAH KATICH K20

BT RIGHT TIME 24J

MILLAH MURRAH FLOWER G41

MILLAH MURRAH FLOWER C15

SITZ UPWARD 307R

PLATTEMERE WEIGH UP K360

BARBARA OF PLATTEMERE 337

Dam: AZSL35 HEART VEREX L35

BULLIAC ZAMBEZI Z7

KANSAS VERYX D152

KANSAS VERYX Z210

\$Index Values

ABI	DOM	GRN	GRS
+\$124	+\$119	+\$126	+\$123

AMFU NHFU CAFU DDFU**Traits Observed:** CE,BWT,200WT,
400WT,Genomics**June 2019 Angus Australia BREEDPLAN**

	Dir	Dtr	GL	BW	200	400	600	Mwt	Milk
EBV's	+0.4	+0.7	-5.5	+6.3	+53	+95	+121	+105	+14
Acc	54%	40%	68%	69%	67%	66%	66%	62%	54%
SC	DC	CWT	EMA	Rib	Rump	RBY	IMF%	NFI-F	DOC
+1.4	-4.1	+63	+7.4	-0.8	-0.8	+1.4	+1.2	-0.39	--
59%	38%	59%	57%	61%	58%	54%	56%	48%	

Only 3 Katich sons available in this years sale. 6 Katich sons averaged \$1000 above sale average at last years sale. Out of an attractive large Weigh Up female this framey bull has been one of the heaviest all the way through.

Purchaser:..... **\$:**.....**Lot
8****HEART NAME DROPPER N45^{SV}****HBR****Tattoo:** HRT N45 (T&F)**Ident:** AZSN45**DOB:** 18/07/2017

B/R DESTINATION 727-928

SYDGEN 928 DESTINATION 5420

SHADY BROOK ENTENSE 76D 29H

Sire: USA17640892 SPRING COVE GENTLEMAN JACK

STEVENSON CE DELUXE 1914

SPRING COVE CAROL SB 901

SPRING COVE CAROL SB 742

L T 598 BANDO 9074

WATTLETOP ANDY C109

WATTLETOP ANN V58

Dam: NWP231 WATTLETOP KERRY G231

BON VIEW NEW DESIGN 1407

WATTLETOP KERRY B315

WATTLETOP KERRY X94

\$Index Values

ABI	DOM	GRN	GRS
+\$125	+\$119	+\$131	+\$122

AMFU NHFU CAFU DDFU**Traits Observed:** GL,CE,BWT,200WT,400WT**June 2019 Angus Australia BREEDPLAN**

	Dir	Dtr	GL	BW	200	400	600	Mwt	Milk
EBV's	-0.2	+2.2	-4.5	+4.8	+53	+100	+128	+114	+17
Acc	41%	33%	84%	64%	65%	67%	63%	58%	53%
SC	DC	CWT	EMA	Rib	Rump	RBY	IMF%	NFI-F	DOC
+1.7	-4.7	+76	+3.7	-0.9	-1.4	+0.9	+1.4	-0.52	--
56%	34%	57%	51%	53%	51%	49%	50%	40%	

N45 is out of one of our pick Wattletop cows. Large frame bull with muscle and thickness. If you're looking to add growth this is the bull for you.

Purchaser:..... **\$:**.....

**Lot
9**

HEART NORMANDY N77^{PV}

HBR

Tattoo: HRT N77 (T&F)

Ident: AZSN77

DOB: 9/08/2017

C A FUTURE DIRECTION 5321

BASIN FRANCHISE P142

BASIN CHLOE 812L

Sire: USA16198796 EF COMPLEMENT 8088

BR MIDLAND

EF EVERELDA ENTENSE 6117

H F EVERELDA ENTENSE 869

BR MIDLAND

BULLIAC ZAMBEZI Z7

BULLIAC LORNA X36

Dam: NKLD152 KANSAS VERYX D152

YTHANBRAE THE DON W57

KANSAS VERYX Z210

KANSAS VERYX T13

\$Index Values

ABI	DOM	GRN	GRS
+\$133	+\$120	+\$140	+\$132

AMFU NHFU CAFU DDFU

Traits Observed: GL,CE,BWT,200WT,400WT,Genomics



June 2019 Angus Australia BREEDPLAN

	Dir	Dtr	GL	BW	200	400	600	Mwt	Milk
EBV's	+2.1	+2.6	-3.8	+4.1	+55	+102	+136	+103	+23
Acc	64%	53%	84%	75%	73%	72%	72%	69%	66%
SC	DC	CWT	EMA	Rib	Rump	RBY	IMF%	NFI-F	DOC
+1.4	-2.4	+75	+4.6	+0.2	+0.7	-0.4	+2.3	+0.16	--
67%	44%	66%	64%	67%	65%	61%	63%	55%	

Dam has had 7 natural calves all to the AI and is still active as an 11 year old. A clean shouldered eye appealing youngster.

Purchaser:..... **\$:**.....

**Lot
10**

HEART NEBULA N50^{PV}

HBR

Tattoo: HRT N50 (T&F)

Ident: AZSN50

DOB: 28/07/2017

R R RITO 707

RITO 707 OF IDEAL 3407 7075

IDEAL 3407 OF 1418 076

Sire: USA17633839 S A V RENOWN 3439

S A V 8180 TRAVELER 004

S A V BLACKCAP MAY 4136

S A V MAY 2397

TUWHARETOA REGENT D145

MILWILLAH GATSBY G279

MILWILLAH LOWAN D112

Dam: DDSK36 N BAR BARA K36

CIRCLE 8 0699 BANDO A115

N BAR A115 BARA C133

KENNY'S CREEK BARA U44

\$Index Values

ABI	DOM	GRN	GRS
+\$145	+\$132	+\$155	+\$139

AMFU NHFU CAFU DDFU

Traits Observed: BWT,200WT,400WT,Genomics



June 2019 Angus Australia BREEDPLAN

	Dir	Dtr	GL	BW	200	400	600	Mwt	Milk
EBV's	-2.2	-2.4	-3.2	+6.0	+60	+115	+141	+103	+19
Acc	55%	38%	72%	72%	71%	69%	69%	64%	59%
SC	DC	CWT	EMA	Rib	Rump	RBY	IMF%	NFI-F	DOC
+1.6	-5.5	+88	+6.9	-1.3	+0.3	+0.7	+2.0	+0.47	--
64%	36%	62%	60%	63%	59%	56%	59%	49%	

First of the 3 flush brothers in the sale. Powerful long bull with great structure.

Purchaser:..... **\$:**.....

**Lot
11****HEART NOTEWORTHY N40^{PV}****HBR**

Tattoo: HRT N40 (T&F)

Ident: AZSN40

DOB: 8/07/2017

R R RITO 707

RITO 707 OF IDEAL 3407 7075

IDEAL 3407 OF 1418 076

Sire: USA17633839 S A V RENOWN 3439

S A V 8180 TRAVELER 004

S A V BLACKCAP MAY 4136

S A V MAY 2397

TUWHARETOA REGENT D145

MILWILLAH GATSBY G279

MILWILLAH LOWAN D112

Dam: DDSK36 N BAR BARA K36

CIRCLE 8 0699 BANDO A115

N BAR A115 BARA C133

KENNY'S CREEK BARA U44

\$Index Values

ABI	DOM	GRN	GRS
+\$136	+\$126	+\$141	+\$132

AMFU NHFU CAFU DDFU

Traits Observed: BWT,200WT,400WT,
Genomics**June 2019 Angus Australia BREEDPLAN**

	Dir	Dtr	GL	BW	200	400	600	Mwt	Milk
EBV's	-1.4	-2.0	-3.6	+5.3	+53	+99	+122	+88	+18
Acc	55%	38%	71%	72%	70%	68%	68%	63%	58%
SC	DC	CWT	EMA	Rib	Rump	RBY	IMF%	NFI-F	DOC
+1.7	-5.7	+74	+9.6	+0.2	+1.0	+1.0	+1.8	+0.48	--
63%	36%	62%	59%	62%	58%	56%	58%	48%	

Second of the flush brothers this bull is extra thick with good muscle.

Purchaser:..... \$:.....

**Lot
12****HEART LD. CAPITALIST P7^{PV}****HBR**

Tattoo: HRT P7 (T&F)

Ident: AZSP7

DOB: 30/01/2018

S A V FINAL ANSWER 0035

CONNEALY CAPITALIST 028

PRIDES PITA OF CONANGA 8821

Sire: USA17666102 LD CAPITALIST 316

C A FUTURE DIRECTION 5321

LD DIXIE ERICA 2053

LD DIXIE ERICA OAR 0853

TE MANIA EMPEROR E343

ASCOT HALLMARK H147

MILLAH MURRAH BRENDA F123

Dam: NMMM133 MILLAH MURRAH ELA M133

BOOROOMOOKA THEO T030

MILLAH MURRAH ELA J29

MILLAH MURRAH ELA G88

\$Index Values

ABI	DOM	GRN	GRS
+\$132	+\$126	+\$140	+\$130

AMFU NHFU CAFU DDFU

Traits Observed: GL,BWT,Genomics

**June 2019 Angus Australia BREEDPLAN**

	Dir	Dtr	GL	BW	200	400	600	Mwt	Milk
EBV's	+3.5	+2.2	-3.6	+2.6	+50	+100	+124	+100	+19
Acc	58%	37%	84%	72%	71%	68%	66%	62%	55%
SC	DC	CWT	EMA	Rib	Rump	RBY	IMF%	NFI-F	DOC
+3.0	-2.0	+67	+8.6	+1.0	+0.3	+0.4	+2.3	+0.49	--
61%	36%	61%	59%	63%	59%	56%	59%	49%	

Out of an attractive large framed Hallmark daughter purchased for \$18,000 at the Millah Murrah female sale and her full sister made \$20,000. P7 has been a stand out since birth. He has length, softness and good muscle expression. He is a real stud sire. Heifer bull with growth.

Purchaser:..... \$:.....

**Lot
13****HEART RESOURCE P12^{SV}****HBR**

Tattoo: HRT P12 (T&F)

Ident: AZSP12

DOB: 22/02/2018

R R RITO 707

RITO 707 OF IDEAL 3407 7075

IDEAL 3407 OF 1418 076

\$Index Values

Sire: USA17016597 S A V RESOURCE 1441

S A V 8180 TRAVELER 004

S A V BLACKCAP MAY 4136

S A V MAY 2397

ABI	DOM	GRN	GRS
+\$105	+\$108	+\$89	+\$115

HYLINE RIGHT TIME 338

THE GRANGE WHEEL WRIGHT D6

IMRAN MISS VEGAS U20

AMFU NHFU CAFU DDFU

Dam: NKLF26 KANSAS HIGHLINE PRIDE F26

YTHANBRAE PRECISION U28

KANSAS HYLINE PRIDE Y125

KANSAS HYLINE PRIDE U136

Traits Observed: GL,BWT,Genomics

**June 2019 Angus Australia BREEDPLAN**

	Dir	Dtr	GL	BW	200	400	600	Mwt	Milk
EBV's	-1.4	-1.4	-6.9	+4.6	+53	+97	+127	+96	+17
Acc	57%	41%	83%	74%	71%	69%	69%	66%	61%
SC	DC	CWT	EMA	Rib	Rump	RBY	IMF%	NFI-F	DOC
+1.8	-2.2	+80	+6.0	+0.4	+0.1	+1.3	-0.2	+0.04	--
65%	38%	63%	61%	64%	61%	58%	61%	50%	

First of the 6 Resource sons to sell and what an impressive line of bulls they are. P12 is a long slicked skinned young sire with a lot of presence. Nat's pick.

Purchaser:..... \$:.....

**Lot
14****HEART CAPITALIST P13^{SV}****HBR**

Tattoo: HRT P13 (T&F)

Ident: AZSP13

DOB: 22/02/2018

SITZ TRAVELER 8180

S A V FINAL ANSWER 0035

S A V EMULOUS 8145

C R A BEXTOR 872 5205 608

\$Index Values

Sire: USA16752262 CONNEALY CAPITALIST 028

PRIDES PITA OF CONANGA 8821

PRIDES TRAV OF CONANGA 6499

SITZ UPWARD 307R

PLATTEMERE WEIGH UP K360

BARBARA OF PLATTEMERE 337

ABI	DOM	GRN	GRS
+\$122	+\$124	+\$121	+\$123

AMFU NHFU CAFU DDFU

Dam: AZSM9 HEART FLOWER M9

BT EQUATOR 395M

MILLAH MURRAH FLOWER E60

MILLAH MURRAH FLOWER A56

Traits Observed: GL,BWT,Genomics

**June 2019 Angus Australia BREEDPLAN**

	Dir	Dtr	GL	BW	200	400	600	Mwt	Milk
EBV's	+2.9	+2.8	-7.0	+1.5	+48	+86	+108	+87	+09
Acc	57%	40%	83%	72%	70%	68%	68%	64%	59%
SC	DC	CWT	EMA	Rib	Rump	RBY	IMF%	NFI-F	DOC
+1.5	-2.5	+61	+9.5	-0.9	-2.9	+2.7	+1.0	+0.20	--
64%	39%	62%	61%	64%	61%	58%	60%	50%	

The only Conneally Capitalist bull in the sale out of a beautiful Weigh Up x E60 daughter. Proper thick heifer bull with good growth.

Purchaser:..... \$:.....



J29
GRAND DAM
OF LOT 12



Lot 13



Lot 14



Lot 5



Lot 7



Lot 23



E60
GRAND DAM
OF LOTS 2,
14, 19 & 31



G88
GREAT GRAND
DAM OF LOT 12





E172
DAM OF LOT 15



Lot 16



**Lot
15****HEART LAKER P1^{SV}****HBR**

Tattoo: HRT P1 (T&F)

Ident: AZSP1

DOB: 2/01/2018

R R RITO 707

RITO 707 OF IDEAL 3407 7075

IDEAL 3407 OF 1418 076

Sire: USA17016597 S A V RESOURCE 1441

S A V 8180 TRAVELER 004

S A V BLACKCAP MAY 4136

S A V MAY 2397

S A NEUTRON 377

BOOROOMOOKA NEUTRON A238

BOOROOMOOKA WAVELET W235

Dam: NMME172 MILLAH MURRAH FLOWER E172

MILLAH MURRAH TEX Z8

MILLAH MURRAH B142

MILLAH MURRAH FLOWER Y26

\$Index Values

ABI	DOM	GRN	GRS
+\$122	+\$123	+\$110	+\$129

AMFU NHFU CAFU DDFU

Traits Observed: BWT,Genomics

**June 2019 Angus Australia BREEDPLAN**

	Dir	Dtr	GL	BW	200	400	600	Mwt	Milk
EBV's	-0.7	-2.1	-3.9	+6.9	+60	+105	+135	+115	+11
Acc	59%	42%	74%	74%	72%	71%	71%	67%	62%
SC	DC	CWT	EMA	Rib	Rump	RBY	IMF%	NFI-F	DOC
+1.3	-1.4	+75	+11.8	-0.9	-0.8	+2.7	-0.2	-0.27	--
69%	39%	64%	63%	66%	63%	60%	62%	51%	

P1 is a Resource son out of a star donor, E172. This will be her last natural calf to sell. Extra thick young sire with great depth of body.

Purchaser:..... \$:.....

**Lot
16****HEART RESOURCE P29^{PV}****HBR**

Tattoo: HRT P29 (T&F)

Ident: AZSP29

DOB: 3/03/2018

R R RITO 707

RITO 707 OF IDEAL 3407 7075

IDEAL 3407 OF 1418 076

Sire: USA17016597 S A V RESOURCE 1441

S A V 8180 TRAVELER 004

S A V BLACKCAP MAY 4136

S A V MAY 2397

TE MANIA UNLIMITED U3271

HIGHLANDER OF STERN AB

STERN 2664

Dam: BRCK23 COOLARMAGH WRANGLER K23

EAGLEHAWK NET WORTH C003

COOLARMAGH WRANGLER G176

COOLARMAGH WRANGLER Y62

\$Index Values

ABI	DOM	GRN	GRS
+\$113	+\$114	+\$99	+\$121

AMFU NHFU CAFU DDFU

Traits Observed: GL,BWT,Genomics

**June 2019 Angus Australia BREEDPLAN**

	Dir	Dtr	GL	BW	200	400	600	Mwt	Milk
EBV's	-3.0	-4.6	-1.8	+7.6	+54	+97	+126	+107	+11
Acc	57%	42%	83%	73%	71%	69%	69%	65%	60%
SC	DC	CWT	EMA	Rib	Rump	RBY	IMF%	NFI-F	DOC
+1.6	-1.9	+70	+12.4	-0.3	-0.1	+3.0	-0.4	+0.24	--
65%	39%	63%	62%	64%	61%	58%	61%	51%	

Awesome power on display here. This extra thick bull will produce thick heavy weaners.

Purchaser:..... \$:.....

**Lot
17****HEART RESOURCE P17 #****HBR**

Tattoo: HRT P17 (T&F)

Ident: AZSP17

DOB: 24/02/2018

R R RITO 707

RITO 707 OF IDEAL 3407 7075

IDEAL 3407 OF 1418 076

\$Index Values

Sire: USA17016597 S A V RESOURCE 1441

S A V 8180 TRAVELER 004

S A V BLACKCAP MAY 4136

S A V MAY 2397

ABI	DOM	GRN	GRS
+\$116	+\$114	+\$104	+\$123

KAROO W109 DIRECTION Z181

CARABAR DOCKLANDS D62

CARABAR BLACKCAP MARY B12

AMFU NHFU CAFU DDFU

Dam: NKLH18 KANSAS DOCKLANDS H18

SITZ UPWARD 307R

KANSAS DOLLY F8

KANSAS DOLLY Z50

Traits Observed: GL,BWT,Genomics

**June 2019 Angus Australia BREEDPLAN**

	Dir	Dtr	GL	BW	200	400	600	Mwt	Milk
EBV's	+0.1	-1.8	-7.2	+4.1	+48	+90	+121	+94	+15
Acc	59%	43%	83%	73%	70%	68%	68%	64%	60%
SC	DC	CWT	EMA	Rib	Rump	RBY	IMF%	NFI-F	DOC
+1.0	-2.9	+74	+9.9	+0.1	-0.4	+2.5	-0.3	+0.49	--
65%	39%	62%	61%	64%	61%	58%	60%	50%	

Smart package here another Resource son with thickness. Dam is breeding very well, from our Dolly family.

Purchaser:..... \$:.....

**Lot
18****HEART PIRATE P15^{SV}****HBR**

Tattoo: HRT P15 (T&F)

Ident: AZSP15

DOB: 23/02/2018

BT RIGHT TIME 24J

KAROO 24J RIGHT TIME D24

KAROO WILCOOLA Y7

\$Index Values

Sire: NENG166 KAROO D24 RIGHT TIME G166

LEACHMAN RIGHT TIME

KAROO PRINCESS A58

ARDROSSAN PRINCESS U102

RITO 2V1 OF 2536 1407

PC RITO 2V1 D31

PC MISS FRONTLINER Z145

Dam: DDSG45 N BAR D31 CHAMPAGNE G45

HYLINE RIGHT TIME 338

N BAR 388 CHAMPAGNE D80

CIRCLE 8 5321 CHAMPANGE X84

ABI	DOM	GRN	GRS
+\$108	+\$104	+\$102	+\$111

AMFU NH7% CAFU DD5%

Traits Observed: GL,BWT,Genomics

**June 2019 Angus Australia BREEDPLAN**

	Dir	Dtr	GL	BW	200	400	600	Mwt	Milk
EBV's	-1.6	+0.0	-7.3	+4.7	+48	+85	+114	+84	+20
Acc	52%	36%	82%	70%	67%	65%	65%	61%	54%
SC	DC	CWT	EMA	Rib	Rump	RBY	IMF%	NFI-F	DOC
+1.5	-3.3	+64	+5.6	+0.4	+1.0	+0.6	+1.2	-0.21	--
59%	38%	58%	57%	61%	58%	54%	56%	48%	

First of the G166 sons for this year. G166 sons have been very consistent, topping at \$15,000 over the last 4 years. Big long cow bull.

Purchaser:..... \$:.....

**Lot
19****HEART PIERRE P16^{SV}****HBR**

Tattoo: HRT P16 (T&F)

Ident: AZSP16

DOB: 23/02/2018

BT RIGHT TIME 24J

KAROO 24J RIGHT TIME D24

KAROO WILCOOLA Y7

Sire: NENG166 KAROO D24 RIGHT TIME G166

LEACHMAN RIGHT TIME

KAROO PRINCESS A58

ARDROSSAN PRINCESS U102

CONNEALY CONSENSUS 7229

CONNEALY COMRADE 1385

HAPPY GEE OF CONANGA 919

Dam: AZSL3 HEART FLOWER L3

BT EQUATOR 395M

MILLAH MURRAH FLOWER E60

MILLAH MURRAH FLOWER A56

\$Index Values

ABI	DOM	GRN	GRS
+\$119	+\$114	+\$113	+\$121

AMFU NHFU CAFU DDFU

Traits Observed: GL,BWT

**June 2019 Angus Australia BREEDPLAN**

	Dir	Dtr	GL	BW	200	400	600	Mwt	Milk
EBV's	+1.7	+1.6	-7.5	+3.8	+49	+89	+115	+95	+16
Acc	42%	34%	83%	70%	59%	58%	59%	58%	48%
SC	DC	CWT	EMA	Rib	Rump	RBY	IMF%	NFI-F	DOC
+1.7	-5.9	+65	+4.9	+1.1	+1.8	+0.2	+0.8	+0.03	--
50%	33%	50%	49%	52%	51%	47%	48%	39%	

This bull is a really nice cross of G166 and a Comrade female, which is Jye's favourite female out of E60. Suitable for heifers.

Purchaser:..... \$:.....

**Lot
20****HEART NEGOTIATOR N58 #****HBR**

Tattoo: HRT N58 (T&F)

Ident: AZSN58

DOB: 3/08/2017

R R RITO 707

RITO 707 OF IDEAL 3407 7075

IDEAL 3407 OF 1418 076

Sire: USA17016597 S A V RESOURCE 1441

S A V 8180 TRAVELER 004

S A V BLACKCAP MAY 4136

S A V MAY 2397

TUWHARETOA REGENT D145

MILWILLAH GATSBY G279

MILWILLAH LOWAN D112

Dam: DDSK36 N BAR BARA K36

CIRCLE 8 0699 BANDO A115

N BAR A115 BARA C133

KENNY'S CREEK BARA U44

\$Index Values

ABI	DOM	GRN	GRS
+\$130	+\$126	+\$136	+\$128

AMFU NHFU CAFU DDFU

Traits Observed: GL,CE,BWT,200WT,
400WT,Genomics**June 2019 Angus Australia BREEDPLAN**

	Dir	Dtr	GL	BW	200	400	600	Mwt	Milk
EBV's	-2.2	-3.7	-5.1	+5.0	+51	+97	+120	+82	+18
Acc	59%	42%	82%	74%	71%	69%	70%	65%	60%
SC	DC	CWT	EMA	Rib	Rump	RBY	IMF%	NFI-F	DOC
+1.9	-2.0	+74	+12.4	-0.9	-1.2	+2.5	+1.9	+0.59	--
66%	38%	63%	62%	64%	61%	58%	61%	50%	

Very smart Resource son. Natural calf of K36, she is breeding very well with four sons in the sale. Presenting again with thickness and muscle.

Purchaser:..... \$:.....

**Lot
21****HEART NOTE BOOK N39^{PV}****HBR****Tattoo:** HRT N39 (T&F)**Ident:** AZSN39**DOB:** 7/07/2017

R R RITO 707

RITO 707 OF IDEAL 3407 7075

IDEAL 3407 OF 1418 076

Sire: USA17633839 S A V RENOWN 3439

S A V 8180 TRAVELER 004

S A V BLACKCAP MAY 4136

S A V MAY 2397

TUWHARETOA REGENT D145

MILWILLAH GATSBY G279

MILWILLAH LOWAN D112

Dam: DDSK36 N BAR BARA K36

CIRCLE 8 0699 BANDO A115

N BAR A115 BARA C133

KENNY'S CREEK BARA U44

\$Index Values

ABI	DOM	GRN	GRS
+\$144	+\$132	+\$154	+\$138

AMFU NHFU CAFU DDFU**Traits Observed:** BWT,200WT,400WT,
Genomics**June 2019 Angus Australia BREEDPLAN**

	Dir	Dtr	GL	BW	200	400	600	Mwt	Milk
EBV's	-1.4	-2.0	-2.5	+6.6	+52	+102	+128	+92	+18
Acc	55%	38%	72%	72%	70%	68%	68%	63%	58%
SC	DC	CWT	EMA	Rib	Rump	RBY	IMF%	NFI-F	DOC
+1.9	-4.4	+73	+11.7	-0.8	-0.6	+2.1	+1.8	+0.73	--
63%	36%	62%	59%	62%	59%	56%	58%	48%	

One of the thickest bulls in the sale. Full brother to lots 10 and 11. Maternal brother to lot 20.

Purchaser:..... **\$:**.....**Lot
22****MILLAH MURRAH NERO N262^{PV}****HBR****Tattoo:** JRT (CONJOINED) N262 (T&F)**Ident:** NMMN262**DOB:** 1/08/2017

BASIN FRANCHISE P142

EF COMPLEMENT 8088

EF EVERELDA ENTENSE 6117

Sire: NMMML119 MILLAH MURRAH LINCOLN L119

TE MANIA EMPEROR E343

MILLAH MURRAH PRUE H62

MILLAH MURRAH PRUE E107

KAROO W109 DIRECTION Z181

CARABAR DOCKLANDS D62

CARABAR BLACKCAP MARY B12

Dam: NMMJ314 MILLAH MURRAH ABIGAIL J314

H A POWER ALLIANCE 1025

MILLAH MURRAH ABIGAIL C37

MILLAH MURRAH ABIGAIL A60

\$Index Values

ABI	DOM	GRN	GRS
+\$98	+\$98	+\$93	+\$103

AMFU NHFU CAFU DDFU**Traits Observed:** GL,CE,BWT,400WT,
Genomics**June 2019 Angus Australia BREEDPLAN**

	Dir	Dtr	GL	BW	200	400	600	Mwt	Milk
EBV's	+0.9	+1.0	-5.6	+2.1	+46	+80	+107	+79	+17
Acc	58%	44%	84%	74%	70%	68%	68%	64%	56%
SC	DC	CWT	EMA	Rib	Rump	RBY	IMF%	NFI-F	DOC
-0.4	-2.5	+62	+3.3	+1.4	+0.3	-0.7	+1.7	+0.38	--
64%	40%	61%	59%	63%	60%	56%	59%	51%	

Dam purchased from Millah Murrah sale for \$12,000 as one of the best females by Docklands. Moderate framed thick heifer bull. Jye's bull.

Purchaser:..... **\$:**.....

**Lot
23****HEART NO WORRIES N86^{SV}****HBR****Tattoo:** HRT N86 (T&F)**Ident:** AZSN86**DOB:** 12/08/2017

C A FUTURE DIRECTION 5321

BASIN FRANCHISE P142

BASIN CHLOE 812L

Sire: USA16198796 EF COMPLEMENT 8088

BR MIDLAND

EF EVERELDA ENTENSE 6117

H F EVERELDA ENTENSE 869

ARDROSSAN DIRECTION W109

ARDROSSAN ADMIRAL A2

KENNY'S CREEK ROSEBUD W171

Dam: DCGJ79 TROWBRIDGE BBB PERFECTION J79

B/R NEW DESIGN 323

TRIPLE B 323 PERFECTION X23

SANDON PERFECTION P13+94

\$Index Values

ABI	DOM	GRN	GRS
+\$117	+\$112	+\$122	+\$115

AMFU NHFU CAFU DDFU**Traits Observed:** GL,CE,BWT,200WT,400WT,Genomics**June 2019 Angus Australia BREEDPLAN**

	Dir	Dtr	GL	BW	200	400	600	Mwt	Milk
EBV's	-1.0	-1.3	-2.1	+6.2	+50	+92	+118	+98	+13
Acc	64%	55%	83%	73%	71%	70%	70%	68%	64%
SC	DC	CWT	EMA	Rib	Rump	RBY	IMF%	NFI-F	DOC
+0.1	-3.7	+71	+7.8	-0.9	-1.8	+1.0	+1.6	+0.31	--
66%	47%	65%	63%	66%	64%	61%	63%	57%	

Easy fleshy Compliment son. Good butt shape in a moderate framed bull.

Purchaser:..... **\$:**.....**Lot
24****HEART NITROUS N104^{SV}****HBR****Tattoo:** HRT N104 (T&F)**Ident:** AZSN104**DOB:** 19/09/2017

SITZ UPWARD 307R

THOMAS UP RIVER 1614

THOMAS CAROL 7595

Sire: NMML24 MILLAH MURRAH LAKER L24

MILLAH MURRAH DOC F159

MILLAH MURRAH FLOWER J181

MILLAH MURRAH FLOWER F101

BON VIEW NEW DESIGN 1407

SITZ NEW DESIGN 458N

SITZ ELLUNAS ELITE 3308

Dam: DCGG9 TROWBRIDGE BBB 458N PRUE G9

ARDROSSAN ADMIRAL A2

TROWBRIDGE BBB PRUE C67

MILLAH MURRAH PRUE T130

\$Index Values

ABI	DOM	GRN	GRS
+\$129	+\$124	+\$131	+\$128

AMFU NHFU CAFU DDFU**Traits Observed:** BWT,200WT,400WT,Genomics**June 2019 Angus Australia BREEDPLAN**

	Dir	Dtr	GL	BW	200	400	600	Mwt	Milk
EBV's	-1.2	-1.5	-5.5	+5.9	+56	+103	+128	+95	+21
Acc	56%	40%	70%	70%	68%	66%	66%	62%	56%
SC	DC	CWT	EMA	Rib	Rump	RBY	IMF%	NFI-F	DOC
+2.6	-5.1	+73	+7.3	+0.5	-0.2	+1.4	+1.2	+0.00	--
61%	39%	59%	57%	60%	57%	53%	56%	49%	

Probably one of the favourite Laker sons in the rising 2 year olds. Dam is breeding very well for us with all 4 of her bulls making sale grade.

Purchaser:..... **\$:**.....

**Lot
25****HEART NUMERATOR N67^E****HBR****Tattoo:** HRT N67 (T&F)**Ident:** AZSN67**DOB:** 6/08/2017

CONNEALY ONWARD

SITZ UPWARD 307R

SITZ HENRIETTA PRIDE 81M

Sire: USA16692552 **PLATTEMERE WEIGH UP K360**

G A R RETAIL PRODUCT

BARBARA OF PLATTEMERE 337

BARBARA OF PLATTEMERE 311

G A R RETAIL PRODUCT

CONNEALY MENTOR 7374

EXECUTA OF CONANGA 939

Dam: AZSH12 **HEART FINKS PRIDE H12**

L T 598 BANDO 9074

KENNY'S CREEK FINKS PRIDE E268

KENNY'S CREEK FINKS PRIDE B206

\$Index Values

ABI	DOM	GRN	GRS
+\$113	+\$117	+\$115	+\$113

AM50% NHFU CAFU DDFU**Traits Observed:** GL,CE,BWT,200WT,400WT**June 2019 Angus Australia BREEDPLAN**

	Dir	Dtr	GL	BW	200	400	600	Mwt	Milk
EBV's	-4.6	-1.2	-5.1	+4.0	+54	+97	+121	+89	+15
Acc	52%	44%	84%	74%	69%	70%	68%	64%	59%
SC	DC	CWT	EMA	Rib	Rump	RBY	IMF%	NFI-F	DOC
+1.7	-2.0	+71	+7.2	-2.7	-3.7	+2.9	+1.2	-0.10	--
60%	38%	60%	57%	60%	57%	55%	57%	47%	

Moves well with added bone. Suitable for Heifers.

Purchaser:..... **\$:**.....**Lot
26****HEART NIGHT-EAGLE N85^{SV}****HBR****Tattoo:** HRT N85 (T&F)**Ident:** AZSN85**DOB:** 11/08/2017

TE MANIA BERKLEY B1

AYRVALE GENERAL G18

AYRVALE EASE E3

Sire: QBGK115 **GLENOCH KALLI K115**

SYDGEN TRUST 6228

GLENOCH FLOWER H90

GLENOCH FLOWER F214

C A FUTURE DIRECTION 5321

B/R FUTURE DIRECTION 4268

B/R RUBY 9114

Dam: NWPH214 **WATTLETOP BARUNAH H214**

WATTLETOP FUTURE DIRECTIONX109

WATTLETOP BARUNAH UZ318

WATTLETOP BARUNAH U95

\$Index Values

ABI	DOM	GRN	GRS
+\$126	+\$112	+\$140	+\$119

AMFU NHFU CAFU DDFU**Traits Observed:** CE,BWT,200WT,400WT**June 2019 Angus Australia BREEDPLAN**

	Dir	Dtr	GL	BW	200	400	600	Mwt	Milk
EBV's	-1.5	+0.7	-6.8	+6.8	+52	+91	+124	+119	+13
Acc	46%	38%	63%	73%	67%	67%	66%	62%	53%
SC	DC	CWT	EMA	Rib	Rump	RBY	IMF%	NFI-F	DOC
+1.2	-4.3	+74	+5.6	-1.6	-1.0	+0.8	+2.3	+0.09	--
55%	38%	57%	52%	55%	54%	50%	51%	45%	

Out of an attractive Wattletop female H214. One of our favourite cows. Strong top line.

Purchaser:..... **\$:**.....

Lot
27

HEART NOTR DAME N70^{SV}

HBR

Tattoo: HRT N70 (T&F)

Ident: AZSN70

DOB: 7/08/2017

CONNEALY ONWARD
SITZ UPWARD 307R
SITZ HENRIETTA PRIDE 81M

\$Index Values

Sire: USA16692552 PLATTEMERE WEIGH UP K360

ABI	DOM	GRN	GRS
+\$109	+\$114	+\$114	+\$108

G A R RETAIL PRODUCT
BARBARA OF PLATTEMERE 337
BARBARA OF PLATTEMERE 311

AMFU NHFU CAFU DDFU

G A R RETAIL PRODUCT
CONNEALY MENTOR 7374
EXECUTA OF CONANGA 939

Dam: AZSH7 HEART FANCY H7

Traits Observed: GL,CE,BWT,200WT,400WT

B/R NEW FRONTIER 095
KANSAS FANCY Z100
KANSAS FANCY S55



June 2019 Angus Australia BREEDPLAN

	Dir	Dtr	GL	BW	200	400	600	Mwt	Milk
EBV's	-4.9	-1.9	-4.6	+4.8	+52	+96	+118	+98	+13
Acc	52%	44%	85%	74%	69%	70%	68%	64%	59%
SC	DC	CWT	EMA	Rib	Rump	RBY	IMF%	NFI-F	DOC
+1.6	-2.3	+70	+7.1	-2.8	-3.9	+2.8	+1.3	-0.17	--
61%	38%	60%	57%	59%	57%	54%	56%	47%	

Large framed slick skinned bull. Moves well.

Purchaser:..... \$:.....

Lot
28

HEART NOVA SCOTIA N51^{PV}

HBR

Tattoo: HRT N51 (T&F)

Ident: AZSN51

DOB: 30/07/2017

SITZ TRAVELER 8180
S A V FINAL ANSWER 0035
S A V EMULOUS 8145

\$Index Values

Sire: USA16396499 S A V THUNDERBIRD 9061

ABI	DOM	GRN	GRS
+\$94	+\$102	+\$88	+\$99

S A V BISMARCK 5682
S A V EMBLYNETTE 7411
S A V EMBLYNETTE 4408

AMFU NHFU CAFU DDFU

BANQUET OVER LIMIT Y035
BANQUET ABERDEEN A349
BANQUET VICKY X109

Dam: VOND310 BANQUET DREAM D310

Traits Observed: BWT,200WT,400WT

B/R NEW DESIGN 036
BANQUET DREAM V104
BANQUET DREAM Q34+95



June 2019 Angus Australia BREEDPLAN

	Dir	Dtr	GL	BW	200	400	600	Mwt	Milk
EBV's	+1.1	-1.2	-3.9	+4.9	+47	+79	+102	+88	+07
Acc	58%	52%	65%	74%	70%	70%	68%	65%	64%
SC	DC	CWT	EMA	Rib	Rump	RBY	IMF%	NFI-F	DOC
+1.0	-2.6	+52	+3.4	-0.7	-2.1	+1.5	+0.7	-0.19	--
65%	47%	63%	61%	63%	62%	59%	60%	53%	

Out of the \$28,000 second top priced cow at the Banquet female sale. Good growth and free moving.

Purchaser:..... \$:.....

**Lot
29****HEART NOTABILITY N81^{SV}****HBR****Tattoo:** HRT N81 (T&F)**Ident:** AZSN81**DOB:** 10/08/2017

SITZ UPWARD 307R

THOMAS UP RIVER 1614

THOMAS CAROL 7595

\$Index Values**Sire:** NMML24 MILLAH MURRAH LAKER L24

MILLAH MURRAH DOC F159

MILLAH MURRAH FLOWER J181

MILLAH MURRAH FLOWER F101

TE MANIA UNLIMITED U3271

TE MANIA INFINITY 04 379 AB

TE MANIA 95102

ABI	DOM	GRN	GRS
+\$120	+\$116	+\$125	+\$117

AMFU NHFU CAFU DDFU**Dam:** NMME7 MILLAH MURRAH PRUE E7

MILLAH MURRAH WOODY W100

MILLAH MURRAH C63

MILLAH MURRAH PRUE Y134

Traits Observed: CE,BWT,200WT,400WT**June 2019 Angus Australia BREEDPLAN**

	Dir	Dtr	GL	BW	200	400	600	Mwt	Milk
EBV's	+0.8	-0.2	-5.2	+4.3	+49	+92	+115	+92	+19
Acc	45%	38%	65%	72%	65%	66%	63%	60%	53%
SC	DC	CWT	EMA	Rib	Rump	RBY	IMF%	NFI-F	DOC
+3.0	-5.1	+68	+4.6	-0.2	-0.1	+0.4	+1.8	+0.29	--
55%	38%	56%	52%	56%	53%	50%	52%	46%	

N81's dam E7 is really breeding well for us, one of her granddaughters made \$42,000 at the Millah Murrah female sale and her Powerpoint bull calf is one to look out for next year. Suitable for heifers.

Purchaser:..... **\$:**.....

**Lot
30****HEART NUCLEATOR N75^{SV}****HBR****Tattoo:** HRT N75 (T&F)**Ident:** AZSN75**DOB:** 8/08/2017

CONNEALY ONWARD

SITZ UPWARD 307R

SITZ HENRIETTA PRIDE 81M

G A R RETAIL PRODUCT

\$Index Values**Sire:** USA16692552 PLATTEMERE WEIGH UP K360

BARBARA OF PLATTEMERE 337

BARBARA OF PLATTEMERE 311

CONNEALY TOBIN

CONNEALY CONFIDENCE 0100

BECKA GALA OF CONANGA 8281

ABI	DOM	GRN	GRS
+\$116	+\$120	+\$116	+\$117

AMFU NHFU CAFU DDFU**Dam:** AZSK34 HEART FANCY K34

CARABAR DOCKLANDS D62

KANSAS FANCY G295

KANSAS FANCY Z100

Traits Observed: GL,CE,BWT,200WT,400WT**June 2019 Angus Australia BREEDPLAN**

	Dir	Dtr	GL	BW	200	400	600	Mwt	Milk
EBV's	-0.5	+1.8	-4.5	+3.7	+54	+93	+118	+86	+15
Acc	50%	42%	83%	74%	68%	69%	67%	64%	56%
SC	DC	CWT	EMA	Rib	Rump	RBY	IMF%	NFI-F	DOC
+0.8	-1.8	+69	+7.7	-2.2	-4.1	+2.6	+1.1	-0.29	--
59%	36%	59%	56%	58%	56%	53%	55%	44%	

Suitable for heifers.

Purchaser:..... **\$:**.....

**Lot
31****HEART NINJA N109^{SV}****HBR**

Tattoo: HRT N109 (T&F)

Ident: AZSN109

DOB: 5/11/2017

WAITARA VALLEY TEX

HINGAIA 469

HINGAIA 910

Sire: NMMK20 MILLAH MURRAH KATICH K20

BT RIGHT TIME 24J

MILLAH MURRAH FLOWER G41

MILLAH MURRAH FLOWER C15

CONNEALY TOBIN

CONNEALY CONFIDENCE 0100

BECKA GALA OF CONANGA 8281

Dam: AZSK20 HEART FLOWER K20

BT EQUATOR 395M

MILLAH MURRAH FLOWER E60

MILLAH MURRAH FLOWER A56

\$Index Values

ABI	DOM	GRN	GRS
+\$99	+\$102	+\$86	+\$105

AMFU NHFU CAFU DDFU

Traits Observed: BWT,200WT,400WT

**June 2019 Angus Australia BREEDPLAN**

	Dir	Dtr	GL	BW	200	400	600	Mwt	Milk
EBV's	+1.3	+2.9	-5.2	+3.8	+44	+78	+100	+87	+13
Acc	43%	38%	57%	61%	61%	64%	61%	58%	50%
SC	DC	CWT	EMA	Rib	Rump	RBY	IMF%	NFI-F	DOC
+0.0	-4.9	+57	+6.3	+1.2	+0.4	+0.4	+0.3	-0.52	--
52%	38%	54%	52%	56%	53%	51%	52%	44%	

Youngest of the rising 2 year olds, a Katich son that has really gone ahead of late. Suitable for heifers.

Purchaser:..... \$:.....

**Lot
32****HEART GENERATION N79[#]****HBR**

Tattoo: HRT N79 (T&F)

Ident: AZSN79

DOB: 9/08/2017

R R RITO 707

RITO 707 OF IDEAL 3407 7075

IDEAL 3407 OF 1418 076

Sire: USA17016597 S A V RESOURCE 1441

S A V 8180 TRAVELER 004

S A V BLACKCAP MAY 4136

S A V MAY 2397

TE MANIA BERKLEY B1

TE MANIA EMPEROR E343

TE MANIA LOWAN Z74

Dam: DDSK54 N BAR MILDRED K54

N BAR BANDO 5175 Y54

N BAR Y54 MILDRED B88

CIRCLE 8 5321 MILDRED X93

\$Index Values

ABI	DOM	GRN	GRS
+\$124	+\$119	+\$126	+\$124

AMFU NHFU CAFU DDFU

Traits Observed: GL,CE,BWT,200WT,400WT

**June 2019 Angus Australia BREEDPLAN**

	Dir	Dtr	GL	BW	200	400	600	Mwt	Milk
EBV's	-2.1	-1.6	-2.7	+6.2	+55	+102	+130	+113	+14
Acc	50%	41%	83%	73%	68%	69%	66%	63%	57%
SC	DC	CWT	EMA	Rib	Rump	RBY	IMF%	NFI-F	DOC
+2.1	-4.0	+79	+8.0	-0.1	-0.9	+1.6	+1.0	+0.16	--
60%	39%	59%	58%	59%	57%	55%	57%	47%	

Another thick Resource son.

Purchaser:..... \$:.....

**Lot
33****HEART COMMMANDO P₂^{PV}****HBR****Tattoo:** HRT P2 (T&F)**Ident:** AZSP2**DOB:** 25/01/2018

BASIN FRANCHISE P142

EF COMPLEMENT 8088

EF EVERELDA ENTENSE 6117

Sire: USA17082311 EF COMMANDO 1366

B/R AMBUSH 28

RIVERBEND YOUNG LUCY W1470

RIVERBEND YOUNG LUCY T1080

TE MANIA EMPEROR E343

ASCOT HALLMARK H147

MILLAH MURRAH BRENDA F123

Dam: NMMM32 MILLAH MURRAH ABIGAIL M32

MILLAH MURRAH DOC F159

MILLAH MURRAH ABIGAIL K146

MILLAH MURRAH ABIGAIL H144

Index Values

ABI	DOM	GRN	GRS
+\$133	+\$120	+\$140	+\$130

AMFU NHFU CAFU DDFU

Traits Observed: GL,BWT**June 2019 Angus Australia BREEDPLAN**

	Dir	Dtr	GL	BW	200	400	600	Mwt	Milk
EBV's	+1.3	+2.6	-7.7	+4.2	+52	+97	+125	+97	+19
Acc	46%	36%	83%	72%	64%	62%	61%	58%	53%
SC	DC	CWT	EMA	Rib	Rump	RBY	IMF%	NFI-F	DOC
+0.8	-5.7	+71	+5.4	+1.1	+1.2	-0.6	+2.1	+0.34	--
56%	35%	57%	55%	59%	56%	54%	55%	46%	

A heifer bull with good calving ease and short gestation length with added growth and length.

Purchaser:..... **\$:**.....**Lot
34****HEART LAKER P₃₈^{SV}****HBR****Tattoo:** HRT P38 (T&F)**Ident:** AZSP38**DOB:** 19/03/2018

SITZ UPWARD 307R

THOMAS UP RIVER 1614

THOMAS CAROL 7595

Sire: NMML24 MILLAH MURRAH LAKER L24

MILLAH MURRAH DOC F159

MILLAH MURRAH FLOWER J181

MILLAH MURRAH FLOWER F101

KAROO W109 DIRECTION Z181

CARABAR DOCKLANDS D62

CARABAR BLACKCAP MARY B12

Dam: AZSH1 HEART SWEETHEART H1

YTHANBRAE THE DON W57

KANSAS HEART Y142

KANSAS HEART V25

Index Values

ABI	DOM	GRN	GRS
+\$140	+\$127	+\$145	+\$138

AMFU NHFU CAFU DDFU

Traits Observed: BWT,Genomics**June 2019 Angus Australia BREEDPLAN**

	Dir	Dtr	GL	BW	200	400	600	Mwt	Milk
EBV's	+2.8	+1.3	-7.3	+5.0	+53	+102	+134	+101	+21
Acc	55%	38%	70%	71%	68%	66%	66%	61%	56%
SC	DC	CWT	EMA	Rib	Rump	RBY	IMF%	NFI-F	DOC
+1.7	-4.6	+82	+8.1	+0.5	-0.7	+1.1	+1.3	+0.57	--
60%	37%	59%	56%	60%	57%	53%	56%	48%	

A good mix of Millah Murrah Laker and Docklands. Has muscle and natural thickness. Suitable for heifers.

Purchaser:..... **\$:**.....



Lot 29



Lot 32



Lot 33

HEART ANGUS



**Lot
35****HEART LAKER P40^{PV}****HBR****Tattoo:** HRT P40 (T&F)**Ident:** AZSP40**DOB:** 20/03/2018

SITZ UPWARD 307R

THOMAS UP RIVER 1614

THOMAS CAROL 7595

Sire: NMML24 MILLAH MURRAH LAKER L24

MILLAH MURRAH DOC F159

MILLAH MURRAH FLOWER J181

MILLAH MURRAH FLOWER F101

WEBBERLIE EVICTOR

DUNLOUISE COMMANDER BOND

CHAMPAGNE CHERRY BEE B117

Dam: BRCF134 COOLARMAGH USUAL F134

TE MANIA VESTAGE V229

WATTLETOP USUAL A384

WATTLETOP USUAL Y139

\$Index Values

ABI	DOM	GRN	GRS
+\$100	+\$103	+\$88	+\$104

AMFU NHFU CAFU DDFU**Traits Observed:** BWT**June 2019 Angus Australia BREEDPLAN**

	Dir	Dtr	GL	BW	200	400	600	Mwt	Milk
EBV's	+4.5	+2.6	-6.8	+1.5	+37	+71	+87	+54	+20
Acc	40%	29%	64%	71%	62%	60%	60%	57%	51%
SC	DC	CWT	EMA	Rib	Rump	RBY	IMF%	NFI-F	DOC
+1.6	-5.5	+53	+5.1	+2.0	+2.1	-0.3	+1.1	+0.25	--
55%	31%	54%	51%	55%	52%	48%	50%	42%	

Long growthy Laker son. Suitable for heifers.

Purchaser:..... **\$:**.....**Lot
36****HEART PRINCE P30^{SV}****HBR****Tattoo:** HRT P30 (T&F)**Ident:** AZSP30**DOB:** 4/03/2018

BT RIGHT TIME 24J

KAROO 24J RIGHT TIME D24

KAROO WILCOOLA Y7

Sire: NENG166 KAROO D24 RIGHT TIME G166

LEACHMAN RIGHT TIME

KAROO PRINCESS A58

ARDROSSAN PRINCESS U102

MYTTY IN FOCUS

A A R TEN X 7008 S A

A A R LADY KELTON 5551

Dam: AZSL6 HEART DANDALOO L6

MYTTY IN FOCUS

DSK DANDALOO E43

DSK X1 DANDALOO A73

\$Index Values

ABI	DOM	GRN	GRS
+\$114	+\$108	+\$113	+\$114

AMFU NHFU CA2% DDFU**Traits Observed:** GL,BWT**June 2019 Angus Australia BREEDPLAN**

	Dir	Dtr	GL	BW	200	400	600	Mwt	Milk
EBV's	-3.3	-1.1	-1.8	+6.4	+54	+96	+125	+99	+16
Acc	42%	36%	83%	70%	59%	58%	59%	58%	48%
SC	DC	CWT	EMA	Rib	Rump	RBY	IMF%	NFI-F	DOC
+2.3	-5.1	+71	+3.9	-0.2	+0.4	+0.4	+1.2	+0.23	--
51%	36%	50%	50%	53%	52%	48%	49%	41%	

Large framed G166 son. Will add growth.

Purchaser:..... **\$:**.....

**Lot
37****HEART LAKER P43^{SV}****HBR**

Tattoo: HRT P43 (T&F)

Ident: AZSP43

DOB: 26/03/2018

SITZ UPWARD 307R

THOMAS UP RIVER 1614

THOMAS CAROL 7595

\$Index Values

Sire: NMML24 MILLAH MURRAH LAKER L24

ABI DOM GRN GRS

MILLAH MURRAH DOC F159

+\$126 +\$122 +\$130 +\$125

MILLAH MURRAH FLOWER J181

MILLAH MURRAH FLOWER F101

REMITALL NIGHTHAWK 37N

AMFU NHFU CAFU DDFU

REMITALL H RACHIS 21R

HENDERSON MISSIE 32'02

Dam: NKSF55 DSK RR MARTINA F55

S V F HI ROAD

Traits Observed: BWT

DSK HR MARTINA C175

DSK PP MARTINA R9

**June 2019 Angus Australia BREEDPLAN**

	Dir	Dtr	GL	BW	200	400	600	Mwt	Milk
EBV's	-0.6	-0.5	-2.9	+5.7	+56	+106	+134	+116	+21
Acc	41%	31%	64%	71%	60%	58%	58%	55%	49%
SC	DC	CWT	EMA	Rib	Rump	RBY	IMF%	NFI-F	DOC
+2.3	-4.2	+80	+5.3	-0.7	-1.2	+1.4	+1.1	-0.02	--
52%	31%	52%	49%	53%	51%	47%	48%	40%	

Another typical Laker son. His dam is breeding very consistently.

Purchaser:..... \$:.....

**Lot
38****HEART LAKER P44^{PV}****HBR**

Tattoo: HRT P44 (T&F)

Ident: AZSP44

DOB: 31/03/2018

SITZ UPWARD 307R

THOMAS UP RIVER 1614

THOMAS CAROL 7595

\$Index Values

Sire: NMML24 MILLAH MURRAH LAKER L24

ABI DOM GRN GRS

MILLAH MURRAH DOC F159

+\$137 +\$123 +\$149 +\$130

MILLAH MURRAH FLOWER J181

MILLAH MURRAH FLOWER F101

TE MANIA AMBASSADOR A134

AMFU NHFU CAFU DDFU

TUWHARETOA REGENT D145

LAWSONS HENRY VIII Y5

Dam: NKLIJ54 KANSAS ANNIE J54

MOHNEN DYNAMITE 1356

Traits Observed: BWT

KANSAS ANNIE E175

KANSAS ANNIE Y656

**June 2019 Angus Australia BREEDPLAN**

	Dir	Dtr	GL	BW	200	400	600	Mwt	Milk
EBV's	+0.7	-1.7	-4.4	+4.8	+52	+97	+127	+108	+21
Acc	45%	37%	61%	72%	62%	60%	59%	57%	51%
SC	DC	CWT	EMA	Rib	Rump	RBY	IMF%	NFI-F	DOC
+2.5	-5.3	+78	+7.4	+0.3	-0.5	+1.1	+2.1	+0.27	--
54%	38%	54%	52%	55%	53%	50%	51%	45%	

Maternal brother to Lot 1. Really going ahead of late. Long athletic sire.

Purchaser:..... \$:.....

**Lot
39****HEART PEPSI P21^{SV}****HBR**

Tattoo: HRT P21 (T&F)

Ident: AZSP21

DOB: 26/02/2018

BT RIGHT TIME 24J

KAROO 24J RIGHT TIME D24

KAROO WILCOOLA Y7

Sire: NENG166 KAROO D24 RIGHT TIME G166

LEACHMAN RIGHT TIME

KAROO PRINCESS A58

ARDROSSAN PRINCESS U102

BT RIGHT TIME 24J

MILLAH MURRAH RIGHT TIME F240

MILLAH MURRAH FLOWER A70

Dam: AZSL13 HEART LUCY L13

LT 598 BANDO 9074

COOLARMAGH LUCY F82

WATTLETOP LUCY A321

Index Values

ABI	DOM	GRN	GRS
+\$110	+\$101	+\$105	+\$112

AMFU NHFU CAFU DDFU

Traits Observed: GL,BWT

**June 2019 Angus Australia BREEDPLAN**

	Dir	Dtr	GL	BW	200	400	600	Mwt	Milk
EBV's	-2.3	-0.4	-5.3	+5.9	+49	+87	+119	+100	+15
Acc	39%	32%	83%	70%	58%	57%	58%	57%	45%
SC	DC	CWT	EMA	Rib	Rump	RBY	IMF%	NFI-F	DOC
+2.3	-6.0	+63	+3.1	+0.5	+1.7	+0.0	+0.8	-0.02	--
48%	34%	48%	47%	50%	49%	46%	46%	38%	

Another consistent G166 son. Excellent muscle pattern.

Purchaser:..... \$:.....

**Lot
40****HEART LAKER P45^{SV}****HBR**

Tattoo: HRT P45 (T&F)

Ident: AZSP45

DOB: 1/05/2018

SITZ UPWARD 307R

THOMAS UP RIVER 1614

THOMAS CAROL 7595

Sire: NMML24 MILLAH MURRAH LAKER L24

MILLAH MURRAH DOC F159

MILLAH MURRAH FLOWER J181

MILLAH MURRAH FLOWER F101

S A V NET WORTH 4200

EAGLEHAWK NET WORTH C003

EAGLEHAWK MARGOT X87

Dam: BRCH52 COOLARMAGH TAHITI H52

HINGAIA 98787

COOLARMAGH TAHITI B5

COOLARMAGH TAHIT X35

Index Values

ABI	DOM	GRN	GRS
+\$121	+\$114	+\$121	+\$121

AMFU NHFU CAFU DDFU

Traits Observed: BWT

**June 2019 Angus Australia BREEDPLAN**

	Dir	Dtr	GL	BW	200	400	600	Mwt	Milk
EBV's	+1.7	+1.5	-4.0	+4.7	+50	+94	+124	+101	+19
Acc	39%	31%	58%	62%	59%	57%	58%	53%	47%
SC	DC	CWT	EMA	Rib	Rump	RBY	IMF%	NFI-F	DOC
+2.6	-4.5	+67	+3.9	+0.6	+0.3	+0.2	+1.2	+0.07	--
50%	30%	51%	46%	49%	47%	43%	45%	39%	

A stylish bull here to finish the sale, youngest bull of the draft. Has Lakers thickness and maturity pattern. Suitable for heifers.

Purchaser:..... \$:.....



Millah Murrah Nectar N334

SIRE: K C F Bennett Performer
Coonamble Hecor H249
Coonamble E9

DAM: Ythanbrae Henry VIII U8
Millah Murrah Prue H113
Millah Murrah Prue C48

With genuine genetic diversity, a pedigree beyond compare, a balanced and versatile data set, virtually perfect structure and a phenotype to die for, Nectar is the Hector son the breed has been looking for.

- With near perfect structure, Nectar achieved straight 5's for feet and leg structure, C+ muscle score, fat score 3, capacity score of 5 and 4 for sheath and navel.
- Nectar carries one of the more extraordinary pedigrees in the breed based on the performance of his relatives. His dam is the only cow in the breed with three sons to sell for \$40,000 or more. His aunt (dam's full sister), is the record priced mature cow of the Angus breed, selling for \$54,000 to East West Angus last year. His grand dam, Prue C48 had sons and daughters aside from H112 & H113 that sold for \$15,000 or more on several occasions.

Semen available through Genetics Australia, genaustr.com.au



H113
DAM OF NECTAR

• **CHRIS PATERSON** •
STOCK & STATION AGENT PTY. LTD.

AUCTIONEERS * LIVESTOCK * PROPERTY AGENTS

59 Kable Avenue, Tamworth NSW 2340

Phone: 02 6761 3665

www.chrispaterson.com.au • admin@chrispaterson.com.au

- Weekly Fat Cattle & Sheep Sales
- Fortnightly Store Cattle Sales
 - Paddock Sales
 - Property Sales
 - Clearing Sales

Chris Paterson
0428 297 227

Ken Jarrett
0427 661 654



RESIDENTIAL & RURAL SALES | PROPERTY MANAGEMENT

59 KABLE AVENUE • 6761 3665

www.century21.com.au/tamworth

paterson@century21.com.au

NOTES



HEART ANGUS





HEART ANGUS



• CHRIS PATERSON •
STOCK & STATION AGENT PTY. LTD.