

# BULLS & COWS

## LOT 1

VENDOR ROBIN M MCCOSKER

MCKFN1814 CODENWARRA SHIKIKAN N1814

REGO No MCKFN1814 COLOUR BLACK  
 SEX M GRADE FULLBLOOD  
 DOB 4/11/2017 BLOOD 100  
 MIP CASE No 641864 GENETIC STATUS B3FU,  
 SNP CASE No 757850 CHS26%, CL16FU, F1153%

WKSFN2892 WORLD K'S TAKAZAKURA  
 TWAFR0007 TWA SHIKIKAN (IMP USA)  
 WKSFL0976 WORLD K'S SUZUTANI (FB1617)  
**SIRE** SMOFD0107 SUMO CATTLE CO SHIKIKAN D107  
 IMUFR3236 TF ITOHANA 38/1 (IMP USA)  
 SUMFW1742 SUMO HANA W1742  
 SUMFT0786 SUMO YASU T786

WKSFM0164 WORLD K'S MICHIFUKU  
 SMOFF0145 SUMO CATTLE CO MICHIFUKU F145  
 SMOFD0136 SUMO CATTLE CO TAKA D136  
**DAM** MCKFH0818 CODENWARRA 818  
 MCKFB0237 CODENWARRA F B237  
 MCKFF0551 CODENWARRA 551  
 MCKFA0219 CODENWARRA F A219

PURCHASER .....

PRICE .....



GL	BW	200	400	600	MCW	MILK	CWt
0.3	0.8	5	12	17	11	-2	6
47%	62%	70%	73%	82%	69%	59%	67%
EMA	RUMP	RBY	MS	MF	SRI	FTI	F1I
1.3	-0.1	-0.1	0.9	0.15	\$109	\$100	\$91
45%	46%	37%	51%	46%			

### NOTES

CODENWARRA SHIKIKAN N1814 The sire of this bull is SUMO CATTLE CO SHIKIKAN D107. This bull MCKFN1814 has above average F1 and Fullblood Terminal Indexes. Its predicted Marble score of .9 puts it in top 25 percentile for the breed.

*Whilst all care has been taken in the accuracy of the data provided, the lot notes have been provided by the vendor and The Australian Wagyu Association takes no responsibility over the accuracy of this information. Any warranties or representations in this document in respect to animals are given by the owner and not the AWA.*

JUNE 2019 WAGYU GROUP BREEDPLAN

# BULLS & COWS

## LOT 2

VENDOR ROBIN M MCCOSKER

MCKFN1819 CODENWARRA SHIKIKAN N1819

REGO No MCKFN1819 COLOUR BLACK  
 SEX M GRADE FULLBLOOD  
 DOB 1/10/2017 BLOOD 100  
 MIP CASE No 641869 GENETIC STATUS B3FU,  
 SNP CASE No 757852 CHSFU, CL16FU, F1164%

WKSFN2892 WORLD K'S TAKAZAKURA  
 TWAFR0007 TWA SHIKIKAN (IMP USA)  
 WKSFL0976 WORLD K'S SUZUTANI (FB1617)  
**SIRE** SMOFD0107 SUMO CATTLE CO SHIKIKAN D107  
 IMUFR3236 TF ITOHANA 38/1 (IMP USA)  
 SUMFW1742 SUMO HANA W1742  
 SUMFT0786 SUMO YASU T786

IMUFQTF148 ITOSHIGENAMI (IMP USA)  
 SMOFD0087 SUMO CATTLE CO ITOSHIGENAMI D087  
 SUMFV0231 SUMO HANA V0231  
**DAM** MCKFG0594 CODENWARRA 594  
 SUMFV2313 SUMO TERUTANI V2313  
 MCKFA0170 CODENWARRA F A0170  
 MCKFX0086 CODENWARRA F X0086

PURCHASER .....

PRICE .....



GL	BW	200	400	600	MCW	MILK	CWt
0	0	5	11	8	16	1	11
47%	63%	71%	73%	81%	69%	61%	67%
EMA	RUMP	RBY	MS	MF	SRI	FTI	F1I
1.3	-0.2	-0.1	1	0.17	\$117	\$112	\$109
46%	47%	37%	52%	47%			

### NOTES

CODENWARRA SHIKIKAN N1819 The sire of this bull is SUMO CATTLE CO SHIKIKAN D107. This bull MCKFN1819 has a F1 index in top 25 percentile, and Fullblood Index in top 30 percentile. Its predicted Marble Score of 1 puts it in top 20 percentile of the breed for marbling.

*Whilst all care has been taken in the accuracy of the data provided, the lot notes have been provided by the vendor and The Australian Wagyu Association takes no responsibility over the accuracy of this information. Any warranties or representations in this document in respect to animals are given by the owner and not the AWA.*

JUNE 2019 WAGYU GROUP BREEDPLAN

# BULLS & COWS

## LOT 3

VENDOR ROBIN M MCCOSKER

MCKFN1822 CODENWARRA SHIKIKAN N1822

REGO No MCKFN1822 COLOUR BLACK  
 SEX M GRADE FULLBLOOD  
 DOB 23/09/2017 BLOOD 100  
 MIP CASE No 641872 GENETIC STATUS B3FU,  
 SNP CASE No 757853 CHS25%, CL16FU, F1155%

WKSFN2892 WORLD K'S TAKAZAKURA  
 TWAFFR0007 TWA SHIKIKAN (IMP USA)  
 WKSFL0976 WORLD K'S SUZUTANI (FB1617)

SIRE SMOFD0107 SUMO CATTLE CO SHIKIKAN D107  
 IMUFR3236 TF ITOHANA 38/1 (IMP USA)  
 SUMFW1742 SUMO HANA W1742  
 SUMFT0786 SUMO YASU T786

WKSFM0164 WORLD K'S MICHIFUKU  
 SMOFF0145 SUMO CATTLE CO MICHIFUKU F145  
 SMOFD0136 SUMO CATTLE CO TAKA D136

DAM MCKFJ0821 CODENWARRA 821  
 MCKFA0176 CODENWARRA F A0176  
 MCKFE0441 CODENWARRA 441  
 MCKFZ0135 CODENWARRA H135

PURCHASER .....

PRICE .....



GL	BW	200	400	600	MCW	MILK	CWt
-0.2	2	13	19	29	20	4	17
46%	61%	66%	70%	69%	63%	58%	60%
EMA	RUMP	RBY	MS	MF	SRI	FTI	F1I
2.5	-0.4	0.3	0.8	0.12	\$146	\$139	\$122
44%	46%	36%	50%	45%			

### NOTES

CODENWARRA SHIKIKAN N1822 The sire of this bull is SUMO CATTLE CO SHIKIKAN D107. This bull MCKFN1822 has a F1 index in top 25 percentile. Full-blood index in top 20 percentile. The predicted marble score of .8 puts it in top 30 percentile for marbling in this breed.

*Whilst all care has been taken in the accuracy of the data provided, the lot notes have been provided by the vendor and The Australian Wagyu Association takes no responsibility over the accuracy of this information. Any warranties or representations in this document in respect to animals are given by the owner and not the AWA.*

JUNE 2019 WAGYU GROUP BREEDPLAN

# BULLS & COWS

## LOT 4

VENDOR ROBIN M MCCOSKER

MCKFN1828 CODENWARRA SHIKIKAN N1828

REGO No MCKFN1828 COLOUR BLACK  
 SEX M GRADE FULLBLOOD  
 DOB 23/09/2017 BLOOD 100  
 MIP CASE No 641878 GENETIC STATUS B3FU,  
 SNP CASE No 757855 CHSFU, CL16FU, F1175%

WKSFN2892 WORLD K'S TAKAZAKURA  
 TWAFFR0007 TWA SHIKIKAN (IMP USA)  
 WKSFL0976 WORLD K'S SUZUTANI (FB1617)

SIRE SMOFD0107 SUMO CATTLE CO SHIKIKAN D107  
 IMUFR3236 TF ITOHANA 38/1 (IMP USA)  
 SUMFW1742 SUMO HANA W1742  
 SUMFT0786 SUMO YASU T786

WKSFM0164 WORLD K'S MICHIFUKU  
 SMOFG0002 SUMO CATTLE CO MICHIFUKU G002  
 CCOFD0220 COATES NAMI D220

DAM MCKFJ0819 CODENWARRA 819  
 MCKFB0231 CODENWARRA F B231  
 MCKFF0504 CODENWARRA 504  
 MCKFX0075 CODENWARRA F X0075

PURCHASER .....

PRICE .....



GL	BW	200	400	600	MCW	MILK	CWt
0.8	0.1	4	8	-3	0	1	6
47%	63%	71%	73%	82%	69%	61%	67%
EMA	RUMP	RBY	MS	MF	SRI	FTI	F1I
3.3	0.8	-0.1	1.3	0.25	\$120	\$126	\$130
45%	46%	37%	51%	46%			

### NOTES

CODENWARRA SHIKIKAN N1828 The sire of this bull is SUMO CATTLE CO SHIKIKAN D107. This bull MCKFN1818 has an F1 index in top 10 percentile, Fullblood index in top 15 percentile. The predicted Marble Score of 1.3 puts it in the top 5 percentile for marbling in the breed.

*Whilst all care has been taken in the accuracy of the data provided, the lot notes have been provided by the vendor and The Australian Wagyu Association takes no responsibility over the accuracy of this information. Any warranties or representations in this document in respect to animals are given by the owner and not the AWA.*

JUNE 2019 WAGYU GROUP BREEDPLAN

# LOT 5

VENDOR ROBIN M MCCOSKER

MCKFN1834 CODENWARRA SHIKIKAN N1834

REGO No MCKFN1834 COLOUR BLACK  
 SEX M GRADE FULLBLOOD  
 DOB 28/09/2017 BLOOD 100  
 MIP CASE No 641884 GENETIC STATUS B3FU,  
 SNP CASE No 757859 CHSFU, CL16FU, F1175%

WKSFN2892 WORLD K'S TAKAZAKURA  
 TWAFR0007 TWA SHIKIKAN (IMP USA)  
 WKSFL0976 WORLD K'S SUZUTANI (FB1617)  
**SIRE** SMOFD0107 SUMO CATTLE CO SHIKIKAN D107  
 IMUFR3236 TF ITOHANA 38/1 (IMP USA)  
 SUMFW1742 SUMO HANA W1742  
 SUMFT0786 SUMO YASU T786

WKSFM0164 WORLD K'S MICHIFUKU  
**DAM** MCKFH0815 CODENWARRA 815  
 MCKFA0165 CODENWARRA F A165  
 MCKFE0429 CODENWARRA 429  
 MCKFA0198 CODENWARRA F A198

PURCHASER .....

PRICE .....



GL	BW	200	400	600	MCW	MILK	CWt
-0.2	2.5	13	24	43	47	0	39
47%	63%	71%	73%	82%	69%	60%	67%
EMA	RUMP	RBV	MS	MF	SRI	FTI	F1I
1.5	-2.9	0.7	0.7	0.09	\$164	\$128	\$102
45%	47%	37%	51%	46%			

## NOTES

CODENWARRA SHIKIKAN N1834 The sire of this bull is SUMO CATTLE CO SHIKIKAN D107. This bull MCKFN1834 has an F1 index in top 30 percentile, Fullblood index in top 15 percentile and Self Replacing index in top 10 percentile. The Carcase Weight of 41 puts it in the top 5% in the breed, with growth in the top 15 percentile.

*Whilst all care has been taken in the accuracy of the data provided, the lot notes have been provided by the vendor and The Australian Wagyu Association takes no responsibility over the accuracy of this information. Any warranties or representations in this document in respect to animals are given by the owner and not the AWA.*

# LOT 6

VENDOR ROBIN M MCCOSKER

MCKFN1836 CODENWARRA SHIKIKAN N1836

REGO No MCKFN1836 COLOUR BLACK  
 SEX M GRADE FULLBLOOD  
 DOB 23/09/2017 BLOOD 100  
 MIP CASE No 641886 GENETIC STATUS B3FU,  
 SNP CASE No 757860 CHS25%, CL16FU, F1152%

WKSFN2892 WORLD K'S TAKAZAKURA  
 TWAFR0007 TWA SHIKIKAN (IMP USA)  
 WKSFL0976 WORLD K'S SUZUTANI (FB1617)  
**SIRE** SMOFD0107 SUMO CATTLE CO SHIKIKAN D107  
 IMUFR3236 TF ITOHANA 38/1 (IMP USA)  
 SUMFW1742 SUMO HANA W1742  
 SUMFT0786 SUMO YASU T786

WKSFM0164 WORLD K'S MICHIFUKU  
**DAM** MCKFJ0797 CODENWARRA 797  
 MCKFA0176 CODENWARRA F A0176  
 MCKFE0434 CODENWARRA 434  
 MCKFX0097 CODENWARRA F X0097

PURCHASER .....

PRICE .....



GL	BW	200	400	600	MCW	MILK	CWt
-0.2	1.7	10	18	30	32	1	21
47%	63%	71%	73%	82%	69%	60%	67%
EMA	RUMP	RBV	MS	MF	SRI	FTI	F1I
2.7	-0.9	0.5	1	0.16	\$149	\$136	\$119
45%	47%	37%	51%	46%			

## NOTES

CODENWARRA SHIKIKAN N1836 The sire of this bull is SUMO CATTLE CO SHIKIKAN D107. This bull MCKFN1836 has an F1 index in top 15 percentile, Fullblood Index in top 10 percentile and Self Replacing Index in top 20 percentile. The predicted Marble Score of 1 puts this bull in top 20 percentile of the breed, with growth in top 30 percentile.

*Whilst all care has been taken in the accuracy of the data provided, the lot notes have been provided by the vendor and The Australian Wagyu Association takes no responsibility over the accuracy of this information. Any warranties or representations in this document in respect to animals are given by the owner and not the AWA.*

# BULLS & COWS

## LOT 7

VENDOR ROBIN M MCCOSKER

MCKFN1837 CODENWARRA SHIKIKAN N1837

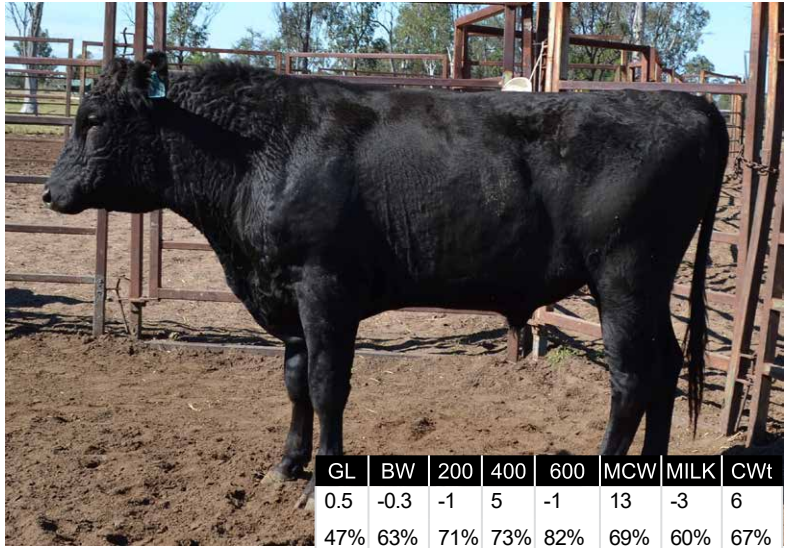
REGO No MCKFN1837 COLOUR BLACK  
 SEX M GRADE FULLBLOOD  
 DOB 1/10/2017 BLOOD 100  
 MIP CASE No 641887 GENETIC STATUS B3FU,  
 SNP CASE No 757861 CHSFU, CL16FU, F1199%

WKSFN2892 WORLD K'S TAKAZAKURA  
 TWAFR0007 TWA SHIKIKAN (IMP USA)  
 WKSFL0976 WORLD K'S SUZUTANI (FB1617)  
**SIRE** SMOFD0107 SUMO CATTLE CO SHIKIKAN D107  
 IMUFR3236 TF ITOHANA 38/1 (IMP USA)  
 SUMFW1742 SUMO HANA W1742  
 SUMFT0786 SUMO YASU T786

WKSFM0164 WORLD K'S MICHIFUKU  
 SMOFG0002 SUMO CATTLE CO MICHIFUKU G002  
 CCOFD0220 COATES NAMI D220  
**DAM** MCKFH0817 CODENWARRA 817  
 MCKFA0176 CODENWARRA F A0176  
 MCKFE0412 CODENWARRA 412  
 MCKFA0204 CODENWARRA F A204

PURCHASER .....

PRICE .....



JUNE 2019 WAGYU GROUP BREEDPLAN

GL	BW	200	400	600	MCW	MILK	CWt
0.5	-0.3	-1	5	-1	13	-3	6
47%	63%	71%	73%	82%	69%	60%	67%
EMA	RUMP	RBY	MS	MF	SRI	FTI	F1I
2.4	-2.6	0.5	1.4	0.22	\$112	\$98	\$100
45%	46%	36%	51%	46%			

### NOTES

CODENWARRA SHIKIKAN N1837 The sire of this bull is SUMO CATTLE CO SHIKIKAN D107. This bull MCKFN1837 has a predicted marble score of 1.3 putting it in the top 10 percentile for the breed for marbling.

*Whilst all care has been taken in the accuracy of the data provided, the lot notes have been provided by the vendor and The Australian Wagyu Association takes no responsibility over the accuracy of this information. Any warranties or representations in this document in respect to animals are given by the owner and not the AWA.*

# BULLS & COWS

## LOT 8

VENDOR ROBIN M MCCOSKER

MCKFN1872 CODENWARRA HIRASHIGETAYASU N1872

REGO No MCKFN1872 COLOUR BLACK  
 SEX M GRADE FULLBLOOD  
 DOB 25/09/2017 BLOOD 100  
 MIP CASE No 642002 GENETIC STATUS B3FU,  
 SNP CASE No 757863 CHSFU, CL16FU, F1126%

PEDFAJ287 DAI 20 HIRASHIGE J287 - KURO IKU  
 IMJFAJ2351 HIRASHIGETAYASU J2351 HONGEN (IMP JAP)  
 PEDFAJ187250 DAI 5 YURUHIME J187250 - KURO KOH  
**SIRE** SMOF0148 SUMO CATTLE CO HIRASHIGETAYASU E148  
 IMUFQTF148 ITOSHIGENAMI (IMP USA)  
 SUMFW1433 SUMO NAMI W1433  
 SUMFT0913 SUMO RUKI T0913

IMUFQTF148 ITOSHIGENAMI (IMP USA)  
 RJNFV2374 NABO F V2374  
 RJNFT0721 NABO YASU T721  
**DAM** MCKFC0355 CODENWARRA F C355  
 WKSFM0139 WORLD K'S HARUKI 2 (FB1614)  
 MCKFW0037 CODENWARRA F W0037  
 TWAFS0193 TWA CHOKKAKU (IMP USA)

PURCHASER .....

PRICE .....



JUNE 2019 WAGYU GROUP BREEDPLAN

GL	BW	200	400	600	MCW	MILK	CWt
1.6	4	24	38	56	69	-1	45
51%	66%	71%	73%	81%	69%	64%	68%
EMA	RUMP	RBY	MS	MF	SRI	FTI	F1I
-0.1	-0.9	0.4	0.2	0.04	\$204	\$141	\$106
49%	50%	41%	54%	50%			

### NOTES

CODENWARRA HIRASHIGETAYASU N1872 The sire of this bull is SUMO CATTLE CO HIRASHIGETAYASU E148 which is in the TOP PERCENTILE band for weight and fertility. Its Index values all fall in the top 1 percentile for the breed. This Bull MCKFN1872 also is showing good index - F1 top 35 percentile, Fullblood top 15 percentile, Self Replacing top 5 percentile. The Carcase Weight of 45 puts it in the top 5 percentile, growth is also the top 5 percentile.

*Whilst all care has been taken in the accuracy of the data provided, the lot notes have been provided by the vendor and The Australian Wagyu Association takes no responsibility over the accuracy of this information. Any warranties or representations in this document in respect to animals are given by the owner and not the AWA.*

# BULLS & COWS

## LOT 9

VENDOR ROBIN M MCCOSKER

MCKFN1878 CODENWARRA HIRASHIGETAYASU N1878

REGO No MCKFN1878 COLOUR BLACK  
 SEX M GRADE FULLBLOOD  
 DOB 28/09/2017 BLOOD 100  
 MIP CASE No 642008 GENETIC STATUS B3FU,  
 SNP CASE No 757864 CHSFU, CL16FU, F1111%

PEDFAJ287 DAI 20 HIRASHIGE J287 - KURO IKU  
 IMJFAJ2351 HIRASHIGETAYASU J2351 HONGEN (IMP JAP)  
 PEDFAJ187250 DAI 5 YURUHIME J187250 - KURO KOH

SIRE SMOFE0148 SUMO CATTLE CO HIRASHIGETAYASU E148

IMUFQTF148 ITOSHIGENAMI (IMP USA)  
 SUMFW1433 SUMO NAMI W1433  
 SUMFT0913 SUMO RUKI T0913

IMUFQTF148 ITOSHIGENAMI (IMP USA)  
 RJNJV2374 NABO F V2374

DAM MCKFC0304 CODENWARRA F C304

RJNFT0721 NABO YASU T721  
 SUMFV2313 SUMO TERUTANI V2313  
 MCKFA0160 CODENWARRA F A0160  
 MCKFW0044 CODENWARRA F W0044

PURCHASER .....

PRICE .....



JUNE 2019 WAGYU GROUP BREEDPLAN

GL	BW	200	400	600	MCW	MILK	CWt
1.7	3.9	22	35	45	63	2	44
51%	66%	71%	73%	81%	69%	65%	68%
EMA	RUMP	RBY	MS	MF	SRI	FTI	F1I
1.5	-0.8	0.7	0.3	0.13	\$184	\$135	\$106
49%	50%	41%	55%	51%			

### NOTES

CODENWARRA HIRASHIGETAYASU N1878 The sire of this bull is SUMO CATTLE CO HIRASHIGETAYASU E148 which is in the TOP PERCENTILE band for weight and fertility. Its Index values all fall in the top 1 percentile for the breed. This Bull MCKFN1878 also is showing good index - F1 top 35 percentile, Fullblood top 20 percentile, Self Replacing top 10 percentile. The Carcase Weight of 45 puts it in the top 5 percentile, growth is also the top 5 percentile.

*Whilst all care has been taken in the accuracy of the data provided, the lot notes have been provided by the vendor and The Australian Wagyu Association takes no responsibility over the accuracy of this information. Any warranties or representations in this document in respect to animals are given by the owner and not the AWA.*

## LOT 10

VENDOR ROBIN M MCCOSKER

MCKFN1881 CODENWARRA HIRASHIGETAYASU N1881

REGO No MCKFN1881 COLOUR BLACK  
 SEX M GRADE FULLBLOOD  
 DOB 25/09/2017 BLOOD 100  
 MIP CASE No 642011 GENETIC STATUS B3FU,  
 SNP CASE No 757865 CHS2%, CL16FU, F1124%

PEDFAJ287 DAI 20 HIRASHIGE J287 - KURO IKU  
 IMJFAJ2351 HIRASHIGETAYASU J2351 HONGEN (IMP JAP)  
 PEDFAJ187250 DAI 5 YURUHIME J187250 - KURO KOH

SIRE SMOFE0148 SUMO CATTLE CO HIRASHIGETAYASU E148

IMUFQTF148 ITOSHIGENAMI (IMP USA)  
 SUMFW1433 SUMO NAMI W1433  
 SUMFT0913 SUMO RUKI T0913

SUMFV2313 SUMO TERUTANI V2313  
 MCKFA0176 CODENWARRA F A0176

DAM MCKFE0421 CODENWARRA 421

MCKFW0056 CODENWARRA F W0056  
 IMUFMTF150 KIKUTERUSHIGE (IMP USA)  
 MCKFZ0120 CODENWARRA H120  
 MCKFW0020 CODENWARRA F W0020

PURCHASER .....

PRICE .....



JUNE 2019 WAGYU GROUP BREEDPLAN

GL	BW	200	400	600	MCW	MILK	CWt
0.5	3.2	23	33	43	44	-1	38
50%	65%	71%	73%	81%	69%	63%	67%
EMA	RUMP	RBY	MS	MF	SRI	FTI	F1I
1.4	0	0.2	0.8	0.22	\$226	\$178	\$153
48%	49%	40%	54%	49%			

### NOTES

CODENWARRA HIRASHIGETAYASU N1881 The sire of this bull is SUMO CATTLE CO HIRASHIGETAYASU E148 which is in the TOP PERCENTILE band for weight and fertility. Its Index values all fall in the top 1 percentile for the breed. This Bull MCKFN1881 also is showing good index - F1 top 10 percentile, Fullblood top 5 percentile, Self Replacing top 1 percentile. The Carcase Weight of 39 puts it in the top 5 percentile and with predicted Marble Score of .8 making it in top 30 percentile of the breed for marbling. Growth also in top 5 percentile.

*Whilst all care has been taken in the accuracy of the data provided, the lot notes have been provided by the vendor and The Australian Wagyu Association takes no responsibility over the accuracy of this information. Any warranties or representations in this document in respect to animals are given by the owner and not the AWA.*

# BULLS & COWS

## LOT 11

VENDOR ROBIN M MCCOSKER

MCKFN1887 CODENWARRA HIRASHIGETAYASU N1887

REGO No MCKFN1887 COLOUR BLACK  
 SEX M GRADE FULLBLOOD  
 DOB 20/09/2017 BLOOD 100  
 MIP CASE No 642017 GENETIC STATUS B3FU,  
 SNP CASE No 757866 CHSFU, CL16FU, F1121%

PEDFAJ287 DAI 20 HIRASHIGE J287 - KURO IKU  
 IMJFAJ2351 HIRASHIGETAYASU J2351 HONGEN (IMP JAP)  
 PEDFAJ187250 DAI 5 YURUHIME J187250 - KURO KOH

SIRE SMOFE0148 SUMO CATTLE CO HIRASHIGETAYASU E148

IMUFQTF148 ITOSHIGENAMI (IMP USA)

SUMFW1433 SUMO NAMI W1433

SUMFT0913 SUMO RUKI T0913

WKSFM0164 WORLD K'S MICHIFUKU

SMOFG0002 SUMO CATTLE CO MICHIFUKU G002

CCOFD0220 COATES NAMI D220

DAM MCKFJ0820 CODENWARRA J820

MCKFA0176 CODENWARRA F A0176

MCKFC0280 CODENWARRA F C280

MCKFZ0119 CODENWARRA H119

PURCHASER .....

PRICE .....



GL	BW	200	400	600	MCW	MILK	CWt
1.3	1.2	11	22	28	37	-2	24
49%	64%	71%	73%	81%	69%	62%	67%
EMA	RUMP	RBV	MS	MF	SRI	FTI	F1I
-0.2	-0.6	0	0.6	0.17	\$151	\$120	\$105
46%	47%	39%	52%	47%			

### NOTES

CODENWARRA HIRASHIGETAYASU N1887 The sire of this bull is SUMO CATTLE CO HIRASHIGETAYASU E148 which is in the TOP PERCENTILE band for weight and fertility. Its Index values all fall in the top 1 percentile for the breed. This Bull MCKFN1887 also is showing good index - F1 top 25 percentile, Fullblood top 20 percentile, Self Replacing top 15 percentile. The Carcase Weight of 27 puts it in the 15 percentile and predicted Marble Score is above average.

*Whilst all care has been taken in the accuracy of the data provided, the lot notes have been provided by the vendor and The Australian Wagyu Association takes no responsibility over the accuracy of this information. Any warranties or representations in this document in respect to animals are given by the owner and not the AWA.*

JUNE 2019 WAGYU GROUP BREEDPLAN

# BULLS & COWS

## LOT 12

VENDOR ROBIN M MCCOSKER

MCKFN1889 CODENWARRA HIRASHIGETAYASU N1889

REGO No MCKFN1889 COLOUR BLACK  
 SEX M GRADE FULLBLOOD  
 DOB 28/09/2017 BLOOD 100  
 MIP CASE No 642019 GENETIC STATUS B3FU,  
 SNP CASE No 757867 CHSFU, CL16FU, F115%

PEDFAJ287 DAI 20 HIRASHIGE J287 - KURO IKU  
 IMJFAJ2351 HIRASHIGETAYASU J2351 HONGEN (IMP JAP)  
 PEDFAJ187250 DAI 5 YURUHIME J187250 - KURO KOH

SIRE SMOFE0148 SUMO CATTLE CO HIRASHIGETAYASU E148

IMUFQTF148 ITOSHIGENAMI (IMP USA)

SUMFW1433 SUMO NAMI W1433

SUMFT0913 SUMO RUKI T0913

WKSFM0139 WORLD K'S HARUKI 2 (FB1614)

MCKFX0113 CODENWARRA F X0113

SUMFU2469 SUMO SHIGE U2469

DAM MCKFA0203 CODENWARRA F A203

IMUFR3258 TF TERUTANI 40/1 (IMP USA)

MCKFX0075 CODENWARRA F X0075

IMUFR3241 TF HIKOHIME 34/2 (IMP USA)

PURCHASER .....

PRICE .....



GL	BW	200	400	600	MCW	MILK	CWt
1.7	5.2	28	43	65	73	1	59
50%	66%	71%	73%	81%	70%	65%	68%
EMA	RUMP	RBV	MS	MF	SRI	FTI	F1I
0.1	0.3	0	0.4	0.19	\$221	\$175	\$135
48%	50%	41%	54%	50%			

### NOTES

CODENWARRA HIRASHIGETAYASU N1889 The sire of this bull is SUMO CATTLE CO HIRASHIGETAYASU E148 which is in the TOP PERCENTILE band for weight and fertility. Its Index values all fall in the top 1 percentile for the breed. This Bull MCKFN1889 also is showing good index - F1 top 10 percentile, Fullblood top 5 percentile, Self Replacing top 1 percentile. Carcase Weight a whopping 60 puts it in the top 1 percentile and Growth is also in top 1 percentile.

*Whilst all care has been taken in the accuracy of the data provided, the lot notes have been provided by the vendor and The Australian Wagyu Association takes no responsibility over the accuracy of this information. Any warranties or representations in this document in respect to animals are given by the owner and not the AWA.*

JUNE 2019 WAGYU GROUP BREEDPLAN

# BULLS & COWS

## LOT 13

VENDOR ROBIN M MCCOSKER

MCKFN1893 CODENWARRA HIRASHIGETAYASU N1893

REGO No MCKFN1893 COLOUR BLACK  
 SEX M GRADE FULLBLOOD  
 DOB 13/09/2017 BLOOD 100  
 MIP CASE No 642023 GENETIC STATUS B3FU,  
 SNP CASE No 757868 CHS25%, CL16FU, F1112%

PEDFAJ287 DAI 20 HIRASHIGE J287 - KURO IKU  
 IMJFAJ2351 HIRASHIGETAYASU J2351 HONGEN (IMP JAP)  
 PEDFAJ187250 DAI 5 YURUHIME J187250 - KURO KOH

SIRE SMOFE0148 SUMO CATTLE CO HIRASHIGETAYASU E148

IMUFQTF148 ITOSHIGENAMI (IMP USA)  
 SUMFW1433 SUMO NAMI W1433  
 SUMFT0913 SUMO RUKI T0913

IMJFAJ2703 ITOMORITAKA J2703 HONGEN (IMP JAP)  
 SMOFE0112 SUMO CATTLE CO ITOMORITAKA E112

DAM MCKFG0632 CODENWARRA 632

IMUFQTF148 ITOSHIGENAMI (IMP USA)  
 MCKFW0043 CODENWARRA F W0043  
 SUMFT0250 SUMO FUKU T250

PURCHASER .....

PRICE .....



GL	BW	200	400	600	MCW	MILK	CWt
1.3	1.3	11	10	5	31	-2	1
51%	66%	71%	73%	81%	70%	64%	67%
EMA	RUMP	RBY	MS	MF	SRI	FTI	F1I
2.7	1.3	-0.1	1.1	0.28	\$153	\$131	\$131
49%	50%	42%	55%	50%			

### NOTES

CODENWARRA HIRASHIGETAYASU N1893 The sire of this bull is SUMO CATTLE CO HIRASHIGETAYASU E148 which is in the TOP PERCENTILE band for weight and fertility. Its Index values all fall in the top 1 percentile for the breed. This Bull MCKFN1893 also is showing good index - F1 top 15 percentile, Fullblood top 20 percentile, Self Replacing top 25 percentile, with a predicted Marble Score of 1 placing it in top 20 percentile for marbling.

*Whilst all care has been taken in the accuracy of the data provided, the lot notes have been provided by the vendor and The Australian Wagyu Association takes no responsibility over the accuracy of this information. Any warranties or representations in this document in respect to animals are given by the owner and not the AWA.*

JUNE 2019 WAGYU GROUP BREEDPLAN

# BULLS & COWS

## LOT 14

VENDOR

WITHDRAWN

REGO No COLOUR  
 SEX GRADE  
 DOB BLOOD  
 MIP CASE No GENETIC STATUS  
 SNP CASE No

SIRE

DAM

PURCHASER .....

PRICE .....

GL	BW	200	400	600	MCW	MILK	CWt
EMA	RUMP	RBY	MS	MF	SRI	FTI	F1I

### NOTES

*Whilst all care has been taken in the accuracy of the data provided, the lot notes have been provided by the vendor and The Australian Wagyu Association takes no responsibility over the accuracy of this information. Any warranties or representations in this document in respect to animals are given by the owner and not the AWA.*

JUNE 2019 WAGYU GROUP BREEDPLAN

# BULLS & COWS

## LOT 15

VENDOR ROBIN M MCCOSKER

MCKFN1898 CODENWARRA HIRASHIGETAYASU N1898

REGO No MCKFN1898 COLOUR BLACK  
 SEX M GRADE FULLBLOOD  
 DOB 25/09/2017 BLOOD 100  
 MIP CASE No 642028 GENETIC STATUS B3FU,  
 SNP CASE No 757870 CHSFU, CL16FU, F1150%

PEDFAJ287 DAI 20 HIRASHIGE J287 - KURO IKU  
 IMJFAJ2351 HIRASHIGETAYASU J2351 HONGEN (IMP JAP)  
 PEDFAJ187250 DAI 5 YURUHIME J187250 - KURO KOH

SIRE SMOFE0148 SUMO CATTLE CO HIRASHIGETAYASU E148

IMUFQTF148 ITOSHIGENAMI (IMP USA)

SUMFW1433 SUMO NAMI W1433

SUMFT0913 SUMO RUKI T0913

IMUFQTF148 ITOSHIGENAMI (IMP USA)

RJNFV2374 NABO F V2374

RJNFT0721 NABO YASU T721

DAM MCKFC0324 CODENWARRA F C324

SUMFV2313 SUMO TERUTANI V2313

MCKFA0175 CODENWARRA F A0175

MCKFX0075 CODENWARRA F X0075

PURCHASER .....

PRICE .....



GL	BW	200	400	600	MCW	MILK	CWt
1.9	3.8	22	32	35	53	2	34
51%	66%	72%	74%	81%	70%	65%	68%
EMA	RUMP	RBV	MS	MF	SRI	FTI	F1I
0.2	0.3	-0.2	0.6	0.24	\$174	\$137	\$116
48%	50%	40%	54%	50%			

### NOTES

CODENWARRA HIRASHIGETAYASU N1898 The sire of this bull is SUMO CATTLE CO HIRASHIGETAYASU E148 which is in the TOP PERCENTILE band for weight and fertility. Its Index values all fall in the top 1 percentile for the breed. This Bull MCKFN1898 also is showing good index - F1 top 20 percentile, Fullblood top 10 percentile, Self Replacing top 10 percentile. The Carcase Weight of 37 puts it in the top 5 percentile and it has above average marbling. Growth is in the top 5 percentile.

*Whilst all care has been taken in the accuracy of the data provided, the lot notes have been provided by the vendor and The Australian Wagyu Association takes no responsibility over the accuracy of this information. Any warranties or representations in this document in respect to animals are given by the owner and not the AWA.*

JUNE 2019 WAGYU GROUP BREEDPLAN

# BULLS & COWS

## LOT 16

VENDOR ROBIN M MCCOSKER

MCKFN1899 CODENWARRA HIRASHIGETAYASU N1899

REGO No MCKFN1899 COLOUR BLACK  
 SEX M GRADE FULLBLOOD  
 DOB 20/09/2017 BLOOD 100  
 MIP CASE No 642029 GENETIC STATUS B3FU,  
 SNP CASE No 757871 CHSFU, CL16FU, F1178%

PEDFAJ287 DAI 20 HIRASHIGE J287 - KURO IKU  
 IMJFAJ2351 HIRASHIGETAYASU J2351 HONGEN (IMP JAP)  
 PEDFAJ187250 DAI 5 YURUHIME J187250 - KURO KOH

SIRE SMOFE0148 SUMO CATTLE CO HIRASHIGETAYASU E148

IMUFQTF148 ITOSHIGENAMI (IMP USA)

SUMFW1433 SUMO NAMI W1433

SUMFT0913 SUMO RUKI T0913

IMUFQTF148 ITOSHIGENAMI (IMP USA)

RJNFV2374 NABO F V2374

RJNFT0721 NABO YASU T721

DAM MCKFA0189 CODENWARRA F A0189

IMUFMTF150 KIKUTERUSHIGE (IMP USA)

SUMFV2056 SUMO SHIGE V2056

IMUFR3232 TF HIKOHIME 34/1 (IMP USA)

PURCHASER .....

PRICE .....



GL	BW	200	400	600	MCW	MILK	CWt
1.5	1.7	14	21	23	31	1	24
50%	66%	70%	71%	70%	65%	65%	63%
EMA	RUMP	RBV	MS	MF	SRI	FTI	F1I
0.5	1.2	-0.3	0.6	0.2	\$148	\$119	\$106
49%	50%	42%	55%	50%			

### NOTES

CODENWARRA HIRASHIGETAYASU N1899 The sire of this bull is SUMO CATTLE CO HIRASHIGETAYASU E148 which is in the TOP PERCENTILE band for weight and fertility. Its Index values all fall in the top 1 percentile for the breed. This Bull MCKFN1899 also is showing good index - F1 top 40 percentile, Fullblood top 35 percentile, Self Replacing top 30 percentile. The Carcase Weight of 22 puts it in the 25 percentile.

*Whilst all care has been taken in the accuracy of the data provided, the lot notes have been provided by the vendor and The Australian Wagyu Association takes no responsibility over the accuracy of this information. Any warranties or representations in this document in respect to animals are given by the owner and not the AWA.*

JUNE 2019 WAGYU GROUP BREEDPLAN



# BULLS & COWS

## LOT 17

VENDOR ROBIN M MCCOSKER

MCKFN1900 CODENWARRA HIRASHIGETAYASU N1900

REGO No MCKFN1900 COLOUR BLACK  
 SEX M GRADE FULLBLOOD  
 DOB 1/10/2017 BLOOD 100  
 MIP CASE No 642030 GENETIC STATUS B3FU,  
 SNP CASE No 757872 CHSFU, CL16FU, F1115%

PEDFAJ287 DAI 20 HIRASHIGE J287 - KURO IKU  
 IMJFAJ2351 HIRASHIGETAYASU J2351 HONGEN (IMP JAP)  
 PEDFAJ187250 DAI 5 YURUHIME J187250 - KURO KOH

SIRE SMOFE0148 SUMO CATTLE CO HIRASHIGETAYASU E148

IMUFQTF148 ITOSHIGENAMI (IMP USA)

SUMFW1433 SUMO NAMI W1433

SUMFT0913 SUMO RUKI T0913

MCKFX0113 CODENWARRA F X0113

MCKFB0231 CODENWARRA F B231

MCKFW0046 CODENWARRA F W0046

DAM MCKKF0523 CODENWARRA 523

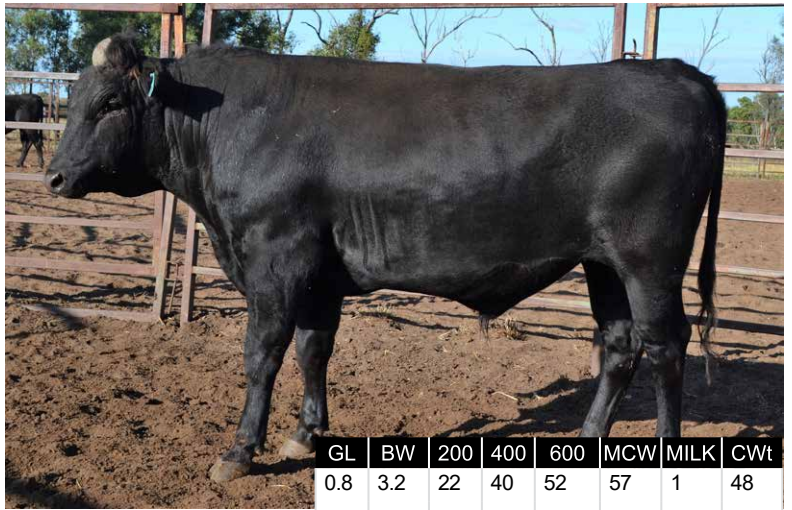
IMUFR3258 TF TERUTANI 40/1 (IMP USA)

MCKFZ0135 CODENWARRA H135

MCKFW0017 CODENWARRA F W0017

PURCHASER .....

PRICE .....



JUNE 2019 WAGYU GROUP BREEDPLAN

GL	BW	200	400	600	MCW	MILK	CWt
0.8	3.2	22	40	52	57	1	48
49%	64%	71%	73%	81%	69%	62%	67%
EMA	RUMP	RBV	MS	MF	SRI	FTI	F1I
1.5	2.3	-0.2	0.5	0.17	\$231	\$189	\$159
47%	48%	40%	53%	48%			

### NOTES

CODENWARRA HIRASHIGETAYASU N1900 The sire of this bull is SUMO CATTLE CO HIRASHIGETAYASU E148 which is in the TOP PERCENTILE band for weight and fertility. Its Index values all fall in the top 1 percentile for the breed. This Bull MCKFN1900 also is showing good index - F1 top 5 percentile, Fullblood top 1 percentile, Self Replacing top 1 percentile. The Carcase Weight of 50 puts it in the top 1 percentile, growth is also top 1 percentile.

*Whilst all care has been taken in the accuracy of the data provided, the lot notes have been provided by the vendor and The Australian Wagyu Association takes no responsibility over the accuracy of this information. Any warranties or representations in this document in respect to animals are given by the owner and not the AWA.*

# BULLS & COWS

## LOT 18

VENDOR ROBIN M MCCOSKER

MCKFN1914 CODENWARRA MICHIFUKU N1914

REGO No MCKFN1914 COLOUR BLACK  
 SEX M GRADE FULLBLOOD  
 DOB 1/10/2017 BLOOD 100  
 MIP CASE No 641940 GENETIC STATUS B3FU,  
 SNP CASE No 757875 CHSFU, CL161%, F1166%

PEDFA201 MONJIRO J11550

WKSFM0164 WORLD K'S MICHIFUKU

PEDFA215 MICHIKO J655635

SIRE SMOFG0002 SUMO CATTLE CO MICHIFUKU G002

IMUFQTF148 ITOSHIGENAMI (IMP USA)

CCOFD0220 COATES NAMI D220

SUMFW0061 SUMO RUKI W0061

IMUFQTF148 ITOSHIGENAMI (IMP USA)

SMOFD0087 SUMO CATTLE CO ITOSHIGENAMI D087

SUMFV0231 SUMO HANA V0231

DAM MCKFK1187 CODENWARRA K1187

SUMFV2313 SUMO TERUTANI V2313

MCKFA0183 CODENWARRA F A0183

MCKFW0022 CODENWARRA F W0022

PURCHASER .....

PRICE .....



JUNE 2019 WAGYU GROUP BREEDPLAN

GL	BW	200	400	600	MCW	MILK	CWt
1.9	1.3	3	8	11	19	-7	10
49%	64%	72%	74%	82%	70%	62%	68%
EMA	RUMP	RBV	MS	MF	SRI	FTI	F1I
2.7	0.7	0	0.8	0.15	\$135	\$88	\$83
47%	49%	39%	53%	48%			

### NOTES

CODENWARRA MICHIFUKU N1914 The sire of this bull is SUMO CATTLE CO MICHIFUKU G002 has a Marble Score in to 5 percentile. This Bull MCKFN1914 has an above average F1 index; and a Self Replacing Index in top 25 percentile. The bull has a predicted Marble Score of .8, being in top 30 percentile for marbling, with low growth making it a good sire for maiden heifers.

*Whilst all care has been taken in the accuracy of the data provided, the lot notes have been provided by the vendor and The Australian Wagyu Association takes no responsibility over the accuracy of this information. Any warranties or representations in this document in respect to animals are given by the owner and not the AWA.*

# BULLS & COWS

## LOT 19

VENDOR ROBIN M MCCOSKER

MCKFN1927 CODENWARRA MICHIFUKU N1927

REGO No MCKFN1927 COLOUR BLACK  
 SEX M GRADE FULLBLOOD  
 DOB 1/10/2017 BLOOD 100  
 MIP CASE No 641953 GENETIC STATUS B3FU,  
 SNP CASE No 757880 CHS50%, CL16FU, F1119%

PEDFA201 MONJIRO J11550  
 WKSFM0164 WORLD K'S MICHIFUKU  
 PEDFA215 MICHIKO J655635  
**SIRE** SMOFF0145 SUMO CATTLE CO MICHIFUKU F145  
 IMJFAJ2703 ITOMORITAKA J2703 HONGEN (IMP JAP)  
 SMOFD0136 SUMO CATTLE CO TAKA D136  
 SUMFW0069 SUMO RUKI W0069  
 IMJFAJ2351 HIRASHIGETAYASU J2351 HONGEN (IMP JAP)  
 SMOFE0148 SUMO CATTLE CO HIRASHIGETAYASU E148  
 SUMFW1433 SUMO NAMI W1433  
**DAM** MCKFK1059 CODENWARRA K1059  
 RJNFV2374 NABO F V2374  
 MCKFD0344 CODENWARRA F D344  
 MCKFZ0143 CODENWARRA F Z0143

PURCHASER .....

PRICE .....



JUNE 2019 WAGYU GROUP BREEDPLAN

GL	BW	200	400	600	MCW	MILK	CWt
1.3	1.8	10	18	13	12	-1	1
49%	63%	70%	73%	81%	68%	57%	66%
EMA	RUMP	RBY	MS	MF	SRI	FTI	F1I
2.5	0.1	0.5	0.6	0.14	\$121	\$94	\$85
46%	47%	39%	51%	47%			

### NOTES

CODENWARRA MICHIFUKU N1927 The Sire of this bull is SUMO CATTLE CO MICHIFUKU F145. This bull MCKFN1927 bull has average Growth, Marble score and Self Replacing Index.

*Whilst all care has been taken in the accuracy of the data provided, the lot notes have been provided by the vendor and The Australian Wagyu Association takes no responsibility over the accuracy of this information. Any warranties or representations in this document in respect to animals are given by the owner and not the AWA.*

# BULLS & COWS

## LOT 20

VENDOR ROBIN M MCCOSKER

MCKFN1930 CODENWARRA MICHIFUKU N1930

REGO No MCKFN1930 COLOUR BLACK  
 SEX M GRADE FULLBLOOD  
 DOB 1/10/2017 BLOOD 100  
 MIP CASE No 641956 GENETIC STATUS B3FU,  
 SNP CASE No 757881 CHSFU, CL16FU, F1175%

PEDFA201 MONJIRO J11550  
 WKSFM0164 WORLD K'S MICHIFUKU  
 PEDFA215 MICHIKO J655635  
**SIRE** SMOFG0002 SUMO CATTLE CO MICHIFUKU G002  
 IMUFQTF148 ITOSHIGENAMI (IMP USA)  
 CCOFD0220 COATES NAMI D220  
 SUMFW0061 SUMO RUKI W0061  
 MCKFX0113 CODENWARRA F X0113  
 MCKFB0231 CODENWARRA F B231  
 MCKFW0046 CODENWARRA F W0046  
**DAM** MCKFF0504 CODENWARRA 504  
 IMUFR3258 TF TERUTANI 40/1 (IMP USA)  
 MCKFX0075 CODENWARRA F X0075  
 IMUFR3241 TF HIKOHIME 34/2 (IMP USA)

PURCHASER .....

PRICE .....



JUNE 2019 WAGYU GROUP BREEDPLAN

GL	BW	200	400	600	MCW	MILK	CWt
1.1	-1.1	-1	4	-4	5	-7	12
48%	65%	72%	74%	82%	71%	63%	68%
EMA	RUMP	RBY	MS	MF	SRI	FTI	F1I
3.1	1.9	-0.2	0.8	0.23	\$115	\$87	\$92
47%	49%	39%	53%	48%			

### NOTES

CODENWARRA MICHIFUKU N1930 The sire of this bull is SUMO CATTLE CO MICHIFUKU G002 has a Marble Score in to 5 percentile. This Bull MCKFN1930 has a predicted Marble Score of .8, being in top 30 percentile for marbling, with low growth making it a good sire for maiden heifers. The Selp Replacing and F1 index values are above average.

*Whilst all care has been taken in the accuracy of the data provided, the lot notes have been provided by the vendor and The Australian Wagyu Association takes no responsibility over the accuracy of this information. Any warranties or representations in this document in respect to animals are given by the owner and not the AWA.*

# BULLS & COWS

## LOT 21

VENDOR ROBIN M MCCOSKER

MCKFN1935 CODENWARRA MICHIFUKU N1935

REGO No MCKFN1935 COLOUR BLACK  
 SEX M GRADE FULLBLOOD  
 DOB 1/10/2017 BLOOD 100  
 MIP CASE No 641961 GENETIC STATUS B3FU,  
 SNP CASE No 757883 CHS12%, CL16FU, F1163%

PEDFA201 MONJIRO J11550  
 WKSFM0164 WORLD K'S MICHIFUKU  
 PEDFA215 MICHIKO J655635  
**SIRE** SMOFG0002 SUMO CATTLE CO MICHIFUKU G002  
 IMUFQTF148 ITOSHIGENAMI (IMP USA)  
 CCOFD0220 COATES NAMI D220  
 SUMFW0061 SUMO RUKI W0061  
 IMJFAJ2351 HIRASHIGETAYASU J2351 HONGEN (IMP JAP)  
 SMOFE0148 SUMO CATTLE CO HIRASHIGETAYASU E148  
 SUMFW1433 SUMO NAMI W1433  
**DAM** MCKFK1068 CODENWARRA K1068  
 SMOFE0112 SUMO CATTLE CO ITOMORITAKA E112  
 MCKFG0623 CODENWARRA 623  
 MCKFW0054 CODENWARRA F W0054

PURCHASER .....

PRICE .....



GL	BW	200	400	600	MCW	MILK	CWt
0.9	0.6	6	7	-1	21	-2	4
50%	65%	72%	74%	82%	70%	62%	68%
EMA	RUMP	RBY	MS	MF	SRI	FTI	F1I
2.9	-0.4	0.3	0.9	0.27	\$108	\$87	\$88
47%	49%	40%	53%	49%			

### NOTES

CODENWARRA MICHIFUKU N1935 The sire of this bull is SUMO CATTLE CO MICHIFUKU G002 has a Marble Score in to 5 percentile. This Bull MCKFN1935 has a predicted Marble Score of .9 putting the marbling in the top 25 percentile of the breed.

*Whilst all care has been taken in the accuracy of the data provided, the lot notes have been provided by the vendor and The Australian Wagyu Association takes no responsibility over the accuracy of this information. Any warranties or representations in this document in respect to animals are given by the owner and not the AWA.*

JUNE 2019 WAGYU GROUP BREEDPLAN

# BULLS & COWS

## LOT 22

VENDOR ROBIN M MCCOSKER

MCKFN1937 CODENWARRA MICHIFUKU N1937

REGO No MCKFN1937 COLOUR BLACK  
 SEX M GRADE FULLBLOOD  
 DOB 1/10/2017 BLOOD 100  
 MIP CASE No 641963 GENETIC STATUS B3FU,  
 SNP CASE No 757884 CHSFU, CL16FU, F1175%

PEDFA201 MONJIRO J11550  
 WKSFM0164 WORLD K'S MICHIFUKU  
 PEDFA215 MICHIKO J655635  
**SIRE** SMOFG0002 SUMO CATTLE CO MICHIFUKU G002  
 IMUFQTF148 ITOSHIGENAMI (IMP USA)  
 CCOFD0220 COATES NAMI D220  
 SUMFW0061 SUMO RUKI W0061  
 IMJFAJ2351 HIRASHIGETAYASU J2351 HONGEN (IMP JAP)  
 SMOFE0148 SUMO CATTLE CO HIRASHIGETAYASU E148  
 SUMFW1433 SUMO NAMI W1433  
**DAM** MCKFH0783 CODENWARRA 783  
 RJNFV2374 NABO F V2374  
 MCKFD0308 CODENWARRA F D308  
 MCKFX0089 CODENWARRA F X0089

PURCHASER .....

PRICE .....



GL	BW	200	400	600	MCW	MILK	CWt
2.2	0.8	4	11	6	14	-6	6
49%	65%	71%	74%	81%	70%	62%	67%
EMA	RUMP	RBY	MS	MF	SRI	FTI	F1I
1.4	1.4	-0.4	0.9	0.2	\$118	\$87	\$85
47%	48%	39%	52%	48%			

### NOTES

CODENWARRA MICHIFUKU N1937 The sire of this bull is SUMO CATTLE CO MICHIFUKU G002 has a Marble Score in to 5 percentile. This Bull MCKFN1937 has has above average index values. The predicted Marble Score of .9 puts the marbling in the top 25 percentile of the breed.

*Whilst all care has been taken in the accuracy of the data provided, the lot notes have been provided by the vendor and The Australian Wagyu Association takes no responsibility over the accuracy of this information. Any warranties or representations in this document in respect to animals are given by the owner and not the AWA.*

JUNE 2019 WAGYU GROUP BREEDPLAN

# BULLS & COWS

## LOT 23

VENDOR ROBIN M MCCOSKER

MCKFN1940 CODENWARRA MICHIFUKU N1940

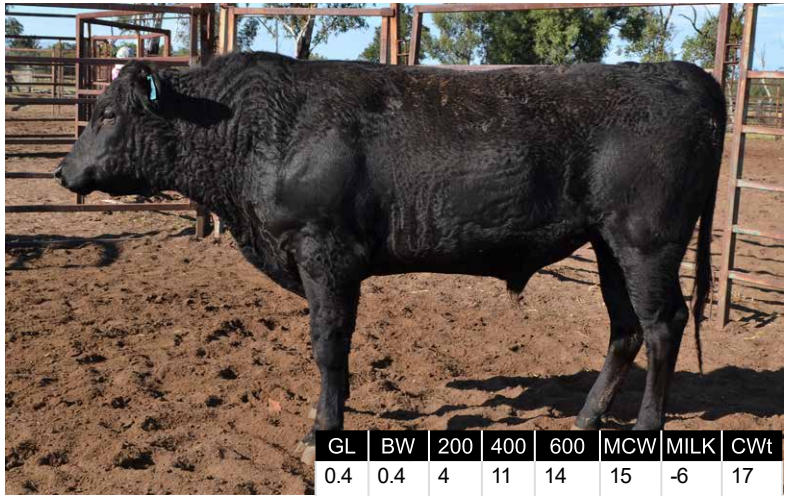
REGO No MCKFN1940 COLOUR BLACK  
 SEX M GRADE FULLBLOOD  
 DOB 1/10/2017 BLOOD 100  
 MIP CASE No 641966 GENETIC STATUS B3FU,  
 SNP CASE No 757885 CHSFU, CL16FU, F1170%

WKSFM0164 WORLD K'S MICHIFUKU  
 PEDFA215 MICHIKO J655635  
**SIRE** SMOFG0002 SUMO CATTLE CO MICHIFUKU G002  
 IMUFQTF148 ITOSHIGENAMI (IMP USA)  
 CCOFD0220 COATES NAMI D220  
 SUMFW0061 SUMO RUKI W0061

TWAFR0007 TWA SHIKIKAN (IMP USA)  
 SMOFD0107 SUMO CATTLE CO SHIKIKAN D107  
 SUMFW1742 SUMO HANA W1742  
**DAM** MCKFK1196 CODENWARRA K1196  
 RJNFV2374 NABO F V2374  
 MCKFD0348 CODENWARRA F D348  
 MCKFZ0148 CODENWARRA H148

PURCHASER .....

PRICE .....



GL	BW	200	400	600	MCW	MILK	CWt
0.4	0.4	4	11	14	15	-6	17
48%	63%	71%	74%	82%	70%	61%	68%
EMA	RUMP	RBY	MS	MF	SRI	FTI	F1I
1.4	-1.2	0.2	0.9	0.18	\$139	\$104	\$98
46%	48%	38%	51%	47%			

### NOTES

CODENWARRA MICHIFUKU N1940 The sire of this bull is SUMO CATTLE CO MICHIFUKU G002 has a Marble Score in to 5 percentile. This Bull MCKFN1940 has a predicted Marble Score of .8, being in top 30 percentile for marbling, with low growth making it a good sire for maiden heifers

*Whilst all care has been taken in the accuracy of the data provided, the lot notes have been provided by the vendor and The Australian Wagyu Association takes no responsibility over the accuracy of this information. Any warranties or representations in this document in respect to animals are given by the owner and not the AWA.*

JUNE 2019 WAGYU GROUP BREEDPLAN

# BULLS & COWS

## LOT 24

VENDOR ROBIN M MCCOSKER

MCKFN1944 CODENWARRA MICHIFUKU N1944

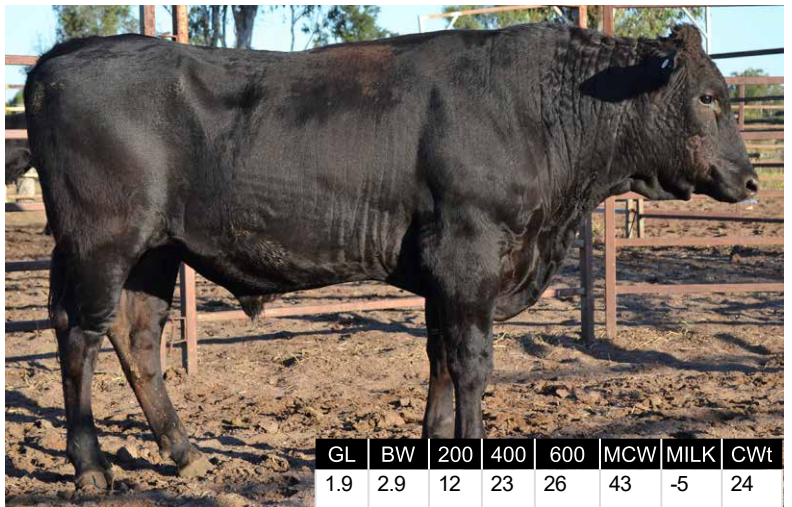
REGO No MCKFN1944 COLOUR BLACK  
 SEX M GRADE FULLBLOOD  
 DOB 1/10/2017 BLOOD 100  
 MIP CASE No 641970 GENETIC STATUS B3FU,  
 SNP CASE No 757886 CHS13%, CL16FU, F1151%

WKSFM0164 WORLD K'S MICHIFUKU  
 PEDFA215 MICHIKO J655635  
**SIRE** SMOFG0002 SUMO CATTLE CO MICHIFUKU G002  
 IMUFQTF148 ITOSHIGENAMI (IMP USA)  
 CCOFD0220 COATES NAMI D220  
 SUMFW0061 SUMO RUKI W0061

IMJFAJ2351 HIRASHIGETAYASU J2351 HONGEN (IMP JAP)  
 SMOFE0148 SUMO CATTLE CO HIRASHIGETAYASU E148  
 SUMFW1433 SUMO NAMI W1433  
**DAM** MCKFK1058 CODENWARRA K1058  
 SMOFE0112 SUMO CATTLE CO ITOMORITAKA E112  
 MCKFG0685 CODENWARRA G685  
 MCKFA0224 CODENWARRA F A224

PURCHASER .....

PRICE .....



GL	BW	200	400	600	MCW	MILK	CWt
1.9	2.9	12	23	26	43	-5	24
49%	65%	71%	74%	82%	70%	62%	68%
EMA	RUMP	RBY	MS	MF	SRI	FTI	F1I
2	-1.4	0.5	0.8	0.22	\$158	\$113	\$96
47%	48%	39%	52%	48%			

### NOTES

CODENWARRA MICHIFUKU N1944 The sire of this bull is SUMO CATTLE CO MICHIFUKU G002 has a Marble Score in to 5 percentile. This Bull MCKFN1944 has above average F1 and Fullblood Index values and Self Replacing in top 20 percentile. Its Marble Score prediction of .7 making it in the top 35 percentile of the breed for Marbling and has low growth, making it a good bull for maiden heifers.

*Whilst all care has been taken in the accuracy of the data provided, the lot notes have been provided by the vendor and The Australian Wagyu Association takes no responsibility over the accuracy of this information. Any warranties or representations in this document in respect to animals are given by the owner and not the AWA.*

JUNE 2019 WAGYU GROUP BREEDPLAN

# BULLS & COWS

## LOT 25

VENDOR ROBIN M MCCOSKER

MCKFN1962 CODENWARRA ITOSHIGENAMI N1962

REGO No MCKFN1962 COLOUR BLACK  
 SEX M GRADE FULLBLOOD  
 DOB 1/10/2017 BLOOD 100  
 MIP CASE No 642047 GENETIC STATUS B3FU,  
 SNP CASE No 757890 CHSFU, CL16FU, F11FU

PEDFA10632 SHIGESHIGENAMI J10632  
 IMUFQTF148 ITOSHIGENAMI (IMP USA)  
 PEDFA661 FUKUYUKI  
**SIRE** SMOFD0062 SUMO CATTLE CO ITOSHIGENAMI D062  
 IMUFLTF151 ITOZURUDOI TF151 (IMP USA)  
 SUMFW1525 SUMO DOI W1525  
 IMUFR3259 TF DAI 2 KINNTOU 35/3 (IMP USA)

WKSFM0164 WORLD K'S MICHIFUKU  
**DAM** MCKFK1135 CODENWARRA K1135  
 MCKFB0237 CODENWARRA F B237  
 MCKFF0503 CODENWARRA 503  
 MCKFX0101 CODENWARRA F X0101

PURCHASER .....

PRICE .....



GL	BW	200	400	600	MCW	MILK	CWt
0.3	-0.3	5	4	4	1	-3	9
48%	62%	67%	69%	67%	59%	53%	58%
EMA	RUMP	RBY	MS	MF	SRI	FTI	F1I
2.1	1.2	-0.2	1	0.26	\$121	\$104	\$104
45%	47%	37%	50%	46%			

### NOTES

CODENWARRA ITOSHIGENAMI N1962 The sire of this bull is SUMO CATTLE CO ITOSHIGENAMI D062 who has above average Index values, and a .9 Marble Score. This bull MCKFN1962 has good Marbling with a Score of 1, putting it in the top 20 percentile for the breed. Index values are all above value, with the F1 Index being within 25 percentile for the breed.

*Whilst all care has been taken in the accuracy of the data provided, the lot notes have been provided by the vendor and The Australian Wagyu Association takes no responsibility over the accuracy of this information. Any warranties or representations in this document in respect to animals are given by the owner and not the AWA.*

JUNE 2019 WAGYU GROUP BREEDPLAN

# BULLS & COWS

## LOT 26

VENDOR ROBIN M MCCOSKER

MCKFN1990 CODENWARRA ITOSHIGENAMI N1990

REGO No MCKFN1990 COLOUR BLACK  
 SEX M GRADE FULLBLOOD  
 DOB 2/10/2017 BLOOD 100  
 MIP CASE No 642075 GENETIC STATUS B3FU,  
 SNP CASE No 757895 CHSFU, CL16FU, F11FU

PEDFA10632 SHIGESHIGENAMI J10632  
 IMUFQTF148 ITOSHIGENAMI (IMP USA)  
 PEDFA661 FUKUYUKI  
**SIRE** SMOFD0062 SUMO CATTLE CO ITOSHIGENAMI D062  
 IMUFLTF151 ITOZURUDOI TF151 (IMP USA)  
 SUMFW1525 SUMO DOI W1525  
 IMUFR3259 TF DAI 2 KINNTOU 35/3 (IMP USA)

TWAFR0007 TWA SHIKIKAN (IMP USA)  
**DAM** MCKFG0658 CODENWARRA 658  
 IMUFR3258 TF TERUTANI 40/1 (IMP USA)  
 MCKFX0097 CODENWARRA F X0097  
 SUMFV2073 SUMO RUKI V2073

PURCHASER .....

PRICE .....



GL	BW	200	400	600	MCW	MILK	CWt
-0.2	3.1	18	30	50	52	4	38
49%	62%	70%	71%	80%	66%	53%	64%
EMA	RUMP	RBY	MS	MF	SRI	FTI	F1I
1.6	1.1	-0.1	0.8	0.16	\$204	\$175	\$147
45%	47%	38%	51%	47%			

### NOTES

CODENWARRA ITOSHIGENAMI N1990 The sire of this bull is SUMO CATTLE CO ITOSHIGENAMI D062 who has above average Index values, and a .9 Marble Score. This bull MCKFN1990 has Carcase Weight score of 40 putting it in the top 5 percentile, growth is in the top 10 percentile. Index values for F1; Fullblood and Self Replacing Index are all in the top 5 percentile for the breed.

*Whilst all care has been taken in the accuracy of the data provided, the lot notes have been provided by the vendor and The Australian Wagyu Association takes no responsibility over the accuracy of this information. Any warranties or representations in this document in respect to animals are given by the owner and not the AWA.*

JUNE 2019 WAGYU GROUP BREEDPLAN

# BULLS & COWS

## LOT 27

VENDOR ROBIN M MCCOSKER

MCKFN2003 CODENWARRA ITOSHIGENAMI N2003

REGO No MCKFN2003 COLOUR BLACK  
 SEX M GRADE FULLBLOOD  
 DOB 30/09/2017 BLOOD 100  
 MIP CASE No 642088 GENETIC STATUS B3FU,  
 SNP CASE No 757897 CHSFU, CL16FU, F1175%

IMUFQTF148 ITOSHIGENAMI (IMP USA)  
 PEDFA661 FUKUYUKI  
**SIRE** SMOFD0114 SUMO CATTLE CO ITOSHIGENAMI D114  
 TWAFR0003 TWA ICHIRYUNO (IMP USA)  
 SUMFW1625 SUMO RUNO W1625  
 SUMFU2153 SUMO F U2153

WKSFM0164 WORLD K'S MICHIFUKU  
 SMOFG0002 SUMO CATTLE CO MICHIFUKU G002  
 CCOFD0220 COATES NAMI D220  
**DAM** MCKFK1141 CODENWARRA K1141  
 MCKFA0176 CODENWARRA F A0176  
 MCKFE0417 CODENWARRA 417  
 MCKFX0101 CODENWARRA F X0101

PURCHASER .....

PRICE .....



GL	BW	200	400	600	MCW	MILK	CWt
0.1	0.7	7	13	16	14	0	15
48%	63%	68%	70%	69%	59%	51%	58%
EMA	RUMP	RBV	MS	MF	SRI	FTI	F1I
1.7	-1.9	0.4	1.1	0.2	\$131	\$121	\$113
44%	45%	36%	49%	45%			

### NOTES

CODENWARRA ITOSHIGENAMI N2003 The Sire of this bull is SUMO CATTLE CO ITOSHIGENAMI D114. This Bull MCKFN2003 has F1 and Fullblood Indes values in the top 30 percentile for the breed. The Marble Score is 1.1 putting marbling in the top 15 percentile for the wagyu breed.

*Whilst all care has been taken in the accuracy of the data provided, the lot notes have been provided by the vendor and The Australian Wagyu Association takes no responsibility over the accuracy of this information. Any warranties or representations in this document in respect to animals are given by the owner and not the AWA.*

JUNE 2019 WAGYU GROUP BREEDPLAN

# BULLS & COWS

## LOT 28

VENDOR ROBIN M MCCOSKER

MCKFN2038 CODENWARRA MICHIFUKU N2038

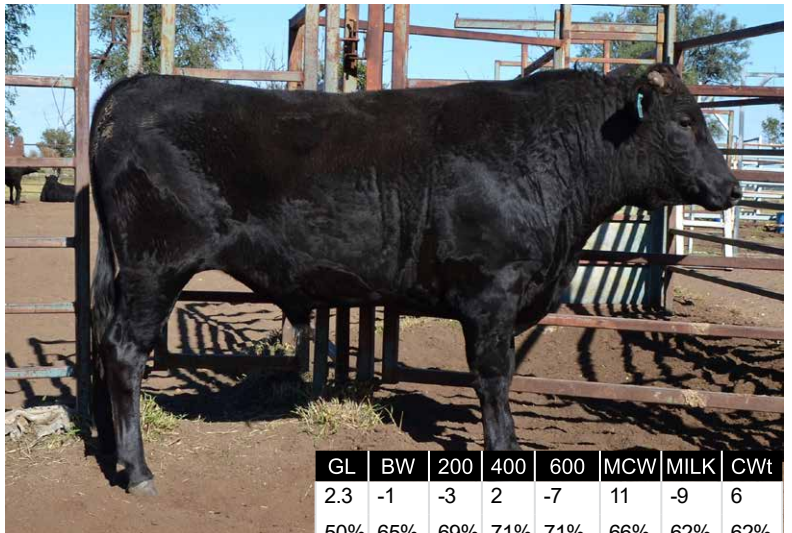
REGO No MCKFN2038 COLOUR BLACK  
 SEX M GRADE FULLBLOOD  
 DOB 10/11/2017 BLOOD 100  
 MIP CASE No 671253 GENETIC STATUS B3FU,  
 SNP CASE No 757902 CHSFU, CL16FU, F1159%

WKSFM0164 WORLD K'S MICHIFUKU  
 PEDFA215 MICHIKO J655635  
**SIRE** SMOFG0002 SUMO CATTLE CO MICHIFUKU G002  
 IMUFQTF148 ITOSHIGENAMI (IMP USA)  
 CCOFD0220 COATES NAMI D220  
 SUMFW0061 SUMO RUKI W0061

IMJFAJ2351 HIRASHIGETAYASU J2351 HONGEN (IMP JAP)  
 SMOFD0148 SUMO CATTLE CO HIRASHIGETAYASU E148  
 SUMFW1433 SUMO NAMI W1433  
**DAM** MCKFJ0887 CODENWARRA J887  
 RJNFV2374 NABO F V2374  
 MCKFC0316 CODENWARRA F C316  
 MCKFA0191 CODENWARRA F A0191

PURCHASER .....

PRICE .....



GL	BW	200	400	600	MCW	MILK	CWt
2.3	-1	-3	2	-7	11	-9	6
50%	65%	69%	71%	71%	66%	62%	62%
EMA	RUMP	RBV	MS	MF	SRI	FTI	F1I
3.3	0.8	0.1	1.2	0.28	\$129	\$94	\$100
48%	49%	40%	53%	49%			

### NOTES

CODENWARRA MICHIFUKU N2038 The sire of this bull is SUMO CATTLE CO MICHIFUKU G002 has a Marble Score in to 5 percentile. This Bull MCKFN2038 has F1 Index value is in top 30 percentile and Self Replacing in top 35 percentile. The predicted Marble Score of 1.1 puts the marbling in the top 15 percentile of the breed plus has an above average Carcase weight.

*Whilst all care has been taken in the accuracy of the data provided, the lot notes have been provided by the vendor and The Australian Wagyu Association takes no responsibility over the accuracy of this information. Any warranties or representations in this document in respect to animals are given by the owner and not the AWA.*

JUNE 2019 WAGYU GROUP BREEDPLAN

# BULLS & COWS

## LOT 29

VENDOR ROBIN M MCCOSKER

MCKFN2039 CODENWARRA MICHIFUKU N2039

REGO No MCKFN2039 COLOUR BLACK  
 SEX M GRADE FULLBLOOD  
 DOB 15/10/2017 BLOOD 100  
 MIP CASE No 671254 GENETIC STATUS B3FU,  
 SNP CASE No 757903 CHSFU, CL16FU, F1168%

PEDFA201 MONJIRO J11550  
 WKSFM0164 WORLD K'S MICHIFUKU

PEDFA215 MICHIKO J655635

SIRE SMOFG0002 SUMO CATTLE CO MICHIFUKU G002

IMUFQTF148 ITOSHIGENAMI (IMP USA)

CCOFD0220 COATES NAMI D220

SUMFW0061 SUMO RUKI W0061

IMJFAJ2351 HIRASHIGETAYASU J2351 HONGEN (IMP JAP)

SMOFE0148 SUMO CATTLE CO HIRASHIGETAYASU E148

SUMFW1433 SUMO NAMI W1433

DAM MCKFK1063 CODENWARRA K1063

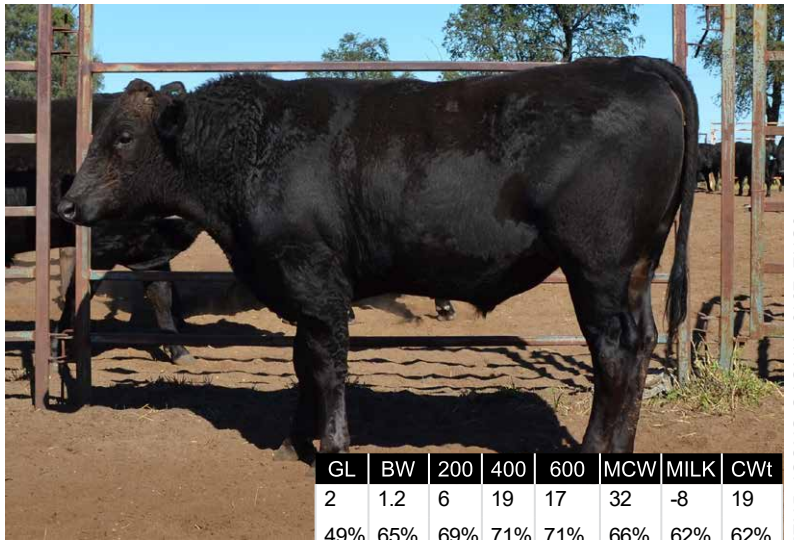
RJNFV2374 NABO F V2374

MCKFC0332 CODENWARRA F C332

MCKFX0077 CODENWARRA F X0077

PURCHASER .....

PRICE .....



GL	BW	200	400	600	MCW	MILK	CWt
2	1.2	6	19	17	32	-8	19
49%	65%	69%	71%	71%	66%	62%	62%
EMA	RUMP	RBY	MS	MF	SRI	FTI	F1I
2.4	0.5	0.2	0.9	0.17	\$162	\$116	\$106
47%	48%	39%	52%	48%			

### NOTES

CODENWARRA MICHIFUKU N2039 The sire of this bull is SUMO CATTLE CO MICHIFUKU G002 has a Marble Score in to 5 percentile. This Bull MCKFN2039 has has above average index values with the Fullblood being in top 30 percentile and Self Replacing being top 10 percentile. The predicted Marble Score of .9 puts the marbling in the top 25 percentile of the breed plus good growth in top 25 percentile with Carcase Weight score of 23.

*Whilst all care has been taken in the accuracy of the data provided, the lot notes have been provided by the vendor and The Australian Wagyu Association takes no responsibility over the accuracy of this information. Any warranties or representations in this document in respect to animals are given by the owner and not the AWA.*

JUNE 2019 WAGYU GROUP BREEDPLAN

# BULLS & COWS

## LOT 30

VENDOR ROBIN M MCCOSKER

MCKFN2047 CODENWARRA SHIKIKAN N2047

REGO No MCKFN2047 COLOUR BLACK  
 SEX M GRADE FULLBLOOD  
 DOB 2/11/2017 BLOOD 100  
 MIP CASE No 671262 GENETIC STATUS B3FU,  
 SNP CASE No 757904 CHSFU, CL16FU, F1175%

WKSFN2892 WORLD K'S TAKAZAKURA  
 TWAFR0007 TWA SHIKIKAN (IMP USA)

WKSFL0976 WORLD K'S SUZUTANI (FB1617)

SIRE SMOFD0107 SUMO CATTLE CO SHIKIKAN D107

IMUFR3236 TF ITOHANA 38/1 (IMP USA)

SUMFW1742 SUMO HANA W1742

SUMFT0786 SUMO YASU T786

WKSFM0164 WORLD K'S MICHIFUKU

SMOFG0002 SUMO CATTLE CO MICHIFUKU G002

CCOFD0220 COATES NAMI D220

DAM MCKFH0814 CODENWARRA 814

MCKFA0165 CODENWARRA F A165

MCKFE0404 CODENWARRA 404

MCKFX0111 CODENWARRA F X0111

PURCHASER .....

PRICE .....



GL	BW	200	400	600	MCW	MILK	CWt
0.5	-0.4	0	7	-3	-1	-2	0
47%	62%	70%	73%	82%	69%	60%	67%
EMA	RUMP	RBY	MS	MF	SRI	FTI	F1I
1.6	-0.2	-0.2	1.4	0.23	\$113	\$112	\$116
44%	46%	36%	50%	46%			

### NOTES

CODENWARRA SHIKIKAN N2047 The sire of this bull is SUMO CATTLE CO SHIKIKAN D107. This bull MCKFN2047 has an F1 index in top 15 percentile, Fullblood index in top 30 percentile. The predicted Marble Score of 1.4 puts it in the top 5 percentile for marbling in the breed.

*Whilst all care has been taken in the accuracy of the data provided, the lot notes have been provided by the vendor and The Australian Wagyu Association takes no responsibility over the accuracy of this information. Any warranties or representations in this document in respect to animals are given by the owner and not the AWA.*

JUNE 2019 WAGYU GROUP BREEDPLAN

# BULLS & COWS

## LOT 31

VENDOR ROBIN M MCCOSKER

MCKFN2050 CODENWARRA SHIKIKAN N2050

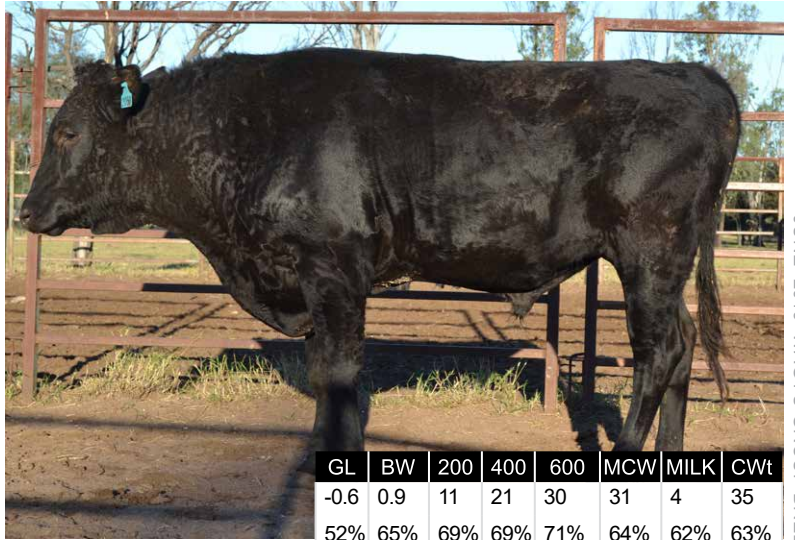
REGO No MCKFN2050 COLOUR BLACK  
 SEX M GRADE FULLBLOOD  
 DOB 11/10/2017 BLOOD 100  
 MIP CASE No 671265 GENETIC STATUS B3FU,  
 SNP CASE No 757906 CHSFU, CL16FU, F1150%

WKSFN2892 WORLD K'S TAKAZAKURA  
 TWAFR0007 TWA SHIKIKAN (IMP USA)  
 WKSFL0976 WORLD K'S SUZUTANI (FB1617)  
**SIRE** SMOFD0107 SUMO CATTLE CO SHIKIKAN D107  
 IMUFR3236 TF ITOHANA 38/1 (IMP USA)  
 SUMFW1742 SUMO HANA W1742  
 SUMFT0786 SUMO YASU T786

IMUFJTF40 TERUTANI J2494 TF40 (IMP JAP)  
 IMUFR3258 TF TERUTANI 40/1 (IMP USA)  
 PEDFA2453 TF DAI 2 KINNTOU 3  
**DAM** MCKFX0097 CODENWARRA F X0097  
 WKSFM0139 WORLD K'S HARUKI 2 (FB1614)  
 SUMFV2073 SUMO RUKI V2073  
 IMUFR3387 TF HIKOHIME 12/3 (IMP USA)

PURCHASER .....

PRICE .....



JUNE 2019 WAGYU GROUP BREEDPLAN

GL	BW	200	400	600	MCW	MILK	CWt
-0.6	0.9	11	21	30	31	4	35
52%	65%	69%	69%	71%	64%	62%	63%
EMA	RUMP	RBY	MS	MF	SRI	FTI	F1I
1.5	-0.1	-0.1	1.3	0.21	\$182	\$181	\$166
51%	52%	43%	56%	52%			

### NOTES

CODENWARRA SHIKIKAN N2050 The sire of this bull is SUMO CATTLE CO SHIKIKAN D107. This bull MCKFN2050 has an F1 index in top 5 percentile, Fullblood index in top 5 percentile and Self Replacing in top 10 percentile. The predicted Marble Score of 1.2 puts it in the top 5 percentile for marbling in the breed.

*Whilst all care has been taken in the accuracy of the data provided, the lot notes have been provided by the vendor and The Australian Wagyu Association takes no responsibility over the accuracy of this information. Any warranties or representations in this document in respect to animals are given by the owner and not the AWA.*

# BULLS & COWS

## LOT 32

VENDOR

WITHDRAWN

REGO No COLOUR  
 SEX GRADE  
 DOB BLOOD  
 MIP CASE No GENETIC STATUS  
 SNP CASE No

SIRE

DAM

PURCHASER .....

PRICE .....

GL	BW	200	400	600	MCW	MILK	CWt
EMA	RUMP	RBY	MS	MF	SRI	FTI	F1I

### NOTES

*Whilst all care has been taken in the accuracy of the data provided, the lot notes have been provided by the vendor and The Australian Wagyu Association takes no responsibility over the accuracy of this information. Any warranties or representations in this document in respect to animals are given by the owner and not the AWA.*

JUNE 2019 WAGYU GROUP BREEDPLAN



# BULLS & COWS

## LOT 33

VENDOR ROBIN M MCCOSKER

MCKFN2067 CODENWARRA HIRASHIGETAYASU N2067

REGO No MCKFN2067 COLOUR BLACK  
 SEX M GRADE FULLBLOOD  
 DOB 20/10/2017 BLOOD 100  
 MIP CASE No 671281 GENETIC STATUS B3FU,  
 SNP CASE No 757912 CHSFU, CL16FU, F1111%

SIRE SMOFE0148 SUMO CATTLE CO HIRASHIGETAYASU E148  
 PEDFAJ287 DAI 20 HIRASHIGE J287 - KURO IKU  
 IMJFAJ2351 HIRASHIGETAYASU J2351 HONGEN (IMP JAP)  
 PEDFAJ187250 DAI 5 YURUHIME J187250 - KURO KOH  
 IMUFQTF148 ITOSHIGENAMI (IMP USA)  
 SUMFW1433 SUMO NAMI W1433  
 SUMFT0913 SUMO RUKI T0913  
 IMUFQTF148 ITOSHIGENAMI (IMP USA)  
 RJNJV2374 NABO F V2374  
 RJNFT0721 NABO YASU T721  
 DAM MCKFC0310 CODENWARRA F C310  
 SUMFV2313 SUMO TERUTANI V2313  
 MCKFA0186 CODENWARRA F A0186  
 SUMFV2040 SUMO SHIGE V2040

PURCHASER .....

PRICE .....



GL	BW	200	400	600	MCW	MILK	CWt
1	3.7	22	33	59	64	0	49
49%	65%	71%	73%	81%	69%	64%	68%
EMA	RUMP	RBY	MS	MF	SRI	FTI	F1I
0.1	-2.5	0.6	0.4	0.08	\$198	\$141	\$104
48%	49%	40%	54%	49%			

### NOTES

CODENWARRA HIRASHIGETAYASU N2067 The sire of this bull is SUMO CATTLE CO HIRASHIGETAYASU E148 which is in the TOP PERCENTILE band for weight and fertility. Its Index values all fall in the top 1 percentile for the breed. This Bull MCKFN2067 also is showing good index - F1 top 35 percentile, Fullblood top 15 percentile, Self Replacing top 5 percentile. The Carcase Weight of 50 puts it in the top 1 percentile. Growth is in the top 5 percentile.

*Whilst all care has been taken in the accuracy of the data provided, the lot notes have been provided by the vendor and The Australian Wagyu Association takes no responsibility over the accuracy of this information. Any warranties or representations in this document in respect to animals are given by the owner and not the AWA.*

JUNE 2019 WAGYU GROUP BREEDPLAN

# BULLS & COWS

## LOT 34

VENDOR ROBIN M MCCOSKER

MCKFN2072 CODENWARRA HIRASHIGETAYASU N2072

REGO No MCKFN2072 COLOUR BLACK  
 SEX M GRADE FULLBLOOD  
 DOB 20/10/2017 BLOOD 100  
 MIP CASE No 671286 GENETIC STATUS B3FU,  
 SNP CASE No 757914 CHSFU, CL16FU, F113%

SIRE SMOFE0148 SUMO CATTLE CO HIRASHIGETAYASU E148  
 PEDFAJ287 DAI 20 HIRASHIGE J287 - KURO IKU  
 IMJFAJ2351 HIRASHIGETAYASU J2351 HONGEN (IMP JAP)  
 PEDFAJ187250 DAI 5 YURUHIME J187250 - KURO KOH  
 IMUFQTF148 ITOSHIGENAMI (IMP USA)  
 SUMFW1433 SUMO NAMI W1433  
 SUMFT0913 SUMO RUKI T0913  
 PEDFA201 MONJIRO J11550  
 WKSFM0139 WORLD K'S HARUKI 2 (FB1614)  
 PEDFA206 SAKURA 2 J741638  
 DAM MCKFW0037 CODENWARRA F W0037  
 IMUFJTF40 TERUTANI J2494 TF40 (IMP JAP)  
 TWAFS0193 TWA CHOKKAKU (IMP USA)  
 PEDFA2453 TF DAI 2 KINNTOU 3

PURCHASER .....

PRICE .....



GL	BW	200	400	600	MCW	MILK	CWt
0.7	2.3	19	29	33	38	2	31
54%	67%	72%	74%	81%	70%	66%	68%
EMA	RUMP	RBY	MS	MF	SRI	FTI	F1I
0.2	1.9	-0.7	1	0.26	\$202	\$181	\$164
52%	53%	45%	56%	52%			

### NOTES

CODENWARRA HIRASHIGETAYASU N2072 The sire of this bull is SUMO CATTLE CO HIRASHIGETAYASU E148 which is in the TOP PERCENTILE band for weight and fertility. Its Index values all fall in the top 1 percentile for the breed. This Bull MCKFN2072 also is showing good index with all F1 Fullblood, Self Replacing top 5 percentile, with a predicted Marble Score of .9 placing it in top 25 percentile for marbling plus in top 10 percentile with Carcase Weight score of 33. Growth is also in top 10 percentile.

*Whilst all care has been taken in the accuracy of the data provided, the lot notes have been provided by the vendor and The Australian Wagyu Association takes no responsibility over the accuracy of this information. Any warranties or representations in this document in respect to animals are given by the owner and not the AWA.*

JUNE 2019 WAGYU GROUP BREEDPLAN

# BULLS & COWS

## LOT 35

VENDOR ROBIN M MCCOSKER

MCKFN2073 CODENWARRA HIRASHIGETAYASU N2073

REGO No MCKFN2073 COLOUR BLACK  
 SEX M GRADE FULLBLOOD  
 DOB 20/10/2017 BLOOD 100  
 MIP CASE No 671287 GENETIC STATUS B3FU,  
 SNP CASE No 757915 CHS2%, CL16FU, F1151%

PEDFAJ287 DAI 20 HIRASHIGE J287 - KURO IKU  
 IMJFAJ2351 HIRASHIGETAYASU J2351 HONGEN (IMP JAP)  
 PEDFAJ187250 DAI 5 YURUHIME J187250 - KURO KOH

SIRE SMOF0148 SUMO CATTLE CO HIRASHIGETAYASU E148

IMUFQTF148 ITOSHIGENAMI (IMP USA)  
 SUMFW1433 SUMO NAMI W1433  
 SUMFT0913 SUMO RUKI T0913

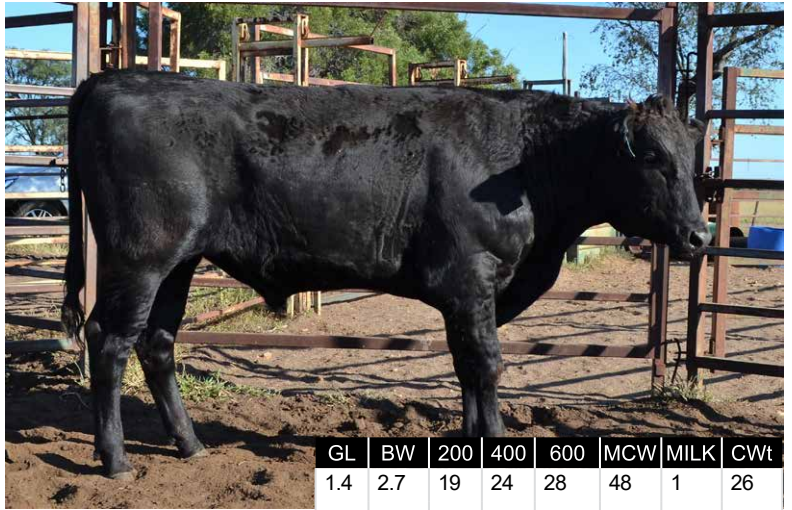
IMUFQTF148 ITOSHIGENAMI (IMP USA)  
 RJNJV2374 NABO F V2374

DAM MCKFC0306 CODENWARRA F C306

RJNFT0721 NABO YASU T721  
 SUMFV2313 SUMO TERUTANI V2313  
 MCKFA0168 CODENWARRA F A0168  
 MCKFX0070 CODENWARRA F X0070

PURCHASER .....

PRICE .....



GL	BW	200	400	600	MCW	MILK	CWt
1.4	2.7	19	24	28	48	1	26
50%	65%	71%	74%	81%	70%	64%	68%
EMA	RUMP	RBY	MS	MF	SRI	FTI	F1I
0.2	0.4	-0.3	0.6	0.2	\$154	\$124	\$108
48%	49%	41%	54%	49%			

### NOTES

CODENWARRA HIRASHIGETAYASU N2073 The sire of this bull is SUMO CATTLE CO HIRASHIGETAYASU E148 which is in the TOP PERCENTILE band for weight and fertility. Its Index values all fall in the top 1 percentile for the breed. This Bull MCKFN2073 also is showing good index - F1 top 35 percentile, Fullblood top 30 percentile, Self Replacing top 20 percentile. The Carcase Weight score of 27 puts it in the 25 percentile, and growth is in top 20 percentile.

*Whilst all care has been taken in the accuracy of the data provided, the lot notes have been provided by the vendor and The Australian Wagyu Association takes no responsibility over the accuracy of this information. Any warranties or representations in this document in respect to animals are given by the owner and not the AWA.*

JUNE 2019 WAGYU GROUP BREEDPLAN

# BULLS & COWS

## LOT 36

VENDOR ROBIN M MCCOSKER

MCKFN2134 CODENWARRA MICHIFUKU N2134

REGO No MCKFN2134 COLOUR BLACK  
 SEX M GRADE FULLBLOOD  
 DOB 19/12/2017 BLOOD 100  
 MIP CASE No 671348 GENETIC STATUS B3FU,  
 SNP CASE No 757921 CHSFU, CL16FU, F1175%

PEDFA201 MONJIRO J11550  
 WKSFM0164 WORLD K'S MICHIFUKU  
 PEDFA215 MICHIKO J655635

SIRE SMOF0002 SUMO CATTLE CO MICHIFUKU G002

IMUFQTF148 ITOSHIGENAMI (IMP USA)  
 CCOFD0220 COATES NAMI D220  
 SUMFW0061 SUMO RUKI W0061

IMJFAJ2351 HIRASHIGETAYASU J2351 HONGEN (IMP JAP)  
 SMOF0148 SUMO CATTLE CO HIRASHIGETAYASU E148

DAM MCKFH0775 CODENWARRA 775

SUMFW1433 SUMO NAMI W1433  
 RJNJV2374 NABO F V2374  
 MCKFC0307 CODENWARRA F C307  
 MCKFA0189 CODENWARRA F A0189

PURCHASER .....

PRICE .....



GL	BW	200	400	600	MCW	MILK	CWt
1.5	1.7	8	18	24	44	-7	23
49%	65%	68%	71%	69%	65%	62%	61%
EMA	RUMP	RBY	MS	MF	SRI	FTI	F1I
1.4	-0.4	-0.1	1.2	0.3	\$175	\$129	\$117
47%	49%	39%	52%	48%			

### NOTES

CODENWARRA MICHIFUKU N2134 The sire of this bull is SUMO CATTLE CO MICHIFUKU G002 has a Marble Score in to 5 percentile. This Bull MCKFN2134 has F1 and Fullblood Index values in top 20 percentile and Self Replacing in top 10 percentile. The predicted Marble Score of 1.2 puts the marbling in the top 10 percentile of the breed plus Carcase weight of 36 puts it in top 5 percentile.

*Whilst all care has been taken in the accuracy of the data provided, the lot notes have been provided by the vendor and The Australian Wagyu Association takes no responsibility over the accuracy of this information. Any warranties or representations in this document in respect to animals are given by the owner and not the AWA.*

JUNE 2019 WAGYU GROUP BREEDPLAN

# BULLS & COWS

## LOT 37

VENDOR ROBIN M MCCOSKER

MCKFN2136 CODENWARRA MICHIFUKU N2136

REGO No MCKFN2136 COLOUR BLACK  
 SEX M GRADE FULLBLOOD  
 DOB 19/12/2017 BLOOD 100  
 MIP CASE No 671350 GENETIC STATUS B3FU,  
 SNP CASE No 757922 CHSFU, CL16FU, F1157%

PEDFA201 MONJIRO J11550  
 WKSFM0164 WORLD K'S MICHIFUKU  
 PEDFA215 MICHIKO J655635  
**SIRE** SMOFG0002 SUMO CATTLE CO MICHIFUKU G002  
 IMUFQTF148 ITOSHIGENAMI (IMP USA)  
 CCOFD0220 COATES NAMI D220  
 SUMFW0061 SUMO RUKI W0061

SUMFV2313 SUMO TERUTANI V2313  
**DAM** MCKFA0165 CODENWARRA F A165  
 MCKFX0094 CODENWARRA F X0094  
 MCKFE0430 CODENWARRA 430  
 IMUFJTF40 TERUTANI J2494 TF40 (IMP JAP)  
 MCKFW0052 CODENWARRA F W0052  
 TWAFT0456 TWA NOBASU

PURCHASER .....

PRICE .....



GL	BW	200	400	600	MCW	MILK	CWt
0	1.1	8	20	26	29	-5	28
48%	64%	68%	68%	69%	63%	61%	61%
EMA	RUMP	RBY	MS	MF	SRI	FTI	F1I
2.6	-1.2	0.8	0.5	0.11	\$163	\$109	\$94
46%	47%	38%	51%	47%			

### NOTES

CODENWARRA MICHIFUKU N2136 The sire of this bull is SUMO CATTLE CO MICHIFUKU G002 has a Marble Score in to 5 percentile. This Bull MCKFN2136 has an above average F1 index; Fullblood index is in top 30 percentile and Self Replacing Index in top 10 percentile. He has a Carcase Weight score of 30 putting him in the top 10 percentile.

*Whilst all care has been taken in the accuracy of the data provided, the lot notes have been provided by the vendor and The Australian Wagyu Association takes no responsibility over the accuracy of this information. Any warranties or representations in this document in respect to animals are given by the owner and not the AWA.*

JUNE 2019 WAGYU GROUP BREEDPLAN

# BULLS & COWS

## LOT 38

VENDOR ROBIN M MCCOSKER

MCKFN2141 CODENWARRA HIRASHIGETAYASU N2141

REGO No MCKFN2141 COLOUR BLACK  
 SEX M GRADE FULLBLOOD  
 DOB 20/12/2017 BLOOD 100  
 MIP CASE No 671355 GENETIC STATUS B3FU,  
 SNP CASE No 757923 CHS2%, CL16FU, F113%

PEDFAJ287 DAI 20 HIRASHIGE J287 - KURO IKU  
 IMJFAJ2351 HIRASHIGETAYASU J2351 HONGEN (IMP JAP)  
 PEDFAJ187250 DAI 5 YURUHIME J187250 - KURO KOH  
**SIRE** SMOFE0148 SUMO CATTLE CO HIRASHIGETAYASU E148  
 IMUFQTF148 ITOSHIGENAMI (IMP USA)  
 SUMFW1433 SUMO NAMI W1433  
 SUMFT0913 SUMO RUKI T0913

SUMFV2313 SUMO TERUTANI V2313  
**DAM** MCKFA0176 CODENWARRA F A0176  
 MCKFW0056 CODENWARRA F W0056  
 MCKFE0447 CODENWARRA 447  
 WKSFM0164 WORLD K'S MICHIFUKU  
 MCKFW0020 CODENWARRA F W0020  
 TWAFS0214 TWA NEGAI (IMP USA)

PURCHASER .....

PRICE .....



GL	BW	200	400	600	MCW	MILK	CWt
1.9	3.3	17	34	37	49	-1	35
49%	64%	68%	70%	68%	63%	62%	61%
EMA	RUMP	RBY	MS	MF	SRI	FTI	F1I
0.5	0	0.1	0.8	0.23	\$192	\$155	\$133
47%	48%	39%	52%	48%			

### NOTES

CODENWARRA HIRASHIGETAYASU N2141 The sire of this bull is SUMO CATTLE CO HIRASHIGETAYASU E148 which is in the TOP PERCENTILE band for weight and fertility. Its Index values all fall in the top 1 percentile for the breed. This Bull MCKFN2141 also is showing good index - F1 top 15 percentile, Fullblood top 10 percentile, Self Replacing top 5 percentile, with a predicted Marble Score of .7 placing it in top 35 percentile for marbling for the wagyu breed. Both growth and Carcase weight is in top 5 percentile.

*Whilst all care has been taken in the accuracy of the data provided, the lot notes have been provided by the vendor and The Australian Wagyu Association takes no responsibility over the accuracy of this information. Any warranties or representations in this document in respect to animals are given by the owner and not the AWA.*

JUNE 2019 WAGYU GROUP BREEDPLAN

# BULLS & COWS

## LOT 39

VENDOR ROBIN M MCCOSKER

MCKFN2142 CODENWARRA HIRASHIGETAYASU N2142

REGO No MCKFN2142 COLOUR BLACK  
 SEX M GRADE FULLBLOOD  
 DOB 20/12/2017 BLOOD 100  
 MIP CASE No 671356 GENETIC STATUS B3FU,  
 SNP CASE No 757924 CHSFU, CL16FU, F116%

PEDFAJ287 DAI 20 HIRASHIGE J287 - KURO IKU  
 IMJFAJ2351 HIRASHIGETAYASU J2351 HONGEN (IMP JAP)  
 PEDFAJ187250 DAI 5 YURUHIME J187250 - KURO KOH

SIRE SMOFE0148 SUMO CATTLE CO HIRASHIGETAYASU E148

IMUFQTF148 ITOSHIGENAMI (IMP USA)

SUMFW1433 SUMO NAMI W1433

SUMFT0913 SUMO RUKI T0913

IMUFQTF148 ITOSHIGENAMI (IMP USA)

RJNJV2374 NABO F V2374

RJNFT0721 NABO YASU T721

DAM MCKFD0312 CODENWARRA F D312

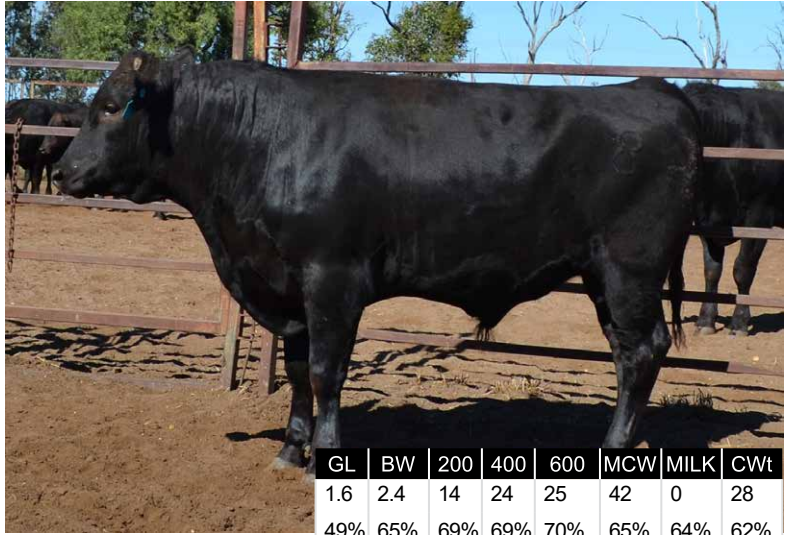
SUMFV2313 SUMO TERUTANI V2313

MCKFA0159 CODENWARRA F A0159

MCKFW0010 CODENWARRA F W0010

PURCHASER .....

PRICE .....



GL	BW	200	400	600	MCW	MILK	CWt
1.6	2.4	14	24	25	42	0	28
49%	65%	69%	69%	70%	65%	64%	62%
EMA	RUMP	RBV	MS	MF	SRI	FTI	F1I
0.4	-0.8	-0.1	0.9	0.23	\$167	\$135	\$121
47%	48%	40%	53%	48%			

### NOTES

CODENWARRA HIRASHIGETAYASU N2142 The sire of this bull is SUMO CATTLE CO HIRASHIGETAYASU E148 which is in the TOP PERCENTILE band for weight and fertility. Its Index values all fall in the top 1 percentile for the breed. This Bull MCKFN2142 also is showing good index - F1 top 30 percentile, Fullblood top 20 percentile, Self Replacing top 15 percentile, with a predicted Marble Score of .8 placing it in top 30 percentile for marbling for the wagyu breed. Carcase weight is in the top 10 percentile with a score of 31.

*Whilst all care has been taken in the accuracy of the data provided, the lot notes have been provided by the vendor and The Australian Wagyu Association takes no responsibility over the accuracy of this information. Any warranties or representations in this document in respect to animals are given by the owner and not the AWA.*

JUNE 2019 WAGYU GROUP BREEDPLAN

# BULLS & COWS

## LOT 40

VENDOR ROBIN M MCCOSKER

MCKFN2149 CODENWARRA ITOSHIGENAMI N2149

REGO No MCKFN2149 COLOUR BLACK  
 SEX M GRADE FULLBLOOD  
 DOB 31/12/2017 BLOOD 100  
 MIP CASE No 685504 GENETIC STATUS B3FU,  
 SNP CASE No 757926 CHSFU, CL16FU, F1174%

PEDFA10632 SHIGESHIGENAMI J10632  
 IMUFQTF148 ITOSHIGENAMI (IMP USA)

PEDFA661 FUKUYUKI

SIRE SMOFD0114 SUMO CATTLE CO ITOSHIGENAMI D114

TWAFR0003 TWA ICHIRYUNO (IMP USA)

SUMFW1625 SUMO RUNO W1625

SUMFU2153 SUMO F U2153

PEDFAJ10787 KIKUTERU DOI J10787 - KURO IKU

IMUFJTF40 TERUTANI J2494 TF40 (IMP JAP)

PEDFA538 TANIFUKU 2 J601115

DAM MCKFW0056 CODENWARRA F W0056

IMUFQ0402 JVP FUKUKANE 402E (IMP USA)

SUMFU2142 SUMO KANE U2142

IMUFR3254 TF CHIYOTAKE 22/4 (IMP USA)

PURCHASER .....

PRICE .....



GL	BW	200	400	600	MCW	MILK	CWt
-0.1	0.3	8	6	7	5	1	9
50%	64%	68%	70%	68%	58%	55%	59%
EMA	RUMP	RBV	MS	MF	SRI	FTI	F1I
3.1	-0.8	0.4	0.8	0.15	\$116	\$109	\$107
47%	49%	40%	52%	48%			

### NOTES

CODENWARRA ITOSHIGENAMI N2149 The Sire of this bull is SUMO CATTLE CO ITOSHIGENAMI D114. This Bull MCKFN2149 has a Marble Score is .7 putting marbling in the top 35 percentile for the wagyu breed.

*Whilst all care has been taken in the accuracy of the data provided, the lot notes have been provided by the vendor and The Australian Wagyu Association takes no responsibility over the accuracy of this information. Any warranties or representations in this document in respect to animals are given by the owner and not the AWA.*

JUNE 2019 WAGYU GROUP BREEDPLAN

# BULLS & COWS

## LOT 41

VENDOR ROBIN M MCCOSKER

MCKFX0064 CODENWARRA F X0064 (AI) (ET)

REGO No MCKFX0064 COLOUR BLACK  
 SEX F GRADE FULLBLOOD  
 DOB 4/02/2002 BLOOD 100  
 MIP CASE No 47406 GENETIC STATUS B3FU,  
 SNP CASE No 757846 CHSFU, CL1615%, F1145%

PE DFAJ9285 KIKUNORI DOI J9285 - KURO IKU  
 PEDFAJ10787 KIKUTERU DOI J10787 - KURO IKU  
 PEDFA544 TOKUKANE J707034  
**SIRE** IMUFMTF150 KIKUTERUSHIGE (IMP USA)  
 PEDFAJ10787 KIKUTERU DOI J10787 - KURO IKU  
 PEDFAJ649744 KIKUNAKA 6 J649744  
 PEDFAJ312006 KIKUTANI J312006

PEDFA504 ITOHANA J809  
 IMUFN2127 TF KIKUHANA (IMP USA)  
 PEDFA523 NAYORI 1 J182450  
**DAM** TWAFS0203 TWA KANDAINA (IMP USA)  
 IMUFJTF40 TERUTANI J2494 TF40 (IMP JAP)  
 PEDFN2435 TF CHIYOTAKE 8/1A  
 PEDFL0554 TF CHIYOTAKE 8 J847346

PURCHASER .....

PRICE .....



JUNE 2019 WAGYU GROUP BREEDPLAN

GL	BW	200	400	600	MCW	MILK	CWt
-0.2	-2.5	-6	-9	-16	-32	-5	-23
57%	69%	72%	72%	75%	71%	76%	69%
EMA	RUMP	RBY	MS	MF	SRI	FTI	F1I
-1.3	1	-0.9	0.1	0.03	\$27	\$12	\$25
57%	58%	54%	59%	57%			

### NOTES

CODENWARRA F X0064 This cow MCKFX0064 has been tested EMPTY. Born 2002, her most recent calf was born late 2018.

*Whilst all care has been taken in the accuracy of the data provided, the lot notes have been provided by the vendor and The Australian Wagyu Association takes no responsibility over the accuracy of this information. Any warranties or representations in this document in respect to animals are given by the owner and not the AWA.*

# BULLS & COWS

## LOT 42

VENDOR ROBIN M MCCOSKER

MCKFA0199 CODENWARRA F A199

REGO No MCKFA0199 COLOUR BLACK  
 SEX F GRADE FULLBLOOD  
 DOB 5/12/2005 BLOOD 100  
 MIP CASE No 88911 GENETIC STATUS B3FU,  
 SNP CASE No 714980 CHSFU, CL16FU, F1156%

PE DFA201 MONJIRO J11550  
 WKSFM0139 WORLD K'S HARUKI 2 (FB1614)  
 PEDFA206 SAKURA 2 J741638  
**SIRE** MCKFX0113 CODENWARRA F X0113  
 IMUFMTF150 KIKUTERUSHIGE (IMP USA)  
 SUMFU2469 SUMO SHIGE U2469  
 TWAFS0304 TWA NAGASA

PEDFAJ10787 KIKUTERU DOI J10787 - KURO IKU  
 IMUFJTF40 TERUTANI J2494 TF40 (IMP JAP)  
 PEDFA538 TANIFUKU 2 J601115  
**DAM** MCKFW0056 CODENWARRA F W0056  
 IMUFQ0402 JVP FUKUKANE 402E (IMP USA)  
 SUMFU2142 SUMO KANE U2142  
 IMUFR3254 TF CHIYOTAKE 22/4 (IMP USA)

PURCHASER .....

PRICE .....



JUNE 2019 WAGYU GROUP BREEDPLAN

GL	BW	200	400	600	MCW	MILK	CWt
-0.3	0.2	7	12	10	-8	2	3
48%	66%	70%	70%	73%	65%	70%	65%
EMA	RUMP	RBY	MS	MF	SRI	FTI	F1I
-0.2	1.6	-0.5	-0.2	-0.04	\$55	\$47	\$43
47%	48%	41%	51%	48%			

### NOTES

CODENWARRA F A199 This cow MCKFA0199 has been tested Pregnant, the joining with SUMO CATTLE CO MICHIFUKU M41. This bull SMOFM0041 has a Self Replacing Index and Carcase Weight in the top 5 percentile, and a Marble Score of .6. The Mating Predictor for PROGENY of this joining is expected to have Carcase Weight in top 25 percentile and ALL indexes in top 60 percentile.

*Whilst all care has been taken in the accuracy of the data provided, the lot notes have been provided by the vendor and The Australian Wagyu Association takes no responsibility over the accuracy of this information. Any warranties or representations in this document in respect to animals are given by the owner and not the AWA.*

# BULLS & COWS

## LOT 43

VENDOR ROBIN M MCCOSKER

MCKFA0209 CODENWARRA F A209

REGO No MCKFA0209 COLOUR BLACK  
 SEX F GRADE FULLBLOOD  
 DOB 29/12/2005 BLOOD 100  
 MIP CASE No 88919 GENETIC STATUS B3FU,  
 SNP CASE No 714982 CHSFU, CL16FU, F1116%

SIRE MCKFX0113 CODENWARRA F X0113  
 PEDFA201 MONJIRO J11550  
 WKSFM0139 WORLD K'S HARUKI 2 (FB1614)  
 PEDFA206 SAKURA 2 J741638  
 IMUFMTF150 KIKUTERUSHIGE (IMP USA)  
 SUMFU2469 SUMO SHIGE U2469  
 TWAFS0304 TWA NAGASA  
 IMUFJTF40 TERUTANI J2494 TF40 (IMP JAP)  
 IMUFR3258 TF TERUTANI 40/1 (IMP USA)  
 PEDFA2453 TF DAI 2 KINNTOU 3  
 DAM MCKFX0110 CODENWARRA F X0110  
 WKSFM0139 WORLD K'S HARUKI 2 (FB1614)  
 SUMFV2357 SUMO RUKI V2357  
 IMUFR3254 TF CHIYOTAKE 22/4 (IMP USA)

PURCHASER .....

PRICE .....



JUNE 2019 WAGYU GROUP BREEDPLAN

GL	BW	200	400	600	MCW	MILK	CWt
-0.1	-0.3	6	13	11	-5	-3	8
51%	66%	70%	71%	71%	64%	69%	64%
EMA	RUMP	RBY	MS	MF	SRI	FTI	F1I
-0.5	3	-0.9	-0.4	-0.05	\$36	\$31	\$26
49%	51%	43%	54%	50%			

### NOTES

CODENWARRA F A209 This cow MCKFA0209 has been tested Pregnant, the joining with SUMO CATTLE CO MICHIFUKU M41. This bull SMOFM0041 has a Self Replacing Index and Carcase Weight in the top 5 percentile, and a Marble Score of .6. The Mating Predictor for PROGENY of this joining is expected to have Carcase Weight in top 20 percentile and Self Replacing and Fullblood indexes in top 60 percentile.

*Whilst all care has been taken in the accuracy of the data provided, the lot notes have been provided by the vendor and The Australian Wagyu Association takes no responsibility over the accuracy of this information. Any warranties or representations in this document in respect to animals are given by the owner and not the AWA.*

# BULLS & COWS

## LOT 44

VENDOR ROBIN M MCCOSKER

MCKFA0240 CODENWARRA F A240

REGO No MCKFA0240 COLOUR BLACK  
 SEX F GRADE FULLBLOOD  
 DOB 14/12/2005 BLOOD 100  
 MIP CASE No 88938 GENETIC STATUS B3FU,  
 SNP CASE No 714985 CHSFU, CL162%, F1115%

SIRE MCKFX0113 CODENWARRA F X0113  
 PEDFA201 MONJIRO J11550  
 WKSFM0139 WORLD K'S HARUKI 2 (FB1614)  
 PEDFA206 SAKURA 2 J741638  
 IMUFMTF150 KIKUTERUSHIGE (IMP USA)  
 SUMFU2469 SUMO SHIGE U2469  
 TWAFS0304 TWA NAGASA  
 PEDFA500 ITOMICHI J1158  
 IMUFP0036 TF ITOMICHI 1/2 (IMP USA)  
 PEDFA464 DAI 2 KINTOU J337756  
 DAM MCKFZ0138 CODENWARRA H138  
 WKSFM0139 WORLD K'S HARUKI 2 (FB1614)  
 MCKFW0053 CODENWARRA F W0053  
 TWAFS0203 TWA KANDAINA (IMP USA)

PURCHASER .....

PRICE .....



JUNE 2019 WAGYU GROUP BREEDPLAN

GL	BW	200	400	600	MCW	MILK	CWt
0.1	1.6	14	28	36	26	5	26
46%	63%	68%	69%	72%	67%	74%	65%
EMA	RUMP	RBY	MS	MF	SRI	FTI	F1I
-2.5	2.1	-0.8	-0.7	-0.1	\$50	\$41	\$20
47%	47%	42%	51%	47%			

### NOTES

CODENWARRA F A240 This cow MCKFA0240 is EMPTY. Born 2007. She has a Carcase weight in the top 20 percentile of the Wagyu breed.

*Whilst all care has been taken in the accuracy of the data provided, the lot notes have been provided by the vendor and The Australian Wagyu Association takes no responsibility over the accuracy of this information. Any warranties or representations in this document in respect to animals are given by the owner and not the AWA.*

# BULLS & COWS

## LOT 45

VENDOR ROBIN M MCCOSKER

MCKFB0227 CODENWARRA F B227

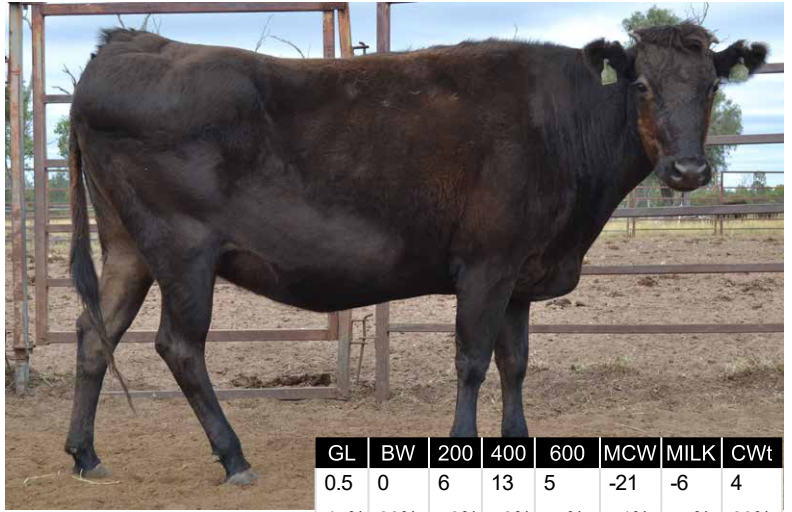
REGO No MCKFB0227 COLOUR BLACK  
 SEX F GRADE FULLBLOOD  
 DOB 22/02/2006 BLOOD 100  
 MIP CASE No 88932 GENETIC STATUS B3FU,  
 SNP CASE No 714986 CHSFU, CL16FU, F1157%

SIRE MCKFX0113 CODENWARRA F X0113  
 PEDFA201 MONJIRO J11550  
 WKSFM0139 WORLD K'S HARUKI 2 (FB1614)  
 PEDFA206 SAKURA 2 J741638  
 IMUFMTF150 KIKUTERUSHIGE (IMP USA)  
 SUMFU2469 SUMO SHIGE U2469  
 TWAFS0304 TWA NAGASA

DAM MCKFW0027 CODENWARRA F W0027  
 PEDFA661 FUKUYUKI  
 IMUFM2100 KIKUYASU 400 (IMP JAP)  
 TWAFS0418 TWA SUGATA  
 TWAFR0005 TWA TSUMU (IMP USA)

PURCHASER .....

PRICE .....



GL	BW	200	400	600	MCW	MILK	CWt
0.5	0	6	13	5	-21	-6	4
47%	68%	73%	73%	77%	71%	77%	69%
EMA	RUMP	RBY	MS	MF	SRI	FTI	F1I
1	1.8	-0.1	-0.2	-0.09	\$67	\$40	\$38
49%	49%	44%	53%	49%			

### NOTES

CODENWARRA F B227 This cow has higher than average EMA and RBY- MCK-FB0227 has been tested Pregnant, the joining was with Multi Sire Group SUMO CATTLE CO ITOSHIGENAMI D0079 (MBS of +1 and EMA of +1.5) & SUMO CATTLE CO MICHIFUKU M155 (MBS +.9 and EMA +2.3). The Wagyu Mating Predictor has the PROGENY results Marble Score of +.4.

*Whilst all care has been taken in the accuracy of the data provided, the lot notes have been provided by the vendor and The Australian Wagyu Association takes no responsibility over the accuracy of this information. Any warranties or representations in this document in respect to animals are given by the owner and not the AWA.*

JUNE 2019 WAGYU GROUP BREEDPLAN

# BULLS & COWS

## LOT 46

VENDOR ROBIN M MCCOSKER

MCKFC0262 CODENWARRA F C262

REGO No MCKFC0262 COLOUR BLACK  
 SEX F GRADE FULLBLOOD  
 DOB 16/02/2007 BLOOD 100  
 MIP CASE No 145815 GENETIC STATUS B3FU,  
 SNP CASE No 714989 CHS6%, CL16FU, F1115%

SIRE MCKFX0113 CODENWARRA F X0113  
 PEDFA201 MONJIRO J11550  
 WKSFM0139 WORLD K'S HARUKI 2 (FB1614)  
 PEDFA206 SAKURA 2 J741638  
 IMUFMTF150 KIKUTERUSHIGE (IMP USA)  
 SUMFU2469 SUMO SHIGE U2469  
 TWAFS0304 TWA NAGASA

DAM MCKFW0011 CODENWARRA F W0011  
 PEDFA201 MONJIRO J11550  
 WKSFM0164 WORLD K'S MICHIFUKU  
 PEDFA215 MICHIKO J655635  
 IMUFN2127 TF KIKUHANA (IMP USA)  
 TWAFS0259 TWA ANSHIN (IMP USA)  
 PEDFJ2451 TF HIKOHIME 3/3

PURCHASER .....

PRICE .....



GL	BW	200	400	600	MCW	MILK	CWt
0.4	2	13	24	30	19	0	9
48%	63%	67%	68%	72%	67%	71%	66%
EMA	RUMP	RBY	MS	MF	SRI	FTI	F1I
-1.8	2	-0.8	-0.6	-0.05	\$65	\$40	\$23
50%	51%	46%	56%	51%			

### NOTES

CODENWARRA F C262 This cow MCKFC0262 has been tested Pregnant, the joining with SUMO CATTLE CO MICHIFUKU M41. This bull SMOFM0041 has a Self Replacing Index and Carcase Weight in the top 5 percentile, and a Marble Score of .6. The Mating Predictor for PROGENY of this joining is expected to have Carcase Weight in top 20 percentile and Self Replacing index in top 50 percentile.

*Whilst all care has been taken in the accuracy of the data provided, the lot notes have been provided by the vendor and The Australian Wagyu Association takes no responsibility over the accuracy of this information. Any warranties or representations in this document in respect to animals are given by the owner and not the AWA.*

JUNE 2019 WAGYU GROUP BREEDPLAN

# BULLS & COWS

## LOT 47

VENDOR ROBIN M MCCOSKER

MCKFC0264 CODENWARRA F C264

REGO No MCKFC0264 COLOUR BLACK  
 SEX F GRADE FULLBLOOD  
 DOB 3/01/2007 BLOOD 100  
 MIP CASE No 145816 GENETIC STATUS B3FU,  
 SNP CASE No 731675 CHSFU, CL16FU, F1133%

SIRE MCKFA0176 CODENWARRA F A0176  
 IMUFJTF40 TERUTANI J2494 TF40 (IMP JAP)  
 SUMFV2313 SUMO TERUTANI V2313  
 TWAFS0313 TWA SHIKATA

DAM MCKFX0098 CODENWARRA F X0098  
 IMUFMTF150 KIKUTERUSHIGE (IMP USA)  
 SUMFV2060 SUMO SGIGE V2060  
 IMUFR3232 TF HIKOHIME 34/1 (IMP USA)

PURCHASER .....

PRICE .....



GL	BW	200	400	600	MCW	MILK	CWt
-0.1	0.8	12	18	25	10	6	19
48%	69%	74%	74%	78%	71%	74%	68%
EMA	RUMP	RBY	MS	MF	SRI	FTI	F1I
0.8	1.3	-0.1	-0.2	0	\$69	\$74	\$60
47%	49%	40%	52%	49%			

### NOTES

CODENWARRA F C264 This cow MCKFC0264 was tested EMPTY. She has above average Carcase Weight, and is 12 years old.

*Whilst all care has been taken in the accuracy of the data provided, the lot notes have been provided by the vendor and The Australian Wagyu Association takes no responsibility over the accuracy of this information. Any warranties or representations in this document in respect to animals are given by the owner and not the AWA.*

JUNE 2019 WAGYU GROUP BREEDPLAN

# BULLS & COWS

## LOT 48

VENDOR ROBIN M MCCOSKER

MCKFC0280 CODENWARRA F C280

REGO No MCKFC0280 COLOUR BLACK  
 SEX F GRADE FULLBLOOD  
 DOB 19/01/2007 BLOOD 100  
 MIP CASE No 145823 GENETIC STATUS B3FU,  
 SNP CASE No 714963 CHSFU, CL16FU, F1141%

SIRE MCKFA0176 CODENWARRA F A0176  
 IMUFJTF40 TERUTANI J2494 TF40 (IMP JAP)  
 SUMFV2313 SUMO TERUTANI V2313  
 TWAFS0313 TWA SHIKATA

DAM MCKFZ0119 CODENWARRA H119  
 IMUFJTF40 TERUTANI J2494 TF40 (IMP JAP)  
 SUMFV2049 SUMO TANI V2049  
 IMUFR3239 TF AIZAKURA 26/1 (IMP USA)

PURCHASER .....

PRICE .....



GL	BW	200	400	600	MCW	MILK	CWt
-0.1	-1.2	2	2	-2	-23	0	-9
47%	66%	71%	70%	72%	69%	74%	64%
EMA	RUMP	RBY	MS	MF	SRI	FTI	F1I
0.7	0.6	-0.2	0.1	-0.01	\$41	\$41	\$44
46%	47%	40%	51%	47%			

### NOTES

CODENWARRA F C280 This cow MCKFC0280 was tested EMPTY. Born 2007 - her last calf was born late 2018. Eye Muscle Area is above average.

*Whilst all care has been taken in the accuracy of the data provided, the lot notes have been provided by the vendor and The Australian Wagyu Association takes no responsibility over the accuracy of this information. Any warranties or representations in this document in respect to animals are given by the owner and not the AWA.*

JUNE 2019 WAGYU GROUP BREEDPLAN



# BULLS & COWS

## LOT 49

VENDOR ROBIN M MCCOSKER

MCKFC0295 CODENWARRA F C295

REGO No MCKFC0295 COLOUR BLACK  
 SEX F GRADE FULLBLOOD  
 DOB 14/01/2007 BLOOD 100  
 MIP CASE No 145831 GENETIC STATUS B3FU,  
 SNP CASE No 731630 CHSFU, CL16FU, F1199%

SIRE IMUFJTF40 TERUTANI J2494 TF40 (IMP JAP)  
 SUMFV2313 SUMO TERUTANI V2313  
 TWAFS0313 TWA SHIKATA

MCKFA0176 CODENWARRA F A0176  
 IMUFJTF40 TERUTANI J2494 TF40 (IMP JAP)  
 MCKFW0056 CODENWARRA F W0056  
 SUMFU2142 SUMO KANE U2142

PEDFAJ10787 KIKUTERU DOI J10787 - KURO IKU  
 IMUFJTF40 TERUTANI J2494 TF40 (IMP JAP)  
 PEDFA538 TANIFUKU 2 J601115

DAM MCKFW0051 CODENWARRA F W0051  
 IMUFM2100 KIKUYASU 400 (IMP JAP)  
 TWAFT0456 TWA NOBASU  
 TWAFR0015 TWA HAYAMERU (IMP USA)

PURCHASER .....

PRICE .....



JUNE 2019 WAGYU GROUP BREEDPLAN

GL	BW	200	400	600	MCW	MILK	CWt
-0.1	-1.5	1	1	-4	-15	-5	4
48%	69%	74%	75%	79%	71%	71%	69%
EMA	RUMP	RYB	MS	MF	SRI	FTI	F1I
2.5	-0.5	0.6	0	-0.06	\$73	\$48	\$51
47%	49%	40%	52%	49%			

### NOTES

CODENWARRA F C295 This cow MCKFC0295 has been tested Pregnant, the joining with SUMO CATTLE CO HIRASHIGETAYASU E148 - the TOP RANKING SIRE for Self Replacing Index for the Wagyu breed, with +1.0 marbling. The PROGENY of this joining is predicted to have Self Replacing INDEX in the top 20 percentile, Carcase Weight in top 15 percentile and a .5 Marble Score. This Cow has Eye Muscle Area and Retail Beef Yield scores in the top 15 percentile.

*Whilst all care has been taken in the accuracy of the data provided, the lot notes have been provided by the vendor and The Australian Wagyu Association takes no responsibility over the accuracy of this information. Any warranties or representations in this document in respect to animals are given by the owner and not the AWA.*

# BULLS & COWS

## LOT 50

VENDOR ROBIN M MCCOSKER

MCKFD0400 CODENWARRA 400

REGO No MCKFD0400 COLOUR BLACK  
 SEX F GRADE FULLBLOOD  
 DOB 19/11/2008 BLOOD 100  
 MIP CASE No 218246 GENETIC STATUS B3FU,  
 SNP CASE No 731546 CHS25%, CL1620%,  
 F1190%

SIRE IMUFJTF40 TERUTANI J2494 TF40 (IMP JAP)  
 SUMFV2313 SUMO TERUTANI V2313  
 TWAFS0313 TWA SHIKATA

MCKFA0176 CODENWARRA F A0176  
 IMUFJTF40 TERUTANI J2494 TF40 (IMP JAP)  
 MCKFW0056 CODENWARRA F W0056  
 SUMFU2142 SUMO KANE U2142

IMJFMJ068 FUKUTSURU J068 (IMP JAP)  
 IMUFQ0402 JVP FUKUKANE 402E (IMP USA)  
 PEDFB2108 CHISAHIME 662 FB2108 (IMP JAP)

DAM SUMFV2057 SUMO KANE V2057  
 IMUFN2294 TF ITOHANA 2 (IMP USA)  
 IMUFR3223 TF HIKOKURA 17/1 (IMP USA)  
 PEDFM2438 TF HIKOKURA 3/15A

PURCHASER .....

PRICE .....



JUNE 2019 WAGYU GROUP BREEDPLAN

GL	BW	200	400	600	MCW	MILK	CWt
-0.5	-1.2	2	0	-6	-17	-1	0
46%	65%	69%	70%	74%	67%	64%	65%
EMA	RUMP	RYB	MS	MF	SRI	FTI	F1I
0.7	1	-0.6	0.4	0.08	\$58	\$59	\$65
45%	46%	37%	50%	46%			

### NOTES

CODENWARRA 400 This cow MCKFD0400 has been tested EMPTY. Born 2008, her last progeny was 2017.

*Whilst all care has been taken in the accuracy of the data provided, the lot notes have been provided by the vendor and The Australian Wagyu Association takes no responsibility over the accuracy of this information. Any warranties or representations in this document in respect to animals are given by the owner and not the AWA.*

# BULLS & COWS

## LOT 51

VENDOR ROBIN M MCCOSKER

MCKFE0459 CODENWARRA 459

REGO No MCKFE0459 COLOUR BLACK  
 SEX F GRADE FULLBLOOD  
 DOB 15/01/2009 BLOOD 100  
 MIP CASE No 218272 GENETIC STATUS B3FU,  
 SNP CASE No 731555 CHSFU, CL162%, F1121%

IMUFJTF40 TERUTANI J2494 TF40 (IMP JAP)  
 SUMFV2313 SUMO TERUTANI V2313  
 TWAFS0313 TWA SHIKATA  
**SIRE** MCKFA0165 CODENWARRA F A165  
 IMUFR3237 TF KIKUHANA 37/1 (IMP USA)  
 MCKFX0094 CODENWARRA F X0094  
 SUMFV2040 SUMO SHIGE V2040  
 PEDFAJ10787 KIKUTERU DOI J10787 - KURO IKU  
 IMUFMTF150 KIKUTERUSHIGE (IMP USA)  
 PEDFAJ649744 KIKUNAKA 6 J649744  
**DAM** MCKFX0086 CODENWARRA F X0086  
 IMUFN2294 TF ITOHANA 2 (IMP USA)  
 TWAFS0212 TWA DAIRISEKI (IMP USA)  
 PEDFL0554 TF CHIYOTAKE 8 J847346

PURCHASER .....

PRICE .....



JUNE 2019 WAGYU GROUP BREEDPLAN

GL	BW	200	400	600	MCW	MILK	CWt
-0.3	1.4	10	13	12	-11	4	5
46%	67%	72%	73%	78%	69%	70%	69%
EMA	RUMP	RBV	MS	MF	SRI	FTI	F1I
-1.2	0.1	-0.5	0	-0.04	\$56	\$52	\$46
49%	50%	42%	56%	50%			

### NOTES

CODENWARRA 459 This cow MCKFE0459 has been tested Pregnant, the joining was with Multi Sire Group SUMO CATTLE CO MICHIFUKU G002 (MBS, MF% & EMA all top 5 percentile, RBV top 20 percentile) and SUMO CATTLE CO MICHIFUKU M65 (MBS & EMA top 20 percentile, CW top 30 percentile). The cow born 2009, has an above average Carcase Weight. - PROGENY would expect PREDICTED INDEX VALUES for all Indexes in 75 percentile. Marble Score between .5 & .7.

*Whilst all care has been taken in the accuracy of the data provided, the lot notes have been provided by the vendor and The Australian Wagyu Association takes no responsibility over the accuracy of this information. Any warranties or representations in this document in respect to animals are given by the owner and not the AWA.*

# BULLS & COWS

## LOT 52

VENDOR ROBIN M MCCOSKER

MCKFE0461 CODENWARRA 461

REGO No MCKFE0461 COLOUR BLACK  
 SEX F GRADE FULLBLOOD  
 DOB 2/02/2009 BLOOD 100  
 MIP CASE No 218274 GENETIC STATUS B3FU,  
 SNP CASE No 757847 CHSFU, CL16FU, F1115%

IMUFJTF40 TERUTANI J2494 TF40 (IMP JAP)  
 SUMFV2313 SUMO TERUTANI V2313  
 TWAFS0313 TWA SHIKATA  
**SIRE** MCKFA0176 CODENWARRA F A0176  
 IMUFJTF40 TERUTANI J2494 TF40 (IMP JAP)  
 MCKFW0056 CODENWARRA F W0056  
 SUMFU2142 SUMO KANE U2142  
 IMUFJTF40 TERUTANI J2494 TF40 (IMP JAP)  
 IMUFR3258 TF TERUTANI 40/1 (IMP USA)  
 PEDFA2453 TF DAI 2 KINNTOU 3  
**DAM** MCKFX0075 CODENWARRA F X0075  
 IMUFN2127 TF KIKUHANA (IMP USA)  
 IMUFR3241 TF HIKOHIME 34/2 (IMP USA)  
 PEDFA5601 TF HIKOHIME 3/2

PURCHASER .....

PRICE .....



JUNE 2019 WAGYU GROUP BREEDPLAN

GL	BW	200	400	600	MCW	MILK	CWt
0.7	0.7	11	15	22	13	2	28
46%	66%	71%	72%	74%	68%	69%	66%
EMA	RUMP	RBV	MS	MF	SRI	FTI	F1I
-0.4	0.6	-0.4	0.2	0.06	\$97	\$85	\$74
47%	48%	40%	51%	48%			

### NOTES

CODENWARRA 461 This cow MCKFE0461 has been tested EMPTY. Born 2009, she has a Carcase Weight in top 15 percentile.

*Whilst all care has been taken in the accuracy of the data provided, the lot notes have been provided by the vendor and The Australian Wagyu Association takes no responsibility over the accuracy of this information. Any warranties or representations in this document in respect to animals are given by the owner and not the AWA.*

# BULLS & COWS

## LOT 53

VENDOR ROBIN M MCCOSKER

MCKFE0478 CODENWARRA 478

REGO No MCKFE0478 COLOUR BLACK  
 SEX F GRADE FULLBLOOD  
 DOB 11/01/2009 BLOOD 100  
 MIP CASE No 218278 GENETIC STATUS B3FU,  
 SNP CASE No 731556 CHSFU, CL16FU, F1138%

WKSFM0139 WORLD K'S HARUKI 2 (FB1614)  
 MCKFX0113 CODENWARRA F X0113  
 SUMFU2469 SUMO SHIGE U2469

SIRE MCKFB0237 CODENWARRA F B237  
 IMUFMTF150 KIKUTERUSHIGE (IMP USA)  
 MCKFW0061 CODENWARRA F W0061  
 TWAFS0203 TWA KANDAINA (IMP USA)

IMUFJTF40 TERUTANI J2494 TF40 (IMP JAP)  
 IMUFR3258 TF TERUTANI 40/1 (IMP USA)  
 PEDFA2453 TF DAI 2 KINNTOU 3

DAM MCKFX0074 CODENWARRA F X0074  
 IMUFQ0402 JVP FUKUKANE 402E (IMP USA)  
 SUMFU2431 SUMO KANE U2431  
 IMUFR3239 TF AIZAKURA 26/1 (IMP USA)

PURCHASER .....

PRICE .....



GL	BW	200	400	600	MCW	MILK	CWt
-0.4	-2.3	-3	-4	-16	-27	-6	-18
48%	70%	76%	76%	80%	73%	77%	70%
EMA	RUMP	RBV	MS	MF	SRI	FTI	F1I
-2.1	1.6	-1	-0.4	-0.03	-\$19	-\$23	-\$11
48%	49%	40%	52%	48%			

### NOTES

CODENWARRA 478 Born in 2009, this cow MCKFE0478 has been tested Pregnant, the joining was with Multi Sire Group SUMO CATTLE CO MICHIFUKU G002 (MBS, MF% & EMA all top 5 percentile, RBV top 20 percentile) and SUMO CATTLE CO MICHIFUKU M65 (MBS & EMA top 20 percentile, CW top 30 percentile). PROGENY would expect Marble Score between .4 & .5.

*Whilst all care has been taken in the accuracy of the data provided, the lot notes have been provided by the vendor and The Australian Wagyu Association takes no responsibility over the accuracy of this information. Any warranties or representations in this document in respect to animals are given by the owner and not the AWA.*

JUNE 2019 WAGYU GROUP BREEDPLAN

# BULLS & COWS

## LOT 54

VENDOR ROBIN M MCCOSKER

MCKFF0488 CODENWARRA 488

REGO No MCKFF0488 COLOUR BLACK  
 SEX F GRADE FULLBLOOD  
 DOB 19/04/2010 BLOOD 100  
 MIP CASE No 238532 GENETIC STATUS B3FU,  
 SNP CASE No 731727 CHSFU, CL16FU, F1142%

WKSFM0139 WORLD K'S HARUKI 2 (FB1614)  
 MCKFX0113 CODENWARRA F X0113  
 SUMFU2469 SUMO SHIGE U2469

SIRE MCKFB0237 CODENWARRA F B237  
 IMUFMTF150 KIKUTERUSHIGE (IMP USA)  
 MCKFW0061 CODENWARRA F W0061  
 TWAFS0203 TWA KANDAINA (IMP USA)

WKSFM0139 WORLD K'S HARUKI 2 (FB1614)  
 MCKFX0113 CODENWARRA F X0113  
 SUMFU2469 SUMO SHIGE U2469

DAM MCKFB0227 CODENWARRA F B227  
 IMUFQTF148 ITOSHIGENAMI (IMP USA)  
 MCKFW0027 CODENWARRA F W0027  
 TWAFS0418 TWA SUGATA

PURCHASER .....

PRICE .....



GL	BW	200	400	600	MCW	MILK	CWt
0.4	-0.4	3	8	-3	-31	-7	-7
44%	66%	72%	72%	75%	66%	73%	68%
EMA	RUMP	RBV	MS	MF	SRI	FTI	F1I
0.1	0.4	0.1	-0.5	-0.12	\$4	-\$11	-\$11
48%	49%	41%	55%	48%			

### NOTES

CODENWARRA 488 This cow MCKFF0488 has been tested Pregnant, the joining was with Multi Sire Group SUMO CATTLE CO ITOSHIGENAMI D062 (MBS of +1 and EMA of +2.5), SUMO CATTLE CO SHIKIKAN M213 (MBS +1.2 and EMA +1.4) & SUMO CATTLE CO ITOSHIGENAMI D114 (MBS +.6 and EMA +2.8). The Cow has a higher than average Retail Beef Yield. The Wagyu Mating Predictor has the PROGENY results MBS between 0 and +.4, EMA between +.8 and +1.5.

*Whilst all care has been taken in the accuracy of the data provided, the lot notes have been provided by the vendor and The Australian Wagyu Association takes no responsibility over the accuracy of this information. Any warranties or representations in this document in respect to animals are given by the owner and not the AWA.*

JUNE 2019 WAGYU GROUP BREEDPLAN

# BULLS & COWS

## LOT 55

VENDOR ROBIN M MCCOSKER

MCKFF0492 CODENWARRA 492

REGO No MCKFF0492 COLOUR BLACK  
 SEX F GRADE FULLBLOOD  
 DOB 26/04/2010 BLOOD 100  
 MIP CASE No 238535 GENETIC STATUS B3FU,  
 SNP CASE No 731557 CHS8%, CL16FU, F1121%

WKSFM0139 WORLD K'S HARUKI 2 (FB1614)  
 MCKFX0113 CODENWARRA F X0113  
 SUMFU2469 SUMO SHIGE U2469  
**SIRE** MCKFB0237 CODENWARRA F B237  
 IMUFMTF150 KIKUTERUSHIGE (IMP USA)  
 MCKFW0061 CODENWARRA F W0061  
 TWAFS0203 TWA KANDAINA (IMP USA)

WKSFM0139 WORLD K'S HARUKI 2 (FB1614)  
 MCKFX0113 CODENWARRA F X0113  
 SUMFU2469 SUMO SHIGE U2469  
**DAM** MCKFA0223 CODENWARRA F A223  
 IMUFR3258 TF TERUTANI 40/1 (IMP USA)  
 MCKFX0070 CODENWARRA F X0070  
 IMUFR3241 TF HIKOHIME 34/2 (IMP USA)

PURCHASER .....

PRICE .....



GL	BW	200	400	600	MCW	MILK	CWt
0.7	0.3	6	11	5	-9	-4	5
46%	68%	72%	74%	77%	68%	71%	69%
EMA	RUMP	RBV	MS	MF	SRI	FTI	F1I
-1.4	1.7	-1	-0.2	0.02	\$50	\$39	\$38
51%	52%	42%	56%	49%			

### NOTES

CODENWARRA 492 This cow MCKFF0492 has been tested Pregnant, the joining was with Multi Sire Group SUMO CATTLE CO MICHIFUKU G002 (MBS, MF% & EMA all top 5 percentile, RBV top 20 percentile) and SUMO CATTLE CO MICHIFUKU M65 (MBS & EMA top 20 percentile, CW top 30 percentile). The cow born 2010, has an above average Carcase Weight. - PROGENY would expect PREDICTED INDEX VALUES for all Indexes in 80 percentile. Marble Score between .4 & .6.

*Whilst all care has been taken in the accuracy of the data provided, the lot notes have been provided by the vendor and The Australian Wagyu Association takes no responsibility over the accuracy of this information. Any warranties or representations in this document in respect to animals are given by the owner and not the AWA.*

JUNE 2019 WAGYU GROUP BREEDPLAN

# BULLS & COWS

## LOT 56

VENDOR ROBIN M MCCOSKER

MCKFF0495 CODENWARRA 495

REGO No MCKFF0495 COLOUR BLACK  
 SEX F GRADE FULLBLOOD  
 DOB 17/03/2010 BLOOD 100  
 MIP CASE No 238537 GENETIC STATUS B3FU,  
 SNP CASE No 731558 CHSFU, CL162%, F1129%

WKSFM0139 WORLD K'S HARUKI 2 (FB1614)  
 MCKFX0113 CODENWARRA F X0113  
 SUMFU2469 SUMO SHIGE U2469  
**SIRE** MCKFB0237 CODENWARRA F B237  
 IMUFMTF150 KIKUTERUSHIGE (IMP USA)  
 MCKFW0061 CODENWARRA F W0061  
 TWAFS0203 TWA KANDAINA (IMP USA)

WKSFM0139 WORLD K'S HARUKI 2 (FB1614)  
 MCKFX0113 CODENWARRA F X0113  
 SUMFU2469 SUMO SHIGE U2469  
**DAM** MCKFA0207 CODENWARRA F A207  
 IMUFMTF150 KIKUTERUSHIGE (IMP USA)  
 MCKFX0086 CODENWARRA F X0086  
 TWAFS0212 TWA DAIRISEKI (IMP USA)

PURCHASER .....

PRICE .....



GL	BW	200	400	600	MCW	MILK	CWt
-0.2	-0.5	2	7	-5	-34	-6	-10
42%	63%	68%	70%	76%	76%	71%	68%
EMA	RUMP	RBV	MS	MF	SRI	FTI	F1I
-1.5	1.2	-0.8	-0.1	-0.04	\$34	\$20	\$24
47%	48%	41%	53%	47%			

### NOTES

CODENWARRA 495 This cow MCKFF0495 has been tested EMPTY. Born 2010. Her last calf born Sept 2018.

*Whilst all care has been taken in the accuracy of the data provided, the lot notes have been provided by the vendor and The Australian Wagyu Association takes no responsibility over the accuracy of this information. Any warranties or representations in this document in respect to animals are given by the owner and not the AWA.*

JUNE 2019 WAGYU GROUP BREEDPLAN

# BULLS & COWS

## LOT 57

VENDOR ROBIN M MCCOSKER

MCKFF0499 CODENWARRA 499

REGO No MCKFF0499 COLOUR BLACK  
 SEX F GRADE FULLBLOOD  
 DOB 22/03/2010 BLOOD 100  
 MIP CASE No 238539 GENETIC STATUS B3FU,  
 SNP CASE No 731728 CHSFU, CL16FU, F1121%

WKSFM0139 WORLD K'S HARUKI 2 (FB1614)  
 MCKFX0113 CODENWARRA F X0113  
 SUMFU2469 SUMO SHIGE U2469

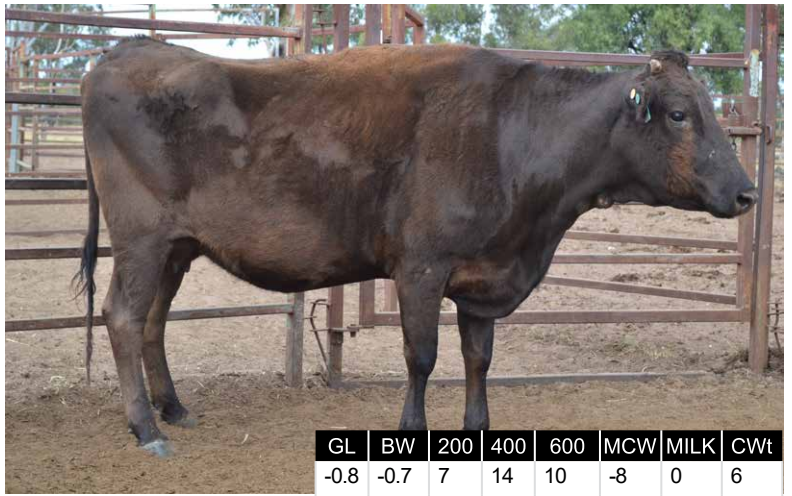
SIRE MCKFB0237 CODENWARRA F B237  
 IMUFMTF150 KIKUTERUSHIGE (IMP USA)  
 MCKFW0061 CODENWARRA F W0061  
 TWAFS0203 TWA KANDAINA (IMP USA)

WKSFM0139 WORLD K'S HARUKI 2 (FB1614)  
 MCKFX0113 CODENWARRA F X0113  
 SUMFU2469 SUMO SHIGE U2469

DAM MCKFA0215 CODENWARRA F A215  
 IMUFR3258 TF TERUTANI 40/1 (IMP USA)  
 MCKFX0111 CODENWARRA F X0111  
 SUMFV2073 SUMO RUKI V2073

PURCHASER .....

PRICE .....



JUNE 2019 WAGYU GROUP BREEDPLAN

GL	BW	200	400	600	MCW	MILK	CWt
-0.8	-0.7	7	14	10	-8	0	6
46%	68%	73%	73%	76%	77%	72%	67%
EMA	RUMP	RBV	MS	MF	SRI	FTI	F1I
-1.1	2.1	-0.9	-0.2	0	\$64	\$65	\$62
46%	47%	38%	51%	47%			

### NOTES

CODENWARRA 499 This cow MCKFF0499 has been tested Pregnant, the joining was with Multi Sire Group SUMO CATTLE CO ITOSHIGENAMI D062 (MBS of +1 and EMA of +2.5), SUMO CATTLE CO SHIKIKAN M213 (MBS +1.2 and EMA +1.4) & SUMO CATTLE CO ITOSHIGENAMI D114 (MBS +.6 and EMA +2.8). The Wagyu Mating Predictor has the PROGENY results Marble Score between +.3 and +.5.

*Whilst all care has been taken in the accuracy of the data provided, the lot notes have been provided by the vendor and The Australian Wagyu Association takes no responsibility over the accuracy of this information. Any warranties or representations in this document in respect to animals are given by the owner and not the AWA.*

# BULLS & COWS

## LOT 58

VENDOR ROBIN M MCCOSKER

MCKFF0500 CODENWARRA 500

REGO No MCKFF0500 COLOUR BLACK  
 SEX F GRADE FULLBLOOD  
 DOB 28/03/2010 BLOOD 100  
 MIP CASE No 238540 GENETIC STATUS B3FU,  
 SNP CASE No 731559 CHSFU, CL16FU, F1176%

WKSFM0139 WORLD K'S HARUKI 2 (FB1614)  
 MCKFX0113 CODENWARRA F X0113  
 SUMFU2469 SUMO SHIGE U2469

SIRE MCKFB0231 CODENWARRA F B231  
 IMUFJTF40 TERUTANI J2494 TF40 (IMP JAP)  
 MCKFW0046 CODENWARRA F W0046  
 TWAFU0456 TWA NOBASU

IMUFJTF40 TERUTANI J2494 TF40 (IMP JAP)  
 IMUFR3258 TF TERUTANI 40/1 (IMP USA)  
 PEDFA2453 TF DAI 2 KINNTOU 3

DAM MCKFX0074 CODENWARRA F X0074  
 IMUFQ0402 JVP FUKUKANE 402E (IMP USA)  
 SUMFU2431 SUMO KANE U2431  
 IMUFR3239 TF AIZAKURA 26/1 (IMP USA)

PURCHASER .....

PRICE .....



JUNE 2019 WAGYU GROUP BREEDPLAN

GL	BW	200	400	600	MCW	MILK	CWt
-0.2	-0.7	6	11	13	9	-1	12
47%	66%	71%	71%	74%	75%	69%	64%
EMA	RUMP	RBV	MS	MF	SRI	FTI	F1I
-1.1	2.7	-0.9	-0.5	-0.03	\$52	\$41	\$36
45%	47%	38%	50%	46%			

### NOTES

CODENWARRA 500 This cow MCKFF0500 has been tested Pregnant, the joining was with Multi Sire Group SUMO CATTLE CO MICHIFUKU G002 (MBS, MF% & EMA all top 5 percentile, RBV top 20 percentile) and SUMO CATTLE C MICHIFUKU M65 (MBS & EMA top 20 percentile, CW top 30 percentile). The cow born 2010, has an above average Carcase Weight. - PROGENY would expect PREDICTED INDEX VALUES for all Indexes in 75 percentile. Marble Score between .3 & .4.

*Whilst all care has been taken in the accuracy of the data provided, the lot notes have been provided by the vendor and The Australian Wagyu Association takes no responsibility over the accuracy of this information. Any warranties or representations in this document in respect to animals are given by the owner and not the AWA.*

# BULLS & COWS

## LOT 59

VENDOR ROBIN M MCCOSKER

MCKFF0503 CODENWARRA 503

REGO No MCKFF0503 COLOUR BLACK  
 SEX F GRADE FULLBLOOD  
 DOB 29/04/2010 BLOOD 100  
 MIP CASE No 238542 GENETIC STATUS B3FU,  
 SNP CASE No 731560 CHSFU, CL16FU, F1111%

WKSFM0139 WORLD K'S HARUKI 2 (FB1614)  
 MCKFX0113 CODENWARRA F X0113  
 SUMFU2469 SUMO SHIGE U2469  
**SIRE** MCKFB0237 CODENWARRA F B237  
 IMUFMTF150 KIKUTERUSHIGE (IMP USA)  
 MCKFW0061 CODENWARRA F W0061  
 TWAFS0203 TWA KANDAINA (IMP USA)

IMUFJTF40 TERUTANI J2494 TF40 (IMP JAP)  
 IMUFR3258 TF TERUTANI 40/1 (IMP USA)  
 PEDFA2453 TF DAI 2 KINNTOU 3  
**DAM** MCKFX0101 CODENWARRA F X0101  
 WKSFM0139 WORLD K'S HARUKI 2 (FB1614)  
 SUMFV2357 SUMO RUKI V2357  
 IMUFR3254 TF CHIYOTAKE 22/4 (IMP USA)

PURCHASER .....

PRICE .....



JUNE 2019 WAGYU GROUP BREEDPLAN

GL	BW	200	400	600	MCW	MILK	CWt
-0.6	0.2	8	17	22	9	0	15
48%	70%	75%	76%	80%	79%	74%	70%
EMA	RUMP	RBV	MS	MF	SRI	FTI	F1I
-1.7	0.6	-0.6	-0.2	-0.01	\$58	\$58	\$46
48%	50%	41%	53%	49%			

### NOTES

**CODENWARRA 503** This cow MCKFF0503 has been tested Pregnant, the joining was with Multi Sire Group SUMO CATTLE CO MICHIFUKU G002 (MBS, MF% & EMA all top 5 percentile, RBV top 20 percentile) and SUMO CATTLE CO MICHIFUKU M65 (MBS & EMA top 20 percentile, CW top 30 percentile). The cow, born 2010 has an above average Carcase Weight. - PROGENY would expect PREDICTED INDEX VALUES for all Indexes in 75 percentile. Marble Score between .4 & .5.

*Whilst all care has been taken in the accuracy of the data provided, the lot notes have been provided by the vendor and The Australian Wagyu Association takes no responsibility over the accuracy of this information. Any warranties or representations in this document in respect to animals are given by the owner and not the AWA.*

# BULLS & COWS

## LOT 60

VENDOR ROBIN M MCCOSKER

MCKFF0516 CODENWARRA 516

REGO No MCKFF0516 COLOUR BLACK  
 SEX F GRADE FULLBLOOD  
 DOB 10/03/2010 BLOOD 100  
 MIP CASE No 238545 GENETIC STATUS B3FU,  
 SNP CASE No 731646 CHSFU, CL16FU, F1110%

WKSFM0139 WORLD K'S HARUKI 2 (FB1614)  
 MCKFX0113 CODENWARRA F X0113  
 SUMFU2469 SUMO SHIGE U2469  
**SIRE** MCKFB0237 CODENWARRA F B237  
 IMUFMTF150 KIKUTERUSHIGE (IMP USA)  
 MCKFW0061 CODENWARRA F W0061  
 TWAFS0203 TWA KANDAINA (IMP USA)

IMUFJTF40 TERUTANI J2494 TF40 (IMP JAP)  
 SUMFV2313 SUMO TERUTANI V2313  
 TWAFS0313 TWA SHIKATA  
**DAM** MCKFA0159 CODENWARRA F A0159  
 WKSFM0164 WORLD K'S MICHIFUKU  
 MCKFW0010 CODENWARRA F W0010  
 TWAFS0212 TWA DAIRISEKI (IMP USA)

PURCHASER .....

PRICE .....



JUNE 2019 WAGYU GROUP BREEDPLAN

GL	BW	200	400	600	MCW	MILK	CWt
0.7	0.7	5	12	9	3	-7	0
45%	67%	72%	72%	76%	68%	70%	66%
EMA	RUMP	RBV	MS	MF	SRI	FTI	F1I
-0.3	0.7	-0.4	-0.2	-0.05	\$57	\$24	\$19
45%	46%	36%	50%	46%			

### NOTES

**CODENWARRA 516** This cow MCKFF0516 has been tested Pregnant, the joining with SUMO CATTLE CO HIRASHIGETAYASU E148 - the TOP RANKING SIRE for Self Replacing Index for the Wagyu breed, with +1.0 marbling. The PROGENY of this joining is predicted to have a Self Replacing INDEX in the top 20 percentile, Carcase Weight in top 15 percentile and a .4 Marble Score.

*Whilst all care has been taken in the accuracy of the data provided, the lot notes have been provided by the vendor and The Australian Wagyu Association takes no responsibility over the accuracy of this information. Any warranties or representations in this document in respect to animals are given by the owner and not the AWA.*

# BULLS & COWS

## LOT 61

VENDOR ROBIN M MCCOSKER

MCKFF0526 CODENWARRA 526

REGO No MCKFF0526 COLOUR BLACK  
 SEX F GRADE FULLBLOOD  
 DOB 13/04/2010 BLOOD 100  
 MIP CASE No 238551 GENETIC STATUS B3FU,  
 SNP CASE No 731563 CHSFU, CL161%, F1116%

WKSFM0139 WORLD K'S HARUKI 2 (FB1614)  
 MCKFX0113 CODENWARRA F X0113  
 SUMFU2469 SUMO SHIGE U2469

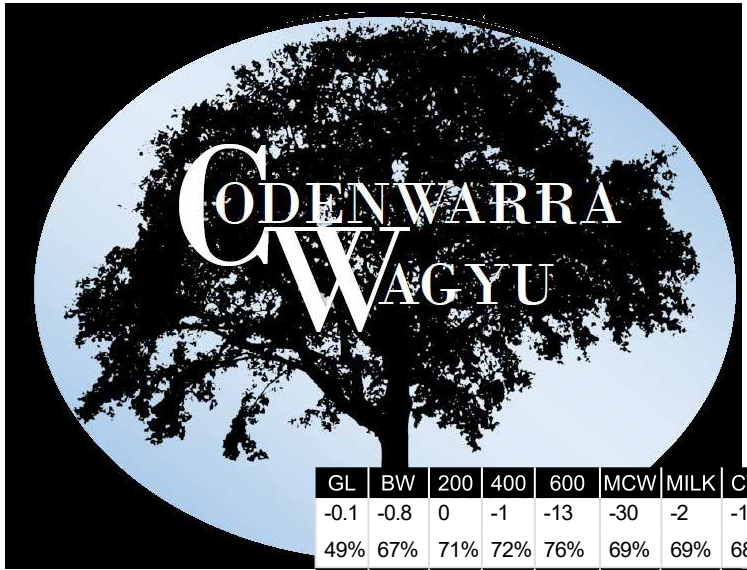
SIRE MCKFB0241 CODENWARRA F B241  
 IMUFP0036 TF ITOMICHI 1/2 (IMP USA)  
 MCKFZ0125 CODENWARRA F Z0125  
 TWAFS0145 TWA SHASHI (IMP USA)

PEDFAJ10787 KIKUTERU DOI J10787 - KURO IKU  
 IMUFMTF150 KIKUTERUSHIGE (IMP USA)  
 PEDFAJ649744 KIKUNAKA 6 J649744

DAM MCKFX0086 CODENWARRA F X0086  
 IMUFN2294 TF ITOHANA 2 (IMP USA)  
 TWAFS0212 TWA DAIRISEKI (IMP USA)  
 PEDFL0554 TF CHIYOTAKE 8 J847346

PURCHASER .....

PRICE .....



JUNE 2019 WAGYU GROUP BREEDPLAN

GL	BW	200	400	600	MCW	MILK	CWt
-0.1	-0.8	0	-1	-13	-30	-2	-11
49%	67%	71%	72%	76%	69%	69%	68%
EMA	RUMP	RBV	MS	MF	SRI	FTI	F1I
-1.1	3.7	-1.7	0.7	0.1	\$55	\$60	\$73
50%	50%	41%	56%	51%			

### NOTES

CODENWARRA 526 This cow MCKFF0526 has been tested Pregnant, the joining was with Multi Sire Group SUMO CATTLE CO MICHIFUKU G002 (MBS, MF% & EMA all top 5 percentile, RBV top 20 percentile) and SUMO CATTLE CO MICHIFUKU M65 (MBS & EMA top 20 percentile, CW top 30 percentile). The cow born 2010, has an above average Marble Score of .6. - PROGENY would expect PREDICTED INDEX VALUES for all Indexes in 70 percentile. Marble Score between +0.8 and +1.

*Whilst all care has been taken in the accuracy of the data provided, the lot notes have been provided by the vendor and The Australian Wagyu Association takes no responsibility over the accuracy of this information. Any warranties or representations in this document in respect to animals are given by the owner and not the AWA.*

# BULLS & COWS

## LOT 62

VENDOR ROBIN M MCCOSKER

MCKFF0533 CODENWARRA 533

REGO No MCKFF0533 COLOUR BLACK  
 SEX F GRADE FULLBLOOD  
 DOB 5/03/2010 BLOOD 100  
 MIP CASE No 238552 GENETIC STATUS B3FU,  
 SNP CASE No 731564 CHSFU, CL164%, F1122%

WKSFM0139 WORLD K'S HARUKI 2 (FB1614)  
 MCKFX0113 CODENWARRA F X0113  
 SUMFU2469 SUMO SHIGE U2469

SIRE MCKFB0237 CODENWARRA F B237  
 IMUFMTF150 KIKUTERUSHIGE (IMP USA)  
 MCKFW0061 CODENWARRA F W0061  
 TWAFS0203 TWA KANDAINA (IMP USA)

PEDFAJ10787 KIKUTERU DOI J10787 - KURO IKU  
 IMUFMTF150 KIKUTERUSHIGE (IMP USA)  
 PEDFAJ649744 KIKUNAKA 6 J649744

DAM MCKFW0061 CODENWARRA F W0061  
 IMUFN2127 TF KIKUHANA (IMP USA)  
 TWAFS0203 TWA KANDAINA (IMP USA)  
 PEDFN2435 TF CHIYOTAKE 8/1A

PURCHASER .....

PRICE .....



JUNE 2019 WAGYU GROUP BREEDPLAN

GL	BW	200	400	600	MCW	MILK	CWt
-0.6	-2.1	-2	-1	-12	-42	-4	-17
51%	72%	77%	78%	82%	80%	75%	74%
EMA	RUMP	RBV	MS	MF	SRI	FTI	F1I
-1.7	0.5	-0.7	0	-0.04	\$16	\$8	\$18
55%	54%	46%	61%	55%			

### NOTES

CODENWARRA 533 This cow MCKFF0533 has been tested Pregnant, the joining was with Multi Sire Group SUMO CATTLE CO MICHIFUKU G002 (MBS, MF% & EMA all top 5 percentile, RBV top 20 percentile) and SUMO CATTLE CO MICHIFUKU M65 (MBS & EMA top 20 percentile, CW top 30 percentile). Cow born 2010- PROGENY would expect Marble Score between .5 & .7.

*Whilst all care has been taken in the accuracy of the data provided, the lot notes have been provided by the vendor and The Australian Wagyu Association takes no responsibility over the accuracy of this information. Any warranties or representations in this document in respect to animals are given by the owner and not the AWA.*

# BULLS & COWS

## LOT 63

VENDOR ROBIN M MCCOSKER

MCKFF0545 CODENWARRA 545

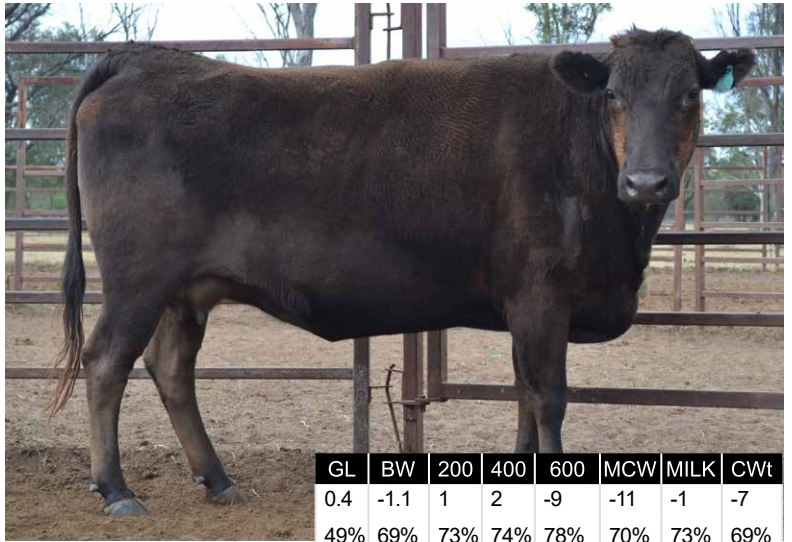
REGO No MCKFF0545 COLOUR BLACK  
 SEX F GRADE FULLBLOOD  
 DOB 21/04/2010 BLOOD 100  
 MIP CASE No 238557 GENETIC STATUS B3FU,  
 SNP CASE No 731566 CHS26%, CL16FU, F1115%

WKSFM0139 WORLD K'S HARUKI 2 (FB1614)  
 MCKFX0113 CODENWARRA F X0113  
 SUMFU2469 SUMO SHIGE U2469  
**SIRE** MCKFB0237 CODENWARRA F B237  
 IMUFMTF150 KIKUTERUSHIGE (IMP USA)  
 MCKFW0061 CODENWARRA F W0061  
 TWAFS0203 TWA KANDAINA (IMP USA)

IMUFJTF40 TERUTANI J2494 TF40 (IMP JAP)  
 IMUFR3258 TF TERUTANI 40/1 (IMP USA)  
 PEDFA2453 TF DAI 2 KINNTOU 3  
**DAM** MCKFX0070 CODENWARRA F X0070  
 IMUFN2127 TF KIKUHANA (IMP USA)  
 IMUFR3241 TF HIKOHIME 34/2 (IMP USA)  
 PEDFA5601 TF HIKOHIME 3/2

PURCHASER .....

PRICE .....



JUNE 2019 WAGYU GROUP BREEDPLAN

GL	BW	200	400	600	MCW	MILK	CWt
0.4	-1.1	1	2	-9	-11	-1	-7
49%	69%	73%	74%	78%	70%	73%	69%
EMA	RUMP	RBV	MS	MF	SRI	FTI	F1I
-2.9	1.1	-1.4	0.3	0.12	\$16	\$31	\$41
50%	52%	42%	55%	51%			

### NOTES

CODENWARRA 545 This cow MCKFF0545 has been tested Pregnant, the joining was with Multi Sire Group SUMO CATTLE CO MICHIFUKU G002 (MBS, MF% & EMA all top 5 percentile, RBV top 20 percentile) and SUMO CATTLE CO MICHIFUKU M65 (MBS & EMA top 20 percentile, CW top 30 percentile). Cow born 2010- PROGENY would expect PREDICTED INDEX VALUES for all Indexes in 75 percentile. Marble Score between .5 & .7.

*Whilst all care has been taken in the accuracy of the data provided, the lot notes have been provided by the vendor and The Australian Wagyu Association takes no responsibility over the accuracy of this information. Any warranties or representations in this document in respect to animals are given by the owner and not the AWA.*

# BULLS & COWS

## LOT 64

VENDOR ROBIN M MCCOSKER

MCKFF0553 CODENWARRA F553

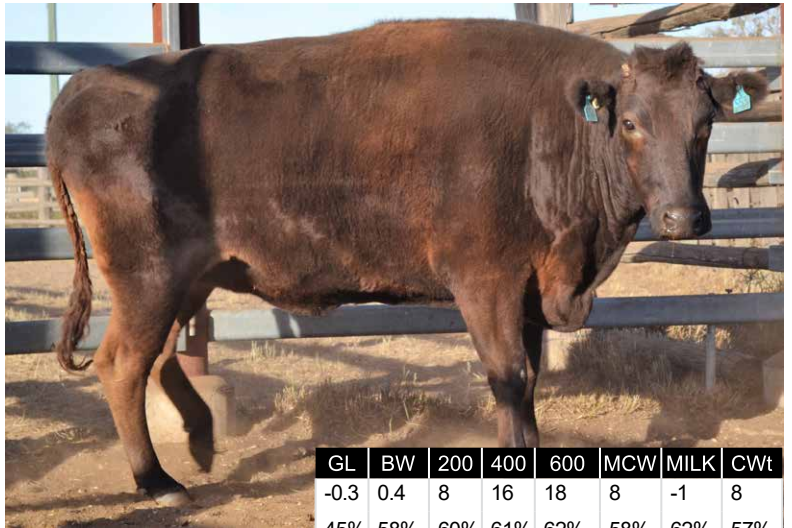
REGO No MCKFF0553 COLOUR BLACK  
 SEX F GRADE FULLBLOOD  
 DOB 16/01/2010 BLOOD 100  
 MIP CASE No 447890 GENETIC STATUS B3FU,  
 SNP CASE No 731797 CHSFU, CL16FU, F1120%

WKSFM0139 WORLD K'S HARUKI 2 (FB1614)  
 MCKFX0113 CODENWARRA F X0113  
 SUMFU2469 SUMO SHIGE U2469  
**SIRE** MCKFB0237 CODENWARRA F B237  
 IMUFMTF150 KIKUTERUSHIGE (IMP USA)  
 MCKFW0061 CODENWARRA F W0061  
 TWAFS0203 TWA KANDAINA (IMP USA)

PEDFA201 MONJIRO J11550  
 WKSFM0139 WORLD K'S HARUKI 2 (FB1614)  
 PEDFA206 SAKURA 2 J741638  
**DAM** MCKFW0049 CODENWARRA F W0049  
 IMUFJTF40 TERUTANI J2494 TF40 (IMP JAP)  
 TWAFS0193 TWA CHOKKAKU (IMP USA)  
 PEDFA2453 TF DAI 2 KINNTOU 3

PURCHASER .....

PRICE .....



JUNE 2019 WAGYU GROUP BREEDPLAN

GL	BW	200	400	600	MCW	MILK	CWt
-0.3	0.4	8	16	18	8	-1	8
45%	58%	60%	61%	62%	58%	62%	57%
EMA	RUMP	RBV	MS	MF	SRI	FTI	F1I
-0.7	1.6	-0.7	-0.3	-0.04	\$66	\$55	\$46
45%	46%	40%	48%	45%			

### NOTES

CODENWARRA 553 This cow MCKFF0553 has a weight of 662kg.

*Whilst all care has been taken in the accuracy of the data provided, the lot notes have been provided by the vendor and The Australian Wagyu Association takes no responsibility over the accuracy of this information. Any warranties or representations in this document in respect to animals are given by the owner and not the AWA.*



# BULLS & COWS

## LOT 65

VENDOR ROBIN M MCCOSKER

MCKFG0605 CODENWARRA 605

REGO No MCKFG0605 COLOUR BLACK  
 SEX F GRADE FULLBLOOD  
 DOB 16/09/2011 BLOOD 100  
 MIP CASE No 271518 GENETIC STATUS B3FU,  
 SNP CASE No 731685 CHSFU, CL16FU, F1174%

PEDFA10632 SHIGESHIGENAMI J10632  
 IMUFQTF148 ITOSHIGENAMI (IMP USA)  
 PEDFA661 FUKUYUKI

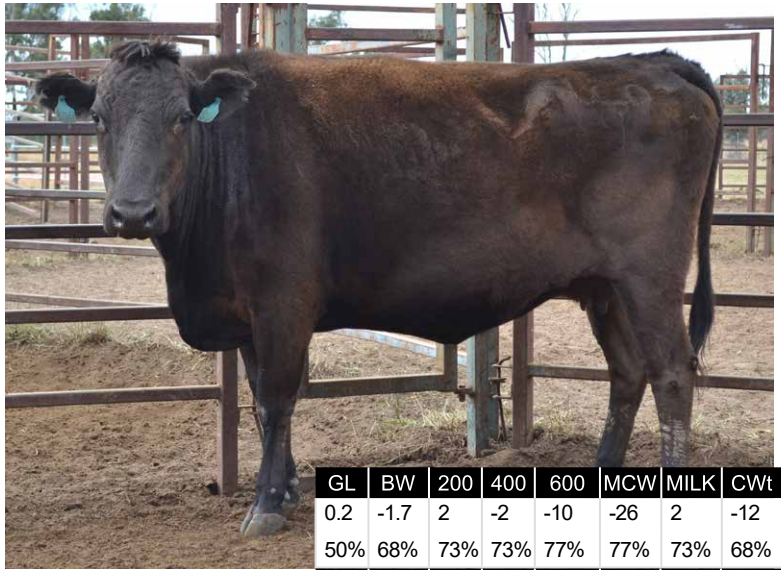
SIRE SMOFD0087 SUMO CATTLE CO ITOSHIGENAMI D087  
 IMUFR3252 TF KIKUHANA 37/2 (IMP USA)  
 SUMFV0231 SUMO HANA V0231  
 SUMFT0088 SUMO F T0088

PEDFAJ10787 KIKUTERU DOI J10787 - KURO IKU  
 IMUFJTF40 TERUTANI J2494 TF40 (IMP JAP)  
 PEDFA538 TANIFUKU 2 J601115

DAM MCKFW0056 CODENWARRA F W0056  
 IMUFQ0402 JVP FUKUKANE 402E (IMP USA)  
 SUMFU2142 SUMO KANE U2142  
 IMUFR3254 TF CHIYOTAKE 22/4 (IMP USA)

PURCHASER .....

PRICE .....



GL	BW	200	400	600	MCW	MILK	CWt
0.2	-1.7	2	-2	-10	-26	2	-12
50%	68%	73%	73%	77%	77%	73%	68%
EMA	RUMP	RBV	MS	MF	SRI	FTI	F1I
0.3	2	-0.8	0.2	0.02	\$39	\$49	\$59
50%	51%	42%	55%	51%			

### NOTES

CODENWARRA 605 This cow MCKFG0605 has been tested Pregnant, the joining was with Multi Sire Group SUMO CATTLE CO ITOSHIGENAMI D0079 (MBS of +1 and EMA of +1.5) and SUMO CATTLE CO MICHIFUKU M155 (MBS +.9 and EMA +2.3). The Wagyu Mating Predictor has the PROGENY results Marble Score of +.6.

*Whilst all care has been taken in the accuracy of the data provided, the lot notes have been provided by the vendor and The Australian Wagyu Association takes no responsibility over the accuracy of this information. Any warranties or representations in this document in respect to animals are given by the owner and not the AWA.*

JUNE 2019 WAGYU GROUP BREEDPLAN

# BULLS & COWS

## LOT 66

VENDOR ROBIN M MCCOSKER

MCKFG0669 CODENWARRA G669

REGO No MCKFG0669 COLOUR BLACK  
 SEX F GRADE FULLBLOOD  
 DOB 15/09/2011 BLOOD 100  
 MIP CASE No 267249 GENETIC STATUS B3FU,  
 SNP CASE No 731655 CHSFU, CL16FU, F1161%

PEDFA10632 SHIGESHIGENAMI J10632  
 IMUFQTF148 ITOSHIGENAMI (IMP USA)  
 PEDFA661 FUKUYUKI

SIRE SMOFD0087 SUMO CATTLE CO ITOSHIGENAMI D087  
 IMUFR3252 TF KIKUHANA 37/2 (IMP USA)  
 SUMFV0231 SUMO HANA V0231  
 SUMFT0088 SUMO F T0088

SUMFV2313 SUMO TERUTANI V2313  
 MCKFA0176 CODENWARRA F A0176  
 MCKFW0056 CODENWARRA F W0056

DAM MCKFC0280 CODENWARRA F C280  
 IMUFMTF150 KIKUTERUSHIGE (IMP USA)  
 MCKFZ0119 CODENWARRA H119  
 SUMFV2049 SUMO TANI V2049

PURCHASER .....

PRICE .....



GL	BW	200	400	600	MCW	MILK	CWt
0.8	1	10	14	24	13	1	12
47%	65%	69%	69%	73%	75%	66%	64%
EMA	RUMP	RBV	MS	MF	SRI	FTI	F1I
-1.3	0.2	-0.6	0	0.02	\$68	\$67	\$55
46%	48%	39%	52%	48%			

### NOTES

CODENWARRA G669 This cow MCKFG0669 has been tested Pregnant, the joining with SUMO CATTLE CO HIRASHIGETAYASU E148 - the TOP RANKING SIRE for Self Replacing Index for the Wagyu breed, with +1.0 marbling. The PROGENY of this joining is predicted to have INDEXES in the top 20 percentile, Carcase Weight in top 10 percentile and a .5 Marble Score.

*Whilst all care has been taken in the accuracy of the data provided, the lot notes have been provided by the vendor and The Australian Wagyu Association takes no responsibility over the accuracy of this information. Any warranties or representations in this document in respect to animals are given by the owner and not the AWA.*

JUNE 2019 WAGYU GROUP BREEDPLAN

# BULLS & COWS

## LOT 67

VENDOR ROBIN M MCCOSKER

MCKFH0818 CODENWARRA 818

REGO No MCKFH0818 COLOUR BLACK  
 SEX F GRADE FULLBLOOD  
 DOB 16/12/2012 BLOOD 100  
 MIP CASE No 328220 GENETIC STATUS B3FU,  
 SNP CASE No 731702 CHS51%, CL16FU, F1111%

PEDFA201 MONJIRO J11550  
 WKSFM0164 WORLD K'S MICHIFUKU  
 PEDFA215 MICHIKO J655635  
**SIRE** SMOFF0145 SUMO CATTLE CO MICHIFUKU F145  
 IMJFAJ2703 ITOMORITAKA J2703 HONGEN (IMP JAP)  
 SMOFD0136 SUMO CATTLE CO TAKA D136  
 SUMFW0069 SUMO RUKI W0069

MCKFX0113 CODENWARRA F X0113  
**DAM** MCKFB0237 CODENWARRA F B237  
 MCKFW0061 CODENWARRA F W0061  
 MCKFF0551 CODENWARRA 551  
 MCKFX0113 CODENWARRA F X0113  
 MCKFA0219 CODENWARRA F A219  
 MCKFW0018 CODENWARRA F W0018

PURCHASER .....

PRICE .....



GL	BW	200	400	600	MCW	MILK	CWt
0.4	-1.6	-3	0	-20	-38	-5	-23
48%	67%	73%	76%	84%	77%	65%	71%
EMA	RUMP	RYB	MS	MF	SRI	FTI	F1I
2.2	1.8	-0.1	0.3	0.08	\$43	\$35	\$48
46%	48%	39%	52%	48%			

### NOTES

CODENWARRA H818 This cow has higher than average RBY and EMA in top 20 percentile - MCKFH0818 has been tested Pregnant, the joining was with Multi Sire Group SUMO CATTLE CO ITOSHIGENAMI D0079 (MBS of +1 and EMA of +1.5) & SUMO CATTLE CO MICHIFUKU M155 (MBS +.9 and EMA +2.3). The Wagyu Mating Predictor has the PROGENY results Marble Score between +.6 and +.7.

*Whilst all care has been taken in the accuracy of the data provided, the lot notes have been provided by the vendor and The Australian Wagyu Association takes no responsibility over the accuracy of this information. Any warranties or representations in this document in respect to animals are given by the owner and not the AWA.*

JUNE 2019 WAGYU GROUP BREEDPLAN

# BULLS & COWS

## LOT 68

VENDOR ROBIN M MCCOSKER

MCKFJ0861 CODENWARRA J861

REGO No MCKFJ0861 COLOUR BLACK  
 SEX F GRADE FULLBLOOD  
 DOB 24/02/2013 BLOOD 100  
 MIP CASE No 382193 GENETIC STATUS B3FU,  
 SNP CASE No 731712 CHS2%, CL16FU, F1154%

PEDFA201 MONJIRO J11550  
 WKSFM0164 WORLD K'S MICHIFUKU  
 PEDFA215 MICHIKO J655635  
**SIRE** SMOFG0002 SUMO CATTLE CO MICHIFUKU G002  
 IMUFQTF148 ITOSHIGENAMI (IMP USA)  
 CCOFD0220 COATES NAMI D220  
 SUMFW0061 SUMO RUKI W0061

MCKFX0113 CODENWARRA F X0113  
**DAM** MCKFB0237 CODENWARRA F B237  
 MCKFW0061 CODENWARRA F W0061  
 MCKFF0560 CODENWARRA 560  
 SUMFV2313 SUMO TERUTANI V2313  
 MCKFA0157 CODENWARRA F A0157  
 MCKFW0018 CODENWARRA F W0018

PURCHASER .....

PRICE .....



GL	BW	200	400	600	MCW	MILK	CWt
0.8	-2.7	-10	-4	-24	-19	-12	-15
48%	68%	74%	76%	84%	77%	69%	71%
EMA	RUMP	RYB	MS	MF	SRI	FTI	F1I
1.3	-0.9	0.2	0.6	0.13	\$56	\$27	\$42
47%	48%	38%	52%	48%			

### NOTES

CODENWARRA J861 This cow has higher than average MBS, EMA, and RBY- MCKFJ0861 has been tested Pregnant, the joining was with Multi Sire Group SUMO CATTLE CO ITOSHIGENAMI D0079 (MBS of +1 and EMA of +1.5) and SUMO CATTLE CO MICHIFUKU M155 (MBS +.9 and EMA +2.3). The Wagyu Mating Predictor has the PROGENY results Marble Score of +.8.

*Whilst all care has been taken in the accuracy of the data provided, the lot notes have been provided by the vendor and The Australian Wagyu Association takes no responsibility over the accuracy of this information. Any warranties or representations in this document in respect to animals are given by the owner and not the AWA.*

JUNE 2019 WAGYU GROUP BREEDPLAN

# BULLS & COWS

## LOT 69

VENDOR ROBIN M MCCOSKER

MCKFJ0941 CODENWARRA J941

REGO No MCKFJ0941 COLOUR BLACK  
 SEX F GRADE FULLBLOOD  
 DOB 15/09/2013 BLOOD 100  
 MIP CASE No 394183 GENETIC STATUS B3FU,  
 SNP CASE No 731581 CHSFU, CL16FU, F1115%

PE DFAJ287 DAI 20 HIRASHIGE J287 - KURO IKU  
 IMJFAJ2351 HIRASHIGETAYASU J2351 HONGEN (IMP JAP)  
 PE DFAJ187250 DAI 5 YURUHIME J187250 - KURO KOH  
**SIRE** SMOFE0148 SUMO CATTLE CO HIRASHIGETAYASU E148  
 IMUFQTF148 ITOSHIGENAMI (IMP USA)  
 SUMFW1433 SUMO NAMI W1433  
 SUMFT0913 SUMO RUKI T0913  
 WKSFM0139 WORLD K'S HARUKI 2 (FB1614)  
 MCKFX0113 CODENWARRA F X0113  
 SUMFU2469 SUMO SHIGE U2469  
**DAM** MCKFB0225 CODENWARRA 225  
 SUMFV2313 SUMO TERUTANI V2313  
 MCKFA0197 CODENWARRA F A0197  
 MCKFX0089 CODENWARRA F X0089

PURCHASER .....

PRICE .....



JUNE 2019 WAGYU GROUP BREEDPLAN

GL	BW	200	400	600	MCW	MILK	CWt
0.3	1	14	21	24	26	0	20
49%	63%	67%	69%	80%	67%	60%	66%
EMA	RUMP	RBY	MS	MF	SRI	FTI	F1I
-0.2	1.9	-0.4	-0.2	0.06	\$105	\$80	\$67
47%	48%	39%	52%	48%			

### NOTES

CODENWARRA J941 This cow MCKFJ0941 has been tested EMPTY. Born 2013, she has a Carcase weight in top 30 percentile.

*Whilst all care has been taken in the accuracy of the data provided, the lot notes have been provided by the vendor and The Australian Wagyu Association takes no responsibility over the accuracy of this information. Any warranties or representations in this document in respect to animals are given by the owner and not the AWA.*

# BULLS & COWS

## LOT 70

VENDOR ROBIN M MCCOSKER

MCKFJ0944 CODENWARRA J944

REGO No MCKFJ0944 COLOUR BLACK  
 SEX F GRADE FULLBLOOD  
 DOB 11/09/2013 BLOOD 100  
 MIP CASE No 397457 GENETIC STATUS B3FU,  
 SNP CASE No 731818 CHSFU, CL16FU, F1150%

WKSFN2892 WORLD K'S TAKAZAKURA  
 TWAFR0007 TWA SHIKIKAN (IMP USA)  
 WKSFL0976 WORLD K'S SUZUTANI (FB1617)  
**SIRE** SMOFD0107 SUMO CATTLE CO SHIKIKAN D107  
 IMUFR3236 TF ITOHANA 38/1 (IMP USA)  
 SUMFW1742 SUMO HANA W1742  
 SUMFT0786 SUMO YASU T786  
 IMUFJTF40 TERUTANI J2494 TF40 (IMP JAP)  
 SUMFV2313 SUMO TERUTANI V2313  
 TWAFS0313 TWA SHIKATA  
**DAM** MCKFA0196 CODENWARRA F A0196  
 IMUFR3258 TF TERUTANI 40/1 (IMP USA)  
 MCKFX0111 CODENWARRA F X0111  
 SUMFV2073 SUMO RUKI V2073

PURCHASER .....

PRICE .....



JUNE 2019 WAGYU GROUP BREEDPLAN

GL	BW	200	400	600	MCW	MILK	CWt
-0.3	-1.3	0	1	-1	6	1	-3
47%	64%	70%	72%	82%	75%	62%	68%
EMA	RUMP	RBY	MS	MF	SRI	FTI	F1I
0.5	-1.4	0.1	0.6	0.08	\$56	\$61	\$64
46%	47%	38%	52%	47%			

### NOTES

CODENWARRA J944 This cow MCKFJ0944 with above average RBY and MBS has been tested Pregnant, the joining was with Multi Sire Group SUMO CATTLE CO ITOSHIGENAMI M115 (MBS +1.2 being top 10 percentile, MF% top 5 percentile) and SUMO CATTLE CO MICHIFUKU M119 (MBS +1.1 and MF% are in top 15 percentile for the breed). The PROGENY of this joining would have an expected TCI between \$105 and \$97. Expected Mating Predictor for PROGENY has a Marble Score of +.9.

*Whilst all care has been taken in the accuracy of the data provided, the lot notes have been provided by the vendor and The Australian Wagyu Association takes no responsibility over the accuracy of this information. Any warranties or representations in this document in respect to animals are given by the owner and not the AWA.*

# BULLS & COWS

## LOT 71

VENDOR ROBIN M MCCOSKER

MCKFJ0946 CODENWARRA J946

REGO No MCKFJ0946 COLOUR BLACK  
 SEX F GRADE FULLBLOOD  
 DOB 21/09/2013 BLOOD 100  
 MIP CASE No 397459 GENETIC STATUS B3FU,  
 SNP CASE No 731582 CHSFU, CL16FU, F1151%

WKSFN2892 WORLD K'S TAKAZAKURA  
 TWAFR0007 TWA SHIKIKAN (IMP USA)  
 WKSFL0976 WORLD K'S SUZUTANI (FB1617)  
**SIRE** SMOFD0107 SUMO CATTLE CO SHIKIKAN D107  
 IMUFR3236 TF ITOHANA 38/1 (IMP USA)  
 SUMFW1742 SUMO HANA W1742  
 SUMFT0786 SUMO YASU T786

IMUFJTF40 TERUTANI J2494 TF40 (IMP JAP)  
 IMUFR3258 TF TERUTANI 40/1 (IMP USA)  
 PEDFA2453 TF DAI 2 KINNTOU 3  
**DAM** MCKFZ0130 CODENWARRA H130  
 WKSFM0139 WORLD K'S HARUKI 2 (FB1614)  
 SUMFV2357 SUMO RUKI V2357  
 IMUFR3254 TF CHIYOTAKE 22/4 (IMP USA)

PURCHASER .....

PRICE .....



JUNE 2019 WAGYU GROUP BREEDPLAN

GL	BW	200	400	600	MCW	MILK	CWt
0.1	-0.2	3	6	-2	4	4	-1
51%	64%	67%	70%	80%	67%	60%	66%
EMA	RUMP	RBY	MS	MF	SRI	FTI	F1I
0.2	1.5	-0.9	0.7	0.15	\$49	\$73	\$78
50%	51%	42%	55%	51%			

### NOTES

CODENWARRA J946 This cow MCKFJ0946 has been tested EMPTY. Born 2013, she has an average Marble Score of .6 and an average F1 index.

*Whilst all care has been taken in the accuracy of the data provided, the lot notes have been provided by the vendor and The Australian Wagyu Association takes no responsibility over the accuracy of this information. Any warranties or representations in this document in respect to animals are given by the owner and not the AWA.*

# BULLS & COWS

## LOT 72

VENDOR ROBIN M MCCOSKER

MCKFK0973 CODENWARRA K973

REGO No MCKFK0973 COLOUR BLACK  
 SEX F GRADE FULLBLOOD  
 DOB 7/01/2014 BLOOD 100  
 MIP CASE No 395570 GENETIC STATUS B3FU,  
 SNP CASE No 731746 CHS50%, CL16FU, F1119%

PEDFA201 MONJIRO J11550  
 WKSFM0164 WORLD K'S MICHIFUKU  
 PEDFA215 MICHIKO J655635  
**SIRE** SMOFF0145 SUMO CATTLE CO MICHIFUKU F145  
 IMJFAJ2703 ITOMORITAKA J2703 HONGEN (IMP JAP)  
 SMOFD0136 SUMO CATTLE CO TAKA D136  
 SUMFW0069 SUMO RUKI W0069

MCKFX0113 CODENWARRA F X0113  
 MCKFB0237 CODENWARRA F B237  
 MCKFW0061 CODENWARRA F W0061

**DAM** MCKFE0478 CODENWARRA 478  
 IMUFR3258 TF TERUTANI 40/1 (IMP USA)  
 MCKFX0074 CODENWARRA F X0074  
 SUMFU2431 SUMO KANE U2431

PURCHASER .....

PRICE .....



JUNE 2019 WAGYU GROUP BREEDPLAN

GL	BW	200	400	600	MCW	MILK	CWt
-0.2	-2.2	-5	-6	-16	-32	-10	-25
46%	63%	70%	74%	70%	62%	68%	62%
EMA	RUMP	RBY	MS	MF	SRI	FTI	F1I
0.4	1	-0.3	0.1	0.06	\$15	\$0	\$11
44%	46%	38%	49%	46%			

### NOTES

CODENWARRA K973 This cow MCKFK0973 has been tested Pregnant, the joining was with Multi Sire Group SUMO CATTLE CO ITOSHIGENAMI D062 (MBS of +1 and EMA of +2.5), SUMO CATTLE CO SHIKIKAN M213 (MBS +1.2 and EMA +1.4) and SUMO CATTLE CO ITOSHIGENAMI D114 (MBS +6 and EMA +2.8). The Wagyu Mating Predictor has the PROGENY results Marble Score between +.4 and +.7.

*Whilst all care has been taken in the accuracy of the data provided, the lot notes have been provided by the vendor and The Australian Wagyu Association takes no responsibility over the accuracy of this information. Any warranties or representations in this document in respect to animals are given by the owner and not the AWA.*

# BULLS & COWS

## LOT 73

VENDOR ROBIN M MCCOSKER

MCKFK1041 CODENWARRA K1041

REGO No MCKFK1041 COLOUR BLACK  
 SEX F GRADE FULLBLOOD  
 DOB 15/09/2014 BLOOD 100  
 MIP CASE No 427277 GENETIC STATUS B3FU,  
 SNP CASE No 735045 CHS25%, CL162%, F1152%

IMJFAJ2703 ITOMORITAKA J2703 HONGEN (IMP JAP)  
 SMOFE0112 SUMO CATTLE CO ITOMORITAKA E112  
 SUMFW1216 SUMO KAN W1216

SIRE MCKFH0760 CODENWARRA 760

RJNFV2374 NABO F V2374

MCKFC0347 CODENWARRA F C347

MCKFW0053 CODENWARRA F W0053

IMUFQTF148 ITOSHIGENAMI (IMP USA)

SMOFD0087 SUMO CATTLE CO ITOSHIGENAMI D087

SUMFV0231 SUMO HANA V0231

DAM MCKFG0600 CODENWARRA 600

IMUFJTF40 TERUTANI J2494 TF40 (IMP JAP)

MCKFX0077 CODENWARRA F X0077

SUMFV2363 SUMO MACHI V2363

PURCHASER .....

PRICE .....



JUNE 2019 WAGYU GROUP BREEDPLAN

GL	BW	200	400	600	MCW	MILK	CWt
1.6	-0.9	1	-4	-20	-14	6	-24
42%	63%	69%	71%	81%	72%	64%	66%
EMA	RUMP	RBY	MS	MF	SRI	FTI	F1I
1	1.7	-0.6	0.3	0.02	\$12	\$27	\$42
40%	41%	33%	46%	41%			

### NOTES

CODENWARRA K1041 This cow MCKFK1041 has been tested Pregnant, the joining was with SUMO CATTLE CO HIRASHIGETAYASU M131 - Born in 2005, this cows has an above Eye Muscle Area score. The sire SMOFM0131 has Indexes in the top 15 percentile and Marble score of +1 and MF% in top 5 percentile. The PROGENY of this joining would have an expected TCI of \$127 and an estimated Marble score of +.7.

*Whilst all care has been taken in the accuracy of the data provided, the lot notes have been provided by the vendor and The Australian Wagyu Association takes no responsibility over the accuracy of this information. Any warranties or representations in this document in respect to animals are given by the owner and not the AWA.*

# BULLS & COWS

## LOT 74

VENDOR ROBIN M MCCOSKER

MCKFK1134 CODENWARRA K1134

REGO No MCKFK1134 COLOUR BLACK  
 SEX F GRADE FULLBLOOD  
 DOB 1/11/2014 BLOOD 100  
 MIP CASE No 447990 GENETIC STATUS B3F,  
 SNP CASE No 731764 CHSF, CL16F, F11F, F13F

PEDFA201 MONJIRO J11550

WKSFM0164 WORLD K'S MICHIFUKU

PEDFA215 MICHIKO J655635

SIRE SMOFG0002 SUMO CATTLE CO MICHIFUKU G002

IMUFQTF148 ITOSHIGENAMI (IMP USA)

CCOFD0220 COATES NAMI D220

SUMFW0061 SUMO RUKI W0061

MCKFX0113 CODENWARRA F X0113

MCKFB0237 CODENWARRA F B237

MCKFW0061 CODENWARRA F W0061

DAM MCKFE0478 CODENWARRA 478

IMUFR3258 TF TERUTANI 40/1 (IMP USA)

MCKFX0074 CODENWARRA F X0074

SUMFU2431 SUMO KANE U2431

PURCHASER .....

PRICE .....



JUNE 2019 WAGYU GROUP BREEDPLAN

GL	BW	200	400	600	MCW	MILK	CWt
0.7	-1.6	-5	0	-15	-17	-11	-10
48%	66%	74%	76%	83%	77%	67%	70%
EMA	RUMP	RBY	MS	MF	SRI	FTI	F1I
1.4	1	-0.1	0.3	0.07	\$56	\$26	\$37
47%	48%	39%	52%	48%			

### NOTES

CODENWARRA K1134 This cow MCKFK1134 has been tested Pregnant, the joining was with Multi Sire Group SUMO CATTLE CO ITOSHIGENAMI D062 (MBS of +1 and EMA of +2.5), SUMO CATTLE CO SHIKIKAN M213 (MBS +1.2 and EMA +1.4) & SUMO CATTLE CO ITOSHIGENAMI D114 (MBS +.6 and EMA +2.8). The Cow has a higher than average Eye Muscle Area score. The Wagyu Mating Predictor has the PROGENY results MBS between +.8 and +.4, EMA between +1.4 and +2.

*Whilst all care has been taken in the accuracy of the data provided, the lot notes have been provided by the vendor and The Australian Wagyu Association takes no responsibility over the accuracy of this information. Any warranties or representations in this document in respect to animals are given by the owner and not the AWA.*

# BULLS & COWS

## LOT 75

VENDOR ROBIN M MCCOSKER

MCKFK1148 CODENWARRA K1148

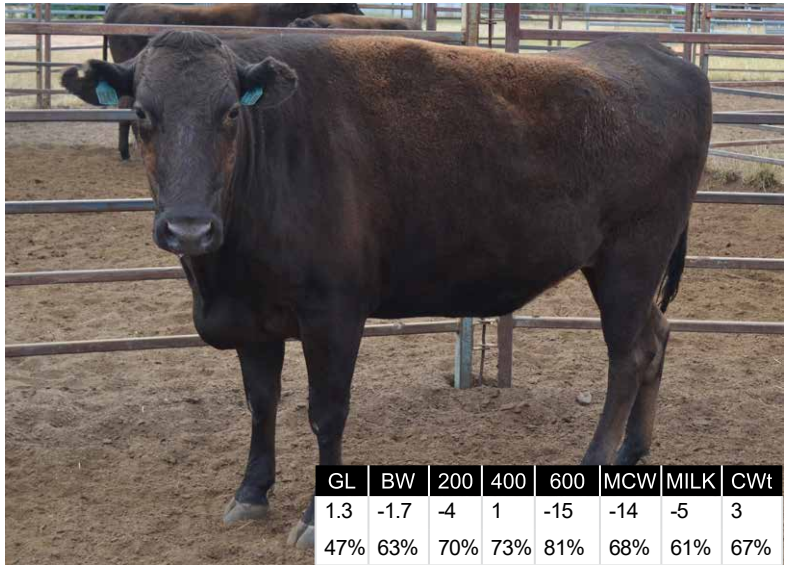
REGO No MCKFK1148 COLOUR BLACK  
 SEX F GRADE FULLBLOOD  
 DOB 15/09/2014 BLOOD 100  
 MIP CASE No 448004 GENETIC STATUS B3FU,  
 SNP CASE No 731777 CHSFU, CL16FU, F1159%

PEDFA201 MONJIRO J11550  
 WKSFM0164 WORLD K'S MICHIFUKU  
 PEDFA215 MICHIKO J655635  
**SIRE** SMOFG0002 SUMO CATTLE CO MICHIFUKU G002  
 IMUFQTF148 ITOSHIGENAMI (IMP USA)  
 CCOFD0220 COATES NAMI D220  
 SUMFW0061 SUMO RUKI W0061

MCKFX0113 CODENWARRA F X0113  
 MCKFB0231 CODENWARRA F B231  
 MCKFW0046 CODENWARRA F W0046  
**DAM** MCKFF0498 CODENWARRA 498  
 SUMFV2313 SUMO TERUTANI V2313  
 MCKFA0173 CODENWARRA F A0173  
 MCKFX0101 CODENWARRA F X0101

PURCHASER .....

PRICE .....



JUNE 2019 WAGYU GROUP BREEDPLAN

GL	BW	200	400	600	MCW	MILK	CWt
1.3	-1.7	-4	1	-15	-14	-5	3
47%	63%	70%	73%	81%	68%	61%	67%
EMA	RUMP	RBY	MS	MF	SRI	FTI	F1I
3.5	1	0.1	0.7	0.13	\$90	\$77	\$88
45%	46%	37%	50%	46%			

### NOTES

CODENWARRA K1148 This cow MCKFK1148 has been tested EMPTY. Born 2014 - she has Eye Muscle Area is in top 5 percentile, average RBY, and Marble Score of .8 (top 30 percentile).

*Whilst all care has been taken in the accuracy of the data provided, the lot notes have been provided by the vendor and The Australian Wagyu Association takes no responsibility over the accuracy of this information. Any warranties or representations in this document in respect to animals are given by the owner and not the AWA.*

# BULLS & COWS

## LOT 76

VENDOR ROBIN M MCCOSKER

MCKFK1172 CODENWARRA K1172

REGO No MCKFK1172 COLOUR BLACK  
 SEX F GRADE FULLBLOOD  
 DOB 1/09/2014 BLOOD 100  
 MIP CASE No 448028 GENETIC STATUS B3FU,  
 SNP CASE No 757848 CHS51%, CL16FU, F1120%

PEDFAJ1555 ITOHIRASHIGE J1555  
 IMJFAJ2703 ITOMORITAKA J2703 HONGEN (IMP JAP)  
 PEDFAJ565554 DAI 6 OEFUJII J565554 - KURO KOH  
**SIRE** SMOFE0112 SUMO CATTLE CO ITOMORITAKA E112  
 TWAFR0007 TWA SHIKIKAN (IMP USA)  
 SUMFW1216 SUMO KAN W1216  
 SUMFT0913 SUMO RUKI T0913

WKSFM0139 WORLD K'S HARUKI 2 (FB1614)  
 MCKFX0113 CODENWARRA F X0113  
 SUMFU2469 SUMO SHIGE U2469  
**DAM** MCKFA0222 CODENWARRA F A222  
 IMUFMTF150 KIKUTERUSHIGE (IMP USA)  
 MCKFZ0120 CODENWARRA H120  
 MCKFW0020 CODENWARRA F W0020

PURCHASER .....

PRICE .....



JUNE 2019 WAGYU GROUP BREEDPLAN

GL	BW	200	400	600	MCW	MILK	CWt
0.1	0.5	6	12	11	-8	0	-6
46%	66%	72%	75%	82%	76%	63%	69%
EMA	RUMP	RBY	MS	MF	SRI	FTI	F1I
1.2	1.8	-0.1	-0.1	-0.01	\$38	\$35	\$28
46%	47%	41%	51%	47%			

### NOTES

CODENWARRA K1172 This cow MCKFK1172 has been tested Pregnant, the joining was with Multi Sire Group SUMO CATTLE CO MICHIFUKU G002 (MBS, MF% & EMA all top 5 percentile, RBY top 20 percentile) and SUMO CATTLE CO MICHIFUKU M65 (MBS & EMA top 20 percentile, CW top 30 percentile). This Cow born in 2014 has an above average Eye Muscle Area score. The PROGENY has PREDICTED INDEX VALUES for all Indexes above 75 percentile. Marble Score between .5 & .6.

*Whilst all care has been taken in the accuracy of the data provided, the lot notes have been provided by the vendor and The Australian Wagyu Association takes no responsibility over the accuracy of this information. Any warranties or representations in this document in respect to animals are given by the owner and not the AWA.*

# BULLS & COWS

## LOT 77

VENDOR ROBIN M MCCOSKER

MCKFK1186 CODENWARRA K1186

REGO No MCKFK1186 COLOUR BLACK  
 SEX F GRADE FULLBLOOD  
 DOB 15/09/2014 BLOOD 100  
 MIP CASE No 448042 GENETIC STATUS B3FU,  
 SNP CASE No 731848 CHS3%, CL16FU, F1150%

PEDFA10632 SHIGESHIGENAMI J10632  
 IMUFQTF148 ITOSHIGENAMI (IMP USA)  
 PEDFA661 FUKUYUKI

SIRE SMOFD0087 SUMO CATTLE CO ITOSHIGENAMI D087  
 IMUFR3252 TF KIKUHANA 37/2 (IMP USA)  
 SUMFV0231 SUMO HANA V0231  
 SUMFT0088 SUMO F T0088

IMUFJTF40 TERUTANI J2494 TF40 (IMP JAP)  
 SUMFV2313 SUMO TERUTANI V2313  
 TWAFS0313 TWA SHIKATA

DAM MCKFA0155 CODENWARRA F A0155  
 WKSFM0164 WORLD K'S MICHIFUKU  
 MCKFW0011 CODENWARRA F W0011  
 TWAFS0259 TWA ANSHIN (IMP USA)

PURCHASER .....

PRICE .....



JUNE 2019 WAGYU GROUP BREEDPLAN

GL	BW	200	400	600	MCW	MILK	CWt
1.8	0.8	7	9	10	7	2	8
46%	63%	68%	71%	78%	75%	65%	67%
EMA	RUMP	RBY	MS	MF	SRI	FTI	F1I
-0.4	0.7	-0.6	0.3	0.07	\$69	\$60	\$56
46%	47%	40%	52%	47%			

### NOTES

CODENWARRA K1186 This cow MCKFK1186 has been tested Pregnant, the joining was with Multi Sire Group SUMO CATTLE CO ITOSHIGENAMI M115 (MBS +1.2 being top 10 percentile, MF% top 5 percentile) and SUMO CATTLE CO MICHIFUKU M119 (MBS +1.1 and MF% are in top 15 percentile for the breed). The PROGENY of this joining would have an expected TCI between \$97 and \$105 and a MS between +.7 and +.8.

*Whilst all care has been taken in the accuracy of the data provided, the lot notes have been provided by the vendor and The Australian Wagyu Association takes no responsibility over the accuracy of this information. Any warranties or representations in this document in respect to animals are given by the owner and not the AWA.*

# BULLS & COWS

## LOT 78

VENDOR ROBIN M MCCOSKER

MCKFL01203 CODENWARRA L1203

REGO No MCKFL01203 COLOUR BLACK  
 SEX F GRADE FULLBLOOD  
 DOB 1/01/2015 BLOOD 100  
 MIP CASE No 448059 GENETIC STATUS B3FU,  
 SNP CASE No 731786 CHS63%, CL16FU, F116%

PEDFA201 MONJIRO J11550  
 WKSFM0164 WORLD K'S MICHIFUKU  
 PEDFA215 MICHIKO J655635

SIRE SMOFF0145 SUMO CATTLE CO MICHIFUKU F145  
 IMJFAJ2703 ITOMORITAKA J2703 HONGEN (IMP JAP)  
 SMOFD0136 SUMO CATTLE CO TAKA D136  
 SUMFW0069 SUMO RUKI W0069

WKSFM0164 WORLD K'S MICHIFUKU  
 SMOFF0145 SUMO CATTLE CO MICHIFUKU F145  
 SMOFD0136 SUMO CATTLE CO TAKA D136

DAM MCKFH0818 CODENWARRA 818  
 MCKFB0237 CODENWARRA F B237  
 MCKFF0551 CODENWARRA 551  
 MCKFA0219 CODENWARRA F A219

PURCHASER .....

PRICE .....



JUNE 2019 WAGYU GROUP BREEDPLAN

GL	BW	200	400	600	MCW	MILK	CWt
-0.1	-2.1	-4	0	-17	-40	-6	-23
55%	70%	74%	75%	78%	71%	64%	69%
EMA	RUMP	RBY	MS	MF	SRI	FTI	F1I
2.3	1.3	0.2	0.6	0.16	\$54	\$47	\$58
53%	55%	44%	58%	54%			

### NOTES

CODENWARRA L1203 This cow MCKFL01203 has been tested Pregnant, the joining was with Multi Sire Group SUMO CATTLE CO ITOSHIGENAMI D062 (MBS of +1 and EMA of +2.5), SUMO CATTLE CO SHIKIKAN M213 (MBS +1.2 and EMA +1.4) & SUMO CATTLE CO ITOSHIGENAMI D114 (MBS +.6 and EMA +2.8). The Cow has EMA of 2.3, top 20 percentile, RBY in top 30 percentile and above average Marble Score. The Wagyu Mating Predictor has the PROGENY results MBS between +.6 and +.9, EMA between +1.9 and +2.5.

*Whilst all care has been taken in the accuracy of the data provided, the lot notes have been provided by the vendor and The Australian Wagyu Association takes no responsibility over the accuracy of this information. Any warranties or representations in this document in respect to animals are given by the owner and not the AWA.*