



Established 1969 by RM Barr Smith

ANNIVERSARY SALE

20th Annual
On property
Production Sale

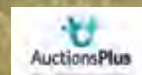
50 Years
Breeding
Charolais

100 Years
Farm Ownership
of Mt William

1pm Friday 8th of February 2019

On Property near Willaura Victoria

AND via AuctionsPlus



51 CHAROLAIS BULLS

10 CHAROLAIS HEIFERS

Mount William is J-BAS 8. All cattle are tested negative to pestivirus. Bulls are semen tested by Nationwide AB.

www.mtwilliamcharolais.com.au

WELCOME to all in the Charolais Family, we hope 2019 is a prosperous year for all in the Agricultural Industry. The beef market is showing good early signs with early weaner sales seeing Charolais Cross steers drawing a circle around \$3 per Kilo live weight. Congratulations to Corangamite Park for winning the best presented Pen at Colac with their Charolais/Red Angus Composite cross calves \$2.99 per kg. And to B & K Kershaw who topped the sale with 10/11-Month-old Charolais Angus Cross steers 388kg making \$1,260 per head, \$3.25per kg. Both runs were sired by Mt William Bulls.

2019 marks a year of milestones for us at Mt William. It is our 20th annual on property sale. And 50 years since my Grandfather RM Barr Smith began inseminating Friesian and Shorthorn cows, with the first batch of Charolais semen to arrive in Australia. The year was 1969 and many of you know the story, but RM had seen Charolais performing well in arid parts of Mexico and thought the breed would fare well in Australian Conditions. In the early days the majority of our bulls were sold privately to northern producers. My mother Anne Cochran (nee Abbott), with the support of Bryce Galvin, conducted the first on property sale in 1999 with around 20 bulls. Now a days the majority of our bulls are sold to southern breeders, with some stud sires heading north and a few sold internationally.

The third milestone 2019 brings is it marks 100 years of ownership of Mount William Station by the Barr Smith Family and their descendants. The property was purchased in 1919 after the first world war and has undergone many transformations and survived succession, drought, fire and flood. Our Son Hugo along with his cousins Scarlett, Floyd and Sinclair are the 6th Generation of Barr Smith descendants to occupy the property. The Charolais have been here for half of that time.

As I was mustering on my oldest horse the other day it occurred to me this 17-year-old gelding had given my 14 years of service. Longevity. The qualities of Longevity, reliability, consistency and predictability are harder to find these days in an age of instant gratification. These are the quality's we need; solid sustainable quality in a product time after time. The cattle in the Mt William Breeding herd have been grazing under these six-hundred-year-old redgums for five decades. The herd has played its role in the Australian Charolais Story. This is by no means an overnight operation and it takes generations to build in consistency.

There is no doubt our investment in quality genetics has helped to accelerate the herd and we now have a very strong base of quality Charolais females to compliment the top Charolais sires of today. Last year this was evident with our record-breaking sale. Top priced bull sold in Victoria \$26,000 to Rosedale Charolais, and record sale average for Victoria of \$8,202. We were also awarded runner up in the 2018 RASV Heifer Challenge for our group of 10 PTIC Charolais Heifers. This was great for the breed and a great honour for us.

So, it goes without saying that the base we are breeding from contains all those qualities of consistency, predictability fertility good conformation good feet and legs and excellent temperaments. We have a good spread of sires in this year's draft and Represented by Palgrove Hannibal, Silverstream Geddes, Mont William Kakadu, Rangan Roundup, Mount William Gifford and Dash, Palgrove Dover and Rosedale E-Tag.

This year's draft have been prepared on pasture, oaten hay and a light grain ration. They are probably a few kilos lighter than last years draft due to the late autumn break and not getting quiet as good a start. However, they are in good nick, present well and contain all the genetic ingredients to further your commercial or stud enterprise.

We have selected 10 heifers to be sold in this year's sale. They have been prepared on pasture. And with the late rains we received in November December helping to maintain them with a small amount of green pick in the paddocks. . They represent a number of sire lines including our first drop of Rangan Roundup and Mount William Kakadu daughters. They have been joined to Palgrove Nitro an exciting young Yearling sire we purchased at Palgrove this year.

We are offering a select amount of Palgrove Hannibal semen for the first time in this year's sale. Hannibal semen will be exported to New Zealand this year to a well-known stud. We are offering stud breeders an exclusive opportunity to access this elite sire. Two lots of 5 straws will be offered in this year's sale. Hannibal has and continues to breed exceptionally well for Mt William and Palgrove. Palgrove Legend equal topping the 2017 Palgrove sale at \$40,000 and Mt William Monolith topping the 2018 Mt William Sale at \$26,000 both Hannibal sons.

We would like to take this opportunity to thank those who have contributed to the preparation of the sale bulls and catalogue this year. Thank you to Lucy Main, Bryce Galvin, Terry Dove, Ross Milne, Mark Facy to Thomas the Frenchman and Kristin the Danish Drover. Special thanks to my wife Victoria and son Hugo for all their support over the past year without which we would not have been able to achieve what we have. Most importantly I would like to thank all our clients, past and present, for your continued support and faith in our product.

Even if you do not require a bull this year, we would still love you to join us for a drink and a bite after the sale to help us celebrate these milestones.

Rob Abbott - Principal, Mount William Charolais.





ON PROPERTY PRODUCTION SALE

COMMENCING AT 1.00PM, FRIDAY 8TH FEBRUARY 2018



The sale will also be interfaced with AuctionsPlus.
Go to <http://auctionsplus.com.au/>

- **51 Charolais Bulls**
- **10 Charolais Heifers (PTIC)**

Participating in the 2019 RASV Heifer Challenge.

Mount William is J-Bas 8.

All cattle are tested negative to pestivirus. Bulls are semen tested by Nationwide AB.

*Preview Sale Cattle at
our Beef Week Field
Day on Saturday the
2nd of February OR
Inspect at any time by
appointment.*

SELLING AGENTS:



Ross Milne

Mobile: 0408 057 558

Email: ross.milne@elders.com.au

Nell Cooper (Radar)

Mobile: 0419 600 354

Sean Simpson

Mobile: 0418 320 335



Terry Dove

Tel: (03) 5236 6150

Mobile: 0407 825 125

Phil Douglas

Mobile: 0437 303 202

Shelby Howard

Mobile: 0432 341 394

CONTACT US:



Rob Abbott

Mobile: 0417 502 692

Email: rob@mtwilliamcharolais.com.au

Bryce Galvin

Tel: (02) 6920 3572

Mobile: 0409 169 712



AuctionsPlus

Tel: (02) 9262 4222

Email: info@auctionsplus.com.au

Lunch and Afternoon Tea catered for by Willaura Hospital Auxiliary

ACCOMMODATION

SHEARERS QUARTERS

On Property accommodation:

There are 8 refurbished rooms available to rent thru Air BnB. Hot showers and communal breakfast room. Please visit Air BnB for details or contact William Abbott on 0448 886 258 or email willabb@gmail.com

LOCAL ACCOMMODATION

Royal Mail Hotel Dunkeld - (03) 5577 2241

Best Western Statesman Motor Inn Ararat - (03) 5352 4111

Ararat Colonial Lodge - (03) 5352 4644

Ararat Motor Inn (4 Star) - (03) 5352 2521

Alternatively, Halls Gap in the Grampians is approximately 40 minutes away and has a wide variety of accommodation. Well worth a visit. For more information go to www.visithallsgap.com.au

CONDITIONS OF SALE



- All animals will be offered at auction. If not sold, they will be retained by the stud.
- Inspection any time before the sale can be arranged with Rob Abbott.
- Telephone bidding available by contacting Ross Milne or Terry Dove, prior to sale.
- Registration transfer fees are the responsibility of the vendor.

AUCTIONSPLUS: The sale will be interfaced with AuctionsPlus. Before you can bid in an auction, you MUST be registered. Registration and connection to an auction over the internet is completely FREE! Please ensure you register at least 2 business days prior to the sale. Visit the AuctionsPlus website for more information – <http://auctionsplus.com.au/>



FERTILITY GUARANTEE: Bulls are sold as fertile and capable of natural service. All bulls are semen tested and reproductively structurally assessed by AB Nationwide. Any claim on a bull must be made within 12 months after sale date and be accompanied by a Veterinary Certificate. The Veterinary report must state that, the bull has not suffered any injury or maltreatment which could have affected his breeding ability since delivery to the purchaser. Bulls which do not breed will be replaced by an animal of equal value or a credit less salvage value at the next sale. This clause will be strictly adhered to. Strictly no cash refunds. Please select your stock carefully. We are only too happy to assist you with your selection. 2019 Sale heifers are due to calve August / September 2019.

All females are sold as guaranteed breeders. Where a Purchaser submits a Veterinary Certificate to the Vendor within 12 months of the date of sale, that a female of joinable age is infertile and in his/her opinion has not suffered any injury or maltreatment which could have affected her breeding ability, the Female will be replaced by an animal of equal value or a credit less salvage value at the next sale. This will not apply where an attempt has been made to transfer embryos from the female. All Heifers will be pregested via a scan prior to sale day. Certificates available.

HEALTH: The Mount William Herd is J-Bas 8. All Animals have been drenched and vaccinated with 7 in 1. All sale animals have been tested negative for Pesti Virus. The Mount William Herd has been tested negative for Pesti Virus. If you are concerned about the presence of Pesti Virus in your herd we suggest you consult a vet regarding a vaccination programme. All animals derive from an accredited Free T.B. and Brucellosis Herd. Any test required by interstate purchasers will be done at Mount William, at costs to the Vendor.

DELIVERY: Transport will be the responsibility of the Purchaser. Mount William will work in conjunction with McEwan's Livestock Transport to reduce transport costs to purchasers. Please speak to us or our Agents about your transport requirements.

INSURANCE: Insurance is available. We encourage you to consider insuring your purchase. Please speak with either Elders or Charles Stewart Dove Agents.

REBATE: The Vendors agree to a rebate of 3% to outside agents who attend the sale or buy on behalf of their clients and settle within 7 days. A rebate of 1% to outside agents introducing approved buyers to the vendor prior to the sale and settling on their behalf within 7 days. Phone call, text message or email must be received prior to the sale.

PLEASE NOTE: This catalogue has been compiled with all due care and attention, however we or our agents cannot be held liable for the accuracy, use or interpretation of the information in this catalogue. People entering the property for the purpose of the sale do so at their own risk.



CHARLES
STEWART DOVE
PTY LTD

Stock & Station Agent -Auctioneer

OFFICE

Tel: (03) 5231 1910

TERRY DOVE

Tel: (03) 5236 6150

Mobile: 0407 825 125

SALEYARD OFFICE

Tel: (03) 5231 1838

Fax: (03) 5232 1024

PO Box 202, Colac, Vic. 3250 Tel: (03) 5231 1910 Fax: (03) 5232 1024

YOUR LOCAL TEAM

Estimated Breeding Values (EBVs)

Calving Ease EBVs (%) are based on calving difficulty scores, birth weights and gestation length information. More positive EBVs are favourable and indicate easier calving.

- **CE % Direct = Direct Calving Ease** - The EBV for direct calving ease indicates the influence of the sire on calving ease in purebred females calving at two years of age.

- **CE % Daughters = Daughters' Calving Ease** - The EBV for daughters' calving ease indicates how easily that sire's daughters will calve at two years of age.

Gestation Length EBV (days) is an estimate of the time from conception to the birth of the calf and is based on Artificial Insemination and hand mating records. Lower (negative) Gestation Length EBVs indicate shorter gestation length and therefore easier calving and increased growth after birth.

Birth Weight EBV (kg) is based on the measured birth weight of progeny, adjusted for dam age. The lower the value the lighter the calf at birth and the lower the likelihood of a difficult birth. This is particularly important when selecting sires for use over heifers.

200-Day Growth EBV (kg) is calculated from the weight of progeny taken between 80 and 300 days of age. Values are adjusted to 200 days and for age of dam. This EBV is the best single estimate of an animal's genetic merit for growth to early ages.

400-Day Weight EBV (kg) is calculated from the weight of progeny taken between 301 and 500 days of age, adjusted to 400 days and for age of dam. This EBV is the best single estimate of an animal's genetic merit for yearling weight.

600-Day Weight EBV (kg) is calculated from the weight of progeny taken between 501 and 900 days of age, adjusted to 600 days and for age of dam. This EBV is the best single estimate of an animal's genetic merit for growth beyond yearling age.

Mature Cow Weight EBV (kg) is based on the cow weight when the calf is weighed for weaning, adjusted to 5 years of age. This EBV is an estimate of the genetic difference in cow weight at 5 years of age and is an indicator of growth at later ages and potential feed maintenance requirements of the females in the breeding herd. Steer breeders wishing to grow animals out to a larger weight may also use the Mature Cow Weight EBV.

Milk EBV (kg) is an estimate of an animal's milking ability. For sires, this EBV indicates the effect of the daughter's milking ability, inherited from the sire, on the 200-day weights of her calves. For dams, it indicates her milking ability.

Scrotal Size EBV (cm) is calculated from the circumference of the scrotum taken between 300 and 700 days of age and adjusted to 400 days of age. This EBV is an estimate of an animal's genetic merit for scrotal size. There is also a small negative correlation with age of puberty in female progeny and therefore selection for increased scrotal size will result in reduced age at calving of female progeny.

Carcase Weight EBV (kg) is based on abattoir carcase records and is an indicator of the genetic differences in carcase weight at the standard age of 650 days.

Eye Muscle Area EBV (sq cm) is calculated from measurements from live animal ultrasound scans and from abattoir carcase data, adjusted to a standard 300 kg carcase. This EBV estimates genetic differences in eye muscle area at the 12/13th rib site of a 300 kg dressed carcase. More positive EBVs indicate better muscling on animals. Sires with relatively higher Eye Muscle Area EBVs are expected to produce better muscled and higher percentage yielding progeny at the same carcase weight than will sires with lower Eye Muscle Area EBVs.

Rib Fat and Rump Fat EBVs (mm) are calculated from measurements of subcutaneous fat depth at the 12/13 rib site and the P8 rump site (from live animal ultrasound scans and from abattoir carcasses) and are adjusted to a standard 300 kg carcase. These EBVs are indicators of the genetic differences in fat distribution on a standard 300 kg carcase. Sires with low, or negative, fat EBVs are expected to produce leaner progeny at any particular carcase weight than will sires with higher EBVs.

Retail Beef Yield EBV (%) indicates genetic differences between animals for retail yield percentage in a standard 300 kg carcase. Sires with larger EBVs are expected to produce progeny with higher yielding carcasses.

Intramuscular Fat EBV (%) is an estimate of the genetic difference in the percentage of intramuscular fat (marbling) at the 12/13th rib site in a 300 kg carcase. Depending on market targets, larger more positive values are generally more favourable.

Selection Indices

Domestic Index (\$) - Estimates the genetic differences between animals in net profitability per cow joined for an example commercial herd with a British cow base (eg Angus) targeting grass-finished production for the domestic trade. This Index assumes pasture grown & finished steers weighing 430 kg (240 kg HSCW and 6 mm P8 fat depth) at 12 months. Daughters are retained or sold for breeding therefore maternal traits are of importance. In response to industry feedback, positive emphasis has been placed on finishing ability.

Export Index (\$) - Estimates the genetic differences between animals in net profitability per cow joined for an example commercial herd with a British cow base (eg Angus) targeting the production of steers for export markets. This Index assumes pasture grown & finished steers weighing 700 kg (380 kg HSCW and 9 mm P8 fat depth) at 29 months. Daughters are retained or sold for breeding therefore maternal traits are of importance. In response to industry feedback, positive emphasis has been placed on finishing ability.

Accuracy

Accuracy (%) is based on the amount of performance information available on the animal and its close relatives - particularly the number of progeny analysed. Accuracy is also based on the heritability of the trait and the genetic correlations with other recorded traits. Hence accuracy indicates the "confidence level" of the EBV. The higher the accuracy value the lower the likelihood of change in the animal's EBV as more information is analysed for that animal or its relatives. Even though an EBV with a low accuracy may change in the future, it is still the best estimate of an animal's genetic merit for that trait. As more information becomes available, an EBV is just as likely to increase in value, as it is to decrease.

Accuracy values range from 0-99%. The following guide is given for interpreting accuracy:

- **less than 50%: Low accuracy.** EBVs are preliminary and could change substantially as more performance information becomes available.

- **50-74%: Medium accuracy.** Usually based on the animal's own records and pedigree.

- **75-90%: Medium-high accuracy.** Some progeny information included. EBVs may change with addition of more progeny data.

- **more than 90%: High accuracy** estimate of the animal's true breeding value.

As a rule, animals should be compared on EBVs regardless of accuracy. However, where two animals have similar EBVs the one with higher accuracy could be the safer choice, assuming other factors are equal.

For further information please contact the Charolais Society or Charolais BREEDPLAN.

Breed Average EBVs for 2016 Born Calves

	CE Dir	CE Dtrs	GL	BW	200	400	600	MCW	Milk	SS	Carc Wt	EMA	Rib	Rump	RBY	IMF
EBV	+1.2	+0.8	-2.5	+0.4	+12	+23	+32	+33	+7	+1.0	+19	+1.5	+0.3	+0.3	+0.2	+0.2

Breed Average Selection Indices

Dom\$	+\$23
Exp\$	+\$32
NTerm\$	+\$17

"Charolais breed celebrates 50 years of success"

*By Kylie Nicholls, Stock and Land
www.stockandland.com.au*

This year marks 50 years since Charolais genetics were introduced to Australia and the breed continues to grow in popularity, mainly due to its success in crossbreeding programs.

According to Mt William stud principal and chair of the Victorian Charolais Society, Rob Abbott, during this time breeders have focused their efforts on producing a distinct Australian type of Charolais.

"The modern Australian Charolais is a refined, soft, moderately muscled animal with quality carcass traits, improved mobility and calving ease which is comparable with other popular cattle breeds," he said.

"Breeders have also been careful to maintain their temperament, constitution and ability to add extra weight on their progeny, which makes them the ideal terminal sire for a range of cross-breeding operations."

Mr Abbott also highlighted the versatility of Charolais, which are being used successfully in both northern breeding programs as well as throughout south-east Australia.

"They suit a range of markets from the domestic to the export trade.

"You regularly see good lines of Charolais-cross calves and they are generally always 20-30 kilograms heavier than the other weaners on offer."

He said a focus on performance recording during the past 10 years has resulted in significant improvement in Estimated Breeding Values measurements and accuracy.

Charolais have also been performing very well in recent progeny tests.

"It is exciting to think about what will happen in the next 50 years, there is a number of Australian Charolais bulls being marketed overseas and I think we will see more and more genetics exported in the future."



Elizabeth and Bob Barr Smith, founders of Mt William Charolais.



A good line up of bulls in the early years with Drover Rick Oram circa 1975



Talgoona Kansas, a great Sire for Mt William during the 1990's



Charolais females on the fenceline in North Argyle with Major Mitchell Plateau, Sugar Loaf and Mt William in the background circa 1980.

Photos reproduced from "Charolais In Australia" by Joan Vickers.



CELEBRATING 50 YEARS OF MT WILLIAM CHAROLAIS

~ Mount William Charolais Founding Sires ~

1	Sucre	F.F.	ORDINAIRE
2	Salomon	F.F.	NAVETTE
3	Siroco	F.F.	POIVROT
4	Superieur	F.F.	TONDVILLE
5	Angola	F.F.	QUI VA LA
6	Criquet	F.F.	NUAGEUSE
7	Argent	F.F.	ULTRA
8	Cacao	F.F.	REGENCE
9	Salopian	F.F.	THEMIDOR
10	Castor	F.F.	TAMINEUSE
11	Adamo	F.F.	OBJECTOR
12	Charmant	F.F.	ECLIPSE
13	Censeur	F.F.	SURE
14	Carabineur	F.F.	ROMAN
15	Clevis	F.F.	RUSSE
16	Ajaccio	F.F.	ULM
17	Apollon	F.F.	SUSETTE
18	Bahire Ois	E.F.	TITAN
19	Alpha Khan	F.F.	THESES
20	Emir De Jhe	F.F.	ARAGON
21	Abascalon	F.F.	TERPSICHOE
22	Matching Clement	E.F.	VOLTAIRE
23	Fairthebaite	E.F.	VAREUSE
24	Charogal	E.F.	ROMEO
25	Calicot	F.F.	DLGA
26	Diplomate	F.F.	RAJON
27	Aramis	F.F.	NOISETTE
28	Credington	E.F.	ADMIRABLE
29	Juanita	F.F.	AUSTRALIEN
30	Louis	F.F.	ORANDI
			PERLE
			TAMBOUR
			RAFALE
			TEXAS
			URANIE
			ADMIRABLE
			ACTION
			VOLTAIRE
			TIROLICANE
			SAPEUR
			NUNE
			SALOPIAN
			ANEMONE
			APOLLON
			EMIR DE THE
			FAWLEY FIONA
			VALENTIN

"Sucre"

An extract of the meticulous records kept by my Grandfather, Bob Barr Smith. Here he lists the Charolais sires used, beginning in 1969 with the newly imported semen of the Full French sire Sucre.

My Grandfathers interest in Charolais began in 1960 during a trip to France which led to a lifelong enthusiasm for the breed. An enthusiasm he has passed down through 5 generations - so far! Bob and Elizabeth attended many Charolais World Conferences and developed a strong network of friends in the Charolais industry.

Since 1969 Mount William Charolais has continued to use top quality Charolais Sires. In the early years the majority of the bull's were sourced from France and the UK. In later years bulls have been sourced from Canada, the USA, Scotland as well as Australian Studs including Talgoona, Palgrove, Medburn, White Lakes, Temana, Gunadoo, Kadlunga, Rosedale, Silverstream (NZ), Rangan and Waterford.

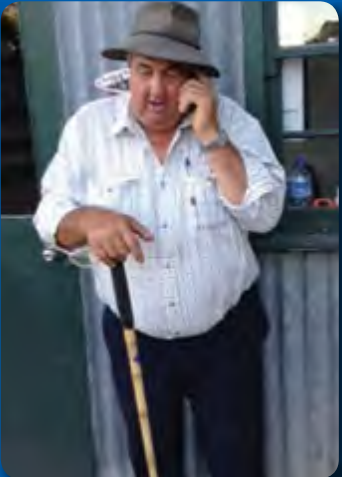
In 1987 Mount William Charolais used one of our first home bred full French Sires, Mount William E2F. Since then, we have used many home bred Mount William Sires in a herd which has grown to include a solid base of over 300 breeding cows and heifers. We have used over 120 Charolais sires in our breeding programme which has spanned 50 years.

CELEBRATING A GREAT CATTLE MAN - TERRY DOVE

As 2019 is a time for us to reflect on the history of our stud and property it is also timely to reflect on the contribution that certain individuals have made to the success of this enterprise. I'm sure there will be many tributes and kind words written about the contribution Terry Dove has made to the cattle industry down here in Victoria and to the Charolais Breed. To have created demand for what is an excellent product, to encourage people to get into Charolais all the time backing it up with his own Actions. Terry and Marilyn run a successful pure Charolais commercial operation selling calves direct to feedlots. The beauty of Terry and Marilyn is they make a great team and with the addition of Nugget the Jack Russel are a hard combination to beat.

Terry first started doing business with our family in the 1980's, his first dealings were with my Grandfather RM 'Bob' Barr Smith. Terrys first dealing was on a bull that Grandfather described as: "he's got nuts and he's polled" simple as that. Terry bought the bull and this started a long-term relationship that has spanned three generations. I never had a conversation with Terry where I came out feeling worse off. Straight down the line, solid advice a huge supporter of Mt William Charolais. A career worth celebrating. On farm tours Terry is famous for leaving the gate open and saying "don't worry we will beat them back there" testament to the work his 400,000kms plus Toyota Prado had done.

Terry is a once in a lifetime Agent and you would be hard pressed to find that sort of loyalty in today's climate. He is a great example to other agents of how things can be done. It would be feeble to try and thank Terry for all he has done. The thing is you can't thank someone enough who has made that sort of contribution to your family. As we celebrate 20/50/100-year milestones we also wanted to take the time out to celebrate the career of a great cattle man Terry Dove.



PALGROVE HANNIBAL (AI) (ET) (P) (R/F)

TATTOO: PK H1312E

MXV COUGARHILL HANK 720G MC200052 (PED -52E)

SIRE: PCC SUDDEN IMPACT 848U PEMC321017 (OAC D1017E) (P)

SPARROWS TEMPEST 174K PFC290732 (PED -732E) (P)

PALGROVE QUINTERO (PK Q228E)

DAM: PALGROVE DIGNA 84 (PK W283E)

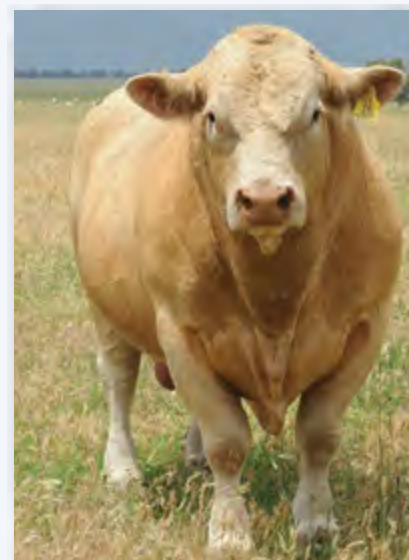
PALGROVE DIGNA 44 R/F (PK Q188E)

December 2018 Australasian Charolais BREEDPLAN Analysis										
	CE Dir	CE Dtrs	GL	BW	200	400	600	MCW	Milk	SS
EBV	-23.3	+3.9	-4.0	+2.0	+17	+41	+55	+44	+13	+2.0
Acc	66%	52%	92%	83%	84%	84%	91%	78%	61%	88%
	Carc Wt	EMA	Rib	Rump	RBV	IMF	SELECTION INDICES			
EBV	+32	+5.6	+2.4	+3.0	-0.3	+1.6	Dom\$	Exp\$	NTerm\$	
Acc	76%	67%	78%	77%	70%	66%	+\$5	+\$4	+\$4	

COMMENTS: Hannibal was one of the sale features in Palgrove's 2014 sale. He is a polled red factor ET bull by Canadian National Champion PCC Sudden Impact. His donor Dam produced 6 sons, sold to Australian Studs for a \$23,000 average. He has an exceptional pedigree, is a sensible mature size with natural thickness, plenty of softness and a sleek coat. His growth and carcass EBV's are outstanding. Hannibal's notoriety has grown significantly in the past two bull selling seasons. 20 of his sons averaged \$10,850 last year at Mt William and in 2017 six sons averaged \$19,000 and topped the sale at \$40,000 at Palgrove. Hannibal is one of those bulls who simply breeds true to form, above expectation, and has proven to be a standout for the modern Charolais breed. Hannibal's genetics are sought after and will make their way to New Zealand later this year. 18 Hannibal sons are on offer in this year's sale.

HANNIBAL EBVS AT THE TOP OF THE BREED:

Top 25% CE Dtrs, top 20% gestation length, top 15% 200, top 5% 400 and 600 day weights, top 25% MCW, top 10% milk, top 15% scrotal size, top 5% carcass weight, trait leader EMA, top 1% for rib, rump and IMF.



MOUNT WILLIAM KAKADU (AI) (P)

TATTOO: BS K16E

BALTHAYOCK ADONIS MBM0020431 UK542626101162 (IAE A431F) (P)

SIRE: BLELACK DIGGER MBM0038543 (IAE D8543F) (P)

GALCANTRAY ABBEY MBF0023749 MBF0023749 (IAE A3749F) (P)

ROSEDALE BOSS (MR B206E)

DAM: MOUNT WILLIAM ESTHER E107 (BS E107E)

MOUNT WILLIAM CLEO C109 (BS C109E)

December 2018 Australasian Charolais BREEDPLAN Analysis										
	CE Dir	CE Dtrs	GL	BW	200	400	600	MCW	Milk	SS
EBV	+3.7	-3.0	-3.3	-0.6	+7	+18	+23	+9	+11	-0.3
Acc	41%	34%	71%	67%	73%	77%	85%	72%	44%	77%
	Carc Wt	EMA	Rib	Rump	RBV	IMF	SELECTION INDICES			
EBV	+24	+3.4	-0.4	-0.5	+1.4	-0.1	Dom\$	Exp\$	NTerm\$	
Acc	71%	59%	68%	67%	64%	59%	+\$21	+\$24	+\$18	



COMMENTS: We retained Kakadu from our 2014 drop of bulls. His Sire Digger produced our top selling bull in 2016 at \$17,000. He was chosen for his conformation, clean front end, power and muscle content. His Dam E107 is a beautiful polled Boss female who delivers consistent quality progeny. Kakadu has two drops of calves on the ground and we have been suitably impressed with his progeny. He is a very powerful bull with substance who moves well and has always had a good temperament. 9 sons and 3 daughters sell in this sale.

Top 30% CE Dir, Top 30% GL, Top 20% BW, Top 25% milk, Top 25% Carc Wt, Top 5% EMA, Top 5% RBV.



SILVERSTREAM GEDDES G102 (P)

TATTOO: OAN G102D

SILVERSTREAM BOOKMAKER B87 083060087E (OAN B87E) (P)
SIRE: SILVERSTREAM ENTICER E30 083090030E (OAN E30E) (P)
 SILVERSTREAM JULIE A27 083050027E (OAN A27E)
 HIGHWAY STEFAN S52 (625 W52E)
DAM: SILVERSTREAM DOLLY V5 083040005C (OAN V5C)
 SILVERSTREAM T89 083020089B (OAN T89B)



December 2018 Australasian Charolais BREEDPLAN Analysis										
	CE Dir	CE Dtrs	GL	BW	200	400	600	MCW	Milk	SS
EBV	+2.3	+4.1	+0.5	+1.6	+15	+42	+59	+71	+0	+2.1
Acc	74%	62%	93%	95%	93%	94%	93%	83%	77%	92%
	Carc Wt	EMA	Rib	Rump	RBV	IMF	SELECTION INDICES			
EBV	+38	+3.4	+0.7	+1.0	+0.5	-0.2	Dom\$	Exp\$	NTerm\$	
Acc	82%	70%	79%	78%	72%	66%	+\$45	+\$68	+\$34	

Top 25% CE Dtrs, top 25% 200, top 5% 400 and 600 day weights, top 5% MCW, top 10% scrotal size, trait leader for carcas weight, top 5% EMA, top 25% rib and rump, top 30% RBV, top 10% domestic, top 5% export and northern terminal index.

COMMENTS: Geddes has proved to be very successful export sire for the NZ stud Silverstream Charolais. His semen was exported to Canada following in the footsteps of Silverstream Evolution. Geddes sired two of the highest priced bulls in Canada in 2015-16 Sos Chuckwagon and High Bluff Casanova. Geddes continues to be a major seller for Semex. We used Geddes in our AI programme for his bone and thickness and have been very impressed by his progeny, heifers and bulls.

MOUNT WILLIAM GIFFORD (AI) (P) (TW)

TATTOO: BS G19E

EATONS PREDICTOR 9230 M304405 (PED J9230E)
SIRE: LT WESTERN SPUR 2061 PLD M645786 (OAU X2061E) (P)
 LT MAIDEN'S BREEZE 8242P F822166 (PED T8242E) (P)
 KADLUNGA VICTOR (KDA Y1E)
DAM: MOUNT WILLIAM CARMEN C34 (BS C34E)
 MOUNT WILLIAM (BS X30E)



December 2018 Australasian Charolais BREEDPLAN Analysis										
	CE Dir	CE Dtrs	GL	BW	200	400	600	MCW	Milk	SS
EBV	+8.4	+8.5	-3.6	-0.3	+8	+13	+22	+22	+6	+2.3
Acc	59%	53%	57%	69%	80%	84%	87%	76%	61%	80%
	Carc Wt	EMA	Rib	Rump	RBV	IMF	SELECTION INDICES			
EBV	+13	+1.3	+1.8	+2.7	-0.7	+0.0	Dom\$	Exp\$	NTerm\$	
Acc	74%	63%	71%	70%	67%	62%	+\$41	+\$63	+\$22	

Top 10% CE Dir, top 5% CE Dtrs, top 25% gestation length and birth weight, top 10% scrotal size, rib, fat, top 5% rump fat, top 15% domestic, top 10% export, top 25% northern terminal index.

COMMENTS: Gifford continues to breed well at Mt William. Still sound at 8 years of age, a reliable breeding bull producing low birthweight easy calving progeny. A soft structurally correct polled bull, one we find hard to retire, as he continues to exceed our expectations.

RANGAN ROUNDUP K36 (AI) (P) (R/F)

TATTOO: RAN K36E

MXS VERMILLION 527R MC299214 (OAC A9214E) (P)
SIRE: MERIT ROUNDUP 9508W PMC326558 (OAC E6558E) (P)
 MERIT YOLANDA 7244T PFC361301 (PED -1301E)
 HARVIE REDEMPTION 36P MC286641 (OAC Z6641E) (P)
DAM: RANGAN PARK BELLE H125 (RAN H125E) (P)
 PALGROVE BELLE 21 (PK P158D)



December 2018 Australasian Charolais BREEDPLAN Analysis										
	CE Dir	CE Dtrs	GL	BW	200	400	600	MCW	Milk	SS
EBV	-2.4	-2.7	-3.2	+0.4	+27	+55	+72	+65	+3	+5.2
Acc	62%	47%	83%	80%	76%	78%	81%	71%	53%	85%
	Carc Wt	EMA	Rib	Rump	RBV	IMF	SELECTION INDICES			
EBV	+36	-1.3	-0.7	-0.8	-0.4	+0.3	Dom\$	Exp\$	NTerm\$	
Acc	69%	62%	71%	70%	66%	62%	+\$39	+\$59	+\$31	

Top 1% 200, 400, 600 day weights, top 5% MCW, top 1% carcase weight, trait leader scrotal size, top 30% IMF, top 15% domestic, top 10% export, top 5% N Term.

COMMENTS: Roundups first drop of bulls and heifers hit the sale ring in our anniversary sale this year. He was the standout and top priced bull in Rangans 2016 bull sale. We purchased him originally to go over heifers but he has developed into a formidably powerful sire. 48cm scrotal at 22 months an incredible set of EBV's he has a number of grunt'y sons in this years draft. An exciting sire who is leaving a great drop of females in the herd.

PALGROVE DOVER (AI) (P)

TATTOO: PK D191E

LT WYOMING WIND 4020 PLD M411450 (OAU P4020E) (P)

SIRE: PALGROVE VIAGRA (PK V92E) (P)

PALGROVE ESTELLA 73 (PK S201E)

PALGROVE VERTICO (PK V325E)

DAM: PALGROVE FLARE 83 (PK A137E)

PALGROVE FLARE 44 (PK W116E)



December 2018 Australasian Charolais BREEDPLAN Analysis										
	CE Dir	CE Dtrs	GL	BW	200	400	600	MCW	Milk	SS
EBV	+6.8	-0.5	-4.8	+1.3	+18	+32	+33	+36	+8	+1.0
Acc	60%	62%	79%	73%	82%	83%	85%	78%	70%	72%
	Carc Wt	EMA	Rib	Rump	RBV	IMF	SELECTION INDICES			
EBV	+25	+5.1	+1.5	+2.1	+0.6	+0.4	Dom\$	Exp\$	NTerm\$	
Acc	74%	63%	68%	68%	66%	62%	+\$43	+\$53	+\$28	

COMMENTS: Dover continues to find a place in our AI programme. Last year Dover semen sold to Conquest Charolais and Chalambar Charolais studs for \$85 and \$95 per straw. Dover is a structurally correct Polled Bull with some fairly handy Palgrove Bloodlines in his pedigree. Dover has good length, muscling and doing ability coupled with a fantastic temperament. He has a classy set of EBV's being at the top end for most traits.

Top 15% CE Dir, top 15% GL, top 10% 200, top 15% 400 day weights, top 30% milk, top 20% carcass weight, top 1% EMA, top 5% rib, top 10% rump, top 25% RBV, top 25% IMF, top 10% domestic, top 15% export, top 10% N term.

ROSEDALE E-TAG (P)

TATTOO: MR E160E

MINNIE-VALE DEPUTY (SGS V78E) (P)

SIRE: ROSEDALE ZINGER (MR Z18E) (P)

ROSEDALE NICKY X7 (MR X7E) (P)

FERNVALE TRAPPER (FEN T50E)

DAM: ROSEDALE LUCY A210 (MR A210E) (P)

ROSEDALE LUCY V69 (MR V69E) (P)



December 2018 Australasian Charolais BREEDPLAN Analysis										
	CE Dir	CE Dtrs	GL	BW	200	400	600	MCW	Milk	SS
EBV	+0.6	+0.9	-2.2	-0.1	+13	+21	+35	+37	+7	+0.8
Acc	63%	61%	64%	80%	84%	86%	92%	80%	63%	82%
	Carc Wt	EMA	Rib	Rump	RBV	IMF	SELECTION INDICES			
EBV	+15	+0.4	+0.8	+1.1	-0.8	+0.7	Dom\$	Exp\$	NTerm\$	
Acc	79%	69%	78%	77%	73%	68%	+\$23	+\$36	+\$19	

COMMENTS: E-Tag was selected in the 2011 Rosedale Sale by Bryce and Rob for his structure and presence. He is a very correct bull that moves well and has been used successfully in our breeding programme at Mt William. E-Tag developed into a very sound and powerful polled sire who has bred some excellent females.

Top 30% birth weight, top 35% 200 day weight, top 20% rib and rump fat, top 20% retail beef yield, top 10% IMF.

MOUNT WILLIAM DASH D62 (P)

TATTOO: BS D62E

PLATINUM WIND-FALL W75E (AJ1 W75E) (P)

SIRE: PALGROVE ZAPP (PK Z175E) (P)

PALGROVE FESTOON 96 (PK X114E)

MOUNT WILLIAM REUBEN (BS R105E)

DAM: MOUNT WILLIAM U9E (BS U9E)

MOUNT WILLIAM ROSEMARY (BS R10E)



December 2018 Australasian Charolais BREEDPLAN Analysis										
	CE Dir	CE Dtrs	GL	BW	200	400	600	MCW	Milk	SS
EBV	+6.5	+4.0	-2.4	-0.8	-1	-7	-16	-21	+7	+1.2
Acc	63%	60%	78%	84%	89%	90%	93%	86%	75%	79%
	Carc Wt	EMA	Rib	Rump	RBV	IMF	SELECTION INDICES			
EBV	-13	+1.9	+1.8	+2.1	-0.4	+0.3	Dom\$	Exp\$	NTerm\$	
Acc	83%	71%	78%	77%	73%	72%	+\$19	+\$23	+\$2	

COMMENTS: Dash is a bull we bred by Palgrove Zapp (purchased by Don Holt for \$32,000 at Palgrove). Dash is a thick set, well muscled bull who puts plenty of grunt into his progeny. He was used in the Charolais Society's 2011 Southern BIN Project Trial, alongside some other top Charolais sires. Dash has done a great job in our herd.

Top 20% CE Dir, top 25% CE DTRS, top 20% birth weight, top 30% EMA, top 5% rib, top 10% rump, top 30% retail beef yield.

REID STOCKFEEDS

The Professional Approach to Feeding.

Proudly recommended by
Mt William Charolais

**Premium, energy feeds for excellent digestibility
and feed conversion efficiency.**

Full range of lifecycle feeds available:

- Start 'Em Up • Grow 'Em Up
- Beef 'Em Up • Keep 'Em Up
- Show & Sale



1300 REID FEED

1 MOUNT WILLIAM NIGHT CAT (P)

PCC SUDDEN IMPACT 848U PEMC321017 (OAC D1017E) (P)

SIRE: PALGROVE HANNIBAL (PK H1312E) (P)

PALGROVE DIGNA 84 (PK W283E)

PALGROVE DOVER (PK D191E) (P)

DAM: MOUNT WILLIAM GLOWING (BS G113E) (P)

MOUNT WILLIAM (BS Y46E)

December 2018 Australasian Charolais BREEDPLAN Analysis										
	CE Dir	CE Dtrs	GL	BW	200	400	600	MCW	Milk	SS
EBV	-8.8	+0.7	-3.5	+1.9	+17	+36	+46	+43	+8	+2.5
Acc	39%	34%	53%	56%	61%	63%	70%	61%	42%	73%
	Carc Wt	EMA	Rib	Rump	RBV	IMF	SELECTION INDICES			
EBV	+28	+4.9	+1.5	+2.0	+0.3	+0.9	Dom\$	Exp\$	NTerm\$	
Acc	58%	49%	53%	52%	51%	48%	+\$24	+\$31	+\$19	

Purchaser / \$:

TATTOO: BS N128E

DOB: 17/04/2017



COMMENTS: Night Cat is an early maturing, long, well muscled, very well put together bull. He has a good balance of EBVs strong Weight and Carcase Traits. A great genetic package combining Dover and Hannibal to start the draft. Top 30% GL, top 15% 200, top 10% 400, top 15% 600, top 30% MCW, top 30% milk, top 5% SS, top 10% carcase weight, top 1% EMA, top 5% rib, top 10% rump, top 15% IMF.

2 MOUNT WILLIAM NAPOLEON (P)

PCC SUDDEN IMPACT 848U PEMC321017 (OAC D1017E) (P)

SIRE: PALGROVE HANNIBAL (PK H1312E) (P)

PALGROVE DIGNA 84 (PK W283E)

ROSEDALE BOSS (MR B206E)

DAM: MOUNT WILLIAM EMILY E80 (BS E80E)

MOUNT WILLIAM BILLIE B50 (BS B50E)

MID PARENT EBVS - JANUARY 2019										
	CE Dir	CE Dtrs	GL	BW	200	400	600	MCW	Milk	SS
EBV	-9.8	-2.0	-3.1	+1.4	+16	+34	+46	+30	+11	+0.9
	Carc Wt	EMA	Rib	Rump	RBV	IMF	SELECTION INDICES			
EBV	+27	+3.8	+1.3	+1.5	+0.3	+0.8	Dom\$	Exp\$	NTerm\$	
							+\$14	+\$16	+\$14	

The EBVs shown are indicative figures only. Current figures available on the Field Day (2 Feb) or via Charolais Society website (www.charolais.com.au) at the start of Feb.

Purchaser / \$:

TATTOO: BS N89E

DOB: 30/03/2017



COMMENTS: Napoleon is a medium maturing, deep, smooth bodied, thick set meat machine with great raw data to match his phenotype. A very classy bull with a great head carriage. This bull is defiantly one for the studs to look at. His scans put him in the top of the drop for EMA, Rib and P8. Heaps of style. Top 20% 200, top 15% 400, top 25% 600, top 25% milk, top 30% carcase weight, top 15% EMA, top 15% RBV, top 15% NTerm Index.

3 MOUNT WILLIAM NAPLES (R/F)

PCC SUDDEN IMPACT 848U PEMC321017 (OAC D1017E) (P)

SIRE: PALGROVE HANNIBAL (PK H1312E) (P)

PALGROVE DIGNA 84 (PK W283E)

PALGROVE ZAPP (PK Z175E) (P)

DAM: MOUNT WILLIAM DORIGO D91 (BS D91E)

MOUNT WILLIAM (BS W91E)

MID PARENT EBVS - JANUARY 2019										
	CE Dir	CE Dtrs	GL	BW	200	400	600	MCW	Milk	SS
EBV	-9.4	+6.0	-4.1	+0.6	+9	+20	+24	+13	+8	+1.6
	Carc Wt	EMA	Rib	Rump	RBV	IMF	SELECTION INDICES			
EBV	+15	+3.7	+1.8	+2.2	-0.2	+0.9	Dom\$	Exp\$	NTerm\$	
							+\$13	+\$15	+\$4	

The EBVs shown are indicative figures only. Current figures available on the Field Day (2 Feb) or via Charolais Society website (www.charolais.com.au) at the start of Feb.

Purchaser / \$:

TATTOO: BS N107E

DOB: 05/04/2017



COMMENTS: Naples is a medium maturing, long, deep, well structured, stylish red factor bull. He has a great top line with a smooth body and is a great example of the Hannibal sons. A great northern bull with frame, stretch and substance. His raw scans put him at the top of the draft for fat EMA and IMF. Top 10% CEDTRS, top 20% GL, top 10% milk, top 20% SS, top 5% EMA, top 5% rib and rump, top 5% IMF.



4 MOUNT WILLIAM NEPTUNE (AI) (P)

SILVERSTREAM ENTICER E30 083090030E (OAN E30E) (P)
SIRE: SILVERSTREAM GEDDES G102 083110102D (OAN G102D) (P)
SILVERSTREAM DOLLY V5 083040005C (OAN V5C)
KADLUNGA VICTOR (KDA Y1E)
DAM: MOUNT WILLIAM GUARANTEED (BS G174E)
MOUNT WILLIAM (BS W86E)

TATTOO: BS N30E

DOB: 19/03/2017



COMMENTS: Neptune is an early maturing, deep, well muscled bull who is very thick set but maintains great softness. The first of the Geddes Sons to be offered.

Top 15% MCW, top 20% EMA, top 15% rib, top 10% rump fat.

MID PARENT EBVS - JANUARY 2019										
	CE Dir	CE Dtrs	GL	BW	200	400	600	MCW	Milk	SS
EBV	-2.8	+2.4	+0.4	+1.9	+11	+25	+35	+50	+3	+1.2
	Carc Wt	EMA	Rib	Rump	RBV	IMF	SELECTION INDICES			
EBV	+20	+2.2	+1.0	+1.4	-0.2	+0.2	Dom\$	Exp\$	NTerm\$	
							+\$20	+\$30	+\$16	

The EBVs shown are indicative figures only. Current figures available on the Field Day (2 Feb) or via Charolais Society website (www.charolais.com.au) at the start of Feb.

Purchaser / \$:

5 MOUNT WILLIAM NORDIC MILE (AI) (P) (R/F)

SILVERSTREAM ENTICER E30 083090030E (OAN E30E) (P)
SIRE: SILVERSTREAM GEDDES G102 083110102D (OAN G102D) (P)
SILVERSTREAM DOLLY V5 083040005C (OAN V5C)
ROSEDALE BOSS (MR B206E)
DAM: MOUNT WILLIAM GRETA G56 (BS G56E)
MOUNT WILLIAM (BS X95E)

TATTOO: BS N52E

DOB: 23/03/2017



COMMENTS: Nordic Mile is a powerhouse of a bull. He is thick set, very well muscled with a great EMA. A standout Geddes son with great carcass and index figures.

Top 30% 600, top 35% SS, top 20% carcass weight, top 10% EMA, top 15% rib, top 20% rump, top 10% domestic, top 15% export, top 10% N term Index.

December 2018 Australasian Charolais BREEDPLAN Analysis										
	CE Dir	CE Dtrs	GL	BW	200	400	600	MCW	Milk	SS
EBV	+4.3	+3.3	-0.9	+0.6	+11	+28	+39	+39	+1	+1.3
Acc	43%	38%	73%	62%	64%	66%	71%	61%	49%	56%
	Carc Wt	EMA	Rib	Rump	RBV	IMF	SELECTION INDICES			
EBV	+25	+2.7	+1.0	+1.3	+0.2	+0.0	Dom\$	Exp\$	NTerm\$	
Acc	60%	51%	55%	54%	53%	48%	+\$38	+\$55	+\$26	

Purchaser / \$:

6 MOUNT WILLIAM NORTH WIND (P)

BLELACK DIGGER MBM0038543 (IAE D8543F) (P)
SIRE: MOUNT WILLIAM KAKADU (BS K16E) (P)
MOUNT WILLIAM ESTHER E107 (BS E107E)
MOUNT WILLIAM CONFUSHOUS (BS C11E)
DAM: MOUNT WILLIAM EDRA E24 (BS E24E)
MOUNT WILLIAM CELESTE C52 (BS C52E)

TATTOO: BS N59E

DOB: 23/03/2017



COMMENTS: North Wind is a well put together, soft, smooth, well muscled bull. The first of the Kakadu sons on offer in a mild birthweight package.

Top 20% CE Dir, top 15% BW, top 15% milk, top 10% EMA, top 20% RBV.

December 2018 Australasian Charolais BREEDPLAN Analysis										
	CE Dir	CE Dtrs	GL	BW	200	400	600	MCW	Milk	SS
EBV	+6.0	+1.5	-2.5	-1.0	+4	+12	+13	+6	+11	+0.8
Acc	29%	25%	45%	54%	59%	62%	69%	60%	39%	71%
	Carc Wt	EMA	Rib	Rump	RBV	IMF	SELECTION INDICES			
EBV	+16	+2.8	+0.1	+0.3	+0.8	-0.1	Dom\$	Exp\$	NTerm\$	
Acc	56%	46%	51%	50%	49%	45%	+\$27	+\$33	+\$15	

Purchaser / \$:



7 MOUNT WILLIAM NINJA (R/F)

PCC SUDDEN IMPACT 848U PEMC321017 (OAC D1017E) (P)

SIRE: PALGROVE HANNIBAL (PK H1312E) (P)

PALGROVE DIGNA 84 (PK W283E)

ROSEDALE BOSS (MR B206E)

DAM: MOUNT WILLIAM ESTHER E107 (BS E107E)

MOUNT WILLIAM CLEO C109 (BS C109E)

December 2018 Australasian Charolais BREEDPLAN Analysis										
	CE Dir	CE Dtrs	GL	BW	200	400	600	MCW	Milk	SS
EBV	-9.4	-1.2	-3.4	+1.9	+19	+41	+60	+47	+9	+1.9
Acc	41%	35%	55%	60%	63%	65%	72%	62%	44%	74%
	Carc Wt	EMA	Rib	Rump	RBV	IMF	SELECTION INDICES			
EBV	+33	+3.9	+1.1	+1.6	+0.1	+1.2	Dom\$	Exp\$	NTerm\$	
Acc	60%	51%	55%	54%	53%	50%	+\$24	+\$35	+\$24	

Purchaser / \$:

TATTOO: BS N125E

DOB: 13/04/2017



COMMENTS: Ninja is an early maturing, deep, smooth bodied, soft, red factor bull.

Top 30% GL, top 5% 200 and 400 day weights, top 1% 600, top 20% MCW, top 25% milk, top 15% SS, top 15% Carcase WT, top 1% EMA, top 15% rib and rump fat, top 5% IMF, top 20% N Term Index.

8 MOUNT WILLIAM NEO (R/F)

PCC SUDDEN IMPACT 848U PEMC321017 (OAC D1017E) (P)

SIRE: PALGROVE HANNIBAL (PK H1312E) (P)

PALGROVE DIGNA 84 (PK W283E)

KADLUNGA VICTOR (KDA Y1E)

DAM: MOUNT WILLIAM HISTORY H177 (BS H177E)

PALGROVE REGALITY 6 (PK A272E) (P)

December 2018 Australasian Charolais BREEDPLAN Analysis										
	CE Dir	CE Dtrs	GL	BW	200	400	600	MCW	Milk	SS
EBV	-13.5	+2.7	-2.5	+2.4	+21	+46	+72	+81	+13	+2.8
Acc	40%	34%	53%	56%	60%	62%	69%	58%	41%	73%
	Carc Wt	EMA	Rib	Rump	RBV	IMF	SELECTION INDICES			
EBV	+34	+2.1	+1.5	+2.2	-0.9	+1.2	Dom\$	Exp\$	NTerm\$	
Acc	57%	49%	54%	53%	52%	49%	+\$23	+\$39	+\$23	

Purchaser / \$:

TATTOO: BS N114E

DOB: 07/04/2017



COMMENTS: Neo is a medium maturing, large framed, deep, huge volume Hannibal son who carries great muscle with softness.

Top 5% 200 and 400 day weights, top 1% 600, top 1% MCW, top 10% milk, top 5% SS, top 5% Carc WT, top 25% EMA, top 5% rib and rump fat, top 5% IMF, top 25% N Term Index.

9 MOUNT WILLIAM NIFTY (P) (R/F)

PCC SUDDEN IMPACT 848U PEMC321017 (OAC D1017E) (P)

SIRE: PALGROVE HANNIBAL (PK H1312E) (P)

PALGROVE DIGNA 84 (PK W283E)

KADLUNGA VICTOR (KDA Y1E)

DAM: MOUNT WILLIAM GABBY (BS G99E)

MOUNT WILLIAM V13E (BS V13E)

December 2018 Australasian Charolais BREEDPLAN Analysis										
	CE Dir	CE Dtrs	GL	BW	200	400	600	MCW	Milk	SS
EBV	-14.3	+3.8	-1.4	+3.4	+18	+37	+54	+66	+9	+1.4
Acc	40%	35%	53%	57%	62%	64%	71%	62%	44%	74%
	Carc Wt	EMA	Rib	Rump	RBV	IMF	SELECTION INDICES			
EBV	+30	+5.3	+1.2	+1.5	+0.9	+0.5	Dom\$	Exp\$	NTerm\$	
Acc	59%	50%	54%	53%	52%	49%	+\$12	+\$18	+\$15	

Purchaser / \$:

TATTOO: BS N138E

DOB: 25/04/2017



COMMENTS: Nifty is a medium maturing, long, deep, smooth muscled, soft bull typical of the Hannibal sons.

Top 25% CE Dtrs, top 10% 200, top 5% 400 and 600 day weights, top 1% MCW, top 25% milk, top 30% SS, top 10% Carc WT, trait leader for EMA, top 10% rib, top 15% rump fat, top 15% RBV, top 20% IMF.

INTRODUCING ...



PALGROVE MODERATOR

TATTOO: PK M544E

SIRE: PALGROVE JUBILEE (PK J395E) (P)

DOB: 24/08/2016

DAM: PALGROVE FELICITY J1046 (PK J1046E) (P)



Moderator was purchased in 2018 for \$23,000 a semen share has been sold to Waterford Charolais.

Structurally he is very hard to fault. He will join the breeding programme in 2019 and compliment the existing base of Hannibal females in the herd. His phenotype and disposition are excellent, he has length, width and depth coupled with an ideal maturity pattern and excellent foot and leg structure.

His Sire Jubilee was the High selling bull in Australia in 2015 (\$35,000) and we are very excited about the future of this sire.

Top 15% CE Dir, top 25% GL, top 25% BW, top 15% 200, top 10% 400, top 25% 600 day weights, top 25% MCW, top 30% milk, top 5% SS, top 5% Carc WT, top 15% EMA, top 30% RBY, top 10% for domestic export and N Term Indexes.

We look forward to offering you Moderator's progeny in our 2022 Sale.

December 2018 Australasian Charolais BREEDPLAN Analysis										
	CE Dir	CE Dtrs	GL	BW	200	400	600	MCW	Milk	SS
EBV	+7.4	+1.3	-3.8	-0.4	+17	+35	+42	+43	+7	+2.6
Acc	43%	32%	74%	70%	64%	65%	62%	57%	41%	75%
	Carc Wt	EMA	Rib	Rump	RBY	IMF	SELECTION INDICES			
EBV	+31	+2.4	+0.2	+0.1	+0.5	-0.2	Dom\$	Exp\$	NTerm\$	
Acc	53%	50%	52%	50%	51%	49%	+\$44	+\$60	+\$29	

PALGROVE NITRO

TATTOO: PK N142E

SIRE: PALGROVE JUSTICE (PK J603E) (P)

DOB: 04/05/2017

DAM: PALGROVE RECKON 87 (PK G182E) (P)



Nitro is a soft easy keeping, medium framed low birth weight bull, who we purchased as a yearling for \$13,000.

He has been used in our herd over heifers and is the joining sire of this years sale heifers.

His sire Palgrove Justice is arguably the top Evolution son Palgrove has bred.

We think he will offer great scope and versatility in our herd and look forward to seeing his progeny in 2021.

Top 25% CE Dir, top 25% GL, top 20% BW, top 10% EMA, top 20% rib and rump fat, top 25% domestic, top 30% export, top 35% N Term Indexes.

We look forward to offering you Nitro's progeny in our 2021 Sale.

December 2018 Australasian Charolais BREEDPLAN Analysis										
	CE Dir	CE Dtrs	GL	BW	200	400	600	MCW	Milk	SS
EBV	+5.4	+0.7	-3.7	-0.7	+10	+19	+23	+25	+6	+1.2
Acc	41%	36%	55%	56%	61%	55%	57%	52%	45%	49%
	Carc Wt	EMA	Rib	Rump	RBY	IMF	SELECTION INDICES			
EBV	+19	+2.7	+0.8	+1.1	+0.3	+0.1	Dom\$	Exp\$	NTerm\$	
Acc	47%	39%	43%	43%	41%	38%	+\$32	+\$42	+\$20	



10 MOUNT WILLIAM NIGHT RIDER

TATTOO: BS N72E

DOB: 25/03/2017

PCC SUDDEN IMPACT 848U PEMC321017 (OAC D1017E) (P)
SIRE: PALGROVE HANNIBAL (PK H1312E) (P)
 PALGROVE DIGNA 84 (PK W283E)
 KADLUNGA VICTOR (KDA Y1E)
DAM: MOUNT WILLIAM GIANNA G40 (BS G40E)
 MOUNT WILLIAM DORIS D77 (BS D77E)



December 2018 Australasian Charolais BREEDPLAN Analysis										
	CE Dir	CE Dtrs	GL	BW	200	400	600	MCW	Milk	SS
EBV	-14.7	+2.2	-3.4	+1.6	+14	+30	+42	+45	+11	+3.1
Acc	40%	34%	54%	57%	62%	64%	71%	61%	43%	74%
	Carc Wt	EMA	Rib	Rump	RBV	IMF	SELECTION INDICES			
EBV	+22	+4.0	+1.9	+2.6	-0.3	+1.0	Dom\$	Exp\$	NTerm\$	
Acc	58%	50%	54%	53%	52%	48%	+\$12	+\$17	+\$9	

COMMENTS: Night rider is an early maturing, well muscled, soft, smooth muscled stylish bull.

Top 30% 200, top 20% 400, top 25% 600 day weights, top 15% milk, top 25% MCW, top 1% SS, trait leader for EMA, top 5% for rib, rump and IMF.

Purchaser / \$:

11 MOUNT WILLIAM NOUGHT N CROSS (P) (R/F)

TATTOO: BS N134E

DOB: 20/04/2017

PCC SUDDEN IMPACT 848U PEMC321017 (OAC D1017E) (P)
SIRE: PALGROVE HANNIBAL (PK H1312E) (P)
 PALGROVE DIGNA 84 (PK W283E)
 MOUNT WILLIAM FERGUS (BS F2E) (P)
DAM: MOUNT WILLIAM J127E (BS J127E)
 MOUNT WILLIAM ZINNIA (BS Z65E)



December 2018 Australasian Charolais BREEDPLAN Analysis										
	CE Dir	CE Dtrs	GL	BW	200	400	600	MCW	Milk	SS
EBV	-9.3	+3.8	-2.9	+1.8	+14	+32	+45	+53	+10	+1.3
Acc	37%	32%	51%	49%	50%	50%	54%	47%	39%	50%
	Carc Wt	EMA	Rib	Rump	RBV	IMF	SELECTION INDICES			
EBV	+26	+3.6	+1.6	+2.0	-0.2	+0.7	Dom\$	Exp\$	NTerm\$	
Acc	45%	39%	45%	44%	41%	38%	+\$20	+\$27	+\$16	

COMMENTS: Nought n cross is a medium maturing , deep, well muscled, soft, red bull.

Top 25% CEDTRS, top 30% 200, top 15% 400 and 600, top 15% MCW, top 20% milk, top 15% Carc WT, top 5% EMA and rib, top 10% rump and IMF.

Purchaser / \$:

12 MOUNT WILLIAM NEWPORT

TATTOO: BS N22E

DOB: 17/03/2017

LT WESTERN SPUR 2061 PLD M645786 (OAU X2061E) (P)
SIRE: MOUNT WILLIAM GIFFORD (BS G19E) (P)
 MOUNT WILLIAM CARMEN C34 (BS C34E)
 MOUNT WILLIAM VIBRANT (BS V16E)
DAM: MOUNT WILLIAM KARLA K9 (BS K9E)
 MOUNT WILLIAM GOLD COAST (BS G152E)



December 2018 Australasian Charolais BREEDPLAN Analysis										
	CE Dir	CE Dtrs	GL	BW	200	400	600	MCW	Milk	SS
EBV	+7.7	+8.6	-4.0	+1.2	+15	+28	+45	+51	+4	+3.2
Acc	37%	34%	46%	53%	60%	63%	70%	59%	41%	72%
	Carc Wt	EMA	Rib	Rump	RBV	IMF	SELECTION INDICES			
EBV	+28	+2.1	-0.1	+0.0	+1.0	-0.4	Dom\$	Exp\$	NTerm\$	
Acc	58%	50%	55%	54%	53%	49%	+\$44	+\$69	+\$30	

COMMENTS: Newport is a medium maturing, long, well grown, well muscled, deep, powerful bull.

Top 15% CE Dir, top 5% CEDTRS, top 20% GL, top 25% 200, 400, top 15% 600 and MCW, top 1% SS, top 10% Carc WT, top 25% EMA, top 5% for all indexes.

Purchaser / \$:



13 MOUNT WILLIAM NEW CONCEPT (P)

PCC SUDDEN IMPACT 848U PEMC321017 (OAC D1017E) (P)

SIRE: PALGROVE HANNIBAL (PK H1312E) (P)

PALGROVE DIGNA 84 (PK W283E)

ROSEDALE E-TAG (MR E160E) (P)

DAM: MOUNT WILLIAM JANET J11 (BS J11E) (P)

MOUNT WILLIAM GINGER (BS G75E)

December 2018 Australasian Charolais BREEDPLAN Analysis										
	CE Dir	CE Dtrs	GL	BW	200	400	600	MCW	Milk	SS
EBV	-8.5	+2.1	-3.5	+0.5	+12	+26	+36	+27	+12	+1.0
Acc	38%	32%	51%	56%	60%	63%	70%	58%	36%	73%
	Carc Wt	EMA	Rib	Rump	RBV	IMF	SELECTION INDICES			
EBV	+18	+2.3	+1.5	+2.0	-1.0	+1.5	Dom\$	Exp\$	NTerm\$	
Acc	58%	48%	53%	52%	51%	48%	+\$17	+\$22	+\$12	

TATTOO: BS N94E

DOB: 01/04/2017



COMMENTS: New Concept is an early maturing, long, smooth bodied, well balanced bull with clean shoulders. He is very well muscled with an easy doing constitution.

Top 25% GL, top 10% milk, top 20% EMA, top 5% rib, top 10% rump, top 1% IMF.

Purchaser / \$:

14 MOUNT WILLIAM NIBULA (P)

LT WESTERN SPUR 2061 PLD M645786 (OAU X2061E) (P)

SIRE: MOUNT WILLIAM GIFFORD (BS G19E) (P)

MOUNT WILLIAM CARMEN C34 (BS C34E)

MOUNT WILLIAM CAESAR (BS C3E)

DAM: MOUNT WILLIAM GROUSE (BS G178E)

MOUNT WILLIAM DOREEN D72 (BS D72E)

December 2018 Australasian Charolais BREEDPLAN Analysis										
	CE Dir	CE Dtrs	GL	BW	200	400	600	MCW	Milk	SS
EBV	+4.6	+6.2	-2.5	+1.0	+11	+18	+29	+20	+2	+2.2
Acc	34%	32%	37%	52%	61%	64%	70%	61%	40%	72%
	Carc Wt	EMA	Rib	Rump	RBV	IMF	SELECTION INDICES			
EBV	+19	+3.1	+0.7	+1.1	+0.9	-0.4	Dom\$	Exp\$	NTerm\$	
Acc	58%	48%	52%	51%	51%	47%	+\$30	+\$47	+\$22	

TATTOO: BS N95E

DOB: 02/04/2017



COMMENTS: Nibula is an early maturing , thick set, well muscled bull with a good EMA.

Top 25% CE Dir, top 10% CEDTRS, top 10% SS, top 5% EMA, top 25% rib, top 20% rump, top 15% RBV, top 30% domestic, top 25% export and North Term Index.

Purchaser / \$:

15 MOUNT WILLIAM NODDY (P)

ROSEDALE ZINGER (MR Z18E) (P)

SIRE: ROSEDALE E-TAG (MR E160E) (P)

ROSEDALE LUCY A210 (MR A210E) (P)

MOUNT WILLIAM DASH D62 (BS D62E) (P)

DAM: MOUNT WILLIAM GRATITUDE G68 (BS G68E) (P)

MOUNT WILLIAM BOBBIE B104 (BS B104E)

December 2018 Australasian Charolais BREEDPLAN Analysis										
	CE Dir	CE Dtrs	GL	BW	200	400	600	MCW	Milk	SS
EBV	-0.3	+1.0	-1.8	+0.4	+10	+14	+21	+25	+7	+1.3
Acc	38%	36%	42%	56%	62%	65%	71%	62%	42%	72%
	Carc Wt	EMA	Rib	Rump	RBV	IMF	SELECTION INDICES			
EBV	+8	+1.6	+1.5	+2.0	-0.6	+0.4	Dom\$	Exp\$	NTerm\$	
Acc	60%	51%	55%	54%	53%	50%	+\$18	+\$28	+\$13	

TATTOO: BS N99E

DOB: 04/04/2017



COMMENTS: Noddy is an early maturing , thick set, well muscled powerhouse of a bull.

Top 35% SS, top 5% rib, top 10% rump, top 25% IMF.

Purchaser / \$:



16 MOUNT WILLIAM NAGAMBIE

PCC SUDDEN IMPACT 848U PEMC321017 (OAC D1017E) (P)

SIRE: PALGROVE HANNIBAL (PK H1312E) (P)

PALGROVE DIGNA 84 (PK W283E)

PINAY 8552394134 (OAF U4134F)

DAM: MOUNT WILLIAM F17E (BS F17E)

MOUNT WILLIAM V56E (BS V56E)

TATTOO: BS N96E

DOB: 02/04/2017



COMMENTS: Nagambie is a very long, well muscled, easy doing, well put together bull.

Top 5% CE Dtrs, top 25% GL, top 30% 200, top 20% 400 and 600 day weights, top 30% MCW, top 25% milk, top 10% Carc WT, top 1% EMA, top 20% rib, top 25% rump, top 20% RBY, top 5% IMF.

December 2018 Australasian Charolais BREEDPLAN Analysis										
	CE Dir	CE Dtrs	GL	BW	200	400	600	MCW	Milk	SS
EBV	-9.6	+8.0	-3.7	+1.5	+14	+31	+43	+42	+9	+1.1
Acc	43%	38%	59%	57%	60%	63%	70%	59%	43%	55%
	Carc Wt	EMA	Rib	Rump	RBY	IMF	SELECTION INDICES			
EBV	+28	+4.9	+0.9	+1.0	+0.7	+0.9	Dom\$	Exp\$	NTerm\$	
Acc	58%	51%	55%	54%	53%	50%	+\$20	+\$25	+\$16	

Purchaser / \$:

17 MOUNT WILLIAM NOTTINGHAM (P)

LT WESTERN SPUR 2061 PLD M645786 (OAU X2061E) (P)

SIRE: MOUNT WILLIAM GIFFORD (BS G19E) (P)

MOUNT WILLIAM CARMEN C34 (BS C34E)

MOUNT WILLIAM CAESAR (BS C3E)

DAM: MOUNT WILLIAM FOREVER F76 (BS F76E)

MOUNT WILLIAM CELESTE C52 (BS C52E)

TATTOO: BS N46E

DOB: 22/03/2017



COMMENTS: Nottingham is an early maturing, deep, well muscled, well balanced bull with a smooth coat.

Top 15% CE Dtrs, top 20% MCW, top 15% SS, top 10% rib and rump, top 25% export and North Term Index.

December 2018 Australasian Charolais BREEDPLAN Analysis										
	CE Dir	CE Dtrs	GL	BW	200	400	600	MCW	Milk	SS
EBV	+1.7	+5.2	-1.6	+1.7	+12	+22	+39	+47	+5	+1.8
Acc	36%	33%	41%	52%	61%	63%	70%	61%	42%	51%
	Carc Wt	EMA	Rib	Rump	RBY	IMF	SELECTION INDICES			
EBV	+20	+1.3	+1.2	+1.7	-0.4	+0.0	Dom\$	Exp\$	NTerm\$	
Acc	58%	48%	52%	51%	51%	47%	+\$27	+\$46	+\$22	

Purchaser / \$:

18 MOUNT WILLIAM NIAGRA (P)

PCC SUDDEN IMPACT 848U PEMC321017 (OAC D1017E) (P)

SIRE: PALGROVE HANNIBAL (PK H1312E) (P)

PALGROVE DIGNA 84 (PK W283E)

PALGROVE YEMEN (PK Y359E)

DAM: MOUNT WILLIAM H40E (BS H40E)

MOUNT WILLIAM AMBER A68 (BS A68E)

TATTOO: BS N2E

DOB: 21/02/2017



COMMENTS: Niagra is an early maturing, long, well muscled, well balanced bull with a good topline.

Top 30% 600 day, milk and SS, top 25% Carc WT, top 1% EMA, top 10% rib, top 15% rump, top 10% IMF.

MID PARENT EBVS - JANUARY 2019										
	CE Dir	CE Dtrs	GL	BW	200	400	600	MCW	Milk	SS
EBV	-9.6	+2.0	-1.6	+2.0	+12	+28	+38	+32	+8	+1.4
	Carc Wt	EMA	Rib	Rump	RBY	IMF	SELECTION INDICES			
EBV	+24	+4.1	+1.2	+1.6	+0.3	+0.8	Dom\$	Exp\$	NTerm\$	
							+\$11	+\$14	+\$10	

The EBVs shown are indicative figures only. Current figures available on the Field Day (2 Feb) or via Charolais Society website (www.charolais.com.au) at the start of Feb.

Purchaser / \$:



19

MOUNT WILLIAM NIGHT WATCHMAN

ROSEDALE ZINGER (MR Z18E) (P)

SIRE: ROSEDALE E-TAG (MR E160E) (P)

ROSEDALE LUCY A210 (MR A210E) (P)

PALGROVE YEMEN (PK Y359E)

DAM: MOUNT WILLIAM HOLISTIC H78 (BS H78E)

MOUNT WILLIAM DONATA D66 (BS D66E)

December 2018 Australasian Charolais BREEDPLAN Analysis table with columns for CE Dir, CE Dtrs, GL, BW, 200, 400, 600, MCW, Milk, SS, Carc Wt, EMA, Rib, Rump, RBY, IMF, and Selection Indices (Dom\$, Exp\$, NTerm\$).

Purchaser / \$:

TATTOO: BS N101E

DOB: 05/04/2017



COMMENTS: Night watchman is a smooth bodied, easy doing, well muscled, deep, well balanced bull with smooth shoulders.

Top 30% CE Dir, top 25% 200 and 400 day, top 15% 600, top 25% MCW, top 15% SS, top 25% Carc WT, top 15% IMF, top 30% domestic, top 20% export, top 15% North Term Index.

20

MOUNT WILLIAM NEVERMIND (P)

LT WESTERN SPUR 2061 PLD M645786 (OAU X2061E) (P)

SIRE: MOUNT WILLIAM GIFFORD (BS G19E) (P)

MOUNT WILLIAM CARMEN C34 (BS C34E)

KADLUNGA VICTOR (KDA Y1E)

DAM: MOUNT WILLIAM GARDEN (BS G129E)

MOUNT WILLIAM (BS Y70E)

December 2018 Australasian Charolais BREEDPLAN Analysis table with columns for CE Dir, CE Dtrs, GL, BW, 200, 400, 600, MCW, Milk, SS, Carc Wt, EMA, Rib, Rump, RBY, IMF, and Selection Indices (Dom\$, Exp\$, NTerm\$).

Purchaser / \$:

TATTOO: BS N67E

DOB: 24/03/2017



COMMENTS: Nevermind is a long, deep, stylish, well muscled bull with a good topline.

Top 25% CE Dtrs, top 15% rib and rump, top 30% IMF.

21

MOUNT WILLIAM NALPA (AI) (P)

SILVERSTREAM ENTICER E30 083090030E (OAN E30E) (P)

SIRE: SILVERSTREAM GEDDES G102 083110102D (OAN G102D) (P)

SILVERSTREAM DOLLY V5 083040005C (OAN V5C)

MOUNT WILLIAM VIBRANT (BS V16E)

DAM: MOUNT WILLIAM DIAZ D92 (BS D92E)

MOUNT WILLIAM (BS X38E)

December 2018 Australasian Charolais BREEDPLAN Analysis table with columns for CE Dir, CE Dtrs, GL, BW, 200, 400, 600, MCW, Milk, SS, Carc Wt, EMA, Rib, Rump, RBY, IMF, and Selection Indices (Dom\$, Exp\$, NTerm\$).

Purchaser / \$:

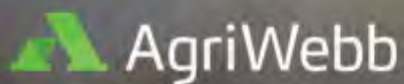
TATTOO: BS N70E

DOB: 24/03/2017



COMMENTS: Nalpa is an early maturing, deep bodied, well balanced, smooth muscled bull with a good topline.

Top 10% CE Dtrs, top 30% 400, top 30% MCW, top 25% SS, top 15% Carc WT, top 5% EMA, top 25% RBY, top 15% domestic, top 20% export, top 25% North Term Index.



You know your farm. We know agricultural software.

Our software will unlock deep, new and valuable insights into your farm. Your farm's health is our motivation.

Find out more about us at
info.agriwebb.com/mtwilliam

AgriWebb Co-founder John Fargher (right) on farm with AD Commodities Farm Manager Steve Kelland (left), in Armidale NSW.

Australia's leading farm and livestock management software.

Trusted by 2,300+ Australian farmers, AgriWebb's farm and livestock management software has helped farmers across the country streamline their operations by providing actionable farm information.





22

MOUNT WILLIAM NERANG (AI) (P) (R/F)

MERIT ROUNDUP 9508W PMC326558 (OAC E6558E) (P)

SIRE: RANGAN ROUNDUP K36 (RAN K36E) (P)

RANGAN PARK BELLE H125 (RAN H125E) (P)

ROSEDALE E-TAG (MR E160E) (P)

DAM: MOUNT WILLIAM LETTER (BS L91E) (P)

MOUNT WILLIAM HURRICANE (BS H154E)

December 2018 Australasian Charolais BREEDPLAN Analysis table with columns for CE Dir, CE Dtrs, GL, BW, 200, 400, 600, MCW, Milk, SS, Carc Wt, EMA, Rib, Rump, RBY, IMF, and Selection Indices (Dom\$, Exp\$, NTerm\$).

Purchaser / \$:

TATTOO: BS N50E

DOB: 23/03/2017



COMMENTS: Nerang is an early maturing, long, well muscled bull with a very good topline. The first of the Roundup sons on offer.

Top 5% 200, top 1% 400 and 600 day weights, top 5% MCW, top 5% Carc WT, top 25% IMF, top 15% domestic, top 10% export, top 5% North Term Index.

23

MOUNT WILLIAM NOAH (AI) (P)

MERIT ROUNDUP 9508W PMC326558 (OAC E6558E) (P)

SIRE: RANGAN ROUNDUP K36 (RAN K36E) (P)

RANGAN PARK BELLE H125 (RAN H125E) (P)

MOUNT WILLIAM FREEWHEELER (BS F6E)

DAM: MOUNT WILLIAM LIBERTY (BS L57E)

MOUNT WILLIAM ADRIANA A20 (BS A20E)

December 2018 Australasian Charolais BREEDPLAN Analysis table with columns for CE Dir, CE Dtrs, GL, BW, 200, 400, 600, MCW, Milk, SS, Carc Wt, EMA, Rib, Rump, RBY, IMF, and Selection Indices (Dom\$, Exp\$, NTerm\$).

Purchaser / \$:

TATTOO: BS N21E

DOB: 17/03/2017



COMMENTS: Noah is a medium maturing, long, thickset bull. A cracker of a bull.

Top 20% GL, top 5% 200, top 1% 400 and 600 day weight, top 5% MCW, top 1% SS, top 5% Carc WT, top 20% domestic, top 15% export, top 10% North Term Index.

24

MOUNT WILLIAM NORFOLK (TW)

PCC SUDDEN IMPACT 848U PEMC321017 (OAC D1017E) (P)

SIRE: PALGROVE HANNIBAL (PK H1312E) (P)

PALGROVE DIGNA 84 (PK W283E)

MOUNT WILLIAM DASH D62 (BS D62E) (P)

DAM: MOUNT WILLIAM GOONDIWINDI (BS G120E)

MOUNT WILLIAM (BS X80E)

December 2018 Australasian Charolais BREEDPLAN Analysis table with columns for CE Dir, CE Dtrs, GL, BW, 200, 400, 600, MCW, Milk, SS, Carc Wt, EMA, Rib, Rump, RBY, IMF, and Selection Indices (Dom\$, Exp\$, NTerm\$).

Purchaser / \$:

TATTOO: BS N35E

DOB: 20/03/2017



COMMENTS: Norfolk is a medium maturing, deep bodied, smooth muscled bull with clean shoulders.

Top 20% CE Dtrs, top 15% milk, top 5% EMA rib, rump, RBY and IMF.



25 MOUNT WILLIAM NANO (AI) (P)

SILVERSTREAM ENTICER E30 083090030E (OAN E30E) (P)

SIRE: SILVERSTREAM GEDDES G102 083110102D (OAN G102D) (P)
SILVERSTREAM DOLLY V5 083040005C (OAN V5C)

PALGROVE YEMEN (PK Y359E)

DAM: MOUNT WILLIAM HESTER H70 (BS H70E)
MOUNT WILLIAM CELESTE C52 (BS C52E)

TATTOO: BS N93E

DOB: 01/04/2017



COMMENTS: Nano is an early maturing, thick set, powerful bull with a very good EMA.

Top 20% 400, top 15% 600, top 10% MCW, top 30% SS, top 10% Carc WT and EMA, top 25% RBY and N Term Index.

December 2018 Australasian Charolais BREEDPLAN Analysis										
	CE Dir	CE Dtrs	GL	BW	200	400	600	MCW	Milk	SS
EBV	-2.7	-1.4	+3.3	+2.7	+11	+30	+47	+55	+5	+1.4
Acc	44%	39%	73%	62%	63%	65%	71%	61%	48%	75%
	Carc Wt	EMA	Rib	Rump	RBV	IMF	SELECTION INDICES			
EBV	+28	+2.8	+0.4	+0.6	+0.6	-0.1	Dom\$	Exp\$	NTerm\$	
Acc	59%	42%	55%	54%	49%	48%	+\$20	+\$32	+\$22	

Purchaser / \$:

26 MOUNT WILLIAM NIXON (P)

BLELACK DIGGER MBM0038543 (IAE D8543F) (P)

SIRE: MOUNT WILLIAM KAKADU (BS K16E) (P)
MOUNT WILLIAM ESTHER E107 (BS E107E)

PINAY 8552394134 (OAF U4134F)

DAM: MOUNT WILLIAM FAVOR F11 (BS F11E)
MOUNT WILLIAM BESSIE B23 (BS B23E)

TATTOO: BS N13E

DOB: 15/03/2017



COMMENTS: Nixon is an early maturing, long, well muscled, deep, thick set bull.

Top 30% CE Dtrs, top 30% GL, top 35% BW, top 15% milk, top 25% Carc WT, top 5% EMA and RBV.

December 2018 Australasian Charolais BREEDPLAN Analysis										
	CE Dir	CE Dtrs	GL	BW	200	400	600	MCW	Milk	SS
EBV	+1.8	+2.7	-3.3	+0.1	+8	+20	+24	+31	+11	+0.2
Acc	34%	32%	51%	55%	59%	62%	69%	60%	38%	71%
	Carc Wt	EMA	Rib	Rump	RBV	IMF	SELECTION INDICES			
EBV	+24	+3.7	-0.6	-0.8	+1.5	+0.0	Dom\$	Exp\$	NTerm\$	
Acc	57%	48%	53%	51%	51%	47%	+\$23	+\$26	+\$16	

Purchaser / \$:

27 MOUNT WILLIAM NAUTICA

BLELACK DIGGER MBM0038543 (IAE D8543F) (P)

SIRE: MOUNT WILLIAM KAKADU (BS K16E) (P)
MOUNT WILLIAM ESTHER E107 (BS E107E)

ROSEDALE BOSS (MR B206E)

DAM: MOUNT WILLIAM HAYLEY H8 (BS H8E)
MOUNT WILLIAM EDITH E20 (BS E20E)

TATTOO: BS N88E

DOB: 29/03/2017



COMMENTS: Nautica is a long, well muscled, well balanced, deep bull.

Top 25% CE Dir, top 35% GL, top 25% BW, top 25% milk, top 20% EMA, top 25% IMF.

December 2018 Australasian Charolais BREEDPLAN Analysis										
	CE Dir	CE Dtrs	GL	BW	200	400	600	MCW	Milk	SS
EBV	+5.4	-7.0	-3.0	-0.4	+7	+17	+23	+2	+9	+0.2
Acc	32%	29%	44%	53%	59%	62%	70%	60%	38%	72%
	Carc Wt	EMA	Rib	Rump	RBV	IMF	SELECTION INDICES			
EBV	+18	+2.2	-0.1	+0.0	+0.6	+0.4	Dom\$	Exp\$	NTerm\$	
Acc	57%	48%	53%	52%	51%	48%	+\$20	+\$25	+\$19	

Purchaser / \$:



28 MOUNT WILLIAM NATRULUS

LT WESTERN SPUR 2061 PLD M645786 (OAU X2061E) (P)

SIRE: MOUNT WILLIAM GIFFORD (BS G19E) (P)
MOUNT WILLIAM CARMEN C34 (BS C34E)

ROSDALE BOSS (MR B206E)

DAM: MOUNT WILLIAM HAZCHEM H46 (BS H46E)
MOUNT WILLIAM AMITY A73 (BS A73E)

TATTOO: BS N41E

DOB: 21/03/2017



COMMENTS: Natrulus is a medium maturing, deep bodied, smooth muscled bull.

Top 20% CE Dir, top 30% SS, top 35% domestic, top 25% export, top 30% North Term Index, top 35% CE Dtrs, top 30% 200, top 25% 400 day weight and milk.

December 2018 Australasian Charolais BREEDPLAN Analysis										
	CE Dir	CE Dtrs	GL	BW	200	400	600	MCW	Milk	SS
EBV	+6.3	-0.4	-2.4	+0.6	+11	+20	+31	+34	+6	+1.4
Acc	37%	35%	37%	53%	60%	64%	70%	61%	43%	72%
	Carc Wt	EMA	Rib	Rump	RBV	IMF	SELECTION INDICES			
EBV	+17	+0.7	+0.3	+0.5	+0.0	+0.1	Dom\$	Exp\$	NTerm\$	
Acc	58%	49%	53%	52%	51%	48%	+\$28	+\$43	+\$21	

Purchaser / \$:

29 MOUNT WILLIAM NORWAY (P)

PCC SUDDEN IMPACT 848U PEMC321017 (OAC D1017E) (P)

SIRE: PALGROVE HANNIBAL (PK H1312E) (P)
PALGROVE DIGNA 84 (PK W283E)

PALGROVE DOVER (PK D191E) (P)

DAM: MOUNT WILLIAM J97E (BS J97E) (P)
MOUNT WILLIAM AMBER A68 (BS A68E)

TATTOO: BS N9E

DOB: 13/03/2017



COMMENTS: Norway is an early maturing, deep bodied, thick set, easy doing bull.

Top 35% CE Dtrs, top 30% 200, top 25% 400, top 25% milk.

December 2018 Australasian Charolais BREEDPLAN Analysis										
	CE Dir	CE Dtrs	GL	BW	200	400	600	MCW	Milk	SS
EBV	-8.3	+2.6	-2.5	+1.9	+14	+29	+35	+32	+9	+0.4
Acc	38%	33%	52%	54%	59%	61%	69%	57%	38%	73%
	Carc Wt	EMA	Rib	Rump	RBV	IMF	SELECTION INDICES			
EBV	+23	+4.6	+1.4	+1.7	+0.3	+0.9	Dom\$	Exp\$	NTerm\$	
Acc	56%	48%	53%	51%	51%	47%	+\$17	+\$18	+\$13	

Purchaser / \$:

30 MOUNT WILLIAM NEBRASKA (R/F)

PCC SUDDEN IMPACT 848U PEMC321017 (OAC D1017E) (P)

SIRE: PALGROVE HANNIBAL (PK H1312E) (P)
PALGROVE DIGNA 84 (PK W283E)

MOUNT WILLIAM FREEWHEELER (BS F6E)

DAM: MOUNT WILLIAM JO J51 (BS J51E)
MOUNT WILLIAM EBONY E8 (BS E8E)

TATTOO: BS N40E

DOB: 20/03/2017



COMMENTS: Nebraska is a medium maturing, deep, smooth bodied, easy doing, red factor bull.

Top 20% CE Dtrs, top 30% 400 and 600 day weight, top 25% milk, top 30% Carc WT, top 1% EMA, top 10% rib and rump, top 5% IMF.

December 2018 Australasian Charolais BREEDPLAN Analysis										
	CE Dir	CE Dtrs	GL	BW	200	400	600	MCW	Milk	SS
EBV	-12.6	+4.7	-2.4	+2.2	+12	+27	+39	+37	+9	+0.8
Acc	38%	32%	52%	56%	61%	63%	71%	59%	38%	73%
	Carc Wt	EMA	Rib	Rump	RBV	IMF	SELECTION INDICES			
EBV	+23	+4.2	+1.4	+1.7	+0.1	+1.1	Dom\$	Exp\$	NTerm\$	
Acc	58%	49%	54%	53%	52%	48%	+\$9	+\$11	+\$9	

Purchaser / \$:

31 MOUNT WILLIAM NIGERIA

BLELACK DIGGER MBM0038543 (IAE D8543F) (P)

SIRE: MOUNT WILLIAM KAKADU (BS K16E) (P)

MOUNT WILLIAM ESTHER E107 (BS E107E)

MOUNT WILLIAM DASH D62 (BS D62E) (P)

DAM: MOUNT WILLIAM HAPPY H4 (BS H4E) (P)

MOUNT WILLIAM DESDOMINA D40 (BS D40E)

December 2018 Australasian Charolais BREEDPLAN Analysis										
	CE Dir	CE Dtrs	GL	BW	200	400	600	MCW	Milk	SS
EBV	+5.8	+2.4	-2.7	-0.1	+4	+10	+15	-1	+7	+0.4
Acc	29%	26%	44%	52%	58%	62%	69%	60%	36%	71%
	Carc Wt	EMA	Rib	Rump	RBV	IMF	SELECTION INDICES			
EBV	+14	+2.8	+0.2	+0.3	+0.8	-0.1	Dom\$	Exp\$	NTerm\$	
Acc	57%	47%	52%	51%	50%	47%	+\$23	+\$30	+\$15	

Purchaser / \$:

TATTOO: BS N25E

DOB: 18/03/2017



COMMENTS: Nigeria is a medium maturing, large framed, long, well muscled bull.

Top 20% CE Dir, top 30% BW, top 10% EMA.

32 MOUNT WILLIAM NUCLEUS (P)

PCC SUDDEN IMPACT 848U PEMC321017 (OAC D1017E) (P)

SIRE: PALGROVE HANNIBAL (PK H1312E) (P)

PALGROVE DIGNA 84 (PK W283E)

MOUNT WILLIAM DASH D62 (BS D62E) (P)

DAM: MOUNT WILLIAM J21E (BS J21E)

MOUNT WILLIAM U7E (BS U7E)

December 2018 Australasian Charolais BREEDPLAN Analysis										
	CE Dir	CE Dtrs	GL	BW	200	400	600	MCW	Milk	SS
EBV	-9.4	+5.3	-2.8	+0.8	+10	+20	+24	+25	+9	+0.7
Acc	39%	33%	54%	56%	60%	62%	70%	58%	41%	73%
	Carc Wt	EMA	Rib	Rump	RBV	IMF	SELECTION INDICES			
EBV	+13	+3.8	+2.0	+2.5	-0.6	+1.2	Dom\$	Exp\$	NTerm\$	
Acc	58%	50%	54%	53%	52%	49%	+\$14	+\$15	+\$7	

Purchaser / \$:

TATTOO: BS N76E

DOB: 25/03/2017



COMMENTS: Nucleus is a medium maturing, deep bodied, easy doing, well muscled bull.

Top 15% CE Dtrs, top 25% milk, 5% EMA, rib, rump and IMF.

33 MOUNT WILLIAM NITRO

PCC SUDDEN IMPACT 848U PEMC321017 (OAC D1017E) (P)

SIRE: PALGROVE HANNIBAL (PK H1312E) (P)

PALGROVE DIGNA 84 (PK W283E)

ROSEDALE BOSS (MR B206E)

DAM: MOUNT WILLIAM HOLLY H33 (BS H33E)

MOUNT WILLIAM BARBIE B9 (BS B9E)

December 2018 Australasian Charolais BREEDPLAN Analysis										
	CE Dir	CE Dtrs	GL	BW	200	400	600	MCW	Milk	SS
EBV	-5.8	+3.4	-3.9	+0.5	+11	+26	+35	+22	+10	+1.6
Acc	40%	35%	54%	57%	61%	64%	71%	61%	43%	73%
	Carc Wt	EMA	Rib	Rump	RBV	IMF	SELECTION INDICES			
EBV	+20	+2.5	+1.4	+1.9	-0.6	+1.1	Dom\$	Exp\$	NTerm\$	
Acc	58%	50%	54%	53%	52%	49%	+\$23	+\$30	+\$15	

Purchaser / \$:

TATTOO: BS N115E

DOB: 09/04/2017



COMMENTS: Nitro is a classy red factor Hannibal son who is early maturing, deep bodied, thick set, well muscled in an easy doing package.

Top 25% GL, top 20% milk and SS, top 15% EMA, top 10% rib and rump, top 5% IMF.



34 MOUNT WILLIAM NEWSTEAD (P)

BLELACK DIGGER MBM0038543 (IAE D8543F) (P)

SIRE: MOUNT WILLIAM KAKADU (BS K16E) (P)

MOUNT WILLIAM ESTHER E107 (BS E107E)

LT WESTERN EDGE 4057 PLD M686616 (OAU Z6616E) (P)

DAM: MOUNT WILLIAM HOPE H38 (BS H38E) (P)

MOUNT WILLIAM DIAZ D92 (BS D92E)

December 2018 Australasian Charolais BREEDPLAN Analysis										
	CE Dir	CE Dtrs	GL	BW	200	400	600	MCW	Milk	SS
EBV	+2.8	+3.2	-3.0	-0.3	+11	+26	+33	+22	+14	+0.4
Acc	33%	29%	50%	52%	58%	61%	69%	59%	38%	71%
	Carc Wt	EMA	Rib	Rump	RBV	IMF	SELECTION INDICES			
EBV	+28	+3.1	+0.3	+0.4	+0.9	-0.3	Dom\$	Exp\$	NTerm\$	
Acc	57%	48%	53%	52%	51%	47%	+\$33	+\$40	+\$23	

Purchaser / \$:

TATTOO: BS N100E

DOB: 04/04/2017



COMMENTS: Newstead is a medium maturing, long bull with a good topline.

Top 25% BW, top 5% milk, top 10% Carc WT, top 5% EMA, top 15% RBV, top 25% domestic and North Term, top 30% export Index.

35 MOUNT WILLIAM NETHERLAND (AI) (P)

PALGROVE VIAGRA (PK V92E) (P)

SIRE: PALGROVE DOVER (PK D191E) (P)

PALGROVE FLARE 83 (PK A137E)

ROSEDALE BOSS (MR B206E)

DAM: MOUNT WILLIAM ERIN E90 (BS E90E)

MOUNT WILLIAM BEYONCE B100 (BS B100E)

December 2018 Australasian Charolais BREEDPLAN Analysis										
	CE Dir	CE Dtrs	GL	BW	200	400	600	MCW	Milk	SS
EBV	+8.2	+3.4	-3.7	+0.0	+9	+18	+15	+4	+7	-0.1
Acc	39%	38%	72%	60%	63%	65%	71%	63%	49%	73%
	Carc Wt	EMA	Rib	Rump	RBV	IMF	SELECTION INDICES			
EBV	+14	+3.0	+1.0	+1.2	+0.5	-0.1	Dom\$	Exp\$	NTerm\$	
Acc	59%	49%	53%	51%	51%	48%	+\$34	+\$39	+\$18	

Purchaser / \$:

TATTOO: BS N31E

DOB: 19/03/2017



COMMENTS: Netherland is an early maturing, deep bodied, well muscled bull.

Top 10% CE Dir, top 30% CE Dtrs, top 20% GL, top 5% EMA, top 15% rib, top 20% rump, top 30% RBV, top 20% domestic Index.

36 MOUNT WILLIAM NORTH STAR

BLELACK DIGGER MBM0038543 (IAE D8543F) (P)

SIRE: MOUNT WILLIAM KAKADU (BS K16E) (P)

MOUNT WILLIAM ESTHER E107 (BS E107E)

MOUNT WILLIAM CAESAR (BS C3E)

DAM: MOUNT WILLIAM GABRIELLE G4 (BS G4E)

MOUNT WILLIAM (BS X12E)

December 2018 Australasian Charolais BREEDPLAN Analysis										
	CE Dir	CE Dtrs	GL	BW	200	400	600	MCW	Milk	SS
EBV	+2.1	+3.6	-2.6	+0.3	+7	+15	+19	+18	+5	+0.3
Acc	27%	25%	43%	52%	59%	62%	69%	60%	39%	71%
	Carc Wt	EMA	Rib	Rump	RBV	IMF	SELECTION INDICES			
EBV	+18	+2.8	+0.0	+0.0	+0.9	-0.2	Dom\$	Exp\$	NTerm\$	
Acc	57%	47%	52%	51%	50%	46%	+\$20	+\$25	+\$14	

Purchaser / \$:

TATTOO: BS N54E

DOB: 23/03/2017



COMMENTS: North Star is an early maturing, long, deep, very well muscled bull. He has a very square behind and is well balanced.

Top 25% CE Dtrs, top 10% EMA, top 15% RBV.

**QUALITY, DEPENDABILITY &
PERFORMANCE
ARE THE FOUNDATIONS OF**



**YOUR BUILDING BLOCKS FOR
BALANCED NUTRITION &
IMPROVED PRODUCTIVITY**

www.totalresult.com.au/tpm-products

For Further information contact

Mark Facy on 0427 243 320

ARTIFICIAL BREEDING
ORGANIZE YOUR AI PROGRAM NOW!



SUPER SPERM SERVICES

- ▶ ARTIFICIAL BREEDING PROGRAMS
- ▶ SEMEN COLLECTIONS
- ▶ SEMEN SALES
- ▶ PREGNANCY TEST SCANNING
- ▶ FREEZE BRANDING
- ▶ SEMEN SHIPMENTS
- ▶ CALF DEHORNING
- ▶ FROM 1 TO 1000, NO JOB TOO BIG OR SMALL!



WWW.NATIONWIDEAB.COM.AU
CONTACT DREW PICKFORD

0428.925.255 | drew@nationwideab.com.au

NATIONWIDE ARTIFICIAL BREEDERS PTY LTD.



37 MOUNT WILLIAM NEWCASTLE (P)

LT WESTERN SPUR 2061 PLD M645786 (OAU X2061E) (P)

SIRE: MOUNT WILLIAM GIFFORD (BS G19E) (P)

MOUNT WILLIAM CARMEN C34 (BS C34E)

PALGROVE DOVER (PK D191E) (P)

DAM: MOUNT WILLIAM JINGELIC J133 (BS J133E)

MOUNT WILLIAM EDWINA E26 (BS E26E)

December 2018 Australasian Charolais BREEDPLAN Analysis										
	CE Dir	CE Dtrs	GL	BW	200	400	600	MCW	Milk	SS
EBV	+6.6	+6.0	-3.0	+0.1	+9	+14	+17	+22	+8	+1.1
Acc	36%	33%	39%	51%	59%	62%	69%	58%	39%	72%
	Carc Wt	EMA	Rib	Rump	RBV	IMF	SELECTION INDICES			
EBV	+12	+2.0	+1.0	+1.4	-0.1	+0.1	Dom\$	Exp\$	NTerm\$	
Acc	56%	48%	51%	50%	50%	47%	+\$32	+\$44	+\$17	

TATTOO: BS N60E

DOB: 24/03/2017



COMMENTS: Newcastle is a medium maturing, deep bodied, smooth muscled bull.

Top 15% CE Dir and CE Dtrs, top 35% GL and BW, top 30% milk and EMA, top 15% rib and rump, top 25% domestic and export Index.

Purchaser / \$:

38 MOUNT WILLIAM NED N17E (AI)

MERIT ROUNDUP 9508W PMC326558 (OAC E6558E) (P)

SIRE: RANGAN ROUNDUP K36 (RAN K36E) (P)

RANGAN PARK BELLE H125 (RAN H125E) (P)

PALGROVE YEMEN (PK Y359E)

DAM: MOUNT WILLIAM HURRICANE (BS H154E)

MOUNT WILLIAM BRIANNA B69 (BS B69E)

December 2018 Australasian Charolais BREEDPLAN Analysis										
	CE Dir	CE Dtrs	GL	BW	200	400	600	MCW	Milk	SS
EBV	+4.9	+3.8	-3.7	-0.2	+14	+21	+40	+33	+5	+3.5
Acc	39%	33%	72%	57%	58%	61%	68%	57%	39%	74%
	Carc Wt	EMA	Rib	Rump	RBV	IMF	SELECTION INDICES			
EBV	+23	+0.2	-0.4	-0.3	-0.3	+0.6	Dom\$	Exp\$	NTerm\$	
Acc	55%	49%	52%	51%	51%	48%	+\$39	+\$56	+\$24	

TATTOO: BS N17E

DOB: 16/03/2017



COMMENTS: Ned is a medium maturing, long, well balanced bull with a good topline.

Top 25% CE Dir, CE Dtrs, and GL, top 30% BW and 200 day, top 20% 400, top 25% 600 day weights, top 1% SS, top 30% Carc WT, top 15% IMF, domestic and export, top 20% N Term Index.

Purchaser / \$:

39 MOUNT WILLIAM NEREO (P)

LT WESTERN SPUR 2061 PLD M645786 (OAU X2061E) (P)

SIRE: MOUNT WILLIAM GIFFORD (BS G19E) (P)

MOUNT WILLIAM CARMEN C34 (BS C34E)

MOUNT WILLIAM FERGUS (BS F2E) (P)

DAM: MOUNT WILLIAM KATHLEEN K90 (BS K90E) (P)

MOUNT WILLIAM DIDI D54 (BS D54E)

MID PARENT EBVS - JANUARY 2019										
	CE Dir	CE Dtrs	GL	BW	200	400	600	MCW	Milk	SS
EBV	+6.4	+6.3	-2.7	+0.4	+8	+14	+23	+25	+5	+1.5
	Carc Wt	EMA	Rib	Rump	RBV	IMF	SELECTION INDICES			
EBV	+15	+1.9	+1.1	+1.6	0.0	-0.2	Dom\$	Exp\$	NTerm\$	
							+\$32	+\$48	+\$20	

TATTOO: BS N108E

DOB: 05/04/2017



COMMENTS: Nereo is an early maturing, very long well balanced bull with a smooth muscle pattern and good neck extension.

Top 20% CE Dir, top 10% CE Dtrs, top 25% SS, top 15% rib and rump, top 25% domestic, top 20% export index.

The EBVs shown are indicative figures only. Current figures available on the Field Day (2 Feb) or via Charolais Society website (www.charolais.com.au) at the start of Feb.

Purchaser / \$:

40 MOUNT WILLIAM NOEL (P)

BLELACK DIGGER MBM0038543 (IAE D8543F) (P)

SIRE: MOUNT WILLIAM KAKADU (BS K16E) (P)

MOUNT WILLIAM ESTHER E107 (BS E107E)

MOUNT WILLIAM FERGUS (BS F2E) (P)

DAM: MOUNT WILLIAM KELLIE K75 (BS K75E) (P)

MOUNT WILLIAM DEE D26 (BS D26E)

December 2018 Australasian Charolais BREEDPLAN Analysis										
	CE Dir	CE Dtrs	GL	BW	200	400	600	MCW	Milk	SS
EBV	+2.6	-0.9	-1.7	+1.0	+10	+21	+29	+24	+9	-1.0
Acc	27%	25%	44%	52%	58%	61%	69%	57%	32%	71%
	Carc Wt	EMA	Rib	Rump	RBV	IMF	SELECTION INDICES			
EBV	+23	+3.2	-0.1	-0.2	+1.3	-0.2	Dom\$	Exp\$	NTerm\$	
Acc	57%	48%	54%	53%	52%	48%	+\$20	+\$23	+\$19	

Purchaser / \$:

TATTOO: BS N16E

DOB: 16/03/2017



COMMENTS: Noel is an early maturing, long, smooth muscled, free moving, well muscled bull.

Top 25% milk, top 30% Carc WT, top 5% EMA, top 5% RBV.

41 MOUNT WILLIAM NECROMANCER (AI)

PALGROVE VIAGRA (PK V92E) (P)

SIRE: PALGROVE DOVER (PK D191E) (P)

PALGROVE FLARE 83 (PK A137E)

MOUNT WILLIAM DASH D62 (BS D62E) (P)

DAM: MOUNT WILLIAM HELENA H20 (BS H20E)

MOUNT WILLIAM DELMA D32 (BS D32E)

December 2018 Australasian Charolais BREEDPLAN Analysis										
	CE Dir	CE Dtrs	GL	BW	200	400	600	MCW	Milk	SS
EBV	+2.5	-0.7	-1.9	+1.2	+9	+15	+12	+17	+9	+0.4
Acc	37%	37%	71%	55%	60%	63%	69%	59%	43%	72%
	Carc Wt	EMA	Rib	Rump	RBV	IMF	SELECTION INDICES			
EBV	+11	+4.1	+1.0	+1.3	+0.7	+0.2	Dom\$	Exp\$	NTerm\$	
Acc	58%	49%	52%	51%	51%	48%	+\$21	+\$23	+\$12	

Purchaser / \$:

TATTOO: BS N49E

DOB: 22/03/2017



COMMENTS: Necromancer is an early maturing, long, deep, well balanced, smooth muscled bull with a good topline.

Top 25% milk, top 1% EMA, top 15% rib, top 20% rump, top 20% RBV.

42 MOUNT WILLIAM NOTORIOUS

PCC SUDDEN IMPACT 848U PEMC321017 (OAC D1017E) (P)

SIRE: PALGROVE HANNIBAL (PK H1312E) (P)

PALGROVE DIGNA 84 (PK W283E)

ROSEDALE BOSS (MR B206E)

DAM: MOUNT WILLIAM JAQRANDA J45 (BS J45E)

MOUNT WILLIAM ANGIE A90 (BS A90E)

December 2018 Australasian Charolais BREEDPLAN Analysis										
	CE Dir	CE Dtrs	GL	BW	200	400	600	MCW	Milk	SS
EBV	-8.8	+2.1	-2.1	+1.5	+11	+26	+32	+24	+10	-0.3
Acc	39%	33%	52%	56%	61%	63%	70%	59%	41%	73%
	Carc Wt	EMA	Rib	Rump	RBV	IMF	SELECTION INDICES			
EBV	+20	+3.5	+1.1	+1.2	+0.3	+0.6	Dom\$	Exp\$	NTerm\$	
Acc	58%	49%	53%	52%	51%	48%	+\$11	+\$9	+\$10	

Purchaser / \$:

TATTOO: BS N139E

DOB: 24/04/2017



COMMENTS: Notorious is an early maturing, long thick set, well muscled bull who is the youngest in the draft but matches up well with his contemporaries.

Top 20% milk, top 5% EMA, top 15% rib, top 20% rump, top 15% IMF.



43 MOUNT WILLIAM NAMIBIA (P)

LT WESTERN SPUR 2061 PLD M645786 (OAU X2061E) (P)

SIRE: MOUNT WILLIAM GIFFORD (BS G19E) (P)

MOUNT WILLIAM CARMEN C34 (BS C34E)

MOUNT WILLIAM CONFUSHOUS (BS C11E)

DAM: MOUNT WILLIAM EFFIE E27 (BS E27E)

MOUNT WILLIAM CANDENCE C2 (BS C2E)

December 2018 Australasian Charolais BREEDPLAN Analysis										
	CE Dir	CE Dtrs	GL	BW	200	400	600	MCW	Milk	SS
EBV	+7.5	+8.3	-3.0	-0.4	+5	+8	+12	+7	+8	+0.6
Acc	35%	32%	39%	55%	61%	64%	70%	61%	45%	72%
	Carc Wt	EMA	Rib	Rump	RBV	IMF	SELECTION INDICES			
EBV	+10	+2.2	+0.9	+1.2	+0.2	+0.2	Dom\$	Exp\$	NTerm\$	
Acc	58%	48%	52%	51%	50%	47%	+\$32	+\$44	+\$16	

Purchaser / \$:

TATTOO: BS N15E

DOB: 15/03/2017



COMMENTS: Nambia is a long, smooth muscled bull with very good structure.

Top 15% CE Dir, top 5% CE Dtrs, top 25% BW, top 30% milk, top 20% EMA, rib and rump, top 25% domestic and export Index. Top 15% CE Dir, top 5% CE Dtrs, top 25% BW, top 30% milk, top 20% EMA, rib and rump, top 25% domestic and export Indexes.

44 MOUNT WILLIAM NUTMEG

BLELACK DIGGER MBM0038543 (IAE D8543F) (P)

SIRE: MOUNT WILLIAM KAKADU (BS K16E) (P)

MOUNT WILLIAM ESTHER E107 (BS E107E)

PALGROVE YEMEN (PK Y359E)

DAM: MOUNT WILLIAM HONEY H101 (BS H101E)

MOUNT WILLIAM DAVINIA (BS D12E)

December 2018 Australasian Charolais BREEDPLAN Analysis										
	CE Dir	CE Dtrs	GL	BW	200	400	600	MCW	Milk	SS
EBV	+1.9	-1.8	-1.4	+1.0	+8	+18	+29	+26	+9	-0.3
Acc	30%	28%	43%	51%	57%	61%	68%	57%	36%	71%
	Carc Wt	EMA	Rib	Rump	RBV	IMF	SELECTION INDICES			
EBV	+20	+2.2	+0.0	+0.0	+0.6	+0.1	Dom\$	Exp\$	NTerm\$	
Acc	56%	47%	51%	50%	50%	46%	+\$16	+\$22	+\$17	

Purchaser / \$:

TATTOO: BS N73E

DOB: 25/03/2017



COMMENTS: Nutmeg is an early maturing, well balanced, thick set, well muscled bull.

Top 25% milk, top 20% EMA, top 25% RBV.

45 MOUNT WILLIAM NESTLE

LT WESTERN SPUR 2061 PLD M645786 (OAU X2061E) (P)

SIRE: MOUNT WILLIAM GIFFORD (BS G19E) (P)

MOUNT WILLIAM CARMEN C34 (BS C34E)

IMPAIR 1893102983 (OAF N189F)

DAM: MOUNT WILLIAM KELLY K31 (BS K31E)

MOUNT WILLIAM ERIN E90 (BS E90E)

December 2018 Australasian Charolais BREEDPLAN Analysis										
	CE Dir	CE Dtrs	GL	BW	200	400	600	MCW	Milk	SS
EBV	+6.7	+8.8	-2.6	-0.5	+6	+13	+17	+17	+10	+0.2
Acc	40%	37%	47%	53%	60%	63%	70%	59%	42%	72%
	Carc Wt	EMA	Rib	Rump	RBV	IMF	SELECTION INDICES			
EBV	+15	+2.6	+0.7	+0.8	+0.5	-0.1	Dom\$	Exp\$	NTerm\$	
Acc	58%	49%	52%	51%	51%	48%	+\$33	+\$43	+\$18	

Purchaser / \$:

TATTOO: BS N62E

DOB: 24/03/2017



COMMENTS: Nestle is an early maturing, long, well muscled, smooth bodied bull.

Top 15% CE Dir, top 5% CE Dtrs, top 25% BW, top 20% milk, top 10% MA, top 25% rib, top 30% rump and RBW, top 25% domestic and export Indexes.



46 MOUNT WILLIAM NEW YORK

TATTOO: BS N131E

DOB: 19/04/2017

PCC SUDDEN IMPACT 848U PEMC321017 (OAC D1017E) (P)
SIRE: PALGROVE HANNIBAL (PK H1312E) (P)
 PALGROVE DIGNA 84 (PK W283E)
 ROSEDALE BOSS (MR B206E)
DAM: MOUNT WILLIAM GRACIE G52 (BS G52E)
 MOUNT WILLIAM AMBER A68 (BS A68E)



December 2018 Australasian Charolais BREEDPLAN Analysis										
	CE Dir	CE Dtrs	GL	BW	200	400	600	MCW	Milk	SS
EBV	-7.0	+2.3	-2.9	+1.4	+14	+33	+43	+33	+10	+1.8
Acc	40%	33%	54%	56%	60%	62%	69%	58%	40%	73%
	Carc Wt	EMA	Rib	Rump	RBV	IMF	SELECTION INDICES			
EBV	+24	+2.8	+1.0	+1.3	+0.1	+0.5	Dom\$	Exp\$	NTerm\$	
Acc	57%	49%	53%	52%	51%	48%	+\$22	+\$27	+\$17	

COMMENTS: New York is a medium maturing, long bodied, well muscled bull.

Top 30% 200, top 10% 400, top 20% 600, top 20% milk, top 15% SS, top 25% Carc WT, top 10% EMA, top 15% rib, top 20% rump and IMF.

Purchaser / \$:

47 MOUNT WILLIAM NEANDERTAL (AI) (R/F)

TATTOO:

DOB: 23/03/2017

MERIT ROUNDUP 9508W PMC326558 (OAC E6558E) (P)
SIRE: RANGAN ROUNDUP K36 (RAN K36E) (P)
 RANGAN PARK BELLE H125 (RAN H125E) (P)
 KADLUNGA VICTOR (KDA Y1E)
DAM: MOUNT WILLIAM ELSA E77 (BS E77E)
 MOUNT WILLIAM (BS W78E)



December 2018 Australasian Charolais BREEDPLAN Analysis										
	CE Dir	CE Dtrs	GL	BW	200	400	600	MCW	Milk	SS
EBV	-9.7	-2.9	-0.4	+2.5	+19	+37	+52	+71	+5	+2.9
Acc	39%	32%	71%	61%	60%	62%	69%	60%	42%	73%
	Carc Wt	EMA	Rib	Rump	RBV	IMF	SELECTION INDICES			
EBV	+23	+0.0	-0.5	-0.6	+0.0	+0.2	Dom\$	Exp\$	NTerm\$	
Acc	56%	48%	52%	51%	50%	47%	+\$8	+\$17	+\$13	

COMMENTS: Neandertal is a medium maturing, long, well muscled, smooth coated red factor bull.

Top 5% 200, 400, top 10% 600, top 5% MCW and SS, top 30% Carc WT.

Purchaser / \$:

48 MOUNT WILLIAM NAYLOR (AI) (P)

TATTOO: BS N28E

DOB: 19/03/2017

MERIT ROUNDUP 9508W PMC326558 (OAC E6558E) (P)
SIRE: RANGAN ROUNDUP K36 (RAN K36E) (P)
 RANGAN PARK BELLE H125 (RAN H125E) (P)
 MOUNT WILLIAM GIFFORD (BS G19E) (P)
DAM: MOUNT WILLIAM LOLLY (BS L52E) (P)
 MOUNT WILLIAM H40E (BS H40E)



December_2 2018 Australasian Charolais BREEDPLAN Analysis										
	CE Dir	CE Dtrs	GL	BW	200	400	600	MCW	Milk	SS
EBV	+3.8	+2.5	-2.7	-0.4	+10	+22	+26	+22	+5	+3.0
Acc	37%	29%	71%	55%	56%	59%	67%	55%	33%	52%
	Carc Wt	EMA	Rib	Rump	RBV	IMF	SELECTION INDICES			
EBV	+14	-0.4	+0.3	+0.5	-0.6	+0.2	Dom\$	Exp\$	NTerm\$	
Acc	54%	47%	51%	49%	49%	46%	+\$30	+\$43	+\$16	

COMMENTS: Naylor is an early maturing, deep bodied, well muscled, neat bull

Purchaser / \$:



49 MOUNT WILLIAM NELSON N29E (P)

TATTOO: BS N29E

DOB: 19/03/2017

PALGROVE ZAPP (PK Z175E) (P)
SIRE: MOUNT WILLIAM DASH D62 (BS D62E) (P)
MOUNT WILLIAM U9E (BS U9E)
ROSEDALE BOSS (MR B206E)
DAM: MOUNT WILLIAM KATE K17 (BS K17E) (P)
MOUNT WILLIAM HAPPY H112 (BS H112E)



COMMENTS: Nelson is an early maturing, long, well muscled, smooth bodied bull.

Top 15% CE Dir, top 35% rib fat.

December 2018 Australasian Charolais BREEDPLAN Analysis										
	CE Dir	CE Dtrs	GL	BW	200	400	600	MCW	Milk	SS
EBV	+6.7	+2.9	-2.6	-0.3	+3	+8	+10	+4	+10	+0.3
Acc	38%	36%	47%	58%	63%	65%	72%	62%	46%	73%
	Carc Wt	EMA	Rib	Rump	RBV	IMF	SELECTION INDICES			
EBV	-1	+1.3	+0.5	+0.5	+0.2	+0.0	Dom\$	Exp\$	NTerm\$	
Acc	61%	52%	57%	56%	55%	52%	+\$19	+\$23	+\$8	

Purchaser / \$:

50 MOUNT WILLIAM NADAL (P)

TATTOO: BS N61E

DOB: 24/03/2017

ROSEDALE ZINGER (MR Z18E) (P)
SIRE: ROSEDALE E-TAG (MR E160E) (P)
ROSEDALE LUCY A210 (MR A210E) (P)
PALGROVE DOVER (PK D191E) (P)
DAM: MOUNT WILLIAM KILLALEE K95 (BS K95E)
MOUNT WILLIAM BRIANNA B69 (BS B69E)



COMMENTS: Nadal is a medium maturing , long, smooth muscled bull.

Top 25% CE Dir, top 15% CE Dtrs, top 35% GL, top 20% BW, top 35% milk, top 20% rib and rump, top 25% IMF, top 35% domestic Index.

December 2018 Australasian Charolais BREEDPLAN Analysis										
	CE Dir	CE Dtrs	GL	BW	200	400	600	MCW	Milk	SS
EBV	+4.6	+5.1	-3.1	-0.6	+8	+13	+15	+15	+8	+0.8
Acc	38%	36%	42%	55%	61%	64%	71%	59%	40%	72%
	Carc Wt	EMA	Rib	Rump	RBV	IMF	SELECTION INDICES			
EBV	+10	+1.6	+0.9	+1.2	-0.3	+0.4	Dom\$	Exp\$	NTerm\$	
Acc	59%	50%	54%	52%	52%	49%	+\$28	+\$35	+\$13	

Purchaser / \$:

51 MOUNT WILLIAM NEEDLES (P)

TATTOO: BS N122E

DOB: 12/04/2017

BLELACK DIGGER MBM0038543 (IAE D8543F) (P)
SIRE: MOUNT WILLIAM KAKADU (BS K16E) (P)
MOUNT WILLIAM ESTHER E107 (BS E107E)
ROSEDALE E-TAG (MR E160E) (P)
DAM: MOUNT WILLIAM KAHLUHA K119 (BS K119E) (P)
MOUNT WILLIAM HEADLINE H80 (BS H80E)



COMMENTS: Needles is an early maturing, long, smooth well muscled bull.

Top 15% BW, top 30% IMF.

December 2018 Australasian Charolais BREEDPLAN Analysis										
	CE Dir	CE Dtrs	GL	BW	200	400	600	MCW	Milk	SS
EBV	+1.7	-0.1	-2.5	-0.8	+3	+8	+10	+4	+10	+0.1
Acc	29%	26%	42%	51%	58%	61%	69%	57%	31%	71%
	Carc Wt	EMA	Rib	Rump	RBV	IMF	SELECTION INDICES			
EBV	+8	+0.8	+0.1	+0.2	-0.1	+0.3	Dom\$	Exp\$	NTerm\$	
Acc	57%	48%	54%	53%	52%	48%	+\$13	+\$15	+\$8	

Purchaser / \$:

PALGROVE HANNIBAL (AI) (ET) (P) (R/F)

TATTOO: PK H1312E

December 2018 Australasian Charolais BREEDPLAN Analysis										
	CE Dir	CE Dtrs	GL	BW	200	400	600	MCW	Milk	SS
EBV	-23.3	+3.9	-4.0	+2.0	+17	+41	+55	+44	+13	+2.0
Acc	66%	52%	92%	83%	84%	84%	91%	78%	61%	88%
	Carc Wt	EMA	Rib	Rump	RBY	IMF	SELECTION INDICES			
EBV	+32	+5.6	+2.4	+3.0	-0.3	+1.6	Dom\$	Exp\$	NTerm\$	
Acc	76%	67%	78%	77%	70%	66%	+\$5	+\$4	+\$4	



PALGROVE QUINTERO (PK Q228E)

SIRE: PCC SUDDEN IMPACT 848U PEMC321017 (OAC D1017E) (P)
 SPARROWS TEMPEST 174K PFC290732 (PED -732E) (P)

DAM: PALGROVE DIGNA 84 (PK W283E)
 PALGROVE DIGNA 44 R/F (PK Q188E)

COMMENTS: An exclusive opportunity to purchase a limited amount of semen from one of the bulls of the moment Palgrove Hannibal. This herd improving bull produces thick soft clean skinned calves. They grow fast and have both style and substance. For the past three years Hannibal calves have had the top weaning weights at Mt William. His bulls have scanned at the top of the drop for Fat, EMA and IMF. He has sired sale topping progeny at Palgrove in 2017 Palgrove Legend (P) \$40,000 and Holds the Victorian Record for a Charolais sire with Mount William Monolith \$26,000 sold to Rosedale Charolais in 2018. This is an opportunity that may not be repeated and is not to be missed.



Palgrove Legend (PK L564E)
 - Son of Palgrove Hannibal

52 5 STRAWS x PALGROVE HANNIBAL (AI) (ET) (P) (R/F)

Purchaser / \$:

53 5 STRAWS x PALGROVE HANNIBAL (AI) (ET) (P) (R/F)

Purchaser / \$:

agribusiness

Dedicated to agribusiness in Western Victoria.

Our knowledge of the industries and conditions in Western Victoria, means that we have the authority to make decisions on the spot. So whether you're after farm finance, crop finance or risk management products, a local NAB Agribusiness Manager can help you achieve your financial goals. And because we're so close, it's easy for us to catchup at your property or office.

Speak to us today or visit nab.com.au/agribusiness

Lloyd Neilson, Regional Agribusiness Manager, 0412 747 361
Mick Aldermann, Agribusiness Manager, Ararat, 0477 314 074

Nigel Cross, Agribusiness Manager, Hamilton, 0427 364 778
Stuart Postlethwaite, Agribusiness Manager, Ballarat, 0427 820 699



Mount William REGISTERED FEMALES



Heifer lots commence on the next page.



54 MOUNT WILLIAM NADINE (AI)

MERIT ROUNDUP 9508W PMC326558 (OAC E6558E) (P)

SIRE: RANGAN ROUNDUP K36 (RAN K36E) (P)

RANGAN PARK BELLE H125 (RAN H125E) (P)

December 2018 Australasian Charolais BREEDPLAN Analysis										
	CE Dir	CE Dtrs	GL	BW	200	400	600	MCW	Milk	SS
EBV	-0.8	+1.5	-1.4	+0.8	+15	+30	+35	+37	+6	+2.5
Acc	38%	31%	70%	58%	58%	62%	68%	57%	36%	53%
	Carc Wt	EMA	Rib	Rump	RBV	IMF	SELECTION INDICES			
EBV	+20	+0.8	-0.8	-1.2	+0.6	+0.1	Dom\$	Exp\$	NTerm\$	
Acc	57%	46%	59%	59%	53%	47%	+\$23	+\$30	+\$16	

Purchaser / \$:

TATTOO: BS N103E

DOB: 05/04/2017

MOUNT WILLIAM DASH D62 (BS D62E) (P)

DAM: MOUNT WILLIAM LUNA (BS L44E)

MOUNT WILLIAM FAVOR F11 (BS F11E)

COMMENTS: Nadine is an early maturing, refined fronted smooth bodied, red heifer. The first of the Roundup Daughters to sell. **Joined to Palgrove Nitro.**

Top 25% 200, top 20% 400 day weight, top 5% SS, top 25% RBV.

55 MOUNT WILLIAM NAKITA (P)

BLELACK DIGGER MBM0038543 (IAE D8543F) (P)

SIRE: MOUNT WILLIAM KAKADU (BS K16E) (P)

MOUNT WILLIAM ESTHER E107 (BS E107E)

December 2018 Australasian Charolais BREEDPLAN Analysis										
	CE Dir	CE Dtrs	GL	BW	200	400	600	MCW	Milk	SS
EBV	+7.3	+1.0	-1.2	-0.1	+3	+9	+6	+7	+7	-0.4
Acc	28%	25%	42%	55%	59%	62%	69%	60%	39%	49%
	Carc Wt	EMA	Rib	Rump	RBV	IMF	SELECTION INDICES			
EBV	+17	+3.9	-0.2	-0.3	+1.6	-0.4	Dom\$	Exp\$	NTerm\$	
Acc	57%	45%	58%	58%	53%	45%	+\$23	+\$25	+\$13	

Purchaser / \$:

TATTOO: BS N27E

DOB: 18/03/2017

MOUNT WILLIAM BRUTE B111 (BS B111E)

DAM: MOUNT WILLIAM EVALEEN E129 (BS E129E)

MOUNT WILLIAM (BS W61E)

COMMENTS: Nakita is a feminine heifer with a good topline and good muscle expression in her hind quarter. **Joined to Palgrove Nitro.**

Top 15% CE Dir, top 1% EMA, top 5% RBV.

56 MOUNT WILLIAM NUNU (P) (TW)

PCC SUDDEN IMPACT 848U PEMC321017 (OAC D1017E) (P)

SIRE: PALGROVE HANNIBAL (PK H1312E) (P)

PALGROVE DIGNA 84 (PK W283E)

December 2018 Australasian Charolais BREEDPLAN Analysis										
	CE Dir	CE Dtrs	GL	BW	200	400	600	MCW	Milk	SS
EBV	-9.9	+2.0	-3.0	+0.6	+8	+20	+24	+15	+10	+1.3
Acc	39%	33%	52%	57%	61%	62%	69%	59%	40%	54%
	Carc Wt	EMA	Rib	Rump	RBV	IMF	SELECTION INDICES			
EBV	+11	+3.1	+1.6	+1.9	-0.6	+1.2	Dom\$	Exp\$	NTerm\$	
Acc	58%	47%	60%	60%	54%	48%	+\$10	+\$9	+\$5	

Purchaser / \$:

TATTOO: BS N8E

DOB: 13/03/2017

MOUNT WILLIAM DASH D62 (BS D62E) (P)

DAM: MOUNT WILLIAM JILL J44 (BS J44E) (P)

PALGROVE FREDIA 12 (PK C793E)

COMMENTS: NuNu is a typical Hannibal daughter, polled, good volume and softness. She will develop into a nice cow. **Joined to Palgrove Nitro.**

Top 35% GL, top 20% milk, top 35% SS, top 5% EMA, rib, top 10% rump, top 5% IMF.

57 MOUNT WILLIAM NEARSIDE

ROSEDALE ZINGER (MR Z18E) (P)

SIRE: ROSEDALE E-TAG (MR E160E) (P)

ROSEDALE LUCY A210 (MR A210E) (P)

MID PARENT EBVS - JANUARY 2019										
	CE Dir	CE Dtrs	GL	BW	200	400	600	MCW	Milk	SS
EBV	+3.7	-6.3	-2.4	-0.1	+12	+22	+32	+22	+6	+0.9
	Carc Wt	EMA	Rib	Rump	RBV	IMF	SELECTION INDICES			
EBV	+16	+0.5	+0.4	+0.6	-0.3	+0.3	Dom\$	Exp\$	NTerm\$	
							+\$20	+\$29	+\$20	

The EBVs shown are indicative figures only. Current figures available on the Field Day (2 Feb) or via Charolais Society website (www.charolais.com.au) at the start of Feb.

Purchaser / \$:

TATTOO: BS N105E

DOB: 05/04/2017

ROSEDALE BOSS (MR B206E)

DAM: MOUNT WILLIAM GEANIE G58 (BS G58E)

MOUNT WILLIAM DONATA D66 (BS D66E)

COMMENTS: Nearside is an early maturing, long, smooth bodied, easy doing heifer. A nice Heifer by E-tag who has left a good line of females in the herd. **Joined to Palgrove Nitro.**

Top 30% CE Dir, top 30% BW, top 35% rump, top 30% IMF.



Mount William REGISTERED FEMALES

58 MOUNT WILLIAM NOOK (AI) (P)

PALGROVE ZAPP (PK Z175E) (P)

SIRE: MOUNT WILLIAM DASH D62 (BS D62E) (P)

MOUNT WILLIAM U9E (BS U9E)

TATTOO: BS N124E

DOB: 13/04/2017

KADLUNGA VICTOR (KDA Y1E)

DAM: MOUNT WILLIAM ELLA E62 (BS E62E)

MOUNT WILLIAM N49E (BS N49E)

December 2018 Australasian Charolais BREEDPLAN Analysis										
	CE Dir	CE Dtrs	GL	BW	200	400	600	MCW	Milk	SS
EBV	+1.6	+3.5	-0.1	+0.4	+3	+3	-3	-2	+9	+0.1
Acc	40%	38%	50%	62%	64%	66%	72%	65%	52%	52%
	Carc Wt	EMA	Rib	Rump	RBV	IMF	SELECTION INDICES			
EBV	+2	+2.8	+0.8	+0.8	+0.6	+0.1	Dom\$	Exp\$	NTerm\$	
Acc	62%	49%	62%	61%	56%	50%	+\$13	+\$12	+\$3	

COMMENTS: Nook is a neat heifer, good topline, good length, clean fronted and feminine. **Joined to Palgrove Nitro**

Top 30% CE Dtrs, top 25% milk, top 10% EMA, top 20% rib, top 30% rump fat.

Purchaser / \$:

59 MOUNT WILLIAM NANDA (P)

MERIT ROUNDUP 9508W PMC326558 (OAC E6558E) (P)

SIRE: RANGAN ROUNDUP K36 (RAN K36E) (P)

RANGAN PARK BELLE H125 (RAN H125E) (P)

TATTOO: BS N144E

DOB: 01/05/2017

MOUNT WILLIAM FREEWHEELER (BS F6E)

DAM: MOUNT WILLIAM LINDA (BS L51E) (P)

MOUNT WILLIAM GLOWING (BS G113E) (P)

December 2018 Australasian Charolais BREEDPLAN Analysis										
	CE Dir	CE Dtrs	GL	BW	200	400	600	MCW	Milk	SS
EBV	-1.6	+0.1	-2.9	+2.0	+23	+45	+67	+75	+4	+3.4
Acc	36%	30%	47%	55%	57%	61%	67%	56%	34%	52%
	Carc Wt	EMA	Rib	Rump	RBV	IMF	SELECTION INDICES			
EBV	+33	+0.7	-0.3	-0.4	+0.2	+0.2	Dom\$	Exp\$	NTerm\$	
Acc	56%	45%	58%	58%	53%	46%	+\$32	+\$53	+\$30	

COMMENTS: Nanda is a medium maturing, large framed, clean fronted, deep bodied, long heifer. **Joined to Palgrove Nitro.**

Top 1% for 200, 400, 600 day weight, MCW and SS, top 5% Carc WT, top 25% domestic, top 15% export, top 10% N Term Indexes.

Purchaser / \$:

60 MOUNT WILLIAM NARA N113E

BLEBLACK DIGGER MBM0038543 (IAE D8543F) (P)

SIRE: MOUNT WILLIAM KAKADU (BS K16E) (P)

MOUNT WILLIAM ESTHER E107 (BS E107E)

TATTOO: BS N113E

DOB: 07/04/2017

MOUNT WILLIAM FERGUS (BS F2E) (P)

DAM: MOUNT WILLIAM KUTIE K117 (BS K117E) (P)

MOUNT WILLIAM (BS X95E)

December 2018 Australasian Charolais BREEDPLAN Analysis										
	CE Dir	CE Dtrs	GL	BW	200	400	600	MCW	Milk	SS
EBV	+3.3	+0.8	-2.6	+0.3	+11	+23	+33	+36	+6	+0.3
Acc	27%	25%	43%	52%	58%	61%	69%	57%	34%	50%
	Carc Wt	EMA	Rib	Rump	RBV	IMF	SELECTION INDICES			
EBV	+24	+3.0	+0.9	+1.2	+0.3	+0.1	Dom\$	Exp\$	NTerm\$	
Acc	57%	46%	60%	60%	55%	47%	+\$30	+\$43	+\$23	

COMMENTS: Nara is finer style heifer by Kakadu. She is feminine and from a good genetic base. **Joined to Palgrove Nitro.**

Top 35% CE Dir. Top 25% Carc WT, top 5% EMA, top 20% rib and rump, top 30% domestic, top 25% export and N Term Indexes.

Purchaser / \$:



Congratulations to Corangamite Park for winning the best presented Pen at Colac with their Charolais/ Red Angus Composite cross calves \$2.99 per kg.

Pictured: Archie, Jodie and Nigel Barrie of Corangamite Park with Rob Abbott and Malcolm Schultz of the Victorian Region Charolais Society.



61 MOUNT WILLIAM NAY NAY (P)

ROSEDALE ZINGER (MR Z18E) (P)

SIRE: ROSEDALE E-TAG (MR E160E) (P)

ROSEDALE LUCY A210 (MR A210E) (P)

TATTOO: BS N83E

DOB: 27/03/2017

PALGROVE DOVER (PK D191E) (P)

DAM: MOUNT WILLIAM KATIE K5 (BS K5E)

MOUNT WILLIAM CLARE C91 (BS C91E)

December 2018 Australasian Charolais BREEDPLAN Analysis										
	CE Dir	CE Dtrs	GL	BW	200	400	600	MCW	Milk	SS
EBV	+1.7	-3.8	-2.3	+0.8	+13	+24	+30	+29	+8	+0.8
Acc	38%	36%	40%	56%	61%	63%	71%	60%	40%	51%
	Carc Wt	EMA	Rib	Rump	RBV	IMF	SELECTION INDICES			
EBV	+20	+3.2	+0.9	+1.2	+0.3	+0.4	Dom\$	Exp\$	NTerm\$	
Acc	59%	48%	63%	63%	57%	50%	+\$24	+\$30	+\$20	

COMMENTS: Nay nay is a medium maturing , neat, deep bodied, refined fronted heifer. **Joined to Palgrove Nitro.**

Top 25% CE Dtrs, top 35% 200, top 30% milk, top 5% EMA, top 20% rib and rump, top 25% IMF, top 35% N Term Index.

Purchaser / \$:

62 MOUNT WILLIAM NISKY (P)

BLELACK DIGGER MBM0038543 (IAE D8543F) (P)

SIRE: MOUNT WILLIAM KAKADU (BS K16E) (P)

MOUNT WILLIAM ESTHER E107 (BS E107E)

TATTOO: BS N110E

DOB: 06/04/2017

KADLUNGA VICTOR (KDA Y1E)

DAM: MOUNT WILLIAM KATHLEEN K37 (BS K37E)

MOUNT WILLIAM GILLIAN G43 (BS G43E)

December 2018 Australasian Charolais BREEDPLAN Analysis										
	CE Dir	CE Dtrs	GL	BW	200	400	600	MCW	Milk	SS
EBV	+1.3	-0.2	-2.2	+1.0	+13	+28	+46	+47	+10	+0.7
Acc	31%	28%	44%	53%	59%	61%	69%	58%	36%	51%
	Carc Wt	EMA	Rib	Rump	RBV	IMF	SELECTION INDICES			
EBV	+26	+1.9	+0.2	+0.2	+0.2	+0.4	Dom\$	Exp\$	NTerm\$	
Acc	58%	45%	59%	59%	54%	46%	+\$27	+\$40	+\$25	

COMMENTS: Nisky is a long, clean fronted heifer with a good hindquarter. **Joined to Palgrove Nitro.**

Top 35% BW, top 30% 400, top 15% 600, top 20% MCW and milk, top 30% EMA, top 25% IMF, top 35% domestic, top 30% export, top 15% N Term Indexes.

Purchaser / \$:

63 MOUNT WILLIAM NOVA (AI)

MERIT ROUNDUP 9508W PMC326558 (OAC E6558E) (P)

SIRE: RANGAN ROUNDUP K36 (RAN K36E) (P)

RANGAN PARK BELLE H125 (RAN H125E) (P)

TATTOO: BS N14E

DOB: 15/03/2017

KADLUNGA VICTOR (KDA Y1E)

DAM: MOUNT WILLIAM HARRIOTVILLE H62 (BS H62E)

MOUNT WILLIAM APRIL A99 (BS A99E)

December 2018 Australasian Charolais BREEDPLAN Analysis										
	CE Dir	CE Dtrs	GL	BW	200	400	600	MCW	Milk	SS
EBV	-0.2	+1.1	-3.4	+0.9	+18	+35	+49	+48	+4	+3.1
Acc	39%	33%	71%	59%	59%	62%	69%	58%	40%	54%
	Carc Wt	EMA	Rib	Rump	RBV	IMF	SELECTION INDICES			
EBV	+22	-0.2	-0.3	-0.4	-0.3	+0.7	Dom\$	Exp\$	NTerm\$	
Acc	57%	46%	59%	59%	54%	47%	+\$29	+\$45	+\$23	

COMMENTS: Nova is a medium maturing, deep bodied, large capacity heifer who will go on to make a great matron of the future. **Joined to Palgrove Nitro.**

Top 30% GL, top 10% 200, 400 and 600 day weight, top 20% MCW, top 1% SS, top 35% Carc WT, top 10% IMF, top 30% domestic, top 25% export and N Term Indexes.

Purchaser / \$:

END OF SALE



Thank you for attending the Mount William 2019 Annual On Property Sale.

We look forward to seeing you again next year.



Gorst Rural

**Best in Field for
Pastures and Livestock**
Lake Bolac - Tatyoon - Willaura - Skipton

For premium products, service and advice, contact:

admin@gorstrural.com.au

03 5350 2440



proadvice
helping family business grow

Proudly supporting Mt William

We can assist you with:

- Accounting
- Tax & Compliance
- Rural Consulting
- Strategic Business Planning
- Succession Planning

Call us for a no obligation discussion.

T: 03 5241 3888

E: geelong@proadvice.com.au

www.proadvice.com.au

LEADER PRODUCTS

- *Ear Tags for Sheep & Cattle*
- *Marking Rings*
- *Large range of Livestock Requirements*

- **LEADER IN NAME** • **LEADER IN QUALITY**
- **LEADER IN SERVICE**

TEL: (03) 9308 2355 FAX: (03) 93083484

**Thank you to Leader and Bruce Dumbrell
for their support of the 2019 Mount William Sale.**



We're here when you need us.

The business of farming is not for everyone.
But like you that's the business we're in.

With 170 years experience, Elders has the livestock knowledge to support your business. We market over 2.3 million cattle and 13.5 million sheep each year. But there's so much more we can offer. Our specialist animal health services and exclusive ELMS protocols improve the health, weight and quality of your cattle and sheep, whether they're on the farm, in transit or in the yard. And through traditional or online auctions, forward contracts or direct to processor, we ensure more options for buyers and sellers. So, when you're looking for the best livestock partner, we're here when you need us.

elders.com.au

Elders Rural Services Ararat 03 5352 8300
Neil Cooper 0419 600 354 or Nick Gray 0438 833 090





Mount William Station, Willaura, Vic.

